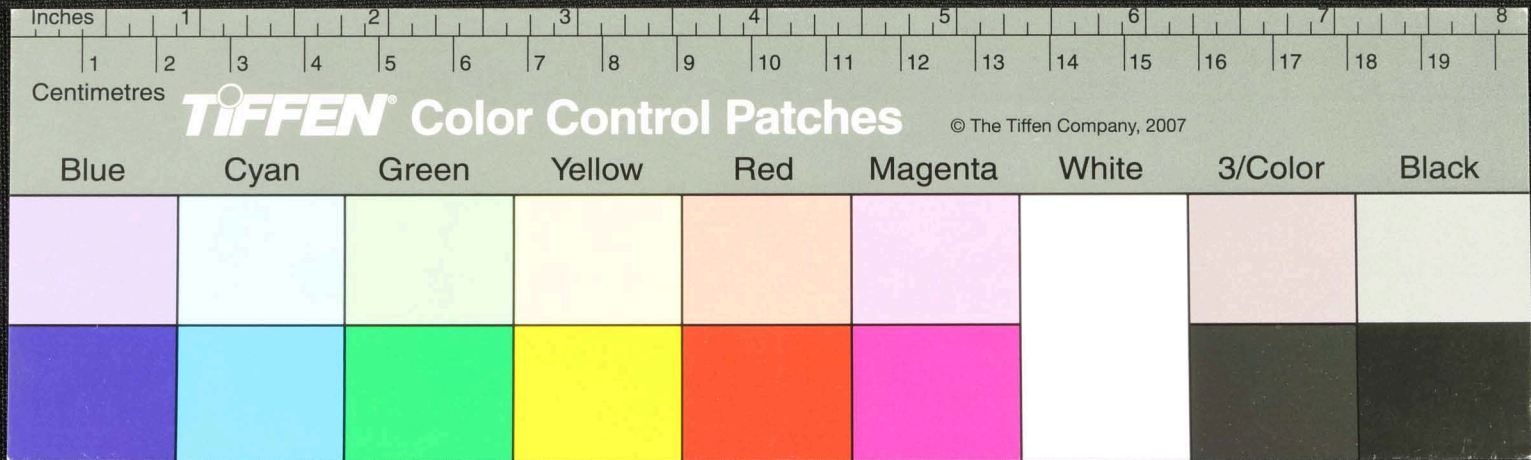
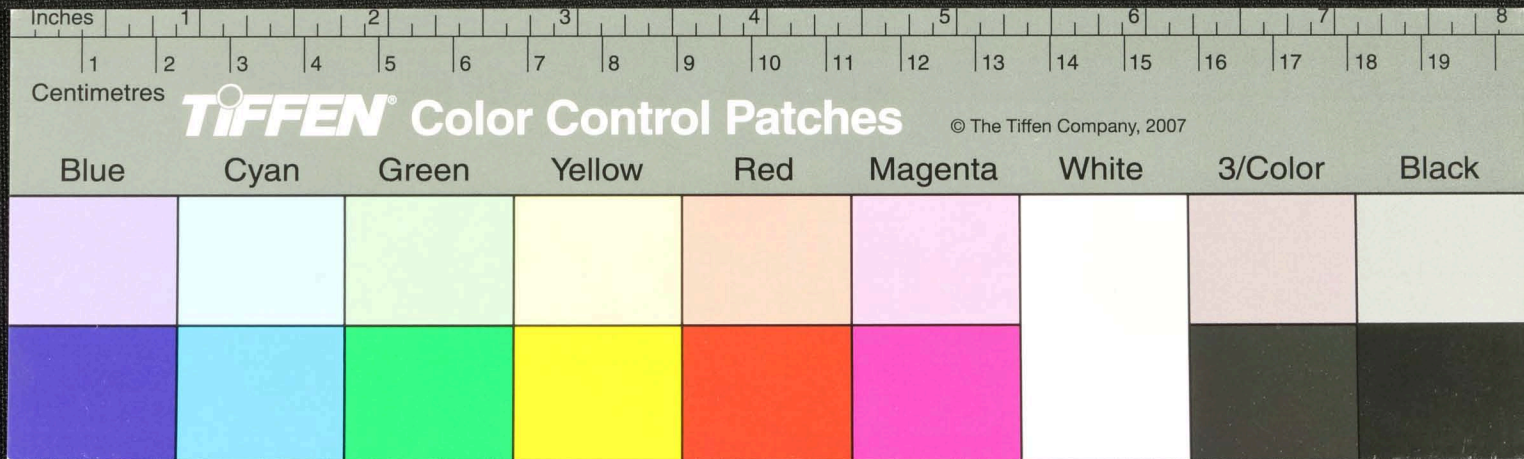


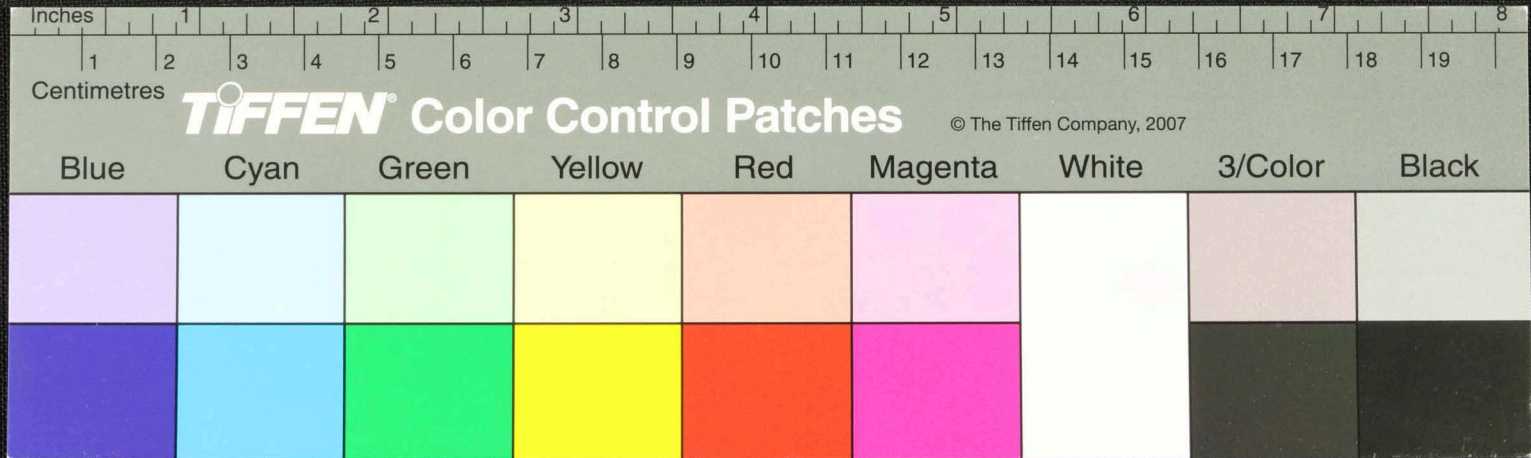
Handwritten Tamil script on a palm leaf manuscript. The text is arranged in approximately 10 horizontal lines. There are three distinct circular holes along the length of the leaf, which were traditionally used for threading a cord to bind multiple leaves together into a book format. The script is finely etched into the surface of the dried leaf.



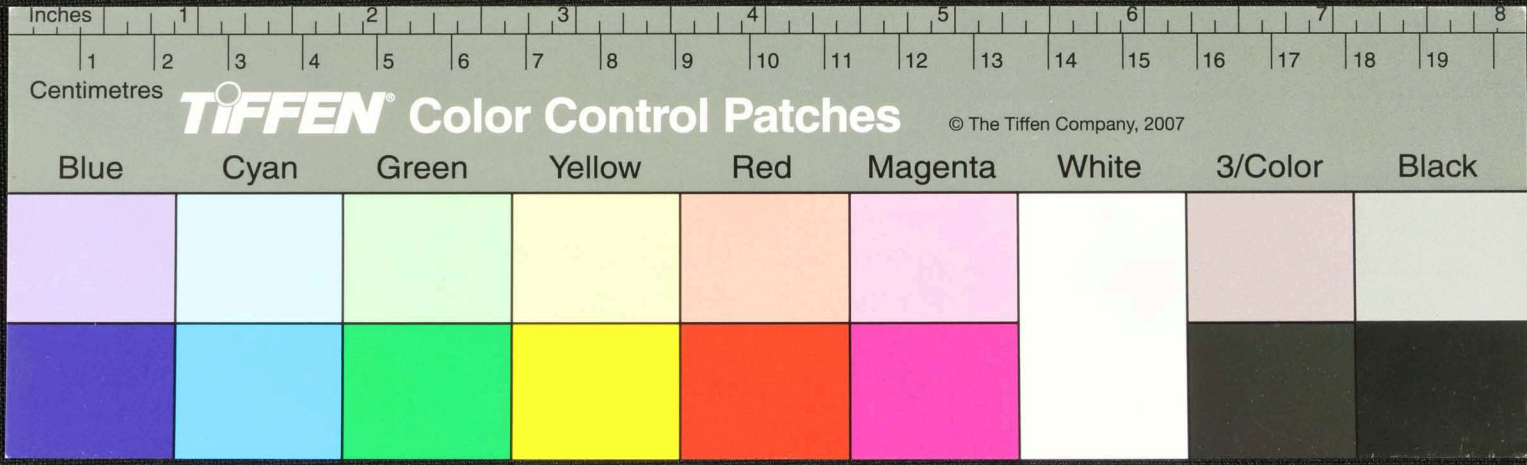
Handwritten Tamil script on a palm leaf manuscript. The text is arranged in approximately 10 horizontal lines across the length of the leaf. There are two distinct circular holes, one near the left end and one near the right end, which were traditionally used for threading a cord to bind multiple leaves together. The script is finely etched into the surface of the dried leaf.



Handwritten Tamil script on a palm leaf manuscript. The text is arranged in approximately 10 horizontal lines across the length of the leaf. The script is finely etched into the surface of the dried leaf. There are several dark, irregular holes and tears along the bottom edge of the leaf, likely due to insect damage or physical wear.

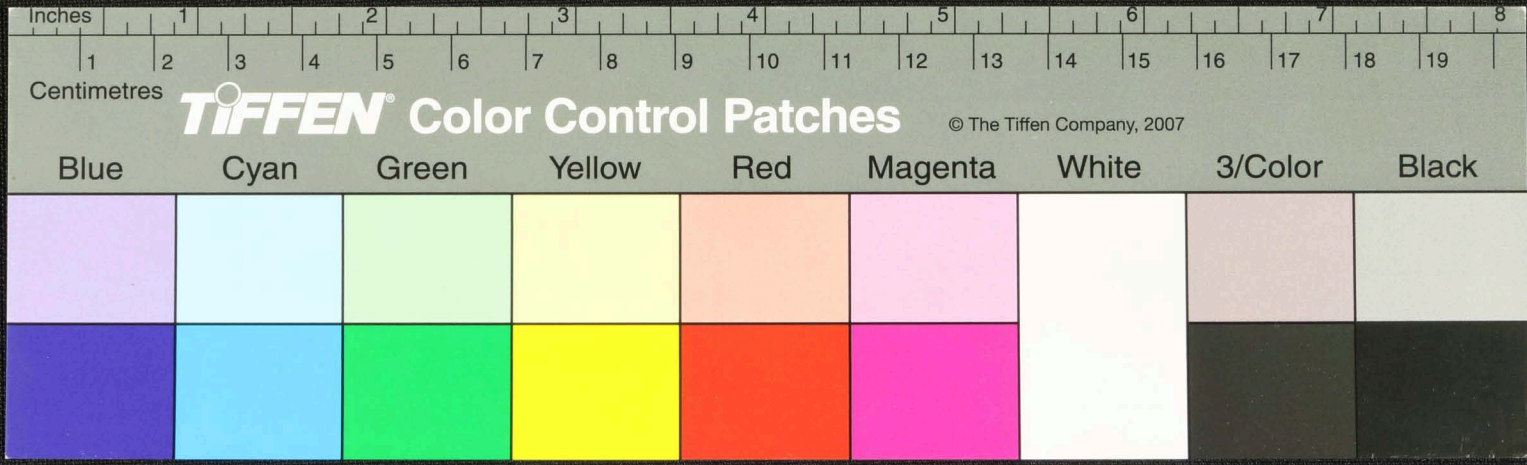


கீழ்க்கண்டவாறு விஜய விஜயரத்தினத்தொடர்வுகளைத் தீட்டிவிட்டு
 7-ஆம் நகல்வைத்து விடுகின்றேன். துணை விஜய
 4-ஆம் நகல்வைத்து விடுகின்றேன். விஜய
 3-ஆம் நகல்வைத்து விடுகின்றேன். விஜய
 கீழ்க்கண்டவாறு விஜய விஜயரத்தினத்தொடர்வுகளைத் தீட்டிவிட்டு
 7-ஆம் நகல்வைத்து விடுகின்றேன். துணை விஜய
 4-ஆம் நகல்வைத்து விடுகின்றேன். விஜய
 3-ஆம் நகல்வைத்து விடுகின்றேன். விஜய

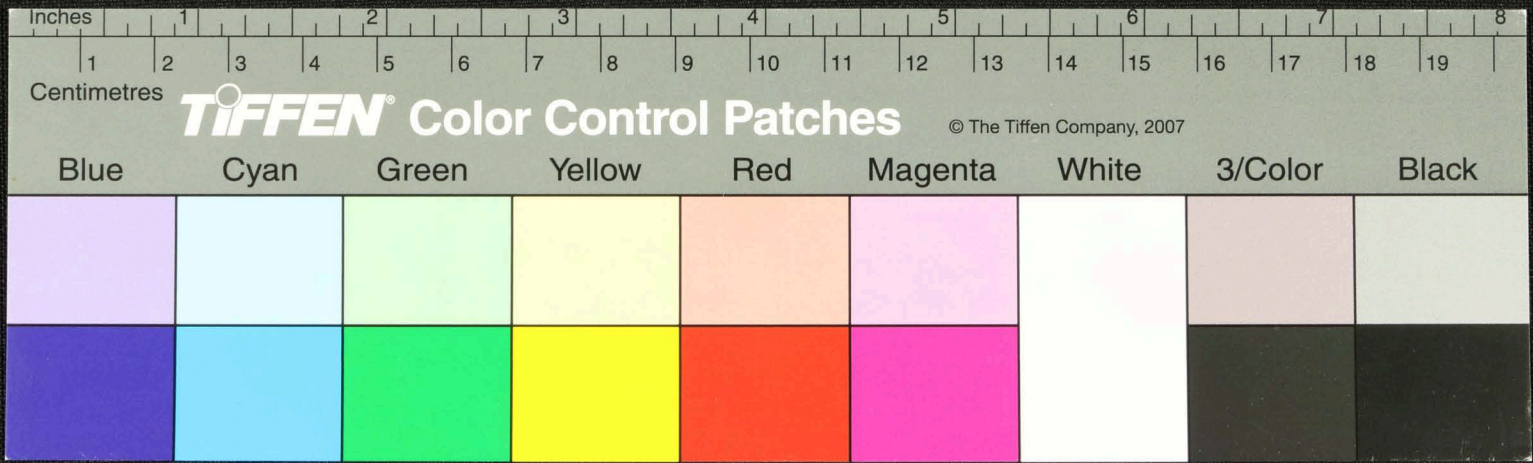


௫௫௫௫
 திசுதீக
 கடுவந
 குஞ்சு
 வெரு
 வெப்பகடு

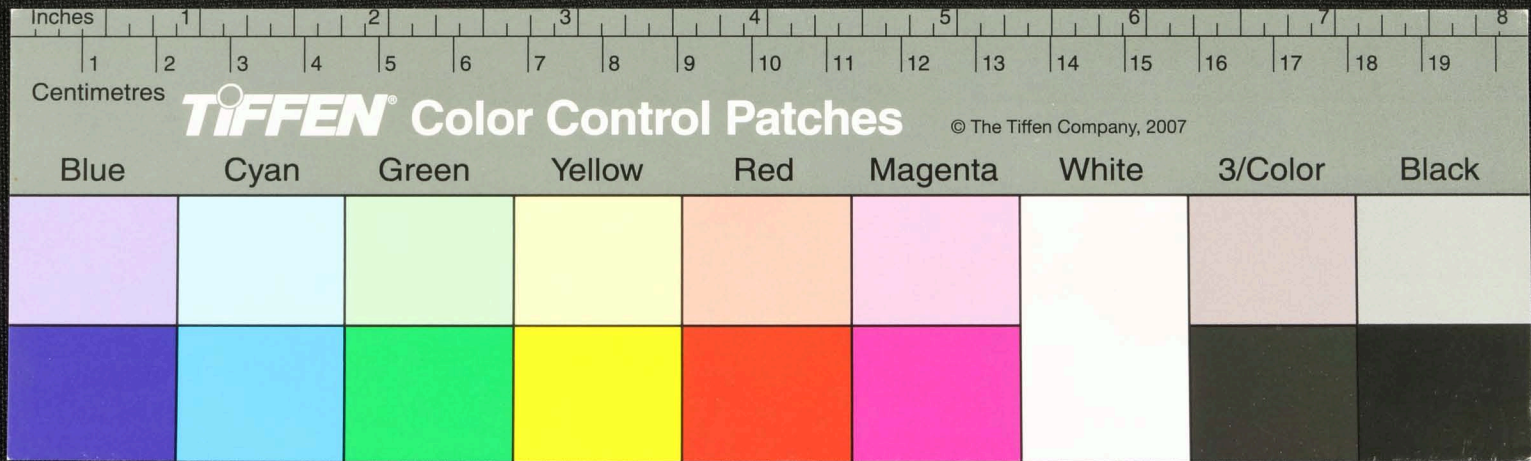
எரிசகரயநு, ண ணிசிசு ணுரகூ கககூரகூ கடுககககூ வினாம...
 பெரணாணகரணிலொரடுவெலிலொர...
 வெளளவெரகூரமபெரநிகாரகூ...
 சரகூரவரரிவெ...
 நெதது கரகூ...
 கடுவநு...
 கடுவநு...



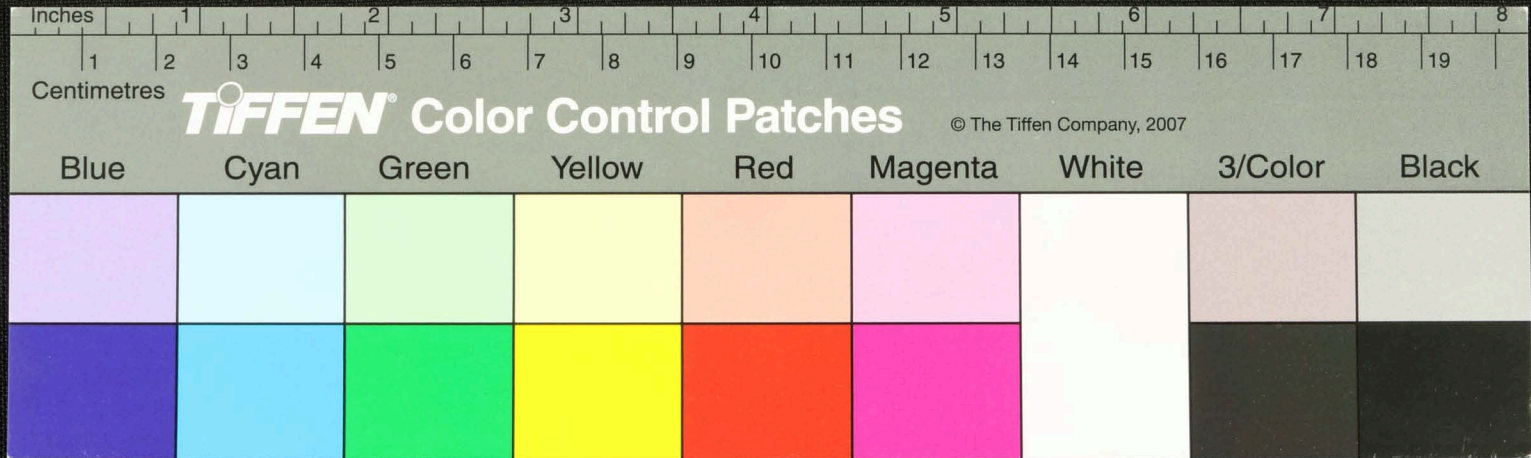
Handwritten Tamil script on a palm leaf manuscript. The text is arranged in approximately 10 horizontal lines across the length of the leaf. The script is a traditional form of the Tamil language, likely used for religious or philosophical purposes. The leaf shows signs of age and wear, with some holes and irregular edges.



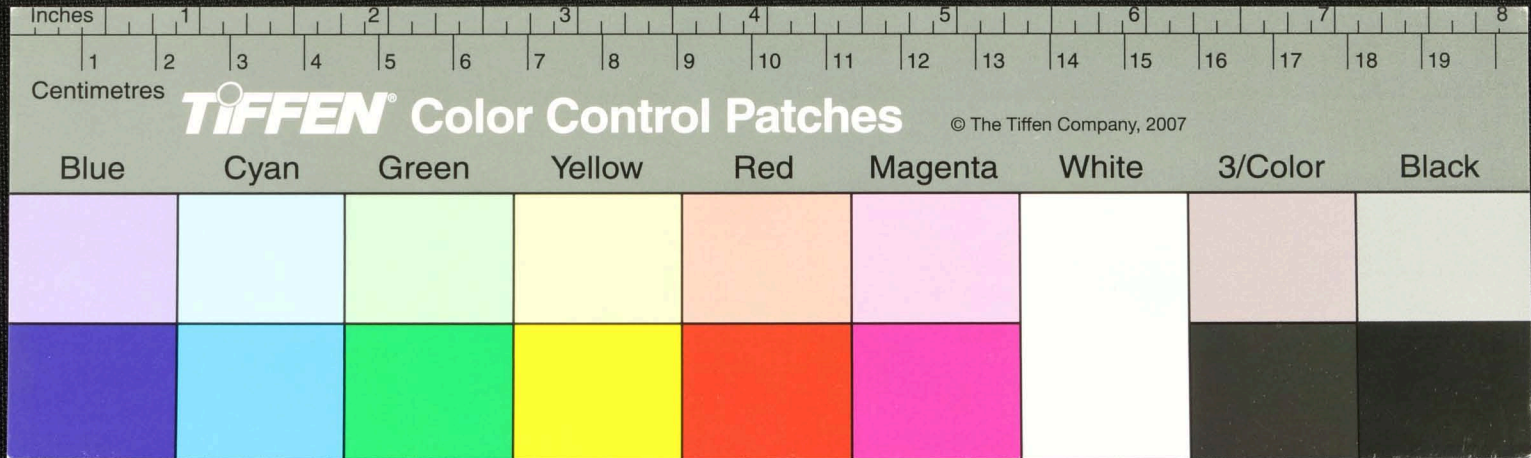
Handwritten Tamil script on a palm leaf manuscript. The text is arranged in approximately 10 horizontal lines across the length of the leaf. The script is densely packed and appears to be a form of classical or religious Tamil. There are two distinct circular holes along the length of the leaf, which were traditionally used for threading a cord to bind multiple leaves together into a book format.



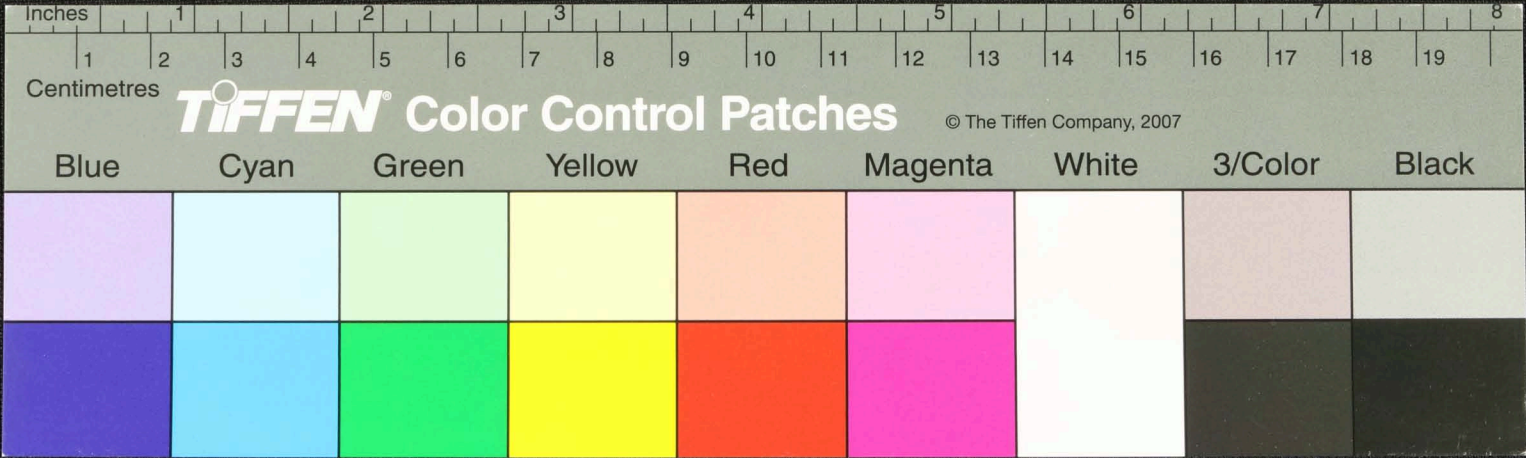
Handwritten Tamil script on a palm leaf manuscript. The text is arranged in approximately 10 horizontal lines across the length of the leaf. Two circular holes are visible, which were traditionally used for threading a cord to bind multiple leaves together. The script is finely etched into the surface of the dried leaf.



Handwritten Tamil script on a palm leaf manuscript. The text is arranged in approximately 10 horizontal lines across the length of the leaf. The script is finely etched into the surface of the dried leaf. There are two prominent circular holes, likely from a traditional string binding method. The leaf shows signs of age, including some fraying and discoloration at the edges.

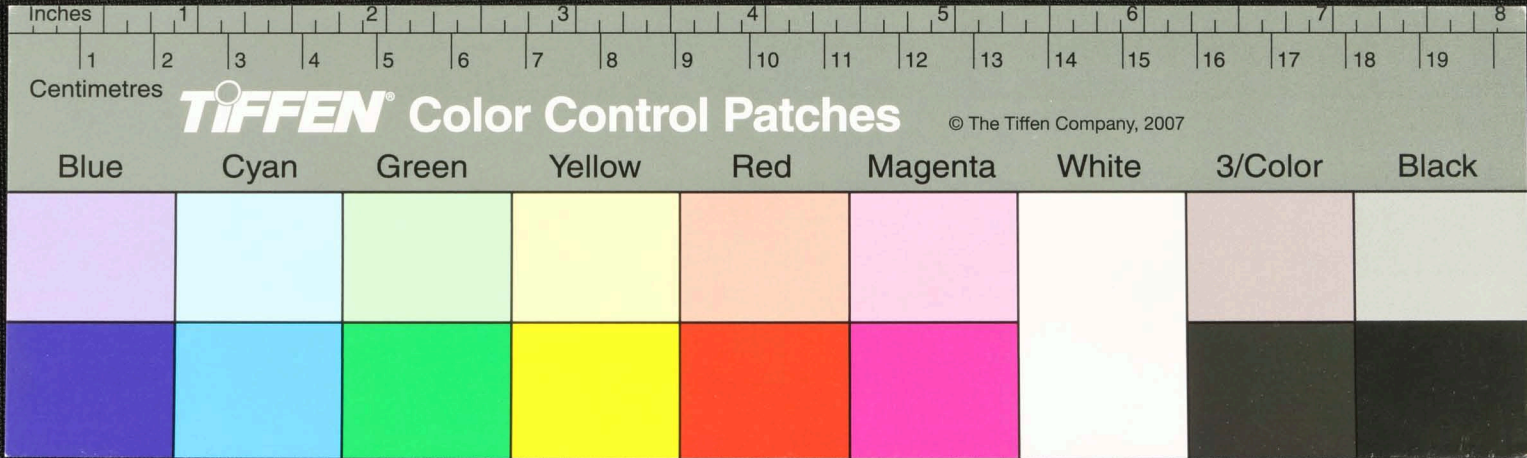


Handwritten Tamil script on a palm leaf manuscript. The text is densely packed and spans the length of the leaf. On the left side, there are marginal notes: 'சுந்தரி', 'பழமன', 'உண', 'வ', 'சுன்னி', 'அரிய', 'புண'. The main text begins with 'குணகி யு...' and contains several lines of script, including 'கெரயகடுககரய', 'எழமஉணாடபண்ணி', 'விஜசிரமபெரமபய', 'புண்ணொரகஉண', 'ஆகுக்கககிடாதநயவெனடி', 'குணகி...', 'புணகி...', 'புணகி...', 'புணகி...'

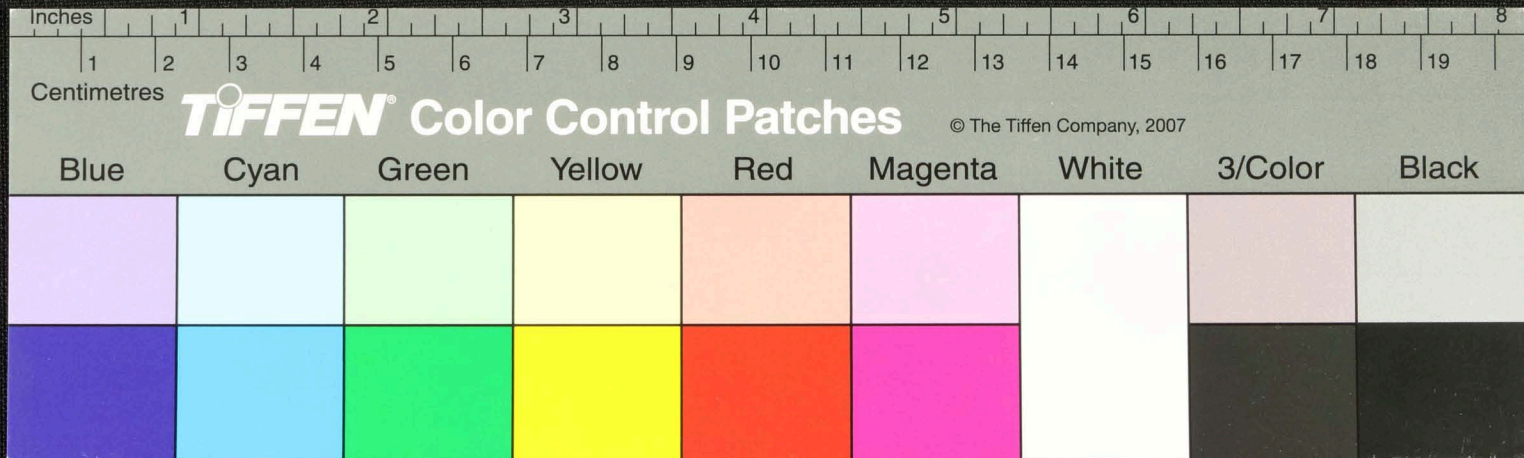


வரகரே
 பபன
 குணம
 மருந
 துல
 ருபி

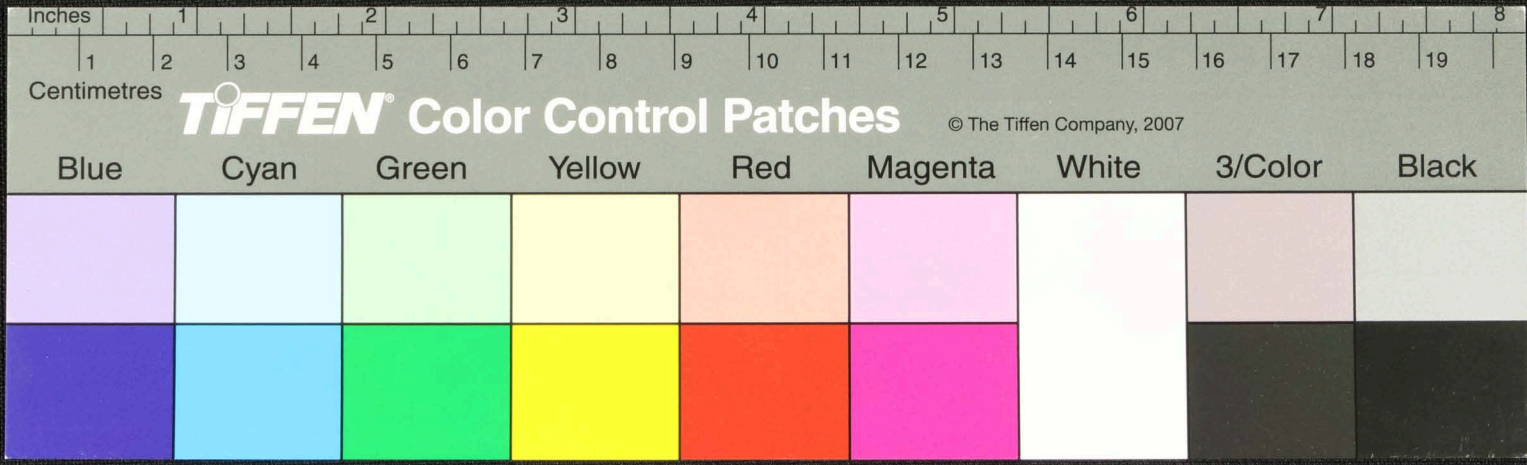
செவரளநடுக்க மவொமரவிலெரு தவொருவதனறிஞ்சாகெகெகெண்டி ருக்குமுக்கு
 திரபிலிவிஞ்சுநி நிலுமரத்தகமபருதிவிஞ்சுநி திகரையகராமமுருவயிரு
 கெருகுசு மதுமிச து முரபு மரு துபுமிபுது ஒரு தேவகரயது குவிநெருகை
 உமகருநெயயுள குசுதயிவவயுட நகுபவகமபு 4 பிசுநது மொது விசும வனநி
 விதநெருகு ஒருசுசுவ வவரநி நடுநிடும வரநகரபபனு கருகநிநரளமொளிபருது
 நவ கள உகரநது மிவ திவ நது தரனமு ணமொகொயு மவருநிடுய யிடுநது வரடும
 வெநது நரளி மொரணு துடு குபு ணவெதுபமு நடுநரணப மயிநுநெரு வரிடுக



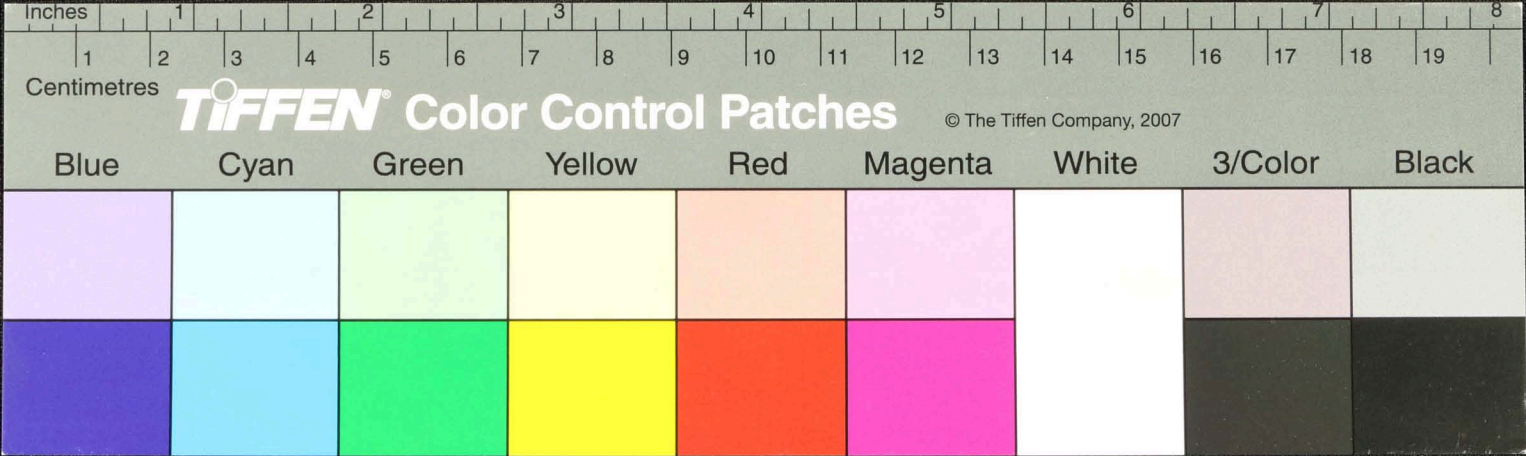
Handwritten Tamil script on a palm leaf manuscript. The text is arranged in approximately 10 horizontal lines across the length of the leaf. The script is densely packed and appears to be a form of classical or historical Tamil. There are two distinct circular holes along the length of the leaf, which were traditionally used for threading a cord to bind multiple leaves together into a book format.



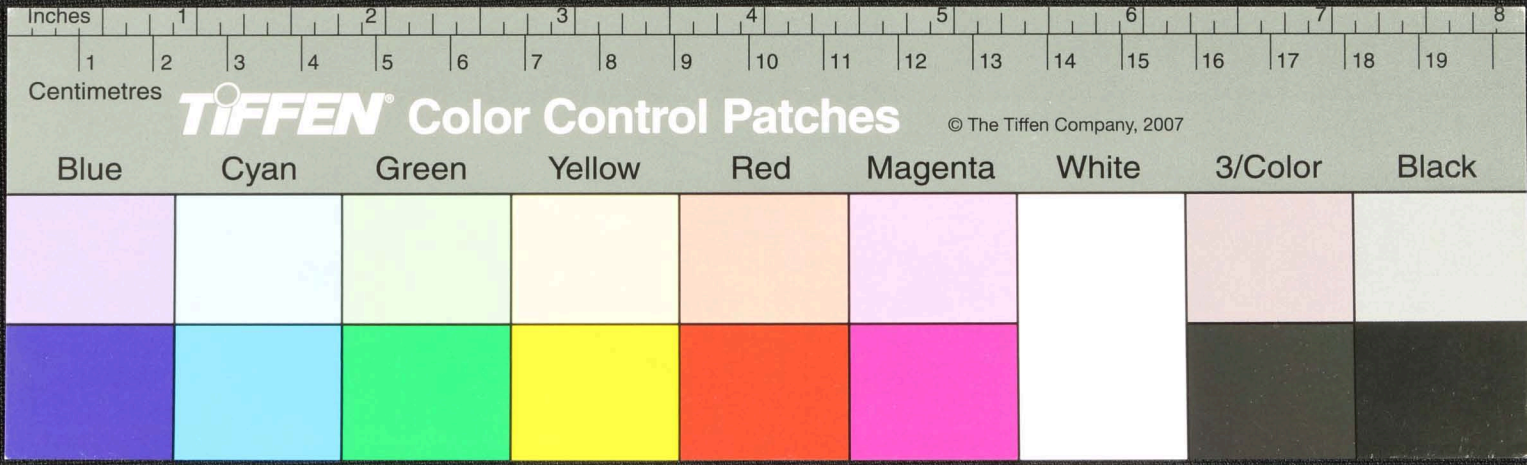
ஒருவ யிஷ்டுபுநகிலு யிது அழபொடநு குயது குர னுமரகடு சீசுரடு குடுது. கஅரைபொடநு யி நினை
 மபொடநுயிழ்... னவயது வெடுகடிதெரடங் கர ய விகிலி னவயது கினையு
 கொளுகெமரவம்... மிளவையிழம்பக உடனையு அம. பது. மரதன்ம திசு சிமர
 துளபடுகு னுநது வெண்து பபிசுறுங் கொறியின னும னுரடிவிடுகு சிலுபபர
 சவிலி னுறு கெழண டியிலி கொடுதி பபுது முகமவிட ரமபுபுசுசு அ. குமி. நநா. ர். சி. மி. ச. ச. ம
 பகத. னுத வட மரகய வது து கினையு திடுசு தமிய திடுகர சுகெடி துகரயயிது னுமபர
 கரடுகு யதையிது மிசசும பக னுவிட திடுமிகெநுத லிழ ட. மி. ப. குடி பபு யிது மிச



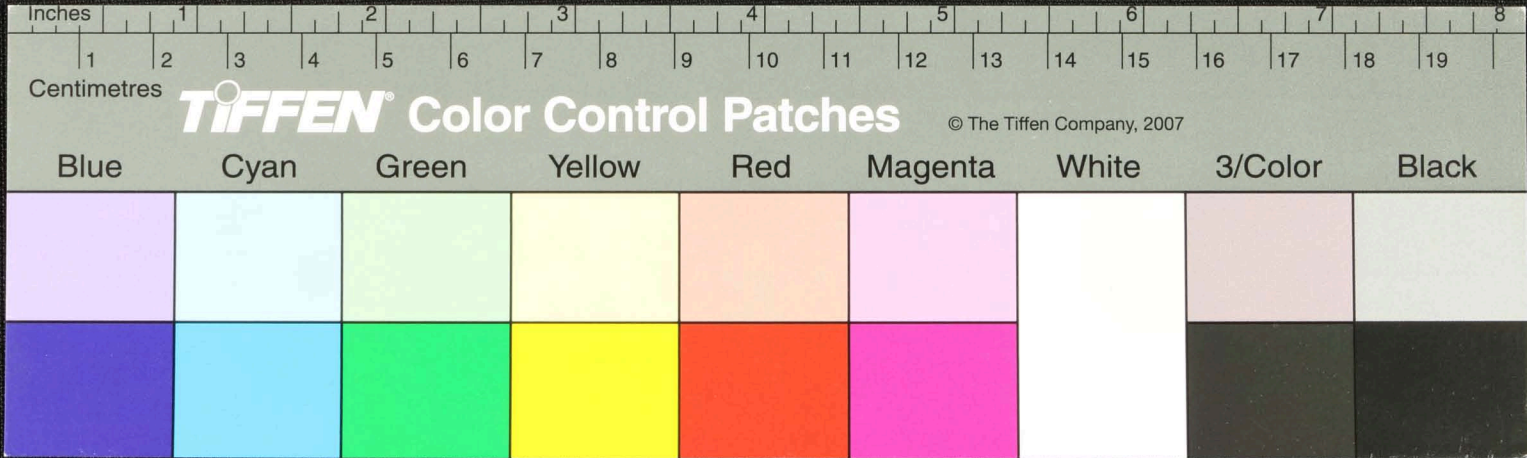
சகமஹிவிரைனாது விமயபயெரெனாது கதறனநிமிர்வதிது கெடுபவிது கடுதெ
 விடுபநிவஜாய மாக்கடுளபதுசுது ஸசுடுவதிமது உடநிதது பாதுபதுசுது
 பது எடுமமாபடுடு கடுமபதுயிர்யபெரடபெபெரிததெறதெடுதுததவிடகக
 மயவெநுதெதிரகி கடுவககடுவகததுகடுபுதுவககடுபடுகடபெரடடு வகடுகவ
 பதுவெநதெதெ வடுதுயிது முண்டமதும
 குடுகவயனா து கடுமவிடபதுசுது கடுடு சகமஹிவிரைனாது
 கடுதெசெரெனா பது முண்ட இளயிது முண்ட கடுதெமநிடுதும விடமடு
 குடுபதுசுது கடுவகடுகடுகடு



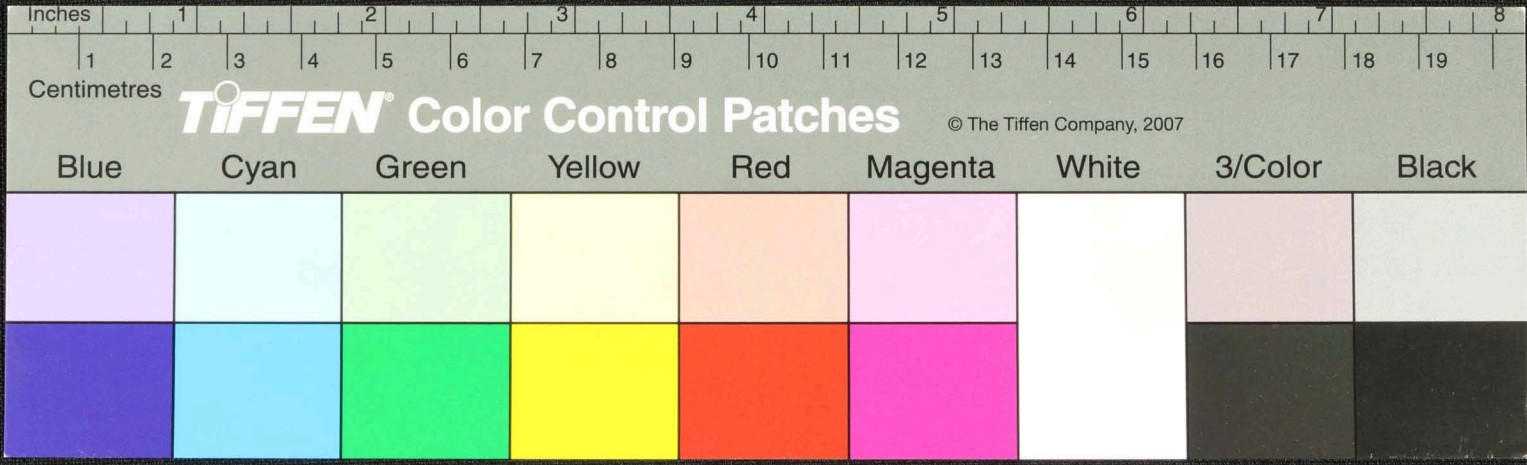
இரதநாள் சதானா மடல்கள் வந்தது யாதிமுதலியும் சூழலையது மயமயொட
 யுள் உலகத்தினை கொணர்நிலி ஓடயயாழினை நெய் மெதுவாநுள் மடுதது
 சதானா மடல்கள் உலகநெடுமது வசமயொடு நெய்வகடுவிலியமுட
 வந்தது கடுகு கடுகு வெடுது மயொடயயது துதவணையெ நிரநொலி
 மயொடயய நிலி உலகநெடுமது வசமயொடு நெய்வகடுவிலியமுட
 மயொடயய நெடுமது மயொடயய நெடுமது மயொடயய நெடுமது மயொடயய நெடுமது



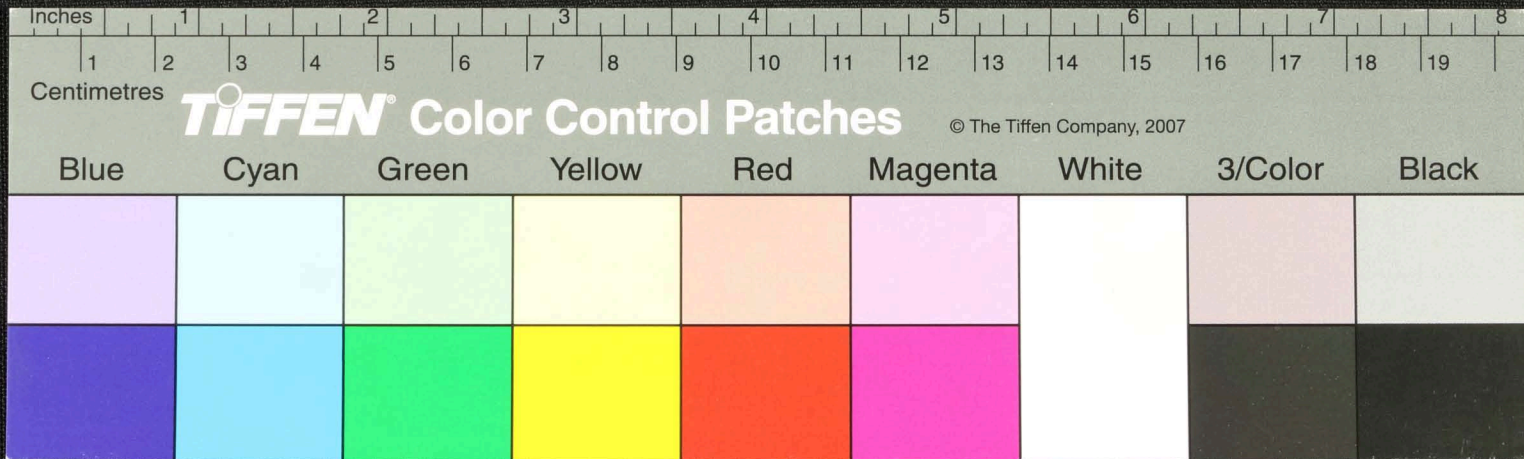
கடுகரதுமம கொனூ 4 டு ன் னு து பபிளநககொநர தரயெடுதபொட லொமய
 நத விககெழவுபொடடுதினமொடுநதமடுநன்கிபுதிடுதபு உனாநவசியா
 இலகெழபதியடுத கையமகட வு விகெழவநினை வநதமடுநவவொரமயபொர
 நியமமிவிம கசமபதியடுநுதுசசுநடுடு சிசுபுலொயபுதுபதிக
 இயமமிவிமகொ டுவிசுதுகெடுபு சினி யுசுடுததையுமபொடுபு
 இயமமிவிமகொ னுதுதமடுநககரடுகொ டு வநுதுசசுடுததையடுந
 இயமமிவிமகொ இடுகொடுதவநுதுமிசுசும பசசுசுநவவநுதுயந



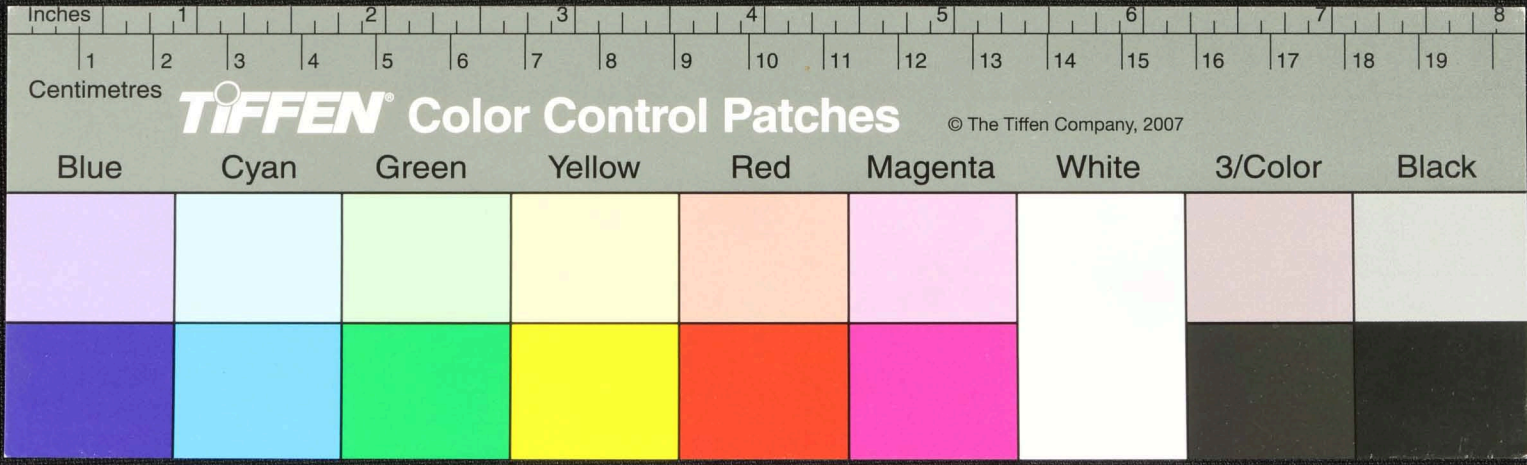
Handwritten text in Tamil script on a palm leaf manuscript. The text is arranged in approximately 10 horizontal lines across the length of the leaf. Two circular holes are visible, which were traditionally used for threading a cord to bind multiple leaves together into a book format. The script is densely packed and appears to be a form of classical or historical Tamil.



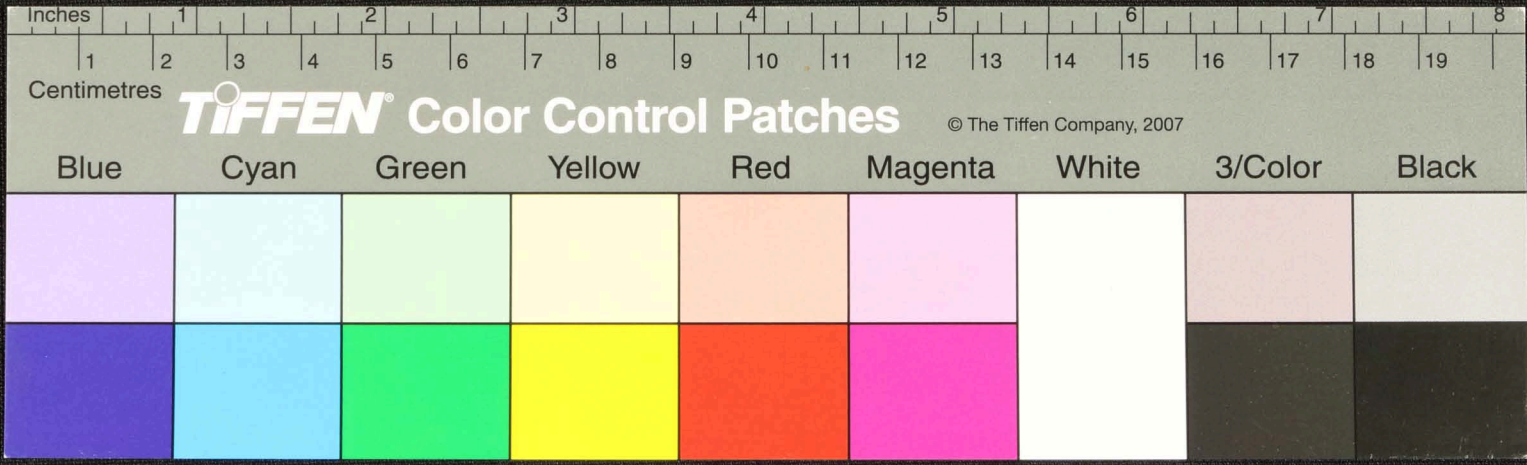
Handwritten text in Tamil script on a palm leaf manuscript. The text is arranged in approximately 10 horizontal lines across the length of the leaf. Two circular holes are visible, which were traditionally used for threading a cord to bind multiple leaves together into a book format. The script is finely etched into the surface of the dried leaf.



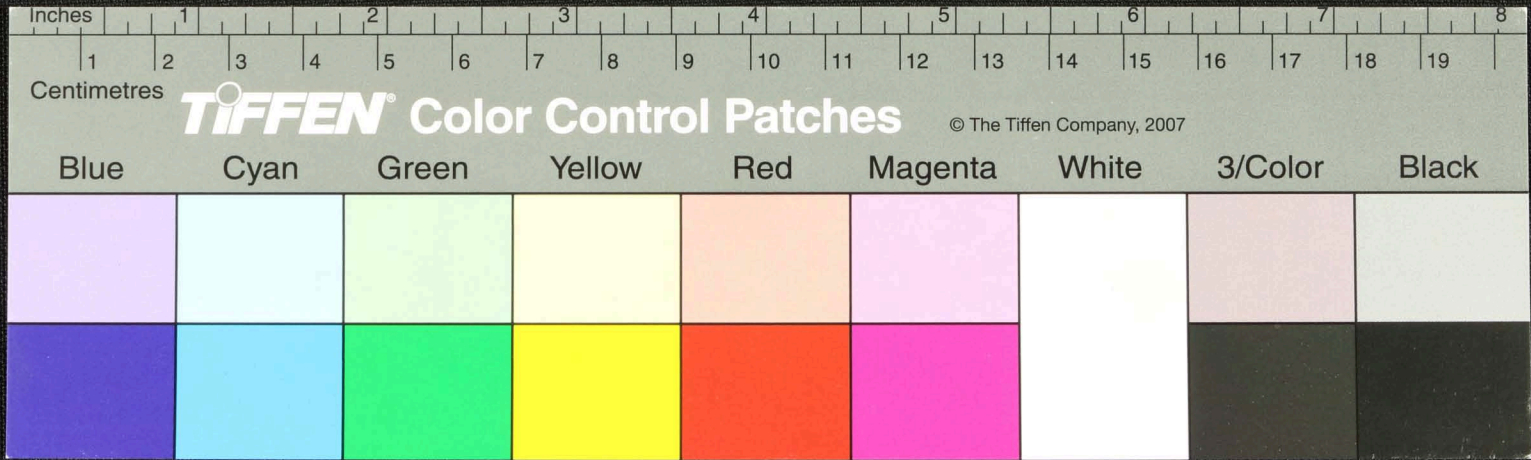
Handwritten Tamil script on a palm leaf manuscript. The text is arranged in approximately four horizontal lines across the length of the leaf. Two circular holes are visible, which were traditionally used for threading a cord to bind multiple leaves together. The script is densely packed and appears to be a form of classical or historical Tamil.



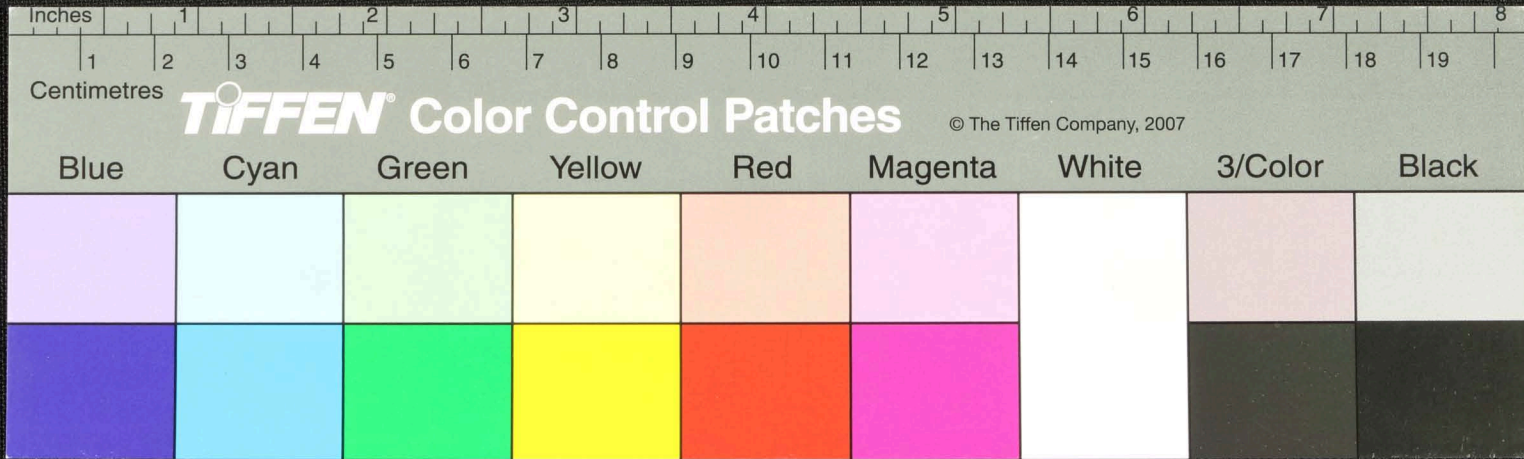
Handwritten Tamil script on a palm leaf manuscript. The text is arranged in approximately 10 horizontal lines across the length of the leaf. Two circular holes are visible, which were traditionally used for threading a cord to bind multiple leaves together. The script is written in a cursive style characteristic of traditional Tamil manuscripts.



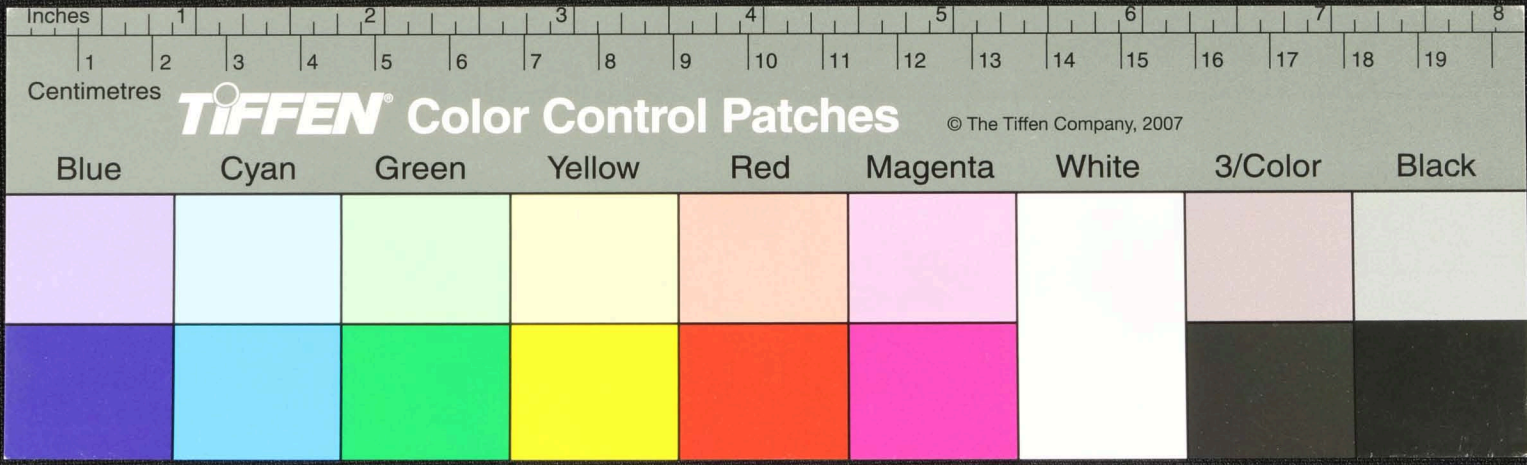
Handwritten Tamil script on a palm leaf manuscript. The text is arranged in approximately 10 horizontal lines. The script is densely packed and appears to be a form of classical or historical Tamil. There are two distinct circular holes punched through the leaf, one near the left edge and one near the right edge, which were traditionally used for threading a cord to bind multiple leaves together into a book format. The leaf itself is aged, showing a yellowish-brown hue and some surface wear.



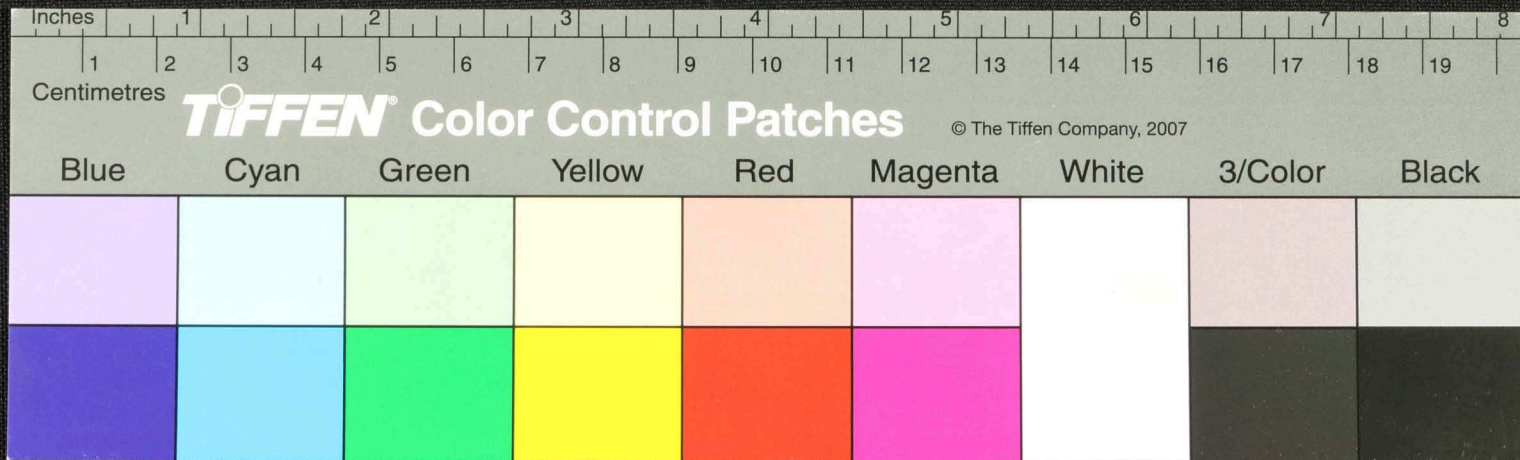
Handwritten Tamil script on a palm leaf manuscript. The text is arranged in approximately six horizontal lines. The script is densely packed and appears to be a form of classical or historical Tamil. There are two distinct circular holes on the leaf, one near the center and another towards the right edge, which were traditionally used for threading a cord to bind multiple leaves together. The leaf itself is aged, yellowish-brown, and shows signs of wear and tear.



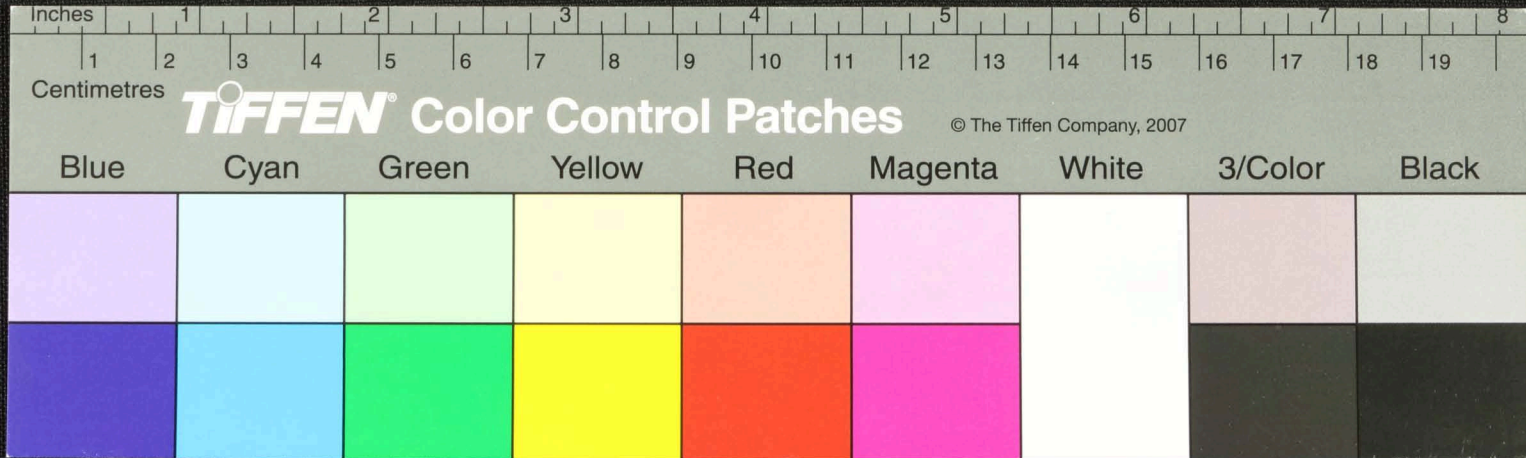
Handwritten Tamil script on a palm leaf manuscript. The text is arranged in approximately 10 horizontal lines across the length of the leaf. The script is in an older form of the Tamil language. The leaf shows signs of age, including several dark holes and irregular edges.



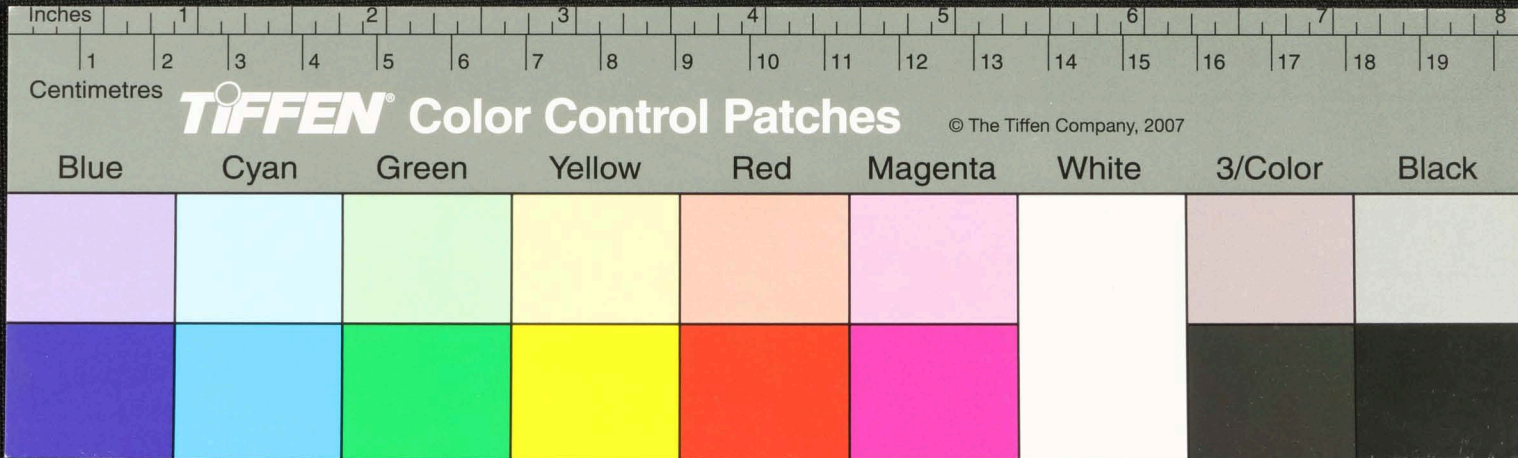
Handwritten text in Tamil script on a palm leaf manuscript. The text is arranged in approximately 10 horizontal lines across the length of the leaf. The script is finely etched into the surface of the dried leaf. The leaf shows signs of age and wear, with several irregular holes and tears, particularly along the right edge and in the middle section.



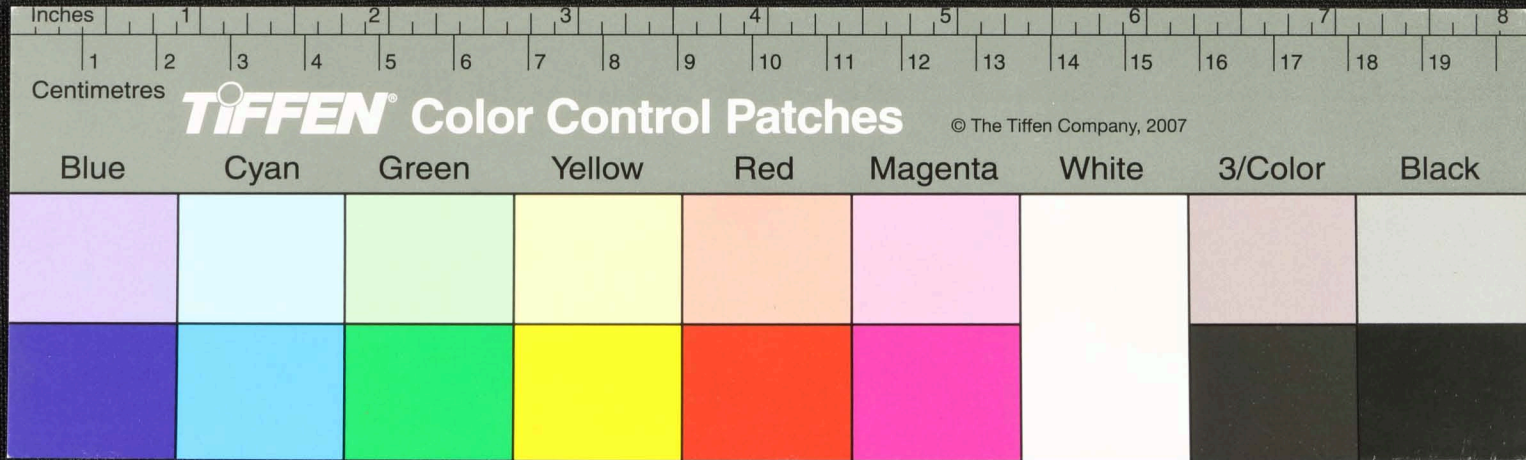
Handwritten Tamil script on a palm leaf manuscript. The text is arranged in approximately 10 horizontal lines across the length of the leaf. The script is a traditional form of the Tamil language, likely used for religious or philosophical purposes. The leaf shows signs of age, including several circular holes and a significant tear near the center.



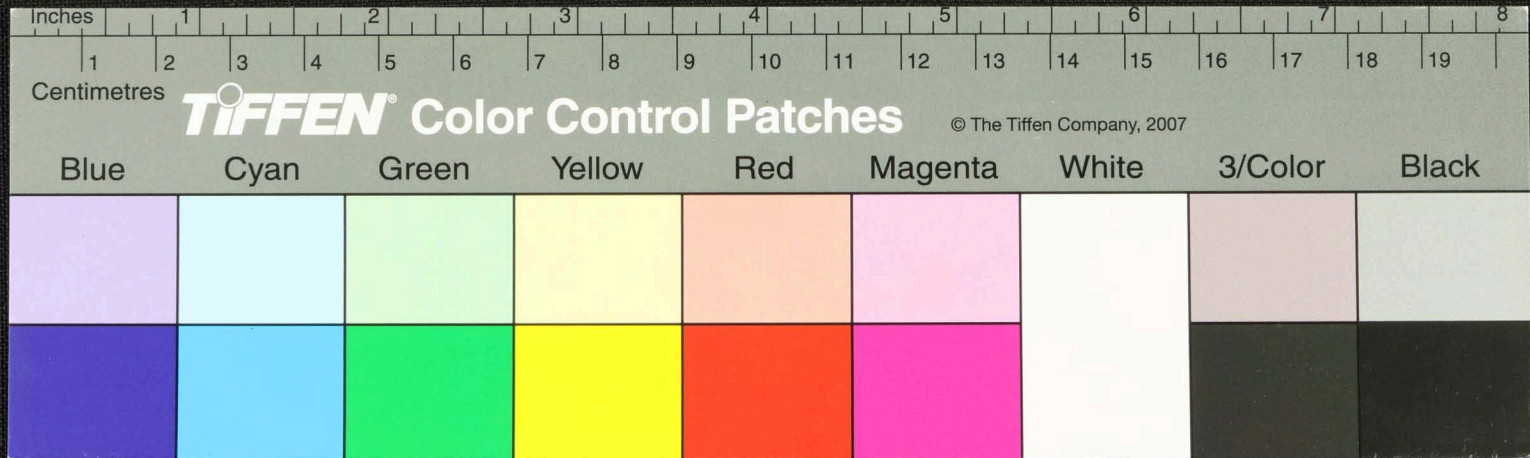
Handwritten Tamil script on a fragment of aged paper. The text is arranged in approximately three horizontal lines. The script is dense and appears to be a form of historical or religious Tamil. The paper is yellowed with age and has several irregular holes and tears, particularly on the left and right sides. The background is a dark, textured surface.



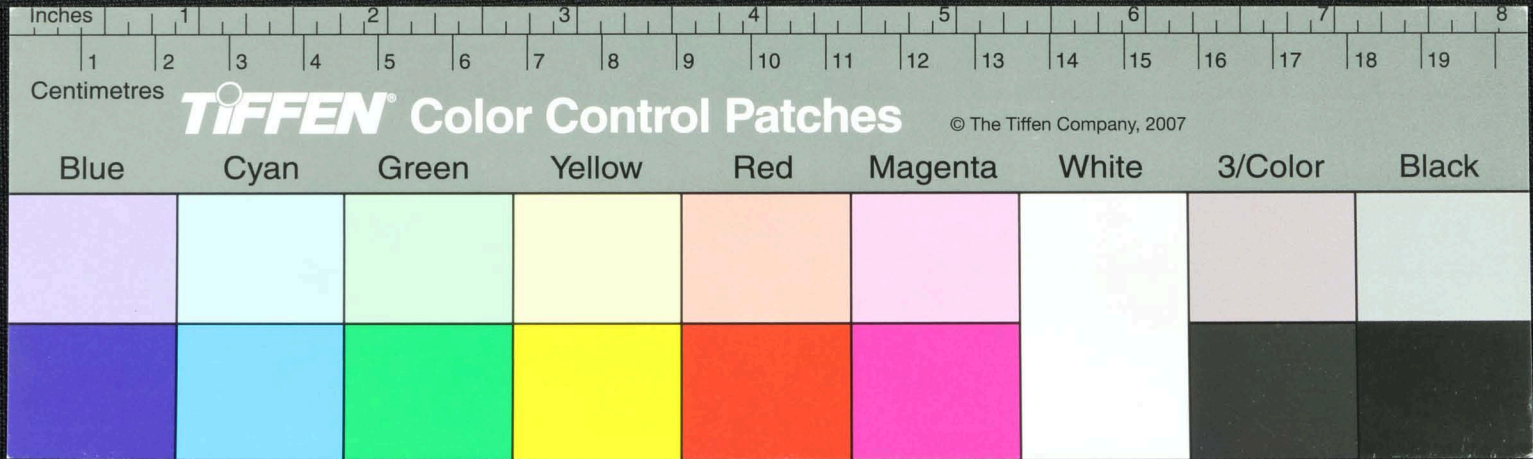
Handwritten Tamil script on a fragment of aged paper. The text is arranged in three lines and includes several words and phrases, some of which are partially obscured by holes in the paper. The script appears to be a form of historical or religious Tamil.



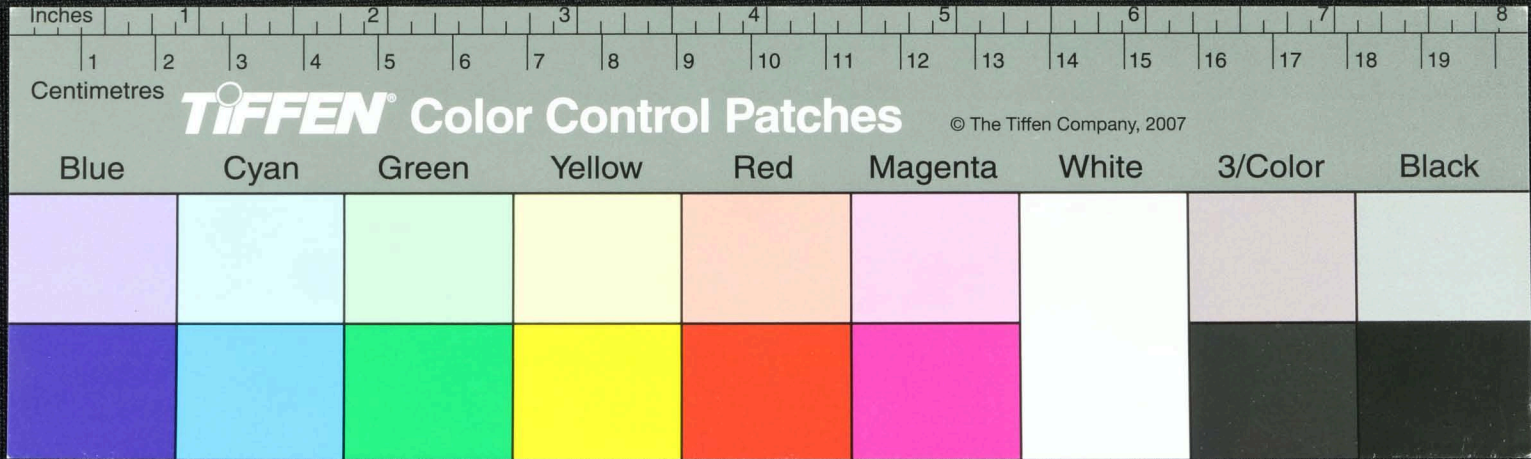
Handwritten Tamil script on a palm leaf manuscript. The text is arranged in approximately four horizontal lines. The script is finely etched into the surface of the dried leaf. There are several small holes and irregularities along the length of the leaf, likely due to its natural texture or the way it was prepared. The first line on the left contains a small circular mark with the number '5' inside. The text appears to be a form of classical or historical Tamil, possibly a religious or philosophical text.



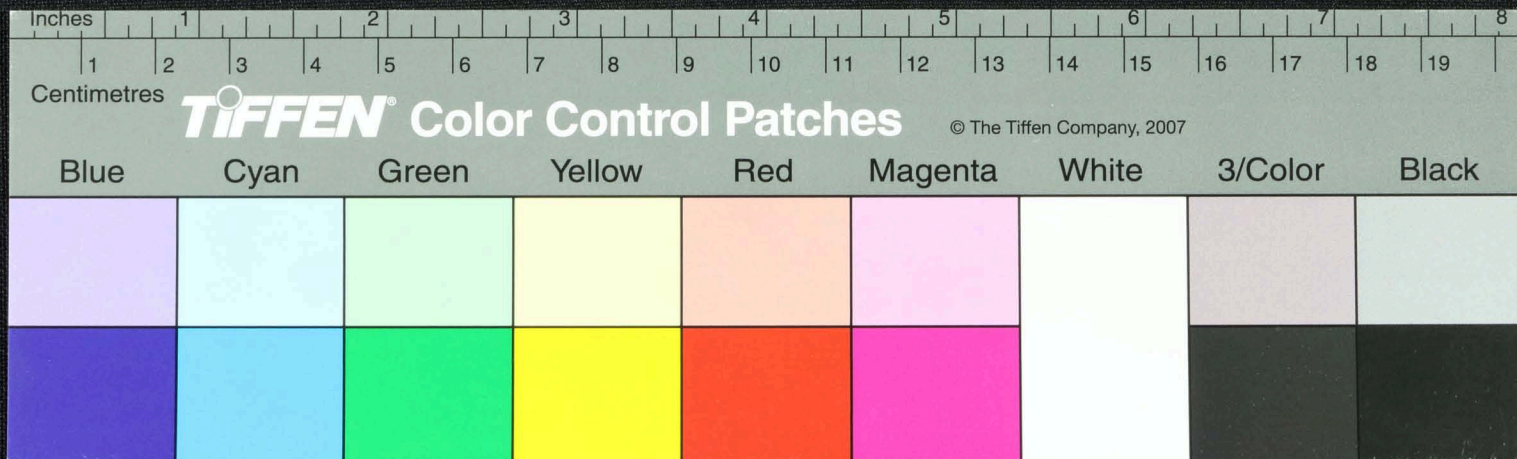
Handwritten Tamil script on a palm leaf manuscript. The text is arranged in approximately four horizontal lines across the length of the leaf. The script is finely etched into the surface of the dried leaf. There are two distinct circular holes along the leaf, which were traditionally used for threading a cord to bind multiple leaves together into a book format. The leaf shows signs of age and wear, with some fraying and discoloration, particularly on the left side.



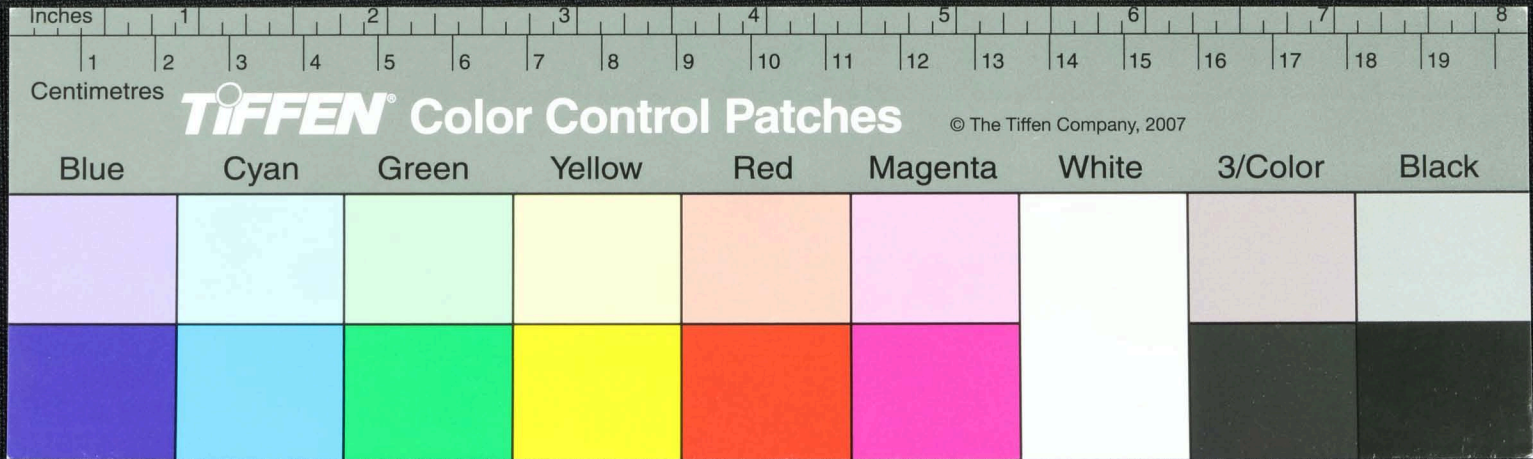
Handwritten Tamil script on a palm leaf manuscript. The text is arranged in approximately 10 horizontal lines across the length of the leaf. The script is in an older form of the Tamil language. The leaf shows signs of age, including some dark spots and a small hole on the right side.



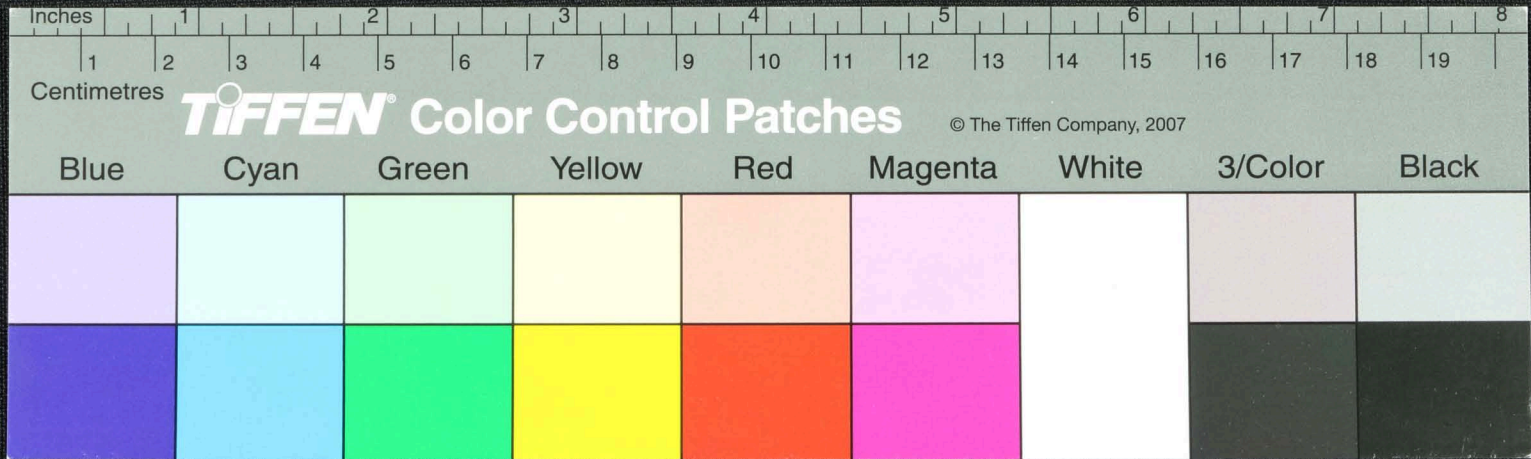
Handwritten Tamil script on a palm leaf manuscript. The text is arranged in approximately three horizontal lines across the length of the leaf. The script is finely etched into the natural texture of the dried leaf. The leaf shows signs of age and wear, with several holes and irregular edges.



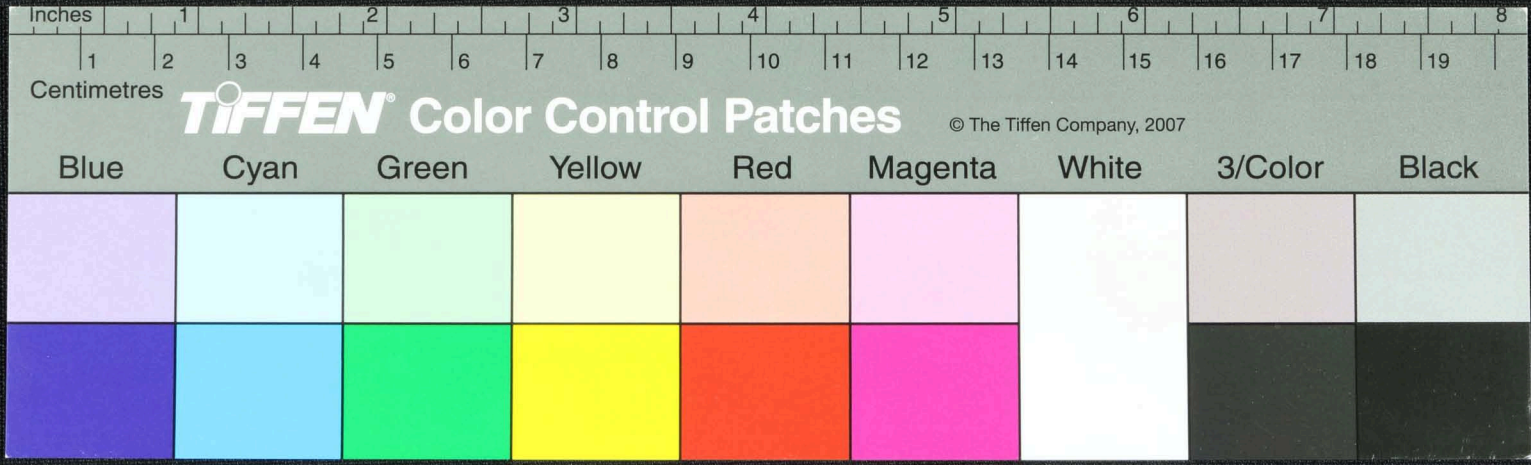
Handwritten Tamil script on a palm leaf manuscript. The text is arranged in approximately 10 horizontal lines across the length of the leaf. The script is finely etched into the surface of the dried leaf. There are two distinct circular holes, likely from a traditional string-and-stick binding method. The leaf shows signs of age, including some discoloration and wear at the edges.



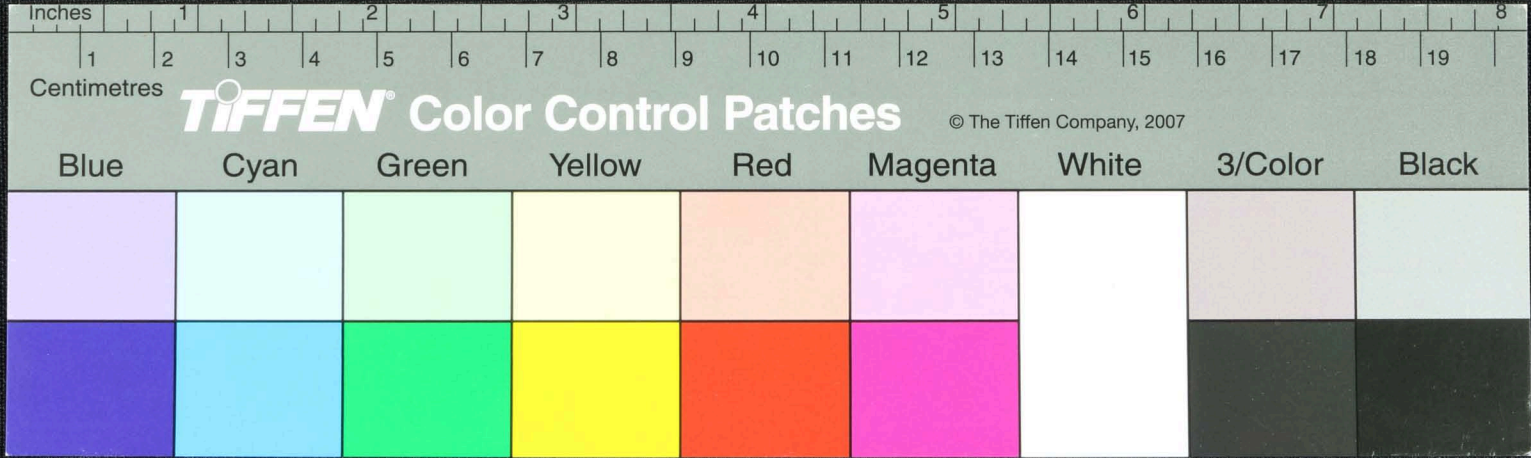
Handwritten Tamil script on a palm leaf manuscript. The text is arranged in approximately 10 horizontal lines across the length of the leaf. Two circular holes are visible, which were traditionally used for threading a cord to bind multiple leaves together. The script is written in a dark ink, likely iron-based, and shows some signs of age and wear.



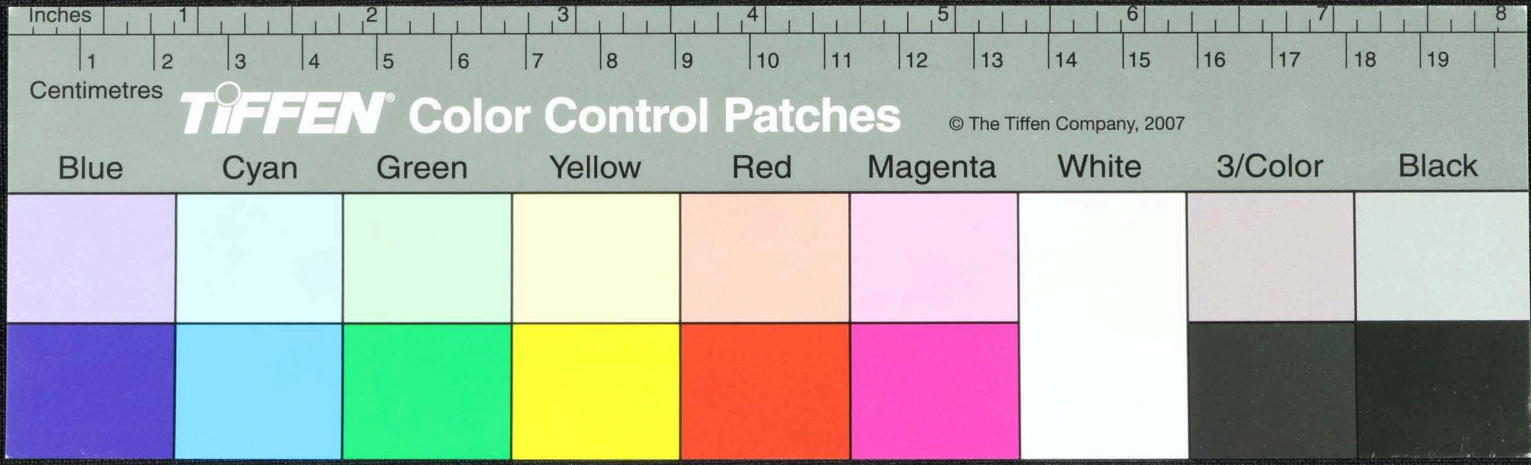
Handwritten Tamil script on a palm leaf manuscript. The text is arranged in approximately 10 horizontal lines across the length of the leaf. Two circular holes are visible, which were traditionally used for threading a cord to bind multiple leaves together into a book format. The script is finely etched into the surface of the dried leaf.



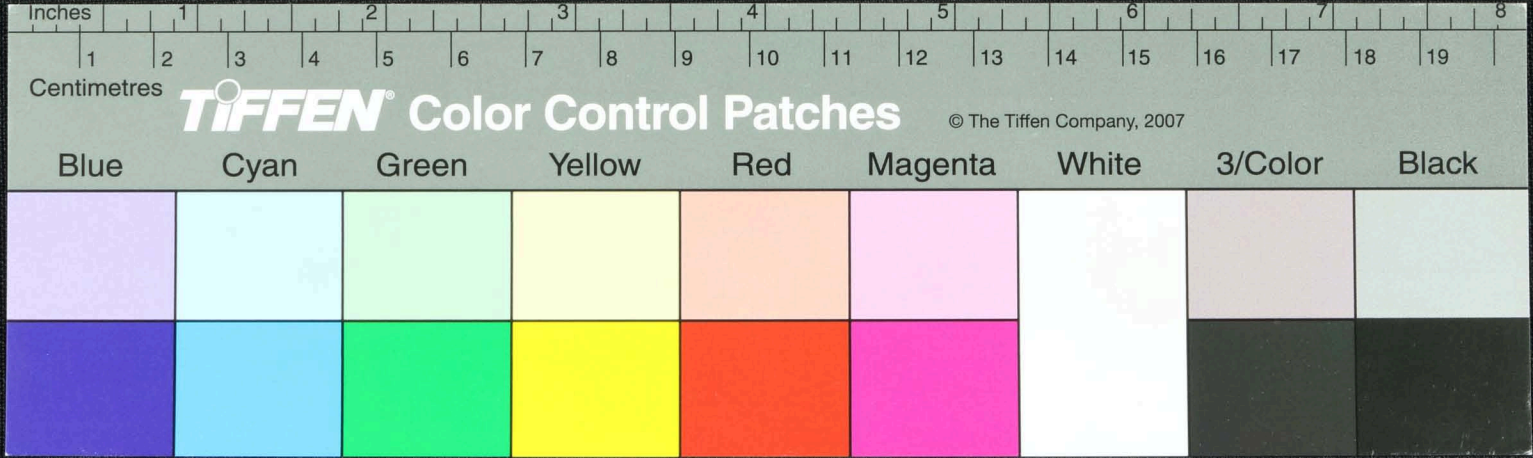
Handwritten text in Tamil script on a palm leaf manuscript. The text is arranged in approximately 10 horizontal lines across the length of the leaf. The script is dense and appears to be a form of classical or historical Tamil. There are two distinct circular holes or indentations on the leaf, one near the left edge and one near the right edge, which were traditionally used for threading a cord to bind multiple leaves together into a book format.



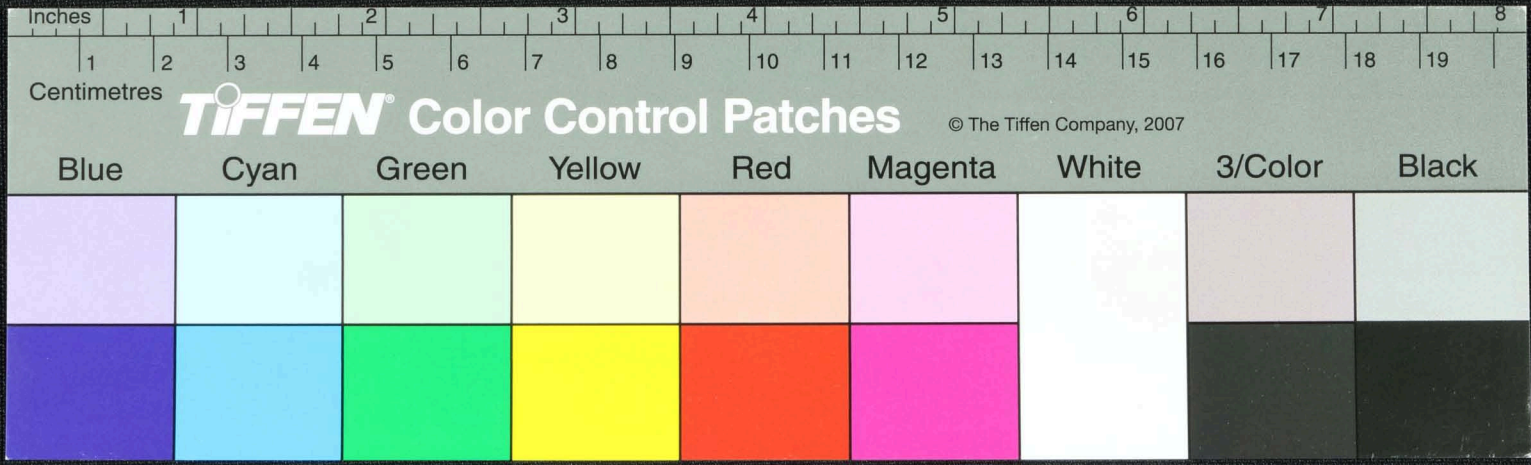
Handwritten Tamil script on a palm leaf manuscript. The text is arranged in approximately 10 horizontal lines. The script is finely etched into the surface of the dried leaf. There are two distinct circular holes, likely from a traditional string-and-button binding system. The leaf shows signs of age, with some fraying at the edges and slight discoloration.



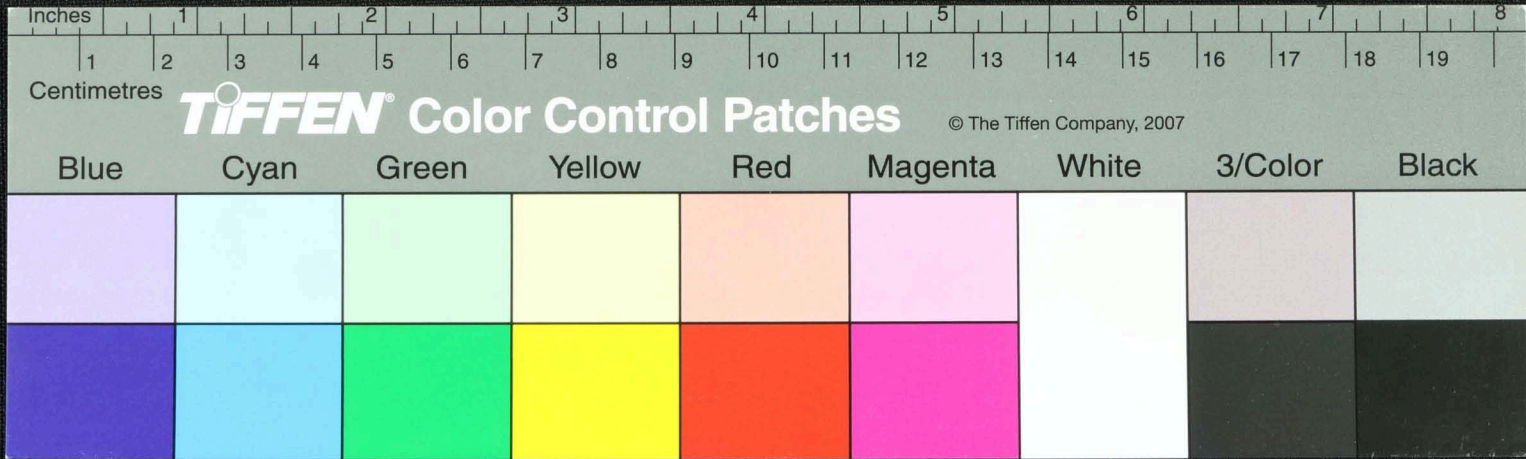
Handwritten text in Tamil script on a palm leaf manuscript. The text is arranged in several lines across the length of the leaf. There are two circular holes visible, which were traditionally used for threading a cord to bind multiple leaves together into a book format. The script is finely etched into the surface of the dried leaf.



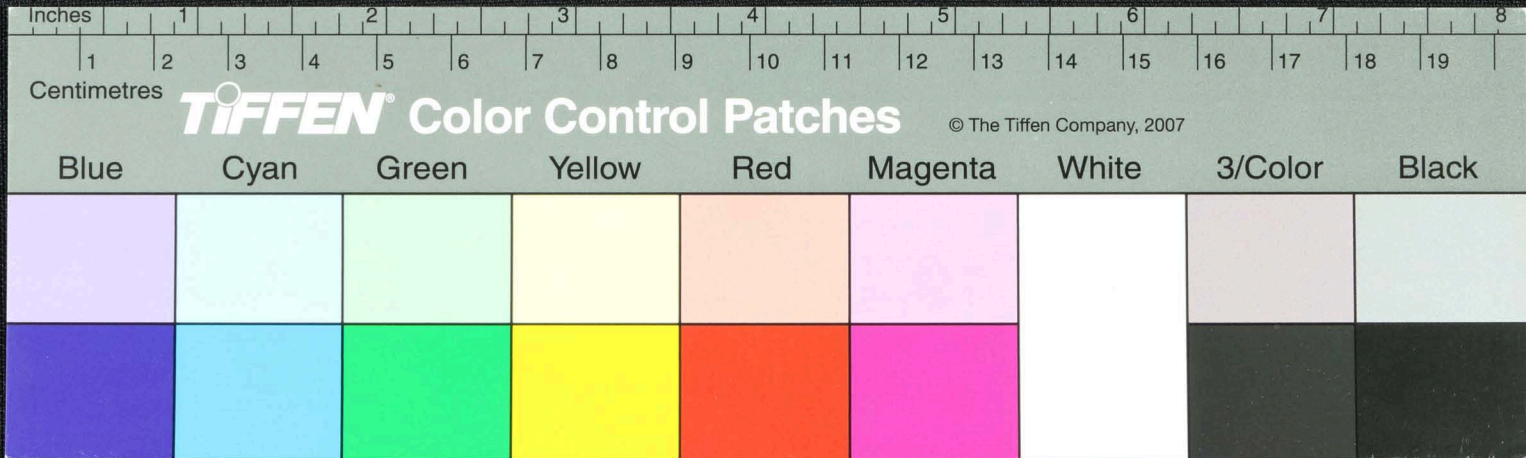
Handwritten Tamil script on a palm leaf manuscript. The text is arranged in approximately 10 horizontal lines across the length of the leaf. The script is finely etched into the surface of the dried leaf. The leaf shows signs of age, including some discoloration and small holes.



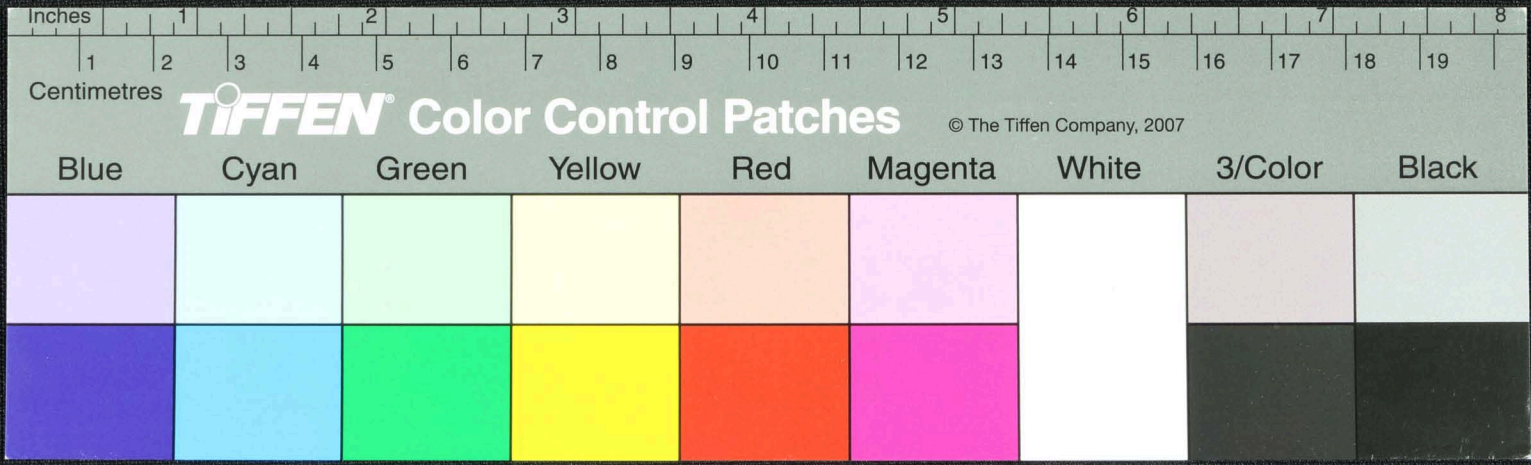
Handwritten Tamil script on a palm leaf manuscript. The text is arranged in approximately 10 horizontal lines across the length of the leaf. The script is a traditional form of the Tamil language, likely used for religious or philosophical purposes. The leaf shows signs of age, including two circular holes and some fraying at the edges.



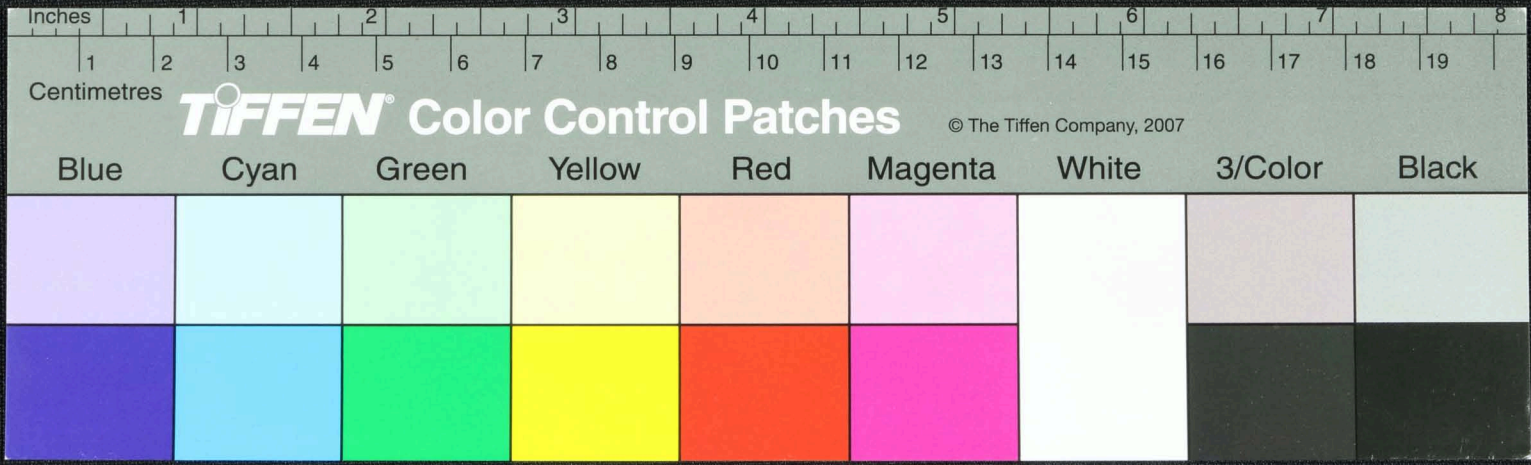
Handwritten Tamil script on a palm leaf manuscript. The text is arranged in approximately five horizontal lines across the length of the leaf. The script is finely etched into the surface of the dried leaf. The leaf shows signs of age, including some dark spots and a small hole near the center.



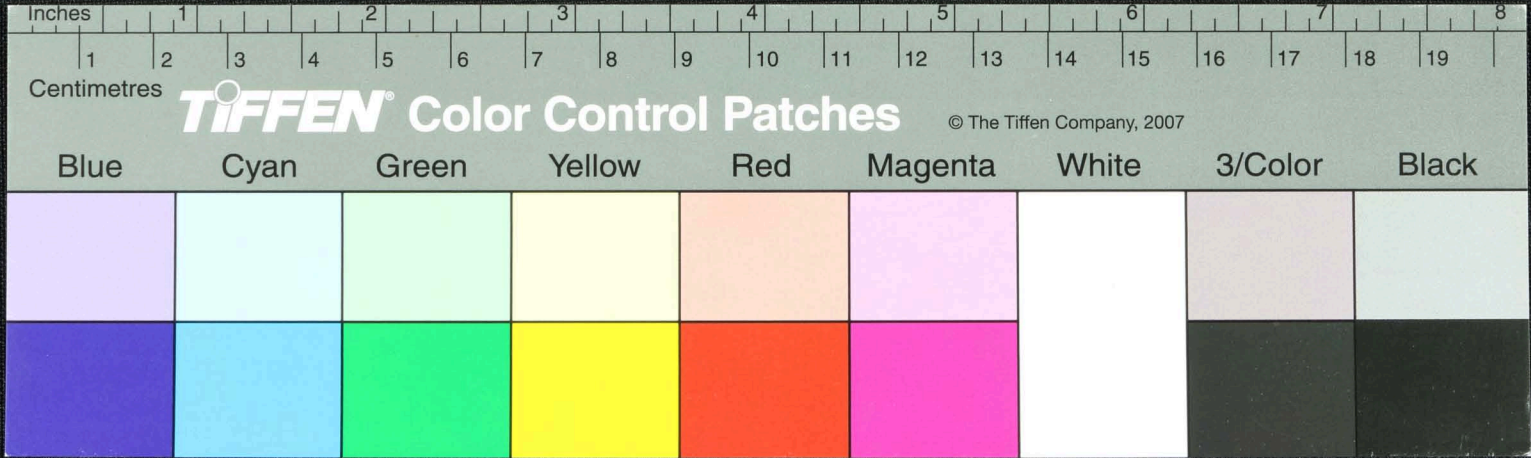
Handwritten Tamil script on a palm leaf manuscript. The text is arranged in approximately 10 horizontal lines. The script is finely etched into the surface of the dried leaf. There are two circular holes visible, which were traditionally used for threading a cord to bind multiple leaves together into a book format. The leaf shows signs of age, including some fraying and discoloration.



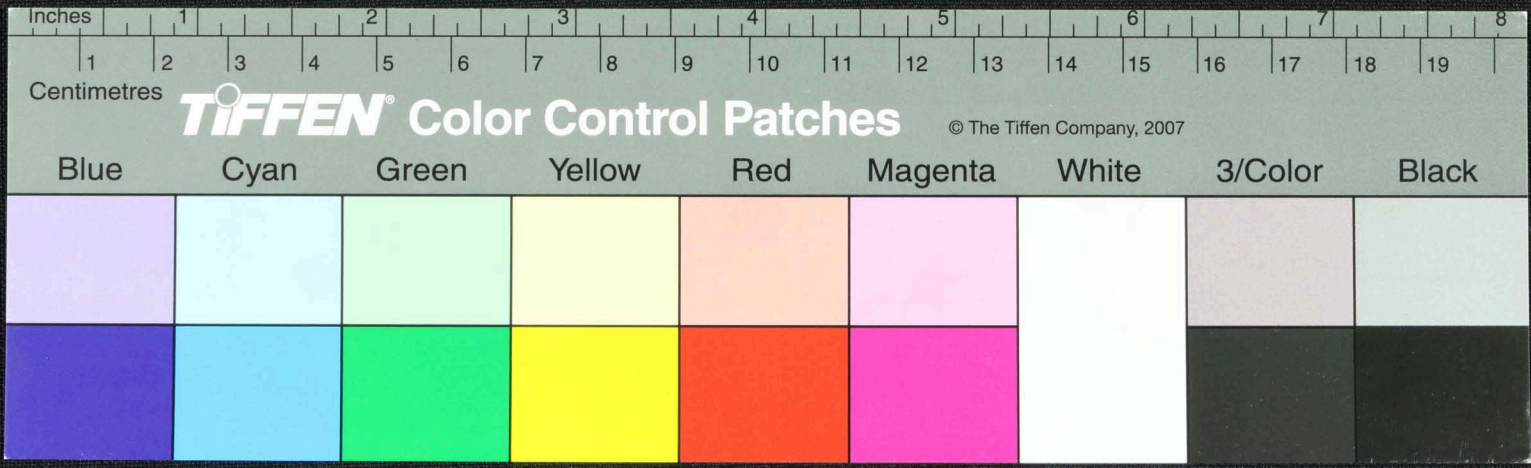
சூனநத வரயுள்
 மதுசூசியில் வரதுமசுரபயவ வவ...
 வரயுள்...
 விடரவப்ப...
 தரவளரண...
 வளவென...
 மதுசூசியில் வரதுமசுரபயவ வவ...
 வரயுள்...
 விடரவப்ப...
 தரவளரண...
 வளவென...



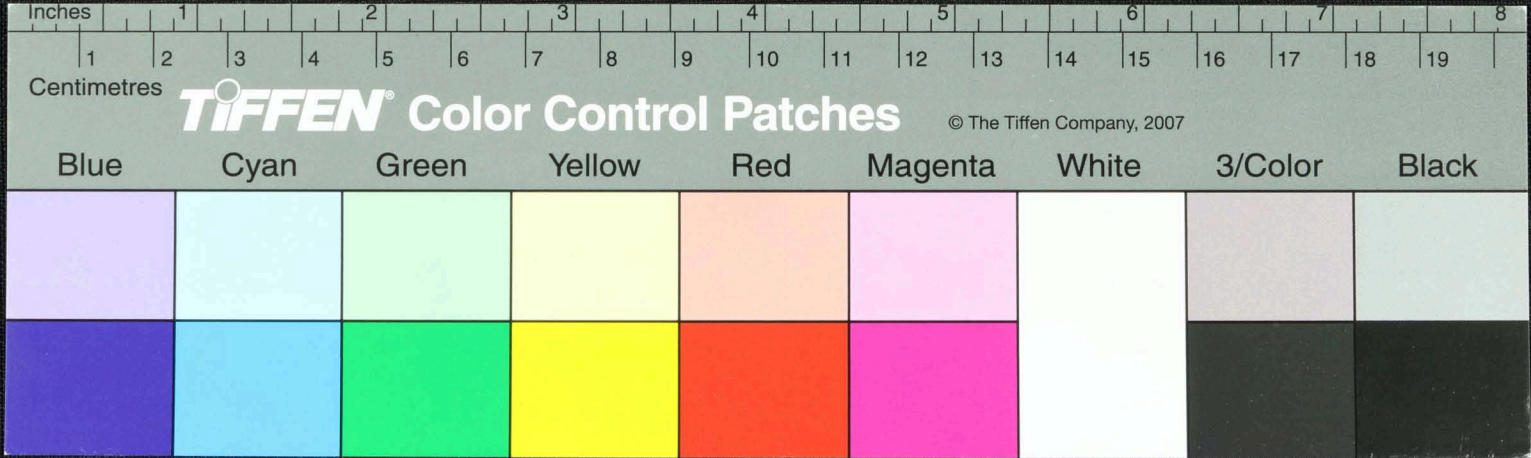
னாதிபதி...
 கரங்கொய்...
 அனாதக...
 கரயய...
 அனாத...
 து...
 அனாத...
 து...
 கரங்கொய்...
 அனாதக...
 கரயய...
 அனாத...
 து...
 அனாத...
 து...



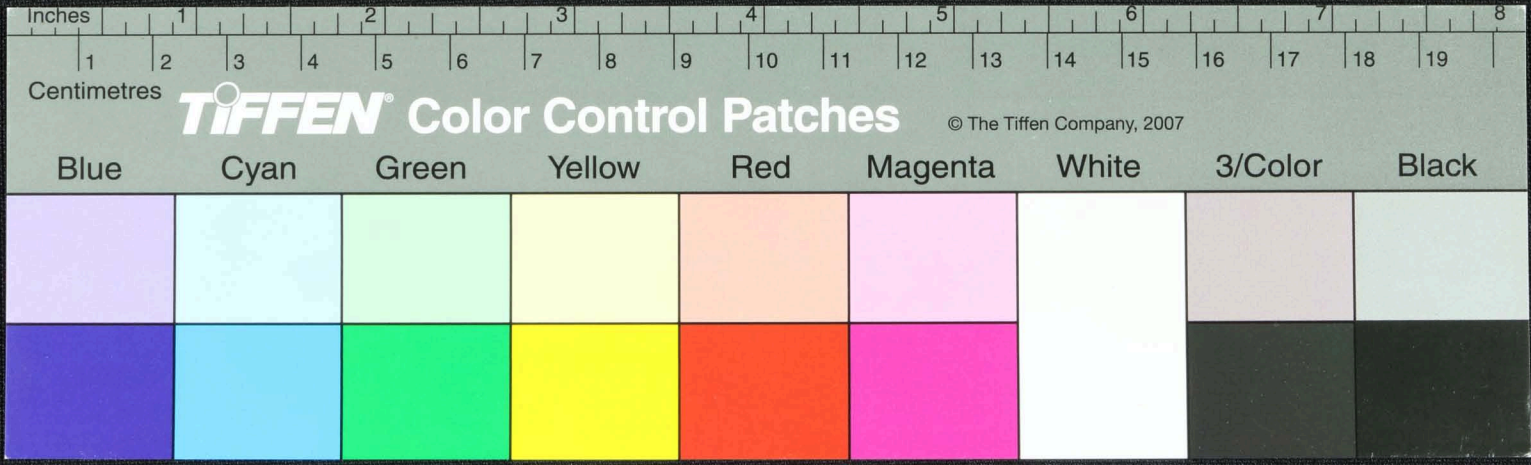
Handwritten text in Tamil script on a palm leaf manuscript. The text is arranged in approximately 10 horizontal lines across the length of the leaf. Two circular holes are visible, which were traditionally used for threading a cord to bind multiple leaves together into a book format. The script is finely etched into the surface of the dried leaf.



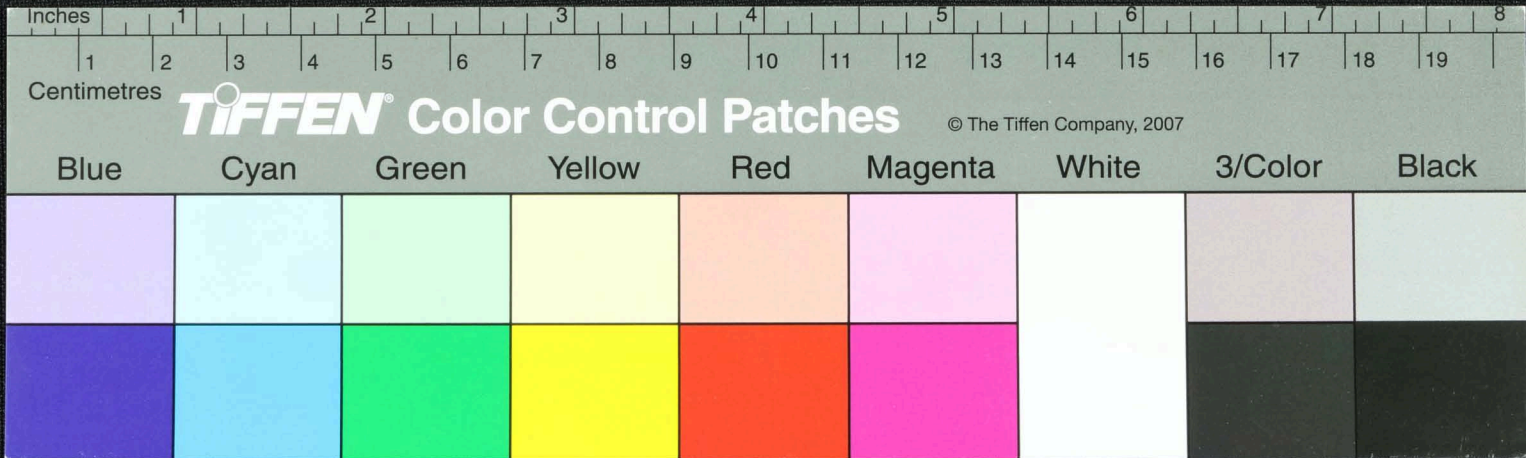
Handwritten Tamil script on a palm leaf manuscript. The text is arranged in approximately 10 horizontal lines across the length of the leaf. The script is densely packed and appears to be a form of classical or religious Tamil. There are two distinct circular holes punched through the leaf, which were traditionally used for threading a cord to bind multiple leaves together into a book format.



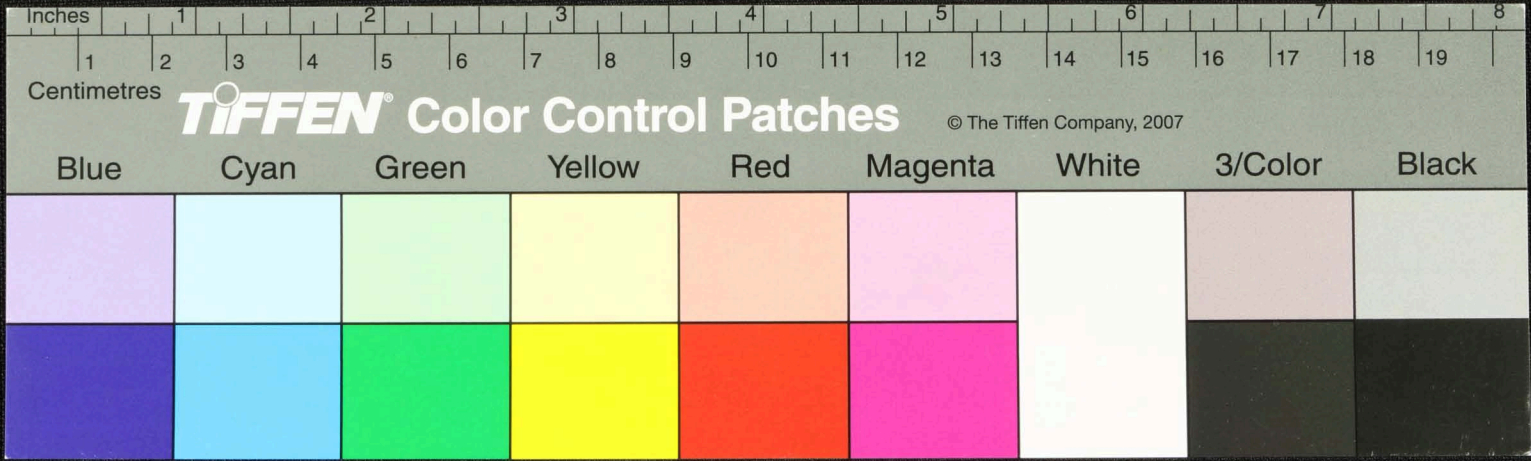
Handwritten Tamil script on a palm leaf manuscript. The text is arranged in approximately 10 horizontal lines across the length of the leaf. The script is a traditional form of the Tamil language, likely used for religious or philosophical purposes. The leaf shows signs of age, including two circular holes and some fraying at the edges.

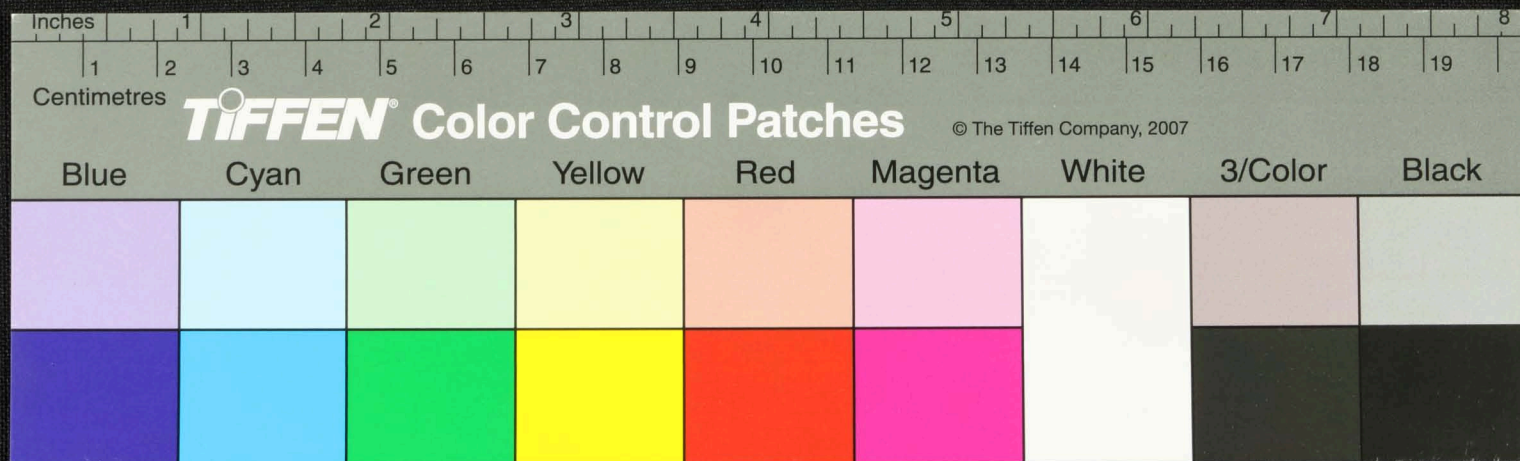


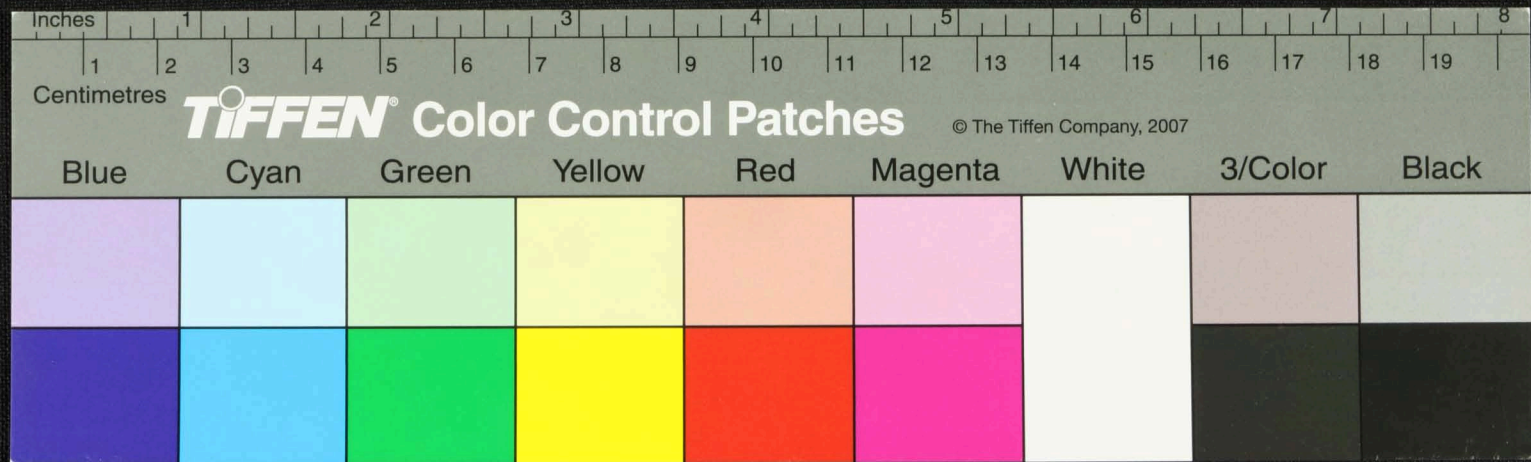
Handwritten Tamil script on a palm leaf manuscript. The text is arranged in approximately 10 horizontal lines across the length of the leaf. The script is densely packed and appears to be a form of classical or religious Tamil. There are two distinct circular holes along the top edge of the leaf, which were traditionally used for threading a cord to bind multiple leaves together into a book format.

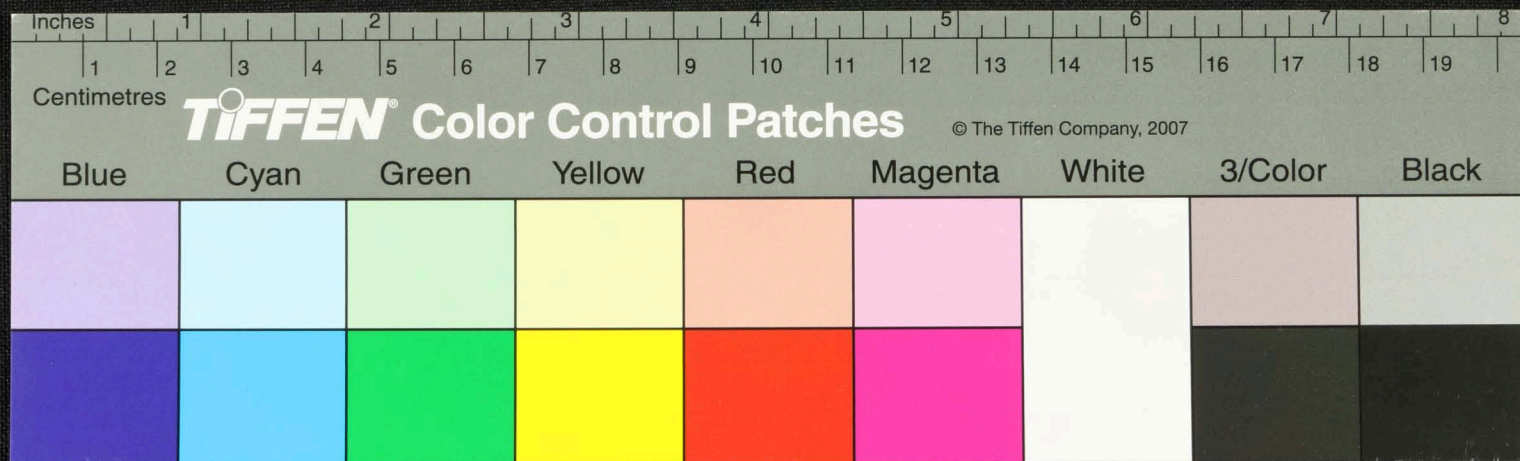


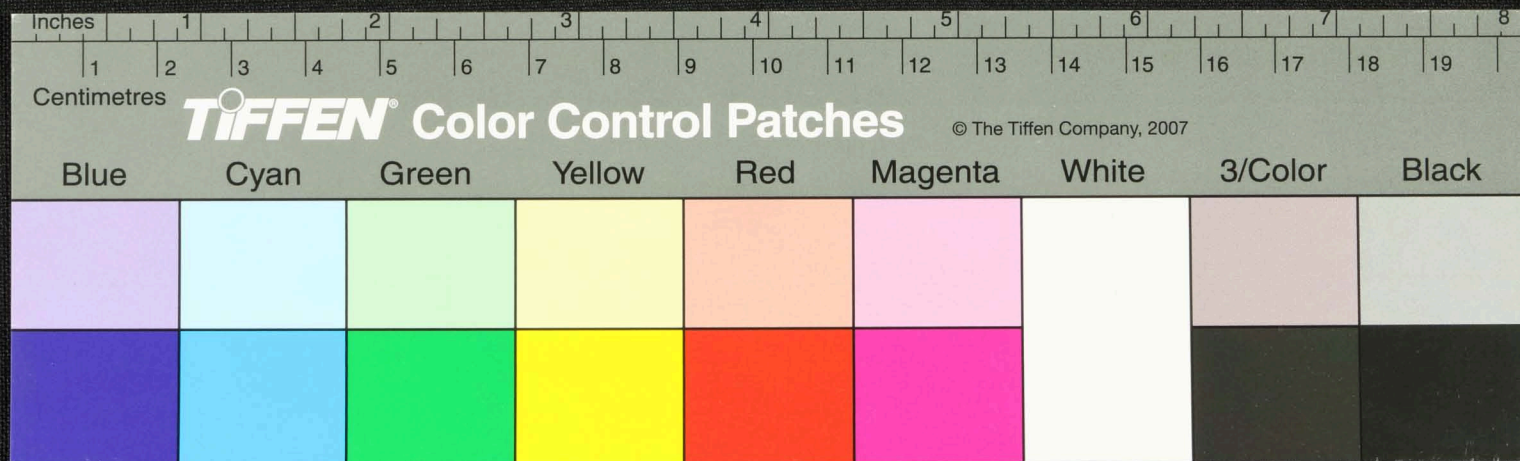
சரணை செந்திரினி லொகடுமபபுலுக் சரமபணலிதடபுடகடுகளளபுடுத
 றி தணைநிலொ துகடுளதெயாகடுததணவரத் துகடுளபபுடுதடுகளளபு
 ஏயந முஜபபரலிவ் றாததிடவள்ளிசுககிலெ படலெதிரமடுவயெ
 லாதடுடும சரணைதடதெசுபபமததில வெளனைபபரசரணமமடை
 கசசுஜிமணசெயதுமடமிடடுகடுகடநிலயிரவலிவ்ரபபெரடடுககசுசு
 சுகடுஅவிநியினைஅருசுக-49வெத்திலிசசுரத்திலொகடு



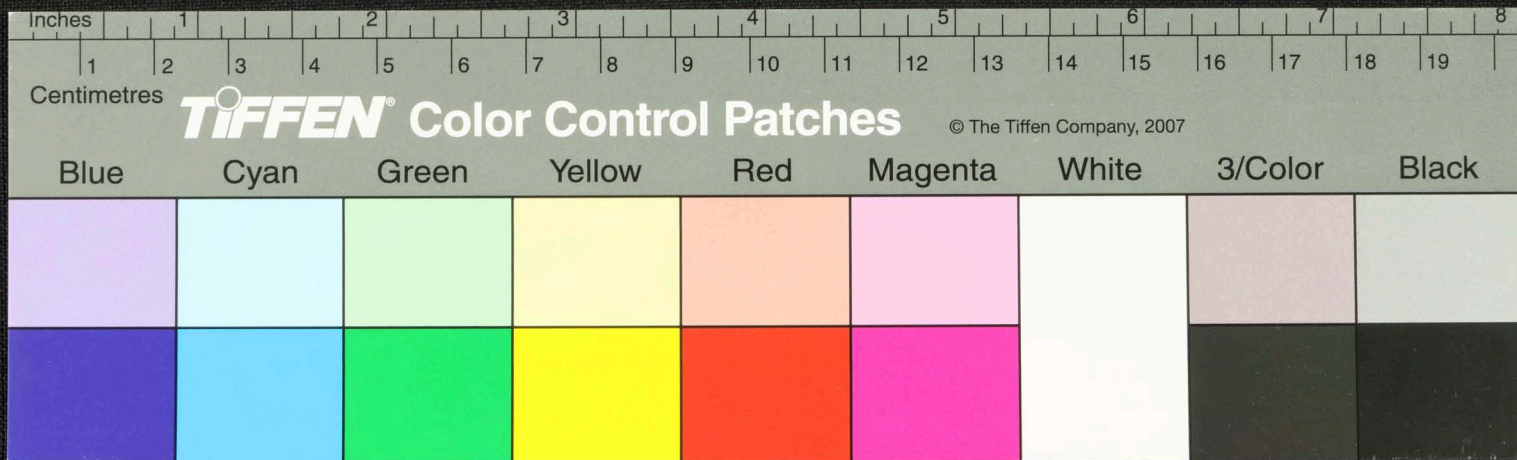




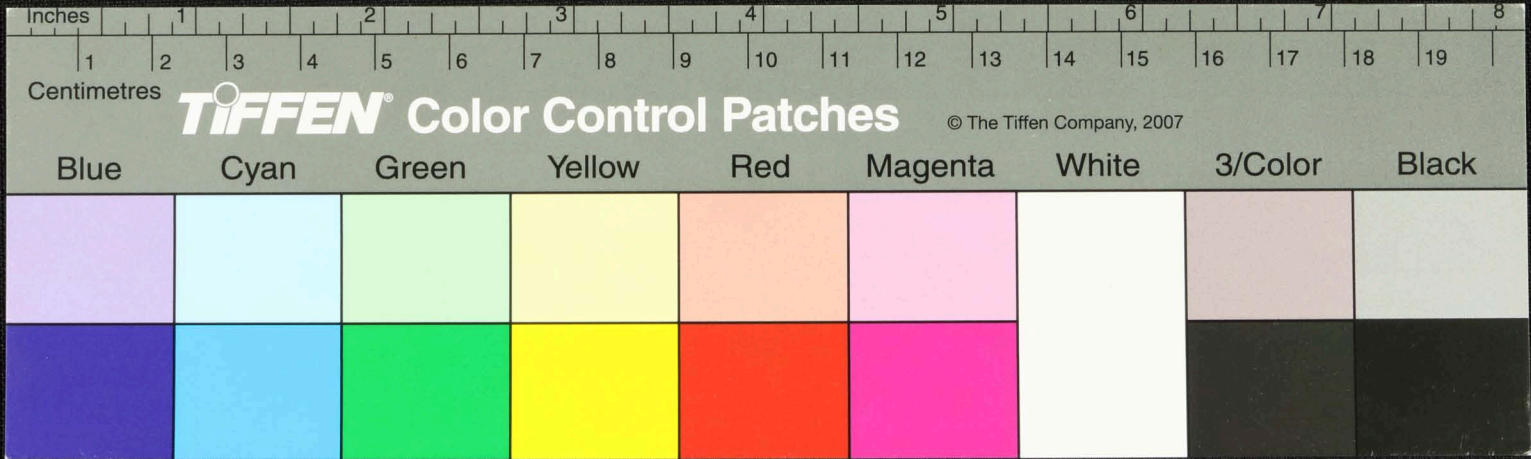




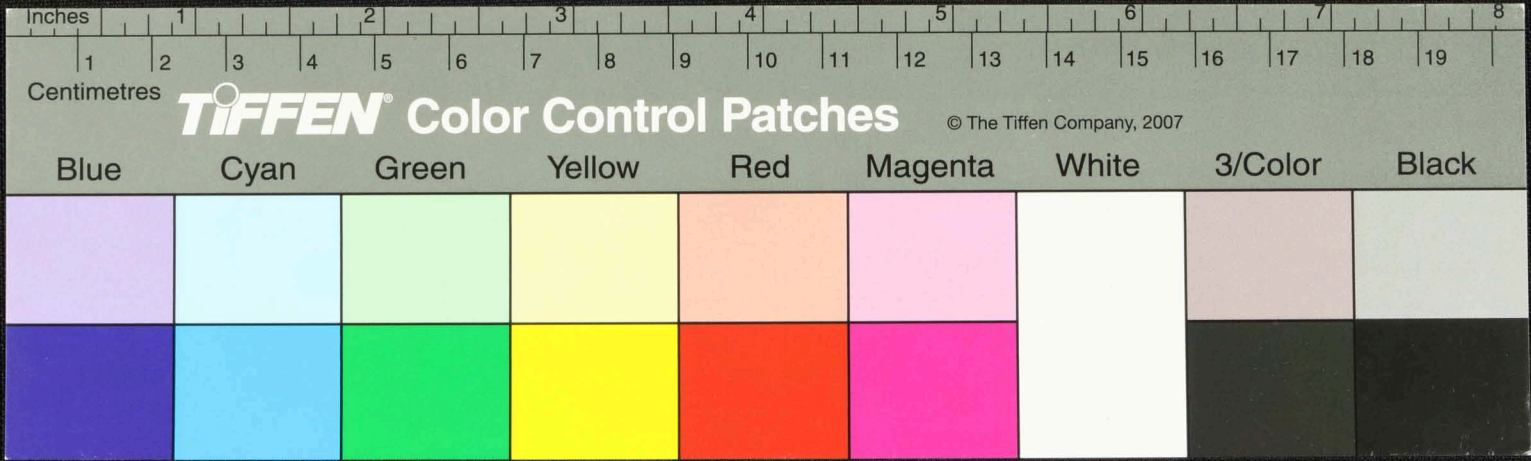
Handwritten text in Tamil script on a palm leaf manuscript. The text is faint and partially obscured by two circular holes. The visible characters include 'புது பொருள்...' and 'சான்றி...'.

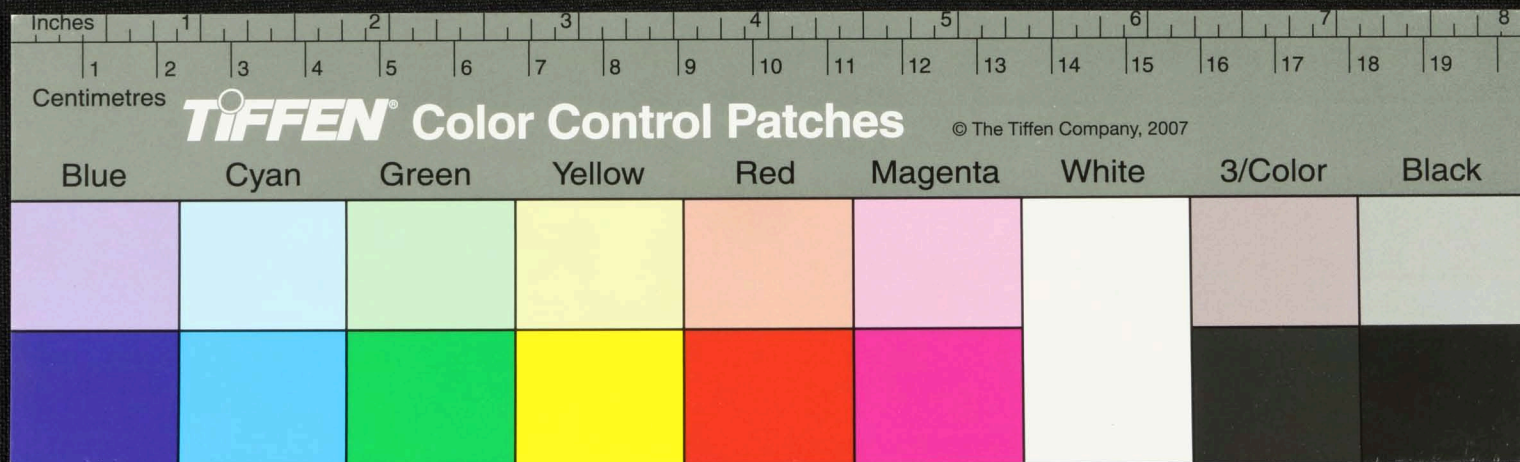


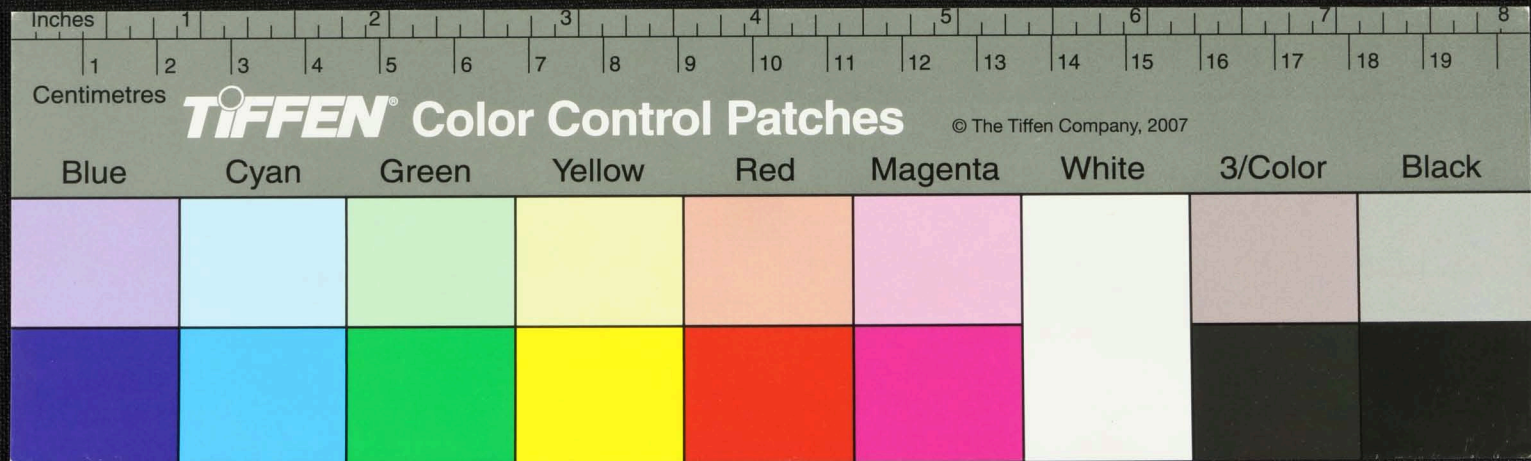
Handwritten Tamil script on a palm leaf manuscript. The text is arranged in approximately 10 horizontal lines across the length of the leaf. The script is a traditional form of the Tamil language, likely used for religious or historical records. The leaf shows signs of age, including several dark circular holes and some surface wear.



Handwritten text in Tamil script on a palm leaf manuscript. The text is arranged in approximately 10 horizontal lines across the length of the leaf. Some characters are obscured by dark circular marks, likely from insect damage or holes used for binding. The script is a traditional form of the Tamil language.



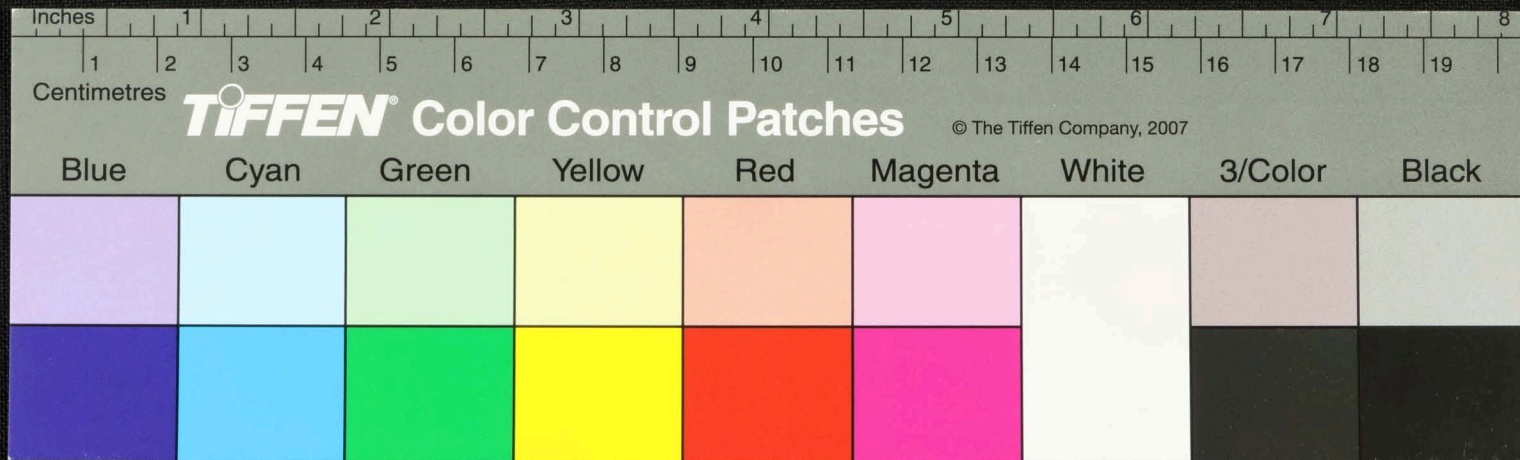




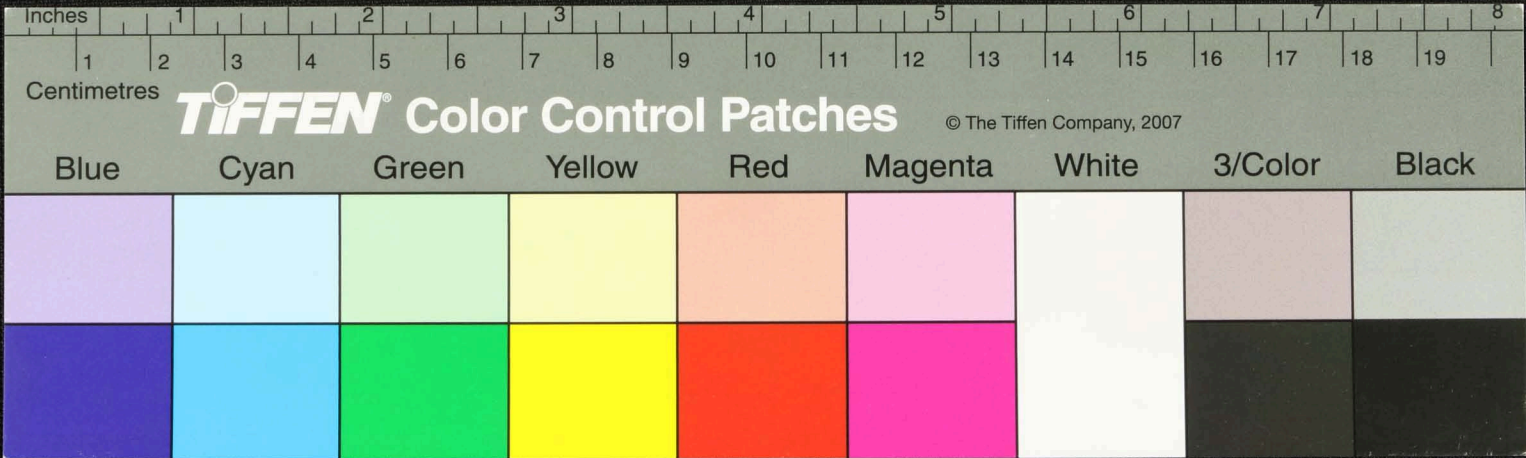
Inches 1 2 3 4 5 6 7 8
Centimetres 1 2 3 4 5 6 7 8 9 10 11 12 13 14 15 16 17 18 19

TIFFEN Color Control Patches © The Tiffen Company, 2007

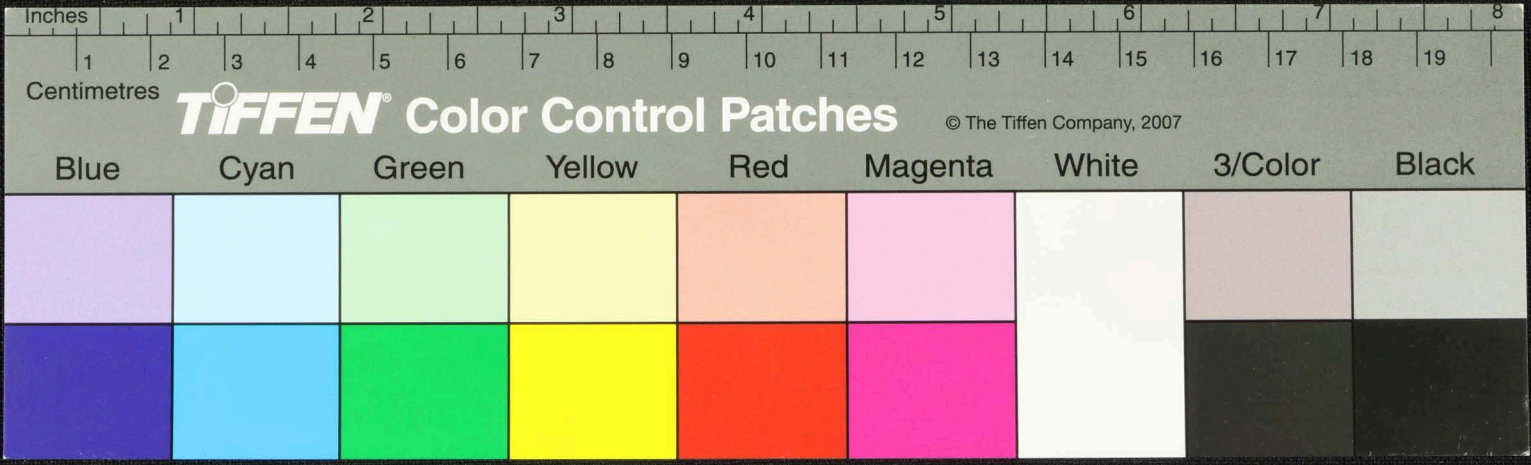
Blue	Cyan	Green	Yellow	Red	Magenta	White	3/Color	Black



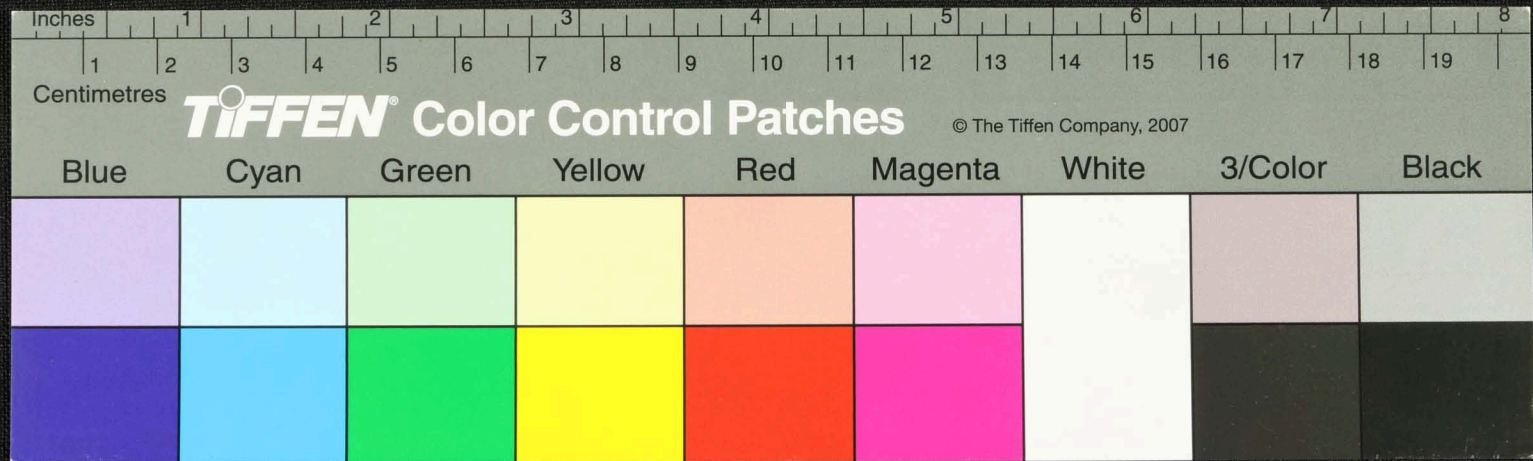
Handwritten Tamil script on a palm leaf manuscript. The text is arranged in approximately 10 horizontal lines across the length of the leaf. The script is a traditional form of the Tamil language, likely used for religious or philosophical purposes. There are two distinct circular holes punched through the leaf, which were traditionally used for threading a cord to bind multiple leaves together into a book format.



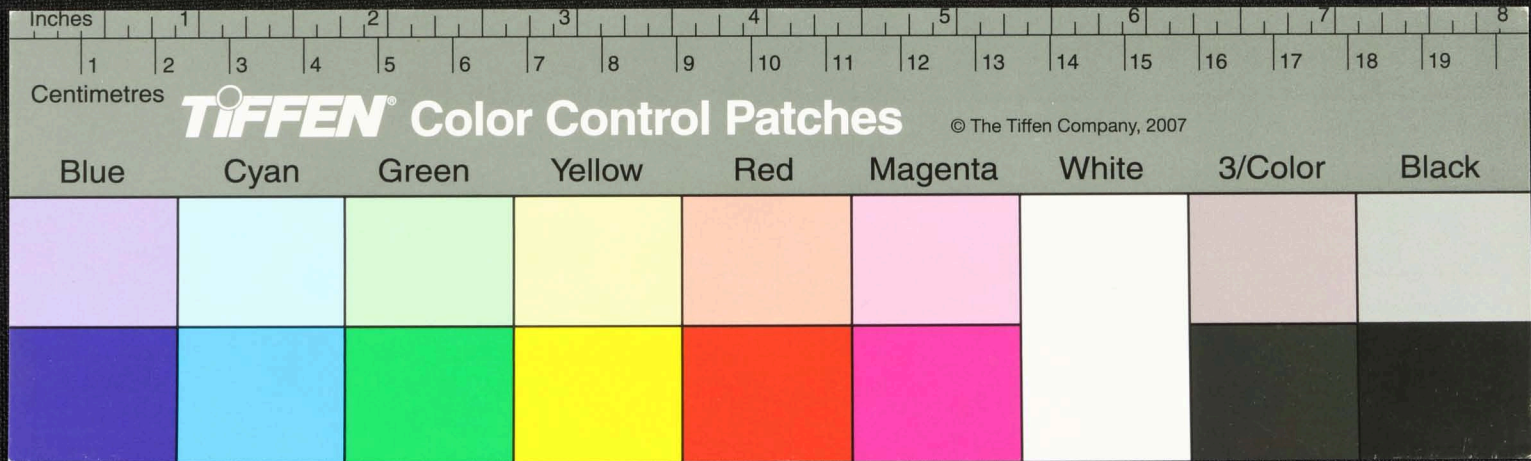
Handwritten Tamil script on a palm leaf manuscript. The text is arranged in approximately 10 horizontal lines across the length of the leaf. The script is finely etched into the surface of the dried leaf. There are two prominent circular holes, likely from a traditional string-and-button binding system, located roughly at the 25% and 65% marks along the leaf's length.



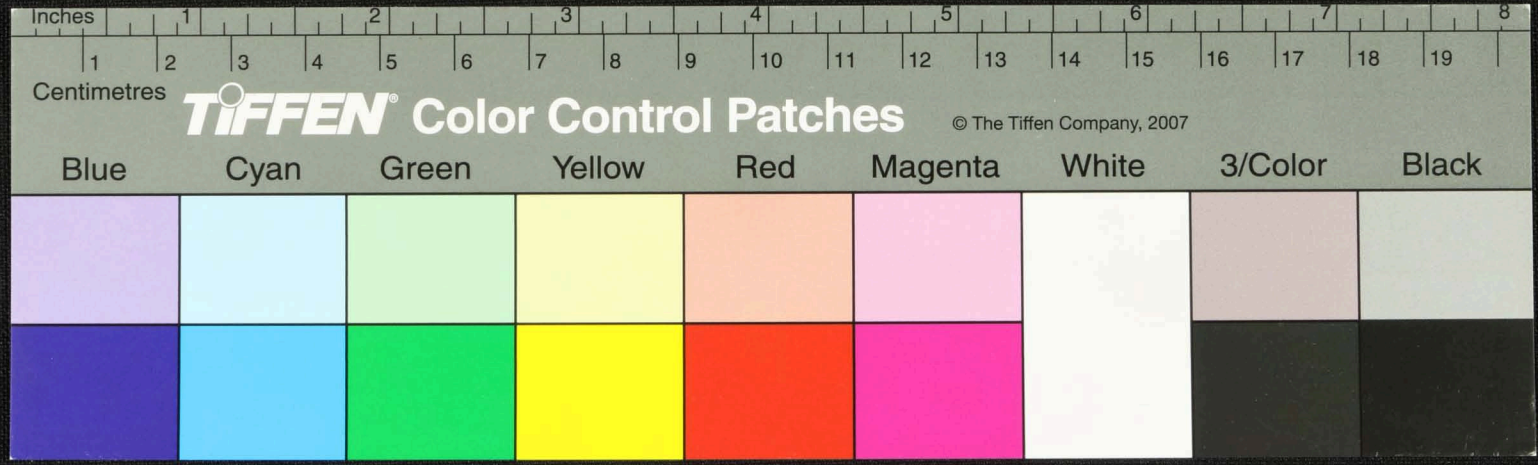
Handwritten Tamil script on a palm leaf manuscript. The text is arranged in approximately four horizontal lines. The script is densely packed and appears to be a form of classical or historical Tamil. There are several dark, circular holes or indentations along the length of the leaf, which are characteristic of traditional palm leaf manuscripts used for binding.



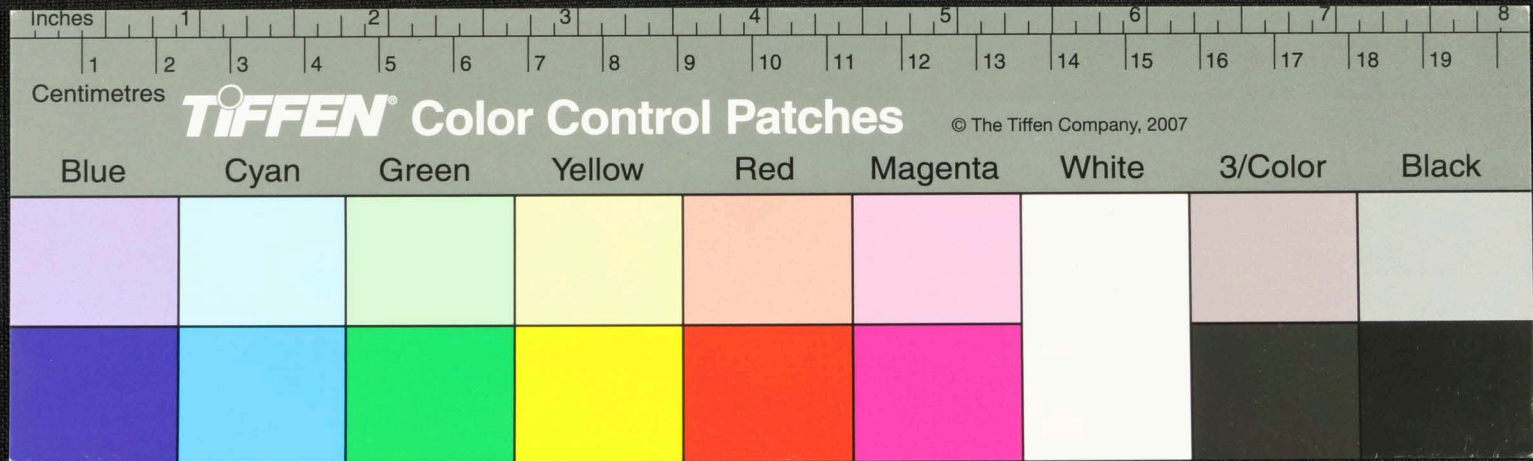
Handwritten text in Tamil script on a palm leaf manuscript. The text is arranged in approximately 10 horizontal lines. There are two prominent circular holes in the leaf, one near the 2-inch mark and another near the 5-inch mark on the ruler below. The script is finely etched into the surface of the dried leaf.



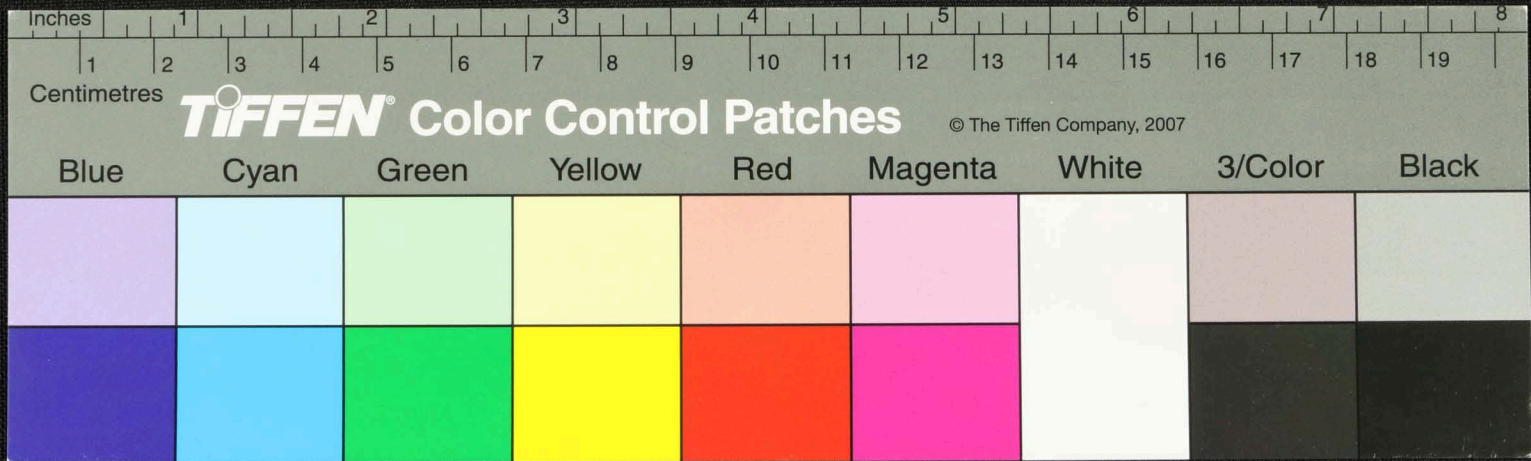
Handwritten Tamil script on a palm leaf manuscript. The text is arranged in approximately 10 horizontal lines across the length of the leaf. The script is a traditional form of the Tamil language, likely used for religious or philosophical purposes. There are several dark spots and irregularities on the leaf, possibly due to age or damage.



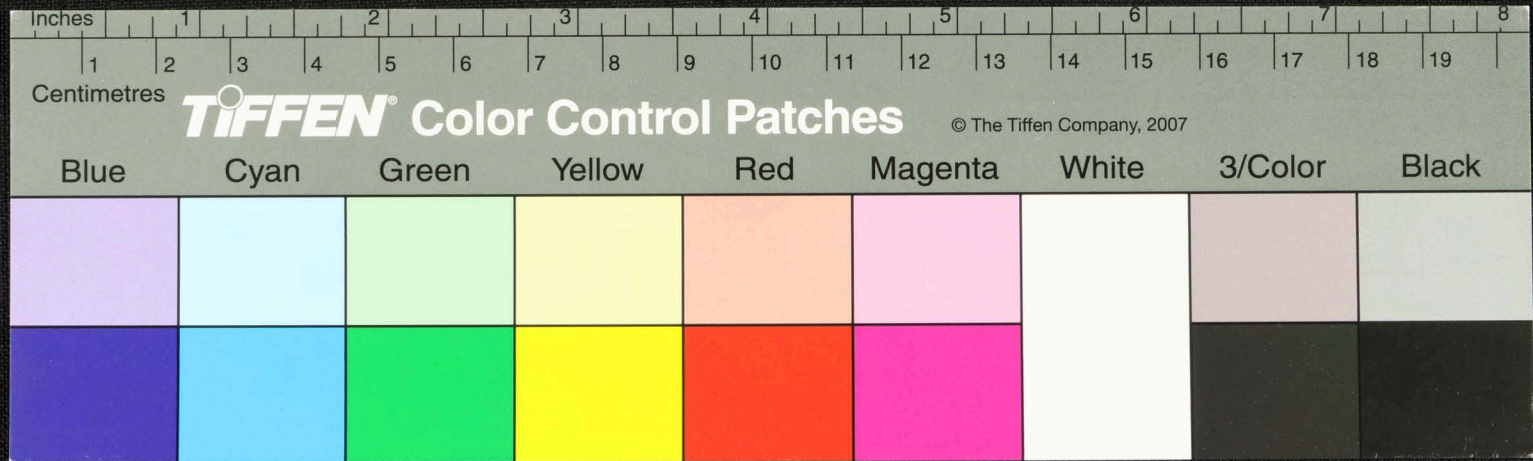
Handwritten Tamil script on a palm leaf manuscript. The text is arranged in approximately four horizontal lines. Two circular holes are visible, used for binding multiple leaves together. The script is finely etched into the surface of the dried leaf.



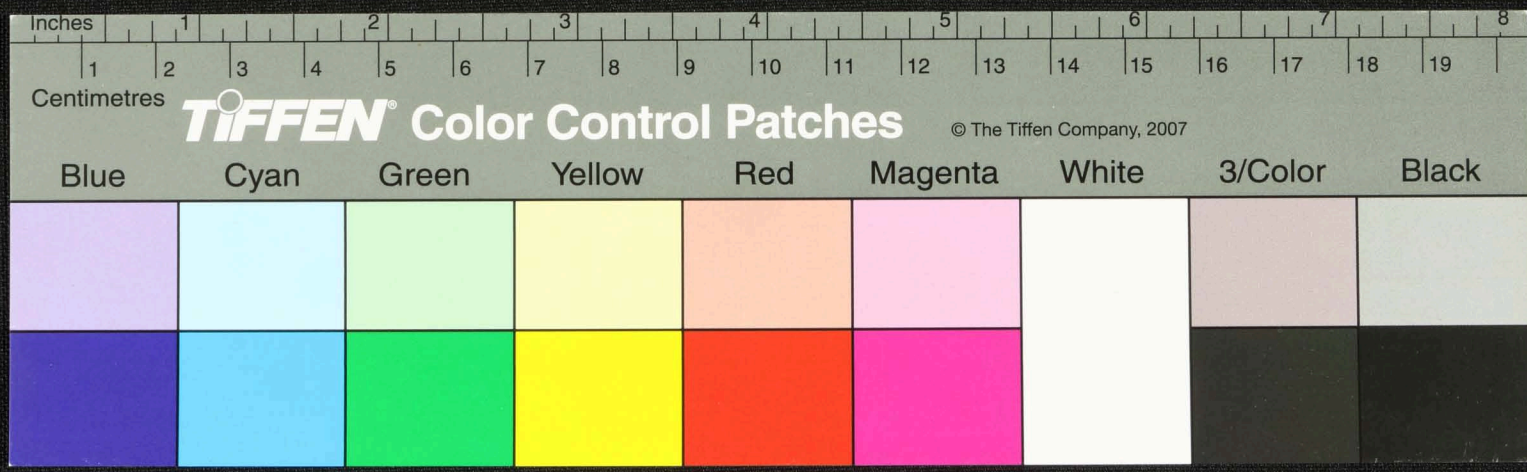
Handwritten Tamil script on a palm leaf manuscript. The text is arranged in approximately six horizontal lines, written from left to right. There are several dark circular spots on the leaf, likely due to insect damage or mold. The script is a traditional form of the Tamil language, possibly representing a religious or philosophical text.



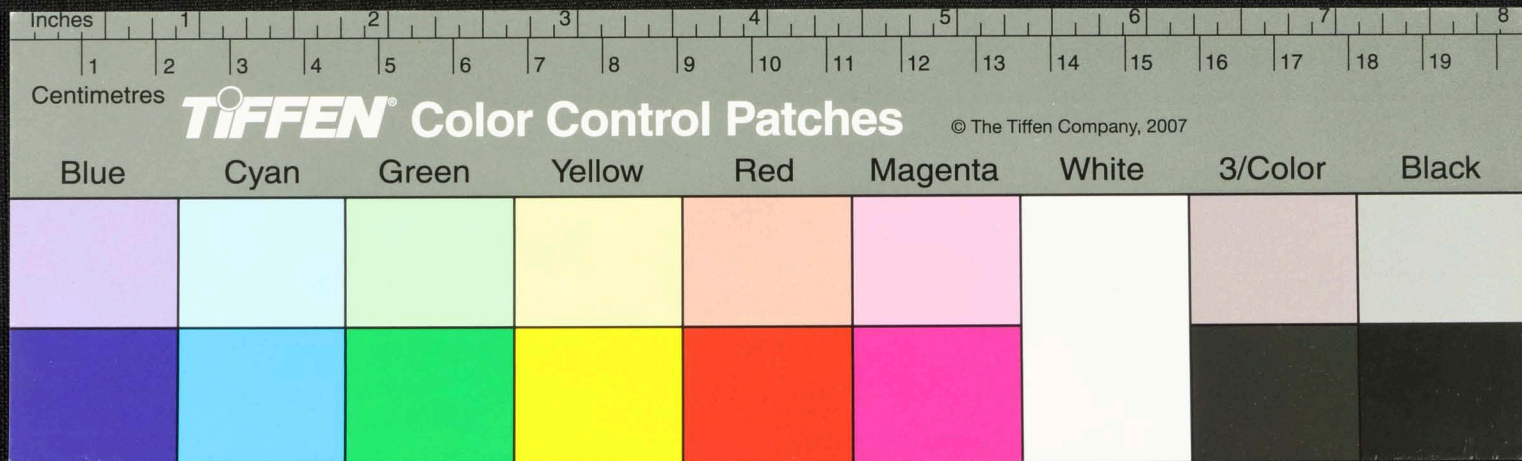
Handwritten Tamil script on a palm leaf manuscript. The text is arranged in approximately 10 horizontal lines across the length of the leaf. The script is a traditional form of the Tamil language, likely used for religious or philosophical purposes. There are several dark, irregular marks on the leaf, possibly from insect damage or handling over time.

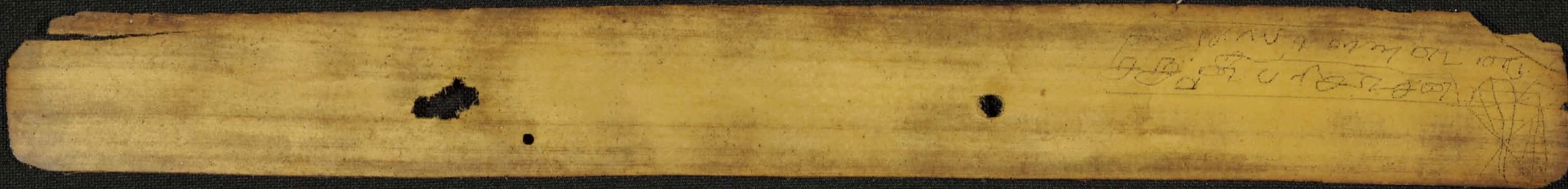


Handwritten text in Tamil script on a palm leaf manuscript. The text is arranged in approximately 10 horizontal lines across the length of the leaf. There are two distinct circular holes or indentations on the leaf, one near the left edge and one near the right edge, which were traditionally used for threading a cord to bind multiple leaves together into a book.

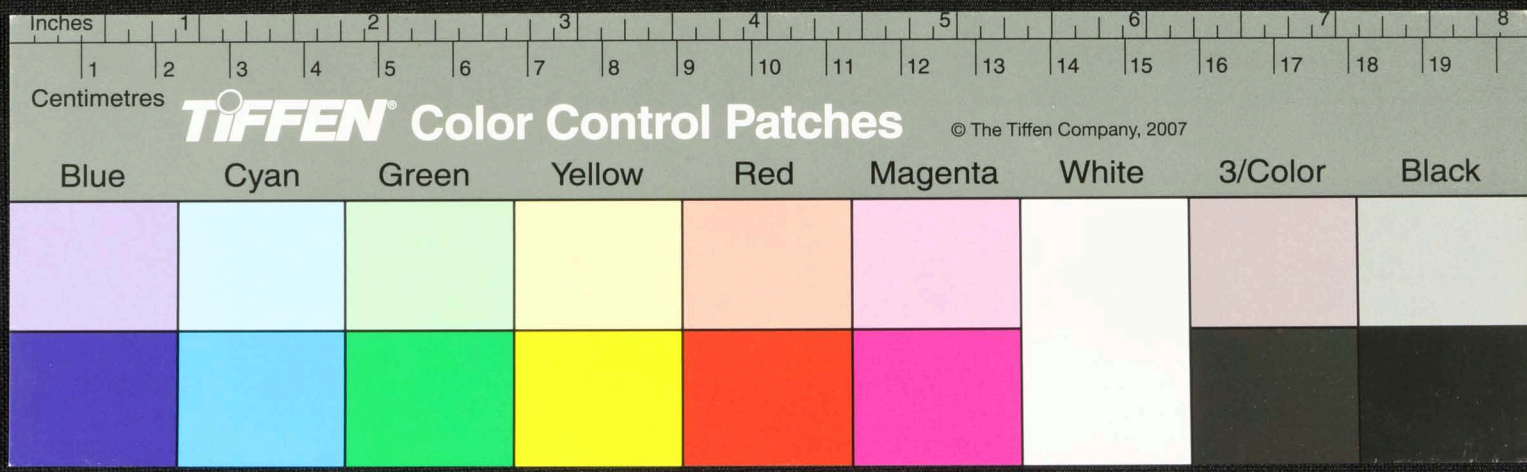


Handwritten text in Tamil script on a palm leaf manuscript. The text is arranged in approximately 10 horizontal lines across the length of the leaf. The script is a traditional form of the Tamil language, used for recording knowledge and literature. The leaf shows signs of age, including some dark spots and wear.





Handwritten text and a diagram on the right side of the object. The text is partially illegible but appears to include "100 No. 1000" and "1000 No. 1000". The diagram is a simple geometric drawing of a circle with internal lines.



Inches 1 2 3 4 5 6 7 8
Centimetres 1 2 3 4 5 6 7 8 9 10 11 12 13 14 15 16 17 18 19

TIFFEN Color Control Patches

© The Tiffen Company, 2007

Blue Cyan Green Yellow Red Magenta White 3/Color Black

