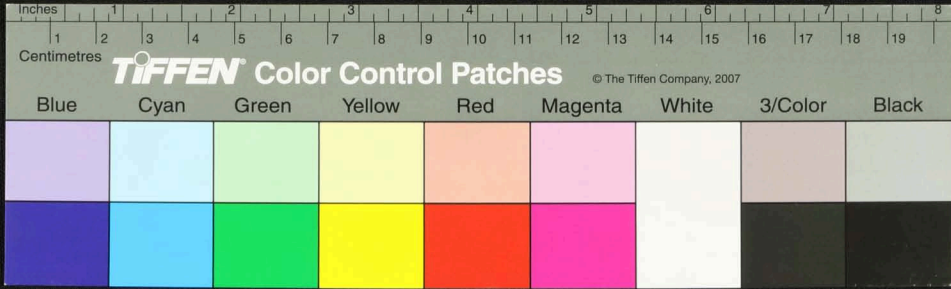
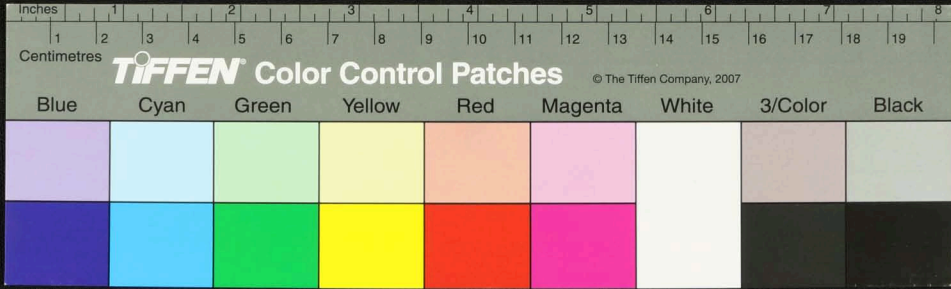


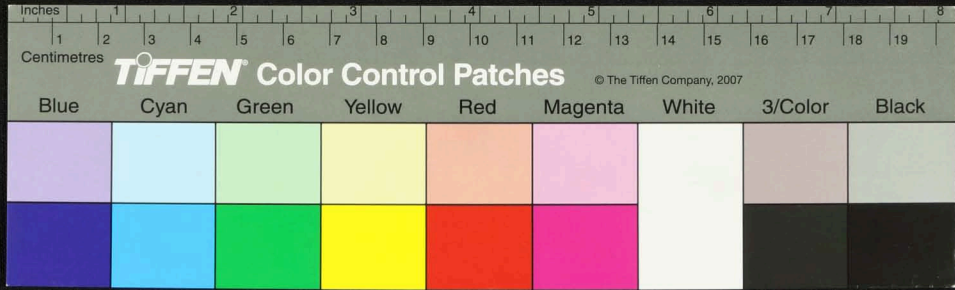
Handwritten Tamil script on a palm leaf manuscript. The text is densely packed and runs horizontally across the length of the leaf. There are two distinct circular holes, one on the left side and one on the right side, which were traditionally used for threading a cord to bind multiple leaves together into a book format. The script is in an older form of the Tamil language, likely from the 17th or 18th century.



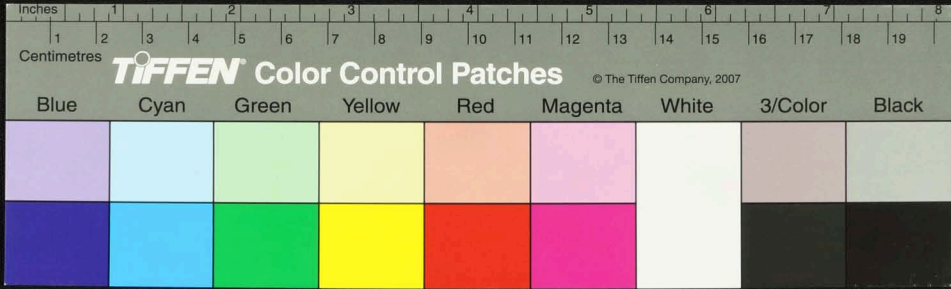
Handwritten text in Tamil script on a palm leaf manuscript. The text is densely packed and spans the length of the leaf. It appears to be a historical record or a religious text, given the context of such manuscripts. The script is in an older form of the Tamil language. There are two distinct circular holes visible on the leaf, which were traditionally used for threading a cord to bind multiple leaves together into a book format.



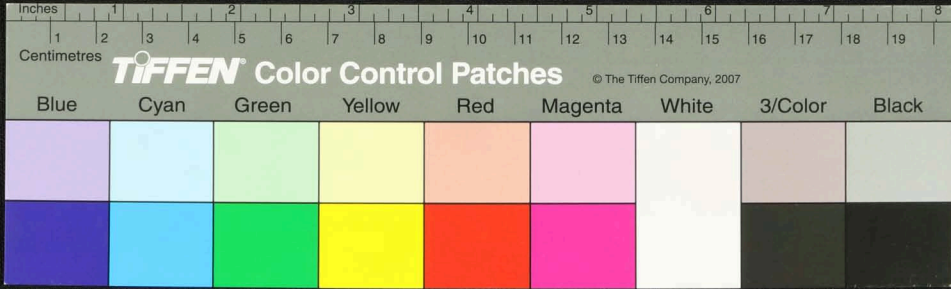
Handwritten Tamil script on a palm leaf manuscript. The text is densely packed and spans the length of the leaf. There are two distinct circular holes, likely from a traditional binding method. The script is written in a cursive style characteristic of historical Tamil manuscripts.



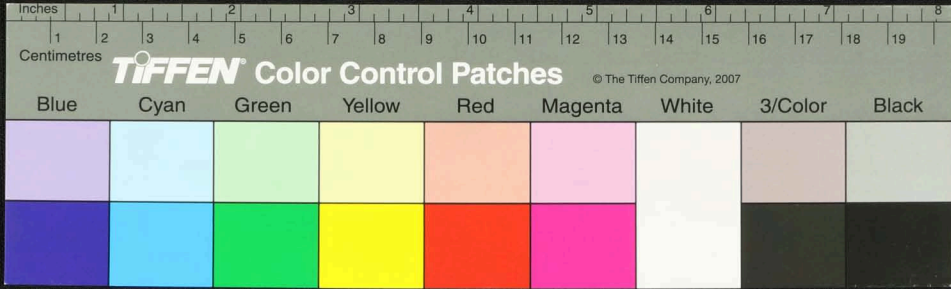
Handwritten Tamil script on a palm leaf manuscript. The text is densely packed and runs horizontally across the length of the leaf. There are two distinct circular holes, likely from a traditional string binding method. The script is in an older form of the Tamil language.



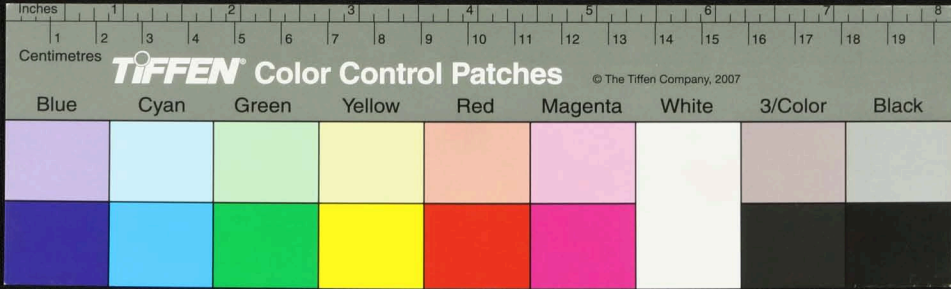
Handwritten Tamil script on a palm leaf manuscript. The text is densely packed and runs horizontally across the length of the leaf. There are two prominent circular holes, likely from a traditional string binding. The script is in an older form of the Tamil language.



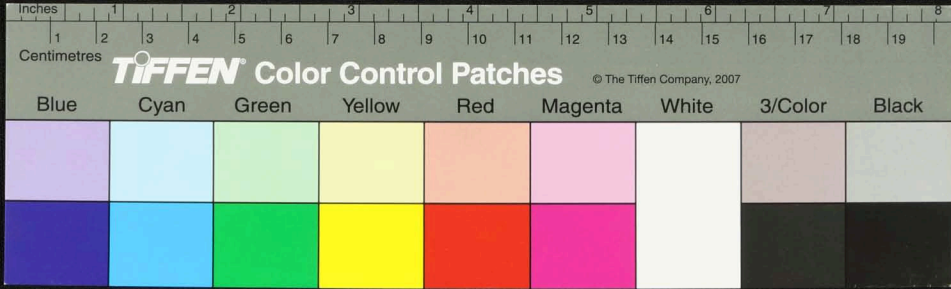
Handwritten text in an ancient script, likely Tamil, on a palm leaf manuscript. The text is densely packed and runs horizontally across the length of the leaf. There are two distinct circular holes punched through the leaf, one near the left edge and one near the right edge, which were used for threading a cord to bind multiple leaves together into a book format. The script is finely etched into the surface of the dried leaf.



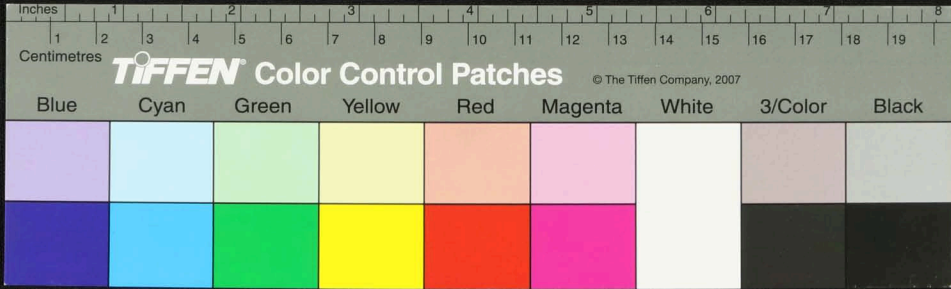
Handwritten Tamil script on a palm leaf manuscript. The text is densely packed and runs horizontally across the length of the leaf. There are two circular holes visible, which were traditionally used for threading a cord to bind multiple leaves together. On the left side, there are some smaller, less legible markings, possibly a date or a reference number.



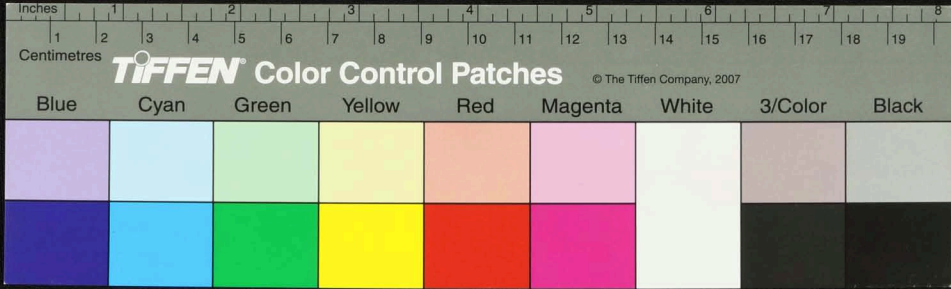
Handwritten text in Tamil script on a palm leaf manuscript. The text is densely packed and spans the length of the leaf. It appears to be a historical record or a religious text, given the nature of the medium. The script is clearly legible and follows the traditional layout of palm leaf manuscripts.



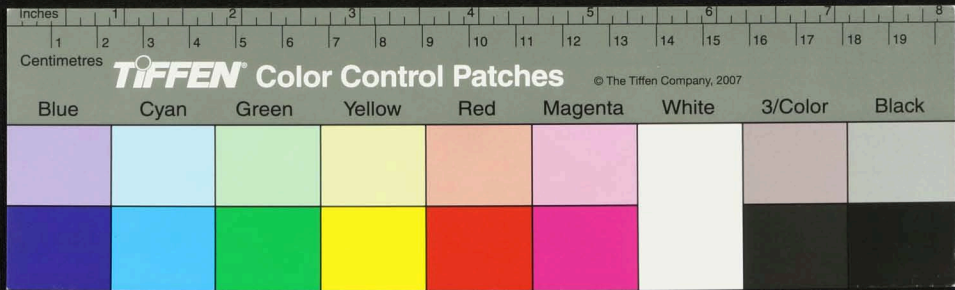
Handwritten text in Tamil script on a palm leaf manuscript. The text is densely packed and spans the length of the leaf. It appears to be a historical record or a religious text, given the context of such manuscripts. The script is in an older form of the Tamil language. There are two circular holes visible on the leaf, which were traditionally used for threading a cord to bind multiple leaves together into a book format.



Handwritten text in Tamil script on a palm leaf manuscript. The text is densely packed and spans the length of the leaf. There are two prominent circular holes, likely from a traditional binding method. The script is in an older form of the Tamil language.

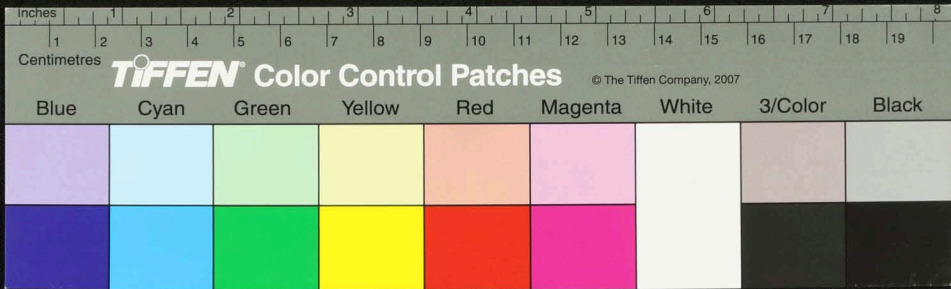


Handwritten Tamil script on a palm leaf manuscript. The text is densely packed and spans the length of the leaf. It appears to be a historical record or a religious text, given the context of such artifacts. The script is written in a traditional style, with some characters that are characteristic of older Tamil inscriptions. There are some dark spots and irregularities on the leaf, possibly due to age or damage.

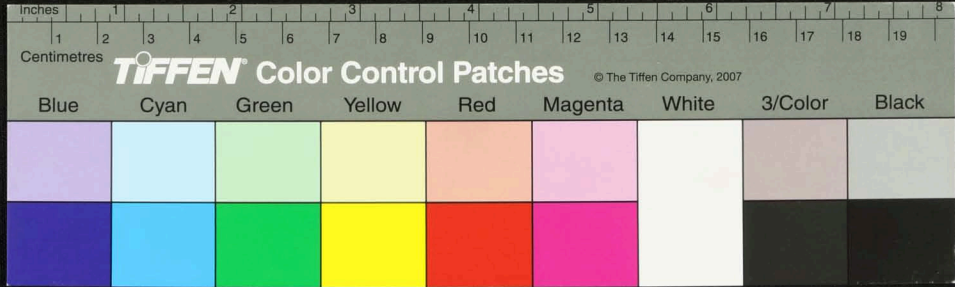


Handwritten Tamil script on a palm leaf manuscript. The text is densely packed and runs horizontally across the length of the leaf. There are two circular holes visible, which were traditionally used for threading a cord to bind multiple leaves together. The script is in an older form of the Tamil language.

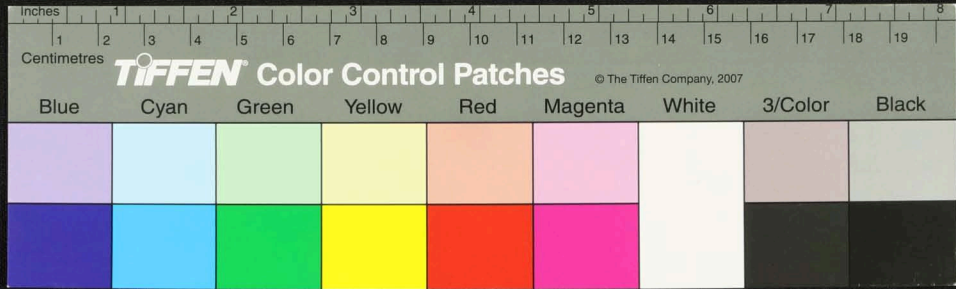
65



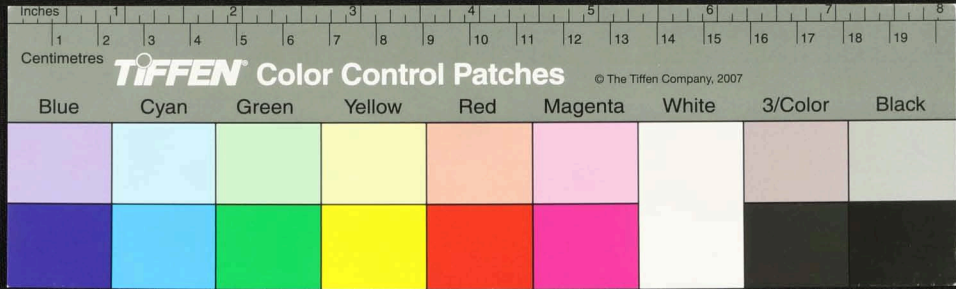
Handwritten Tamil script on a palm leaf manuscript. The text is densely packed and spans the length of the leaf. It appears to be a historical record or a religious text, given the context of such artifacts. The script is written in a traditional style, with clear characters and some decorative elements. The leaf shows signs of age, with some discoloration and wear.



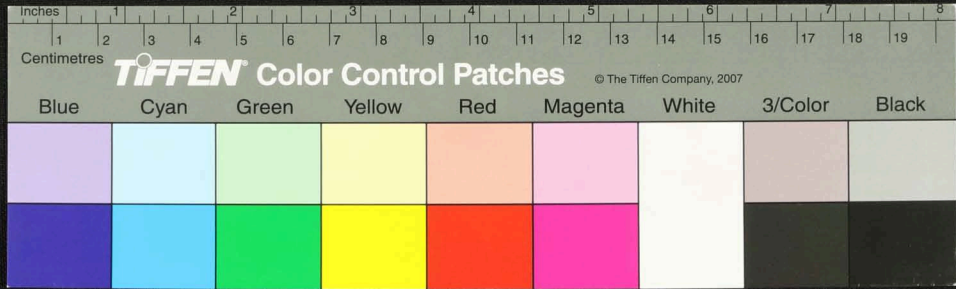
Handwritten Tamil script on a palm leaf manuscript. The text is densely packed and spans the length of the leaf. It appears to be a historical record or a religious text, given the context of such artifacts. The script is written in a traditional style, with some characters that are characteristic of older Tamil inscriptions. There are two distinct circular holes along the length of the leaf, which were used for threading a cord to bind multiple leaves together into a book format.



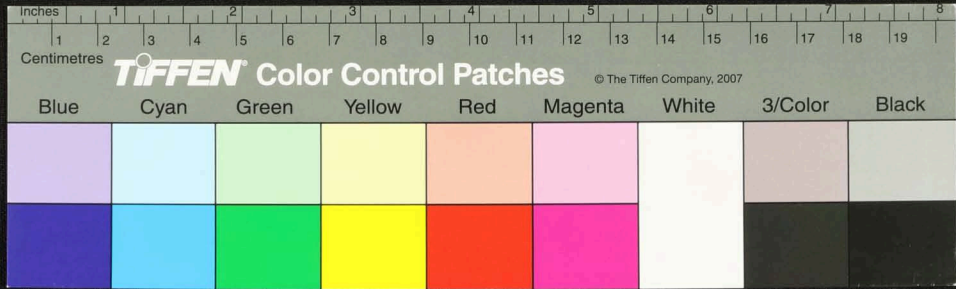
Handwritten Tamil script on a palm leaf manuscript. The text is arranged in approximately 12 horizontal lines across the length of the leaf. On the left side, there is a vertical column of text, likely serving as a title or a reference. Two circular holes are visible, which were traditionally used for threading a cord to bind multiple leaves together.

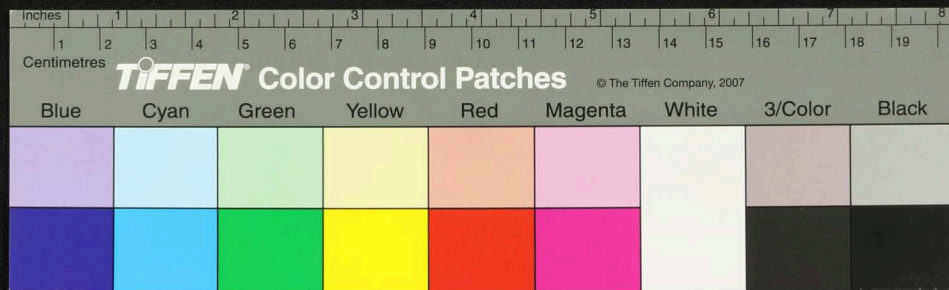


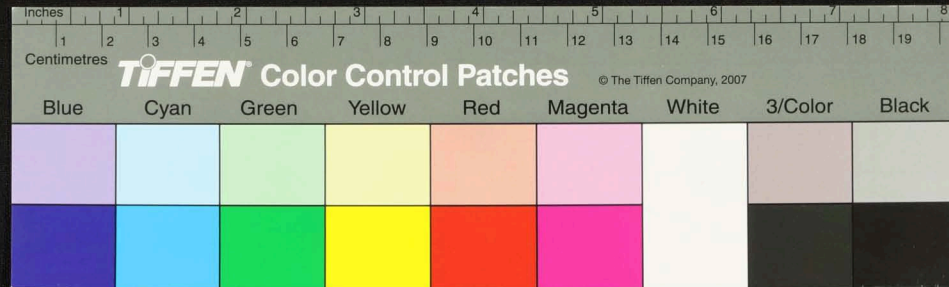
Handwritten Tamil script on a palm leaf manuscript. The text is densely packed and runs horizontally across the length of the leaf. Two circular holes are visible, which were traditionally used for threading a cord to bind multiple leaves together into a book format.



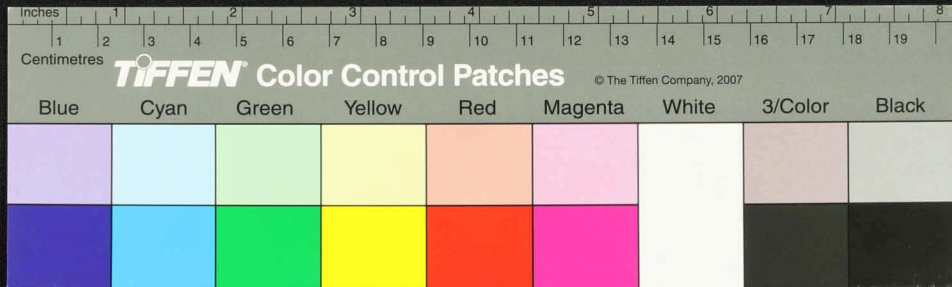
Handwritten text in Tamil script on a palm leaf manuscript. The text is densely packed and runs horizontally across the length of the leaf. There are two circular holes visible, which were traditionally used for threading a cord to bind multiple leaves together. On the left side, there are some marginal notes or numbers, including the number '34'.



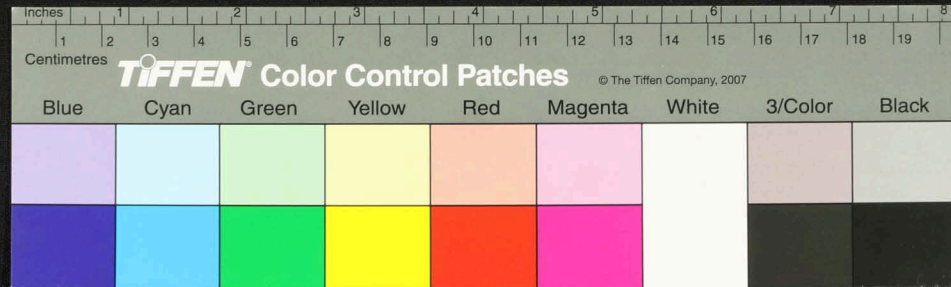




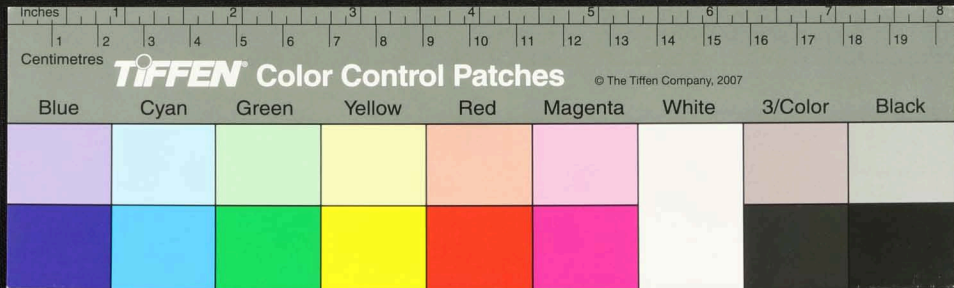
Handwritten Tamil script on a palm leaf manuscript. The text is densely packed and runs horizontally across the length of the leaf. There are two circular holes visible, which were traditionally used for threading a cord to bind multiple leaves together. The script is in an older form of the Tamil language.



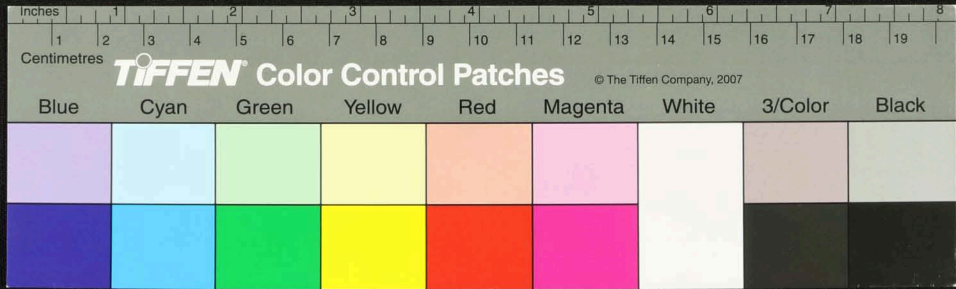
Handwritten Tamil script on a palm leaf manuscript. The text is densely packed and runs horizontally across the length of the leaf. There are two prominent circular holes, likely from a traditional binding system. The script is in an older form of the Tamil language.



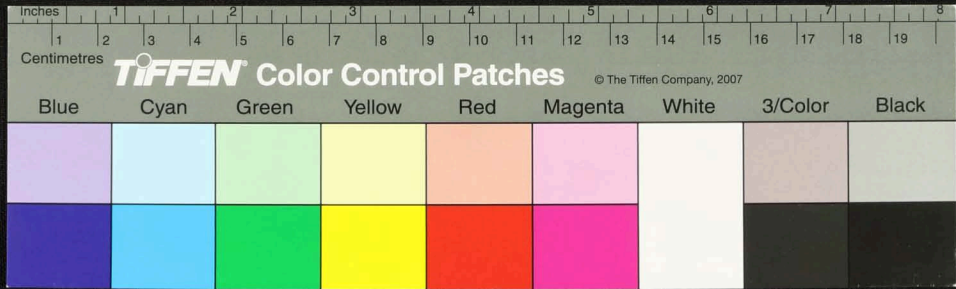
Handwritten Tamil script on a palm leaf manuscript. The text is densely packed and spans the length of the leaf. Two circular holes are visible, used for binding multiple leaves together. The script is written in a traditional style, characteristic of historical Tamil manuscripts.



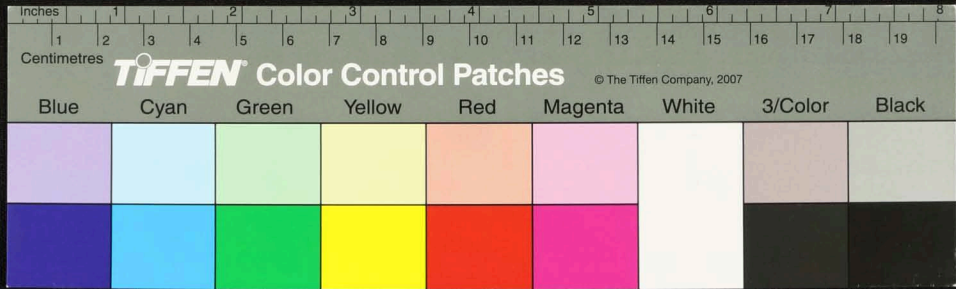
Handwritten text in Tamil script on a palm leaf manuscript. The text is densely packed and covers most of the leaf's surface. There are two prominent circular holes, likely from traditional binding methods. The script is in an older form of the Tamil language.



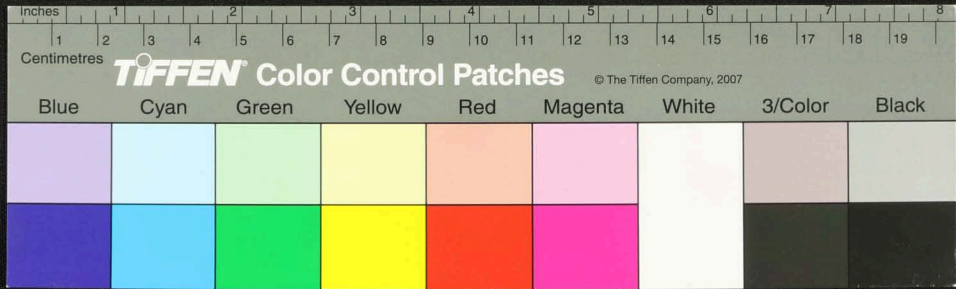
Handwritten text in Tamil script on a palm leaf manuscript. The text is densely packed and spans the length of the leaf. On the left side, there is a small vertical inscription that reads "யாண்டி 1083". The main body of text contains several lines of script, with some characters appearing to be in a different script or dialect, possibly indicating a specific date or location. The leaf shows signs of age and wear, with some dark spots and a slightly uneven texture.



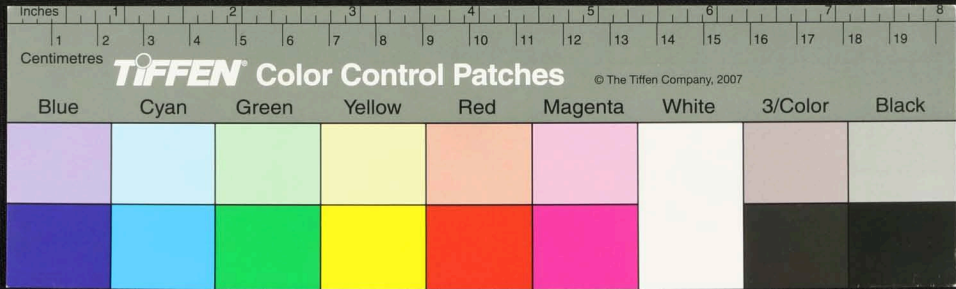
Handwritten Tamil script on a palm leaf manuscript. The text is densely packed and covers most of the leaf's surface. On the left side, there are three vertical labels: 'வரலாறு' (History), 'புதுமை' (Newness), and 'புதுமை' (Newness). The script appears to be a historical or philosophical text, possibly related to the 'புதுமை' (Newness) movement in Tamil literature.



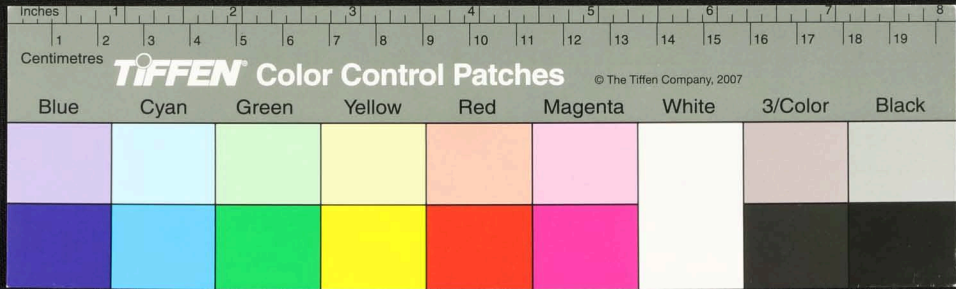
Handwritten text in Tamil script on a palm leaf manuscript. The text is densely packed and spans the length of the leaf. Two circular holes are visible, used for binding multiple leaves together.



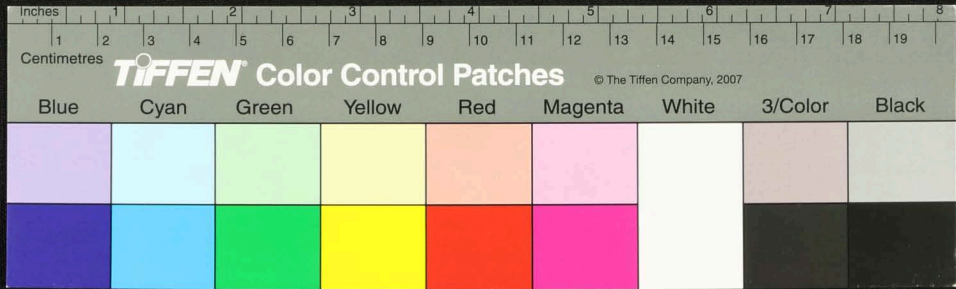
Handwritten text in Tamil script on a palm leaf manuscript. The text is densely packed and spans the length of the leaf. Two circular holes are visible, used for binding multiple leaves together. The script is in an older form of the Tamil language.



Handwritten text in Tamil script on a palm leaf manuscript. The text is densely packed and spans the length of the leaf. Two circular holes are visible, used for binding multiple leaves together.

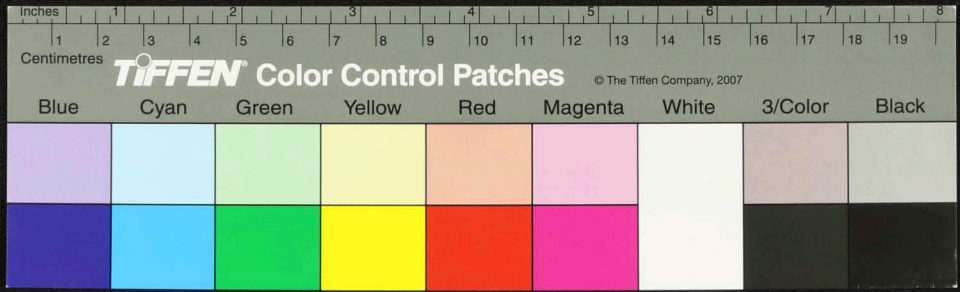


Handwritten text in Tamil script on a palm leaf manuscript. The text is densely packed and spans the length of the leaf. There are two circular holes visible, which were traditionally used for threading a cord to bind multiple leaves together into a book format. The script is in an older form of the Tamil language, likely from the 17th or 18th century.

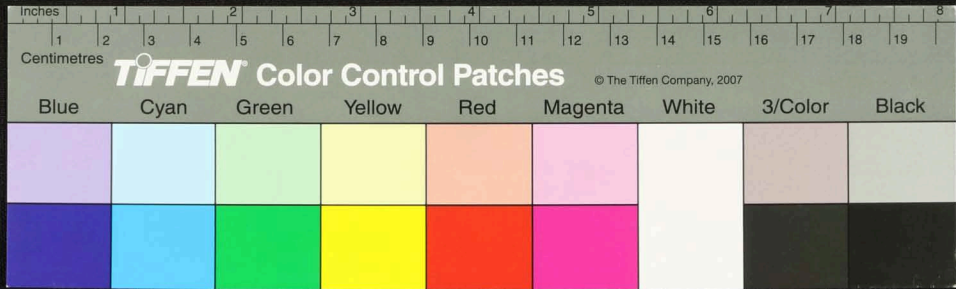


Handwritten text in Tamil script on a palm leaf manuscript. The text is densely packed and covers most of the leaf's surface. There are two circular holes visible, which are traditional for threading a cord to bind multiple leaves together. The script is in an older form of the Tamil language.

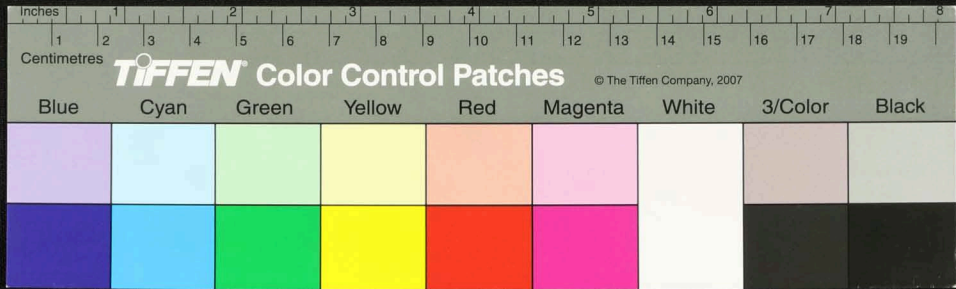
58



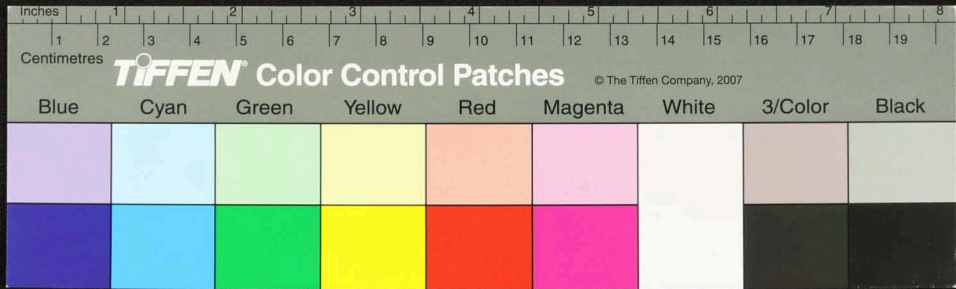
Handwritten text in Tamil script on a palm leaf manuscript. The text is densely packed and covers most of the leaf's surface. There are two circular holes visible, which were traditionally used for threading a cord to bind multiple leaves together into a book format.



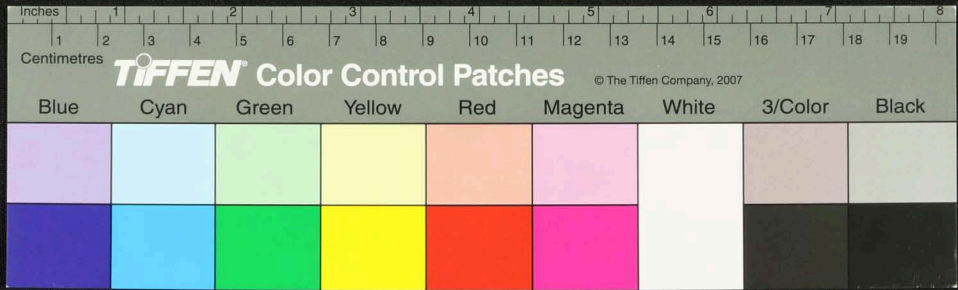
Handwritten Tamil script on a palm leaf manuscript. The text is densely packed and spans the length of the leaf. Two circular holes are visible, which were traditionally used for threading a cord to bind multiple leaves together into a book format.



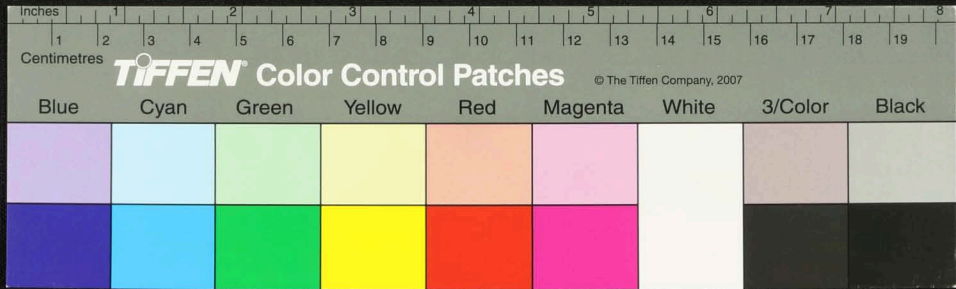
Handwritten text in Tamil script on a palm leaf manuscript. The text is densely packed and spans the length of the leaf. Two circular holes are visible, which were traditionally used for threading a cord to bind multiple leaves together into a book format.



Handwritten Tamil script on a palm leaf manuscript. The text is densely packed and spans the length of the leaf. There are two circular holes visible, which were traditionally used for threading a cord to bind multiple leaves together into a book format. The script is written in a traditional style, characteristic of historical Tamil manuscripts.

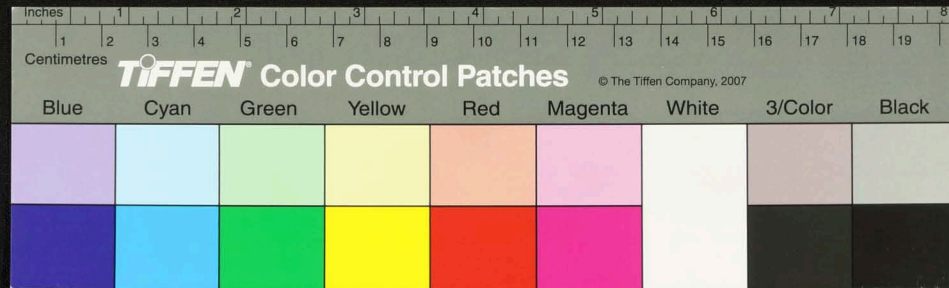


Handwritten Tamil script on a palm leaf manuscript. The text is densely packed and runs horizontally across the length of the leaf. There are two distinct circular holes, likely from a traditional binding system. On the left side, there is a small vertical inscription: 'திருவள்ளூர் நல்லூர்'.

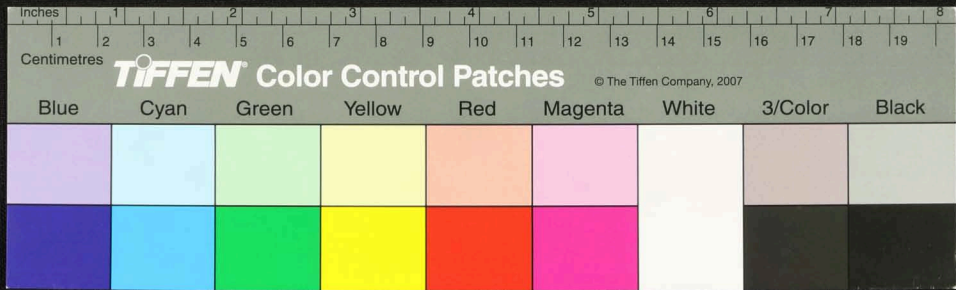


Handwritten Tamil script on a palm leaf manuscript. The text is densely packed and spans the length of the leaf. There are two circular holes visible, which were traditionally used for threading a cord to bind multiple leaves together into a book format.

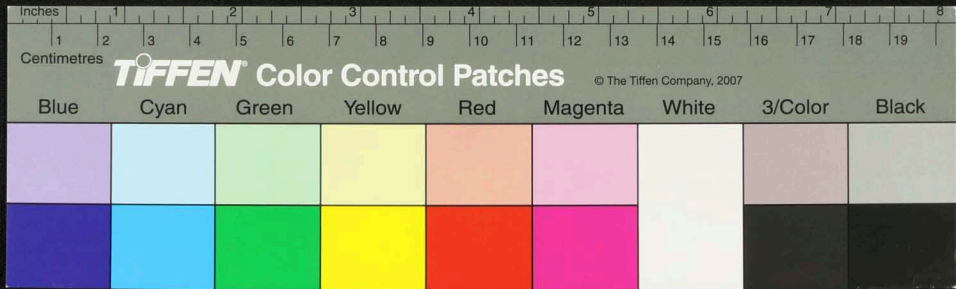
66



Handwritten Tamil script on a palm leaf manuscript. The text is densely packed and spans the length of the leaf. Two circular holes are visible, used for binding multiple leaves together.

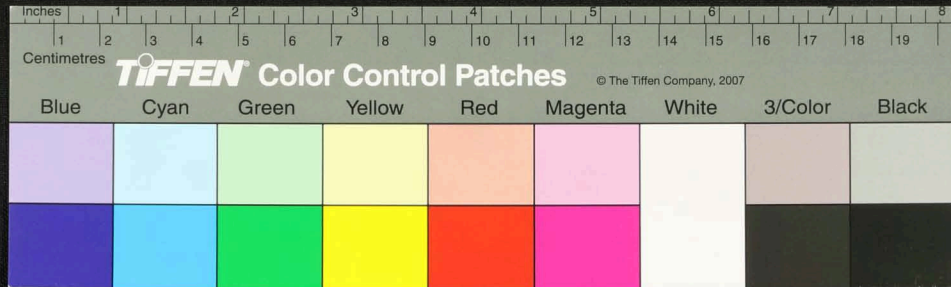


Handwritten Tamil script on a palm leaf manuscript. The text is densely packed and runs horizontally across the length of the leaf. It appears to be a historical record or a religious text, given the context of such artifacts. The script is in an older form of the Tamil language.

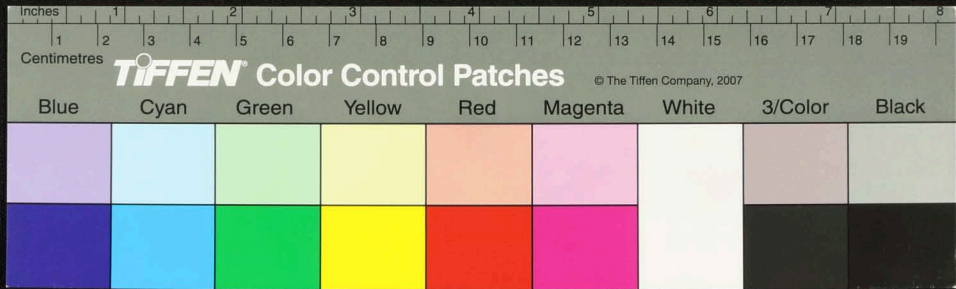


சென்னை
சென்னை
சென்னை

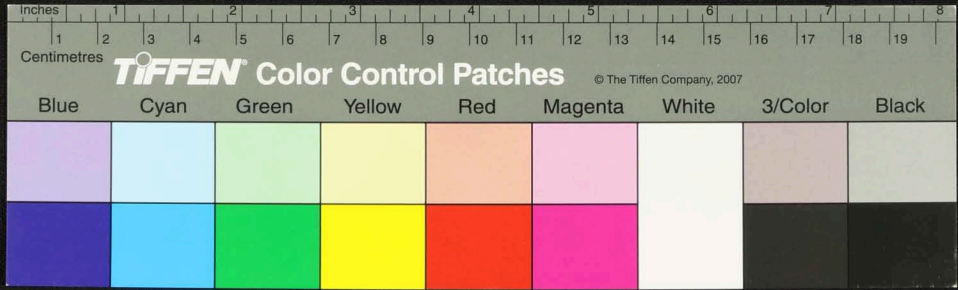
Handwritten text in Tamil script on a palm leaf manuscript. The text is densely packed and covers most of the leaf's length. It appears to be a religious or philosophical text, possibly a prayer or a teaching. The script is in a traditional form, and the leaf shows signs of age and wear, including some dark spots and irregularities in the wood grain.



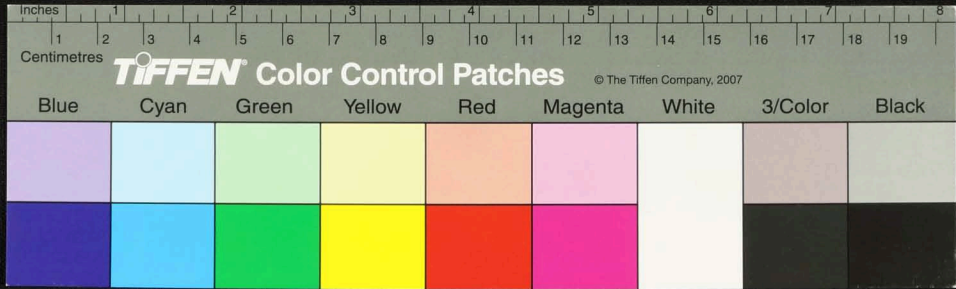
Handwritten Tamil script on a palm leaf manuscript. The text is densely packed and runs horizontally across the length of the leaf. There are two circular holes visible, which were traditionally used for threading a cord to bind multiple leaves together into a book format.



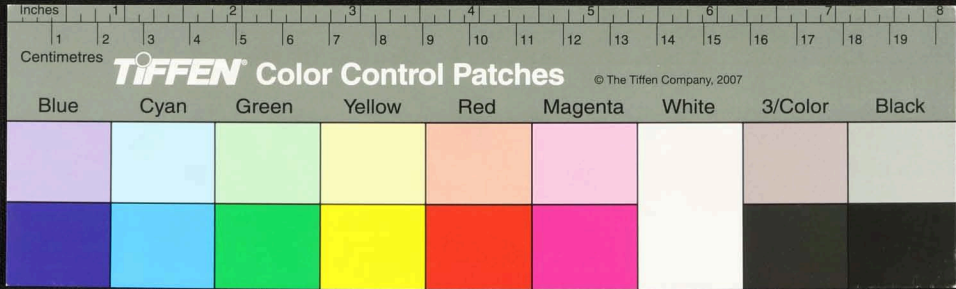
Handwritten Tamil script on a palm leaf manuscript. The text is densely packed and spans the length of the leaf. It appears to be a historical record or a religious text, given the context of such artifacts. The script is written in a traditional style, with some characters that are characteristic of older Tamil forms. There are two distinct circular holes visible on the leaf, which were traditionally used for threading a cord to bind multiple leaves together into a book format.



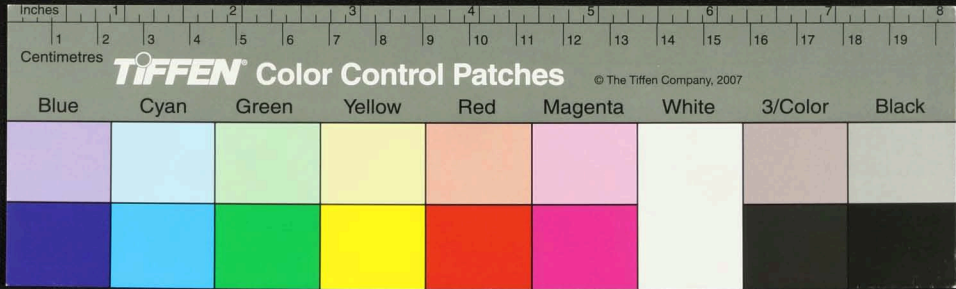
Handwritten text in Tamil script on a palm leaf manuscript. The text is densely packed and covers most of the leaf's surface. There are two circular holes visible, which were traditionally used for threading a cord to bind multiple leaves together. On the left side, there are small handwritten annotations: 'சுருதி' and 'சுருதி' written vertically. At the bottom left corner, there is a small number '45'.



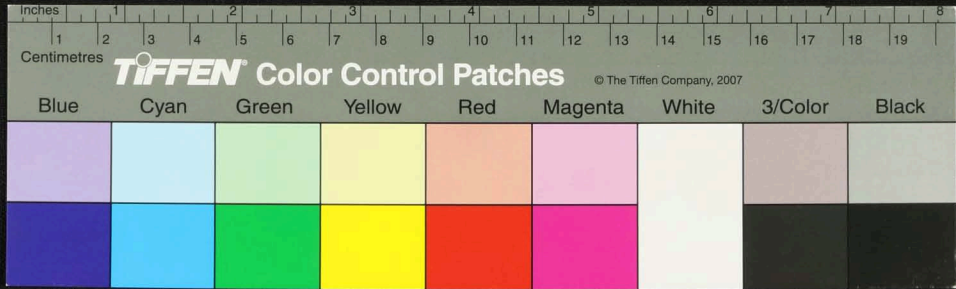
Handwritten text in Tamil script on a palm leaf manuscript. The text is densely packed and runs horizontally across the length of the leaf. There are two circular holes visible, which were traditionally used for threading a cord to bind multiple leaves together into a book format. The script is in an older form of the Tamil language.



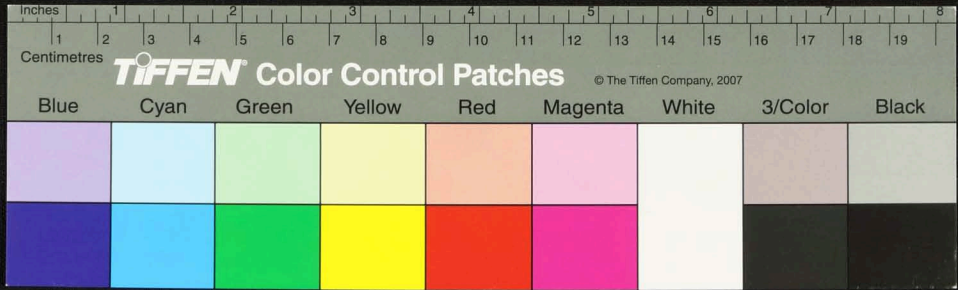
Handwritten text in Tamil script on a palm leaf manuscript. The text is densely packed and covers most of the leaf's surface. There are two distinct circular holes, one on the left side and one on the right side, which were traditionally used for threading a cord to bind multiple leaves together into a book format. The script is a traditional form of the Tamil language, likely containing religious or philosophical content.



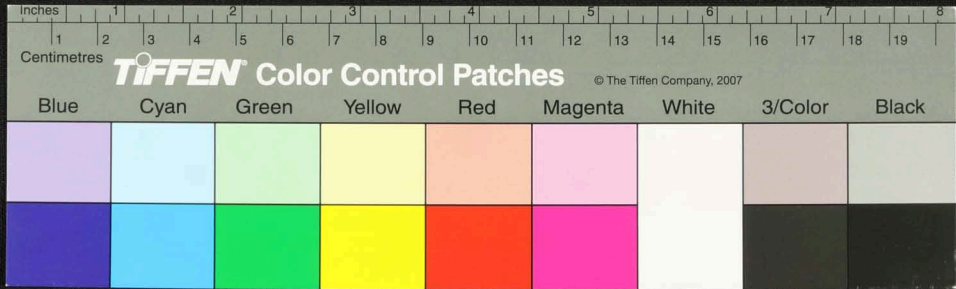
Handwritten text in Tamil script on a palm leaf manuscript. The text is densely packed and spans the length of the leaf. There are two circular holes visible, which were traditionally used for threading a cord to bind multiple leaves together into a book format.



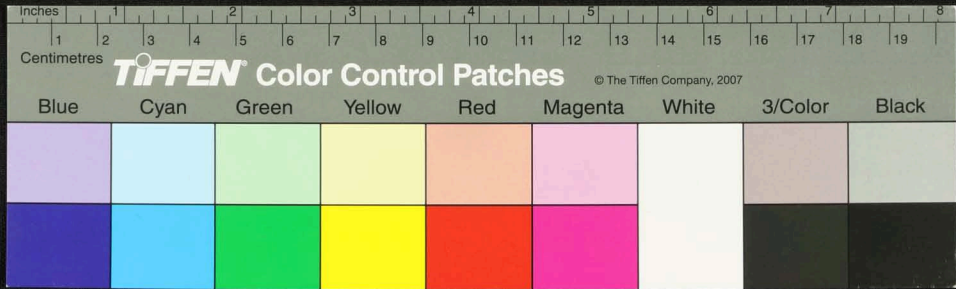
Handwritten Tamil script on a palm leaf manuscript. The text is densely packed and runs horizontally across the length of the leaf. There are two circular holes visible, which were traditionally used for threading a cord to bind multiple leaves together into a book format. The script is in an older form of the Tamil language, likely from the 17th or 18th century.



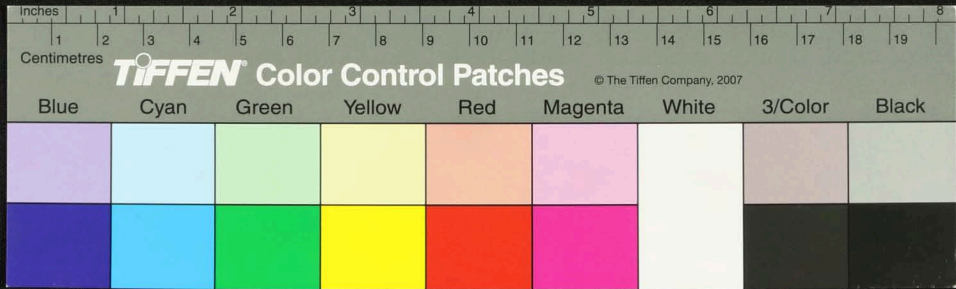
Handwritten text in Tamil script on a palm leaf manuscript. The text is densely packed and spans the length of the leaf. Two circular holes are visible, used for binding multiple leaves together.



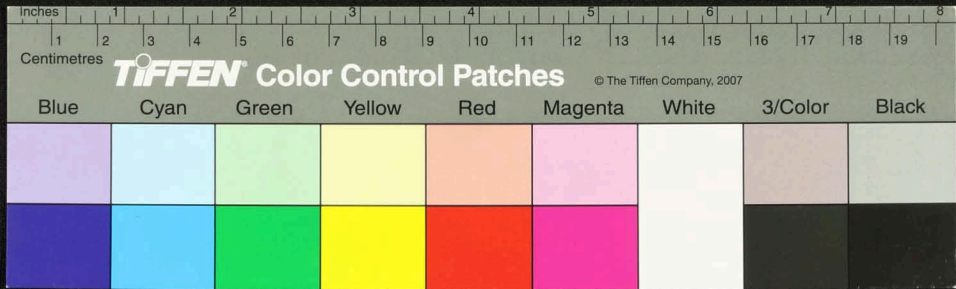
Handwritten text in Tamil script on a palm leaf manuscript. The text is densely packed and covers most of the leaf's surface. There are two circular holes visible, which were traditionally used for threading a cord to bind multiple leaves together into a book format.



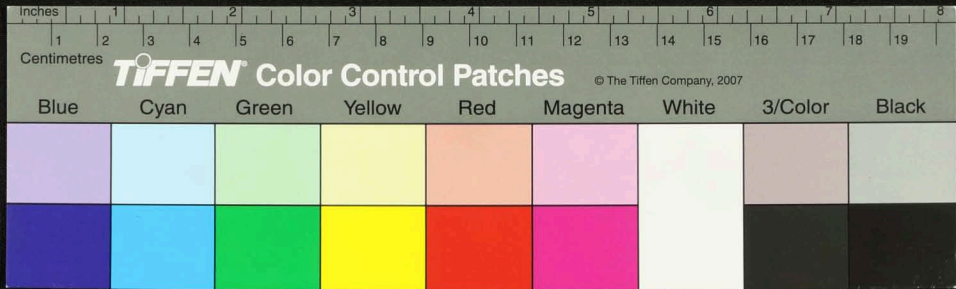
Handwritten text in Tamil script on a palm leaf manuscript. The text is densely packed and runs horizontally across the length of the leaf. It appears to be a historical record or a religious text, given the nature of the medium. The script is in an older form of the Tamil language.



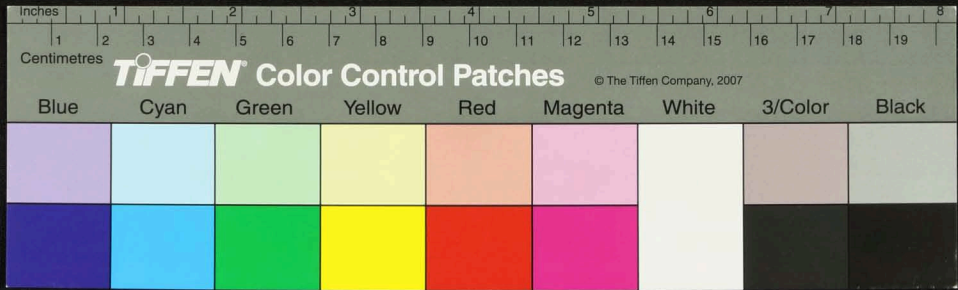
Handwritten Tamil script on a palm leaf manuscript. The text is densely packed in approximately 12 horizontal lines across the length of the leaf. The script is in an older form of the Tamil language. There are two circular holes visible on the leaf, which were traditionally used for threading a cord to bind multiple leaves together into a book format.



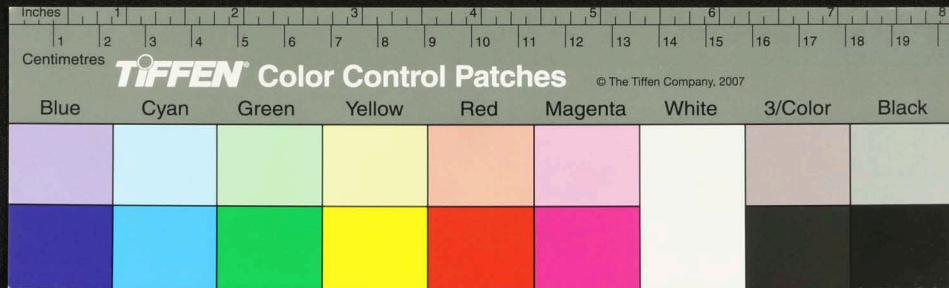
Handwritten text in Tamil script on a palm leaf manuscript. The text is densely packed and spans the entire length of the leaf. Two circular holes are visible, which were traditionally used for threading a cord to bind multiple leaves together into a book format.



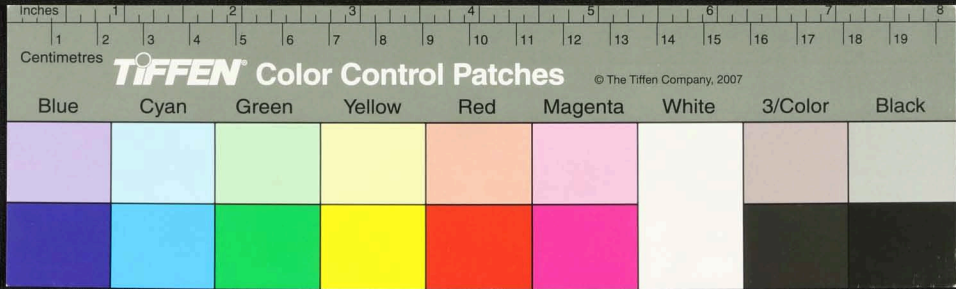
Handwritten text in Tamil script on a palm leaf manuscript. The text is densely packed and covers most of the leaf's surface. There are two circular holes visible, which are traditional for threading a cord to bind multiple leaves together. The script is in an older form of the Tamil language.



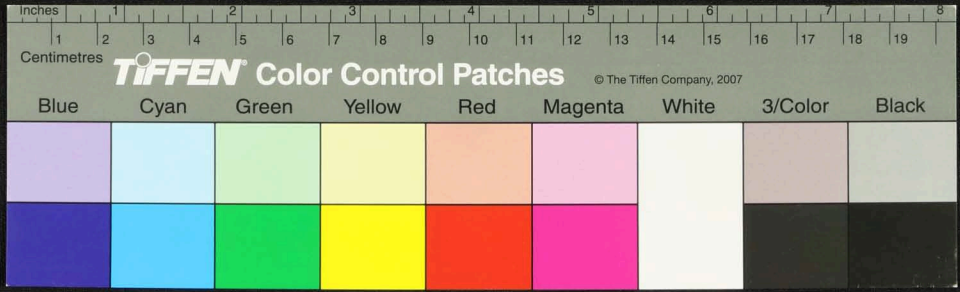
Handwritten Tamil script on a palm leaf manuscript. The text is densely packed and runs horizontally across the length of the leaf. Two circular holes are visible, which were traditionally used for threading a cord to bind multiple leaves together into a book format. The script is in an older form of the Tamil language, likely from the medieval or early modern period.



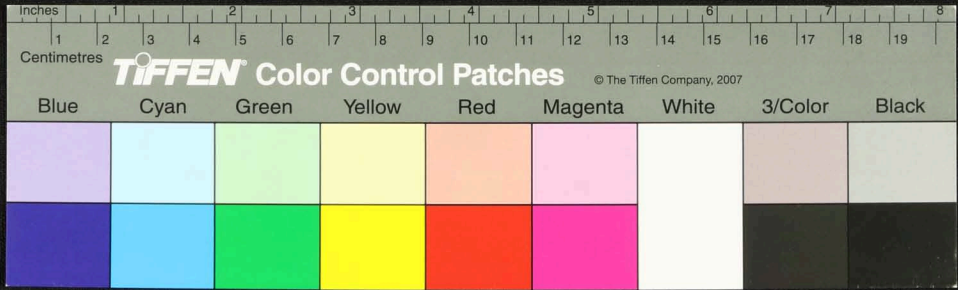
Handwritten text in Tamil script on a palm leaf manuscript. The text is densely packed and covers most of the leaf's surface. There are two circular holes visible, which were traditionally used for threading a cord to bind multiple leaves together into a book format. The script is in an older form of the Tamil language.



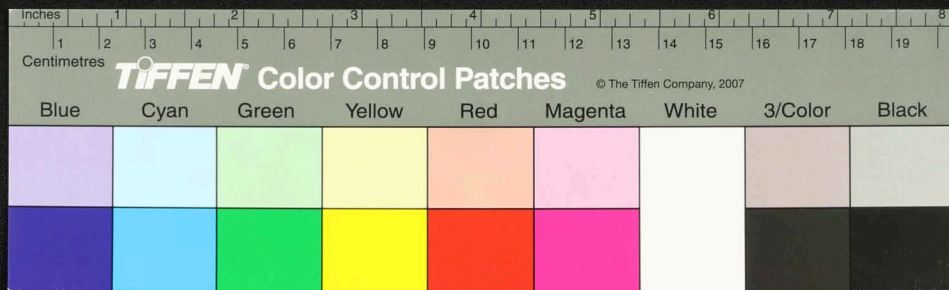
Handwritten text in an ancient script, likely Tamil, inscribed on a palm leaf. The text is arranged in approximately 12 horizontal lines across the length of the leaf. Two circular holes are visible, which were traditionally used for threading a cord to bind multiple leaves together into a book format. The script is finely etched into the surface of the dried leaf.



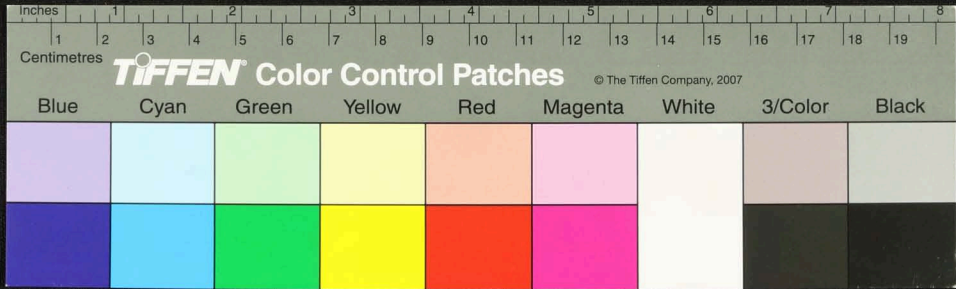
Handwritten text in Tamil script on a palm leaf manuscript. The text is densely packed and covers most of the leaf's surface. There are two prominent circular holes, likely from a traditional binding system. The script is in an older form of the Tamil language.



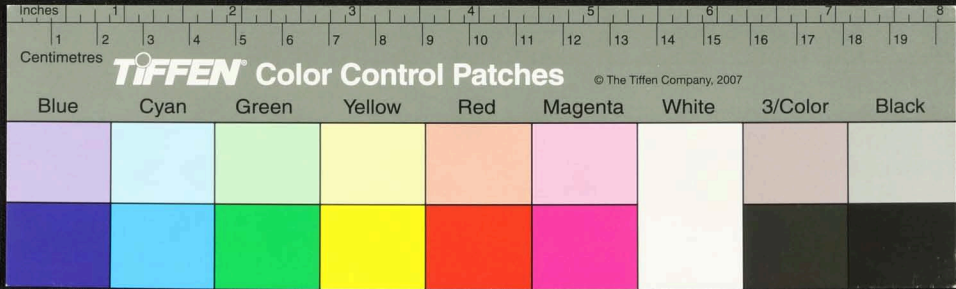
Handwritten text in Tamil script on a palm leaf manuscript. The text is densely packed and spans the length of the leaf. Two circular holes are visible, used for binding multiple leaves together.



Handwritten text in Tamil script on a palm leaf manuscript. The text is densely packed and covers most of the leaf's surface. There are two circular holes visible, which are traditional for threading a cord to bind multiple leaves together. The script is in an older form of the Tamil language.

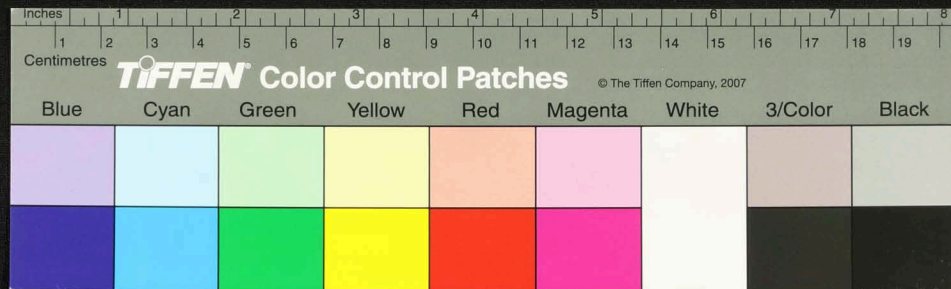


Handwritten text in Tamil script on a palm leaf manuscript. The text is densely packed and spans the length of the leaf. There are two circular holes visible, which were traditionally used for threading a cord to bind multiple leaves together into a book format. The script is in an older form of the Tamil language.

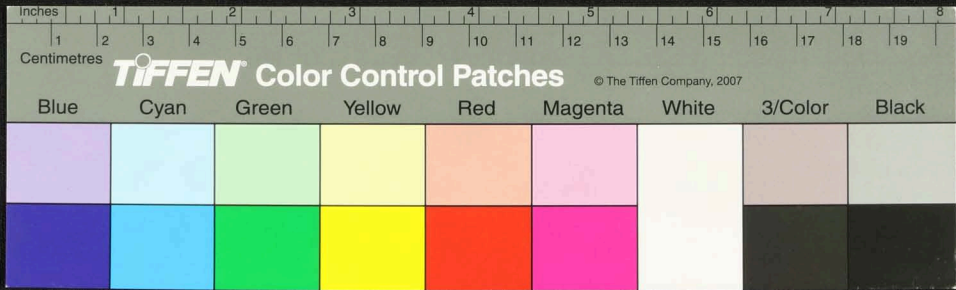


Handwritten Tamil script on a palm leaf manuscript. The text is densely packed and spans the length of the leaf. There are two circular holes visible, which were traditionally used for threading a cord to bind multiple leaves together. The script is written in a traditional style, with some characters appearing to be in a different dialect or historical form of Tamil.

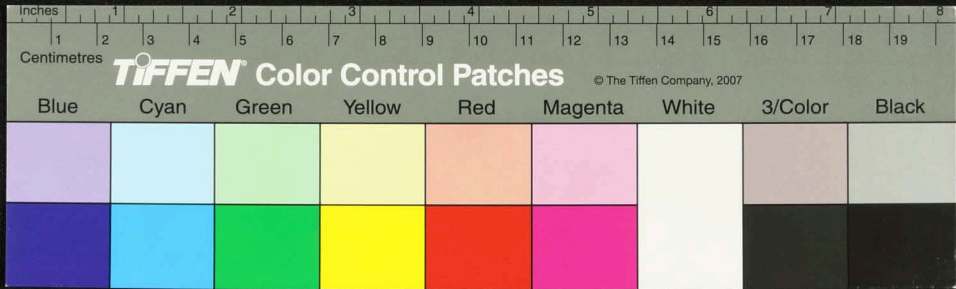
16



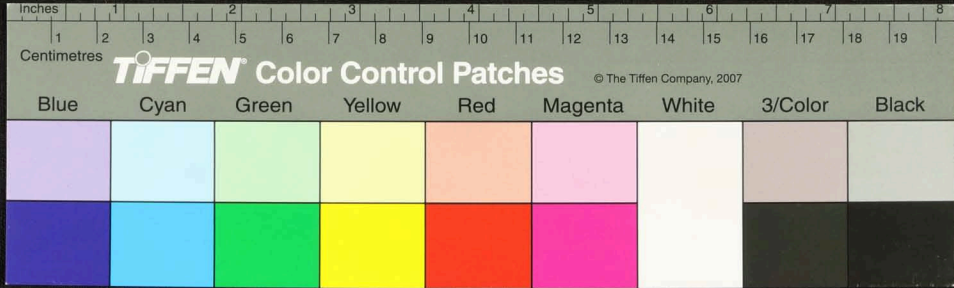
Handwritten Tamil script on a palm leaf manuscript. The text is densely packed and runs horizontally across the length of the leaf. There are two prominent circular holes, likely from a traditional binding system. The script is in an older form of the Tamil language.



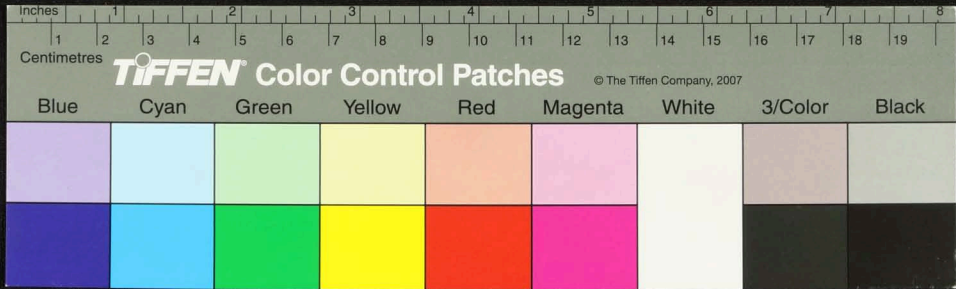
Handwritten Tamil script on a palm leaf manuscript. The text is arranged in approximately 10 horizontal lines across the length of the leaf. The script is finely etched into the natural texture of the dried leaf. The leaf shows signs of age, including some dark spots and slight discoloration.



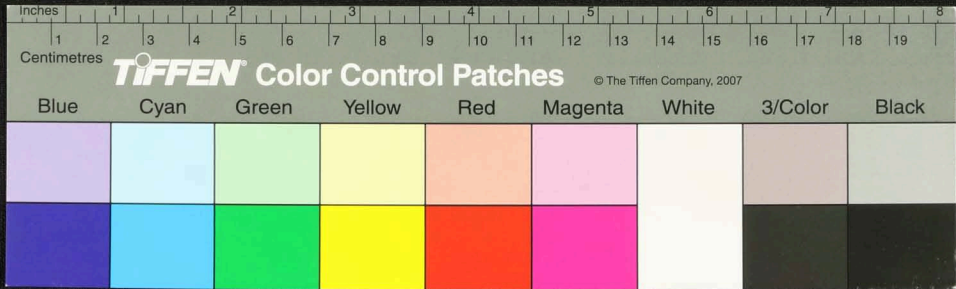
Handwritten Tamil script on a palm leaf, featuring two circular holes for binding.



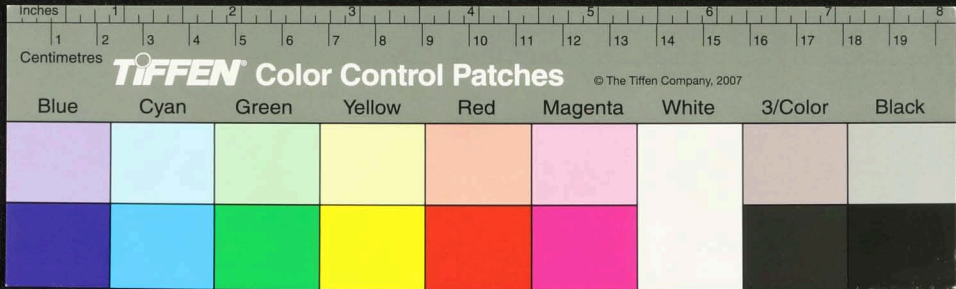
Handwritten text in Tamil script on a palm leaf manuscript. The text is arranged in approximately 12 horizontal lines across the length of the leaf. The script is dense and characteristic of traditional South Indian manuscripts. There are two distinct circular holes along the length of the leaf, which were used for threading a cord to bind multiple leaves together into a book format.



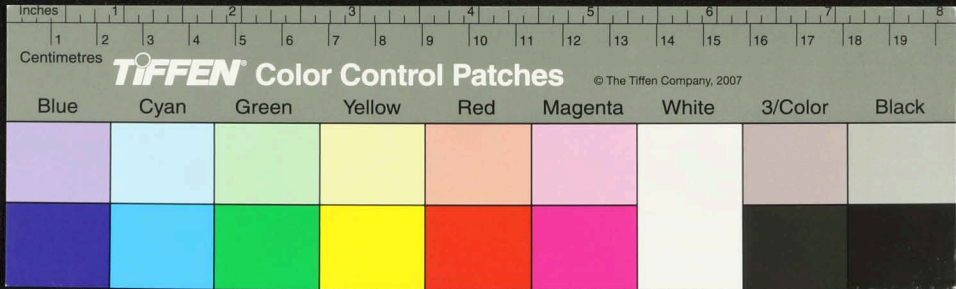
Handwritten text in Tamil script on a palm leaf manuscript. The text is densely packed and covers most of the leaf's surface. There are two prominent circular holes, likely from a traditional binding method. The script is in an older form of the Tamil language.



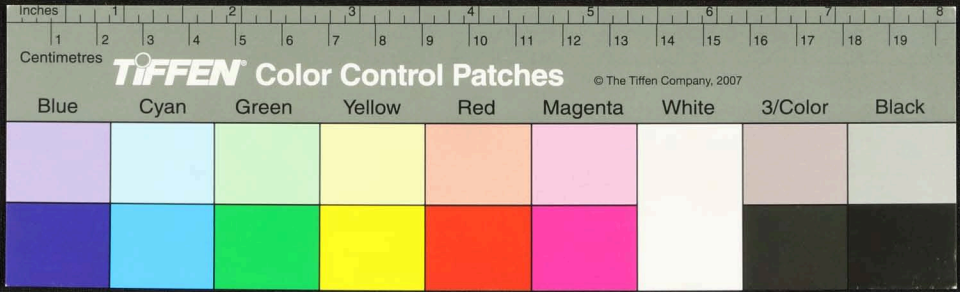
Handwritten text in Tamil script on a palm leaf manuscript. The text is densely packed and covers most of the leaf's surface. There are two circular holes visible, which were traditionally used for threading a cord to bind multiple leaves together into a book format. The script is in an older form of the Tamil language, likely from the 17th or 18th century.



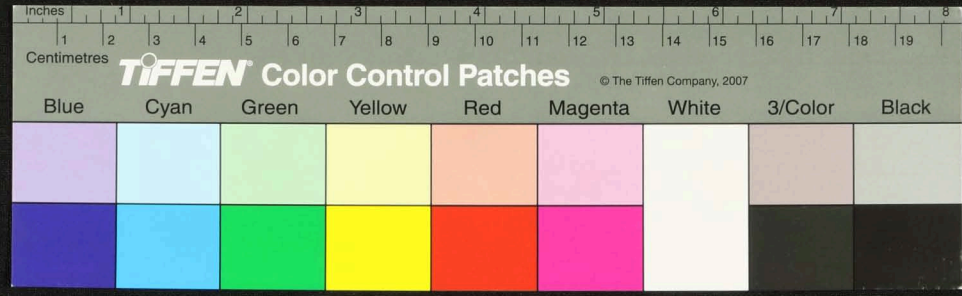
Handwritten text in Tamil script on a palm leaf manuscript. The text is densely packed and covers most of the leaf's surface. There are two circular holes visible, which are traditional for threading a cord to bind multiple leaves together. The script is in an older form of the Tamil language.



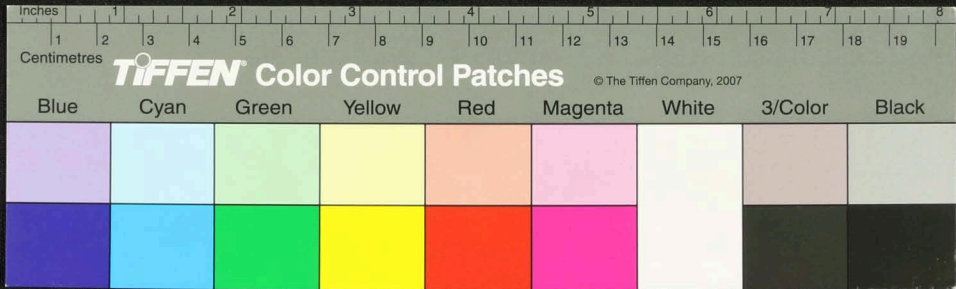
Handwritten Tamil script on a palm leaf manuscript. The text is densely packed and runs horizontally across the length of the leaf. Two circular holes are visible, used for binding multiple leaves together.



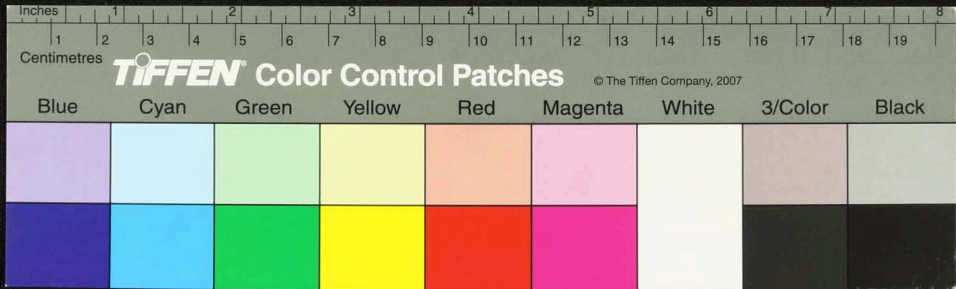
Handwritten Tamil script on a palm leaf manuscript. The text is densely packed and covers most of the leaf's surface. There are two distinct circular holes, one on the left and one on the right, which were traditionally used for threading a cord to bind multiple leaves together into a book format. The script is written in a traditional style, with clear letterforms and consistent spacing.



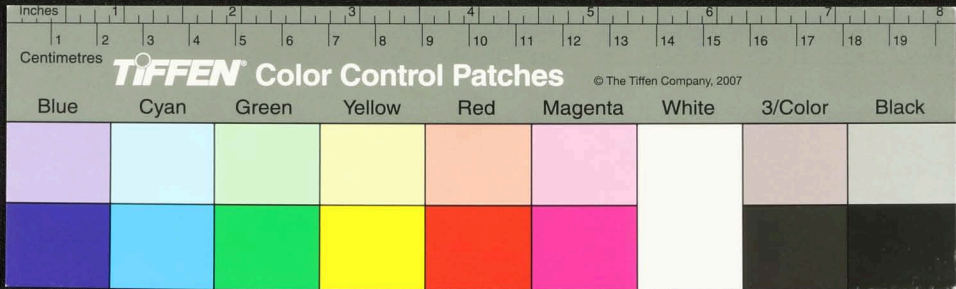
Handwritten Tamil script on a palm leaf manuscript. The text is densely packed in approximately 12 horizontal lines across the length of the leaf. Two circular holes are visible, which were traditionally used for threading a cord to bind multiple leaves together into a book format. The script is written in a clear, consistent hand.



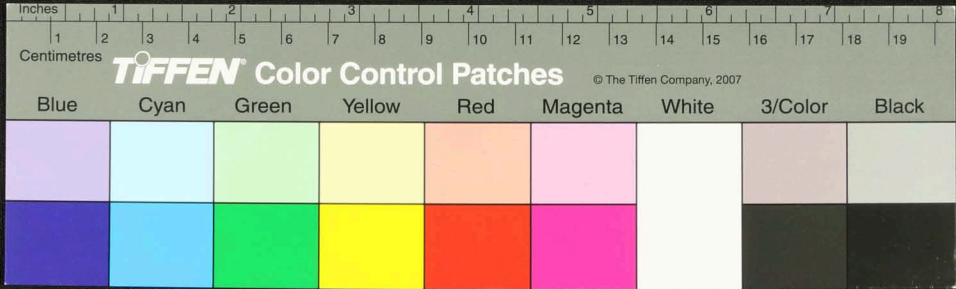
Handwritten text in Tamil script on a palm leaf manuscript. The text is densely packed and covers most of the leaf's surface. It appears to be a historical record or a religious text, given the context of such manuscripts. The script is finely etched into the natural texture of the dried leaf.



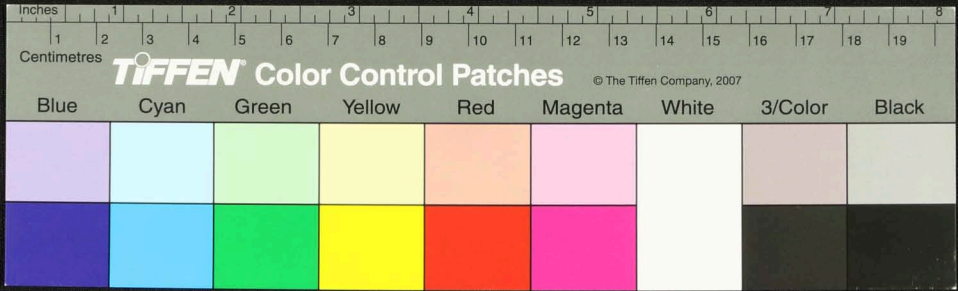
Handwritten text in Tamil script, likely a historical record or document, inscribed on a palm leaf. The text is densely packed and spans the length of the leaf. It appears to be a formal record, possibly related to land or administrative matters, given the context of such inscriptions. The script is in an older form of the Tamil language, characteristic of historical documents.



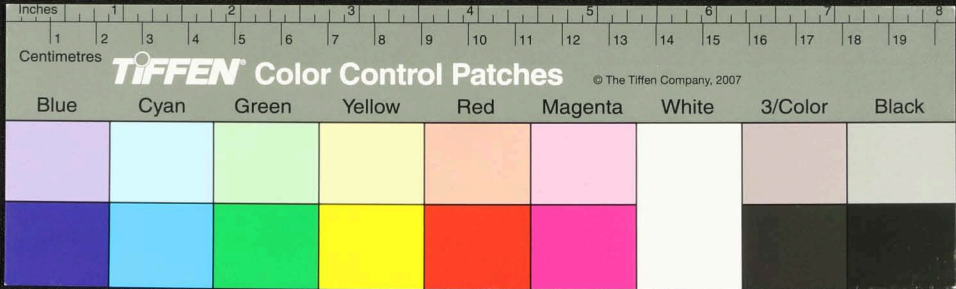
Handwritten Tamil script on a palm leaf manuscript. The text is densely packed and runs horizontally across the length of the leaf. There are two distinct circular holes, likely from a traditional binding method. The script is in an older form of the Tamil language.



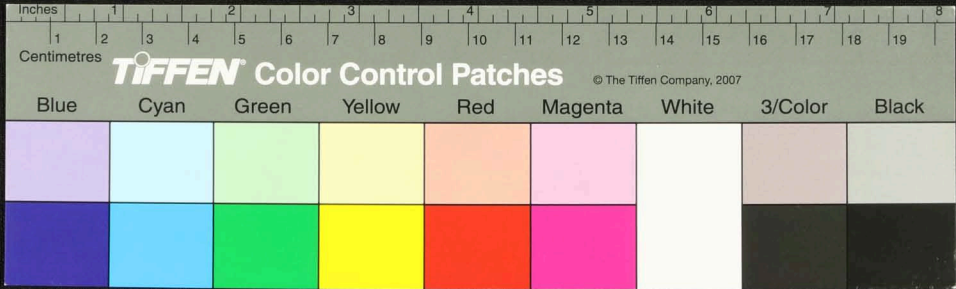
Handwritten Tamil script on a palm leaf manuscript. The text is densely packed and spans the length of the leaf. Two circular holes are visible, used for binding multiple leaves together. The script is written in a traditional style, with clear characters and some larger characters that may represent specific words or symbols.



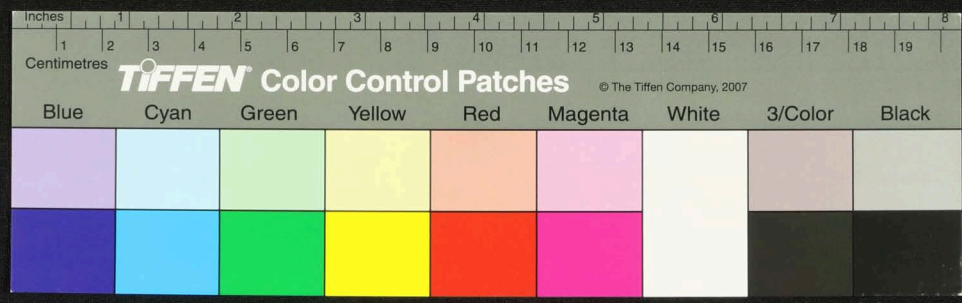
Handwritten text in Tamil script on a palm leaf manuscript. The text is densely packed and covers most of the leaf's surface. There are two circular holes visible, which were traditionally used for threading a cord to bind multiple leaves together. The script is in an older form of the Tamil language.



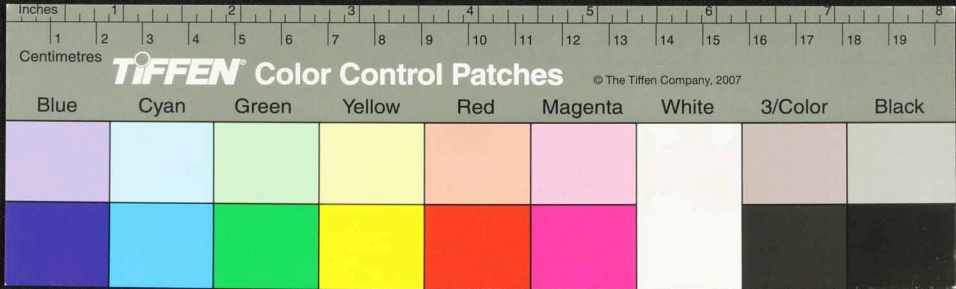
Handwritten text in Tamil script on a palm leaf manuscript. The text is densely packed and spans the length of the leaf. Two circular holes are visible, used for binding multiple leaves together.



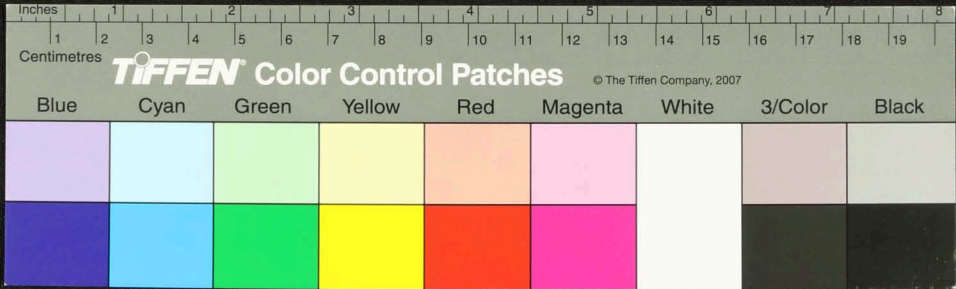
Handwritten Tamil script on a palm leaf manuscript. The text is densely packed and runs horizontally across the length of the leaf. The script is in an older form of the Tamil language. There are some dark spots and irregularities on the leaf, possibly due to age or damage.



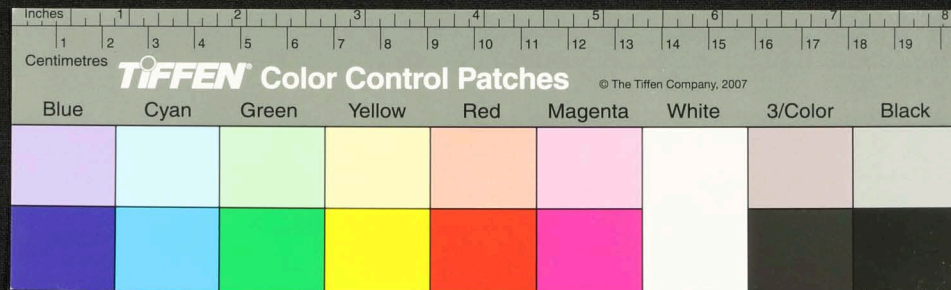
Handwritten text in an ancient script, likely Tamil, on a palm leaf manuscript. The text is arranged in approximately 10 horizontal lines across the length of the leaf. The script is finely etched into the surface of the dried leaf. The leaf shows signs of age, including some darkening and wear at the edges.



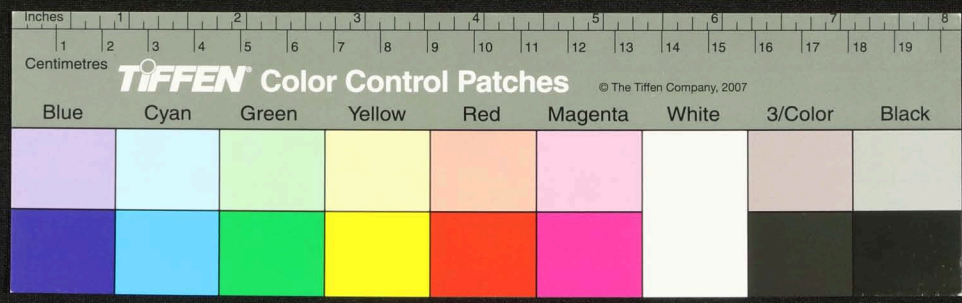
Handwritten Tamil script on a palm leaf manuscript. The text is densely packed and runs horizontally across the length of the leaf. There are some dark spots and irregularities on the leaf, possibly due to age or damage. The script is in an older form of the Tamil language.



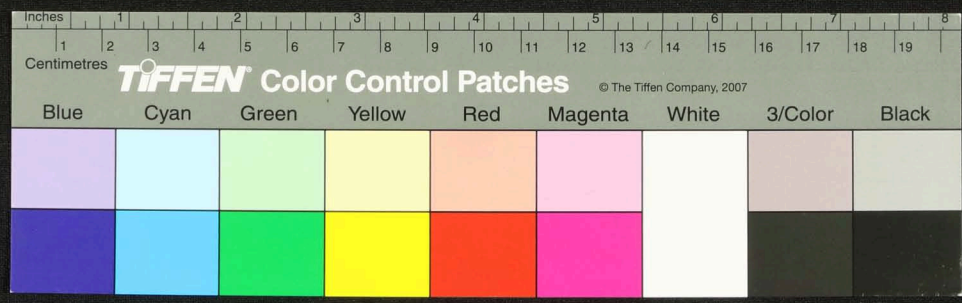
Handwritten Tamil script on a palm leaf manuscript. The text is densely packed and spans the entire length of the leaf. The script is in an older form of the Tamil language, likely from the pre-colonial period. The leaf shows signs of age, including some discoloration and wear at the edges.



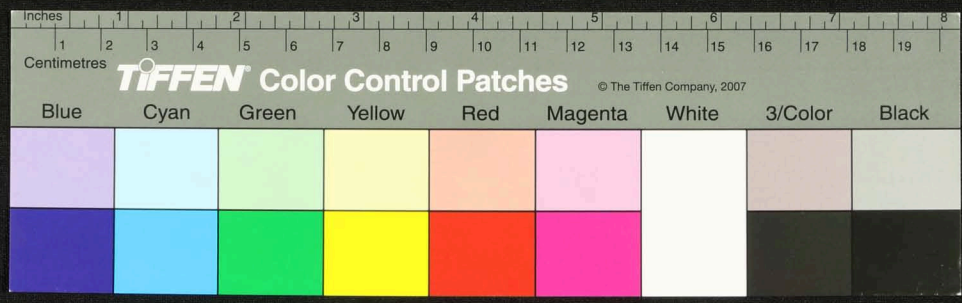
Handwritten Tamil script on a palm leaf manuscript. The text is densely packed and runs horizontally across the length of the leaf. There are two circular holes visible, which were traditionally used for threading a cord to bind multiple leaves together. The script is in an older form of the Tamil language.



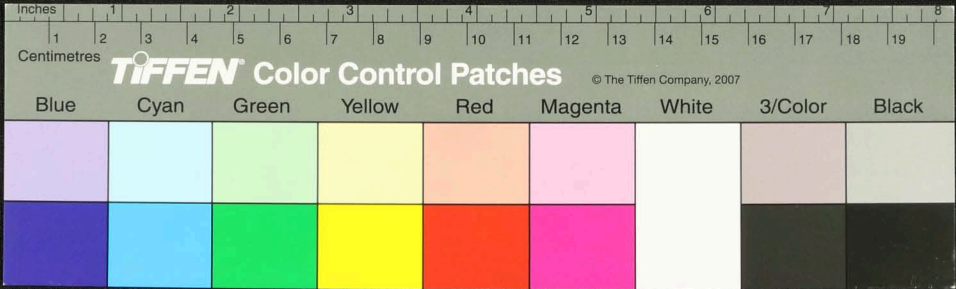
Handwritten text in Tamil script on a palm leaf manuscript. The text is densely packed and spans the length of the leaf. There are two distinct circular holes, one near the left end and one near the right end, which were traditionally used for threading a cord to bind multiple leaves together into a book format.



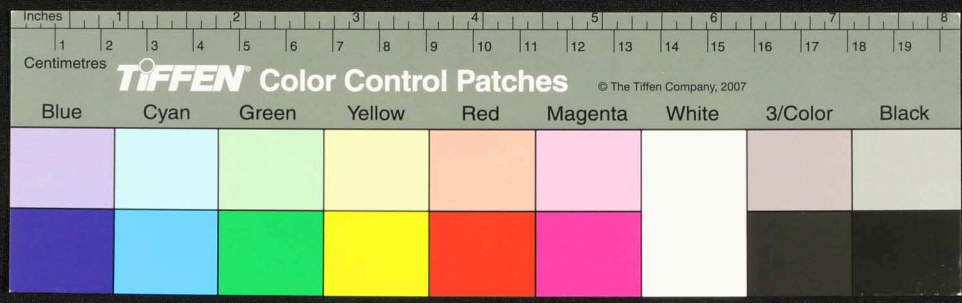
Handwritten text in Tamil script on a palm leaf manuscript. The text is densely packed and spans the length of the leaf. Two circular holes are visible, used for binding multiple leaves together.



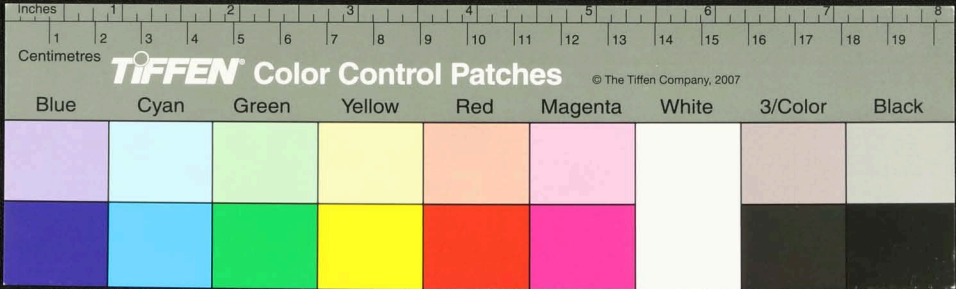
Handwritten Tamil script on a palm leaf manuscript. The text is densely packed and runs horizontally across the length of the leaf. There are two circular holes visible, which were traditionally used for threading a cord to bind multiple leaves together into a book format. The script is in an older form of the Tamil language, likely from the 17th or 18th century.



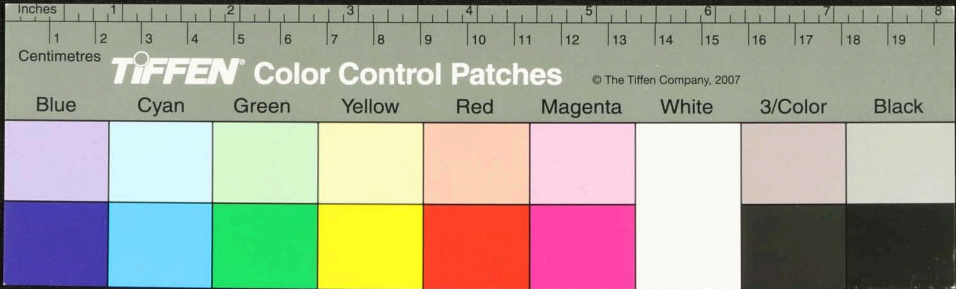
Handwritten text in an ancient script, likely Tamil, on a palm leaf manuscript. The text is densely packed and runs horizontally across the length of the leaf. There are two circular holes visible, which were traditionally used for threading a cord to bind multiple leaves together into a book format.



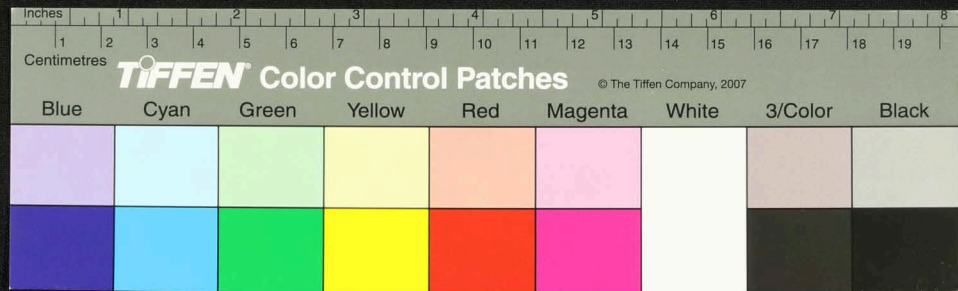
Handwritten Tamil script on a palm leaf manuscript. The text is densely packed and runs horizontally across the length of the leaf. There are two circular holes visible, which were traditionally used for threading a cord to bind multiple leaves together. The script is in an older form of the Tamil language.



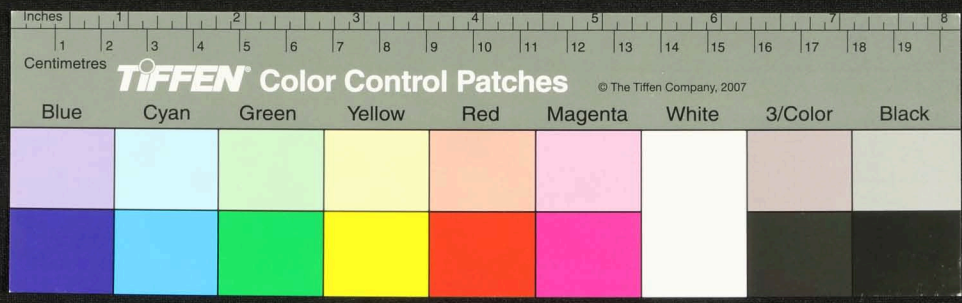
Handwritten text in Tamil script on a palm leaf manuscript. The text is densely packed and covers most of the leaf's surface. There are some faint markings on the left side, possibly indicating line numbers or page markers.



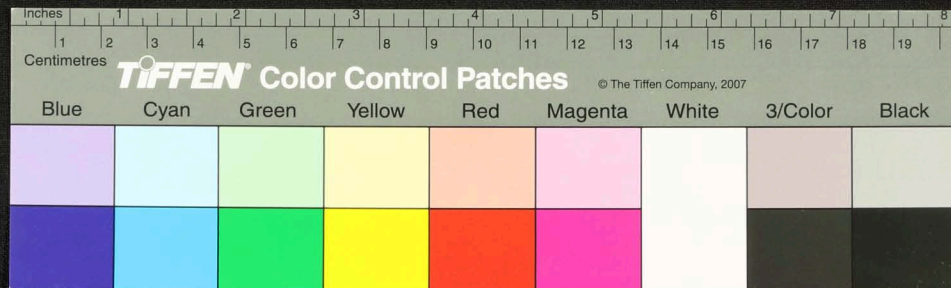
Handwritten text in Tamil script on a palm leaf manuscript. The text is densely packed and runs horizontally across the length of the leaf. There are two prominent circular holes, likely from a traditional binding system. The script is in an older form of the Tamil language.



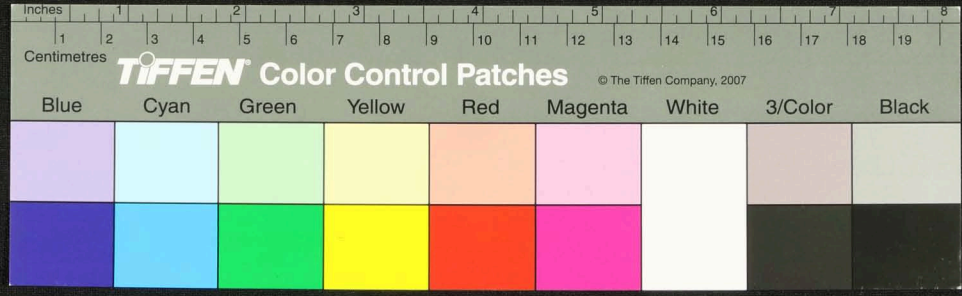
Handwritten text in Tamil script on a palm leaf manuscript. The text is densely packed and spans the length of the leaf. There are two circular holes visible, which were traditionally used for threading a cord to bind multiple leaves together into a book format. The script is in an older form of the Tamil language.



Handwritten text in Tamil script on a palm leaf manuscript. The text is densely packed and covers most of the leaf's surface. There are two prominent circular holes, likely from traditional binding methods. The leaf shows signs of age and wear, with some discoloration and fraying at the edges.

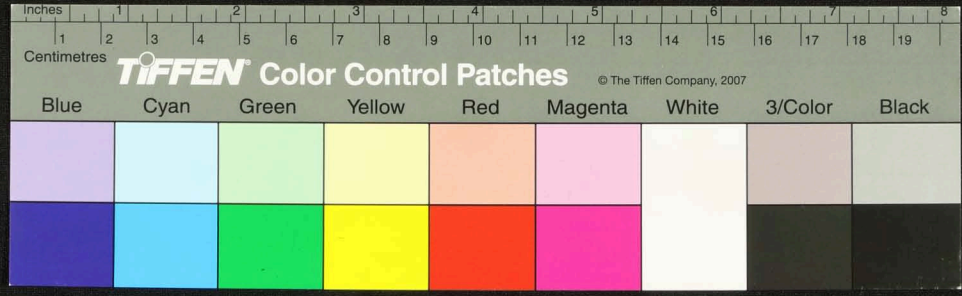


Handwritten text in Tamil script on a palm leaf manuscript. The text is densely packed and spans the length of the leaf. It appears to be a historical record or a religious text, given the context of such artifacts. The script is finely etched into the surface of the dried leaf.

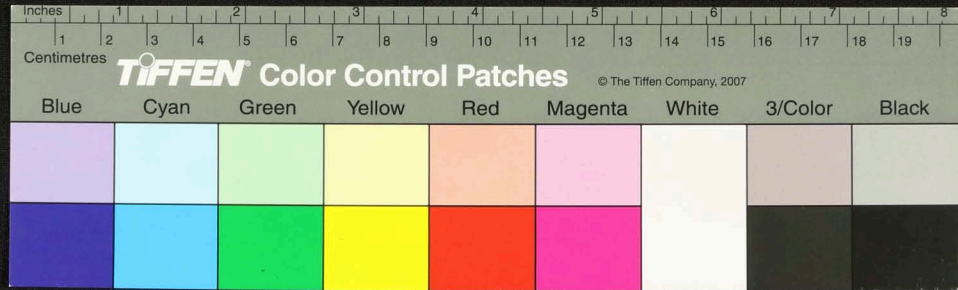




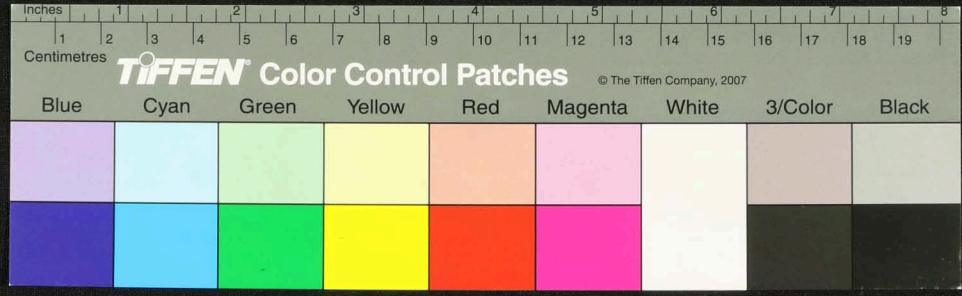
Handwritten Tamil script on a palm leaf manuscript. The text is densely packed and runs horizontally across the length of the leaf. There are two prominent circular holes, likely from a traditional binding system. On the left side, there are some faint, smaller inscriptions or markings.



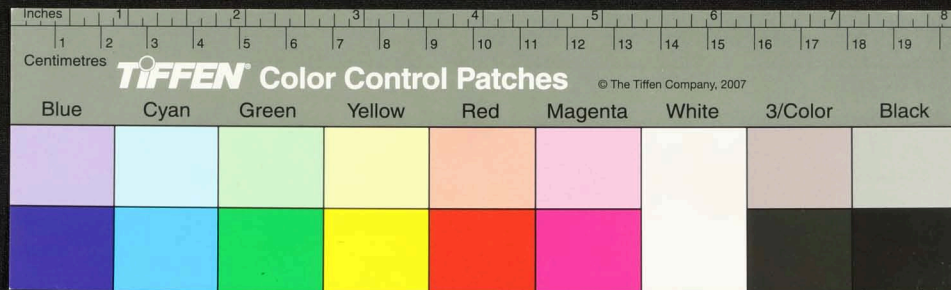
Handwritten Tamil script on a palm leaf manuscript. The text is densely packed in approximately 12 horizontal lines across the length of the leaf. Two circular holes are visible, which were traditionally used for threading a cord to bind multiple leaves together into a book format. The script is a form of the Tamil language, likely containing religious or philosophical content.



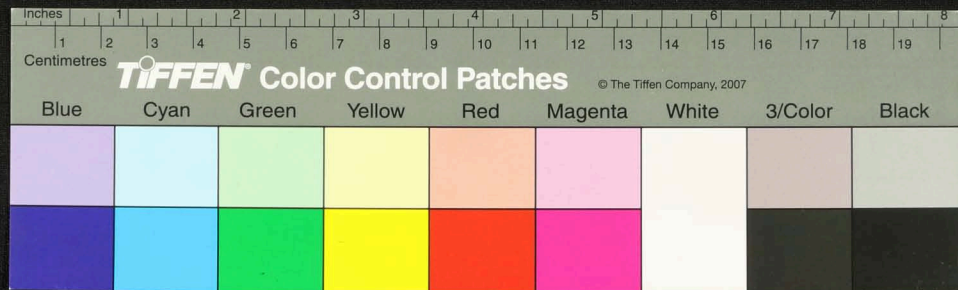
Handwritten Tamil script on a palm leaf manuscript. The text is densely packed and runs horizontally across the length of the leaf. There are two circular holes visible, which were traditionally used for threading a cord to bind multiple leaves together into a book format. The script is in an older form of the Tamil language, likely from the 17th or 18th century.



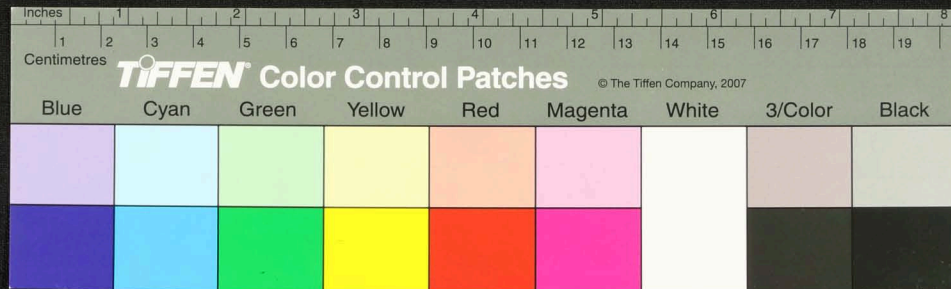
Handwritten Tamil script on a palm leaf manuscript. The text is densely packed and runs horizontally across the length of the leaf. There are two circular holes visible, which were traditionally used for threading a cord to bind multiple leaves together into a book format.



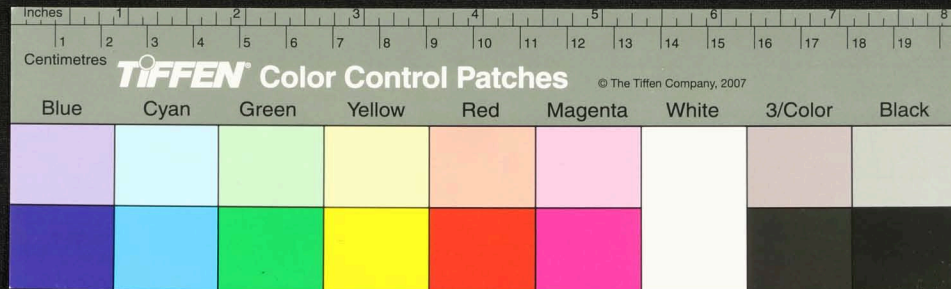
Handwritten text in Tamil script on a palm leaf manuscript. The text is densely packed and spans the length of the leaf. Two circular holes are visible, used for binding multiple leaves together.



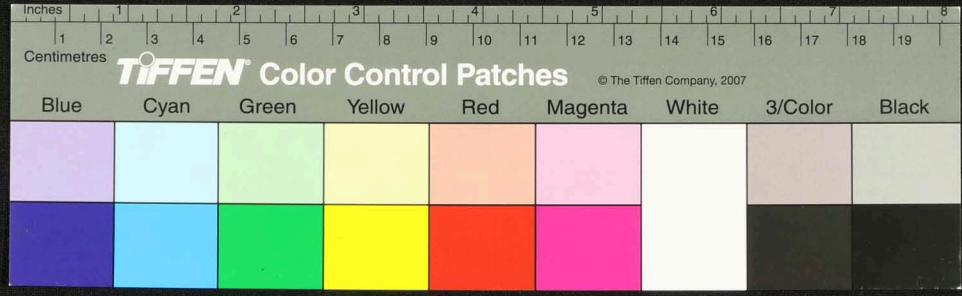
Handwritten text in Tamil script on a palm leaf manuscript. The text is densely packed and spans the length of the leaf. Two circular holes are visible, used for binding multiple leaves together.



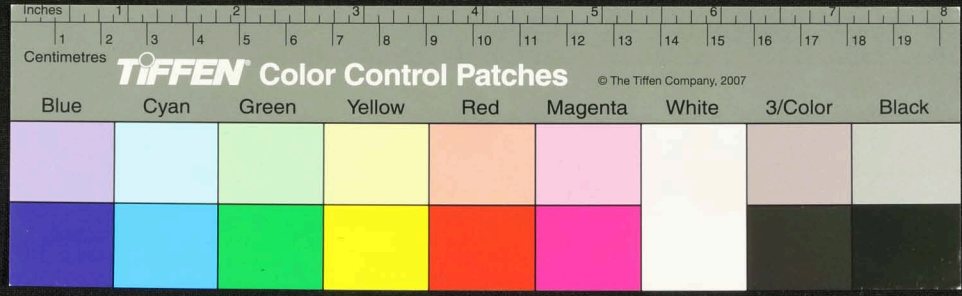
Handwritten text in Tamil script on a palm leaf manuscript. The text is densely packed and spans the length of the leaf. There are two circular holes visible, which were traditionally used for threading a cord to bind multiple leaves together into a book format. The script is in an older form of the Tamil language.



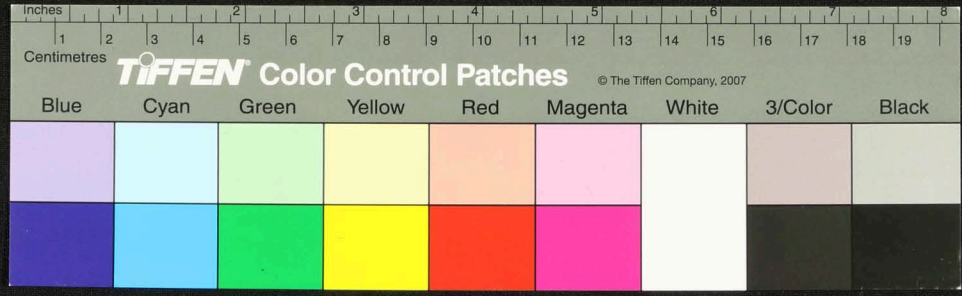
Handwritten text in an ancient script, likely Tamil, on a palm leaf manuscript. The text is densely packed and runs horizontally across the length of the leaf. There are two prominent circular holes, which are traditional for threading a cord to bind multiple leaves together into a book format. The script is finely etched into the surface of the dried leaf.



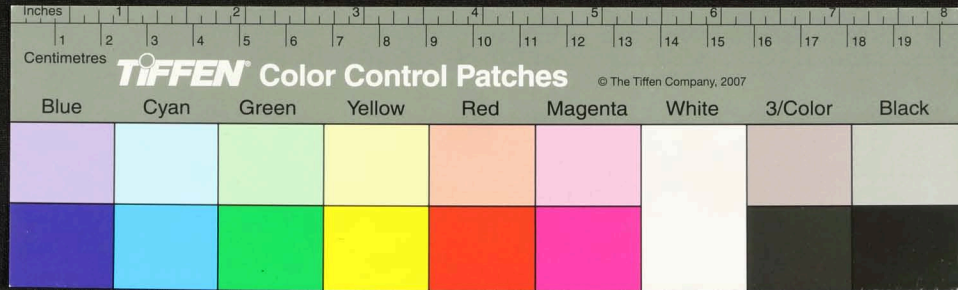
Handwritten Tamil script on a palm leaf manuscript. The text is densely packed and spans the length of the leaf. There are two circular holes visible, which are traditional for threading a cord to bind multiple leaves together.



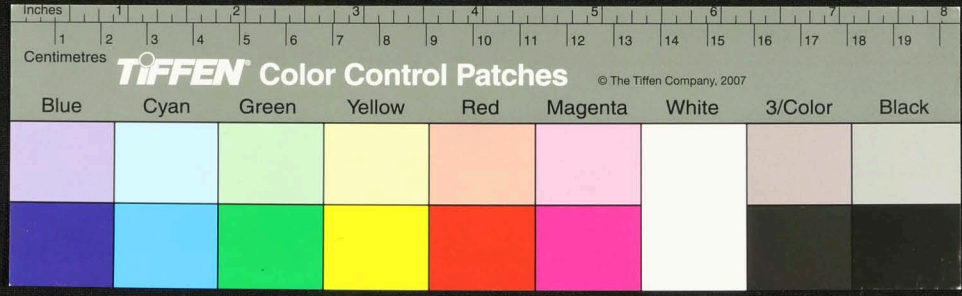
Handwritten Tamil script on a palm leaf manuscript. The text is densely packed in approximately 12 horizontal lines across the length of the leaf. Two circular holes are visible, which were traditionally used for threading a cord to bind multiple leaves together into a book format.



Handwritten Tamil script on a palm leaf manuscript. The text is densely packed and runs horizontally across the length of the leaf. There are two circular holes visible, which were traditionally used for threading a cord to bind multiple leaves together into a book format. The script is in an older form of the Tamil language, likely from the 17th or 18th century.

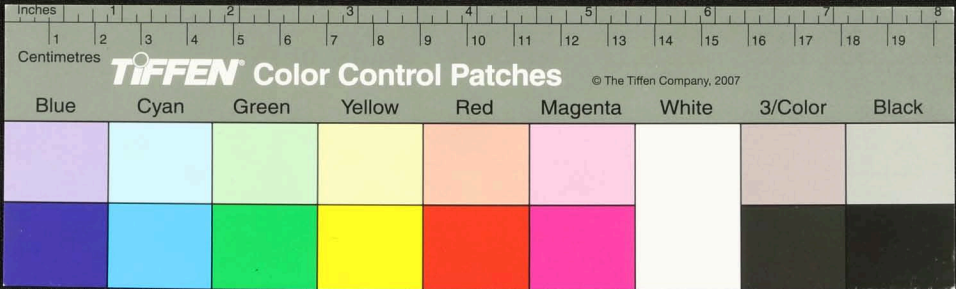


Handwritten text in Tamil script on a palm leaf manuscript. The text is densely packed and covers most of the leaf's surface. There are two circular holes visible, which were traditionally used for threading a cord to bind multiple leaves together into a book format. The script is in an older form of the Tamil language.



நவம்பர்
திருவள்ளூர்
வ.

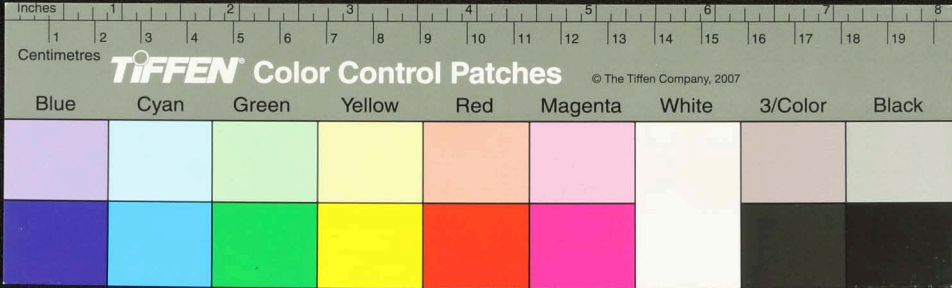
Handwritten Tamil script on a palm leaf manuscript, consisting of approximately 10 lines of text.



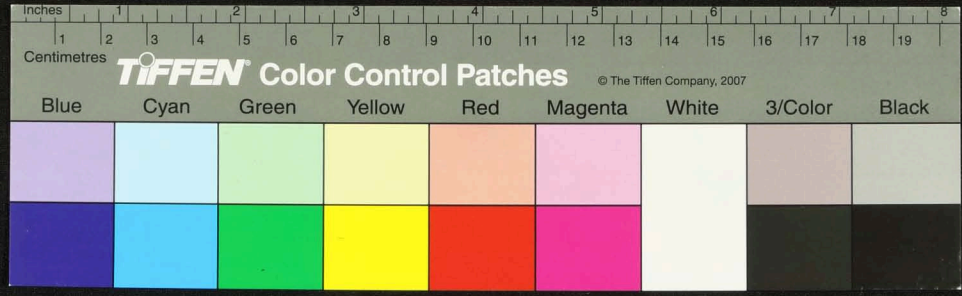
Handwritten Tamil script on a palm leaf manuscript. The text is densely packed and spans the length of the leaf. Two circular holes are visible, which were traditionally used for threading a cord to bind multiple leaves together into a book format. The script appears to be a form of classical or historical Tamil, possibly containing religious or philosophical content.



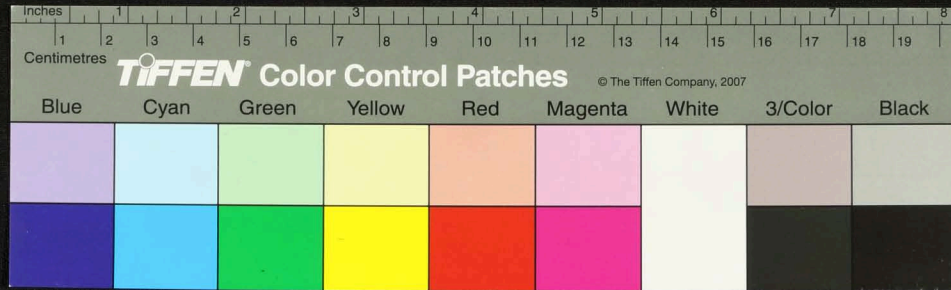
Handwritten text in Tamil script on a palm leaf manuscript. The text is densely packed and spans the length of the leaf. It appears to be a historical record or a religious text, given the context of such artifacts. The script is finely etched into the surface of the dried leaf.



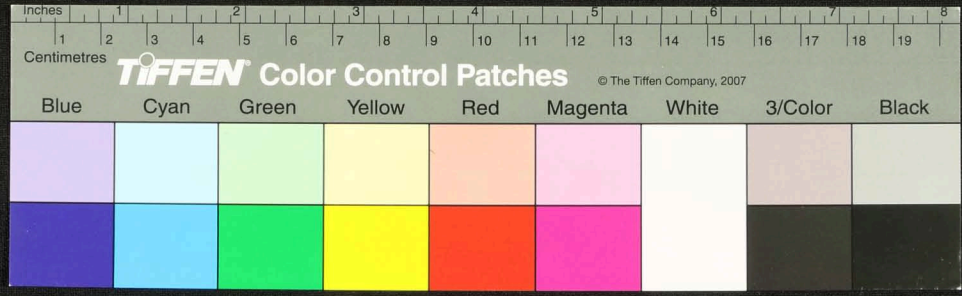
Handwritten text in Tamil script on a palm leaf manuscript. The text is arranged in approximately 10 horizontal lines across the length of the leaf. The script is dense and characteristic of traditional South Indian manuscripts. There are some dark spots and a hole on the leaf, likely due to age or insect damage.



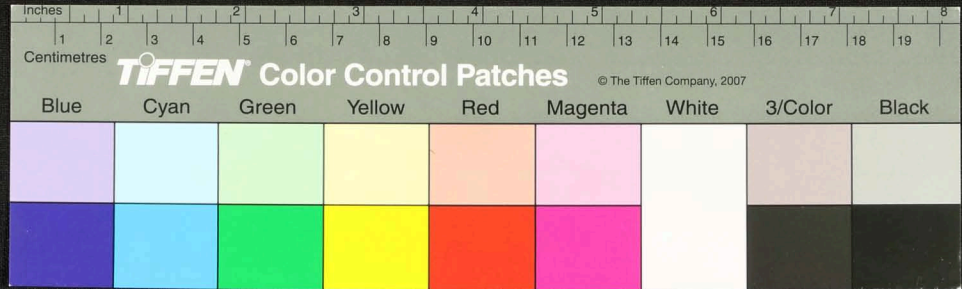
Handwritten text in an ancient script, likely Tamil, inscribed on a palm leaf manuscript. The text is arranged in a single line across the length of the leaf. Two circular holes are visible, which were traditionally used for threading a cord to bind multiple leaves together into a book format.



Handwritten Tamil script on a palm leaf manuscript. The text is densely packed and covers most of the leaf's surface. On the left side, there are three lines of text: 'சுந்தர:', 'யு on', and 'கூழ'. The script is written in a traditional style with dark ink on the natural yellowish-brown color of the dried leaf.

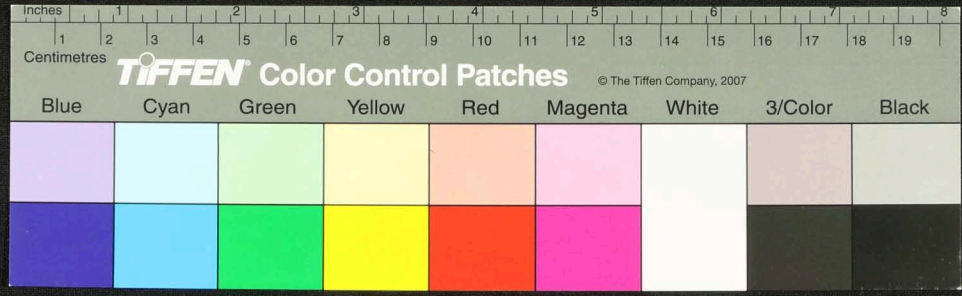


Handwritten text in Tamil script on a palm leaf manuscript. The text is densely packed and spans the length of the leaf. There are two distinct circular holes visible on the leaf, which were traditionally used for threading a cord to bind multiple leaves together into a book format.

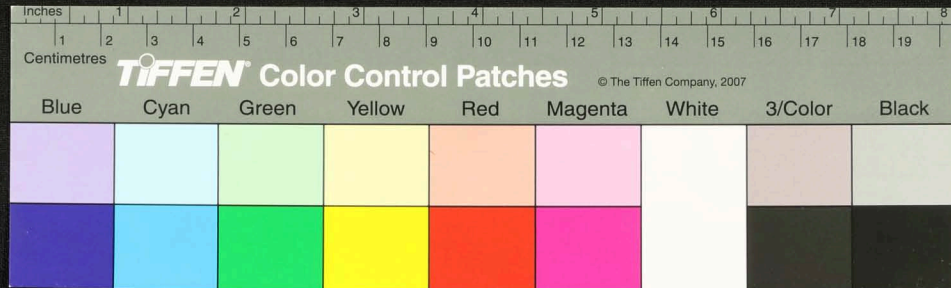


Handwritten Tamil script on a palm leaf manuscript. The text is densely packed and runs horizontally across the length of the leaf. There are two circular holes visible, which were traditionally used for threading a cord to bind multiple leaves together into a book format. The script is in an older form of the Tamil language.

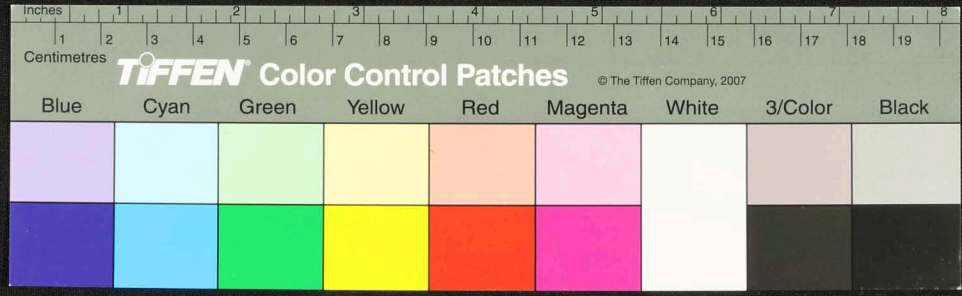
சி.சி



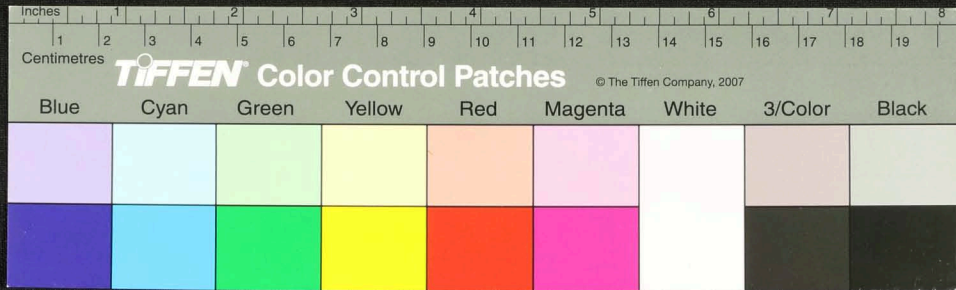
Handwritten text in Tamil script on a palm leaf manuscript. The text is densely packed and spans the length of the leaf. It appears to be a historical record or a religious text, given the context of such manuscripts. The script is in an older form of the Tamil language. There are some dark spots and signs of wear on the leaf, particularly a large one near the center.



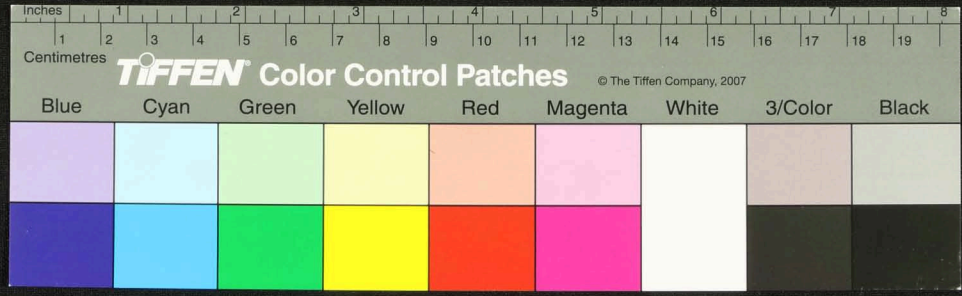
Handwritten text in Tamil script on a palm leaf manuscript. The text is densely packed and covers most of the leaf's surface. There are two circular holes visible, which are traditional for threading a cord to bind multiple leaves together. The script is in an older form of the Tamil language.



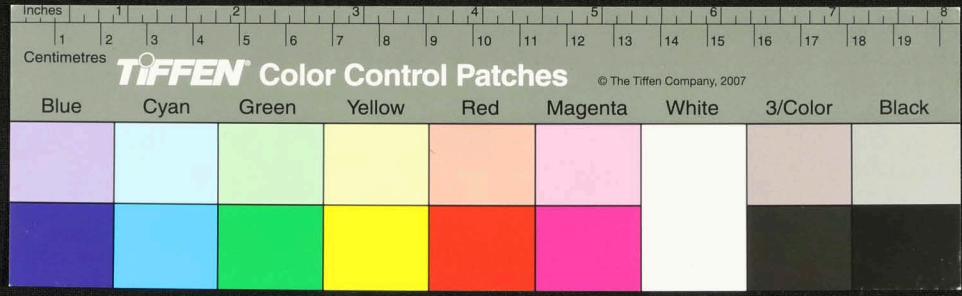
Handwritten text in Tamil script on a palm leaf manuscript. The text is densely packed and covers the entire length of the leaf. Two circular holes are visible, which were traditionally used for threading a cord to bind multiple leaves together into a book format.



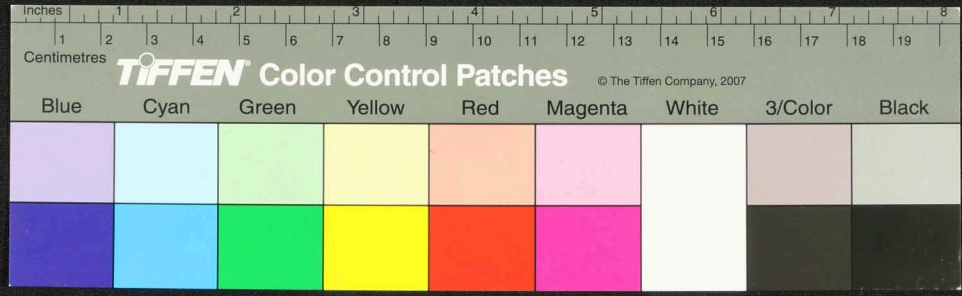
Handwritten Tamil script on a palm leaf manuscript. The text is densely packed and runs horizontally across the length of the leaf. There are some dark spots and irregularities on the leaf, possibly due to age or damage. On the left side, there are some faint markings that appear to be 'பு. 12' and '12'.



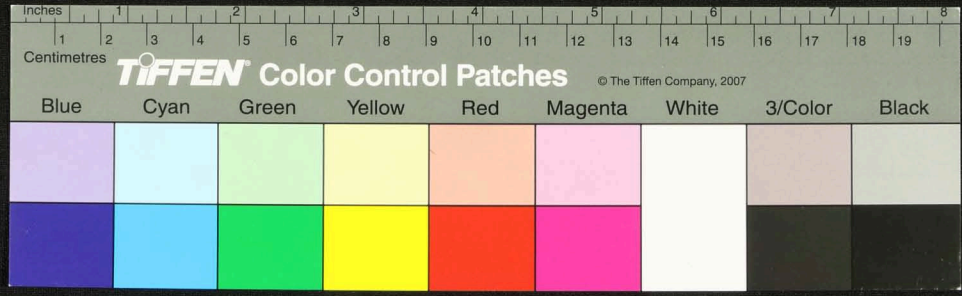
Handwritten Tamil script on a palm leaf manuscript. The text is densely packed and runs horizontally across the length of the leaf. There are two circular holes visible, which were traditionally used for threading a cord to bind multiple leaves together. The script is in an older form of the Tamil language.



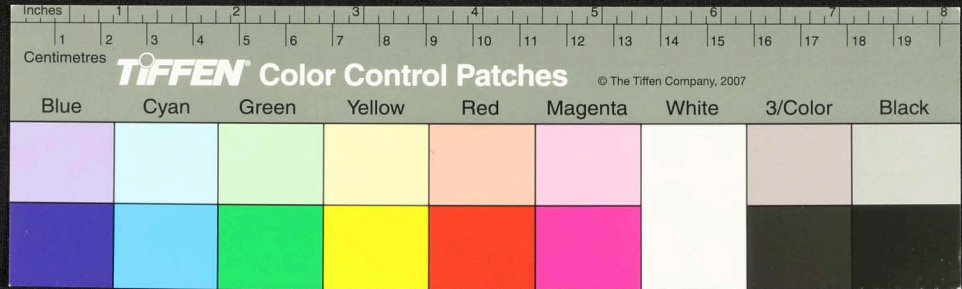
Handwritten Tamil script on a palm leaf manuscript. The text is densely packed and spans the length of the leaf. There are two distinct circular holes, likely from a traditional binding system. The script is written in a clear, consistent hand.



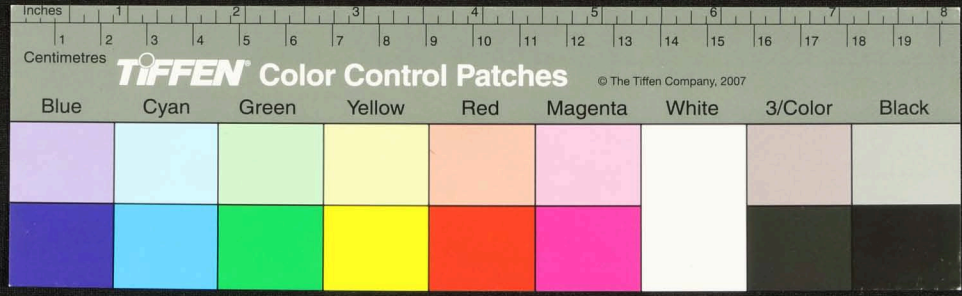
Handwritten text in Tamil script on a palm leaf manuscript. The text is densely packed and covers most of the leaf's surface. There are two prominent circular holes, one near the left end and one near the right end, which were traditionally used for threading a cord to bind multiple leaves together into a book format. The script is in an older form of the Tamil language.



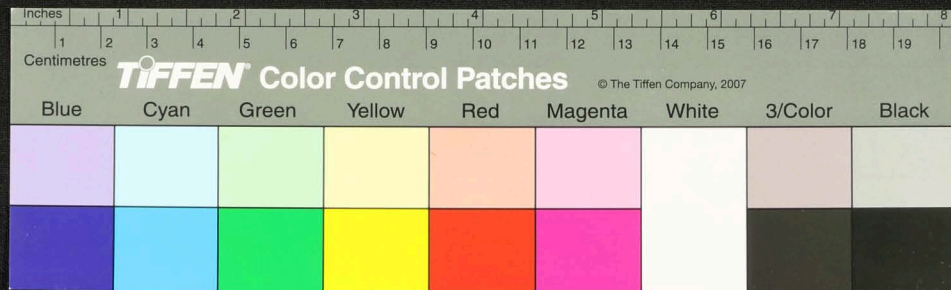
Handwritten text in Tamil script on a palm leaf manuscript. The text is densely packed and runs horizontally across the length of the leaf. There are two distinct circular holes, likely from a traditional binding method. The script is finely etched into the surface of the dried leaf.



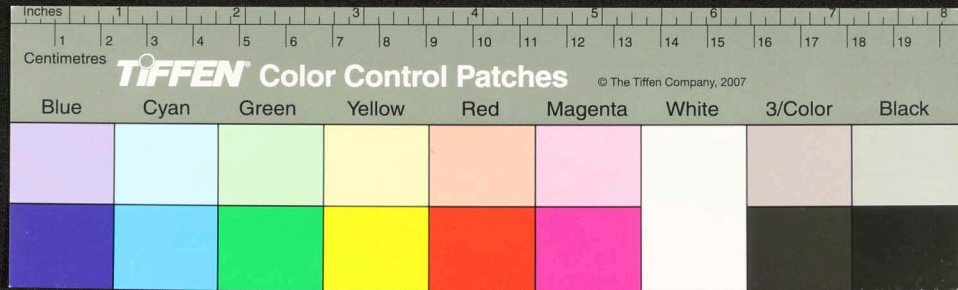
Handwritten Tamil script on a palm leaf manuscript. The text is densely packed and spans the length of the leaf. It appears to be a historical record or a religious text, given the context of such artifacts. The script is written in a traditional style, with clear characters and some decorative elements. The leaf shows signs of age, with some discoloration and wear.



Handwritten Tamil script on a palm leaf manuscript. The text is densely packed and runs horizontally across the length of the leaf. There are two prominent dark circular spots, likely from insect damage or mold, located approximately one-third and two-thirds of the way along the leaf. The script is in an older form of the Tamil language.

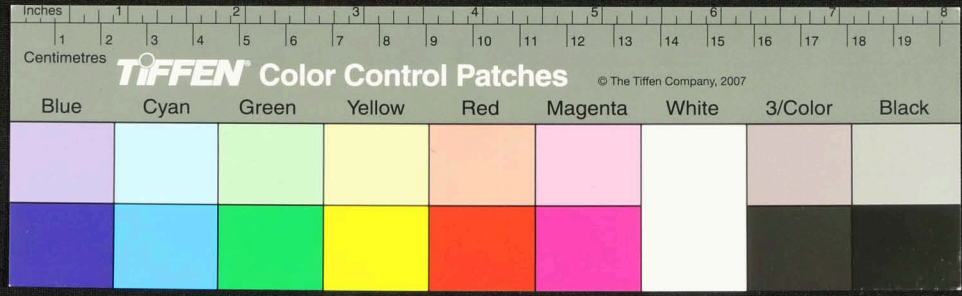


Handwritten text in Tamil script on a palm leaf manuscript. The text is densely packed and spans the length of the leaf. There are two prominent circular holes, likely from traditional binding methods. The leaf shows signs of age and wear.

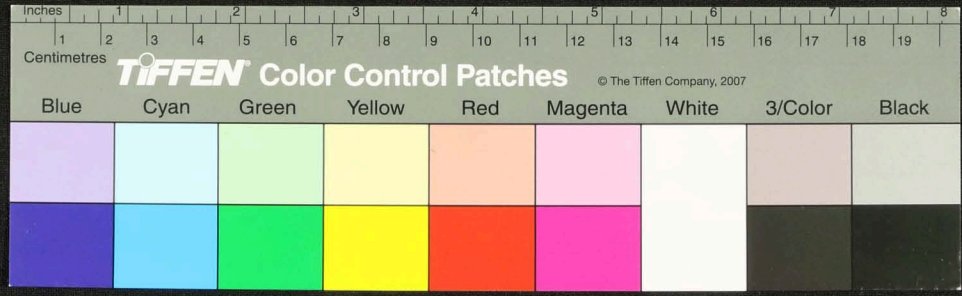


Handwritten Tamil script on a palm leaf manuscript. The text is densely packed and runs horizontally across the length of the leaf. There are two distinct circular holes, likely from a traditional binding system. The script is in an older form of the Tamil language.

74



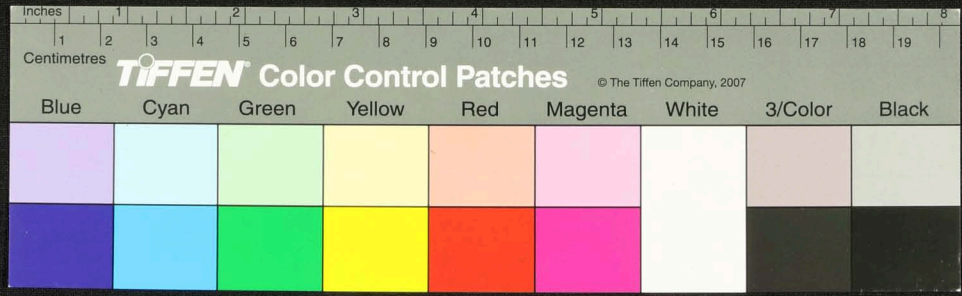
Handwritten Tamil script on a palm leaf manuscript. The text is densely packed and runs horizontally across the length of the leaf. There are two distinct circular holes, one near the left end and one near the right end, which were traditionally used for threading a cord to bind multiple leaves together into a book format. The script is in an older form of the Tamil language, likely from the 17th or 18th century.



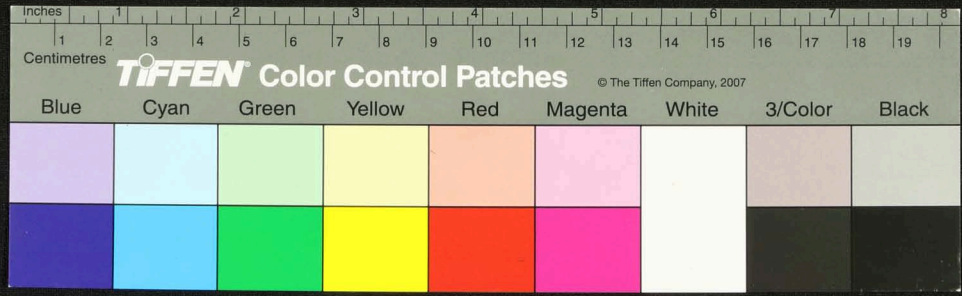
2000154
2300231
லி 16

17

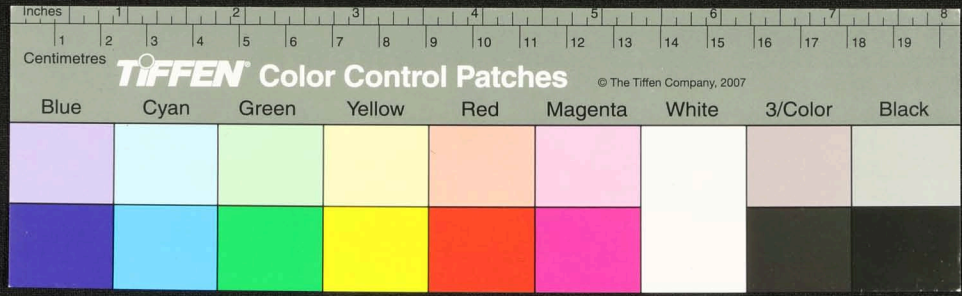
Handwritten Tamil script on a palm leaf manuscript. The text is densely packed and runs horizontally across the length of the leaf. There are two distinct circular holes, one near the left end and one near the right end, which were traditionally used for threading a cord to bind multiple leaves together into a book format.



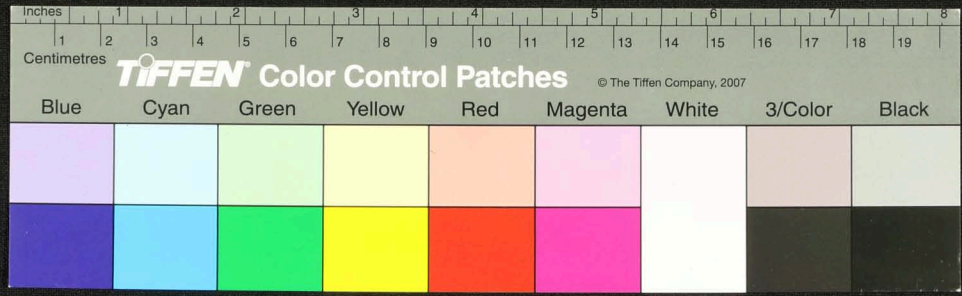
Handwritten text in Tamil script on a palm leaf manuscript. The text is densely packed and spans the length of the leaf. It appears to be a historical record or a religious text, given the context of such manuscripts. The script is finely etched into the surface of the dried leaf.



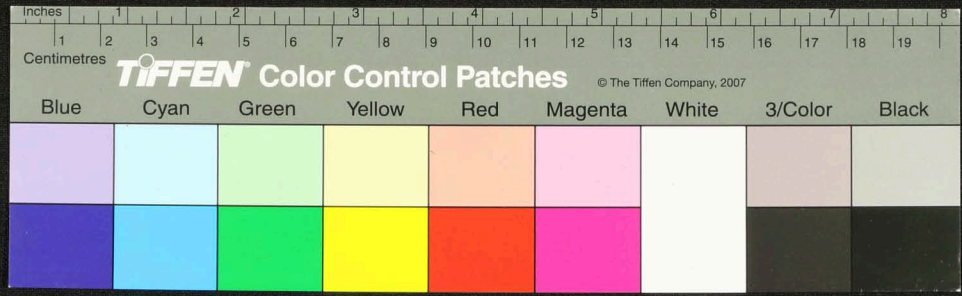
Handwritten text in Tamil script on a palm leaf manuscript. The text is densely packed and covers most of the leaf's surface. There are two distinct circular holes, likely from a traditional binding method. The script is in an older form of the Tamil language.



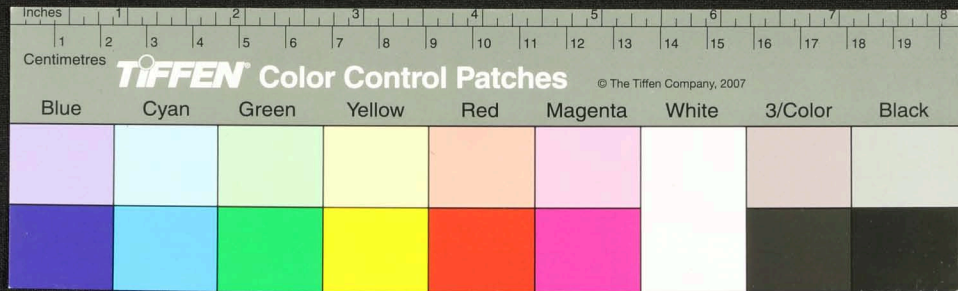
Handwritten text in Tamil script on a palm leaf manuscript. The text is densely packed and spans the length of the leaf. Two circular holes are visible, used for binding multiple leaves together.



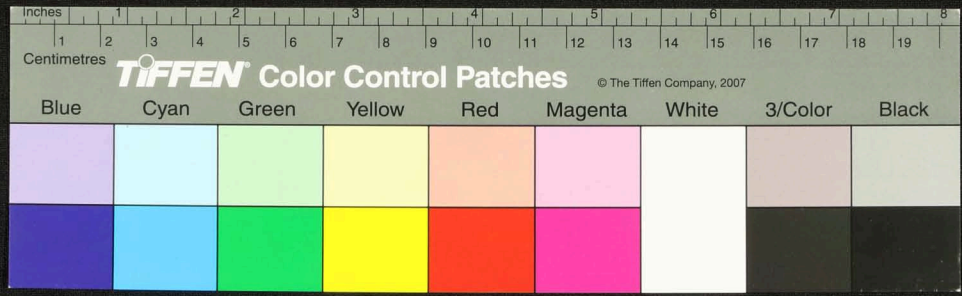
Handwritten Tamil script on a palm leaf manuscript. The text is densely packed in approximately 12 horizontal lines across the length of the leaf. Two circular holes are visible, which were traditionally used for threading a cord to bind multiple leaves together into a book format.



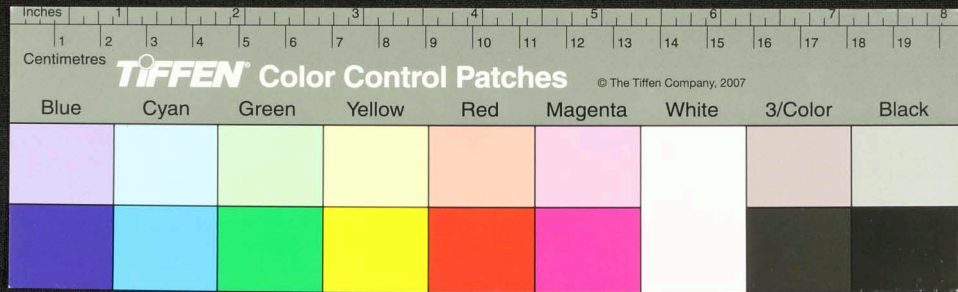
Handwritten text in Tamil script on a palm leaf manuscript. The text is densely packed and spans the length of the leaf. There are two circular holes visible, which were traditionally used for threading a cord to bind multiple leaves together into a book format.



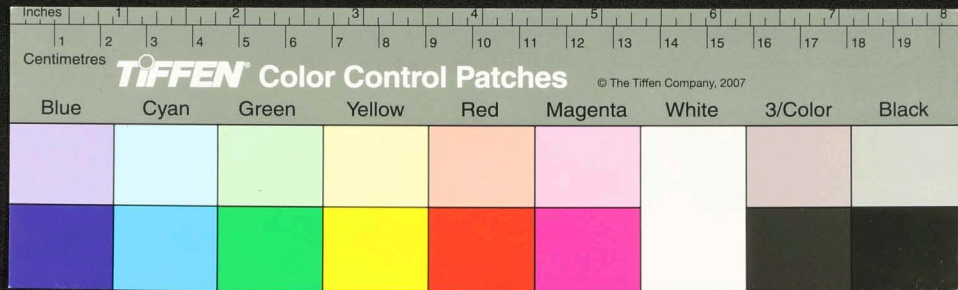
Handwritten text in Tamil script on a palm leaf manuscript. The text is densely packed and runs horizontally across the length of the leaf. There are two circular holes visible, which were traditionally used for threading a cord to bind multiple leaves together into a book format. The script is in an older form of the Tamil language.



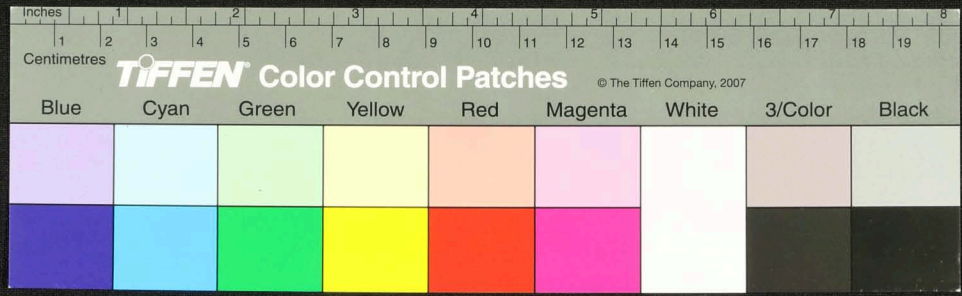
Handwritten text in Tamil script on a palm leaf manuscript. The text is densely packed and covers most of the leaf's surface. There are two circular holes visible, which were traditionally used for threading a cord to bind multiple leaves together into a book format. The script is in an older form of the Tamil language, likely from the medieval or early modern period.



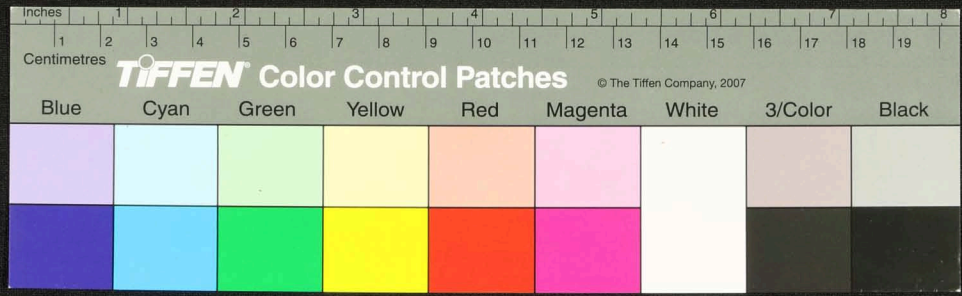
Handwritten text in Tamil script on a palm leaf manuscript. The text is densely packed and spans the length of the leaf. It appears to be a historical record or a religious text, given the context of such manuscripts. The script is in an older form of the Tamil language. There are some dark spots and signs of wear on the leaf, particularly a large one near the center.



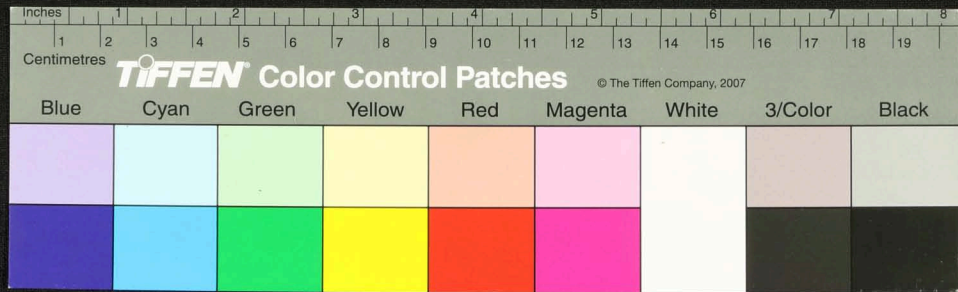
Handwritten text in Tamil script on a palm leaf manuscript. The text is densely packed and covers most of the leaf's surface. There are two distinct circular holes, likely from a traditional binding method. The script is in an older form of the Tamil language.



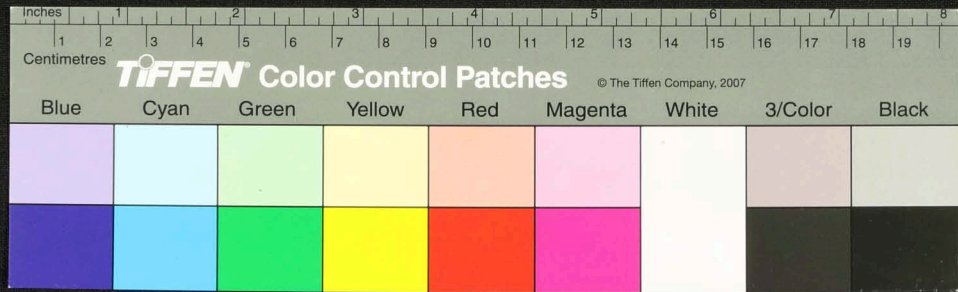
Handwritten Tamil script on a palm leaf manuscript. The text is densely packed and runs horizontally across the length of the leaf. On the left side, there are several small annotations or marginal notes, including the characters 'சுருதி' and 'சுருதி'.



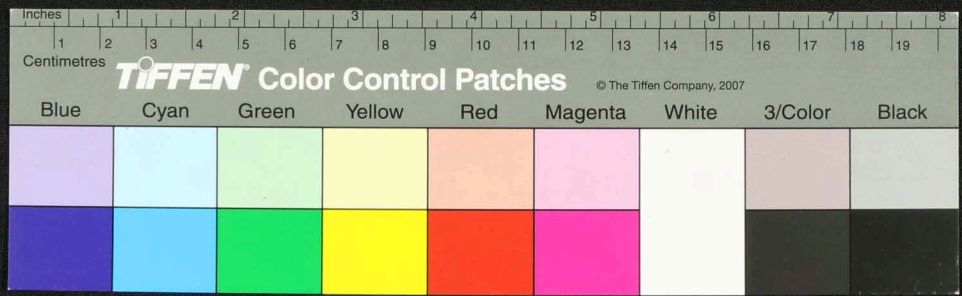
Handwritten Tamil script on a palm leaf manuscript. The text is densely packed and spans the length of the leaf. It appears to be a historical record or a religious text, given the context of such artifacts. The script is written in a traditional style, with some characters that are characteristic of older Tamil forms. There are some dark spots on the leaf, possibly due to age or damage.



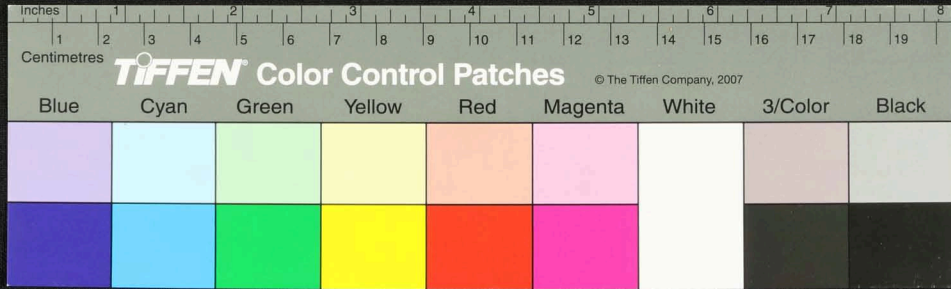
Handwritten text in Tamil script on a palm leaf manuscript. The text is densely packed and spans the length of the leaf. There are two circular holes visible, which were traditionally used for threading a cord to bind multiple leaves together. The script is in an older form of the Tamil language.



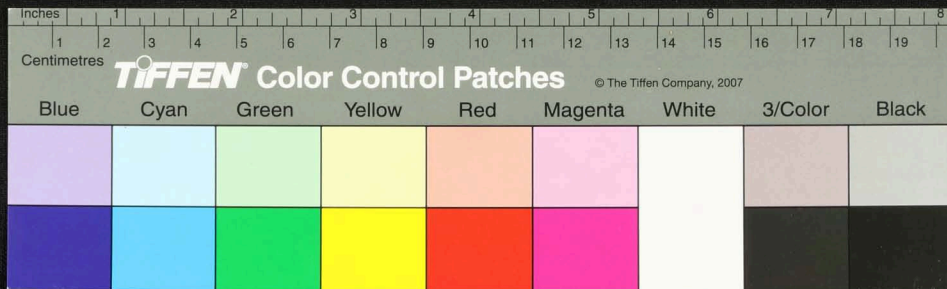
Handwritten Tamil script on a palm leaf manuscript. The text is densely packed and spans the length of the leaf. On the left side, there are marginal notes in Tamil, including the characters 'சுடி' and 'நாயகி'. The script appears to be a form of classical or historical Tamil, possibly containing religious or philosophical content.



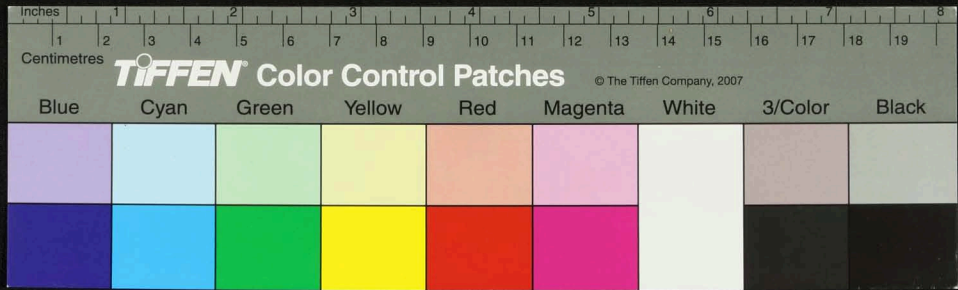
Handwritten Tamil script on a palm leaf manuscript. The text is densely packed and runs horizontally across the length of the leaf. It appears to be a historical record or a religious text, given the context of such artifacts. The script is in an older form of the Tamil language.



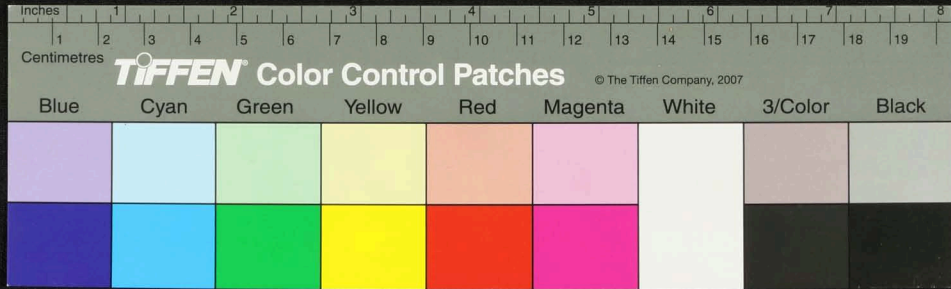
Handwritten text in Tamil script on a palm leaf manuscript. The text is arranged in a single line across the length of the leaf. Two circular holes are visible, used for binding multiple leaves together.



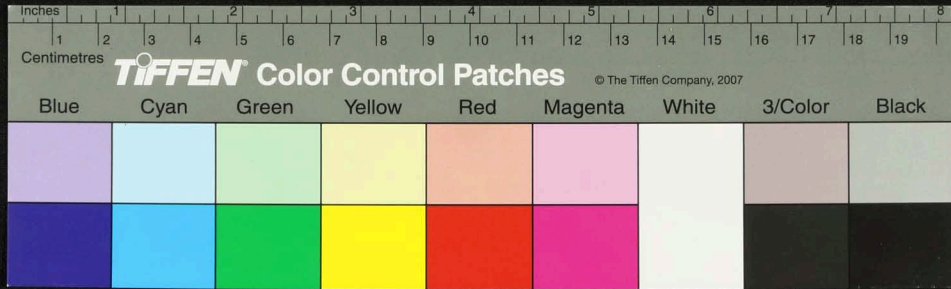
Handwritten text in Tamil script on a palm leaf manuscript. The text is densely packed and covers most of the leaf's surface. There are two circular holes visible, which were traditionally used for threading a cord to bind multiple leaves together into a book format. The script is in an older form of the Tamil language.



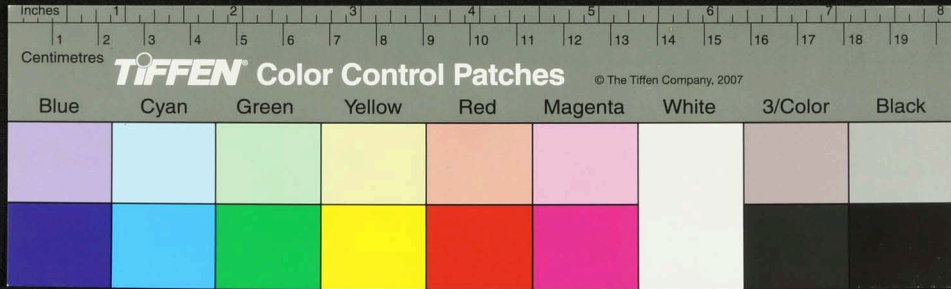
Handwritten text in Tamil script on a palm leaf manuscript. The text is densely packed and spans the length of the leaf. There are two circular holes visible, which were traditionally used for threading a cord to bind multiple leaves together into a book format.



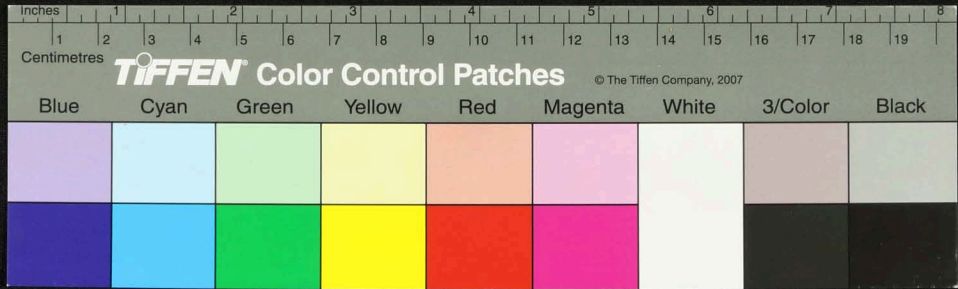
Handwritten text in Tamil script on a palm leaf manuscript. The text is densely packed and covers the entire length of the leaf. It appears to be a historical record or a religious text, given the context of such manuscripts. The script is finely etched into the surface of the dried leaf.



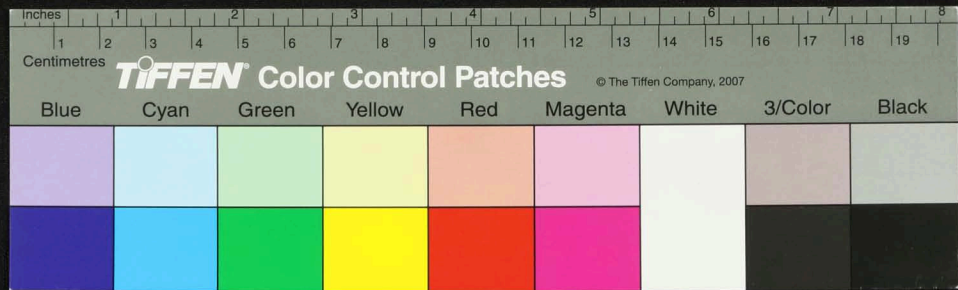
Handwritten Tamil script on a palm leaf manuscript. The text is densely packed in approximately 15 horizontal lines across the length of the leaf. Two circular holes are visible, used for threading a cord to bind multiple leaves together. The script is in an older form of the Tamil language.



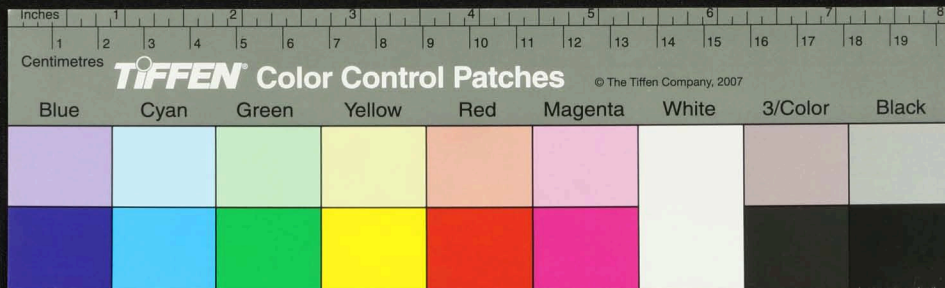
Handwritten text in Tamil script on a palm leaf manuscript. The text is densely packed and covers most of the leaf's surface. There are two circular holes visible, which were traditionally used for threading a cord to bind multiple leaves together. The script is in an older form of the Tamil language.



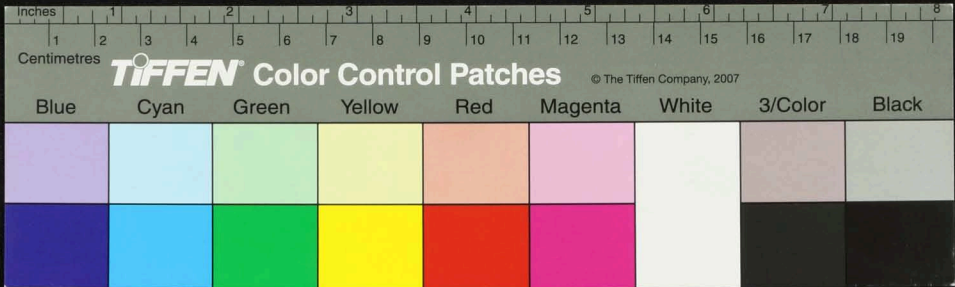
Handwritten text in Tamil script on a palm leaf manuscript. The text is arranged in approximately 15 horizontal lines across the length of the leaf. The script is dense and characteristic of traditional South Indian manuscripts. There are some dark spots and signs of wear on the leaf, particularly in the middle section.



Handwritten text in Tamil script on a palm leaf manuscript. The text is densely packed and covers most of the leaf's surface. Two circular holes are visible, used for binding multiple leaves together.



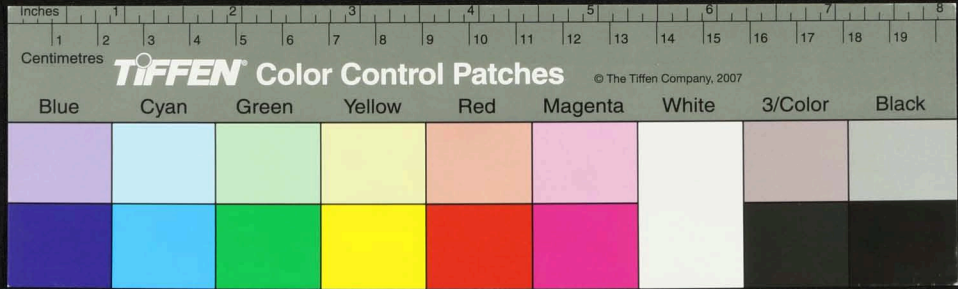
Handwritten text in Tamil script on a palm leaf manuscript. The text is densely packed and covers the entire length of the leaf. Two circular holes are visible, used for binding multiple leaves together.



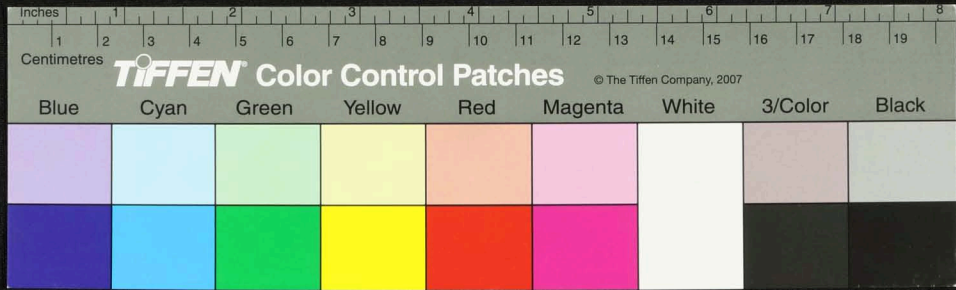
15

Handwritten text in Tamil script, likely a historical record or legal document. The text is densely packed and covers most of the length of the palm leaf. It appears to be a formal record, possibly related to land ownership or a court proceeding, given the nature of such documents on palm leaves. The script is in an older form of the Tamil language.

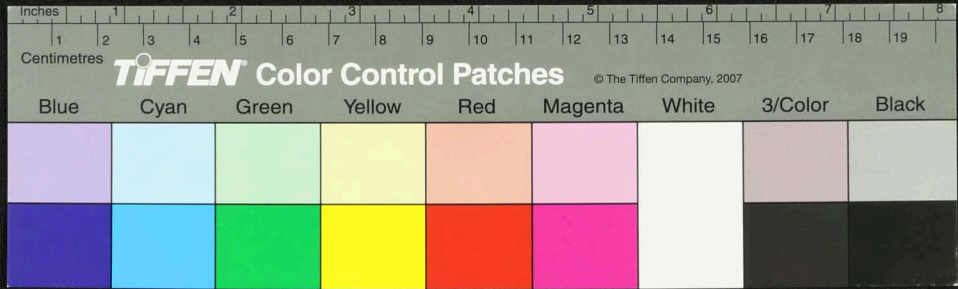
15



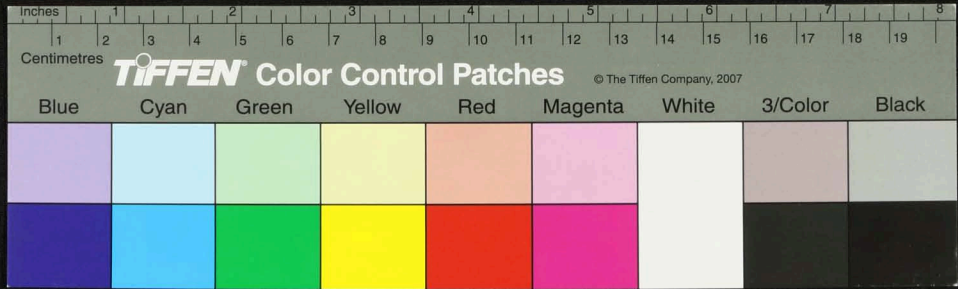
Handwritten text in Tamil script on a palm leaf manuscript. The text is arranged in approximately 12 horizontal lines across the length of the leaf. On the left side, there are several vertical labels in Tamil: 'மேலே', 'பின்னே', 'மேலே', 'பின்னே', 'மேலே', 'பின்னே', 'மேலே', 'பின்னே', 'மேலே', 'பின்னே', 'மேலே', 'பின்னே'. The main body of text is densely packed and appears to be a historical or administrative record.



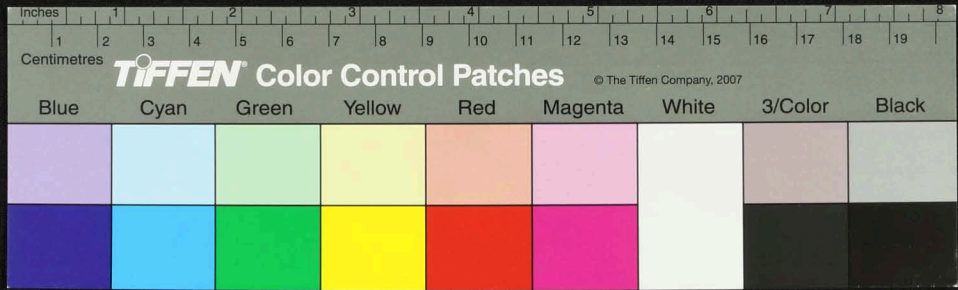
Handwritten Tamil script on a palm leaf manuscript. The text is densely packed and covers most of the leaf's surface. There are some faint markings on the left side, possibly indicating line numbers or page markers. The script is written in a traditional style, characteristic of historical Tamil manuscripts.



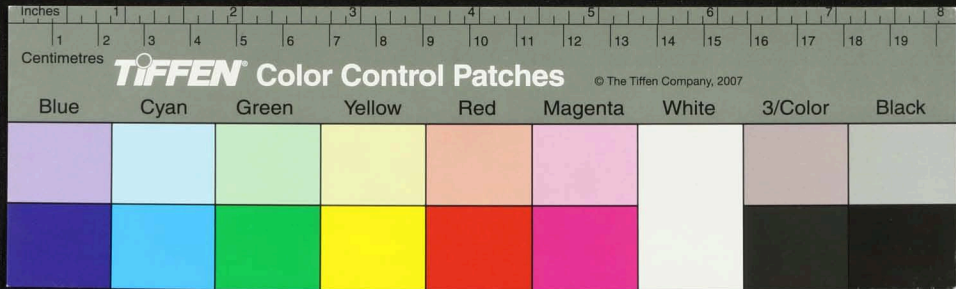
Handwritten text in Tamil script on a palm leaf manuscript. The text is densely packed and covers most of the leaf's surface. On the left side, there are marginal notes or labels in Tamil, including 'கயமா' and 'புது'.



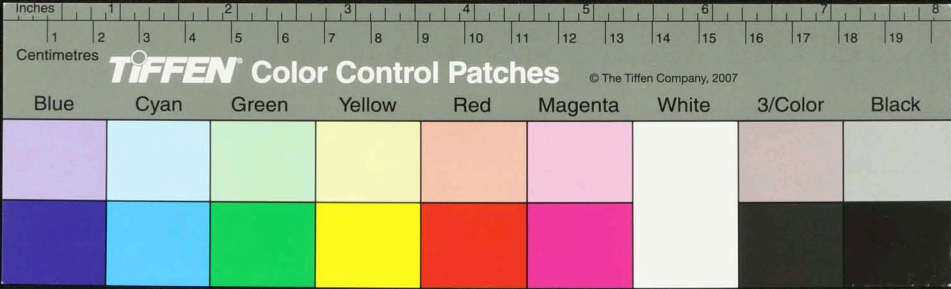
Handwritten Tamil script on a palm leaf manuscript. The text is densely packed and spans the length of the leaf. Two circular holes are visible, used for binding multiple leaves together.



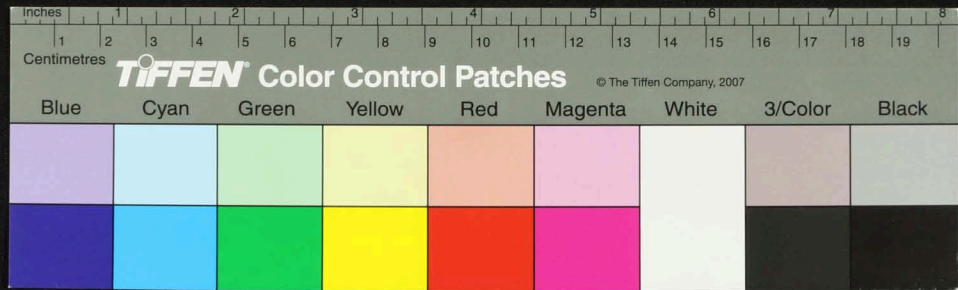
Handwritten text in Tamil script on a palm leaf manuscript. The text is densely packed and covers most of the leaf's surface. There are two circular holes visible, which were traditionally used for threading a cord to bind multiple leaves together into a book format. The script is in an older form of the Tamil language.

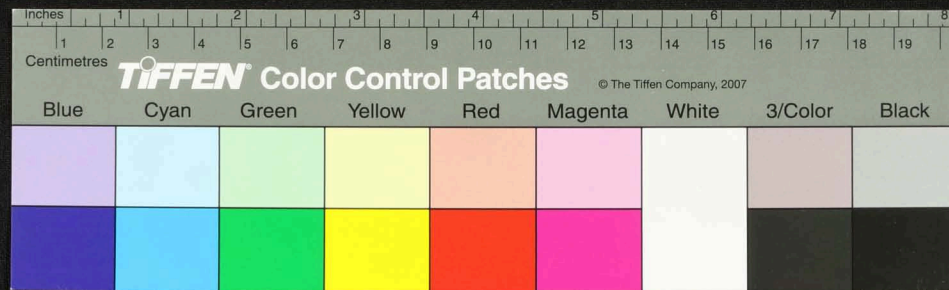


Handwritten text in Tamil script on a palm leaf manuscript. The text is densely packed and spans the length of the leaf. It appears to be a historical record or a religious text, given the context of such manuscripts. The script is finely etched into the surface of the dried leaf.



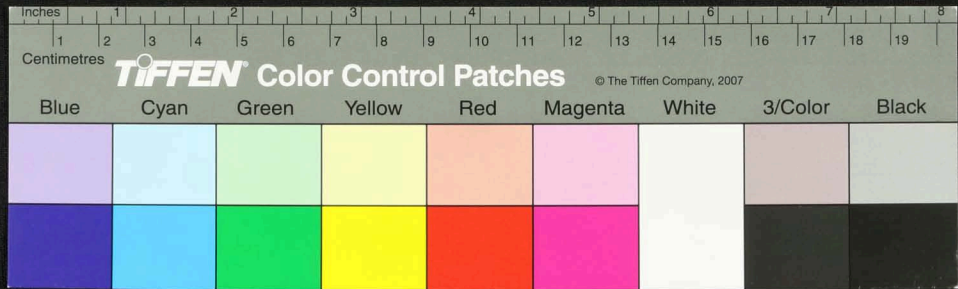
Handwritten Tamil script on a palm leaf manuscript. The text is densely packed and spans the length of the leaf. It appears to be a historical record or a religious text, given the context of such artifacts. The script is written in a traditional style, with some characters that are characteristic of older Tamil inscriptions. The leaf shows signs of age, with some darkening and wear, particularly around the edges and in the middle section.



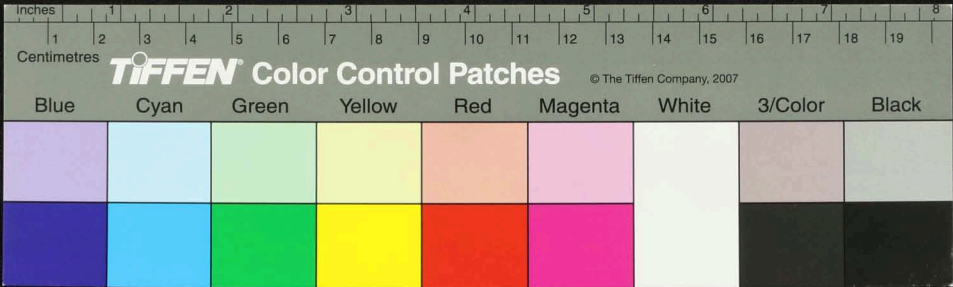


Handwritten text in Tamil script on a palm leaf manuscript. The text is densely packed and spans the length of the leaf. There are two distinct circular holes, likely from a traditional binding method. The script is in an older form of the Tamil language.

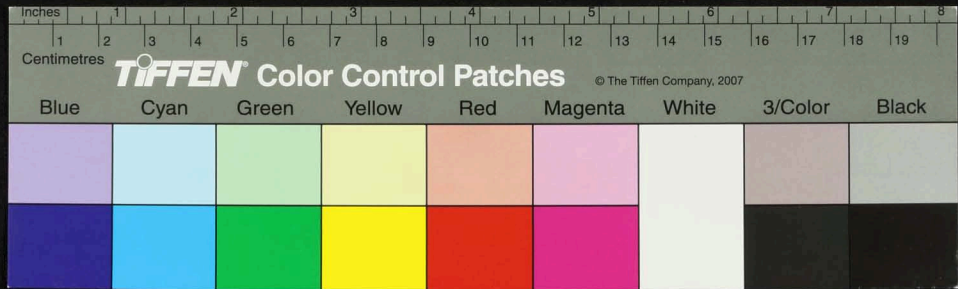
Handwritten notes in Tamil script, located on the left side of the leaf, possibly serving as a title or a reference.

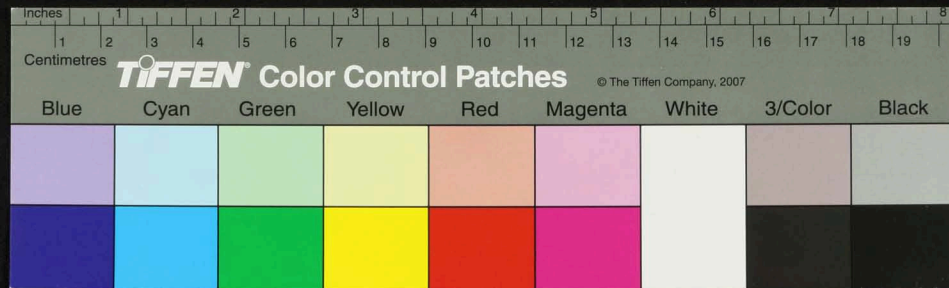
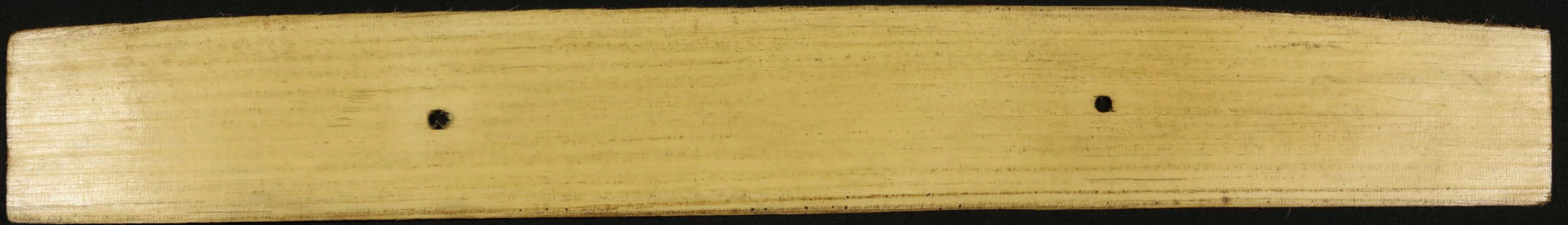


Handwritten text in Tamil script on a palm leaf manuscript. The text is densely packed and covers most of the leaf's surface. There are two distinct circular holes, likely from a traditional binding method. The script is in an older form of the Tamil language.

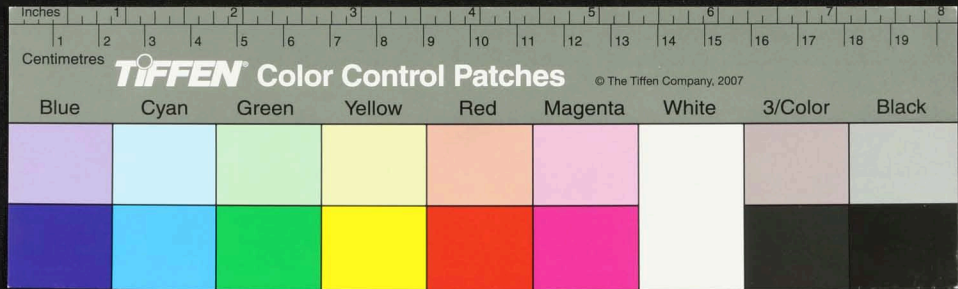


Handwritten Tamil script on a palm leaf manuscript. The text is densely packed and covers most of the leaf's surface. It appears to be a historical record or a religious text, given the context of such artifacts. The script is written in a traditional style, with clear characters and some use of diacritics. There are two circular holes visible on the leaf, which were traditionally used for threading a cord to bind multiple leaves together into a book format.

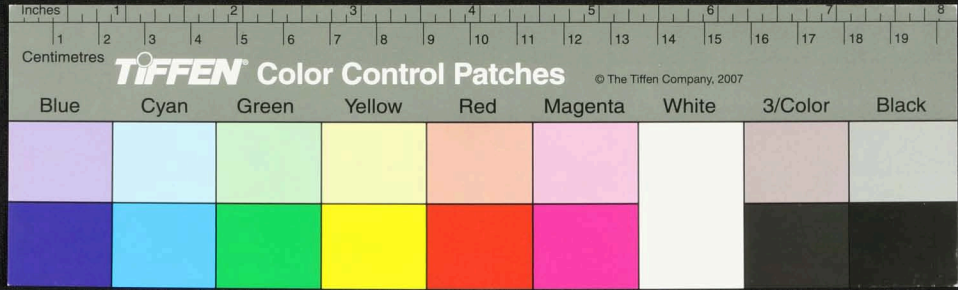




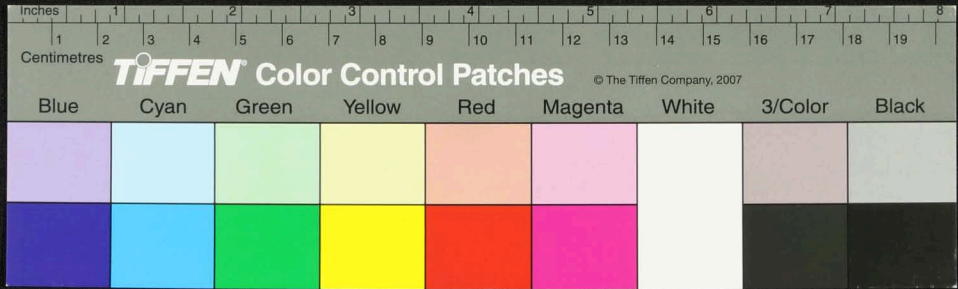
Handwritten text in Tamil script on a palm leaf manuscript. The text is arranged in approximately 10 horizontal lines across the length of the leaf. The script is dense and characteristic of traditional South Indian manuscripts. There are two circular holes visible on the leaf, which were traditionally used for threading a cord to bind multiple leaves together into a book format.



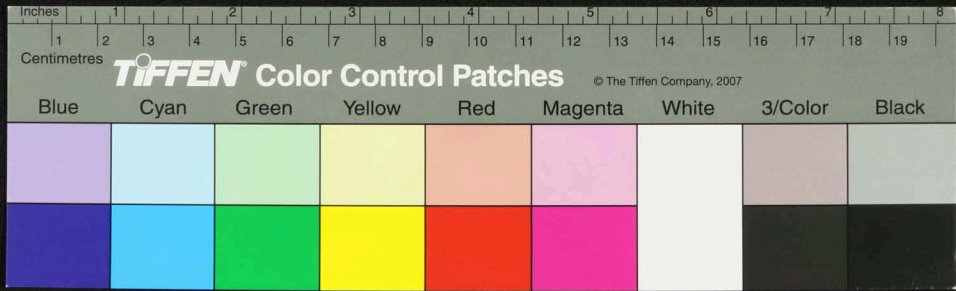
Handwritten text in Tamil script on a palm leaf manuscript. The text is arranged in approximately 10 horizontal lines across the length of the leaf. The script is dense and characteristic of traditional Tamil inscriptions. There are two circular holes visible on the leaf, which were traditionally used for threading a cord to bind multiple leaves together into a book format. The leaf shows signs of age, including some discoloration and wear along the edges.



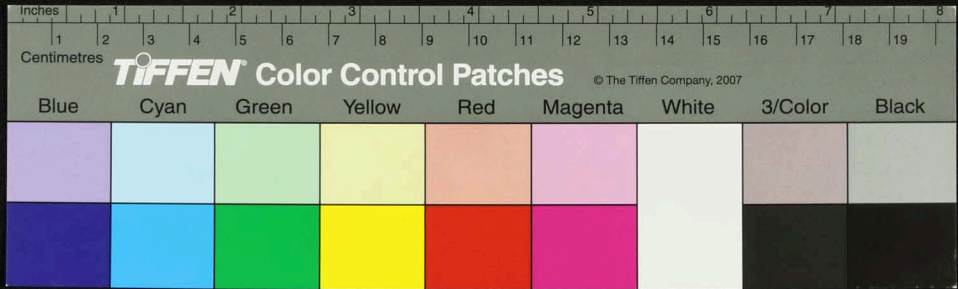
Handwritten Tamil script on a palm leaf manuscript. The text is densely packed and spans the length of the leaf. Two circular holes are visible, used for binding multiple leaves together. The script is written in a traditional style, characteristic of historical Tamil manuscripts.



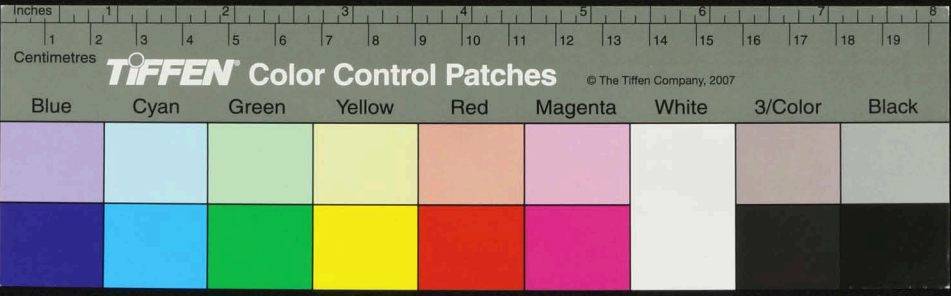
Handwritten text in Tamil script on a palm leaf manuscript. The text is arranged in approximately 12 horizontal lines across the length of the leaf. The script is dense and characteristic of traditional South Indian manuscripts. There are two small circular holes visible on the leaf, which were traditionally used for threading a cord to bind multiple leaves together into a book format.



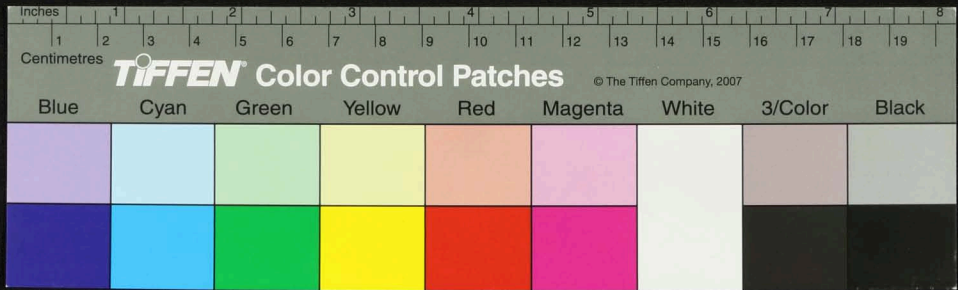
Handwritten text in Tamil script on a palm leaf manuscript. The text is arranged in approximately 12 horizontal lines across the length of the leaf. The script is dense and characteristic of traditional South Indian manuscripts. There are two circular holes visible on the leaf, which were traditionally used for threading a cord to bind multiple leaves together into a book format.



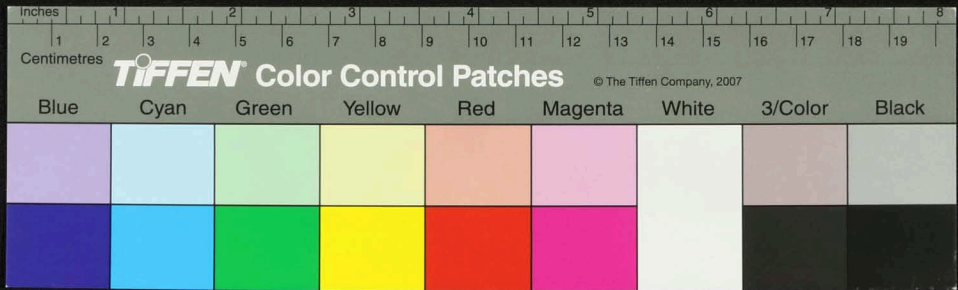
Handwritten text in Tamil script on a palm leaf manuscript. The text is densely packed and covers most of the leaf's surface. On the left side, there are marginal notes: '4) 1000' and '21'. The script appears to be a traditional form of Tamil, possibly including religious or philosophical content.



Handwritten text in Tamil script on a palm leaf manuscript. The text is arranged in approximately 10 horizontal lines across the length of the leaf. The script is dense and characteristic of traditional South Indian manuscripts. There are two circular holes visible on the leaf, which were traditionally used for threading a cord to bind multiple leaves together into a book format.



Handwritten text in Tamil script on a palm leaf manuscript. The text is arranged in approximately 10 horizontal lines across the length of the leaf. The script is dense and appears to be a form of classical or historical Tamil. There are two distinct circular holes punched through the leaf, one on the left side and one on the right side, which were traditionally used for threading a cord to bind multiple leaves together into a book format.



Handwritten Tamil script on a palm leaf manuscript. The text is arranged in approximately 10 horizontal lines across the length of the leaf. The script is dense and appears to be a form of classical or historical Tamil. There are two distinct circular holes or indentations on the leaf, one near the left edge and one near the right edge, which were traditionally used for threading a cord to bind multiple leaves together into a book.

