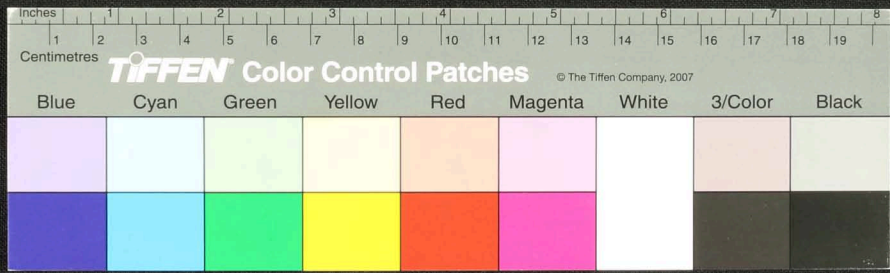


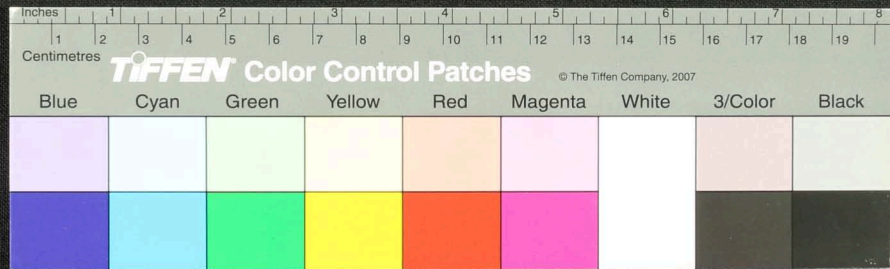
Handwritten text in Tamil script on a palm leaf manuscript. The text is arranged in approximately 12 horizontal lines across the length of the leaf. The script is finely etched into the surface of the dried leaf. There are some dark spots and irregularities on the leaf, possibly due to age or damage.



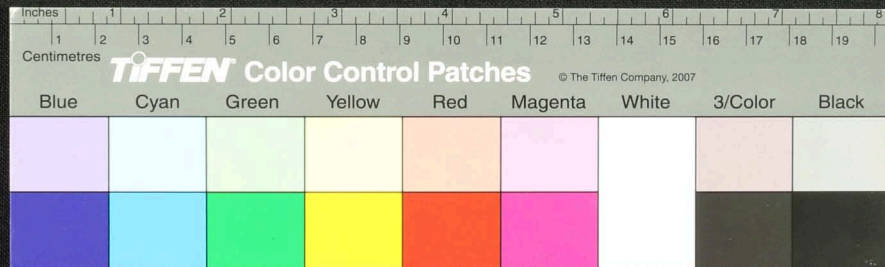




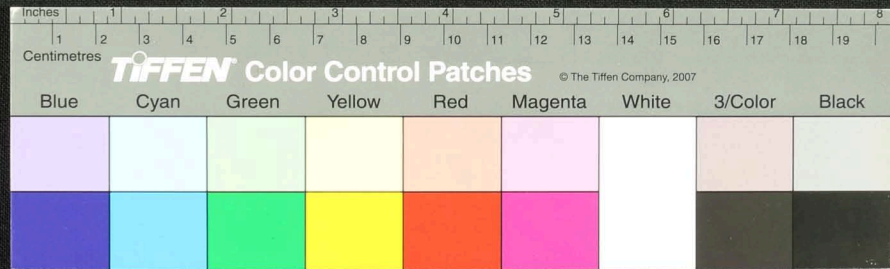
Handwritten text in Tamil script on a palm leaf manuscript. The text is arranged in approximately 10 horizontal lines across the length of the leaf. The script is finely etched into the surface of the dried leaf. There are two distinct circular holes along the leaf, which were traditionally used for threading a cord to bind multiple leaves together into a book format. The leaf shows signs of age, including some dark spots and irregular edges.



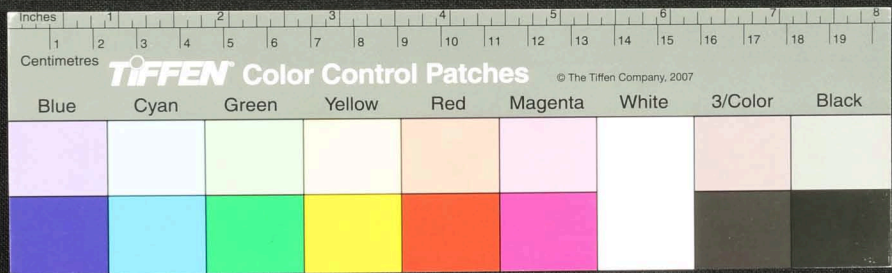
Handwritten Tamil script on a palm leaf manuscript. The text is arranged in approximately 12 columns across the length of the leaf. The script is finely etched into the surface of the dried leaf. There are several small holes and dark spots, likely from insect damage or natural decay, scattered across the leaf's surface.



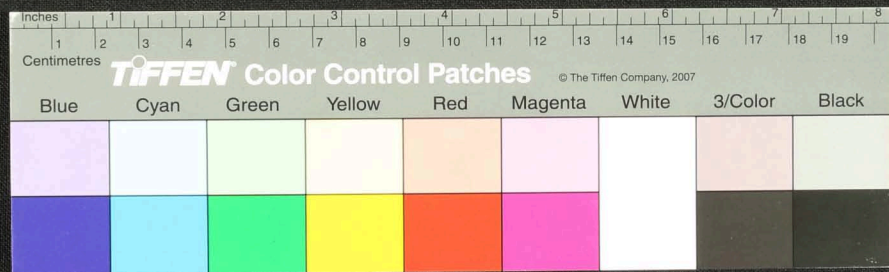
Handwritten text in Tamil script on a palm leaf manuscript. The text is arranged in several lines across the length of the leaf, with some characters appearing to be in a different script or dialect. The leaf shows signs of age and wear, including dark spots and a hole on the right side.



Handwritten text in Tamil script on a palm leaf manuscript. The text is arranged in approximately 10 horizontal lines across the length of the leaf. There are two circular holes, one on the left and one on the right, which were traditionally used for threading a cord to bind multiple leaves together. The leaf shows signs of age, including some dark staining and wear along the edges.

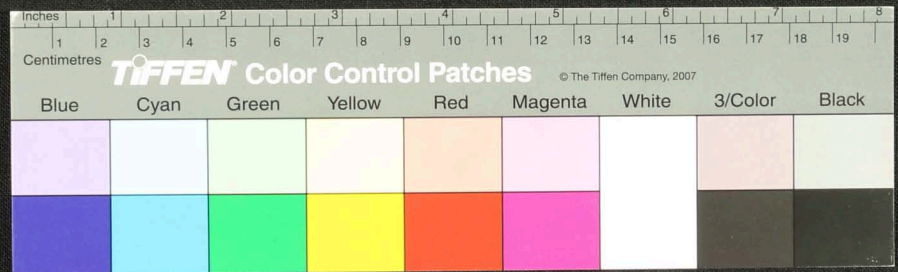


A long, narrow, yellowish-brown palm-leaf manuscript strip with handwritten text in an ancient script, likely Tamil. The text is arranged in approximately 10 horizontal lines. The leaf shows signs of age, including several dark, irregular stains and two circular holes, one near the left end and one near the right end. The script is finely etched into the surface of the leaf.

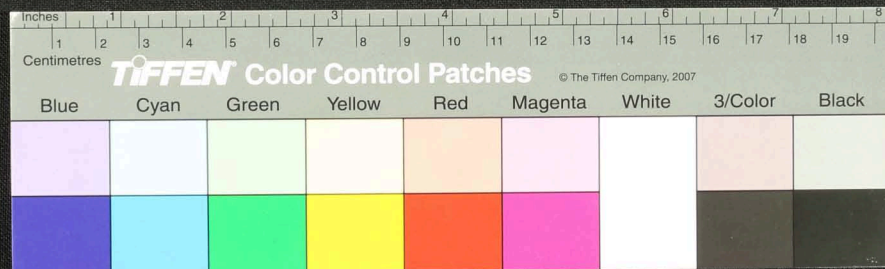




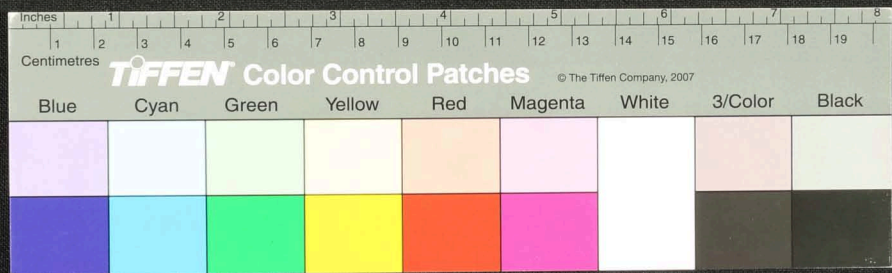
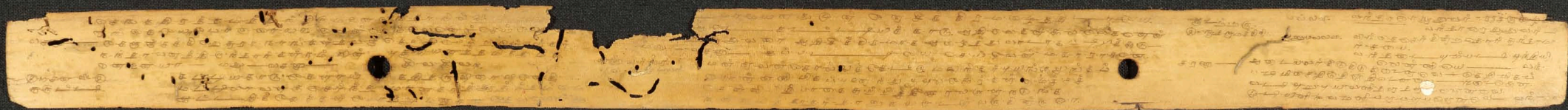
Handwritten text in Tamil script on a palm leaf manuscript strip. The text is arranged in approximately 10 horizontal lines across the length of the leaf. The script is finely etched into the surface of the dried leaf. There are several small holes and irregular marks along the strip, likely from traditional binding or insect damage.



Handwritten text in Tamil script on a palm leaf manuscript. The text is arranged in approximately 10 horizontal lines across the length of the leaf. The script is finely etched into the surface of the dried leaf. There are some dark spots and a small hole on the left side of the leaf, likely due to age or insect damage.

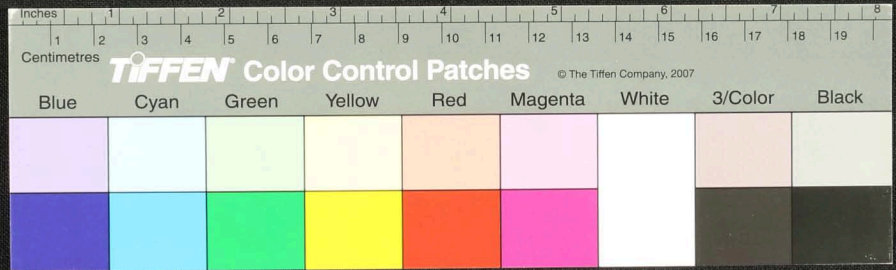




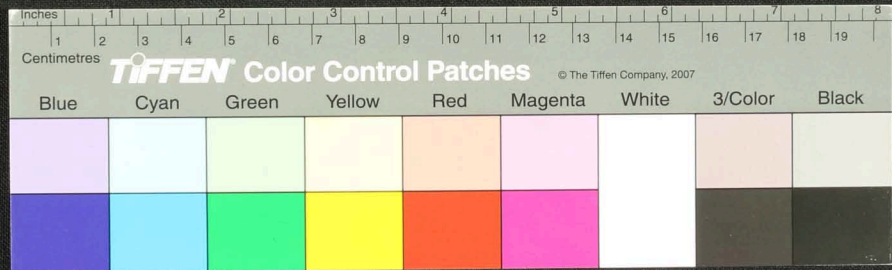




Handwritten text in Tamil script on a palm leaf manuscript. The text is arranged in approximately 10 horizontal lines across the length of the leaf. The script is finely etched into the surface of the dried leaf. There are some dark spots and irregularities on the leaf, possibly due to age or damage.



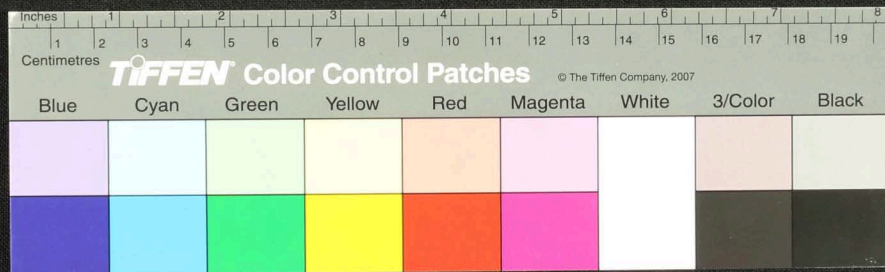
Handwritten text in Tamil script on a palm leaf manuscript. The text is arranged in approximately 10 horizontal lines across the length of the leaf. The script is finely etched into the surface of the dried leaf. There are some dark spots and irregularities on the leaf, possibly due to age or damage.







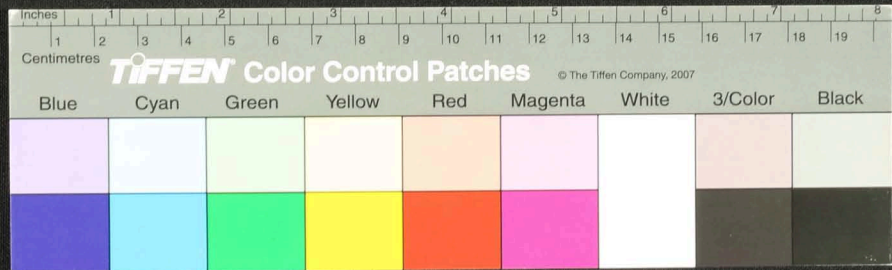
Fragment of a palm-leaf manuscript with handwritten text in an Indic script, possibly Tamil. The leaf is yellowed and shows signs of wear, including several holes and tears. The text is arranged in horizontal lines across the length of the leaf.



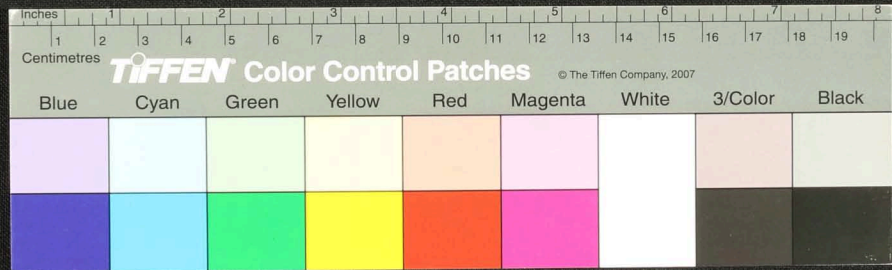




Handwritten Tamil script on a palm leaf manuscript strip. The text is arranged in approximately 12 horizontal lines across the length of the leaf. Two circular holes are visible, which were traditionally used for threading a cord to bind multiple leaves together into a book format. The script is finely etched into the natural texture of the dried leaf.

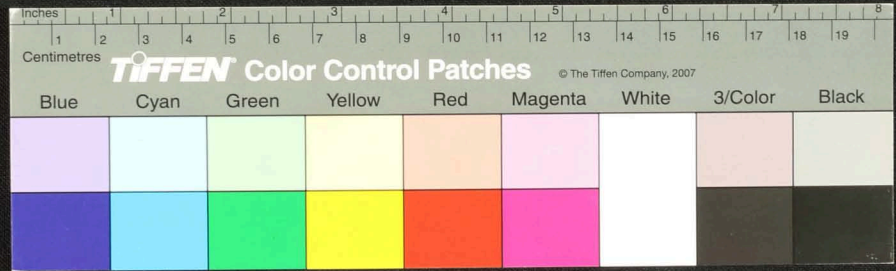


Handwritten text in Tamil script on a palm leaf manuscript. The text is arranged in several lines across the length of the leaf. There are some dark spots and a large hole on the left side, likely due to insect damage or wear. The script is finely etched into the surface of the dried leaf.





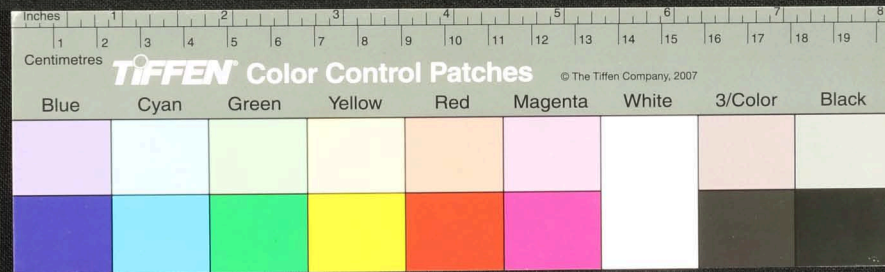
Handwritten text in Tamil script on a palm leaf manuscript. The text is arranged in approximately 10 horizontal lines across the length of the leaf. Two circular holes are visible, which were traditionally used for threading a cord to bind multiple leaves together. The leaf shows signs of age, including some staining and wear at the edges.





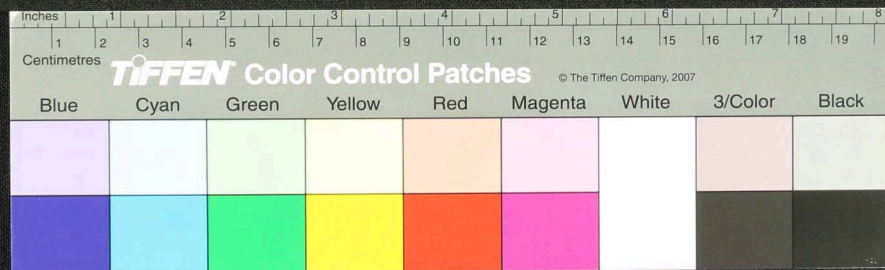


Handwritten text in Tamil script on a palm leaf manuscript. The text is arranged in approximately 12 horizontal lines across the length of the leaf. The script is finely etched into the surface of the dried leaf. There are two circular holes visible on the leaf, which were traditionally used for threading a cord to bind multiple leaves together into a book format. The leaf shows signs of age, including some dark spots and irregular edges.

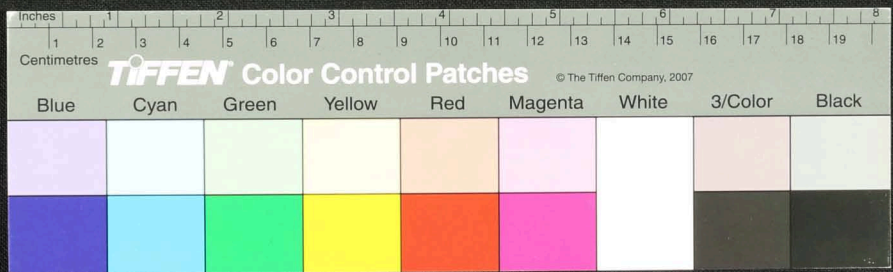




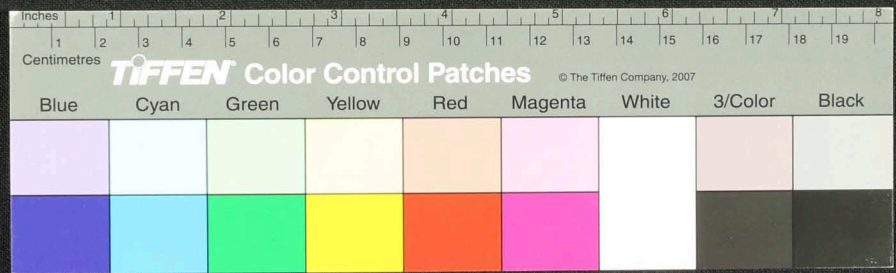
Fragment of a palm-leaf manuscript with handwritten text in an ancient script, possibly Tamil. The fragment is approximately 18 inches long and contains several lines of text. There are two circular holes visible, likely from a binding system. The text is written in a cursive style on a yellowish-brown leaf.



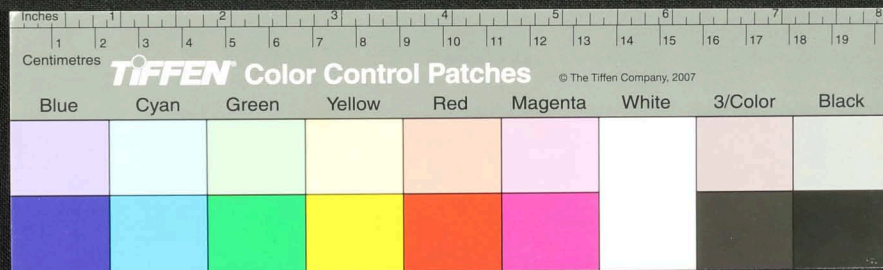
Handwritten text in Tamil script on a palm leaf manuscript. The text is arranged in approximately 12 horizontal lines across the length of the leaf. The script is finely etched into the surface of the dried leaf. There are some dark spots and irregularities on the leaf, possibly due to age or damage.

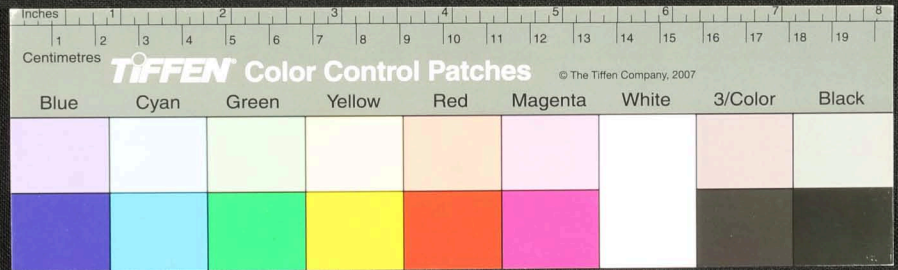
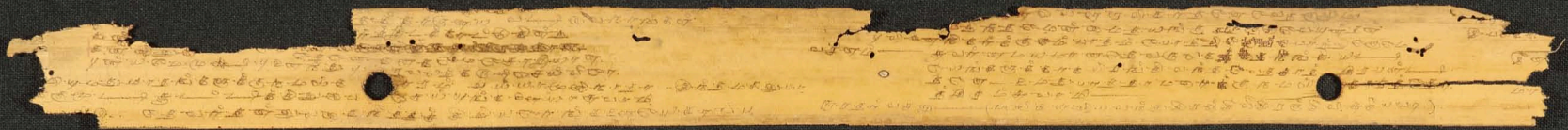


Handwritten text on a palm-leaf manuscript strip, likely in an ancient script such as Tamil or Grantha. The text is arranged in several lines across the length of the leaf. The leaf is yellowed with age and has irregular, torn edges. A small circular hole is visible on the right side of the strip.



Fragment of a palm-leaf manuscript with handwritten text in an ancient script, possibly Tamil. The text is arranged in several lines across the length of the leaf. There are some dark spots and a hole on the right side of the fragment.

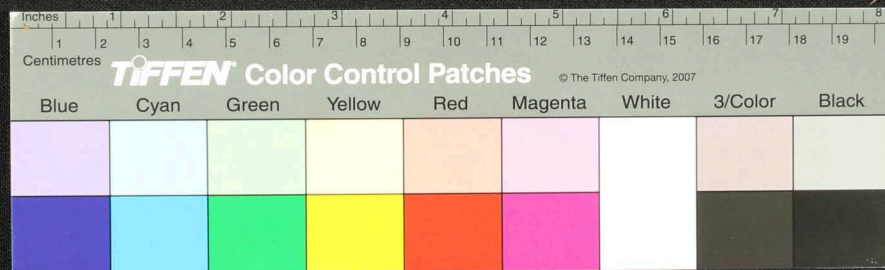




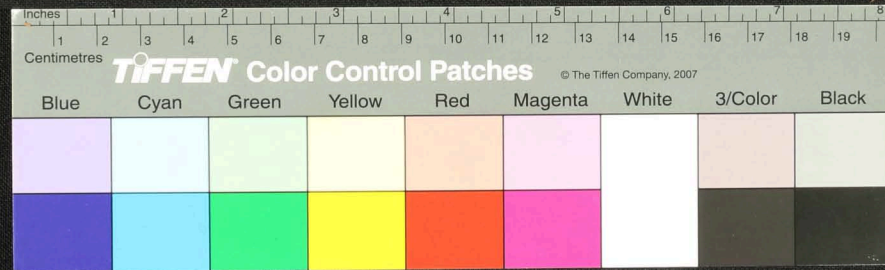




A long, narrow, yellowish-brown strip of aged paper or parchment, heavily damaged with numerous dark stains and holes. Faint, illegible handwritten text is visible across the surface.



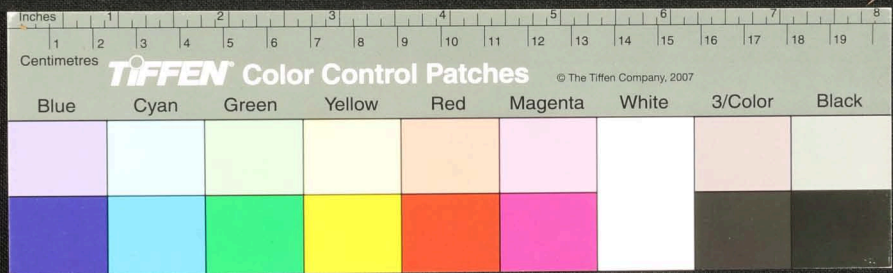
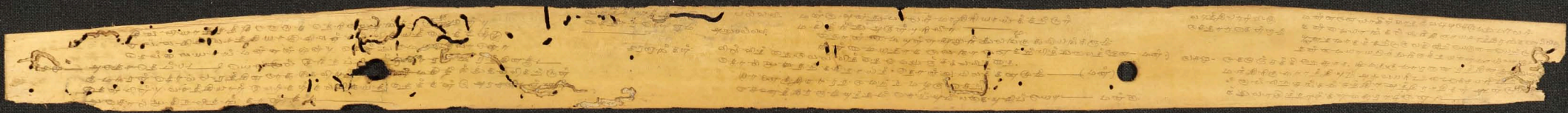
A long, narrow, yellowish-brown strip of aged paper or parchment, heavily stained and damaged. The surface is covered in faint, illegible handwritten text in a dark ink. The strip is approximately 18 inches long and 1.5 inches wide. There are several dark, irregular stains and holes scattered across the surface, particularly on the left and right sides. The text is written in a cursive script, likely from the 18th or 19th century, but is too faded to be transcribed accurately.









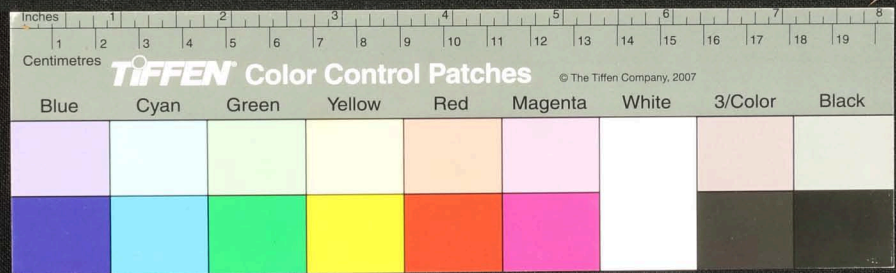




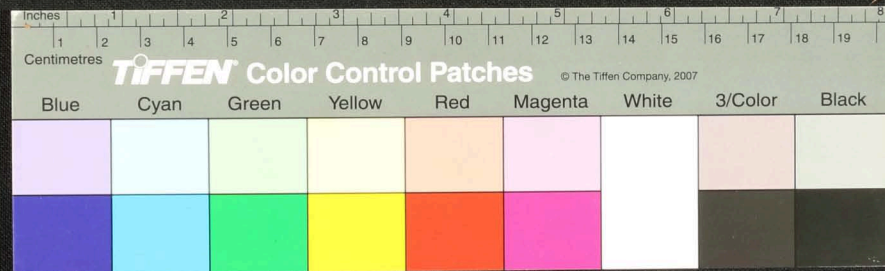




Handwritten text in Tamil script on a palm leaf manuscript strip. The text is arranged in several lines across the length of the leaf. Two circular holes are visible, which were traditionally used for threading a cord to bind multiple leaves together into a book format. The script is finely etched into the surface of the dried leaf.



Handwritten text in an ancient script, possibly Tamil, on a palm leaf manuscript. The text is arranged in several lines across the length of the leaf. There are two circular holes punched through the leaf, one near the left end and one near the right end, used for binding multiple leaves together. The leaf shows signs of age and wear, with some fraying at the edges.









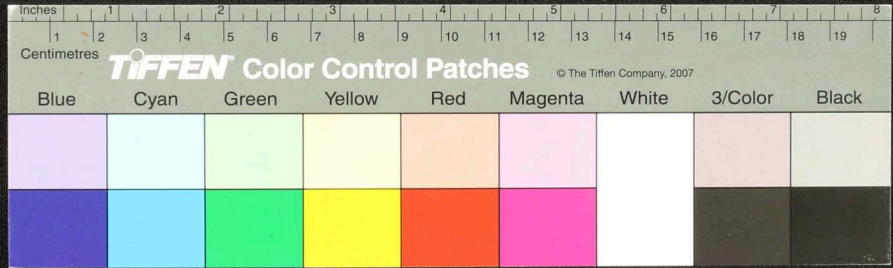




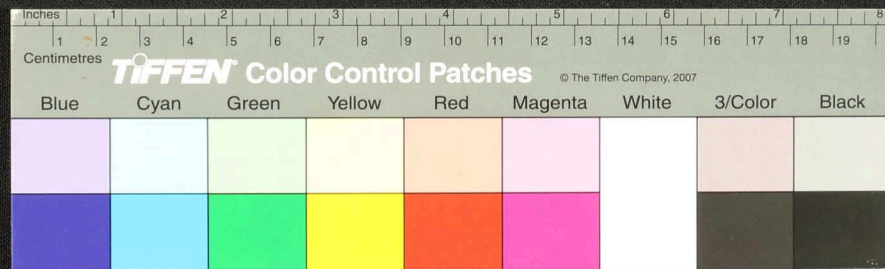




Handwritten text in Tamil script on a palm leaf manuscript. The text is arranged in approximately 10 horizontal lines across the length of the leaf. Two circular holes are visible, which were traditionally used for threading a cord to bind multiple leaves together. The leaf shows signs of age, including some staining and wear at the edges.



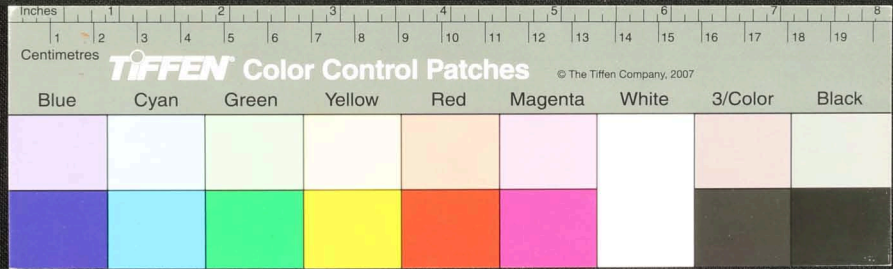
Fragment of a palm-leaf manuscript with handwritten text in an ancient script, possibly Tamil. The fragment is yellowed and shows signs of wear, including two circular holes and some surface damage. The text is arranged in several lines across the length of the leaf.







Handwritten text in Tamil script on a palm leaf manuscript. The text is arranged in approximately 12 horizontal lines across the length of the leaf. The script is finely etched into the surface of the dried leaf. There are two circular holes visible, which were traditionally used for threading a cord to bind multiple leaves together into a book format. The leaf shows signs of age, including some dark spots and irregular edges.



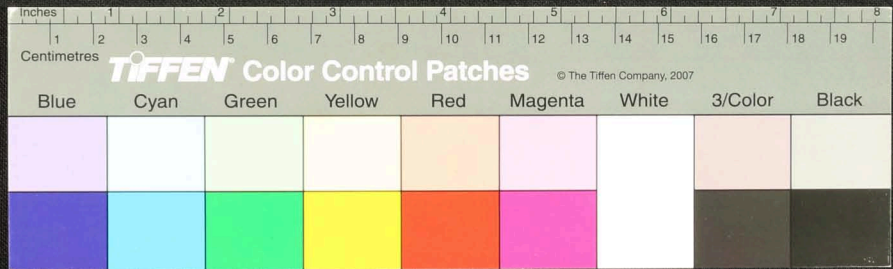






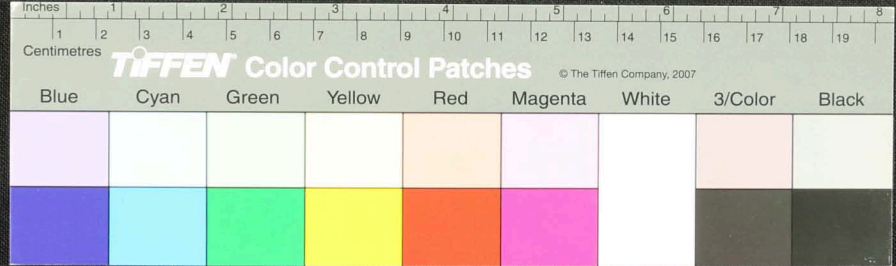


Handwritten text in Tamil script on a palm leaf manuscript strip. The text is arranged in approximately 10 horizontal lines across the length of the leaf. The script is finely etched into the surface of the dried leaf. There are two circular holes visible on the strip, which were traditionally used for threading a cord to bind multiple leaves together into a book format. The leaf shows signs of age, including some staining and irregular edges.





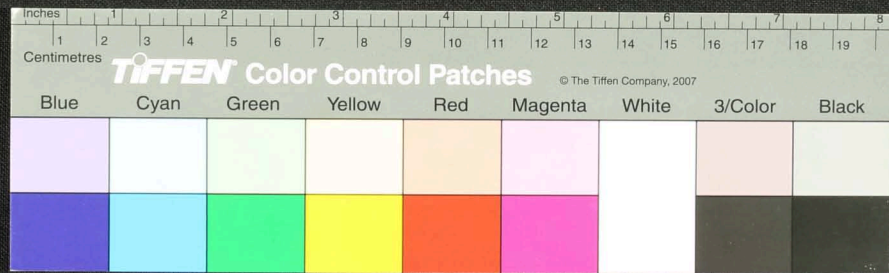
Handwritten text in Tamil script on a palm leaf manuscript. The text is arranged in approximately 10 horizontal lines across the length of the leaf. The script is finely etched into the surface of the dried leaf. The leaf shows signs of age, including some fraying at the left end and a small dark spot near the center.



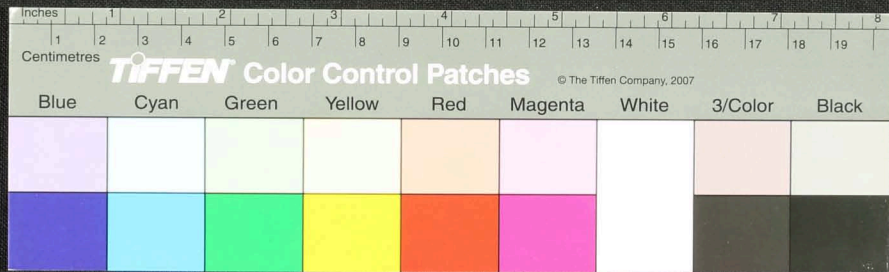




Fragment of a papyrus scroll with handwritten text in an ancient script, possibly Demotic or Hieroglyphic. The text is arranged in several lines across the length of the strip. The papyrus is yellowed and shows signs of wear, including a hole on the right side and irregular edges.



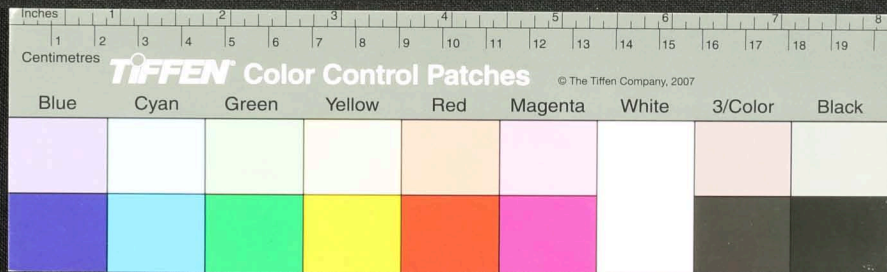
Handwritten text in Tamil script on a palm leaf manuscript. The text is arranged in several lines across the length of the leaf. A small circular hole is visible on the right side of the leaf, used for binding multiple leaves together.



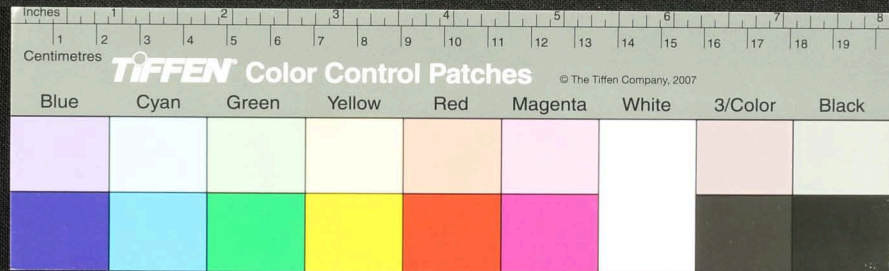




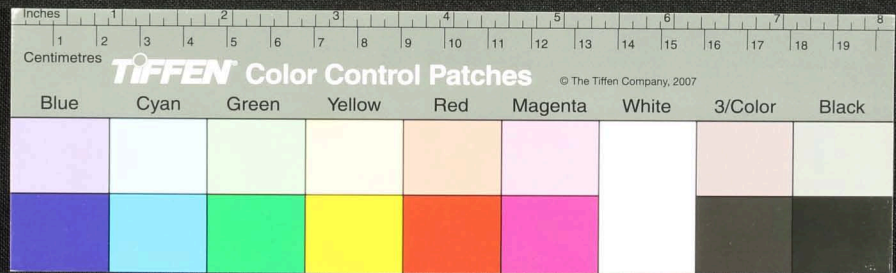
Handwritten text in Tamil script on a palm leaf manuscript. The text is arranged in approximately 10 horizontal lines across the length of the leaf. The script is dense and appears to be a form of classical or historical Tamil. There are two distinct circular holes along the length of the leaf, which were traditionally used for threading a cord to bind multiple leaves together into a book format.



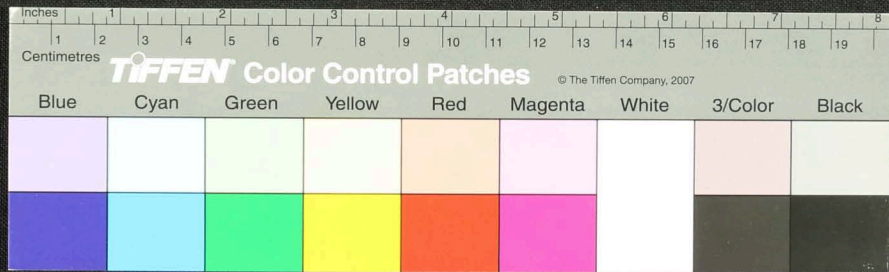
Handwritten text in Tamil script on a palm leaf manuscript. The text is arranged in approximately 10 horizontal lines across the length of the leaf. The script is finely etched into the surface of the dried leaf. The leaf shows signs of age, including some dark spots and a hole on the right side.



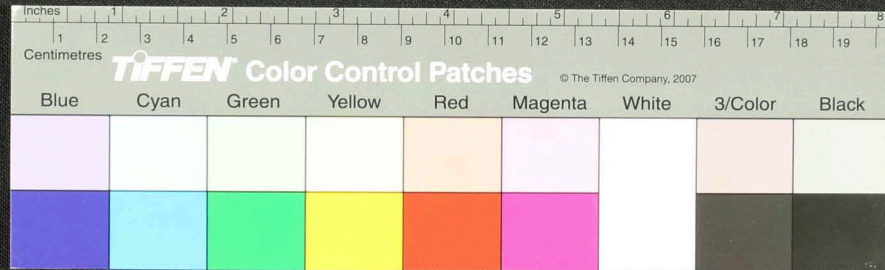
Handwritten Tamil script on a palm leaf fragment. The text is arranged in several lines, with a small circular hole visible near the center. The script appears to be a form of historical or religious Tamil, possibly including a date or a specific reference.



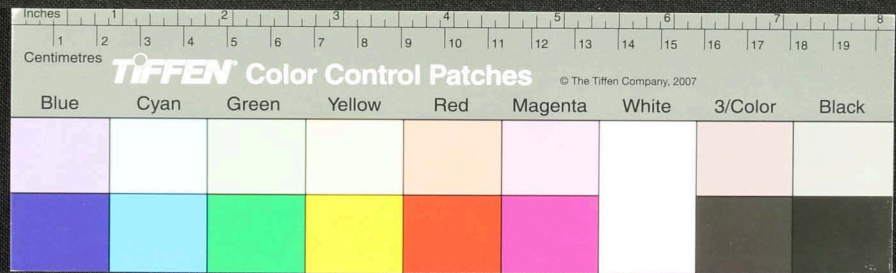
Handwritten text on a fragment of aged, yellowed paper. The text is written in a cursive script, likely a historical form of English or a related language. The fragment is irregularly shaped with torn edges and a small hole near the center. The text is arranged in several lines across the length of the strip.



Handwritten text in an ancient script, possibly Pahlavi or Sogdian, on a fragment of aged parchment. The text is arranged in several lines and includes some decorative elements. A small circular hole is visible in the center of the fragment.

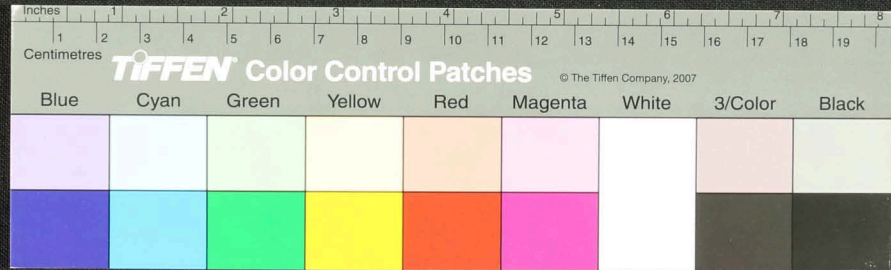


Handwritten text in Tamil script on a palm leaf manuscript. The text is arranged in several lines across the length of the leaf. A small circular hole is visible near the center of the leaf, used for binding multiple leaves together. The script is finely etched into the surface of the dried leaf.



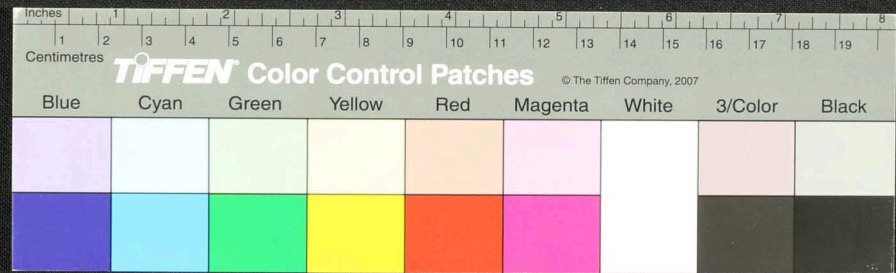


Handwritten text in Tamil script on a long, narrow, aged paper strip. The text is arranged in approximately 10 horizontal lines across the length of the strip. The paper is heavily damaged, with significant tearing and missing sections, particularly in the middle and right-hand portions. The ink is dark and appears to be a traditional writing style.

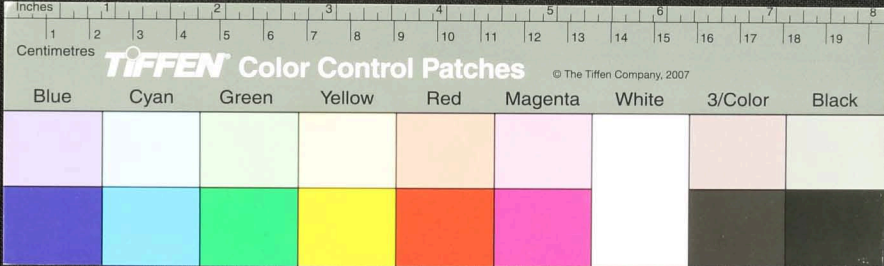




Handwritten text in Tamil script on a palm leaf manuscript. The text is arranged in approximately 10 horizontal lines across the length of the leaf. The script is finely etched into the surface of the dried leaf. There are two distinct circular holes, one on the left side and one on the right side, which were traditionally used for threading a cord to bind multiple leaves together into a book format. The leaf shows signs of age, including some staining and irregular edges.



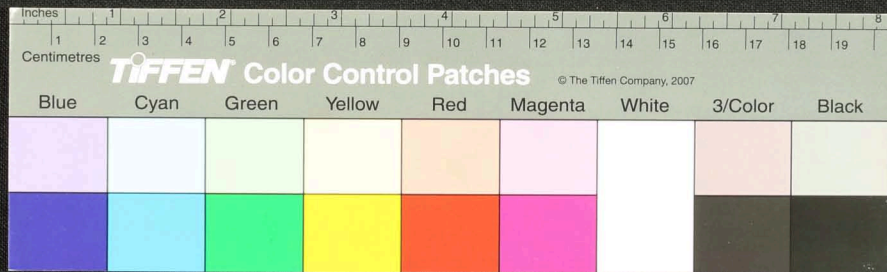
Handwritten text in Tamil script on a palm leaf manuscript. The text is arranged in approximately 10 horizontal lines across the length of the leaf. The script is finely etched into the surface of the dried leaf. There are some dark spots and a hole on the left side of the leaf, and a circular hole on the right side.







Fragment of a papyrus scroll with handwritten text in an ancient script, likely Demotic or Hieroglyphic. The fragment is yellowed and shows signs of wear, including two circular holes and a large tear on the left side. The text is arranged in several lines across the length of the strip.



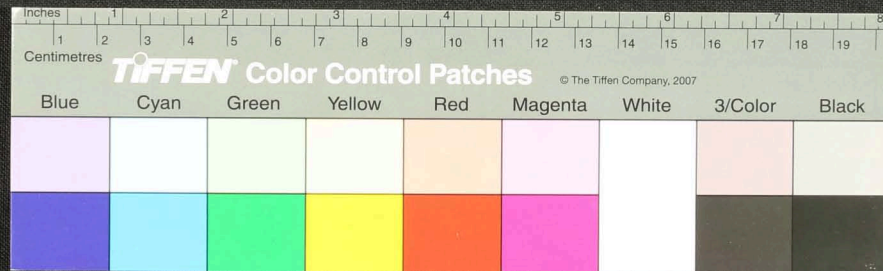






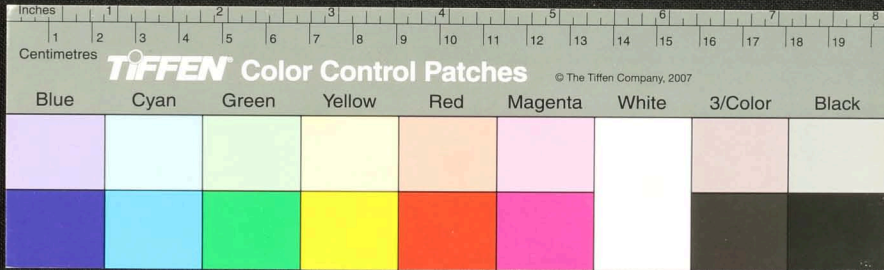


Fragment of a palm-leaf manuscript with handwritten text in an ancient script, possibly Tamil. The fragment is yellowed and shows signs of wear, including a hole and a tear. The text is arranged in several lines across the length of the leaf.





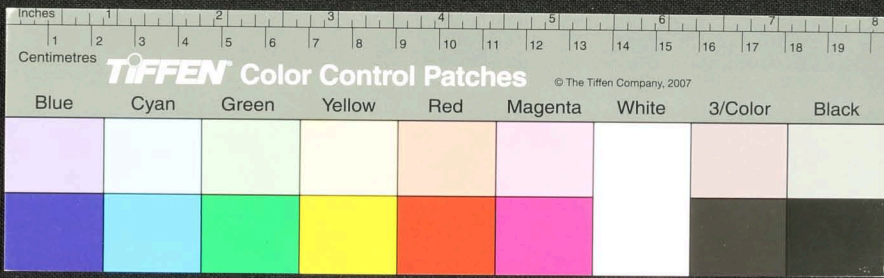
Handwritten text in an ancient script, possibly Tamil, on a palm leaf manuscript. The text is arranged in approximately 10 horizontal lines across the length of the leaf. The script is finely etched into the surface of the dried leaf. There are two circular holes visible, which were traditionally used for threading a cord to bind multiple leaves together into a book format. The leaf shows signs of age, including some darkening and wear, particularly in the center where the text is partially obscured by a tear.





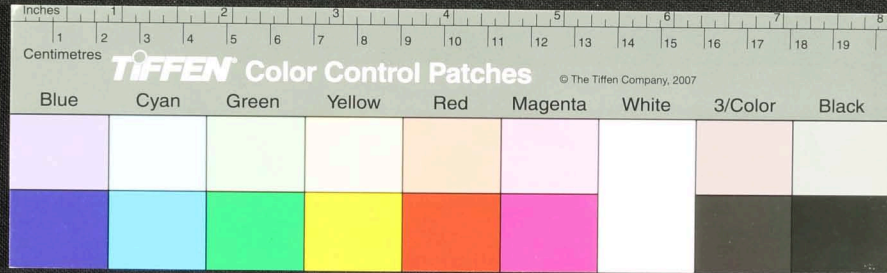


Handwritten text in Tamil script on a palm leaf manuscript. The text is arranged in approximately 10 horizontal lines across the length of the leaf. The script is finely etched into the surface of the dried leaf. The leaf shows signs of age, including some dark spots and a hole near the center.





Handwritten text in Tamil script on a palm leaf manuscript. The text is arranged in approximately 10 horizontal lines across the length of the leaf. There are two circular holes, one near the left end and one near the right end, which were traditionally used for threading a cord to bind multiple leaves together. The leaf shows signs of age, including some dark staining and wear, particularly in the middle section.



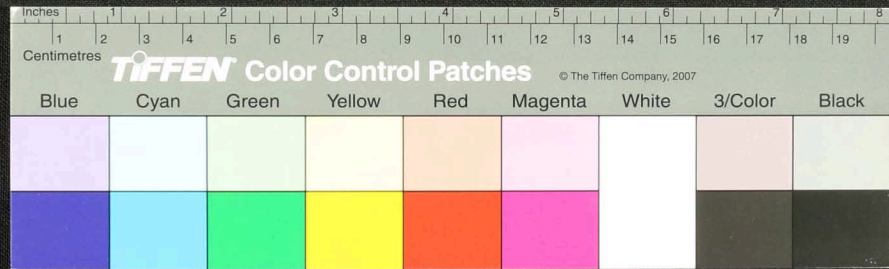




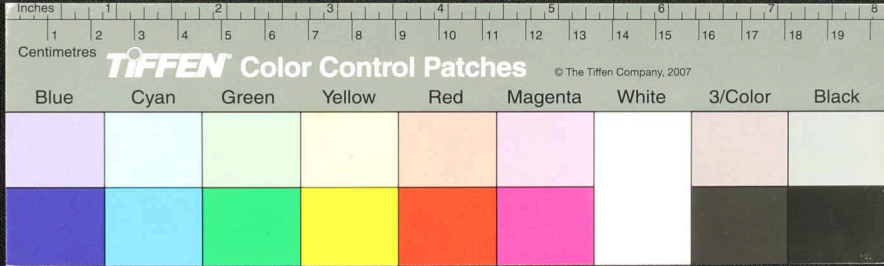




Handwritten text in Tamil script on a palm leaf manuscript strip. The text is arranged in several lines across the length of the leaf. There are two circular holes visible, which were traditionally used for threading a cord to bind multiple leaves together into a book format. The script is finely etched into the surface of the dried leaf.



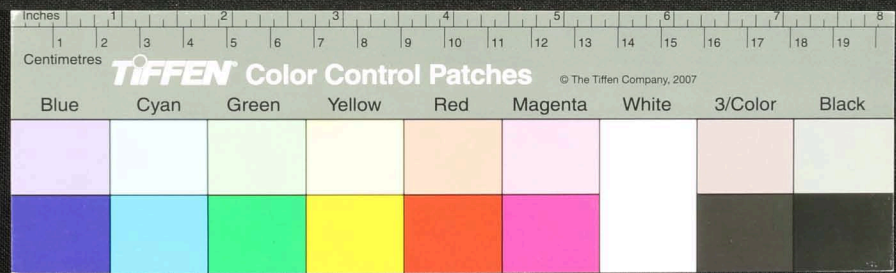
Handwritten text in Tamil script on a palm leaf manuscript strip. The text is arranged in several lines across the length of the leaf. The script is finely etched into the surface of the dried leaf. There are some dark spots and irregularities on the leaf, possibly due to age or damage.







Handwritten text in Tamil script on a palm leaf manuscript. The text is arranged in several lines across the length of the leaf. There are two circular holes visible, which were traditionally used for threading a cord to bind multiple leaves together. The script is finely etched into the surface of the dried leaf.

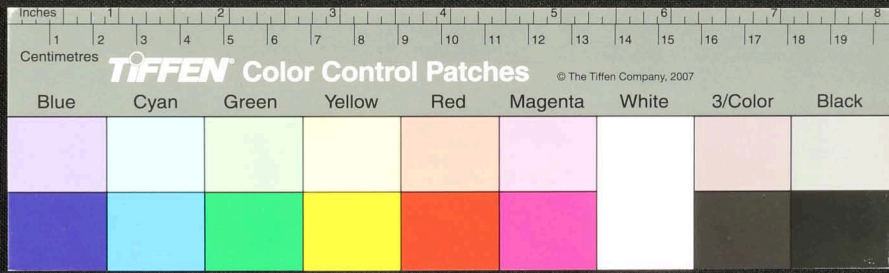








Handwritten text in Tamil script on a palm leaf manuscript. The text is arranged in approximately 10 horizontal lines across the length of the leaf. The script is finely etched into the surface of the dried leaf. The leaf shows signs of age, including some dark spots and irregular edges.

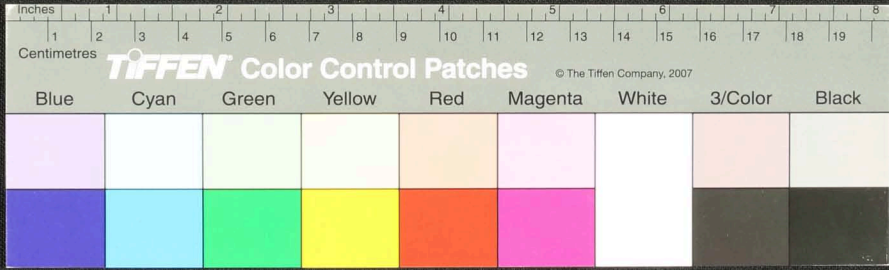








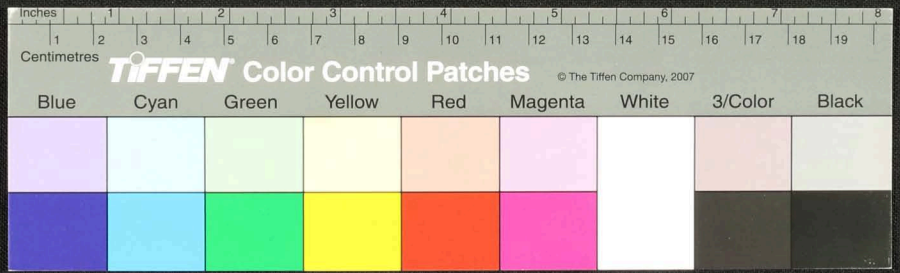
Handwritten text in Tamil script on a palm leaf manuscript. The text is arranged in approximately 10 horizontal lines. The script is finely etched into the surface of the dried leaf. The leaf shows signs of age and wear, with some fraying at the edges and a small circular hole near the center.



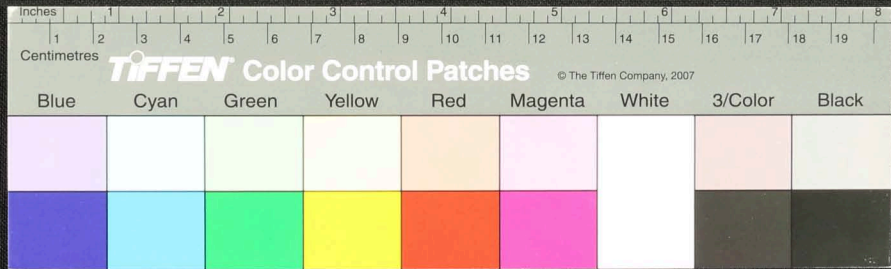




Handwritten text in an ancient script, likely Tamil, inscribed on a palm leaf manuscript. The text is arranged in approximately 10 horizontal lines across the length of the leaf. Two circular holes are visible, which were traditionally used for threading a cord to bind multiple leaves together into a book format. The leaf shows signs of age, including some staining and wear at the edges.



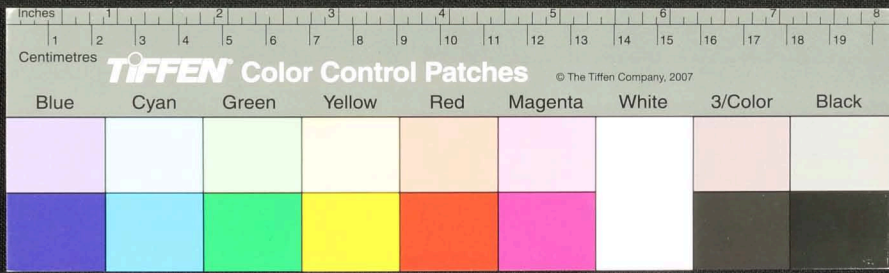
Handwritten text in an ancient script, likely Tamil, on a palm leaf manuscript. The text is arranged in several lines across the length of the leaf. There are two circular holes visible, which were traditionally used for threading a cord to bind multiple leaves together into a book format. The leaf shows signs of age, including some staining and wear.







Handwritten text in Tamil script on a palm leaf manuscript. The text is arranged in approximately 10 horizontal lines across the length of the leaf. There are three circular holes punched along the top edge, which were traditionally used for threading a cord to bind multiple leaves together. The leaf shows signs of age, including some staining and wear.



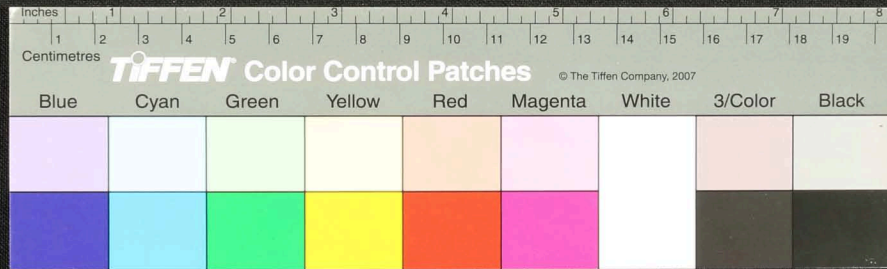




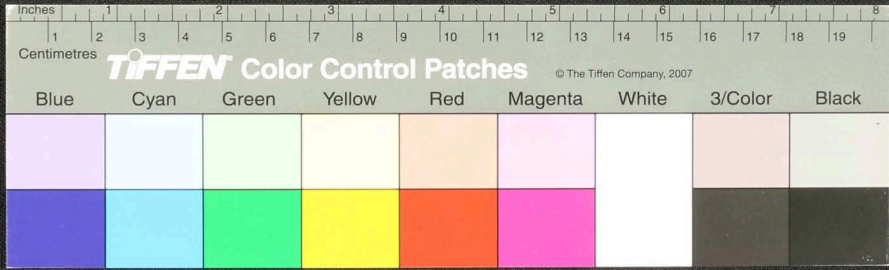




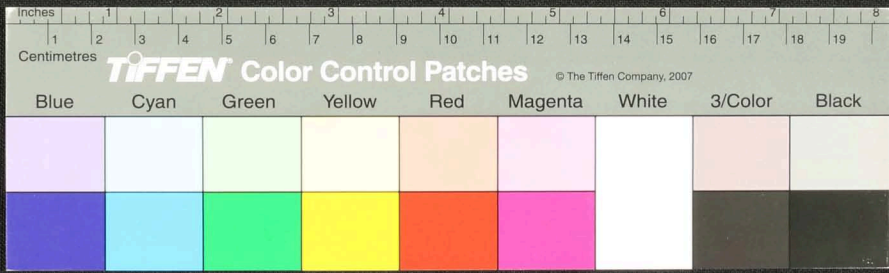
Fragment of a palm-leaf manuscript with handwritten text in an ancient script, possibly Tamil or Grantha. The text is arranged in horizontal lines across the length of the leaf. A small circular hole is visible on the right side of the fragment.



Handwritten text in Tamil script on a palm leaf manuscript. The text is arranged in approximately 10 horizontal lines across the length of the leaf. The script is finely etched into the surface of the dried leaf. There is a small circular hole on the right side of the leaf, which is a traditional feature for threading a cord to bind multiple leaves together into a book.

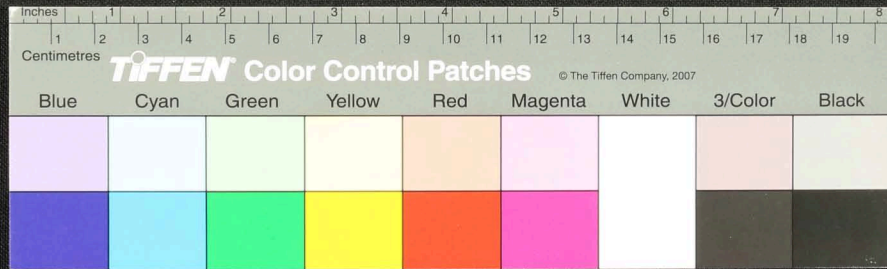


Handwritten Tamil script on a palm leaf manuscript. The text is arranged in approximately 12 horizontal lines across the length of the leaf. Two circular holes are visible, used for threading a cord to bind multiple leaves together. The script is a traditional form of the Tamil language, likely containing religious or philosophical content.

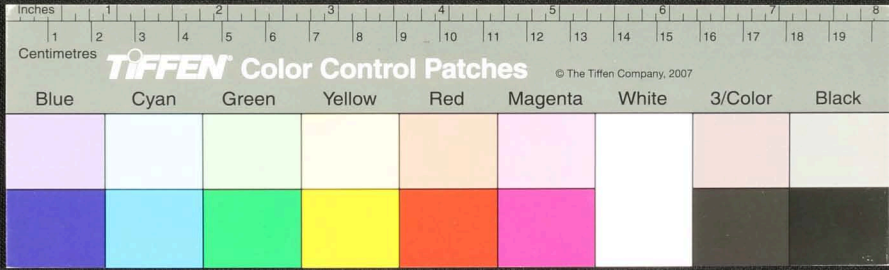




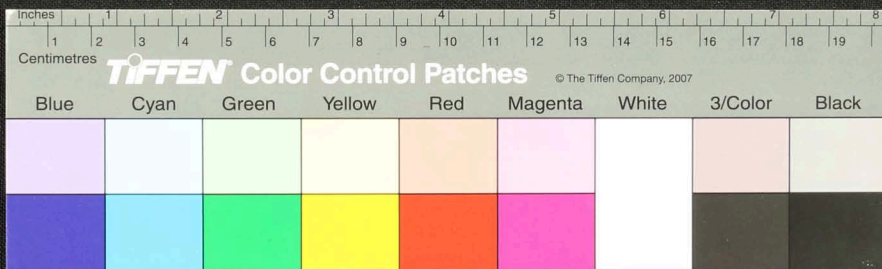
Handwritten text in Tamil script on a palm leaf manuscript strip. The text is arranged in approximately 10 horizontal lines across the length of the leaf. There are two circular holes visible, one near the left end and one near the right end, which were traditionally used for threading a cord to bind multiple leaves together into a book format. The leaf shows signs of age, including some staining and wear at the edges.



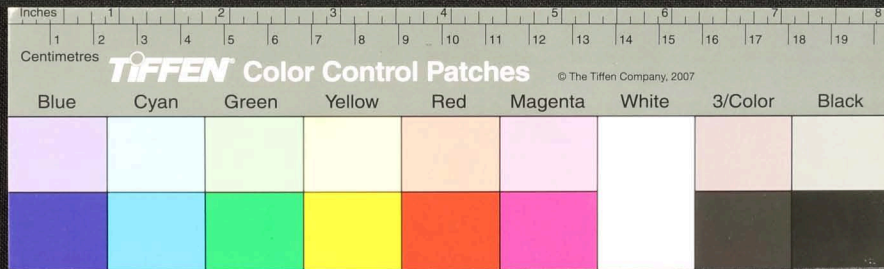
Handwritten Tamil script on a palm leaf manuscript strip. The text is arranged in approximately 10 horizontal lines across the length of the leaf. The script is finely etched into the surface of the dried leaf. There are two circular holes visible, which were traditionally used for threading a cord to bind multiple leaves together into a book format. The ink is a dark, natural pigment, and the leaf shows signs of age and wear, including some staining and irregular edges.



A long, narrow, yellowish-brown strip of aged paper or parchment, heavily damaged and stained. The strip is covered in faint, illegible handwritten text in a cursive script, likely from an ancient manuscript. The text is arranged in several horizontal lines across the length of the strip. There are two distinct circular holes, one near the left end and one near the right end, suggesting the strip was part of a bound volume. The edges are frayed and uneven, with some dark staining and small tears.

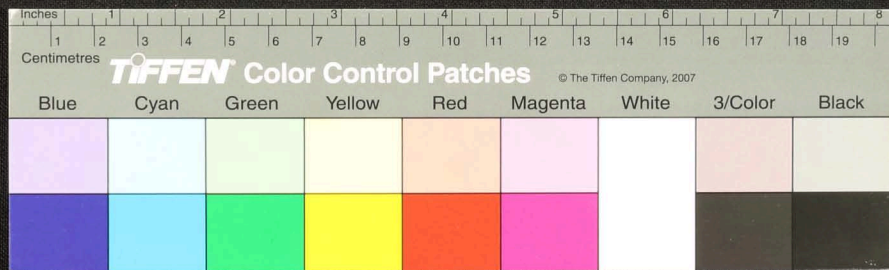


Handwritten text in Tamil script on a palm leaf manuscript. The text is arranged in approximately 10 horizontal lines across the length of the leaf. The script is finely etched into the surface of the dried leaf. There are some dark spots and irregularities on the leaf, possibly due to age or damage.

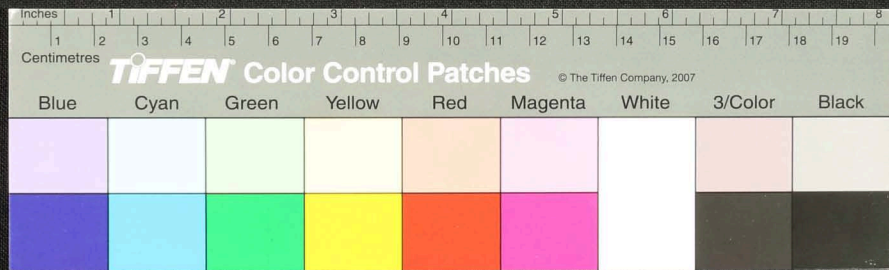




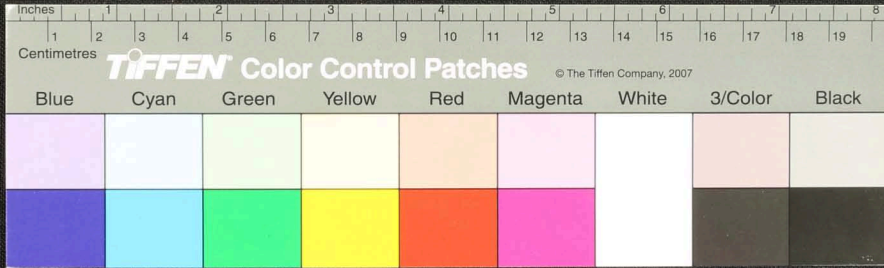
Handwritten Tamil script on a palm leaf manuscript strip. The text is arranged in approximately 10 horizontal lines across the length of the leaf. The script is finely etched into the surface of the dried leaf. There are two circular holes punched through the leaf, one near the left end and one near the right end, which were traditionally used for threading a cord to bind multiple leaves together into a book format. The leaf shows signs of age, including some staining and wear, particularly around the edges and the holes.



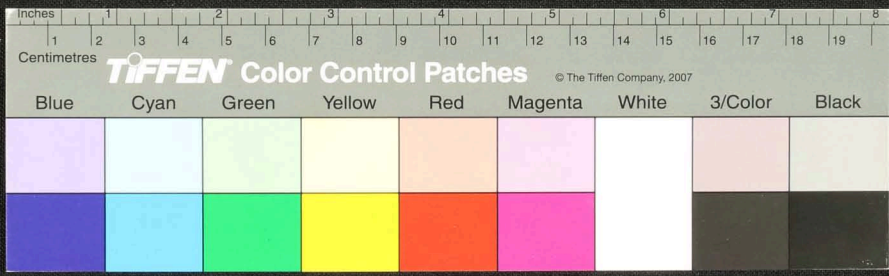
Fragment of an ancient papyrus scroll with handwritten text in a cursive script, likely Demotic or Hieroglyphic. The fragment is heavily damaged, showing significant wear, tear, and discoloration. Two circular holes are visible, suggesting it was part of a bound volume. The text is arranged in several horizontal lines across the length of the strip.



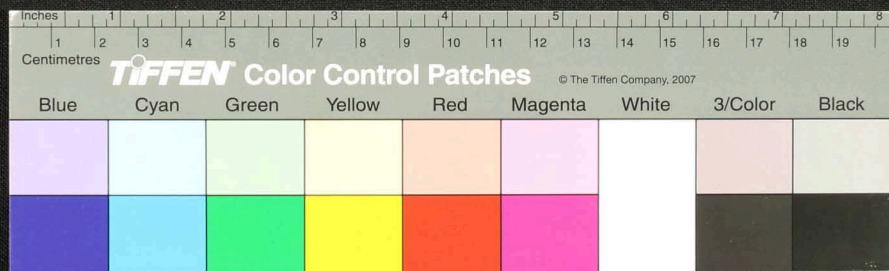
Handwritten Tamil script on a palm leaf manuscript strip. The text is arranged in approximately 10 horizontal lines across the length of the leaf. The script is finely etched into the surface of the dried leaf. There are three circular holes along the strip, which were traditionally used for threading a cord to bind multiple leaves together into a book format. The leaf shows signs of age, including some darkening and wear, particularly at the left end.



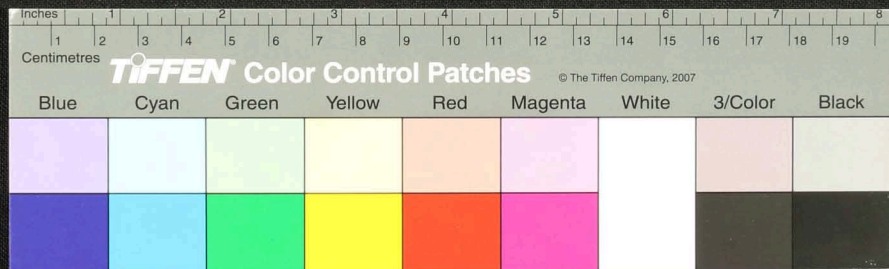
Handwritten text in Tamil script on a palm leaf manuscript. The text is arranged in several lines across the length of the leaf. There are two circular holes visible, which were traditionally used for threading a cord to bind multiple leaves together. The script is finely etched into the surface of the dried leaf.



Fragment of a palm-leaf manuscript with handwritten text in an ancient script, possibly Tamil. The fragment is approximately 18 inches long and features two circular holes for binding. The text is arranged in several lines across the length of the leaf, with some characters appearing to be in a different script or dialect than the main body of text.



Handwritten text in Tamil script on a palm leaf manuscript. The text is arranged in approximately 12 horizontal lines across the length of the leaf. The script is finely etched into the surface of the dried leaf. There are two circular holes visible, which were traditionally used for threading a cord to bind multiple leaves together into a book format. The leaf shows signs of age, including some staining and wear at the edges.

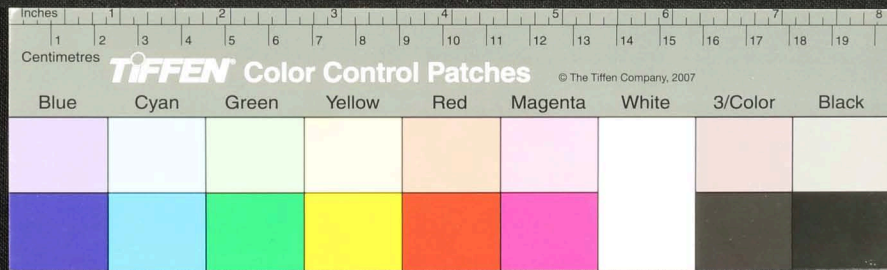




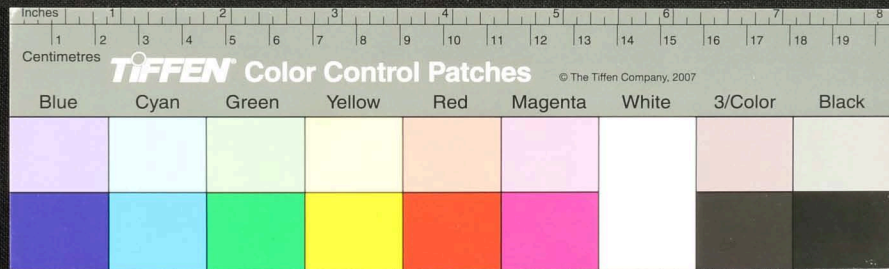




Handwritten Tamil script on a palm leaf manuscript strip. The text is arranged in several lines across the length of the leaf. Two circular holes are visible, used for binding multiple leaves together. The script is finely etched into the surface of the dried leaf.



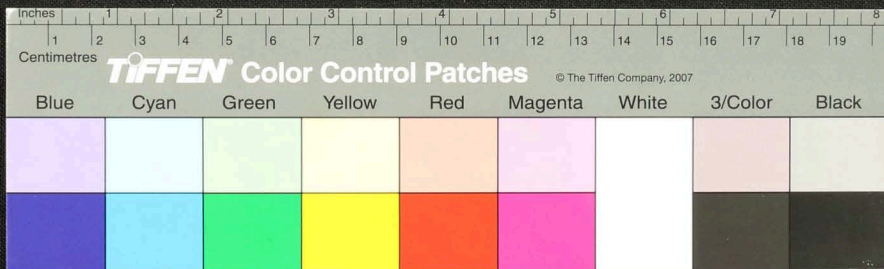
Handwritten Tamil script on a palm leaf manuscript. The text is arranged in approximately 10 horizontal lines across the length of the leaf. The script is dense and appears to be a form of classical or historical Tamil. There are two distinct circular holes along the leaf, which were traditionally used for threading a cord to bind multiple leaves together into a book format. The leaf shows signs of age, including some staining and wear at the edges.



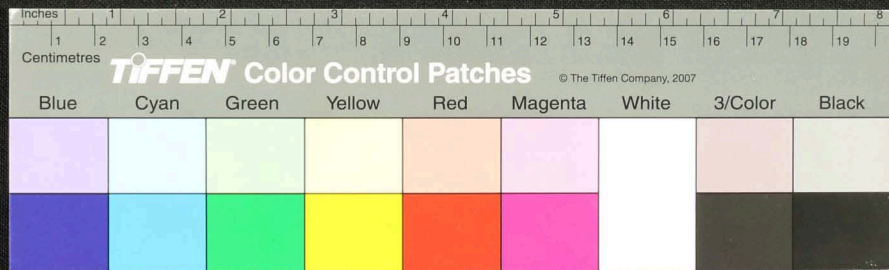
Handwritten text in Tamil script on a palm leaf manuscript. The text is arranged in approximately 10 horizontal lines across the length of the leaf. The script is finely etched into the surface of the dried leaf. There are two circular holes visible, which were traditionally used for threading a cord to bind multiple leaves together into a book format. The leaf shows signs of age, including some staining and wear at the edges.



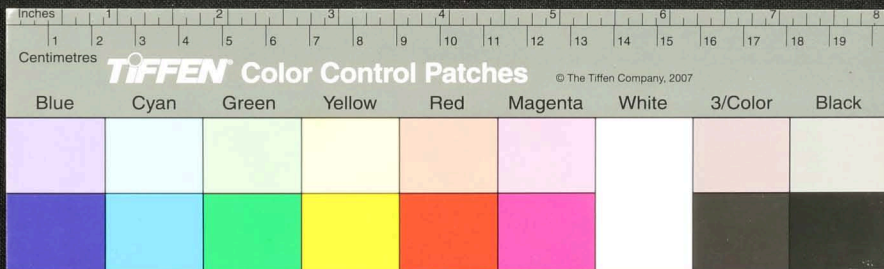
Handwritten text in Tamil script on a palm leaf manuscript. The text is arranged in approximately 10 horizontal lines across the length of the leaf. There are two circular holes visible, which were traditionally used for threading a cord to bind multiple leaves together. The leaf shows signs of age, including some staining and wear at the ends.



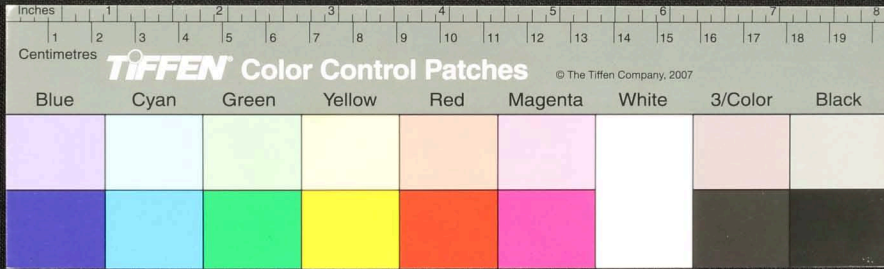
Handwritten Tamil script on a palm leaf manuscript strip. The text is arranged in several lines across the length of the leaf. There are two circular holes visible, which were traditionally used for threading a cord to bind multiple leaves together into a book format. The script is densely packed and appears to be a form of classical or historical Tamil.



Handwritten text in Tamil script on a palm leaf manuscript. The text is arranged in approximately 10 horizontal lines across the length of the leaf. The script is finely etched into the surface of the dried leaf. There are two circular holes visible, which were traditionally used for threading a cord to bind multiple leaves together into a book format.



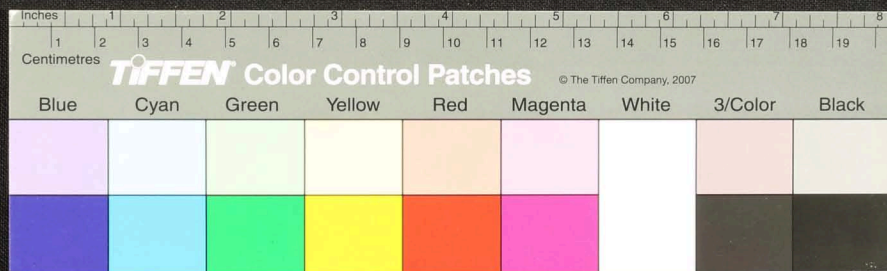
Handwritten Tamil script on a palm leaf manuscript. The text is arranged in several lines across the length of the leaf. A circular hole is visible on the right side, used for binding multiple leaves together. The script is finely etched into the surface of the dried leaf.



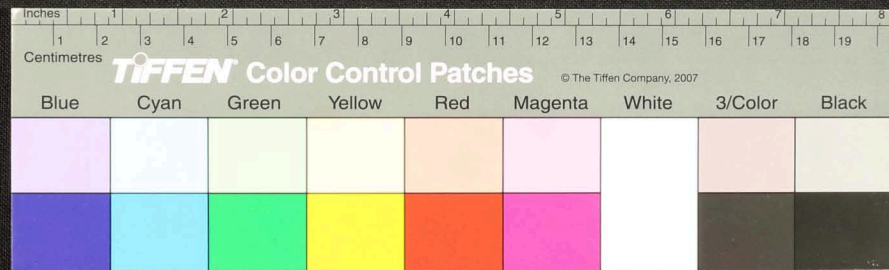




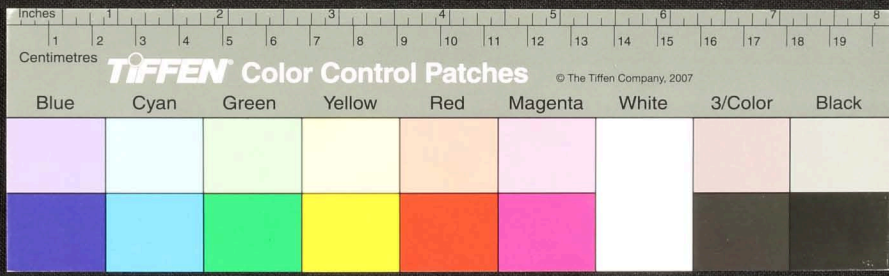
Handwritten text in Tamil script on a palm leaf manuscript. The text is arranged in horizontal lines across the length of the leaf. There are two circular holes punched through the leaf, one near the left end and one near the right end. The leaf shows signs of wear, including some dark spots and a small tear near the center.



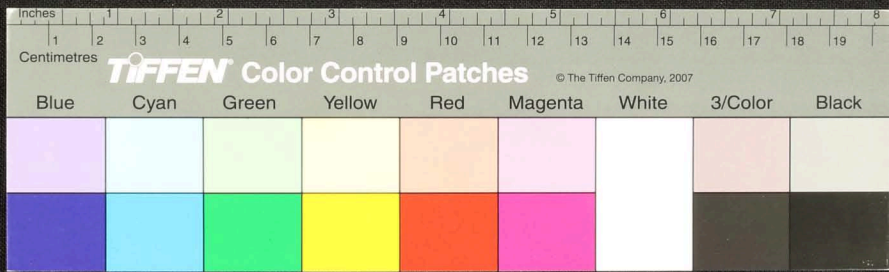
Handwritten text in Tamil script on a palm leaf manuscript. The text is arranged in approximately 10 horizontal lines across the length of the leaf. The script is finely etched into the surface of the dried leaf. There are some dark spots and irregularities on the leaf, possibly due to age or damage.



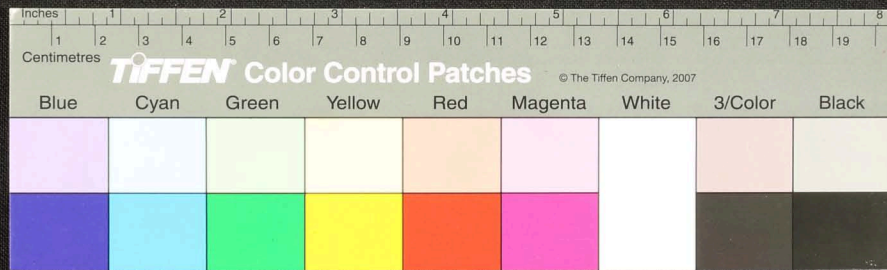
Handwritten text in Tamil script on a palm leaf manuscript. The text is arranged in several lines across the length of the leaf. The script is finely etched into the surface of the dried leaf. There are some dark spots and a hole on the right side of the leaf, possibly due to insect damage or age.



Handwritten text in Tamil script on a palm leaf manuscript. The text is arranged in approximately 10 horizontal lines across the length of the leaf. The script is finely etched into the surface of the dried leaf. There are some dark spots and a hole on the right side of the leaf, likely due to insect damage or natural decay.



Handwritten text in Tamil script on a palm leaf manuscript. The text is arranged in approximately 10 horizontal lines across the length of the leaf. The script is finely etched into the surface of the dried leaf. There are two circular holes, one on the left and one on the right, which were traditionally used for threading a cord to bind multiple leaves together into a book format. The leaf shows signs of age, including some staining and irregular edges.



Handwritten Tamil script on a palm leaf manuscript strip. The text is arranged in approximately 10 horizontal lines across the length of the leaf. Two circular holes are visible, which were traditionally used for threading a cord to bind multiple leaves together. The script is written in a dark ink, likely iron-based, and shows signs of age and wear.

