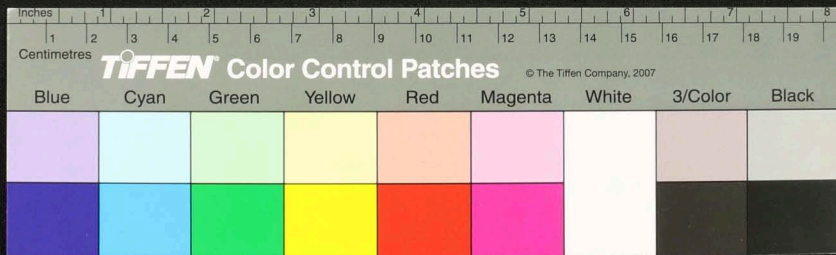


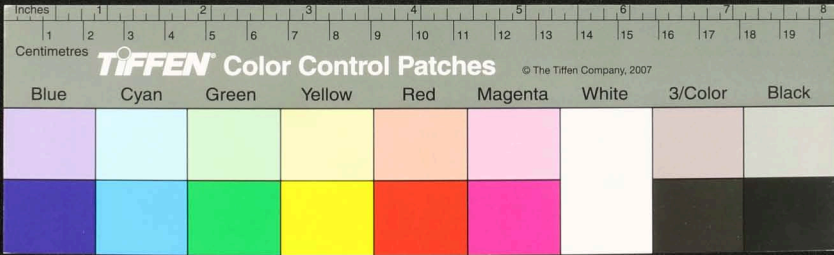




Handwritten text in Tamil script on a palm leaf manuscript. The text is arranged in approximately 15 horizontal lines across the length of the leaf. Two circular holes are visible, used for threading a cord to bind multiple leaves together. The script is finely etched into the surface of the dried leaf.



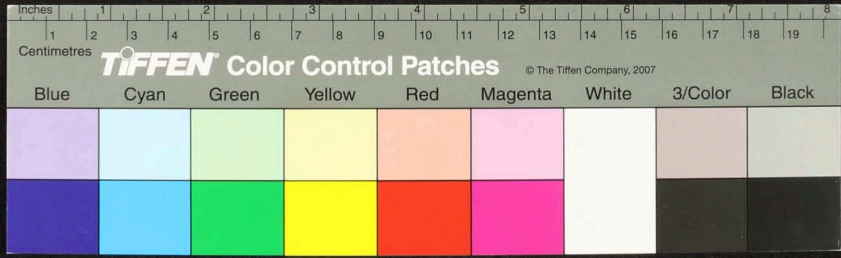
Handwritten Tamil script on a palm leaf manuscript. The text is arranged in approximately 15 horizontal lines across the length of the leaf. The script is finely etched into the surface of the dried leaf. There are two distinct circular holes, likely from a traditional string binding method, located roughly one-third and two-thirds of the way along the leaf's length.



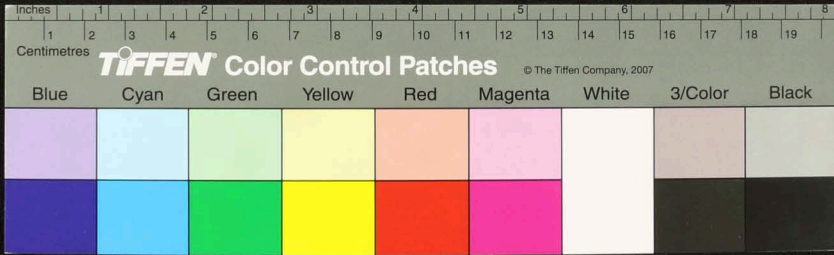




Handwritten Tamil script on a palm leaf manuscript. The text is arranged in several lines across the length of the leaf. On the left side, there are four lines of text, each preceded by a small circular symbol. The main body of the leaf contains a single long line of text with two circular symbols interspersed. The script is finely etched into the natural texture of the dried palm leaf.

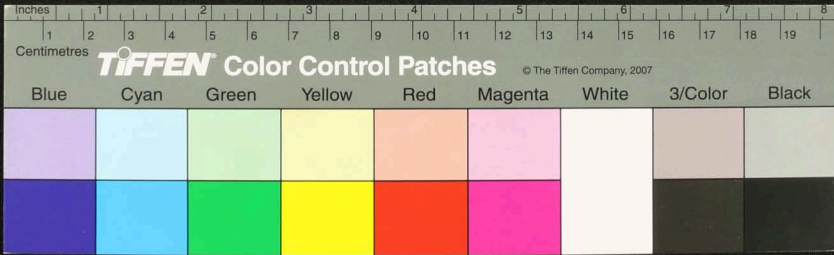


Handwritten text in Tamil script on a palm leaf manuscript. The text is arranged in several lines across the length of the leaf. On the far right end, there is a small number '574'.

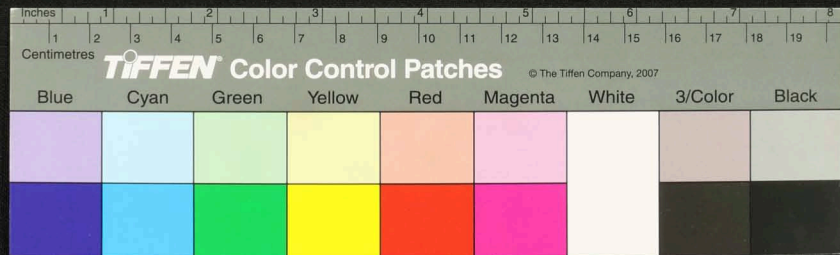




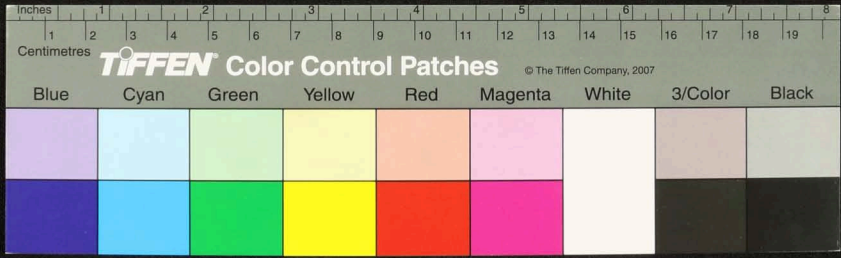
Handwritten Tamil script on a palm leaf manuscript. The text is arranged in approximately 10 horizontal lines across the length of the leaf. The script is a traditional form of the Tamil language. On the left side, there is a small circular mark containing the number '5'. The leaf shows signs of age, including some dark spots and slight discoloration.



Handwritten text in Tamil script on a palm leaf manuscript. The text is arranged in several lines across the length of the leaf. Some lines are more densely packed than others, and there are two distinct circular holes punched through the leaf, likely for binding purposes. The script is a traditional form of the Tamil language, and the leaf shows signs of age and wear.

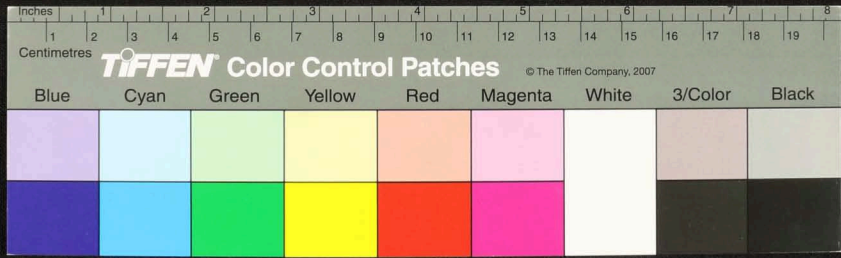


Handwritten Tamil script on a palm leaf manuscript. The text is arranged in several lines across the length of the leaf. On the left side, there are marginal notes and a small symbol. On the right side, there are some faint markings and a small symbol. The script is densely packed and appears to be a form of classical Tamil.

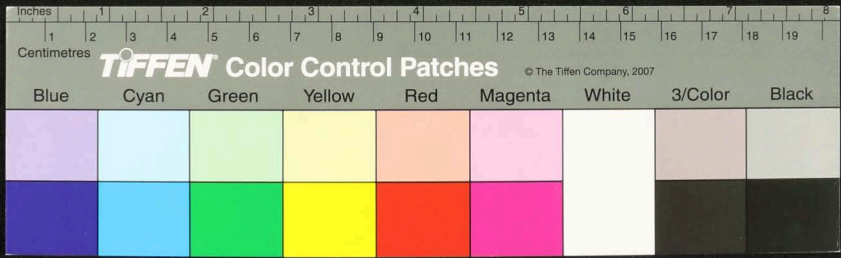




Handwritten Tamil script on a palm leaf manuscript. The text is arranged in approximately 10 horizontal lines across the length of the leaf. On the left side, there are vertical labels in Tamil: 'சுருதி', 'புத்தொலி', 'புத்தொலி', 'புத்தொலி', 'புத்தொலி', 'புத்தொலி', 'புத்தொலி', 'புத்தொலி', 'புத்தொலி', 'புத்தொலி'. The script is densely packed and appears to be a form of classical or religious Tamil text.



Handwritten text in Tamil script on a palm leaf manuscript. The text is arranged in approximately 10 horizontal lines across the length of the leaf. The script is dense and appears to be a form of classical or historical Tamil. There are two circular holes visible on the leaf, which were traditionally used for threading a cord to bind multiple leaves together into a book format.

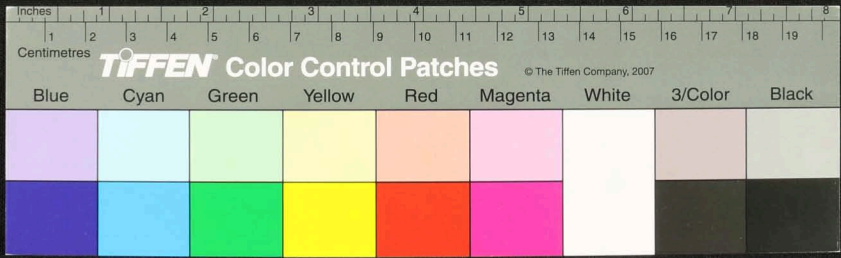




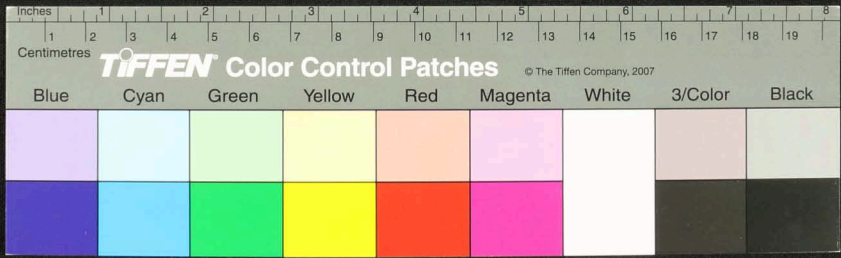




Handwritten Tamil script on a palm leaf manuscript. The text is arranged in approximately four horizontal lines. On the right side of the leaf, there are several small, handwritten numbers or symbols, including '19', '20', '21', '22', and '23', which likely serve as a table of contents or line markers. The script is densely packed and appears to be a form of classical or religious Tamil.



Handwritten text in Tamil script on a palm leaf manuscript. The text is arranged in approximately 10 horizontal lines across the length of the leaf. The script is finely etched into the surface of the dried leaf. There are two distinct circular holes, likely from a traditional string binding method, located roughly one-third and two-thirds of the way along the leaf's length.

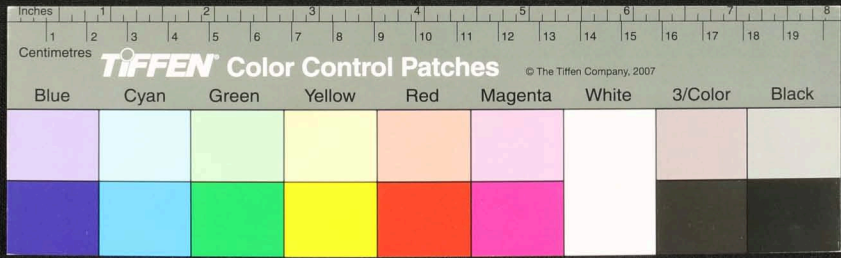




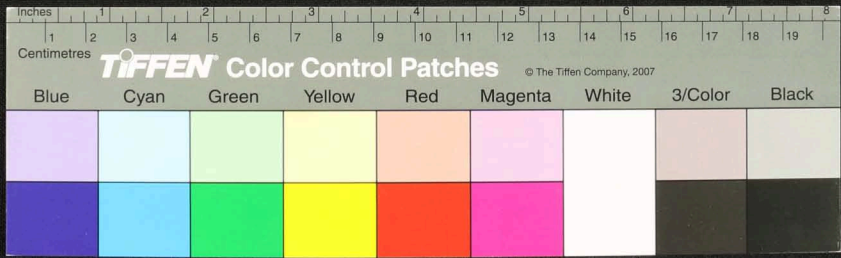
சேரமண்டலமுதலாயினர்  
 சேரமண்டலமுதலாயினர்  
 சேரமண்டலமுதலாயினர்  
 சேரமண்டலமுதலாயினர்

சேரமண்டலமுதலாயினர்  
 சேரமண்டலமுதலாயினர்  
 சேரமண்டலமுதலாயினர்  
 சேரமண்டலமுதலாயினர்

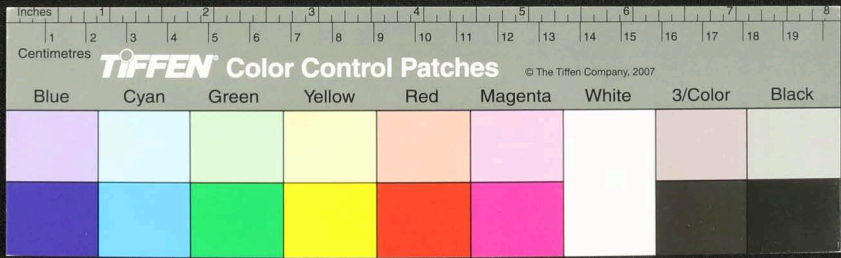
சேரமண்டலமுதலாயினர்  
 சேரமண்டலமுதலாயினர்  
 சேரமண்டலமுதலாயினர்  
 சேரமண்டலமுதலாயினர்



Handwritten Tamil script on a palm leaf manuscript. The text is arranged in approximately 10 horizontal lines across the length of the leaf. The script is dense and appears to be a form of classical or historical Tamil. There are some dark spots and irregularities on the leaf, possibly due to age or damage.

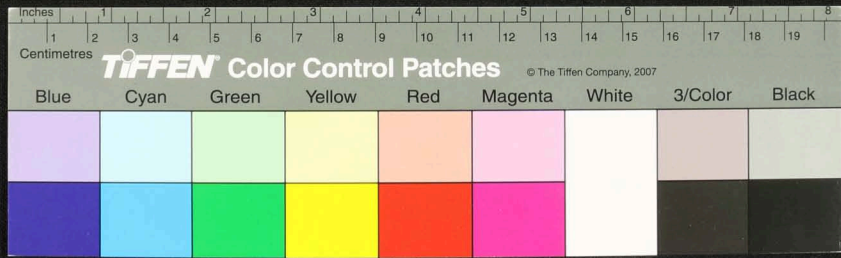


Handwritten Tamil script on a palm leaf manuscript. The text is organized into several lines, with some lines starting with a circled number (1, 2, 3, 4). The script is densely packed and covers most of the length of the leaf. There are two circular holes visible on the leaf, which were traditionally used for threading a cord to bind multiple leaves together into a book format.



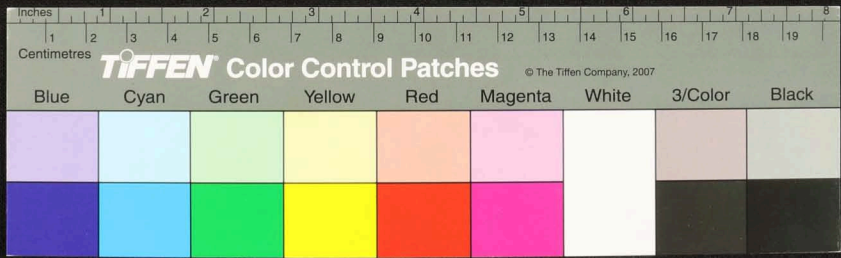


Handwritten Tamil script on a palm leaf manuscript. The text is arranged in approximately 10 horizontal lines across the length of the leaf. The script is finely etched into the surface of the dried leaf. There are two distinct circular holes, likely from a traditional string binding method, located roughly one-third and two-thirds of the way along the leaf's length.





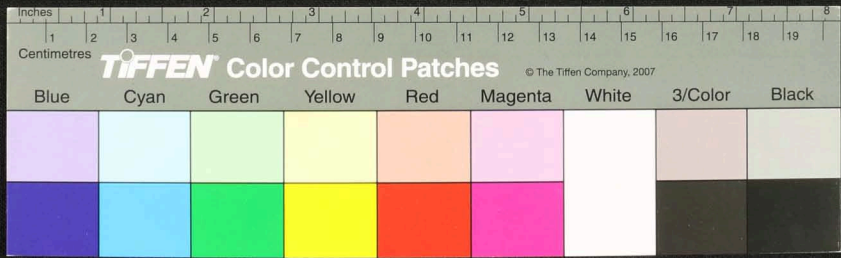
Handwritten text in Tamil script on a palm leaf manuscript. The text is arranged in approximately 10 horizontal lines across the length of the leaf. The script is dense and characteristic of traditional Tamil inscriptions.



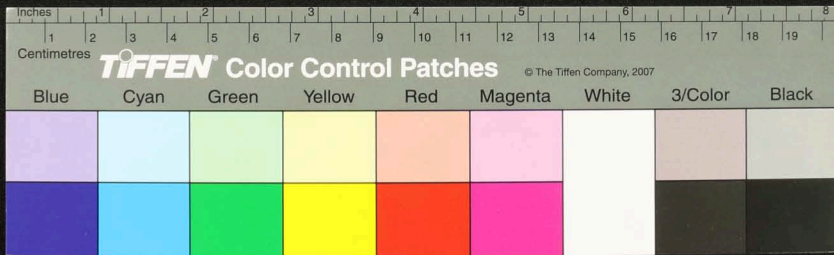




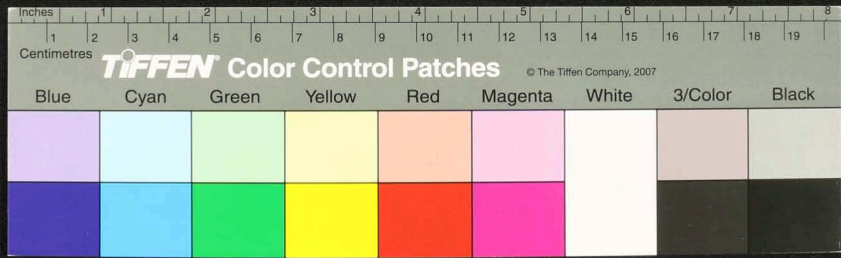
Handwritten text in Tamil script on a palm leaf manuscript. The text is arranged in approximately 10 horizontal lines across the length of the leaf. The script is finely etched into the surface of the dried leaf. There are two distinct circular holes, likely from a traditional string binding method. The leaf shows signs of age, including some discoloration and wear at the ends.



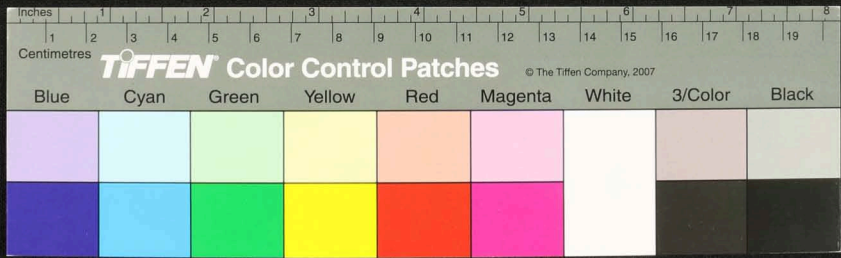
Handwritten Tamil script on a palm leaf manuscript. The text is arranged in approximately 10 horizontal lines across the length of the leaf. The script is dense and appears to be a form of classical or historical Tamil. There are some faint markings and what might be small diagrams or symbols interspersed within the text, particularly in the middle section. The leaf shows signs of age and wear, with some dark spots and a slightly uneven texture.



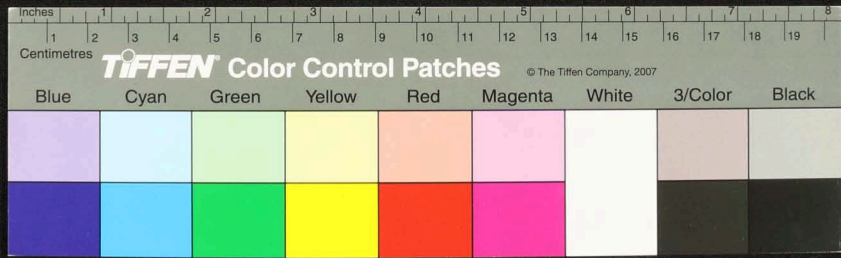
Handwritten text in Tamil script on a palm leaf manuscript. The text is arranged in approximately 10 horizontal lines across the length of the leaf. On the left side, there are some larger characters, possibly indicating a chapter or section. The script is finely etched into the natural texture of the dried leaf.



Handwritten Tamil script on a palm leaf manuscript. The text is arranged in approximately 10 horizontal lines across the length of the leaf. The script is finely etched into the surface of the dried leaf. The leaf shows signs of age, including two distinct circular holes and some surface wear.

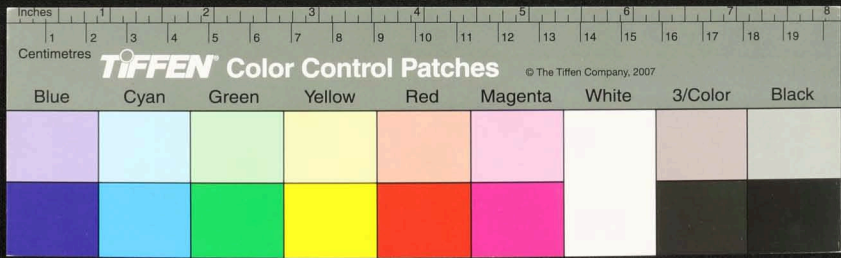


Handwritten Tamil script on a palm leaf manuscript. The text is arranged in approximately 10 horizontal lines across the length of the leaf. The script is dense and appears to be a form of classical or historical Tamil. There are some dark spots and irregularities on the leaf, possibly due to age or damage.



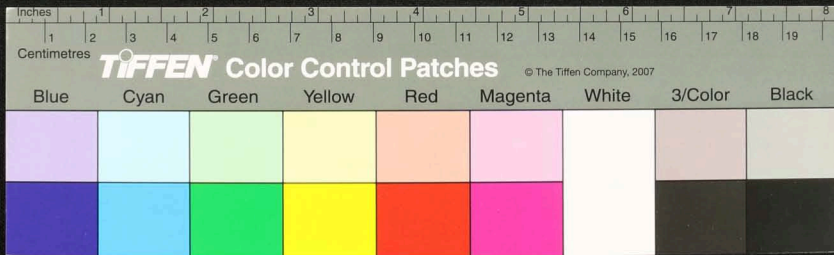


Handwritten Tamil script on a palm leaf manuscript. The text is arranged in approximately 10 horizontal lines across the length of the leaf. The script is dense and appears to be a form of classical or historical Tamil. There are some circular marks or holes along the length of the leaf, which are characteristic of traditional palm leaf manuscripts used for binding.





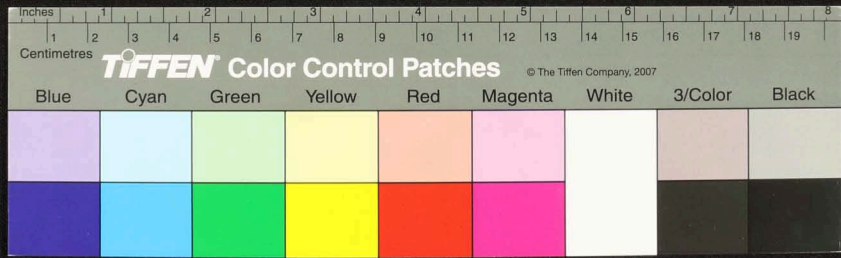
Handwritten Tamil script on a palm leaf manuscript. The text is densely packed and spans the entire length of the leaf. On the left side, there are several vertical labels in Tamil, including 'முதலாவது' (First), 'இரண்டாவது' (Second), 'மூன்றாவது' (Third), 'நான்காவது' (Fourth), and 'ஐந்தாவது' (Fifth). The script is written in a traditional style with dark ink on the natural yellowish-brown surface of the leaf.



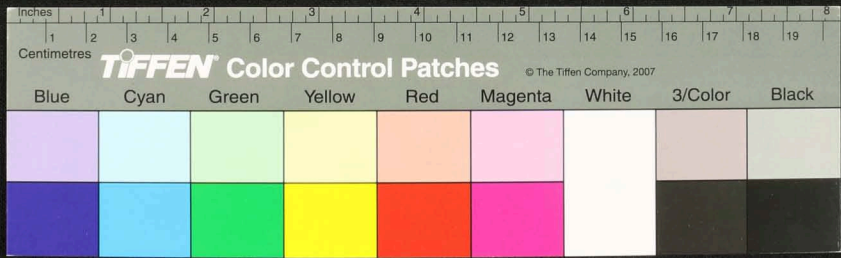




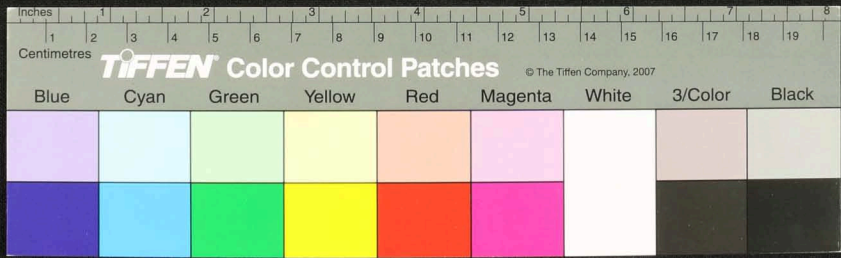
Handwritten text in Tamil script on a palm leaf manuscript. The text is arranged in approximately 15 horizontal lines across the length of the leaf. Two circular holes are visible, used for binding multiple leaves together. The script is finely etched into the surface of the dried leaf.



Handwritten Tamil script on a palm leaf manuscript. The text is arranged in approximately 10 horizontal lines across the length of the leaf. The script is dense and characteristic of traditional Tamil inscriptions. There are two circular holes visible on the leaf, which were used for threading a cord to bind multiple leaves together into a book format.



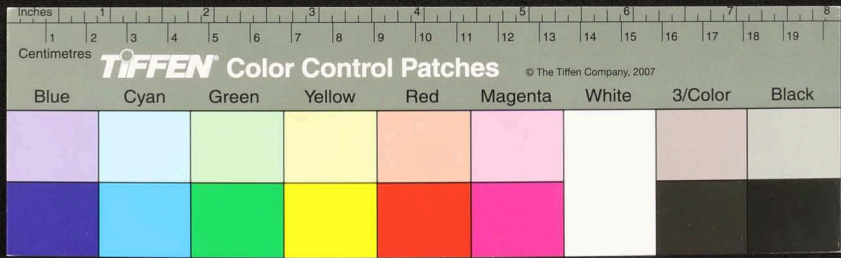
Handwritten Tamil script on a palm leaf manuscript. The text is arranged in approximately 10 horizontal lines across the length of the leaf. The script is dense and appears to be a form of classical or historical Tamil. There are some dark spots and irregularities on the leaf, possibly due to age or damage.



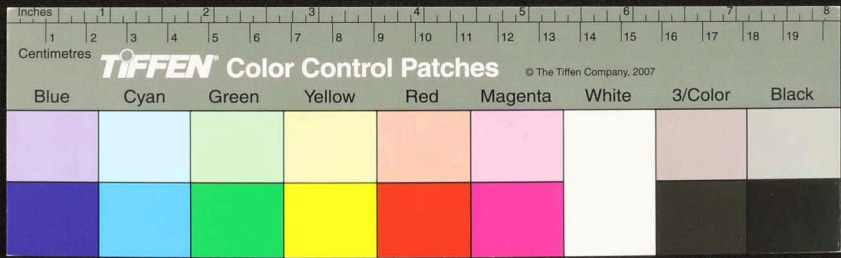




Handwritten Tamil script on a palm leaf manuscript. The text is arranged in approximately 10 horizontal lines across the length of the leaf. The script is a traditional form of the Tamil language, used for recording knowledge and literature. The leaf shows signs of age, including two distinct circular holes and some surface wear.

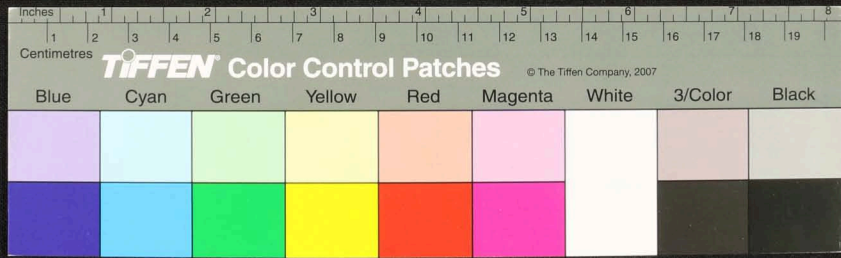


Handwritten Tamil script on a palm leaf manuscript. The text is arranged in approximately 10 horizontal lines across the length of the leaf. The script is a traditional form of the Tamil language, likely containing a historical record or a religious text. The leaf shows signs of age, including some dark spots and slight discoloration.

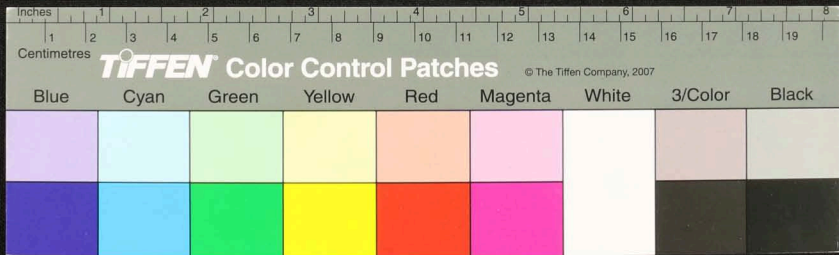




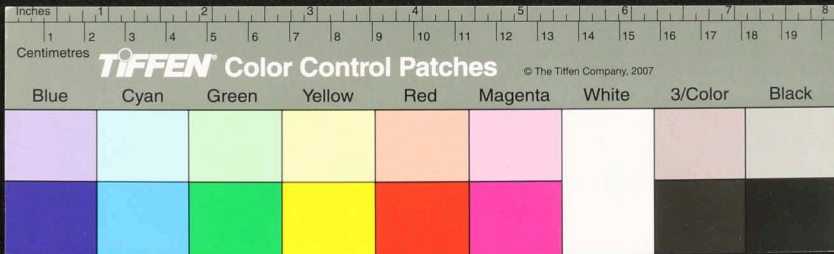
Handwritten Tamil script on a palm leaf manuscript. The text is arranged in approximately 10 horizontal lines. On the left side, there are vertical annotations, possibly indicating line numbers or specific markers. The script is finely etched into the surface of the dried leaf.



Handwritten text in Tamil script on a palm leaf manuscript. The text is arranged in several lines across the length of the leaf. The script is finely etched into the surface of the dried leaf. There are two circular holes visible, which were traditionally used for threading a cord to bind multiple leaves together into a book format.

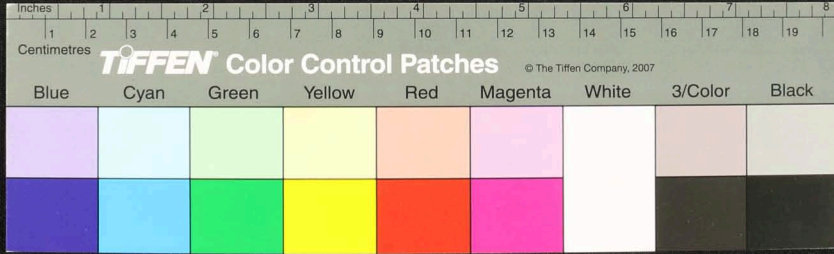


Handwritten text in Tamil script on a palm leaf manuscript. The text is arranged in approximately 10 horizontal lines across the length of the leaf. The script is finely etched into the surface of the dried leaf. There are two distinct circular holes along the length of the leaf, which were traditionally used for threading a cord to bind multiple leaves together into a book format. The leaf shows signs of age, with some discoloration and wear at the edges.



வல்லவர்க்கு  
வந்தவர்க்கு  
புறவர்க்கு  
கூடுவர்க்கு  
வந்தவர்க்கு

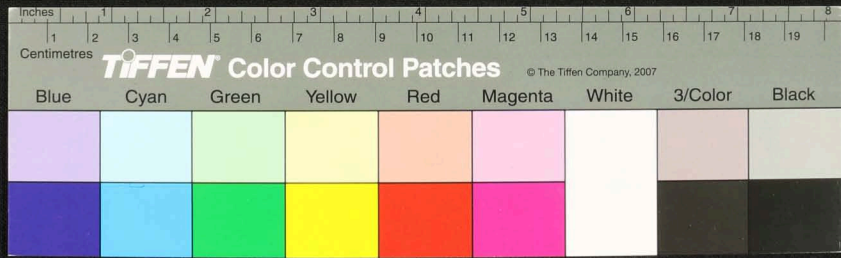
செய்தவர்க்கு...  
வந்தவர்க்கு...  
புறவர்க்கு...  
கூடுவர்க்கு...  
வந்தவர்க்கு...





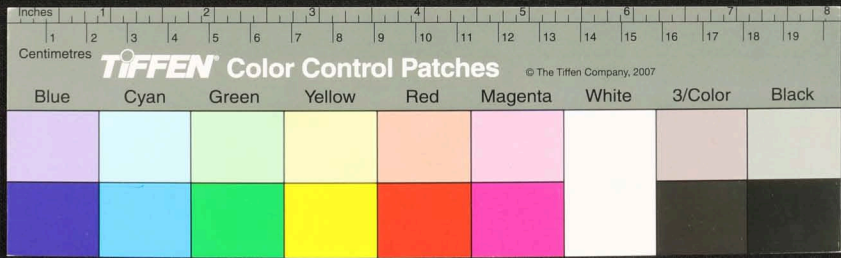


Handwritten text in Tamil script on a palm leaf manuscript. The text is arranged in several horizontal lines across the length of the leaf. The script is finely etched into the surface of the dried leaf. There are two distinct circular holes along the length of the leaf, which were traditionally used for threading a cord to bind multiple leaves together into a book format.





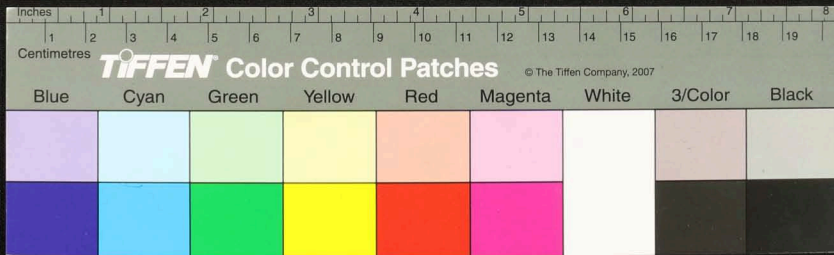
Handwritten text in an ancient script, likely Tamil, inscribed on a palm leaf. The text is arranged in approximately 10 horizontal lines across the length of the leaf. There are two distinct circular holes, one on the left and one on the right, which were traditionally used for threading a cord to bind multiple leaves together into a book format. The ink is dark and the leaf shows signs of age and wear.



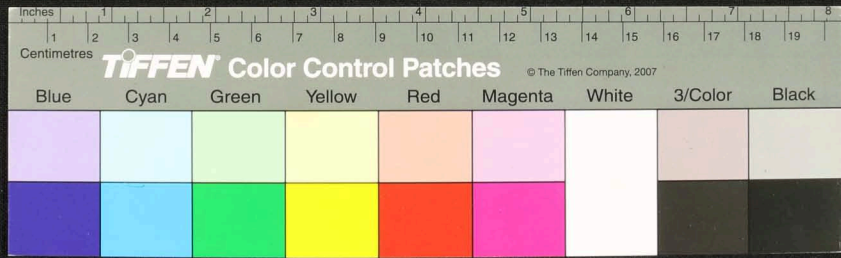




Handwritten text in Tamil script on a palm leaf manuscript. The text is arranged in approximately 10 horizontal lines across the length of the leaf. The script is dense and appears to be a form of classical or historical Tamil. There are some faint markings and what might be small holes or indentations on the leaf's surface.



Handwritten Tamil script on a palm leaf manuscript. The text is arranged in approximately 10 horizontal lines across the length of the leaf. The script is finely etched into the surface of the dried leaf. On the left side, there are some larger characters and possibly a date or reference number. The leaf shows signs of age, including some dark spots and slight discoloration.

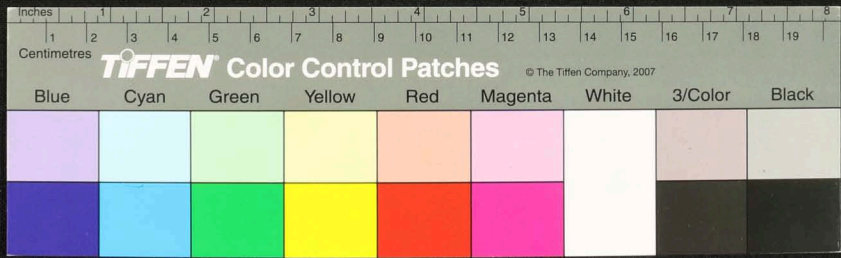




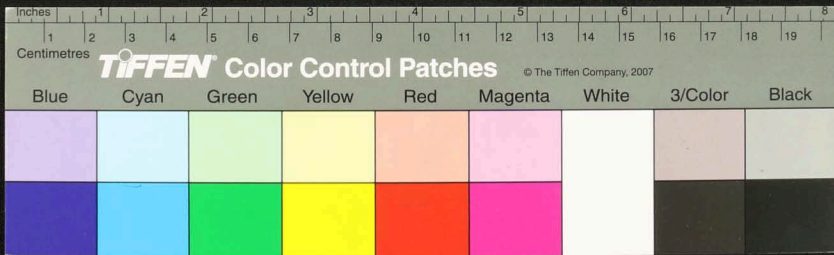




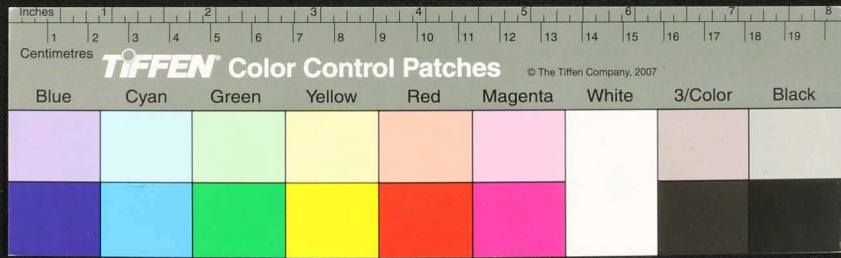
Handwritten Tamil script on a palm leaf manuscript. The text is arranged in approximately 10 horizontal lines across the length of the leaf. The script is dense and appears to be a form of classical or historical Tamil. There are some faint markings and what might be a signature or date at the bottom left.



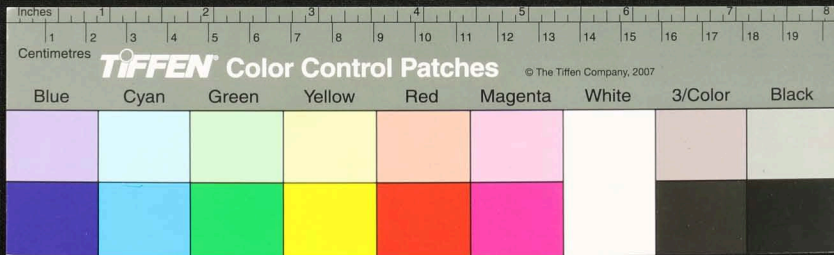
Handwritten text in an ancient script, likely Tamil, inscribed on a palm leaf. The text is arranged in approximately 10 horizontal lines across the length of the leaf. Two circular holes are visible, which were traditionally used for threading a cord to bind multiple leaves together into a book format. The script is finely etched into the surface of the dried leaf.



Handwritten text in Tamil script on a palm leaf manuscript. The text is arranged in approximately 10 horizontal lines across the length of the leaf. The script is dark and appears to be a traditional form of the Tamil language. There are some faint markings and what might be small holes or indentations on the leaf, possibly from a previous binding or insect damage.

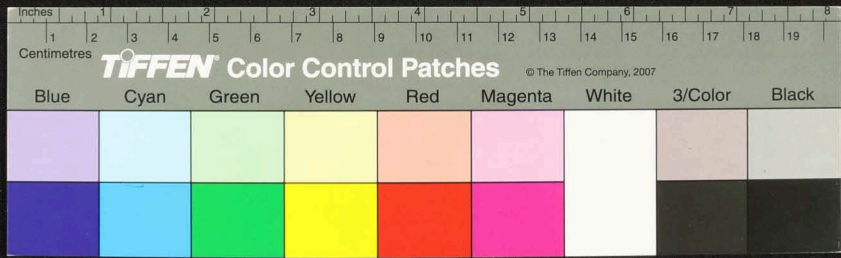


Handwritten Tamil script on a palm leaf manuscript. The text is arranged in approximately 10 horizontal lines across the length of the leaf. The script is finely etched into the surface of the dried leaf. The leaf shows signs of age, including some dark spots and a slightly uneven texture.



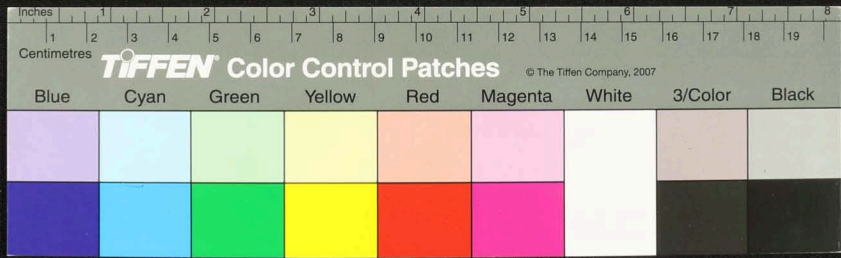


Handwritten text in Tamil script on a palm leaf manuscript. The text is arranged in several lines across the length of the leaf. The script is dense and appears to be a form of classical or historical Tamil. There are some dark spots on the leaf, possibly from insect damage or age.





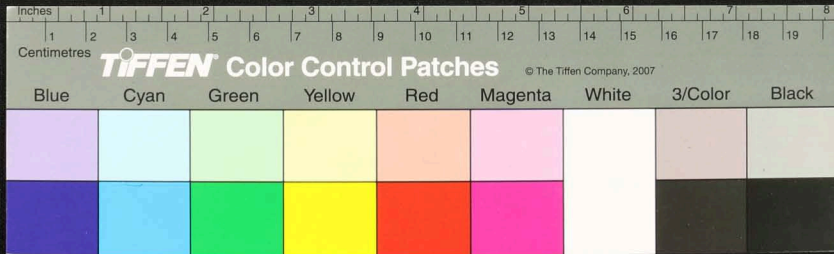
Handwritten Tamil script on a palm leaf manuscript. The text is arranged in approximately 10 horizontal lines. On the left side, there are several vertical labels or headings, possibly identifying different sections or parts of the text. The script is densely packed and appears to be a traditional form of Tamil writing.



Handwritten text in the top left corner of the palm leaf manuscript, consisting of several lines of script.

Main body of handwritten text in Tamil script, spanning most of the length of the palm leaf. The text is arranged in approximately 10 horizontal lines.

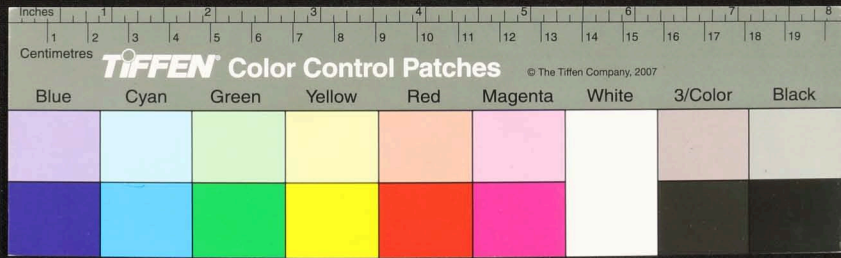
Handwritten text in the top right corner of the palm leaf manuscript, possibly a signature or date.



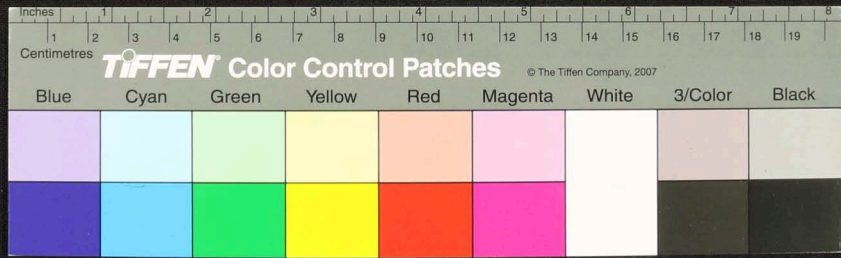
Handwritten text in Tamil script on a palm leaf manuscript. The text is arranged in approximately 10 horizontal lines across the length of the leaf. There are two circular holes visible on the leaf, which were traditionally used for threading a cord to bind multiple leaves together into a book format. The script is finely etched into the surface of the dried leaf.

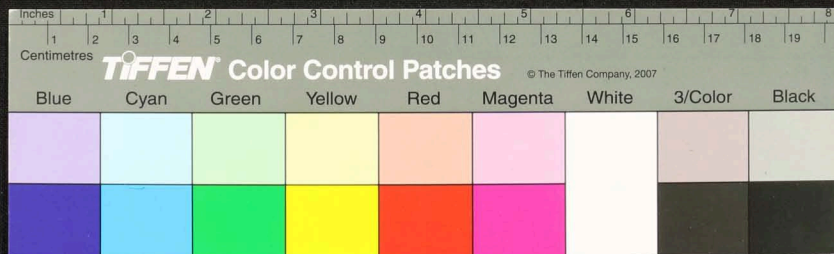


Handwritten text in Tamil script on a palm leaf manuscript. The text is arranged in several lines across the length of the leaf. The script is finely etched into the surface of the dried leaf. The first line on the left reads 'மெய்யுறுவாய்' (Meiyayuruvai). The text continues with various characters and symbols, including some that appear to be decorative or specific to the dialect. The leaf shows signs of age, with some dark spots and a slightly uneven texture.



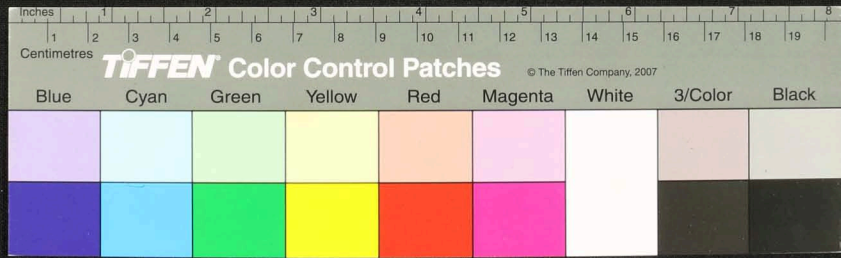
Handwritten text in Tamil script on a palm leaf manuscript. The text is arranged in several lines across the length of the leaf. Two circular holes are visible, used for binding multiple leaves together.





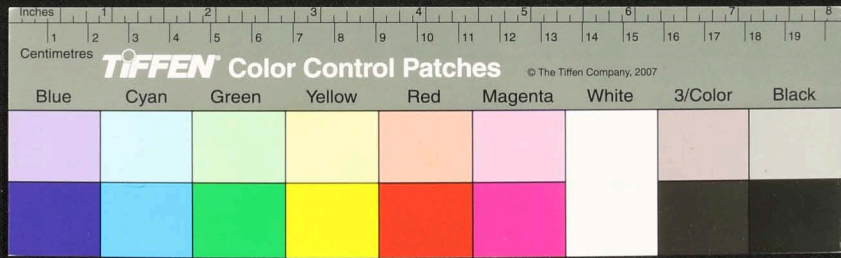


Handwritten text in Tamil script on a palm leaf manuscript. The text is arranged in approximately 10 horizontal lines across the length of the leaf. The script is dense and characteristic of traditional South Indian manuscripts. There are some dark spots and irregularities on the leaf, possibly due to age or damage.



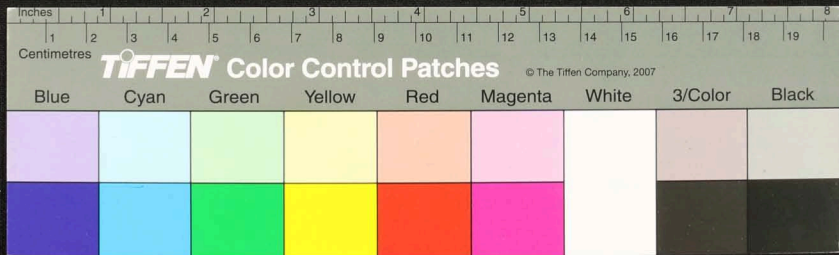


Handwritten Tamil script on a palm leaf manuscript. The text is arranged in approximately 12 horizontal lines across the length of the leaf. The script is dense and appears to be a form of classical or historical Tamil. There are some dark spots and irregularities on the leaf, possibly due to age or damage.

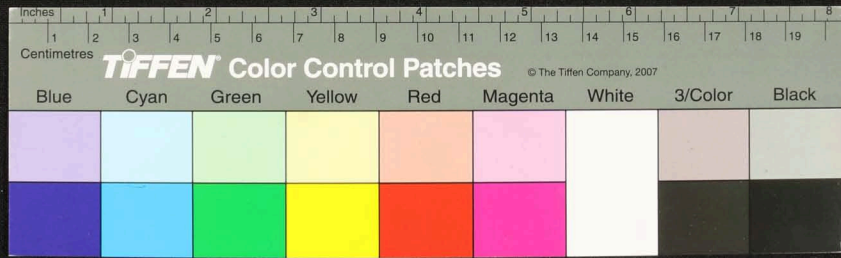




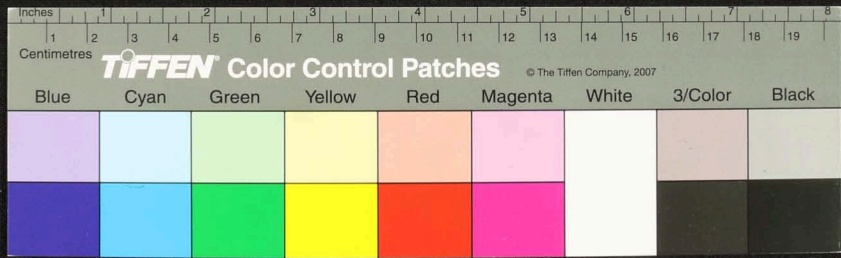
Handwritten text in Tamil script on a palm leaf manuscript. The text is arranged in approximately 10 horizontal lines across the length of the leaf. The script is finely etched into the surface of the dried leaf. On the left side, there are some marginal notes or a header, and on the right side, there are some smaller characters or a signature. The leaf shows signs of age and wear, with some dark spots and a slightly uneven texture.



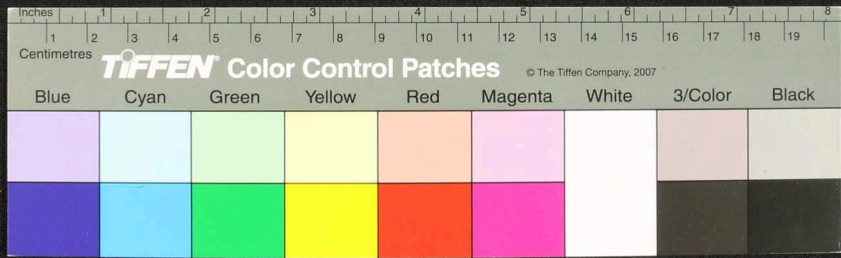
Handwritten text in Tamil script on a palm leaf manuscript. The text is arranged in approximately 12 horizontal lines across the length of the leaf. The script is dense and characteristic of traditional South Indian manuscripts. There are two circular holes visible on the leaf, which were used for threading a cord to bind multiple leaves together.



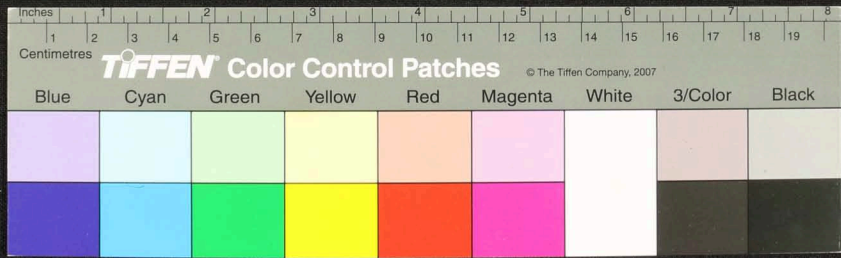
Handwritten text in Tamil script on a palm leaf manuscript. The text is arranged in approximately 15 horizontal lines across the length of the leaf. There are two circular holes punched through the leaf, one at approximately the 3-inch mark and another at the 6-inch mark. On the right side of the leaf, there are several small, handwritten annotations or numbers, including '10', '11', '12', '13', '14', '15', '16', '17', '18', '19', '20', '21', '22', '23', '24', '25', '26', '27', '28', '29', '30', '31', '32', '33', '34', '35', '36', '37', '38', '39', '40', '41', '42', '43', '44', '45', '46', '47', '48', '49', '50', '51', '52', '53', '54', '55', '56', '57', '58', '59', '60', '61', '62', '63', '64', '65', '66', '67', '68', '69', '70', '71', '72', '73', '74', '75', '76', '77', '78', '79', '80', '81', '82', '83', '84', '85', '86', '87', '88', '89', '90', '91', '92', '93', '94', '95', '96', '97', '98', '99', '100'. The text is written in a dark ink, likely iron-based, and is clearly legible.



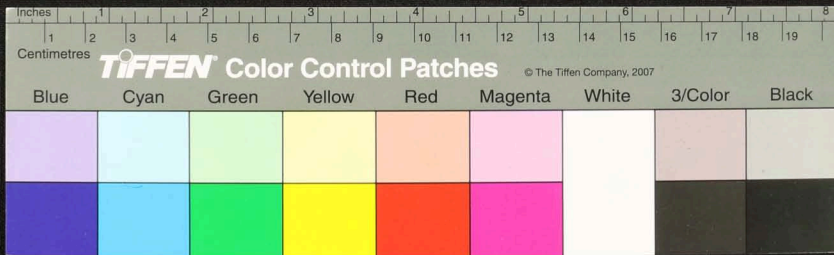
Handwritten text in Tamil script on a palm leaf manuscript. The text is arranged in approximately 10 horizontal lines across the length of the leaf. The script is dense and characteristic of traditional South Indian manuscripts. There are some dark spots and irregularities on the leaf, possibly due to age or damage.



Handwritten text in Tamil script on a palm leaf manuscript. The text is arranged in approximately 12 horizontal lines across the length of the leaf. The script is finely etched into the surface of the dried leaf. There are two circular holes visible on the leaf, which were traditionally used for threading a cord to bind multiple leaves together into a book format.

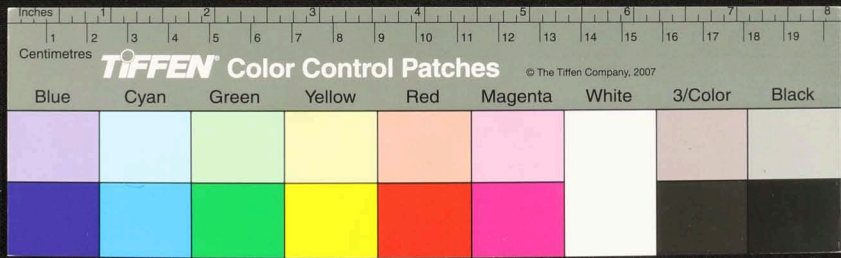


Handwritten text in Tamil script on a palm leaf manuscript. The text is arranged in approximately 12 horizontal lines across the length of the leaf. The script is finely etched into the surface of the dried leaf. On the far left, there are some faint, larger characters that appear to be a title or a reference number, possibly 'சுருதி' (Srutu) and '1000'.





Handwritten text in Tamil script on a palm leaf manuscript. The text is arranged in approximately 12 horizontal lines across the length of the leaf. The script is dense and characteristic of traditional Tamil inscriptions.







Handwritten text at the top of the palm leaf manuscript, likely a title or introductory line.

சுருதி

சுருதி

சுருதி

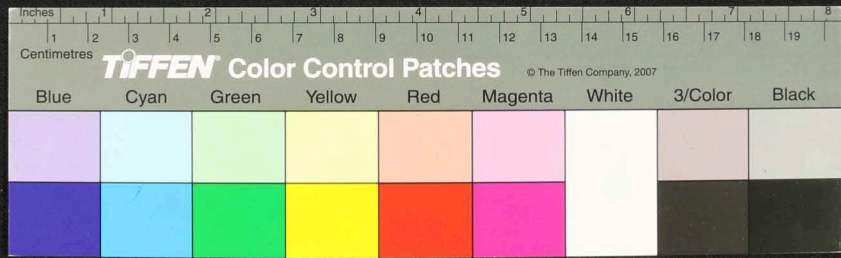
சுருதி

சுருதி

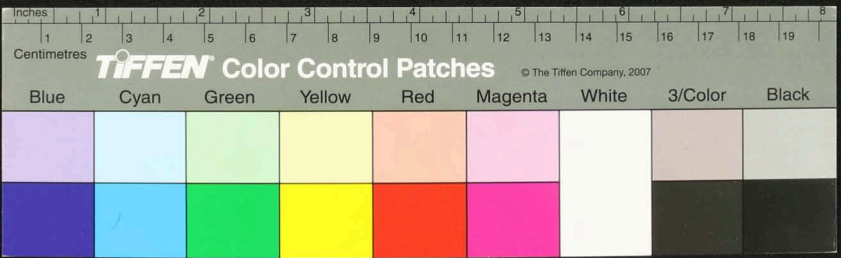
சுருதி

சுருதி

Main body of handwritten text in Tamil script on the palm leaf manuscript.

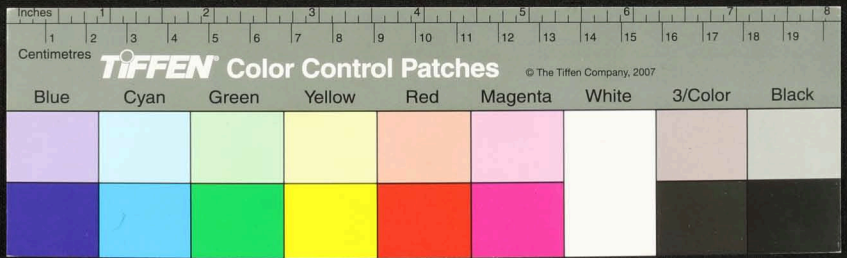


Handwritten text in Tamil script on a palm leaf manuscript. The text is densely packed and covers most of the leaf's surface. There are two circular holes visible, which were traditionally used for threading a cord to bind multiple leaves together into a book format. The script is in an older form of the Tamil language, likely from the medieval or early modern period.





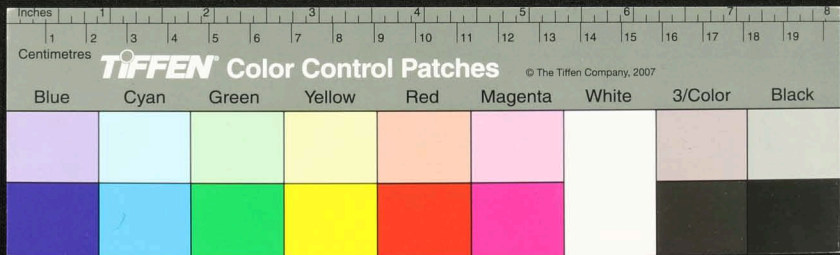
Handwritten text in Tamil script on a palm leaf manuscript. The text is densely packed and covers the entire length of the leaf. There are two circular holes visible, which were traditionally used for threading a cord to bind multiple leaves together into a book format.



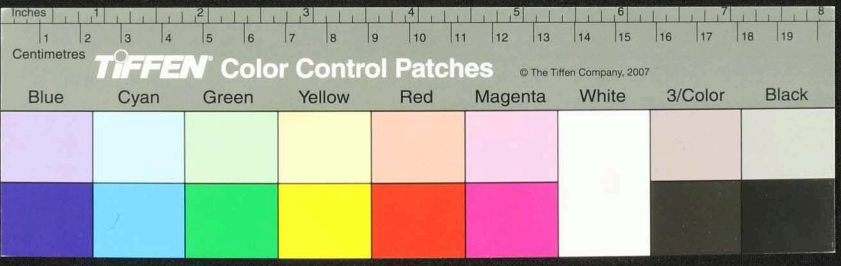




Handwritten text in Tamil script on a palm leaf manuscript. The text is densely packed and covers the entire length of the leaf. Two circular holes are visible, used for binding multiple leaves together.



Handwritten text in an ancient script, likely Tamil, on a palm leaf manuscript. The text is densely packed and covers most of the leaf's surface. There are two distinct circular holes on the right side, which were traditionally used for threading a cord to bind multiple leaves together into a book format. The script is finely etched into the natural texture of the dried leaf.

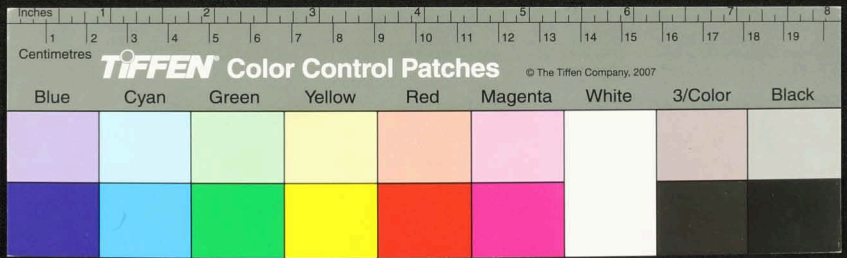




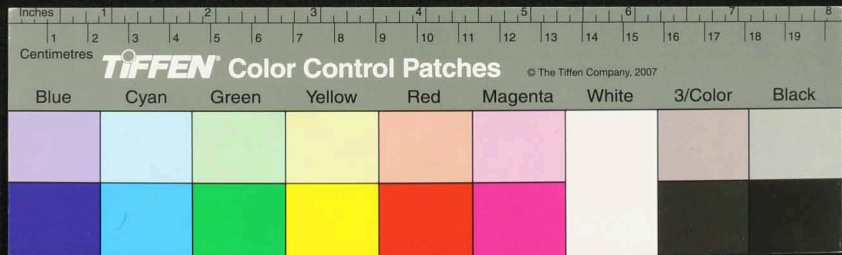
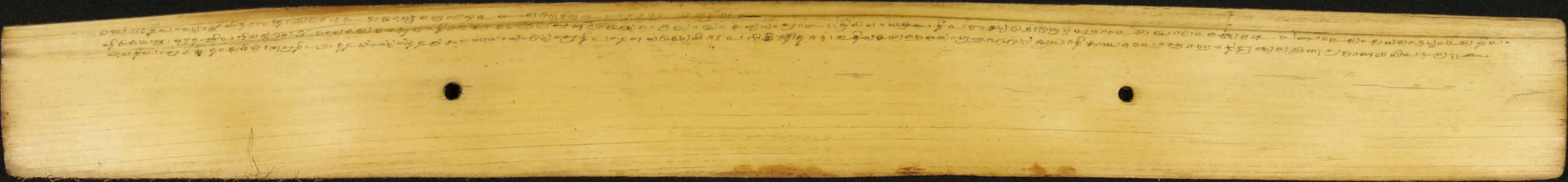
Handwritten text in Tamil script on a palm leaf manuscript. The text is densely packed and covers most of the leaf's surface. There are two circular holes visible, which were traditionally used for threading a cord to bind multiple leaves together into a book format. The script is in an older form of the Tamil language, likely from the 17th or 18th century.

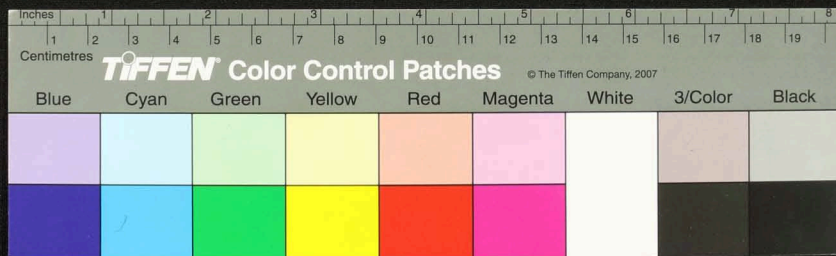


Handwritten text in Tamil script on a palm leaf manuscript. The text is densely packed and covers most of the leaf's surface. There are two circular holes visible, which were traditionally used for threading a cord to bind multiple leaves together into a book format. The script is in an older form of the Tamil language, likely from the 17th or 18th century.



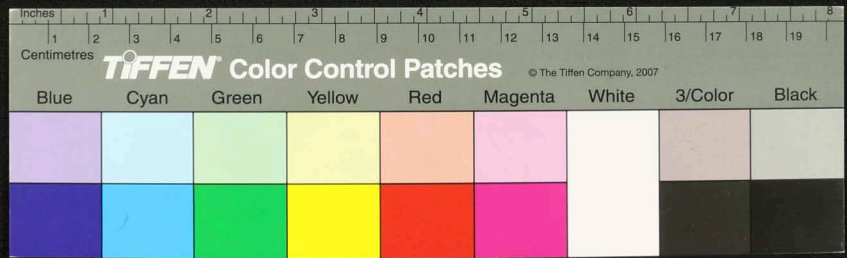










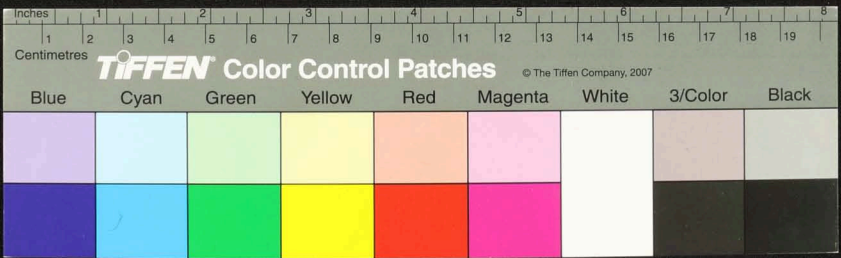






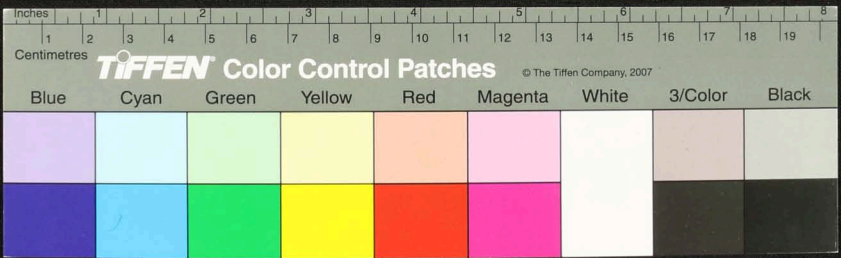


Handwritten text in an ancient script, likely cuneiform, inscribed on a long, narrow wooden tablet. The text is arranged in approximately 15 horizontal lines across the length of the tablet. Two circular holes are visible, spaced apart, which were traditionally used for threading a cord to bind multiple tablets together into a book-like format. The wood shows signs of age, including some staining and wear.





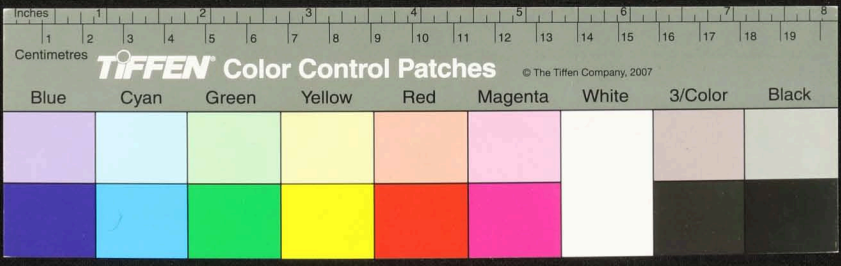
Handwritten Tamil script on a palm leaf manuscript. The text is densely packed and spans the length of the leaf. Two circular holes are visible, used for binding multiple leaves together. The script is in an older form of the Tamil language.



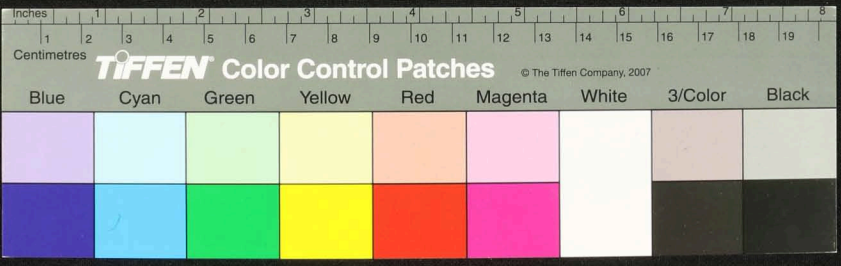




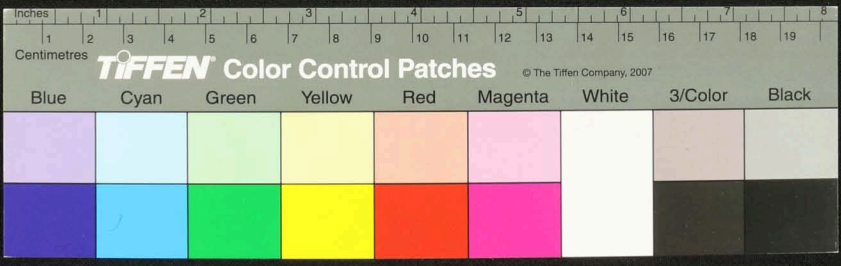
Handwritten text in Tamil script on a palm leaf manuscript. The text is arranged in several lines across the length of the leaf. On the left side, there are vertical labels: 'முதலாவது', 'இரண்டாவது', 'மூன்றாவது', and 'நான்காவது'. On the right side, there is a date '1857'. The script is densely packed and appears to be a historical record or a list of items.



Handwritten text in Tamil script on a palm leaf manuscript. The text is densely packed and covers most of the leaf's surface. There are two circular holes visible, which were traditionally used for threading a cord to bind multiple leaves together. The script is in an older form of the Tamil language.



Handwritten text in Tamil script on a palm leaf manuscript. The text is densely packed and covers most of the leaf's surface. There are two circular holes visible, which were traditionally used for threading a cord to bind multiple leaves together into a book format. The script is in an older form of the Tamil language.





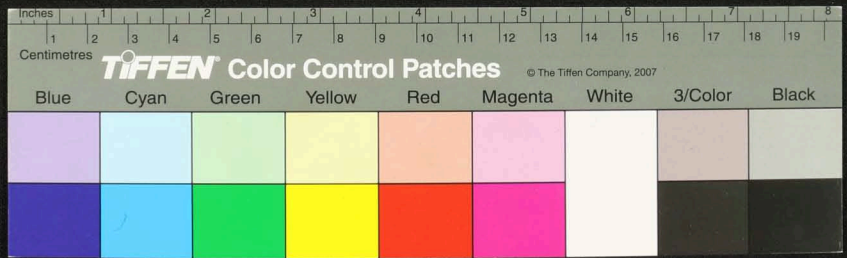
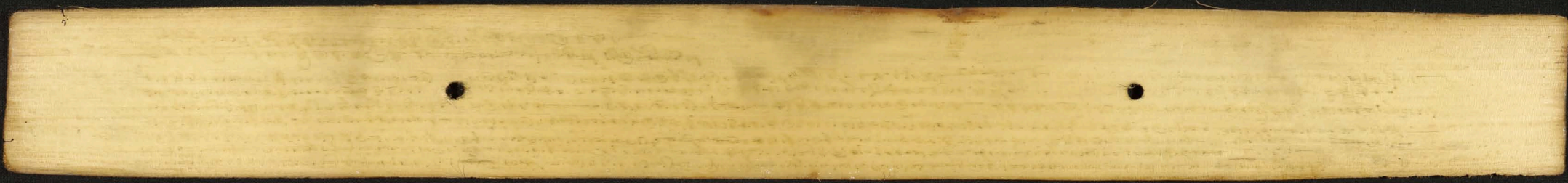




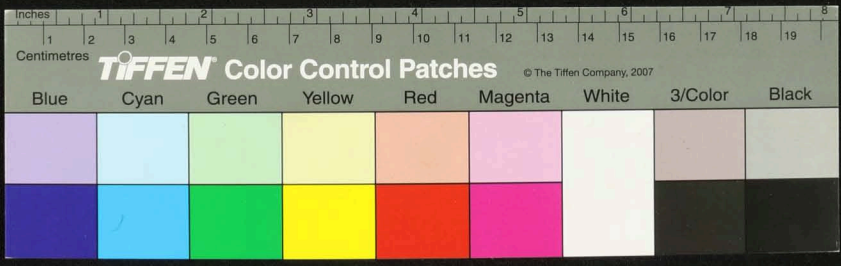


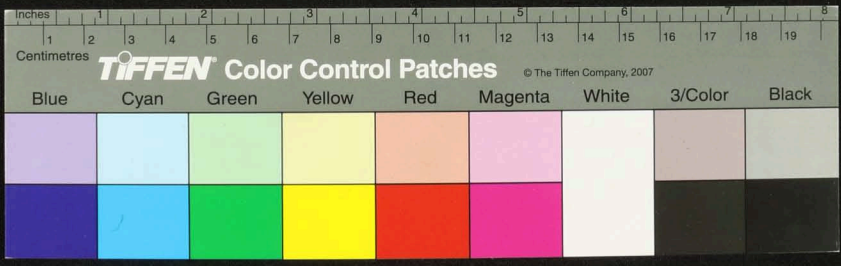


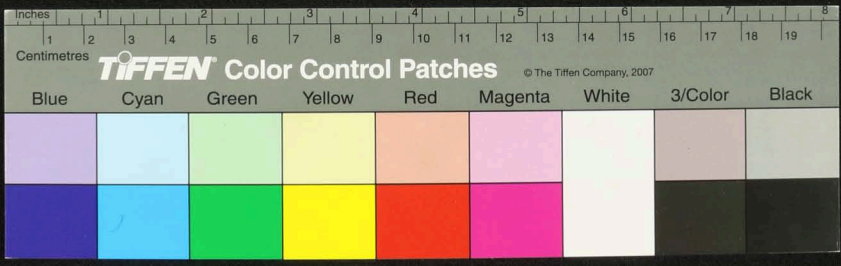




Handwritten text in Tamil script on a palm leaf manuscript. The text is densely packed and covers most of the leaf's surface. Two circular holes are visible, used for binding multiple leaves together.





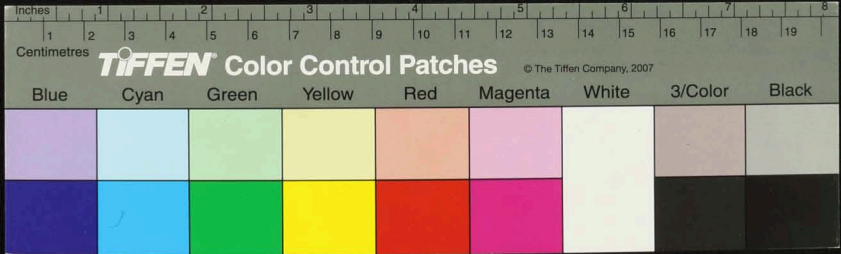


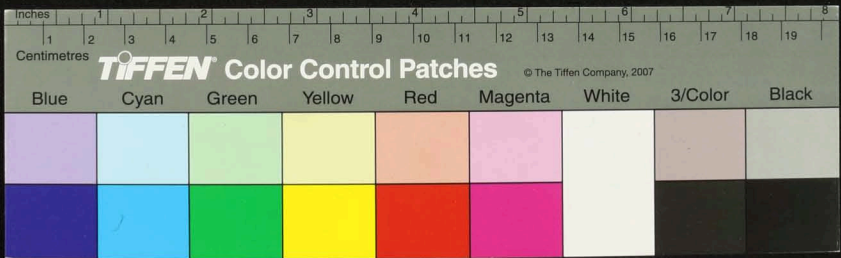


Inches 1 2 3 4 5 6 7 8  
Centimetres 1 2 3 4 5 6 7 8 9 10 11 12 13 14 15 16 17 18 19

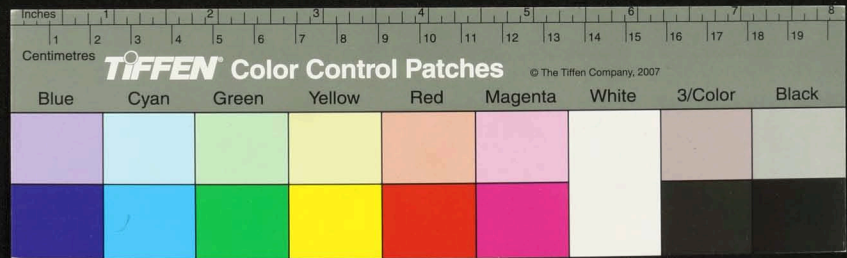
**TIFFEN** Color Control Patches © The Tiffen Company, 2007

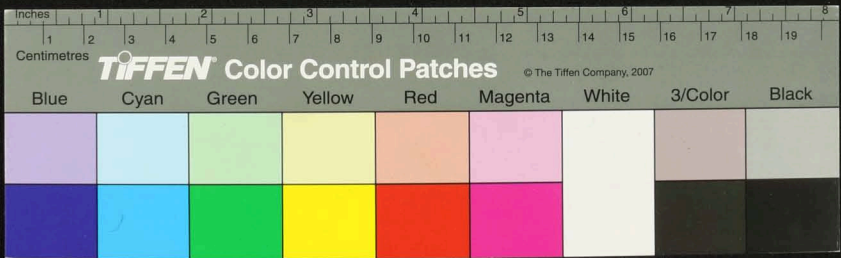
Blue	Cyan	Green	Yellow	Red	Magenta	White	3/Color	Black



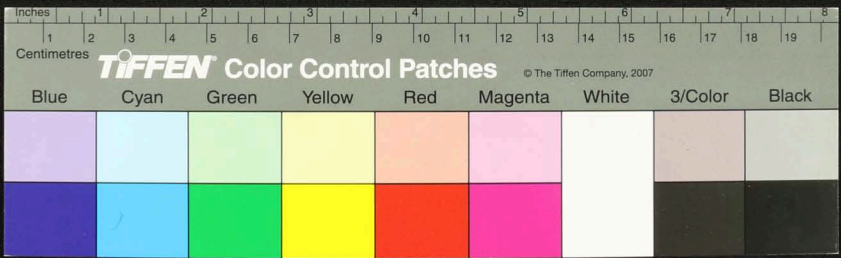




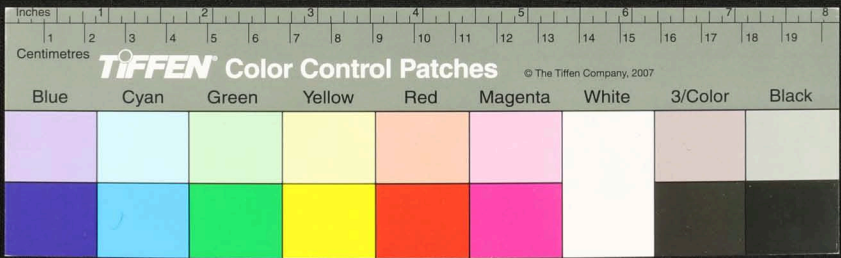




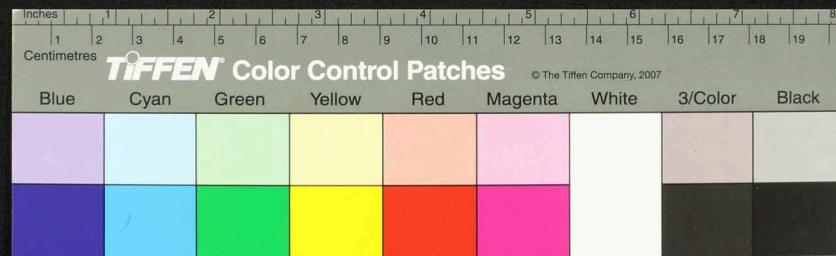
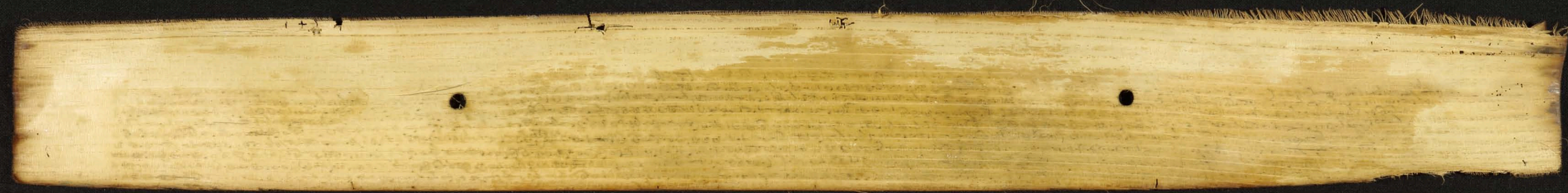
Handwritten text in an ancient script, likely Tamil, inscribed on a long, narrow palm leaf. The text is arranged in approximately 15 vertical columns across the length of the leaf. Two circular holes are visible, used for threading a cord to bind multiple leaves together into a book format. The leaf shows signs of age, including some staining and wear at the ends.

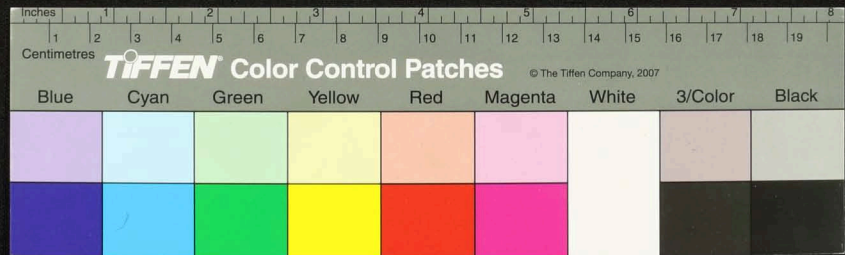
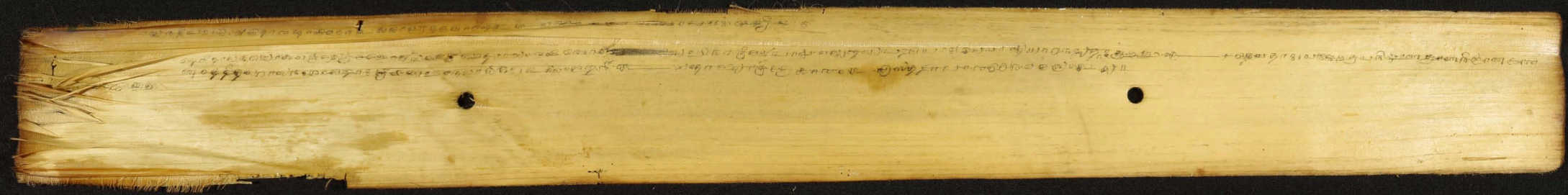


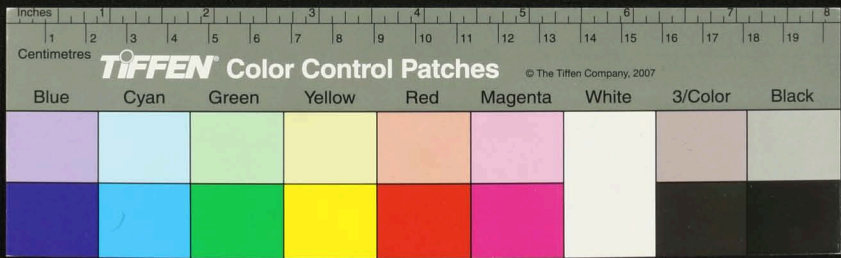
Handwritten text in Tamil script on a palm leaf manuscript. The text is arranged in approximately 12 vertical columns across the length of the leaf. The script is finely etched into the surface of the dried leaf. There are some dark spots and signs of wear on the leaf, particularly a prominent one near the center.



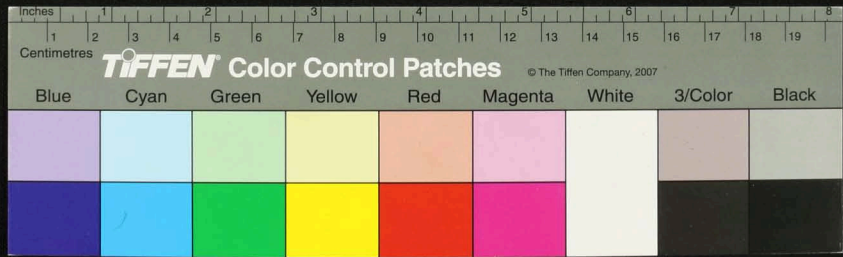


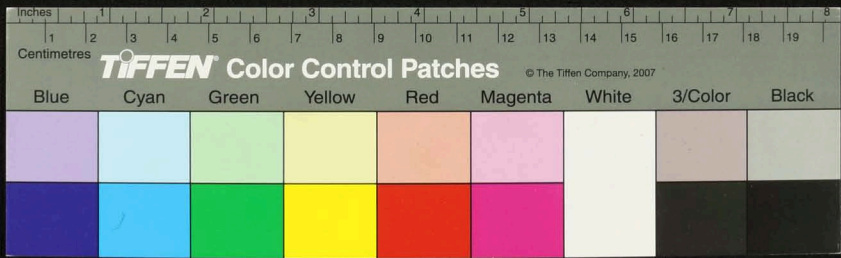
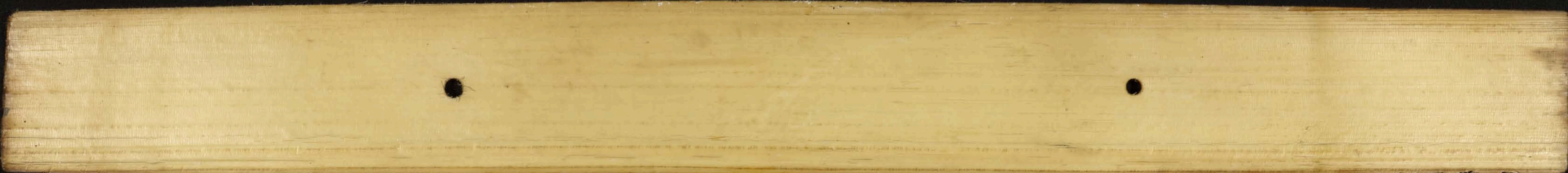




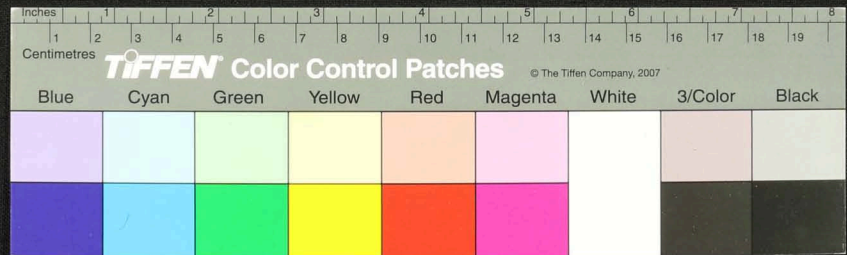




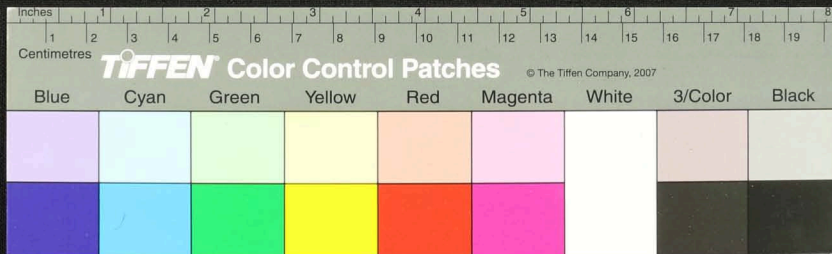




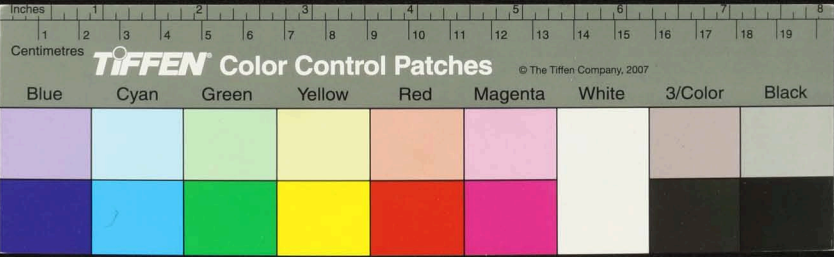
Handwritten text in Tamil script on a palm leaf manuscript. The text is densely packed and covers most of the leaf's surface. There are two circular holes visible, which were traditionally used for threading a cord to bind multiple leaves together into a book format.



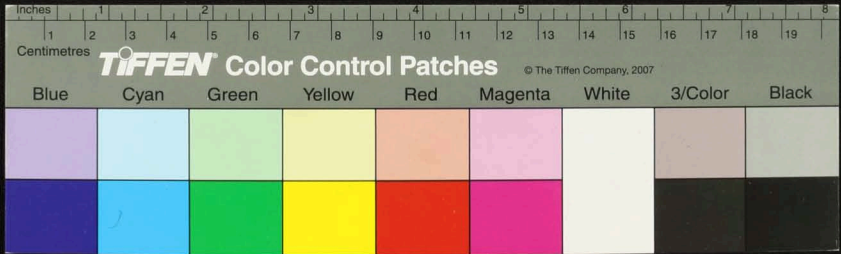
Handwritten text in Tamil script on a palm leaf manuscript. The text is densely packed and covers the entire length of the leaf. Two circular holes are visible, used for binding multiple leaves together.



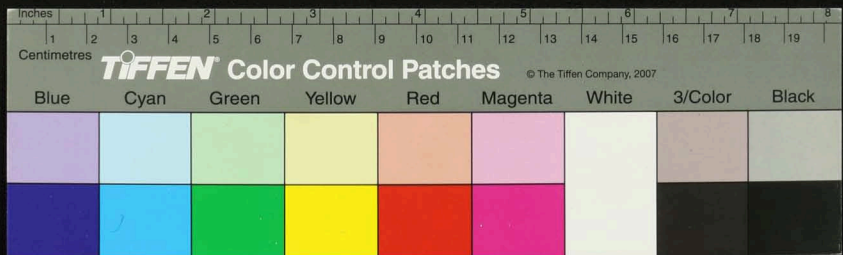
Handwritten text in Tamil script on a palm leaf manuscript. The text is densely packed and covers most of the leaf's surface. Two circular holes are visible, used for binding multiple leaves together. The script is in an older form of the Tamil language.



Handwritten text in Tamil script on a palm leaf manuscript. The text is densely packed and covers most of the leaf's surface. Two circular holes are visible, used for binding multiple leaves together.



Handwritten text in Tamil script on a palm leaf manuscript. The text is densely packed and covers most of the leaf's surface. Two circular holes are visible, used for binding multiple leaves together.







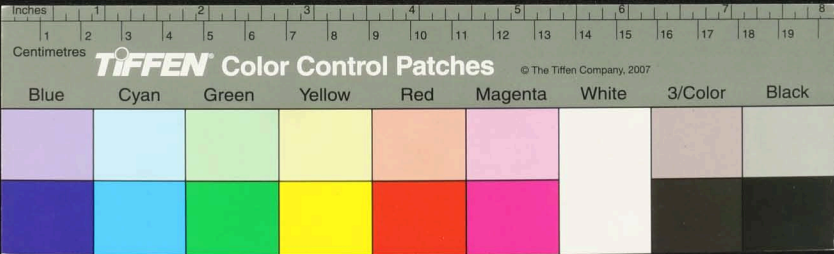
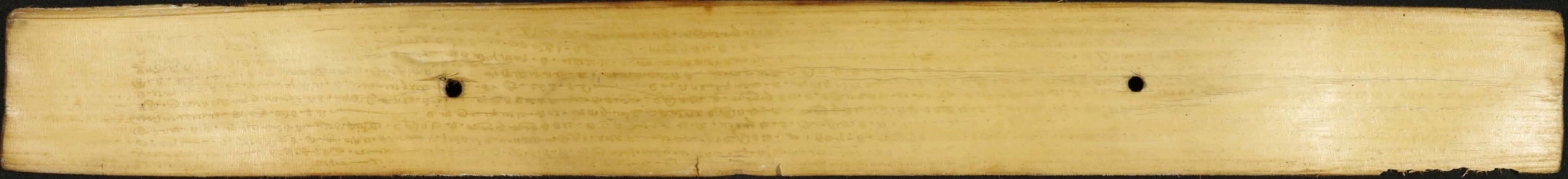






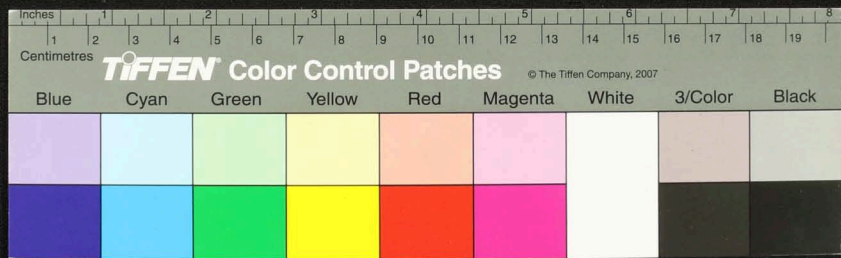








Handwritten text on a palm-leaf manuscript strip, featuring two circular holes for binding. The text is written in an ancient script, likely Tamil, and is arranged in approximately 15 horizontal lines across the length of the leaf. The leaf is light brown and shows signs of age and wear.

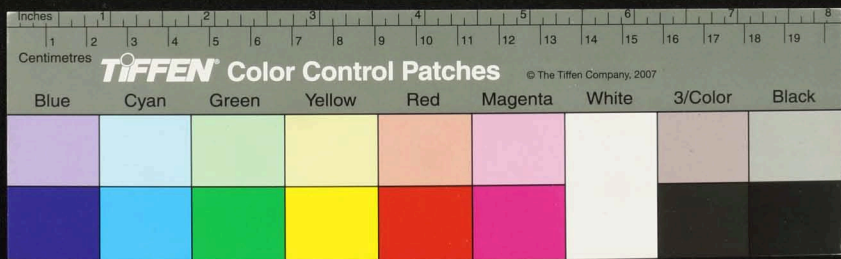
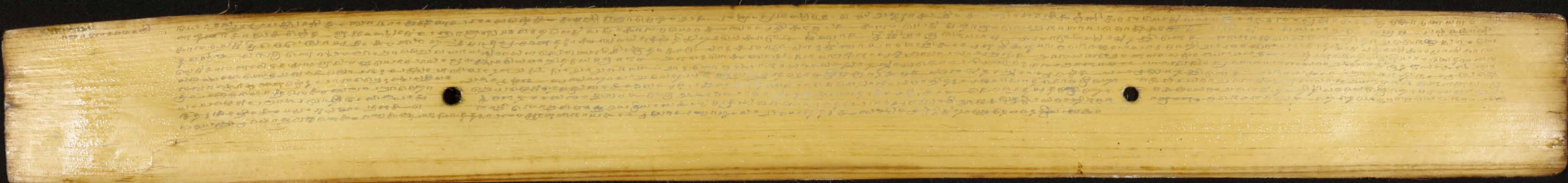




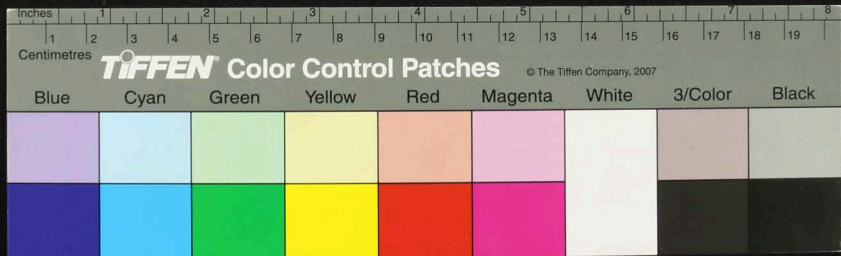
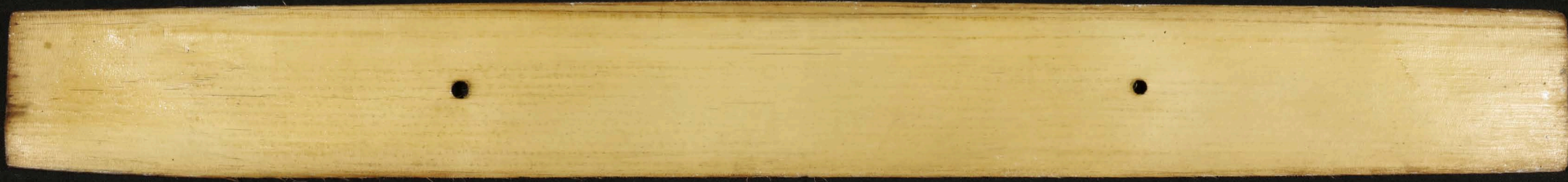




Blue	Cyan	Green	Yellow	Red	Magenta	White	3/Color	Black

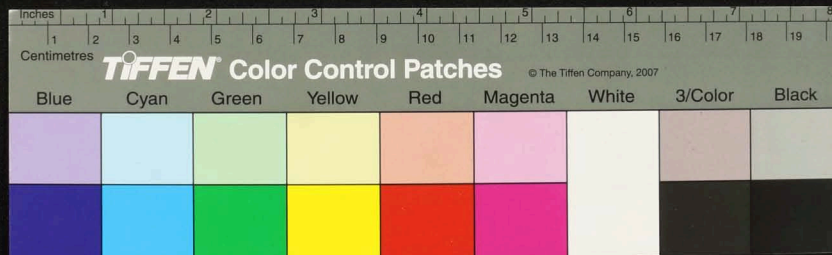


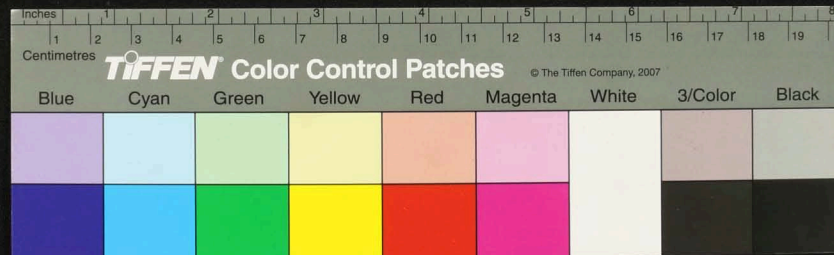
Blue	Cyan	Green	Yellow	Red	Magenta	White	3/Color	Black





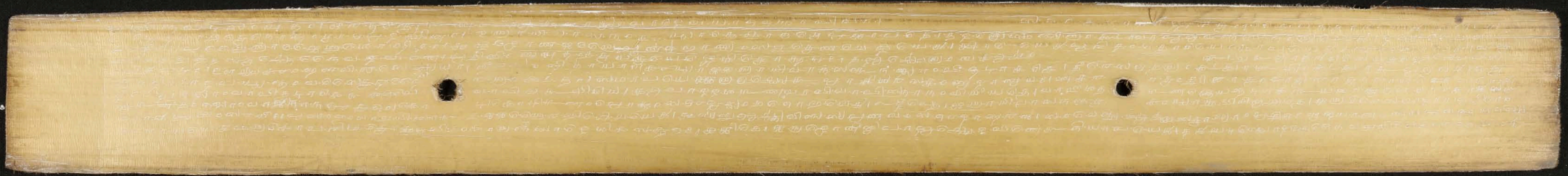




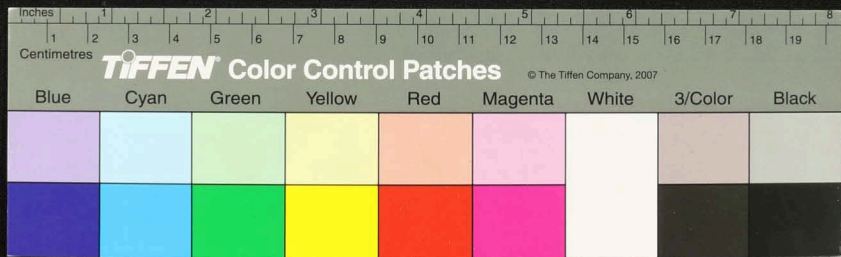




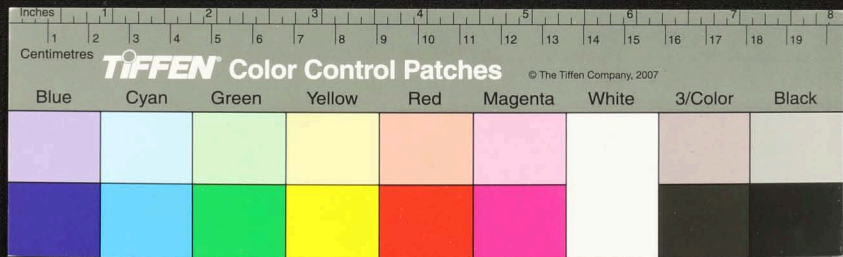


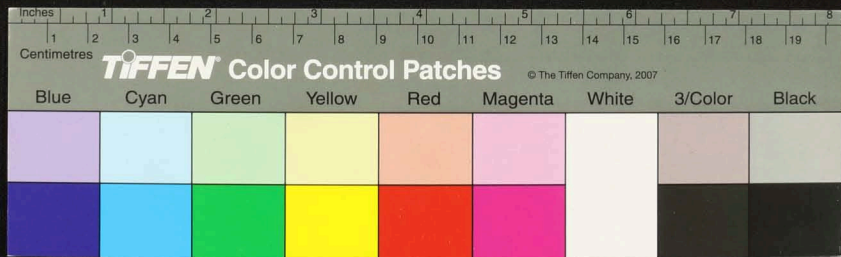


Handwritten text in Tamil script on a palm leaf manuscript. The text is arranged in approximately 15 horizontal lines across the length of the leaf. Two circular holes are visible, which were traditionally used for threading a cord to bind multiple leaves together. The script is finely etched into the surface of the dried leaf.



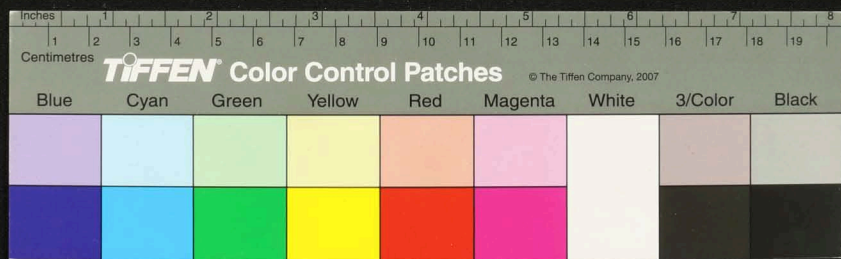






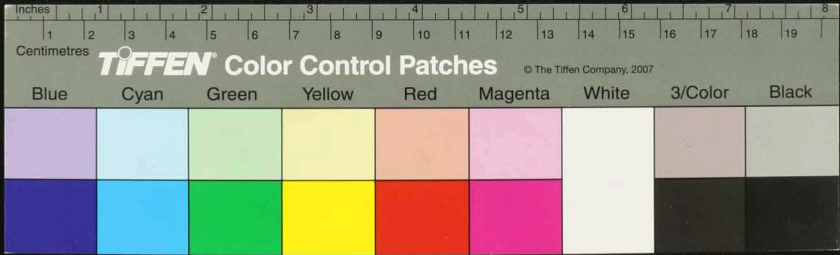


Handwritten text in Tamil script on a palm leaf manuscript. The text is arranged in approximately 15 horizontal lines across the length of the leaf. Two circular holes are visible, used for threading a cord to bind multiple leaves together. The script is finely etched into the surface of the dried leaf.

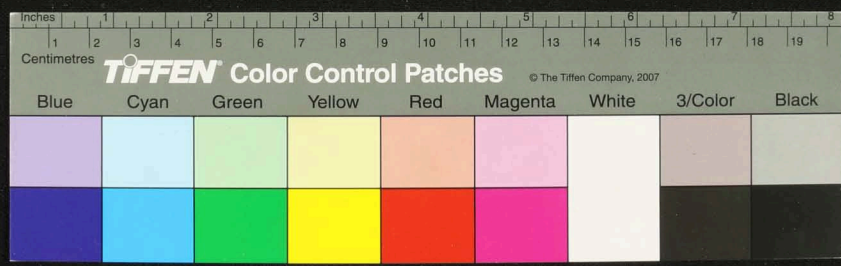




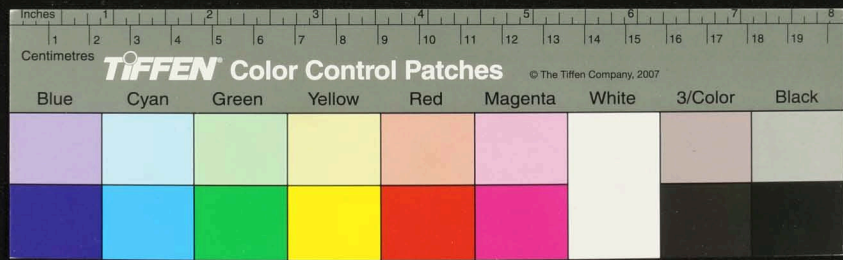
Handwritten text in an ancient script, likely Tamil, inscribed on a palm leaf. The text is arranged in approximately 15 horizontal lines across the length of the leaf. Two circular holes are visible, which were traditionally used for threading a cord to bind multiple leaves together into a book format. The script is finely etched into the surface of the dried leaf.



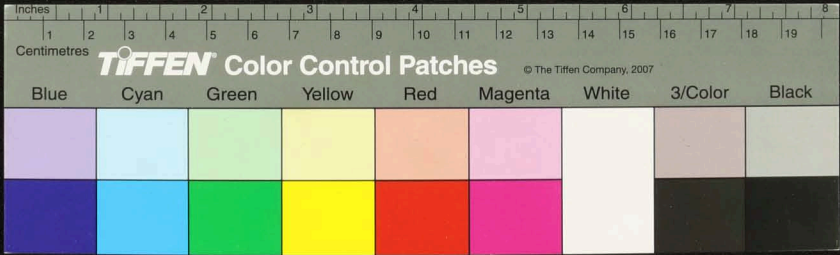
Handwritten text in an ancient script, likely Tamil, inscribed on a palm leaf. The text is arranged in approximately 15 horizontal lines across the length of the leaf. Two circular holes are visible, used for threading a cord to bind multiple leaves into a book format. The leaf shows signs of age, including slight discoloration and wear at the edges.



Handwritten text in Tamil script on a palm leaf manuscript. The text is densely packed and covers most of the leaf's surface. Two circular holes are visible, used for binding multiple leaves together.

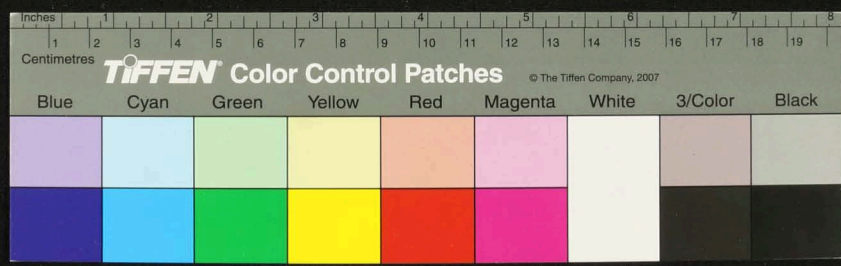


Handwritten text in Tamil script on a palm leaf manuscript. The text is densely packed and runs horizontally across the length of the leaf. Two circular holes are visible, used for binding multiple leaves together.



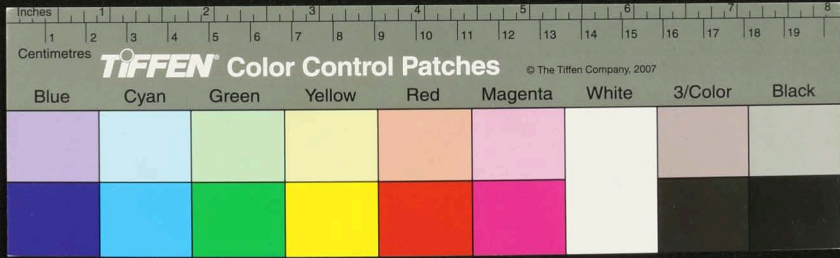


Handwritten text in Tamil script on a palm leaf manuscript. The text is densely packed and covers most of the leaf's surface. Two circular holes are visible, used for binding multiple leaves together.



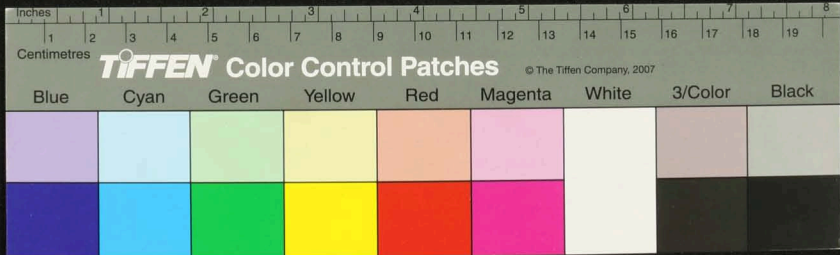


Handwritten text in Tamil script on a palm leaf manuscript. The text is densely packed and covers most of the leaf's surface. There are two circular holes visible, which were traditionally used for threading a cord to bind multiple leaves together into a book format. The script is in an older form of the Tamil language, likely from the 17th or 18th century.

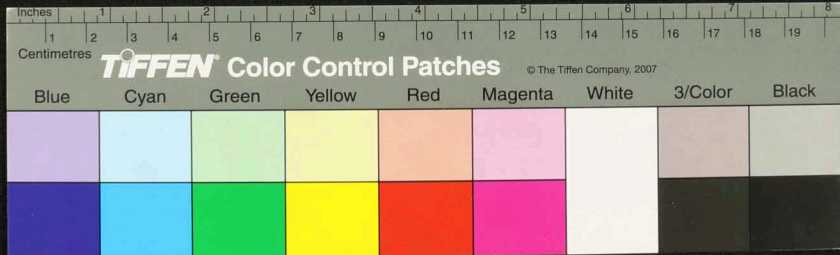




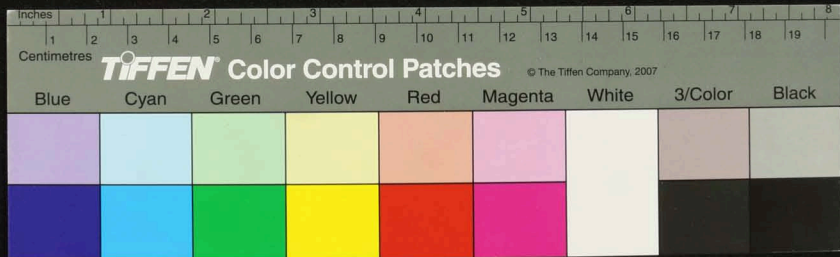
Handwritten text in Tamil script on a palm leaf manuscript. The text is arranged in approximately 12 horizontal lines across the length of the leaf. Two circular holes are visible, used for binding multiple leaves together. The script is finely etched into the natural texture of the dried leaf.



Handwritten Tamil script on a palm leaf manuscript. The text is densely packed and covers most of the leaf's surface. There are two circular holes visible, which were traditionally used for threading a cord to bind multiple leaves together into a book format. The script appears to be a form of classical or historical Tamil, possibly containing religious, philosophical, or administrative content.

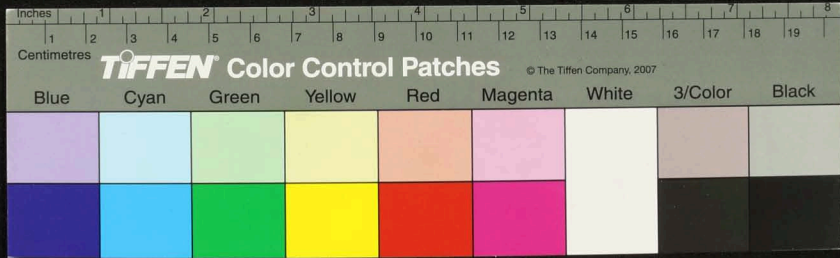


Handwritten text in Tamil script on a palm leaf manuscript. The text is densely packed and covers most of the leaf's surface. Two circular holes are visible, used for binding multiple leaves together.

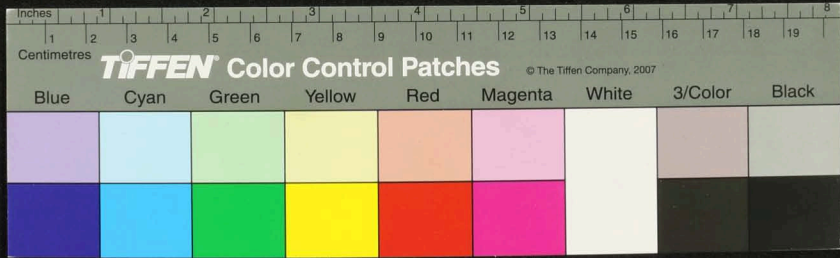




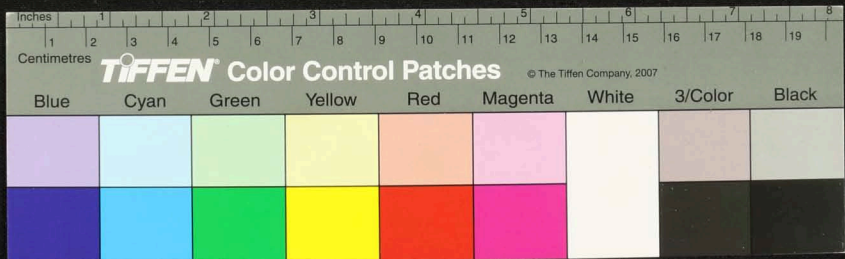
Handwritten text in Tamil script on a palm leaf manuscript. The text is densely packed and covers most of the leaf's surface. Two circular holes are visible, used for binding multiple leaves together. The script is in an older form of the Tamil language.



Handwritten text in Tamil script on a palm leaf manuscript. The text is densely packed and spans the length of the leaf. Two circular holes are visible, used for binding multiple leaves together.



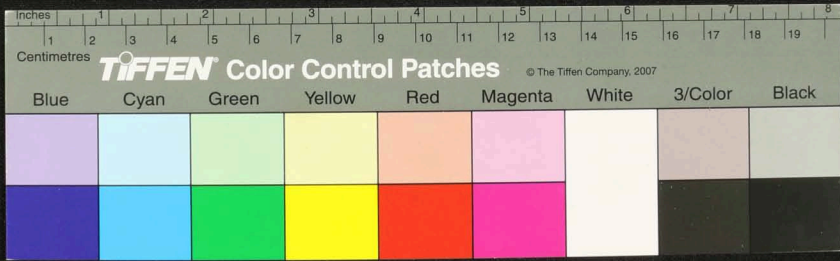
Handwritten text in Tamil script on a palm leaf manuscript. The text is densely packed and covers most of the length of the leaf. There are two circular holes visible, which were traditionally used for threading a cord to bind multiple leaves together into a book format.



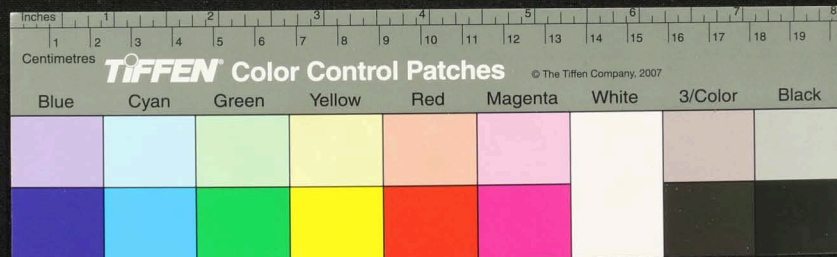




Handwritten text in Tamil script on a palm leaf manuscript. The text is densely packed and covers most of the leaf's surface. Two circular holes are visible, used for binding multiple leaves together.

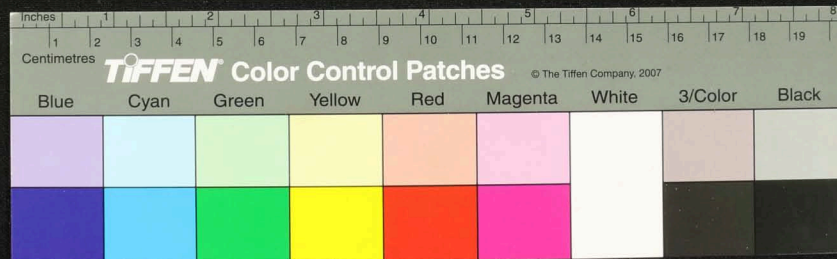


Handwritten text in Tamil script on a palm leaf manuscript. The text is densely packed and spans the length of the leaf. It appears to be a historical record or a religious text, given the context of such manuscripts. The script is clearly legible and follows the traditional layout of a palm leaf document.

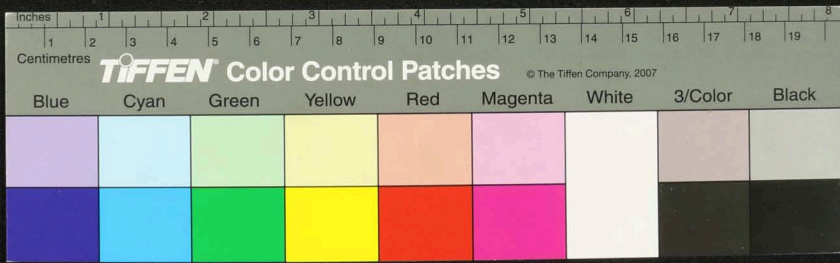


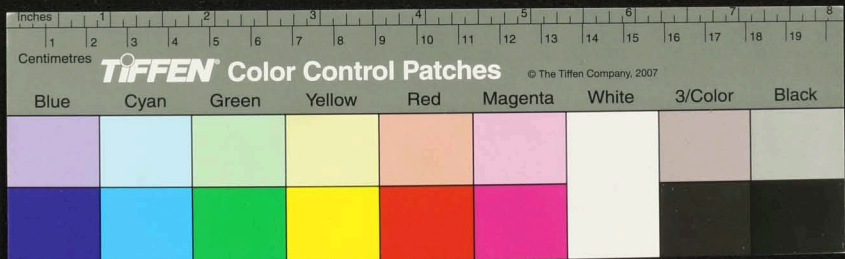
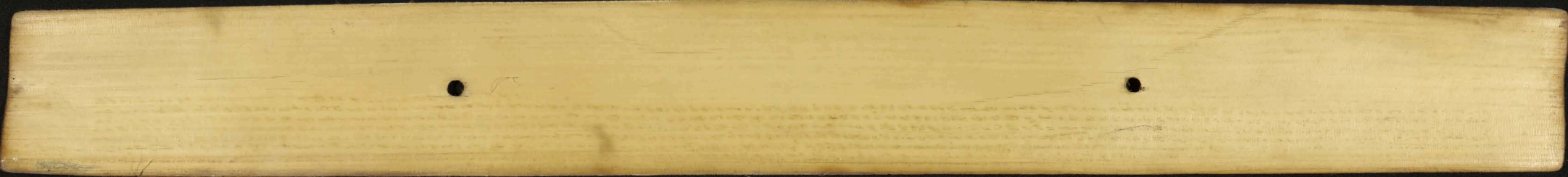


Handwritten text in Tamil script on a palm leaf manuscript. The text is arranged in approximately 10 horizontal lines across the length of the leaf. Two circular holes are visible, used for binding multiple leaves together.

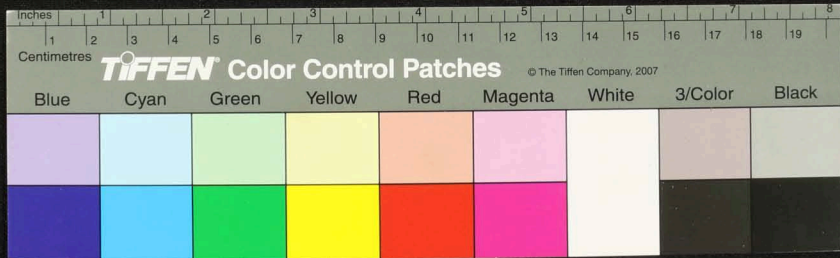


Handwritten text in an ancient script, likely cuneiform, inscribed on a wooden tablet. The text is arranged in approximately 15 horizontal lines across the length of the tablet. Two circular holes are visible, used for binding multiple tablets together. The script is densely packed and covers most of the tablet's surface.

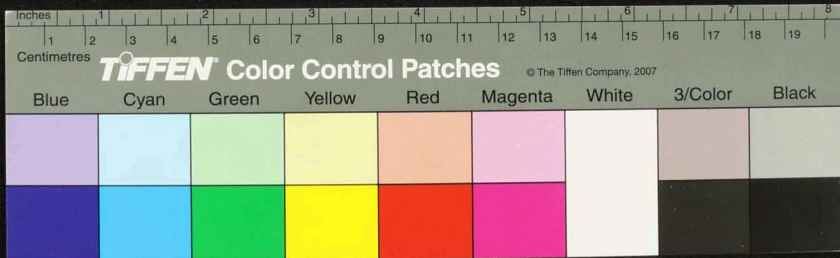




Handwritten text in Tamil script on a palm leaf manuscript. The text is arranged in approximately 10 horizontal lines across the length of the leaf. Two circular holes are visible, used for binding multiple leaves together. The script is finely etched into the surface of the dried leaf.



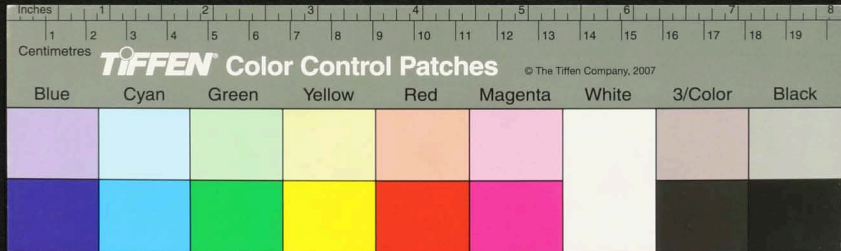
Handwritten text in Tamil script on a palm leaf manuscript. The text is arranged in several lines across the length of the leaf. Two circular holes are visible, used for binding multiple leaves together.



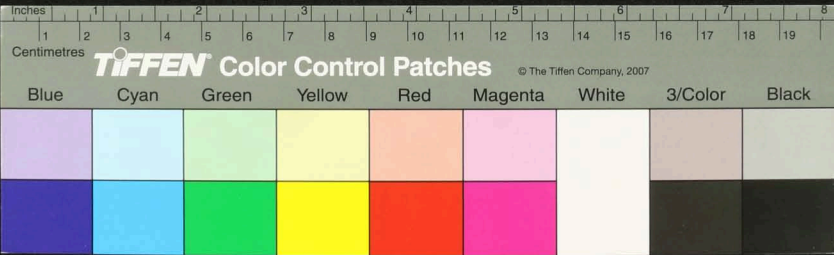




Handwritten text in Tamil script on a palm leaf manuscript. The text is arranged in approximately 15 horizontal lines across the length of the leaf. Two circular holes are visible, used for binding multiple leaves together.

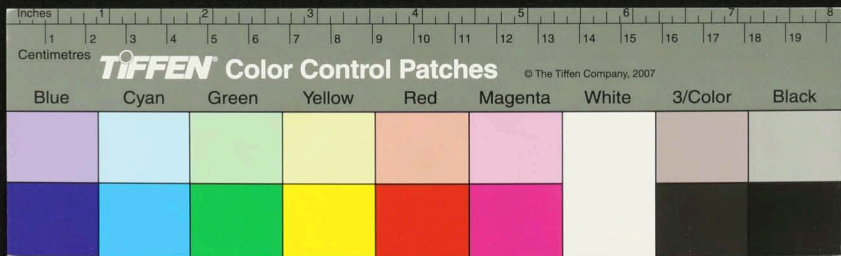
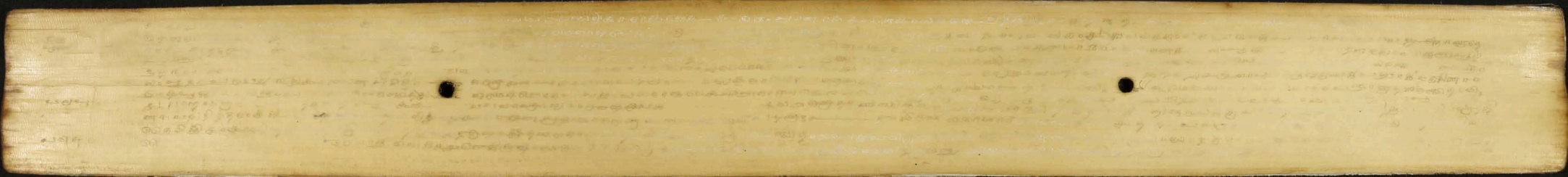


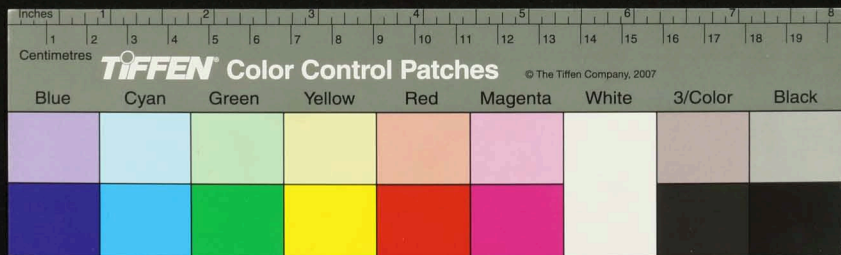
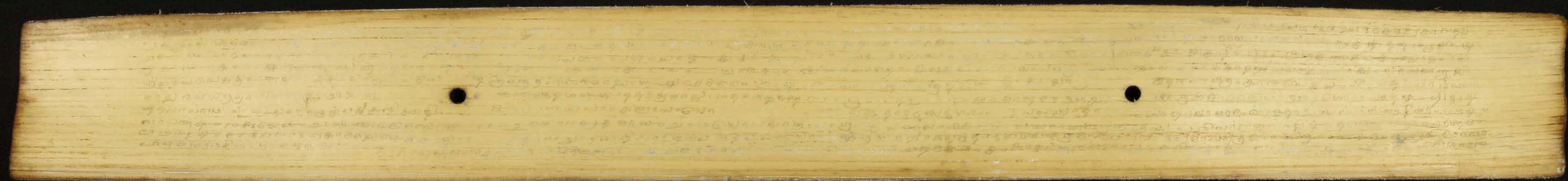
Handwritten text in Tamil script on a palm leaf manuscript. The text is arranged in approximately 10 horizontal lines across the length of the leaf. Two circular holes are visible, which were traditionally used for threading a cord to bind multiple leaves together into a book format. The script is finely etched into the surface of the dried leaf.

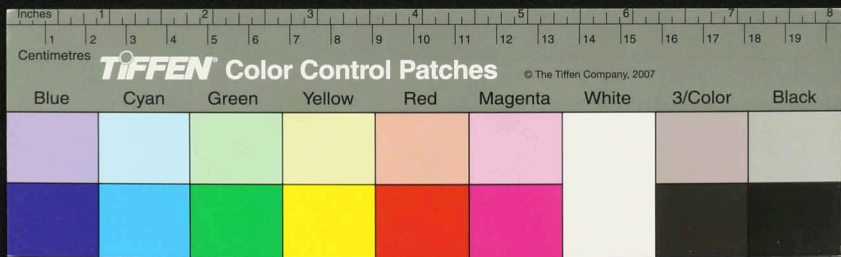






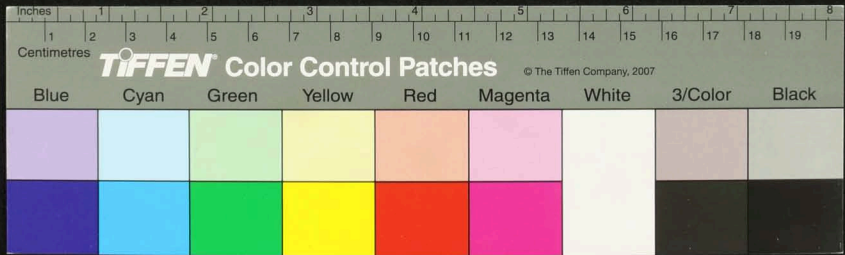




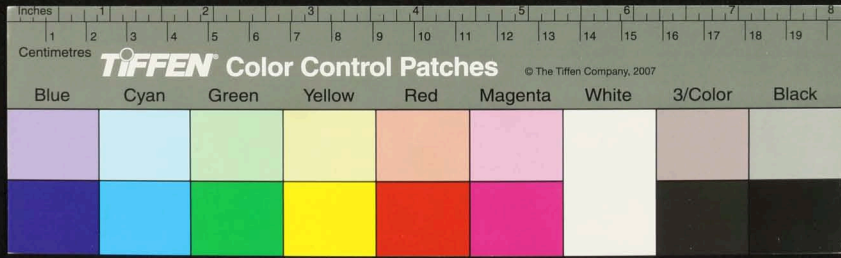




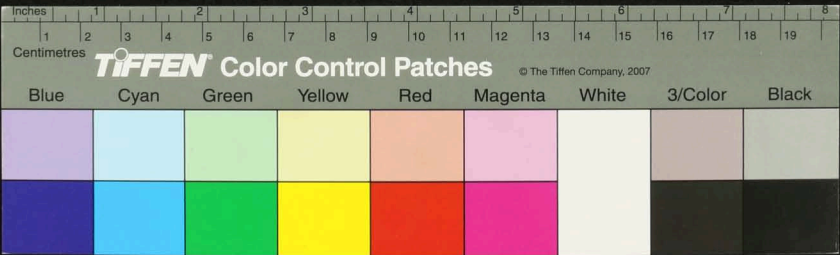
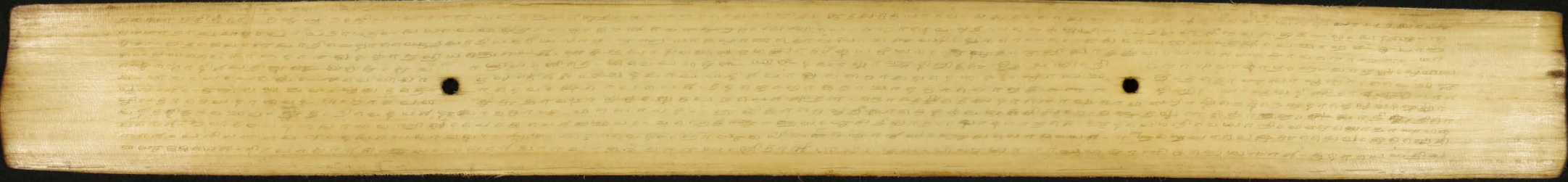
Handwritten text in Tamil script on a palm leaf manuscript. The text is arranged in approximately 10 horizontal lines across the length of the leaf. Two circular holes are visible, used for binding multiple leaves together. The script is finely etched into the natural texture of the dried leaf.

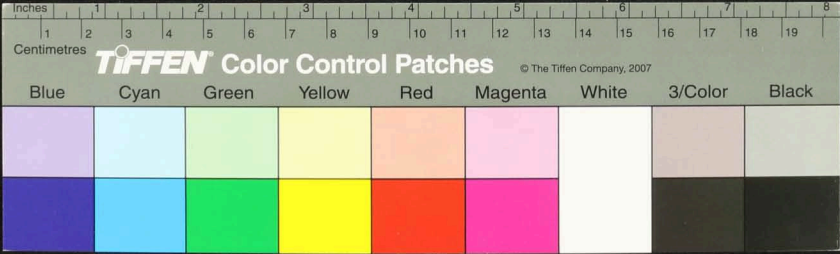
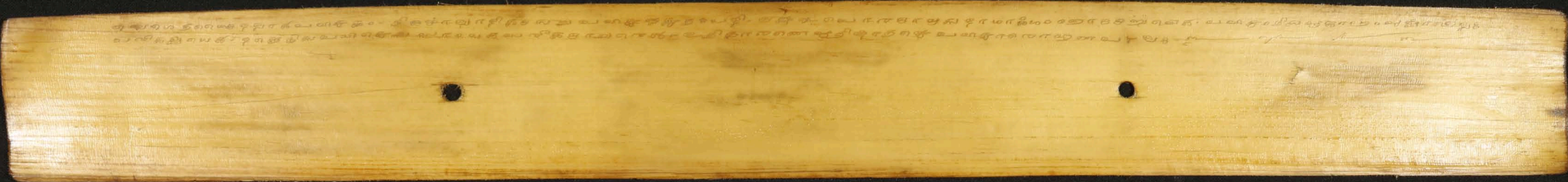


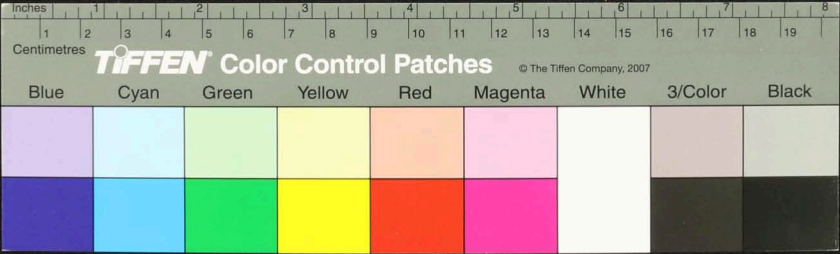
Handwritten text in Tamil script on a palm leaf manuscript. The text is arranged in approximately 12 horizontal lines across the length of the leaf. Two circular holes are visible, used for threading a cord to bind multiple leaves together. The script is finely etched into the surface of the dried leaf.



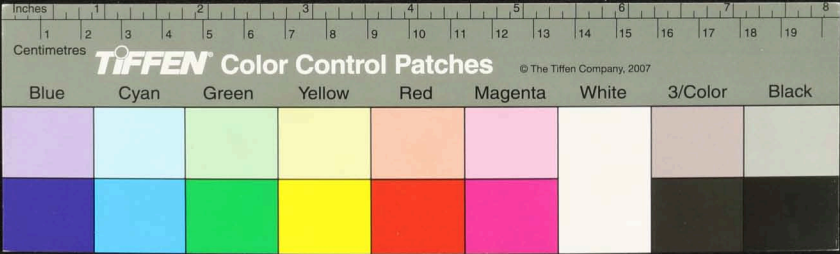








Handwritten text in Tamil script on a palm leaf manuscript. The text is arranged in approximately 15 horizontal lines across the length of the leaf. Two circular holes are visible, used for binding multiple leaves together. On the left side, there are some marginal notes or a list of numbers, including '62 1/2', '54 1/2', and '50 1/2'.





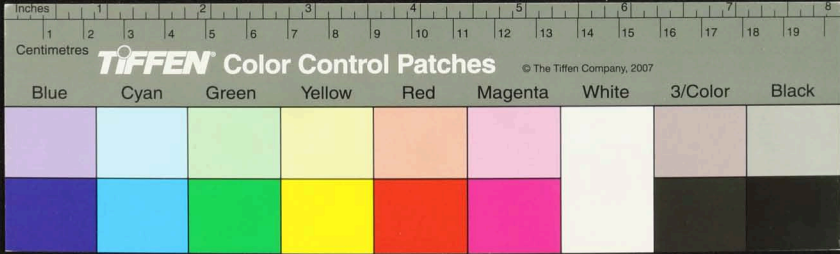




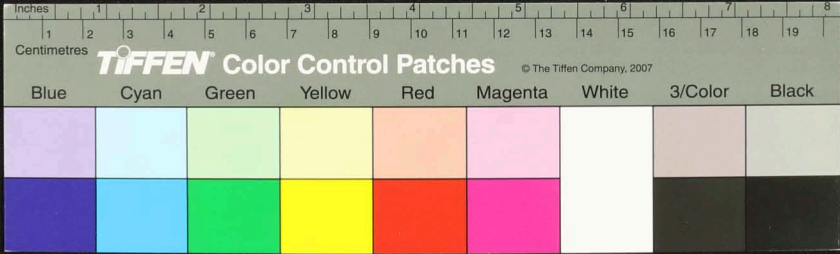




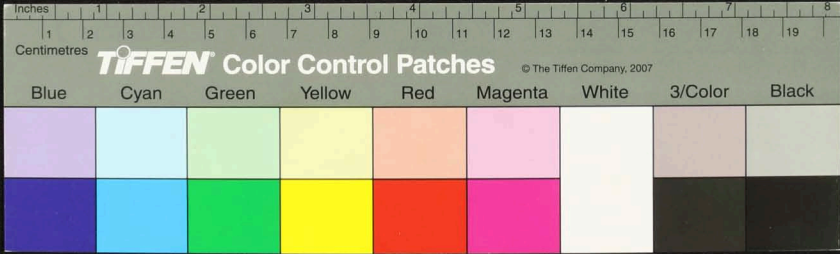
Handwritten Tamil script on a palm leaf manuscript. The text is arranged in approximately 10 horizontal lines across the length of the leaf. The script is finely etched into the natural texture of the dried leaf. The characters are in a traditional form, and the overall appearance is that of an ancient or historical document. The leaf shows signs of age, including some dark spots and slight discoloration.



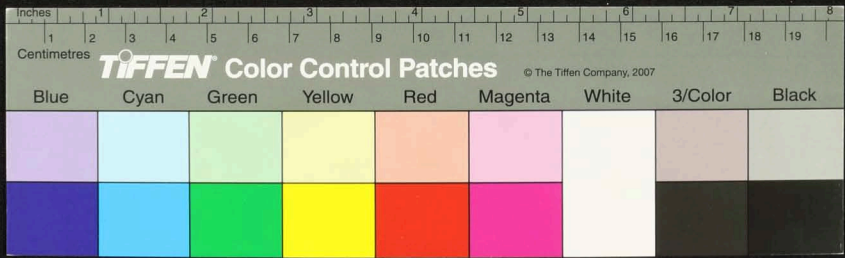
Handwritten Tamil script on a palm leaf manuscript. The text is densely packed and runs horizontally across the length of the leaf. Some characters are clearly legible, such as 'செய்தவர்களை' and 'புத்தகம்', but the rest is difficult to read due to the cursive style and fading. There are two circular holes visible on the leaf, which were traditionally used for threading a cord to bind multiple leaves together.



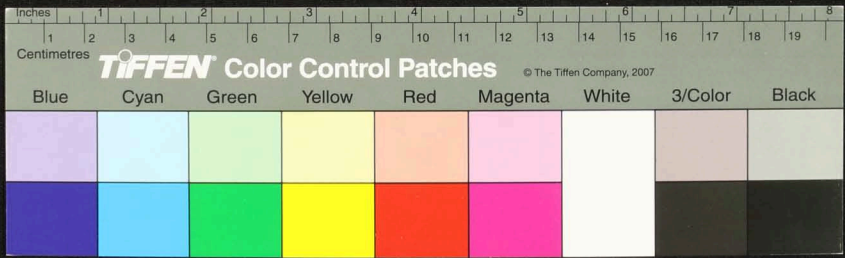
Handwritten text in Tamil script on a palm leaf manuscript. The text is arranged in approximately 10 horizontal lines across the length of the leaf. The script is dense and appears to be a form of classical or historical Tamil. There are two circular holes visible on the leaf, which were traditionally used for threading a cord to bind multiple leaves together into a book format.



Handwritten Tamil script on a palm leaf manuscript. The text is arranged in approximately 10 horizontal lines across the length of the leaf. The script is dense and appears to be a form of classical or historical Tamil. There are some dark spots and a small hole on the leaf, likely due to age or insect damage.



Handwritten text in Tamil script on a palm leaf manuscript. The text is arranged in approximately 15 horizontal lines across the length of the leaf. The script is finely etched into the surface of the dried leaf. There are some dark spots and irregularities on the leaf, particularly towards the right end, which may be due to age or damage.

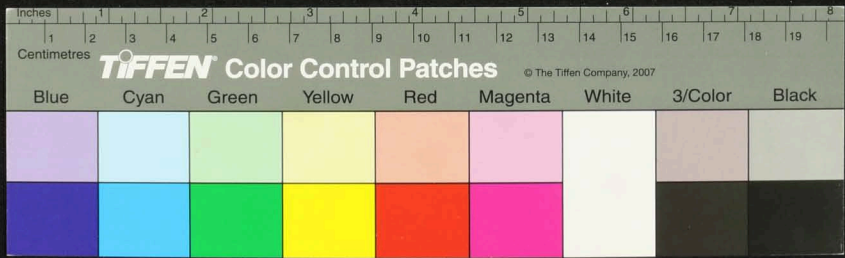


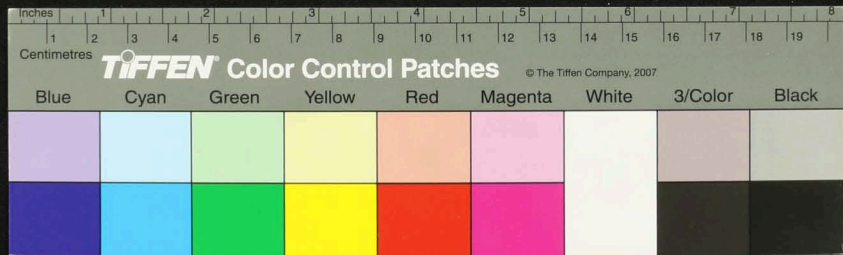
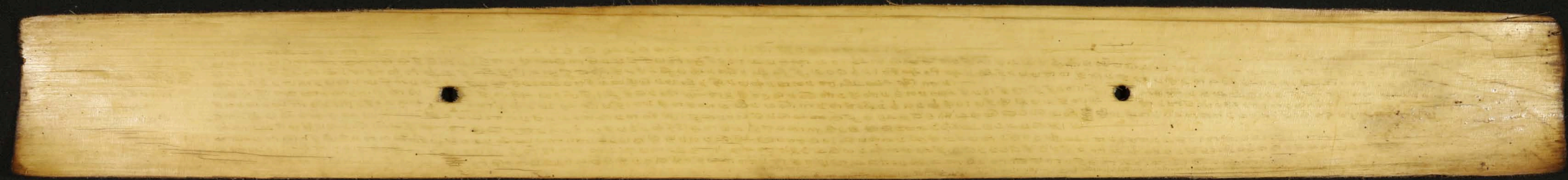






Handwritten text in Tamil script on a palm leaf manuscript. The text is arranged in approximately 12 horizontal lines across the length of the leaf. The script is dense and characteristic of traditional South Indian manuscripts.

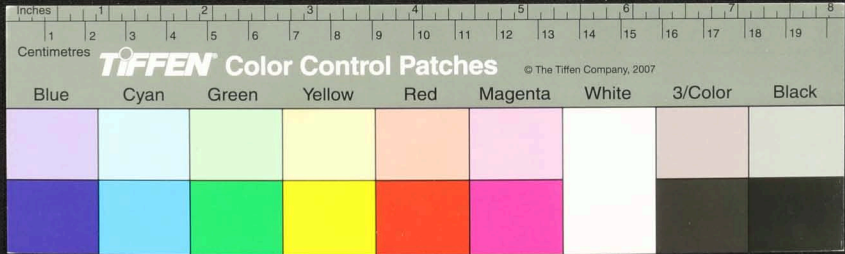








Handwritten text in Tamil script on a palm leaf manuscript. The text is densely packed and spans the length of the leaf. Two circular holes are visible, used for binding multiple leaves together.

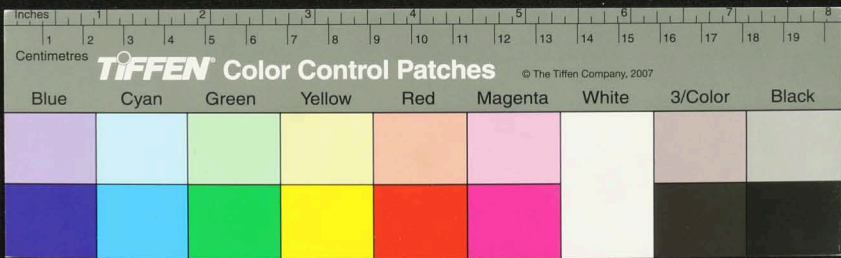






Handwritten text in Tamil script on a palm leaf manuscript. The text is densely packed and runs horizontally across the length of the leaf. There are two circular holes visible, which were traditionally used for threading a cord to bind multiple leaves together.

Handwritten notes in Tamil script on the left margin of the palm leaf.

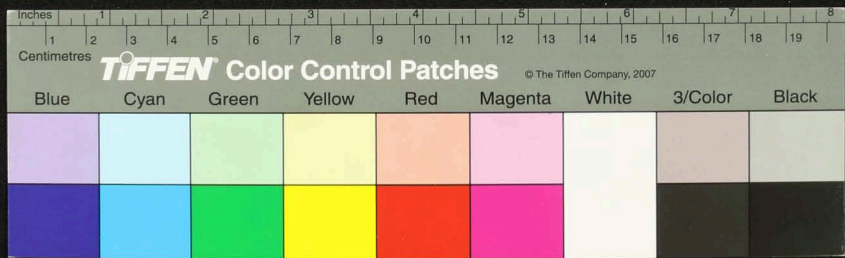




Handwritten text in Tamil script on a palm leaf manuscript. The text is densely packed and spans the length of the leaf. Two circular holes are visible, used for binding multiple leaves together.



Handwritten text in Tamil script on a palm leaf manuscript. The text is arranged in approximately 15 horizontal lines across the length of the leaf. Two circular holes are visible, which were traditionally used for threading a cord to bind multiple leaves together into a book format. The script is finely etched into the natural texture of the dried leaf.



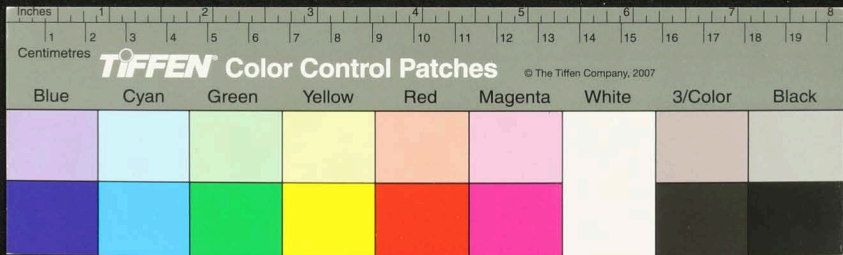




Handwritten text in Tamil script on a palm leaf manuscript. The text is densely packed and runs horizontally across the length of the leaf. Two circular holes are visible, used for binding multiple leaves together.



Handwritten Tamil script on a palm leaf manuscript. The text is densely packed in approximately 12 horizontal lines across the length of the leaf. Two circular holes are visible, used for threading a cord to bind multiple leaves together.

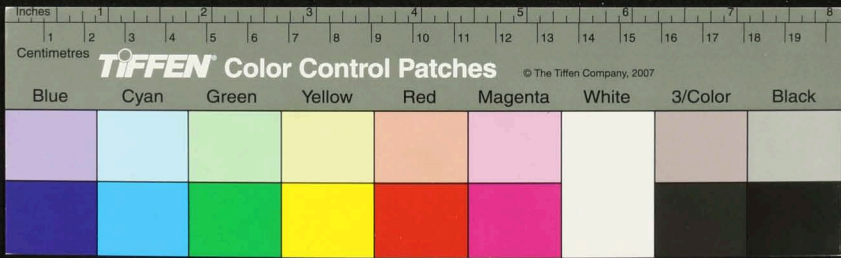




Handwritten text in an ancient script, likely Tamil, inscribed on a palm leaf. The text is arranged in approximately 15 horizontal lines across the length of the leaf. The script is finely etched into the surface of the dried leaf.

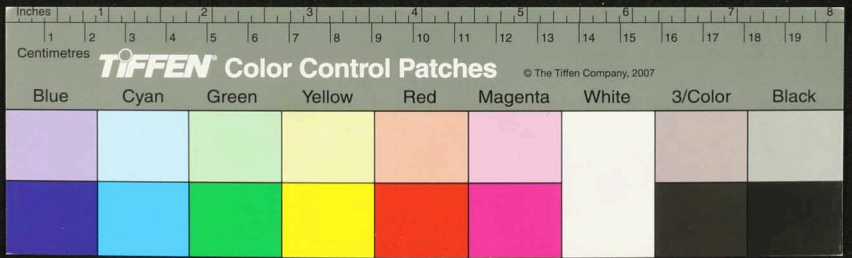


Handwritten text in Tamil script on a palm leaf manuscript. The text is densely packed and spans the entire length of the leaf. Two circular holes are visible, used for binding multiple leaves together.





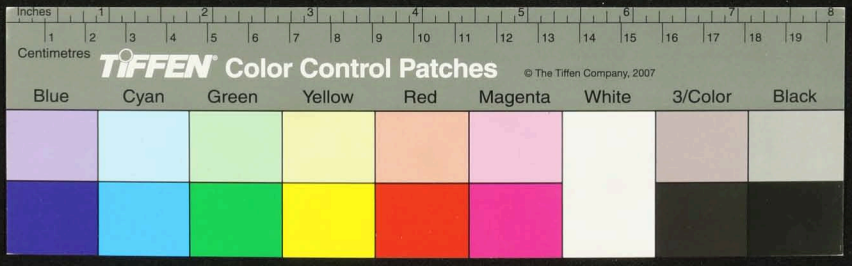
Handwritten text on a palm-leaf manuscript strip, featuring two circular holes for binding. The text is written in a cursive script, likely Tamil or Grantha, and is arranged in approximately 15 horizontal lines across the length of the leaf. The leaf is light brown and shows signs of age and wear.







Handwritten text in Tamil script on a palm leaf manuscript. The text is densely packed and covers most of the leaf's surface. There are two circular holes visible, which were traditionally used for threading a cord to bind multiple leaves together into a book format.





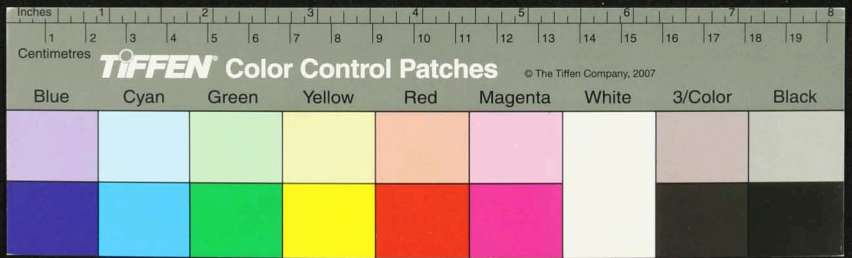


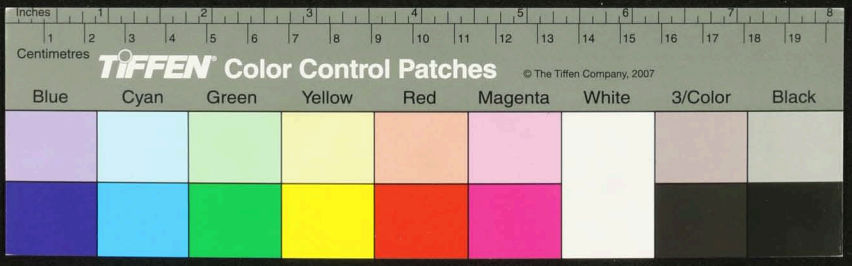
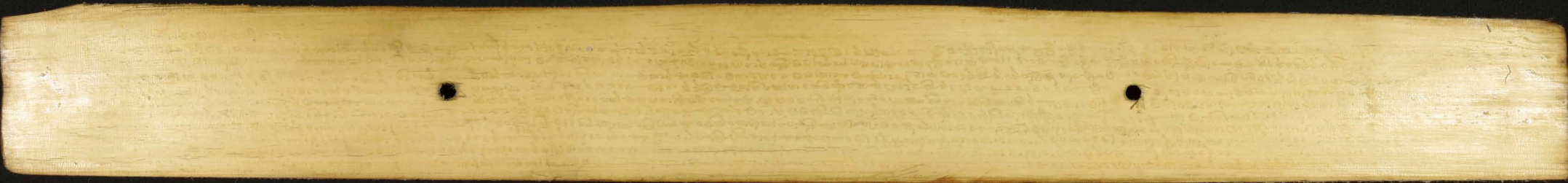


Handwritten text in Tamil script on a palm leaf manuscript. The text is densely packed and covers most of the leaf's surface. There are two circular holes visible, which were traditionally used for threading a cord to bind multiple leaves together into a book format. The script is in an older form of the Tamil language.

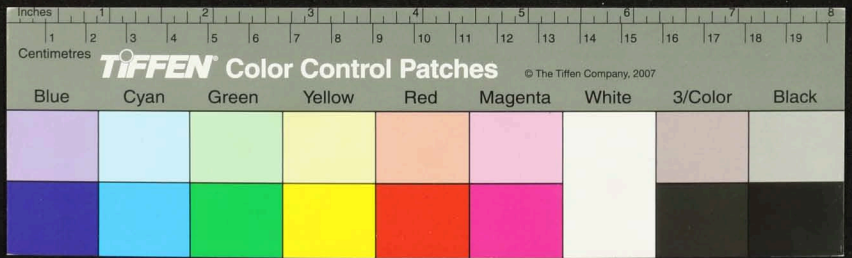


Handwritten text in an ancient script, likely Tamil, inscribed on a palm leaf manuscript. The text is arranged in approximately 12 horizontal lines across the length of the leaf. The script is finely etched into the surface of the dried leaf, which shows natural aging and some dark spots.



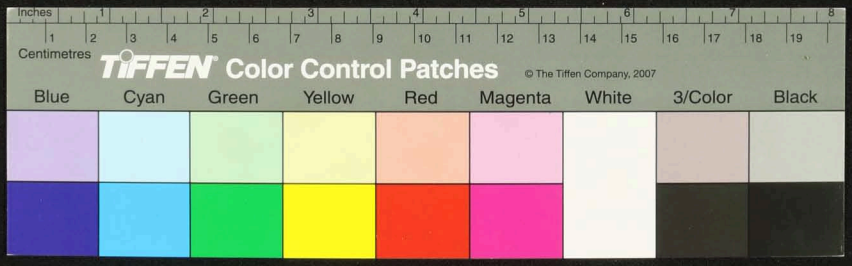


Handwritten text in Tamil script on a palm leaf manuscript. The text is densely packed and covers most of the leaf's surface. There are two circular holes visible, which were traditionally used for threading a cord to bind multiple leaves together into a book format. The script is in an older form of the Tamil language.





Handwritten text in Tamil script on a palm leaf manuscript. The text is densely packed and runs horizontally across the length of the leaf. There are two circular holes visible, which were traditionally used for threading a cord to bind multiple leaves together into a book format.

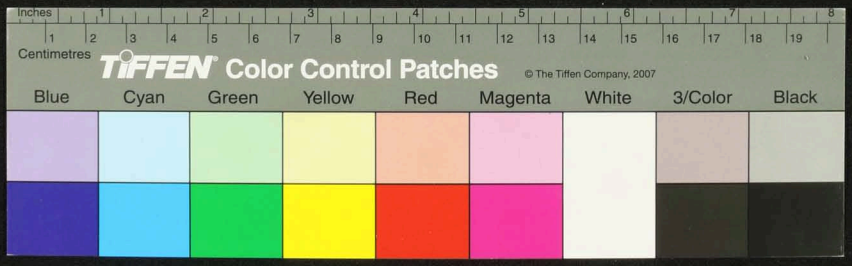




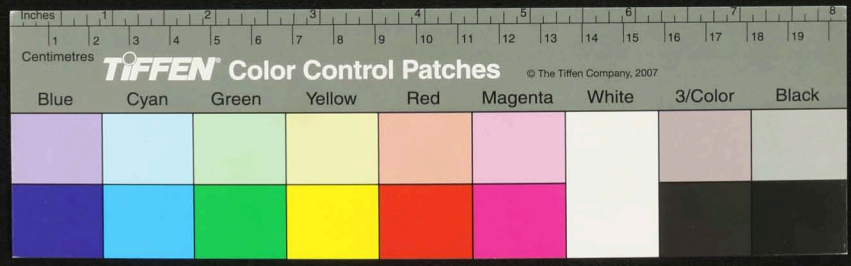




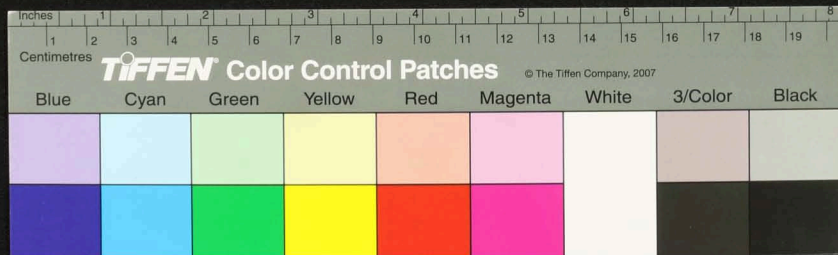
Handwritten text in Tamil script on a palm leaf manuscript. The text is densely packed and covers the entire length of the leaf. Two circular holes are visible, used for binding multiple leaves together.



Handwritten text in an ancient script, likely Tamil, inscribed on a palm leaf. The text is arranged in approximately 15 horizontal lines across the length of the leaf. Two circular holes are visible, which were traditionally used for threading a cord to bind multiple leaves together into a book format. The script is finely etched into the surface of the dried leaf.

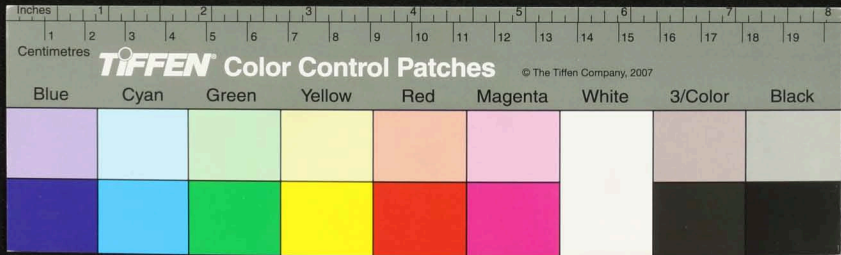


Handwritten text in Tamil script on a palm leaf manuscript. The text is arranged in approximately 15 horizontal lines across the length of the leaf. Two circular holes are visible, one near the left end and one near the right end, which were traditionally used for threading a cord to bind multiple leaves together into a book format. The script is finely etched into the surface of the dried leaf.

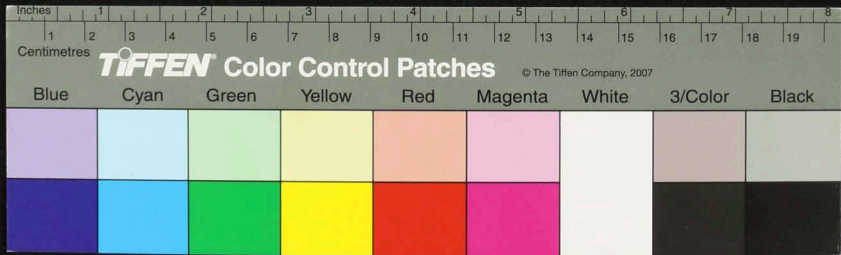




Handwritten text in Tamil script on a palm leaf manuscript. The text is arranged in approximately 15 horizontal lines across the length of the leaf. Two circular holes are visible, used for threading a cord to bind multiple leaves together. The script is finely etched into the surface of the dried leaf.



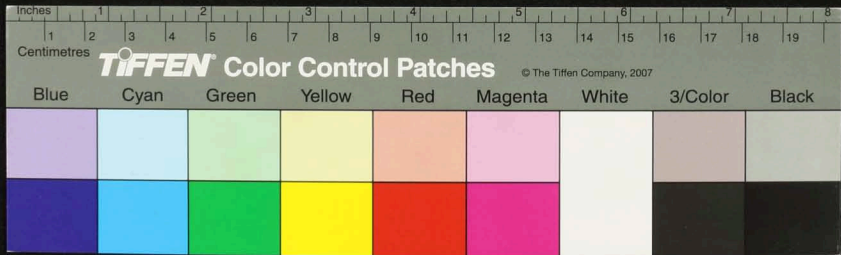
Handwritten text in an ancient script, likely Tamil, inscribed on a palm leaf manuscript. The text is arranged in approximately 15 horizontal lines across the length of the leaf. Two circular holes are visible, which were traditionally used for threading a cord to bind multiple leaves together into a book format. The leaf shows signs of age, including some staining and wear.

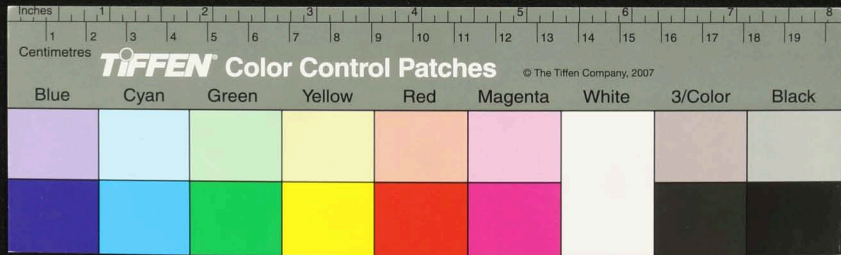


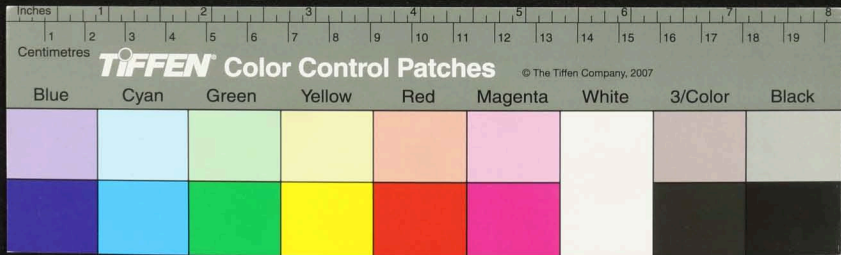




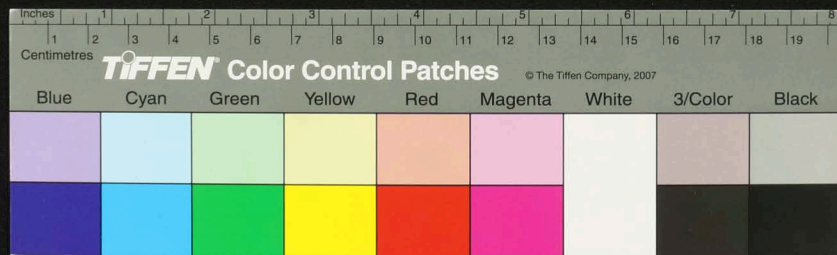
Handwritten text in Tamil script on a palm leaf manuscript. The text is densely packed and covers most of the leaf's surface. There are two circular holes visible, which were traditionally used for threading a cord to bind multiple leaves together. On the left side, there are some faint markings that appear to be the number '65' and a signature or date '1952'.



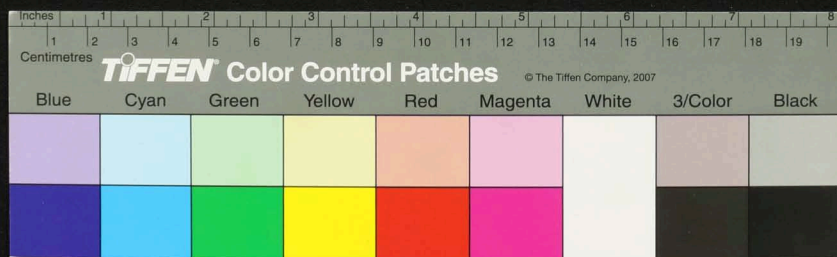




Handwritten text in Tamil script on a palm leaf manuscript. The text is arranged in approximately 15 horizontal lines across the length of the leaf. Two circular holes are visible, which were traditionally used for threading a cord to bind multiple leaves together into a book format. The script is finely etched into the surface of the dried leaf.

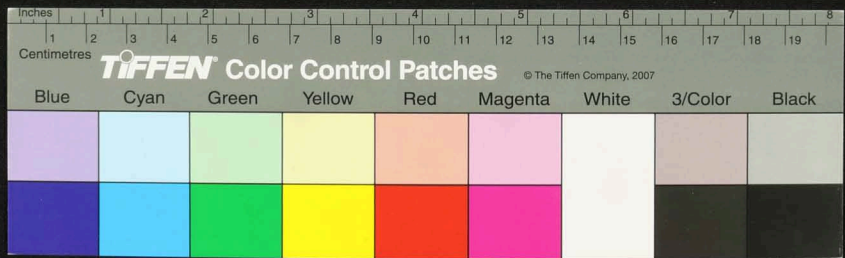








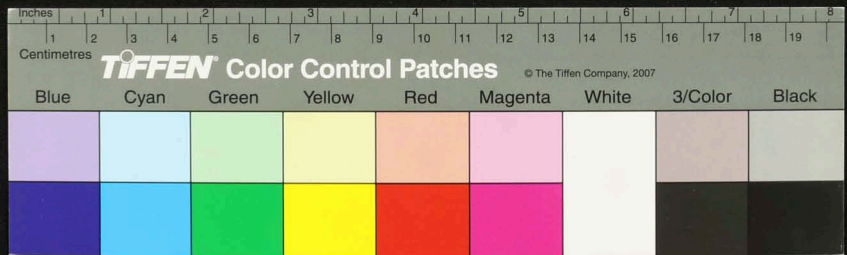
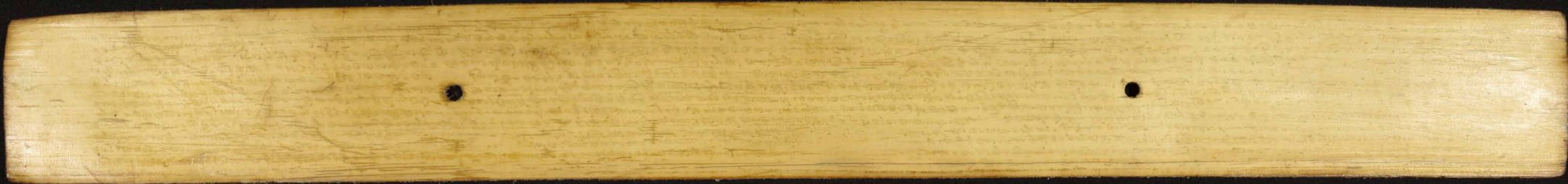
Handwritten text in Tamil script on a palm leaf manuscript. The text is densely packed and covers most of the leaf's surface. Two circular holes are visible, which were traditionally used for threading a cord to bind multiple leaves together into a book format.

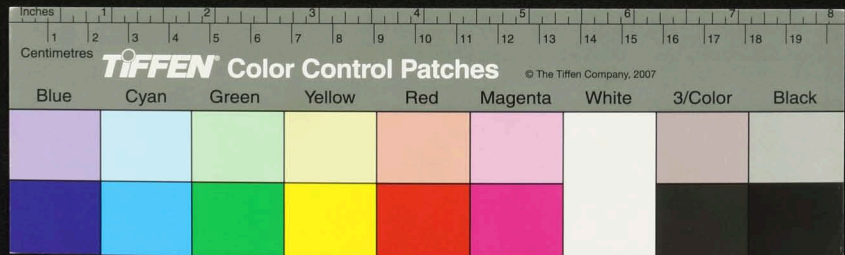


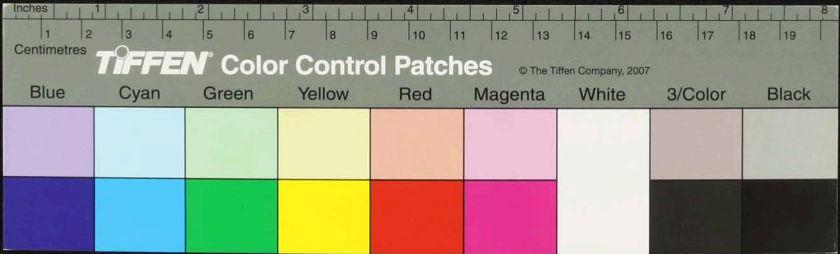


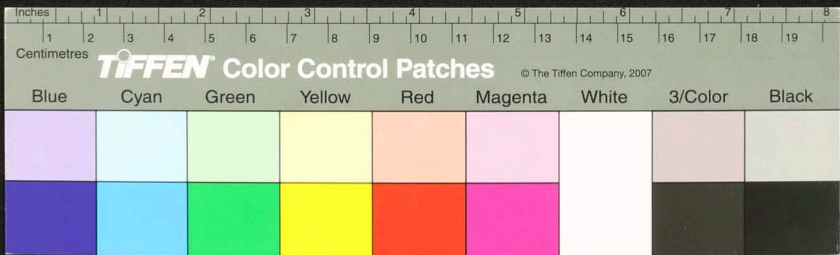




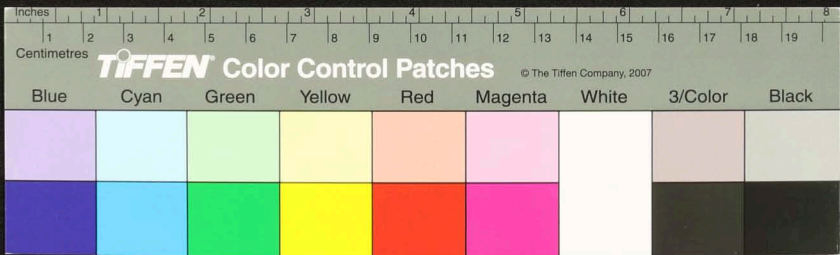








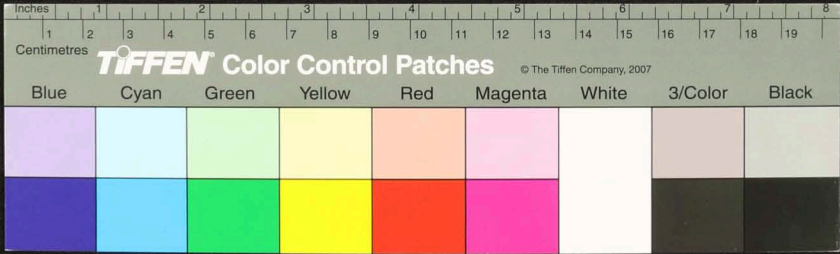
Handwritten text in Tamil script on a palm leaf manuscript. The text is arranged in three columns across the length of the leaf. The script is finely etched into the surface of the dried leaf. There are two circular holes on the leaf, one on the left and one on the right, which were traditionally used for threading a cord to bind multiple leaves together into a book format.



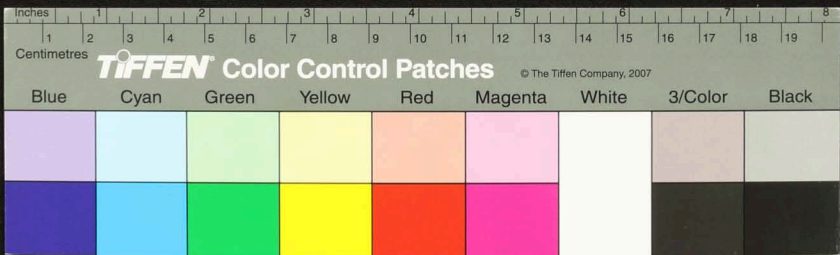
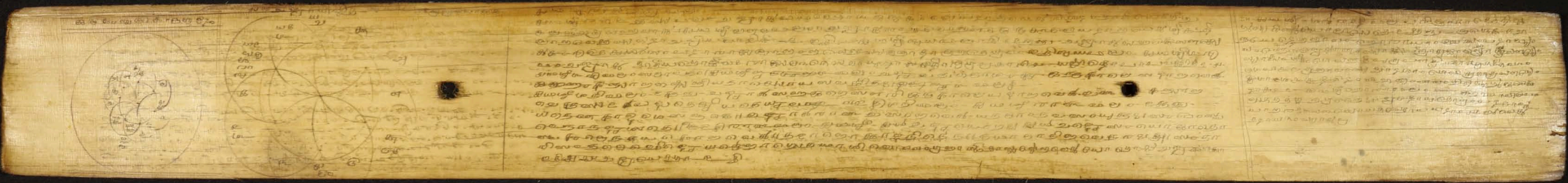
Handwritten text in Tamil script on a palm leaf manuscript. The text is arranged in approximately 15 horizontal lines across the length of the leaf. The script is dense and appears to be a form of classical or religious Tamil. There are some dark spots and signs of wear on the leaf, particularly near the center.

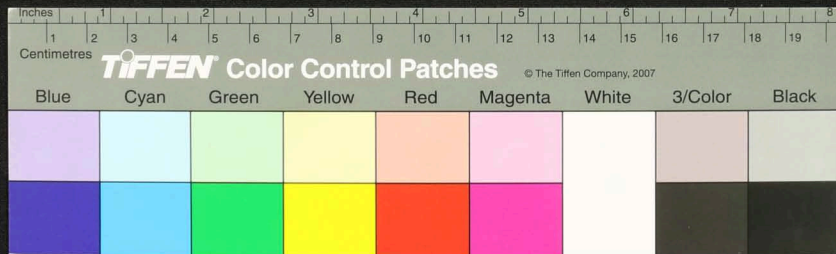
Handwritten header text above the table: சீவக விலாபம் திருமுறை

பாட்டு	பாட்டு	பாட்டு	பாட்டு	பாட்டு	பாட்டு	பாட்டு	பாட்டு	பாட்டு	பாட்டு
1	2	3	4	5	6	7	8	9	10
11	12	13	14	15	16	17	18	19	20
21	22	23	24	25	26	27	28	29	30
31	32	33	34	35	36	37	38	39	40
41	42	43	44	45	46	47	48	49	50
51	52	53	54	55	56	57	58	59	60
61	62	63	64	65	66	67	68	69	70
71	72	73	74	75	76	77	78	79	80
81	82	83	84	85	86	87	88	89	90
91	92	93	94	95	96	97	98	99	100

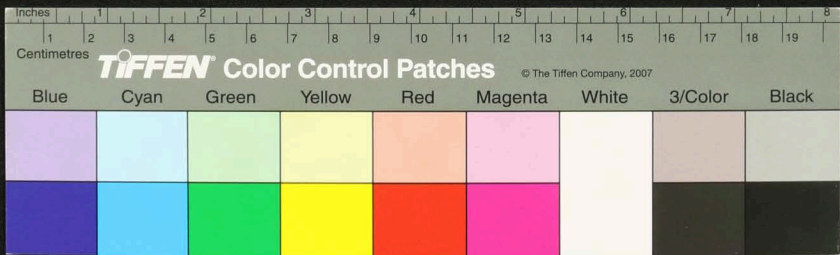
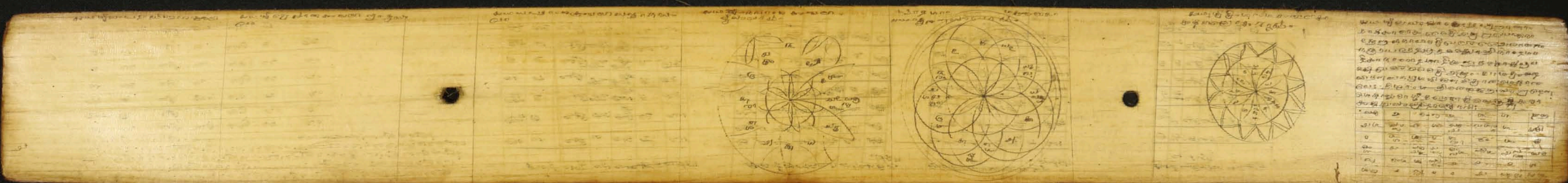








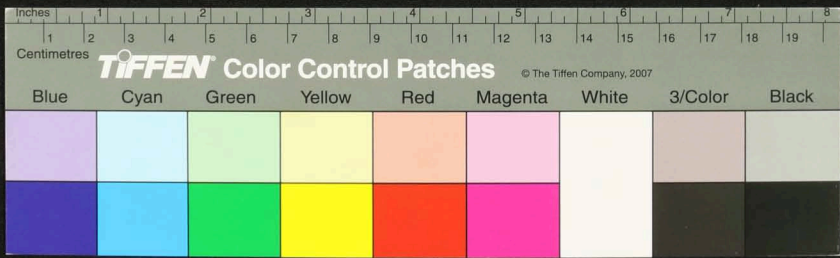


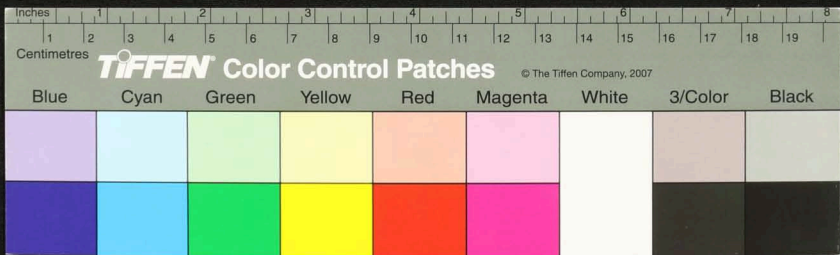
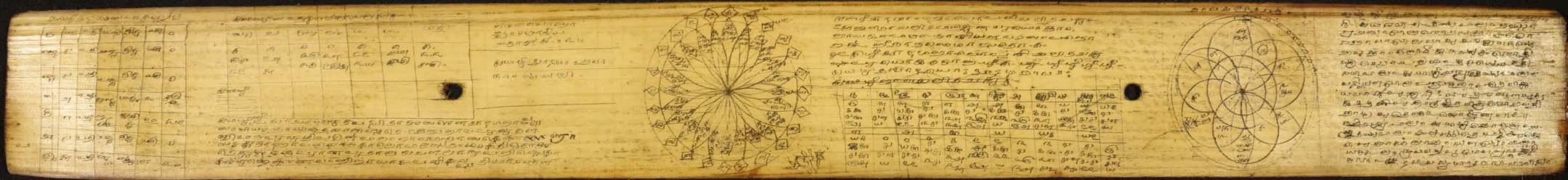


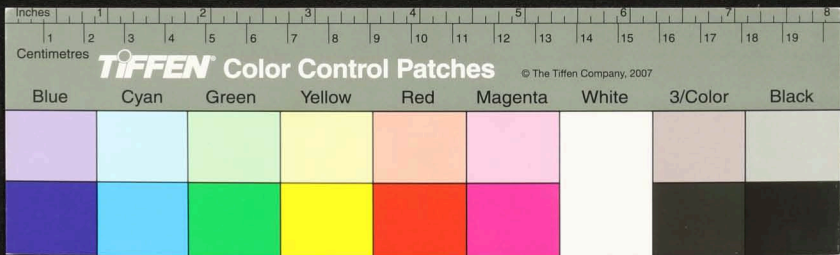
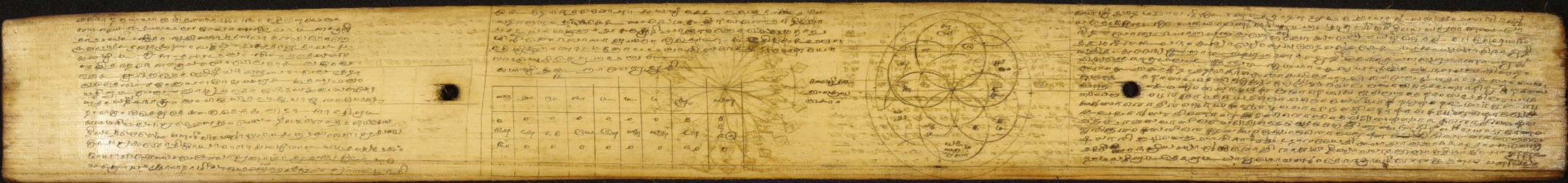
Handwritten text in Tamil script on a palm leaf manuscript. The text is organized into several columns, with some sections containing tables of numbers and characters. The script is finely etched into the surface of the leaf.

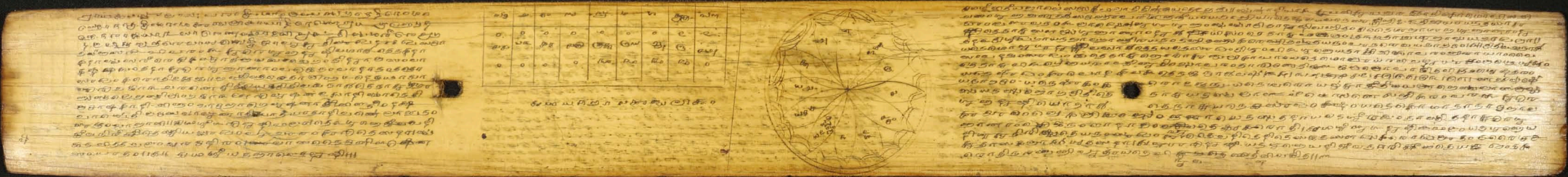
20	u	25	u	25	u	25	u
21	u	25	u	25	u	25	u
22	u	25	u	25	u	25	u
23	u	25	u	25	u	25	u
24	u	25	u	25	u	25	u
25	u	25	u	25	u	25	u
26	u	25	u	25	u	25	u
27	u	25	u	25	u	25	u
28	u	25	u	25	u	25	u
29	u	25	u	25	u	25	u
30	u	25	u	25	u	25	u

20	u	25	u	25	u	25	u
21	u	25	u	25	u	25	u
22	u	25	u	25	u	25	u
23	u	25	u	25	u	25	u
24	u	25	u	25	u	25	u
25	u	25	u	25	u	25	u
26	u	25	u	25	u	25	u
27	u	25	u	25	u	25	u
28	u	25	u	25	u	25	u
29	u	25	u	25	u	25	u
30	u	25	u	25	u	25	u

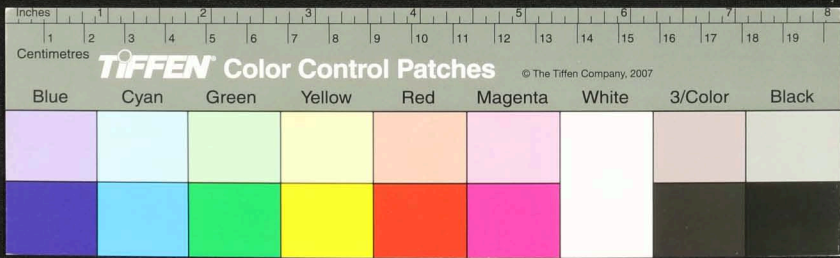








0	0	0	0	0	0	0	0	0	0
0	0	0	0	0	0	0	0	0	0
0	0	0	0	0	0	0	0	0	0
0	0	0	0	0	0	0	0	0	0





Handwritten text in a cursive script, likely a list or table of numbers.



Handwritten text in a cursive script, likely a list or table of numbers.

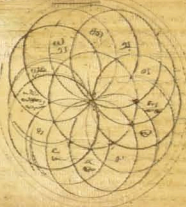
Handwritten text in a cursive script, likely a list or table of numbers.

Handwritten text in a cursive script.

100	10	10	10	10	10	10	10	10	10
0	0	0	0	0	0	0	0	0	0
100	10	10	10	10	10	10	10	10	10
0	0	0	0	0	0	0	0	0	0



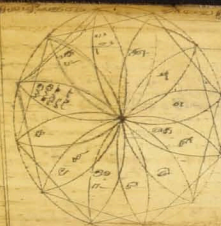
Handwritten text at the top left of the palm leaf manuscript.



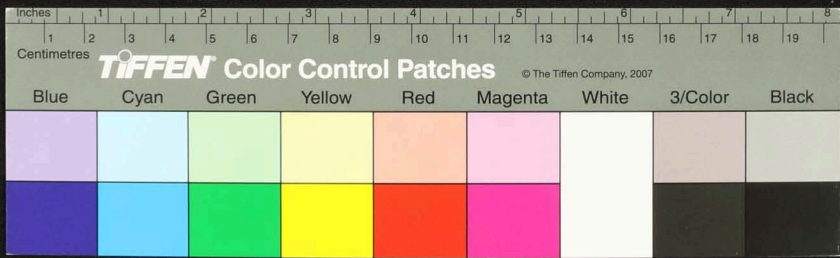
Main body of handwritten text in the left section of the palm leaf manuscript, written in a traditional script.

Handwritten text in the middle section of the palm leaf manuscript, positioned above the table.

A small table with multiple columns and rows of handwritten numbers or characters, likely a calendar or a data table.



Handwritten text in the right section of the palm leaf manuscript, continuing the script from the left.

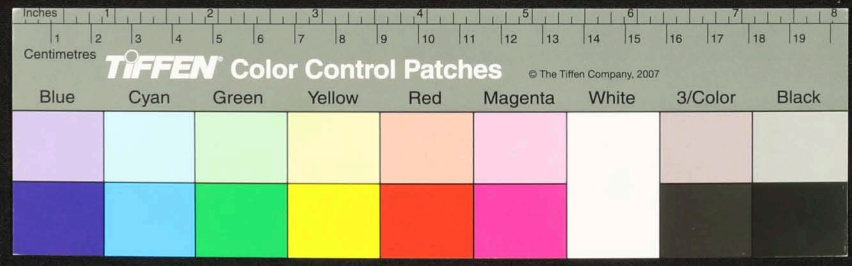


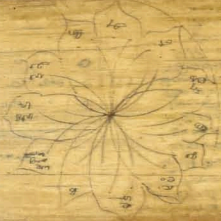
Handwritten text in Tamil script, likely a historical record or account, spanning the length of the palm leaf manuscript.

செய்த	மீ	பெ	கொ	மீ	மீ	மீ	மீ	மீ	மீ
0	0	0	0	0	0	0	0	0	0
0	0	0	0	0	0	0	0	0	0
0	0	0	0	0	0	0	0	0	0

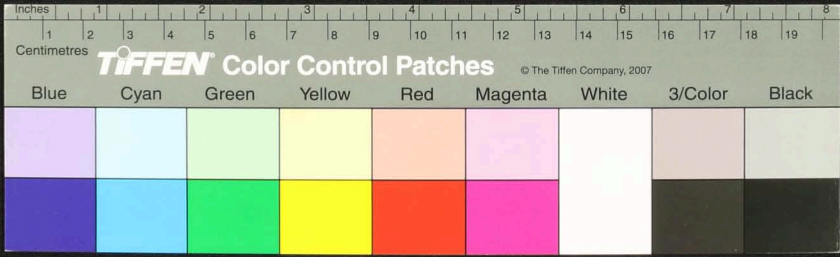
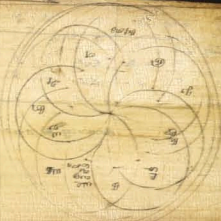


Handwritten text in Tamil script, continuing the historical record or account from the left side of the leaf.





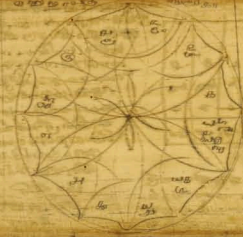
0	0	0	0	0	0	0	0	0	0
0	0	0	0	0	0	0	0	0	0
0	0	0	0	0	0	0	0	0	0
0	0	0	0	0	0	0	0	0	0
0	0	0	0	0	0	0	0	0	0
0	0	0	0	0	0	0	0	0	0
0	0	0	0	0	0	0	0	0	0
0	0	0	0	0	0	0	0	0	0
0	0	0	0	0	0	0	0	0	0
0	0	0	0	0	0	0	0	0	0



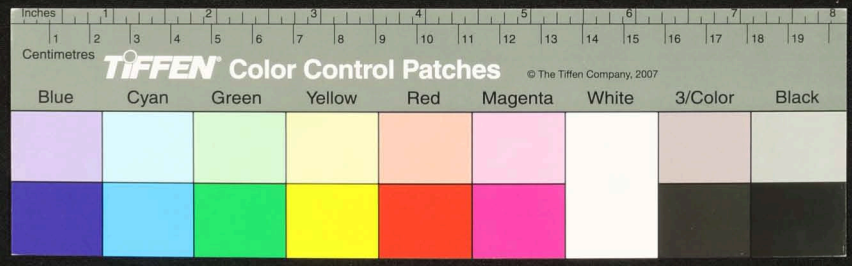


Handwritten text in Tamil script, including a table on the left and a geometric diagram in the center.

செயல்	அளவு	பெயர்	அளவு	பெயர்	அளவு	பெயர்	அளவு	பெயர்
1	2	3	4	5	6	7	8	9
10	11	12	13	14	15	16	17	18
19	20	21	22	23	24	25	26	27
28	29	30	31	32	33	34	35	36



Handwritten text in Tamil script, continuing from the left page.

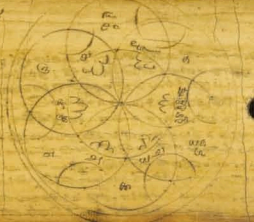


Handwritten text in Tamil script, likely a historical record or account. The text is densely packed and covers the left portion of the palm leaf.

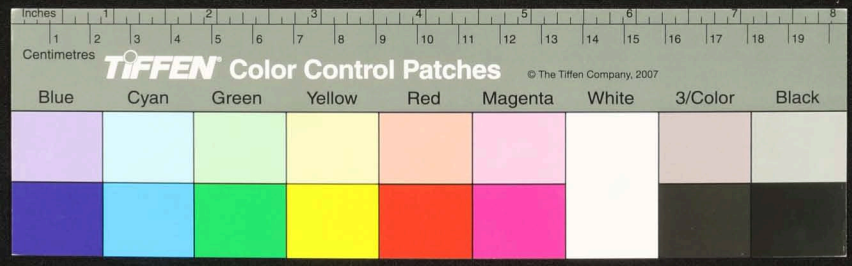
Handwritten text in Tamil script, possibly a title or introductory section, located above the table.

Handwritten title above the table: *புலியேரி-புலியேரி-புலியேரி*

சு	ம	பு	ம	பு	ம	பு	ம	பு	ம
0	0	0	0	0	0	0	0	0	0
0	0	0	0	0	0	0	0	0	0
0	0	0	0	0	0	0	0	0	0



Handwritten text in Tamil script, continuing the record or account, located on the right portion of the palm leaf.

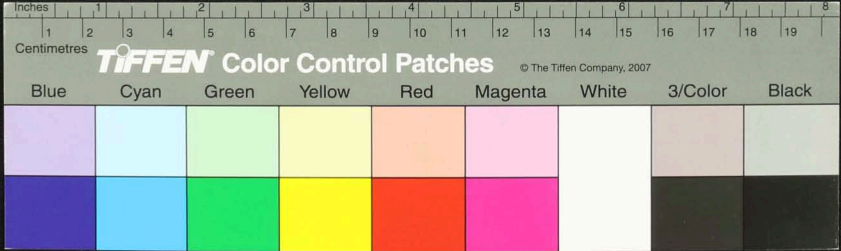
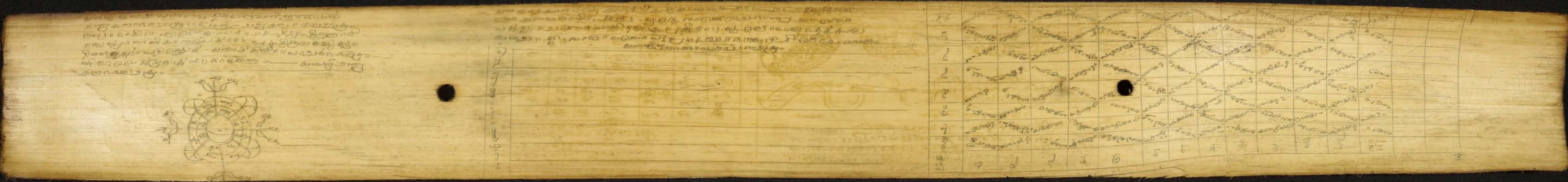




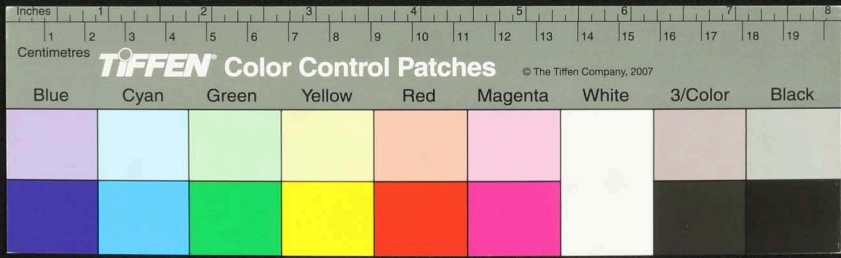
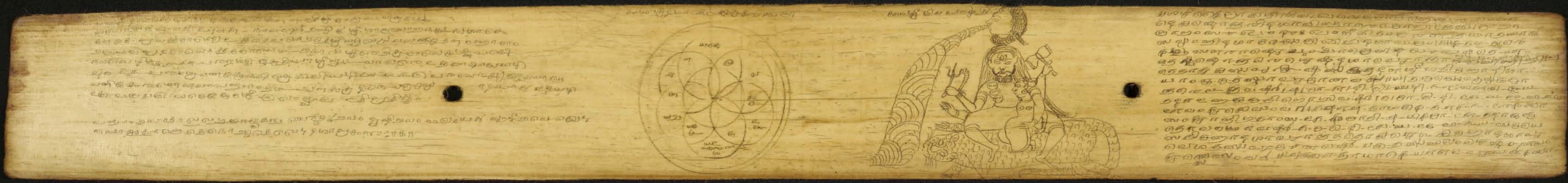




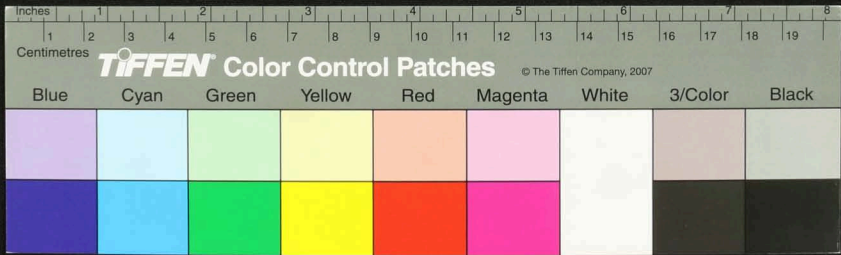






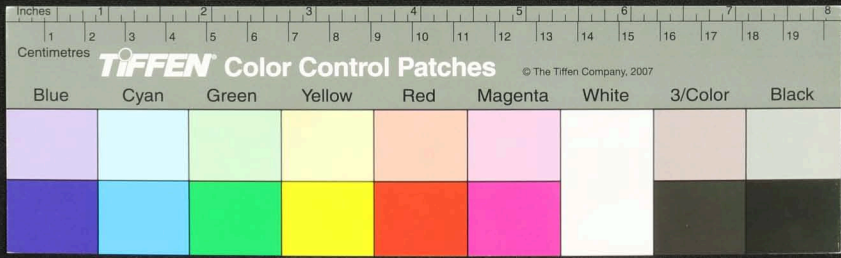


Handwritten text in Tamil script on a palm leaf manuscript. The text is arranged in approximately 10 horizontal lines across the length of the leaf. The script is dense and characteristic of traditional South Indian manuscripts.





Handwritten text in Tamil script on a palm leaf manuscript. The text is arranged in three columns across the length of the leaf. The script is finely etched into the surface of the dried leaf. There are two circular holes visible, which were traditionally used for threading a cord to bind multiple leaves together into a book format.





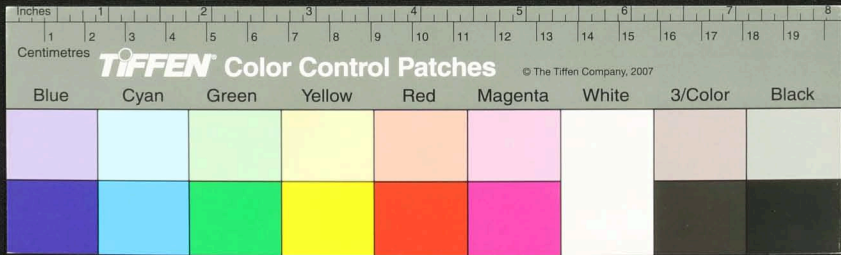
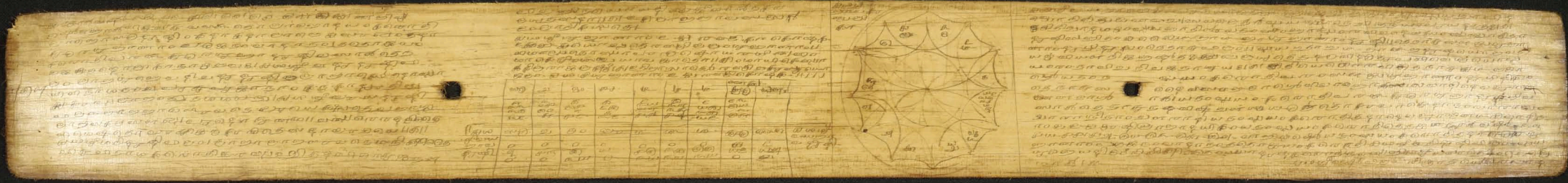








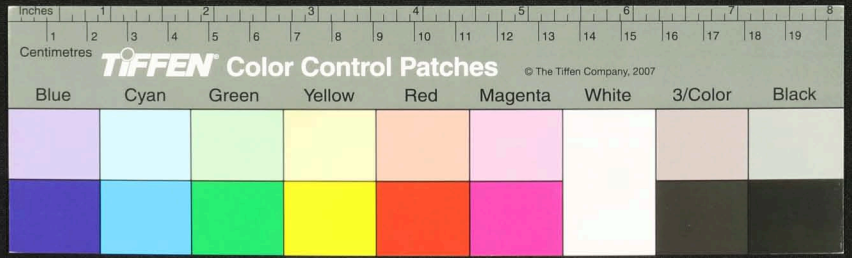






1. வழுதாண்டி... வழுதாண்டி...  
 2. கி...  
 3. ...  
 4. ...  
 5. ...  
 6. ...  
 7. ...  
 8. ...  
 9. ...  
 10. ...  
 11. ...  
 12. ...  
 13. ...  
 14. ...  
 15. ...  
 16. ...  
 17. ...  
 18. ...  
 19. ...  
 20. ...

1. ...  
 2. ...  
 3. ...  
 4. ...  
 5. ...  
 6. ...  
 7. ...  
 8. ...  
 9. ...  
 10. ...  
 11. ...  
 12. ...  
 13. ...  
 14. ...  
 15. ...  
 16. ...  
 17. ...  
 18. ...  
 19. ...  
 20. ...



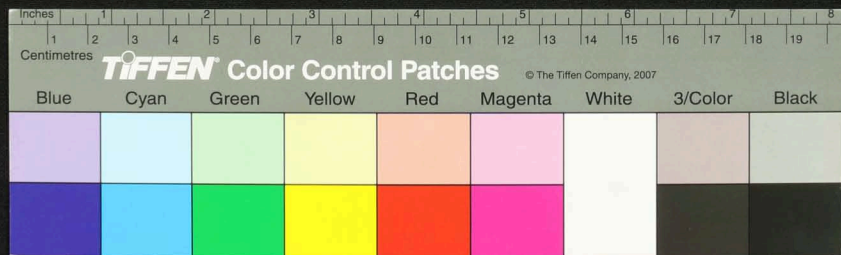








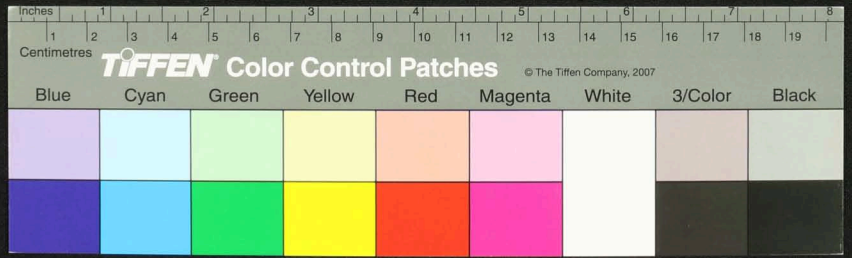






Handwritten Tamil script on the left side of the palm leaf manuscript. The text is arranged in approximately 10 horizontal lines, written in a traditional style.

Handwritten Tamil script on the right side of the palm leaf manuscript. The text is arranged in approximately 10 horizontal lines, continuing the script from the left side.



Handwritten text in Tamil script on a palm leaf manuscript. The text is arranged in approximately 10 horizontal lines across the length of the leaf. The script is finely etched into the surface of the dried leaf. The leaf shows signs of age, including some dark spots and a slightly uneven texture.

