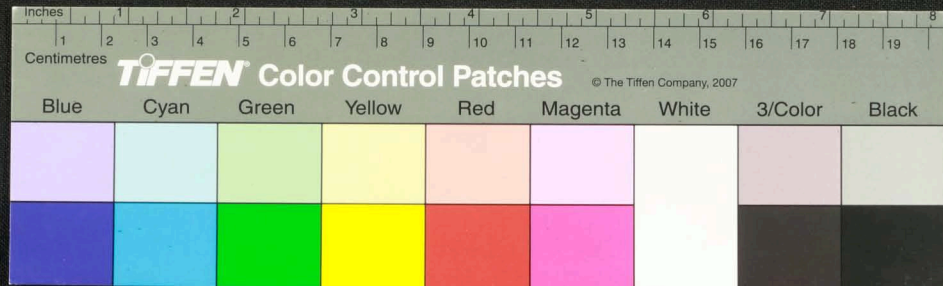
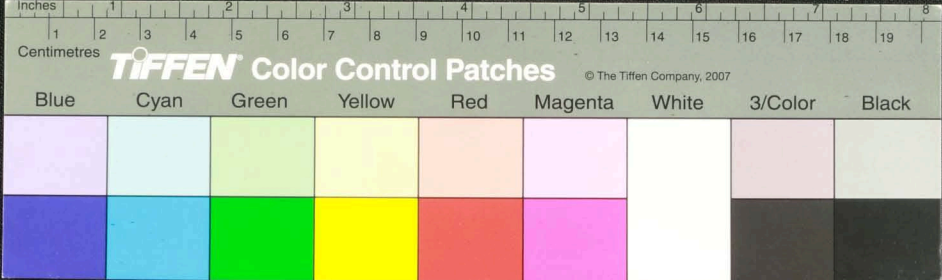


Handwritten text in Tamil script on a palm leaf manuscript. The text is arranged in approximately three horizontal lines. Two circular holes are visible, which were traditionally used for threading a cord to bind multiple leaves together. The script is finely etched into the surface of the dried leaf.

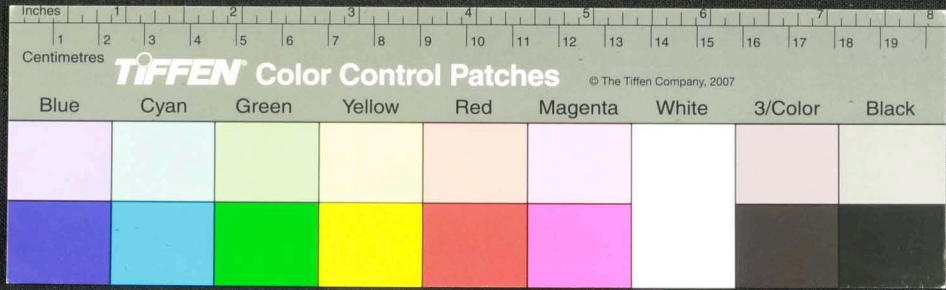


வினாயகாய நம: ||
 சிவாய நம: ||
 4

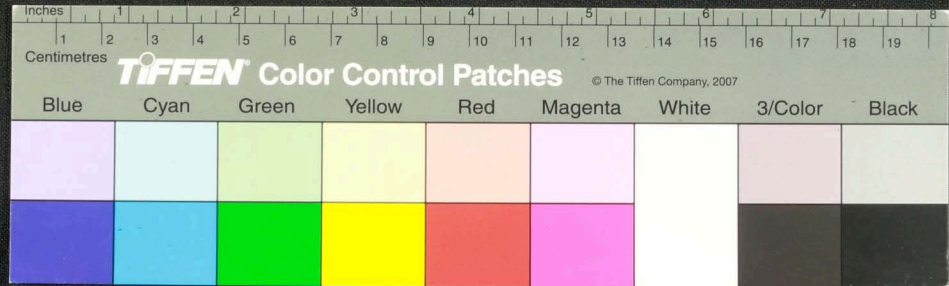
மகாலட்சுமி காலகாலம் பிழைக்கின்றவர்களுக்கு உதவியாக இருக்கட்டும். இவ்வாறு உதவி செய்து கொடுக்கப்படுகிறது. இவ்வாறு உதவி செய்து கொடுக்கப்படுகிறது. இவ்வாறு உதவி செய்து கொடுக்கப்படுகிறது.



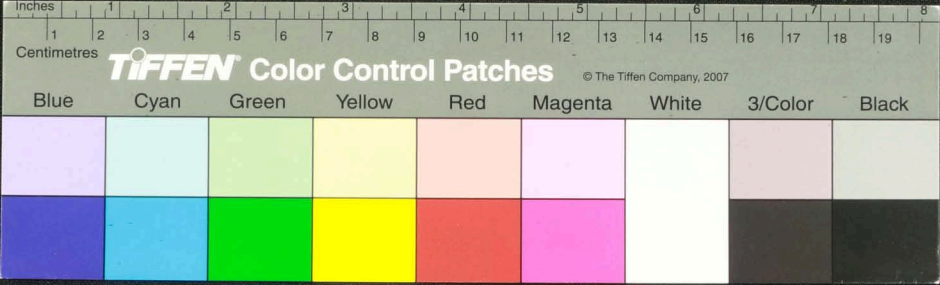
Handwritten text in Tamil script on a palm leaf manuscript. The text is arranged in approximately 10 horizontal lines across the length of the leaf. Two circular holes are visible, which were traditionally used for threading a cord to bind multiple leaves together into a book format. The script is finely etched into the surface of the dried leaf.



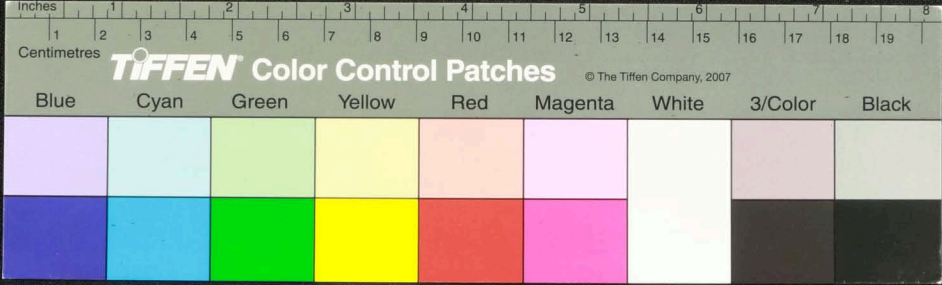
Handwritten Tamil script on a palm leaf manuscript. The text is arranged in approximately 10 horizontal lines. On the left side, there are two small labels: 'உணவு' (Uṇavu) and 'உ' (U). On the right side, there is a small number '3'. The script is densely packed and appears to be a form of historical Tamil used for recording information such as recipes or medical instructions.



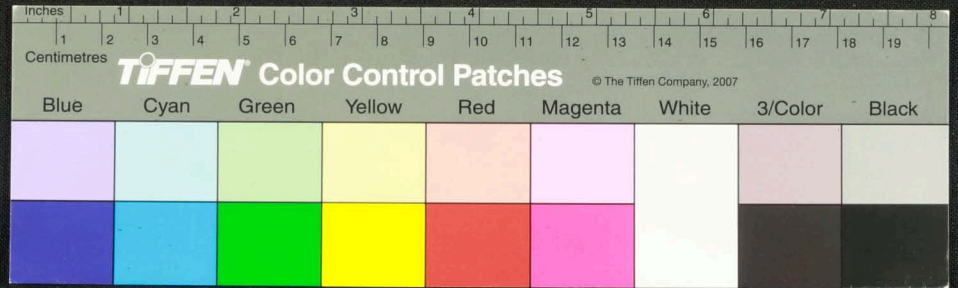
Handwritten text in Tamil script on a palm leaf manuscript. The text is arranged in approximately 12 horizontal lines. On the left side of the leaf, the word 'புலியே' (Puliyē) is written vertically. Two circular holes are visible on the leaf, used for threading a cord to bind multiple leaves together. The script is finely etched into the natural texture of the dried leaf.



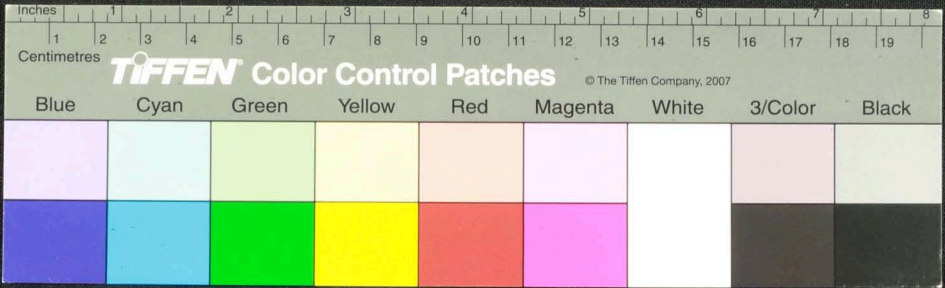
Handwritten text in Tamil script on a palm leaf manuscript. The text is arranged in approximately 10 horizontal lines across the length of the leaf. The script is a traditional form of the Tamil language. There are two circular holes visible on the leaf, which were traditionally used for threading a cord to bind multiple leaves together into a book format. The leaf is light brown and shows some signs of age and wear.



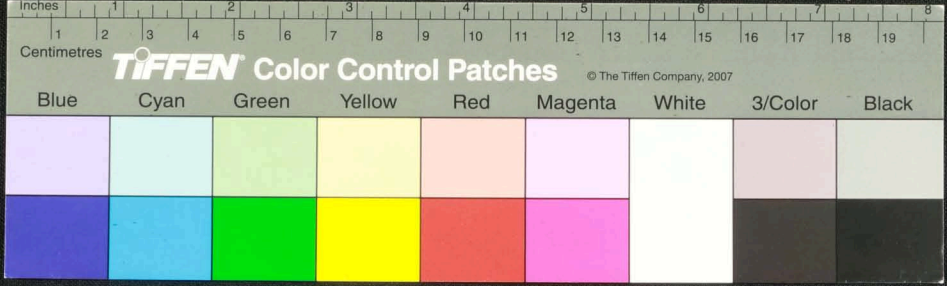
Handwritten text in Tamil script on a palm leaf manuscript. The text is arranged in a single line across the length of the leaf. There are two circular holes punched through the leaf, one on the left and one on the right, used for binding multiple leaves together.

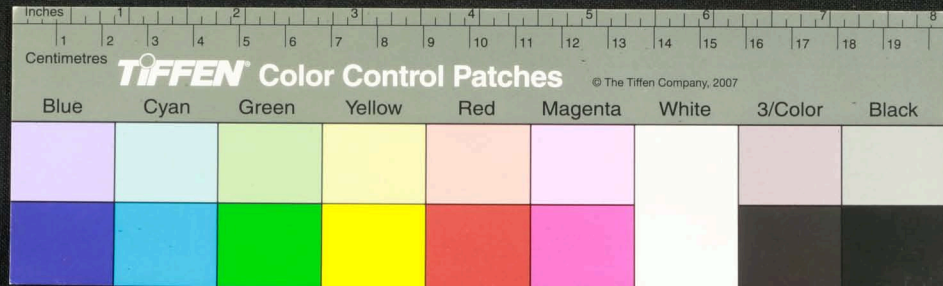


Handwritten text in Tamil script on a palm leaf manuscript. The text is arranged in approximately 10 horizontal lines across the length of the leaf. Two circular holes are visible, used for binding multiple leaves together. The script is finely etched into the surface of the dried leaf.

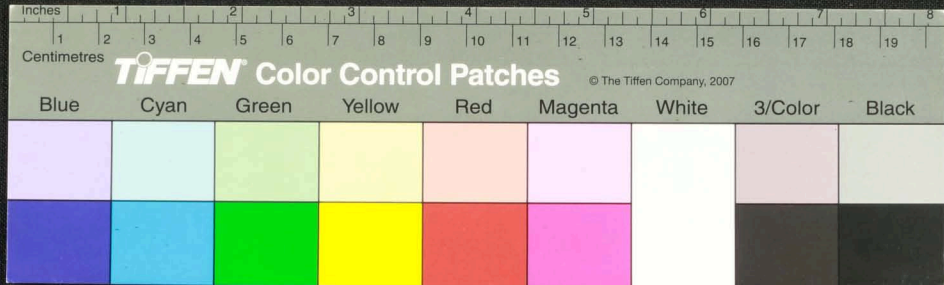


Handwritten text on a palm leaf manuscript in Tamil script. The text is arranged in approximately 10 horizontal lines across the length of the leaf. On the left side, there is a small circular symbol containing the number '15'. On the right side, there is a small number '3'.

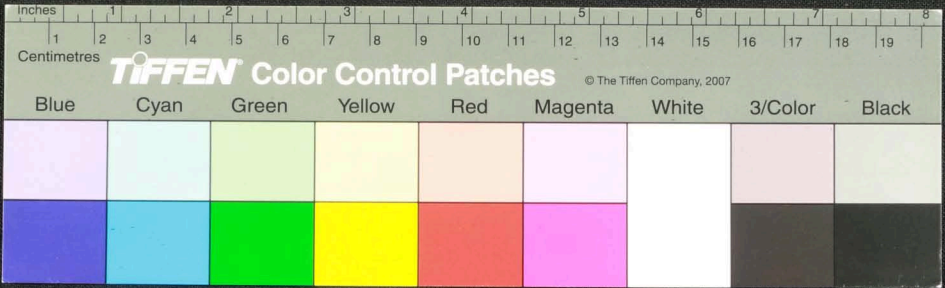




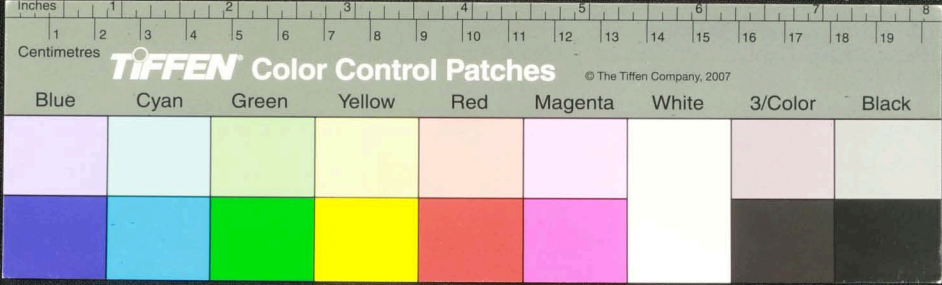
Handwritten text in Tamil script on a palm leaf manuscript. The text is arranged in approximately 10 horizontal lines across the length of the leaf. The script is dense and characteristic of traditional Tamil inscriptions on palm leaves.



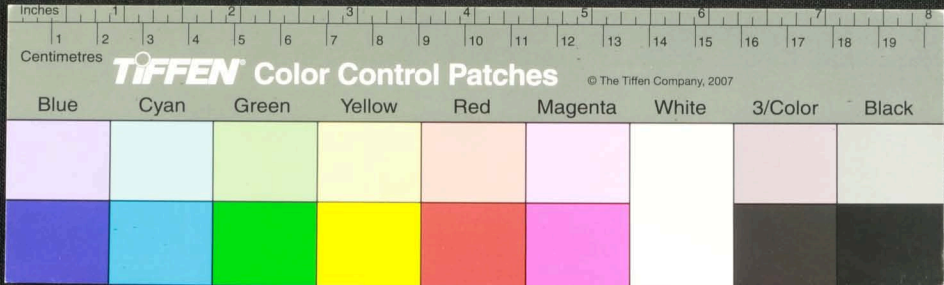
Handwritten text in Tamil script on a palm leaf manuscript. The text is arranged in approximately 10 horizontal lines. On the left side, there is a vertical column of text that appears to be a title or a reference number. The main body of text contains several lines of prose. There are two distinct circular holes punched through the leaf, which were traditionally used for threading a cord to bind multiple leaves together into a book format. The script is finely etched into the surface of the dried leaf.



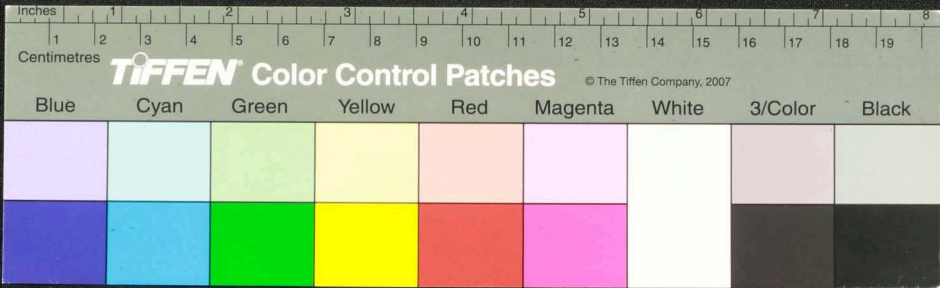
Handwritten text in Tamil script on a palm leaf manuscript. The text is arranged in approximately 10 horizontal lines across the length of the leaf. The script is finely etched into the surface of the dried leaf. Two circular holes are visible, which were traditionally used for threading a cord to bind multiple leaves together into a book format.



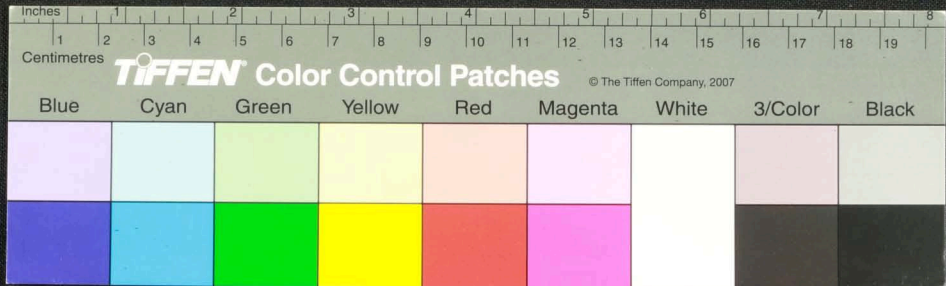
Handwritten text in Tamil script on a palm leaf manuscript. The text is arranged in approximately 10 horizontal lines across the length of the leaf. There are two circular holes visible on the leaf, which were traditionally used for threading a cord to bind multiple leaves together into a book format. The script is finely etched into the surface of the dried leaf.



Handwritten text in Tamil script on a palm leaf manuscript. The text is arranged in approximately 10 horizontal lines across the length of the leaf. The script is dense and characteristic of traditional South Indian manuscripts. There are two circular holes visible on the leaf, which were traditionally used for threading a cord to bind multiple leaves together into a book format.

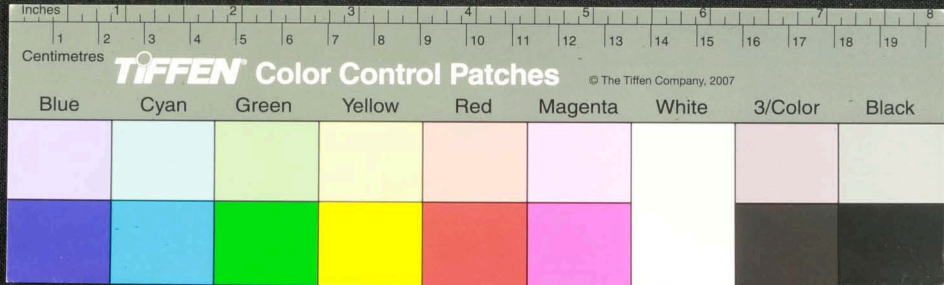


Handwritten text in Tamil script on a palm leaf manuscript. The text is arranged in approximately 10 horizontal lines. There are two circular holes visible on the leaf, which were traditionally used for threading a cord to bind multiple leaves together. A small number '7' is written in the top right corner of the leaf.

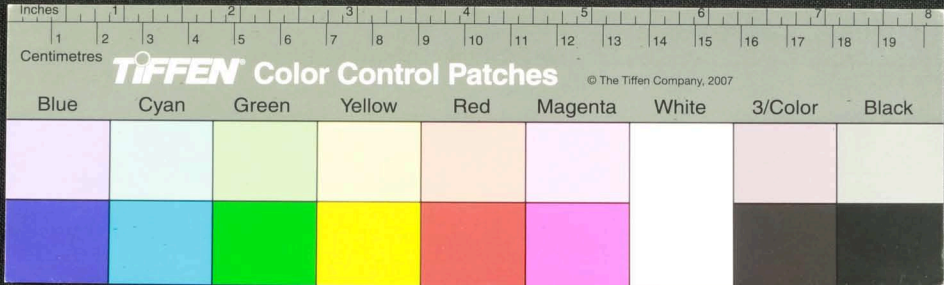


17
18

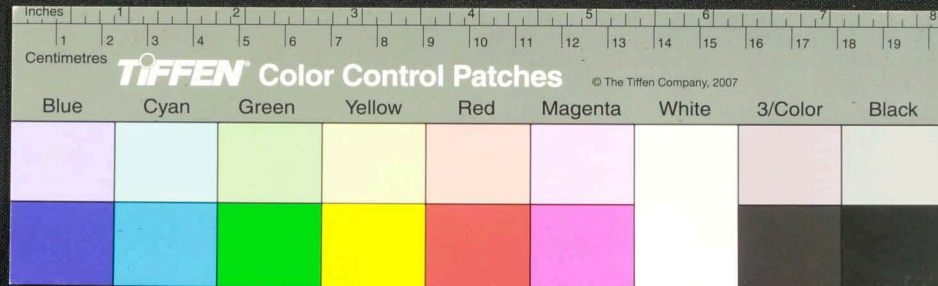
Handwritten text in an ancient script, possibly Tamil, on a palm leaf. The text is arranged in several lines across the length of the leaf. Two circular holes are visible, which were traditionally used for threading a cord to bind multiple leaves together into a book.



Handwritten text in Tamil script on a palm leaf manuscript. The text is arranged in approximately 10 horizontal lines across the length of the leaf. There are two circular holes visible, which were traditionally used for threading a cord to bind multiple leaves together. The script is finely etched into the surface of the dried leaf.



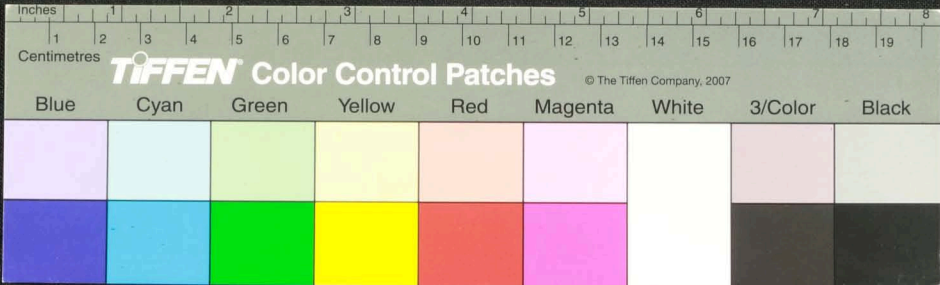
Handwritten text in Tamil script on a palm leaf manuscript. The text is arranged in approximately 10 horizontal lines across the length of the leaf. Two circular holes are visible, which were traditionally used for threading a cord to bind multiple leaves together into a book format. The script is finely etched into the surface of the dried leaf.



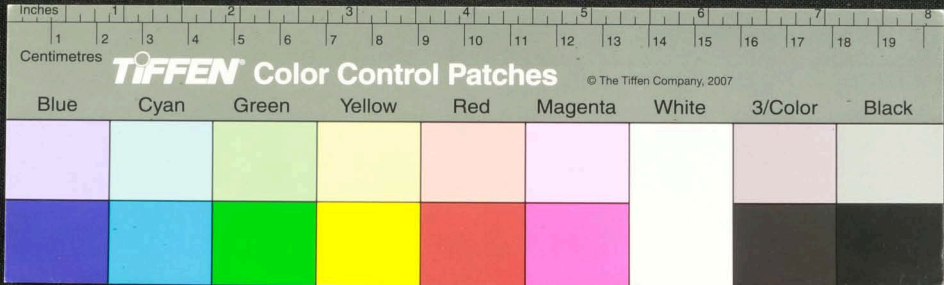
56
 இராமநாதபுரம் மீனாட்சி
 சுவாமிநாதர் கோயில்
 கல்வெட்டு

 11

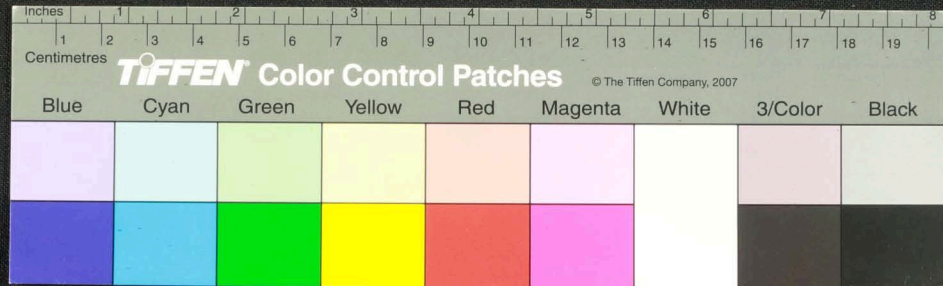
உருகியுள்ள அகலாபதி சுவாமிநாதர் கோயிலில் சுவாமிநாதர் சிலைக்கு உடையுள்ள கல்வெட்டு. இவ்வெட்டு 17 ஆம் நூற்றாண்டில் எழுதப்பட்டது. இவ்வெட்டு
 கல்வெட்டுக்கு உடையுள்ள கல்வெட்டு. இவ்வெட்டு 17 ஆம் நூற்றாண்டில் எழுதப்பட்டது. இவ்வெட்டு 17 ஆம் நூற்றாண்டில் எழுதப்பட்டது. இவ்வெட்டு 17 ஆம் நூற்றாண்டில் எழுதப்பட்டது.



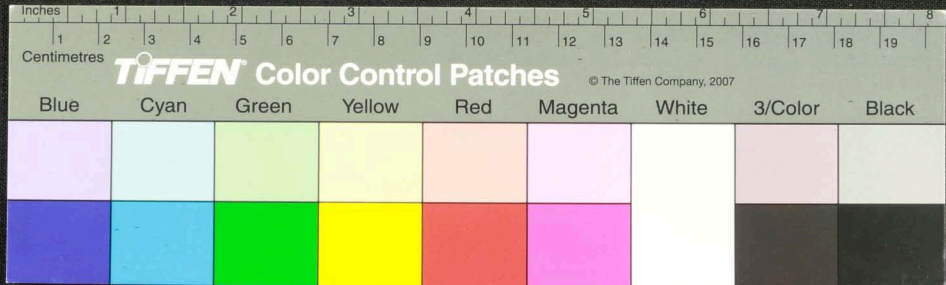
Handwritten text in Tamil script on a palm leaf manuscript. The text is arranged in approximately 10 horizontal lines. The first line on the left contains the number '52'. The script is finely etched into the surface of the dried leaf. Two circular holes are visible, which were traditionally used for threading a cord to bind multiple leaves together into a book format.



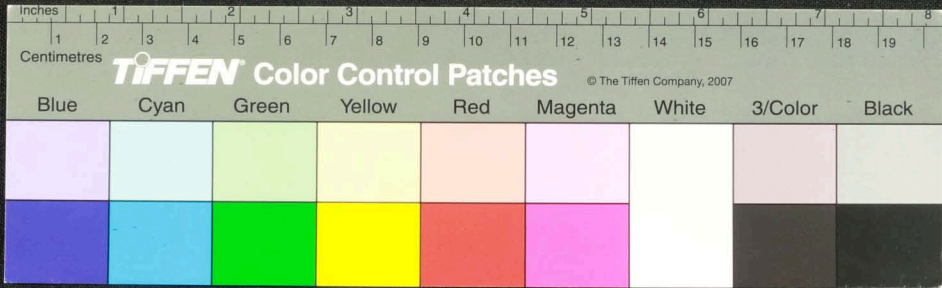
Handwritten Tamil script on a palm leaf manuscript. The text is arranged in approximately 10 horizontal lines across the length of the leaf. Two circular holes are visible, used for threading a cord to bind multiple leaves together. The script is finely etched into the surface of the dried leaf.



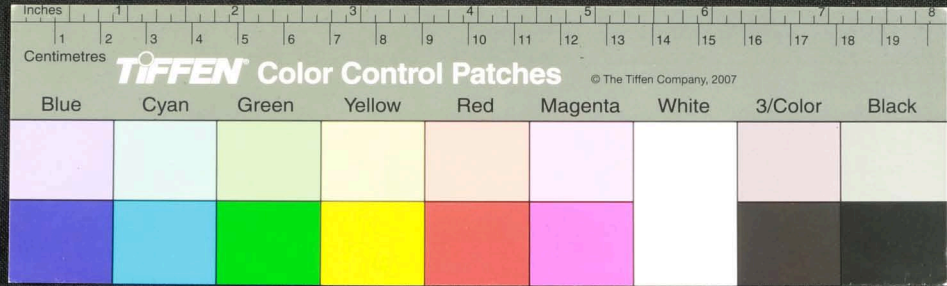
Handwritten text in Tamil script on a palm leaf manuscript. The text is arranged in approximately 10 horizontal lines across the length of the leaf. Two circular holes are visible, which were traditionally used for threading a cord to bind multiple leaves together into a book format. The script is finely etched into the surface of the dried leaf.



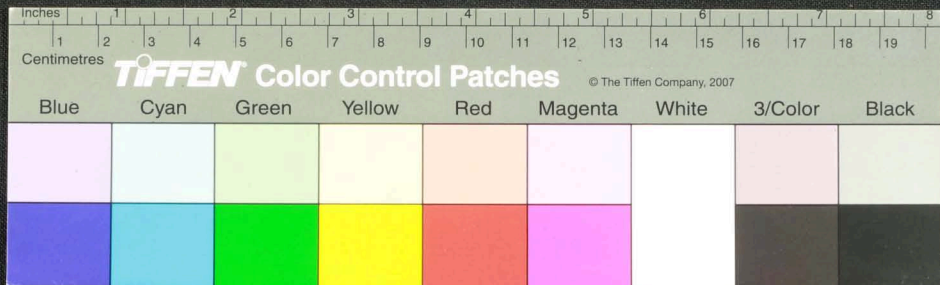
Handwritten text in Tamil script on a palm leaf manuscript. The text is arranged in approximately 10 horizontal lines across the length of the leaf. Two circular holes are visible, which were traditionally used for threading a cord to bind multiple leaves together into a book format. The script is finely etched into the surface of the dried leaf.



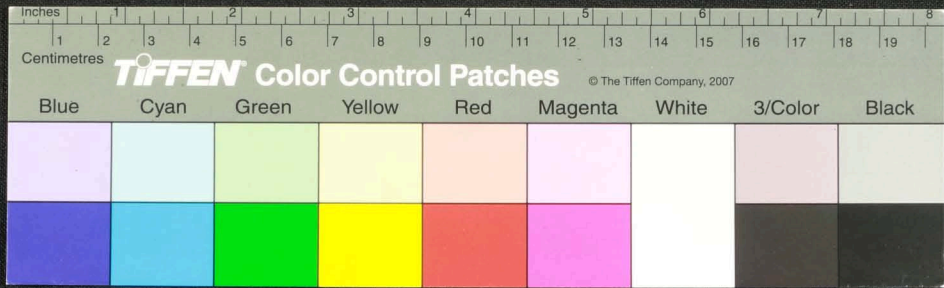
Handwritten text in Tamil script on a palm leaf manuscript. The text is arranged in approximately 10 horizontal lines across the length of the leaf. Two circular holes are visible, used for binding multiple leaves together. The script is finely etched into the surface of the dried leaf.



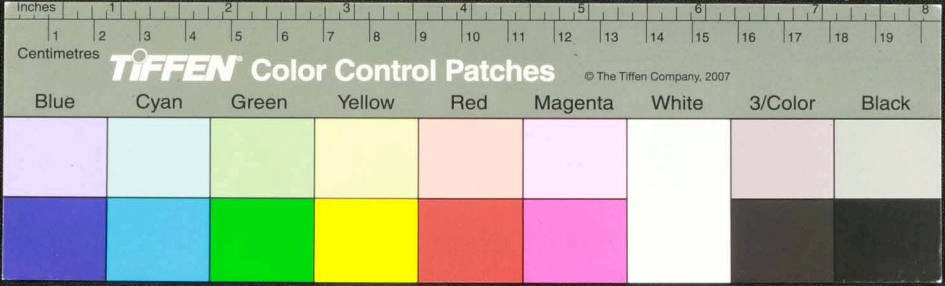
Handwritten text in Tamil script on a palm leaf manuscript. The text is arranged in approximately 10 horizontal lines across the length of the leaf. Two circular holes are visible, which were traditionally used for threading a cord to bind multiple leaves together into a book format. The script is finely etched into the surface of the dried leaf.



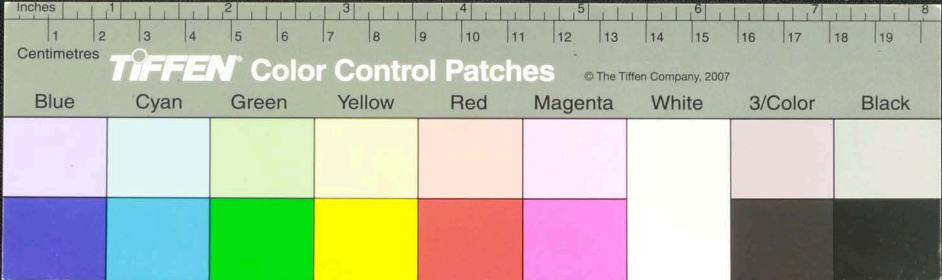
Handwritten text in Tamil script on a palm leaf manuscript. The text is arranged in approximately 10 horizontal lines across the length of the leaf. The script is a traditional form of the Tamil language, used for recording knowledge and literature. The leaf shows signs of age and wear, with some dark spots and a slightly uneven texture.



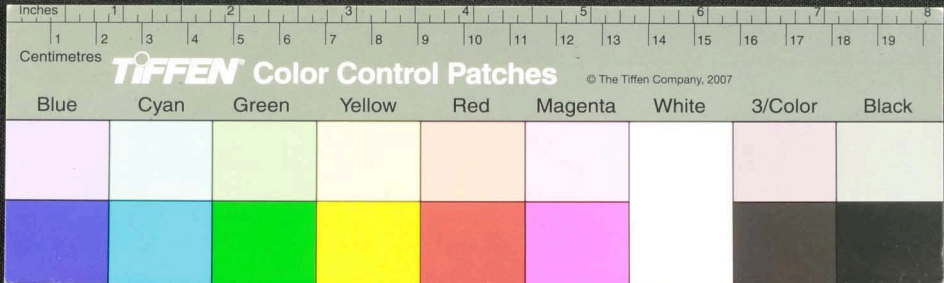
Handwritten text in Tamil script on a palm leaf manuscript. The text is arranged in approximately 10 horizontal lines. On the left side of the leaf, there is a small handwritten number '57'. Two circular holes are visible, which were traditionally used for threading a cord to bind multiple leaves together.



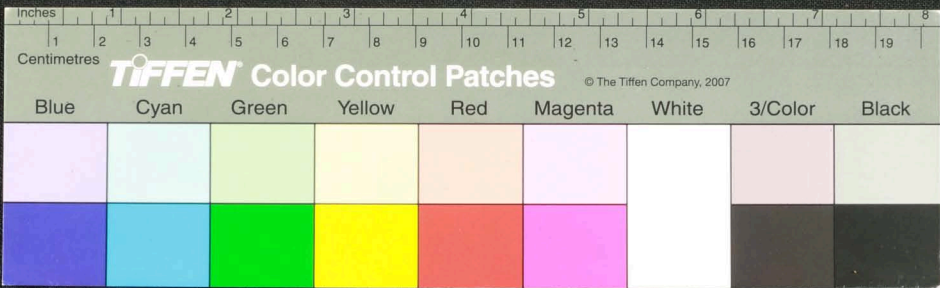
வினாயக விநாயக நம: ॥ விநாயக நம: ॥ விநாயக நம: ॥ விநாயக நம: ॥ விநாயக நம: ॥ விநாயக நம: ॥ விநாயக நம: ॥ விநாயக நம: ॥ விநாயக நம: ॥ விநாயக நம: ॥
 விநாயக நம: ॥ விநாயக நம: ॥ விநாயக நம: ॥ விநாயக நம: ॥ விநாயக நம: ॥ விநாயக நம: ॥ விநாயக நம: ॥ விநாயக நம: ॥ விநாயக நம: ॥ விநாயக நம: ॥
 விநாயக நம: ॥ விநாயக நம: ॥ விநாயக நம: ॥ விநாயக நம: ॥ விநாயக நம: ॥ விநாயக நம: ॥ விநாயக நம: ॥ விநாயக நம: ॥ விநாயக நம: ॥ விநாயக நம: ॥
 விநாயக நம: ॥ விநாயக நம: ॥ விநாயக நம: ॥ விநாயக நம: ॥ விநாயக நம: ॥ விநாயக நம: ॥ விநாயக நம: ॥ விநாயக நம: ॥ விநாயக நம: ॥ விநாயக நம: ॥
 விநாயக நம: ॥ விநாயக நம: ॥ விநாயக நம: ॥ விநாயக நம: ॥ விநாயக நம: ॥ விநாயக நம: ॥ விநாயக நம: ॥ விநாயக நம: ॥ விநாயக நம: ॥ விநாயக நம: ॥



Handwritten text in Tamil script on a palm leaf manuscript. The text is arranged in approximately 10 horizontal lines across the length of the leaf. Two circular holes are visible, which were traditionally used for threading a cord to bind multiple leaves together into a book format. The script is finely etched into the surface of the dried leaf.



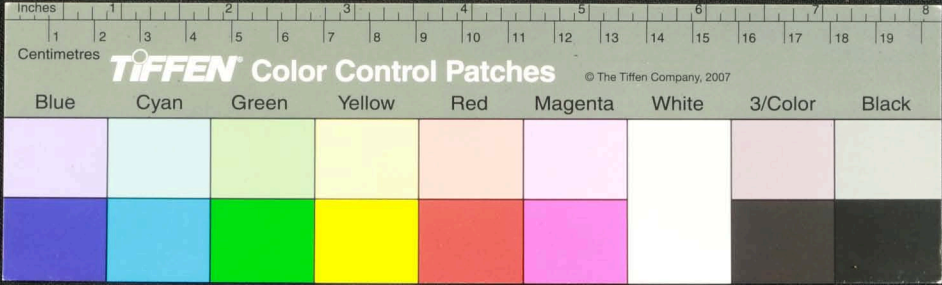
Handwritten text in Tamil script on a palm leaf manuscript. The text is arranged in approximately 10 horizontal lines. The script is dense and characteristic of traditional Tamil inscriptions on palm leaves. There are two circular holes visible on the leaf, which were used for threading a cord to bind multiple leaves together into a book format. The leaf shows signs of age, including some discoloration and wear at the edges.



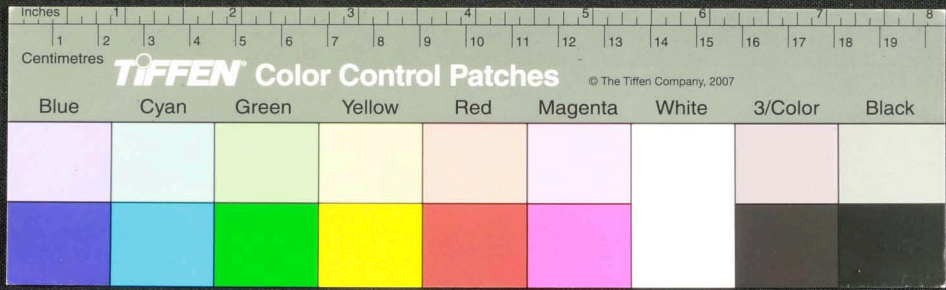
Handwritten text in Tamil script on a palm leaf manuscript. The text is arranged in approximately 10 horizontal lines across the length of the leaf. The script is dense and characteristic of traditional Tamil inscriptions on palm leaves.



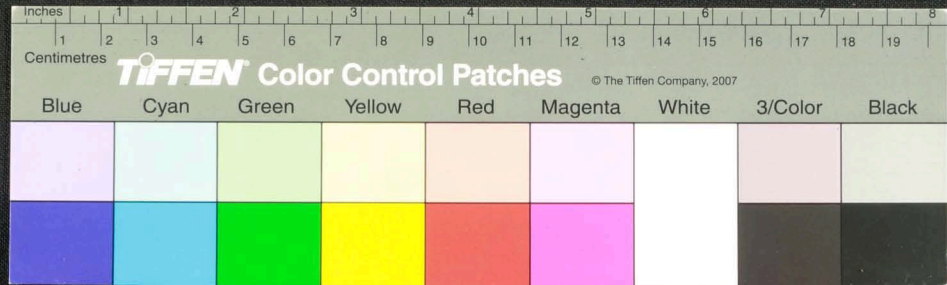
Handwritten Tamil script on a palm leaf manuscript. The text is arranged in a single line across the length of the leaf. Two circular holes are visible, used for threading a cord to bind multiple leaves together. The script is finely etched into the surface of the dried leaf.

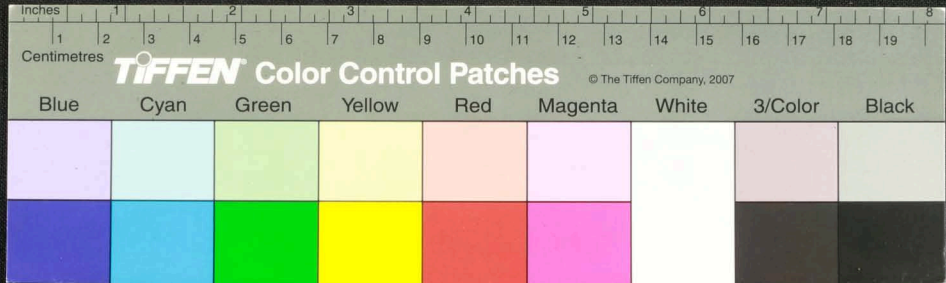


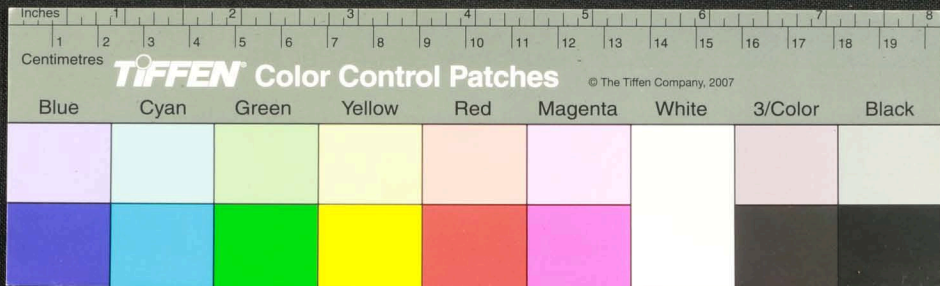
Handwritten Tamil script on a palm leaf manuscript. The text is arranged in approximately 10 horizontal lines across the length of the leaf. The script is finely etched into the surface of the dried leaf. Two circular holes are visible, which were traditionally used for threading a cord to bind multiple leaves together into a book format. The leaf shows signs of age, with some fraying at the edges and slight discoloration.



Handwritten text in Tamil script on a palm leaf manuscript. The text is arranged in approximately 10 horizontal lines across the length of the leaf. Two circular holes are visible, which were traditionally used for threading a cord to bind multiple leaves together into a book format. The script is finely etched into the surface of the dried leaf.







வினாக்கள் 30
பதில்கள்
 தலைமுறைகளைக் குறிப்பிட்டு அவற்றின் சிறப்புகள்
 பற்றி விவரிக்கவும். (10)
 அடுத்து, பண்டைய காலங்களில்
 மனிதர்களுக்கு உண்டான
 சிக்கல்களைக் குறிப்பிட்டு அவற்றின்
 காரணங்களை விவரிக்கவும். (10)

