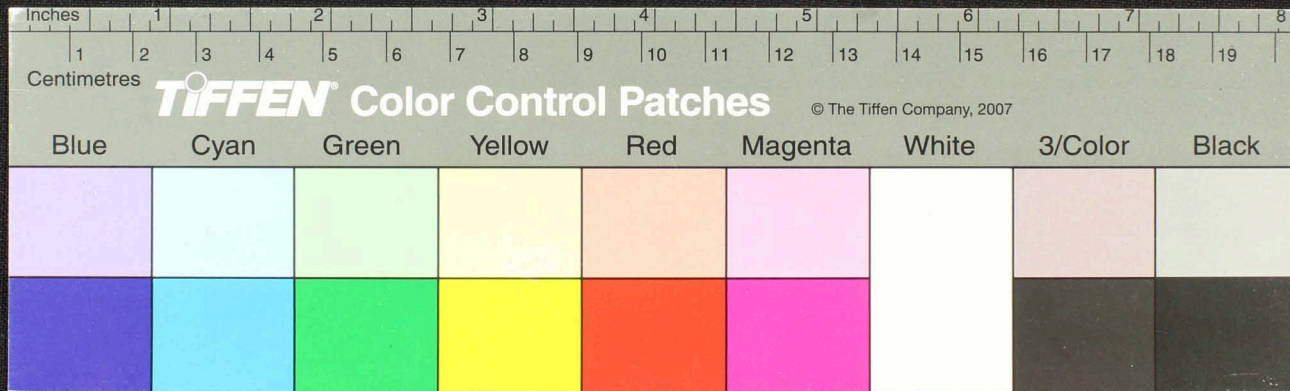
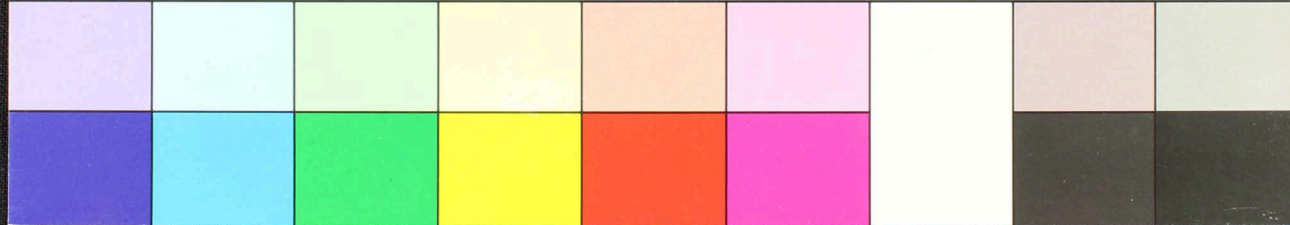


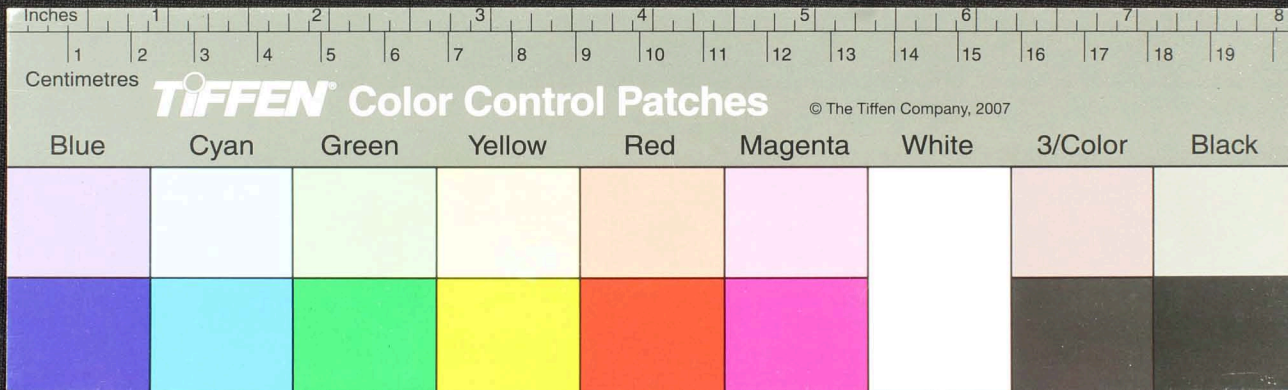
Blue	Cyan	Green	Yellow	Red	Magenta	White	3/Color	Black
[Blue patch]	[Cyan patch]	[Green patch]	[Yellow patch]	[Red patch]	[Magenta patch]	[White patch]	[3/Color patch]	[Black patch]
[Dark Blue patch]	[Dark Cyan patch]	[Dark Green patch]	[Dark Yellow patch]	[Dark Red patch]	[Dark Magenta patch]	[Dark White patch]	[Dark 3/Color patch]	[Dark Black patch]



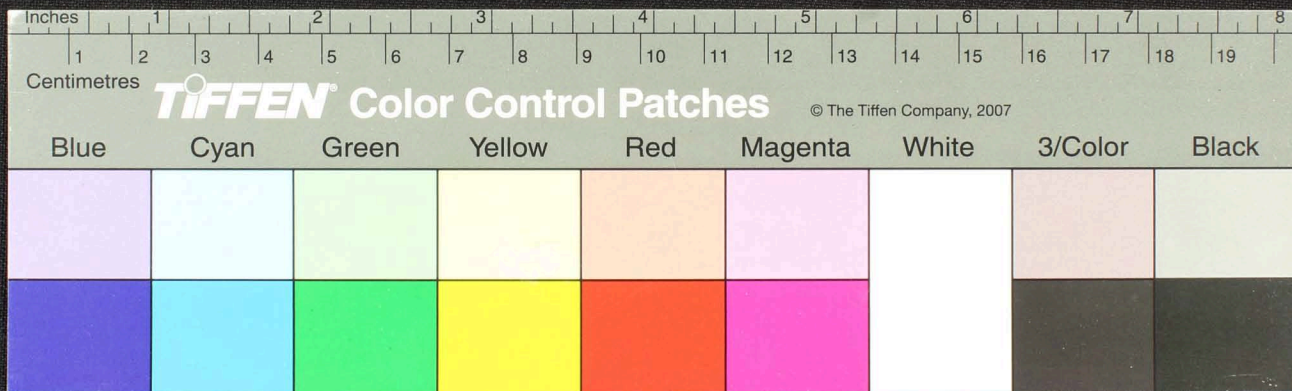
Blue Cyan Green Yellow Red Magenta White 3/Color Black



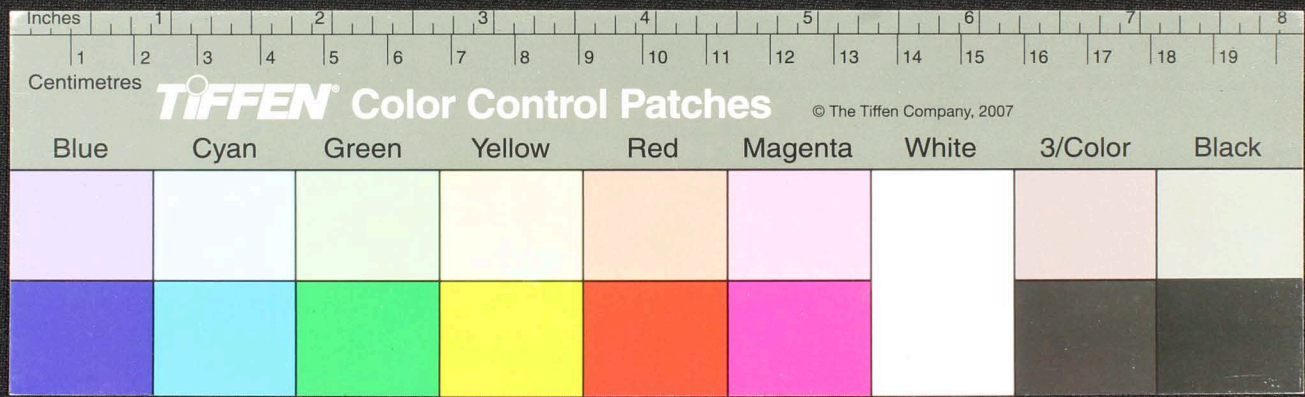
Handwritten text in Tamil script on a palm leaf manuscript. The text is arranged in approximately 10 horizontal lines across the length of the leaf. Two circular holes are visible, which were traditionally used for threading a cord to bind multiple leaves together into a book format. The leaf shows signs of age, including some staining and wear.



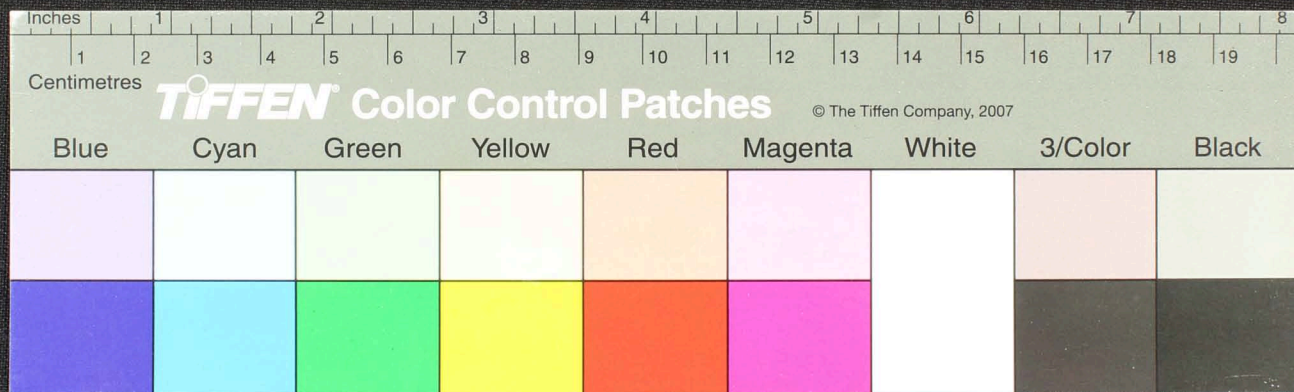
Handwritten text in Tamil script on a palm leaf manuscript. The text is arranged in approximately 10 horizontal lines across the length of the leaf. Two circular holes are visible, used for threading a cord to bind multiple leaves together. The leaf shows signs of age, including dark spots and some surface wear.



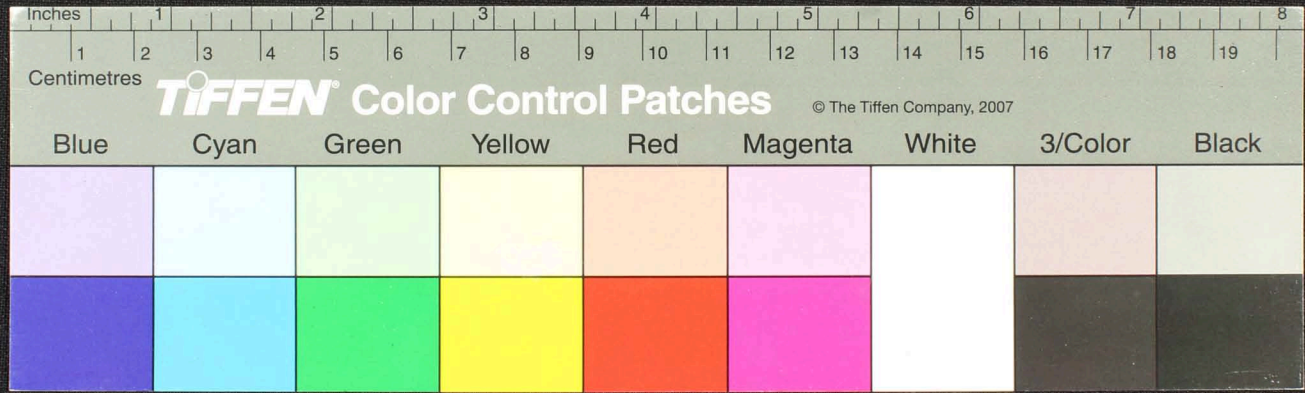
Handwritten Tamil script on a palm leaf manuscript. The text is arranged in approximately 10 horizontal lines across the length of the leaf. The script is densely packed and appears to be a form of classical Tamil. There are two circular holes visible on the leaf, which were traditionally used for threading a cord to bind multiple leaves together into a book format. The leaf shows signs of age, including some darkening and wear, particularly around the edges and between the lines of text.



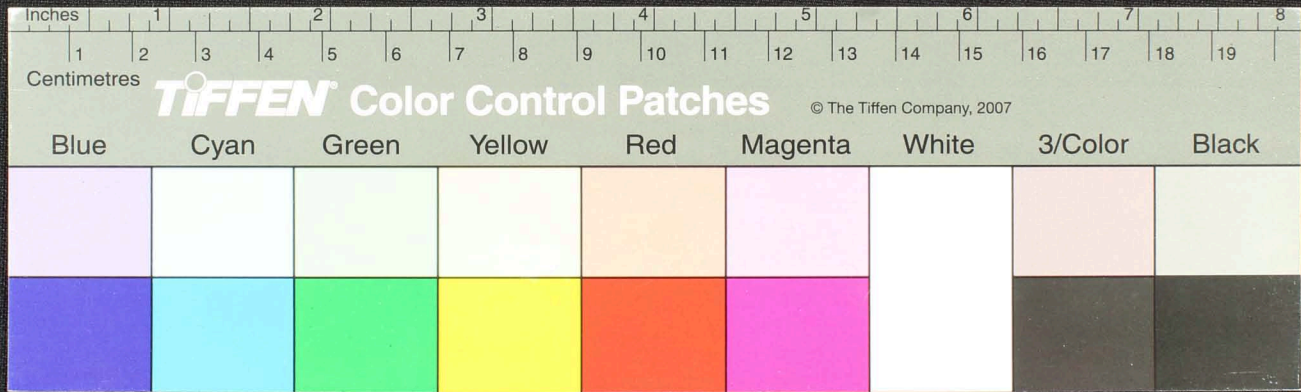
Handwritten Tamil script on a palm leaf manuscript. The text is arranged in approximately 10 horizontal lines across the length of the leaf. Two circular holes are visible, which were traditionally used for threading a cord to bind multiple leaves together into a book format. The leaf shows signs of age, including some dark spots and wear.



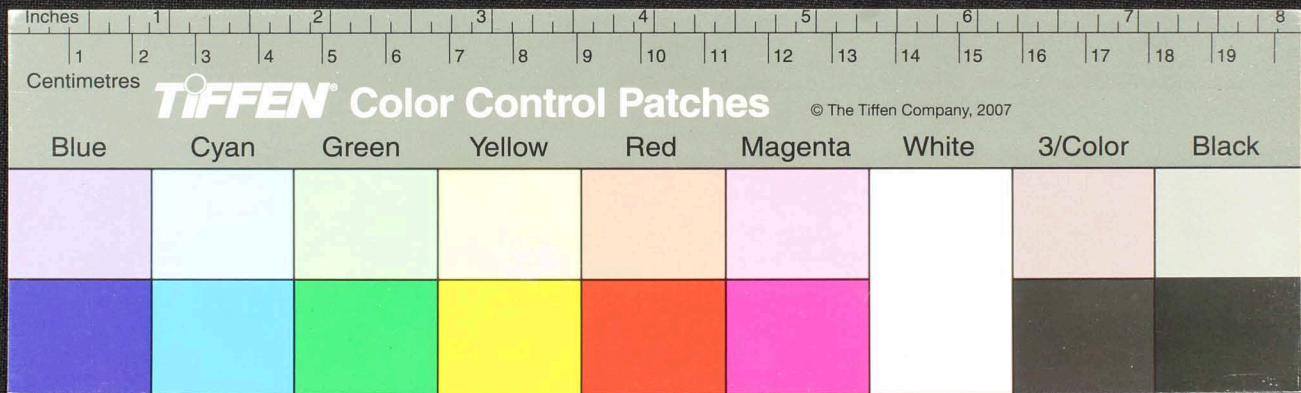
Handwritten Tamil script on a palm leaf manuscript. The text is densely packed and runs horizontally across the length of the leaf. Two circular holes are visible, which were traditionally used for threading a cord to bind multiple leaves together. The leaf shows signs of age, including some staining and wear at the edges.



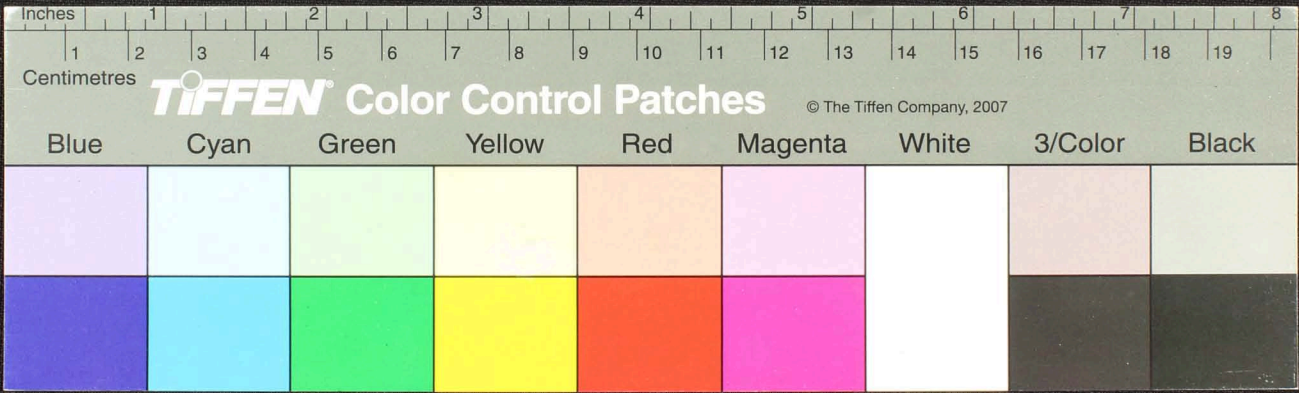
Handwritten Tamil script on a palm leaf manuscript. The text is arranged in approximately 10 horizontal lines across the length of the leaf. The script is finely etched into the surface of the dried leaf. There are two circular holes visible, which were traditionally used for threading a cord to bind multiple leaves together into a book format. The leaf shows signs of age, including some darkening and wear, particularly at the ends.



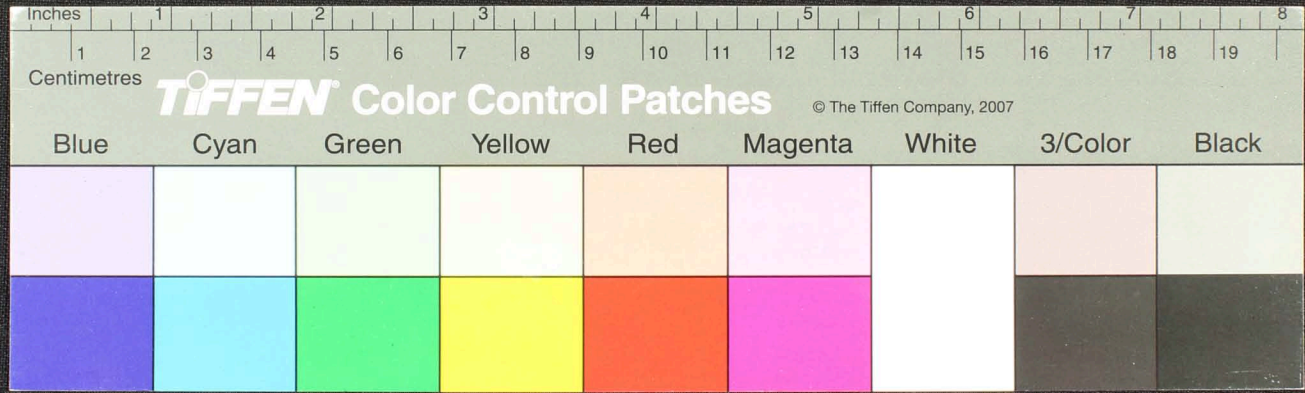
Handwritten Tamil script on a palm leaf manuscript. The text is densely packed and spans the length of the leaf. Two circular holes are visible, used for binding multiple leaves together. The script is written in a traditional style, with some characters appearing to be in a different script or dialect, possibly Grantha or a specific regional variant of Tamil.



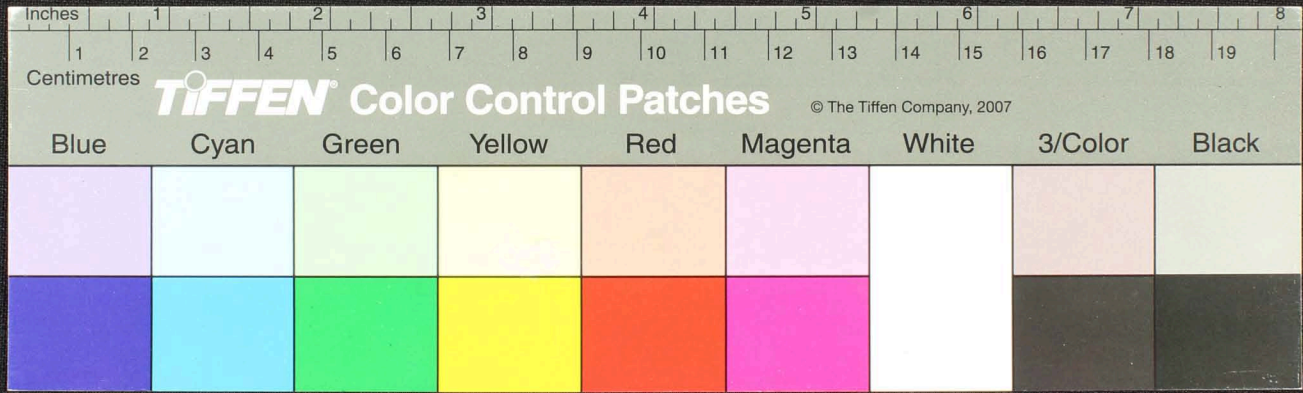
Handwritten Tamil script on a palm leaf manuscript. The text is densely packed in approximately 10 horizontal lines across the length of the leaf. Two circular holes are visible, used for threading a cord to bind multiple leaves together. The script is in an older form of the Tamil language.



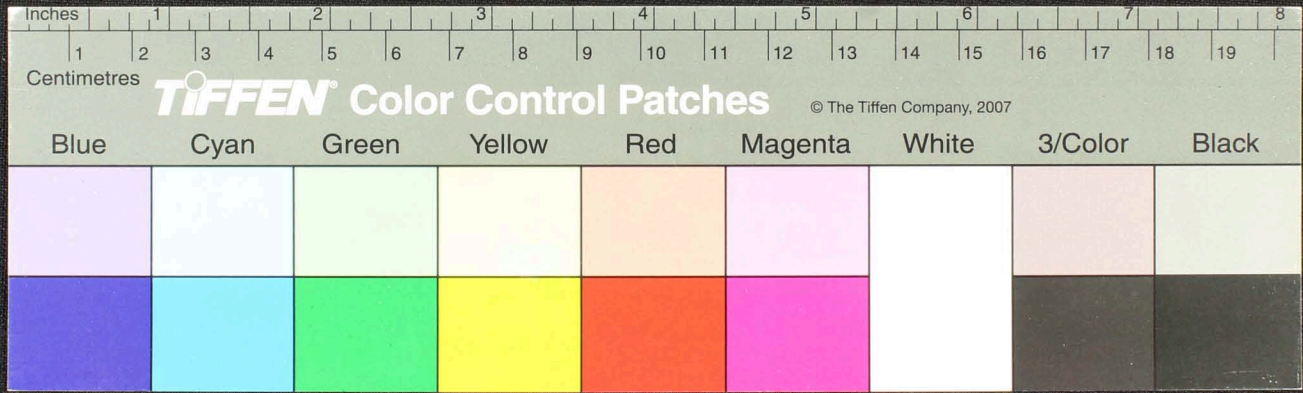
Handwritten Tamil script on a palm leaf manuscript. The text is densely packed and spans the length of the leaf. Two circular holes are visible, used for binding multiple leaves together. The script is written in a traditional style, with some characters appearing to be in a different script or dialect, possibly Grantha or a specific regional variant of Tamil.



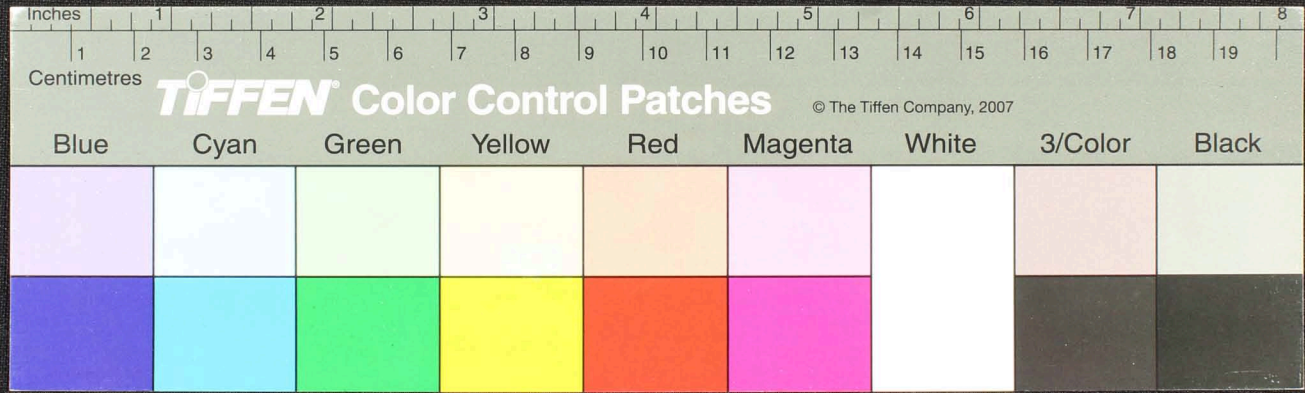
Handwritten Tamil script on a palm leaf manuscript. The text is densely packed and runs horizontally across the length of the leaf. There are two circular holes visible, which were traditionally used for threading a cord to bind multiple leaves together into a book format. The script is in an older form of the Tamil language.



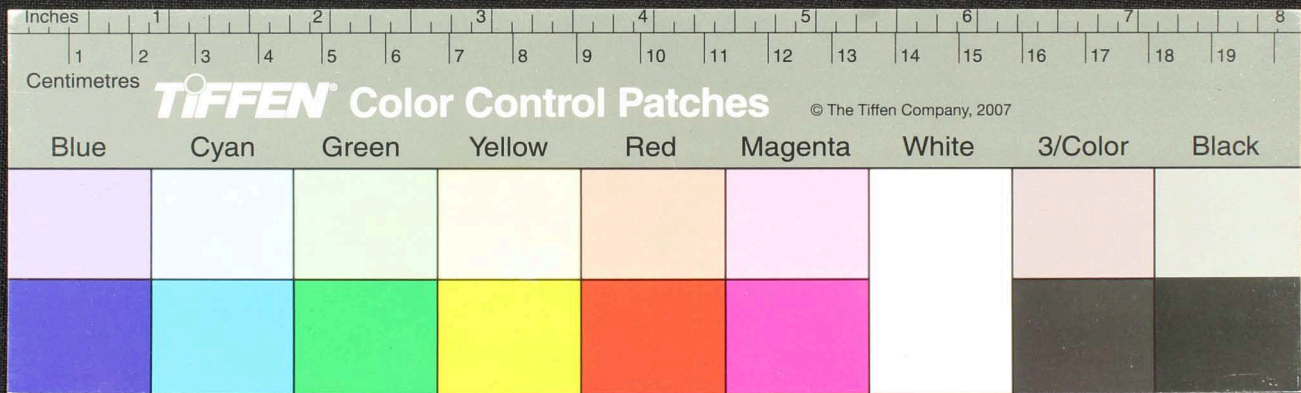
Handwritten Tamil script on a palm leaf manuscript. The text is densely packed in approximately 10 horizontal lines across the length of the leaf. Two circular holes are visible, used for binding multiple leaves together. The leaf shows signs of age and wear, with some dark spots and fraying at the edges.



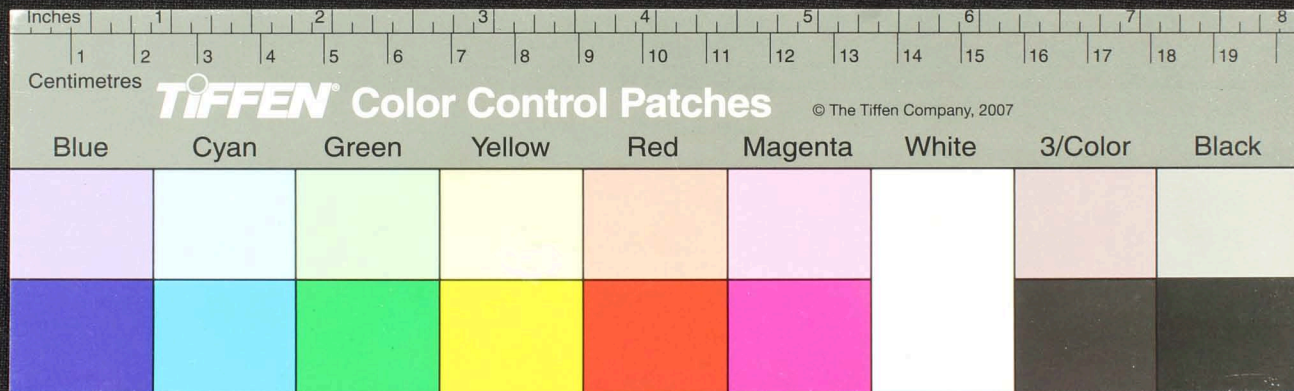
Handwritten Tamil script on a palm leaf manuscript. The text is arranged in approximately 12 horizontal lines across the length of the leaf. The script is finely etched into the surface of the dried leaf. There are two prominent circular holes, likely from a traditional string-and-button binding system. The leaf shows signs of age, including some dark spots and wear along the edges.



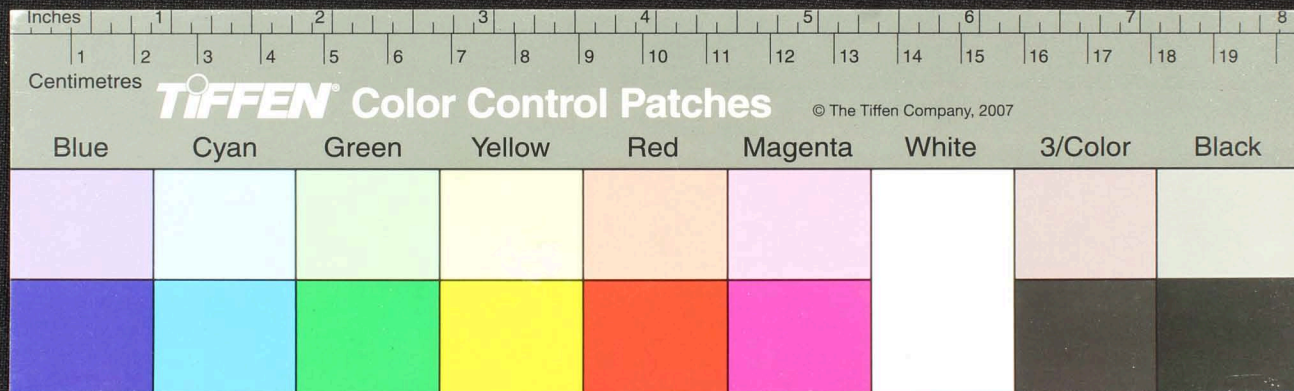
Handwritten Tamil script on a palm leaf manuscript. The text is arranged in approximately 10 horizontal lines across the length of the leaf. Two circular holes are visible, used for threading a cord to bind multiple leaves together. The script is densely packed and appears to be a form of classical Tamil.



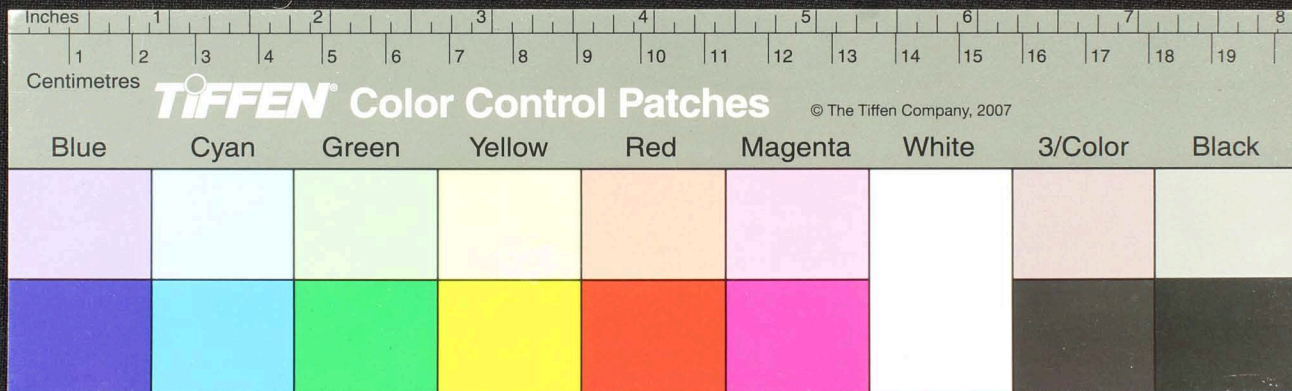
Handwritten Tamil script on a palm leaf manuscript. The text is arranged in approximately 12 horizontal lines across the length of the leaf. Two circular holes are visible, which were traditionally used for threading a cord to bind multiple leaves together into a book format. The script is densely packed and appears to be a form of classical or religious Tamil.



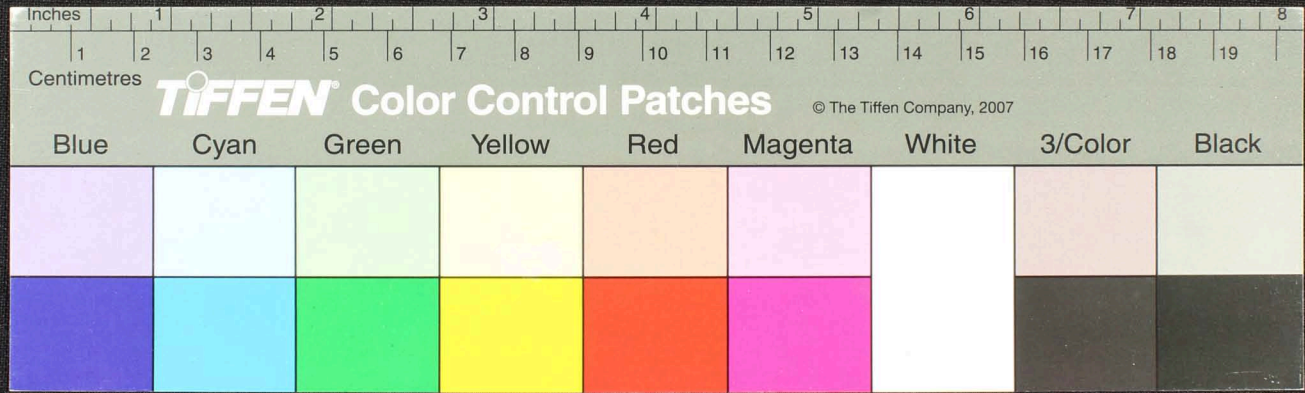
Handwritten Tamil script on a palm leaf manuscript. The text is arranged in approximately 10 horizontal lines across the length of the leaf. Two circular holes are visible, which were traditionally used for threading a cord to bind multiple leaves together. The script is finely etched into the surface of the dried leaf.



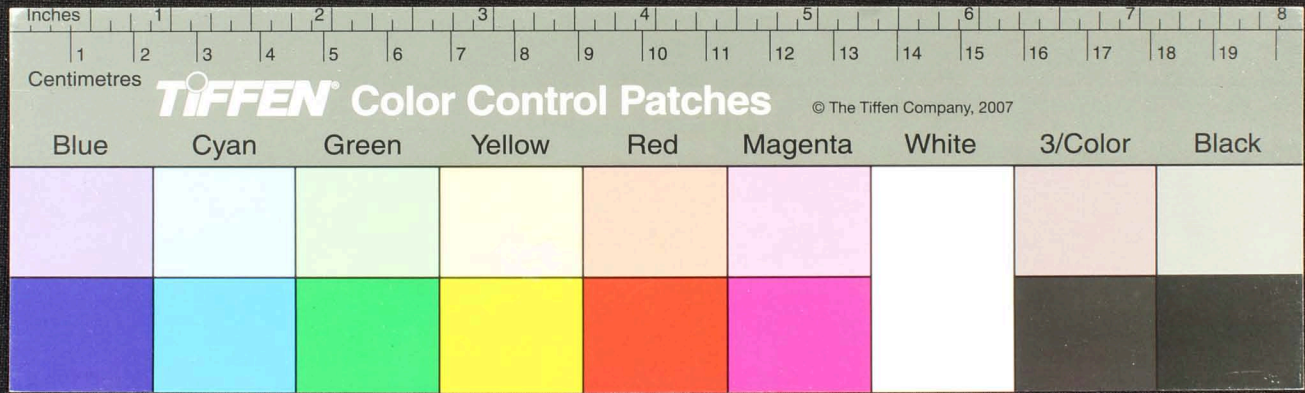
Handwritten Tamil script on a palm leaf manuscript. The text is arranged in approximately 10 horizontal lines across the length of the leaf. The script is densely packed and appears to be a form of classical Tamil. There are two prominent circular holes on the leaf, which were traditionally used for threading a cord to bind multiple leaves together into a book format. The leaf shows signs of age, including some staining and wear, particularly around the edges and the holes.



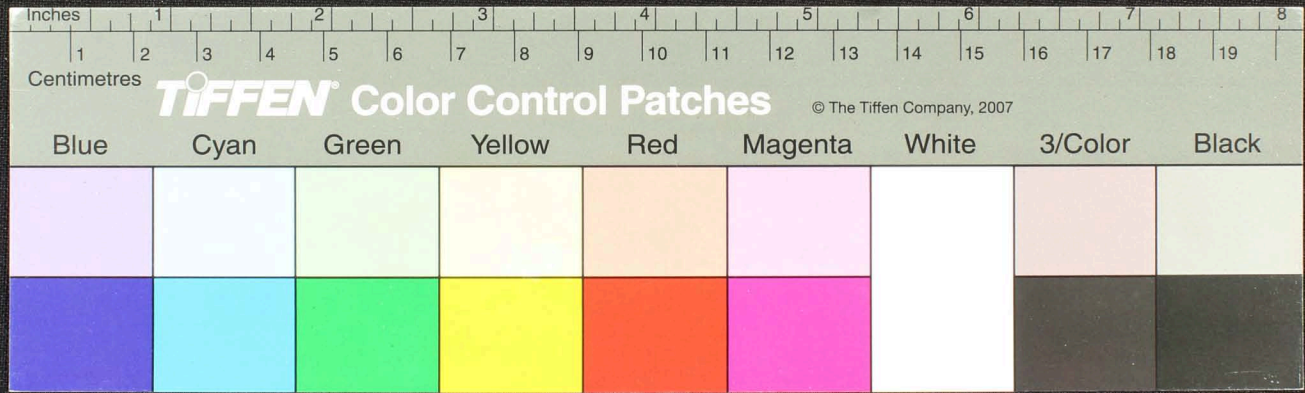
Handwritten Tamil script on a palm leaf manuscript. The text is arranged in approximately 10 horizontal lines across the length of the leaf. The script is dense and appears to be a form of classical or religious Tamil. There are two circular holes visible on the leaf, which were traditionally used for threading a cord to bind multiple leaves together into a book format.



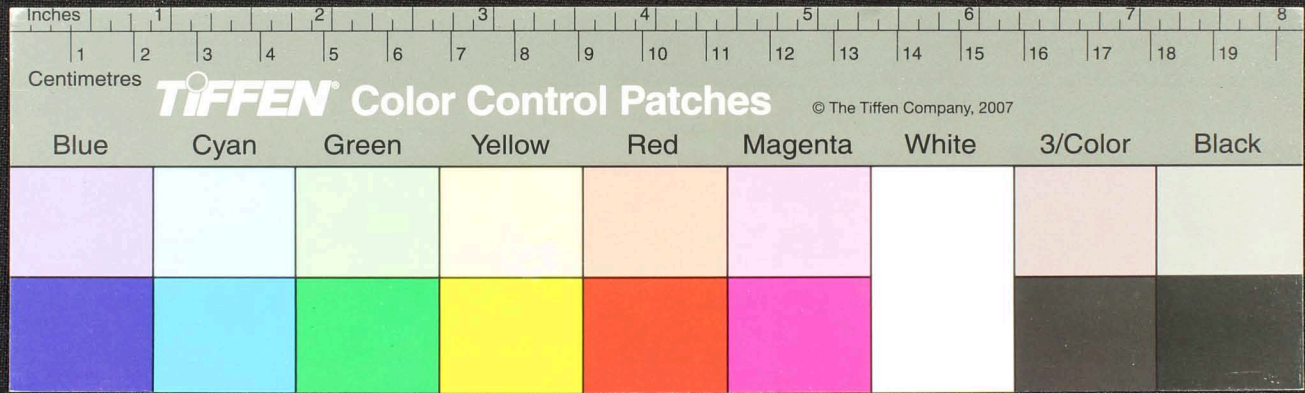
Handwritten Tamil script on a palm leaf manuscript. The text is arranged in approximately 12 horizontal lines across the length of the leaf. The script is densely packed and appears to be a form of classical or religious Tamil. There are two circular holes visible on the leaf, which were traditionally used for threading a cord to bind multiple leaves together into a book format.



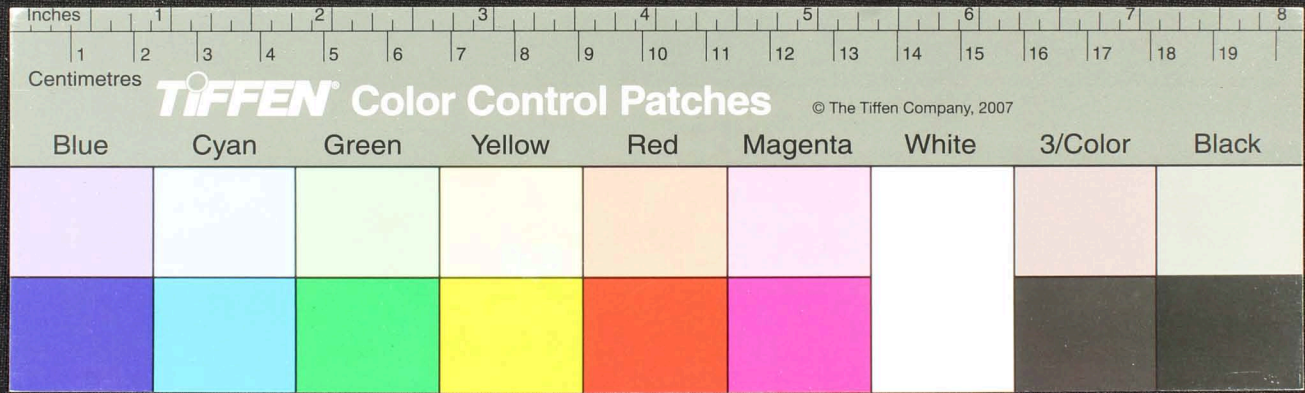
பதினாறு பிள்ளைகள்... இது கெட்டு... பாடினார்...
 பதினாறு பிள்ளைகள்... இது கெட்டு... பாடினார்...
 பதினாறு பிள்ளைகள்... இது கெட்டு... பாடினார்...
 பதினாறு பிள்ளைகள்... இது கெட்டு... பாடினார்...
 பதினாறு பிள்ளைகள்... இது கெட்டு... பாடினார்...
 பதினாறு பிள்ளைகள்... இது கெட்டு... பாடினார்...
 பதினாறு பிள்ளைகள்... இது கெட்டு... பாடினார்...
 பதினாறு பிள்ளைகள்... இது கெட்டு... பாடினார்...
 பதினாறு பிள்ளைகள்... இது கெட்டு... பாடினார்...
 பதினாறு பிள்ளைகள்... இது கெட்டு... பாடினார்...



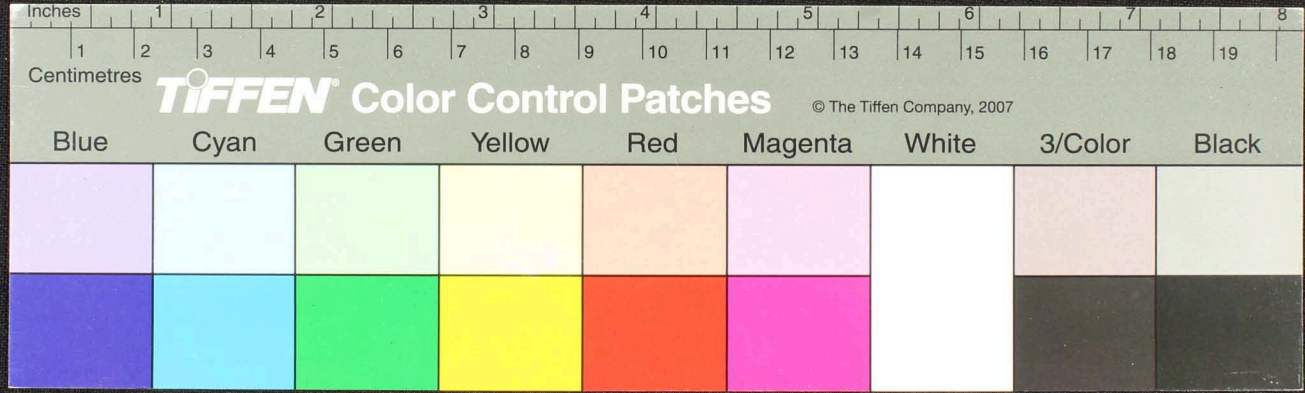
Handwritten Tamil script on a palm leaf manuscript. The text is arranged in approximately 10 horizontal lines across the length of the leaf. Two circular holes are visible, used for threading a cord to bind multiple leaves together. The script is a traditional form of the Tamil language, likely containing a religious or philosophical text.



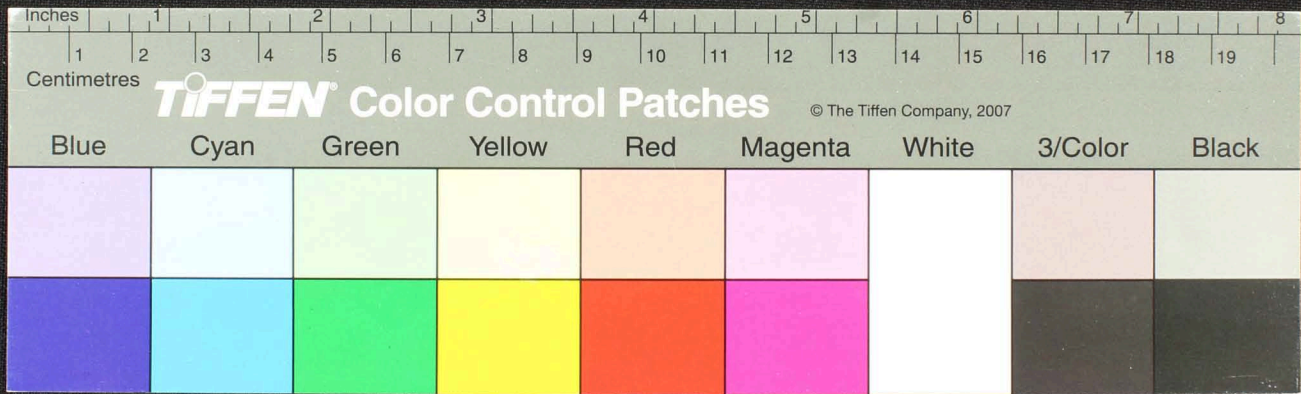
Handwritten Tamil script on a palm leaf manuscript. The text is arranged in approximately 12 horizontal lines across the length of the leaf. Two circular holes are visible, used for threading a cord to bind multiple leaves together. The script is densely packed and appears to be a form of classical or religious Tamil.



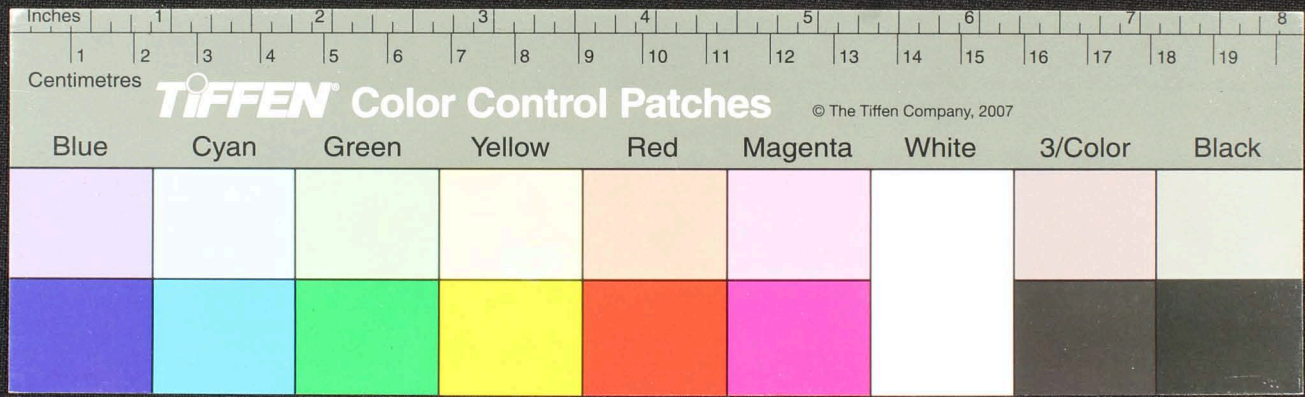
Handwritten Tamil script on a palm leaf manuscript. The text is arranged in approximately 10 horizontal lines across the length of the leaf. Two circular holes are visible, used for threading a cord to bind multiple leaves together. The script is densely packed and appears to be a form of classical Tamil literature or religious text.



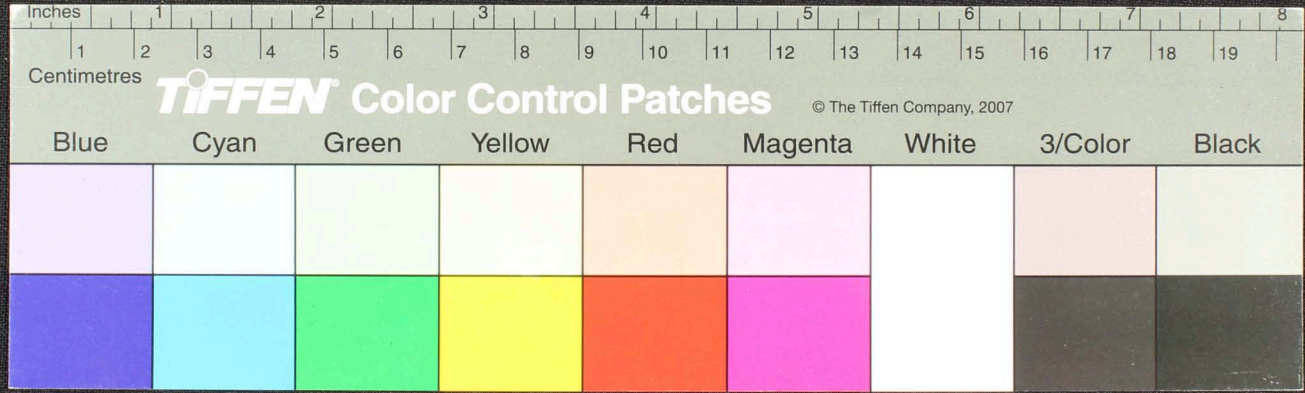
Handwritten Tamil script on a palm leaf manuscript. The text is densely packed and spans the length of the leaf. Two circular holes are visible, used for binding multiple leaves together. The script appears to be a form of classical Tamil, possibly containing religious or philosophical content.



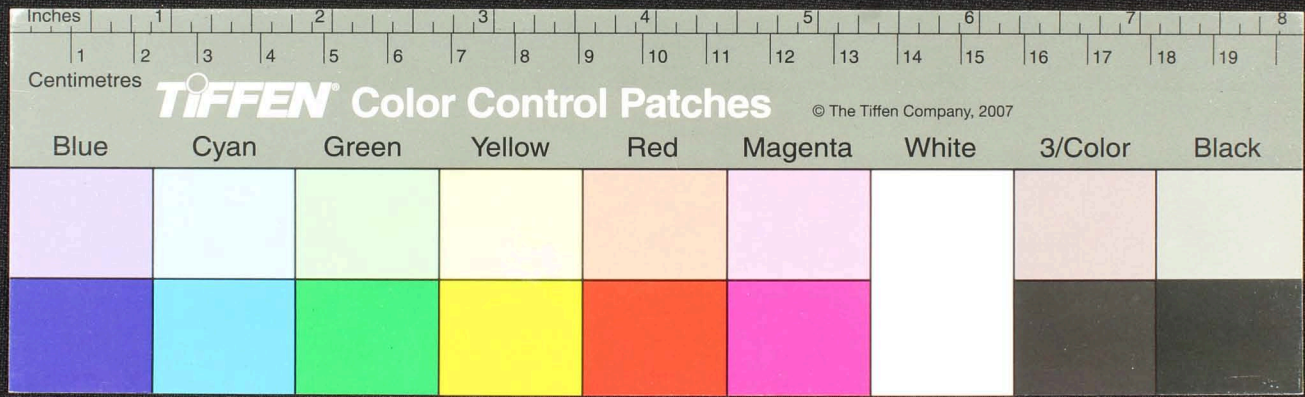
Handwritten Tamil script on a palm leaf manuscript. The text is densely packed and spans the length of the leaf. Two circular holes are visible, used for binding multiple leaves together. The script appears to be a form of classical Tamil, possibly containing religious or philosophical content.



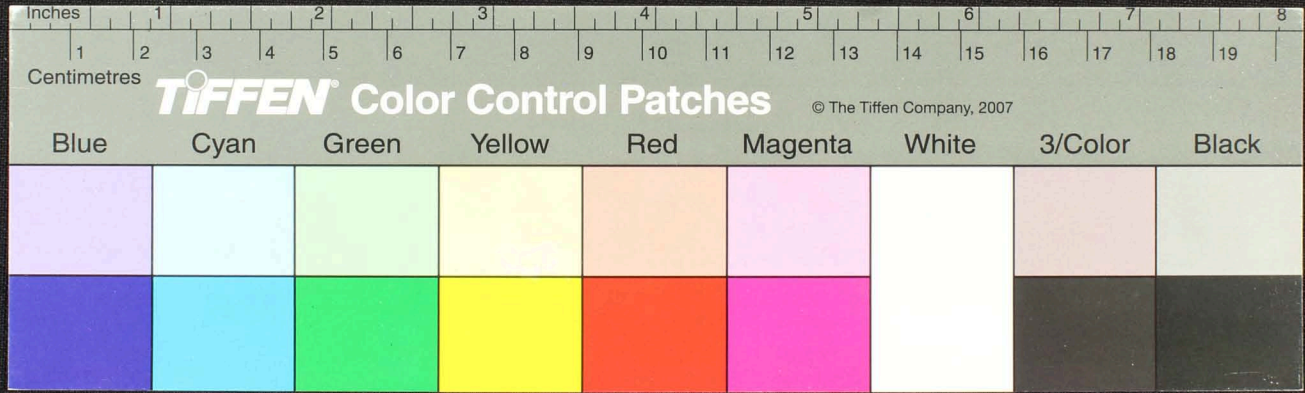
Handwritten Tamil script on a palm leaf manuscript. The text is arranged in approximately 10 horizontal lines across the length of the leaf. Two circular holes are visible, used for threading a cord to bind multiple leaves together. The script is densely packed and appears to be a form of classical Tamil.



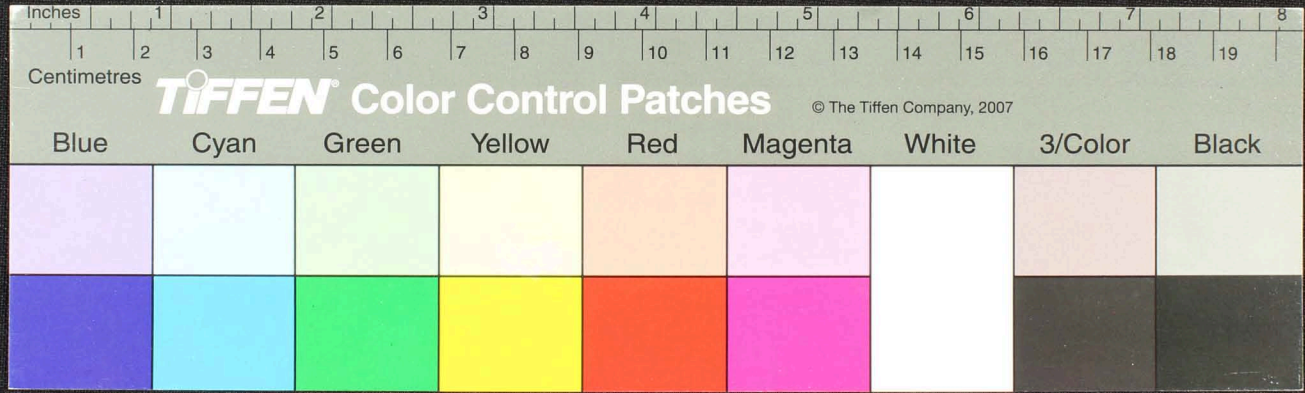
Handwritten Tamil script on a palm leaf manuscript. The text is arranged in approximately 10 horizontal lines across the length of the leaf. Two circular holes are visible, which were traditionally used for threading a cord to bind multiple leaves together into a book format. The script is densely packed and appears to be a form of classical or religious Tamil.



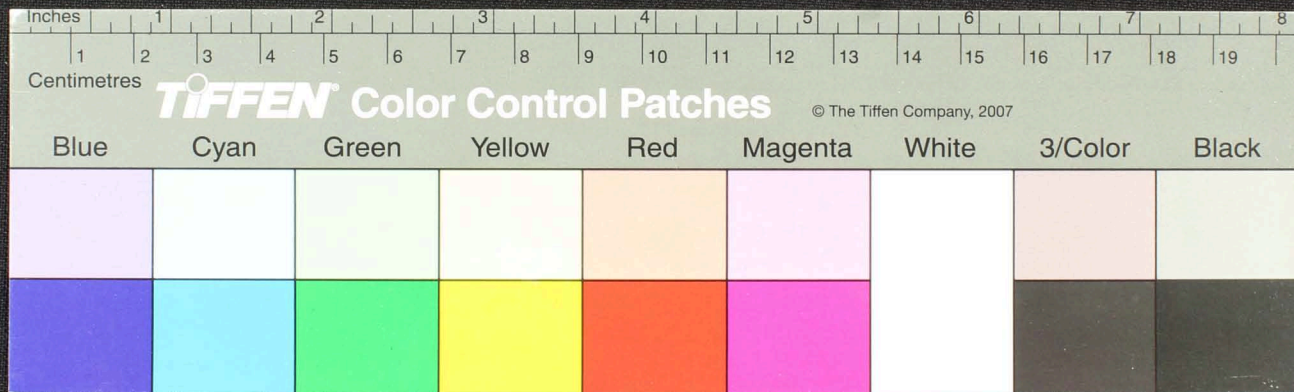
Handwritten Tamil script on a palm leaf manuscript. The text is arranged in approximately 10 horizontal lines across the length of the leaf. Two circular holes are visible, used for threading a cord to bind multiple leaves together. The script is finely etched into the surface of the dried leaf.



Handwritten Tamil script on a palm leaf manuscript. The text is arranged in approximately 10 horizontal lines across the length of the leaf. Two circular holes are visible, which were traditionally used for threading a cord to bind multiple leaves together into a book format. The script is densely packed and appears to be a form of classical or religious Tamil.



Handwritten Tamil script on a palm leaf manuscript. The text is arranged in approximately 10 horizontal lines across the length of the leaf. Two circular holes are visible, which were traditionally used for threading a cord to bind multiple leaves together into a book format. The script is finely etched into the surface of the dried leaf.



Handwritten Tamil script on a palm leaf manuscript. The text is arranged in approximately 10 horizontal lines across the length of the leaf. Two circular holes are visible, which were traditionally used for threading a cord to bind multiple leaves together into a book format. The script is finely etched into the surface of the dried leaf.

