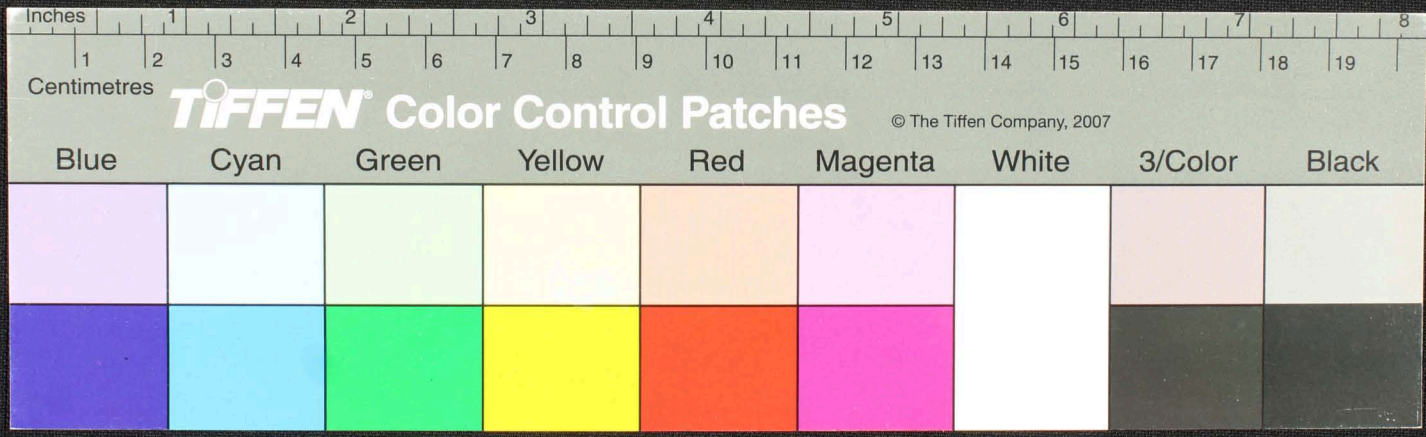
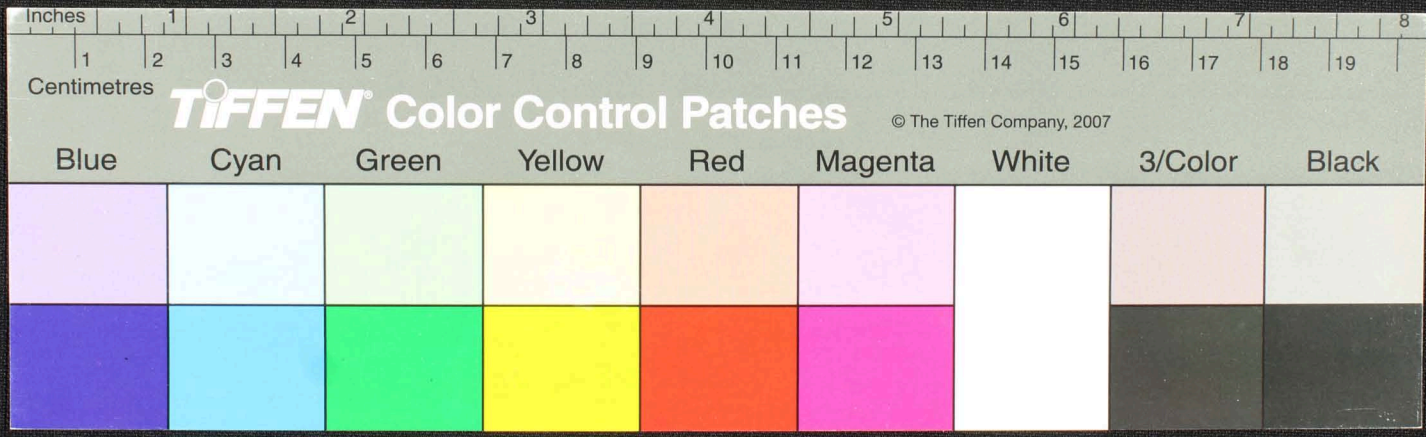


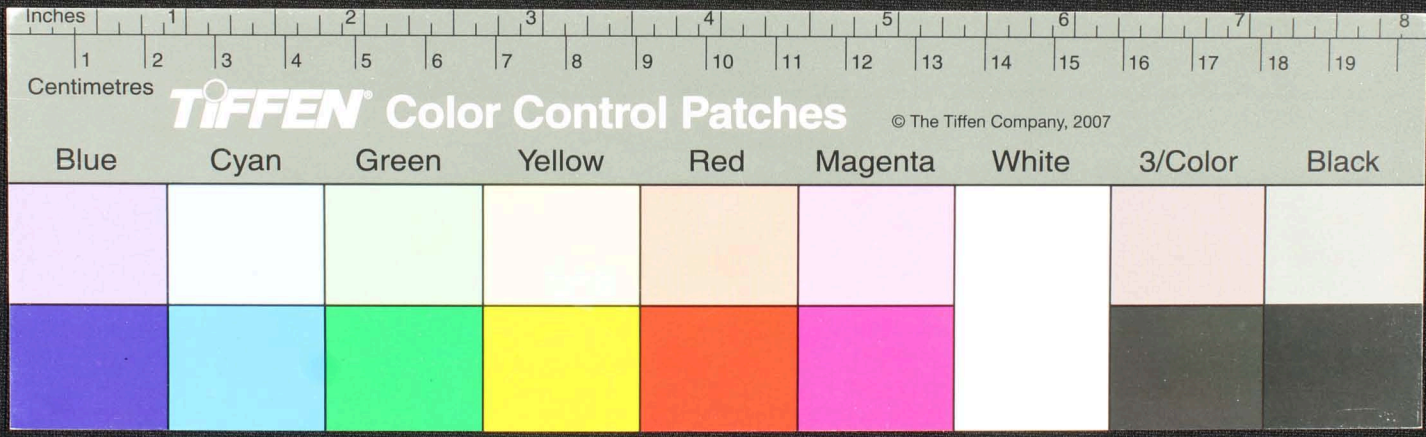
Handwritten Tamil script on a palm leaf manuscript. The text is arranged in approximately 10 horizontal lines across the length of the leaf. Two circular holes are visible, which were traditionally used for threading a cord to bind multiple leaves together into a book format. The script is densely packed and appears to be a form of classical or historical Tamil.



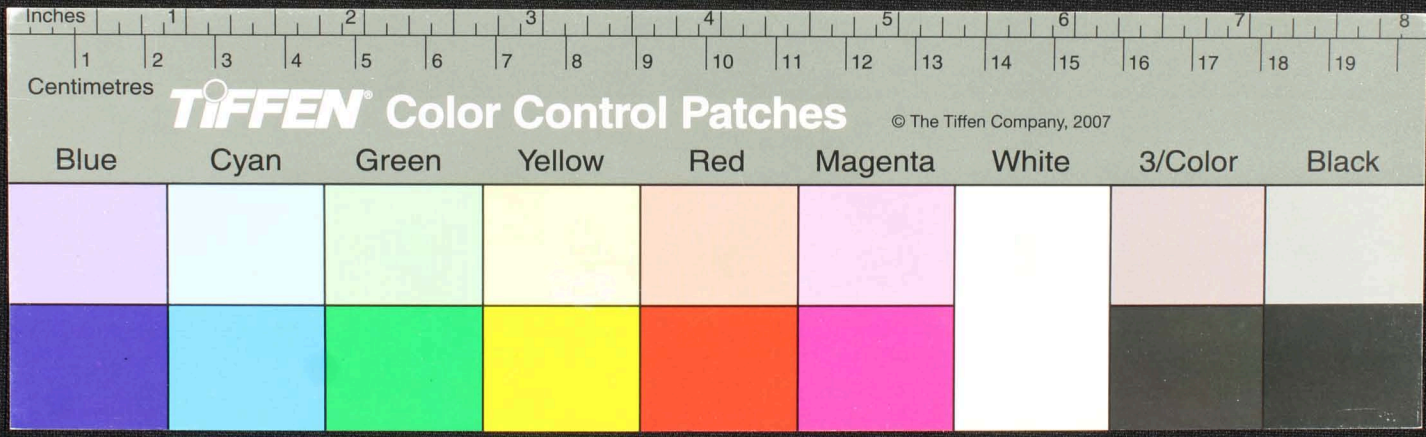
Handwritten Tamil script on a palm leaf manuscript. The text is arranged in approximately 10 horizontal lines across the length of the leaf. Two circular holes are visible, which were traditionally used for threading a cord to bind multiple leaves together. The script is finely etched into the surface of the dried leaf.



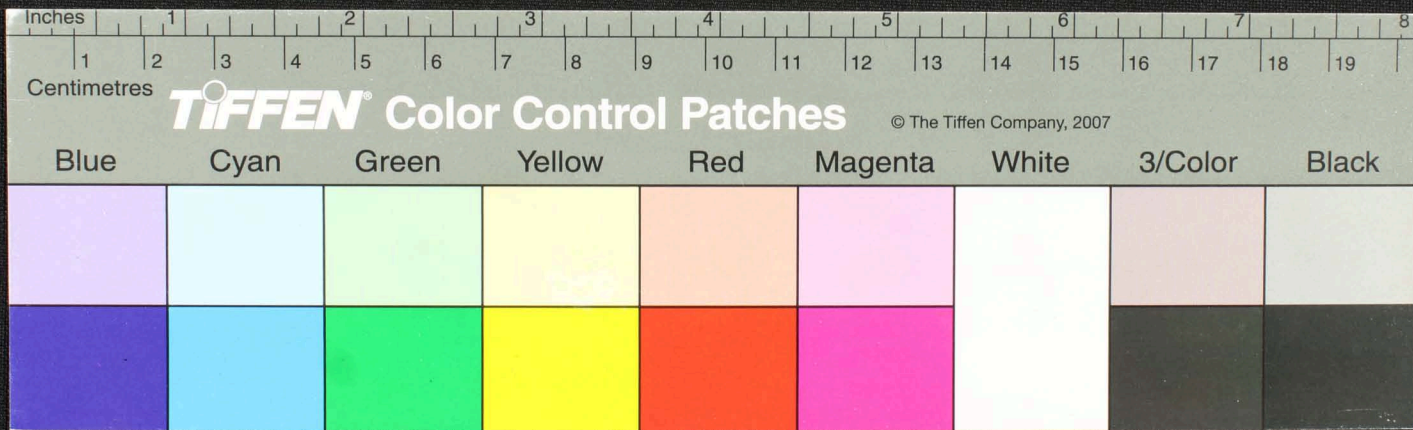
Handwritten Tamil script on a palm leaf manuscript. The text is arranged in approximately 10 horizontal lines across the length of the leaf. Two circular holes are visible, used for threading a cord to bind multiple leaves together. The script is densely packed and appears to be a form of classical Tamil.



Handwritten Tamil script on a palm leaf manuscript. The text is arranged in approximately 10 horizontal lines across the length of the leaf. Two circular holes are visible, which were traditionally used for threading a cord to bind multiple leaves together into a book format. The script is finely etched into the surface of the dried leaf.



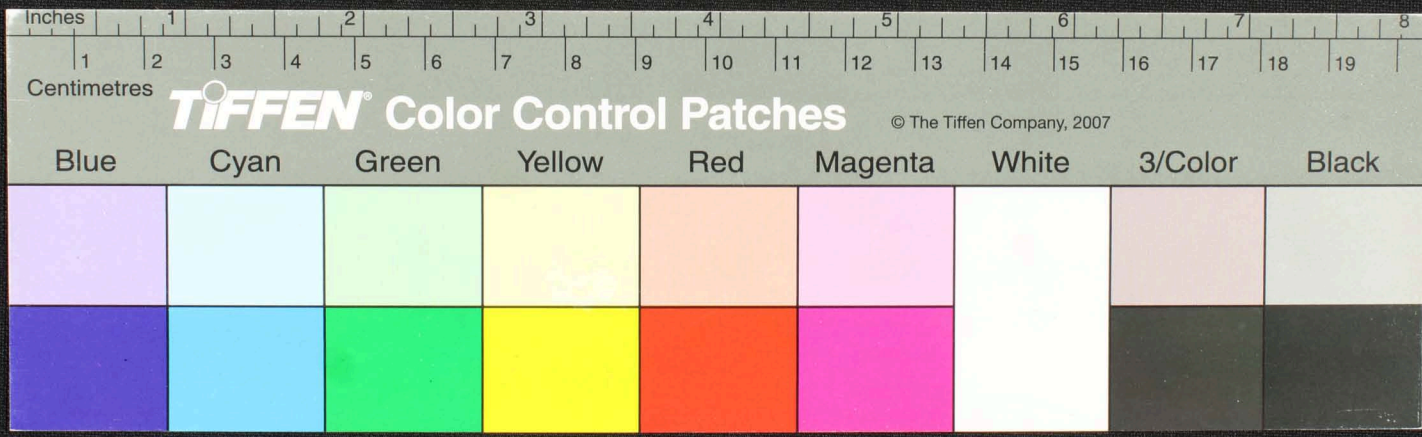
Handwritten Tamil script on a palm leaf manuscript. The text is arranged in approximately 10 horizontal lines across the length of the leaf. Two circular holes are visible, which were traditionally used for threading a cord to bind multiple leaves together. The script is densely packed and appears to be a form of classical or historical Tamil.





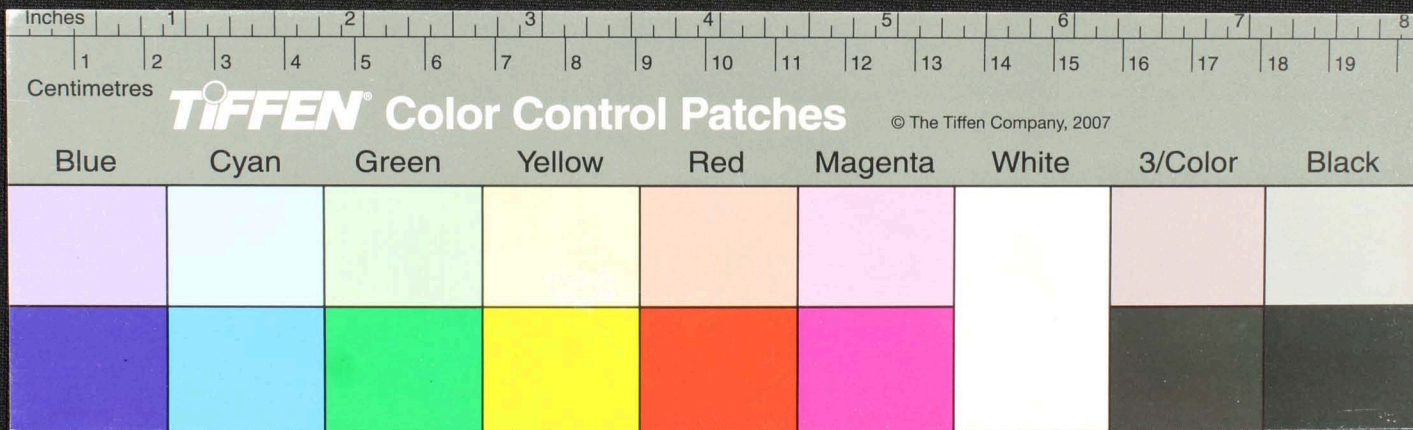


Handwritten Tamil script on a palm leaf manuscript. The text is arranged in approximately 10 horizontal lines across the length of the leaf. Two circular holes are visible, which were traditionally used for threading a cord to bind multiple leaves together into a book format. The script is densely packed and appears to be a form of classical or historical Tamil.

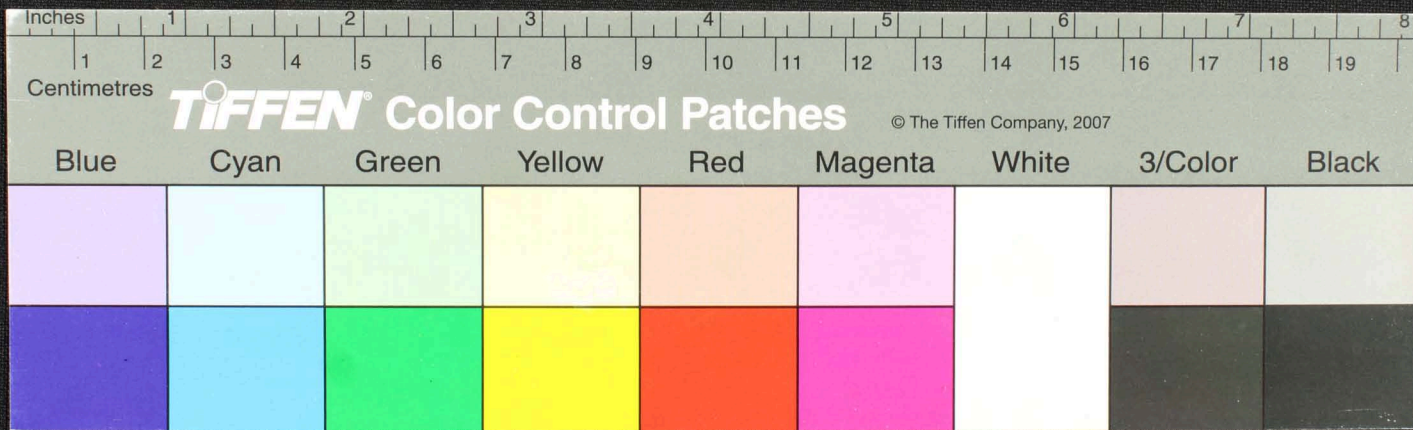




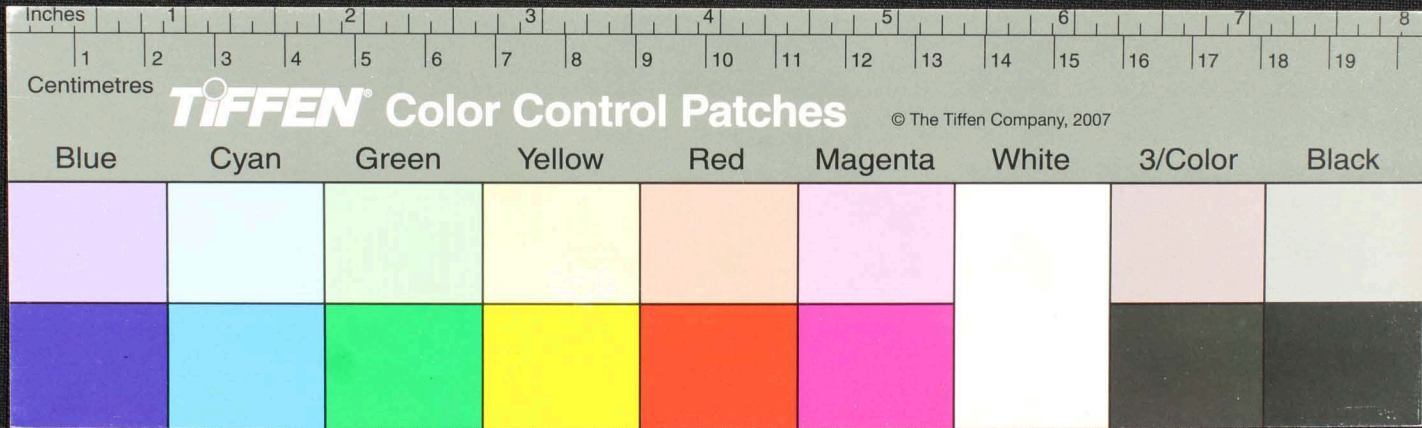
Handwritten Tamil script on a palm leaf manuscript. The text is arranged in approximately 10 horizontal lines across the length of the leaf. Two circular holes are visible, which were traditionally used for threading a cord to bind multiple leaves together. The script is densely packed and appears to be a form of classical Tamil.



Handwritten text in Tamil script on a palm leaf manuscript. The text is arranged in approximately 10 horizontal lines across the length of the leaf. Two circular holes are visible, which were traditionally used for threading a cord to bind multiple leaves together into a book format. The script is densely packed and appears to be a form of classical or religious Tamil.



Handwritten Tamil script on a palm leaf manuscript. The text is arranged in approximately 10 horizontal lines across the length of the leaf. Two circular holes are visible, which were traditionally used for threading a cord to bind multiple leaves together. The script is finely etched into the surface of the dried leaf.



Handwritten Tamil script on a palm leaf manuscript. The text is arranged in approximately 10 horizontal lines across the length of the leaf. Two circular holes are visible, used for binding multiple leaves together. The script is finely etched into the surface of the dried leaf.

