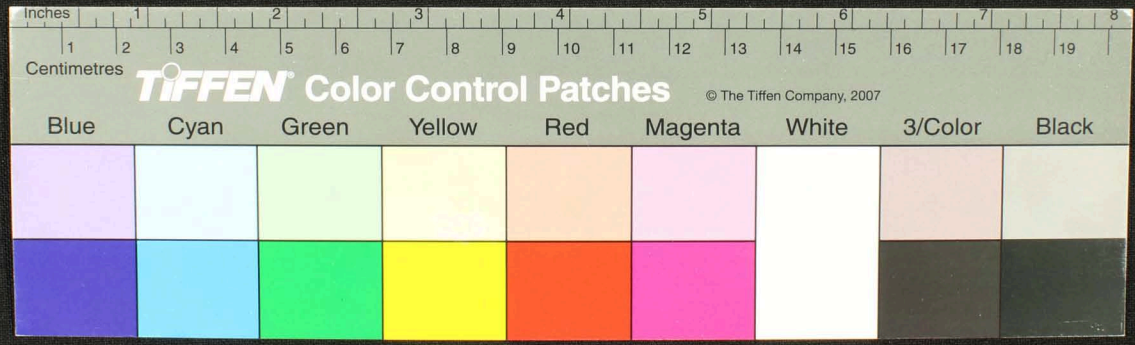
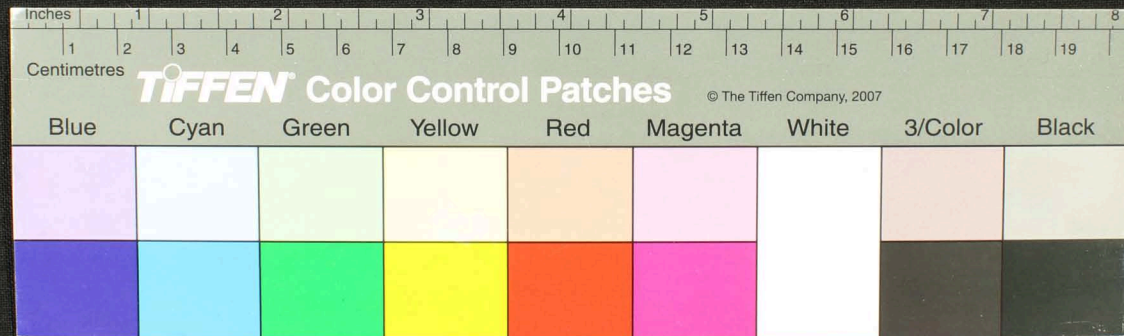




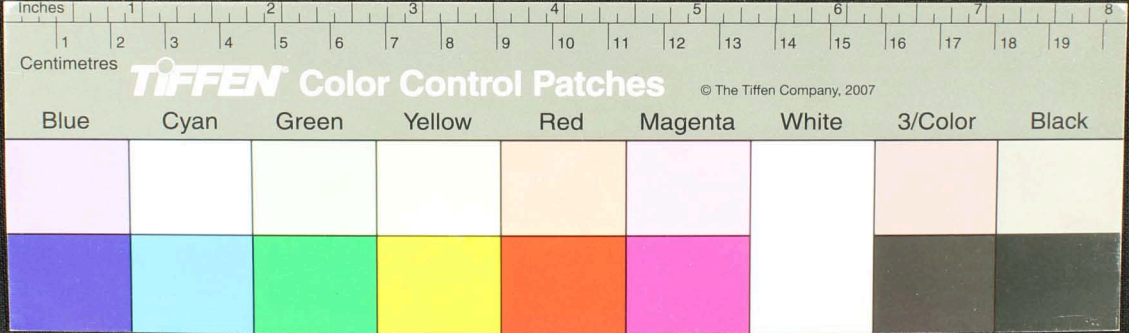
மூலிகை கள் பெர் புவ
@.53, ப. 14



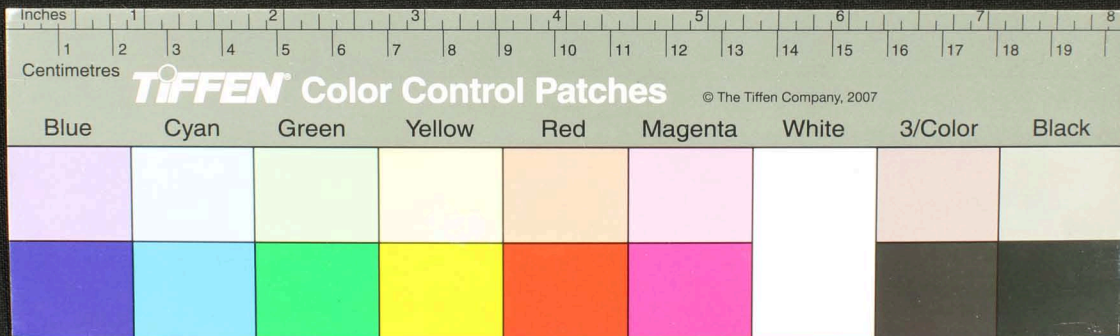
Blue	Cyan	Green	Yellow	Red	Magenta	White	3/Color	Black
[Blue patch]	[Cyan patch]	[Green patch]	[Yellow patch]	[Red patch]	[Magenta patch]	[White patch]	[3/Color patch]	[Black patch]
[Dark Blue patch]	[Dark Cyan patch]	[Dark Green patch]	[Dark Yellow patch]	[Dark Red patch]	[Dark Magenta patch]	[Dark White patch]	[Dark 3/Color patch]	[Dark Black patch]



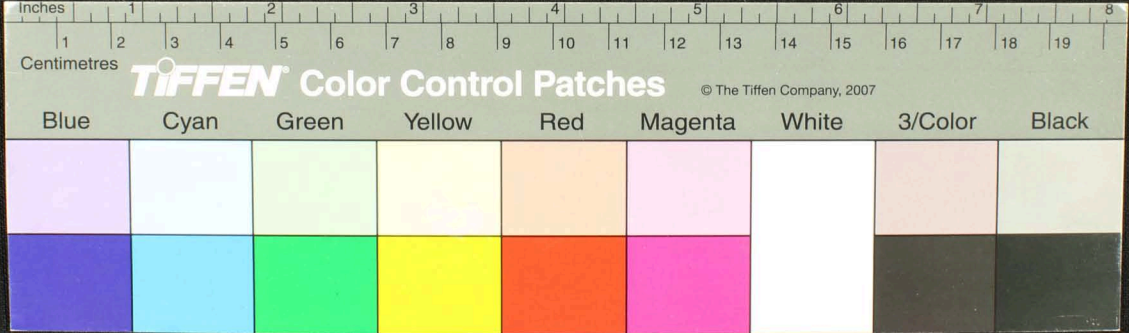
Handwritten Tamil script on a palm leaf manuscript. The text is arranged in approximately 10 horizontal lines across the length of the leaf. The script is finely etched into the surface of the dried leaf. The leaf shows signs of age, including some staining and a small hole near the center.



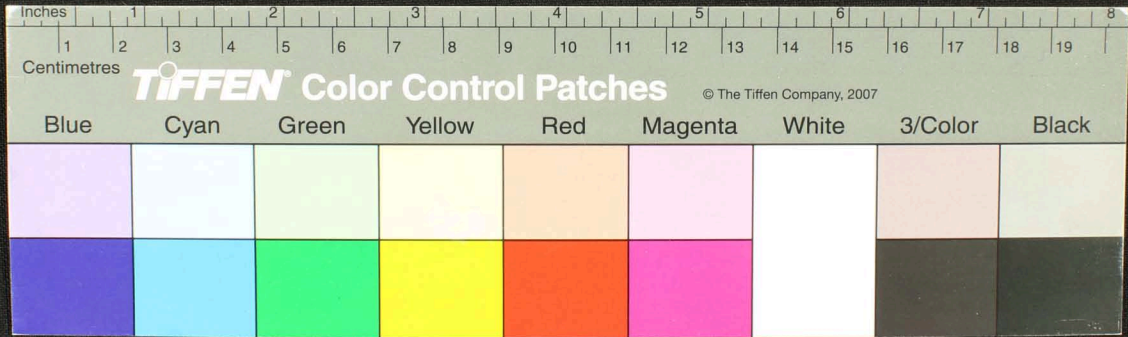
Handwritten text in Tamil script on a palm leaf manuscript. The text is arranged in approximately 10 columns across the length of the leaf. The script is finely etched into the surface of the dried leaf. The leaf shows signs of age, including some staining and a small hole near the center.



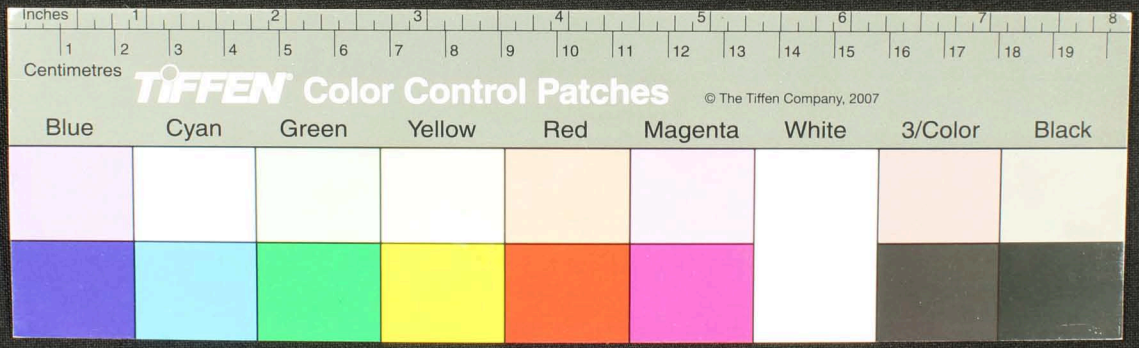
Handwritten Tamil script on a palm leaf manuscript strip. The text is arranged in approximately 10 columns across the length of the leaf. The script is finely etched into the surface of the dried leaf. Some characters are clearly legible, such as 'சுலம்', 'கொடும்பு', and 'சுலம்', though many are partially obscured by damage or bleed-through from the reverse side.



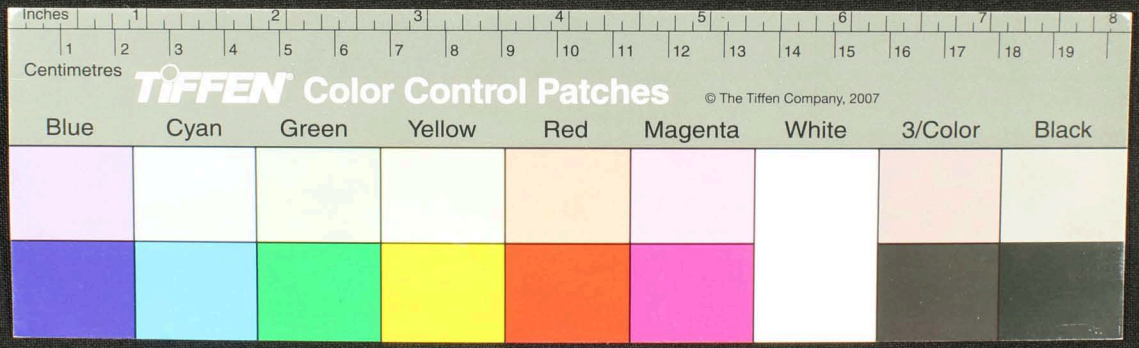
Handwritten text in Tamil script on a palm leaf manuscript. The text is arranged in approximately 10 columns across the length of the leaf. The script is finely etched into the surface of the dried leaf.



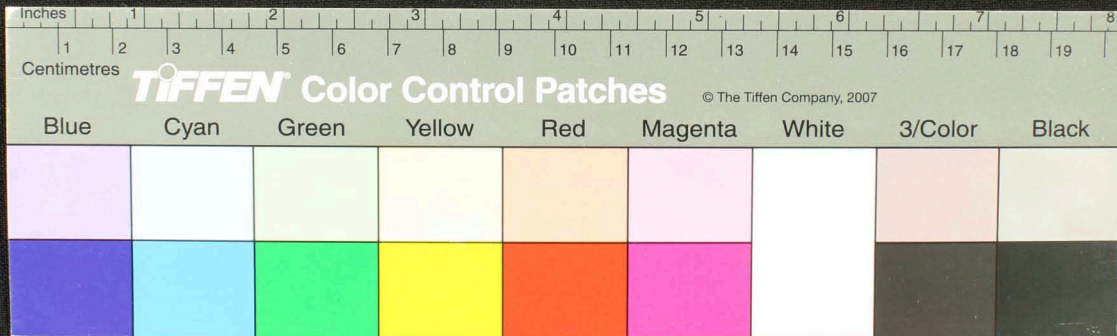
Handwritten text in Tamil script on a palm leaf manuscript. The text is arranged in approximately 10 vertical columns across the length of the leaf. The script is finely etched into the surface of the dried leaf. Some characters are partially obscured by small holes or damage to the leaf.



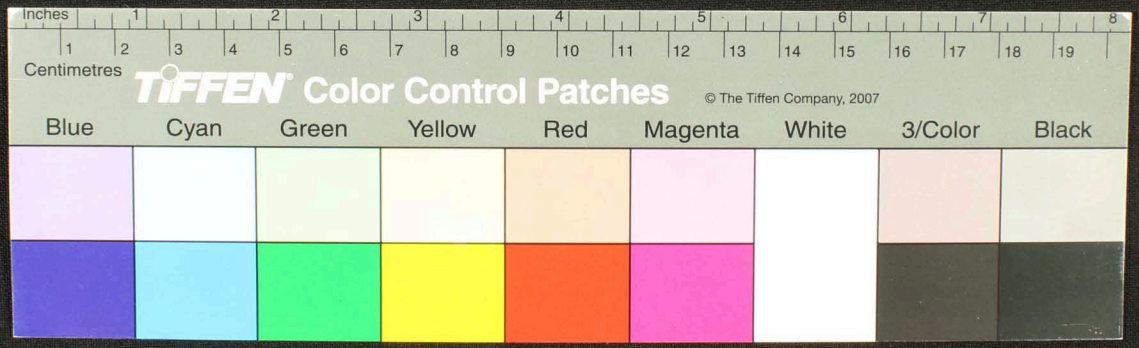
Handwritten text in Tamil script on a palm leaf manuscript. The text is arranged in approximately 10 vertical columns across the length of the leaf. The script is finely etched into the surface of the dried leaf. The columns contain various characters, including letters and numbers, typical of traditional Tamil writing.



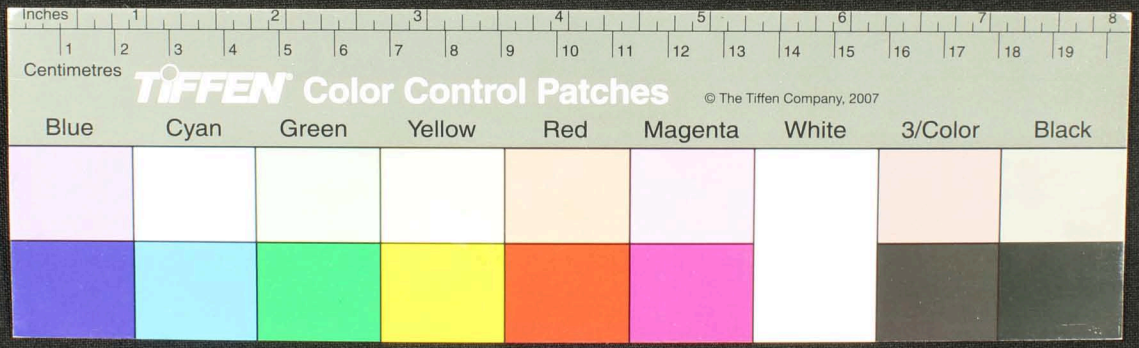
Handwritten Tamil script on a palm leaf manuscript strip. The text is arranged in approximately 10 vertical columns, reading from right to left. The script is finely etched into the surface of the dried leaf. The columns contain various characters and words, including some that appear to be religious or philosophical in nature, such as 'சுவாமி' (Sivami) and 'மாம' (Mama).



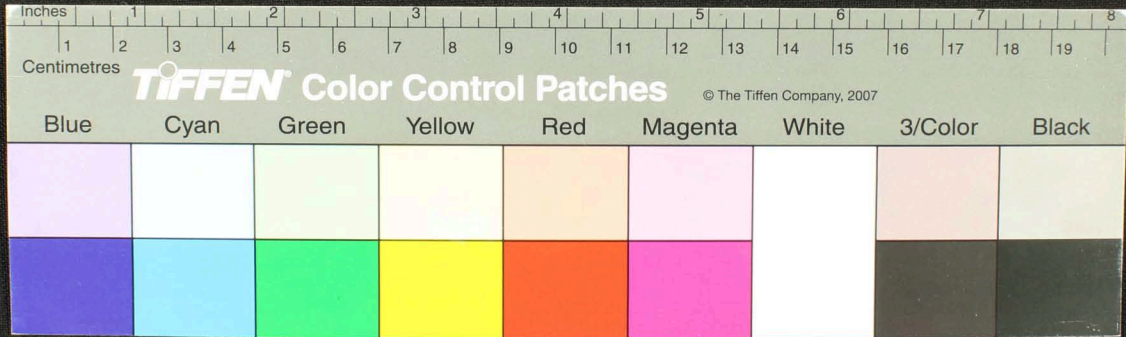
Handwritten text in Tamil script on a palm leaf manuscript. The text is arranged in approximately 10 vertical columns, with some characters appearing to be in a different script or dialect. The leaf shows signs of age, including dark spots and a hole.



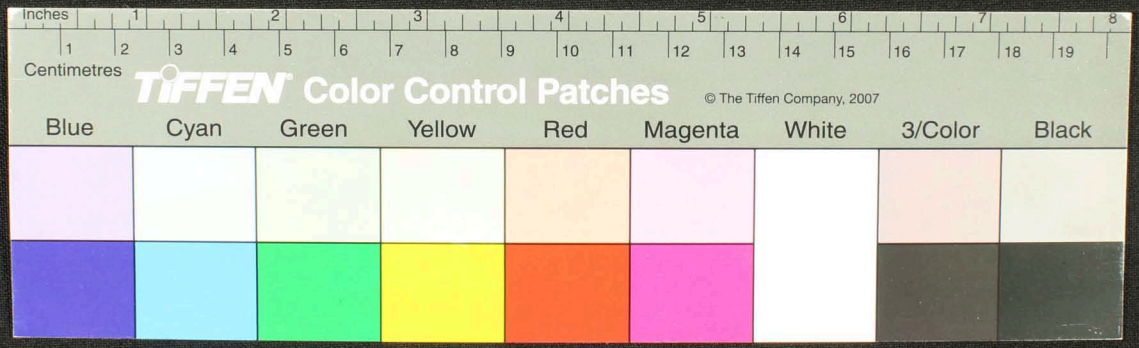
Handwritten text in Tamil script on a palm leaf manuscript. The text is arranged in approximately 10 vertical columns across the length of the leaf. The script is finely etched into the surface of the dried leaf. Some characters are difficult to decipher due to the texture and wear of the leaf, but the overall structure suggests a list or a series of entries.



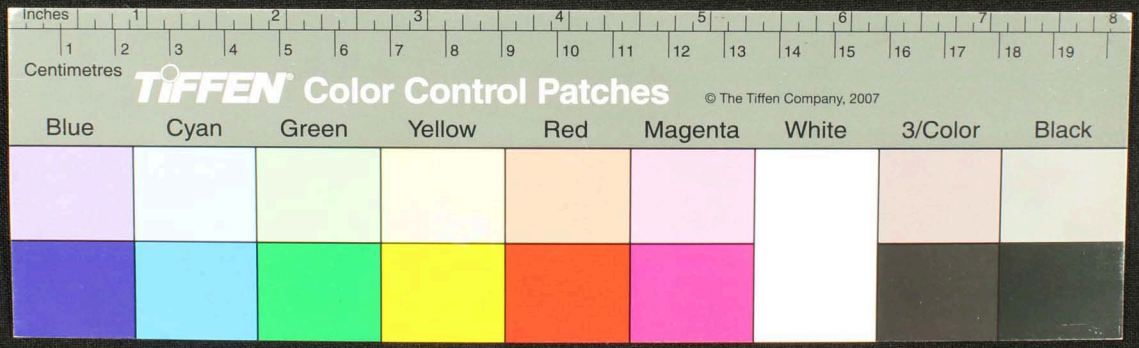
Handwritten Tamil script on a palm leaf manuscript. The text is arranged in approximately 10 vertical columns across the length of the leaf. The script is finely etched into the surface of the dried leaf. The columns contain various characters and words, typical of traditional Tamil literature or records.



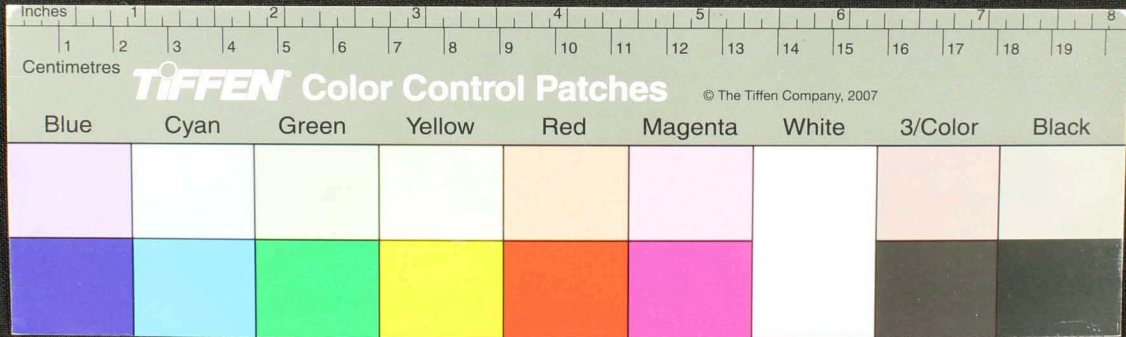
Handwritten Tamil script on a palm leaf manuscript. The text is arranged in approximately 10 columns across the length of the leaf. The script is finely etched into the surface of the dried leaf. Two circular holes are visible, which were traditionally used for threading a cord to bind multiple leaves together into a book format.



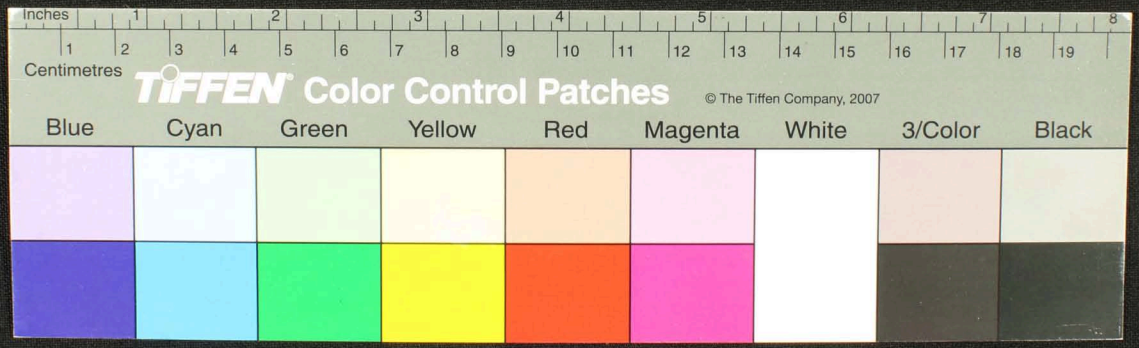
Handwritten Tamil script on a palm leaf manuscript. The text is arranged in approximately 10 columns across the length of the leaf. The script is finely etched into the surface of the dried leaf. The leaf shows signs of age, including a dark spot and some fraying at the left end.



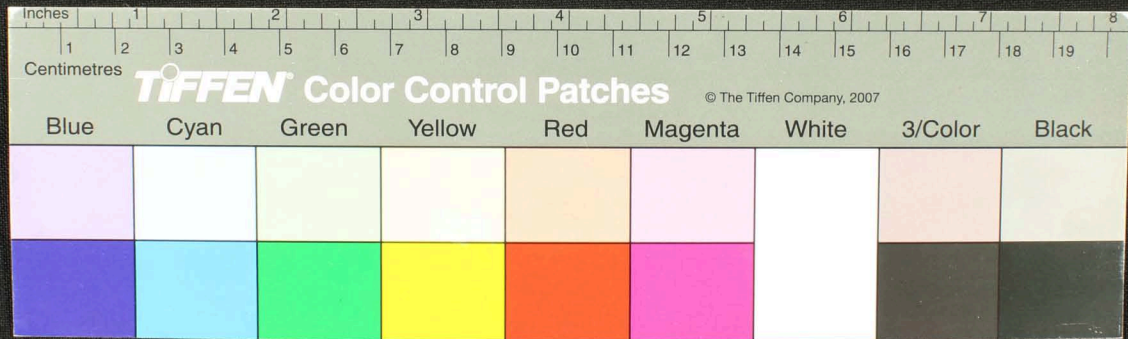
Handwritten Tamil script on a palm leaf manuscript. The text is arranged in approximately 10 vertical columns, reading from right to left. The script is finely etched into the surface of the dried leaf. A small circular hole is visible near the center of the leaf, which is a traditional feature for threading a cord to bind multiple leaves together.



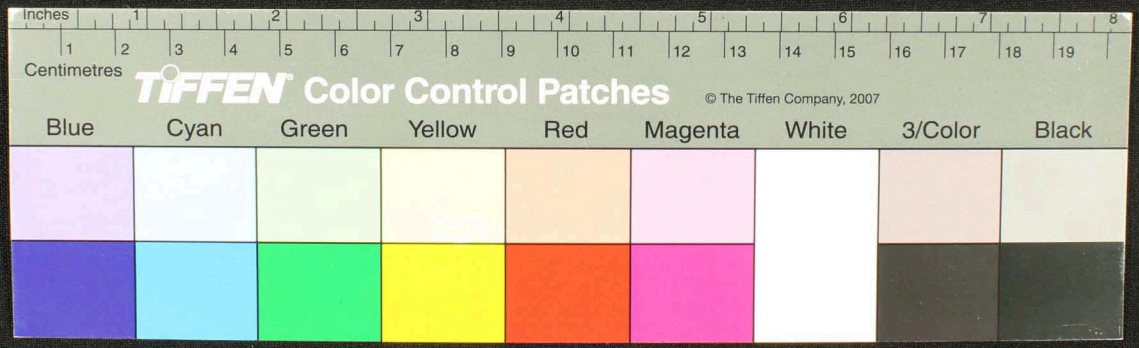
Handwritten text in Tamil script on a palm leaf manuscript. The text is arranged in approximately 10 vertical columns across the length of the leaf. The script is finely etched into the surface of the dried leaf. The leaf shows signs of age, including a hole and some staining.



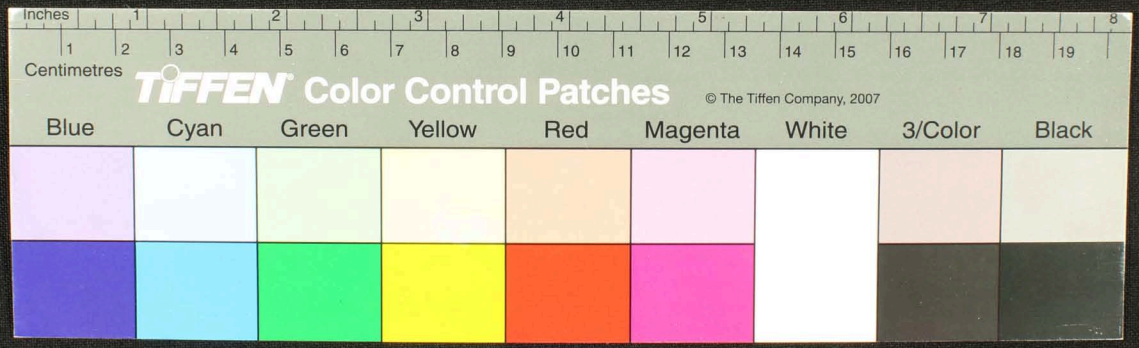
Handwritten Tamil script on a palm leaf manuscript strip. The text is arranged in approximately 10 vertical columns, reading from right to left. The script is finely etched into the surface of the dried leaf. A small circular hole is visible near the center of the strip, which is a traditional feature for threading a cord to bind multiple leaves together.



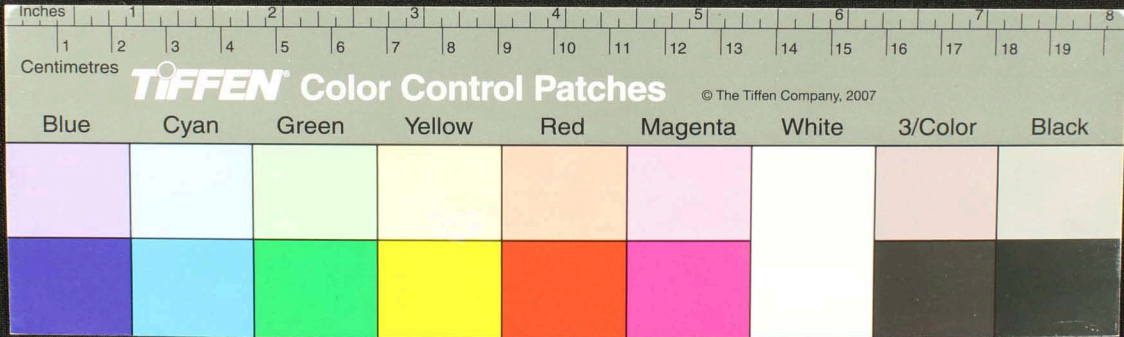
Handwritten text in Tamil script on a palm leaf manuscript. The text is arranged in approximately 10 vertical columns from left to right. The script is finely etched into the surface of the dried leaf. Some characters are clearly legible, such as 'குடிசை', 'பாடி', 'புத்திரன்', and 'குடிசை'. There are also some decorative or larger characters interspersed within the columns.



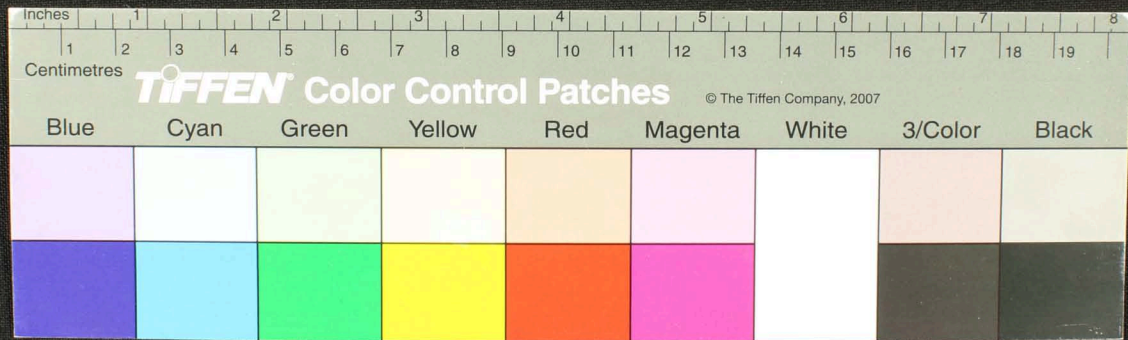
Handwritten text in Tamil script on a palm leaf manuscript. The text is arranged in approximately 10 vertical columns across the length of the leaf. The script is finely etched into the surface of the dried leaf. The columns contain various words and phrases, including names and titles, though some are difficult to decipher due to the cursive nature of the script and the wear of the leaf.



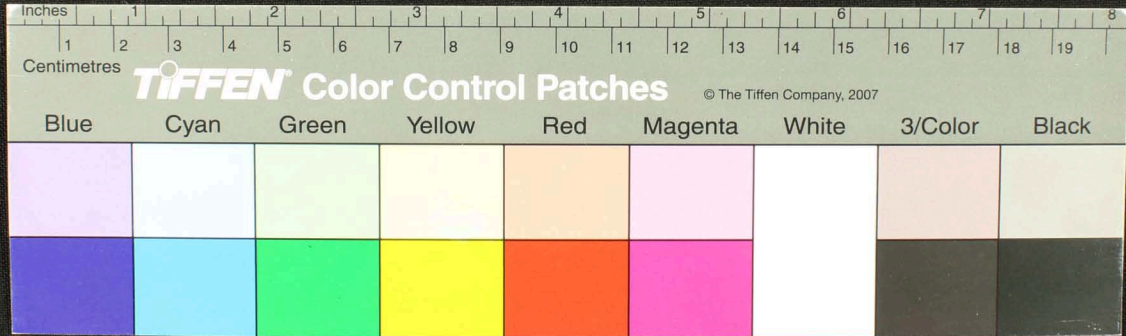
Handwritten Tamil script on a palm leaf manuscript. The text is arranged in approximately 10 vertical columns across the length of the leaf. The script is finely etched into the surface of the dried leaf. A circular hole is visible near the center of the leaf, which is a traditional feature for threading a cord to bind multiple leaves together into a book format.



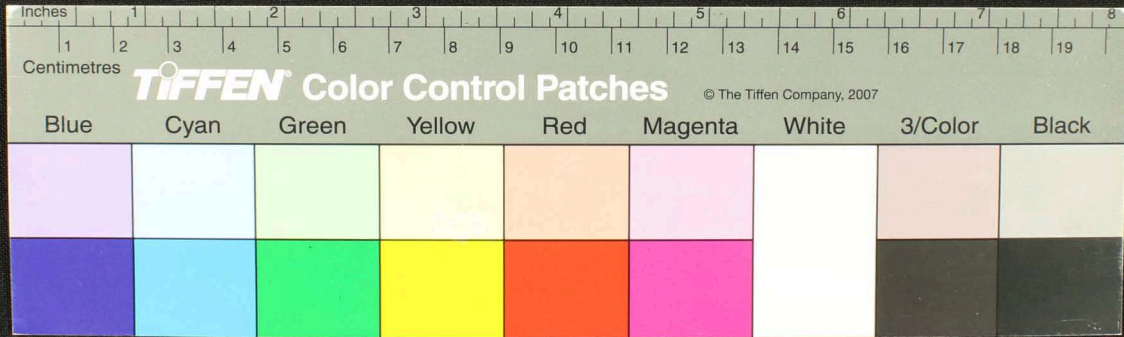
Handwritten text in Tamil script on a palm leaf manuscript. The text is arranged in approximately 10 columns across the length of the leaf. The script is finely etched into the surface of the dried leaf. The leaf shows signs of age, including some dark spots and a small hole near the center.



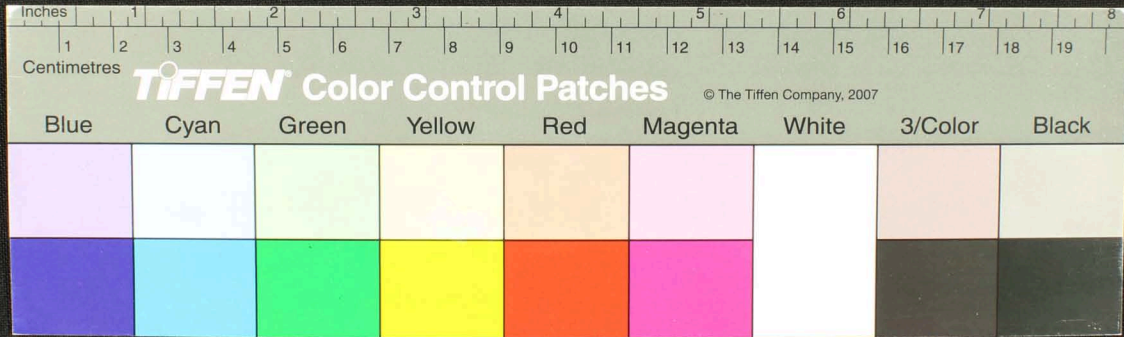
Handwritten text in Tamil script on a palm leaf manuscript. The text is arranged in approximately 10 columns across the length of the leaf. The script is finely etched into the surface of the dried leaf. The leaf shows signs of age, including some dark spots and a small hole near the center.



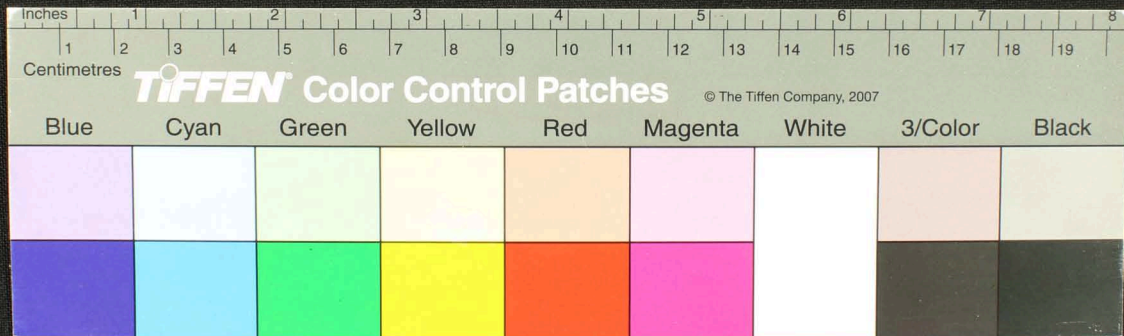
Handwritten text in Tamil script on a palm leaf manuscript. The text is arranged in approximately 10 horizontal lines across the length of the leaf. The script is densely packed and appears to be a form of classical or religious Tamil. There are some small drawings or symbols interspersed within the text, particularly on the left side. The leaf shows signs of age, including a hole and some staining.



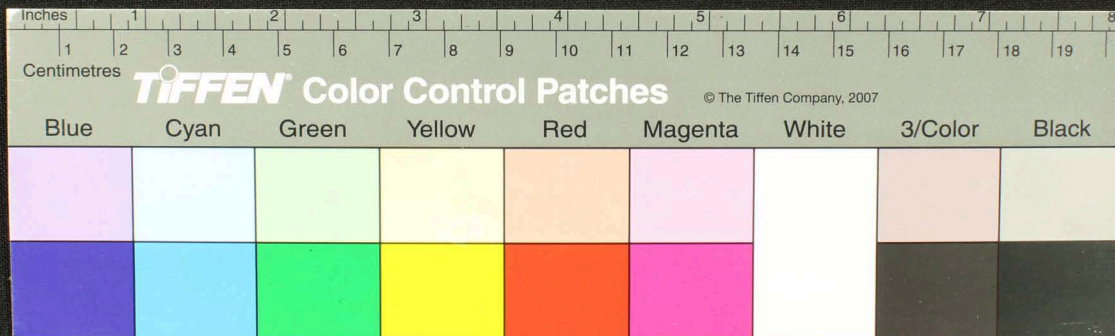
Handwritten Tamil script on a palm leaf manuscript. The text is arranged in approximately seven vertical columns, reading from right to left. The script is densely packed and appears to be a form of classical or religious Tamil. The leaf shows signs of age, including some staining and a small circular hole near the center.



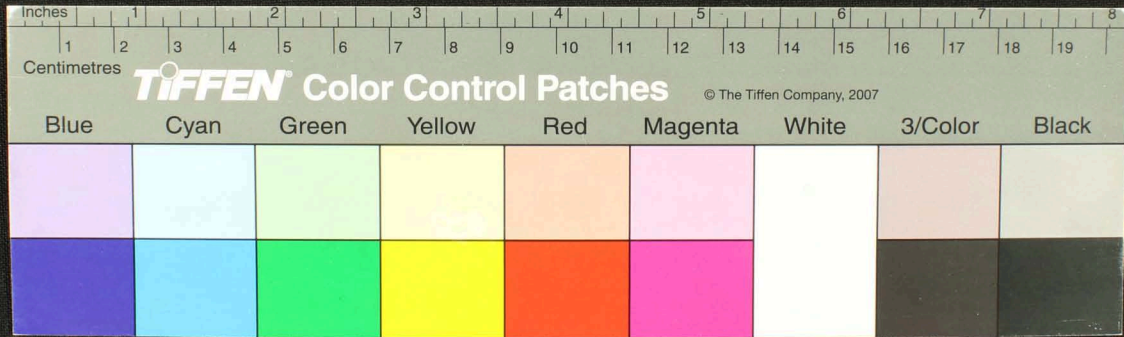
Handwritten text in Tamil script on a palm leaf manuscript strip. The text is arranged in approximately 10 vertical columns across the length of the leaf. The script is finely etched into the surface of the dried leaf. A small circular hole is visible near the center of the strip, which is a traditional feature for threading a cord to bind multiple leaves together.



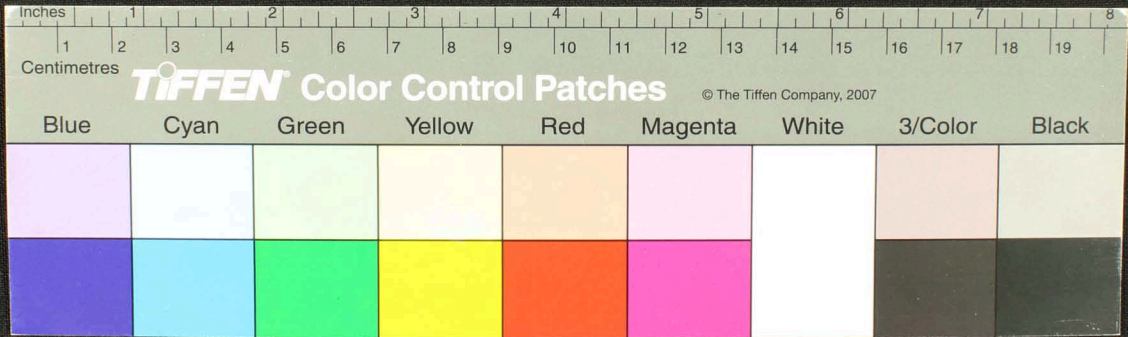
Handwritten Tamil script on a palm leaf manuscript. The text is arranged in approximately 10 vertical columns across the length of the leaf. The script is finely etched into the surface of the dried leaf. The columns contain various characters, including letters and numbers, typical of traditional Tamil writing.



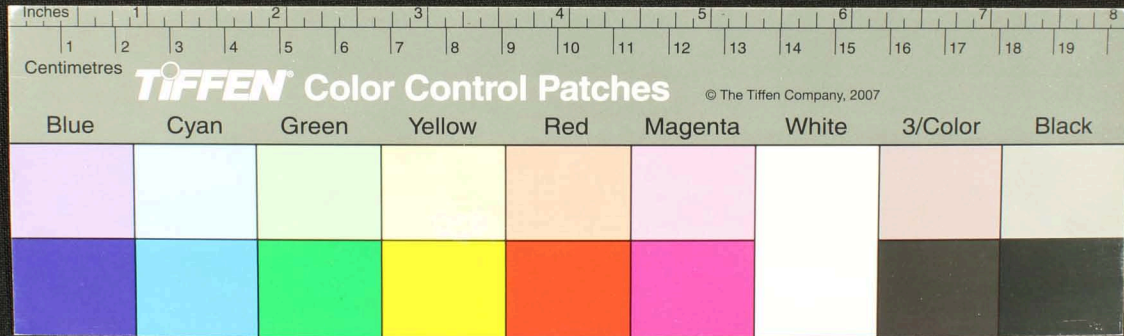
Handwritten text in Tamil script on a palm leaf manuscript. The text is arranged in approximately 10 vertical columns. The script is finely etched into the surface of the dried leaf. Some characters are partially obscured by a dark circular hole or a tear in the leaf. The text appears to be a form of classical or religious Tamil literature.



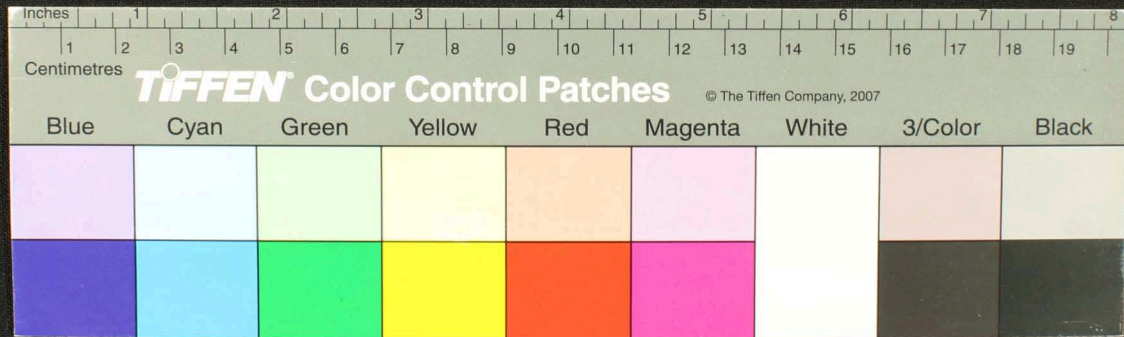
Handwritten text in Tamil script on a palm leaf manuscript. The text is arranged in approximately 10 vertical columns across the length of the leaf. The script is finely etched into the surface of the dried leaf. A small circular hole is visible near the center of the leaf, likely for binding.



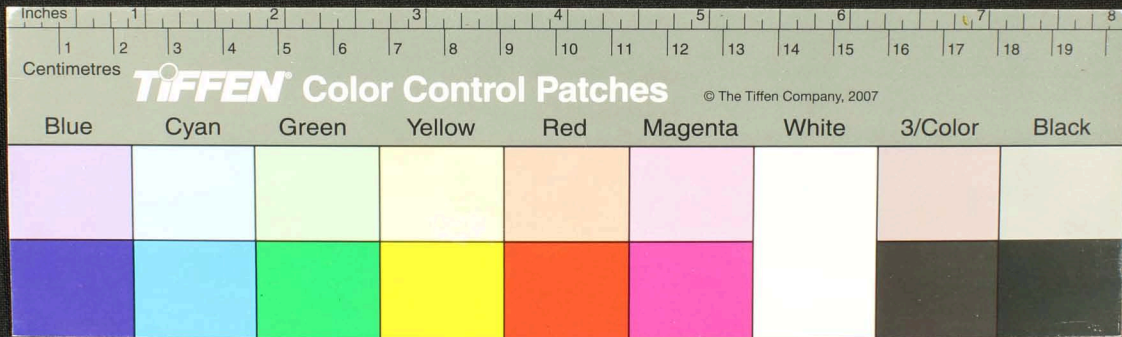
Handwritten Tamil script on a palm leaf manuscript. The text is arranged in approximately 10 horizontal lines across the length of the leaf. The script is finely etched into the surface of the dried leaf. The leaf shows signs of age and wear, with some dark spots and irregular edges.



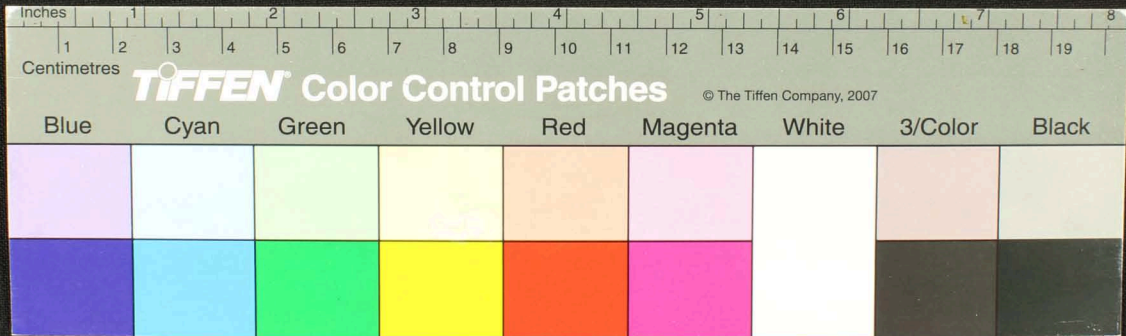
Handwritten text in Tamil script on a palm leaf manuscript. The text is arranged in approximately 10 columns across the length of the leaf. The script is finely etched into the surface of the dried leaf. The columns contain various characters and words, typical of traditional Tamil literature or records.



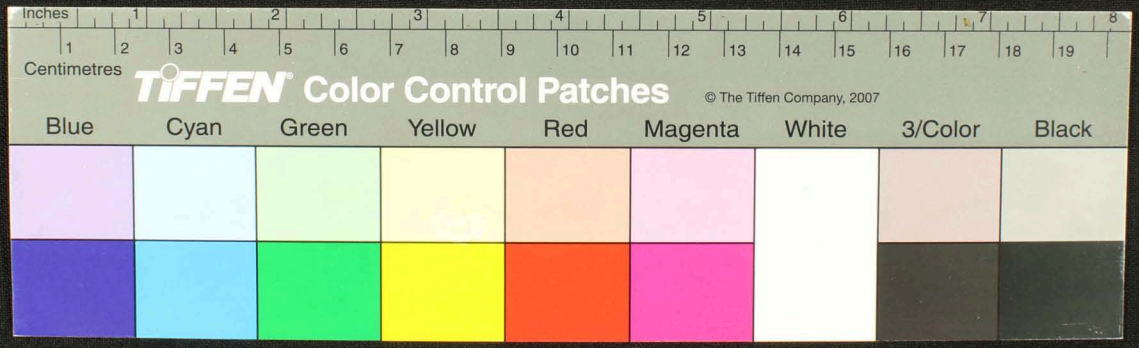
Handwritten Tamil script on a palm leaf manuscript. The text is arranged in approximately 12 vertical columns, reading from right to left. The script is finely etched into the surface of the dried leaf. A small circular hole is visible near the center of the leaf, which is a traditional feature for threading a cord to bind multiple leaves together into a book format.



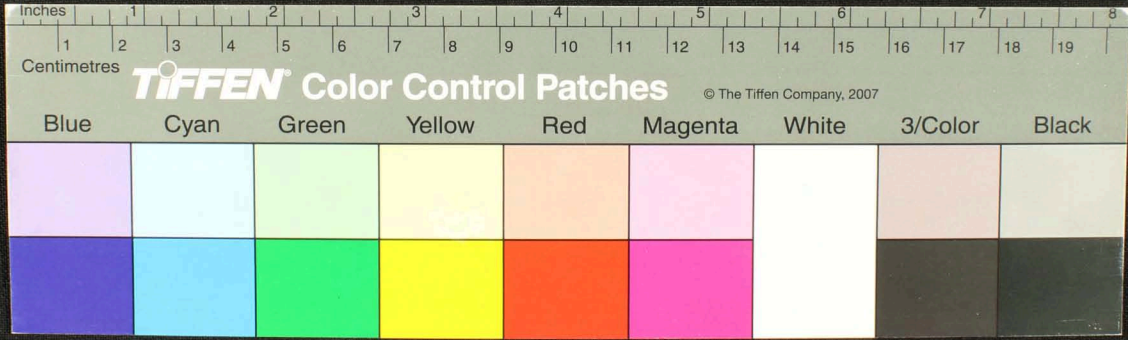
Handwritten Tamil script on a palm leaf manuscript. The text is arranged in approximately 10 vertical columns, with characters written in a traditional style. The leaf shows signs of age and wear, including a prominent circular hole in the middle section.



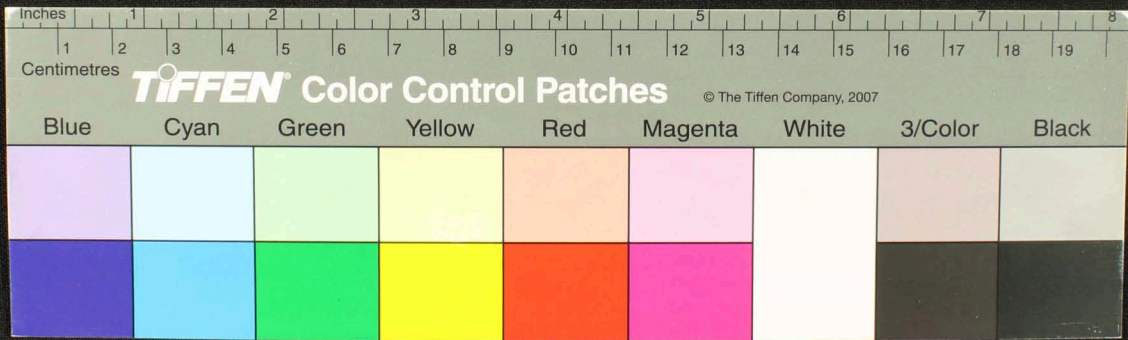
Handwritten text in Tamil script on a palm leaf manuscript. The text is arranged in approximately 10 vertical columns across the length of the leaf. The script is finely etched into the surface of the dried leaf. A small circular hole is visible near the center of the leaf, likely for binding purposes.



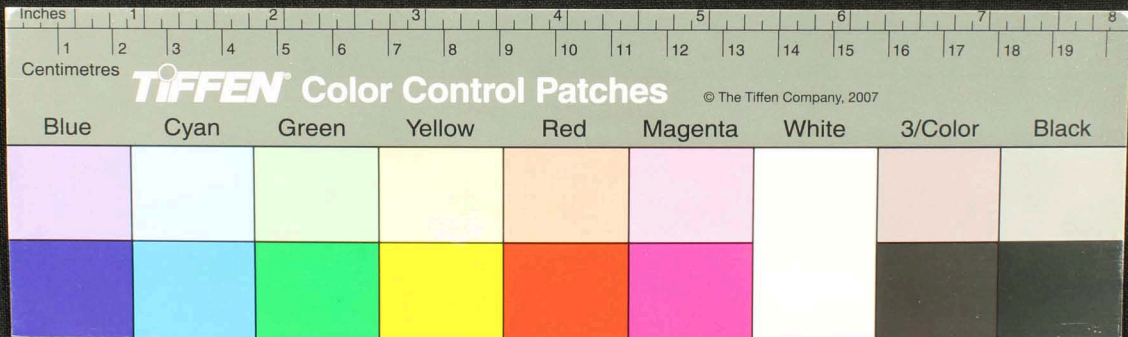
Handwritten Tamil script on a palm leaf manuscript. The text is arranged in approximately seven vertical columns, with some characters appearing to be in a different script or dialect. The leaf is aged and shows signs of wear, including a hole and frayed edges.



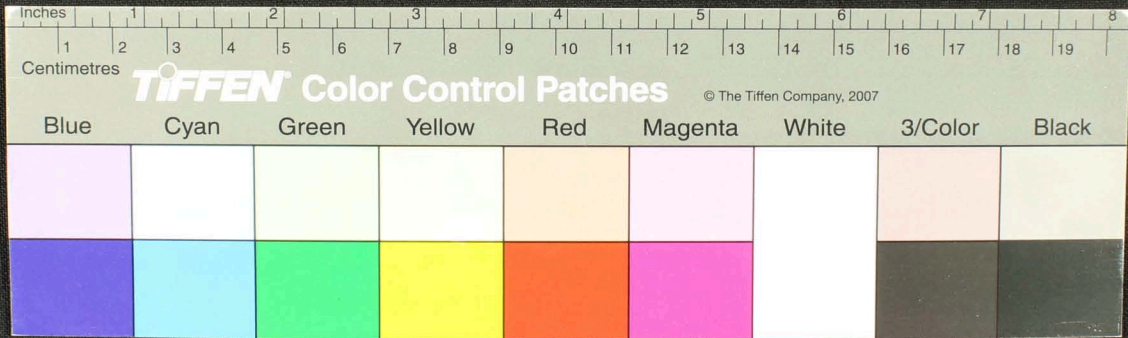
Handwritten Tamil script on a palm leaf manuscript. The text is arranged in approximately 10 vertical columns, with some characters appearing to be in a different script or dialect. The leaf shows signs of age and wear, including a small hole and some staining.



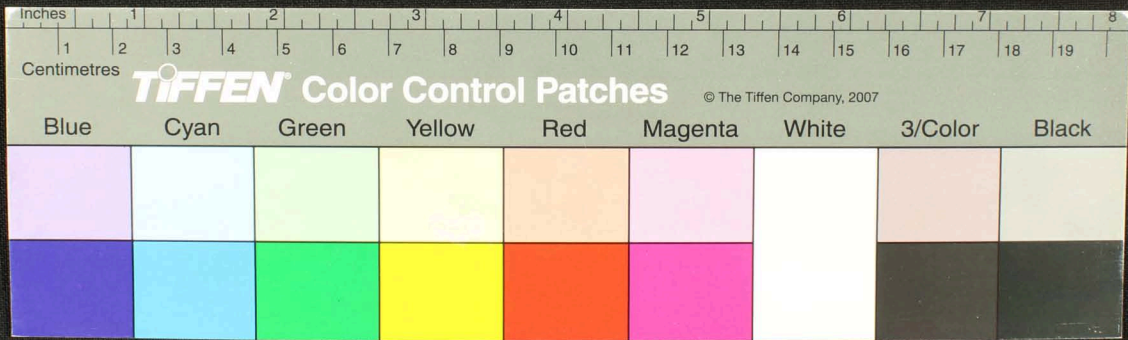
Handwritten text in Tamil script on a palm leaf manuscript. The text is arranged in approximately seven vertical columns from left to right. The script is finely etched into the surface of the dried leaf. The columns contain various characters and words, including some that appear to be numbers or specific terms. The leaf shows signs of age and wear, particularly at the left end.



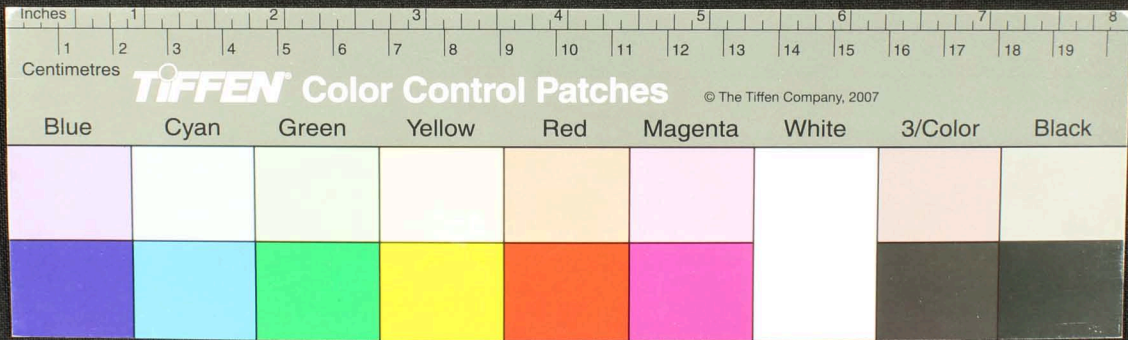
Handwritten text in Tamil script on a palm leaf manuscript. The text is arranged in approximately 10 columns across the length of the leaf. The script is finely etched into the surface of the dried leaf. Some characters are partially obscured by small holes or damage to the leaf.



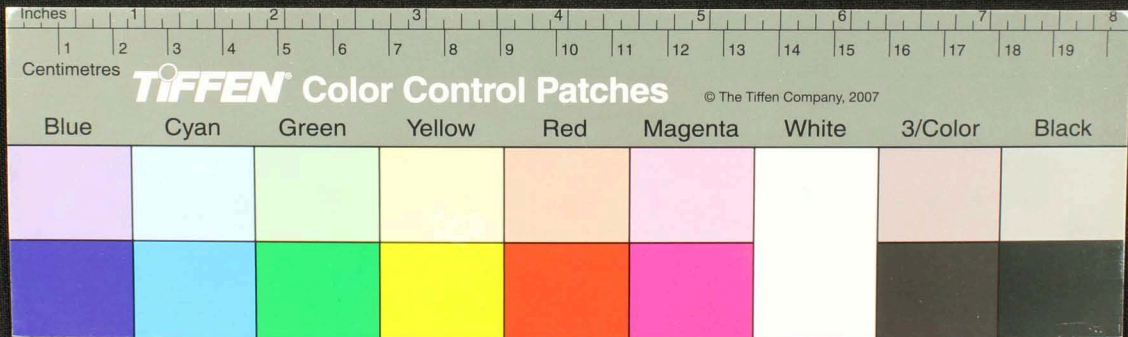
Handwritten text in Tamil script on a palm leaf manuscript. The text is arranged in approximately 10 columns across the length of the leaf. The script is finely etched into the surface of the dried leaf. Some characters are partially obscured by a hole in the leaf and some ink bleed-through from the reverse side.



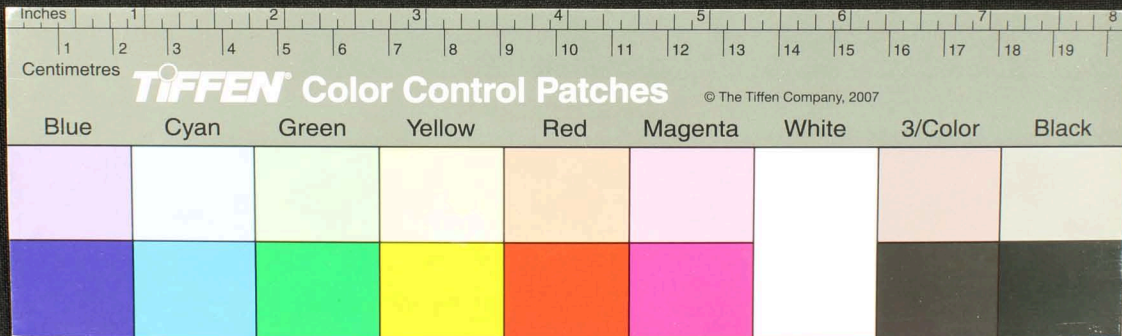
Handwritten Tamil script on a palm leaf manuscript. The text is arranged in approximately seven vertical columns, with some characters appearing to be in a different script or dialect. The leaf shows signs of age and wear, including a small hole and some staining.



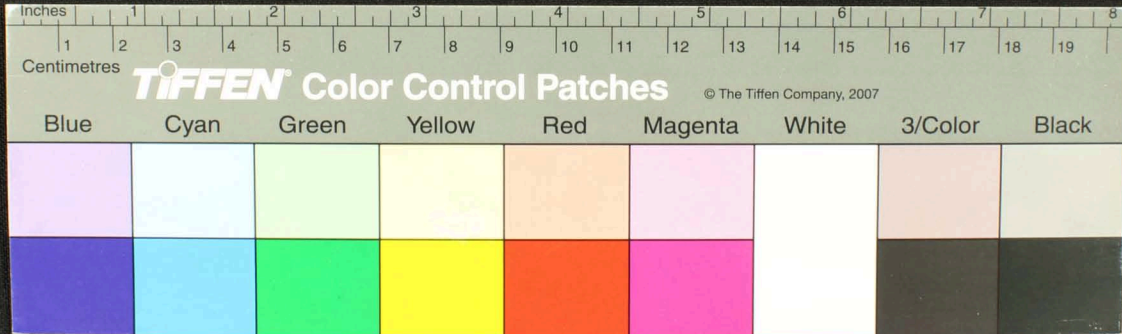
Handwritten Tamil script on a palm leaf manuscript. The text is arranged in approximately 10 vertical columns across the length of the leaf. The script is finely etched into the surface of the dried leaf. Some characters are clearly legible, such as 'நமசிவாய', 'சுந்தராமாய', and 'சுந்தராமாயை'. There are some dark spots and irregularities on the leaf, possibly due to age or damage.



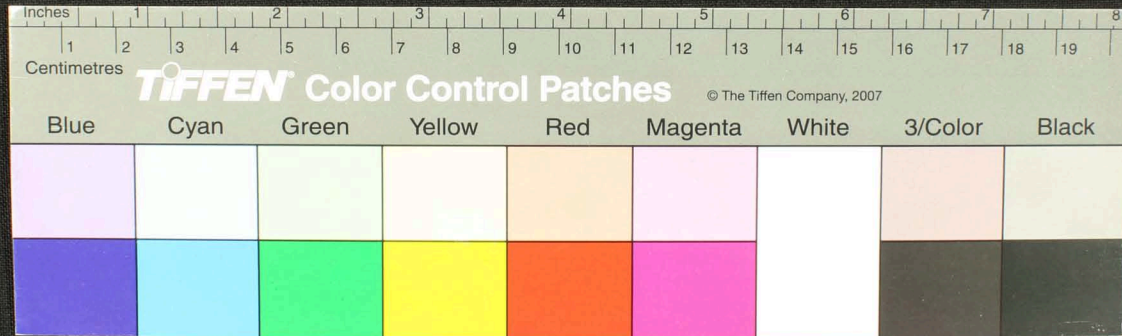
Handwritten Tamil script on a palm leaf manuscript. The text is arranged in approximately 10 columns across the length of the leaf. The script is finely etched into the surface of the dried leaf. The columns contain various lines of text, including what appears to be a list or a series of entries, possibly related to a calendar or a record-keeping system. The leaf shows signs of age and wear, with some dark spots and a small hole near the center.



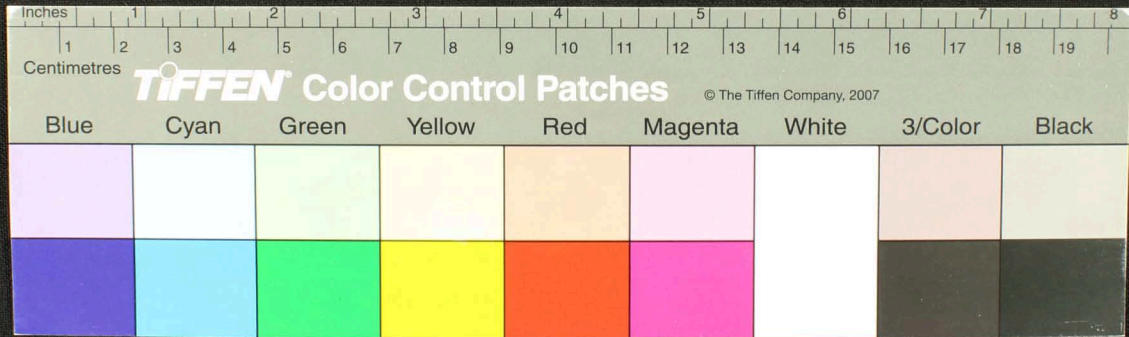
Handwritten text in Tamil script on a palm leaf manuscript. The text is arranged in approximately 10 vertical columns, with some characters appearing to be in a different script or dialect. The leaf shows signs of age and wear, with some damage and discoloration.



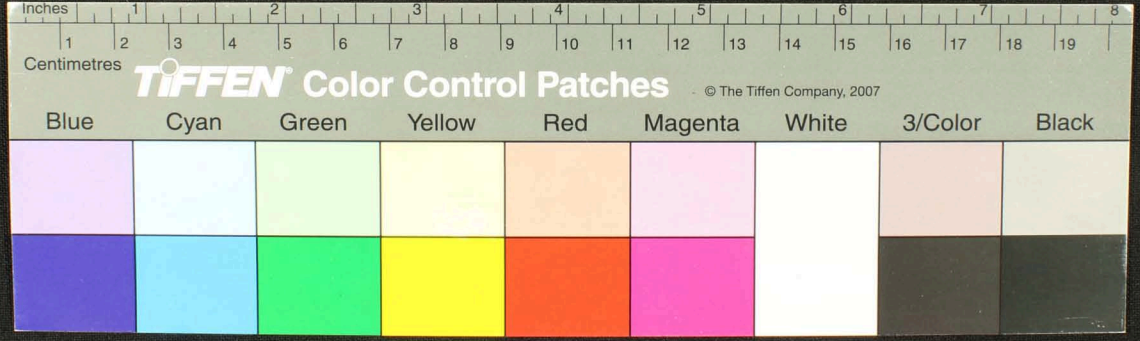
Handwritten text in Tamil script on a palm leaf manuscript. The text is arranged in approximately 10 vertical columns across the length of the leaf. The script is densely packed and includes various characters and symbols, some of which appear to be religious or philosophical in nature. The leaf shows signs of age, with some dark spots and a small hole near the center.



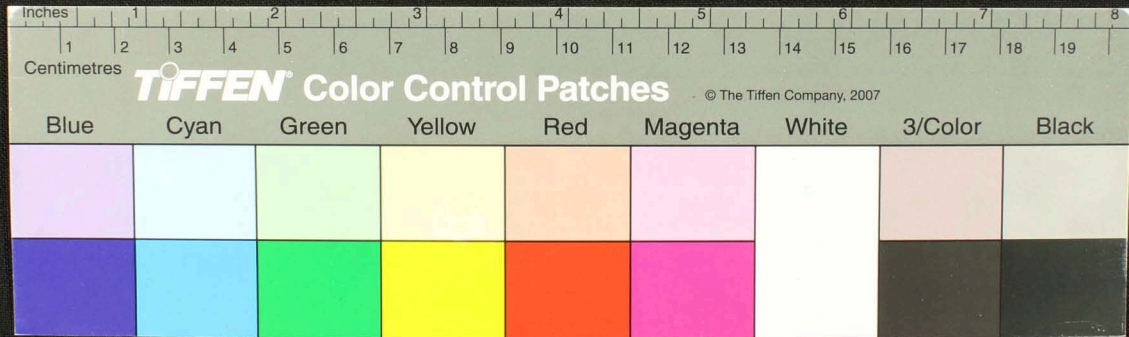
Handwritten text in Tamil script on a palm leaf manuscript. The text is arranged in approximately 10 columns across the length of the leaf. The script is densely packed and includes various characters and symbols, some of which appear to be religious or philosophical in nature. The leaf shows signs of age and wear, with some dark spots and a hole near the center.



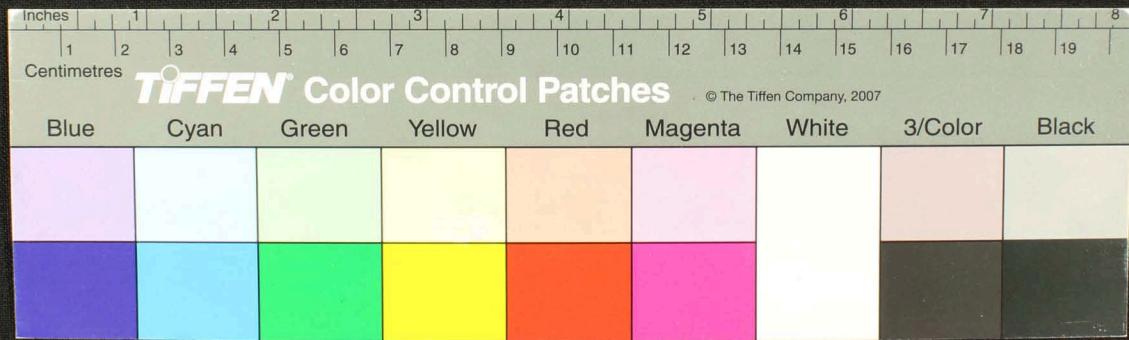
Handwritten text in Tamil script on a palm leaf manuscript. The text is arranged in approximately 10 columns across the length of the leaf. The script is finely etched into the surface of the dried leaf. Some characters are difficult to decipher due to fading and the texture of the leaf, but the overall structure suggests a traditional form of writing, possibly a list or a set of instructions.



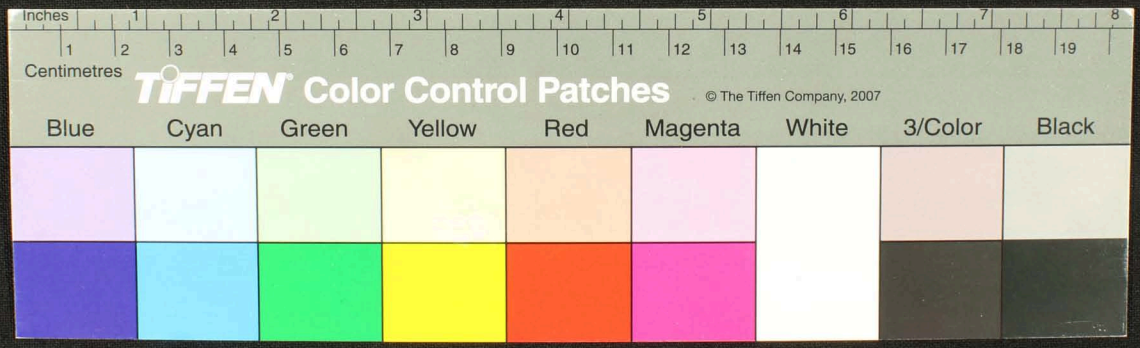
Handwritten text in Tamil script on a palm leaf manuscript. The text is arranged in approximately 10 columns across the length of the leaf. The script is finely etched into the surface of the dried leaf. The leaf shows signs of age, including some staining and a small hole on the right side.



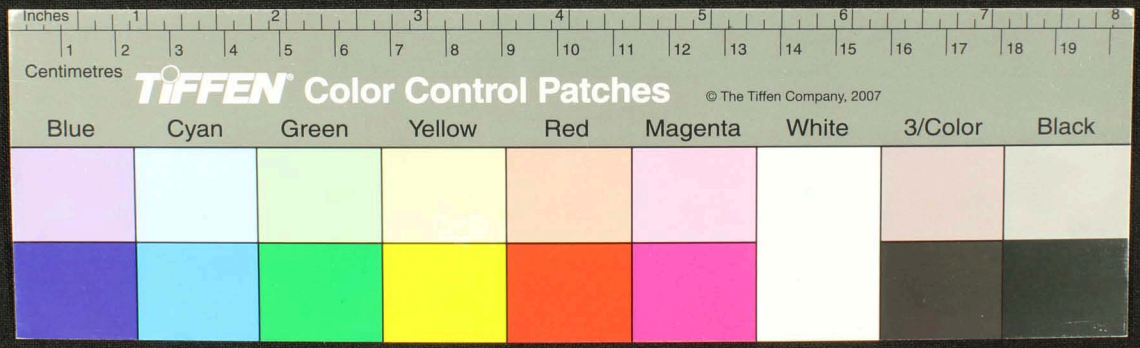
Handwritten Tamil script on a palm leaf manuscript. The text is organized into approximately 10 vertical columns, with characters written in a traditional style. The script includes various characters and symbols, some of which are repeated across columns, suggesting a list or a specific sequence of characters. The leaf shows signs of age and wear, with some discoloration and a small hole near the center.



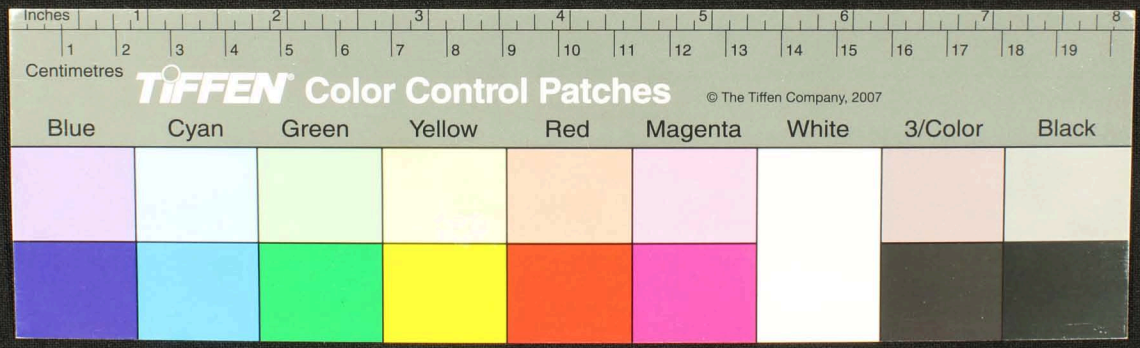
Handwritten Tamil script on a palm leaf manuscript. The text is arranged in three columns from left to right. The script is finely etched into the surface of the dried leaf. The first column contains approximately 10 lines of text, the second column contains about 8 lines, and the third column contains about 6 lines. There are some small holes and irregularities in the leaf's surface, particularly in the middle section.



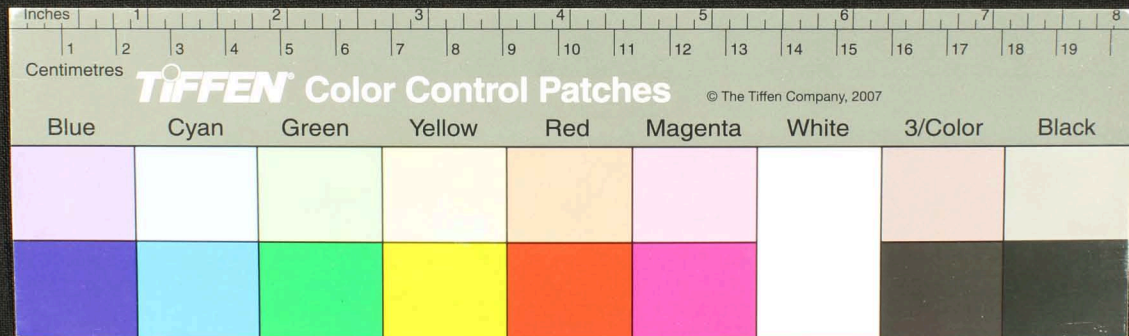
Handwritten Tamil script on a palm leaf manuscript. The text is arranged in approximately 10 columns across the length of the leaf. The script is finely etched into the surface of the dried leaf. Some characters are clearly legible, such as 'மகனல்', 'மருமகனல்', and 'மகனல்'. There are also some decorative flourishes and a small circular hole visible on the leaf.



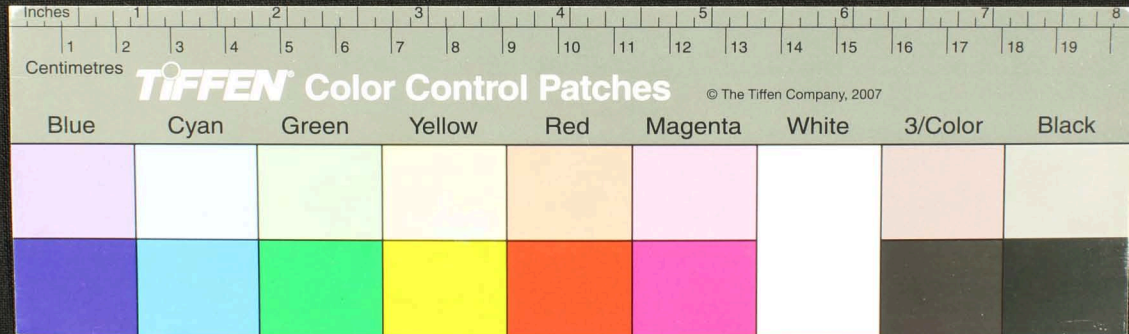
Handwritten Tamil script on a palm leaf manuscript. The text is arranged in approximately 10 columns across the length of the leaf. The script is finely etched into the surface of the dried leaf. Some characters are partially obscured by a dark circular hole or a stain near the center of the leaf.



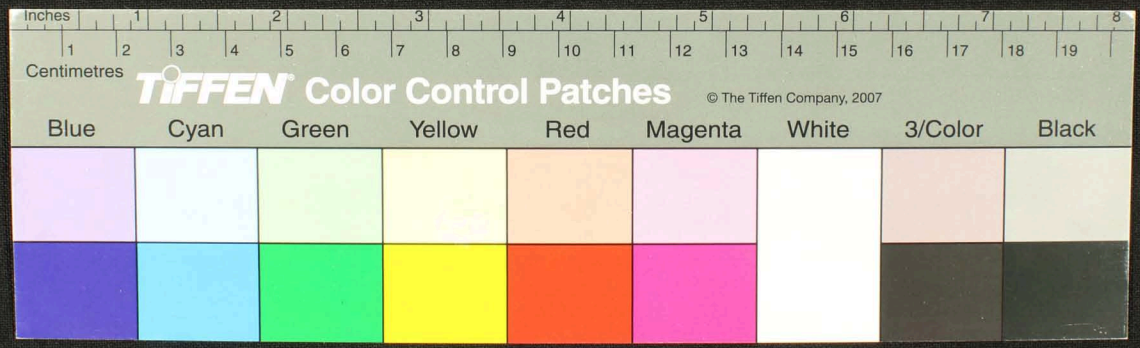
Handwritten Tamil script on a palm leaf manuscript. The text is arranged in approximately 10 columns across the length of the leaf. The script is finely etched into the surface of the dried leaf. The columns contain various characters and words, including what appears to be a list or a series of entries. Some characters are clearly legible, such as 'சுருதி', 'சுருதி', 'சுருதி', 'சுருதி', 'சுருதி', 'சுருதி', 'சுருதி', 'சுருதி', 'சுருதி', 'சுருதி'. The leaf shows signs of age and wear, with some fraying at the edges and a small dark spot near the center.



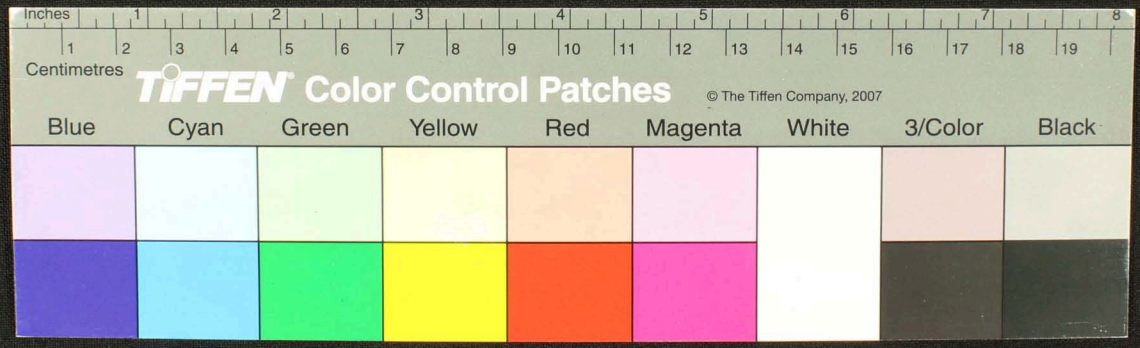
Handwritten Tamil script on a palm leaf manuscript. The text is arranged in approximately 10 columns across the length of the leaf. The script is finely etched into the surface of the dried leaf. The right edge of the leaf is significantly damaged and ragged.



Handwritten text in Tamil script on a palm leaf manuscript. The text is arranged in several columns across the length of the leaf. Some words are circled in red ink, possibly indicating specific terms or names. The script is dense and fills most of the leaf's surface.



Handwritten Tamil script on a palm leaf manuscript. The text is arranged in several columns across the length of the leaf. The script is finely etched into the surface of the dried leaf. A small circular hole is visible near the center of the leaf, which is a traditional feature for threading a cord to bind multiple leaves together.



18. நாயுடு வி
 ம.ல. ரா. சி. தி. னா
 க. ச. ச. ர. வ. ல. னா
 ம. ச. ச. சி. சி.
 ய. சி. சி. ம. ரா. சி.
 ம. சி. சி. சி. ம.

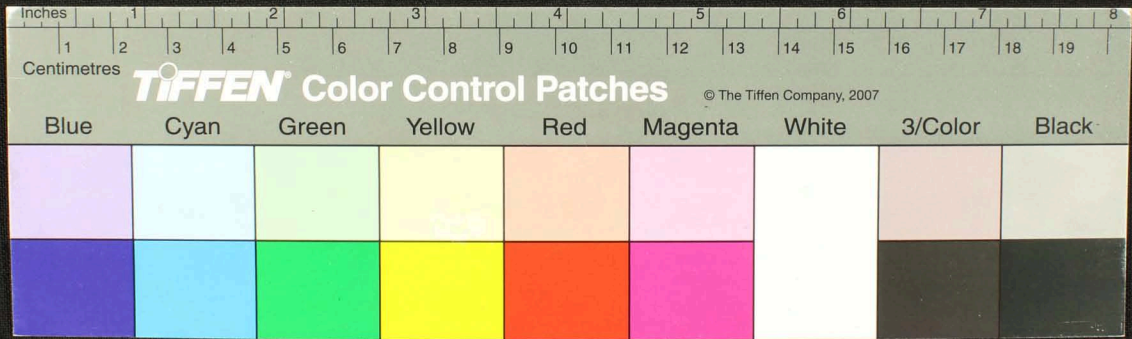
தி. ரா. சி.
 ம. சி. சி. சி. ம.
 ம. சி. சி. சி. சி.
 ம. சி. சி. சி. ம.
 ம. சி. சி. சி. ம.

சி. சி. சி.
 ம. சி. சி. சி.
 சி. சி. சி.
 ம. சி. சி. சி.
 சி. சி. சி.

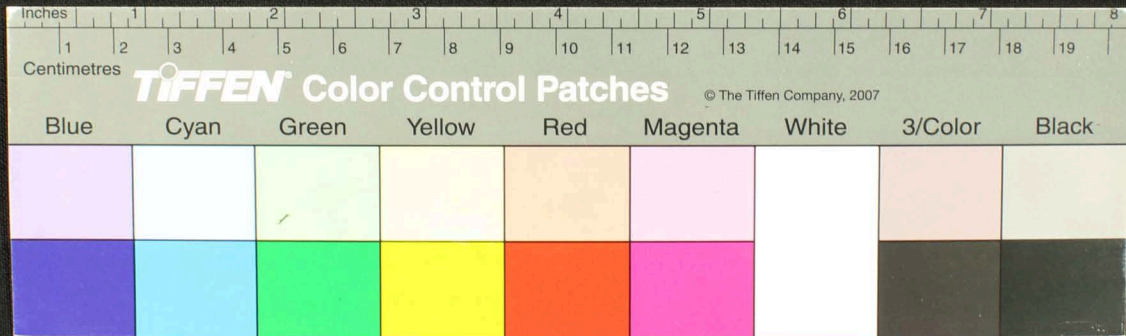
தி. ரா. சி.
 ம. சி. சி. சி.
 ம. சி. சி. சி.
 ம. சி. சி. சி.
 ம. சி. சி. சி.

ம. ரா. சி. சி. ம.
 ம. சி. சி. சி. சி.
 சி. சி. சி. சி.
 ம. சி. சி. சி.
 சி. சி. சி.

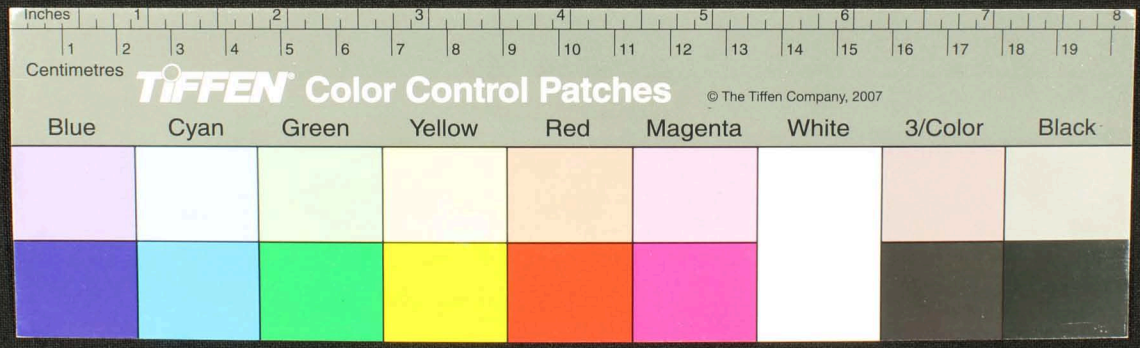
சி. சி. சி.
 ம. சி. சி. சி. சி.
 சி. சி. சி. சி.
 ம. சி. சி. சி. சி.
 சி. சி. சி. சி.



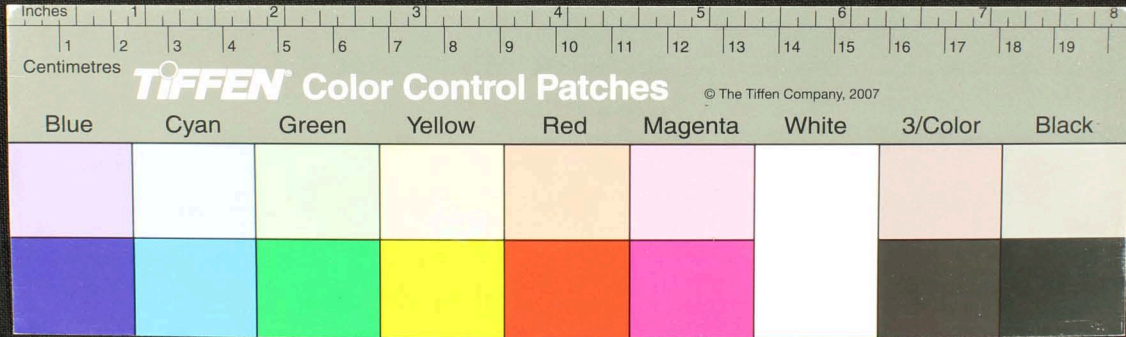
Handwritten Tamil script on a palm leaf manuscript. The text is arranged in approximately six vertical columns. The script is finely etched into the surface of the dried leaf. There are some dark spots and irregularities on the leaf, possibly due to age or damage. The first column on the left has a small circular mark containing the letter 'B'.



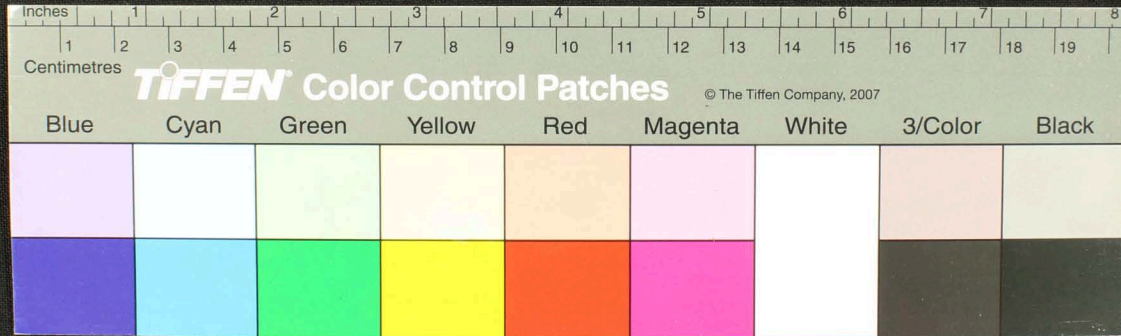
Handwritten Tamil script on a palm leaf manuscript. The text is arranged in several columns and includes various characters and symbols, such as 'சு' and 'ம'. The leaf shows signs of age and damage, with some areas being torn or stained.



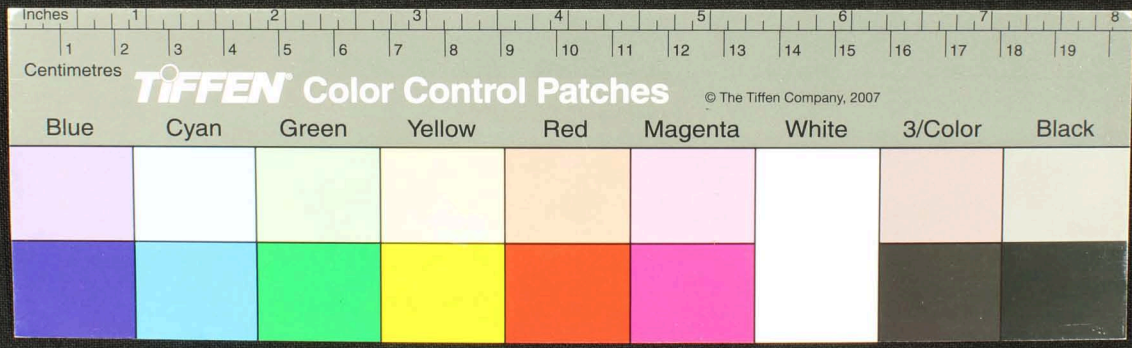
Handwritten Tamil script on a palm leaf manuscript. The text is arranged in approximately 10 columns across the length of the leaf. The script is finely etched into the surface of the dried leaf. A small circular hole is visible near the center of the leaf, likely for threading a cord to bind multiple leaves together.



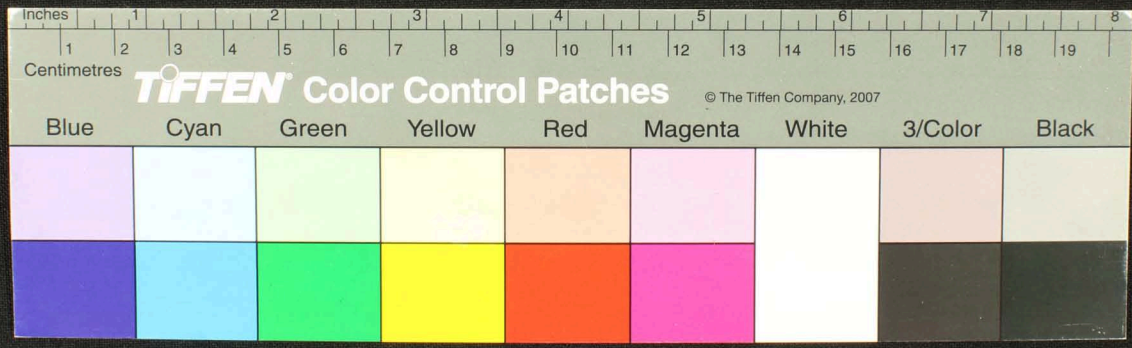
Handwritten Tamil script on a palm leaf manuscript. The text is arranged in approximately five columns across the length of the leaf. The script is finely etched into the surface of the dried leaf. The leaf shows signs of age, including some staining and a small hole near the center.



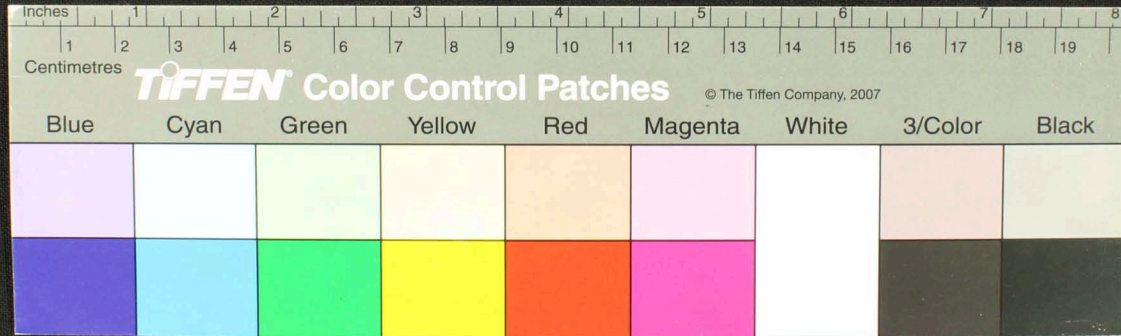
Handwritten text in Tamil script on a palm leaf manuscript. The text is arranged in several columns across the length of the leaf. The script is finely etched into the surface of the dried leaf. The leaf shows signs of age, including some dark spots and a hole near the center.



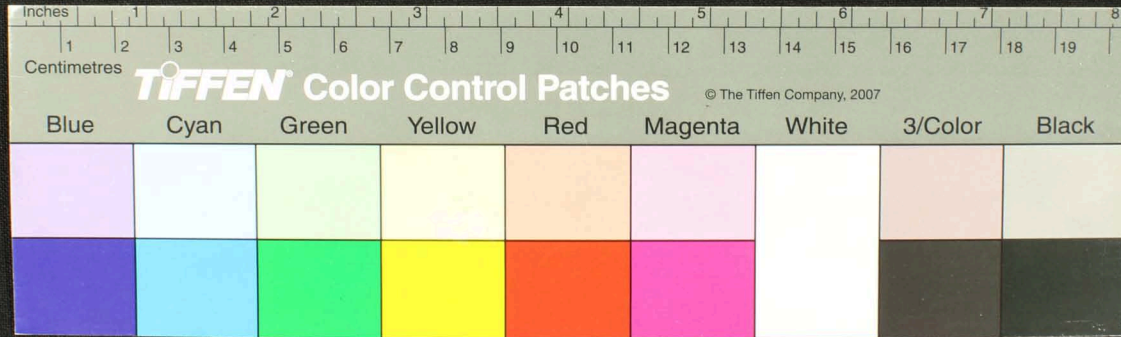
Handwritten text in Tamil script on a palm leaf manuscript. The text is arranged in approximately 10 columns across the length of the leaf. The script is finely etched into the surface of the dried leaf. The leaf shows signs of age, including some dark spots and a small hole near the center.



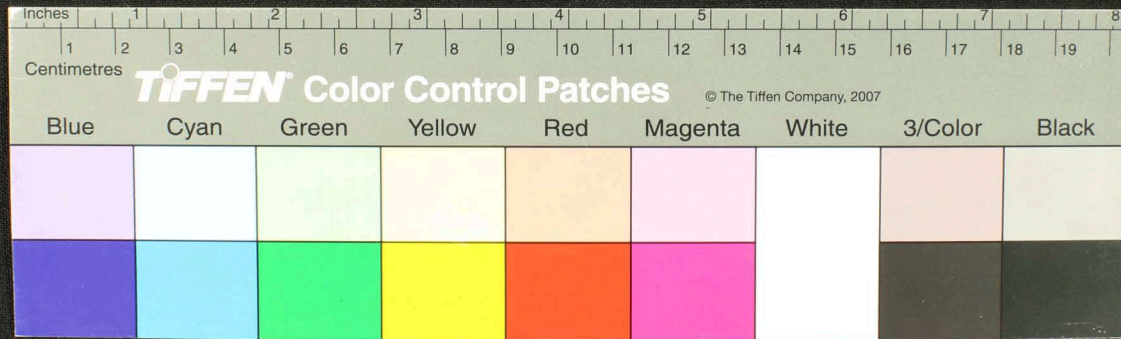
Handwritten Tamil script on a palm leaf manuscript strip. The text is arranged in approximately 10 columns across the length of the leaf. The script is finely etched into the surface of the dried leaf. The leaf shows signs of age, including some dark spots and a small hole near the center.



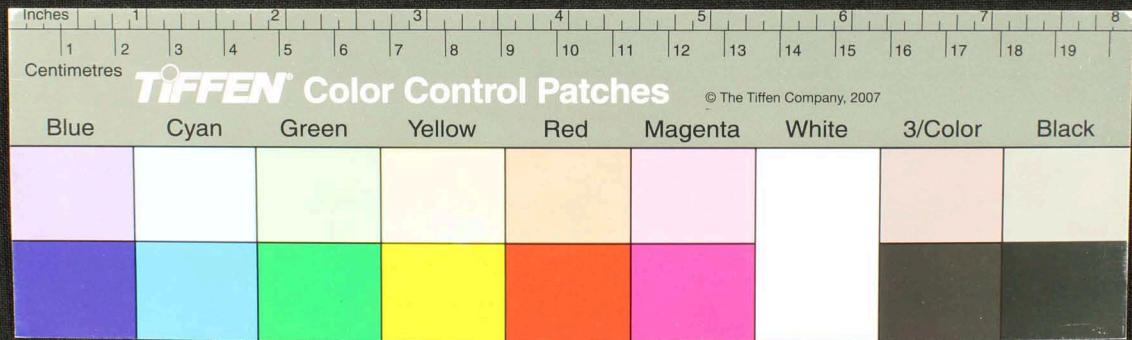
Handwritten Tamil script on a palm leaf manuscript. The text is arranged in approximately 10 columns across the length of the leaf. The script is finely etched into the surface of the dried leaf. Some characters are clearly legible, such as 'வருமல', 'வருமல', 'வருமல', 'வருமல', 'வருமல', 'வருமல', 'வருமல', 'வருமல', 'வருமல', 'வருமல'. There are also some larger, more decorative characters interspersed throughout the text.



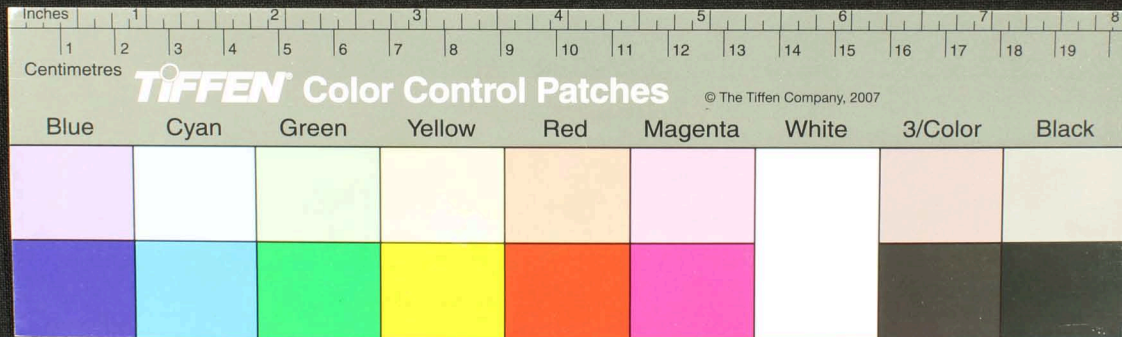
Handwritten Tamil script on a palm leaf manuscript. The text is arranged in approximately seven columns from left to right. The script is finely etched into the surface of the dried leaf. The columns contain various characters and words, including some that appear to be religious or philosophical in nature, such as 'சுருதி' (Srutu) and 'வெள்கு' (Velaiku).



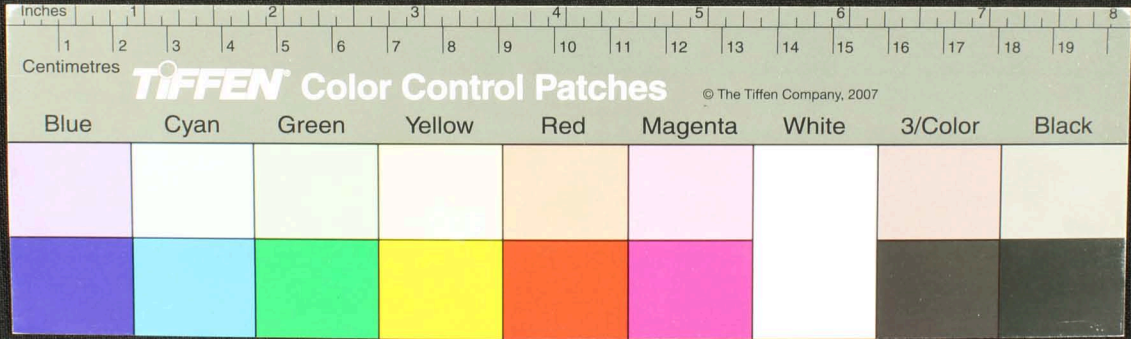
Handwritten Tamil script on a palm leaf manuscript. The text is arranged in several columns across the length of the leaf. The script is finely etched into the surface of the dried leaf. The leaf shows signs of age and wear, with some fraying at the right end.

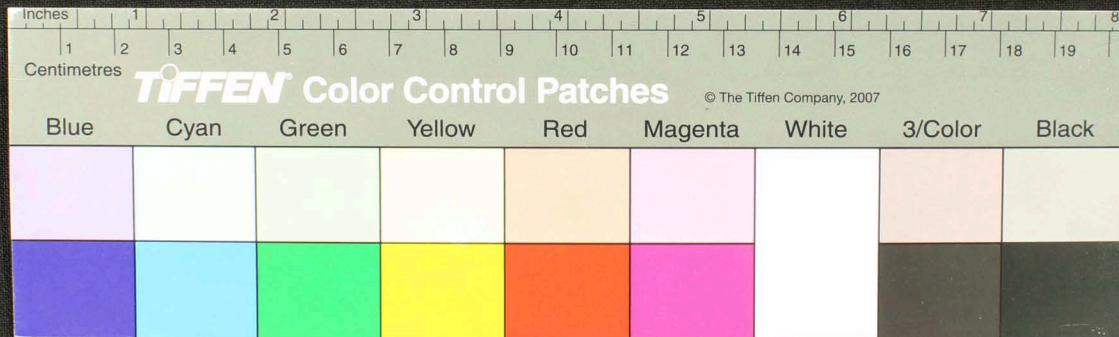


Handwritten Tamil script on a palm leaf manuscript. The text is arranged in approximately 10 columns across the length of the leaf. The script is finely etched into the surface of the dried leaf. The leaf shows signs of age and wear, with some fraying at the ends and a small dark spot near the center.



Handwritten text in Tamil script on a palm leaf manuscript. The text is arranged in approximately three lines across the length of the leaf. The script is finely etched into the surface of the dried leaf.





Inches 1 2 3 4 5 6 7 8
Centimetres 1 2 3 4 5 6 7 8 9 10 11 12 13 14 15 16 17 18 19

TIFFEN Color Control Patches © The Tiffen Company, 2007

Blue	Cyan	Green	Yellow	Red	Magenta	White	3/Color	Black
[Light Blue patch]	[Light Cyan patch]	[Light Green patch]	[Light Yellow patch]	[Light Red patch]	[Light Magenta patch]	[White patch]	[Light Grey patch]	[Light Black patch]
[Dark Blue patch]	[Dark Cyan patch]	[Dark Green patch]	[Dark Yellow patch]	[Dark Red patch]	[Dark Magenta patch]	[White patch]	[Dark Grey patch]	[Dark Black patch]

