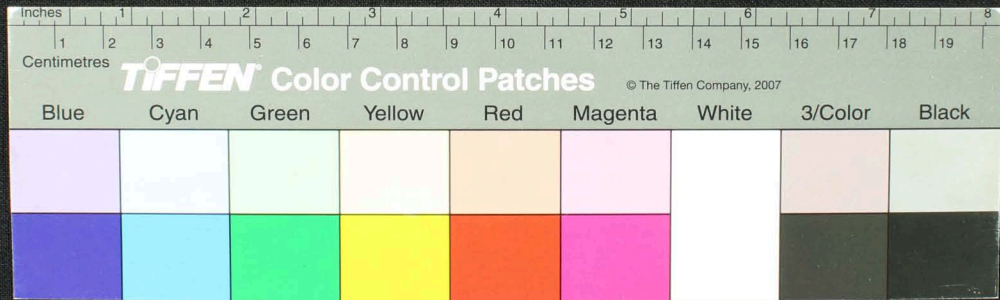
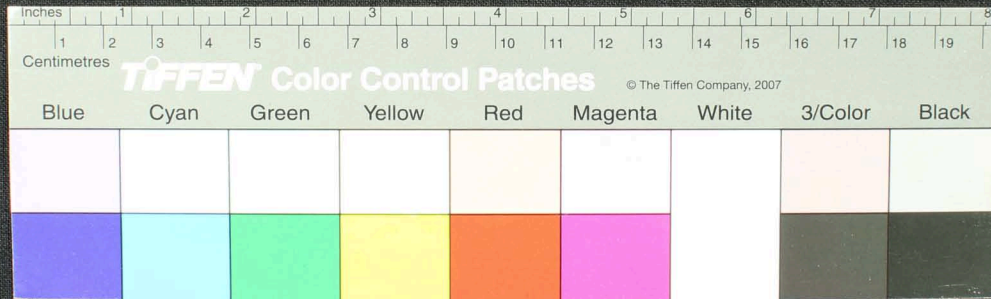


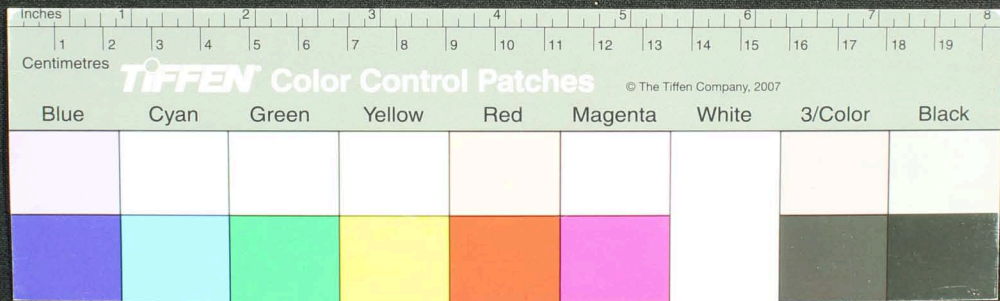
Blue	Cyan	Green	Yellow	Red	Magenta	White	3/Color	Black



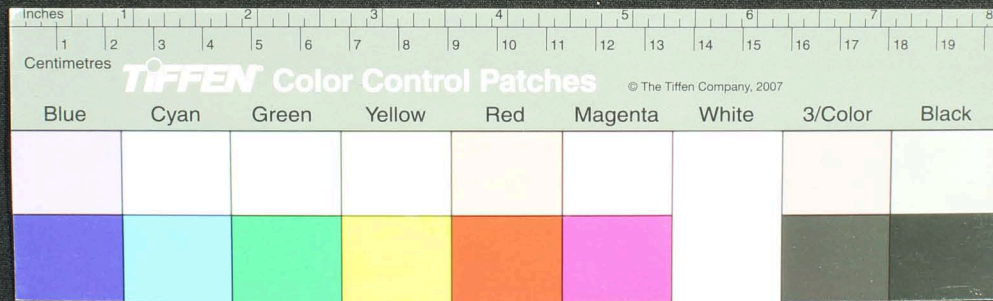
Handwritten text in Tamil script on a fragment of aged, yellowed paper. The text is arranged in approximately four horizontal lines. The paper is heavily damaged, with irregular, jagged edges and a prominent hole on the right side. The ink is dark and appears to be a traditional writing style.



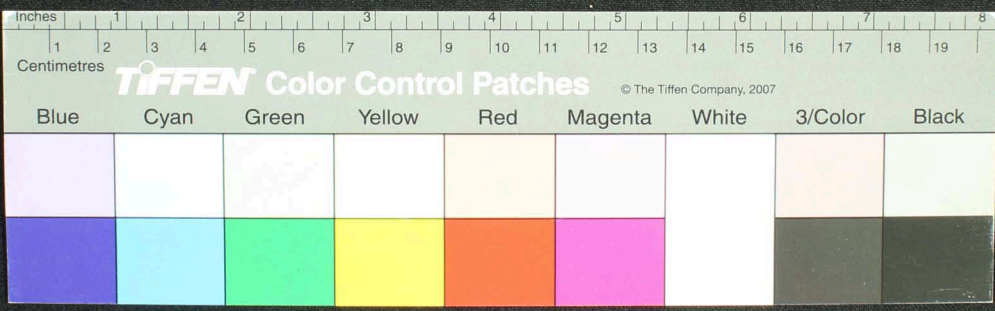
Handwritten Tamil script on a palm leaf manuscript. The text is arranged in approximately 10 horizontal lines across the length of the leaf. The script is densely packed and appears to be a form of classical Tamil. There are two circular holes visible on the leaf, which were traditionally used for threading a cord to bind multiple leaves together into a book format. The leaf shows signs of age, including some discoloration and wear at the edges.



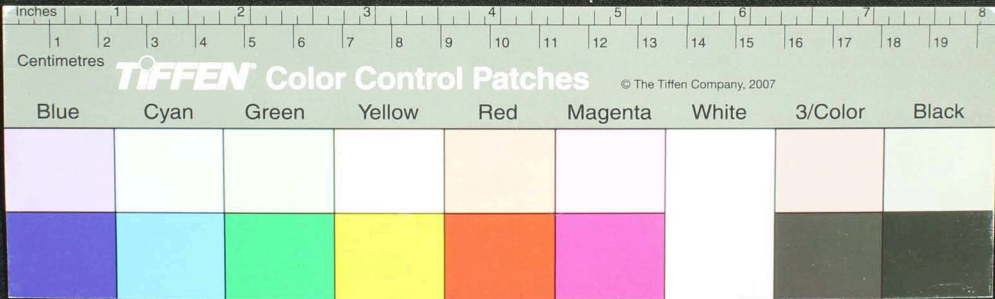
Handwritten Tamil script on a palm leaf manuscript. The text is arranged in approximately 10 horizontal lines across the length of the leaf. Two circular holes are visible, which were traditionally used for threading a cord to bind multiple leaves together into a book format. The script is densely packed and appears to be a form of classical or historical Tamil.



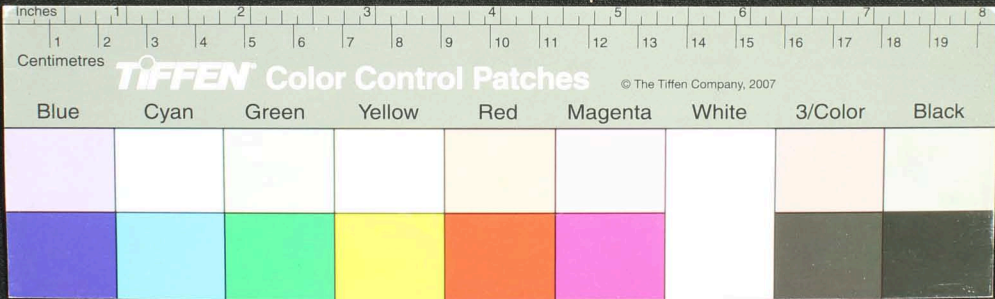
Handwritten Tamil script on a palm leaf manuscript. The text is densely packed and spans the length of the leaf, with some characters appearing to be in a different script or dialect. The leaf shows signs of age and wear, with some damage and discoloration.



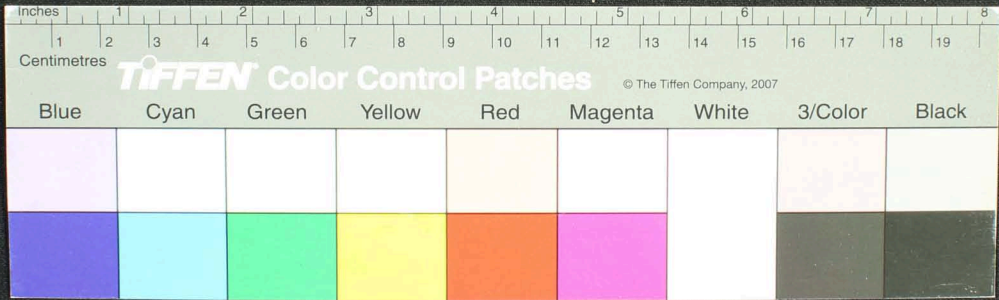
Handwritten Tamil script on a palm leaf manuscript. The text is arranged in approximately 10 horizontal lines across the length of the leaf. The script is densely packed and appears to be a form of classical or historical Tamil. There are two circular holes visible on the leaf, which were traditionally used for threading a cord to bind multiple leaves together into a book format.



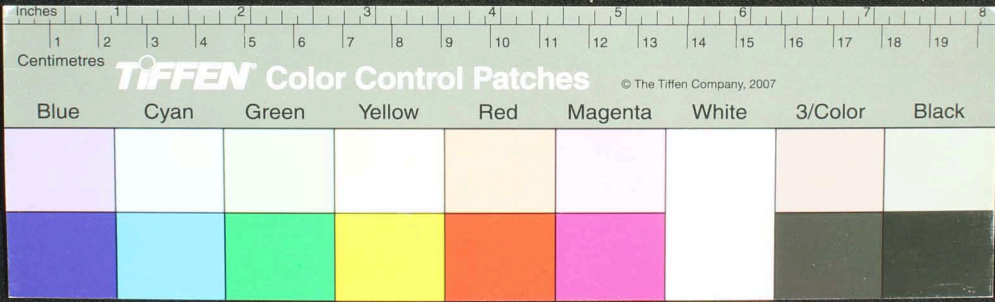
Handwritten Tamil script on a palm leaf manuscript. The text is arranged in approximately 10 horizontal lines across the length of the leaf. Two circular holes are visible, which were traditionally used for threading a cord to bind multiple leaves together into a book format. The script is densely packed and appears to be a form of classical or historical Tamil.



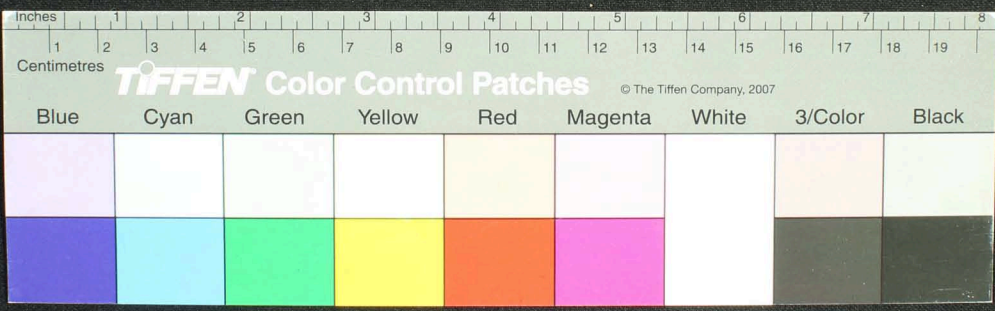
Handwritten Tamil script on a palm leaf manuscript. The text is arranged in approximately 10 horizontal lines across the length of the leaf. Two circular holes are visible, which were traditionally used for threading a cord to bind multiple leaves together into a book format. The script is densely packed and appears to be a form of classical or religious Tamil.



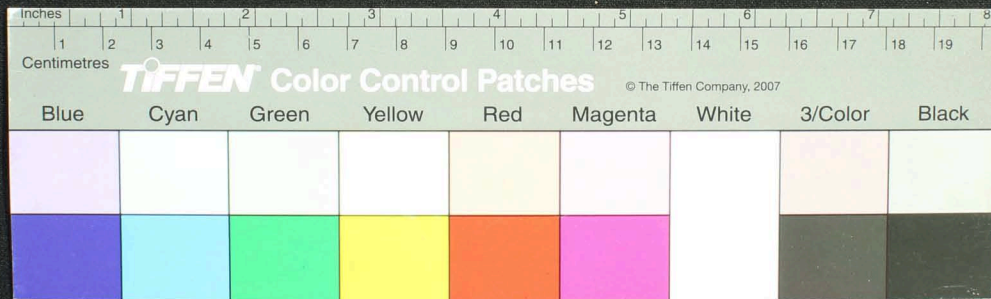
சிவனாய்வாய் ஏதிரா மிதமனத்திவமொராம இத்தென்தெதம்திரா மனினிமனம்யும னுயுனெடுகெதம வொருய மிநிநிலெவெனருளநாத்தகைய
 னவநுநெக்டிராமதெய் ஏனொராதலரை குமினெய்நுதபனம் — யுயுநுயபயநாருமய வுநிழமெலிய விடைமெயயா — அயதமகு உரு துனமனம் னுருவெ
 மமர — பத்தினுதரை — னுனதகுயப்பாரும — னுனொ திரைகைபிரபுநி யருமெனதெதொளகு னுயினுயைப னை — இராணுவெதந்பமெருநிராணுப
 னை — யுமநுமதர் உபரை — யுமனுதெய் — னுனெய் தயிராணுபரை — யுமமனுயி ரணுத — னுபயுனாபரை — திரானு
 இராந்வின உயருளரை — ஏடகுதவெய் — குமலு னிரயடுக்கு மயுனருயுடுதும் — தவது ரொர் மிகாநெய் ரா — தவபடுக்கு னு
 உபடுக்கு மெநிதநு ஆநதமதின மாணுதவகுதவகா — துபடுக்கு மென்துதநதநு னுனென குணினுதமொழியயுள் னுதினதநிவெட்டுகா
 திம்பொருதநுதவகுதவெய் னு னவனவமொழிநுதடுததிவகுதாவுடுநுதநினைவர்தம ஏனொராதுகினு உயாநிவசை — வயருதவகாதகெய்வாமரு — ம



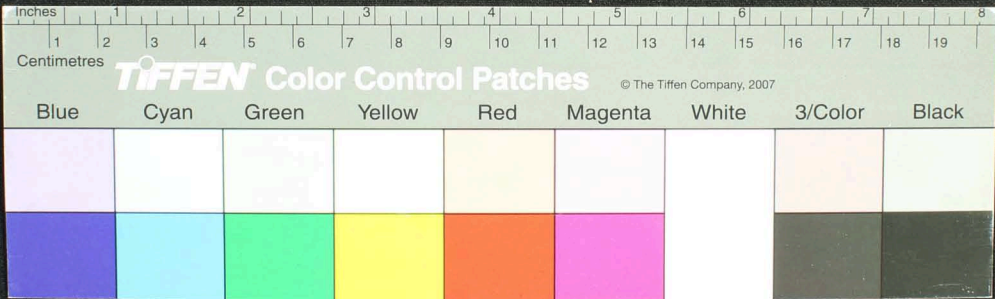
Handwritten Tamil script on a palm leaf manuscript. The text is densely packed and spans the length of the leaf. Two circular holes are visible, used for binding multiple leaves together. The script is written in a traditional style, with some characters appearing to be in a different dialect or historical form of Tamil.



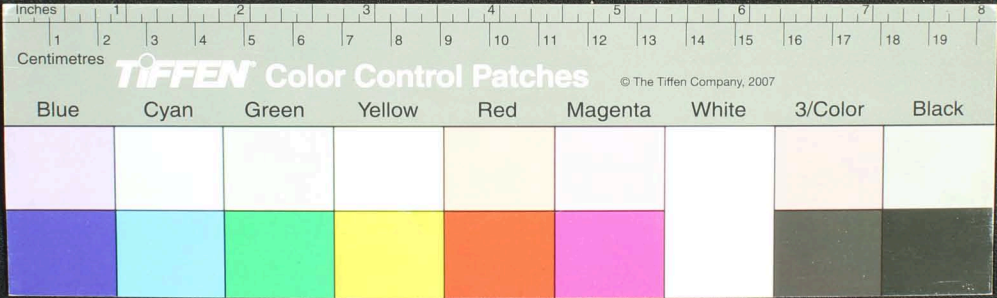
Handwritten Tamil script on a palm leaf manuscript. The text is densely packed and runs horizontally across the length of the leaf. Two circular holes are visible, used for threading a cord to bind multiple leaves together. The script is in an older form of the Tamil language.



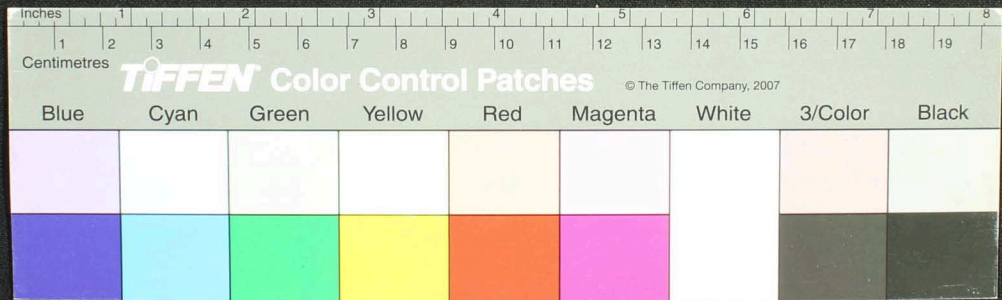
Handwritten Tamil script on a palm leaf manuscript. The text is densely packed and runs horizontally across the length of the leaf. Two circular holes are visible, which were traditionally used for threading a cord to bind multiple leaves together into a book format. The script is in an older form of the Tamil language.



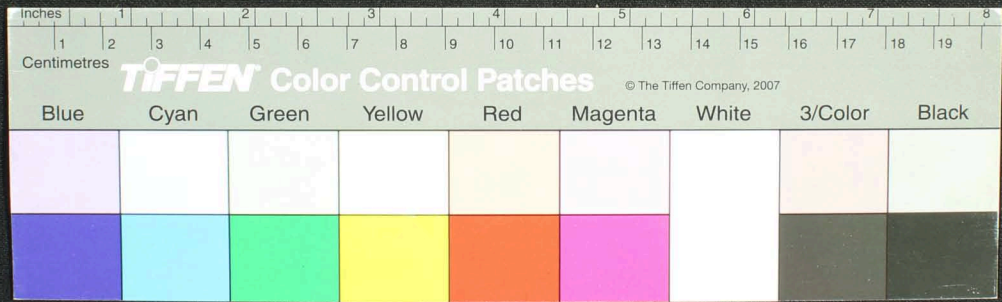
Handwritten Tamil script on a palm leaf manuscript. The text is densely packed and runs horizontally across the length of the leaf. Two circular holes are visible, which were traditionally used for threading a cord to bind multiple leaves together into a book format.



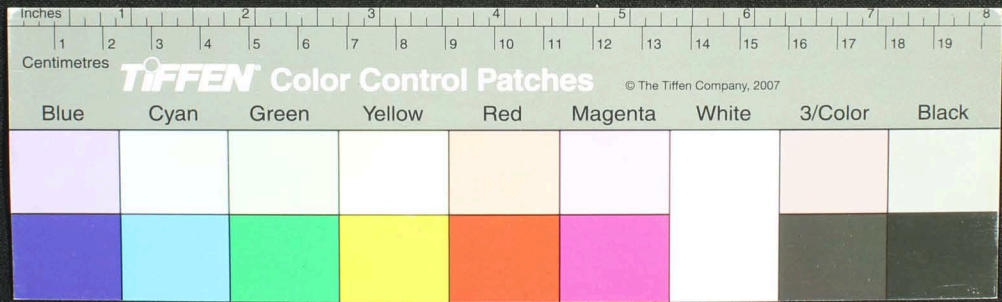
Handwritten Tamil script on a palm leaf manuscript. The text is densely packed and runs horizontally across the length of the leaf. Two circular holes are visible, used for binding multiple leaves together. The leaf shows signs of age and wear, particularly at the edges.



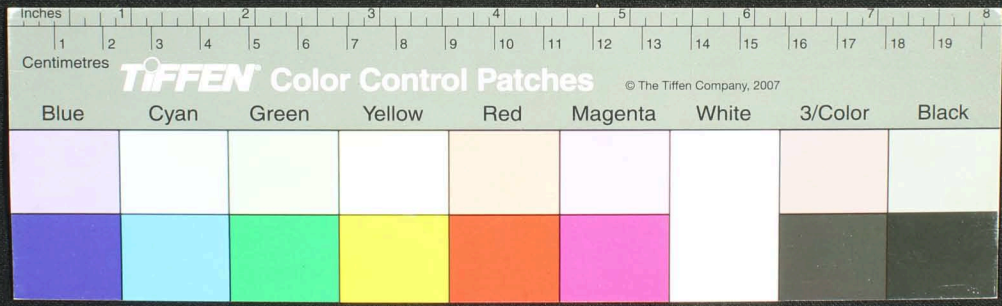
Handwritten Tamil script on a palm leaf manuscript. The text is densely packed and runs horizontally across the length of the leaf. Two circular holes are visible, which were traditionally used for threading a cord to bind multiple leaves together into a book format.



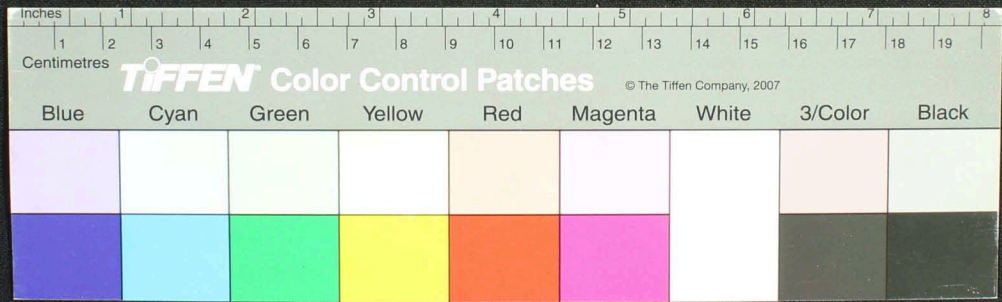
Handwritten Tamil script on a palm leaf manuscript. The text is densely packed and runs horizontally across the length of the leaf. Two circular holes are visible, which were traditionally used for threading a cord to bind multiple leaves together into a book format.



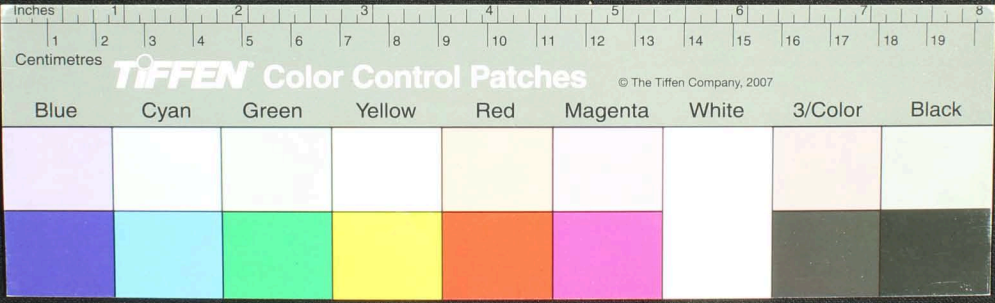
Handwritten Tamil script on a palm leaf manuscript. The text is densely packed and runs horizontally across the length of the leaf. Two circular holes are visible, which were traditionally used for threading a cord to bind multiple leaves together into a book format. The script is in an older form of the Tamil language, likely from the 17th or 18th century.



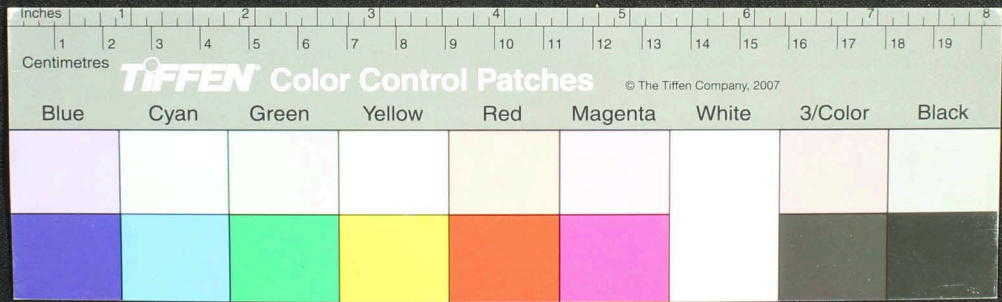
Handwritten Tamil script on a palm leaf manuscript. The text is densely packed and runs horizontally across the length of the leaf. Two circular holes are visible, used for binding multiple leaves together. The script is in an older form of the Tamil language.



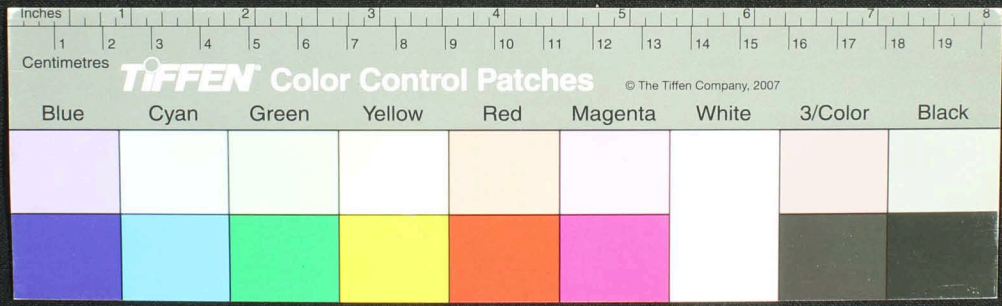
Handwritten Tamil script on a palm leaf manuscript. The text is densely packed and spans the length of the leaf. Two circular holes are visible, used for threading a cord to bind multiple leaves together. The script is written in a traditional style, with some characters appearing to be in a different script or dialect, possibly Grantha or a specific regional variant of Tamil.



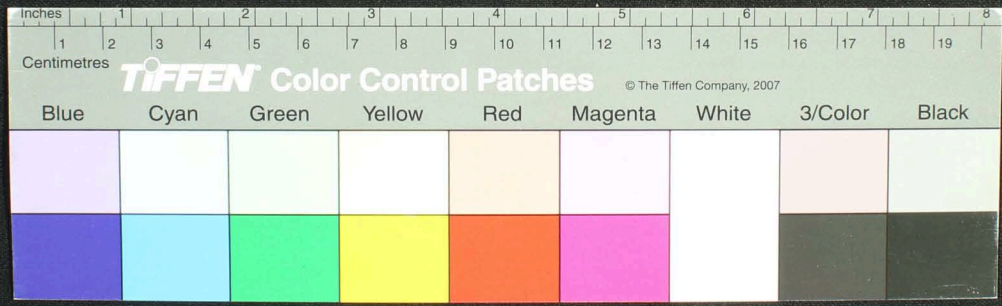
Handwritten Tamil script on a palm leaf manuscript. The text is densely packed and covers most of the leaf's surface. Two circular holes are visible, used for binding multiple leaves together. The script is written in a traditional style, characteristic of historical Tamil manuscripts.



Handwritten Tamil script on a palm leaf manuscript. The text is densely packed and spans the length of the leaf. Two circular holes are visible, used for binding multiple leaves together. The script is written in a traditional style, with some characters appearing to be in a different script or dialect, possibly Grantha or a specific regional variant of Tamil.



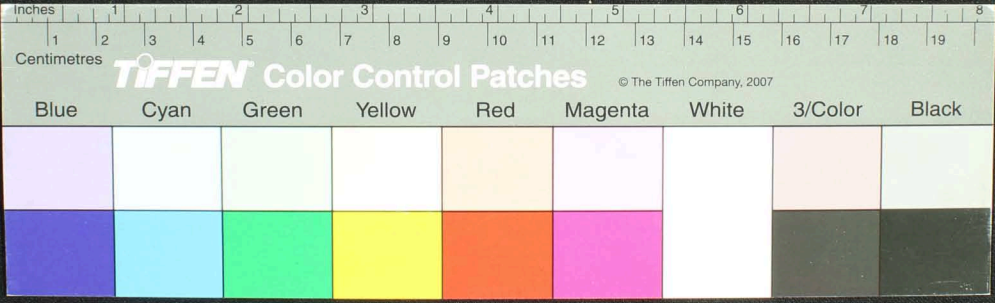
Handwritten Tamil script on a palm leaf manuscript. The text is densely packed and covers most of the leaf's surface. There are two circular holes visible, which were traditionally used for threading a cord to bind multiple leaves together into a book format. The script appears to be a form of classical or historical Tamil, possibly containing religious, philosophical, or administrative content.



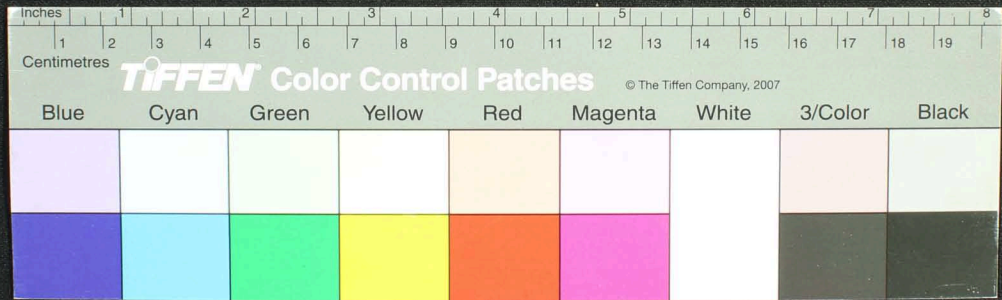
இரண்டாம் நிலைக்கு வந்த பின்னர் அதற்குரிய பணிகளை மேற்கொள்ள வேண்டும் என்று அரசாங்கம் உத்தேசித்துள்ளது. இவ்வாறு உத்தேசிப்பது அரசாங்கத்தின் நோக்கம். இவ்வாறு உத்தேசிப்பது அரசாங்கத்தின் நோக்கம். இவ்வாறு உத்தேசிப்பது அரசாங்கத்தின் நோக்கம்.

அரசாங்கம் இவ்வாறு உத்தேசிப்பது அரசாங்கத்தின் நோக்கம். இவ்வாறு உத்தேசிப்பது அரசாங்கத்தின் நோக்கம். இவ்வாறு உத்தேசிப்பது அரசாங்கத்தின் நோக்கம்.

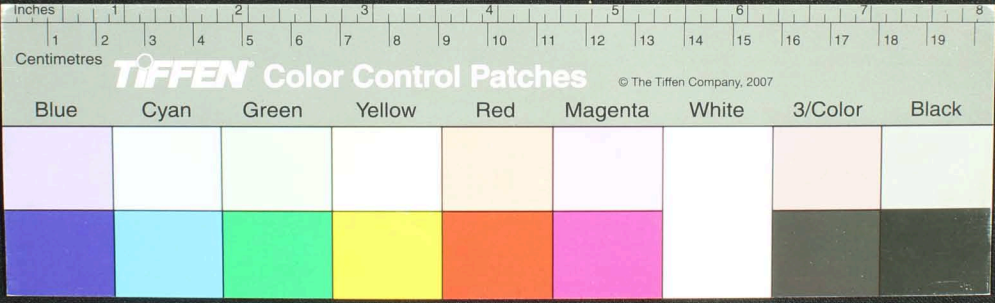
அரசாங்கம் இவ்வாறு உத்தேசிப்பது அரசாங்கத்தின் நோக்கம். இவ்வாறு உத்தேசிப்பது அரசாங்கத்தின் நோக்கம். இவ்வாறு உத்தேசிப்பது அரசாங்கத்தின் நோக்கம்.



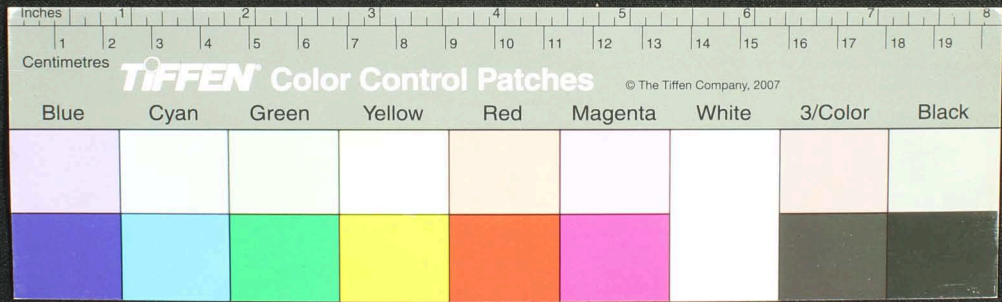
Handwritten Tamil script on a palm leaf manuscript. The text is densely packed and spans the length of the leaf. Two circular holes are visible, used for binding multiple leaves together. The script is written in a traditional style, with some characters appearing to be in a different script or dialect, possibly Grantha or a specific regional variant of Tamil.



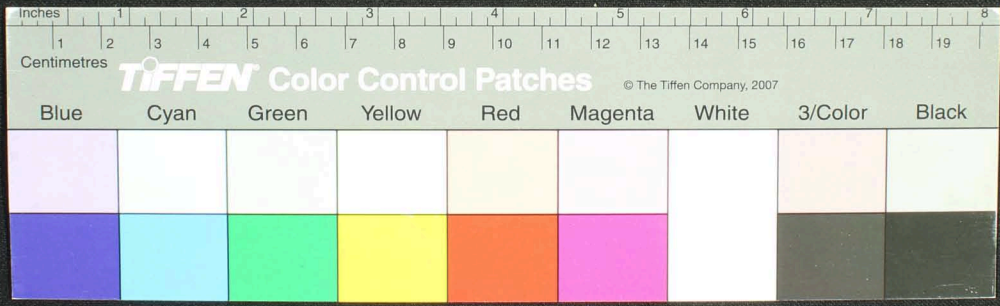
Handwritten Tamil script on a palm leaf manuscript. The text is arranged in approximately 10 horizontal lines across the length of the leaf. Two circular holes are visible, used for threading a cord to bind multiple leaves together. The script is densely packed and appears to be a form of classical or religious Tamil.



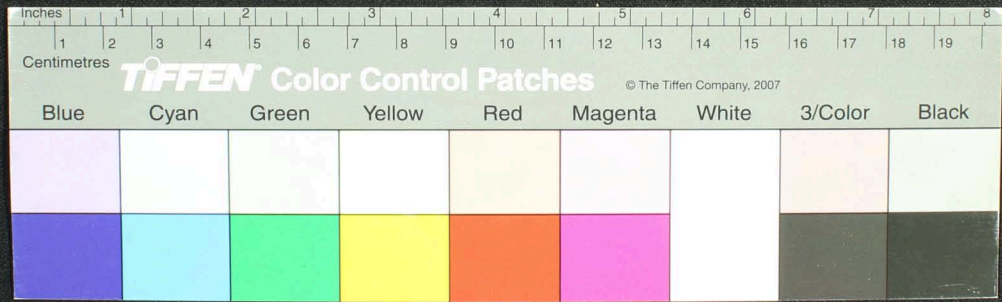
Handwritten Tamil script on a palm leaf manuscript. The text is densely packed and spans the length of the leaf. Two circular holes are visible, used for binding multiple leaves together.



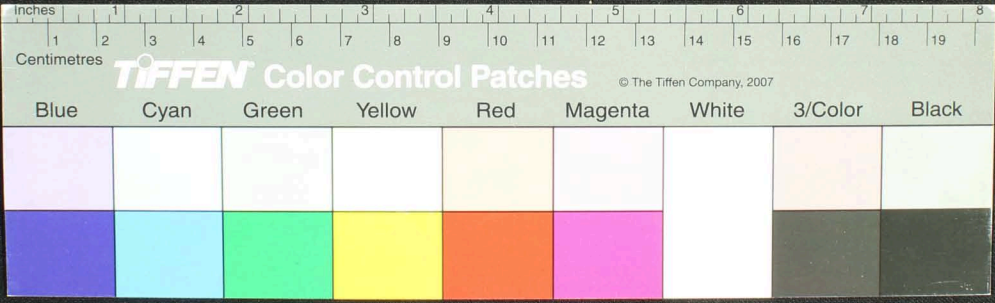
Handwritten Tamil script on a palm leaf manuscript. The text is densely packed and spans the length of the leaf. Two circular holes are visible, used for binding multiple leaves together.



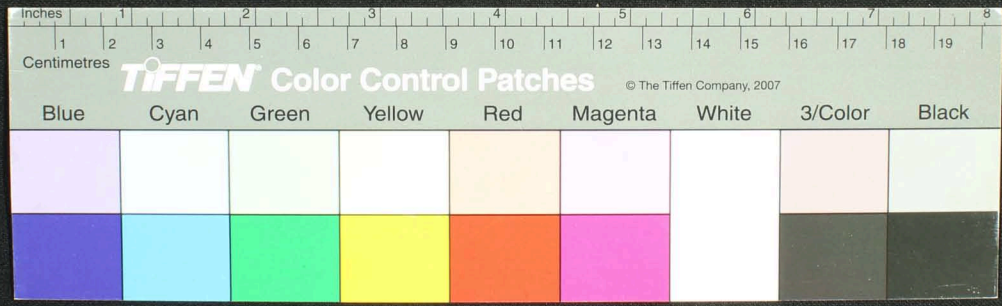
Handwritten Tamil script on a palm leaf manuscript. The text is densely packed and runs horizontally across the length of the leaf. There are two circular holes visible, which were traditionally used for threading a cord to bind multiple leaves together into a book format. The script is in an older form of the Tamil language, likely from the medieval or early modern period.



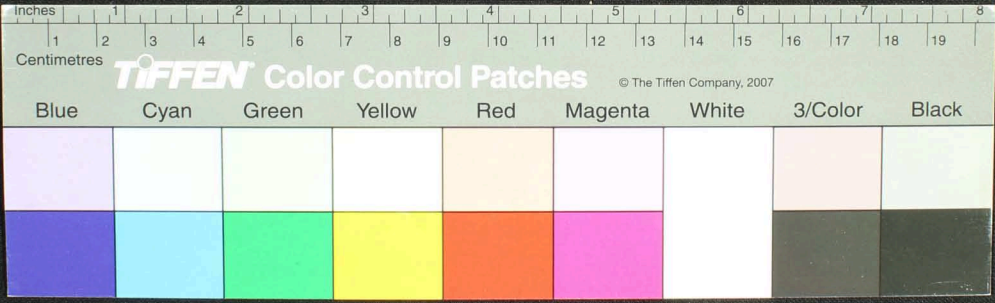
Handwritten Tamil script on a palm leaf manuscript. The text is arranged in approximately 10 horizontal lines across the length of the leaf. The script is densely packed and appears to be a form of classical or religious Tamil. There are two circular holes visible on the leaf, which were traditionally used for threading a cord to bind multiple leaves together into a book format.



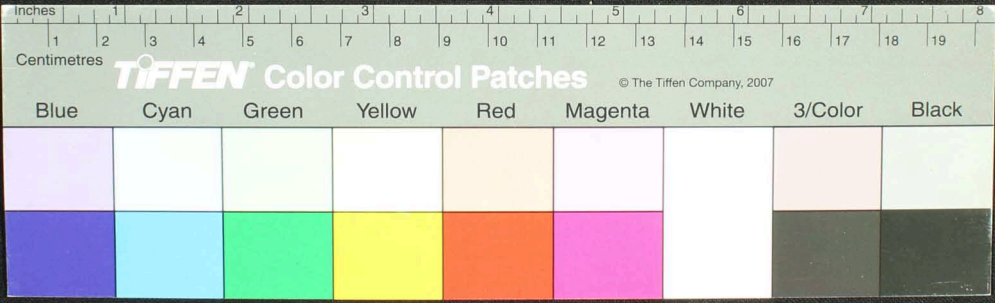
Handwritten Tamil script on a palm leaf manuscript. The text is densely packed and runs horizontally across the length of the leaf. There are two circular holes visible, which were traditionally used for threading a cord to bind multiple leaves together into a book format. The script is in an older form of the Tamil language, likely from the medieval or early modern period.



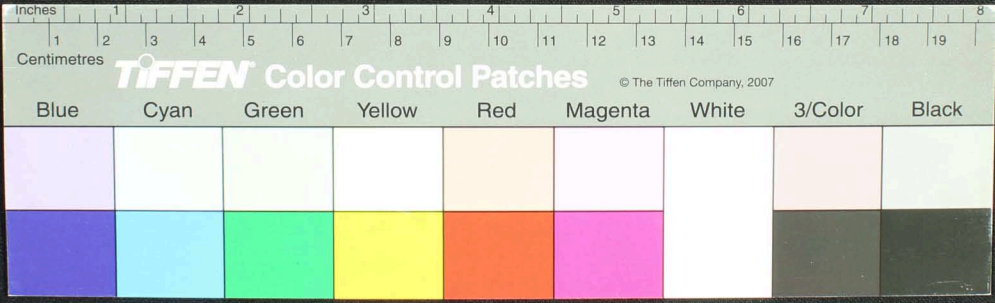
Handwritten Tamil script on a palm leaf manuscript. The text is densely packed and spans the length of the leaf. Two circular holes are visible, used for binding multiple leaves together.



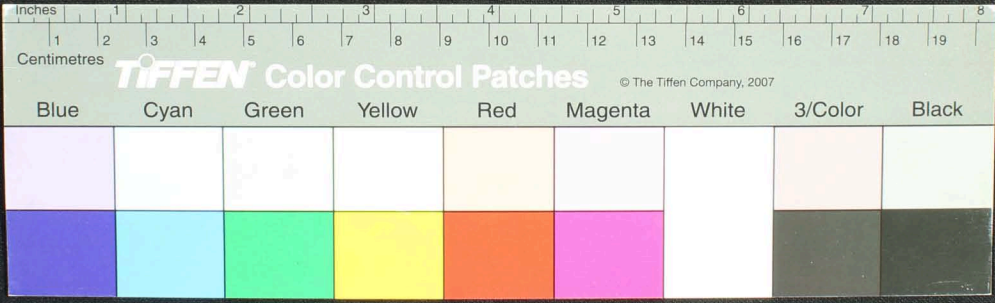
Handwritten text in Tamil script on a palm leaf manuscript. The text is arranged in approximately 10 horizontal lines across the length of the leaf. The script is dense and appears to be a form of classical or historical Tamil. There are two circular holes visible on the leaf, which were traditionally used for threading a cord to bind multiple leaves together into a book format.



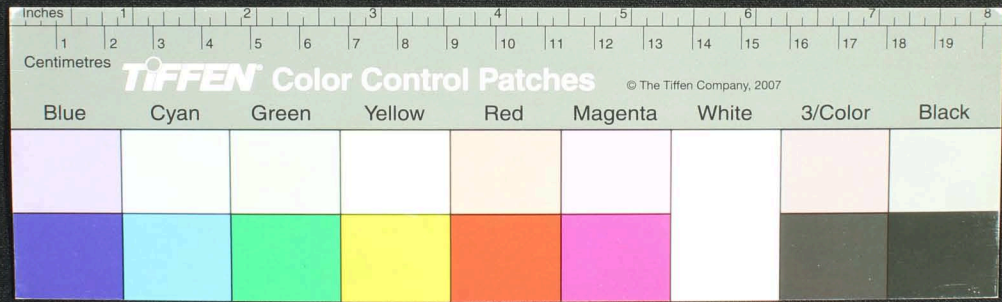
Handwritten Tamil script on a palm leaf manuscript. The text is densely packed and spans the length of the leaf. Two circular holes are visible, used for binding multiple leaves together. The script is written in a traditional style with dark ink.



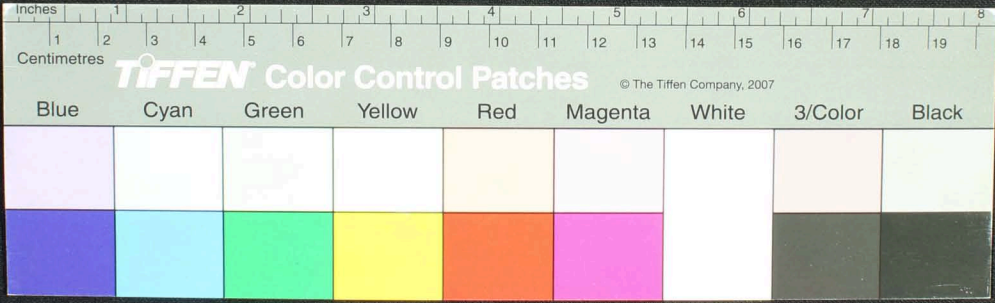
Handwritten Tamil script on a palm leaf manuscript. The text is densely packed and runs horizontally across the length of the leaf. Two circular holes are visible, which were traditionally used for threading a cord to bind multiple leaves together into a book format. The script appears to be a form of classical Tamil, possibly containing religious or philosophical content.



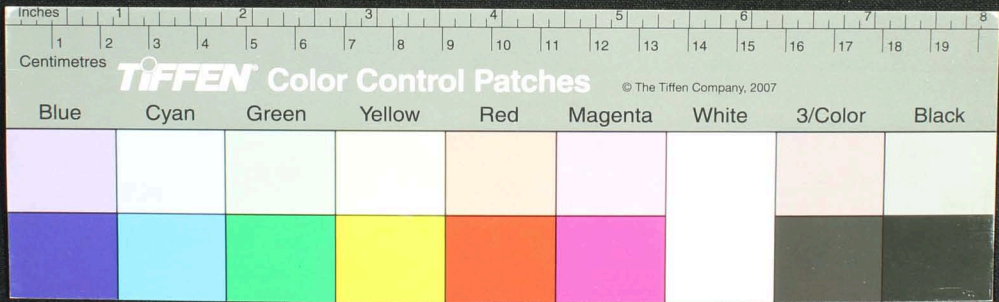
Handwritten Tamil script on a palm leaf manuscript. The text is densely packed and spans the length of the leaf. Two circular holes are visible, used for binding multiple leaves together. The script is written in a traditional style, with some characters appearing to be in a different script or dialect, possibly Grantha or a specific regional variant of Tamil.



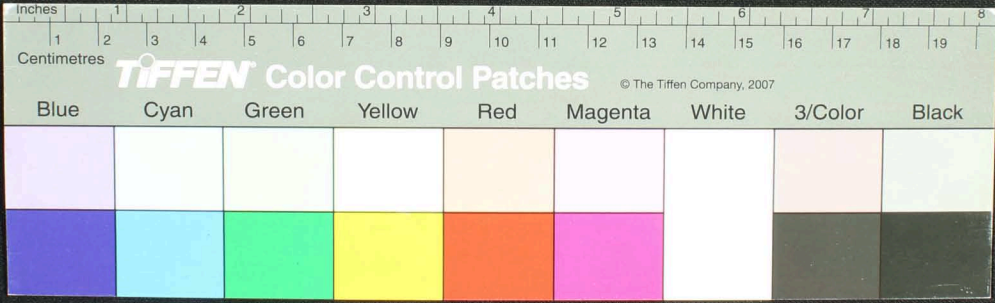
Handwritten Tamil script on a palm leaf manuscript. The text is densely packed and runs horizontally across the length of the leaf. Two circular holes are visible, which were traditionally used for threading a cord to bind multiple leaves together into a book format.



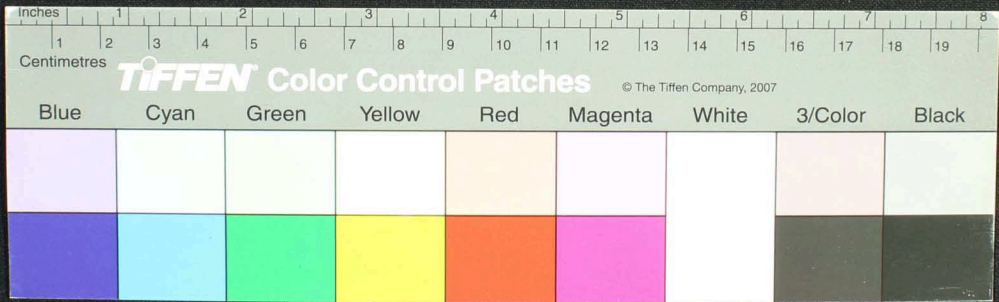
Handwritten Tamil script on a palm leaf manuscript. The text is densely packed and runs horizontally across the length of the leaf. There are two circular holes visible, which were traditionally used for threading a cord to bind multiple leaves together into a book format. The script is in an older form of the Tamil language.



Handwritten Tamil script on a palm leaf manuscript. The text is densely packed and spans the length of the leaf. Two circular holes are visible, used for binding multiple leaves together. The script appears to be a form of classical Tamil, possibly containing religious or philosophical content.

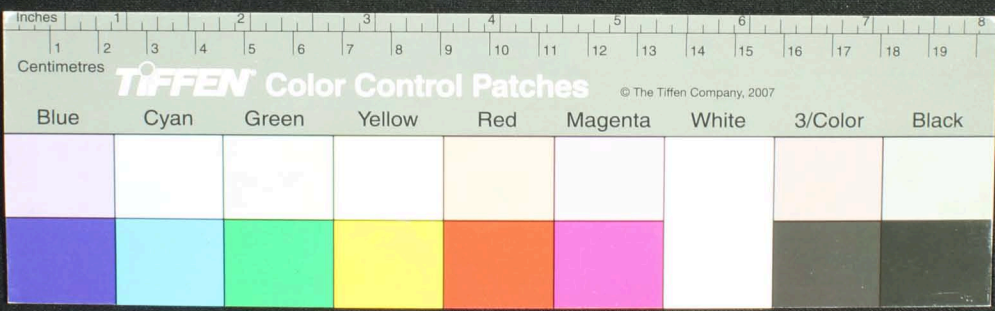


Handwritten Tamil script on a palm leaf manuscript. The text is densely packed and spans the length of the leaf. Two circular holes are visible, which were traditionally used for threading a cord to bind multiple leaves together into a book format. The script is written in a traditional style, with some characters appearing to be in a different dialect or historical form of Tamil.



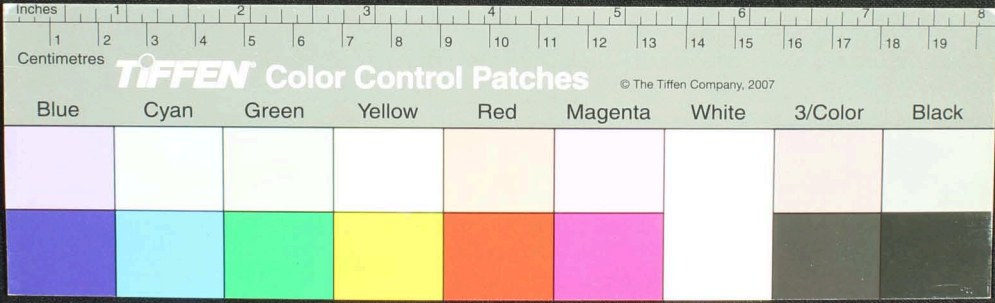
50

Handwritten text in Tamil script on a palm leaf manuscript. The text is densely packed and spans the length of the leaf. Two circular holes are visible, which were traditionally used for threading a cord to bind multiple leaves together into a book format.

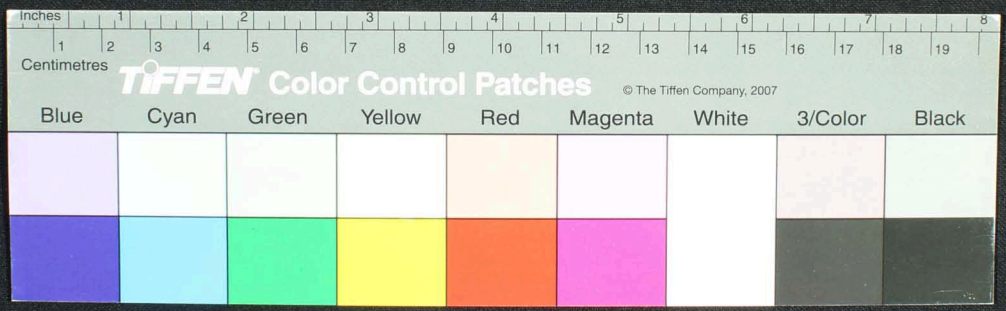


55

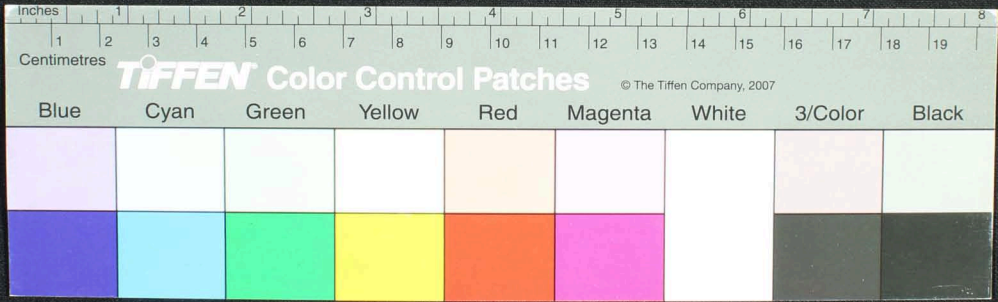
Handwritten Tamil script on a palm leaf manuscript. The text is densely packed and spans the length of the leaf, with some characters appearing to be in a different script or dialect. There are two circular holes visible, which were traditionally used for threading a cord to bind multiple leaves together.



Handwritten Tamil script on a palm leaf manuscript. The text is densely packed and runs horizontally across the length of the leaf. There are two circular holes visible, which were traditionally used for threading a cord to bind multiple leaves together. The leaf shows signs of age and wear, with some dark spots and irregular edges.

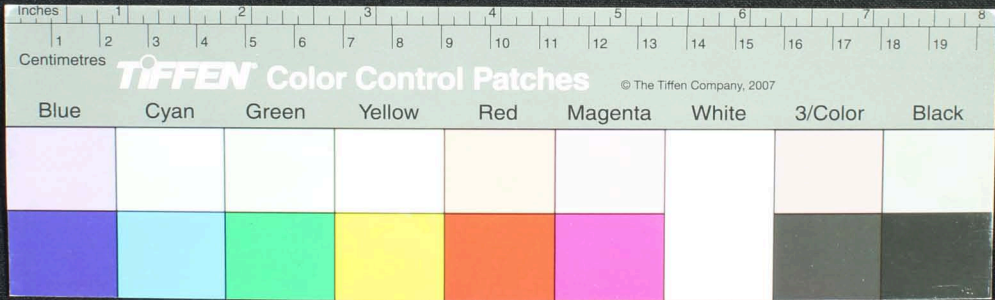


Handwritten Tamil script on a palm leaf manuscript. The text is densely packed and spans the length of the leaf. Two circular holes are visible, used for binding multiple leaves together. The script is in an older form of the Tamil language.

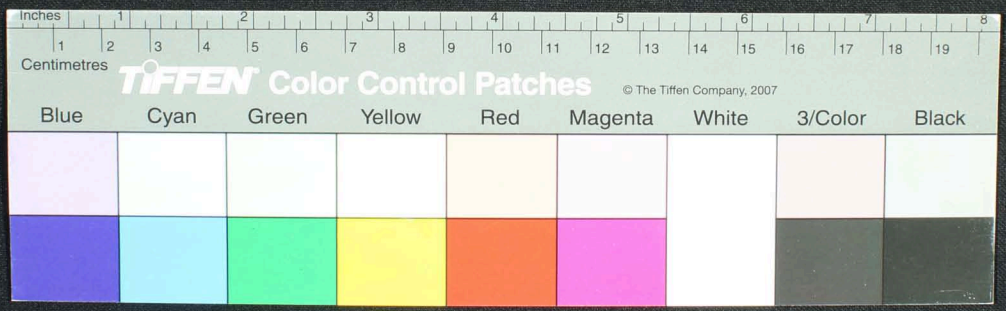


௩௬

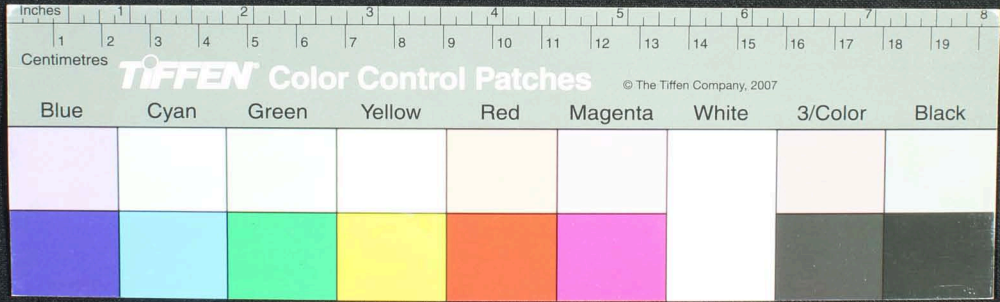
Handwritten Tamil script on a palm leaf manuscript. The text is densely packed and covers most of the leaf's surface. Two circular holes are visible, which were traditionally used for threading a cord to bind multiple leaves together into a book format.



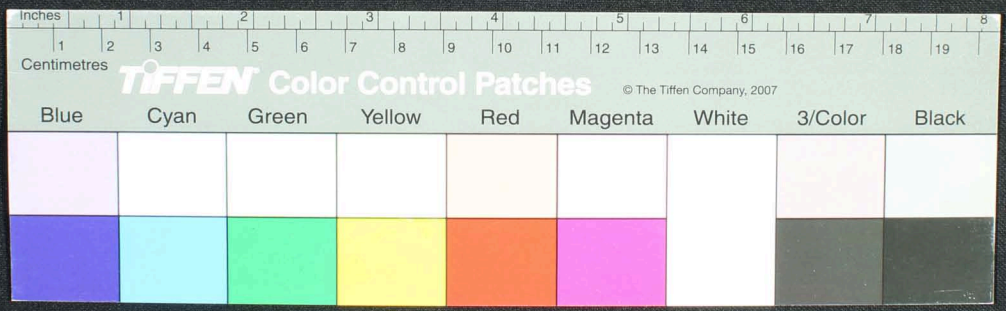
தா - வ நதி திவனாவு பரவலிடு தா அருகே... இது மூலி தா... பவி திரைத் தவிர்ப்பெவ்...
 மகாநாயக பிள்ளை கல்செய் தாநாமதாராய நவநிவனாரை... இது மூலி தா... பவி திரைத் தவிர்ப்பெவ்...
 சூனாட டயாநாயகவனாவு பரவலிடு தாநதி... இது மூலி தா... பவி திரைத் தவிர்ப்பெவ்...
 தாநிவனாவு வநதிநாட டயாநாடு... இது மூலி தா... பவி திரைத் தவிர்ப்பெவ்...
 மலகேசனாவு தாநவலிடு தாநக... இது மூலி தா... பவி திரைத் தவிர்ப்பெவ்...
 வடுவென்பதா... இது மூலி தா... பவி திரைத் தவிர்ப்பெவ்...
 இது மூலி தா... பவி திரைத் தவிர்ப்பெவ்...
 இது மூலி தா... பவி திரைத் தவிர்ப்பெவ்...



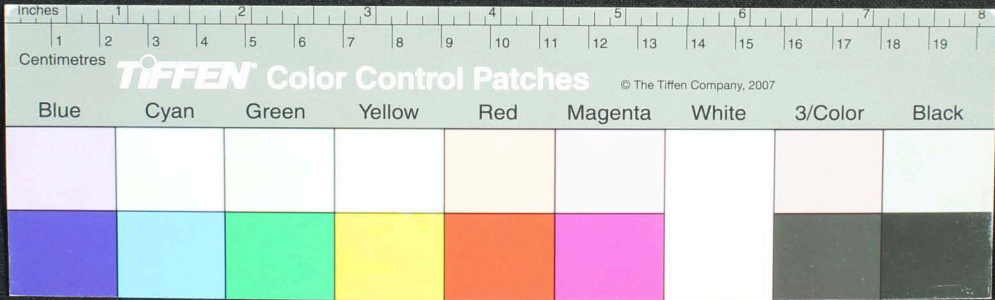
Handwritten text in Tamil script on a palm leaf manuscript. The text is densely packed and covers the entire length of the leaf. Two circular holes are visible, which were traditionally used for threading a cord to bind multiple leaves together. The script is in an older form of the Tamil language.



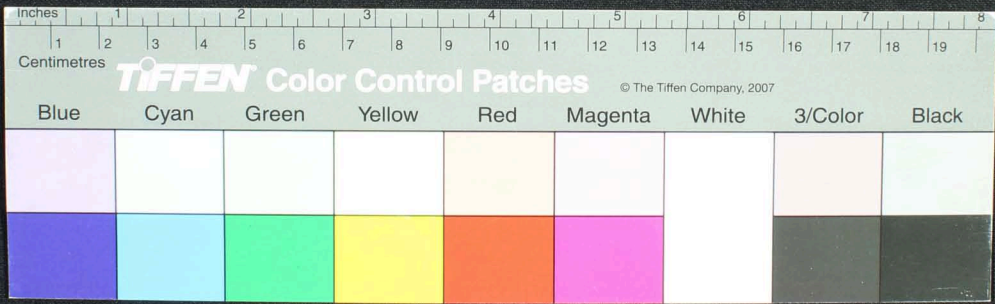
Handwritten Tamil script on a palm leaf manuscript. The text is densely packed and covers the entire length of the leaf. Two circular holes are visible, which were traditionally used for threading a cord to bind multiple leaves together into a book format.



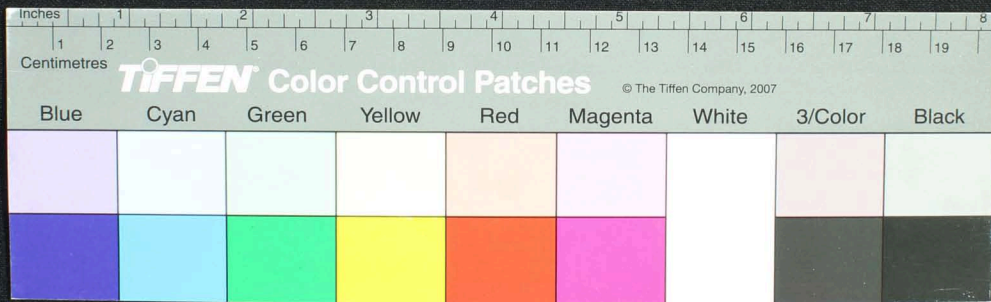
உமலபலவெனவுமா ஏய்நிததுவெயபபடுமெனவாப... இடைமடகாரமபபதனையாடுகாவிடுகலையவகட்டி... ராணி... மனபதனை...
 ஏய்விரலகடுகட்டி... மகிழ்ச்சிபமாடபவொடுகாரகட்டுகொனமுப... டிசிரவனா... மகிழ்ச்சி... விராமகாலகளை... சாரண... மடயாயவ... பரப...
 னாபொடுகார... மகிழ்ச்சி... விராமகாலகளை... சாரண... மடயாயவ... பரப...
 யாபநது... மகிழ்ச்சி... விராமகாலகளை... சாரண... மடயாயவ... பரப...
 மகிழ்ச்சி... விராமகாலகளை... சாரண... மடயாயவ... பரப...
 பண... மகிழ்ச்சி... விராமகாலகளை... சாரண... மடயாயவ... பரப...
 ரா... மகிழ்ச்சி... விராமகாலகளை... சாரண... மடயாயவ... பரப...
 விர... மகிழ்ச்சி... விராமகாலகளை... சாரண... மடயாயவ... பரப...



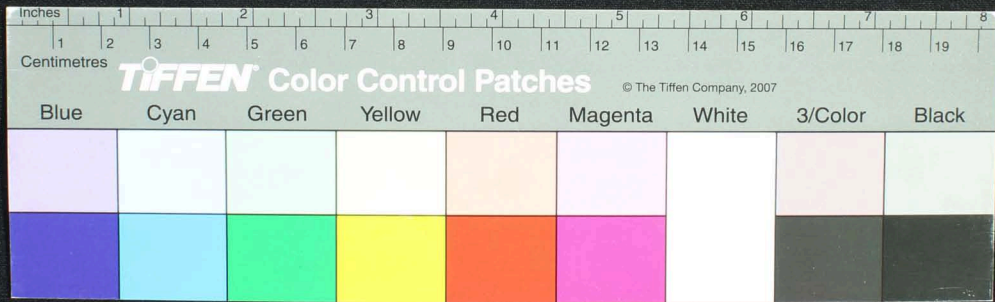
தளமே - நெடுநிலாதிசுருமருவியதிரவதிரவ...
 உண்டாகத்தேயுநாதிசுருமருவியதிரவதிரவ...
 அந்தமே...
 தளமே...
 தளமே...
 தளமே...
 தளமே...
 தளமே...
 தளமே...
 தளமே...
 தளமே...
 தளமே...
 தளமே...



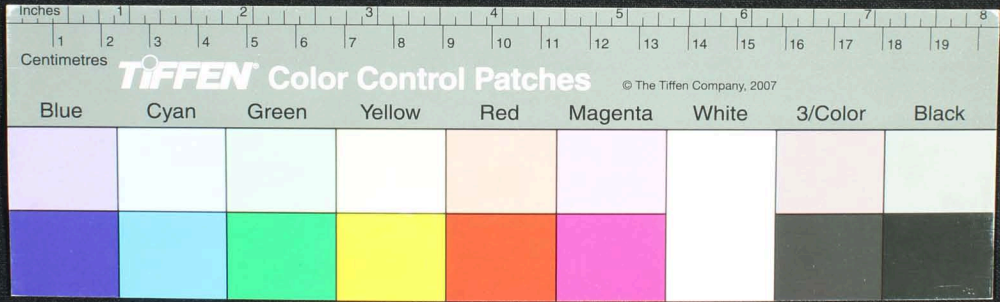
Handwritten Tamil script on a palm leaf manuscript. The text is densely packed and runs horizontally across the length of the leaf. There are two circular holes visible, which were traditionally used for threading a cord to bind multiple leaves together into a book format. The script is in an older form of the Tamil language.



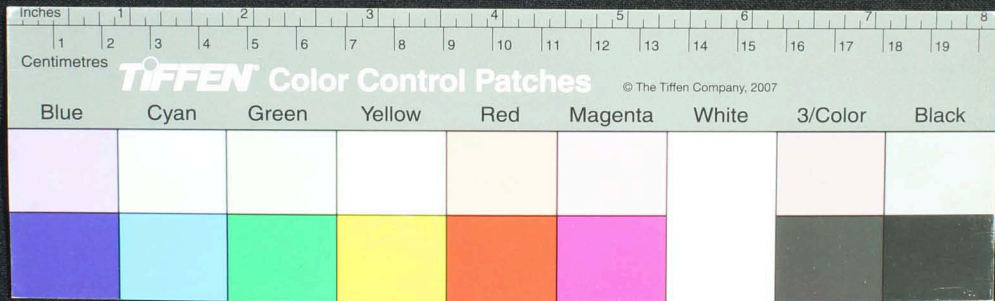
Handwritten Tamil script on a palm leaf manuscript. The text is densely packed and runs horizontally across the length of the leaf. Two circular holes are visible, used for binding multiple leaves together. The script is in an older form of the Tamil language.



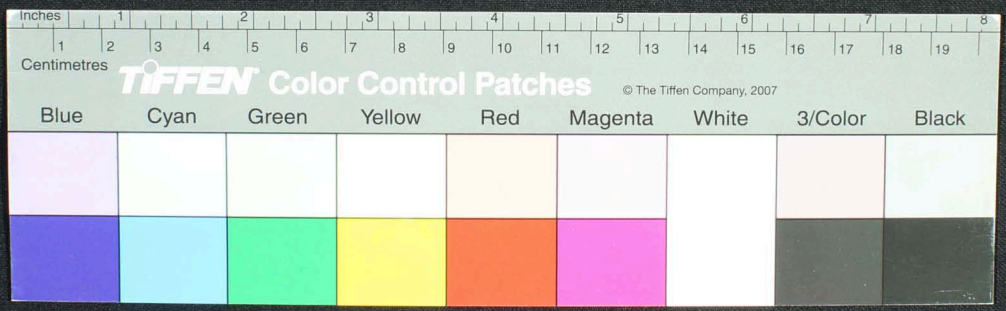
Handwritten Tamil script on a palm leaf manuscript. The text is densely packed and spans the length of the leaf. Two circular holes are visible, used for binding multiple leaves together. The script is in an older form of the Tamil language.



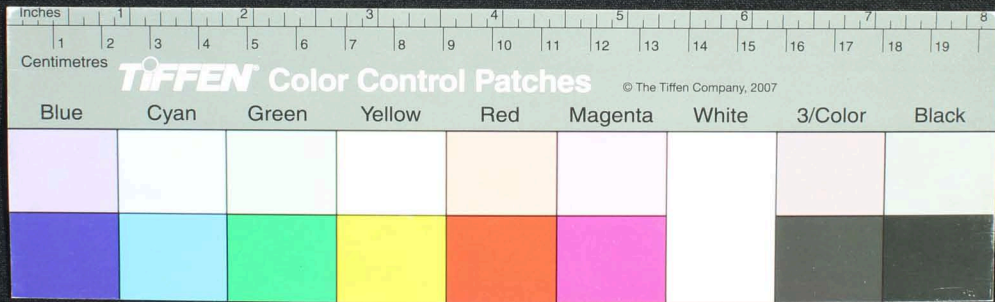
Handwritten Tamil script on a palm leaf manuscript. The text is densely packed and runs horizontally across the length of the leaf. There are two circular holes visible, which were traditionally used for threading a cord to bind multiple leaves together into a book format. The script is in an older form of the Tamil language.



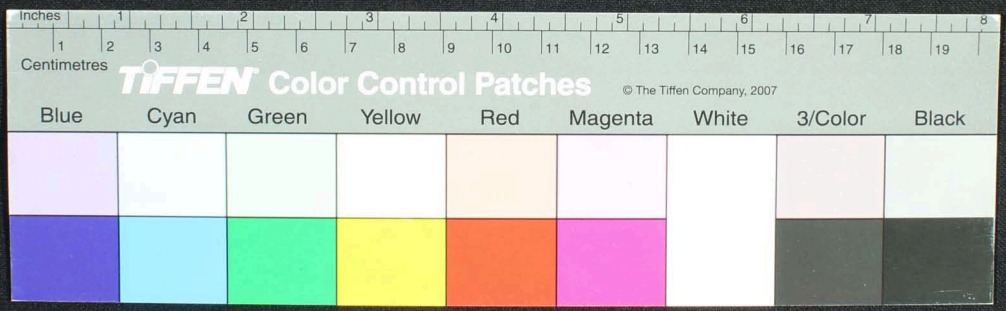
Handwritten text in Tamil script on a palm leaf manuscript. The text is densely packed and runs horizontally across the length of the leaf. There are two circular holes visible, which were traditionally used for threading a cord to bind multiple leaves together. The leaf shows signs of age and wear, with some fraying at the edges.



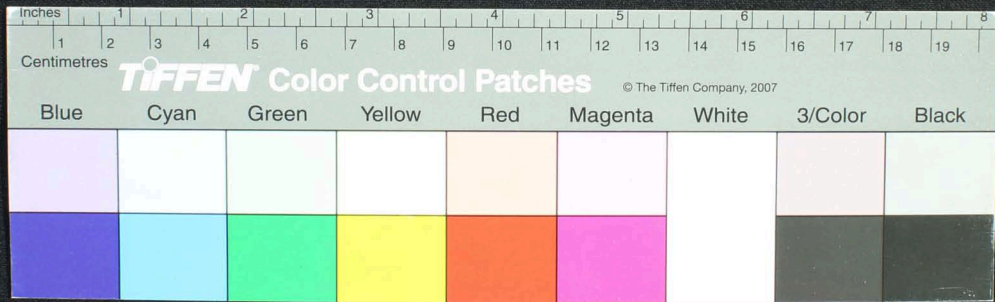
Handwritten Tamil script on a palm leaf manuscript. The text is densely packed and spans the length of the leaf. Two circular holes are visible, used for binding multiple leaves together. The script is written in a traditional style, with some characters appearing to be in a different dialect or historical form of Tamil.



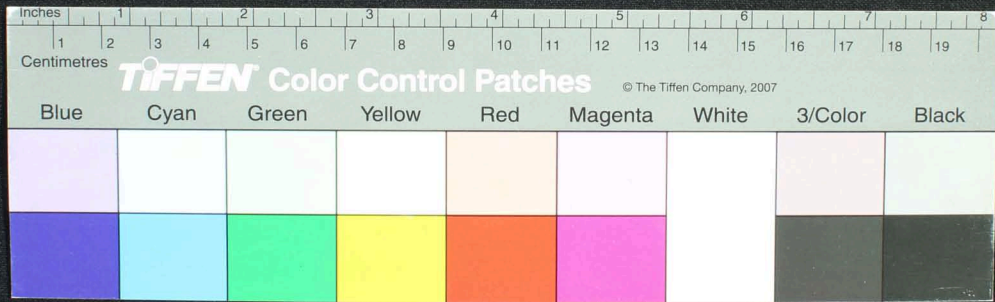
Handwritten Tamil script on a palm leaf manuscript. The text is densely packed and spans the length of the leaf. Two circular holes are visible, used for binding multiple leaves together. The script is in an older form of the Tamil language.



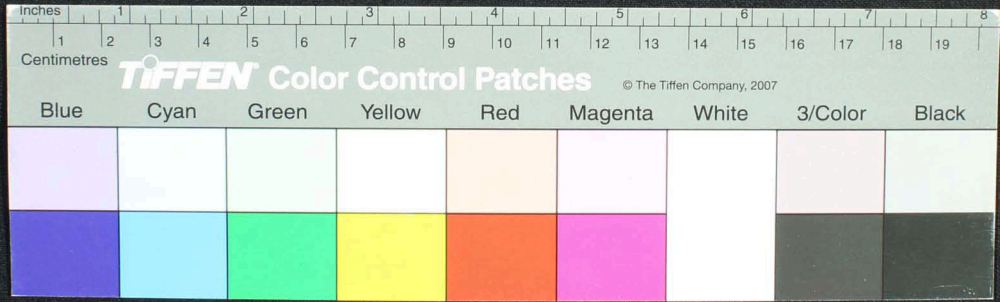
Handwritten Tamil script on a palm leaf manuscript. The text is arranged in approximately 10 horizontal lines across the length of the leaf. Two circular holes are visible, which were traditionally used for threading a cord to bind multiple leaves together into a book format. The script is densely packed and appears to be a form of classical Tamil literature or religious text.



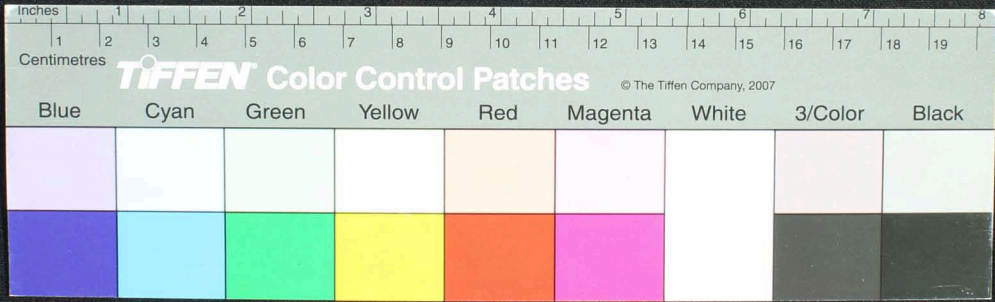
Handwritten Tamil script on a palm leaf manuscript. The text is densely packed in approximately 10 horizontal lines across the length of the leaf. Two circular holes are visible, used for threading a cord to bind multiple leaves together. The script is in an older form of the Tamil language.



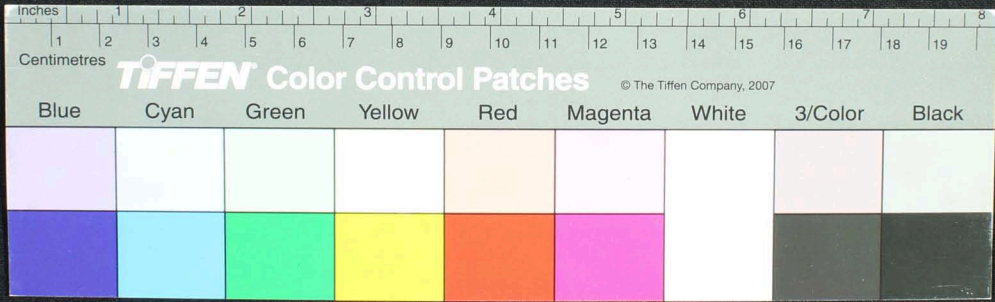
Handwritten text in Tamil script on a palm leaf manuscript. The text is densely packed and runs horizontally across the length of the leaf. There are two circular holes visible, which were traditionally used for threading a cord to bind multiple leaves together into a book format.



Handwritten Tamil script on a palm leaf manuscript. The text is densely packed and spans the length of the leaf. Two circular holes are visible, used for binding multiple leaves together.

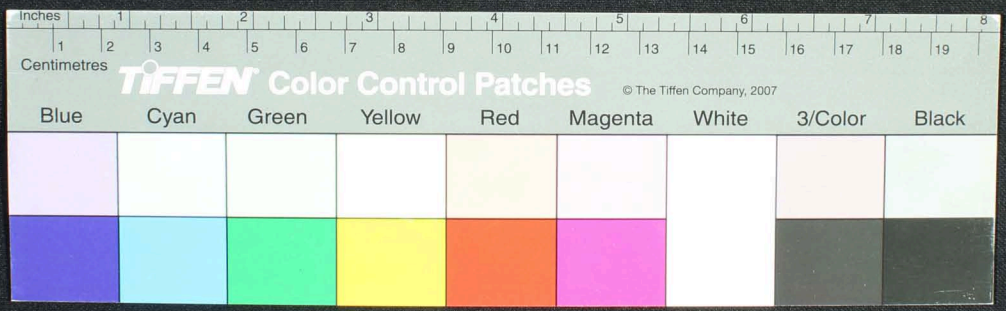


Handwritten Tamil script on a palm leaf manuscript. The text is densely packed and runs horizontally across the length of the leaf. There are two circular holes visible, which were traditionally used for threading a cord to bind multiple leaves together into a book format.

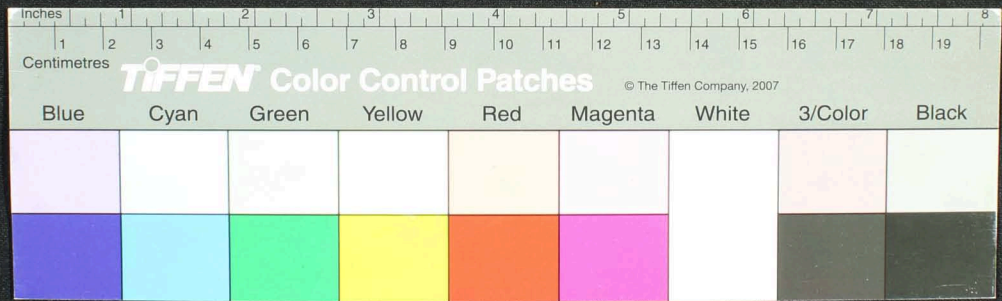


100

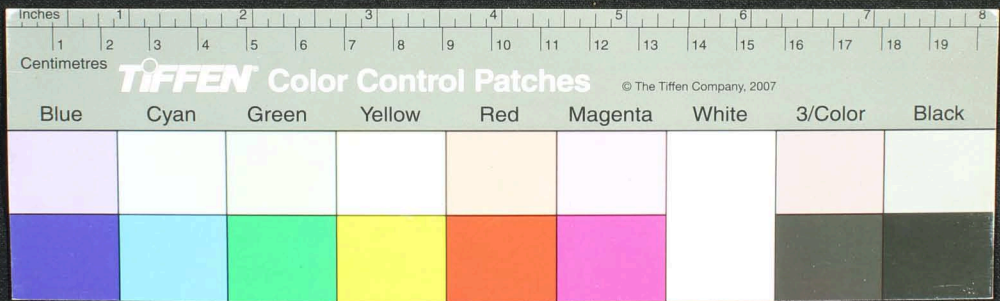
Handwritten Tamil script on a palm leaf manuscript, featuring two circular holes for binding.



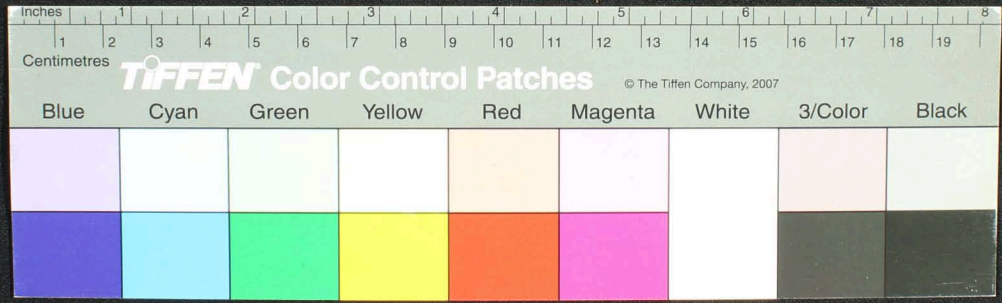
Handwritten Tamil script on a palm leaf manuscript. The text is densely packed and runs horizontally across the length of the leaf. Two circular holes are visible, used for binding multiple leaves together.



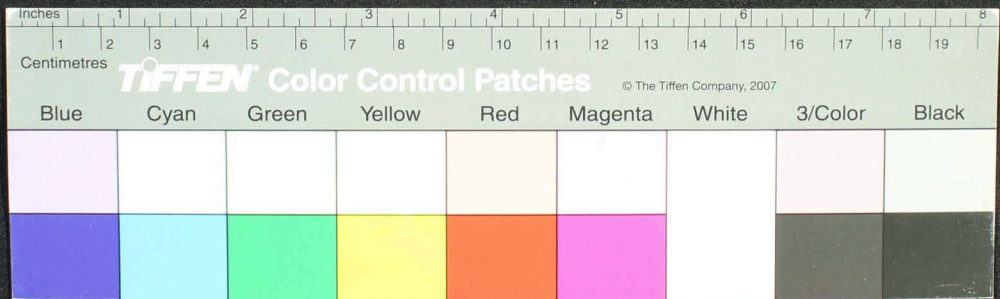
Handwritten Tamil script on a palm leaf manuscript. The text is densely packed and spans the entire length of the leaf. Two circular holes are visible, used for binding multiple leaves together.



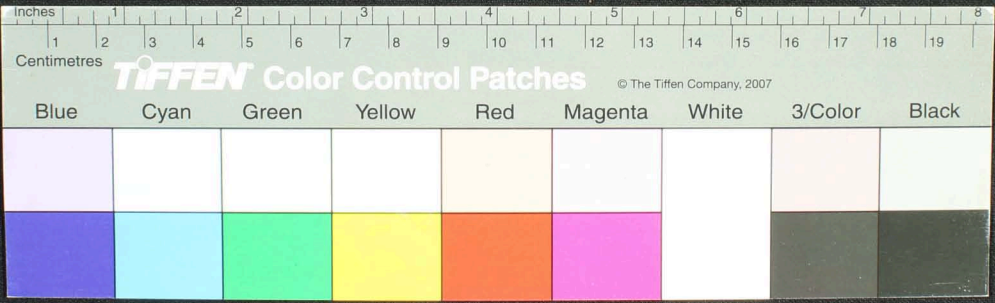
Handwritten Tamil script on a palm leaf manuscript. The text is densely packed and runs horizontally across the length of the leaf. There are two prominent circular holes, likely from a traditional binding system. The leaf shows signs of age and wear, with some dark spots and irregular edges.



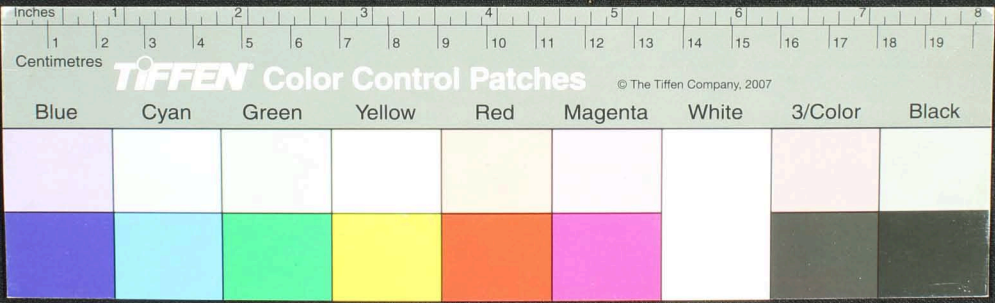
Handwritten Tamil script on a palm leaf manuscript. The text is arranged in approximately 10 horizontal lines across the length of the leaf. Two circular holes are visible, used for threading a cord to bind multiple leaves together. The script is densely packed and appears to be a form of classical Tamil literature or religious text.



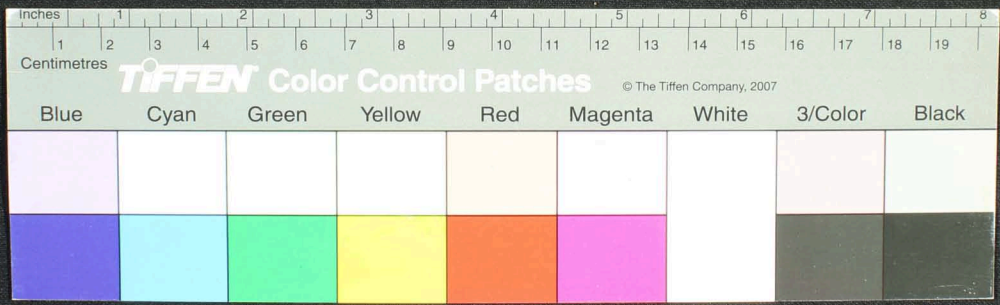
Handwritten Tamil script on a palm leaf manuscript. The text is densely packed and spans the length of the leaf. Two circular holes are visible, used for binding multiple leaves together. The script is in an older form of the Tamil language.



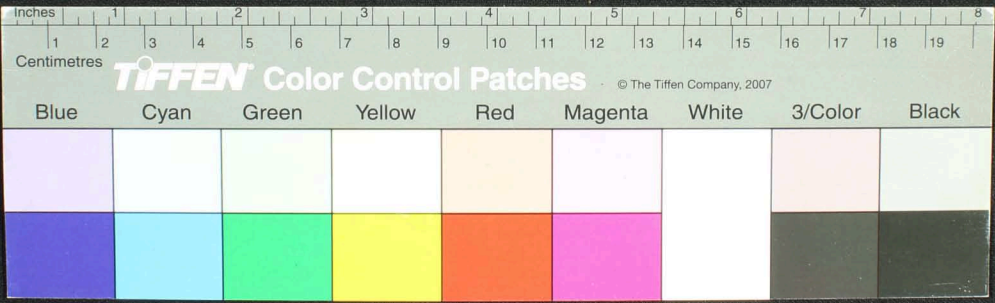
Handwritten Tamil script on a palm leaf manuscript. The text is densely packed and covers most of the leaf's surface. There are two circular holes visible, which were traditionally used for threading a cord to bind multiple leaves together into a book format. The script is written in a traditional style, with some characters appearing slightly faded or worn due to the age of the material.



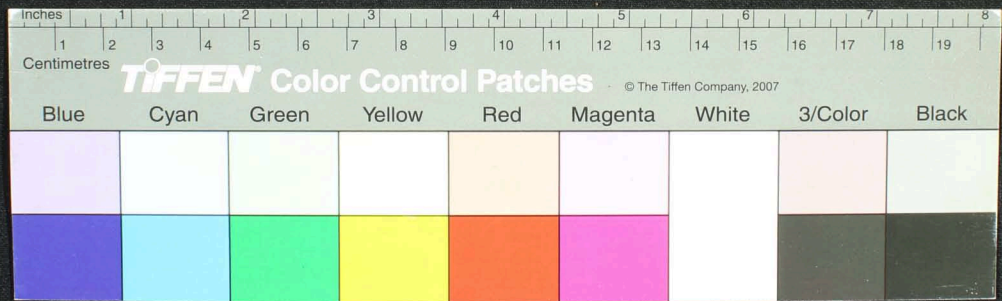
Handwritten Tamil script on a palm leaf manuscript. The text is densely packed and runs horizontally across the length of the leaf. There are two circular holes visible, which were traditionally used for threading a cord to bind multiple leaves together into a book format. The script is in an older form of the Tamil language, likely from the medieval or early modern period.



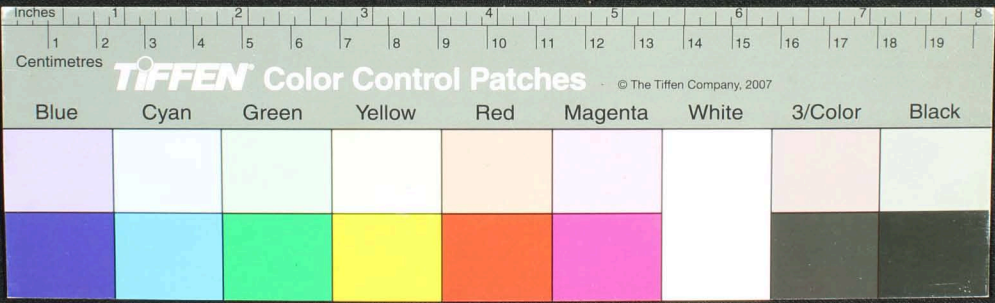
Handwritten text in Tamil script on a palm leaf manuscript. The text is densely packed and spans the length of the leaf. Two circular holes are visible, used for binding multiple leaves together.



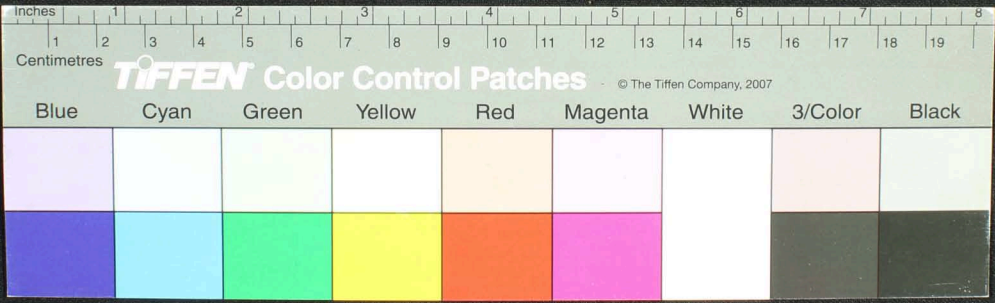
Handwritten Tamil script on a palm leaf manuscript. The text is densely packed and runs horizontally across the length of the leaf. There are two circular holes visible, which were traditionally used for threading a cord to bind multiple leaves together. The script is in an older form of the Tamil language.



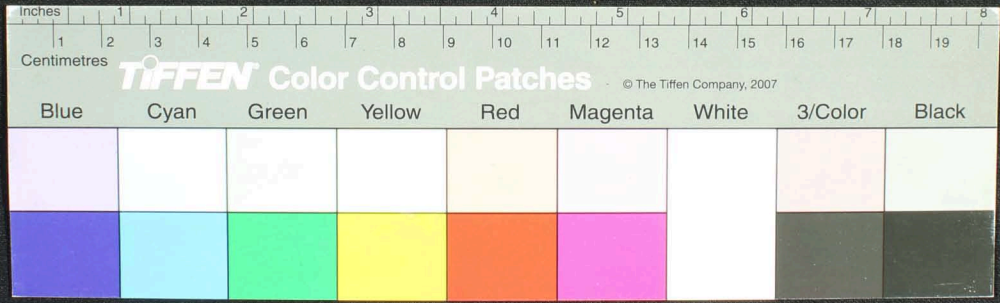
Handwritten Tamil script on a palm leaf manuscript. The text is arranged in approximately 10 horizontal lines across the length of the leaf. On the left side, there are two vertical inscriptions: 'சுருதி' (Srutu) and 'யுதி' (Yuthi). The script is densely packed and appears to be a form of classical Tamil literature or a religious text.



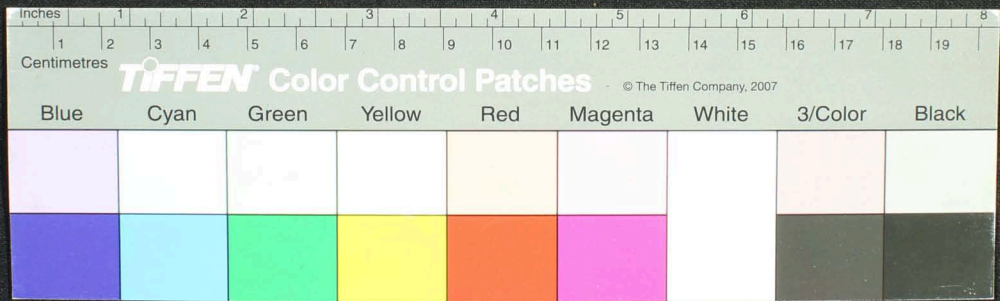
Handwritten Tamil script on a palm leaf manuscript. The text is densely packed and spans the length of the leaf. Two circular holes are visible, used for binding multiple leaves together. The script is written in a traditional style, with some characters appearing to be in a different script or dialect, possibly Grantha or a specific regional variant of Tamil.



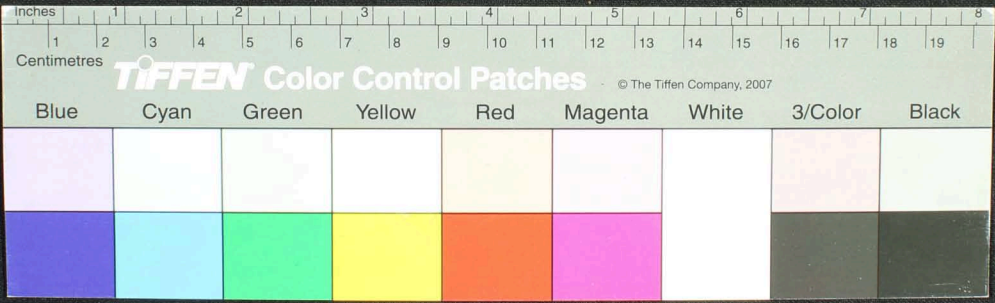
Handwritten Tamil script on a palm leaf manuscript. The text is densely packed and covers the entire length of the leaf. Two circular holes are visible, used for binding multiple leaves together.



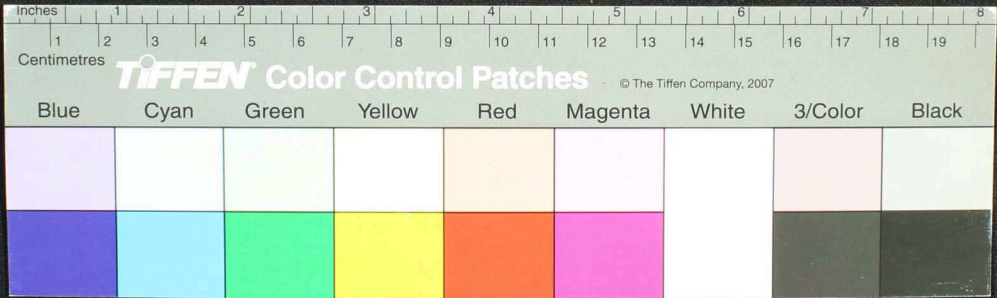
Handwritten Tamil script on a palm leaf manuscript. The text is densely packed and spans the length of the leaf. There are two circular holes visible, which were traditionally used for threading a cord to bind multiple leaves together. The script is written in a traditional style, with some characters appearing to be in a different dialect or historical form of Tamil.



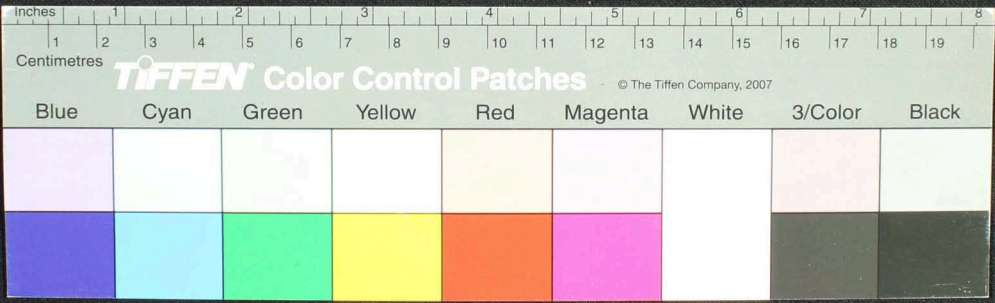
Handwritten Tamil script on a palm leaf manuscript. The text is densely packed and runs horizontally across the length of the leaf. Two circular holes are visible, which were traditionally used for threading a cord to bind multiple leaves together into a book format. The script is in an older form of the Tamil language.



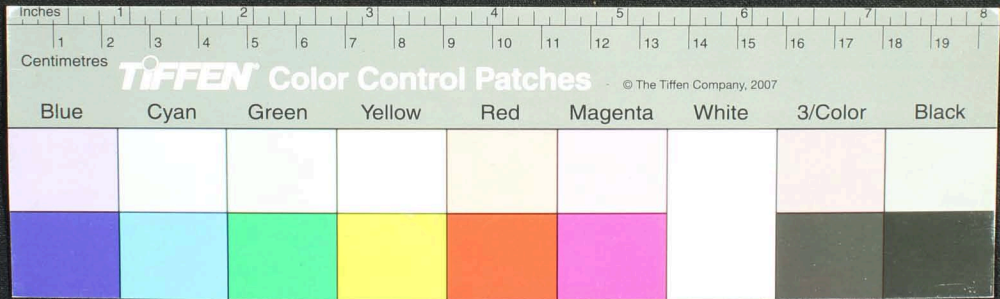
Handwritten Tamil script on a palm leaf manuscript. The text is densely packed and runs horizontally across the length of the leaf. Two circular holes are visible, used for threading a cord to bind multiple leaves together.



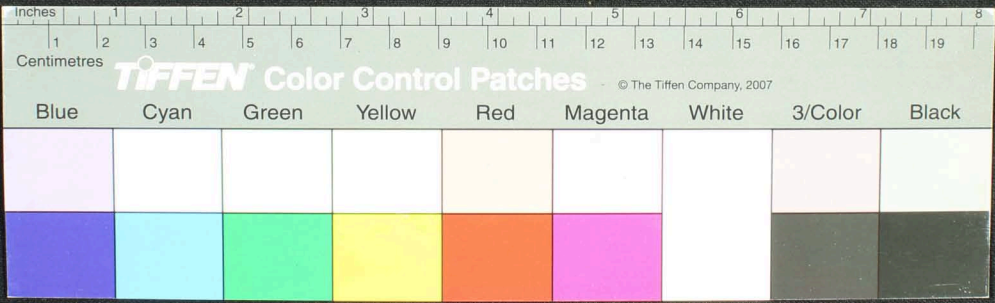
Handwritten Tamil script on a palm leaf manuscript. The text is densely packed and covers most of the leaf's surface. There are two circular holes visible, which were traditionally used for threading a cord to bind multiple leaves together. The script is written in a traditional style, with some characters appearing to be in a different dialect or historical form of Tamil.



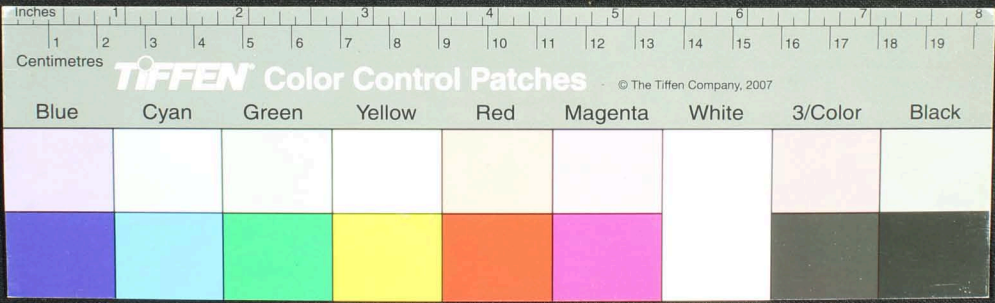
Handwritten Tamil script on a palm leaf manuscript. The text is densely packed and runs horizontally across the length of the leaf. Two circular holes are visible, which were traditionally used for threading a cord to bind multiple leaves together into a book format.



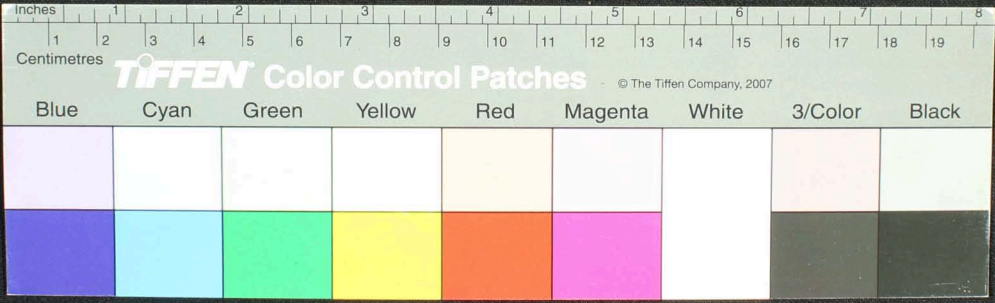
Handwritten Tamil script on a palm leaf manuscript. The text is densely packed and runs horizontally across the length of the leaf. Two circular holes are visible, used for threading a cord to bind multiple leaves together.



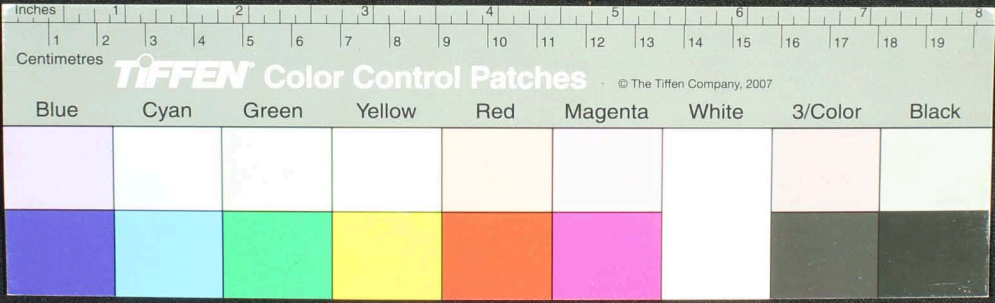
Handwritten Tamil script on a palm leaf manuscript. The text is densely packed and runs horizontally across the length of the leaf. Two circular holes are visible, used for threading a cord to bind multiple leaves together. The script is in an older form of the Tamil language.



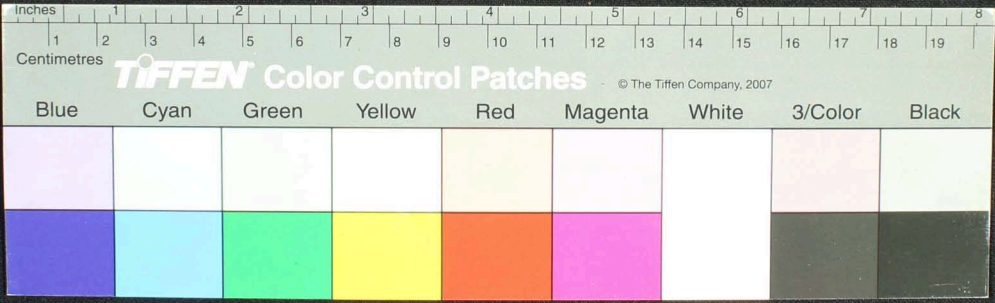
Handwritten Tamil script on a palm leaf manuscript. The text is densely packed and spans the length of the leaf. There are two circular holes visible, which were traditionally used for threading a cord to bind multiple leaves together into a book format.



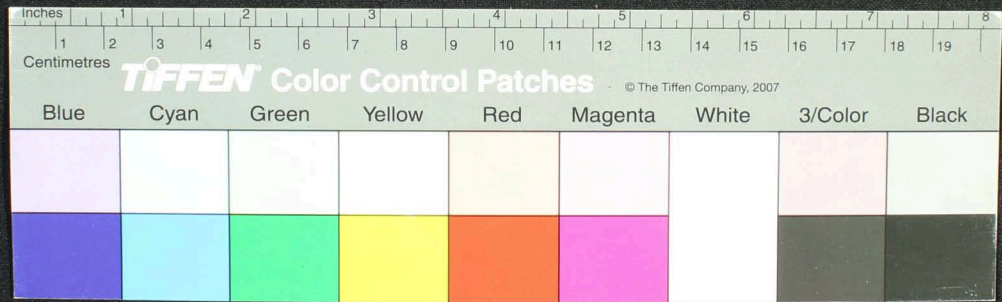
Handwritten Tamil script on a palm leaf manuscript. The text is densely packed and runs horizontally across the length of the leaf. Two circular holes are visible, used for binding multiple leaves together.



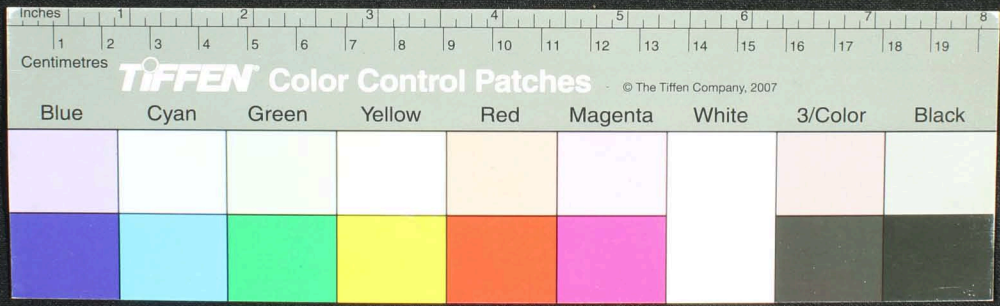
Handwritten Tamil script on a palm leaf manuscript. The text is arranged in approximately 10 horizontal lines across the length of the leaf. Two circular holes are visible, used for threading a cord to bind multiple leaves together. The script is densely packed and appears to be a form of classical or religious Tamil.



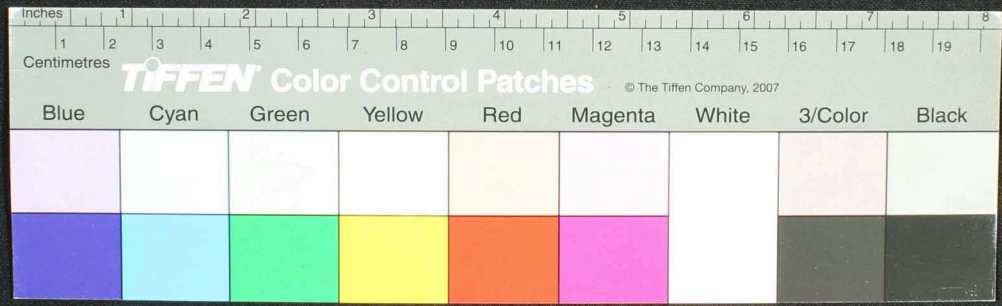
Handwritten Tamil script on a palm leaf manuscript. The text is densely packed and runs horizontally across the length of the leaf. Two circular holes are visible, used for threading a cord to bind multiple leaves together.



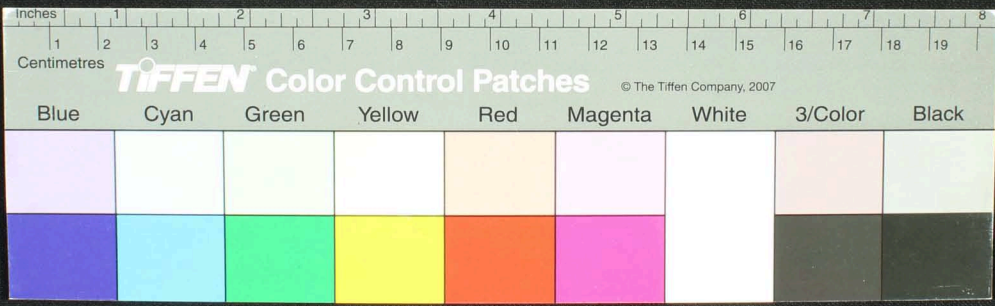
Handwritten Tamil script on a palm leaf manuscript. The text is densely packed and runs horizontally across the length of the leaf. Two circular holes are visible, which were traditionally used for threading a cord to bind multiple leaves together into a book format. The leaf shows signs of age, including some discoloration and wear at the edges.



Handwritten Tamil script on a palm leaf manuscript. The text is densely packed and runs horizontally across the length of the leaf. Two circular holes are visible, which were traditionally used for threading a cord to bind multiple leaves together into a book format. The script is in an older form of the Tamil language, likely from the pre-colonial period.



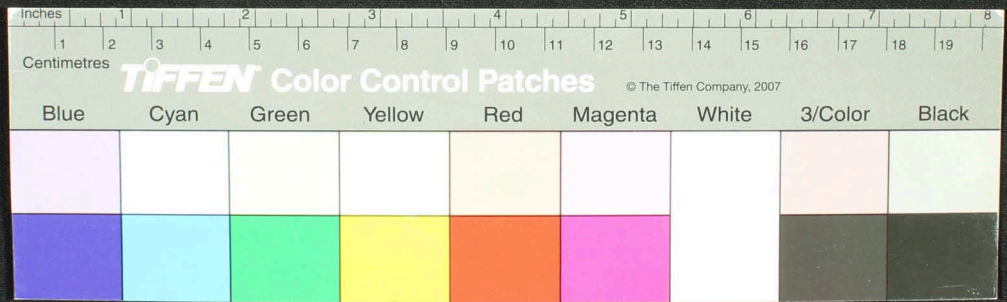
Handwritten Tamil script on a palm leaf manuscript. The text is densely packed and spans the length of the leaf. Two circular holes are visible, used for binding multiple leaves together. The script is in an older form of the Tamil language.



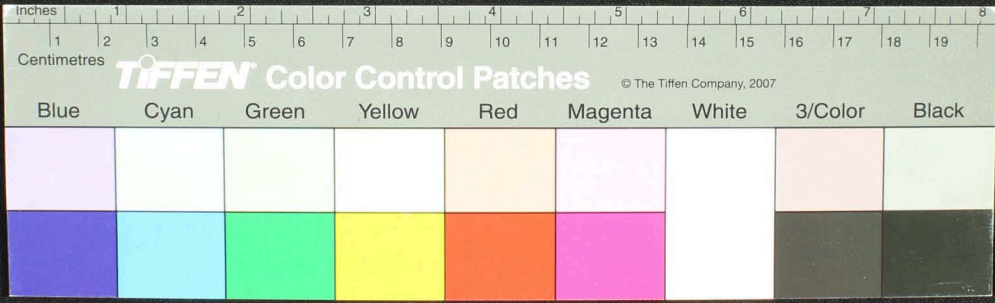
Handwritten Tamil script on a palm leaf manuscript. The text is densely packed and runs horizontally across the length of the leaf. There are two circular holes visible, which were traditionally used for threading a cord to bind multiple leaves together into a book format. The script is in an older form of the Tamil language.



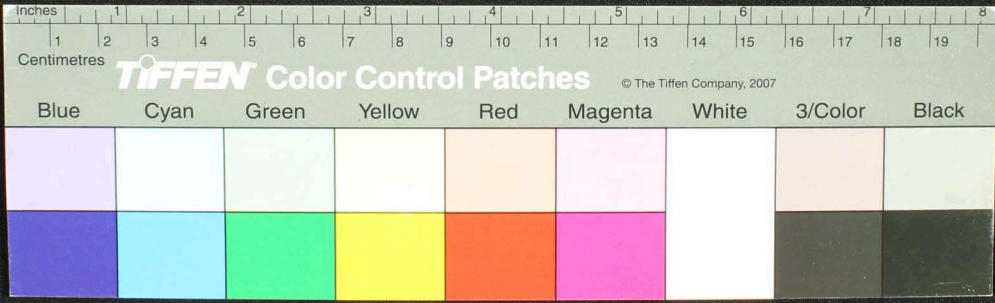
Handwritten text in Tamil script on a palm leaf manuscript. The text is densely packed and runs horizontally across the length of the leaf. Two circular holes are visible, which were traditionally used for threading a cord to bind multiple leaves together into a book format.



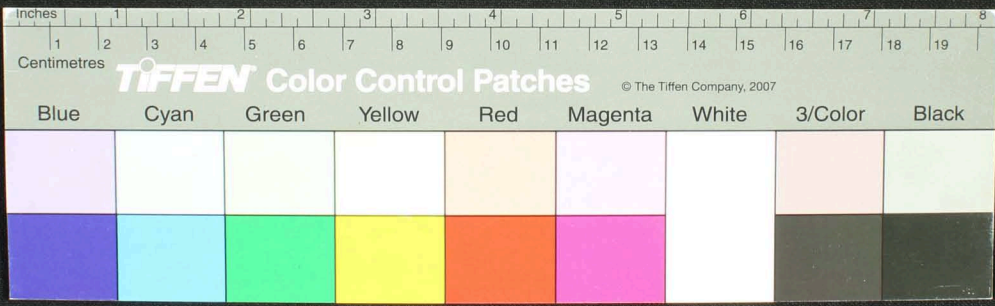
Handwritten Tamil script on a palm leaf manuscript. The text is densely packed and runs horizontally across the length of the leaf. Two circular holes are visible, used for binding multiple leaves together.



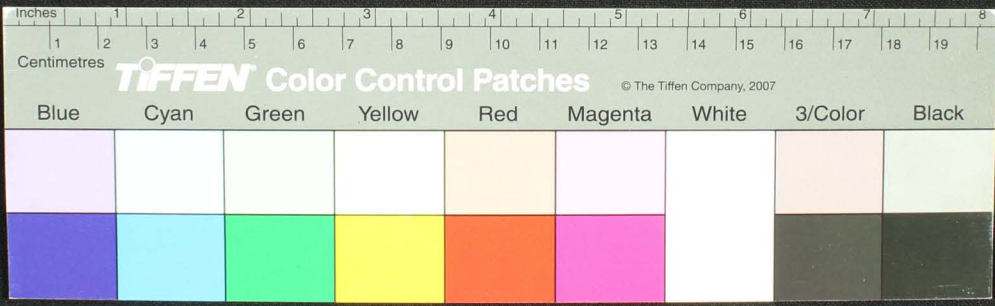
Handwritten Tamil script on a palm leaf manuscript. The text is densely packed and runs horizontally across the length of the leaf. The leaf shows signs of age, including some dark spots and wear at the edges.



Handwritten text in Tamil script on a palm leaf manuscript. The text is densely packed and runs horizontally across the length of the leaf. The leaf shows signs of age, including some dark spots and wear at the edges.



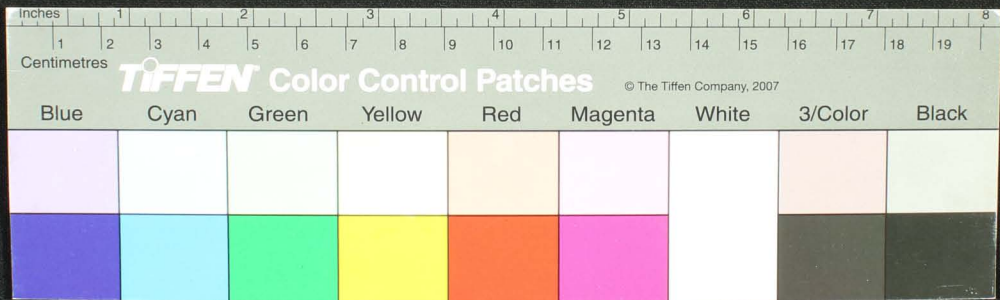
Handwritten Tamil script on a palm leaf manuscript. The text is densely packed and runs horizontally across the length of the leaf. The leaf shows signs of age, including some dark spots and wear at the edges.



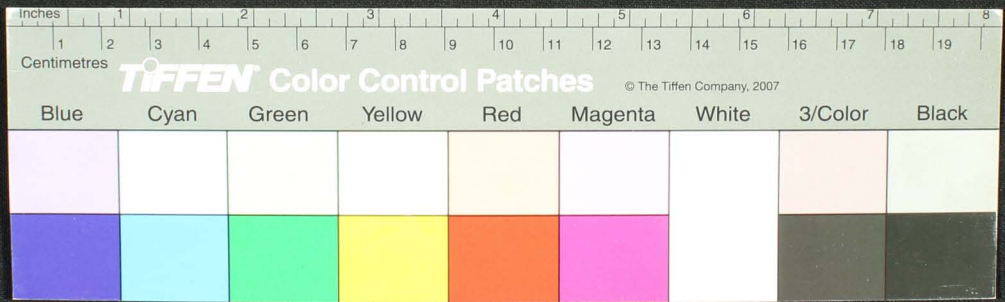
Handwritten text in Tamil script on a palm leaf manuscript. The text is densely packed and runs horizontally across the length of the leaf. The script is a traditional form of the Tamil language, used for recording knowledge and literature. The leaf shows signs of age and wear, with some dark spots and irregular edges.



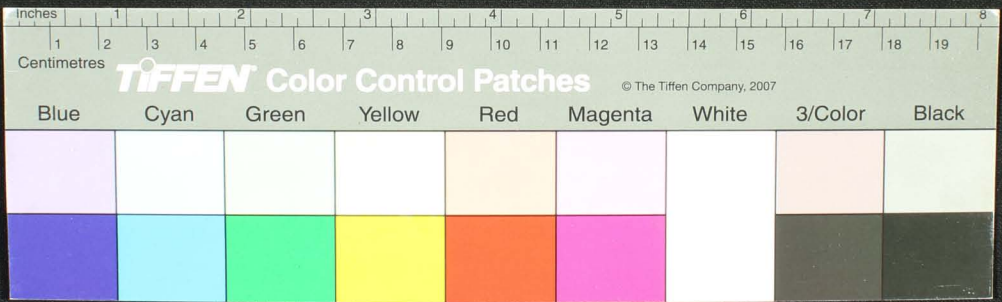
Handwritten text in Tamil script on a palm leaf manuscript. The text is densely packed and runs horizontally across the length of the leaf. Two circular holes are visible, which were traditionally used for threading a cord to bind multiple leaves together into a book format. The leaf shows signs of age, including some darkening and wear, particularly around the edges and between the holes.



Handwritten text in Tamil script on a palm leaf manuscript. The text is densely packed and runs horizontally across the length of the leaf. There are two circular holes visible, which were traditionally used for threading a cord to bind multiple leaves together. The leaf shows signs of age and wear, with some dark spots and irregular edges.



Handwritten text in Tamil script on a palm leaf manuscript. The text is densely packed and covers most of the leaf's surface. There are two circular holes visible, which were traditionally used for threading a cord to bind multiple leaves together into a book format. The script is in an older form of the Tamil language, and the leaf shows signs of age and wear.



Handwritten Tamil script on a palm leaf manuscript strip. The text is densely packed and runs horizontally across the length of the leaf. The leaf shows signs of age, including some dark spots and irregular edges.



Handwritten text in Tamil script on a palm leaf manuscript. The text is densely packed and runs horizontally across the length of the leaf. The leaf shows signs of age and wear, with some dark spots and irregular edges.

