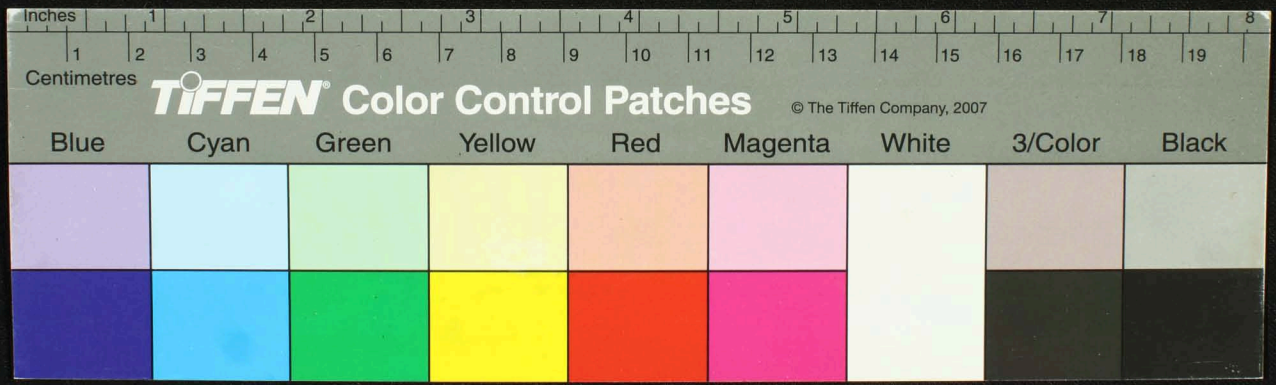
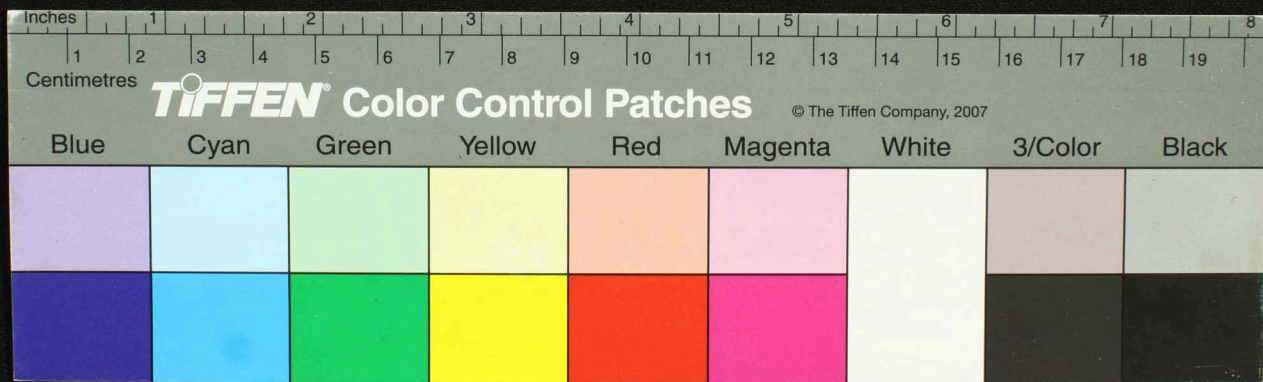
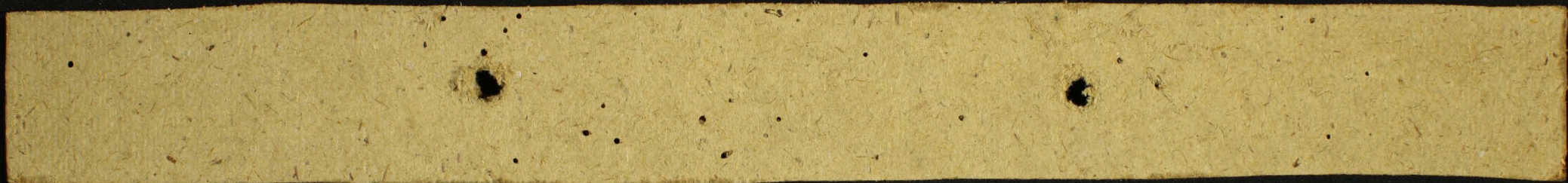
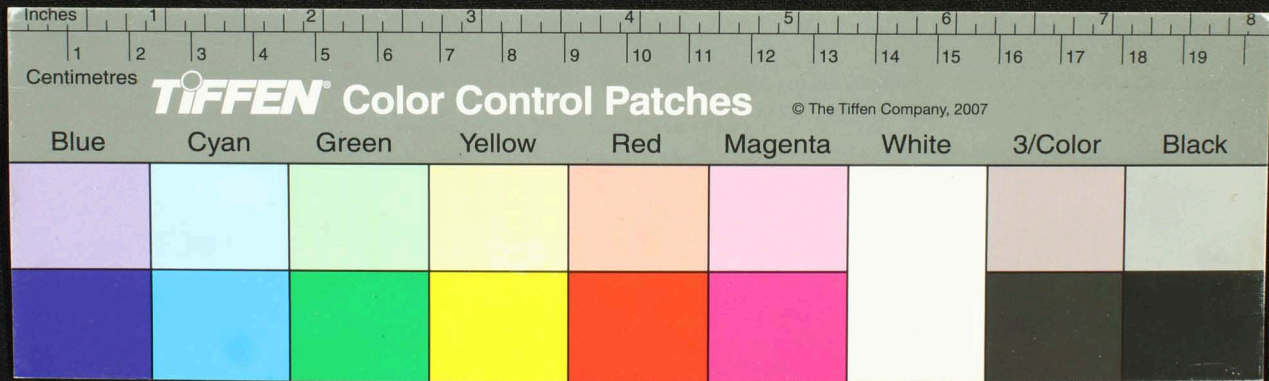
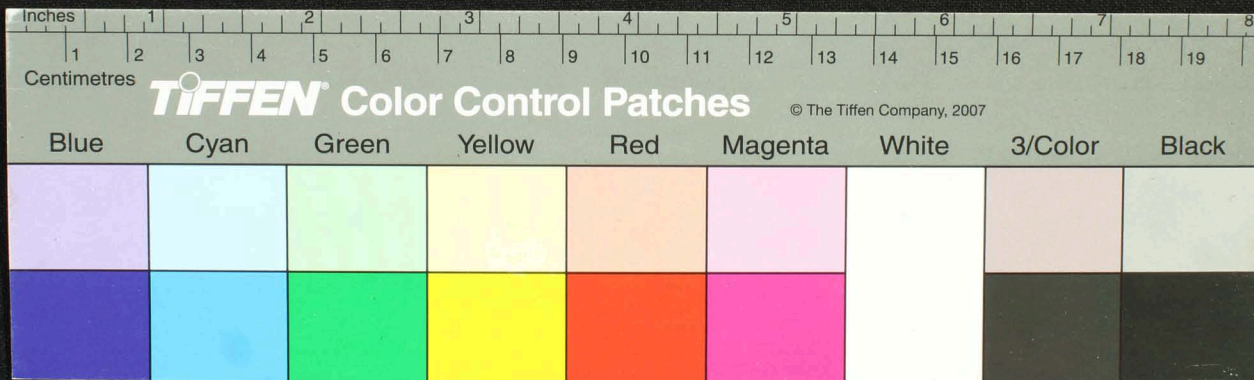
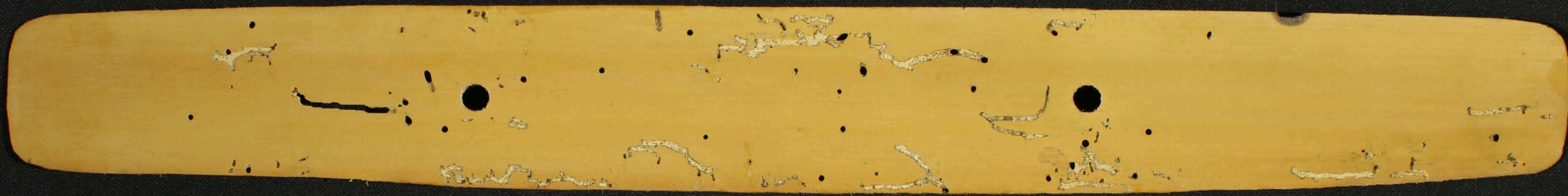


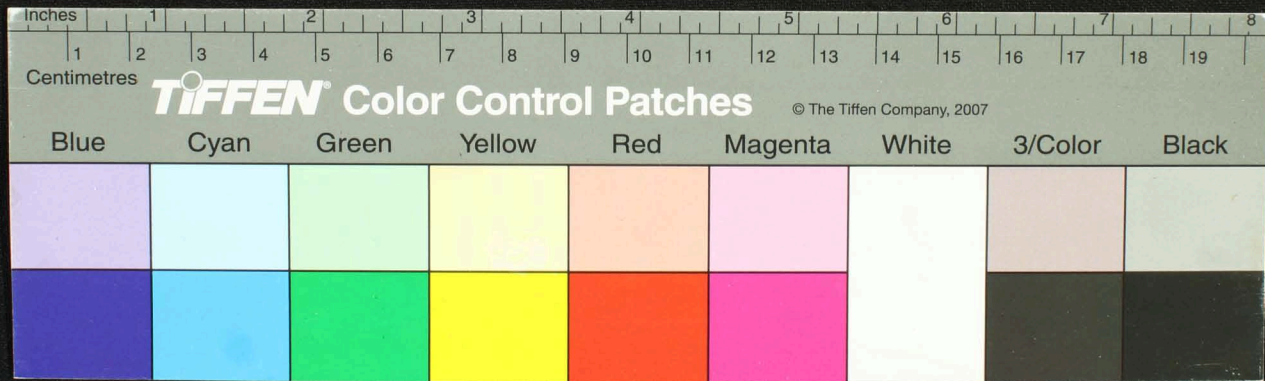
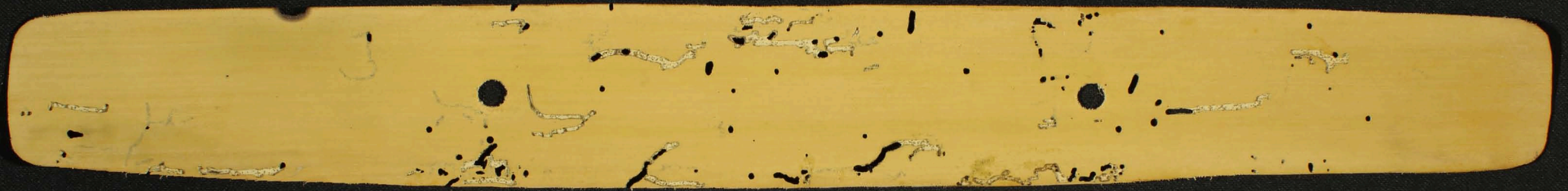
உலாபலி நிகண்டு (முழுமயனதன்)
இ. 43, ப. 11" x 1.5", ம. 2

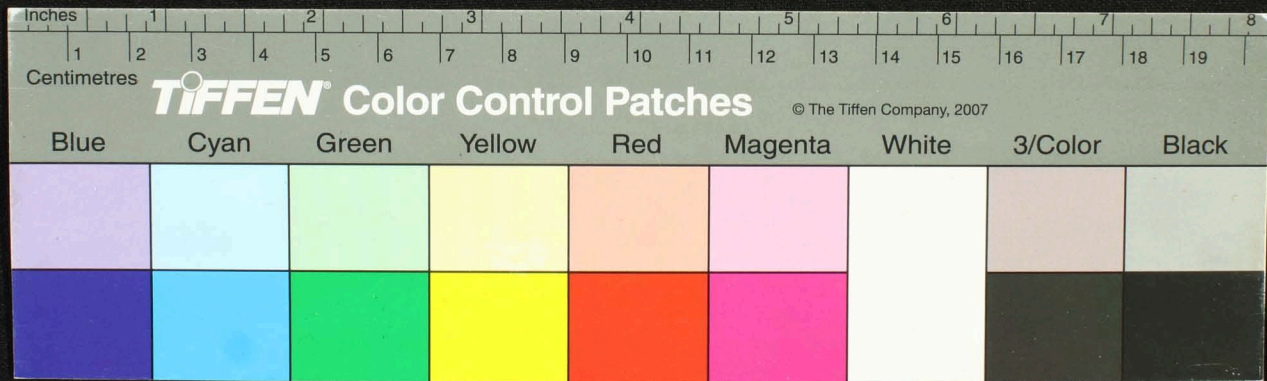
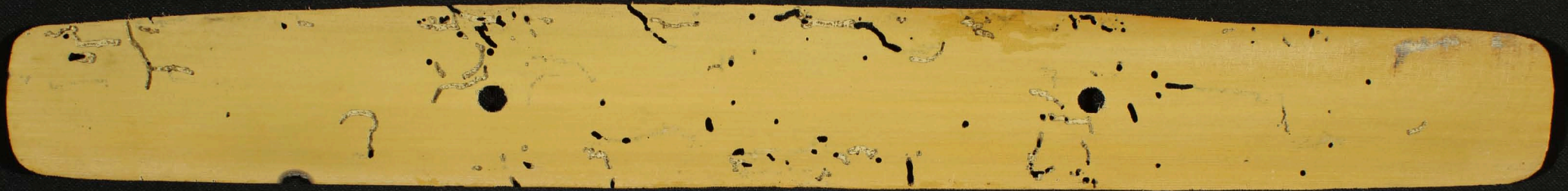


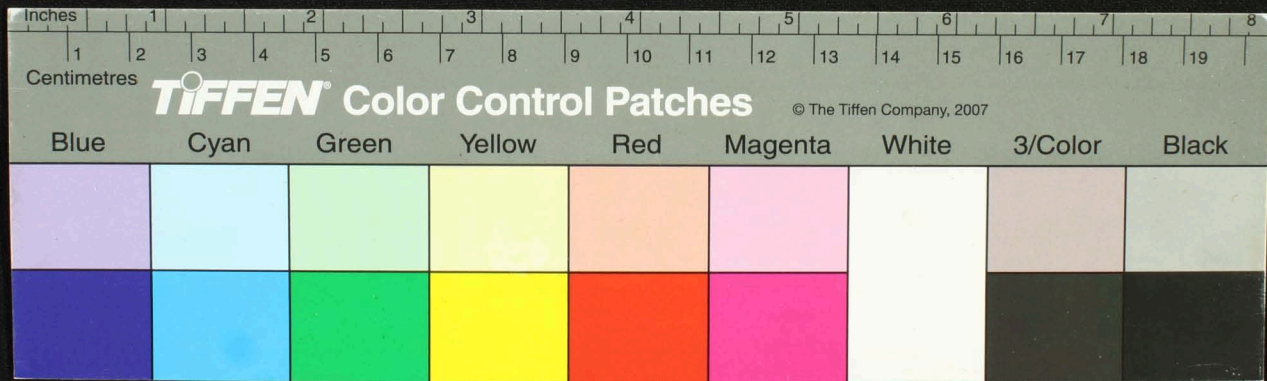


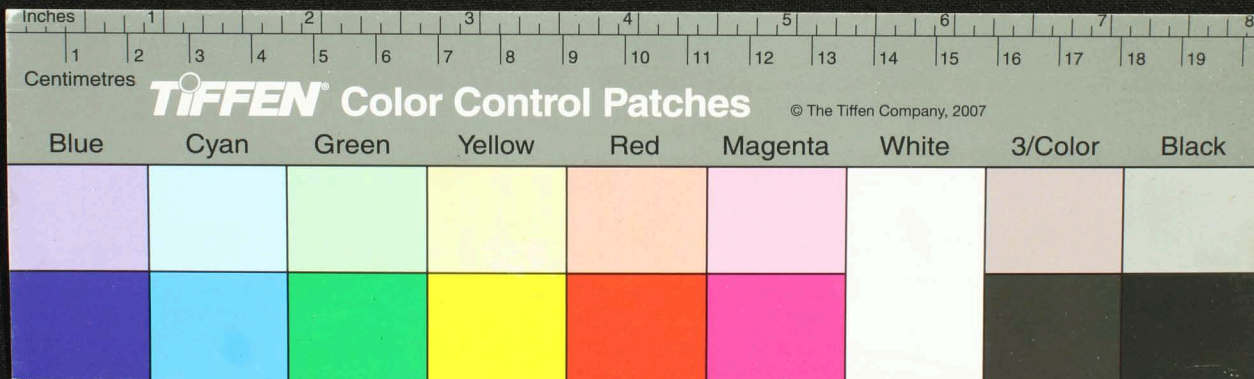


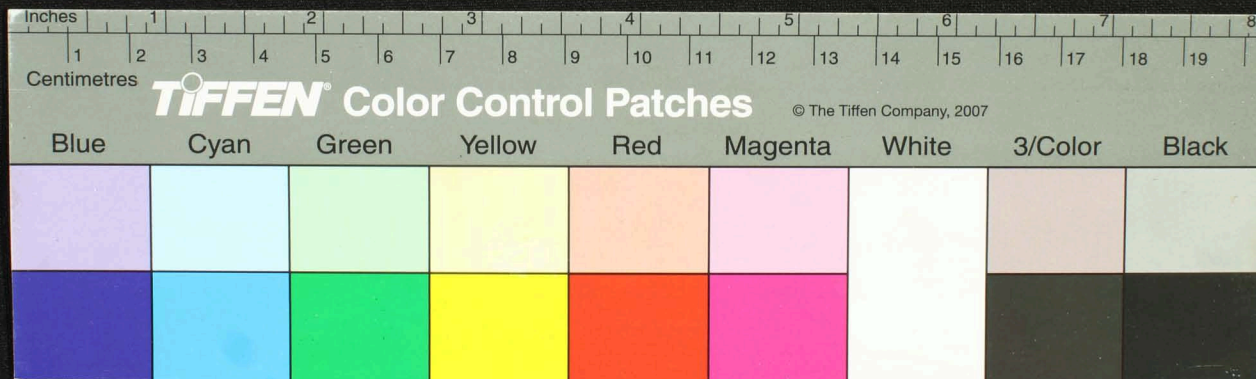


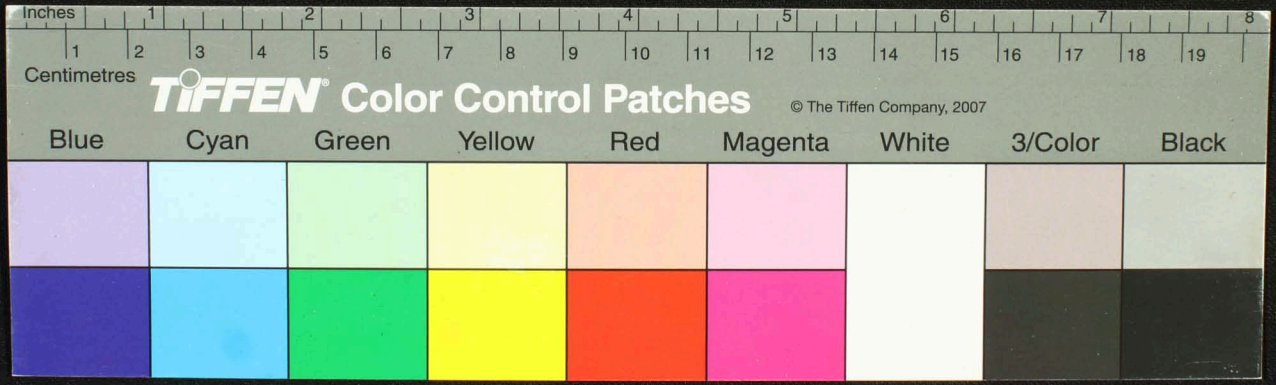


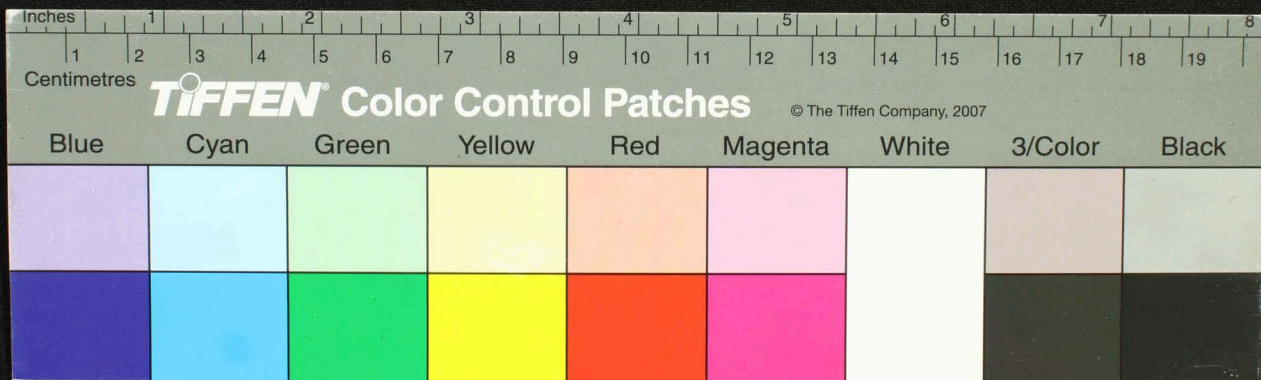
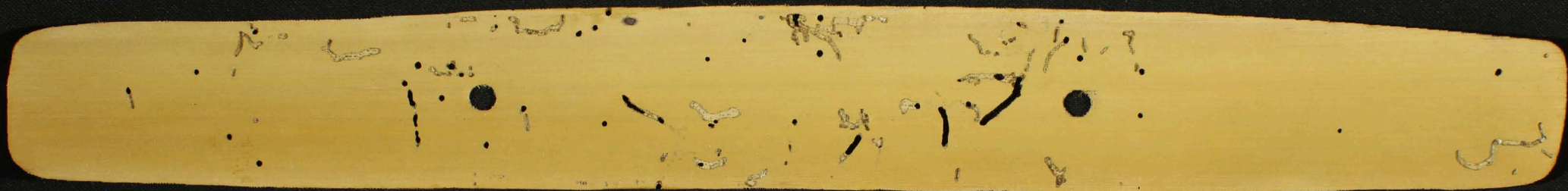


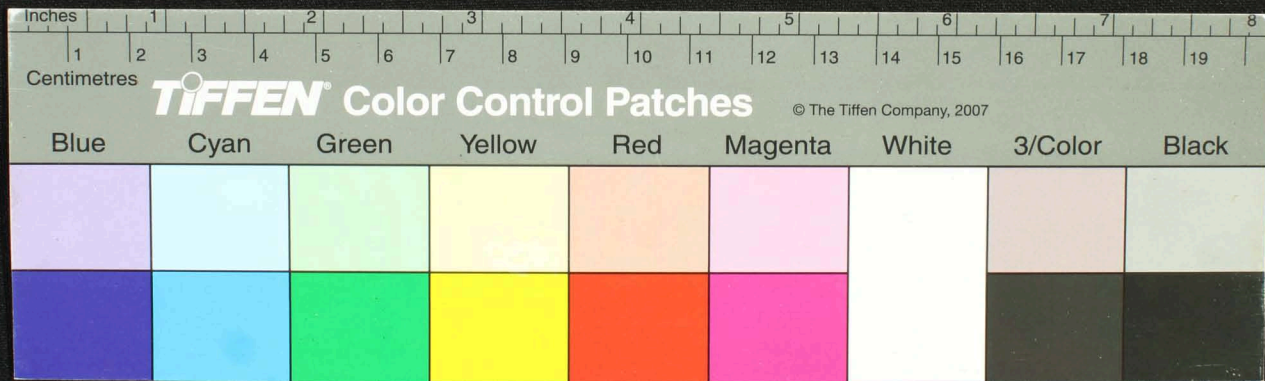




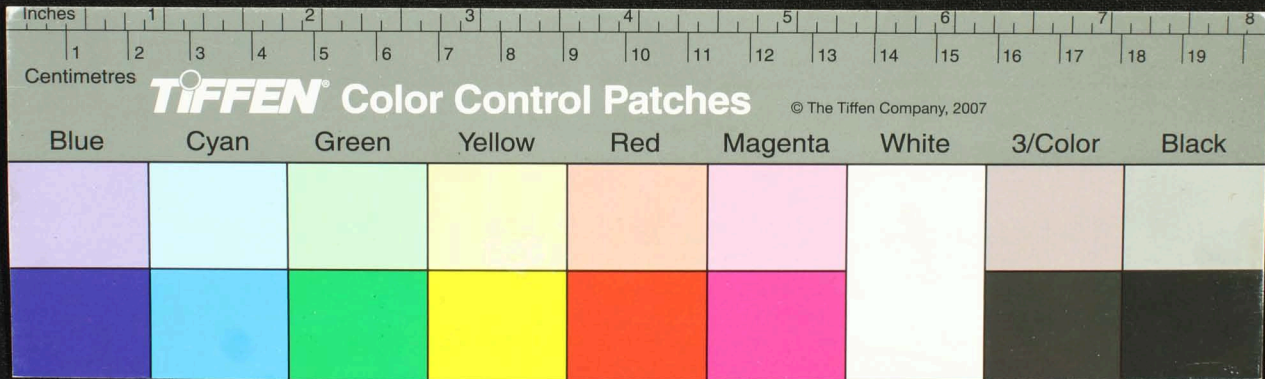
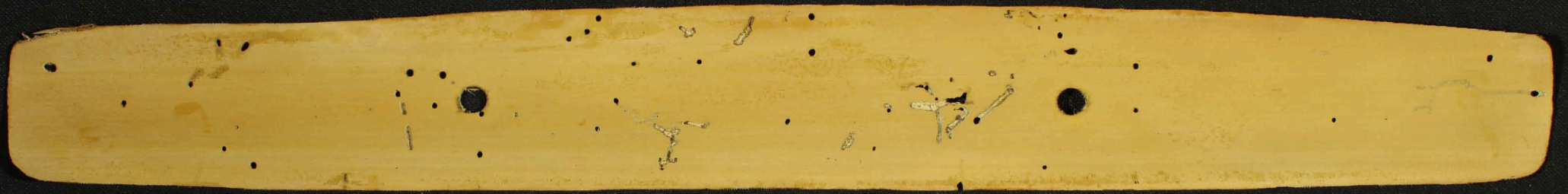




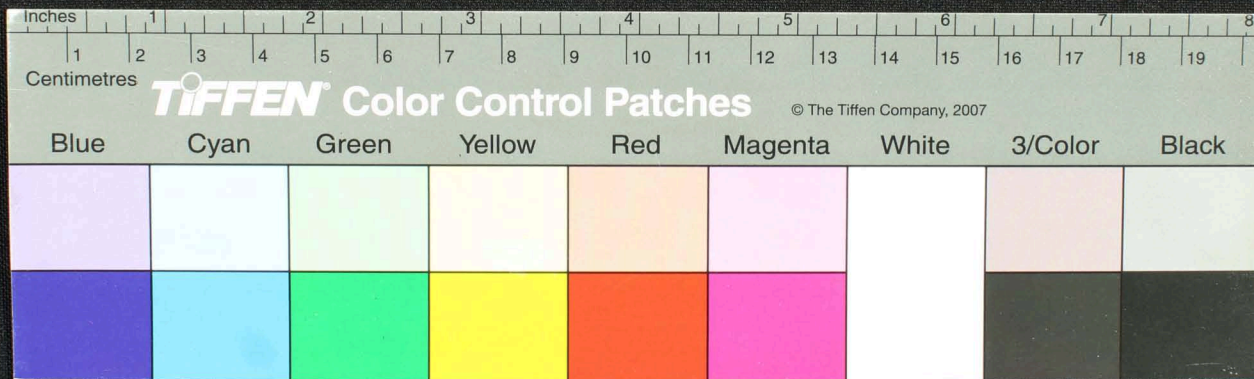


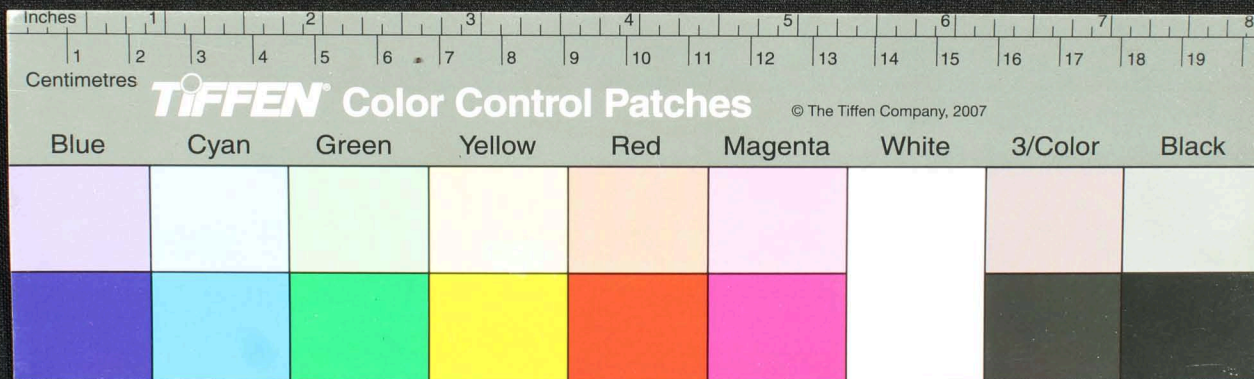


Blue	Cyan	Green	Yellow	Red	Magenta	White	3/Color	Black



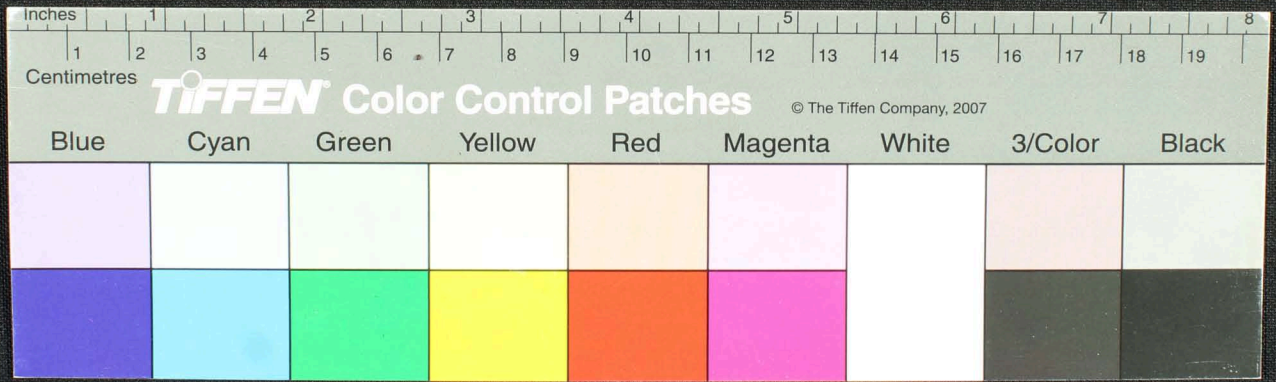
Handwritten text in Tamil script on a palm leaf manuscript. The text is arranged in approximately 12 horizontal lines across the length of the leaf. The script is dark and appears to be a traditional form of the Tamil language. There are several dark spots and irregular markings on the leaf, possibly due to age or environmental factors.



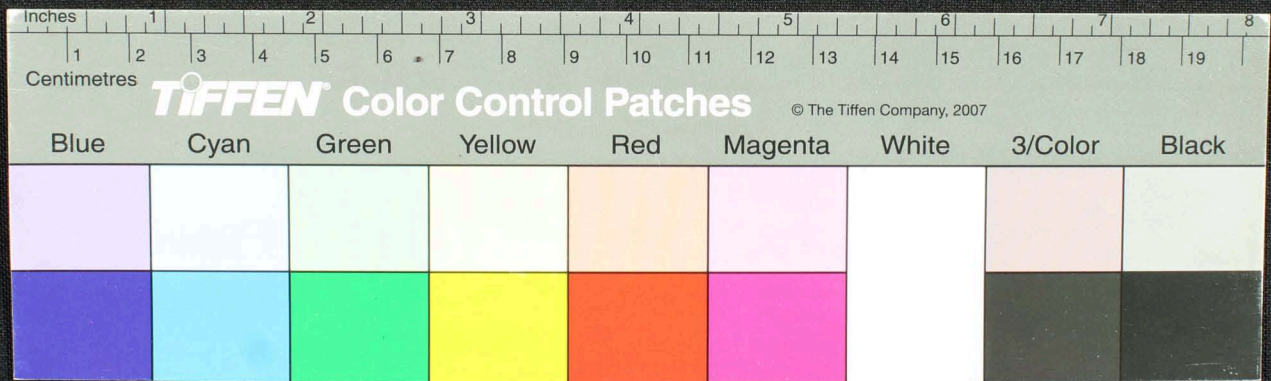


Blue	Cyan	Green	Yellow	Red	Magenta	White	3/Color	Black

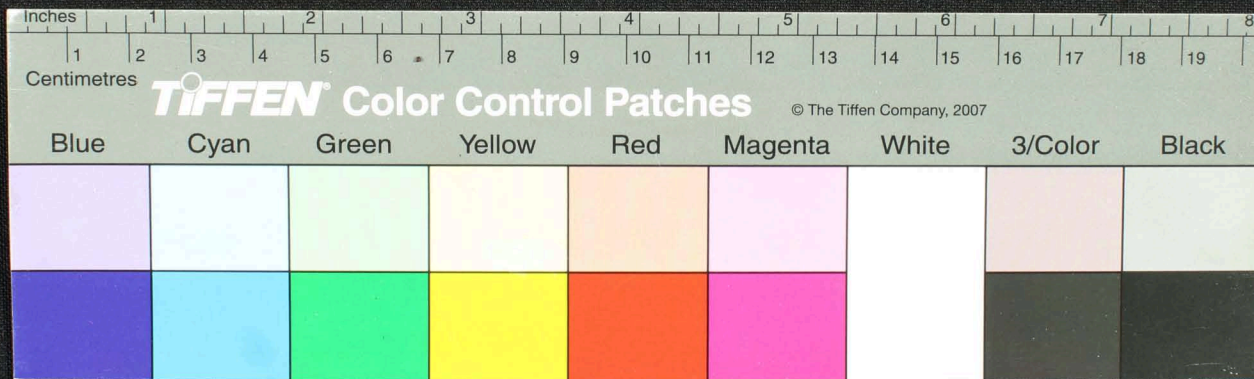
Handwritten Tamil script on a palm leaf manuscript. The text is arranged in approximately 12 columns across the length of the leaf. The script is finely etched into the surface of the dried leaf. There are several dark spots and signs of wear on the leaf, particularly in the center and towards the right end.



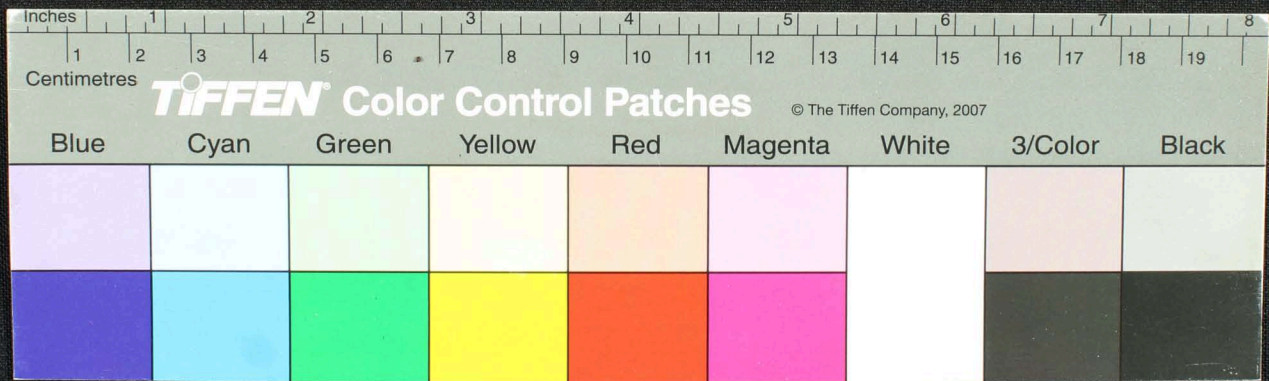
Handwritten Tamil script on a palm leaf manuscript. The text is arranged in approximately 12 vertical columns across the length of the leaf. The script is finely etched into the surface of the dried leaf. There are several dark spots and irregularities on the leaf, possibly due to age or environmental factors. The leaf is positioned horizontally against a dark background.



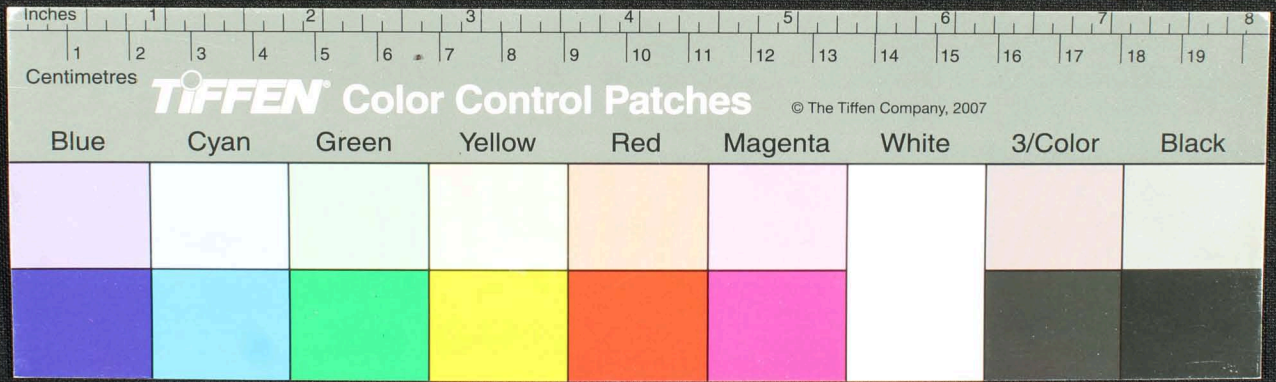
Handwritten Tamil script on a palm leaf manuscript. The text is arranged in approximately 12 columns across the length of the leaf. The script is finely etched into the surface of the dried leaf. There are several dark, irregular spots and stains, particularly on the left and right sides, which appear to be damage or ink bleed-through from the reverse side.



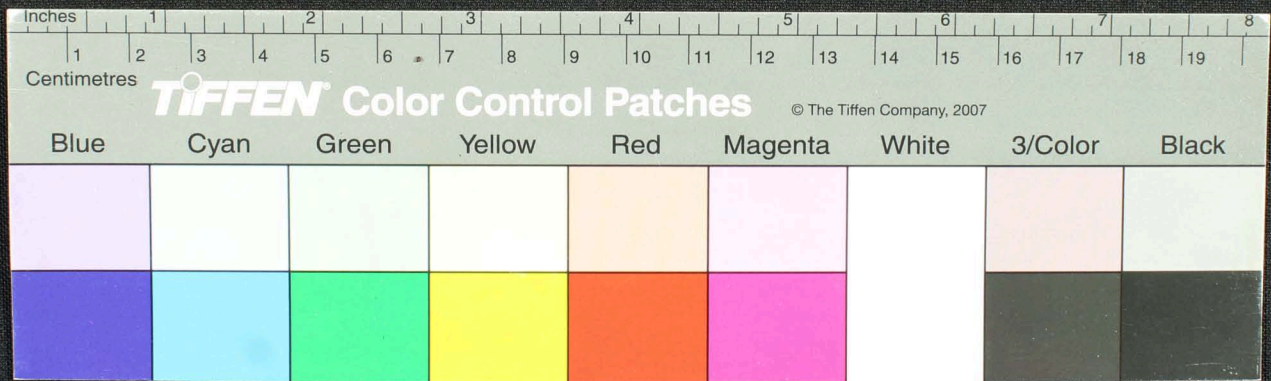
Handwritten Tamil script on a palm leaf manuscript. The text is arranged in approximately 12 columns across the length of the leaf. The script is finely etched into the surface of the dried leaf. There are several dark spots and irregular markings on the leaf, possibly due to insect damage or environmental factors. The leaf is oriented horizontally and shows signs of age and wear.



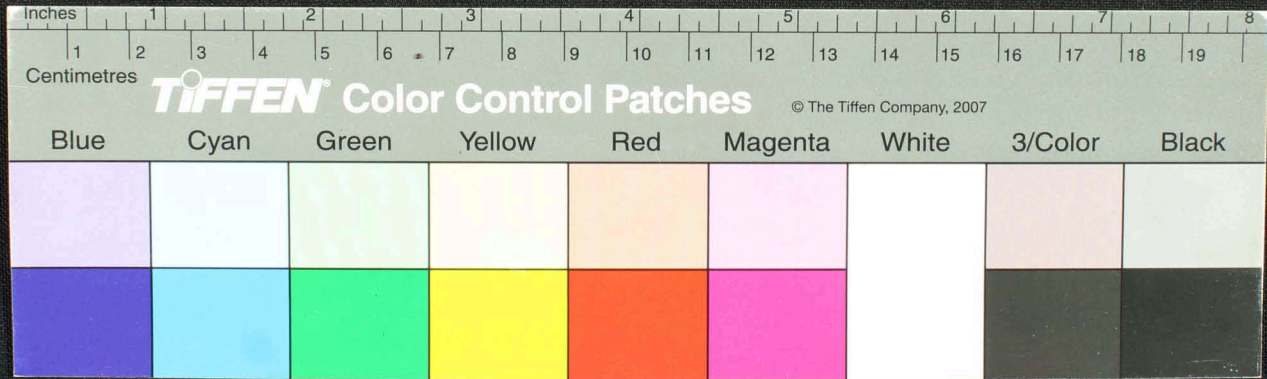
Handwritten text in Tamil script on a palm leaf manuscript. The text is arranged in four columns across the length of the leaf. The script is finely etched into the surface of the dried leaf, which shows signs of age and wear, including dark spots and some loss of material.



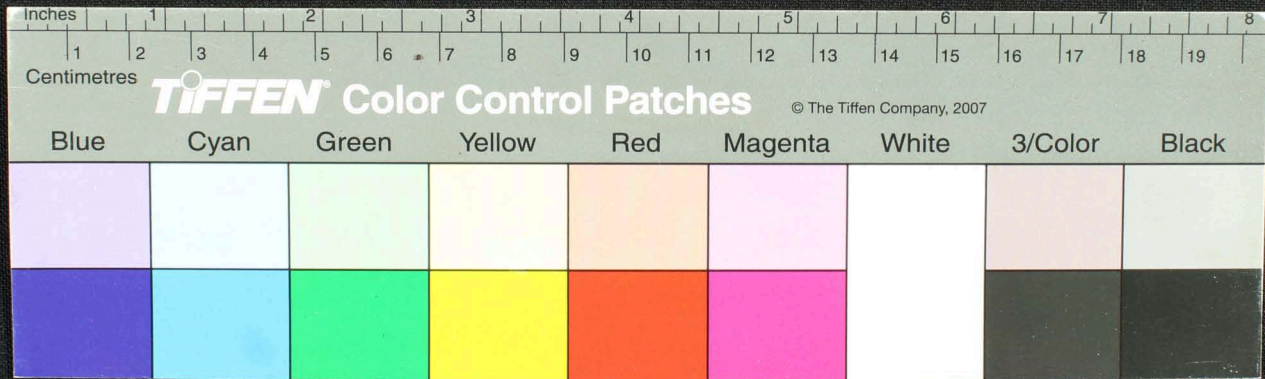
Handwritten text in Tamil script on a palm leaf manuscript. The text is arranged in four columns across the length of the leaf. The script is finely etched into the surface of the dried leaf. There are several dark spots and signs of wear on the leaf, particularly in the middle and right sections.



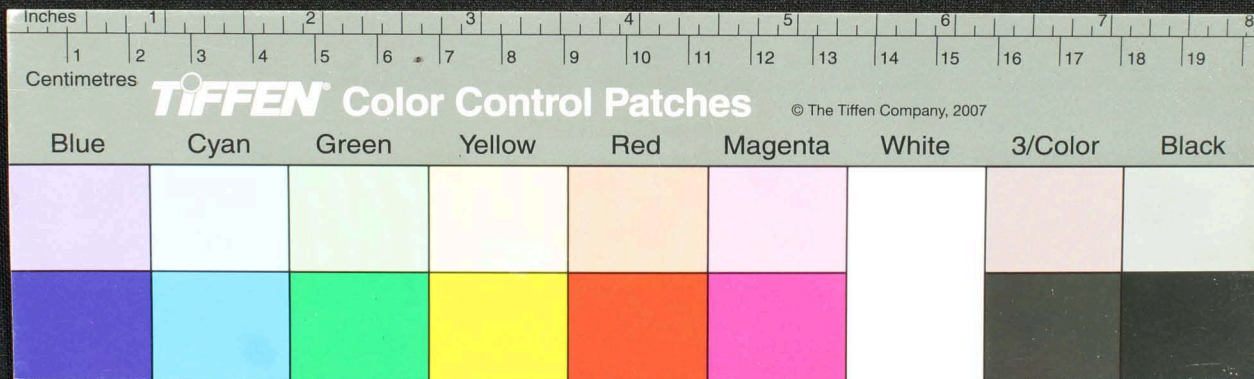
Handwritten text in Tamil script on a palm leaf manuscript. The text is arranged in approximately four columns across the length of the leaf. The script is finely etched into the surface of the dried leaf. There are several dark spots and signs of wear on the leaf, particularly in the middle and right sections.



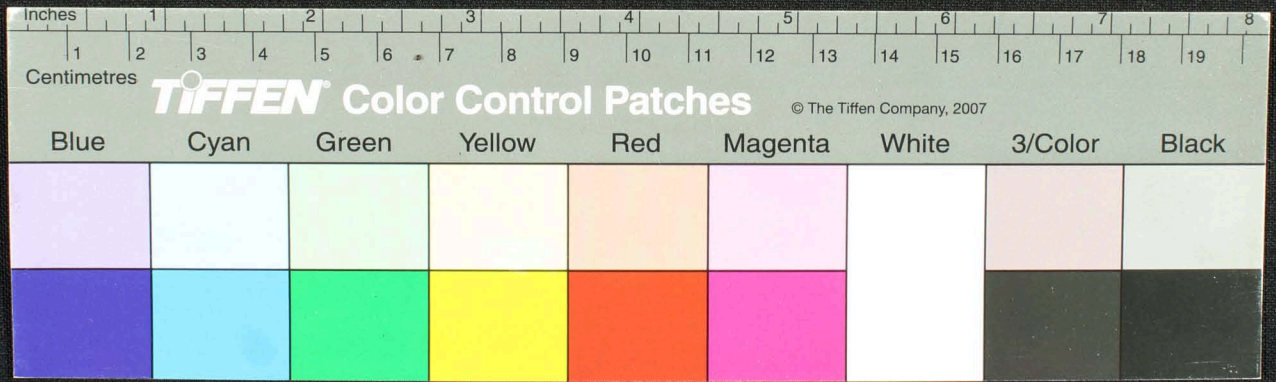
Handwritten text in Tamil script on a palm leaf manuscript. The text is arranged in approximately 12 columns across the length of the leaf. The script is finely etched into the surface of the dried leaf. There are two circular holes visible, which were traditionally used for threading a cord to bind multiple leaves together into a book format.



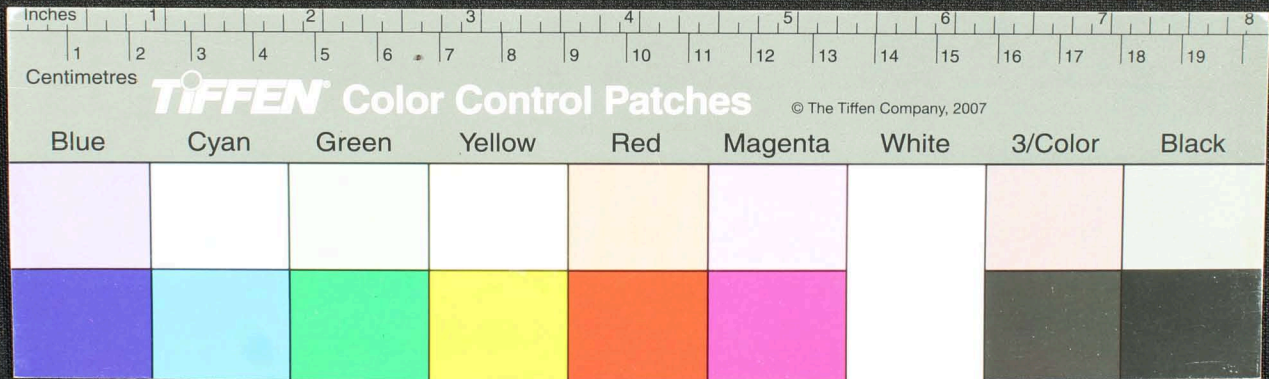
Handwritten text in Tamil script on a palm leaf manuscript. The text is arranged in approximately four columns across the length of the leaf. The script is finely etched into the surface of the dried leaf. There are several dark spots and signs of wear on the leaf, particularly in the center and towards the right end.



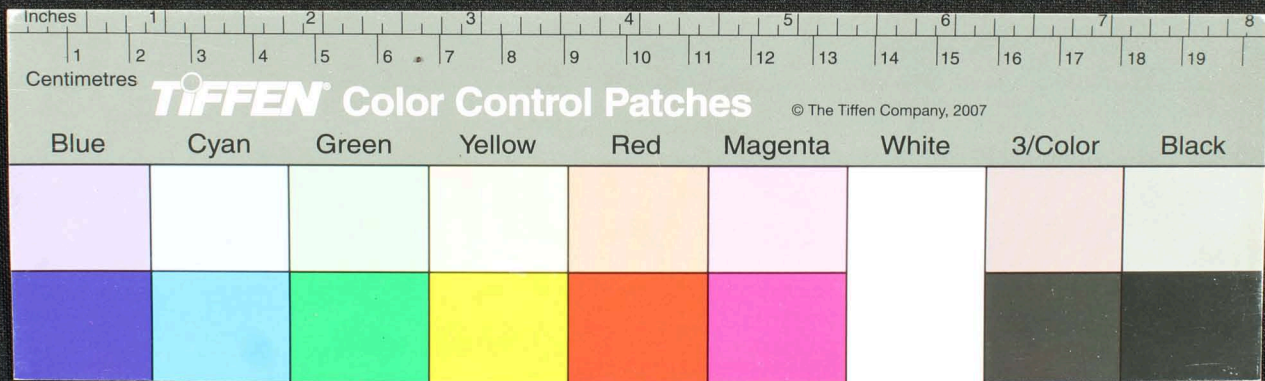
Handwritten Tamil script on a palm leaf manuscript. The text is arranged in four columns across the length of the leaf. The script is finely etched into the surface of the dried leaf. There are several dark spots and holes along the leaf, likely due to insect damage or natural decay. The leaf is mounted on a dark background.



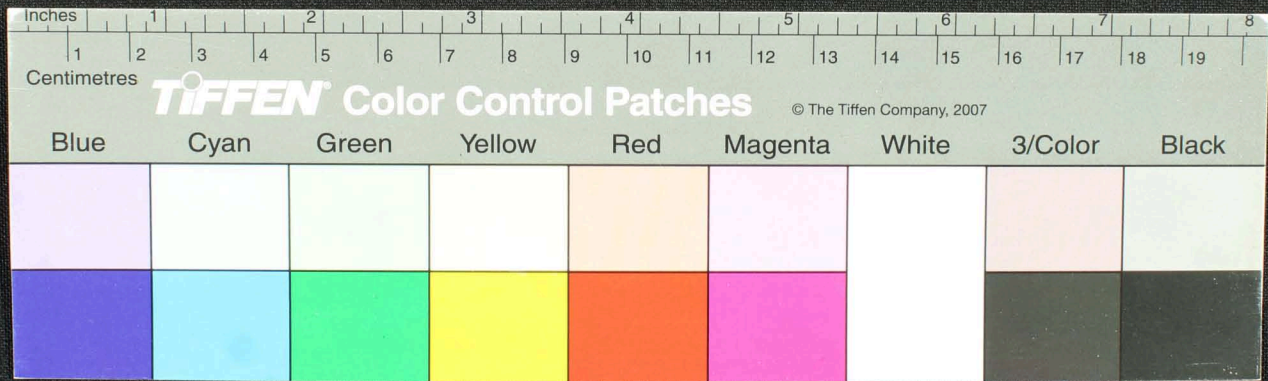
Handwritten text in Tamil script on a palm leaf manuscript. The text is arranged in four columns across the length of the leaf. The script is finely etched into the surface of the dried leaf. There are some dark spots and ink smudges on the leaf, particularly in the middle and right sections.



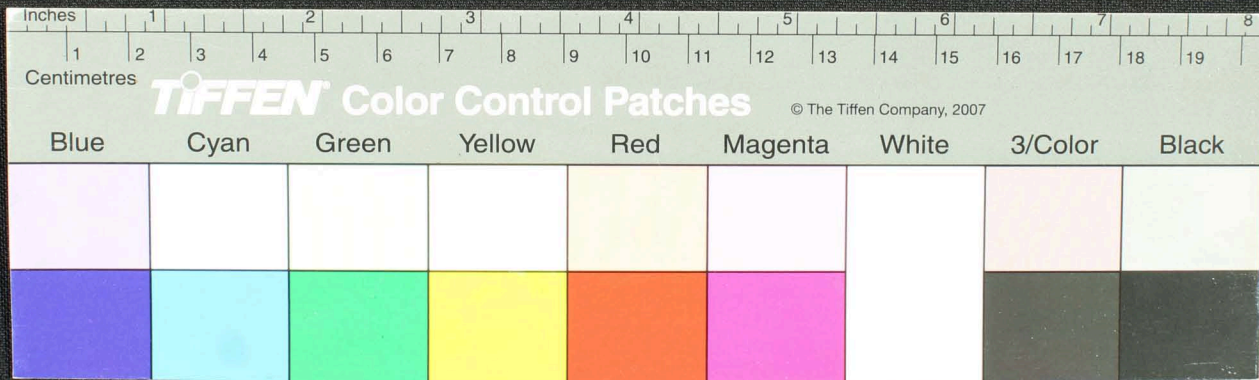
Handwritten Tamil script on a palm leaf manuscript. The text is arranged in approximately 12 vertical columns across the length of the leaf. The script is finely etched into the surface of the dried leaf. There are several dark spots and a small hole on the leaf, likely due to age or insect damage.



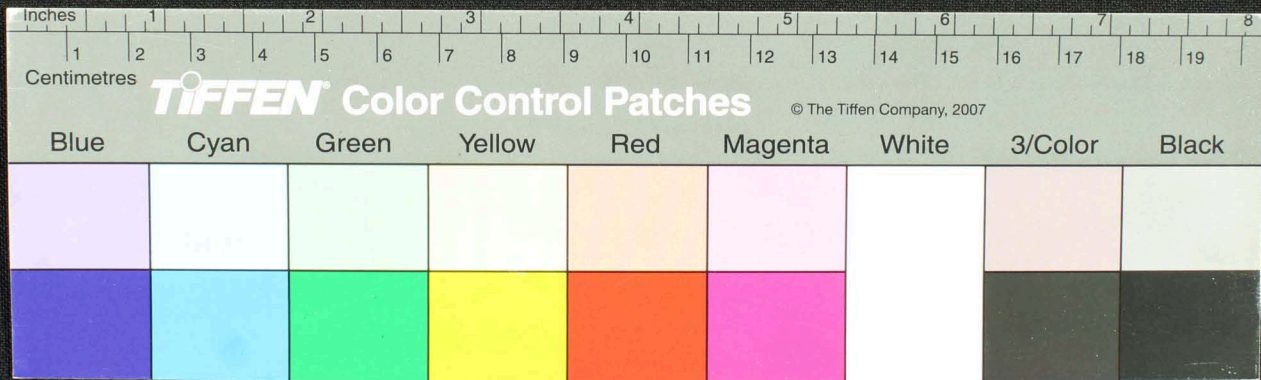
Handwritten text in Tamil script on a palm leaf manuscript. The text is arranged in four columns across the length of the leaf. The script is finely etched into the surface of the dried leaf. There are some dark spots and signs of wear on the leaf, particularly in the middle section.



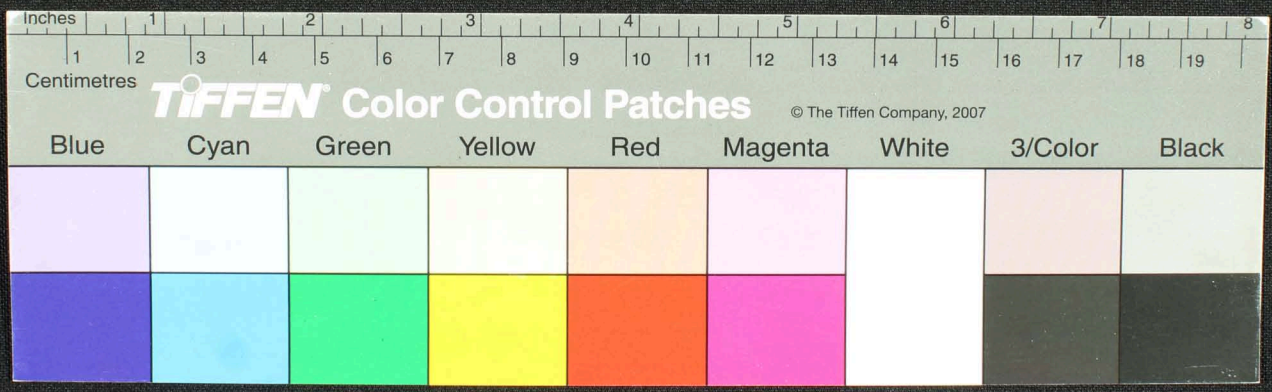
Handwritten text in Tamil script on a palm leaf manuscript. The text is arranged in approximately 12 columns across the length of the leaf. The script is finely etched into the surface of the dried leaf. The leaf shows signs of age, including dark spots and some surface wear.



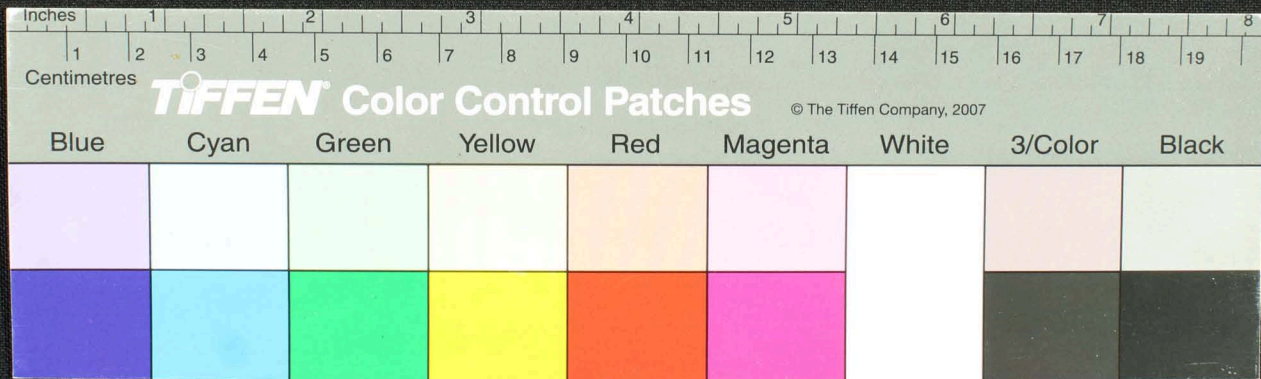
Handwritten text on a palm-leaf manuscript strip, likely in an ancient script. The text is arranged in approximately 15 horizontal lines across the length of the leaf. The script is finely etched into the surface of the dried leaf, which shows signs of age and wear, including dark spots and some surface irregularities. The text is most legible in the central and right-hand portions of the strip.



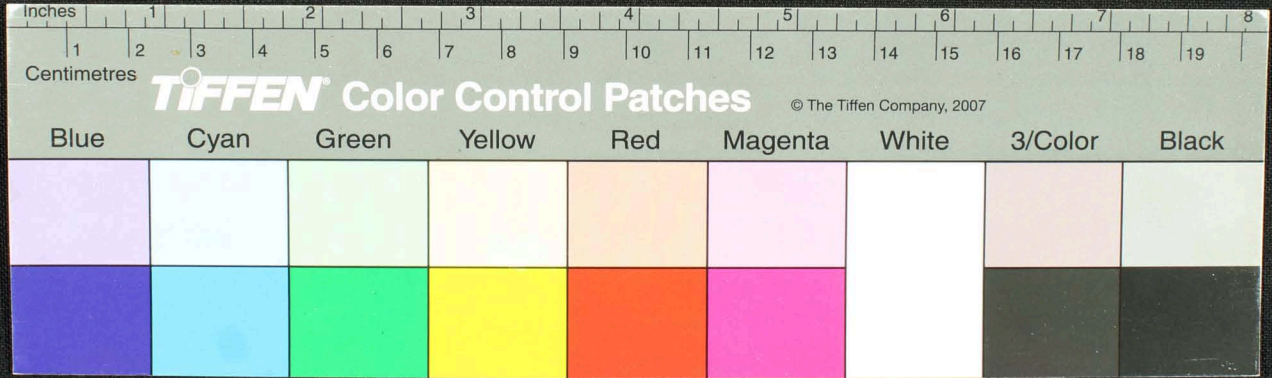
Handwritten Tamil script on a palm leaf manuscript. The text is arranged in approximately 12 columns across the length of the leaf. The script is finely etched into the surface of the dried leaf. The leaf shows signs of age, including dark spots and some surface wear.



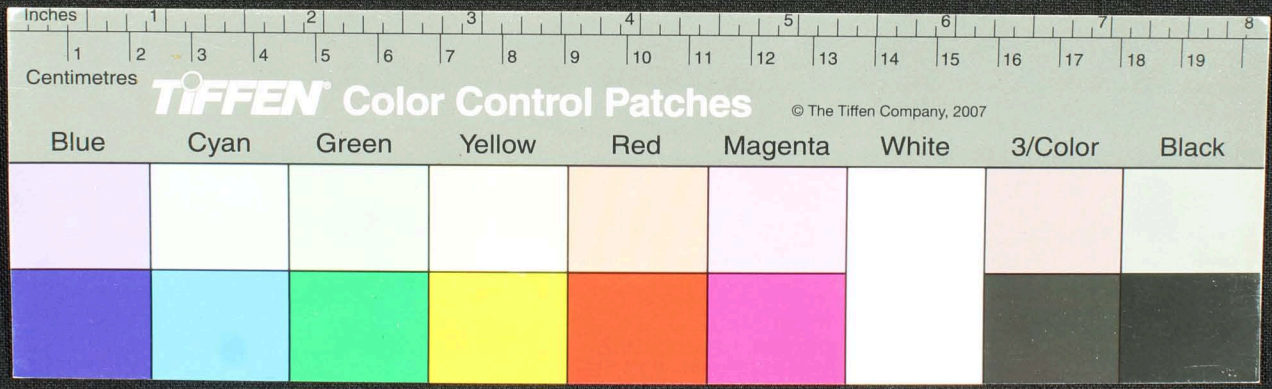
Handwritten Tamil script on a palm leaf manuscript. The text is arranged in approximately 12 columns across the length of the leaf. The script is finely etched into the surface of the dried leaf. There are several dark spots and irregularities on the leaf, likely due to age or environmental factors. The leaf is oriented horizontally and shows signs of wear and tear.



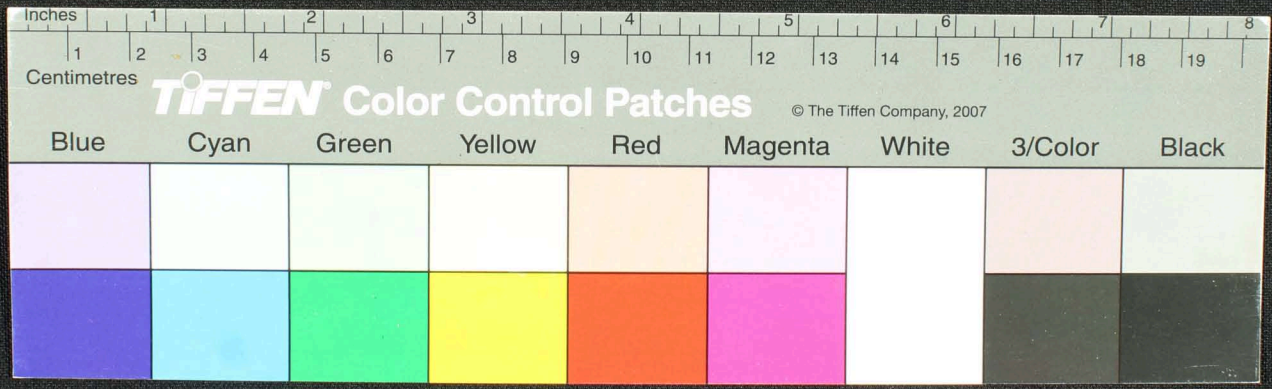
Handwritten Tamil script on a palm leaf manuscript. The text is arranged in approximately 12 vertical columns across the length of the leaf. The script is finely etched into the surface of the dried leaf, which shows signs of age and wear, including dark spots and some loss of material.



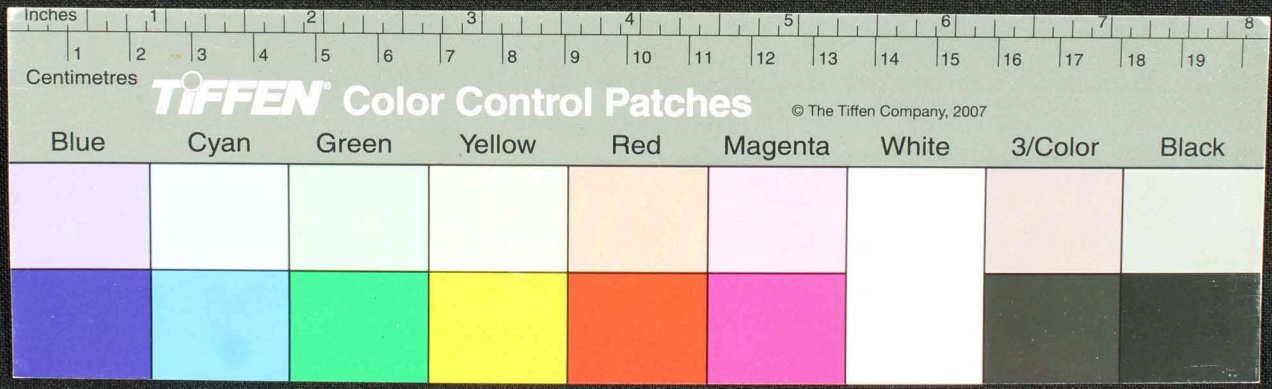
Handwritten Tamil script on a palm leaf manuscript. The text is arranged in approximately 12 vertical columns across the length of the leaf. The script is finely etched into the surface of the dried leaf. There are two circular holes visible, which were traditionally used for threading a cord to bind multiple leaves together into a book format. The leaf shows signs of age, including some dark spots and wear along the edges.



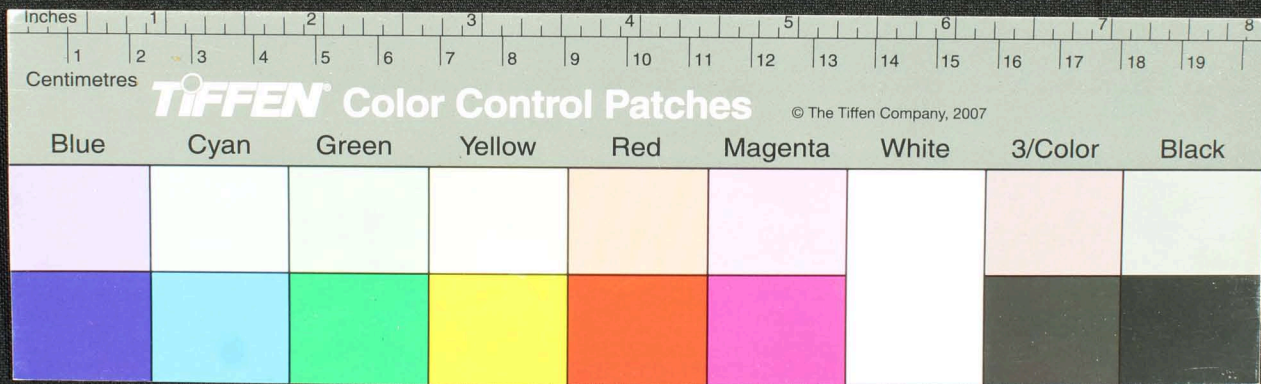
Handwritten text in Tamil script on a palm leaf manuscript. The text is arranged in four distinct columns across the length of the leaf. The script is finely etched into the surface of the dried leaf, which shows signs of age and wear, including dark spots and some surface damage.



Handwritten Tamil script on a palm leaf manuscript. The text is arranged in approximately 12 vertical columns, reading from right to left. The script is densely packed and appears to be a form of classical or religious Tamil. There are several dark, irregular spots and stains on the leaf, particularly in the center and towards the right side, which may be due to age or environmental factors. The leaf is light brown and shows signs of wear and tear.

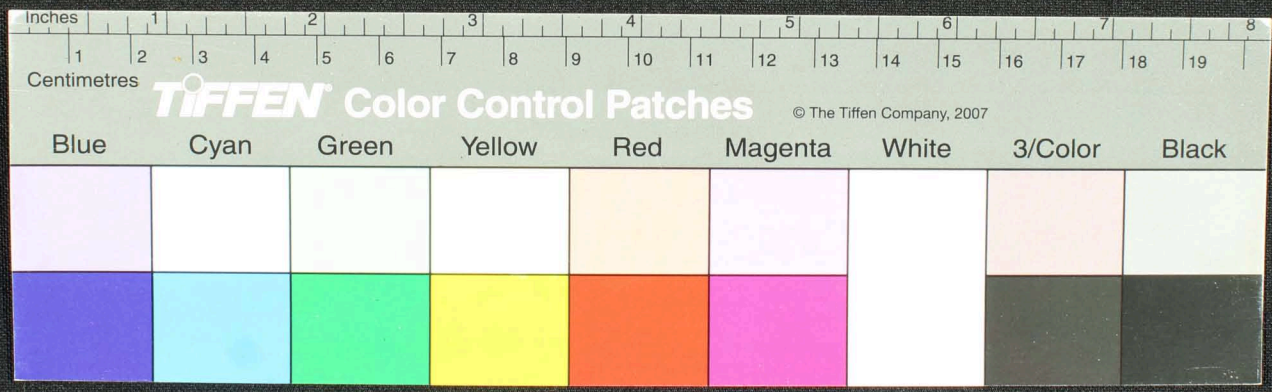


Handwritten Tamil script on a palm leaf manuscript. The text is arranged in approximately 12 vertical columns across the length of the leaf. The script is finely etched into the surface of the dried leaf, which shows signs of age and wear, including dark spots and some surface damage.

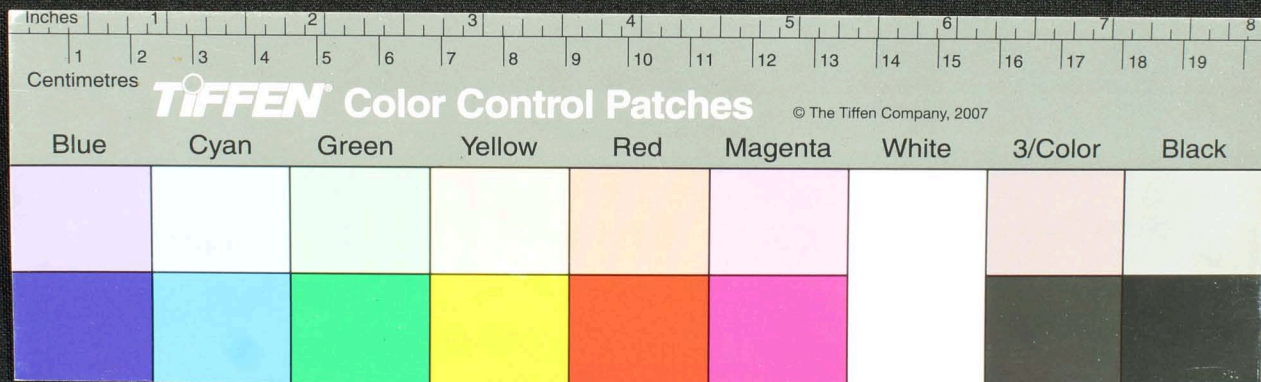


185

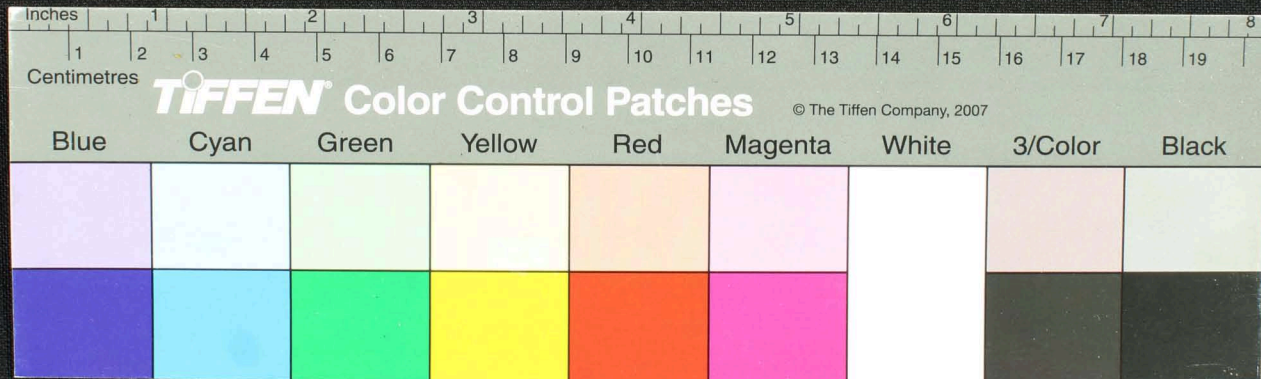
Handwritten Tamil script on a palm leaf manuscript. The text is arranged in approximately 12 horizontal lines across the length of the leaf. The script is finely etched into the surface of the dried leaf. The leaf shows signs of age, including dark spots and some surface wear.



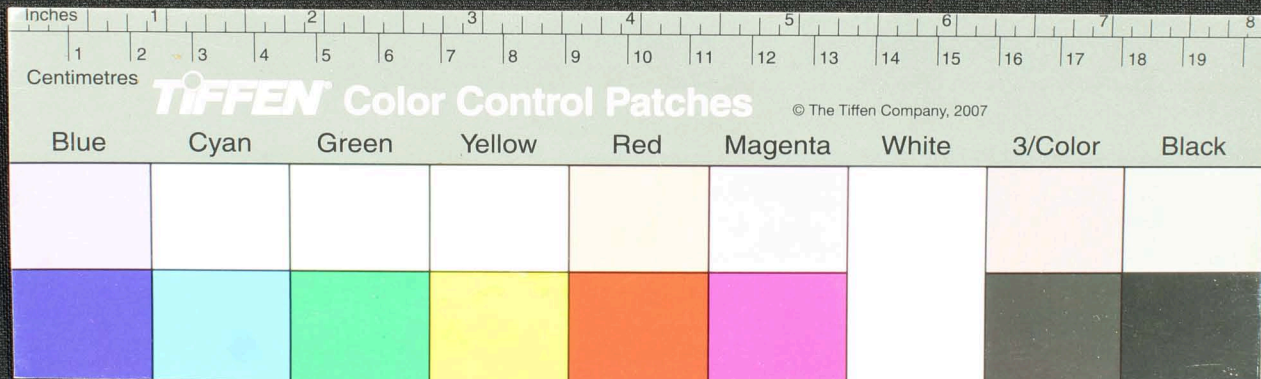
Handwritten Tamil script on a palm leaf manuscript. The text is arranged in approximately 12 vertical columns across the length of the leaf. The script is finely etched into the surface of the dried leaf, which shows signs of age and wear, including dark spots and some loss of material.



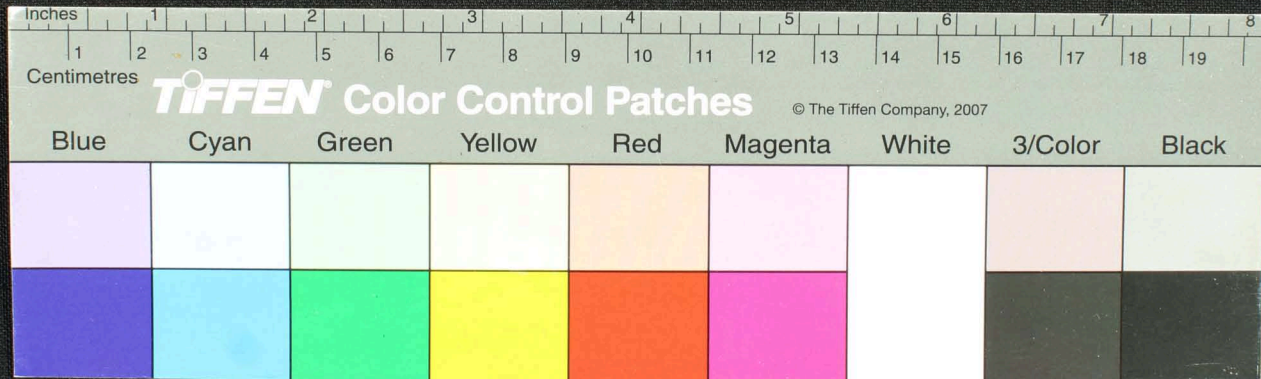
Handwritten Tamil script on a palm leaf manuscript. The text is arranged in approximately 12 columns across the length of the leaf. The script is finely etched into the surface of the dried leaf, which shows signs of age and wear, including dark spots and some fading of the ink.



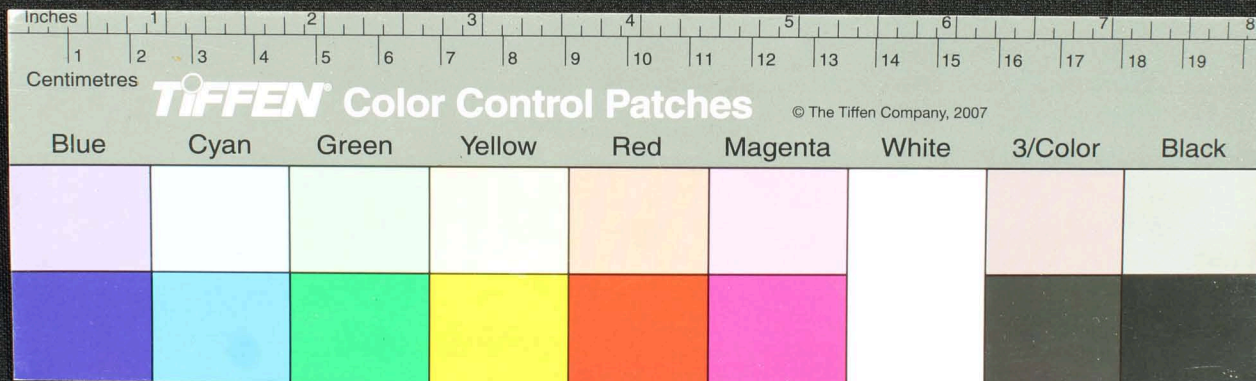
Handwritten text in Tamil script on a palm leaf manuscript. The text is arranged in approximately 10 horizontal lines across the length of the leaf. The script is finely etched into the surface of the dried leaf. There are several dark spots and irregularities on the leaf, likely due to age or environmental factors. The leaf is positioned horizontally against a dark background.



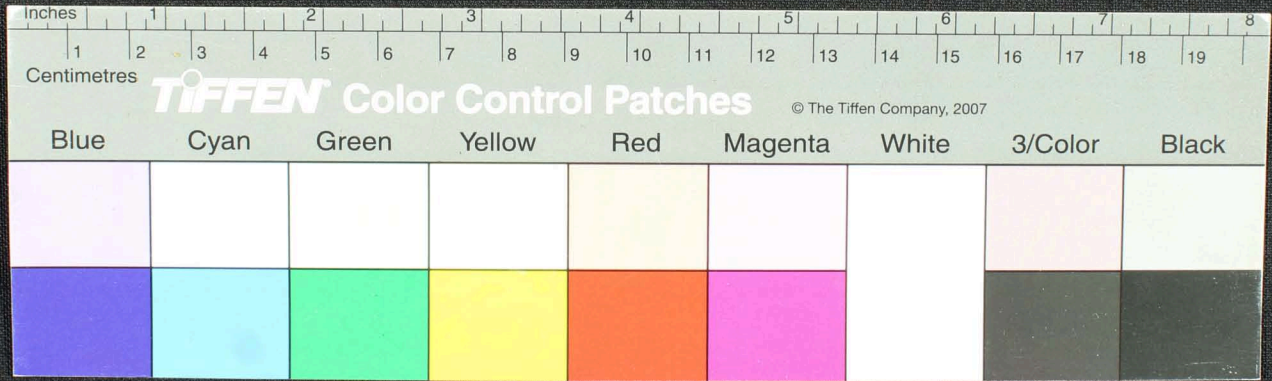
Handwritten Tamil script on a palm leaf manuscript. The text is arranged in approximately 10 horizontal lines across the length of the leaf. The script is densely packed and appears to be a form of classical Tamil. The leaf shows signs of age, including dark spots and some surface damage.



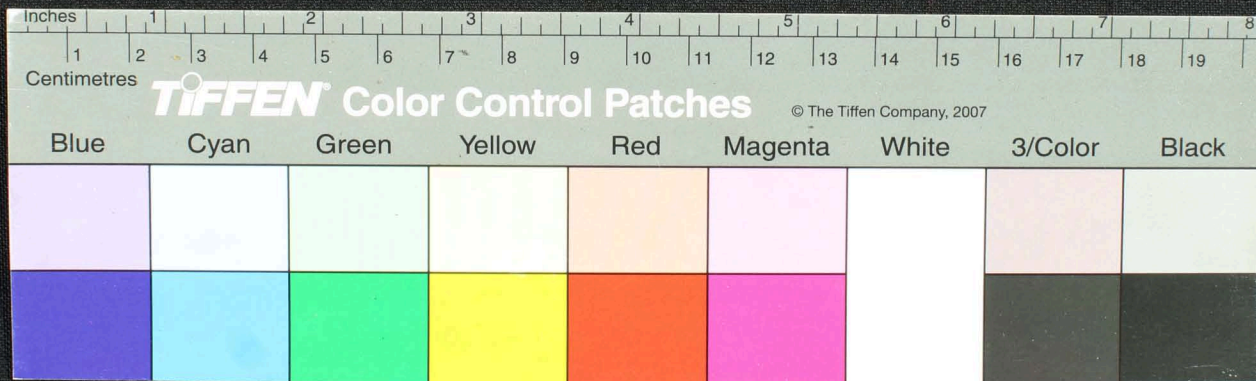
Handwritten text in Tamil script on a palm leaf manuscript. The text is arranged in approximately 10 horizontal lines across the length of the leaf. The script is dark and appears to be a traditional form of the Tamil language. The leaf shows signs of age, with some dark spots and irregularities in the surface.



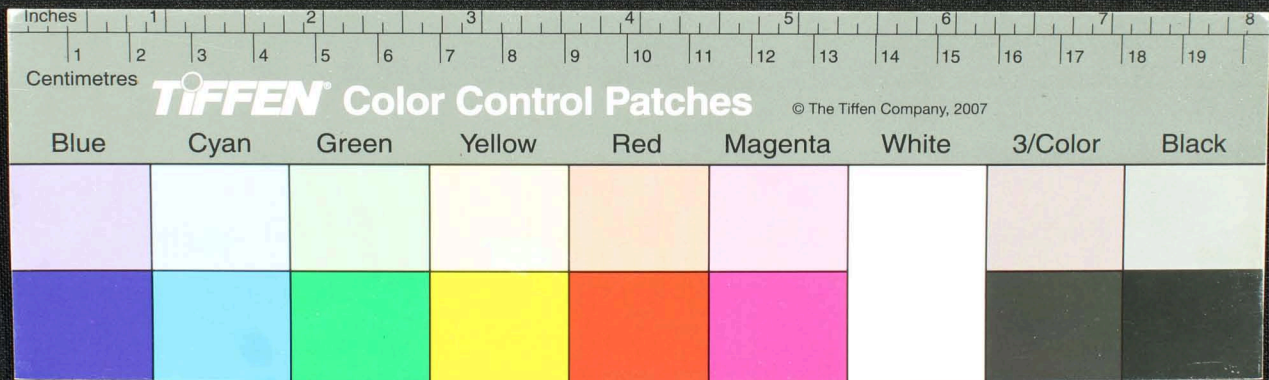
Handwritten text in Tamil script on a palm leaf manuscript. The text is arranged in approximately 10 horizontal lines across the length of the leaf. The script is dark and appears to be a traditional form of the Tamil language. There are several circular holes along the length of the leaf, which are characteristic of traditional palm leaf manuscripts used for binding multiple leaves together. The leaf shows signs of age and wear, with some dark spots and irregularities in the surface.



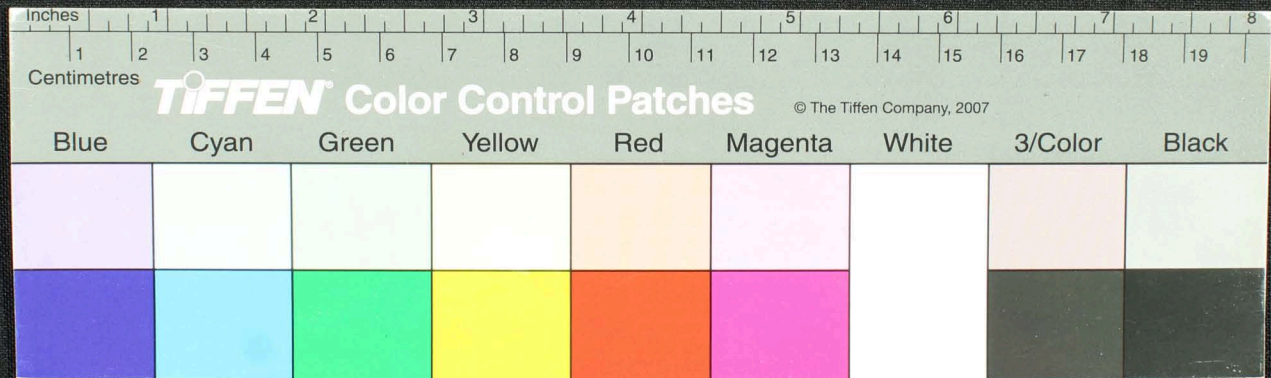
Handwritten text in Tamil script on a palm leaf manuscript. The text is arranged in approximately 12 horizontal lines across the length of the leaf. The script is finely etched into the surface of the dried leaf, which shows signs of age and wear, including several dark spots and a small hole near the center.



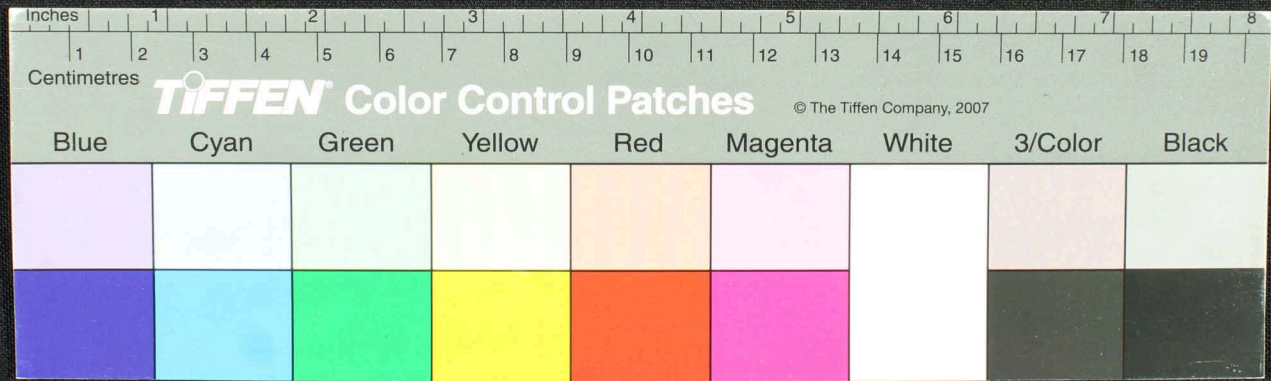
Handwritten text in Tamil script on a palm leaf manuscript. The text is arranged in approximately 12 columns across the length of the leaf. The script is finely etched into the surface of the dried leaf. There are several dark, irregular spots and stains, particularly on the left and right sides, which appear to be damage or mold. The leaf is oriented horizontally and shows signs of age and wear.



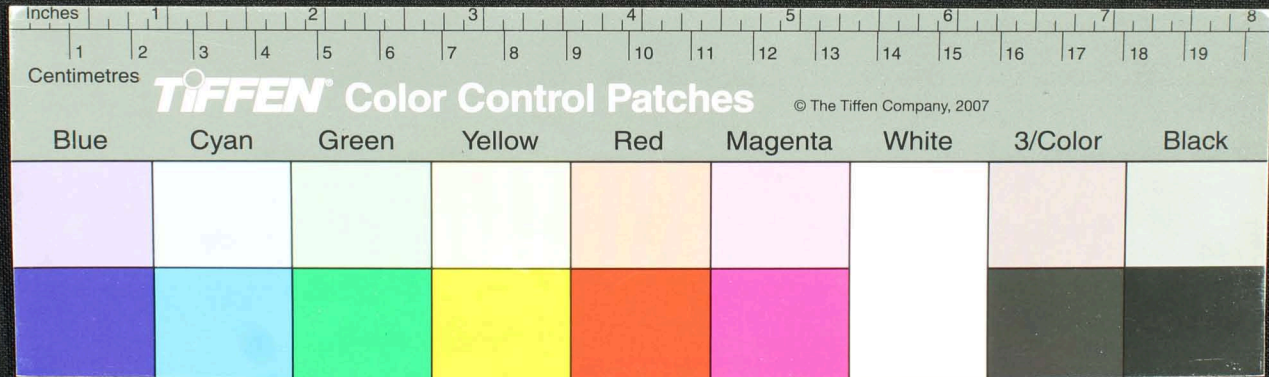
Handwritten Tamil script on a palm leaf manuscript. The text is arranged in approximately 12 columns across the length of the leaf. The script is finely etched into the surface of the dried leaf, which shows signs of age and wear, including dark spots and some surface damage.



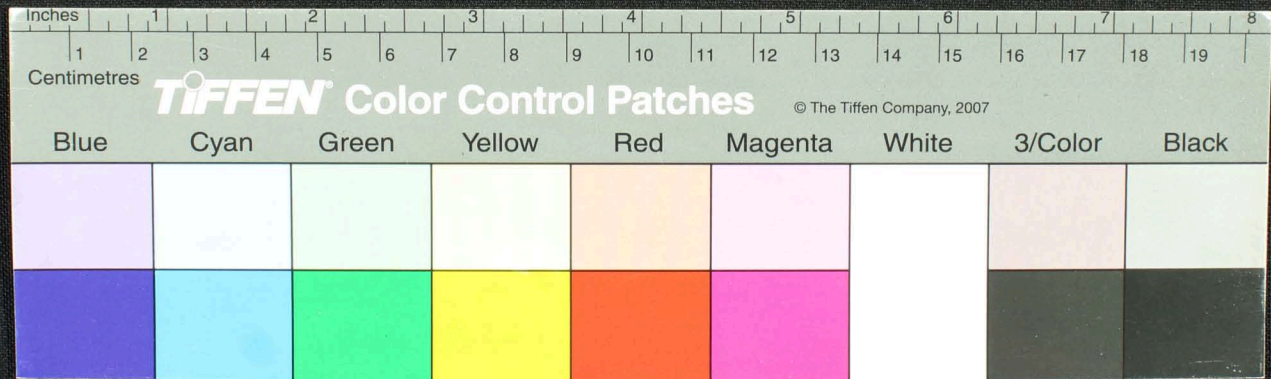
Handwritten text in Tamil script on a palm leaf manuscript. The text is arranged in approximately 12 vertical columns across the length of the leaf. The script is finely etched into the surface of the dried leaf, which shows signs of age and wear, including dark spots and some loss of material.



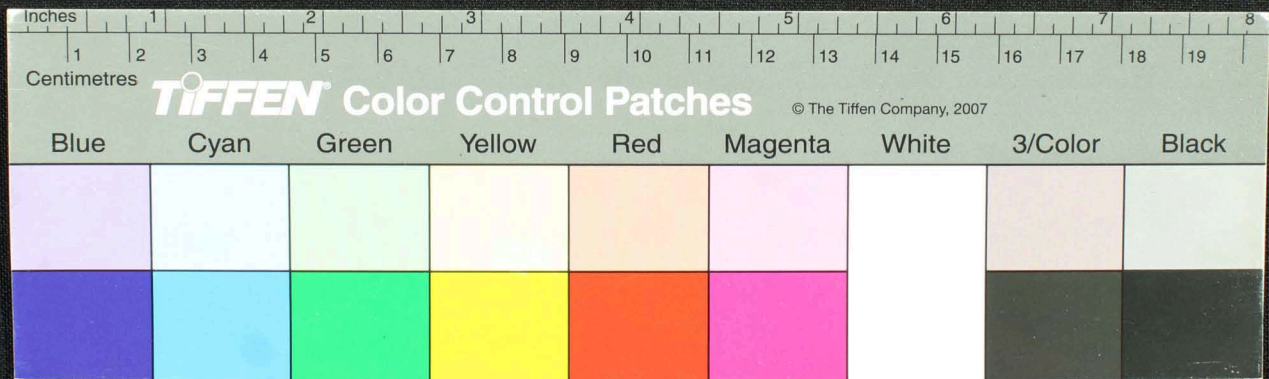
Handwritten text in Tamil script on a palm leaf manuscript. The text is arranged in approximately 10 horizontal lines across the length of the leaf. The script is dark and appears to be a traditional form of the Tamil language. There are some dark spots and signs of wear on the leaf, particularly near the center and right side.



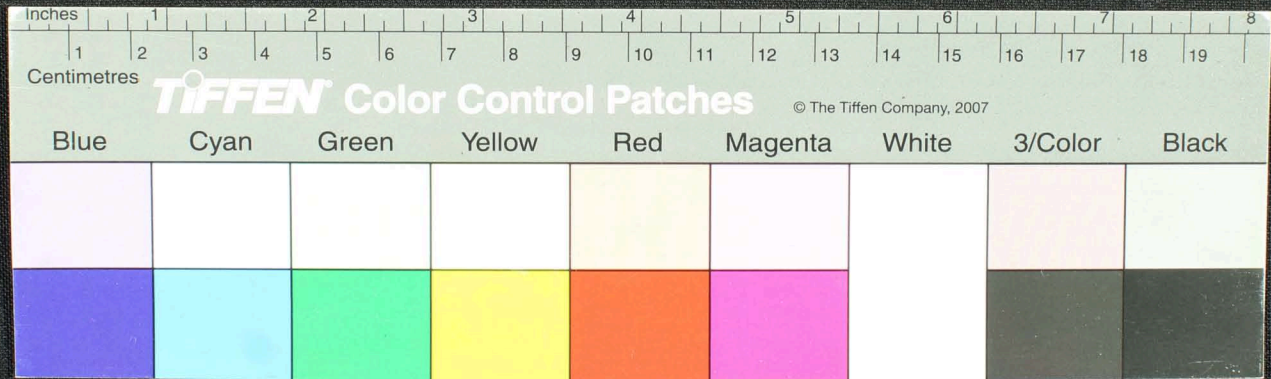
Handwritten Tamil script on a palm leaf manuscript. The text is arranged in approximately 12 horizontal lines across the length of the leaf. The script is finely etched into the surface of the dried leaf, which shows signs of age and wear, including dark spots and some surface damage. The characters are small and densely packed, typical of traditional Tamil inscriptions on palm leaves.



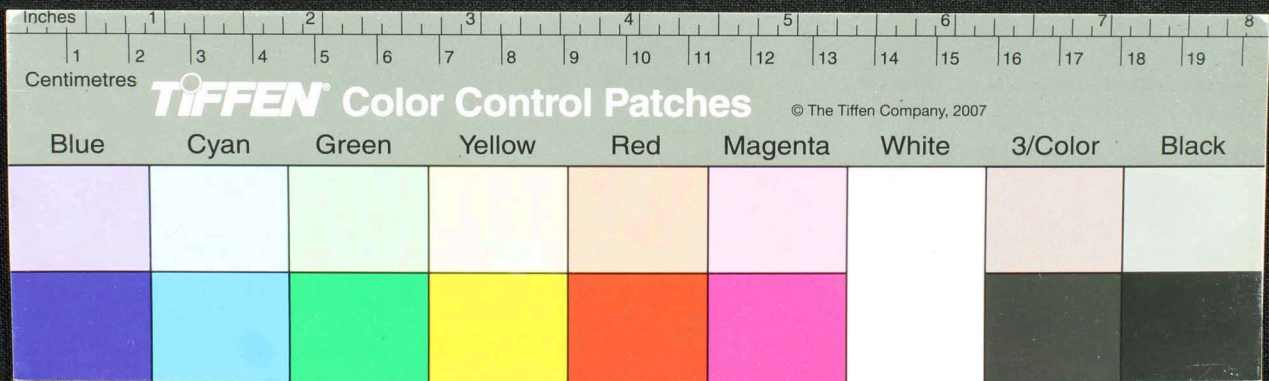
Handwritten text in Tamil script on a palm leaf manuscript. The text is arranged in approximately 12 columns across the length of the leaf. The script is dark and appears to be a traditional form of the Tamil language. There are several dark spots and irregularities on the leaf, possibly due to age or damage.



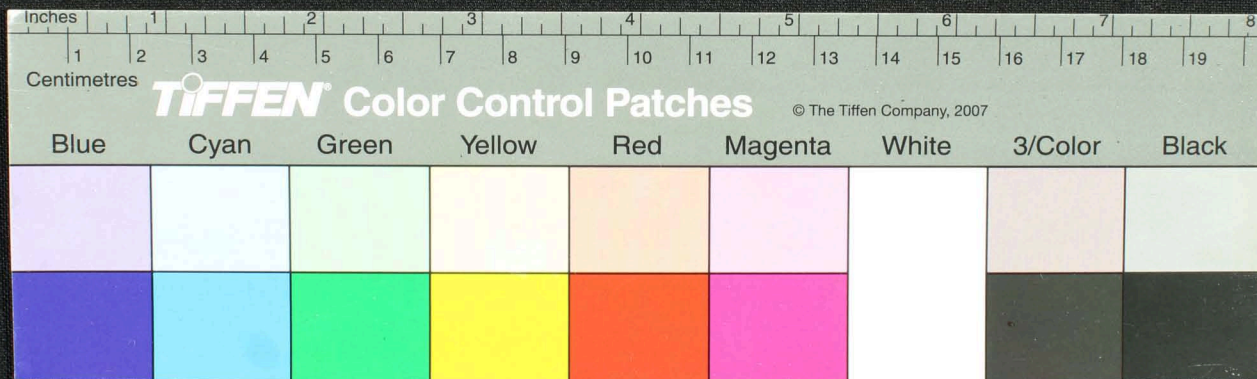
Handwritten Tamil script on a palm leaf manuscript. The text is arranged in approximately 10 horizontal lines across the length of the leaf. The script is finely etched into the surface of the dried leaf. There are two circular holes visible, which were traditionally used for threading a cord to bind multiple leaves together into a book format. The leaf shows signs of age, including some dark spots and wear at the edges.



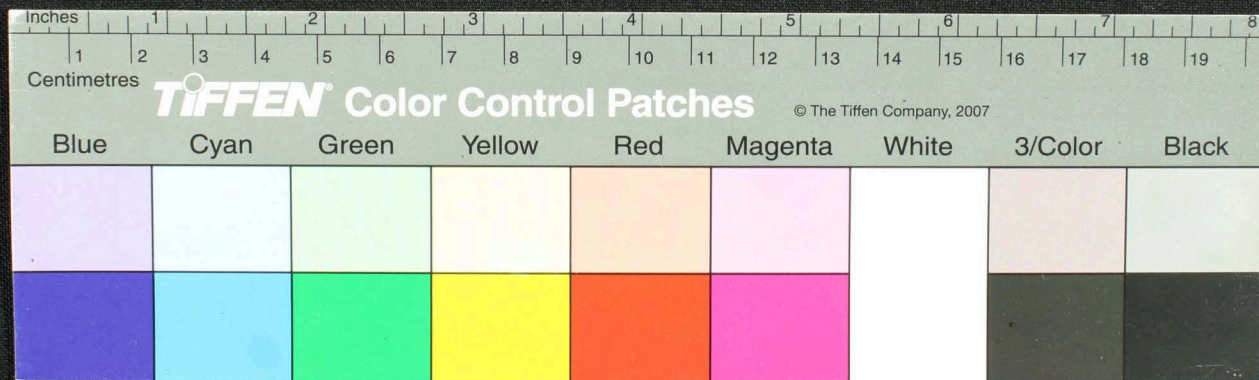
Handwritten Tamil script on a palm leaf manuscript. The text is arranged in approximately 12 columns across the length of the leaf. The script is finely etched into the surface of the dried leaf, which shows signs of age and wear, including some dark spots and irregular edges. The characters are small and densely packed, typical of traditional Tamil palm leaf inscriptions.

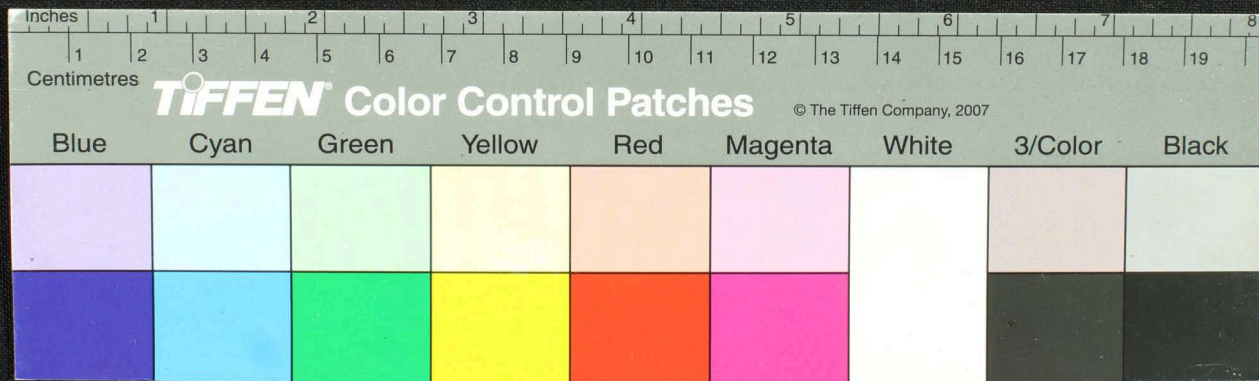


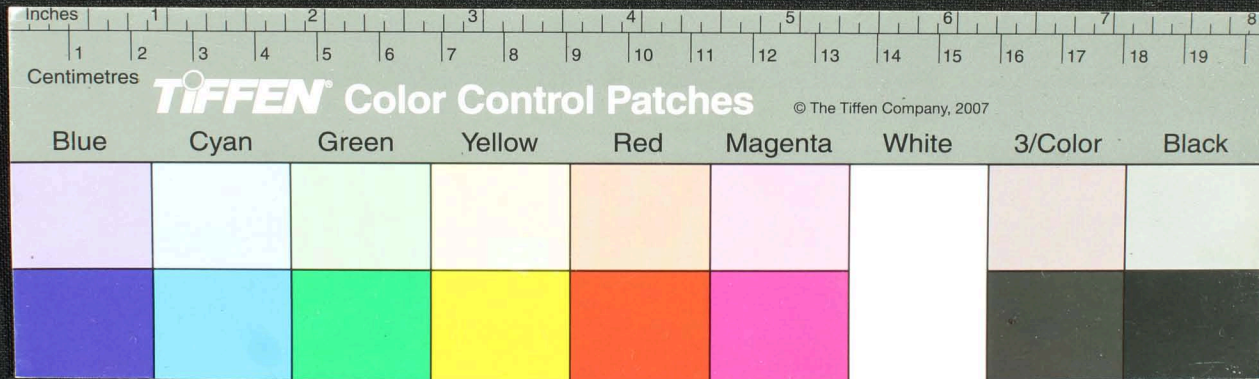
Handwritten Tamil script on a palm leaf manuscript. The text is arranged in approximately 12 columns across the length of the leaf. The script is finely etched into the surface of the dried leaf. There are several dark, irregular spots and smudges scattered across the leaf, particularly in the middle and right sections, which may be due to age or environmental factors. The leaf is light brown and shows signs of wear and tear.



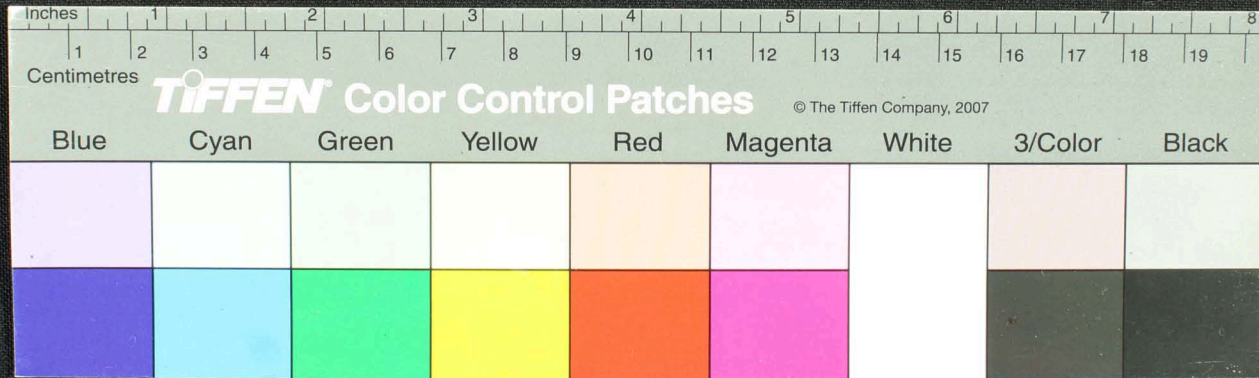
Handwritten Tamil script on a palm leaf manuscript. The text is arranged in approximately 12 vertical columns across the length of the leaf. The script is finely etched into the surface of the dried leaf, which shows signs of age and wear, including several dark spots and irregular holes.







Handwritten Tamil script on a palm leaf manuscript. The text is arranged in approximately 10 horizontal lines across the length of the leaf. The script is finely etched into the surface of the dried leaf. There are several large, dark, irregular stains or holes scattered across the leaf, particularly in the middle and right sections, which appear to be damage or decay.



Handwritten text in Tamil script on a palm leaf manuscript. The text is arranged in approximately 10 horizontal lines across the length of the leaf. The script is dark and appears to be a traditional form of the Tamil language. The leaf shows signs of age, including dark spots and some surface damage.

