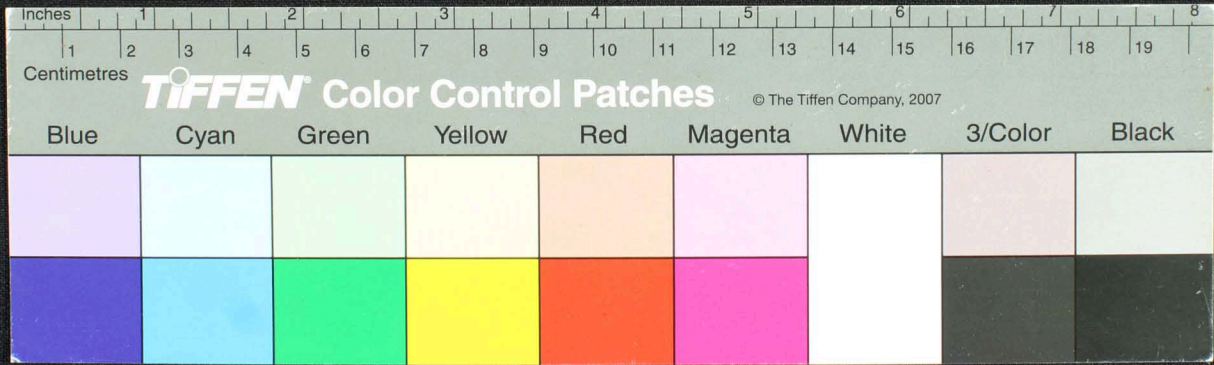
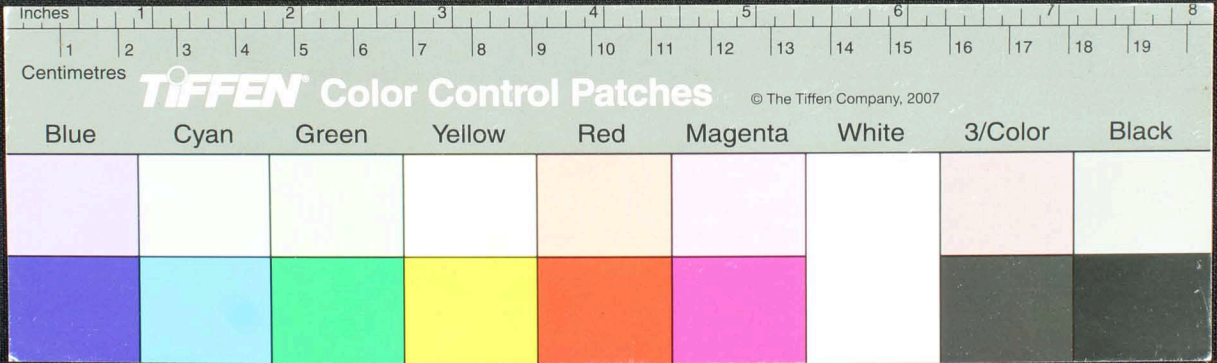
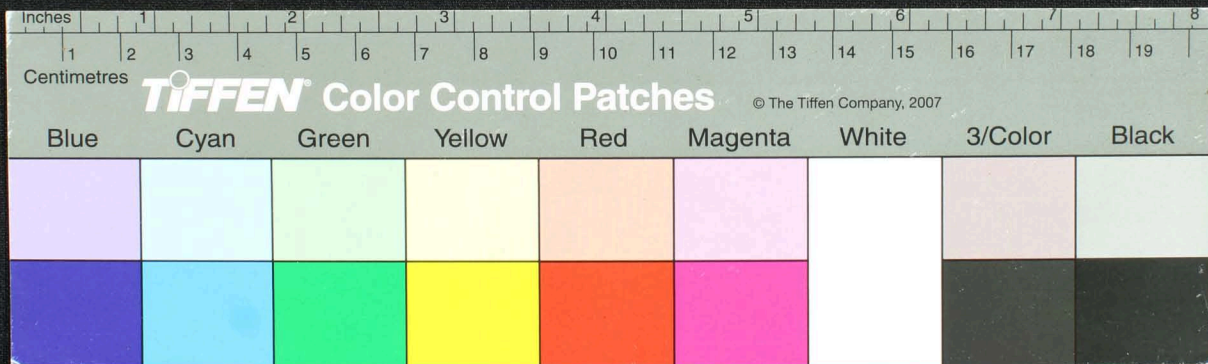
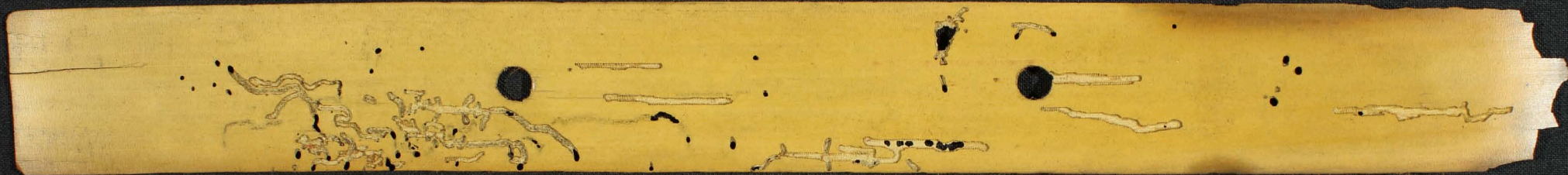


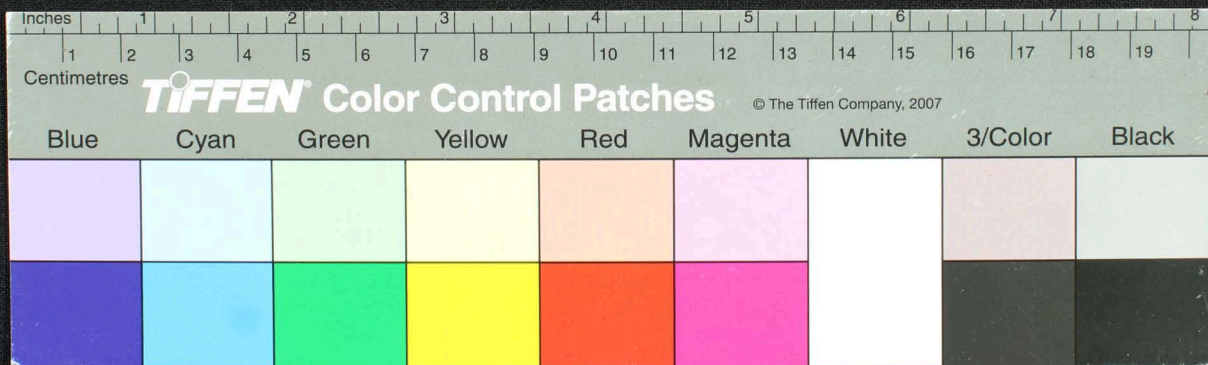
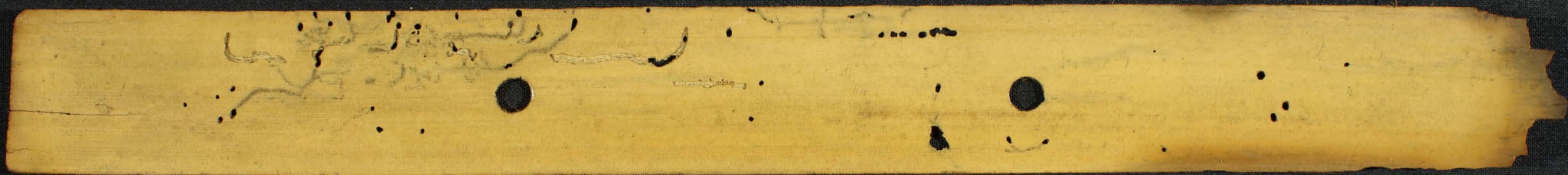
Handwritten Tamil script on a palm leaf manuscript. The text is arranged in approximately 10 horizontal lines across the length of the leaf. The script is in an older form of the Tamil language. There are two circular holes visible on the leaf, which were traditionally used for threading a cord to bind multiple leaves together into a book format. The leaf shows signs of age, including some staining and wear, particularly around the edges and between the lines of text.



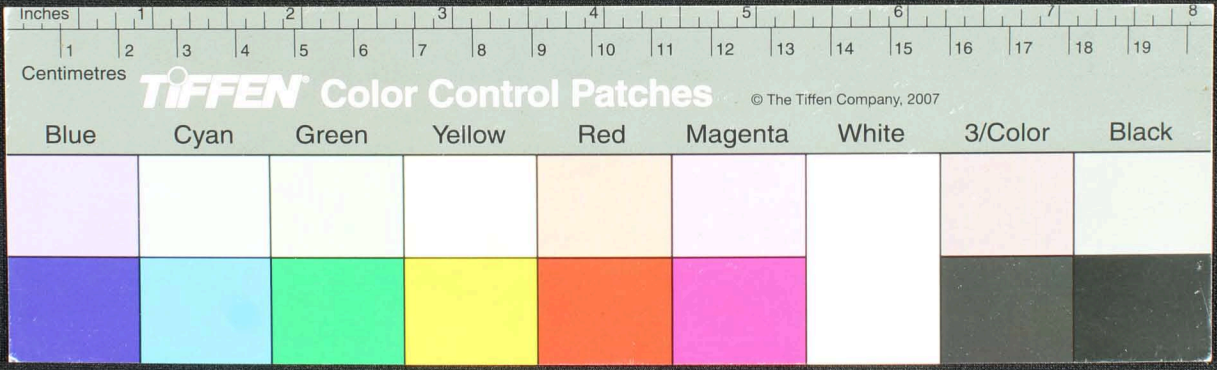
ம. விவர இசு ஸ் திரசுநாயம் வநிலிசா... லி...
 ரய...
 திமிலா...
 ப. நா...
 ச...
 ம. த...
 க...
 ஸ...

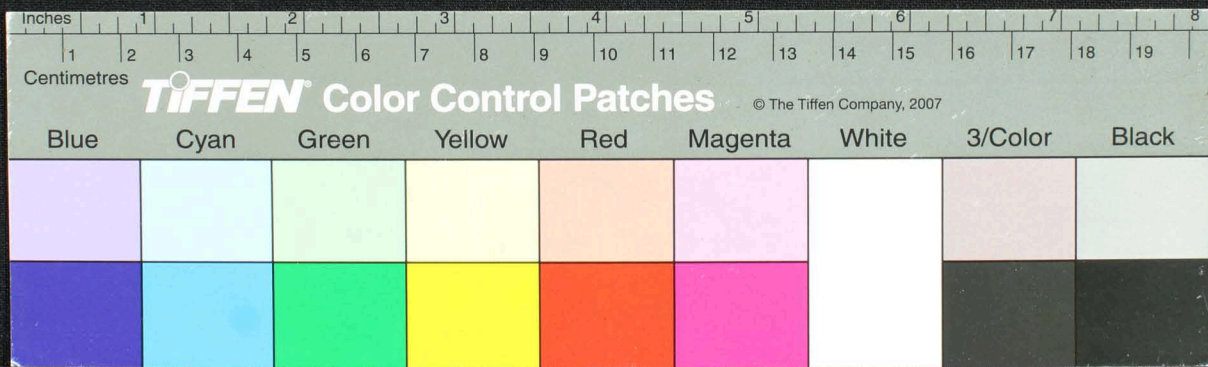




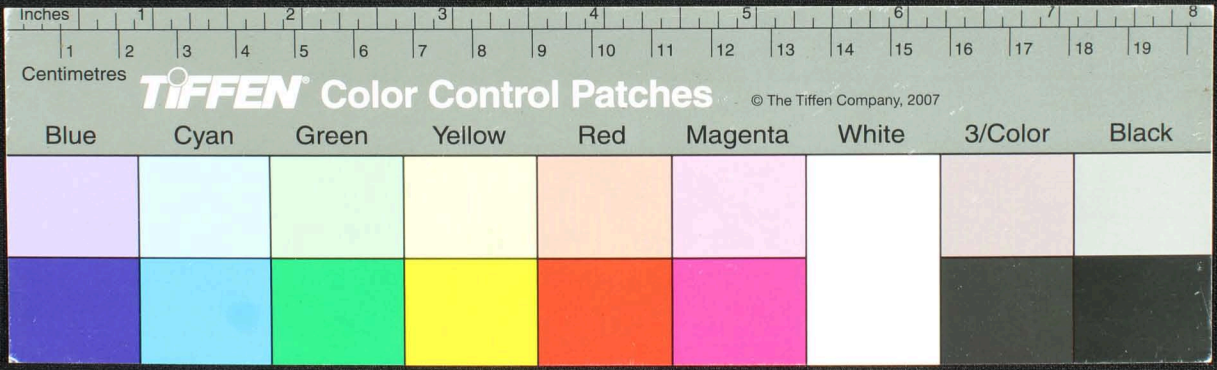


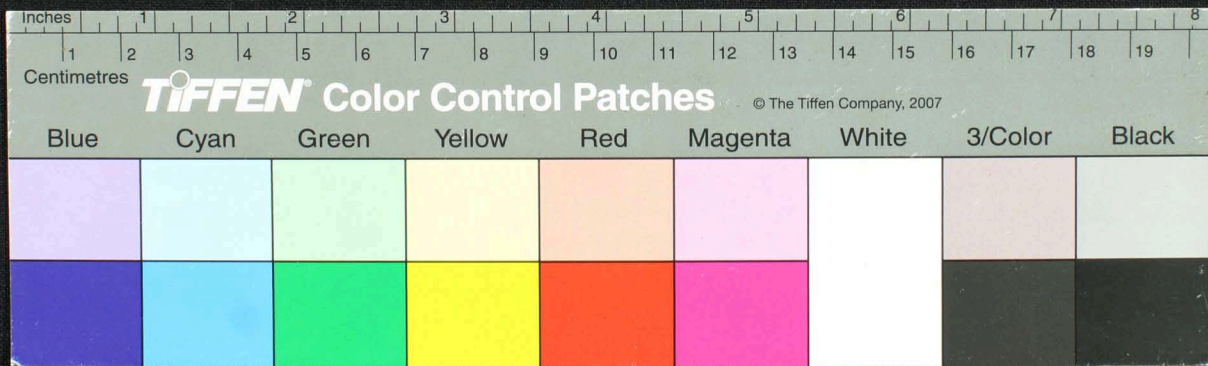
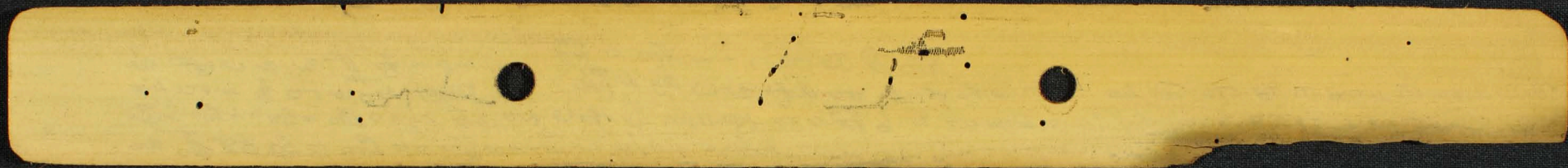
Handwritten text in Tamil script on a palm leaf manuscript. The text is arranged in approximately four horizontal lines. The script is dense and characteristic of traditional Tamil inscriptions on palm leaves. There are two circular holes visible on the leaf, which were traditionally used for threading a cord to bind multiple leaves together into a book format.





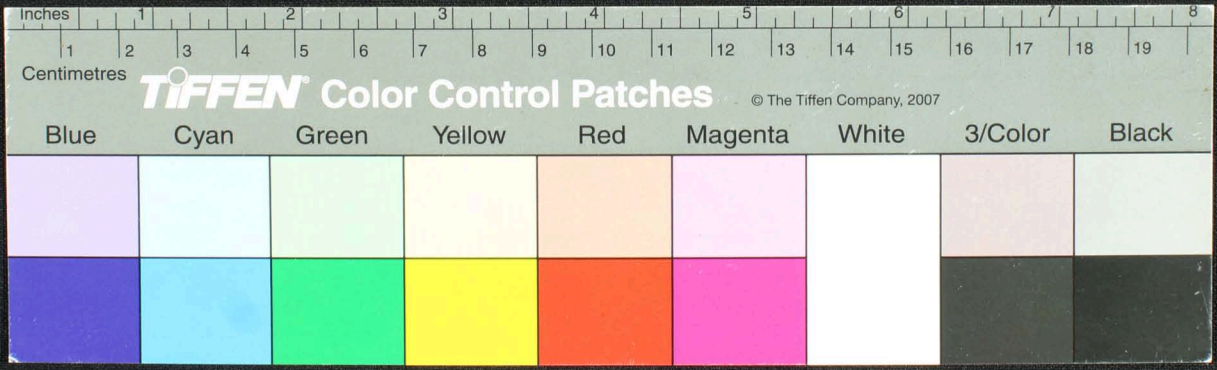
Handwritten Tamil script on a palm leaf manuscript. The text is arranged in approximately three lines. The first line contains a long sentence starting with 'அன்பு' (Anbu). The second line continues the text, mentioning 'பாடு' (Paadu) and 'பாடு' (Paadu). The third line includes 'பாடு' (Paadu) and 'பாடு' (Paadu). There are two circular holes punched through the leaf, one near the center and one towards the right end.



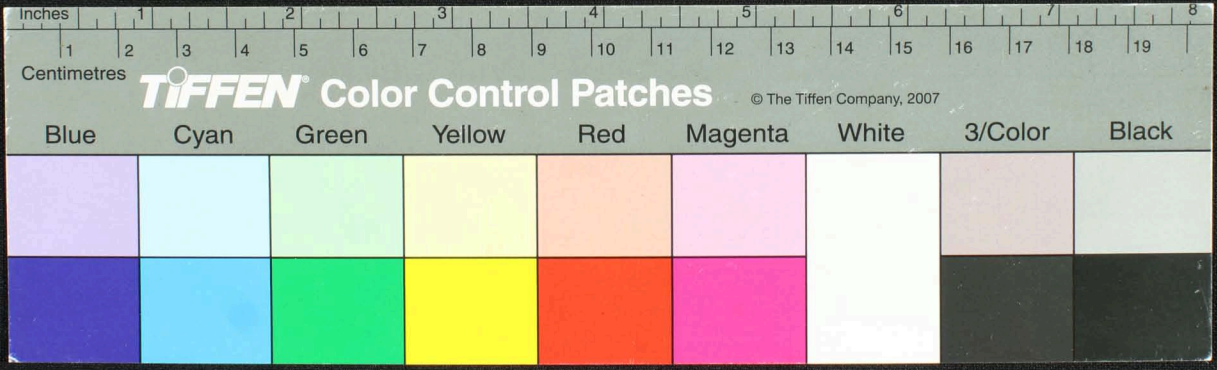


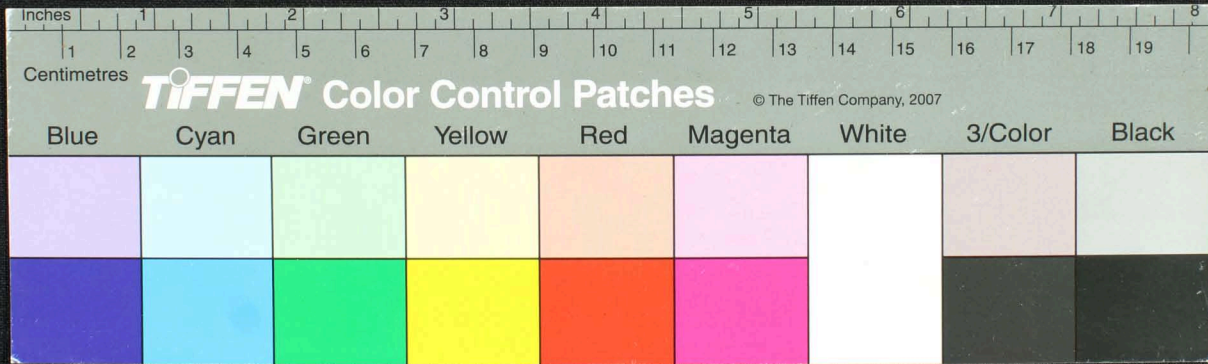
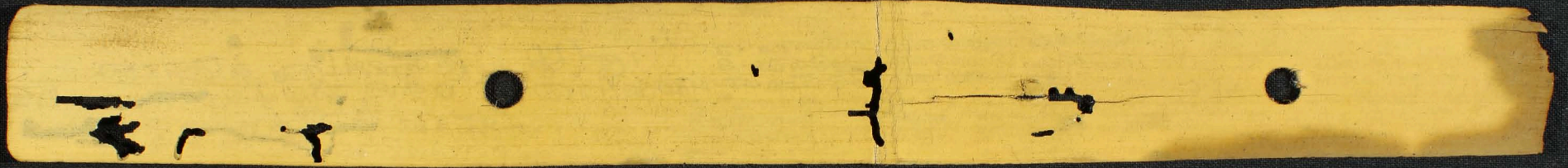
Blue	Cyan	Green	Yellow	Red	Magenta	White	3/Color	Black
[Light Blue patch]	[Light Cyan patch]	[Light Green patch]	[Light Yellow patch]	[Light Red patch]	[Light Magenta patch]	[White patch]	[Light Gray patch]	[Light Black patch]
[Dark Blue patch]	[Dark Cyan patch]	[Dark Green patch]	[Dark Yellow patch]	[Dark Red patch]	[Dark Magenta patch]	[White patch]	[Dark Gray patch]	[Dark Black patch]

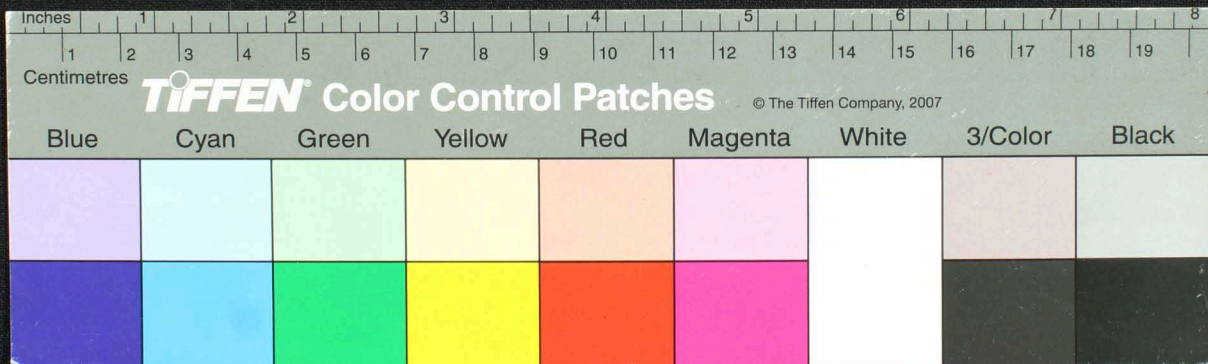
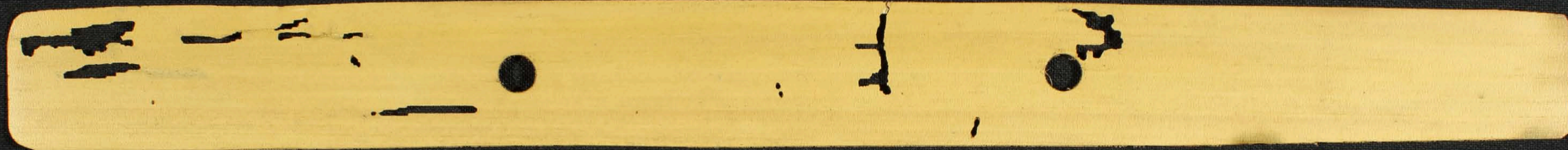
Handwritten text in Tamil script on a palm leaf manuscript. The text is arranged in several lines, with some characters appearing to be in a different script or dialect. There are two circular holes on the leaf, likely for binding. A small mark on the left side reads "செய்தார்" (Seythar) and "சுயம்" (Suyam).



Handwritten Tamil script on a palm leaf manuscript. The text is arranged in several lines across the length of the leaf. Some characters are obscured by dark ink blotches or holes. The script appears to be a form of classical or historical Tamil, possibly containing religious or philosophical content. The leaf is yellowed with age and shows signs of wear, including two circular holes used for binding.







Blue	Cyan	Green	Yellow	Red	Magenta	White	3/Color	Black

கண்டி. துணை -
 வெ. முத்துமேளாருக்கு -
 சென்னை மாவட்டம்
 கெய்வரப்பாடி த. ச.
 வெள்ளையப்பாடி ம. ச.

