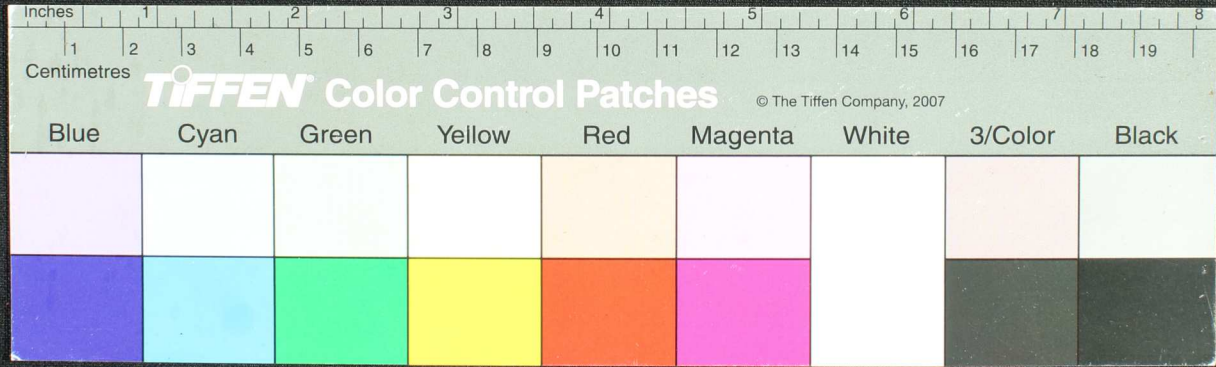
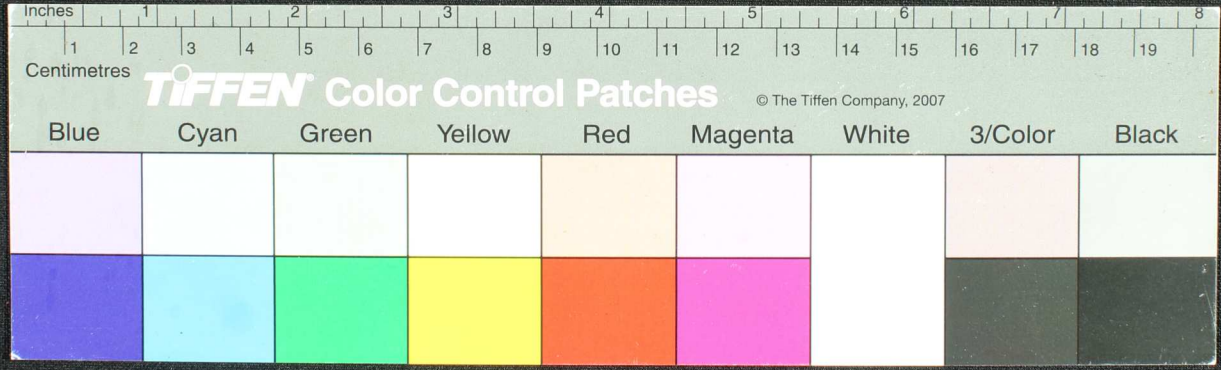


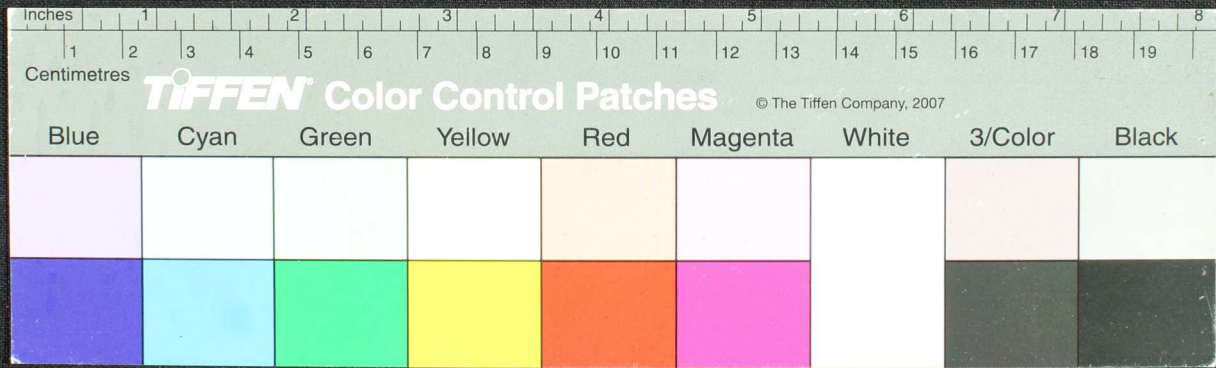
Handwritten Tamil script on a palm leaf manuscript. The text is arranged in approximately 10 horizontal lines. The leaf shows signs of age and damage, with several large, irregular holes and tears, particularly in the upper and middle sections. The script is finely etched into the surface of the dried leaf.



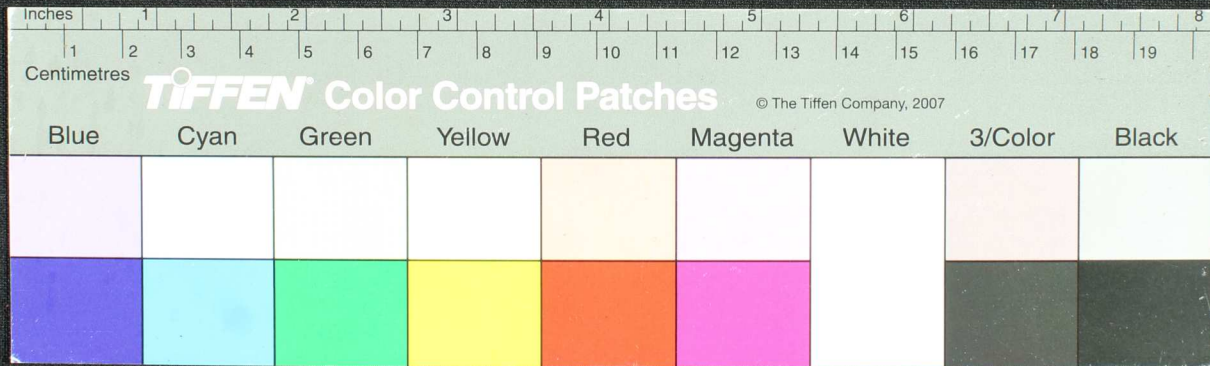
Handwritten Tamil script on a palm leaf manuscript. The text is arranged in approximately 10 horizontal lines across the length of the leaf. The script is densely packed and appears to be a form of classical Tamil. There are several dark, irregular holes or damage marks along the length of the leaf, particularly in the middle section.



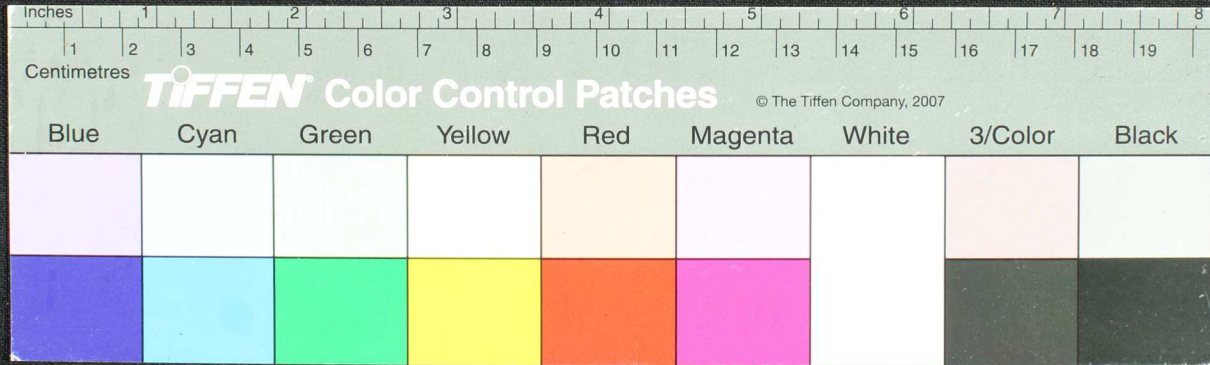
Handwritten Tamil script on a palm leaf manuscript. The text is densely packed in approximately 10 horizontal lines. Two circular holes are visible, which were traditionally used for threading a cord to bind multiple leaves together. The leaf shows signs of age, including some staining and wear at the edges.



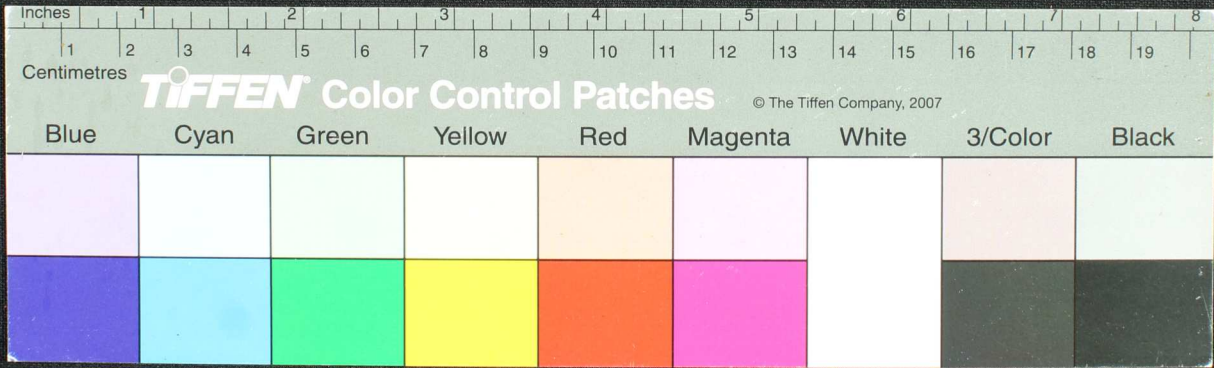
Handwritten Tamil script on a palm leaf manuscript. The text is densely packed and runs horizontally across the length of the leaf. There are two circular holes visible, which were traditionally used for threading a cord to bind multiple leaves together. The leaf shows signs of age, including some staining and wear at the edges.



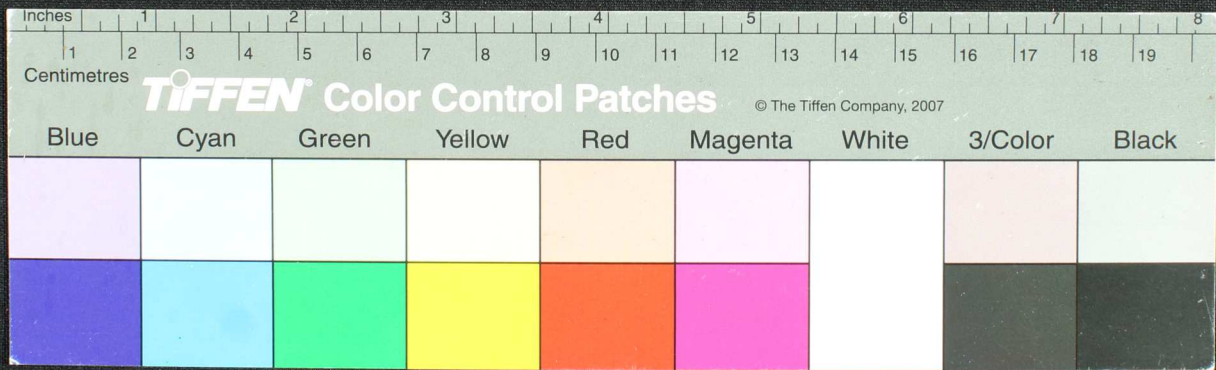
Handwritten text in Tamil script on a palm leaf manuscript. The text is arranged in approximately 10 horizontal lines across the length of the leaf. The script is finely etched into the surface of the dried leaf. The leaf shows signs of age, including dark spots and irregular holes, particularly on the left and right sides.



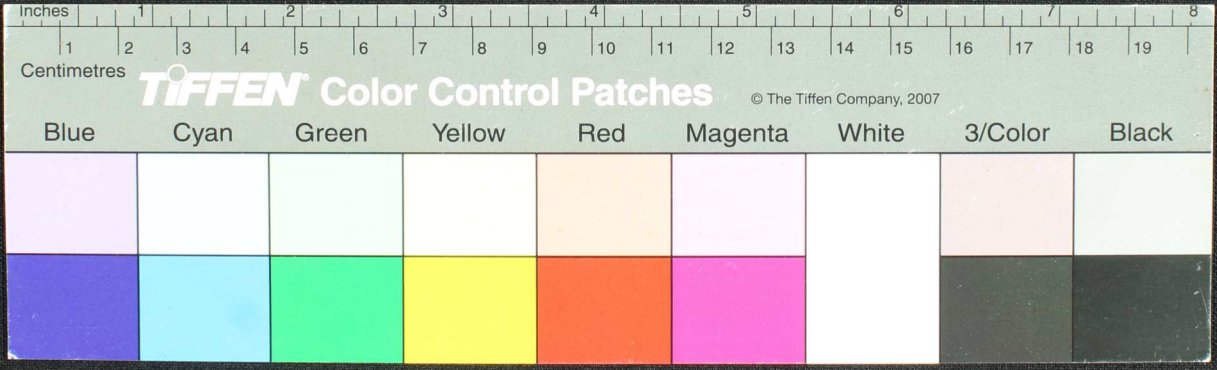
Handwritten Tamil script on a palm leaf manuscript strip. The text is arranged in approximately 10 horizontal lines across the length of the leaf. The script is densely packed and appears to be a form of classical or historical Tamil. The leaf shows signs of age, including some dark spots and irregular edges.



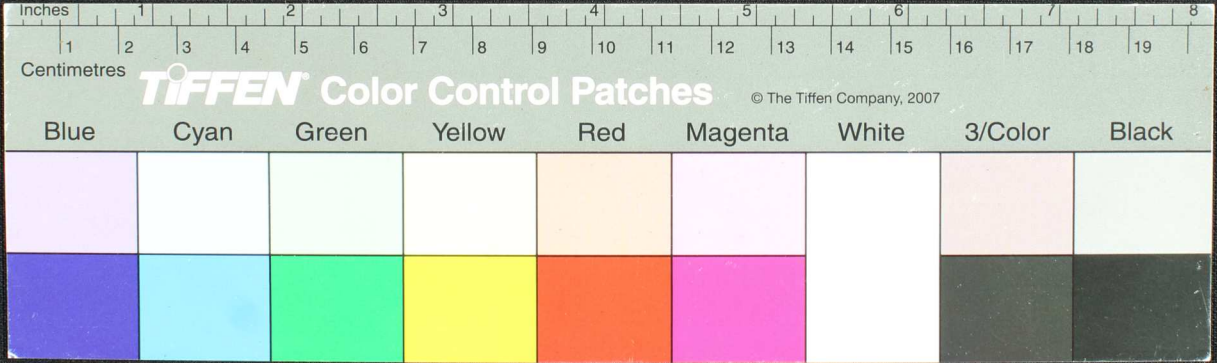
Handwritten Tamil script on a palm leaf manuscript. The text is arranged in approximately 10 horizontal lines across the length of the leaf. The script is densely packed and appears to be a form of classical Tamil. The leaf shows signs of age, including some dark spots and irregular edges.



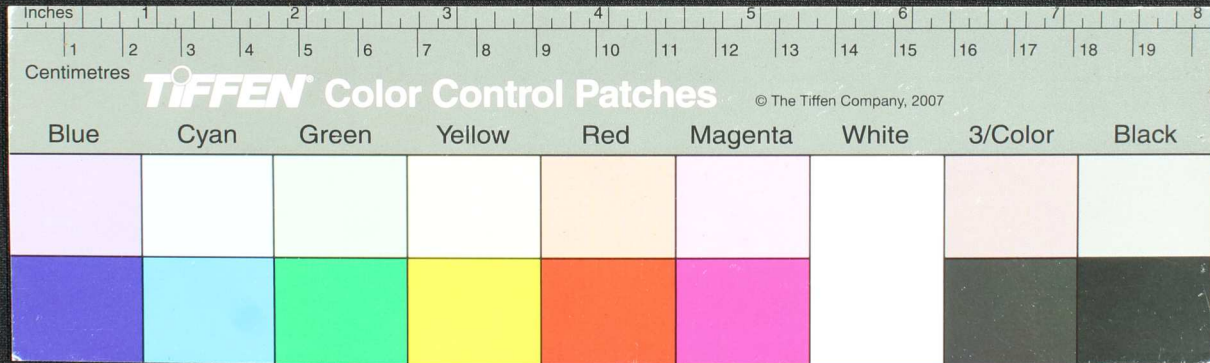
Handwritten Tamil script on a palm leaf manuscript. The text is arranged in approximately 10 horizontal lines across the length of the leaf. On the left side, there are three vertical annotations: 'வகுப்பின்', 'யது', and 'யது'. The script is densely packed and shows signs of age and wear.



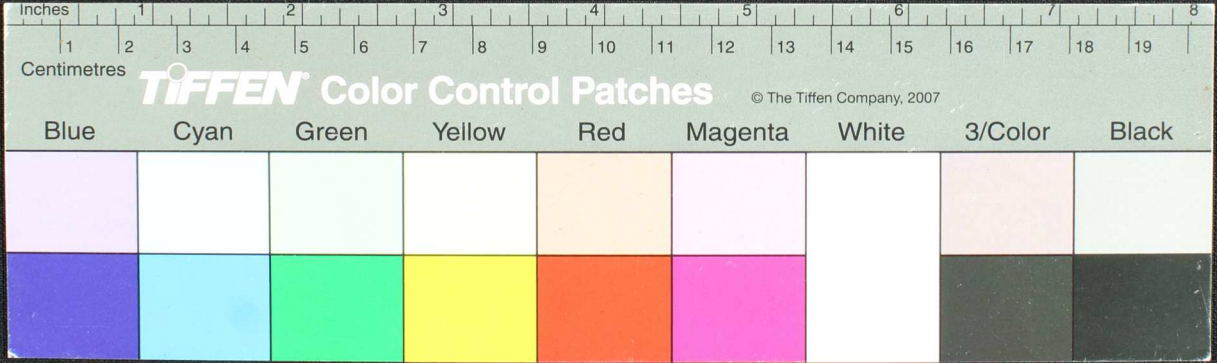
Handwritten Tamil script on a palm leaf manuscript. The text is densely packed and runs horizontally across the length of the leaf. There are two distinct circular holes, likely from a traditional string binding. The leaf shows signs of age and wear, with some fraying at the edges.



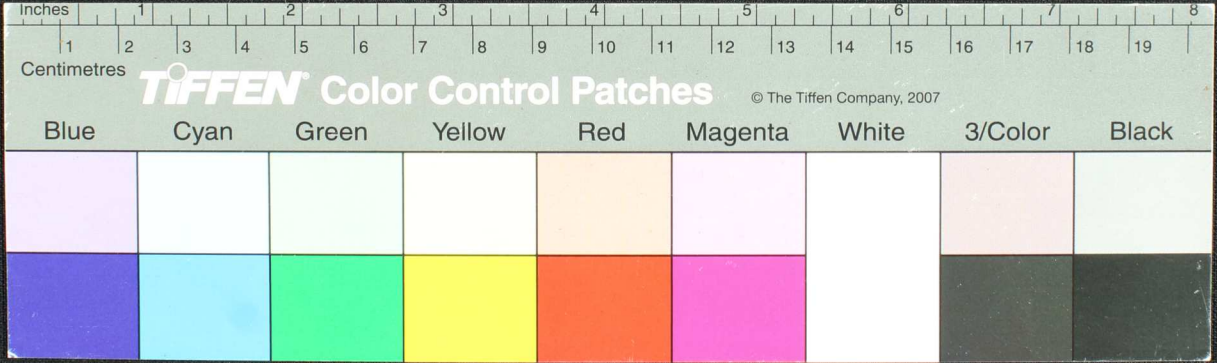
Handwritten Tamil script on a palm leaf manuscript. The text is densely packed and runs horizontally across the length of the leaf. The leaf shows signs of age, including some dark spots and irregular edges. The script is in an older form of the Tamil language.



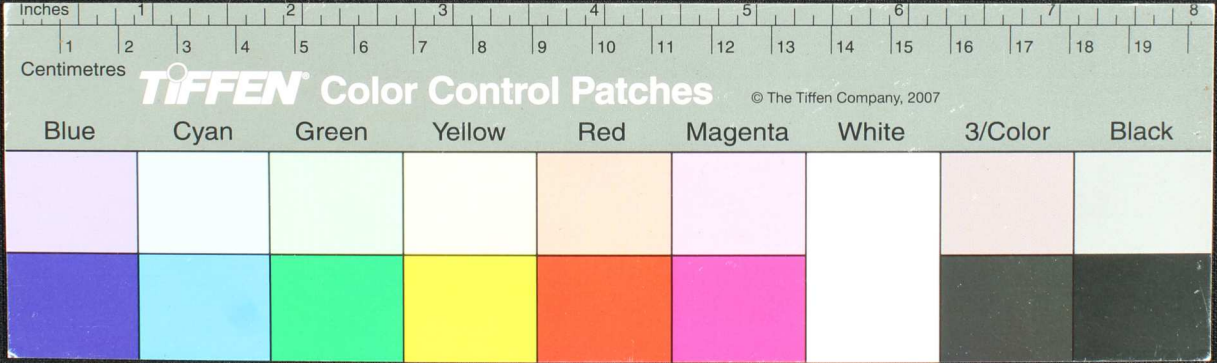
Handwritten Tamil script on a palm leaf manuscript strip. The text is densely packed and spans the length of the leaf. On the left side, there is a small handwritten label that reads "நாளி" (Nāli).



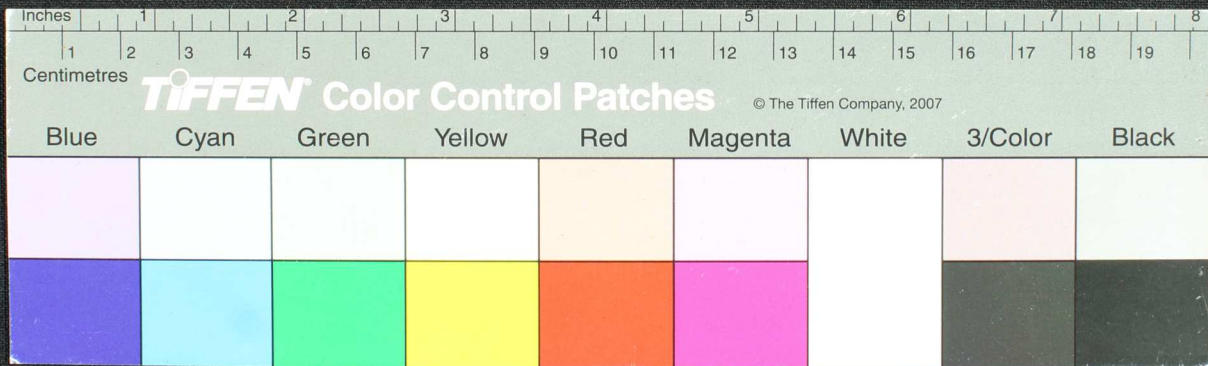
Handwritten Tamil script on a fragment of aged paper. The text is arranged in approximately 10 horizontal lines. The paper shows signs of wear, including two circular holes and irregular edges. The script is densely packed and appears to be a form of classical or historical Tamil.



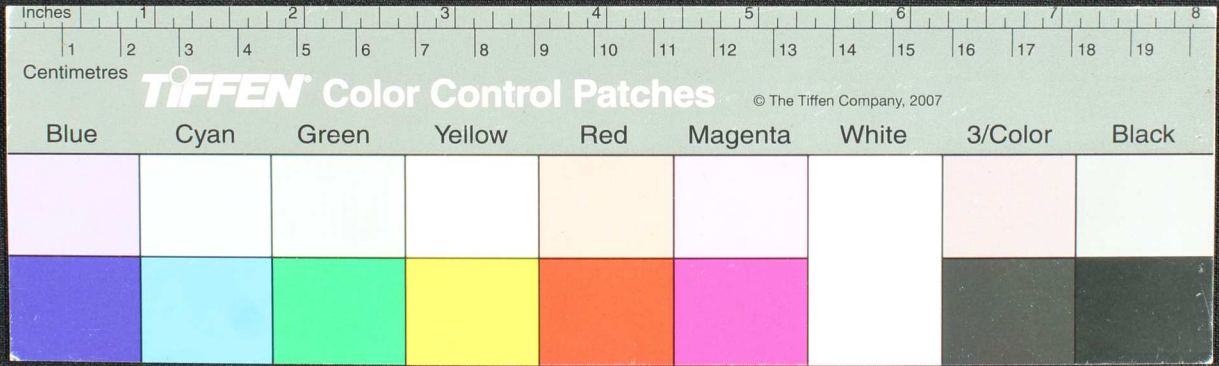
Handwritten Tamil script on a palm leaf manuscript. The text is densely packed and spans the length of the leaf. Two circular holes are visible, used for binding multiple leaves together. The script is written in a traditional style with dark ink.



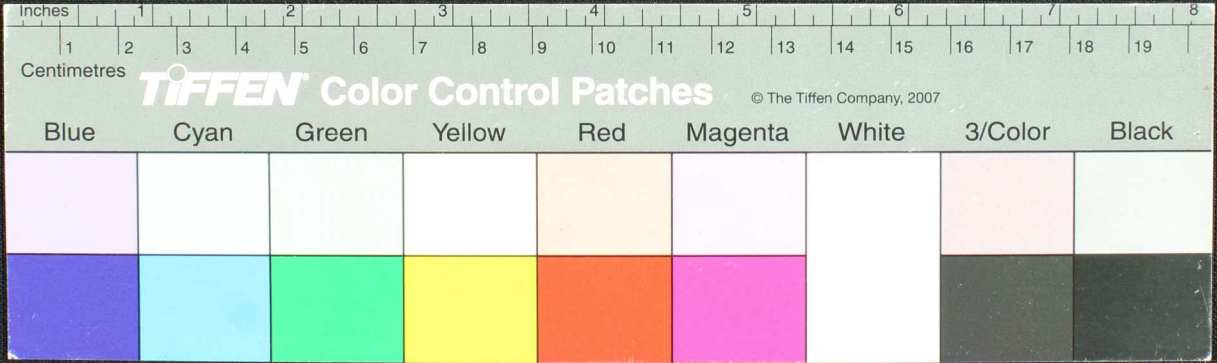
சதவகையகூசு...
 யா...
 கமயிரா...
 நிடை...
 தொ...



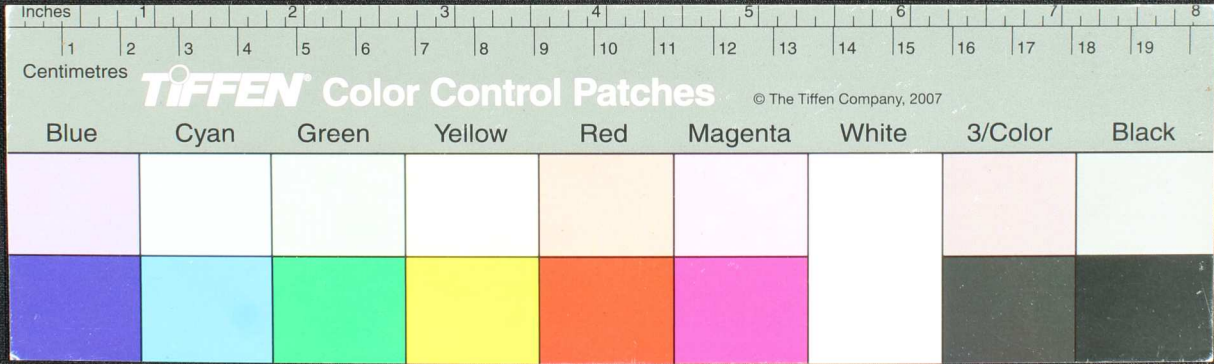
Handwritten Tamil script on a palm leaf manuscript. The text is arranged in approximately 10 horizontal lines across the length of the leaf. The script is densely packed and appears to be a form of classical Tamil. The leaf shows signs of age, including dark spots and irregular holes, particularly in the middle section.



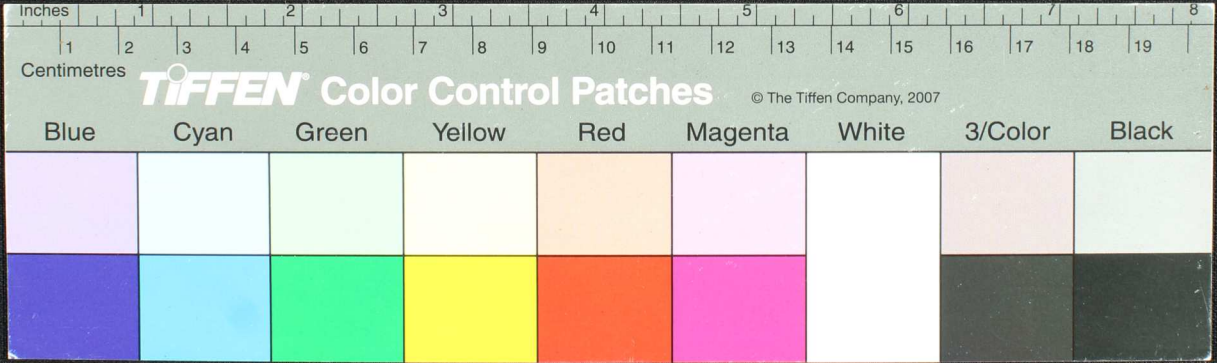
Handwritten text in Tamil script on a palm leaf manuscript. The text is arranged in approximately 10 horizontal lines across the length of the leaf. The script is dense and appears to be a form of classical or historical Tamil. There are several dark spots and irregularities on the leaf, possibly due to age or damage. On the left side, there is a small, faint handwritten word that appears to be 'வினா' (Vina).



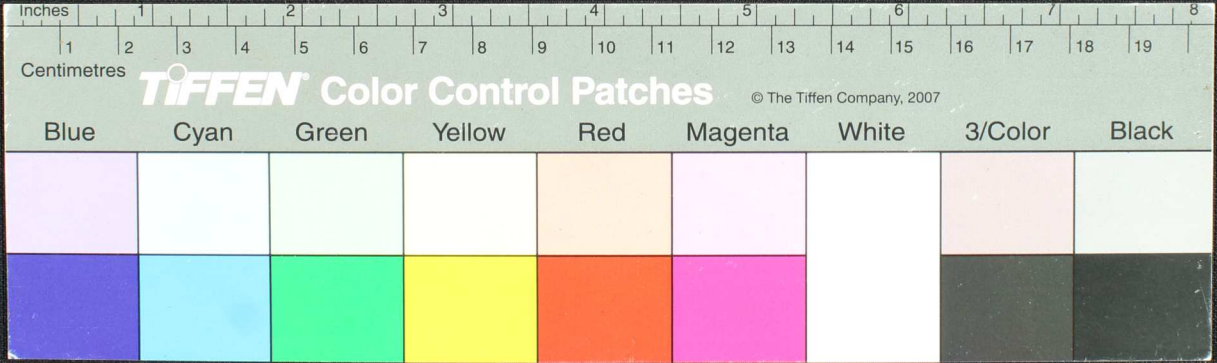
Handwritten Tamil script on a palm leaf manuscript. The text is densely packed and runs horizontally across the length of the leaf. The leaf shows signs of age and wear, with some fraying at the edges. On the left side, there are several lines of text that appear to be a list or index, possibly identifying different parts of the manuscript or specific characters. The main body of text is written in a traditional Tamil script, likely a form of Grantha or an early form of Tamil used in religious or philosophical contexts.



Handwritten Tamil script on a palm leaf manuscript. The text is densely packed and appears to be a religious or philosophical treatise. The leaf shows signs of age and wear, with some holes and discoloration. A small mark resembling the number '6' is visible on the left side of the leaf.



உரு
 யாரொமகேதீரதமயிவரா மாறாடுடுக உனயு மில உலயனா லிவியனு தால ஸிடுயெ மாபபா ரெடு
 பாலமலயைமயாய நீசிரிமயிநதிப சிநிடுமகதபபாசைனதிரிநிடு பரிநெலிமவடுவ தனநிடுகெரிநிடு நாநிடு
 பாயபாணா சிலிடுகிடுமனனமபசியநிநிடு தாயபாணா கொலோ வயாபடுதனிபபா ரெடுகெநியுமோமி டுமநாவிடுகார
 நாயபனநிய ஸிஸிடுகோகமதவய தாயபாணா துமவலமா மடுவிடுதாறு ஸலவாரா துதிவிவியுறு வேத மிதவயுதாநிடுதாய
 உனநமயிடுமினபனிமினாறுகுமடு சுவத்துடுசியுமினபலிபுதுடிபபடுகெநிடுகெநிடுகெநிடுகெநிடுகெநிடுகெநிடுகெநிடு
 அடுகெநிடுகெநிடுகெநிடுகெநிடுகெநிடுகெநிடுகெநிடுகெநிடுகெநிடுகெநிடுகெநிடுகெநிடுகெநிடுகெநிடுகெநிடுகெநிடு
 துமராணாததயளிபடுபா லுமதேயெனனி சுவனாறுனதேகாநவாநிடுகெநிடுகெநிடுகெநிடுகெநிடுகெநிடுகெநிடுகெநிடு
 னிடுகெநிடுகெநிடுகெநிடுகெநிடுகெநிடுகெநிடுகெநிடுகெநிடுகெநிடுகெநிடுகெநிடுகெநிடுகெநிடுகெநிடுகெநிடுகெநிடு
 யெநிடுகெநிடுகெநிடுகெநிடுகெநிடுகெநிடுகெநிடுகெநிடுகெநிடுகெநிடுகெநிடுகெநிடுகெநிடுகெநிடுகெநிடுகெநிடு



Handwritten Tamil script on a palm leaf manuscript. The text is densely packed and runs horizontally across the length of the leaf. Two circular holes are visible, which were traditionally used for threading a cord to bind multiple leaves together into a book format. The script appears to be a form of classical or historical Tamil, possibly containing religious or philosophical content.

