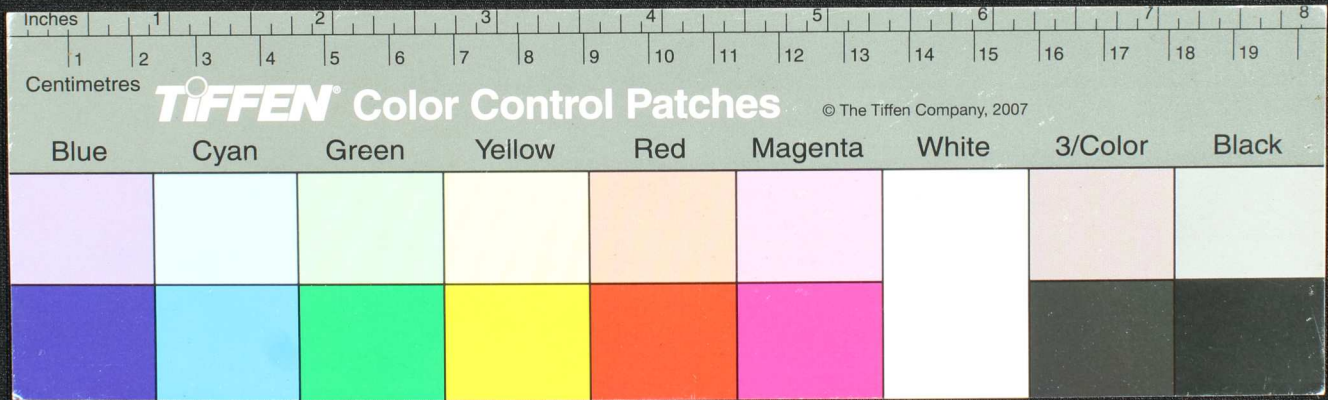
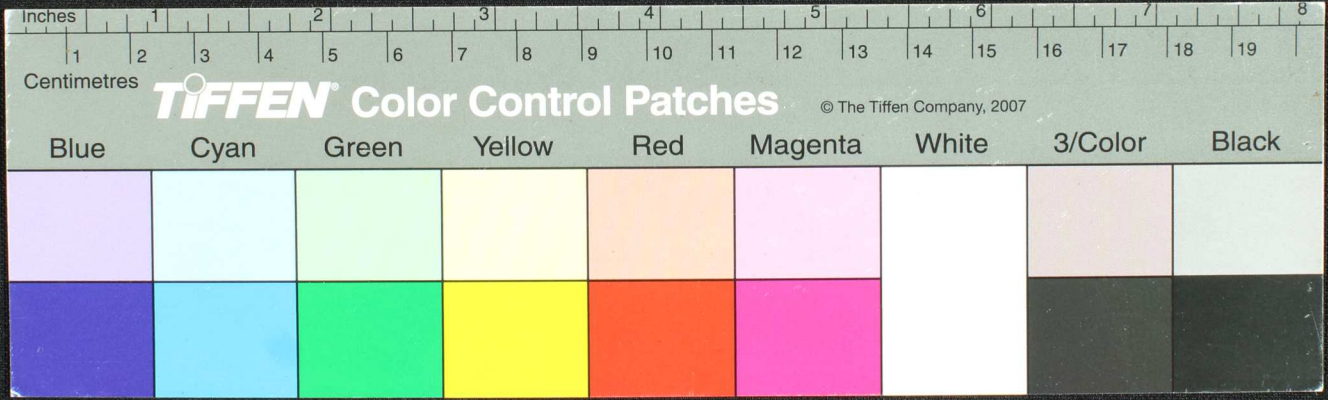


Handwritten text in an ancient script, possibly Tamil, on a palm leaf manuscript. The text is arranged in several lines across the length of the leaf. A small circular hole is visible near the center of the leaf, used for binding multiple leaves together.

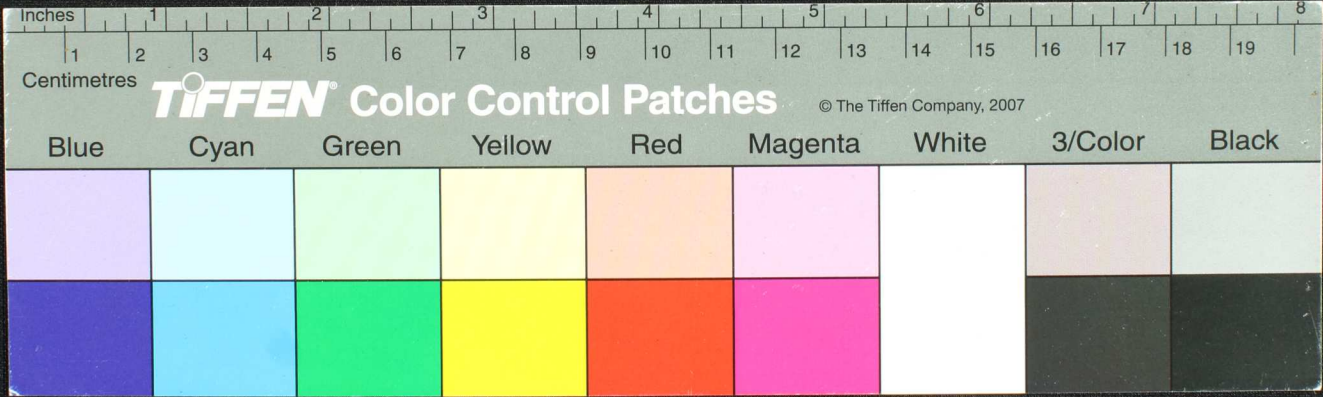


Handwritten text in an ancient script, likely Cuneiform, on a palm-leaf manuscript. The text is arranged in approximately 10 horizontal lines across the length of the leaf. A small circular hole is visible on the left side of the leaf, used for binding multiple leaves together.

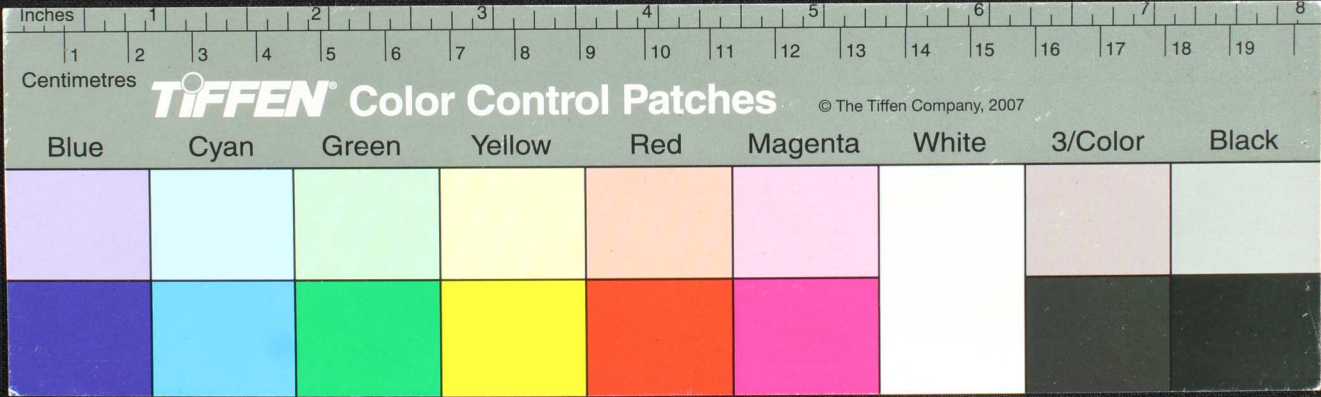


௪

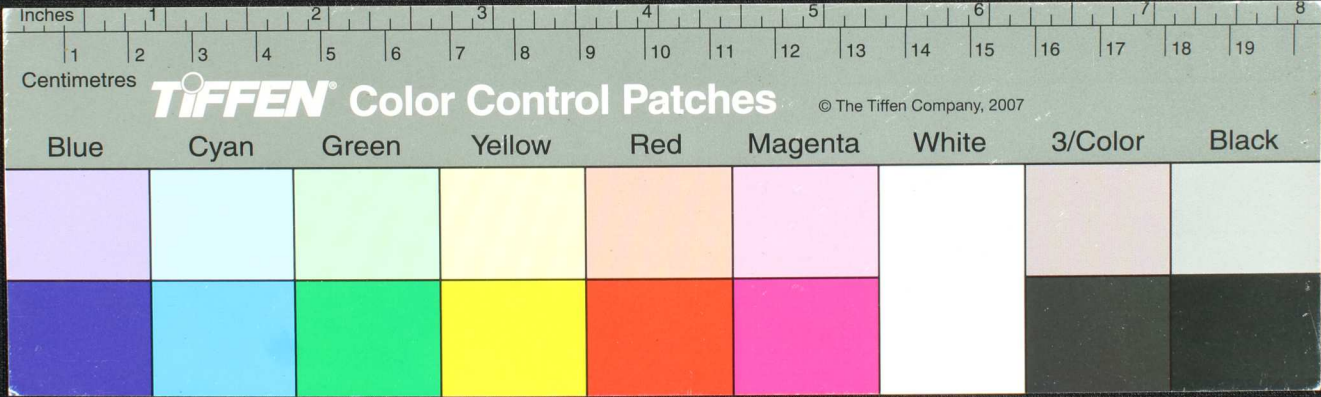
ஐங்குலவெண்கொண்டாய் ஸ்ரீவர்க்கென்று வேண்டுகொண்ட
 மூன்றுபாண்டுகளாய் திரை ஸ்ரீவர்க்கு ஸ்ரீவர்க்கு
 யுள்ளுள்ளுண்டாய் ஸ்ரீவர்க்கு ஸ்ரீவர்க்கு
 ஸ்ரீவர்க்கு ஸ்ரீவர்க்கு ஸ்ரீவர்க்கு ஸ்ரீவர்க்கு
 ஸ்ரீவர்க்கு ஸ்ரீவர்க்கு ஸ்ரீவர்க்கு ஸ்ரீவர்க்கு
 ஸ்ரீவர்க்கு ஸ்ரீவர்க்கு ஸ்ரீவர்க்கு ஸ்ரீவர்க்கு



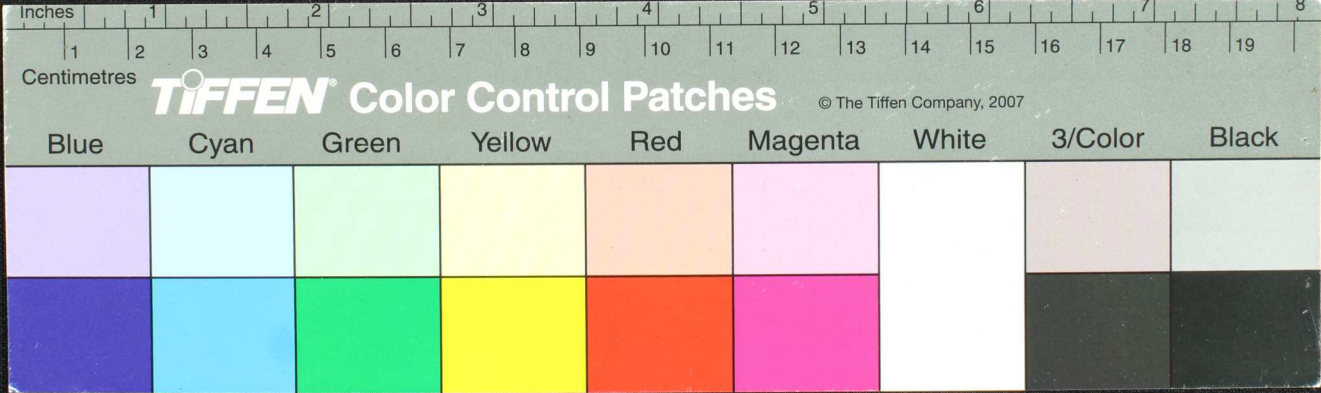
Handwritten text in Tamil script on a palm leaf manuscript. The text is arranged in several lines across the length of the leaf. On the right side, there is a separate column of text, possibly a signature or a date. The script is dense and characteristic of traditional Tamil inscriptions on palm leaves.



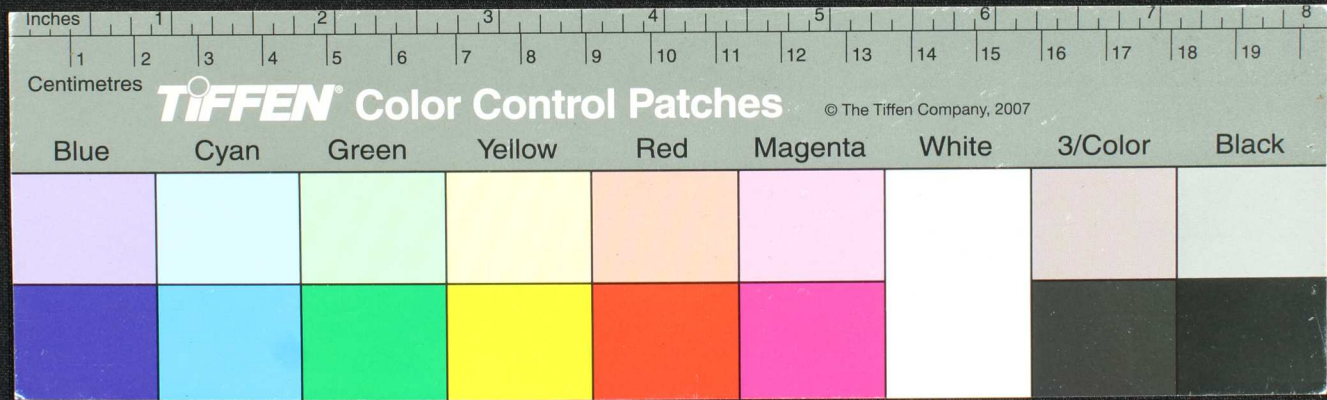
Handwritten text in Tamil script on a palm leaf manuscript. The text is arranged in several lines across the length of the leaf. A prominent black circular hole is visible near the center of the leaf. The script appears to be a form of classical or historical Tamil, possibly containing religious or philosophical content. The leaf shows signs of age and wear, with some discoloration and a slightly uneven texture.



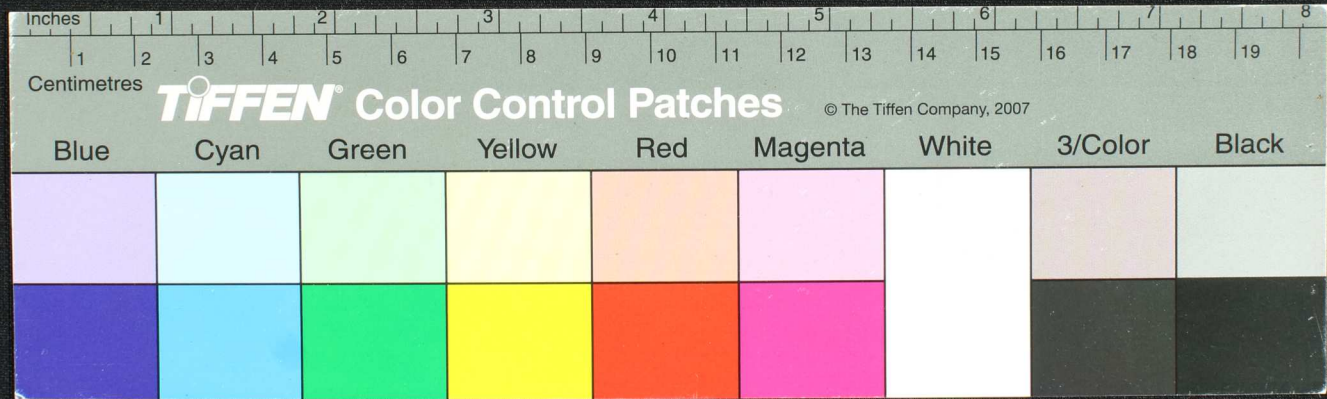
மாயா மொழி நான்காம் பி. மாயா மொழி மூன்றாம் பி. மாயா மொழி இரண்டாம் பி. மாயா மொழி
 மாயா மொழி முதலாம் பி. மாயா மொழி இரண்டாம் பி. மாயா மொழி மூன்றாம் பி. மாயா மொழி நான்காம் பி.
 மாயா மொழி ஐந்தாம் பி. மாயா மொழி ஆறாம் பி. மாயா மொழி ஏழாம் பி. மாயா மொழி எட்டாம் பி.
 மாயா மொழி ஒன்பாம் பி. மாயா மொழி பத்தாம் பி. மாயா மொழி பதின்மூன்றாம் பி. மாயா மொழி பதின்மூன்று பி.
 மாயா மொழி பதின்மூன்று பி. மாயா மொழி பதின்மூன்று பி. மாயா மொழி பதின்மூன்று பி. மாயா மொழி பதின்மூன்று பி.



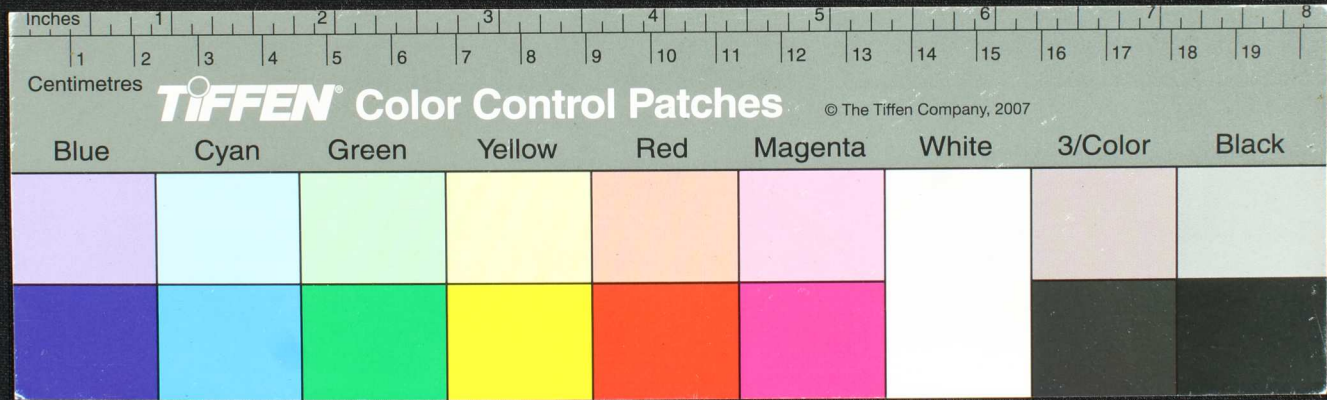
Handwritten text on a palm leaf manuscript strip, written in a South Indian script (likely Grantha or Tamil). The text is arranged in approximately 10 horizontal lines. A small black circular mark is present on the left side of the strip. The script is finely etched into the surface of the dried leaf.



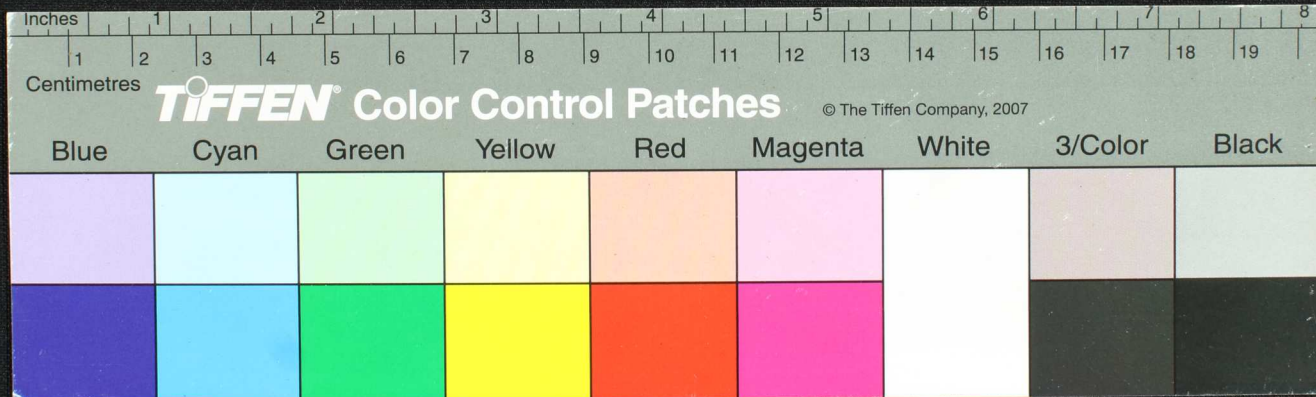
Handwritten text in an ancient script, likely cuneiform, on a palm-leaf manuscript. The text is arranged in several lines across the length of the leaf. A small, dark, circular hole is visible near the center of the leaf, which is a traditional feature for threading a cord to bind multiple leaves together.



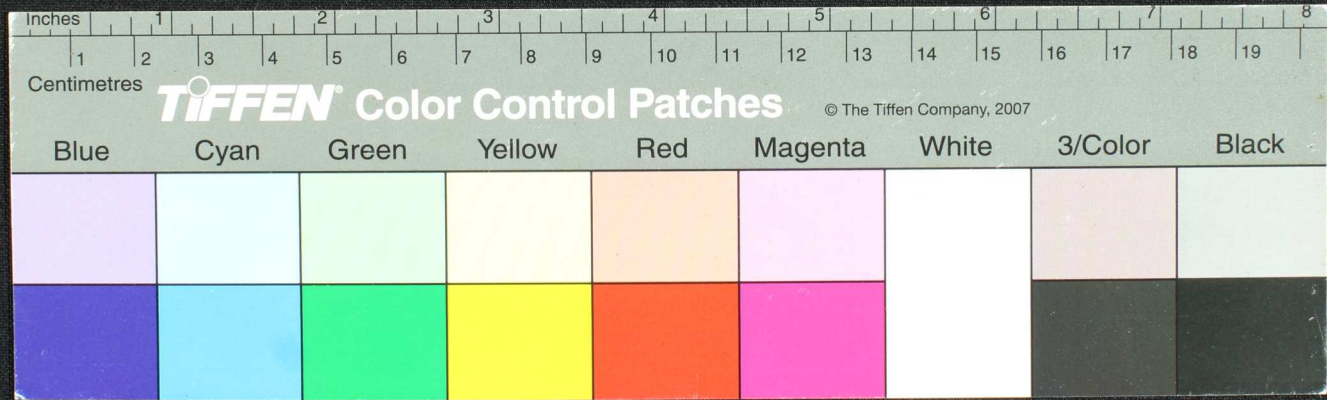
Handwritten text in an ancient script, likely Tamil, on a palm leaf manuscript. The text is arranged in approximately four horizontal lines across the length of the leaf. A circular hole is visible near the center of the leaf, used for binding multiple leaves together.



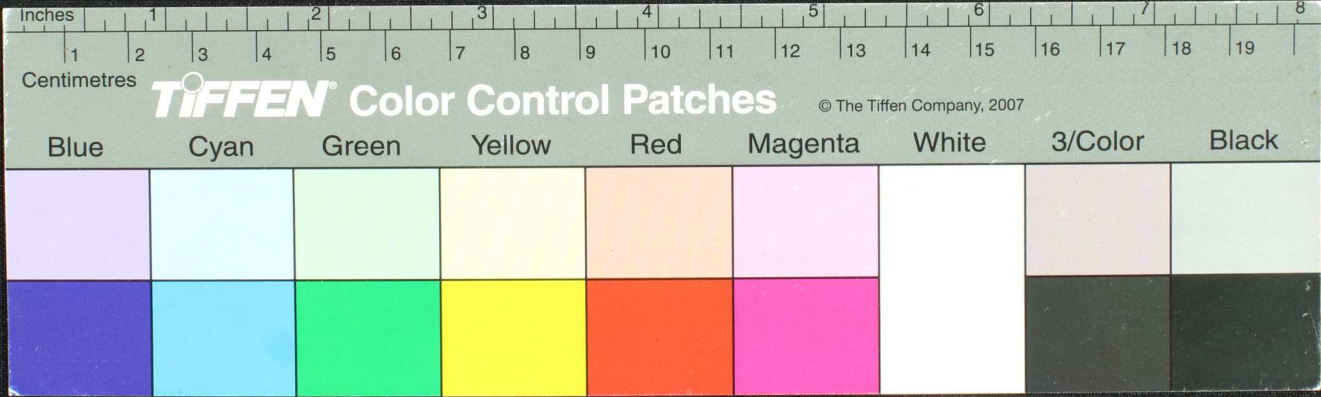
Handwritten text in an ancient script, likely Tamil, on a palm leaf manuscript. The text is arranged in approximately 10 horizontal lines across the length of the leaf. A small, dark circular hole is visible on the left side of the leaf, approximately one-third of the way from the left edge.



Handwritten text in an ancient script, possibly Sumerian or Akkadian, on a palm-leaf manuscript. The text is arranged in several lines across the length of the leaf. A small circular hole is visible near the center of the leaf, used for binding multiple leaves together. The word "NIST" is written vertically on the left side of the leaf.

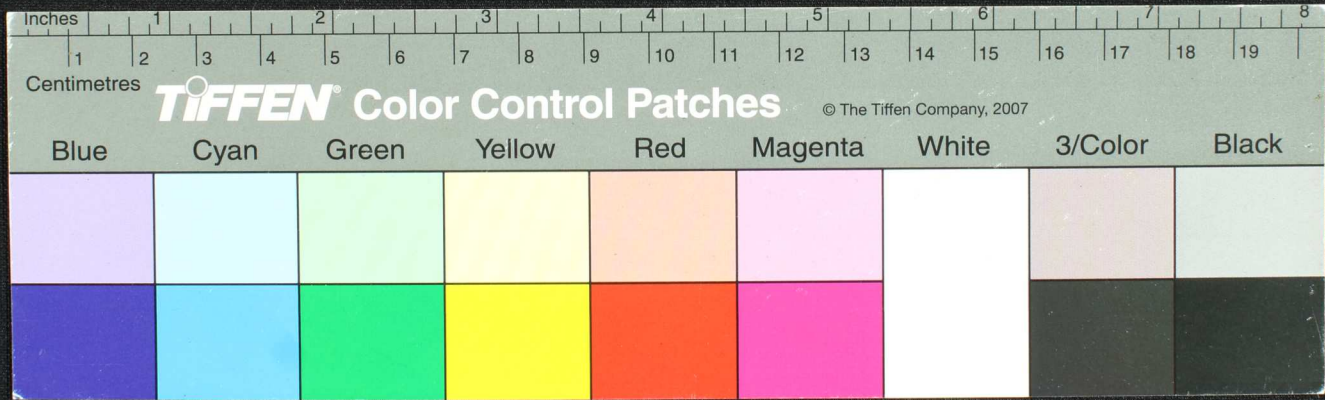


Handwritten text in an ancient script, likely Tamil, on a palm leaf manuscript. The text is arranged in approximately three lines across the length of the leaf. A small circular hole is visible on the left side of the leaf, used for binding multiple leaves together.

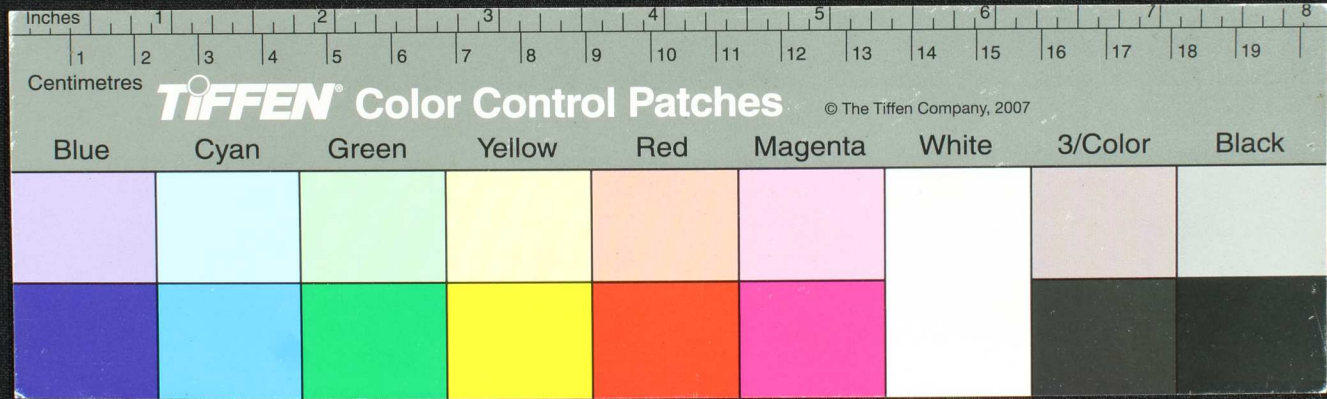


22

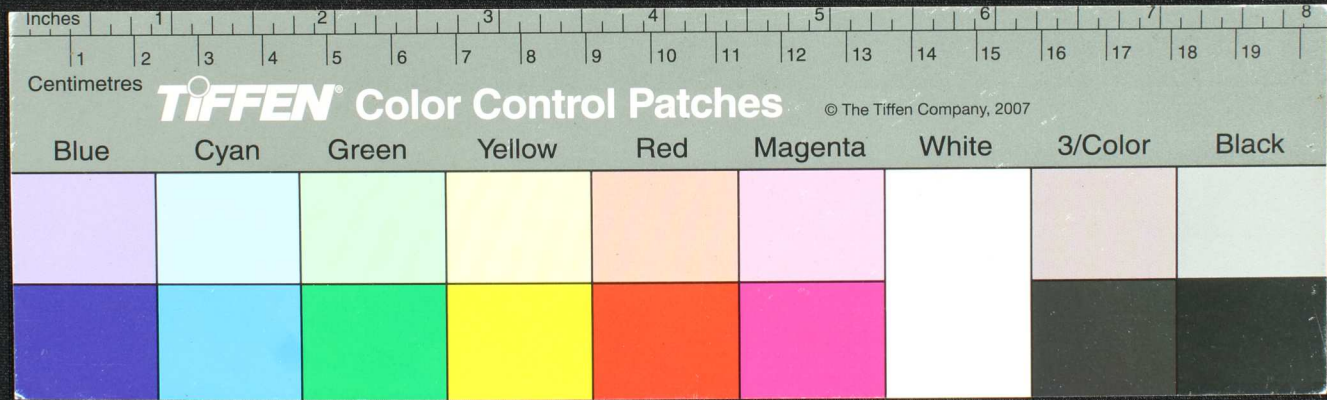
Handwritten text in Tamil script on a palm leaf manuscript strip.



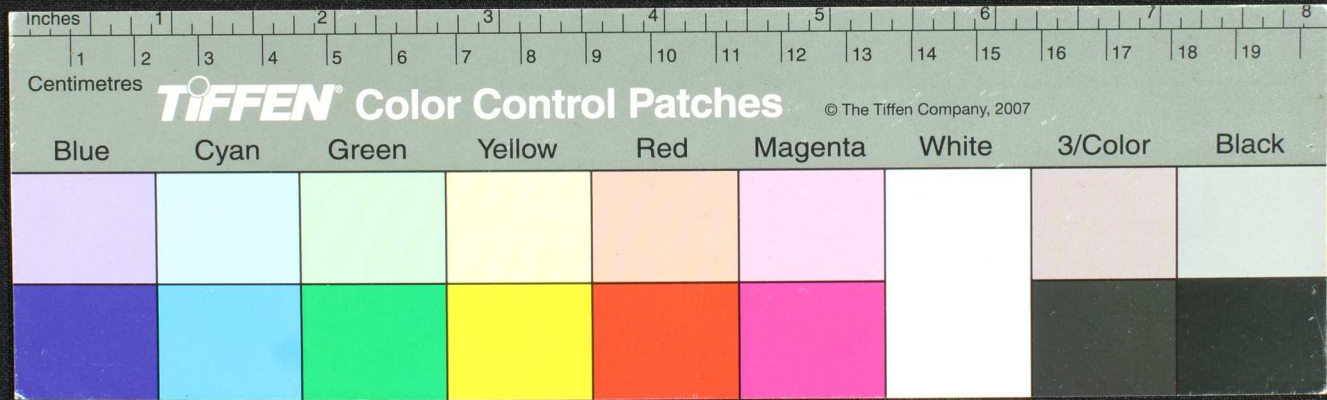
Handwritten text in an ancient script, likely cuneiform, on a palm-leaf manuscript. The text is arranged in approximately 12 horizontal lines across the length of the leaf. A small, dark circular hole is visible near the center of the leaf, approximately 5 inches from the left end.



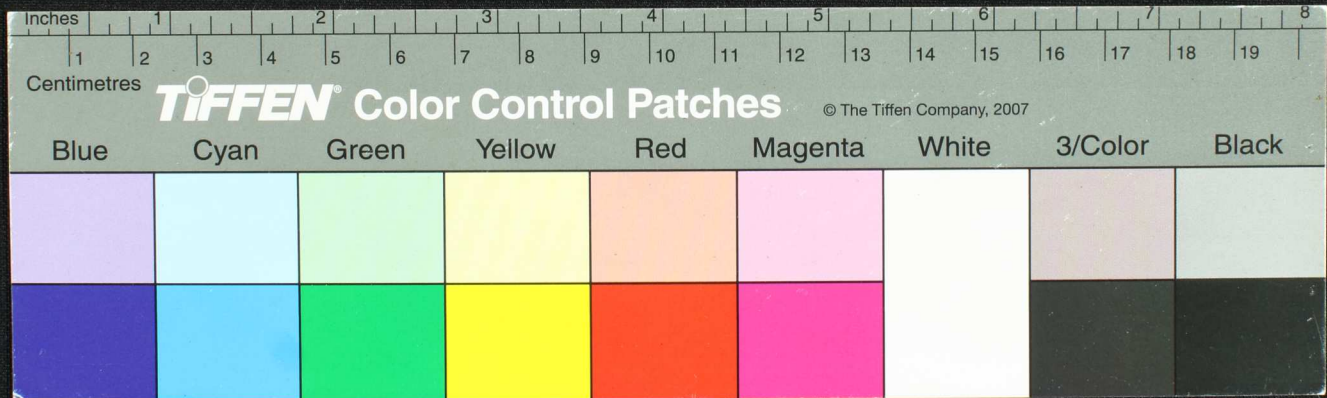
வகிசினம (பு) N-உ. 6-அ. யக. திந்தினையொயாட்டயும .. ந. கர. சி - ம. திந்தினையொ. தி
 யொசினம (பு) N-உ. 6-அ. யக. திந்தினையொயாட்டயும .. ந. கர. சி - ம. திந்தினையொ. தி
 ம. ந. கர. சி - ம. திந்தினையொயாட்டயும .. ந. கர. சி - ம. திந்தினையொ. தி
 ம. ந. கர. சி - ம. திந்தினையொயாட்டயும .. ந. கர. சி - ம. திந்தினையொ. தி
 ம. ந. கர. சி - ம. திந்தினையொயாட்டயும .. ந. கர. சி - ம. திந்தினையொ. தி
 ம. ந. கர. சி - ம. திந்தினையொயாட்டயும .. ந. கர. சி - ம. திந்தினையொ. தி



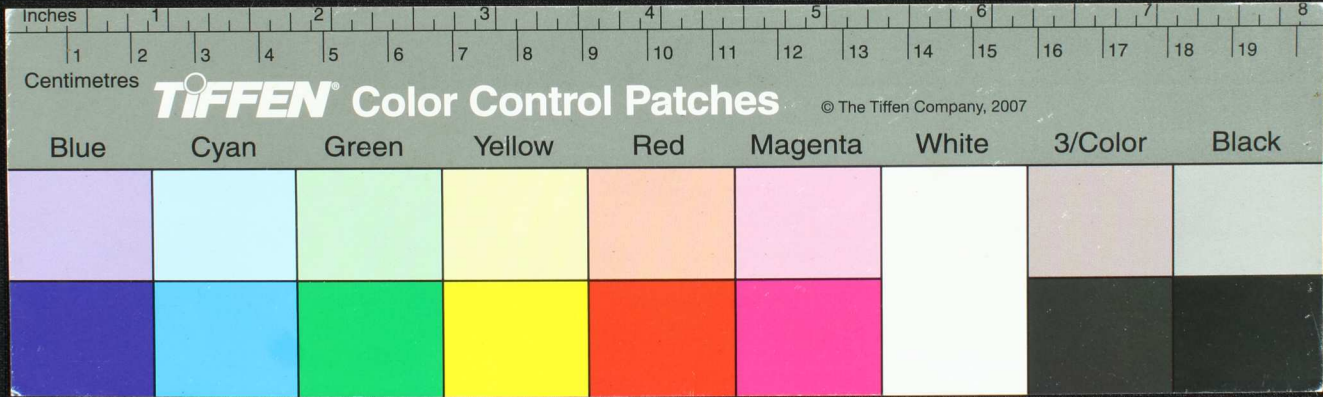
Handwritten text in Tamil script on a palm leaf manuscript. The text is arranged in approximately 10 horizontal lines across the length of the leaf. A small circular hole is visible near the center of the leaf, used for threading a cord to bind multiple leaves together.



Handwritten text in an ancient script, likely Tamil, on a palm leaf manuscript. The text is arranged in approximately 10 horizontal lines across the length of the leaf. A small circular hole is visible near the center of the leaf, used for threading a cord to bind multiple leaves together. The script is finely etched into the surface of the dried leaf.



Handwritten text on a yellowed strip of paper, possibly a document fragment. The text is written in a cursive script and is partially obscured by a dark circular mark. The text is written in two lines, with the second line starting further to the right than the first. The paper is aged and shows some staining and wear.



Handwritten text in an ancient script, likely cuneiform, on a palm-leaf manuscript. The text is arranged in approximately 10 horizontal lines across the length of the leaf. The script is finely etched into the surface of the dried leaf. A small circular hole is visible near the center of the leaf, which was traditionally used for threading a cord to bind multiple leaves together into a book format.

