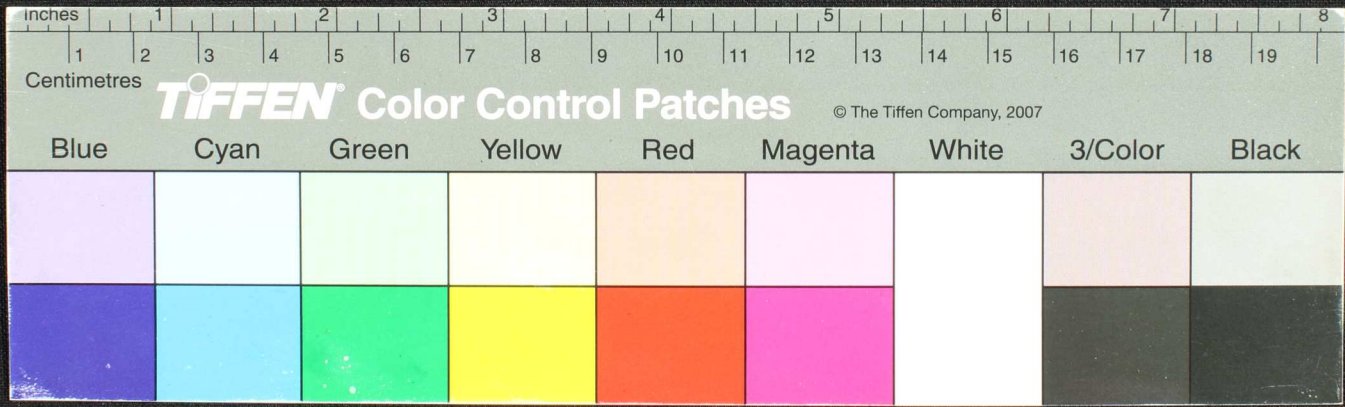
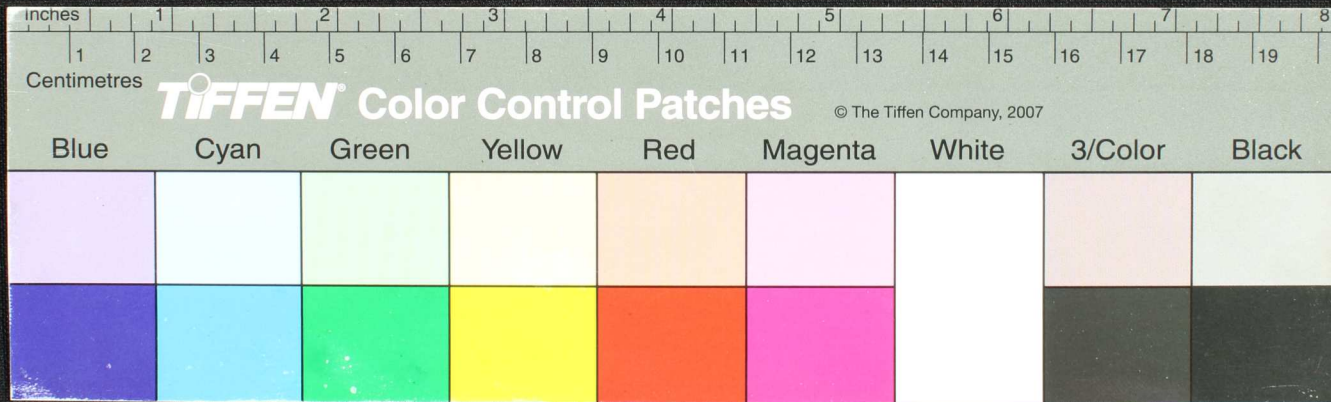


Handwritten Tamil script on a palm leaf manuscript. The text is arranged in approximately 10 horizontal lines. The script is densely packed and appears to be a form of classical or religious Tamil. There are several dark spots and signs of wear on the leaf, particularly a prominent circular hole near the center. The leaf is yellowed with age and is set against a dark, textured background.



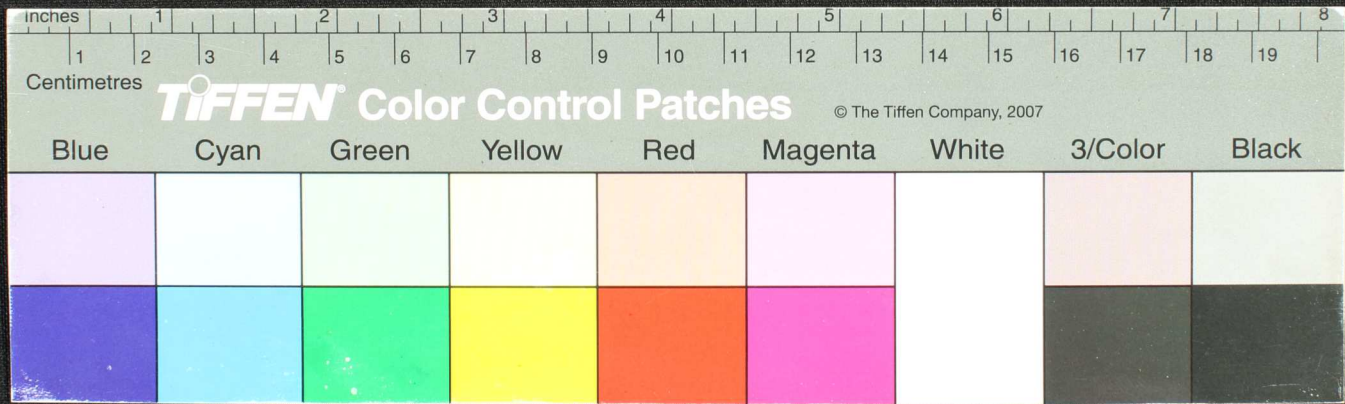


கையெழுத்து எழுதிய பண்டைய தமிழ் கல்வெட்டு. இது ஒரு சிறிய கல்வெட்டு மற்றும் அதில் தமிழ் எழுத்துக்களில் எழுப்பப்பட்டிருக்கிறது. கல்வெட்டு மிகவும் சிறியதாகும். கல்வெட்டு மிகவும் சிறியதாகும். கல்வெட்டு மிகவும் சிறியதாகும்.



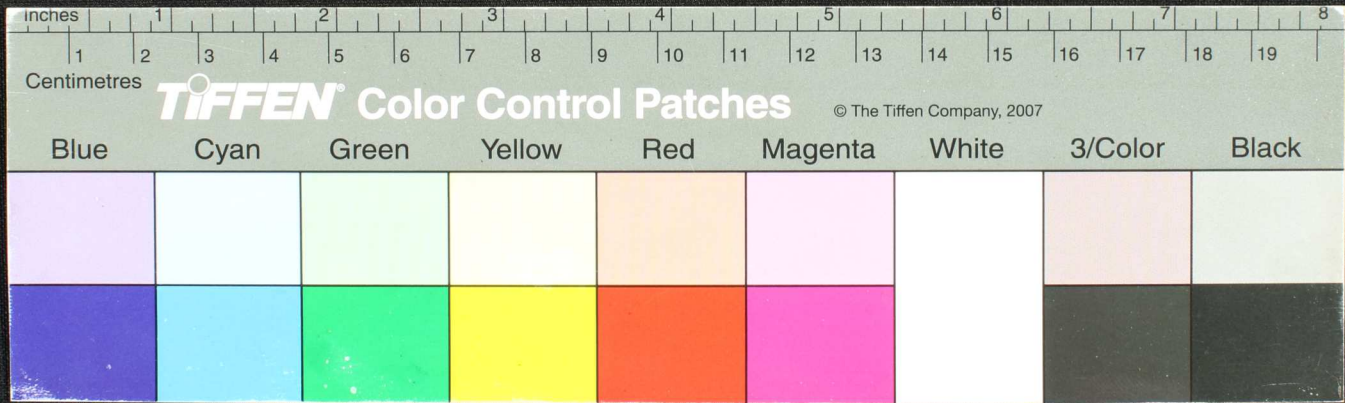


Handwritten text in Tamil script on a palm leaf manuscript. The text is arranged in approximately 10 horizontal lines. There are several dark, circular holes or indentations along the length of the leaf, which are characteristic of traditional palm leaf manuscripts used for binding.



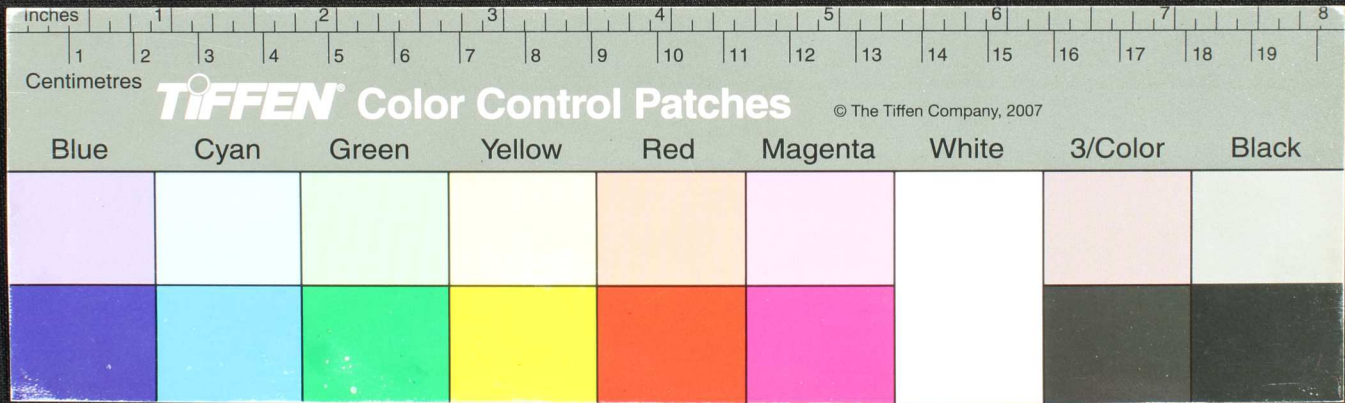


Handwritten Tamil script on a palm leaf manuscript. The text is arranged in approximately 10 horizontal lines across the length of the leaf. There are several dark, circular holes or indentations along the leaf, which are characteristic of traditional palm leaf manuscripts used for binding.





Handwritten text in Tamil script on a palm leaf manuscript. The text is arranged in approximately 10 horizontal lines. There are several dark, irregular holes and marks scattered across the leaf, most notably a large one near the center and several smaller ones along the top and bottom edges. The script is finely etched into the surface of the dried leaf.

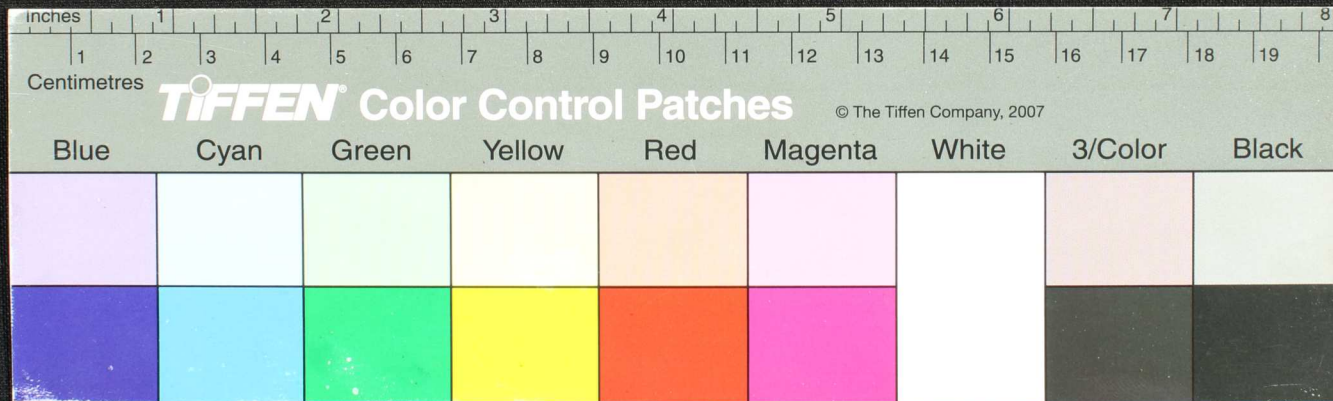






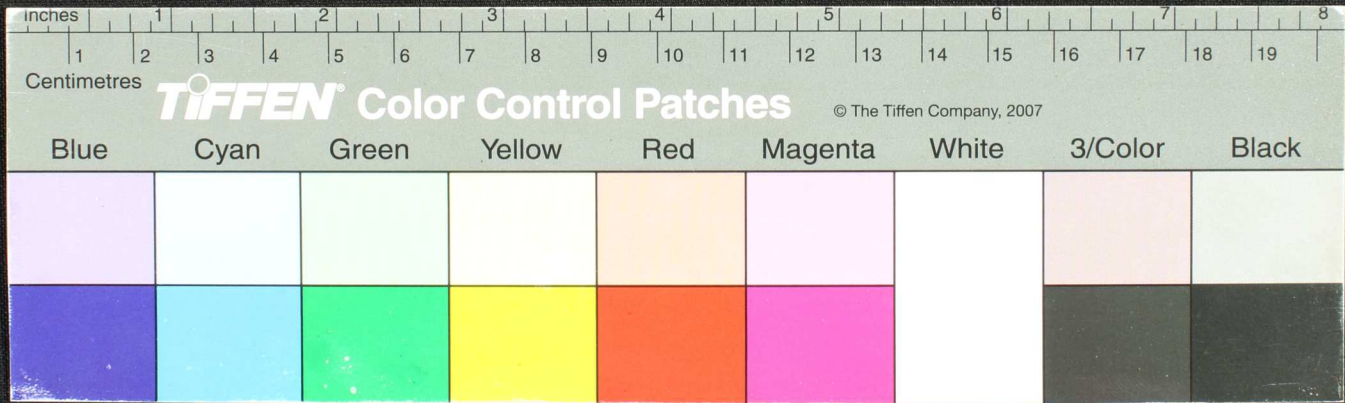


Handwritten text on a palm leaf manuscript, featuring several lines of script with some characters obscured by black redaction marks.





Handwritten text in Tamil script on a palm leaf manuscript. The text is arranged in approximately 10 horizontal lines. Several lines of text are obscured by dark, irregular ink blotches or damage to the leaf. The script is finely etched into the surface of the dried leaf.





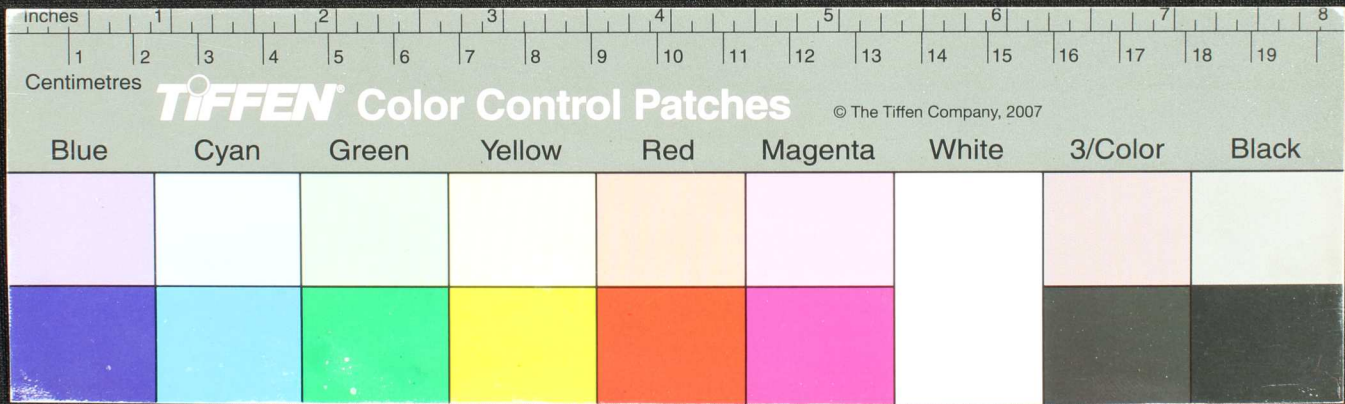






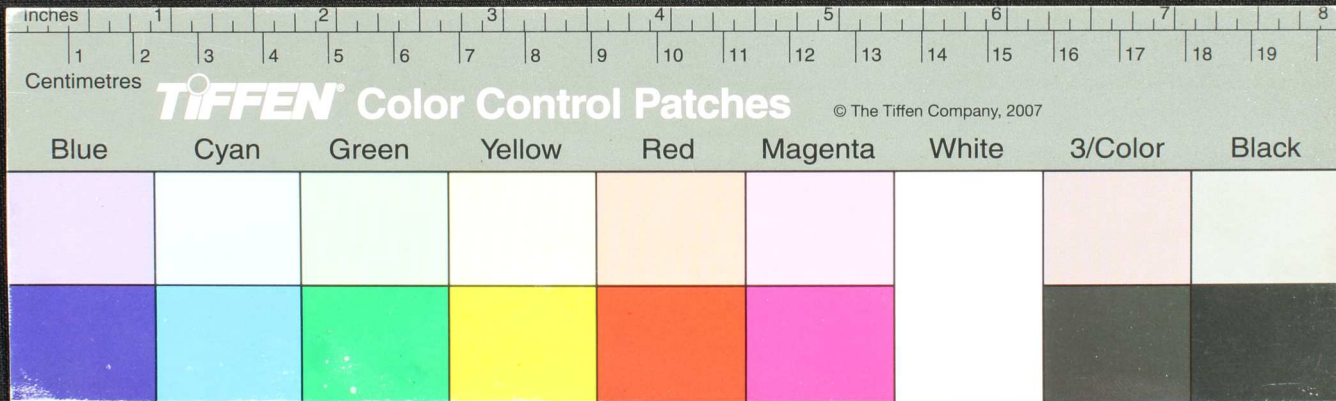


Handwritten text in Tamil script on a palm leaf manuscript. The text is arranged in approximately 10 horizontal lines. There are several dark, irregular marks and a hole on the leaf, which appear to be damage or intentional markings. The script is finely etched into the surface of the dried leaf.



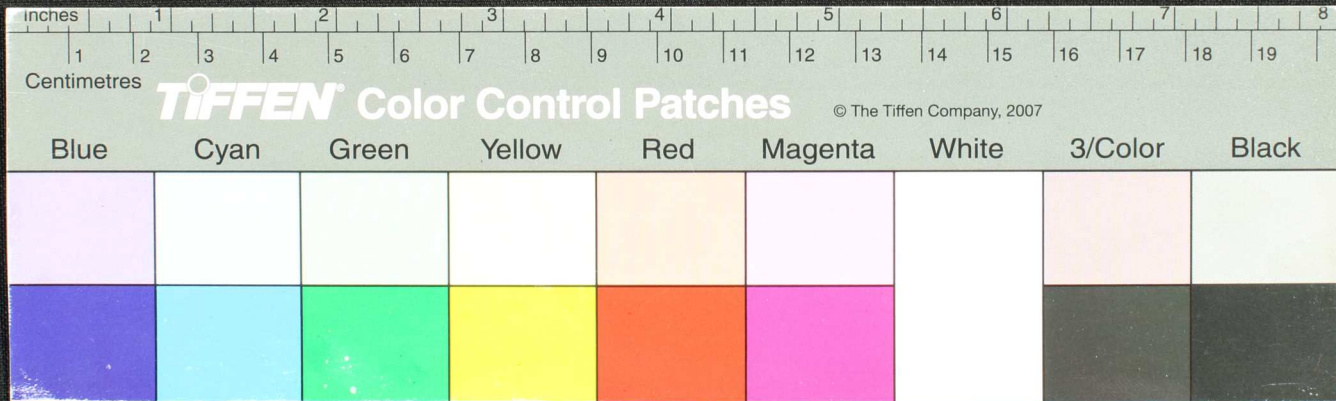


Handwritten text in Tamil script on a palm leaf manuscript. The text is arranged in approximately 10 horizontal lines. Several lines contain large, dark, irregular blotches that obscure the original characters, likely due to ink bleed-through or physical damage to the leaf. The visible script is a traditional form of the Tamil language.





Handwritten Tamil script on a palm leaf manuscript. The text is arranged in approximately 10 horizontal lines. A large, irregular hole is present on the right side of the leaf, obscuring the text in that area. The script is finely etched into the surface of the dried leaf.

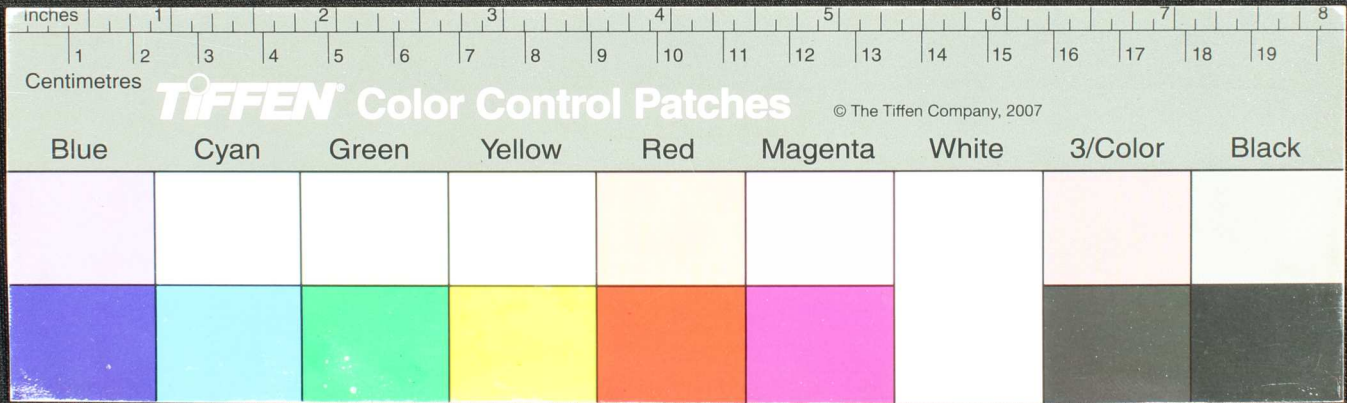








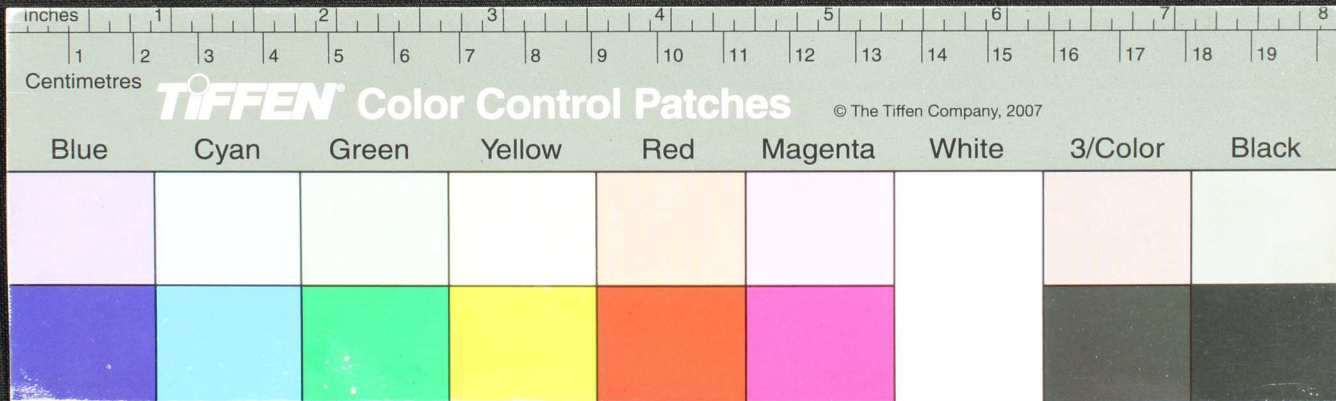
Handwritten text in Tamil script on a palm leaf manuscript. The text is arranged in approximately 10 horizontal lines across the length of the leaf. The script is finely etched into the surface of the dried leaf. The leaf shows signs of age, including several dark circular holes and irregular dark spots, likely due to insect damage or mold. The text is difficult to read due to the texture and damage of the original material.













Handwritten text in Tamil script on a palm leaf manuscript. The text is arranged in approximately 10 horizontal lines across the length of the leaf. The leaf is yellowed with age and shows significant damage, including a large circular hole and several irregular dark spots. The script is finely etched into the surface of the leaf.

