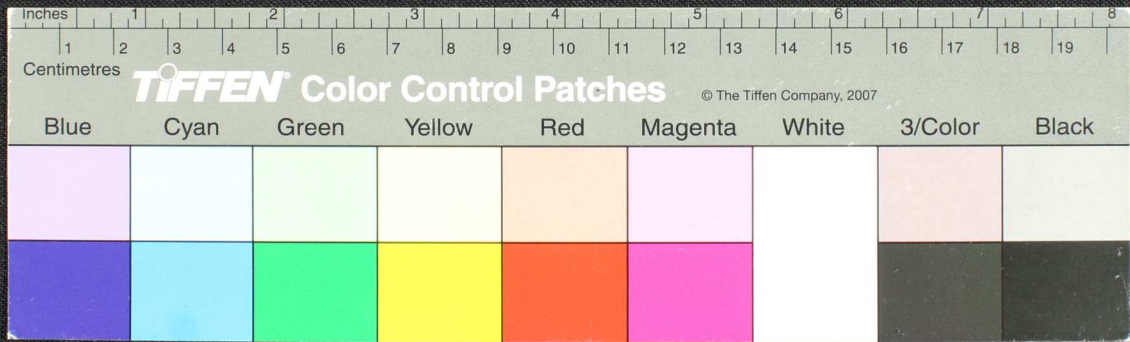
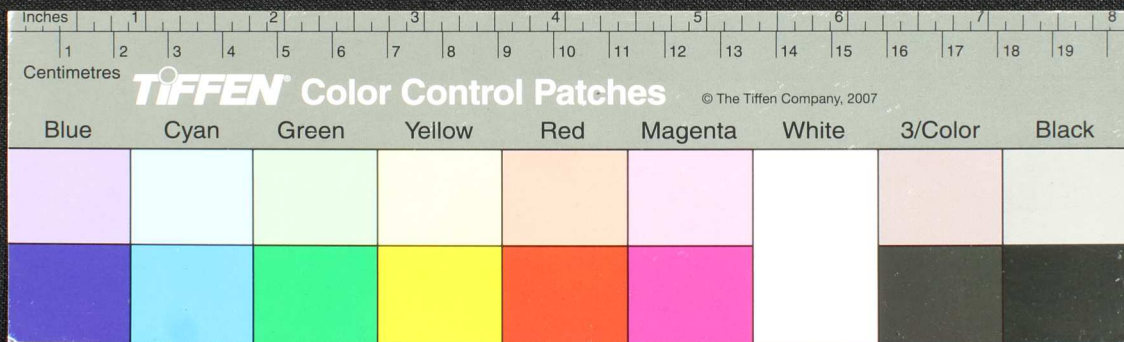


Handwritten text on a palm leaf manuscript strip, likely in Tamil script. The text is arranged in several lines and is partially obscured by dark spots and stains. On the left side of the strip, there is a vertical inscription: "22364".

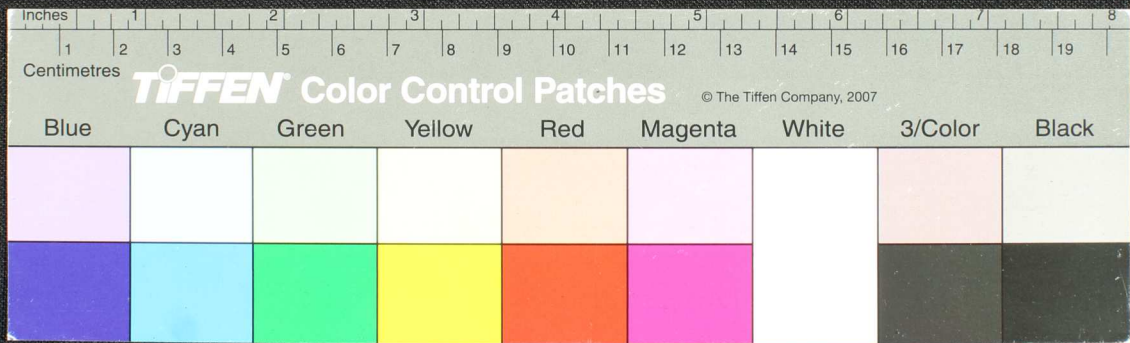


Handwritten text on a palm leaf manuscript strip, likely in Tamil script. The text is arranged in several lines and is partially obscured by dark ink smudges and a hole. The script is finely inscribed on the natural texture of the leaf.





Handwritten text in Tamil script on a palm leaf manuscript. The text is arranged in several lines across the length of the leaf. There is a significant dark, irregular hole or tear in the center of the leaf, obscuring some of the text. The script is finely etched into the surface of the dried leaf.



Handwritten text on a fragment of aged, yellowed paper, likely a manuscript or document. The text is written in a cursive script, possibly Tamil or a similar South Asian language. The fragment is heavily damaged, with significant staining and a large hole near the center. The text is arranged in several lines, with some characters appearing to be organized into a table or grid on the left side.

