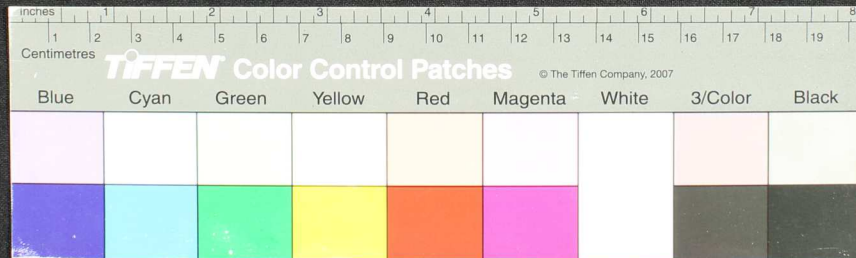


Handwritten text on a palm-leaf manuscript strip, likely in an ancient script. The text is arranged in several lines across the length of the leaf. There are some dark spots and a hole in the center of the leaf, possibly due to insect damage or wear.









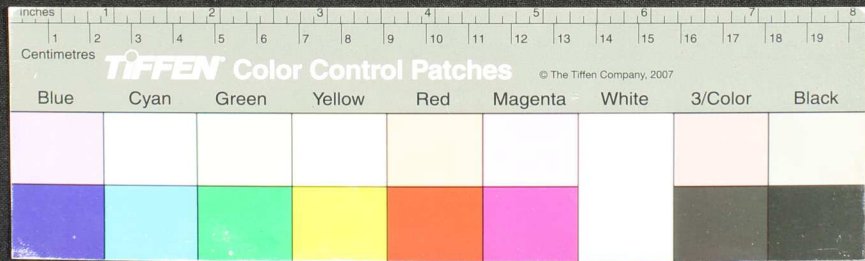








Handwritten Tamil script on a palm leaf manuscript. The text is arranged in approximately 10 horizontal lines across the length of the leaf. The script is finely etched into the surface of the dried leaf. There are several prominent dark, irregular marks and tears along the left and center portions of the leaf, suggesting damage or wear over time. The leaf is yellowish-brown in color and is set against a dark, textured background.





Handwritten text in Tamil script on a palm leaf manuscript. The text is arranged in approximately 10 horizontal lines across the length of the leaf. A circular stamp or seal is visible on the left side, partially overlapping the text. The leaf shows signs of age, including cracks and discoloration.

