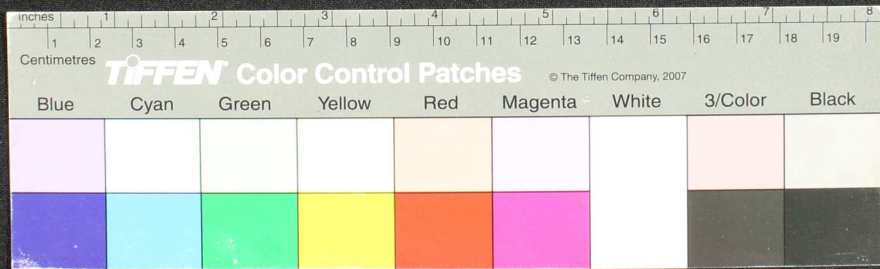
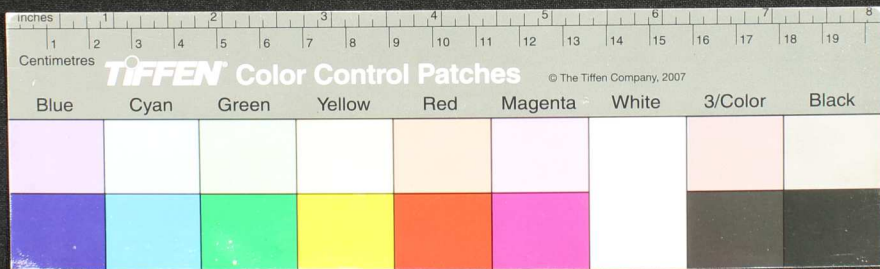


Handwritten text in Tamil script on a palm leaf manuscript. The text is arranged in approximately 15 horizontal lines across the length of the leaf. Two circular holes are visible, which were traditionally used for threading a cord to bind multiple leaves together. The leaf shows signs of age, including some staining and wear at the edges.





Fragment of an ancient manuscript, likely a palm leaf, showing handwritten text in a South Asian script. The text is arranged in horizontal lines across the length of the leaf. The leaf is heavily damaged, with significant portions missing, particularly at the ends and along the top edge. Two circular holes are visible, which were traditionally used for threading a cord to bind multiple leaves together into a book format. The ink is dark and the leaf is a light tan color due to age.

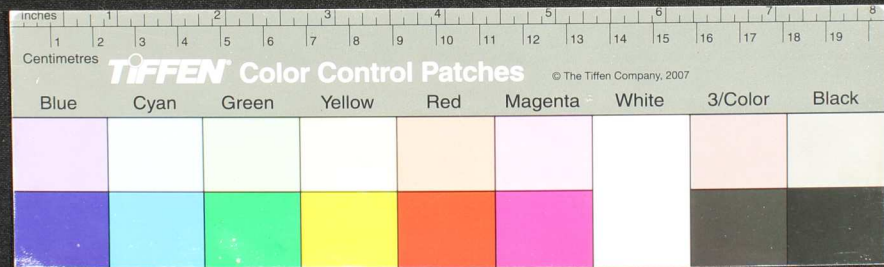








Fragment of an ancient manuscript, likely a palm leaf, showing handwritten text in a South Asian script. The text is arranged in horizontal lines across the length of the leaf. The leaf is heavily damaged, with significant portions missing from the left and right edges, and several circular holes are visible, possibly from insect damage or intentional perforations. The ink is dark and the leaf is a light brownish-yellow color.



Handwritten text on a palm leaf manuscript strip, showing two circular holes for binding. The text is in an ancient script, likely Tamil, and is arranged in horizontal lines across the length of the leaf. The leaf is yellowed and shows signs of age and wear.



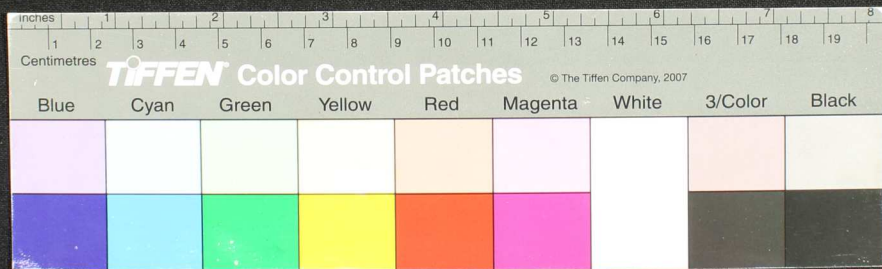




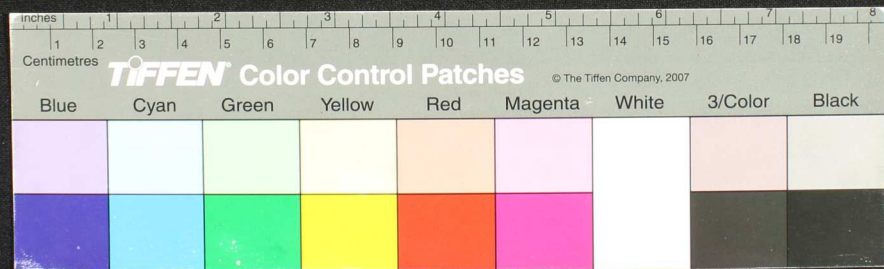




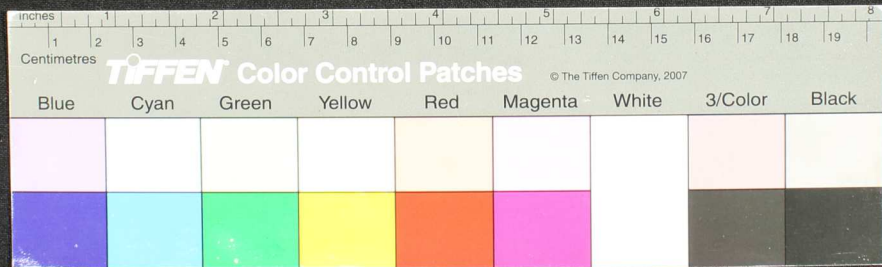
Handwritten text in Tamil script on a palm leaf manuscript. The text is densely packed and runs horizontally across the length of the leaf. There are two circular holes visible, which were traditionally used for threading a cord to bind multiple leaves together into a book format. The script is in an older form of the Tamil language, and the leaf shows signs of age and wear.

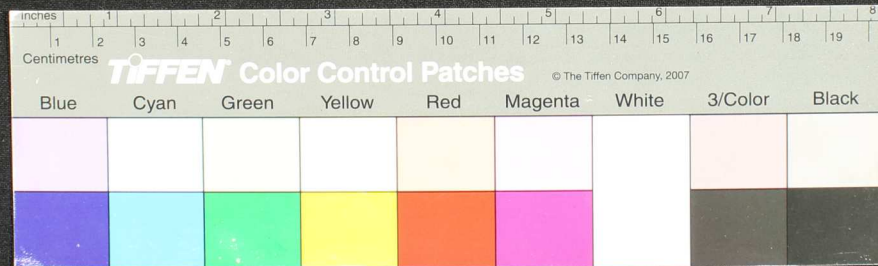


Fragment of an ancient palm-leaf manuscript with handwritten text in Tamil script. The leaf is heavily damaged, showing significant wear, tear, and discoloration. The text is arranged in horizontal lines across the length of the leaf. Two circular holes are visible, which were traditionally used for threading a cord to bind multiple leaves together into a book format. The script is densely packed and appears to be a form of classical Tamil.



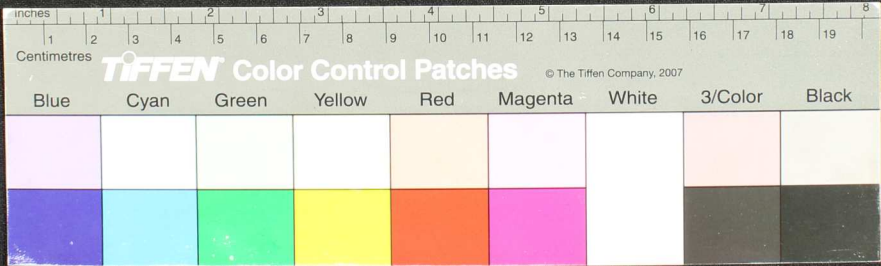






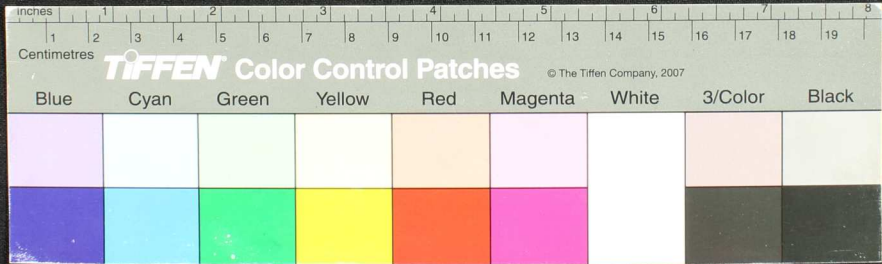


Handwritten text in Tamil script on a palm leaf manuscript. The text is arranged in horizontal lines across the length of the leaf. There are two circular holes visible, which were traditionally used for threading a cord to bind multiple leaves together. The leaf shows signs of age, including some darkening and wear, particularly around the edges and between the holes.





Handwritten text in Tamil script on a palm leaf manuscript. The text is arranged in approximately 15 horizontal lines across the length of the leaf. There are two circular holes punched through the leaf, one near the left end and one near the right end, used for threading a cord to bind multiple leaves together. The leaf shows signs of age, including some staining and wear at the edges.



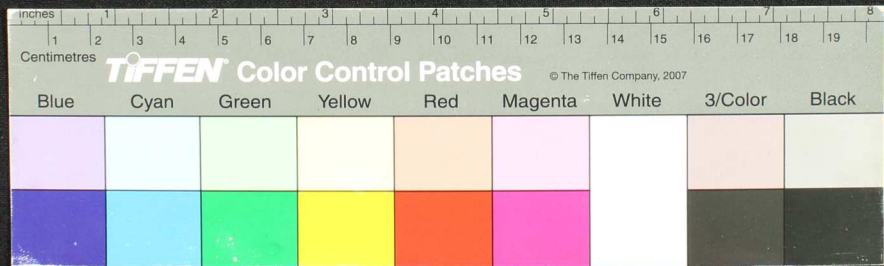
Handwritten Tamil script on a palm leaf manuscript. The text is densely packed in approximately 15 horizontal lines across the length of the leaf. Two circular holes are visible, which were traditionally used for threading a cord to bind multiple leaves together into a book format. The leaf shows signs of age, including some staining and wear at the edges.



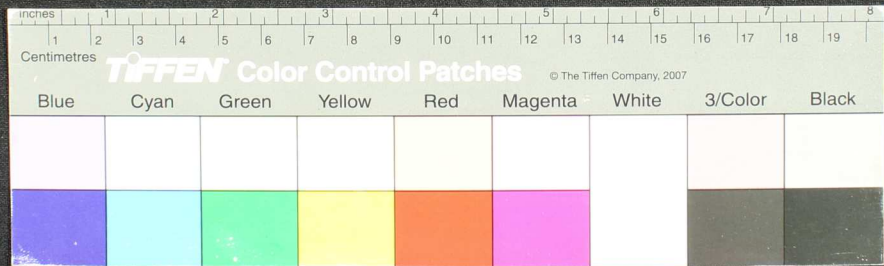
Handwritten text in Tamil script on a palm leaf manuscript. The text is densely packed and runs horizontally across the length of the leaf. There are two circular holes visible, which were traditionally used for threading a cord to bind multiple leaves together into a book format. The leaf shows signs of age, including some staining and wear at the edges.



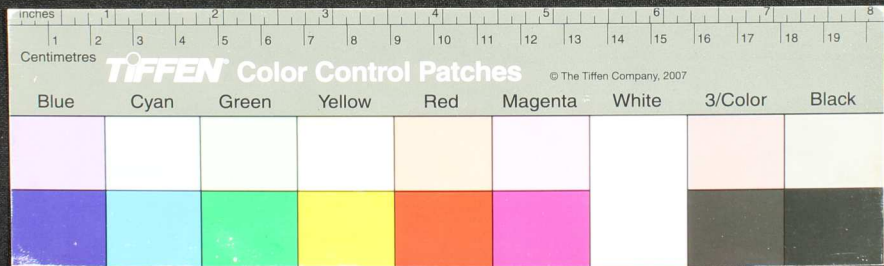
Handwritten text in Tamil script on a palm leaf manuscript. The text is densely packed and runs horizontally across the length of the leaf. There are two circular holes visible, which were traditionally used for threading a cord to bind multiple leaves together into a book format. The leaf shows signs of age, including some discoloration and wear at the edges.



Handwritten text in Tamil script on a palm leaf manuscript. The text is arranged in approximately 15 horizontal lines across the length of the leaf. The script is finely etched into the surface of the dried leaf. There are two prominent circular holes, one near the left end and one near the right end, which were traditionally used for threading a cord to bind multiple leaves together into a book format. The leaf shows signs of age, including some darkening and wear along the edges.

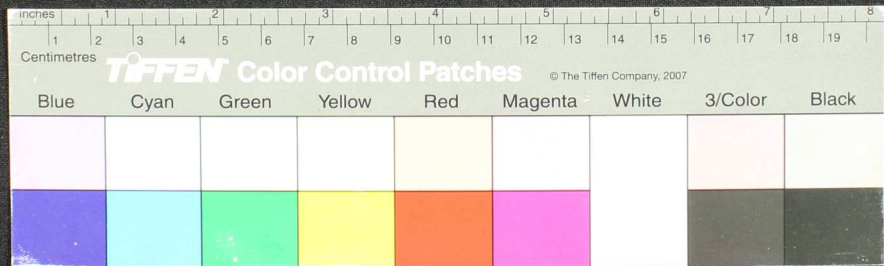


Handwritten text in Tamil script on a palm leaf manuscript. The text is densely packed and runs horizontally across the length of the leaf. There are two circular holes visible, which were traditionally used for threading a cord to bind multiple leaves together. The leaf shows signs of age, including some dark spots and wear at the edges.





Handwritten text on a palm leaf manuscript strip, showing multiple lines of script in an ancient South Asian language. The leaf is heavily damaged with numerous holes and dark spots.





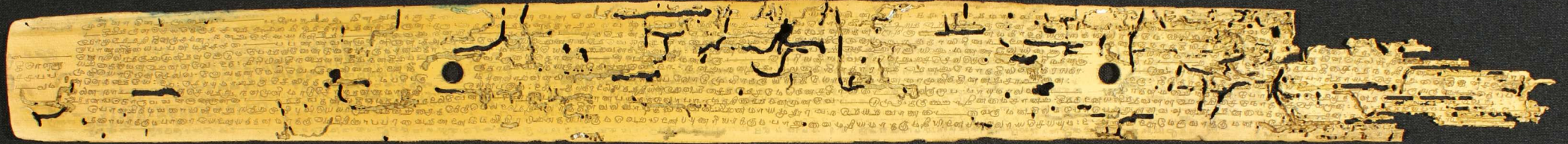
Handwritten text in Tamil script on a palm leaf manuscript. The text is densely packed and runs horizontally across the length of the leaf. There are two circular holes visible, which were traditionally used for threading a cord to bind multiple leaves together. The leaf shows signs of age, including some dark spots and irregular edges.















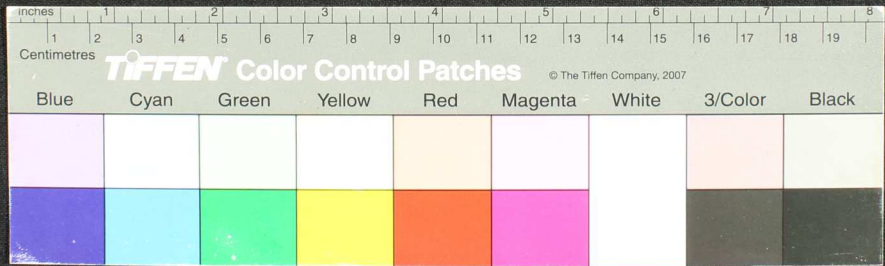
Handwritten text in Tamil script on a palm leaf manuscript. The text is densely packed and runs horizontally across the length of the leaf. There are two circular holes visible, which were traditionally used for threading a cord to bind multiple leaves together. The leaf shows signs of age, including discoloration and some surface damage.



Handwritten text in Tamil script on a palm leaf manuscript. The text is densely packed and runs horizontally across the length of the leaf. There are two circular holes visible, which were traditionally used for threading a cord to bind multiple leaves together. The leaf shows signs of age and wear, with some darkening and fraying at the right end.



Handwritten text in Tamil script on a palm leaf manuscript. The text is densely packed and runs horizontally across the length of the leaf. There are two circular holes visible, which were traditionally used for threading a cord to bind multiple leaves together. The leaf shows signs of age, including some darkening and wear, particularly at the edges.



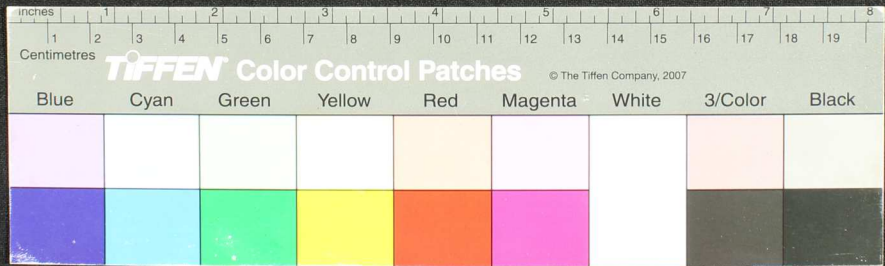
Handwritten text in Tamil script on a palm leaf manuscript. The text is densely packed and runs horizontally across the length of the leaf. Two circular holes are visible, which were traditionally used for threading a cord to bind multiple leaves together. The leaf shows signs of age, including discoloration and some surface damage.



Handwritten text in Tamil script on a palm leaf manuscript. The text is densely packed and runs horizontally across the length of the leaf. There are two circular holes visible, which were traditionally used for threading a cord to bind multiple leaves together. The leaf shows signs of age, including some staining and wear.



Handwritten text in Tamil script on a palm leaf manuscript. The text is densely packed and runs horizontally across the length of the leaf. There are two circular holes visible, which were traditionally used for threading a cord to bind multiple leaves together. The leaf shows signs of age, including some staining and wear at the edges.





A long, narrow, yellowish-brown palm-leaf manuscript strip with faint, handwritten text in an ancient script. The strip is heavily damaged, showing significant cracking, discoloration, and two circular holes. The text is arranged in horizontal lines across the length of the leaf.





Handwritten text in Tamil script on a palm leaf manuscript. The text is densely packed and runs horizontally across the length of the leaf. There are two circular holes visible, which were traditionally used for threading a cord to bind multiple leaves together. The leaf shows signs of age, including some staining and wear at the edges.





A long, narrow, heavily damaged palm-leaf manuscript strip with two circular holes. The surface is covered in dense, handwritten text in an ancient script, likely Tamil. The leaf is yellowed and shows significant wear, including tears and dark spots.



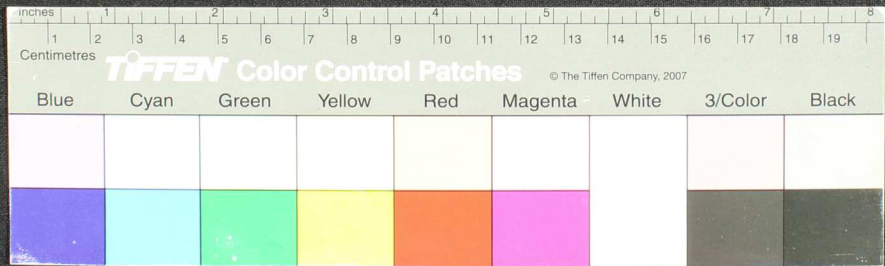
Handwritten text on a palm leaf manuscript strip, showing significant damage and two circular holes. The text is written in a South Indian script, likely Tamil, and is arranged in horizontal lines across the length of the leaf. The leaf is yellowed and has several dark, irregular spots and tears, particularly on the right side.



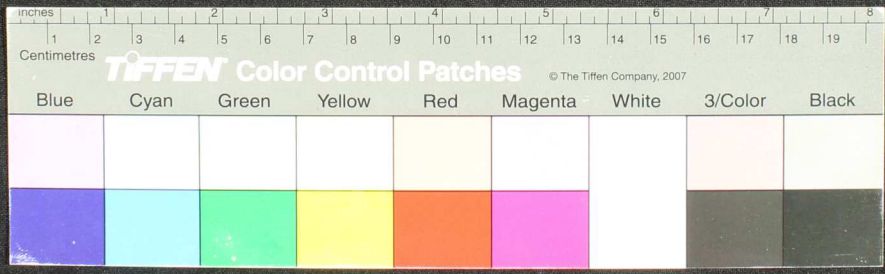
Handwritten text in Tamil script on a palm leaf manuscript. The text is densely packed and runs horizontally across the length of the leaf. There are two circular holes visible, which were traditionally used for threading a cord to bind multiple leaves together. The leaf shows signs of age, including some darkening and wear along the edges.



Handwritten Tamil script on a palm leaf manuscript. The text is arranged in approximately 15 horizontal lines across the length of the leaf. Two circular holes are visible, which were traditionally used for threading a cord to bind multiple leaves together. The leaf shows signs of age, including some staining and wear at the edges.



Handwritten text in Tamil script on a palm leaf manuscript. The text is densely packed and runs horizontally across the length of the leaf. There are two circular holes visible, which were traditionally used for threading a cord to bind multiple leaves together. The leaf shows signs of age, including some staining and wear, particularly on the right side.









Handwritten text in Tamil script on a palm leaf manuscript. The text is arranged in approximately 15 horizontal lines across the length of the leaf. Two circular holes are visible, used for threading a cord to bind multiple leaves together. The leaf shows signs of age, including some staining and wear at the edges.

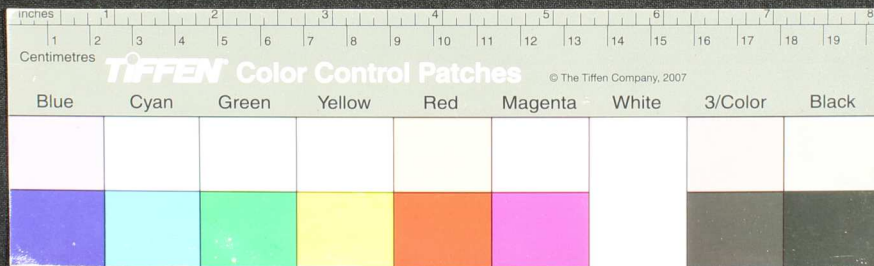


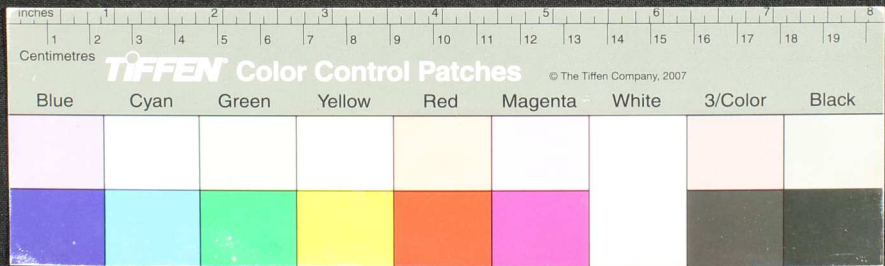
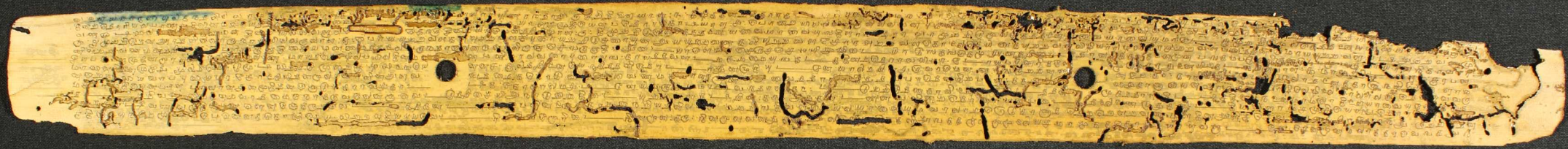
Handwritten Tamil script on a palm leaf manuscript strip. The text is arranged in approximately 12 horizontal lines. Two circular holes are visible, which were traditionally used for threading a cord to bind multiple leaves together. The script is densely packed and appears to be a form of classical Tamil, possibly containing religious or philosophical content.



Handwritten text in Tamil script on a palm leaf manuscript. The text is arranged in approximately 15 horizontal lines across the length of the leaf. Two circular holes are visible, which were traditionally used for threading a cord to bind multiple leaves together into a book format. The leaf shows signs of age, including some discoloration and wear at the edges.









Handwritten text on a palm leaf manuscript strip, showing two circular holes for binding. The text is in an ancient script, likely Tamil, and is arranged in horizontal lines across the length of the leaf. The leaf is yellowed and shows signs of age and wear.







Handwritten Tamil script on a palm leaf manuscript. The text is arranged in approximately 12 horizontal lines across the length of the leaf. Two circular holes are visible, which were traditionally used for threading a cord to bind multiple leaves together. The leaf shows signs of age, including some discoloration and wear at the edges.



Handwritten text in Tamil script on a palm leaf manuscript. The text is arranged in approximately 12 horizontal lines across the length of the leaf. The script is finely etched into the surface of the dried leaf. There are several dark, irregular holes and tears along the top and bottom edges of the leaf, indicating significant wear and damage over time. The leaf is yellowish-brown in color due to its age.



Handwritten text in Tamil script on a palm leaf manuscript. The text is arranged in approximately 12 horizontal lines across the length of the leaf. The script is finely etched into the surface of the dried leaf. There are several dark, irregular holes and tears along the length of the leaf, particularly on the right side, which are characteristic of insect damage or physical wear over time. The leaf is yellowish-brown in color due to its age and the drying process.

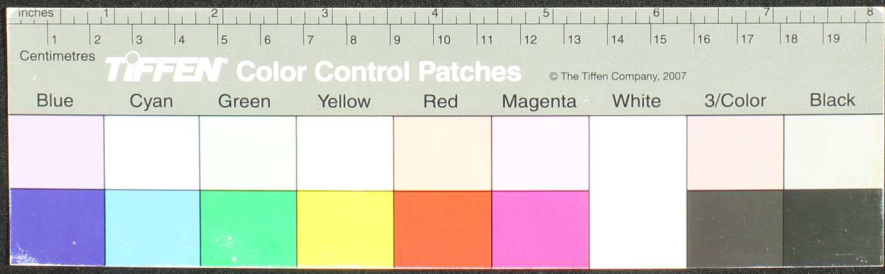




Fragment of an ancient palm-leaf manuscript with handwritten text in Tamil script. The leaf is yellowed and shows signs of wear, including two circular holes and irregular dark stains. The text is densely packed and runs horizontally across the length of the leaf.



A long, narrow, yellowish-brown strip of ancient papyrus or parchment, heavily damaged and stained. The surface is covered in dense, handwritten text in an ancient script, likely Egyptian hieroglyphs or cursive. The text is arranged in horizontal lines across the length of the strip. There are two prominent circular holes, one near the left end and one near the right end, which were likely used for binding or threading. The edges are frayed and irregular, and the overall appearance is that of a well-preserved but aged archaeological artifact.







Handwritten text in Tamil script on a palm leaf manuscript. The text is arranged in approximately 15 horizontal lines across the length of the leaf. The script is finely etched into the surface of the dried leaf. There are several dark, irregular spots and stains, particularly on the right side, which appear to be ink splatters or damage to the leaf. The leaf is yellowed with age and has a slightly uneven texture.





Handwritten text in Tamil script on a palm leaf manuscript. The text is densely packed and runs horizontally across the length of the leaf. There are two circular holes visible, which were traditionally used for threading a cord to bind multiple leaves together. The script is in an older form of the Tamil language.



Handwritten text in an ancient script, likely Tamil, inscribed on a palm leaf. The text is arranged in approximately 15 horizontal lines across the length of the leaf. The leaf shows signs of age, including discoloration and some physical damage, particularly along the right edge and around two circular holes. The script is finely etched into the surface of the dried leaf.



Handwritten Tamil script on a palm leaf manuscript. The text is densely packed in approximately 15 horizontal lines across the length of the leaf. Two circular holes are visible, used for threading a cord to bind multiple leaves together. The leaf shows signs of age, including discoloration and some surface damage.



Handwritten text in Tamil script on a palm leaf manuscript. The text is densely packed and runs horizontally across the length of the leaf. There are two circular holes visible, which were traditionally used for threading a cord to bind multiple leaves together. The leaf shows signs of age, including some staining and wear at the edges.





Fragment of an ancient manuscript with handwritten text in an Indic script, possibly Tamil or Grantha. The text is arranged in horizontal lines across the length of the fragment. The parchment is heavily damaged, with numerous holes and irregular tears, particularly along the right edge and in the center. Two circular holes are visible, which may have been part of a binding system. The ink is dark and the parchment is aged and yellowed.

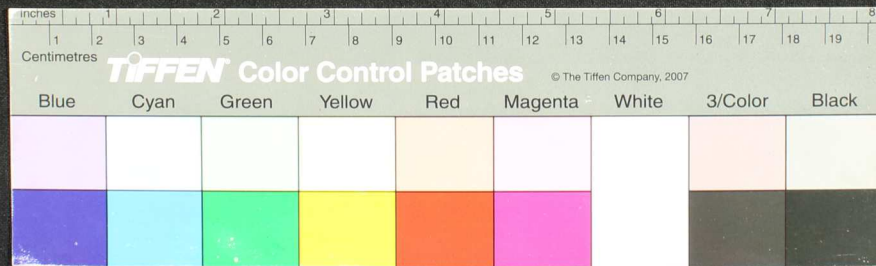






Handwritten text in Tamil script on a palm leaf manuscript. The text is densely packed and runs horizontally across the length of the leaf. Two circular holes are visible, used for binding multiple leaves together. The leaf shows signs of age, including discoloration and some surface damage.







Fragment of an ancient palm-leaf manuscript with handwritten text in Tamil script. The leaf is yellowed and shows signs of wear, including two circular holes and significant damage along the right edge. The text is densely packed and runs horizontally across the length of the leaf.



Handwritten Tamil script on a long, narrow, and heavily damaged strip of aged paper. The text is arranged in approximately 15 horizontal lines. The paper is yellowed and shows significant signs of wear, including two circular holes and numerous dark spots and tears. The script is dense and appears to be a form of historical or religious text.





Handwritten text in Tamil script on a palm leaf manuscript. The text is arranged in approximately 15 horizontal lines across the length of the leaf. The script is densely packed and appears to be a form of classical or religious Tamil. There are several circular holes along the length of the leaf, which were traditionally used for threading a cord to bind multiple leaves together into a book. The leaf shows signs of age, including some discoloration and wear at the edges.





Handwritten text on a palm leaf manuscript, showing significant damage and discoloration. The text is written in a South Indian script, likely Tamil, and is arranged in horizontal lines across the length of the leaf. The leaf is heavily worn, with large holes and irregular dark spots throughout, particularly on the right side. The text is mostly illegible due to the damage and fading.





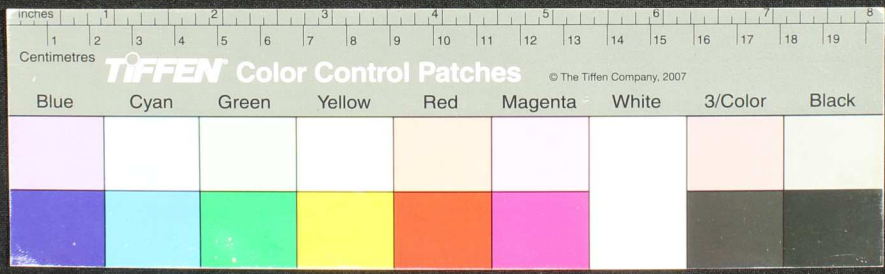
Handwritten text in Tamil script on a palm leaf manuscript. The text is densely packed and runs horizontally across the length of the leaf. There are two circular holes visible, which were traditionally used for threading a cord to bind multiple leaves together. The leaf shows signs of age and wear, with some darkening and irregular edges.



Handwritten text on a palm leaf manuscript strip, showing multiple lines of script in an ancient South Asian language. The leaf is heavily damaged, with significant tearing and two circular holes. The text is densely packed and spans the entire length of the strip.









Handwritten text in Tamil script on a palm leaf manuscript. The text is arranged in approximately 15 horizontal lines across the length of the leaf. The script is finely etched into the surface of the dried leaf. There are several circular holes along the length of the leaf, which were traditionally used for threading a cord to bind multiple leaves together into a book format. The leaf shows signs of age, including some staining and irregular edges.



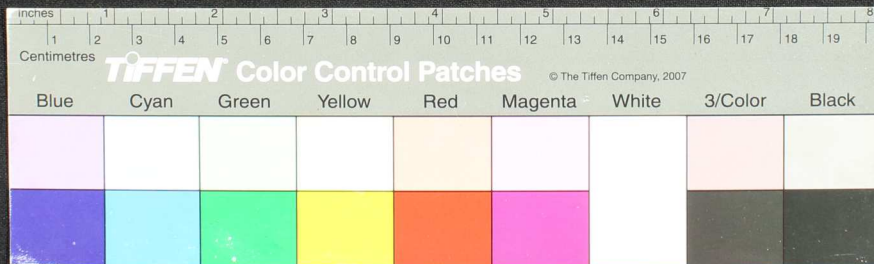








Handwritten text on a palm leaf manuscript strip, showing two circular holes for binding. The text is written in a South Indian script, likely Tamil, and is arranged in horizontal lines across the length of the leaf. The leaf is yellowed and shows signs of age and wear.



Handwritten text in Tamil script on a palm leaf manuscript. The text is densely packed and runs horizontally across the length of the leaf. There are two circular holes visible, which were traditionally used for threading a cord to bind multiple leaves together. The leaf shows signs of age, including some staining and wear.



Handwritten text in Tamil script on a palm leaf manuscript. The text is densely packed and spans the length of the leaf. There are two circular holes visible, which were traditionally used for threading a cord to bind multiple leaves together. The script is in an older form of the Tamil language.



Handwritten text in Tamil script on a palm leaf manuscript. The text is densely packed and runs horizontally across the length of the leaf. There are two circular holes visible, which were traditionally used for threading a cord to bind multiple leaves together. The leaf shows signs of age, including some staining and wear at the edges.

சுருதி



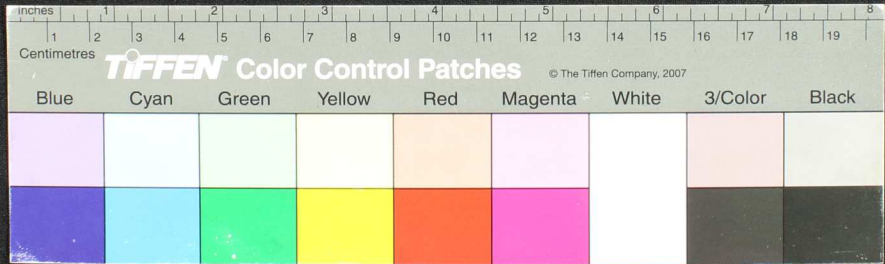
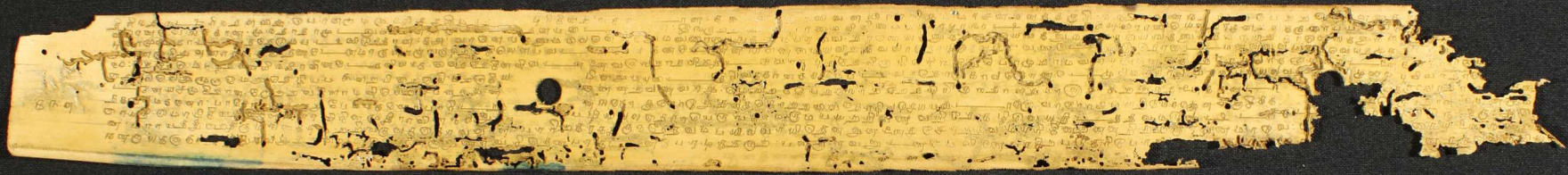
Handwritten text in Tamil script on a palm leaf manuscript. The text is densely packed and runs horizontally across the length of the leaf. There are two circular holes visible, which were traditionally used for threading a cord to bind multiple leaves together. The leaf shows signs of age, including some staining and wear at the edges.













Handwritten text in Tamil script on a palm leaf manuscript. The text is arranged in horizontal lines across the length of the leaf. The leaf shows signs of age, including dark spots and some physical damage, particularly on the right side where the edge is jagged and broken.



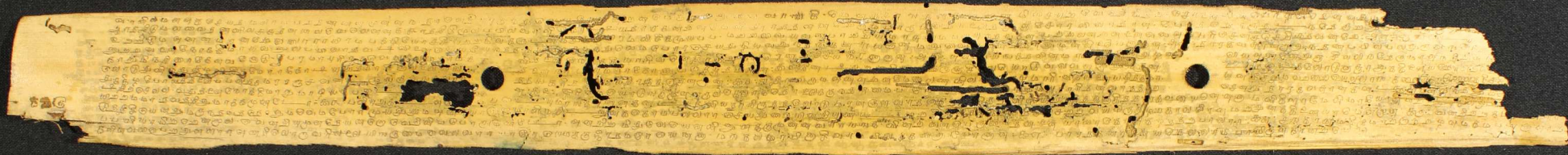
Handwritten text in Tamil script on a palm leaf manuscript. The text is arranged in horizontal lines across the length of the leaf. There are two circular holes visible, which were traditionally used for threading a cord to bind multiple leaves together. The leaf shows signs of age and wear, with some fraying and discoloration.













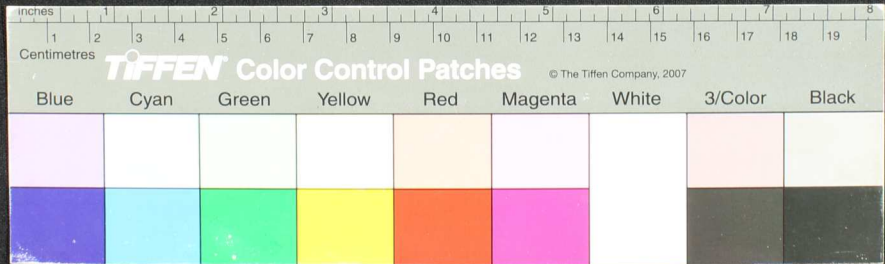
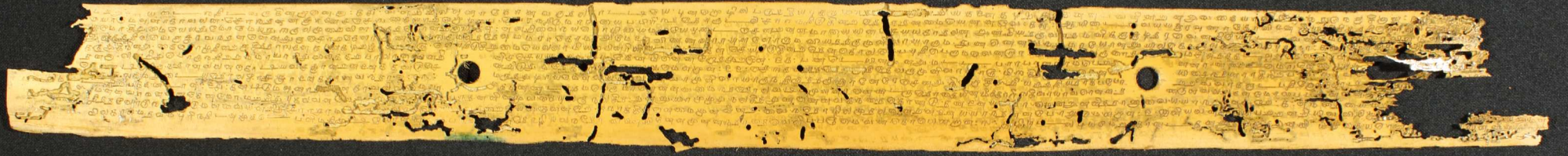
Handwritten text in Tamil script on a palm leaf manuscript. The text is densely packed and runs horizontally across the length of the leaf. There are two circular holes visible, which were traditionally used for threading a cord to bind multiple leaves together. The leaf shows signs of age, including some dark spots and wear along the edges.



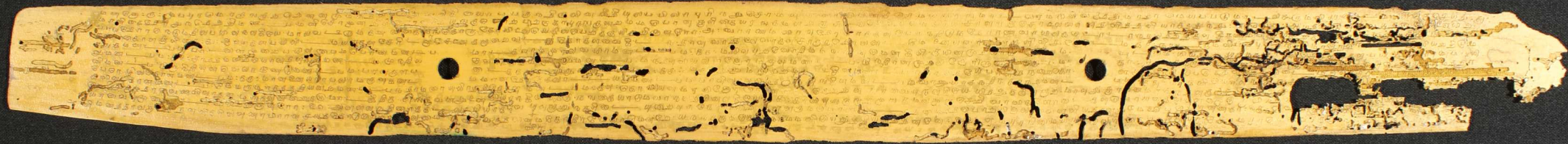
Fragment of an ancient palm-leaf manuscript with handwritten text in Tamil script. The leaf is yellowed and shows signs of wear, including two circular holes and a large tear. The text is arranged in horizontal lines across the length of the leaf.





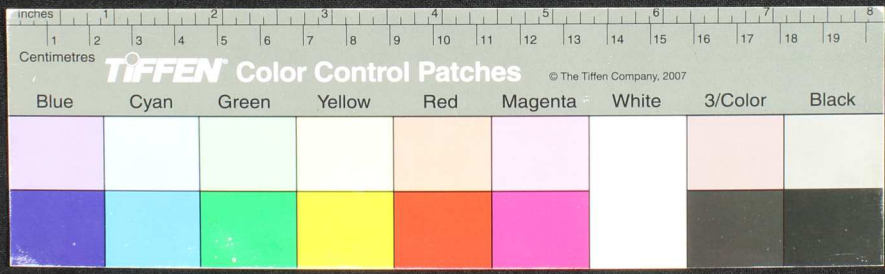








Fragment of an ancient palm-leaf manuscript with handwritten text in Tamil script. The leaf is heavily damaged, showing significant wear, tears, and two circular holes. The text is arranged in horizontal lines across the length of the leaf.



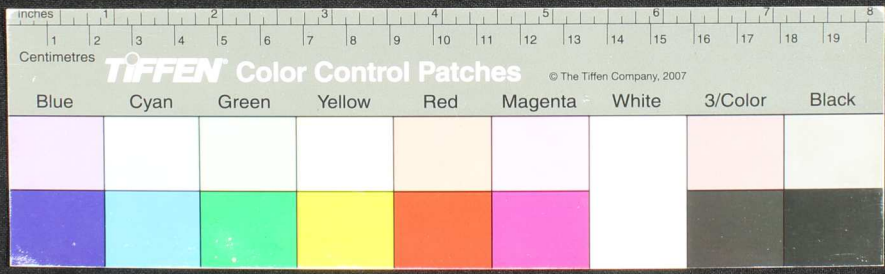




Fragment of an ancient manuscript, likely a palm leaf, featuring handwritten text in a South Asian script. The text is arranged in horizontal lines across the length of the leaf. The leaf is heavily damaged, showing significant wear, including two circular holes and extensive cracking and discoloration, particularly along the right edge. The script is densely packed and appears to be a form of Tamil or Grantha.



Handwritten text in Tamil script on a palm leaf manuscript. The text is arranged in horizontal lines across the length of the leaf. The leaf is heavily damaged, with numerous holes and tears, particularly in the center and right-hand side. The number '586' is written in the left margin.





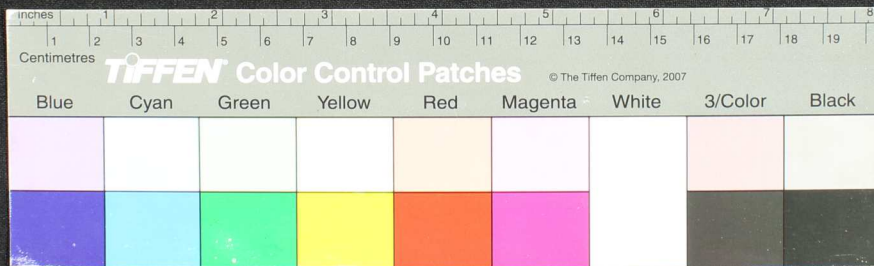
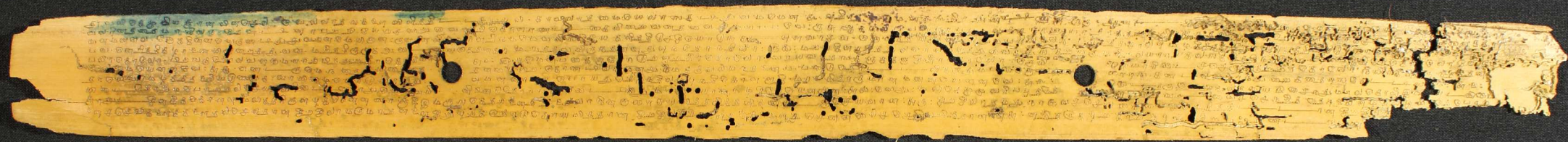


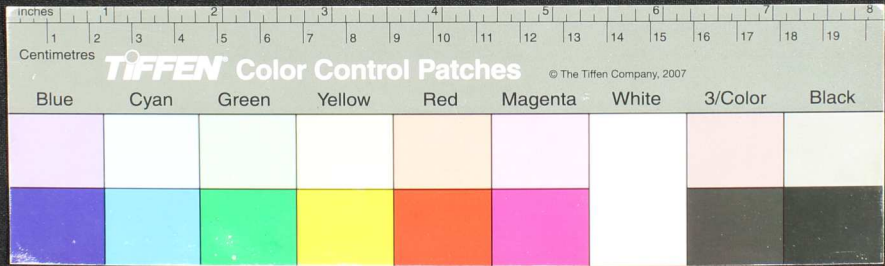
Fragment of an ancient manuscript, likely a scroll, showing dense handwritten text in a cursive script. The fragment is heavily damaged, with significant tearing and missing sections, particularly along the top and bottom edges. Two circular holes are visible, suggesting the fragment was part of a bound volume. The text is written in a dark ink on a light-colored, aged parchment or paper.





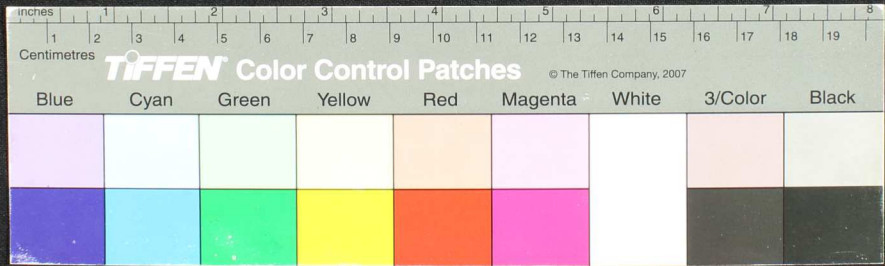














Handwritten text in Tamil script on a palm leaf manuscript. The text is densely packed and runs horizontally across the length of the leaf. There are two circular holes visible, which were traditionally used for threading a cord to bind multiple leaves together into a book format. The leaf shows signs of age, including some discoloration and wear at the edges.

