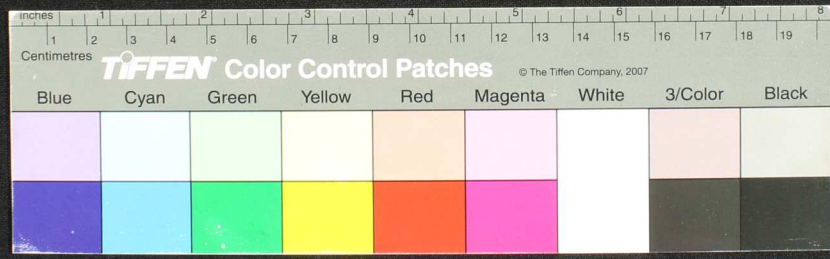
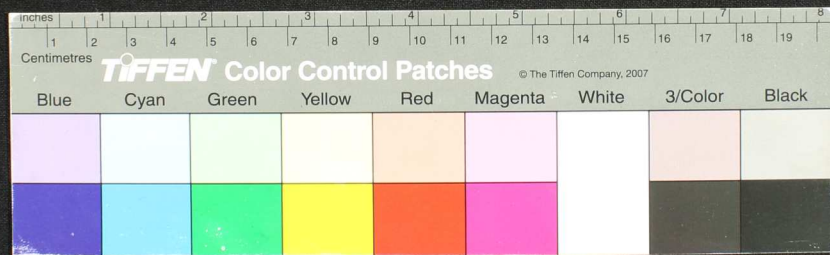
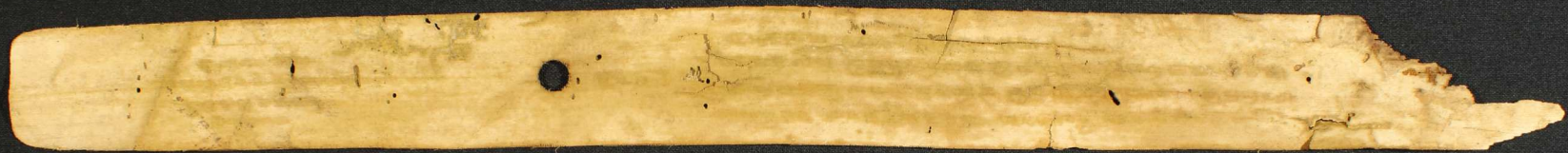


Handwritten text in Tamil script on a palm leaf manuscript. The text is arranged in several lines across the length of the leaf. A small circular hole is visible near the center of the leaf, used for threading a cord to bind multiple leaves together. The leaf shows signs of age, including some staining and a jagged, broken edge on the right side.







Handwritten Tamil script on a palm leaf manuscript strip. The text is arranged in two columns, with the right column being slightly longer than the left. The script is finely etched into the surface of the dried leaf.





