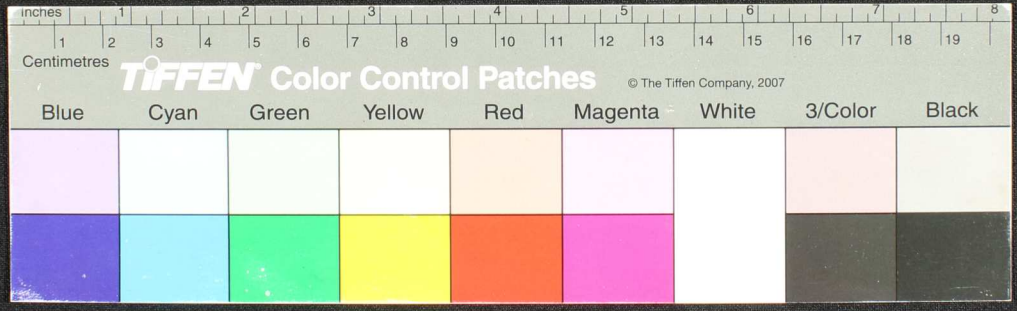
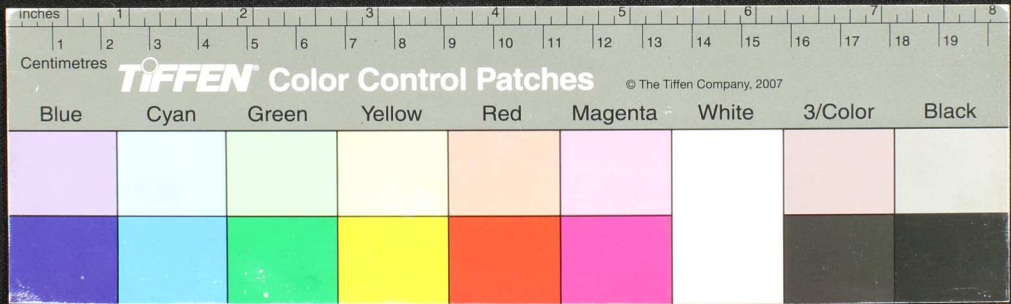


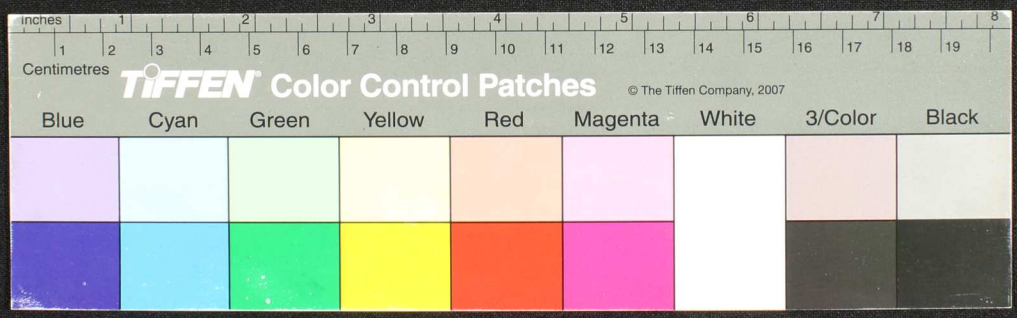
Handwritten Tamil script on a palm leaf manuscript. The text is arranged in approximately 10 horizontal lines across the length of the leaf. The script is densely packed and appears to be a form of classical Tamil. There are two circular holes visible on the leaf, which were traditionally used for threading a cord to bind multiple leaves together into a book format. The leaf shows signs of age, including some darkening and wear, particularly at the edges.



Handwritten Tamil script on a palm leaf manuscript. The text is arranged in approximately 10 horizontal lines across the length of the leaf. The script is densely packed and appears to be a form of classical Tamil. There are two circular holes visible on the leaf, which were traditionally used for threading a cord to bind multiple leaves together into a book format. The leaf shows signs of age, including some discoloration and wear at the edges.



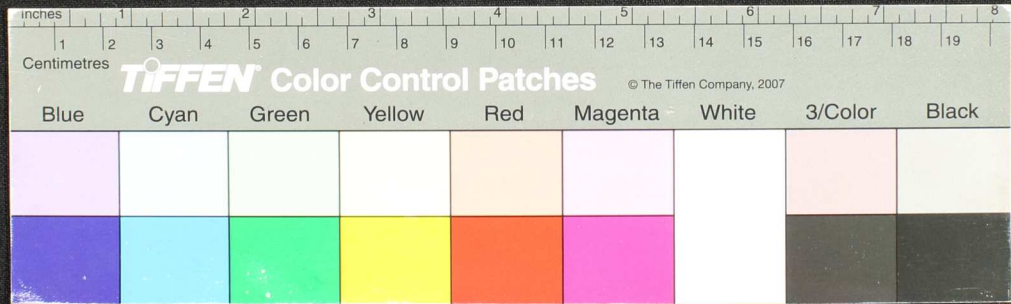
Handwritten text in Tamil script on a palm leaf manuscript. The text is arranged in approximately 10 horizontal lines across the length of the leaf. The script is dense and characteristic of traditional Tamil inscriptions. The leaf shows signs of age, including some staining and irregular edges.



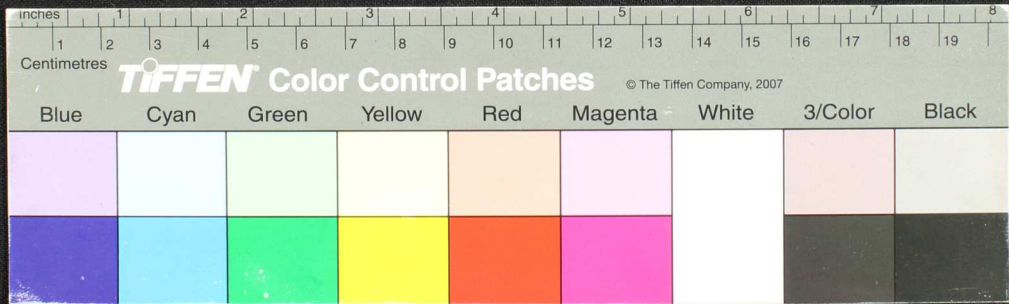
Handwritten Tamil script on a palm leaf manuscript strip. The text is arranged in approximately 10 horizontal lines. The script is finely etched into the surface of the dried leaf. There are two circular holes visible on the strip, which were traditionally used for threading a cord to bind multiple leaves together into a book format. The leaf shows signs of age, including some discoloration and wear at the edges.



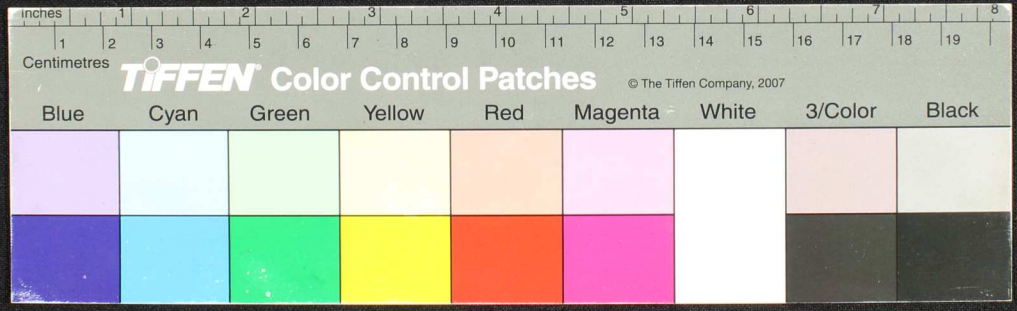
Handwritten Tamil script on a palm leaf manuscript fragment. The text is arranged in approximately 10 horizontal lines. On the left side, there are vertical inscriptions, including the word 'முடிபு' (Mudipu) and 'முடிபு' (Mudipu). The main body of text contains several lines of script, with some characters appearing to be in a different script or dialect, possibly indicating a specific dialect or a mix of scripts. The leaf shows signs of age and wear, with some holes and irregular edges.



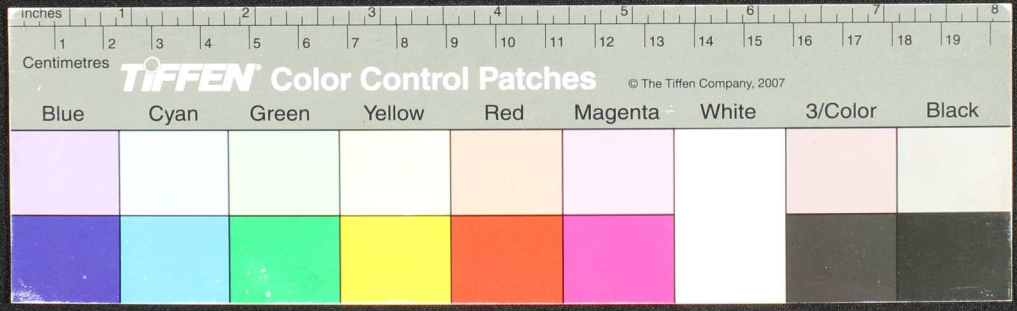
Handwritten text in Tamil script on a palm leaf manuscript. The text is densely packed and spans the length of the leaf. Two circular holes are visible, which were traditionally used for threading a cord to bind multiple leaves together. The script is in an older form of the Tamil language.



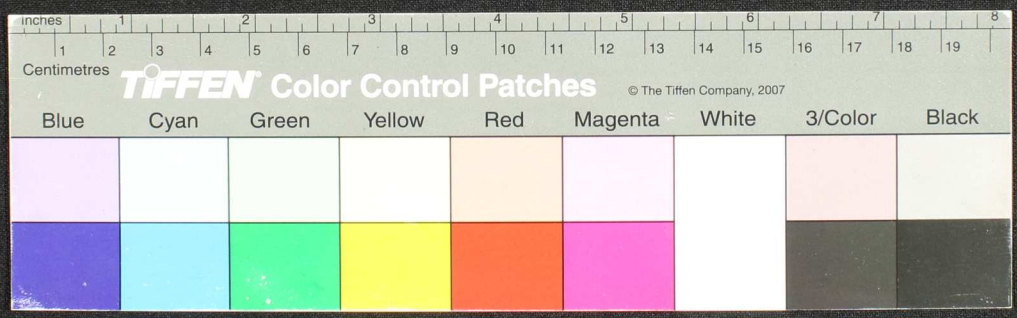
Handwritten text in Tamil script on a palm leaf manuscript. The text is arranged in approximately 10 horizontal lines across the length of the leaf. The script is dense and appears to be a form of classical or historical Tamil. There are two circular holes visible on the leaf, which were traditionally used for threading a cord to bind multiple leaves together into a book format.



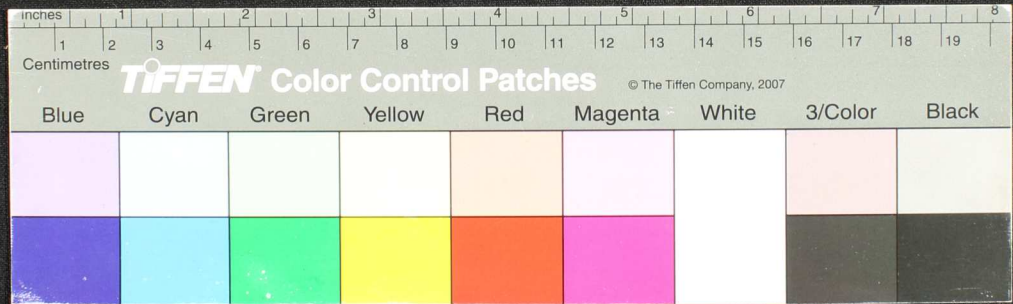
Handwritten text in Tamil script on a fragment of aged, yellowed paper. The text is densely packed and appears to be a historical record or document. The paper is heavily damaged, with significant tearing and discoloration, particularly around the edges and a central hole.



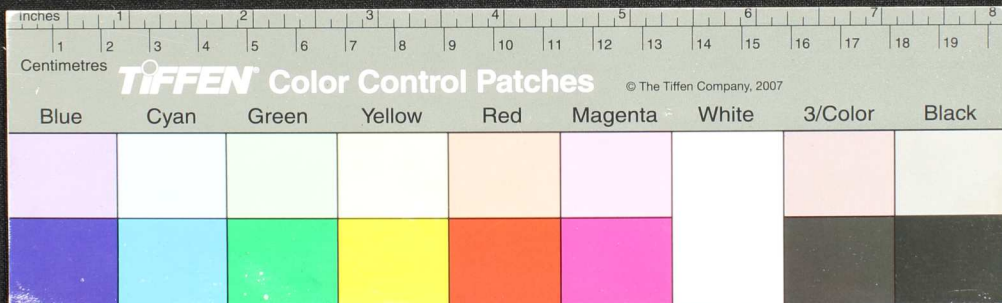
Handwritten text in Tamil script on a palm leaf manuscript. The text is arranged in approximately 10 horizontal lines across the length of the leaf. The script is dense and appears to be a form of classical or historical Tamil. The leaf shows signs of age, including some darkening and wear at the edges.



Handwritten Tamil script on a palm leaf manuscript. The text is arranged in approximately 10 horizontal lines across the length of the leaf. The script is finely etched into the surface of the dried leaf. The leaf shows signs of age, including some dark spots and a slightly irregular, torn edge on the left side.



Handwritten Tamil script on a palm leaf manuscript. The text is arranged in approximately 10 horizontal lines across the length of the leaf. Two circular holes are visible, which were traditionally used for threading a cord to bind multiple leaves together into a book format. The leaf shows signs of age, including some dark spots and fraying at the edges.



Handwritten Tamil script on a palm leaf manuscript. The text is arranged in approximately 12 horizontal lines across the length of the leaf. Two circular holes are visible, which were traditionally used for threading a cord to bind multiple leaves together. The leaf shows signs of age, including some staining and wear at the right end.



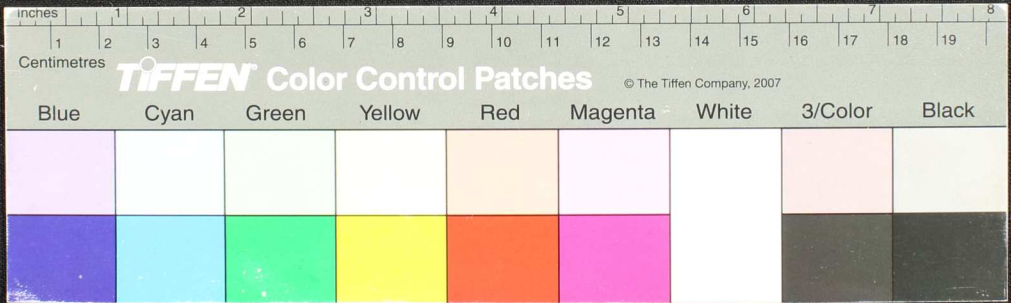
Handwritten text in Tamil script on a palm leaf manuscript. The text is arranged in approximately 10 horizontal lines across the length of the leaf. The script is dense and appears to be a form of classical or historical Tamil. There are some dark spots and irregularities on the leaf, possibly due to age or damage.



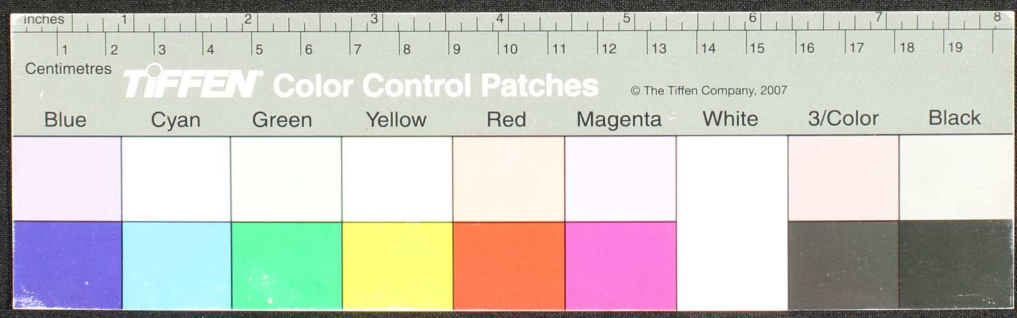
Handwritten Tamil script on a palm leaf manuscript. The text is arranged in approximately 12 horizontal lines across the length of the leaf. The script is finely etched into the surface of the dried leaf. There are several dark, irregular holes and burn marks along the top edge of the leaf, particularly between the 2-inch and 7-inch marks. The leaf is yellowish-brown in color and shows signs of age and wear.



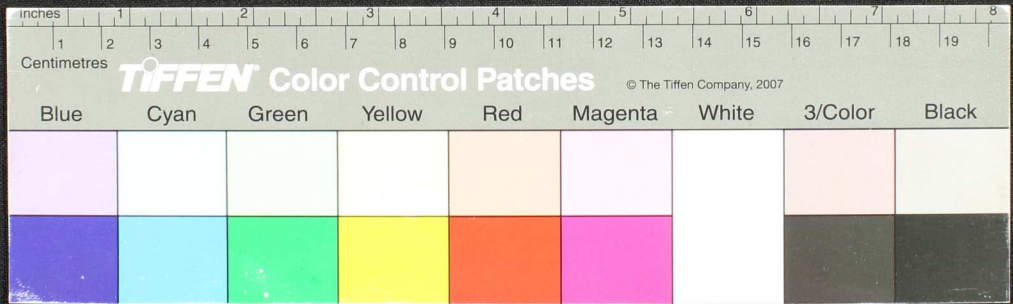
Handwritten Tamil script on a palm leaf manuscript. The text is arranged in approximately 10 horizontal lines across the length of the leaf. The script is densely packed and appears to be a form of classical Tamil. The leaf shows signs of age, including several circular holes and irregular tears, particularly on the right side.



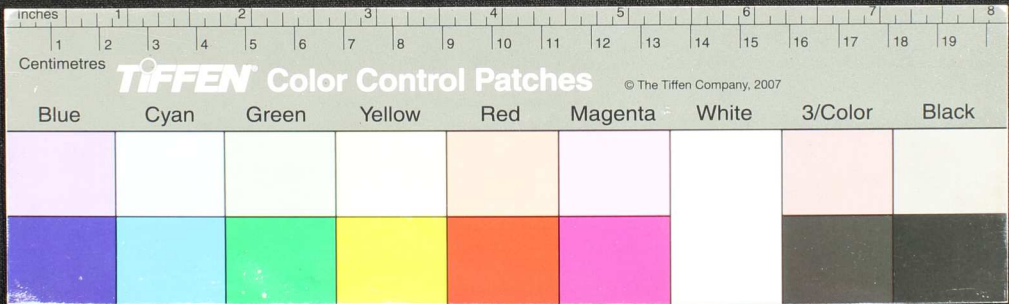
Handwritten text in Tamil script on a palm leaf manuscript. The text is arranged in approximately 10 horizontal lines across the length of the leaf. The script is finely etched into the surface of the dried leaf. The leaf shows signs of age and wear, with some fraying and discoloration, particularly at the left end.



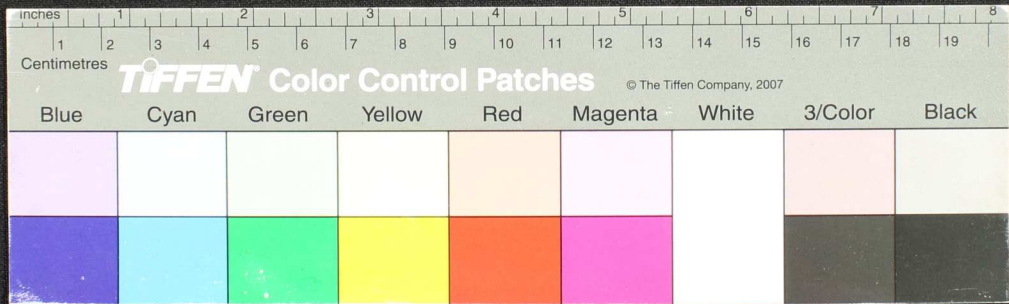
Handwritten text in Tamil script on a palm leaf manuscript. The text is arranged in approximately 10 horizontal lines across the length of the leaf. The script is finely etched into the surface of the dried leaf. The leaf shows signs of age and wear, with some fraying and dark spots, particularly on the left side.



Handwritten Tamil script on a palm leaf manuscript. The text is arranged in approximately 10 horizontal lines across the length of the leaf. The script is densely packed and appears to be a form of classical or historical Tamil. There are several dark spots and irregularities on the leaf, possibly due to age or damage.



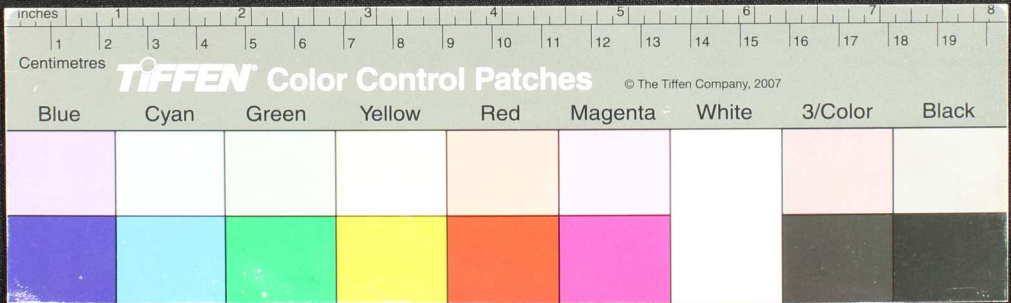
Handwritten text in Tamil script on a palm leaf manuscript. The text is arranged in approximately 10 horizontal lines across the length of the leaf. There are several dark, irregular spots and holes, likely due to insect damage or mold, scattered throughout the leaf, particularly in the middle and right sections.



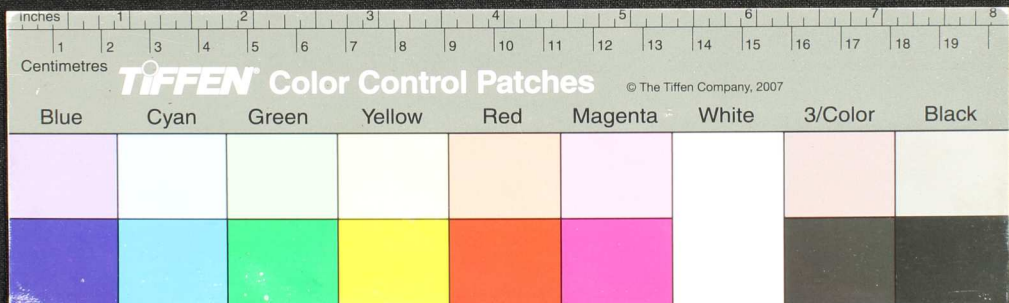
Handwritten Tamil script on a palm leaf manuscript. The text is arranged in approximately 10 horizontal lines across the length of the leaf. The script is densely packed and appears to be a form of classical or historical Tamil. The leaf shows signs of age, including some staining and a small circular hole near the center.



யா - இளையாலத்தூர் மாதங்குடி கி. பி. 12 ஆண்டி லுள்ளுள் றுயாமல் மூர்திரை வந்து புதிது மொ
 ளிரைவாலத்தூர் மாதங்குடி கி. பி. 12 ஆண்டி லுள்ளுள் றுயாமல் மூர்திரை வந்து புதிது மொ
 தலிச்சுரி நாராயண பாயல் தளதான யாய்ச்சமாய்ச்செய்வன வுநிலாரகட
 டி. பி. 12 ஆண்டி லுள்ளுள் றுயாமல் மூர்திரை வந்து புதிது மொ
 ளிரைவாலத்தூர் மாதங்குடி கி. பி. 12 ஆண்டி லுள்ளுள் றுயாமல் மூர்திரை வந்து புதிது மொ
 தலிச்சுரி நாராயண பாயல் தளதான யாய்ச்சமாய்ச்செய்வன வுநிலாரகட
 டி. பி. 12 ஆண்டி லுள்ளுள் றுயாமல் மூர்திரை வந்து புதிது மொ
 ளிரைவாலத்தூர் மாதங்குடி கி. பி. 12 ஆண்டி லுள்ளுள் றுயாமல் மூர்திரை வந்து புதிது மொ



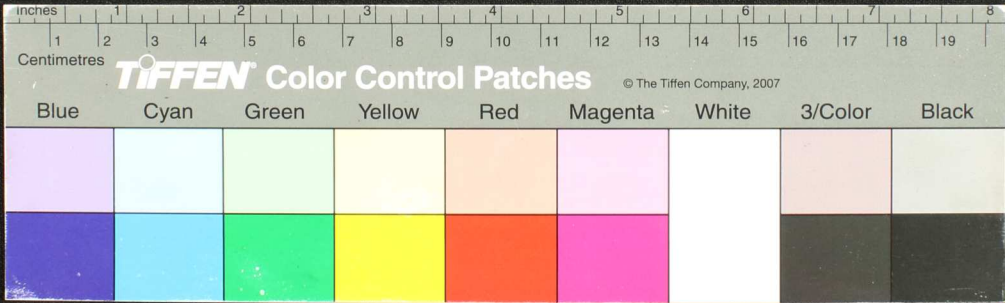
Handwritten Tamil script on a palm leaf manuscript strip. The text is densely packed and runs horizontally across the length of the leaf. There are two circular holes visible, which were traditionally used for threading a cord to bind multiple leaves together into a book format. The leaf shows signs of age, including some darkening and wear.



Handwritten Tamil script on a palm leaf manuscript strip. The text is densely packed and runs horizontally across the length of the leaf. The leaf shows signs of age and wear, with some dark spots and irregular edges.



Handwritten text in Tamil script on a palm leaf manuscript. The text is arranged in approximately 10 horizontal lines across the length of the leaf. The script is dense and appears to be a form of classical or historical Tamil. The leaf shows signs of age, including some dark spots and irregular edges.



Handwritten text in Tamil script on a palm leaf manuscript. The text is arranged in approximately 10 horizontal lines across the length of the leaf. There are two circular holes visible on the leaf, which were traditionally used for threading a cord to bind multiple leaves together into a book format. The script is finely etched into the surface of the dried leaf.



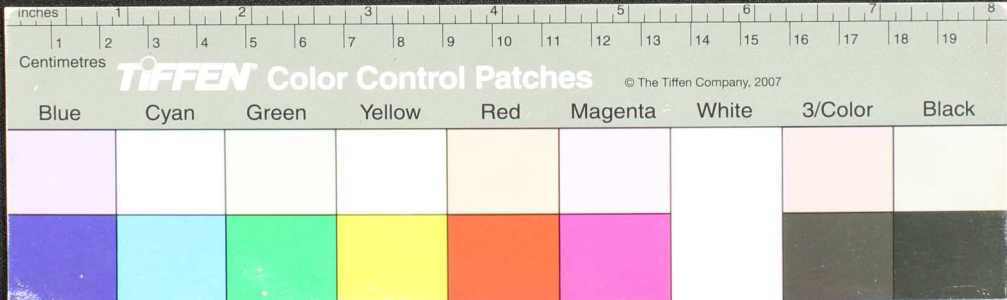
Handwritten text in Tamil script on a palm leaf manuscript. The text is arranged in approximately 10 horizontal lines across the length of the leaf. The script is finely etched into the surface of the dried leaf. The leaf shows signs of age, including dark spots and irregular holes, particularly in the middle section.



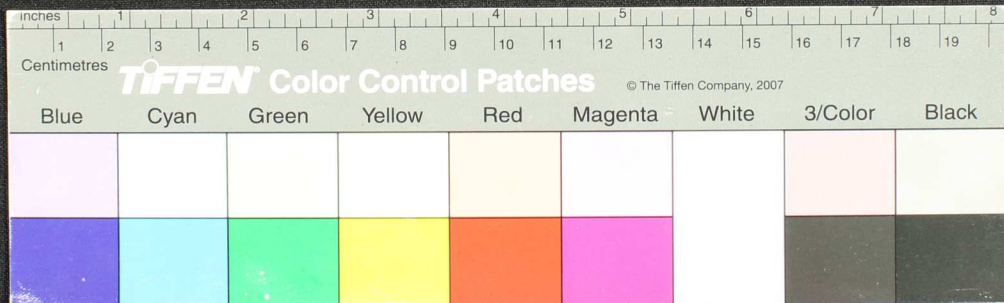
Handwritten text in Tamil script on a palm leaf manuscript. The text is densely packed and runs horizontally across the length of the leaf. There are several circular holes along the leaf, which were traditionally used for threading a cord to bind multiple leaves together into a book format. The leaf shows signs of age, including some staining and wear at the edges.

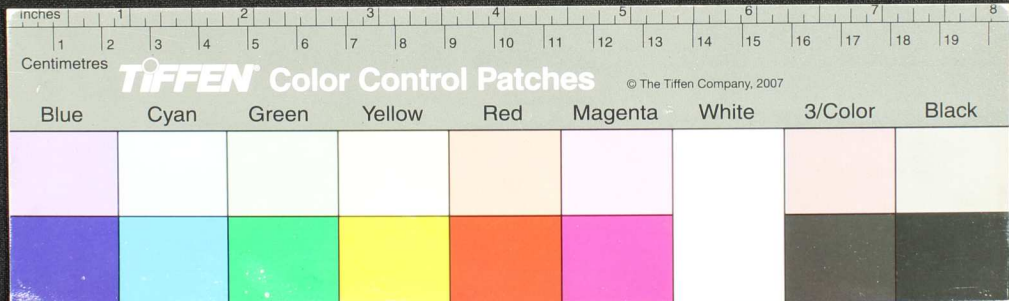


Handwritten Tamil script on a palm leaf manuscript strip. The text is arranged in approximately four horizontal lines. The script is finely inscribed and appears to be a form of classical or historical Tamil. The leaf shows signs of age, including some darkening and wear, particularly at the edges.

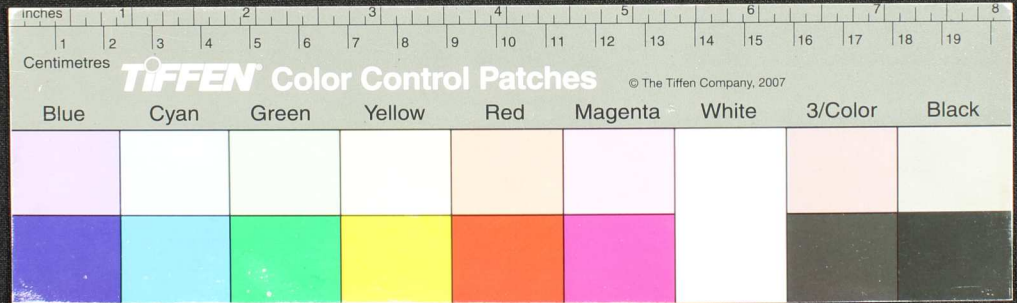


Handwritten Tamil script on a palm leaf manuscript. The text is arranged in approximately 10 horizontal lines across the length of the leaf. The script is finely etched into the surface of the dried leaf. The leaf shows signs of age and wear, with some fraying and a large hole in the center.

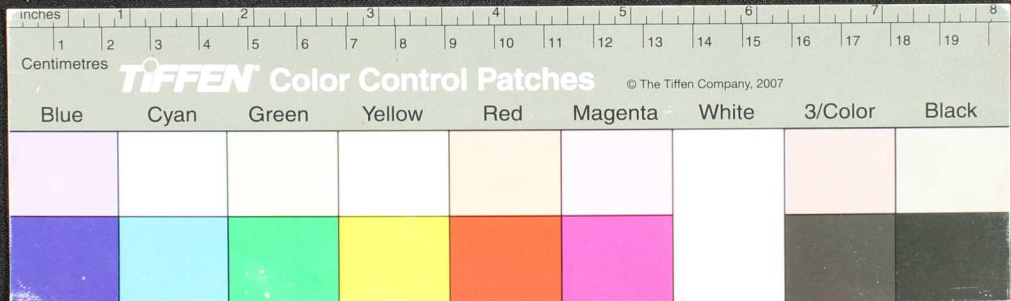




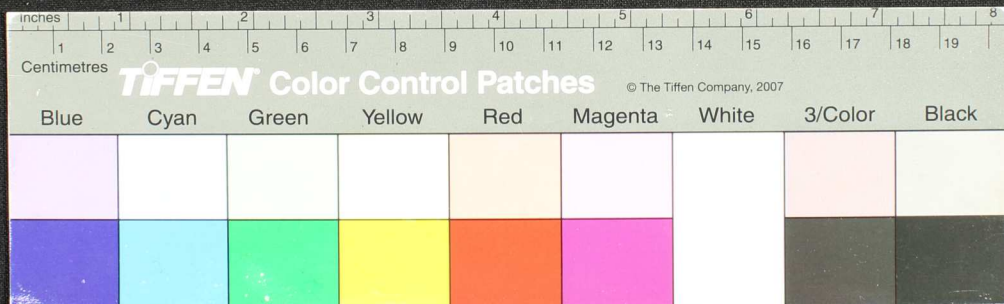
Handwritten Tamil script on a palm leaf manuscript. The text is arranged in approximately 10 horizontal lines across the length of the leaf. The script is a traditional form of the Tamil language, likely used for religious or philosophical purposes. The leaf shows signs of age and wear, with some dark spots and irregular edges.



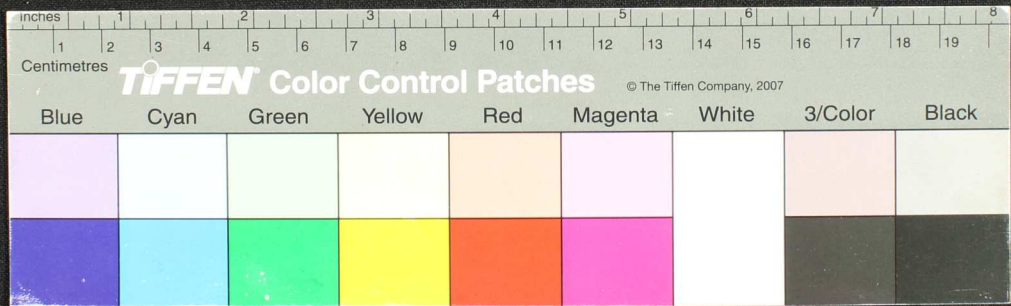
விதம்பலத்தொள்ளி... மயக்கி... யாமித்திர...
 தெர... ம... ந... ய...
 பா... ந... ந...
 க... ம... ய...
 ய... ர... ம... ர...
 ல... ர... ம...



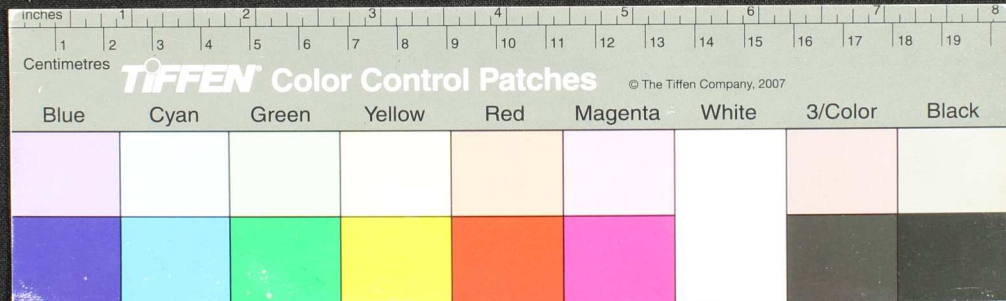
Handwritten Tamil script on a palm leaf manuscript. The text is arranged in approximately 10 horizontal lines across the length of the leaf. The script is densely packed and appears to be a form of classical or historical Tamil. There are two circular holes visible on the leaf, which were traditionally used for threading a cord to bind multiple leaves together into a book format. The leaf shows signs of age, including some darkening and wear at the edges.



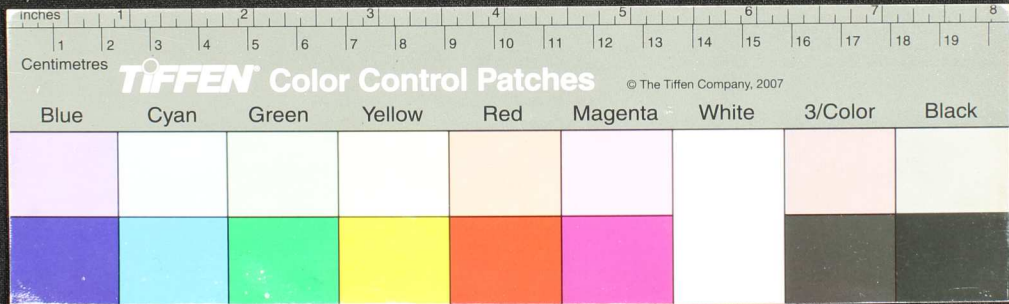
Handwritten Tamil script on a palm leaf manuscript. The text is arranged in approximately 10 horizontal lines across the length of the leaf. The script is densely packed and appears to be a form of classical Tamil. There are two circular holes visible on the leaf, which were traditionally used for threading a cord to bind multiple leaves together into a book format. The leaf shows signs of age, including some darkening and wear, particularly around the holes and the edges.



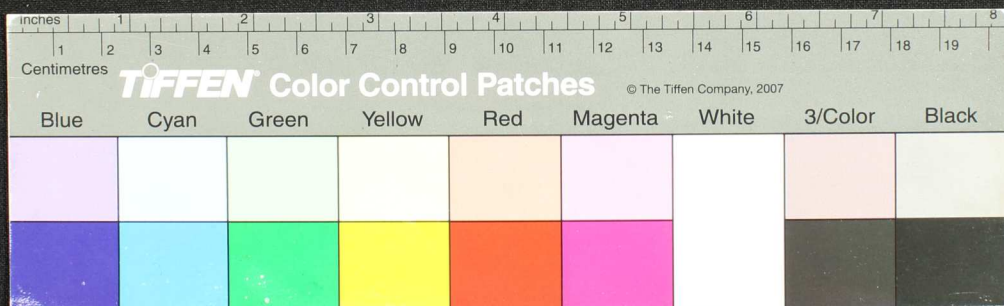
Handwritten Tamil text on a palm leaf manuscript. The text is arranged in approximately 8-9 horizontal lines across the length of the leaf. The script is a traditional form of Tamil, and the leaf shows signs of age, including some dark spots and wear.



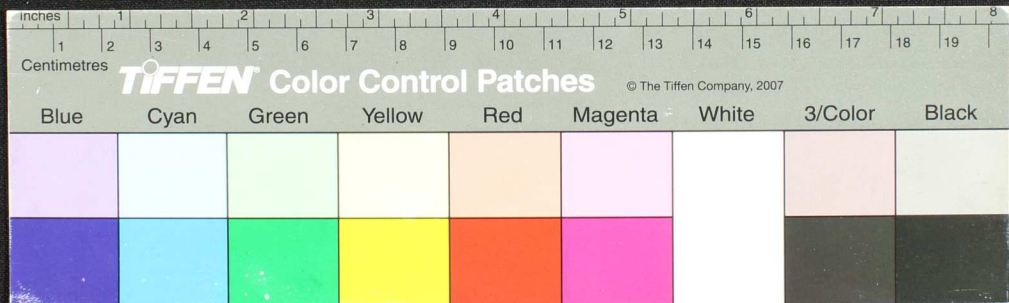
Handwritten text in Tamil script on a palm leaf manuscript. The text is arranged in approximately 10 horizontal lines across the length of the leaf. The script is densely packed and appears to be a form of classical or historical Tamil. There are two distinct circular holes along the length of the leaf, which were traditionally used for threading a cord to bind multiple leaves together into a book format. The leaf shows signs of age, including some darkening and wear, particularly around the edges and between the holes.

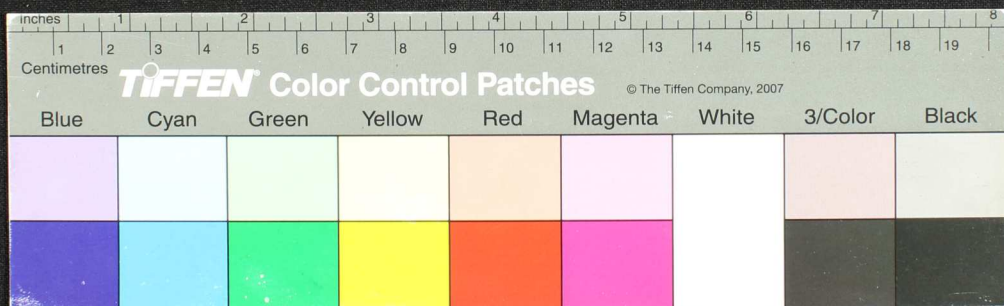


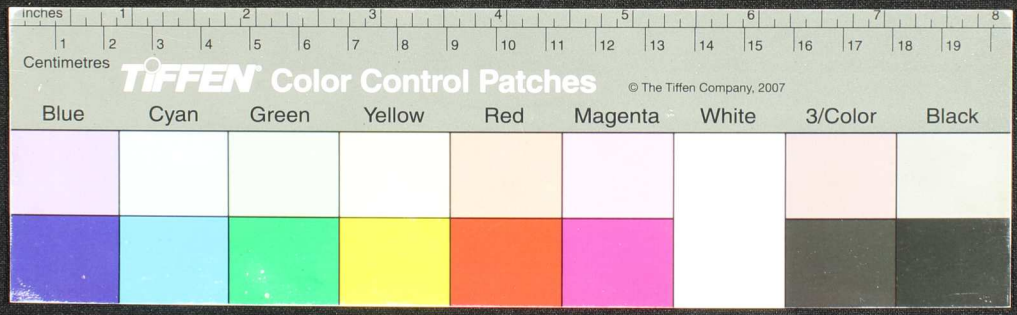




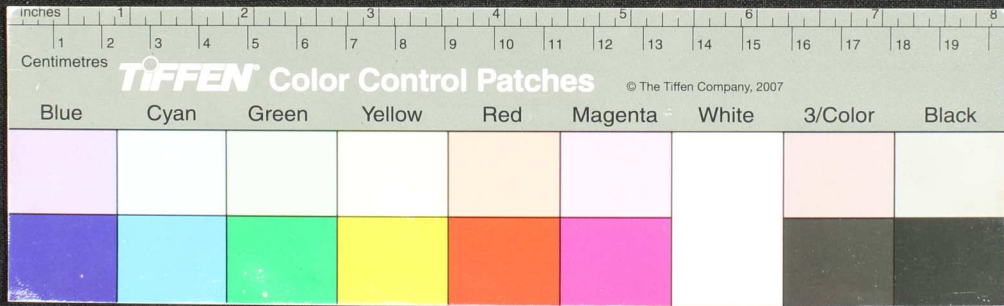




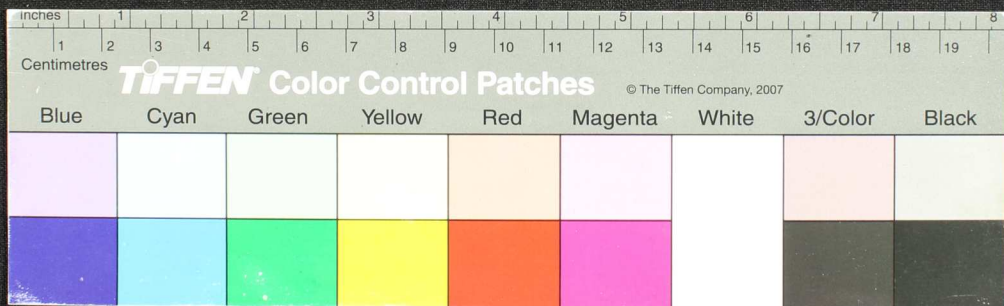




Handwritten text in Tamil script on a palm leaf manuscript. The text is arranged in approximately 10 horizontal lines. Two circular holes are visible, which were traditionally used for threading a cord to bind multiple leaves together. The leaf shows signs of age, including some darkening and wear, particularly at the right end.

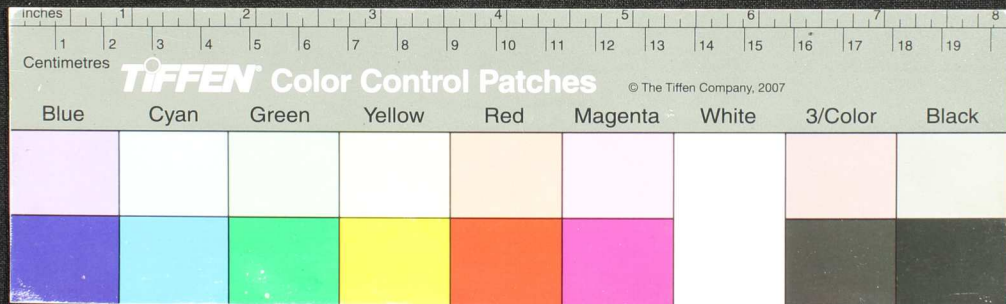


Handwritten text in Tamil script on a fragment of aged, yellowed paper. The text is arranged in approximately 10 horizontal lines. The script is dense and appears to be a form of historical or religious Tamil. The paper is heavily worn, with significant tearing and discoloration, particularly along the edges. A small circular hole is visible in the center of the fragment.

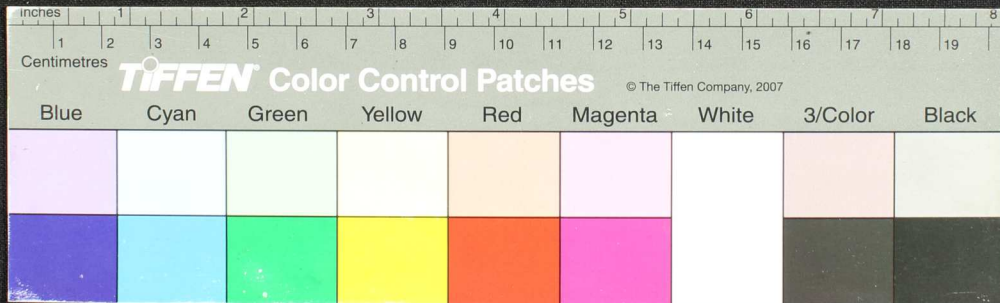


Handwritten Tamil script on a palm leaf fragment. The text is arranged in approximately 10 horizontal lines. The script is finely etched into the surface of the dried leaf. A small circular hole is visible in the center of the fragment, which is a traditional feature used for threading a cord to bind multiple leaves into a book format. The fragment is irregularly shaped with frayed edges, suggesting it was part of a larger document.





Handwritten text in Tamil script on a palm leaf manuscript. The text is arranged in several lines and is partially obscured by dark ink blotches and physical damage to the leaf. The script is a traditional form of the Tamil language.

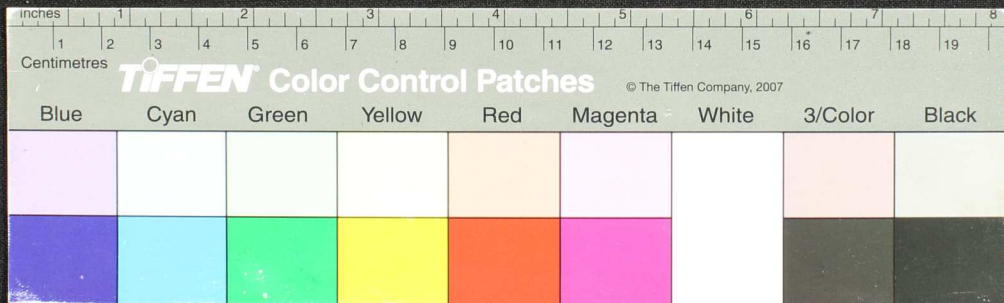


Handwritten Tamil script on a palm leaf manuscript. The text is arranged in approximately five horizontal lines. A prominent circular hole is visible in the center of the leaf, which is a traditional feature for threading a cord to bind multiple leaves together. The script is finely etched into the surface of the dried leaf.



Handwritten Tamil script on a palm leaf fragment. The text is arranged in approximately 10 horizontal lines. The script is densely packed and appears to be a form of classical or historical Tamil. The leaf is yellowed and shows signs of age and wear, with some dark spots and a jagged right edge.





Handwritten text in Tamil script on a palm leaf fragment. The text is arranged in three lines. The first line contains a small symbol followed by several characters. The second line begins with a square symbol and contains more characters. The third line also begins with a square symbol and contains the most legible characters, including 'சுருதி' and 'புள்ளி'.



Handwritten text in Tamil script on a fragment of aged, yellowed paper. The text is arranged in approximately five horizontal lines. The paper is heavily damaged, with irregular, jagged edges and a prominent hole on the left side. The ink is dark and somewhat faded, making some characters difficult to discern. The background is a dark, textured surface.

