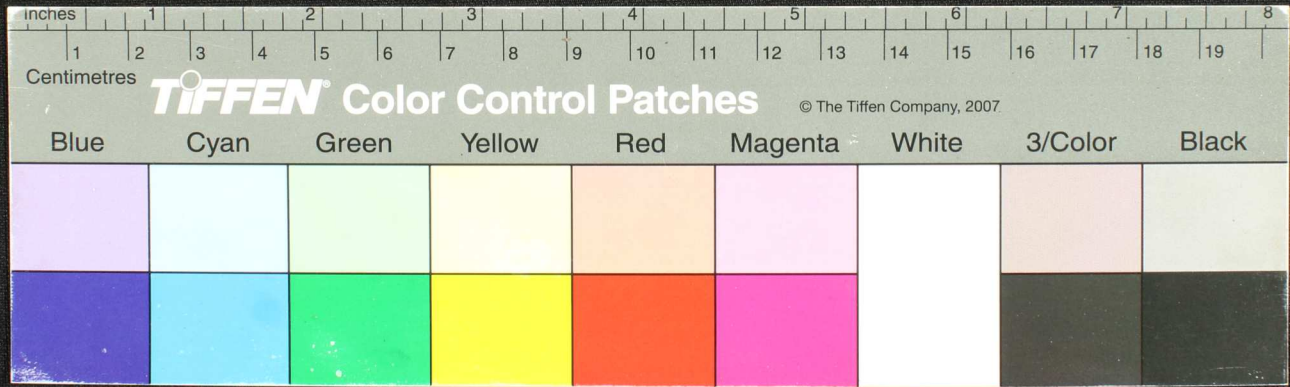
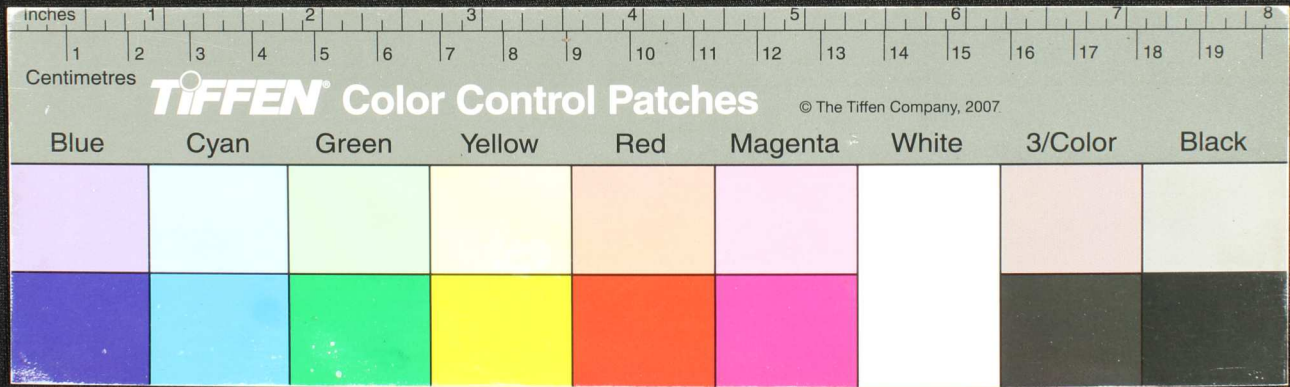


Handwritten Tamil script on a palm leaf manuscript. The text is arranged in three columns, with some characters appearing to be in a different script or dialect. The leaf shows signs of age and damage, including a large hole and irregular staining.

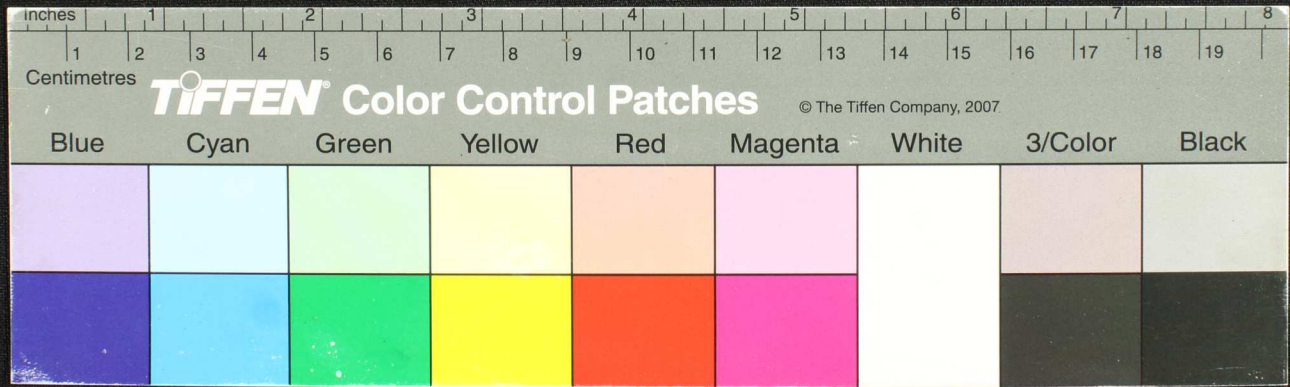




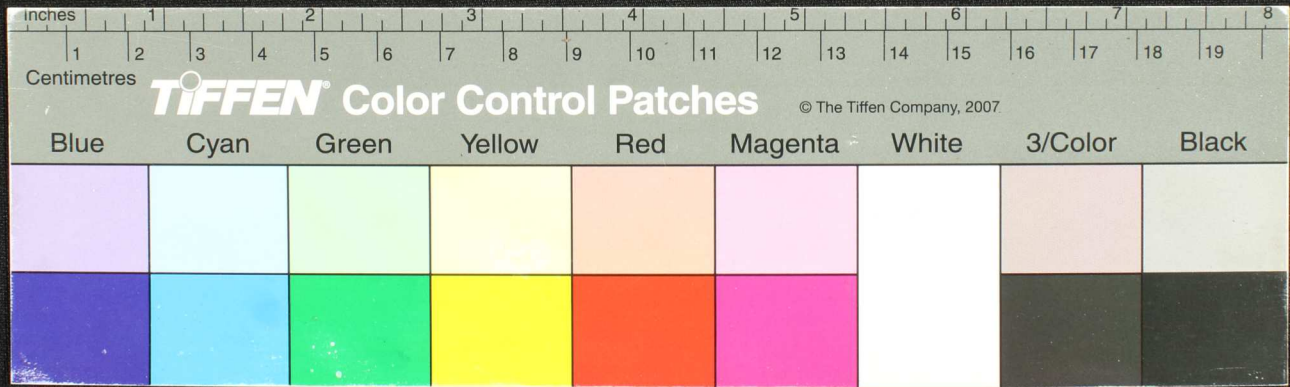
Handwritten Tamil script on a palm leaf manuscript. The text is arranged in approximately 10 horizontal lines across the length of the leaf. The script is densely packed and appears to be a form of classical or religious Tamil. There are several dark spots and irregularities on the leaf, possibly due to age or damage.



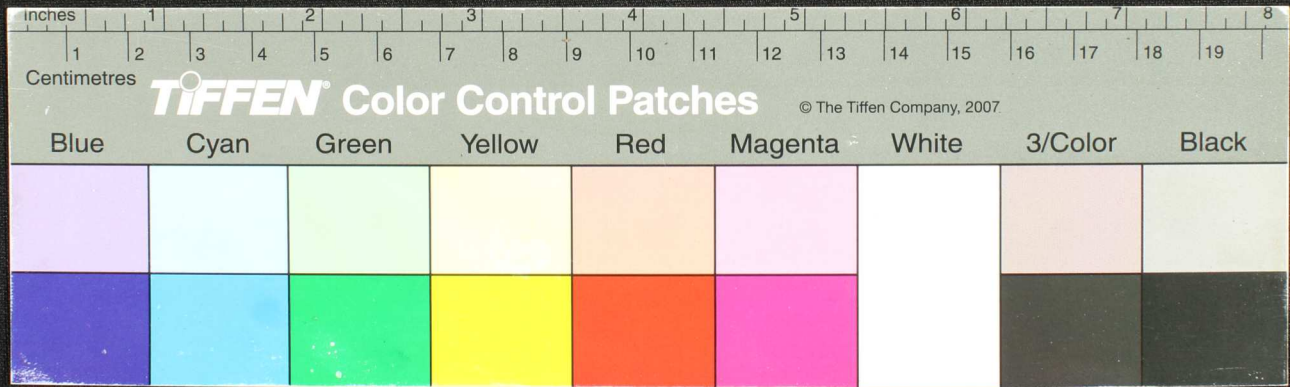
Handwritten text in Tamil script on a palm leaf manuscript. The text is arranged in approximately 10 horizontal lines. The leaf shows signs of age, including dark spots, stains, and some physical damage, particularly a large hole and irregular dark markings in the middle section.



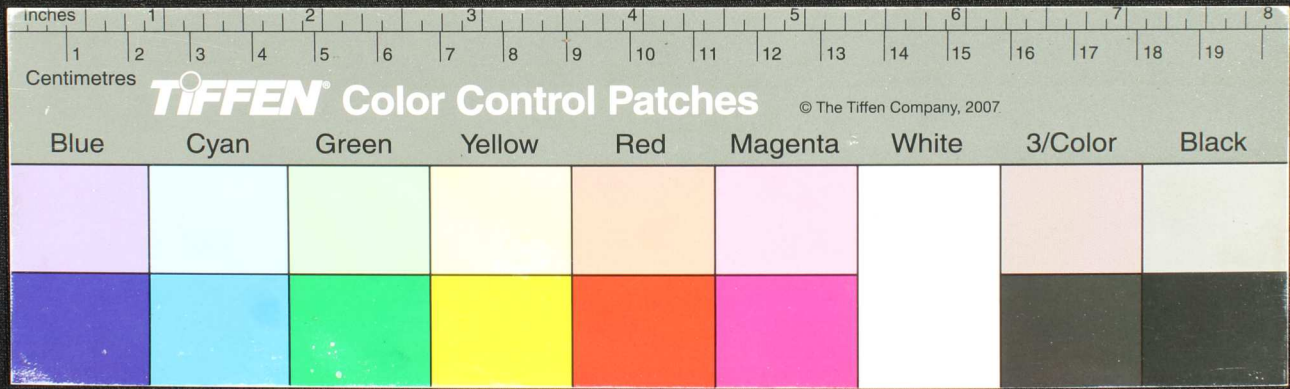
Handwritten Tamil script on a palm leaf manuscript. The text is arranged in vertical columns, with a circular hole visible near the center. The script is densely packed and appears to be a form of classical Tamil.



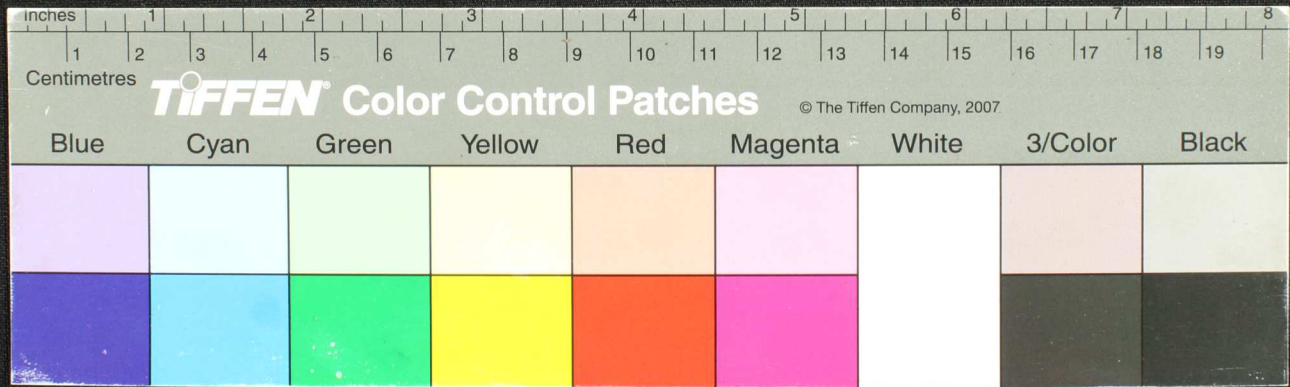
Handwritten Tamil script on a palm leaf manuscript. The text is arranged in approximately 10 horizontal lines across the length of the leaf. The script is densely packed and appears to be a form of classical Tamil. There are several dark, irregular spots and holes scattered across the leaf, particularly in the middle and right-hand sections, which are likely due to insect damage or mold. The leaf itself is a light tan or yellowish-brown color, showing signs of age and wear.



Handwritten Tamil script on a palm leaf manuscript. The text is arranged in approximately 12 vertical columns, reading from right to left. The script is finely etched into the surface of the dried leaf. A small circular hole is visible near the center of the leaf, which is a traditional feature for threading a cord to bind multiple leaves together. The leaf shows signs of age and wear, particularly at the right end where it is torn and frayed.

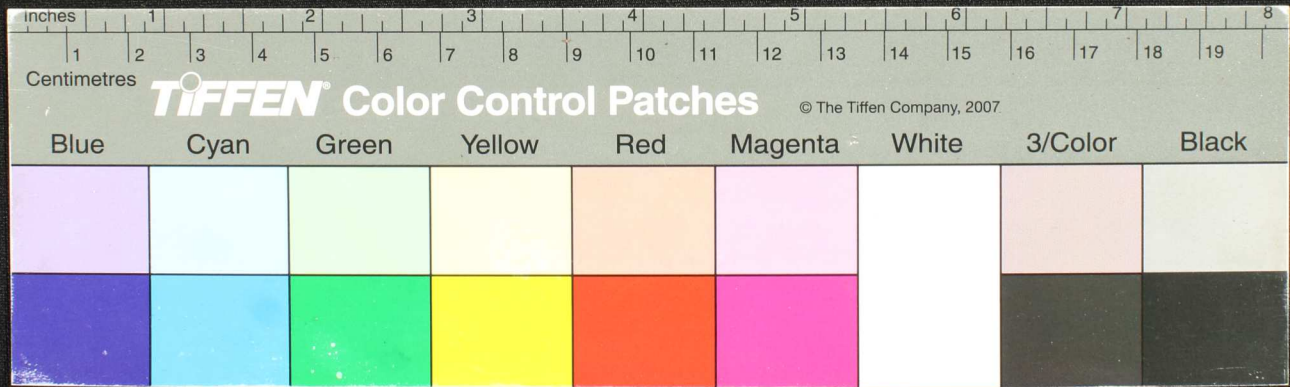


Handwritten text in Tamil script on a palm leaf manuscript. The text is arranged in approximately 12 horizontal lines. The first line contains a small symbol followed by the characters 'வாய்மையே வெல்லும்' (Truth alone triumphs). The subsequent lines contain several lines of text, including 'செய்யுள்' (Poem) and 'செய்யுள்' (Poem) repeated. The leaf shows signs of age, including a prominent dark circular hole near the center and some staining at the right end.

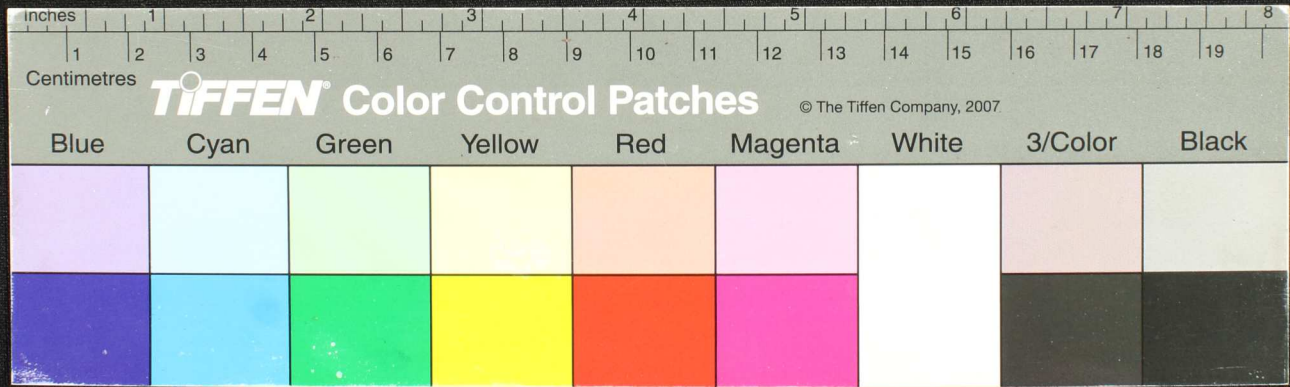




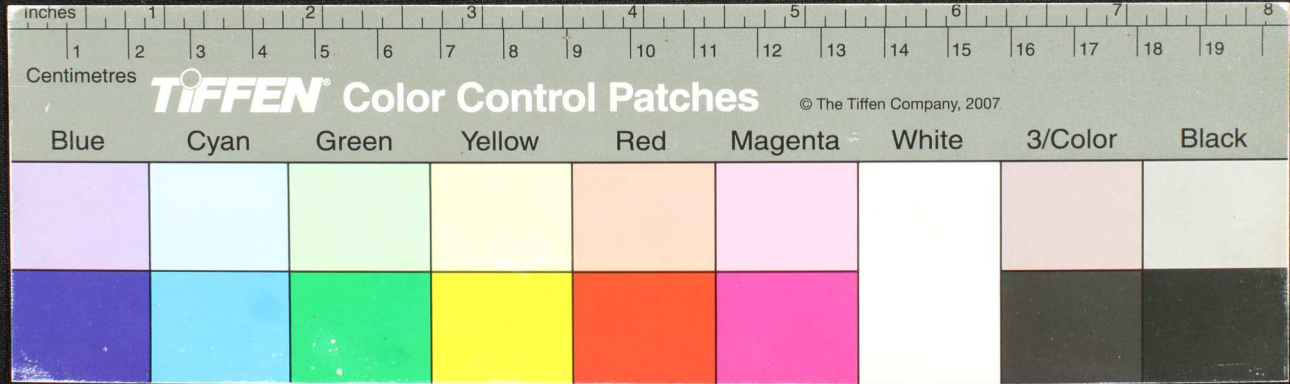
Handwritten text in an ancient script, likely cuneiform, on a yellowish-brown tablet. The text is arranged in several columns and is partially obscured by a dark, irregular mark in the center. The right edge of the tablet is jagged and broken.



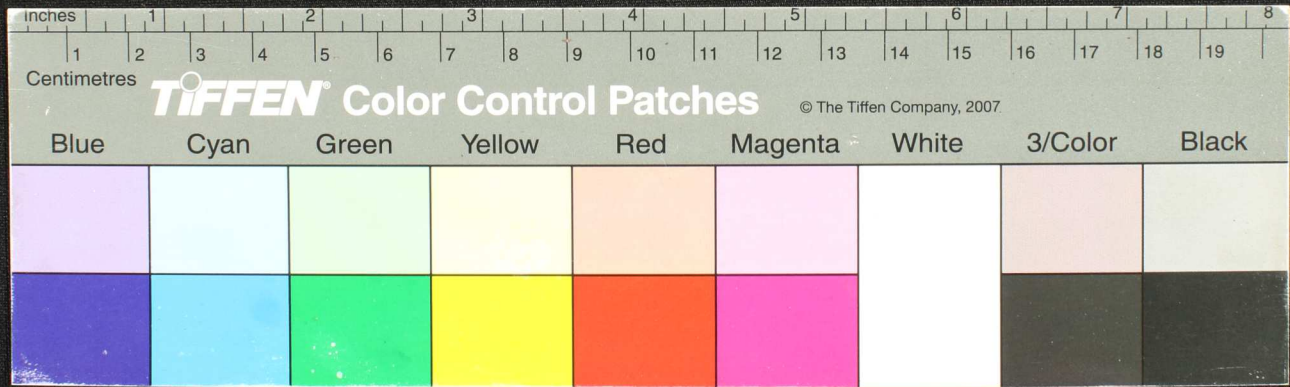
Handwritten Tamil script on a palm leaf manuscript. The text is arranged in approximately 10 horizontal lines across the length of the leaf. The script is finely etched into the surface of the dried leaf. There are some dark spots and a small hole on the leaf, likely due to age or insect damage.



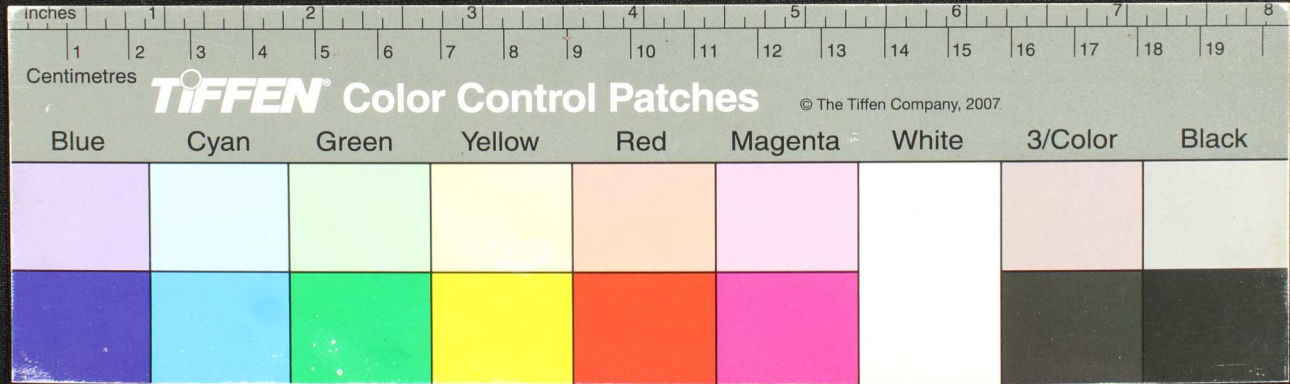
Handwritten Tamil script on a palm leaf manuscript. The text is arranged in approximately 12 horizontal lines across the length of the leaf. The script is finely etched into the surface of the dried leaf. The leaf shows signs of age, including dark spots and some physical damage, particularly near the right edge.

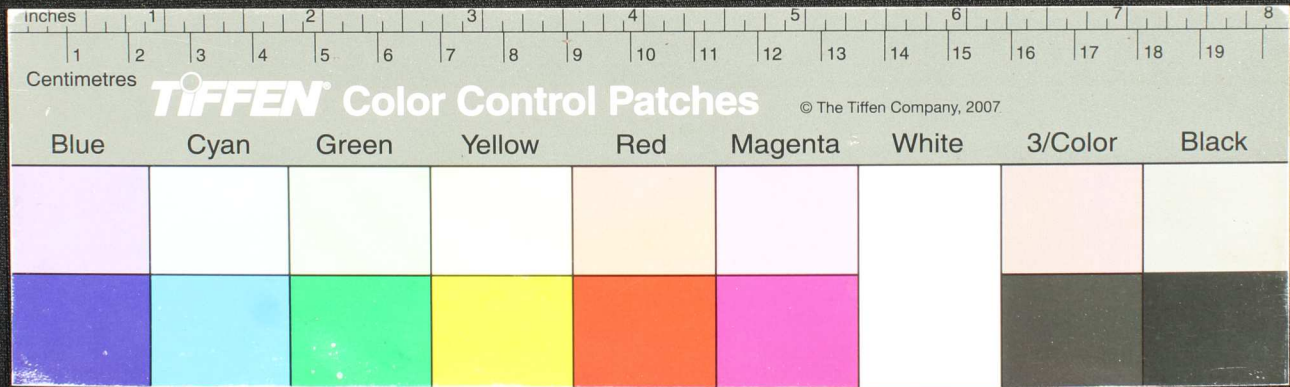


Handwritten text in Tamil script on a palm leaf manuscript. The text is arranged in approximately 10 horizontal lines across the length of the leaf. The script is finely etched into the surface of the dried leaf. There are several dark, irregular spots and a circular hole on the left side, likely due to insect damage or natural decay. The leaf is yellowish-brown in color.

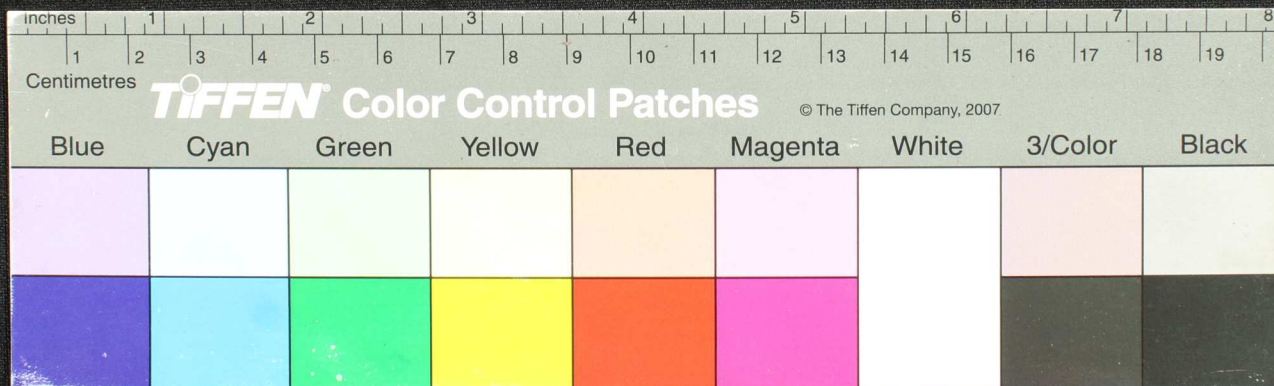






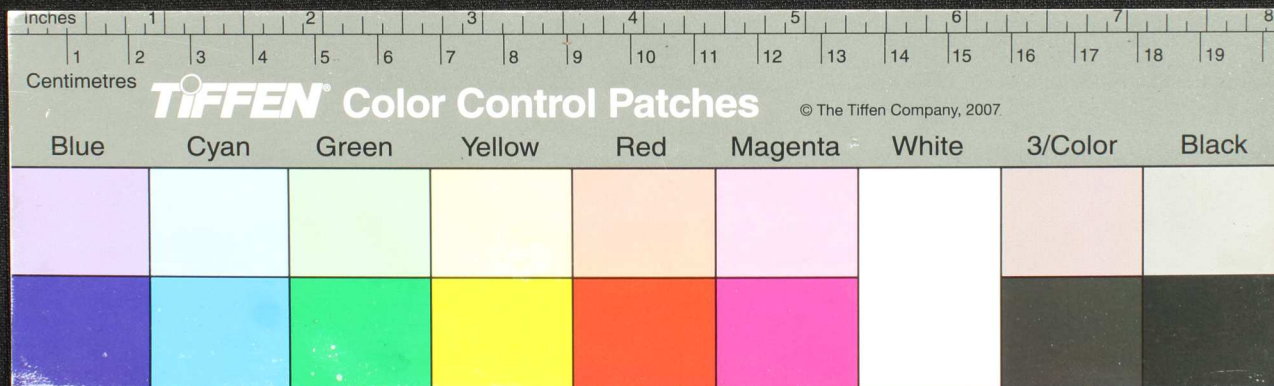


Handwritten text in Tamil script on a palm leaf manuscript. The text is arranged in approximately 10 horizontal lines. The leaf is significantly damaged, with large, irregular black holes and missing sections, particularly in the middle and right portions. The remaining text is faint and difficult to read due to the damage and the natural texture of the leaf.

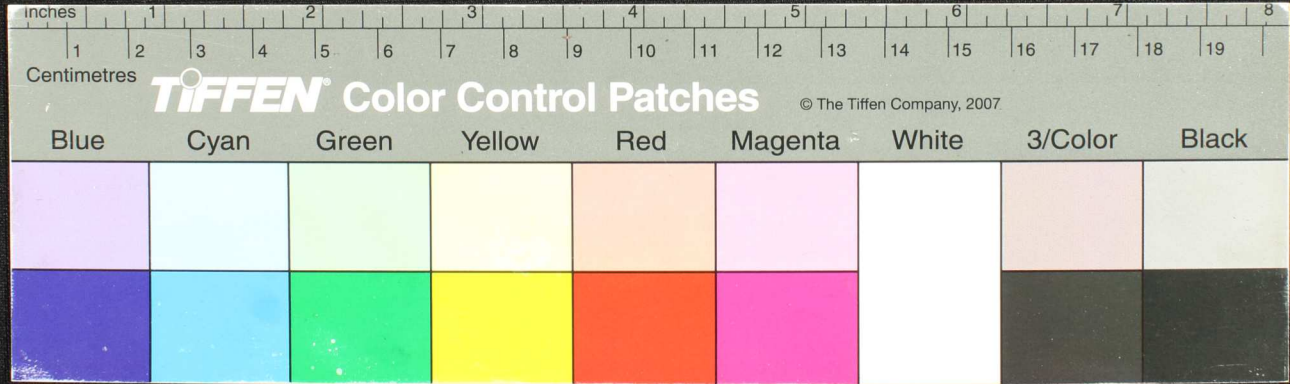




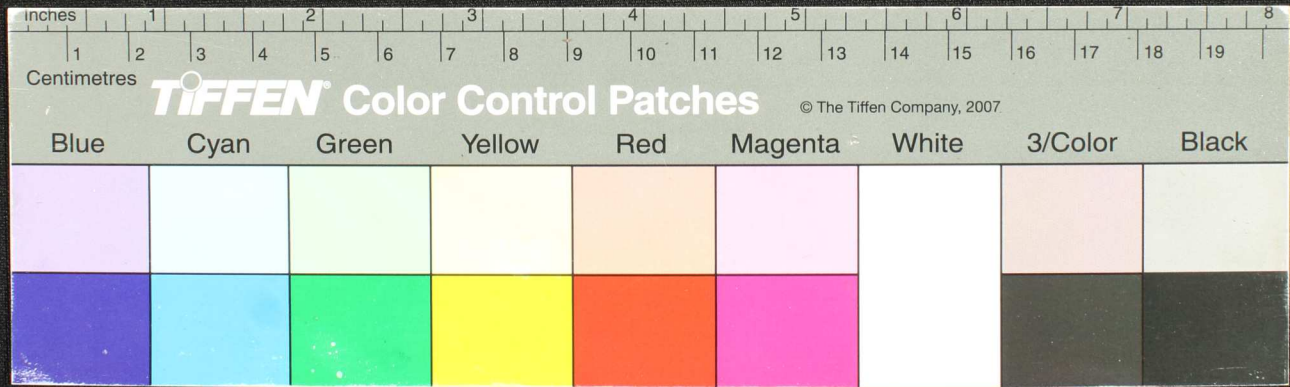
Handwritten text in Tamil script on a palm leaf manuscript. The text is arranged in three columns. The rightmost column is partially obscured by a jagged tear in the leaf. The script is finely etched into the surface of the dried leaf.

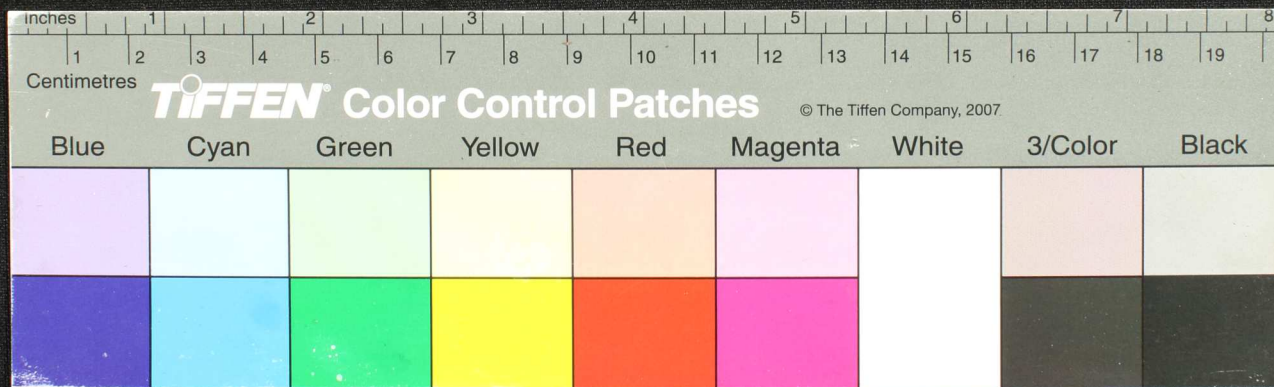
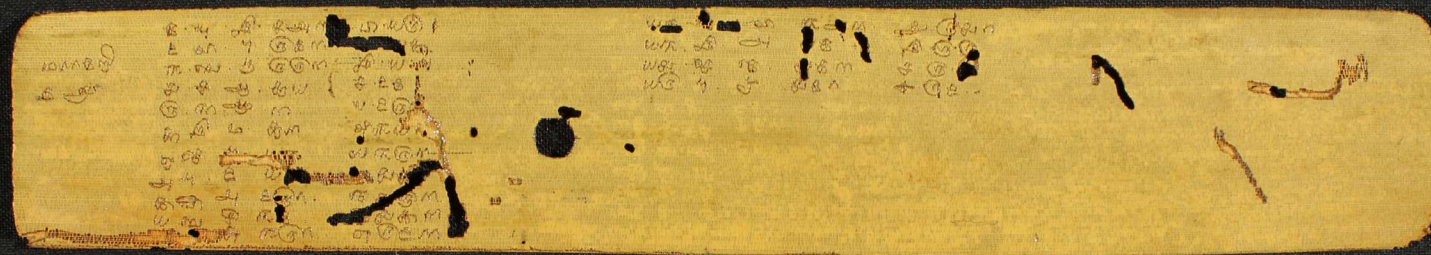


Handwritten text in Tamil script on a palm leaf manuscript. The text is arranged in approximately 10 columns across the length of the leaf. The script is finely etched into the surface of the dried leaf. There are some dark spots and a hole on the leaf, possibly from insect damage or handling.

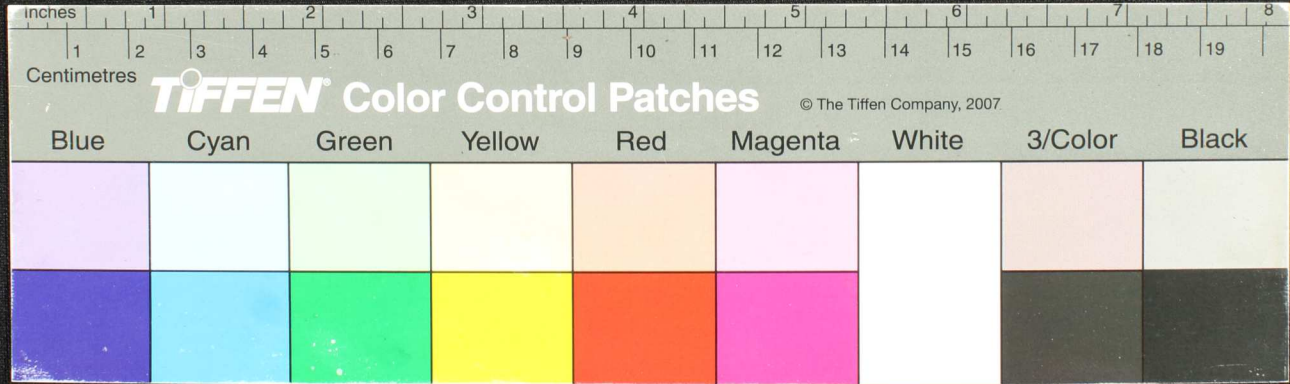


Handwritten text in Tamil script on a palm leaf manuscript. The text is arranged in approximately 12 vertical columns across the length of the leaf. The script is finely etched into the surface of the dried leaf. There are several dark spots and irregularities on the leaf, possibly due to age or damage.

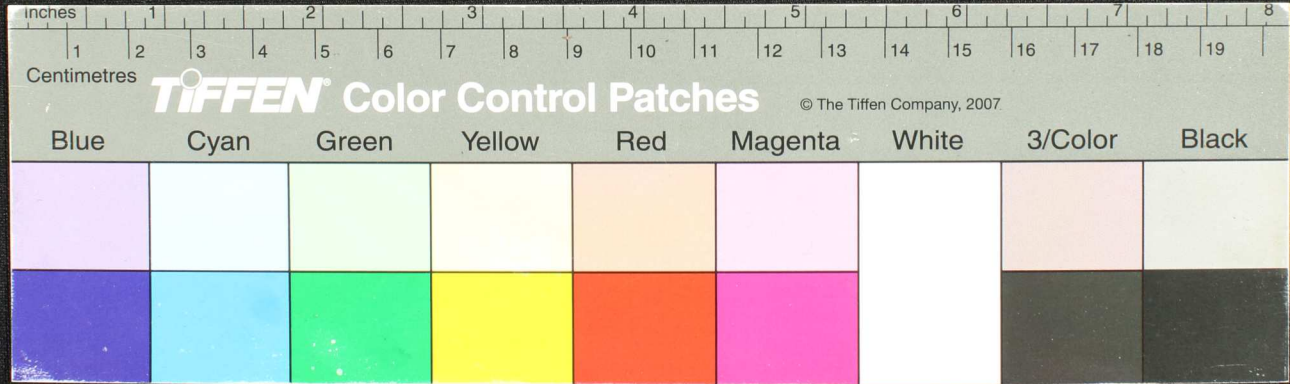




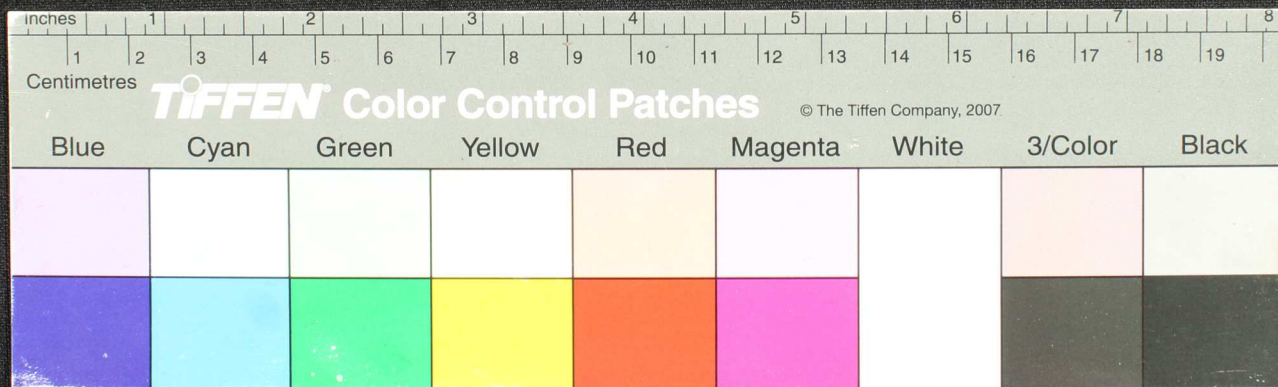
Handwritten text in Tamil script on a palm leaf manuscript. The text is arranged in approximately 10 horizontal lines across the length of the leaf. The script is finely etched into the surface of the dried leaf. There are some dark spots and a hole on the leaf, possibly due to insect damage or age.



Handwritten text on a yellowed, aged strip of paper, possibly a manuscript or document fragment. The text is written in a cursive script, likely a historical form of a European language. The strip is approximately 8 inches long and 1 inch wide. The text is arranged in two columns, with some lines starting with a circled letter. There are some ink smudges and a small hole on the right side of the strip.

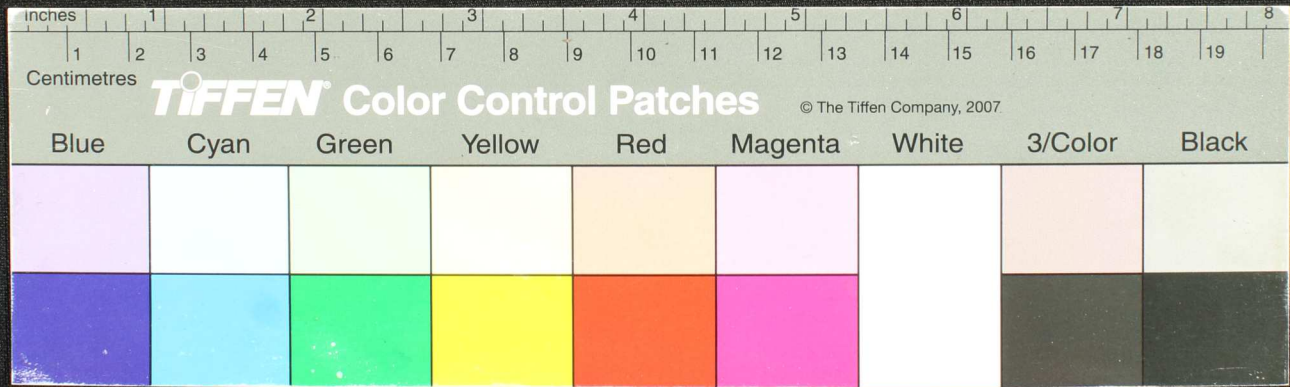


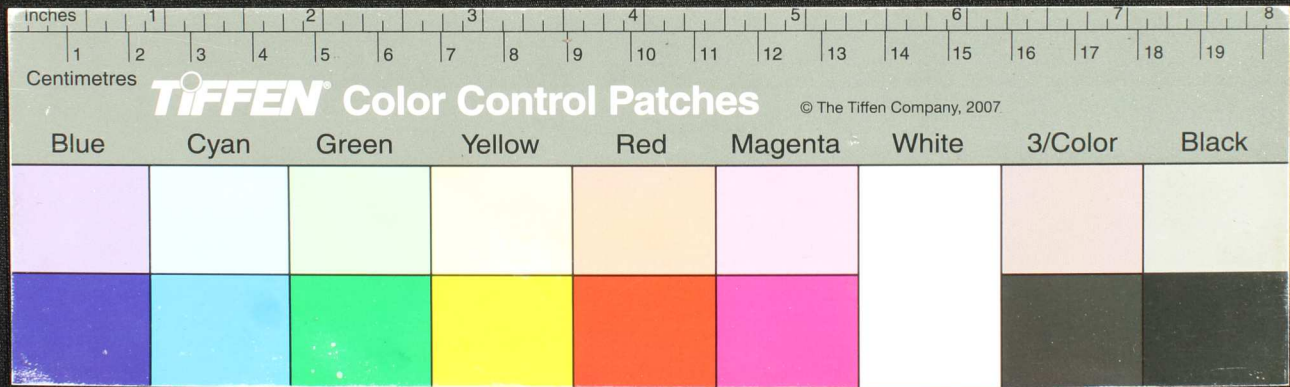


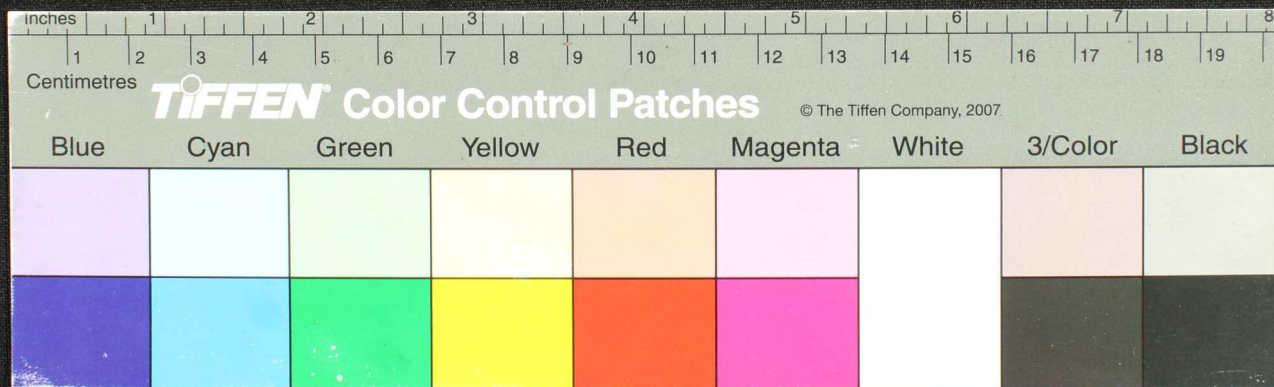


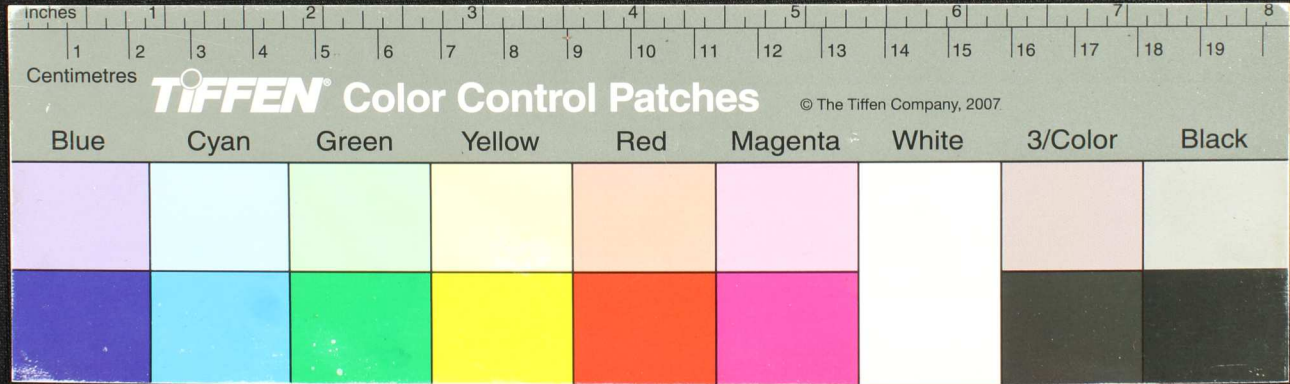
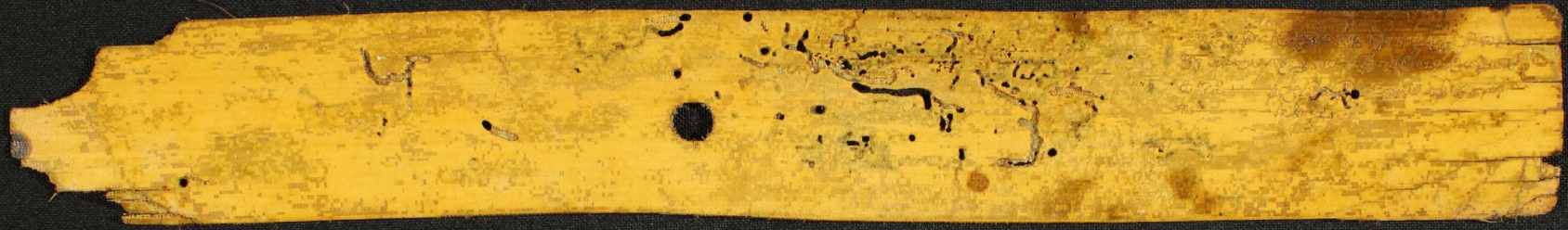


Handwritten Tamil script on a palm leaf manuscript. The text is arranged in several lines across the length of the leaf. There are two prominent circular holes, likely from a traditional binding system. The leaf shows signs of age and wear, with some dark spots and irregular edges.

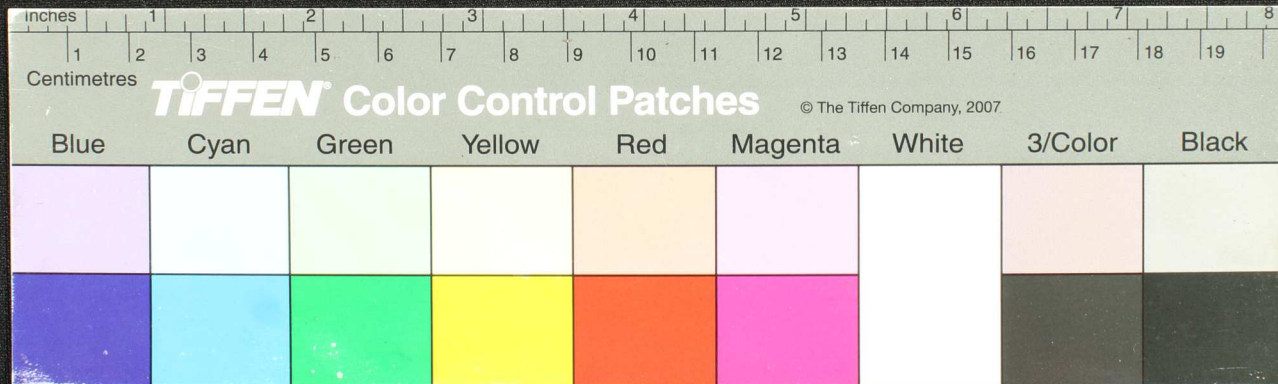


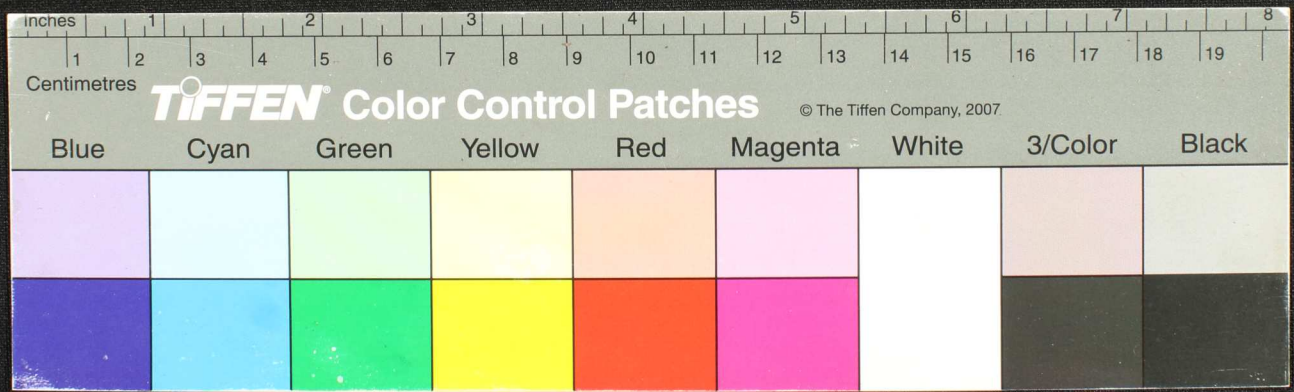




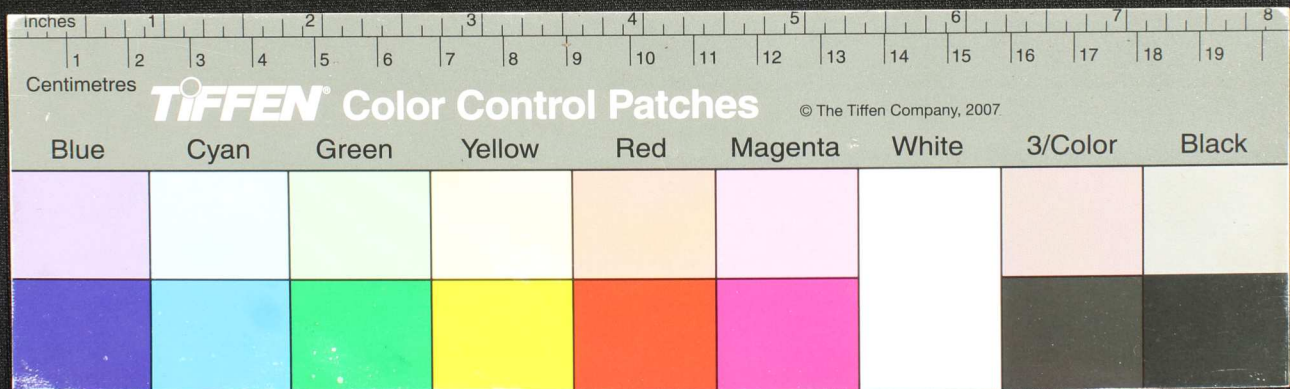


Handwritten text on a yellowed, torn strip of paper, likely a palm leaf manuscript. The text is written in Tamil script and is partially obscured by the tear in the center. The visible characters include 'புலகேசரி' and 'புலகேசரி'.







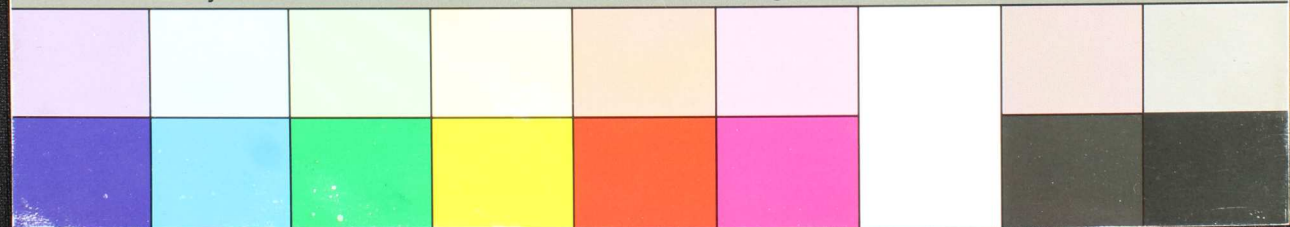


Centimetres

**TIFFEN** Color Control Patches

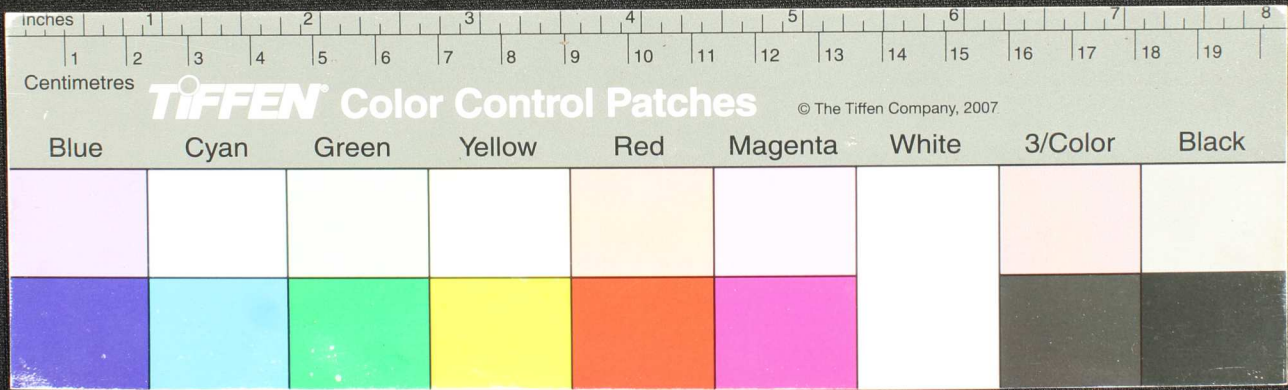
© The Tiffen Company, 2007

Blue Cyan Green Yellow Red Magenta White 3/Color Black



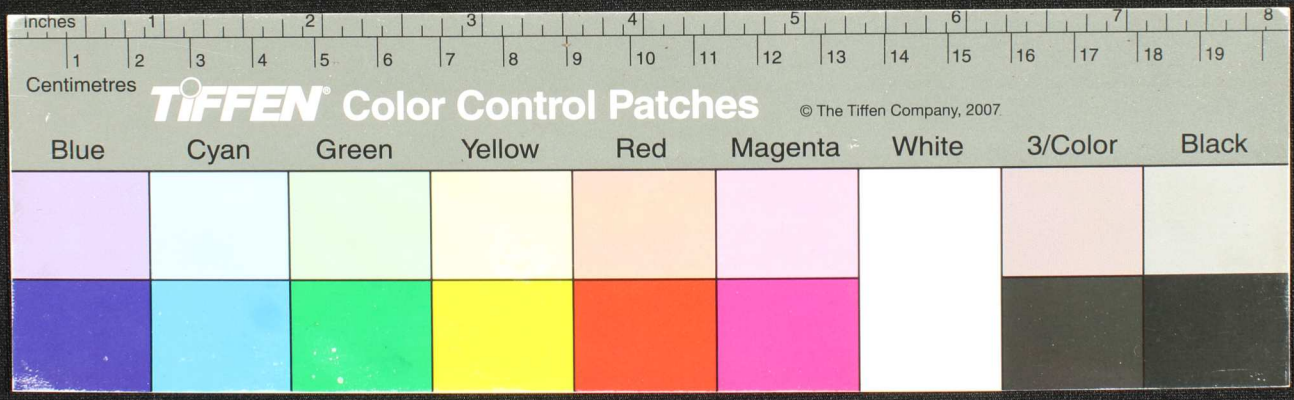


Handwritten text in Tamil script on a palm leaf manuscript. The text is arranged in approximately four lines. A small hole is visible on the left side of the leaf. The script is finely etched into the surface of the dried leaf.





Handwritten text on a palm leaf manuscript, likely in Tamil script. The text is arranged in approximately three columns and is partially obscured by a large tear on the left side. The script is finely etched into the surface of the dried leaf.



Handwritten text in Tamil script on a yellowed, damaged palm leaf manuscript. The text is arranged in approximately 10 horizontal lines. The leaf shows significant wear, including a large tear on the left side and a vertical crease down the center. The script is finely etched into the surface of the leaf.

