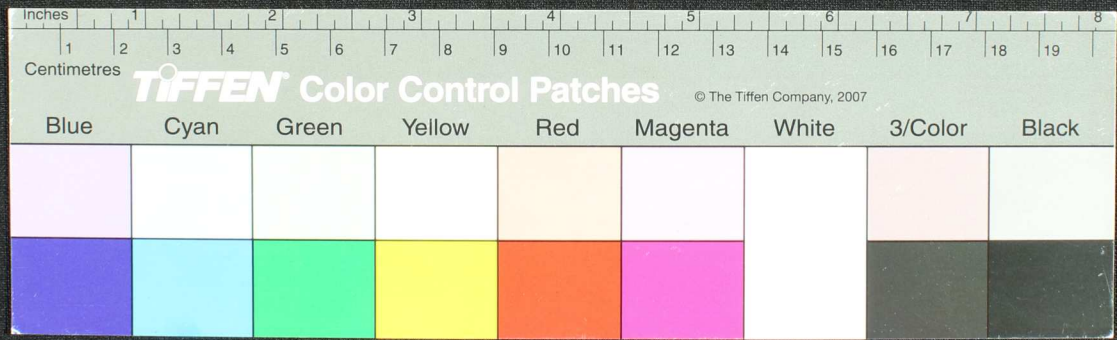
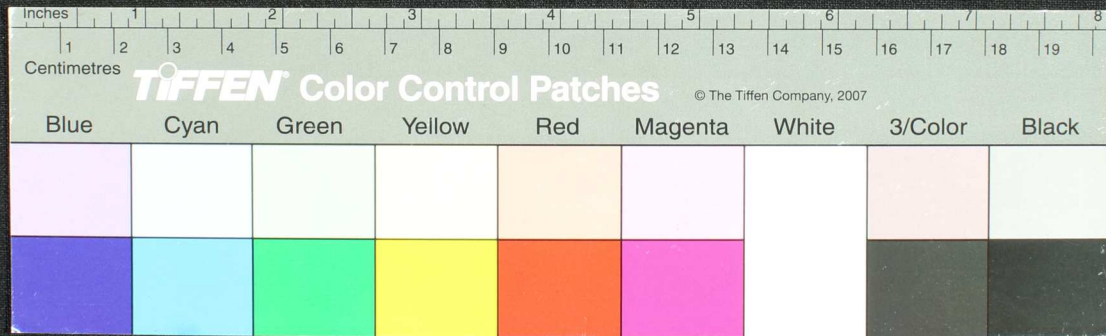


Handwritten text in Tamil script on a palm leaf manuscript. The text is arranged in approximately 10 horizontal lines. On the left side, there is a handwritten number '27' and a circular hole. The script is finely etched into the surface of the dried leaf.

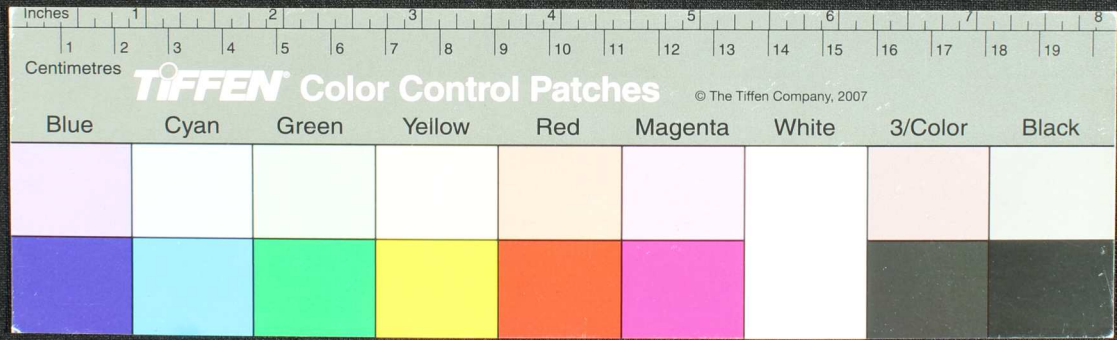


Handwritten text on a palm-leaf manuscript strip, including a date and a signature. The text is written in a cursive script, likely Tamil or a related South Asian language. The strip is yellowed and shows signs of age and wear, with a hole near the left end.

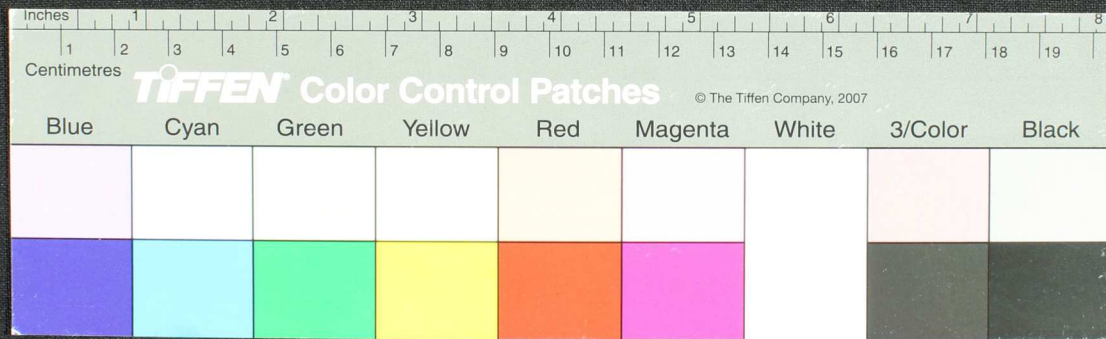
Handwritten text on the palm-leaf manuscript strip, including a date and a signature. The text is written in a cursive script, likely Tamil or a related South Asian language. The strip is yellowed and shows signs of age and wear, with a hole near the left end.



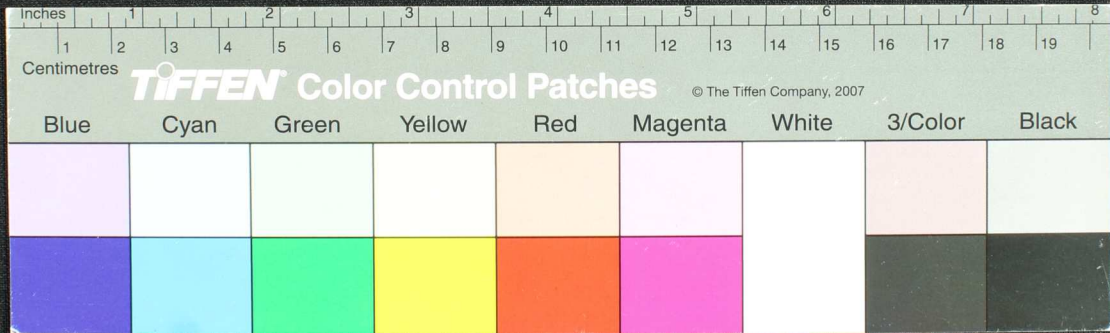
Handwritten Tamil script on a palm leaf manuscript. The text is arranged in approximately 10 horizontal lines across the length of the leaf. The script is a traditional form of the Tamil language, likely used for religious or philosophical purposes. The leaf shows signs of age, including some discoloration and a small hole on the left side.



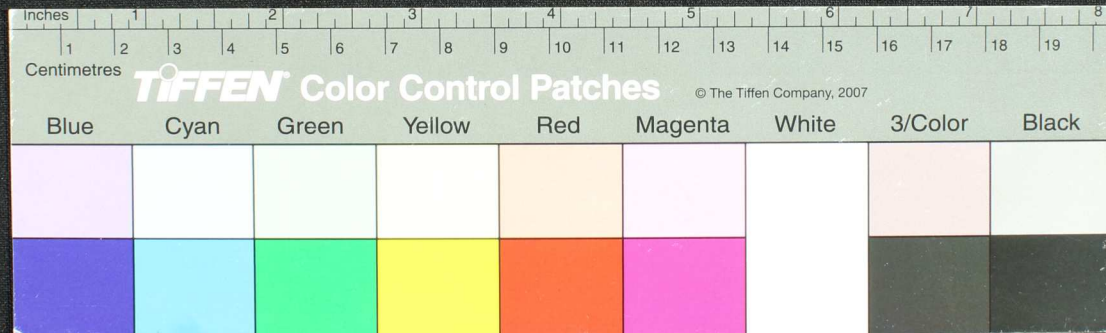
Handwritten Tamil script on a palm leaf manuscript. The text is arranged in approximately 10 horizontal lines across the length of the leaf. The script is finely etched into the surface of the dried leaf. A small circular hole is visible on the left side, used for threading a cord to bind multiple leaves together.



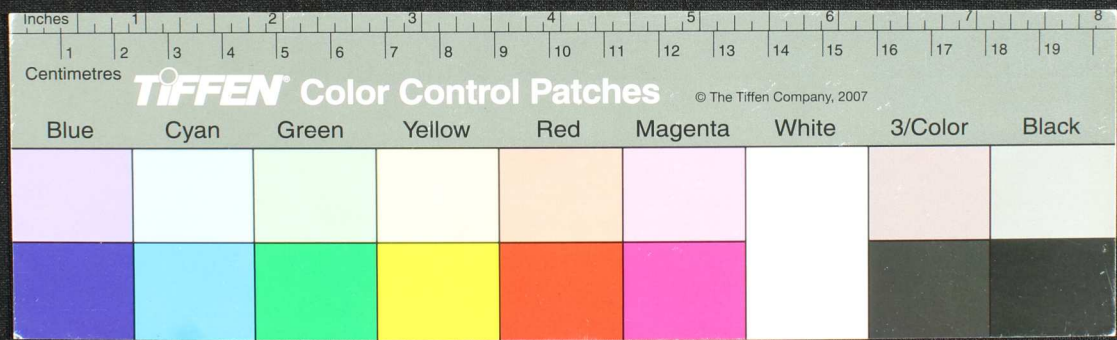
Handwritten Tamil script on a palm leaf manuscript. The text is arranged in two lines, with some characters appearing to be in a different script or dialect. The leaf shows signs of age, including discoloration and a small hole.



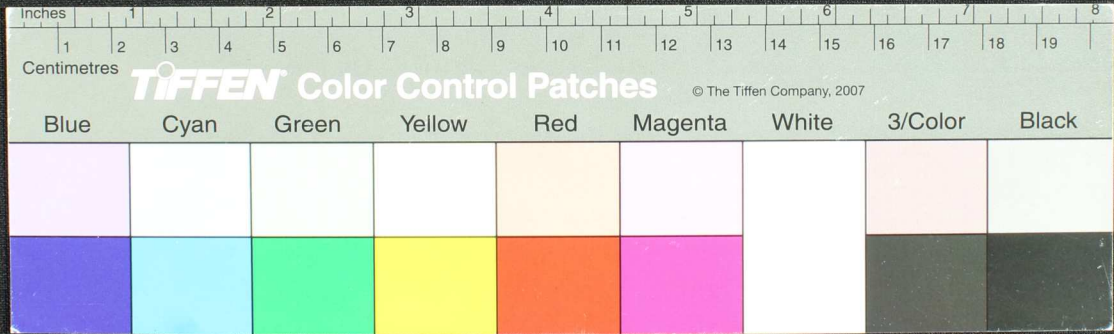
Handwritten Tamil script on a palm leaf manuscript. The text is arranged in approximately 10 horizontal lines across the length of the leaf. The script is a traditional form of the Tamil language, likely used for religious or philosophical purposes. The leaf shows signs of age and wear, with some fraying at the edges.



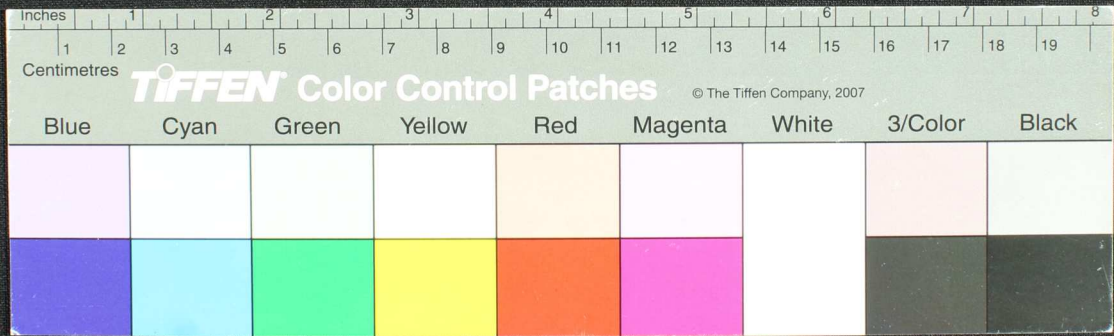
Handwritten Tamil script on a palm leaf manuscript fragment. The text is arranged in three horizontal lines across the length of the leaf. The script is finely etched into the surface of the dried leaf. The fragment is irregularly shaped, with a jagged right edge.



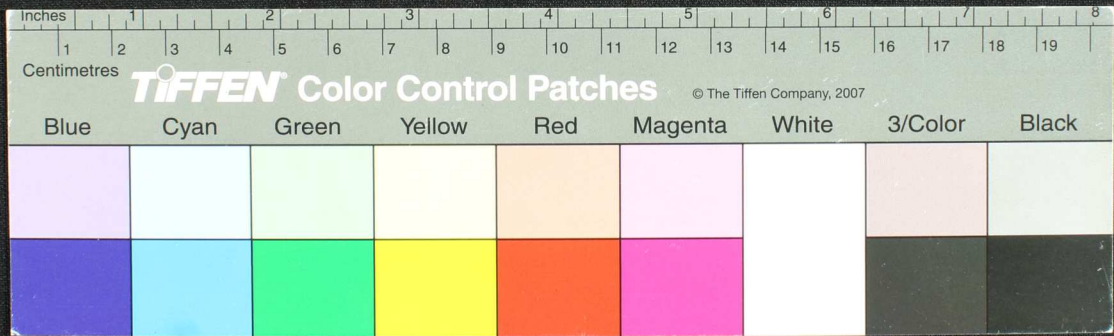
Handwritten Tamil script on a palm leaf manuscript. The text is arranged in approximately 10 horizontal lines. On the left side, there is a small circular mark and the characters "இந்த தேசத்து" (This country) and "கி. ராஜ" (K. Raja). The main body of text is densely packed and appears to be a historical or administrative record.



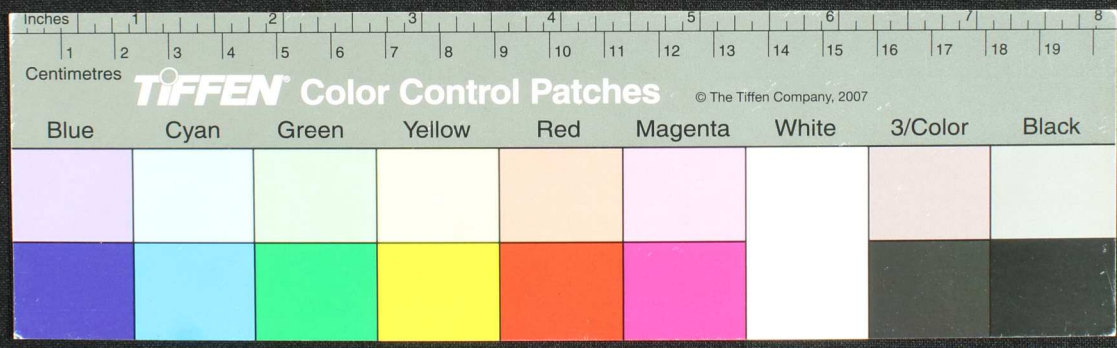
Handwritten text in Tamil script on a palm leaf manuscript. The text is arranged in approximately 10 horizontal lines across the length of the leaf. The script is dark and appears to be a traditional form of the Tamil language. There are two distinct circular holes on the leaf, one near the left end and one near the right end, which were traditionally used for threading a cord to bind multiple leaves together into a book format.



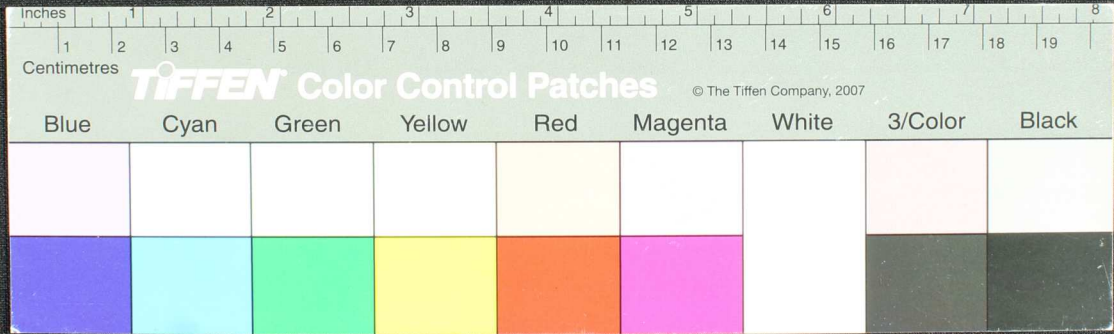
Handwritten Tamil script on a palm leaf manuscript. The text is arranged in two columns. On the left side, there are several lines of text, some starting with 'சரி' (Sari) and 'சரி' (Sari). In the center, there is a circular stamp or seal. On the right side, there are more lines of text, some starting with 'சரி' (Sari) and 'சரி' (Sari). The leaf shows signs of age and wear, with some discoloration and a small hole.



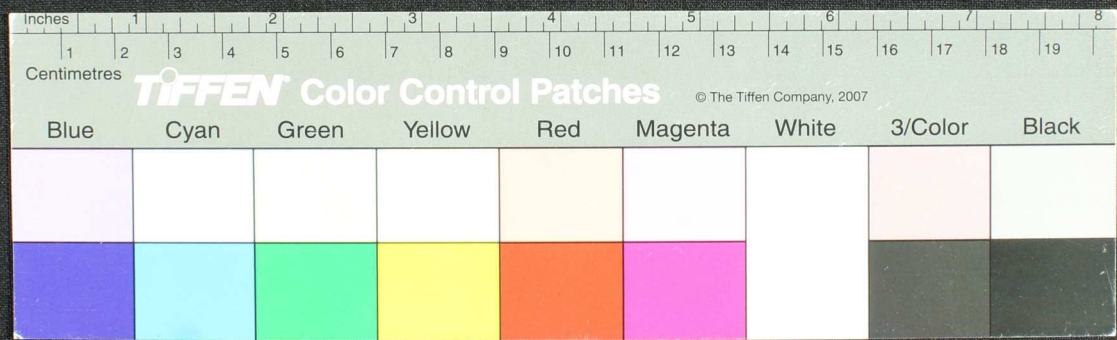
Handwritten Tamil script on a palm leaf manuscript. The text is densely packed and runs horizontally across the length of the leaf. The leaf shows signs of age and wear, with some fraying at the edges.



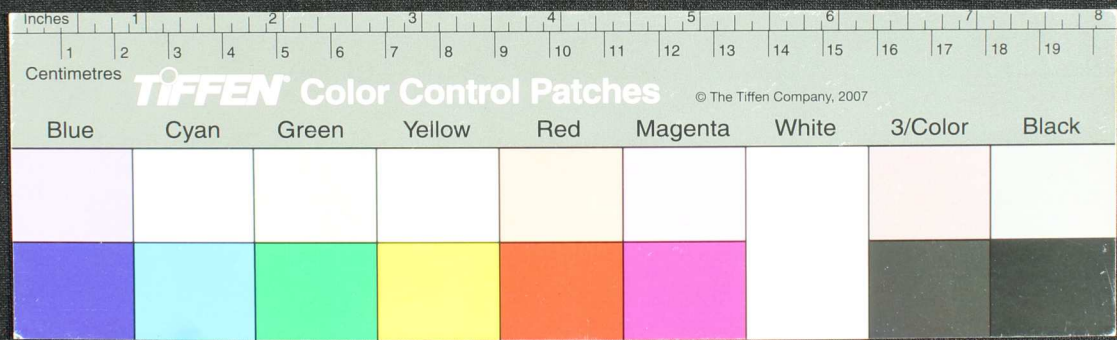
Handwritten text in Tamil script on a palm leaf manuscript. The text is arranged in approximately 12 horizontal lines across the length of the leaf. The script is dense and characteristic of traditional Tamil inscriptions. There are two circular holes visible on the left side of the leaf, which were traditionally used for threading a cord to bind multiple leaves together into a book format.



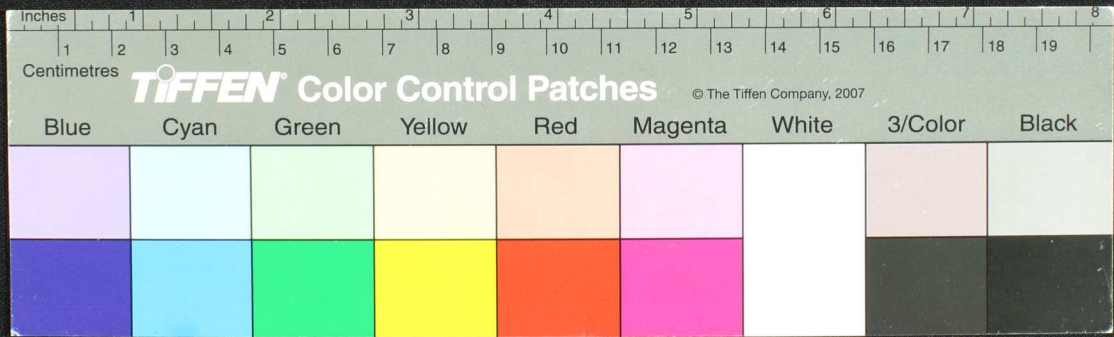
Handwritten Tamil script on a palm leaf manuscript. The text is arranged in two columns. The left column contains approximately four lines of text, and the right column contains approximately ten lines. The script is finely etched into the surface of the dried leaf.



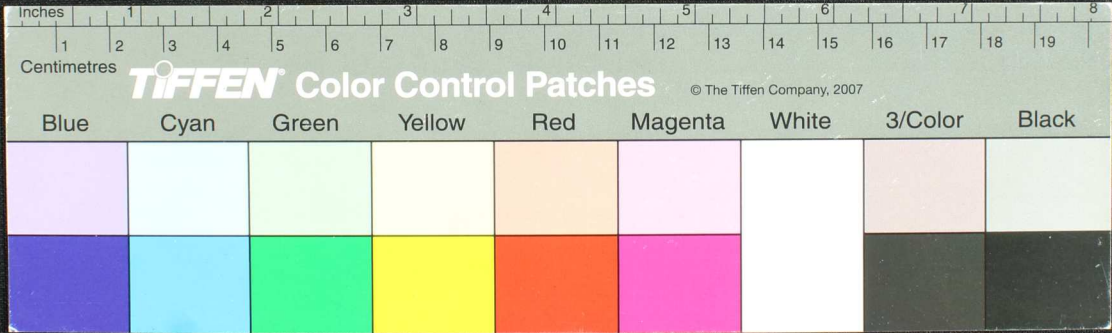
Handwritten Tamil script on a palm leaf manuscript. The text is arranged in several lines across the length of the leaf. The script is finely etched into the surface of the dried leaf. The leaf shows signs of age, including some discoloration and a small hole on the left side.



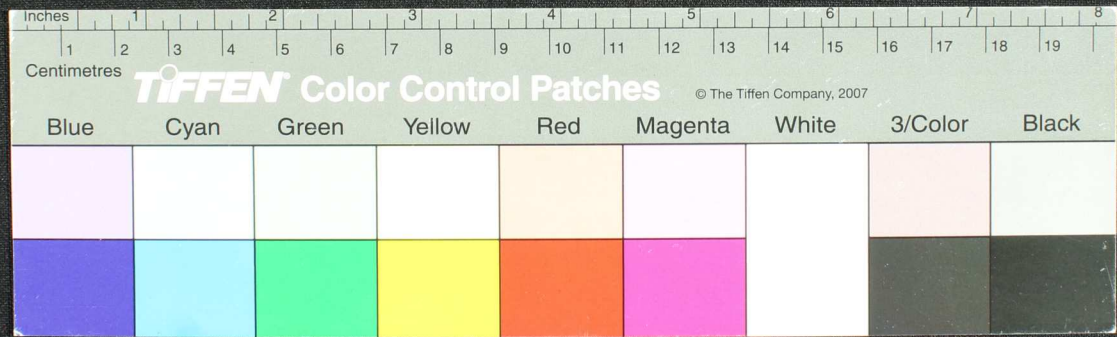
Handwritten Tamil script on a palm leaf manuscript. The text is arranged in approximately 10 horizontal lines across the length of the leaf. The script is densely packed and appears to be a form of classical Tamil. There are some dark spots and signs of wear on the leaf, particularly near the center and right edge. A small circular hole is visible on the left side of the leaf.



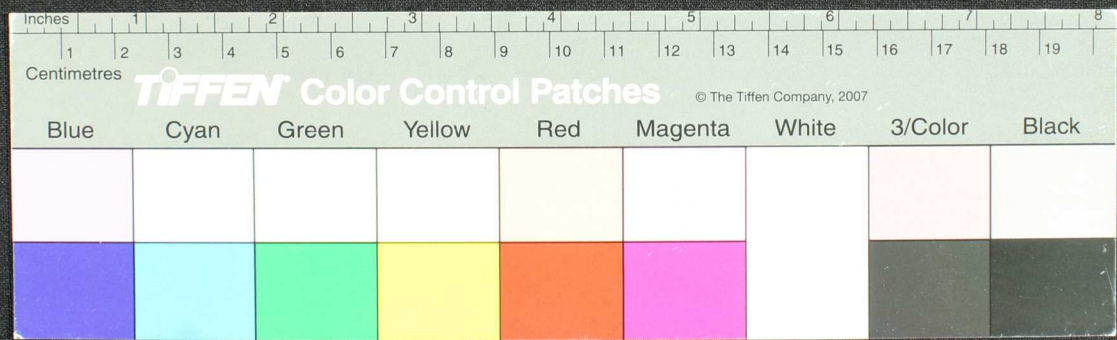
Handwritten Tamil script on a palm leaf manuscript. The text is arranged in approximately 10 horizontal lines across the length of the leaf. The script is dense and appears to be a form of classical or historical Tamil. There are some circular markings or stamps on the left side of the leaf, possibly indicating ownership or archival status. The leaf shows signs of age, including some discoloration and a small hole on the left side.



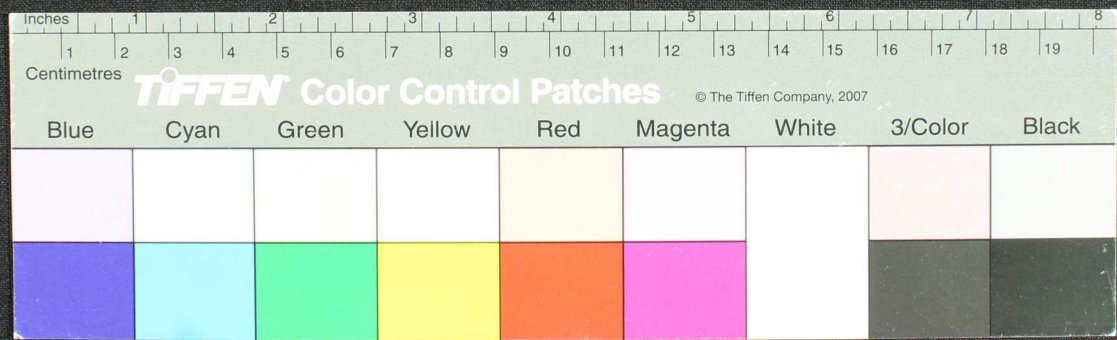
Handwritten text in Tamil script on a palm leaf manuscript. The text is arranged in approximately 10 horizontal lines across the length of the leaf. The script is finely etched into the surface of the dried leaf. The leaf shows signs of age and wear, with some fraying at the edges.



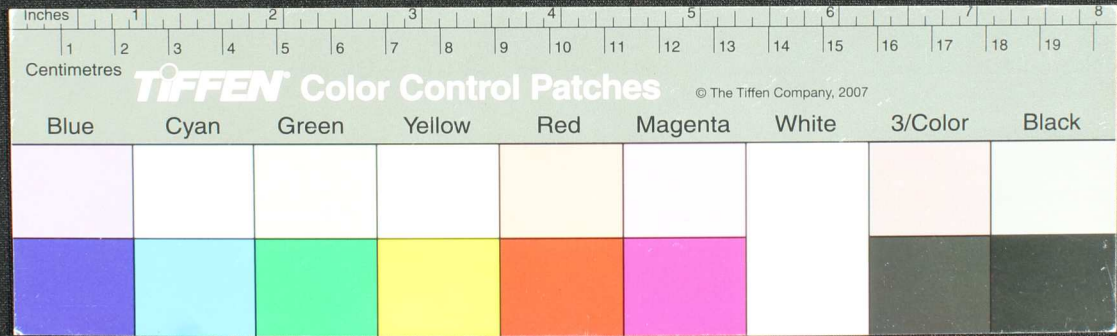
187009
 1872
 [Handwritten text in Tamil script, including a date and a signature]



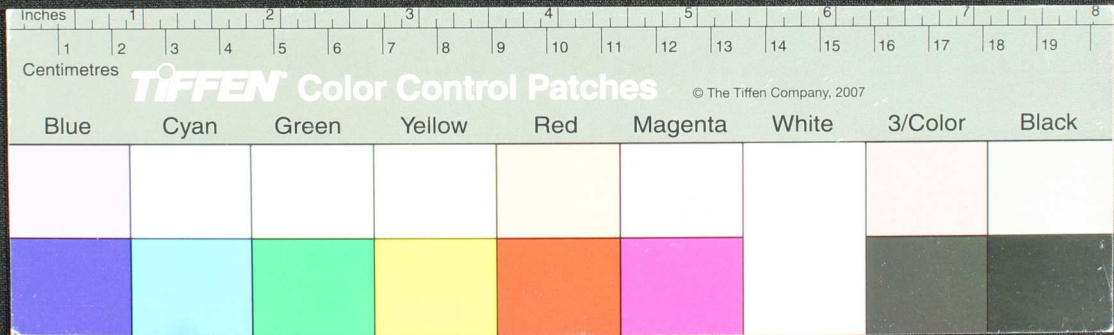
Handwritten Tamil script on a palm leaf manuscript. The text is arranged in approximately 10 horizontal lines. On the left side, there are two distinct circular stamps or seals, one above the other, with illegible markings inside. A small circular hole is visible in the leaf, approximately one-third of the way from the left end. The leaf shows signs of age and wear, particularly at the right end which is frayed and broken.



Handwritten text in Tamil script on a yellowed, torn strip of paper. The text is partially obscured by a large tear in the center. A circular stamp is visible on the right side of the strip.

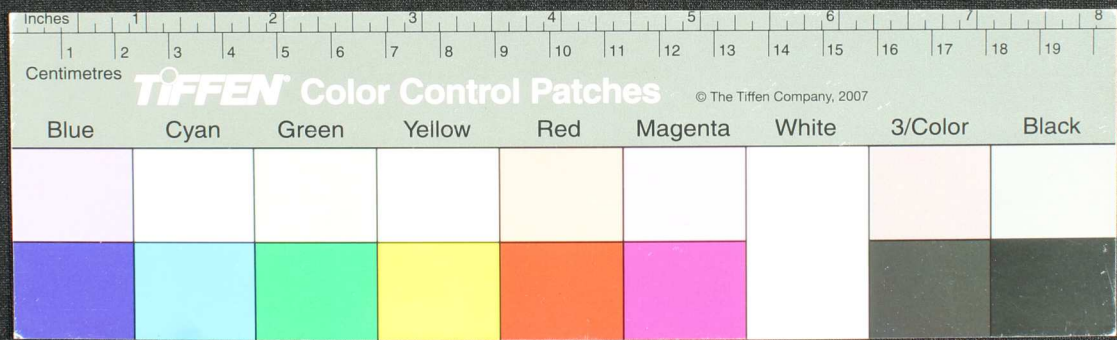


Fragment of a palm-leaf manuscript with handwritten text in an ancient script, possibly Tamil or Grantha. The text is arranged in approximately four horizontal lines across the length of the leaf. The leaf is yellowed and shows signs of wear and tear, particularly along the right edge.

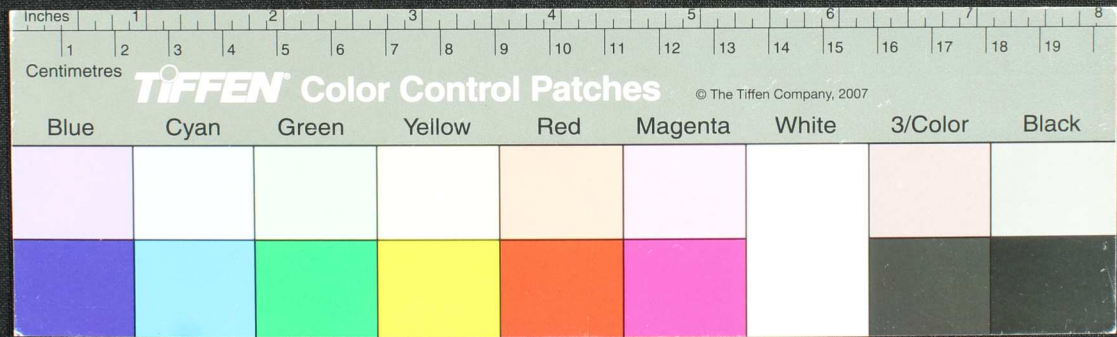


சா... இராமலிங்க
 கா... இராமலிங்க
 சா... இராமலிங்க

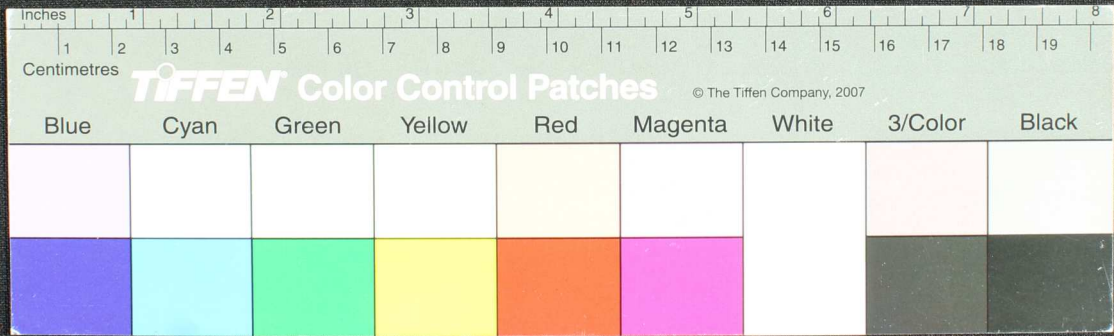
சூழல்புலர்ன் இமத் திரதரமலும சூபயத இரகு சிபா தி இன் தகநிதலிவள
 சமலர்யரகு திரதரமர ஆவகுரவளகு சாமநநகிர ஆயுமயள்ளைவ தகநிதலிவள இரமர
 வெளநிபிவளகு இபயத இவாகிளதிர தி இரகு நநயதகு ஏகு இவச ஆமபல்வானை



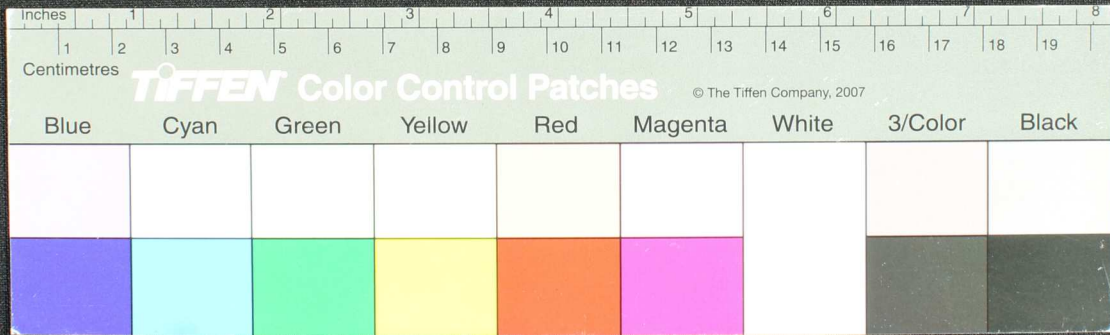
Handwritten text on a yellowed, torn strip of paper. The text is partially obscured by a hole and includes the number "18" and the fraction "65 2/3".



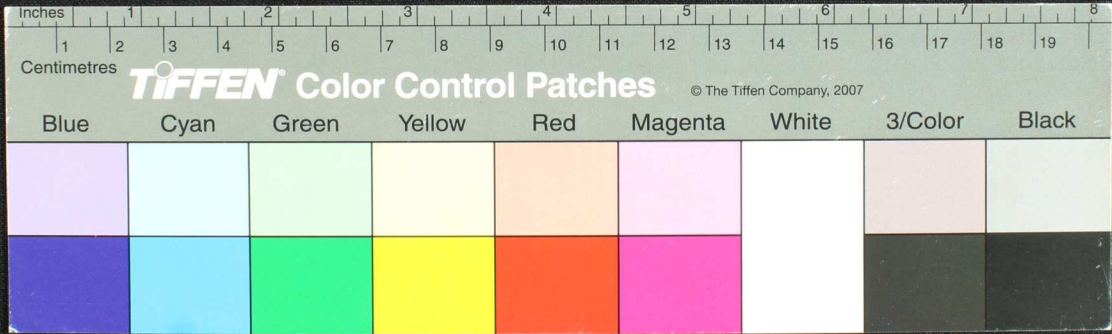
Handwritten Tamil script on a palm leaf manuscript. The text is arranged in approximately 10 horizontal lines across the length of the leaf. The script is finely etched into the surface of the dried leaf. The leaf shows signs of age and wear, with some fraying at the edges.



Handwritten Tamil script on a palm leaf manuscript strip. The text is arranged in approximately 10 horizontal lines across the length of the leaf. The script is finely etched into the surface of the dried leaf.



Handwritten text on a yellowed, torn strip of paper, likely a manuscript fragment. The text is written in a South Asian script, possibly Tamil or Grantha, and is arranged in several lines. Some characters are circled, and there are some markings that look like musical notes or symbols. The paper is heavily damaged, with significant tearing and discoloration.



சீர்திருத்தியுள்ள இனம் பி. பி. 15) 15-17 05 -
 சீர்திருத்தியுள்ள பி. பி. 17) 16-17 05 -
 சீர்திருத்தியுள்ள பி. பி. 18) 17-17 05 -
 சீர்திருத்தியுள்ள பி. பி. 19) 18-17 05 -
 சீர்திருத்தியுள்ள பி. பி. 20) 19-17 05 -

