

Inches

Centimetres

**TIFFEN** Color Control Patches

© The Tiffen Company, 2007

Blue

Cyan

Green

Yellow

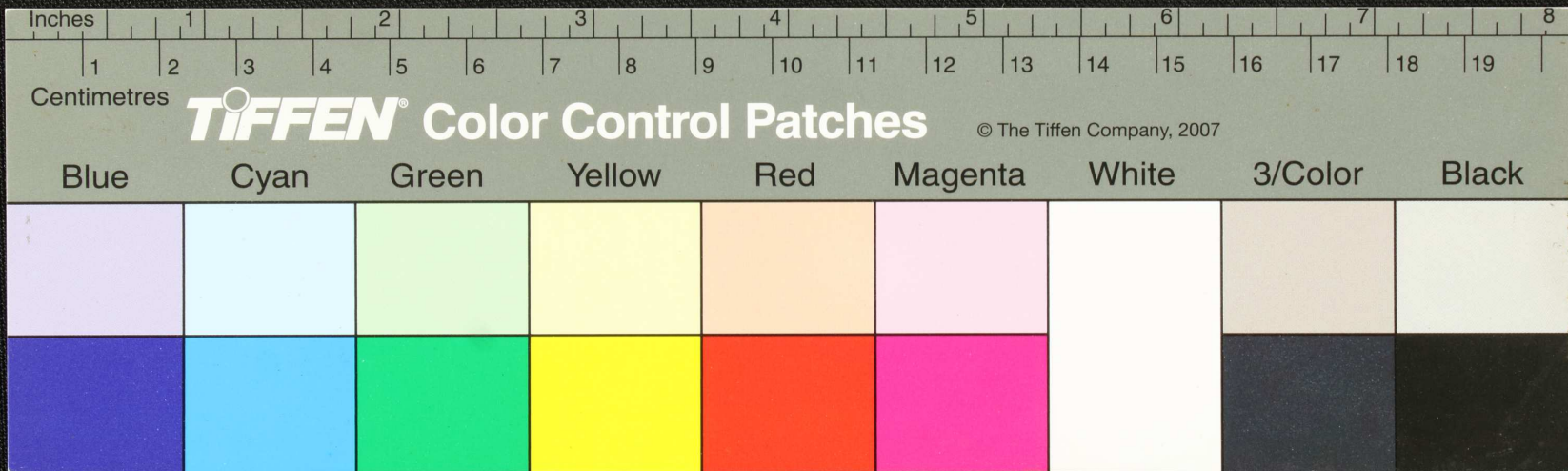
Red

Magenta

White

3/Color

Black



Inches

1

2

3

4

5

6

7

8

Centimetres

1

2

3

4

5

6

7

8

9

10

11

12

13

14

15

16

17

18

19

**TIFFEN** Color Control Patches

© The Tiffen Company, 2007

Blue

Cyan

Green

Yellow

Red

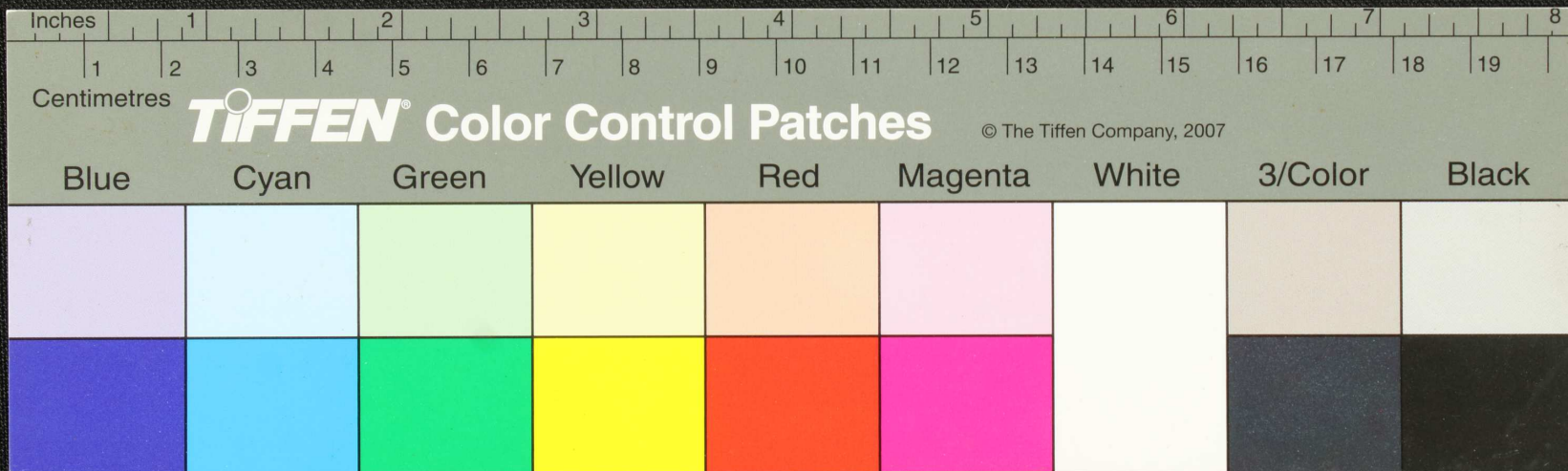
Magenta

White

3/Color

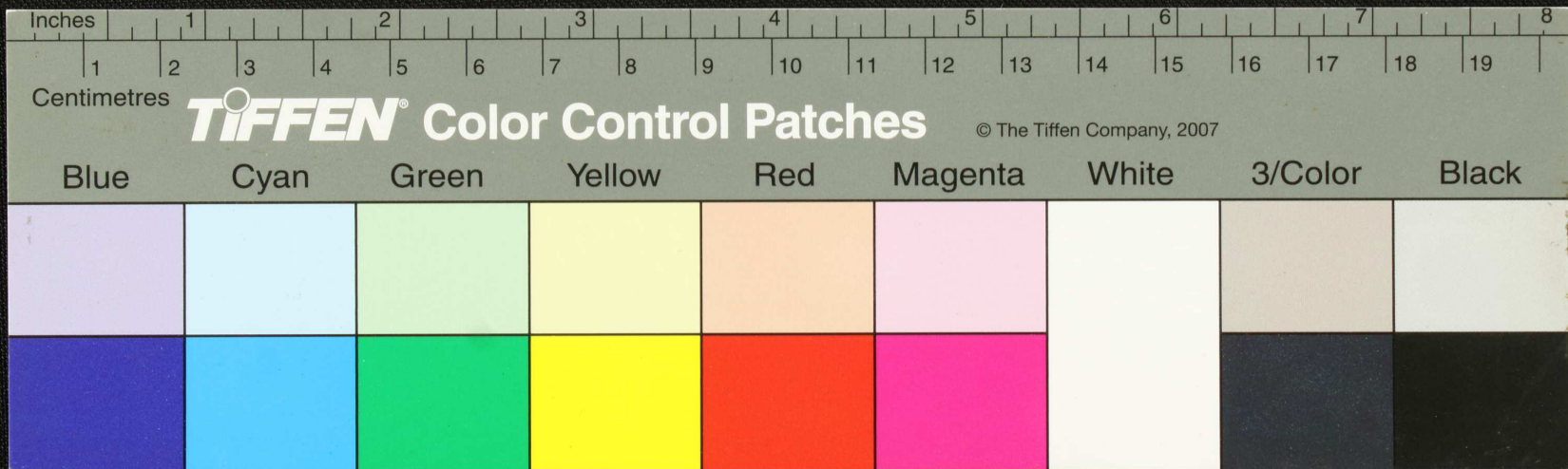
Black

Handwritten text in Tamil script on a yellowish-brown rectangular strip. The text is arranged in three lines, with some characters underlined. A small black circular mark is present in the center of the strip.



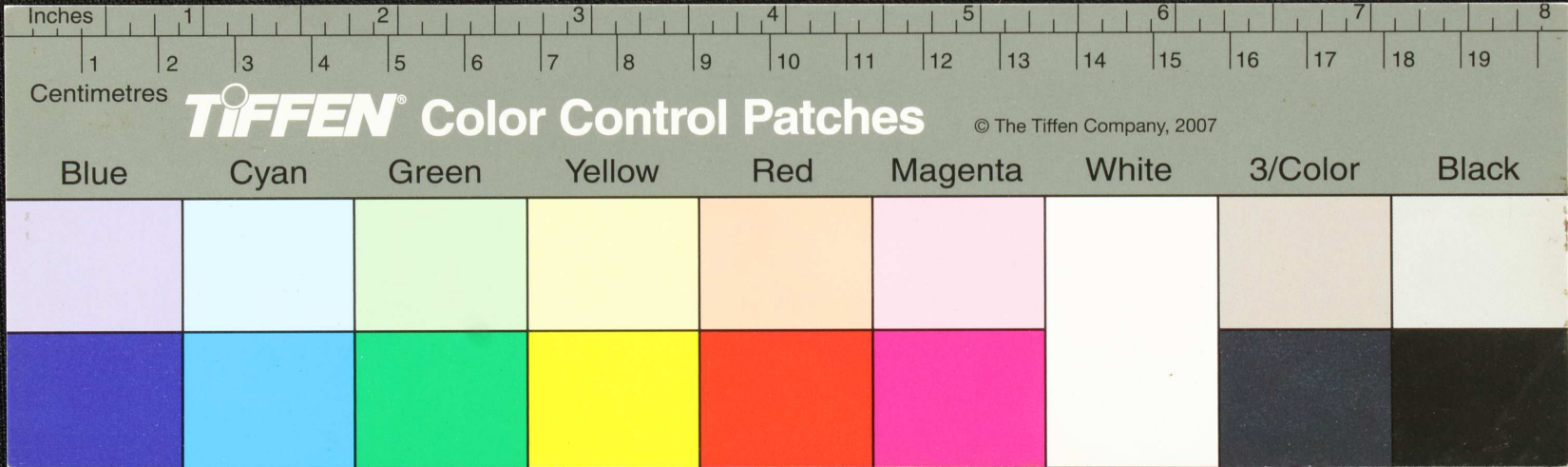
திருச்சி  
 N. 01-507  
 திருச்சி மாவட்டம்  
 திருச்சி மாவட்டம்  
 திருச்சி மாவட்டம்

கரு  
 சி  
 சி  
 சி

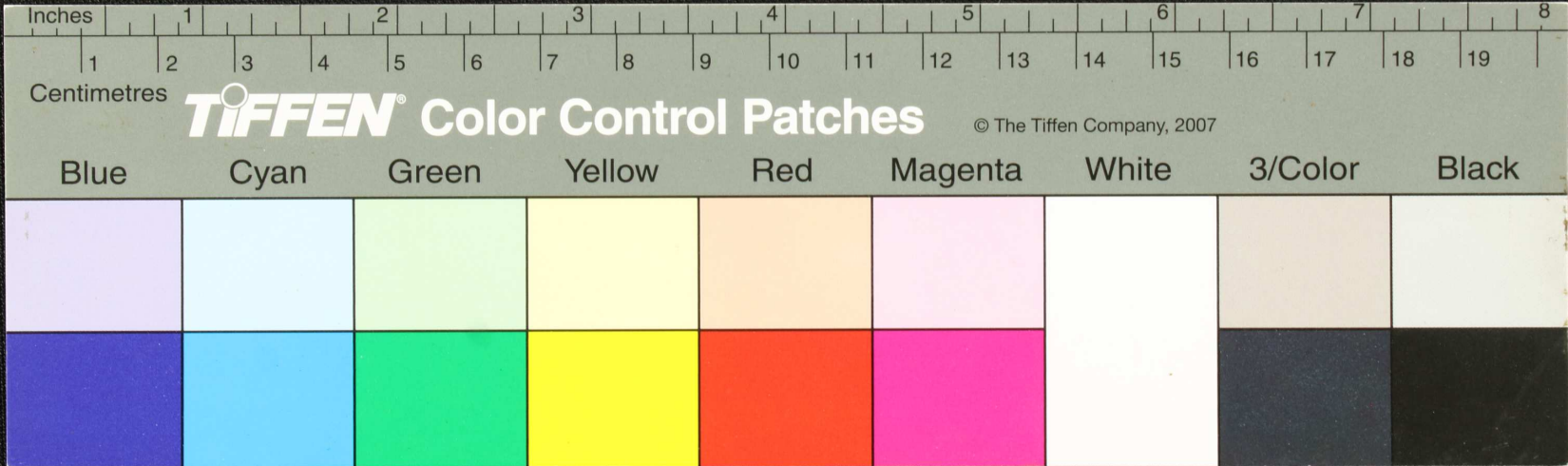




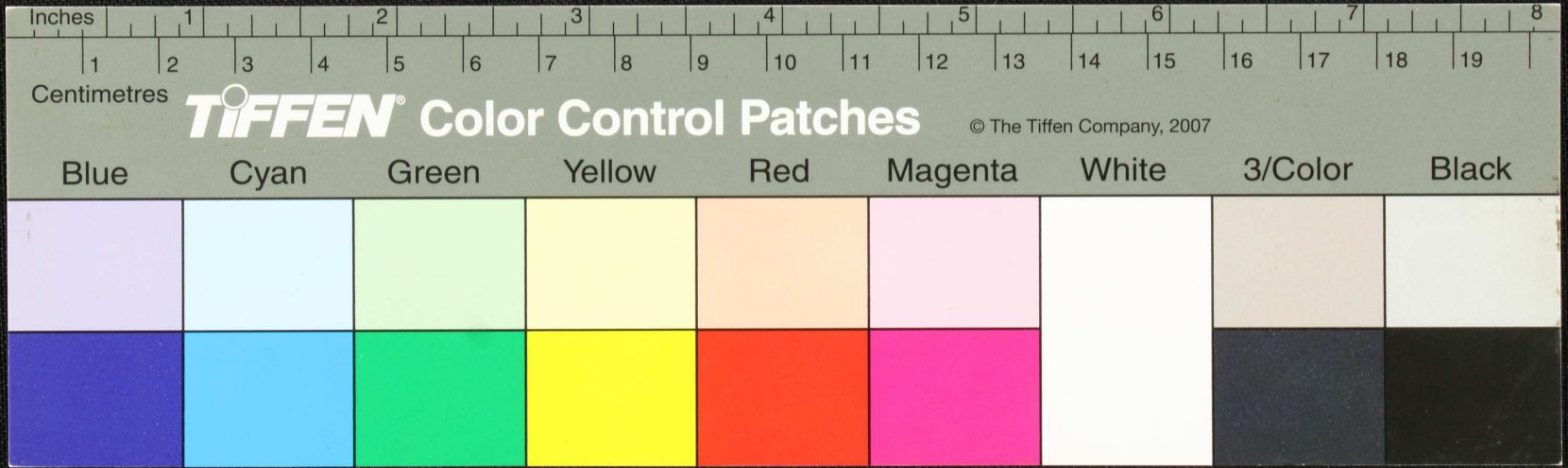
Handwritten Tamil script on a palm leaf manuscript. The text is arranged in four horizontal lines. A small black circular mark is present in the second line, approximately at the 8.5 cm mark on the ruler below. The script is finely etched into the surface of the dried leaf.



Handwritten text in Tamil script on a palm leaf manuscript. The text is arranged in approximately four horizontal lines across the length of the leaf. A small circular hole is visible near the center of the leaf, used for binding multiple leaves together.

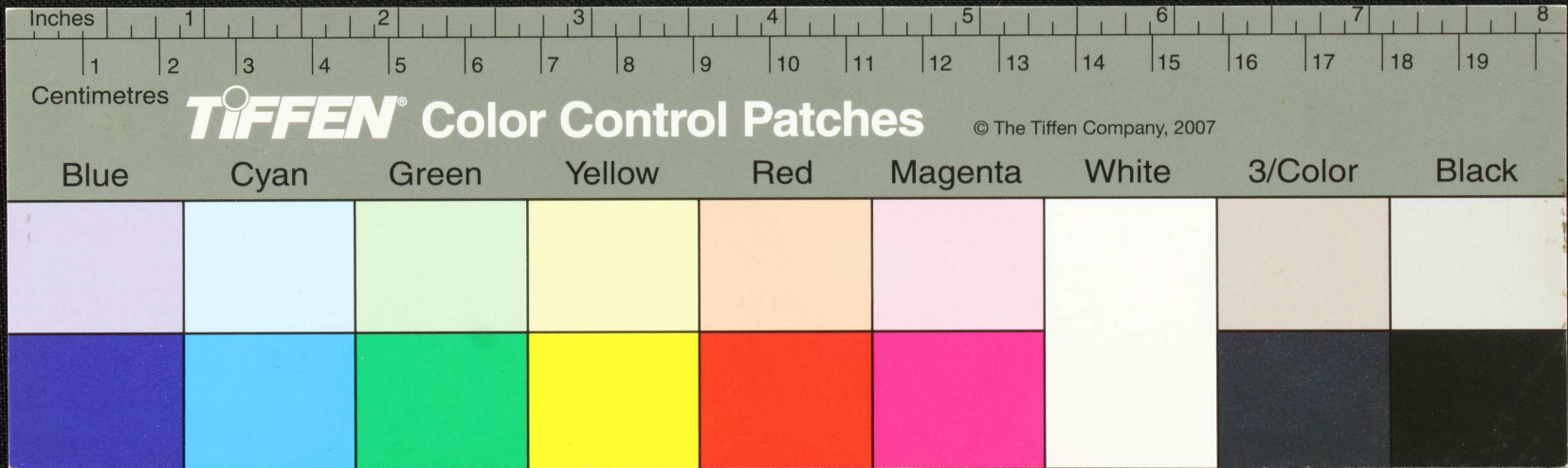


Handwritten text in Tamil script on a palm leaf manuscript. The text is arranged in approximately four lines across the length of the leaf. The script is a traditional form of the Tamil language.

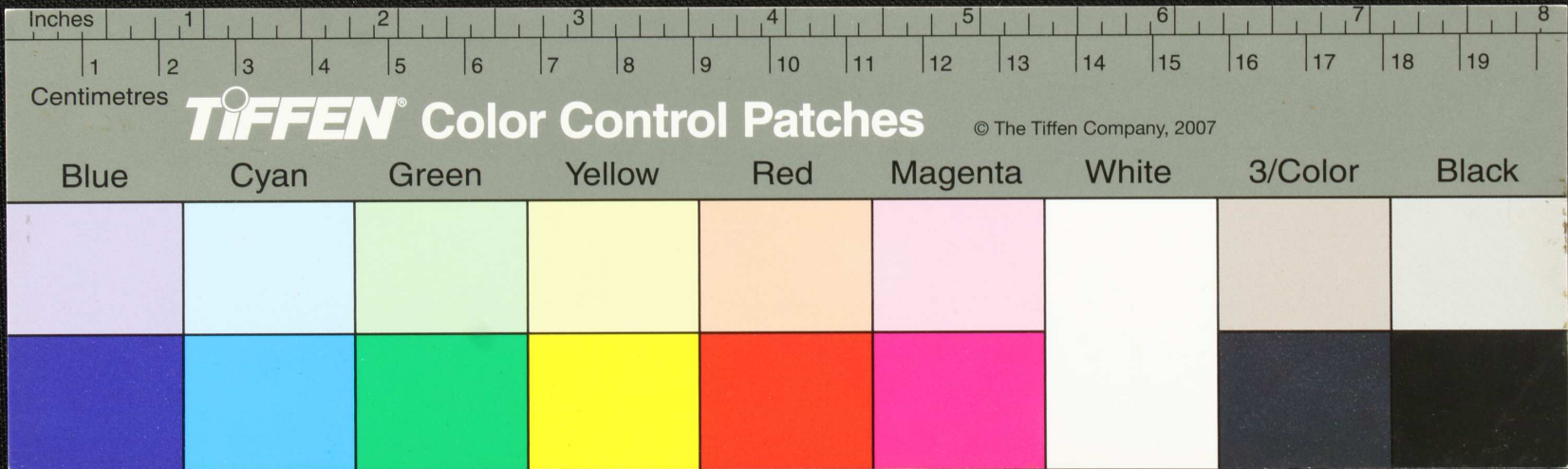




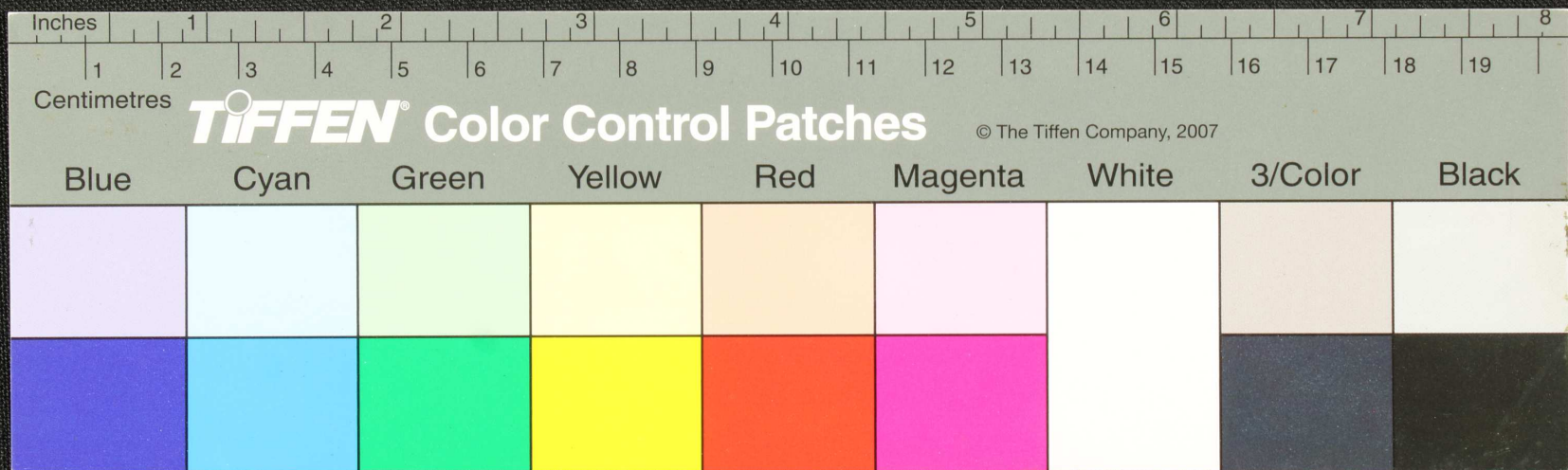
Handwritten text in Tamil script on a yellowed palm leaf manuscript strip. The text is arranged in approximately four horizontal lines. A small dark circular hole is visible near the center of the strip, which is a traditional feature for threading a cord to bind multiple leaves together. The script is finely etched into the surface of the leaf.



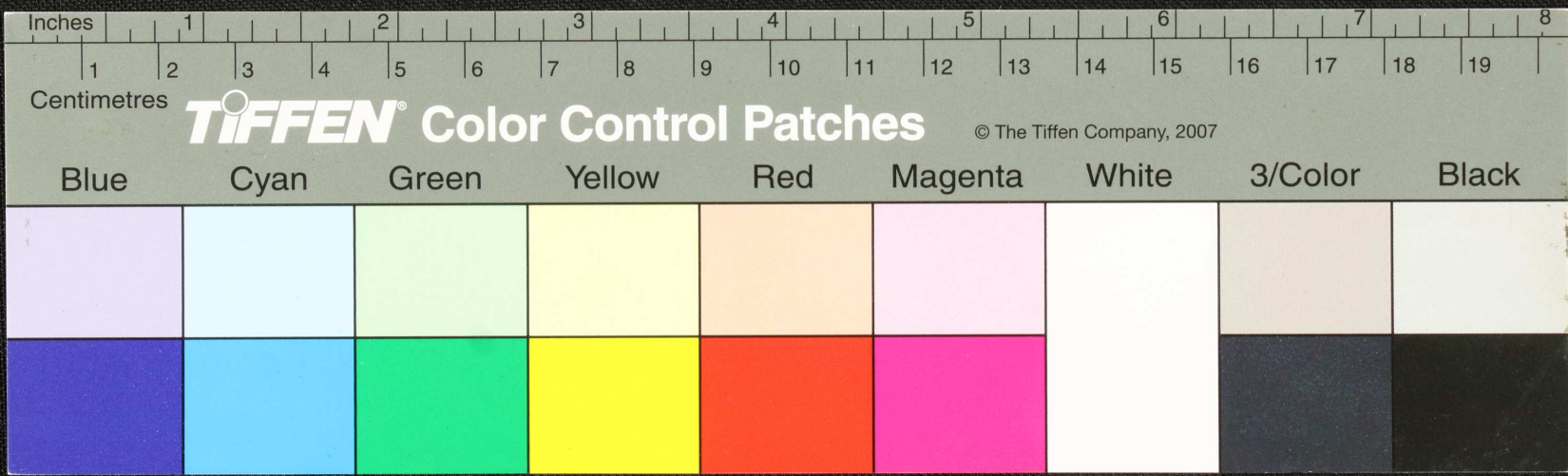
Handwritten text in Tamil script on a palm leaf manuscript. The text is arranged in approximately four horizontal lines. A small circular hole is visible in the center of the leaf, used for binding multiple leaves together. The script is finely etched into the surface of the dried leaf.



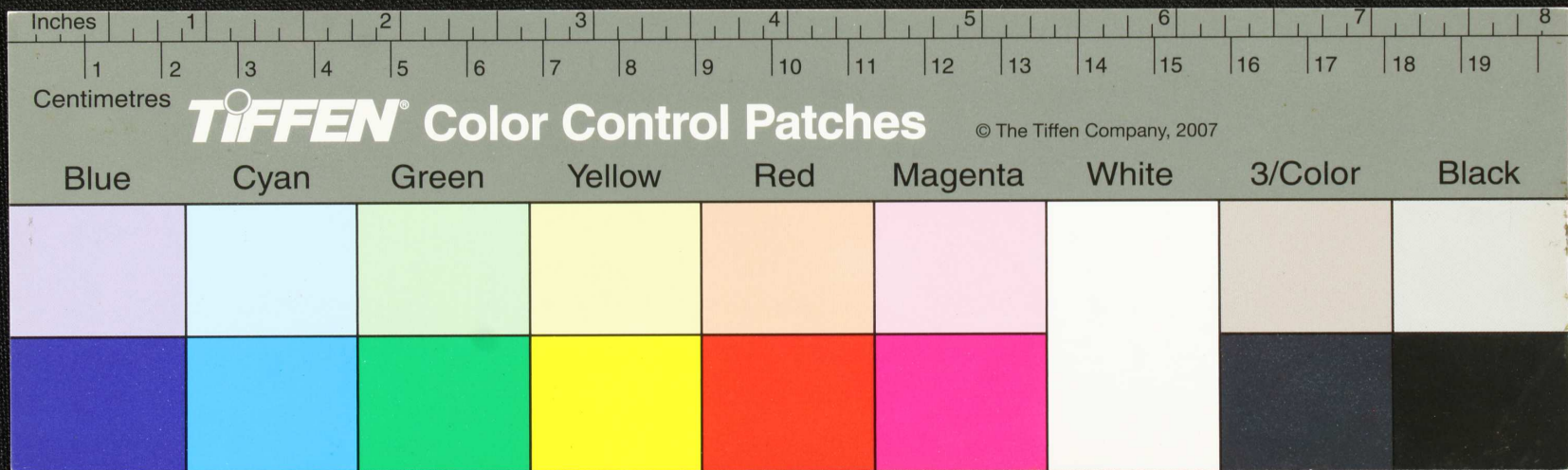
Handwritten text in Tamil script on a palm leaf manuscript. The text is arranged in approximately four horizontal lines. A small, dark circular hole is visible in the center of the leaf, likely from a traditional binding method. The script is finely etched into the surface of the dried leaf.



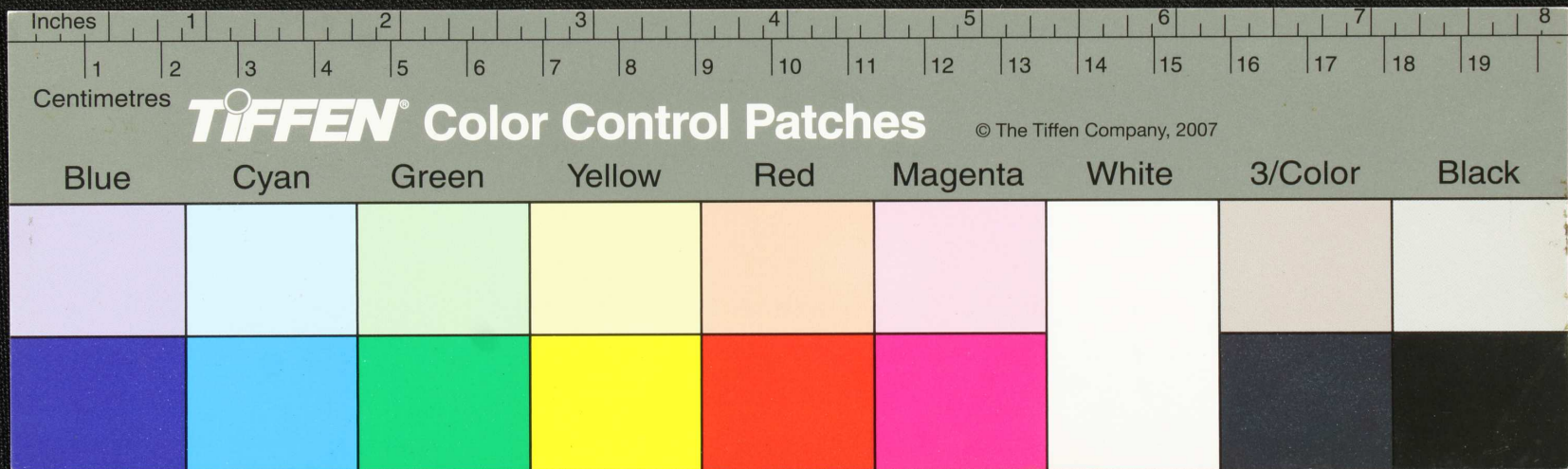
Handwritten text in Tamil script on a palm leaf manuscript. The text is arranged in approximately four horizontal lines across the length of the leaf. The script is finely etched into the natural texture of the dried leaf. A small, dark circular hole is visible near the center of the leaf, which is a traditional feature used for threading a cord to bind multiple leaves together into a book format.



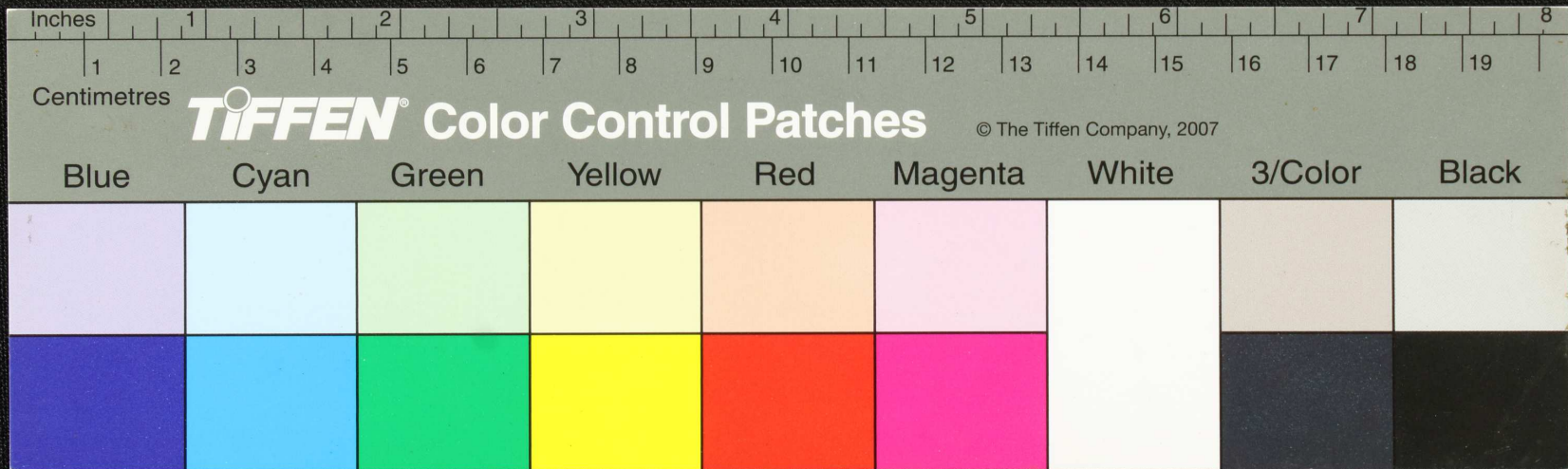
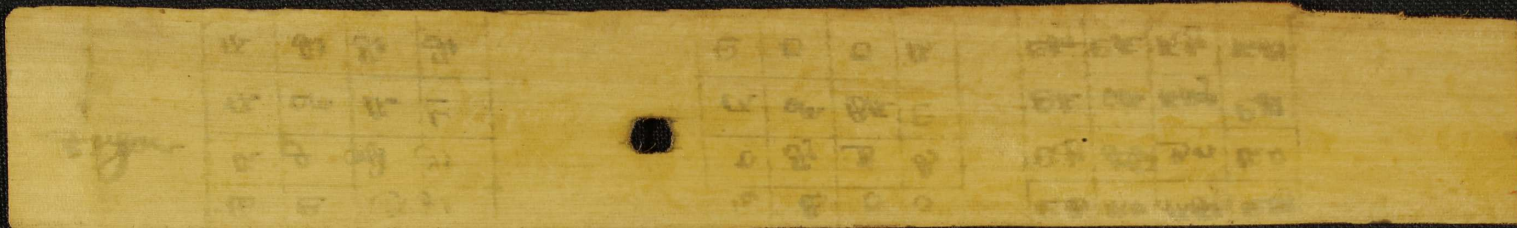
Handwritten text in Tamil script on a palm leaf manuscript. The text is arranged in approximately four horizontal lines. A small black circular mark is visible on the second line of text.



Handwritten text in Tamil script on a palm leaf manuscript. The text is arranged in several lines across the length of the leaf. A small circular hole is visible near the center of the leaf, used for binding multiple leaves together. The script is finely etched into the surface of the dried leaf.

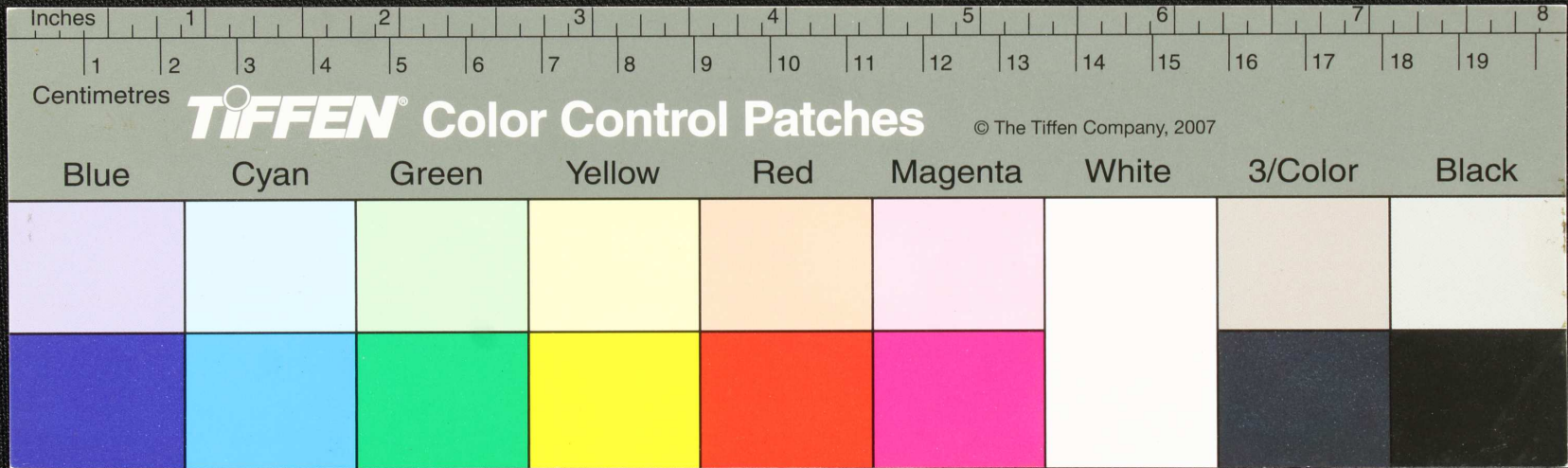




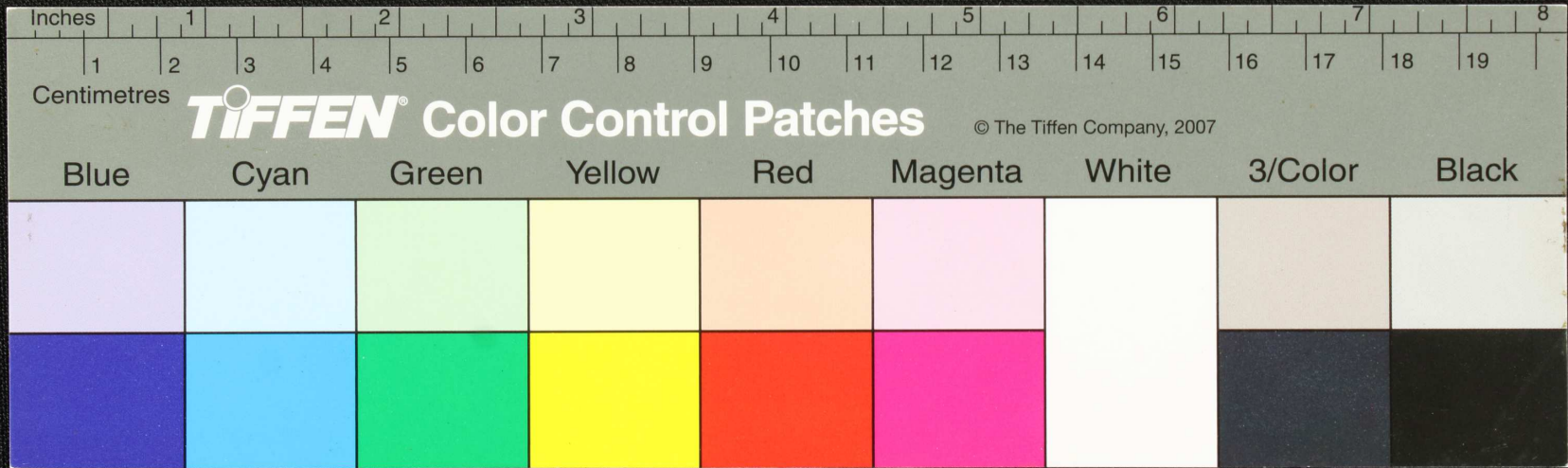




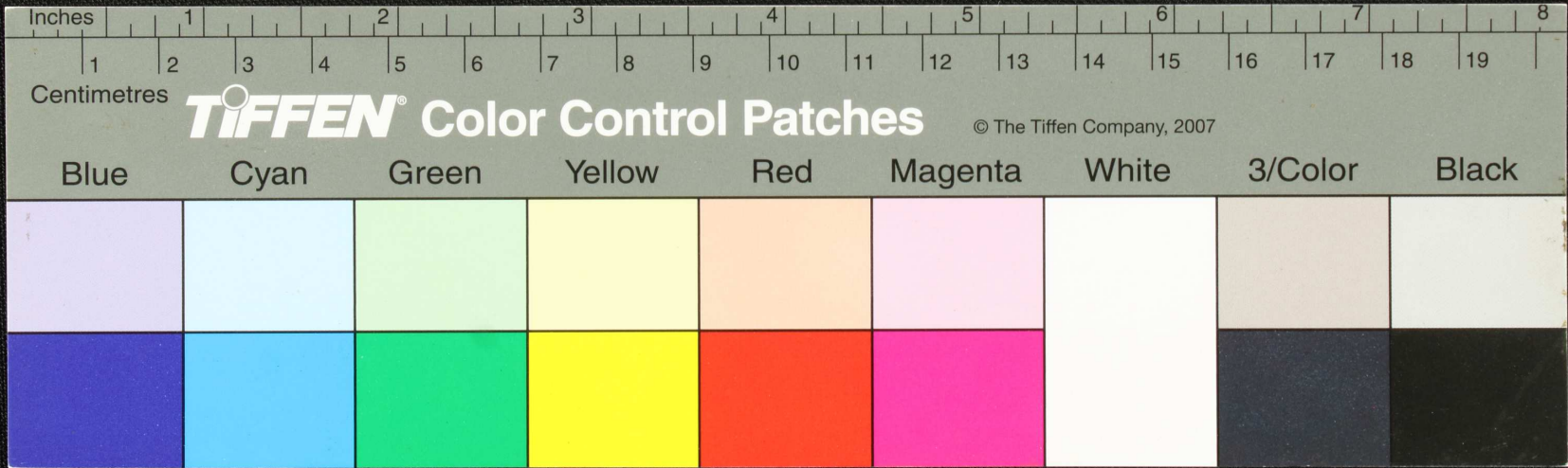
Handwritten text in Tamil script on a palm leaf manuscript. The text is arranged in approximately four horizontal lines. A small black circular mark is visible on the leaf, partially obscuring the text in the second line. The script is finely etched into the surface of the dried leaf.



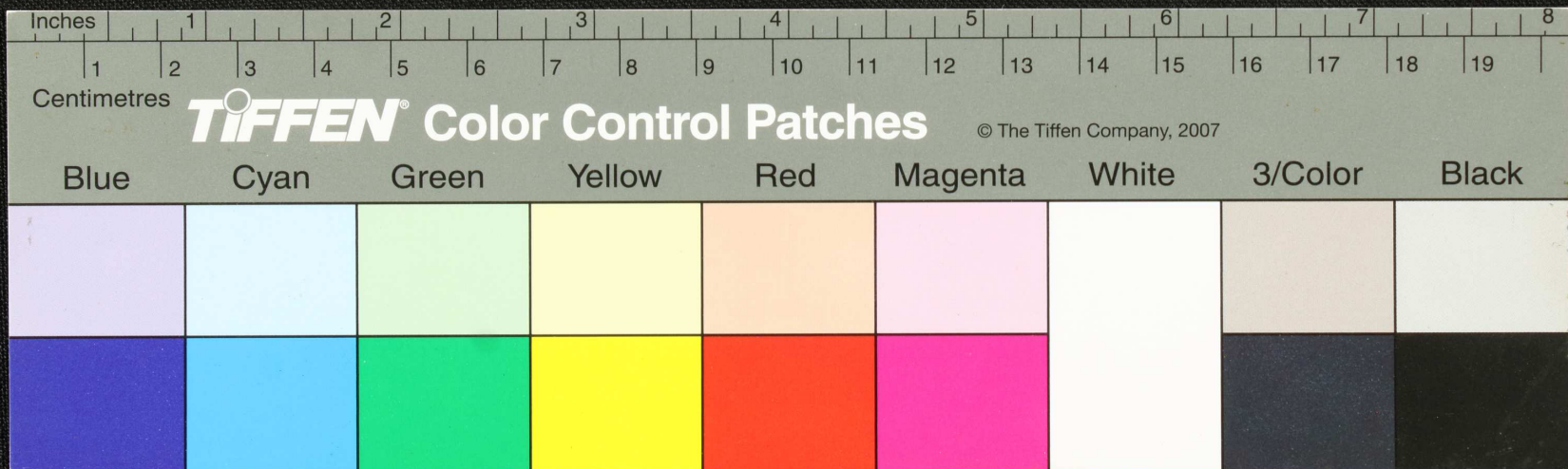
Handwritten text in Tamil script on a palm leaf manuscript. The text is arranged in approximately four horizontal lines. A prominent dark circular hole is visible in the center of the leaf, which is a traditional feature for threading a cord to bind multiple leaves together. The script is finely etched into the surface of the dried leaf.



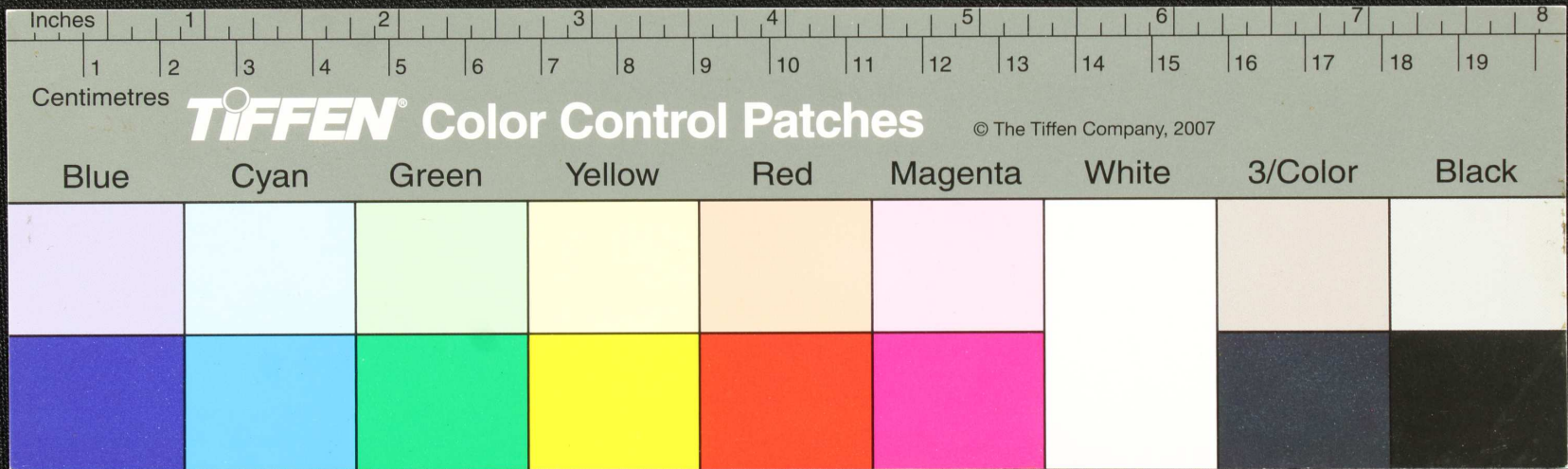
Handwritten text in Tamil script on a palm leaf manuscript. The text is organized into three columns. The first column contains several lines of text, possibly a list or a series of entries. The second column contains a few lines of text, including a prominent black circular mark. The third column contains a longer passage of text, possibly a narrative or a set of instructions. The script is finely etched into the surface of the dried leaf.



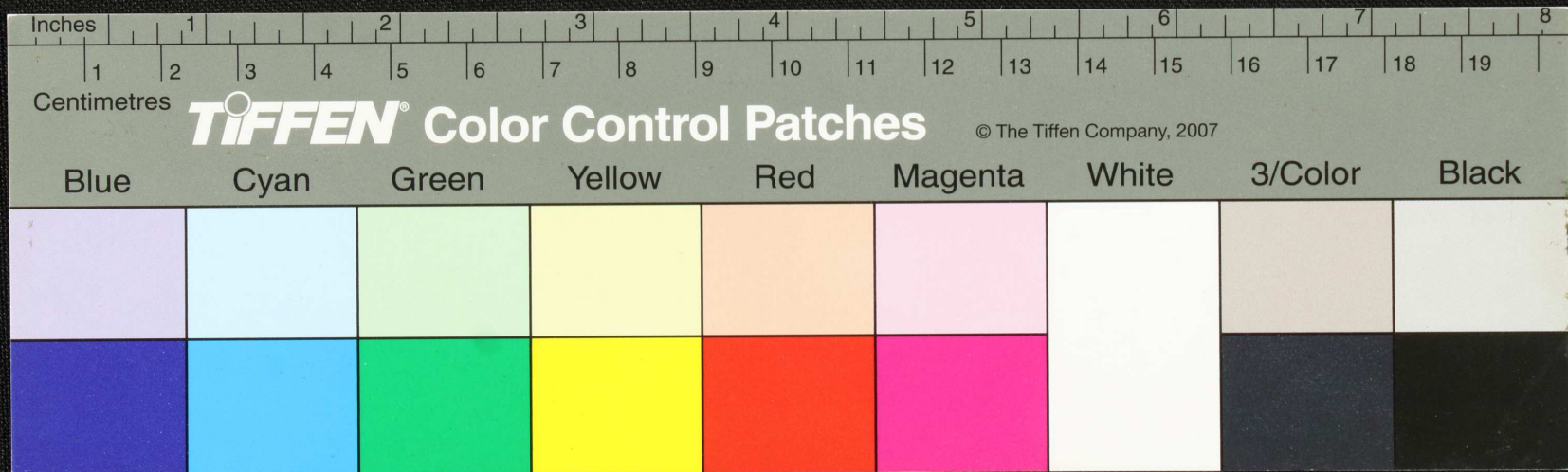
Handwritten text in Tamil script on a palm leaf manuscript. The text is arranged in three lines, with a small black circular mark (possibly a hole or a stain) located in the middle of the second line. The script is finely etched into the surface of the leaf.



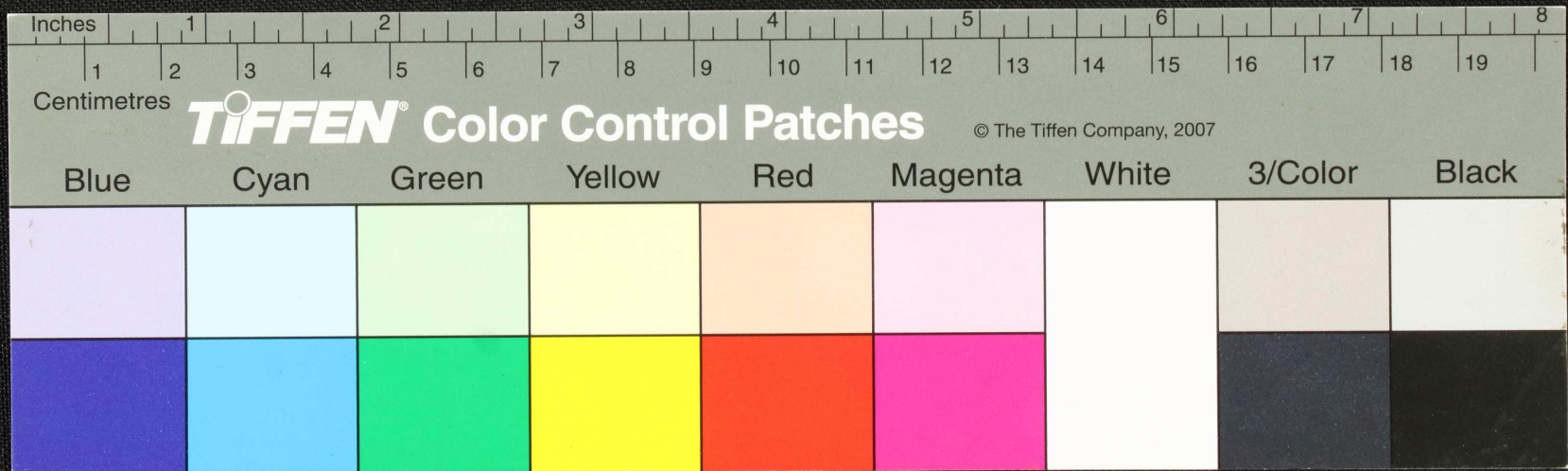
Handwritten text in Tamil script on a palm leaf manuscript. The text is arranged in approximately four horizontal lines. The script is finely etched into the surface of the dried leaf. A small circular hole is visible near the center of the leaf, which is a traditional feature used for threading a cord to bind multiple leaves together into a book format.



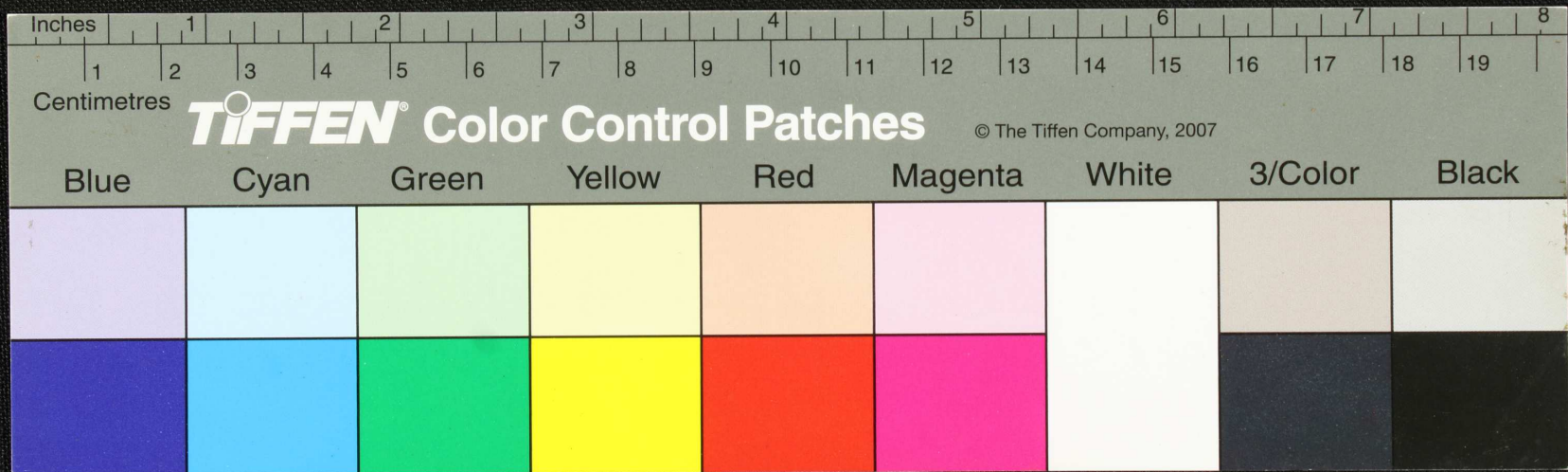
Handwritten text in Tamil script on a palm leaf manuscript. The text is arranged in approximately four horizontal lines across the length of the leaf. The script is finely etched into the natural texture of the dried leaf. There is a small, dark circular hole or mark on the leaf, located roughly in the middle of the second line of text.



Handwritten text in Tamil script on a palm leaf manuscript. The text is arranged in approximately three lines across the length of the leaf. The script is finely etched into the surface of the dried leaf.

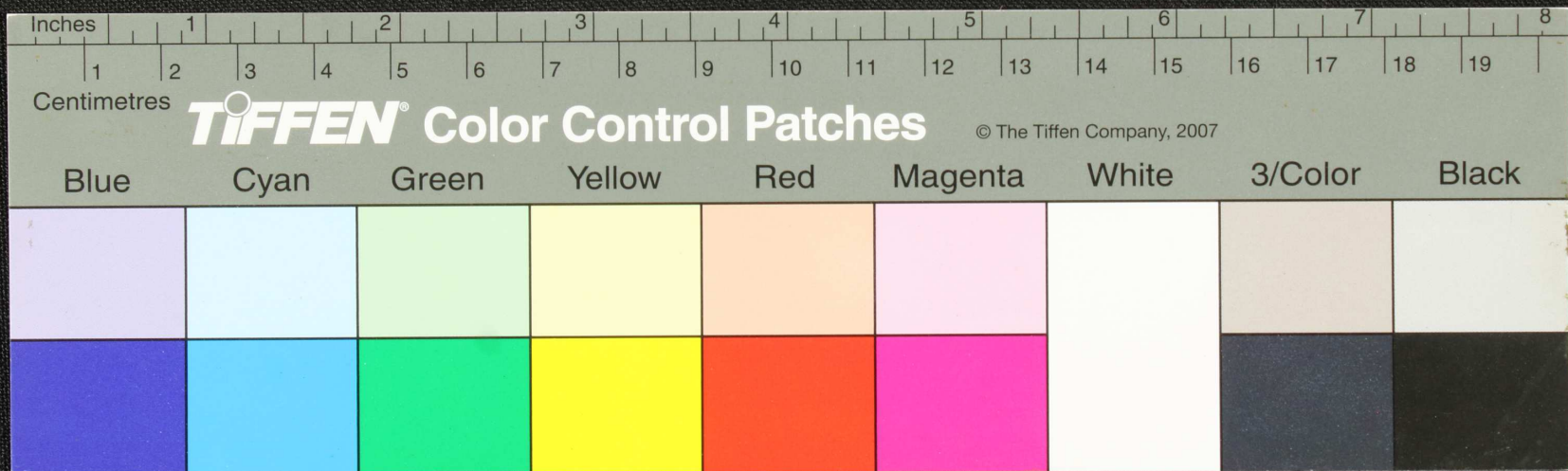


Handwritten text in Tamil script on a palm leaf manuscript. The text is arranged in three lines and includes a central circular stamp or hole. The script is finely etched into the surface of the leaf.

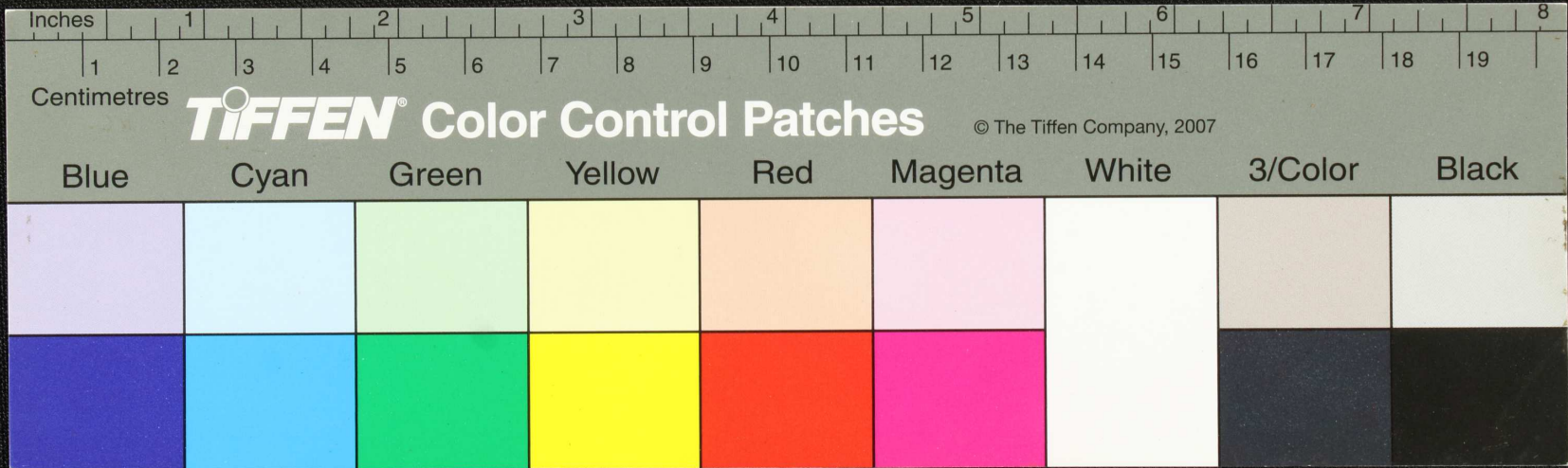




Handwritten text in Tamil script on a palm leaf manuscript. The text is arranged in several lines and includes a circular stamp or seal in the center. The script is finely etched into the surface of the leaf.



Handwritten text in Tamil script on a palm leaf manuscript. The text is arranged in approximately four horizontal lines. A small circular hole is visible in the center of the leaf, used for binding multiple leaves together. The script is finely etched into the surface of the dried leaf.



தி. ஏ. மூலநாதன் என்பவரால் விரிவு செய்யும். ஒருகதையை  
 வரலாம். சிவமூலகதையை வரலாம். சிவமூலகதையை வரலாம். சிவ  
 மூலகதையை வரலாம். சிவமூலகதையை வரலாம். சிவமூலகதையை வரலாம்.  
 மூல: சிவமூலகதையை வரலாம். சிவமூலகதையை வரலாம். சிவமூலகதையை வரலாம்.

Inches 1 2 3 4 5 6 7 8

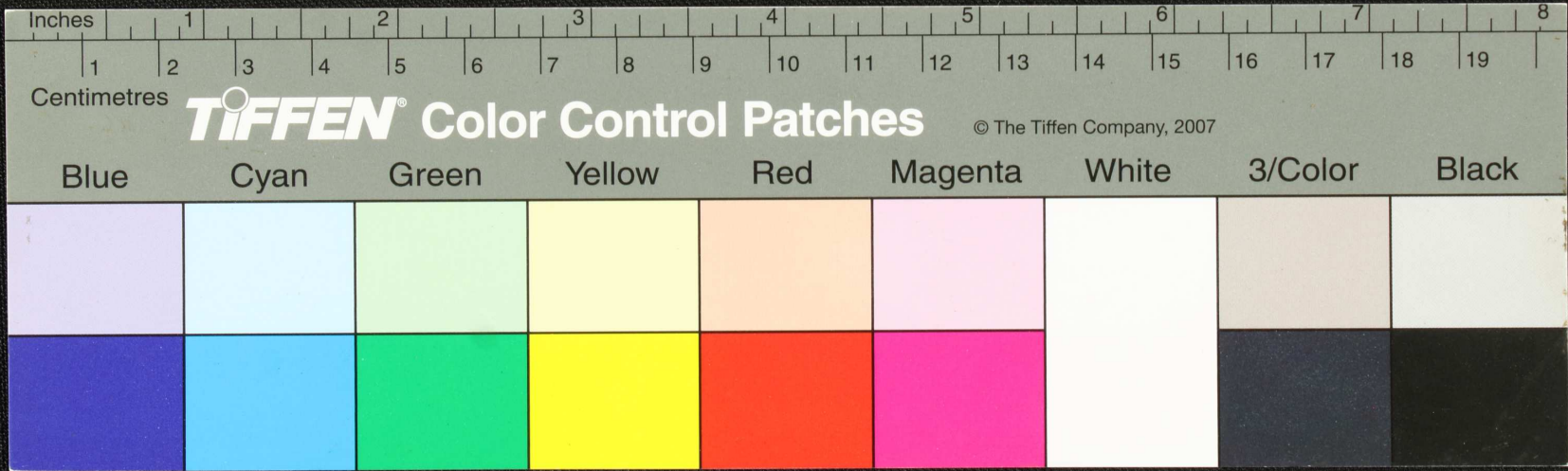
Centimetres 1 2 3 4 5 6 7 8 9 10 11 12 13 14 15 16 17 18 19

**TIFFEN** Color Control Patches © The Tiffen Company, 2007

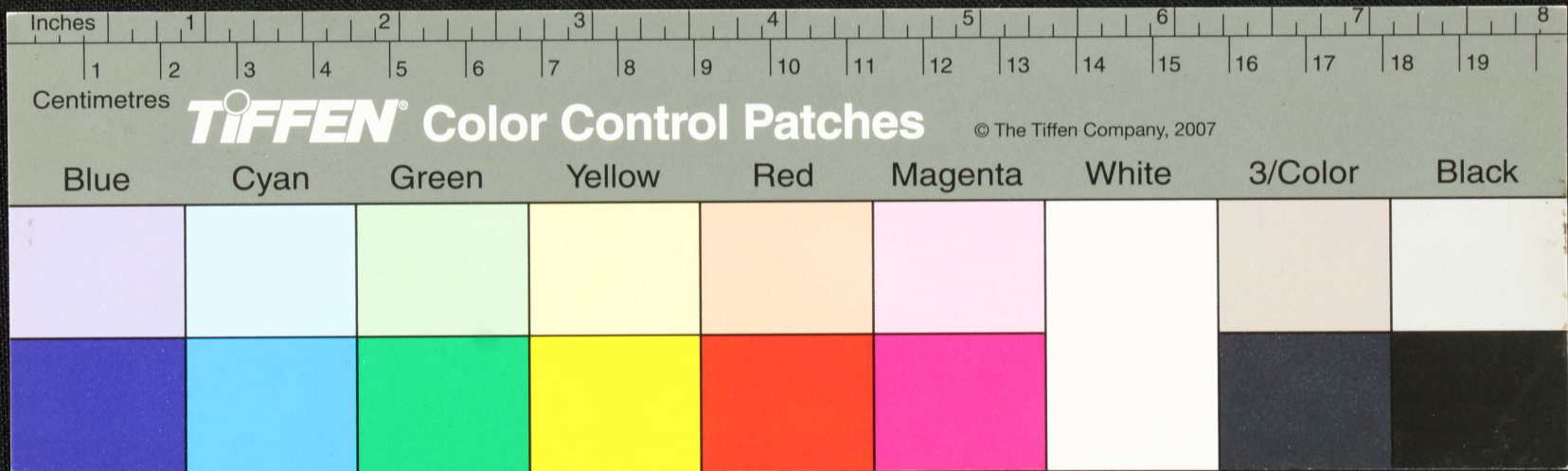
| Blue | Cyan | Green | Yellow | Red | Magenta | White | 3/Color | Black |
|------|------|-------|--------|-----|---------|-------|---------|-------|
|      |      |       |        |     |         |       |         |       |
|      |      |       |        |     |         |       |         |       |

உரிமை  
 உ.ந.ந.ந.

உரிமை உரிமை உரிமை உரிமை உரிமை  
 உரிமை உரிமை உரிமை உரிமை உரிமை  
 உரிமை உரிமை உரிமை உரிமை உரிமை  
 உரிமை உரிமை உரிமை உரிமை உரிமை

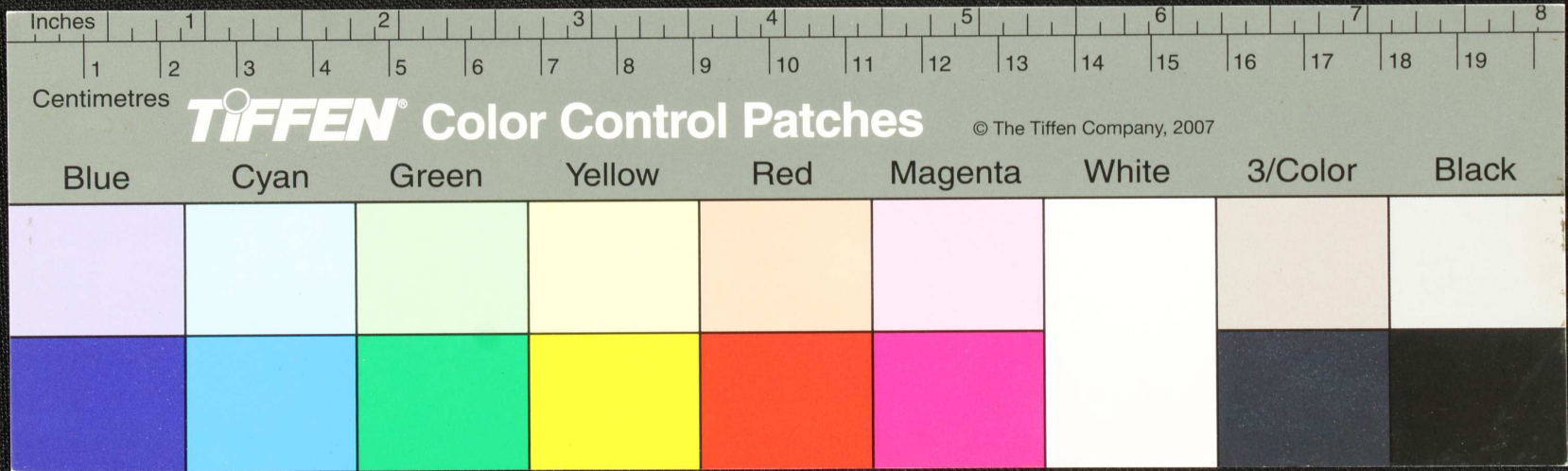


Handwritten text in Tamil script on a palm leaf manuscript. The text is arranged in approximately five horizontal lines. A small black circular mark is present in the middle of the second line. The script is finely etched into the surface of the dried leaf.

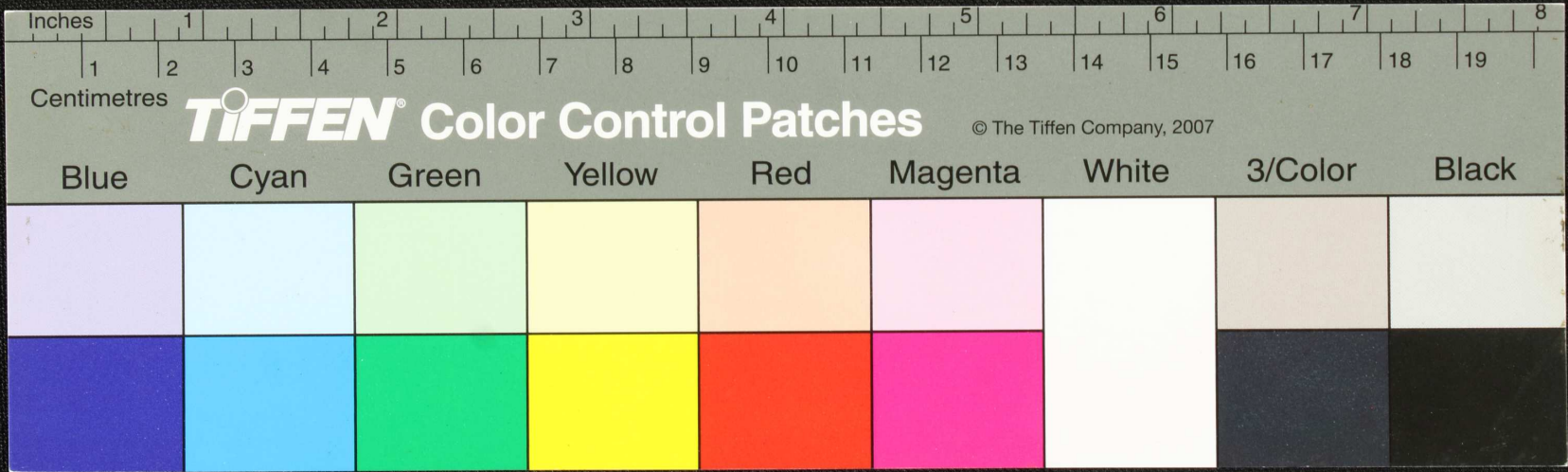




Handwritten text in Tamil script on a palm leaf manuscript. The text is arranged in approximately four horizontal lines. A small circular hole is visible in the center of the leaf, which is a traditional feature for threading a cord to bind multiple leaves together. The script is finely etched into the surface of the dried leaf.

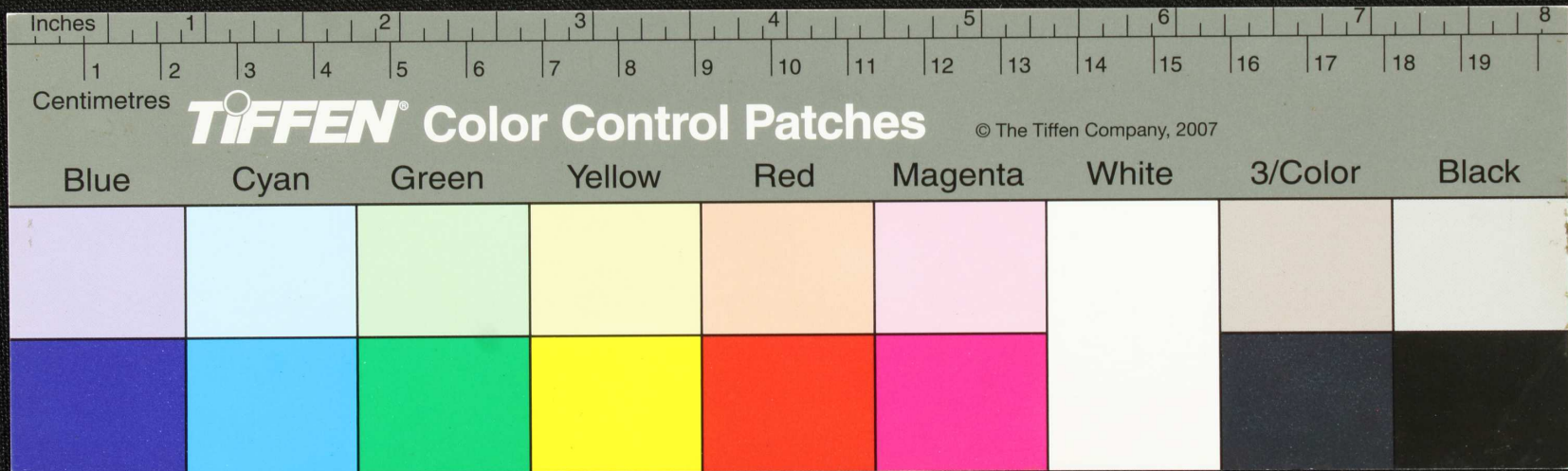


Handwritten text in Tamil script on a palm leaf manuscript. The text is arranged in approximately four lines, with some characters appearing to be in a different script or dialect. The leaf shows signs of age and wear, including a prominent dark circular stain in the center.

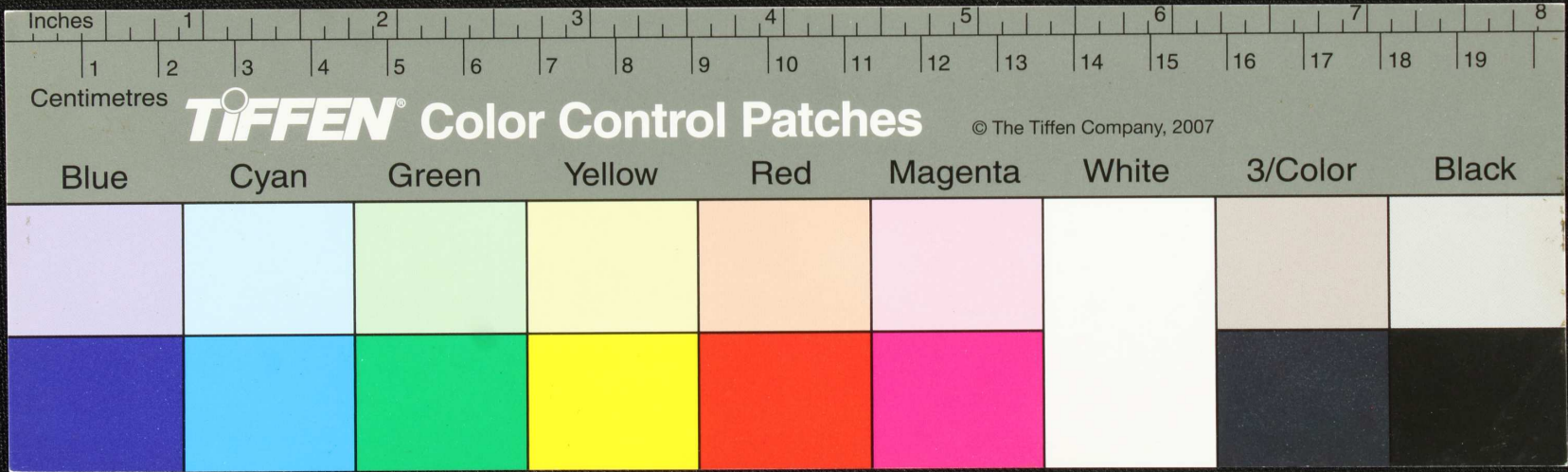




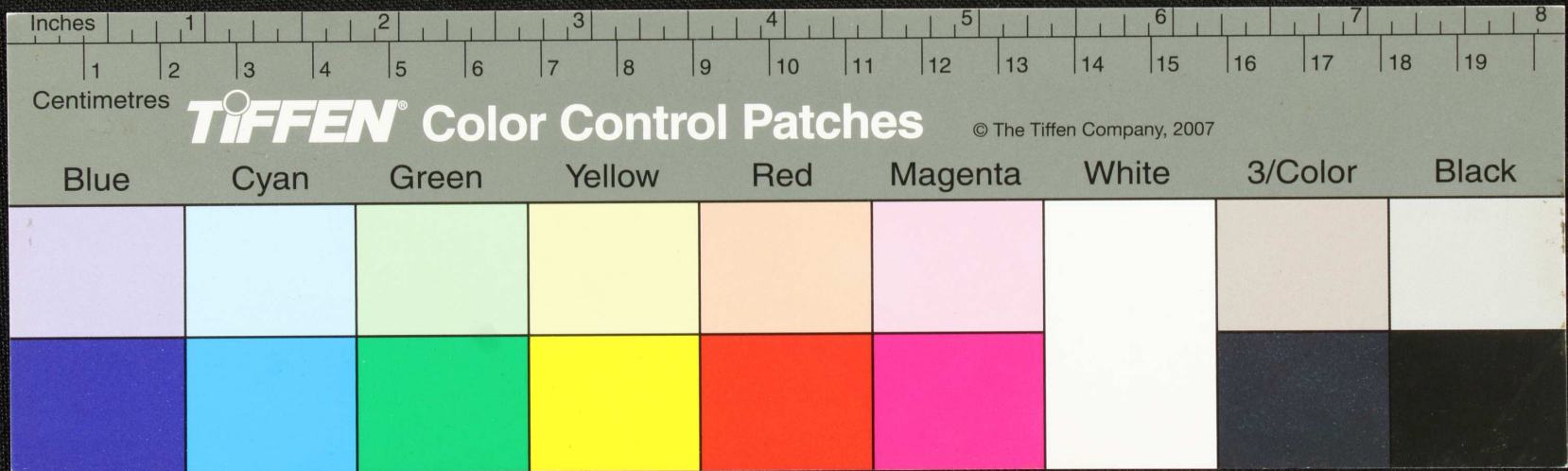
*[Faint, illegible handwritten text on aged paper]*



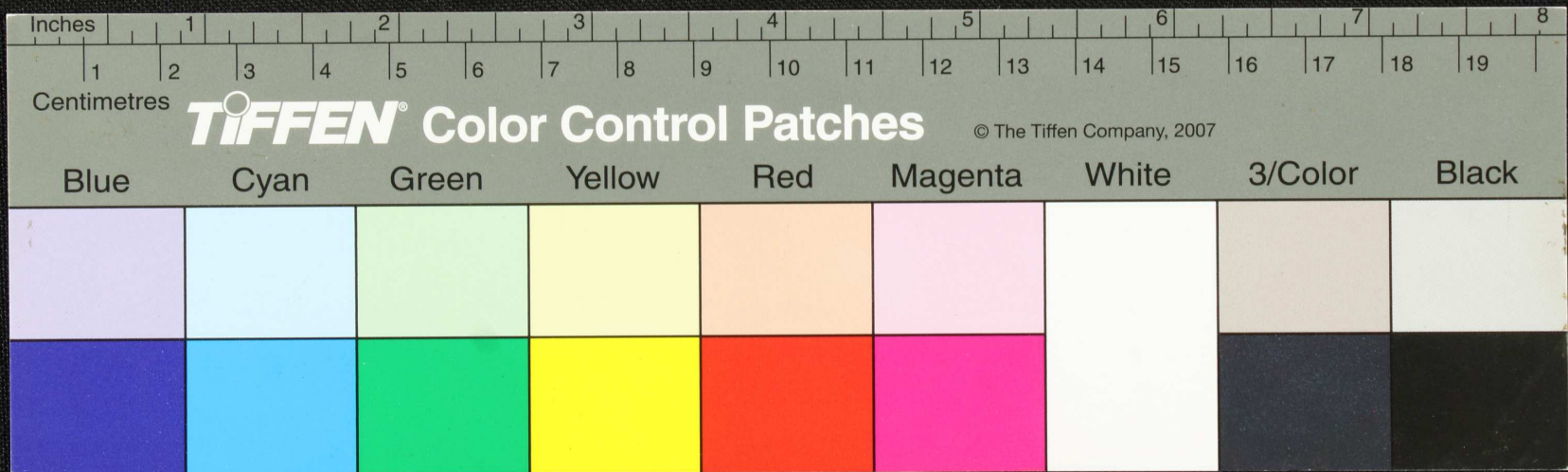
Handwritten text in Tamil script on a yellowed strip of paper. The text is arranged in approximately four lines, with some characters appearing to be in a different script or dialect. A small black circular mark is present on the strip.



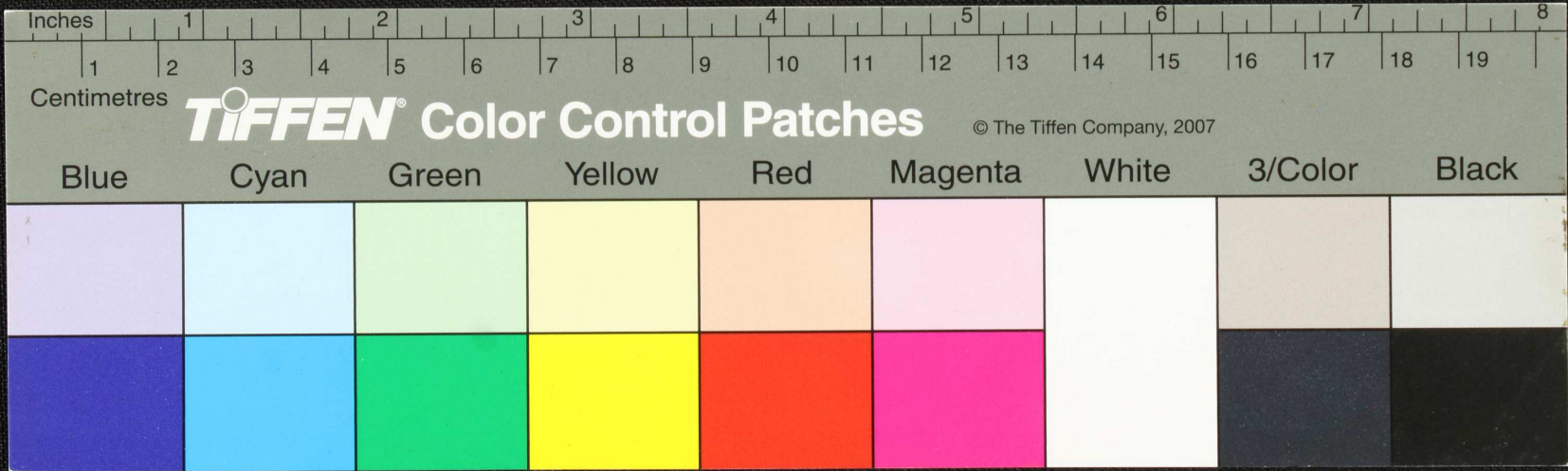
Handwritten text in Tamil script on a palm leaf manuscript. The text is arranged in approximately four horizontal lines. A circular hole is present in the center of the leaf, used for threading a cord to bind multiple leaves together. The script is finely etched into the surface of the dried leaf.



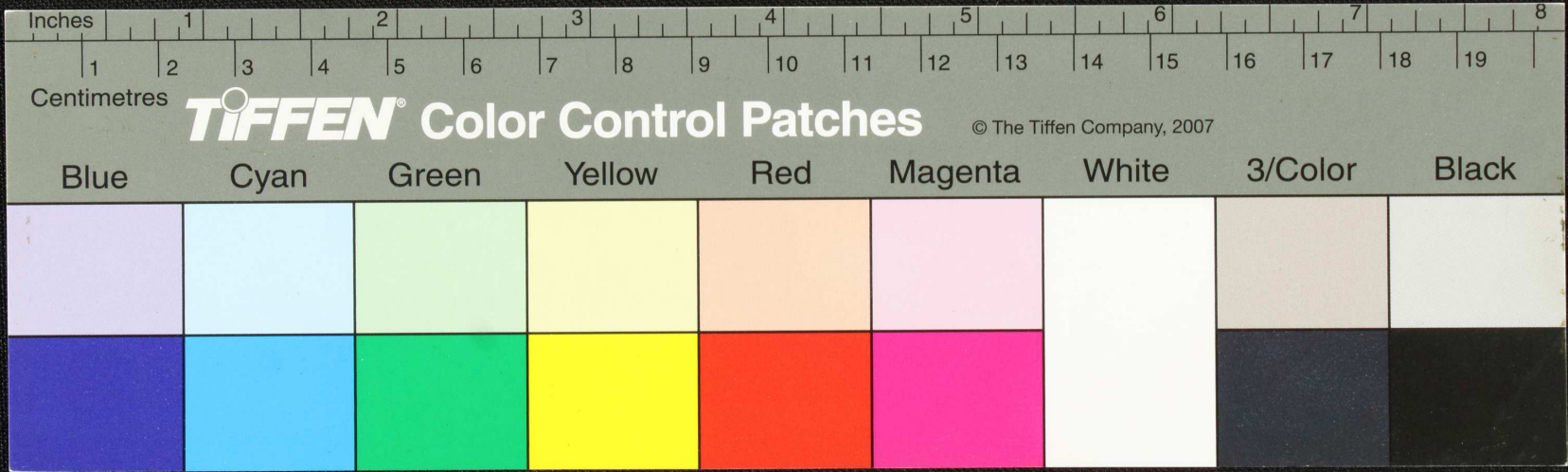
Handwritten text in Tamil script on a palm leaf manuscript. The text is arranged in approximately four horizontal lines across the length of the leaf. The script is finely etched into the natural texture of the dried leaf. A small, dark circular hole is visible near the center of the leaf, which is a traditional feature used for threading a cord to bind multiple leaves together into a book format.



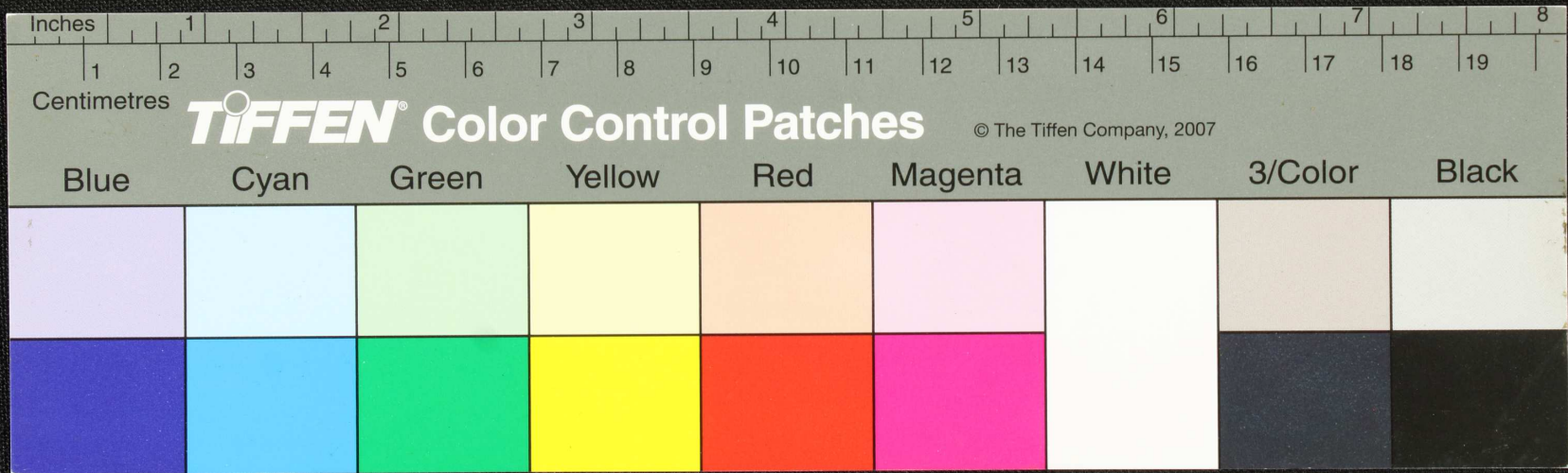
Handwritten text in Tamil script on a palm leaf manuscript. The text is arranged in approximately four horizontal lines across the length of the leaf. The script is finely etched into the surface of the dried leaf.



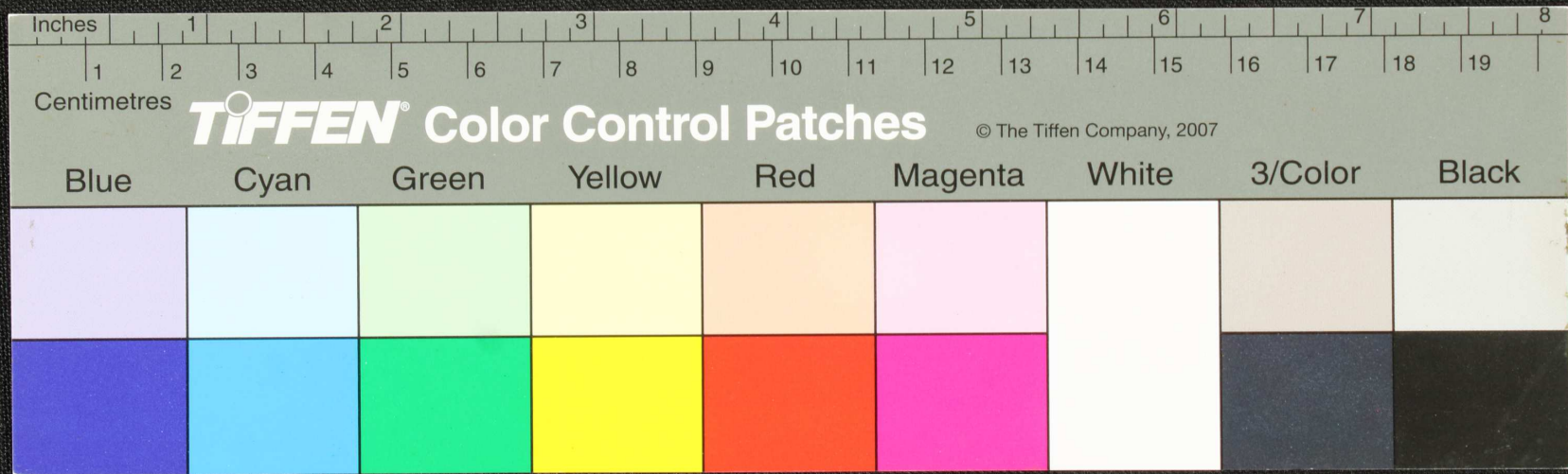
Handwritten text in Malayalam script on a yellowed strip of paper. The text is arranged in three lines and appears to be a list or record of names and titles. A small black circular mark is present in the center of the strip.



Handwritten text in Tamil script on a palm leaf manuscript. The text is arranged in approximately four horizontal lines. A small circular hole is visible in the center of the leaf, used for binding multiple leaves together.

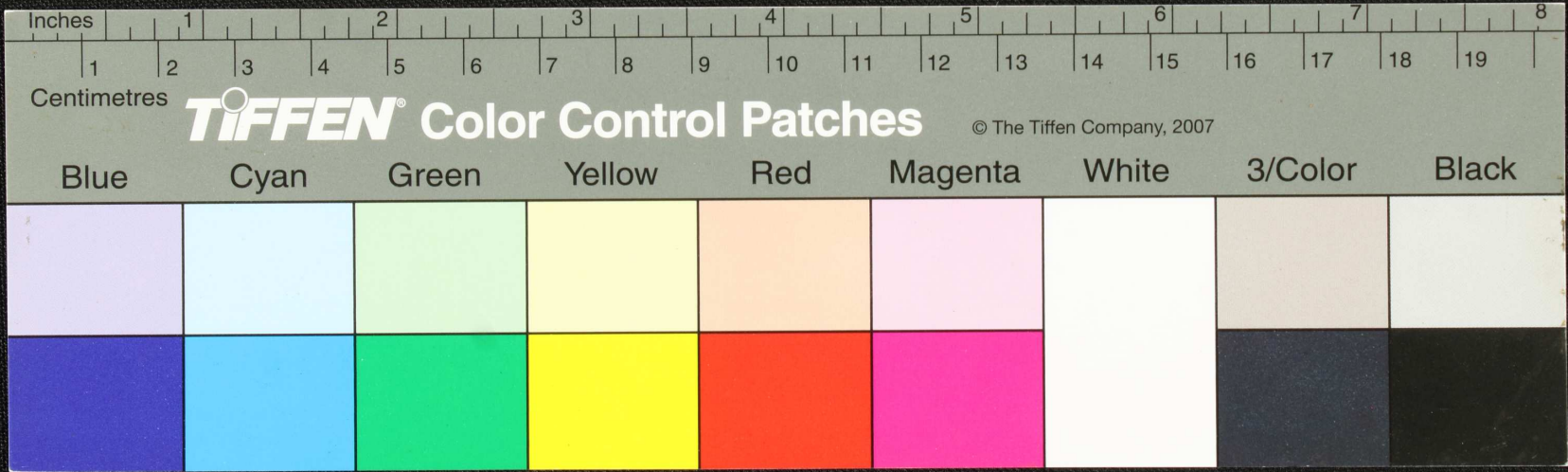


Handwritten text in Tamil script on a palm leaf manuscript. The text is arranged in approximately four horizontal lines. A small circular hole is visible near the center of the leaf, which is a traditional feature for threading a cord to bind multiple leaves together. The script is finely etched into the surface of the dried leaf.

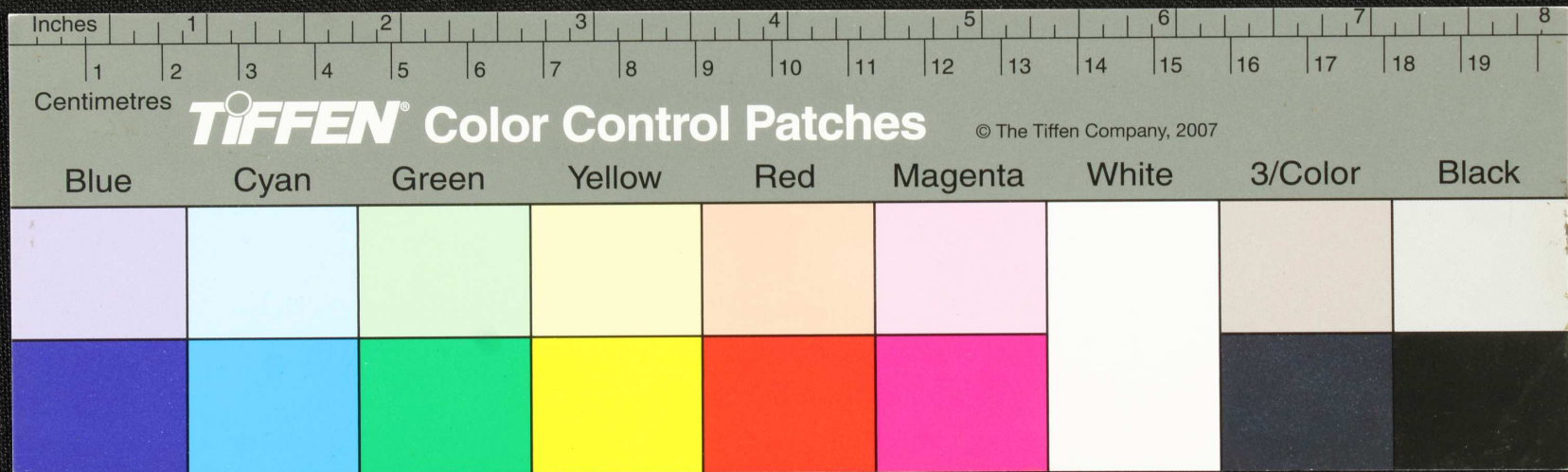




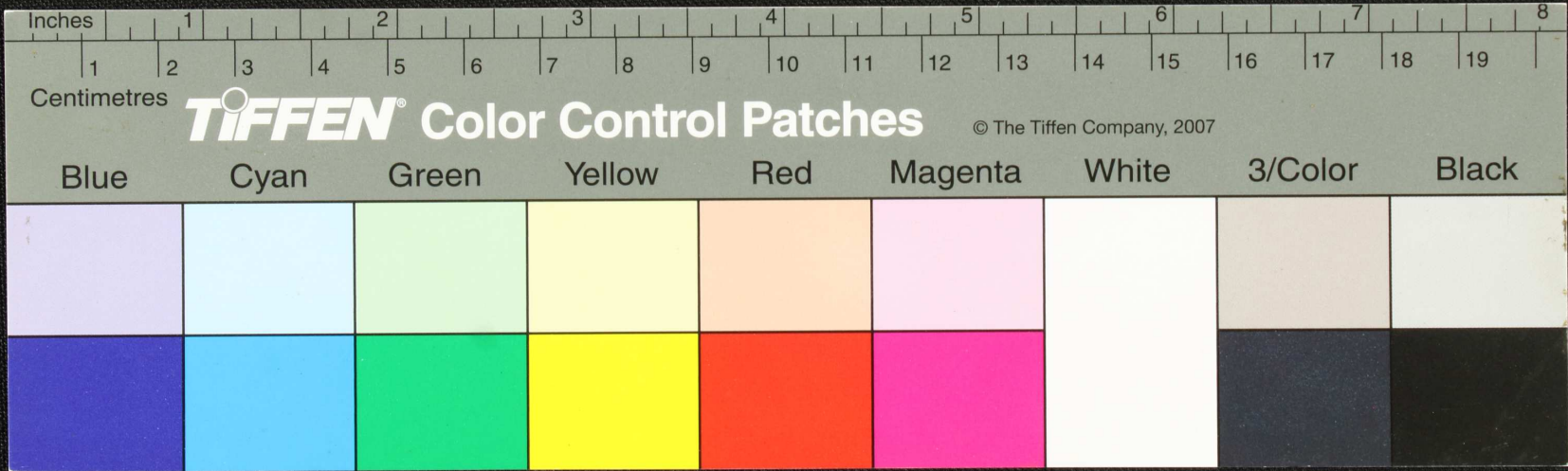
Handwritten text in Tamil script on a palm leaf manuscript. The text is arranged in approximately four horizontal lines. The script is finely etched into the surface of the dried leaf. There are some dark spots and a hole on the leaf, likely due to age or insect damage.



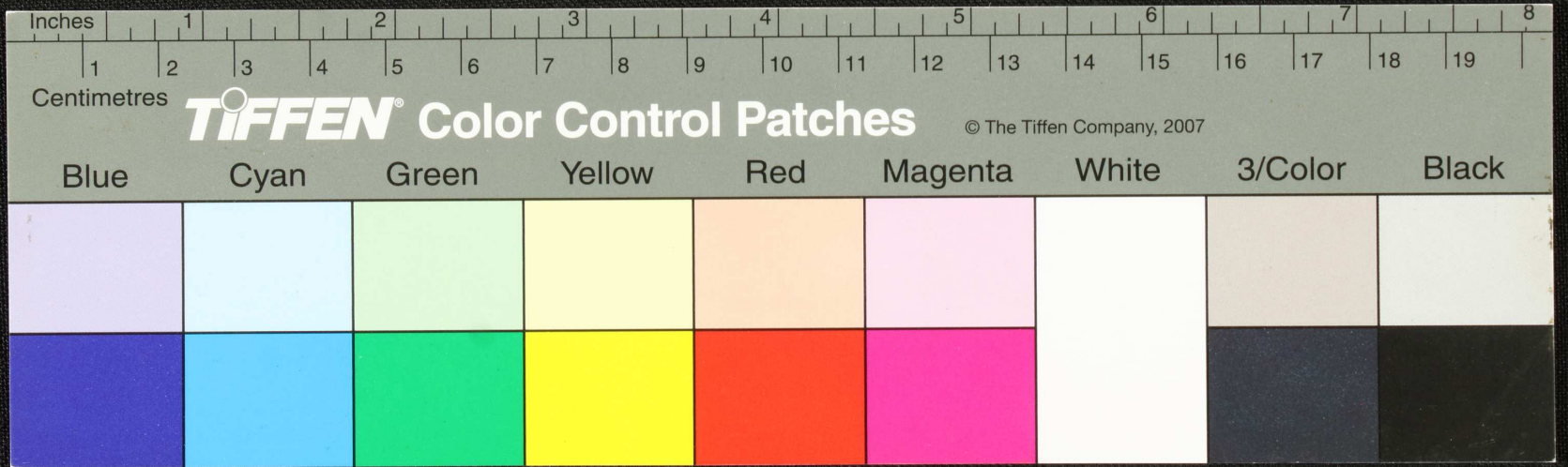
Handwritten text in Tamil script on a yellowed strip of paper. The text is arranged in four lines and appears to be a historical record or a list of names and titles. The script is cursive and somewhat faded. A small black circular mark is visible on the second line.



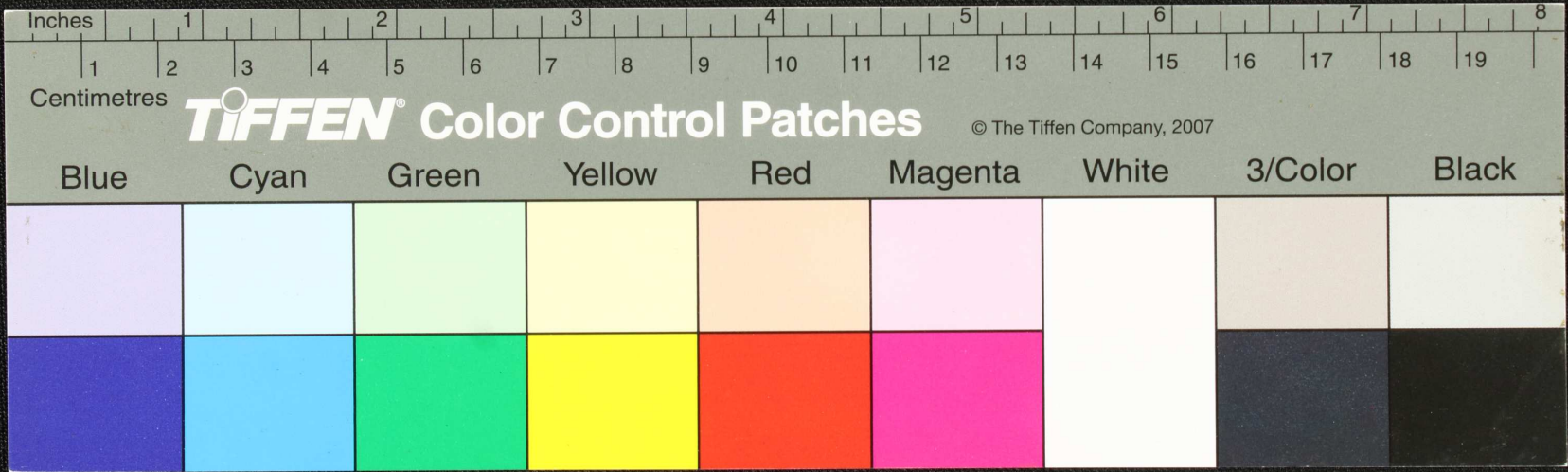
Handwritten text in Tamil script on a palm leaf manuscript. The text is arranged in approximately four horizontal lines. The script is finely etched into the surface of the leaf. There are some dark spots and a small hole on the leaf, possibly due to age or insect damage.



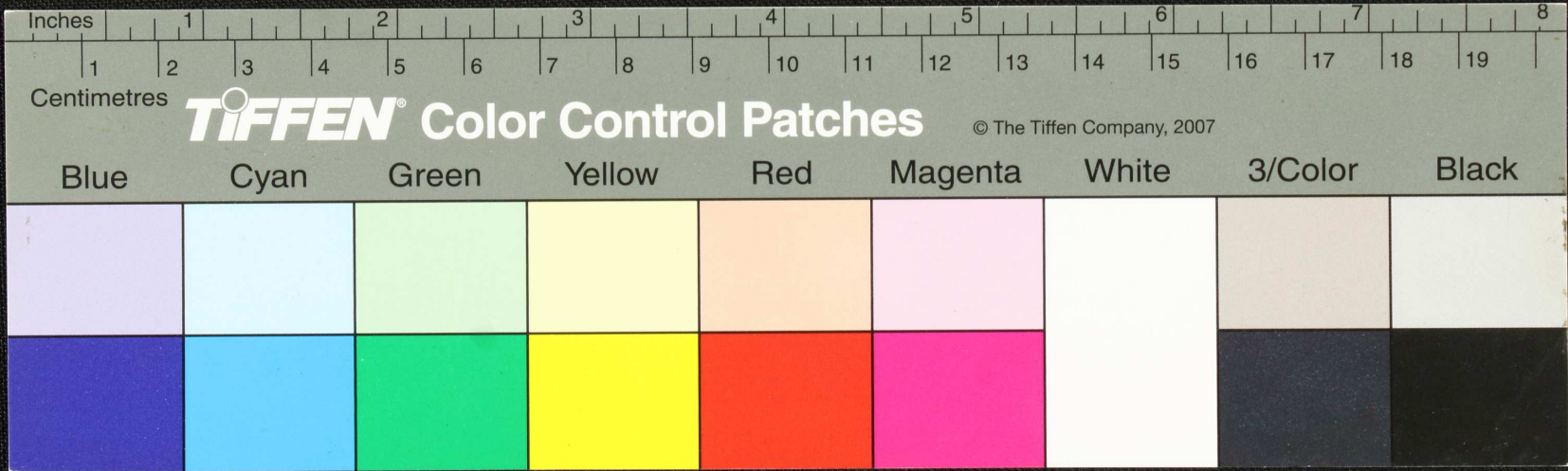
Handwritten Tamil script on a palm leaf manuscript. The text is arranged in approximately four horizontal lines across the length of the leaf. A small, dark circular hole is visible near the center of the leaf, which is a traditional feature for threading a cord to bind multiple leaves together.



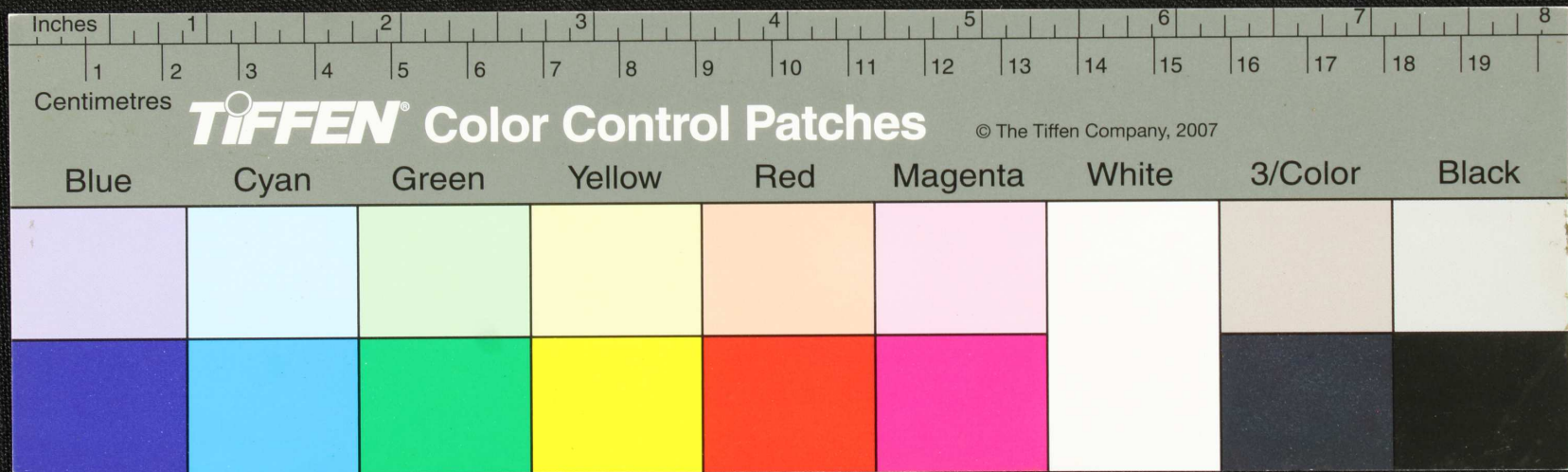
Handwritten text in Tamil script on a palm leaf manuscript. The text is arranged in approximately four horizontal lines. On the left side of the leaf, there is a vertical inscription that reads "திருவள்ளூர்" (Tiruvalluvar) and "4. அ. 100" (A. 100).



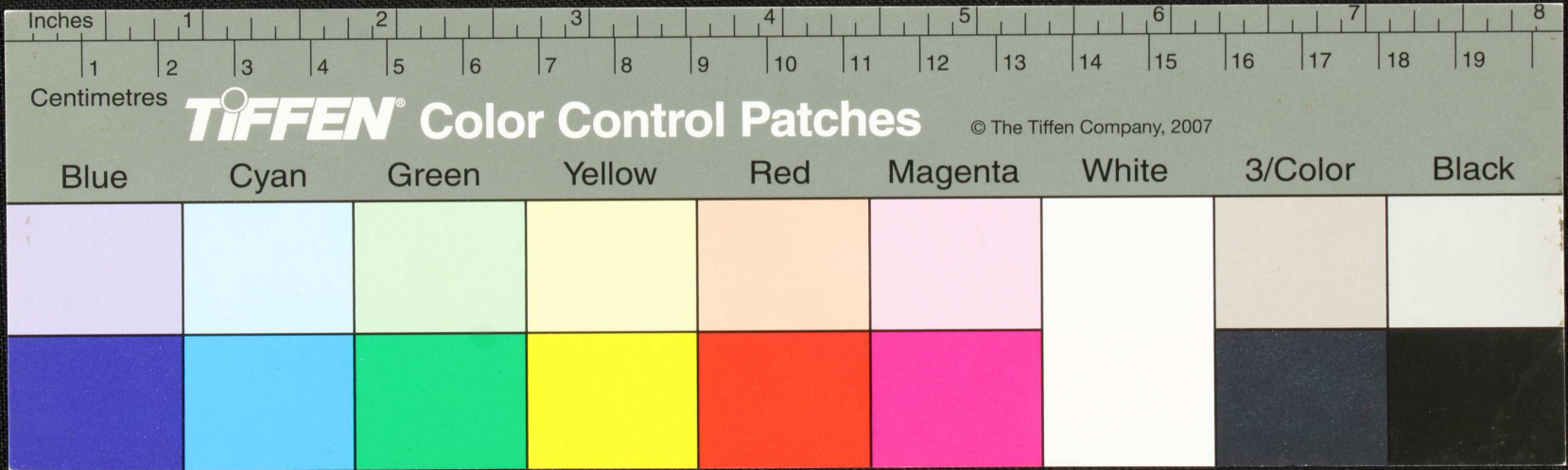
Handwritten text in Tamil script on a palm leaf manuscript. The text is arranged in approximately five horizontal lines across the length of the leaf. The script is finely etched into the surface of the dried leaf.



Handwritten text in an ancient script, likely Tamil, on a palm leaf manuscript. The text is arranged in several lines across the length of the leaf. The script is finely etched into the surface of the dried leaf. There are some dark spots and a hole on the leaf, possibly from insect damage or wear.

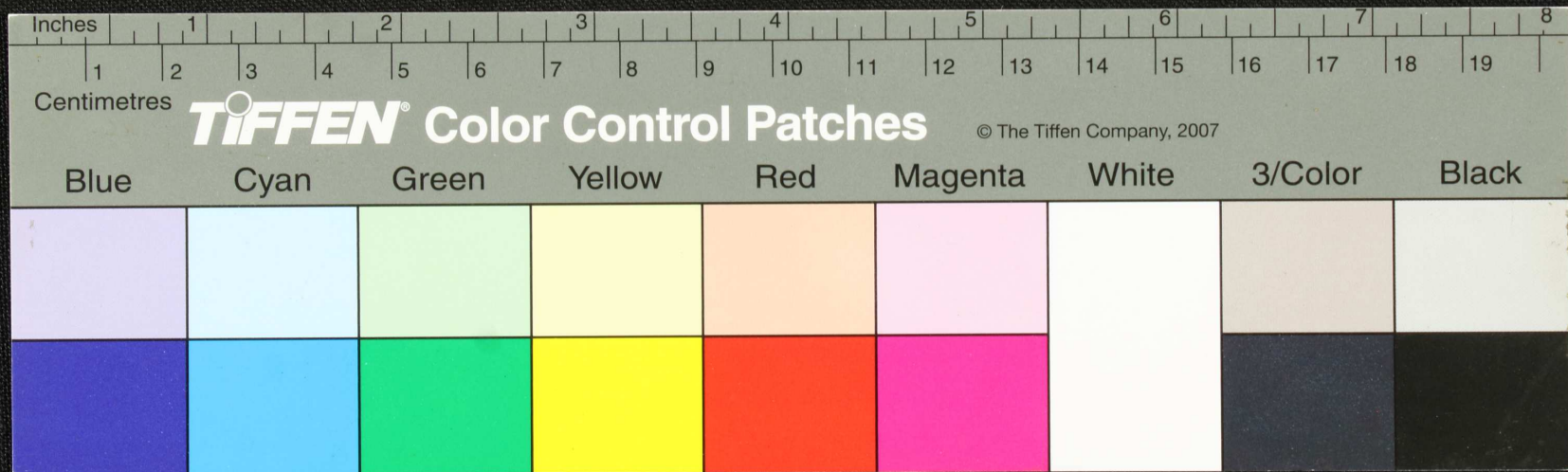


Handwritten text in Tamil script on a palm leaf manuscript. The text is arranged in approximately four horizontal lines across the length of the leaf. The script is finely etched into the surface of the dried leaf.

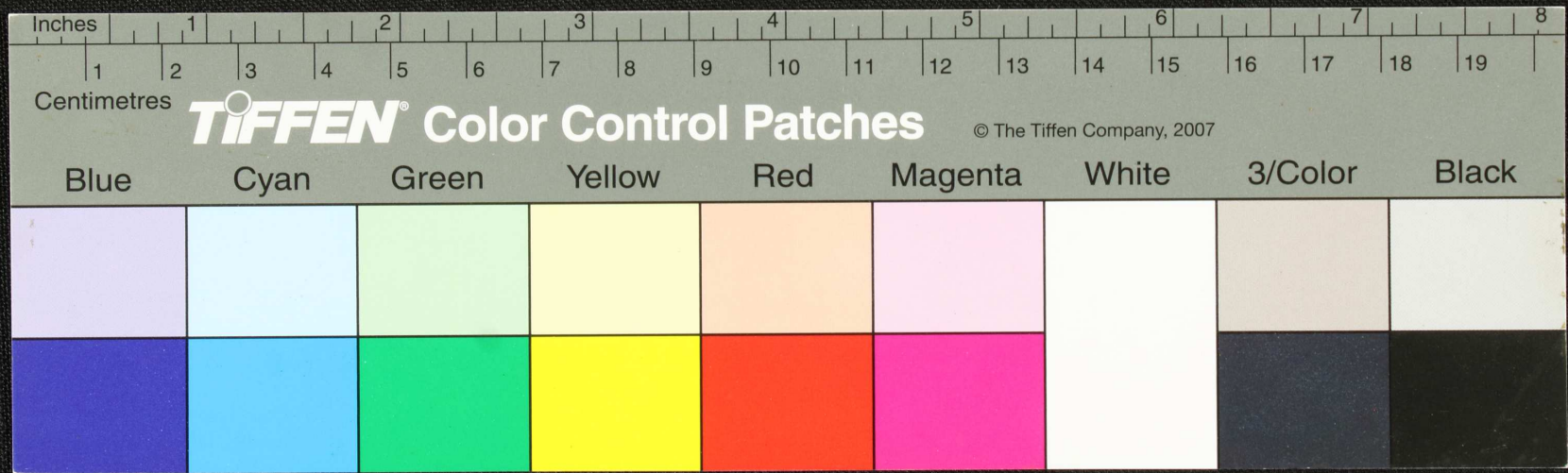




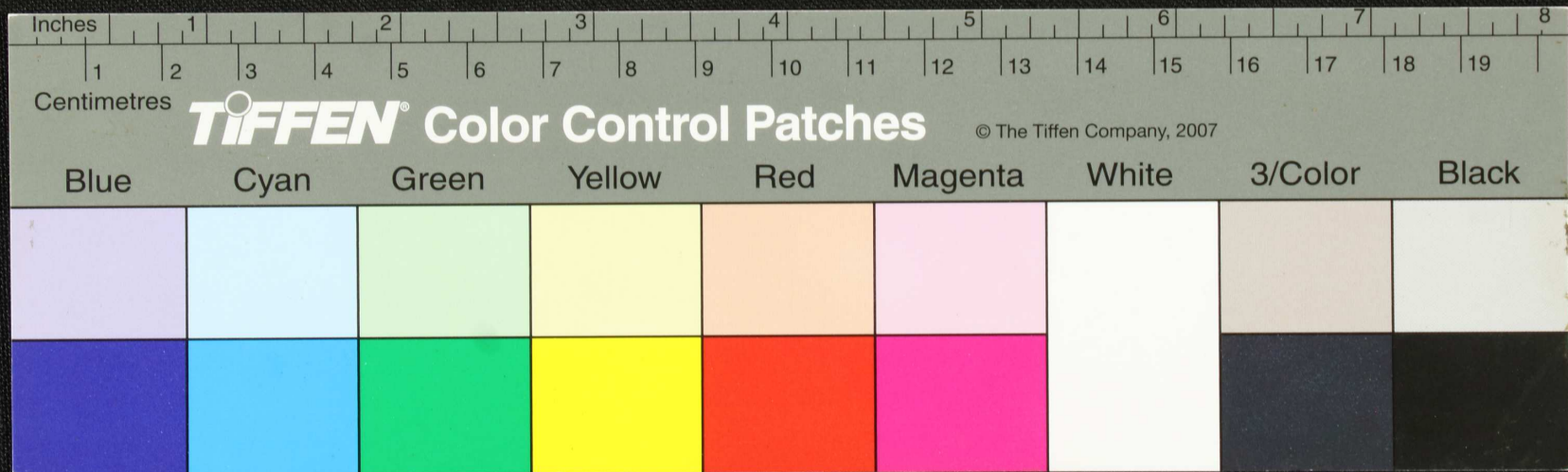
Handwritten text in an ancient script, possibly Tamil, on a palm leaf manuscript. The text is arranged in several lines across the length of the leaf. A small dark circular mark is visible near the center of the leaf.



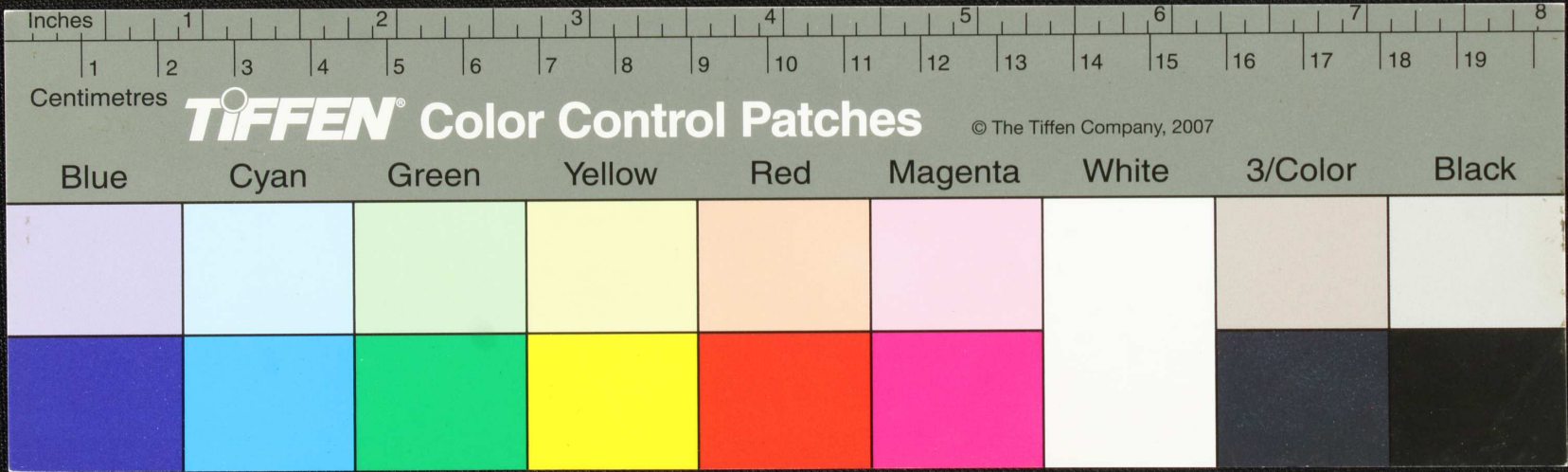
Handwritten text in Tamil script on a palm leaf manuscript. The text is arranged in approximately four horizontal lines across the length of the leaf. The script is a traditional form of the Tamil language.



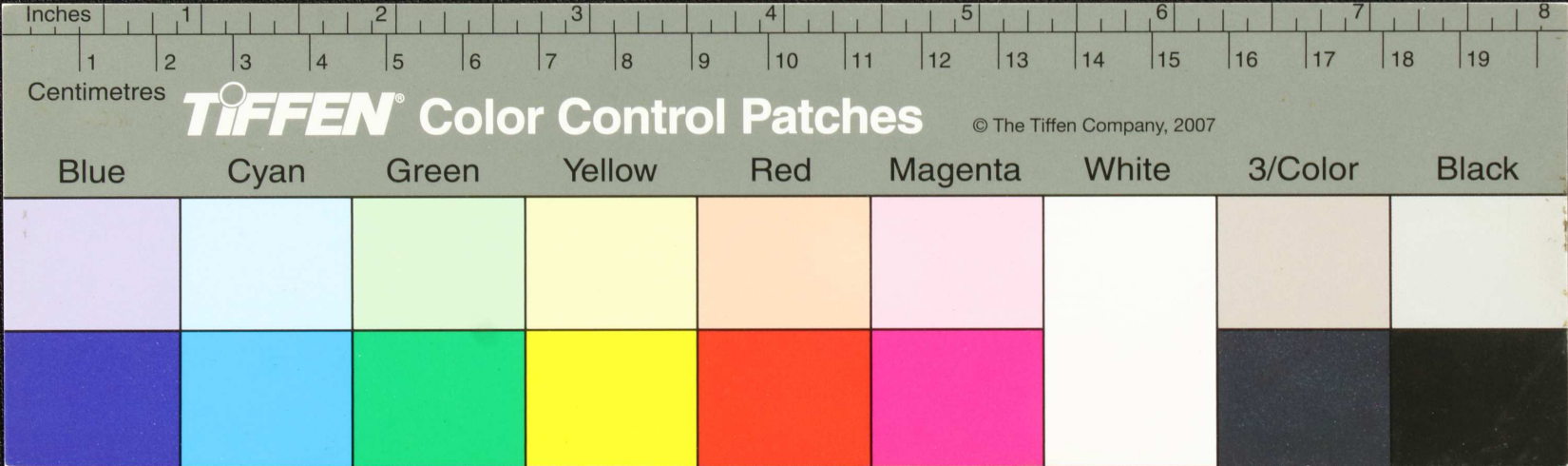
Handwritten text in Tamil script on a palm leaf manuscript. The text is arranged in four horizontal lines. The first line contains approximately 10 characters. The second line contains approximately 10 characters. The third line contains approximately 10 characters. The fourth line contains approximately 10 characters. There is a small dark spot or hole in the center of the leaf, between the second and third lines of text.



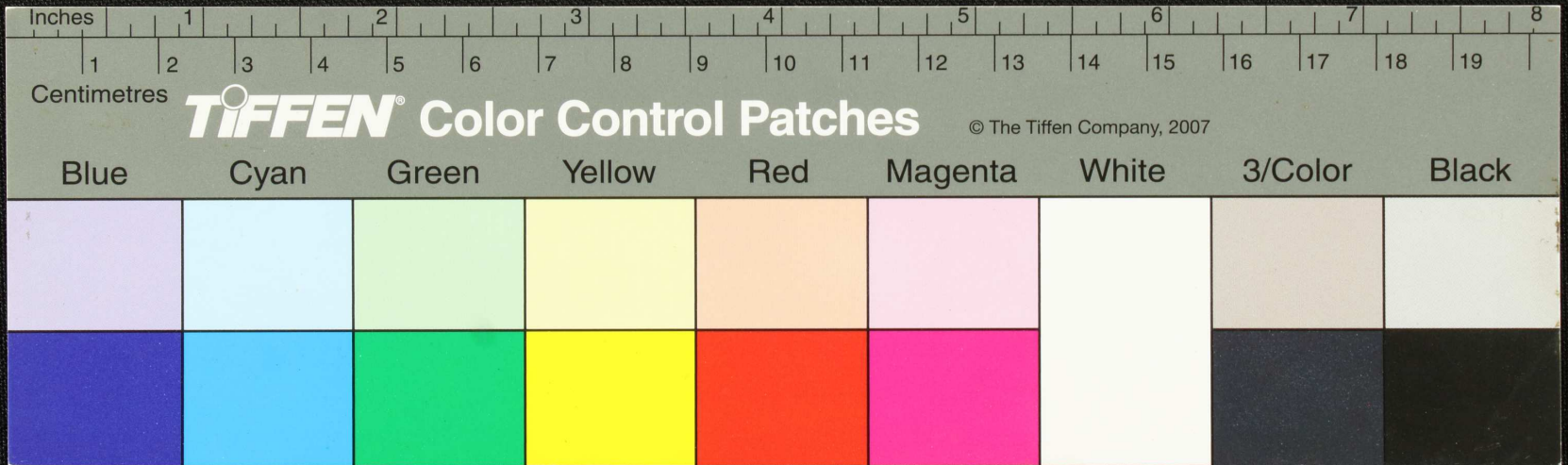
Handwritten text in Tamil script on a palm leaf manuscript. The text is arranged in approximately four lines. The first line begins with 'மறை' (Mara) and ends with '15'. The second line starts with 'மறை' (Mara) and ends with '17'. The third line starts with 'மறை' (Mara) and ends with '18'. The fourth line starts with 'மறை' (Mara) and ends with '19'. There is a small dark spot on the leaf between the second and third lines.



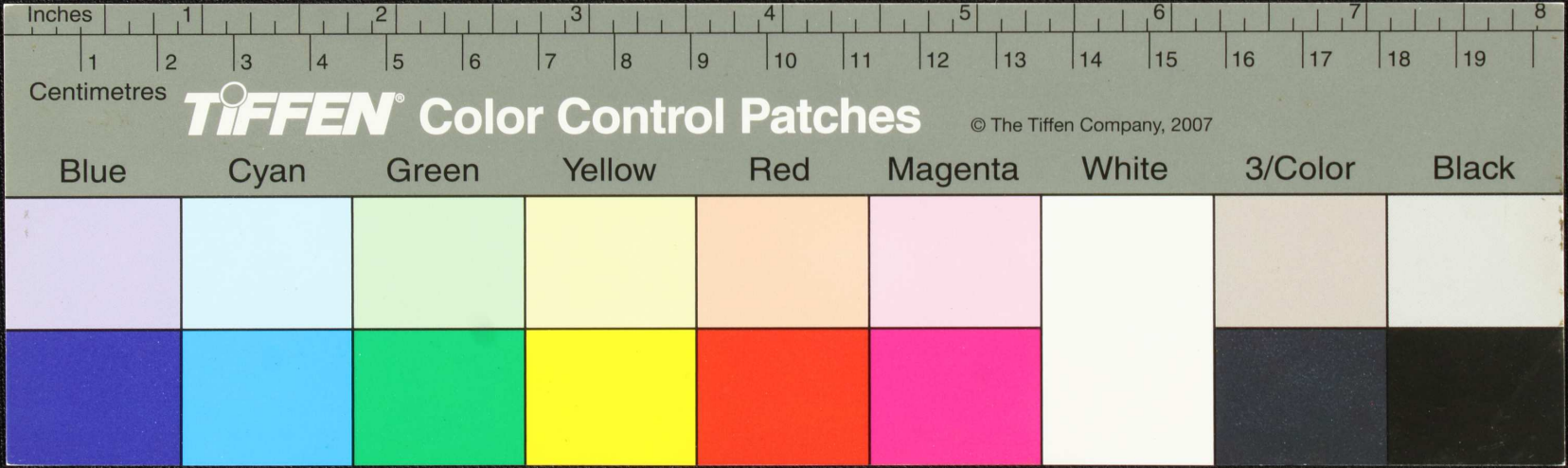
திருநெல்வேலி மாவட்டம் திருச்சி மாவட்டம்  
 திருச்சி மாவட்டம் திருச்சி மாவட்டம் திருச்சி மாவட்டம்  
 திருச்சி மாவட்டம் திருச்சி மாவட்டம் திருச்சி மாவட்டம்  
 திருச்சி மாவட்டம் திருச்சி மாவட்டம் திருச்சி மாவட்டம்



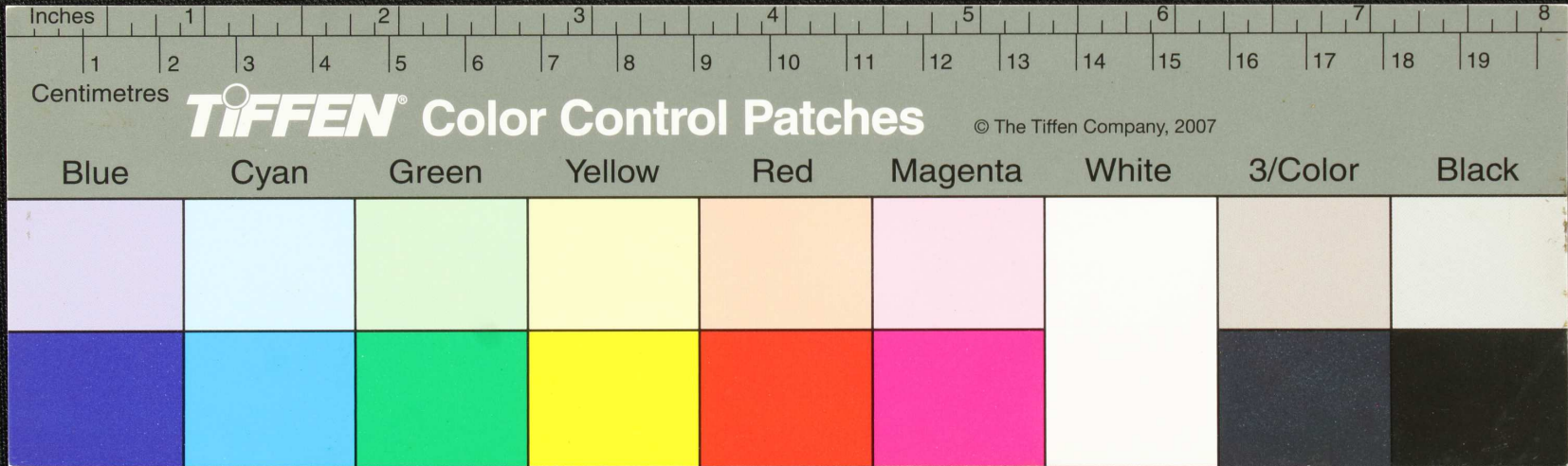
Handwritten text in Tamil script on a palm leaf manuscript. The text is arranged in several lines across the length of the leaf. A prominent circular hole is visible in the center of the leaf, which is a traditional feature for threading a cord to bind multiple leaves together. The script is finely etched into the surface of the dried leaf.



Handwritten text in Tamil script on a yellowed strip of paper. The text is arranged in four lines and is partially obscured by a black circular mark. The script is a form of the Tamil language, likely a historical or religious document.

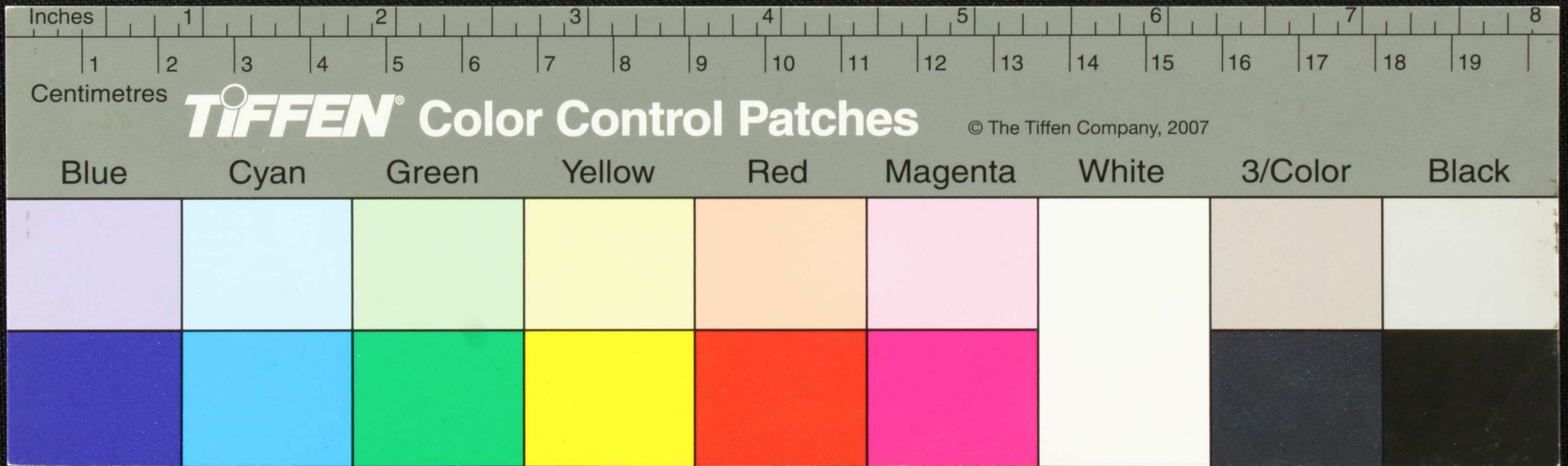


சிவகுமாரன் சைவியன் குடி ரொங்குமது குடுமல விமலகுடி  
 னை பிசாவுகதவொல உ வய பகு வொல னும்திடுகதபுல  
 இளவிரை உகதொகரி குடுகுவை னவலியு விமதி  
 வயகு: கிடுகா விடுகா ருசா ரொகதகதசுசுசுசுசுசு

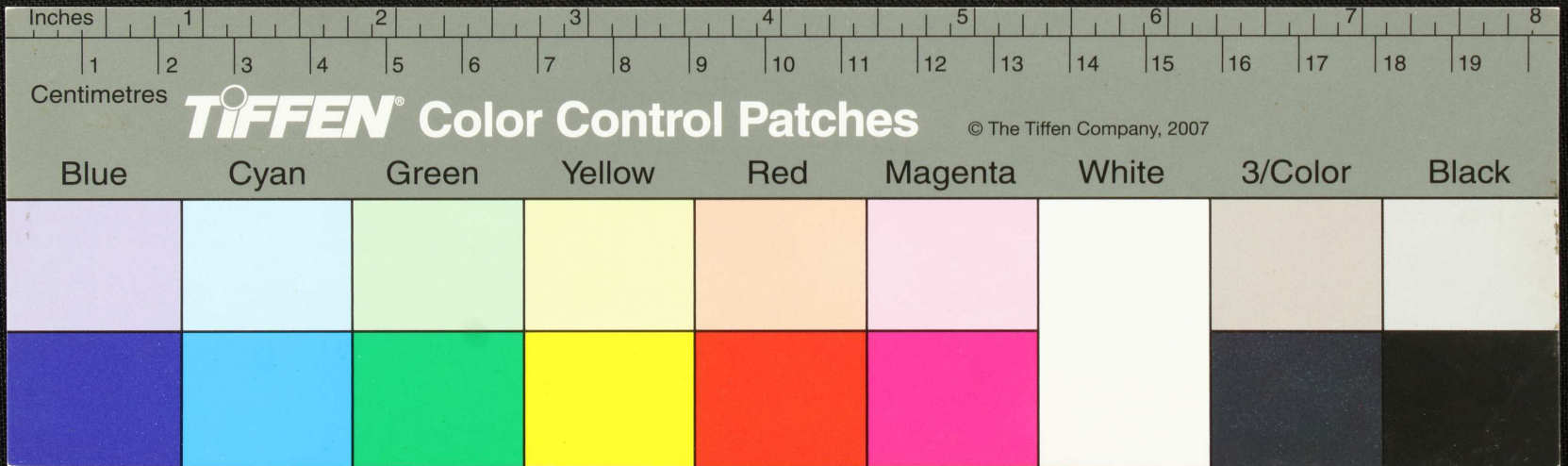




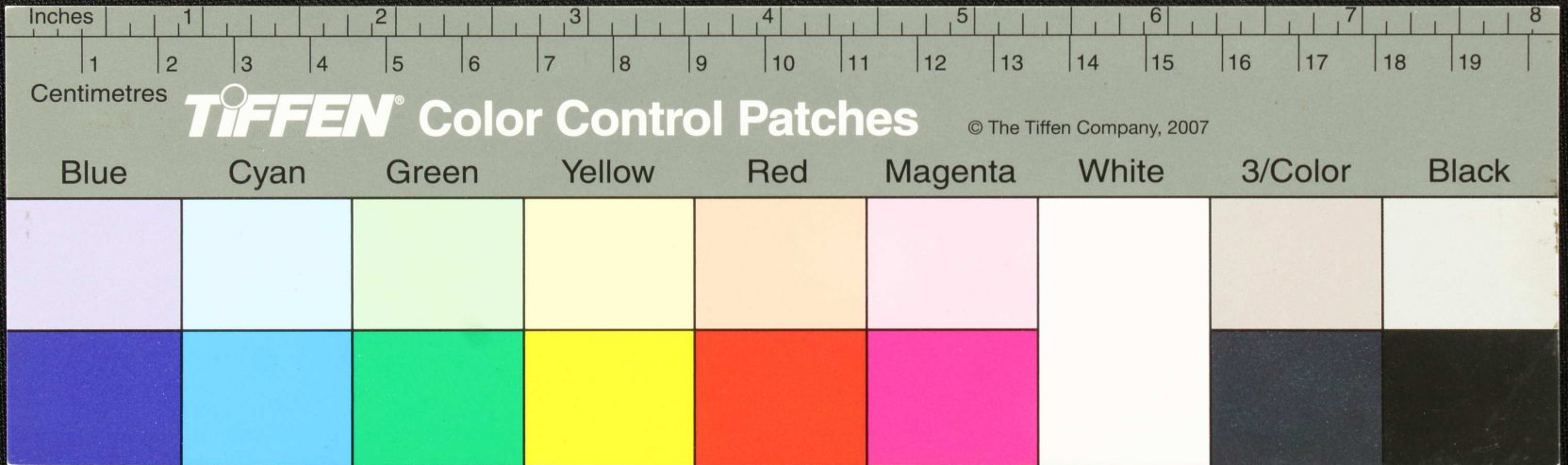
Handwritten text in Tamil script on a palm leaf manuscript. The text is arranged in approximately four horizontal lines across the length of the leaf. The script is finely etched into the surface of the dried leaf. A small, dark circular hole is visible near the center of the leaf, likely from a traditional binding method.



மொழியியல் மொழி அறிவு உடைய தலைவர்களுக்கு உரிய  
 உதவிகளை வழங்கி திருவிருந்தினர்களுக்கு உரிய உதவிகளை  
 செய்து கொடுக்க உதவி செய்து கொடுக்க உதவி செய்து கொடுக்க  
 உதவி செய்து கொடுக்க உதவி செய்து கொடுக்க உதவி செய்து கொடுக்க

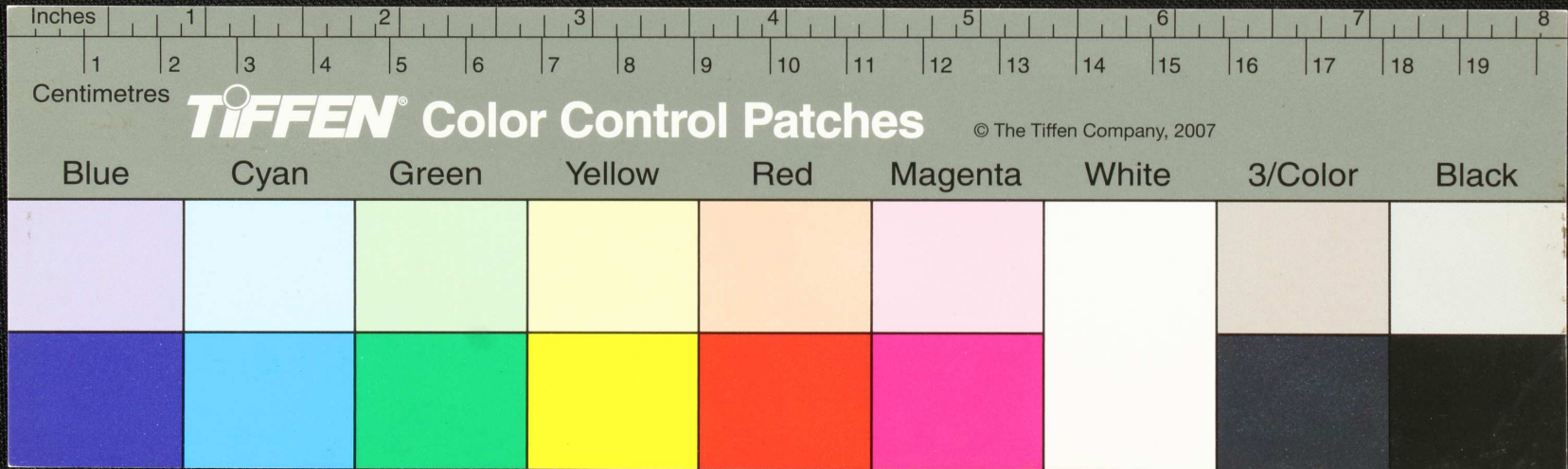


Handwritten text in Tamil script on a palm leaf manuscript. The text is arranged in approximately four lines. A small circular hole is visible in the center of the leaf, and a small mark resembling a question mark is at the bottom right corner.

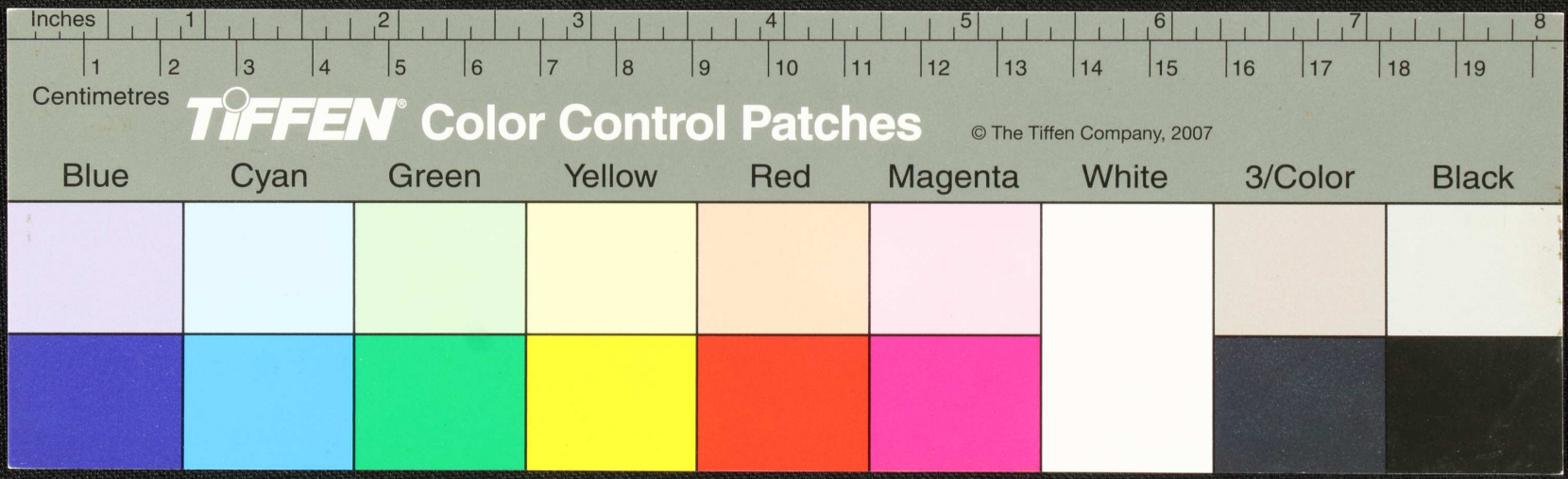




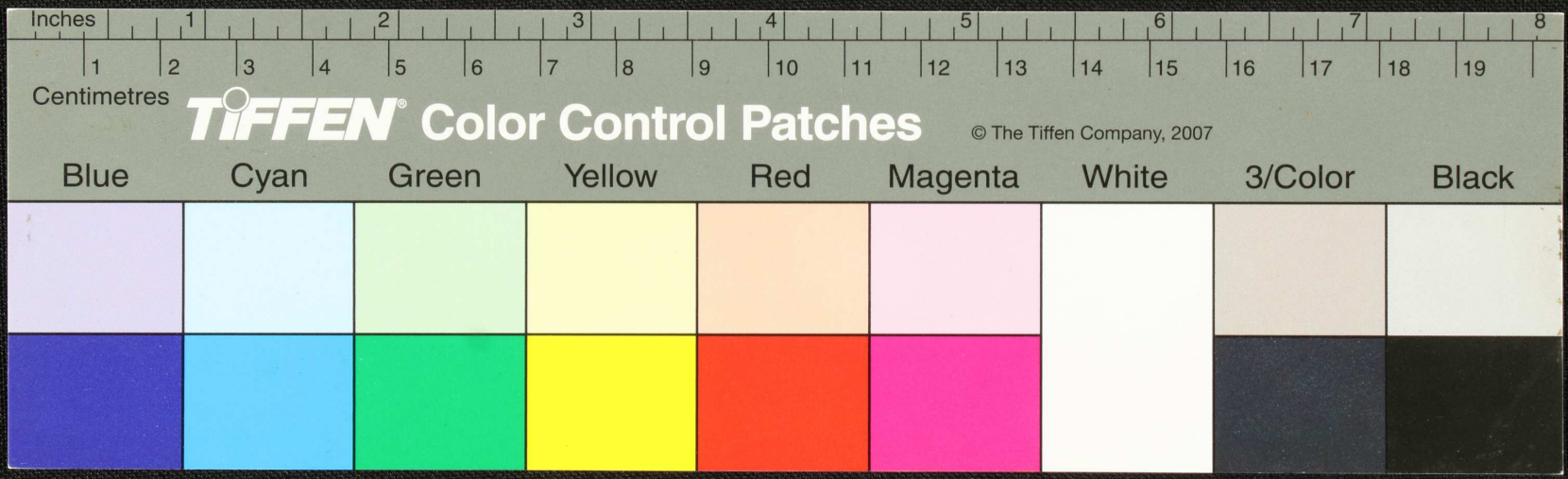
கீழ்க்கண்ட சில சான்றுகளைப் பார்த்து  
 உறுதியாக உணர்த்துக. இவற்றைப் பற்றி  
 உறுதியாக உணர்த்துக. இவற்றைப் பற்றி  
 உறுதியாக உணர்த்துக. இவற்றைப் பற்றி  
 உறுதியாக உணர்த்துக. இவற்றைப் பற்றி



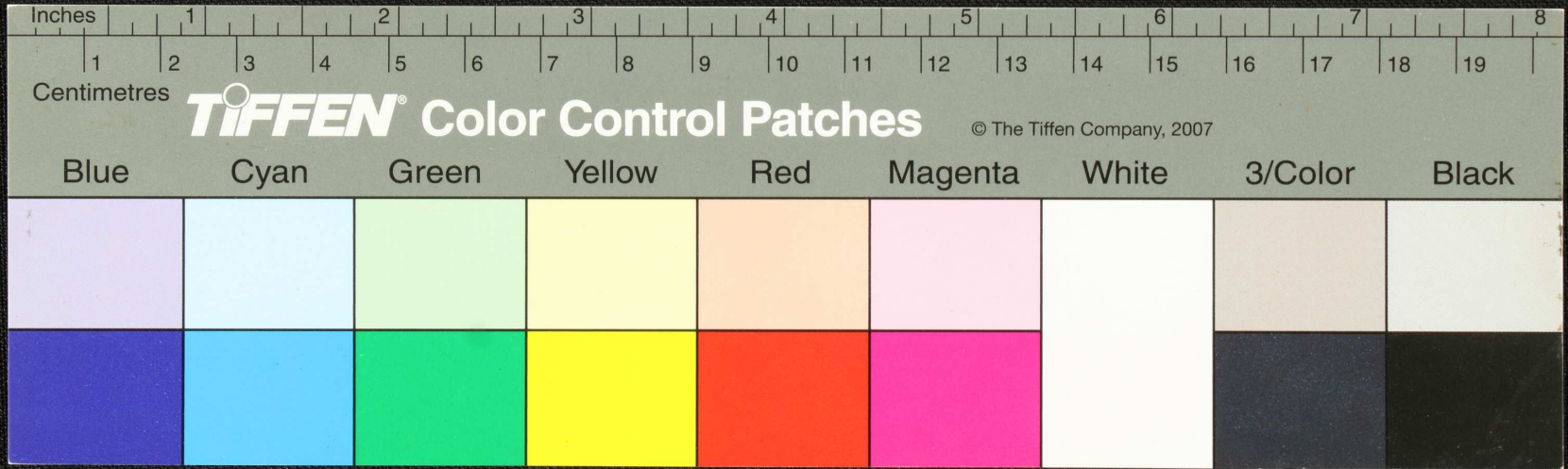
Handwritten text in Tamil script on a yellowed, aged paper strip. The text is arranged in four lines and appears to be a list or a set of instructions. The first line starts with 'செய்தல்' (Seithal) followed by a dash and 'சுரைசு' (Suraisu). The second line starts with 'சுந்' (Sunt) followed by a dash and 'சுரைசு' (Suraisu). The third line starts with 'சுந்' (Sunt) followed by a dash and 'சுரைசு' (Suraisu). The fourth line starts with 'சுந்' (Sunt) followed by a dash and 'சுரைசு' (Suraisu). There is a small black circular mark on the paper strip.



Handwritten text in Tamil script on a palm leaf manuscript. The text is arranged in approximately four horizontal lines across the length of the leaf. The script is a traditional form of the Tamil language.

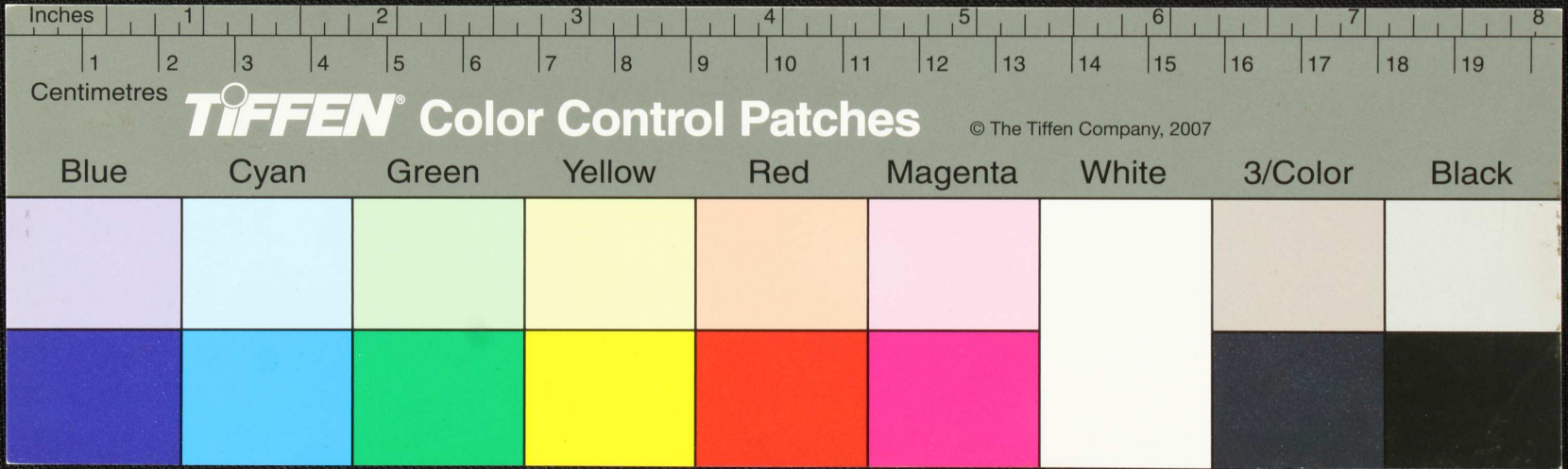


Handwritten Tamil script on a palm leaf manuscript. The text is arranged in approximately four horizontal lines. A circular hole is visible in the center of the leaf, used for binding multiple leaves together. The script is written in a traditional style with dark ink.

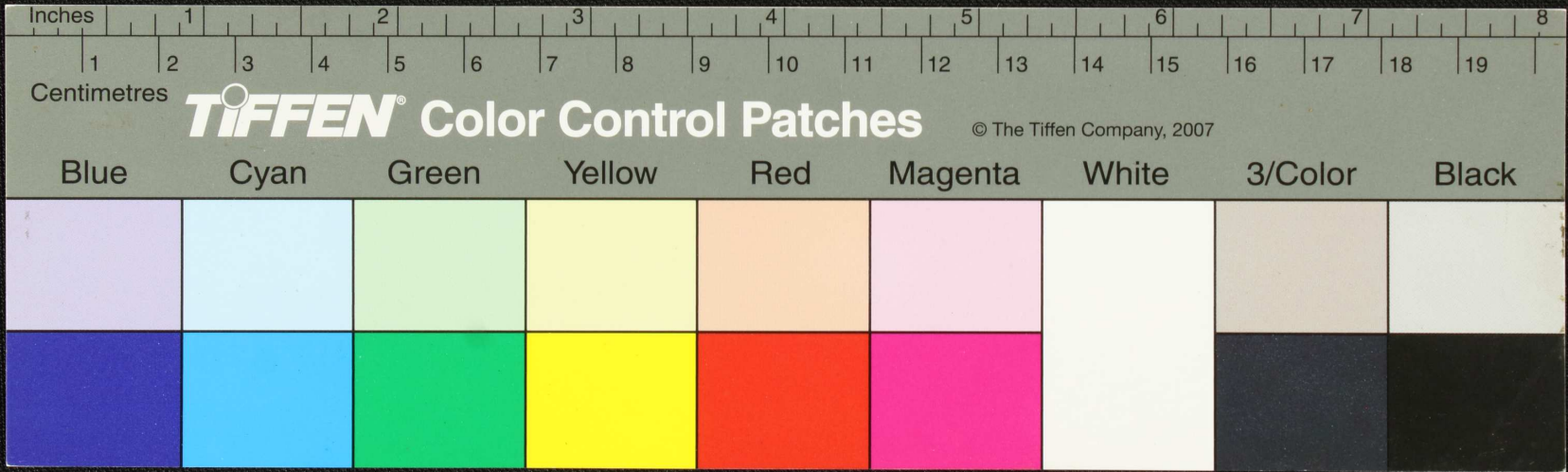




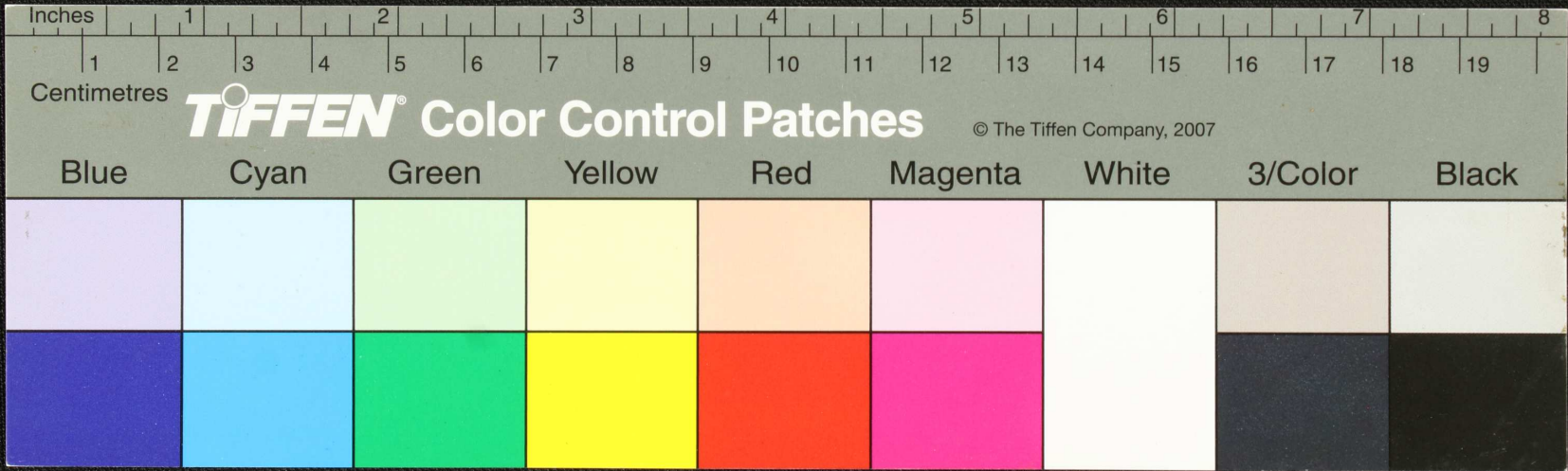
Handwritten text in Tamil script on a palm leaf manuscript. The text is arranged in approximately four horizontal lines across the length of the leaf. The script is finely etched into the surface of the dried leaf.



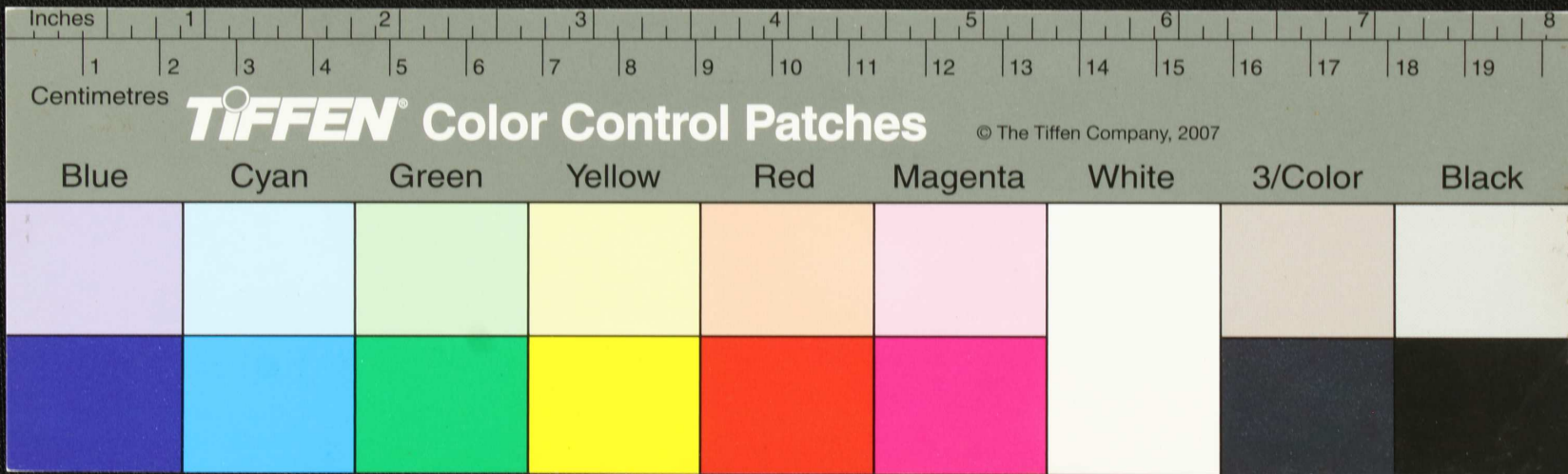
Handwritten text in Tamil script on a palm leaf manuscript. The text is arranged in approximately four horizontal lines. The first line begins with 'யம்...'. The second line contains 'வ.லி...'. The third line starts with 'க...'. The fourth line begins with 'வ...'. The script is a traditional form of the Tamil language.



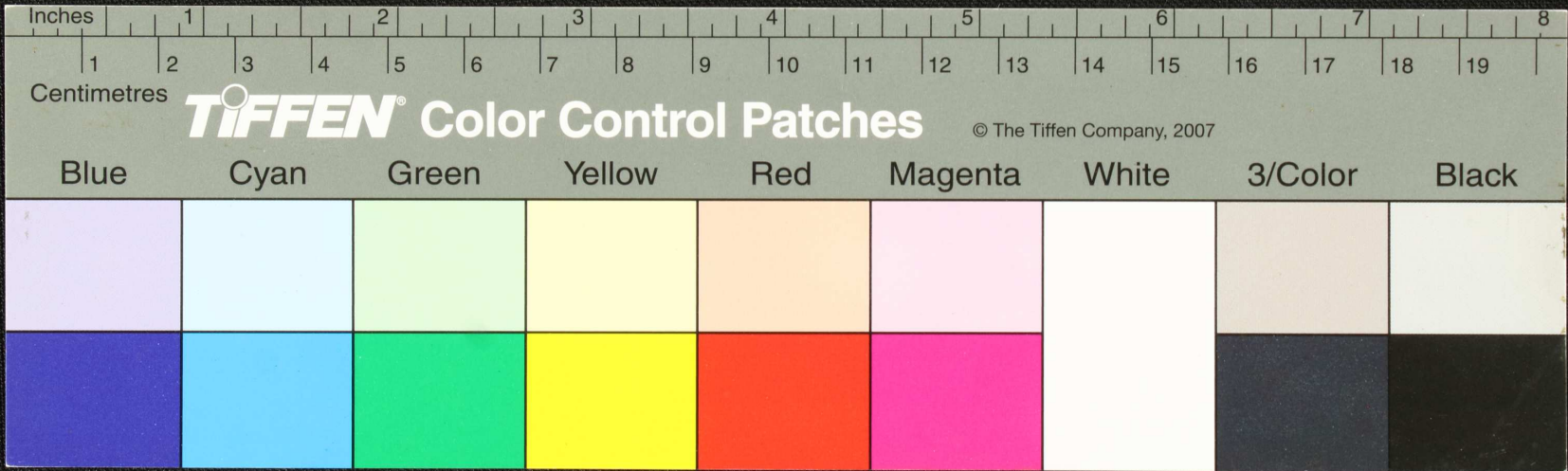
Handwritten text in Tamil script on a palm leaf manuscript. The text is arranged in approximately four horizontal lines. A small, dark circular hole is visible in the center of the leaf, which is a traditional feature for threading a cord to bind multiple leaves together. The script is finely etched into the surface of the dried leaf.



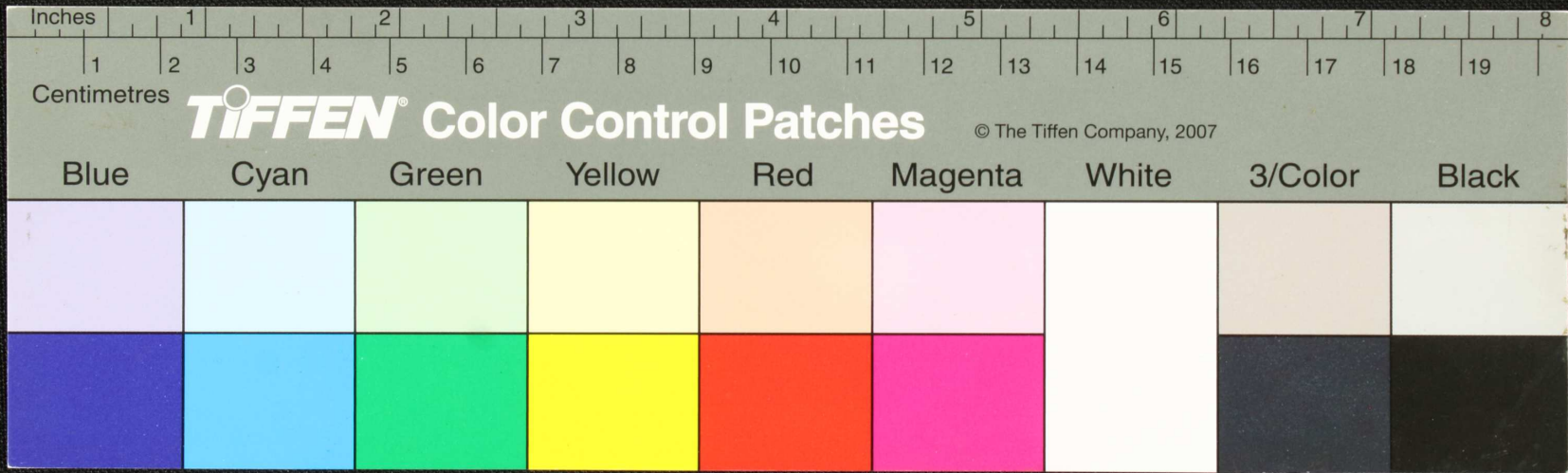
Handwritten text in Tamil script on a palm leaf manuscript. The text is arranged in four horizontal lines. A prominent black circular hole is visible in the center of the leaf, approximately between the 8 and 9 centimeter marks on the ruler below. The script is finely etched into the surface of the dried leaf.



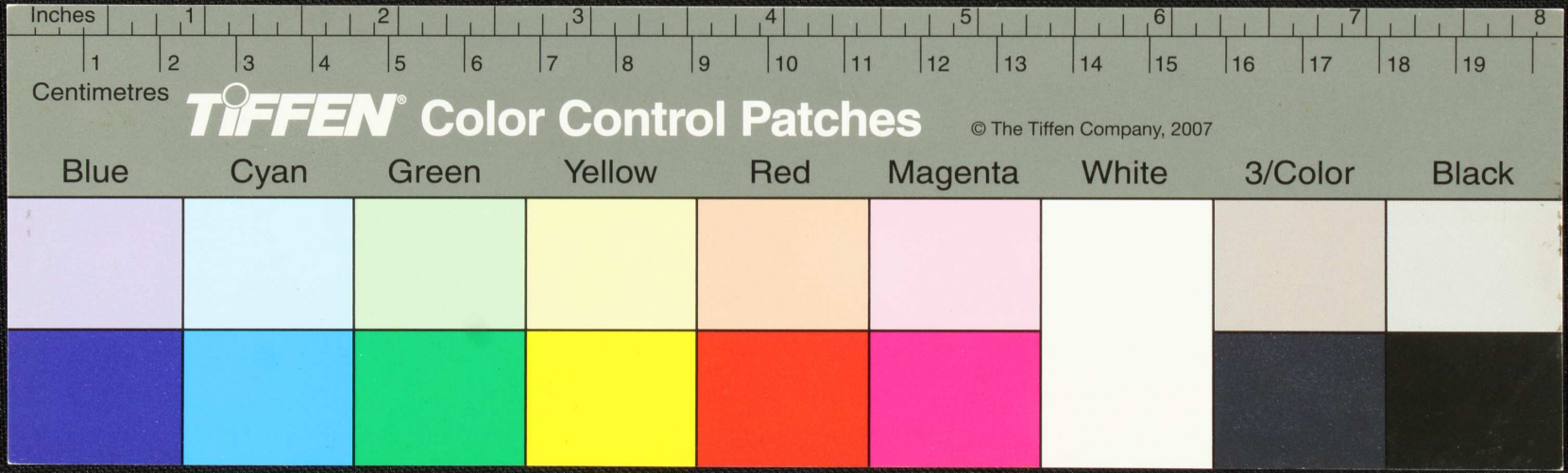
கனகசபை விசேஷ சபை உட்காரை  
 சபை விசேஷ சபை உட்காரை  
 சபை விசேஷ சபை உட்காரை  
 சபை விசேஷ சபை உட்காரை  
 சபை விசேஷ சபை உட்காரை



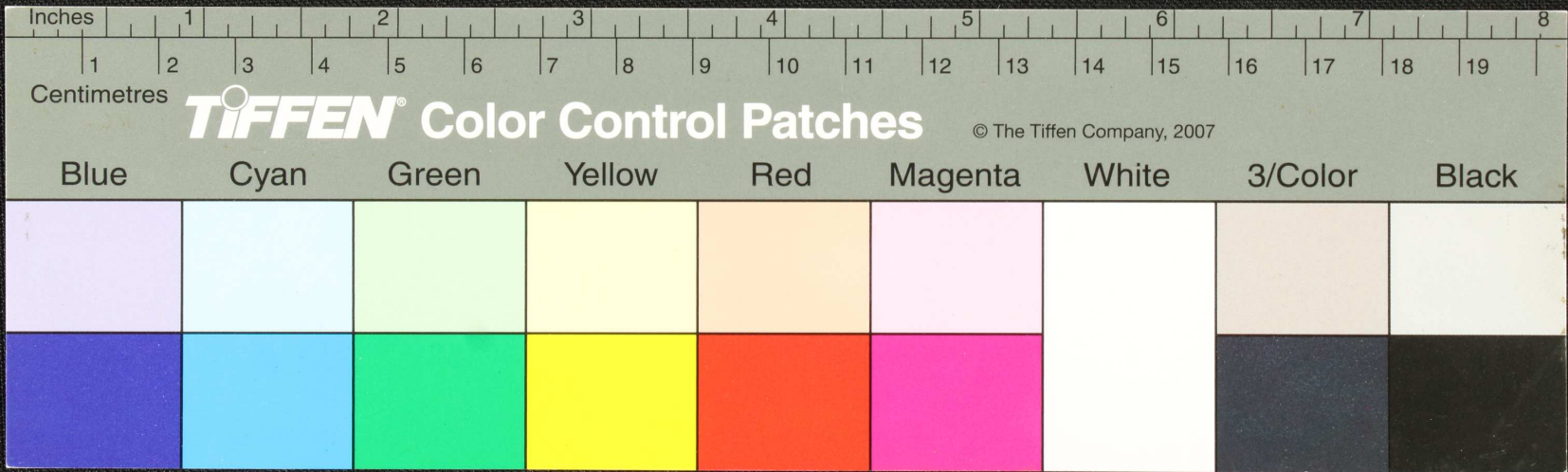
Handwritten text in Tamil script on a palm leaf manuscript. The text is arranged in four lines, with some characters appearing to be part of a list or a set of instructions. The script is finely etched into the surface of the dried leaf.



Handwritten text in Tamil script on a palm leaf manuscript. The text is arranged in approximately four horizontal lines across the length of the leaf. A small dark circular mark is visible near the center of the leaf.



Handwritten text in Tamil script on a palm leaf manuscript. The text is arranged in approximately four horizontal lines. A small, dark circular hole is visible in the center of the leaf, likely from a traditional binding method. The script is finely etched into the surface of the dried leaf.

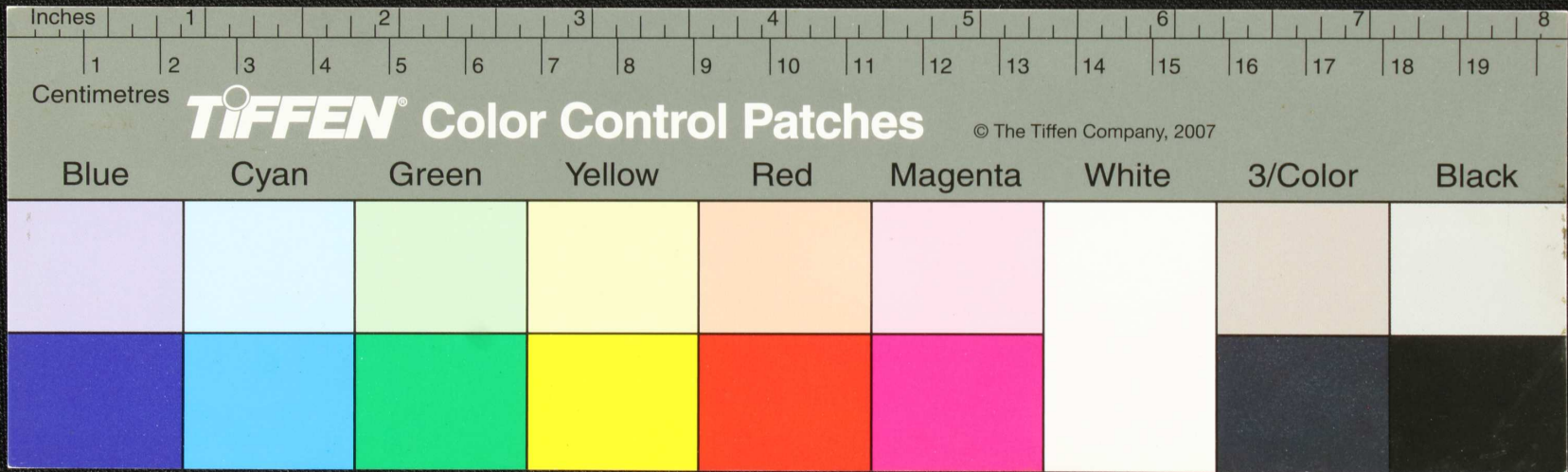




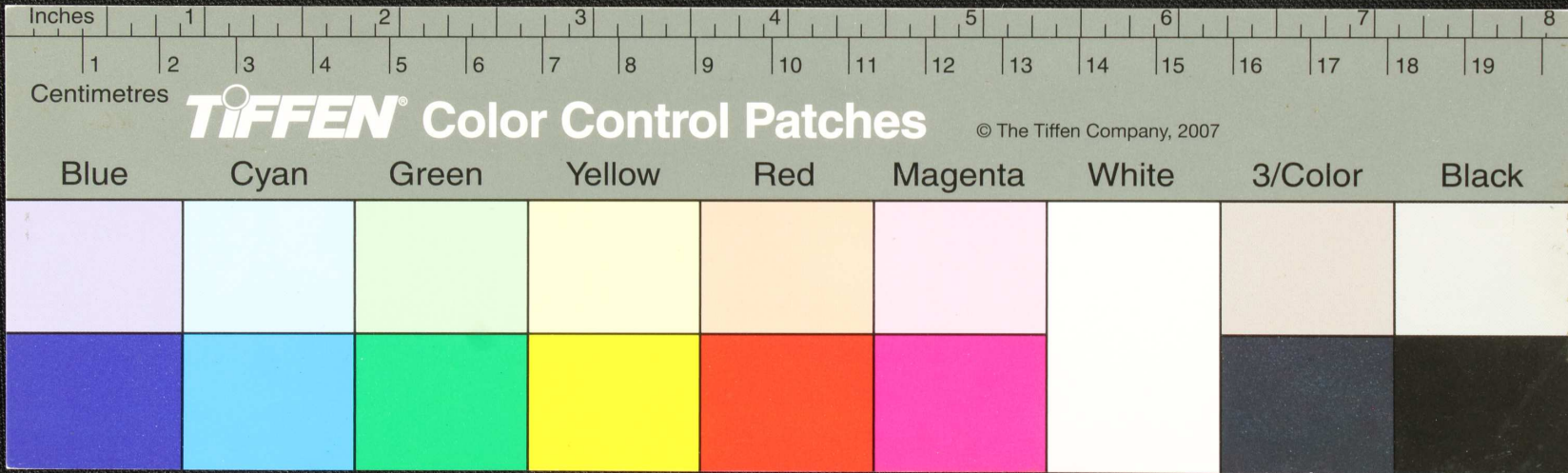
Handwritten text on a palm leaf manuscript strip, organized into columns and rows. The text is in an ancient script, likely Tamil. A circular hole is visible in the center of the strip.

|    |    |    |    |
|----|----|----|----|
| சு | ந  | டு | பு |
| ப  | சு | டு | பு |
| ந  | சு | டு | பு |
| பு | ந  | டு | சு |

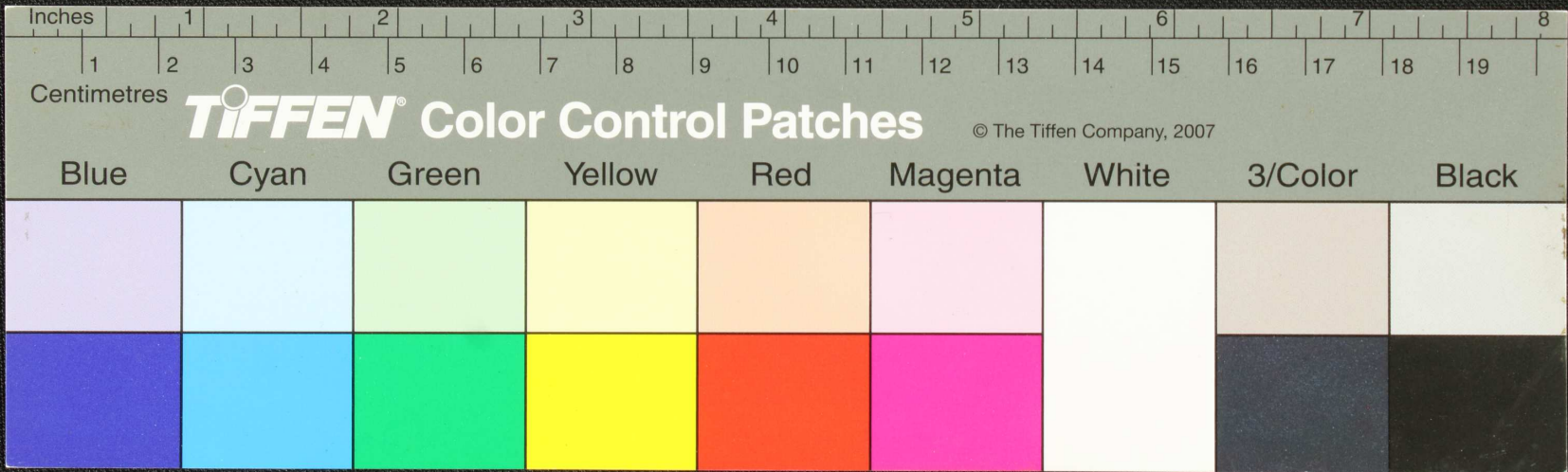
|    |    |    |    |
|----|----|----|----|
| ப  | சு | டு | பு |
| சு | ந  | டு | பு |
| பு | ந  | டு | சு |
| ப  | சு | டு | பு |



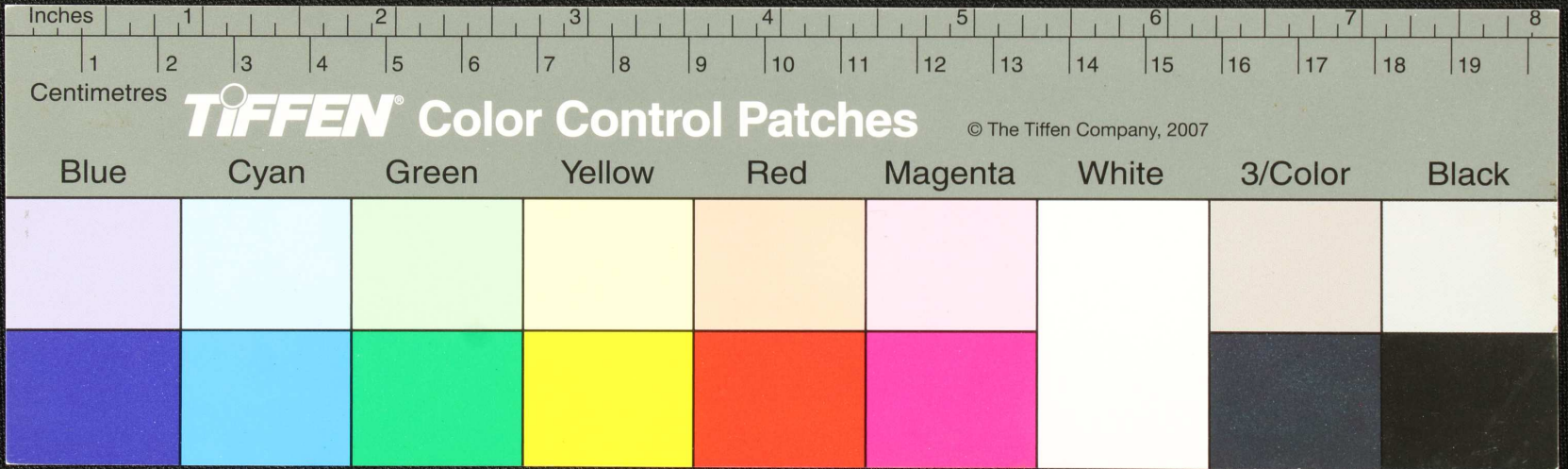
Handwritten text on a yellowed strip of paper, possibly a manuscript or record. The text is arranged in a grid-like pattern with columns and rows, and includes a small circular mark or hole near the center. The characters appear to be from an Indic script, possibly Devanagari or a related script, and are written in a cursive style. The paper is aged and shows some staining and a small hole.



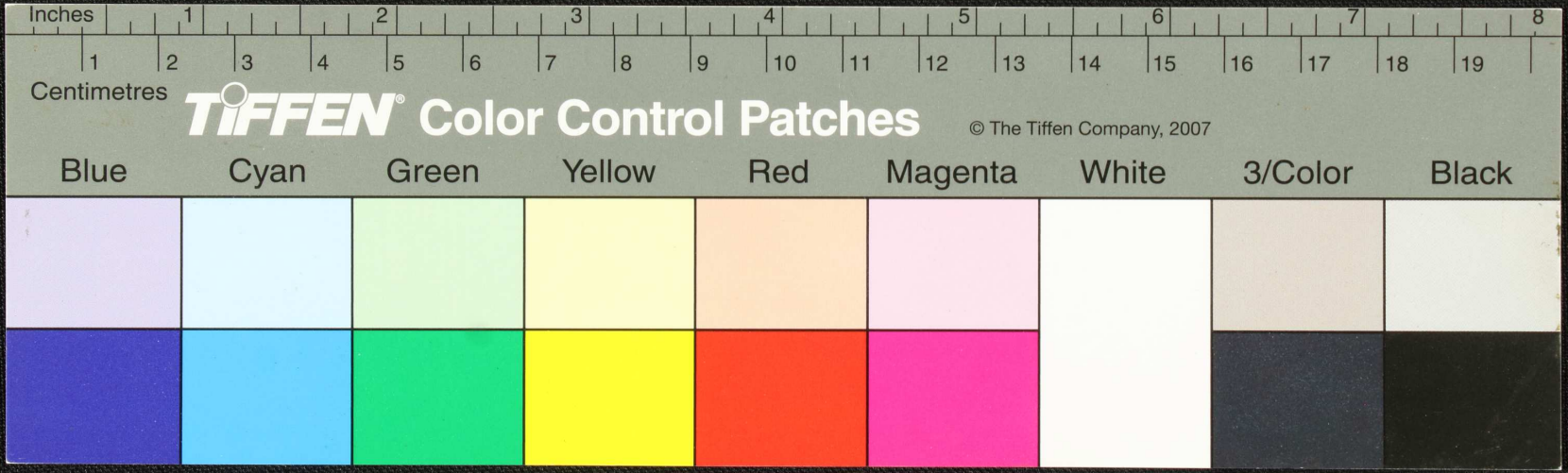
Handwritten text in Tamil script on a palm leaf manuscript. The text is arranged in four horizontal lines. The first line begins with a small symbol resembling the Tamil character 'தி' (thi) followed by several characters. The second line starts with 'மனத்தின' (manaththin) and continues with more characters. The third line begins with 'உயர்வான' (uayravan) and includes a small circular hole, likely for binding. The fourth line starts with 'வாழ்வி' (vazhvi) and ends with a period. The script is finely etched into the surface of the dried leaf.



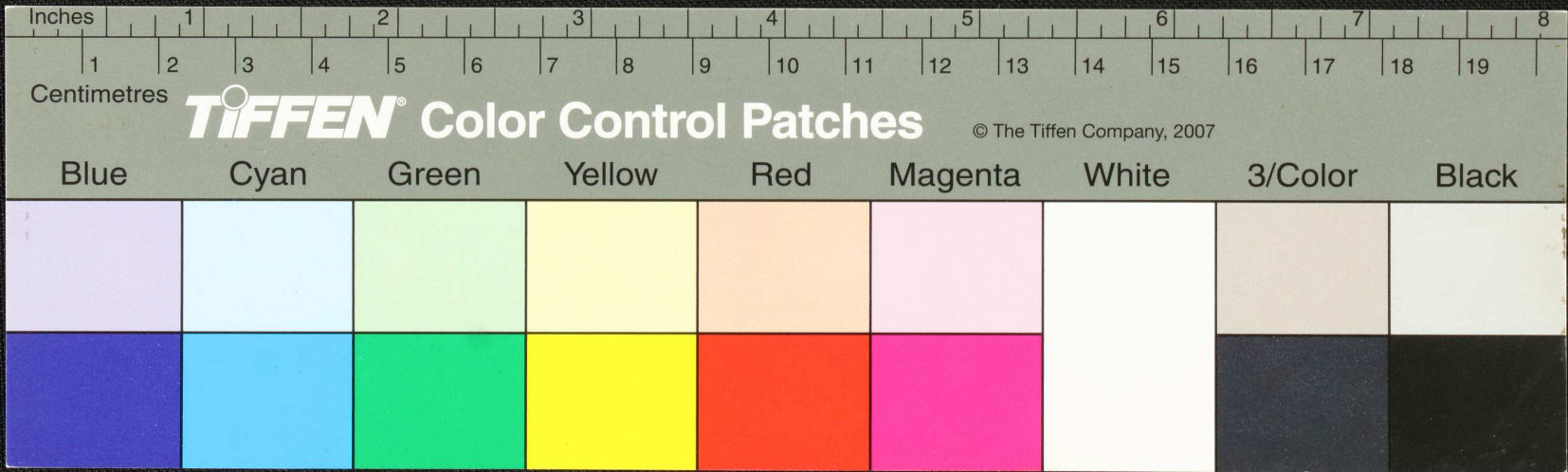
Handwritten text in Tamil script on a palm leaf manuscript. The text is arranged in approximately four horizontal lines across the length of the leaf. The script is finely etched into the surface of the dried leaf. A small, dark circular hole is visible near the center of the leaf, which is a traditional feature used for threading a cord to bind multiple leaves together into a book format.

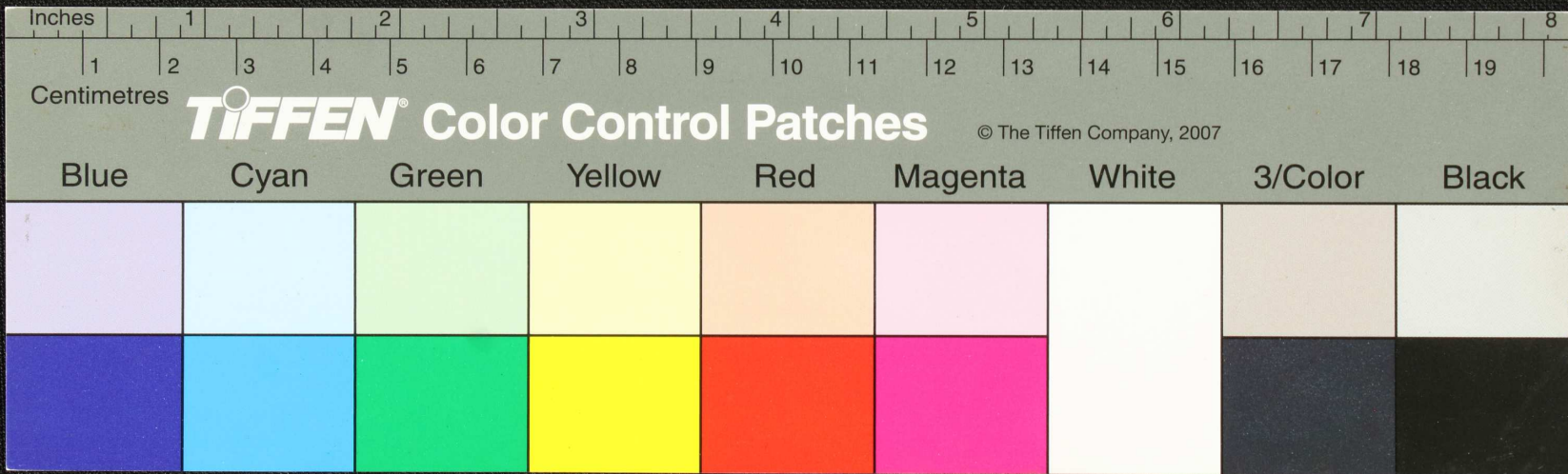


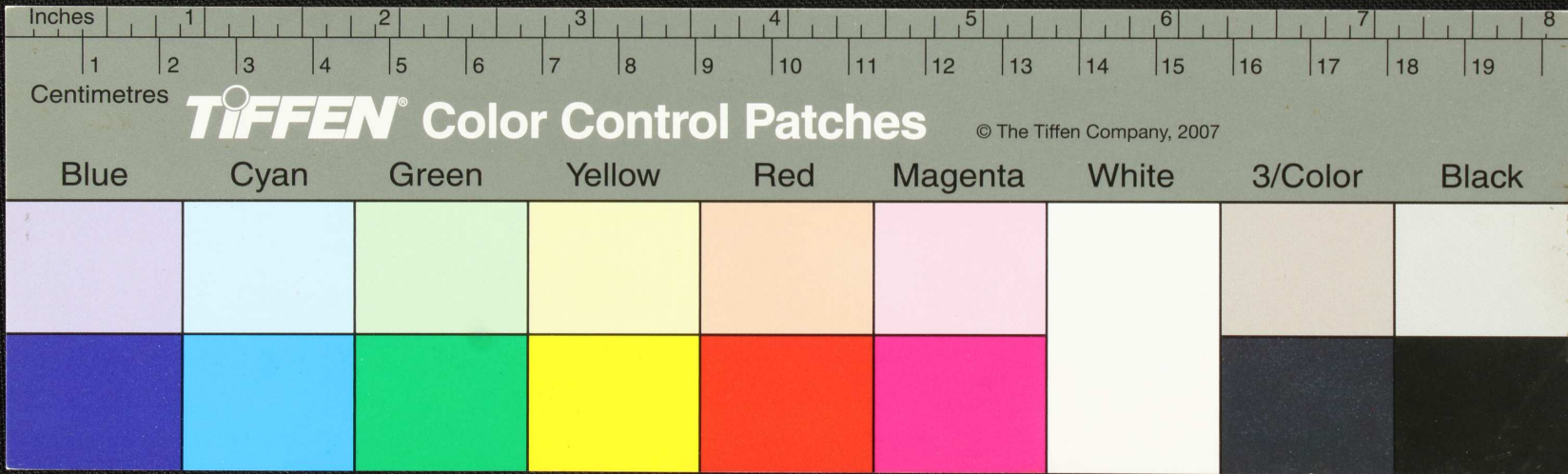
Handwritten text in Tamil script on a palm leaf manuscript. The text is arranged in several lines across the length of the leaf. A prominent black circular hole is visible in the middle of the leaf, which is a traditional feature used for threading a cord to bind multiple leaves together into a book format.



Handwritten text in Tamil script on a yellowed paper strip. The text is arranged in three lines and appears to be a historical record or a list of items. The first line contains approximately 10 characters. The second line contains approximately 15 characters. The third line contains approximately 10 characters. There is a small dark circular mark on the paper between the second and third lines.







Inches

Centimetres

**TIFFEN** Color Control Patches

© The Tiffen Company, 2007

Blue

Cyan

Green

Yellow

Red

Magenta

White

3/Color

Black