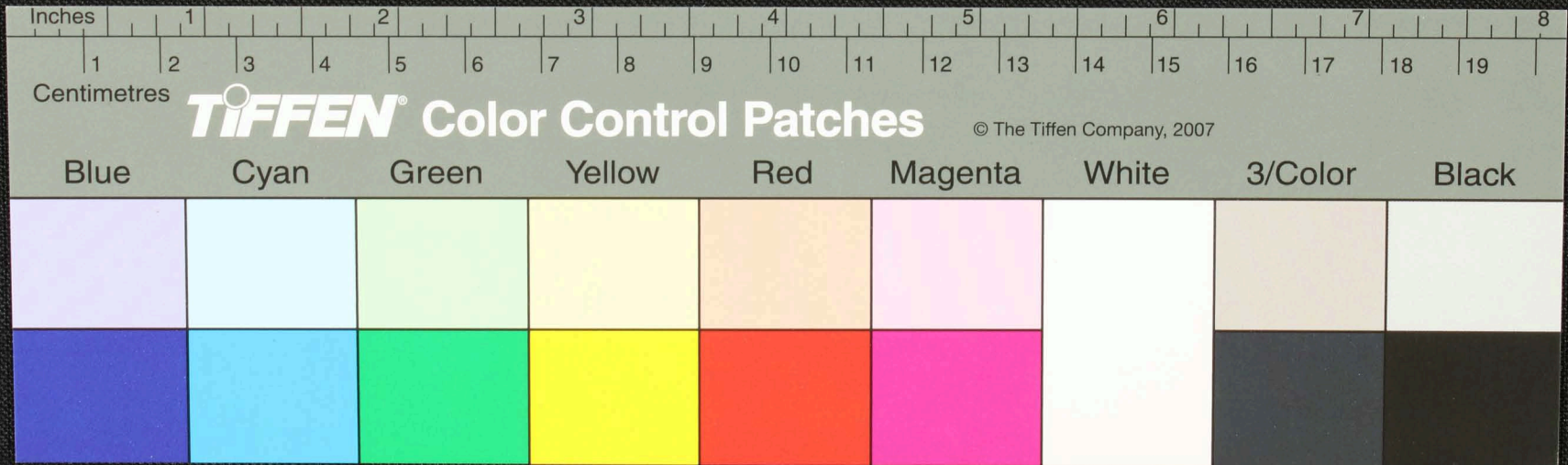
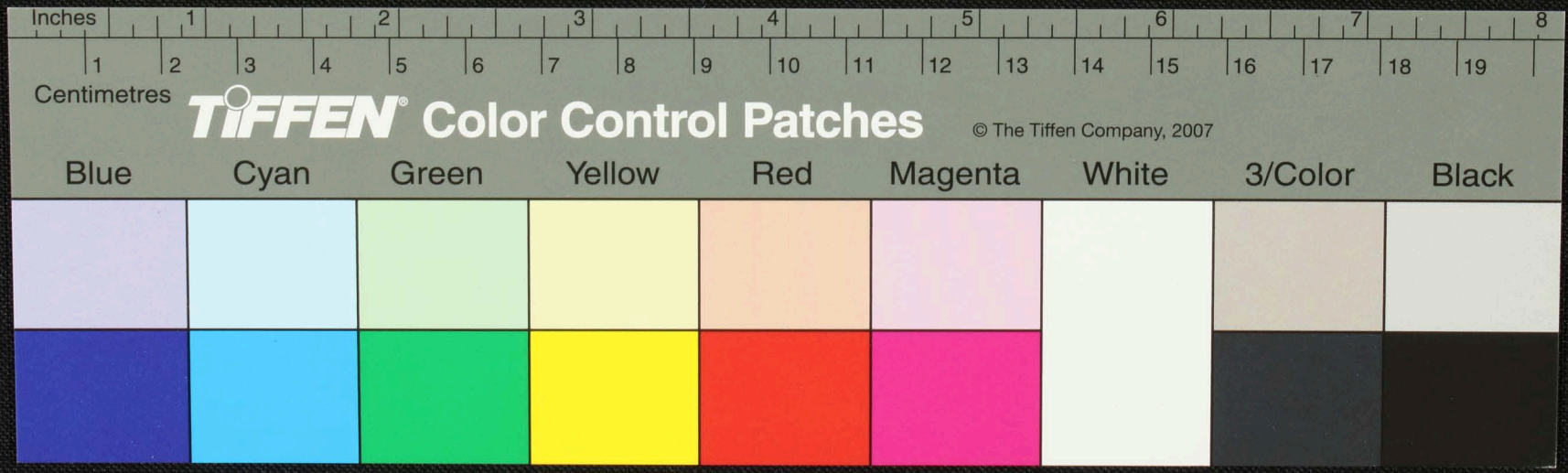


Handwritten text on a palm-leaf manuscript strip, divided into three sections by vertical lines. The text is in an ancient script, likely Tamil. The rightmost section includes a table with asterisks and circles.

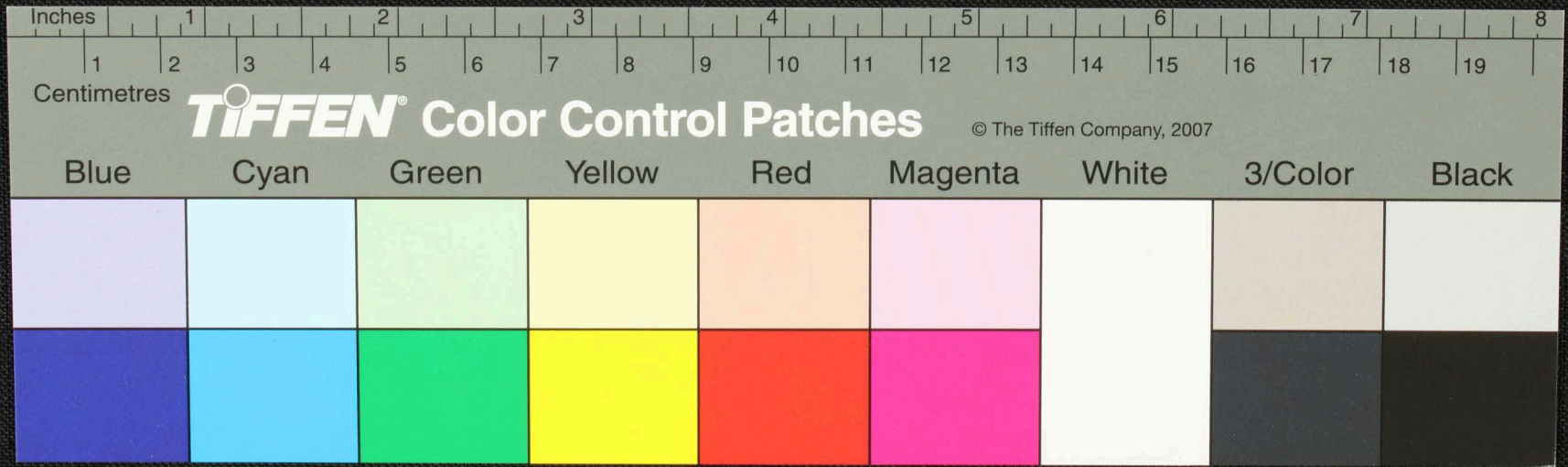
*	o	*
*	o	o
*	*	*
o	o	o



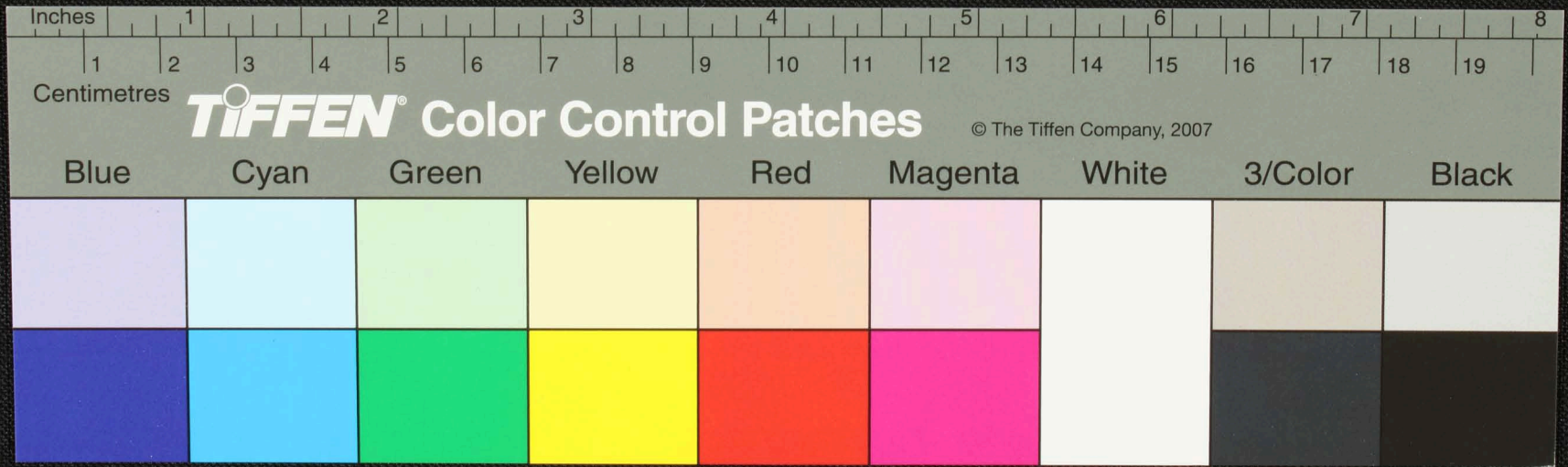


Handwritten text in Tamil script, possibly a date or location, including the characters 'செய்த' and 'புதி'.

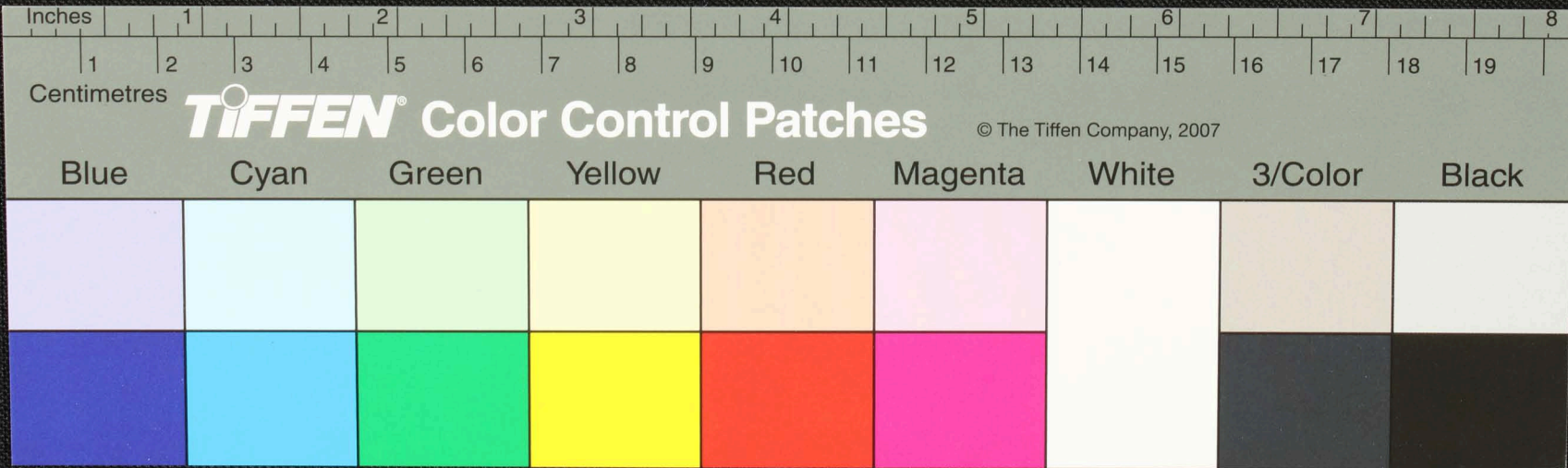
Main body of handwritten text in Tamil script on a palm leaf, containing approximately 15 characters.



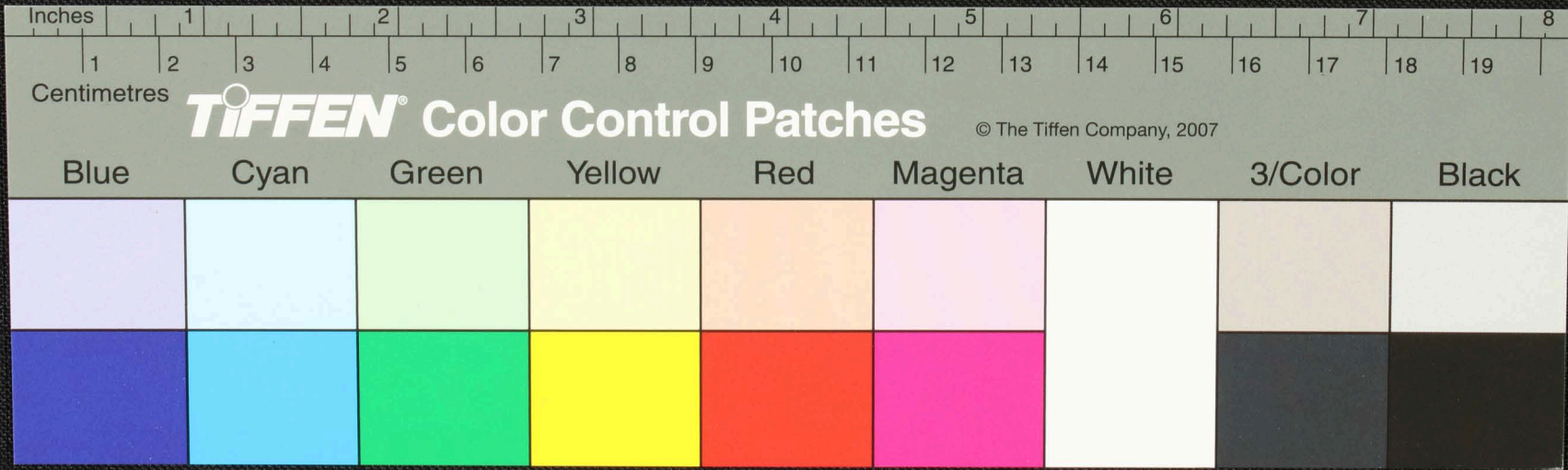
Handwritten text in Tamil script on a palm leaf manuscript. The text is arranged in two lines. The first line contains approximately 15 characters, and the second line contains approximately 15 characters. There is a small black circular mark on the second line, approximately at the 4.5-inch mark on the ruler below.



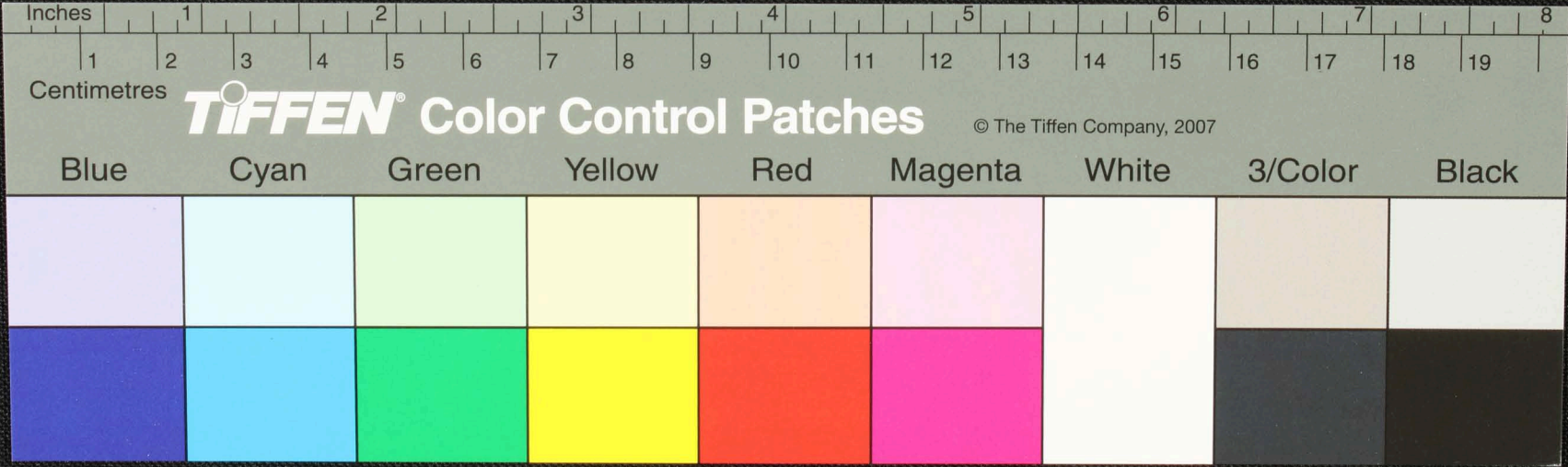
Handwritten text on a palm leaf manuscript, likely in Tamil script, arranged in columns and rows. The text includes various characters and symbols, possibly representing a calendar or a list of events. A central hole is visible, used for binding multiple leaves together.



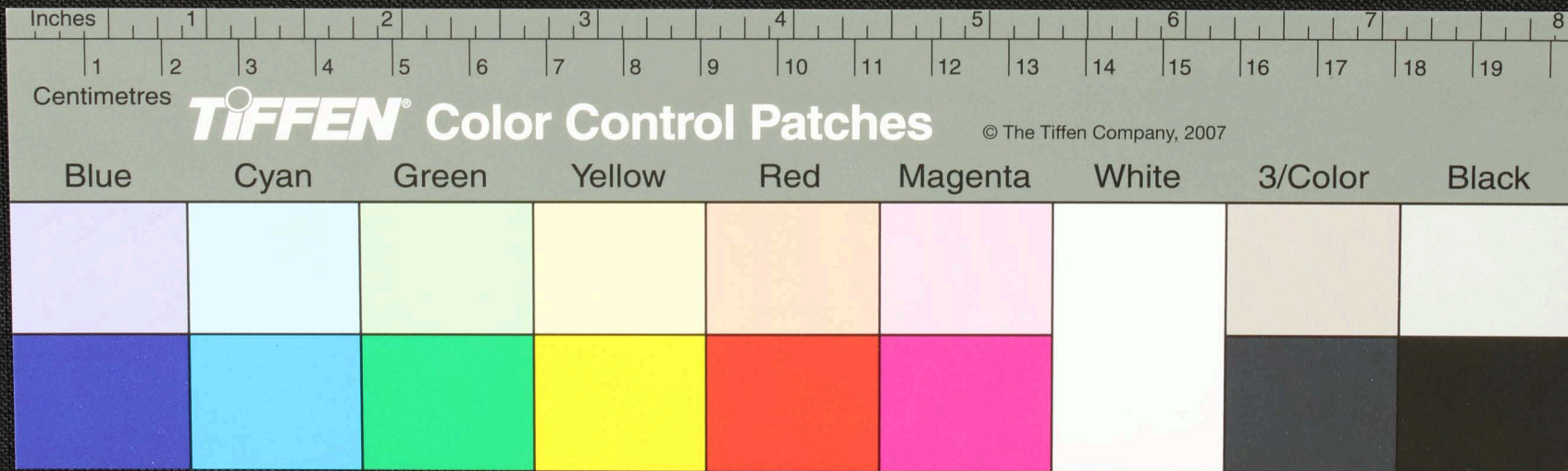
Handwritten text in Tamil script on a palm leaf manuscript. The text is arranged in several lines across the length of the leaf. A small circular hole is visible in the center of the leaf, used for threading a cord to bind multiple leaves together.



Handwritten text in Tamil script on a palm leaf manuscript. The text is arranged in approximately 10 horizontal lines across the length of the leaf. The script is a traditional form of the Tamil language.

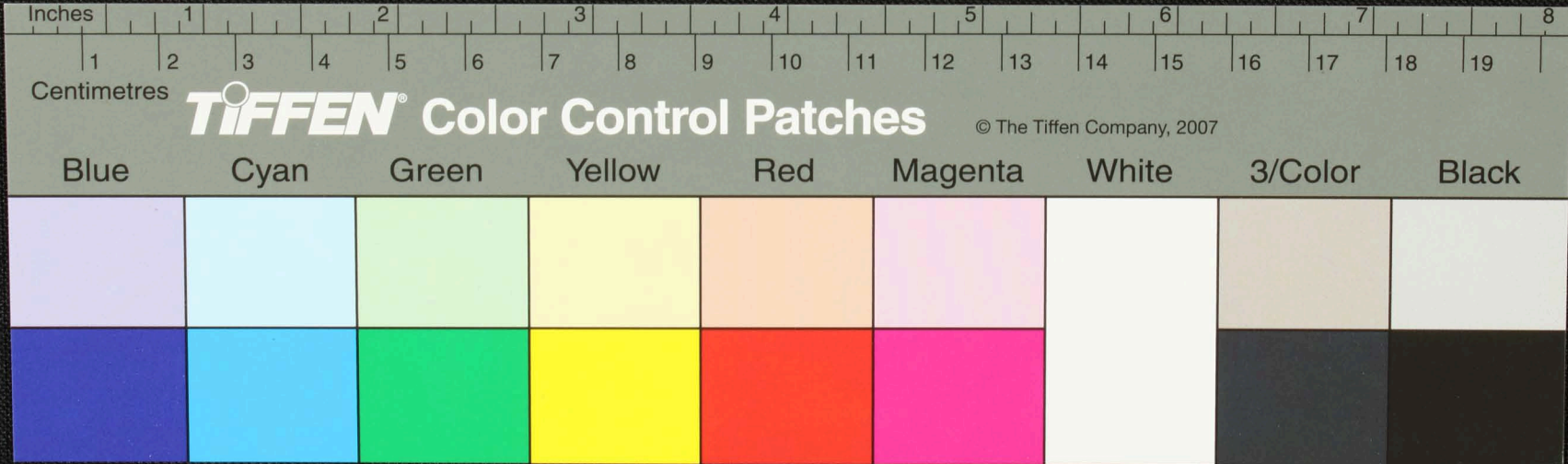


Handwritten text in Tamil script on a palm leaf manuscript. The text is arranged in approximately 10 horizontal lines. On the left side, there are two lines of text that appear to be a title or a specific reference, possibly 'செய்யுள்' (Seyyul) and 'பாட்டு' (Paattu). The main body of text consists of rhythmic patterns of characters, characteristic of traditional Tamil poetry or religious texts. A small circular hole is visible in the center of the leaf, used for threading a cord to bind multiple leaves together.



Handwritten Tamil characters on the left side of the palm leaf manuscript.

Handwritten Tamil script on a palm leaf manuscript, consisting of approximately 12 lines of text.



சுமரத்த
சசுந்
 உமல உமல உமல உமல உமல உமல உமல உமல உமல உமல - உமல
 உமல உமல உமல உமல உமல உமல உமல உமல உமல உமல
 உமல உமல உமல உமல உமல உமல உமல உமல உமல உமல
 உமல உமல உமல உமல உமல உமல உமல உமல உமல உமல
 உமல உமல உமல உமல உமல உமல உமல உமல உமல உமல

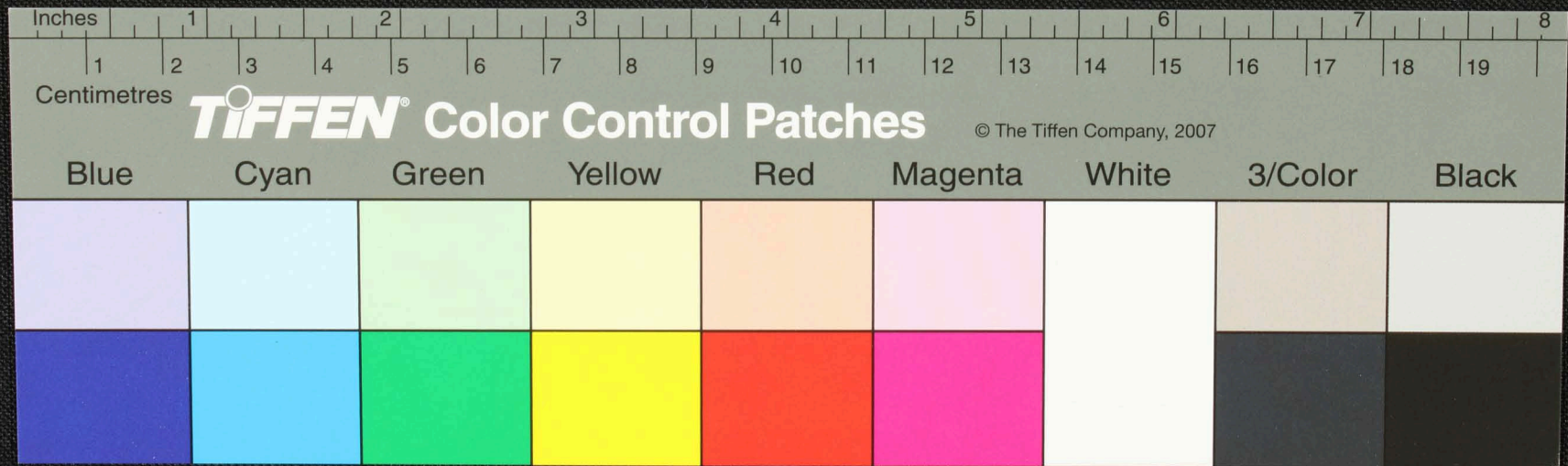
Inches 1 2 3 4 5 6 7 8

Centimetres 1 2 3 4 5 6 7 8 9 10 11 12 13 14 15 16 17 18 19

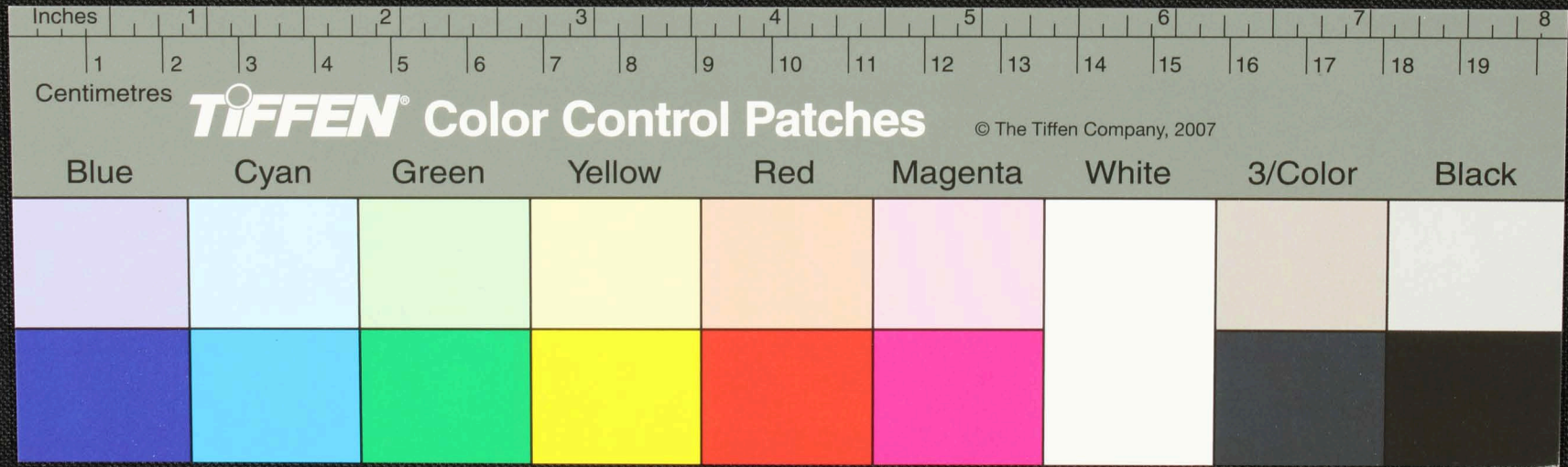
TIFFEN® Color Control Patches © The Tiffen Company, 2007

Blue	Cyan	Green	Yellow	Red	Magenta	White	3/Color	Black

Handwritten Tamil script on a palm leaf manuscript. The text is arranged in approximately 10 horizontal lines. On the left side, there are some vertical markings and characters, possibly indicating a page or chapter number. The script is written in a traditional style with some decorative flourishes.



Handwritten text in Tamil script on a palm leaf manuscript. The text is arranged in approximately 10 horizontal lines. On the left side, there are some characters that appear to be a signature or a reference mark, possibly "மேன்" and "மாம" written vertically. The main body of text is densely packed and follows the traditional layout of a palm leaf manuscript.



மகாபாரத
திருநாவுக்கரசர்
 மகாபாரத காவியம் நான்காம் பாகம்
 மூலக்காண்டி அகத்தியர் பாடியிருக்கிறார்
 சூரியன் உதயமாகிய நேரத்தில்
 மகாபாரத காவியம் பாடியிருக்கிறார்
 மகாபாரத காவியம் பாடியிருக்கிறார்
 மகாபாரத காவியம் பாடியிருக்கிறார்

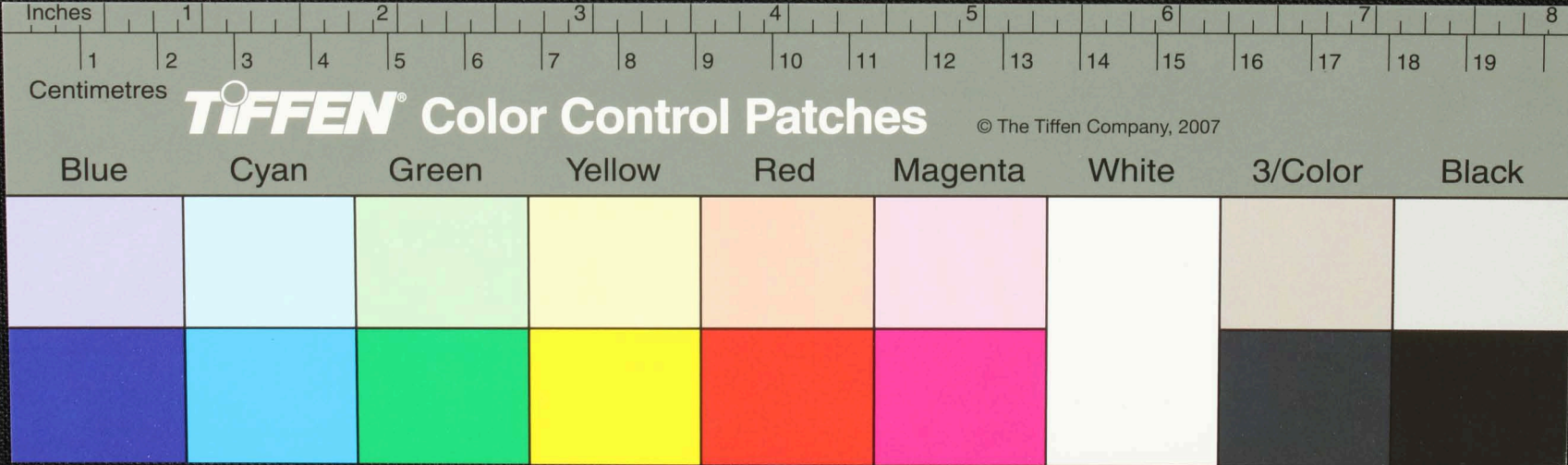
Inches 1 2 3 4 5 6 7 8

Centimetres 1 2 3 4 5 6 7 8 9 10 11 12 13 14 15 16 17 18 19

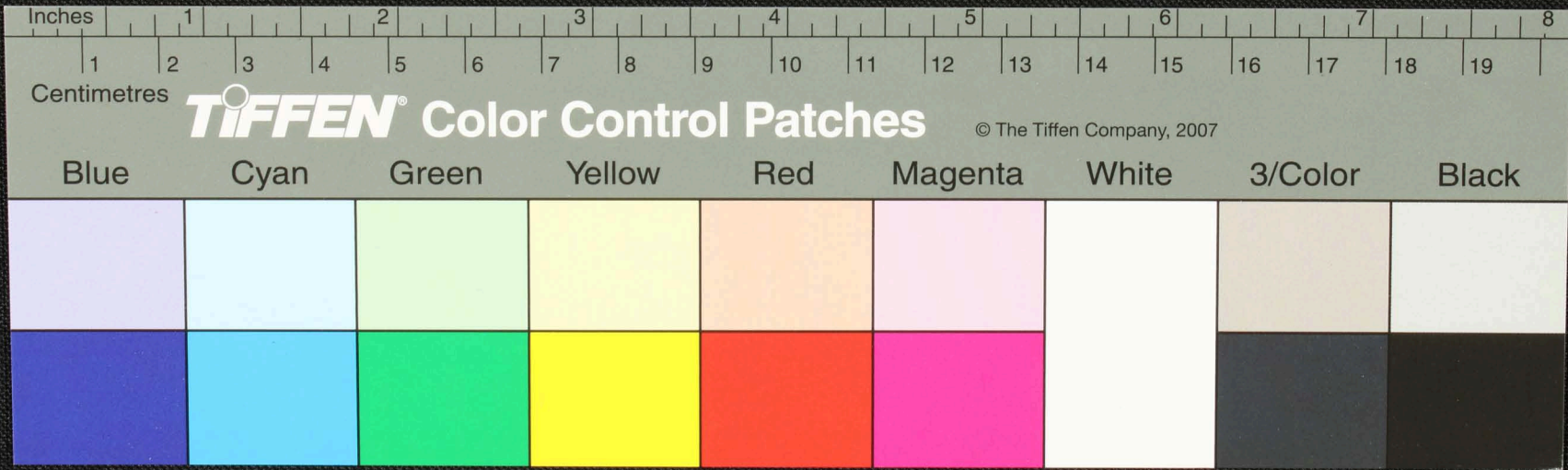
TIFFEN Color Control Patches © The Tiffen Company, 2007

Blue	Cyan	Green	Yellow	Red	Magenta	White	3/Color	Black

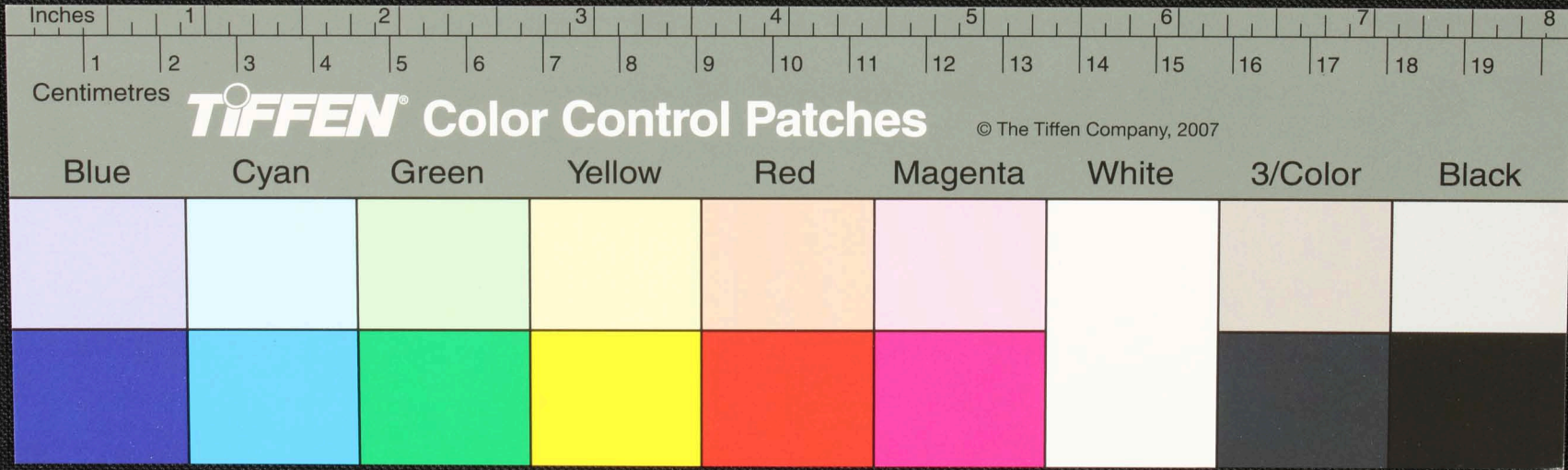
Handwritten text in Tamil script on a palm leaf manuscript. The text is arranged in approximately five horizontal lines. The first line on the left contains the characters 'சு' and 'ம' separated by a vertical line. The main body of text consists of several lines of characters, including a prominent black circular ink blot in the second line from the top.



பு. சி. சி. செய்தியை பு. சி. சி.
செய்தியை செய்தியை செய்தியை
செய்தியை செய்தியை செய்தியை
செய்தியை செய்தியை செய்தியை
செய்தியை செய்தியை செய்தியை
செய்தியை செய்தியை செய்தியை



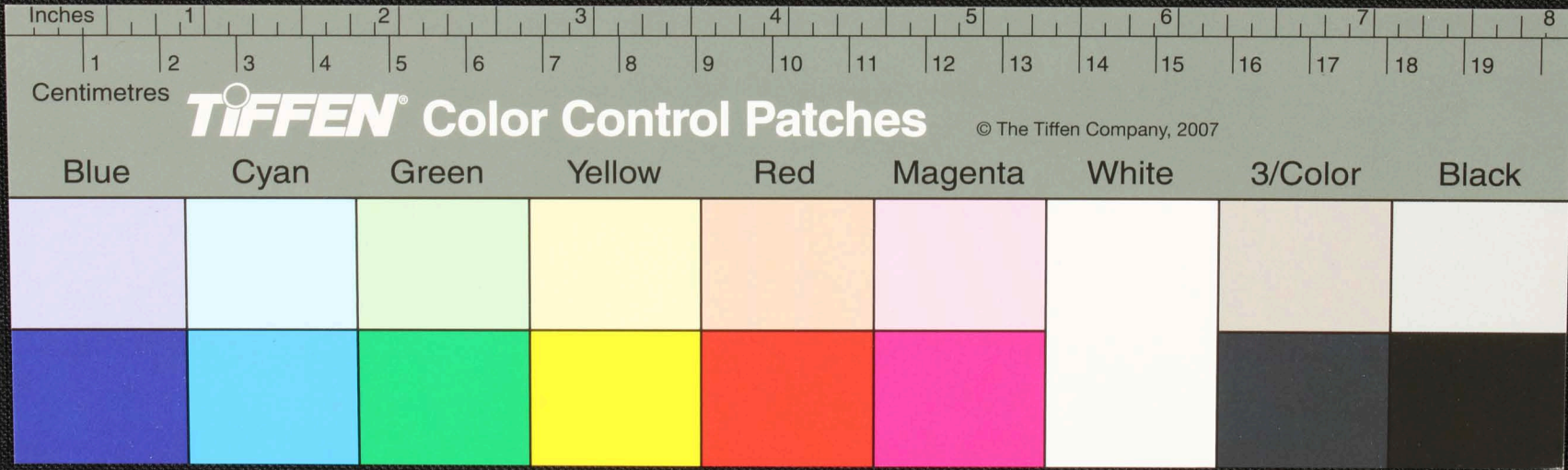
Handwritten text in Tamil script on a palm leaf manuscript. The text is arranged in approximately five horizontal lines across the length of the leaf. The script is a traditional form of the Tamil language, used for recording information such as laws, religious texts, or administrative records. The leaf shows signs of age, including a dark circular hole and some surface wear.



நெடுந
வரன்

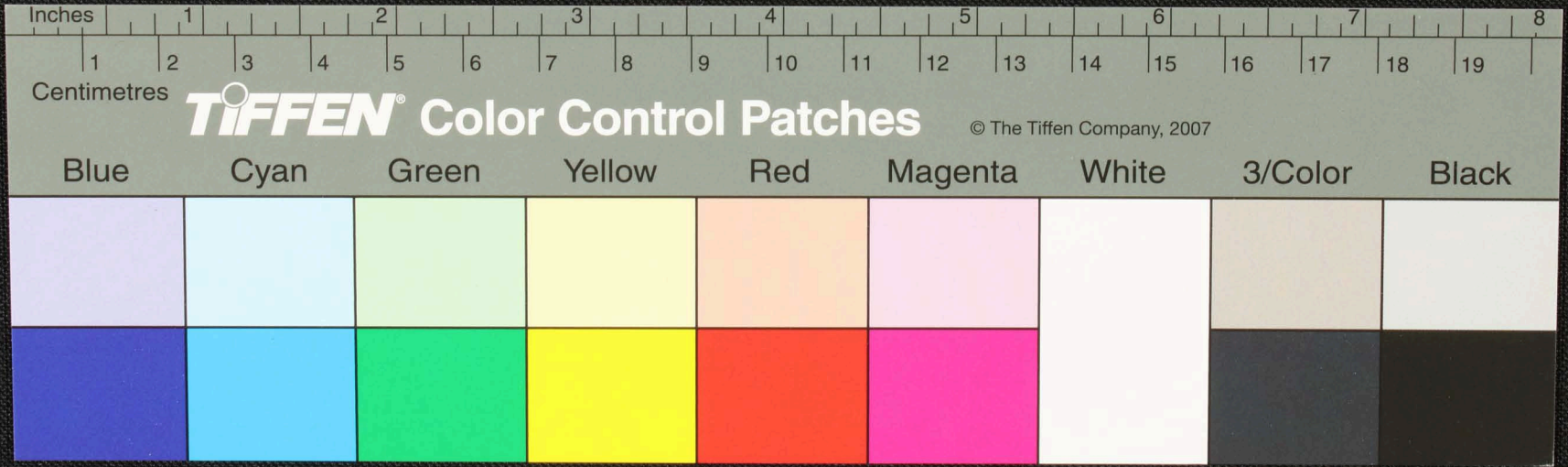
தெய்வமே நமசிவாய நமசிவாய நமசிவாய நமசிவாய நமசிவாய நமசிவாய நமசிவாய நமசிவாய நமசிவாய நமசிவாய
இயங்கியிருக்கின்றன இயங்கியிருக்கின்றன இயங்கியிருக்கின்றன இயங்கியிருக்கின்றன இயங்கியிருக்கின்றன
நமசிவாய நமசிவாய நமசிவாய நமசிவாய நமசிவாய நமசிவாய நமசிவாய நமசிவாய நமசிவாய நமசிவாய
நமசிவாய நமசிவாய நமசிவாய நமசிவாய நமசிவாய நமசிவாய நமசிவாய நமசிவாய நமசிவாய நமசிவாய
நமசிவாய நமசிவாய நமசிவாய நமசிவாய நமசிவாய நமசிவாய நமசிவாய நமசிவாய நமசிவாய நமசிவாய
நமசிவாய நமசிவாய நமசிவாய நமசிவாய நமசிவாய நமசிவாய நமசிவாய நமசிவாய நமசிவாய நமசிவாய

பொ



செய்யுள்
N

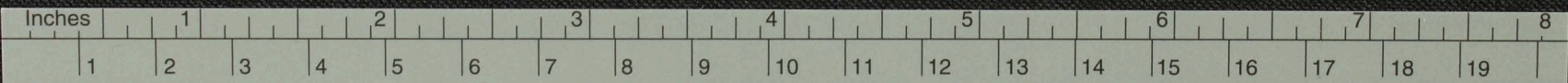
மதுவக வகுதியுணர்விய மகாபுரிசுமல வமகநகரிமகாபுரிசுமல
மதுவக வகுதியுணர்விய மகாபுரிசுமல வமகநகரிமகாபுரிசுமல
மதுவக வகுதியுணர்விய மகாபுரிசுமல வமகநகரிமகாபுரிசுமல
மதுவக வகுதியுணர்விய மகாபுரிசுமல வமகநகரிமகாபுரிசுமல



செய்த
N

செய்திருக்கின்றன...
செய்திருக்கின்றன...
செய்திருக்கின்றன...
செய்திருக்கின்றன...

செய்த



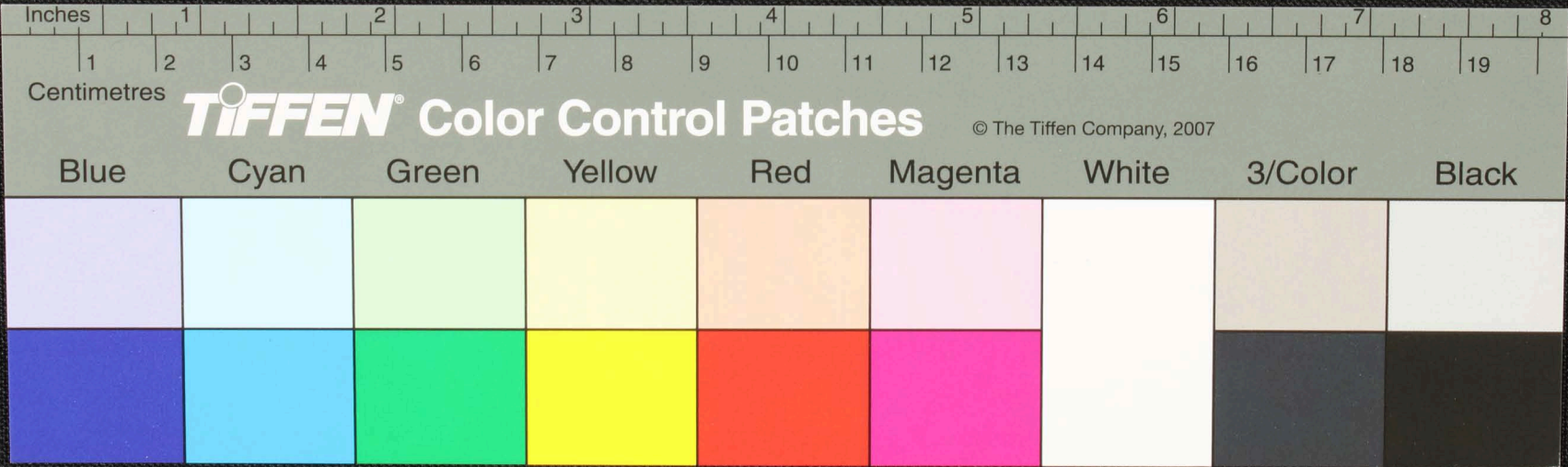
Centimetres

TIFFEN Color Control Patches

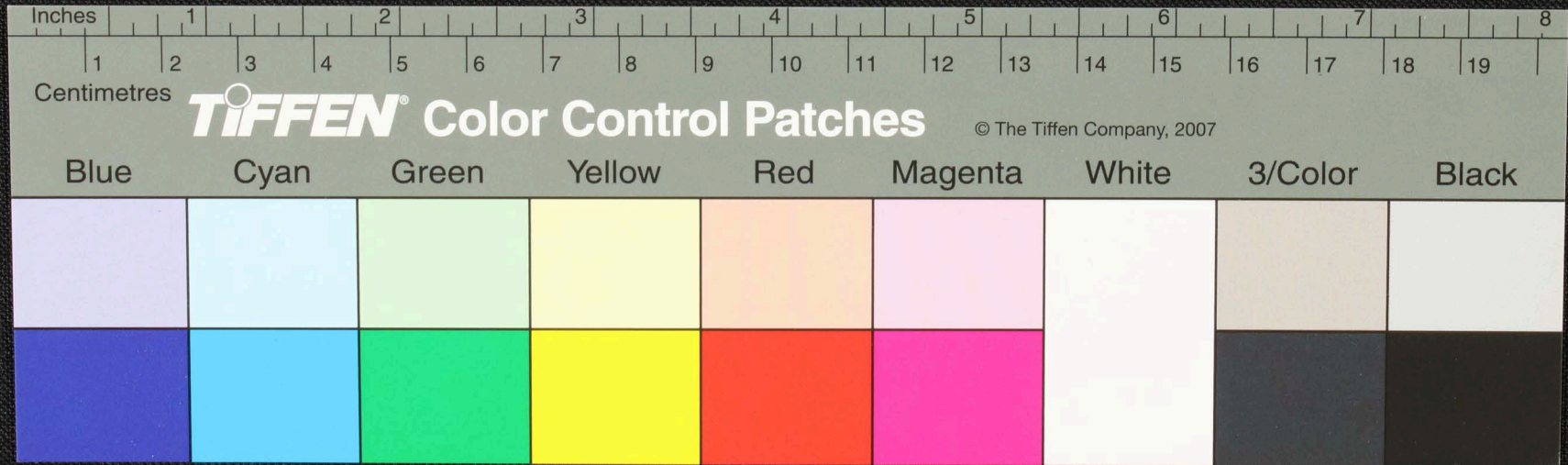
© The Tiffen Company, 2007

Blue	Cyan	Green	Yellow	Red	Magenta	White	3/Color	Black
[Light Blue patch]	[Light Cyan patch]	[Light Green patch]	[Light Yellow patch]	[Light Red patch]	[Light Magenta patch]	[White patch]	[Light Gray patch]	[White patch]
[Dark Blue patch]	[Dark Cyan patch]	[Dark Green patch]	[Dark Yellow patch]	[Dark Red patch]	[Dark Magenta patch]	[White patch]	[Dark Gray patch]	[Black patch]

Handwritten text in Tamil script on a palm leaf manuscript. The text is arranged in approximately 10 horizontal lines. On the left side, there are two lines of text that appear to be a title or reference: "புத்தவ" and "நனந".



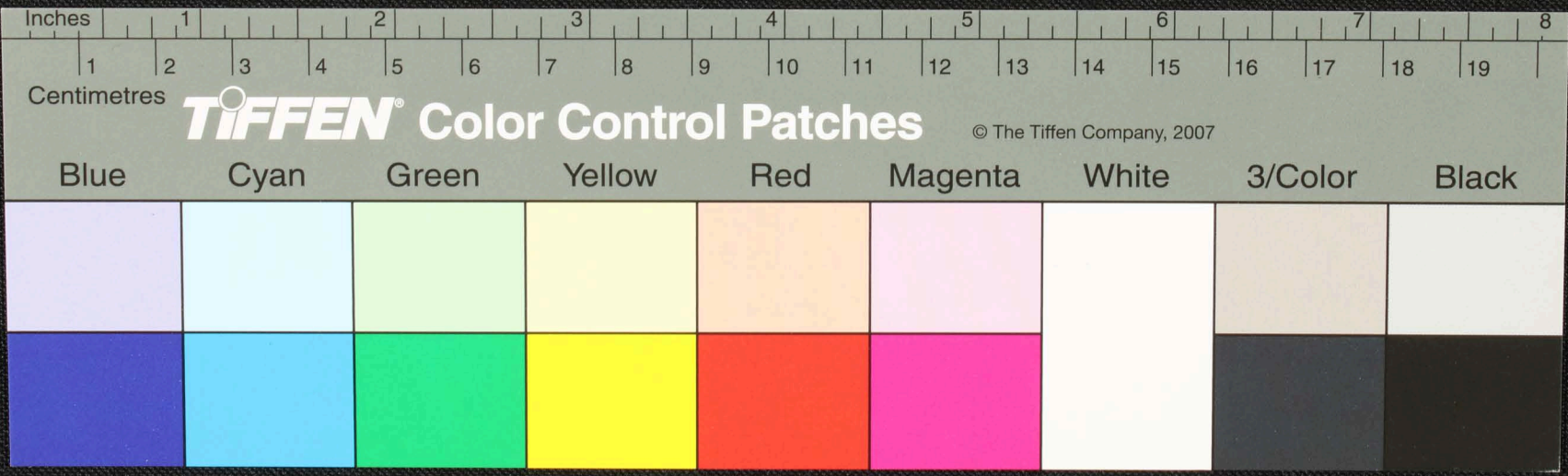
Handwritten text on a palm leaf manuscript, likely in Tamil script. The text is arranged in approximately 10 horizontal lines across the length of the leaf. On the left side, there are vertical markings and characters, possibly indicating a chapter or section. A small circular hole is visible in the center of the leaf, used for binding multiple leaves together.



Handwritten text on a palm leaf manuscript, including a table of characters and several lines of script.

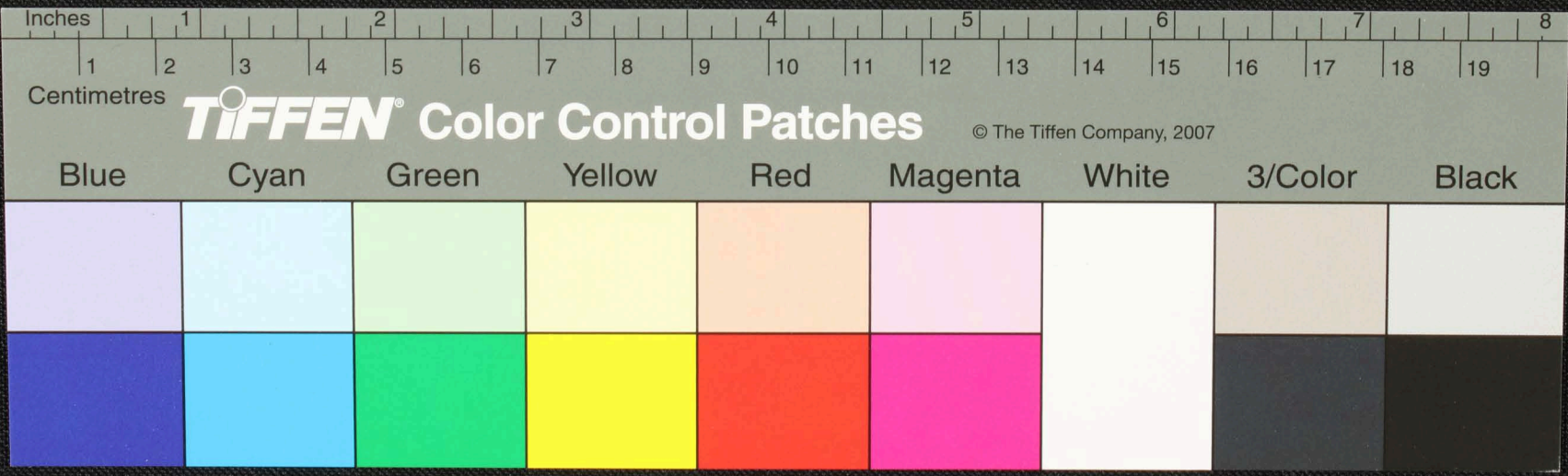
ര	ര	ര	ര
ര	ര	ര	ര
ര	ര	ര	ര
ര	ര	ര	ര

നമുക്കു കയ്യേറ്റം ചെയ്ത
 കയ്യേറ്റം ചെയ്ത കയ്യേറ്റം
 കയ്യേറ്റം ചെയ്ത കയ്യേറ്റം
 കയ്യേറ്റം ചെയ്ത കയ്യേറ്റം
 കയ്യേറ്റം ചെയ്ത കയ്യേറ്റം

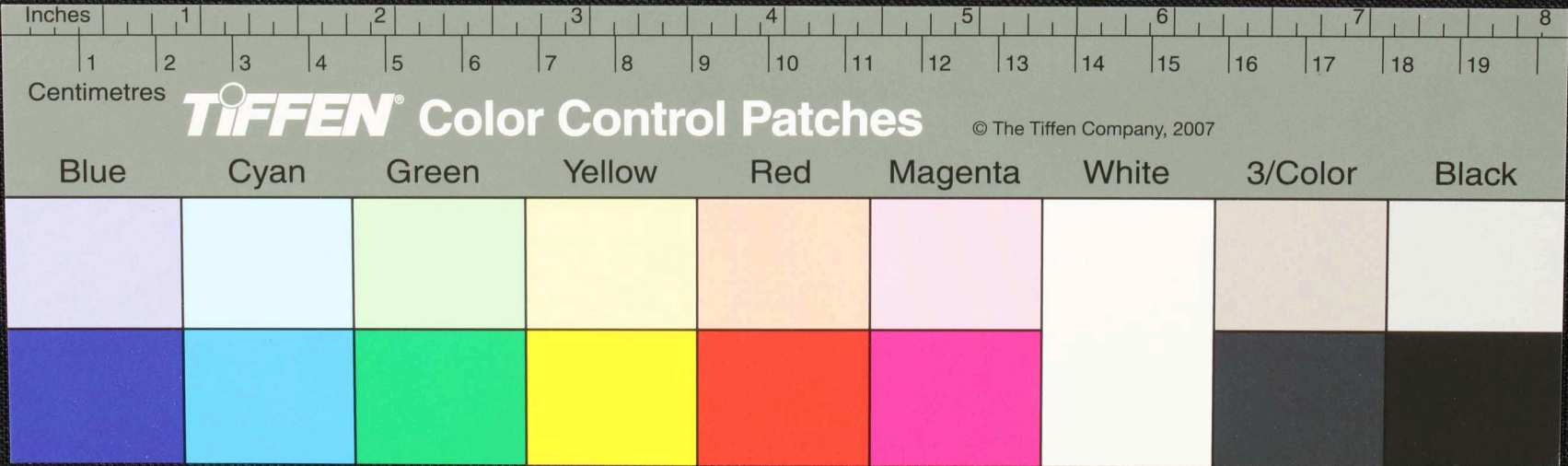


10 00
11 00

Handwritten text in Tamil script on a palm leaf manuscript. The text is arranged in approximately 10 horizontal lines across the length of the leaf. The script is a traditional form of the Tamil language.



கூடுதலாக விவரிக்கப்படும் இய சூகிய ந-வ-ந-புறது -ச-தி-மரந
கூடுதலாக மகிழ்ச்சியுடன் நமது மனதில் இவர்களை மகிழ்வுடன் பின்புலம்
கூடுதலாக மகிழ்ச்சியுடன் நமது மனதில் இவர்களை மகிழ்வுடன் பின்புலம்
கூடுதலாக மகிழ்ச்சியுடன் நமது மனதில் இவர்களை மகிழ்வுடன் பின்புலம்



செய்த
ஆய்வு

மாநிலத்தின் பகுதிகளில் புகழ்பெற்ற ஆய்வுகூடங்களில் கிடைக்கக்கூடிய
நிபந்தனைகள் - 1 - 2 - 3 - 4 - 5 - 6 - 7 - 8 - 9 - 10 - 11 - 12 - 13 - 14 - 15 - 16 - 17 - 18 - 19 - 20
தமிழ்நாடு அரசின் ஆய்வுகூடங்களில் புகழ்பெற்ற ஆய்வுகூடங்களில் கிடைக்கக்கூடிய
நிபந்தனைகள் - 1 - 2 - 3 - 4 - 5 - 6 - 7 - 8 - 9 - 10 - 11 - 12 - 13 - 14 - 15 - 16 - 17 - 18 - 19 - 20
தமிழ்நாடு அரசின் ஆய்வுகூடங்களில் புகழ்பெற்ற ஆய்வுகூடங்களில் கிடைக்கக்கூடிய

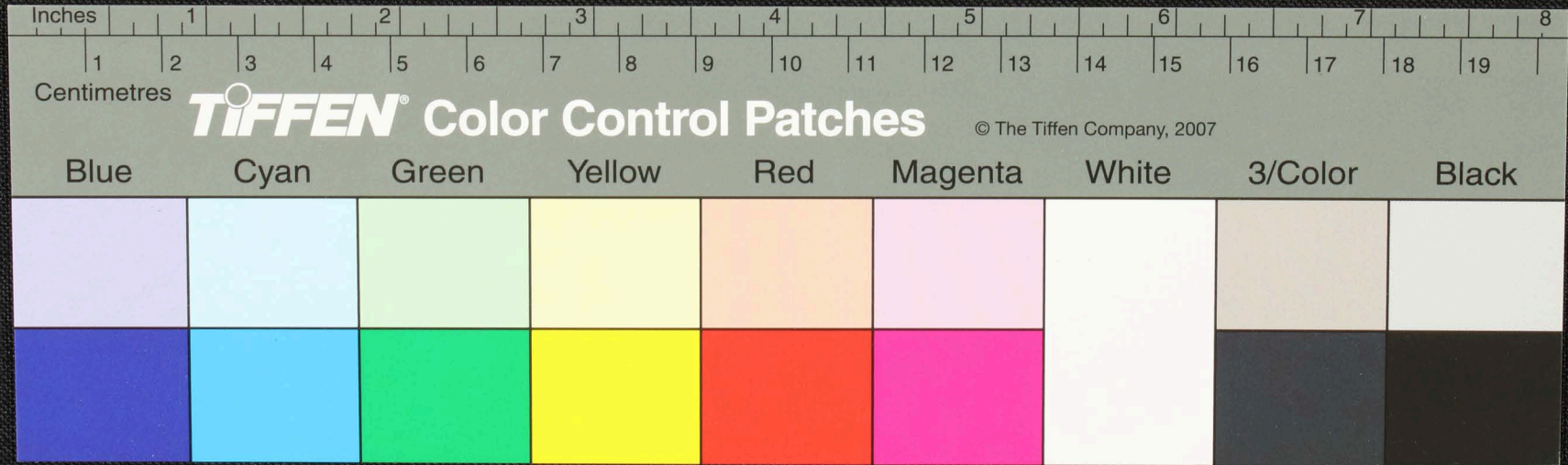
Inches 1 2 3 4 5 6 7 8

Centimetres 1 2 3 4 5 6 7 8 9 10 11 12 13 14 15 16 17 18 19

TIFFEN Color Control Patches © The Tiffen Company, 2007

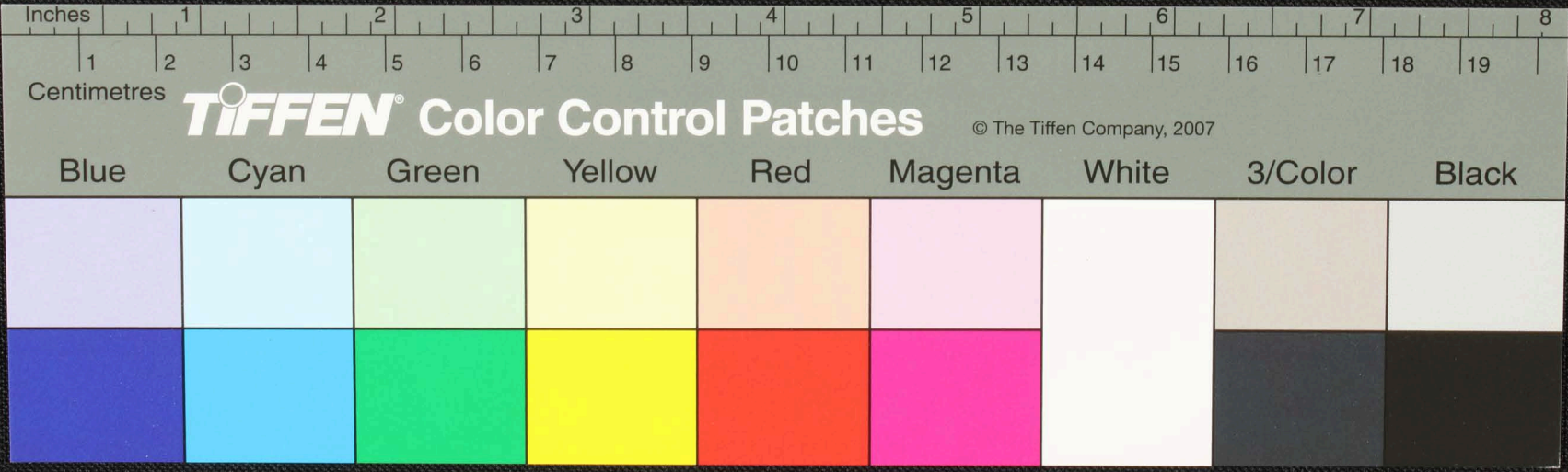
Blue	Cyan	Green	Yellow	Red	Magenta	White	3/Color	Black

Handwritten text in Tamil script on a palm leaf manuscript. The text is arranged in approximately five horizontal lines across the length of the leaf. A prominent circular hole is visible in the center of the leaf, which is a traditional feature for threading a cord to bind multiple leaves together into a book format.

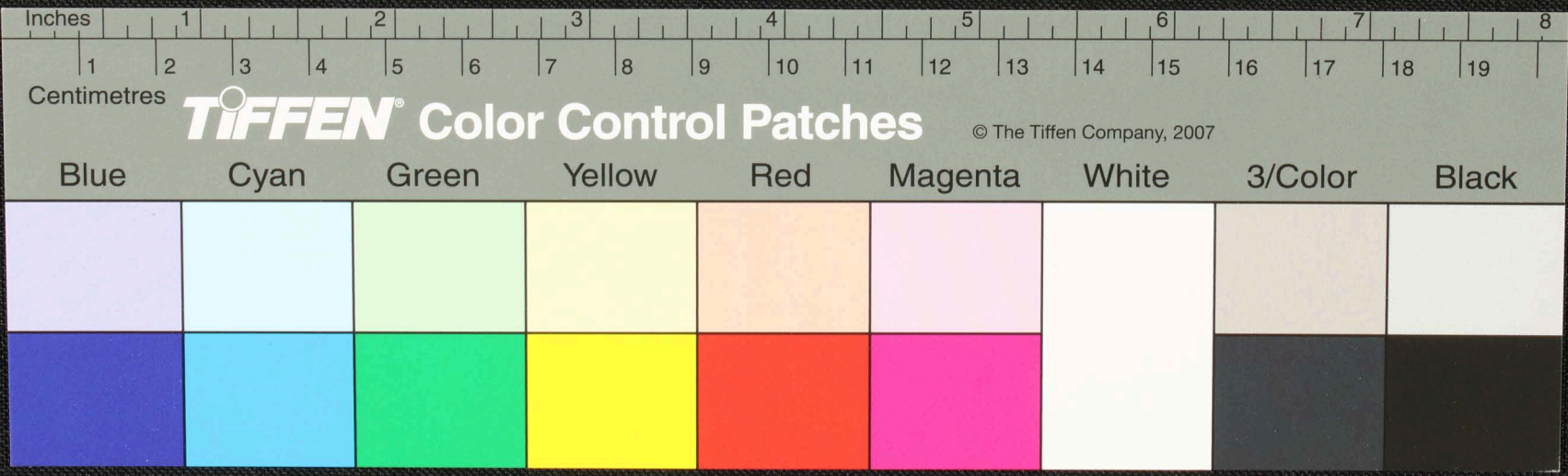


WV
WV

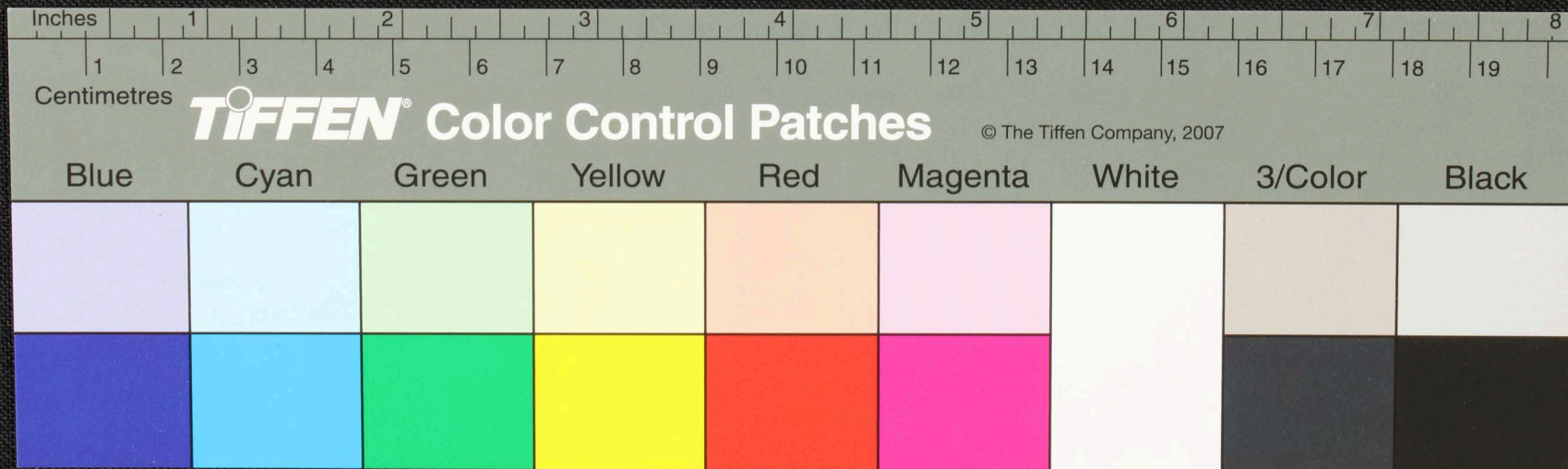
சுருதிநாடு மதுரை நகரம் சிவசுந்தரி நாயகியின்
பெயர் - சிவசுந்தரி - இவ்வாறு நன்கு கவனித்து
புதிதான சிவசுந்தரியின் மதுரை நகரம் சிவசுந்தரி
நாயகியின் பெயர் - சிவசுந்தரி - இவ்வாறு நன்கு
கவனித்து புதிதான சிவசுந்தரியின் மதுரை நகரம்
சிவசுந்தரி நாயகியின் பெயர் - சிவசுந்தரி - இவ்வாறு



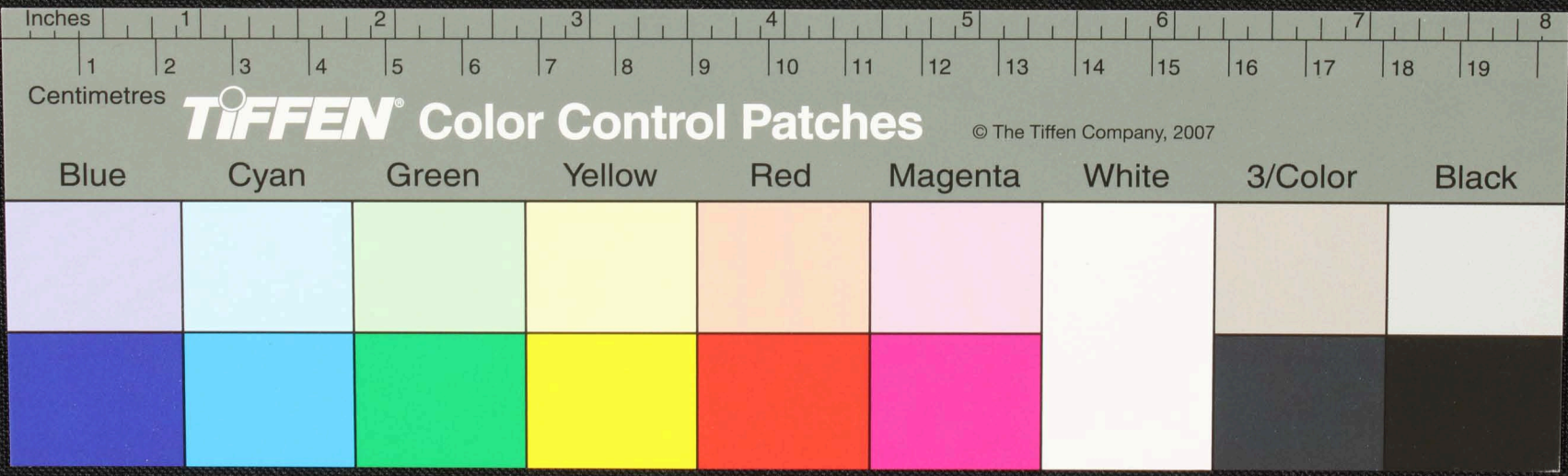
110
 உயர்ந்த தகுதி மையம் அளிக்கும் தகுதி மையம் உடனடி
 உயர்ந்த தகுதி மையம் அளிக்கும் தகுதி மையம் உடனடி
 உயர்ந்த தகுதி மையம் அளிக்கும் தகுதி மையம் உடனடி
 உயர்ந்த தகுதி மையம் அளிக்கும் தகுதி மையம் உடனடி
 உயர்ந்த தகுதி மையம் அளிக்கும் தகுதி மையம் உடனடி



Handwritten text in Tamil script on a palm leaf manuscript. The text is arranged in four horizontal lines across the length of the leaf. The script is a traditional form of the Tamil language, likely used for religious or historical records. The leaf shows signs of age and wear, with some dark spots and a small hole near the center.

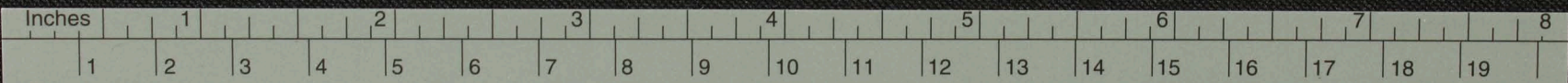


Handwritten text in Tamil script on a palm leaf manuscript. The text is arranged in approximately five horizontal lines across the length of the leaf. The script is a traditional form of the Tamil language.



Handwritten text in Tamil script, possibly a signature or reference code.

Main body of handwritten text in Tamil script, consisting of several lines of characters.



Centimetres

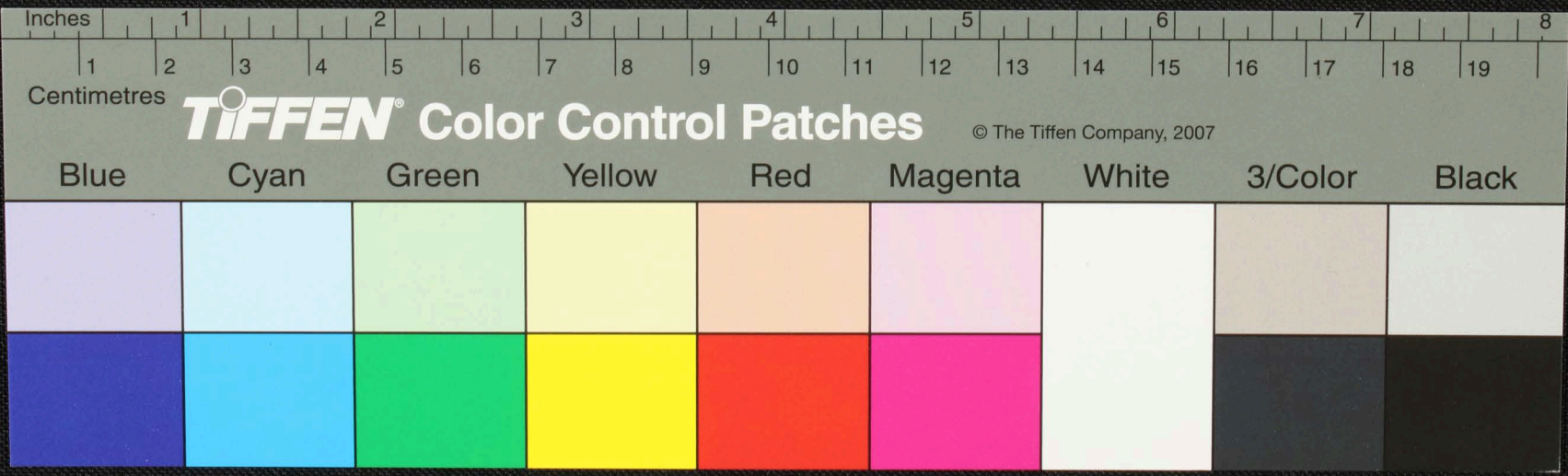
TIFFEN® Color Control Patches

© The Tiffen Company, 2007

Blue	Cyan	Green	Yellow	Red	Magenta	White	3/Color	Black

Handwritten text on a palm leaf manuscript, including a list of items on the left and a larger block of text on the right.

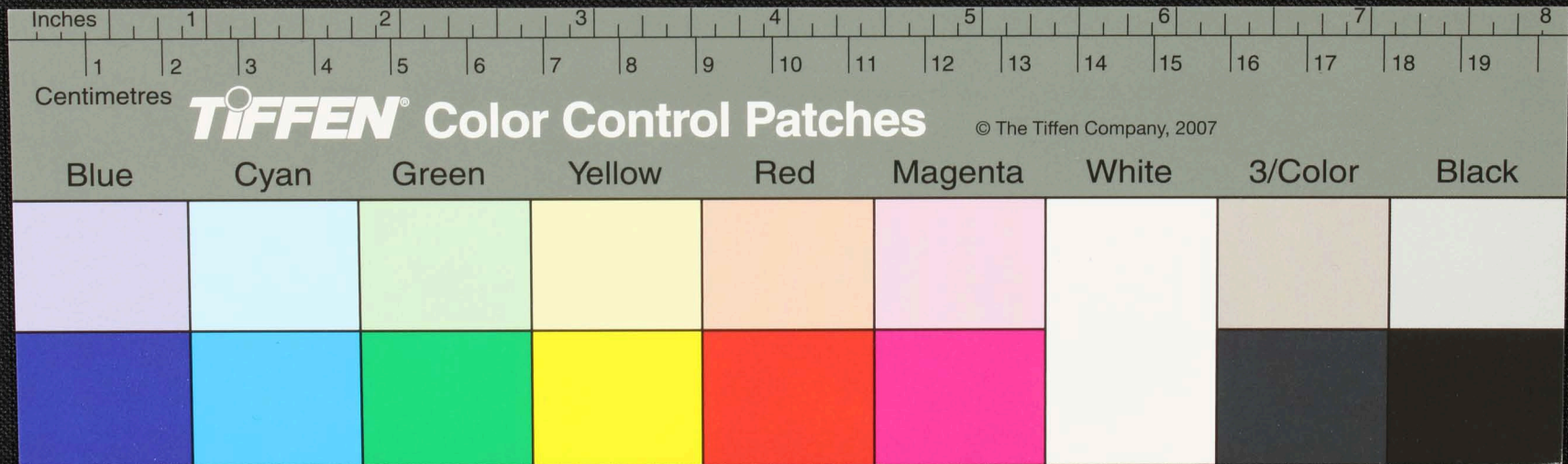
၁ ဝှိဝှိ
 ၂ ဝှိဝှိ
 ၃ ဝှိဝှိ
 ၄ ဝှိဝှိ
 ၅ ဝှိဝှိ
 ၆ ဝှိဝှိ
 ၇ ဝှိဝှိ
 ၈ ဝှိဝှိ
 ၉ ဝှိဝှိ
 ၁၀ ဝှိဝှိ
 ၁၁ ဝှိဝှိ
 ၁၂ ဝှိဝှိ
 ၁၃ ဝှိဝှိ
 ၁၄ ဝှိဝှိ
 ၁၅ ဝှိဝှိ
 ၁၆ ဝှိဝှိ
 ၁၇ ဝှိဝှိ
 ၁၈ ဝှိဝှိ
 ၁၉ ဝှိဝှိ
 ၂၀ ဝှိဝှိ
 ၂၁ ဝှိဝှိ
 ၂၂ ဝှိဝှိ
 ၂၃ ဝှိဝှိ
 ၂၄ ဝှိဝှိ
 ၂၅ ဝှိဝှိ
 ၂၆ ဝှိဝှိ
 ၂၇ ဝှိဝှိ
 ၂၈ ဝှိဝှိ
 ၂၉ ဝှိဝှိ
 ၃၀ ဝှိဝှိ
 ၃၁ ဝှိဝှိ
 ၃၂ ဝှိဝှိ
 ၃၃ ဝှိဝှိ
 ၃၄ ဝှိဝှိ
 ၃၅ ဝှိဝှိ
 ၃၆ ဝှိဝှိ
 ၃၇ ဝှိဝှိ
 ၃၈ ဝှိဝှိ
 ၃၉ ဝှိဝှိ
 ၄၀ ဝှိဝှိ
 ၄၁ ဝှိဝှိ
 ၄၂ ဝှိဝှိ
 ၄၃ ဝှိဝှိ
 ၄၄ ဝှိဝှိ
 ၄၅ ဝှိဝှိ
 ၄၆ ဝှိဝှိ
 ၄၇ ဝှိဝှိ
 ၄၈ ဝှိဝှိ
 ၄၉ ဝှိဝှိ
 ၅၀ ဝှိဝှိ
 ၅၁ ဝှိဝှိ
 ၅၂ ဝှိဝှိ
 ၅၃ ဝှိဝှိ
 ၅၄ ဝှိဝှိ
 ၅၅ ဝှိဝှိ
 ၅၆ ဝှိဝှိ
 ၅၇ ဝှိဝှိ
 ၅၈ ဝှိဝှိ
 ၅၉ ဝှိဝှိ
 ၆၀ ဝှိဝှိ
 ၆၁ ဝှိဝှိ
 ၆၂ ဝှိဝှိ
 ၆၃ ဝှိဝှိ
 ၆၄ ဝှိဝှိ
 ၆၅ ဝှိဝှိ
 ၆၆ ဝှိဝှိ
 ၆၇ ဝှိဝှိ
 ၆၈ ဝှိဝှိ
 ၆၉ ဝှိဝှိ
 ၇၀ ဝှိဝှိ
 ၇၁ ဝှိဝှိ
 ၇၂ ဝှိဝှိ
 ၇၃ ဝှိဝှိ
 ၇၄ ဝှိဝှိ
 ၇၅ ဝှိဝှိ
 ၇၆ ဝှိဝှိ
 ၇၇ ဝှိဝှိ
 ၇၈ ဝှိဝှိ
 ၇၉ ဝှိဝှိ
 ၈၀ ဝှိဝှိ
 ၈၁ ဝှိဝှိ
 ၈၂ ဝှိဝှိ
 ၈၃ ဝှိဝှိ
 ၈၄ ဝှိဝှိ
 ၈၅ ဝှိဝှိ
 ၈၆ ဝှိဝှိ
 ၈၇ ဝှိဝှိ
 ၈၈ ဝှိဝှိ
 ၈၉ ဝှိဝှိ
 ၉၀ ဝှိဝှိ
 ၉၁ ဝှိဝှိ
 ၉၂ ဝှိဝှိ
 ၉၃ ဝှိဝှိ
 ၉၄ ဝှိဝှိ
 ၉၅ ဝှိဝှိ
 ၉၆ ဝှိဝှိ
 ၉၇ ဝှိဝှိ
 ၉၈ ဝှိဝှိ
 ၉၉ ဝှိဝှိ
 ၁၀၀ ဝှိဝှိ



Handwritten text on a palm leaf manuscript, including a table of numbers and a paragraph of text.

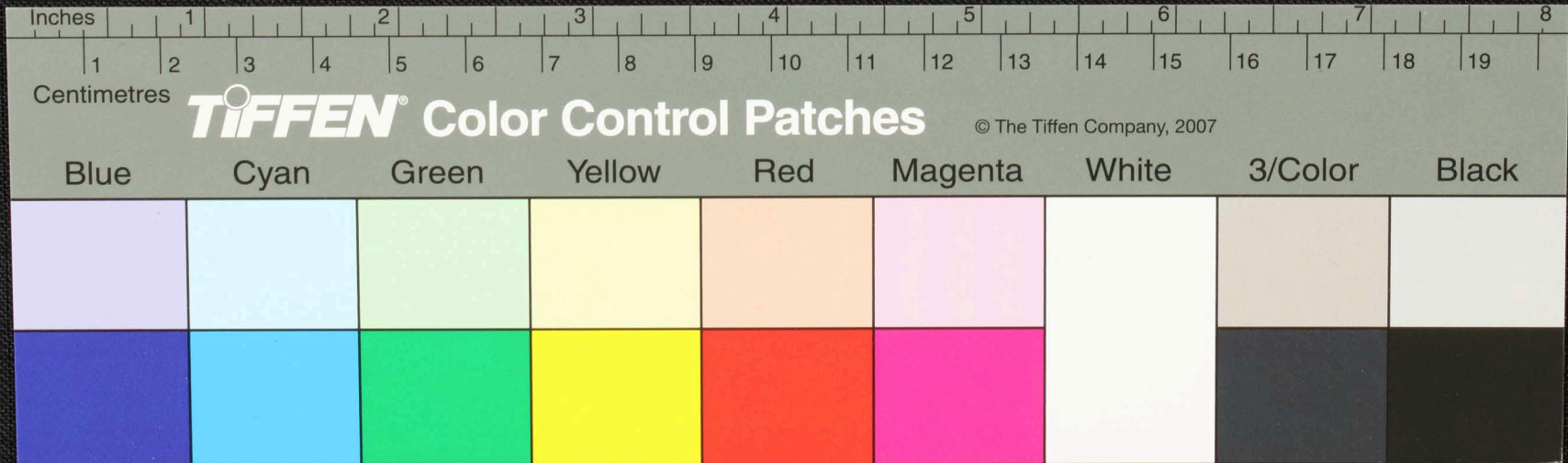
0	0	0	0
0	0	0	0
0	0	0	0
0	0	0	0

Handwritten text in a South Indian script (likely Grantha or Tamil) follows the table.



புத்தகம்
புத்தகம்

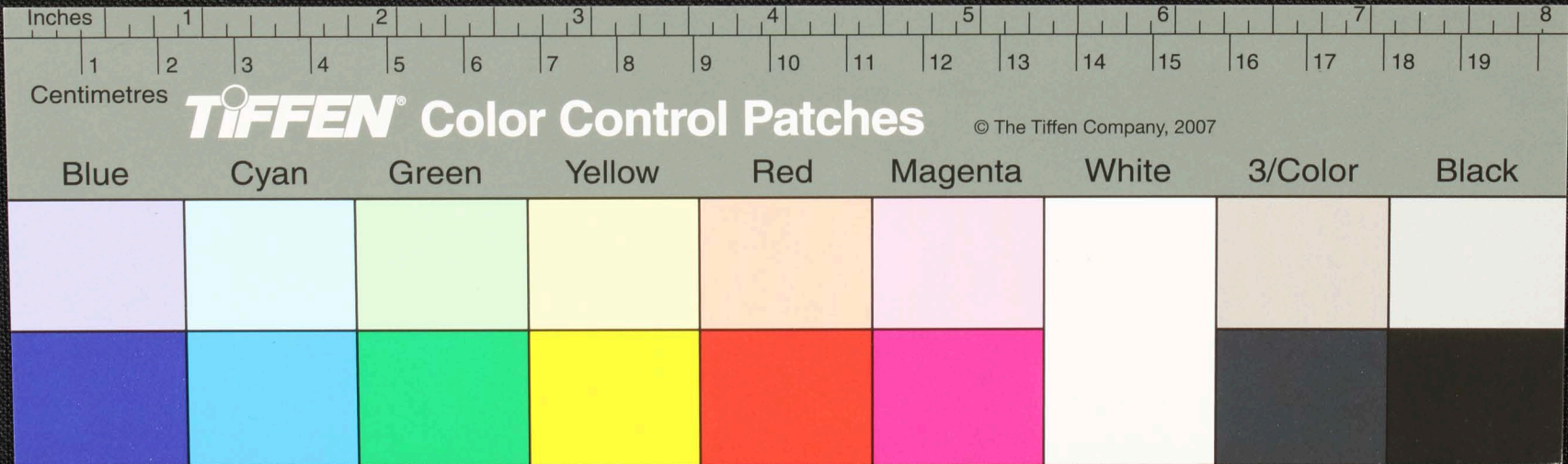
புத்தகம் புத்தகம் புத்தகம் புத்தகம் புத்தகம் புத்தகம் புத்தகம் புத்தகம்
புத்தகம் புத்தகம் புத்தகம் புத்தகம் புத்தகம் புத்தகம் புத்தகம் புத்தகம்
புத்தகம் புத்தகம் புத்தகம் புத்தகம் புத்தகம் புத்தகம் புத்தகம் புத்தகம்
புத்தகம் புத்தகம் புத்தகம் புத்தகம் புத்தகம் புத்தகம் புத்தகம் புத்தகம்
புத்தகம் புத்தகம் புத்தகம் புத்தகம் புத்தகம் புத்தகம் புத்தகம் புத்தகம்
புத்தகம் புத்தகம் புத்தகம் புத்தகம் புத்தகம் புத்தகம் புத்தகம் புத்தகம்



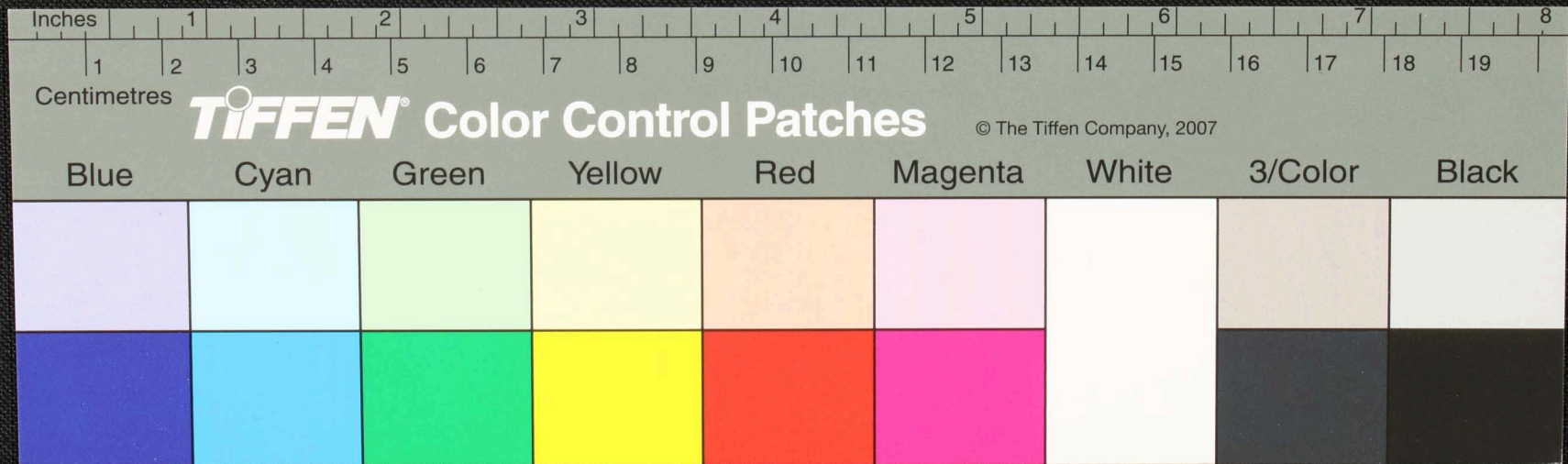
புறநாடு
வரலாறு

மேலேயேயுள்ளதற்குரியவர்களுக்கெனவேயுள்ள
பெயர்முறைகளைப்பற்றிப்பெரியவர்களுக்குரிய
பெயர்முறைகளைப்பற்றிப்பெரியவர்களுக்குரிய
பெயர்முறைகளைப்பற்றிப்பெரியவர்களுக்குரிய
பெயர்முறைகளைப்பற்றிப்பெரியவர்களுக்குரிய

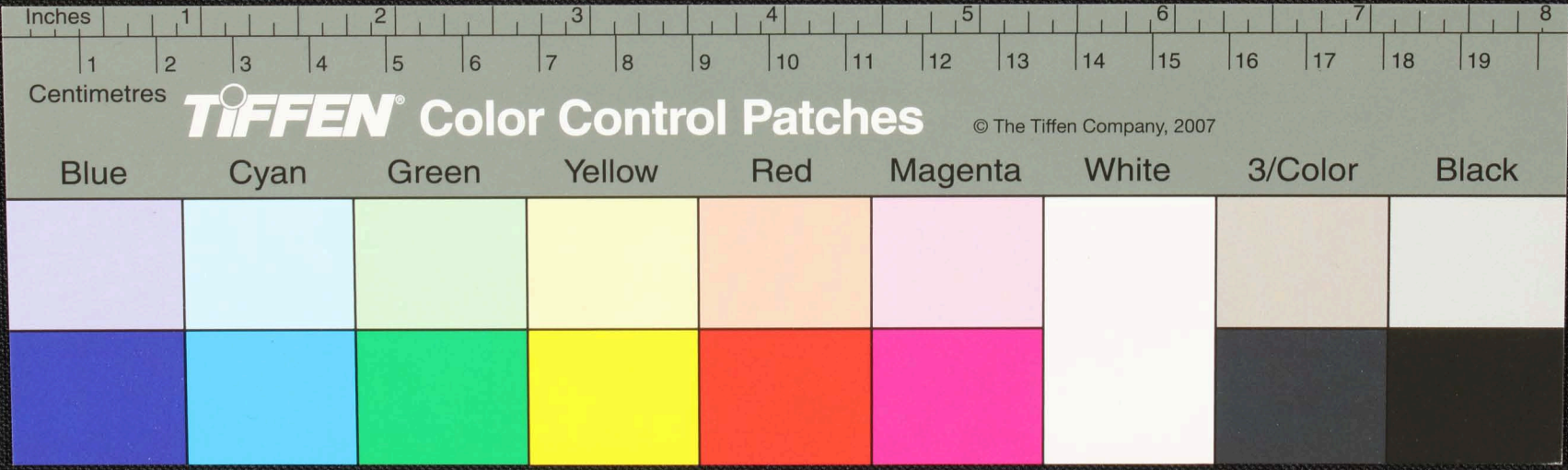
புறநாடு



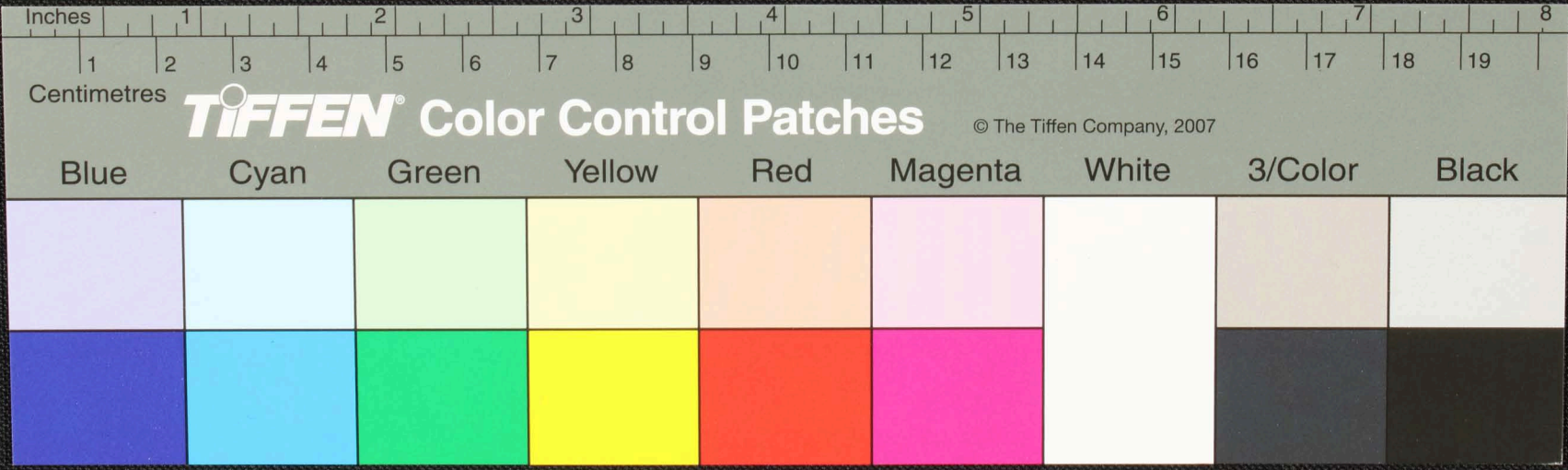
Handwritten text in Tamil script on a palm leaf manuscript. The text is arranged in four horizontal lines. The first line contains approximately 18 characters. The second line contains approximately 18 characters. The third line contains approximately 18 characters. The fourth line contains approximately 18 characters. There is a small black circular mark in the middle of the third line.



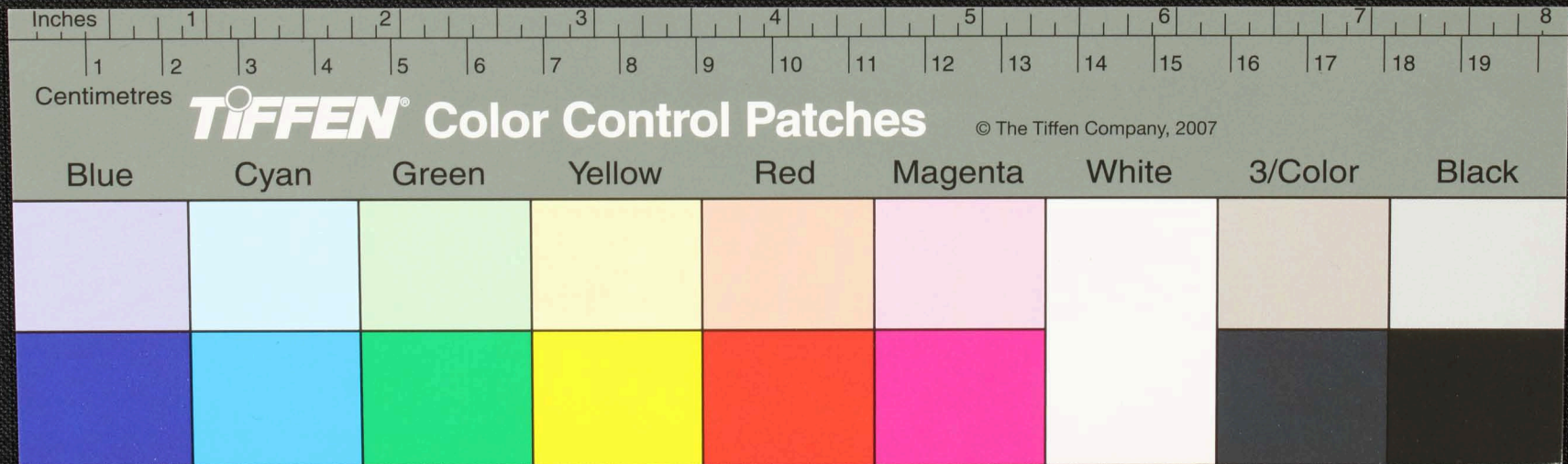
Handwritten Tamil script on a palm leaf manuscript. The text is arranged in two columns. The left column contains a few lines of text, including what appears to be a signature or name. The right column contains a longer passage of text. A central diagram is drawn between the two columns of text.



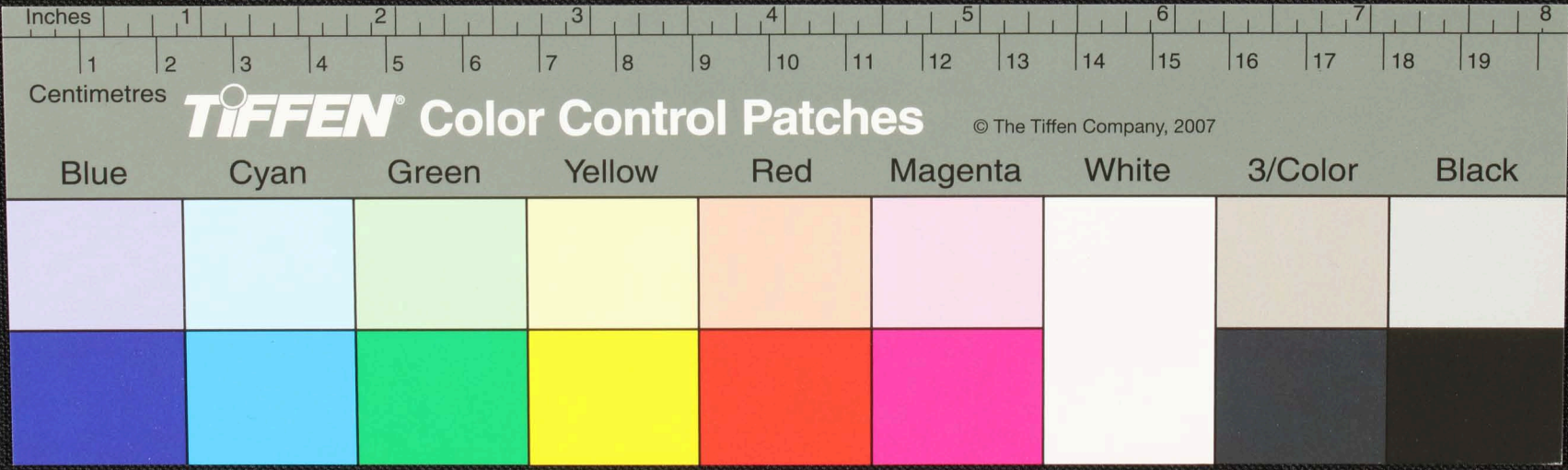
Handwritten text in Tamil script on a palm leaf manuscript. The text is arranged in approximately five horizontal lines across the length of the leaf. The script is a traditional form of the Tamil language, used for recording information such as laws, religious texts, or historical events. The leaf shows signs of age and wear, with some dark spots and a slightly uneven texture.



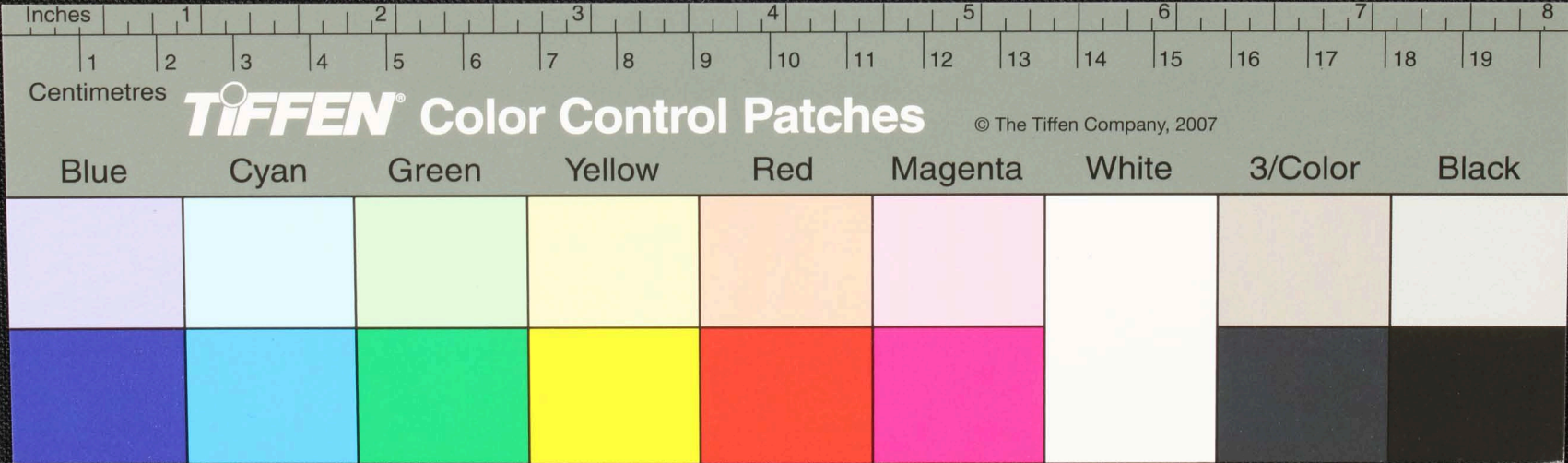
Handwritten text in Tamil script on a palm leaf manuscript. The text is arranged in approximately 10 horizontal lines across the length of the leaf. The script is a traditional form of the Tamil language, likely used for religious or historical records. The leaf shows signs of age and wear, with some dark spots and irregular edges.



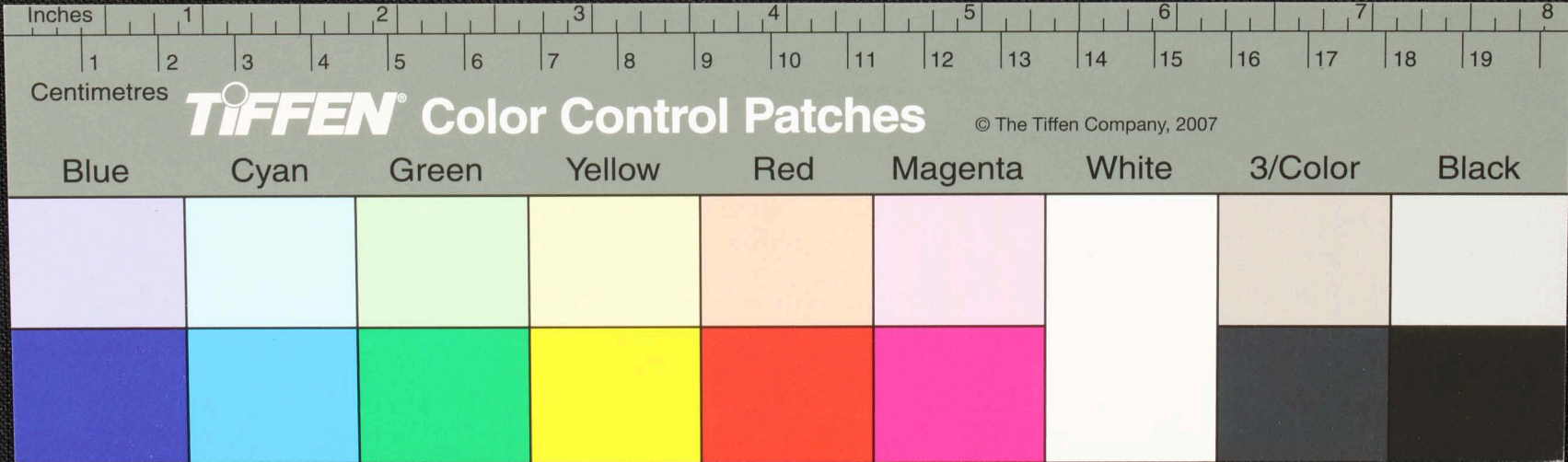
Handwritten text in Tamil script on a palm leaf manuscript. The text is arranged in approximately 10 horizontal lines across the length of the leaf. The script is a traditional form of the Tamil language, likely used for religious or philosophical purposes. A small circular hole is visible near the center of the leaf, which is a traditional feature for threading a cord to bind multiple leaves together into a book.



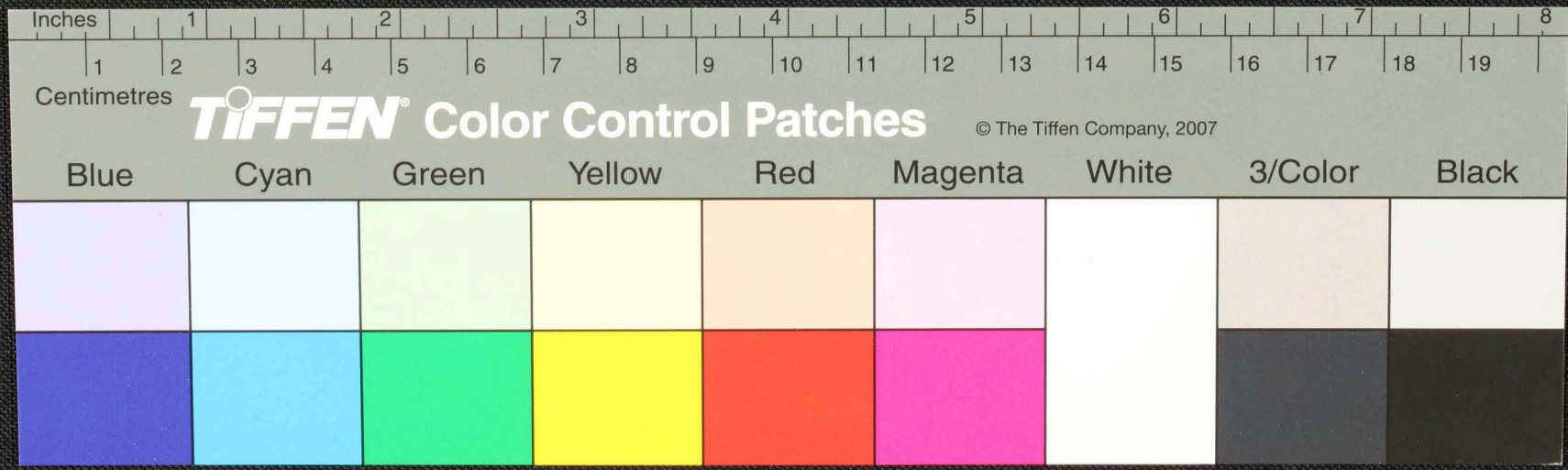
Handwritten Tamil script on a palm leaf manuscript. The text is arranged in approximately 10 horizontal lines across the length of the leaf. The script is a traditional form of the Tamil language, likely used for religious or philosophical purposes. A small circular hole is visible in the center of the leaf, which was traditionally used for threading a cord to bind multiple leaves together into a book.



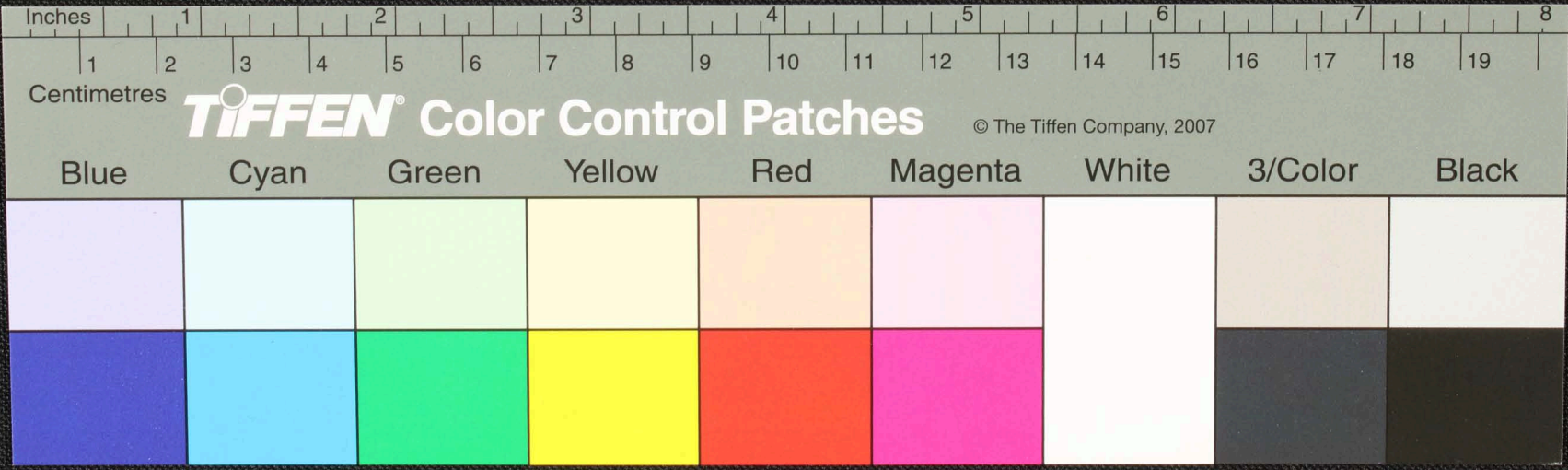
Handwritten text in Tamil script on a palm leaf manuscript. The text is arranged in approximately six horizontal lines. The script is dense and appears to be a form of classical or historical Tamil. There is a small circular hole or mark in the center of the leaf, which is a traditional feature for threading a cord to bind multiple leaves together.



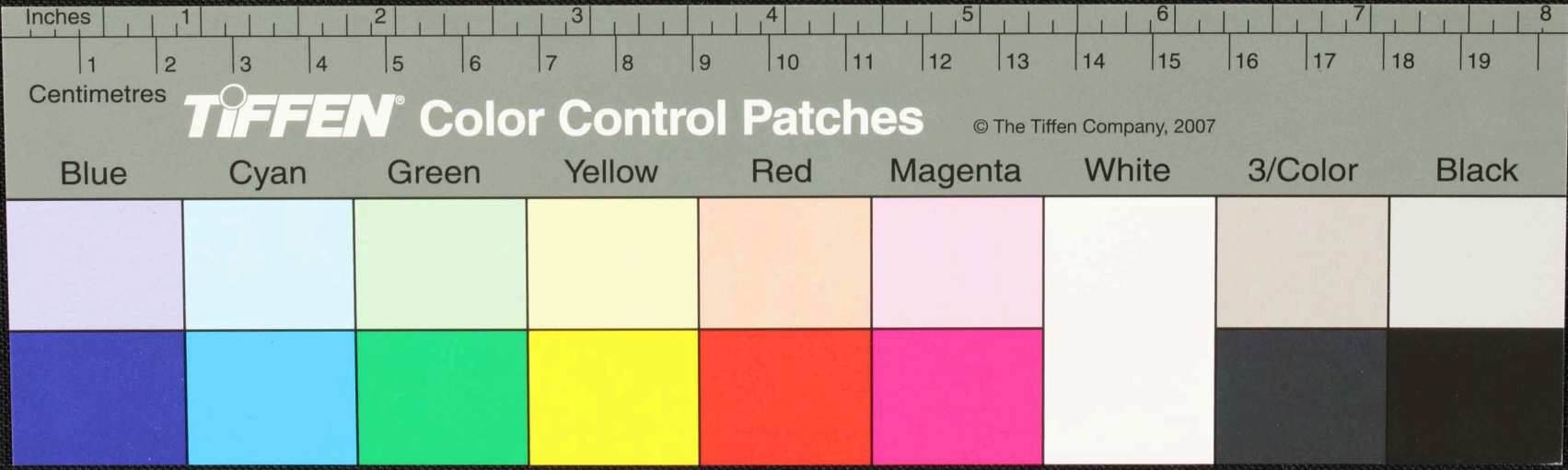
Handwritten text in Tamil script on a palm leaf manuscript. The text is arranged in approximately five horizontal lines across the length of the leaf. The script is a traditional form of the Tamil language, likely used for religious or historical records.



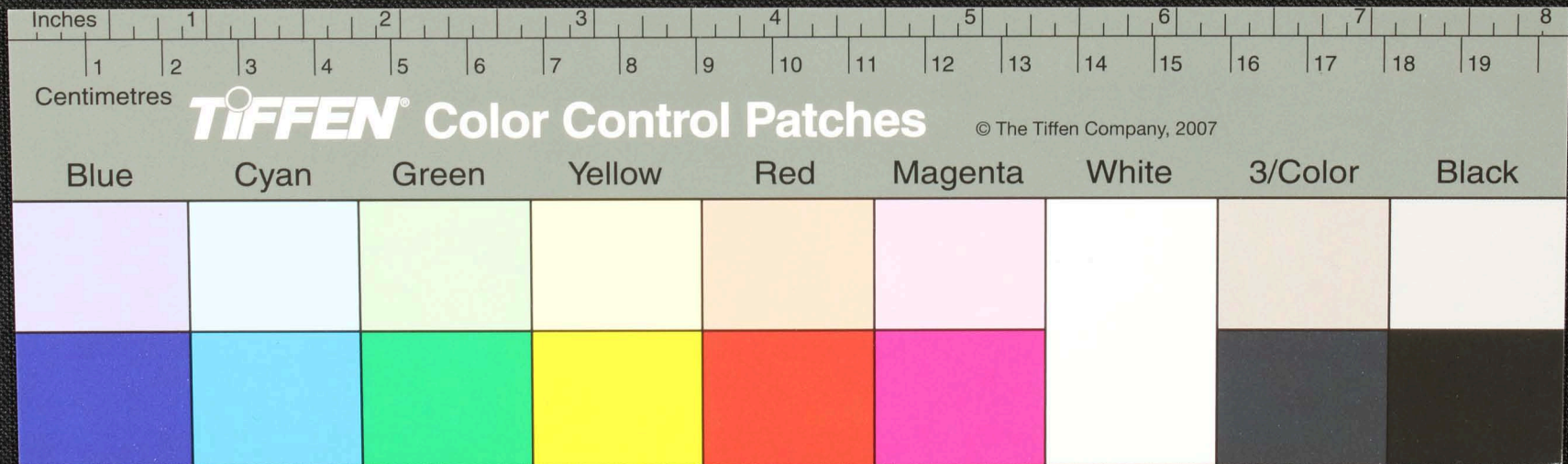
Handwritten text in Tamil script on a palm leaf. The text is arranged in approximately five lines, starting with a small circular symbol on the left. The script is densely packed and appears to be a form of historical or religious record.



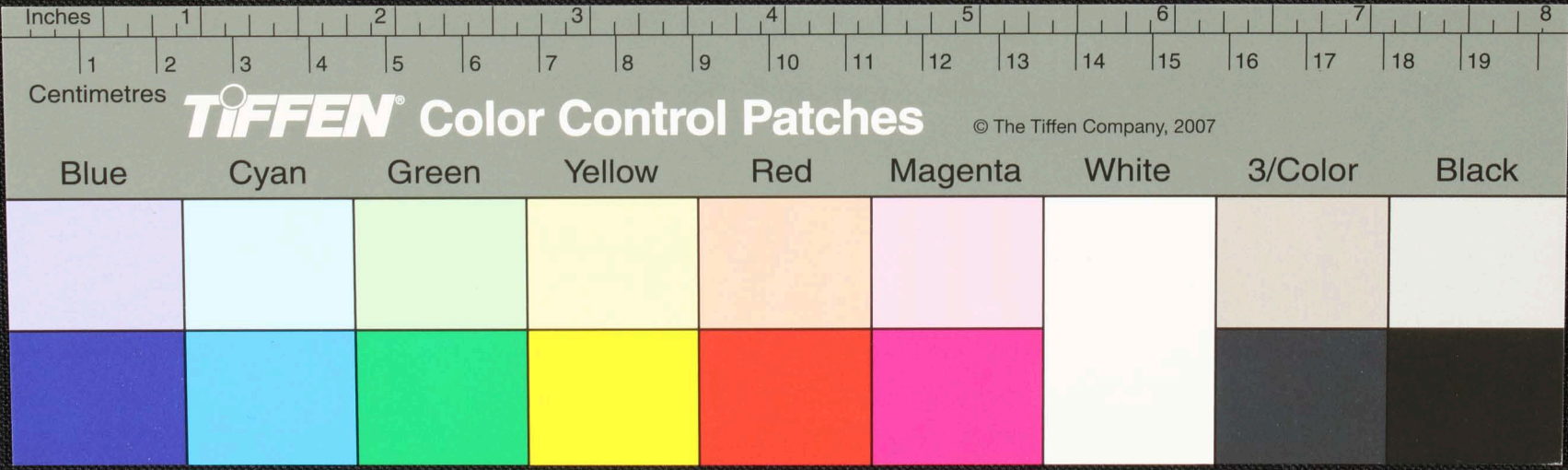
Handwritten text in Tamil script on a palm leaf manuscript. The text is arranged in approximately 10 horizontal lines across the length of the leaf. The script is a traditional form of the Tamil language, likely used for religious or philosophical purposes. The leaf shows signs of age and wear, with some dark spots and a hole near the center.



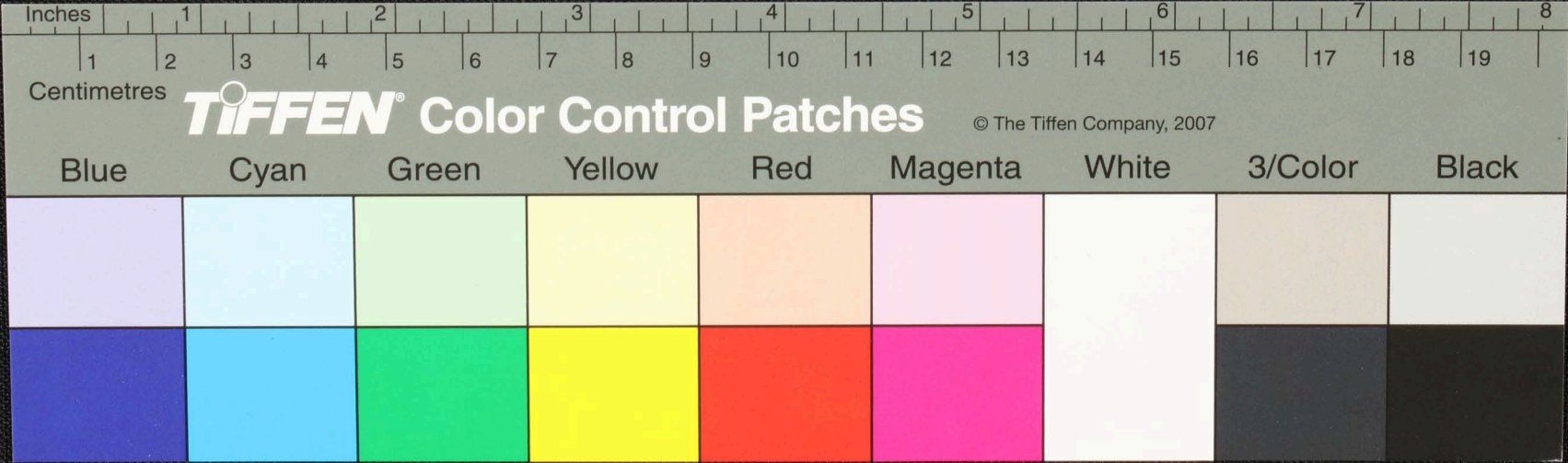
Handwritten text in Tamil script on a palm leaf manuscript. The text is arranged in three main sections from left to right. The first section on the left contains several lines of text. The middle section features a diagram with a central point and lines extending to the corners, with numbers written around it. The right section contains a longer passage of text.



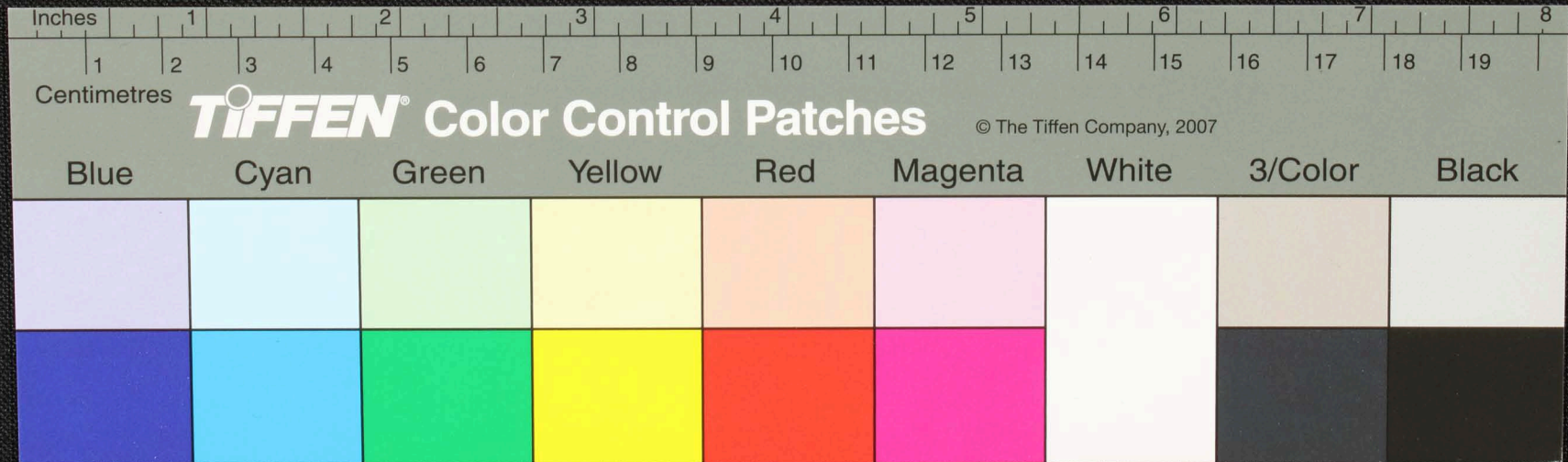
Handwritten Tamil script on a palm leaf manuscript. The text is arranged in approximately 10 horizontal lines across the length of the leaf. The script is a traditional form of the Tamil language, likely used for religious or philosophical purposes.



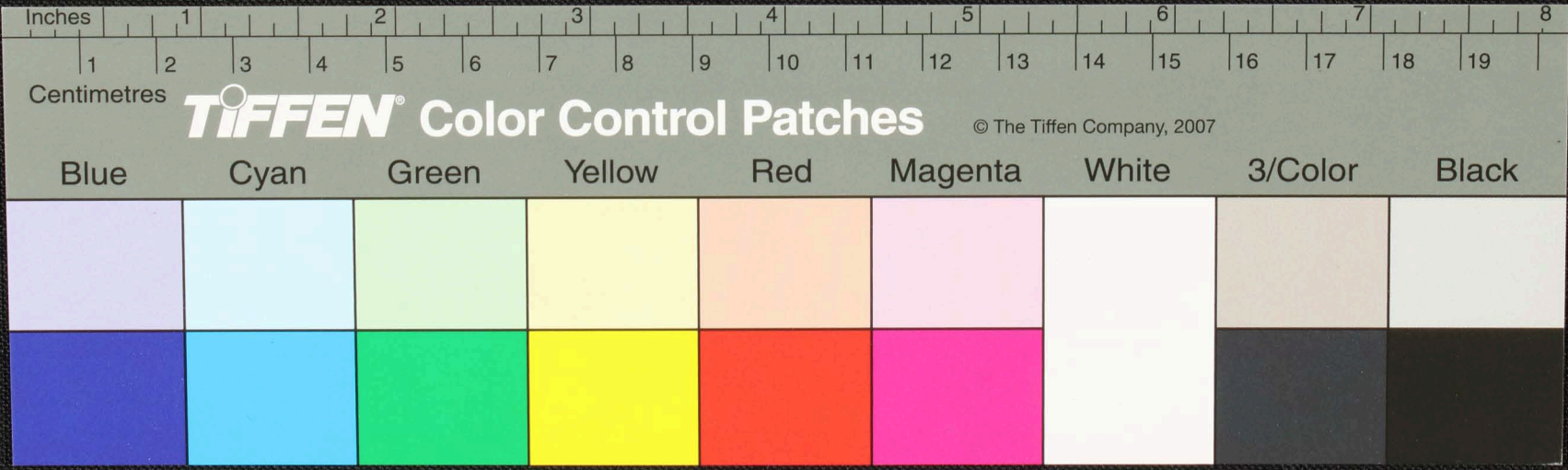
Handwritten Tamil script on a palm leaf manuscript. The text is arranged in approximately 10 horizontal lines across the length of the leaf. The script is a traditional form of the Tamil language, likely used for religious or philosophical purposes. A small circular hole is visible near the center of the leaf, which was traditionally used for threading a cord to bind multiple leaves together into a book.



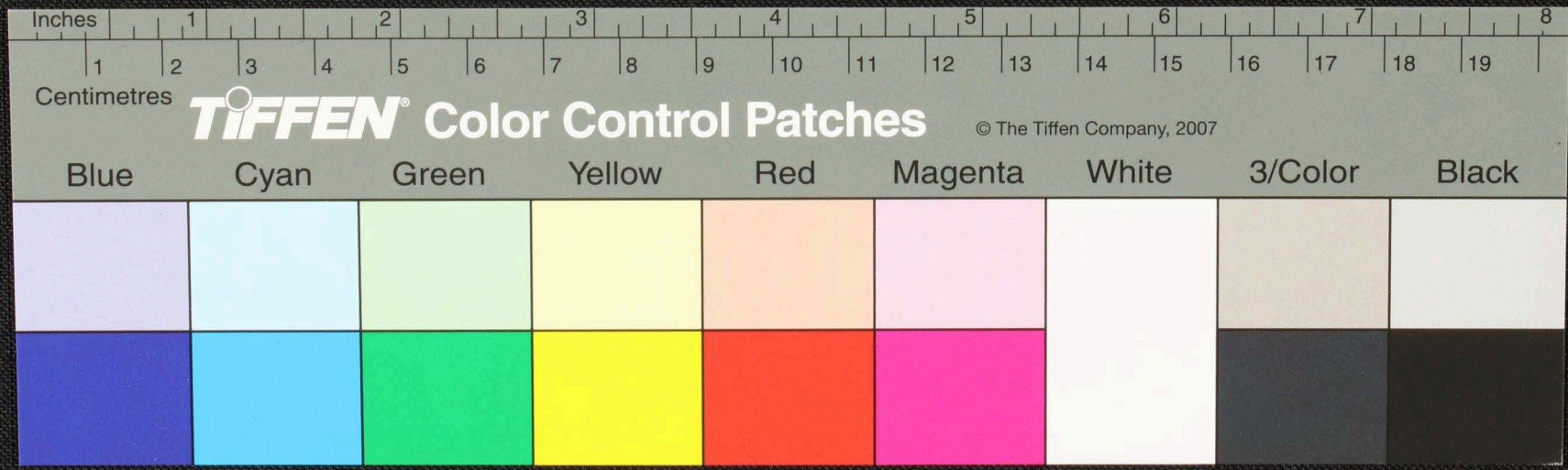
Handwritten text in Tamil script on a palm leaf manuscript. The text is arranged in approximately 10 horizontal lines across the length of the leaf. The script is a traditional form of the Tamil language, used for recording knowledge and literature. The leaf shows signs of age and wear, with some darkening and a small hole near the center.



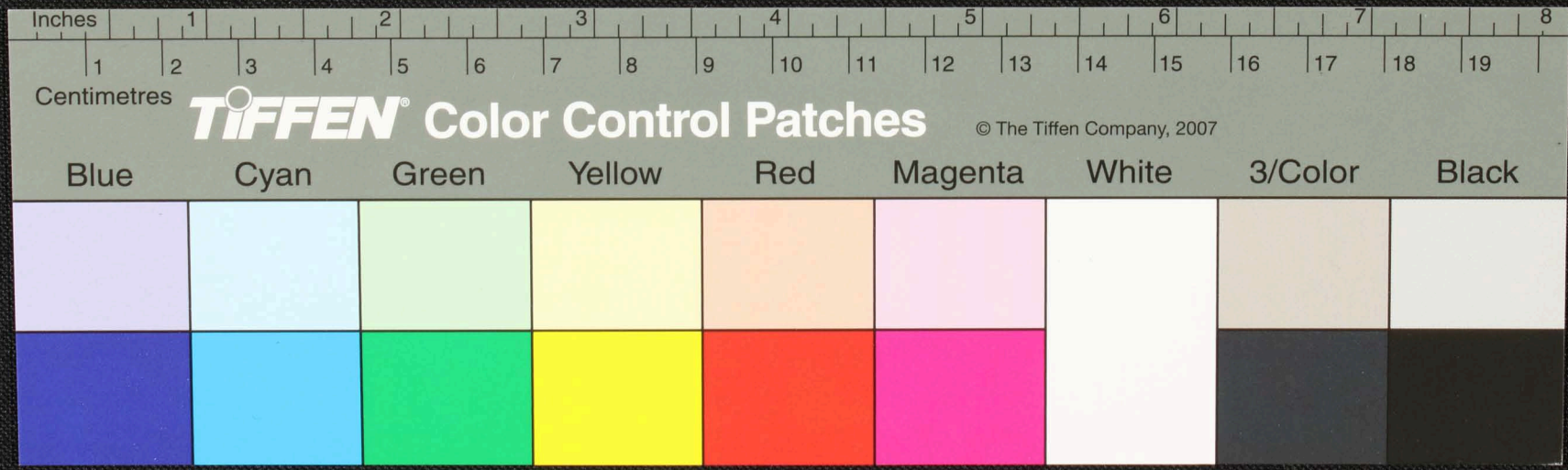
Handwritten text in Tamil script on a palm leaf manuscript. The text is arranged in approximately 10 horizontal lines across the length of the leaf. The script is a traditional form of the Tamil language.



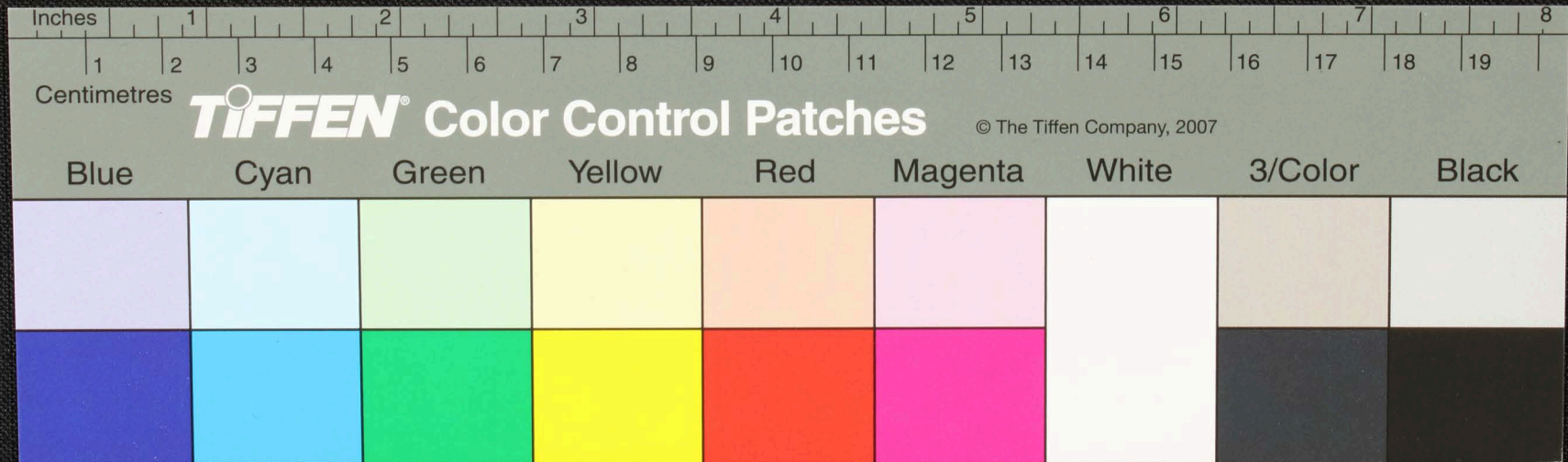
Handwritten text in Tamil script on a palm leaf manuscript. The text is arranged in approximately 10 horizontal lines across the length of the leaf. The script is a traditional form of the Tamil language, used for recording knowledge and literature. The leaf shows signs of age, including a small dark spot near the center.



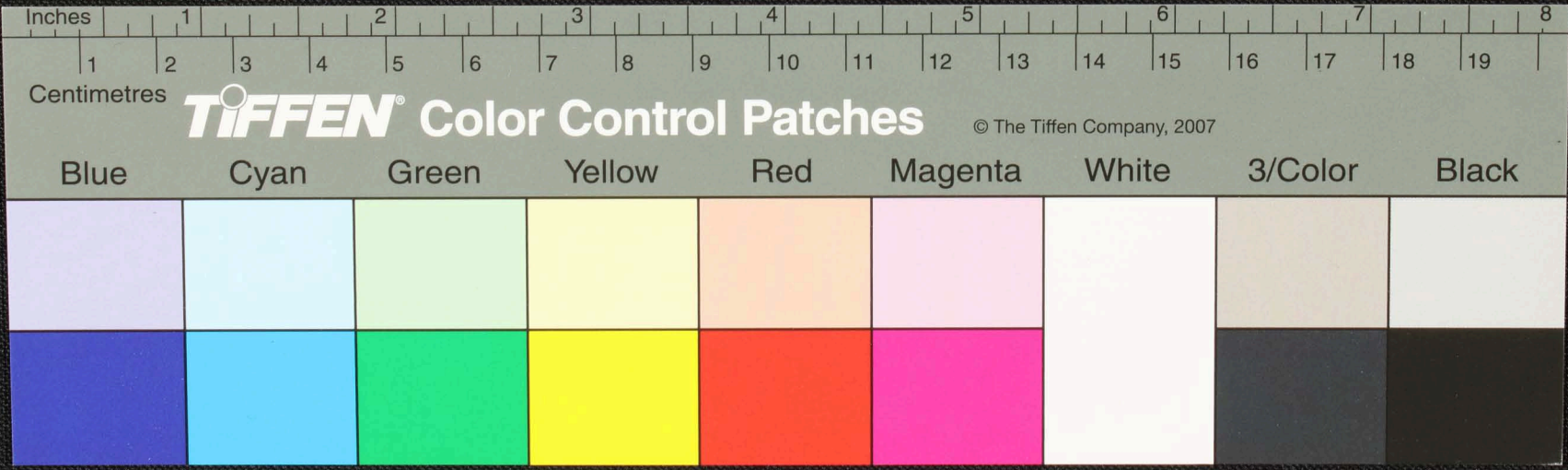
Handwritten text in Tamil script on a palm leaf manuscript. The text is arranged in approximately five horizontal lines across the length of the leaf. The script is a traditional form of the Tamil language.



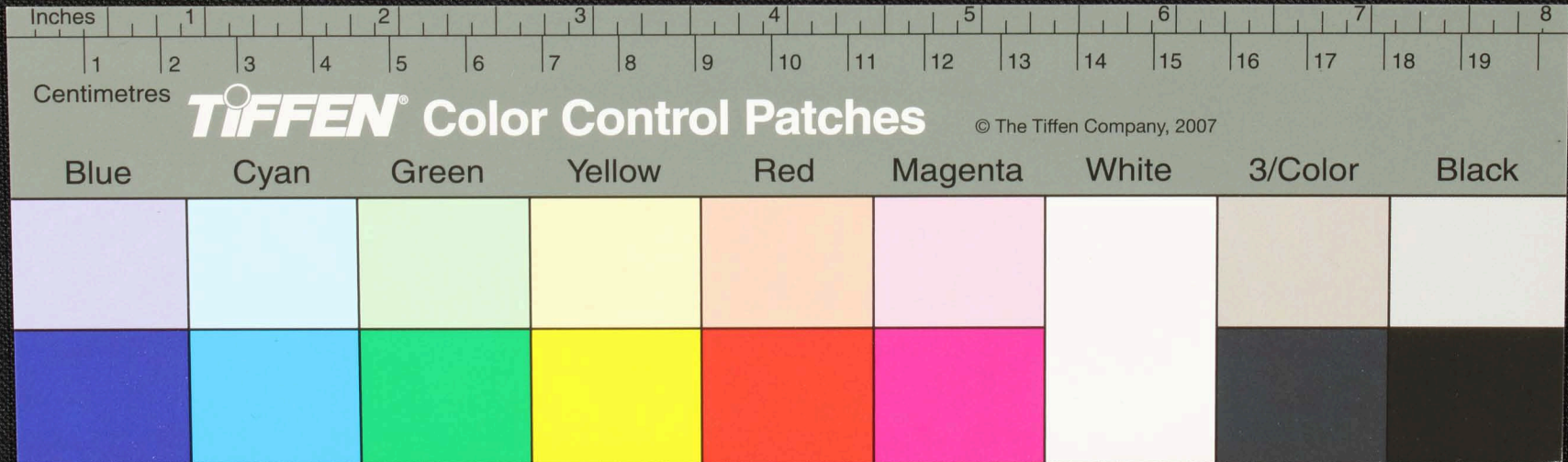
Handwritten Tamil script on a palm leaf manuscript. The text is arranged in approximately 10 horizontal lines across the length of the leaf. The script is a traditional form of the Tamil language, likely used for religious or historical records. A small circular hole is visible near the center of the leaf, which is a traditional feature for threading a cord to bind multiple leaves together.



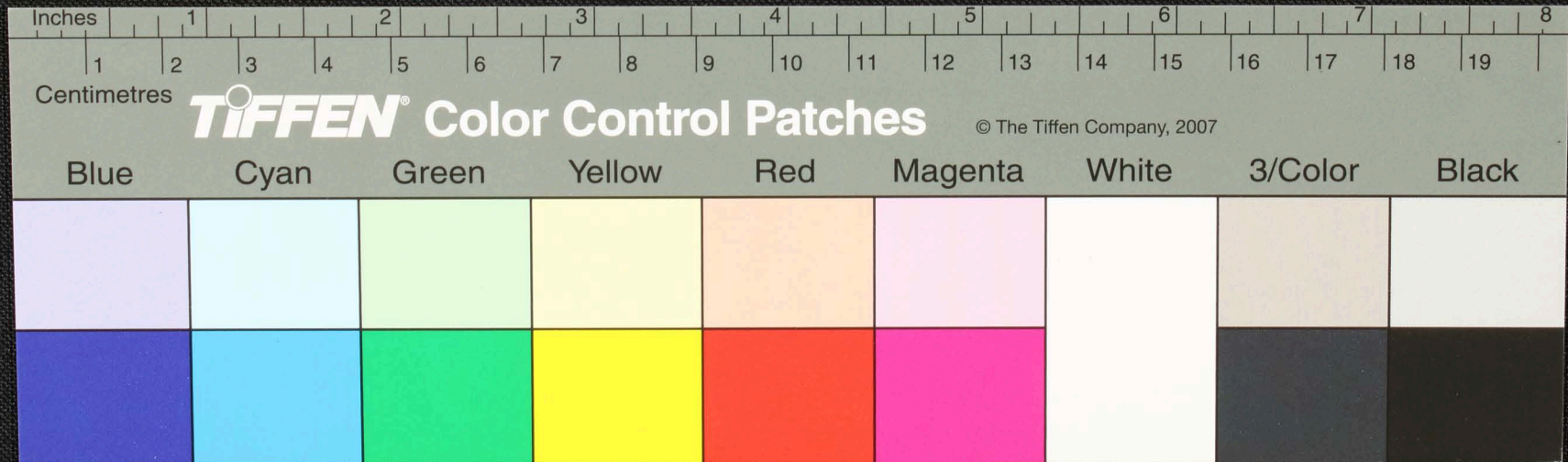
Handwritten text in Tamil script on a palm leaf manuscript. The text is arranged in approximately 10 horizontal lines across the length of the leaf. The script is a traditional form of the Tamil language, used for recording information on natural materials like palm leaves.



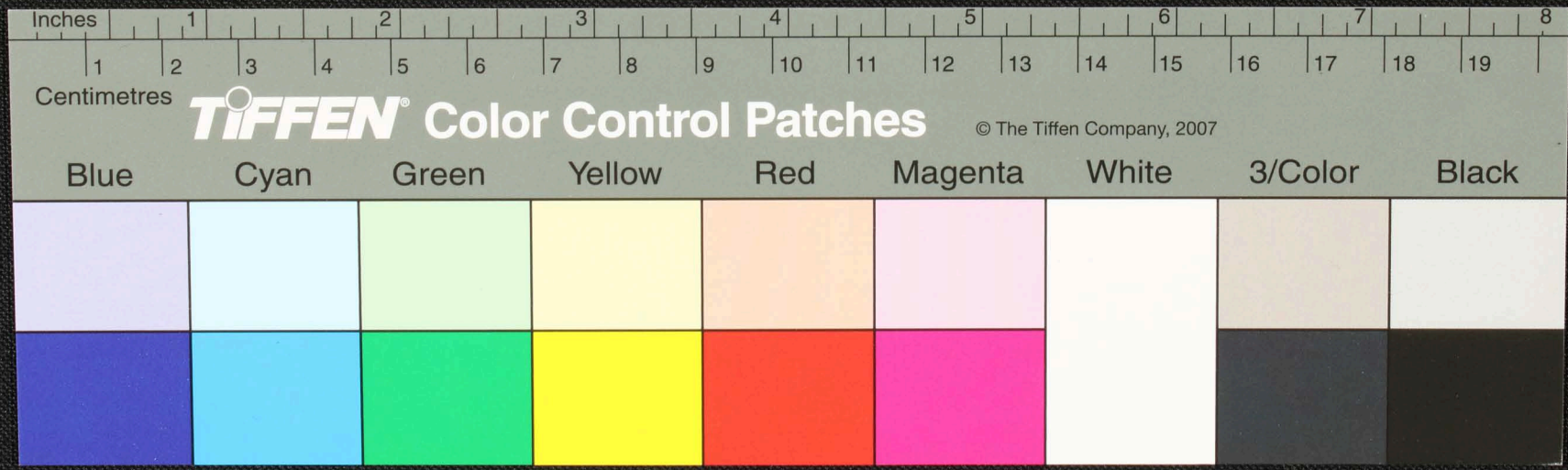
Handwritten text in Tamil script on a palm leaf manuscript. The text is arranged in approximately five horizontal lines across the length of the leaf. The script is a traditional form of the Tamil language.



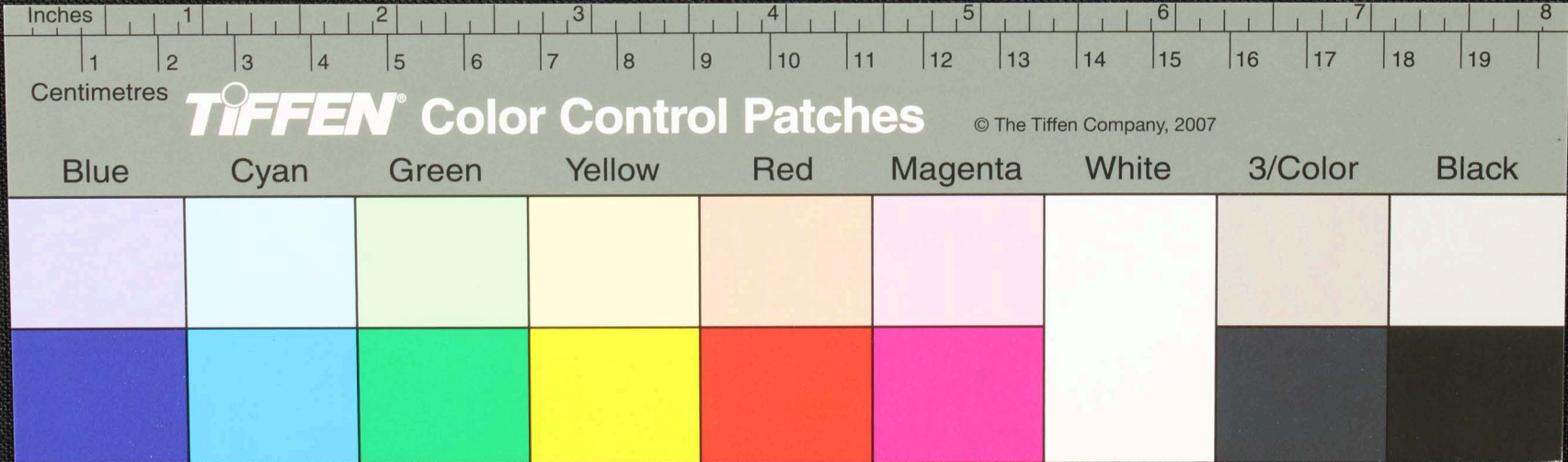
Handwritten text in Tamil script on a palm leaf manuscript. The text is arranged in approximately 10 horizontal lines across the length of the leaf. The script is a traditional form of the Tamil language, used for recording knowledge and literature. The leaf shows signs of age and wear, with some dark spots and a small hole near the center.



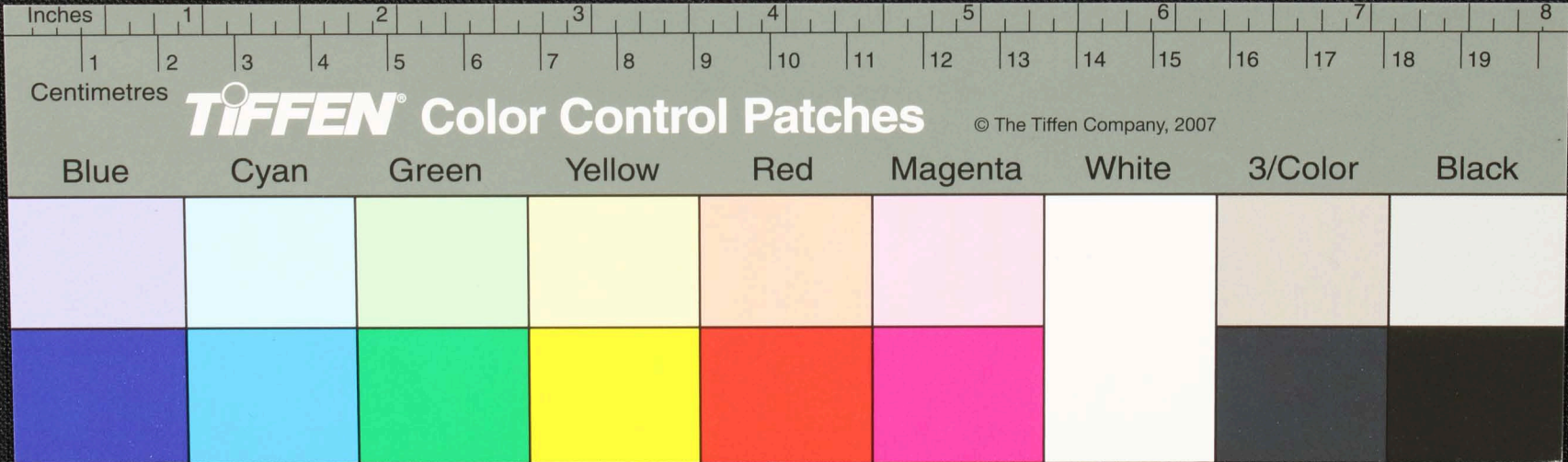
Handwritten text in Tamil script on a palm leaf manuscript. The text is arranged in approximately five horizontal lines across the length of the leaf. The script is a traditional form of the Tamil language.



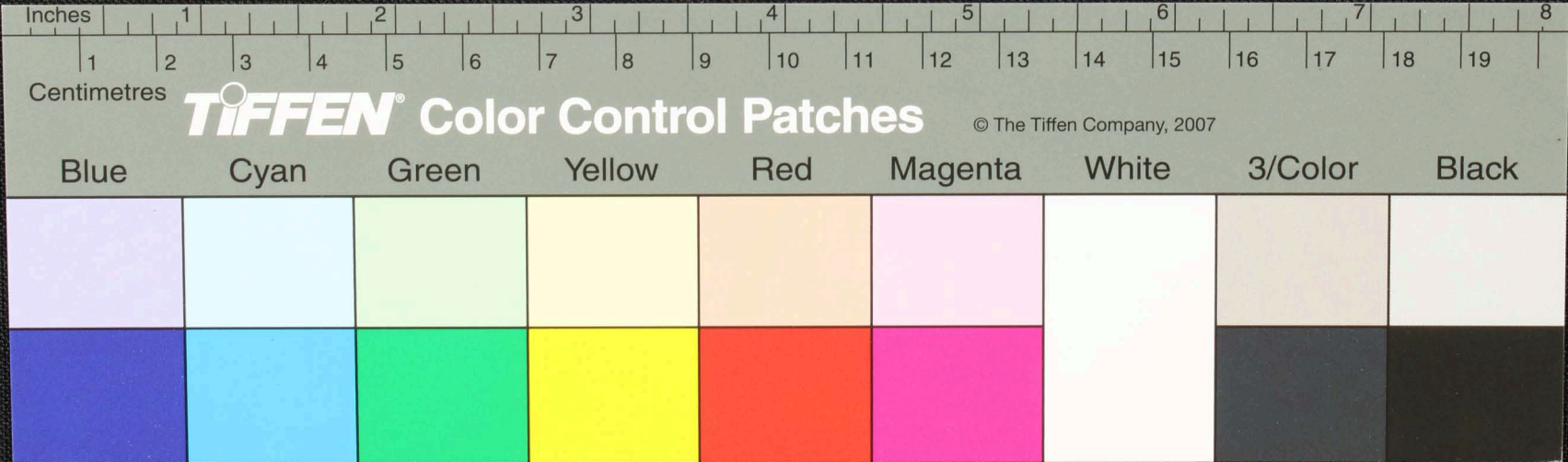
Handwritten text in Tamil script on a palm leaf manuscript. The text is arranged in approximately 10 horizontal lines. A small signature or mark is visible on the left side of the leaf.



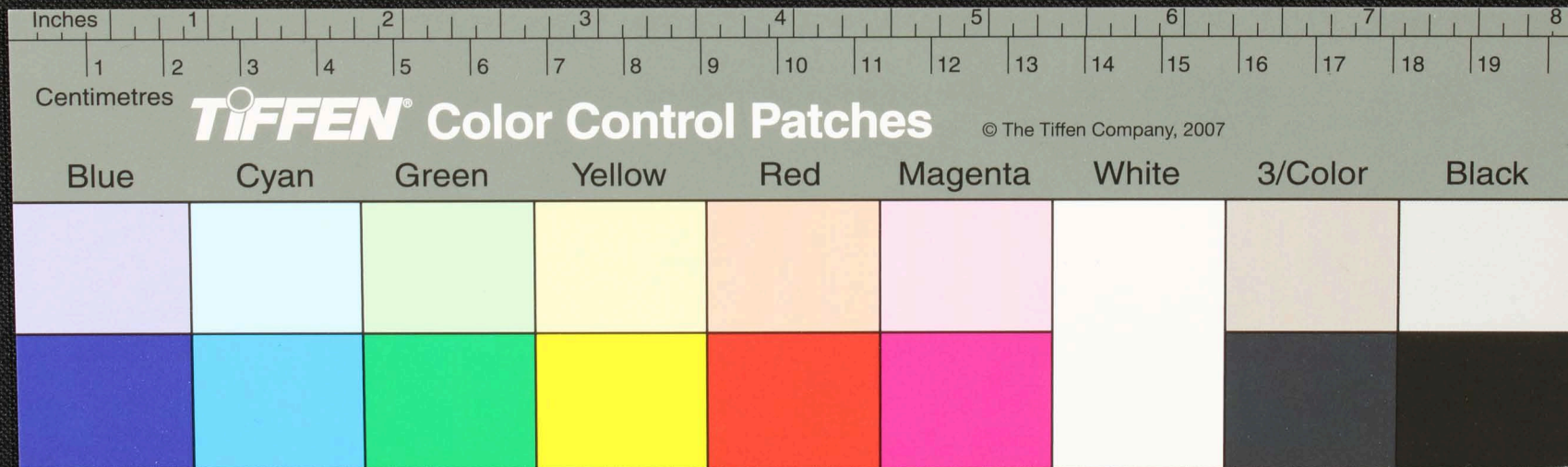
Handwritten text in Tamil script on a palm leaf manuscript. The text is arranged in approximately 10 horizontal lines across the length of the leaf. The script is a traditional form of the Tamil language, likely used for religious or historical records.



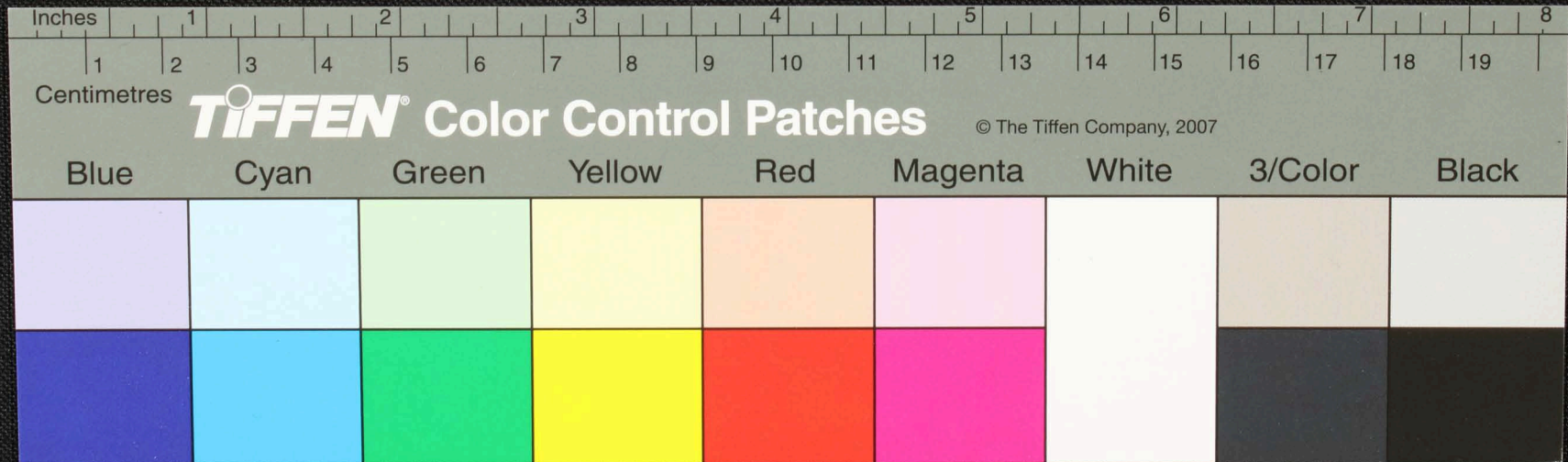
Handwritten text in Tamil script on a palm leaf manuscript. The text is arranged in approximately 10 horizontal lines. The first line begins with the character 'நவ' (Naava) and ends with 'யொ' (yoya). The script is dense and characteristic of traditional Tamil inscriptions on palm leaves.



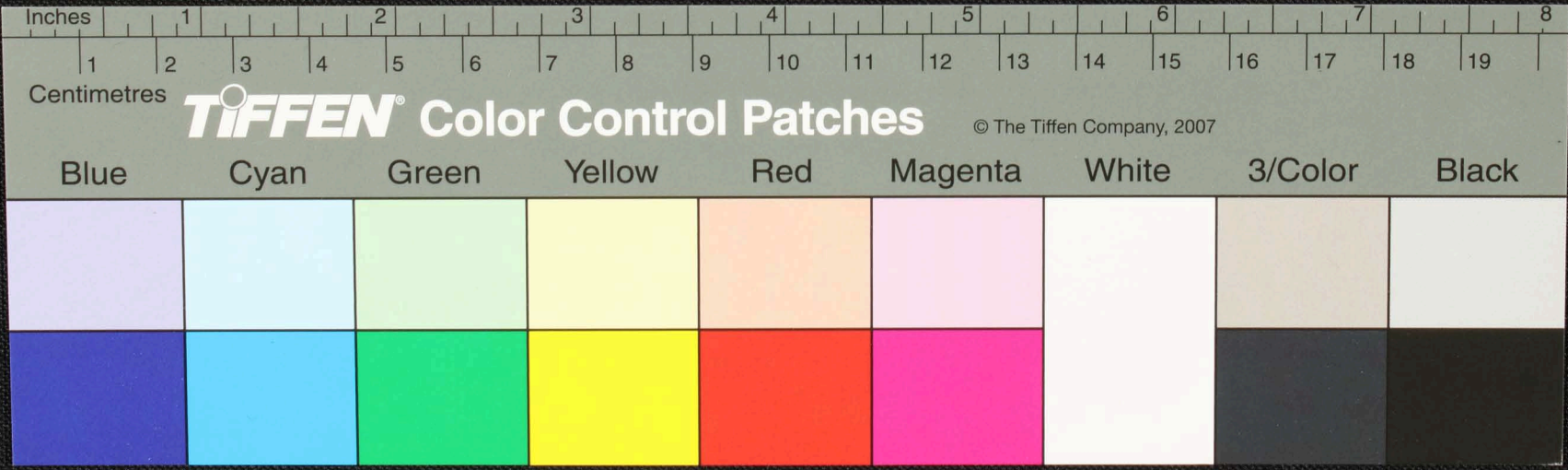
Handwritten text in Tamil script on a palm leaf manuscript. The text is arranged in approximately five horizontal lines across the length of the leaf. The script is dense and appears to be a form of classical or historical Tamil.



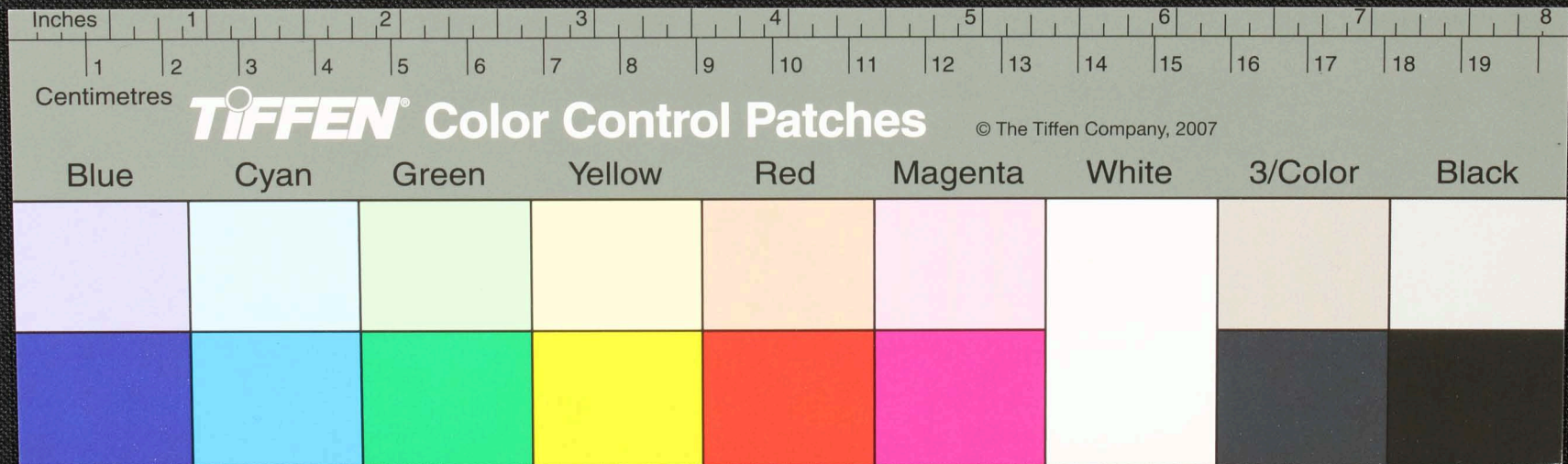
Handwritten text in Tamil script on a palm leaf manuscript. The text is arranged in approximately 10 horizontal lines across the length of the leaf. The script is finely etched into the surface of the dried leaf. A small circular hole is visible near the center of the leaf, which is a traditional feature for threading a cord to bind multiple leaves together into a book format.



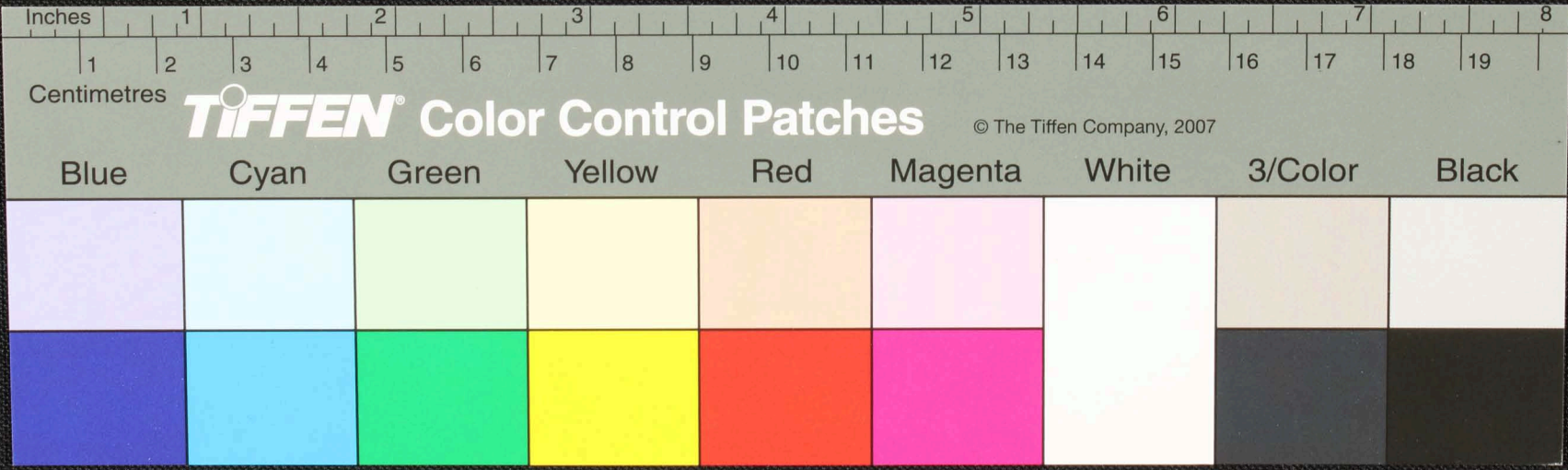
Handwritten text in Tamil script on a palm leaf manuscript. The text is arranged in approximately 10 horizontal lines across the length of the leaf. The script is a traditional form of the Tamil language.



Handwritten text in Tamil script on a palm leaf manuscript. The text is arranged in approximately 10 horizontal lines across the length of the leaf. The script is a traditional form of the Tamil language, likely used for religious or historical records. The leaf shows signs of age and wear, with some dark spots and a small hole near the center.



Handwritten Tamil script on a palm leaf manuscript. The text is arranged in approximately 10 horizontal lines across the length of the leaf. The script is a traditional form of the Tamil language, likely used for religious or philosophical purposes. The leaf shows signs of age, including a prominent dark circular hole near the center.



Handwritten text in Tamil script on a piece of aged paper. The text is arranged in two lines. The first line contains approximately 15 characters, and the second line contains approximately 10 characters. There is a small dark smudge or hole in the center of the paper strip.

