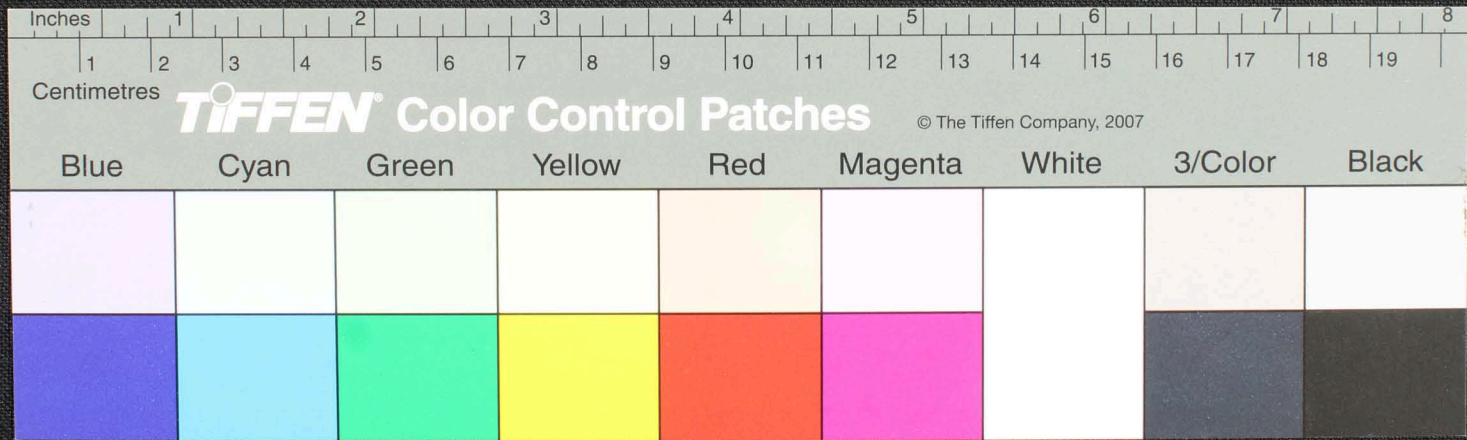




Handwritten text in Tamil script on a palm leaf manuscript. The text is arranged in approximately five horizontal lines across the length of the leaf. The script is finely etched into the surface of the dried leaf. There are three distinct circular holes along the top edge of the leaf, which are traditional for threading a cord to bind multiple leaves together into a book format.













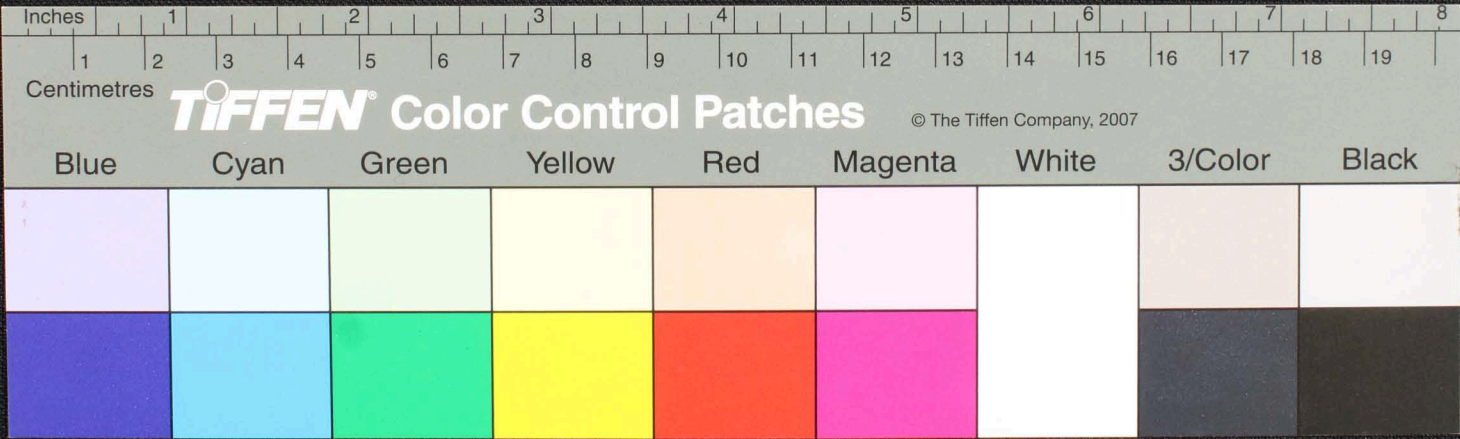








கருவையுடையதாயுபதூபபாசுசூபவொட... இநாமலினுலவருசூககம்... தகருசு  
 கருவையுடையதாயுபதூபபாசுசூபவொட... இநாமலினுலவருசூககம்... தகருசு  
 வயசூயகுரகு... குரவாசூபம... சூகவன... அபாசூசூபவொட... இநாமலினுலவருசூககம்... தகருசு  
 இசயசூகாங்கோ... இநாமலினுலவருசூககம்... தகருசு  
 தூபவொட... இநாமலினுலவருசூககம்... தகருசு  
 இவகு... இநாமலினுலவருசூககம்... தகருசு  
 தகருசு... இநாமலினுலவருசூககம்... தகருசு









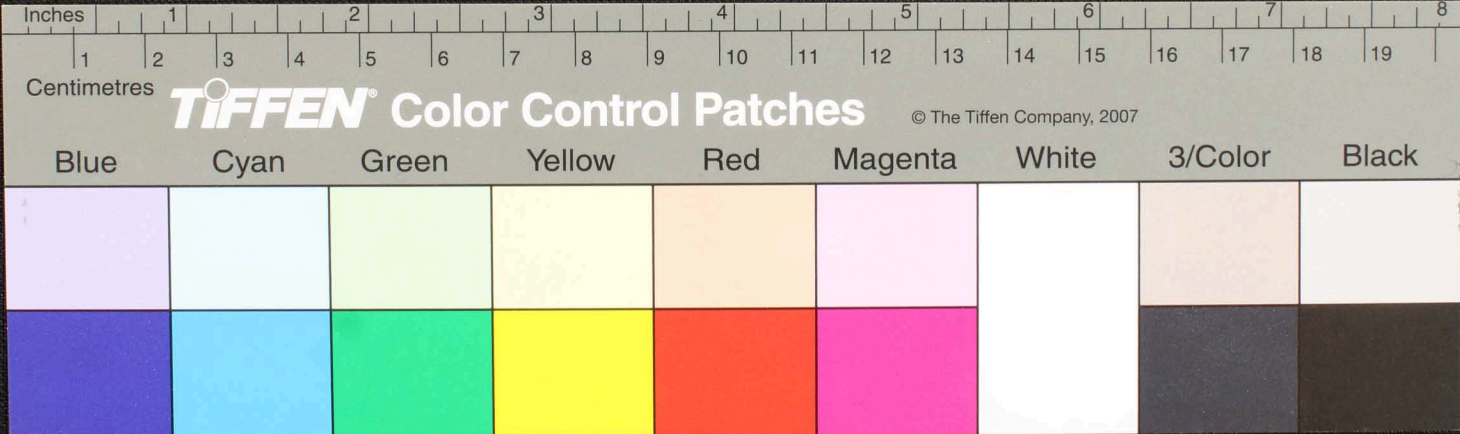








சீவகவெண்பொருள் சீவகவெண்பொருள் 2 னாசெரிமுலம் தன்னவ ஆதி தநெழ்முநாநூரிய  
 வணாயுலா அரவா அமணமுனைநடு வி யரபுகடு மயுலாயு தளதி வெராபயையு செவயரபக  
 குமலாயலனபடு னா அமெபபடு அநதான மெ ரய ர தான மாசுலந தன்னிரஙதயசுந  
 நரபமுன மாங்கிஷத னை பரநியரநிரநி மெனந் ஆனசுநகினியு நரபமுலை தொலமாநியொப மாண  
 னாயபாய நடுநடு மல மாமபர் பொலத தானை நயது பநந து வாரி னியு நரபமுநதசசுபு  
 செல அமகி நதசுந கினியு நசுந தி மெலவிய அனசு னவப பரபுபரிநதெலபுகள் திரவபொ  
 குநதிநி மெலவிய அனசு னவப பரபுபரிநதெலபுகள் திரவபொ  
 யநியெபொலபபெரு கு மெர பாயநதெந்நி டிபகன னலாநகா மதுவாரமதின தநதமுநசசொ





























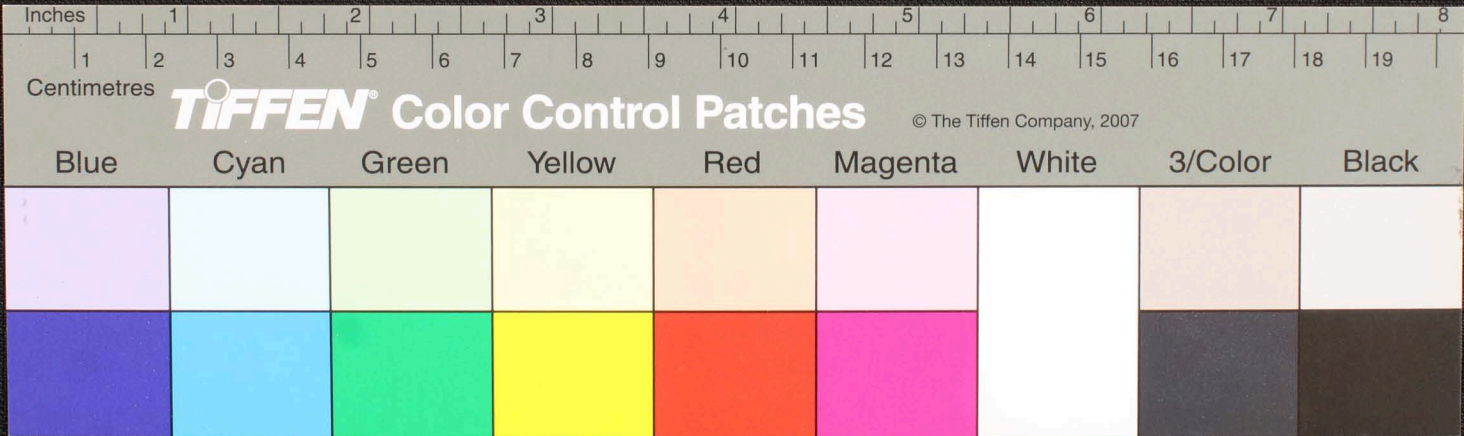








கலவையுடைம்தனிவநகரத்திலநாளுத்தொழி...  
 தை... சுவத்தவவா... சுவநாயநருநா...  
 யநாமவினபநதொண்கிழ...  
 அபகாலம...  
 சுவத்தவவா... சுவநாயநருநா...  
 யநாமவினபநதொண்கிழ...  
 அபகாலம...











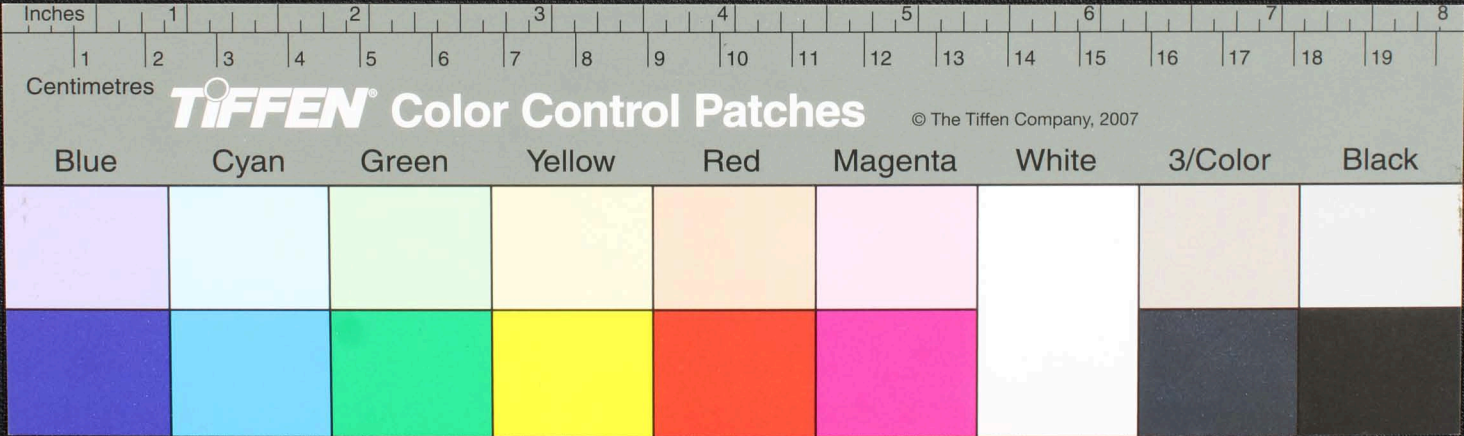






பய

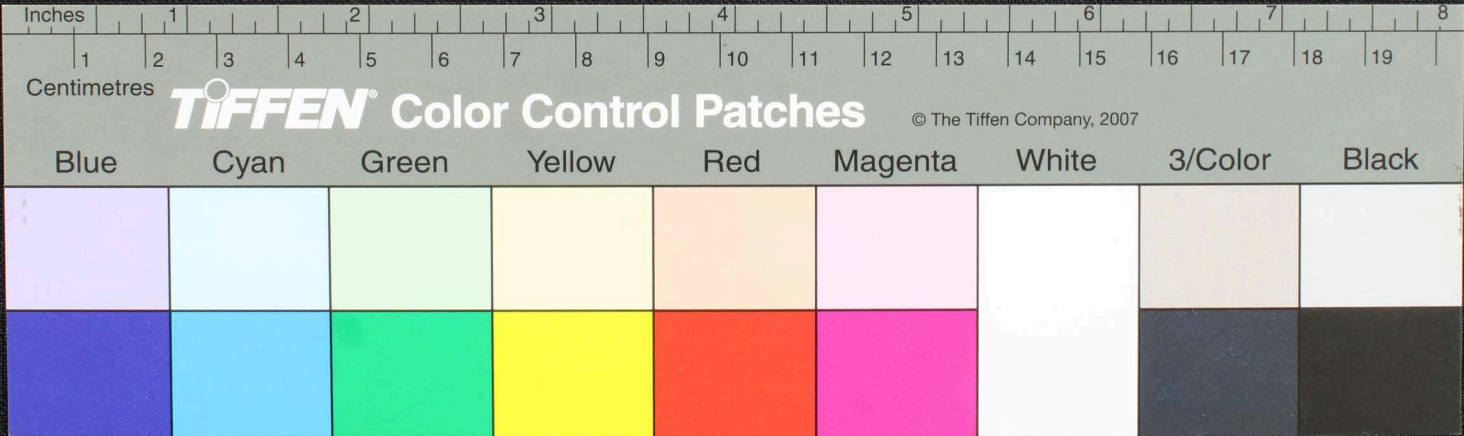
எதுவுள்ளதெனவுறுவதிப்பபு வநதிதிநாளுகுதிங்கு—குறுவுநாசுமாய்குதலலுநதா  
 ளென்கவது—ஏதிதியதிவநதனுவநிசுநிநவவெபாவுததெதாரியநாபுதானுமது  
 யாரததொது—மாதிவமாபுருமவானுலநானுமவநதி—குறுக—எனினநாபுசைமதிவ  
 ளனிலவாராநய—நதிதையுநதுபாரிநகையகை—ஏளலம—லதி—வநதினினநவிசுலமலை—  
 யவ்வநாபுசைககாலமவாநநதொனுவகடுமபகுயததநநானுமமகலயவயவதொனுவம  
 வகையுததிசுயுசைமனனசுதிவமாயவெதமமமதிததெதிநதவாமமாநிநததாம—  
 தானமாமவநநபுதானுவலவாநிசிலனானமாமயு—மபுலவநாயதினானுலவாவை



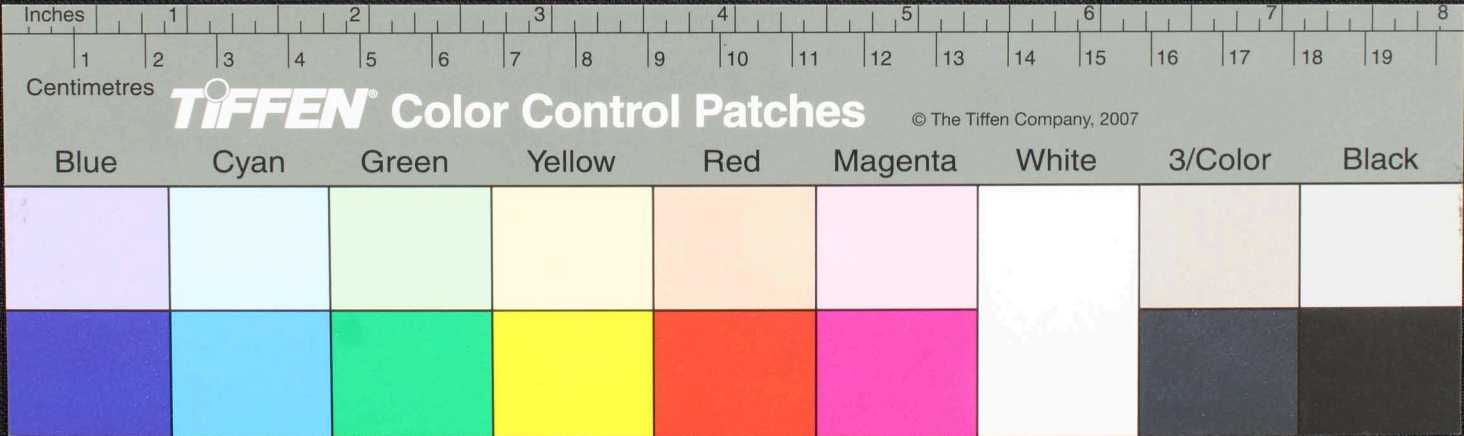


உமக

நினைவுகூர்ந்து நெய்தல் மருங்கு...  
நினைவுகூர்ந்து நெய்தல் மருங்கு...  
நினைவுகூர்ந்து நெய்தல் மருங்கு...  
நினைவுகூர்ந்து நெய்தல் மருங்கு...  
நினைவுகூர்ந்து நெய்தல் மருங்கு...  
நினைவுகூர்ந்து நெய்தல் மருங்கு...  
நினைவுகூர்ந்து நெய்தல் மருங்கு...  
நினைவுகூர்ந்து நெய்தல் மருங்கு...  
நினைவுகூர்ந்து நெய்தல் மருங்கு...  
நினைவுகூர்ந்து நெய்தல் மருங்கு...



Handwritten Tamil script on a palm leaf manuscript. The text is arranged in approximately 10 horizontal lines across the length of the leaf. The script is finely etched into the surface of the dried leaf. Two circular holes are visible, which were traditionally used for threading a cord to bind multiple leaves together into a book format.

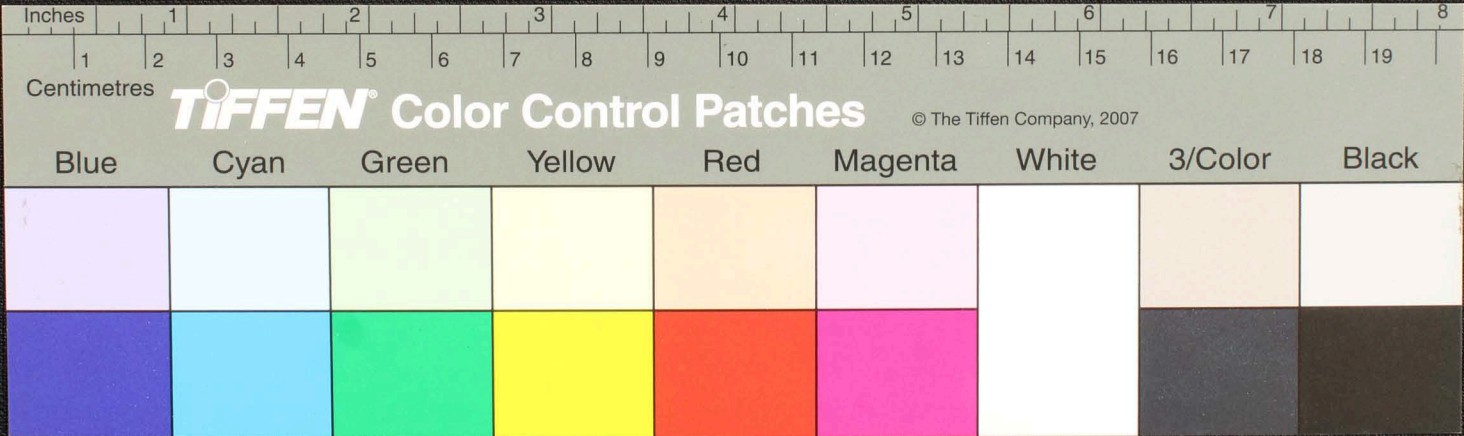








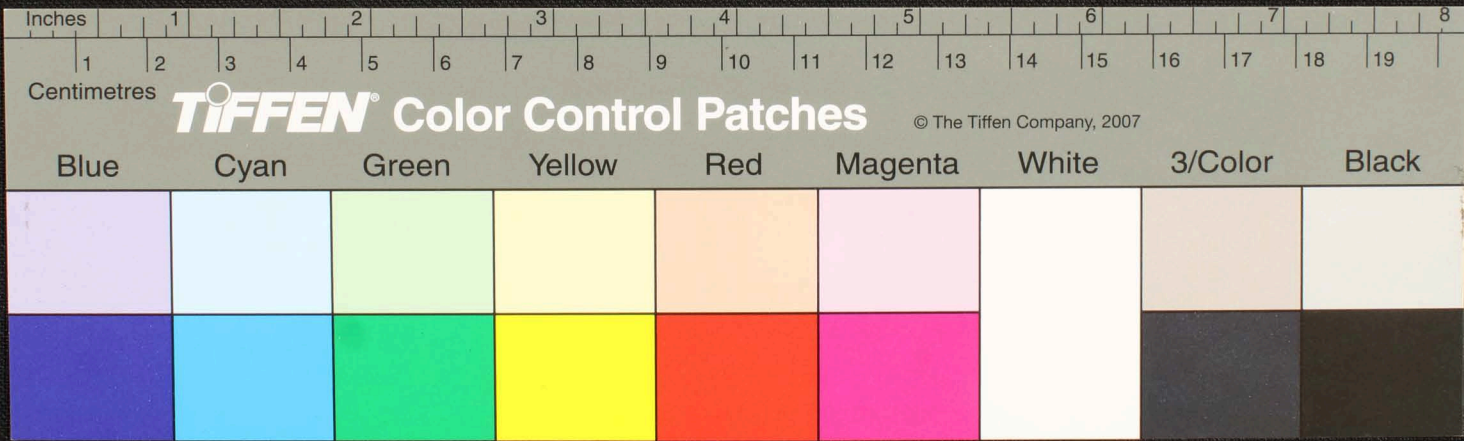
Handwritten Tamil script on a palm leaf manuscript. The text is arranged in approximately 10 horizontal lines across the length of the leaf. The script is a traditional form of the Tamil language, likely containing a religious or philosophical text. There are two distinct circular holes or indentations on the leaf, one near the left edge and one near the right edge, which were traditionally used for threading a cord to bind multiple leaves together into a book format.





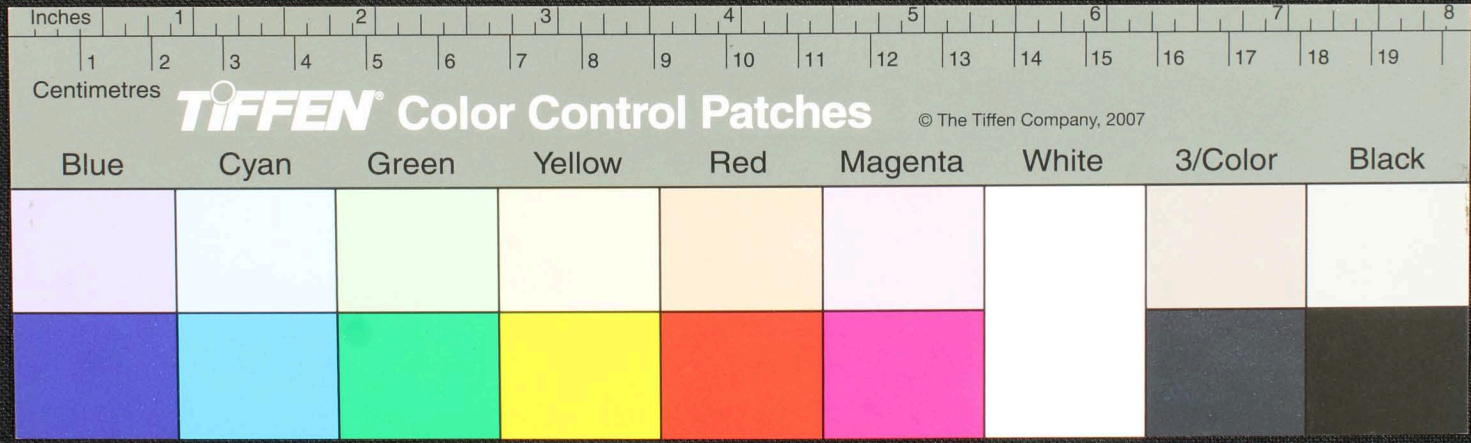


Handwritten Tamil script on a palm leaf manuscript. The text is arranged in approximately 10 horizontal lines across the length of the leaf. The script is a traditional form of the Tamil language, likely used for religious or philosophical purposes. There are two prominent circular holes along the length of the leaf, which were traditionally used for threading a cord to bind multiple leaves together into a book format.

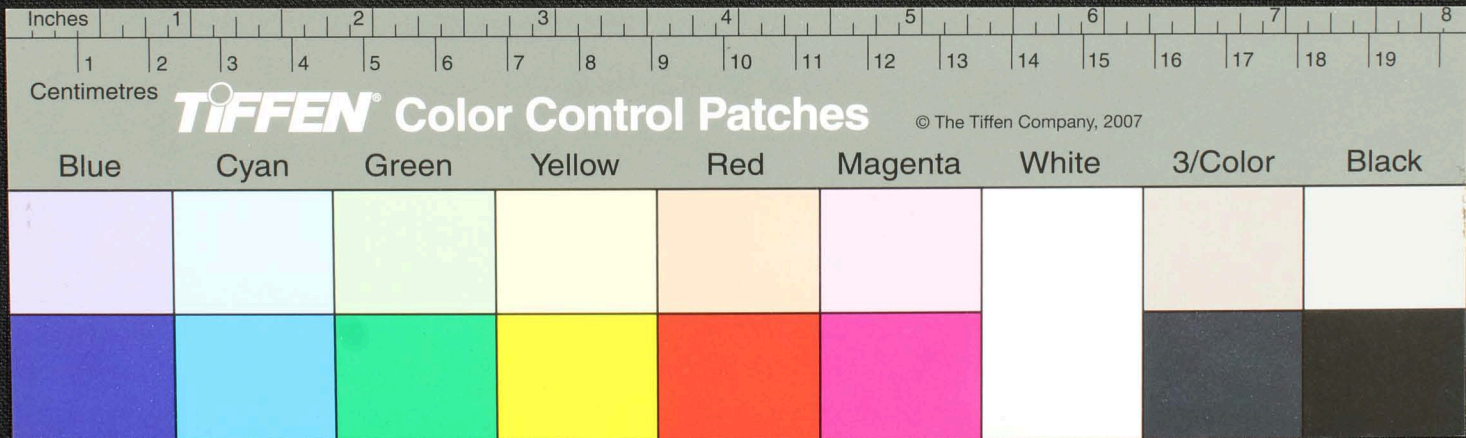




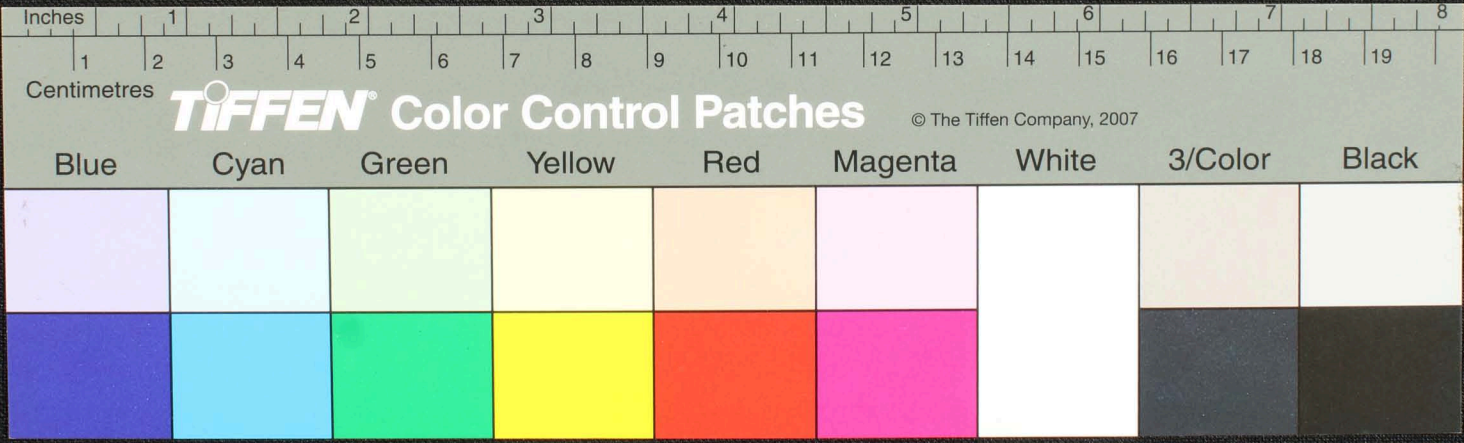
Handwritten Tamil script on a palm leaf manuscript. The text is arranged in approximately 10 horizontal lines across the length of the leaf. The script is finely etched into the surface of the dried leaf. Two circular holes are visible, which were traditionally used for threading a cord to bind multiple leaves together into a book format.



Handwritten Tamil script on a palm leaf manuscript. The text is arranged in approximately 10 horizontal lines across the length of the leaf. Two circular holes are visible, which were traditionally used for threading a cord to bind multiple leaves together into a book format. The script is densely packed and appears to be a form of classical or religious Tamil.

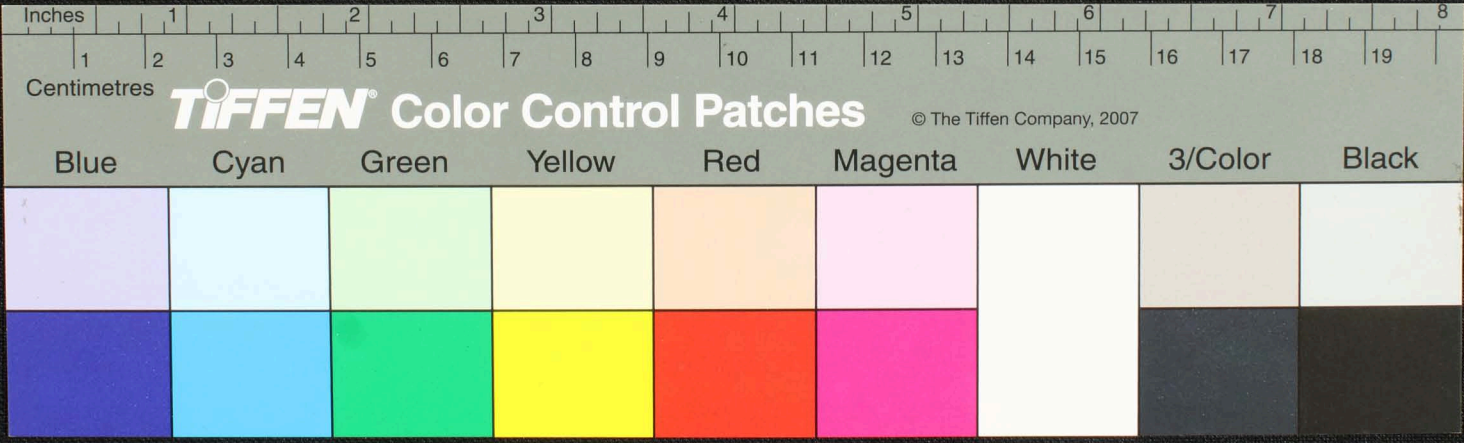


Handwritten Tamil script on a palm leaf manuscript. The text is arranged in approximately 10 horizontal lines across the length of the leaf. On the left side, there are two vertical characters: 'மா' (Ma) and 'சு' (Su). The script is densely packed and appears to be a form of classical Tamil.





நாதமாமு அனாமகிரா... அடியமுதிவியயநவகா... மருமவிமுதிவக... அடியயவையமுதி...  
 மறுவயகதவபாநதி... விசுலுநகரோ... மூலமயமவையநடு... குசாலநதி... குசுமு...  
 மவையமுதிநதி... அனாமகிரா... அடியமுதிவியயநவகா... மருமவிமுதிவக...  
 அடியயவையமுதி... மறுவயகதவபாநதி... விசுலுநகரோ... மூலமயமவையநடு...  
 குசாலநதி... குசுமு... அனாமகிரா... அடியமுதிவியயநவகா... மருமவிமுதிவக...  
 அடியயவையமுதி... மறுவயகதவபாநதி... விசுலுநகரோ... மூலமயமவையநடு...  
 குசாலநதி... குசுமு... அனாமகிரா... அடியமுதிவியயநவகா... மருமவிமுதிவக...  
 அடியயவையமுதி... மறுவயகதவபாநதி... விசுலுநகரோ... மூலமயமவையநடு...  
 குசாலநதி... குசுமு...







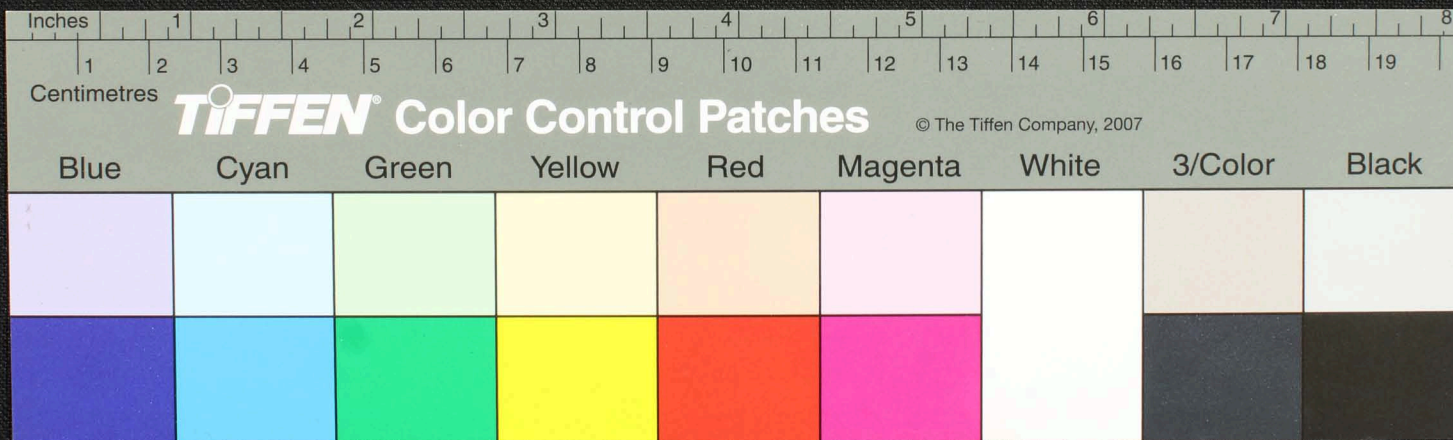






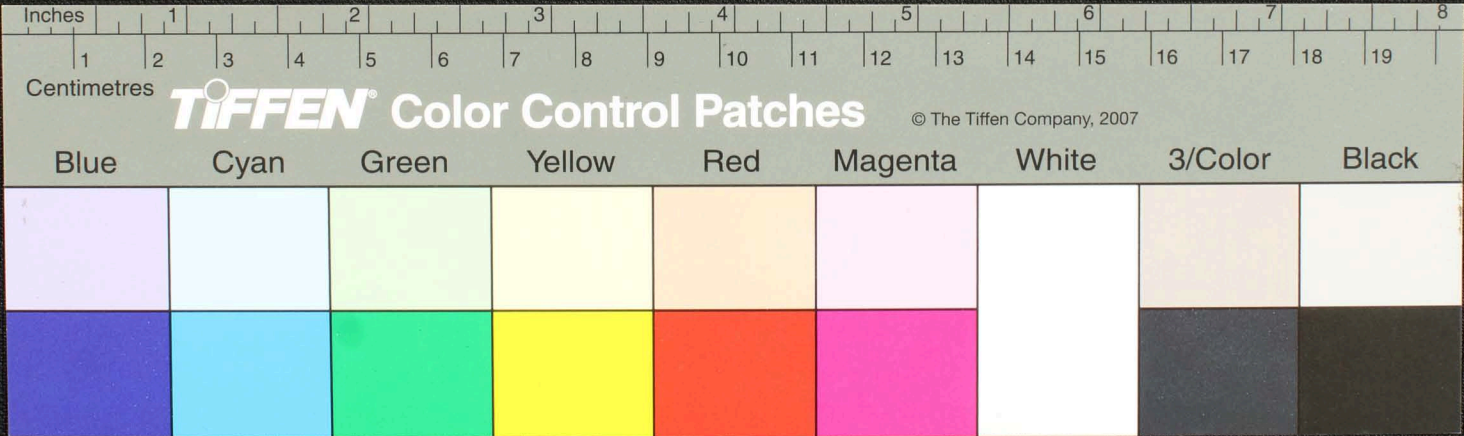


Handwritten Tamil script on a palm leaf manuscript. The text is arranged in approximately 10 horizontal lines across the length of the leaf. The script is a traditional form of the Tamil language, likely used for religious or philosophical purposes. The leaf shows signs of age, with some darkening and wear, particularly around the two circular holes used for binding.





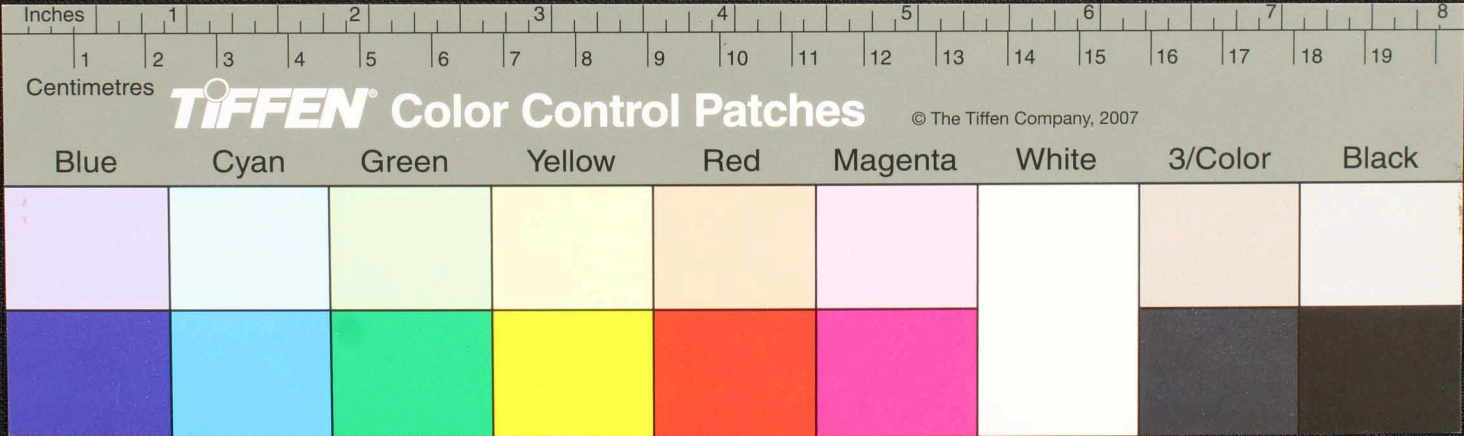
Handwritten Tamil script on a palm leaf manuscript. The text is densely packed and spans the length of the leaf. Two circular holes are visible, used for threading a cord to bind multiple leaves together. The script appears to be a form of classical Tamil, possibly containing religious or philosophical content.







Handwritten Tamil script on a palm leaf manuscript. The text is arranged in approximately 10 horizontal lines across the length of the leaf. The script is a traditional form of the Tamil language, likely used for religious or philosophical purposes. Two circular holes are visible, which were traditionally used for threading a cord to bind multiple leaves together into a book format.

















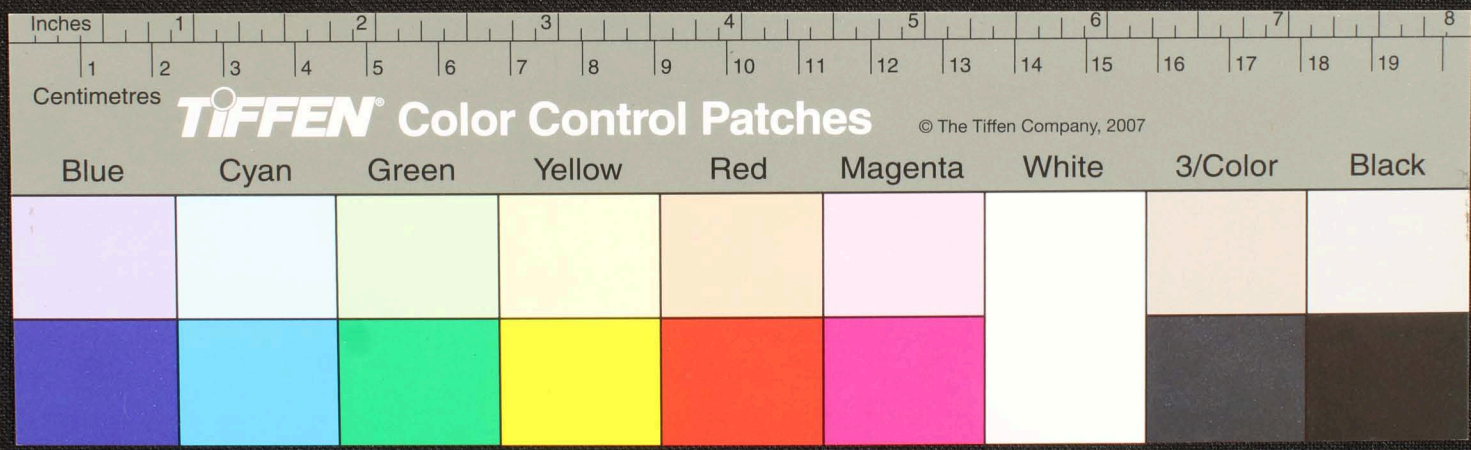






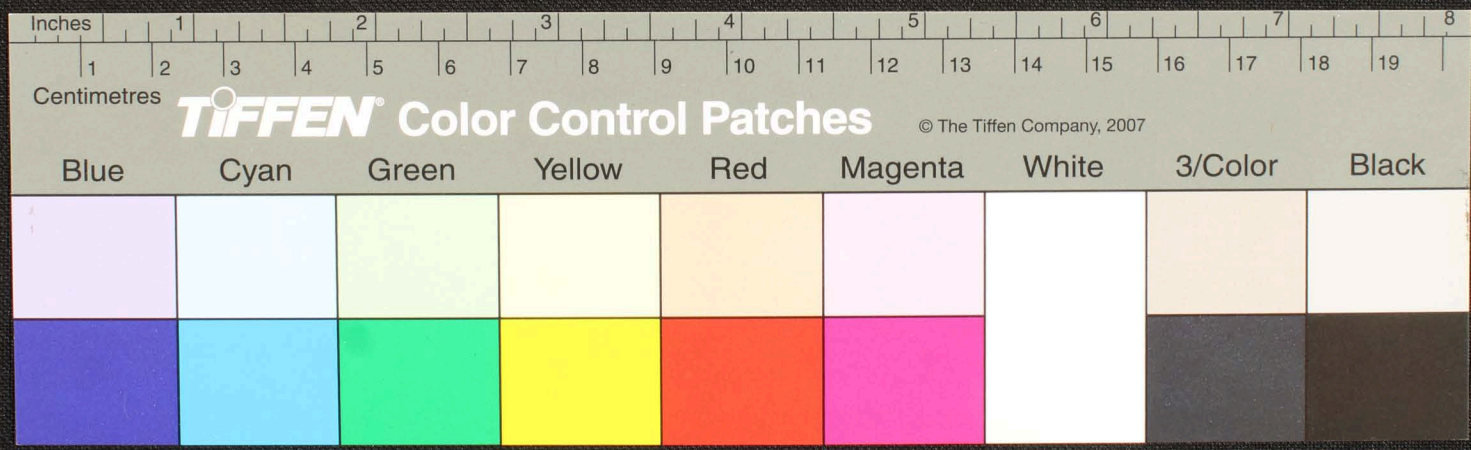


Handwritten Tamil script on a palm leaf manuscript. The text is arranged in approximately 10 horizontal lines across the length of the leaf. Two circular holes are visible, which were traditionally used for threading a cord to bind multiple leaves together into a book format. The script is a form of the Tamil language, likely a historical or religious text.

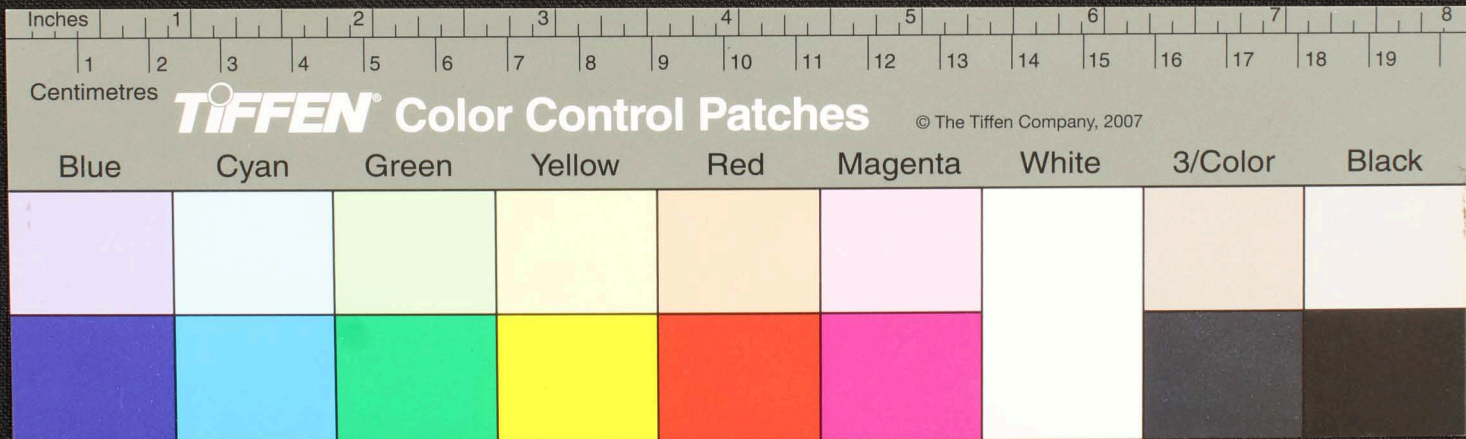




1506  
 வயாக்கென்கு வினாறு மலாமிசு துமிசு திசு மகாசு கோசு துமிசு மலாமிசு கோப மகமபாபுயு  
 பகருசு கோசு வினாறு மலாமிசு துமிசு திசு மகாசு கோசு துமிசு மலாமிசு கோப மகமபாபுயு  
 குநாசு யாவிட வு அருசு கோசு திசு மகாசு கோசு துமிசு மலாமிசு கோப மகமபாபுயு  
 னு அருசு கோசு திசு மகாசு கோசு துமிசு மலாமிசு கோப மகமபாபுயு  
 3  
 வெறுசு திசு மகாசு கோசு துமிசு மலாமிசு கோப மகமபாபுயு  
 வெறுசு திசு மகாசு கோசு துமிசு மலாமிசு கோப மகமபாபுயு  
 யசு மலாமிசு கோப மகமபாபுயு  
 திசு மகாசு கோசு துமிசு மலாமிசு கோப மகமபாபுயு  
 யசு மலாமிசு கோப மகமபாபுயு



Handwritten Tamil script on a palm leaf manuscript. The text is arranged in approximately 10 horizontal lines across the length of the leaf. The script is a traditional form of the Tamil language, likely containing a religious or philosophical text. Two circular holes are visible, which were traditionally used for threading a cord to bind multiple leaves together into a book format.

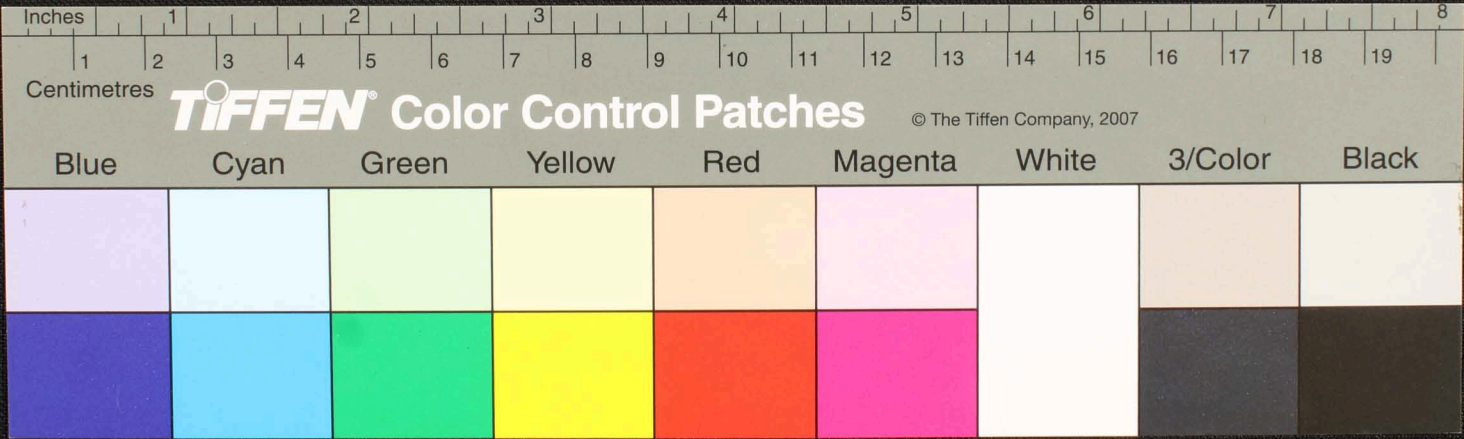




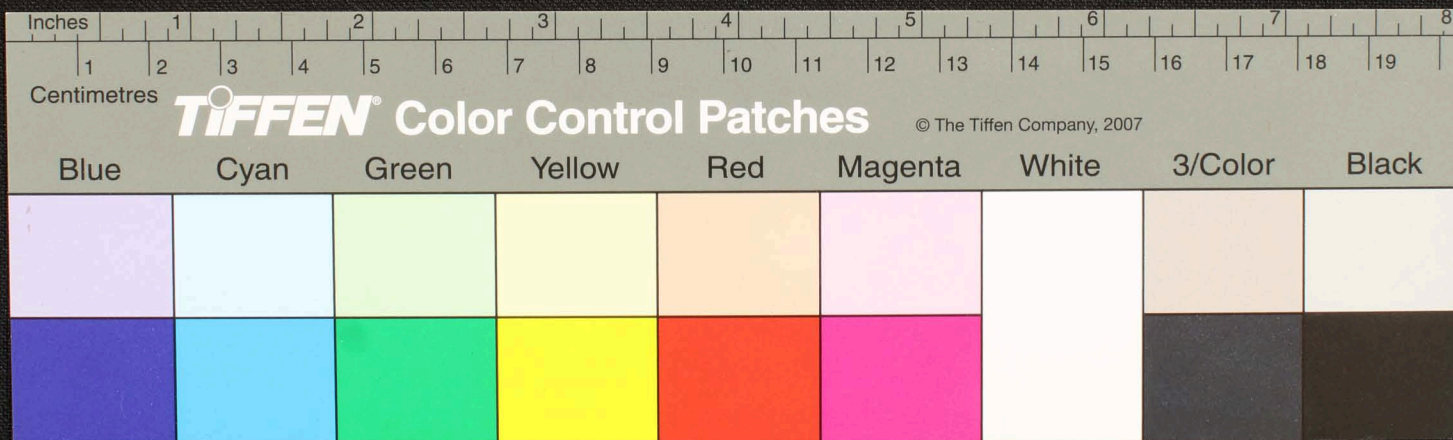




எவ்வழி ரவலாதி லகன்குவிட வு ளுபுலுதுகாண்கு ளு காளு ளுதரகட குலபிதா  
 சாபுதிவநி வியிலவா வுமலிவா ளுவிடுமலியுவிளா ளுபுசுருது ளுளகு நடுநிதைவாளுவ  
 பமலிமகசுமலிவா ளுமலிவா ளுமலிவா ளுமலிவா ளுமலிவா ளுமலிவா ளுமலிவா ளுமலிவா  
 குமலிவா ளுமலிவா ளுமலிவா ளுமலிவா ளுமலிவா ளுமலிவா ளுமலிவா ளுமலிவா  
 யுளவா ளுமலிவா ளுமலிவா ளுமலிவா ளுமலிவா ளுமலிவா ளுமலிவா ளுமலிவா  
 ளுமலிவா ளுமலிவா ளுமலிவா ளுமலிவா ளுமலிவா ளுமலிவா ளுமலிவா ளுமலிவா  
 ளுமலிவா ளுமலிவா ளுமலிவா ளுமலிவா ளுமலிவா ளுமலிவா ளுமலிவா ளுமலிவா

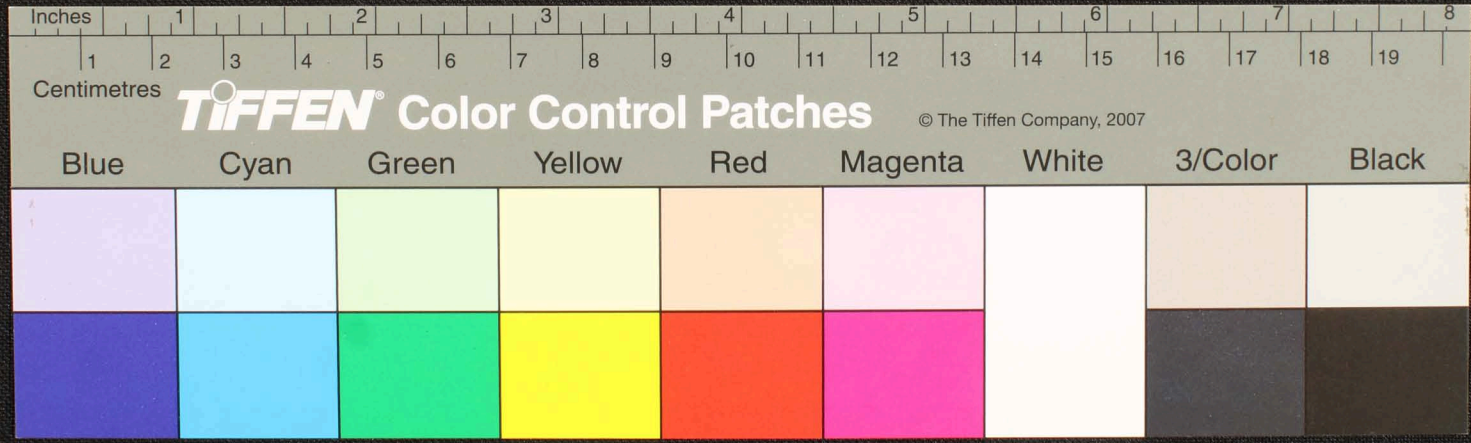


Handwritten Tamil script on a palm leaf manuscript. The text is arranged in approximately 10 horizontal lines across the length of the leaf. The script is a traditional form of the Tamil language, likely containing a religious or philosophical text. Two circular holes are visible, which were traditionally used for threading a cord to bind multiple leaves together into a book format.



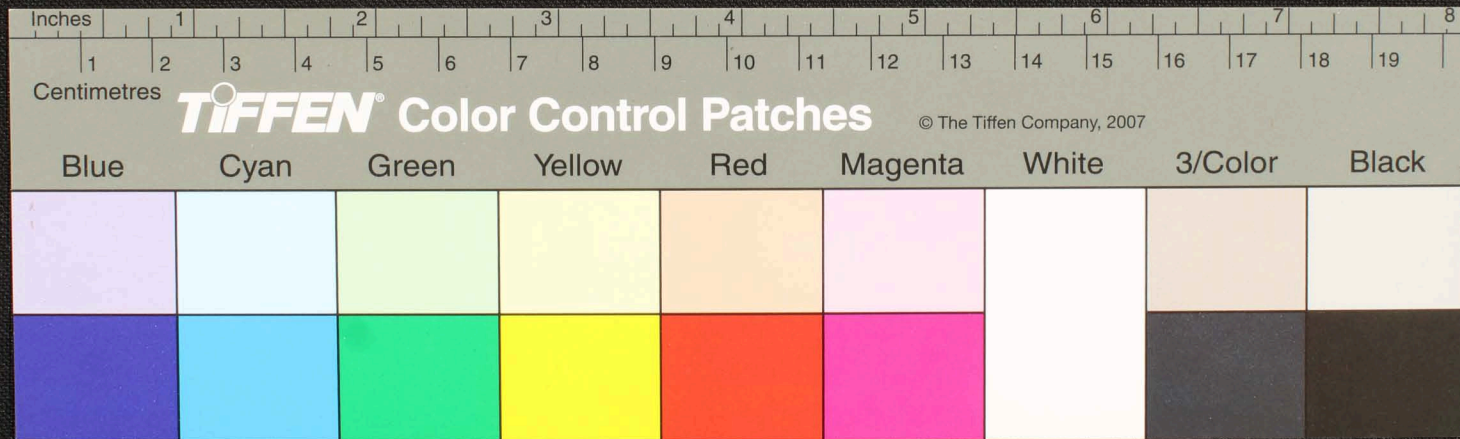


Handwritten Tamil script on a palm leaf manuscript. The text is arranged in approximately 10 horizontal lines. On the left side, there are two vertical labels: 'வரதேவ' (Vardheva) and 'சுரம்' (Sura). The script is densely packed and appears to be a form of classical Tamil literature or religious text. There are two dark circular marks on the leaf, possibly from insect damage or binding holes.





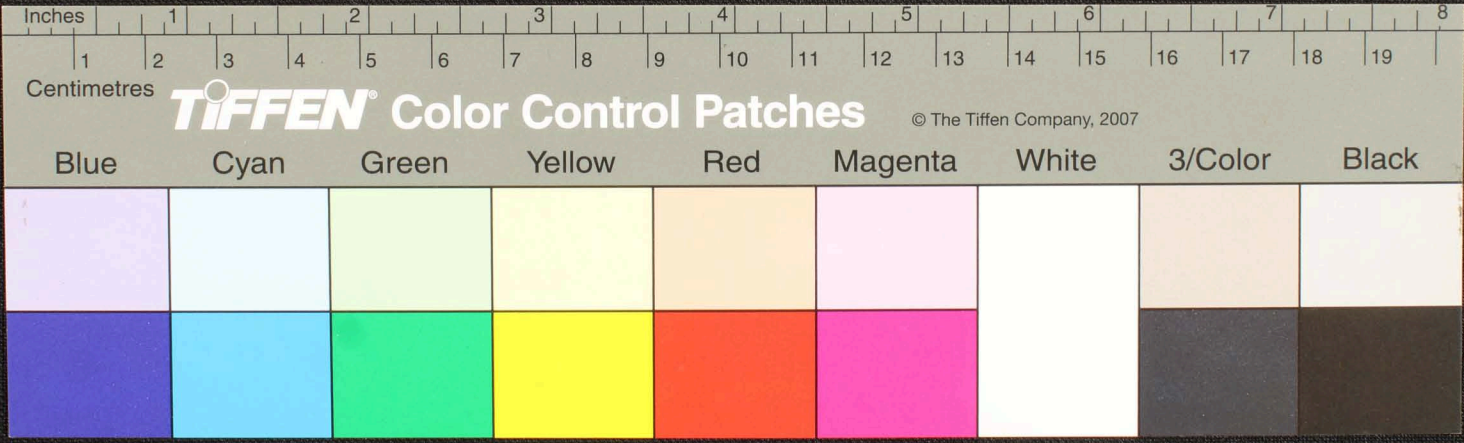
Handwritten Tamil script on a palm leaf manuscript. The text is arranged in approximately 10 horizontal lines across the length of the leaf. The script is a traditional form of the Tamil language, likely used for religious or philosophical purposes. The leaf shows signs of age, with some dark spots and a slightly uneven texture.







ஈனட ஆதேயுதவையேழேசுரநேதமயல்கோத்தாயநடுபுகையுதோதிசுரகா...  
 கோசினுதேவபாபாநுசுரகோதிசுரநகொனாபுகுலமாமயுமபிரகுகெனகெனவெடுமருந்ர  
 வசேயுநதிபிபிதிபவியுமாதெவவாநவநவனவையகைகே...  
 டாரவனசுரவா...  
 கு...  
 கு...  
 கு...









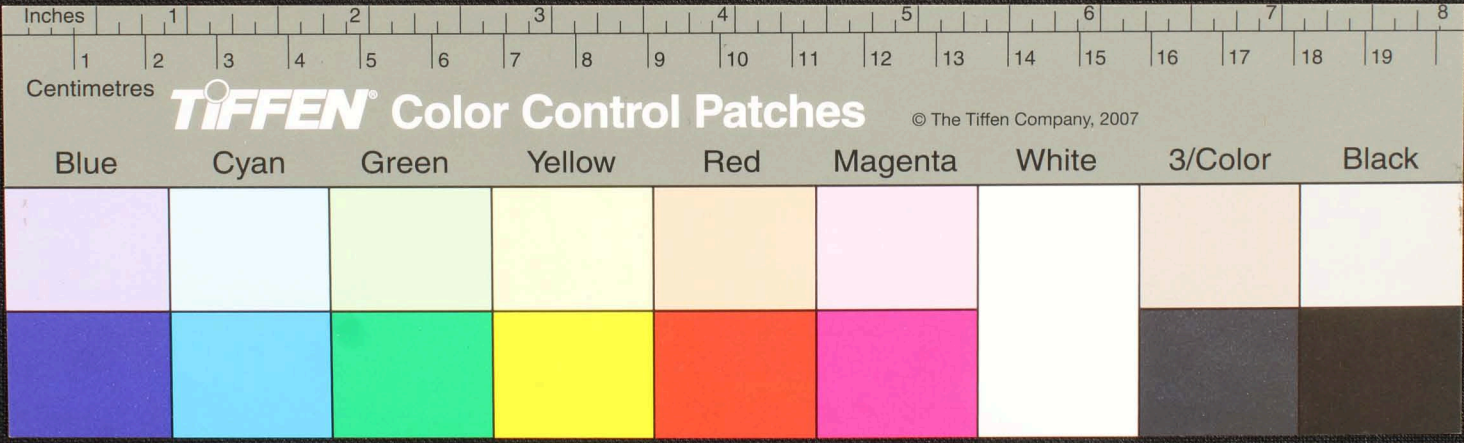






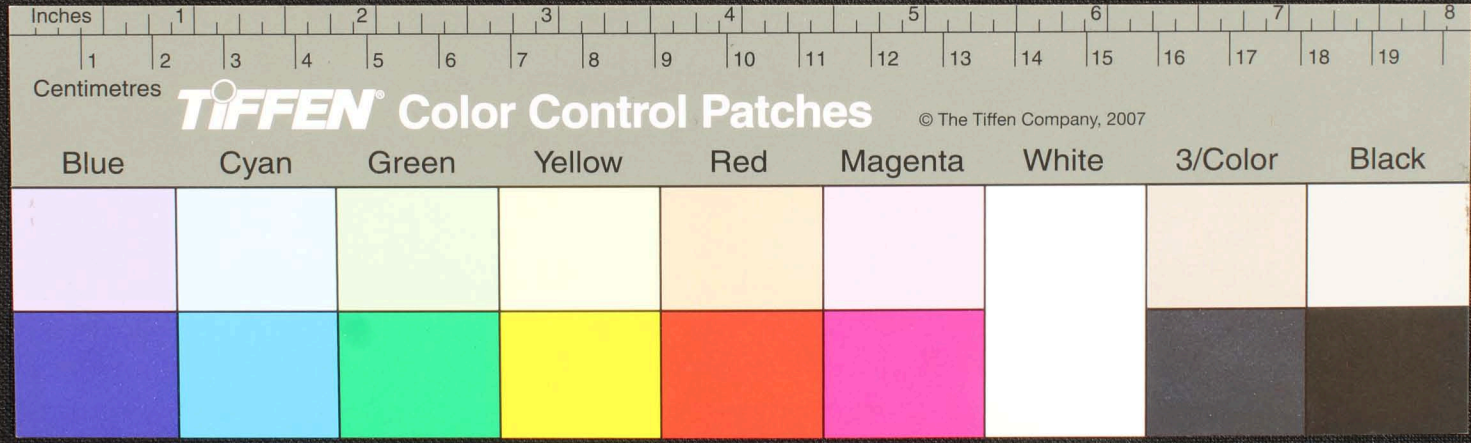


Handwritten Tamil script on a palm leaf manuscript. The text is arranged in approximately 10 horizontal lines across the length of the leaf. The script is a traditional form of the Tamil language, likely used for religious or philosophical purposes. The leaf shows signs of age and wear, with some dark spots and a slightly uneven texture.



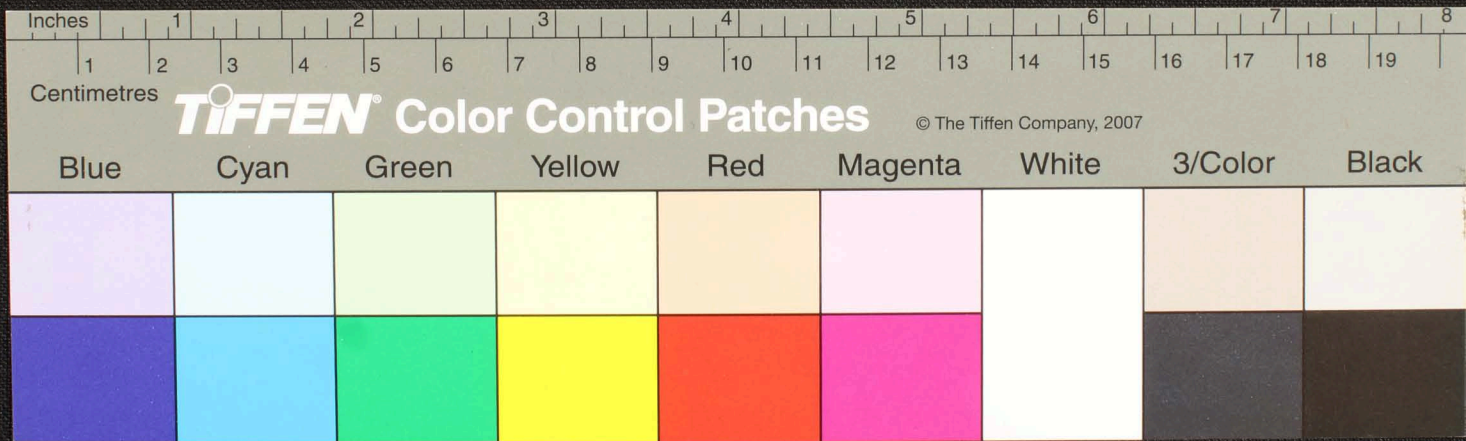
ம.ந.க.ப.  
த.த.சு.ப.  
ம.

திருவள்ளூர் மாவட்டம் திருவள்ளூர் அருகில் உள்ள திருவள்ளூர் கிராமத்தில்  
சுமார் 100 வருஷங்களுக்கு முன்பு கட்டப்பட்டிருந்திருக்கிற கட்டிடம்  
என்பதற்குரிய சான்றுகளாக வலிக் குத்துவாய் கட்டியிருக்கிற கட்டிடம்  
வசதியாக இருக்கையாகக் கட்டியிருக்கிற கட்டிடம் என்று சொல்லுகிற கட்டிடம்  
கட்டியிருக்கிற கட்டிடம் கட்டியிருக்கிற கட்டிடம் கட்டியிருக்கிற கட்டிடம்  
கட்டியிருக்கிற கட்டிடம் கட்டியிருக்கிற கட்டிடம் கட்டியிருக்கிற கட்டிடம்  
கட்டியிருக்கிற கட்டிடம் கட்டியிருக்கிற கட்டிடம் கட்டியிருக்கிற கட்டிடம்  
கட்டியிருக்கிற கட்டிடம் கட்டியிருக்கிற கட்டிடம் கட்டியிருக்கிற கட்டிடம்  
கட்டியிருக்கிற கட்டிடம் கட்டியிருக்கிற கட்டிடம் கட்டியிருக்கிற கட்டிடம்





Handwritten Tamil script on a palm leaf manuscript. The text is arranged in approximately 10 horizontal lines across the length of the leaf. The script is a traditional form of the Tamil language, likely containing a religious or philosophical text. There are two distinct circular holes along the length of the leaf, which were used for threading a cord to bind multiple leaves together into a book format.







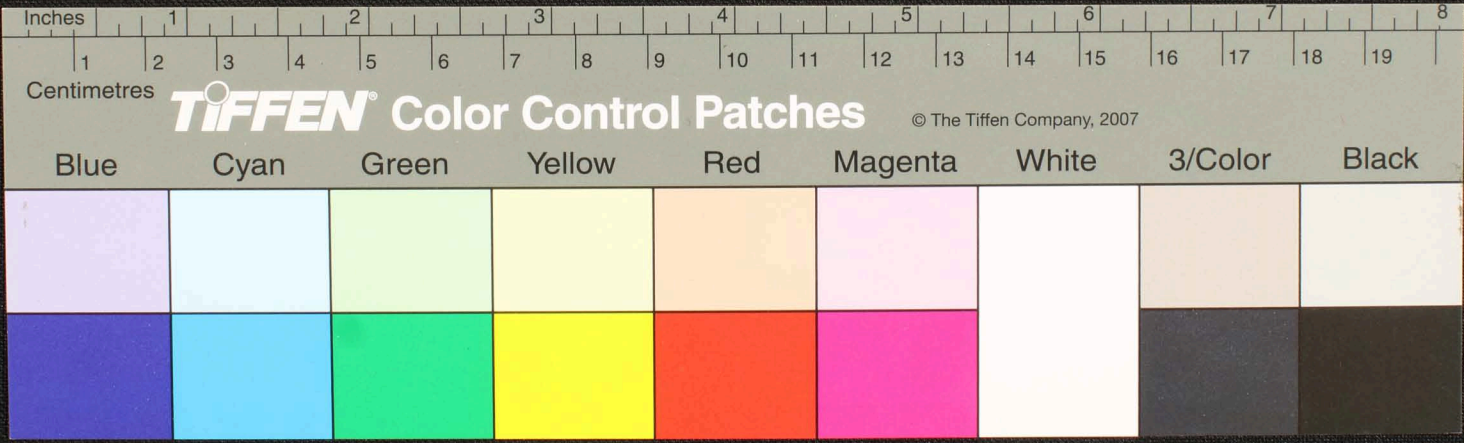








Handwritten Tamil script on a palm leaf manuscript. The text is arranged in approximately 10 horizontal lines across the length of the leaf. The script is finely etched into the surface of the dried leaf. There are two prominent circular holes, likely from a traditional string binding method. The leaf shows signs of age and wear, with some fraying at the right end.



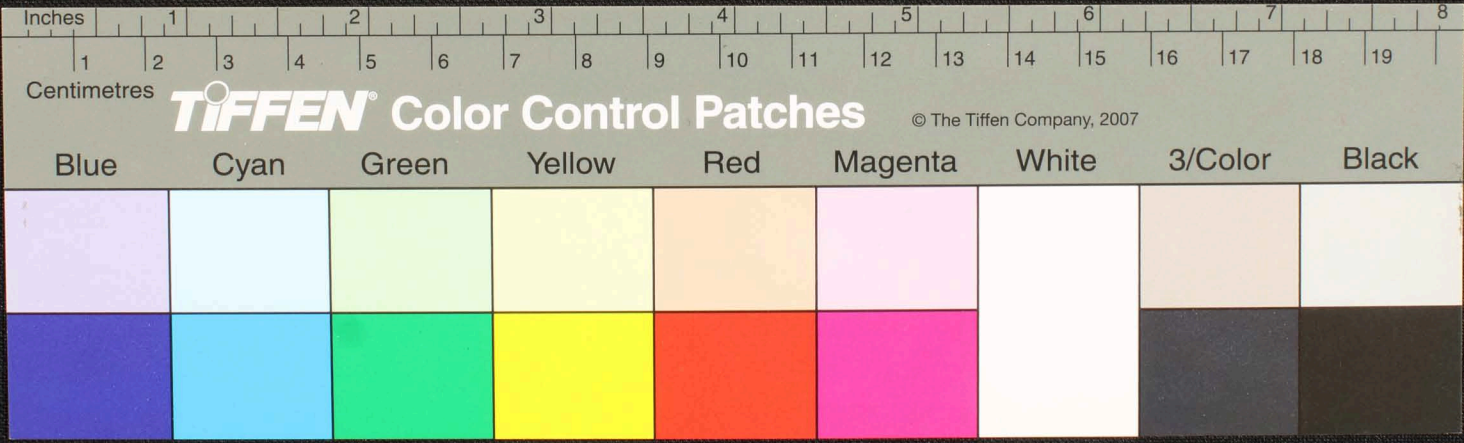








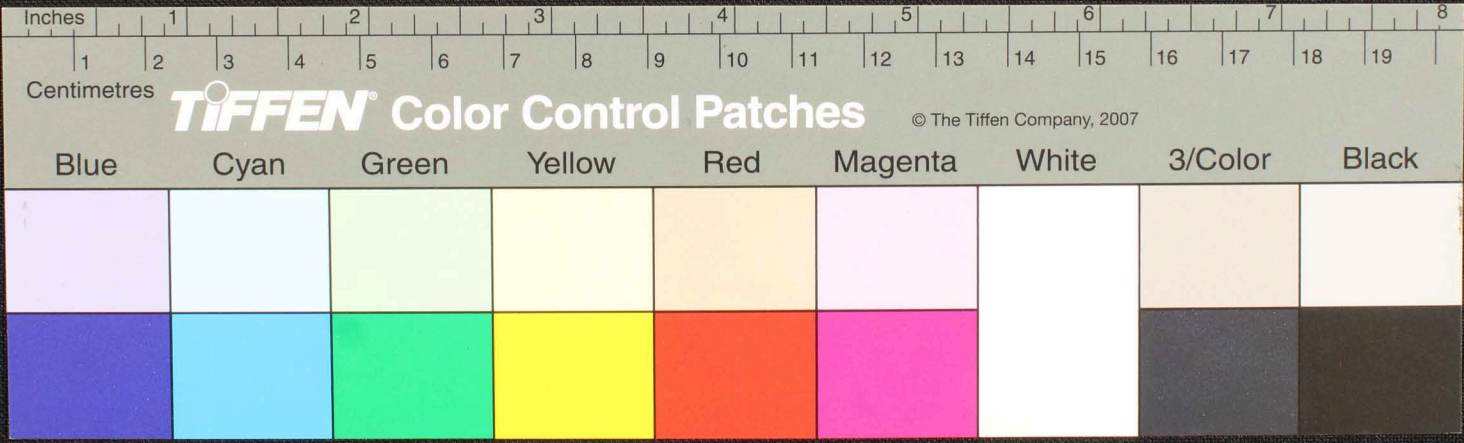
Handwritten Tamil script on a palm leaf manuscript. The text is arranged in approximately 10 horizontal lines across the length of the leaf. The script is finely etched into the surface of the dried leaf. There are two prominent circular holes, likely from a traditional string binding method. The leaf shows signs of age and wear, with some fraying at the edges.



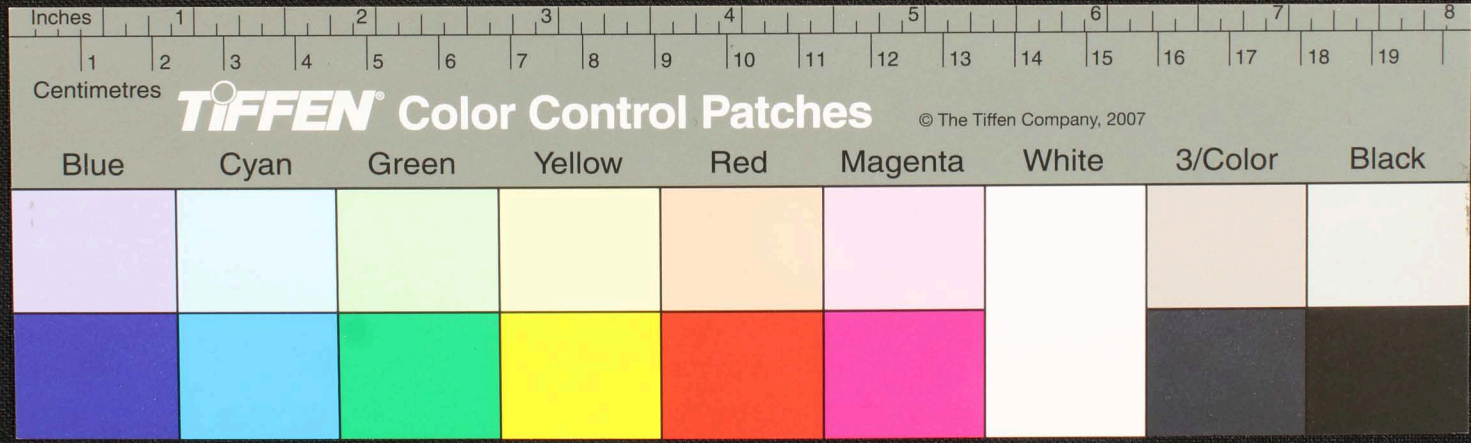




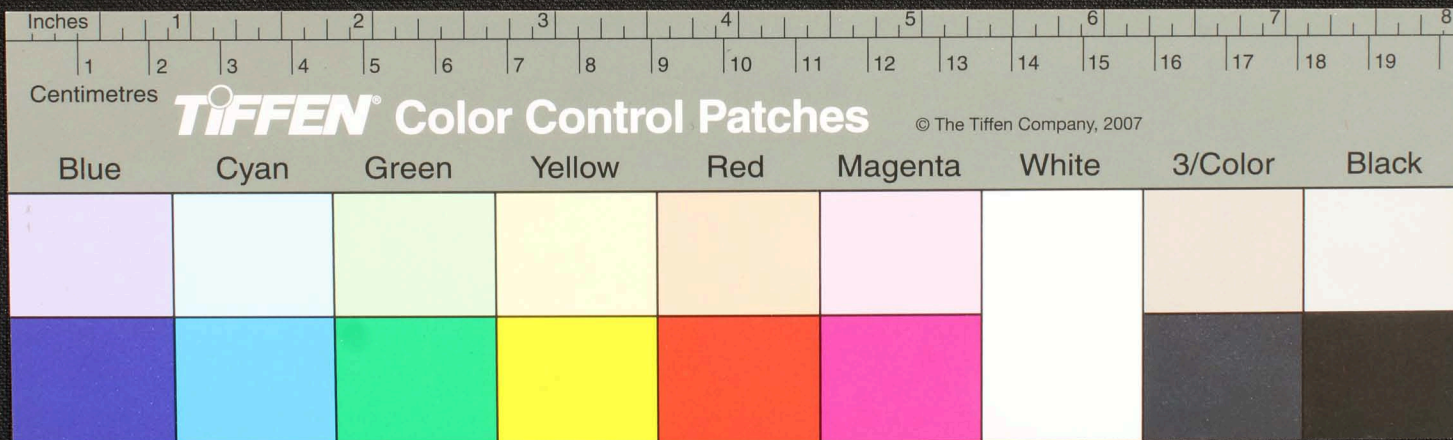
Handwritten text in Tamil script on a palm leaf manuscript. The text is arranged in approximately 10 horizontal lines. On the left side, there are three lines of text that appear to be a title or header, possibly including the name of the author or the subject of the manuscript. The main body of text is densely packed and covers most of the length of the leaf. There are some dark spots and irregularities on the leaf, likely due to its age and the way it was preserved.



Handwritten Tamil script on a palm leaf manuscript. The text is arranged in approximately 10 horizontal lines across the length of the leaf. On the left side, there is a circular stamp or mark containing the characters 'சுருதி' and 'சுருதி' below it.



Handwritten text in Tamil script on a palm leaf manuscript. The text is arranged in approximately 10 horizontal lines across the length of the leaf. The script is dense and appears to be a form of classical or religious Tamil. There are some dark spots and irregularities on the leaf, possibly due to age or damage.



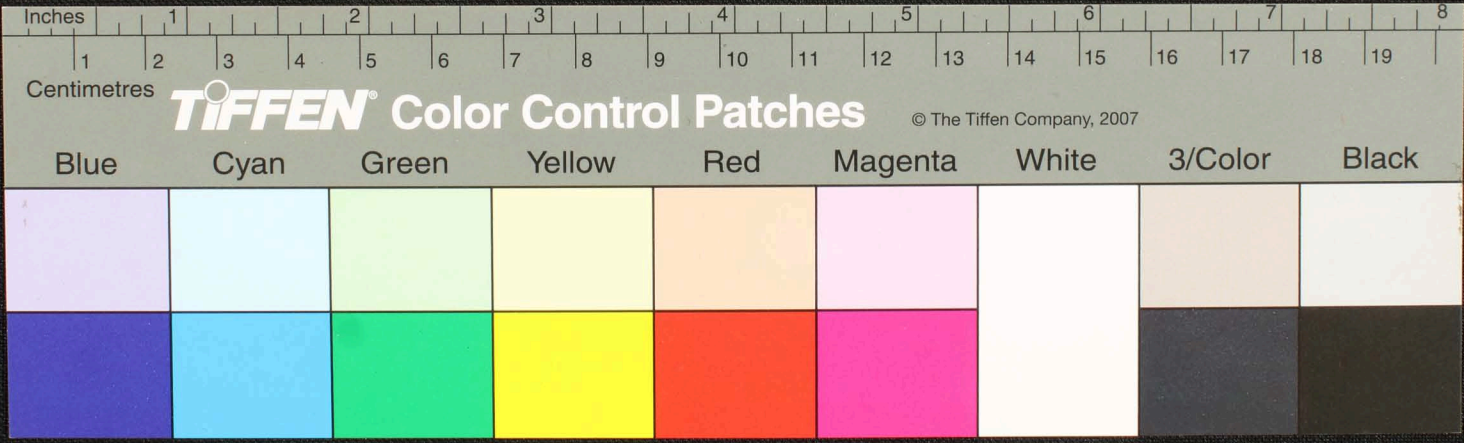








சூழலாசிரியர் குறுந்தொகை பாடியது தமாத்வை தமபுரி சாமநவதாமமாவயுடையது — அந்நகுயை  
 ரு — ருருநதாநுநரிவசமுவுசருமுனை — மயநுயுமதீநியருசுருமதீவ உபாநாநாநதாநு  
 மு — வநதாநுநுநவவாசவசயுநகுநிவவவ — ருருய — தமபுரிநுவுசருமுனை





























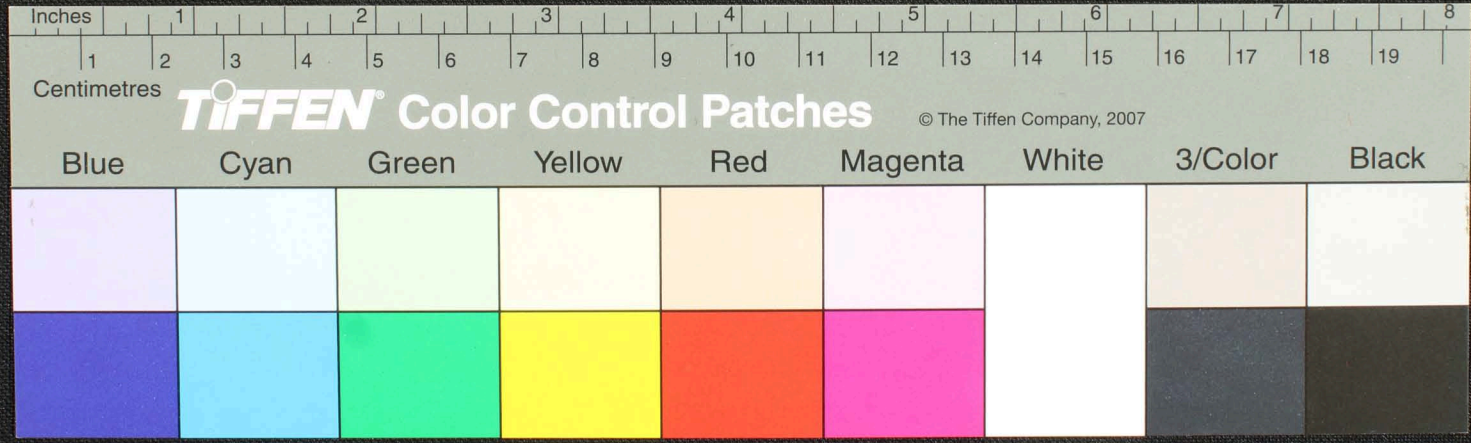








சுவையுடையது... குதிரத்தமலர்... ஓயவன... யிரகீவரதாவ... குணமென...  
 சந்திர... மொ... சந்திர... குதிர... மொ... சந்திர... குதிர... மொ... சந்திர... குதிர...  
 மொ... சந்திர... குதிர... மொ... சந்திர... குதிர... மொ... சந்திர... குதிர...  
 குதிர... மொ... சந்திர... குதிர... மொ... சந்திர... குதிர... மொ... சந்திர... குதிர...  
 குதிர... மொ... சந்திர... குதிர... மொ... சந்திர... குதிர... மொ... சந்திர... குதிர...



















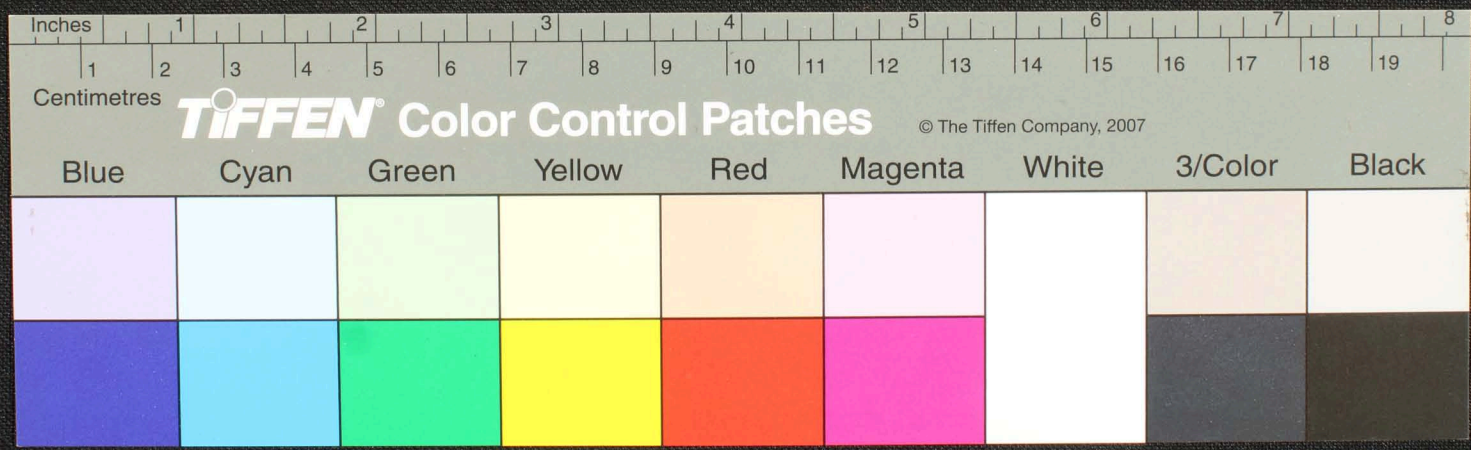








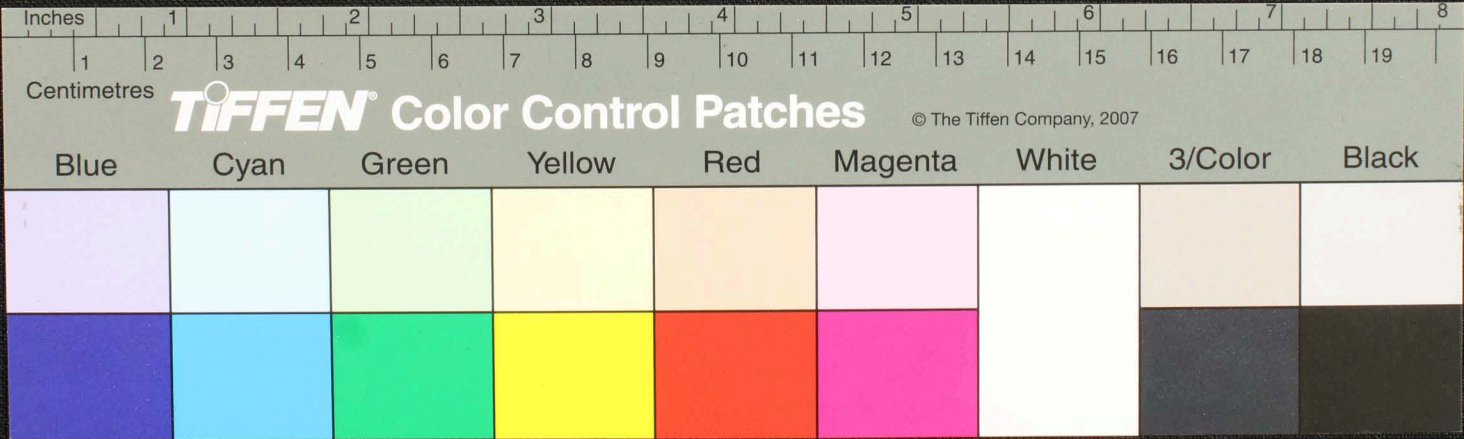
Handwritten Tamil script on a palm leaf manuscript. The text is arranged in approximately 12 horizontal lines across the length of the leaf. On the left side, there are several lines of text that appear to be a title or introductory notes, including the characters 'அயி' and 'தினதினம்'. The main body of text is densely packed and follows a traditional format for such manuscripts.







Handwritten Tamil script on a palm leaf manuscript. The text is densely packed and spans the length of the leaf. It appears to be a historical record or a religious text, given the context of such artifacts. The script is written in a traditional style, with some characters that are characteristic of older Tamil forms. The leaf shows signs of age, with some discoloration and wear at the edges.

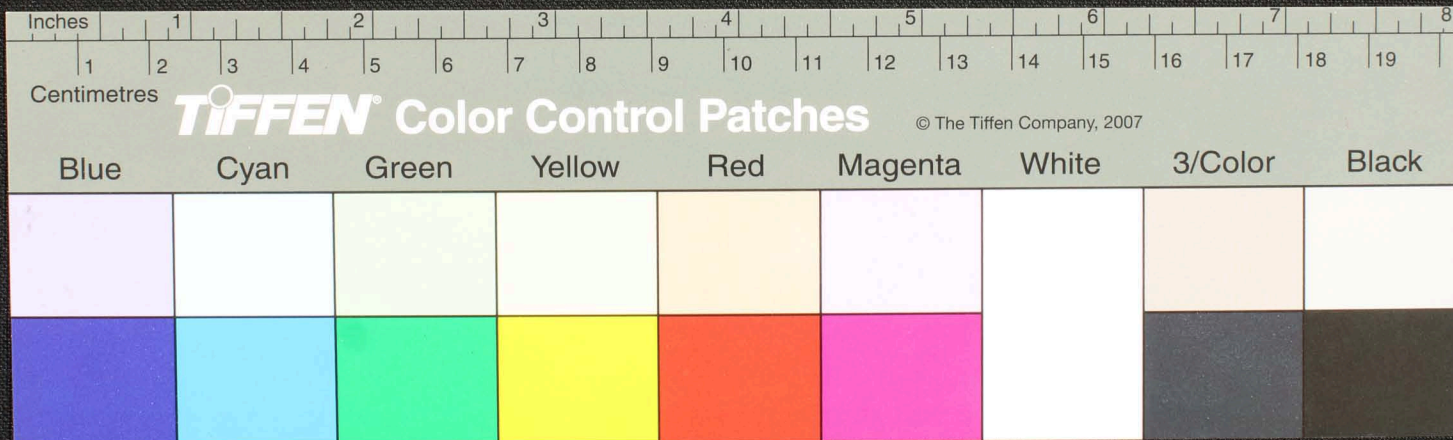




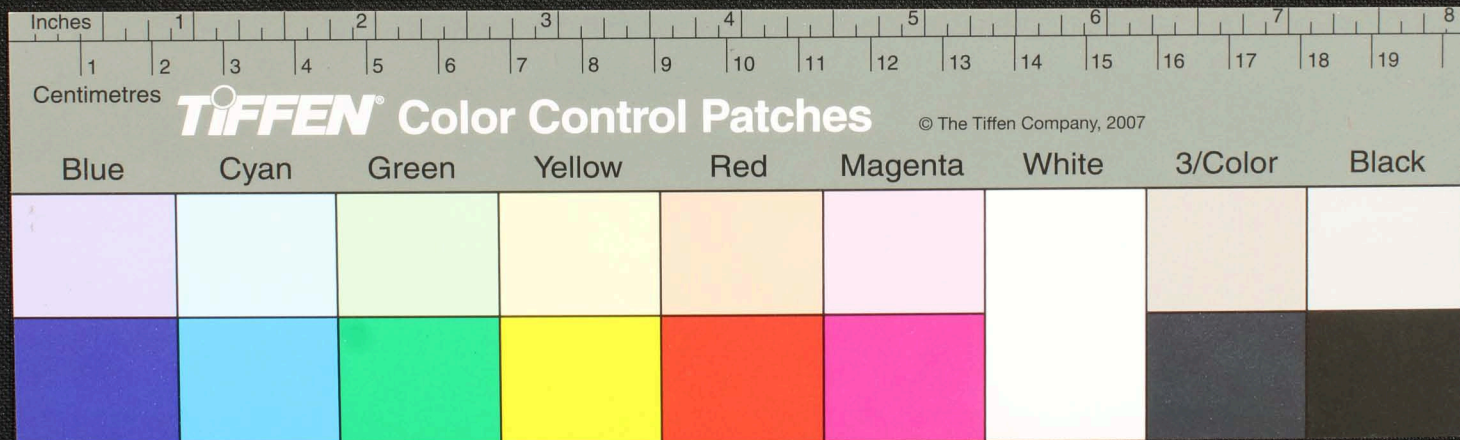




Handwritten Tamil script on a palm leaf manuscript. The text is arranged in approximately 10 horizontal lines across the length of the leaf. The script is finely etched into the surface of the dried leaf. There are two prominent circular holes, likely from traditional binding methods. The leaf shows signs of age and wear, with some fraying at the edges.

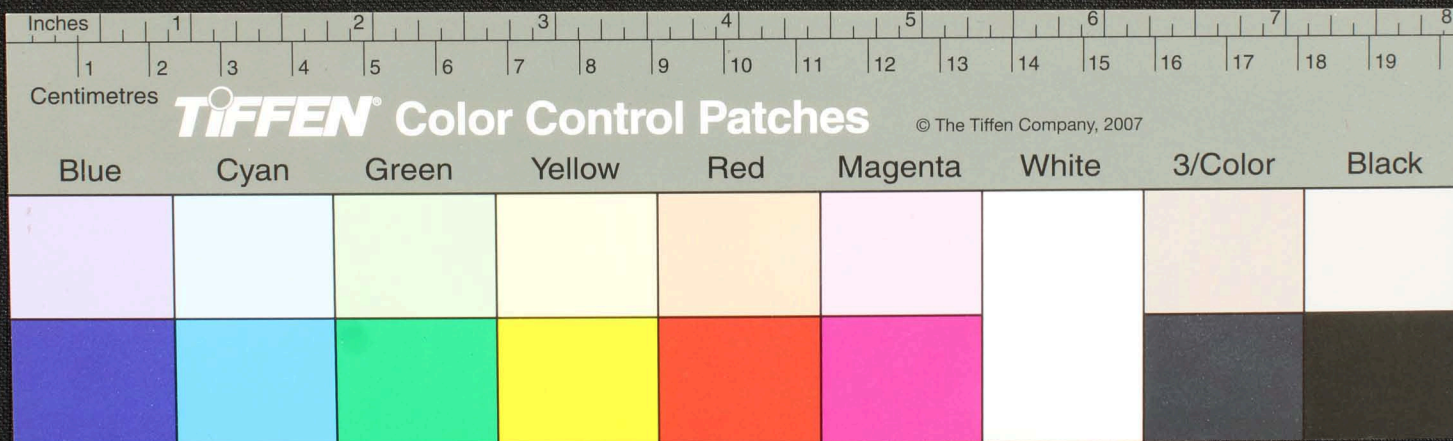


Handwritten Tamil script on a palm leaf manuscript. The text is densely packed and spans the length of the leaf. Two circular holes are visible, used for binding multiple leaves together. The script is written in a traditional style, with some characters appearing to be in a different script or dialect, possibly Grantha or a specific regional variant of Tamil.





Handwritten text in Tamil script on a palm leaf manuscript. The text is arranged in several lines across the length of the leaf. There are two circular holes visible, which were traditionally used for threading a cord to bind multiple leaves together. The script is finely etched into the surface of the dried leaf.



















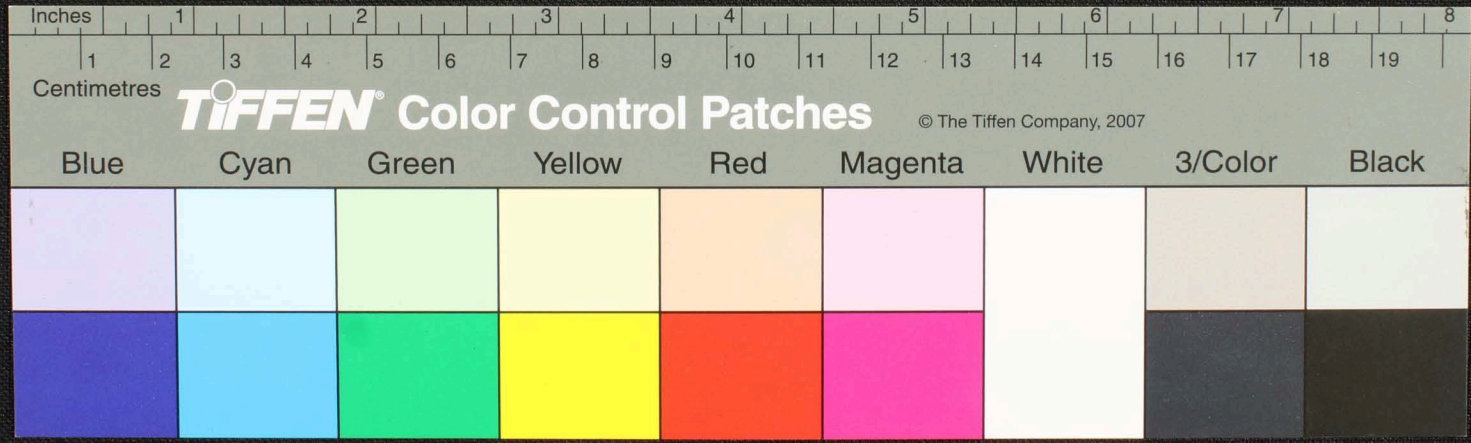






Handwritten Tamil script on a palm leaf manuscript. The text is densely packed and appears to be a form of classical or religious literature. The leaf shows signs of age and wear, with some dark spots and irregular edges.

50, 67

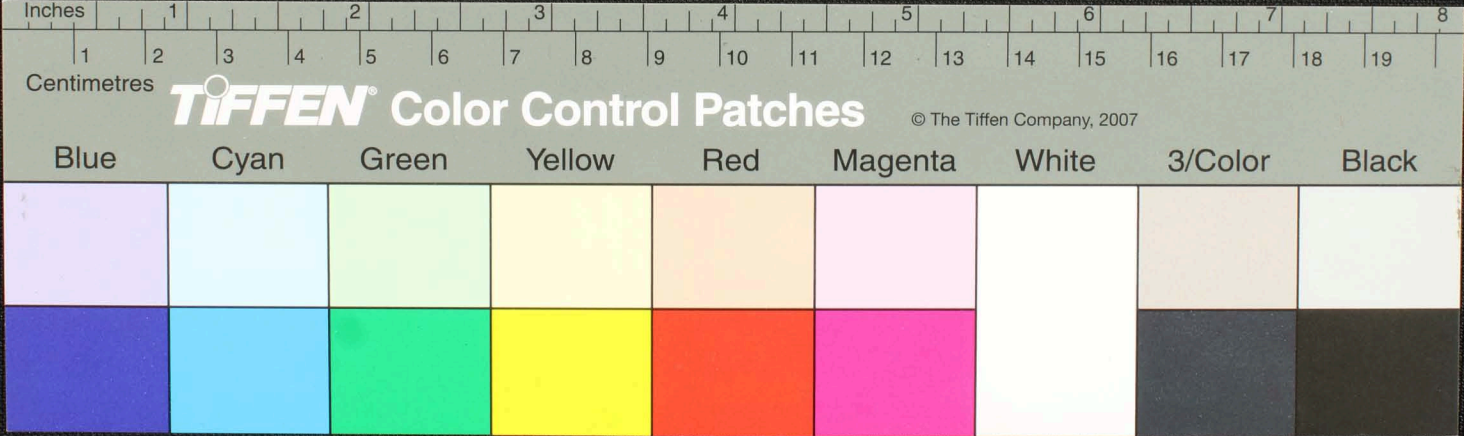




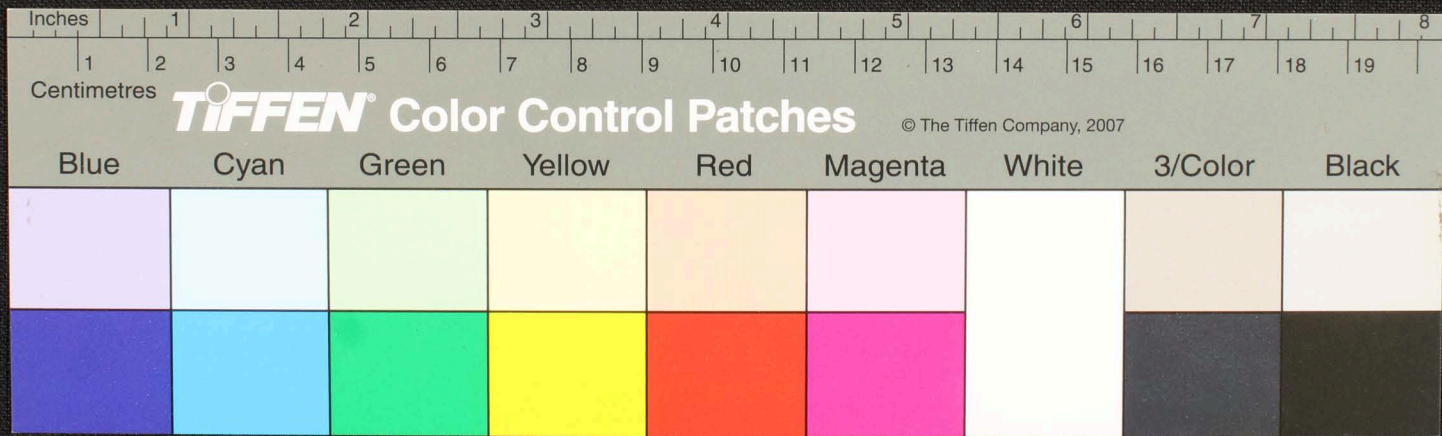




Handwritten Tamil script on a palm leaf manuscript. The text is densely packed and spans the length of the leaf. It appears to be a historical record or a religious text, given the nature of the medium. The script is written in a traditional style, with some characters that are characteristic of older Tamil inscriptions. The leaf shows signs of age, with some darkening and wear, particularly around the two circular holes used for binding.



Handwritten Tamil script on a palm leaf manuscript. The text is arranged in approximately 10 horizontal lines across the length of the leaf. On the left side, there is a handwritten number '102'.









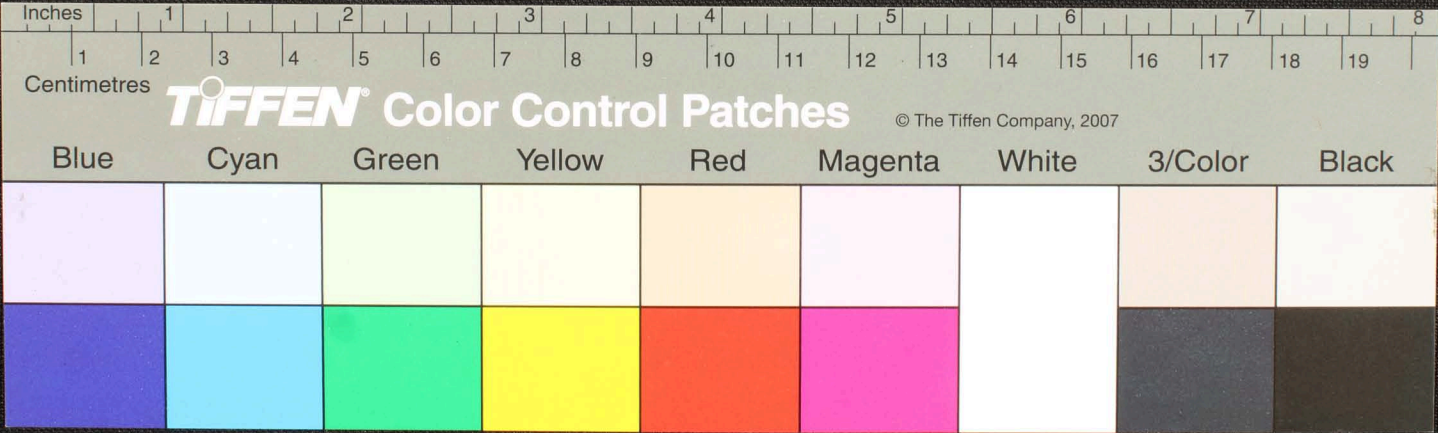




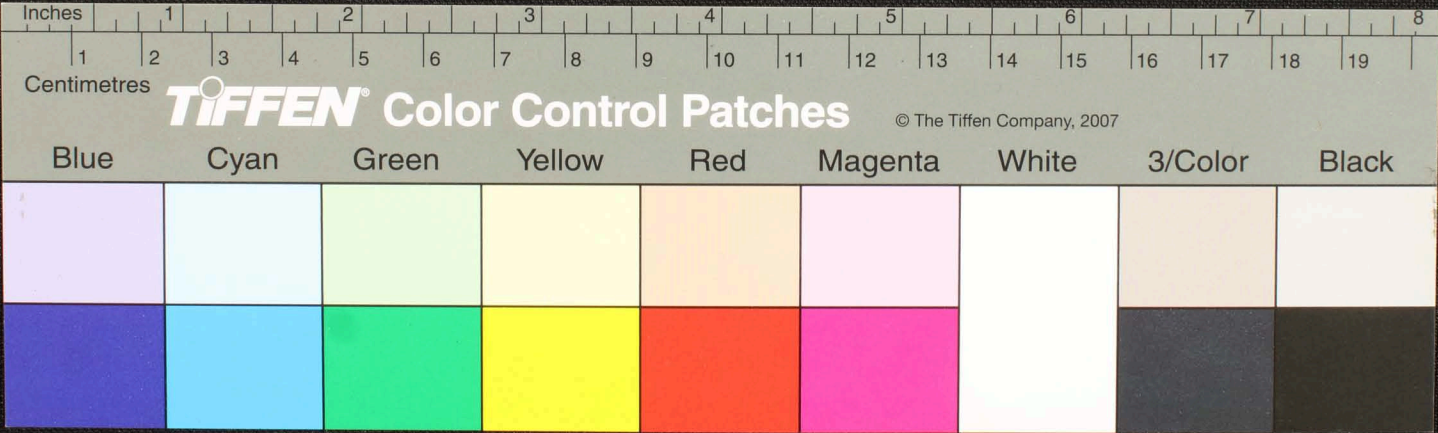




Handwritten Tamil script on a palm leaf manuscript. The text is arranged in approximately 10 horizontal lines across the length of the leaf. The script is finely etched into the surface of the dried leaf. Two circular holes are visible, which were traditionally used for threading a cord to bind multiple leaves together into a book format.



Handwritten Tamil script on a palm leaf manuscript. The text is arranged in approximately 10 horizontal lines. On the left side, there are several lines of text that appear to be a title or a specific section header, including characters like 'யு', 'யுதிவையினை', 'விரிசெய்து', and 'கேள்யு'. The main body of text continues across the leaf, with a small circular hole visible near the center-left. The script is written in a traditional, cursive style.

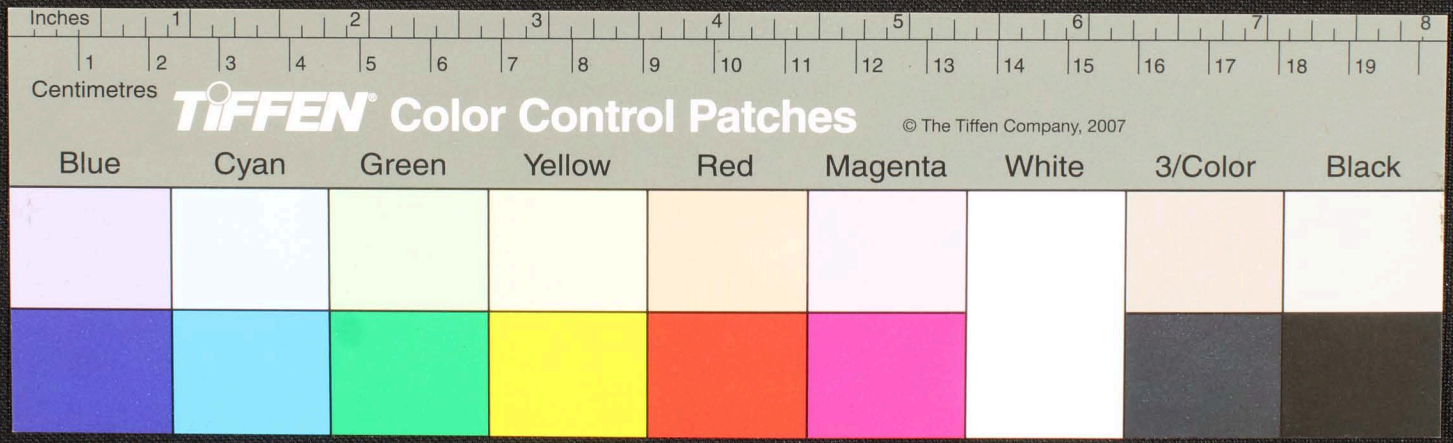




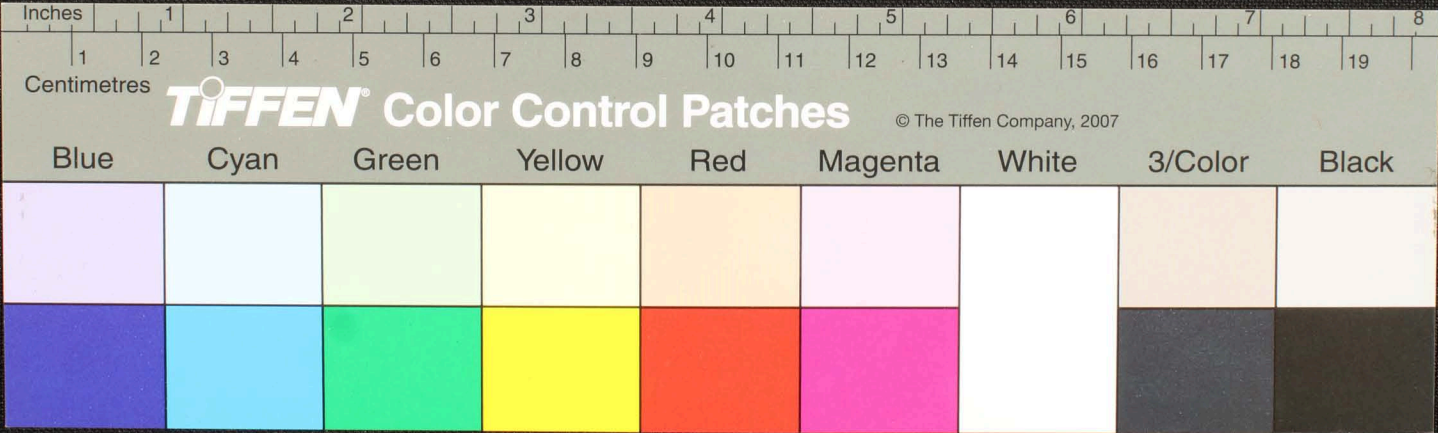




Handwritten Tamil script on a palm leaf manuscript. The text is arranged in approximately 10 horizontal lines. The script is densely packed and appears to be a form of classical or historical Tamil. There are some dark spots and irregularities on the leaf, possibly due to age or damage. The leaf is slightly curved and has a natural, light brown color.



Handwritten Tamil script on a palm leaf manuscript. The text is densely packed and spans the length of the leaf. It appears to be a historical record or a religious text, given the context of such artifacts. The script is written in a traditional style, with some characters that are characteristic of older Tamil inscriptions. The leaf shows signs of age, with some wear and tear, particularly at the ends.















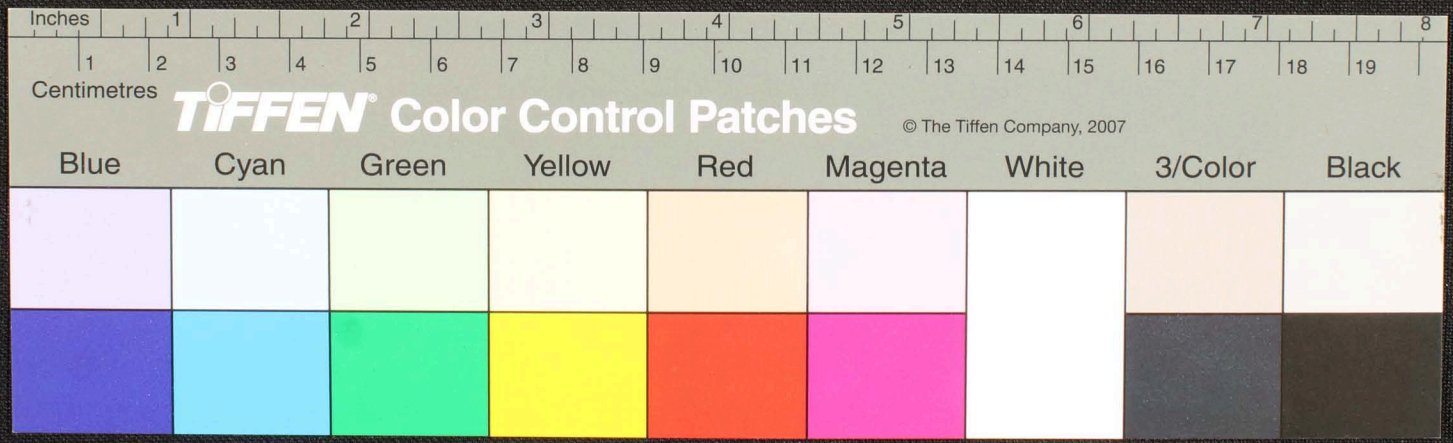








Handwritten Tamil script on a palm leaf manuscript. The text is densely packed and appears to be a historical record or a religious text. The leaf shows signs of age and wear, with some dark spots and irregular edges. The script is written in a traditional style, with clear letterforms and consistent spacing between words.







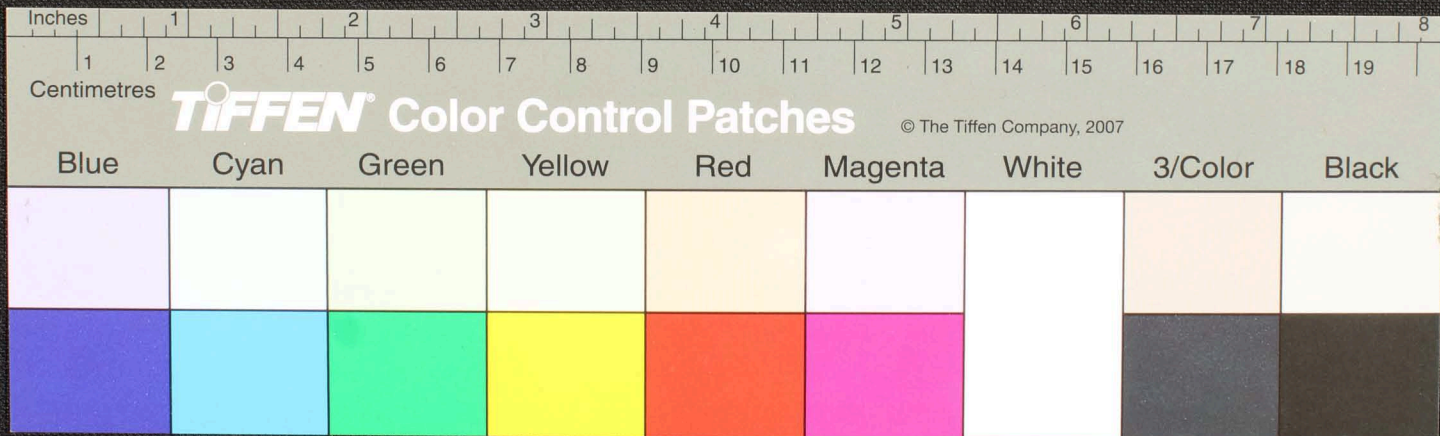








Handwritten Tamil script on a palm leaf manuscript. The text is arranged in approximately 10 horizontal lines across the length of the leaf. The script is finely etched into the surface of the dried leaf. The leaf is irregularly shaped with frayed edges, particularly on the right side.







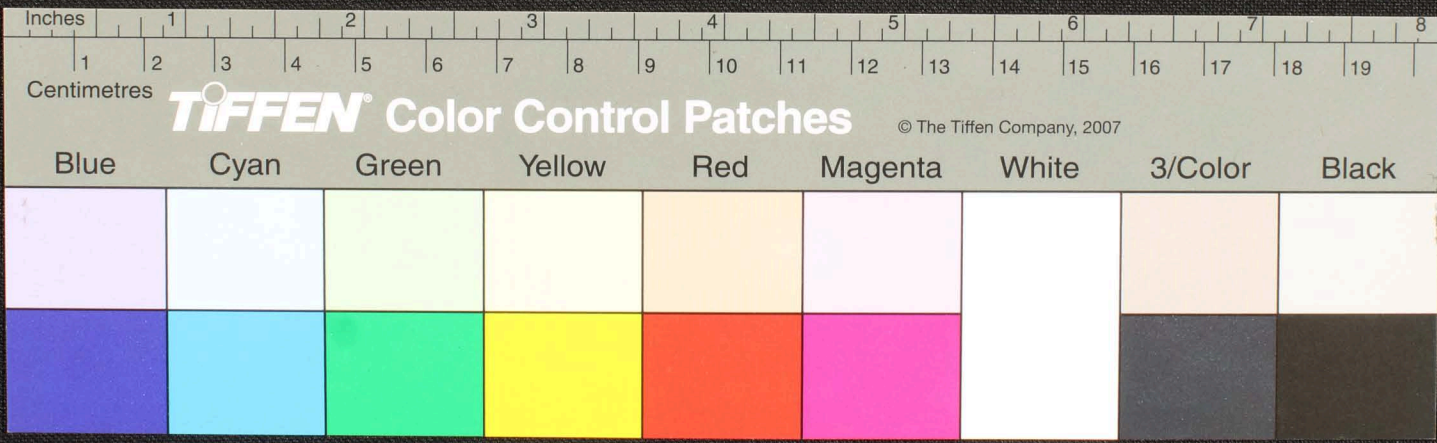




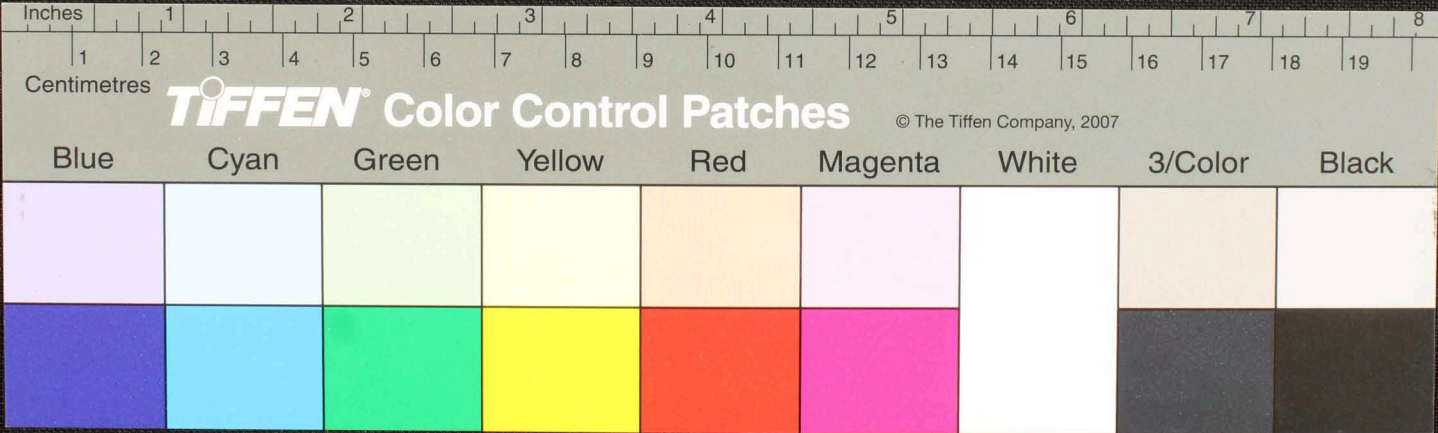




Handwritten Tamil script on a palm leaf manuscript. The text is arranged in approximately 10 horizontal lines. The script is finely etched into the surface of the dried leaf. There are some dark spots and irregularities on the leaf, possibly due to age or damage.



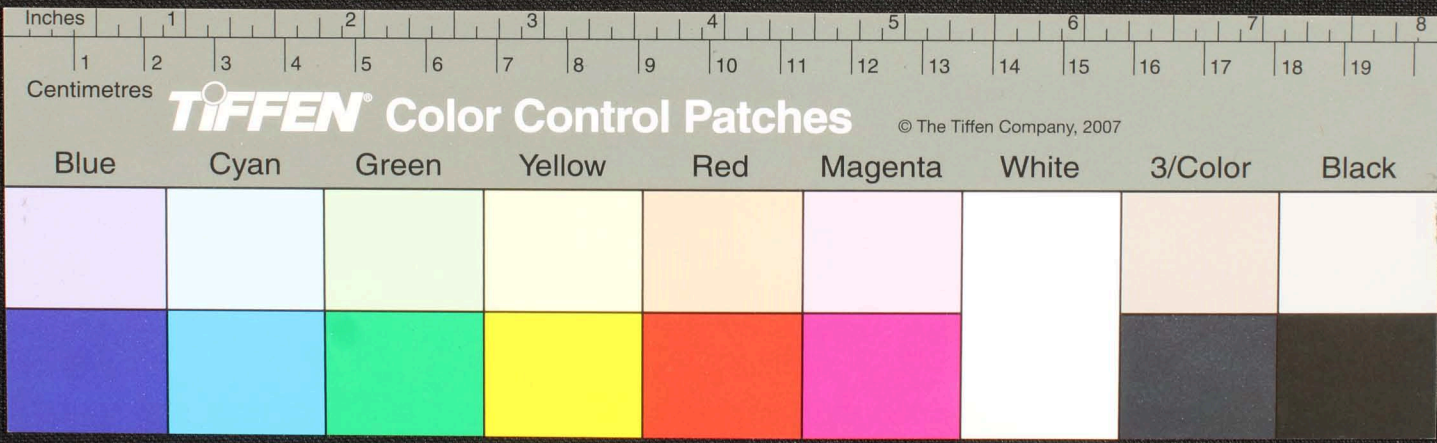
17. 2. 17  
 உயர்வாகியுள்ள சீமையானுதிக்கு தந்தையியார் ஓர் ஆறு ஓர் தீவியர் பொருள்குறி நினைவுகூர்ந்து  
 உயர்வாகியுள்ள சீமையானுதிக்கு தந்தையியார் ஓர் ஆறு ஓர் தீவியர் பொருள்குறி நினைவுகூர்ந்து  
 உயர்வாகியுள்ள சீமையானுதிக்கு தந்தையியார் ஓர் ஆறு ஓர் தீவியர் பொருள்குறி நினைவுகூர்ந்து  
 உயர்வாகியுள்ள சீமையானுதிக்கு தந்தையியார் ஓர் ஆறு ஓர் தீவியர் பொருள்குறி நினைவுகூர்ந்து  
 உயர்வாகியுள்ள சீமையானுதிக்கு தந்தையியார் ஓர் ஆறு ஓர் தீவியர் பொருள்குறி நினைவுகூர்ந்து  
 உயர்வாகியுள்ள சீமையானுதிக்கு தந்தையியார் ஓர் ஆறு ஓர் தீவியர் பொருள்குறி நினைவுகூர்ந்து  
 உயர்வாகியுள்ள சீமையானுதிக்கு தந்தையியார் ஓர் ஆறு ஓர் தீவியர் பொருள்குறி நினைவுகூர்ந்து  
 உயர்வாகியுள்ள சீமையானுதிக்கு தந்தையியார் ஓர் ஆறு ஓர் தீவியர் பொருள்குறி நினைவுகூர்ந்து  
 உயர்வாகியுள்ள சீமையானுதிக்கு தந்தையியார் ஓர் ஆறு ஓர் தீவியர் பொருள்குறி நினைவுகூர்ந்து  
 உயர்வாகியுள்ள சீமையானுதிக்கு தந்தையியார் ஓர் ஆறு ஓர் தீவியர் பொருள்குறி நினைவுகூர்ந்து



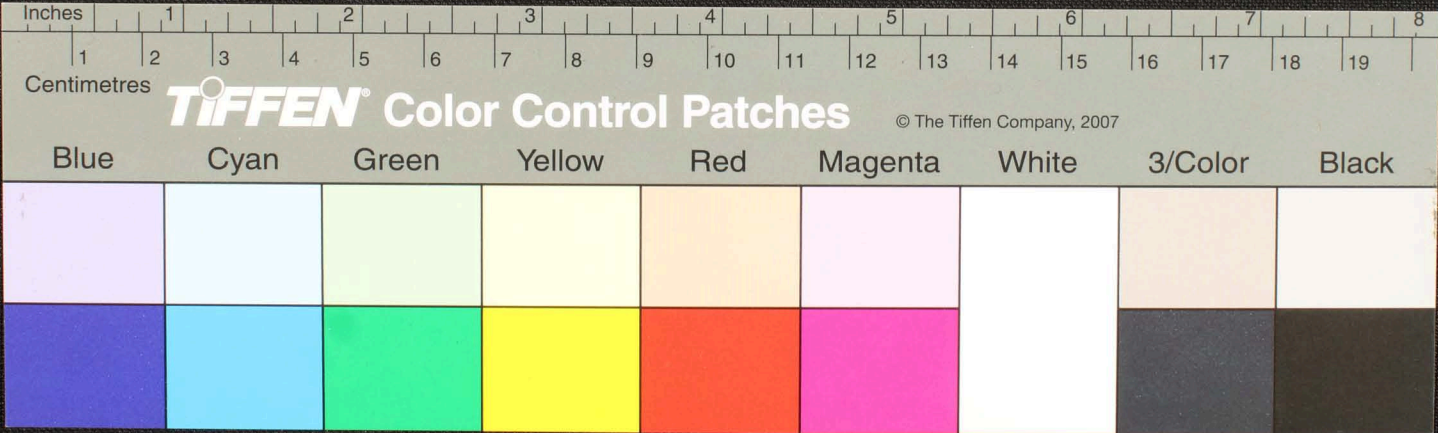




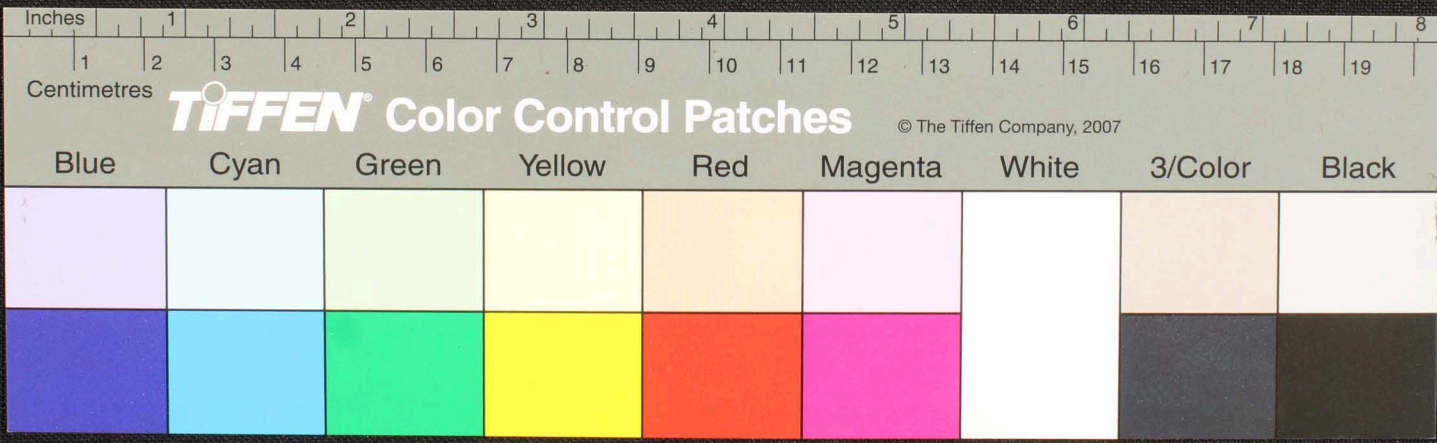
Handwritten Tamil script on a palm leaf manuscript. The text is arranged in approximately 10 horizontal lines across the length of the leaf. The script is a traditional form of the Tamil language, likely used for religious or philosophical purposes. A small circular hole is visible on the left side of the leaf, which was traditionally used for threading a cord to bind multiple leaves together into a book.



Handwritten Tamil script on a palm leaf manuscript. The text is arranged in approximately 10 horizontal lines across the length of the leaf. The script is finely etched into the surface of the dried leaf. A small circular hole is visible on the left side, used for threading a cord to bind multiple leaves together.



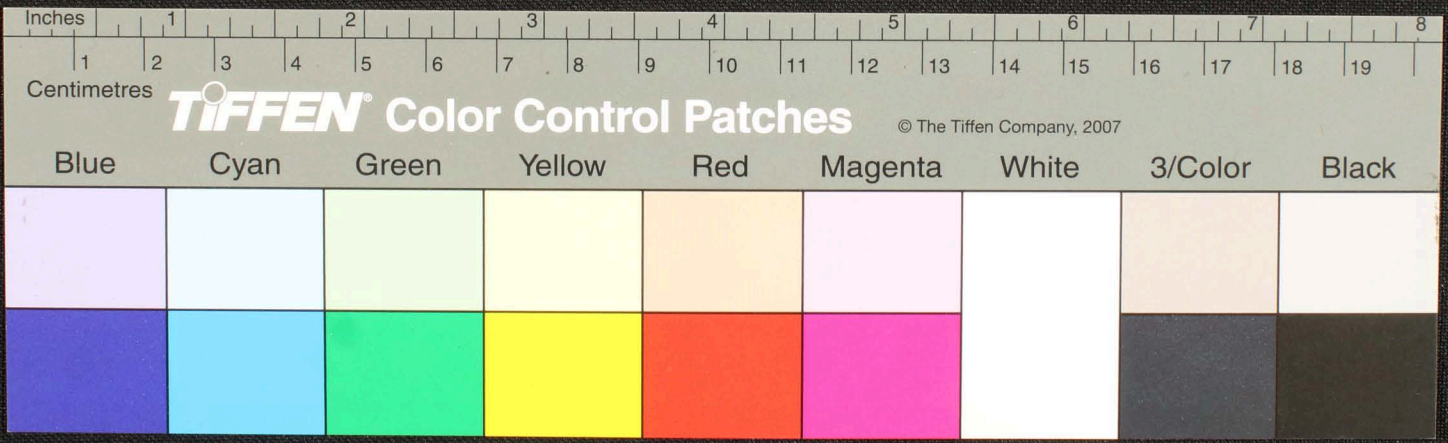
Handwritten Tamil script on a palm leaf manuscript. The text is arranged in approximately 10 horizontal lines. The first line on the left contains the word 'முடிய' (Mudiyar). The script is densely packed and appears to be a form of classical Tamil. There is a small circular hole or mark on the leaf, approximately one-third of the way from the left end.





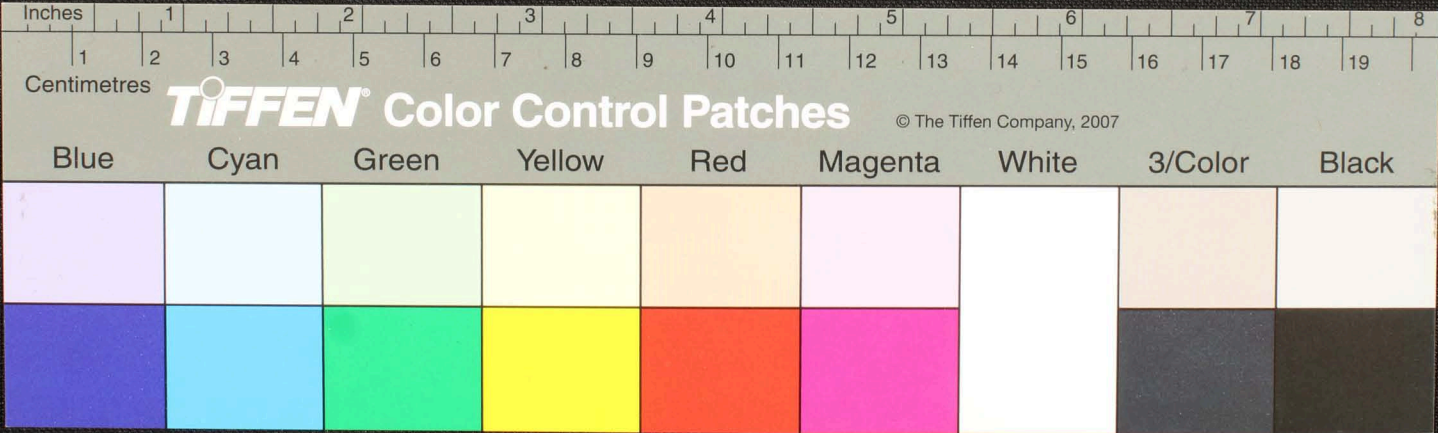
19.09

Handwritten Tamil script on a palm leaf manuscript, consisting of approximately 10 lines of text.

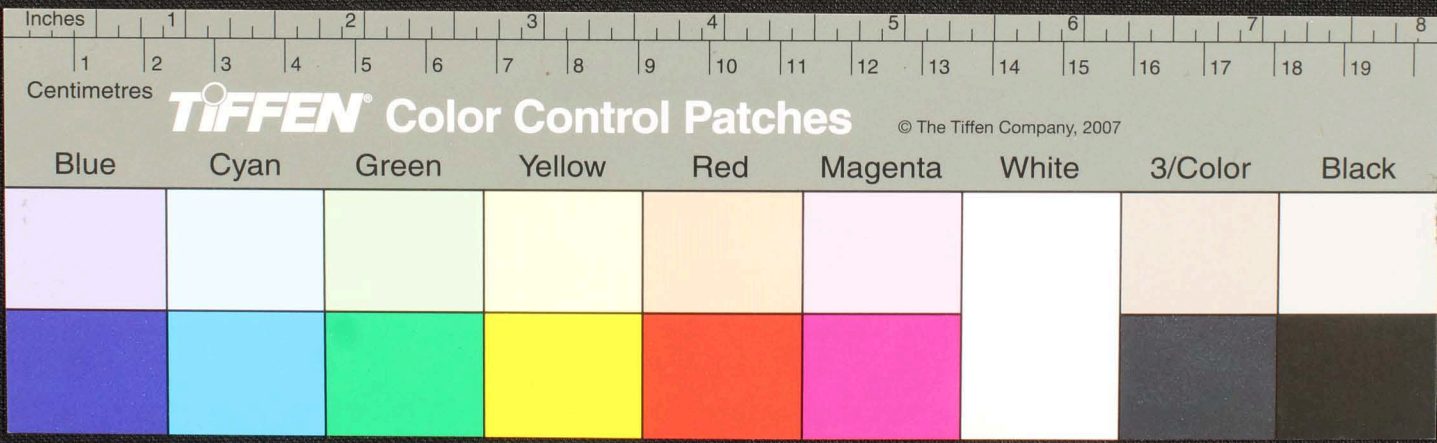




Handwritten Tamil script on a palm leaf manuscript. The text is arranged in approximately 10 horizontal lines. On the left side, there are several lines of text that appear to be a title or a specific section header, possibly starting with 'முருகு' (Murugu). The main body of text consists of continuous script, with a small circular hole visible near the center of the leaf, likely for binding purposes. The script is densely packed and covers most of the length of the leaf.



Handwritten text in Tamil script on a palm leaf manuscript. The text is arranged in approximately 10 horizontal lines. On the left side, there are three lines of text that appear to be a header or title, possibly including the name of the author or a specific reference. The main body of text is densely packed and follows a traditional format for such documents. A small, dark circular mark is visible on the leaf, likely a hole from a binding process.









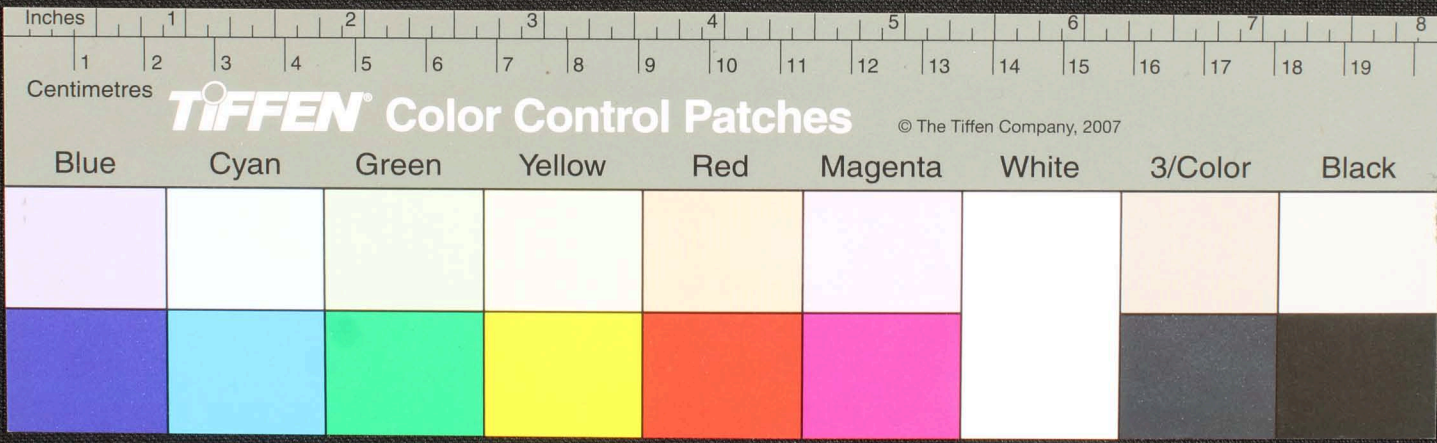








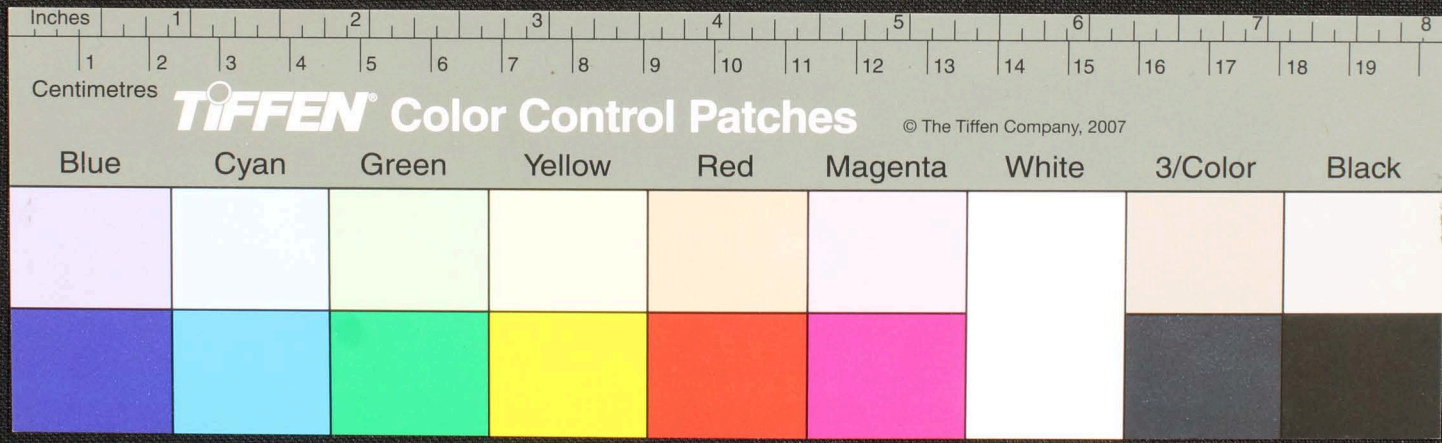
Handwritten text in Tamil script on a palm leaf manuscript. The text is arranged in approximately 10 horizontal lines. The script is dense and characteristic of traditional South Indian manuscripts. There is a small dark circular mark on the left side of the leaf, approximately at the 3.5-inch mark.



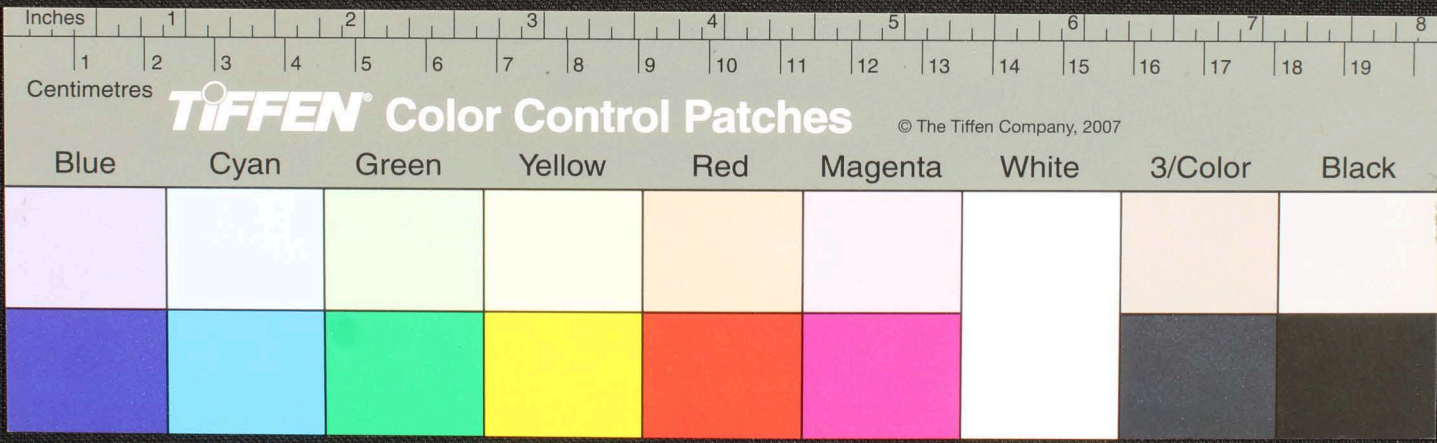




Handwritten Tamil script on a palm leaf manuscript. The text is arranged in approximately 10 horizontal lines across the length of the leaf. On the left side, there are several lines of text that appear to be a title or a specific reference, possibly including the name of a deity or a religious figure. The main body of text consists of continuous script, likely a form of Tamil used in religious or philosophical contexts. The leaf shows signs of age, with some fraying and discoloration at the edges.



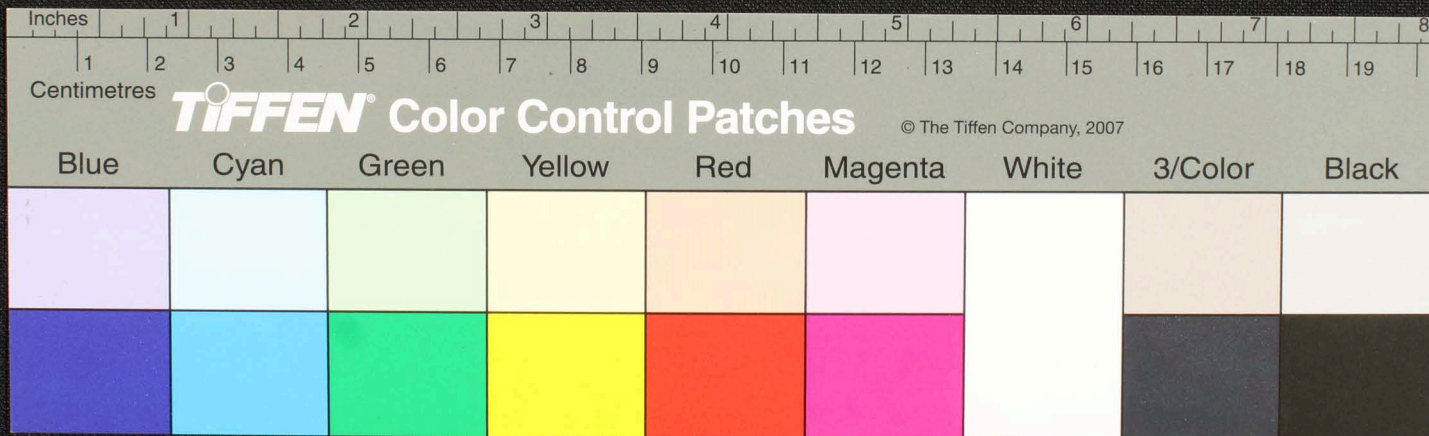
Handwritten Tamil script on a palm leaf manuscript. The text is arranged in approximately 10 horizontal lines across the length of the leaf. The script is a traditional form of the Tamil language, likely used for religious or philosophical purposes. The leaf shows signs of age and wear, with some fraying at the edges.





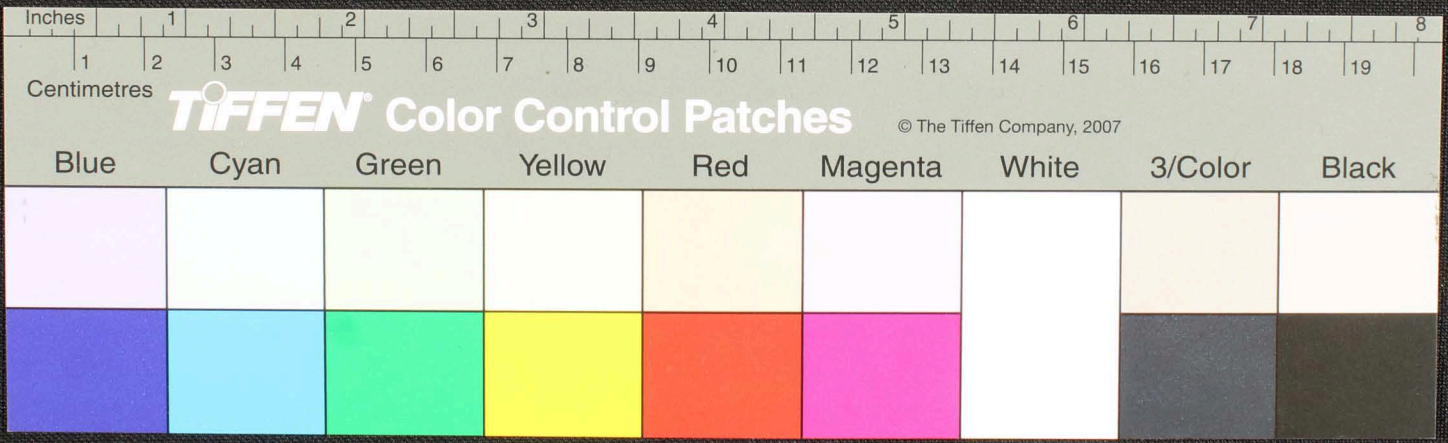


Handwritten Tamil script on a palm leaf manuscript strip. The text is arranged in a single line across the top of the leaf. Two circular holes are visible, used for threading a cord to bind multiple leaves together.

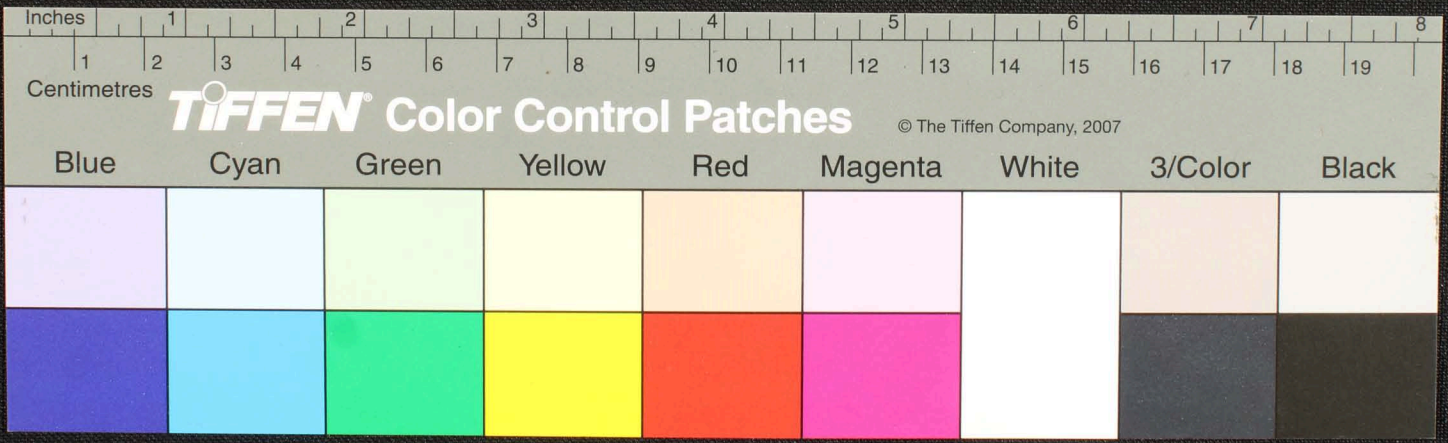




Handwritten Tamil script on a palm leaf manuscript. The text is densely packed and appears to be a historical record or a religious text. The leaf shows signs of age and wear, with some dark spots and a slightly irregular edge. The script is written in a traditional style, with clear characters and some larger characters that may indicate the start of new sections or words.



Handwritten text in Tamil script on a palm leaf manuscript. The text is arranged in approximately 10 horizontal lines across the length of the leaf. Two circular holes are visible, which were traditionally used for threading a cord to bind multiple leaves together into a book format. The script is finely etched into the surface of the dried leaf.







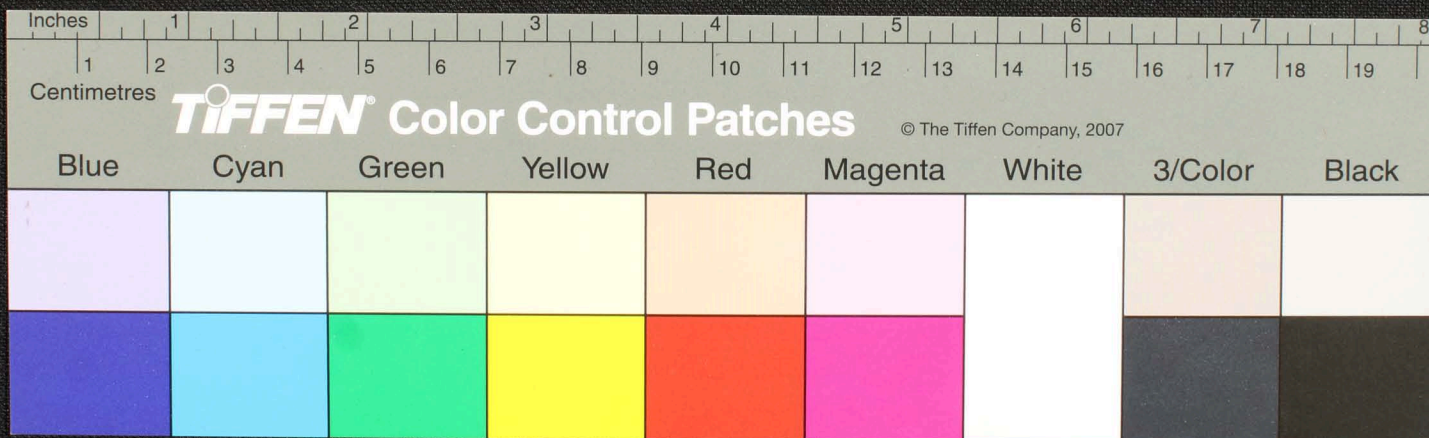


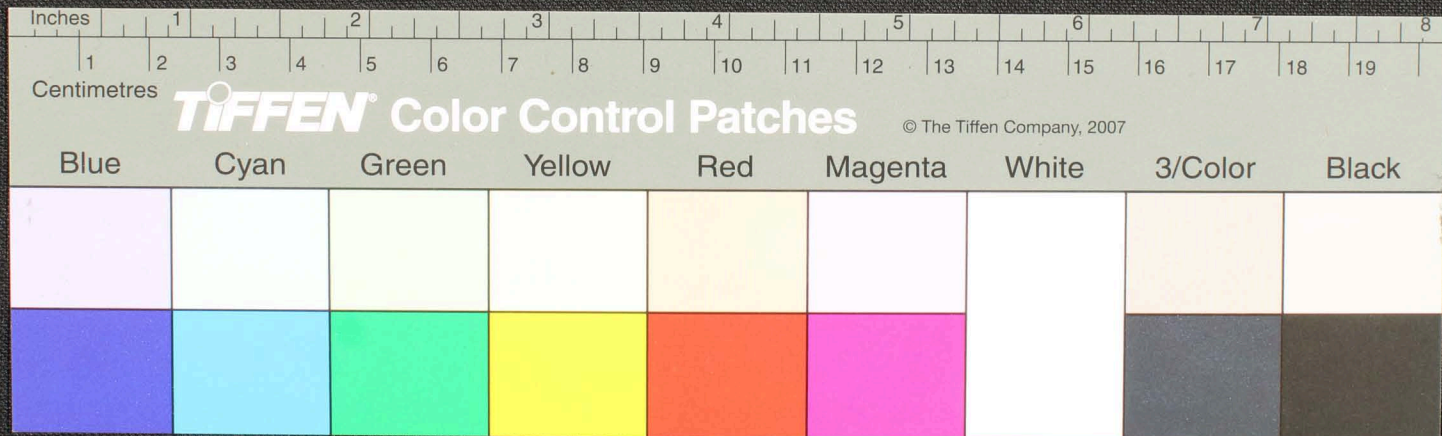












Inches 1 2 3 4 5 6 7 8

Centimetres 1 2 3 4 5 6 7 8 9 10 11 12 13 14 15 16 17 18 19

**TIFFEN** Color Control Patches © The Tiffen Company, 2007

Blue Cyan Green Yellow Red Magenta White 3/Color Black

