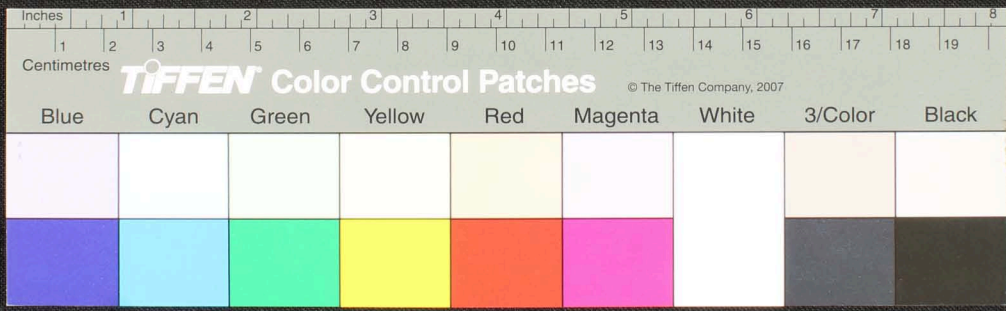
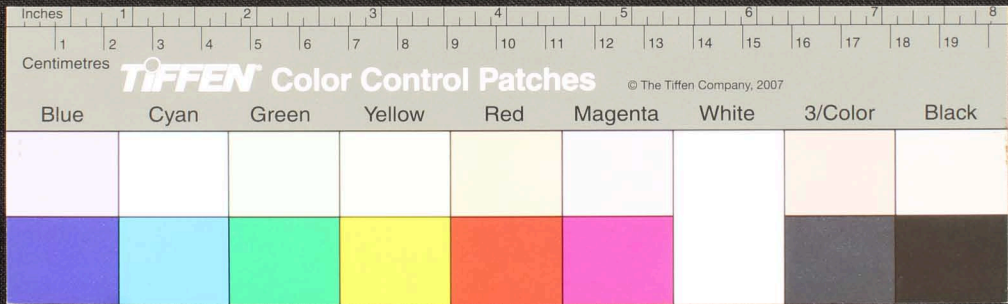


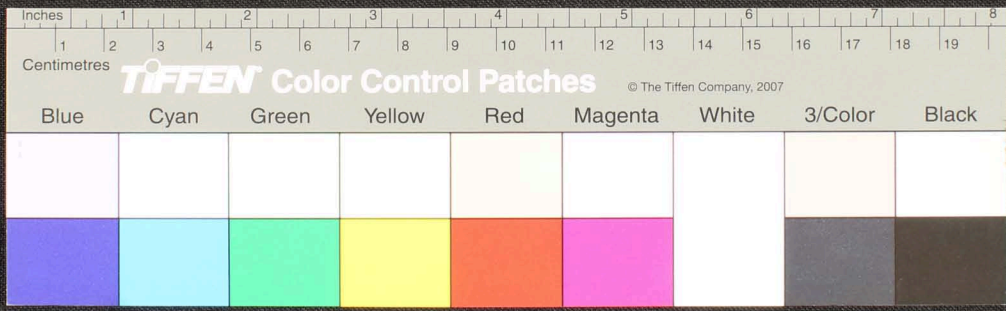
Handwritten text in Tamil script on a palm leaf manuscript. The text is arranged in approximately 12 horizontal lines across the length of the leaf. The script is finely etched into the surface of the dried leaf, which shows signs of age and wear, including dark spots and irregular edges.



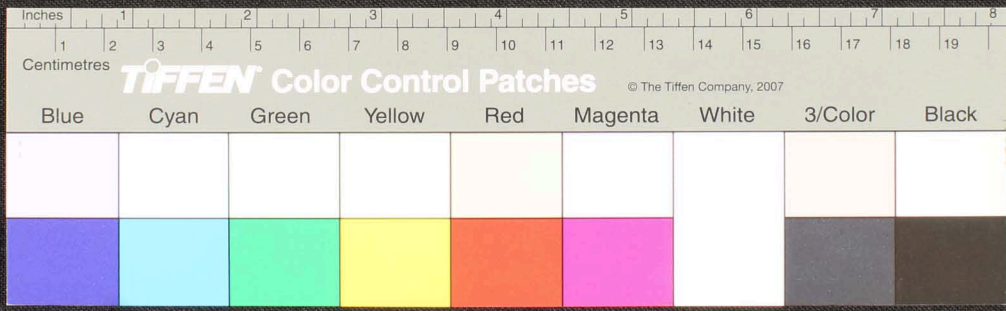
Handwritten Tamil script on a palm leaf manuscript strip. The text is arranged in approximately 10 horizontal lines across the length of the leaf. The script is densely packed and appears to be a form of classical Tamil. The leaf shows signs of age, including dark spots and some surface wear.



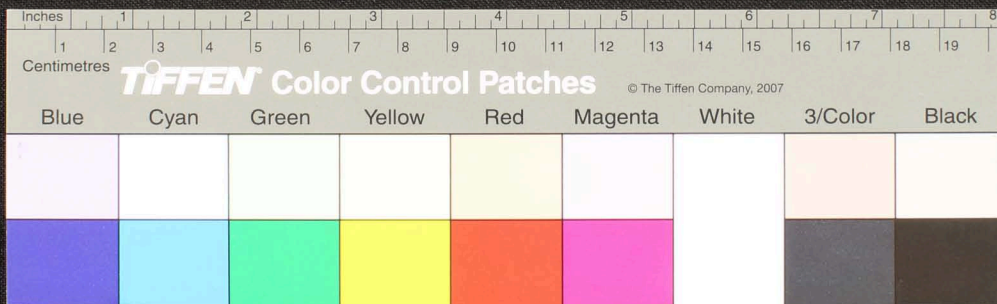
Handwritten Tamil script on a palm leaf manuscript strip. The text is arranged in approximately 10 horizontal lines across the length of the leaf. The script is finely etched into the surface of the dried leaf. There are two prominent circular holes, likely from traditional binding methods. The leaf shows signs of age and wear, with some fraying at the ends.



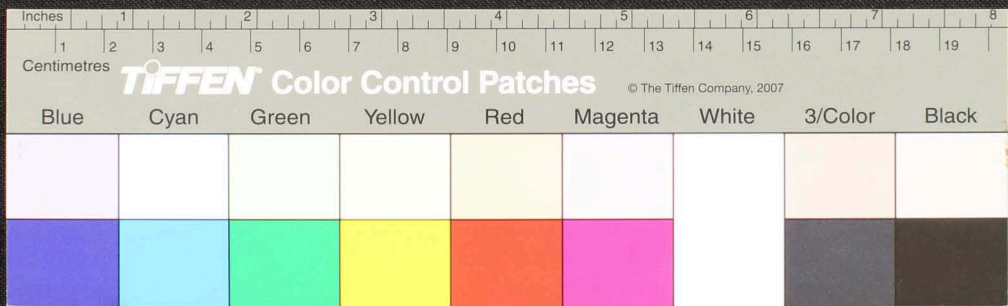
Handwritten Tamil script on a palm leaf manuscript strip. The text is arranged in approximately 10 horizontal lines across the length of the leaf. The script is finely etched into the surface of the dried leaf. There are two distinct circular holes along the strip, which were traditionally used for threading a cord to bind multiple leaves together into a book format. The leaf shows signs of age, including some staining and wear at the edges.



Fragment of an ancient papyrus scroll with handwritten text in a cursive script, likely Demotic or Hieroglyphic. The fragment is yellowed and shows signs of wear, including two circular holes and significant damage to the left edge.

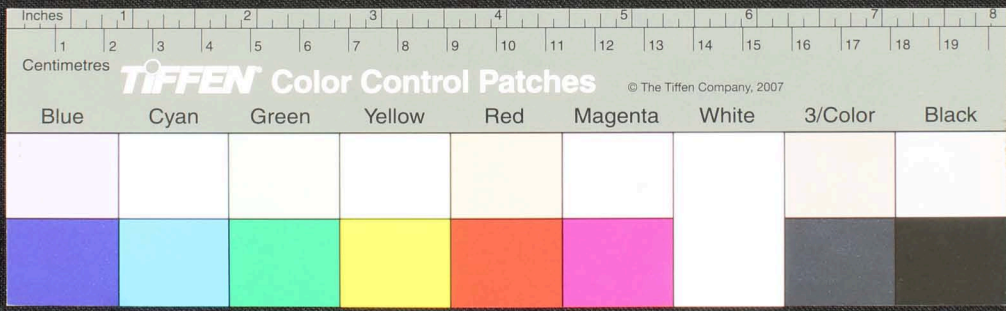


Handwritten text in Tamil script on a palm leaf manuscript. The text is arranged in approximately 10 horizontal lines across the length of the leaf. The script is dark and appears to be a traditional form of the Tamil language. There are two distinct circular holes along the leaf, which were traditionally used for threading a cord to bind multiple leaves together into a book format. The leaf shows signs of age, including some discoloration and wear at the edges.





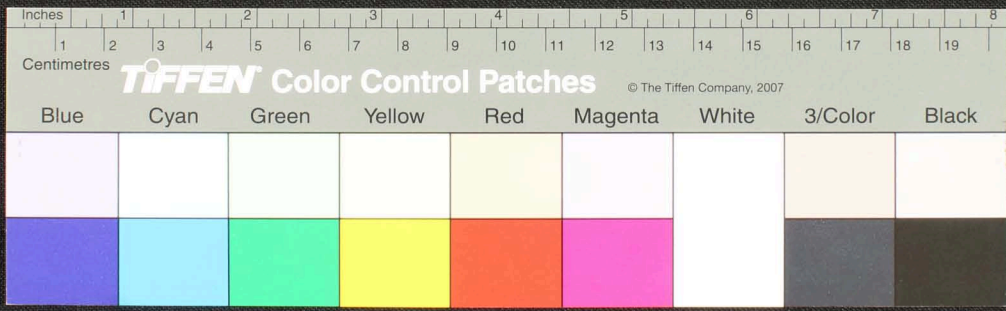
Handwritten Tamil script on a palm leaf manuscript. The text is arranged in several lines across the length of the leaf. There are two circular holes visible, which were traditionally used for threading a cord to bind multiple leaves together. The script is finely etched into the surface of the dried leaf.



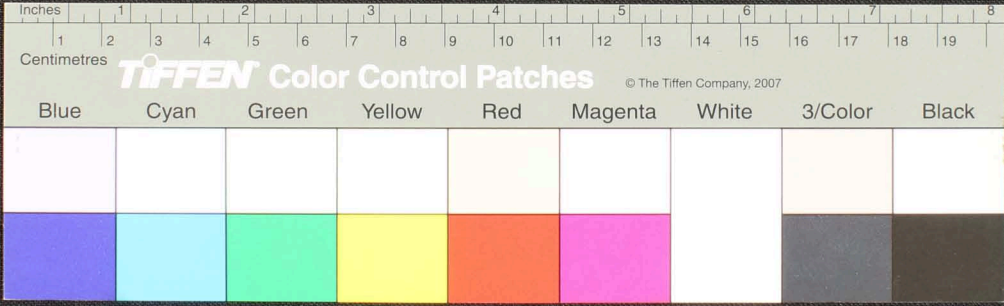




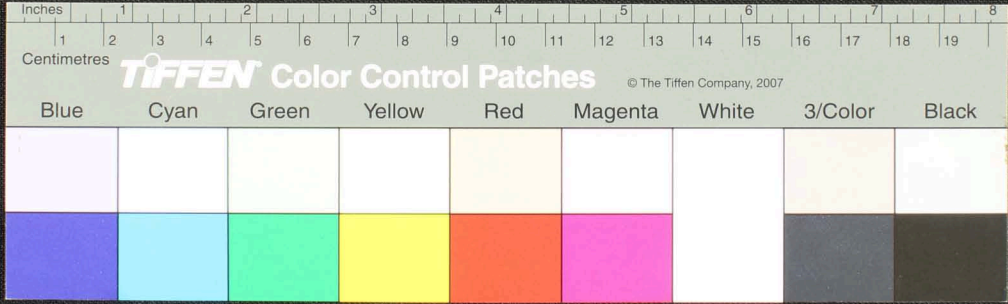
Handwritten text in Tamil script on a palm leaf manuscript strip. The text is arranged in two lines and includes several circular symbols or characters interspersed with the script. The leaf shows signs of age and wear, with some dark spots and a hole near the center.



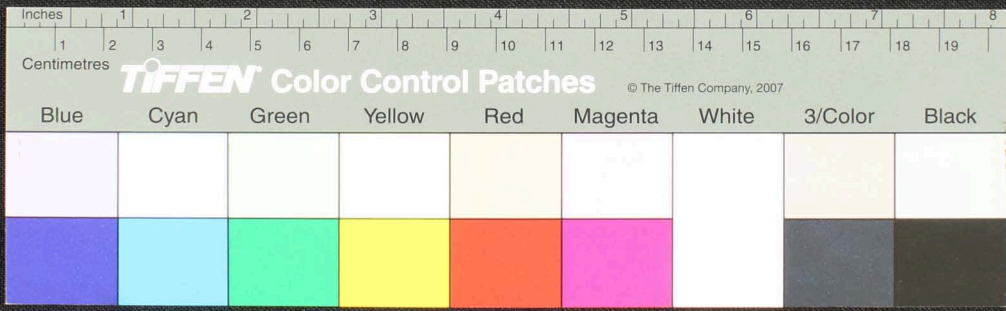
Handwritten Tamil script on a palm leaf. The text is arranged in a single line across the length of the leaf. It appears to be a historical record or a list of names and titles, possibly related to a royal court or administrative matters. The script is finely etched into the surface of the dried leaf.



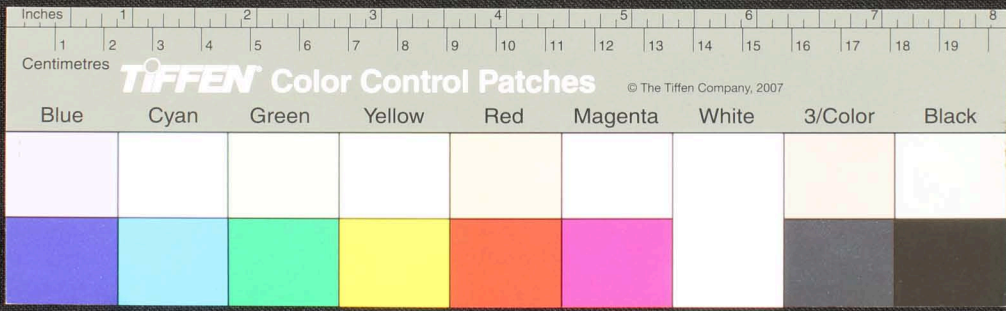
கருணாநிதி மடத்துக்கு உரிய சீர்திருத்தங்களை மேற்கொள்ளுமாறு பரிந்துரை செய்துள்ளார். இவருடைய பரிந்துரையை மீட்டி கொடுக்கவேண்டுகிறார். கருணாநிதி மடத்துக்கு உரிய சீர்திருத்தங்களை மேற்கொள்ளுமாறு பரிந்துரை செய்துள்ளார். இவருடைய பரிந்துரையை மீட்டி கொடுக்கவேண்டுகிறார். கருணாநிதி மடத்துக்கு உரிய சீர்திருத்தங்களை மேற்கொள்ளுமாறு பரிந்துரை செய்துள்ளார். இவருடைய பரிந்துரையை மீட்டி கொடுக்கவேண்டுகிறார்.



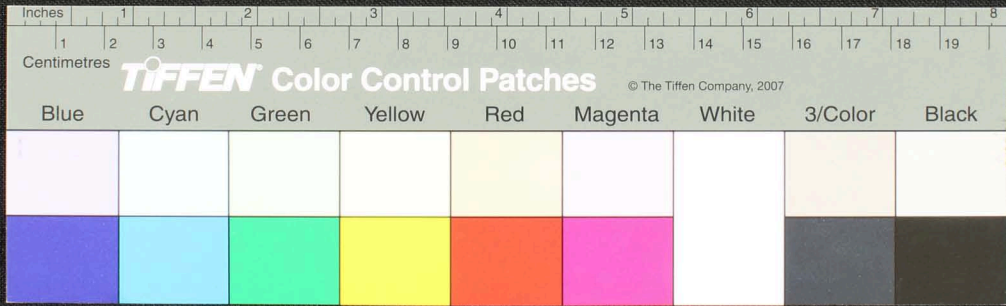
Handwritten Tamil script on a palm leaf manuscript. The text is densely packed and appears to be a historical record or a list of items, possibly related to land or trade, as suggested by the words 'புதுபுதி' (new/old) and 'புதுபுதி' (new/old). The script is written in a traditional style with some characters that are difficult to decipher due to the cursive nature of the handwriting.



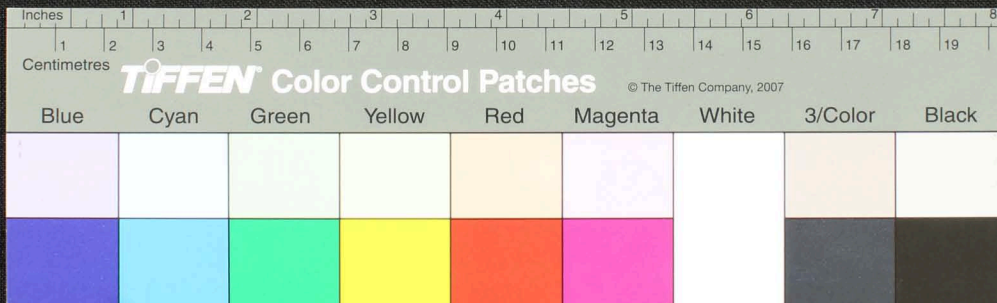
Handwritten Tamil script on a palm leaf manuscript. The text is arranged in approximately 10 horizontal lines across the length of the leaf. The script is densely packed and appears to be a form of classical or historical Tamil. There are two circular holes visible on the leaf, which were traditionally used for threading a cord to bind multiple leaves together into a book format.



Handwritten Tamil script on a palm leaf manuscript. The text is densely packed and runs horizontally across the length of the leaf. There are two circular holes visible, which were traditionally used for threading a cord to bind multiple leaves together. The script is in an older form of the Tamil language, likely from the medieval or early modern period.

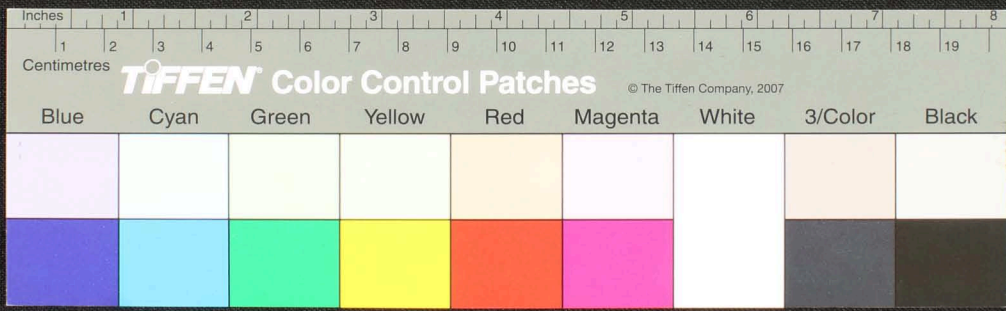


Handwritten Tamil script on a palm leaf manuscript. The text is densely packed and runs horizontally across the length of the leaf. Two circular holes are visible, which were traditionally used for threading a cord to bind multiple leaves together. The script is in an older form of the Tamil language, with some characters appearing slightly different from modern Tamil. The leaf shows signs of age, including some dark spots and wear along the edges.





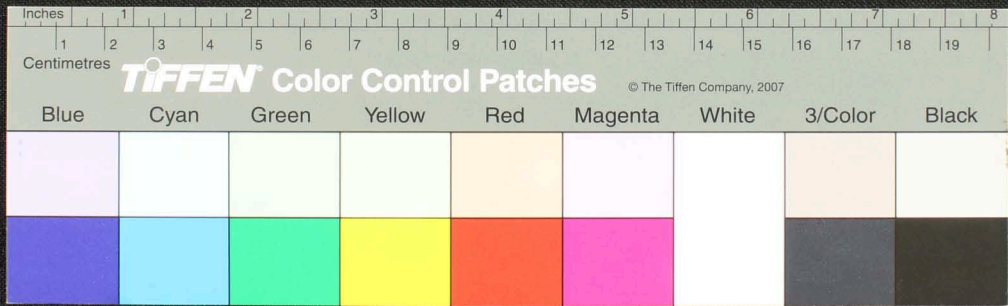
Handwritten Tamil script on a palm leaf manuscript. The text is arranged in approximately 10 horizontal lines across the length of the leaf. The script is finely etched into the surface of the dried leaf. The leaf shows signs of age, with some fraying and discoloration, particularly at the ends and along the edges.



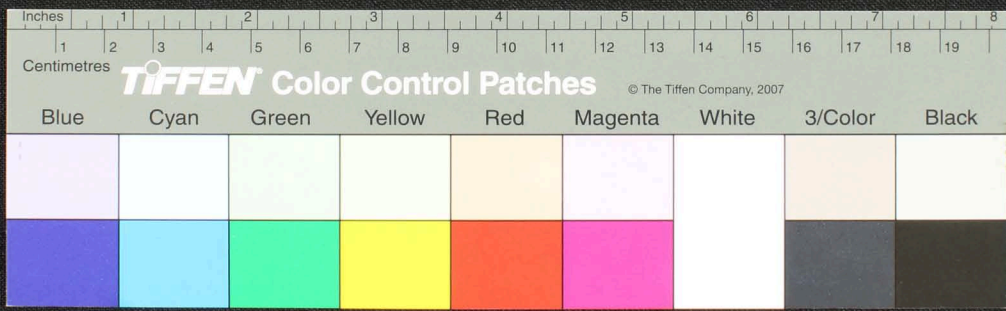
Handwritten Tamil script on a palm leaf manuscript. The text is arranged in approximately 10 horizontal lines across the length of the leaf. The script is finely etched into the surface of the dried leaf. There are two circular holes visible, which were traditionally used for threading a cord to bind multiple leaves together into a book format. The leaf shows signs of age, including some discoloration and wear at the edges.



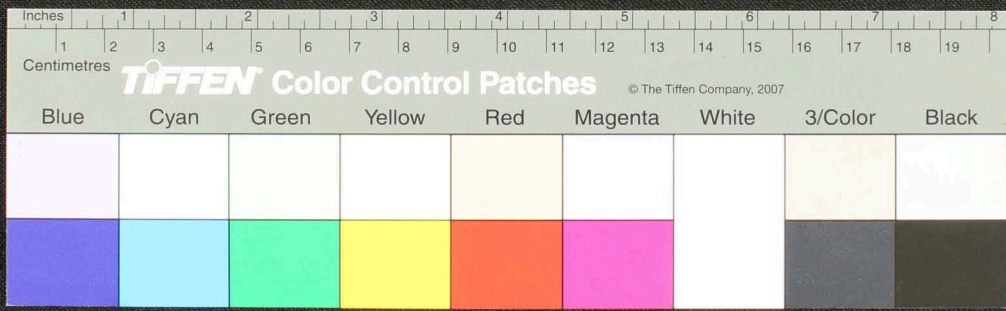
Handwritten text in Tamil script on a palm leaf manuscript. The text is arranged in approximately 10 horizontal lines across the length of the leaf. The script is finely etched into the surface of the dried leaf. The leaf shows signs of age, including some dark spots and irregular edges.



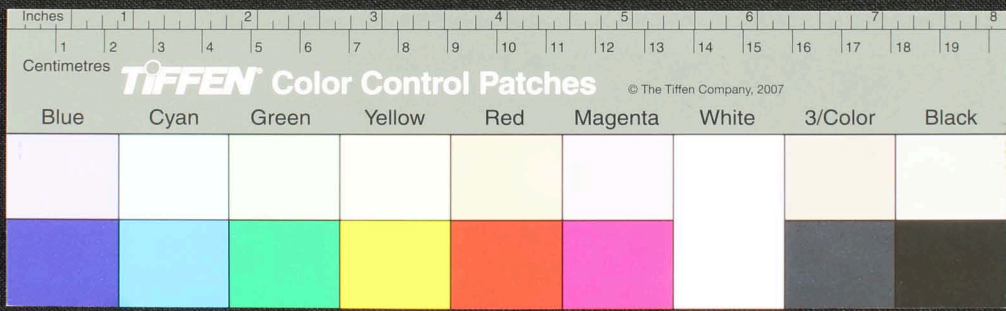
Handwritten text in Tamil script on a palm leaf manuscript. The text is arranged in approximately 10 horizontal lines across the length of the leaf. The script is finely etched into the surface of the dried leaf. Two circular holes are visible, which were traditionally used for threading a cord to bind multiple leaves together into a book format. The leaf shows signs of age, including some darkening and wear, particularly at the edges.



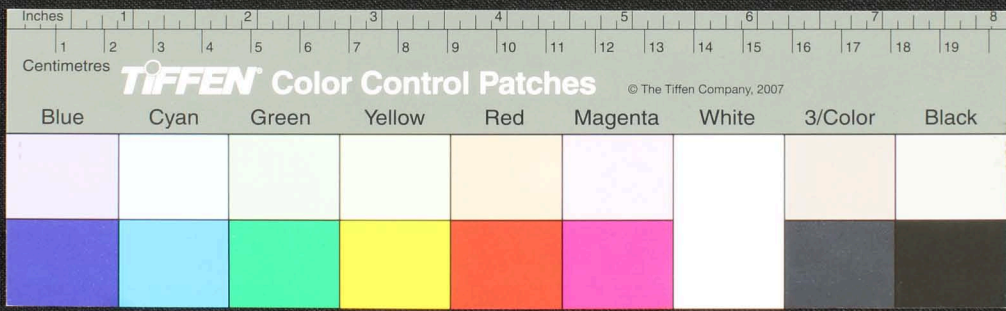
Handwritten Tamil script on a palm leaf manuscript. The text is arranged in approximately 10 horizontal lines across the length of the leaf. Two circular holes are visible, used for threading a cord to bind multiple leaves together. The script is densely packed and appears to be a form of classical or historical Tamil.



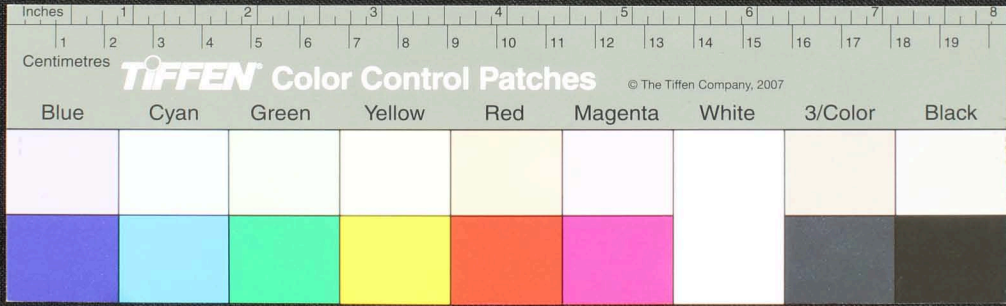
Handwritten Tamil script on a palm leaf manuscript. The text is arranged in a single line across the length of the leaf. Two circular holes are visible, used for threading a cord to bind multiple leaves together. The script is densely packed and appears to be a form of classical or historical Tamil.



Handwritten text in Tamil script on a palm leaf manuscript. The text is arranged in approximately 10 horizontal lines across the length of the leaf. Two circular holes are visible, which were traditionally used for threading a cord to bind multiple leaves together. The leaf shows signs of age, including some staining and wear.

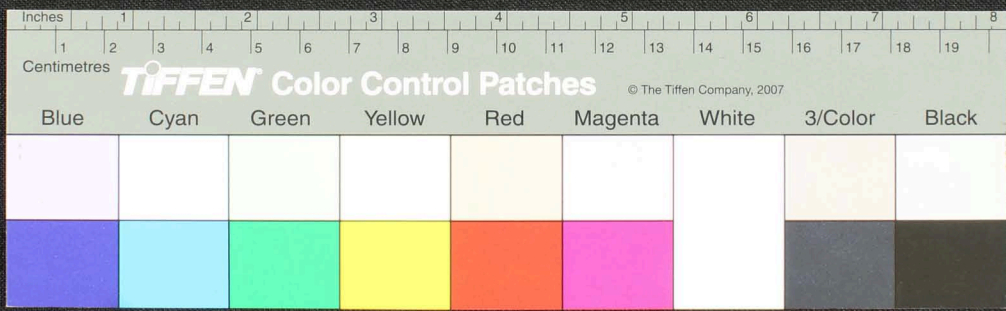


Handwritten text in Tamil script on a palm leaf manuscript. The text is arranged in approximately 10 horizontal lines across the length of the leaf. The script is dark and appears to be a traditional form of the Tamil language. There are two circular holes visible on the leaf, which were traditionally used for threading a cord to bind multiple leaves together into a book format. The leaf shows signs of age, including some staining and wear, particularly at the ends.

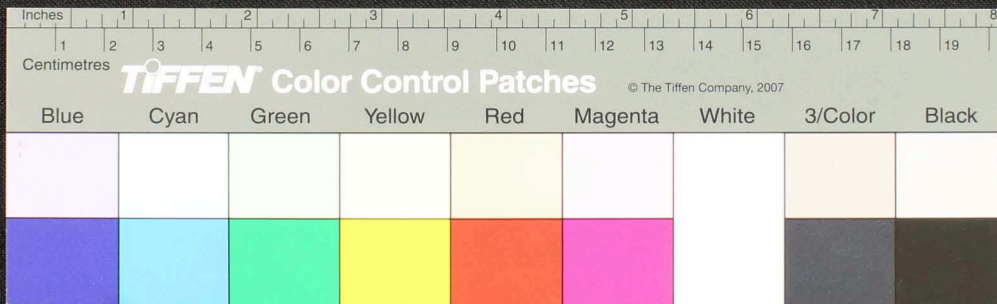




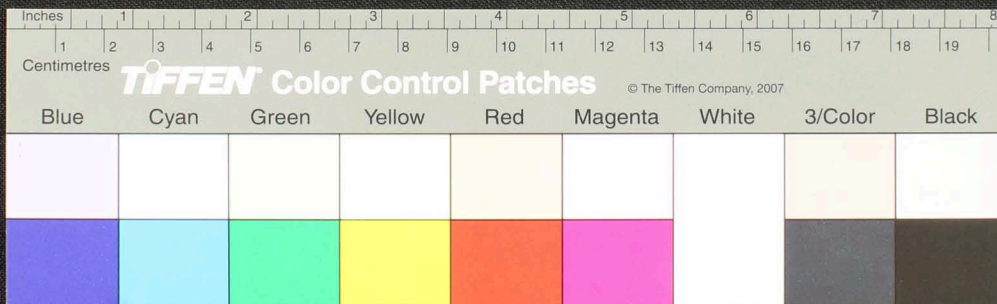
Handwritten Tamil script on a palm leaf manuscript. The text is arranged in approximately 10 horizontal lines across the length of the leaf. Two circular holes are visible, used for threading a cord to bind multiple leaves together. The script is finely etched into the surface of the dried leaf.



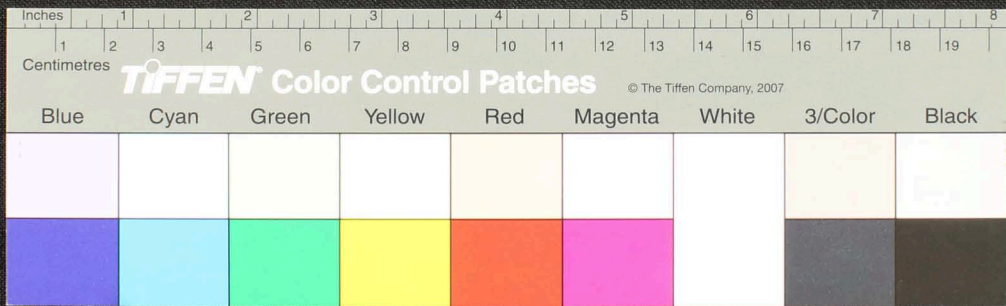
Handwritten Tamil script on a palm leaf manuscript. The text is arranged in approximately 10 horizontal lines across the length of the leaf. The script is densely packed and appears to be a form of classical or religious Tamil. There are two distinct circular holes along the length of the leaf, which were traditionally used for threading a cord to bind multiple leaves together into a book format. The leaf shows signs of age, including some darkening and wear, particularly around the edges and the holes.



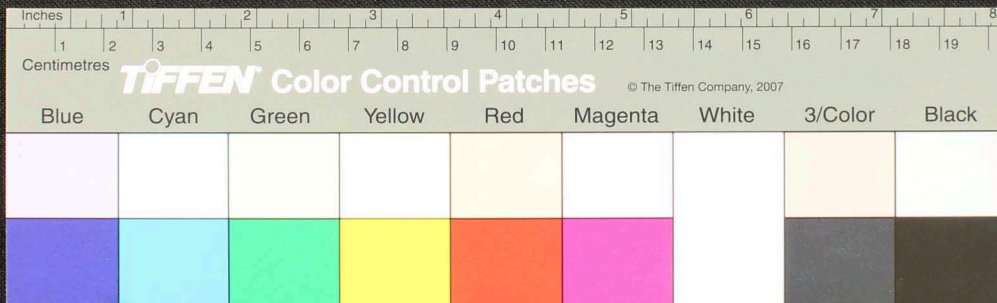
Handwritten Tamil script on a palm leaf manuscript strip. The text is arranged in approximately 10 horizontal lines across the length of the leaf. The script is finely etched into the surface of the dried leaf. There are two circular holes visible, which were traditionally used for threading a cord to bind multiple leaves together into a book format. The leaf shows signs of age, including some staining and wear at the edges.



Handwritten Tamil script on a palm leaf manuscript strip. The text is arranged in a single line across the length of the leaf. There are two circular holes visible, which were traditionally used for threading a cord to bind multiple leaves together. The script is finely etched into the surface of the dried leaf.

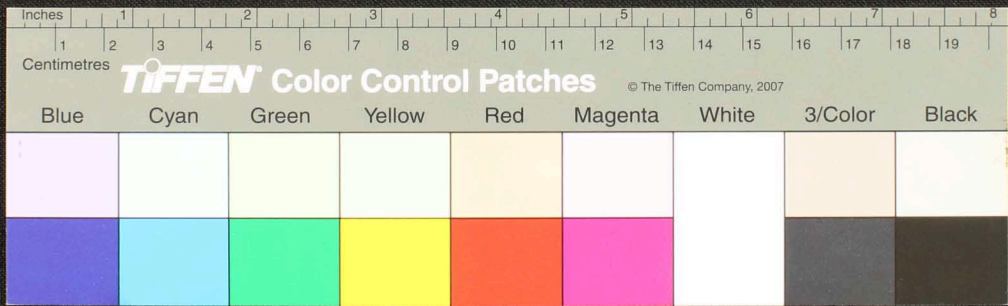


Handwritten Tamil script on a palm leaf manuscript. The text is arranged in approximately 10 horizontal lines across the length of the leaf. The script is finely etched into the surface of the dried leaf. There are two circular holes visible, which were traditionally used for threading a cord to bind multiple leaves together into a book format. The leaf shows signs of age, including some dark spots and wear.

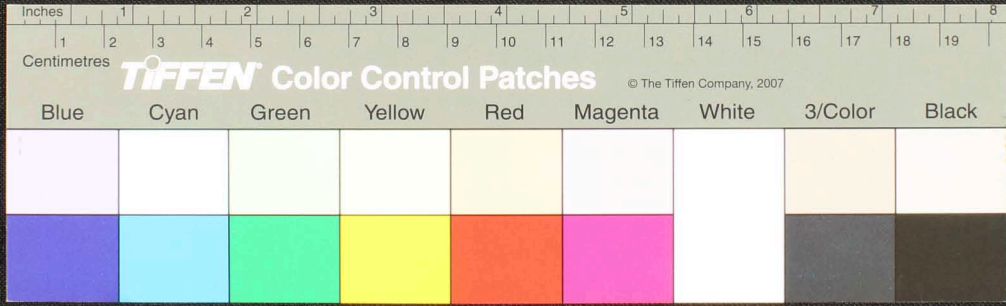




Handwritten Tamil script on a palm leaf manuscript. The text is arranged in approximately 10 horizontal lines across the length of the leaf. The script is finely etched into the surface of the dried leaf. The leaf shows signs of age, with some dark spots and irregular edges, particularly on the left side.

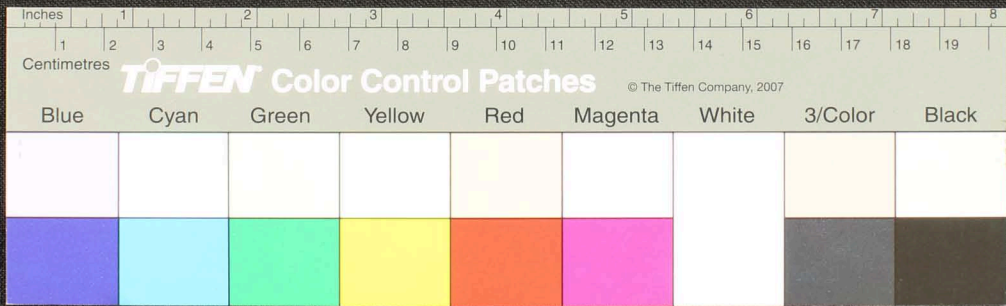


Handwritten Tamil script on a palm leaf manuscript. The text is arranged in approximately 10 horizontal lines across the length of the leaf. The script is finely etched into the surface of the dried leaf. There are several dark, irregular holes and areas of damage, particularly on the left side and in the middle, which are characteristic of insect infestation or environmental wear. The leaf is a light tan color and is set against a dark, textured background.

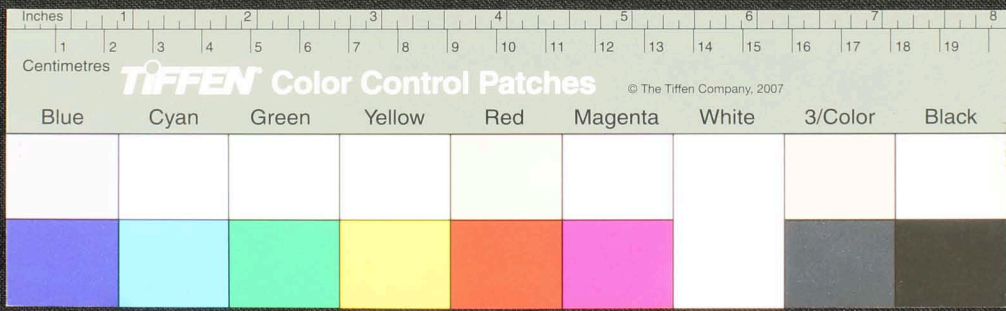




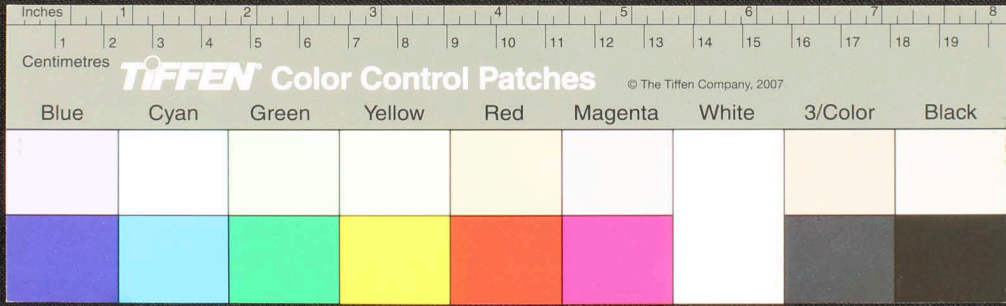
Handwritten Tamil script on a palm leaf manuscript. The text is arranged in approximately 10 horizontal lines across the length of the leaf. Two circular holes are visible, which were traditionally used for threading a cord to bind multiple leaves together. The script is finely etched into the surface of the dried leaf.



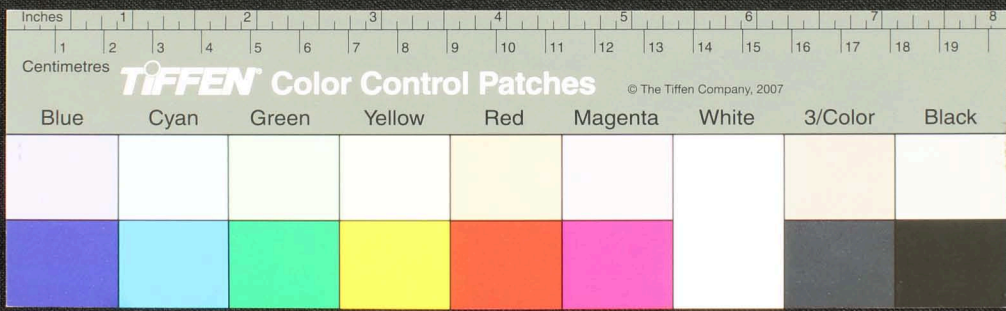
Handwritten Tamil script on a palm leaf manuscript. The text is arranged in approximately 10 horizontal lines across the length of the leaf. On the left side, there is a small, intricate drawing of a deity or figure. Two circular holes are visible, which were traditionally used for threading a cord to bind multiple leaves together into a book format.



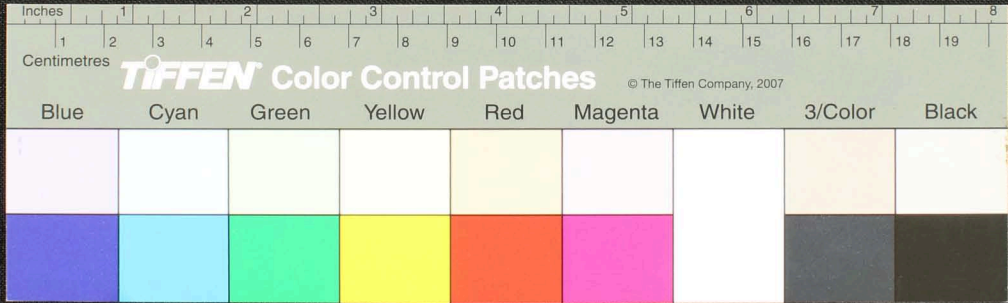
Handwritten Tamil script on a palm leaf manuscript. The text is arranged in approximately 10 columns across the length of the leaf. The script is finely etched into the surface of the dried leaf. Two circular holes are visible, which were traditionally used for threading a cord to bind multiple leaves together into a book format.



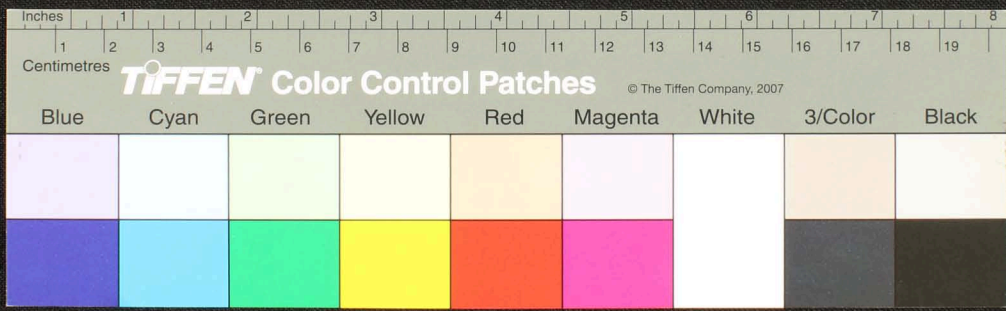
Handwritten Tamil script on a palm leaf manuscript. The text is arranged in approximately 10 horizontal lines across the length of the leaf. The script is finely etched into the surface of the dried leaf. The leaf shows signs of age, including some dark spots and wear.



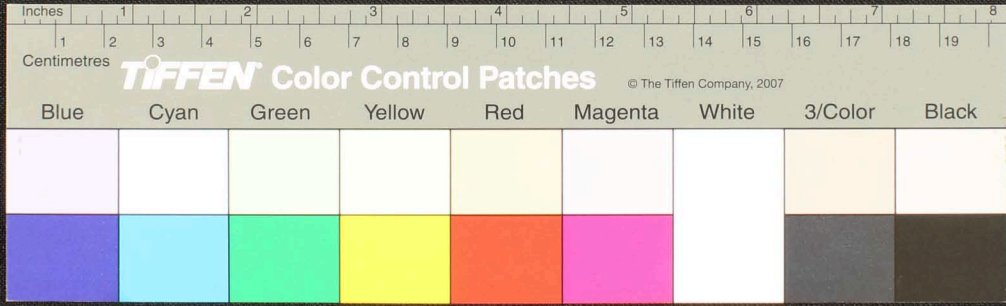
Handwritten Tamil script on a palm leaf manuscript. The text is densely packed and spans the length of the leaf. The script is in an older form of the Tamil language, characteristic of historical manuscripts. The leaf shows signs of age, with some darkening and wear, particularly at the ends.



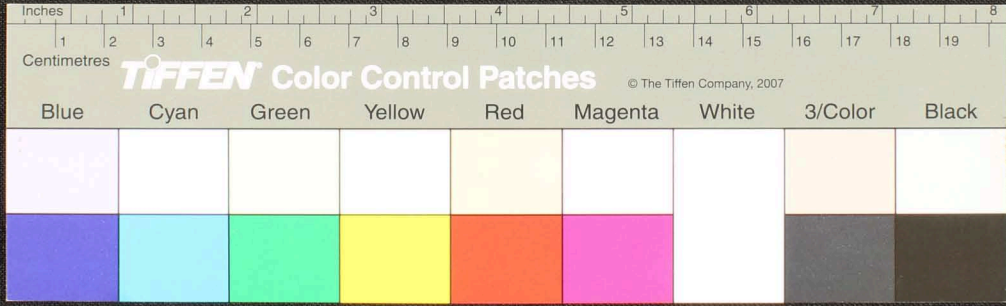
Handwritten text in Tamil script on a palm leaf manuscript. The text is arranged in approximately 10 horizontal lines across the length of the leaf. The script is finely etched into the surface of the dried leaf. There are two prominent circular holes, one near the left end and one near the right end, which were traditionally used for threading a cord to bind multiple leaves together into a book format. The leaf shows signs of age, including some darkening and wear along the edges.



Handwritten Tamil script on a palm leaf manuscript. The text is arranged in approximately 10 horizontal lines across the length of the leaf. The script is a traditional form of the Tamil language, likely used for religious or administrative purposes. There are two circular holes visible on the leaf, which were traditionally used for threading a cord to bind multiple leaves together into a book.

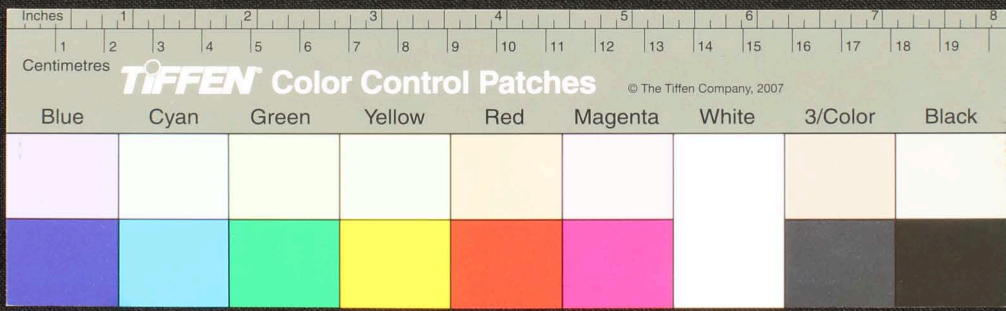


Handwritten Tamil script on a palm leaf manuscript strip. The text is arranged in approximately 10 horizontal lines across the length of the leaf. Two circular holes are visible, which were traditionally used for threading a cord to bind multiple leaves together into a book format. The script is finely etched into the surface of the dried leaf.

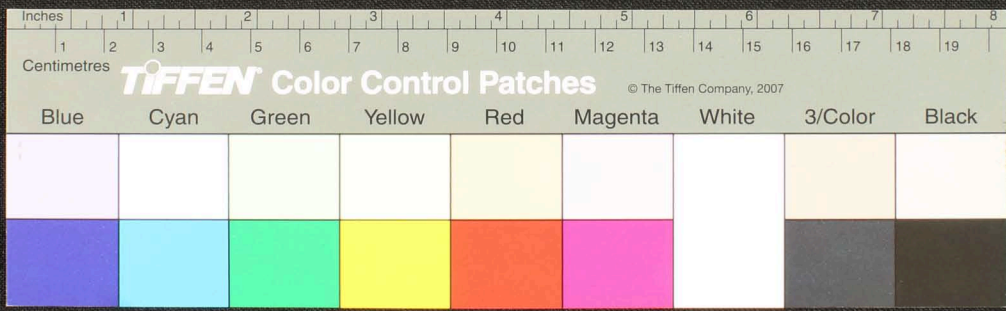




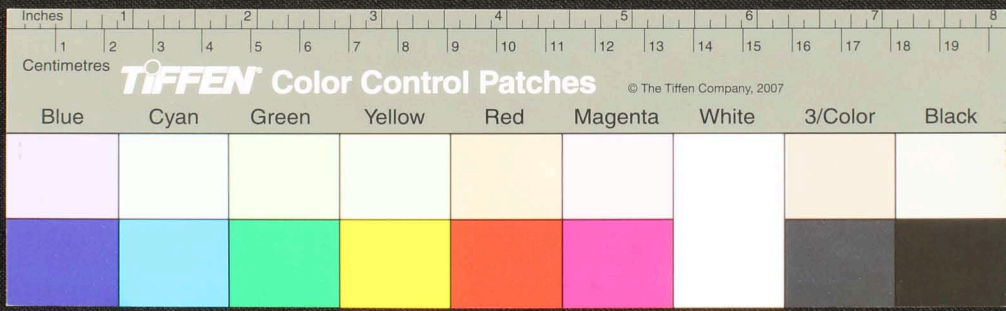
Handwritten text in Tamil script on a palm leaf manuscript. The text is arranged in approximately 10 horizontal lines across the length of the leaf. The script is finely etched into the surface of the dried leaf. There are two distinct circular holes, one near the left end and one near the right end, which were traditionally used for threading a cord to bind multiple leaves together into a book format. The leaf shows signs of age, including some staining and irregular edges.



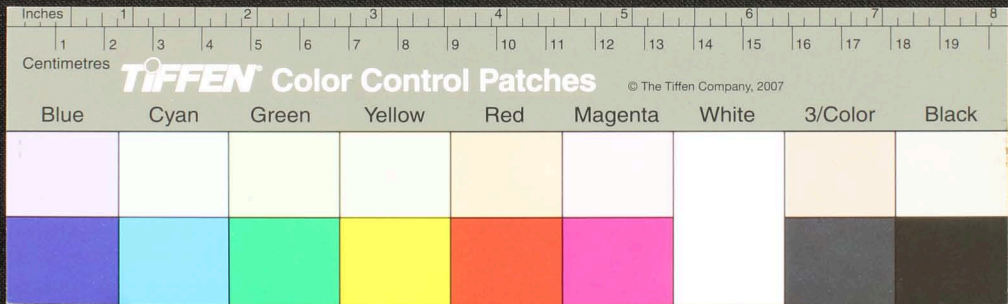
Handwritten text in Tamil script on a palm leaf manuscript. The text is arranged in approximately 10 horizontal lines across the length of the leaf. The script is finely etched into the surface of the dried leaf. There are two circular holes visible, which were traditionally used for threading a cord to bind multiple leaves together into a book format.



Handwritten Tamil script on a palm leaf manuscript. The text is arranged in approximately three horizontal lines across the length of the leaf. The script is finely etched into the surface of the dried leaf. The leaf shows signs of age, including some dark spots and irregular edges.



Handwritten Tamil script on a palm leaf manuscript strip. The text is densely packed and spans the length of the leaf. Two circular holes are visible, which were traditionally used for threading a cord to bind multiple leaves together into a book format. The script is written in a cursive style characteristic of traditional Tamil manuscripts.



Handwritten text in Tamil script on a palm leaf manuscript strip. The text is arranged in several lines across the length of the leaf. There are two circular holes visible, which were traditionally used for threading a cord to bind multiple leaves together. The script is densely packed and appears to be a form of classical or historical Tamil.

