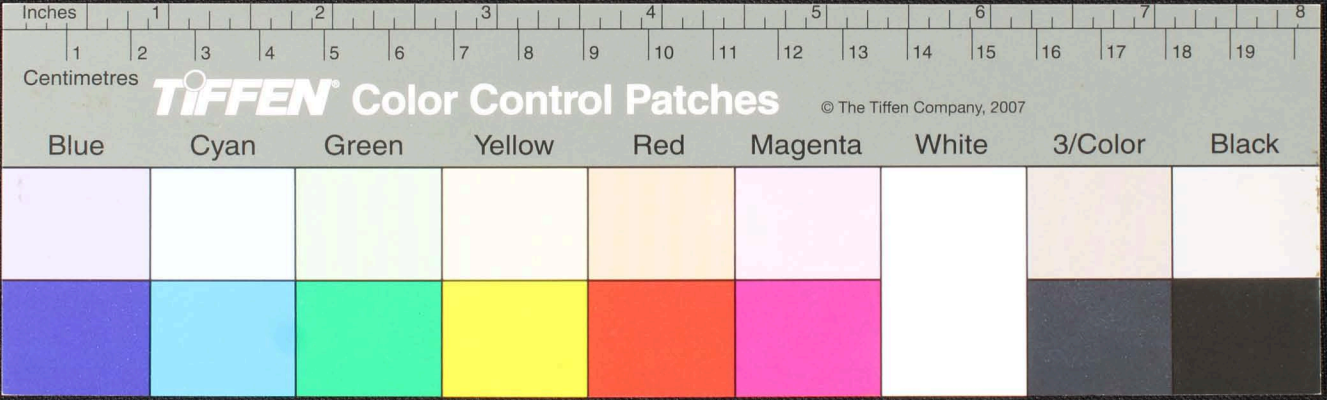
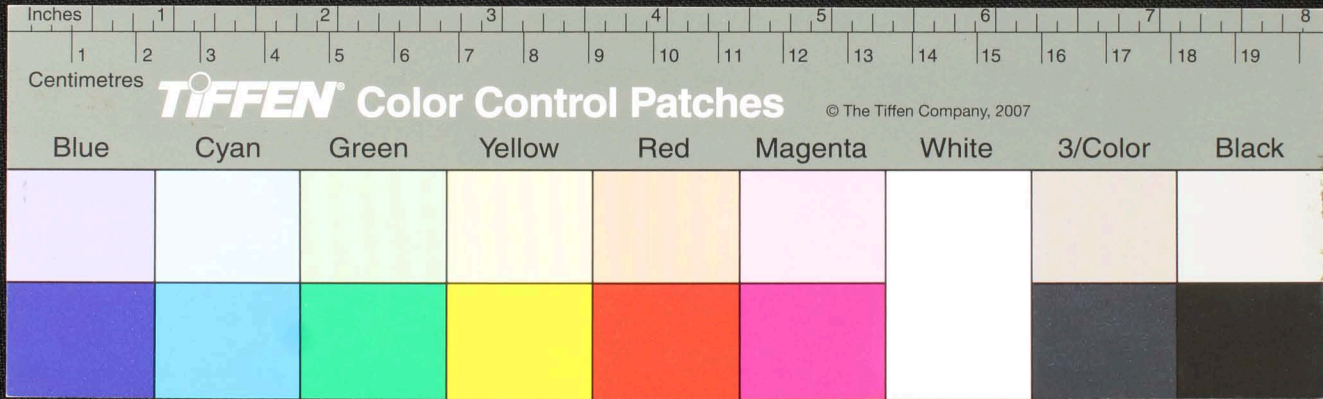


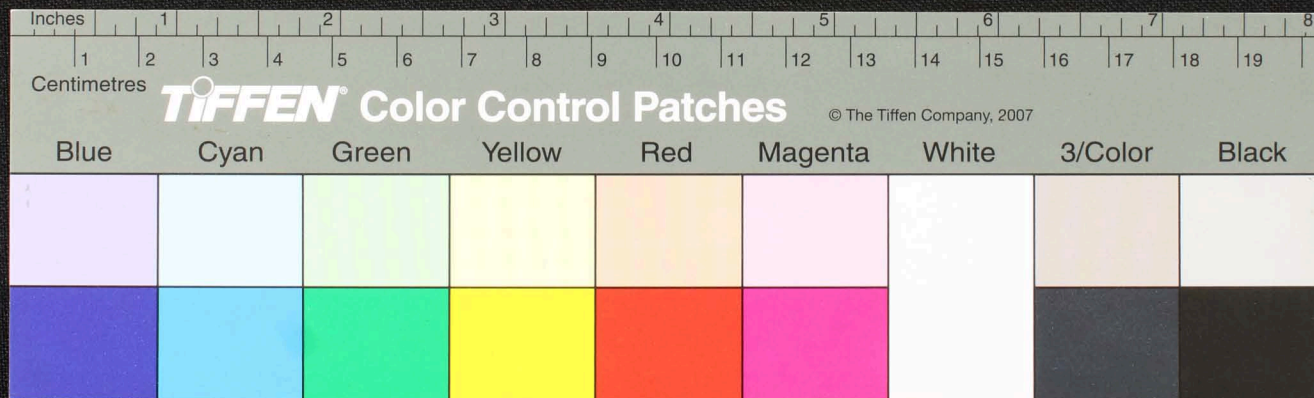
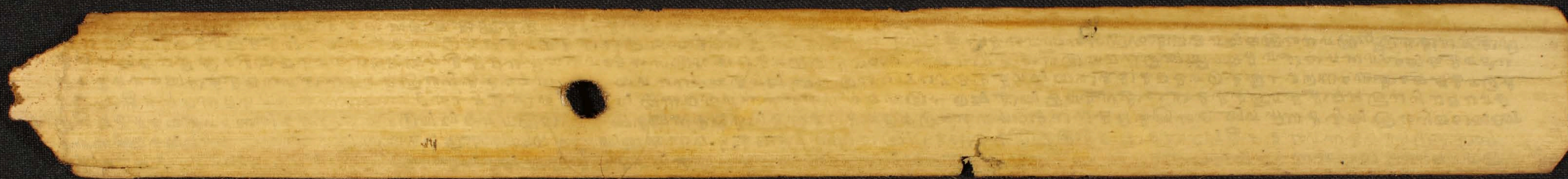


Handwritten Tamil script on a palm leaf manuscript. The text is densely packed and spans the length of the leaf. A circular hole is visible in the center, used for threading a cord to bind multiple leaves together. The script is written in a traditional style, with clear letterforms and consistent spacing.

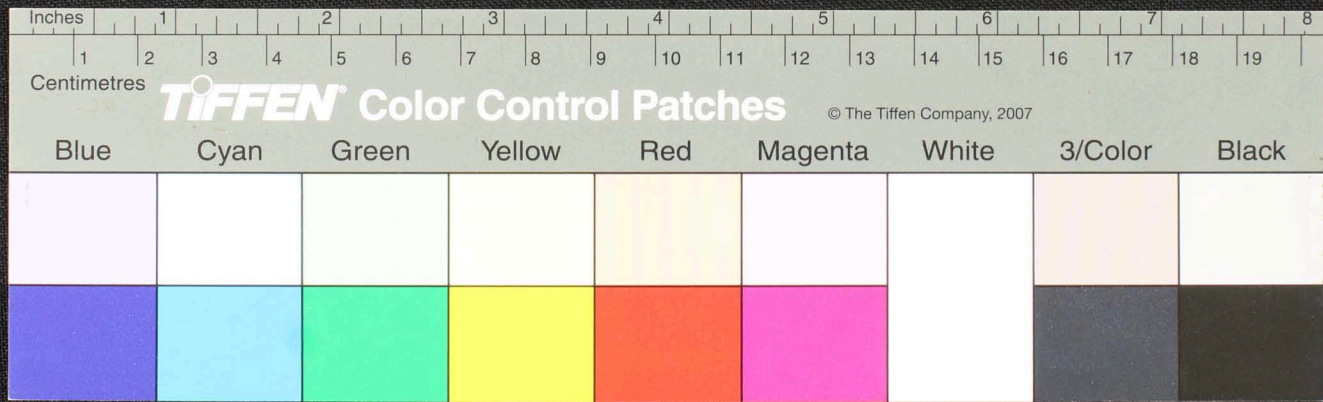


Handwritten text in Tamil script on a palm leaf manuscript. The text is densely packed and spans the length of the leaf. A small circular hole is visible near the center of the leaf.









Handwritten text in Tamil script on a palm leaf manuscript fragment. The text is arranged in approximately 10 horizontal lines across the length of the leaf. The script is finely etched into the surface of the dried leaf. The fragment is irregularly shaped with jagged edges, particularly on the left and right sides. The background is a dark, textured surface.

