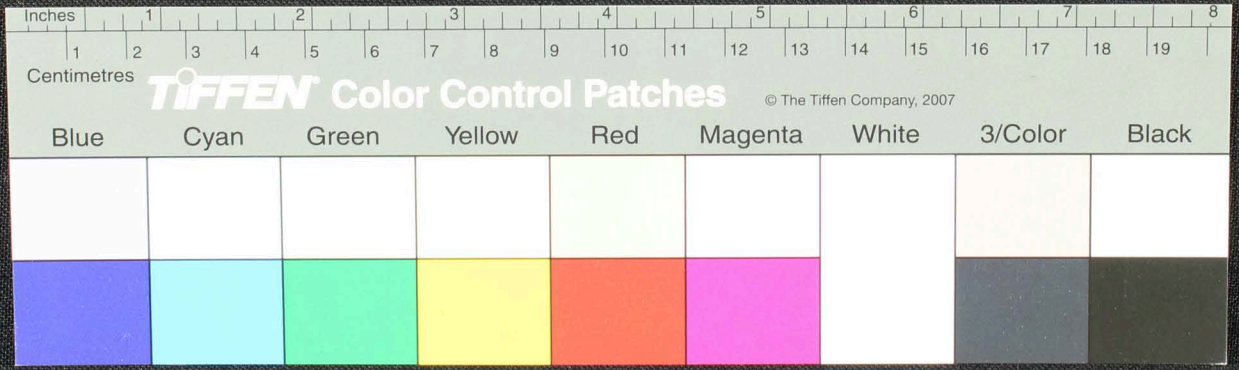
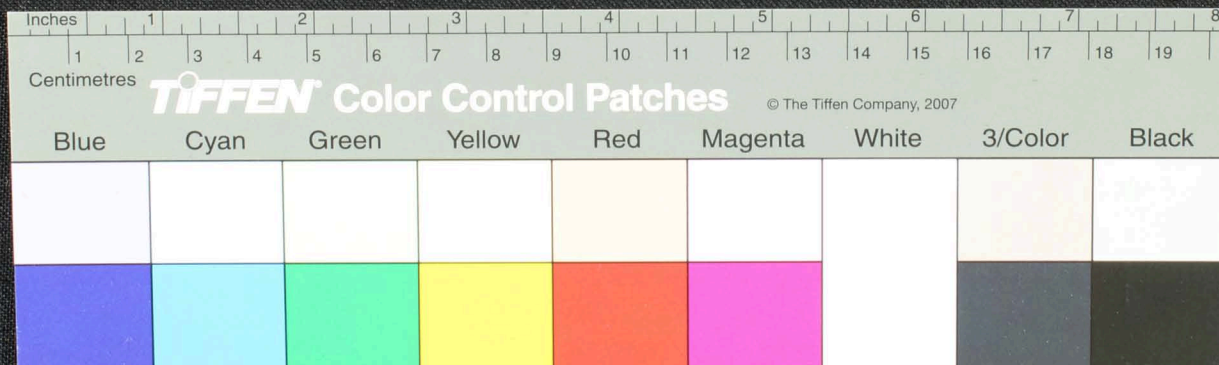


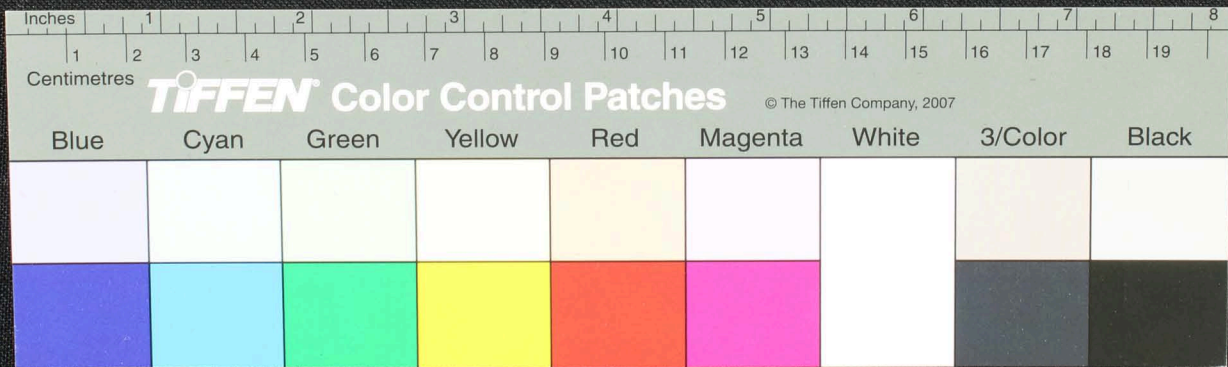
Handwritten Tamil script on a palm leaf manuscript. The text is arranged in approximately 10 horizontal lines across the length of the leaf. The script is a traditional form of the Tamil language, likely used for religious or philosophical purposes. The leaf shows signs of age and wear, with some fraying at the edges and two circular holes, possibly from a binding system.



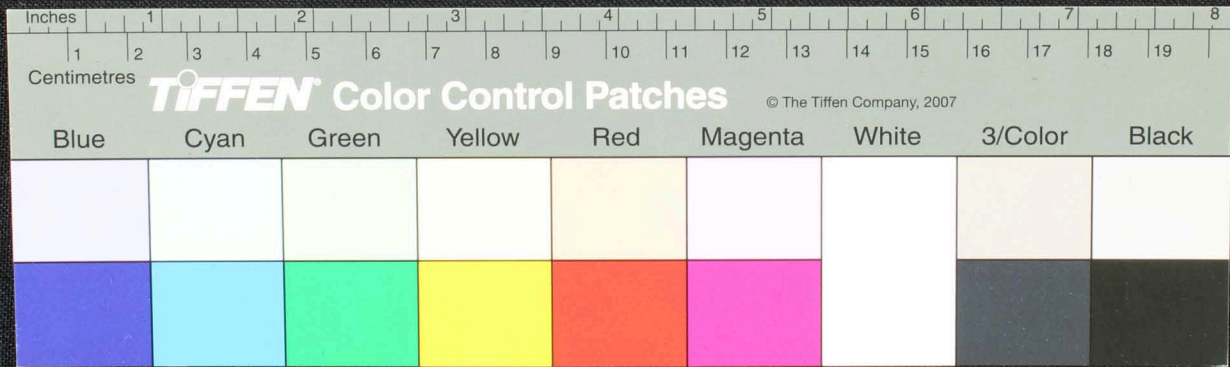
Handwritten Tamil script on a palm leaf manuscript. The text is arranged in approximately 10 horizontal lines across the length of the leaf. Two circular holes are visible, which were traditionally used for threading a cord to bind multiple leaves together into a book format. The script is finely etched into the surface of the dried leaf.



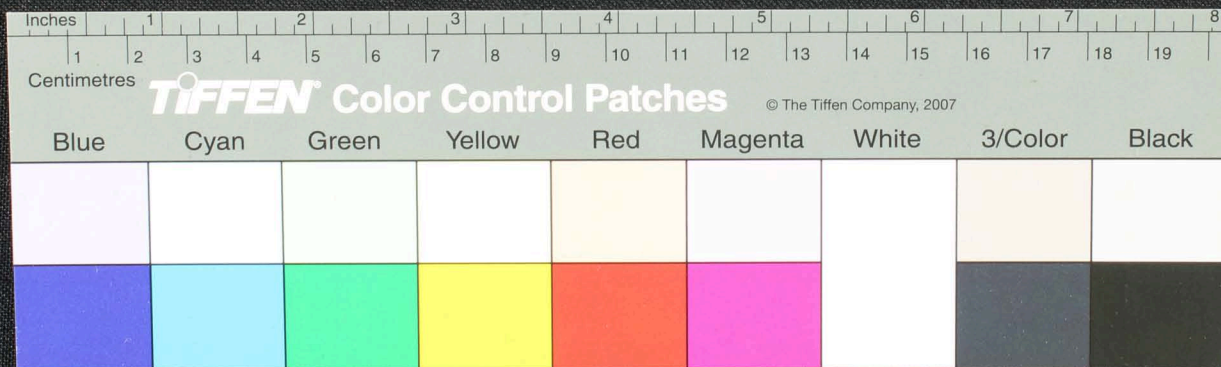
Handwritten text in Tamil script on a palm leaf manuscript. The text is arranged in approximately 10 horizontal lines across the length of the leaf. The script is finely etched into the surface of the dried leaf. The leaf shows signs of age and wear, with some fraying at the edges and a small circular hole near the center.



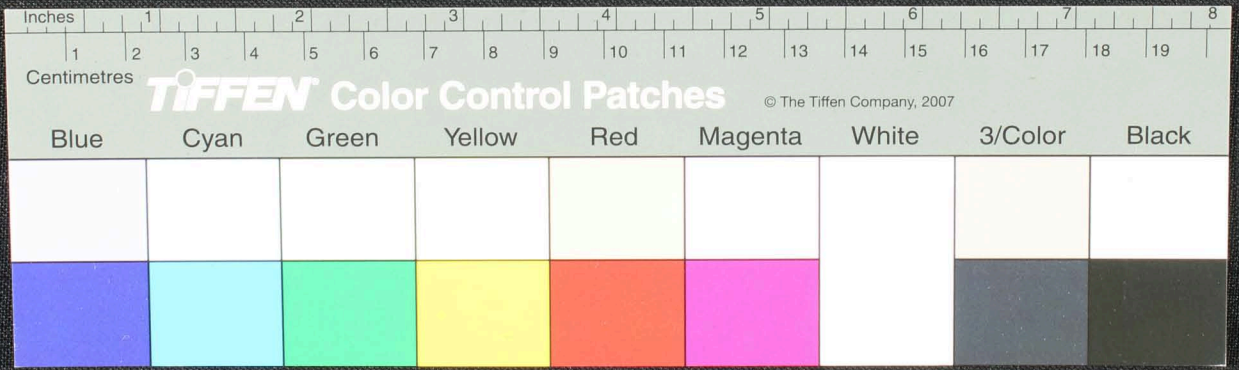
Handwritten Tamil script on a palm leaf manuscript strip. The text is arranged in approximately 10 horizontal lines. The script is finely etched into the surface of the dried leaf. The leaf shows signs of age, including a dark circular hole and irregular edges.



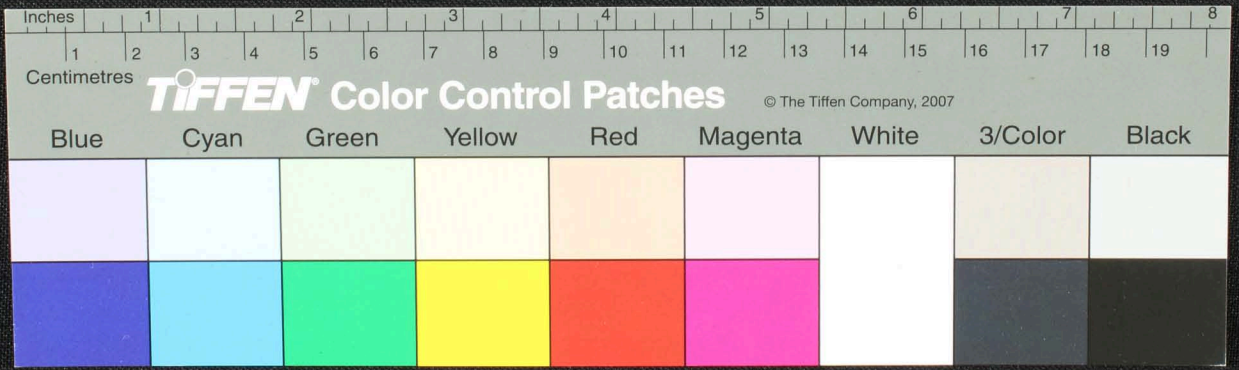
Handwritten Tamil script on a palm leaf manuscript. The text is arranged in approximately 12 horizontal lines. The script is finely etched into the surface of the dried leaf. On the right side, there is a circular hole, which is a traditional feature used for threading a cord to bind multiple leaves together into a book format. The leaf shows signs of age, with some fraying and discoloration, particularly at the left end.



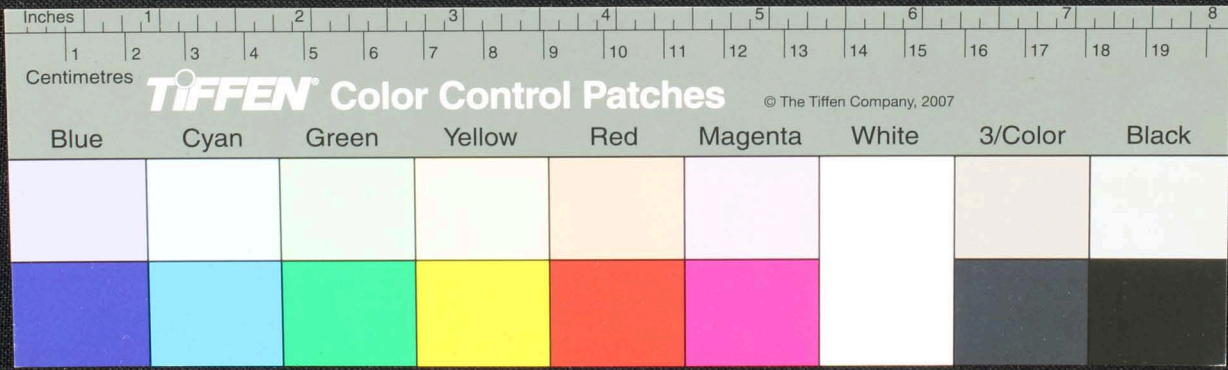
Handwritten Tamil script on a palm leaf manuscript. The text is arranged in approximately 10 horizontal lines across the length of the leaf. There are two circular holes, one near the left end and one near the right end, used for binding multiple leaves together. The script is finely etched into the surface of the dried leaf.



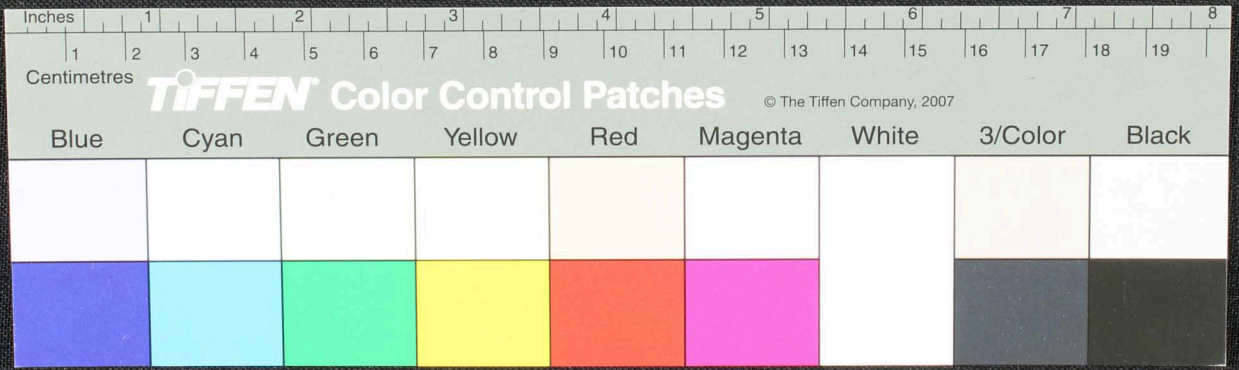
பஞ் பரணெயெரு நகடுதூகடுய — நது ௨௭ யமயவ தும ரிவ வரவரு ஆம உரு சீ
 சசுவஞ் சிலை — மம ம ௨ ரகமா ரவவெஞ் ததுநி கதி ஈ ருரு வய — வவரு ததமடு
 டீன. மா நகடுதூத — வரவெ — ரு — ஈரதமபல — நரவரு மசலமல
 கடு ம பரதம கடுயு — வரபுந் தரவரு கடுதர ஈ ம கடுதூ ரசவகடும
 வரவரு பருதூ ரம வன ரசு சீ ல. தருவெ சலபம ரம வம வரவரு — ரு —



கடுகாடு
 ராலகடுகாடு
 ராலகாடு
 உவனிகடுகாடு உயிது கடுகாடு உயிது கடுகாடு உயிது கடுகாடு உயிது கடுகாடு உயிது கடுகாடு
 உயிது கடுகாடு உயிது கடுகாடு உயிது கடுகாடு உயிது கடுகாடு உயிது கடுகாடு உயிது கடுகாடு
 உயிது கடுகாடு உயிது கடுகாடு உயிது கடுகாடு உயிது கடுகாடு உயிது கடுகாடு உயிது கடுகாடு
 உயிது கடுகாடு உயிது கடுகாடு உயிது கடுகாடு உயிது கடுகாடு உயிது கடுகாடு உயிது கடுகாடு



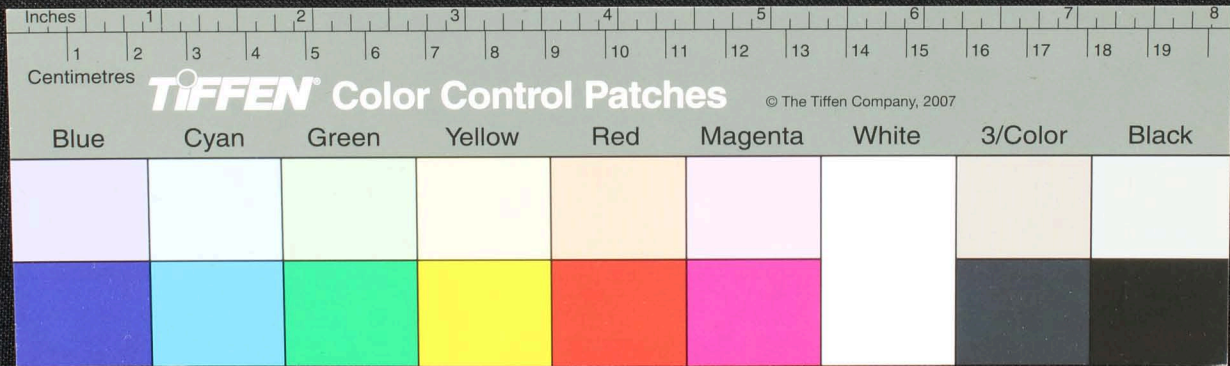
Handwritten text in Tamil script on a palm leaf manuscript. The text is arranged in two main sections. The left section contains approximately 10 lines of text, and the right section contains approximately 5 lines. The script is finely etched into the surface of the dried leaf.



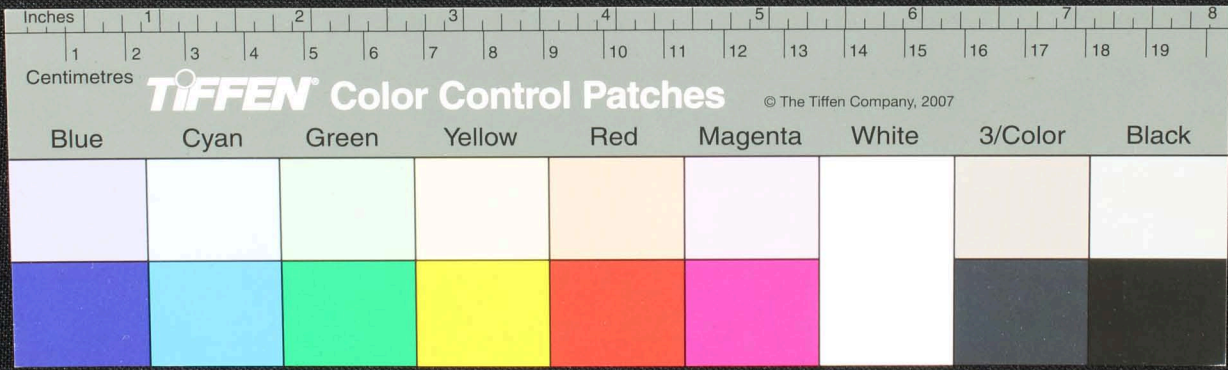
ஸீராதூய்ய
 ஹவகி கி னு அருயருதன - க -
 கராமக கருகி - க -
 சாதக காரகருகி - சி - க -
 குருசா னி கருகி - சி - க -
 கி னு கருகி - க -

சாதக கருகி - க -
 கருகி - க -
 கருகி - க -
 கருகி - க -
 கருகி - க -

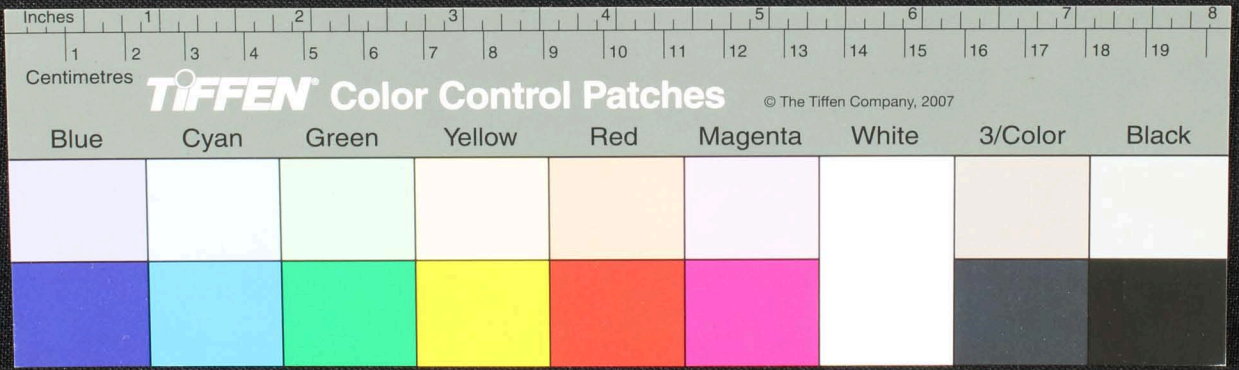
கருகி - க -
 கருகி - க -
 கருகி - க -
 கருகி - க -



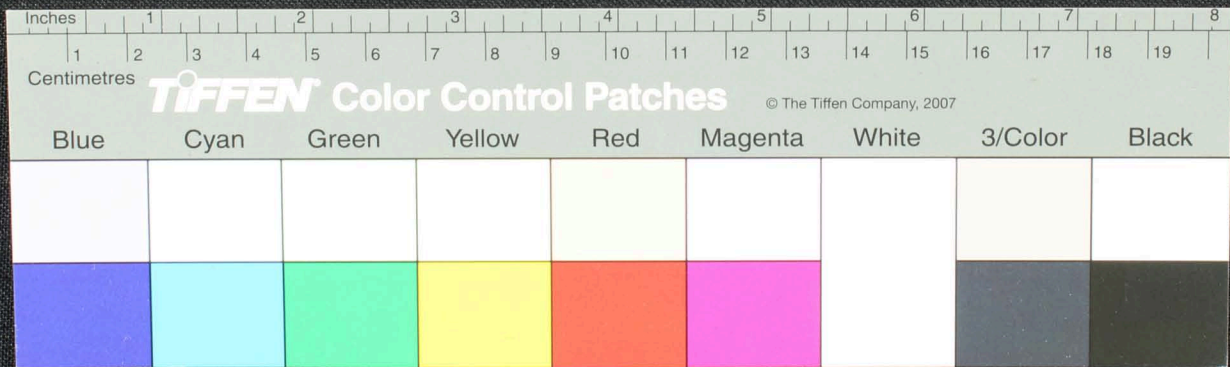
Handwritten Tamil script on a palm leaf manuscript. The text is arranged in two columns. The left column contains approximately 10 lines of text, and the right column contains approximately 10 lines. The script is a traditional form of the Tamil language, likely used for religious or philosophical purposes. The leaf shows signs of age and wear, with some fraying at the edges.



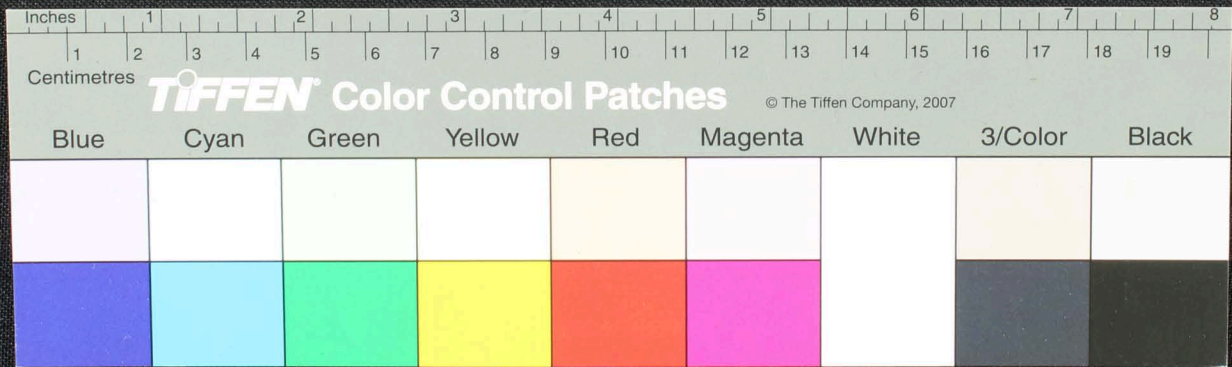
சீவனமுமாயிசுலவவழிவவ்வி... தரீ...
 விசுவலிசுலவவழிவவ்வி... தரீ...
 சீவனமுமாயிசுலவவழிவவ்வி... தரீ...
 விசுவலிசுலவவழிவவ்வி... தரீ...
 சீவனமுமாயிசுலவவழிவவ்வி... தரீ...
 விசுவலிசுலவவழிவவ்வி... தரீ...



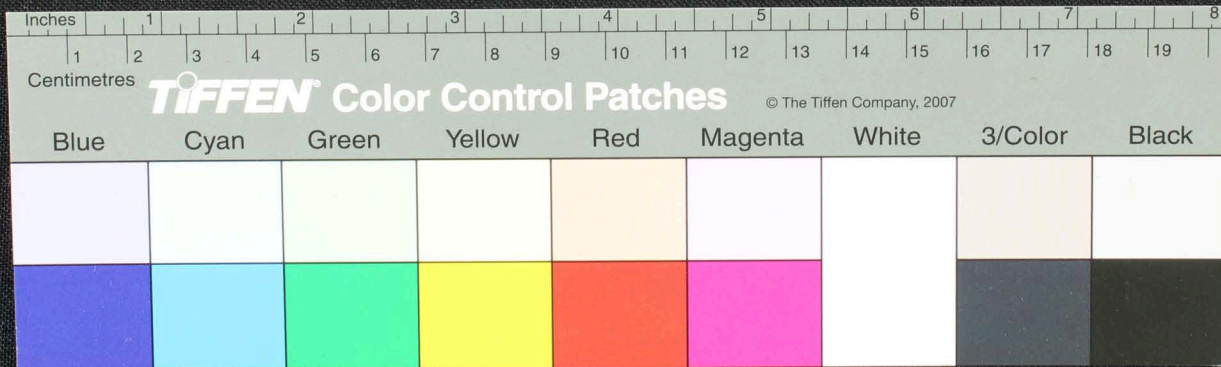
Handwritten Tamil script on a palm leaf manuscript strip. The text is arranged in approximately four horizontal lines. The script is finely etched into the surface of the dried leaf. Two circular holes are visible, which were traditionally used for threading a cord to bind multiple leaves together into a book format. The leaf shows signs of age, with some fraying and discoloration at the edges.



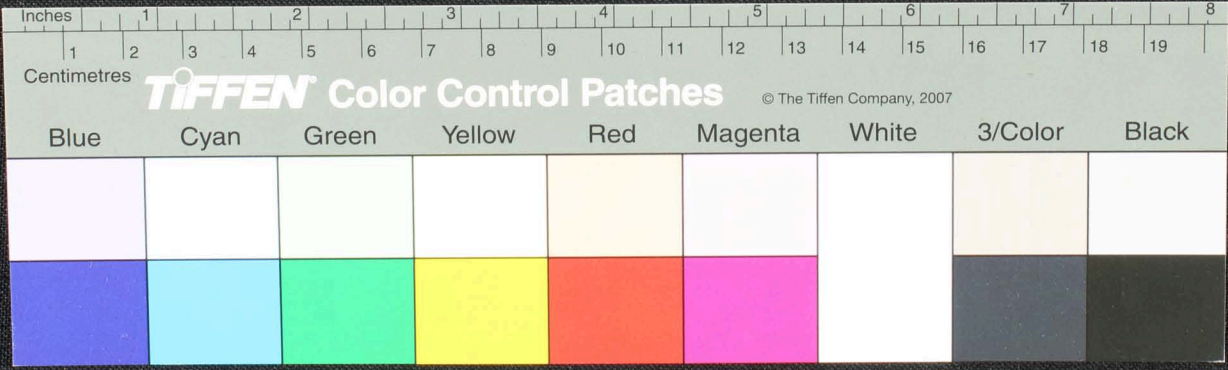
Handwritten Tamil script on a palm leaf manuscript strip. The text is arranged in approximately four horizontal lines. The script is finely etched into the surface of the dried leaf. The leaf shows signs of age and wear, with some fraying at the edges and a small circular hole near the center.



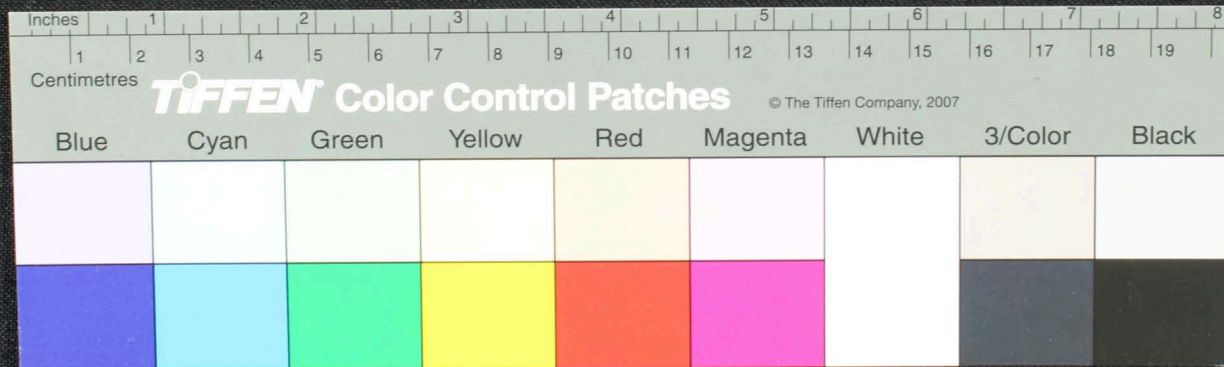
Handwritten Tamil script on a palm leaf manuscript. The text is arranged in three columns. The first column contains approximately 12 lines of text. The second column is shorter, with about 6 lines. The third column contains about 8 lines of text. The script is written in a traditional style with dark ink on the natural yellowish-brown surface of the leaf.



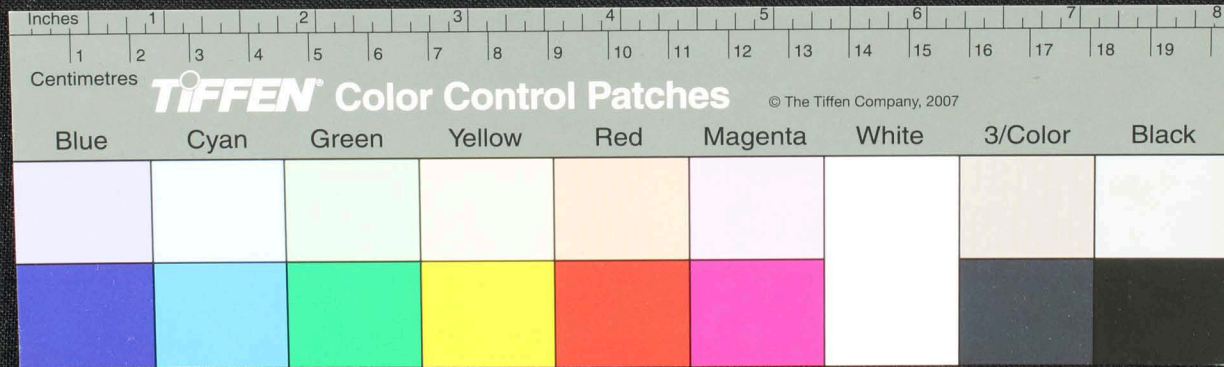
வர- ச னடு வடுத றவசுள- கடு வுலநரளி ரெரளடு வநது அதுதது உவன
 வமமரநலிசு- அமமரந வயதிவ-சாடு திமநி திவமடு டசர
 மநவடு திள வடு மமர- டு னவயலவலநர வலவதது
 லெரளி வமந நிவ வுதது மரர நது வநி வலவதது அலதது
 ஓடுதது வடு ரிசு மநர மர மடு டசடு நுனி க-சு தரவு மமர-



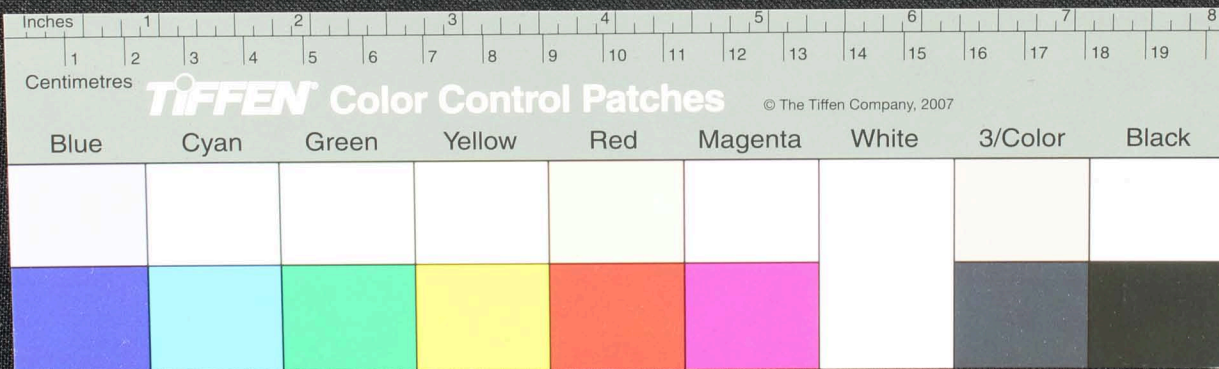
Handwritten Tamil script on a palm leaf manuscript. The text is arranged in approximately 10 horizontal lines across the length of the leaf. Two circular holes are visible, which were traditionally used for threading a cord to bind multiple leaves together into a book format. The script is densely packed and appears to be a form of classical Tamil literature or religious text.



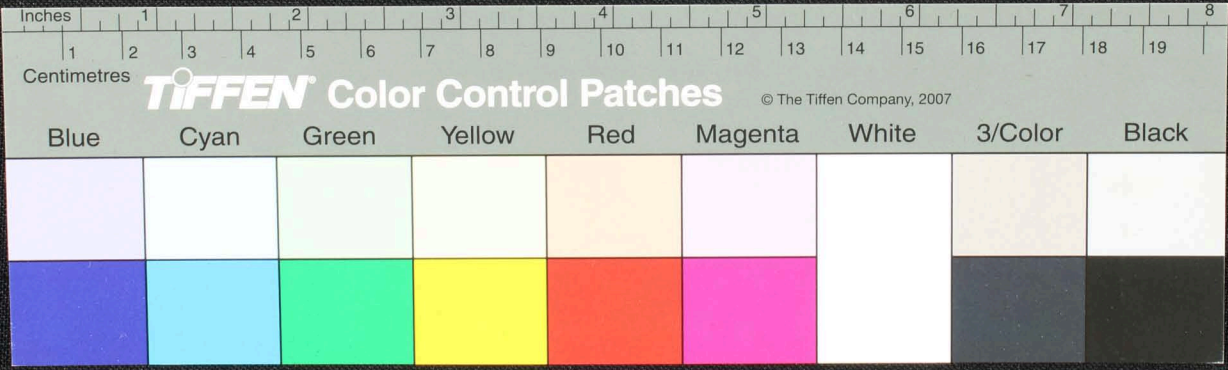
Handwritten Tamil script on a palm leaf manuscript. The text is arranged in three lines, with some characters appearing to be in a different script or dialect. The leaf is yellowed and shows signs of wear.



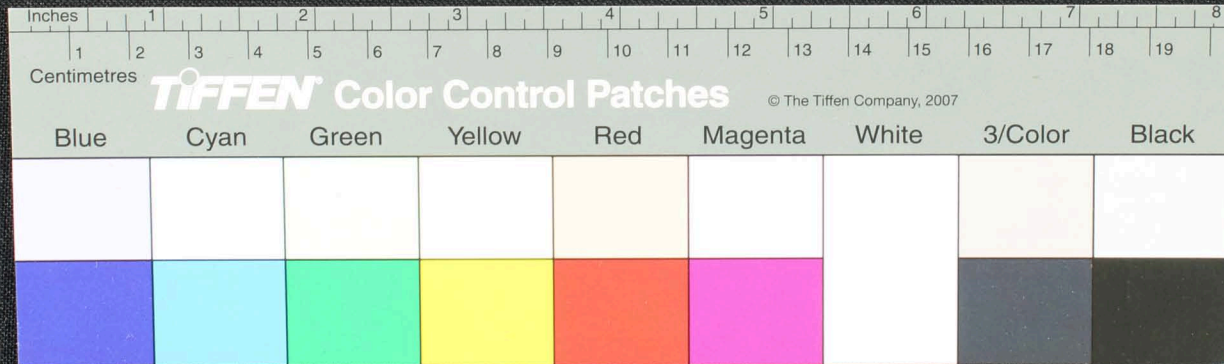
Handwritten Tamil script on a palm leaf manuscript strip. The text is arranged in approximately 10 horizontal lines. Two circular holes are visible on the left side of the strip, which were traditionally used for threading a cord to bind multiple leaves together. The script is finely etched into the surface of the dried leaf.



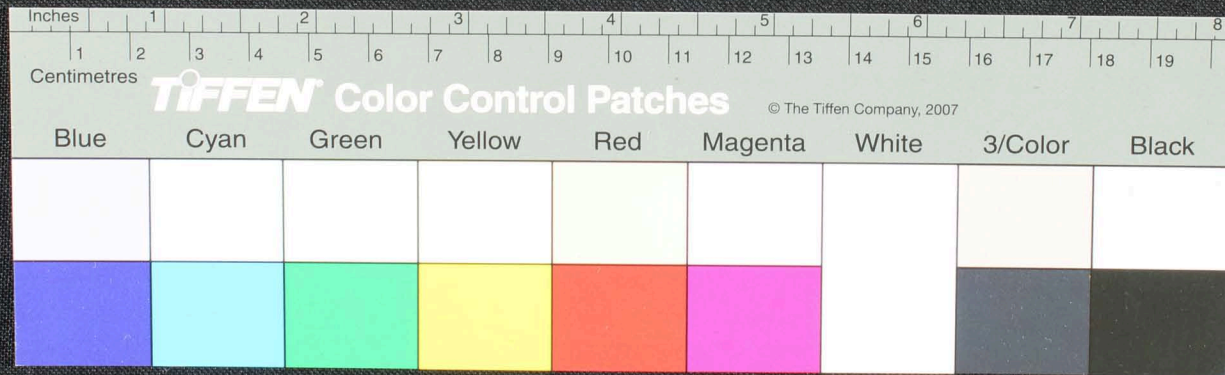
மெய்யுடைசாரகதீயர்யகீரவெருததுநதவவருததா W
 துததுகீயுததுடரயு நகுமட வதனளிவ
 மலயரவெருமயிவதிதயய வுமரடுததுயரஸார
 யு — வயலகரடுகடுகந பாலருமதிதகயந
 வுமெயுசுளடுகதிதடுமனடு வரட சதனடுவதுயு
 வுமெயுசுளடுகதிதடுமனடு வரட சதனடுவதுயு



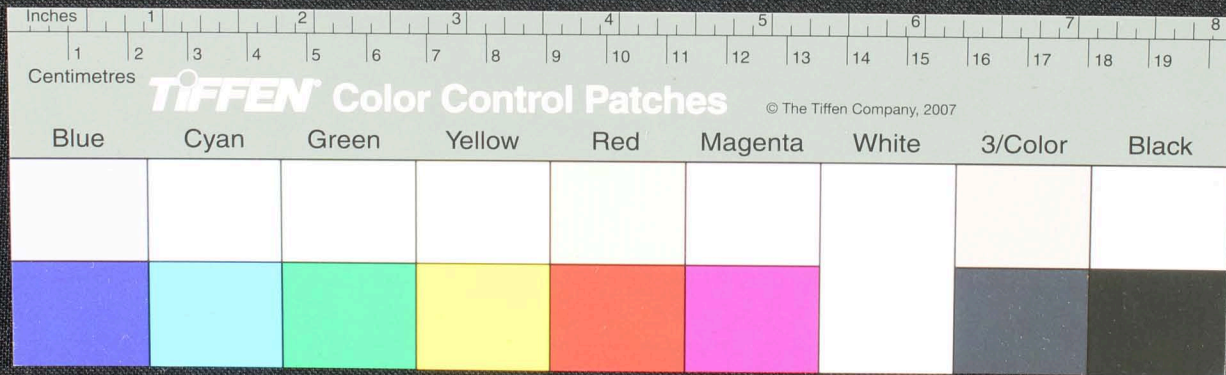
Handwritten Tamil script on a palm leaf manuscript. The text is arranged in approximately five horizontal lines. The script is finely etched into the surface of the dried leaf. A small circular hole is visible in the center of the leaf, which is a traditional feature used for threading a cord to bind multiple leaves together into a book format. The leaf shows signs of age and wear, with some fraying at the edges.



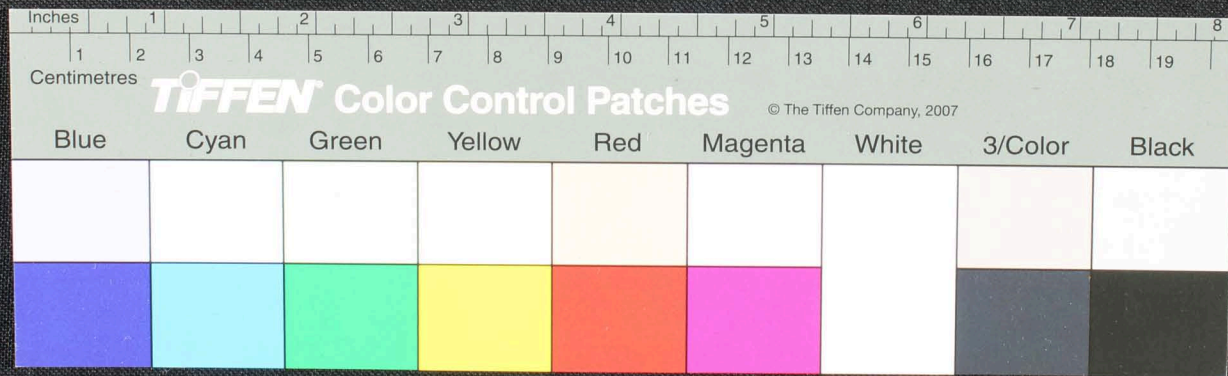
Handwritten Tamil script on a palm leaf manuscript strip. The text is arranged in approximately 10 horizontal lines across the length of the leaf. The script is a traditional form of the Tamil language, likely used for religious or philosophical purposes. The leaf shows signs of age and wear, with some fraying at the right end.



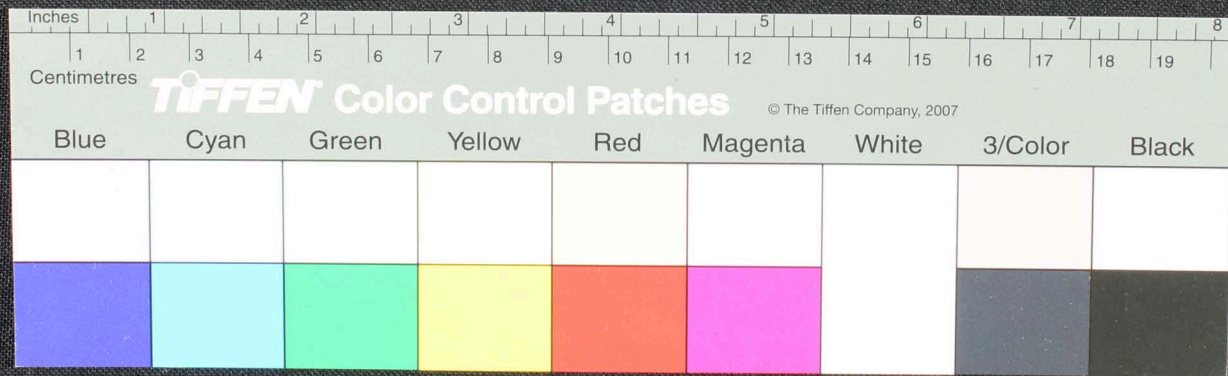
Handwritten Tamil script on a palm leaf manuscript strip. The text is arranged in approximately four horizontal lines, written in a traditional cursive style. The leaf shows signs of age and wear, with some dark spots and irregular edges.



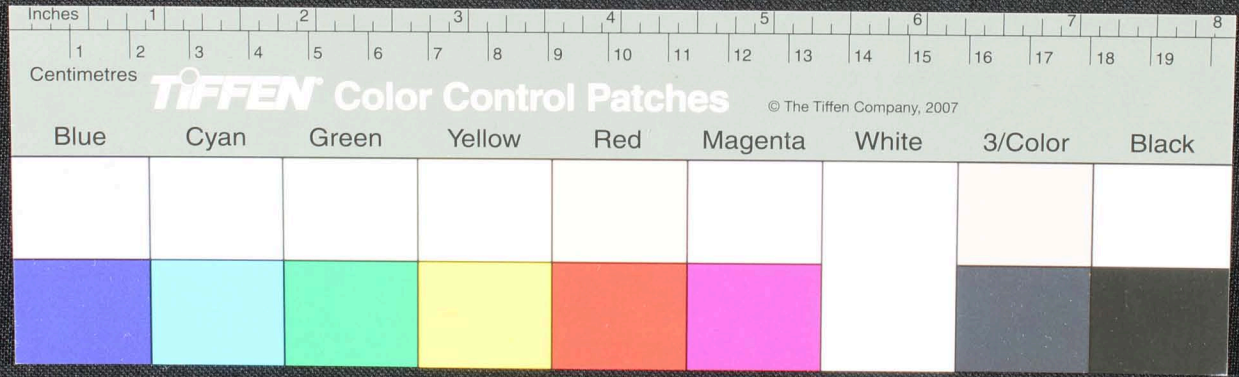
Handwritten Tamil script on a palm leaf fragment. The text is arranged in approximately four horizontal lines. The script is finely etched into the surface of the dried leaf. The fragment is irregularly shaped with frayed edges, particularly on the left side. The background is a dark, textured surface.



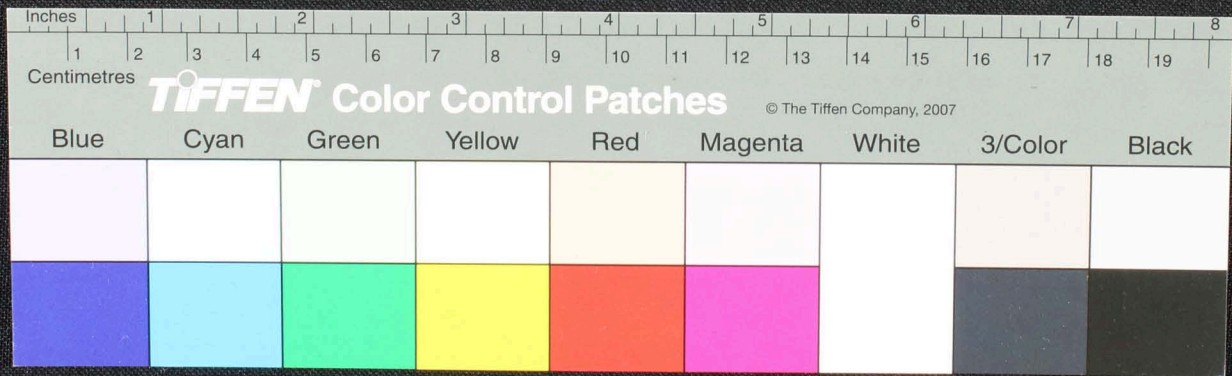
Handwritten Tamil script on a palm leaf manuscript strip. The text is arranged in approximately 10 horizontal lines. Two circular holes are visible, which were traditionally used for threading a cord to bind multiple leaves together. The script is densely packed and appears to be a form of classical Tamil.



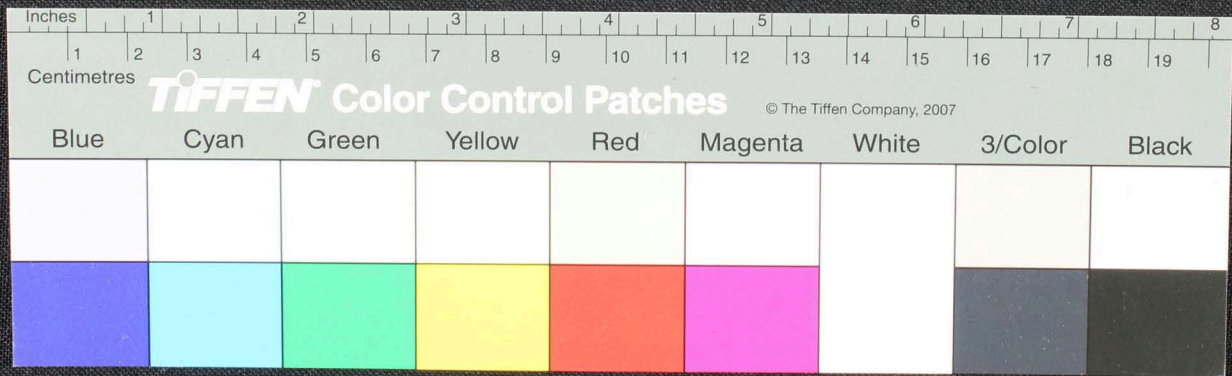
Handwritten Tamil script on a palm leaf manuscript strip. The text is arranged in approximately 10 horizontal lines. Two circular holes are visible, which were traditionally used for threading a cord to bind multiple leaves together. The script is finely etched into the surface of the dried leaf.



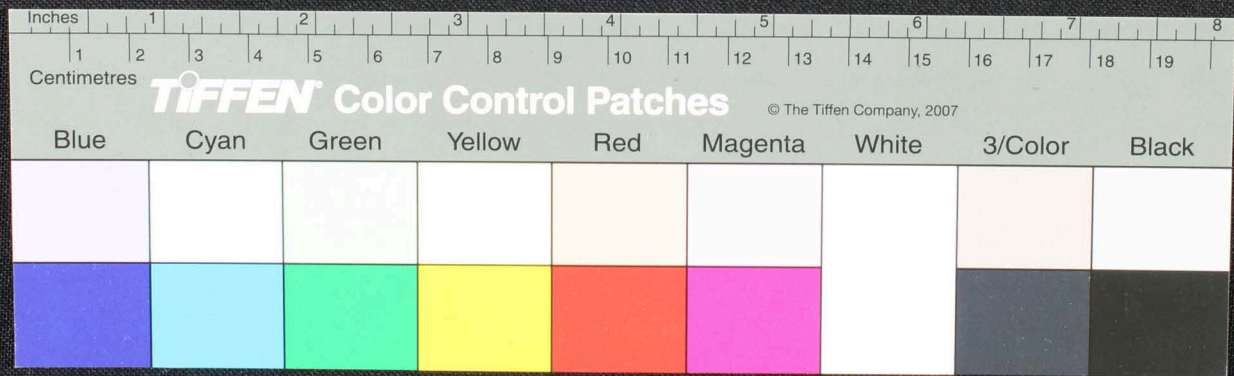
Handwritten Tamil script on a palm leaf manuscript. The text is arranged in approximately 10 horizontal lines across the length of the leaf. Several characters are circled in red ink, likely indicating specific words or syllables. The script is densely packed and covers most of the leaf's surface.



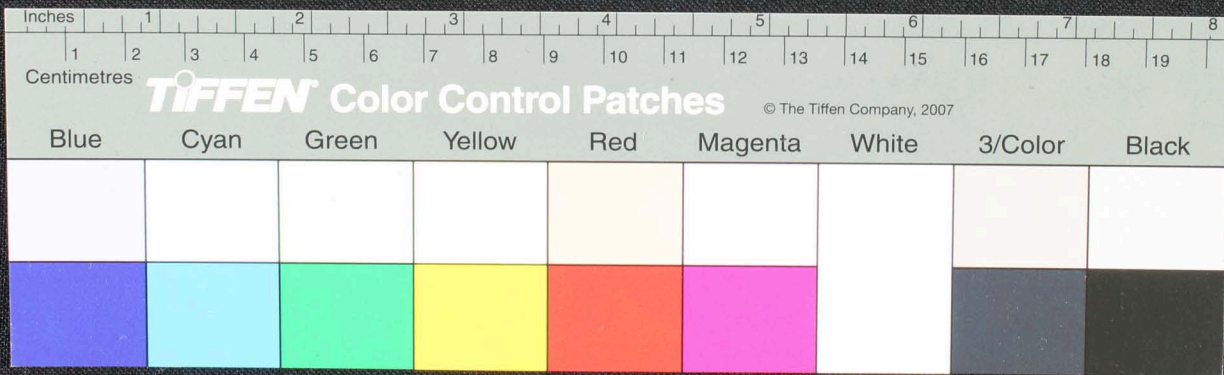
Handwritten text in Tamil script on a palm leaf manuscript. The text is arranged in approximately 10 horizontal lines across the length of the leaf. Two circular holes are visible, used for threading a cord to bind multiple leaves together. The script is a traditional form of the Tamil language.



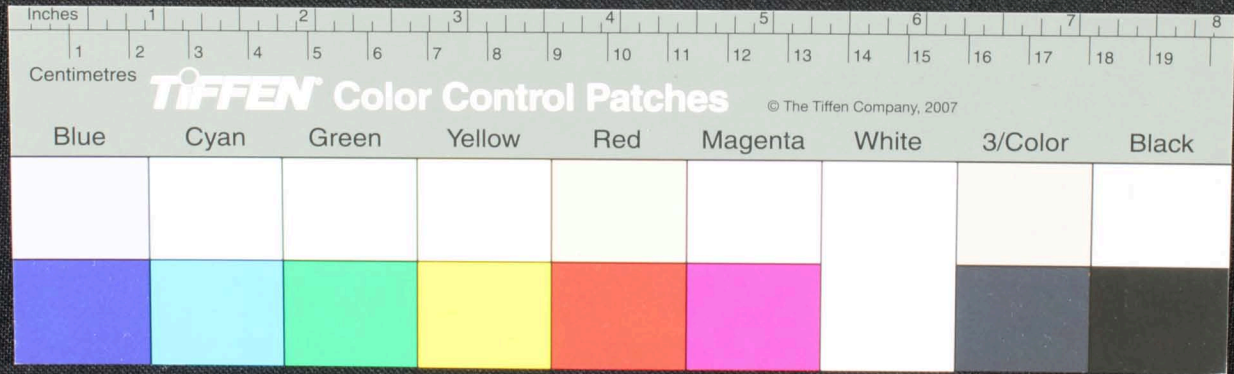
Handwritten Tamil script on a palm leaf manuscript. The text is arranged in approximately 10 horizontal lines across the length of the leaf. The script is a traditional form of the Tamil language, likely used for religious or philosophical purposes. The leaf shows signs of age and wear, with some fraying at the edges.



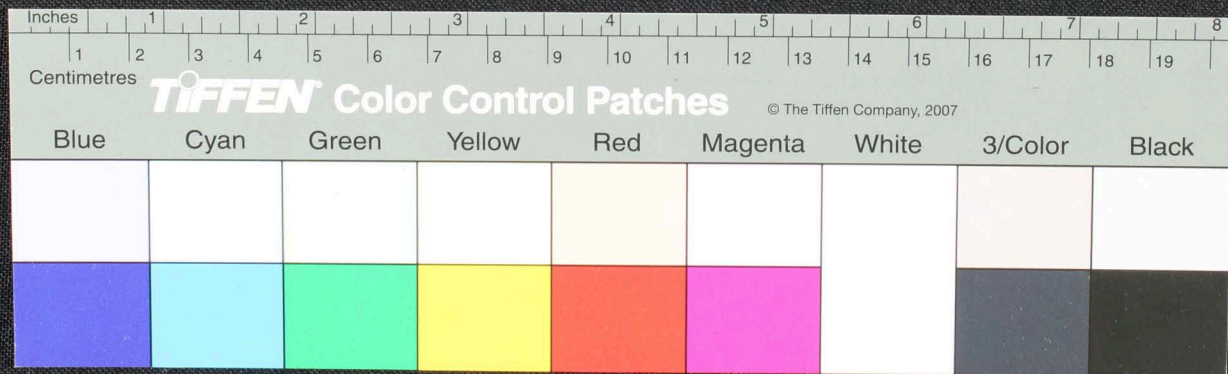
Handwritten Tamil script on a palm leaf manuscript fragment. The text is densely packed and appears to be a continuous line of writing, though some characters are obscured by a hole in the leaf. The script is written in a traditional style on a yellowish-brown, weathered leaf.



Handwritten Tamil script on a palm leaf manuscript. The text is arranged in approximately 10 horizontal lines across the length of the leaf. The script is dense and appears to be a form of classical or historical Tamil. There is a small circular hole or mark in the center of the leaf, likely from a traditional binding method.

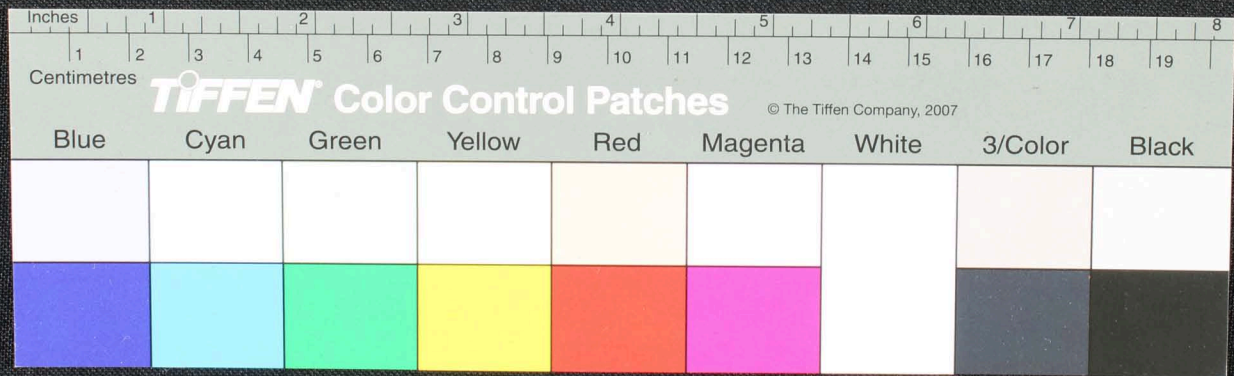


Handwritten Tamil script on a palm leaf manuscript strip. The text is arranged in approximately four horizontal lines, with some characters appearing to be circled or marked. The script is densely packed and characteristic of traditional Tamil inscriptions on palm leaves.

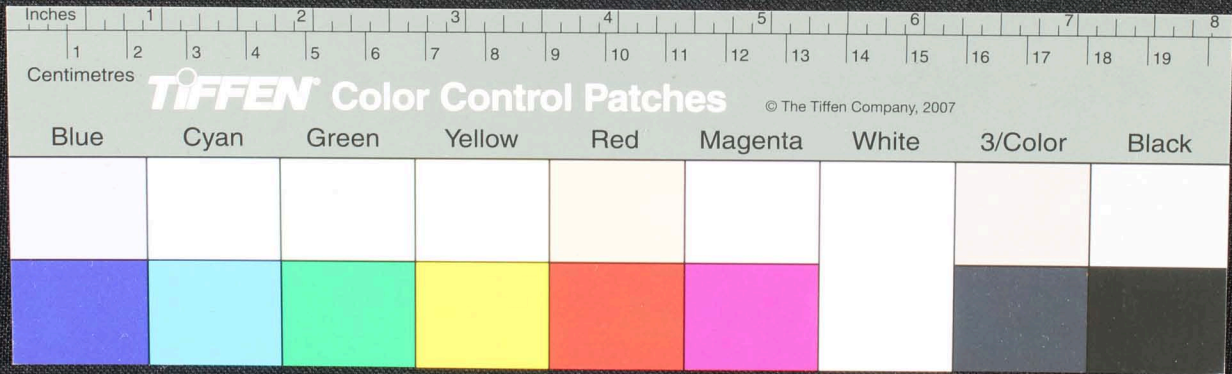


துருநகரநடு
 147 நாது
 2-11 சிடு நகரயில்
 மருநகரநடு
 147 நாது

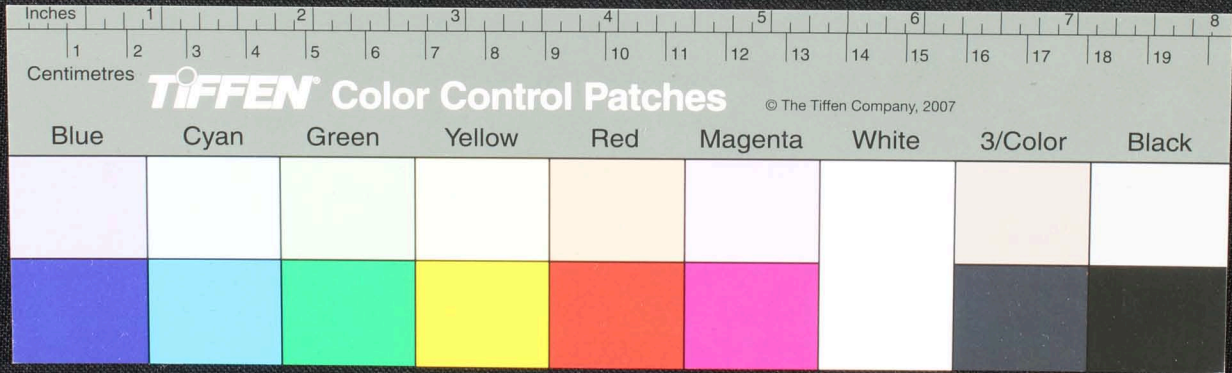
2 நகநகரநடு மருநகரநடு 11 நாது நகநடு
 நடு 11 நாது 147 நாது நடு 147 நாது
 நடு 147 நாது 147 நாது 147 நாது 147 நாது
 நடு 147 நாது 147 நாது 147 நாது 147 நாது



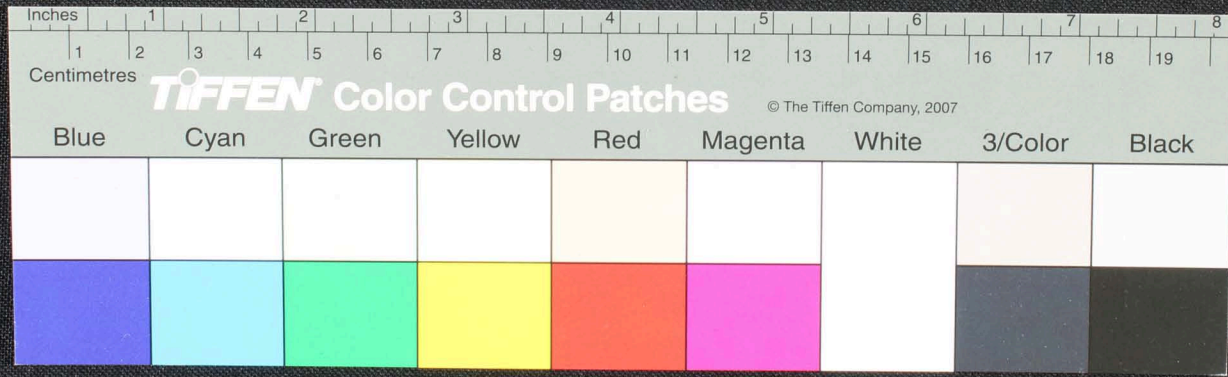
Handwritten Tamil script on a palm leaf fragment. The text is arranged in approximately five horizontal lines. The script is finely etched into the surface of the dried leaf. The fragment is irregularly shaped with some missing sections on the left side.



Handwritten Tamil script on a palm leaf manuscript. The text is arranged in approximately four horizontal lines. The script is finely etched into the surface of the dried leaf. The leaf shows signs of age and wear, with some fraying and a small circular hole on the right side.



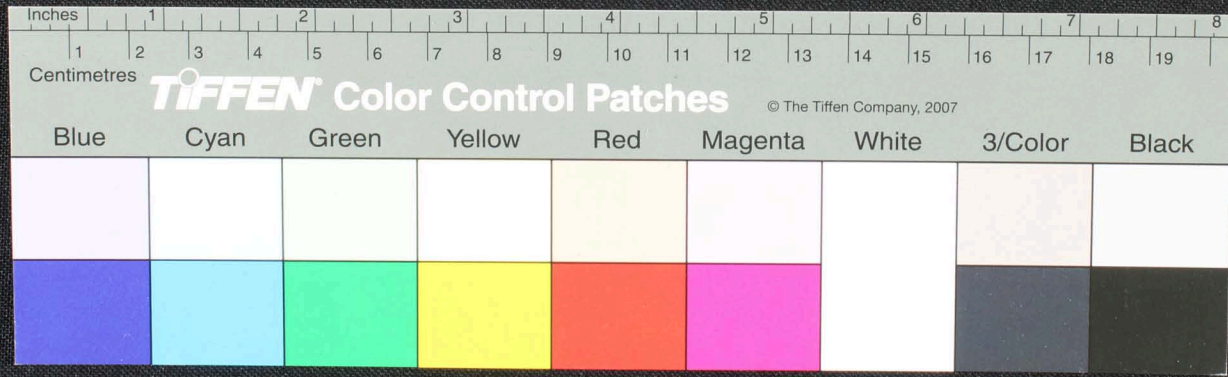
Handwritten Tamil script on a palm leaf manuscript strip. The text is arranged in approximately 10 horizontal lines. Two circular holes are visible, which were traditionally used for threading a cord to bind multiple leaves together. The script is finely etched into the surface of the dried leaf.



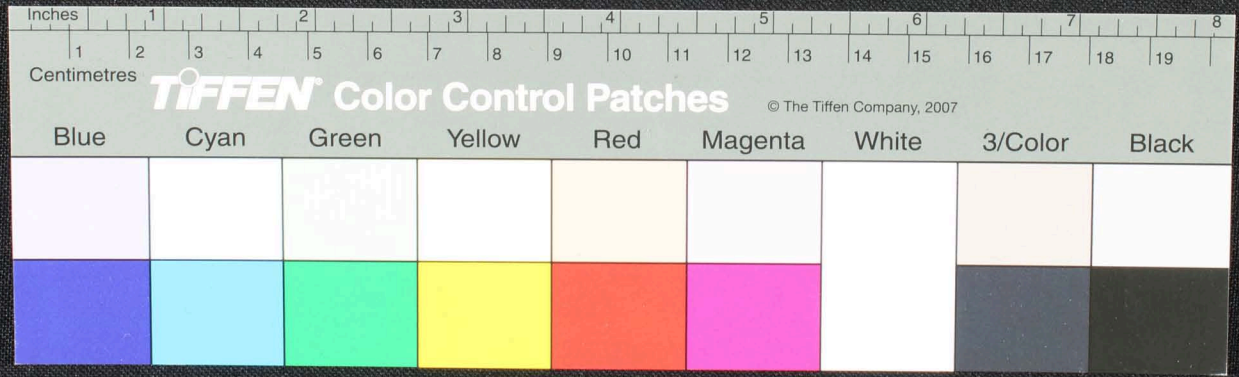
Handwritten Tamil script on a palm leaf manuscript. The text is arranged in approximately 10 horizontal lines across the length of the leaf. The script is a traditional form of the Tamil language, likely used for religious or philosophical purposes. The leaf shows signs of age and wear, with some fraying at the edges and a small circular hole near the center.



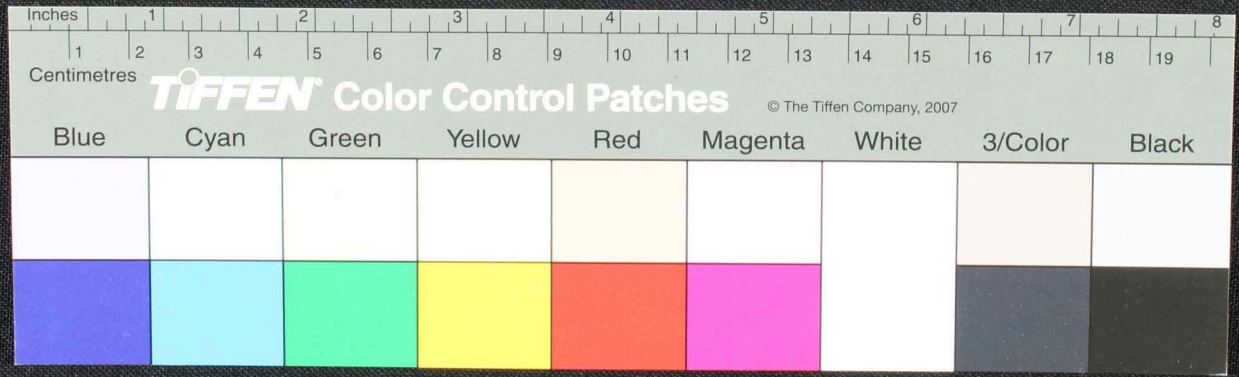
Handwritten Tamil script on a palm leaf manuscript strip. The text is arranged in approximately five horizontal lines. On the left side, there is a small, faint diagram or sketch. The script is densely packed and appears to be a form of historical Tamil, possibly including religious or philosophical content.



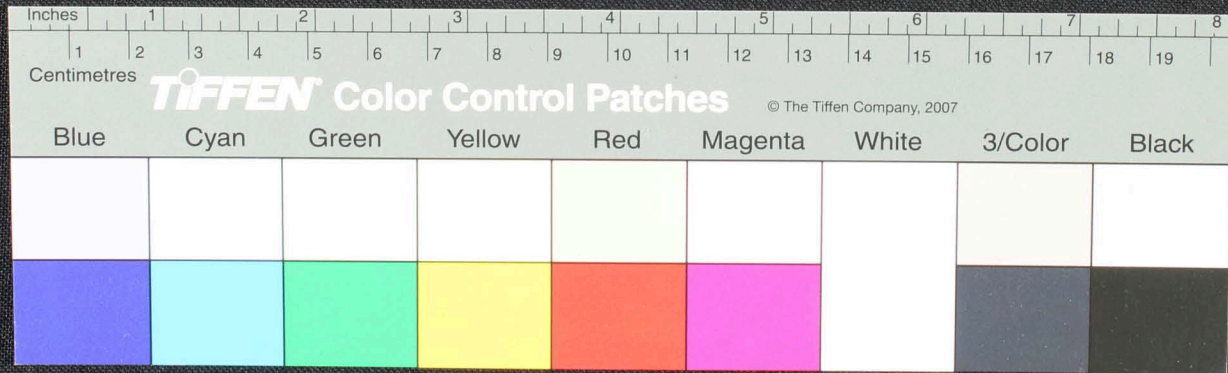
Handwritten Tamil script on a palm leaf manuscript. The text is arranged in three columns, with some characters appearing to be in a different script or dialect. The leaf shows signs of age and wear, with some damage at the ends.



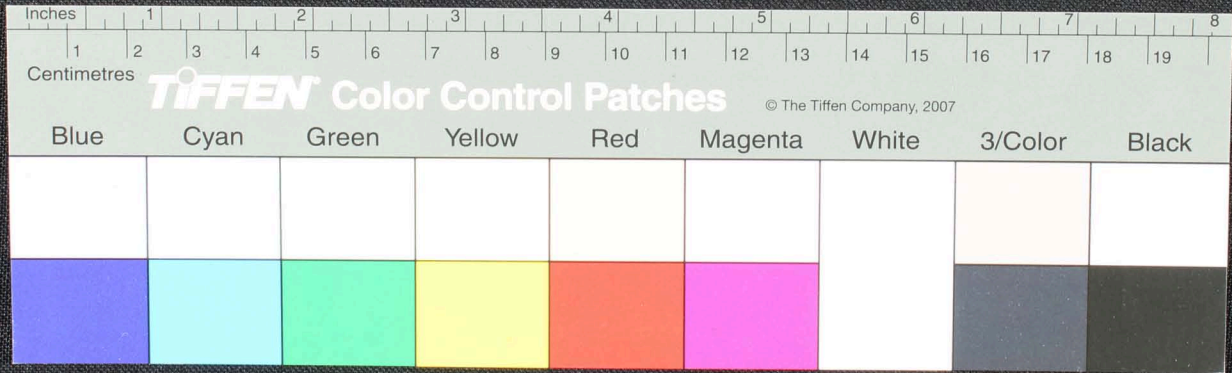
Handwritten Tamil script on a palm leaf manuscript strip. The text is arranged in approximately 10 horizontal lines. Two circular holes are visible, used for binding multiple leaves together. The script is a traditional form of the Tamil language.



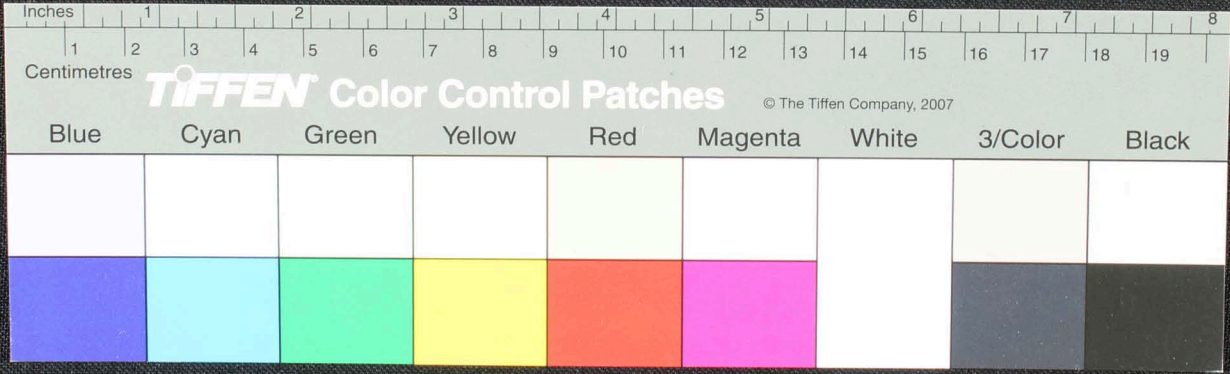
Handwritten Tamil script on a palm leaf manuscript strip. The text is arranged in approximately 10 horizontal lines, written in a traditional style. Two circular holes are visible, which were used for threading a cord to bind multiple leaves together. The leaf shows signs of age and wear, with some fraying at the edges.



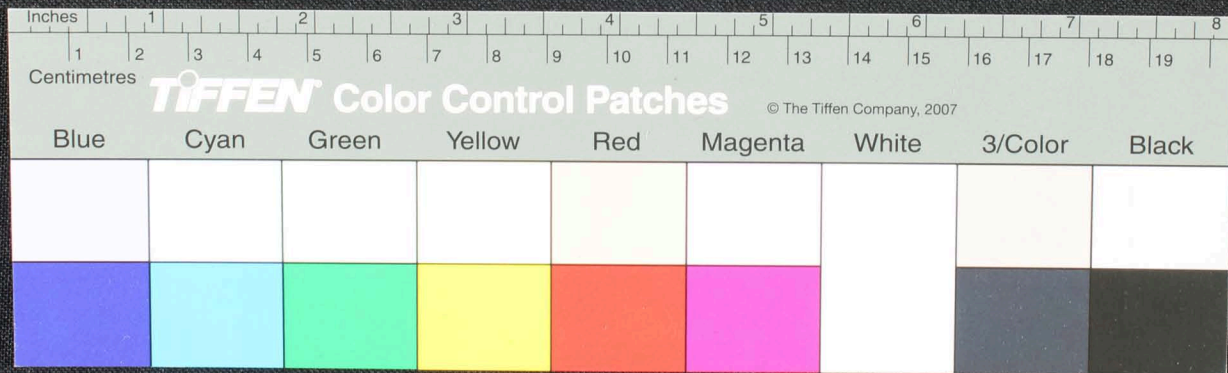
பாரதித்யதிபாநிசுமுமுதம் நானுநாநானுசுயாநயிதூவாஓமகமவைவாதிபியு
 அமவைவாதிபியுநாநானுசுயாநயிதூவாஓமகமவைவாதிபியுநாநானுசுயாநயிதூவாஓமகமவைவாதிபியு
 சூபபதவிநுபபாநிசுமுமுதம் நானுநாநானுசுயாநயிதூவாஓமகமவைவாதிபியுநாநானுசுயாநயிதூவாஓமகமவைவாதிபியு
 காசுநாநானுசுயாநயிதூவாஓமகமவைவாதிபியுநாநானுசுயாநயிதூவாஓமகமவைவாதிபியுநாநானுசுயாநயிதூவாஓமகமவைவாதிபியு
 சூபபதவிநுபபாநிசுமுமுதம் நானுநாநானுசுயாநயிதூவாஓமகமவைவாதிபியுநாநானுசுயாநயிதூவாஓமகமவைவாதிபியு
 காசுநாநானுசுயாநயிதூவாஓமகமவைவாதிபியுநாநானுசுயாநயிதூவாஓமகமவைவாதிபியுநாநானுசுயாநயிதூவாஓமகமவைவாதிபியு



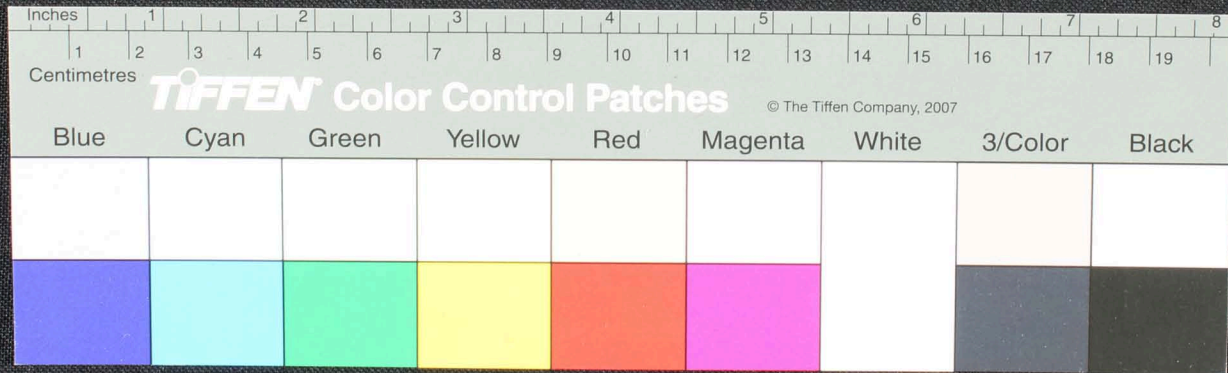
Handwritten Tamil script on a palm leaf manuscript. The text is arranged in approximately four horizontal lines across the length of the leaf. The script is finely etched into the surface of the dried leaf. The leaf shows signs of age, including some dark spots and irregular edges.



Handwritten Tamil script on a palm leaf manuscript. The text is arranged in approximately five horizontal lines across the length of the leaf. The script is finely etched into the surface of the dried leaf. The leaf shows signs of age and wear, with some fraying at the edges and two circular holes, likely from a traditional binding method.



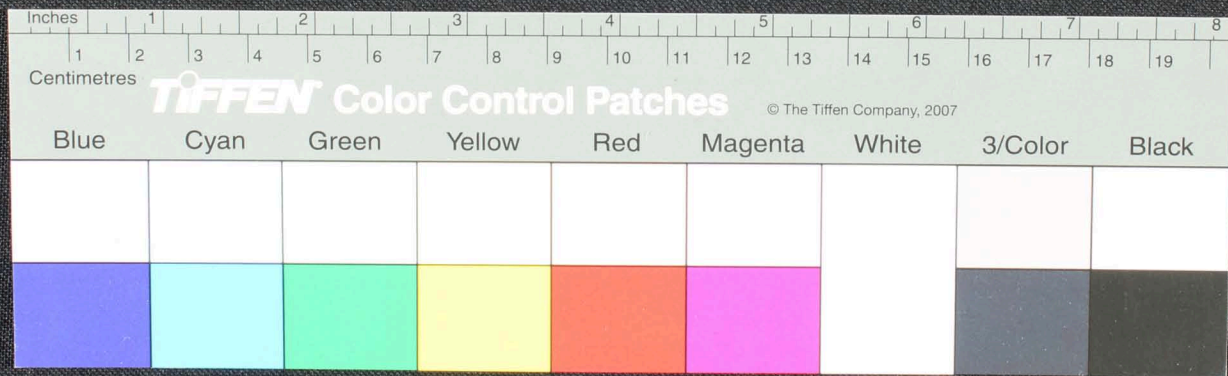
Handwritten Tamil script on a palm leaf manuscript strip. The text is arranged in approximately four horizontal lines. The script is finely etched into the surface of the dried leaf. The leaf shows signs of age and wear, with some irregular edges and a small dark circular mark near the center.



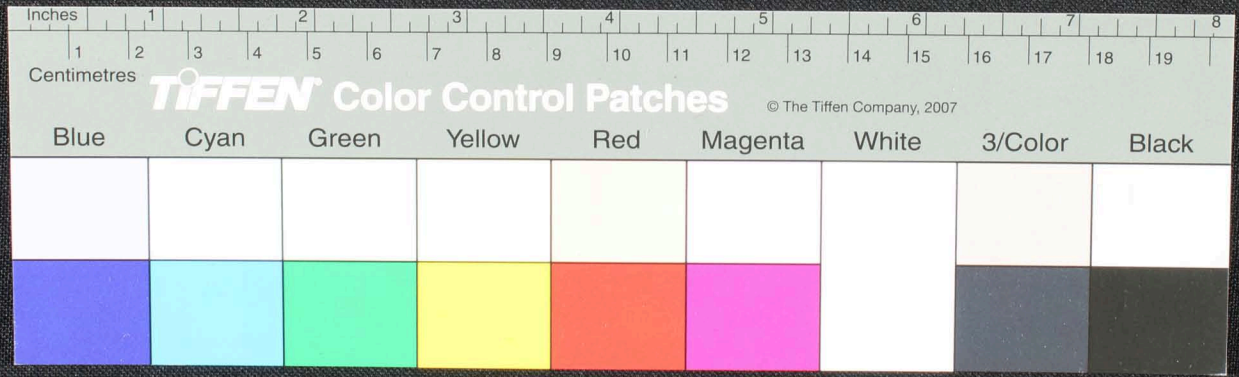
Handwritten Tamil script on a palm leaf manuscript strip. The text is arranged in approximately four horizontal lines. The script is finely etched into the surface of the dried leaf. The leaf shows signs of age, including some darkening and wear, particularly around the edges and two circular holes that were used for binding multiple leaves together.



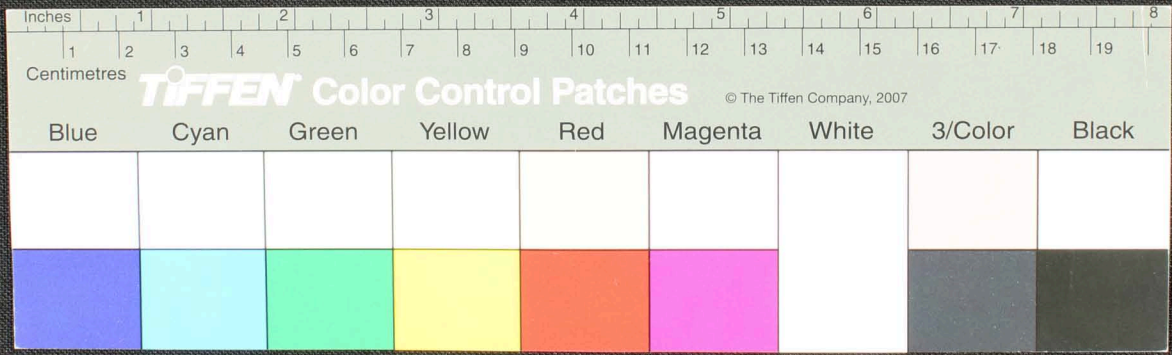
Handwritten text in Tamil script on a palm leaf manuscript. The text is arranged in approximately 10 horizontal lines. A circular hole is visible near the center of the leaf, which is a traditional feature for threading a cord to bind multiple leaves together. The script is finely etched into the surface of the dried leaf.



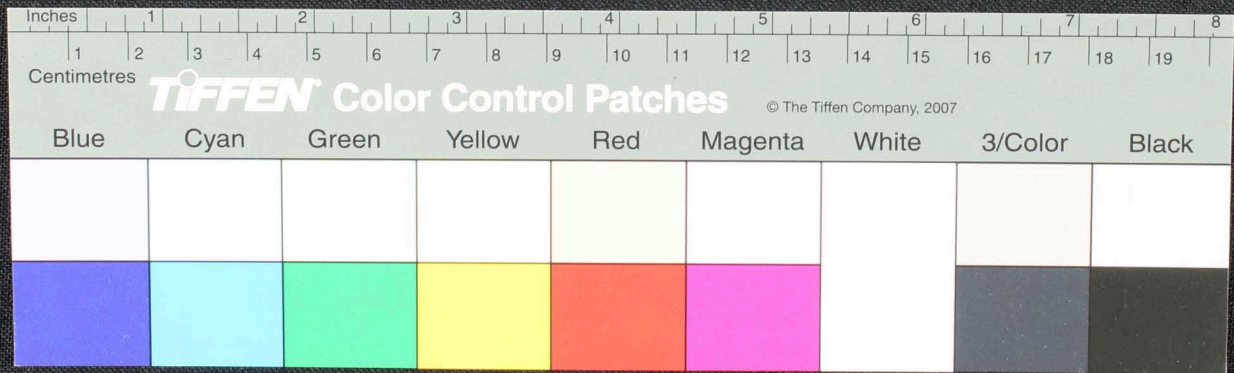
Handwritten Tamil script on a palm leaf manuscript. The text is arranged in approximately 10 horizontal lines across the length of the leaf. Two circular holes are visible, which were traditionally used for threading a cord to bind multiple leaves together into a book format. The script is finely etched into the surface of the dried leaf.



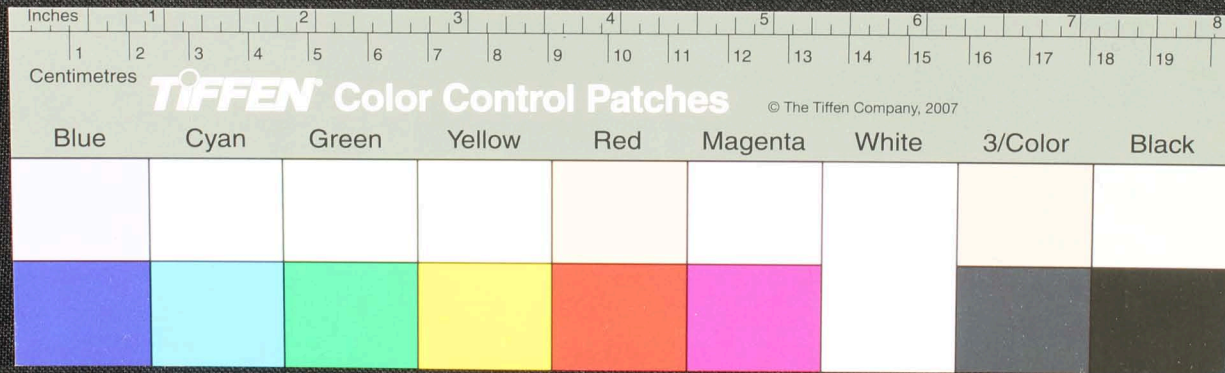
Handwritten Tamil script on a palm leaf manuscript strip. The text is arranged in approximately five horizontal lines. The script is finely etched into the surface of the dried leaf. Two circular holes are visible, which were traditionally used for threading a cord to bind multiple leaves together into a book format. The leaf shows signs of age and wear, with some fraying at the edges.



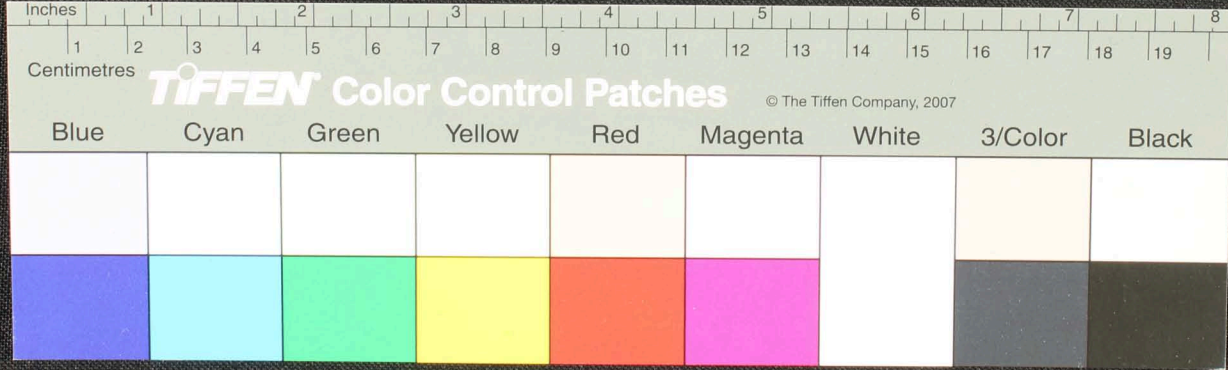
Handwritten Tamil script on a palm leaf manuscript. The text is arranged in approximately 10 horizontal lines. The script is finely etched into the surface of the dried leaf. There are two circular holes visible, which were traditionally used for threading a cord to bind multiple leaves together into a book format. The leaf shows signs of age and wear, with some fraying at the edges.



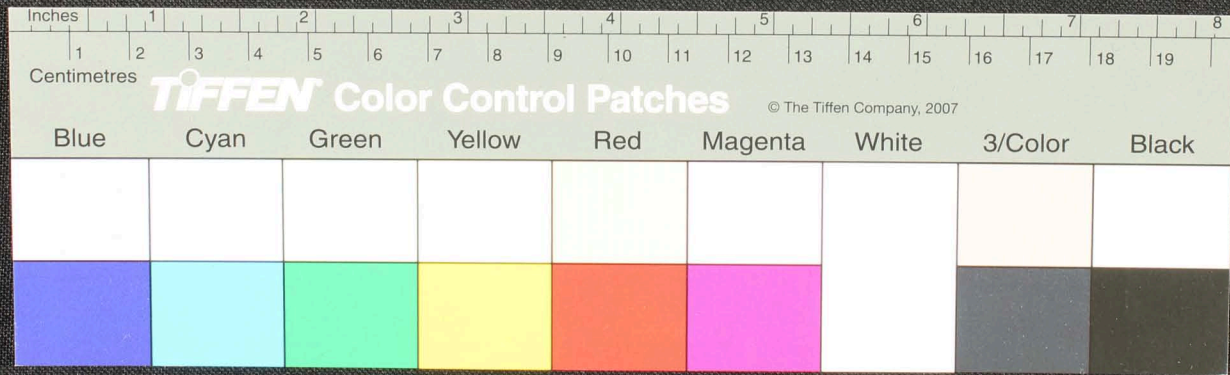
Handwritten Tamil script on a palm leaf manuscript. The text is arranged in approximately 10 horizontal lines across the length of the leaf. The script is finely etched into the surface of the dried leaf. There are two circular holes visible, which were traditionally used for threading a cord to bind multiple leaves together into a book format. The leaf shows signs of age, including some discoloration and wear at the edges.



Handwritten Tamil script on a palm leaf manuscript. The text is arranged in approximately 10 horizontal lines across the length of the leaf. Two circular holes are visible, which were traditionally used for threading a cord to bind multiple leaves together. The script is finely etched into the surface of the dried leaf.



Handwritten Tamil script on a palm leaf manuscript. The text is arranged in approximately 10 horizontal lines across the length of the leaf. Two circular holes are visible, which were traditionally used for threading a cord to bind multiple leaves together. The script is finely etched into the surface of the dried leaf.



Handwritten Tamil script on a palm leaf manuscript. The text is arranged in approximately four horizontal lines. Two circular holes are visible on the left side of the leaf, which were traditionally used for threading a cord to bind multiple leaves together. The script is finely etched into the surface of the dried leaf.

