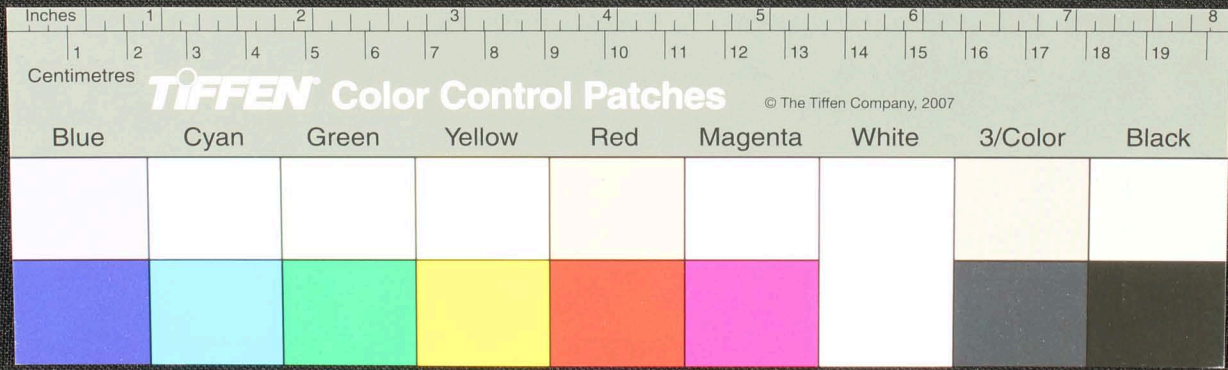
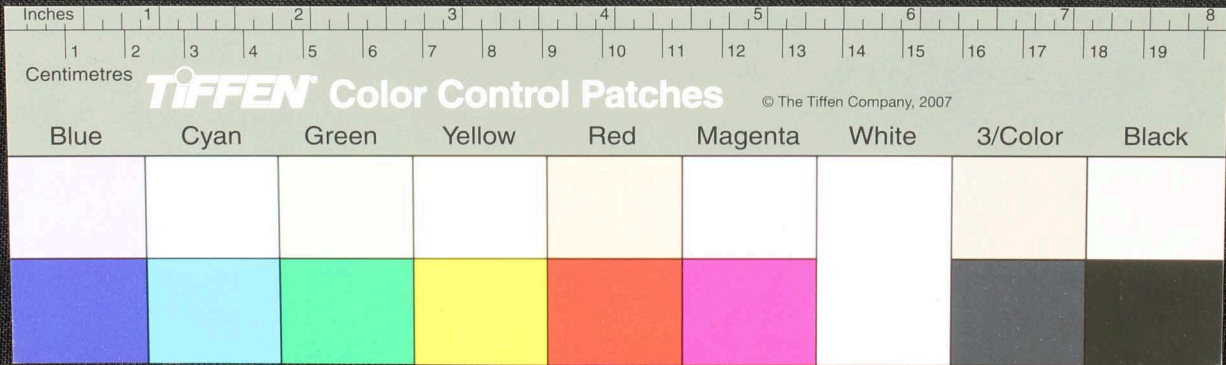
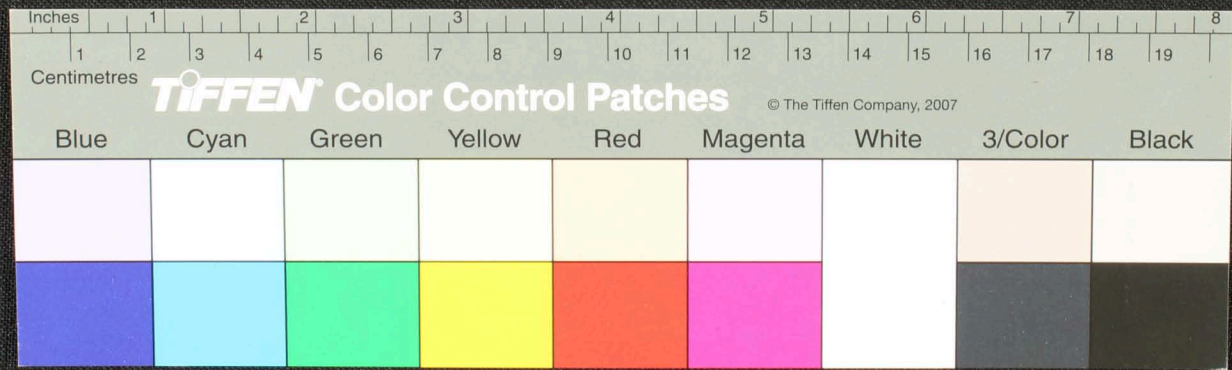


Handwritten Tamil script on a palm leaf manuscript. The text is arranged in approximately 10 horizontal lines across the length of the leaf. Two circular holes are visible, used for threading a cord to bind multiple leaves together. The script is a traditional form of the Tamil language.

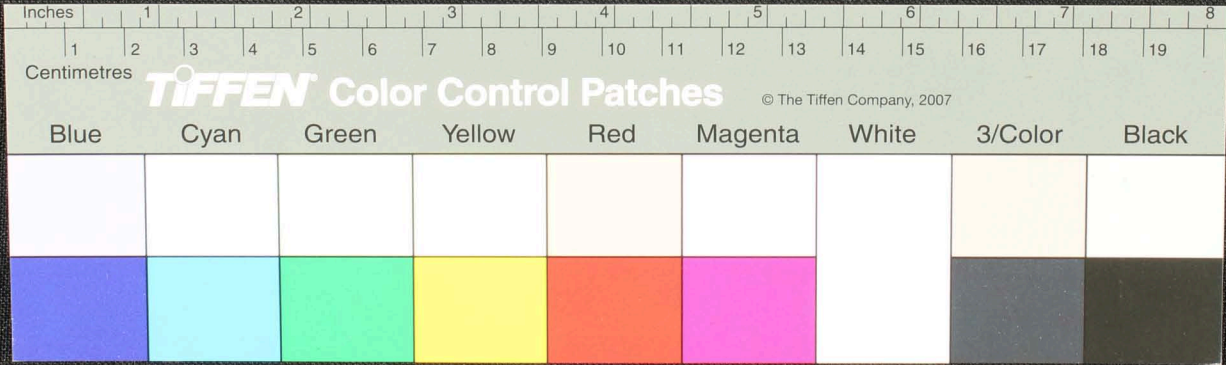


Handwritten Tamil script on a palm leaf manuscript. The text is arranged in approximately 10 horizontal lines across the length of the leaf. The script is a traditional form of the Tamil language, likely used for religious or philosophical purposes. The leaf shows signs of age and wear, with some dark spots and irregular edges.

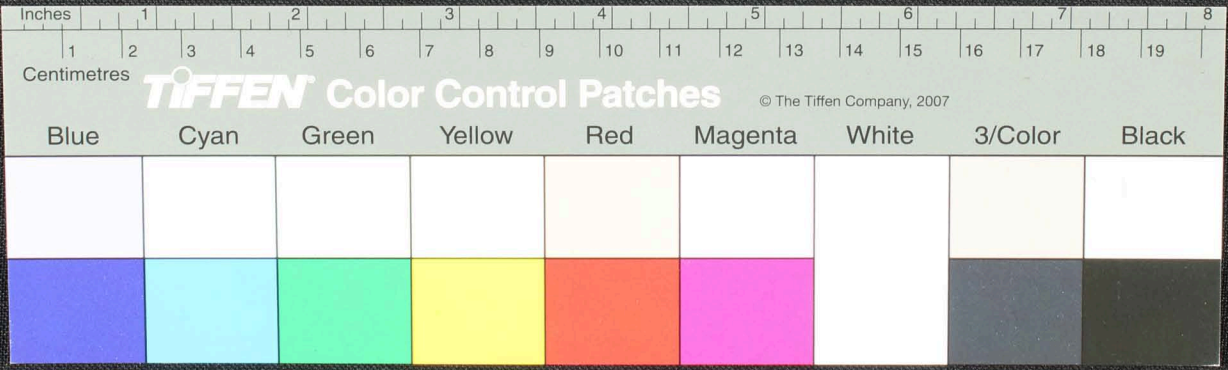




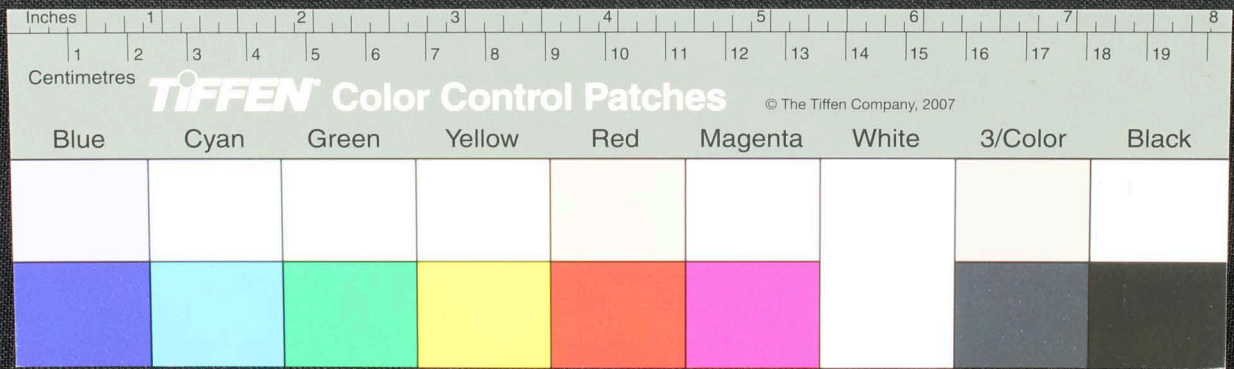
Handwritten Tamil script on a palm leaf manuscript, arranged in three columns. The text is finely inscribed and spans across the length of the leaf.



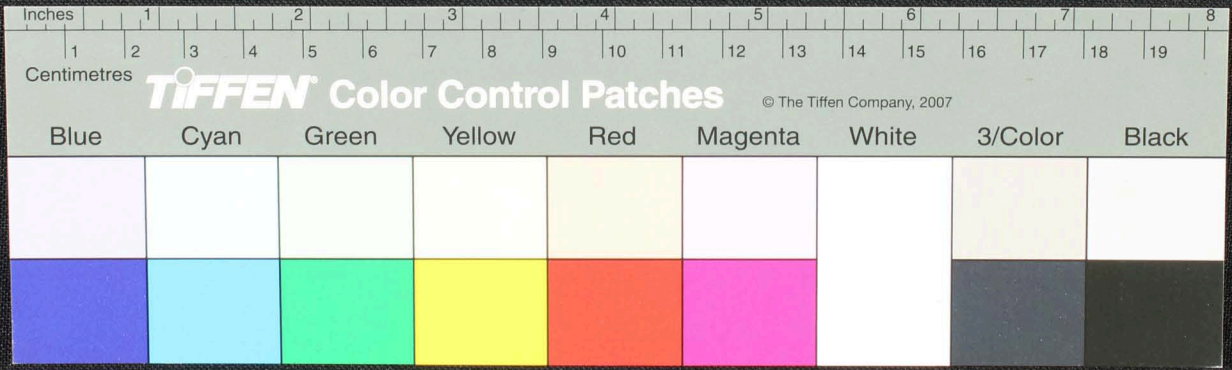
Handwritten Tamil script on a palm leaf manuscript. The text is arranged in approximately 10 horizontal lines. The script is finely etched into the surface of the dried leaf. Some characters are circled in red ink. The leaf shows signs of age and wear, with some fraying at the left end.



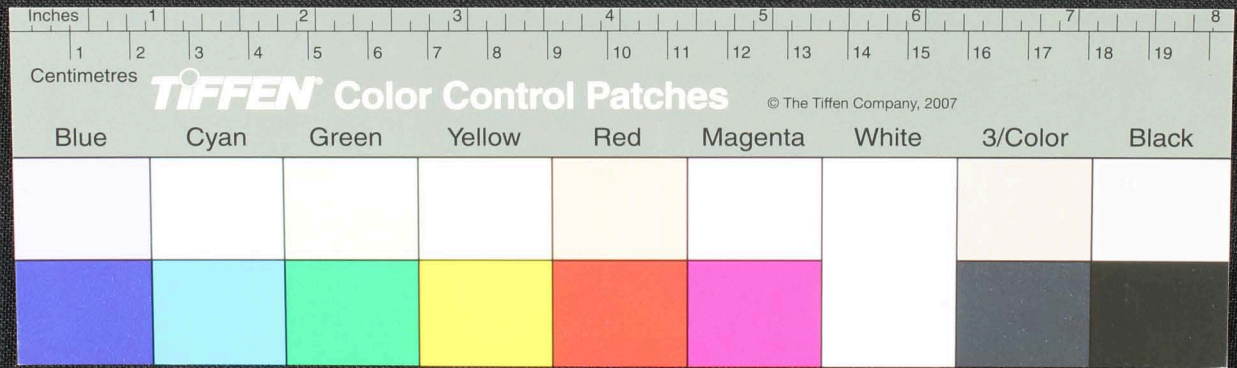
Handwritten Tamil script on a palm leaf manuscript. The text is arranged in approximately 10 horizontal lines. The script is finely etched into the surface of the dried leaf. A small circular hole is visible near the center of the leaf, which is a traditional feature for threading a cord to bind multiple leaves together. The leaf shows signs of age and wear, with some fraying at the left end.



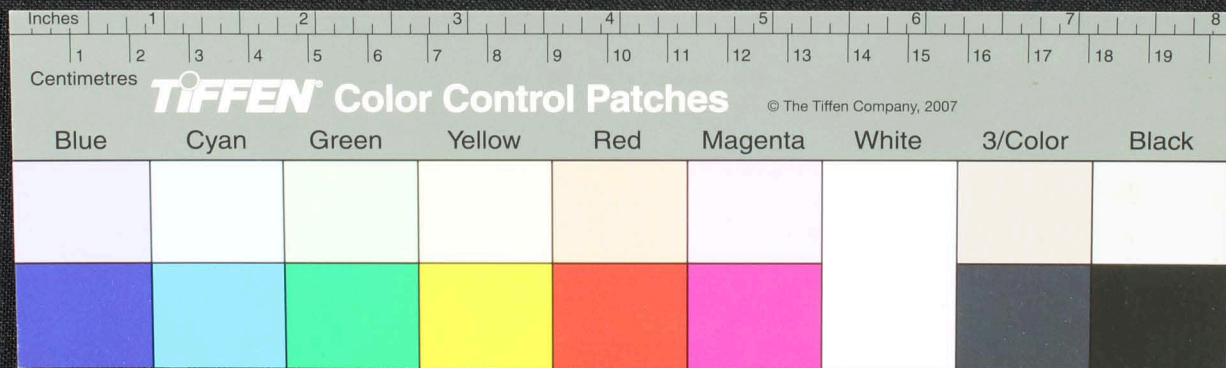
Handwritten Tamil script on a palm leaf manuscript. The text is arranged in several lines and includes a circular hole, a common feature for binding multiple leaves together.



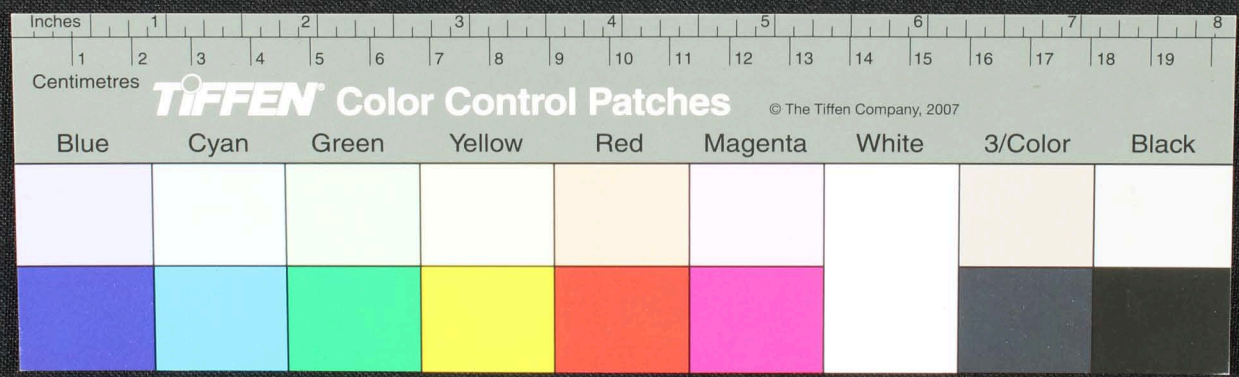
Handwritten Tamil script on a palm leaf manuscript fragment. The text is arranged in approximately four horizontal lines. The script is finely etched into the surface of the dried leaf. The fragment is irregularly shaped, with some missing sections on the right side.



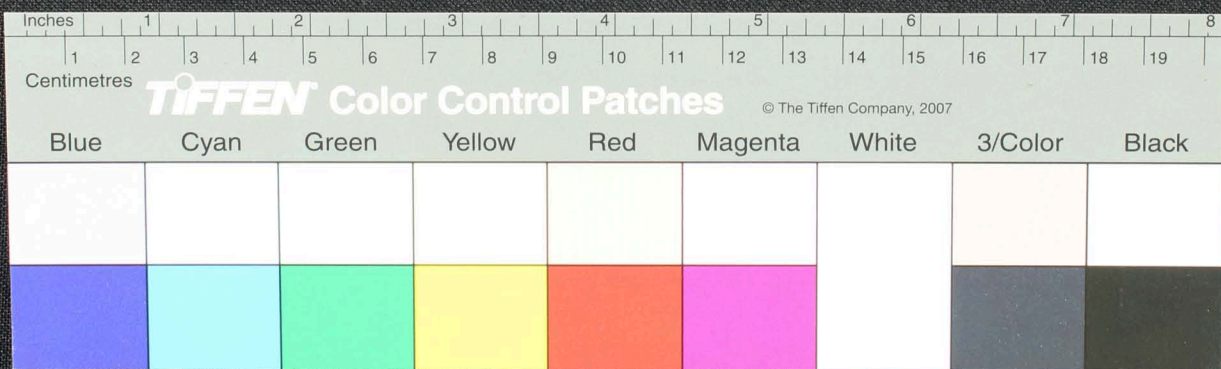
Handwritten Tamil script on a palm leaf manuscript. The text is arranged in approximately three horizontal lines across the length of the leaf. The script is a traditional form of the Tamil language, likely used for religious or philosophical purposes. The leaf shows signs of age and wear, with some fraying at the edges.



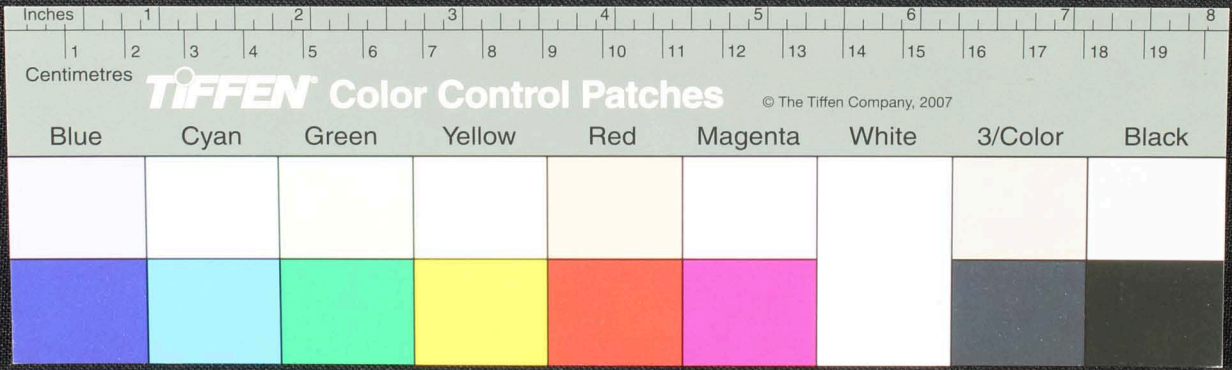
Handwritten Tamil script on a palm leaf manuscript. The text is arranged in approximately four horizontal lines. The script is finely etched into the surface of the dried leaf. The leaf shows signs of age and wear, with some irregularities and a small hole near the center.



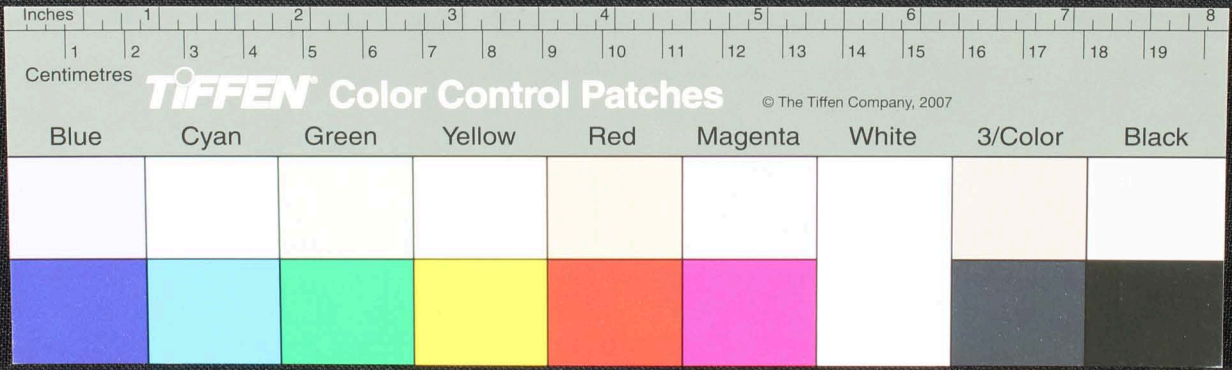
Handwritten Tamil script on a palm leaf manuscript strip. The text is arranged in approximately 10 horizontal lines. Two circular holes are visible, which were traditionally used for threading a cord to bind multiple leaves together. The script is finely etched into the surface of the dried leaf.



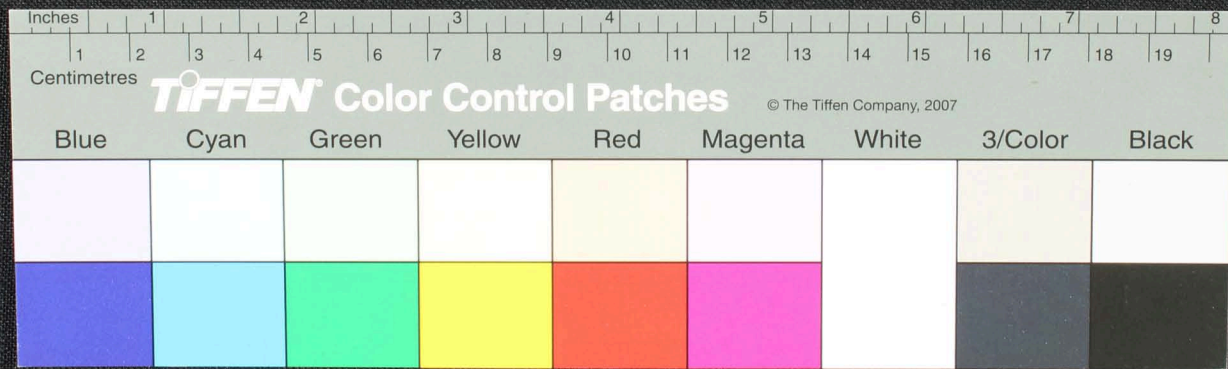
Handwritten Tamil script on a palm leaf manuscript. The text is arranged in a single line across the length of the leaf. Two circular holes are visible, which were traditionally used for threading a cord to bind multiple leaves together into a book format. The script is finely etched into the surface of the dried leaf.



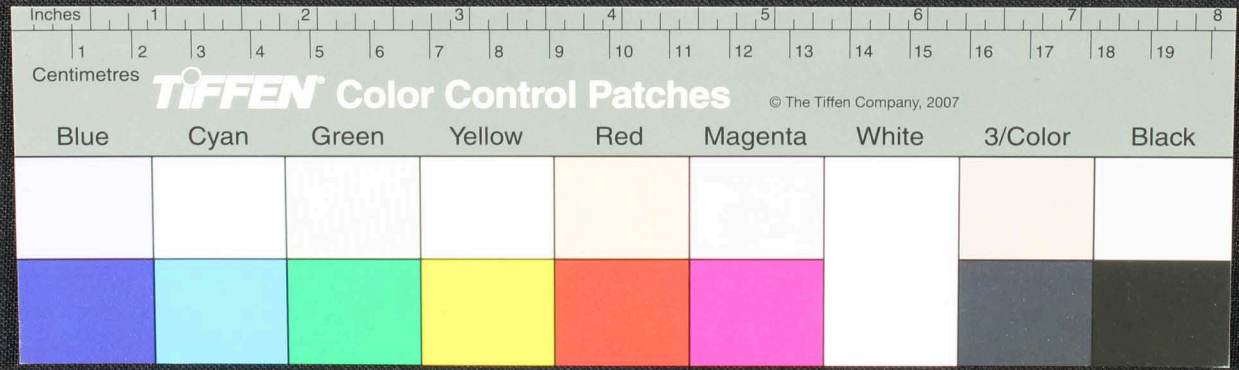
Handwritten Tamil script on a palm leaf manuscript strip. The text is arranged in approximately four horizontal lines. The script is finely etched into the surface of the dried leaf. The first line begins with a character that resembles 'w' or 'v'. The text continues across the length of the leaf, with some characters appearing to be in a different script or dialect, possibly including 'ச' (sa) and 'ந' (na). The leaf shows signs of age and wear, with some fraying at the edges.



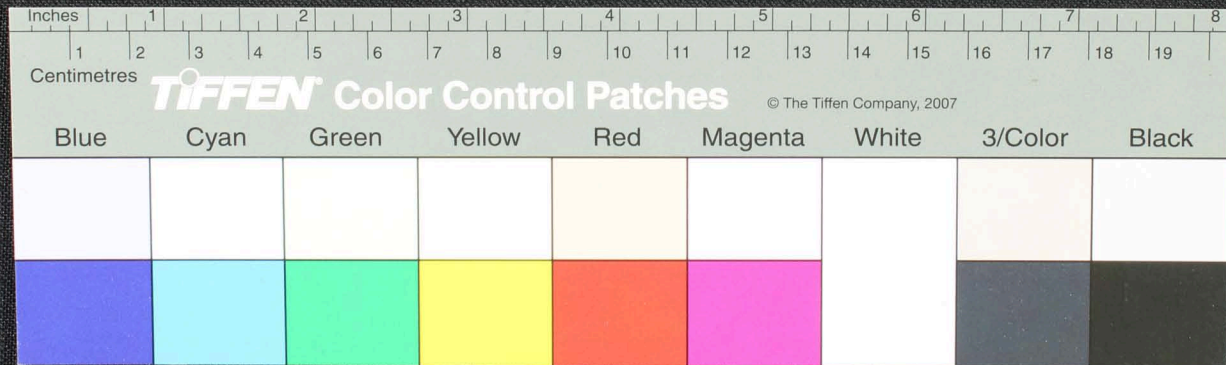
Handwritten text in Tamil script on a palm leaf manuscript. The text is arranged in approximately four horizontal lines across the length of the leaf. The script is finely etched into the natural texture of the dried leaf. Two circular holes are visible, which were traditionally used for threading a cord to bind multiple leaves together into a book format. The leaf shows signs of age and wear, particularly at the edges.



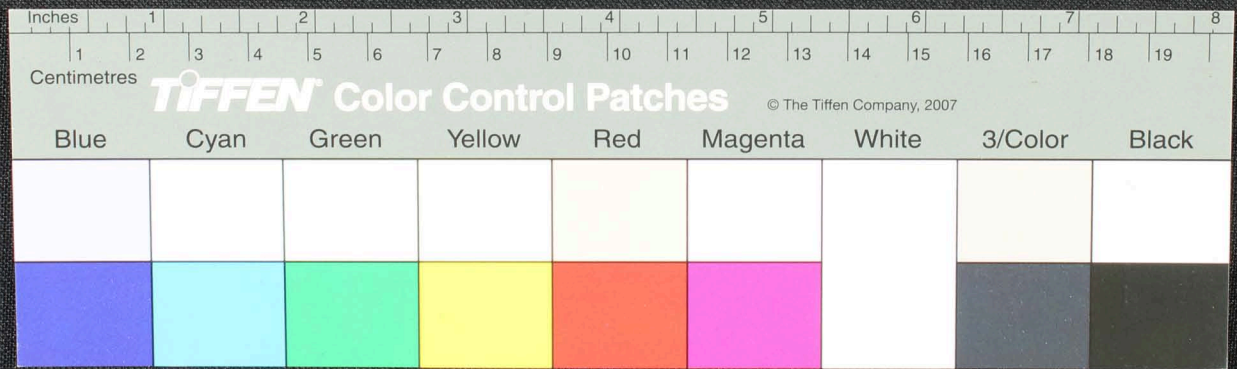
உகா... உகா... உகா... உகா... உகா... உகா... உகா... உகா... உகா... உகா...
 உகா... உகா... உகா... உகா... உகா... உகா... உகா... உகா... உகா... உகா...
 உகா... உகா... உகா... உகா... உகா... உகா... உகா... உகா... உகா... உகா...
 உகா... உகா... உகா... உகா... உகா... உகா... உகா... உகா... உகா... உகா...
 உகா... உகா... உகா... உகா... உகா... உகா... உகா... உகா... உகா... உகா...



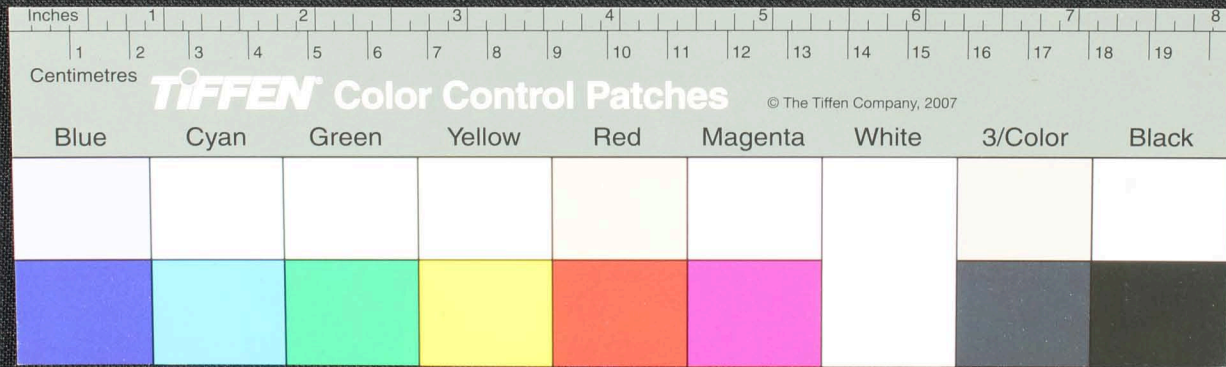
Handwritten Tamil script on a palm leaf manuscript. The text is densely packed and runs horizontally across the length of the leaf. A circular hole is visible near the center, used for binding multiple leaves together. The leaf shows signs of age and wear, with some fraying at the edges.



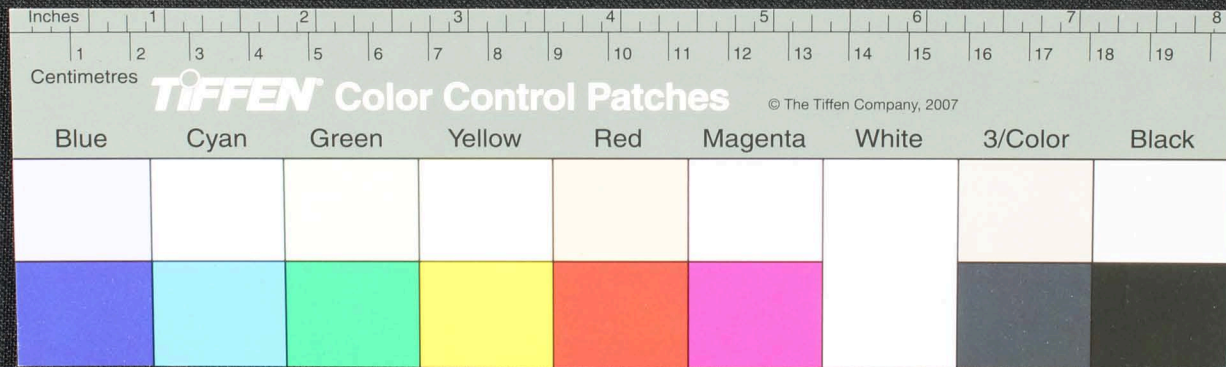
Handwritten Tamil script on a palm leaf manuscript. The text is arranged in approximately five horizontal lines. The script is finely etched into the surface of the dried leaf. A small circular hole is visible near the center of the leaf, which is a traditional feature used for threading a cord to bind multiple leaves together into a book format. The leaf shows signs of age and wear, with some fraying at the edges.



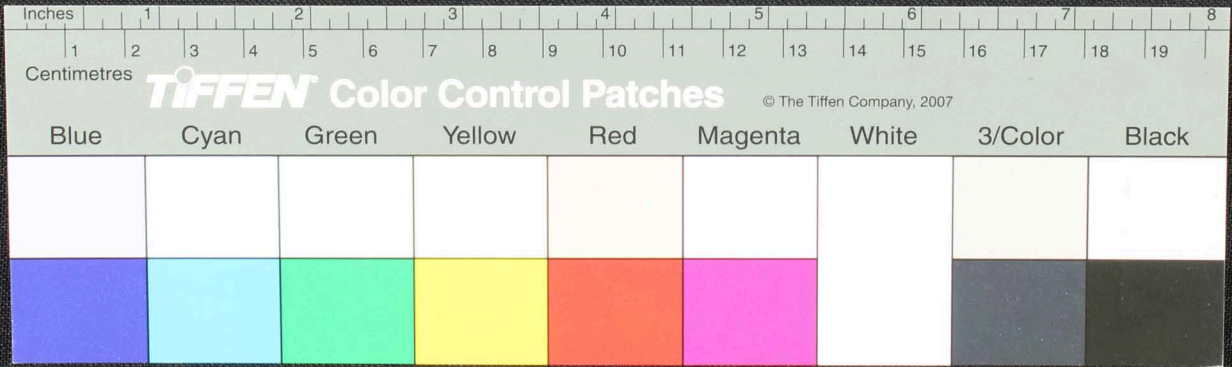
Handwritten Tamil script on a palm leaf manuscript. The text is arranged in approximately four horizontal lines across the length of the leaf. The script is finely etched into the surface of the dried leaf. A small circular hole is visible near the center of the leaf, which was traditionally used for threading a cord to bind multiple leaves together into a book format.



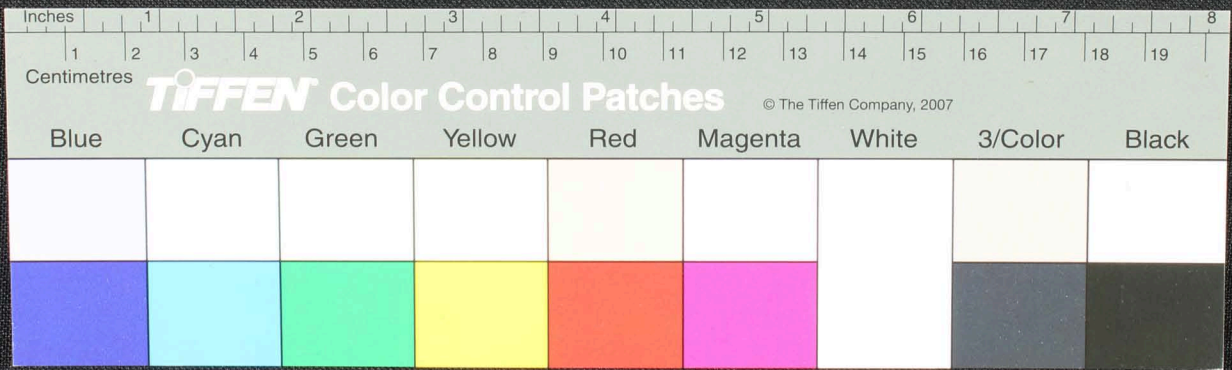
Handwritten Tamil script on a palm leaf manuscript. The text is arranged in approximately 10 horizontal lines across the length of the leaf. Two circular holes are visible, which were traditionally used for threading a cord to bind multiple leaves together into a book format. The script is densely packed and appears to be a form of classical or historical Tamil.



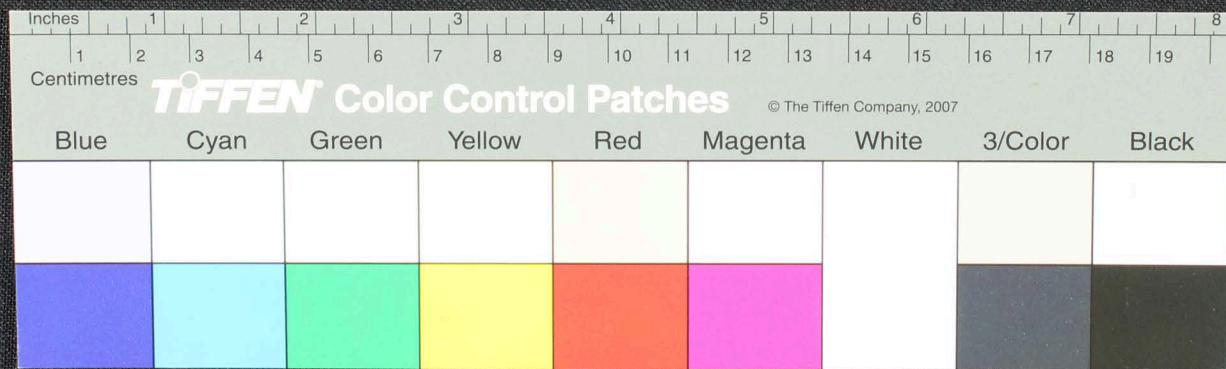
Handwritten Tamil script on a palm leaf manuscript. The text is arranged in approximately 10 horizontal lines across the length of the leaf. The script is finely etched into the surface of the dried leaf. There are two circular holes visible, which were traditionally used for threading a cord to bind multiple leaves together into a book format. The leaf shows signs of age, with some discoloration and wear at the edges.



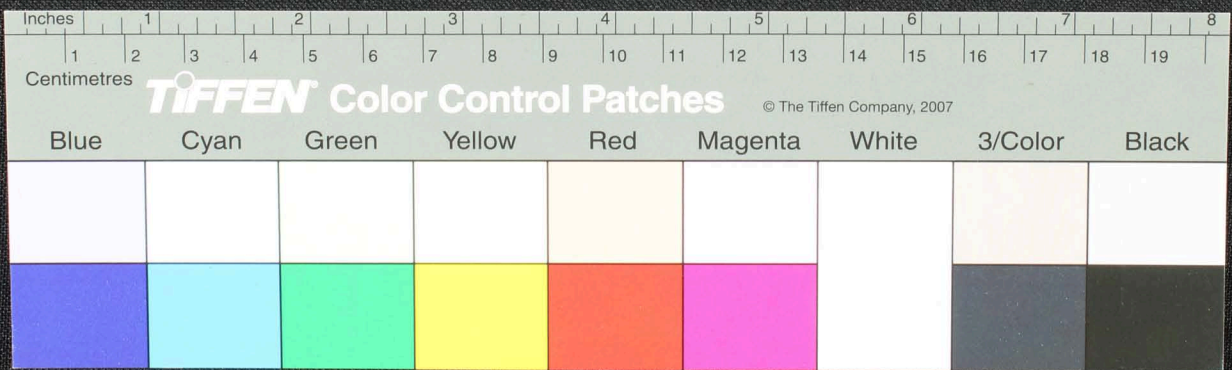
Handwritten Tamil script on a palm leaf manuscript. The text is arranged in approximately 10 horizontal lines. The script is densely packed and appears to be a form of classical or historical Tamil. There are two circular holes visible on the leaf, which were traditionally used for threading a cord to bind multiple leaves together into a book format. The leaf shows signs of age, with some discoloration and wear at the edges.



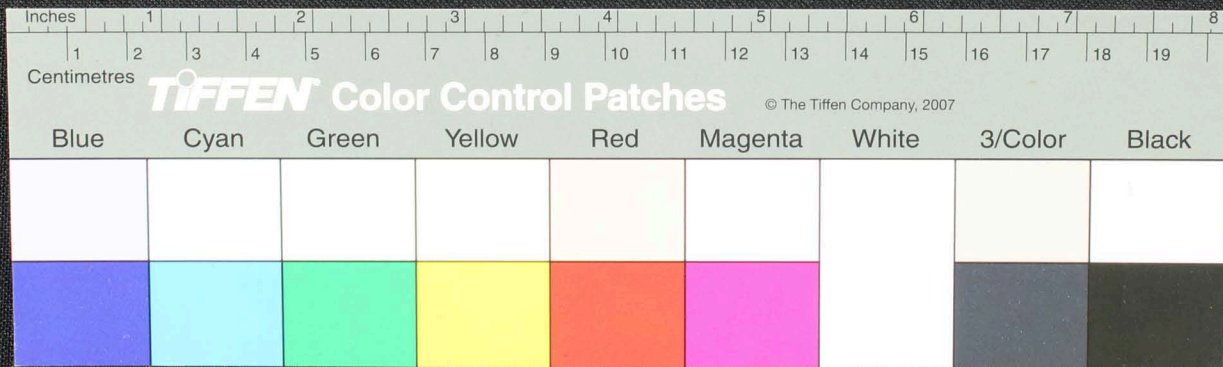
Handwritten Tamil script on a palm leaf manuscript. The text is arranged in approximately four horizontal lines. The script is finely etched into the surface of the dried leaf. Two circular holes are visible, which were traditionally used for threading a cord to bind multiple leaves together into a book format. The leaf shows signs of age, with some discoloration and wear at the edges.



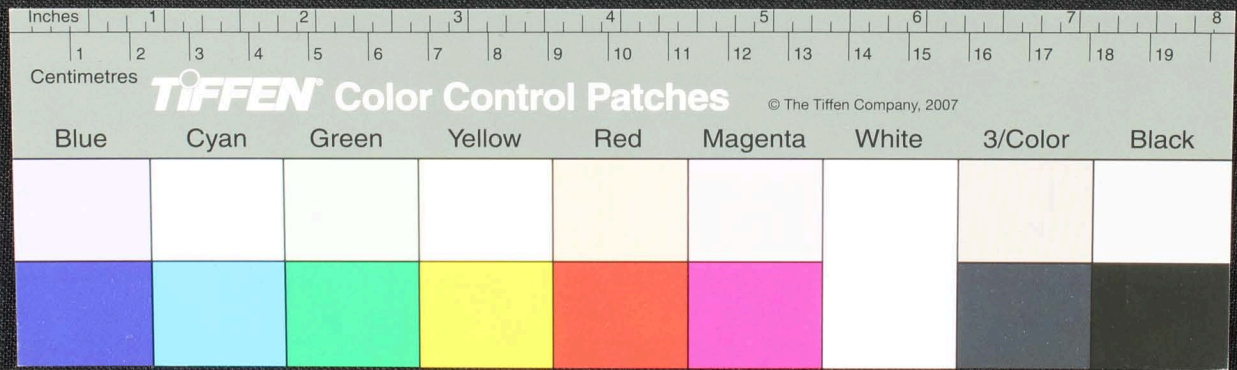
Handwritten text in an ancient script, possibly Tamil, on a palm leaf manuscript. The text is arranged in several lines across the length of the leaf. On the left side, there is a small grid or table with handwritten characters in its cells. Two circular holes are visible on the leaf, used for threading a cord to bind multiple leaves together.



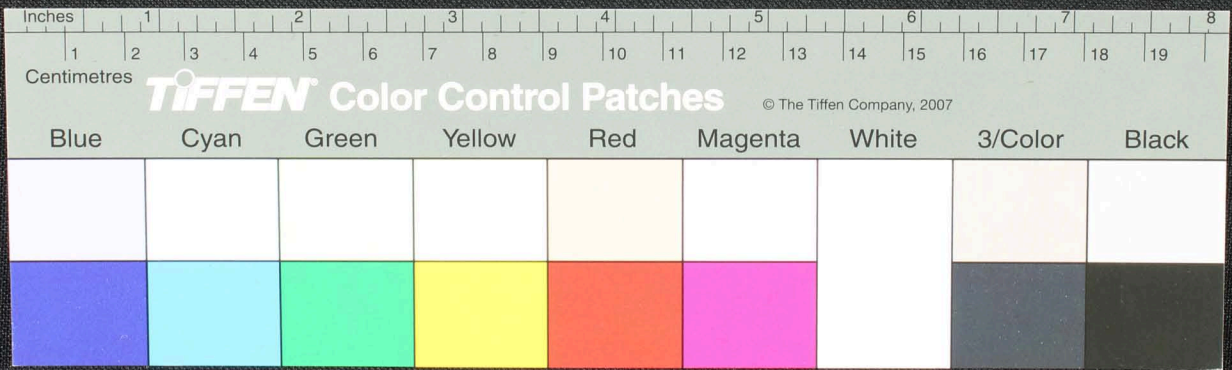
Handwritten Tamil script on a palm leaf manuscript. The text is arranged in approximately six horizontal lines across the length of the leaf. The script is finely etched into the surface of the dried leaf. A small circular hole is visible near the center of the leaf, which is a traditional feature used for threading a cord to bind multiple leaves together into a book format.



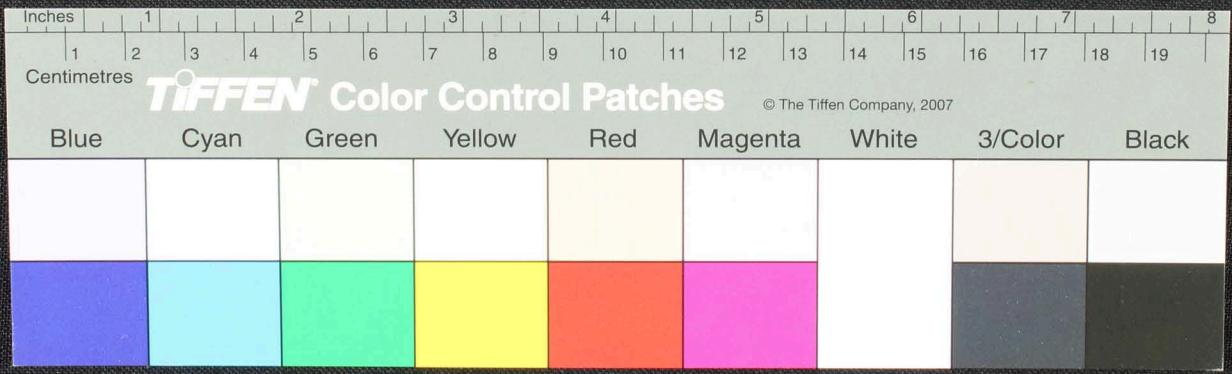
Handwritten Tamil script on a palm leaf manuscript. The text is arranged in approximately four horizontal lines. The script is finely etched into the surface of the dried leaf. A small circular hole is visible in the center of the leaf, which is a traditional feature for threading a cord to bind multiple leaves together into a book format.

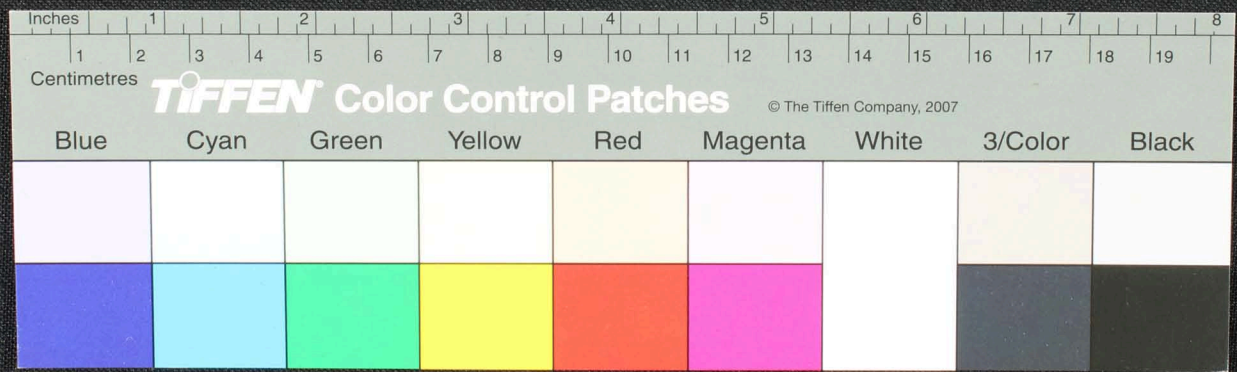
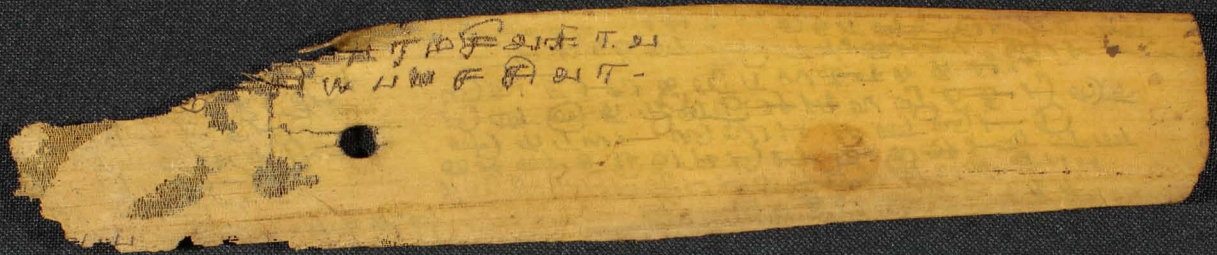


Handwritten Tamil script on a palm leaf manuscript fragment. The text is arranged in approximately four horizontal lines. The script is finely etched into the surface of the dried leaf. The fragment is irregularly shaped with some missing sections, particularly on the left and right edges.



Handwritten Tamil script on a palm leaf manuscript fragment. The text is arranged in approximately 10 horizontal lines. A circular hole is visible on the left side of the leaf, approximately one-third of the way across its width. The script is finely etched into the surface of the dried leaf.





Blue

Cyan

Green

Yellow

Red

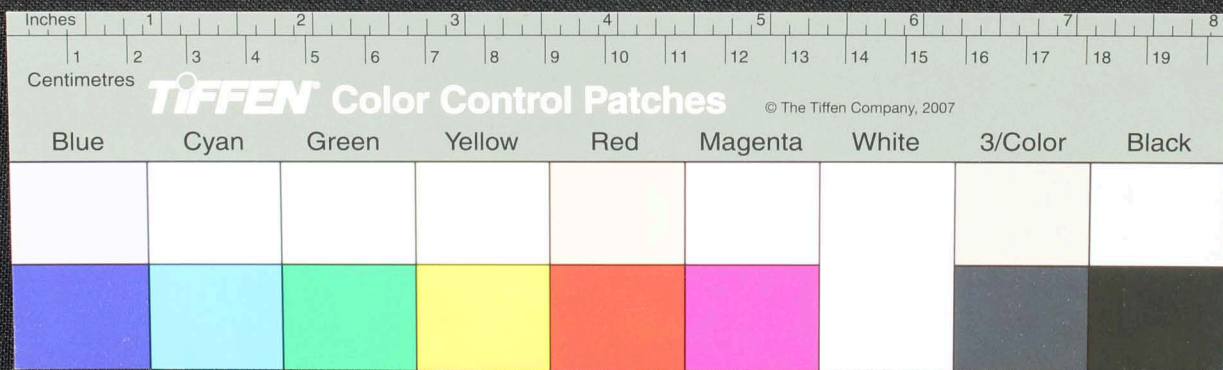
Magenta

White

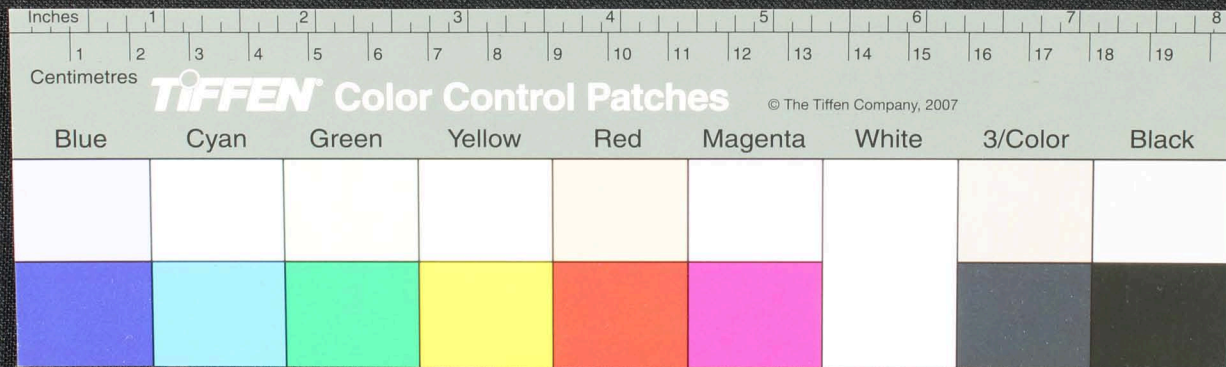
3/Color

Black

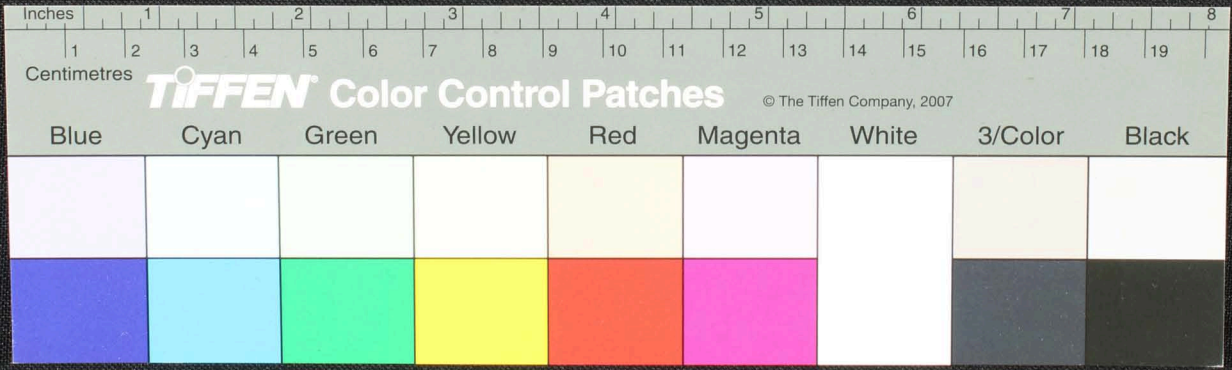
Handwritten Tamil script on a palm leaf manuscript. The text is arranged in approximately 10 horizontal lines. The script is finely etched into the surface of the dried leaf. There are two prominent circular holes, likely from traditional binding methods. The leaf shows signs of age, including some discoloration and wear at the edges.



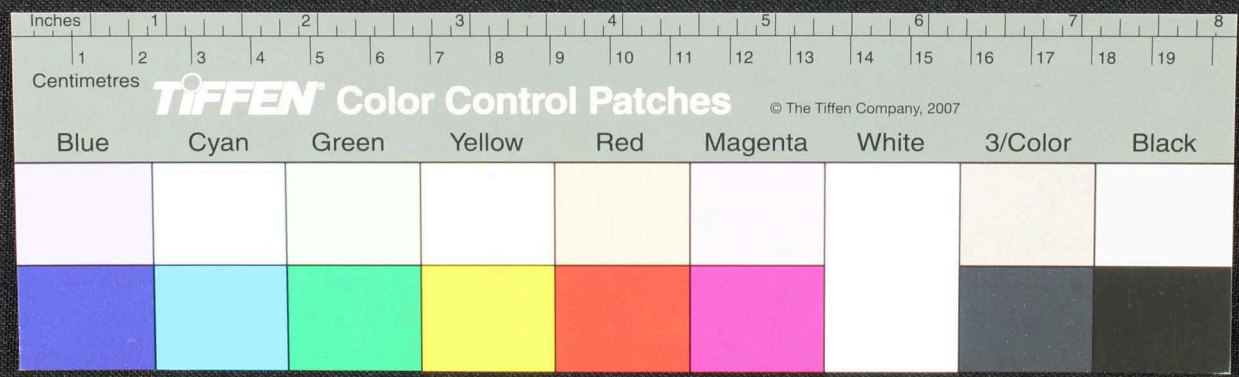
Handwritten Tamil script on a palm leaf manuscript strip. The text is arranged in approximately 10 horizontal lines. A circular hole is visible in the center of the strip, used for threading a cord to bind multiple leaves together. The script is densely packed and appears to be a form of classical Tamil.



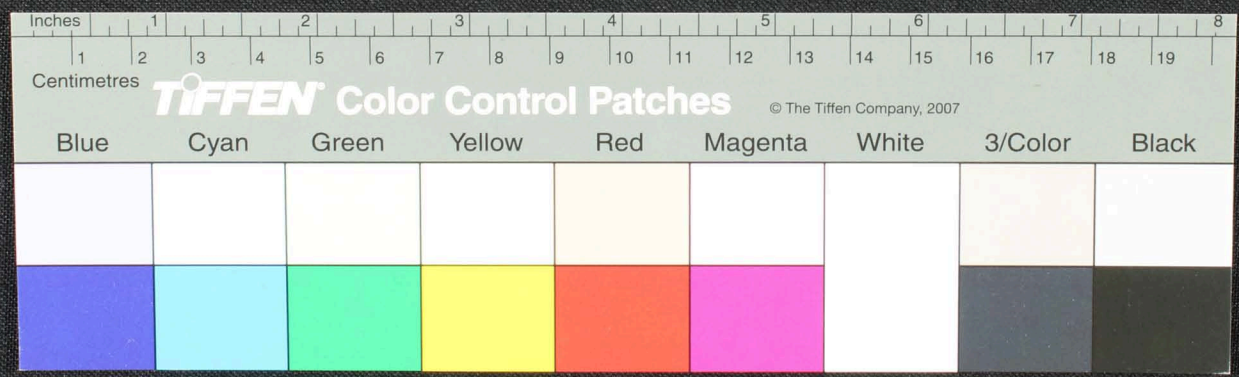
520
 தாளுநு சௌளுவரனாருட
 சௌயுமது திதூ ஶு அரும அலயுலமாடுவெ ருநகரஜமதிதப்படுவமாருது
 திலயு துநெ ஶயபநிகராமதிதயு ஶவெச வதுயரீரதுலயுநுசௌளுவெ
 மது சௌளுவரனாருவரல ஶுசயும-கவடு அருதமடுததடுதது
 கடுதயுமதுமதுவரல வரலததுவரலததுயுடு நரசு கடுபலபாசுலயலது



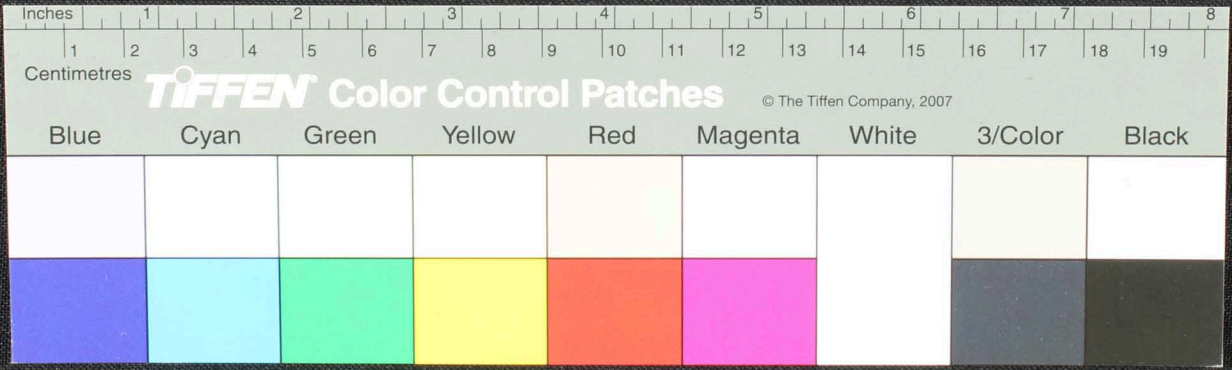
Handwritten Tamil script on a palm leaf manuscript. The text is arranged in approximately 10 horizontal lines across the length of the leaf. The script is a traditional form of the Tamil language, likely containing religious or philosophical content. The leaf shows signs of age and wear, with some fraying at the edges and two circular holes for binding.



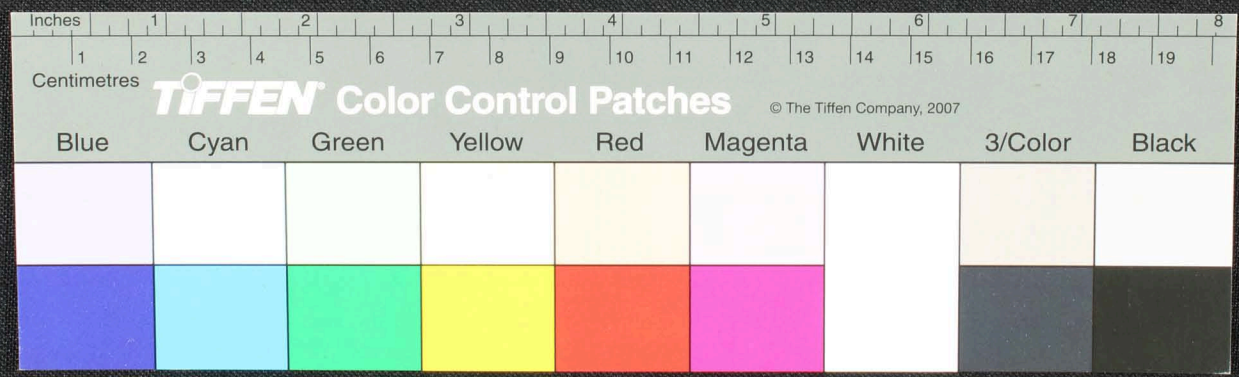
Handwritten Tamil script on a palm leaf manuscript. The text is densely packed and runs horizontally across the length of the leaf. A circular hole is visible near the center, used for binding multiple leaves together.



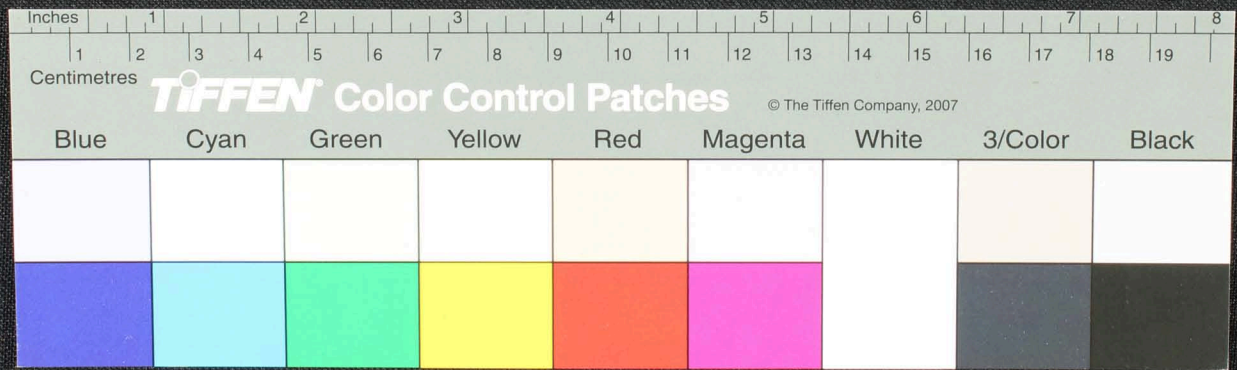
Handwritten Tamil script on a palm leaf manuscript. The text is arranged in approximately 10 horizontal lines across the length of the leaf. The script is finely etched into the surface of the dried leaf. A small circular hole is visible near the center of the leaf, which is a traditional feature used for threading a cord to bind multiple leaves together into a book format.



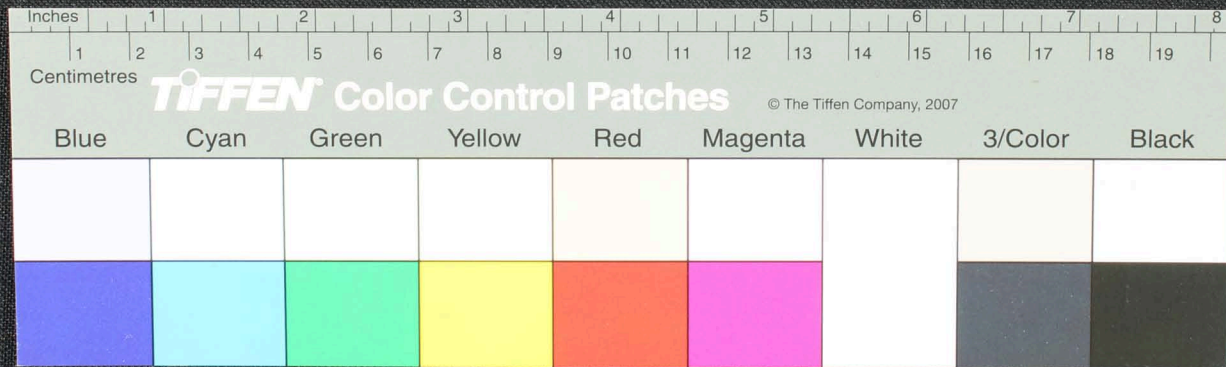
Handwritten Tamil script on a palm leaf manuscript. The text is arranged in approximately 10 horizontal lines across the length of the leaf. The script is densely packed and includes several circular symbols or characters interspersed within the lines of text. The leaf shows signs of age and wear, with some fraying at the edges.



Handwritten Tamil script on a palm leaf manuscript strip. The text is arranged in approximately 10 horizontal lines. Two circular holes are visible, which were traditionally used for threading a cord to bind multiple leaves together. The script is finely etched into the surface of the dried leaf.

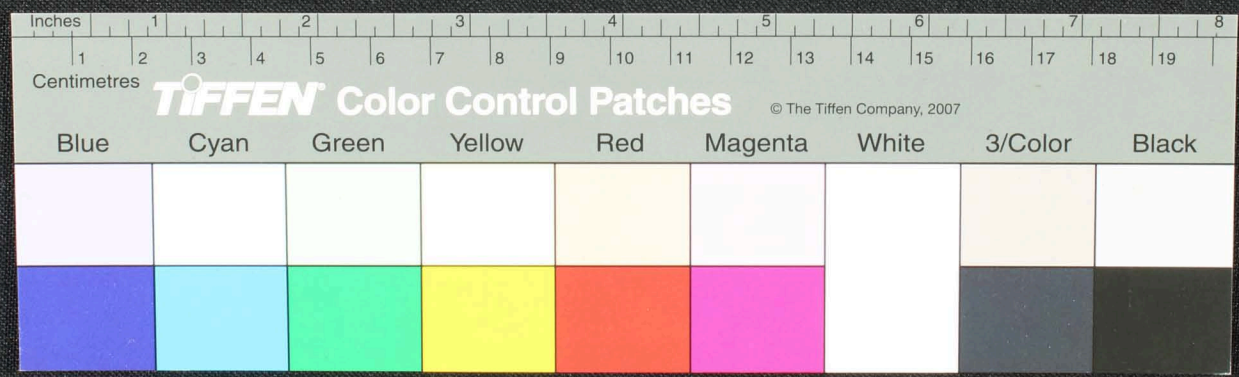


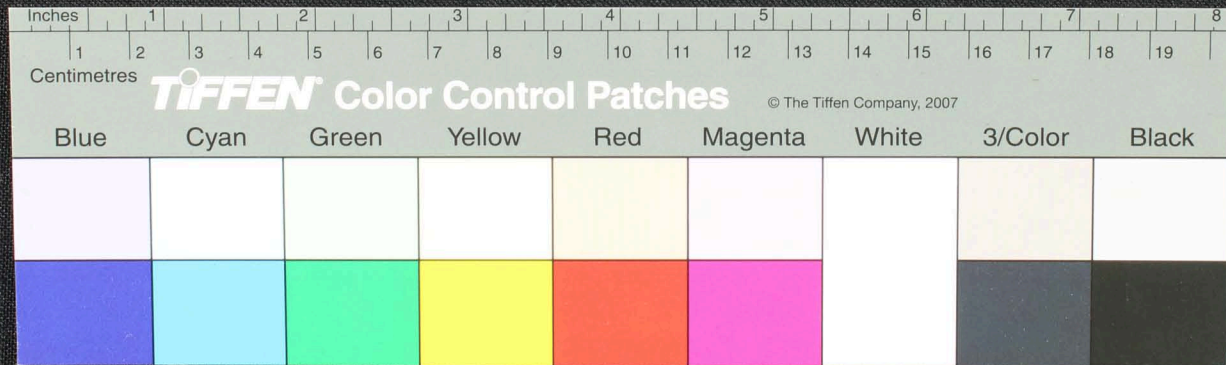
Handwritten Tamil script on a palm leaf manuscript strip. The text is arranged in approximately four horizontal lines. Two circular holes are visible, which were traditionally used for threading a cord to bind multiple leaves together. The script is finely etched into the surface of the dried leaf.



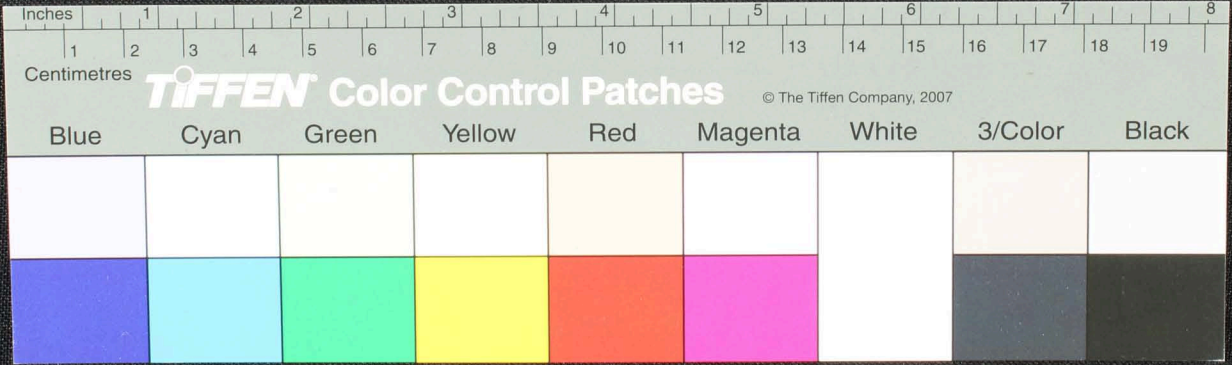
Handwritten Tamil script on a palm leaf manuscript. The text is arranged in six columns from left to right:

- Column 1:** மயன்யார-
சுவந்
குளிகை
- Column 2:** தநயல
அதவனயம்
கைநககம்
ஏவம்
வதுலாசு
அதல
- Column 3:** இநதுய
கயபலசுலம்
இவவகிகம்
அதமயுரம்
கைமம்
கராமய
- Column 4:** உயுவா
வெனகாரம்
பெருவகாயம்
குருகாணி
சுனககாரம்
கடுகு
- Column 5:** தரநகம்
இவைகழ்ருசு-க-
வாரககாமயசுசாபு
துசுவநககருணத்துகந்
இசுசுசாமநிலைம
- Column 6:** சபம்
வெனகாமய
சசாமநிலை
ம

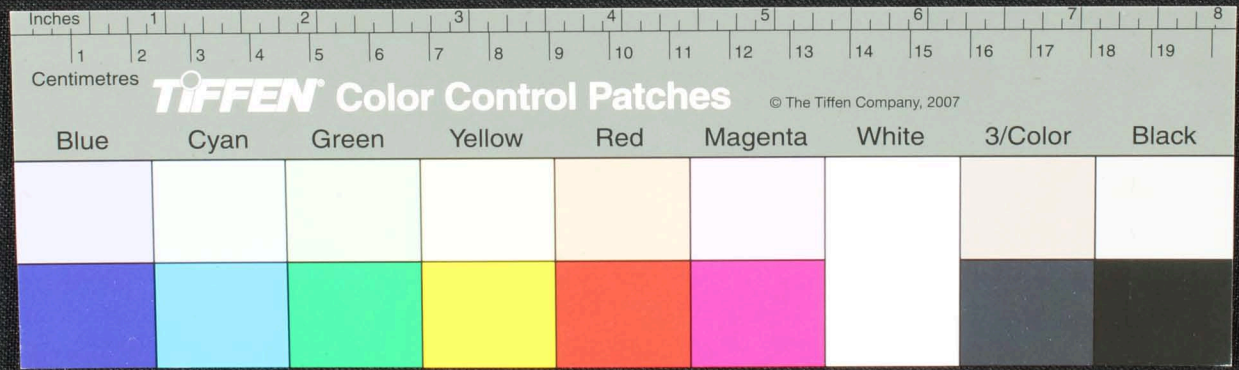




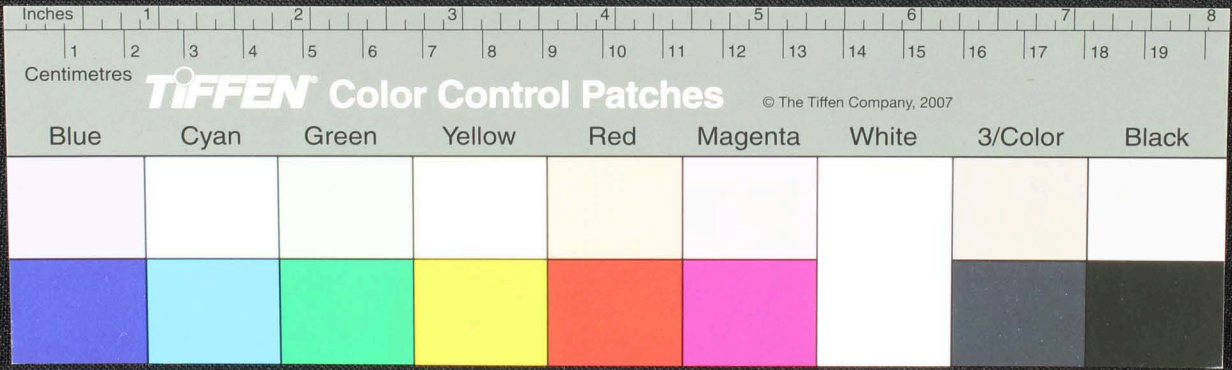
உருது மருந்து உருது மருந்து உருது மருந்து உருது மருந்து உருது மருந்து உருது மருந்து உருது மருந்து உருது மருந்து உருது மருந்து உருது மருந்து
 உருது மருந்து உருது மருந்து உருது மருந்து உருது மருந்து உருது மருந்து உருது மருந்து உருது மருந்து உருது மருந்து உருது மருந்து உருது மருந்து
 உருது மருந்து உருது மருந்து உருது மருந்து உருது மருந்து உருது மருந்து உருது மருந்து உருது மருந்து உருது மருந்து உருது மருந்து உருது மருந்து
 உருது மருந்து உருது மருந்து உருது மருந்து உருது மருந்து உருது மருந்து உருது மருந்து உருது மருந்து உருது மருந்து உருது மருந்து உருது மருந்து



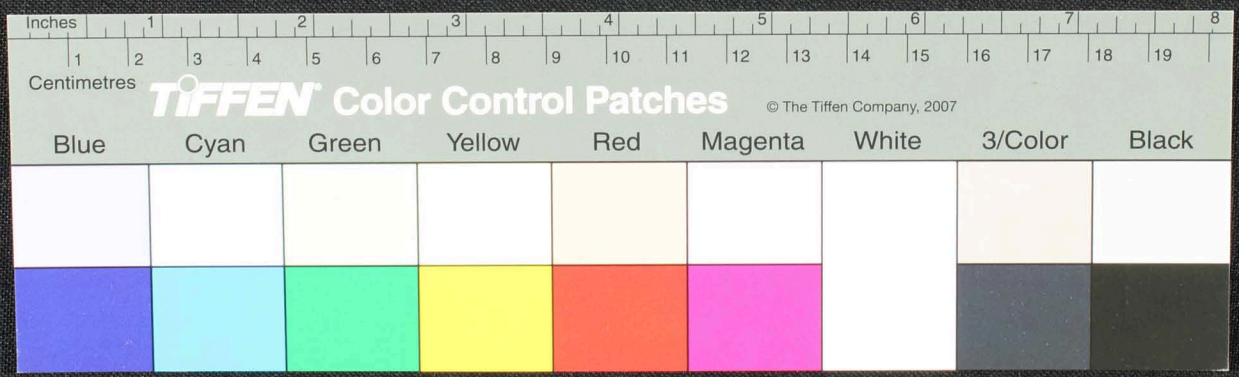
மீது வந்திருக்கிறார். இவ்வாறு தான்
 மீது வந்திருக்கிறார். இவ்வாறு தான்
 மீது வந்திருக்கிறார். இவ்வாறு தான்
 மீது வந்திருக்கிறார். இவ்வாறு தான்



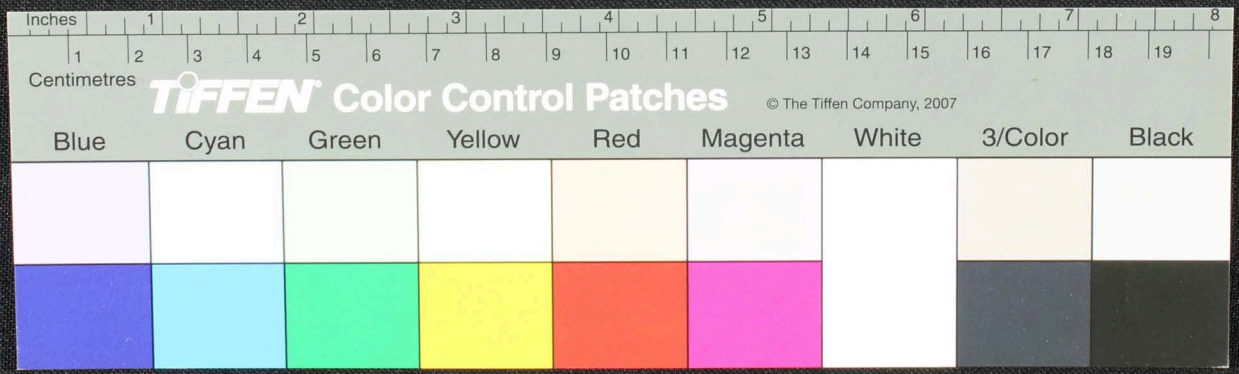
Handwritten Tamil script on a palm leaf manuscript. The text is arranged in approximately six horizontal lines across the length of the leaf. The script is finely inscribed and appears to be a traditional form of Tamil used in historical documents or religious texts. The leaf shows signs of age, with some fraying and discoloration at the edges.



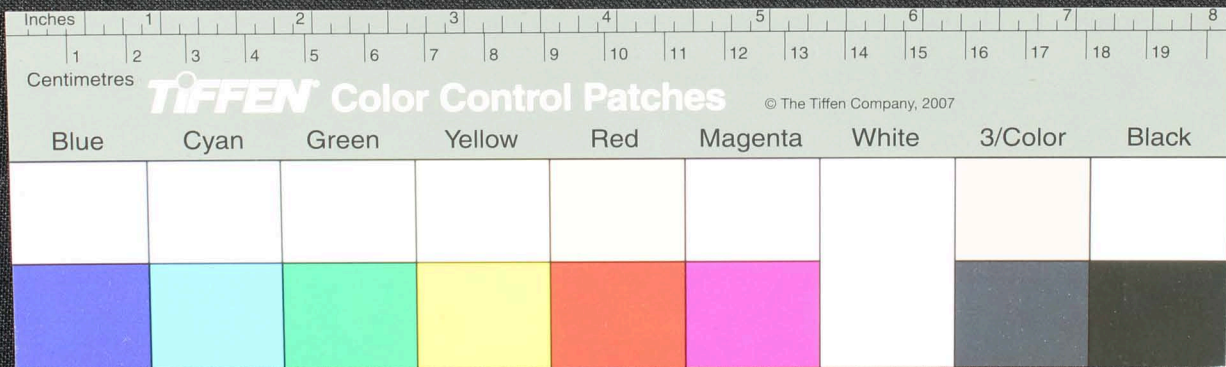
Handwritten Tamil script on a palm leaf manuscript. The text is arranged in approximately 10 horizontal lines across the length of the leaf. The script is a traditional form of the Tamil language, likely used for religious or philosophical purposes. Two circular holes are visible, which were traditionally used for threading a cord to bind multiple leaves together into a book format.



Handwritten Tamil script on a palm leaf manuscript strip. The text is arranged in approximately four horizontal lines. The script is finely etched into the surface of the dried leaf. Two circular holes are visible, which were traditionally used for threading a cord to bind multiple leaves together into a book format. The leaf shows signs of age, including some discoloration and wear at the edges.



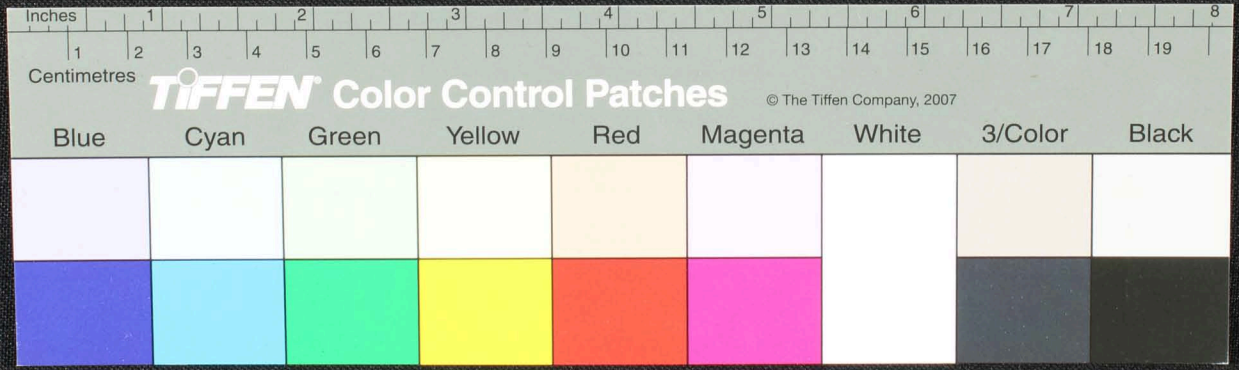
Handwritten Tamil script on a palm leaf manuscript strip. The text is arranged in approximately four horizontal lines. The script is finely etched into the surface of the dried leaf. The strip is irregularly shaped with frayed edges and contains two circular holes, likely for binding. The background is a dark, textured surface.



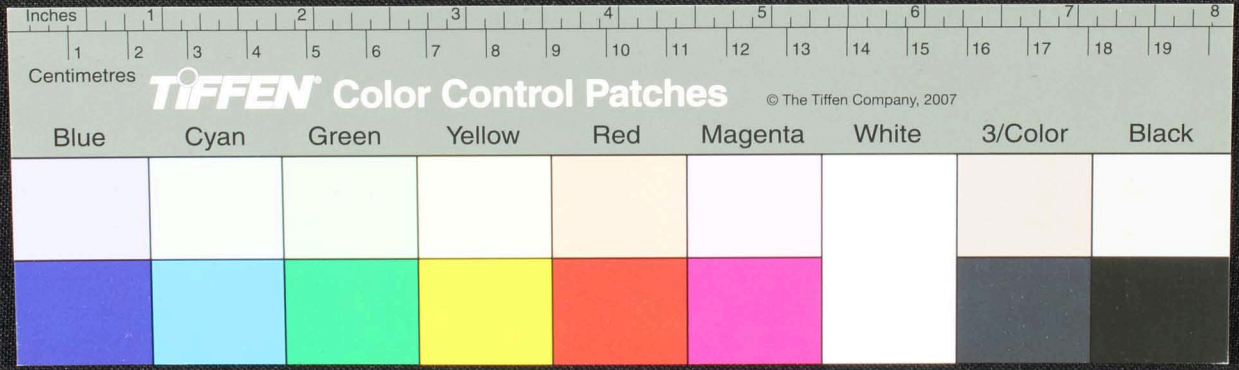
௩௪௦௪௩௬௩-௩
 ௩௪௩௩௩-௩
 ௩௪௩௩௩௩௩௩
 ௩௩௩௩௩௩௩
 ௩௩௩௩௩௩௩௩
 ௩௩௩௩௩௩௩௩

௩௪௩௩௩௩௩௩
 ௩௩௩௩௩௩௩௩
 ௩௩௩௩௩௩௩௩
 ௩௩௩௩௩௩௩௩
 ௩௩௩௩௩௩௩௩
 ௩௩௩௩௩௩௩௩

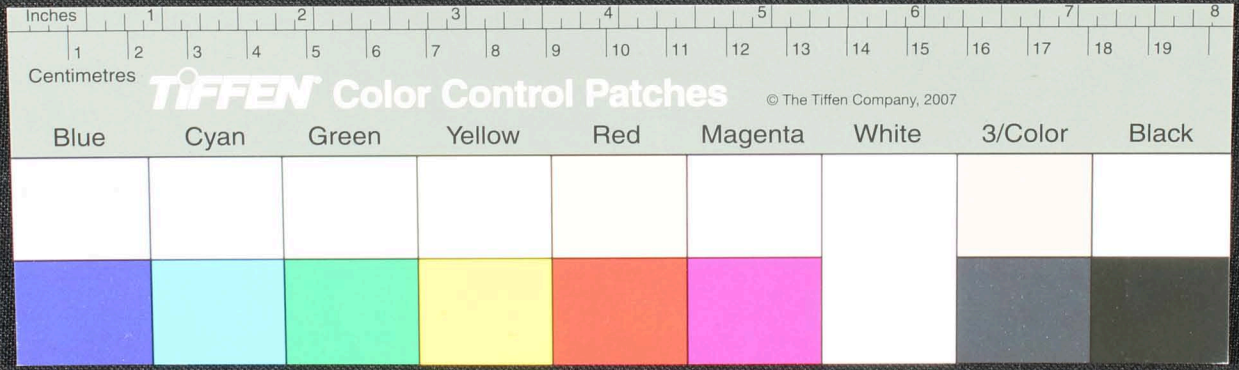
௩௩௩௩௩௩௩௩
 ௩௩௩௩௩௩௩௩
 ௩௩௩௩௩௩௩௩
 ௩௩௩௩௩௩௩௩
 ௩௩௩௩௩௩௩௩
 ௩௩௩௩௩௩௩௩



Handwritten Tamil script on a palm leaf manuscript. The text is arranged in approximately five horizontal lines across the length of the leaf. The script is finely etched into the surface of the dried leaf.



4
 1
 2
 3
 4
 5
 6
 7
 8
 9
 10
 11
 12
 13
 14
 15
 16
 17
 18
 19
 20
 21
 22
 23
 24
 25
 26
 27
 28
 29
 30
 31
 32
 33
 34
 35
 36
 37
 38
 39
 40
 41
 42
 43
 44
 45
 46
 47
 48
 49
 50
 51
 52
 53
 54
 55
 56
 57
 58
 59
 60
 61
 62
 63
 64
 65
 66
 67
 68
 69
 70
 71
 72
 73
 74
 75
 76
 77
 78
 79
 80
 81
 82
 83
 84
 85
 86
 87
 88
 89
 90
 91
 92
 93
 94
 95
 96
 97
 98
 99
 100



வாழ்வாமை - மயந - இரண்டு மூன்று சிறு குன்று அருகே நிராசு சுவாமி மயசிறகது இடம்
 சுவாமி - உரனுல - 2 - ஆம வதது வடும வடு வடு - வெதாசு சுவாமி இடம் - தனதது
 வெய்யமரபு - நகையொதி - ஈநவெதரபயி ரபு சுவாமி - ஈ சுவாமி சுவாமி சுவாமி
 சுவாமி - 2 - தானவெதரபயி - வெ - மய - பரமமரபு சுவாமி - வெதாசு - சுவாமி
 சுவாமி - 2 - தானவெதரபயி - வெதாசு சுவாமி - சுவாமி சுவாமி சுவாமி - சுவாமி சுவாமி சுவாமி
 வெதாசு சுவாமி சுவாமி சுவாமி சுவாமி சுவாமி சுவாமி சுவாமி சுவாமி சுவாமி சுவாமி

