

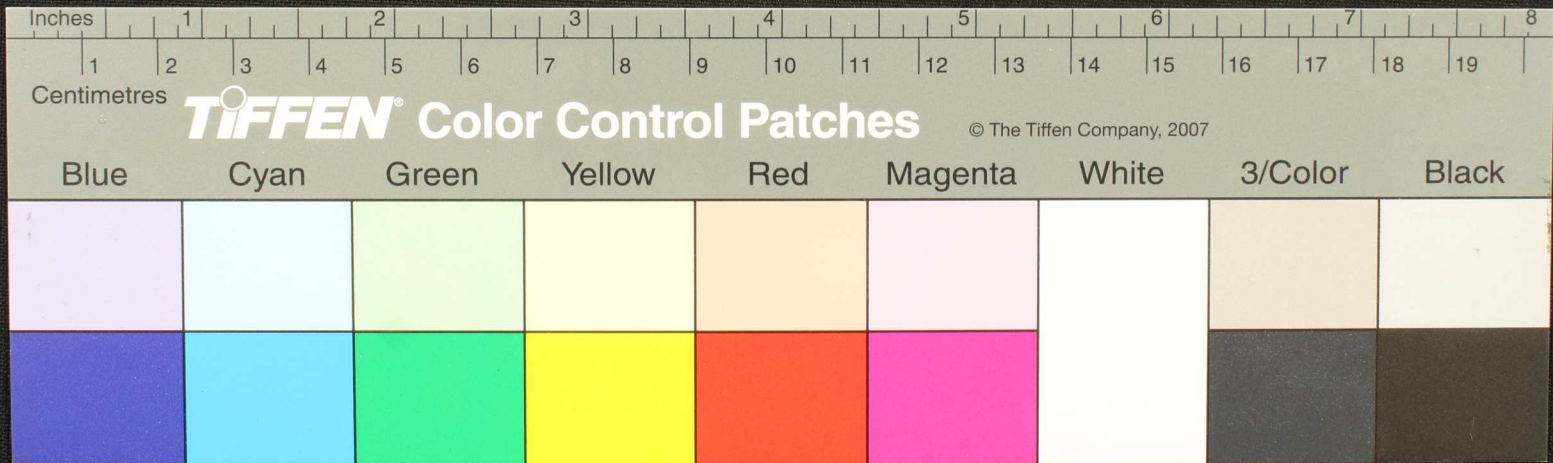






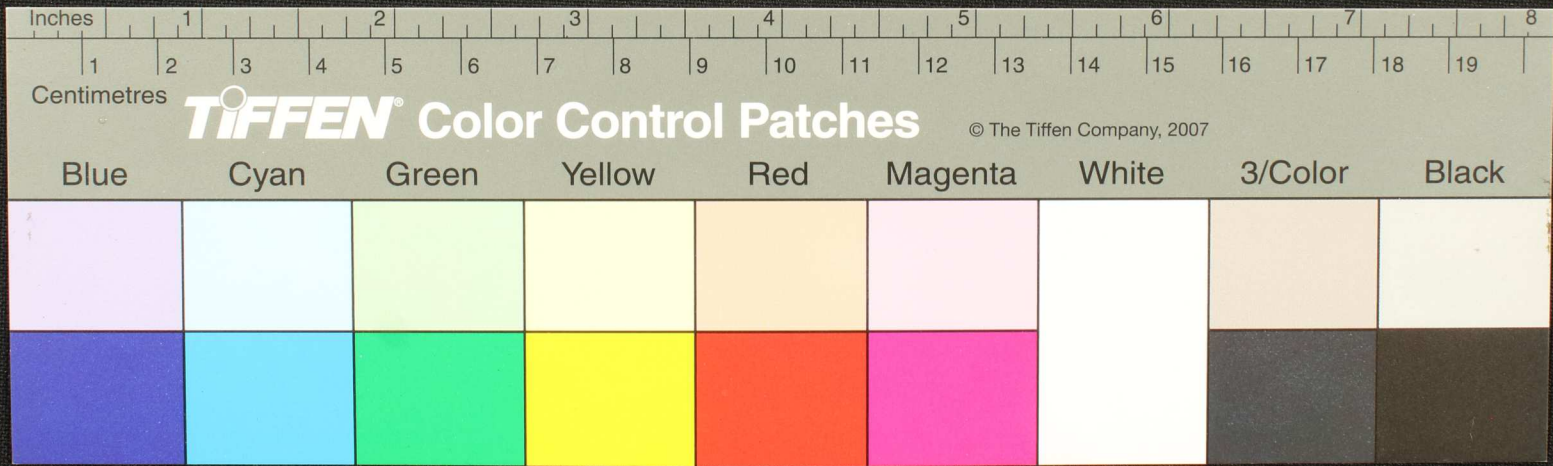


Handwritten Tamil script on a palm leaf manuscript. The text is arranged in approximately 10 horizontal lines across the length of the leaf. A circular hole is visible near the center of the leaf, which is a traditional feature for threading a cord to bind multiple leaves together. The script is written in a cursive style characteristic of traditional Tamil manuscripts.





Handwritten Tamil script on a palm leaf manuscript. The text is arranged in approximately five lines across the length of the leaf. A small circular hole is visible near the center of the leaf, which is a traditional feature for threading a cord to bind multiple leaves together. The script is finely etched into the surface of the dried leaf.

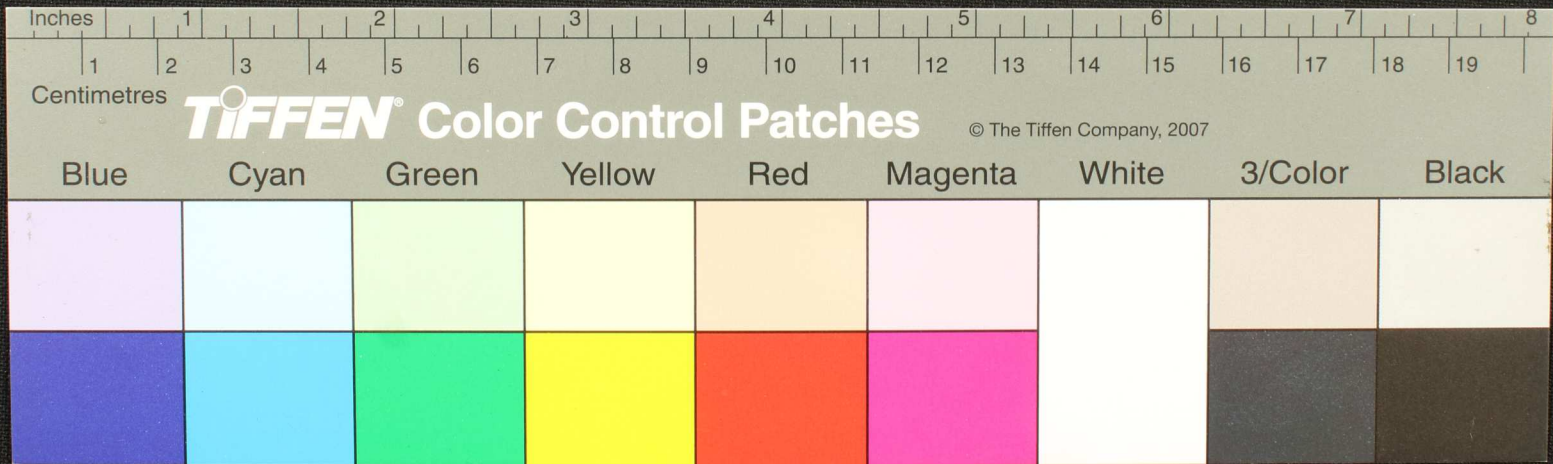








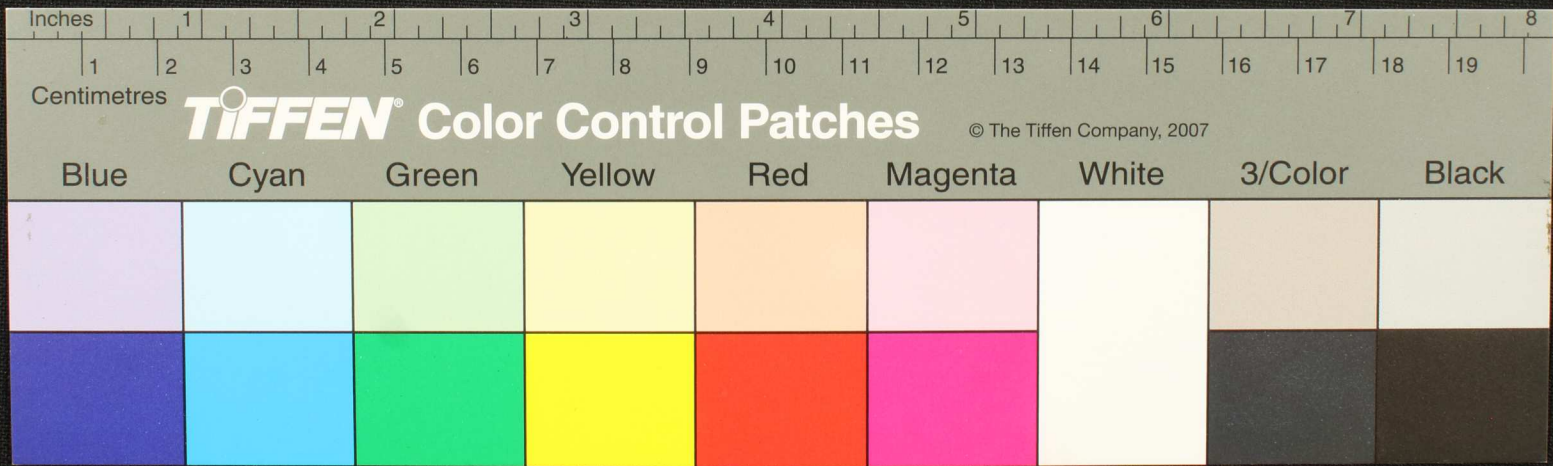
Handwritten Tamil script on a palm leaf manuscript. The text is arranged in approximately 10 horizontal lines across the length of the leaf. A prominent circular hole is visible in the middle of the leaf, which is a traditional feature for threading a cord to bind multiple leaves together. The script is finely etched into the surface of the dried leaf.





உகம துருசு கெருகம மெனெ லுதீநீயளி மிளகுலை  
 லுதீநீயளி மிளகுலை - 2 - லுதீநீயளி மிளகுலை - 3 - லுதீநீயளி மிளகுலை  
 பமாருகிவை லுதீநீயளி மிளகுலை - 4 - லுதீநீயளி மிளகுலை - 5 - லுதீநீயளி மிளகுலை  
 லுதீநீயளி மிளகுலை - 6 - லுதீநீயளி மிளகுலை - 7 - லுதீநீயளி மிளகுலை  
 லுதீநீயளி மிளகுலை - 8 - லுதீநீயளி மிளகுலை - 9 - லுதீநீயளி மிளகுலை  
 லுதீநீயளி மிளகுலை - 10 - லுதீநீயளி மிளகுலை - 11 - லுதீநீயளி மிளகுலை  
 லுதீநீயளி மிளகுலை - 12 - லுதீநீயளி மிளகுலை - 13 - லுதீநீயளி மிளகுலை  
 லுதீநீயளி மிளகுலை - 14 - லுதீநீயளி மிளகுலை - 15 - லுதீநீயளி மிளகுலை  
 லுதீநீயளி மிளகுலை - 16 - லுதீநீயளி மிளகுலை - 17 - லுதீநீயளி மிளகுலை  
 லுதீநீயளி மிளகுலை - 18 - லுதீநீயளி மிளகுலை - 19 - லுதீநீயளி மிளகுலை  
 லுதீநீயளி மிளகுலை - 20 - லுதீநீயளி மிளகுலை

மருகி  
 மருகி  
 மருகி









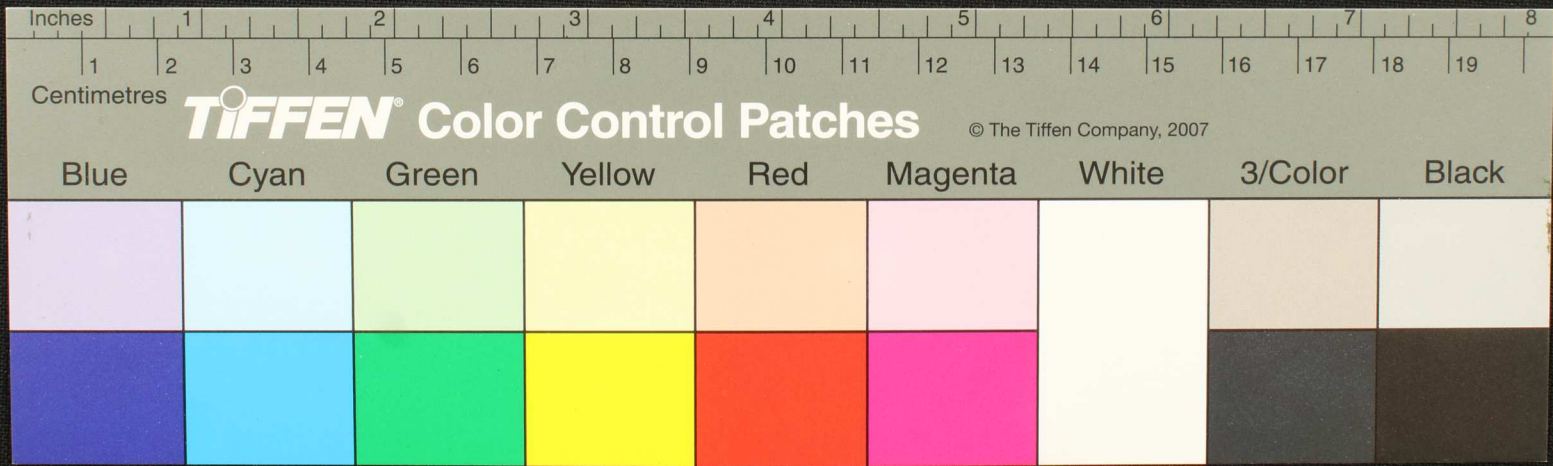






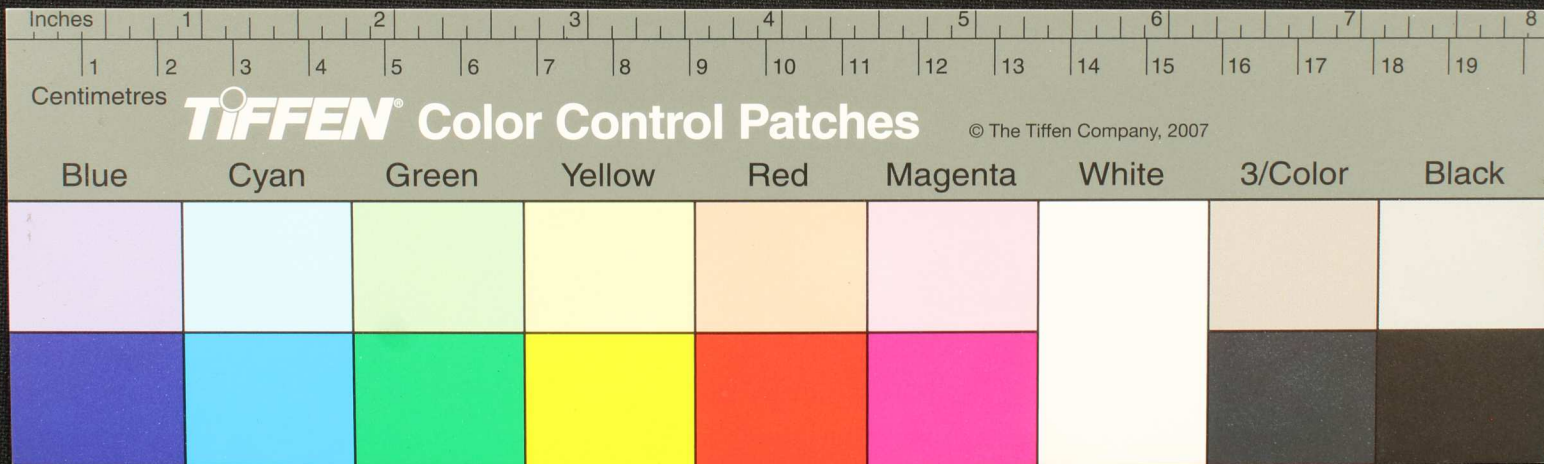


1999  
 கருணாநிதி மாவட்டம் கருணாநிதி  
 கருணாநிதி மாவட்டம் கருணாநிதி  
 கருணாநிதி மாவட்டம் கருணாநிதி  
 கருணாநிதி மாவட்டம் கருணாநிதி  
 கருணாநிதி மாவட்டம் கருணாநிதி  
 கருணாநிதி மாவட்டம் கருணாநிதி





Handwritten text in Tamil script on a palm leaf manuscript. The text is arranged in approximately 10 horizontal lines. A circular hole is visible on the left side of the leaf, approximately one-third of the way across its length. The script is finely etched into the surface of the dried leaf.





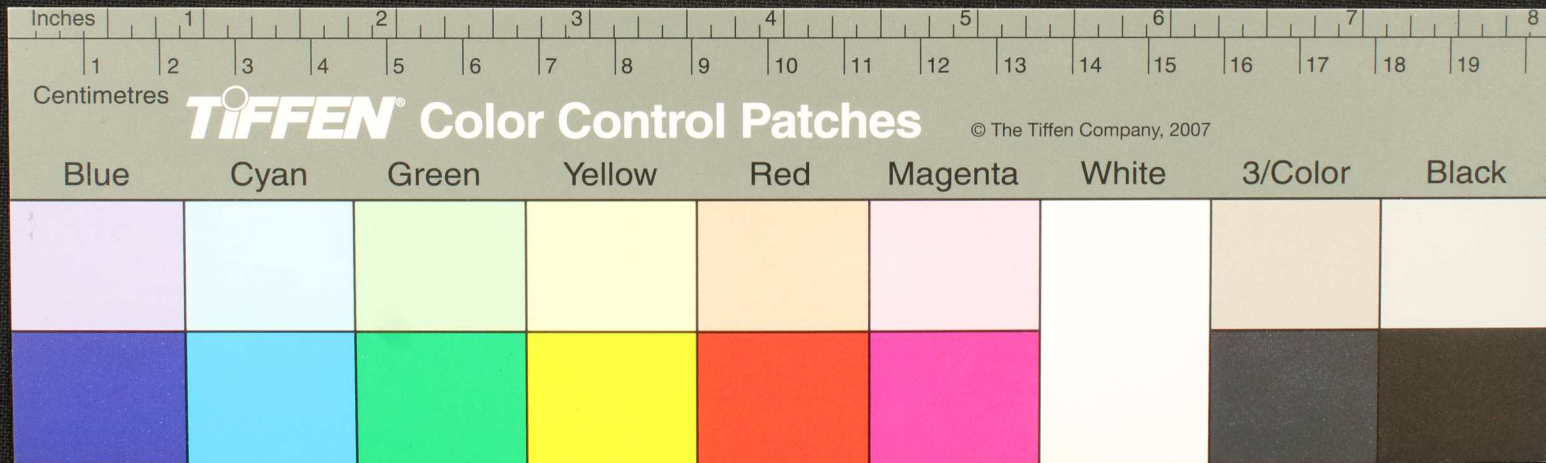






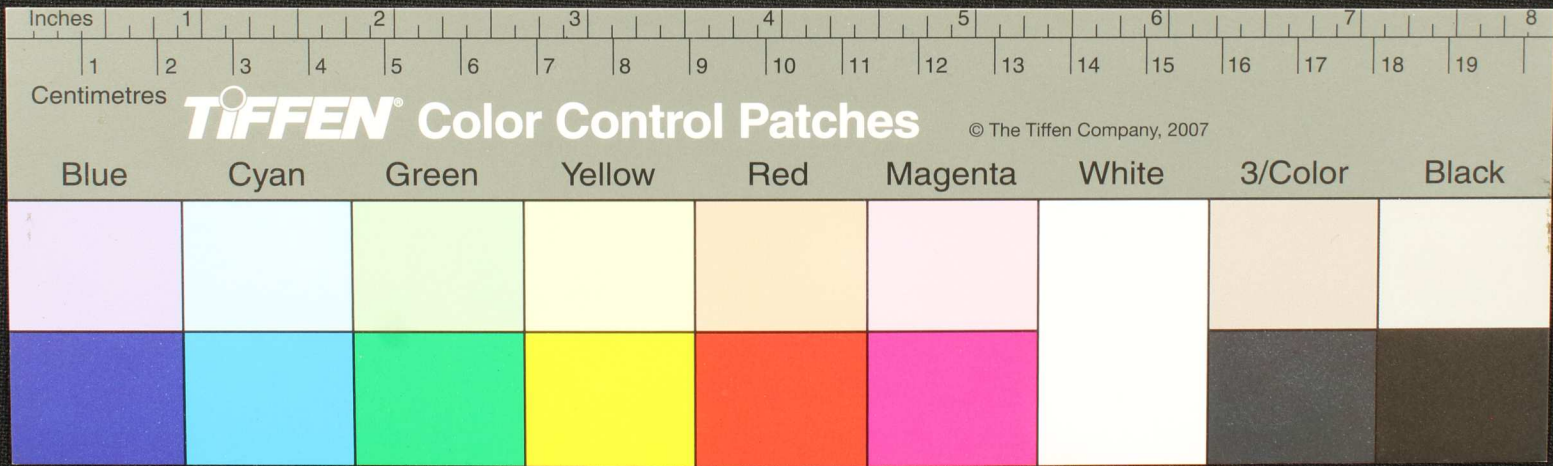


Handwritten Tamil script on a palm leaf manuscript. The text is arranged in several lines across the length of the leaf, with a small circular hole visible in the center. The script is finely etched into the surface of the dried leaf.





Handwritten Tamil script on a palm leaf manuscript. The text is arranged in approximately 10 horizontal lines across the length of the leaf. On the left side, there are two vertical labels: 'தினம்' (Day) and 'வரவு' (Income/Record). The script is a traditional form of the Tamil language, likely used for record-keeping or administrative purposes. A small circular hole is visible in the center of the leaf, which was traditionally used for threading a cord to bind multiple leaves together.

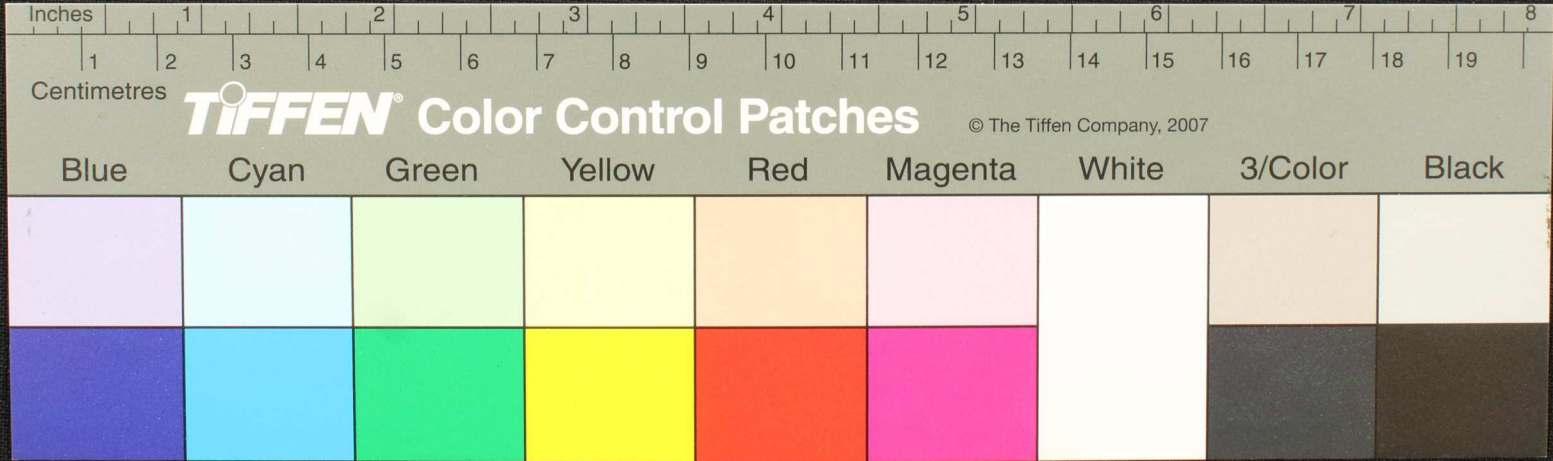








Handwritten Tamil script on a palm leaf manuscript. The text is arranged in approximately 7 horizontal lines. A prominent circular hole is visible in the middle of the leaf, which is a traditional feature for threading a cord to bind multiple leaves together. The script is finely etched into the surface of the dried leaf.

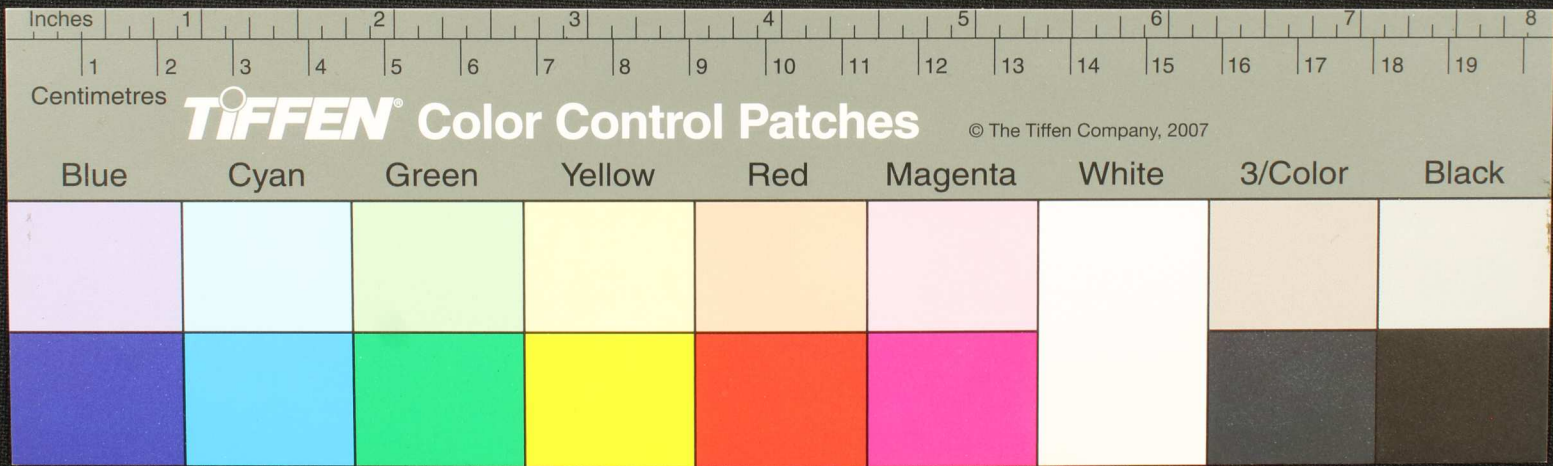






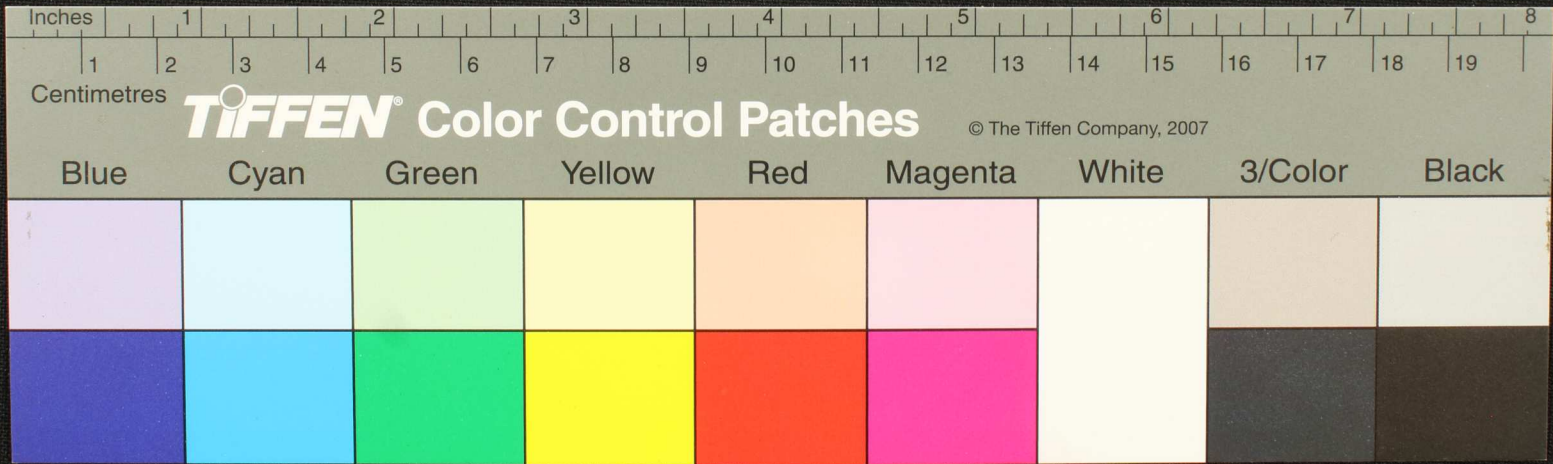


Handwritten Tamil script on a palm leaf manuscript. The text is arranged in approximately 10 horizontal lines. A circular hole is present in the center of the leaf, used for threading a cord to bind multiple leaves together. The script is a traditional form of the Tamil language.



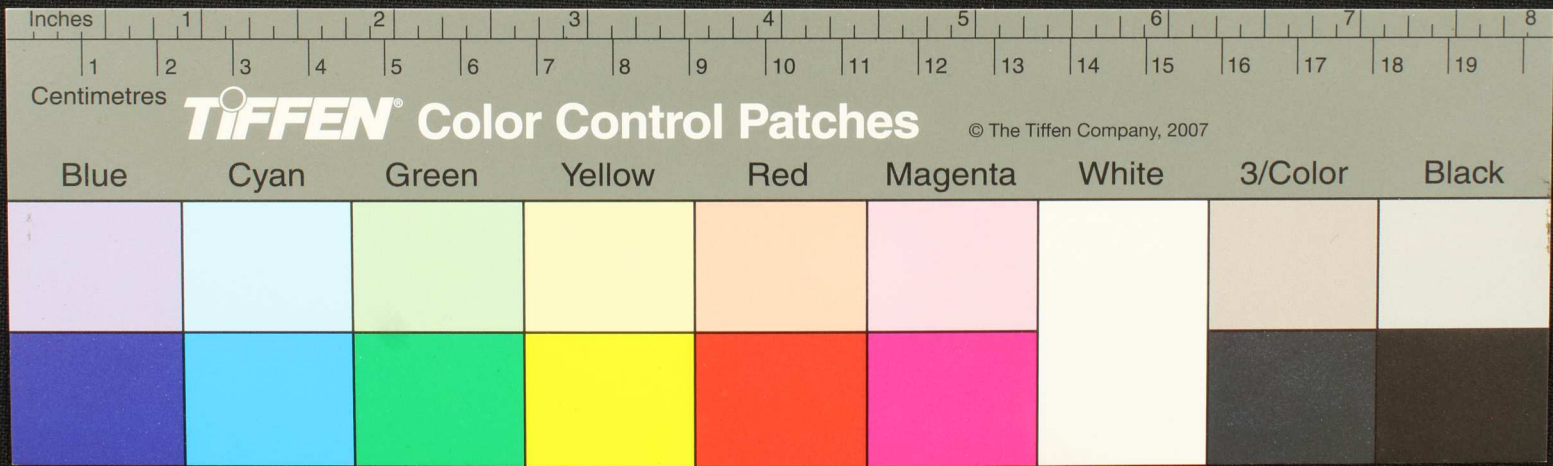


Handwritten text in Tamil script on a palm leaf manuscript. The text is arranged in approximately 10 horizontal lines. On the left side of the leaf, there is a vertical inscription that reads "மதுரை" (Madurai). The main body of text is densely packed and appears to be a form of religious or philosophical discourse.



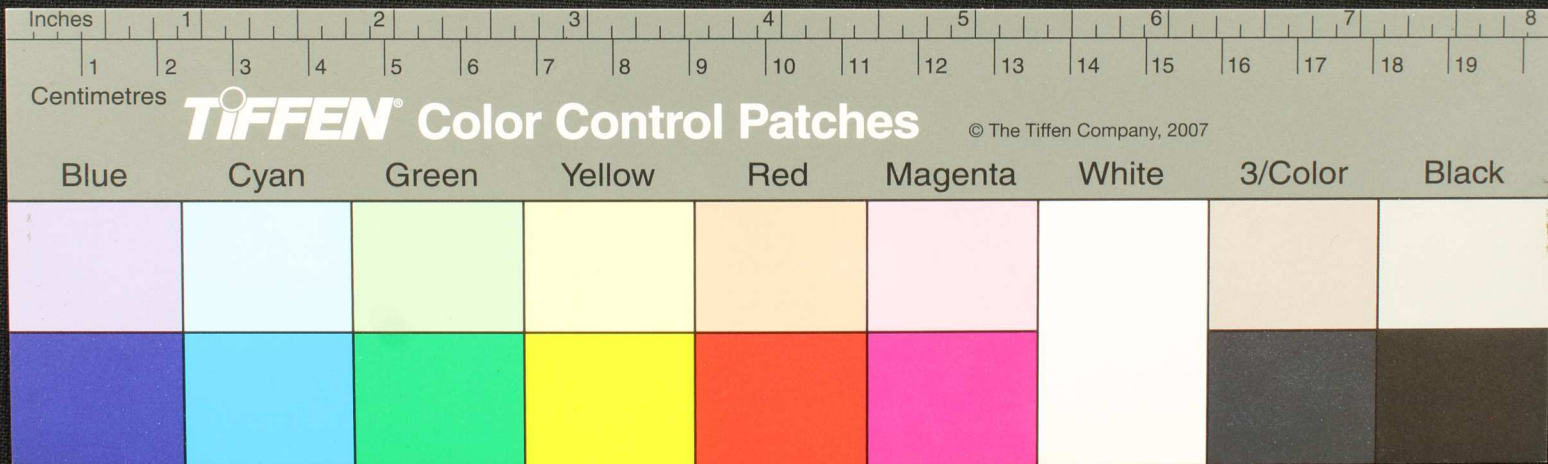


Handwritten Tamil script on a palm leaf manuscript. The text is arranged in approximately 10 horizontal lines. On the left side, there are three vertical lines of text, likely serving as a title or reference. The main body of text is densely packed and written in a traditional cursive style. A small circular hole is visible in the center of the leaf, used for threading a cord to bind multiple leaves together.



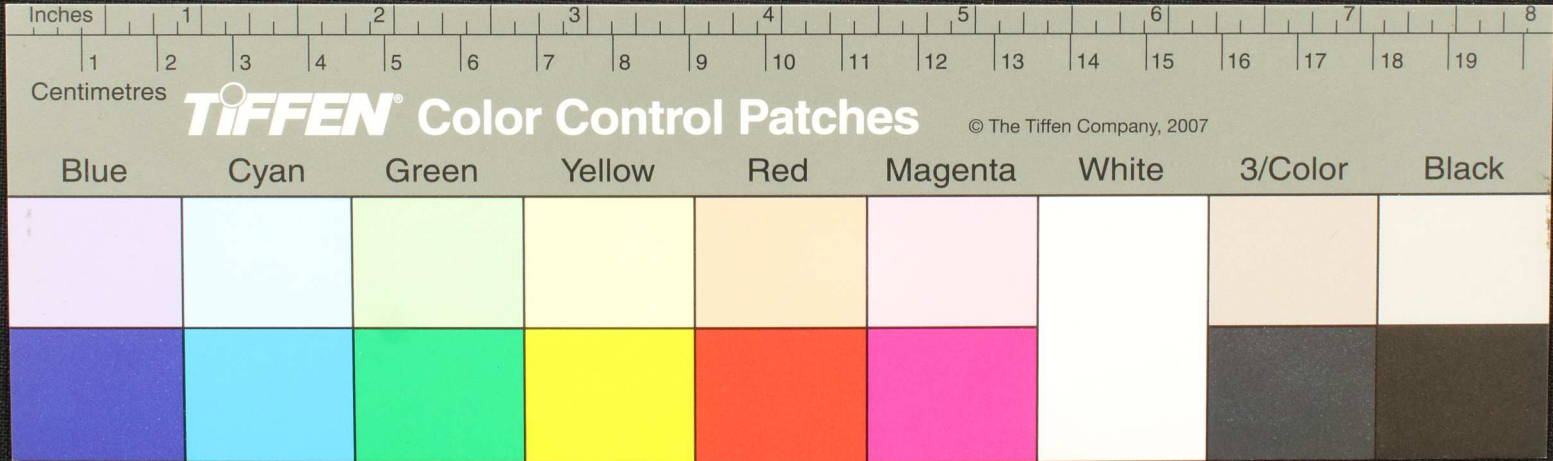


Handwritten Tamil script on a palm leaf manuscript. The text is arranged in approximately five lines, written from right to left. A prominent circular hole is visible in the center of the leaf, which is a traditional feature used for threading a cord to bind multiple leaves together. The script is finely etched into the surface of the dried leaf.





Handwritten Tamil script on a palm leaf manuscript. The text is arranged in approximately 10 horizontal lines. The script is finely etched into the surface of the dried leaf. A prominent dark circular hole is visible on the left side of the leaf, approximately one-third of the way across its width. The leaf itself is a light tan color with some darker staining and irregular edges.

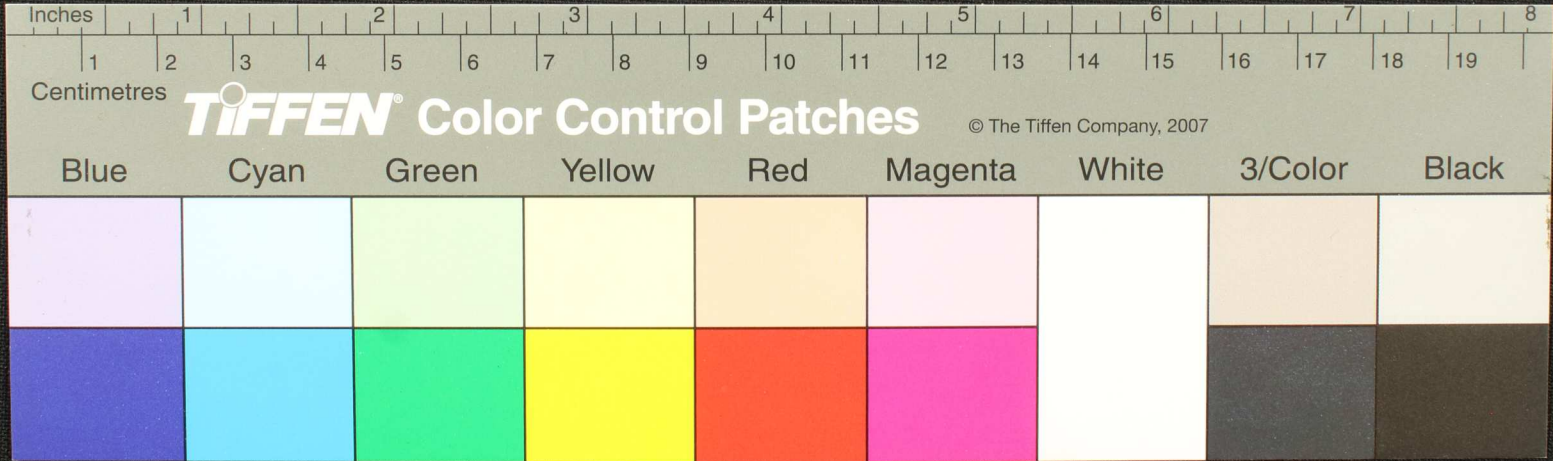






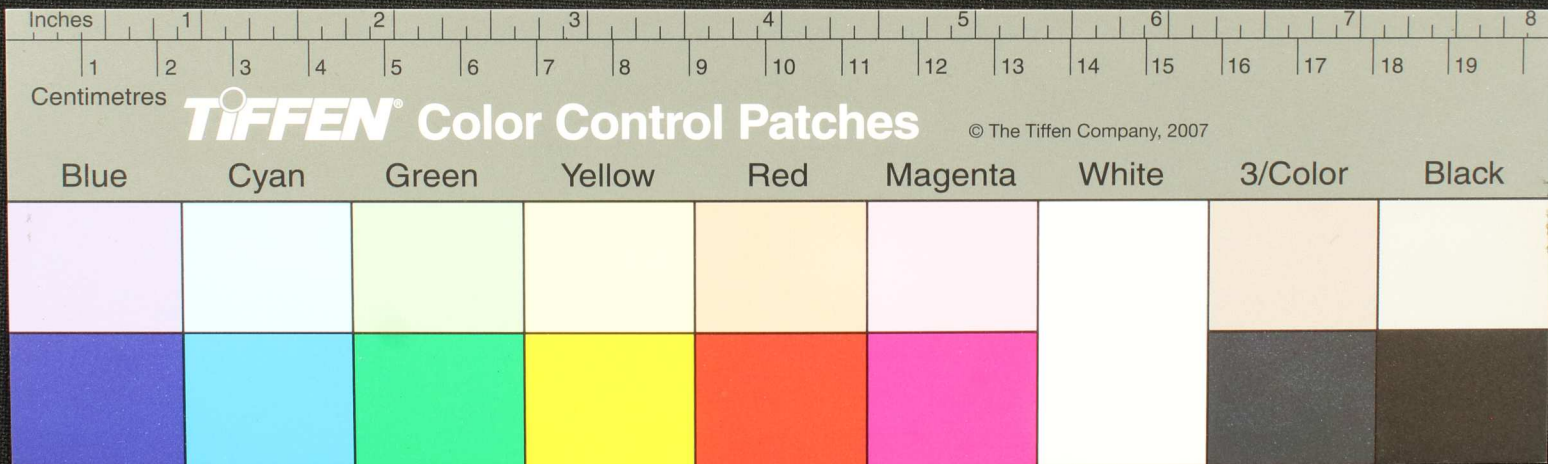


மலர்வாசனம் பூட்டுதல் எவ்வாறு செய்து கொடுக்க வேண்டும் என்பது  
 யார்க்குரியதென்றும் மலர்வாசனம் பூட்டுதல் யார்க்குரியது என்பது  
 வகுத்துக் கொடுத்தும் அறிவித்துள்ளேன். மலர்வாசனம் பூட்டுதல்  
 யார்க்குரியது என்பது யார்க்குரியது என்பது யார்க்குரியது  
 என்பது யார்க்குரியது என்பது யார்க்குரியது என்பது யார்க்குரியது  
 என்பது யார்க்குரியது என்பது யார்க்குரியது என்பது யார்க்குரியது



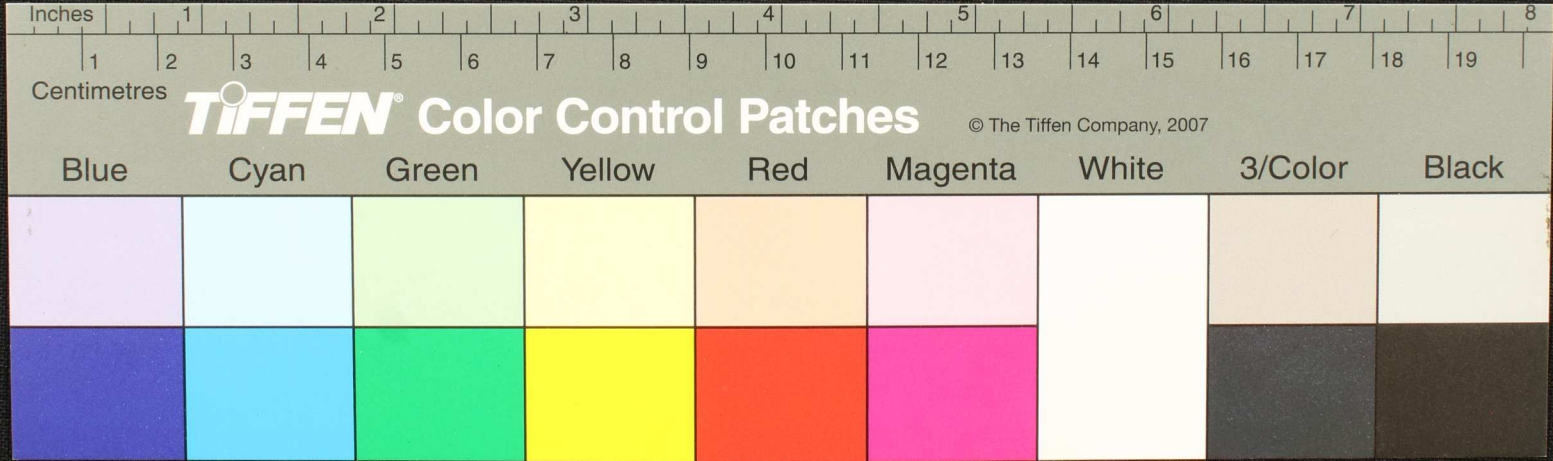


Handwritten Tamil script on a palm leaf manuscript. The text is arranged in approximately 10 horizontal lines across the length of the leaf. A prominent circular hole is visible near the center of the leaf, which is a traditional feature for threading a cord to bind multiple leaves together. The script is finely etched into the surface of the dried leaf.



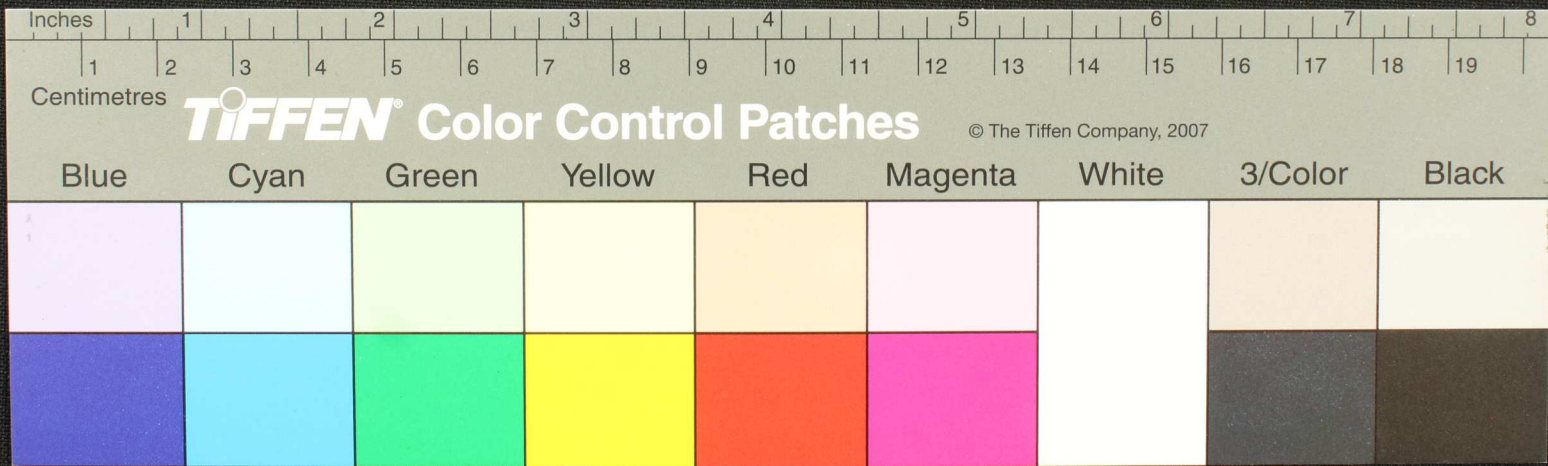


திருவெளித்துயரணமுலம் மதுரை மதுரை மதுரை மதுரை மதுரை  
 மதுரை மதுரை மதுரை மதுரை மதுரை மதுரை மதுரை மதுரை  
 மதுரை மதுரை மதுரை மதுரை மதுரை மதுரை மதுரை மதுரை  
 மதுரை மதுரை மதுரை மதுரை மதுரை மதுரை மதுரை மதுரை  
 மதுரை மதுரை மதுரை மதுரை மதுரை மதுரை மதுரை மதுரை  
 மதுரை மதுரை மதுரை மதுரை மதுரை மதுரை மதுரை மதுரை  
 மதுரை மதுரை மதுரை மதுரை மதுரை மதுரை மதுரை மதுரை



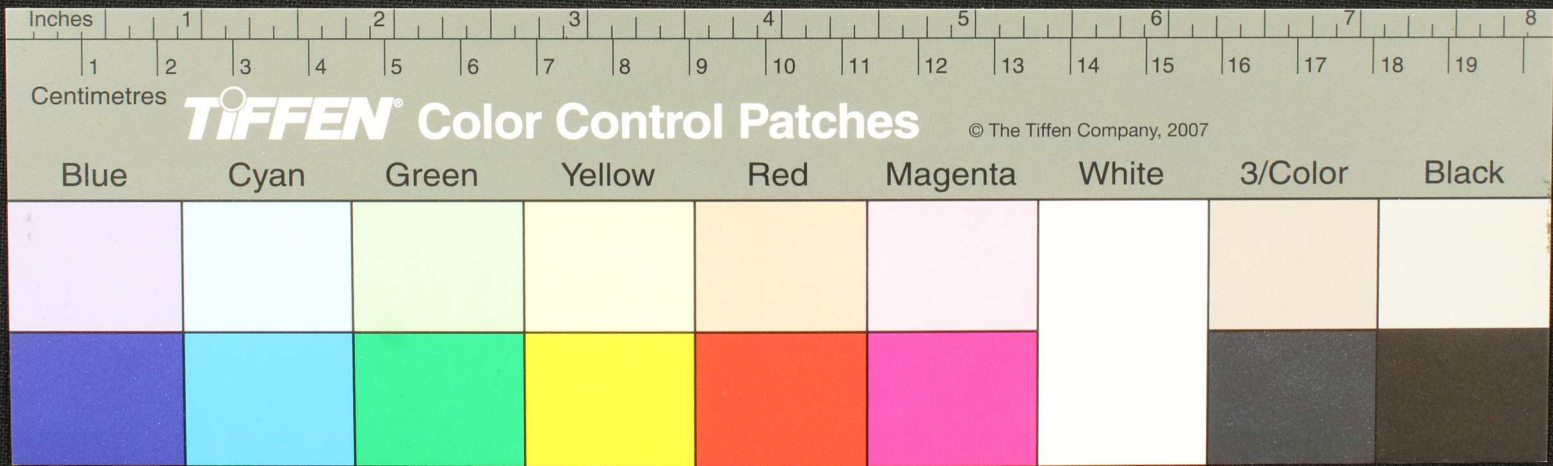


Handwritten Tamil script on a palm leaf manuscript. The text is arranged in approximately 10 horizontal lines across the length of the leaf. A small circular hole is visible near the center of the leaf, used for threading a cord to bind multiple leaves together. The script is a traditional form of the Tamil language.





மகிழ்ச்சி தரிசுமதினா... மகிழ்ச்சிமதினா... மகிழ்ச்சிமதினா... மகிழ்ச்சிமதினா... மகிழ்ச்சிமதினா...  
 மகிழ்ச்சிமதினா... மகிழ்ச்சிமதினா... மகிழ்ச்சிமதினா... மகிழ்ச்சிமதினா... மகிழ்ச்சிமதினா...  
 மகிழ்ச்சிமதினா... மகிழ்ச்சிமதினா... மகிழ்ச்சிமதினா... மகிழ்ச்சிமதினா... மகிழ்ச்சிமதினா...  
 மகிழ்ச்சிமதினா... மகிழ்ச்சிமதினா... மகிழ்ச்சிமதினா... மகிழ்ச்சிமதினா... மகிழ்ச்சிமதினா...  
 மகிழ்ச்சிமதினா... மகிழ்ச்சிமதினா... மகிழ்ச்சிமதினா... மகிழ்ச்சிமதினா... மகிழ்ச்சிமதினா...  
 மகிழ்ச்சிமதினா... மகிழ்ச்சிமதினா... மகிழ்ச்சிமதினா... மகிழ்ச்சிமதினா... மகிழ்ச்சிமதினா...  
 மகிழ்ச்சிமதினா... மகிழ்ச்சிமதினா... மகிழ்ச்சிமதினா... மகிழ்ச்சிமதினா... மகிழ்ச்சிமதினா...  
 மகிழ்ச்சிமதினா... மகிழ்ச்சிமதினா... மகிழ்ச்சிமதினா... மகிழ்ச்சிமதினா... மகிழ்ச்சிமதினா...  
 மகிழ்ச்சிமதினா... மகிழ்ச்சிமதினா... மகிழ்ச்சிமதினா... மகிழ்ச்சிமதினா... மகிழ்ச்சிமதினா...  
 மகிழ்ச்சிமதினா... மகிழ்ச்சிமதினா... மகிழ்ச்சிமதினா... மகிழ்ச்சிமதினா... மகிழ்ச்சிமதினா...









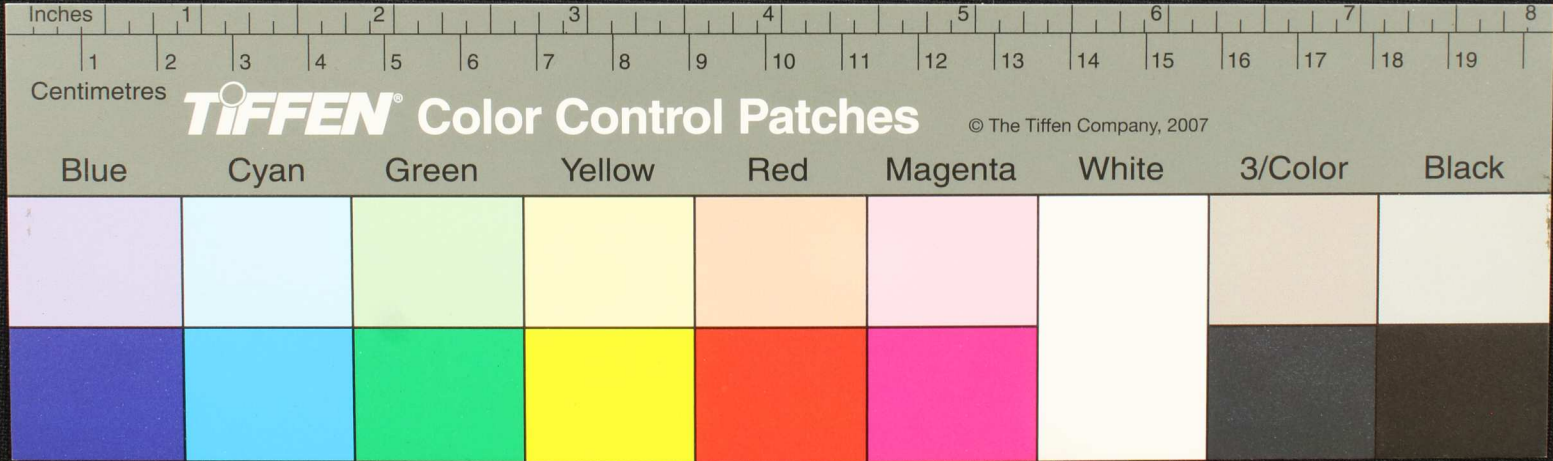








அச்சுநாதிபு மூலத்து பம்பமபுக்கீ வஞ்சுநாளவெடுகூழ்  
 கடுமலக பிடு மரிணமது னளவு - உலுபயுனிதவிரவு சூது  
 ரலியமடுகு சீரகமலுமம துறியவெடுகீகீரமலகூகூகூமலா  
 பம்ப இடுசுரணிகூடு குளிராசனகுநதுபயகூடுகூஉளவை  
 சூடுயாபவ சூவாநிவலமடுவவதுகீ மபரிதூரம  
 உலுசூகீகூகூம சூகூகூகூயகூகூமபயு உலுவிரசூ  
 வைரீயகு கூகூயமகூரமபயுகூகூமசூகூவகூம

















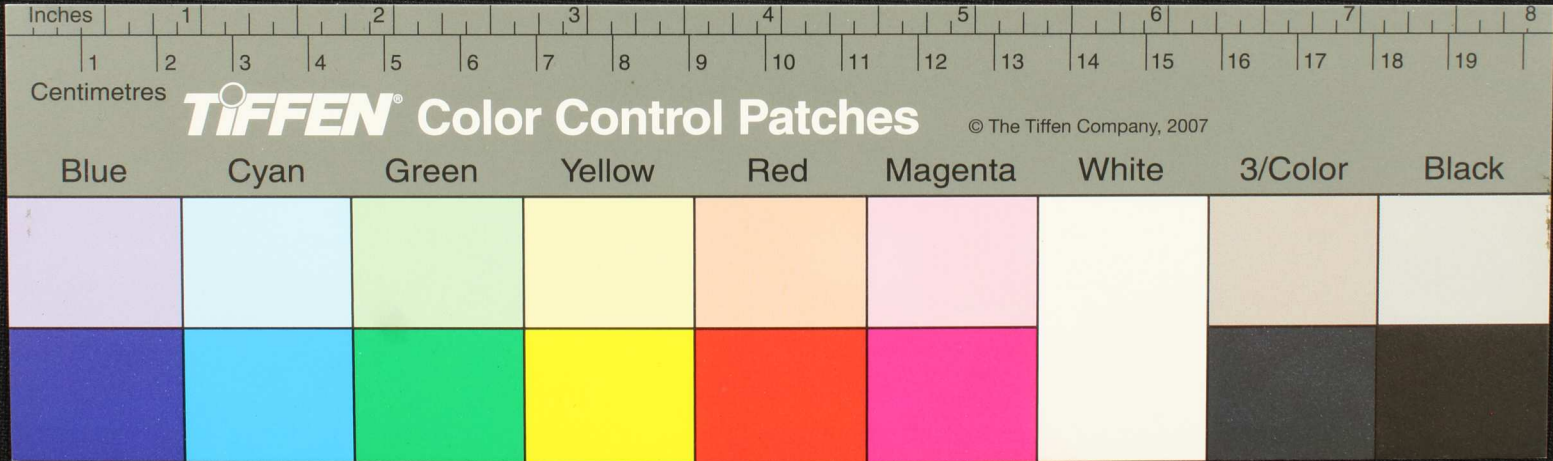








சுதந்திரம் என்னதான் என்று சொல்லுகிறார்  
குடிமகனாகிய மனவையுடைய மனமே பூதமாய்  
உண்டாகிய மனவையுடைய மனமே பூதமாய்  
மேலாய் உண்டாகிய மனவையுடைய மனமே  
மேலாய் உண்டாகிய மனவையுடைய மனமே  
மேலாய் உண்டாகிய மனவையுடைய மனமே  
மேலாய் உண்டாகிய மனவையுடைய மனமே  
மேலாய் உண்டாகிய மனவையுடைய மனமே









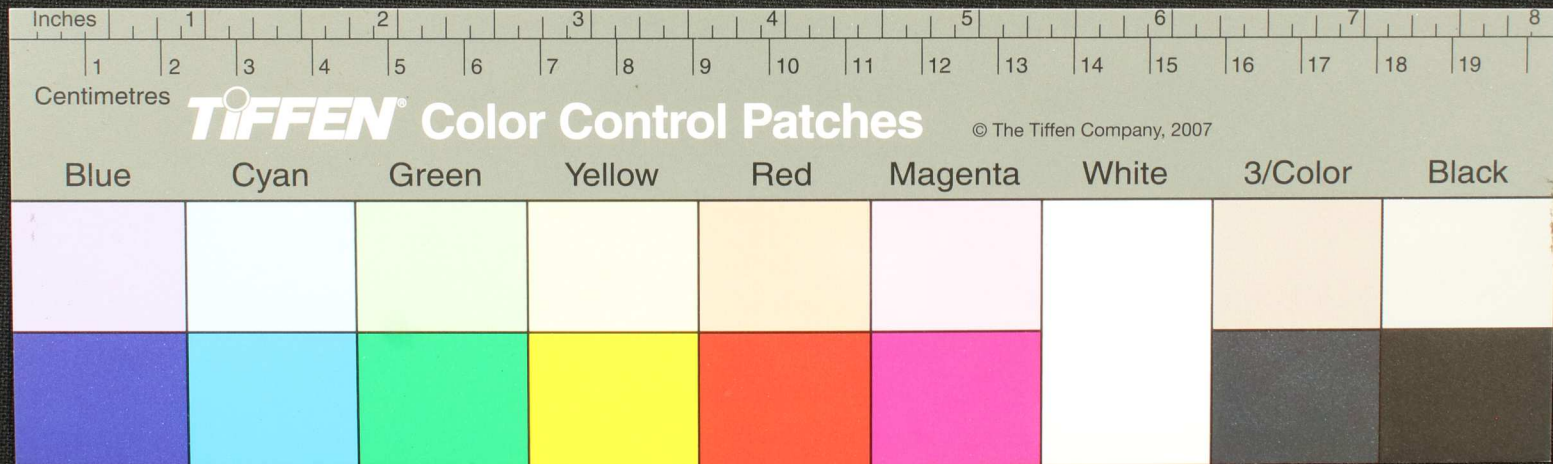








Handwritten text in Tamil script on a palm leaf manuscript. The text is arranged in approximately five horizontal lines. A prominent circular hole is visible in the center of the leaf, which is a traditional feature for threading a cord to bind multiple leaves together. The script is finely etched into the surface of the dried leaf.

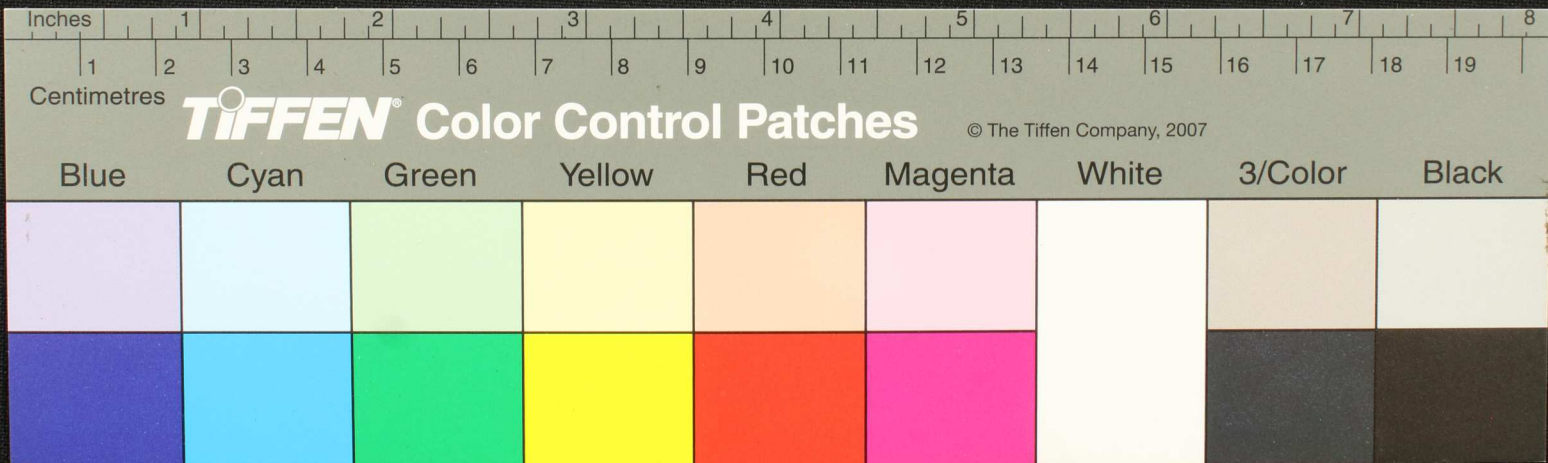






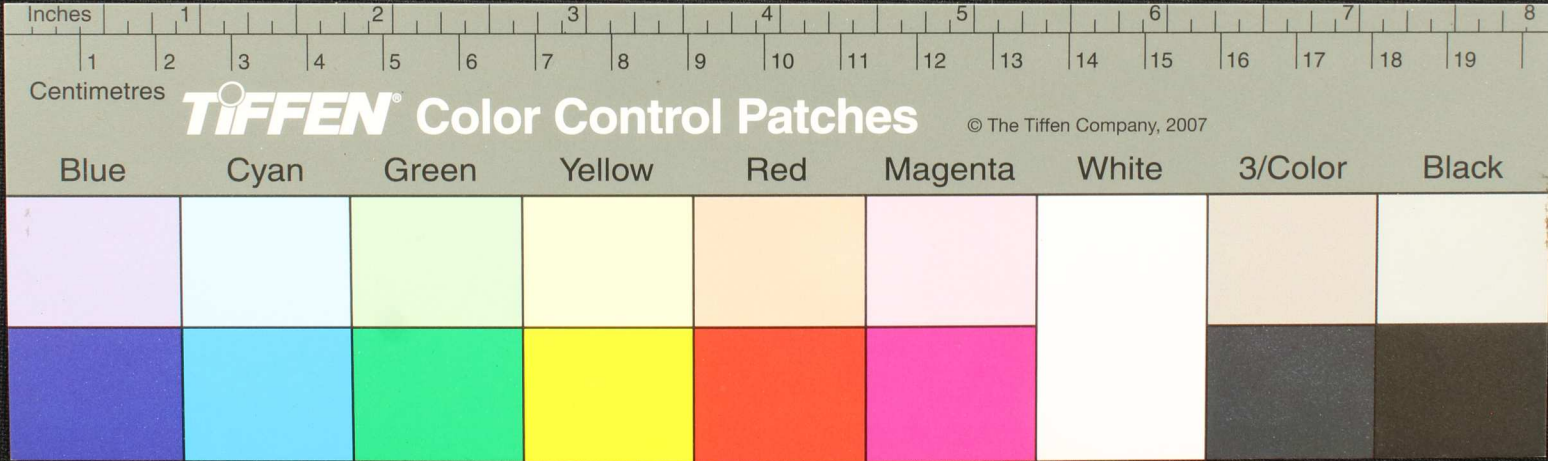


Handwritten Tamil script on a palm leaf manuscript. The text is arranged in approximately 10 horizontal lines across the length of the leaf. A small circular hole is visible on the left side of the leaf, used for binding multiple leaves together.





Handwritten Tamil script on a palm leaf manuscript. The text is arranged in approximately six horizontal lines. A small circular hole is visible on the left side of the leaf, used for binding multiple leaves together. The script is finely etched into the surface of the dried leaf.

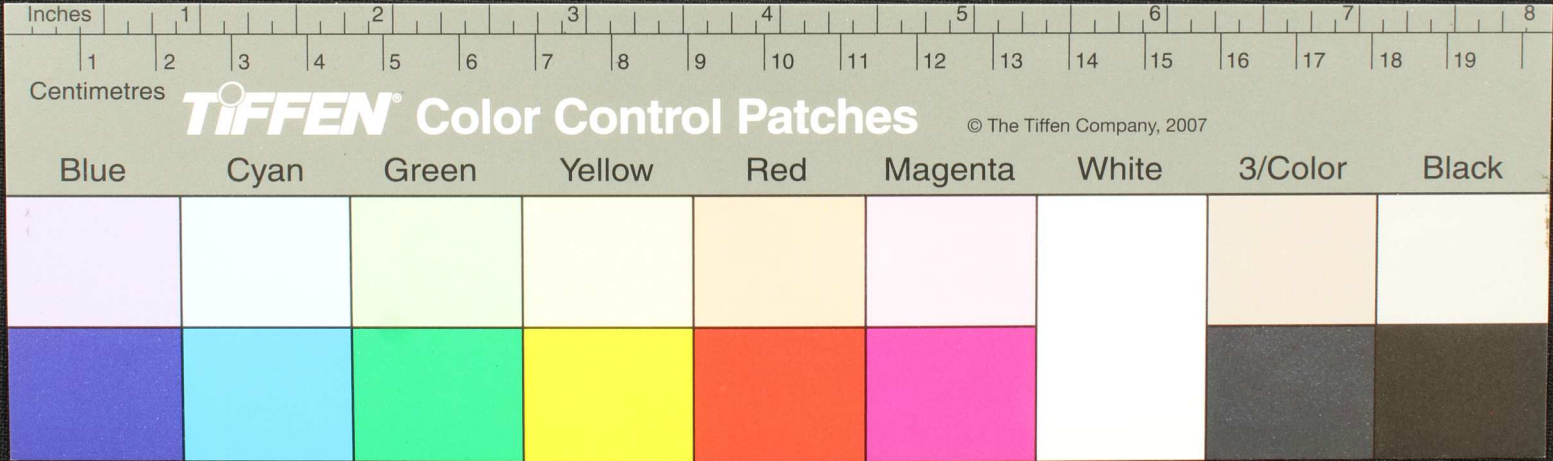






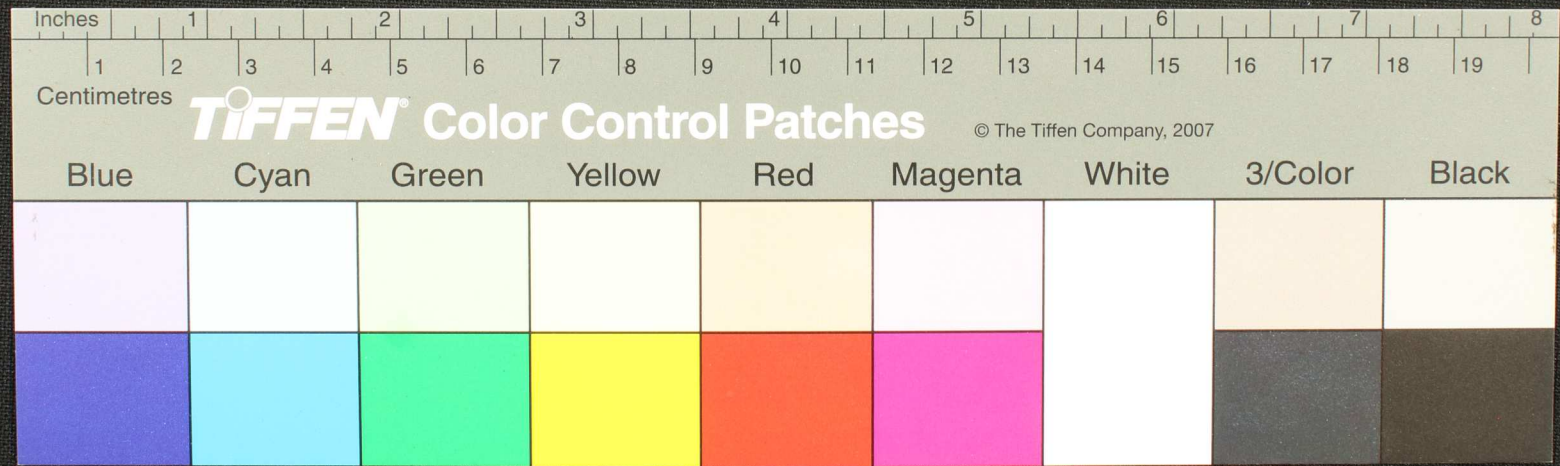


46  
 உதயசூரியன் உதித்த பின்னர் உலகம் முழுவதும் உலகம் முழுவதும்  
 உலகம் முழுவதும் உலகம் முழுவதும் உலகம் முழுவதும் உலகம் முழுவதும்  
 உலகம் முழுவதும் உலகம் முழுவதும் உலகம் முழுவதும் உலகம் முழுவதும்  
 உலகம் முழுவதும் உலகம் முழுவதும் உலகம் முழுவதும் உலகம் முழுவதும்  
 உலகம் முழுவதும் உலகம் முழுவதும் உலகம் முழுவதும் உலகம் முழுவதும்



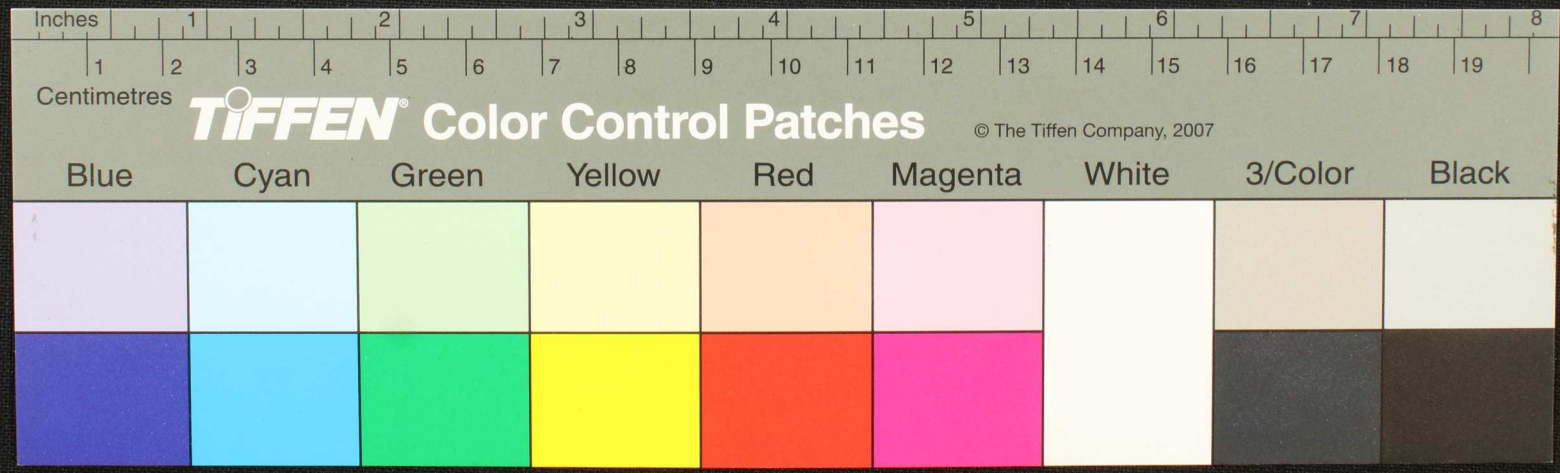


Handwritten text in Tamil script on a palm leaf manuscript. The text is arranged in approximately four lines across the length of the leaf. A small circular hole is visible near the center of the leaf, used for traditional binding.





கீழ்க்கண்டவாறு நிரந்தரமாக இருக்கக்கூடிய சுவைப்பருத்தியில்  
 கீழ்க்கண்டவாறு நிரந்தரமாக இருக்கக்கூடிய சுவைப்பருத்தியில்  
 மலையாள மொழி எழுத்துக்களை உட்கொண்டிருக்கக்கூடிய  
 கீழ்க்கண்டவாறு நிரந்தரமாக இருக்கக்கூடிய சுவைப்பருத்தியில்  
 கீழ்க்கண்டவாறு நிரந்தரமாக இருக்கக்கூடிய சுவைப்பருத்தியில்  
 கீழ்க்கண்டவாறு நிரந்தரமாக இருக்கக்கூடிய சுவைப்பருத்தியில்  
 கீழ்க்கண்டவாறு நிரந்தரமாக இருக்கக்கூடிய சுவைப்பருத்தியில்  
 கீழ்க்கண்டவாறு நிரந்தரமாக இருக்கக்கூடிய சுவைப்பருத்தியில்  
 கீழ்க்கண்டவாறு நிரந்தரமாக இருக்கக்கூடிய சுவைப்பருத்தியில்

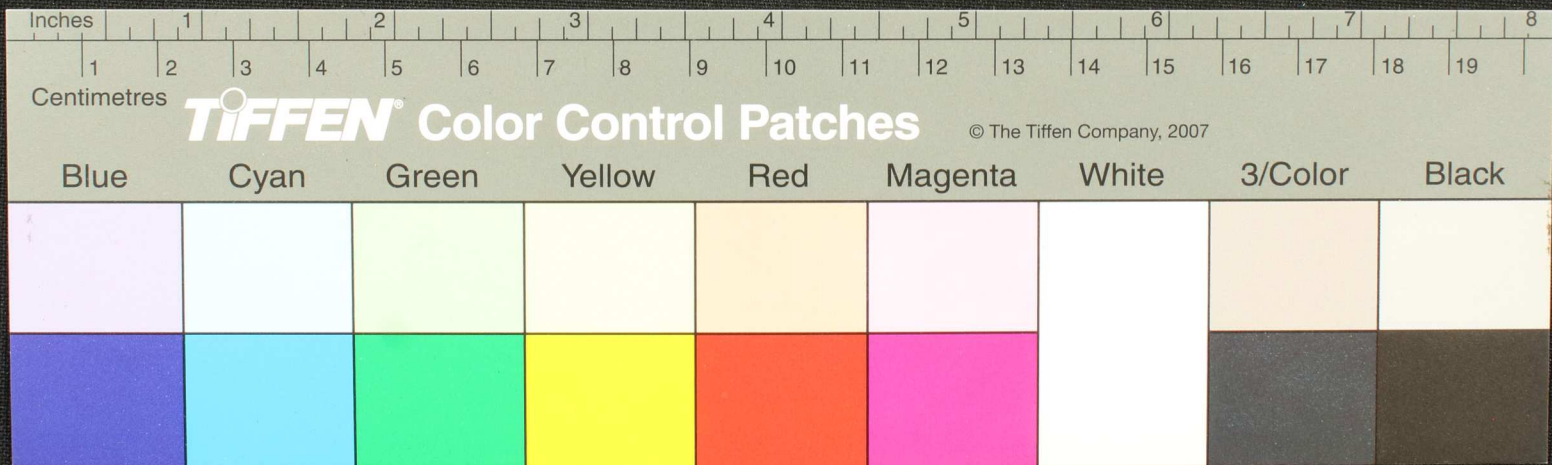






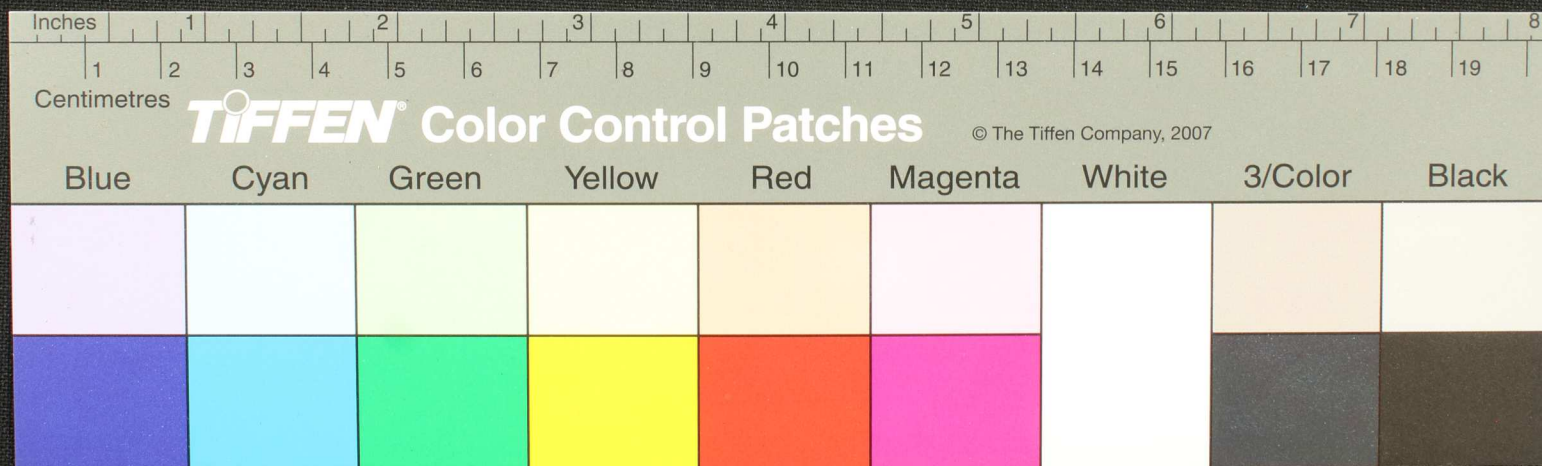


Handwritten text in Tamil script on a palm leaf manuscript strip. The text is arranged in several columns and includes various characters and symbols, some of which are circled. A small black circular mark is visible on the left side of the strip.





Handwritten text in an ancient script, possibly Tamil, on a palm leaf manuscript. The text is arranged in approximately 10 horizontal lines. A small circular hole is visible near the center of the leaf, which is a traditional feature for threading a cord to bind multiple leaves together. The leaf is yellowed with age and has irregular, torn edges.









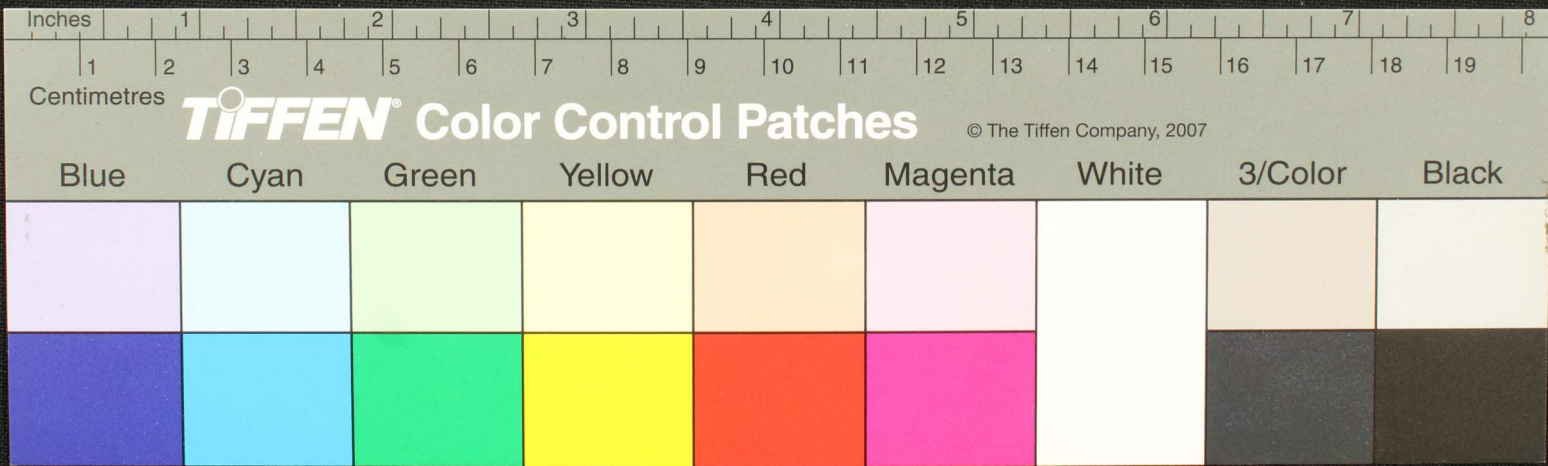








Handwritten Tamil script on a palm leaf manuscript. The text is arranged in approximately 10 horizontal lines. On the left side, there is a circular stamp or seal containing a stylized figure or symbol. The script is finely etched into the surface of the dried leaf.

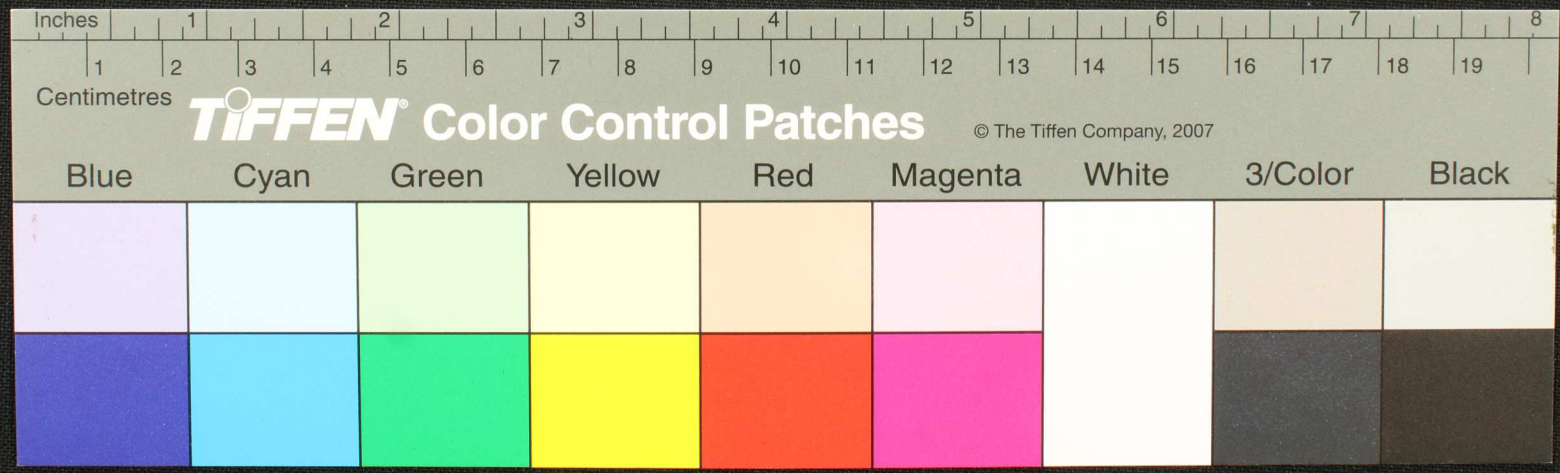








Handwritten Tamil script on a palm leaf manuscript. The text is arranged in approximately 10 horizontal lines. On the left side, there is a circular stamp or seal containing some characters, possibly a library or collection mark. The leaf shows signs of age and wear, with a small dark spot near the center.

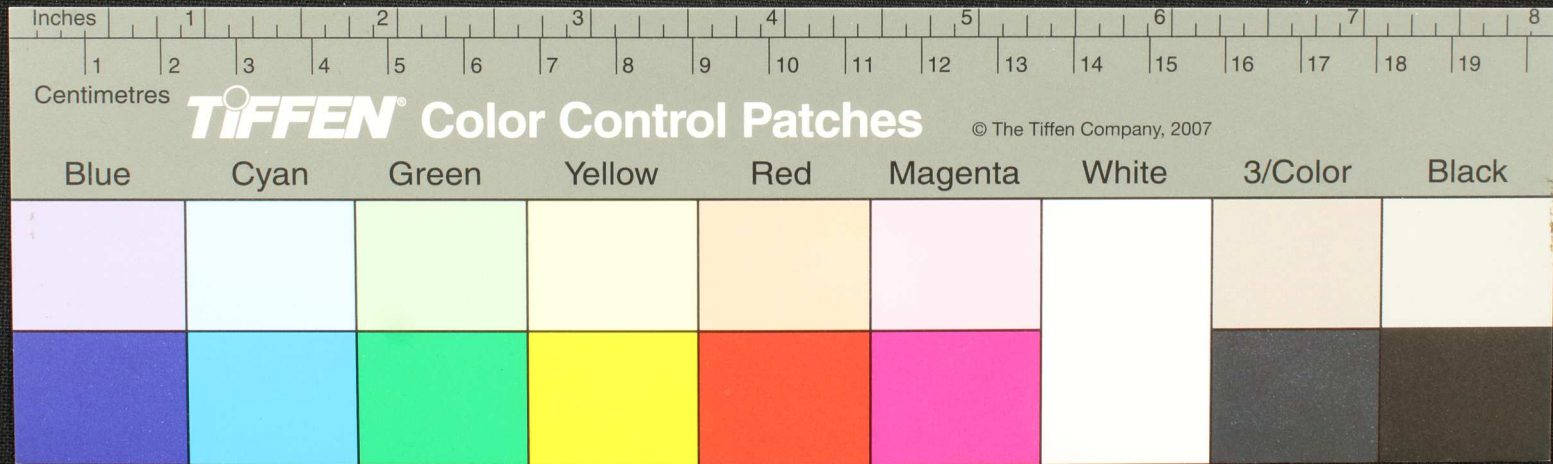








Handwritten text in Tamil script on a palm leaf manuscript. The text is arranged in approximately five horizontal lines across the length of the leaf. The script is a traditional form of the Tamil language, likely used for religious or historical records. The leaf shows signs of age and wear, with some dark spots and irregular edges.













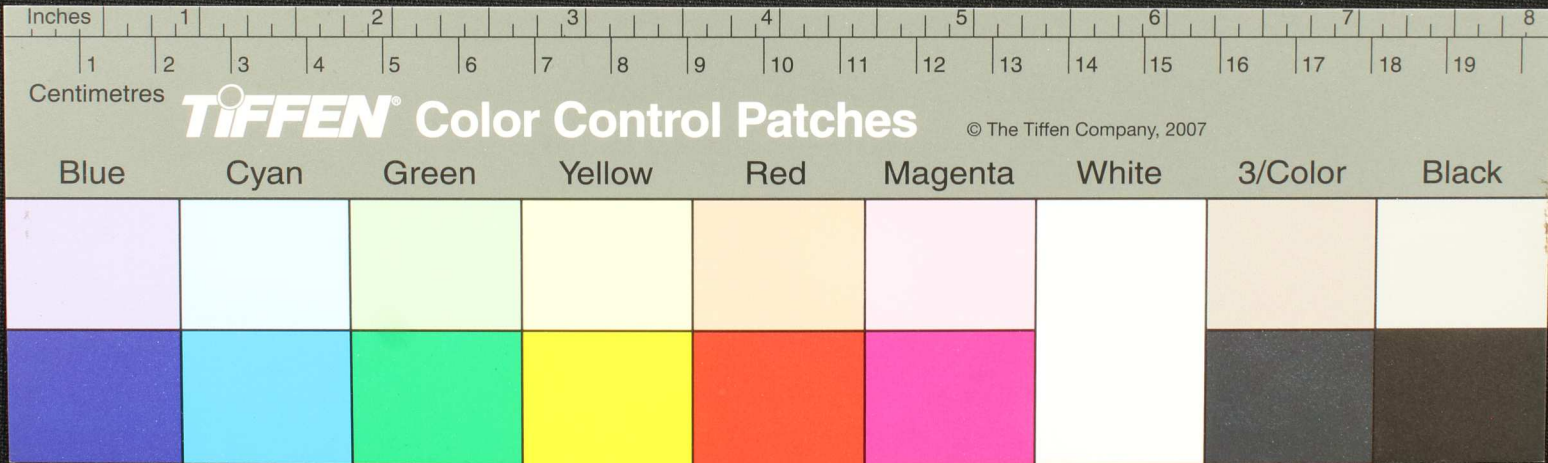








(1) W. 9. 11. 12. 13. 14. 15. 16. 17. 18. 19. 20. 21. 22. 23. 24. 25. 26. 27. 28. 29. 30. 31. 32. 33. 34. 35. 36. 37. 38. 39. 40. 41. 42. 43. 44. 45. 46. 47. 48. 49. 50. 51. 52. 53. 54. 55. 56. 57. 58. 59. 60. 61. 62. 63. 64. 65. 66. 67. 68. 69. 70. 71. 72. 73. 74. 75. 76. 77. 78. 79. 80. 81. 82. 83. 84. 85. 86. 87. 88. 89. 90. 91. 92. 93. 94. 95. 96. 97. 98. 99. 100. 101. 102. 103. 104. 105. 106. 107. 108. 109. 110. 111. 112. 113. 114. 115. 116. 117. 118. 119. 120. 121. 122. 123. 124. 125. 126. 127. 128. 129. 130. 131. 132. 133. 134. 135. 136. 137. 138. 139. 140. 141. 142. 143. 144. 145. 146. 147. 148. 149. 150. 151. 152. 153. 154. 155. 156. 157. 158. 159. 160. 161. 162. 163. 164. 165. 166. 167. 168. 169. 170. 171. 172. 173. 174. 175. 176. 177. 178. 179. 180. 181. 182. 183. 184. 185. 186. 187. 188. 189. 190. 191. 192. 193. 194. 195. 196. 197. 198. 199. 200. 201. 202. 203. 204. 205. 206. 207. 208. 209. 210. 211. 212. 213. 214. 215. 216. 217. 218. 219. 220. 221. 222. 223. 224. 225. 226. 227. 228. 229. 230. 231. 232. 233. 234. 235. 236. 237. 238. 239. 240. 241. 242. 243. 244. 245. 246. 247. 248. 249. 250. 251. 252. 253. 254. 255. 256. 257. 258. 259. 260. 261. 262. 263. 264. 265. 266. 267. 268. 269. 270. 271. 272. 273. 274. 275. 276. 277. 278. 279. 280. 281. 282. 283. 284. 285. 286. 287. 288. 289. 290. 291. 292. 293. 294. 295. 296. 297. 298. 299. 300. 301. 302. 303. 304. 305. 306. 307. 308. 309. 310. 311. 312. 313. 314. 315. 316. 317. 318. 319. 320. 321. 322. 323. 324. 325. 326. 327. 328. 329. 330. 331. 332. 333. 334. 335. 336. 337. 338. 339. 340. 341. 342. 343. 344. 345. 346. 347. 348. 349. 350. 351. 352. 353. 354. 355. 356. 357. 358. 359. 360. 361. 362. 363. 364. 365. 366. 367. 368. 369. 370. 371. 372. 373. 374. 375. 376. 377. 378. 379. 380. 381. 382. 383. 384. 385. 386. 387. 388. 389. 390. 391. 392. 393. 394. 395. 396. 397. 398. 399. 400. 401. 402. 403. 404. 405. 406. 407. 408. 409. 410. 411. 412. 413. 414. 415. 416. 417. 418. 419. 420. 421. 422. 423. 424. 425. 426. 427. 428. 429. 430. 431. 432. 433. 434. 435. 436. 437. 438. 439. 440. 441. 442. 443. 444. 445. 446. 447. 448. 449. 450. 451. 452. 453. 454. 455. 456. 457. 458. 459. 460. 461. 462. 463. 464. 465. 466. 467. 468. 469. 470. 471. 472. 473. 474. 475. 476. 477. 478. 479. 480. 481. 482. 483. 484. 485. 486. 487. 488. 489. 490. 491. 492. 493. 494. 495. 496. 497. 498. 499. 500. 501. 502. 503. 504. 505. 506. 507. 508. 509. 510. 511. 512. 513. 514. 515. 516. 517. 518. 519. 520. 521. 522. 523. 524. 525. 526. 527. 528. 529. 530. 531. 532. 533. 534. 535. 536. 537. 538. 539. 540. 541. 542. 543. 544. 545. 546. 547. 548. 549. 550. 551. 552. 553. 554. 555. 556. 557. 558. 559. 560. 561. 562. 563. 564. 565. 566. 567. 568. 569. 570. 571. 572. 573. 574. 575. 576. 577. 578. 579. 580. 581. 582. 583. 584. 585. 586. 587. 588. 589. 590. 591. 592. 593. 594. 595. 596. 597. 598. 599. 600. 601. 602. 603. 604. 605. 606. 607. 608. 609. 610. 611. 612. 613. 614. 615. 616. 617. 618. 619. 620. 621. 622. 623. 624. 625. 626. 627. 628. 629. 630. 631. 632. 633. 634. 635. 636. 637. 638. 639. 640. 641. 642. 643. 644. 645. 646. 647. 648. 649. 650. 651. 652. 653. 654. 655. 656. 657. 658. 659. 660. 661. 662. 663. 664. 665. 666. 667. 668. 669. 670. 671. 672. 673. 674. 675. 676. 677. 678. 679. 680. 681. 682. 683. 684. 685. 686. 687. 688. 689. 690. 691. 692. 693. 694. 695. 696. 697. 698. 699. 700. 701. 702. 703. 704. 705. 706. 707. 708. 709. 710. 711. 712. 713. 714. 715. 716. 717. 718. 719. 720. 721. 722. 723. 724. 725. 726. 727. 728. 729. 730. 731. 732. 733. 734. 735. 736. 737. 738. 739. 740. 741. 742. 743. 744. 745. 746. 747. 748. 749. 750. 751. 752. 753. 754. 755. 756. 757. 758. 759. 760. 761. 762. 763. 764. 765. 766. 767. 768. 769. 770. 771. 772. 773. 774. 775. 776. 777. 778. 779. 780. 781. 782. 783. 784. 785. 786. 787. 788. 789. 790. 791. 792. 793. 794. 795. 796. 797. 798. 799. 800. 801. 802. 803. 804. 805. 806. 807. 808. 809. 810. 811. 812. 813. 814. 815. 816. 817. 818. 819. 820. 821. 822. 823. 824. 825. 826. 827. 828. 829. 830. 831. 832. 833. 834. 835. 836. 837. 838. 839. 840. 841. 842. 843. 844. 845. 846. 847. 848. 849. 850. 851. 852. 853. 854. 855. 856. 857. 858. 859. 860. 861. 862. 863. 864. 865. 866. 867. 868. 869. 870. 871. 872. 873. 874. 875. 876. 877. 878. 879. 880. 881. 882. 883. 884. 885. 886. 887. 888. 889. 890. 891. 892. 893. 894. 895. 896. 897. 898. 899. 900. 901. 902. 903. 904. 905. 906. 907. 908. 909. 910. 911. 912. 913. 914. 915. 916. 917. 918. 919. 920. 921. 922. 923. 924. 925. 926. 927. 928. 929. 930. 931. 932. 933. 934. 935. 936. 937. 938. 939. 940. 941. 942. 943. 944. 945. 946. 947. 948. 949. 950. 951. 952. 953. 954. 955. 956. 957. 958. 959. 960. 961. 962. 963. 964. 965. 966. 967. 968. 969. 970. 971. 972. 973. 974. 975. 976. 977. 978. 979. 980. 981. 982. 983. 984. 985. 986. 987. 988. 989. 990. 991. 992. 993. 994. 995. 996. 997. 998. 999. 1000.

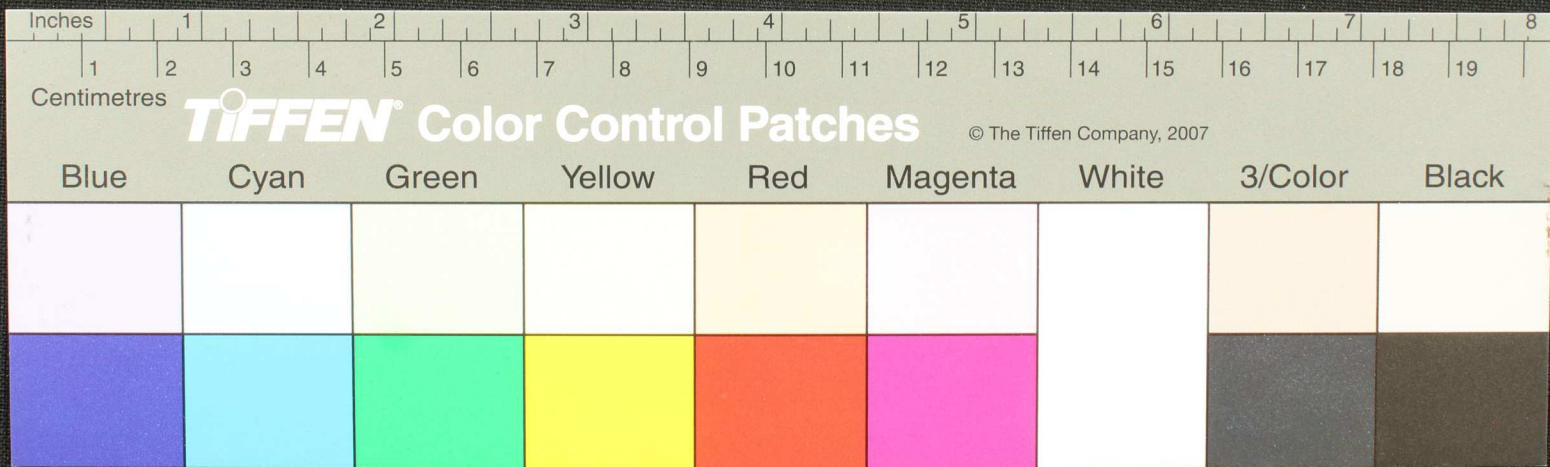








Handwritten text in Tamil script on a palm leaf manuscript. The text is arranged in approximately 10 horizontal lines across the length of the leaf. A small circular hole is visible near the center of the leaf, which is a traditional feature for threading a cord to bind multiple leaves together. The script is finely etched into the surface of the dried leaf.

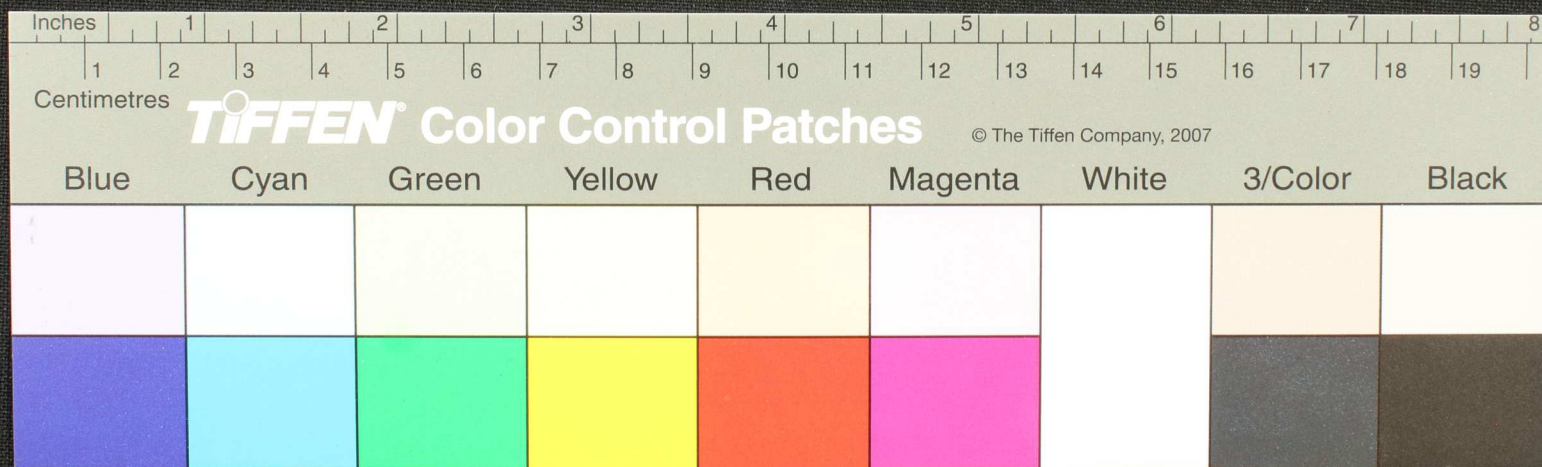








Handwritten text in Tamil script on a palm leaf manuscript. The text is arranged in approximately 10 horizontal lines across the length of the leaf. A small circular hole is visible near the center of the leaf, which is a traditional feature for threading a cord to bind multiple leaves together. The script is finely etched into the surface of the dried leaf.

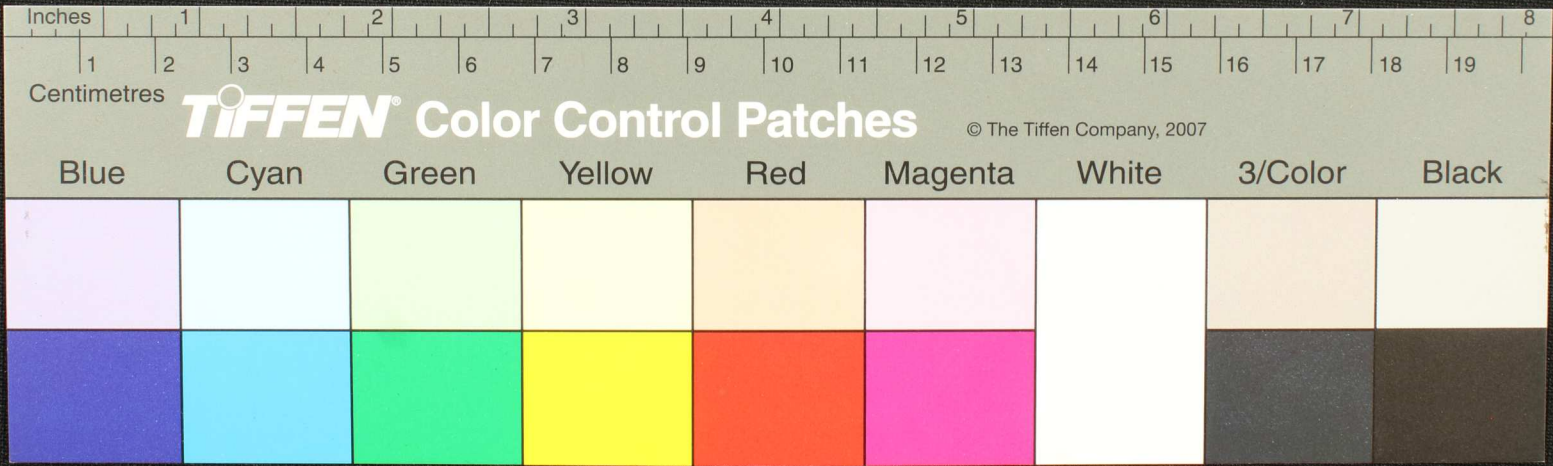






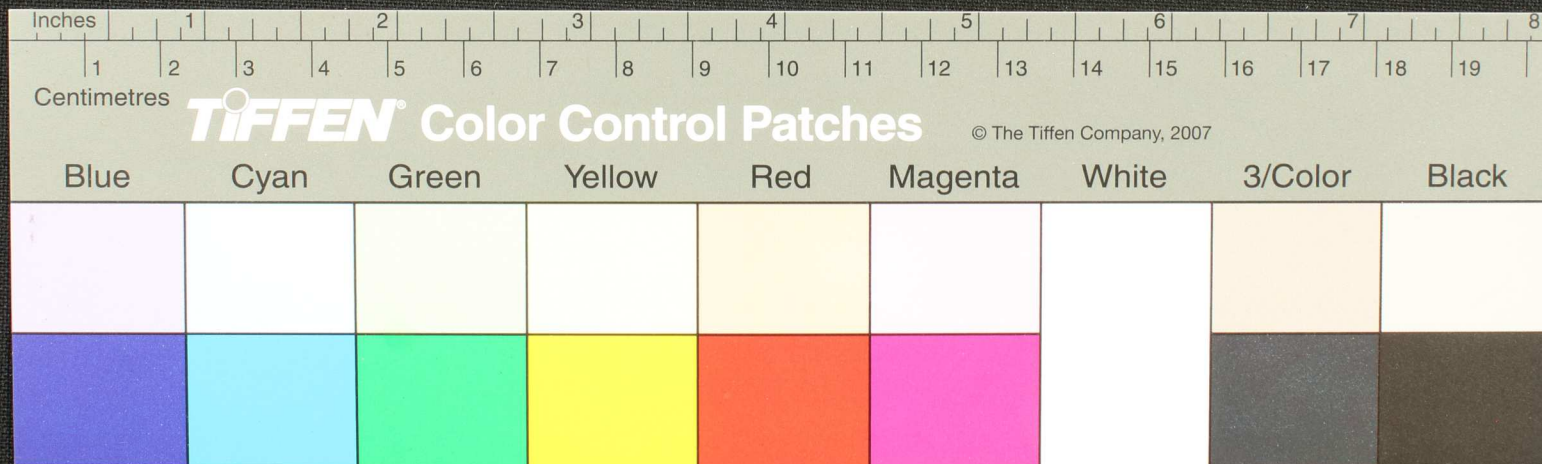


42-  
 வதலினவரதிசரிம - வசதுதருமவாசுநினைவானபநுது  
 சீகிமமுபதேமரிசரிவனமுனனுமருகிசுருதுலவதுருதாம  
 சிவதகமுமிடமன குறைசெய்துமரிசரிசுருதுமவிசேதுமயுருன  
 மருபரிவசரிசுரு அருனதுகவருருன - வவவவவவவவவவ  
 வசரிமிளசுருன நருனனுரிசுருசுருரிவவவவவவவவவவ  
 சீகிரவாரவவவவவவவவவவவவவவவவவவவவவவவவவவவவ  
 வவவவவவவவவவவவவவவவவவவவவவவவவவவவவவவவவவ



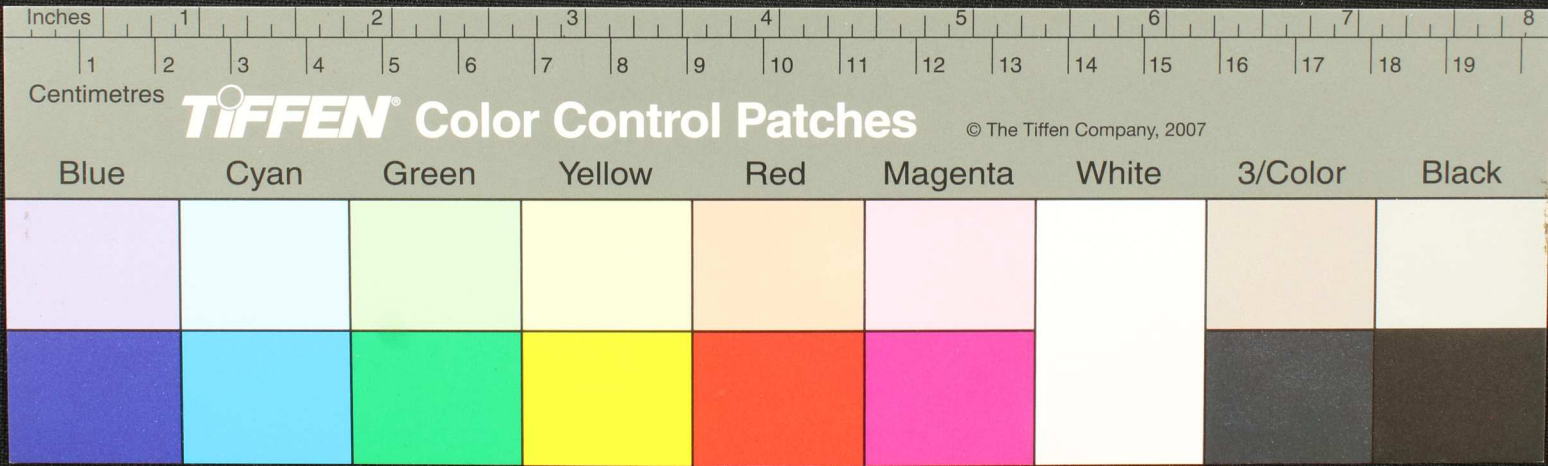


Handwritten text in Tamil script on a palm leaf manuscript. The text is arranged in approximately 10 horizontal lines across the length of the leaf. A small circular hole is visible near the center of the leaf, which is a traditional feature for threading a cord to bind multiple leaves together. The script is finely etched into the surface of the dried leaf.



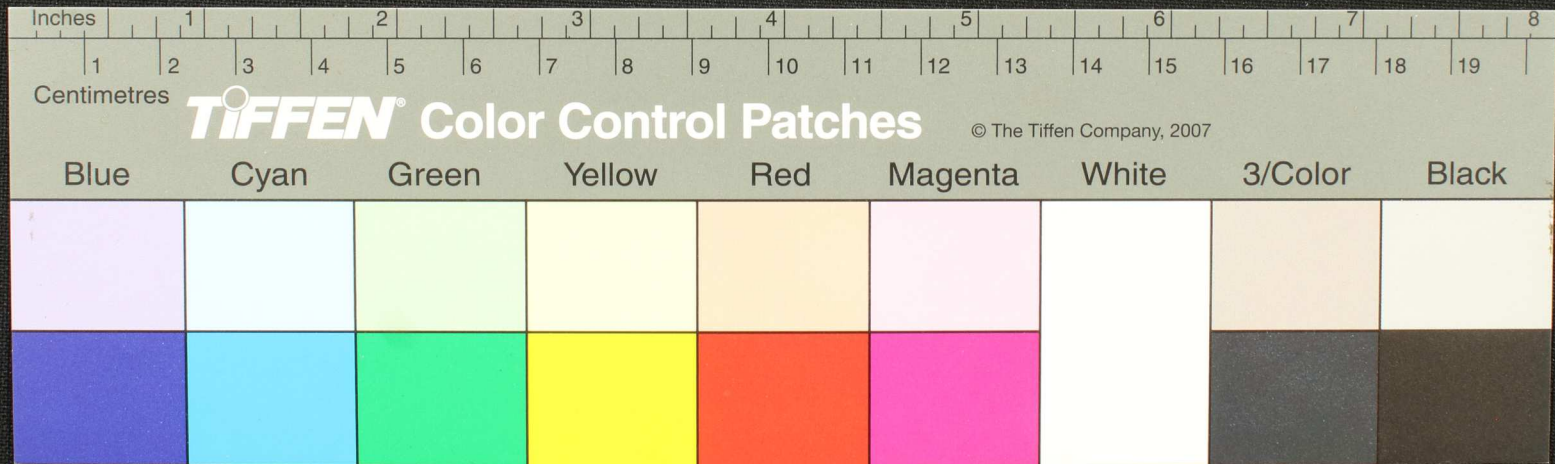


Handwritten Tamil script on a palm leaf manuscript. The text is arranged in approximately 10 horizontal lines. A prominent dark circular hole is visible in the center of the leaf, likely from a traditional binding method. The script is finely etched into the surface of the dried leaf.





Handwritten Tamil script on a palm leaf manuscript. The text is arranged in approximately 10 horizontal lines. On the left side, there is a circular stamp or seal containing the Tamil characters 'சுடி' (Sudi) and 'மே' (Me), which likely denote a date or a specific day of the week. The script is finely etched into the surface of the dried leaf.





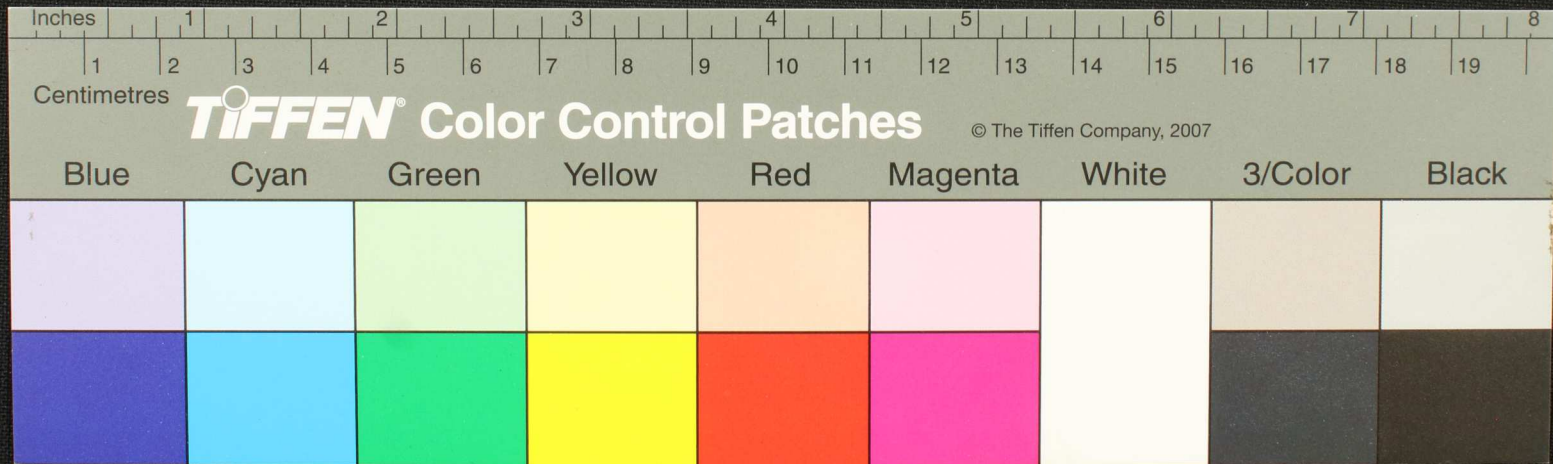






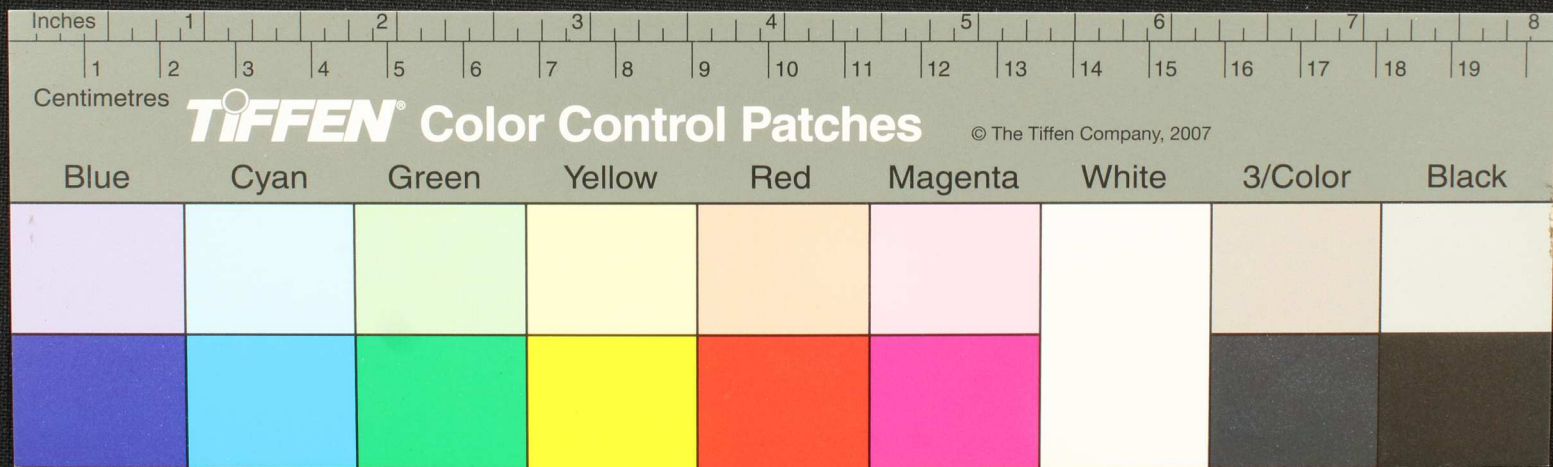


Handwritten Tamil script on a palm leaf manuscript. The text is arranged in approximately 10 horizontal lines. A circular hole is visible near the center of the leaf, used for binding multiple leaves together. The script is finely etched into the surface of the dried leaf.





Handwritten Tamil script on a palm leaf manuscript. The text is arranged in approximately 10 horizontal lines across the length of the leaf. A circular hole is visible on the left side, used for threading a cord to bind multiple leaves together. The script is finely etched into the surface of the dried leaf.

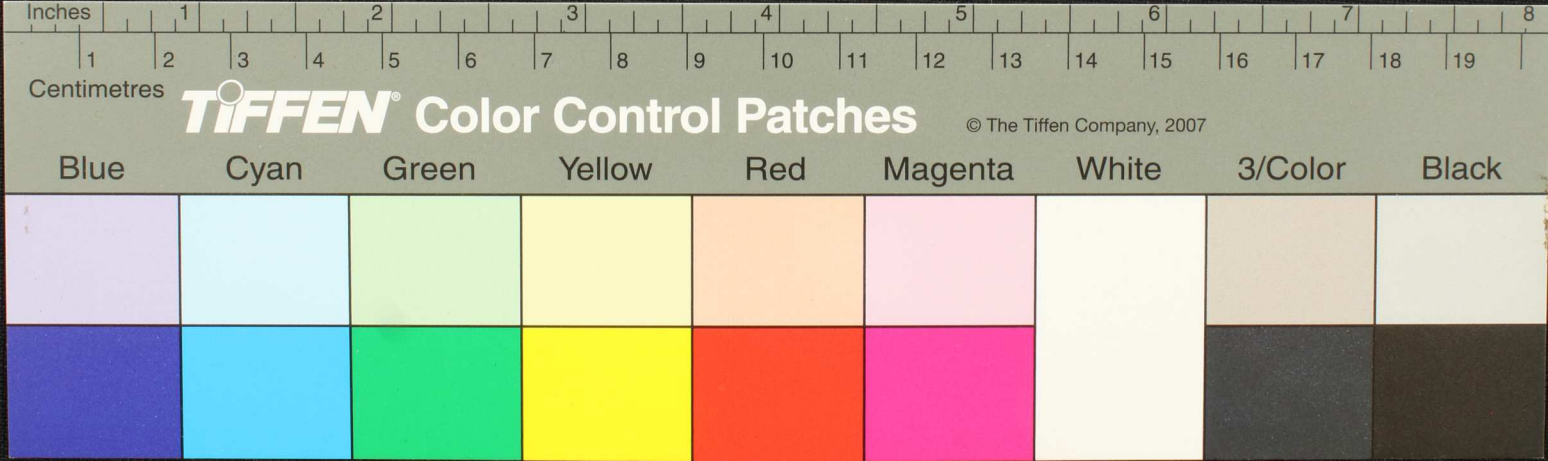








Handwritten Tamil script on a palm leaf manuscript. The text is arranged in approximately 10 horizontal lines. A prominent dark circular hole is visible in the center of the leaf, which is a traditional feature used for threading a cord to bind multiple leaves together into a book. The script is finely etched into the surface of the dried leaf.

















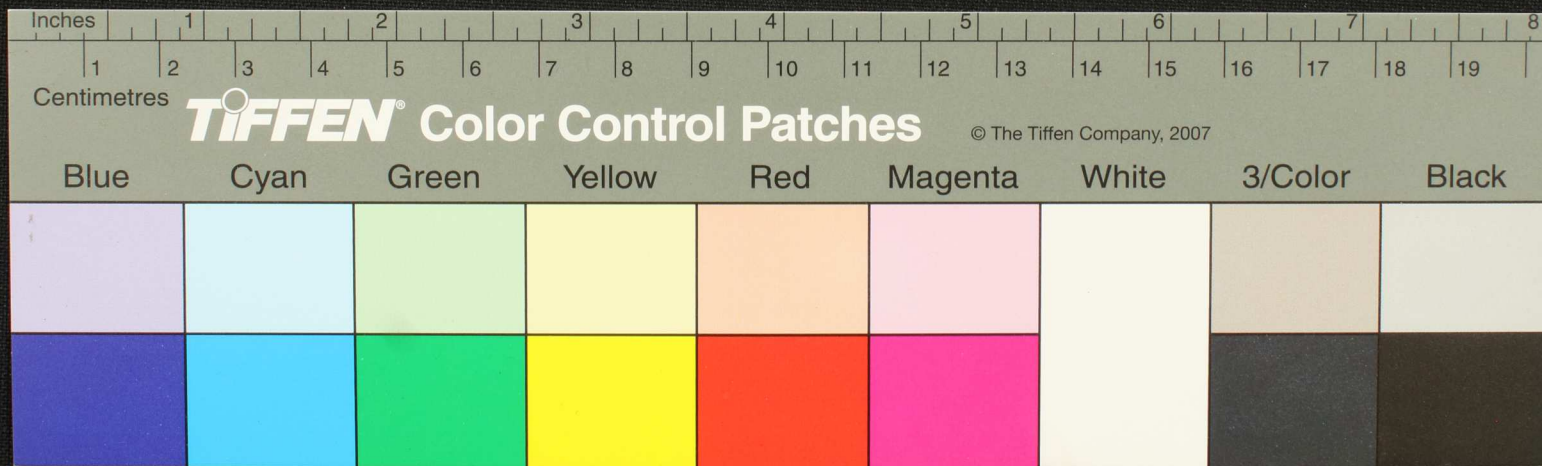








Handwritten Tamil script on a palm leaf manuscript. The text is arranged in approximately 10 horizontal lines across the length of the leaf. The script is finely etched into the surface of the dried leaf. A small, dark circular hole is visible near the center of the leaf, which is a traditional feature used for threading a cord to bind multiple leaves together into a book format.









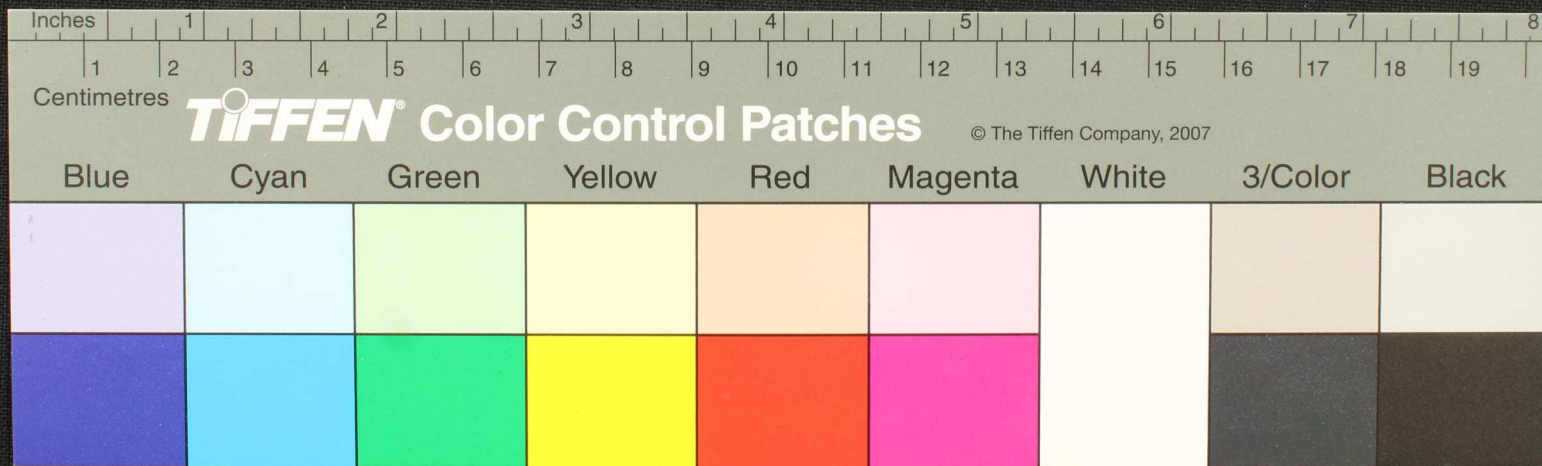








Handwritten text in Tamil script on a palm leaf manuscript. The text is arranged in approximately 10 horizontal lines. A circular hole is present on the left side of the leaf, about one-third of the way across its width. The script is finely etched into the surface of the dried leaf.

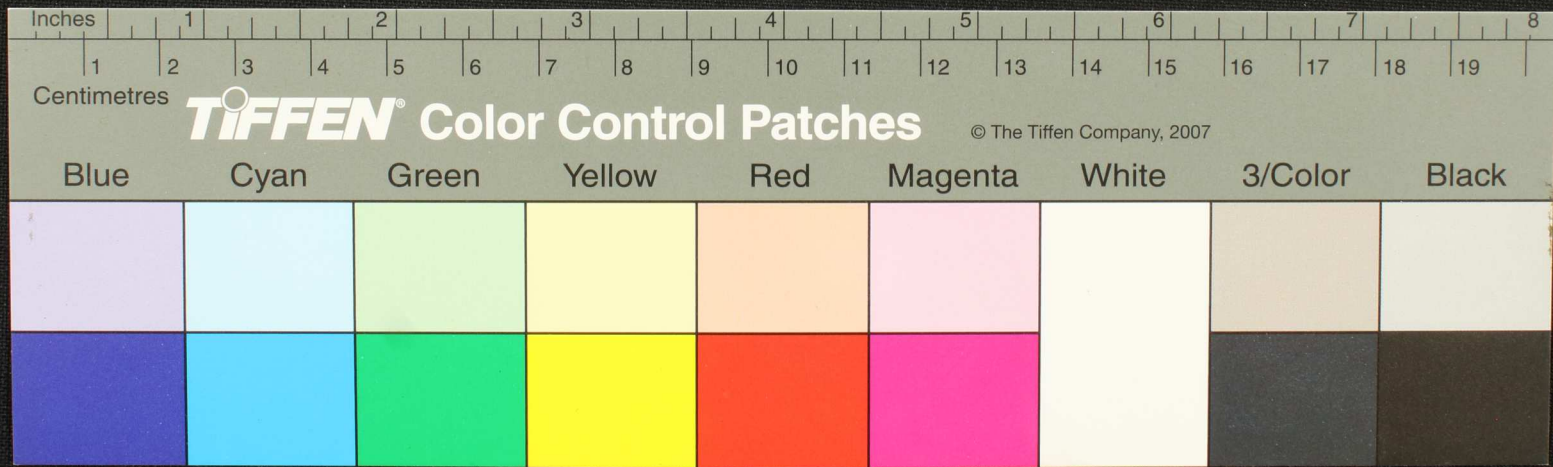






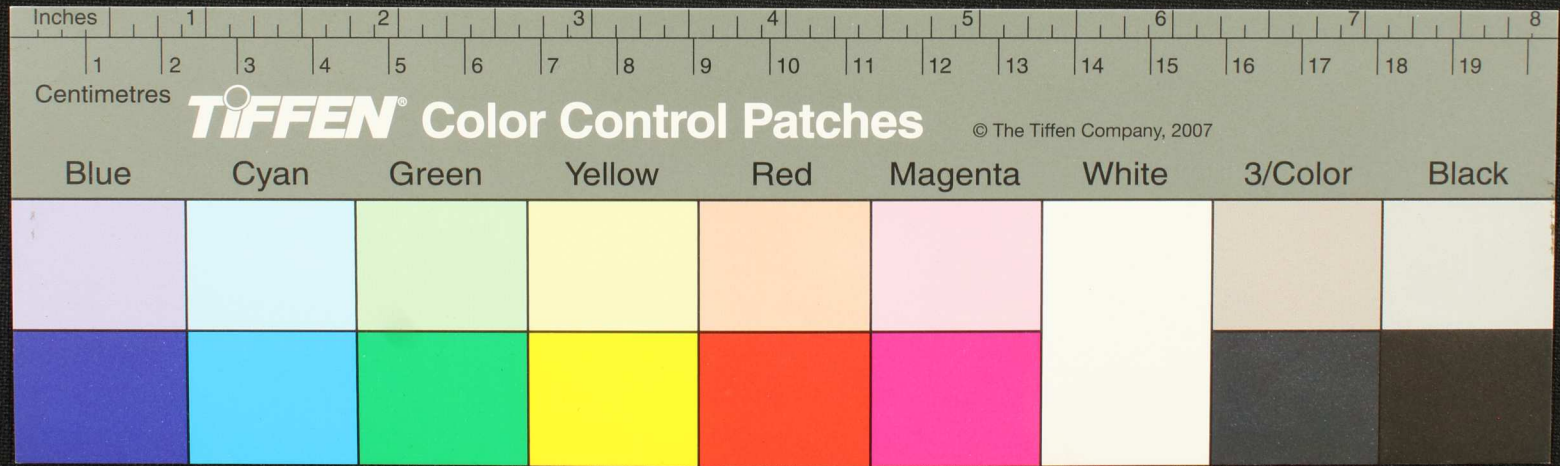


Handwritten Tamil script on a palm leaf manuscript. The text is arranged in approximately 10 horizontal lines. On the left side, there are three distinct lines of text, possibly serving as a title or a specific reference, including the characters 'சுருட்டி' and 'புத்தொரு' (likely 'புத்தொரு'). The main body of text is densely packed and appears to be a continuous passage of prose or a list of items. A small, dark circular hole is visible in the center of the leaf, which is a traditional feature used for threading a cord to bind multiple leaves together.



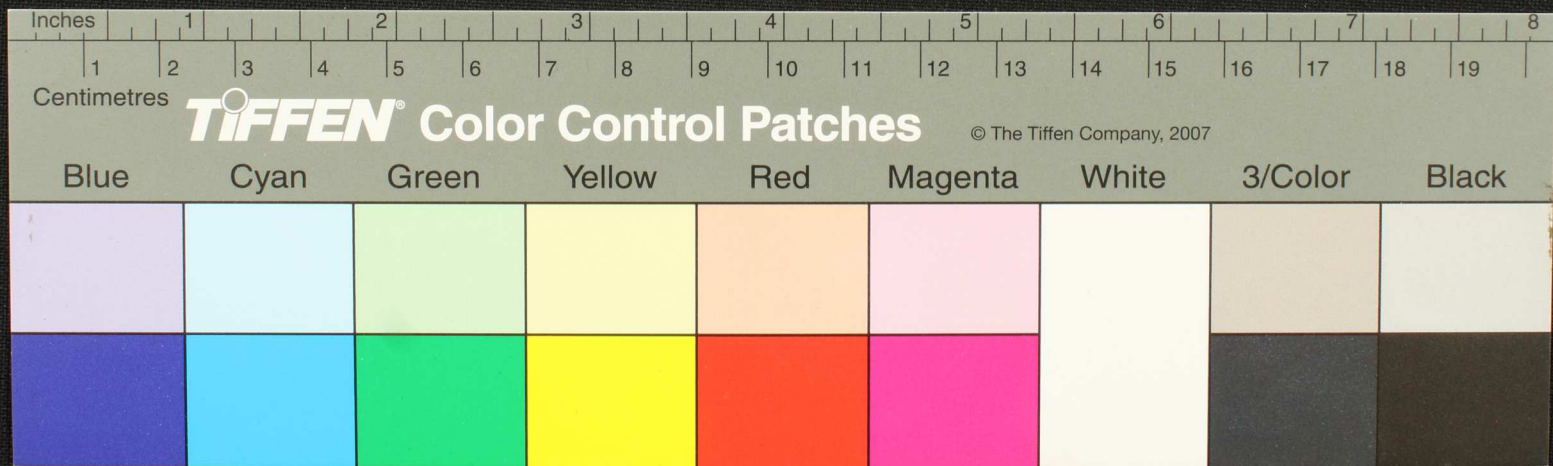


Handwritten Tamil script on a palm leaf manuscript. The text is arranged in approximately 10 horizontal lines. A prominent circular hole is visible in the center of the leaf, likely from a traditional binding method. The script is finely etched into the surface of the dried leaf.



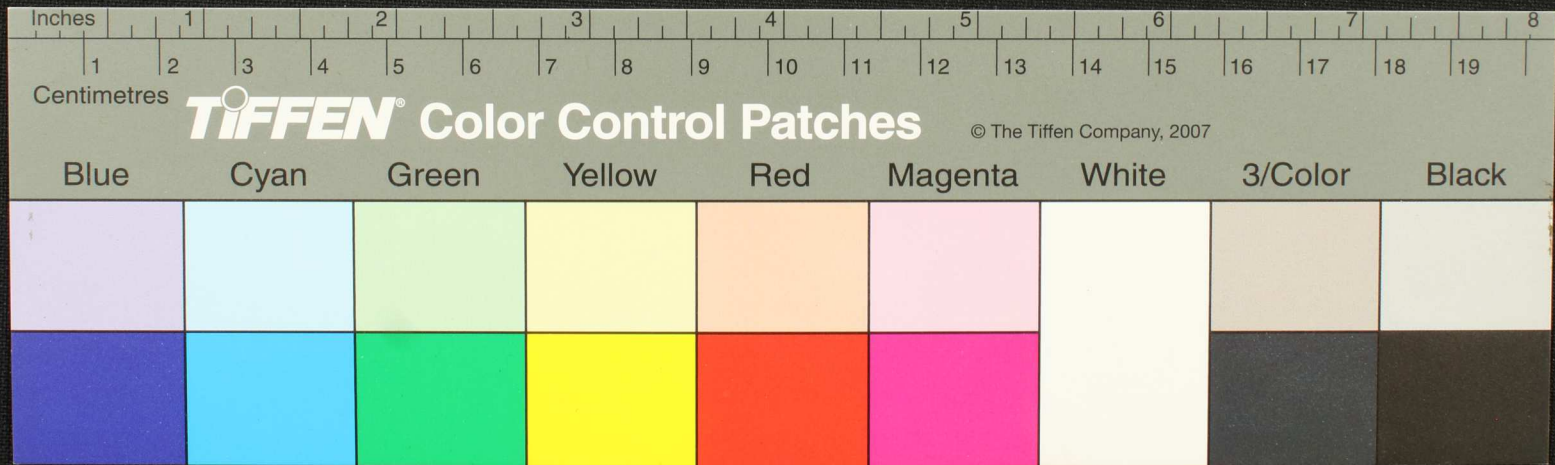


Handwritten text in Tamil script on a palm leaf manuscript. The text is arranged in approximately 10 horizontal lines across the length of the leaf. A small, dark circular hole is visible near the center of the leaf, likely from a traditional binding method. The script is finely etched into the surface of the dried leaf.



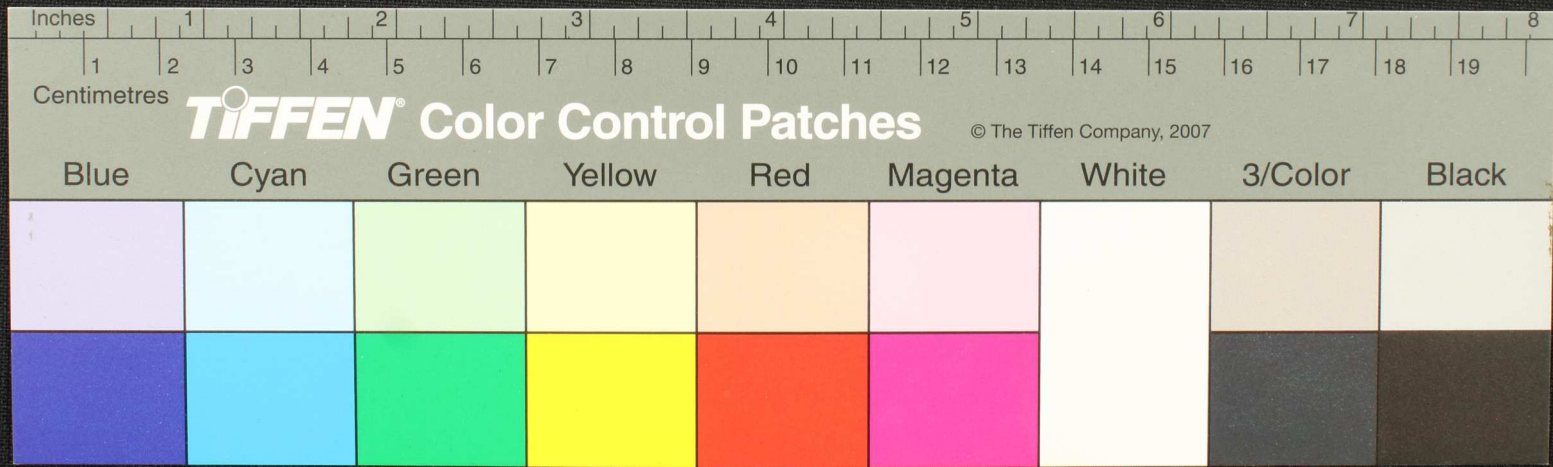


Handwritten Tamil script on a palm leaf manuscript. The text is arranged in approximately 10 horizontal lines. On the left side, there are two vertical annotations: 'பதிவு' (Pattivu) and 'பயி' (Pai). A circular hole is present in the center of the leaf, used for threading a cord to bind multiple leaves together.



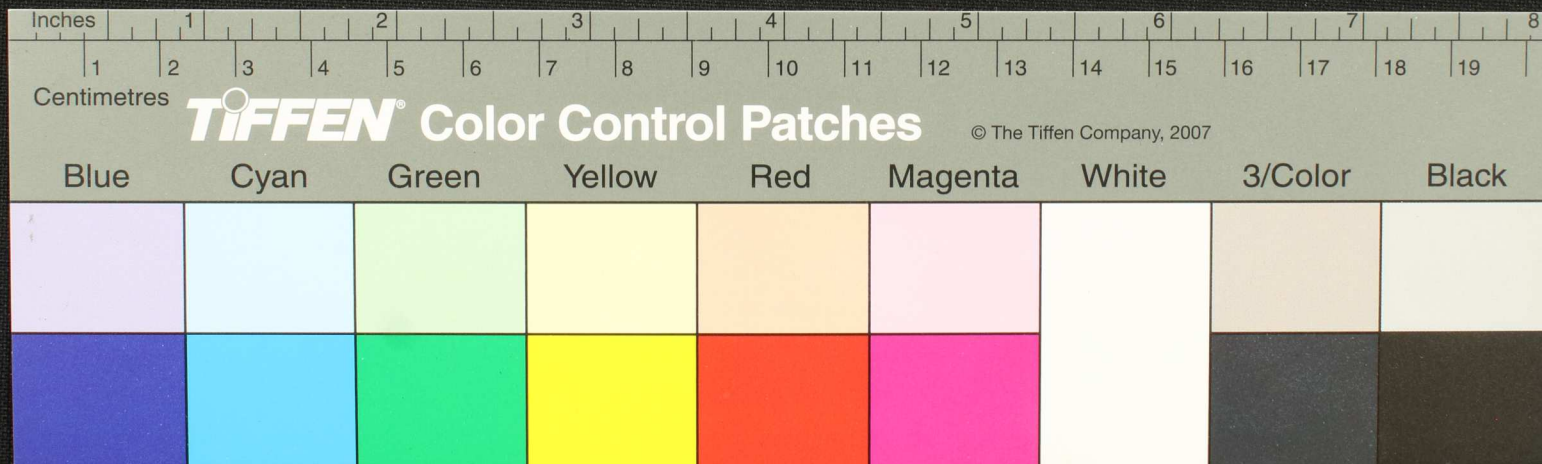


Handwritten Tamil script on a palm leaf manuscript. The text is arranged in approximately 10 horizontal lines. On the left side, there are vertical annotations: 'மேதகம்', 'மொழி', 'பிழை', and 'விக்கம்'. A circular hole is present in the center of the leaf, approximately at the 6-inch mark on the ruler below.





Handwritten Tamil script on a palm leaf manuscript. The text is arranged in approximately 10 horizontal lines. A circular hole is visible on the left side of the leaf, used for binding. The script is finely etched into the surface of the dried leaf.





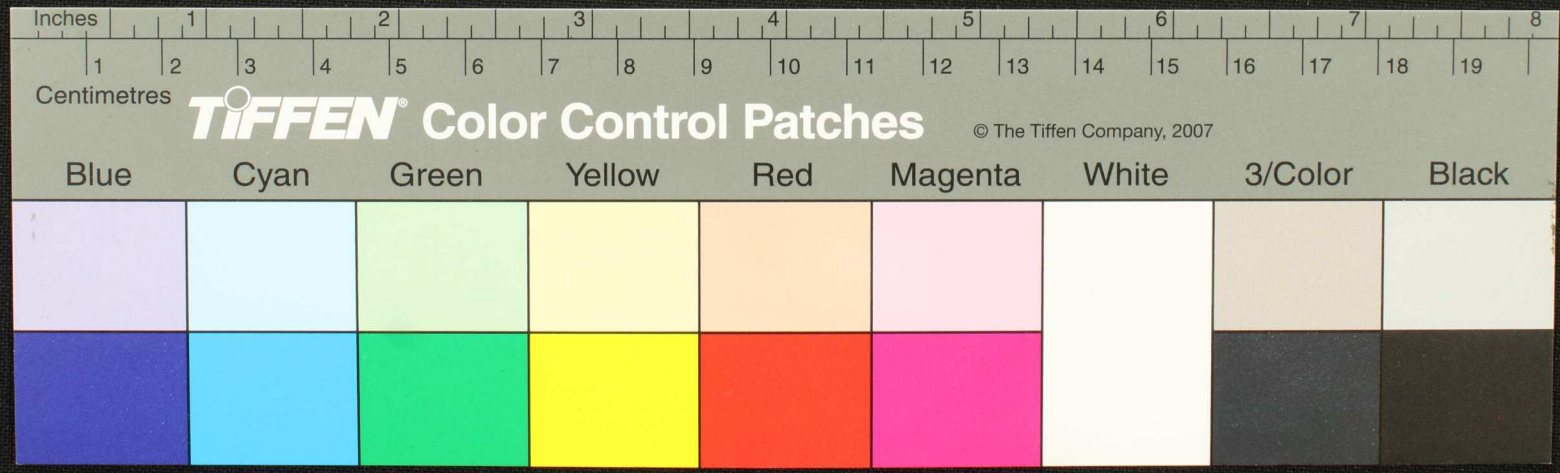








Handwritten Tamil script on a palm leaf manuscript. The text is arranged in approximately 10 horizontal lines. A circular hole is visible on the left side of the leaf, used for binding multiple leaves together. The script is densely packed and appears to be a form of classical or religious Tamil.





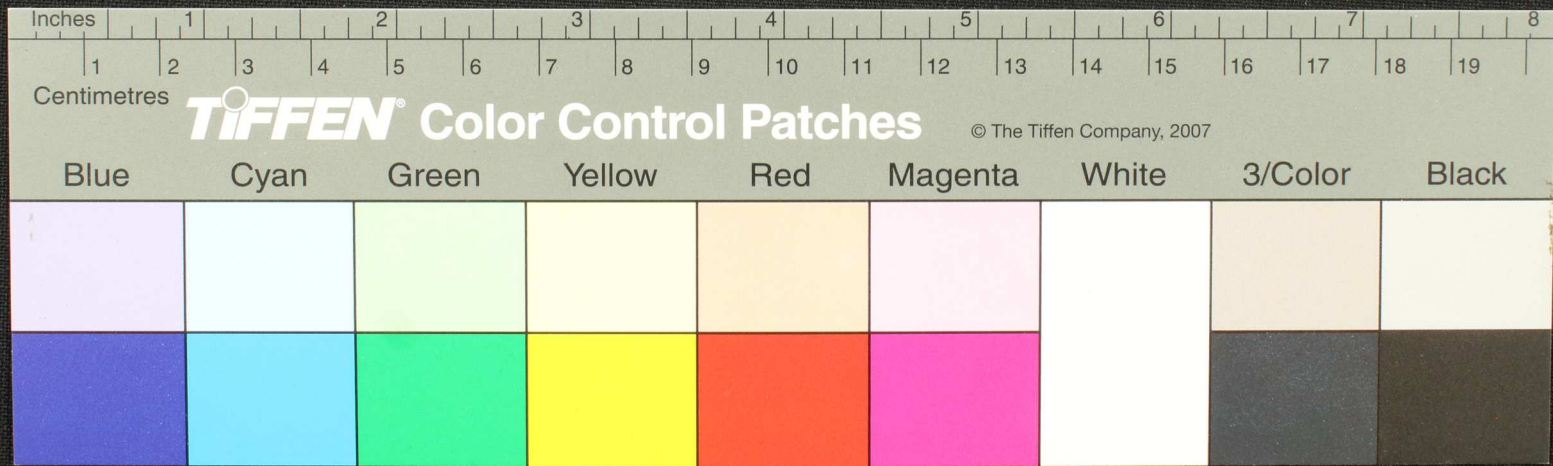






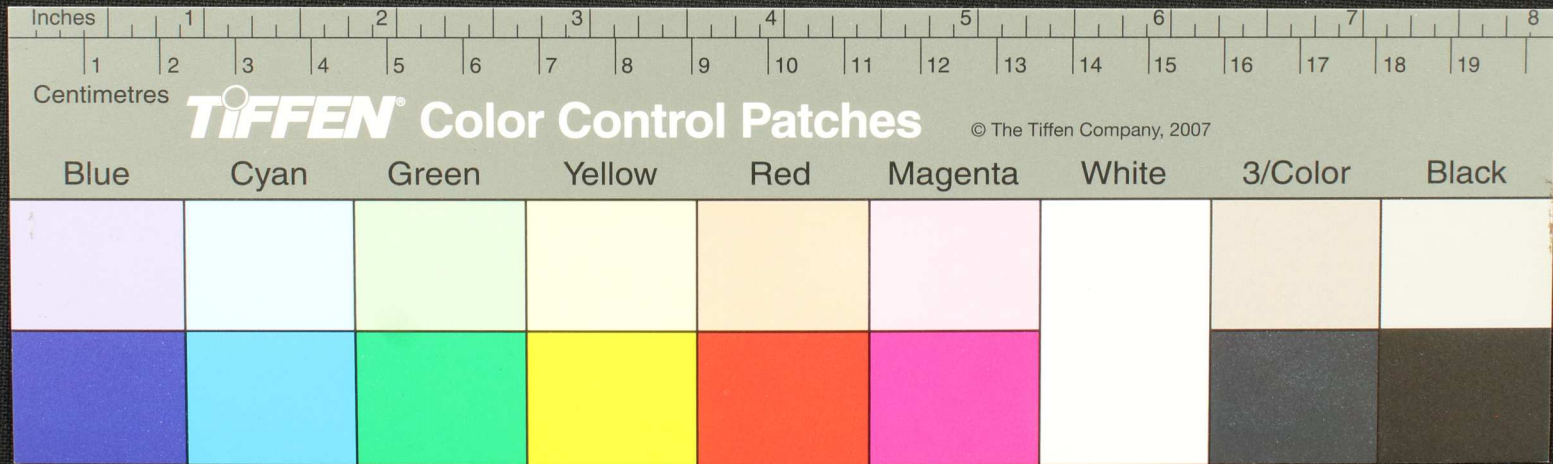


Handwritten text in an ancient script, likely Tamil, on a palm leaf manuscript. The text is arranged in several lines across the length of the leaf. A small circular hole is visible near the center of the leaf, which is a traditional feature for threading a cord to bind multiple leaves together.





Handwritten text in Tamil script on a palm leaf manuscript. The text is arranged in approximately four horizontal lines. A small circular hole is visible on the left side of the leaf, which is a traditional feature for threading a cord to bind multiple leaves together. The script is finely etched into the surface of the dried leaf.





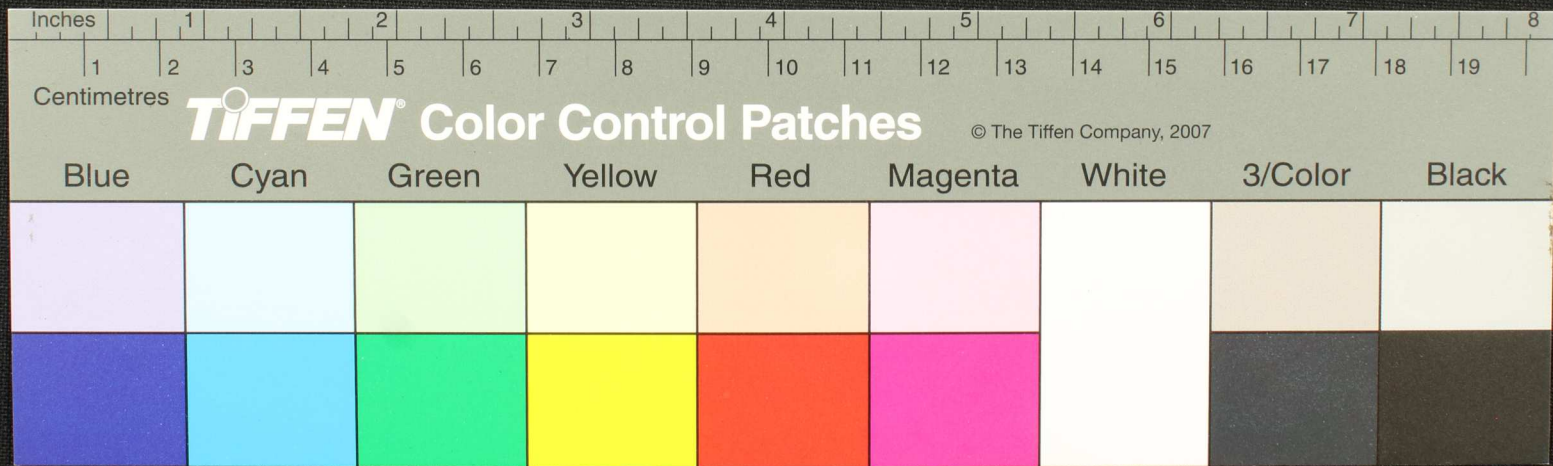






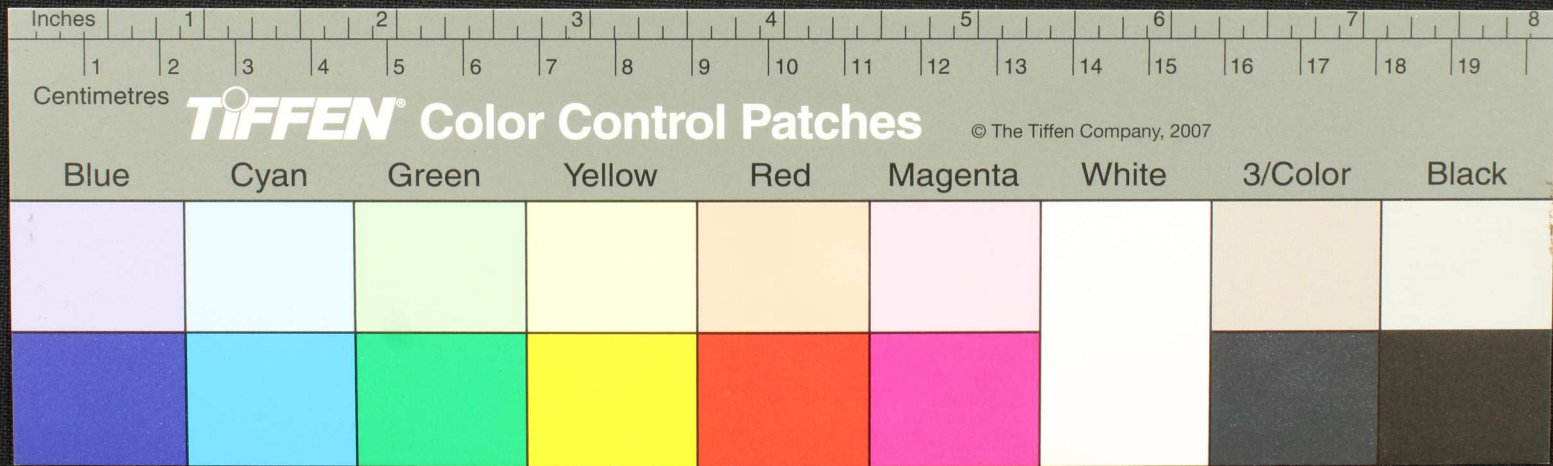


Handwritten Tamil script on a palm leaf manuscript. The text is arranged in approximately six horizontal lines. A prominent circular hole is visible on the left side of the leaf, which is a traditional feature for threading a cord to bind multiple leaves together. The script is finely etched into the surface of the dried leaf.



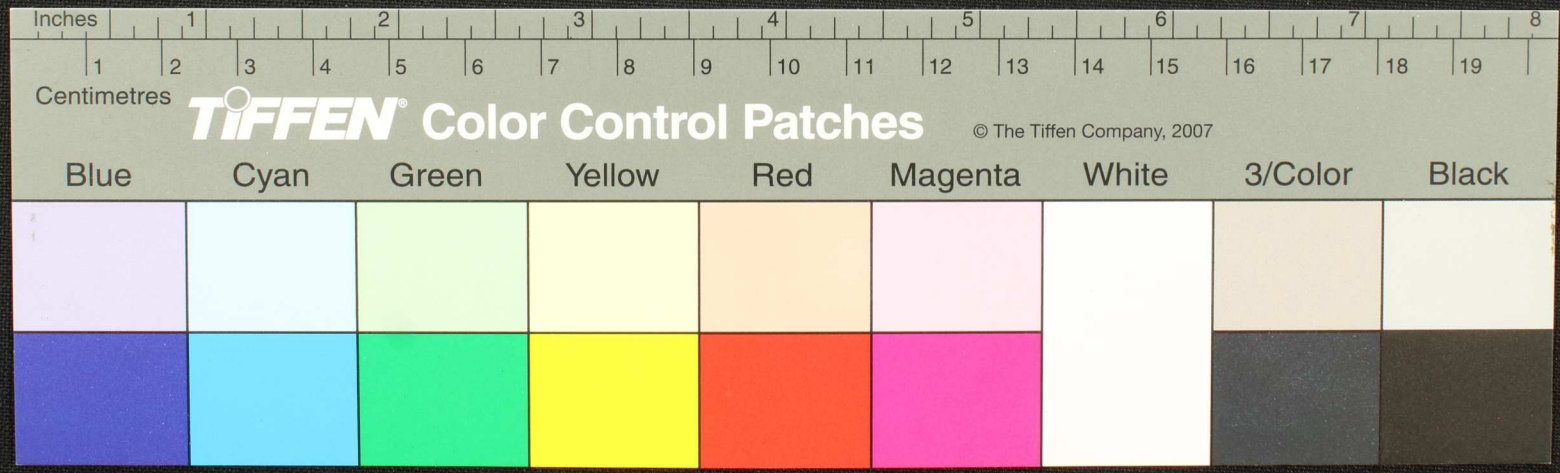


Handwritten Tamil script on a palm leaf manuscript. The text is arranged in approximately 10 horizontal lines across the length of the leaf. A small circular hole is visible on the left side of the leaf, approximately one-third of the way from the left edge.



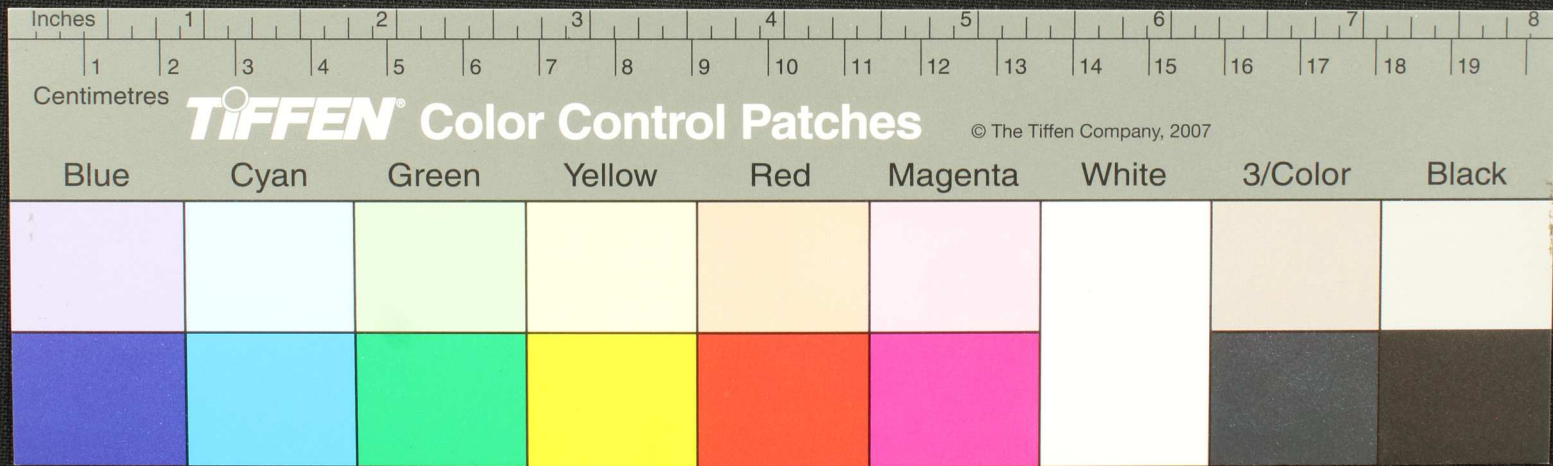


Handwritten Tamil script on a palm leaf manuscript. The text is arranged in approximately six horizontal lines. A small circular hole is visible in the center of the leaf, used for threading a cord to bind multiple leaves together. The script is finely etched into the surface of the dried leaf.





Handwritten text in Tamil script on a palm leaf manuscript. The text is arranged in three columns, with a circular hole visible in the center. The script is finely etched into the surface of the leaf.

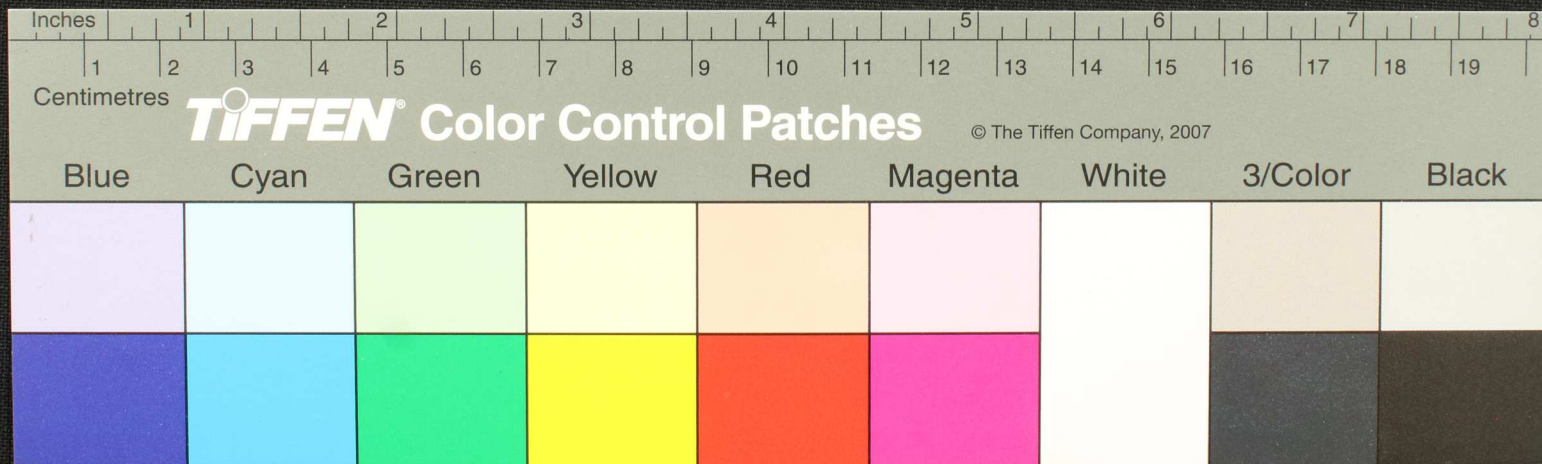






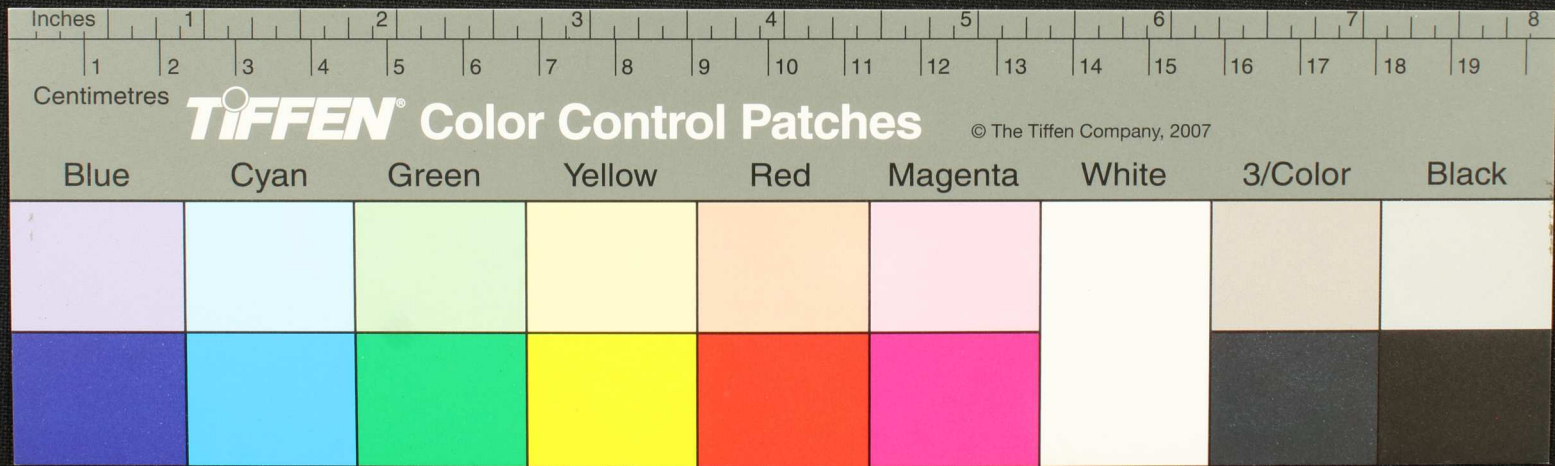


Handwritten Tamil script on a palm leaf manuscript. The text is arranged in approximately 10 horizontal lines across the length of the leaf. A small circular hole is visible near the center of the leaf, which is a traditional feature for threading a cord to bind multiple leaves together. The script is finely etched into the surface of the dried leaf.





Handwritten text in Tamil script on a palm leaf manuscript. The text is arranged in several lines across the length of the leaf. A prominent circular hole is visible near the center of the leaf, which is a traditional feature used for threading a cord to bind multiple leaves together into a book format. The script is finely etched into the surface of the dried leaf.

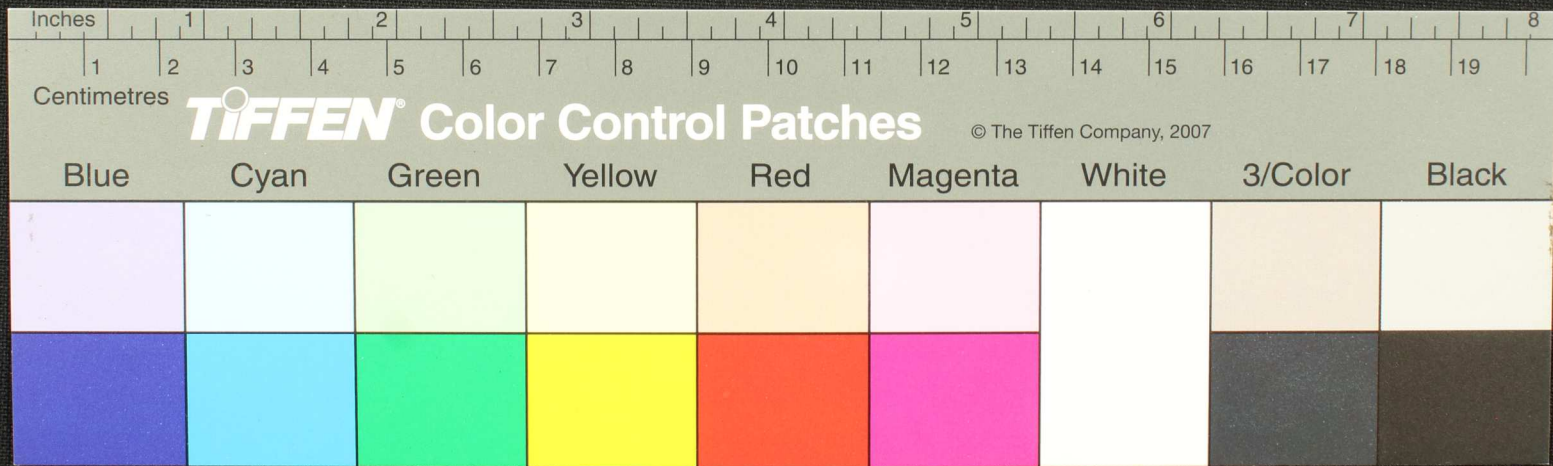






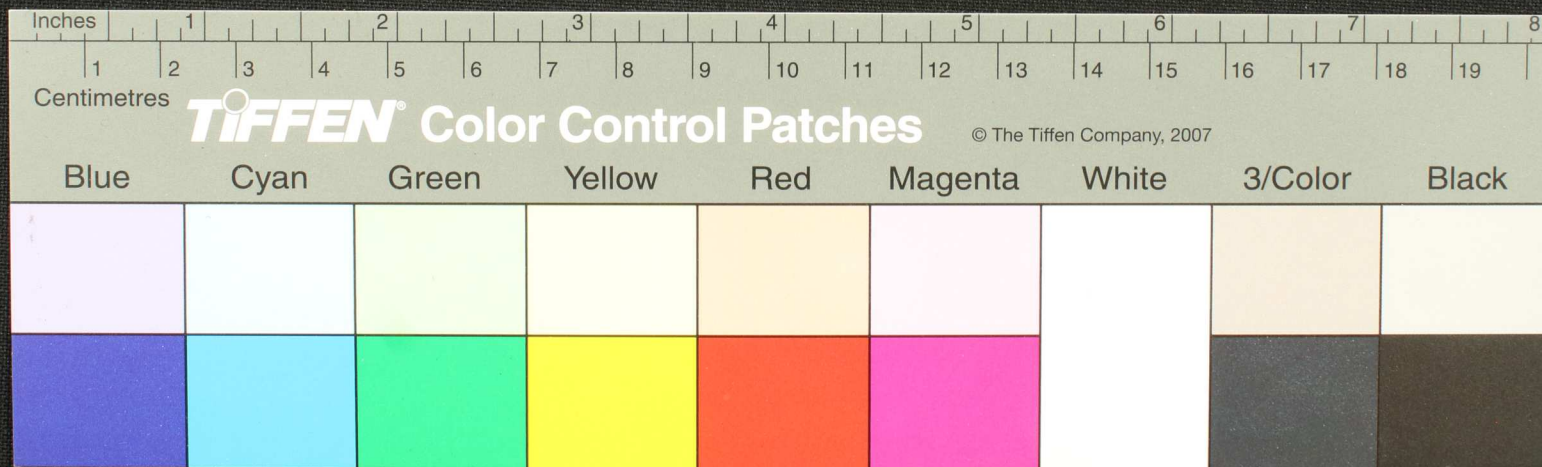


Handwritten text in Tamil script on a palm leaf manuscript. The text is arranged in approximately four horizontal lines. A small circular hole is visible on the left side of the leaf, used for binding. The script is finely etched into the surface of the dried leaf.





Handwritten text in Tamil script on a palm leaf manuscript. The text is arranged in approximately 10 horizontal lines across the length of the leaf. A small circular hole is visible near the center of the leaf, likely for binding. The script is finely etched into the surface of the dried leaf.





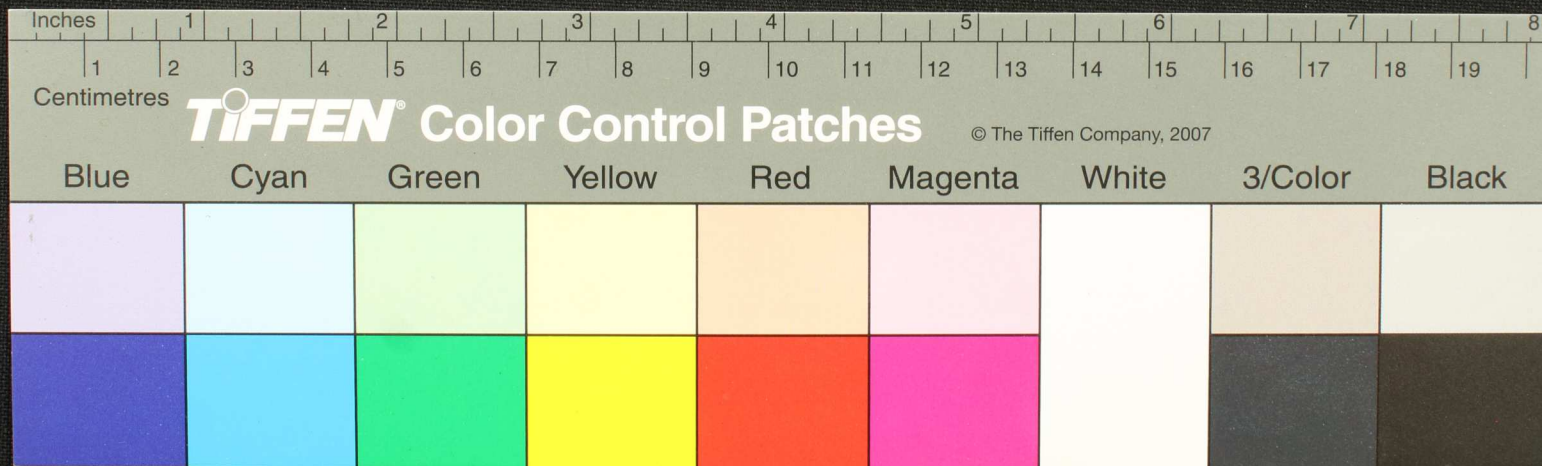








Handwritten Tamil script on a palm leaf manuscript. The text is arranged in approximately 10 horizontal lines. A circular hole is visible near the center of the leaf, used for binding multiple leaves together. The script is finely etched into the surface of the dried leaf.





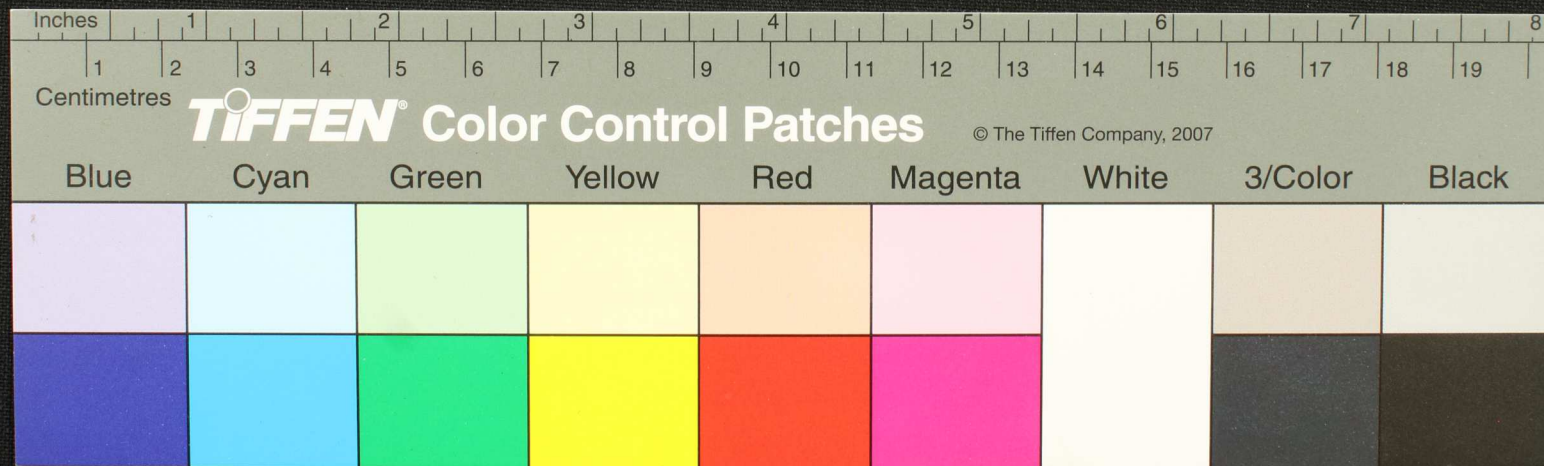








Handwritten text in Tamil script on a palm leaf manuscript. The text is arranged in two lines. A small circular hole is visible on the left side of the leaf.

























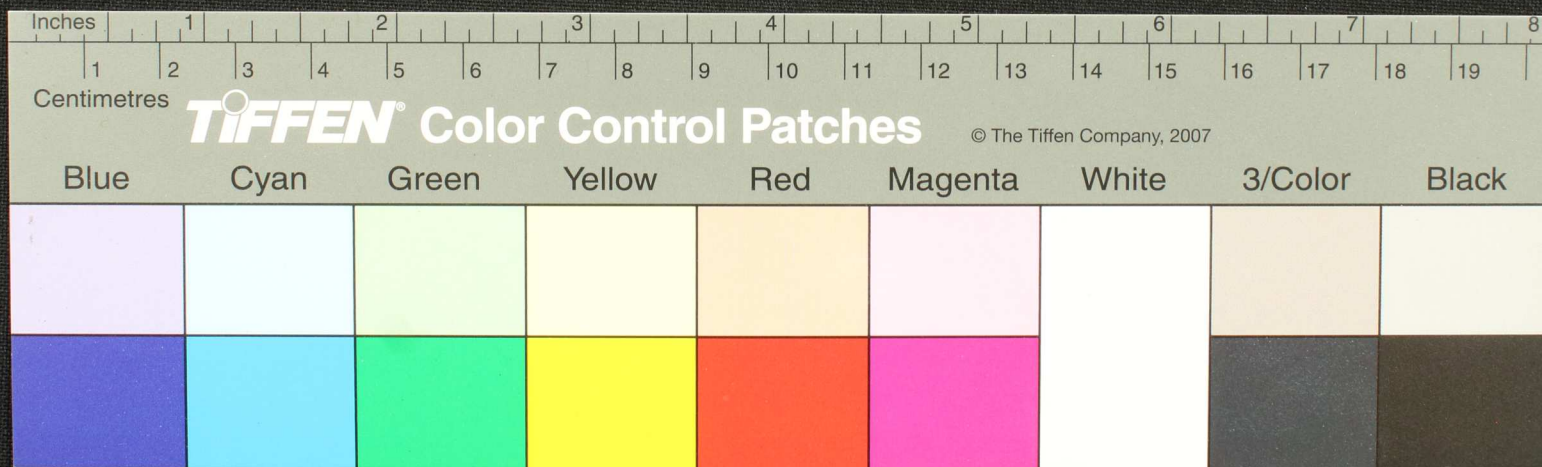






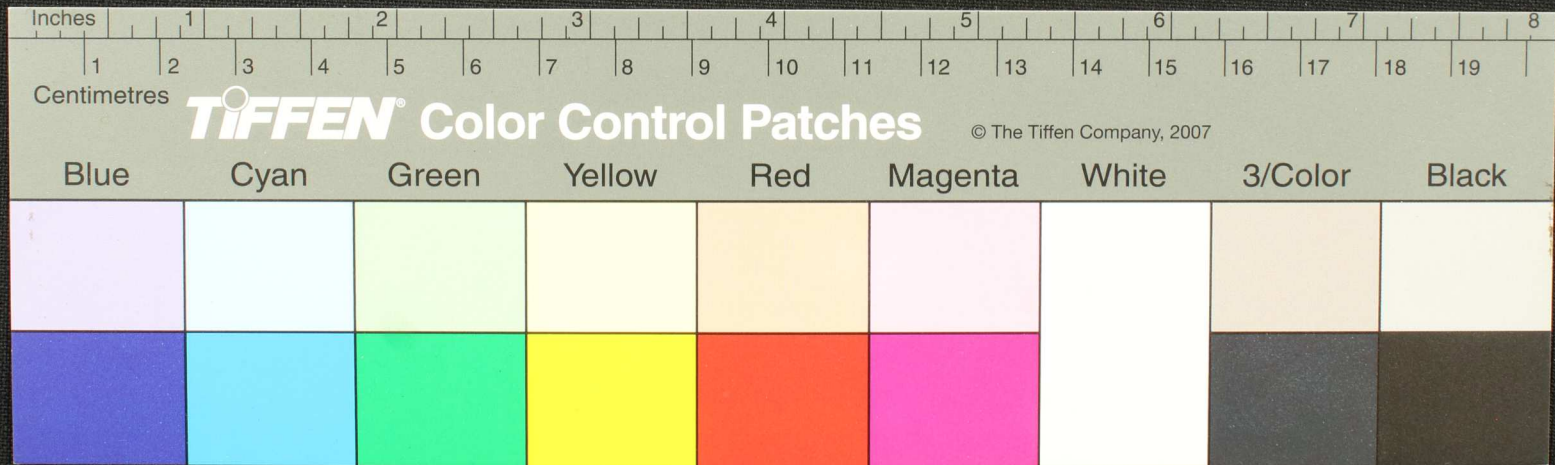


Handwritten text in Tamil script on a palm leaf manuscript. The text is arranged in approximately 10 horizontal lines across the length of the leaf. A small, dark circular hole is visible on the left side of the leaf, approximately one-third of the way from the left end.



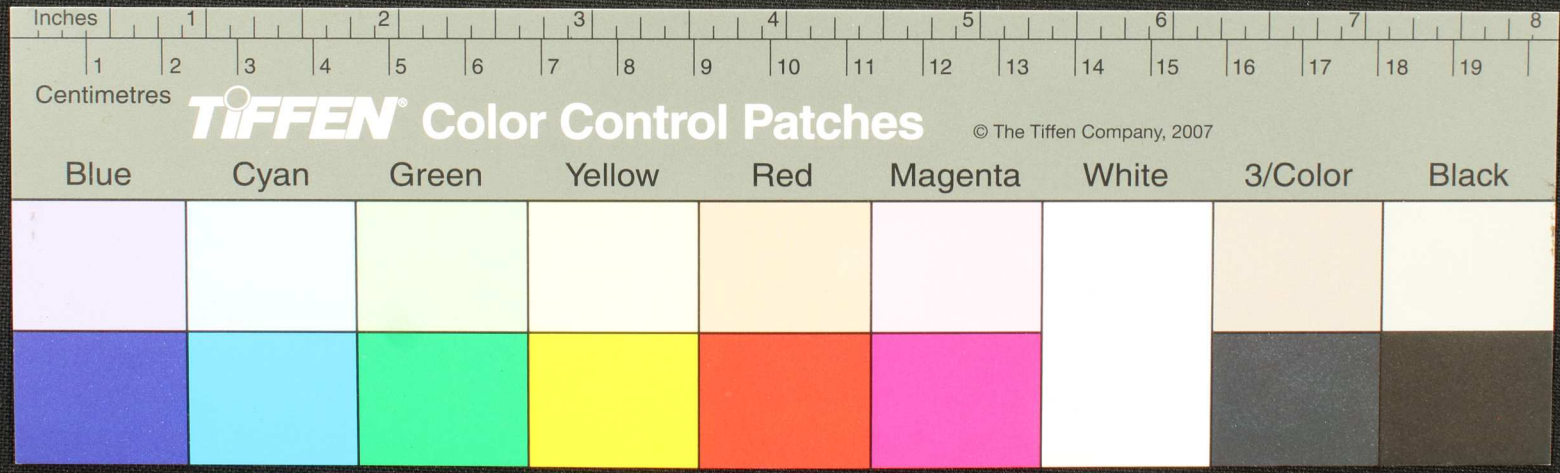


Handwritten Tamil script on a palm leaf. The text is arranged in several lines, with a small circular hole visible in the middle section. The script is finely etched into the surface of the leaf.



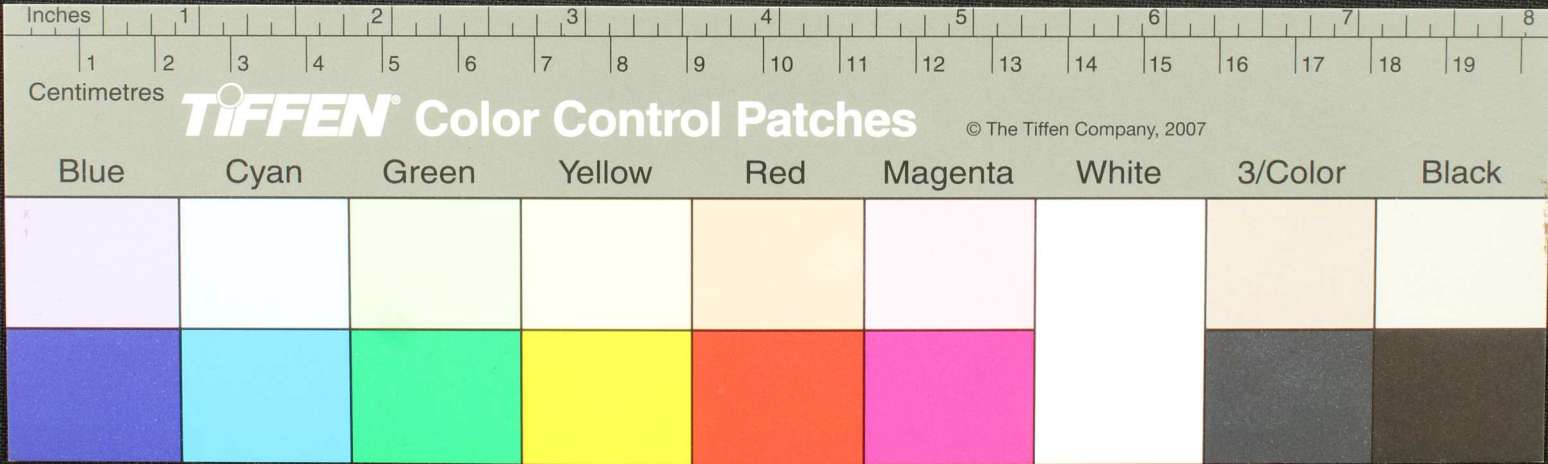


Handwritten text in Tamil script on a palm leaf manuscript. The text is arranged in approximately five horizontal lines. A circular hole is visible in the center of the leaf, used for threading a cord to bind multiple leaves together. The script is finely etched into the surface of the dried leaf.



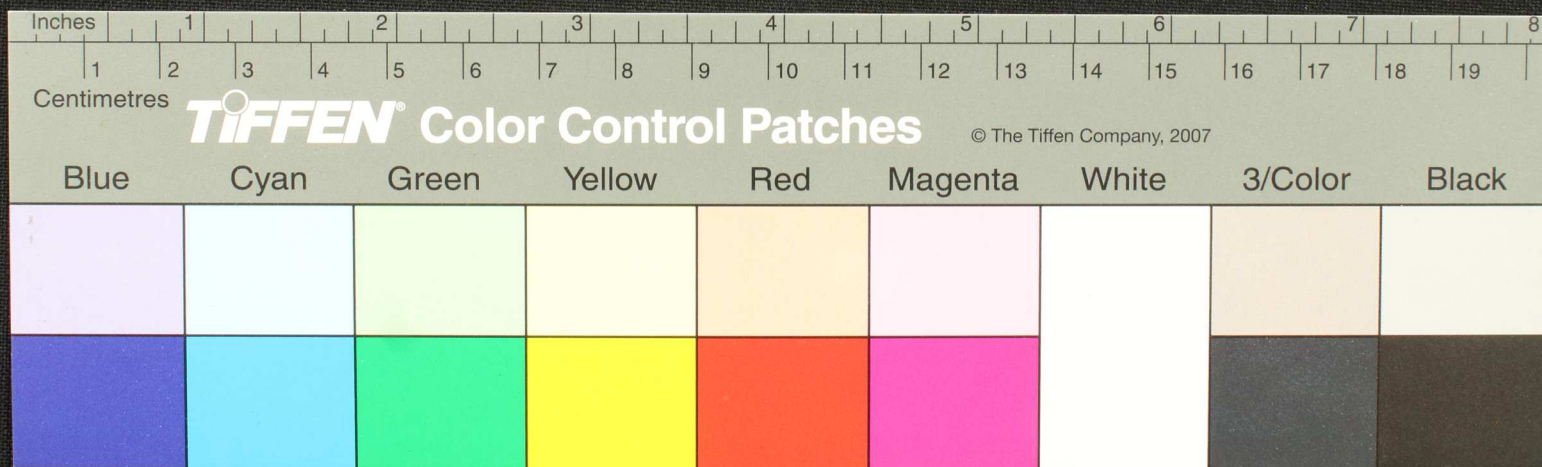


Handwritten text in Tamil script on a palm leaf manuscript. The text is arranged in approximately 10 horizontal lines. On the left side, there are two vertical inscriptions: the top one reads 'கோடி' (Kodi) and the bottom one reads 'புறநாடு' (Purandoru). A circular hole is present in the center of the leaf, approximately at the 6 cm mark of the ruler below.





Handwritten text in Tamil script on a palm leaf manuscript. The text is arranged in approximately 10 horizontal lines. A circular hole is visible near the center of the leaf, used for binding multiple leaves together. The script is finely etched into the surface of the dried leaf.

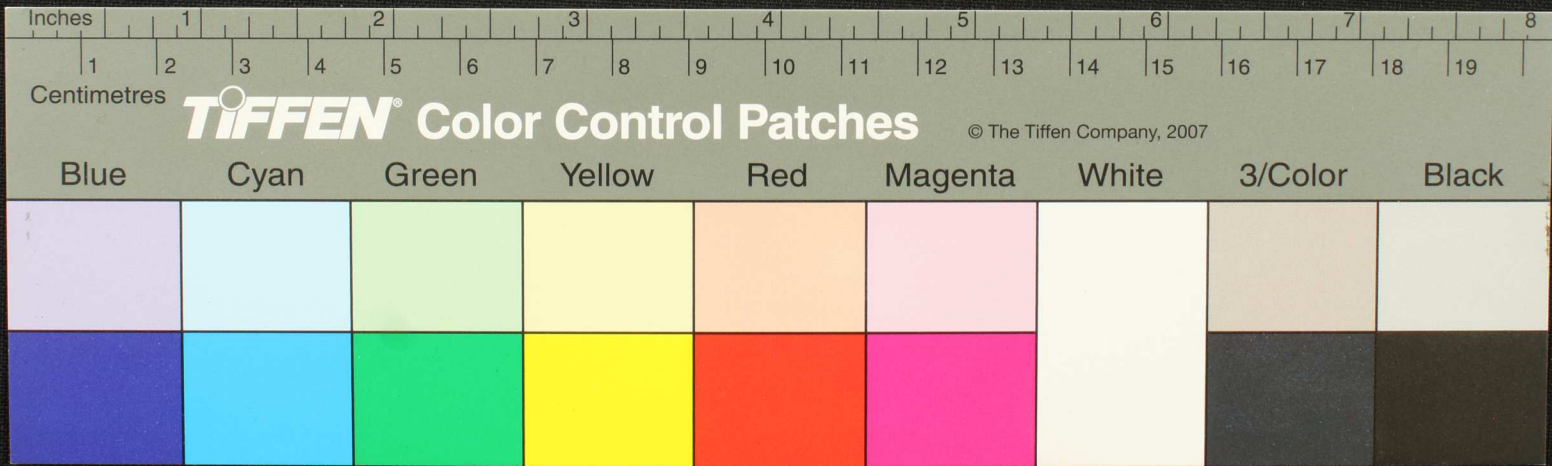








Handwritten Tamil script on a palm leaf manuscript. The text is arranged in approximately 10 horizontal lines across the length of the leaf. The script is finely etched into the natural texture of the dried leaf. A small, dark circular hole is visible near the center of the leaf, which is a traditional feature used for threading a cord to bind multiple leaves together into a book format.

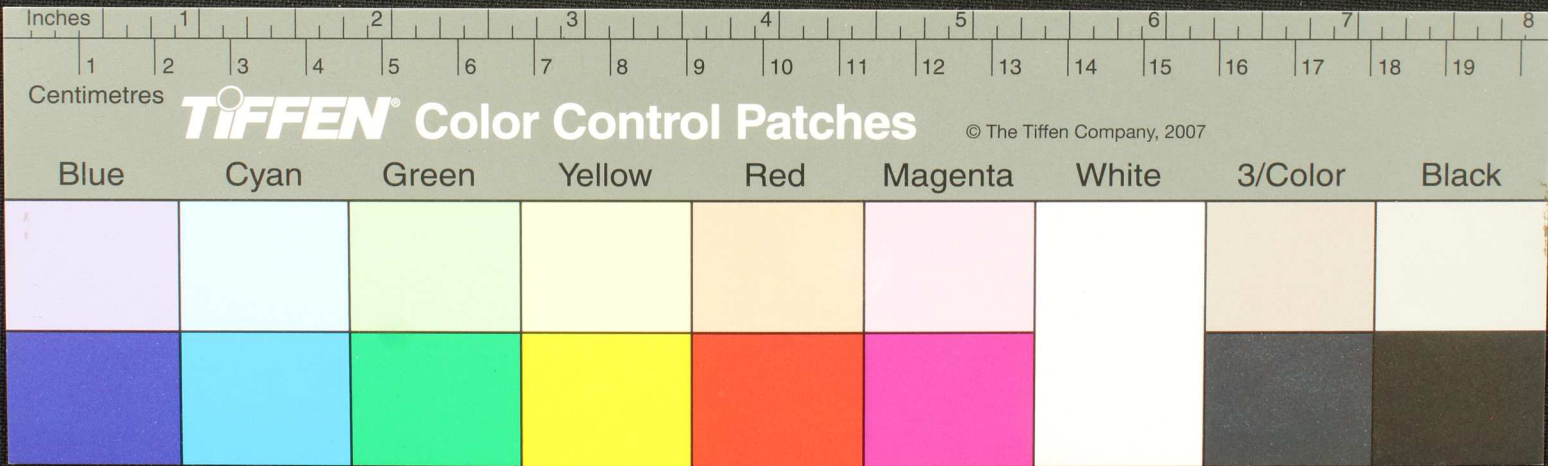








Handwritten Tamil script on a palm leaf manuscript. The text is arranged in approximately 10 horizontal lines. On the left side, there is a circular diagram or symbol, possibly a calendar or a specific religious icon, with some characters written around it. A small hole is visible in the center of the leaf, likely from a traditional binding method.

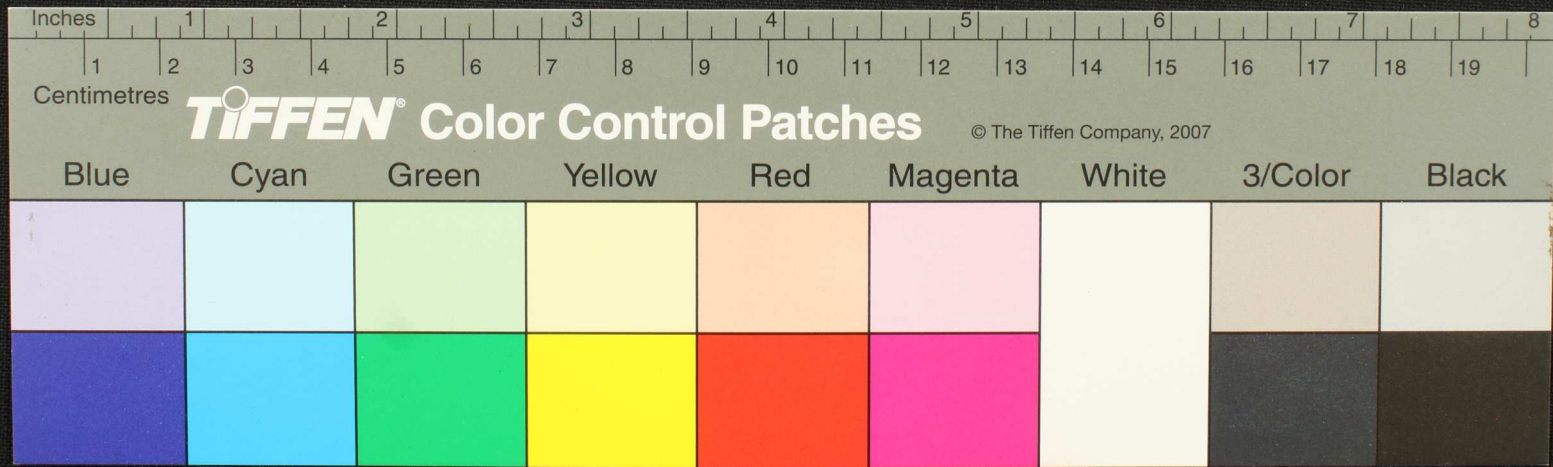








Handwritten Tamil script on a palm leaf manuscript. The text is arranged in approximately 10 horizontal lines. A prominent black circular hole is visible in the center of the leaf, used for threading a cord to bind multiple leaves together. The script is finely etched into the surface of the dried leaf.

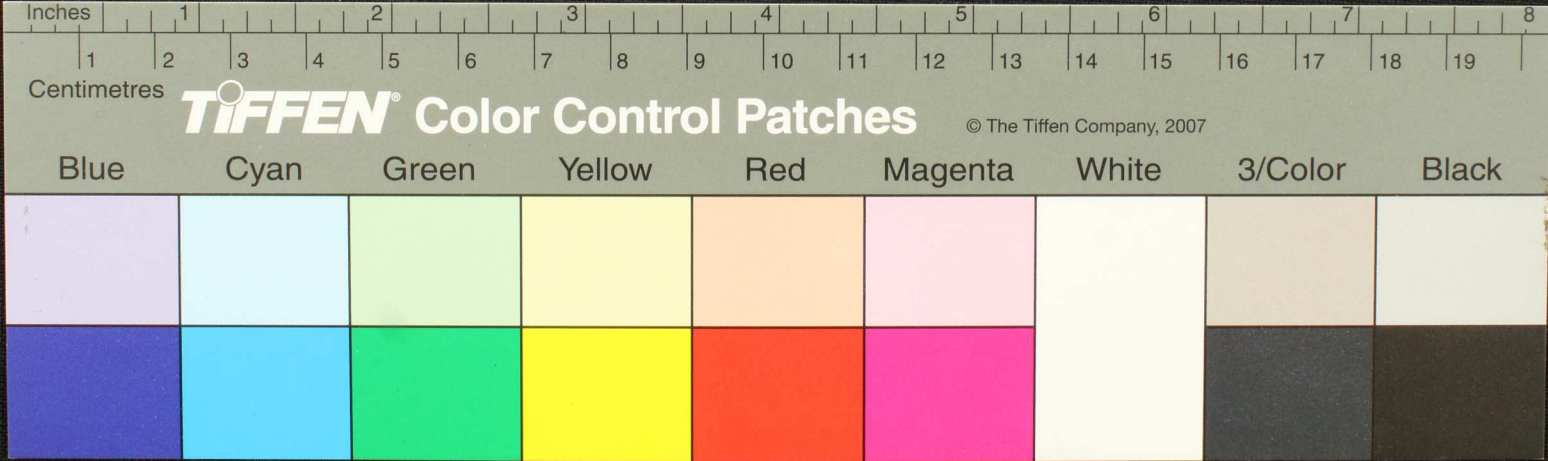






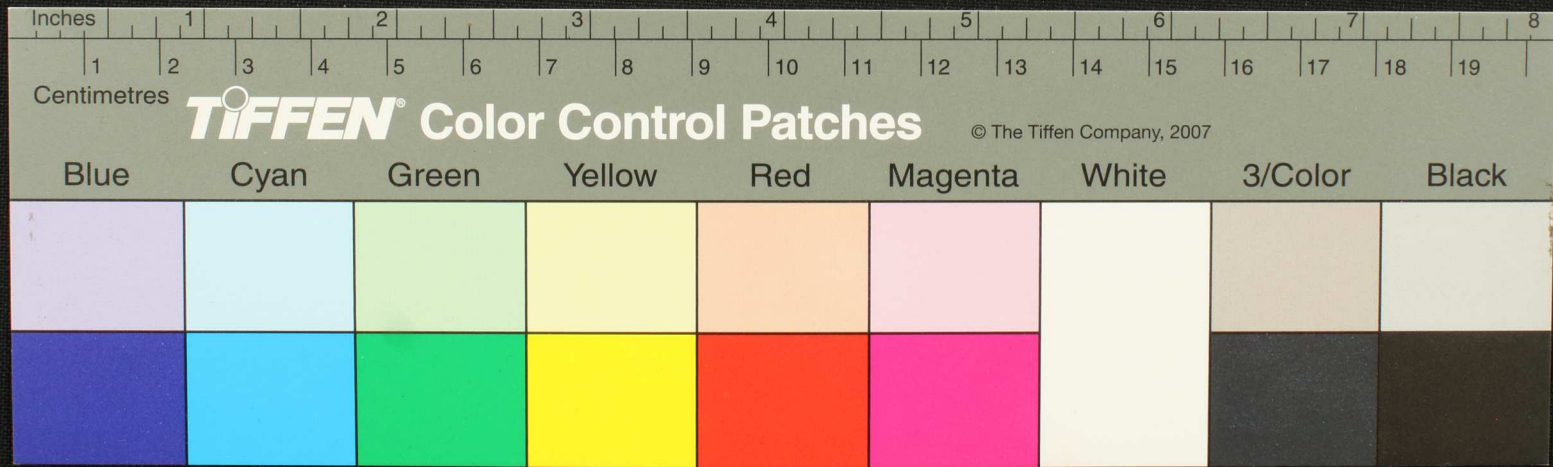


Handwritten Tamil script on a palm leaf manuscript. The text is arranged in approximately 10 horizontal lines across the length of the leaf. A small circular hole is visible on the left side of the leaf, approximately one-third of the way from the left edge.





Handwritten Tamil script on a palm leaf manuscript. The text is arranged in approximately 10 horizontal lines. A small circular hole is visible on the left side of the leaf, used for binding. The script is finely etched into the surface of the dried leaf.

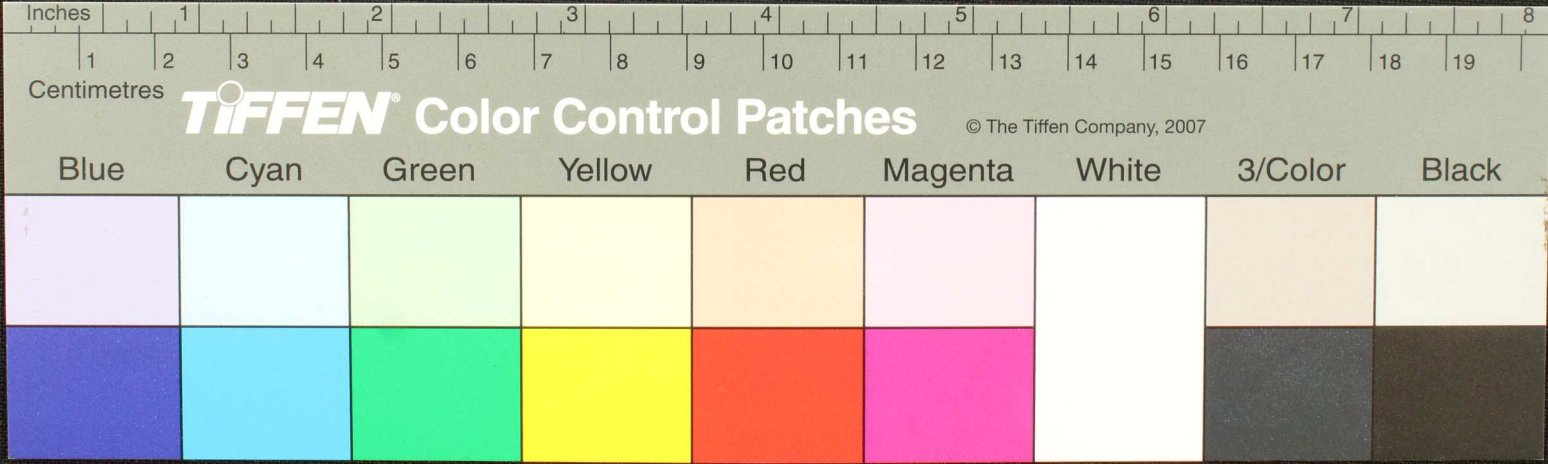






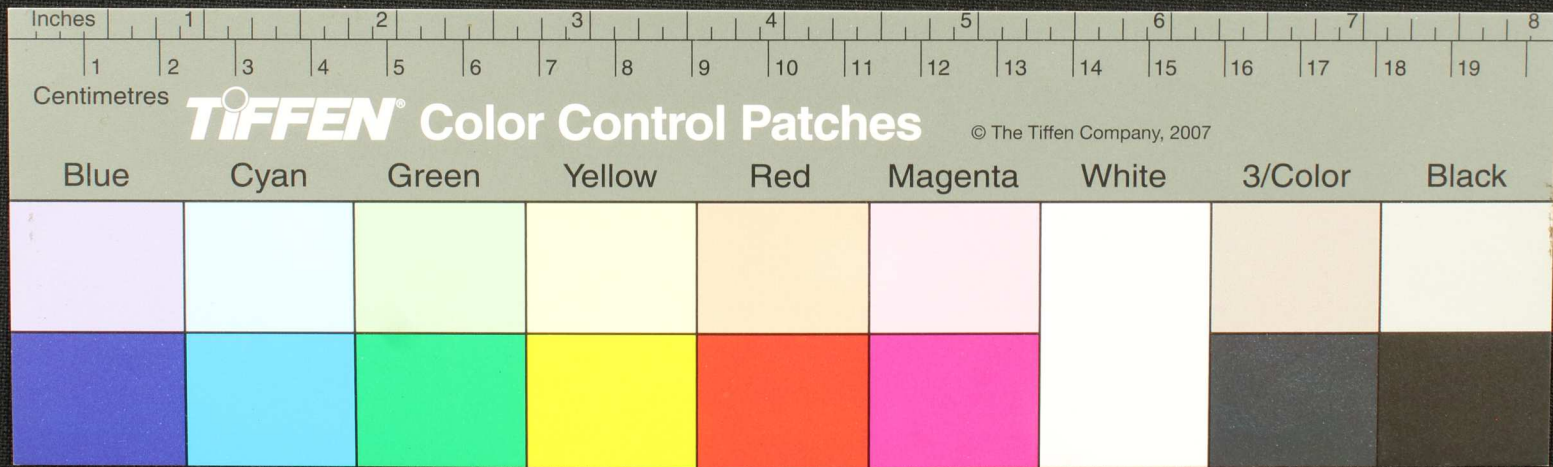


Handwritten Tamil script on a palm leaf manuscript. The text is arranged in approximately 10 horizontal lines. A prominent circular hole is visible on the left side of the leaf, approximately one-third of the way across its width. The script is finely etched into the surface of the dried leaf.



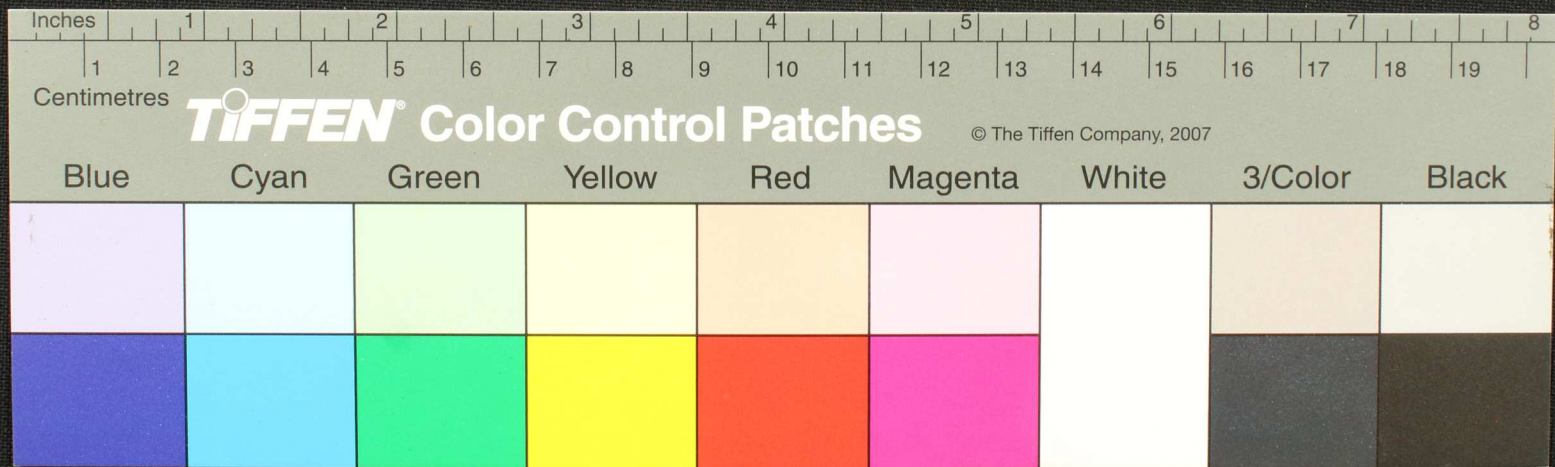


Handwritten Tamil script on a palm leaf manuscript. The text is arranged in approximately five horizontal lines across the length of the leaf. A small circular hole is visible near the center of the leaf, which is a traditional feature for threading a cord to bind multiple leaves together. The script is finely etched into the surface of the dried leaf.



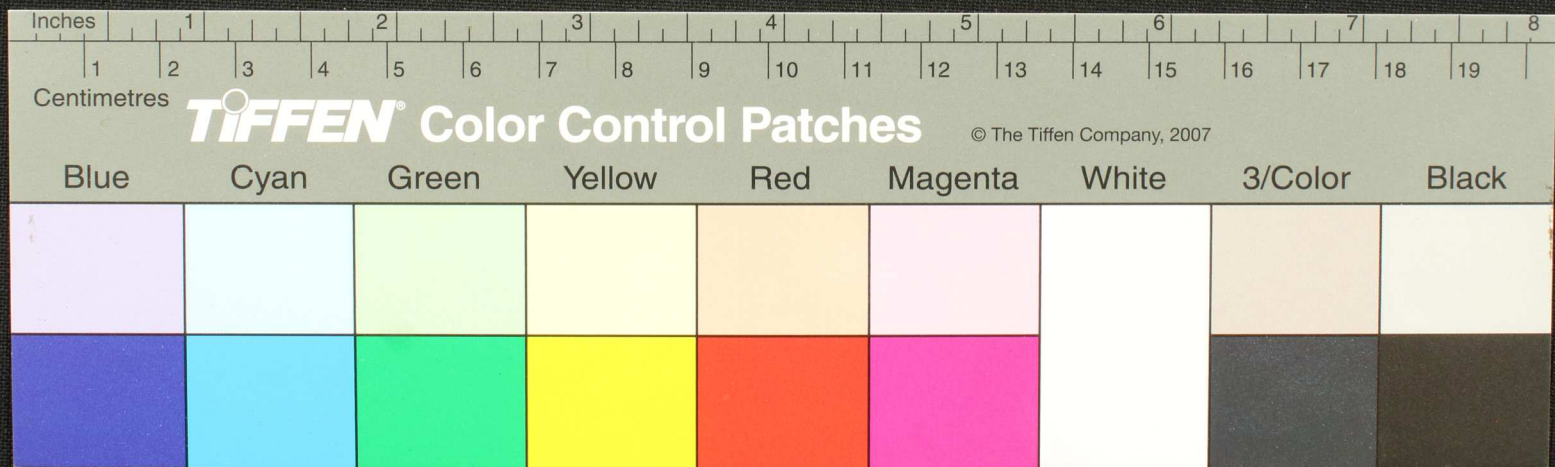


Handwritten Tamil script on a palm leaf manuscript. The text is arranged in approximately 10 horizontal lines across the length of the leaf. A circular hole is visible near the left end, used for threading a cord to bind multiple leaves together. The script is finely etched into the surface of the dried leaf.



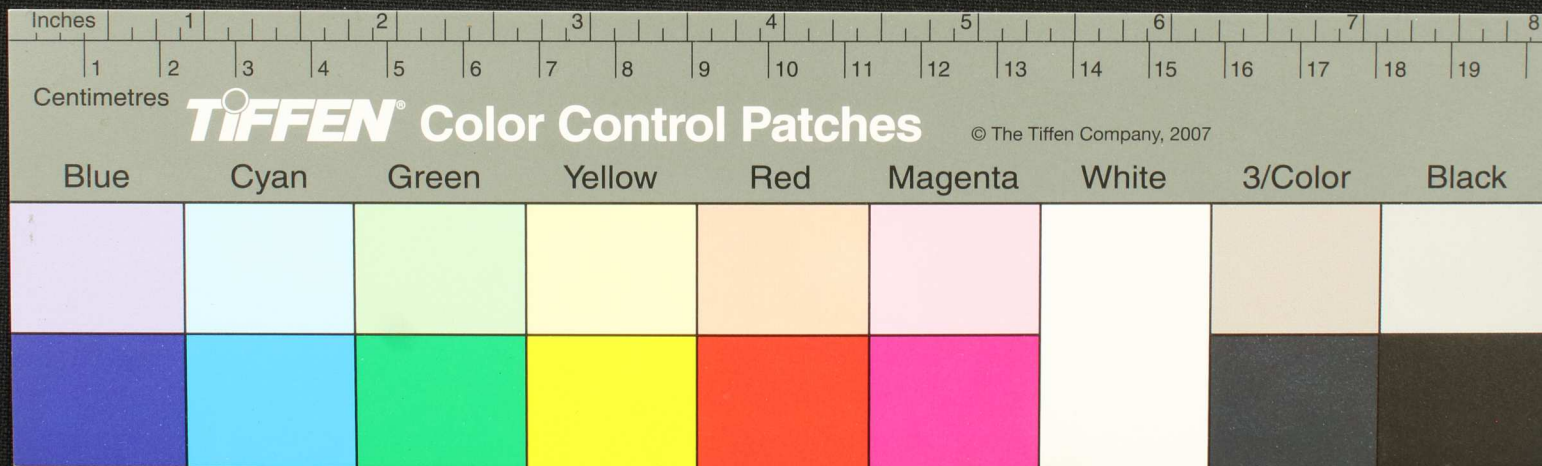


Handwritten text in Tamil script on a palm leaf manuscript. The text is arranged in approximately 10 horizontal lines across the length of the leaf. A small, dark circular hole is visible near the center of the leaf, which is a traditional feature used for threading a cord to bind multiple leaves together.





Handwritten Tamil script on a palm leaf manuscript. The text is arranged in approximately 10 horizontal lines. A prominent circular hole is visible in the center of the leaf, which is a traditional feature for threading a cord to bind multiple leaves together. The script is written in a cursive style characteristic of historical Tamil manuscripts.

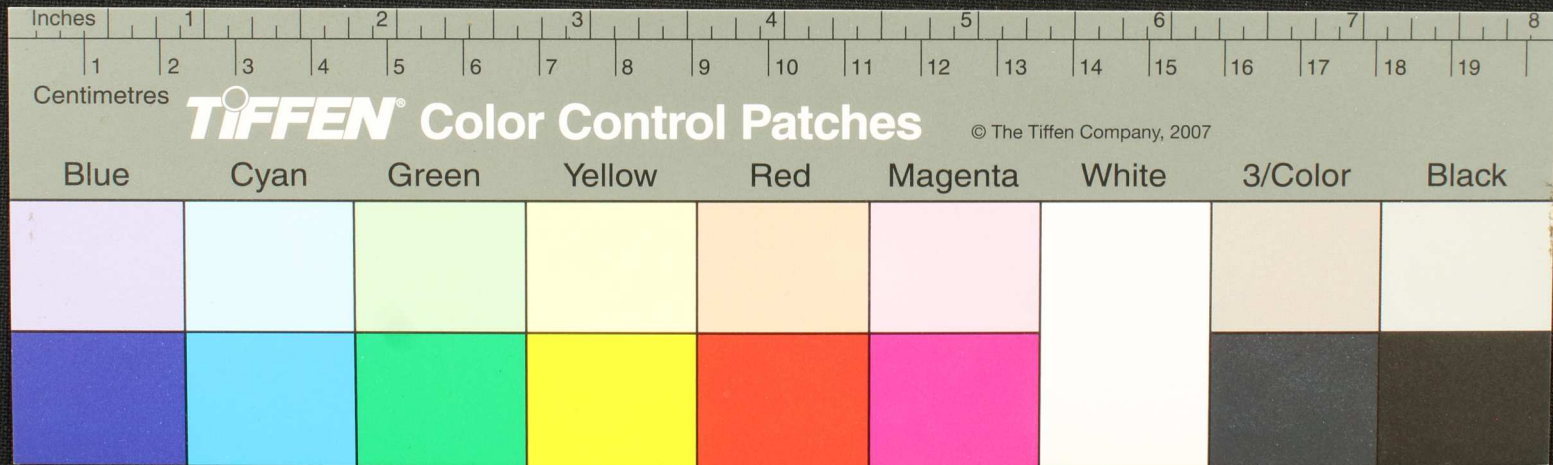








Handwritten Tamil script on a palm leaf manuscript. The text is arranged in approximately 10 horizontal lines. The script is finely etched into the surface of the dried leaf. A small circular hole is visible near the center of the leaf, which is a traditional feature used for threading a cord to bind multiple leaves together into a book format.





சூழ்நிலை சம்பந்தம் பெரிசு - மயம ம சூழ்நிலை மயம சூழ்நிலை  
 சூழ்நிலை சம்பந்தம் பெரிசு - மயம ம சூழ்நிலை மயம சூழ்நிலை  
 சூழ்நிலை சம்பந்தம் பெரிசு - மயம ம சூழ்நிலை மயம சூழ்நிலை  
 சூழ்நிலை சம்பந்தம் பெரிசு - மயம ம சூழ்நிலை மயம சூழ்நிலை  
 சூழ்நிலை சம்பந்தம் பெரிசு - மயம ம சூழ்நிலை மயம சூழ்நிலை

