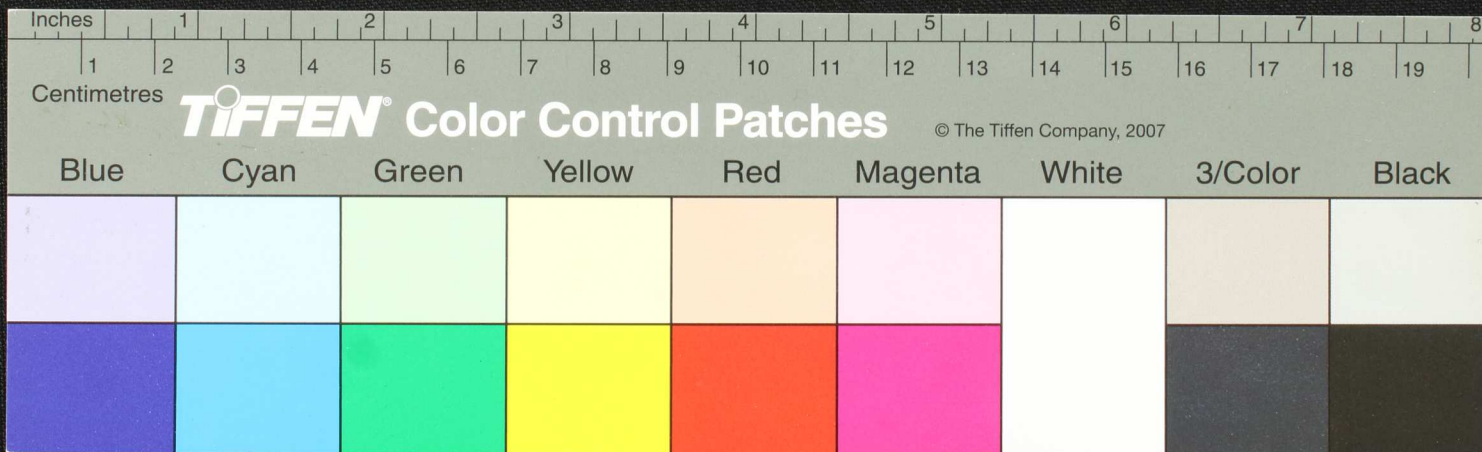
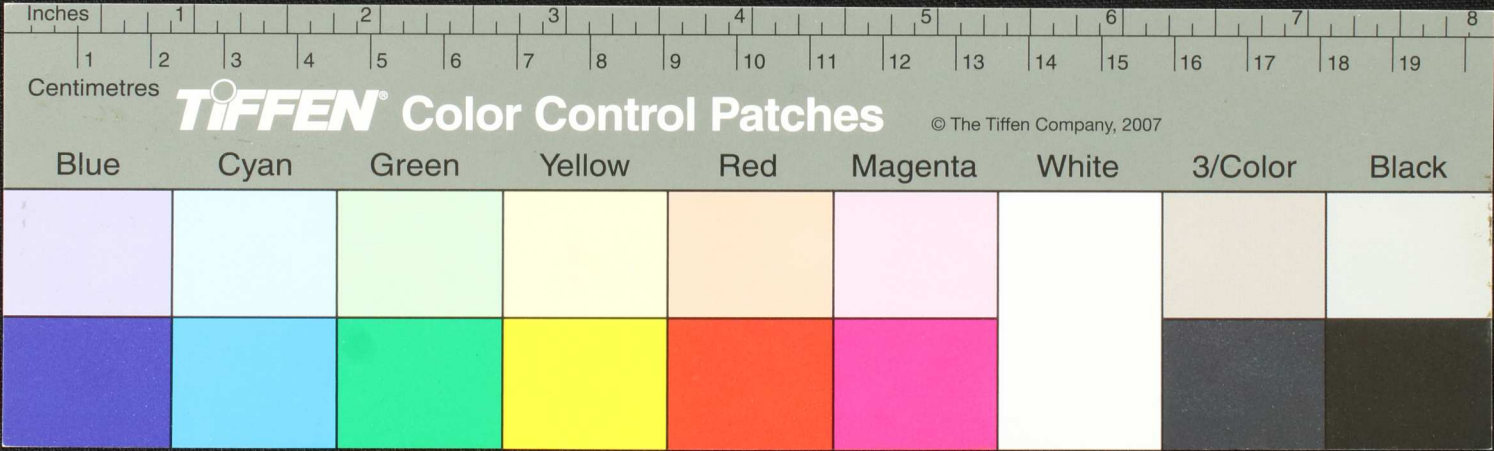


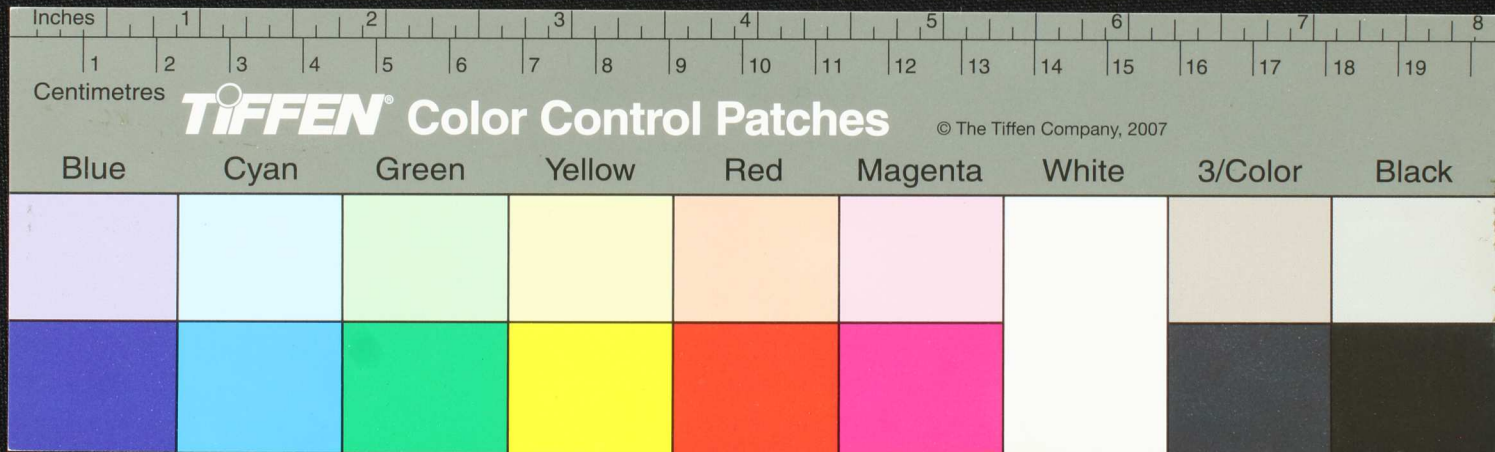
Handwritten text in Tamil script on a palm leaf manuscript. The text is arranged in several columns and includes a circular hole for binding. The script is finely etched into the surface of the leaf.



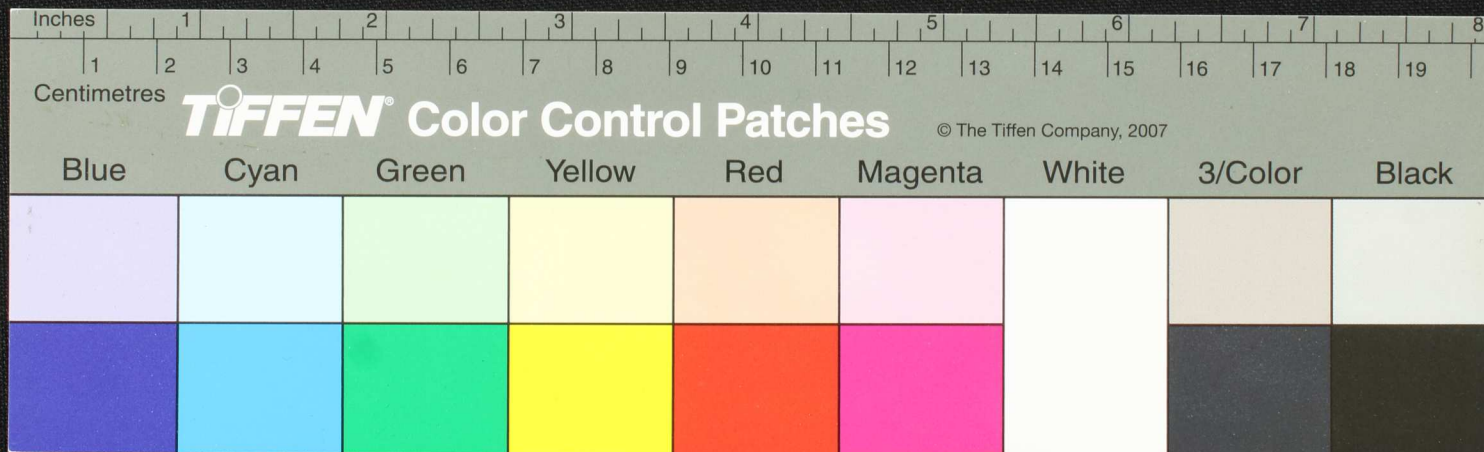
Handwritten text in Tamil script on a palm leaf manuscript. The text is arranged in two columns. The left column contains approximately 5 lines of text, and the right column contains approximately 5 lines of text. The script is finely etched into the surface of the dried leaf.



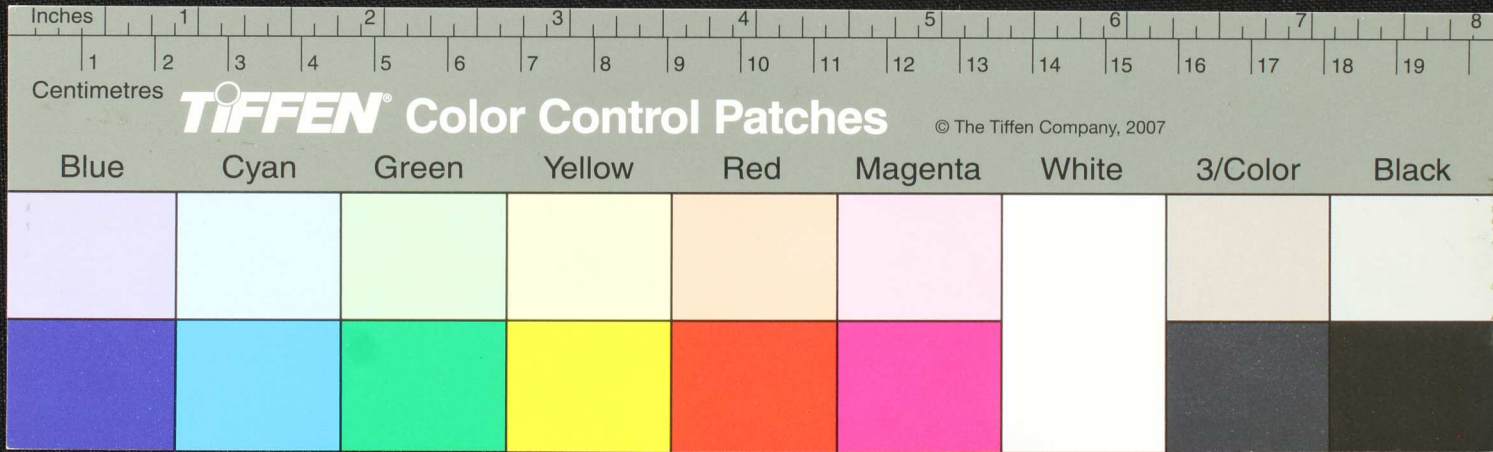
157
 158
 159
 160
 161
 162
 163
 164
 165
 166
 167
 168
 169
 170
 171
 172
 173
 174
 175
 176
 177
 178
 179
 180
 181
 182
 183
 184
 185
 186
 187
 188
 189
 190
 191
 192
 193
 194
 195
 196
 197
 198
 199
 200



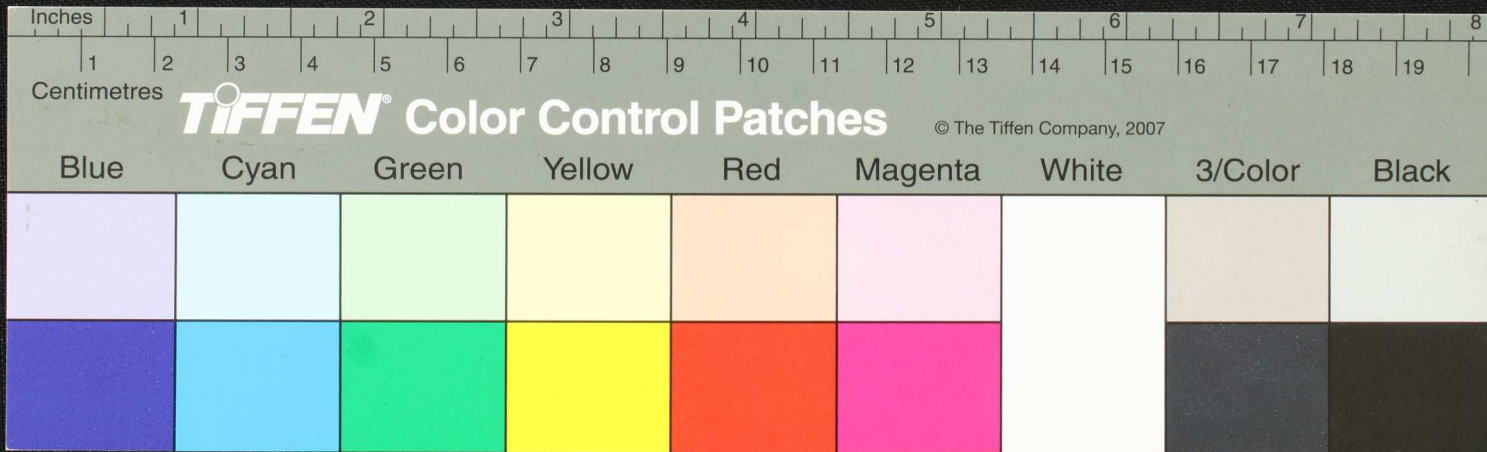
Handwritten text in Tamil script on a palm leaf manuscript. The text is arranged in several lines across the length of the leaf. A circular hole is visible in the center of the leaf, used for binding multiple leaves together. The script is finely etched into the surface of the dried leaf.

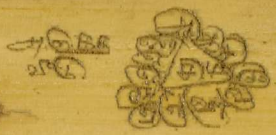


Handwritten text in Tamil script on a yellowed strip of paper. The text is arranged in several columns and includes a central black square. The script is a form of the Tamil language, likely a historical record or document.

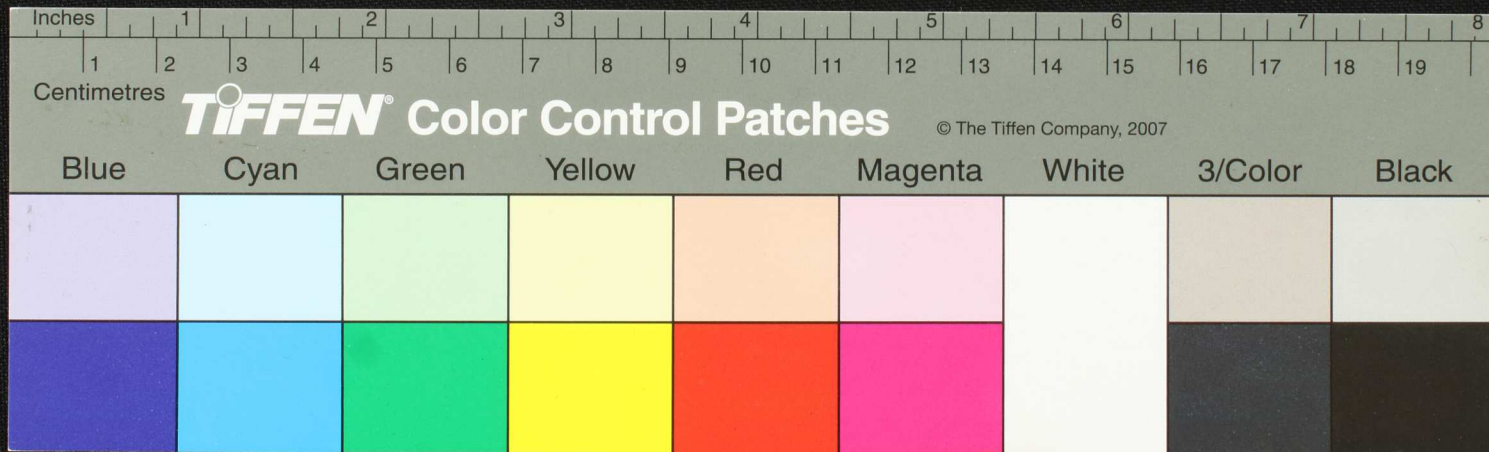


Handwritten text in Tamil script on a palm leaf manuscript. The text is arranged in several columns and includes a circular hole for binding. The script is finely etched into the surface of the leaf.

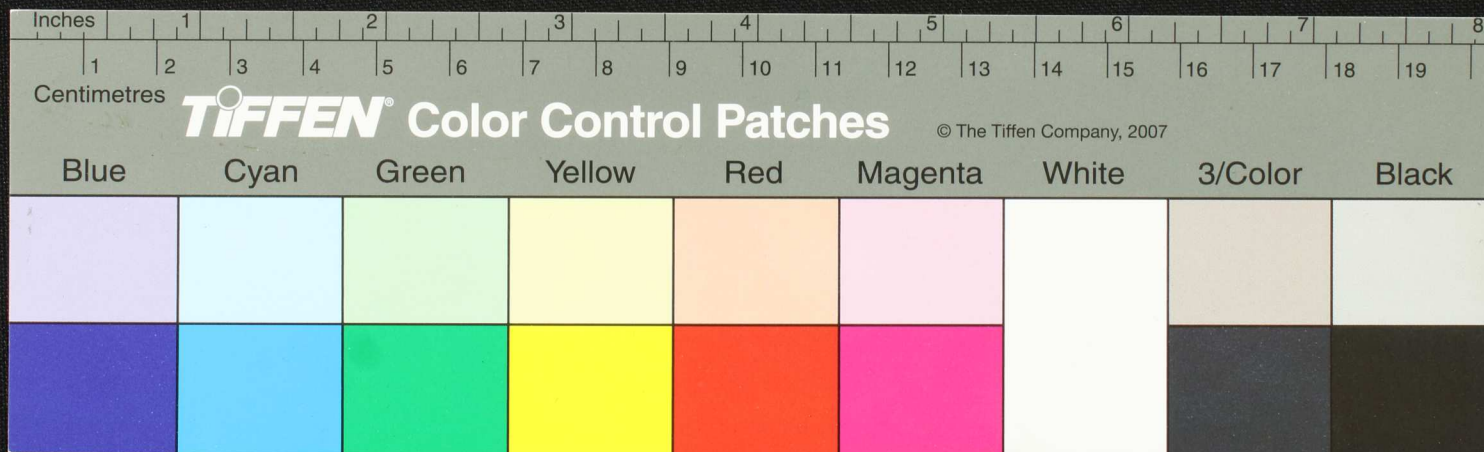




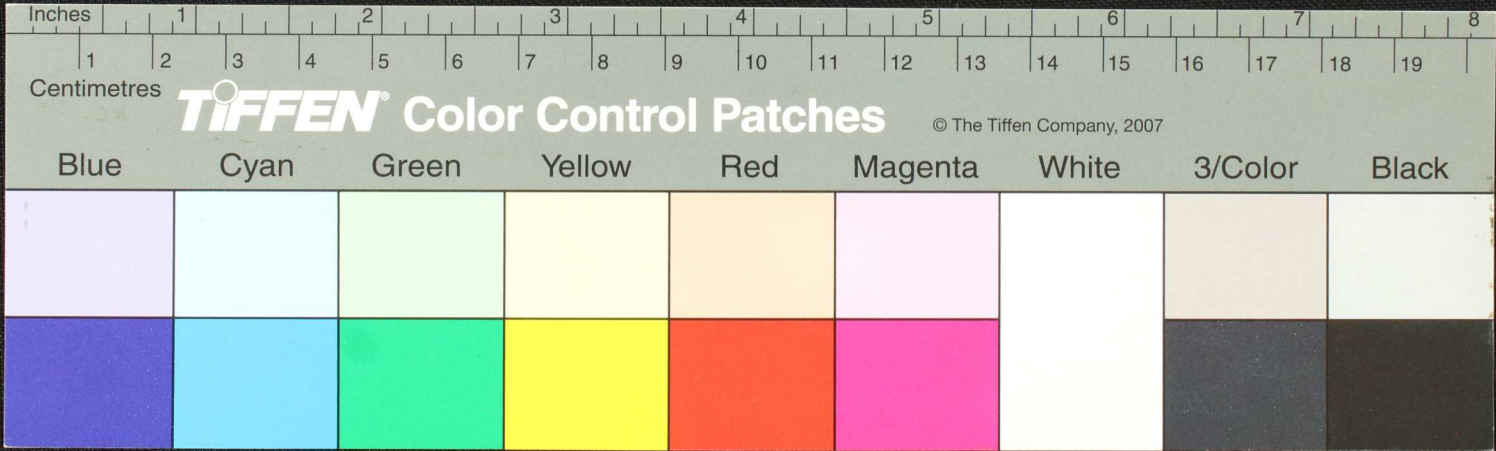
செய்தார் சீர்திருத்தி விட்டார்
செய்தார் சீர்திருத்தி விட்டார்



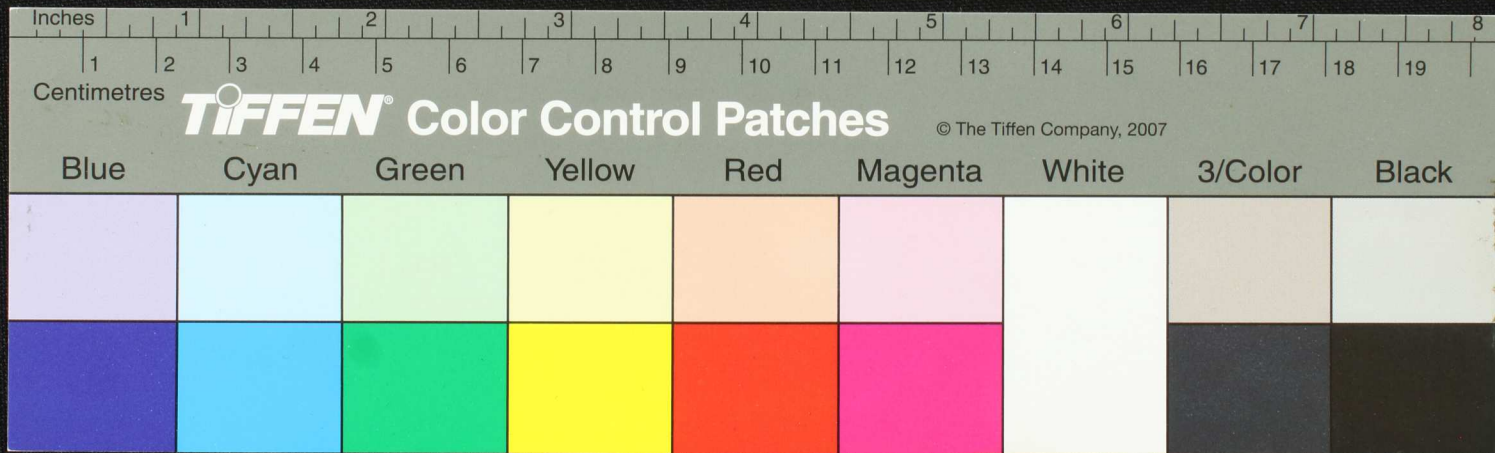
Handwritten text in Tamil script on a palm leaf manuscript. The text is arranged in several lines on the left side of the leaf. A circular hole is visible in the center of the leaf. Faint, illegible markings are present on the right side of the leaf.



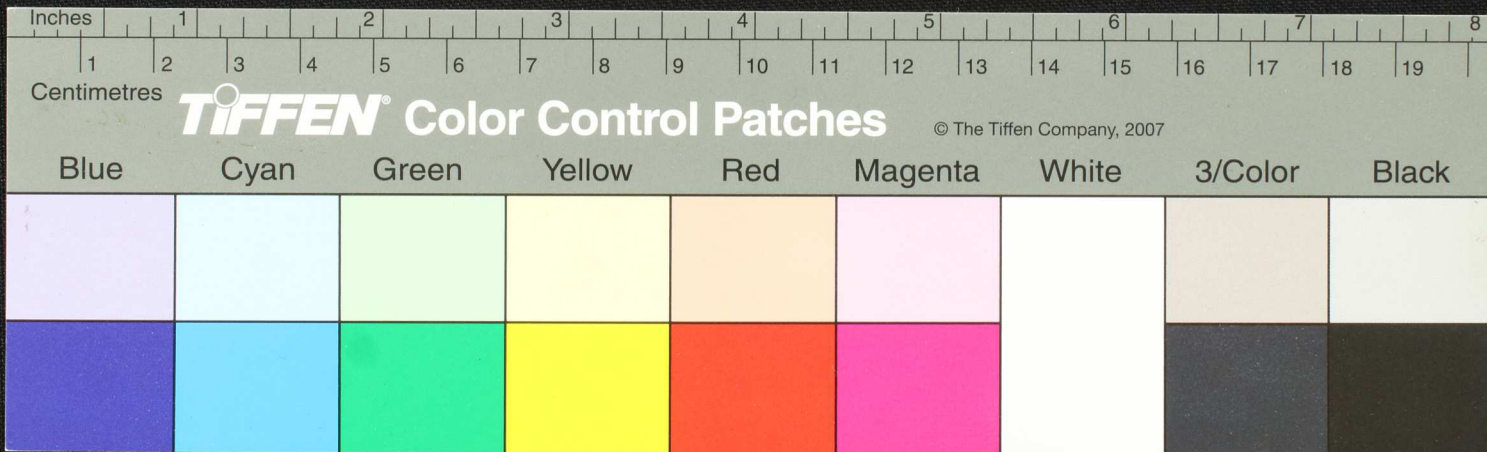
Handwritten Tamil script on a palm leaf manuscript. The text is arranged in two columns, with a circular hole visible in the center. The script is densely packed and appears to be a form of classical or historical Tamil.



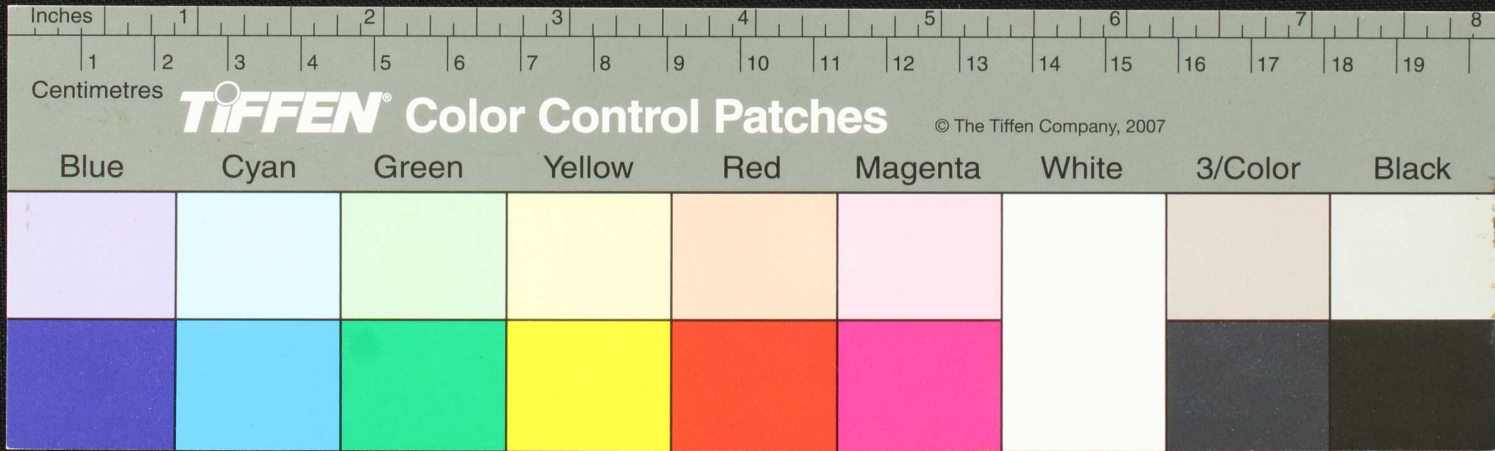
Handwritten text in Tamil script on a palm leaf manuscript. The text is arranged in several columns and includes various characters and symbols, such as a circular mark in the center. The script is finely etched into the surface of the leaf.



Handwritten text in Tamil script on a palm leaf manuscript. The text is arranged in several lines across the length of the leaf. A prominent hole is visible near the center of the leaf, approximately at the 3-inch mark on the ruler below. The script appears to be a form of historical or religious Tamil, possibly including a date or a specific reference like 'சுந்தரம் - ௭ - ௭'.

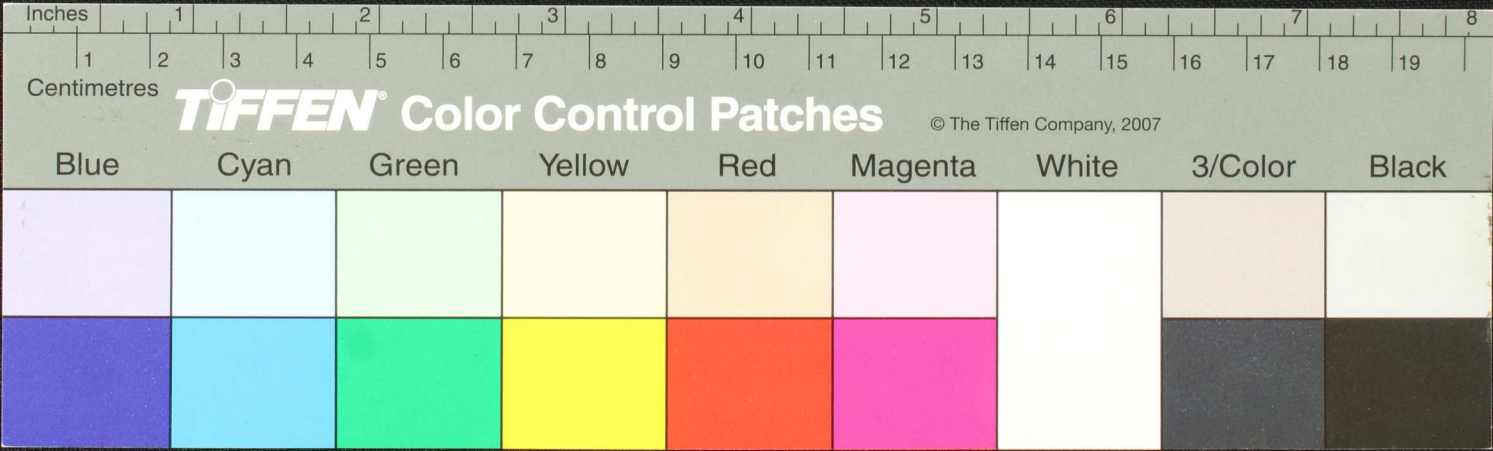


Handwritten text in Tamil script on a palm leaf manuscript. The text is arranged in four columns. A dark circular hole is visible in the center of the leaf. The script is finely etched into the surface of the dried leaf.

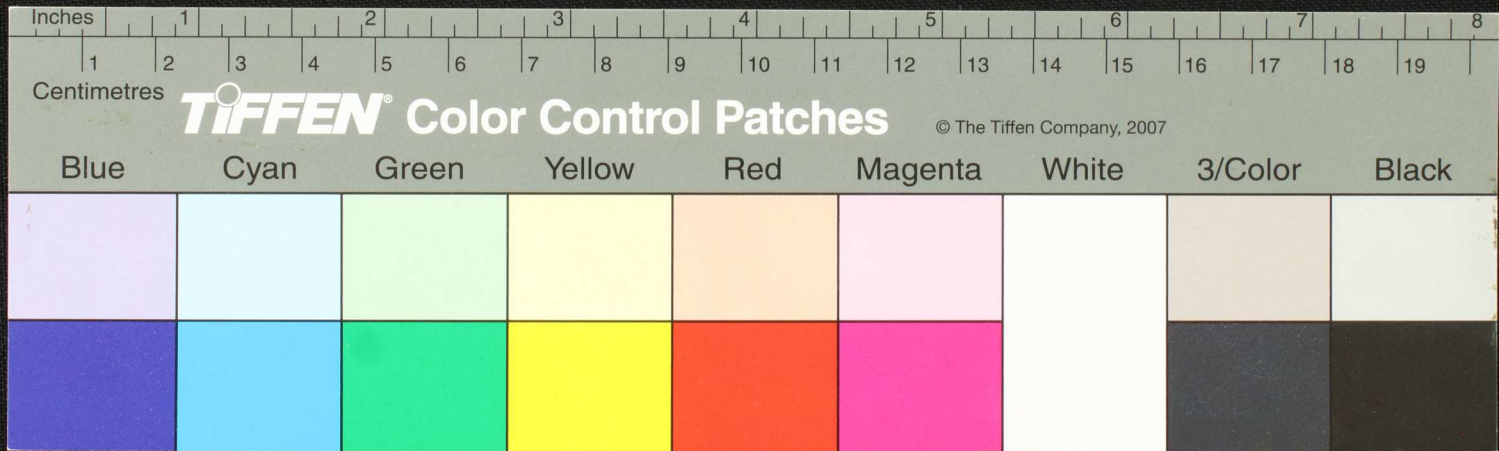


117
 207
 111
 114

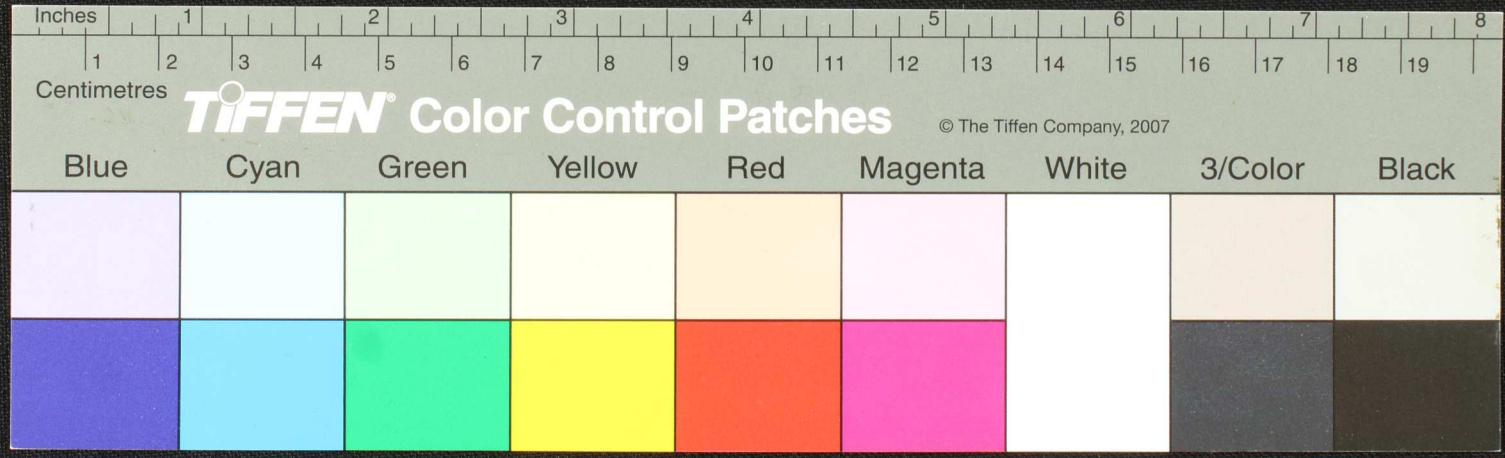
மரமயூபு—கை— வரவ— தவணியவாபவசுகரதிராமமய— சுகரதிர— கை— மரமயூபுபு
 கராயதசாமகரதுபபடுய்கிரயகருயிகரதிரயகதிக— தகமசுககுமககிர— கை— யுய
 கரதுதுசுசுமப— கை— வய? — ர— குடி ஐ ரியசுயி— தவய— 9 தகமபுகுகரக சுகுகுகி
 சுகுகிரகாம— தவய— பிடுக— கயுயி வயாதுயகயுயகருயுவய? திணவமவய— கை— வயாந
 மவவமயுயவய— தவயமண— வயுயா— பிடுகுகுகி— ர— ககுகுகுகிசுகுகுகுகிரகாம—



கருமலுயிர்—முன்னாரு மெதுமொரு கைகையொரு—கதுலிய உய்யமு
 —சூசுமொ—ஒபாகடுவொரு—எருநாருவொரு—
 எதொரு—கடுவொரு—தொபொரு—தொமமதுமததெய்யொரு—
 —கொரு—கொரு—கொரு—கொரு—கொரு—கொரு—
 கருமலுயிர்—முன்னாரு மெதுமொரு கைகையொரு—கதுலிய உய்யமு



Handwritten text in Tamil script on a palm leaf fragment. The text is arranged in approximately 10 horizontal lines. The script is a traditional form of the Tamil language. The fragment is irregularly shaped with some missing edges.



Handwritten Tamil script on a palm leaf manuscript. The text is arranged in approximately three columns. The left column contains several lines of text, including what appears to be a date or reference number '1757-24'. The middle column contains a list of names or titles, such as 'செவ்வாய்' and 'செவ்வாய்'. The right column contains a longer passage of text, possibly a narrative or a list of items. The script is written in a traditional style with dark ink on the natural yellowish-brown surface of the leaf.

