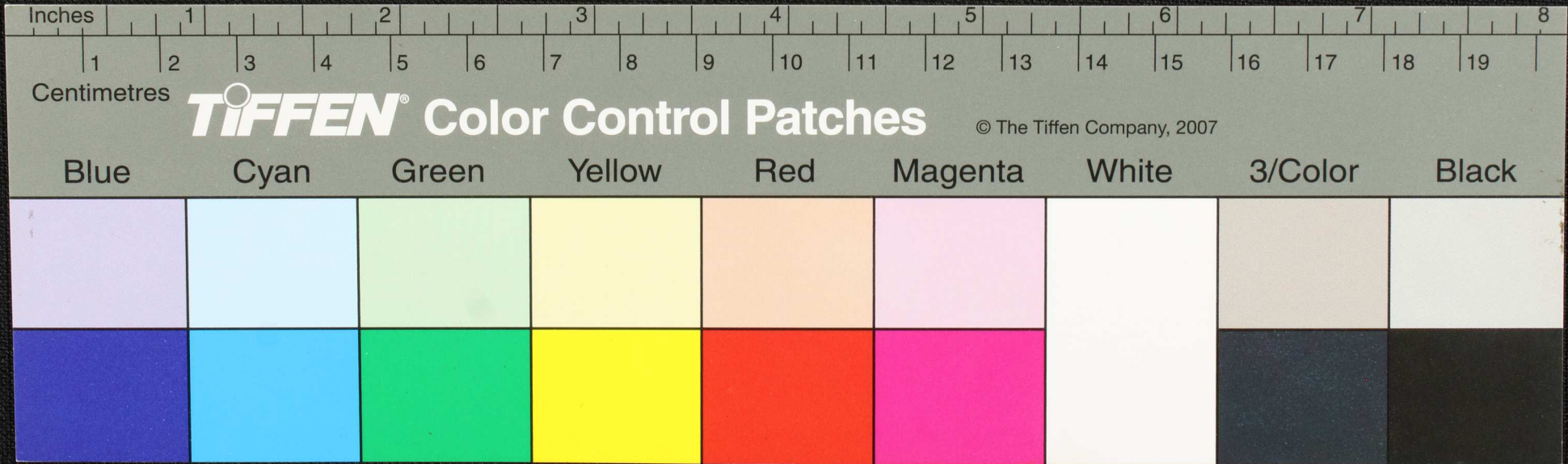
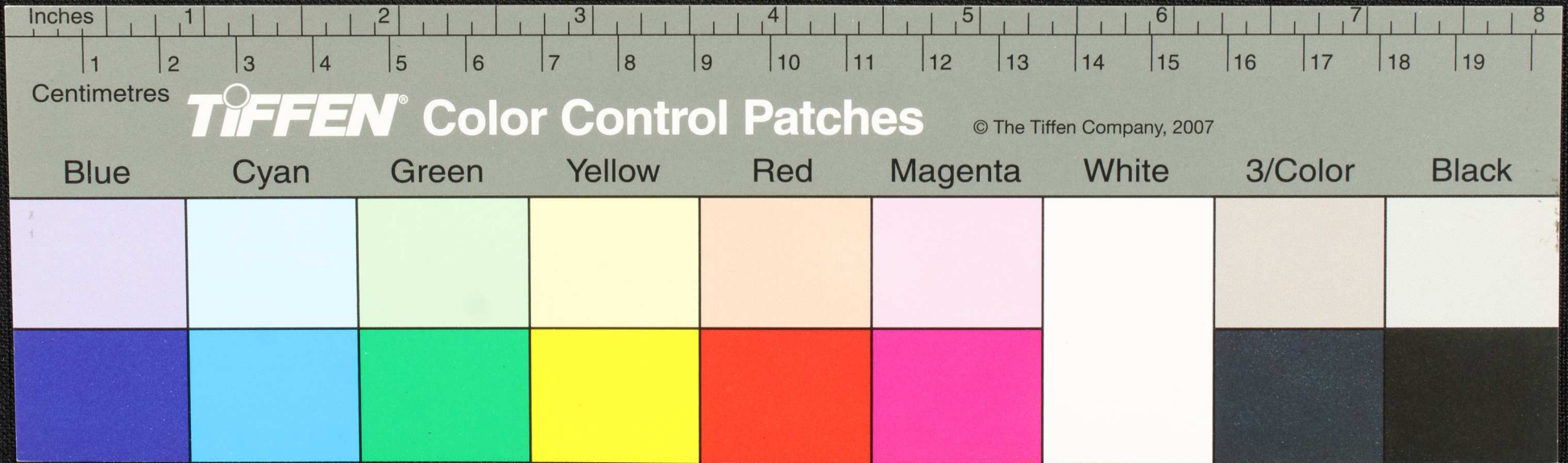


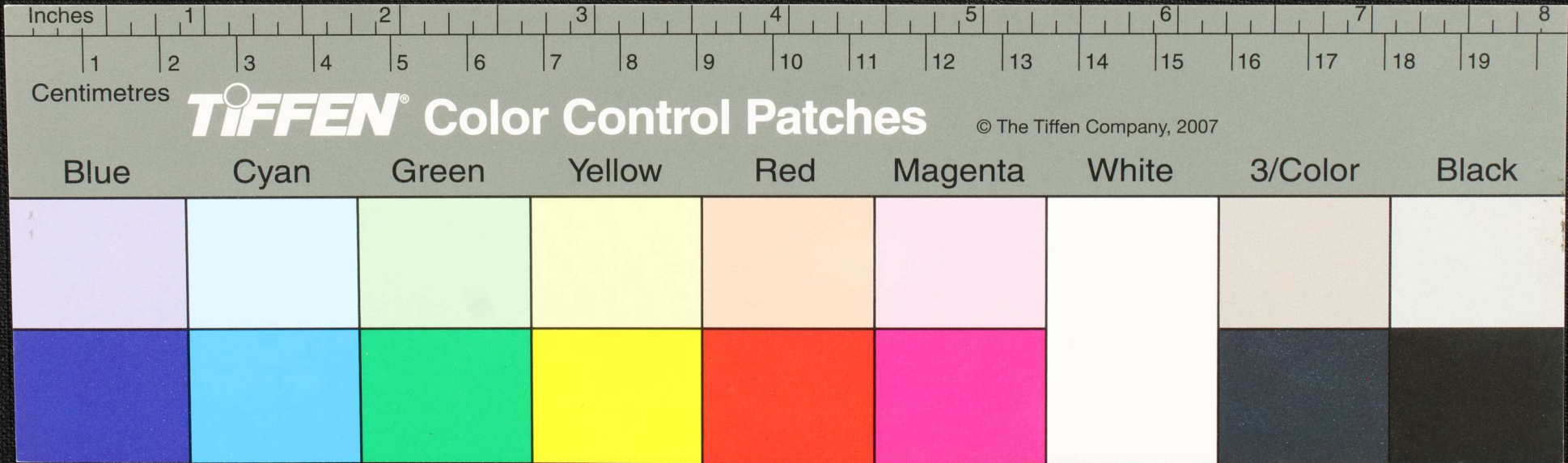
Handwritten text in Tamil script on a yellowish paper strip. The text is arranged in three lines. A small black circular mark is present in the second line. The script is cursive and appears to be a form of Tamil.



Handwritten text in Malayalam script on a palm leaf manuscript. The text is arranged in three lines across the length of the leaf. A small circular hole is visible near the center of the leaf.

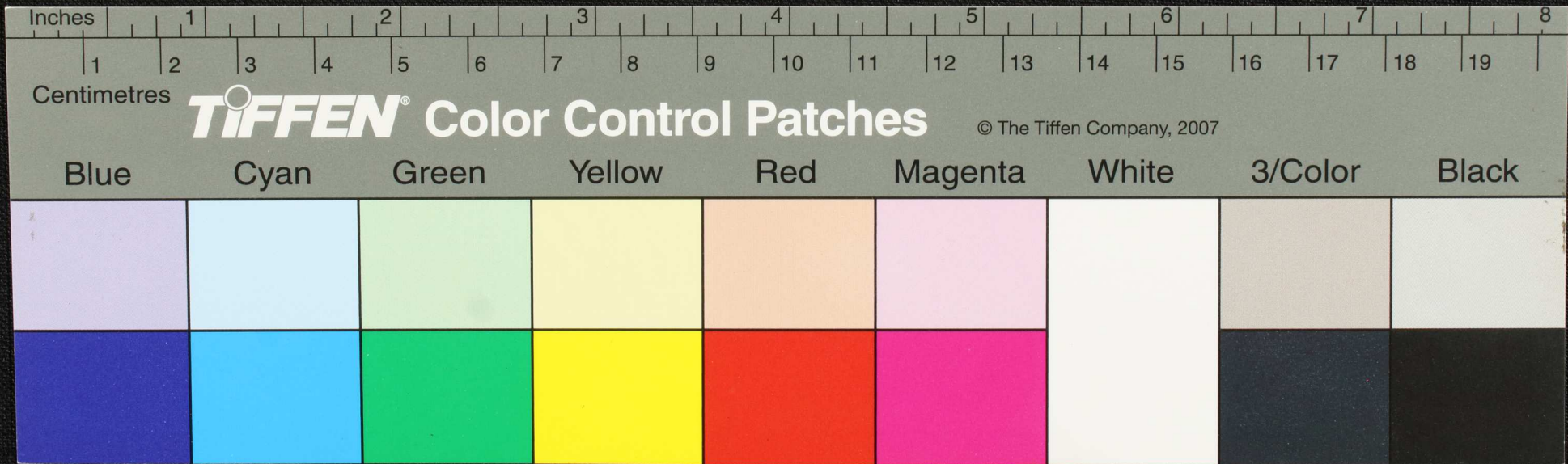


Handwritten text in a script, possibly Tamil, on a yellowish paper strip. The text is arranged in several lines and includes a prominent black circular mark in the center. The script is difficult to decipher due to its cursive nature and the angle of the strip.

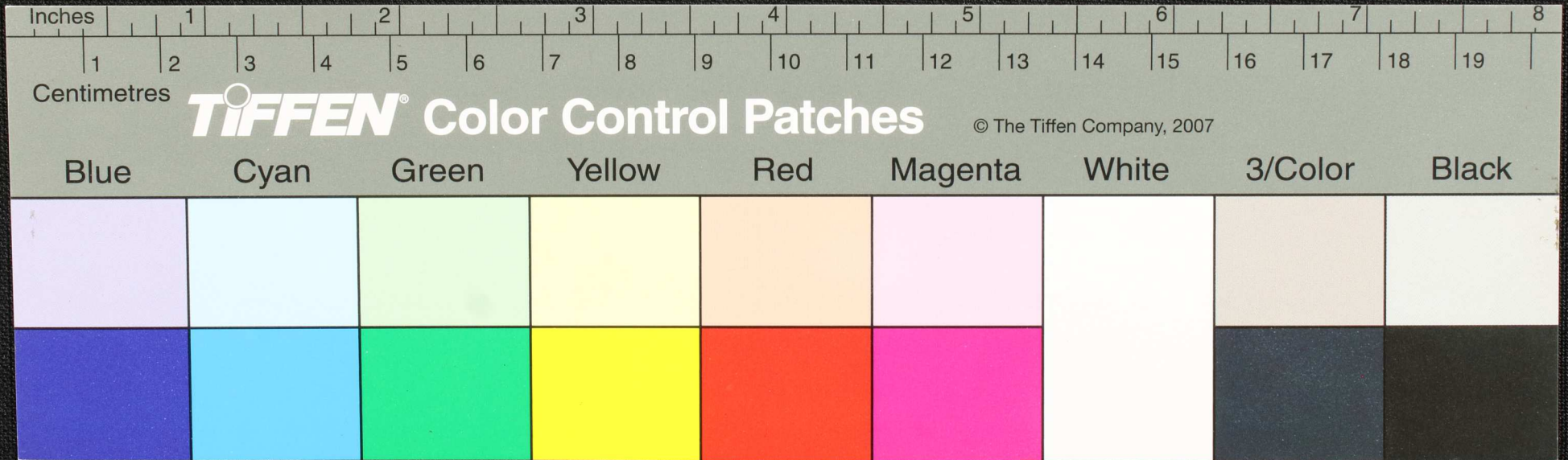




Handwritten text in Malayalam script on a palm leaf manuscript. The text is arranged in three lines. A small black circular mark is present in the second line. The script is written in a traditional style.

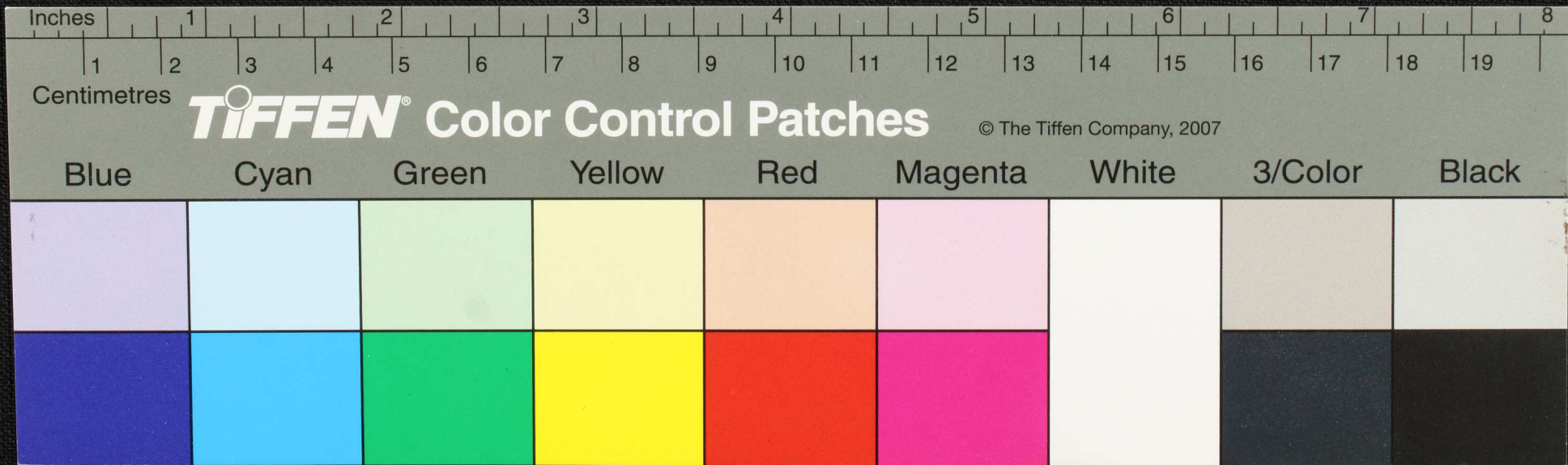


Handwritten text in an Indic script, possibly Tamil, on a yellowish-brown strip. The text is arranged in two lines with horizontal lines drawn through it. A small black circular mark is present on the strip.

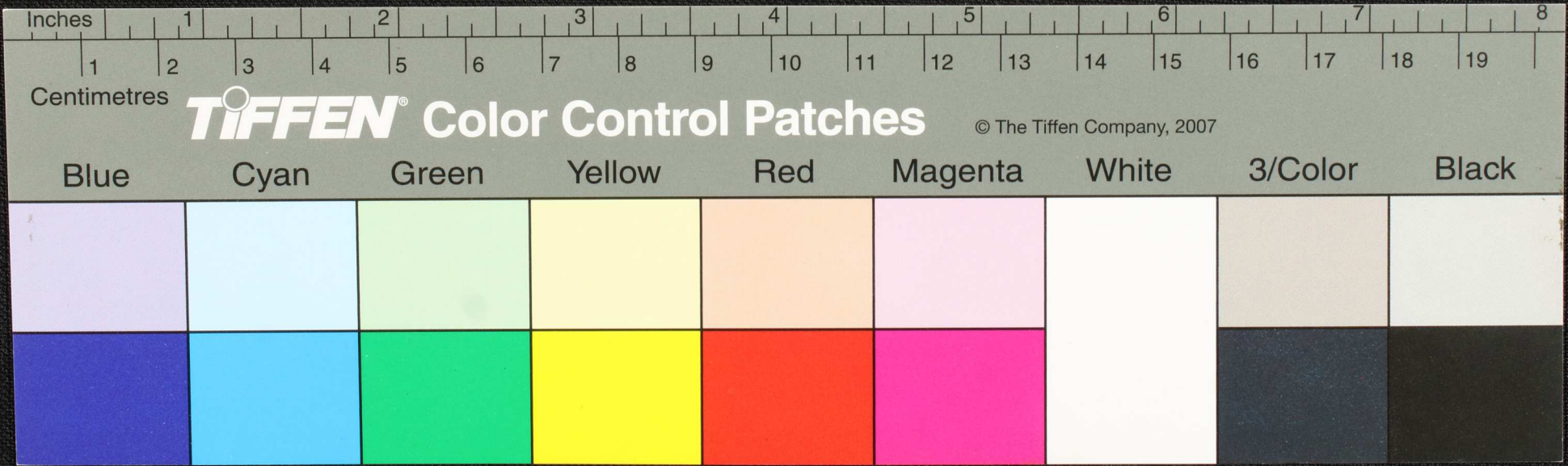




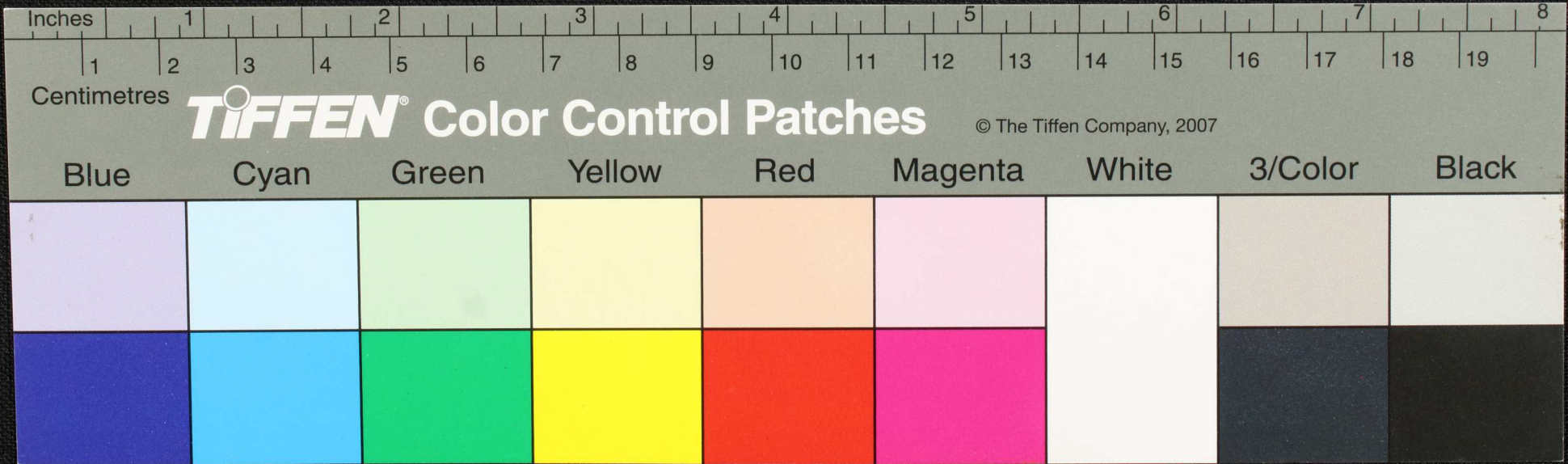
Handwritten text on a yellowish paper strip, possibly a palm leaf manuscript. The text is written in a cursive script and is mostly illegible due to fading and the angle of the strip. A small black circular mark is visible near the center of the strip.



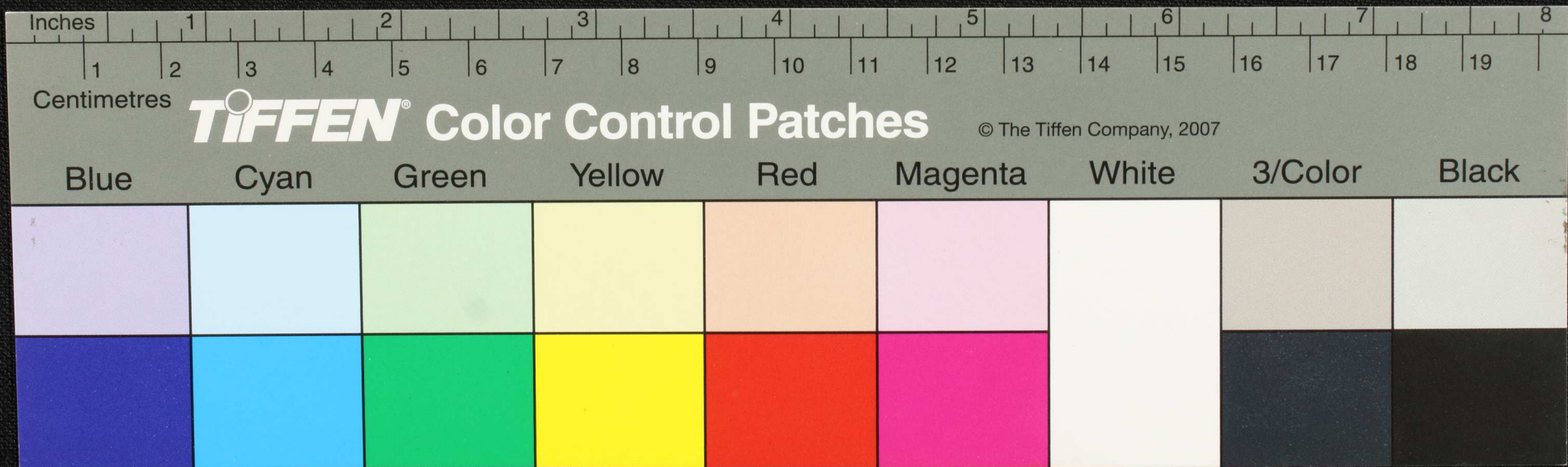
Handwritten text in Tamil script on a yellowish paper strip. The text is arranged in four lines and appears to be a historical record or a list of items. A small black circular mark is present on the second line of text.



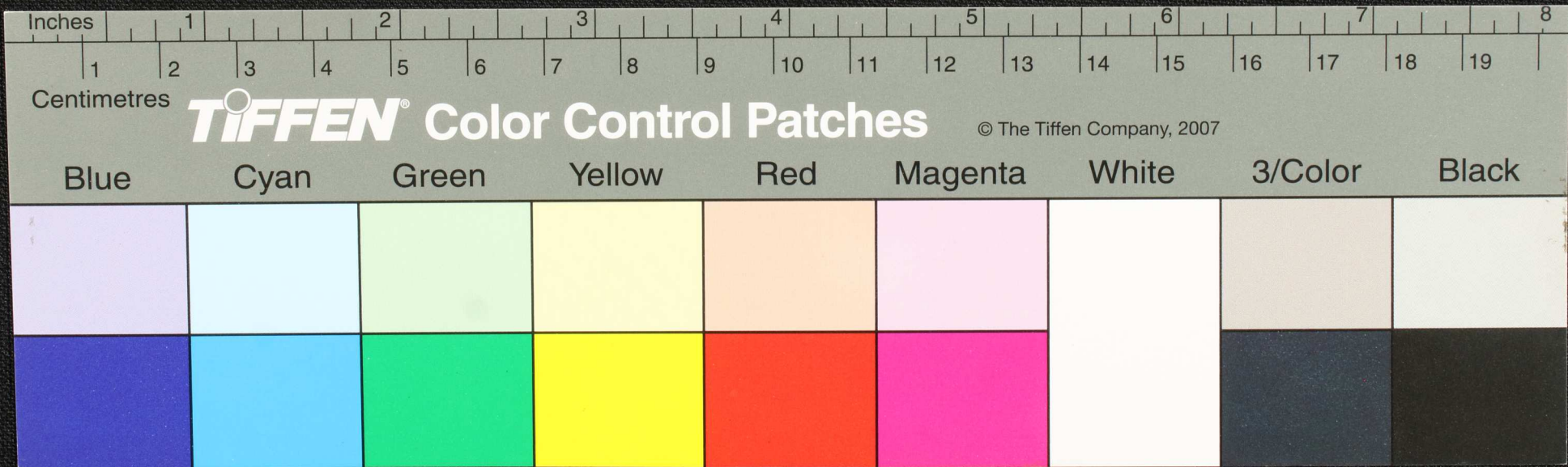
Handwritten text in Tamil script on a yellowish paper strip. The text is arranged in four lines and includes a prominent black circular mark in the second line. The script is a form of the Tamil language, likely used for administrative or legal purposes.



Handwritten text in Tamil script on a palm leaf manuscript. The text is arranged in four lines and is partially obscured by a dark circular mark in the center. The script is finely etched into the surface of the dried leaf.

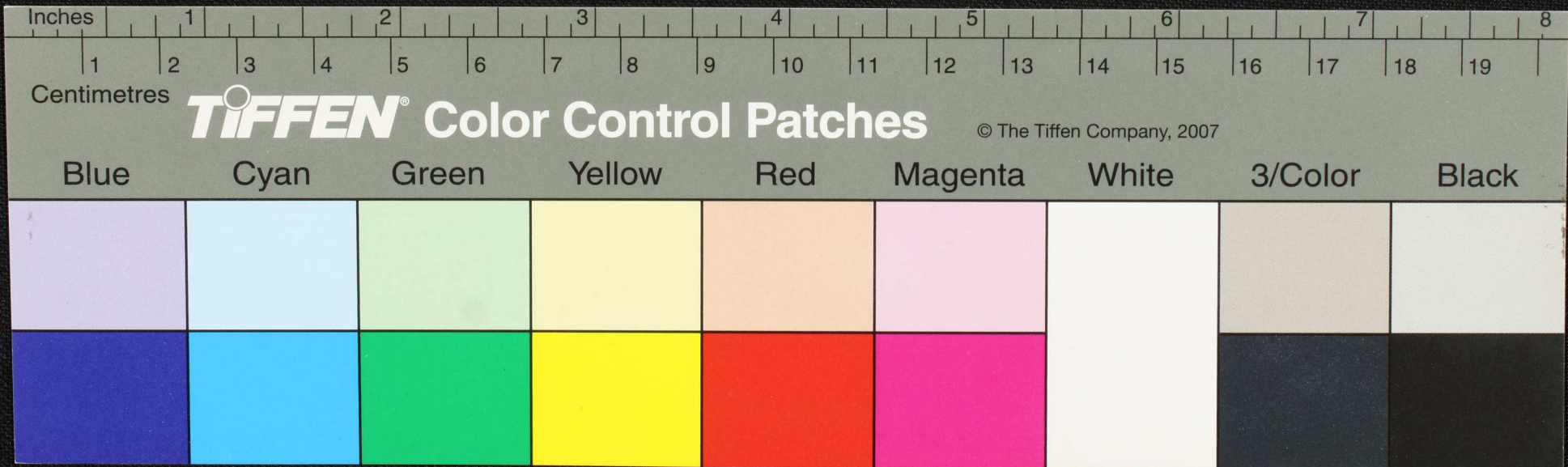


Handwritten text in Malayalam script on a palm leaf manuscript. The text is arranged in approximately four lines. A small black circular mark is present on the second line. The script is finely etched into the surface of the dried leaf.

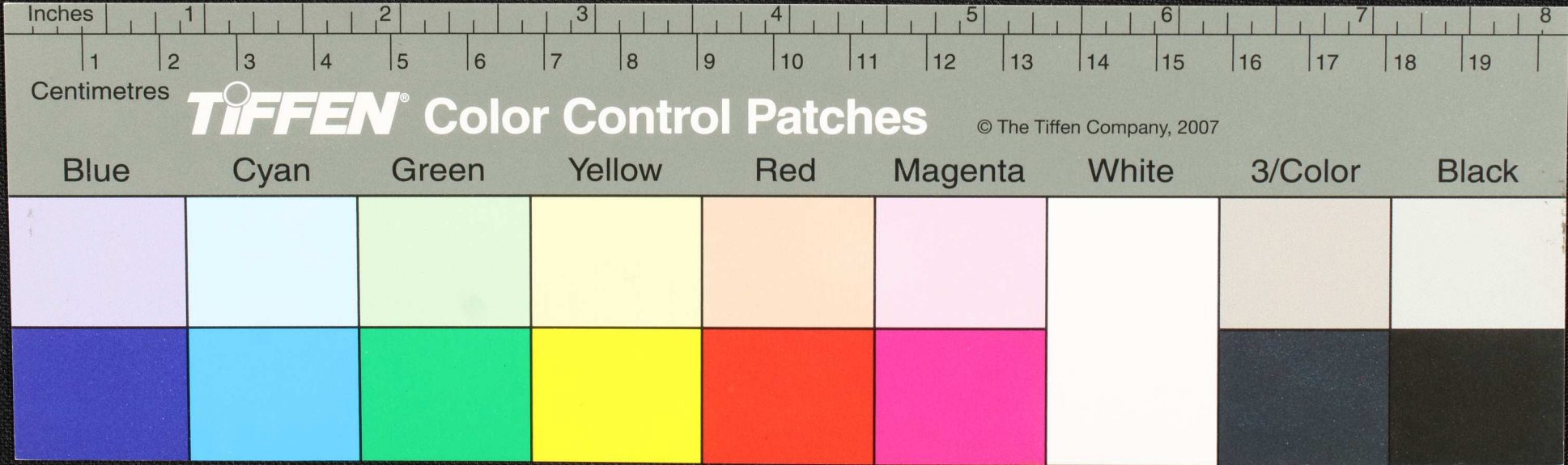




Handwritten text on a palm leaf manuscript strip, arranged in two columns. The script is an ancient form of Tamil. A small circular hole is visible in the center of the strip.

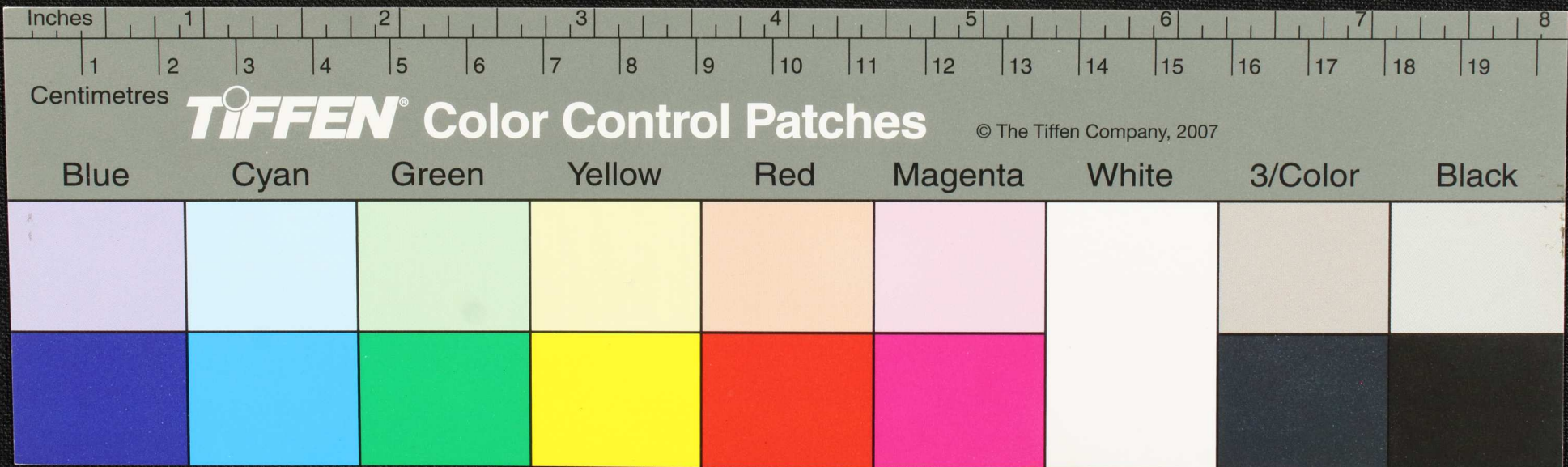


Handwritten text in Malayalam script on a palm leaf manuscript. The text is arranged in two columns, with a small black circular mark in the center. The script is written in a traditional style on a light brown, textured surface.

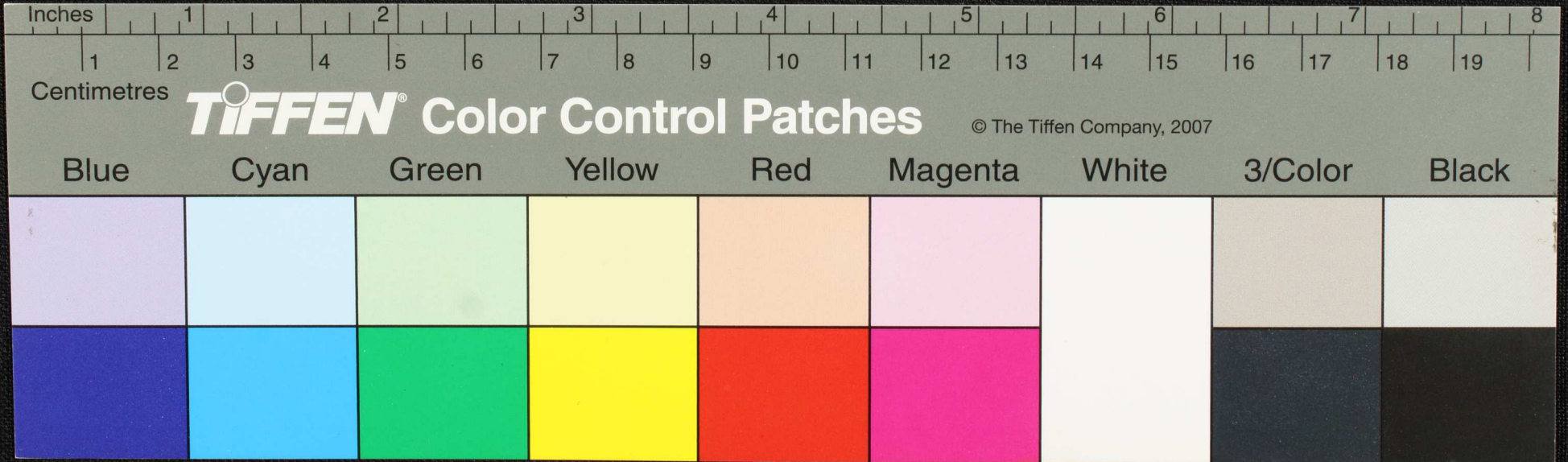




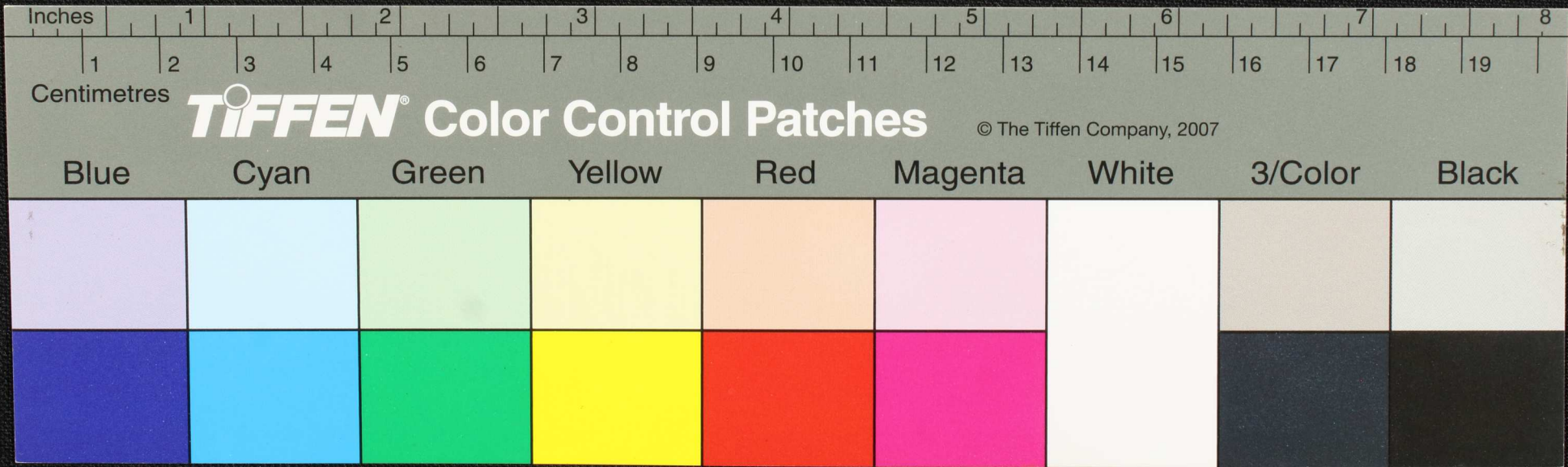
Handwritten text in Malayalam script on a palm leaf manuscript. The text is arranged in several lines, with a prominent black circular mark in the second line. The script is finely etched into the surface of the dried leaf.



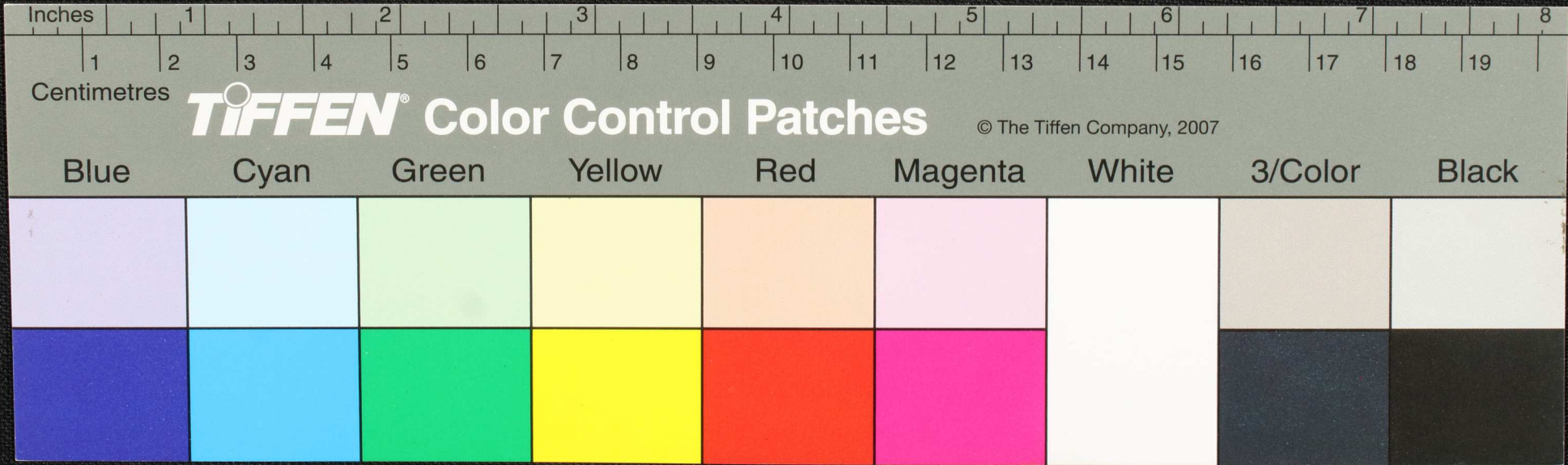
Handwritten text in a script, possibly Tamil, on a yellowish paper strip. The text is arranged in three lines and is partially obscured by a dark circular mark in the center. The script appears to be a form of South Indian writing.



Handwritten text in Malayalam script on a palm leaf manuscript. The text is arranged in four lines, with a small black circular mark on the second line. The script is written in a traditional style.



Handwritten text in Tamil script on a yellowish paper strip. The text is arranged in two lines. The first line contains approximately 15 characters, and the second line contains approximately 18 characters. There is a small dark circular mark on the paper strip.



Handwritten text in Malayalam script on a palm leaf manuscript. The text is arranged in several lines across the length of the leaf. A small circular hole is visible near the center of the leaf, used for binding multiple leaves together.

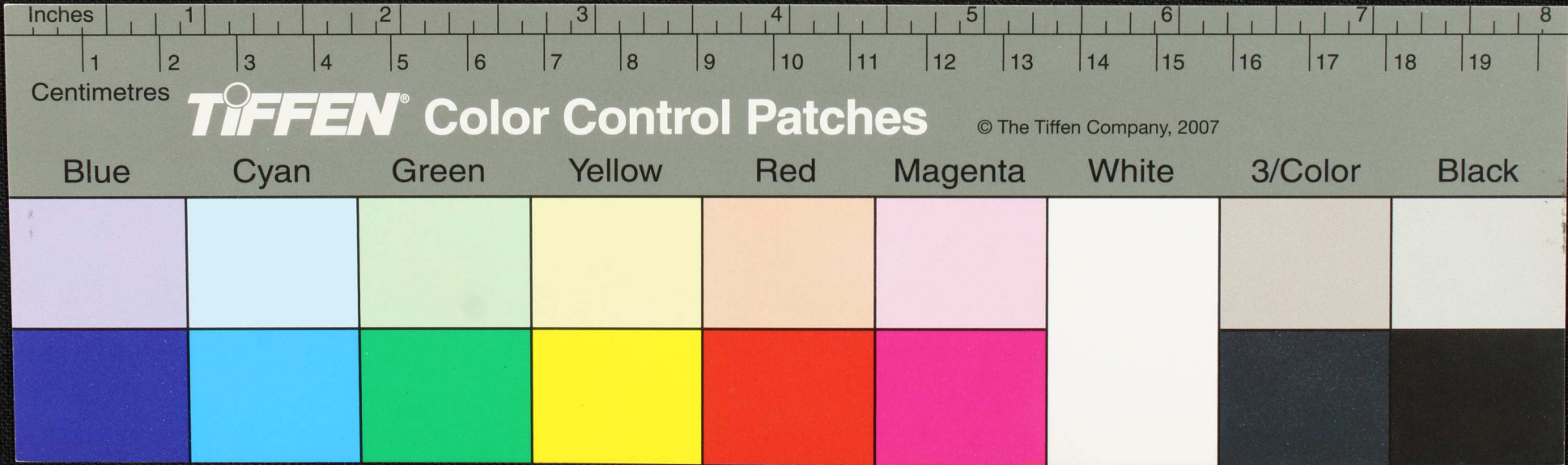
Inches 1 2 3 4 5 6 7 8  
 Centimetres 1 2 3 4 5 6 7 8 9 10 11 12 13 14 15 16 17 18 19

**TIFFEN** Color Control Patches

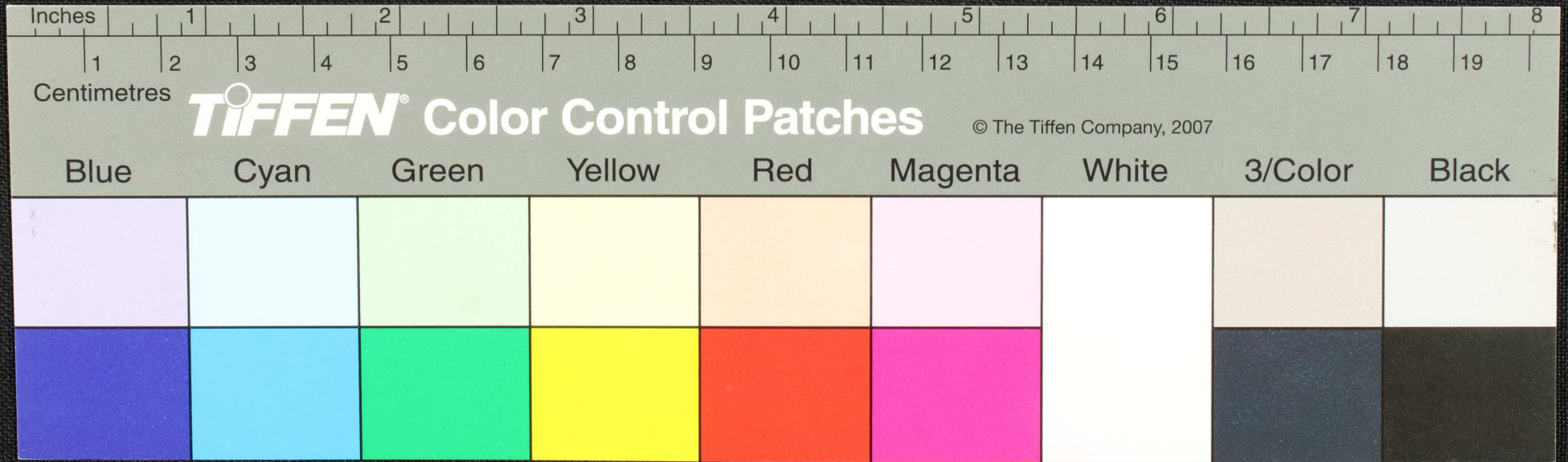
© The Tiffen Company, 2007

Blue	Cyan	Green	Yellow	Red	Magenta	White	3/Color	Black

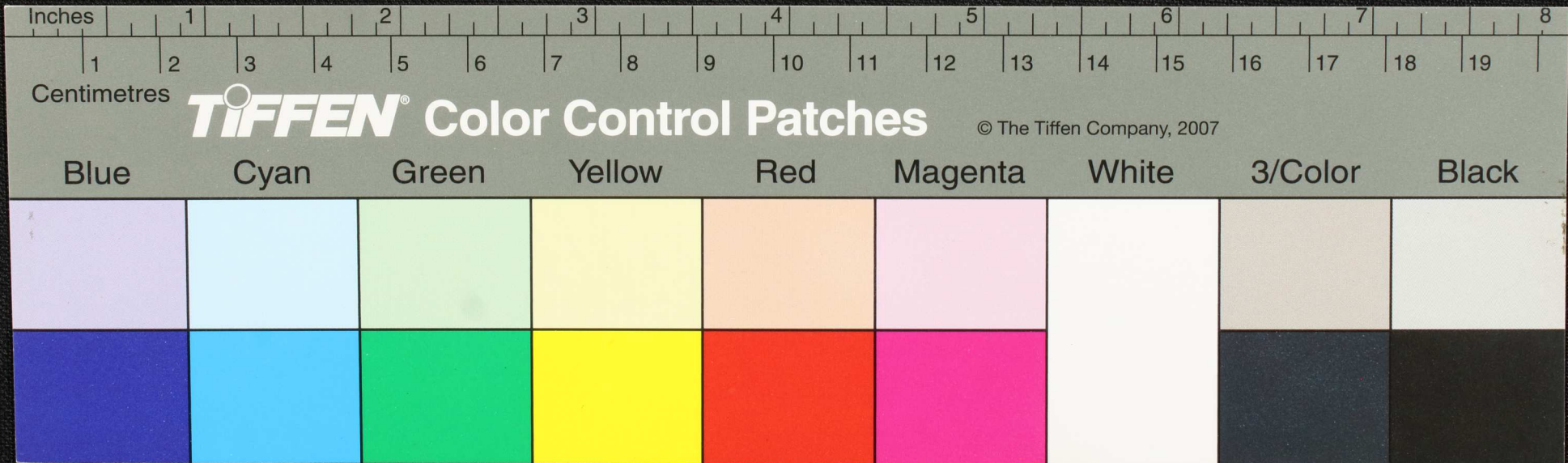
Handwritten text in Malayalam script on a yellowed palm leaf manuscript strip. The text is arranged in three lines and includes a prominent black circular hole in the center of the second line.



Handwritten text in Tamil script on a palm leaf manuscript. The text is arranged in four horizontal lines. A small black circular mark is present on the second line, approximately at the 3.5-inch mark on the ruler below.

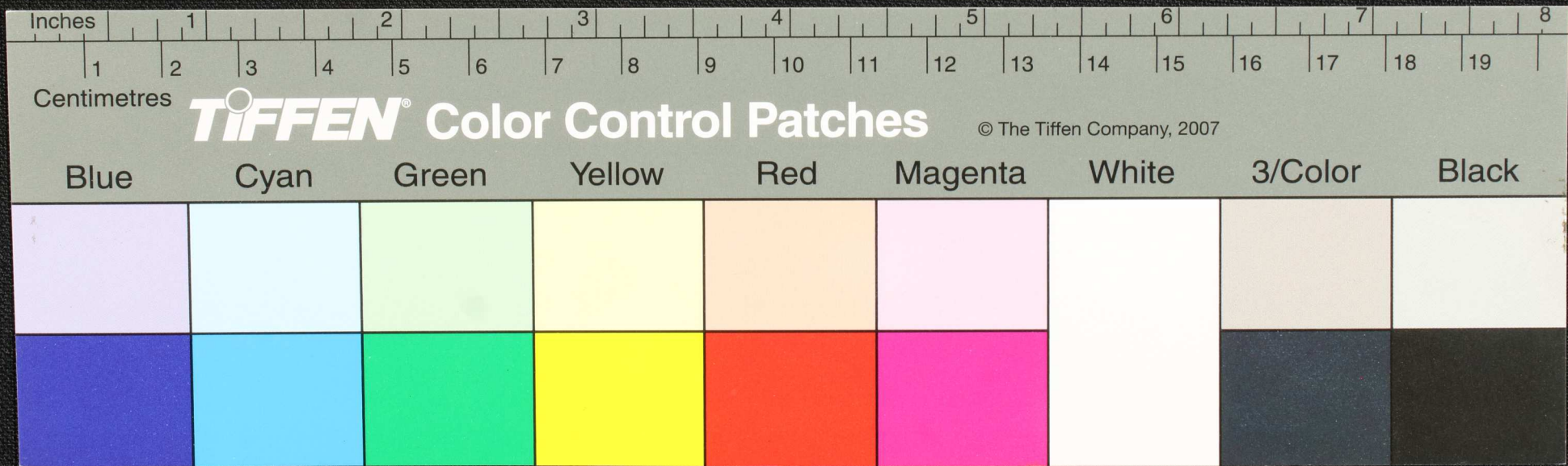


Handwritten text in Tamil script on a palm leaf manuscript. The text is arranged in approximately four lines. A prominent black circular ink blot is visible in the second line, partially obscuring the characters. The script is finely etched into the natural texture of the dried leaf.

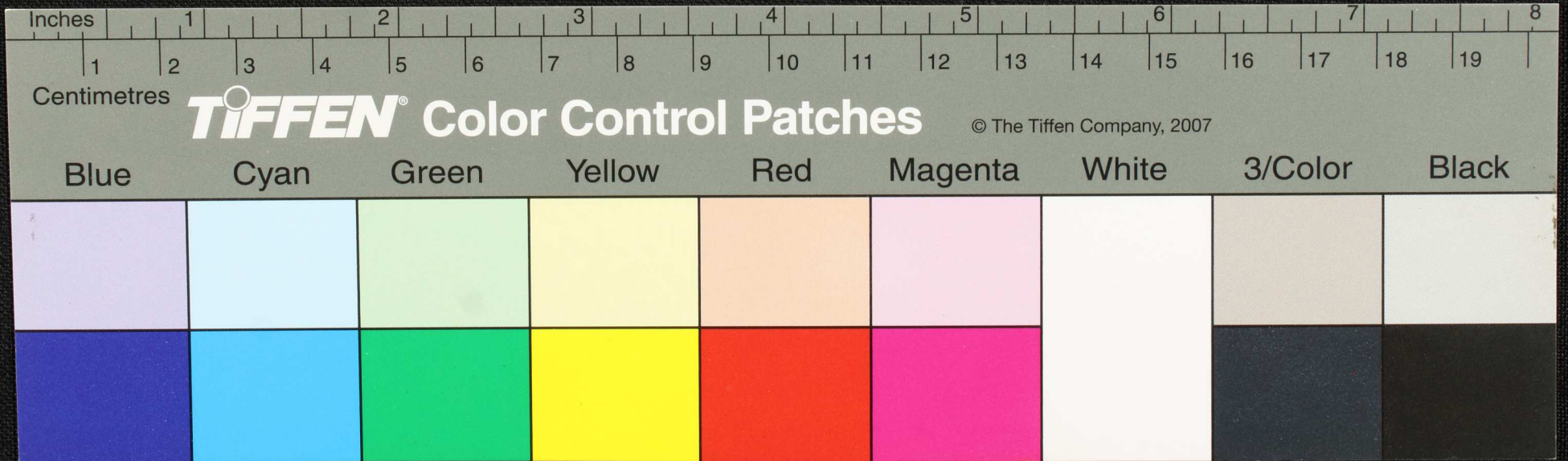


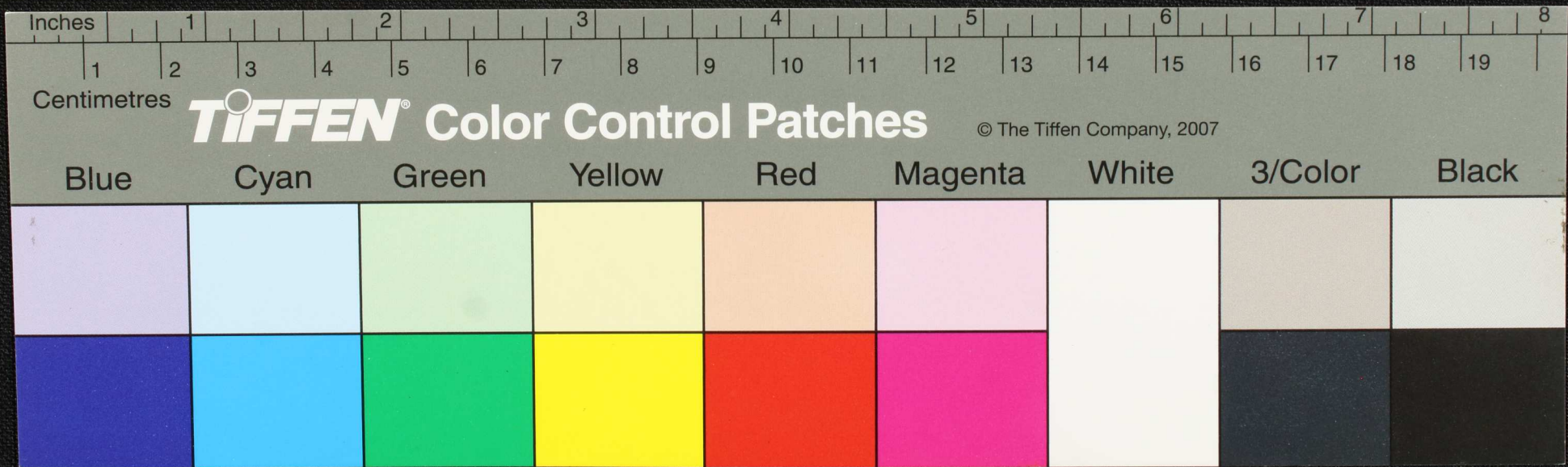


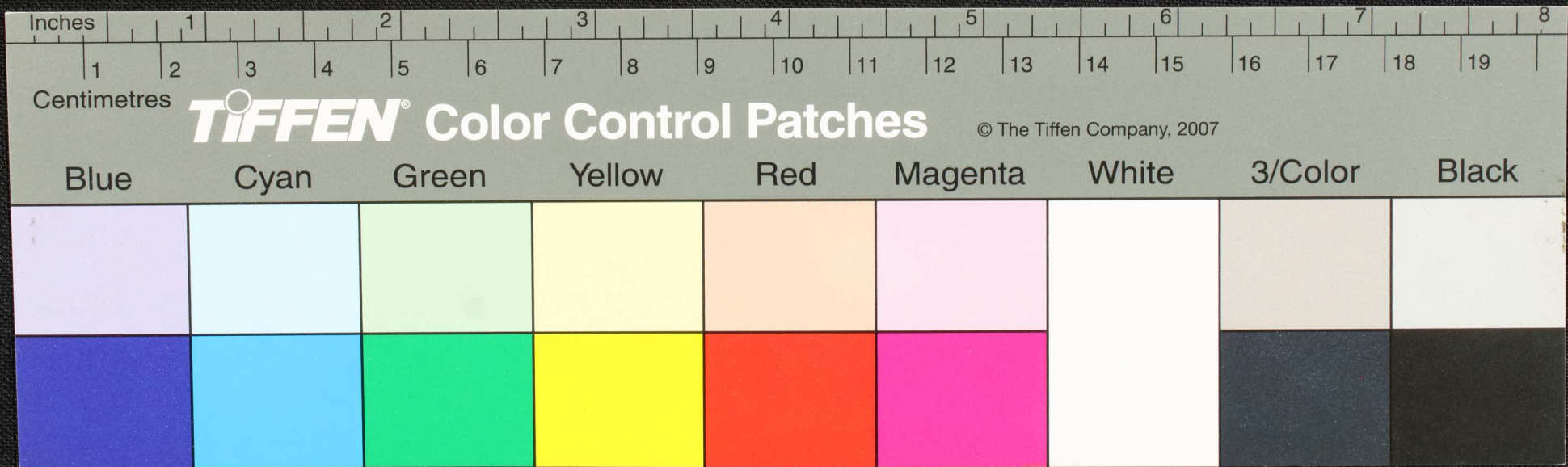
Handwritten text in an ancient script, possibly Tamil, on a palm leaf manuscript. The text is arranged in two lines and is partially obscured by a dark circular mark in the center.

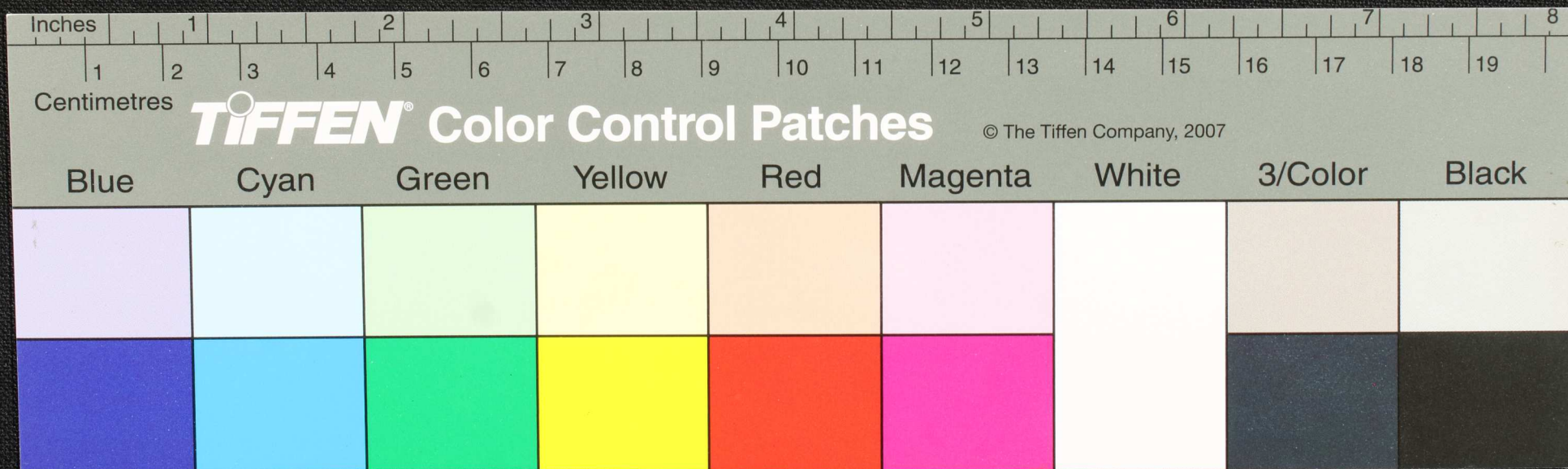


Handwritten text in Tamil script on a yellowish paper strip. The text is arranged in several lines and is partially obscured by a dark circular mark in the center. The script appears to be a form of historical or religious text.









Inches

1

2

3

4

5

6

7

8

Centimetres

1

2

3

4

5

6

7

8

9

10

11

12

13

14

15

16

17

18

19

**TIFFEN** Color Control Patches

© The Tiffen Company, 2007

Blue

Cyan

Green

Yellow

Red

Magenta

White

3/Color

Black

