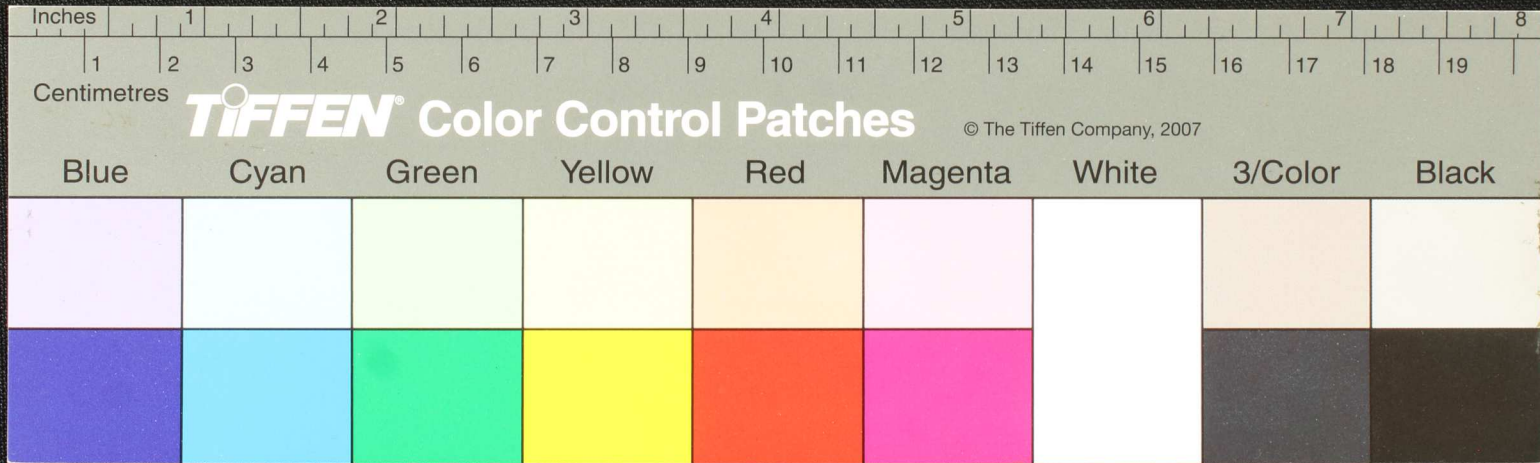
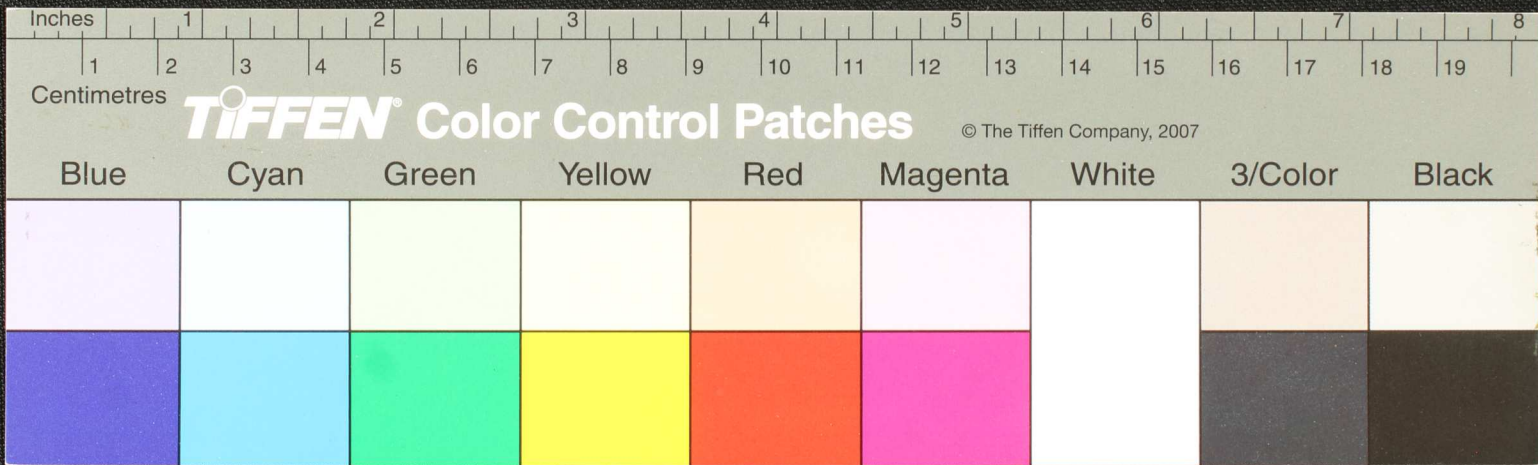


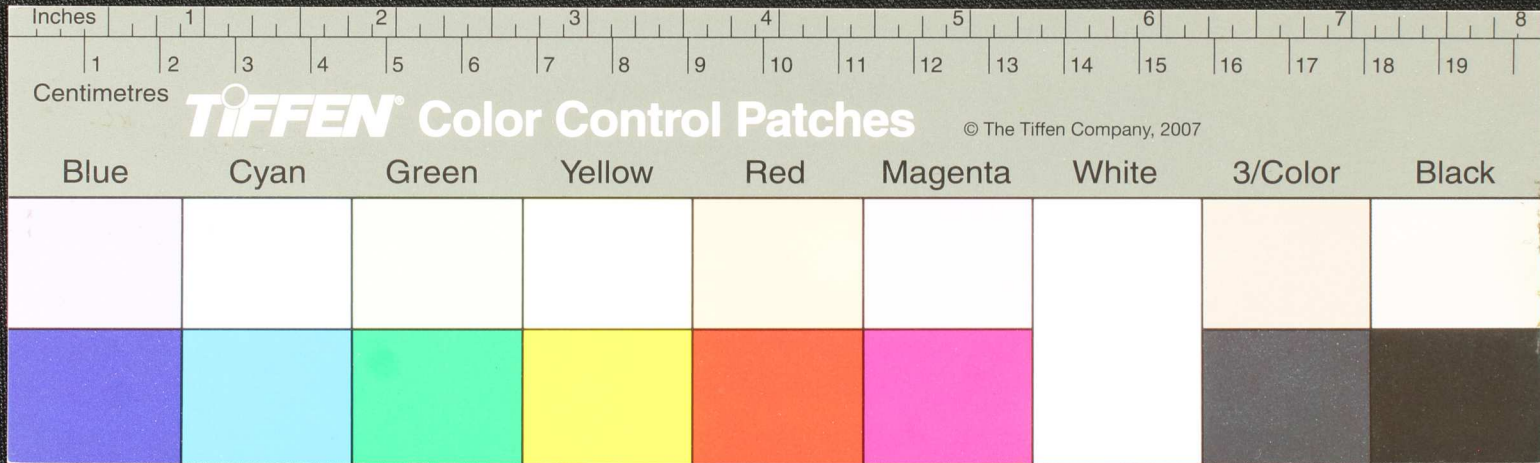
Handwritten Tamil script on a palm leaf manuscript. The text is arranged in approximately 10 horizontal lines. The script is densely packed and appears to be a form of classical or religious Tamil. There are two prominent circular holes or indentations on the leaf, one near the center and another towards the right side. The leaf itself is yellowish-brown with some darker spots and irregular edges, characteristic of aged palm leaves.




Handwritten Tamil script on a palm leaf manuscript. The text is arranged in approximately 10 horizontal lines. The script is finely etched into the surface of the dried leaf. There are two distinct circular holes, likely from a traditional string-and-button binding system. The leaf is yellowish-brown with some darker spots and a small tear at the top edge.



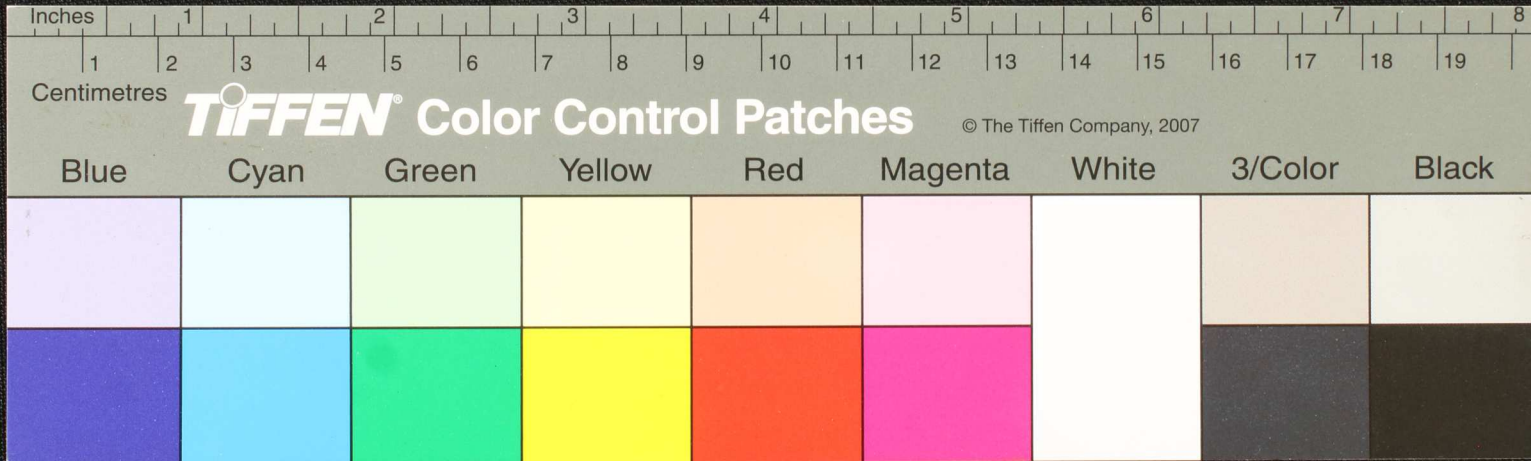
Handwritten text in Tamil script on a palm leaf manuscript. The text is arranged in approximately 10 horizontal lines across the length of the leaf. The script is dense and characteristic of traditional Tamil inscriptions. There are some dark spots and irregularities on the leaf, possibly due to age or damage.

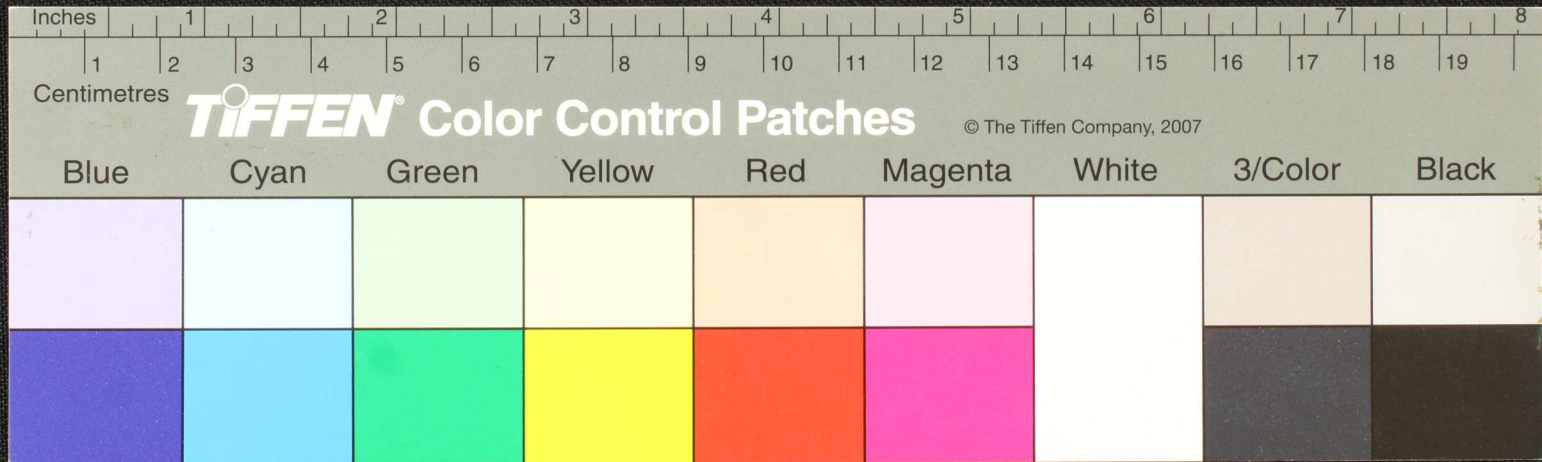
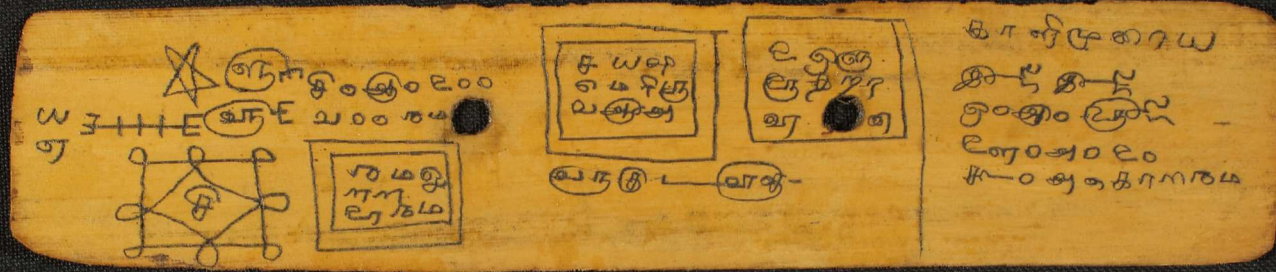


வய
 யத்
 குய
 ஸத்
 மய
 ரம்



சூம வயிநகராயிடிம டியுனவு
 இநகரபெலிநகரதவளாவிடு
 விடுஞ்சூலவிடுதிவகாயிடுமது
 வடமரீயபெரயவகுஅமமை
 மையாணெயபாயுனவுஒம்பரி
 புமயசுஞ்சுஞ்சுகிடுகெகாலவனிசு
 குவிமச்சகதபமகாளிசுள்ளி
 வாலடிபதகுரமனைத்தகட





Handwritten text in an ancient script, possibly Tamil, on a palm leaf manuscript. The text is arranged in approximately 10 horizontal lines. A circular hole is visible on the left side of the leaf, used for binding. The right edge of the leaf is irregular and appears to be broken or torn.

