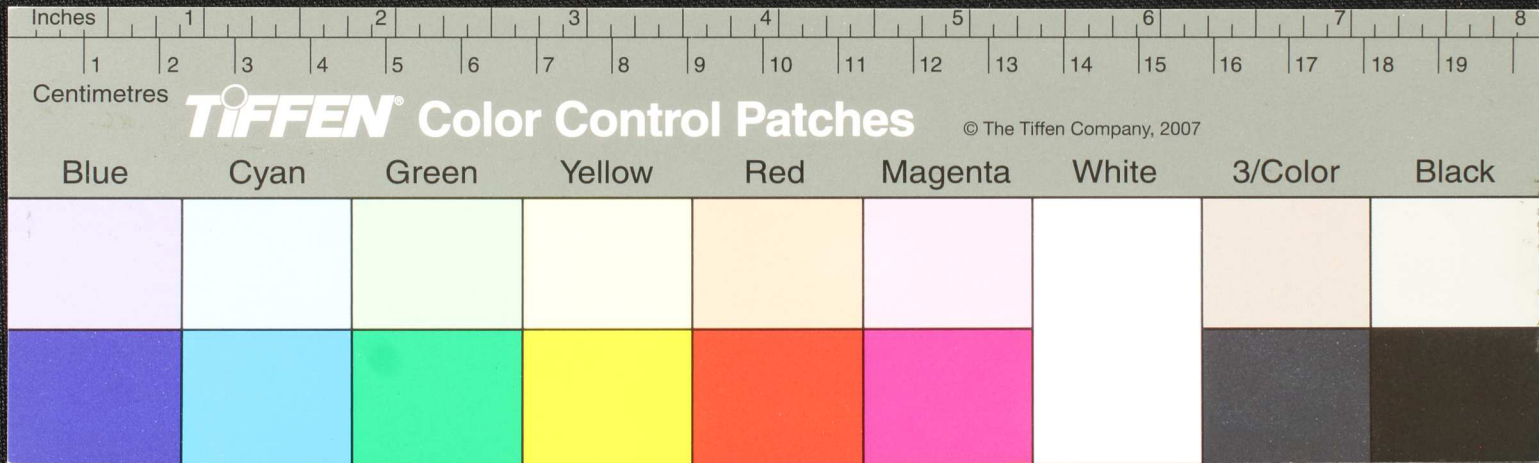


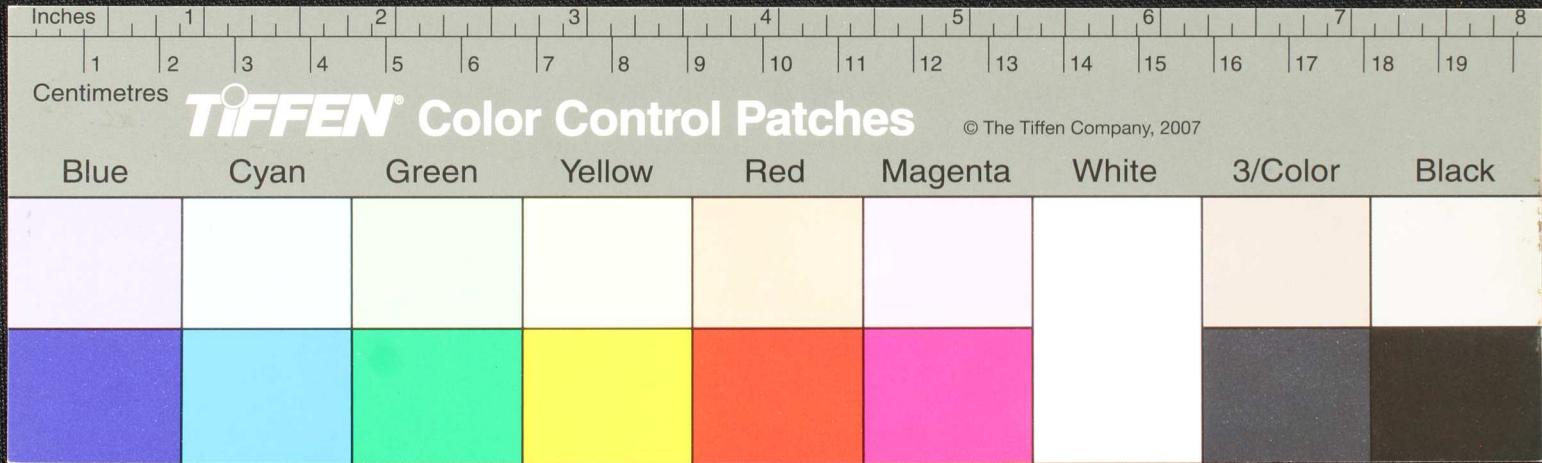


Handwritten text in an ancient script, likely Linear B, on a yellowish-brown tablet. The text is arranged in approximately six horizontal lines. Two circular holes are visible on the left side of the tablet, used for binding.



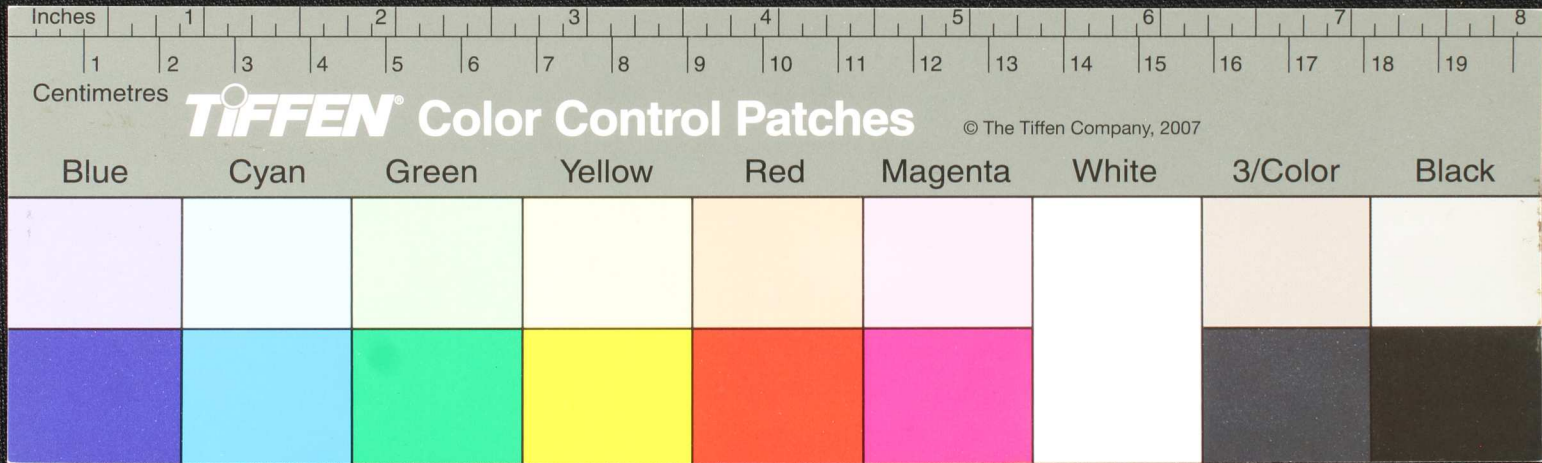


Handwritten text in Tamil script on a palm leaf manuscript. The text is arranged in approximately 10 horizontal lines across the length of the leaf. The script is dense and characteristic of traditional Tamil inscriptions on palm leaves.



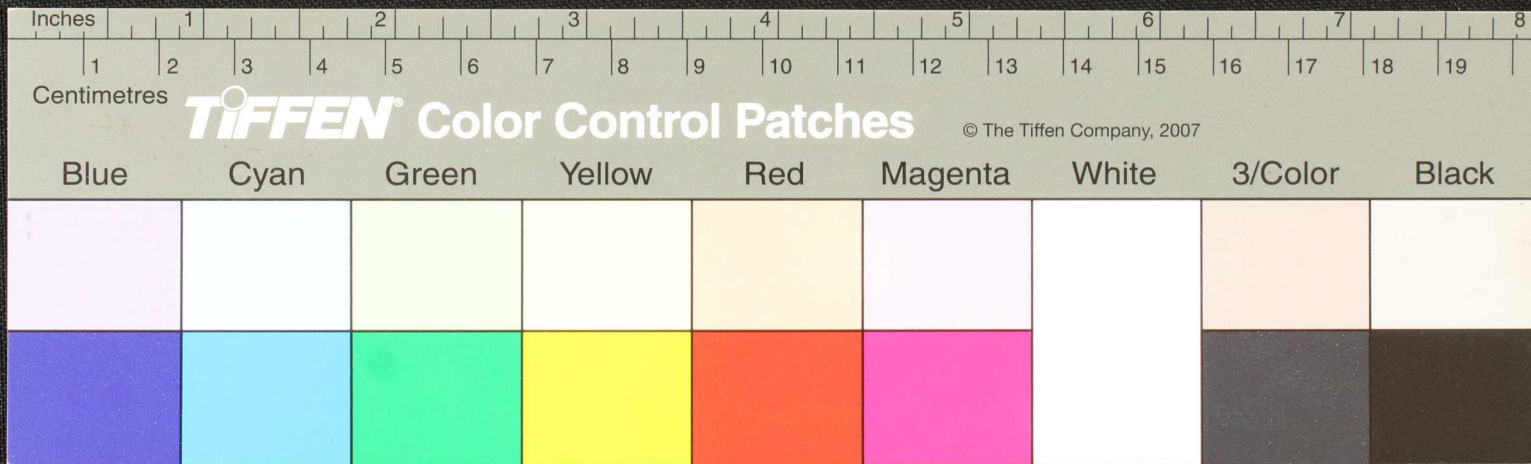


Handwritten text in Tamil script on a palm leaf manuscript. The text is arranged in approximately six lines across the length of the leaf. The script is dark and clearly legible against the light-colored leaf background.





Handwritten text in Tamil script on a palm leaf manuscript. The text is arranged in approximately 10 horizontal lines. Two circular holes are visible, which were traditionally used for threading a cord to bind multiple leaves together. The script is densely packed and appears to be a form of classical or historical Tamil.





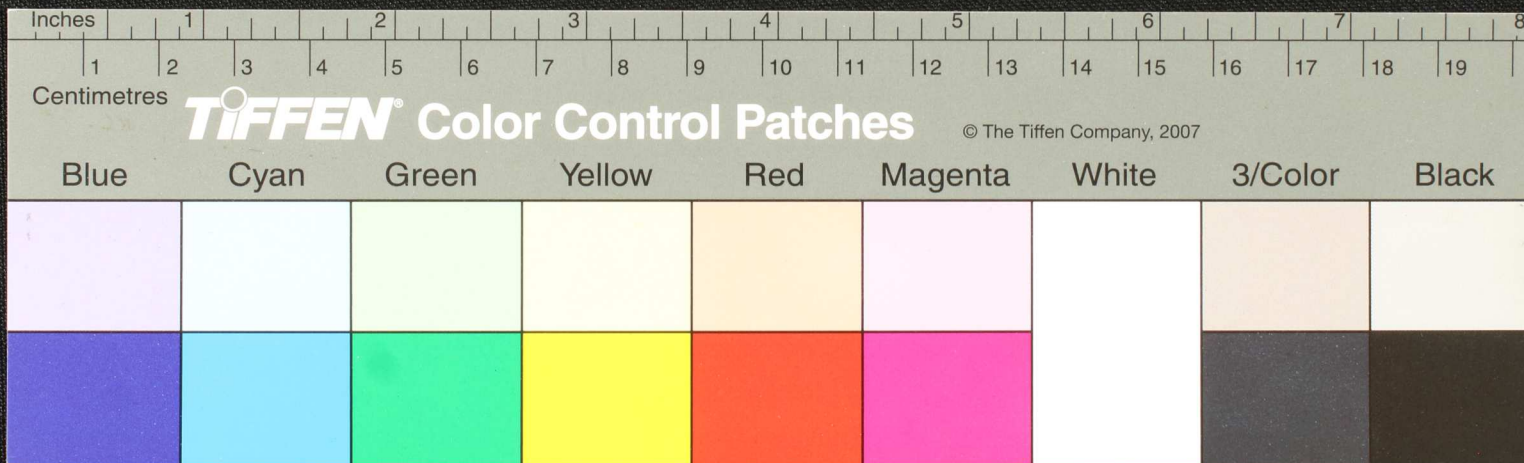








Handwritten text on a palm-leaf manuscript strip, likely in an ancient script. The text is arranged in several lines across the length of the leaf. Two circular holes are visible, used for threading a cord to bind multiple leaves together. The script is finely etched into the surface of the dried leaf.



Handwritten text on a palm-leaf manuscript strip, featuring several lines of script and two circular holes for binding.

