

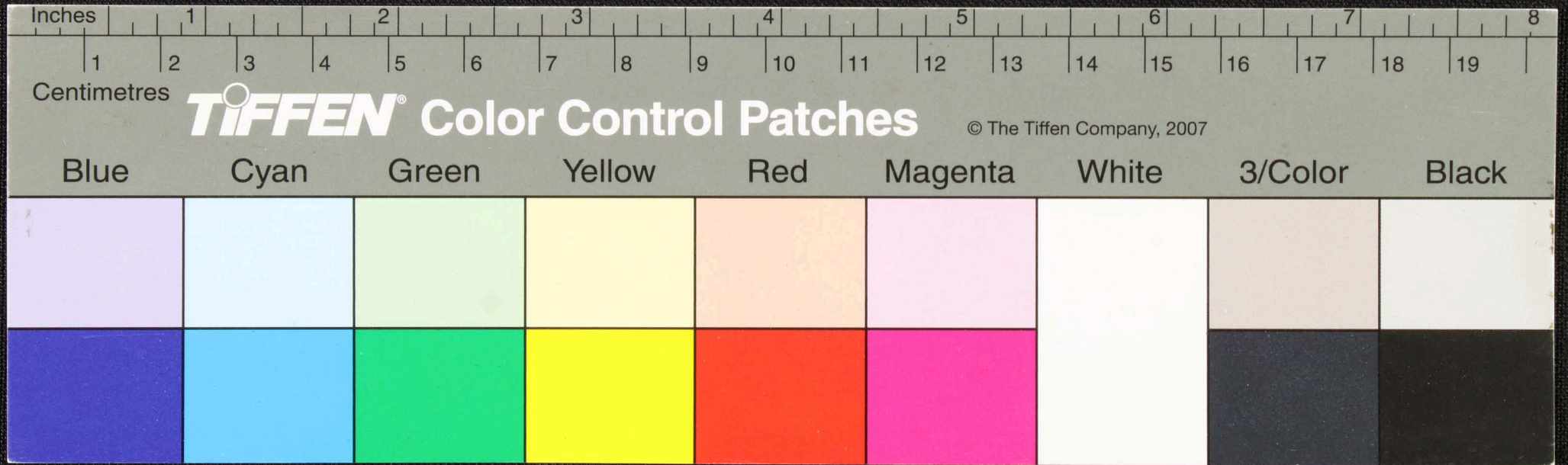
Handwritten text on a palm leaf manuscript strip, including a table and a paragraph of text.

செய்த நாள்		சு
		ம
		சு
		ம

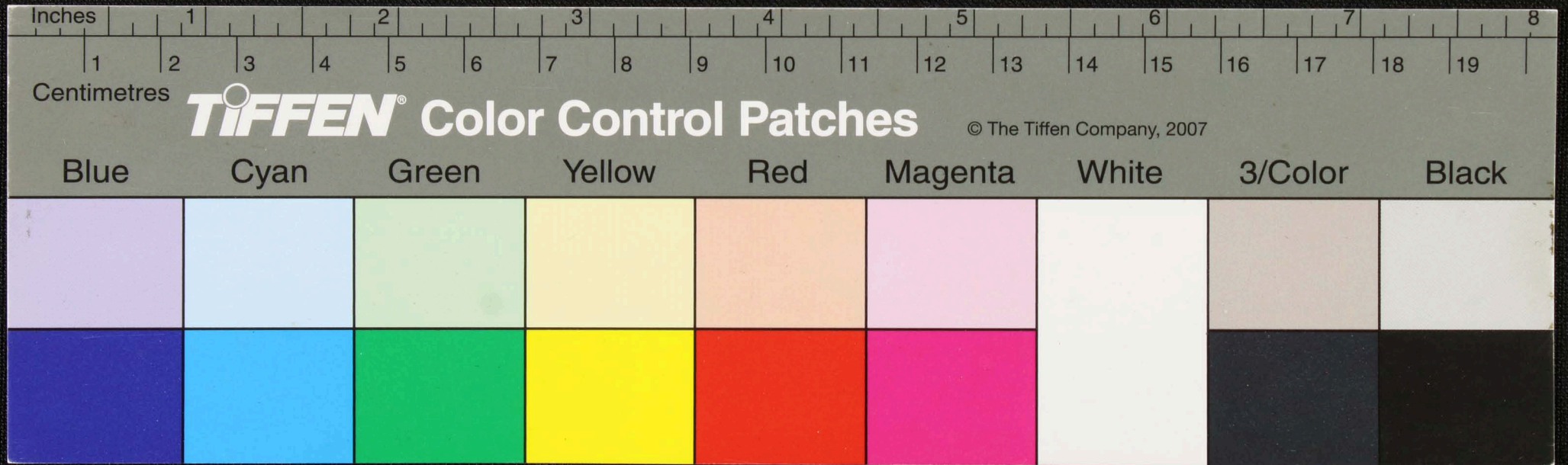
செய்த நாள்
சு
ம
சு
ம

Handwritten text on the right side of the strip:

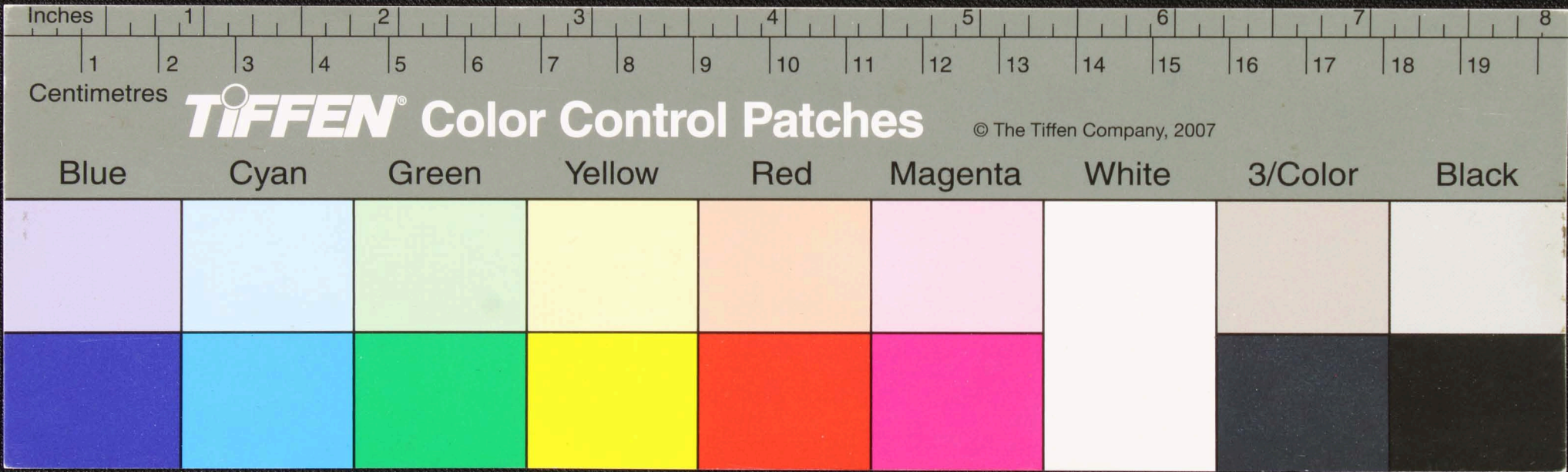
செய்த நாள்
சு
ம
சு
ம



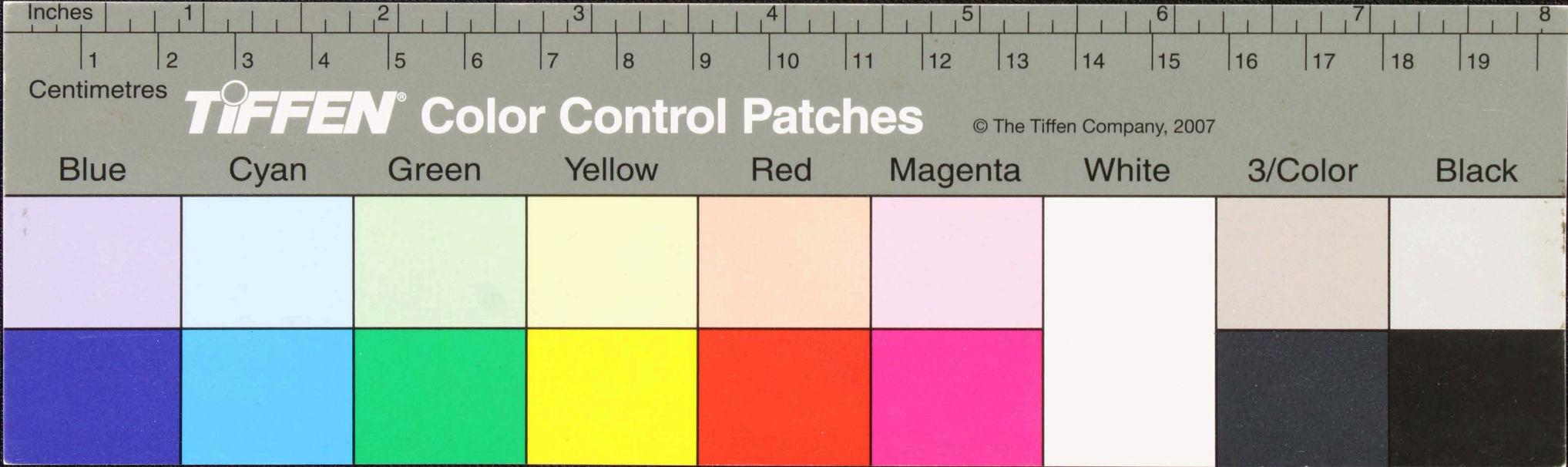
Handwritten text in Tamil script on a palm leaf manuscript fragment. The text is arranged in three lines and includes a small circular hole for binding. The script is finely etched into the surface of the dried leaf.



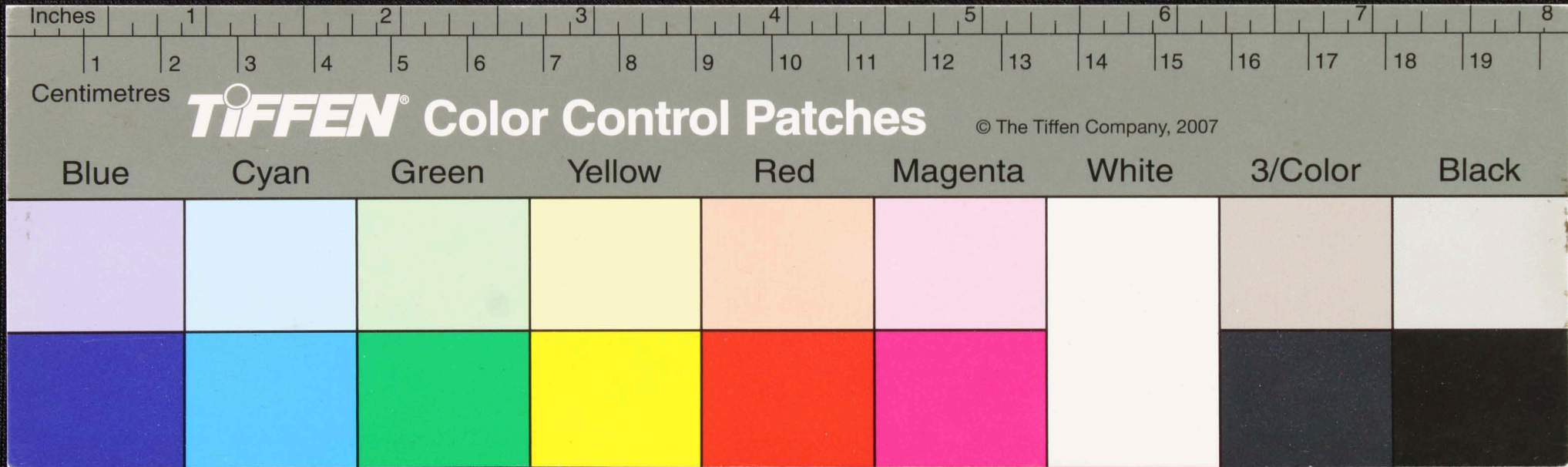
Handwritten text in Tamil script on a palm leaf manuscript. The text is arranged in approximately four horizontal lines. A small circular hole is visible in the center of the leaf, used for binding multiple leaves together. The script is finely etched into the surface of the dried leaf.



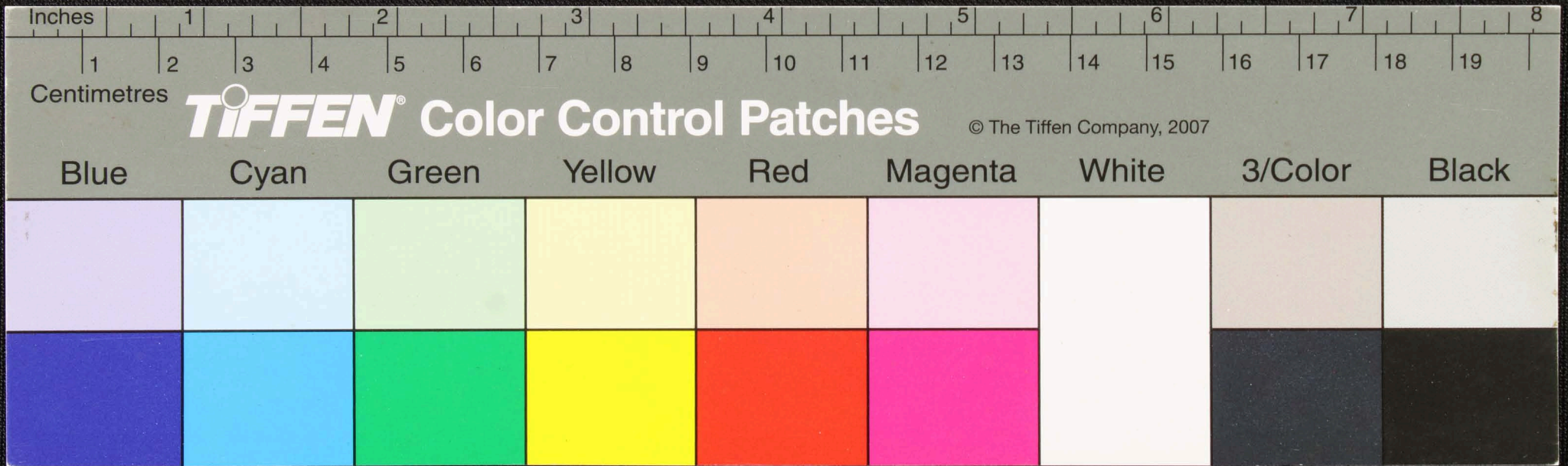
Handwritten text in Tamil script on a palm leaf manuscript. The text is arranged in approximately four lines across the length of the leaf. A small circular hole is visible near the center of the leaf, used for binding multiple leaves together.



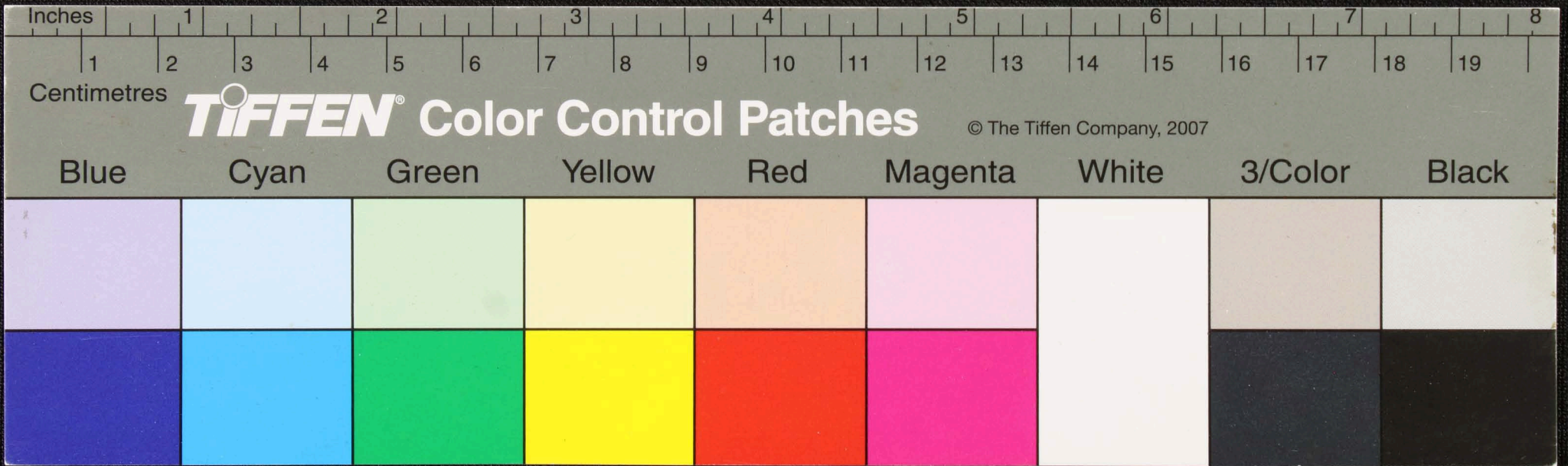
156
உலக
கொடுகிறது. உலகம் நன்றாக இருக்க வேண்டும் என்று
உலகம் நன்றாக இருக்க வேண்டும் என்று உலகம் நன்றாக இருக்க வேண்டும்
உலகம் நன்றாக இருக்க வேண்டும் என்று உலகம் நன்றாக இருக்க வேண்டும்
உலகம் நன்றாக இருக்க வேண்டும் என்று உலகம் நன்றாக இருக்க வேண்டும்
உலகம் நன்றாக இருக்க வேண்டும் என்று உலகம் நன்றாக இருக்க வேண்டும்



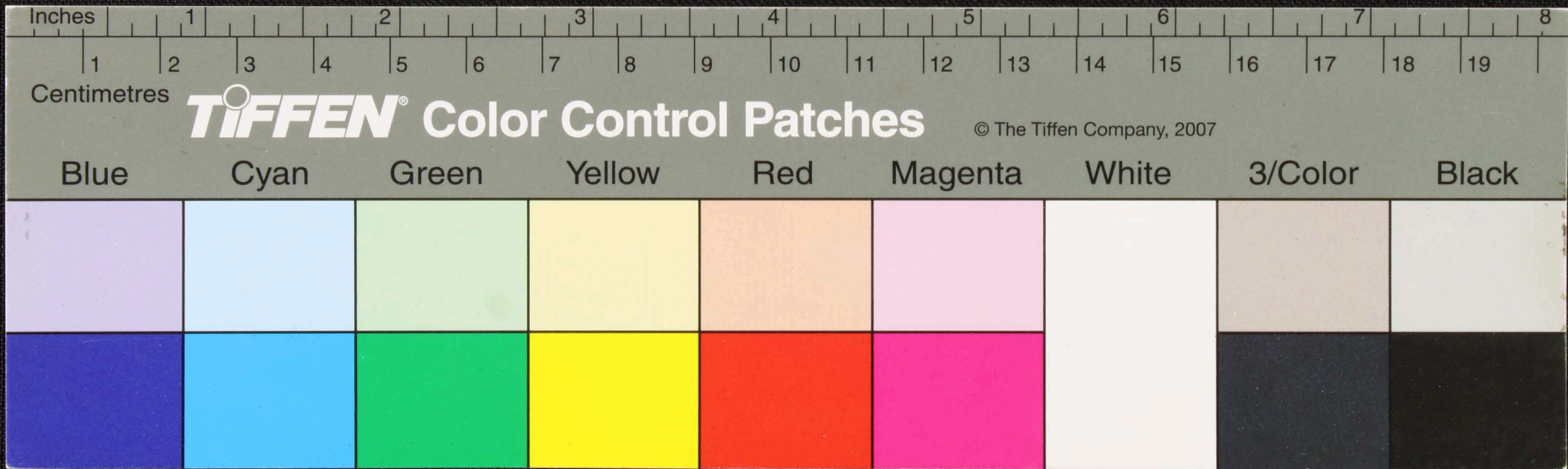
Handwritten text in Tamil script on a palm leaf manuscript. The text is arranged in approximately five horizontal lines. There are two circular holes visible on the leaf, which were traditionally used for threading a cord to bind multiple leaves together. The script is finely etched into the surface of the dried leaf.



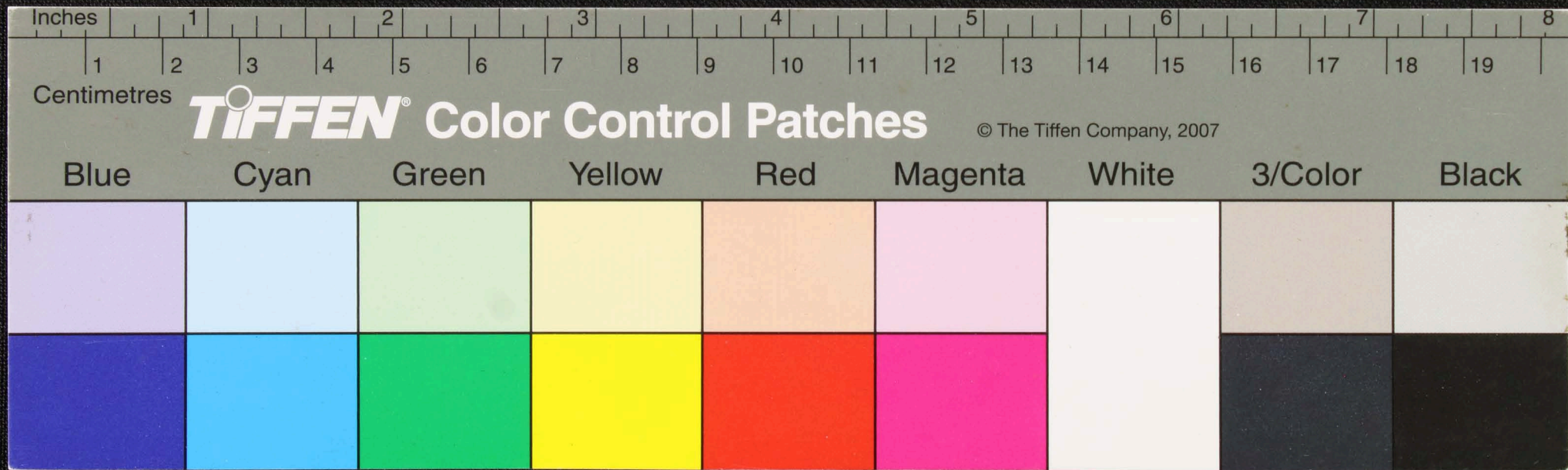
Handwritten text in an ancient script, likely Tamil, on a palm leaf manuscript. The text is arranged in approximately four lines across the length of the leaf. A small circular hole is visible near the center of the leaf, used for threading a cord to bind multiple leaves together.



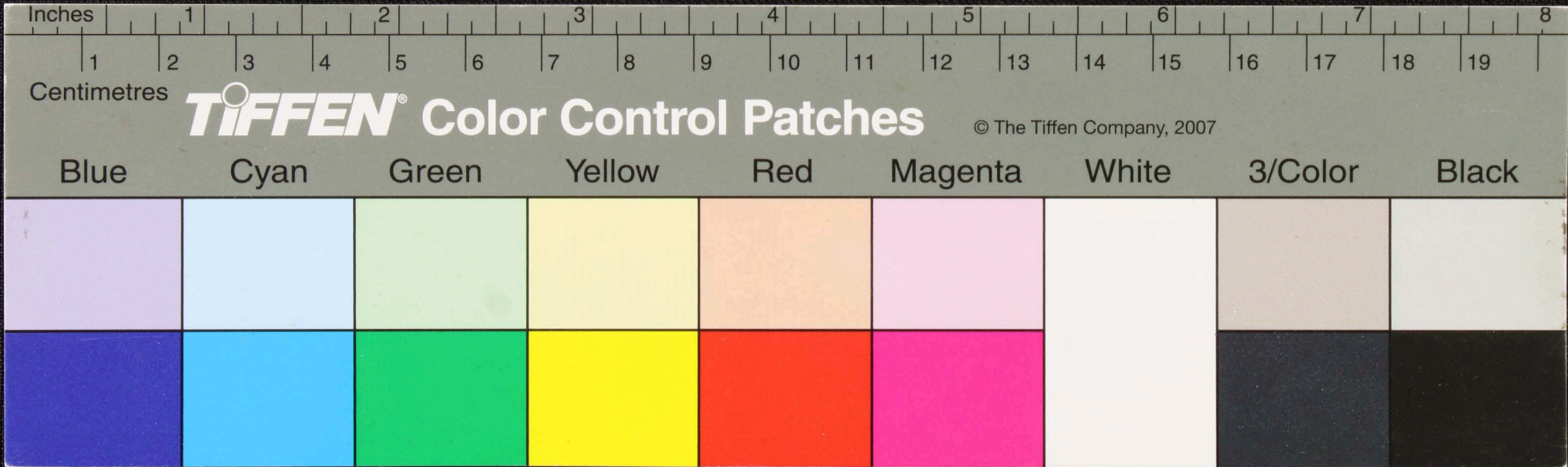
Handwritten text on a palm leaf manuscript strip, likely in an ancient script. The text is arranged in several lines across the length of the strip. There are two circular holes visible, which were traditionally used for threading a cord to bind multiple leaves together into a book format. The ink is dark and the leaf is aged and yellowed.



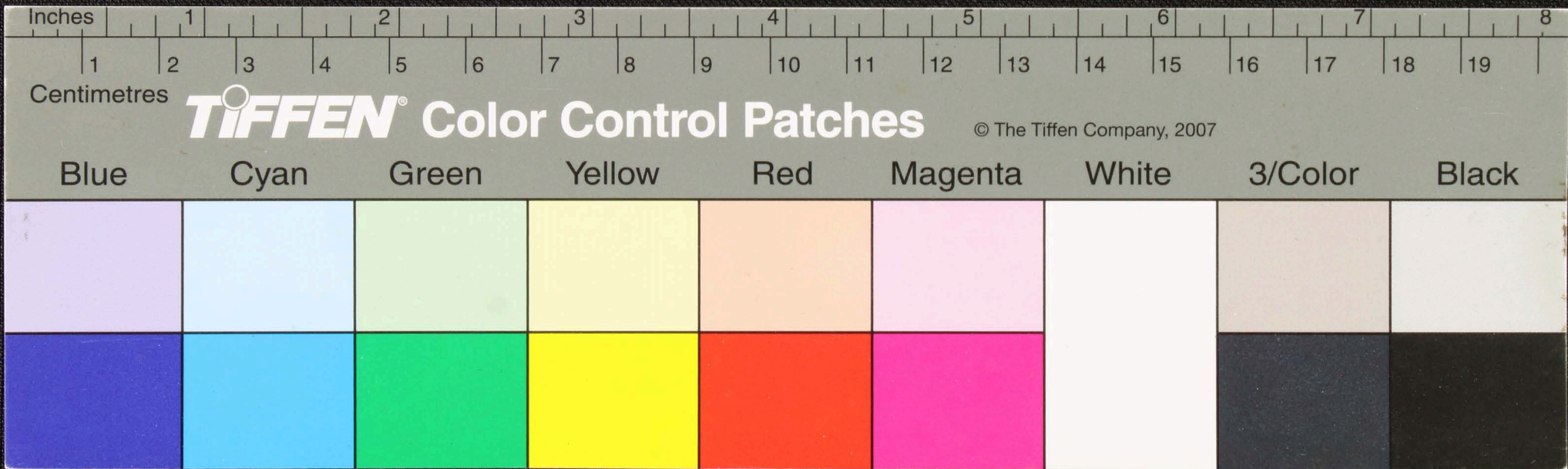
Handwritten text in Tamil script on a palm leaf manuscript. The text is arranged in approximately five horizontal lines across the length of the leaf. The script is finely etched into the surface of the dried leaf. There are two distinct circular holes along the left edge of the leaf, which are traditional features used for threading a cord to bind multiple leaves together into a book format.



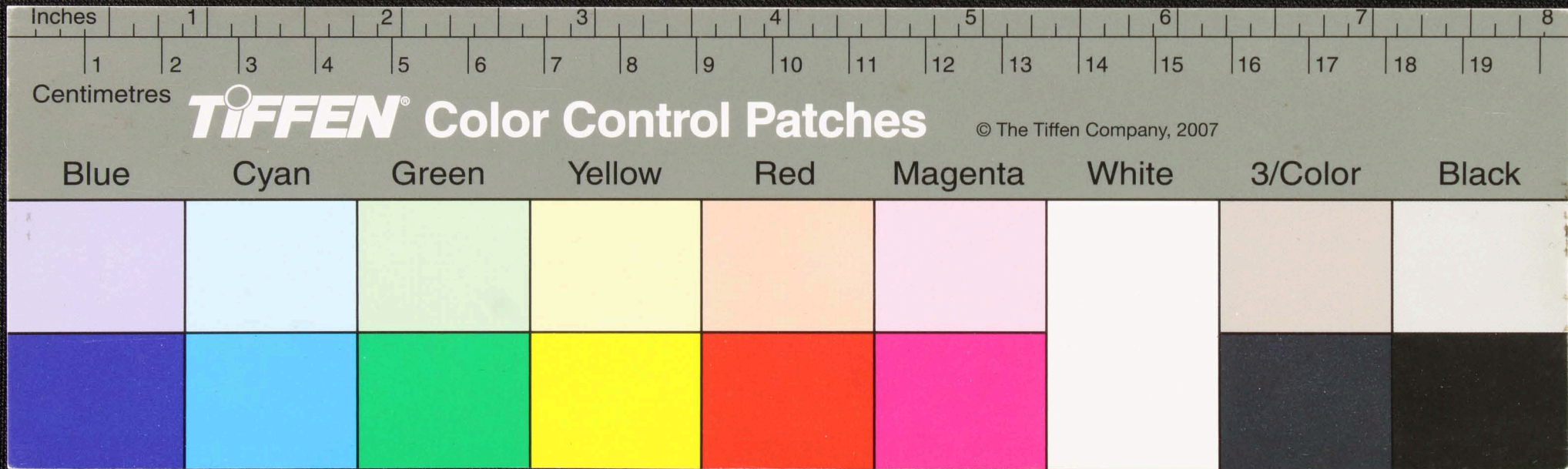
Handwritten text in Tamil script on a palm leaf manuscript. The text is arranged in approximately five horizontal lines. A small circular hole is visible in the center of the leaf, used for threading a cord to bind multiple leaves together. The script is finely etched into the surface of the dried leaf.



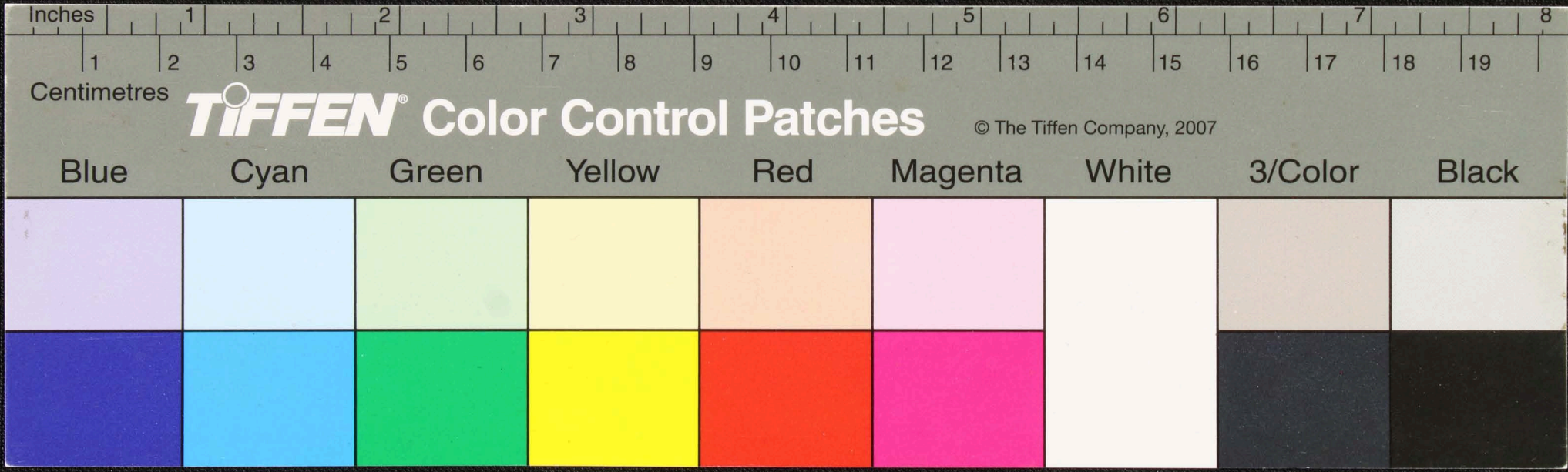
Handwritten text in Tamil script on a palm leaf manuscript. The text is arranged in approximately five horizontal lines. A small circular hole is visible in the center of the leaf, used for threading a cord to bind multiple leaves together. The script is finely etched into the surface of the dried leaf.



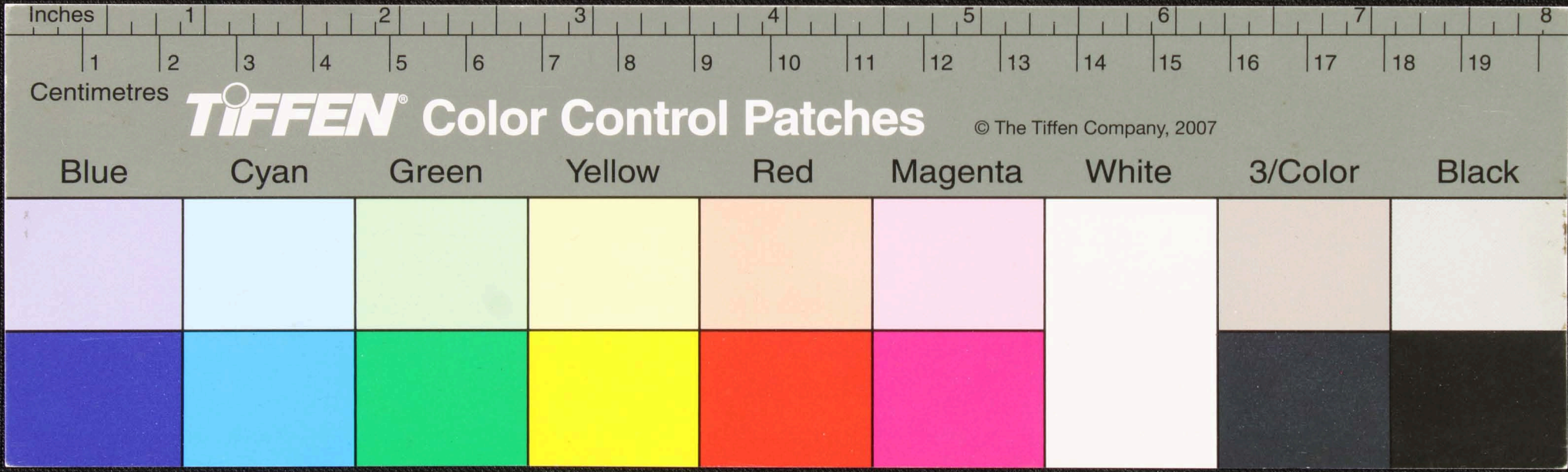
Handwritten text in Tamil script on a palm leaf manuscript. The text is arranged in approximately four horizontal lines. The script is finely etched into the surface of the dried leaf. A small circular hole is visible near the center of the leaf, which is a traditional feature for threading a cord to bind multiple leaves together into a book format.



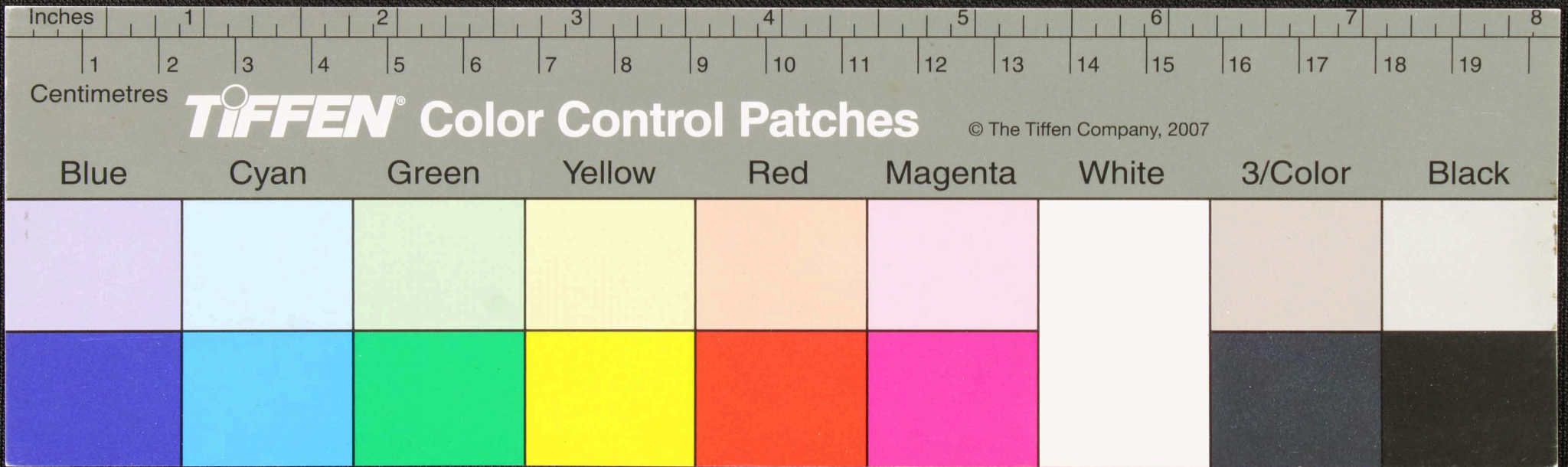
Handwritten text in Tamil script on a palm leaf manuscript. The text is arranged in approximately five horizontal lines. A small circular hole is visible in the center of the leaf, used for threading a cord to bind multiple leaves together. The script is finely etched into the surface of the dried leaf.



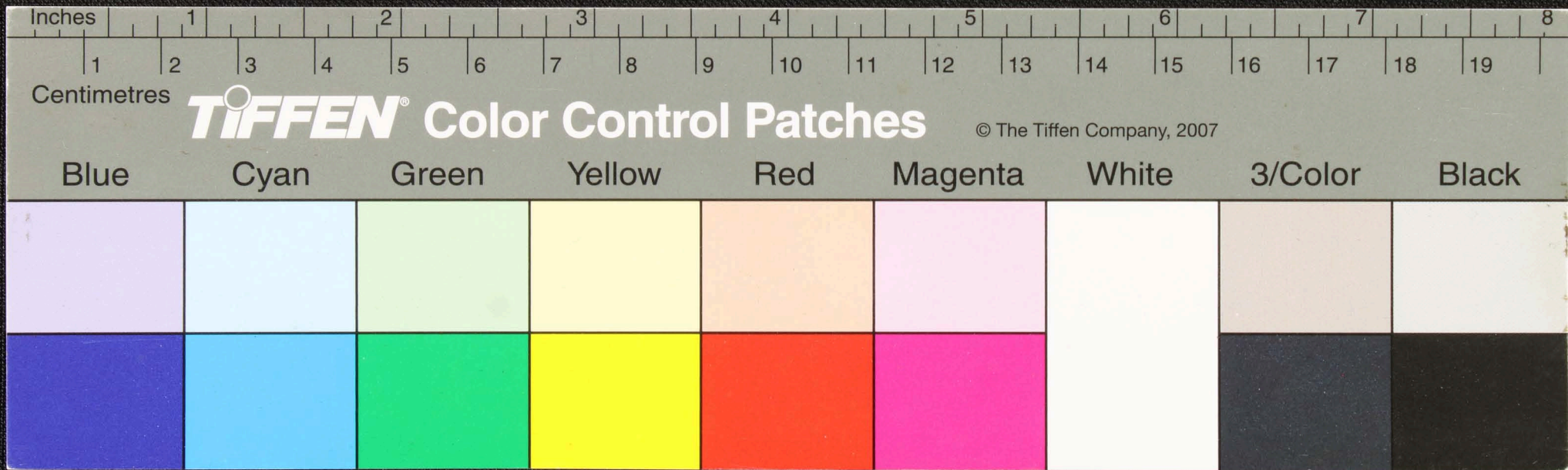
Handwritten text in Tamil script on a palm leaf manuscript. The text is arranged in several lines across the length of the leaf. Two circular holes are visible, which were traditionally used for threading a cord to bind multiple leaves together. The script is finely etched into the surface of the dried leaf.



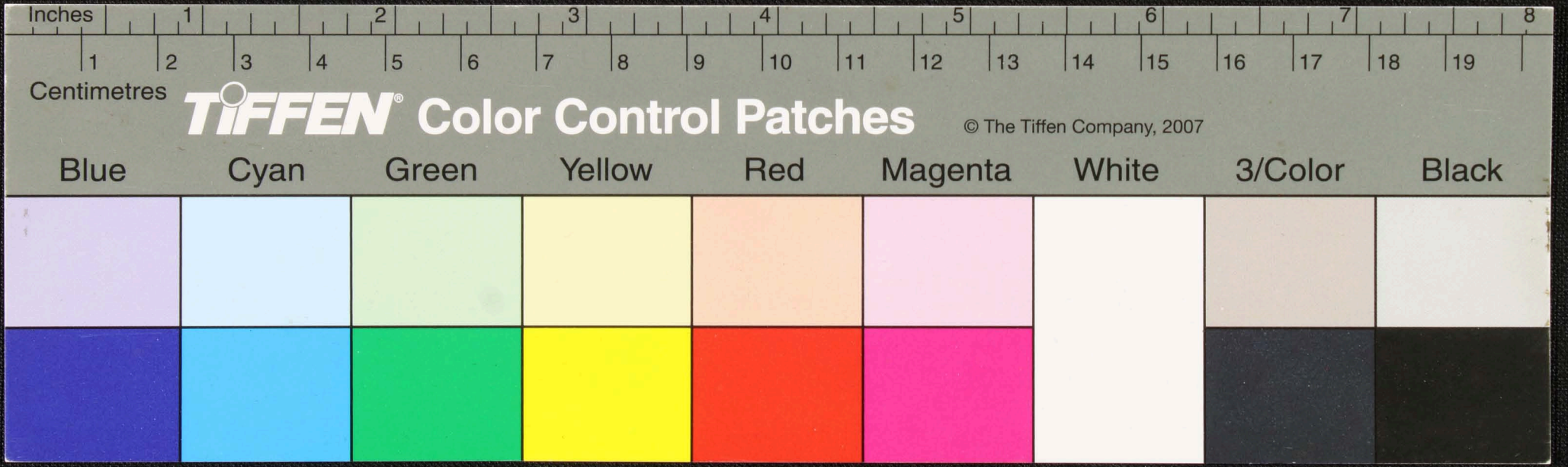
Handwritten text in Tamil script on a palm leaf manuscript. The text is arranged in approximately four horizontal lines. The script is finely etched into the surface of the dried leaf. Two circular holes are visible, which were traditionally used for threading a cord to bind multiple leaves together into a book format.



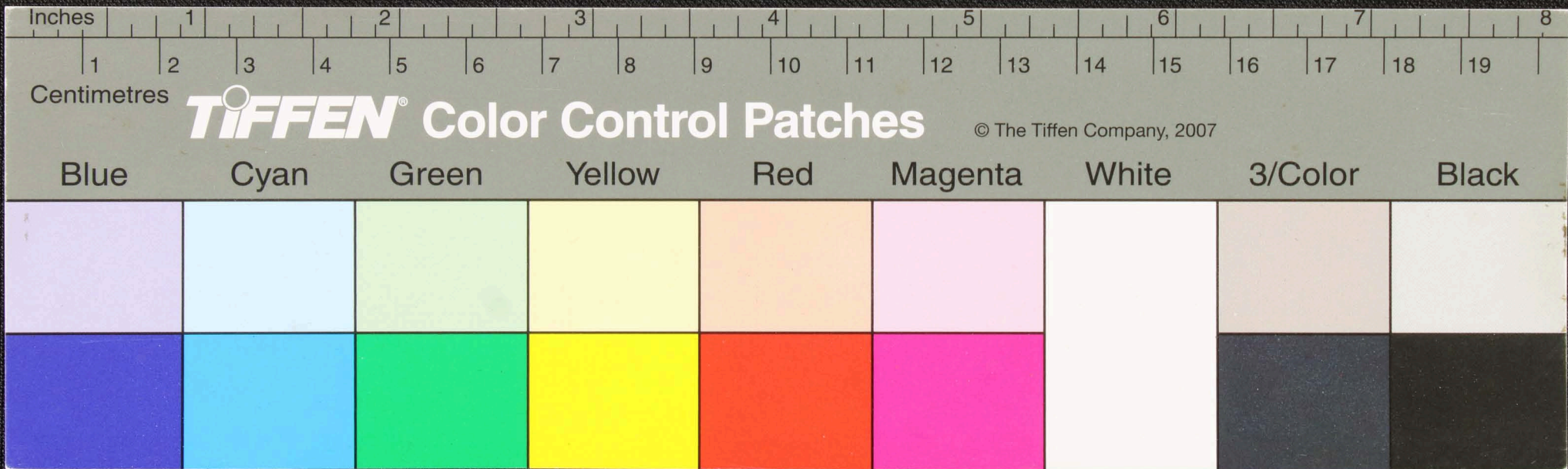
Handwritten text in Tamil script on a palm leaf manuscript. The text is arranged in approximately four horizontal lines. The first line contains the characters 'செய்யுள்' (Seyyul) and 'பாட்டு' (Paatu). The second line contains 'பாட்டு' (Paatu) and 'பாட்டு' (Paatu). The third line contains 'பாட்டு' (Paatu) and 'பாட்டு' (Paatu). The fourth line contains 'பாட்டு' (Paatu) and 'பாட்டு' (Paatu). There are two circular holes visible on the leaf, one near the center and one near the right edge.



Handwritten text in Tamil script on a palm leaf manuscript. The text is arranged in approximately five lines across the length of the leaf. There are three circular holes visible along the top edge, which were traditionally used for threading a cord to bind multiple leaves together into a book format.



Handwritten text in Tamil script on a palm leaf manuscript. The text is arranged in several lines across the length of the leaf. A small circular hole is visible near the center of the leaf. The script appears to be a form of historical Tamil, possibly including religious or administrative content.



Handwritten text in an ancient script, possibly Tamil, on a palm leaf manuscript. The text is arranged in approximately five horizontal lines. There are two circular holes visible on the leaf, one near the center and another towards the right edge. The leaf is yellowish-brown and shows signs of age and wear.

