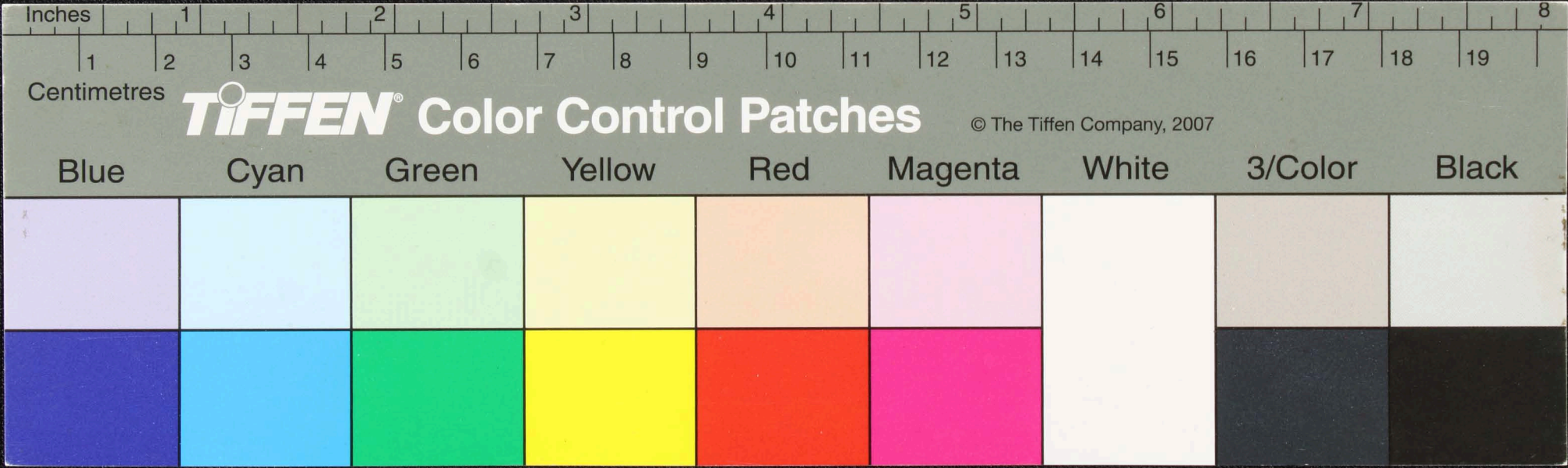
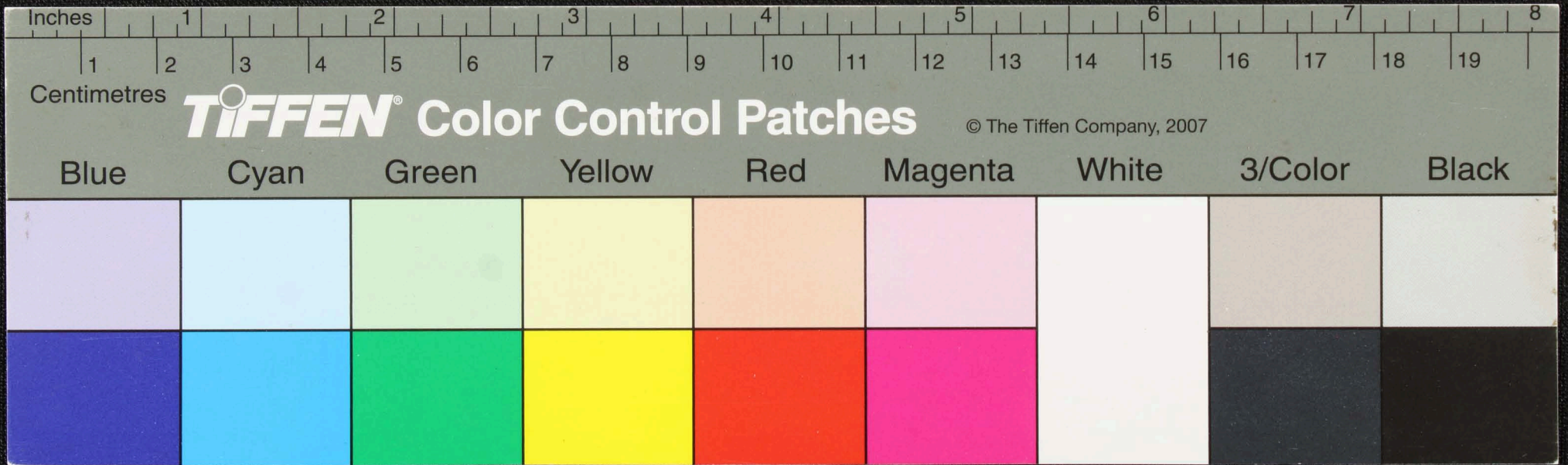


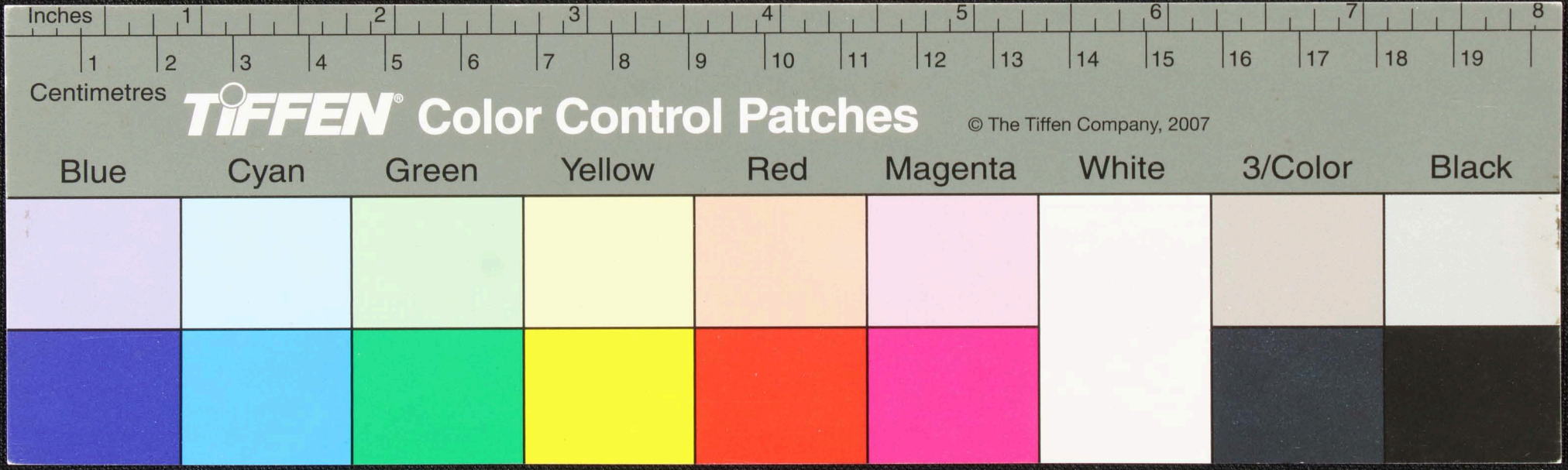
1000
 1000
 1000
 2

சான்றிதழ் உட்காண்பதற்காக
 சான்றிதழ் சிவசுந்தரபெரியாள்
 பிள்ளைக்குரிய சான்றிதழ்
 பெரியாள் பிள்ளைக்குரிய சான்றிதழ்
 சான்றிதழ் பிள்ளைக்குரிய சான்றிதழ்
 சான்றிதழ் பிள்ளைக்குரிய சான்றிதழ்
 சான்றிதழ் பிள்ளைக்குரிய சான்றிதழ்

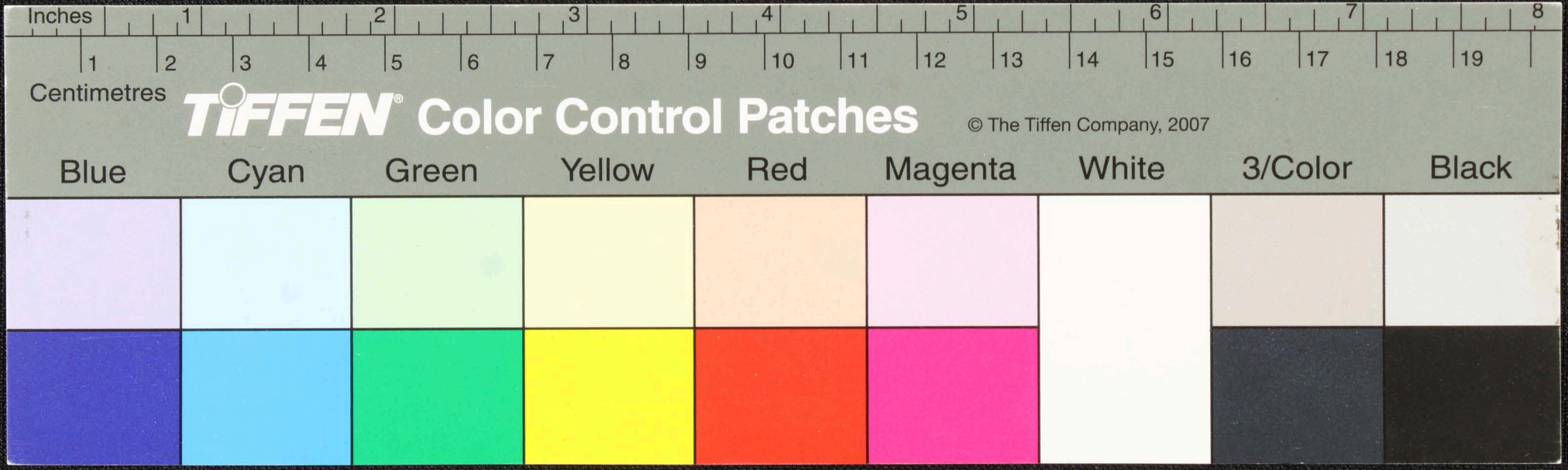




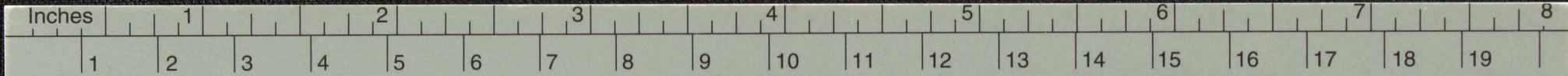
Handwritten text in Tamil script on a palm leaf manuscript. The text is arranged in approximately 10 horizontal lines. On the left side of the leaf, there is a vertical column of text: சீட்டு, னவசு, புவலகம். The main body of text consists of several lines of characters, some of which are obscured by two circular holes used for binding. The script is a traditional form of the Tamil language.



Handwritten Tamil script on a palm leaf manuscript. The text is arranged in approximately 10 horizontal lines across the length of the leaf. Two circular holes are visible, which were traditionally used for threading a cord to bind multiple leaves together into a book format.



Handwritten text in Tamil script on a palm leaf manuscript. The text is arranged in two columns. The right column begins with the word 'யுககாமம்' (Yugakamam) at the top. The script is densely packed and covers most of the leaf's surface.



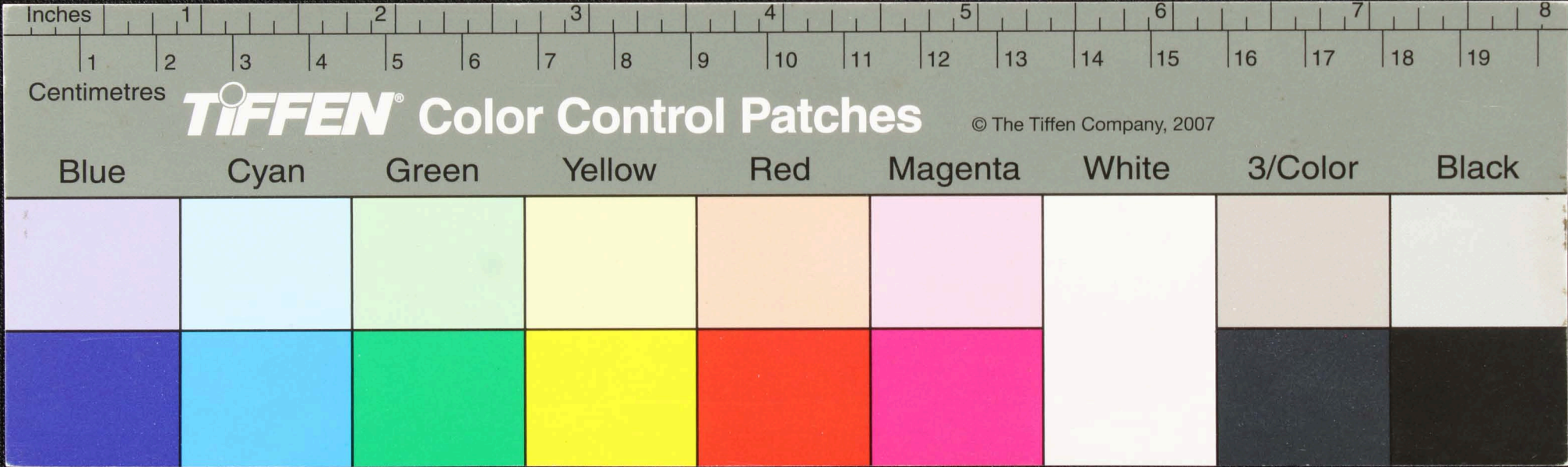
Centimetres

TIFFEN Color Control Patches

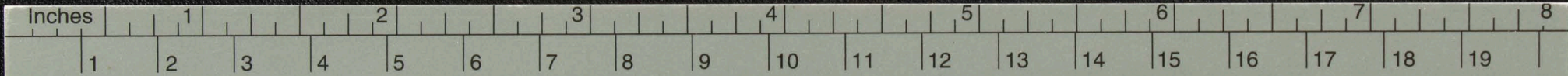
© The Tiffen Company, 2007

Blue	Cyan	Green	Yellow	Red	Magenta	White	3/Color	Black

Handwritten Tamil script on a palm leaf manuscript. The text is arranged in approximately 10 horizontal lines. Two circular holes are visible, used for binding multiple leaves together. The script is a form of classical Tamil, likely containing a religious or philosophical text.



Handwritten Tamil script on a palm leaf manuscript. The text is arranged in two columns. The left column contains approximately 8 lines of text, and the right column contains approximately 3 lines. Two circular holes are visible on the leaf, used for binding multiple leaves together.



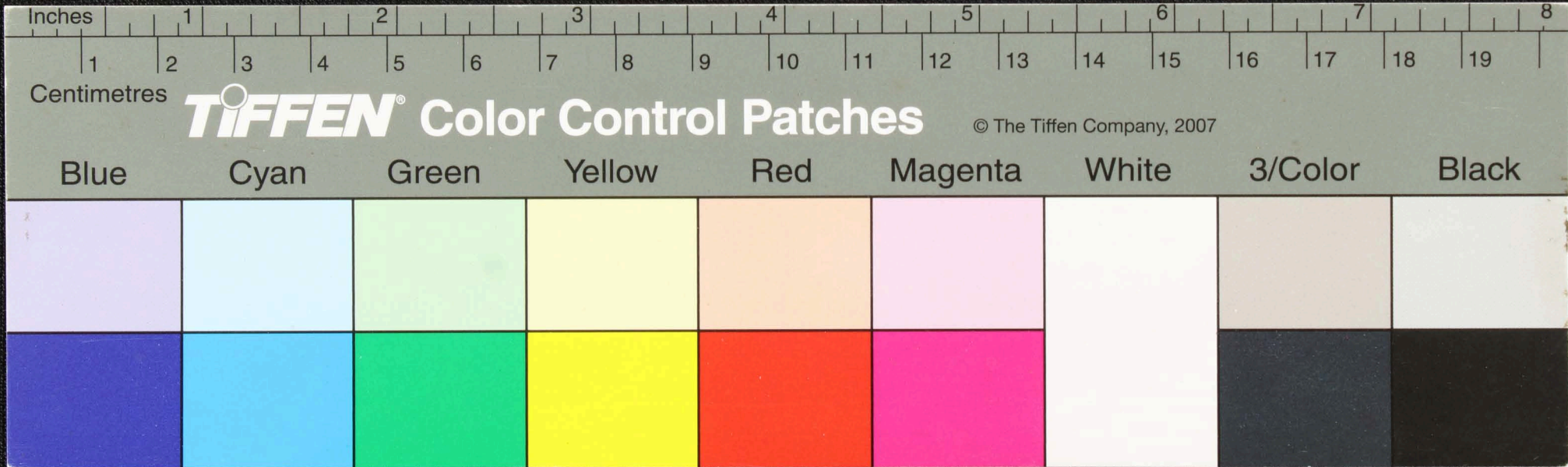
Centimetres

TIFFEN Color Control Patches

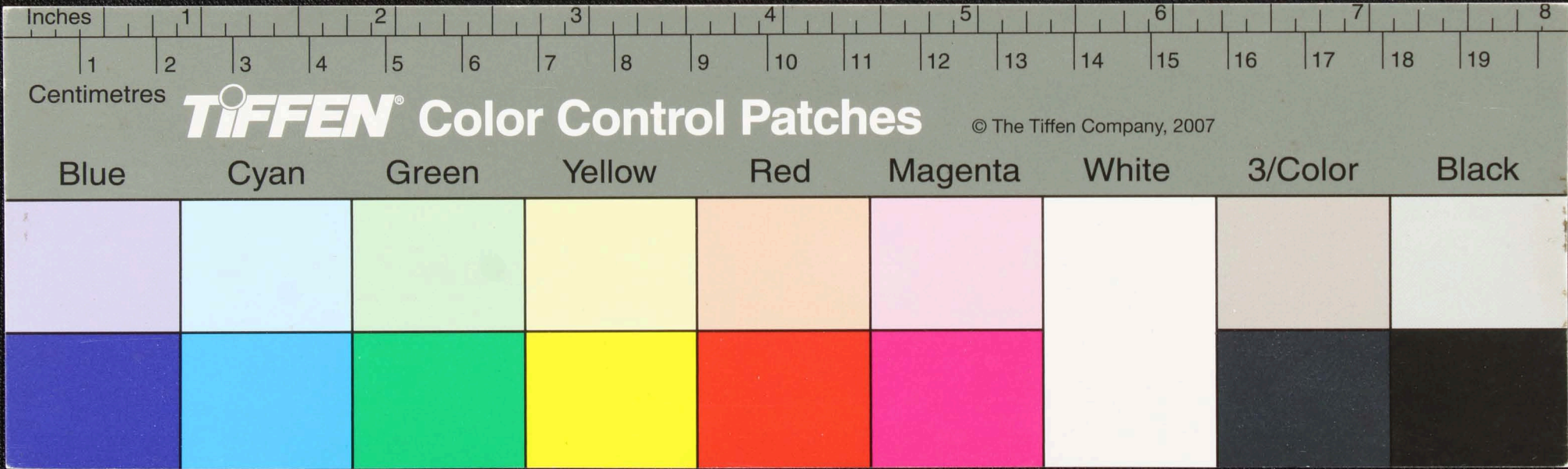
© The Tiffen Company, 2007

Blue	Cyan	Green	Yellow	Red	Magenta	White	3/Color	Black
[Blue patch]	[Cyan patch]	[Green patch]	[Yellow patch]	[Red patch]	[Magenta patch]	[White patch]	[3/Color patch]	[Black patch]
[Dark Blue patch]	[Dark Cyan patch]	[Dark Green patch]	[Dark Yellow patch]	[Dark Red patch]	[Dark Magenta patch]	[Dark White patch]	[Dark 3/Color patch]	[Dark Black patch]

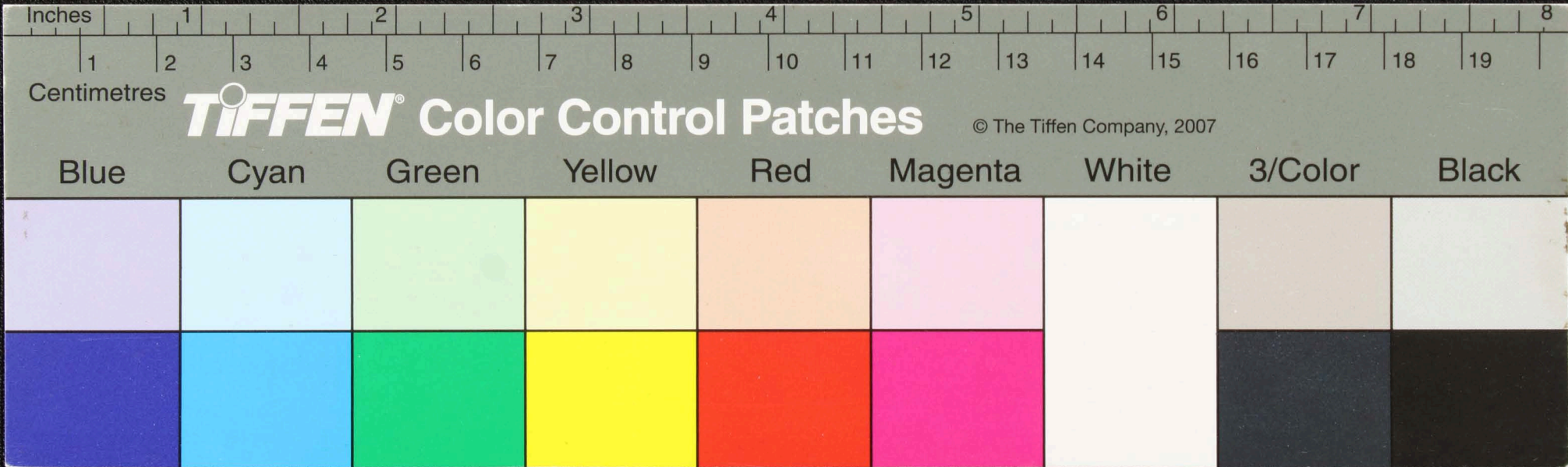
Handwritten Tamil script on a palm leaf manuscript. The text is arranged in approximately 10 horizontal lines. Two circular holes are visible, which were traditionally used for threading a cord to bind multiple leaves together. The script is densely packed and appears to be a form of classical or historical Tamil.



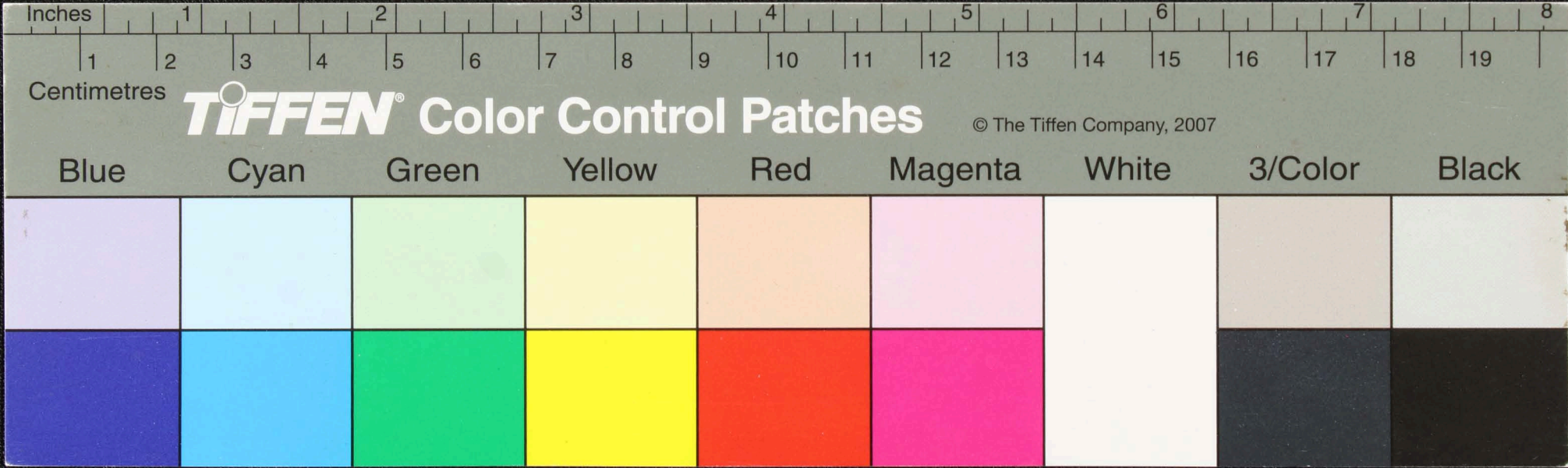
Handwritten text in Tamil script on a palm leaf manuscript. The text is arranged in approximately 10 horizontal lines. On the left side, there is a small vertical inscription that reads 'ய சி'.



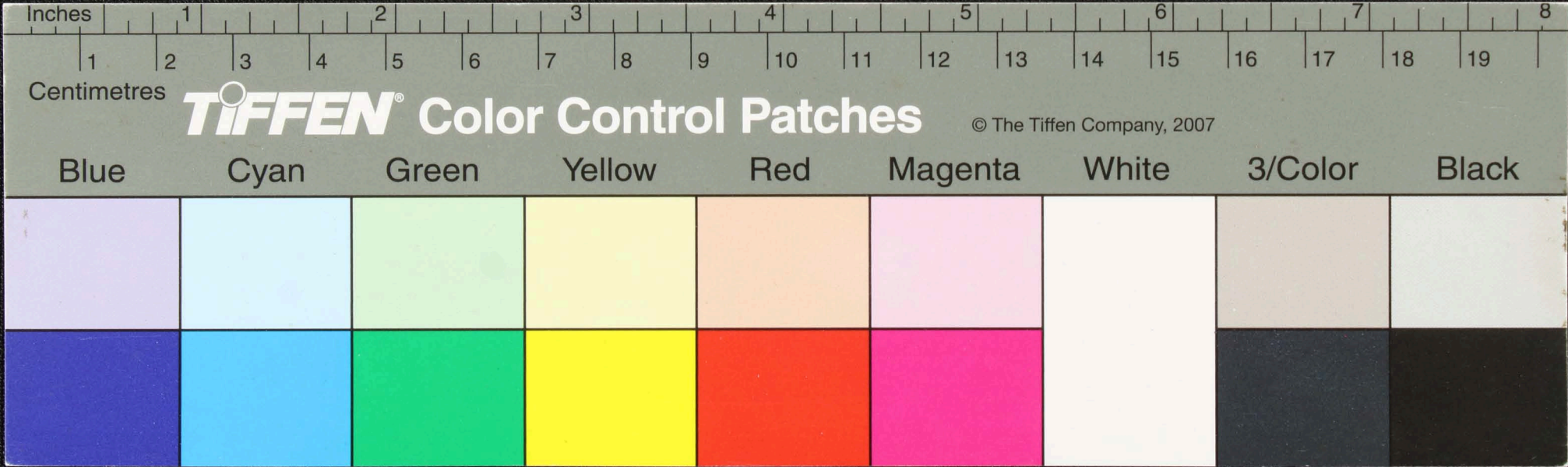
Handwritten text in Tamil script on a palm leaf manuscript. The text is arranged in approximately 10 horizontal lines. Two circular holes are visible, used for binding multiple leaves together. The script is a traditional form of the Tamil language.



Handwritten Tamil script on a palm leaf manuscript. The text is arranged in approximately 10 horizontal lines across the length of the leaf. There are two distinct circular holes on the left side, which are traditional features for threading a cord to bind multiple leaves together into a book.



லோகநாபுருவிமிதிராநாடு லோகநாபுரு
 லோகநாபுரு வெளிமருதிசுதாநாடு கடுபு
 குதினலோகநாபுருயுமொருநாடு நியுமொருநாடு
 வகுமட்டு மவசுதாநாடு லுமருதி
 வயகுமட்டு விவலோகநாபுருயுமொரு
 வெளிமருதி மருமொருநாடு விவரு
 மொருநாடு மொருநாடு மொருநாடு
 மருமொருநாடு மொருநாடு மொருநாடு



மயமகாநாடு...
 வேளநாடு...
 உலகநாடு...
 பாடு...
 உலகநாடு...
 மயமகாநாடு...
 உலகநாடு...
 மயமகாநாடு...

