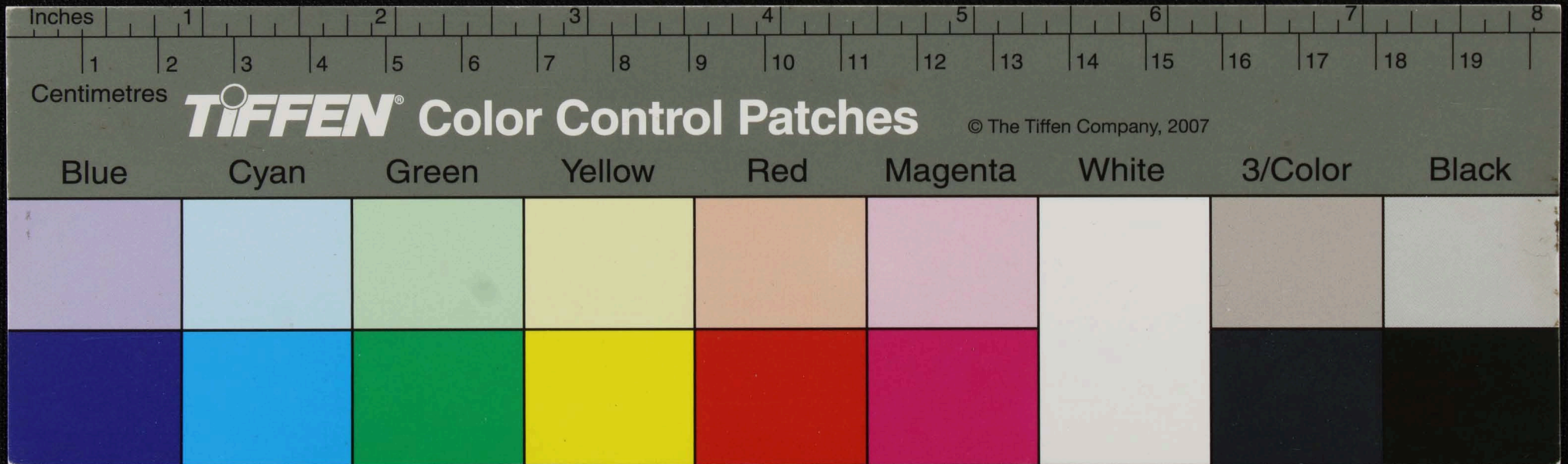
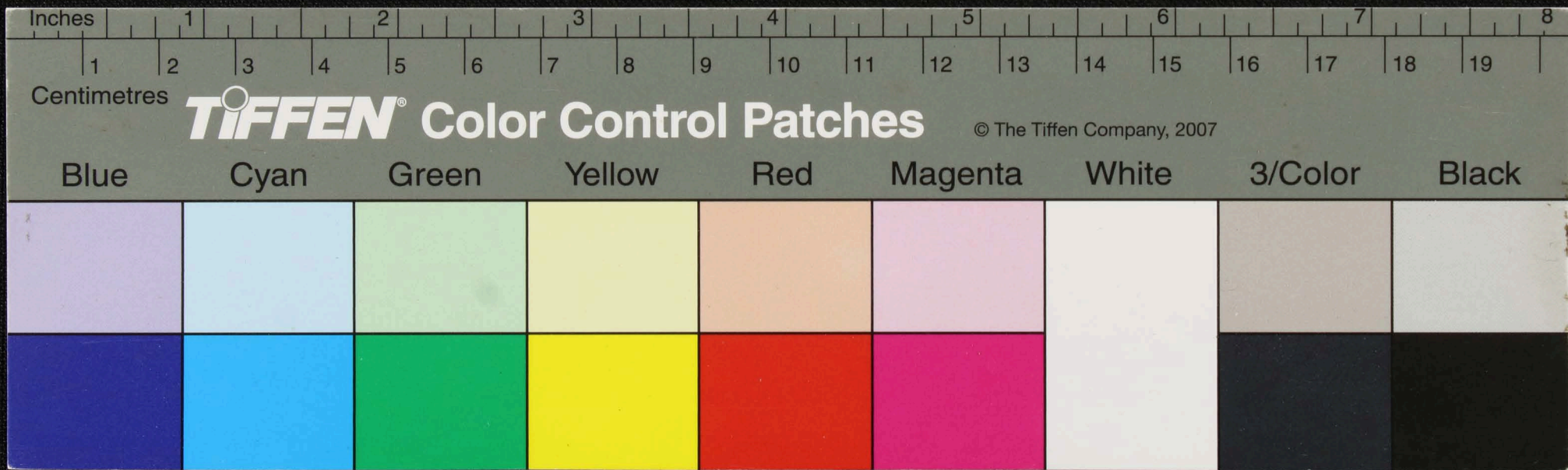
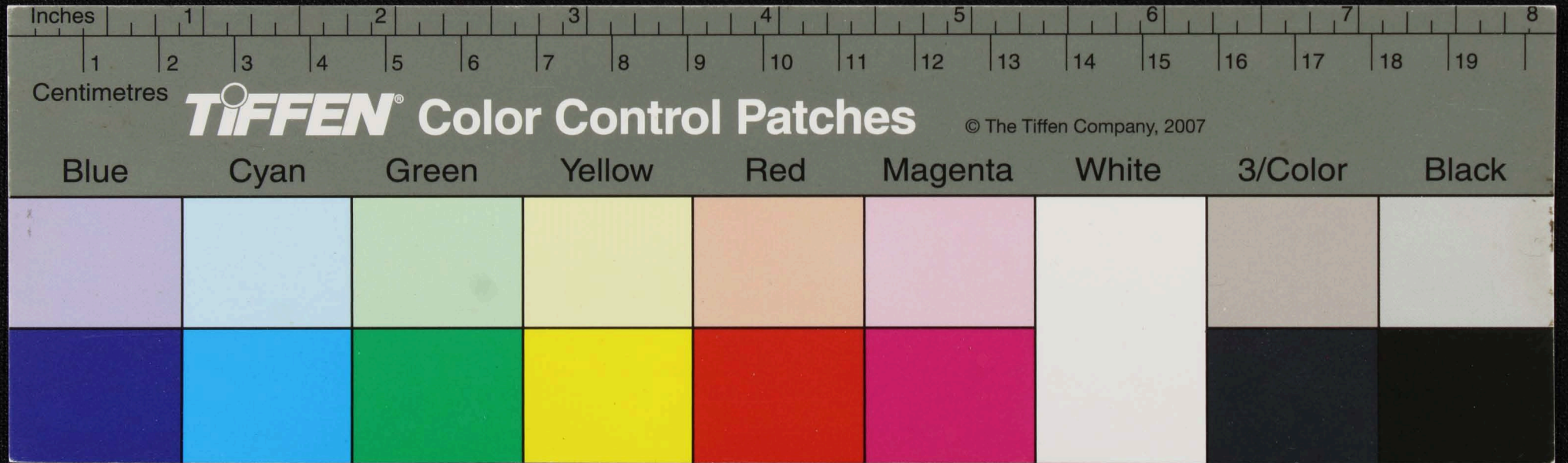


Handwritten text in an ancient script, possibly Tamil, on a palm leaf manuscript. The text is arranged in several lines across the length of the leaf. A small black circular mark is visible on the second line of text.

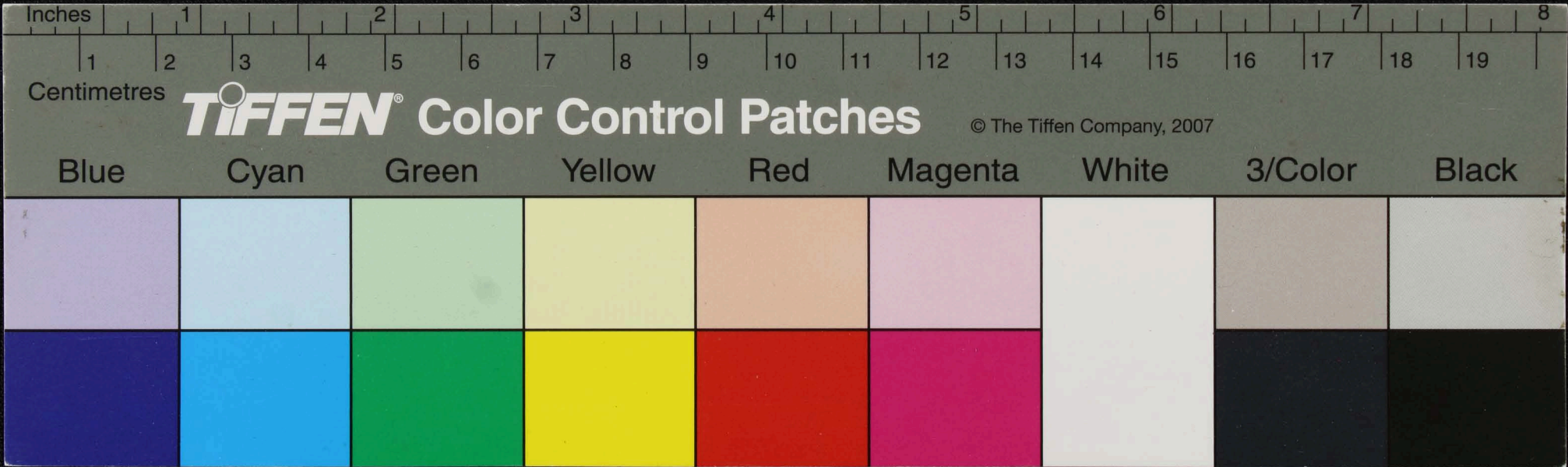




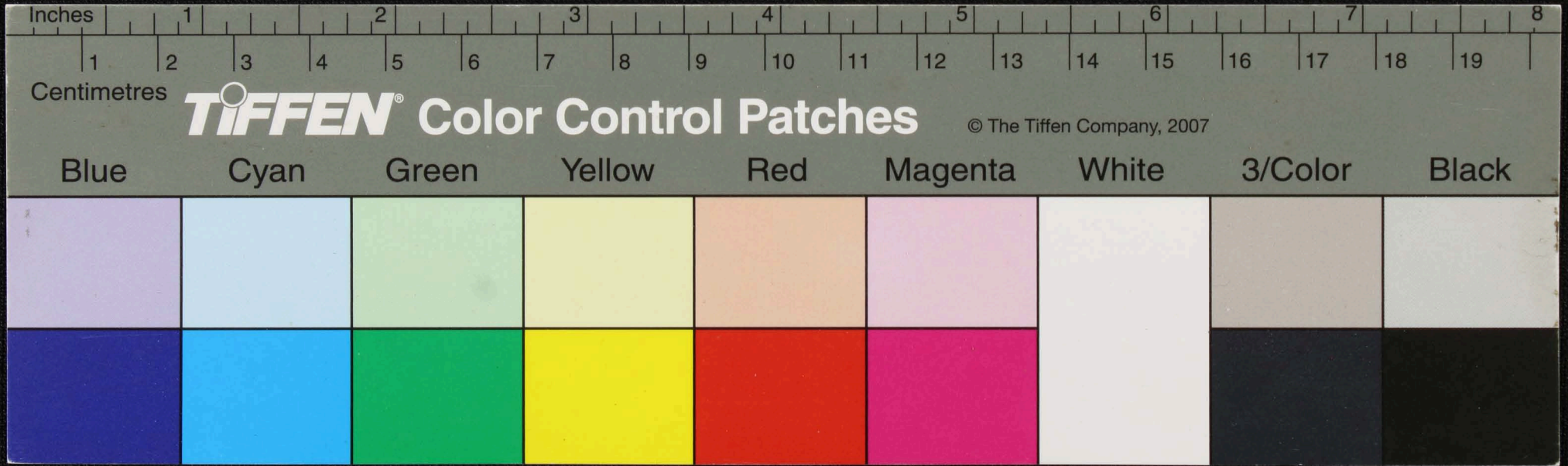
Handwritten text in Tamil script on a palm leaf manuscript. The text is arranged in four horizontal lines. A small circular hole is visible in the center of the leaf, used for binding multiple leaves together. The script is finely etched into the surface of the dried leaf.



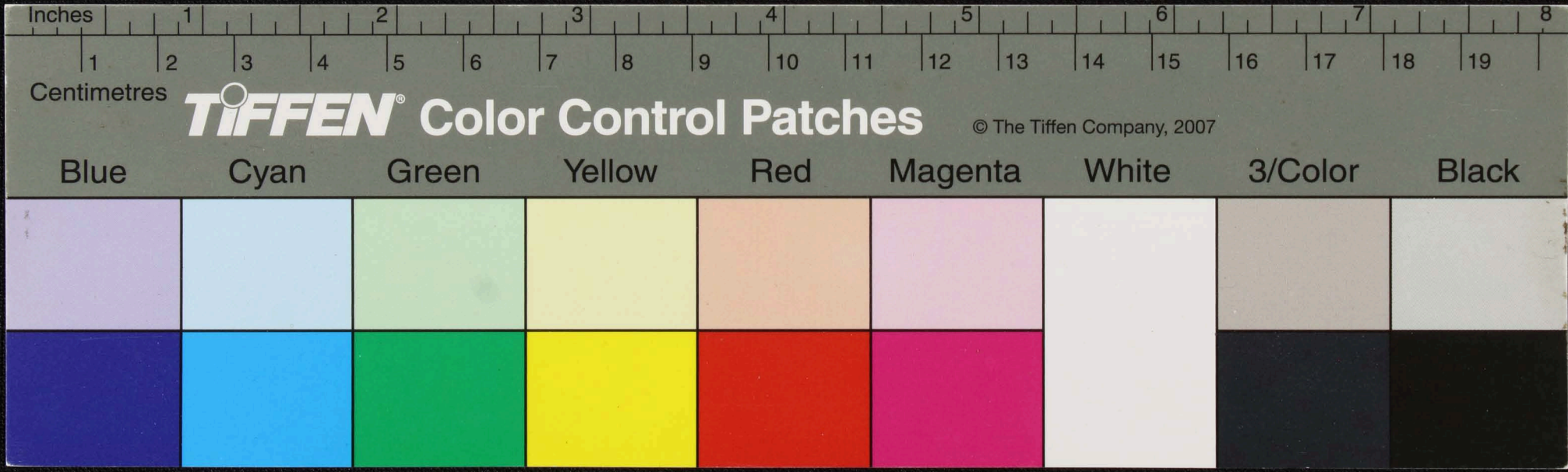
சூ.க.வி.ச.ம.யி.சி. ————— சூ.க.வி.ச.ம.யி.சி. க.க.வி.ச.ம.யி.சி. க.க.வி.ச.ம.யி.சி. க.க.வி.ச.ம.யி.சி.
 சூ.க.வி.ச.ம.யி.சி. க.க.வி.ச.ம.யி.சி. க.க.வி.ச.ம.யி.சி. க.க.வி.ச.ம.யி.சி. க.க.வி.ச.ம.யி.சி. க.க.வி.ச.ம.யி.சி.
 க.க.வி.ச.ம.யி.சி. க.க.வி.ச.ம.யி.சி. க.க.வி.ச.ம.யி.சி. க.க.வி.ச.ம.யி.சி. க.க.வி.ச.ம.யி.சி. க.க.வி.ச.ம.யி.சி.
 க.க.வி.ச.ம.யி.சி. க.க.வி.ச.ம.யி.சி. க.க.வி.ச.ம.யி.சி. க.க.வி.ச.ம.யி.சி. க.க.வி.ச.ம.யி.சி. க.க.வி.ச.ம.யி.சி.



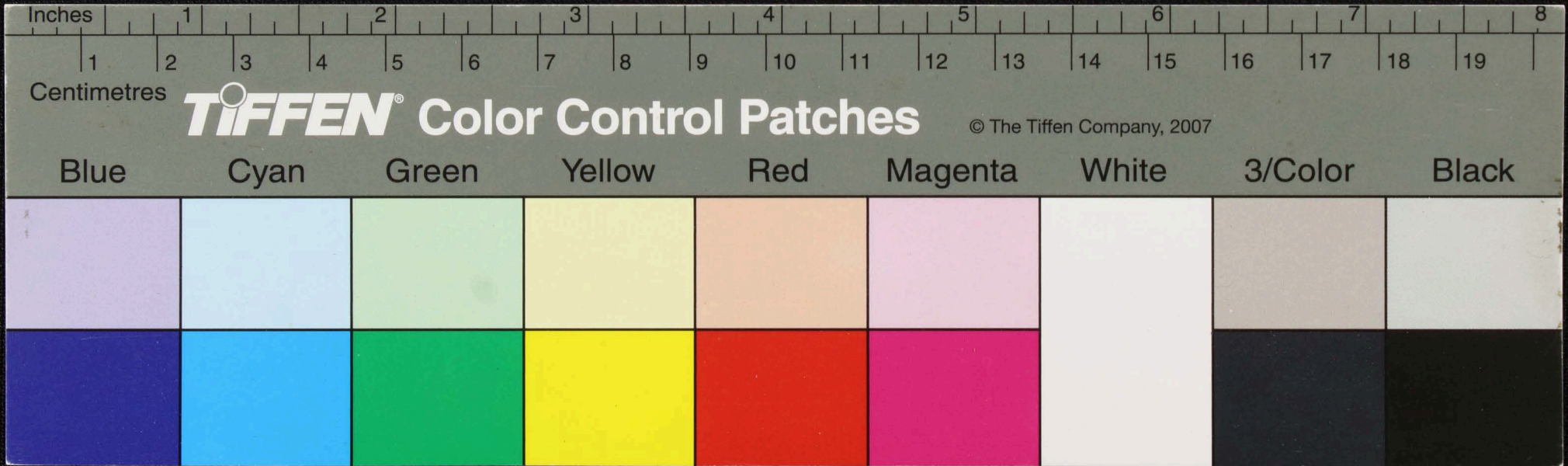
Handwritten text in Tamil script on a palm leaf manuscript. The text is arranged in three horizontal lines. A circular hole is visible in the center of the leaf, used for binding multiple leaves together. The script is finely etched into the surface of the dried leaf.



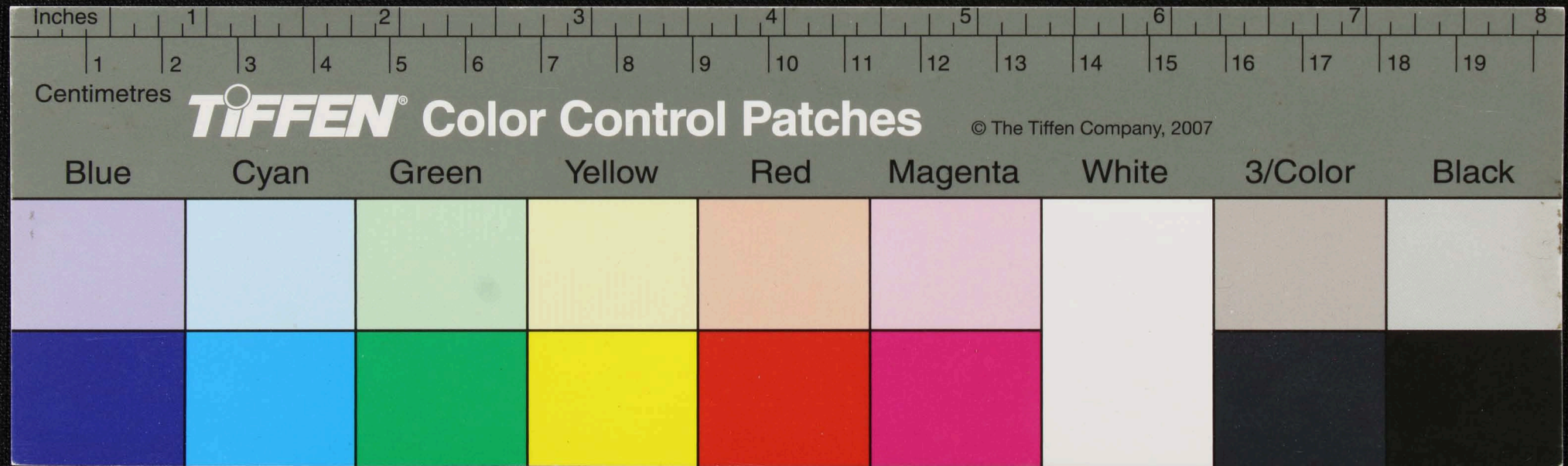
Handwritten text in Tamil script on a palm leaf manuscript. The text is arranged in four horizontal lines. A circular hole is visible in the center of the leaf, used for binding multiple leaves together. The script is finely etched into the surface of the dried leaf.



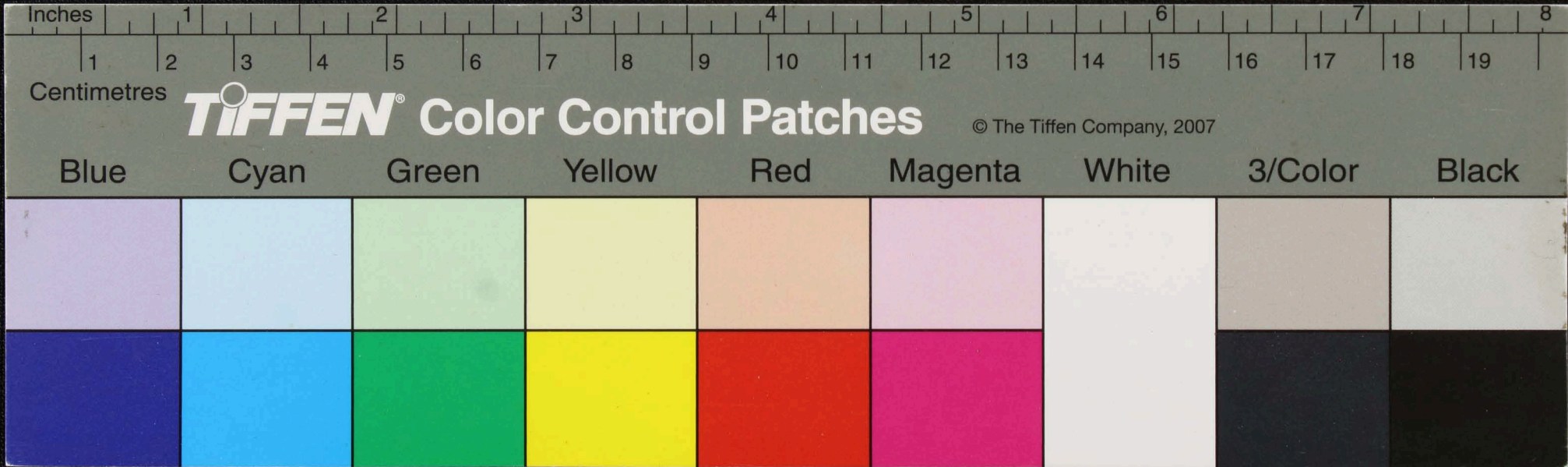
Handwritten text in Tamil script on a palm leaf manuscript. The text is arranged in approximately four horizontal lines. A small circular hole is visible in the center of the leaf, used for binding multiple leaves together. The script is finely etched into the surface of the dried leaf.



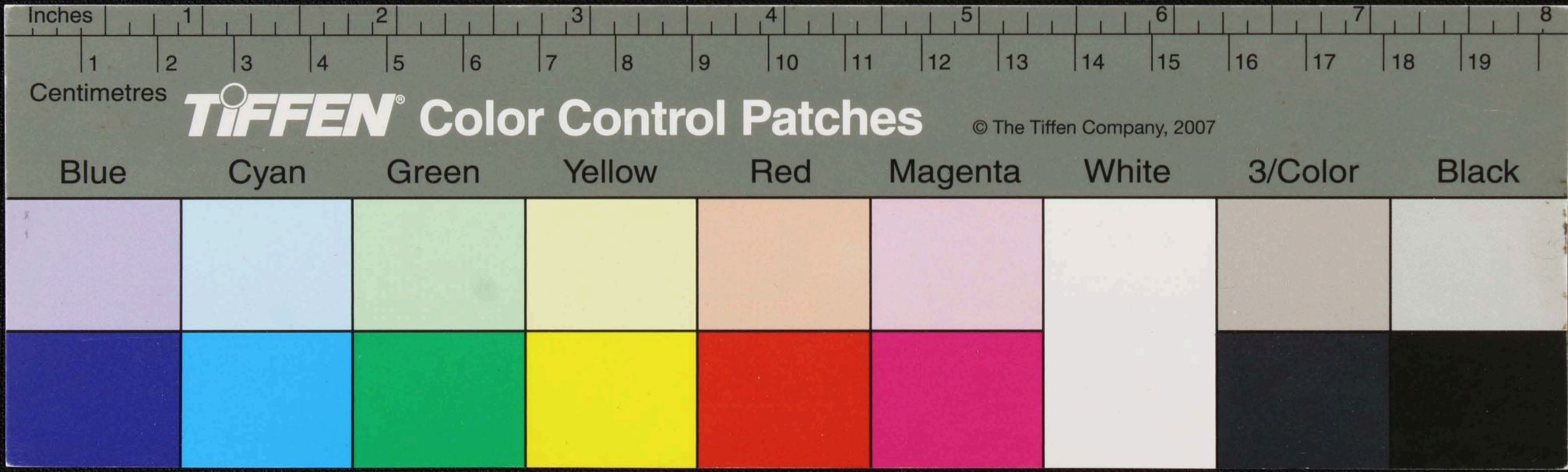
Handwritten text in Tamil script on a palm leaf manuscript. The text is arranged in approximately four horizontal lines. A small, dark circular hole is visible in the center of the leaf, which is a traditional feature for threading a cord to bind multiple leaves together. The script is finely etched into the surface of the dried leaf.



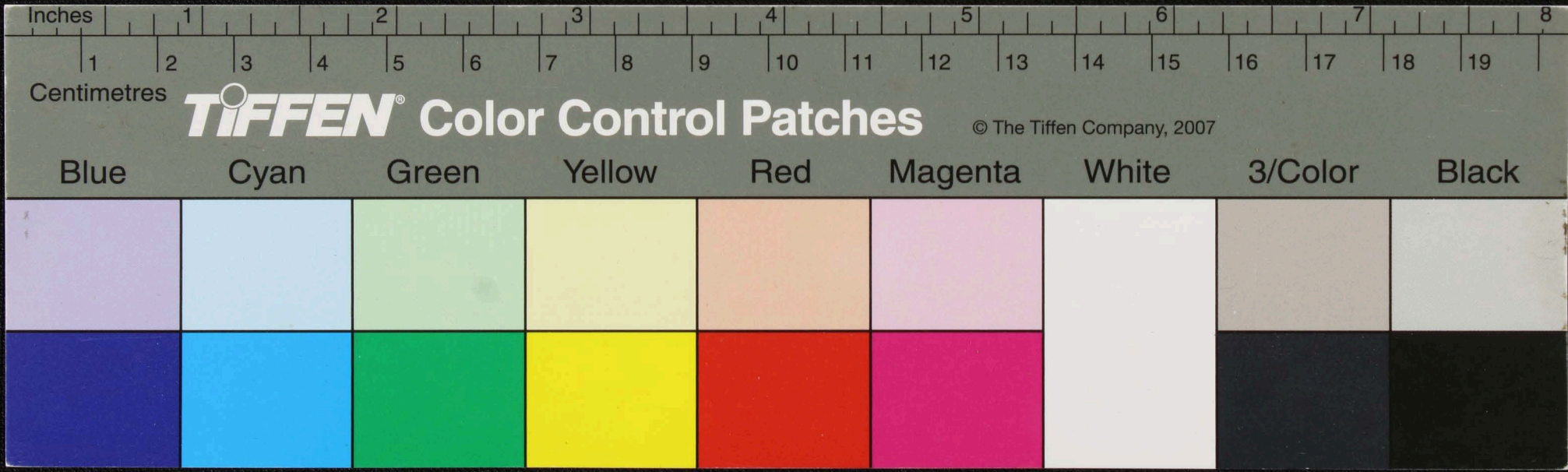
Handwritten text in Tamil script on a palm leaf manuscript. The text is arranged in approximately four horizontal lines. A small circular hole is visible in the center of the leaf, used for binding multiple leaves together. The script is finely etched into the surface of the dried leaf.

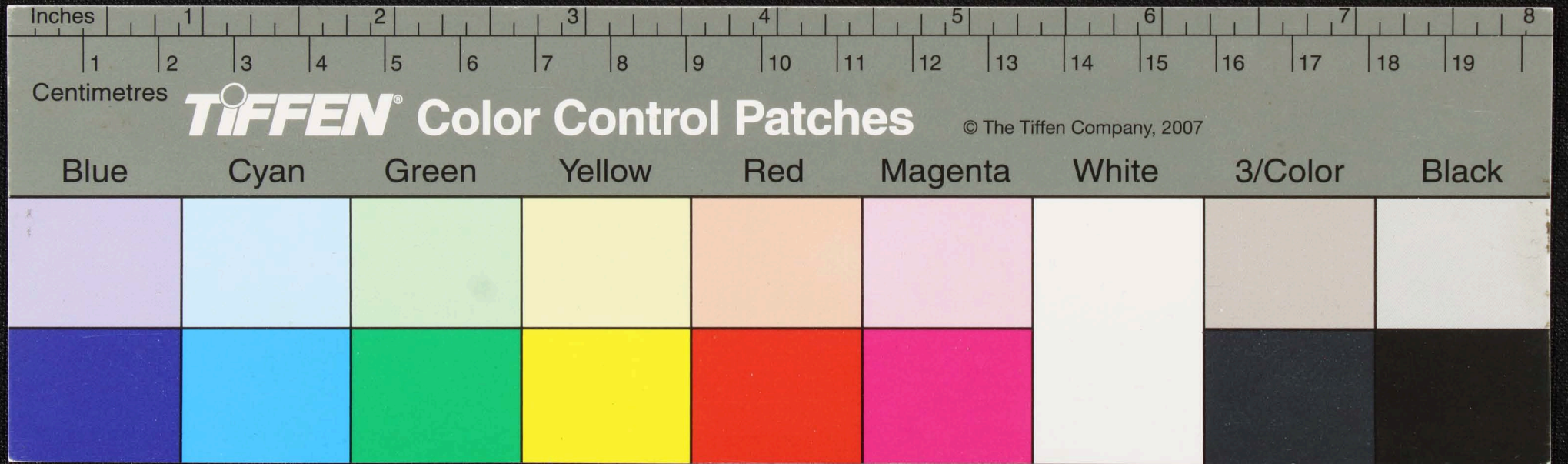


Handwritten text in Tamil script on a palm leaf manuscript. The text is arranged in three lines and includes a central circular hole. The script is finely etched into the surface of the leaf.



Handwritten text in Tamil script on a palm leaf manuscript. The text is arranged in four horizontal lines. A circular hole is visible in the center of the leaf, used for binding multiple leaves together. The script is finely etched into the surface of the dried leaf.





Inches

1

2

3

4

5

6

7

8

1

2

3

4

5

6

7

8

9

10

11

12

13

14

15

16

17

18

19

Centimetres

TIFFEN Color Control Patches

© The Tiffen Company, 2007

Blue

Cyan

Green

Yellow

Red

Magenta

White

3/Color

Black

