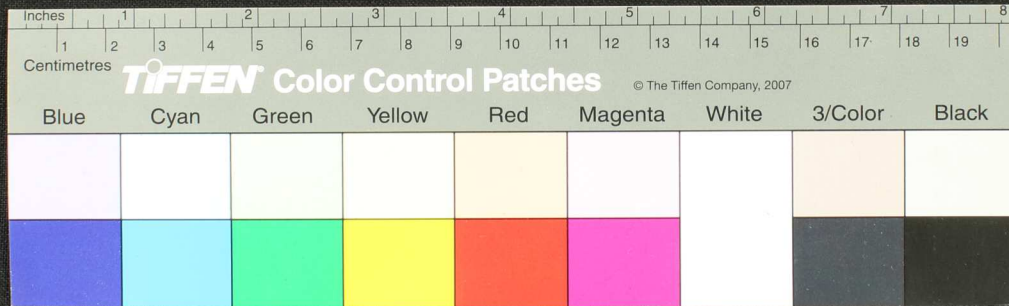






Handwritten text in Tamil script on a palm leaf manuscript. The text is arranged in several lines across the length of the leaf. A small circular hole is visible near the center of the leaf, which is a traditional feature for threading a cord to bind multiple leaves together. The script is finely etched into the surface of the dried leaf.

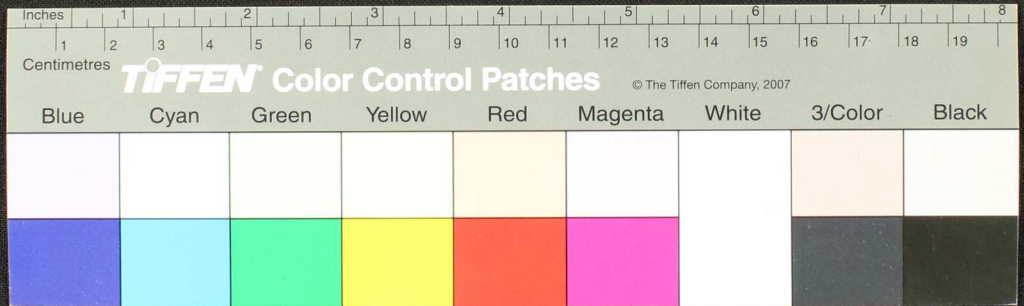






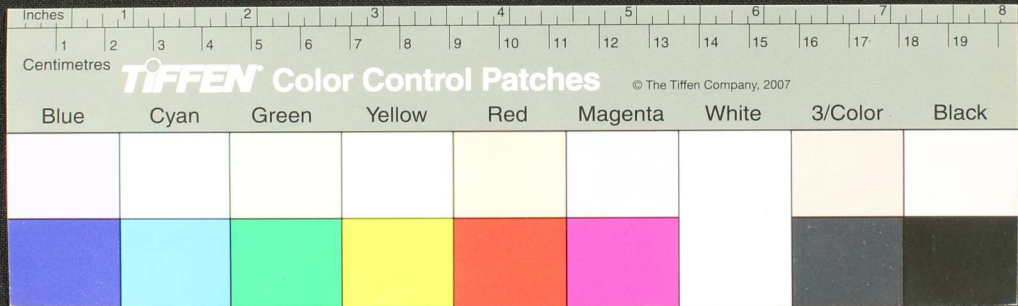


Handwritten Tamil script on a palm leaf manuscript strip. The text is arranged in approximately 10 horizontal lines. A circular hole is visible on the left side of the leaf, used for binding. The script is finely etched into the surface of the dried leaf.





Handwritten text in Tamil script on a palm leaf manuscript. The text is arranged in approximately 10 horizontal lines across the length of the leaf. A small circular hole is visible near the center of the leaf, which is a traditional feature for threading a cord to bind multiple leaves together. The script is finely etched into the surface of the dried leaf.









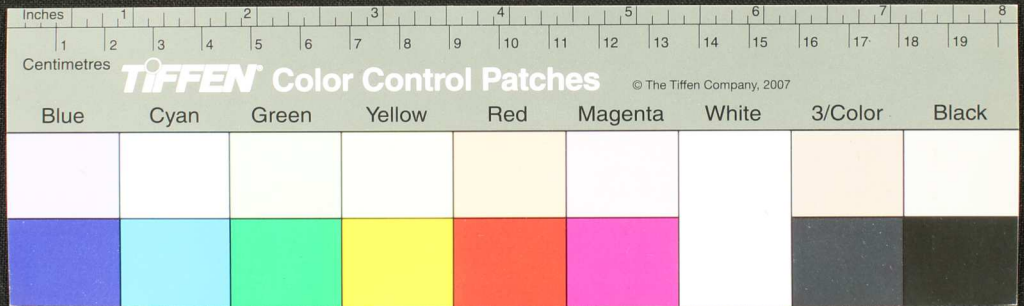






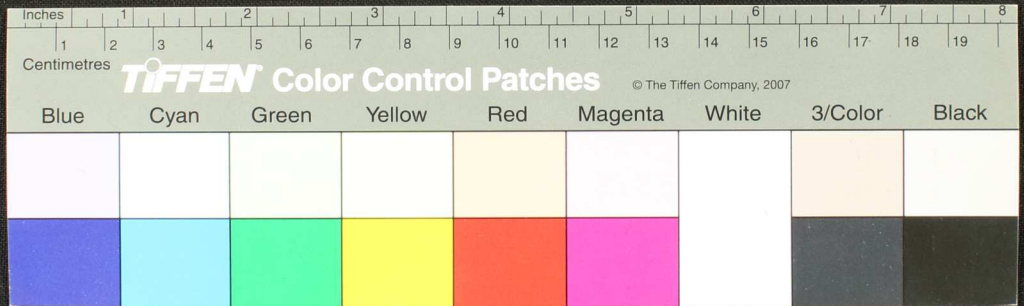


Handwritten Tamil script on a palm leaf manuscript. The text is arranged in approximately 10 horizontal lines across the length of the leaf. The script is finely etched into the surface of the dried leaf. A small circular hole is visible near the center of the leaf, which is a traditional feature for threading a cord to bind multiple leaves together into a book format.





Handwritten text in Tamil script on a palm leaf manuscript. The text is arranged in approximately 10 horizontal lines across the length of the leaf. The script is finely etched into the surface of the dried leaf. A small circular hole is visible near the center of the leaf, which is a traditional feature for threading a cord to bind multiple leaves together.

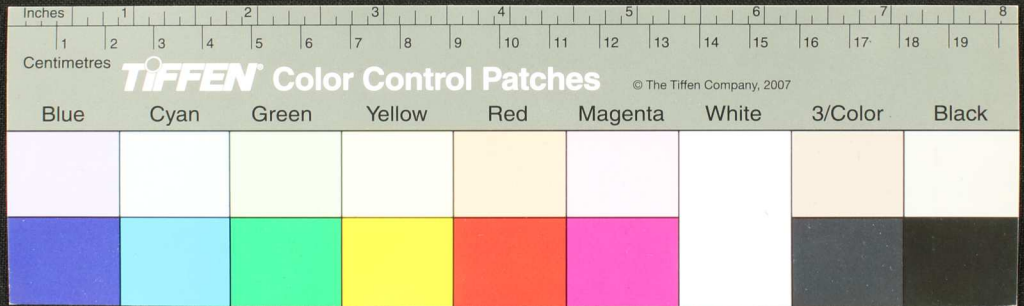






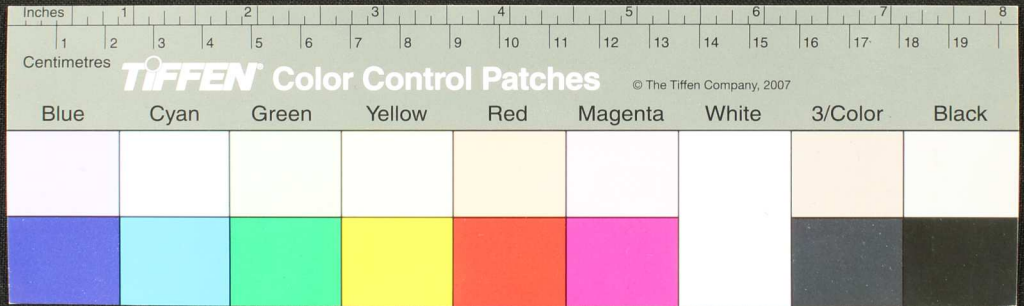


Handwritten text in Tamil script on a palm leaf manuscript strip. The text is arranged in approximately 10 horizontal lines across the length of the leaf. Two circular holes are visible, which were traditionally used for threading a cord to bind multiple leaves together into a book format. The script is finely etched into the surface of the dried leaf.



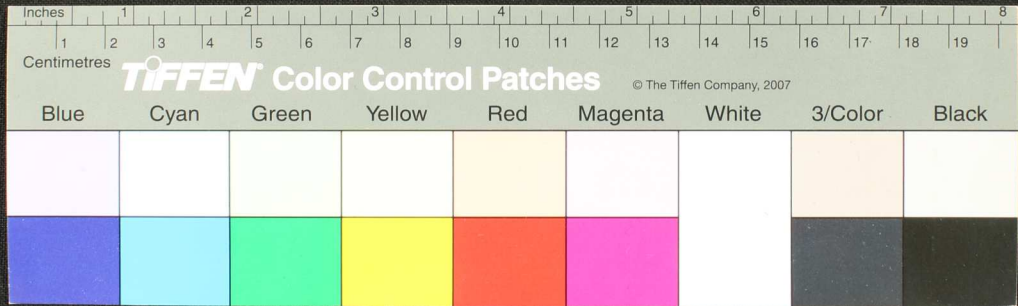


Handwritten Tamil script on a palm leaf manuscript. The text is arranged in two columns, with a small circular hole visible in the center of the leaf. The script is finely etched into the surface of the dried leaf.





Handwritten Tamil script on a palm leaf manuscript strip. The text is arranged in approximately 10 horizontal lines across the length of the leaf. A small circular hole is visible near the center of the strip, which is a traditional feature for threading a cord to bind multiple leaves together. The script is finely etched into the surface of the dried leaf.









Handwritten text in Tamil script on a palm leaf manuscript. The text is arranged in approximately 10 horizontal lines across the length of the leaf. A circular hole is visible on the left side, used for threading a cord to bind multiple leaves together. The script is finely etched into the surface of the dried leaf.



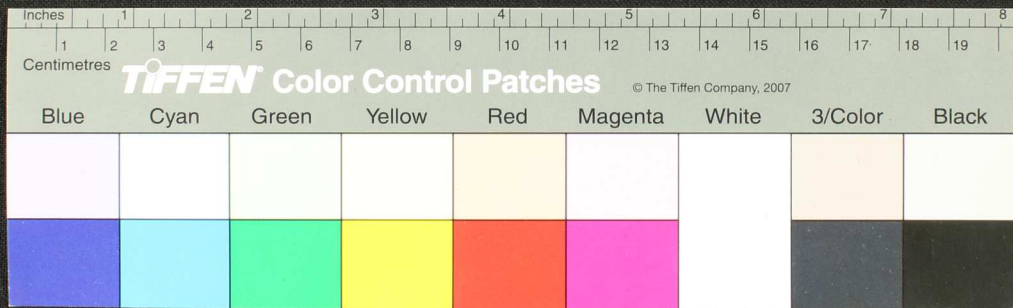


Handwritten text in Tamil script on a palm leaf manuscript strip. The text is arranged in approximately 10 horizontal lines across the length of the leaf. There are two circular holes punched through the leaf, one near the center and one towards the right end. The leaf shows signs of age and wear, with some fraying at the edges.





Handwritten text in Tamil script on a palm leaf manuscript strip. The text is arranged in approximately 10 horizontal lines across the length of the leaf. The script is finely etched into the surface of the dried leaf. The leaf shows signs of age, including some darkening and a small hole near the center.

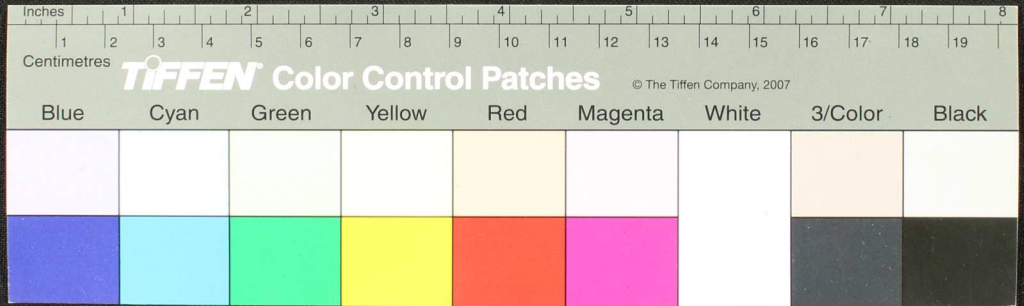






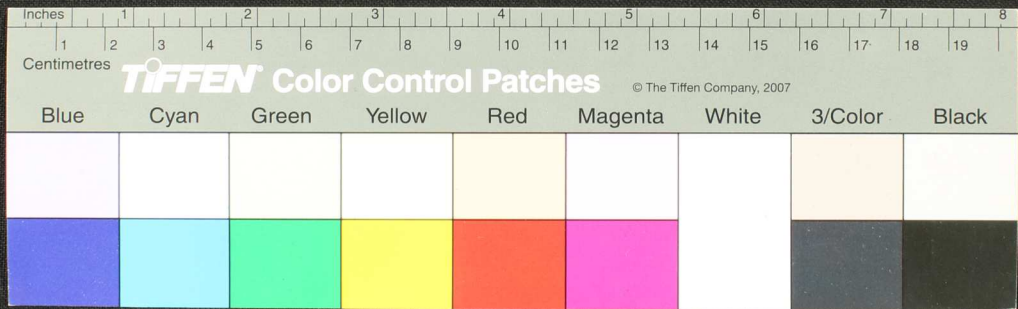


Handwritten text in Tamil script on a piece of aged, yellowed paper. The text is arranged in several lines and appears to be a historical record or document. The paper shows signs of wear, including a hole and irregular edges.



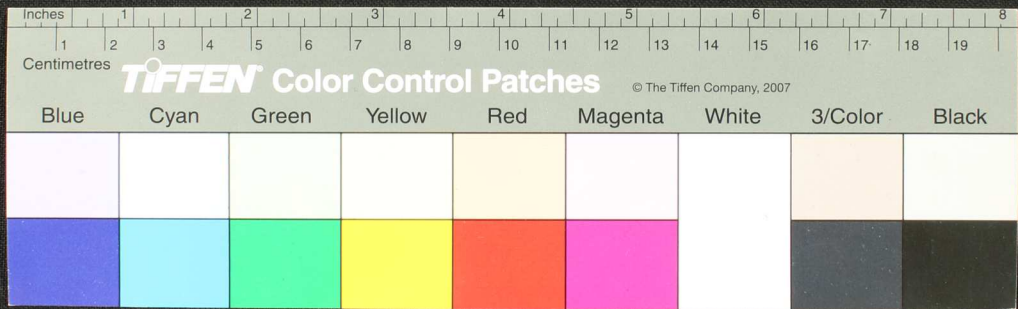


Handwritten Tamil script on a palm leaf manuscript. The text is arranged in approximately 10 horizontal lines across the length of the leaf. Two circular holes are visible, used for threading a cord to bind multiple leaves together. The script is finely etched into the surface of the dried leaf.



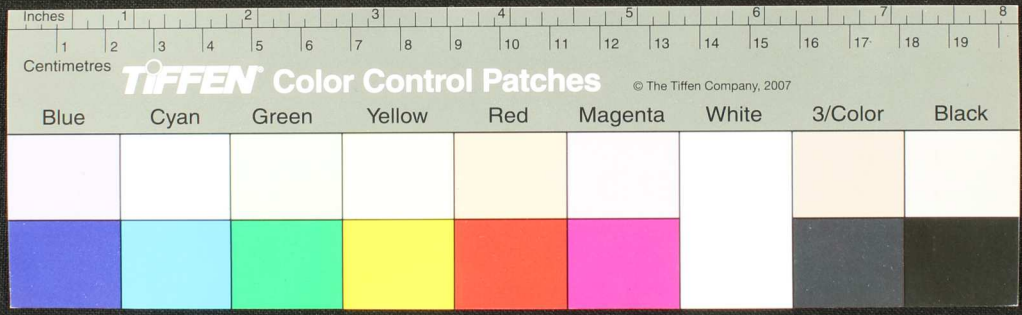


Handwritten Tamil script on a palm leaf manuscript strip. The text is arranged in three columns, with two circular holes visible for binding. The script is finely etched into the surface of the dried leaf.





Handwritten Tamil script on a palm leaf manuscript strip. The text is arranged in approximately 10 horizontal lines. The script is finely etched into the surface of the dried leaf. The strip is slightly curved and has irregular, torn edges. A small circular hole is visible near the center of the strip, likely from a traditional binding method. The background is a dark, textured surface.





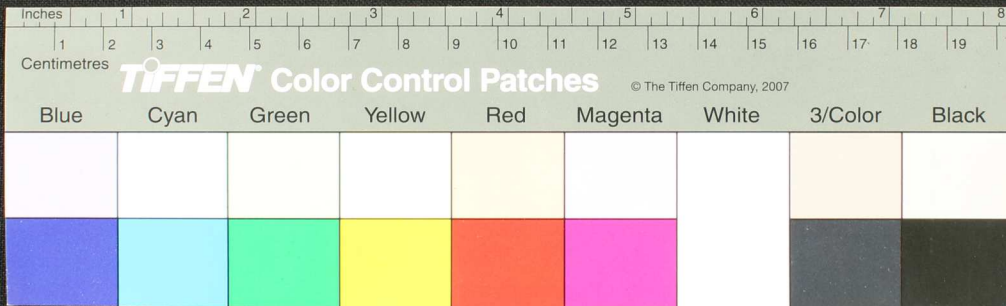








Handwritten text in Tamil script on a palm leaf manuscript. The text is arranged in approximately 10 horizontal lines across the length of the leaf. A small circular hole is visible near the center of the leaf, used for threading a cord to bind multiple leaves together. The leaf shows signs of age, with some fraying and discoloration at the edges.





Handwritten text in Tamil script on a palm leaf manuscript. The text is arranged in two columns, with a small circular hole on the left side. The script is finely etched into the surface of the dried leaf.

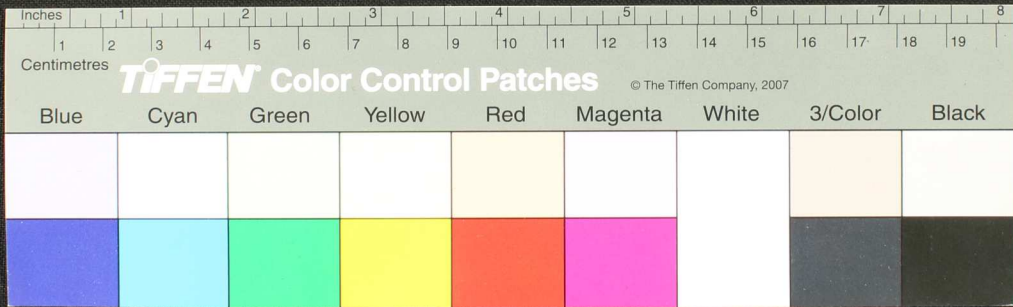






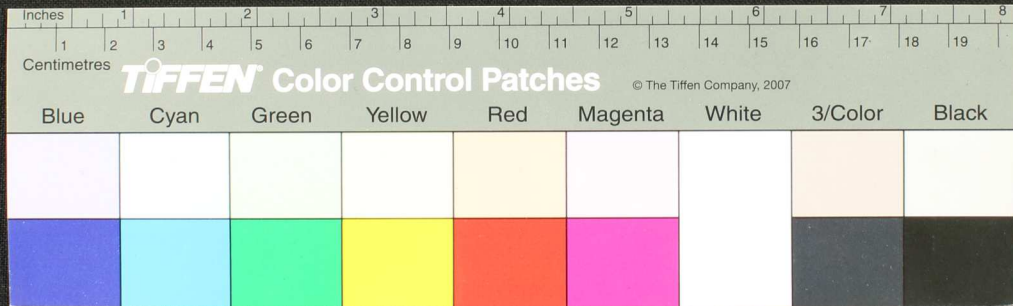


Handwritten text in Tamil script on a palm leaf manuscript. The text is arranged in approximately 10 horizontal lines across the length of the leaf. The script is finely etched into the surface of the dried leaf. A small circular hole is visible near the center of the leaf, which is a traditional feature for threading a cord to bind multiple leaves together into a book format.



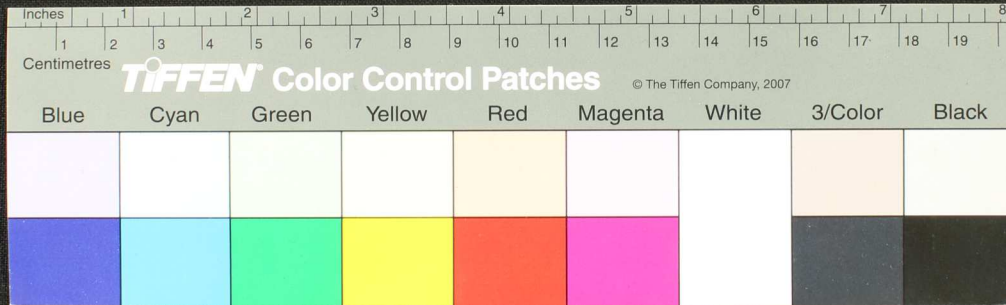


Handwritten text in Tamil script on a palm leaf manuscript. The text is arranged in approximately 10 horizontal lines across the length of the leaf. The script is finely etched into the surface of the dried leaf. The leaf shows signs of age, including a small hole and some fraying at the edges.



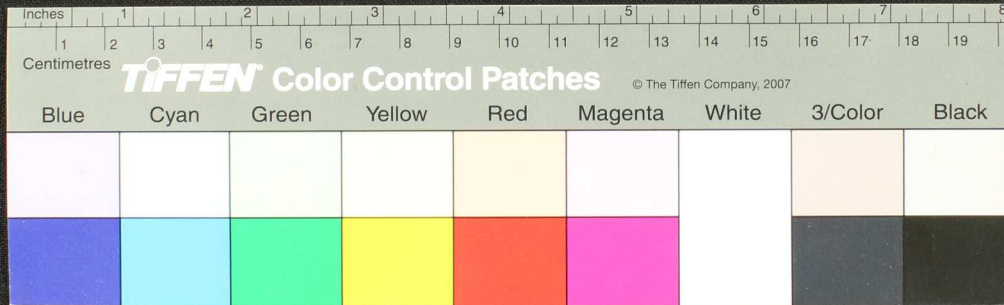


Handwritten Tamil script on a palm leaf manuscript strip. The text is arranged in approximately 10 horizontal lines across the length of the leaf. The script is finely etched into the surface of the dried leaf. The leaf shows signs of age and wear, with some fraying at the edges and a small circular hole on the right side.



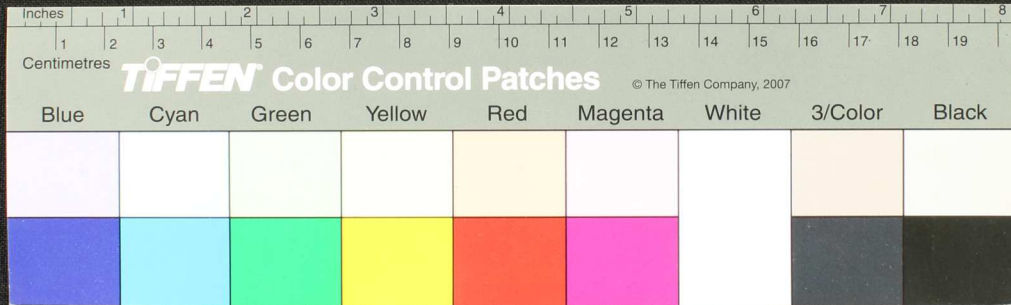


Handwritten text in Tamil script on a palm leaf manuscript. The text is arranged in approximately 10 horizontal lines across the length of the leaf. The script is finely etched into the surface of the dried leaf. The leaf shows signs of age, with some fraying and discoloration, particularly at the edges and around a small hole on the right side.





Handwritten Tamil script on a palm leaf manuscript. The text is arranged in two columns, with a small circular hole visible on the right side. The script is finely etched into the surface of the dried leaf.













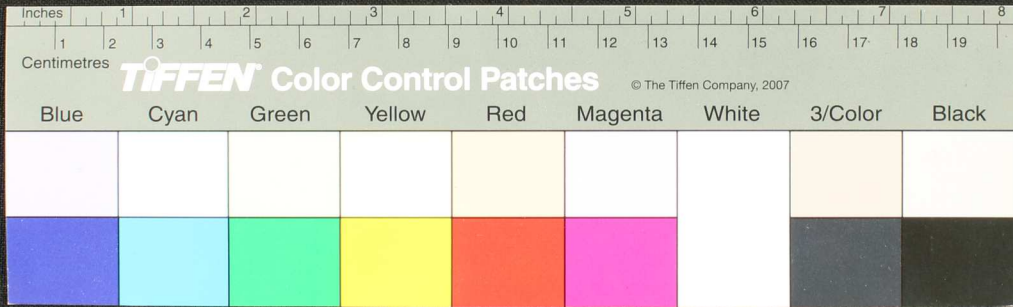






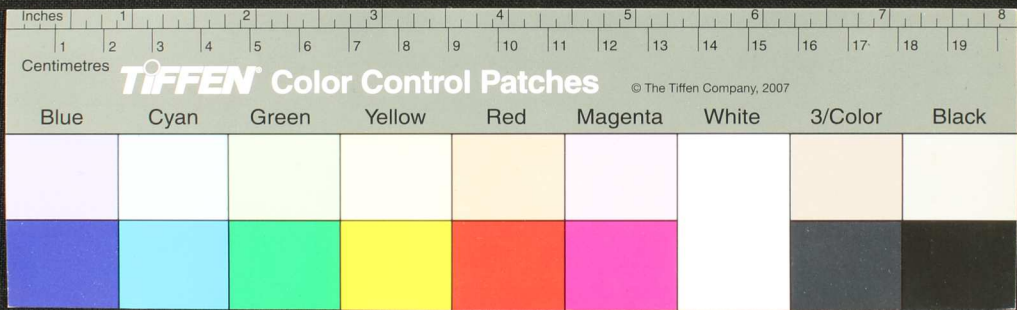


Handwritten text in Tamil script on a palm leaf manuscript. The text is arranged in two columns, with a small circular hole visible in the center of the leaf. The script is finely etched into the surface of the dried leaf.





Handwritten text in Tamil script on a palm leaf manuscript. The text is arranged in approximately 12 horizontal lines across the length of the leaf. The script is finely etched into the surface of the dried leaf. There are two circular holes visible, which were traditionally used for threading a cord to bind multiple leaves together into a book format.





















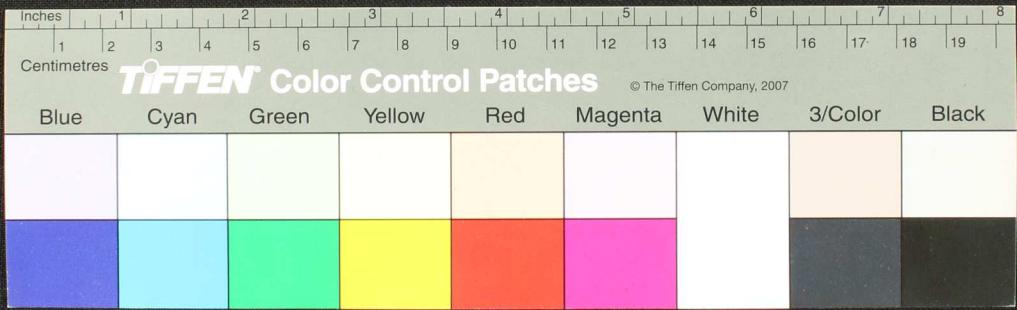








Handwritten Tamil script on a palm leaf manuscript. The text is arranged in three columns across the length of the leaf. The script is finely etched into the surface of the dried leaf.









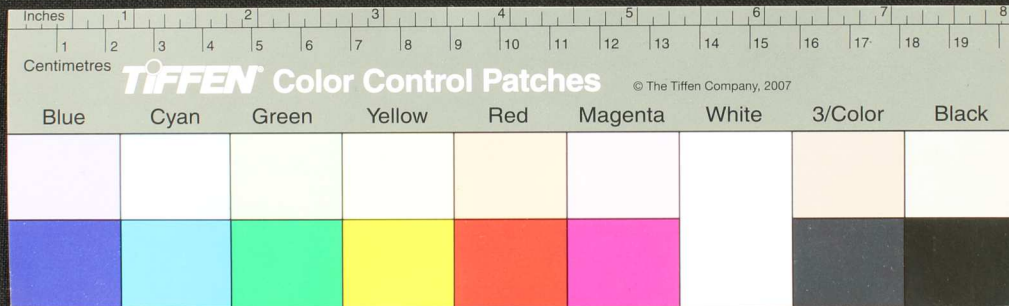








Handwritten text in Tamil script on a palm leaf manuscript strip. The text is arranged in three columns across the length of the leaf. The script is finely etched into the surface of the dried leaf.



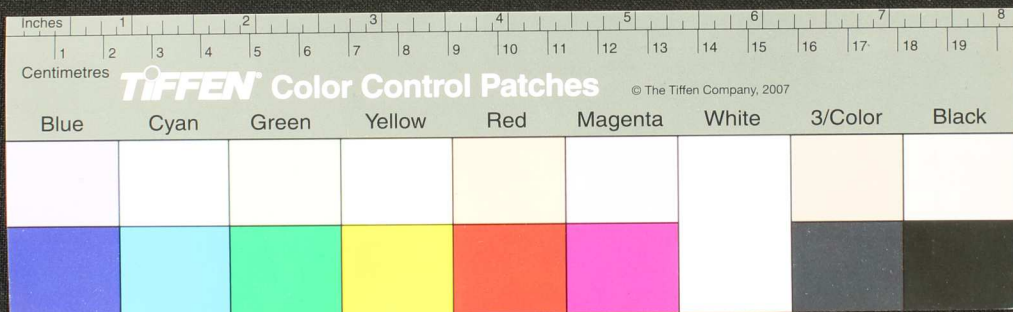










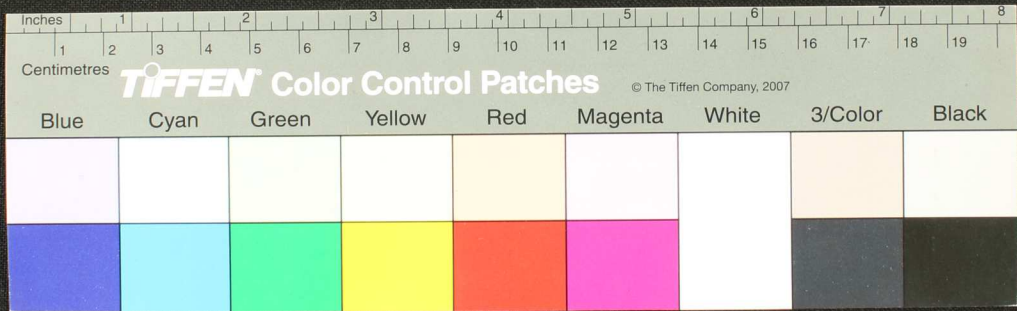






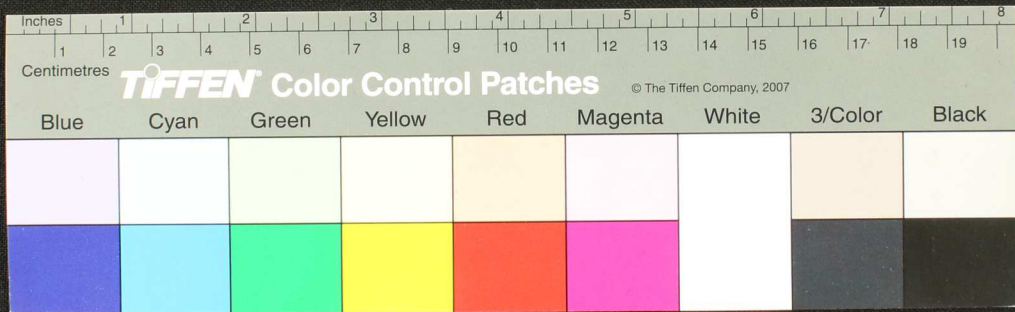


Handwritten text in Tamil script on a palm leaf manuscript. The text is arranged in three columns across the length of the leaf. The script is finely etched into the surface of the dried leaf.





Handwritten Tamil script on a palm leaf manuscript strip. The text is arranged in three distinct sections from left to right, separated by a hole and another hole. The script is finely etched into the surface of the dried leaf.







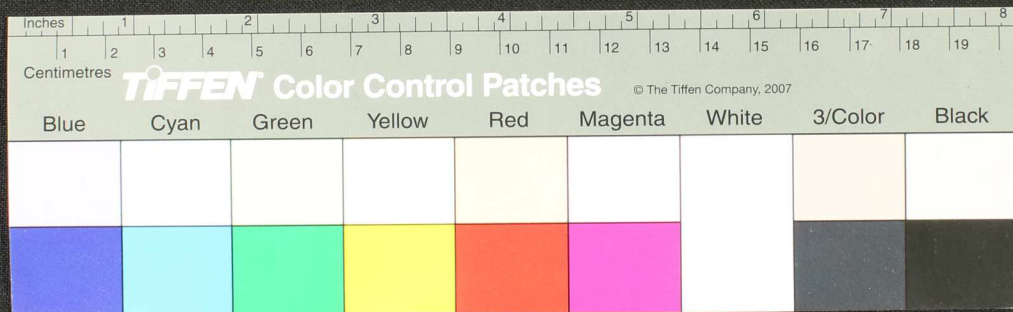






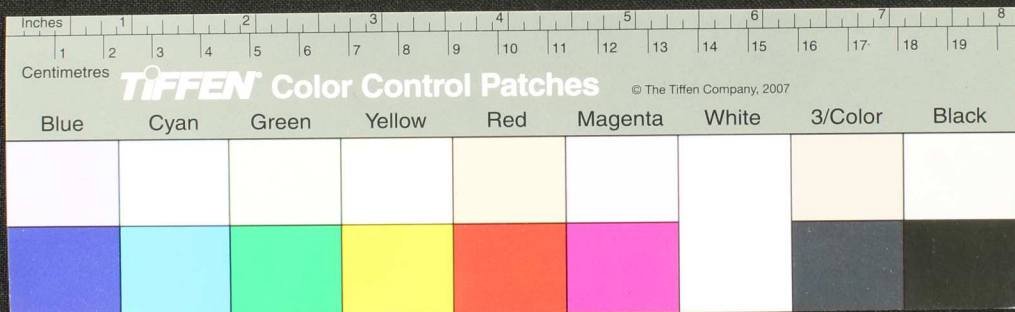






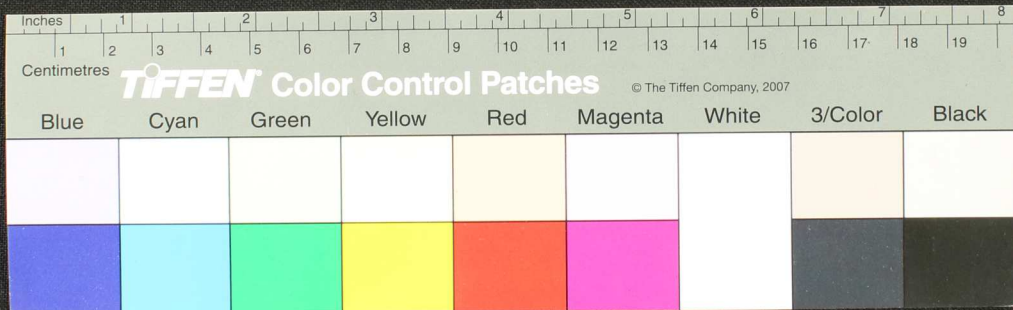


Handwritten text in Tamil script on a palm leaf manuscript. The text is arranged in approximately 10 horizontal lines across the length of the leaf. There are two circular holes visible: one on the left side and one on the right side, which were traditionally used for threading a cord to bind multiple leaves together into a book.





Handwritten text in Tamil script on a palm leaf manuscript strip. The text is arranged in approximately 10 horizontal lines across the length of the leaf. Two circular holes are visible, one near the left end and one near the right end, which were traditionally used for threading a cord to bind multiple leaves together into a book format. The leaf shows signs of age, including some discoloration and wear at the edges.

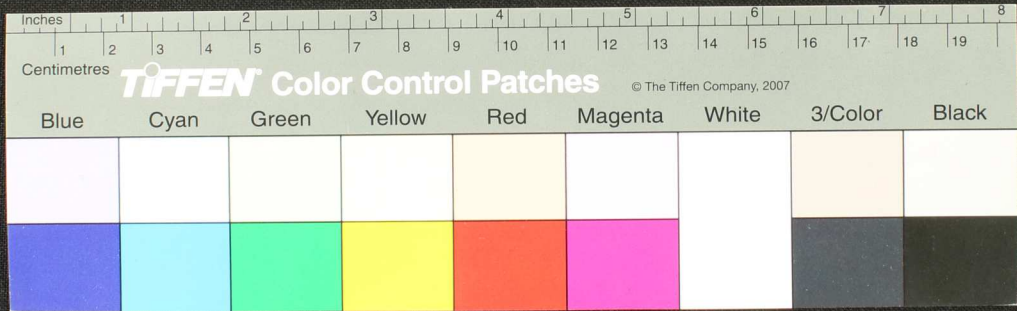








Handwritten text in Tamil script on a palm leaf manuscript. The text is arranged in approximately 12 horizontal lines across the length of the leaf. There are two circular holes, one on the left side and one on the right side, which were traditionally used for threading a cord to bind multiple leaves together into a book format. The ink is dark and the leaf shows signs of age and wear.





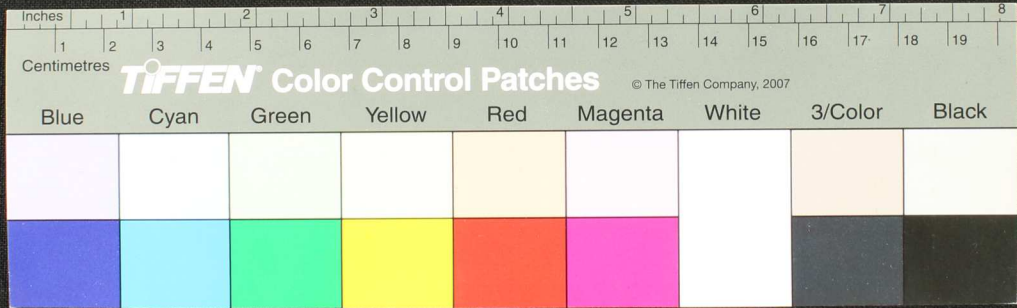




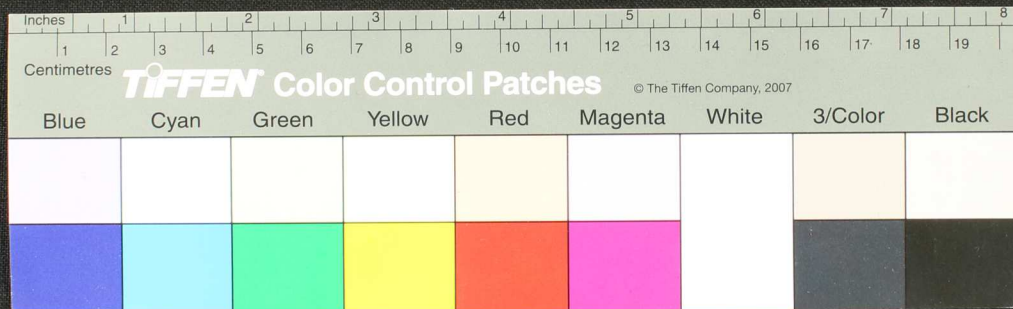




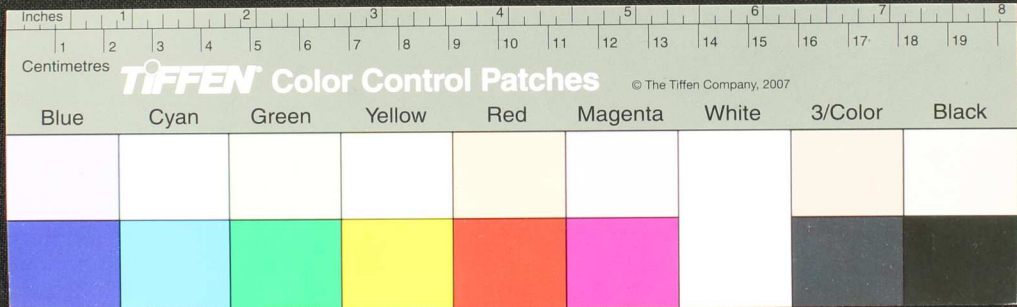
Handwritten text in Tamil script on a palm leaf manuscript strip. The text is arranged in several lines across the length of the leaf. There are two circular holes, one on the left and one on the right, which were traditionally used for threading a cord to bind multiple leaves together into a book format. The script is finely etched into the surface of the dried leaf.

























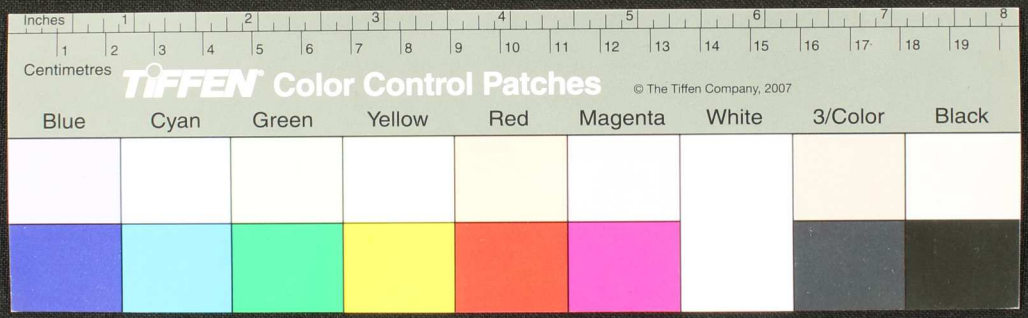








Handwritten text in Tamil script on a palm leaf manuscript strip. The text is arranged in approximately 10 horizontal lines across the length of the leaf. There are two circular holes punched through the leaf, one near the left end and one near the right end, which were traditionally used for threading a cord to bind multiple leaves together into a book format. The script is finely etched into the surface of the dried leaf.





















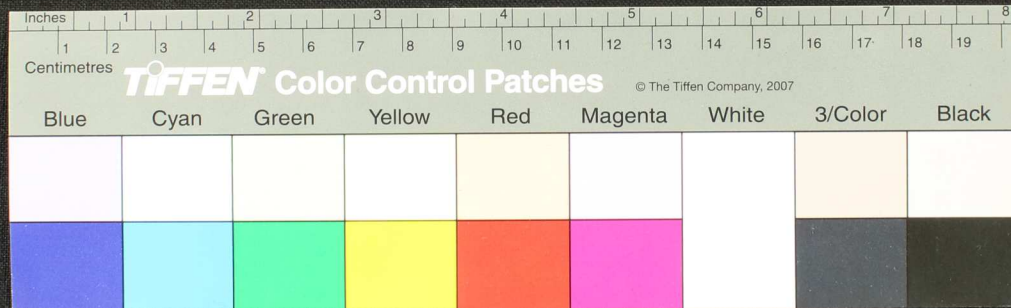








Handwritten text on a palm leaf manuscript fragment, featuring a circular hole for binding. The text is written in a South Indian script, likely Tamil, and is arranged in several lines across the length of the leaf.

















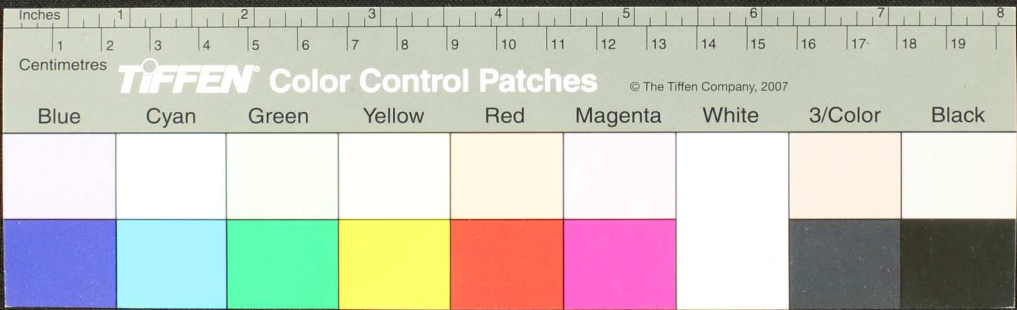






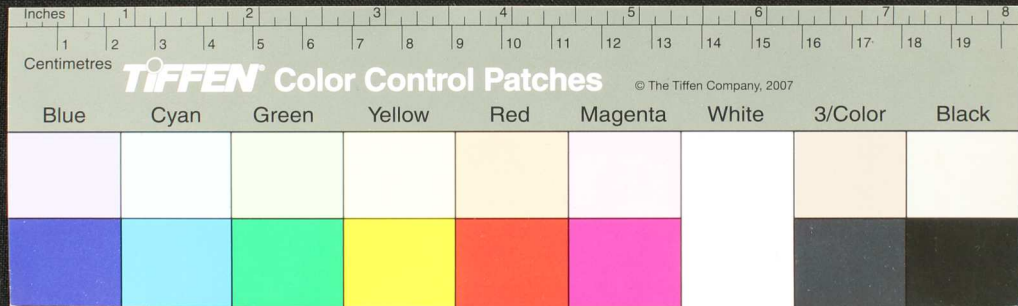


Handwritten Tamil script on a palm leaf manuscript. The text is arranged in three columns across the length of the leaf. The script is finely etched into the surface of the dried leaf.



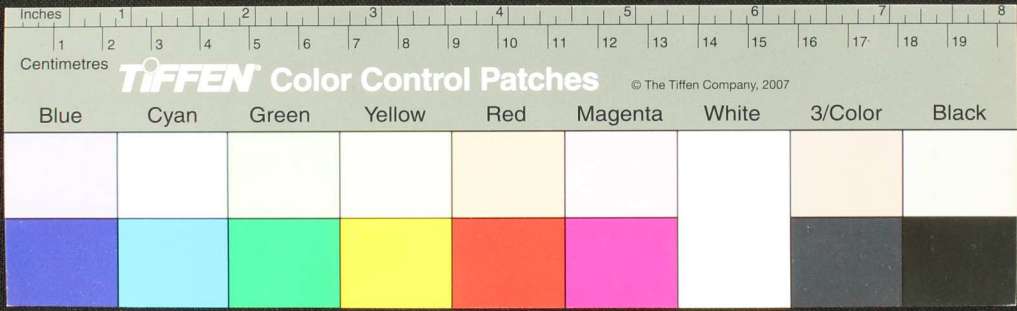


Handwritten Tamil script on a palm leaf manuscript. The text is arranged in three columns from left to right. The script is finely etched into the surface of the dried leaf. The first column on the left contains approximately 10 lines of text. The middle column contains about 10 lines. The rightmost column contains about 10 lines. There are two circular holes visible on the leaf, one near the left end and one near the right end, which were traditionally used for threading a cord to bind multiple leaves together into a book format.





Handwritten text in Tamil script on a palm leaf manuscript. The text is arranged in three columns across the length of the leaf. The script is finely etched into the surface of the dried leaf.



























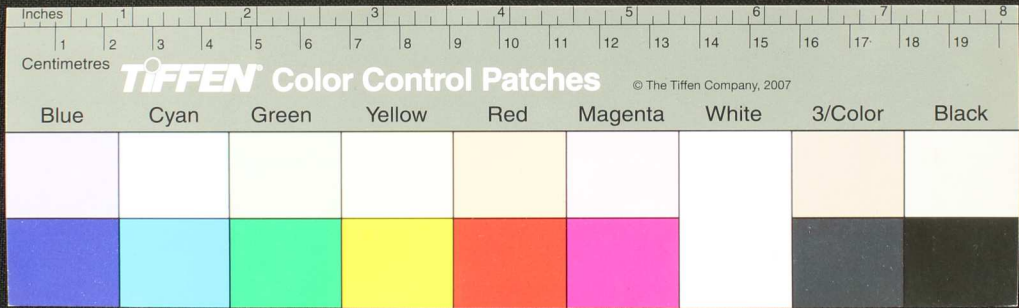


Handwritten Tamil script on a palm leaf manuscript. The text is arranged in approximately 10 horizontal lines across the length of the leaf. The script is finely etched into the surface of the dried leaf. There is a small circular hole on the right side of the leaf, which is a traditional feature for threading a cord to bind multiple leaves together into a book format.



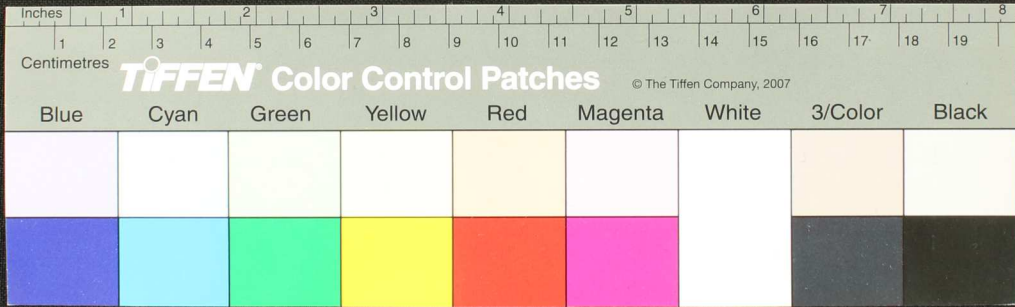


Handwritten Tamil script on a palm leaf manuscript. The text is arranged in two columns, with the right column being slightly longer. The script is finely etched into the surface of the dried leaf. The leaf shows signs of age, including a small hole and some fraying at the edges.





Handwritten text in Tamil script on a palm leaf manuscript. The text is arranged in several lines across the length of the leaf. A circular hole is visible on the left side, used for threading a cord to bind multiple leaves together. The script is finely etched into the surface of the dried leaf.





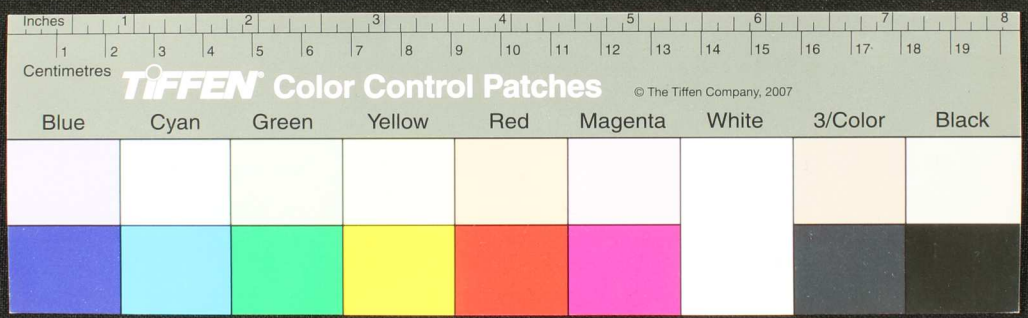








Handwritten Tamil script on a palm leaf manuscript strip. The text is arranged in three distinct sections, separated by two circular holes. The script is finely etched into the surface of the dried leaf.





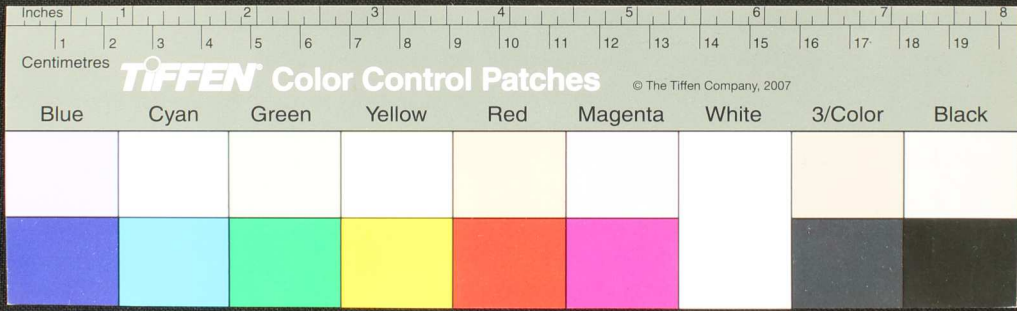








Handwritten Tamil script on a palm leaf manuscript strip. The text is arranged in three columns from left to right. The left column contains approximately 10 lines of text, the middle column contains about 8 lines, and the right column contains about 8 lines. The script is finely etched into the surface of the dried leaf.

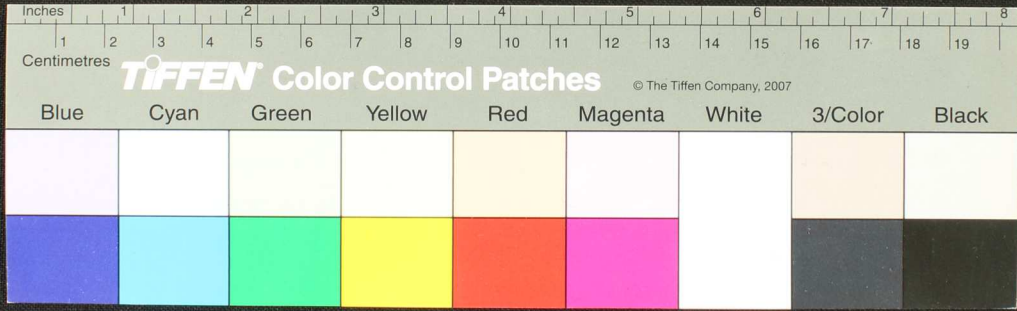




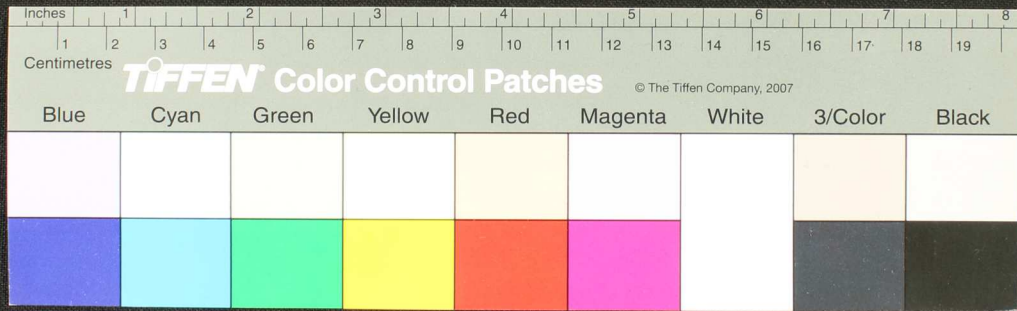




Handwritten Tamil script on a palm leaf manuscript strip. The text is arranged in approximately 10 horizontal lines across the length of the leaf. A small circular hole is visible near the center of the strip, which is a traditional feature for threading a cord to bind multiple leaves together. The script is finely etched into the surface of the dried leaf.









Handwritten Tamil script on a palm leaf manuscript strip. The text is arranged in three distinct sections from left to right, separated by small gaps. The script is finely etched into the surface of the dried leaf.

