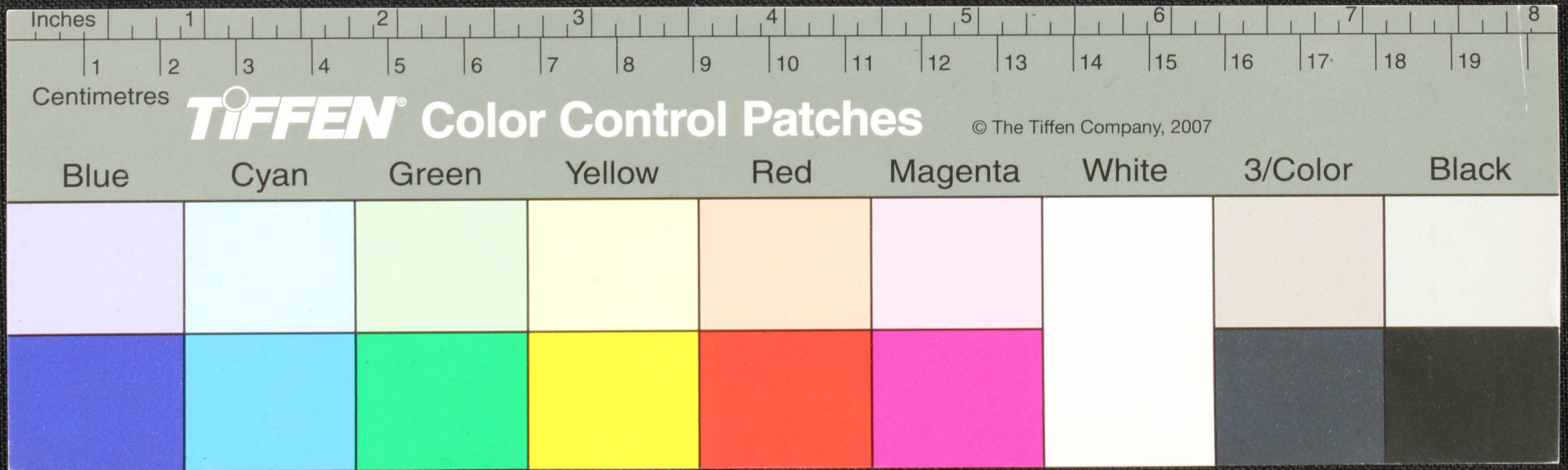
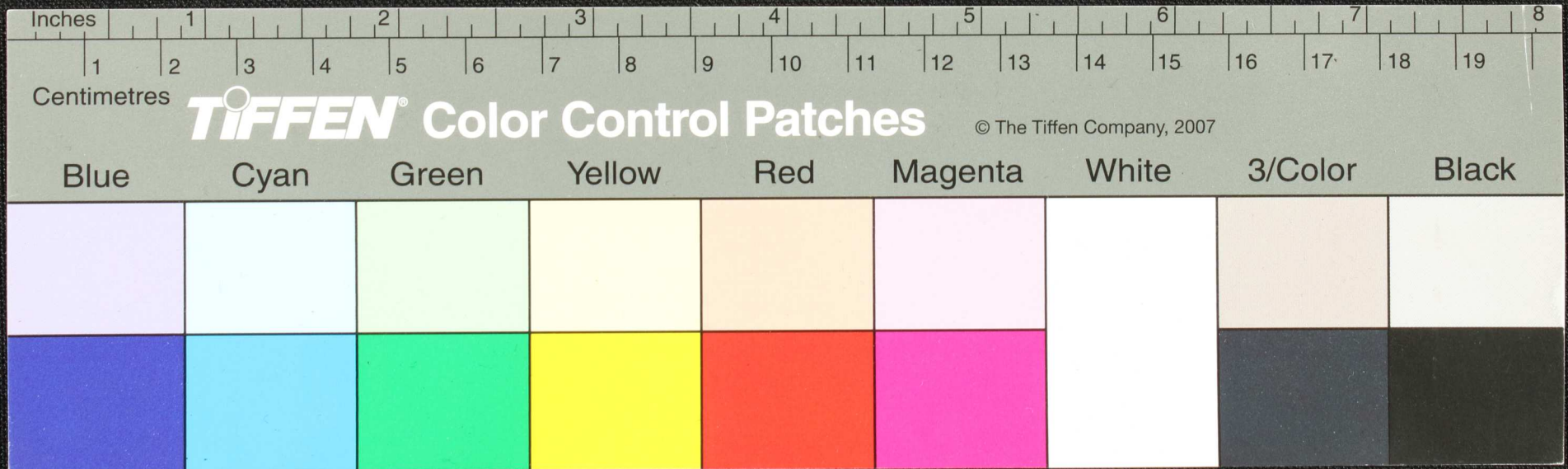


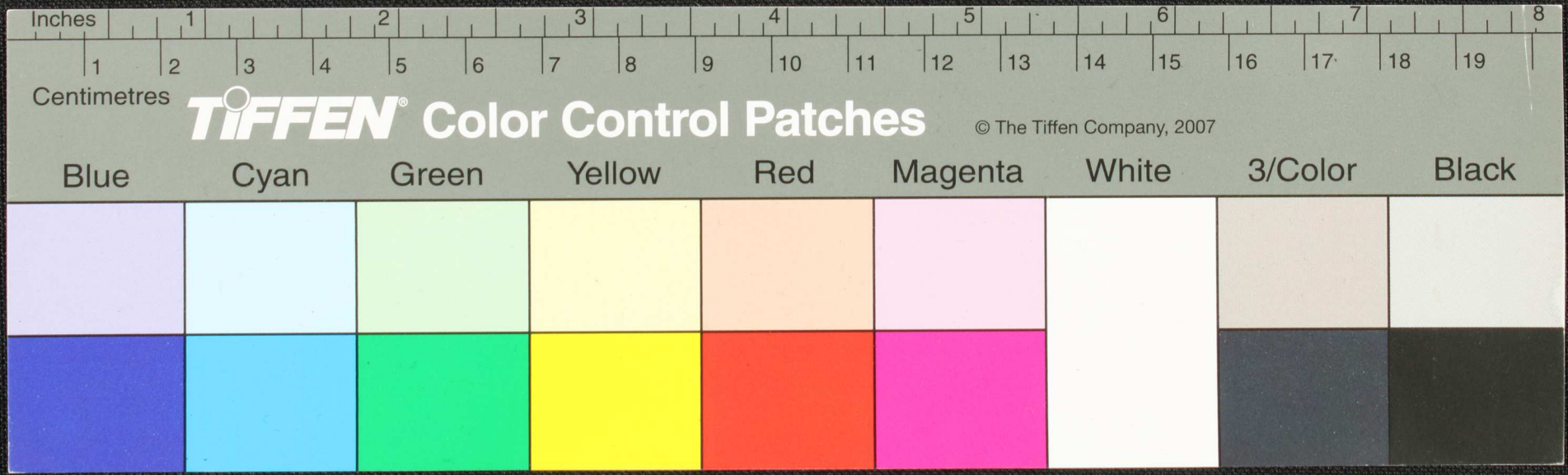
Handwritten text in Tamil script on a palm leaf manuscript. The text is arranged in several lines across the length of the leaf. A circular hole is visible in the center of the leaf, used for binding multiple leaves together.



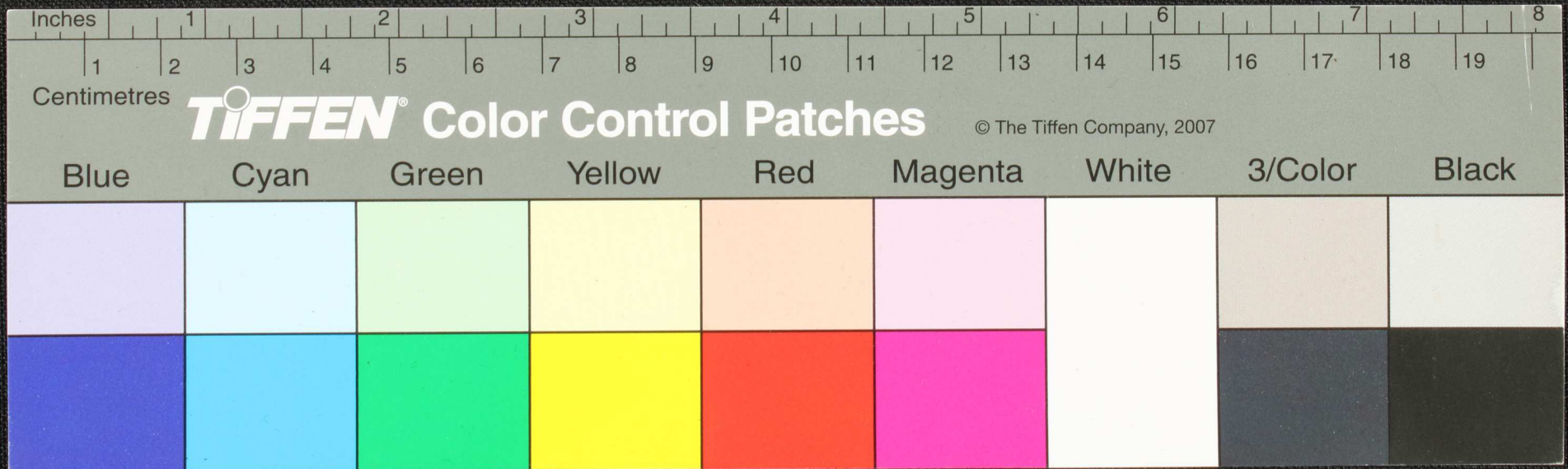
Handwritten Tamil script on a palm leaf manuscript. The text is arranged in approximately 10 horizontal lines. A circular hole is present in the center of the leaf, likely for binding. The script is in an older form of the Tamil language.



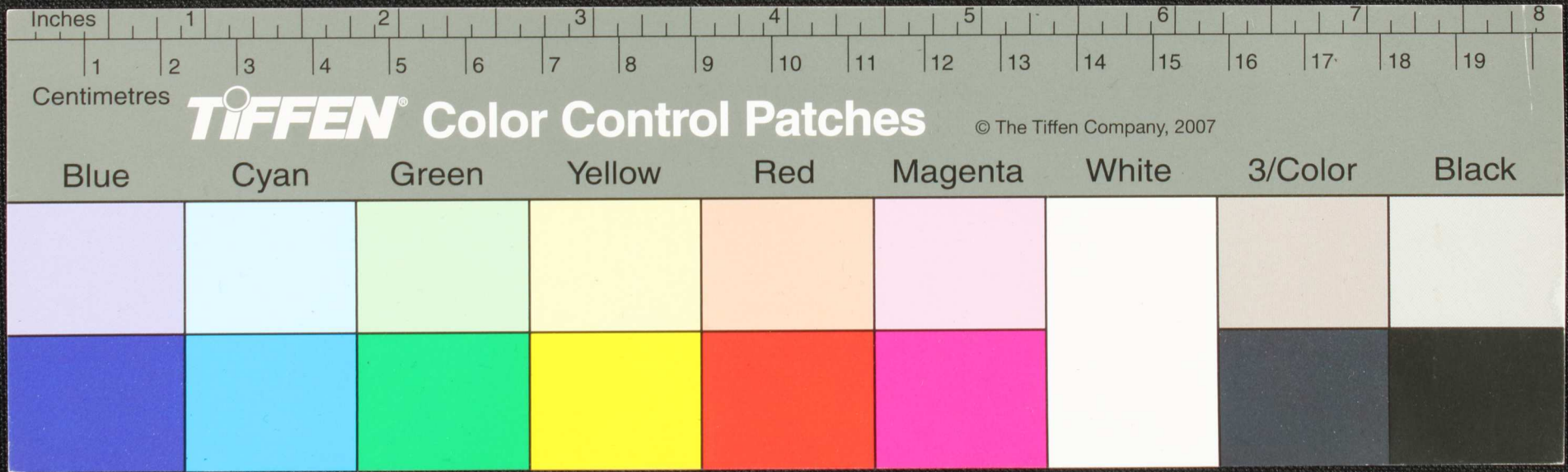
Handwritten Tamil script on a palm leaf manuscript. The text is arranged in approximately 10 horizontal lines. Two circular holes are visible, used for threading a cord to bind multiple leaves together. The script is densely packed and appears to be a form of classical or religious Tamil.



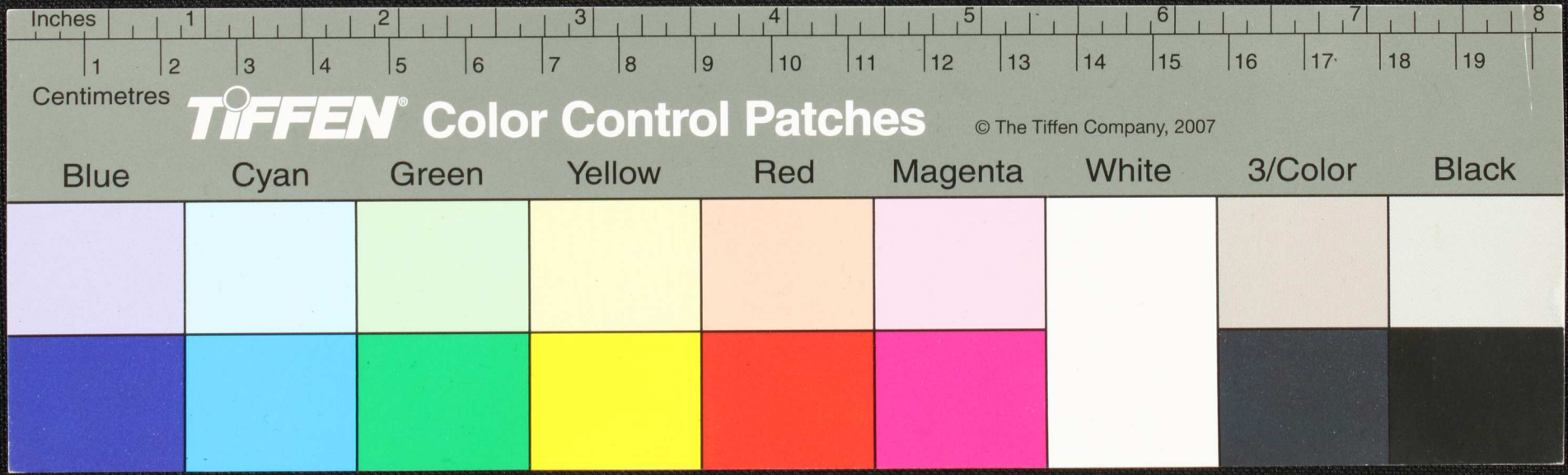
Handwritten Tamil script on a palm leaf manuscript. The text is arranged in approximately 10 horizontal lines across the length of the leaf. Two circular holes are visible, which were traditionally used for threading a cord to bind multiple leaves together into a book format. The script is densely packed and appears to be a form of classical or religious Tamil.



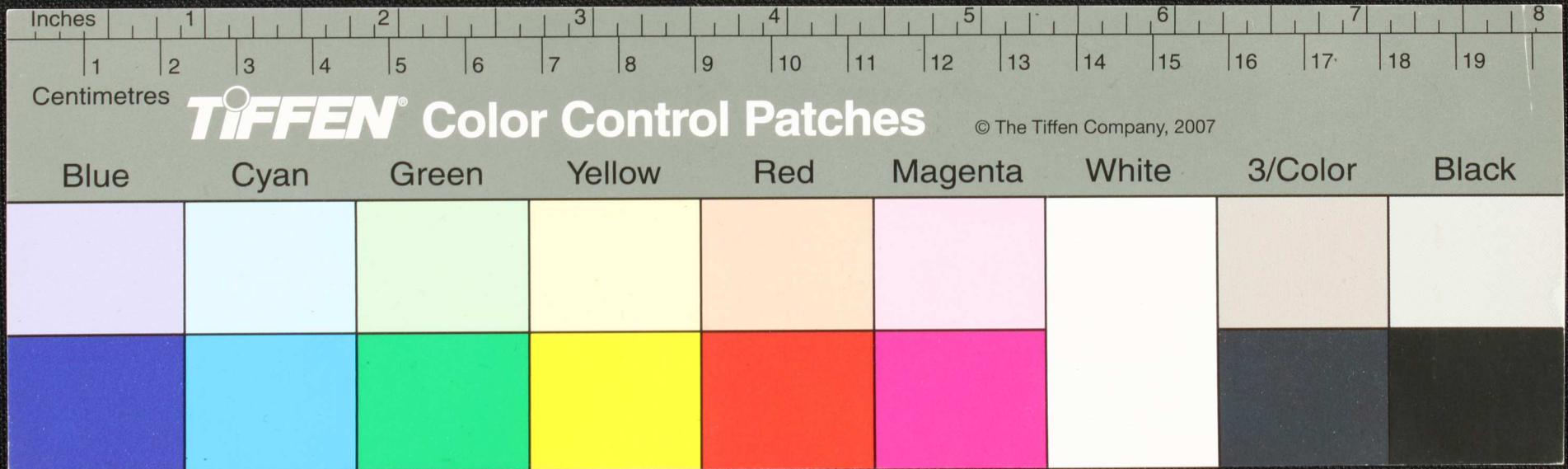
Handwritten Tamil script on a palm leaf manuscript. The text is arranged in approximately 10 horizontal lines across the length of the leaf. The script is a traditional form of the Tamil language, likely used for religious or philosophical purposes. The leaf shows signs of age, with some dark spots and a slightly uneven texture.



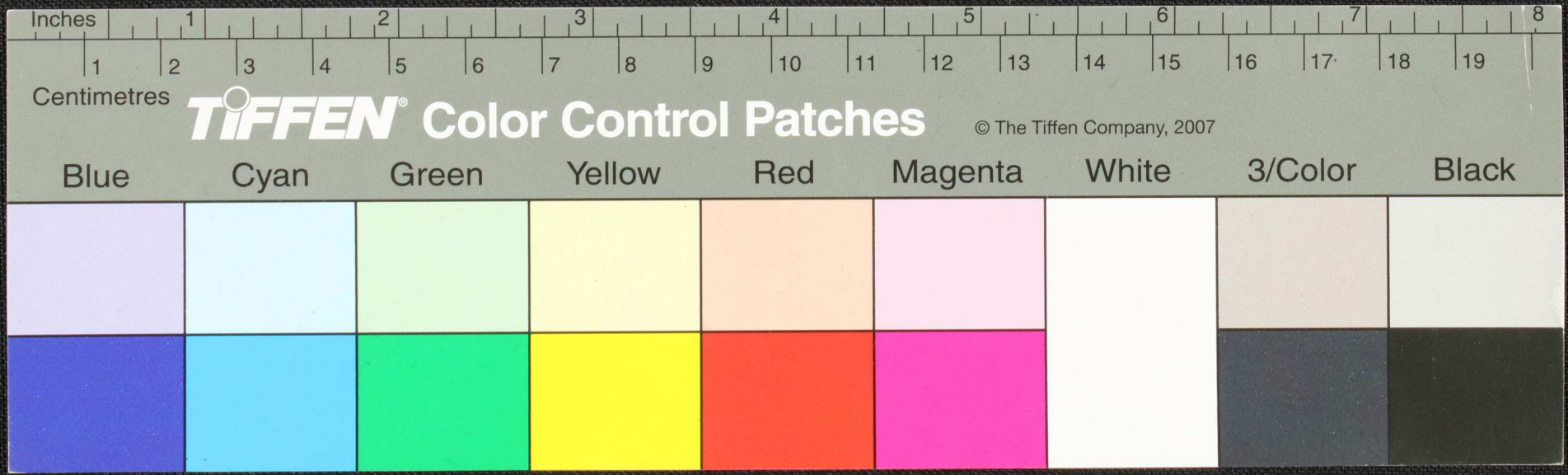
Handwritten Tamil script on a palm leaf manuscript. The text is arranged in approximately 10 horizontal lines. Two circular holes are visible, used for binding multiple leaves together. The script is finely etched into the surface of the dried leaf.



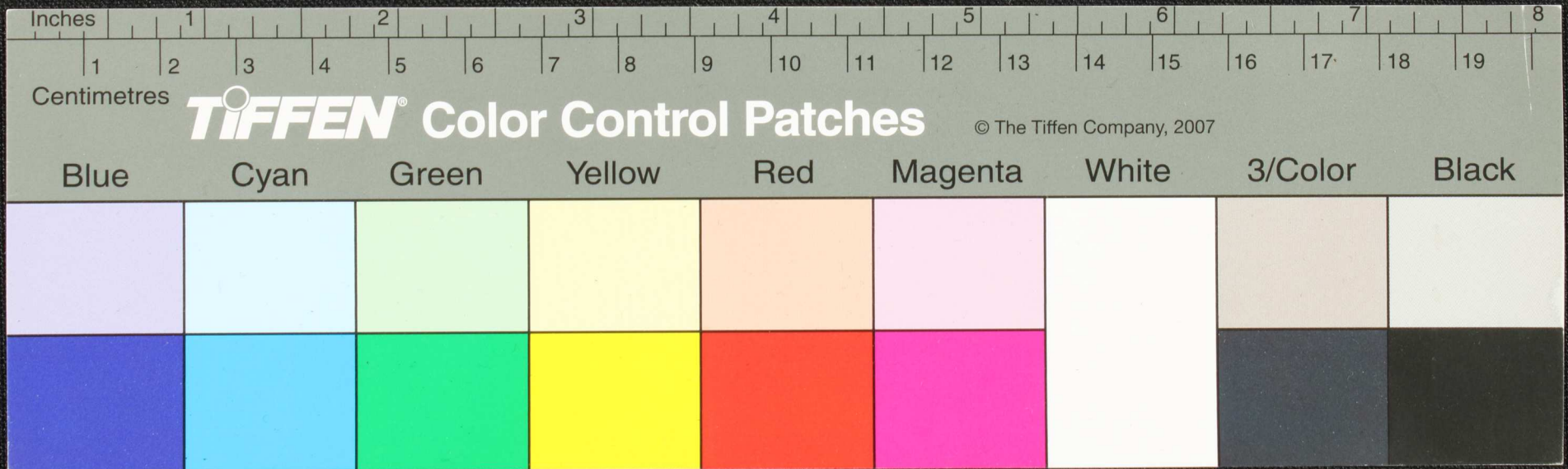
Handwritten Tamil script on a palm leaf manuscript. The text is arranged in approximately 10 horizontal lines. On the left side, there is a vertical column of text, possibly a title or a reference. The main body of text contains several lines of prose. Two circular holes are visible, which were traditionally used for threading a cord to bind multiple leaves together. The script is a traditional form of the Tamil language.



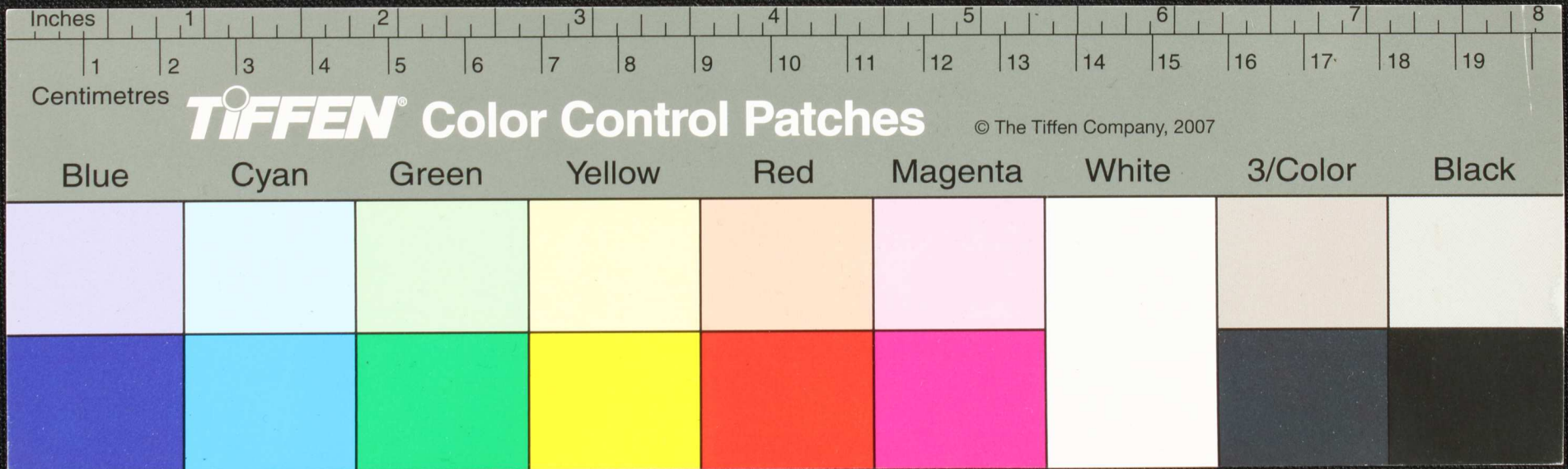
Handwritten Tamil script on a palm leaf manuscript. The text is arranged in approximately 10 horizontal lines across the length of the leaf. The script is a traditional form of the Tamil language, likely used for religious or philosophical purposes. There are two prominent circular holes along the length of the leaf, which were traditionally used for threading a cord to bind multiple leaves together into a book format.



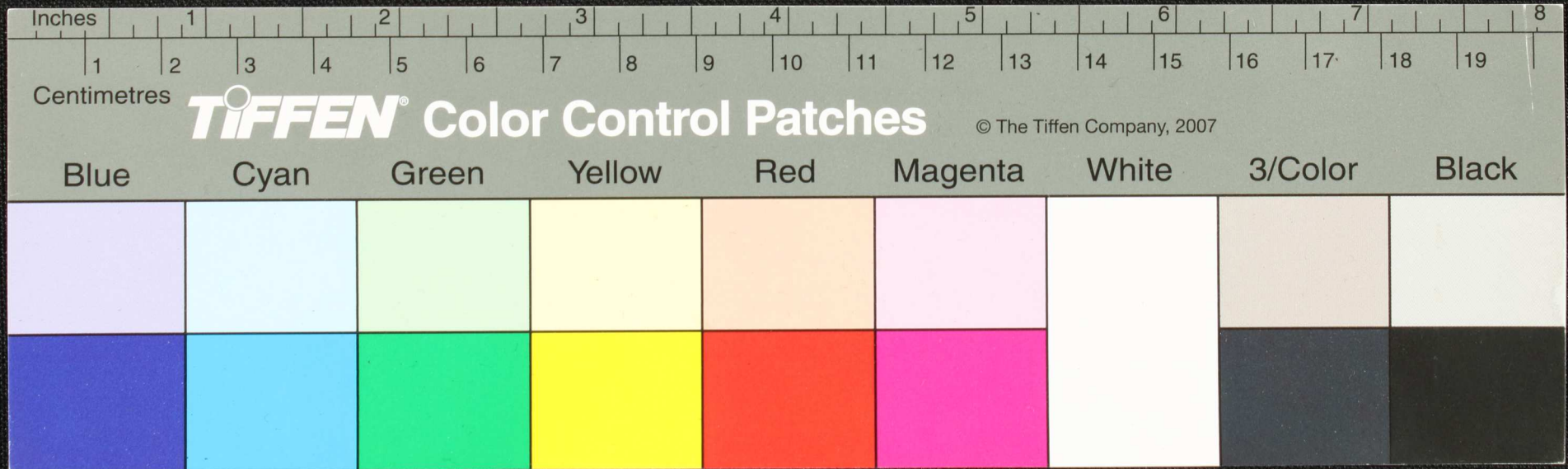
Handwritten Tamil script on a palm leaf manuscript. The text is arranged in approximately 10 horizontal lines across the length of the leaf. Two circular holes are visible, which were traditionally used for threading a cord to bind multiple leaves together. The script is a form of the Tamil language, likely containing a religious or philosophical text.



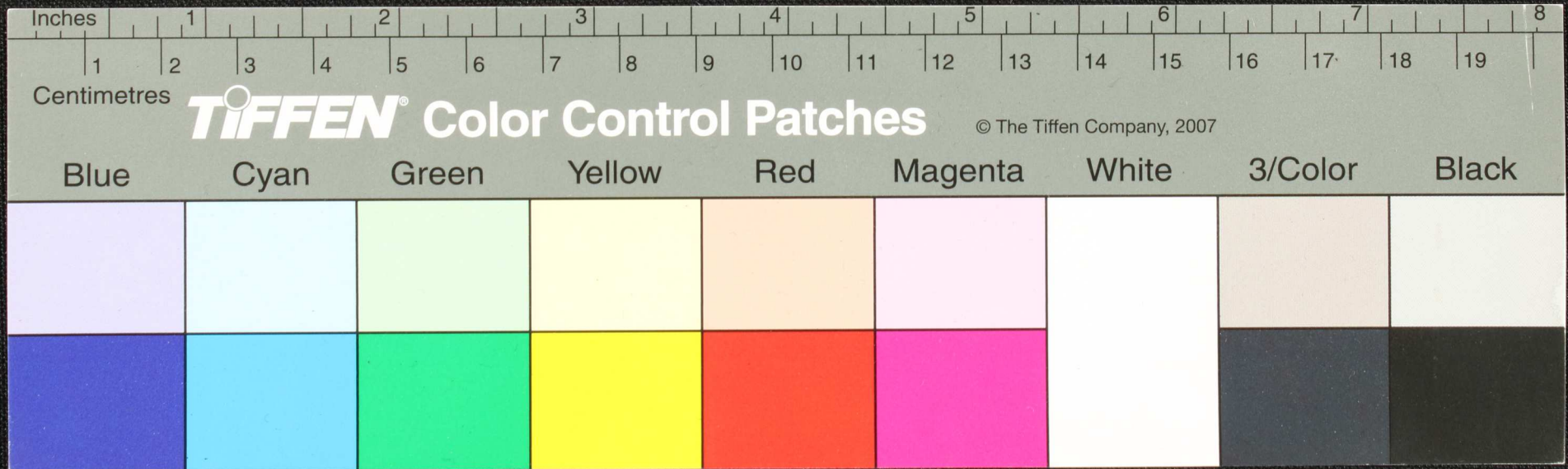
Handwritten Tamil script on a palm leaf manuscript. The text is arranged in approximately 10 horizontal lines across the length of the leaf. The script is a traditional form of the Tamil language, likely containing a religious or philosophical text. Two circular holes are visible, which were traditionally used for threading a cord to bind multiple leaves together into a book format.



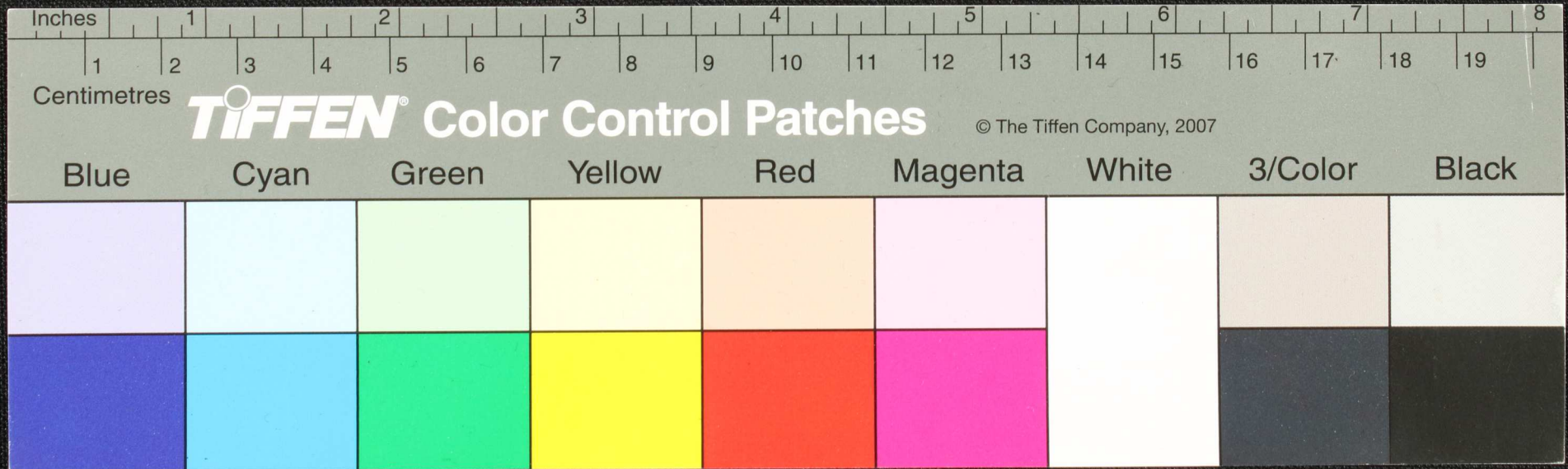
சூ மாவததுகூ.
 இவ்வாறுபுயகு சாதமவியு—காத்து படுதது ஆமததா தனிசசுலெயாடுமலெமாயும. ரவ. த குதடும
 குநது கமய மலிதய ச சூ—குத நியாக இடுதா றுடுயதினயிர குசுக திடுதமயு திசயலிவ சமயுயடு
 ததிடுகூ— லு—பயடு பயுமிசுடு இவைவெயலொடு. சய—உயலிப—குததுவயுதது
 இசுததுவவது. துதடுகூ இலயமலிசுய—தநியடுமவாது. இலெயா—குடுத கமயாத்தகாத்து
 உகலிடுகூ இலய ச துடுவா னடு இலெயா னடுதா குத கமயாடுதடுமலெயாடுதடு இலயகதகாது—து. சூ—சூ
 சூ—தடுகா ததுவா னடுதா குடுதது இலயாடுபசா மலெடுத து சூ—கலி மய சமயுசூ—உயலாத்து



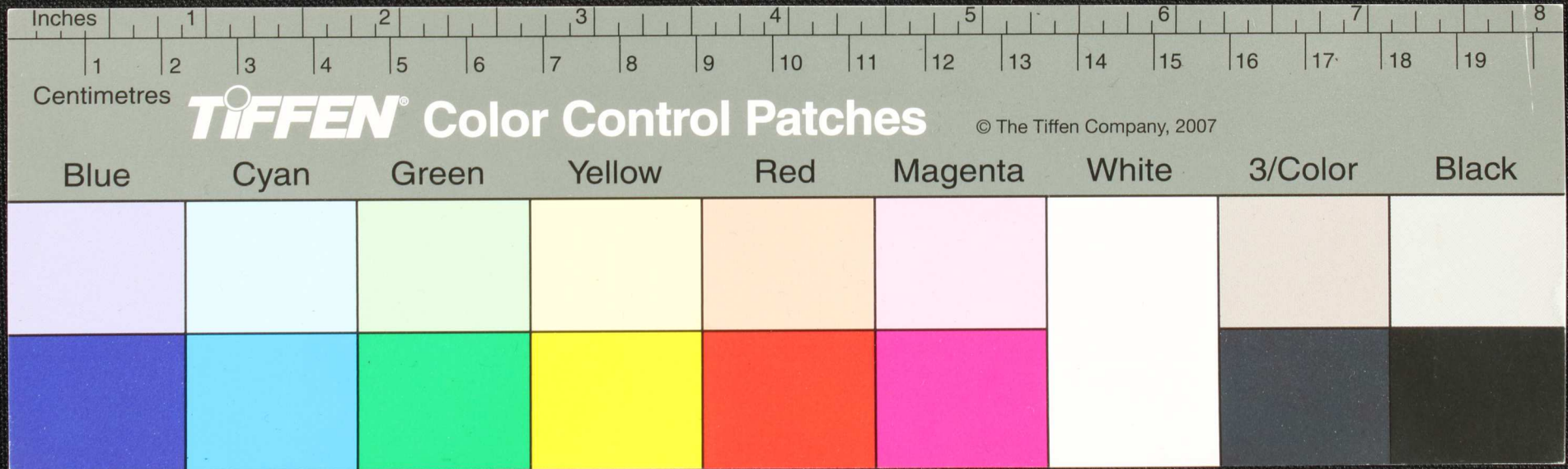
Handwritten Tamil script on a palm leaf manuscript. The text is arranged in approximately 10 horizontal lines across the length of the leaf. Two circular holes are visible, used for threading a cord to bind multiple leaves together. The script is a traditional form of the Tamil language, likely containing religious or philosophical content.



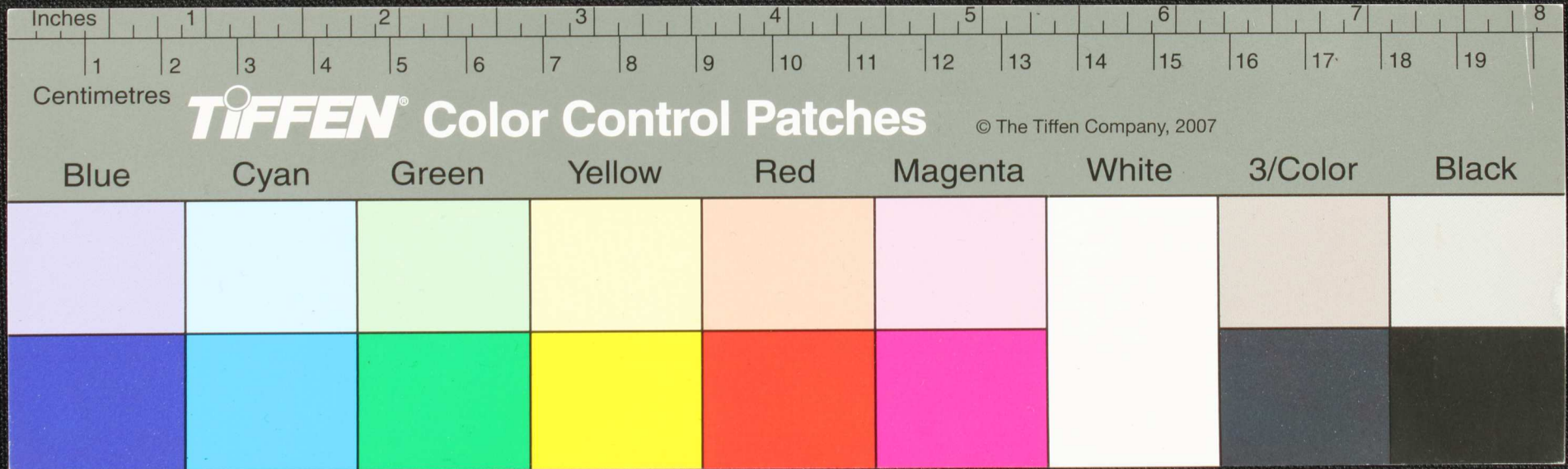
Handwritten Tamil script on a palm leaf manuscript. The text is arranged in approximately 10 horizontal lines. On the left side, there is a vertical column of text, possibly serving as a title or a reference. The main body of text contains several lines of prose, with some characters appearing to be in a different script or dialect. Two circular holes are visible, which were traditionally used for threading a cord to bind multiple leaves together.



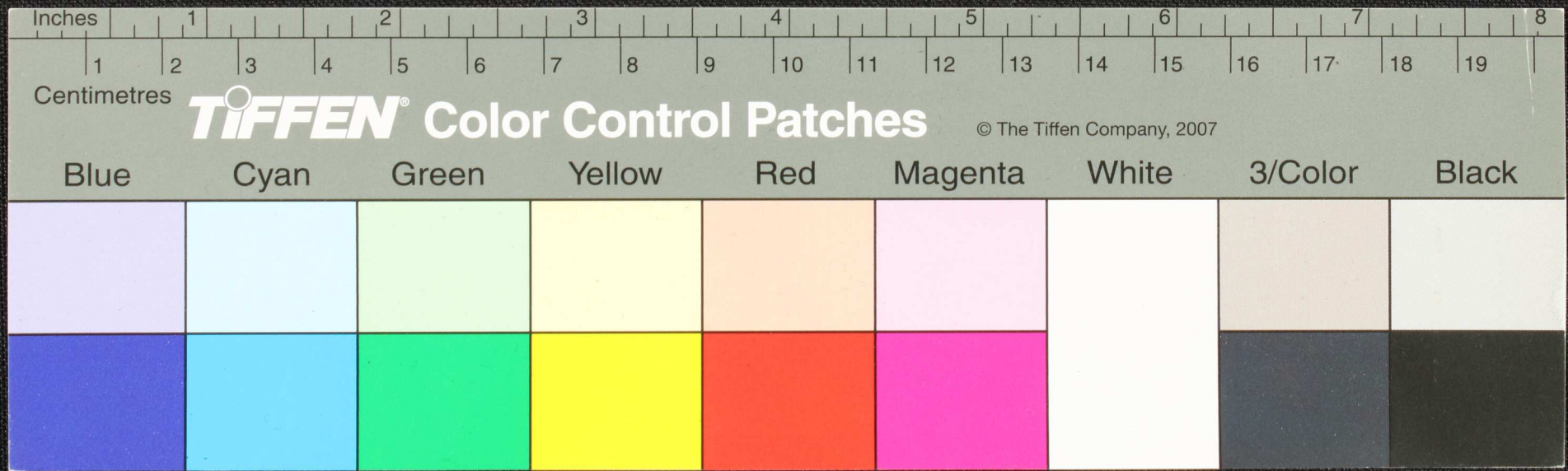
Handwritten text in Tamil script on a palm leaf manuscript. The text is arranged in approximately 10 horizontal lines. The script is dark and appears to be a traditional form of the Tamil language. There are two circular holes visible on the leaf, which were traditionally used for threading a cord to bind multiple leaves together into a book format.



Handwritten text in Tamil script on a palm leaf manuscript. The text is arranged in several lines across the length of the leaf. Two circular holes are visible, which were traditionally used for threading a cord to bind multiple leaves together into a book format. The script is densely packed and appears to be a form of classical or religious Tamil.

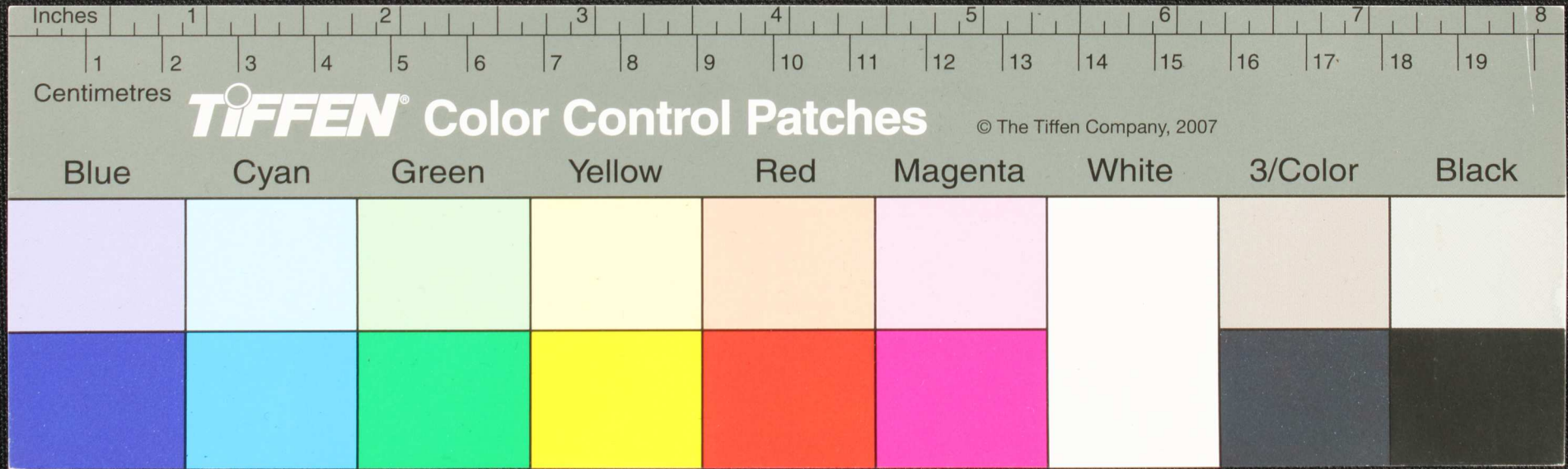


Handwritten text in Tamil script on a palm leaf manuscript. The text is densely packed and spans the entire length of the leaf. Two circular holes are visible, used for binding multiple leaves together.



Handwritten text on the left side of the palm leaf manuscript, including the characters 'வருபவரு' and 'குறிப்புகள்'.

Main body of handwritten text in Tamil script on a palm leaf manuscript, spanning approximately 8 inches in length.

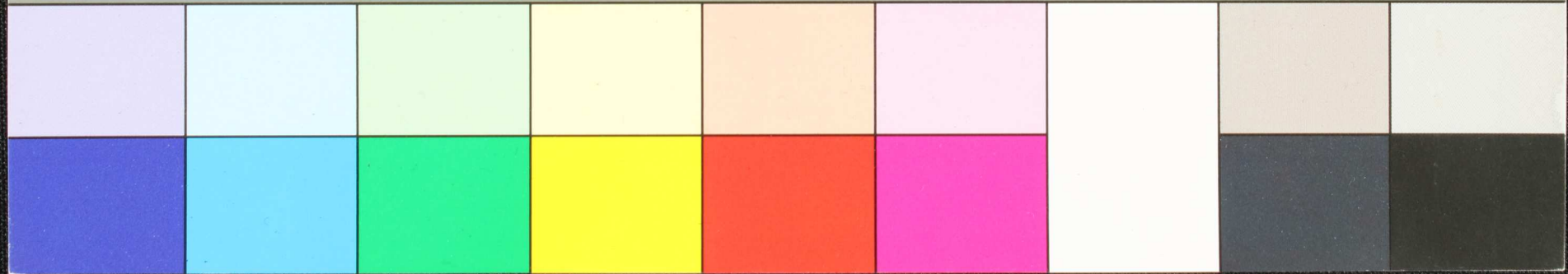


Inches 1 2 3 4 5 6 7 8
Centimetres 1 2 3 4 5 6 7 8 9 10 11 12 13 14 15 16 17 18 19

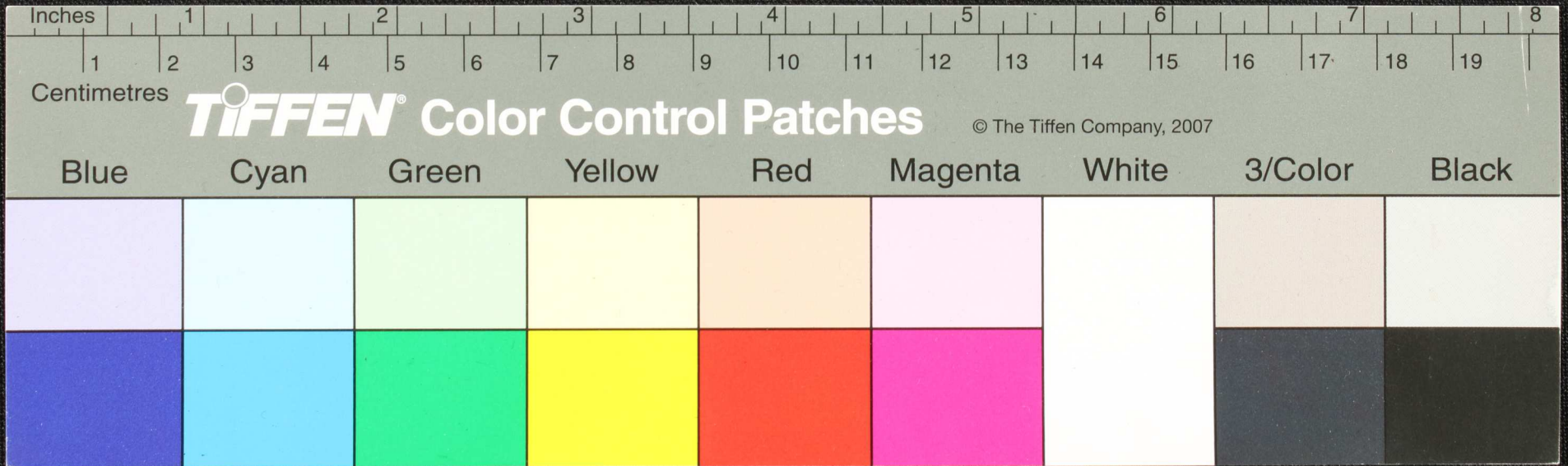
TIFFEN Color Control Patches

© The Tiffen Company, 2007

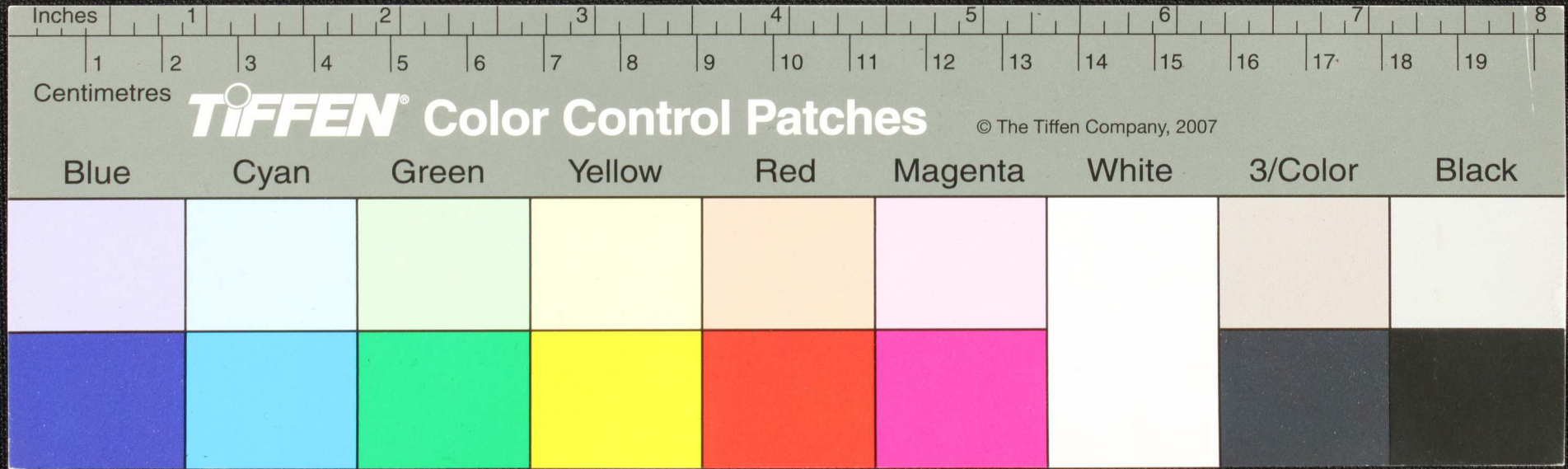
Blue Cyan Green Yellow Red Magenta White 3/Color Black



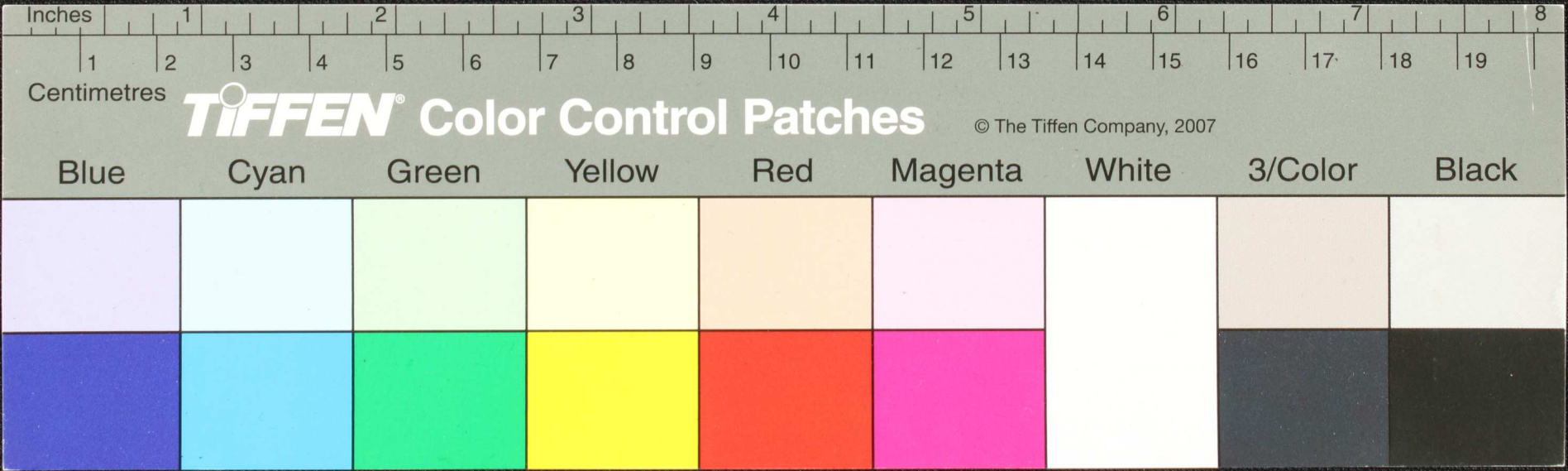
Handwritten Tamil script on a palm leaf manuscript. The text is arranged in approximately 10 horizontal lines across the length of the leaf. Two circular holes are visible, which were traditionally used for threading a cord to bind multiple leaves together into a book format. The script is densely packed and appears to be a form of classical or historical Tamil.



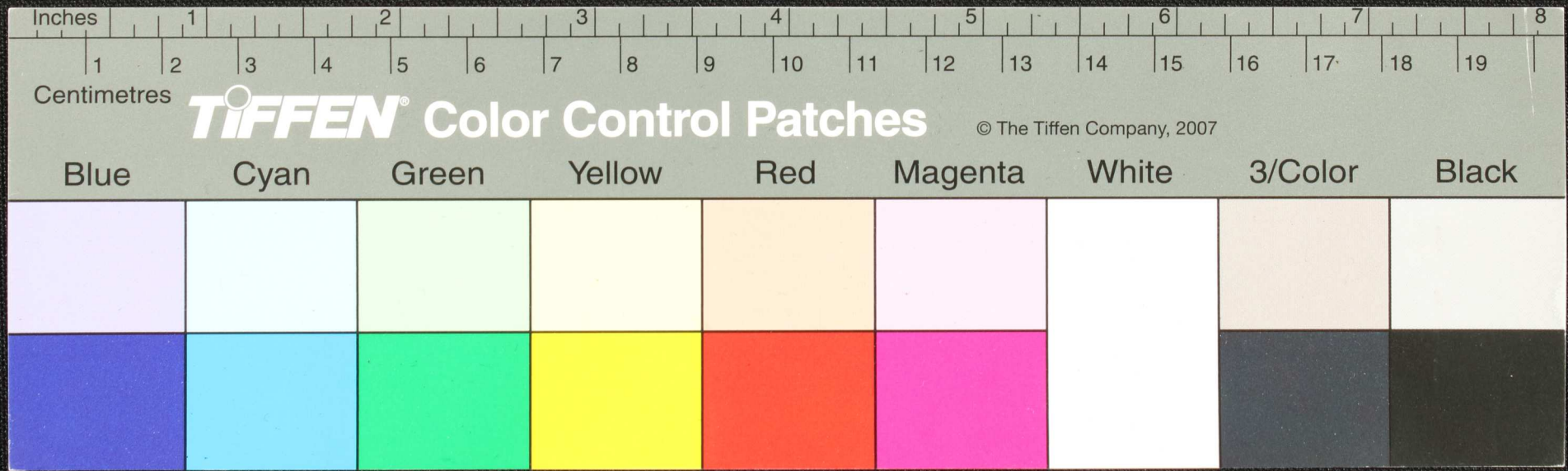
Handwritten Tamil script on a palm leaf manuscript. The text is arranged in approximately 10 horizontal lines across the length of the leaf. Two circular holes are visible, which were traditionally used for threading a cord to bind multiple leaves together into a book format. The script is finely etched into the natural texture of the dried leaf.



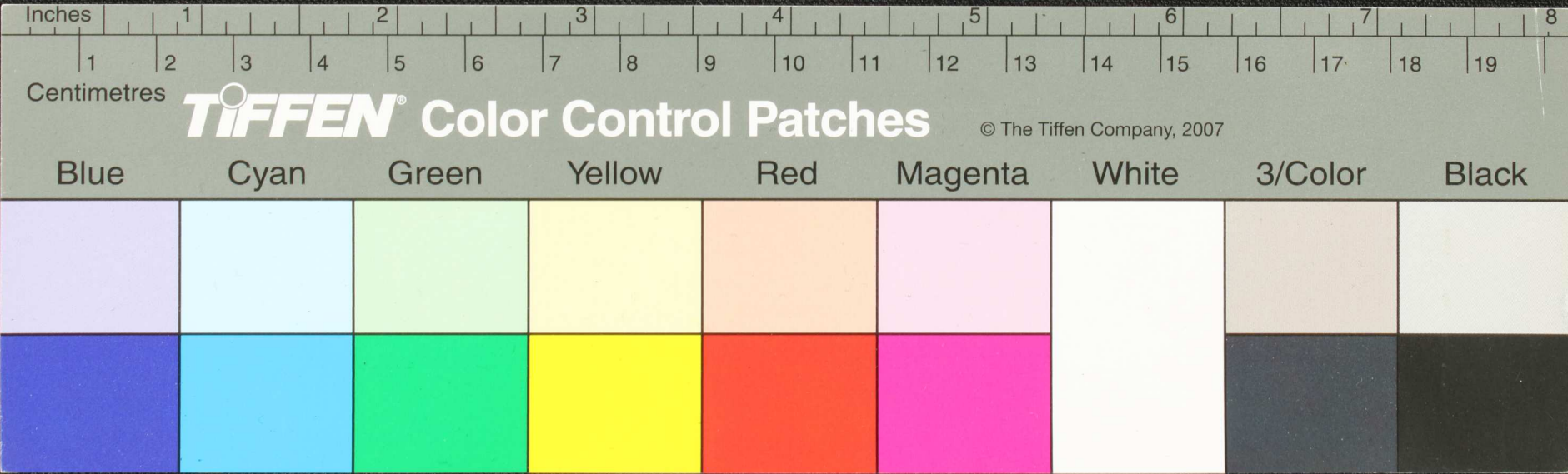
Handwritten text in Tamil script on a palm leaf manuscript. The text is arranged in approximately 10 horizontal lines across the length of the leaf. Two circular holes are visible, which were traditionally used for threading a cord to bind multiple leaves together. The script is dense and appears to be a form of classical or religious Tamil.



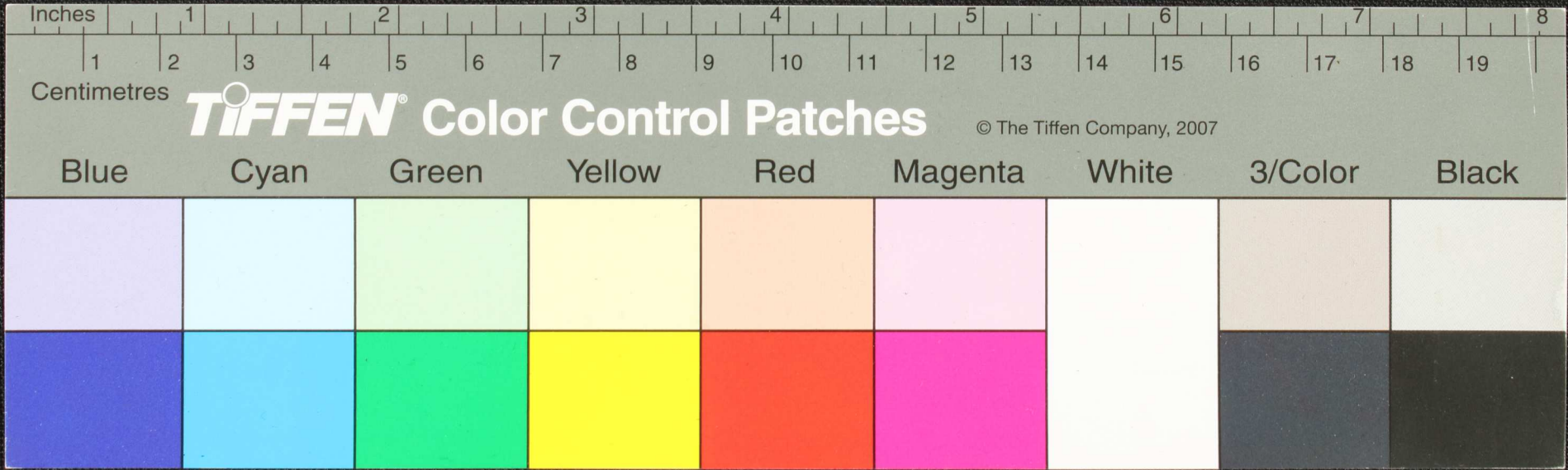
Handwritten Tamil script on a palm leaf manuscript. The text is arranged in approximately 10 horizontal lines across the length of the leaf. There are two distinct circular holes, likely for binding, located roughly one-third and two-thirds of the way along the leaf. The script is finely etched into the surface of the dried leaf.



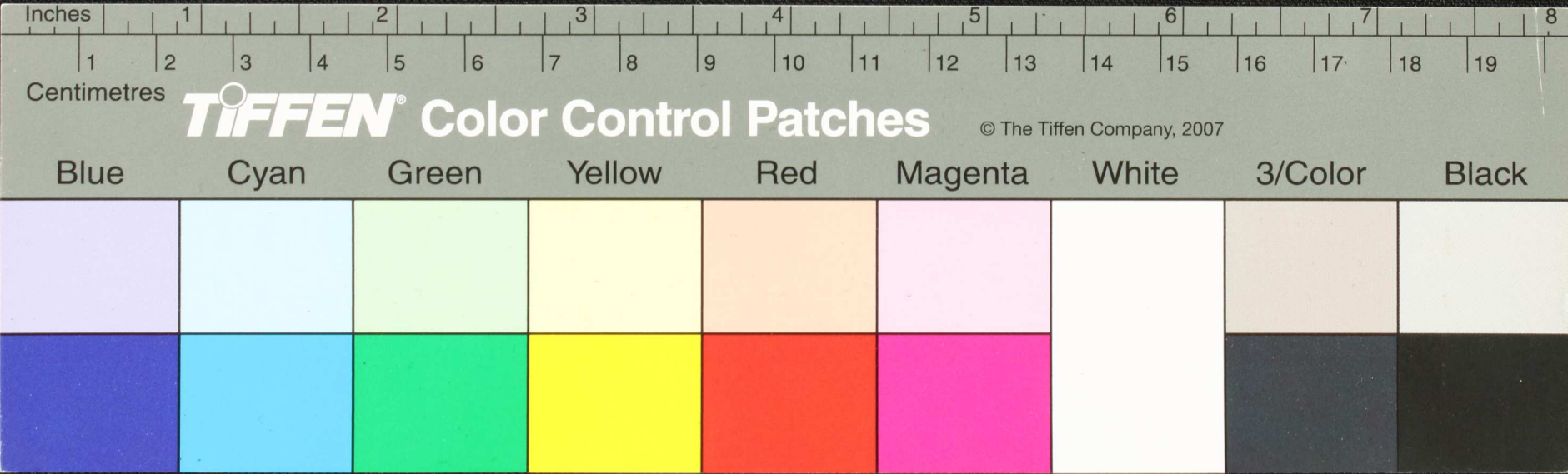
Handwritten text in Tamil script on a palm leaf manuscript. The text is arranged in approximately 10 horizontal lines across the length of the leaf. Two circular holes are visible, used for threading a cord to bind multiple leaves together. The script is finely etched into the surface of the dried leaf.



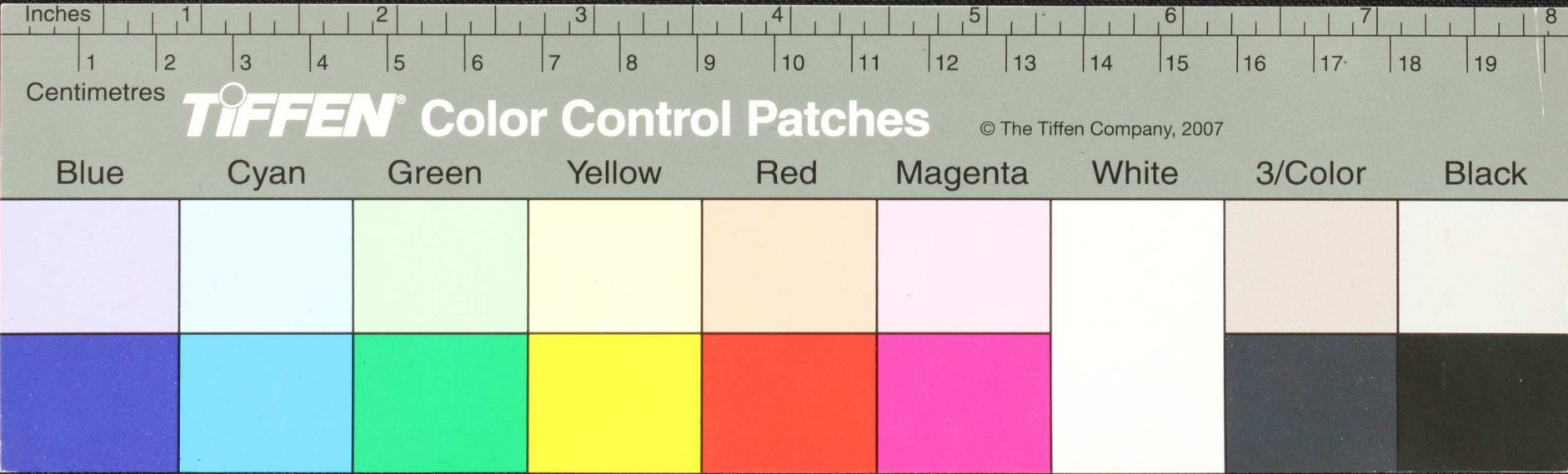
Handwritten Tamil script on a palm leaf manuscript. The text is arranged in approximately 10 horizontal lines across the length of the leaf. Two circular holes are visible, which were traditionally used for threading a cord to bind multiple leaves together into a book format. The script is densely packed and appears to be a form of classical or historical Tamil.



Handwritten Tamil script on a palm leaf manuscript. The text is arranged in approximately 10 horizontal lines across the length of the leaf. The script is finely etched into the natural texture of the dried leaf. Two circular holes are visible, which were traditionally used for threading a cord to bind multiple leaves together into a book format.



Handwritten Tamil script on a palm leaf manuscript. The text is arranged in approximately 10 horizontal lines across the length of the leaf. Two circular holes are visible, which were traditionally used for threading a cord to bind multiple leaves together. The script is densely packed and appears to be a form of classical Tamil.

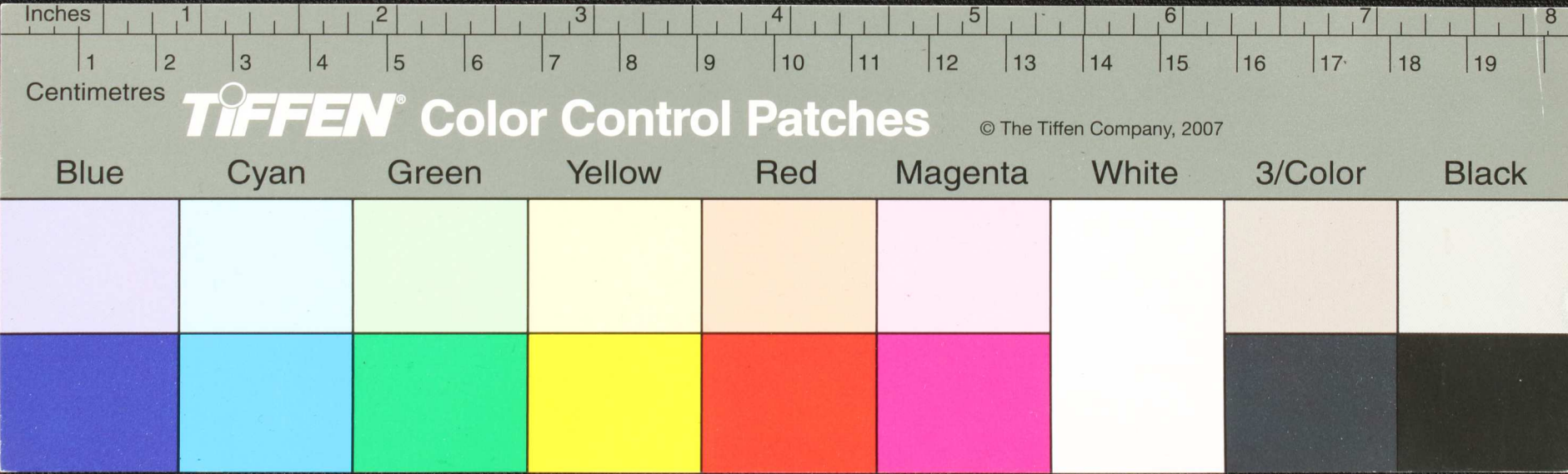


நடாட்கு
 கரு
 திராவி
 மரு
 இரண்டாயு
 னானகூர்

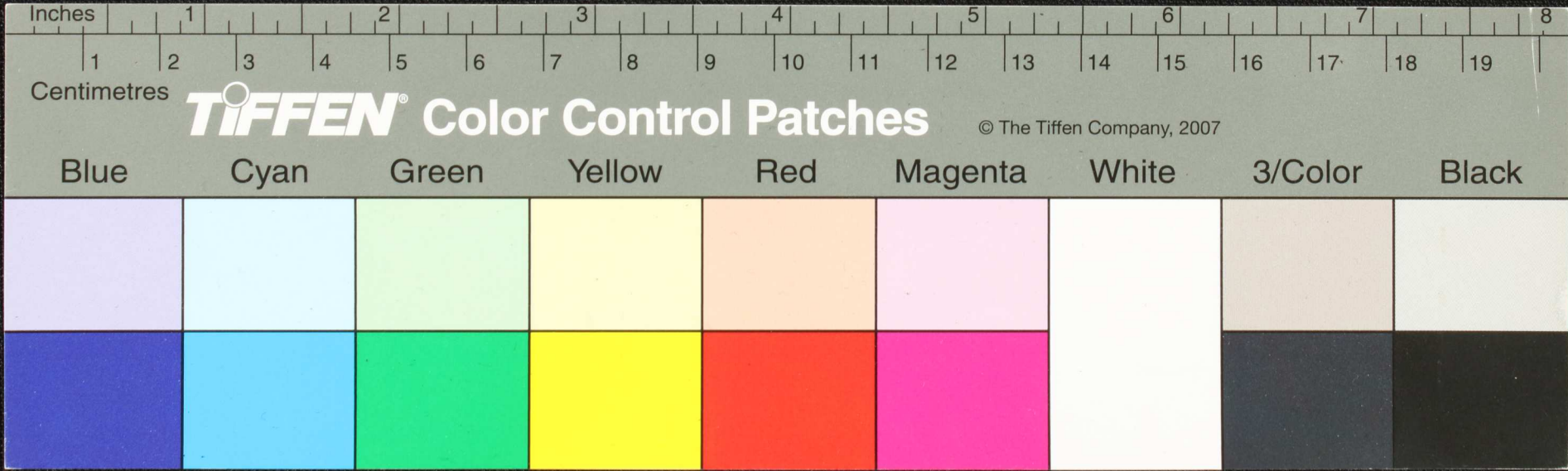
குதவொருகாடுமாடுசெவ்வாயமாடுமராலித்க்குமாடுவொருகூய்யுமடுவென்றுதிநிவினொகூக்குக்
 குறைகொட்காமடுசெய்யுயினிநுடுகாறுநில்கடுகொடுகொடுகொடுகொடுகொடுகொடுகொடுகொடுகொடுகொடு
 காடுகருமடுவொருகாறுடை—ருவாடுவறுடுகொடுவொருகொடு—ருடுகூருகொடுகொடுகொடுகொடுகொடு
 மானுதுகொடுநானகூக்கு. னுதிருட்கூகொடுகொடுகொடுகொடுகொடுகொடுகொடுகொடுகொடுகொடு
 சீமாசுனும்பொருது—கொடுகொடுகொடுகொடுகொடுகொடுகொடுகொடுகொடுகொடுகொடுகொடு
 தலைவொருகொடுகொடுகொடுகொடுகொடுகொடுகொடுகொடுகொடுகொடுகொடுகொடுகொடுகொடுகொடு
 கொடுகொடுகொடுகொடுகொடுகொடுகொடுகொடுகொடுகொடுகொடுகொடுகொடுகொடுகொடுகொடு
 கொடுகொடுகொடுகொடுகொடுகொடுகொடுகொடுகொடுகொடுகொடுகொடுகொடுகொடுகொடுகொடு

Inches		1	2	3	4	5	6	7	8											
Centimetres		1	2	3	4	5	6	7	8	9	10	11	12	13	14	15	16	17	18	19
TIFFEN® Color Control Patches																				
© The Tiffen Company, 2007																				
Blue	Cyan	Green	Yellow	Red	Magenta	White	3/Color	Black												

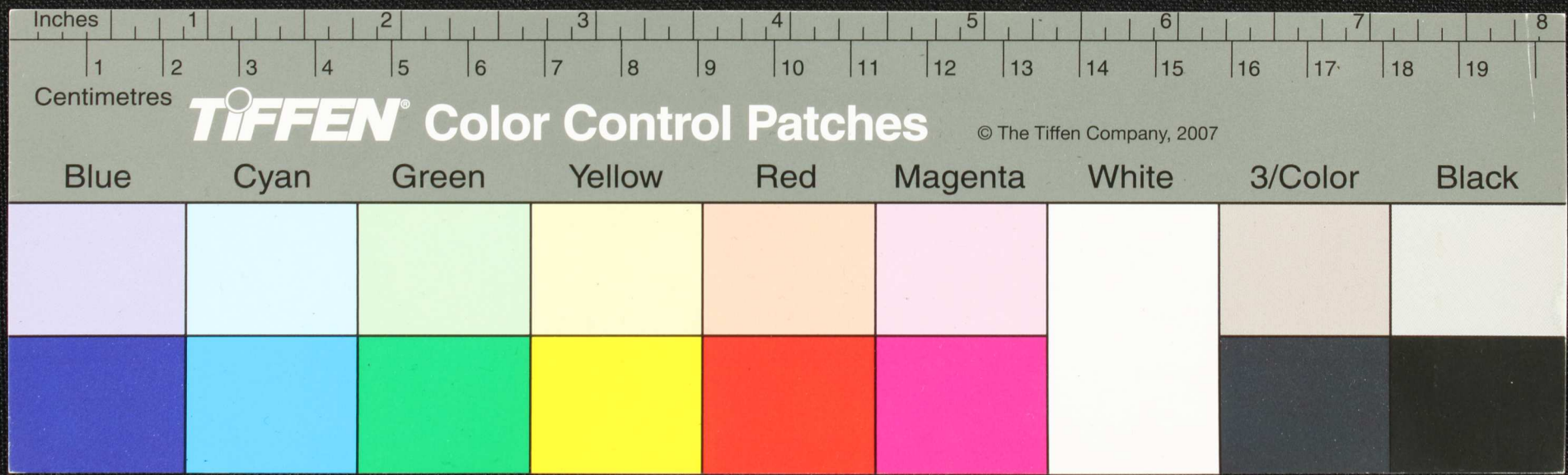
கருடத்திட்டு மெல்லிய சாரங்கமயிர்
 உறுதிபுறத்துவழிமுடித்துப்பெருநகராயம-சுநிலாசுடுத்தகடுதா-மபுளியிபு கைமதுயிழ்த்து
 ஓங்கலி-கட-மெல்லியைக் கடுகூ-9சுழலித்து- வெண்கலத்துப்புளிசுத்துபுடையபுருகைநயிநு
 சாரங்கமயிர்-சாரங்கமயிர்சாரங்கமயிர்சாரங்கமயிர்சாரங்கமயிர்சாரங்கமயிர்சாரங்கமயிர்சாரங்கமயிர்
 கடுகூ-9சுழலித்து- வெண்கலத்துப்புளிசுத்துபுடையபுருகைநயிநு
 மருத்துவியிடு நியமலிவசுமபுபெரு நகராயம-சுநிலாசுடுத்தகடுதா-மபுளியிபு கைமதுயிழ்த்து
 கடுகூ-9சுழலித்து- வெண்கலத்துப்புளிசுத்துபுடையபுருகைநயிநு
 மருத்துவியிடு நியமலிவசுமபுபெரு நகராயம-சுநிலாசுடுத்தகடுதா-மபுளியிபு கைமதுயிழ்த்து
 கடுகூ-9சுழலித்து- வெண்கலத்துப்புளிசுத்துபுடையபுருகைநயிநு



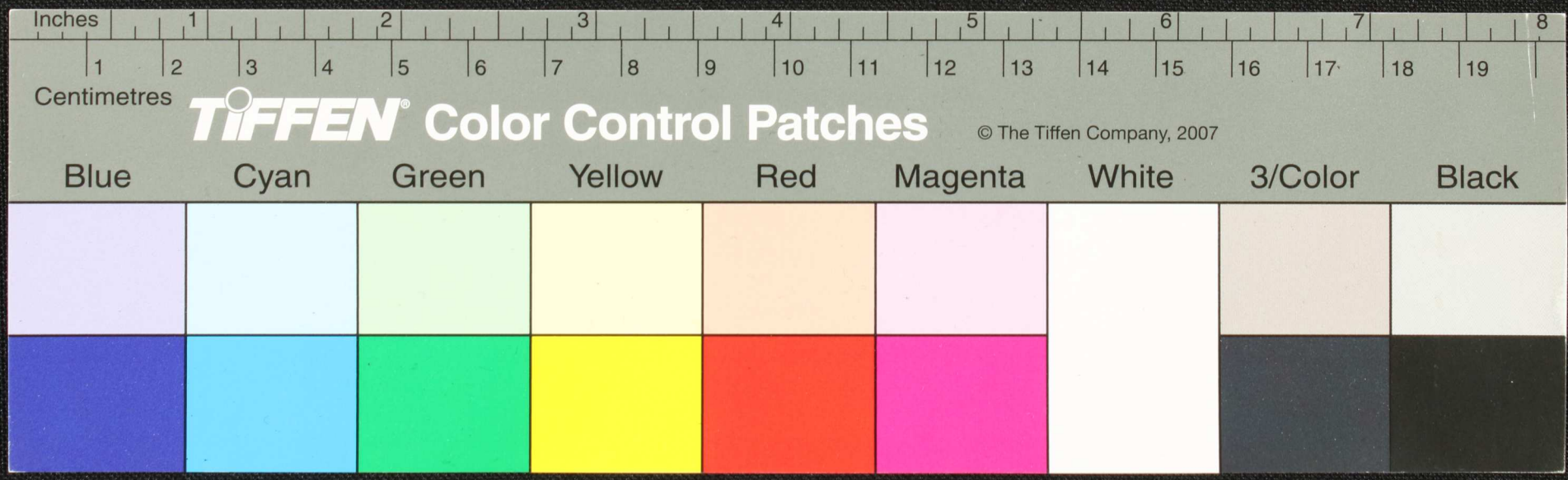
Handwritten Tamil script on a palm leaf manuscript. The text is arranged in approximately 10 horizontal lines across the length of the leaf. The script is a traditional form of the Tamil language, likely containing a religious or philosophical text. There are two prominent circular holes along the length of the leaf, which were traditionally used for threading a cord to bind multiple leaves together into a book format.



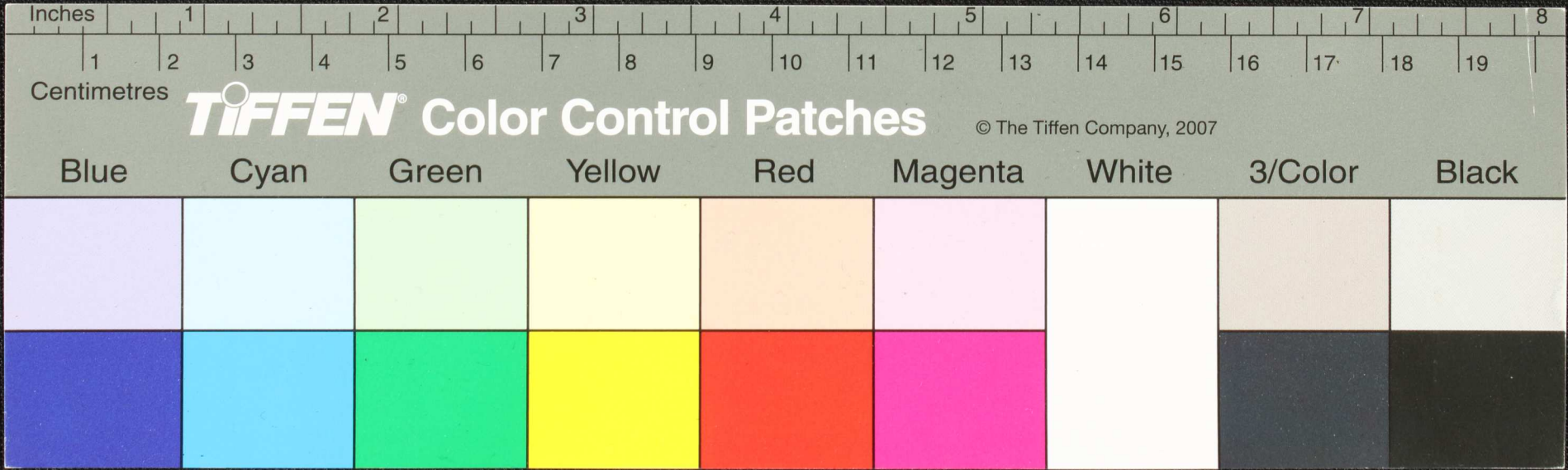
Handwritten text in Tamil script on a palm leaf manuscript. The text is arranged in approximately 10 horizontal lines across the length of the leaf. The script is dense and characteristic of traditional Tamil inscriptions. There are two prominent circular holes along the length of the leaf, which were used for threading a cord to bind multiple leaves together into a book format.



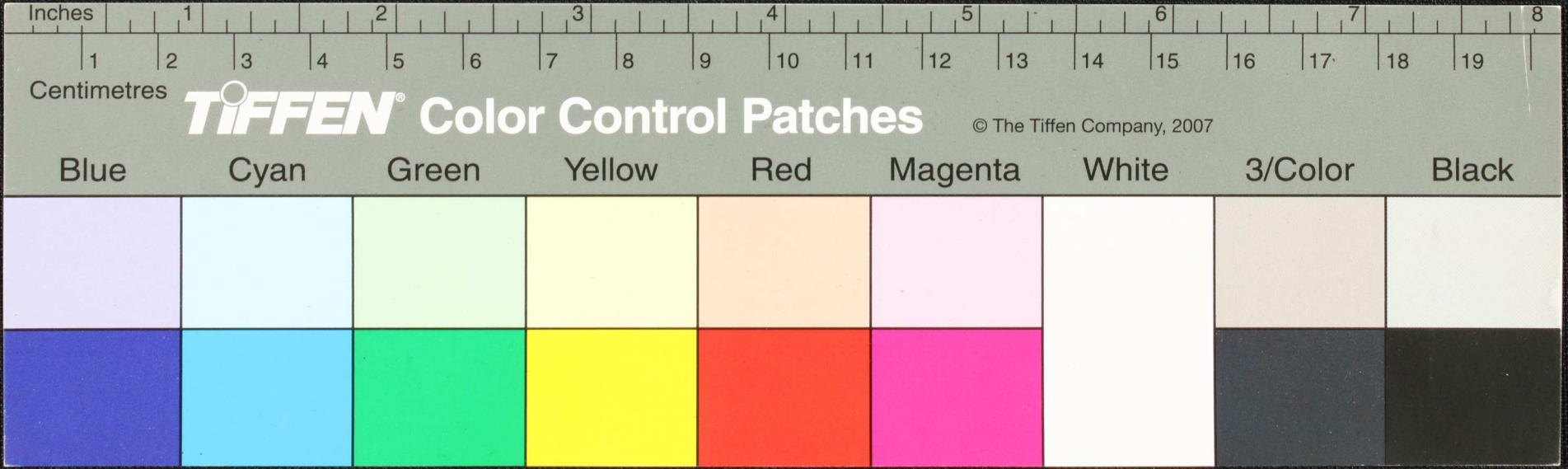
Handwritten Tamil script on a palm leaf manuscript. The text is arranged in approximately 10 horizontal lines. Two circular holes are visible, used for threading a cord to bind multiple leaves together. The script is written in a traditional, slightly cursive style.



Handwritten Tamil script on a palm leaf manuscript. The text is arranged in approximately 10 horizontal lines across the length of the leaf. Two circular holes are visible, which were traditionally used for threading a cord to bind multiple leaves together into a book format. The script is densely packed and appears to be a form of classical Tamil.



Handwritten Tamil script on a palm leaf. The text is arranged in approximately 10 horizontal lines across the length of the leaf. On the left side, there are three distinct vertical entries: 'சுயலத்தி', 'சுக்க', and 'உதய', each followed by a horizontal line. The main body of text is densely packed and appears to be a continuous passage or a collection of short verses.



Inches

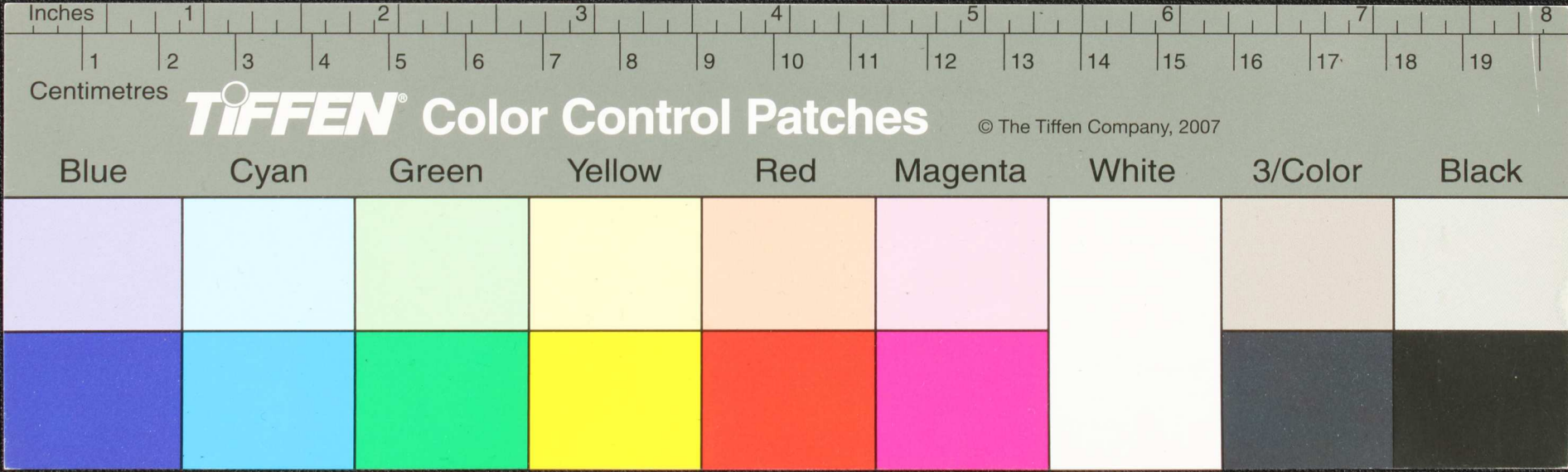
Centimetres

TIFFEN Color Control Patches

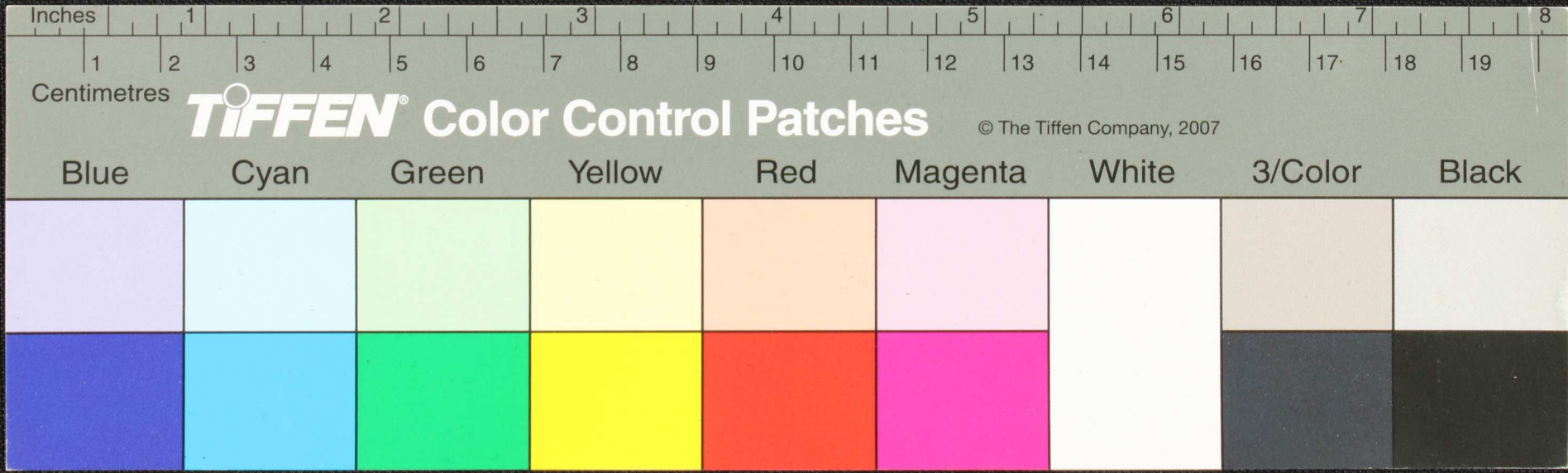
© The Tiffen Company, 2007

Blue Cyan Green Yellow Red Magenta White 3/Color Black

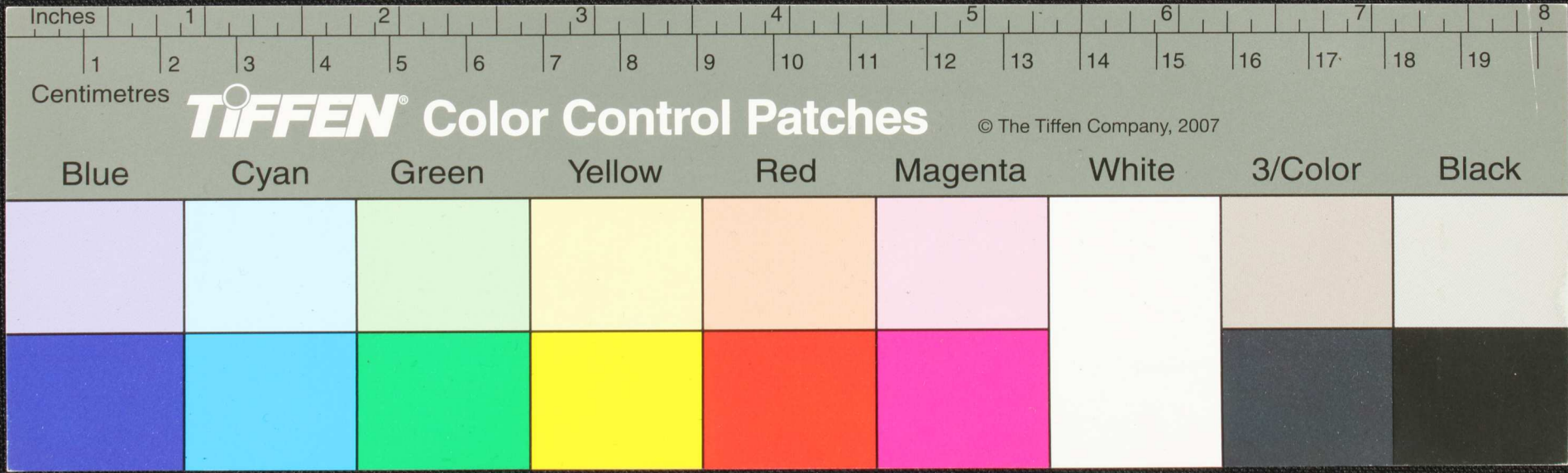
Handwritten Tamil script on a palm leaf manuscript. The text is arranged in approximately 10 horizontal lines across the length of the leaf. On the left side, there are vertical annotations, including the characters 'யது' and 'மணி'.



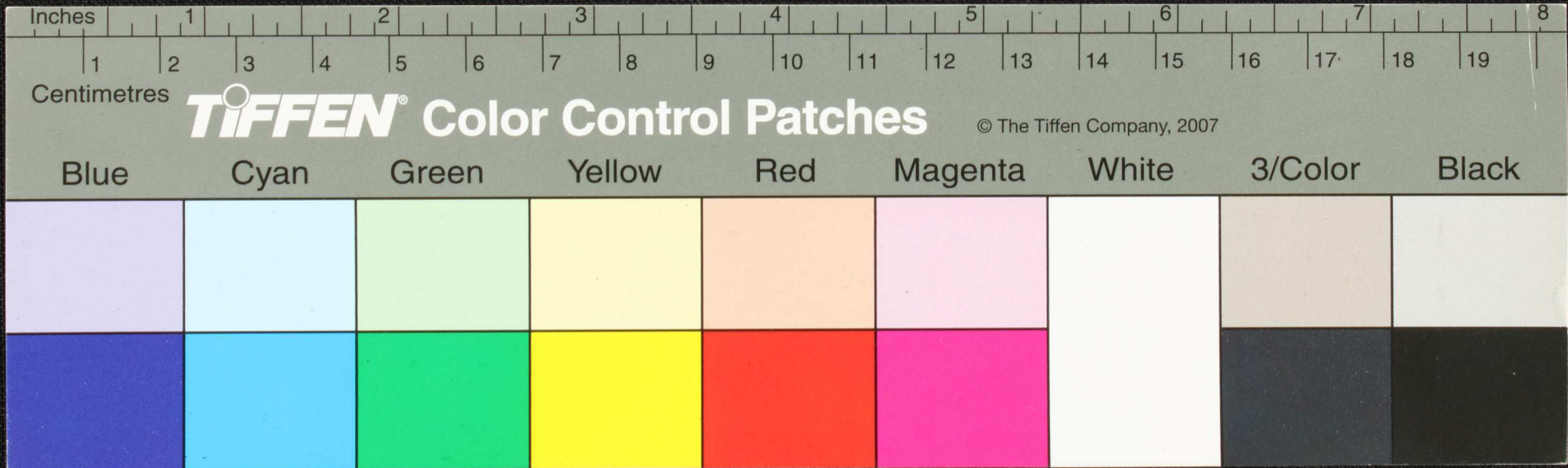
Handwritten Tamil script on a palm leaf manuscript. The text is arranged in approximately 10 horizontal lines across the length of the leaf. Two circular holes are visible, which were traditionally used for threading a cord to bind multiple leaves together into a book format. The script is densely packed and appears to be a form of classical or religious Tamil.



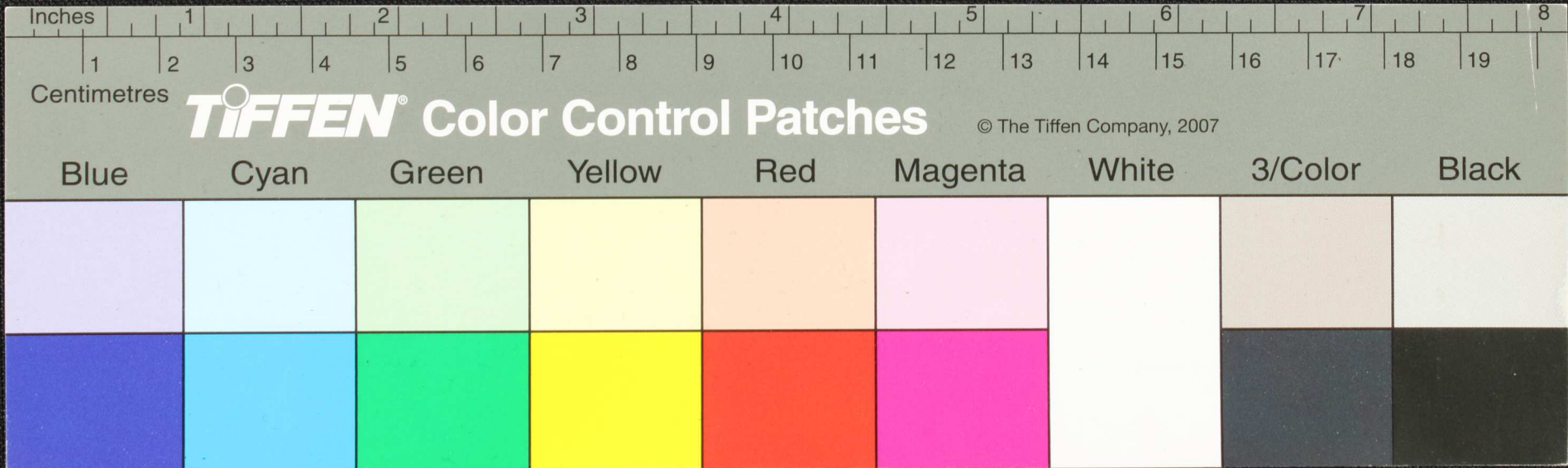
Handwritten Tamil script on a palm leaf manuscript. The text is arranged in approximately 10 horizontal lines. On the left side, there are four distinct lines of text, possibly serving as a title or header, separated by horizontal lines. The main body of text follows in a continuous flow across the remaining lines. The script is finely inscribed and clearly legible. Two circular holes are visible on the leaf, used for traditional binding.



Handwritten Tamil script on a palm leaf manuscript. The text is arranged in approximately 10 horizontal lines across the length of the leaf. Two circular holes are visible, which were traditionally used for threading a cord to bind multiple leaves together into a book format.

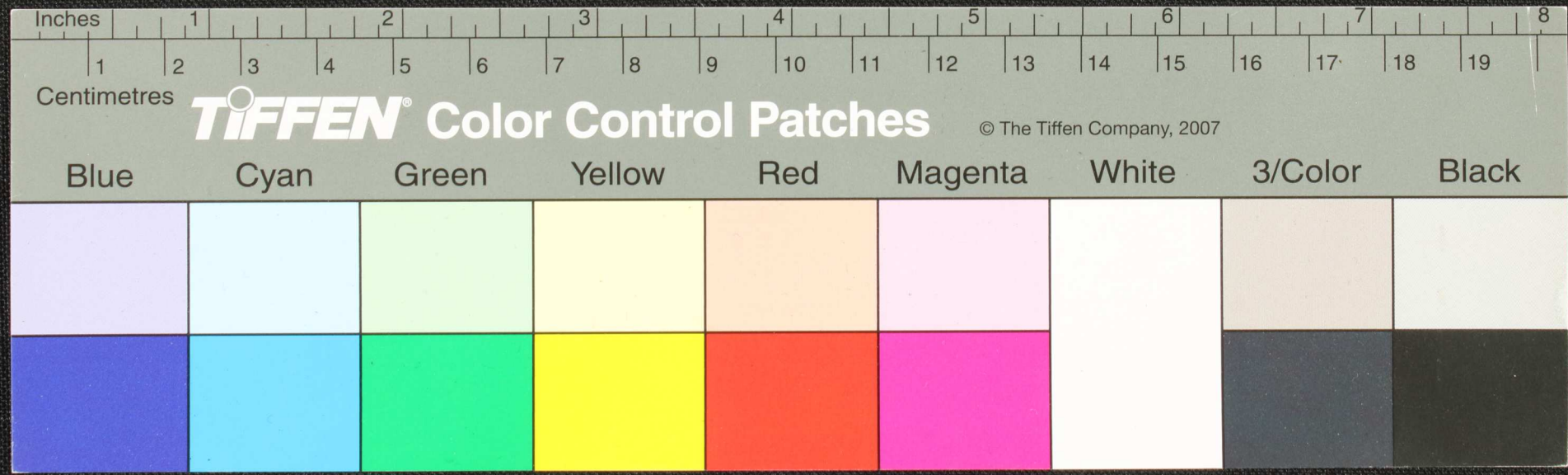


Handwritten Tamil script on a palm leaf manuscript. The text is arranged in approximately 12 horizontal lines. On the left side, there is a vertical label 'ஓய்- 1000' and a circular symbol. Two circular holes are visible, which were traditionally used for stringing multiple leaves together.

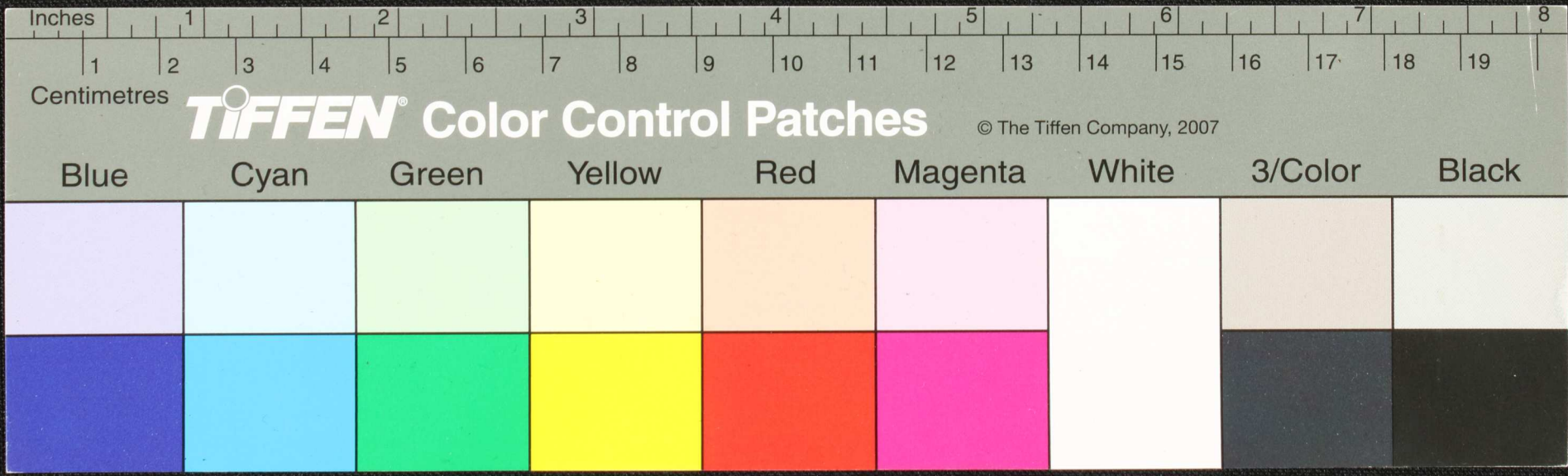


சுருஷி
குருஷி

ஸ்ருஷிடுதாவுபொகட்டுதகலவைக்த்பபசுவிஸுபாவிஸுஹுபராடடுடுகாசுமய
 துமலிஸுஸுபாஹுமஸுஸுஸாஹுடுததுவயயஸுஸுஸுயஸுஸுஸுஸுஸுஸுஸுஸுஸுஸுஸுஸு
 துடுகாஸு
 தாயவைக்துநாஹுஸு
 ஸு
 ஸு
 ஸு
 ஸு
 ஸு
 ஸு
 ஸு
 ஸு
 ஸு

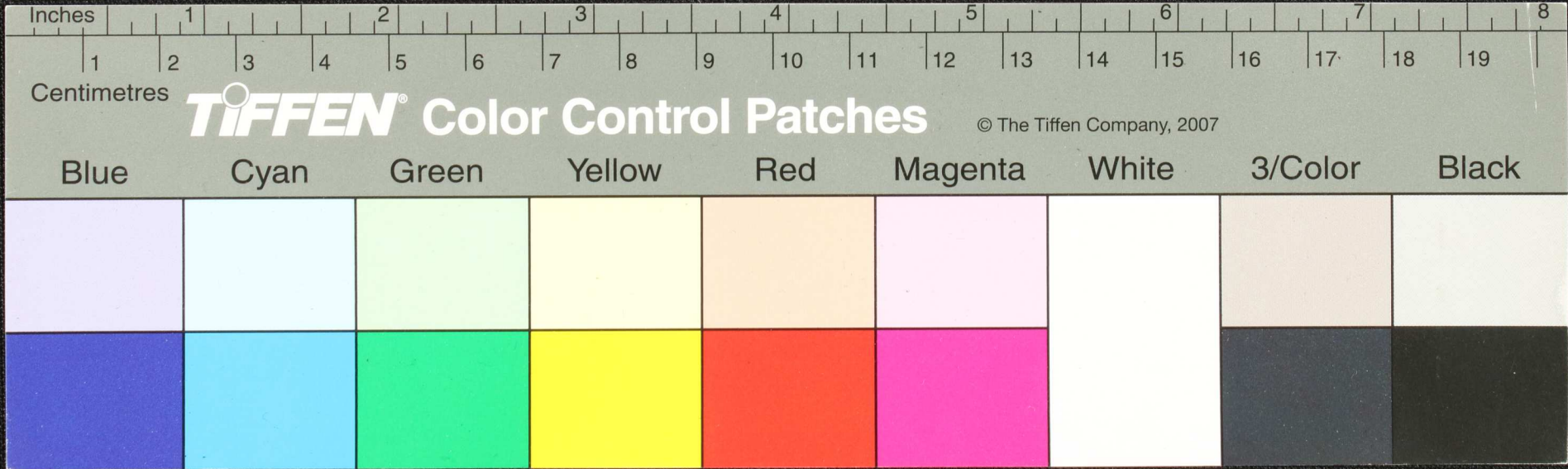


Handwritten Tamil script on a palm leaf manuscript. The text is arranged in approximately 10 horizontal lines across the length of the leaf. The script is dense and appears to be a form of classical or religious Tamil. The leaf shows signs of age and wear, with some fraying at the edges.

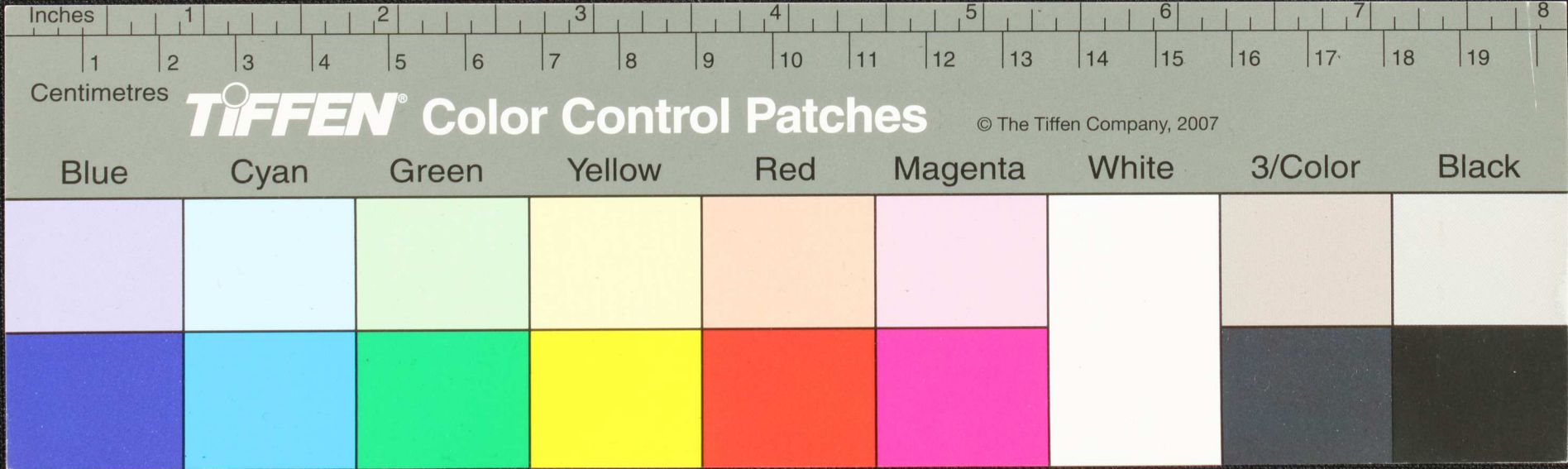


சிவபிரஸாத
 சூதுமராசு
 மனாநாமி
 சிவலகம-
 னுதி...

உபநாசுயமவயமபுதிருபலிசு...
 சிவசசித்ததுளிமபு...
 கு...
 ரபு...
 துவ...
 ம...
 வ...

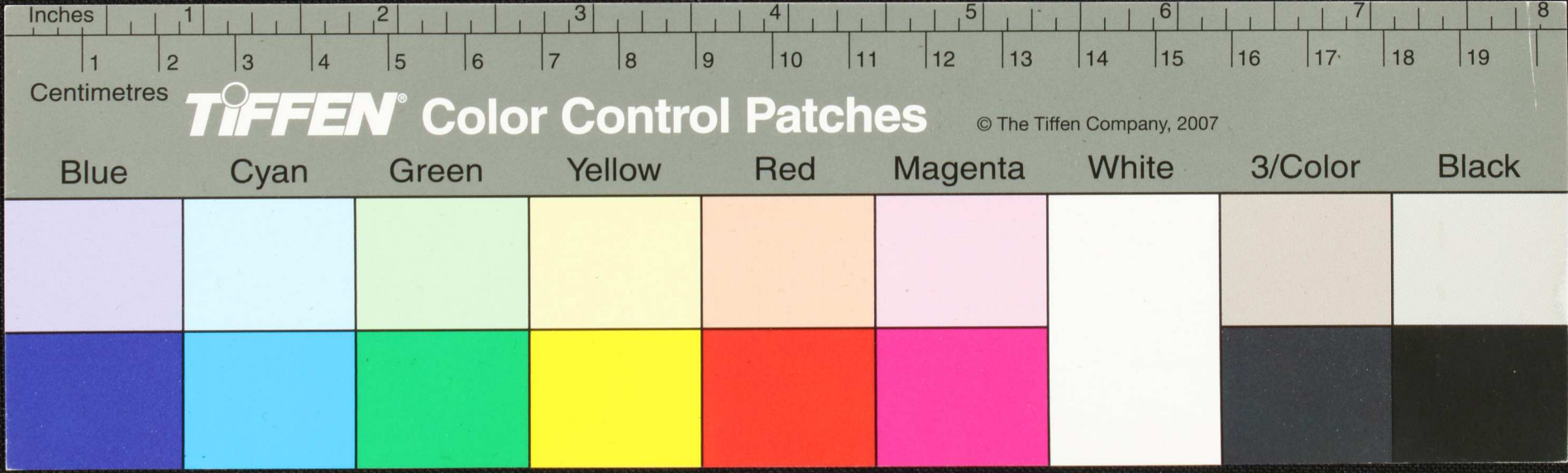


Handwritten Tamil script on a palm leaf manuscript. The text is arranged in approximately 12 horizontal lines. The script is densely packed and includes several circular holes, which are characteristic of palm leaf manuscripts used for binding with cords. The ink is dark brown or black, and the leaf itself is a light tan color.

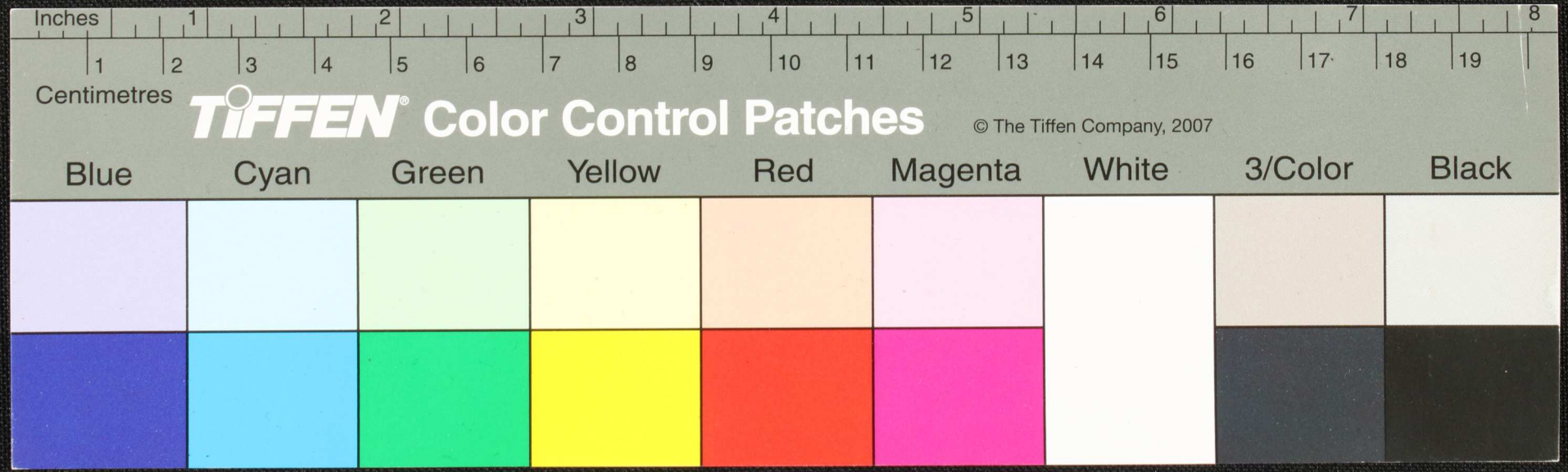


உ
வெண்கல்
பெரியம்.

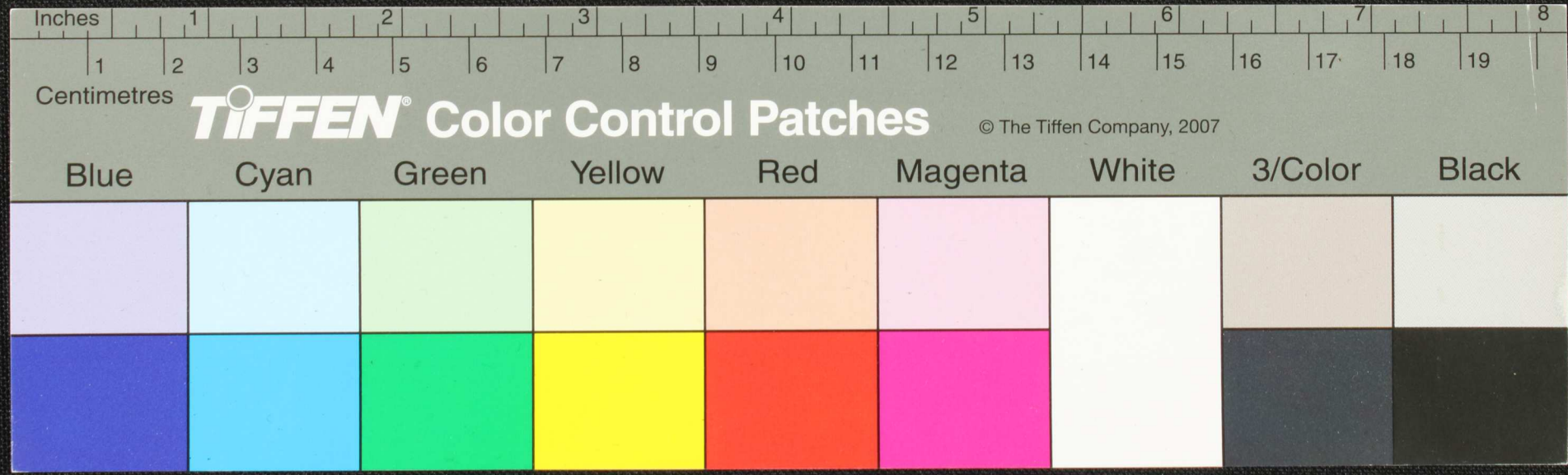
உரையெழுத்துவெண்கல் உருவகங்களைவெண்கல் மலகத்து உருவகங்களைவெண்கல்
கிடைக்கப்பெற்ற உரையெழுத்துவெண்கல் மலகத்து உருவகங்களைவெண்கல்
கிடைக்கப்பெற்ற உரையெழுத்துவெண்கல் மலகத்து உருவகங்களைவெண்கல்
உருவகங்களைவெண்கல் மலகத்து உருவகங்களைவெண்கல்
உருவகங்களைவெண்கல் மலகத்து உருவகங்களைவெண்கல்
உருவகங்களைவெண்கல் மலகத்து உருவகங்களைவெண்கல்
உருவகங்களைவெண்கல் மலகத்து உருவகங்களைவெண்கல்
உருவகங்களைவெண்கல் மலகத்து உருவகங்களைவெண்கல்



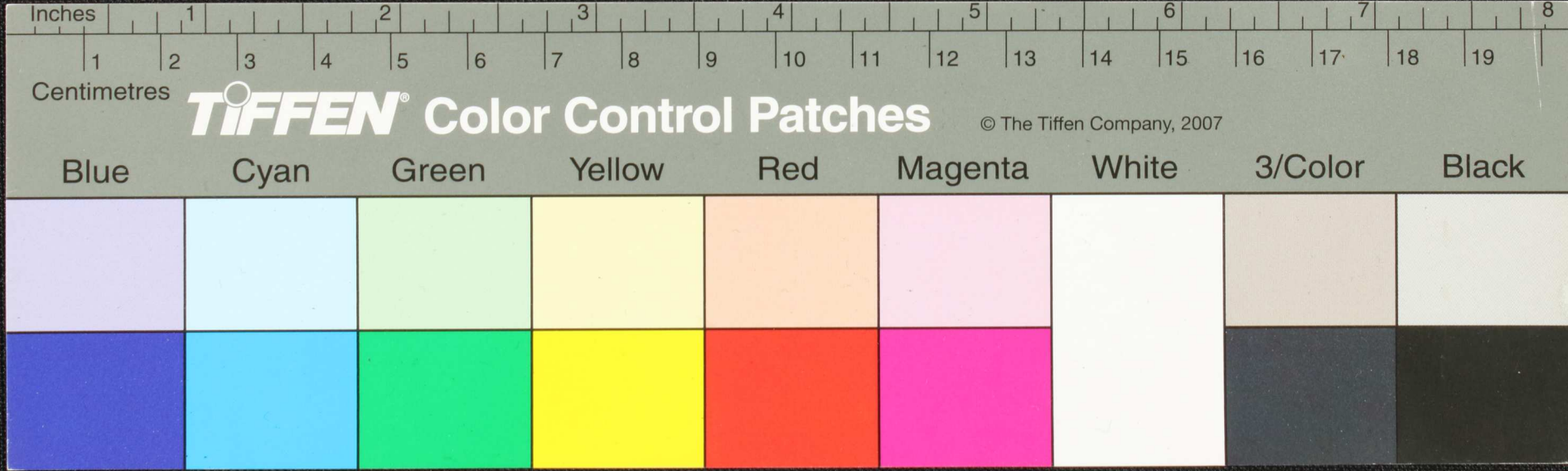
நாடி கழகமுடைய சாயகூறுதல் வெல்லி நாடி கழகமுடைய சாயகூறுதல் வெல்லி
 இரகலம் பாகுதலுமேயுள்ளியிவையொருங்கு தமையுமேயுடைய அந்தரகமேயுடைய
 இரகலம் பாகுதலுமேயுள்ளியிவையொருங்கு தமையுமேயுடைய அந்தரகமேயுடைய
 கையாடியபுலமுடைய இரகலம் பாகுதலுமேயுள்ளியிவையொருங்கு தமையுமேயுடைய
 கையாடியபுலமுடைய இரகலம் பாகுதலுமேயுள்ளியிவையொருங்கு தமையுமேயுடைய
 கையாடியபுலமுடைய இரகலம் பாகுதலுமேயுள்ளியிவையொருங்கு தமையுமேயுடைய



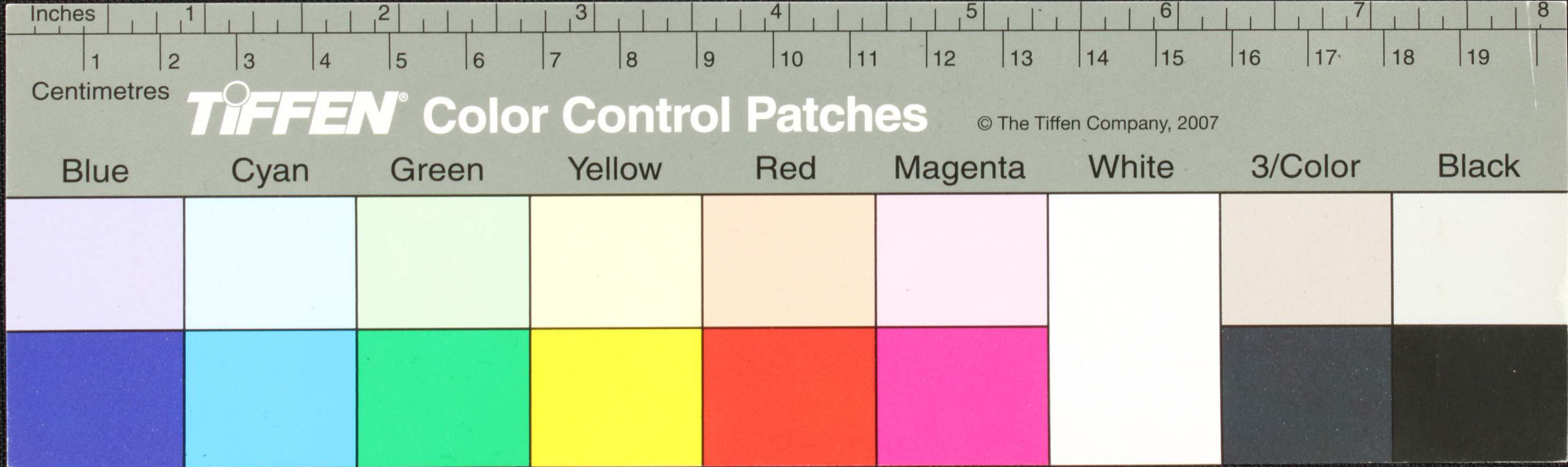
Handwritten text in Tamil script on a palm leaf manuscript. The text is arranged in approximately 10 horizontal lines across the length of the leaf. Two circular holes are visible, used for threading a cord to bind multiple leaves together.



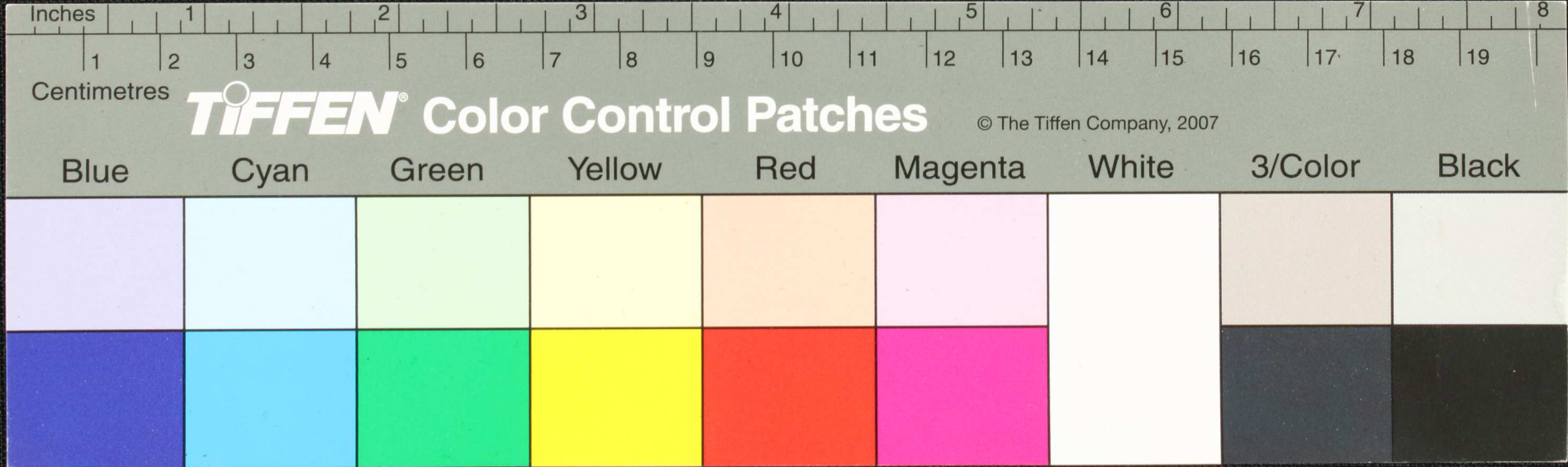
கமலபுத்
 சூரபு
 தாதுமபபுநாதிசபுயுயு...
 மரயவகுநாதுநகவு...
 சூரபு...
 சூரபு...
 சூரபு...
 சூரபு...
 சூரபு...
 சூரபு...



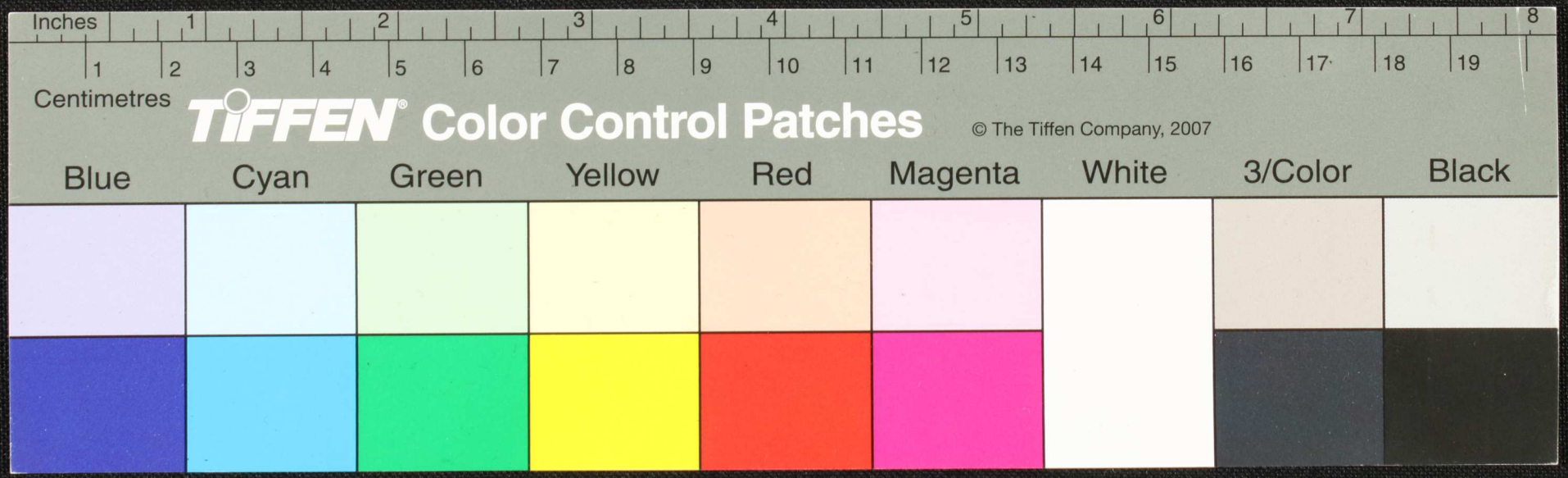
Handwritten Tamil script on a palm leaf manuscript. The text is arranged in approximately 10 horizontal lines. The script is finely etched into the surface of the dried leaf. The first line begins with a small symbol resembling 'செ' followed by several characters. The subsequent lines contain dense, continuous text. There are two distinct circular holes or indentations along the length of the leaf, which were traditionally used for threading a cord to bind multiple leaves together into a book format. The leaf shows signs of age, with some fraying and discoloration at the edges.



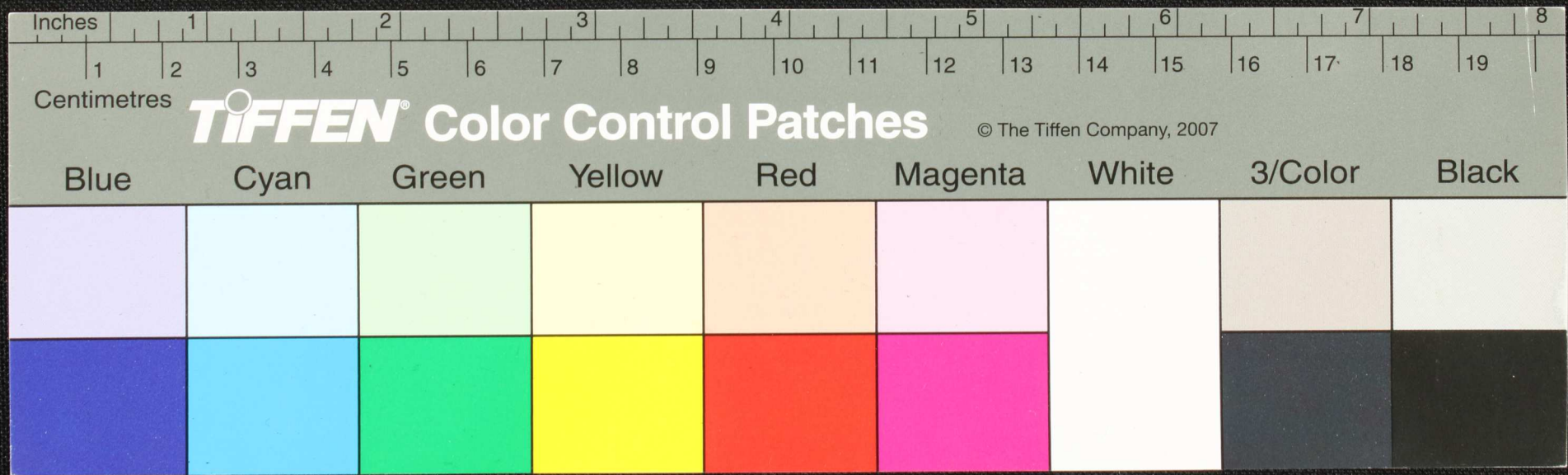
Handwritten Tamil script on a palm leaf manuscript. The text is arranged in approximately 10 horizontal lines across the length of the leaf. The script is finely etched into the surface of the dried leaf. The leaf shows signs of age and wear, with some dark spots and irregular edges. The text appears to be a form of classical or historical Tamil, possibly containing religious or philosophical content.



Handwritten text in Tamil script on a palm leaf manuscript. The text is densely packed and appears to be a historical record or a religious text. The script is written in a traditional style, with some characters that are specific to the Tamil language. The leaf shows signs of age and wear, with some dark spots and irregular edges.

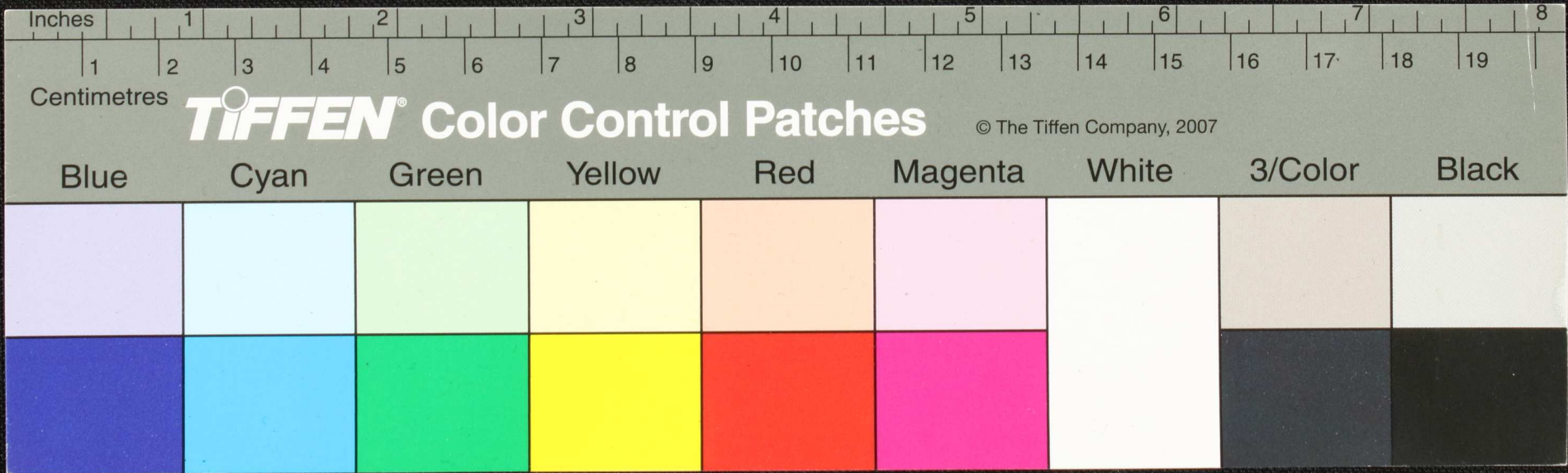


Handwritten text in Tamil script on a palm leaf manuscript. The text is arranged in approximately 10 horizontal lines across the length of the leaf. The script is dense and appears to be a form of classical or historical Tamil. There are several circular holes or indentations along the leaf, which were traditionally used for threading a cord to bind multiple leaves together into a book format.



கந்த
 குலநக
 எநய-
 கணனுத
 குழிதை-

இவநதைபாலெருநமாநகநாஜீநுடைத்துப்பயுறிரதவபுத்துக்குஞ்சு-11ர்வின்
 எநயுருகொகத்துச்சாநிகருகொகப்புகருகுநாநகமொனதுத்துகுரு-உ
 குயெருதுபத்துநி-லிருகதுவைத்துக்குஞ்சுநொமமபுச்சுபபொநம-
 திருநுஷ-திருநித-குழிச்சலிசைககுழிச்சலாகத்து-ககுநிச்சலிவைதுகுமபுத
 குமபுஷபிபுருகுருநுநிகுக்கைகுமுநுநுபொடகுதகுழிச்சமைத்துக்குஞ்சு
 துத்துநதுநிசெமபுபொடபுயிவைச்சமனுக்கொருகுதலைசுடுகுதகுபுயினி



1- அரைத்துத் தந்தபடி அரிசு உலிப்பராலுக்குத் தந்திடை டரட்டலி மடாது ம - ஏனென்ற -
 ஆக்காத இரண்டா த ம ம தா ம வெ ம - ம ரு லி மி லி வ ரு க ம ச ர த த னு ம னு ரு வ லி ல ர மி ச ர க ரு கு னி ச டு
 த ர னு னு இ ர னு ர னு த் து ச ரு னை வ ரை த - து மி க ட - த ர ம ரா ர னு லி னு அ ரு தி ச ர த ச ர க ரு னு னு த்
 ய ம வெ ட ம ந லி ல னு னு - ௧ - ௧ - க க து - ப ப ரு ப ப ன - ௧ - ௧ - க து - திர - திர னா த க க து து வி ட
 ய ம த லி க ச ச ன ட த து து க க து - ௧ - ௧ - ம - த த ல ர ய ல னு து - ௧ - ௧ - ம னி ய லி லி க க வ ரை ம னி
 து ச ர னு சி து த ரி க ர ய ல லி லி - ௧ - ௧ - ம ர ச த ரை ம லி லி - ௧ - ௧ - க து - ௧ - ௧ - க து - ந த ரி ம - ௧ - ௧ -
 த து - ௧ - ௧ - ம ர ச த ரை ம லி லி - ௧ - ௧ - ம - ௧ - ௧ - ம ர ச த ரை ம லி லி - ௧ - ௧ - ம ர ச த ரை ம லி லி - ௧ - ௧ -
 ௧ - ௧ - ம ர ச த ரை ம லி லி - ௧ - ௧ - ம ர ச த ரை ம லி லி - ௧ - ௧ - ம ர ச த ரை ம லி லி - ௧ - ௧ -

