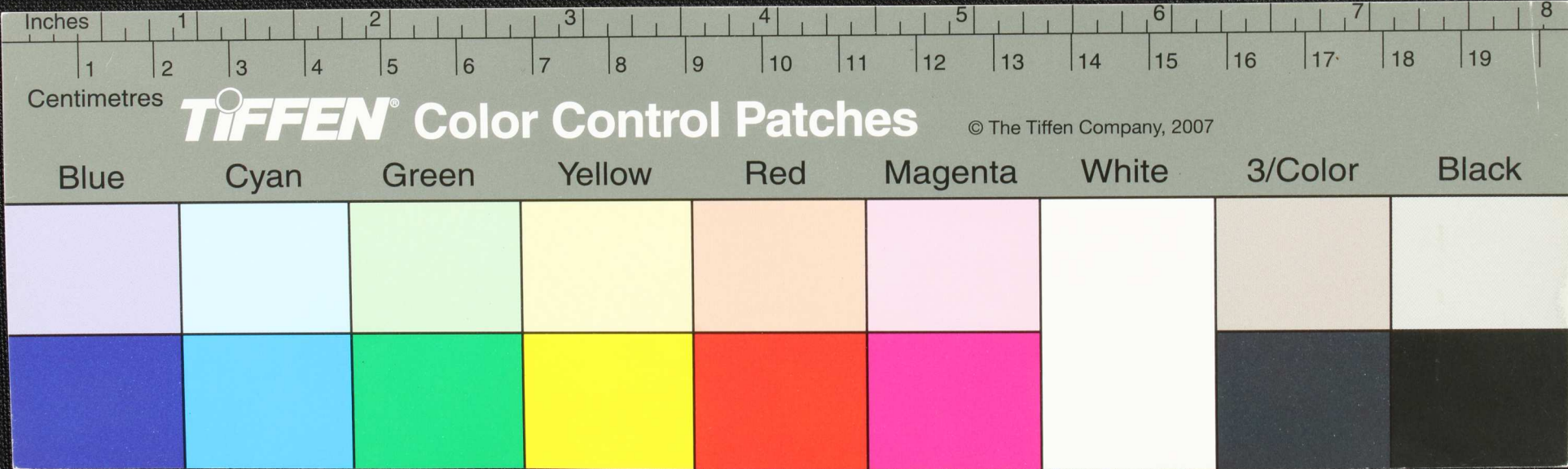
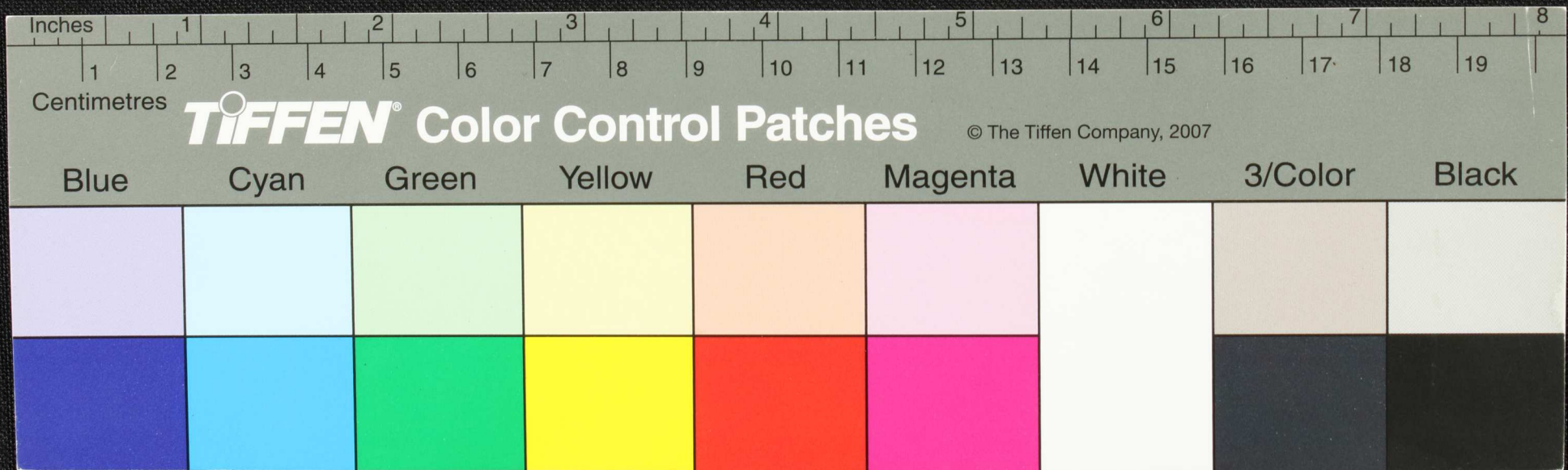


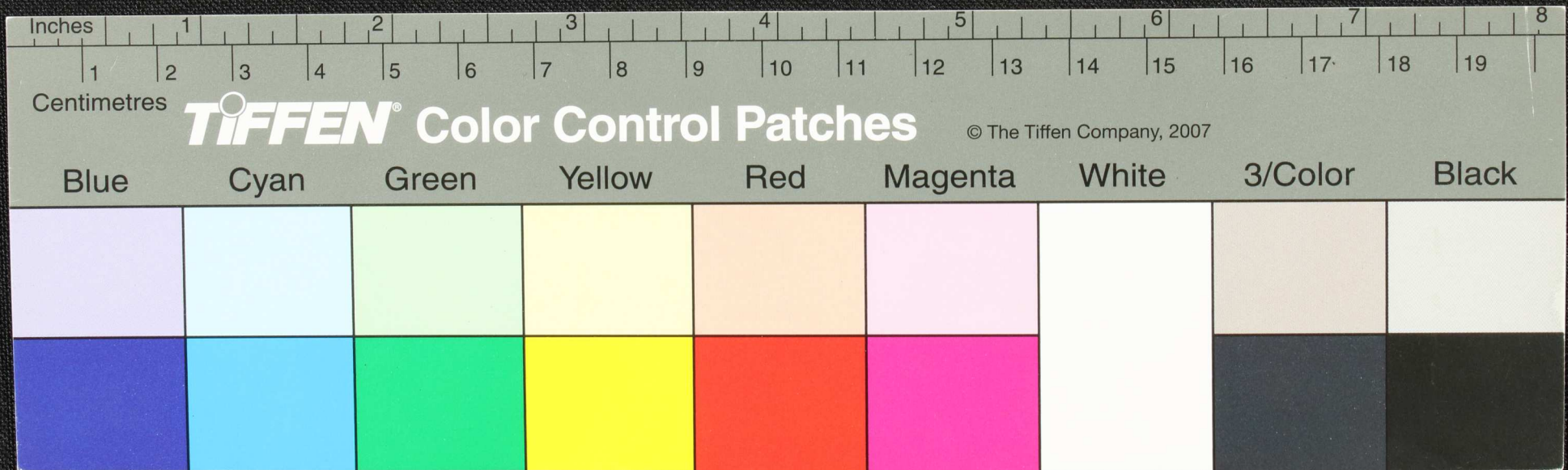
Handwritten Tamil script on a palm leaf manuscript. The text is arranged in approximately 10 horizontal lines. Two circular holes are visible, which were traditionally used for threading a cord to bind multiple leaves together. The script is a form of the Tamil language, likely a historical or religious text.



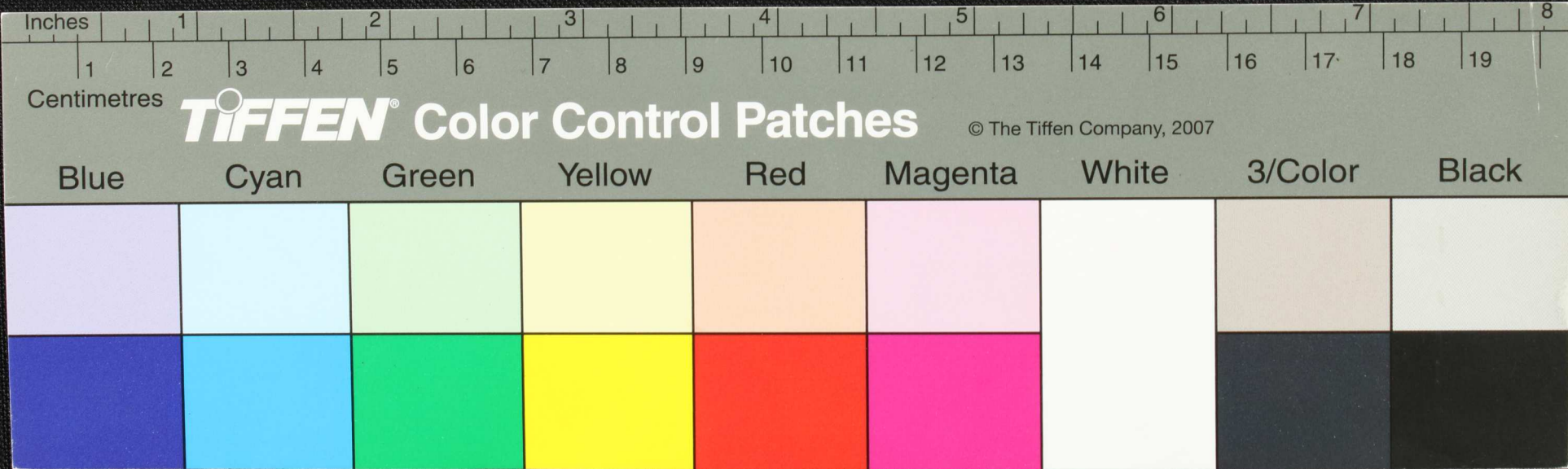
Handwritten Tamil script on a palm leaf manuscript. The text is arranged in approximately 10 horizontal lines. Two circular holes are visible, which were traditionally used for threading a cord to bind multiple leaves together. The script is finely etched into the surface of the dried leaf.



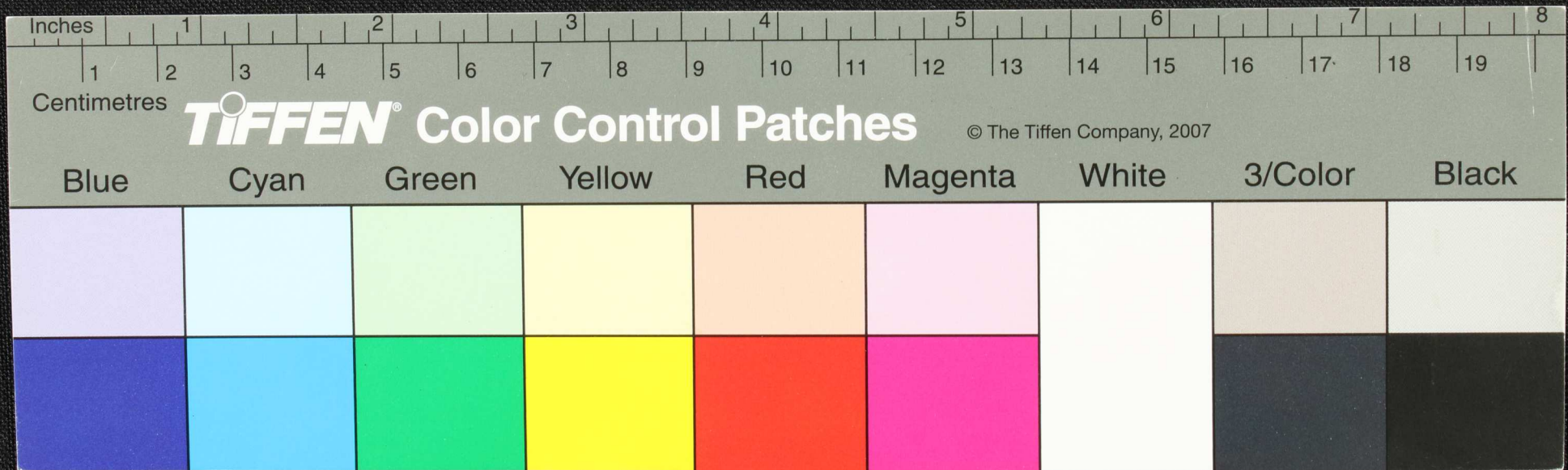
Handwritten Tamil script on a palm leaf manuscript. The text is arranged in approximately 10 horizontal lines. Two circular holes are visible, used for threading a cord to bind multiple leaves together. The script is finely etched into the surface of the dried leaf.



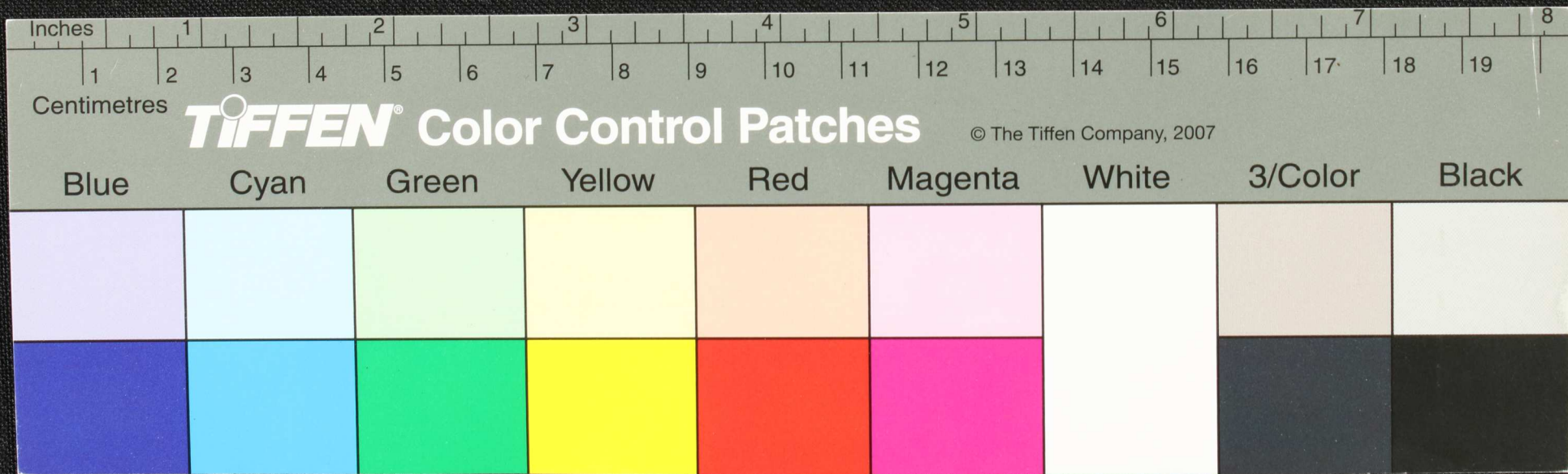
Handwritten Tamil script on a palm leaf manuscript. The text is arranged in approximately 10 horizontal lines. Two circular holes are visible, which were traditionally used for threading a cord to bind multiple leaves together. The script is finely etched into the surface of the dried leaf.

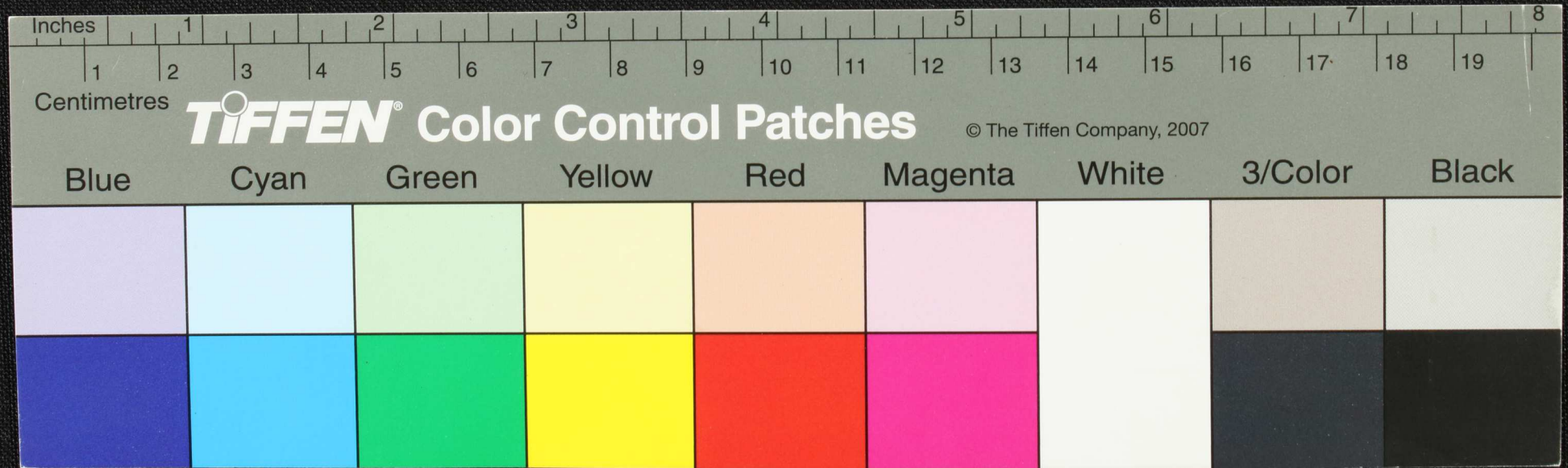


Handwritten Tamil script on a palm leaf manuscript. The text is arranged in approximately 10 horizontal lines. On the left side, there are three lines of text: 'இயாதி', 'செரும', and 'யா'. The main body of the leaf contains dense Tamil characters, with two circular holes punched through it for binding.

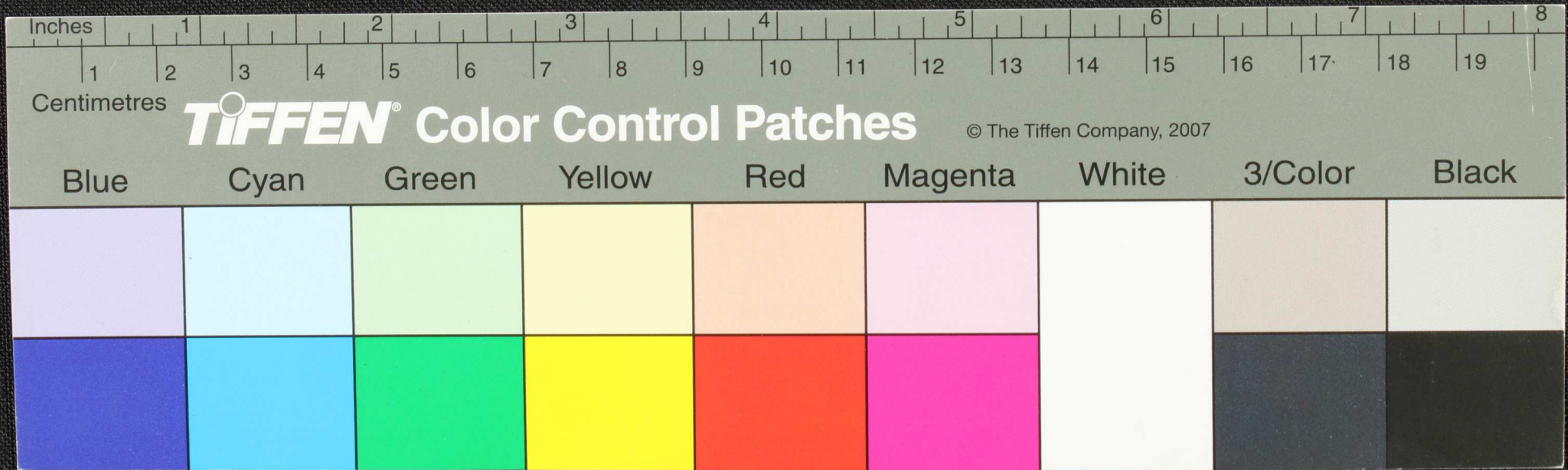


Handwritten Tamil script on a palm leaf manuscript. The text is arranged in approximately 10 horizontal lines. Two circular holes are visible, which were traditionally used for threading a cord to bind multiple leaves together. The script is finely etched into the surface of the dried leaf.

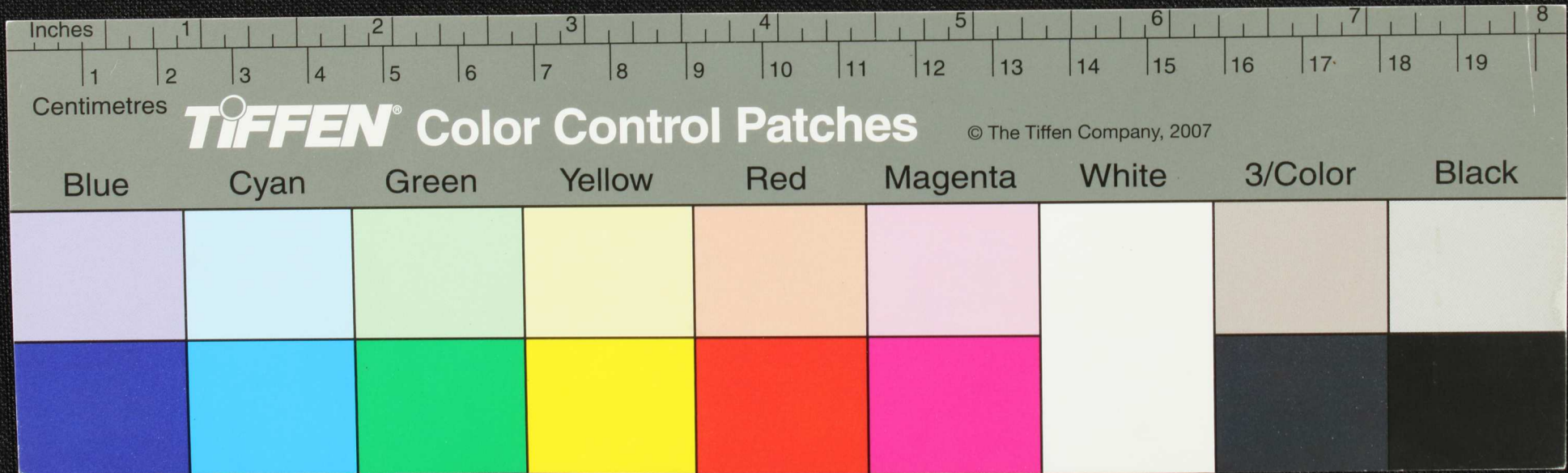




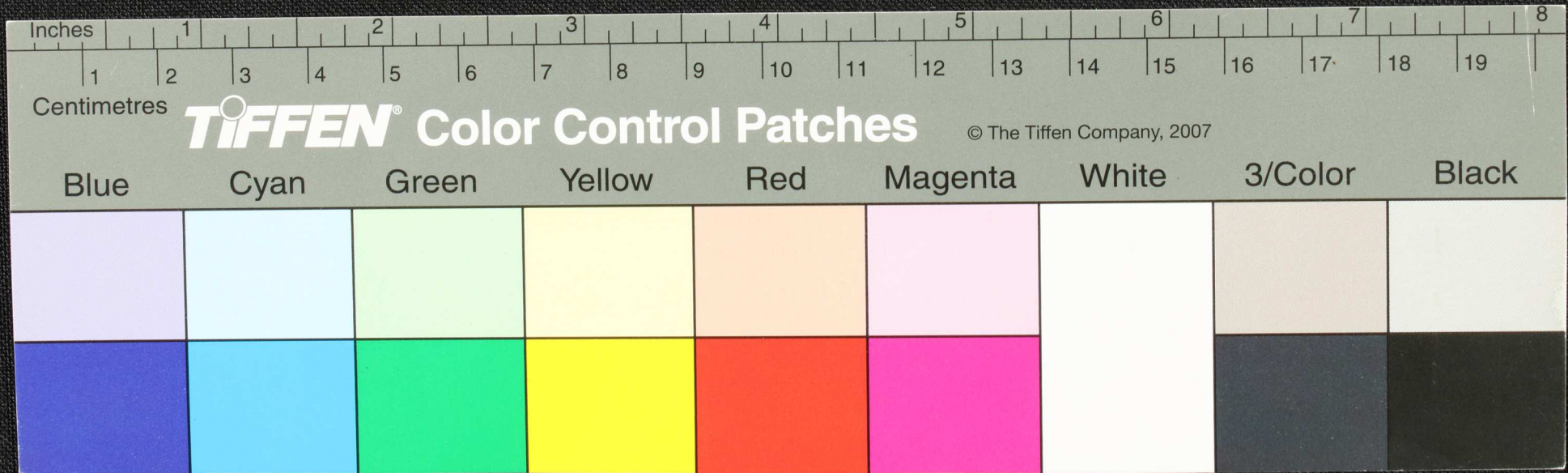
Handwritten Tamil script on a palm leaf manuscript. The text is arranged in approximately 10 horizontal lines. Two circular holes are visible, which were traditionally used for threading a cord to bind multiple leaves together. The script is finely etched into the surface of the dried leaf.



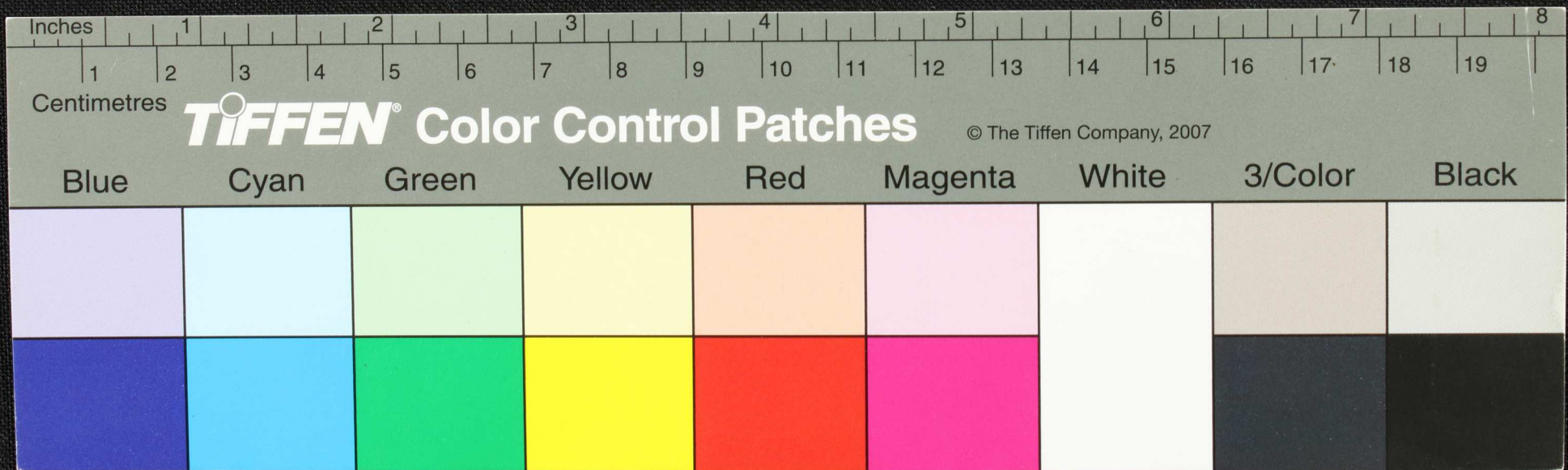
Handwritten Tamil script on a palm leaf manuscript. The text is arranged in approximately 10 horizontal lines. Two circular holes are visible, which were traditionally used for threading a cord to bind multiple leaves together. The script is densely packed and appears to be a form of classical or historical Tamil.



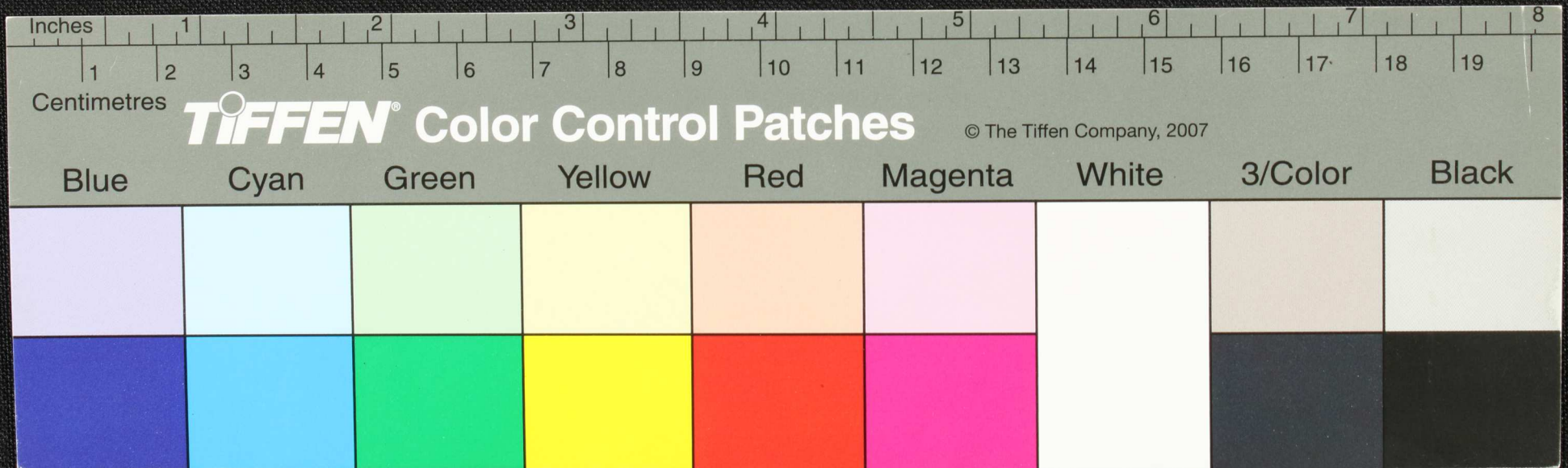
Handwritten Tamil script on a palm leaf manuscript. The text is arranged in approximately 10 horizontal lines. Two circular holes are visible, which were traditionally used for threading a cord to bind multiple leaves together. The script is finely etched into the surface of the dried leaf.



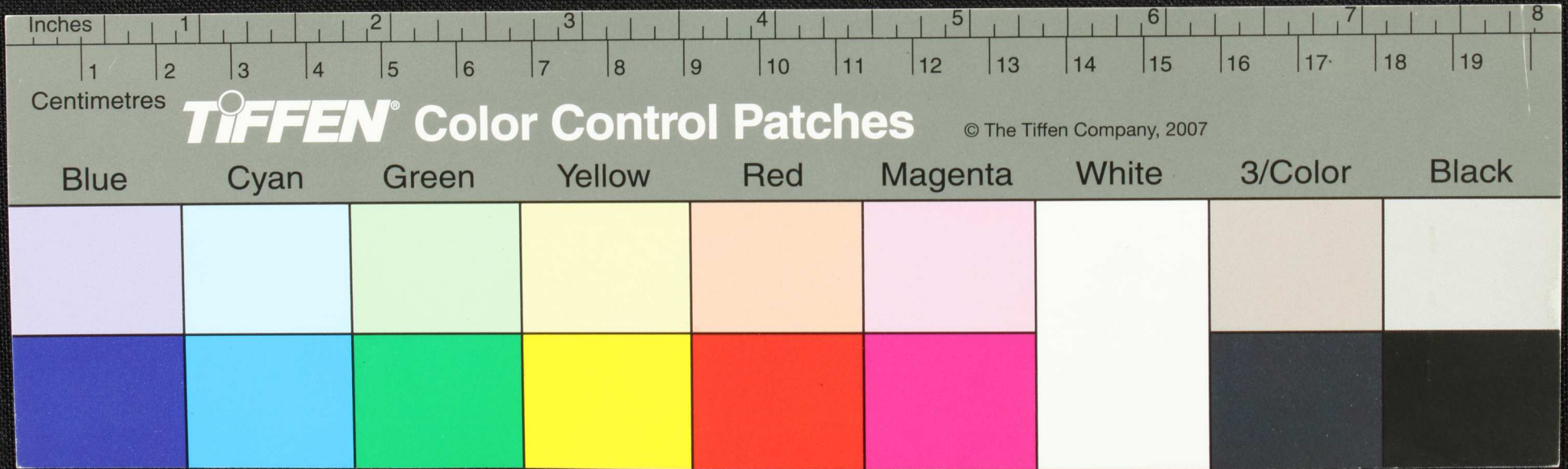
Handwritten Tamil script on a palm leaf manuscript. The text is arranged in approximately 10 horizontal lines. On the left side, there are vertical annotations in smaller script, including the characters 'அ', 'கு', 'ம', 'ம', 'வ', 'கு', 'ம'. Two circular holes are visible, which were traditionally used for threading a cord to bind multiple leaves together.



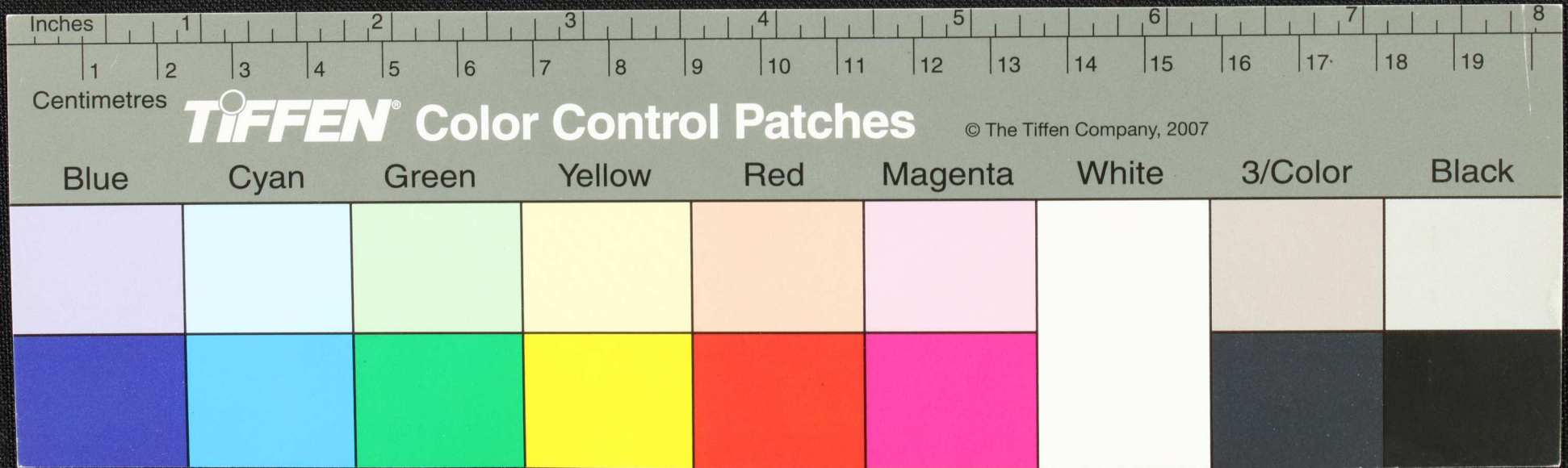
Handwritten Tamil script on a palm leaf manuscript. The text is arranged in approximately 10 horizontal lines. Two circular holes are visible, which were traditionally used for threading a cord to bind multiple leaves together. The script is densely packed and appears to be a form of classical or religious Tamil.



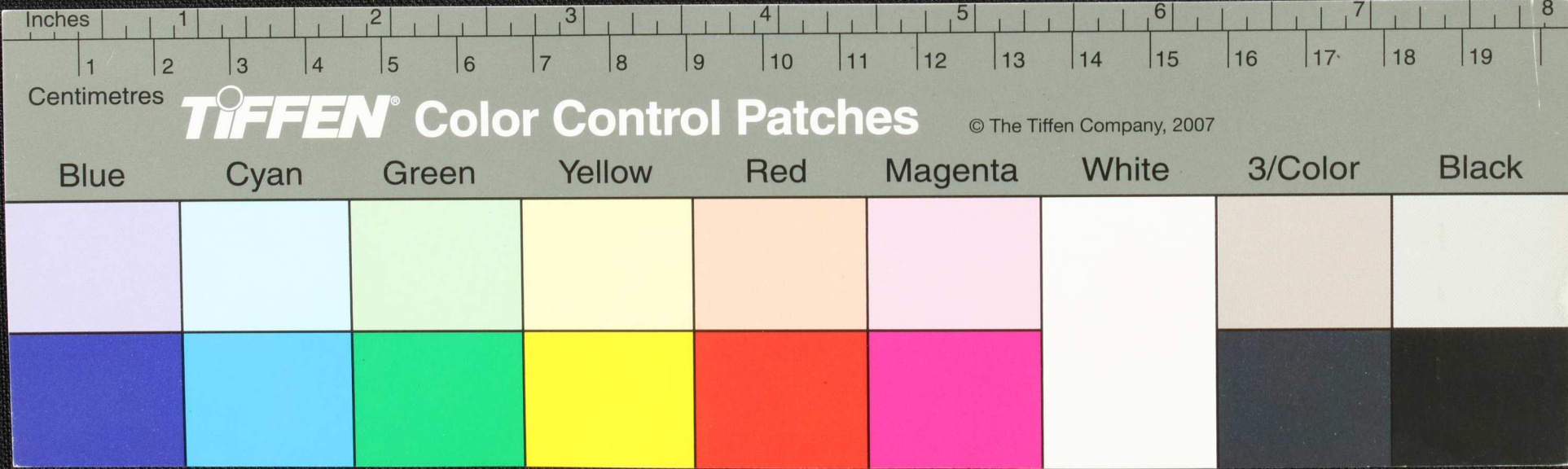
Handwritten Tamil script on a palm leaf manuscript. The text is arranged in approximately 10 horizontal lines. On the left side, there are vertical annotations, including the characters 'ம', 'த', 'வ', 'ர', 'வ', 'ர', 'வ', 'ர', 'வ', 'ர'. Two circular holes are visible, used for binding multiple leaves together.



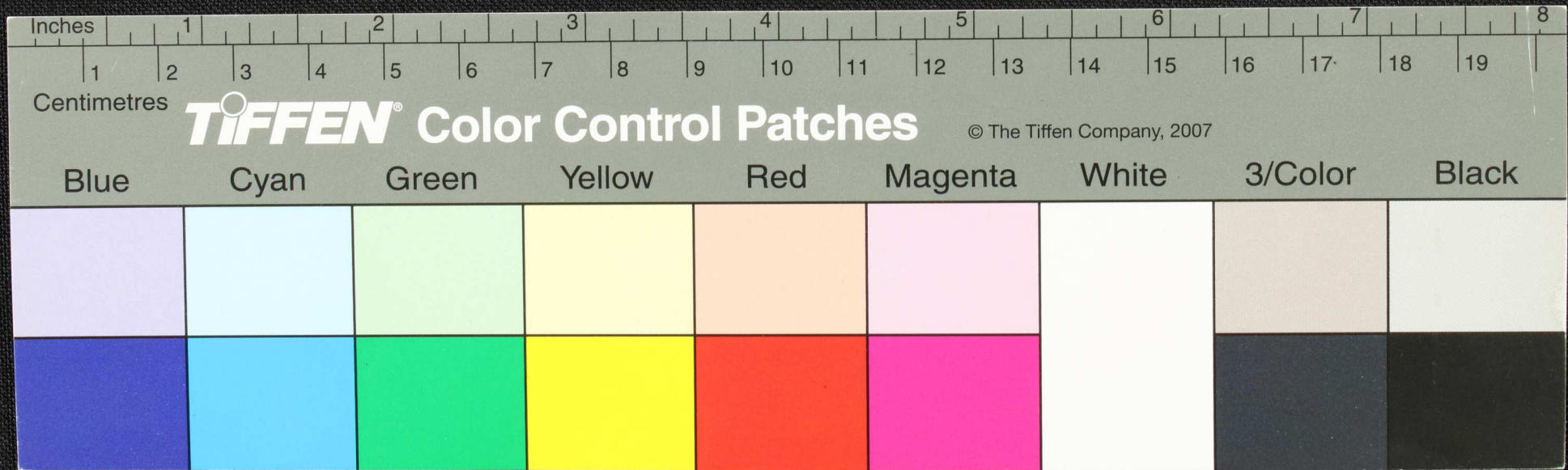
Handwritten text in Tamil script on a palm leaf manuscript. The text is arranged in approximately 10 horizontal lines. There are two circular holes punched through the leaf, one located roughly at the 2.5-inch mark and another at the 6.5-inch mark on the ruler below. The script is dense and appears to be a form of classical or religious Tamil.



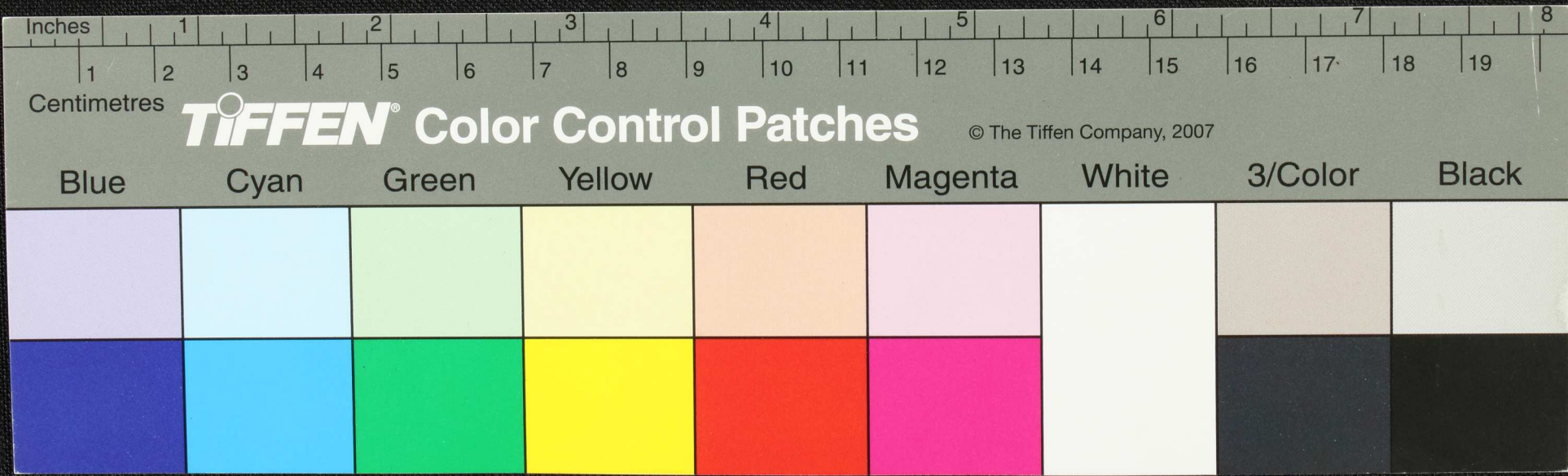
Handwritten Tamil script on a palm leaf manuscript. The text is arranged in approximately 10 horizontal lines. On the left side, there are vertical annotations including the number '17' and the character 'ய'. Two circular holes are visible, which were traditionally used for threading a cord to bind multiple leaves together.



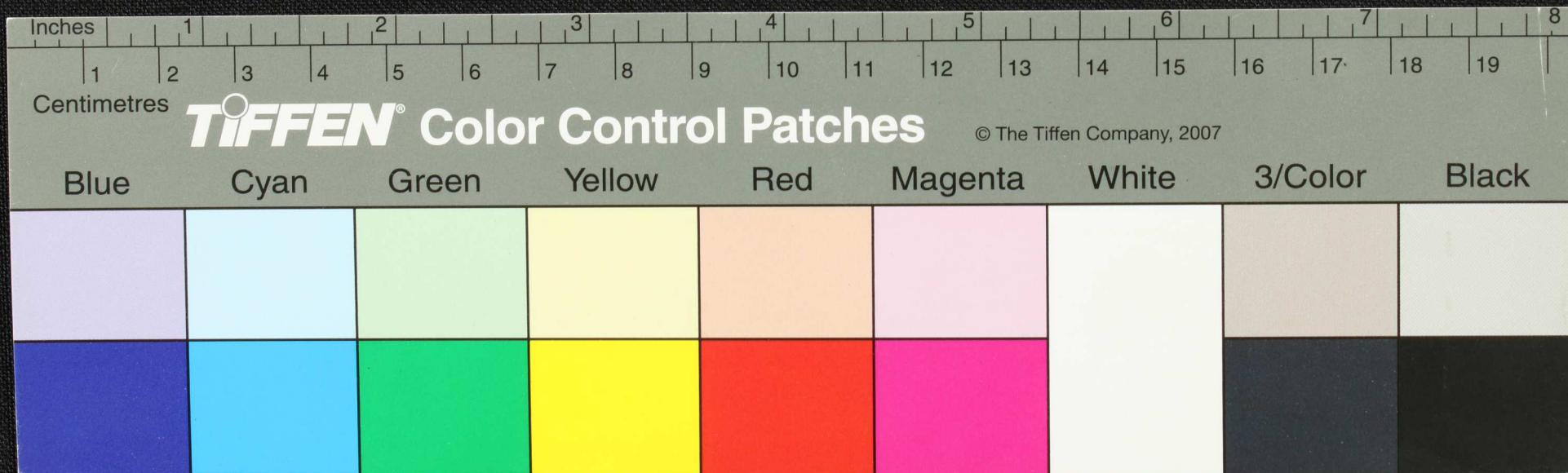
Handwritten text in Tamil script on a palm leaf manuscript. The text is arranged in approximately four lines across the length of the leaf. Two circular holes are visible, which were traditionally used for threading a cord to bind multiple leaves together into a book format. The script is finely etched into the surface of the dried leaf.



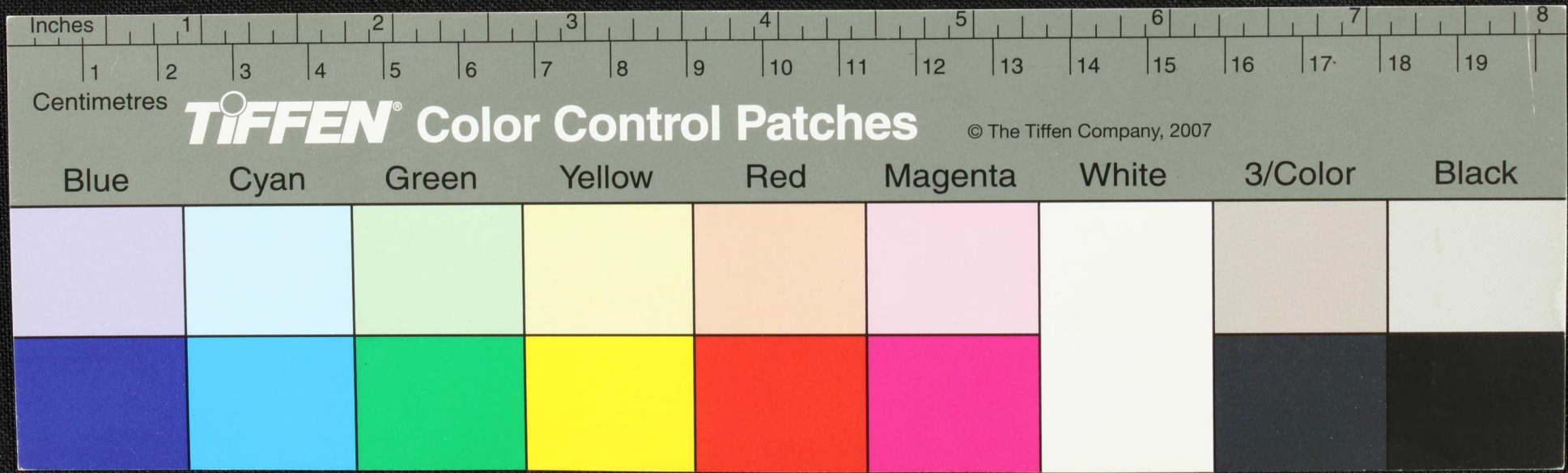
Handwritten Tamil script on a palm leaf manuscript. The text is arranged in approximately 10 horizontal lines. The script is densely packed and includes several circular symbols, likely representing specific characters or markers. The leaf shows signs of age and wear, with two prominent circular holes.



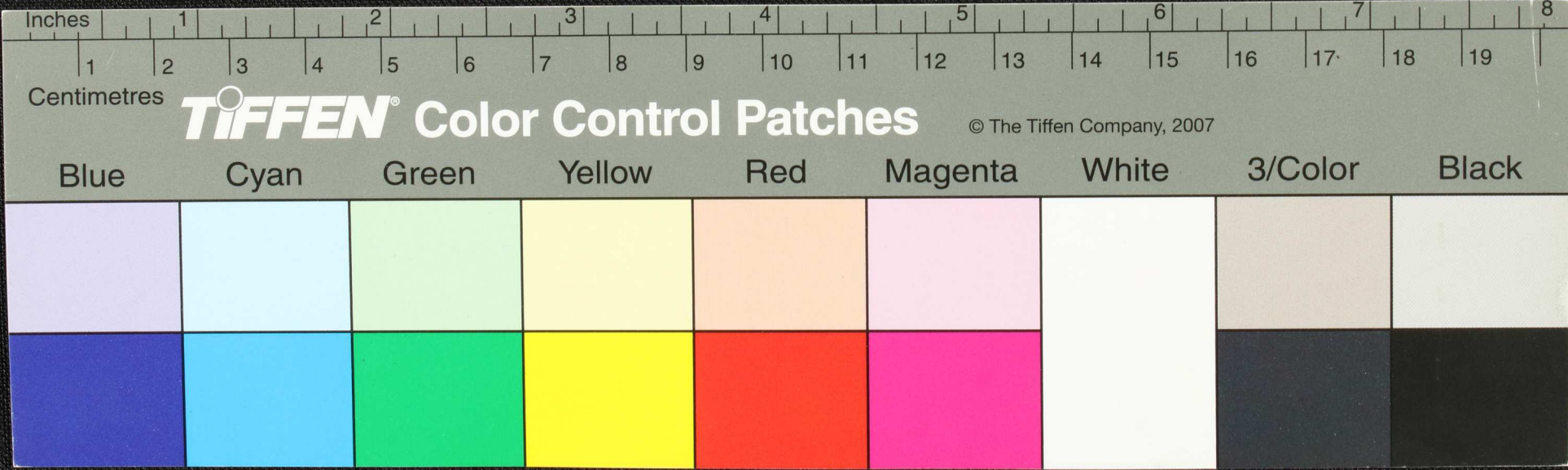
Handwritten Tamil script on a palm leaf manuscript. The text is arranged in approximately 10 horizontal lines. On the left side, there are several vertical annotations, including the number '10' and the word 'வாழ்' (vazhai, meaning 'live' or 'prosper'). The main body of text contains several circular holes, which are characteristic of palm leaf manuscripts designed to be strung together for binding.



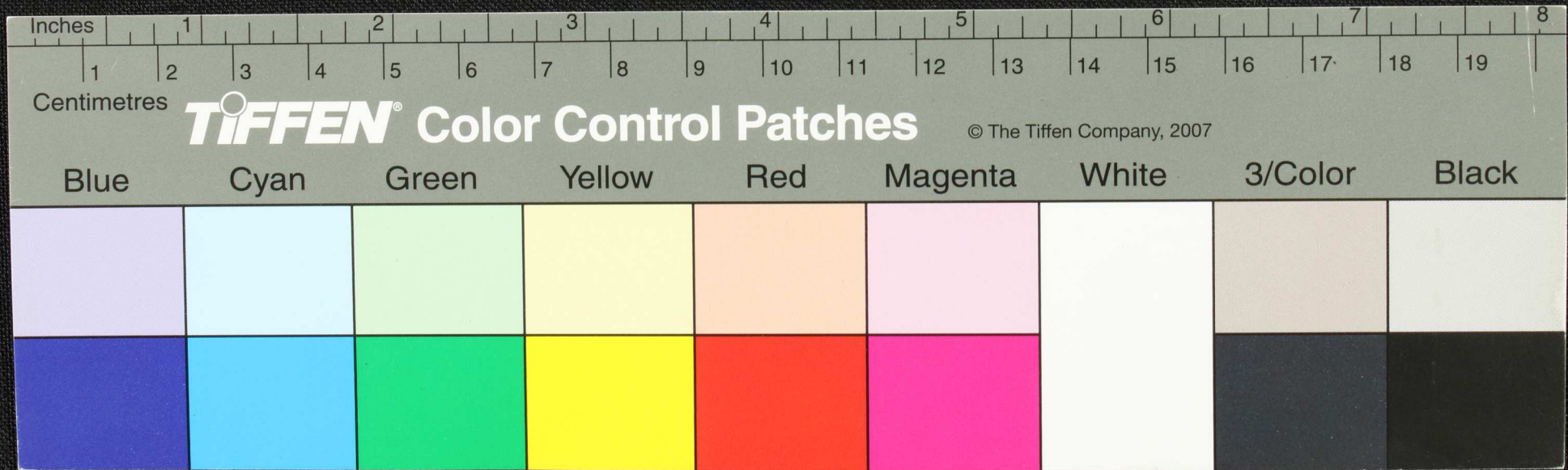
Handwritten Tamil script on a palm leaf manuscript. The text is arranged in approximately 10 horizontal lines. Two circular holes are visible, which were traditionally used for threading a cord to bind multiple leaves together. The script is densely packed and appears to be a form of classical or religious Tamil.



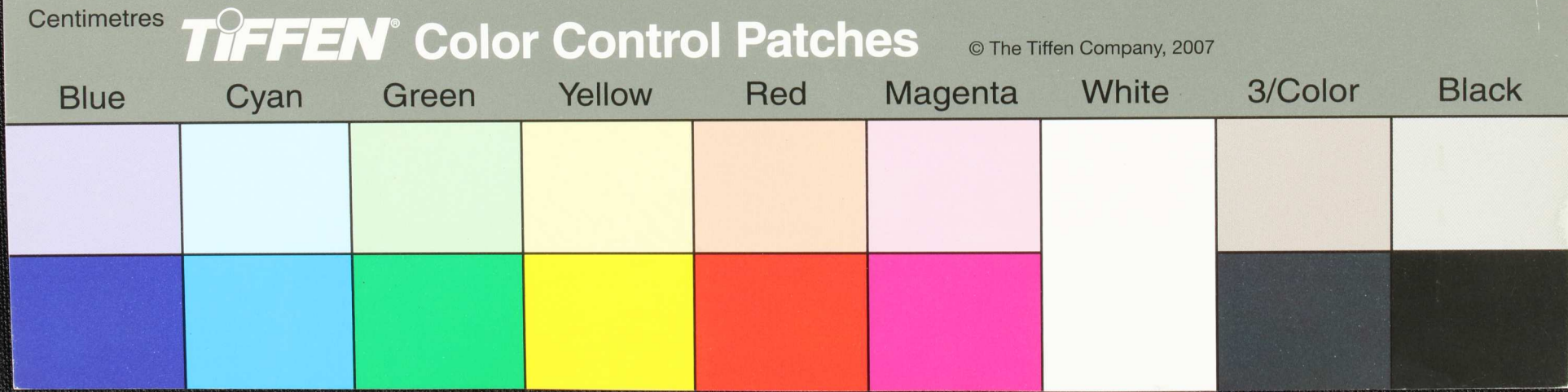
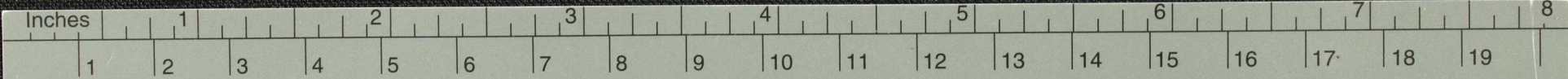
சூழ்முறகுடாசுளாடுமொசூ... தூய... சூழ்முறகுடாசுளாடு... சூழ்முறகுடாசுளாடு...
 சூழ்முறகுடாசுளாடு... சூழ்முறகுடாசுளாடு... சூழ்முறகுடாசுளாடு... சூழ்முறகுடாசுளாடு...
 சூழ்முறகுடாசுளாடு... சூழ்முறகுடாசுளாடு... சூழ்முறகுடாசுளாடு... சூழ்முறகுடாசுளாடு...
 சூழ்முறகுடாசுளாடு... சூழ்முறகுடாசுளாடு... சூழ்முறகுடாசுளாடு... சூழ்முறகுடாசுளாடு...
 சூழ்முறகுடாசுளாடு... சூழ்முறகுடாசுளாடு... சூழ்முறகுடாசுளாடு... சூழ்முறகுடாசுளாடு...
 சூழ்முறகுடாசுளாடு... சூழ்முறகுடாசுளாடு... சூழ்முறகுடாசுளாடு... சூழ்முறகுடாசுளாடு...
 சூழ்முறகுடாசுளாடு... சூழ்முறகுடாசுளாடு... சூழ்முறகுடாசுளாடு... சூழ்முறகுடாசுளாடு...
 சூழ்முறகுடாசுளாடு... சூழ்முறகுடாசுளாடு... சூழ்முறகுடாசுளாடு... சூழ்முறகுடாசுளாடு...
 சூழ்முறகுடாசுளாடு... சூழ்முறகுடாசுளாடு... சூழ்முறகுடாசுளாடு... சூழ்முறகுடாசுளாடு...
 சூழ்முறகுடாசுளாடு... சூழ்முறகுடாசுளாடு... சூழ்முறகுடாசுளாடு... சூழ்முறகுடாசுளாடு...



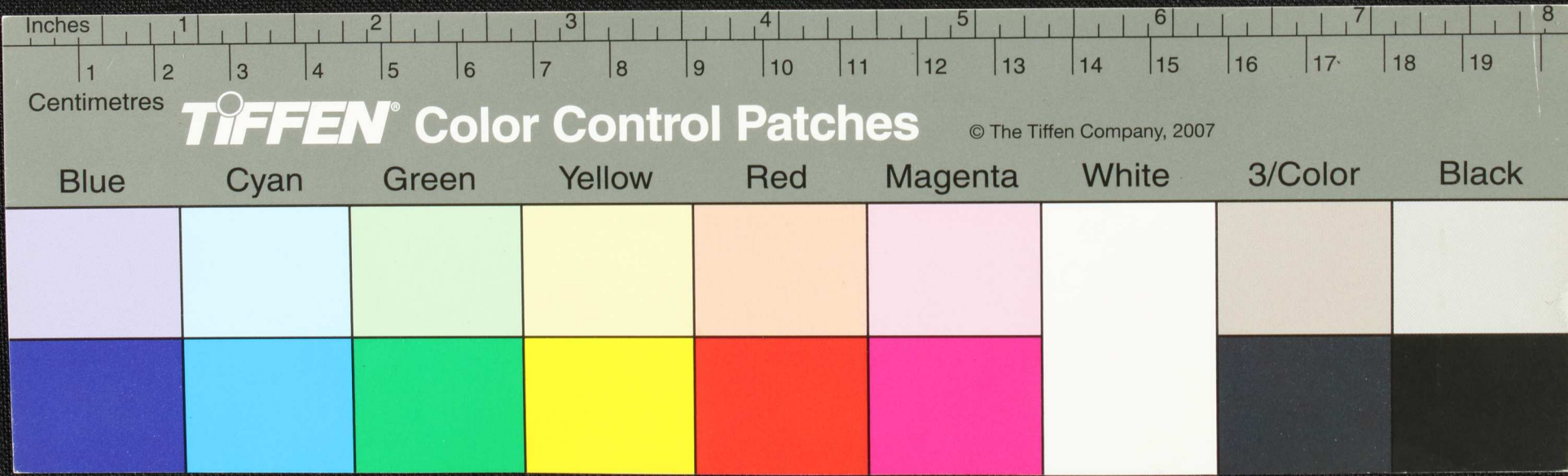
Handwritten Tamil script on a palm leaf manuscript. The text is arranged in approximately 10 horizontal lines. On the left side, there is a vertical column of text, possibly a title or a reference. The main body of text contains several lines of prose. Two circular holes are visible on the leaf, which were traditionally used for threading a cord to bind multiple leaves together into a book format.



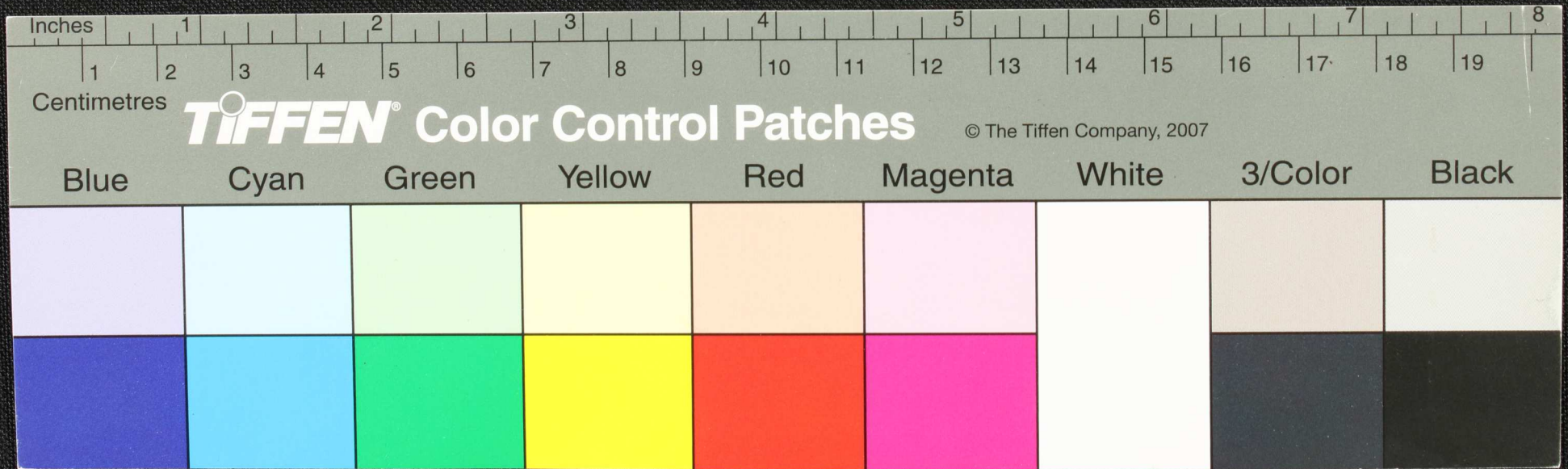
Handwritten Tamil script on a palm leaf manuscript. The text is arranged in approximately 10 horizontal lines across the length of the leaf. Two circular holes are visible, used for threading a cord to bind multiple leaves together. The script is a traditional form of the Tamil language, likely containing a religious or philosophical text.



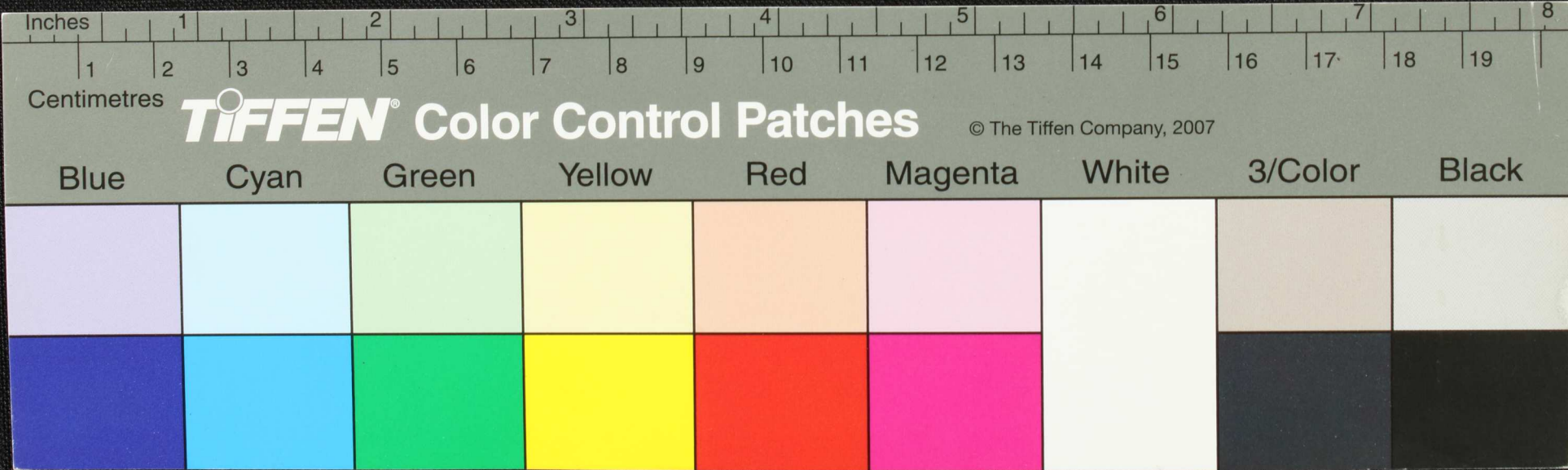
சுவரம் பகவதாரம் 00-வெழி-மாநகர-தே-ச-சாநி-தா-த-
 க-நி-ப-க-ம-த-ச-வ-க-ர-ச-இ-ச-ச-
 ச-ச-ப-ப-ப-ப-ச-ச-ச-ச-ச-
 ம-ச-ச-ம-ப-ப-ச-ச-ச-ச-
 ச-ச-ச-ச-ச-ச-ச-ச-ச-
 ச-ச-ச-ச-ச-ச-ச-ச-ச-



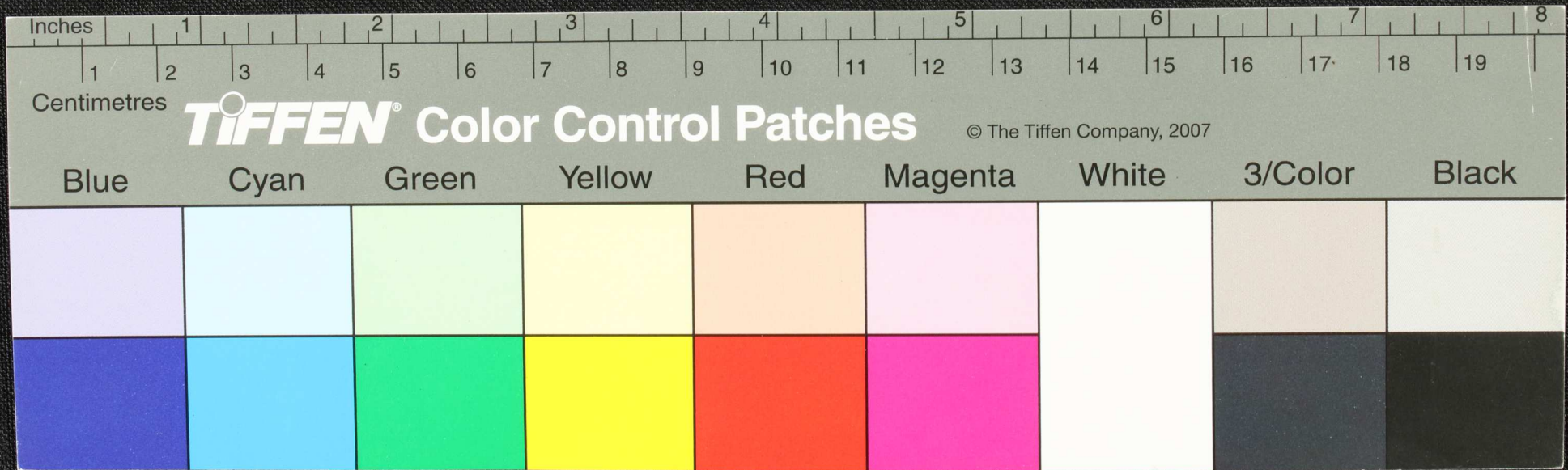
Handwritten text in Tamil script on a palm leaf manuscript. The text is arranged in two lines. The first line contains approximately 15 characters, and the second line contains approximately 12 characters. There are two circular holes punched through the leaf, one on the left and one on the right.



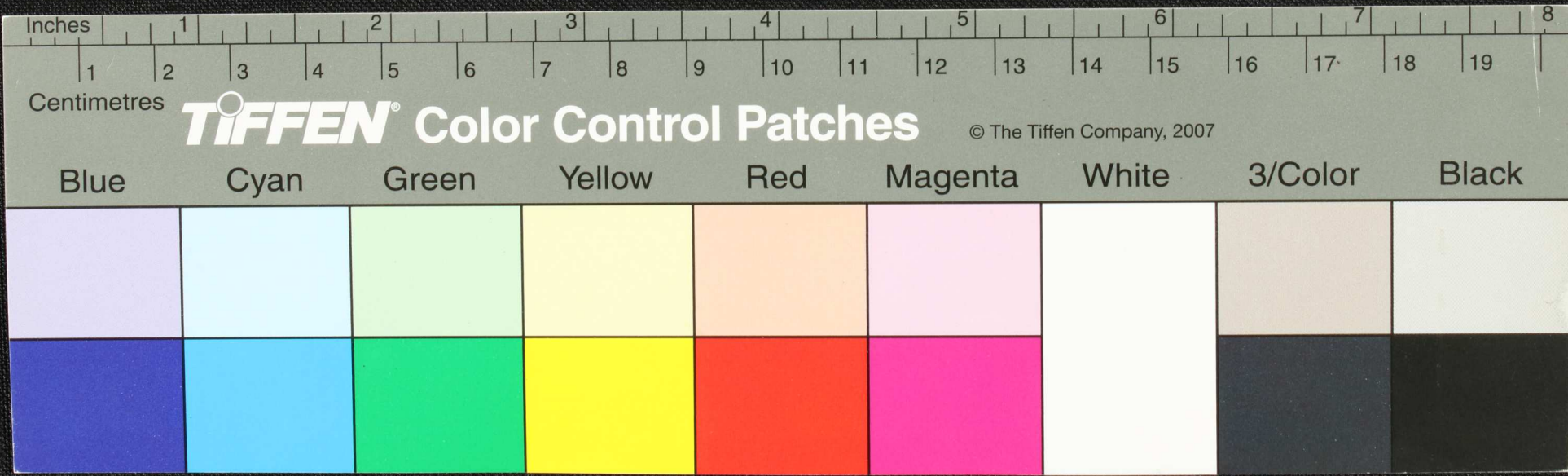
Handwritten Tamil script on a palm leaf manuscript. The text is arranged in approximately 10 horizontal lines. Two circular holes are visible, used for binding multiple leaves together. The script is a form of classical Tamil, possibly including a religious or philosophical text.



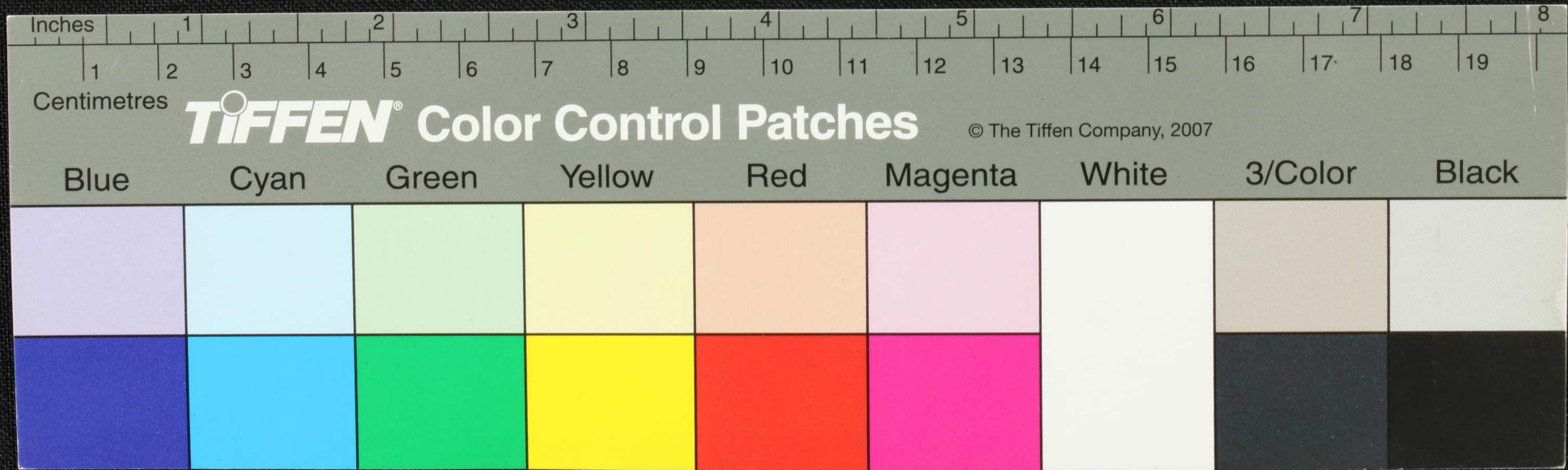
மடை — வர சிவ சிவ பூணத ககவும — ஓம - காராயாககார இலங்
 கைக் காவலா ஓமக் ॥ १ மீனுகன்கி ॥ १ யாறு சிவநான்தருவெ
 ன் நானினைத் தாரயி — ததில சிவகூல — நர ருக் நர ருக்
 வெ சிவாசி — செஷுதிகை - பாகதூர — பதம - ஈ - வெ - ஈ -
 ஓடு கனாயு — ககமருக் தெர்வலெ - ஏழு வினெதுவ் சிவம பண்ணி
 மரு நனகக் மயிலக் ॥ १ சாதி லெயில பூணத ககவும ॥



Handwritten Tamil script on a palm leaf manuscript. The text is arranged in approximately 10 horizontal lines. On the left side, there are vertical annotations: 'செய்து' (written vertically), 'செய்து' (written vertically), 'செய்து' (written vertically), and 'செய்து' (written vertically). The main body of text contains several lines of script, including some that appear to be a list or a set of instructions. Two circular holes are visible, used for binding multiple leaves together.



Handwritten Tamil script on a palm leaf manuscript. The text is arranged in approximately 10 horizontal lines. The script is a traditional form of the Tamil language, likely used for religious or philosophical purposes. There are two prominent circular holes on the leaf, which were traditionally used for threading a cord to bind multiple leaves together into a book format.



Handwritten Tamil script on a palm leaf manuscript. The text is arranged in several lines across the length of the leaf. Two circular holes are visible, which were traditionally used for threading a cord to bind multiple leaves together. The script is a form of the Tamil language, likely a historical or religious text.

