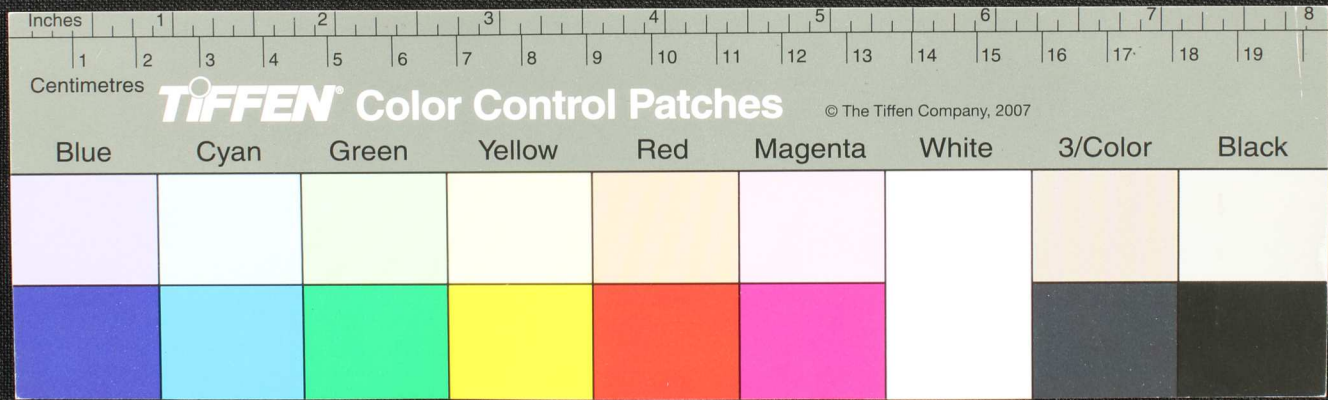
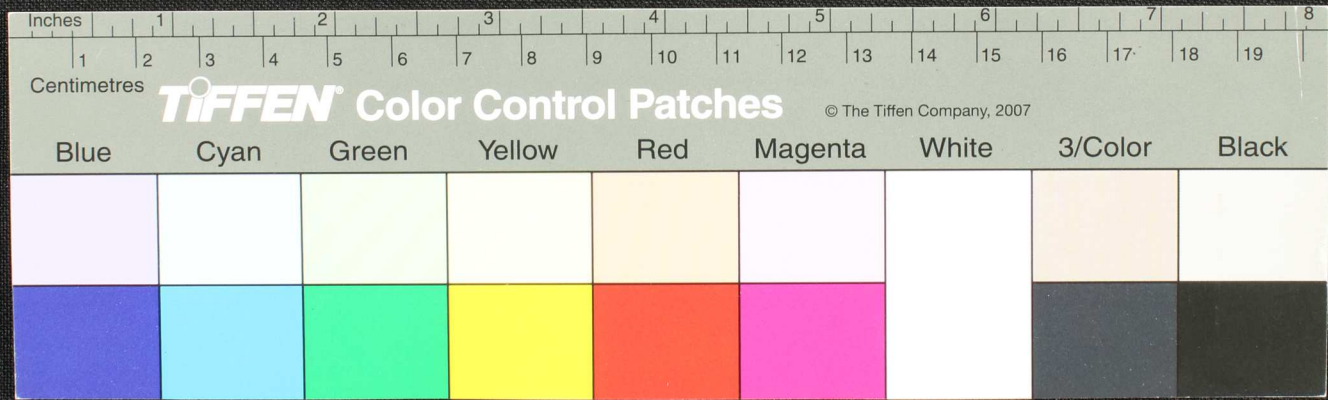


Handwritten Tamil script on a palm leaf manuscript. The text is densely packed and runs horizontally across the length of the leaf. A small circular hole is visible near the center, used for binding multiple leaves together.



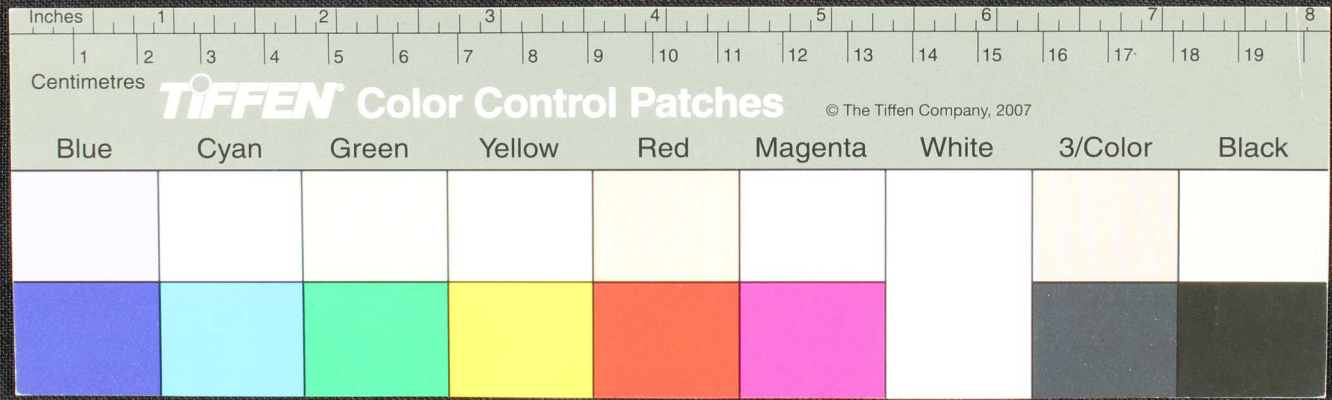


Handwritten Tamil script on a palm leaf manuscript. The text is densely packed in approximately 10 horizontal lines across the length of the leaf. A circular hole is visible near the center, used for threading a cord to bind multiple leaves together.





Handwritten Tamil script on a palm leaf manuscript. The text is arranged in approximately 10 horizontal lines across the length of the leaf. The script is finely etched into the surface of the dried leaf. There is a significant tear in the center of the leaf, and a small circular hole is visible on the left side. The leaf is mounted on a dark, textured background.

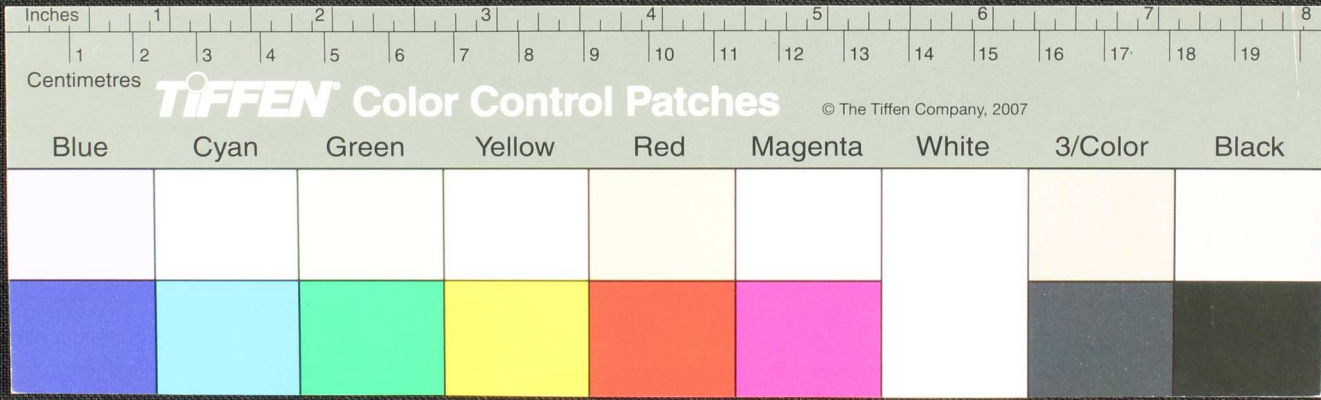








Handwritten Tamil script on a palm leaf manuscript strip. The text is arranged in approximately 10 horizontal lines across the length of the leaf. The script is finely etched into the surface of the dried leaf. A small circular hole is visible near the center of the strip, which is a traditional feature for threading a cord to bind multiple leaves together into a book format.

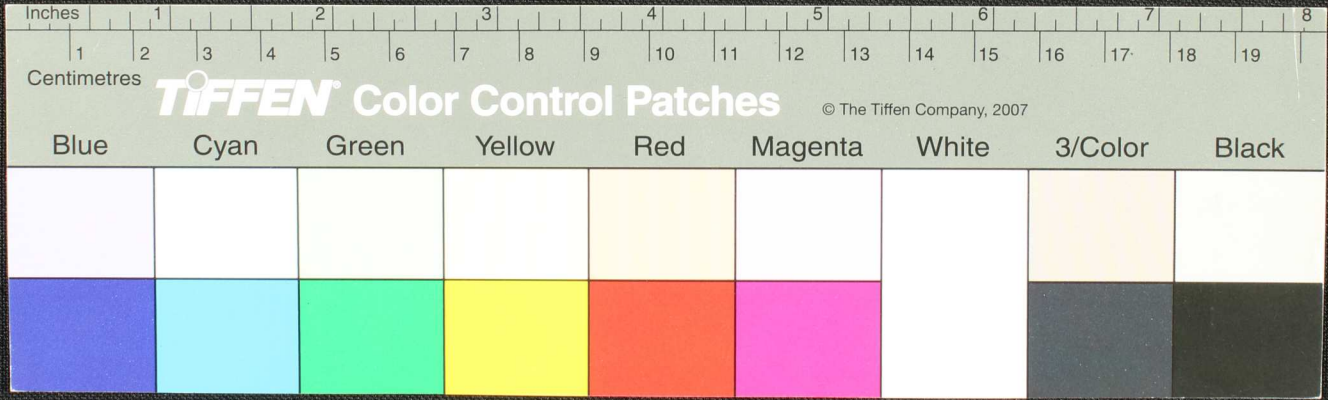








Handwritten Tamil script on a palm leaf manuscript. The text is densely packed and spans the length of the leaf, with a small circular hole visible near the center. The script is written in a traditional style, characteristic of historical Tamil manuscripts.

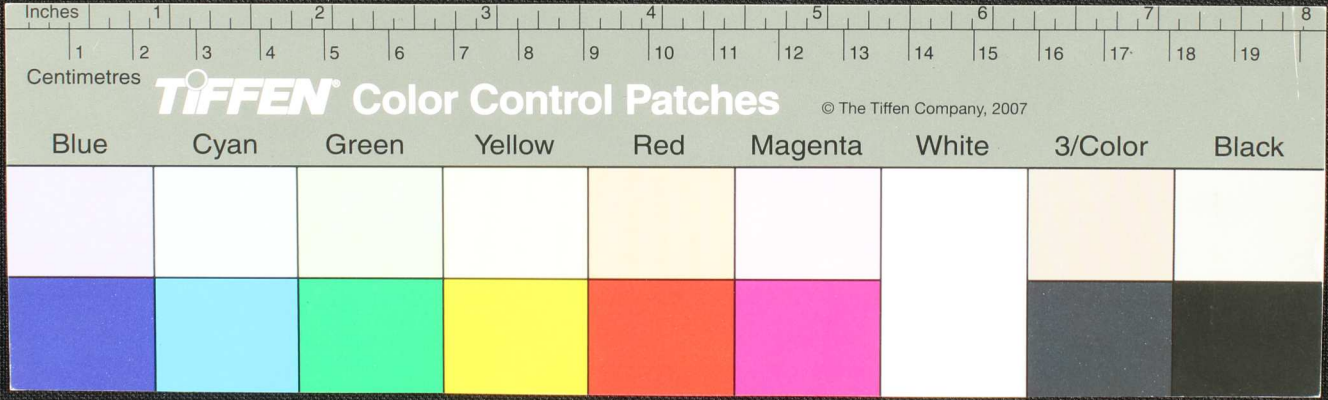






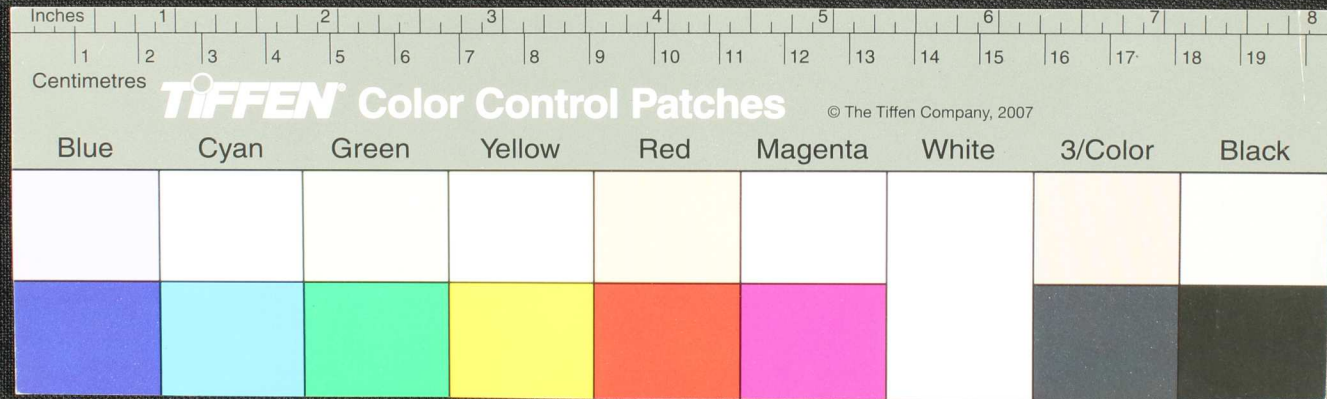


Handwritten Tamil script on a palm leaf manuscript. The text is arranged in approximately 10 horizontal lines across the length of the leaf. A circular hole is visible near the center, used for threading a cord to bind multiple leaves together. The script is finely etched into the surface of the dried leaf.





Handwritten Tamil script on a palm leaf manuscript. The text is arranged in approximately 10 horizontal lines across the length of the leaf. The script is finely etched into the surface of the dried leaf. A small circular hole is visible near the center of the leaf, which is a traditional feature for threading a cord to bind multiple leaves together into a book format.





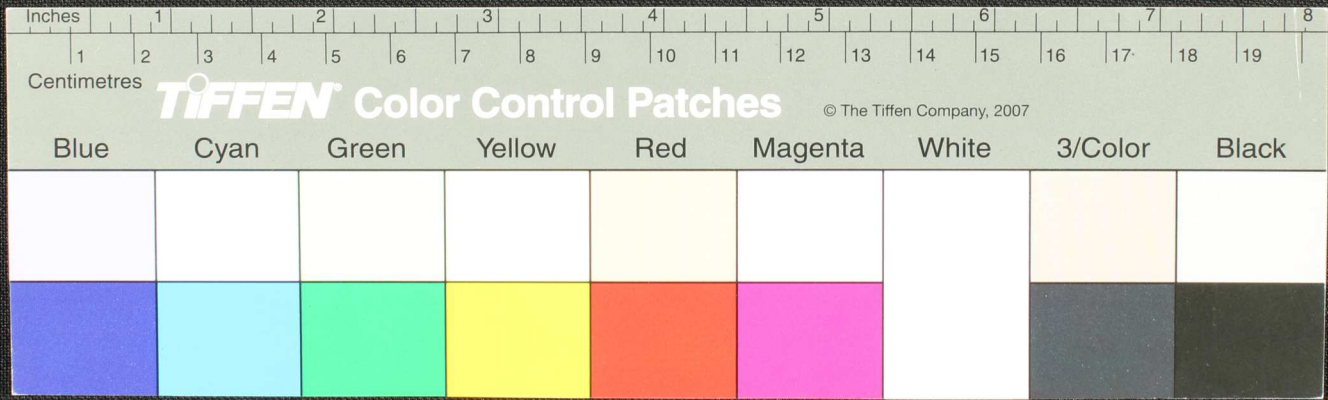






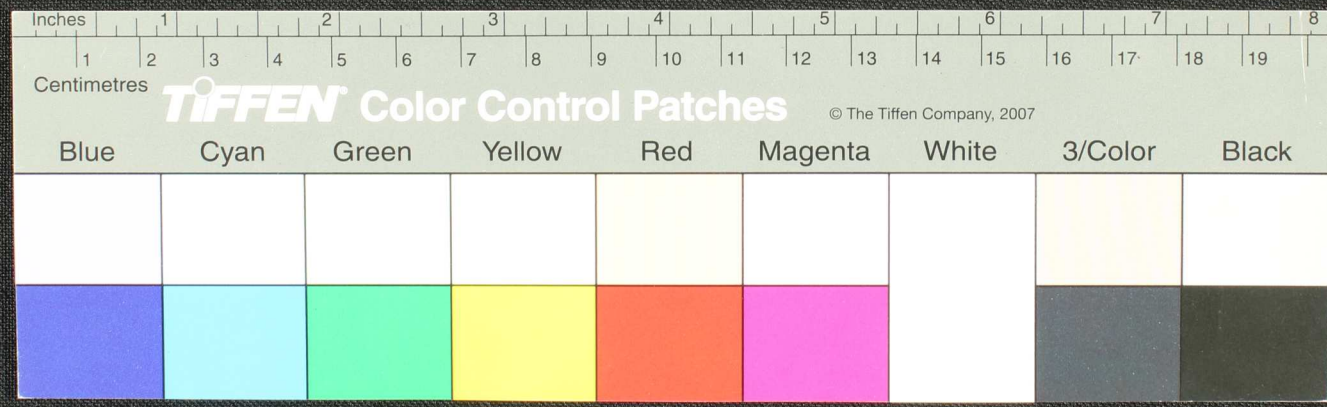


Handwritten text in Tamil script on a palm leaf manuscript. The text is arranged in approximately 10 horizontal lines across the length of the leaf. The script is finely etched into the surface of the dried leaf.



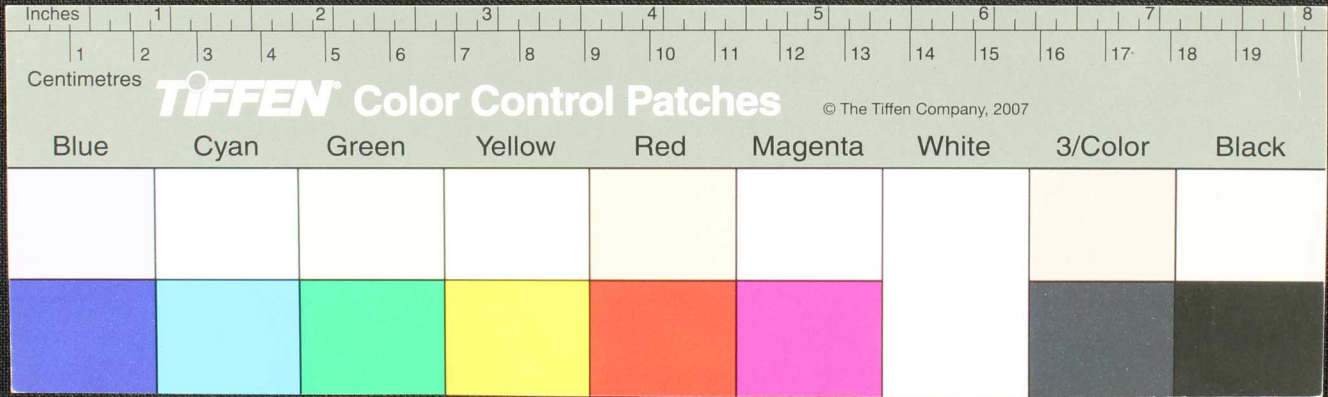


Handwritten text in Tamil script on a palm leaf manuscript. The text is arranged in approximately 10 horizontal lines across the length of the leaf. The script is finely etched into the surface of the dried leaf.





Handwritten text in Tamil script on a palm leaf manuscript. The text is arranged in approximately 10 horizontal lines across the length of the leaf. The script is finely etched into the surface of the dried leaf. There is a small circular hole, likely from a traditional binding method, located roughly in the middle of the leaf. The leaf shows signs of age and wear, with some fraying at the right edge.

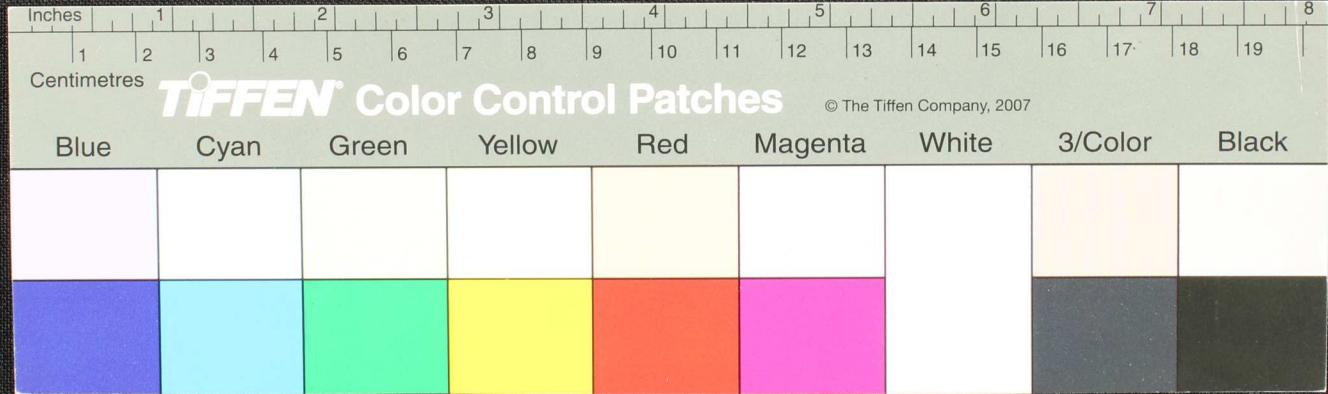








Handwritten Tamil script on a palm leaf manuscript. The text is arranged in approximately 10 horizontal lines. The script is a traditional form of the Tamil language, likely a religious or philosophical text. The leaf shows signs of age and wear, with some fraying at the right edge.





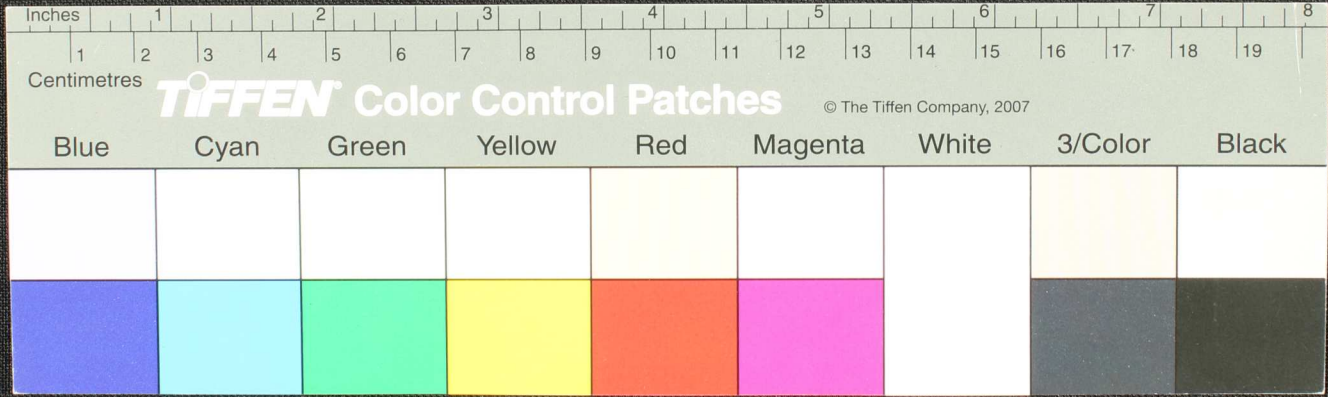








Handwritten Tamil script on a palm leaf manuscript. The text is arranged in approximately 10 horizontal lines across the length of the leaf. A circular hole is visible on the right side, used for threading a cord to bind multiple leaves together. The script is finely etched into the surface of the dried leaf.

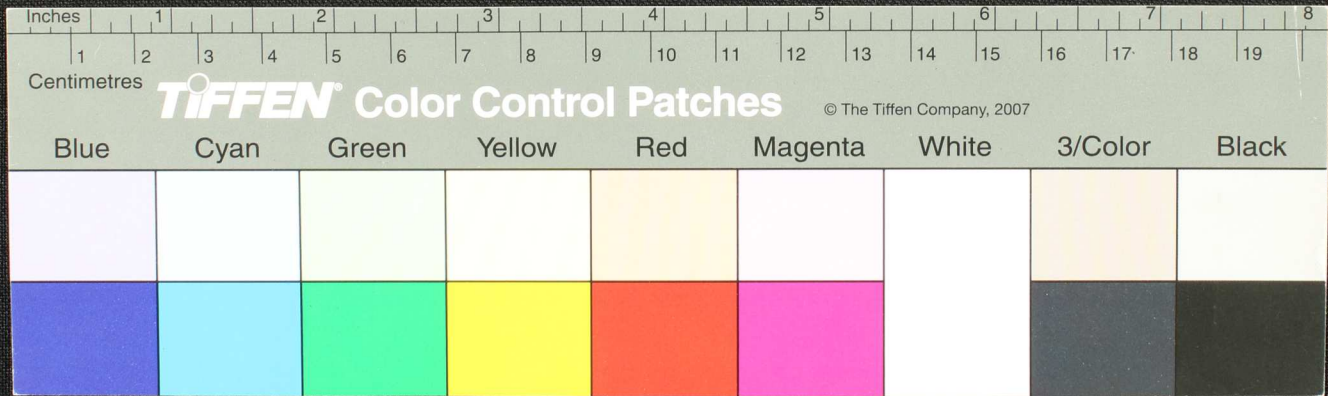






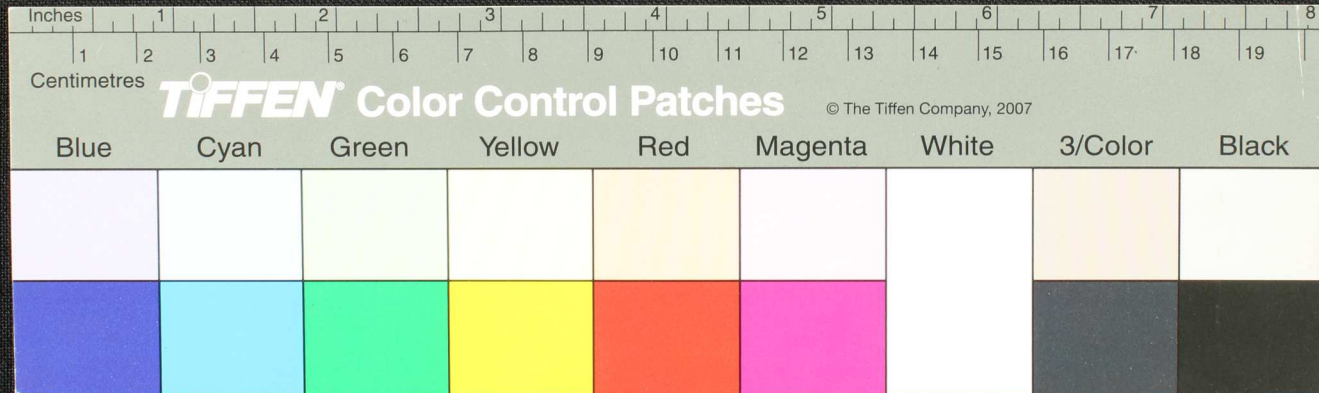


Handwritten Tamil script on a palm leaf manuscript. The text is arranged in approximately 10 horizontal lines across the length of the leaf. The script is a traditional form of the Tamil language, likely used for religious or philosophical purposes. The leaf shows signs of age and wear, with some fraying at the right end.





Handwritten Tamil script on a palm leaf manuscript. The text is arranged in approximately 10 horizontal lines. The script is finely etched into the surface of the dried leaf. A small circular hole is visible on the right side of the leaf, which is a traditional feature for threading a cord to bind multiple leaves together into a book format. The leaf shows signs of age and wear, with some fraying at the edges.

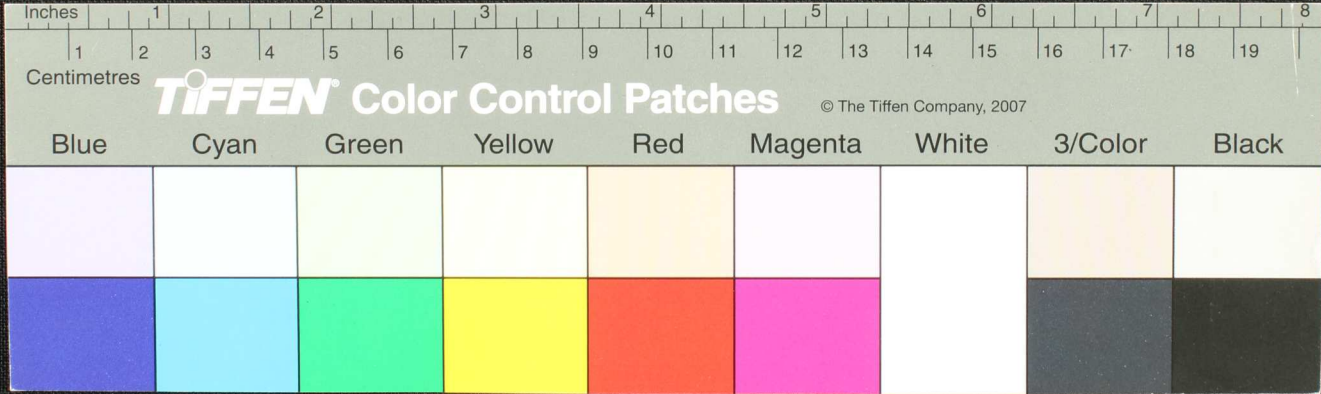






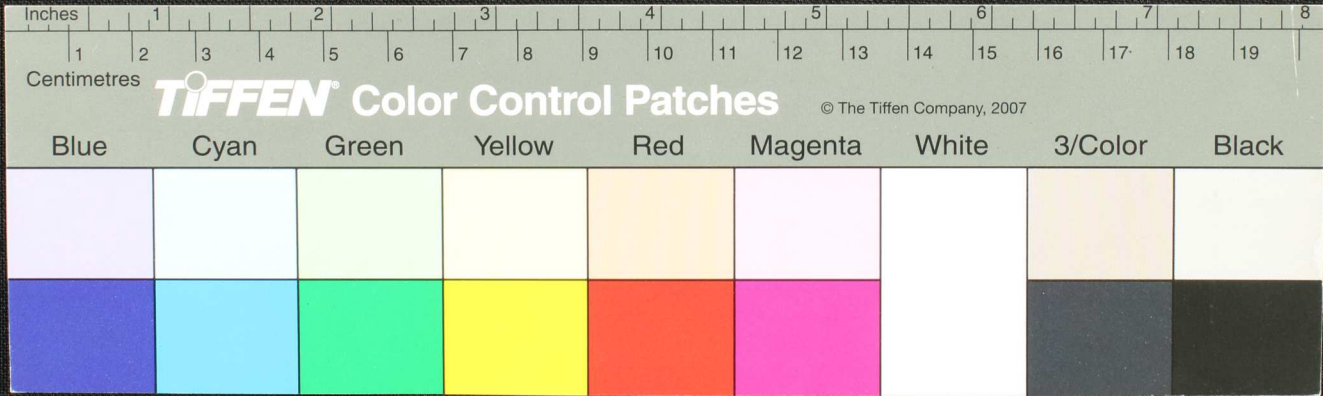


Handwritten Tamil script on a palm leaf manuscript. The text is arranged in approximately 10 horizontal lines across the length of the leaf. The script is dense and appears to be a form of classical or historical Tamil. There is a small circular hole or mark near the center of the leaf.





திருவள்ளூர் பாரதி அந்திக்குமெரெநெடுபது பதவம் அருவிக் அழிந்து...  
 தர-ஆனுவலர் வாரநாளிக்குமெரெநெடுபது பதவம் அருவிக் அழிந்து...  
 து-யத்-அனுவலர் வாரநாளிக்குமெரெநெடுபது பதவம் அருவிக் அழிந்து...  
 னாயடுநெடும-அந்திக்குமெரெநெடுபது பதவம் அருவிக் அழிந்து...  
 இந்நெடும-அந்திக்குமெரெநெடுபது பதவம் அருவிக் அழிந்து...  
 நள-யதற்குமெரெநெடுபது பதவம் அருவிக் அழிந்து...  
 பதுமத்-அனுவலர் வாரநாளிக்குமெரெநெடுபது பதவம் அருவிக் அழிந்து...

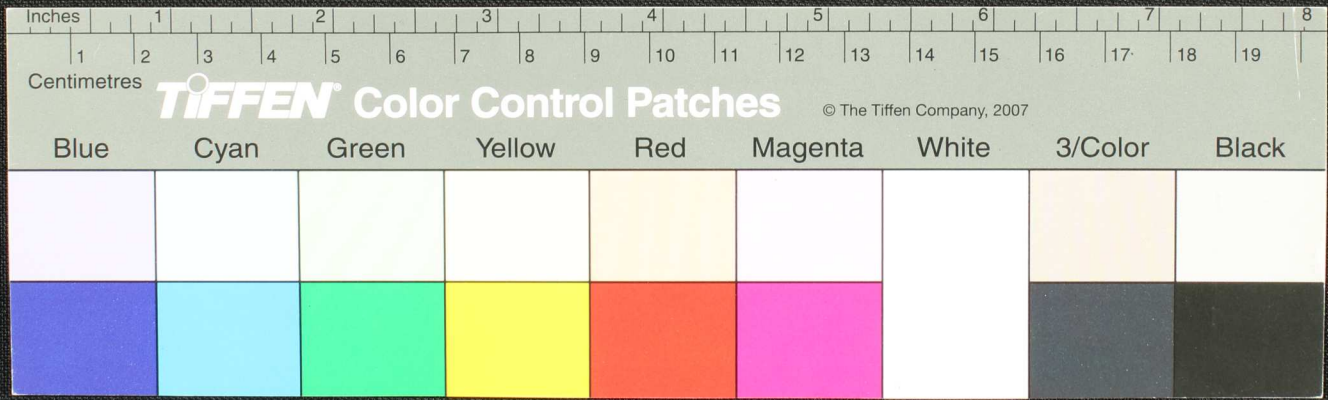








Handwritten Tamil script on a palm leaf manuscript. The text is arranged in approximately 10 horizontal lines across the length of the leaf. The script is finely etched into the surface of the dried leaf. There are some dark spots and a hole on the leaf, possibly due to insect damage or natural decay.

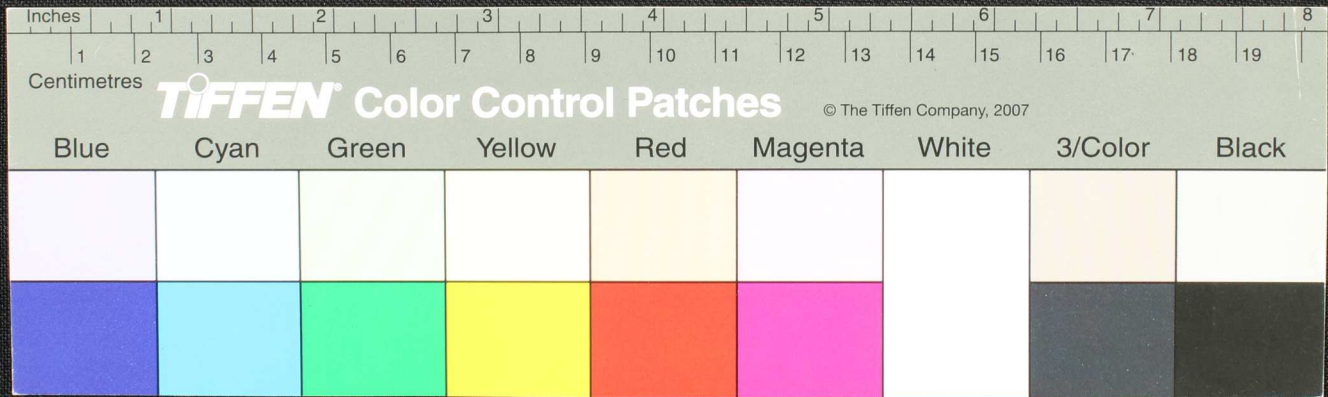








Handwritten text in Tamil script on a palm leaf manuscript. The text is arranged in approximately 10 horizontal lines. A circular hole is visible on the right side of the leaf, which is a traditional feature for threading a cord to bind multiple leaves together. The script is finely etched into the surface of the dried leaf.

















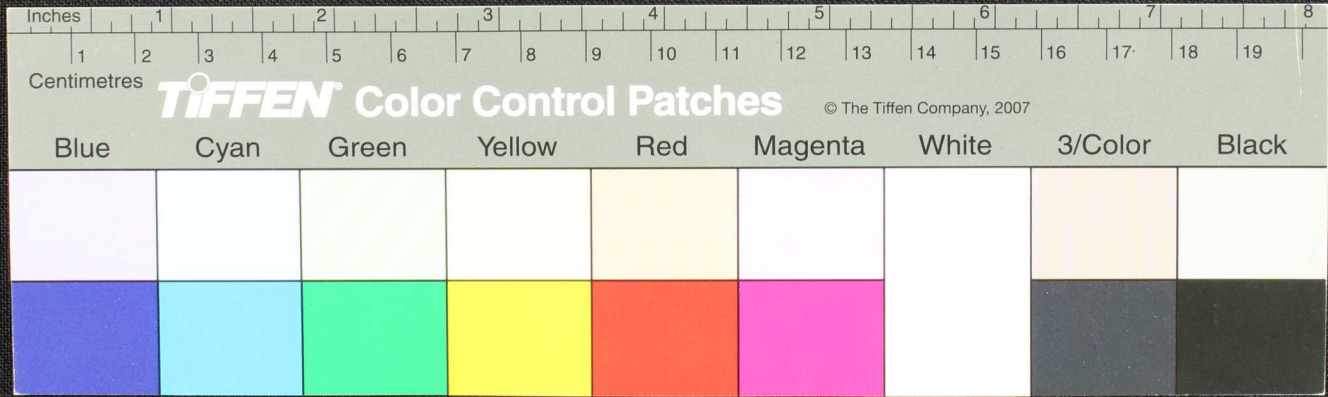






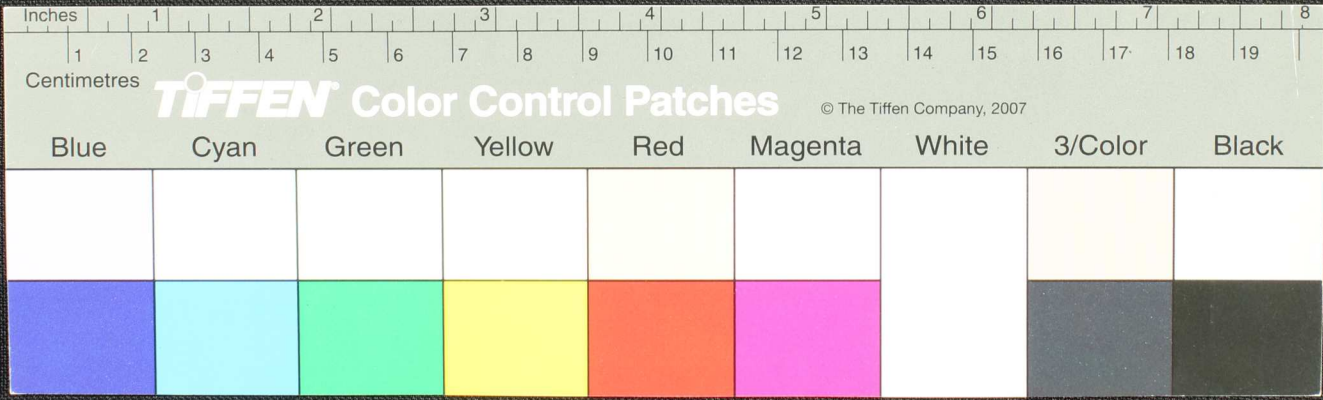


Handwritten Tamil script on a palm leaf manuscript. The text is arranged in approximately 10 horizontal lines across the length of the leaf. A circular hole is visible on the right side of the leaf, used for threading a cord to bind multiple leaves together.



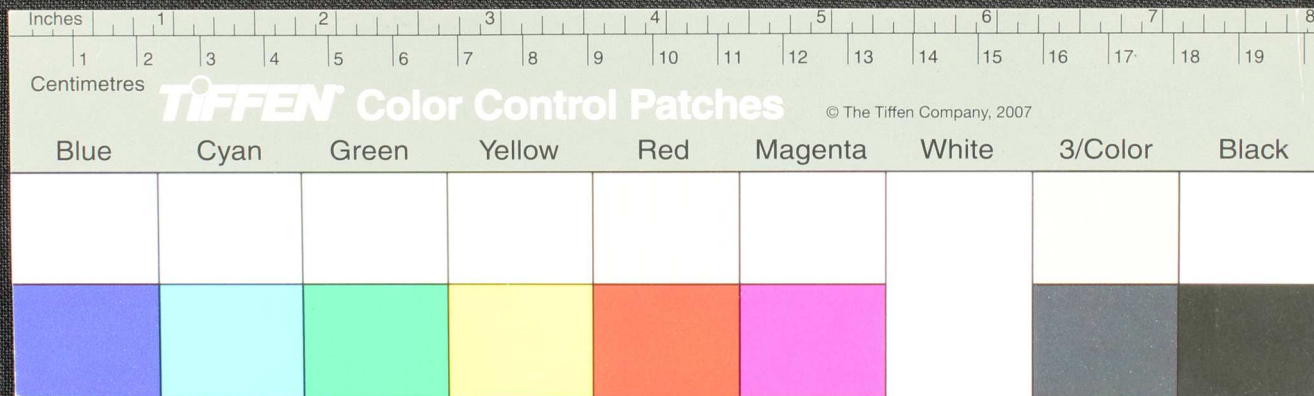


Handwritten Tamil script on a palm leaf manuscript. The text is arranged in approximately 10 horizontal lines across the length of the leaf. The script is finely etched into the surface of the dried leaf.



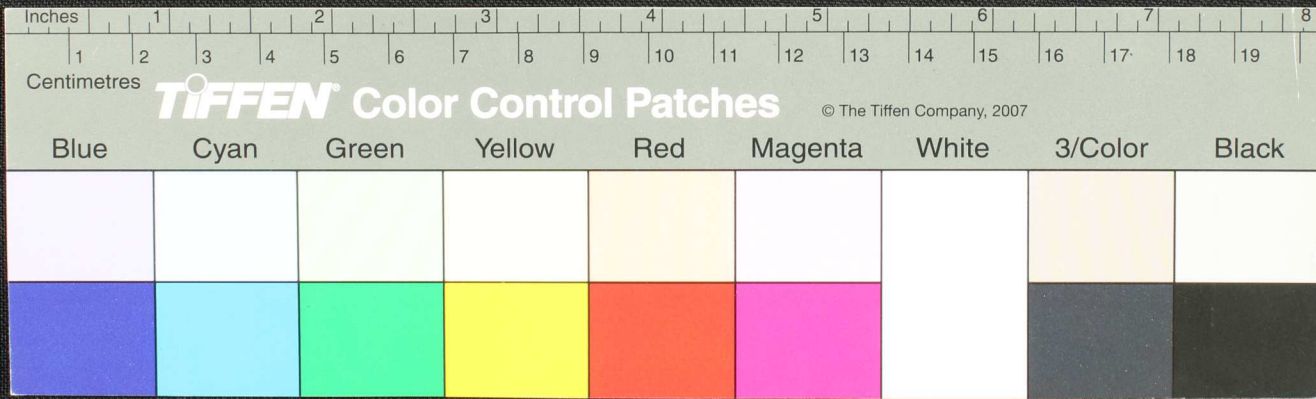


Handwritten Tamil script on a palm leaf manuscript fragment. The text is arranged in approximately five horizontal lines, though the leaf is damaged and the script is partially obscured. The characters are finely etched into the surface of the dried leaf.





Handwritten Tamil script on a palm leaf manuscript. The text is densely packed and runs horizontally across the length of the leaf. There are two circular holes visible, which were traditionally used for threading a cord to bind multiple leaves together into a book format. The script is in an older form of the Tamil language.





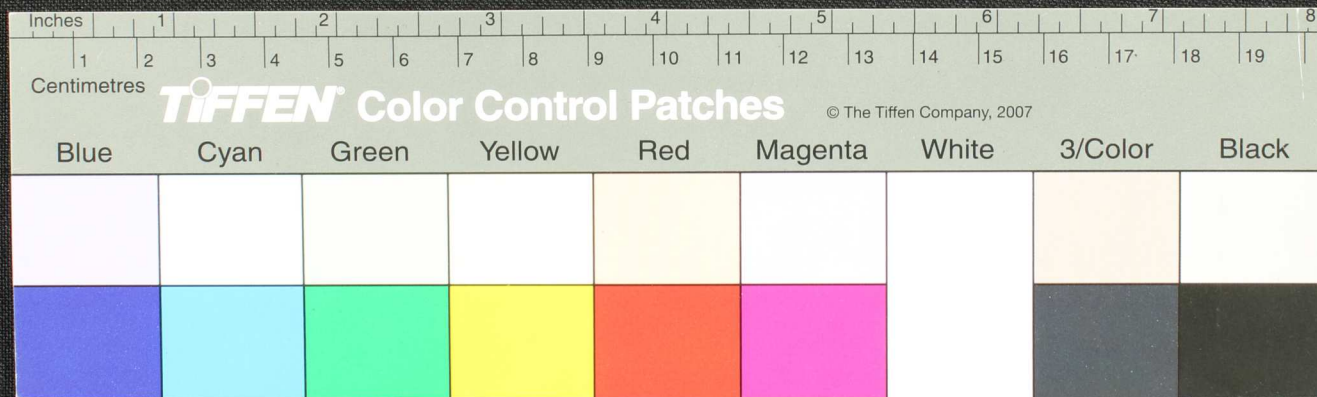






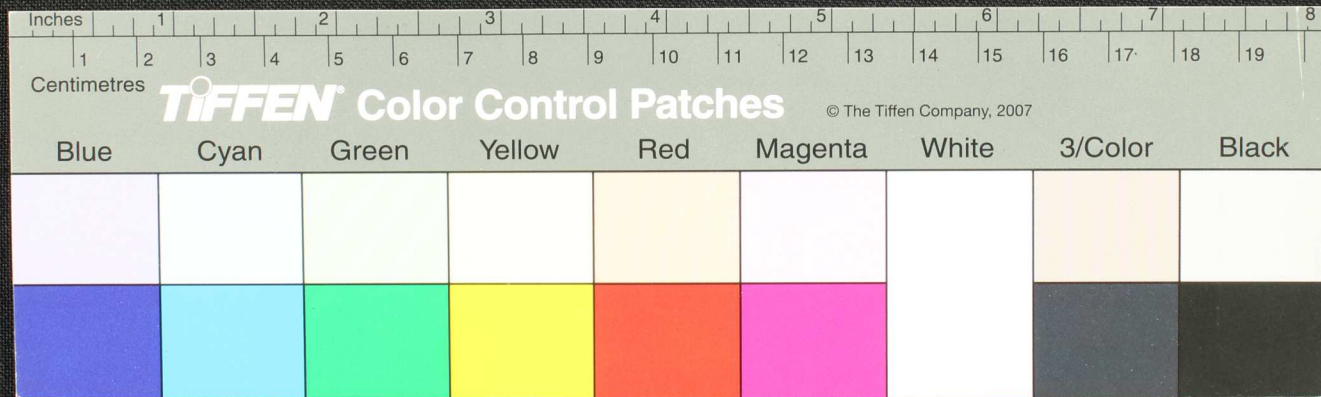


Handwritten Tamil script on a palm leaf manuscript. The text is arranged in approximately 12 horizontal lines across the length of the leaf. A circular hole is visible near the center, used for threading a cord to bind multiple leaves together. The script is finely etched into the surface of the dried leaf.





Handwritten text in Tamil script on a palm leaf manuscript. The text is arranged in approximately 10 horizontal lines. A circular hole is visible on the right side of the leaf, used for binding multiple leaves together.





















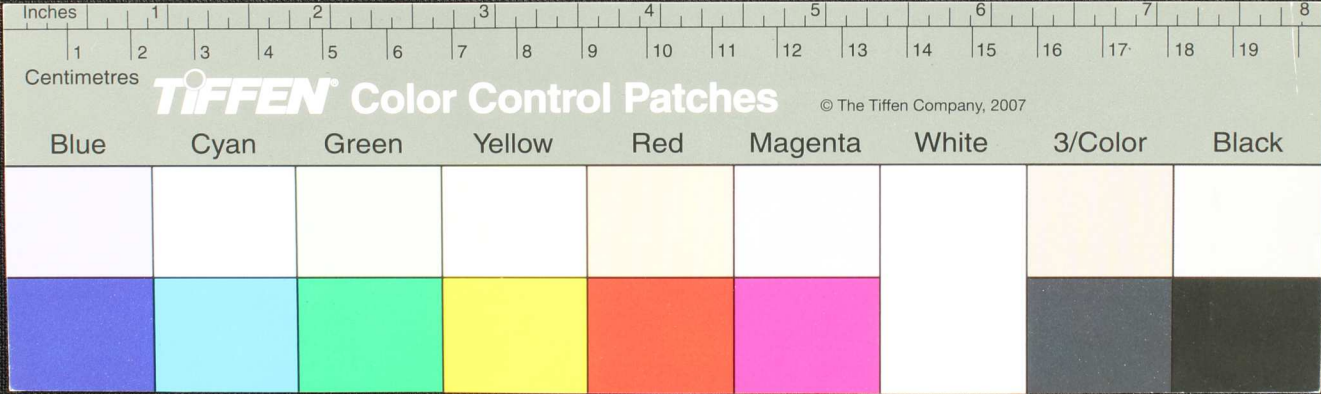








Handwritten Tamil script on a palm leaf manuscript. The text is arranged in approximately 10 horizontal lines across the length of the leaf. The script is dense and appears to be a form of classical or historical Tamil. A small circular hole is visible near the center of the leaf, which is a traditional feature for threading a cord to bind multiple leaves together.

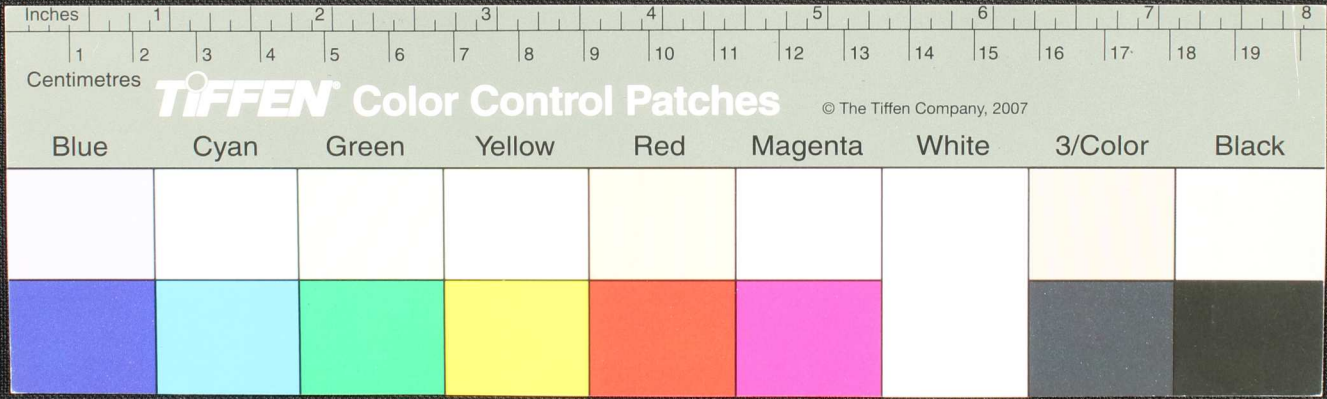








Handwritten Tamil script on a palm leaf manuscript. The text is densely packed in approximately 10 horizontal lines across the length of the leaf. A small circular hole is visible near the center of the leaf, which is a traditional feature for threading a cord to bind multiple leaves together.









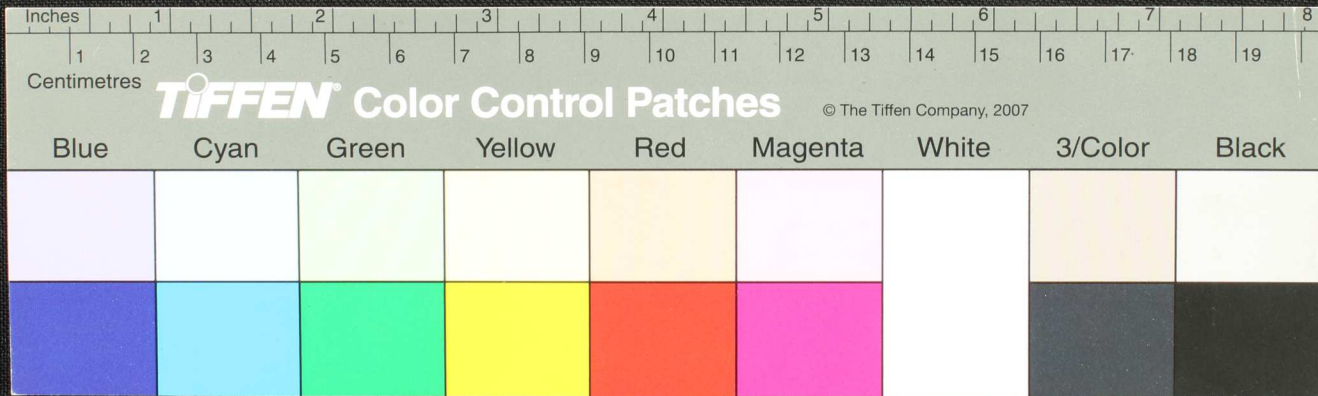








Handwritten Tamil script on a palm leaf manuscript. The text is densely packed and runs horizontally across the length of the leaf. A small circular hole is visible near the center of the leaf, used for binding multiple leaves together.













Handwritten Tamil script on a palm leaf manuscript fragment. The text is arranged in approximately 10 horizontal lines across the length of the leaf. A small circular hole is visible near the center of the fragment, which is a traditional feature for threading a cord to bind multiple leaves together. The script is finely etched into the surface of the dried leaf.

