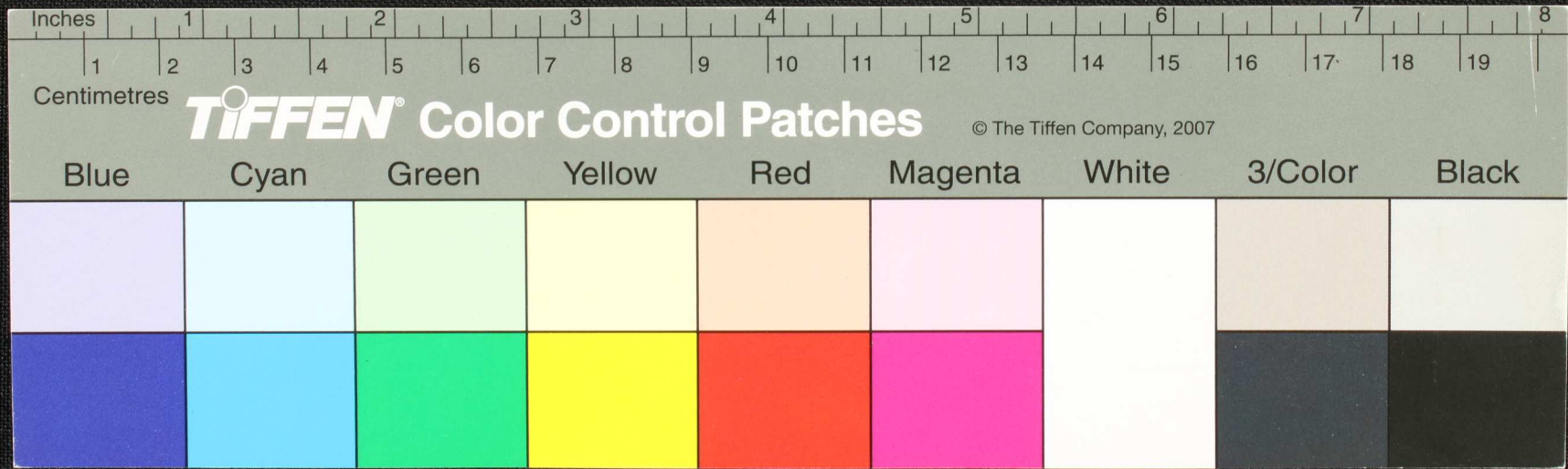
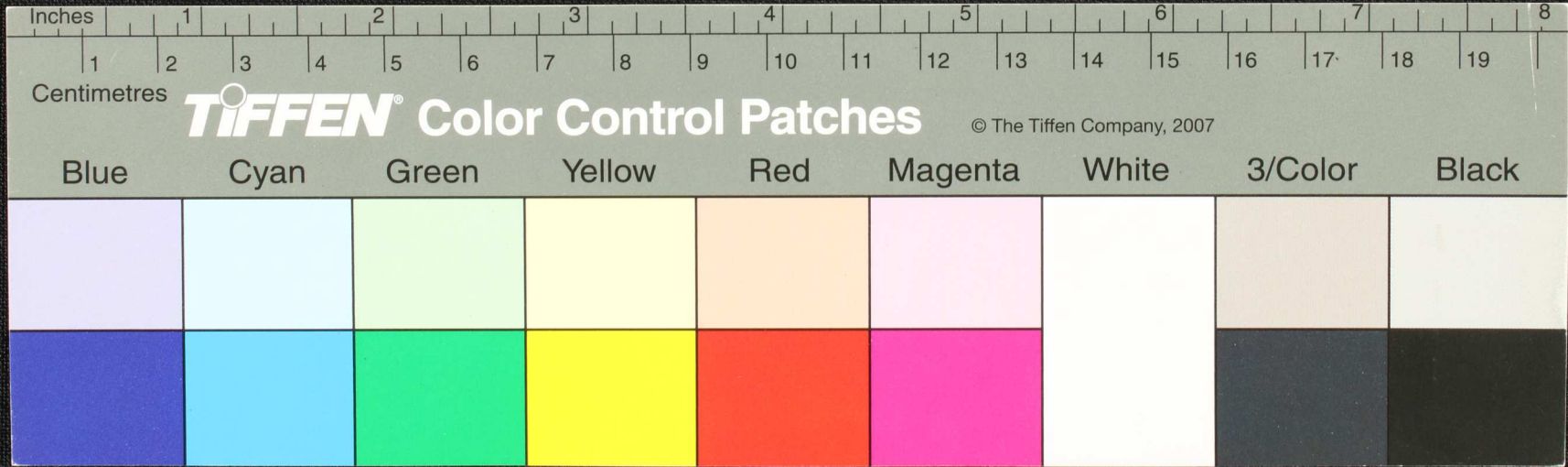


Handwritten Tamil script on a palm leaf manuscript. The text is arranged in approximately 10 horizontal lines across the length of the leaf. The script is a traditional form of the Tamil language, likely used for religious or philosophical purposes. A small circular hole is visible near the center of the leaf, which is a traditional feature for threading a cord to bind multiple leaves together.

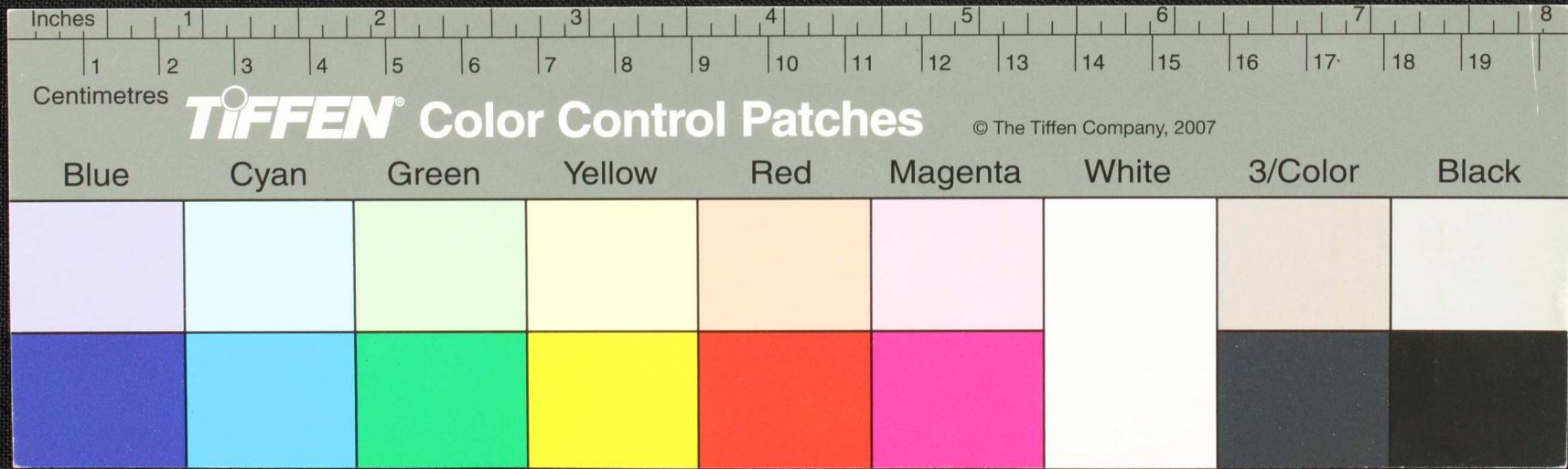


Handwritten Tamil script on a palm leaf manuscript. The text is arranged in approximately 10 horizontal lines across the length of the leaf. The script is finely etched into the surface of the dried leaf. A small circular hole is visible near the center of the leaf, which is a traditional feature used for threading a cord to bind multiple leaves together into a book format.





Handwritten text in Tamil script on a palm leaf manuscript. The text is arranged in approximately five horizontal lines. The script is dense and characteristic of traditional Tamil inscriptions on palm leaves. The leaf shows signs of age, including some staining and wear at the edges.



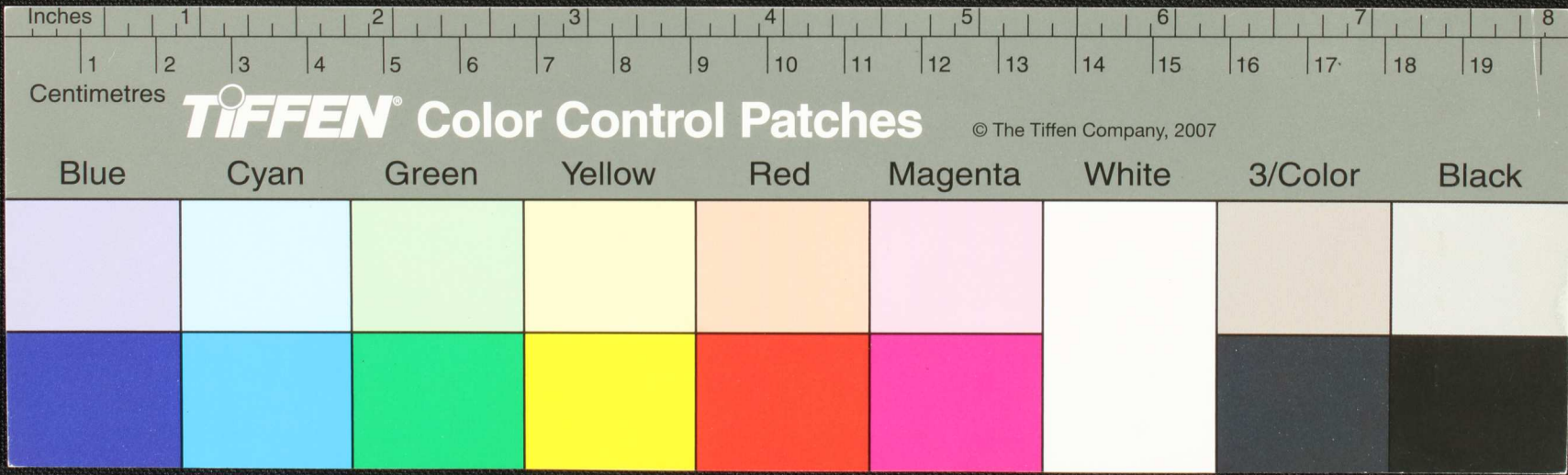




Handwritten text in Tamil script, possibly a date or reference number.

Handwritten Tamil characters, possibly initials or a signature.

Main body of handwritten text in Tamil script, consisting of several lines of text.



Handwritten Tamil script on a palm leaf manuscript. The text is arranged in approximately 10 horizontal lines across the length of the leaf. The script is a traditional form of the Tamil language, likely used for religious or philosophical purposes. A small circular hole is visible in the center of the leaf, which is a traditional feature for threading a cord to bind multiple leaves together into a book.

