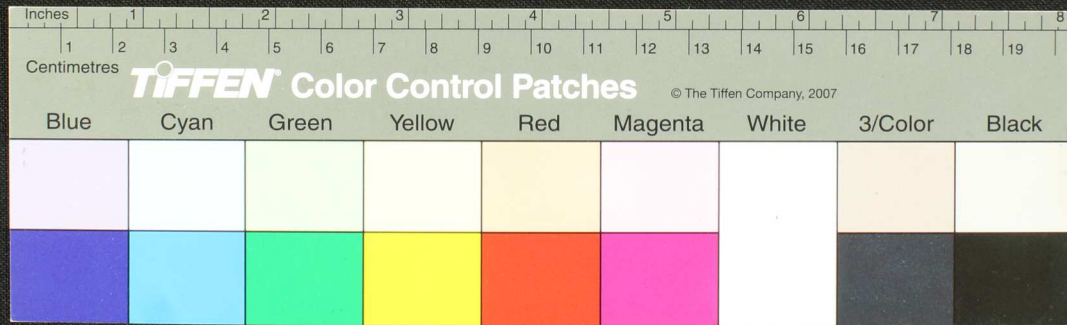


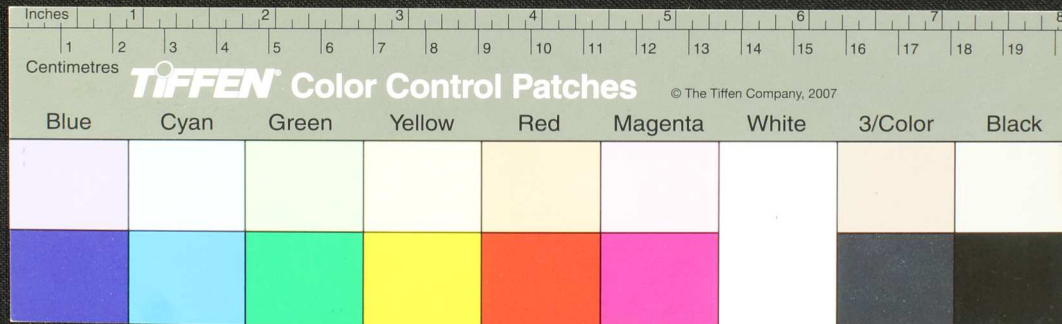


Blue	Cyan	Green	Yellow	Red	Magenta	White	3/Color	Black
[Blue patch]	[Cyan patch]	[Green patch]	[Yellow patch]	[Red patch]	[Magenta patch]	[White patch]	[3/Color patch]	[Black patch]
[Blue patch]	[Cyan patch]	[Green patch]	[Yellow patch]	[Red patch]	[Magenta patch]	[White patch]	[3/Color patch]	[Black patch]

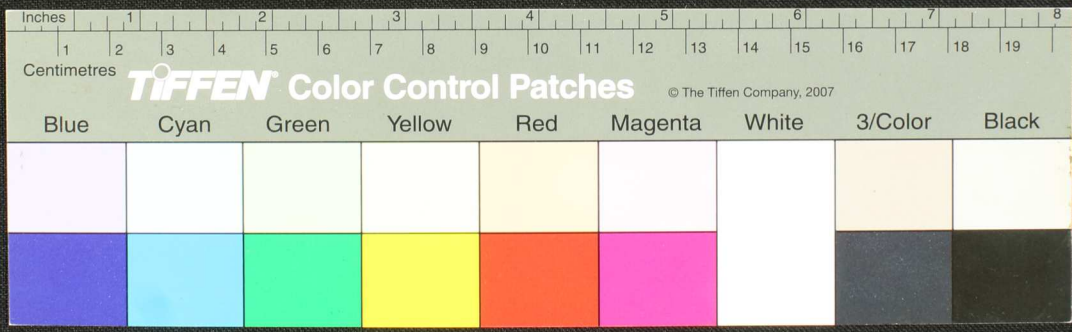
Handwritten Tamil script on a palm leaf manuscript strip. The text is arranged in approximately 10 horizontal lines across the length of the leaf. Two circular holes are visible, which were traditionally used for threading a cord to bind multiple leaves together into a book format. The script is finely etched into the surface of the dried leaf.



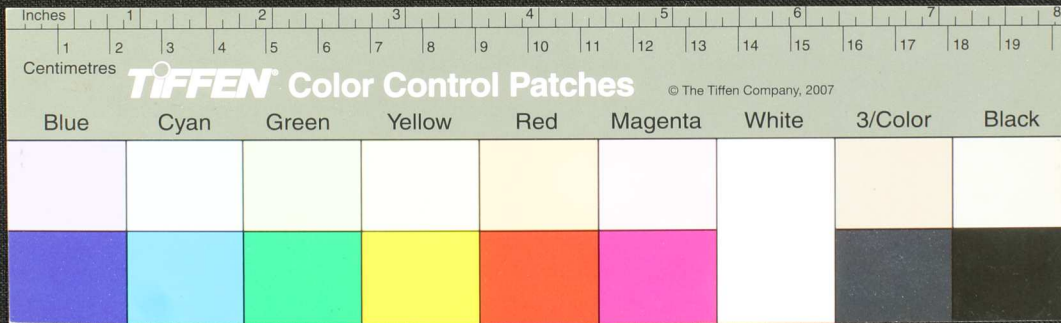
Handwritten Tamil script on a long, narrow, aged strip of paper. The text is arranged in approximately 10 horizontal lines. Two circular holes are visible, suggesting the strip was part of a bound volume. The paper is heavily worn, with frayed edges and some discoloration.



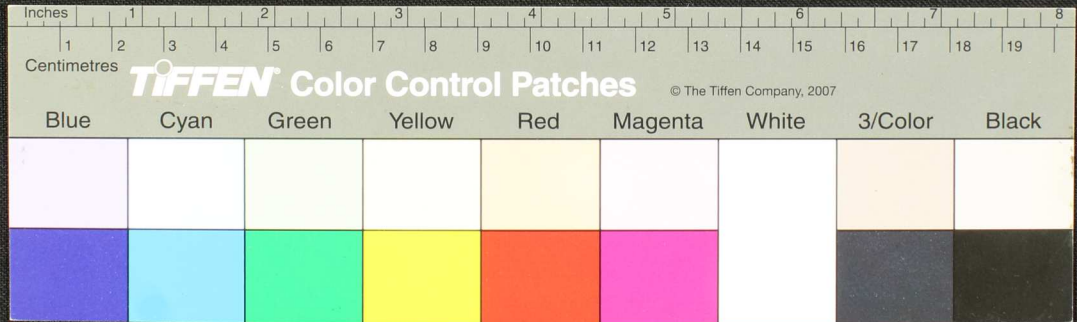
Handwritten text on a palm leaf manuscript fragment, featuring several lines of script in an ancient South Asian language, possibly Tamil or Grantha, with some decorative elements.



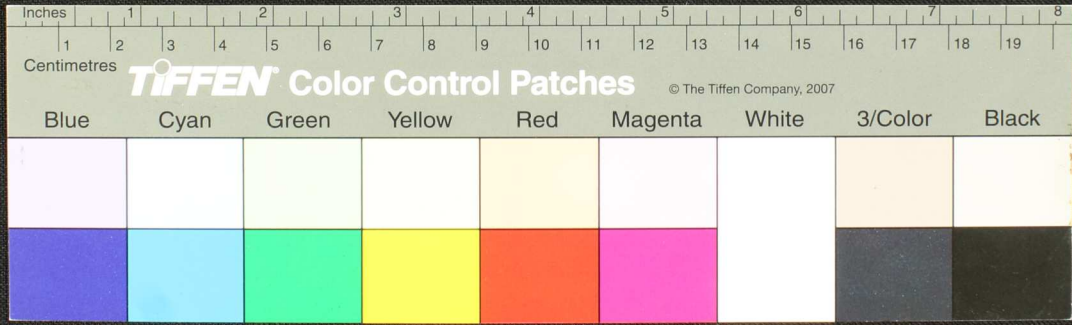
12
Handwritten Tamil script on a palm leaf manuscript fragment. The text is arranged in approximately 10 horizontal lines. The leaf is aged and shows signs of wear, including a small hole on the right side.



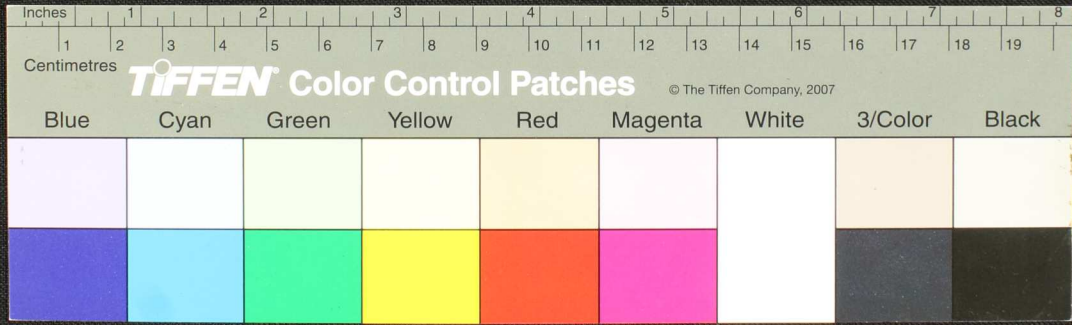
Handwritten Tamil script on a fragment of aged, yellowed paper. The text is arranged in approximately six horizontal lines. The script is dense and appears to be a form of classical or religious Tamil. The paper fragment is irregularly shaped with some dark spots and a small hole on the right side.



Handwritten Tamil script on a palm leaf manuscript. The text is arranged in approximately 10 horizontal lines across the length of the leaf. The script is densely packed and appears to be a form of classical Tamil. There are two circular holes visible on the leaf, which were traditionally used for threading a cord to bind multiple leaves together into a book format. The leaf shows signs of age, including some discoloration and wear, particularly at the ends and around the holes.

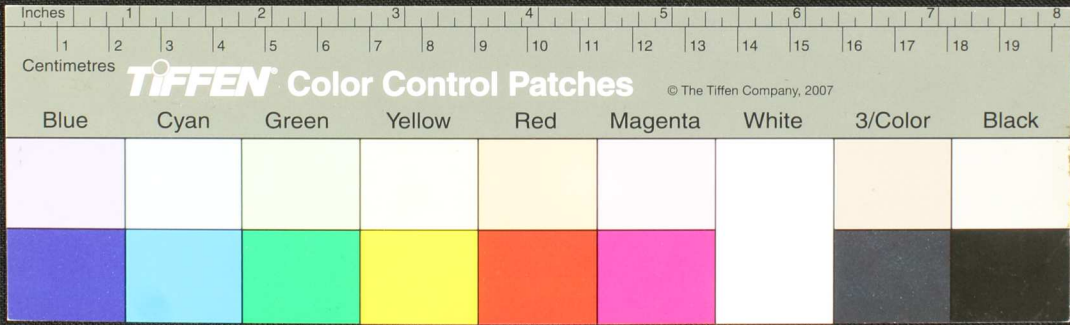


Handwritten text in Tamil script on a palm leaf manuscript. The text is arranged in approximately 10 horizontal lines across the length of the leaf. There are two circular holes visible, which were traditionally used for threading a cord to bind multiple leaves together. The script is finely etched into the surface of the dried leaf.

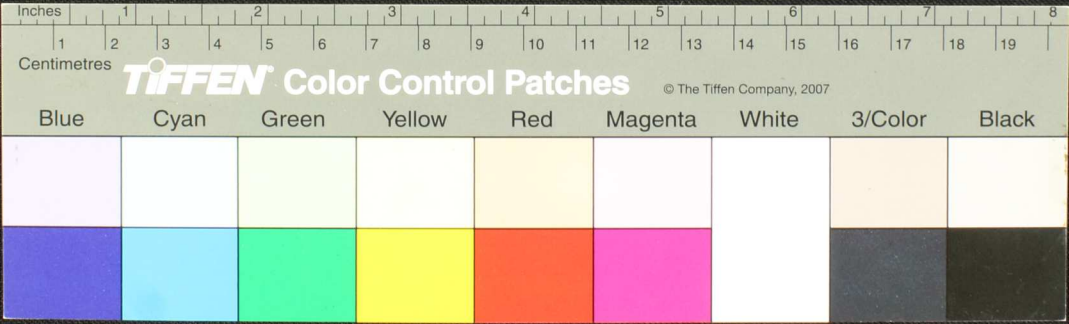


30

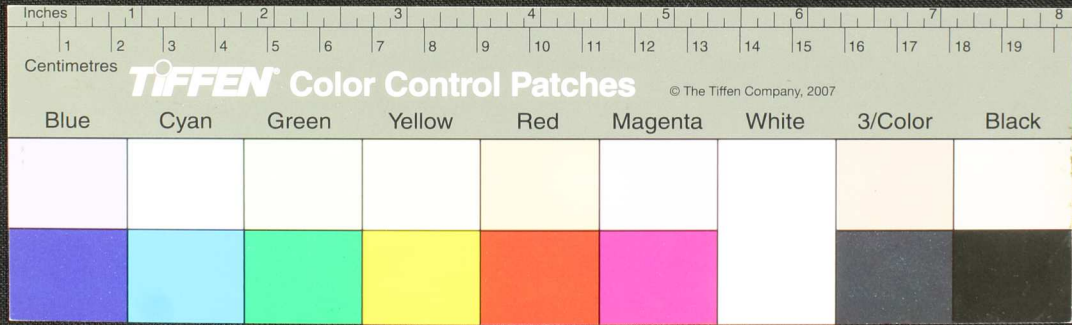
சிலிதது ளரது கரியுநிவான உயிர்... மலரலிதர... மலரலிதர... மலரலிதர... மலரலிதர... மலரலிதர... மலரலிதர... மலரலிதர... மலரலிதர... மலரலிதர... மலரலிதர...
 மலரலிதர... மலரலிதர... மலரலிதர... மலரலிதர... மலரலிதர... மலரலிதர... மலரலிதர... மலரலிதர... மலரலிதர... மலரலிதர...
 மலரலிதர... மலரலிதர... மலரலிதர... மலரலிதர... மலரலிதர... மலரலிதர... மலரலிதர... மலரலிதர... மலரலிதர... மலரலிதர...
 மலரலிதர... மலரலிதர... மலரலிதர... மலரலிதர... மலரலிதர... மலரலிதர... மலரலிதர... மலரலிதர... மலரலிதர... மலரலிதர...
 மலரலிதர... மலரலிதர... மலரலிதர... மலரலிதர... மலரலிதர... மலரலிதர... மலரலிதர... மலரலிதர... மலரலிதர... மலரலிதர...
 மலரலிதர... மலரலிதர... மலரலிதர... மலரலிதர... மலரலிதர... மலரலிதர... மலரலிதர... மலரலிதர... மலரலிதர... மலரலிதர...
 மலரலிதர... மலரலிதர... மலரலிதர... மலரலிதர... மலரலிதர... மலரலிதர... மலரலிதர... மலரலிதர... மலரலிதர... மலரலிதர...
 மலரலிதர... மலரலிதர... மலரலிதர... மலரலிதர... மலரலிதர... மலரலிதர... மலரலிதர... மலரலிதர... மலரலிதர... மலரலிதர...
 மலரலிதர... மலரலிதர... மலரலிதர... மலரலிதர... மலரலிதர... மலரலிதர... மலரலிதர... மலரலிதர... மலரலிதர... மலரலிதர...



Handwritten Tamil script on a palm leaf manuscript. The text is arranged in approximately 10 horizontal lines across the length of the leaf. There are two circular holes punched through the leaf, likely for binding. The script is densely packed and appears to be a form of classical Tamil.

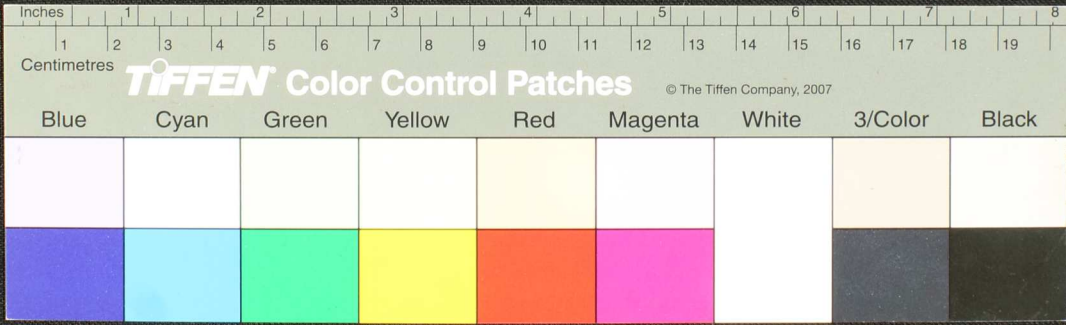


34
 யுரகாபு... மூல...
 உறாக...
 தா...
 உ...
 ம...
 ப...
 ம...
 ம...
 ம...

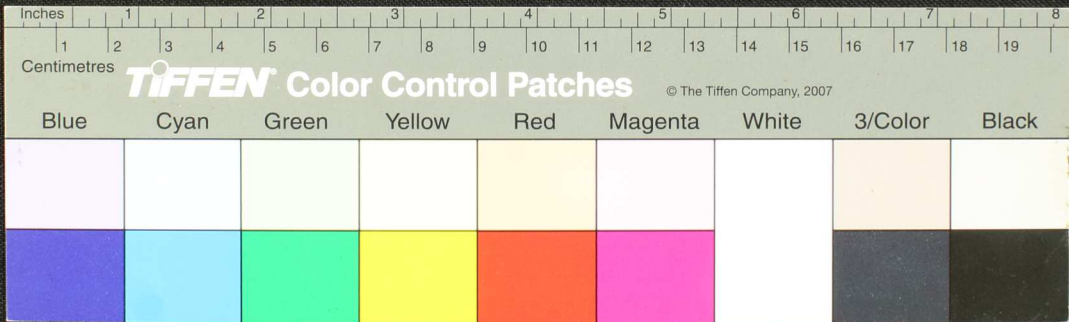


37

Handwritten Tamil script on a palm leaf manuscript strip, featuring two circular holes for binding.



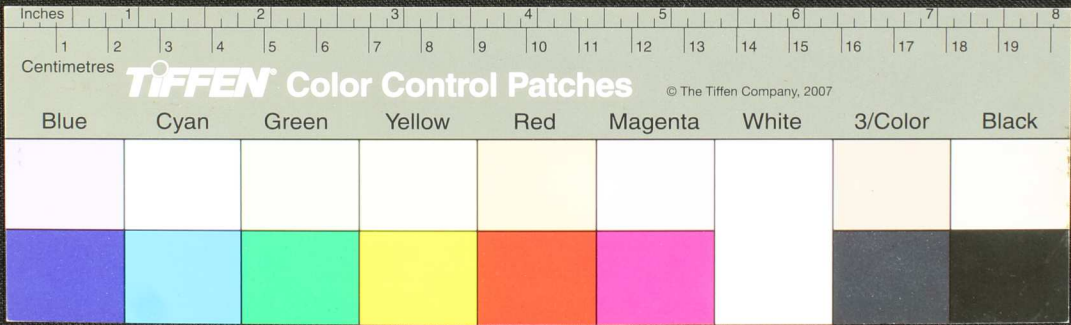
42
 வகுநாம பரபரகரஞ்...
 ரெபகிசுகிளலி...
 திரபநிசியவய...
 தரதரபதவசர...
 ரகூனவனபரத...
 பிராமவதவக...
 ஐசமிநி...



102

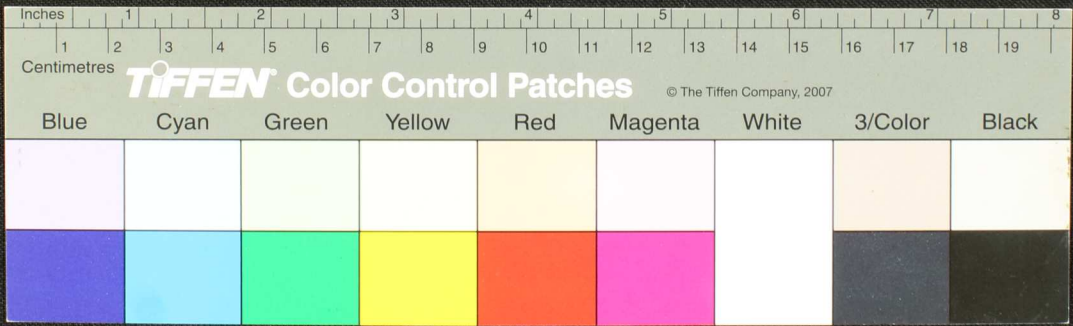
143

Handwritten Tamil script on a palm leaf manuscript. The text is arranged in approximately 12 horizontal lines across the length of the leaf. The script is densely packed and appears to be a form of classical Tamil. There are two distinct circular holes punched through the leaf, one near the left edge and one near the right edge, which were traditionally used for threading a cord to bind multiple leaves together into a book format.



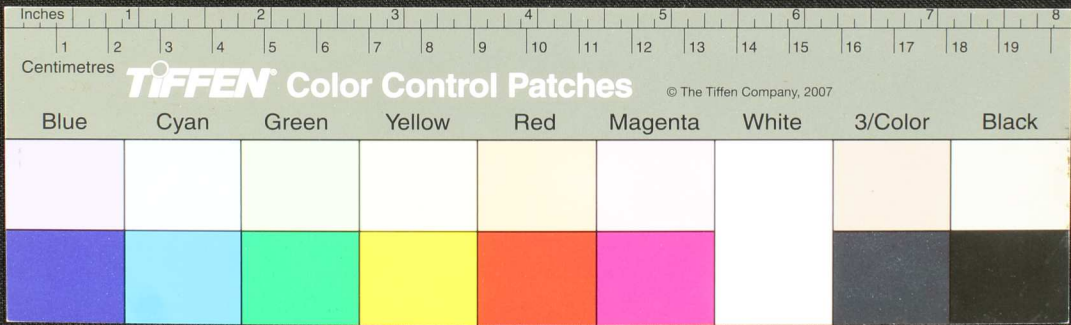
306

Handwritten Tamil script on a palm leaf, consisting of approximately 12 lines of text. The script is densely packed and written in a traditional style. Two circular holes are visible along the length of the leaf, which were traditionally used for threading a cord to bind multiple leaves together into a book format.



46

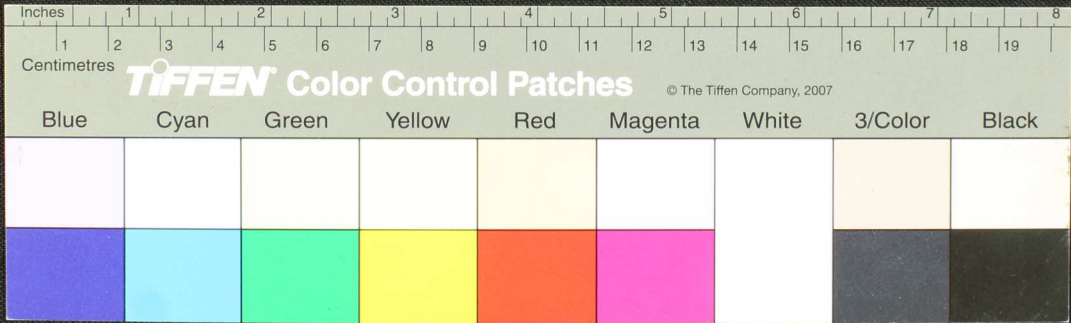
Handwritten Tamil script on a palm leaf manuscript, featuring two circular holes for binding.



502

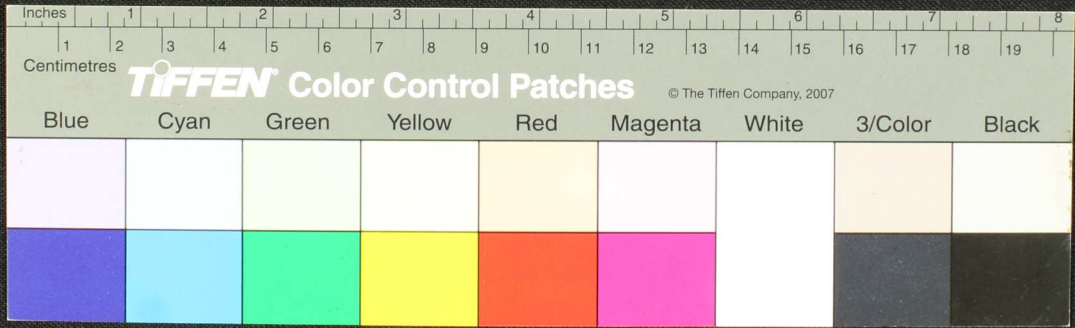
47

Tamil script on a palm leaf manuscript strip, written in a traditional style with approximately 10 lines of text.



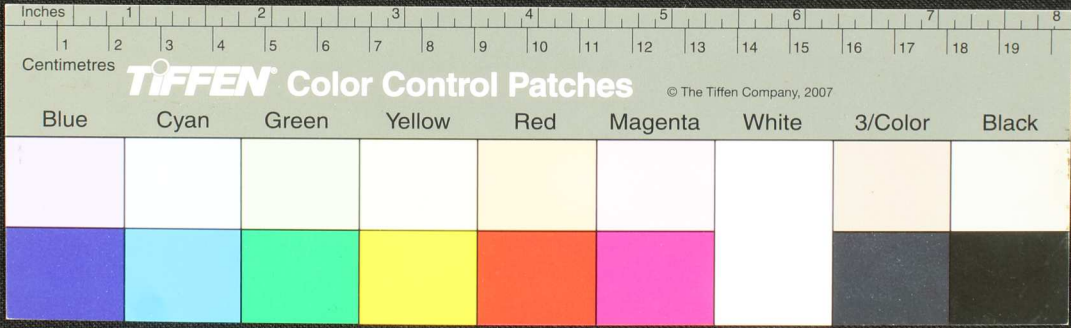
Handwritten Tamil script on a palm leaf manuscript. The text is arranged in approximately 10 horizontal lines across the length of the leaf. The script is densely packed and appears to be a form of classical or historical Tamil. There are several dark, irregular holes and stains along the length of the leaf, particularly in the middle section, which are likely due to insect damage or environmental factors. The leaf is light brown and shows signs of age.

50

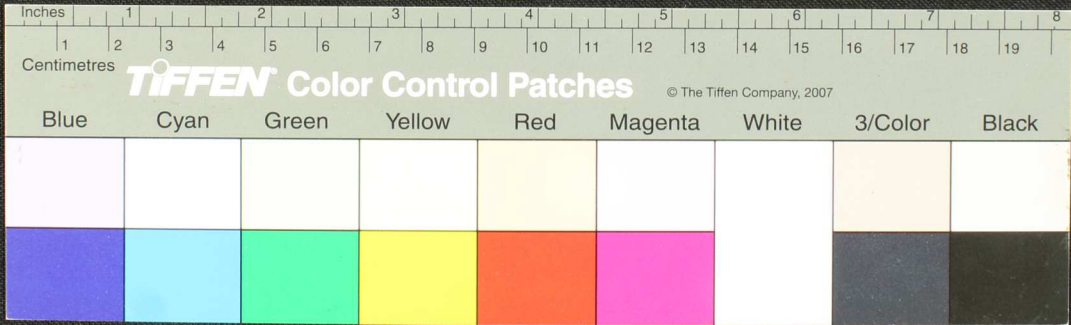


54

Handwritten text in Tamil script on a palm leaf manuscript, consisting of approximately 12 lines of characters.

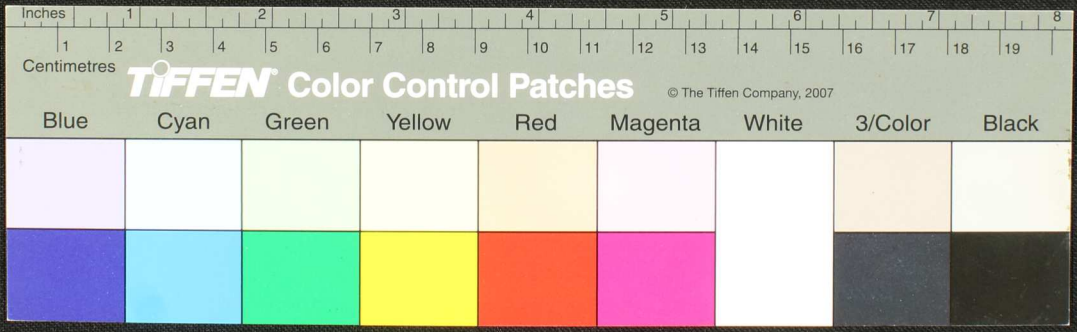


Handwritten Tamil script on a palm leaf manuscript. The text is arranged in approximately 10 horizontal lines across the length of the leaf. Two circular holes are visible, used for binding multiple leaves together. The script is finely etched into the surface of the dried leaf.

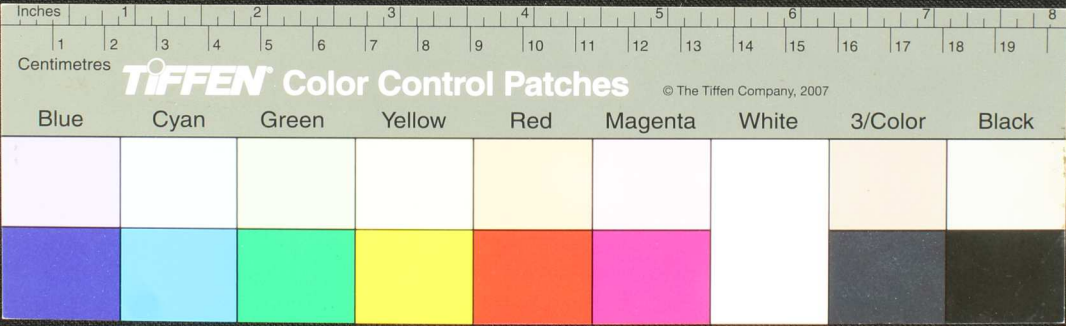


58

Handwritten Tamil script on a palm leaf manuscript, featuring approximately 15 lines of text in an ancient script.

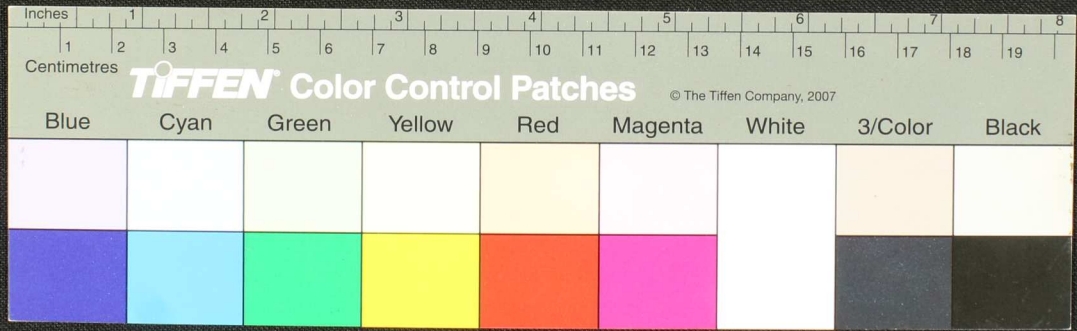


Handwritten Tamil script on a palm leaf, likely a historical record or document. The text is written in a traditional style and is arranged in several lines across the length of the leaf. The leaf shows signs of age with some dark spots and irregular edges.

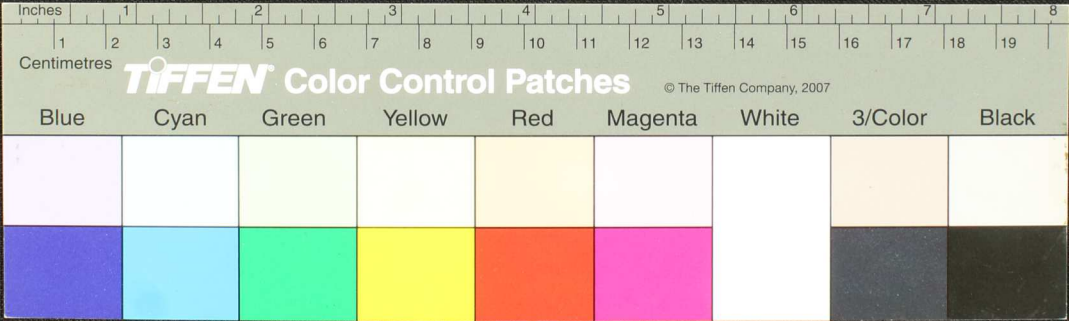


64

Handwritten Tamil script on a palm leaf manuscript, consisting of approximately 12 lines of text.



68
[Handwritten text in Tamil script on a palm leaf manuscript fragment]

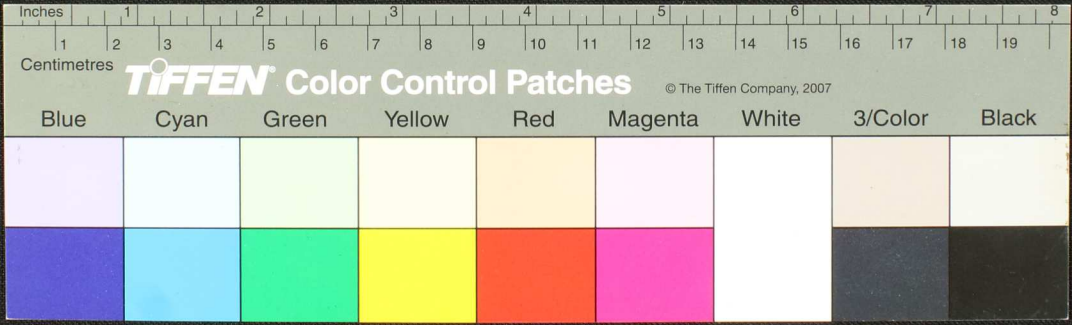


Handwritten Tamil script on a palm leaf manuscript. The text is arranged in approximately 10 horizontal lines across the length of the leaf. The script is densely packed and appears to be a form of classical or historical Tamil. There are two distinct circular holes along the length of the leaf, which were traditionally used for threading a cord to bind multiple leaves together into a book format.

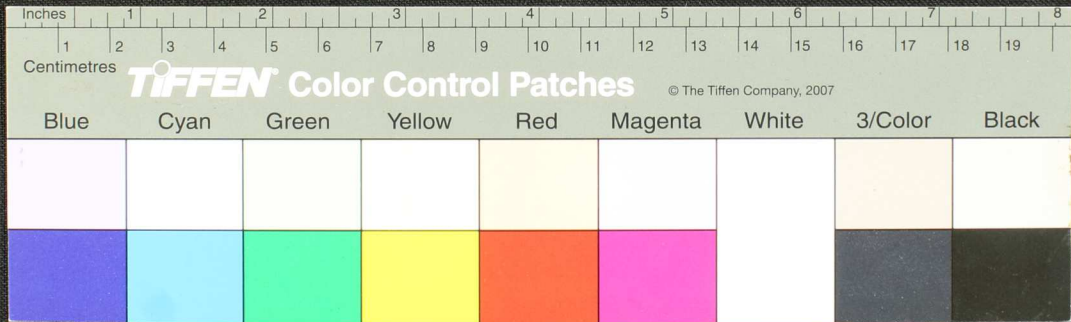


77 x

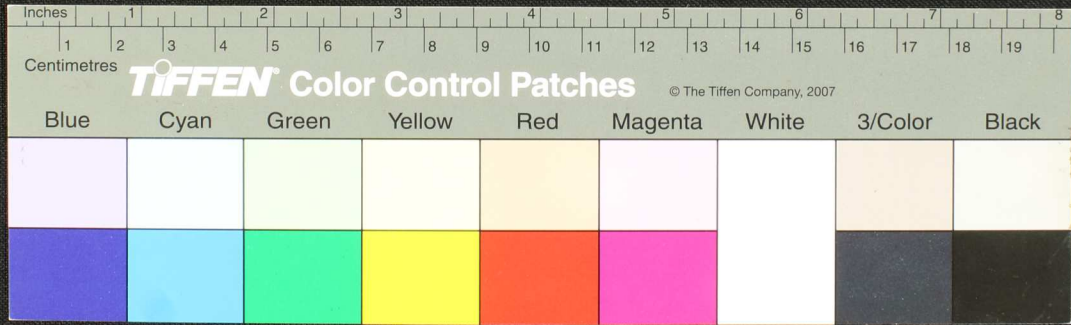
Handwritten Tamil script on a palm leaf manuscript. The text is arranged in approximately 10 horizontal lines across the length of the leaf. The script is finely etched into the surface of the dried leaf. The leaf shows signs of age, including some dark spots and a slightly irregular edge.



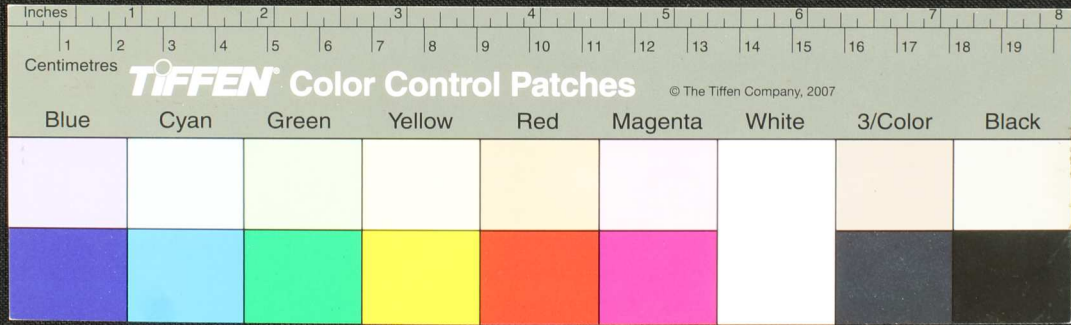
Handwritten text in Tamil script on a palm leaf manuscript. The text is arranged in approximately 10 horizontal lines across the length of the leaf. The script is dense and appears to be a form of classical or religious Tamil. There are two circular holes visible on the leaf, which were traditionally used for threading a cord to bind multiple leaves together into a book format.



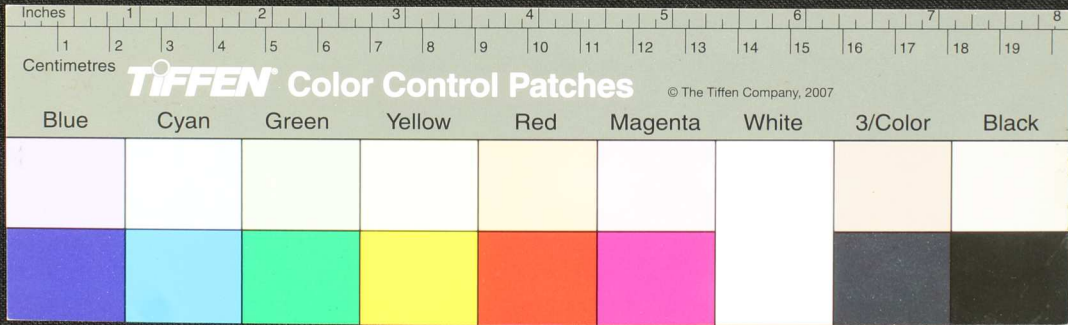
Handwritten text in Tamil script on a palm leaf manuscript. The text is densely packed and spans the length of the leaf. Two circular holes are visible, used for binding multiple leaves together. The script is in an older form of the Tamil language.



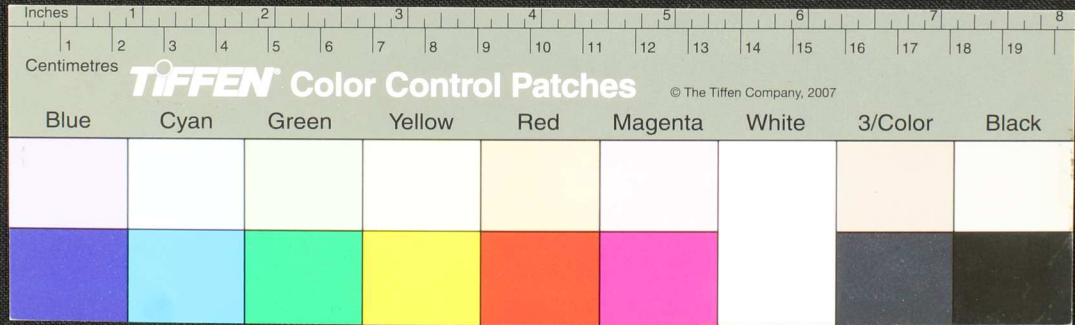
Handwritten Tamil script on a palm leaf manuscript. The text is densely packed and spans the length of the leaf. Two circular holes are visible, which were traditionally used for threading a cord to bind multiple leaves together. The script is written in a traditional style, with some characters appearing to be in a different script or dialect, possibly Grantha or a specific regional variant of Tamil.



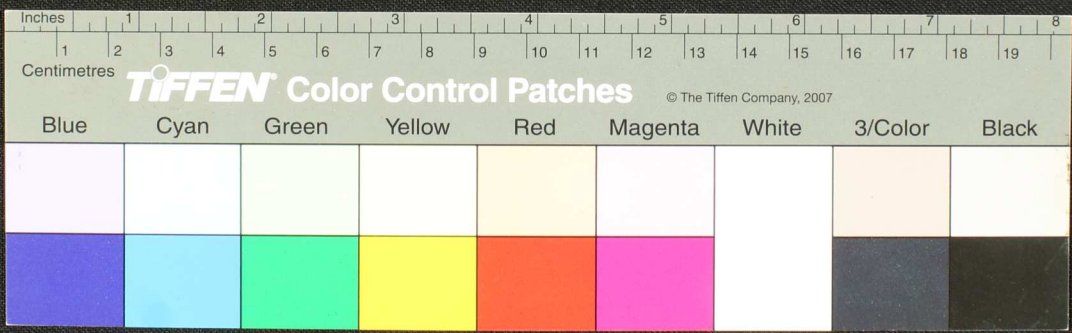
Handwritten Tamil script on a palm leaf manuscript. The text is arranged in approximately 10 horizontal lines across the length of the leaf. The script is densely packed and appears to be a form of classical Tamil. There are two circular holes visible on the leaf, which were traditionally used for threading a cord to bind multiple leaves together into a book format. The leaf shows signs of age, including some discoloration and wear at the edges.



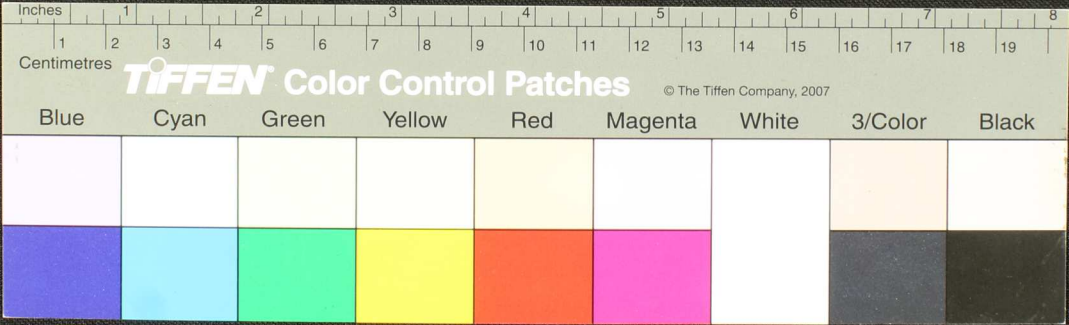
Handwritten Tamil script on a palm leaf manuscript. The text is arranged in approximately 10 horizontal lines across the length of the leaf. Two circular holes are visible, which were traditionally used for threading a cord to bind multiple leaves together. The script is densely packed and appears to be a form of classical Tamil.



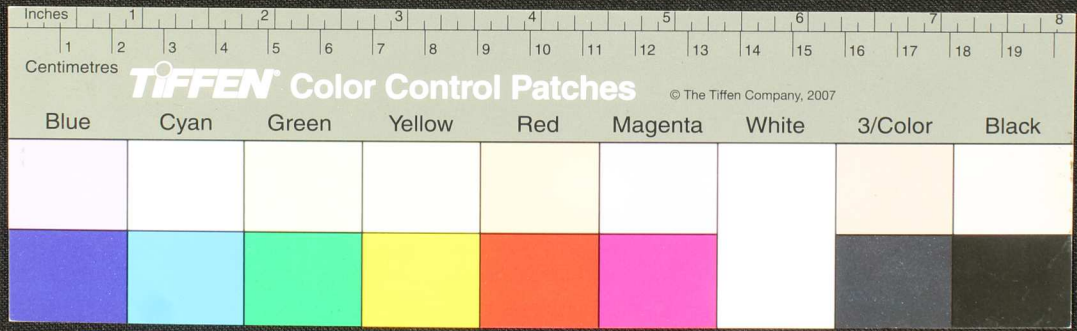
Handwritten Tamil script on a palm leaf manuscript. The text is arranged in approximately 10 horizontal lines across the length of the leaf. Two circular holes are visible, which were traditionally used for threading a cord to bind multiple leaves together. The script is finely etched into the surface of the dried leaf.



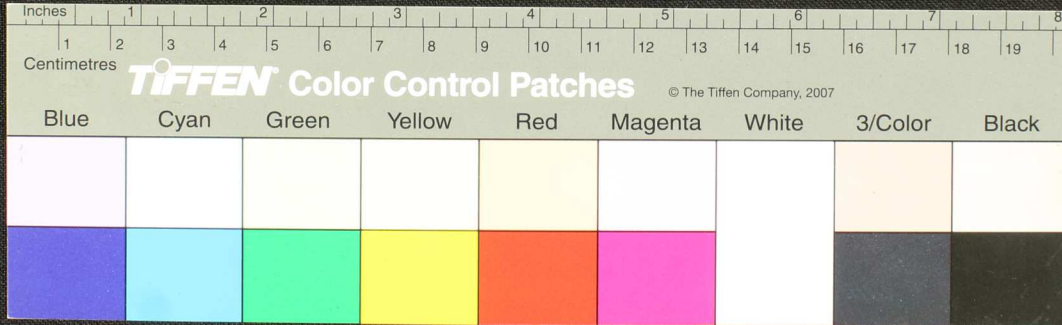
Handwritten Tamil script on a palm leaf manuscript. The text is densely packed and spans the length of the leaf. There are two circular holes visible, which were traditionally used for threading a cord to bind multiple leaves together. The script is written in a traditional style with dark ink on the natural yellowish-brown surface of the leaf.



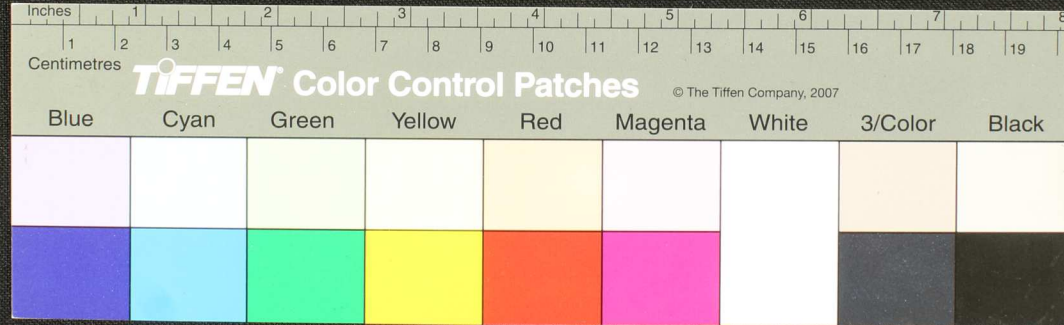
Handwritten text in Tamil script on a palm leaf manuscript strip. The text is arranged in approximately 10 horizontal lines across the length of the leaf. The leaf shows signs of age, including two prominent circular holes and irregular dark stains, particularly near the right edge.



Handwritten Tamil script on a fragment of aged, yellowed paper. The text is arranged in approximately five horizontal lines. The script is dense and appears to be a form of historical or religious Tamil. There are some dark spots and a hole on the right side of the fragment, suggesting it is an old document.



Handwritten Tamil script on a fragment of aged, yellowed paper. The text is arranged in approximately five horizontal lines. The script is dense and appears to be a form of classical or historical Tamil. There are several dark, irregular holes and tears in the paper, particularly on the right side and in the middle, which obscure some of the characters. The paper is set against a dark, textured background.



Handwritten Tamil script on a palm leaf manuscript. The text is arranged in approximately 10 horizontal lines across the length of the leaf. The script is finely etched into the surface of the dried leaf. There are some dark spots and a hole on the leaf, likely due to age or insect damage.

