









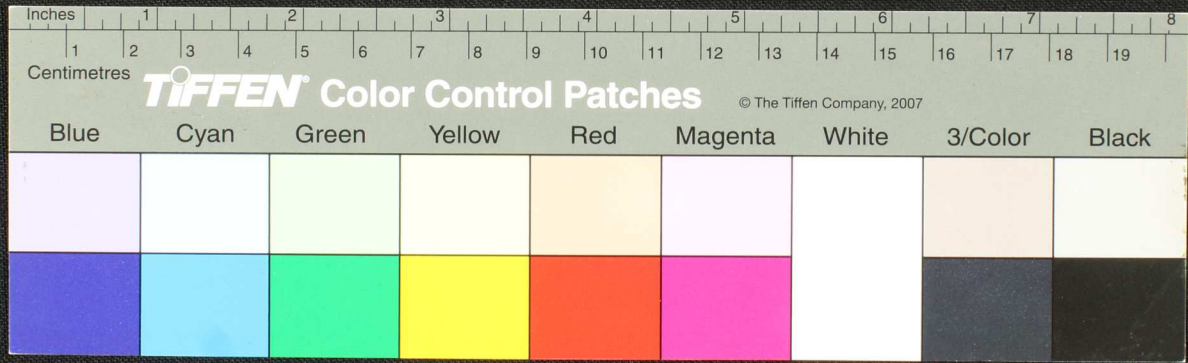








Handwritten text in Tamil script on a palm leaf manuscript. The text is arranged in two lines. The first line contains approximately 12 characters, and the second line contains approximately 14 characters. The script is finely etched into the surface of the dried leaf.

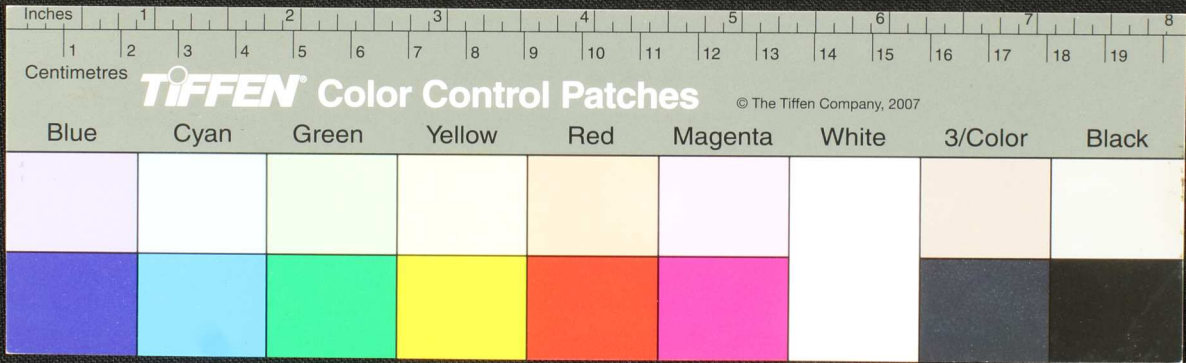








Handwritten text in Tamil script on a palm leaf manuscript. The text is arranged in approximately 10 horizontal lines. The script is dense and appears to be a form of classical or historical Tamil. The leaf shows signs of age, including some dark spots and irregular damage, particularly on the right side.





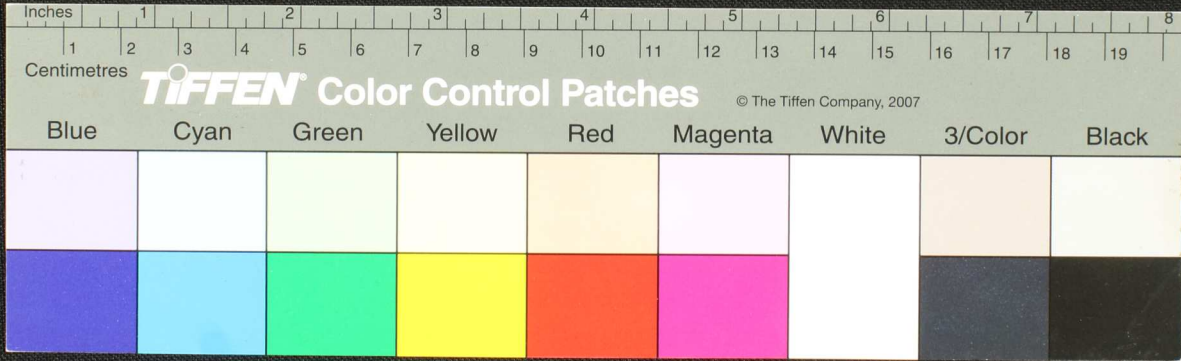








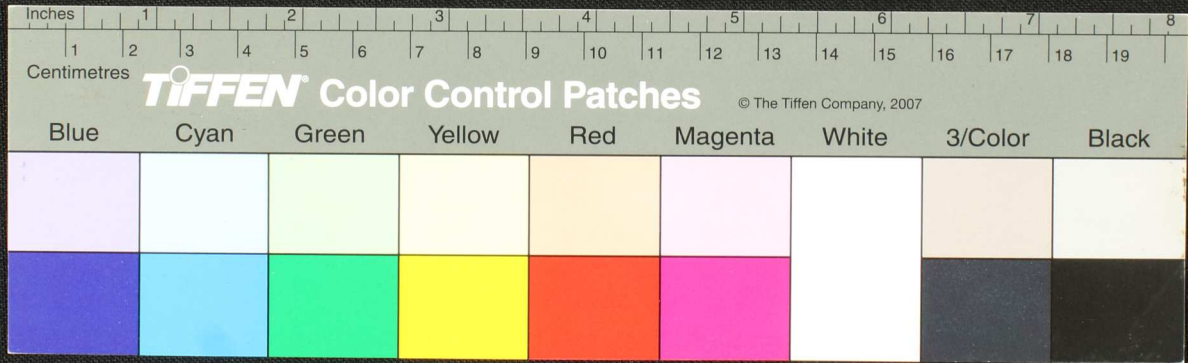
Handwritten text in Tamil script on a palm leaf manuscript. The text is arranged in three columns. The rightmost column is partially obscured by a tear in the leaf. The script is finely etched into the surface of the dried leaf.









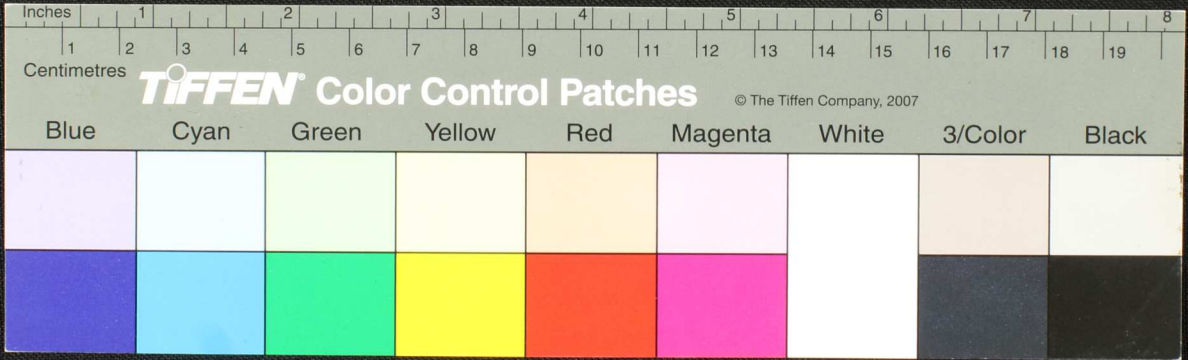






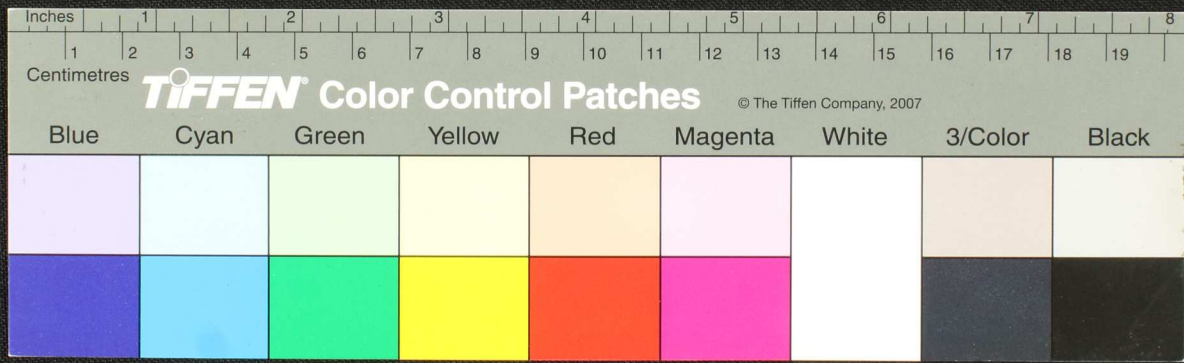


Handwritten text in Tamil script on a palm leaf manuscript. The text is arranged in approximately 10 horizontal lines across the length of the leaf. The script is finely etched into the surface of the dried leaf. The leaf shows signs of age, including some dark spots and a hole near the center.





8. உறவுகூட்டு...  
 விவரம்...  
 கருவியை...  
 உயர்நீதிமன்றம்...  
 உயர்நீதிமன்றம்...



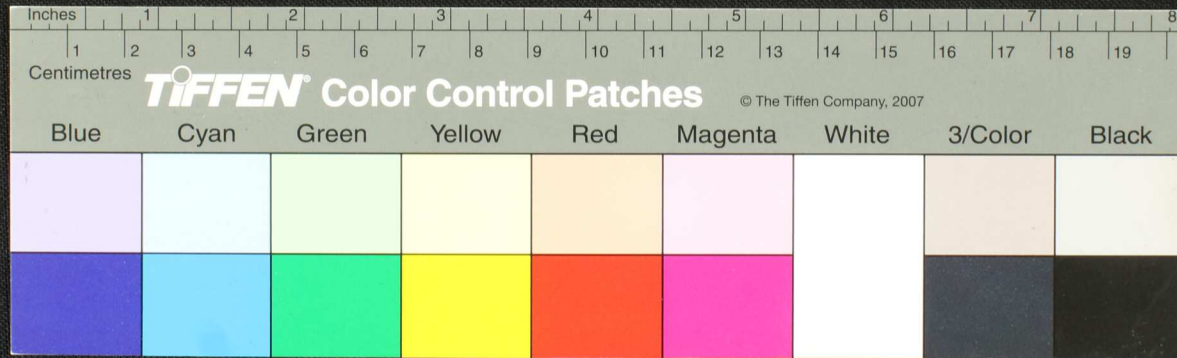


Handwritten text in Tamil script on a palm leaf manuscript. The text is arranged in approximately five horizontal lines across the length of the leaf. The script is finely etched into the surface of the dried leaf. The leaf shows signs of age, including some dark spots and irregular edges.



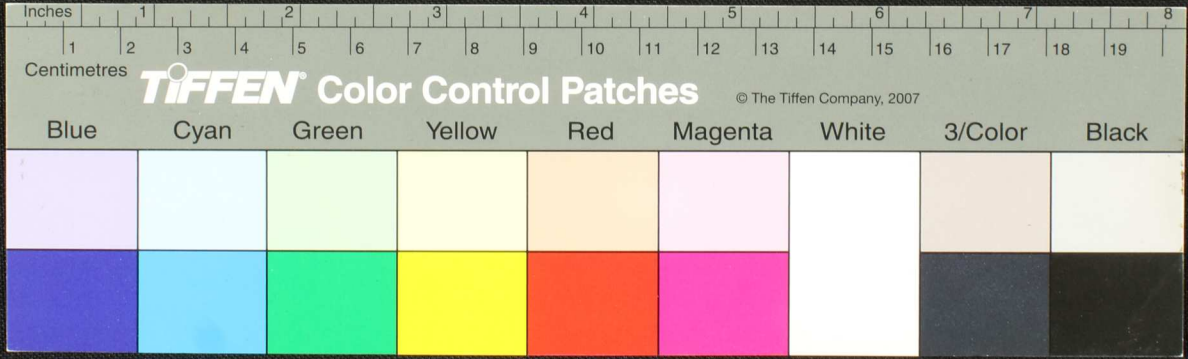


Handwritten text in Tamil script on a palm leaf manuscript. The text is arranged in approximately 10 horizontal lines across the length of the leaf. The script is dense and characteristic of traditional Tamil inscriptions. There are two circular holes visible on the leaf, which were traditionally used for threading a cord to bind multiple leaves together into a book format. The leaf shows signs of age, including some staining and wear at the edges.





Handwritten text in Tamil script on a palm leaf manuscript. The text is arranged in approximately 10 horizontal lines. The script is dense and appears to be a form of classical or religious Tamil. There are some dark spots and irregularities on the leaf, possibly due to age or damage. The text is written in a dark ink or natural dye on the light-colored surface of the leaf.





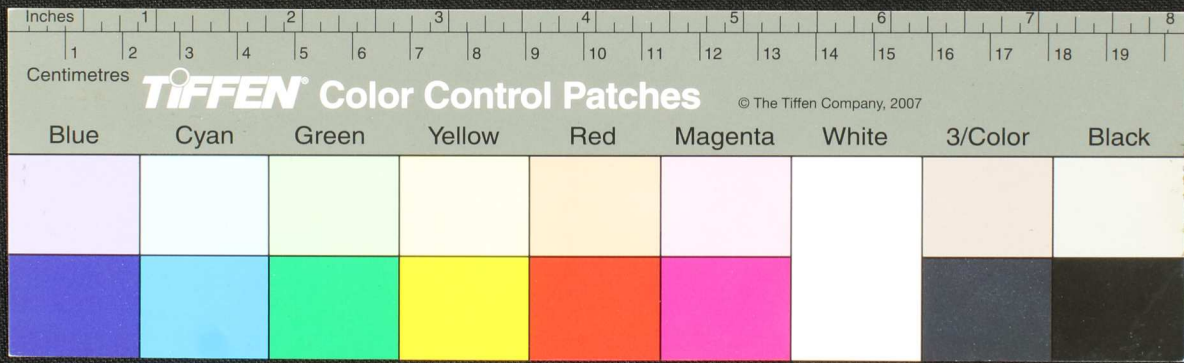








௧௦௭௦௭௩யாய சூவாஹநா தி வவகபவாநாநலகூலாநாயதமபூதிஃ ௧  
 சிந்திரா ஸௌஹிஸாஸநாயமதிஃ சிந்திரா ஸௌஹிஸாஸநாயமதிஃ சிந்திரா ஸௌஹிஸாஸநாயமதிஃ  
 ஸௌஹிஸாஸநாயமதிஃ சிந்திரா ஸௌஹிஸாஸநாயமதிஃ சிந்திரா ஸௌஹிஸாஸநாயமதிஃ  
 யந்திஃ பகிவிரதவதாஸுஹி யந்திஃ பகிவிரதவதாஸுஹி யந்திஃ பகிவிரதவதாஸுஹி  
 ஸௌஹிஸாஸநாயமதிஃ சிந்திரா ஸௌஹிஸாஸநாயமதிஃ சிந்திரா ஸௌஹிஸாஸநாயமதிஃ  
 ஸௌஹிஸாஸநாயமதிஃ சிந்திரா ஸௌஹிஸாஸநாயமதிஃ சிந்திரா ஸௌஹிஸாஸநாயமதிஃ  
 சிந்திரா ஸௌஹிஸாஸநாயமதிஃ சிந்திரா ஸௌஹிஸாஸநாயமதிஃ சிந்திரா ஸௌஹிஸாஸநாயமதிஃ  
 சிந்திரா ஸௌஹிஸாஸநாயமதிஃ சிந்திரா ஸௌஹிஸாஸநாயமதிஃ சிந்திரா ஸௌஹிஸாஸநாயமதிஃ





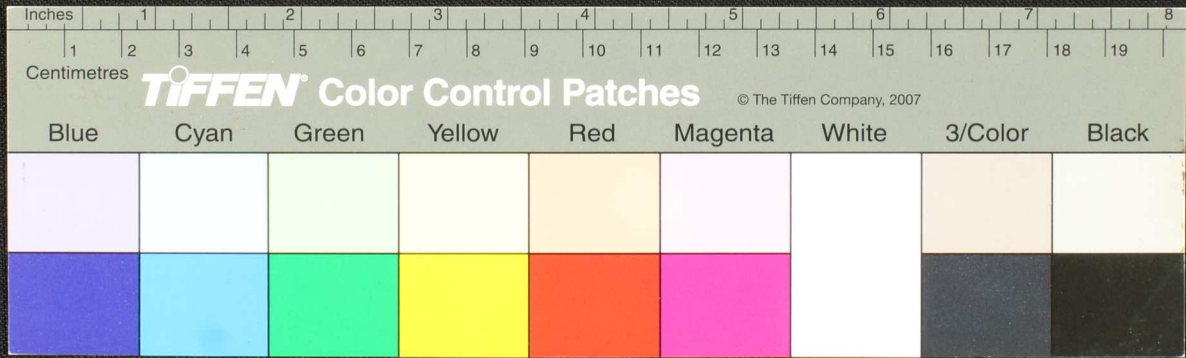








Handwritten text in Tamil script on a palm leaf manuscript. The text is arranged in several lines across the length of the leaf. The script is dense and appears to be a form of classical or historical Tamil. There are two circular holes visible on the leaf, which were traditionally used for threading a cord to bind multiple leaves together into a book format.

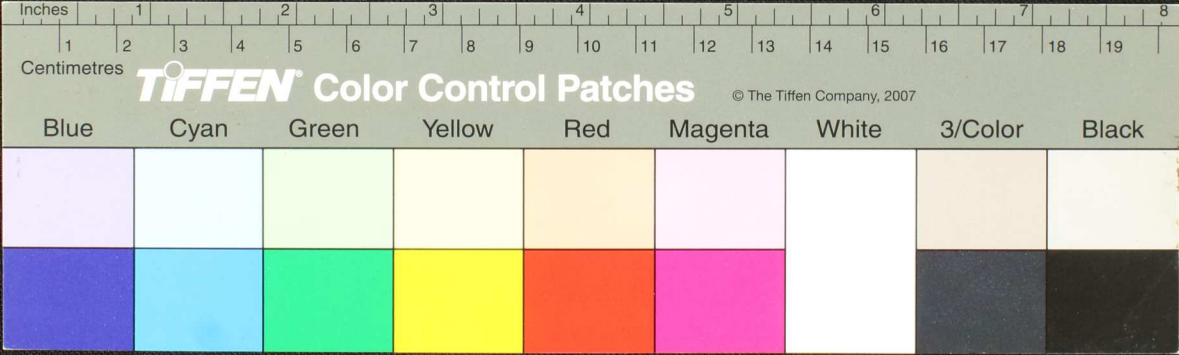








Handwritten Tamil script on a palm leaf manuscript. The text is densely packed and appears to be a historical record or a religious text. The leaf shows signs of age and wear, with some discoloration and a small hole near the center.









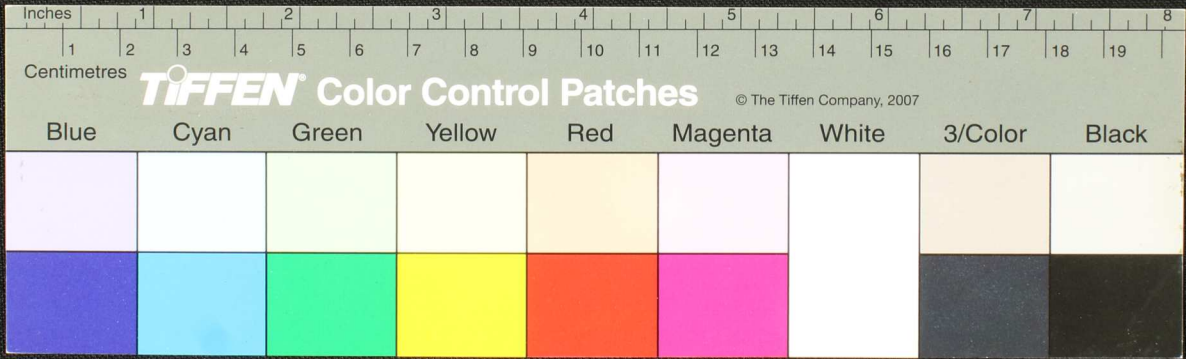








யதொருவாயுயிர்வென்றபுதி ஸ்ரீமந் பகவதேவகிருஷ்ணே பதிவாழயாதி: கருணாகரணம் கருணாகரணம் + சதவகா - யாருணா + து கருணா  
 உகா - சகலக்: ஸகலதிக்: கருணா கருணா கருணா கருணா கருணா கருணா கருணா கருணா கருணா கருணா கருணா கருணா கருணா கருணா கருணா கருணா  
 சபயம் - வரததனாஜலேய்யம் - கருணா கருணா கருணா கருணா கருணா கருணா கருணா கருணா கருணா கருணா கருணா கருணா கருணா கருணா கருணா  
 ன் - கருணா கருணா கருணா கருணா கருணா கருணா கருணா கருணா கருணா கருணா கருணா கருணா கருணா கருணா கருணா கருணா  
 அருணா கருணா கருணா கருணா கருணா கருணா கருணா கருணா கருணா கருணா கருணா கருணா கருணா கருணா கருணா கருணா  
 பதிவா கருணா கருணா கருணா கருணா கருணா கருணா கருணா கருணா கருணா கருணா கருணா கருணா கருணா கருணா கருணா  
 பதிவா கருணா கருணா கருணா கருணா கருணா கருணா கருணா கருணா கருணா கருணா கருணா கருணா கருணா கருணா கருணா





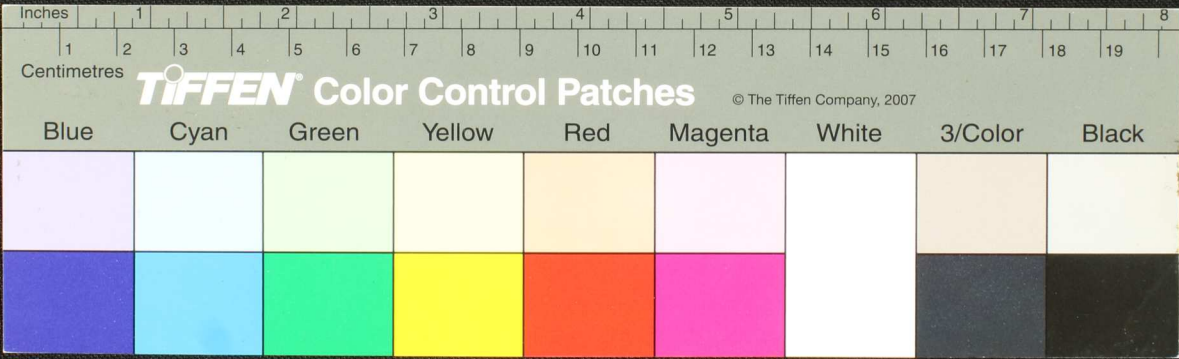








Handwritten text in Tamil script on a palm leaf manuscript. The text is densely packed and appears to be a historical or religious record. The leaf shows signs of age and wear, with some damage and discoloration.

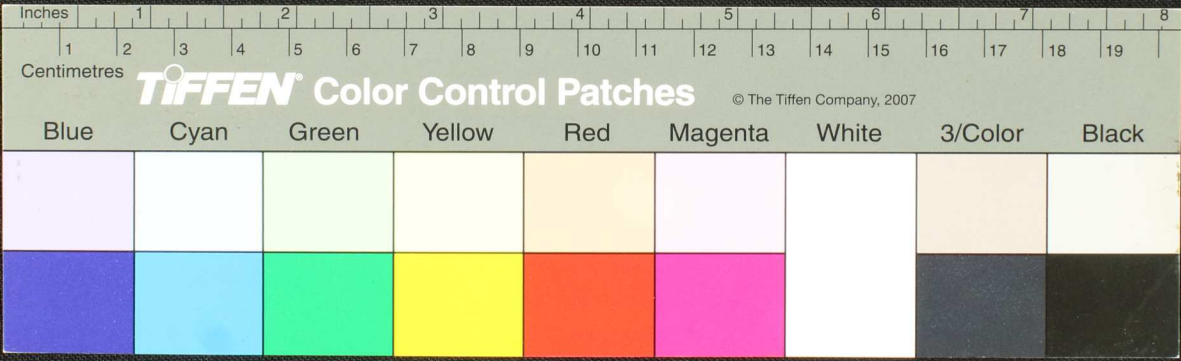






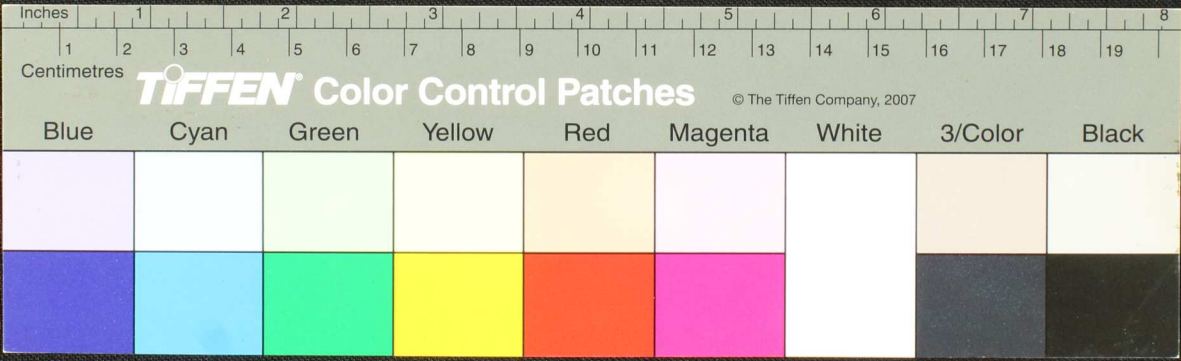


Handwritten text in Tamil script on a palm leaf manuscript. The text is densely packed and spans the length of the leaf. It appears to be a historical record or a religious text, given the context of such manuscripts. The script is in an older form of the Tamil language. The leaf shows signs of age, with some discoloration and wear.





Handwritten text in Tamil script on a palm leaf manuscript. The text is densely packed and spans the length of the leaf. It appears to be a historical record or a religious text, given the context of such manuscripts. The script is in an older form of the Tamil language. The leaf shows signs of age, with some discoloration and wear along the edges.

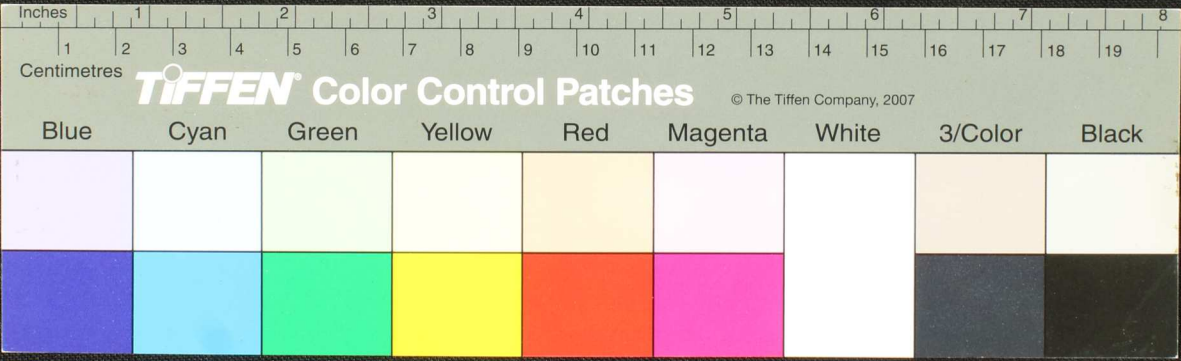






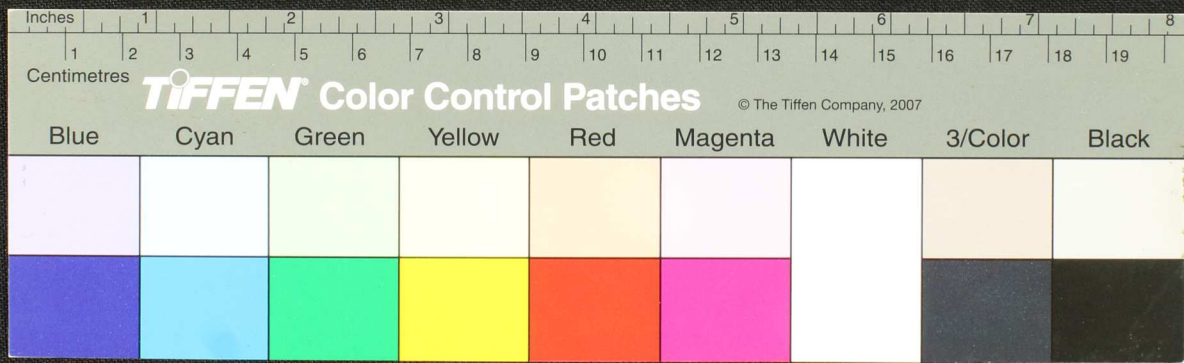


Handwritten text in Tamil script on a palm leaf manuscript. The text is densely packed and appears to be a historical record or a religious text. The leaf shows signs of age and wear, with some discoloration and small holes.



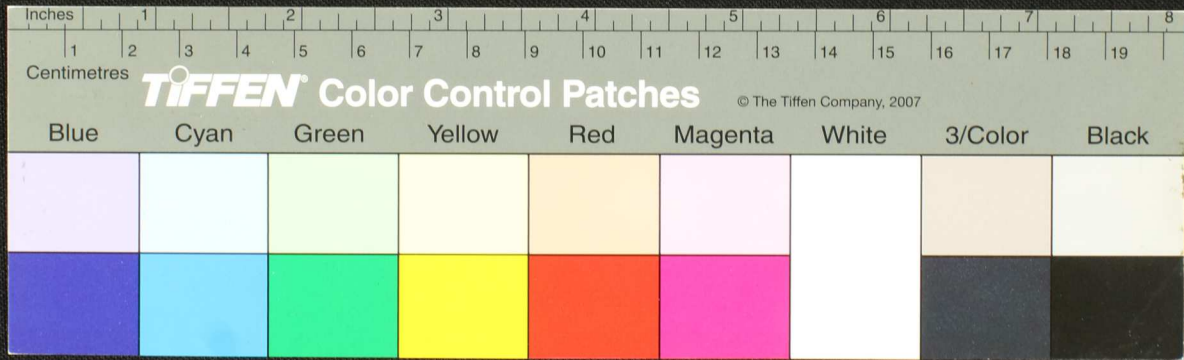


Handwritten text in an ancient script, likely Tamil, on a palm leaf manuscript. The text is arranged in a single line across the length of the leaf. The script is finely etched into the surface of the dried leaf. The leaf shows signs of age and wear, with some dark spots and irregular edges.



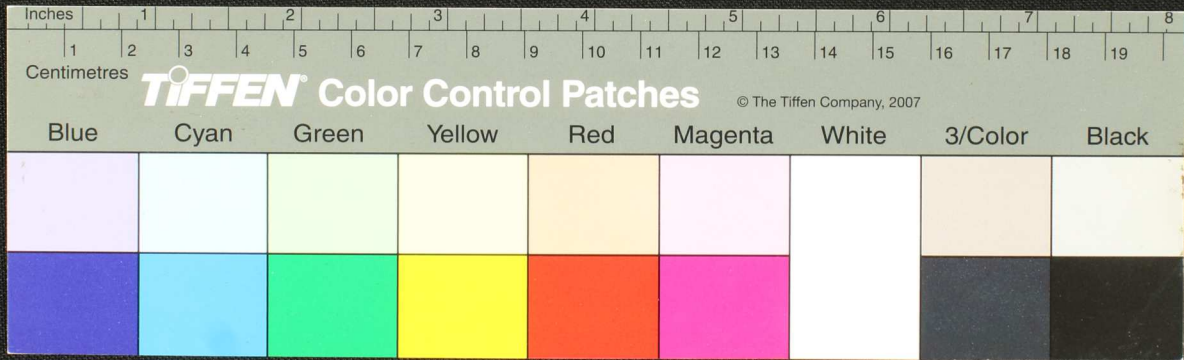


Handwritten Tamil script on a palm leaf manuscript. The text is densely packed and spans the length of the leaf. Two circular holes are visible, used for threading a cord to bind multiple leaves together. The script is written in a traditional style, with some characters appearing to be in a different script or dialect, possibly Grantha or a specific regional variant of Tamil.





Handwritten text in Tamil script on a palm leaf manuscript. The text is arranged in approximately 10 horizontal lines across the length of the leaf. The script is dense and appears to be a form of classical or historical Tamil. There are two circular holes visible on the leaf, which were traditionally used for threading a cord to bind multiple leaves together into a book format. The leaf shows signs of age, including some discoloration and wear at the edges.





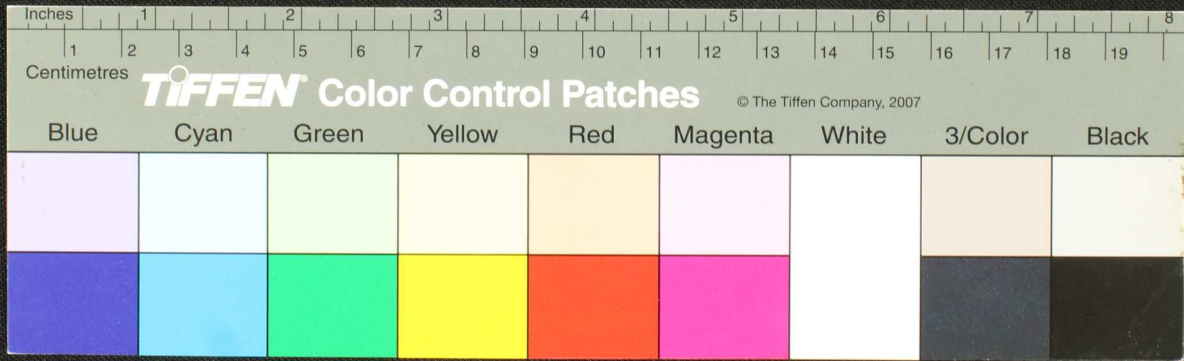








Handwritten Tamil script on a palm leaf manuscript. The text is arranged in approximately 10 horizontal lines across the length of the leaf. The script is finely etched into the surface of the dried leaf. The leaf shows signs of age, including some dark spots and irregular edges.

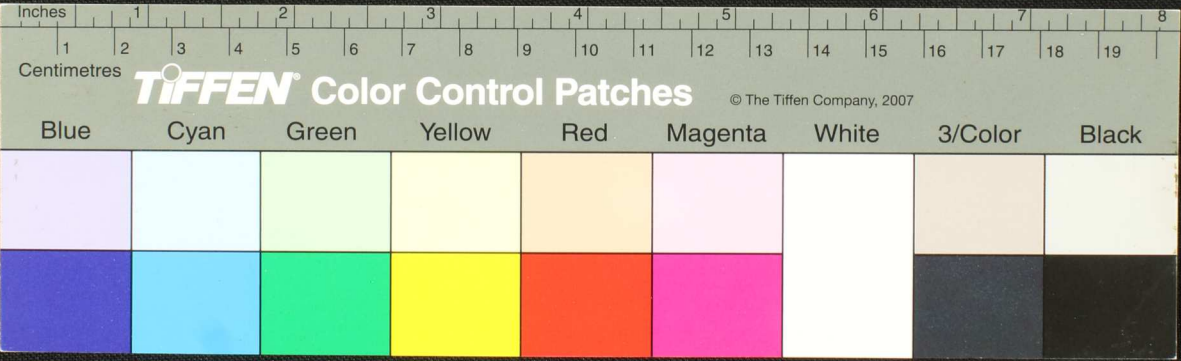








Handwritten text in Tamil script on a palm leaf manuscript. The text is densely packed and spans the length of the leaf. It appears to be a historical record or a religious text, given the nature of the medium. The script is in an older form of the Tamil language. The leaf shows signs of age, with some discoloration and wear, particularly at the ends.

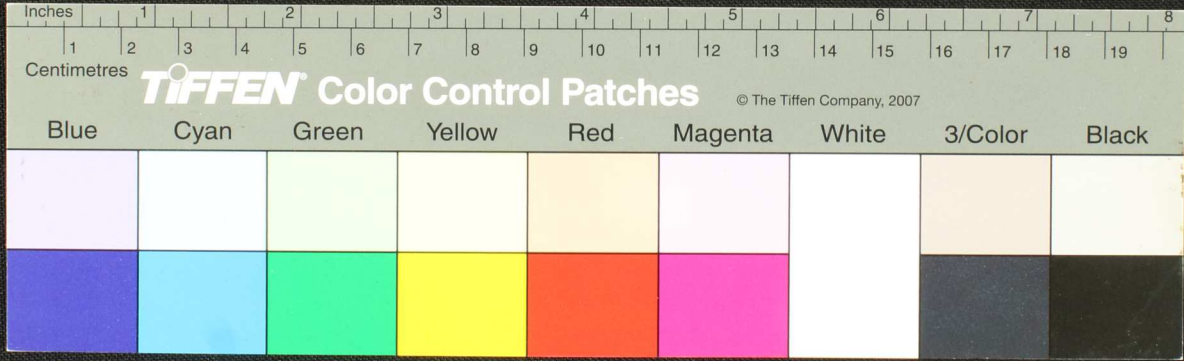








Handwritten Tamil script on a palm leaf manuscript. The text is arranged in approximately 10 horizontal lines across the length of the leaf. The script is dense and appears to be a form of classical or historical Tamil. There are two circular holes visible on the leaf, which were traditionally used for threading a cord to bind multiple leaves together into a book format.









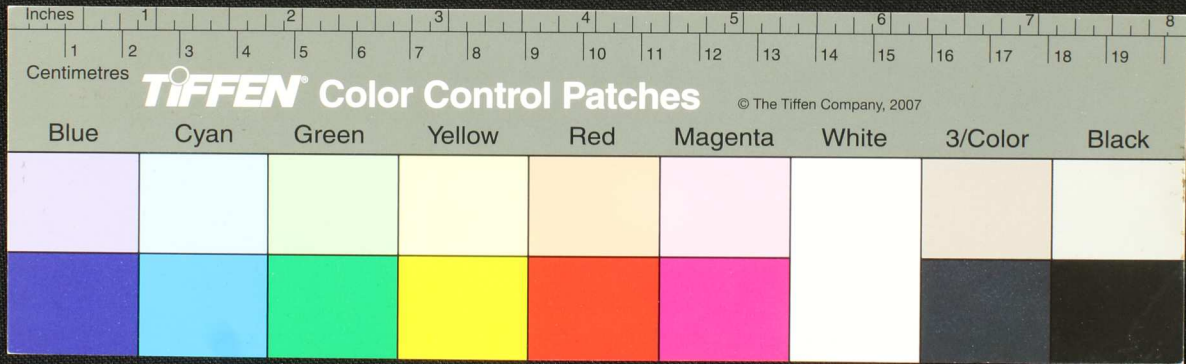








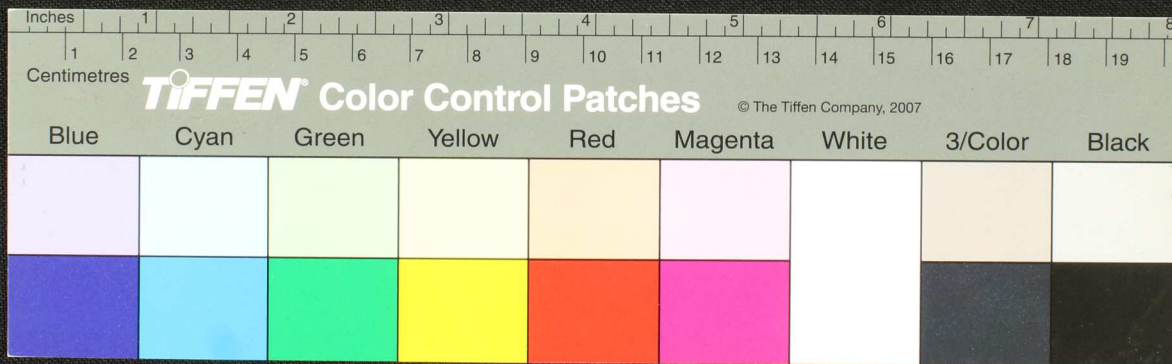
சுவாமி உவாணசுதணி சிறிசூரநீடு யநுலெறாஷ்பாதி சிறாசூரதா + தமம் சீரணா - யநபாகூ + யநாநிஷரணா - வநிஷி சிறா  
 பிலணா + தமம் சீரணா - சூரவயலெ ஓண்டலானா வாயவவ ஓலம் ஓண்டலானாயவயலெ யுரெயுதம் ஓண்டலானாயவயலெ  
 வயலெயுதம் - வகியினிஷி வயலெயுதம் சூரவயலெயுதம் சூரவயலெயுதம் சூரவயலெயுதம் சூரவயலெயுதம் சூரவயலெயுதம்  
 சூரவயலெயுதம் சூரவயலெயுதம் சூரவயலெயுதம் சூரவயலெயுதம் சூரவயலெயுதம் சூரவயலெயுதம் சூரவயலெயுதம் சூரவயலெயுதம்  
 சூரவயலெயுதம் சூரவயலெயுதம் சூரவயலெயுதம் சூரவயலெயுதம் சூரவயலெயுதம் சூரவயலெயுதம் சூரவயலெயுதம் சூரவயலெயுதம்









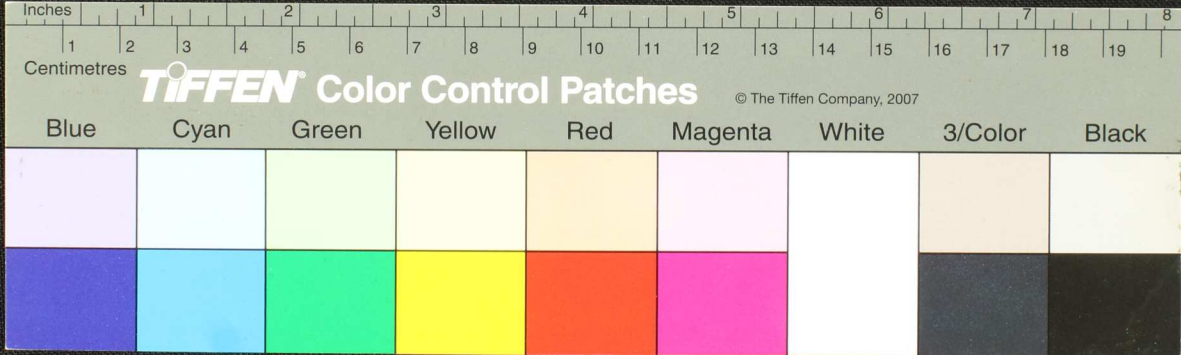








உயரதவதி... உயரதவதி... உயரதவதி... உயரதவதி... உயரதவதி... உயரதவதி... உயரதவதி... உயரதவதி... உயரதவதி... உயரதவதி...  
 உயரதவதி... உயரதவதி... உயரதவதி... உயரதவதி... உயரதவதி... உயரதவதி... உயரதவதி... உயரதவதி... உயரதவதி... உயரதவதி...  
 உயரதவதி... உயரதவதி... உயரதவதி... உயரதவதி... உயரதவதி... உயரதவதி... உயரதவதி... உயரதவதி... உயரதவதி... உயரதவதி...  
 உயரதவதி... உயரதவதி... உயரதவதி... உயரதவதி... உயரதவதி... உயரதவதி... உயரதவதி... உயரதவதி... உயரதவதி... உயரதவதி...  
 உயரதவதி... உயரதவதி... உயரதவதி... உயரதவதி... உயரதவதி... உயரதவதி... உயரதவதி... உயரதவதி... உயரதவதி... உயரதவதி...





Handwritten text in Tamil script on a palm leaf manuscript strip. The text is arranged in a single line across the length of the leaf. The script is finely etched into the surface of the dried leaf. There are two prominent circular holes, likely from traditional binding methods. The leaf shows signs of age, including small dark spots and some surface wear.

