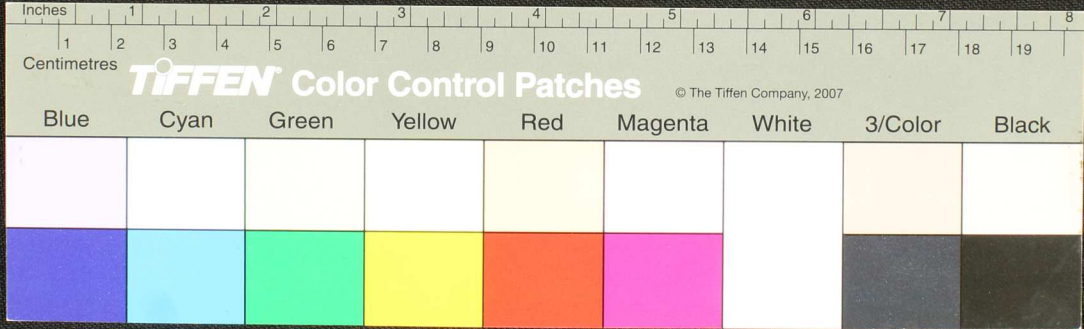
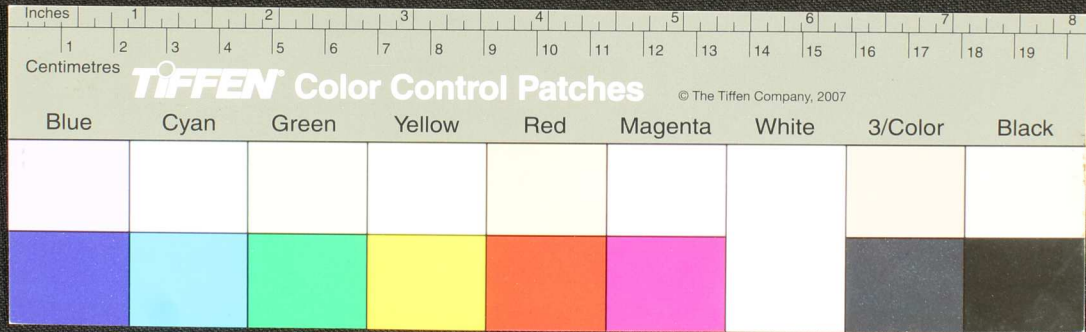


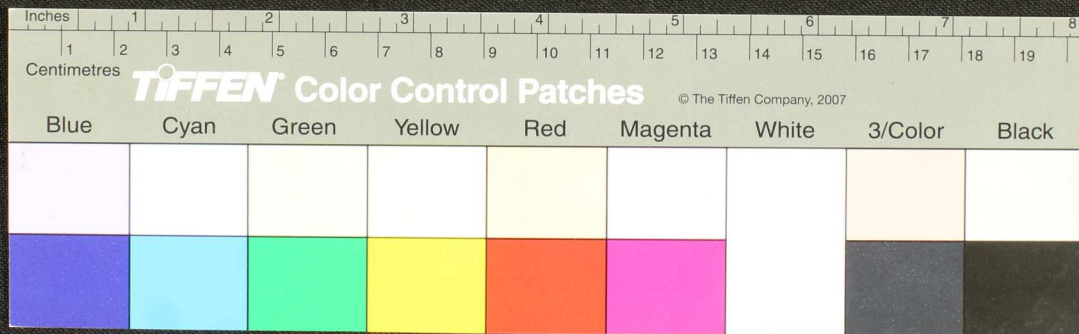
விநியமரநு வடுரெடு லை மா ரநி தீர
 சய பீரானு கெயயவசாநு ஆயு - ருமர
 குநாவு கெய வரவ வரவ துபெயர து
 ருமரவச சிவயாருடய - கெய கெய கெய
 உயு - மர வ சிவ சிவ சிவ சிவ சிவ சிவ
 குபு - மர வ சிவ சிவ சிவ சிவ சிவ சிவ
 குபு - மர வ சிவ சிவ சிவ சிவ சிவ சிவ
 வயு - மர வ சிவ சிவ சிவ சிவ சிவ சிவ
 வயு - மர வ சிவ சிவ சிவ சிவ சிவ சிவ



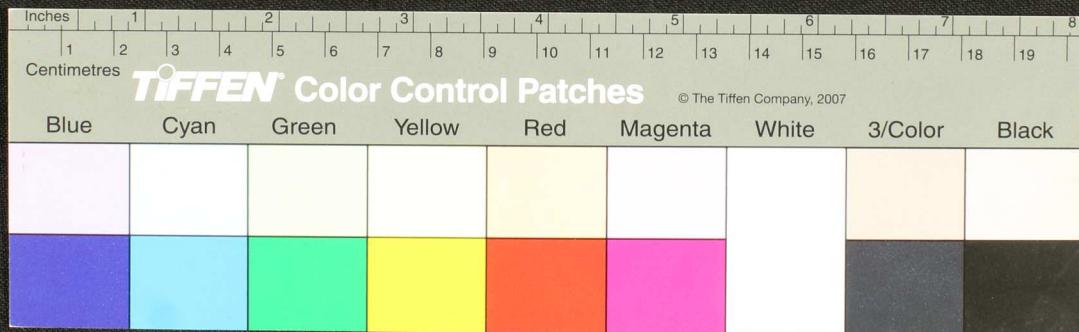
Handwritten Tamil script on a palm leaf manuscript fragment. The text is arranged in approximately 10 horizontal lines. The script is a traditional form of the Tamil language, likely used for religious or philosophical purposes. The leaf shows signs of age and wear, with some fraying at the edges.



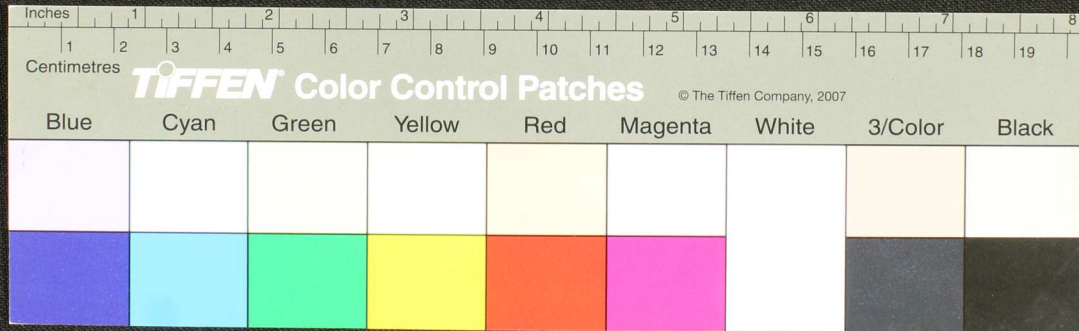
Handwritten text in an ancient script, likely Tamil, inscribed on a palm leaf. The text is arranged in approximately 15 horizontal lines across the length of the leaf. The leaf shows signs of age, including dark spots, cracks, and some loss of material, particularly at the ends and in the middle section.



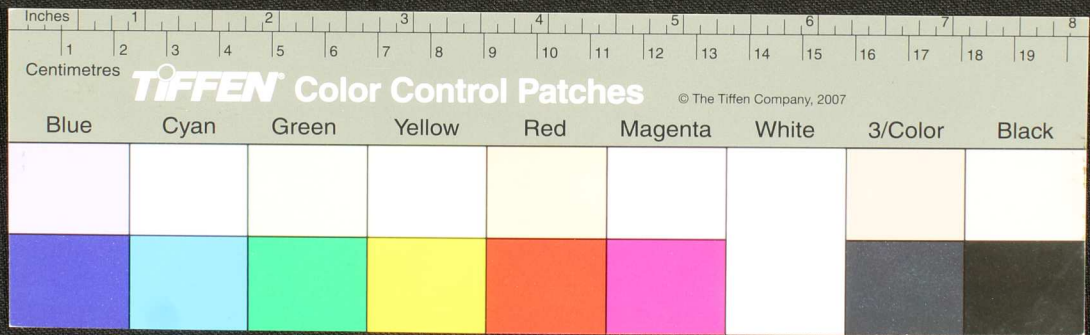
Handwritten text in Tamil script on a palm leaf manuscript. The text is densely packed and spans the length of the leaf, which is heavily damaged and torn at the edges. The script is in an older form of the Tamil language.

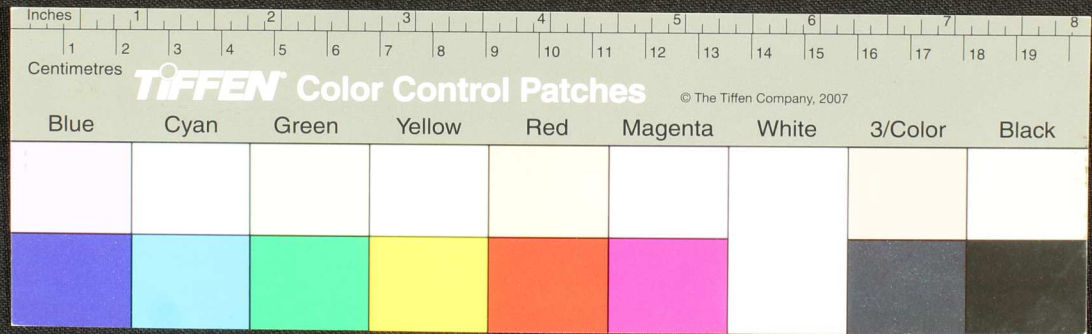


Handwritten text in Tamil script on a yellowed, damaged strip of paper. The text is arranged in approximately 10 horizontal lines. The paper is heavily stained and has irregular, jagged edges, particularly on the right side. The script is dense and appears to be a form of historical or religious text.

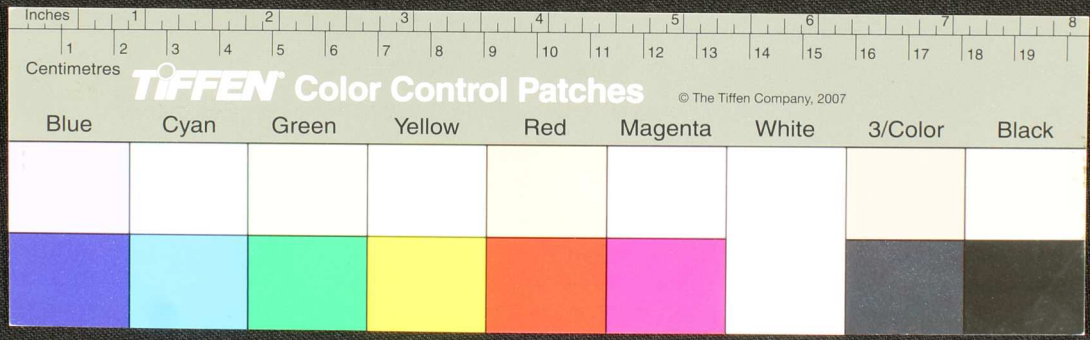


Handwritten text in Tamil script on a palm leaf manuscript. The text is arranged in approximately 10 horizontal lines. The leaf is heavily damaged, with a large, jagged tear on the right side and smaller holes and fraying throughout. The script is dark and appears to be a traditional form of Tamil.

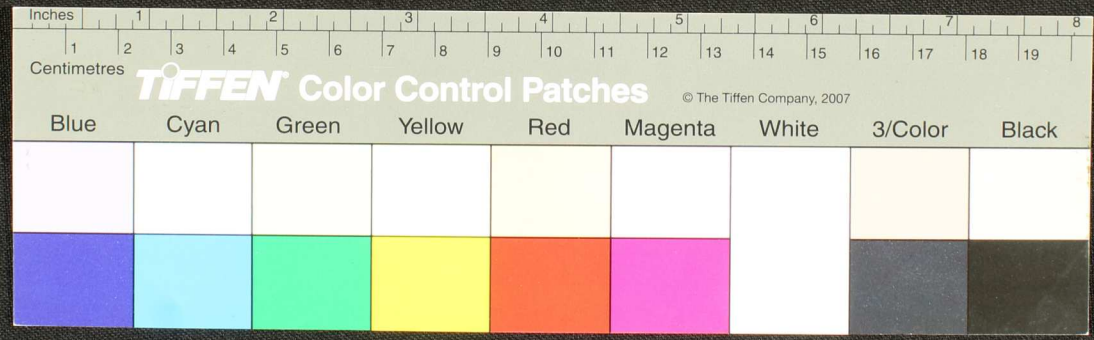


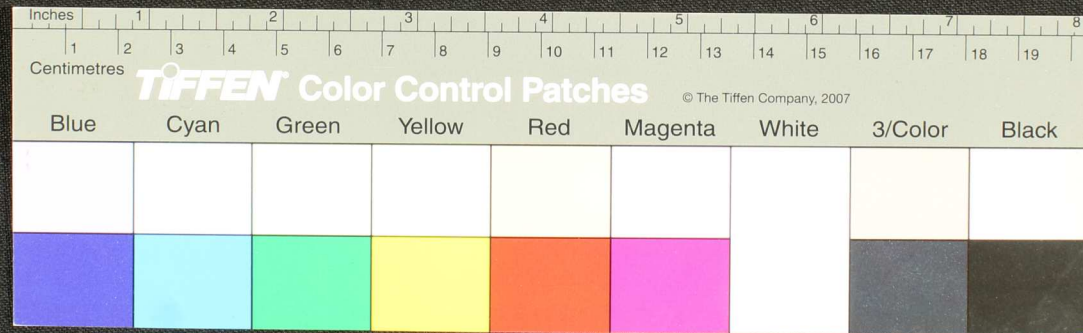


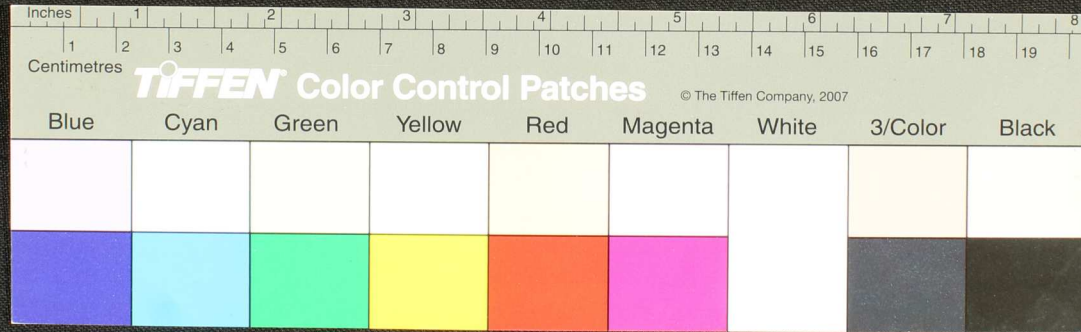
Fragment of a palm-leaf manuscript with inscribed text in an ancient script, possibly Tamil or Grantha. The text is arranged in approximately 10 horizontal lines across the length of the leaf. The leaf is yellowed with age and shows signs of wear, including a hole on the left side and some dark spots.



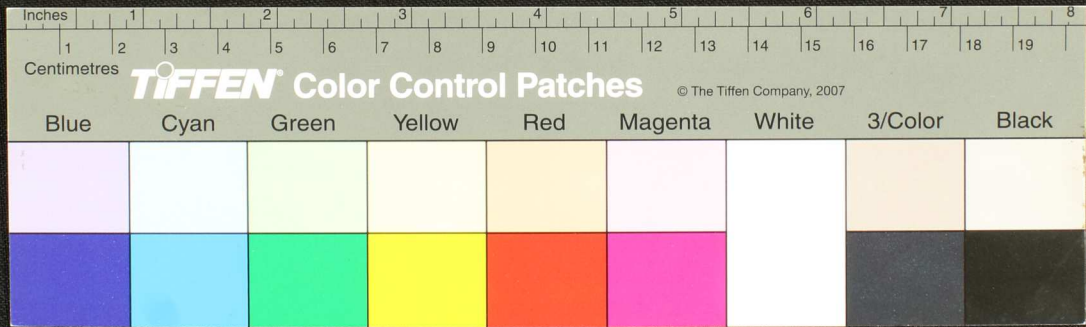
Fragment of a palm-leaf manuscript with handwritten text in an ancient script, possibly Tamil or Grantha. The text is arranged in approximately 10 horizontal lines across the length of the leaf. The leaf is yellowed with age and shows signs of wear, including a hole on the left side and some surface damage.

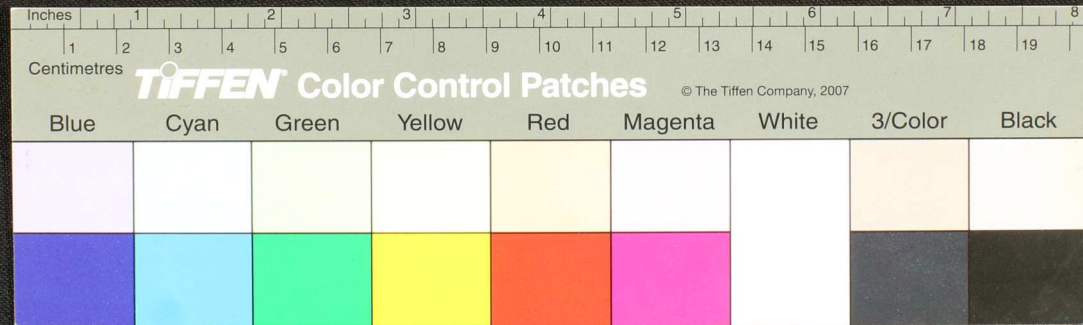




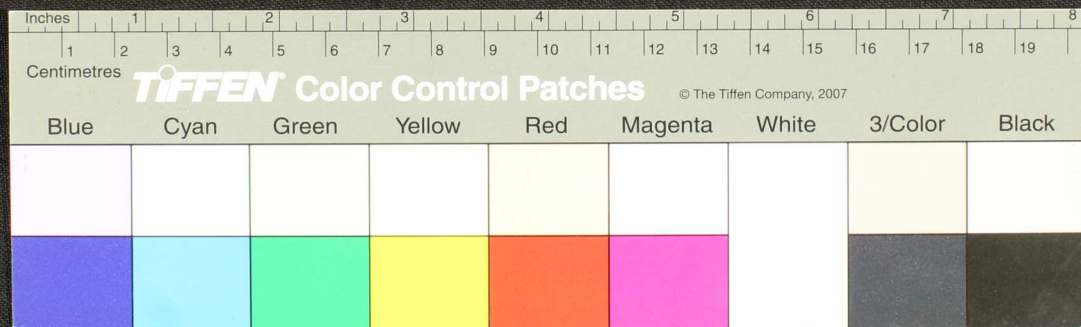


Handwritten Tamil script on a palm leaf manuscript strip. The text is arranged in approximately 10 horizontal lines. The script is finely etched into the surface of the dried leaf. There are several dark spots and a hole on the leaf, likely due to insect damage or natural decay. The leaf is yellowed and shows signs of age.

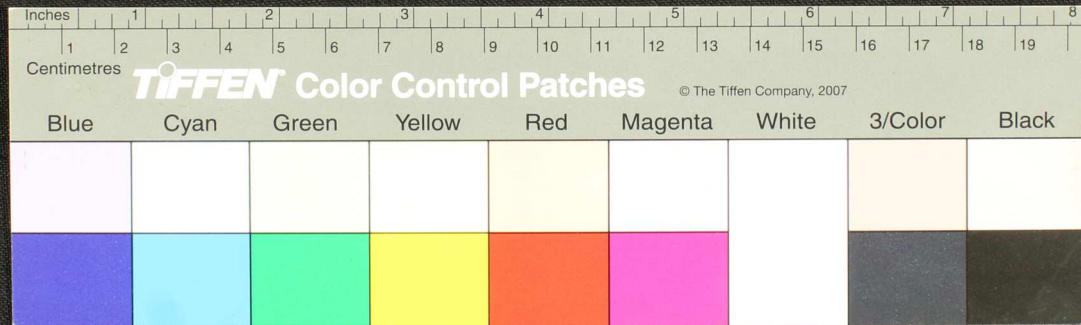




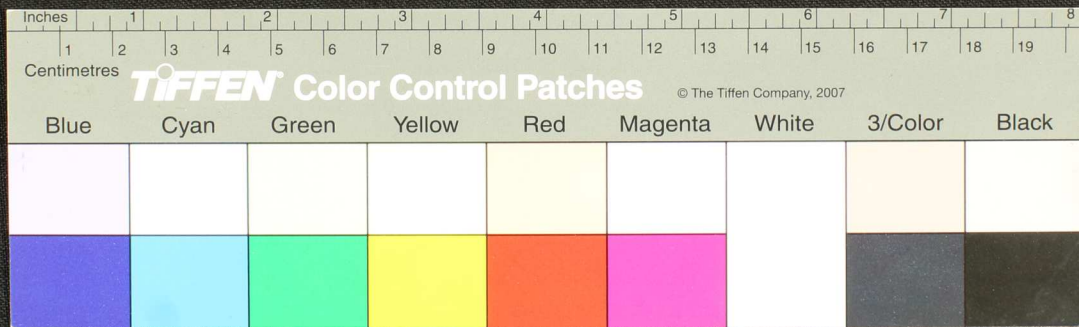
Fragment of a palm-leaf manuscript with handwritten text in an ancient script, possibly Tamil or Grantha, arranged in approximately 12 horizontal lines. The leaf is yellowed and shows signs of wear and tear.



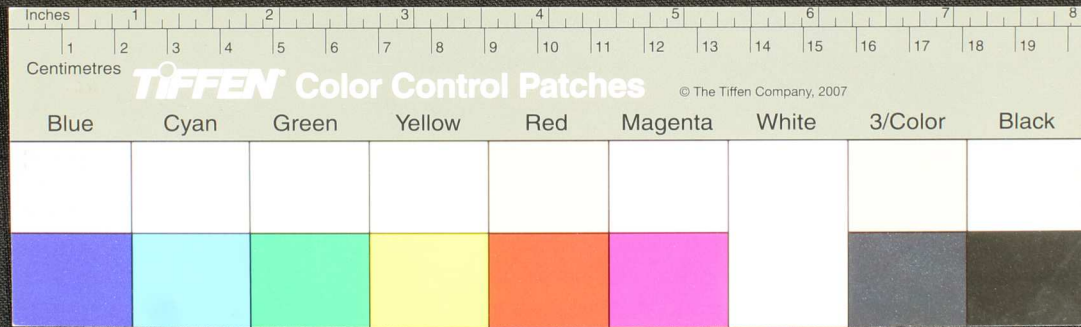
Handwritten text in Tamil script on a palm leaf manuscript. The text is arranged in approximately 10 horizontal lines across the length of the leaf. The script is dense and characteristic of traditional Tamil inscriptions on palm leaves.



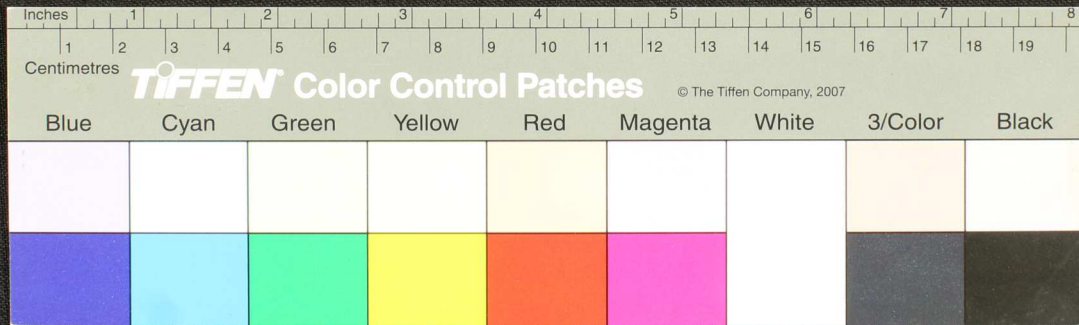
Handwritten text in Tamil script on a palm leaf manuscript. The text is arranged in approximately 10 horizontal lines across the length of the leaf. The script is finely etched into the surface of the dried leaf. The leaf shows signs of age, including some dark spots and a slightly irregular, worn edge.



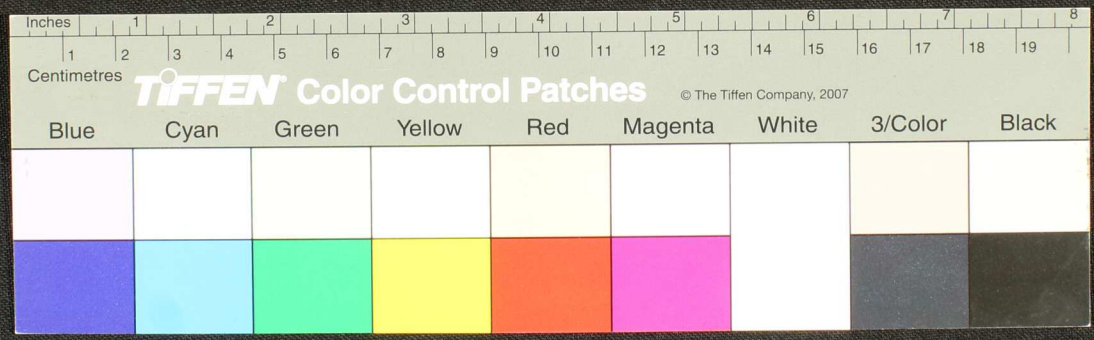
Handwritten text on a palm leaf manuscript strip, likely in Tamil script. The text is arranged in approximately 10 horizontal lines across the length of the leaf. The leaf shows signs of age, including a small circular hole and irregular, dark, jagged edges, particularly on the right side.



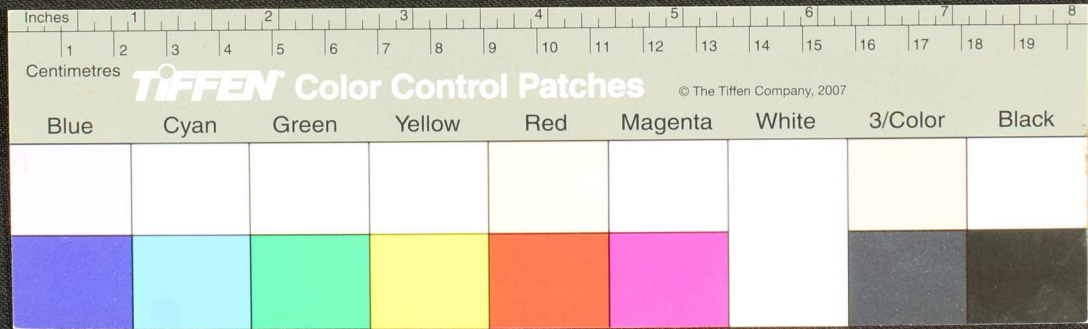
Handwritten text in Tamil script on a yellowed, damaged strip of paper. The text is arranged in approximately 10 horizontal lines. The paper is heavily stained and has irregular, jagged edges, particularly on the left side. The ink is dark and appears to be a traditional writing style.



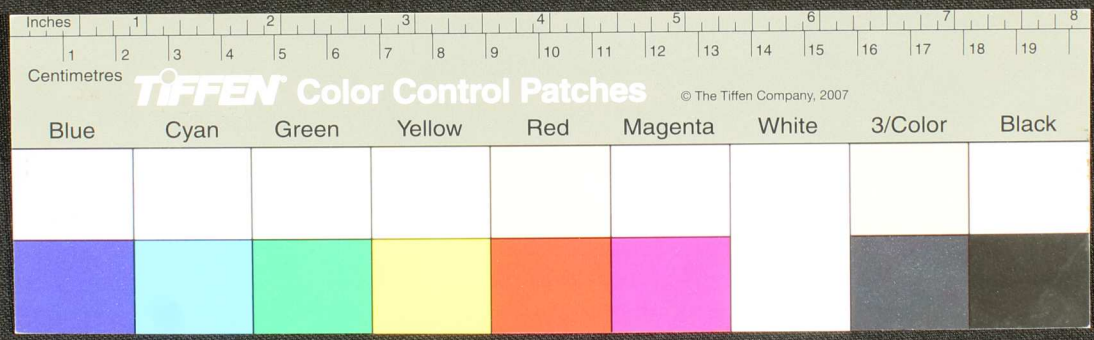
Handwritten text in Tamil script on a palm leaf manuscript. The text is arranged in approximately 10 horizontal lines across the length of the leaf. The script is finely etched into the surface of the dried leaf, which shows signs of age and wear, particularly along the left edge.



Handwritten text on a palm leaf manuscript strip, likely in Tamil script. The text is arranged in approximately five horizontal lines. The leaf is aged and shows signs of wear, including a prominent circular hole near the center and irregular dark spots and fraying at the edges.



Handwritten text in Tamil script on a palm leaf manuscript fragment. The text is arranged in approximately four horizontal lines, though some characters are obscured by damage and ink bleed-through from the reverse side. The script is a traditional form of the Tamil language.



Handwritten text on a palm leaf manuscript fragment, likely in Tamil script. The text is arranged in several horizontal lines and is partially obscured by a dark, irregular mark in the center.

