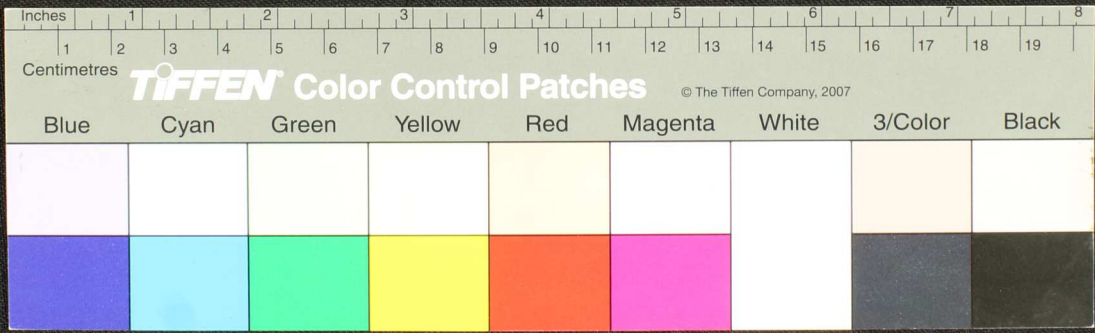
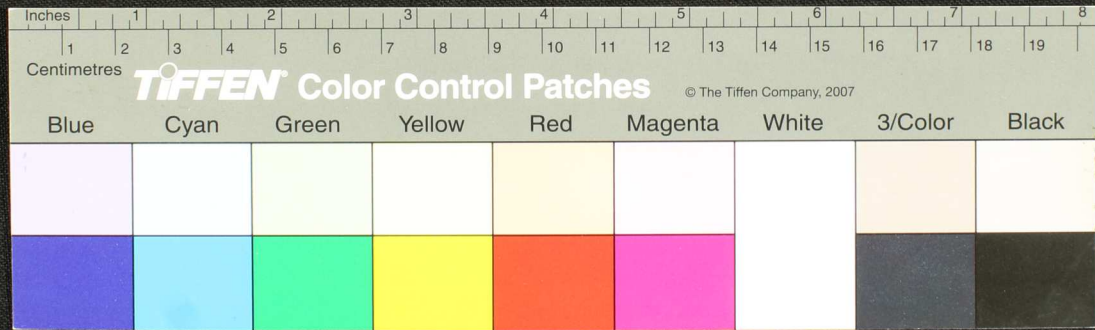


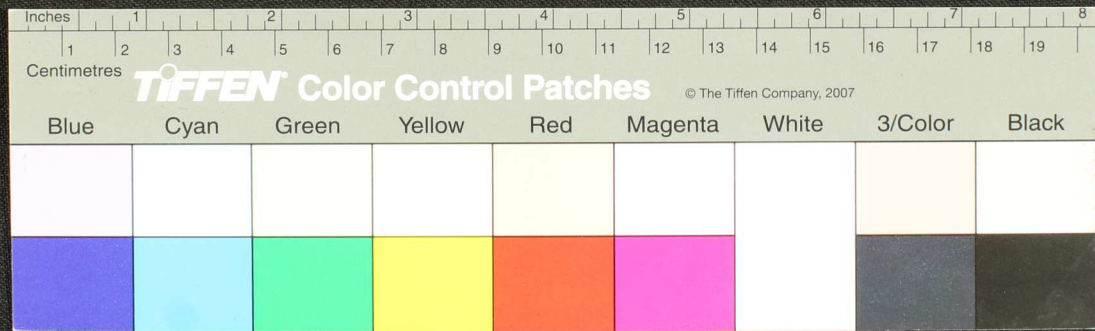
சூக்து வுஜர் வெளுநது மதுகுடி ததுப்பலவா...
 திடுடுஹமநிதாரயந் திவனவகுகுப்பனாமனன
 வெவ ஷாமிப்போசாரரிநபேசிலுக்கடுத
 விநிலவலாமடுலவரபு...
 நீதிடுவெதொரத...



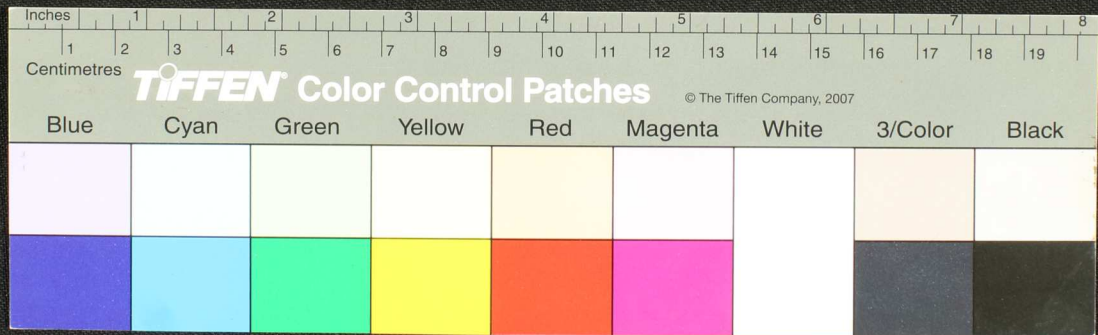
Handwritten Tamil script on a palm leaf manuscript. The text is arranged in approximately 12 horizontal lines across the length of the leaf. The script is finely etched into the surface of the dried leaf. The leaf shows signs of age, including some dark spots and a small hole near the center.

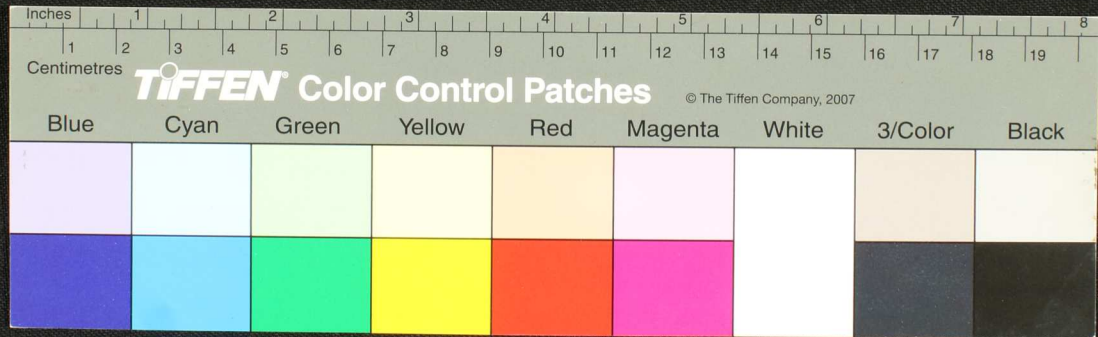


Handwritten text in Tamil script on a palm leaf manuscript. The text is arranged in approximately 10 horizontal lines across the length of the leaf. The script is finely etched into the surface of the dried leaf. There are some dark spots and irregularities on the leaf, possibly due to age or environmental factors.

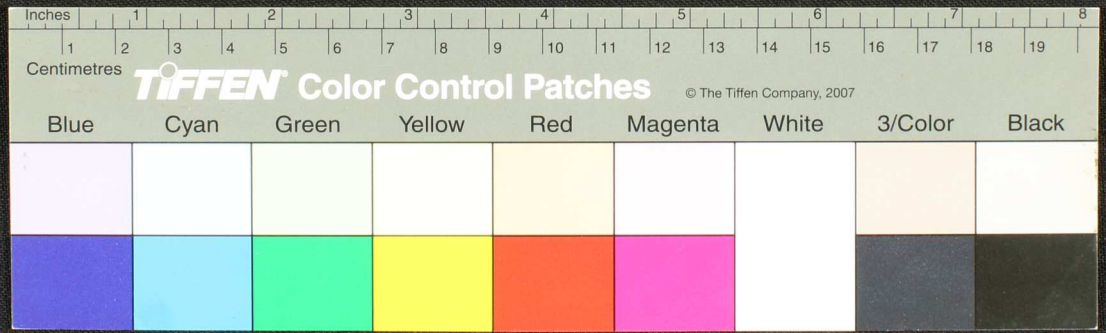


Handwritten Tamil script on a palm leaf manuscript strip. The text is arranged in approximately three horizontal lines across the length of the leaf. The script is finely etched into the surface of the dried leaf. A small circular hole is visible on the left side of the strip, which is a traditional feature for threading a cord to bind multiple leaves together into a book format.

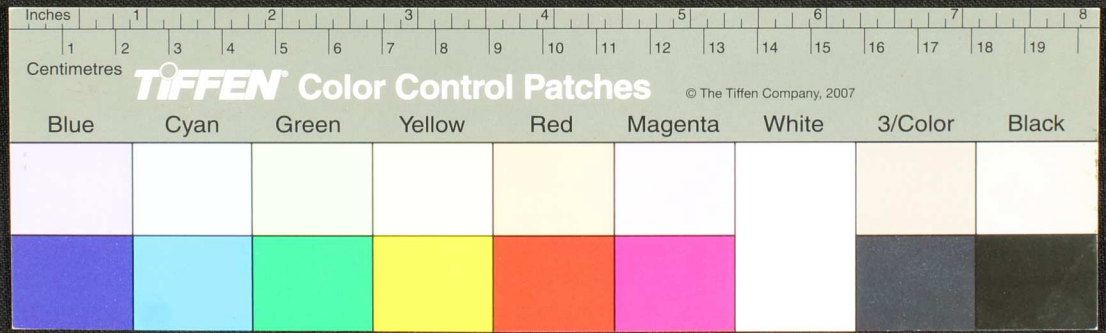




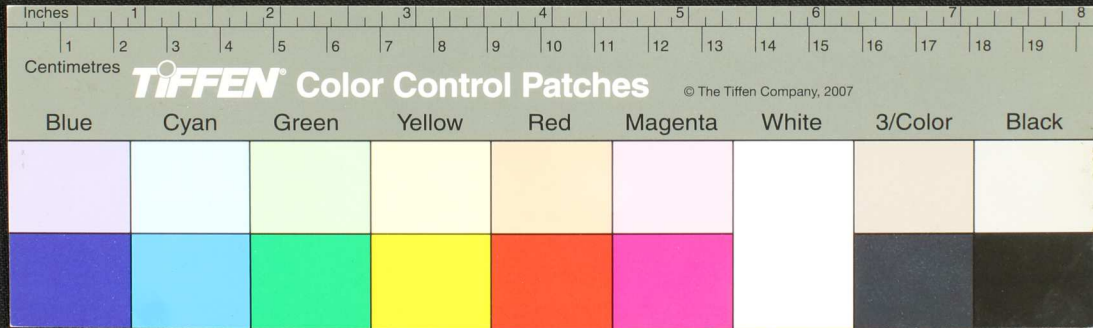
Handwritten Tamil script on a palm leaf manuscript strip. The text is arranged in approximately four horizontal lines, though some characters are obscured by damage on the left side. The script is finely etched into the surface of the dried leaf.



Handwritten Tamil script on a palm leaf manuscript strip. The text is arranged in approximately five horizontal lines, though the left edge is significantly damaged and irregular. The script is finely etched into the surface of the dried leaf.



Handwritten text in an ancient script, likely Tamil, on a palm leaf manuscript. The text is arranged in five columns across the length of the leaf. The script is finely etched into the surface of the dried leaf.



Handwritten text in an ancient script, possibly Tamil, on a palm leaf manuscript. The text is arranged in approximately 10 horizontal lines across the length of the leaf. The script is finely etched into the surface of the dried leaf. Some characters are circled, and there are some dark spots or stains on the leaf, particularly towards the right end.

