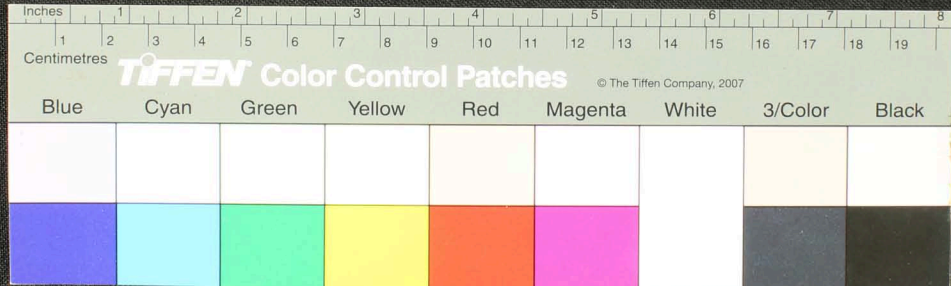
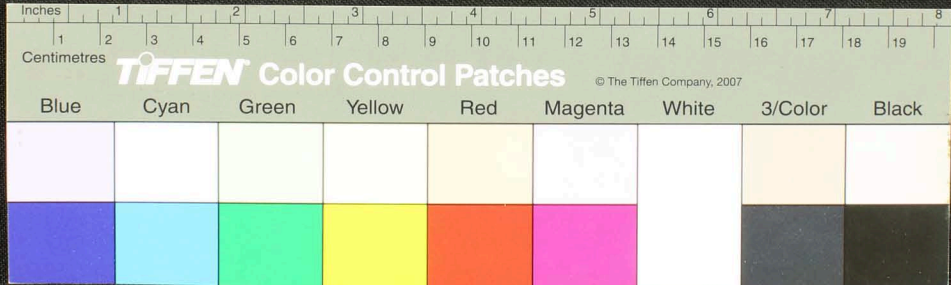


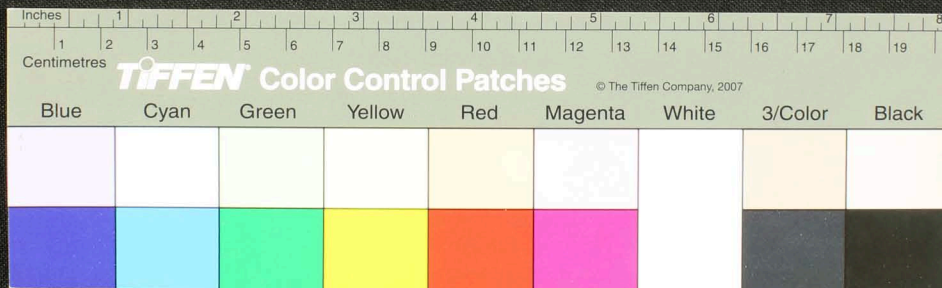
Handwritten text in Tamil script on a palm leaf manuscript. The text is arranged in approximately 10 horizontal lines across the length of the leaf. The script is finely etched into the surface of the dried leaf. There is a small, dark, circular hole or indentation in the center of the leaf, approximately at the 4-inch mark on the ruler below.



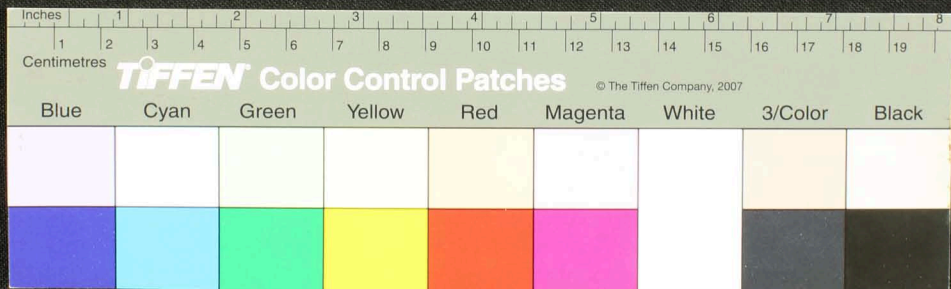
Handwritten Tamil script on a palm leaf manuscript. The text is densely packed and spans the length of the leaf. A small circular hole is visible near the center, used for binding multiple leaves together.



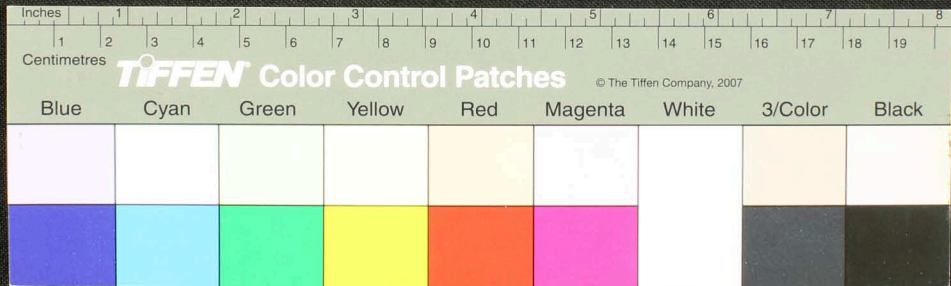
Handwritten text in Tamil script on a palm leaf manuscript. The text is arranged in approximately 12 horizontal lines across the length of the leaf. The script is finely etched into the surface of the dried leaf. There is a small hole in the leaf, likely from a traditional binding method.



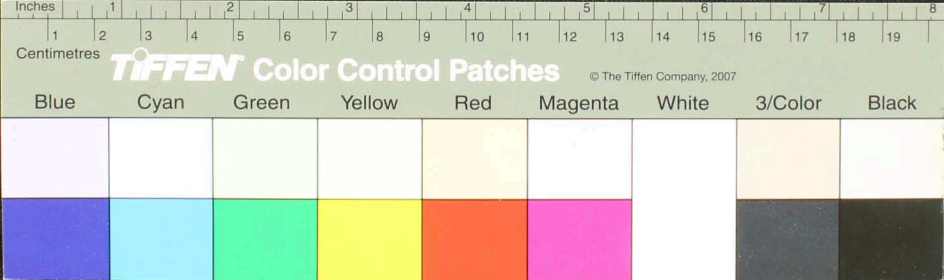
Handwritten Tamil script on a palm leaf manuscript strip. The text is arranged in approximately 10 horizontal lines across the length of the leaf. The script is finely etched into the surface of the dried leaf. There is a significant hole or tear in the center of the leaf, which has caused some of the text to be lost or obscured. The leaf is yellowed with age and shows signs of wear and tear.



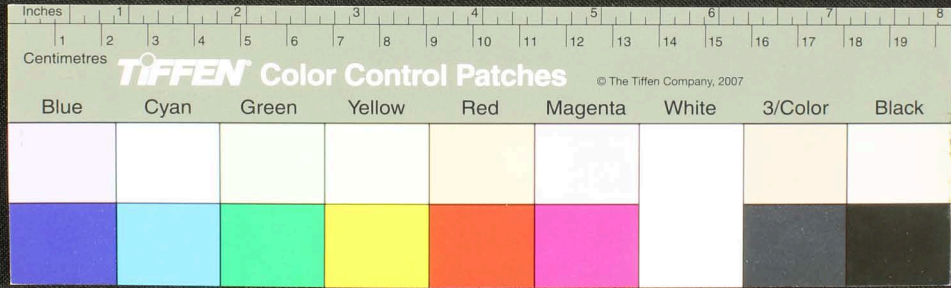
Handwritten Tamil script on a palm leaf manuscript. The text is arranged in approximately 10 horizontal lines across the length of the leaf. The script is finely etched into the surface of the dried leaf. On the left side, there are some additional markings and characters, possibly serving as a title or reference. The leaf shows signs of age and wear, with some fraying at the edges.



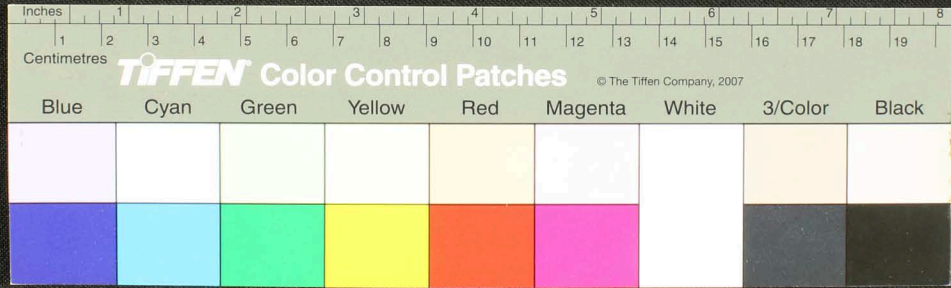
Handwritten Tamil script on a palm leaf manuscript strip. The text is densely packed and runs horizontally across the length of the leaf. On the left side, there are marginal notes or a list of items, including the numbers 1, 2, 3, 4, 5, 6, 7, 8, 9, 10, 11, 12, 13, 14, 15, 16, 17, 18, 19, 20, 21, 22, 23, 24, 25, 26, 27, 28, 29, 30, 31, 32, 33, 34, 35, 36, 37, 38, 39, 40, 41, 42, 43, 44, 45, 46, 47, 48, 49, 50, 51, 52, 53, 54, 55, 56, 57, 58, 59, 60, 61, 62, 63, 64, 65, 66, 67, 68, 69, 70, 71, 72, 73, 74, 75, 76, 77, 78, 79, 80, 81, 82, 83, 84, 85, 86, 87, 88, 89, 90, 91, 92, 93, 94, 95, 96, 97, 98, 99, 100. The main body of text appears to be a list or a series of instructions corresponding to these numbers.



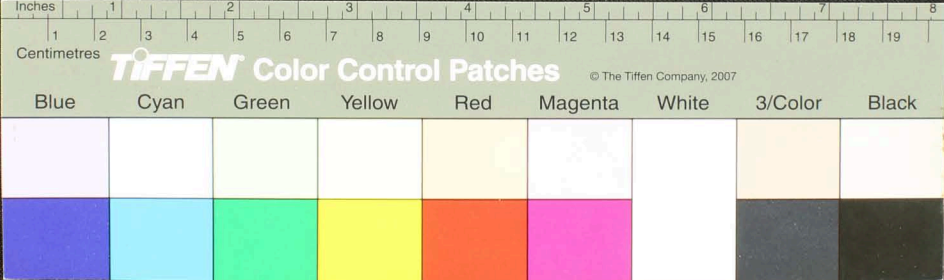
Handwritten text in Tamil script on a palm leaf manuscript. The text is arranged in approximately 10 horizontal lines across the length of the leaf. On the left side, there are small annotations: 'W', 'M', and 'C'.



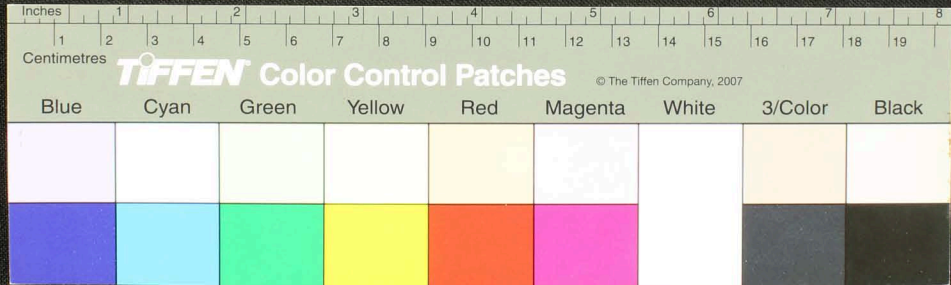
Handwritten Tamil script on a palm leaf manuscript. The text is arranged in approximately 10 horizontal lines across the length of the leaf. On the left side, there are several small circular markings, possibly serving as a table of contents or section markers. The script is densely packed and appears to be a form of classical or historical Tamil.



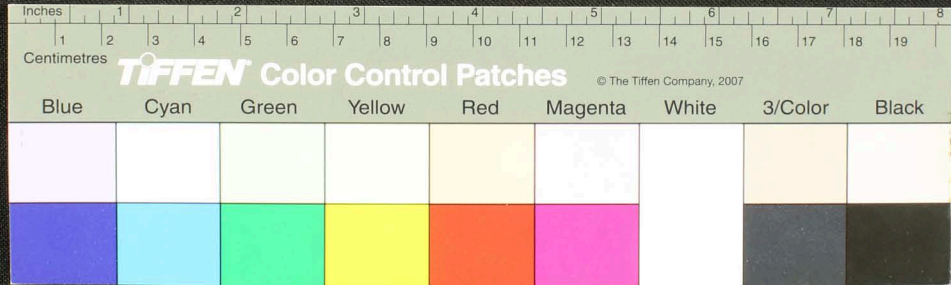
Handwritten Tamil script on a palm leaf manuscript. The text is densely packed and runs horizontally across the length of the leaf. On the left side, there is a small vertical inscription:
சு.பெ.வ. 11
1875



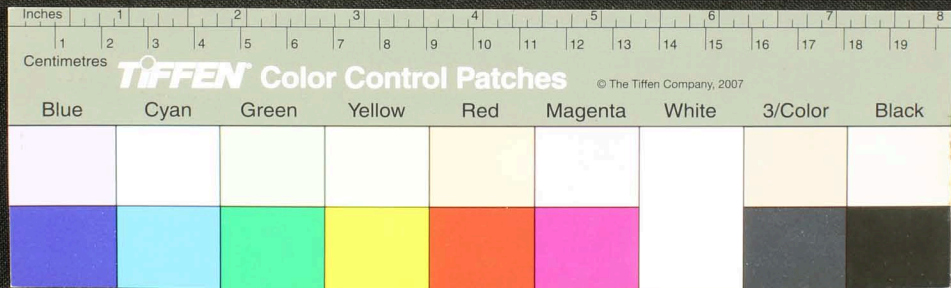
Handwritten Tamil script on a palm leaf manuscript. The text is arranged in approximately 10 horizontal lines across the length of the leaf. The script is finely etched into the surface of the dried leaf. A small circular hole is visible near the center of the leaf, which is a traditional feature for threading a cord to bind multiple leaves together into a book format.



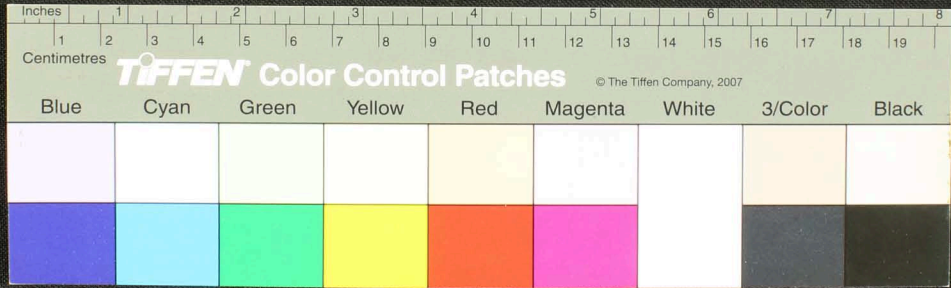
Handwritten Tamil script on a palm leaf manuscript. The text is densely packed and spans the length of the leaf. A small circular hole is visible near the center of the leaf, which is a traditional feature for threading a cord to bind multiple leaves together.



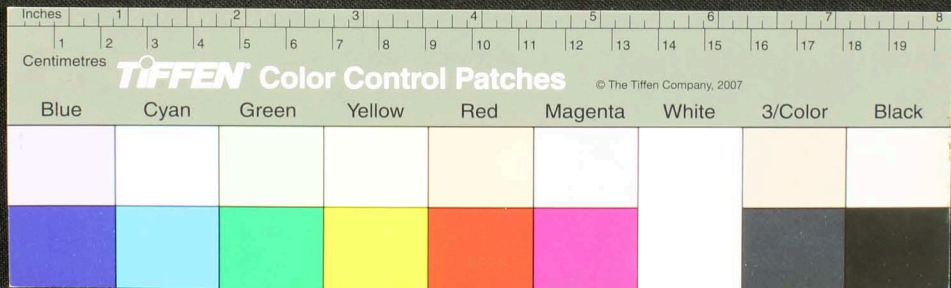
Handwritten Tamil script on a palm leaf manuscript. The text is arranged in approximately 10 horizontal lines. On the left side, there are several lines of text that appear to be a header or a list of items, possibly including names or titles. The main body of the text is a continuous passage of script. A small circular hole is visible in the center of the leaf, which is a traditional feature for threading a cord to bind multiple leaves together.



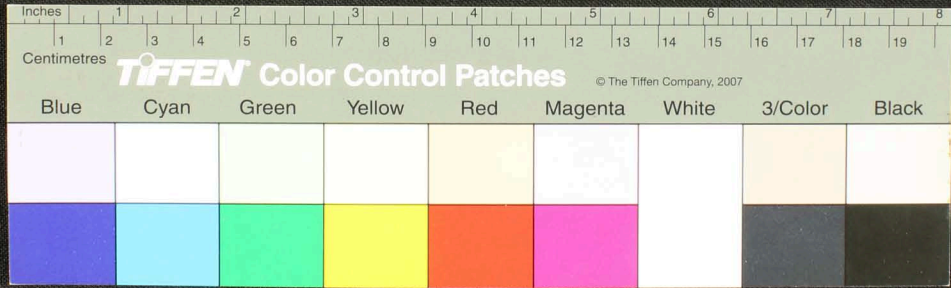
Handwritten Tamil script on a palm leaf manuscript. The text is arranged in approximately 10 horizontal lines across the length of the leaf. The script is finely etched into the surface of the dried leaf. On the left side, there are three vertical labels: 'சுவகி', 'செவகி', and 'பெரியகி'. The main body of text contains various characters and symbols, including some that appear to be decorative or specific to the script. A small circular hole is visible near the center of the leaf, which is a traditional feature for threading a cord to bind multiple leaves together.



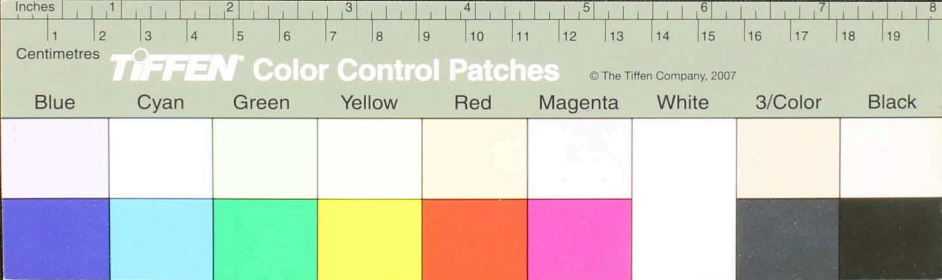
Handwritten text in Tamil script on a palm leaf manuscript. The text is densely packed and spans the length of the leaf. A small circular hole is visible near the center of the leaf, used for binding multiple leaves together.



Handwritten text in Tamil script on a palm leaf manuscript. The text is densely packed and spans the length of the leaf. A small hole is visible near the center of the leaf.



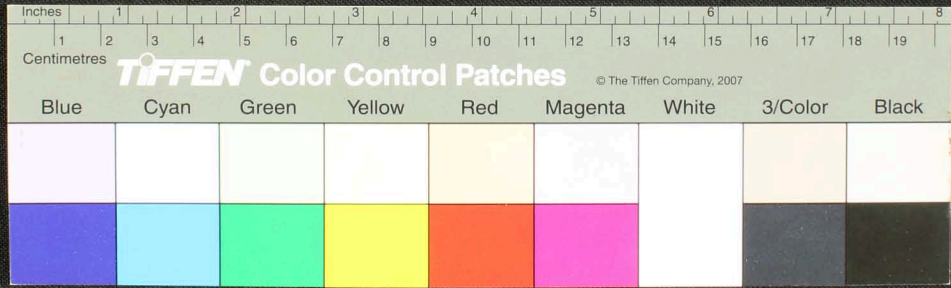
Handwritten Tamil script on a palm leaf manuscript. The text is densely packed in approximately 10 horizontal lines across the length of the leaf. The script is in an older form of the Tamil language. A small circular hole is visible in the center of the leaf, which is a traditional feature for threading a cord to bind multiple leaves together into a book format.



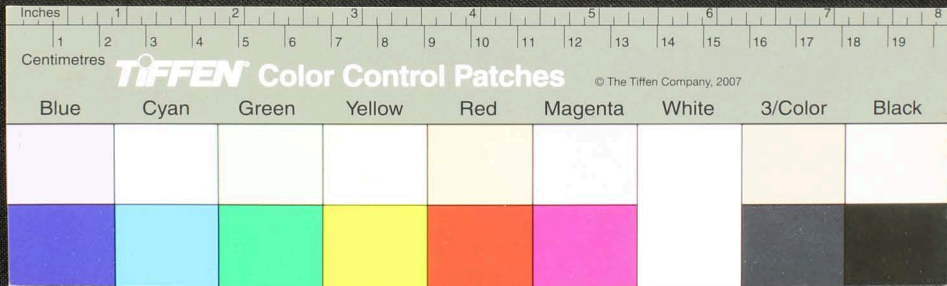
Handwritten Tamil script on a palm leaf manuscript. The text is densely packed and runs horizontally across the length of the leaf. A small circular hole is visible near the center of the leaf, which is a traditional feature for threading a cord to bind multiple leaves together. The script is in an older form of the Tamil language.



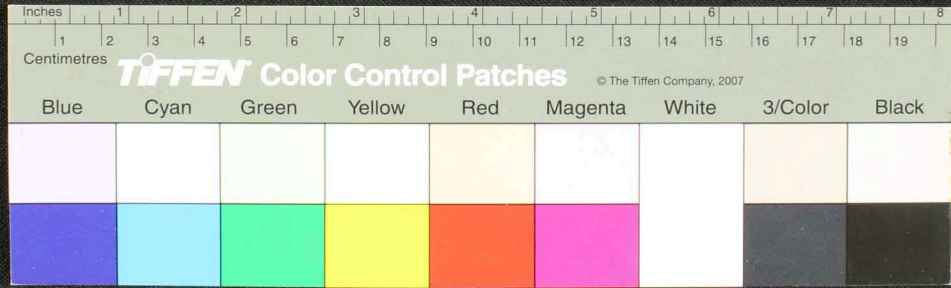
Handwritten Tamil script on a palm leaf manuscript. The text is arranged in approximately 10 horizontal lines across the length of the leaf. The script is a traditional form of the Tamil language, likely used for religious or philosophical purposes. The leaf shows signs of age, including some discoloration and a small hole near the center.



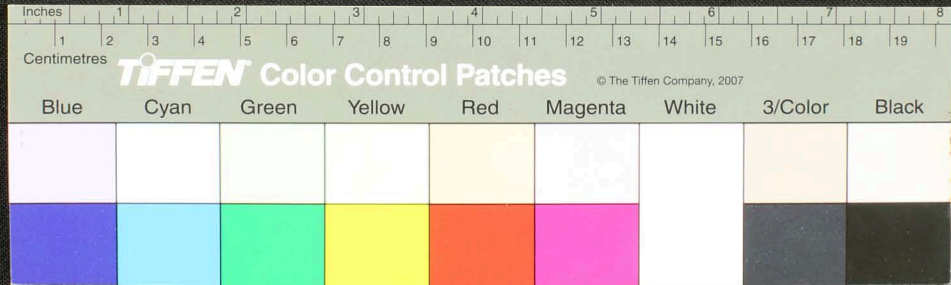
Handwritten Tamil script on a palm leaf manuscript. The text is arranged in approximately 10 horizontal lines across the length of the leaf. The script is finely etched into the surface of the dried leaf. On the left side, there is a short introductory line: "சென்னை - 1905".



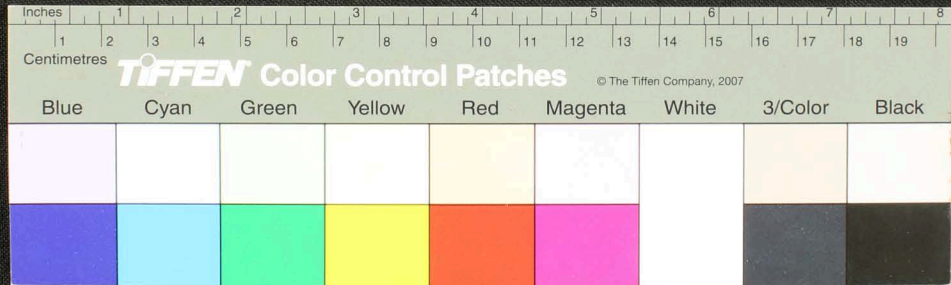
Handwritten text in Tamil script on a palm leaf manuscript. The text is densely packed and spans the length of the leaf. A small circular hole is visible near the center of the leaf, likely for binding. The script is written in a traditional style with dark ink on the natural yellowish-brown surface of the leaf.



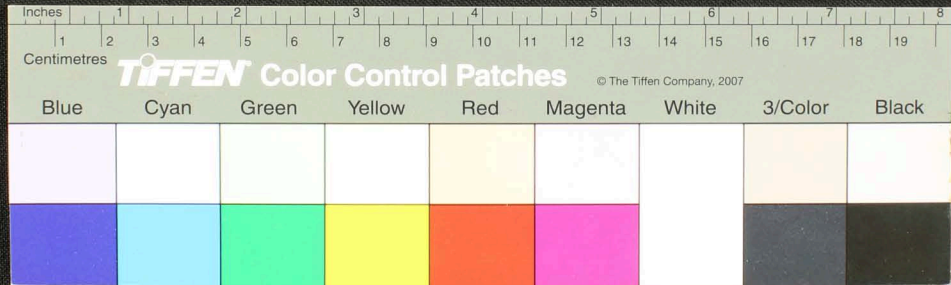
Handwritten Tamil script on a palm leaf manuscript. The text is densely packed and runs horizontally across the length of the leaf. A small circular hole is visible near the center of the leaf, which is a traditional feature for threading a cord to bind multiple leaves together. The script is in an older form of the Tamil language.



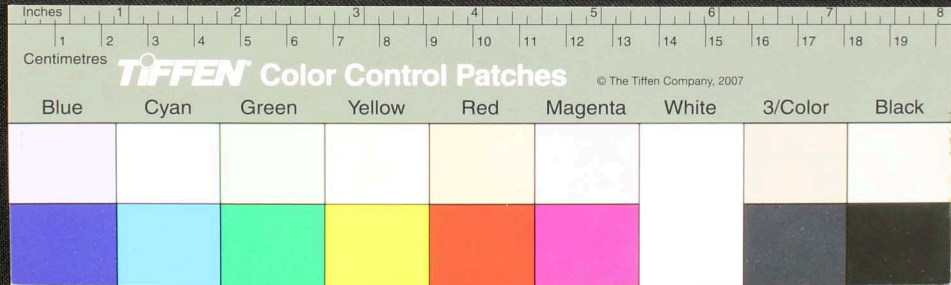
Handwritten Tamil script on a palm leaf manuscript. The text is densely packed in approximately 10 horizontal lines across the length of the leaf. The script is a traditional form of the Tamil language, likely used for religious or philosophical purposes. The leaf shows signs of age, including a small hole and some discoloration.



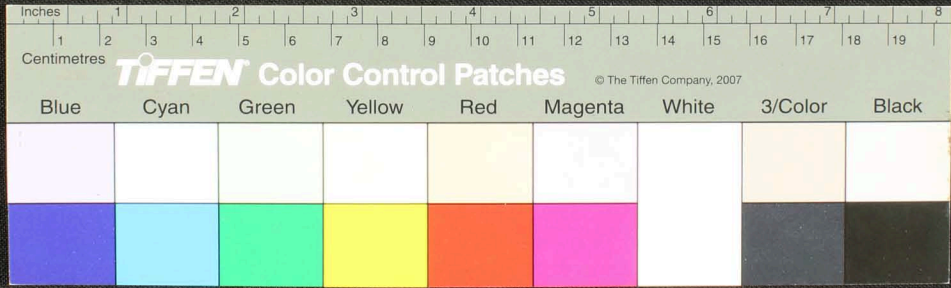
Handwritten Tamil script on a palm leaf manuscript. The text is arranged in approximately 10 horizontal lines across the length of the leaf. The script is finely etched into the surface of the dried leaf. A small circular hole is visible near the center of the leaf, which is a traditional feature used for threading a cord to bind multiple leaves together into a book format.



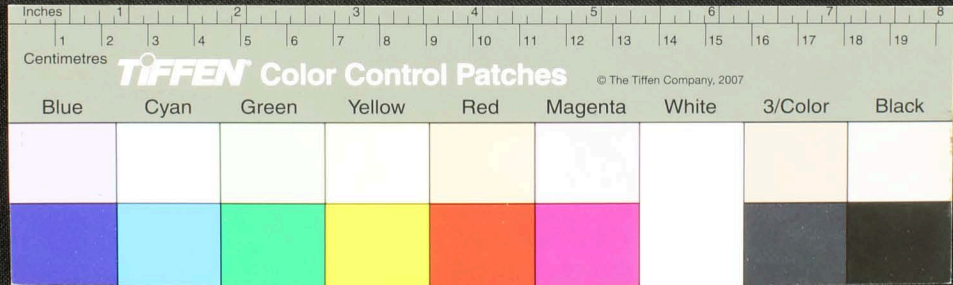
Handwritten Tamil script on a palm leaf manuscript. The text is densely packed and runs horizontally across the length of the leaf. On the left side, there are two lines of text: 'சீரானந்த' and 'சீரானந்தம்'. The script is in an older form of the Tamil language, likely from the 17th or 18th century. The leaf shows signs of age, including a small hole and some discoloration.



Handwritten text in Tamil script on a palm leaf manuscript. The text is arranged in approximately 10 horizontal lines across the length of the leaf. The script is finely etched into the surface of the dried leaf. The leaf shows signs of age and wear, with some fraying and a small hole near the center.

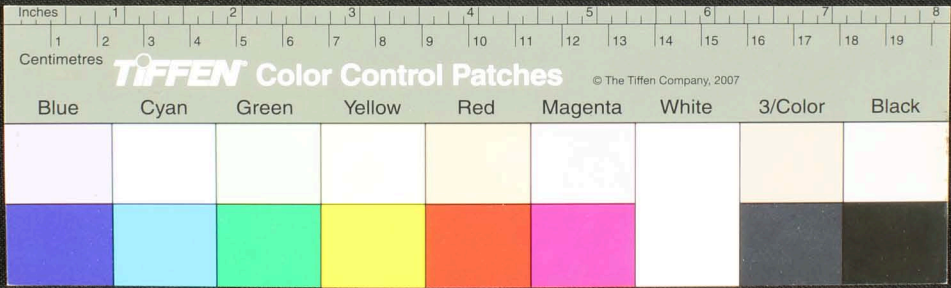


Handwritten text in Tamil script on a palm leaf manuscript. The text is arranged in approximately 10 horizontal lines across the length of the leaf. The script is finely etched into the surface of the dried leaf. On the left side, there is a small section of text that appears to be a header or a specific title, possibly starting with 'சுருதி' (Srutu) and 'புத்திர' (Putra).

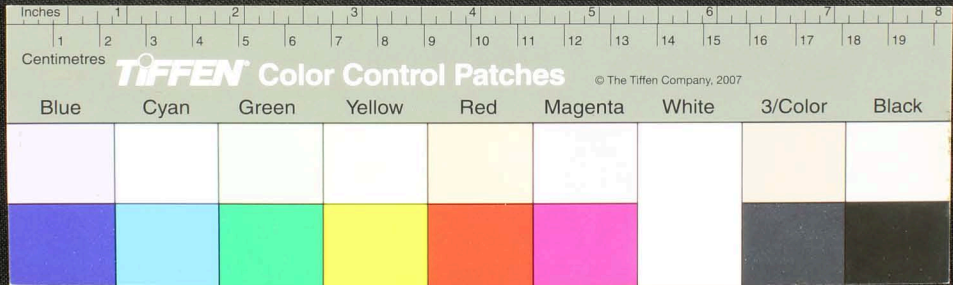


Handwritten Tamil script on a palm leaf manuscript. The text is densely packed and runs horizontally across the length of the leaf. The leaf shows signs of age and wear, with some fraying at the right end.

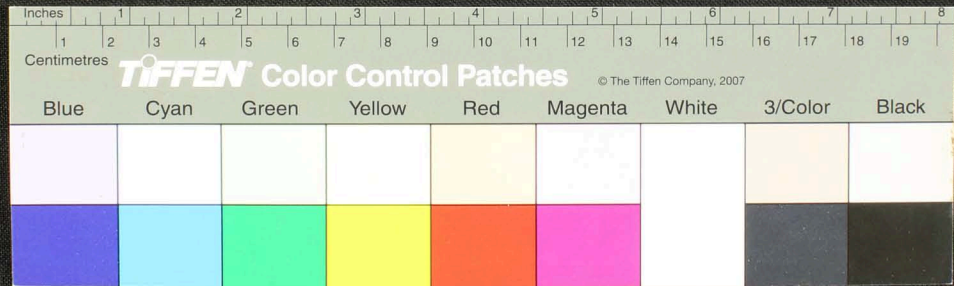
தலைநிலி
சுயலு.



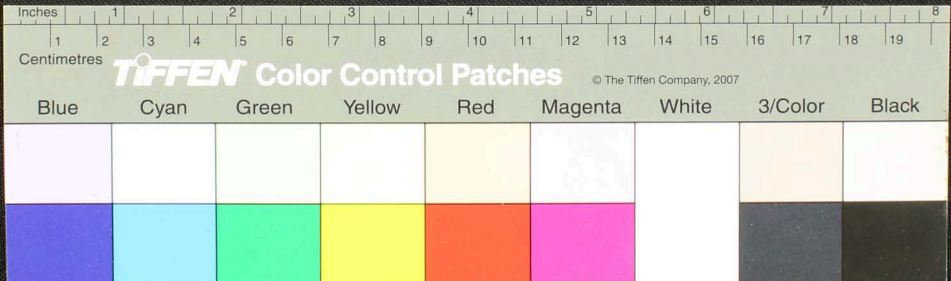
Handwritten Tamil script on a palm leaf manuscript. The text is arranged in approximately 10 horizontal lines across the length of the leaf. A small circular hole is visible near the center of the leaf, which is a traditional feature for threading a cord to bind multiple leaves together. The script is finely etched into the surface of the dried leaf.



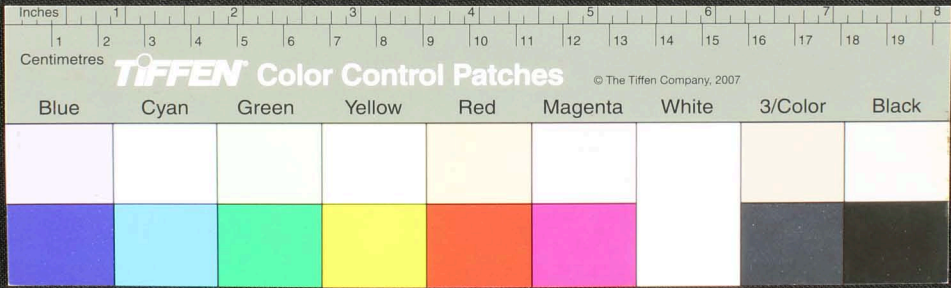
Handwritten Tamil script on a palm leaf manuscript. The text is densely packed and spans the length of the leaf. On the left side, there are some marginal notes or a small signature.



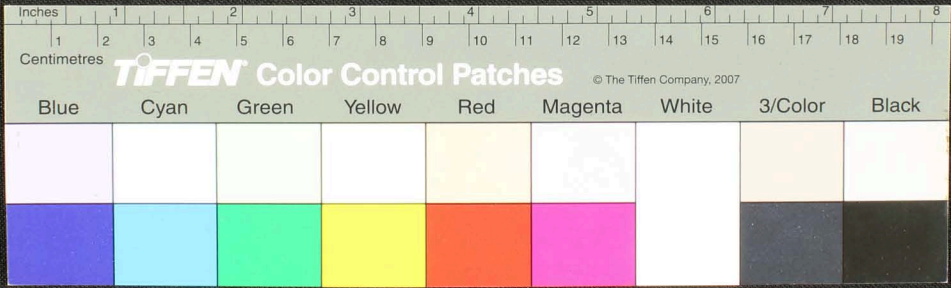
Handwritten Tamil script on a palm leaf manuscript. The text is densely packed and runs horizontally across the length of the leaf. A small circular hole is visible near the center of the leaf, which is a traditional feature for threading a cord to bind multiple leaves together. The script is written in a clear, consistent hand.



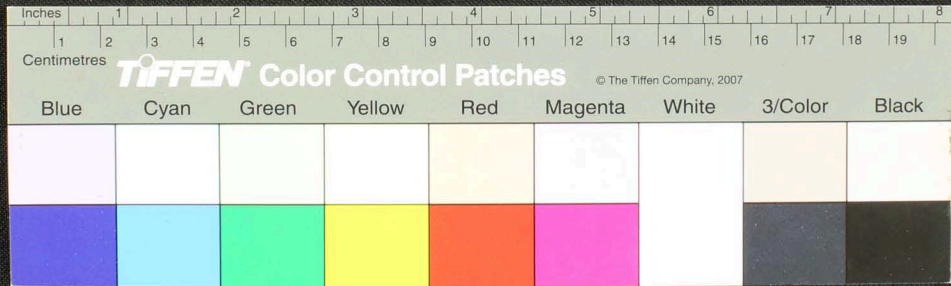
Handwritten Tamil script on a palm leaf manuscript. The text is densely packed and spans the length of the leaf. A small number '456' is written on the left side. The script appears to be a form of classical Tamil, possibly including religious or philosophical content.



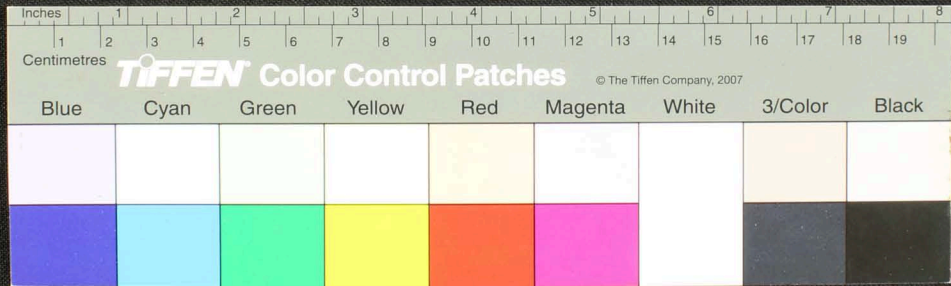
Handwritten Tamil script on a palm leaf manuscript. The text is arranged in approximately 10 horizontal lines across the length of the leaf. On the left side, there are several lines of text that appear to be a header or a list of items, possibly including a date or a reference number. The main body of text is densely packed and follows a traditional format for such documents. A small circular hole is visible near the center of the leaf, which is a common feature for binding multiple leaves together.



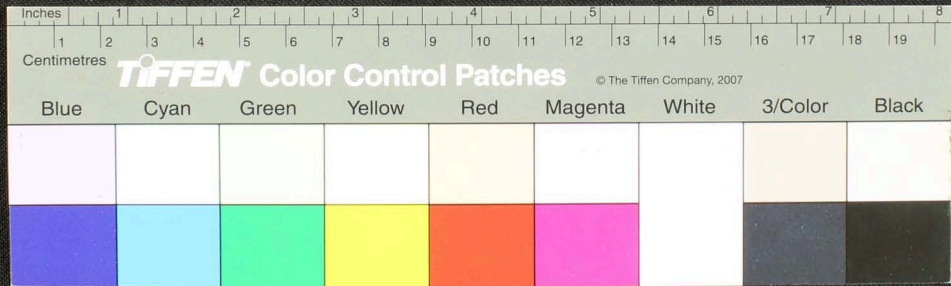
Handwritten Tamil script on a palm leaf manuscript. The text is arranged in approximately 10 horizontal lines across the length of the leaf. On the left side, there are several lines of text that appear to be a title or a specific reference, including the word 'புத்தகம்' (Book) and 'புத்தகம்' (Book) written vertically. The main body of text consists of continuous Tamil characters, likely representing a historical record or a religious text. A small circular hole is visible in the center of the leaf, which is a traditional feature for threading a cord to bind multiple leaves together.



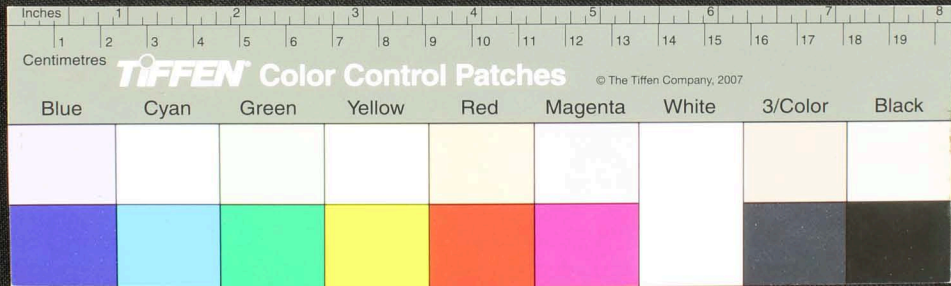
Handwritten Tamil script on a palm leaf manuscript. The text is arranged in approximately 10 horizontal lines across the length of the leaf. The script is a traditional form of the Tamil language, likely containing a historical or religious record. The leaf shows signs of age, including a small dark hole near the center.



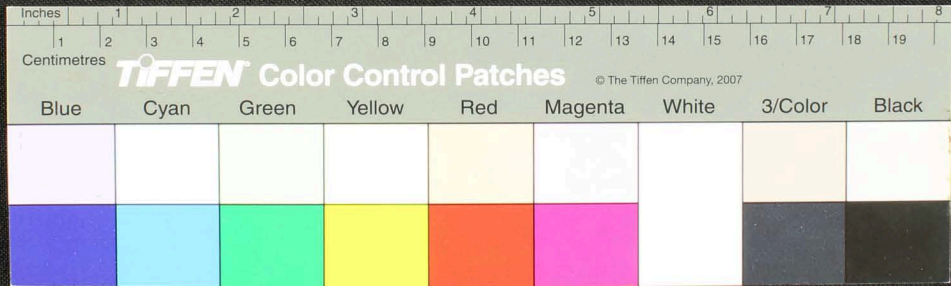
Handwritten Tamil script on a palm leaf manuscript. The text is densely packed and spans the length of the leaf. A small circular hole is visible near the center, used for binding multiple leaves together. The script is written in a traditional style, with some characters appearing to be in a different script or dialect, possibly Grantha or a specific regional variant of Tamil.



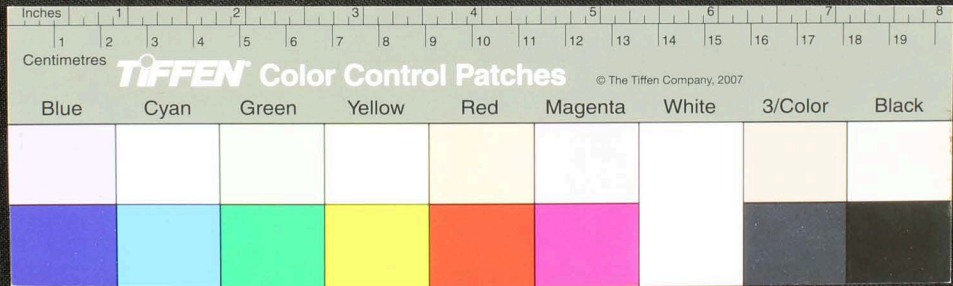
Handwritten Tamil script on a palm leaf manuscript. The text is arranged in approximately 10 horizontal lines across the length of the leaf. The script is finely etched into the surface of the dried leaf. On the left side, there are some larger characters and symbols, possibly indicating a chapter or section. The leaf shows signs of age, including a small hole and some fraying at the right end.



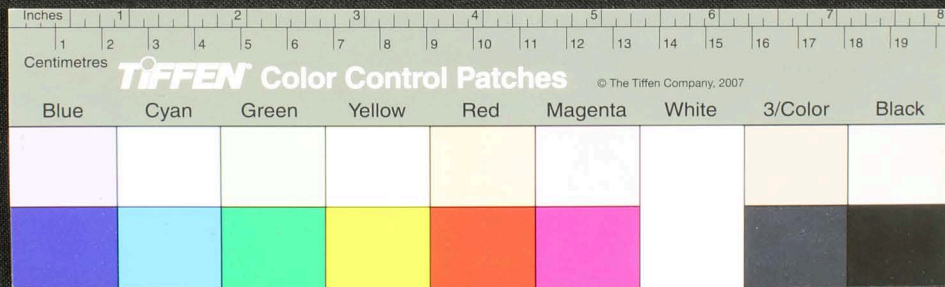
Handwritten Tamil script on a palm leaf manuscript. The text is arranged in approximately 10 horizontal lines across the length of the leaf. The script is a traditional form of the Tamil language, likely used for religious or philosophical purposes. The leaf shows signs of age, including a small hole and some fraying at the right end.



1. 11
 2. 11
 3. 11
 4. 11
 5. 11
 6. 11
 7. 11
 8. 11
 9. 11
 10. 11
 11. 11
 12. 11
 13. 11
 14. 11
 15. 11
 16. 11
 17. 11
 18. 11
 19. 11
 20. 11
 21. 11
 22. 11
 23. 11
 24. 11
 25. 11
 26. 11
 27. 11
 28. 11
 29. 11
 30. 11
 31. 11
 32. 11
 33. 11
 34. 11
 35. 11
 36. 11
 37. 11
 38. 11
 39. 11
 40. 11
 41. 11
 42. 11
 43. 11
 44. 11
 45. 11
 46. 11
 47. 11
 48. 11
 49. 11
 50. 11
 51. 11
 52. 11
 53. 11
 54. 11
 55. 11
 56. 11
 57. 11
 58. 11
 59. 11
 60. 11
 61. 11
 62. 11
 63. 11
 64. 11
 65. 11
 66. 11
 67. 11
 68. 11
 69. 11
 70. 11
 71. 11
 72. 11
 73. 11
 74. 11
 75. 11
 76. 11
 77. 11
 78. 11
 79. 11
 80. 11
 81. 11
 82. 11
 83. 11
 84. 11
 85. 11
 86. 11
 87. 11
 88. 11
 89. 11
 90. 11
 91. 11
 92. 11
 93. 11
 94. 11
 95. 11
 96. 11
 97. 11
 98. 11
 99. 11
 100. 11



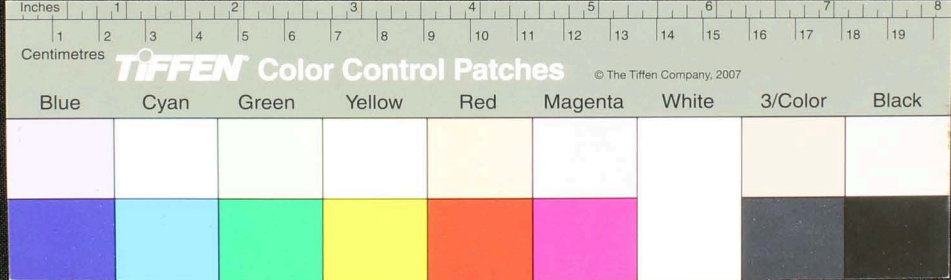
Handwritten text in Tamil script on a palm leaf manuscript. The text is arranged in approximately 10 horizontal lines across the length of the leaf. A small, dark circular hole is visible near the center of the leaf, approximately at the 3-inch mark. The script is finely etched into the surface of the dried leaf.



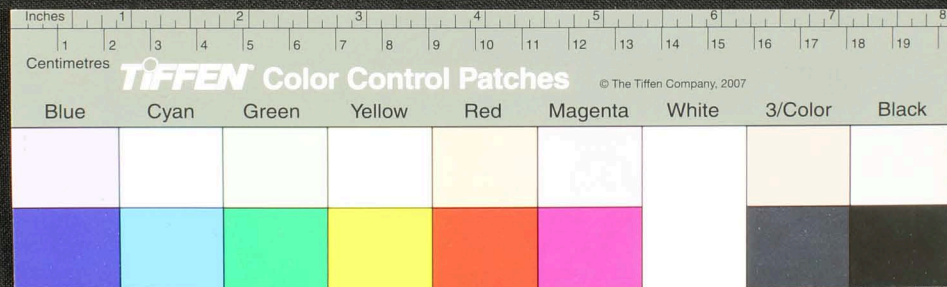
81

செந்திரன்
சுந்தரன்
சுந்தரன்

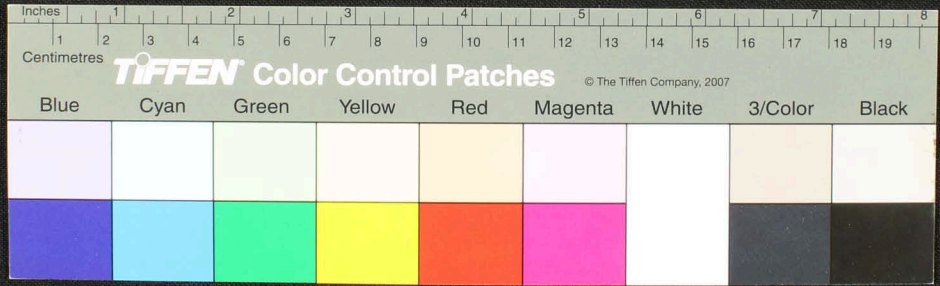
Handwritten Tamil script on a palm leaf manuscript, consisting of approximately 12 lines of text.



Handwritten Tamil script on a palm leaf manuscript. The text is arranged in approximately 10 horizontal lines across the length of the leaf. The script is finely etched into the surface of the dried leaf. A small, dark circular hole is visible near the center of the leaf, likely from a traditional binding method. The leaf shows signs of age and wear, with some fraying at the edges.

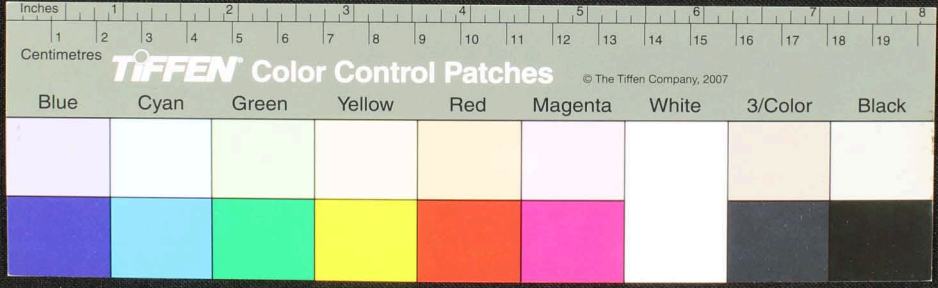


Handwritten text in Tamil script on a palm leaf manuscript. The text is arranged in approximately 10 horizontal lines across the length of the leaf. On the left side, there are three vertical characters: 'நீதி', 'செய்து', and 'பயன்பு'.

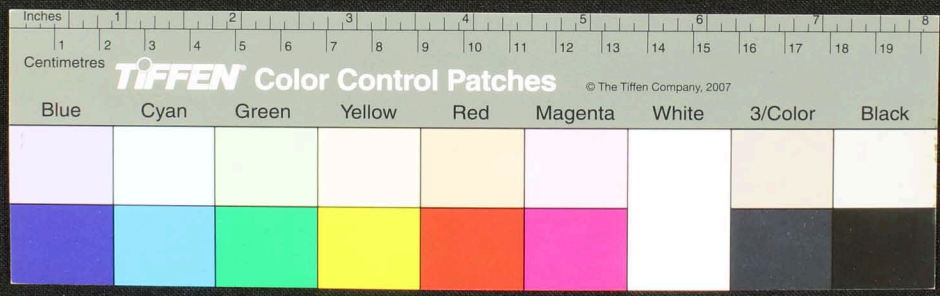


86

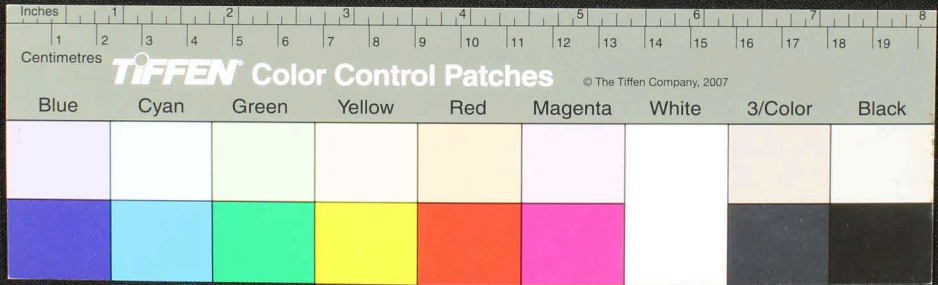
Handwritten Tamil script on a palm leaf manuscript. The text is densely packed and spans the length of the leaf. It appears to be a historical record or a religious text, given the context of such artifacts. The script is written in a traditional style, with clear characters and some decorative elements.



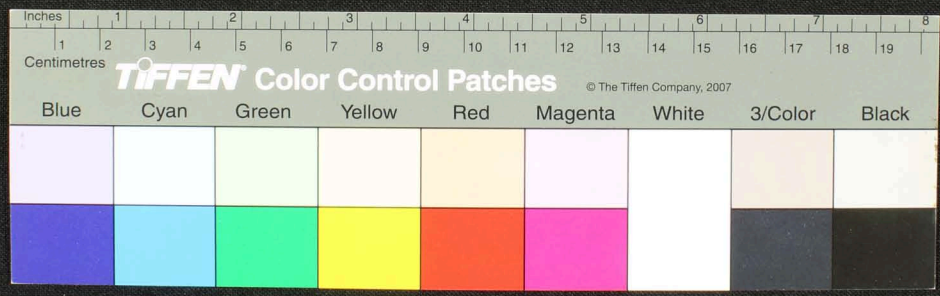
Handwritten Tamil script on a palm leaf manuscript. The text is densely packed and spans the length of the leaf. On the left side, there are two lines of text: "செவ்வாய்" and "மாணிக்கம்". The main body of text is written in a traditional Tamil script, with some characters appearing to be in a different script or dialect. The leaf shows signs of age, including a small hole and some discoloration.



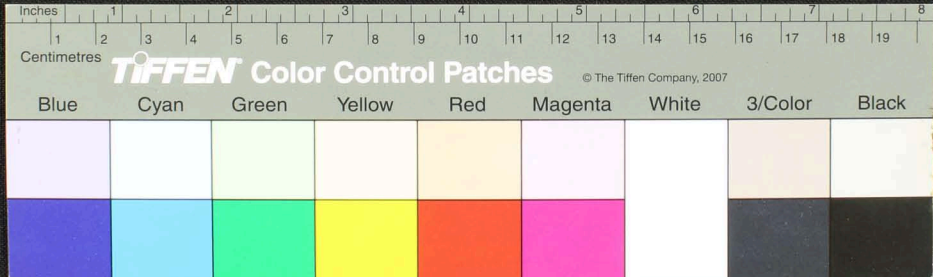
Handwritten Tamil script on a palm leaf manuscript. The text is densely packed and runs horizontally across the length of the leaf. On the left side, there is a small header or title written in Tamil: "சென்னை (15) பப்பாடு -". The script is in an older form of the Tamil language, typical of historical manuscripts.



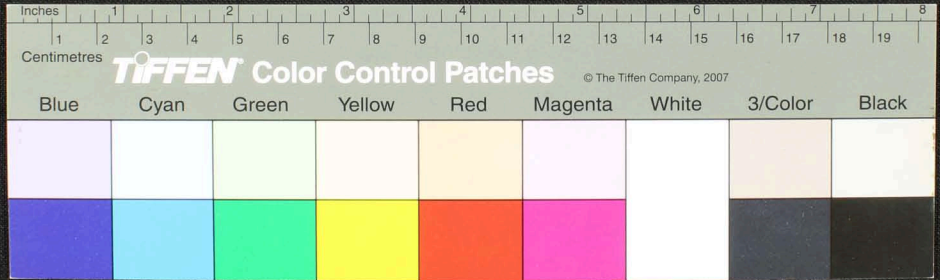
Handwritten Tamil script on a palm leaf manuscript. The text is arranged in approximately 10 horizontal lines across the length of the leaf. The script is finely etched into the surface of the dried leaf. On the left side, there are some larger characters that appear to be a title or a specific reference, possibly including the word 'புத்தகம்' (book).



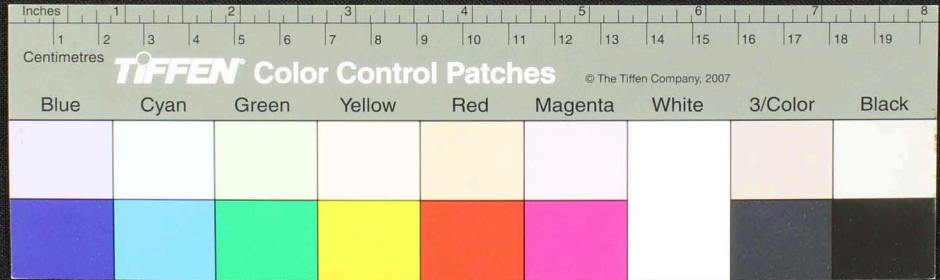
Handwritten Tamil script on a palm leaf manuscript. The text is arranged in approximately 10 horizontal lines across the length of the leaf. The script is finely etched into the natural texture of the dried leaf. The leaf shows signs of age, including some discoloration and a small hole near the center.



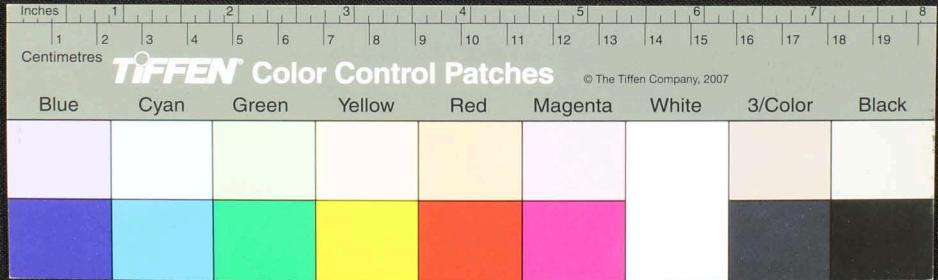
Handwritten Tamil script on a palm leaf manuscript. The text is arranged in approximately 10 horizontal lines across the length of the leaf. The script is a traditional form of the Tamil language. There are some dark spots and a small hole on the leaf, likely due to age or insect damage.



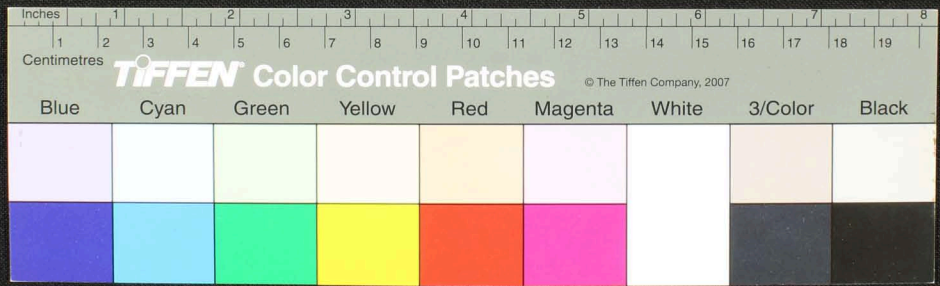
Handwritten Tamil script on a palm leaf manuscript strip. The text is densely packed and runs horizontally across the length of the leaf. On the left side, there are some marginal notes and a small circular hole, likely from a traditional binding method.



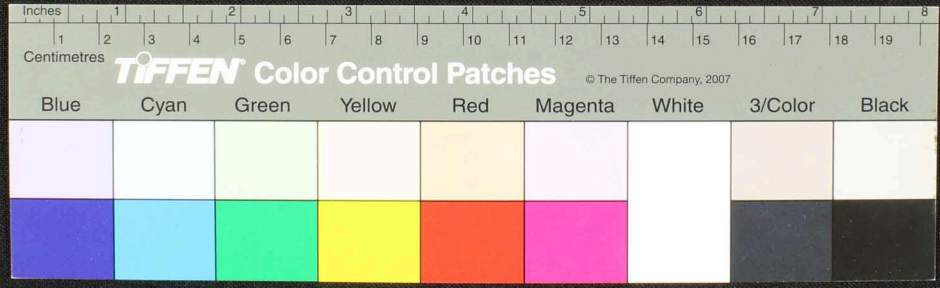
Handwritten Tamil script on a palm leaf manuscript. The text is densely packed and runs horizontally across the length of the leaf. A small circular hole is visible near the center, used for binding multiple leaves together.

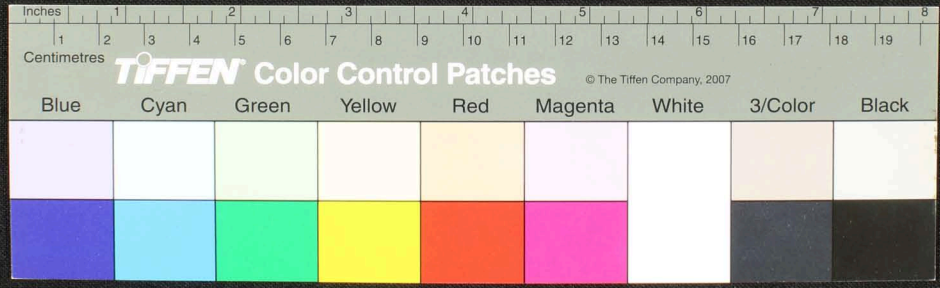


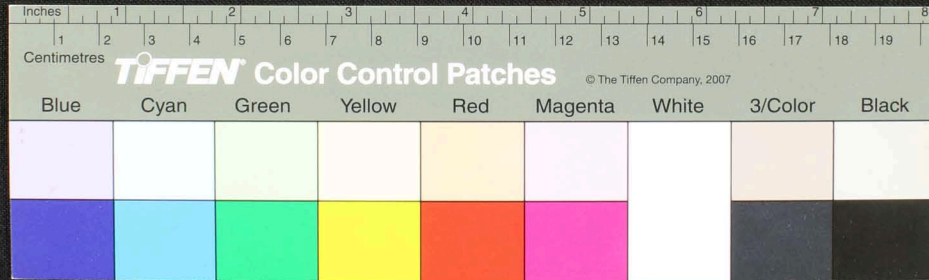
Handwritten text in Tamil script on a palm leaf manuscript. The text is densely packed and runs horizontally across the length of the leaf. A small circular hole is visible near the center of the leaf, which is a traditional feature for threading a cord to bind multiple leaves together.



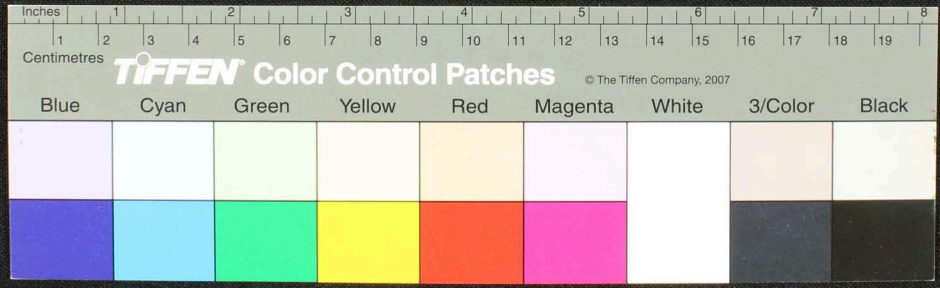
Handwritten text in Tamil script on a palm leaf manuscript. The text is arranged in approximately 10 horizontal lines across the length of the leaf. A small circular hole is visible near the center of the leaf, used for threading a cord to bind multiple leaves together.



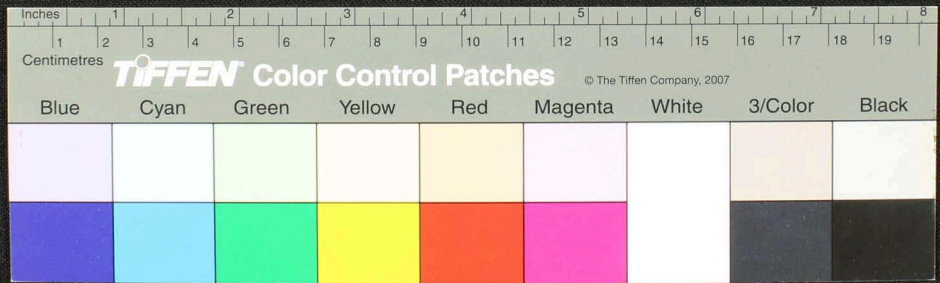




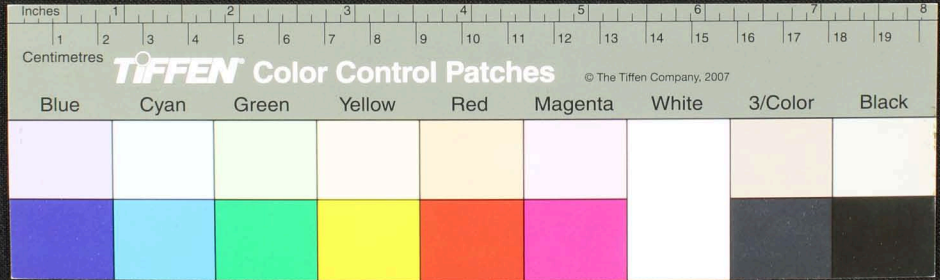
Handwritten text on a palm-leaf manuscript strip, likely in Tamil script. The text is arranged in several columns across the length of the leaf. A small circular hole is visible on the left side of the leaf.



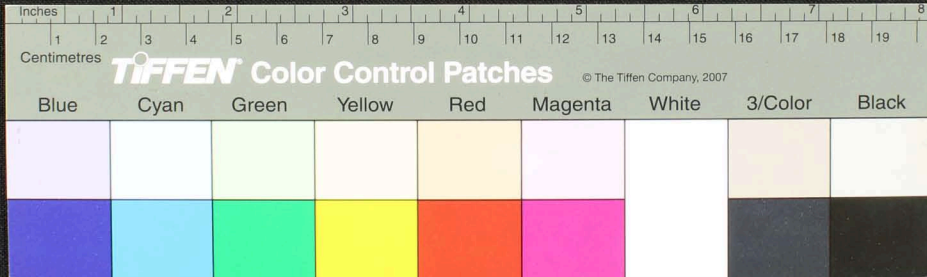
Handwritten text in Tamil script on a palm leaf manuscript. The text is arranged in several lines across the length of the leaf. A small circular hole is visible near the center of the leaf, which is a traditional feature for threading a cord to bind multiple leaves together. The script is finely etched into the surface of the dried leaf.



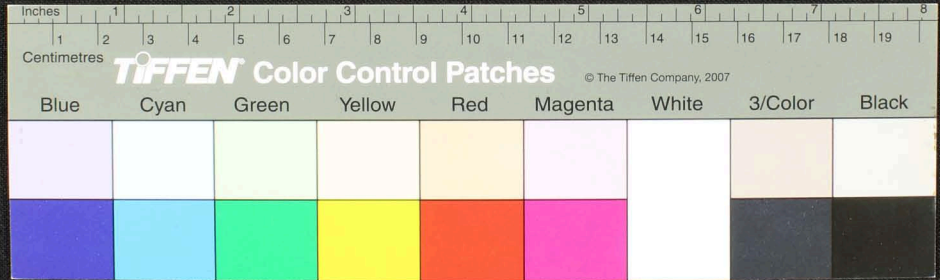
Handwritten text in an ancient script, likely Tamil, inscribed on a palm leaf. The text is arranged in approximately four horizontal lines across the length of the leaf. The script is finely etched into the surface of the dried leaf.



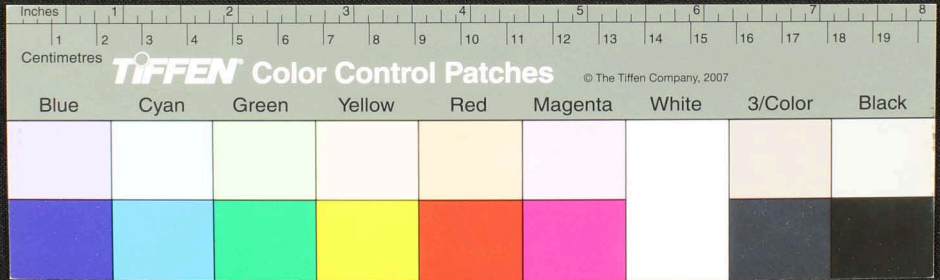
Handwritten text in Tamil script on a palm leaf manuscript. The text is arranged in several lines across the length of the leaf. A small hole is visible near the center of the leaf.



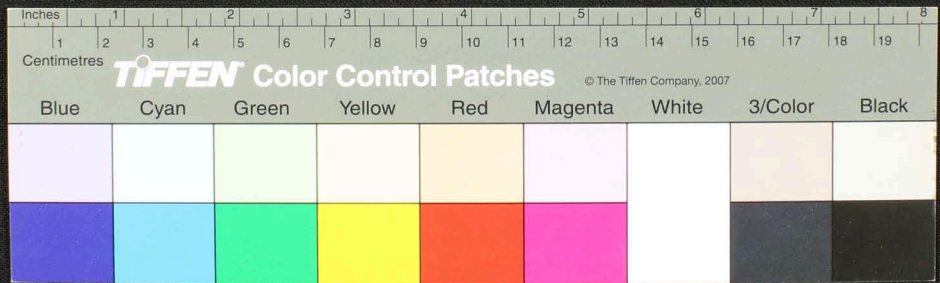
Handwritten text in Tamil script on a palm leaf manuscript. The text is arranged in two columns, with approximately 10 lines of script on each side. The leaf shows signs of age and wear, with some fraying at the right end.



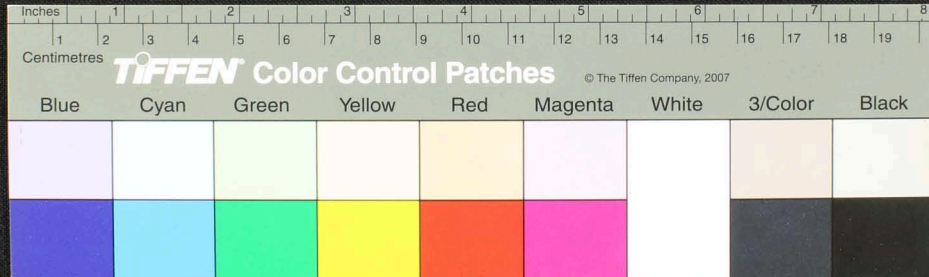
Handwritten text in Tamil script on a palm leaf manuscript. The text is arranged in three columns and is partially obscured by a hole in the leaf. The script is finely etched into the surface of the dried leaf.



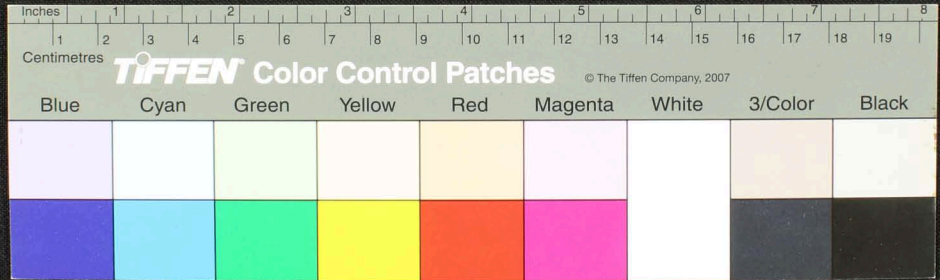
Fragment of a palm-leaf manuscript with handwritten text in an ancient script, possibly Tamil. The fragment is yellowed and shows signs of wear, including a small hole on the left side.



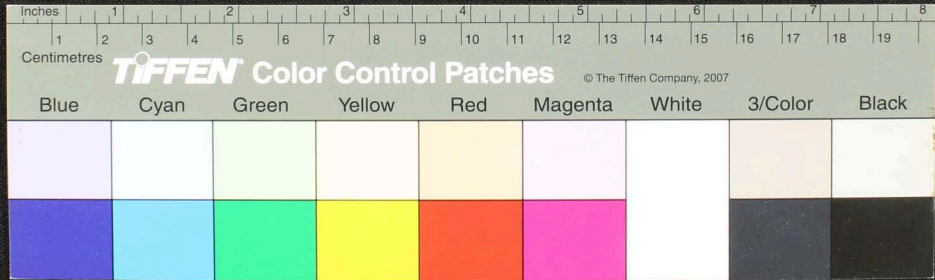
Handwritten text on a palm leaf manuscript fragment, likely in Tamil script. The text is arranged in several lines and is partially obscured by a dark hole on the left side. The characters are finely etched into the surface of the dried leaf.



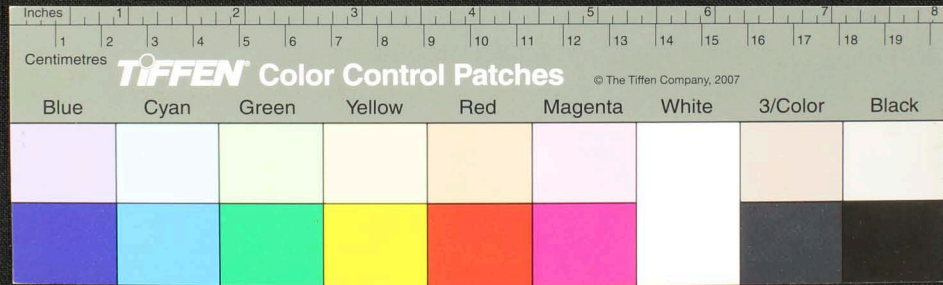
Handwritten text on a fragment of aged, yellowed paper. The text is written in a cursive script, likely Tamil, and is arranged in several lines. A small, dark circular hole is visible near the center of the fragment.



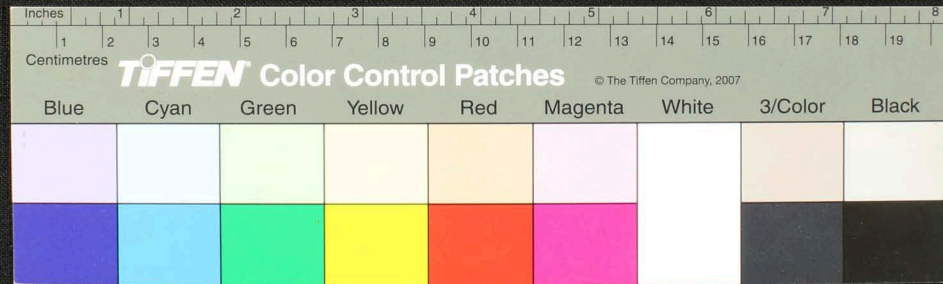
Handwritten text in Tamil script on a fragment of aged, yellowed paper. The text is arranged in approximately five horizontal lines. A small, dark circular hole is present near the center of the fragment. The paper is irregularly shaped with torn edges.



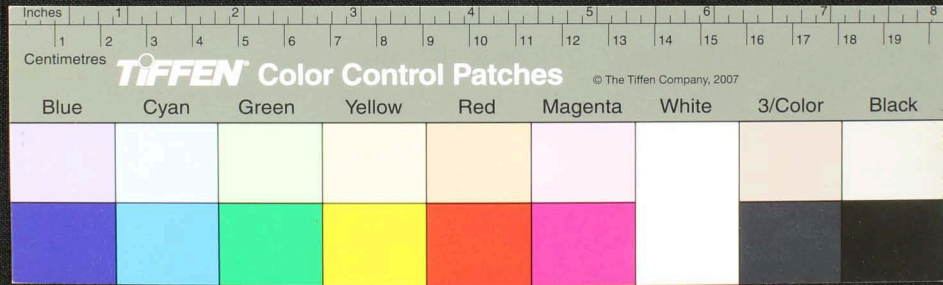
Handwritten Tamil script on a palm leaf manuscript. The text is arranged in approximately 10 horizontal lines across the length of the leaf. The script is finely etched into the surface of the dried leaf. The leaf shows signs of age and wear, with some fraying at the edges and a small circular hole near the center.



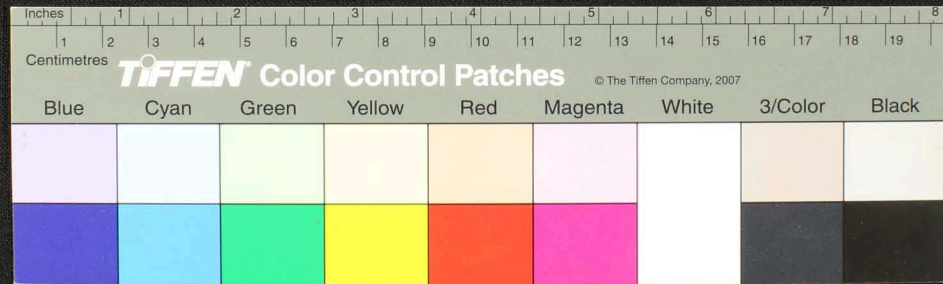
Handwritten text in Tamil script on a palm leaf manuscript. The text is arranged in approximately three horizontal lines across the length of the leaf. The script is finely etched into the surface of the dried leaf. A small circular hole is visible near the center of the leaf, which is a traditional feature for threading a cord to bind multiple leaves together into a book format.



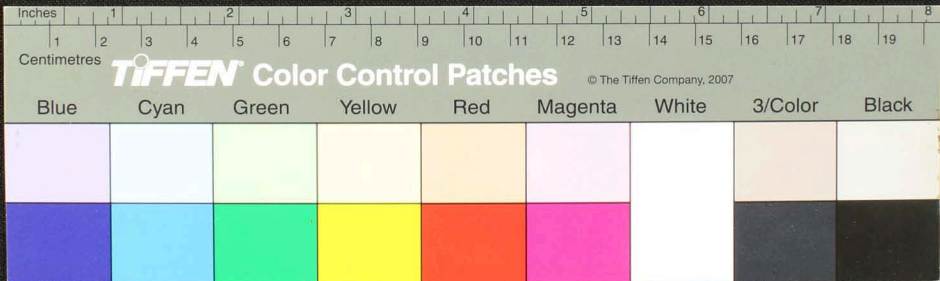
Handwritten Tamil script on a palm leaf manuscript strip. The text is arranged in approximately 10 horizontal lines. On the left side, there is a vertical inscription that reads "சுதே" and "அக்டோபர் 1955". The script is densely packed and appears to be a form of classical or historical Tamil.



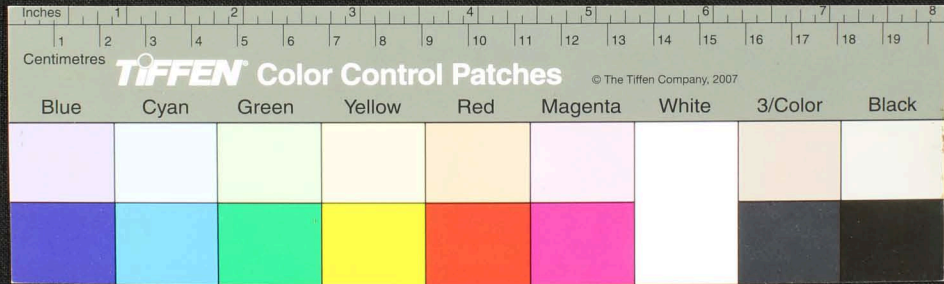
Handwritten text in Tamil script on a palm leaf manuscript. The text is arranged in approximately 10 horizontal lines across the length of the leaf. The script is finely etched into the surface of the dried leaf. The leaf shows signs of age and wear, with some fraying at the edges and a small dark spot near the center.



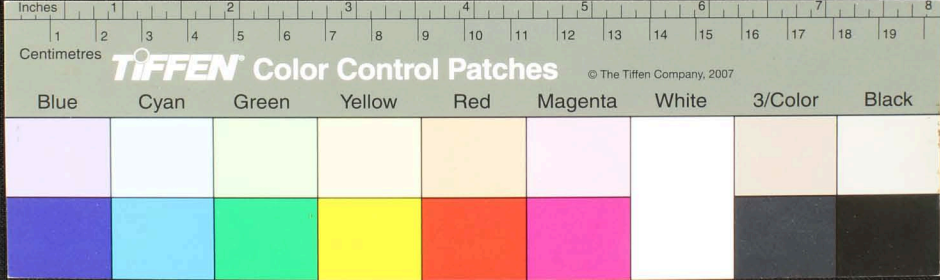
Handwritten text in Tamil script on a palm leaf manuscript. The text is densely packed and spans the length of the leaf. A small circular hole is visible near the center of the leaf, likely for binding.



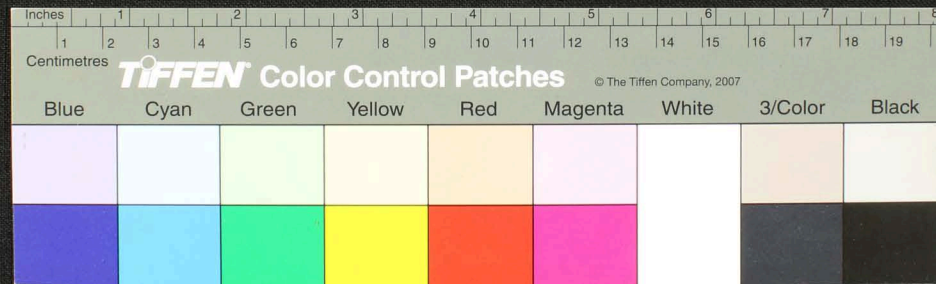
Handwritten text in Tamil script on a palm leaf manuscript. The text is arranged in approximately 12 horizontal lines across the length of the leaf. The script is finely etched into the surface of the dried leaf. There is a small, dark circular hole or mark on the leaf, located roughly in the middle of the length and slightly above the center line.



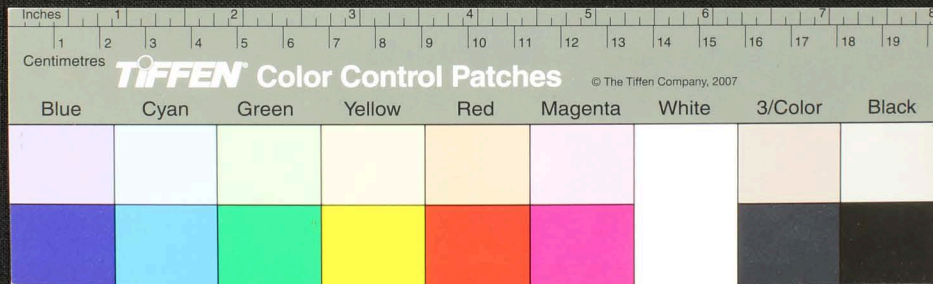
Handwritten text in Tamil script on a palm leaf manuscript. The text is arranged in approximately 12 horizontal lines across the length of the leaf. The script is finely etched into the surface of the dried leaf. A small circular hole is visible near the center of the leaf, which is a traditional feature for threading a cord to bind multiple leaves together into a book format.



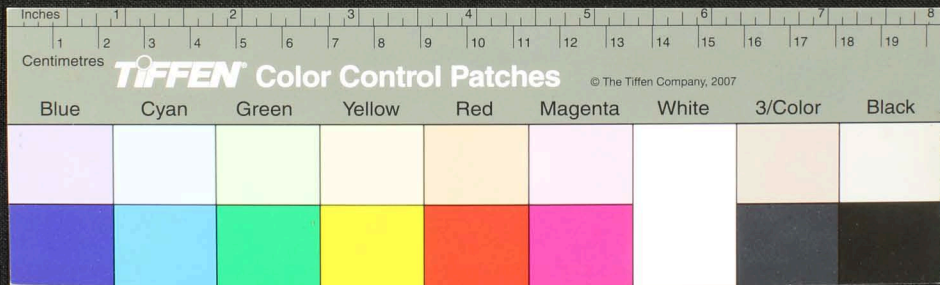
Handwritten text in Tamil script on a palm leaf manuscript strip. The text is arranged in approximately 10 horizontal lines across the length of the leaf. The script is finely etched into the surface of the dried leaf. There is a small, dark, irregular hole or tear in the leaf near the center, approximately at the 3.5-inch mark on the ruler below.



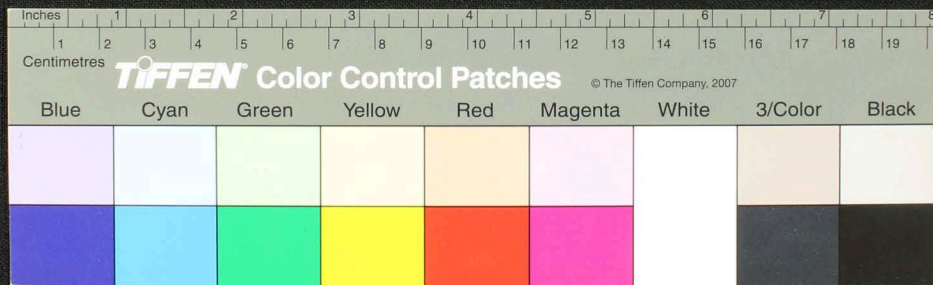
Handwritten text in Tamil script on a palm leaf manuscript. The text is densely packed and runs horizontally across the length of the leaf. There is a small, dark, irregular hole or tear in the center of the leaf, approximately between the 3 and 4 inch marks of the ruler below.



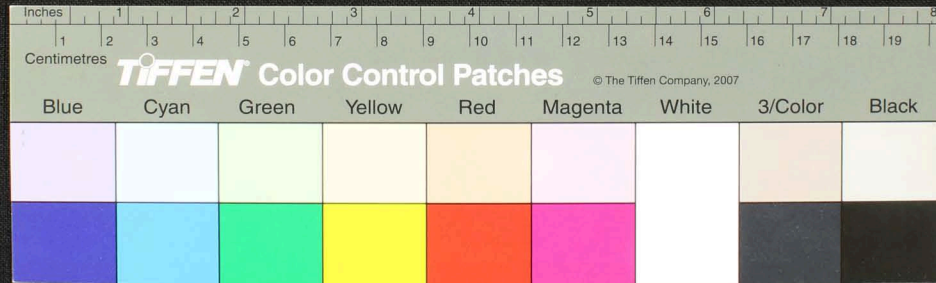
Handwritten text in Tamil script on a palm leaf manuscript. The text is densely packed and runs horizontally across the length of the leaf. A small circular hole is visible near the center of the leaf, which is a traditional feature for threading a cord to bind multiple leaves together.



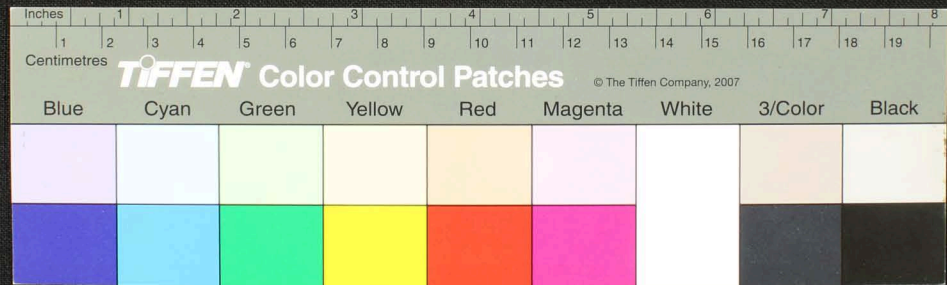
Handwritten text in Tamil script on a palm leaf manuscript. The text is arranged in approximately 10 horizontal lines across the length of the leaf. A small circular hole is visible near the center of the leaf, which is a traditional feature for threading a cord to bind multiple leaves together. The script is finely etched into the surface of the dried leaf.



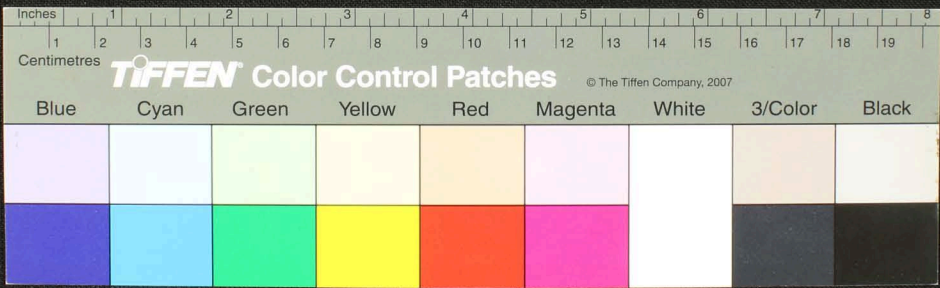
Handwritten text in Tamil script on a palm leaf manuscript. The text is arranged in approximately 10 horizontal lines across the length of the leaf. The script is finely etched into the surface of the dried leaf. There is a small, dark circular hole or indentation in the center of the leaf, approximately at the 4-inch mark on the ruler below.



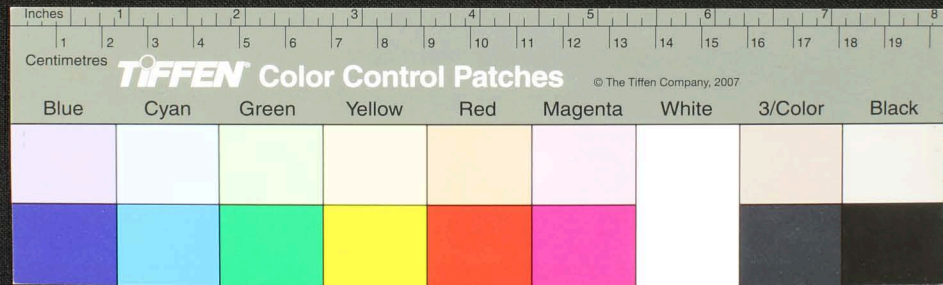
Handwritten text in Tamil script on a palm leaf manuscript. The text is arranged in approximately 10 horizontal lines across the length of the leaf. The script is finely etched into the surface of the dried leaf. A small circular hole is visible near the center of the leaf, which is a traditional feature used for threading a cord to bind multiple leaves together into a book format.



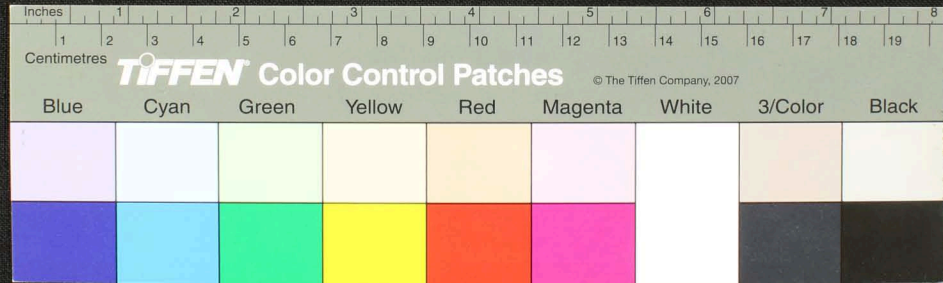
Handwritten text in Tamil script on a palm leaf manuscript. The text is arranged in approximately 10 horizontal lines across the length of the leaf. The script is finely etched into the surface of the dried leaf. A small circular hole is visible near the center of the leaf, which is a traditional feature used for threading a cord to bind multiple leaves together into a book format.



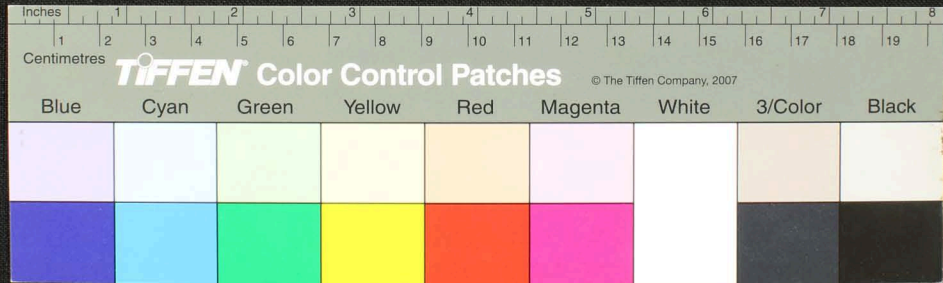
Handwritten Tamil script on a palm leaf manuscript. The text is densely packed and runs horizontally across the length of the leaf. A small circular hole is visible near the center of the leaf, which is a traditional feature for threading a cord to bind multiple leaves together. The script is written in a cursive style characteristic of traditional Tamil manuscripts.



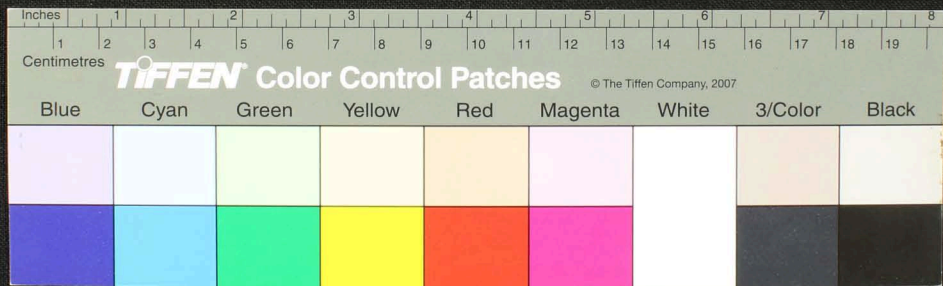
Handwritten Tamil script on a palm leaf manuscript. The text is arranged in approximately 10 horizontal lines across the length of the leaf. On the left side, there are three distinct vertical markings or symbols, possibly serving as a header or section indicator. The script is densely packed and appears to be a form of classical or historical Tamil.



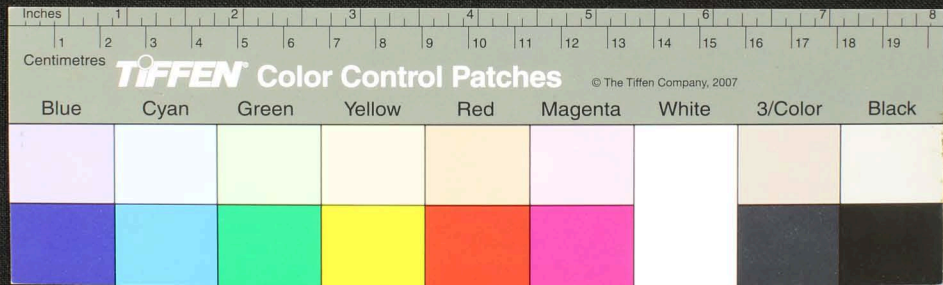
Handwritten Tamil script on a palm leaf manuscript. The text is densely packed and runs horizontally across the length of the leaf. A small circular hole is visible near the center of the leaf, which is a traditional feature for threading a cord to bind multiple leaves together.



Handwritten text in Tamil script on a palm leaf manuscript. The text is arranged in horizontal lines across the length of the leaf, with a significant portion missing due to a large tear in the center. The script is finely etched into the surface of the dried leaf.



Handwritten text in Tamil script on a palm leaf manuscript. The text is arranged in approximately 10 horizontal lines across the length of the leaf. The script is finely etched into the surface of the dried leaf. There is a significant tear in the center of the leaf, where the text is missing.



Handwritten text on a palm-leaf manuscript strip, including a central hole and several lines of script in an ancient language.

