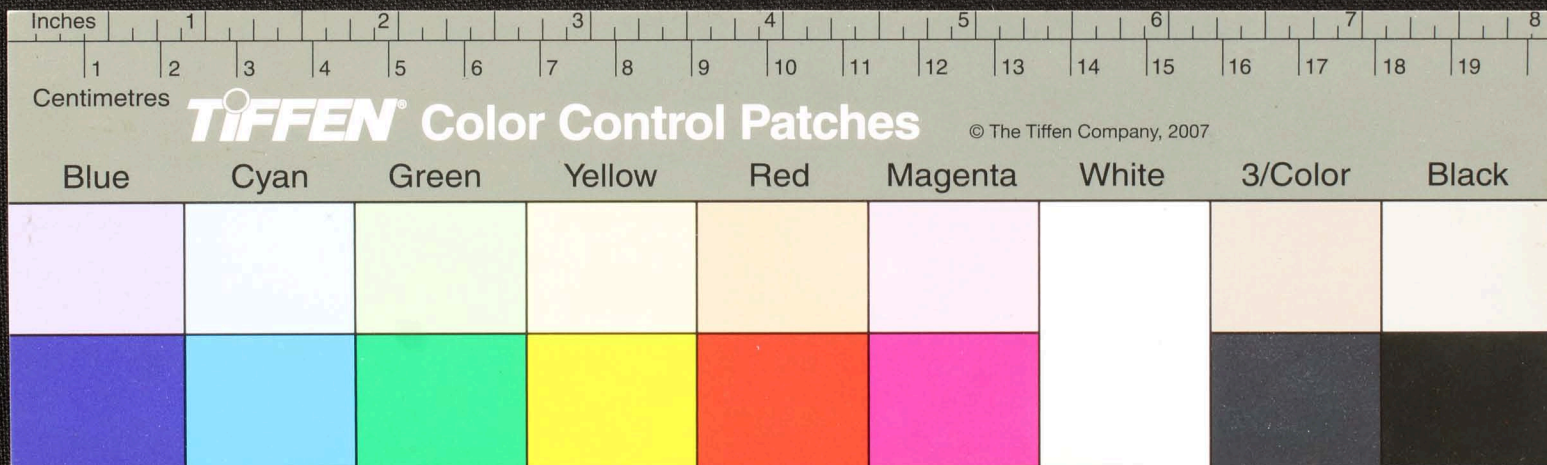




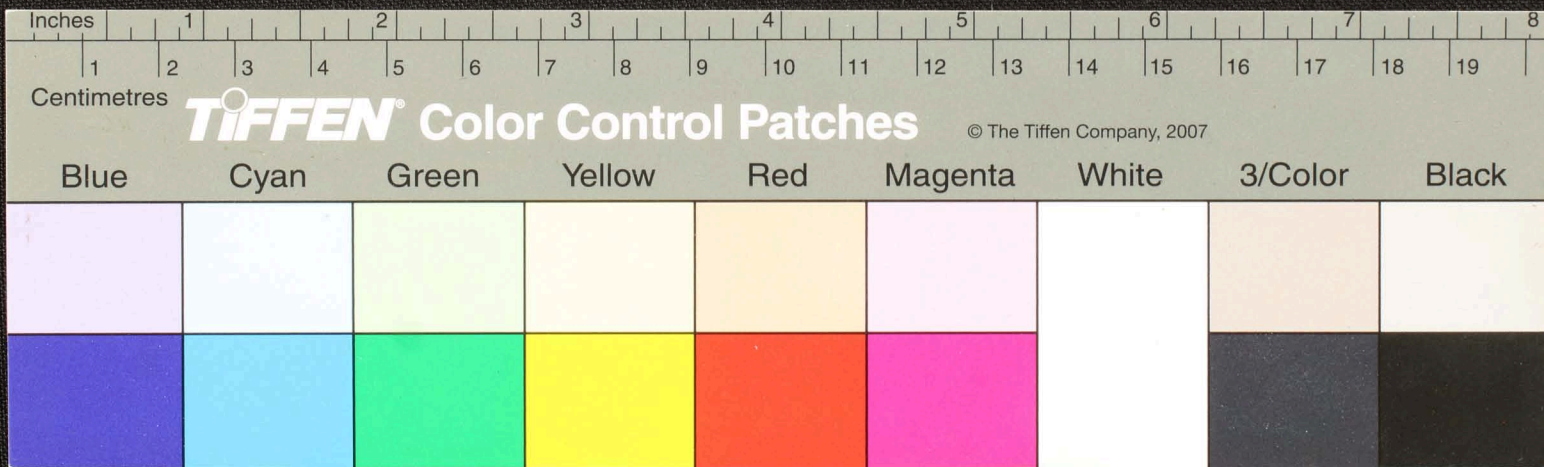


Handwritten Tamil script on a palm leaf manuscript. The text is arranged in approximately three horizontal lines across the length of the leaf. The script is finely etched into the surface of the dried leaf. Two circular holes are visible, which were traditionally used for threading a cord to bind multiple leaves together into a book format.





Handwritten Tamil script on a palm leaf manuscript. The text is arranged in approximately 10 horizontal lines. The leaf is significantly damaged, with large irregular holes and missing sections, particularly on the left side and in the middle. A small circular hole is visible on the right side. The script is densely packed and appears to be a form of classical Tamil.

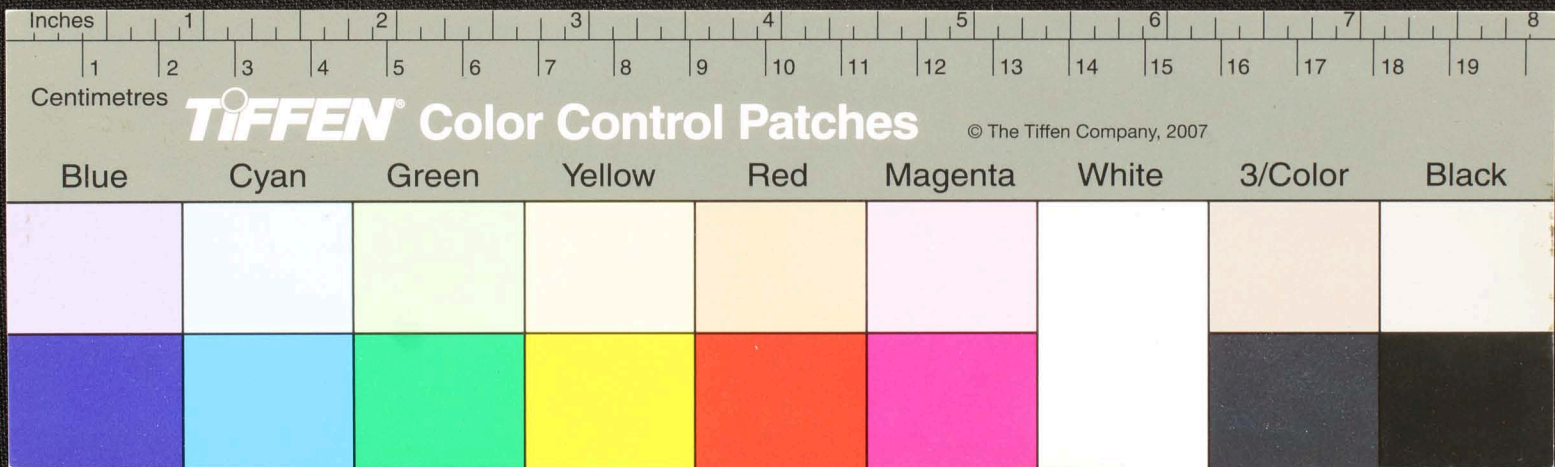








Handwritten Tamil script on a palm leaf manuscript. The text is arranged in approximately 10 horizontal lines across the length of the leaf. The script is finely etched into the surface of the dried leaf. The leaf shows signs of age and wear, with some dark spots and irregular edges.





















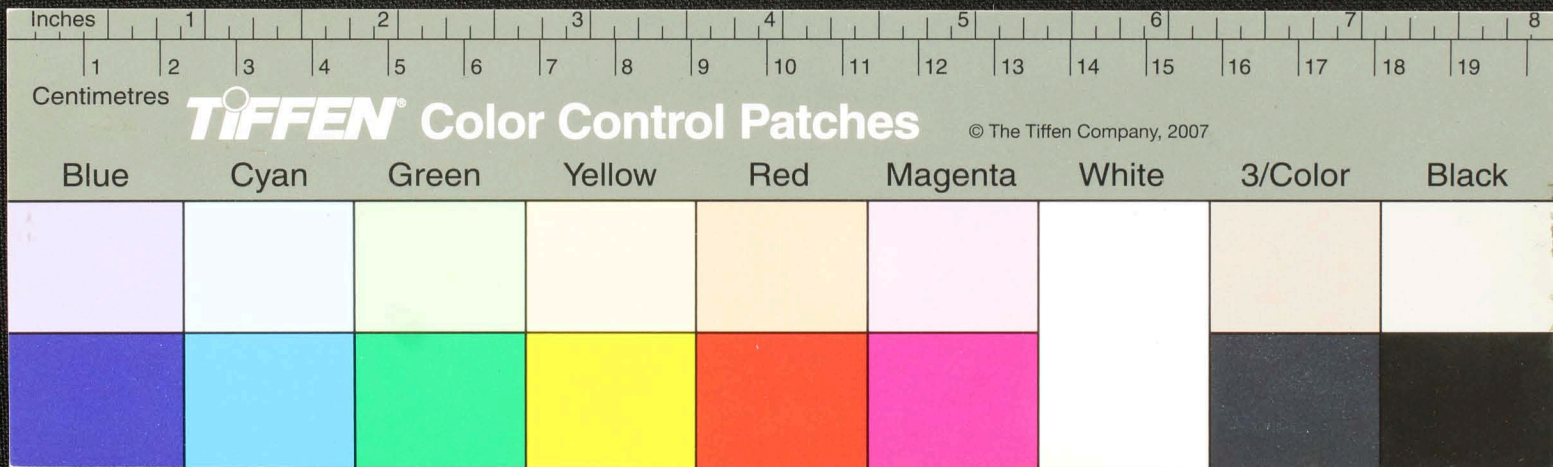






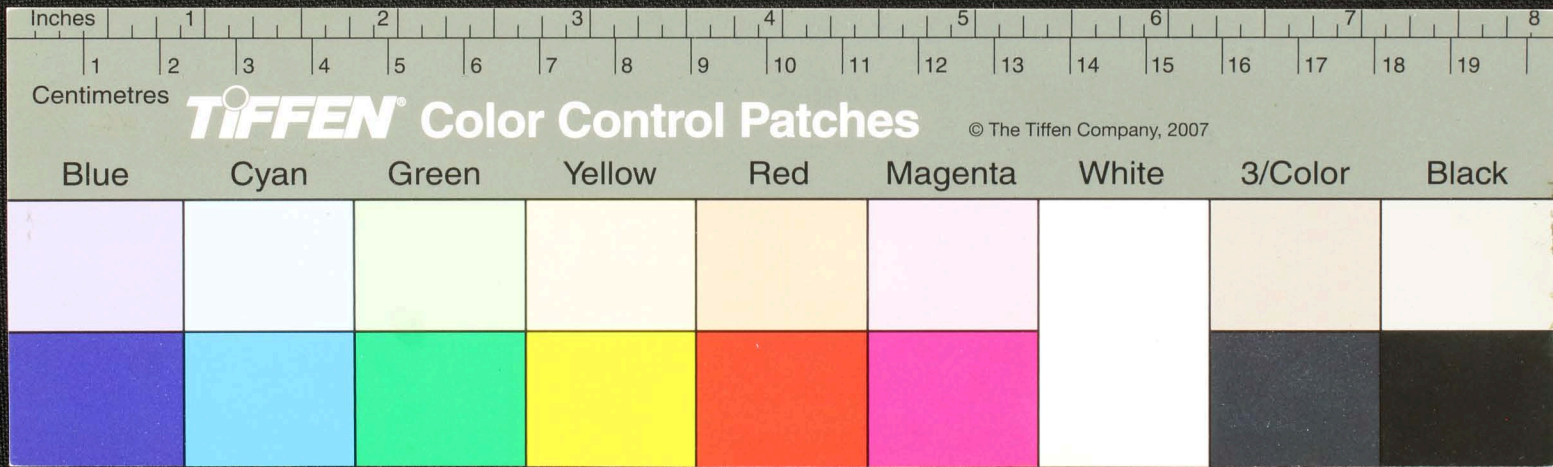


Handwritten Tamil script on a palm leaf manuscript. The text is arranged in approximately 10 horizontal lines across the length of the leaf. The script is densely packed and appears to be a form of classical Tamil. There are several dark, irregular spots and holes on the leaf, likely due to insect damage or mold. The leaf is yellowed with age and shows signs of wear.





Handwritten text in Tamil script on a palm leaf manuscript. The text is arranged in approximately 10 horizontal lines across the length of the leaf. The script is finely etched into the surface of the dried leaf. There are some dark spots and irregularities on the leaf, possibly due to age or damage.

















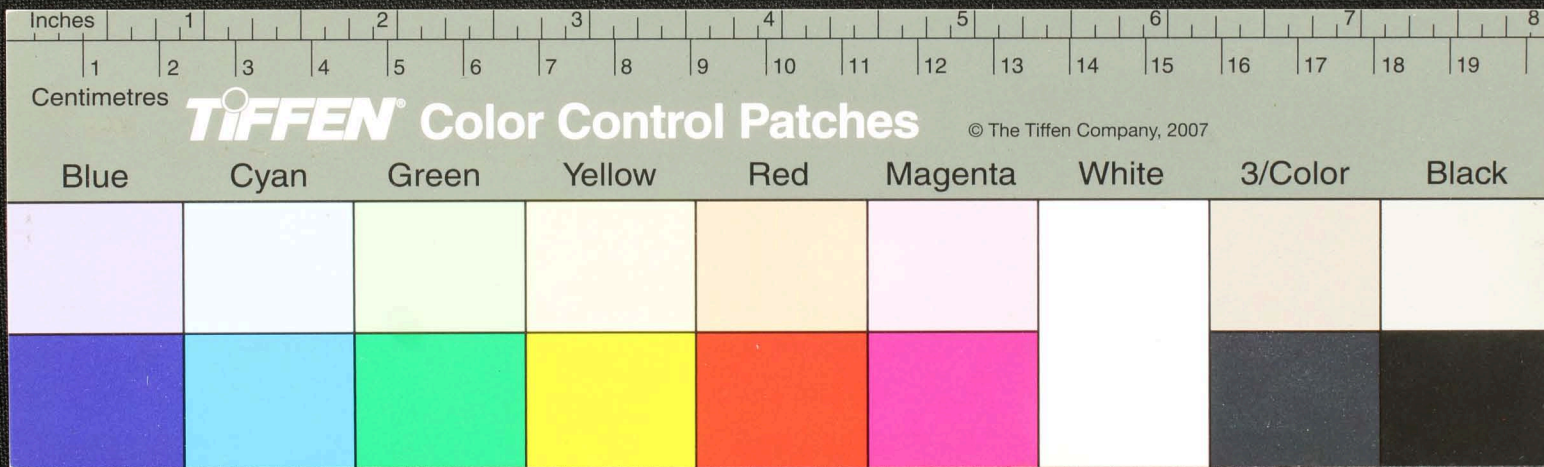








Handwritten Tamil script on a palm leaf manuscript. The text is arranged in approximately 10 horizontal lines across the length of the leaf. There are several large, irregular holes and significant damage to the leaf, particularly in the middle section, which obscures some of the characters. The script appears to be a form of classical Tamil, possibly including religious or philosophical content.

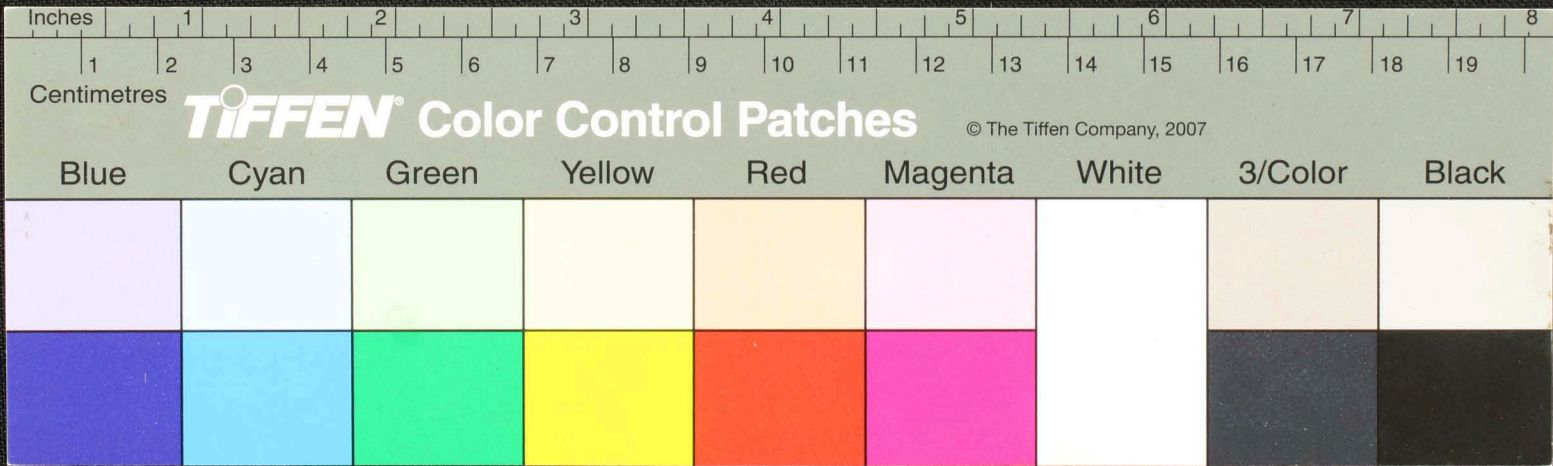








Handwritten Tamil script on a palm leaf manuscript. The text is arranged in approximately 10 horizontal lines across the length of the leaf. The script is densely packed and appears to be a form of classical Tamil. There are several large, irregular holes and areas of damage, particularly in the middle section, which obscure some of the characters. The leaf is yellowed with age and shows signs of wear and tear.

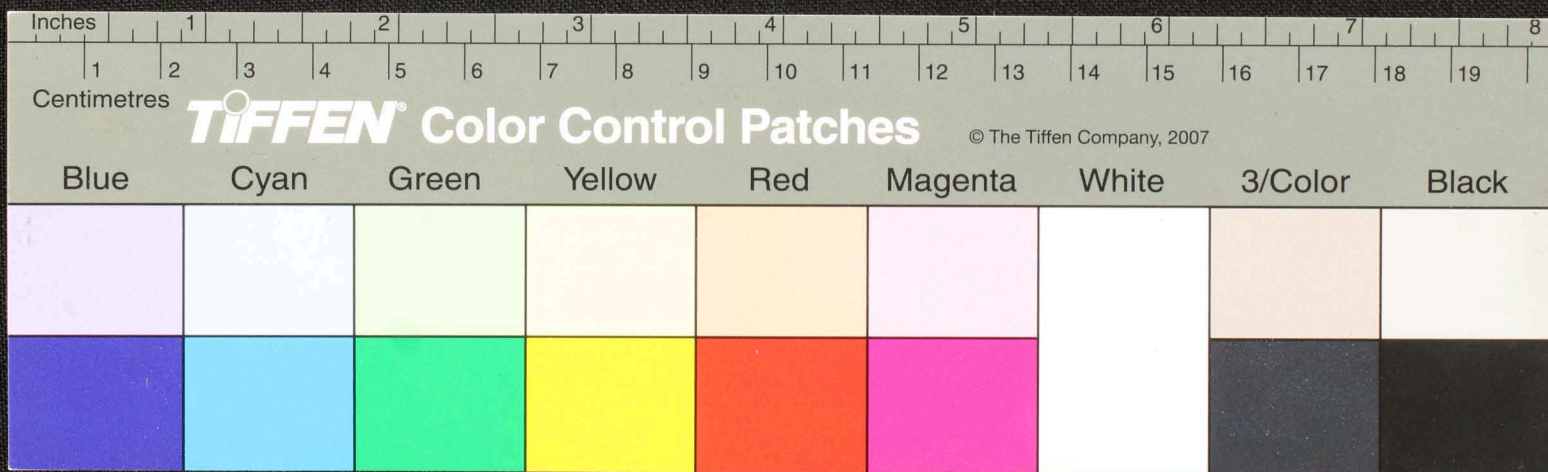






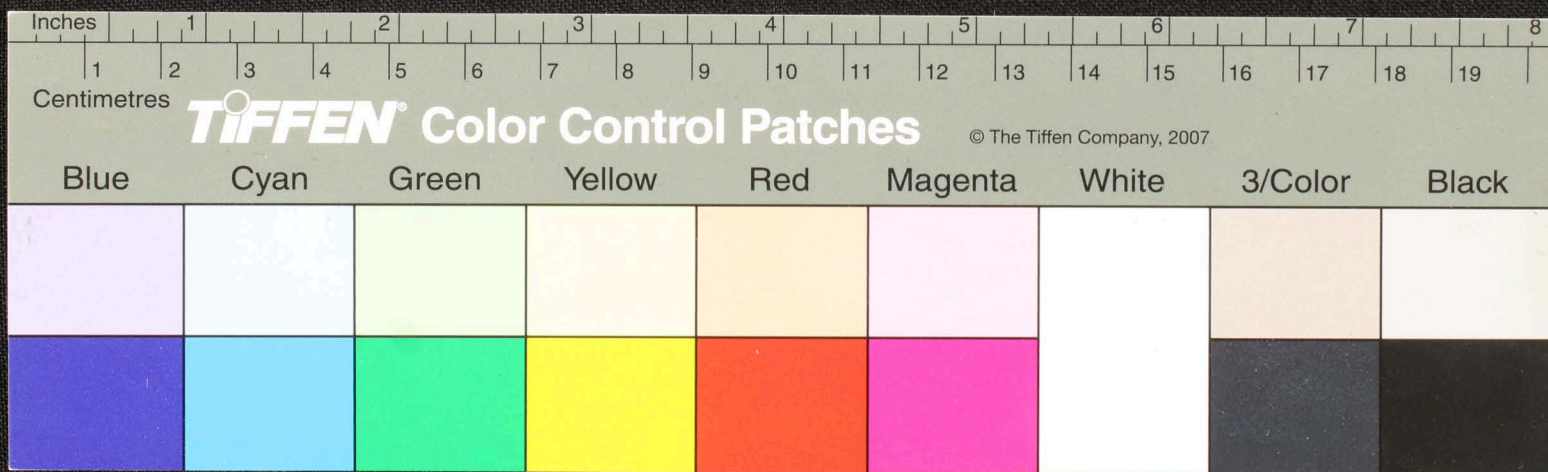


Handwritten Tamil script on a palm leaf manuscript. The text is arranged in approximately 10 horizontal lines across the length of the leaf. The script is finely etched into the surface of the dried leaf. The leaf shows signs of age and wear, with some fraying and discoloration, particularly on the left side.



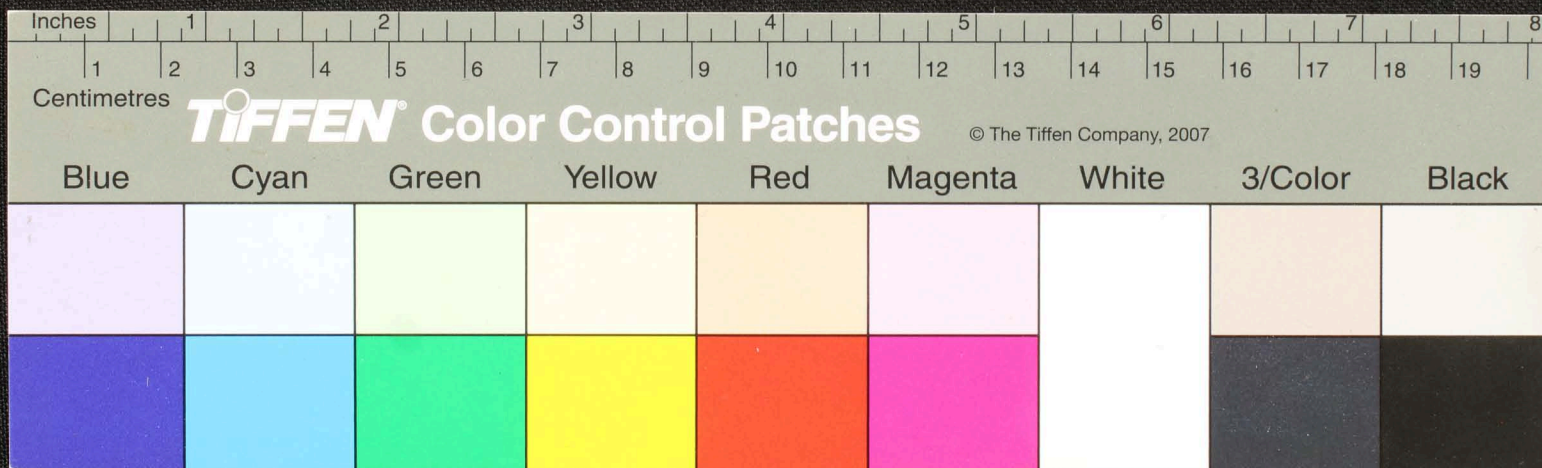


Handwritten text in Tamil script on a palm leaf manuscript. The text is arranged in approximately 10 horizontal lines. The leaf is significantly damaged, with large irregular holes and missing sections, particularly on the left side and in the middle. The script is dark and appears to be a traditional form of Tamil. A small circular hole is visible on the right side of the leaf.

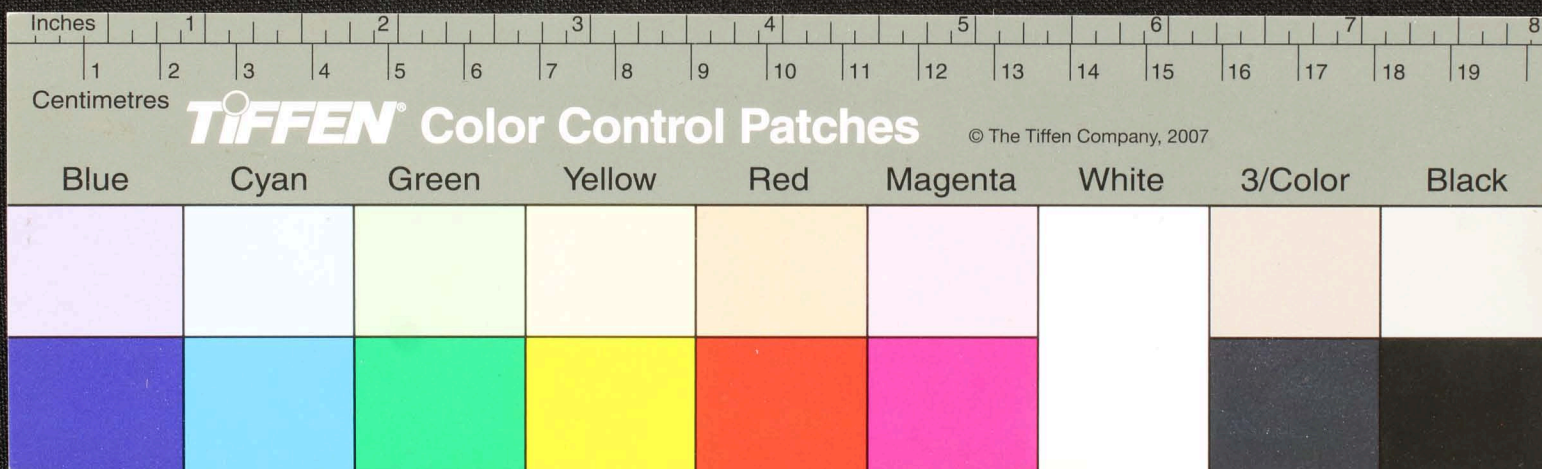




Handwritten Tamil script on a palm leaf manuscript. The text is arranged in approximately 10 horizontal lines across the length of the leaf. Two circular holes are visible, which were traditionally used for threading a cord to bind multiple leaves together. The script is densely packed and appears to be a form of classical Tamil.

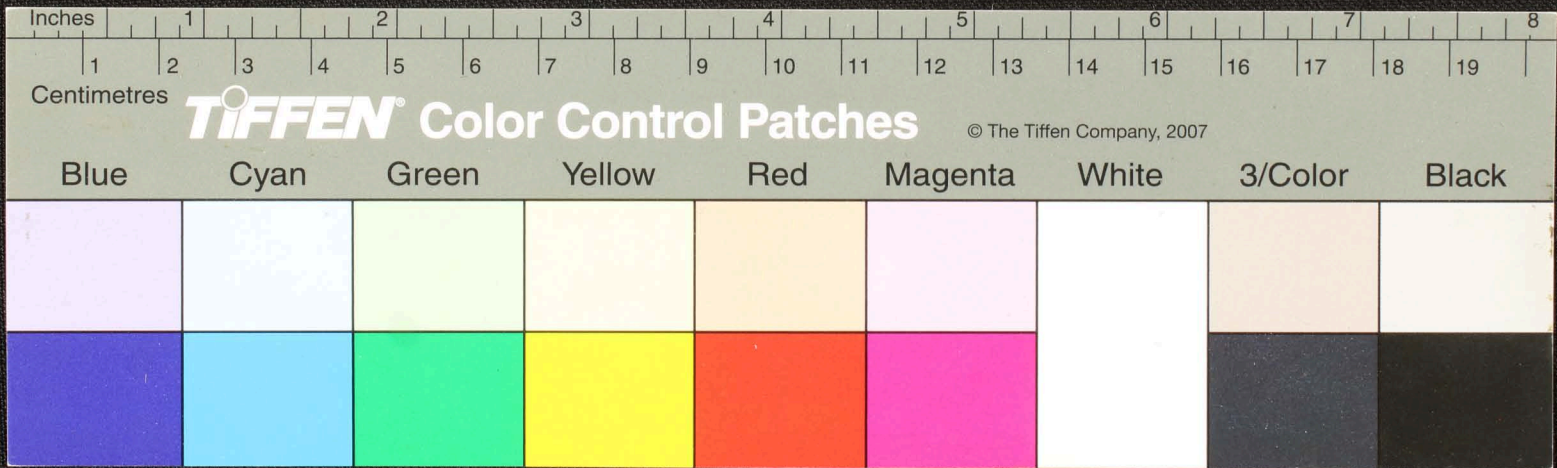






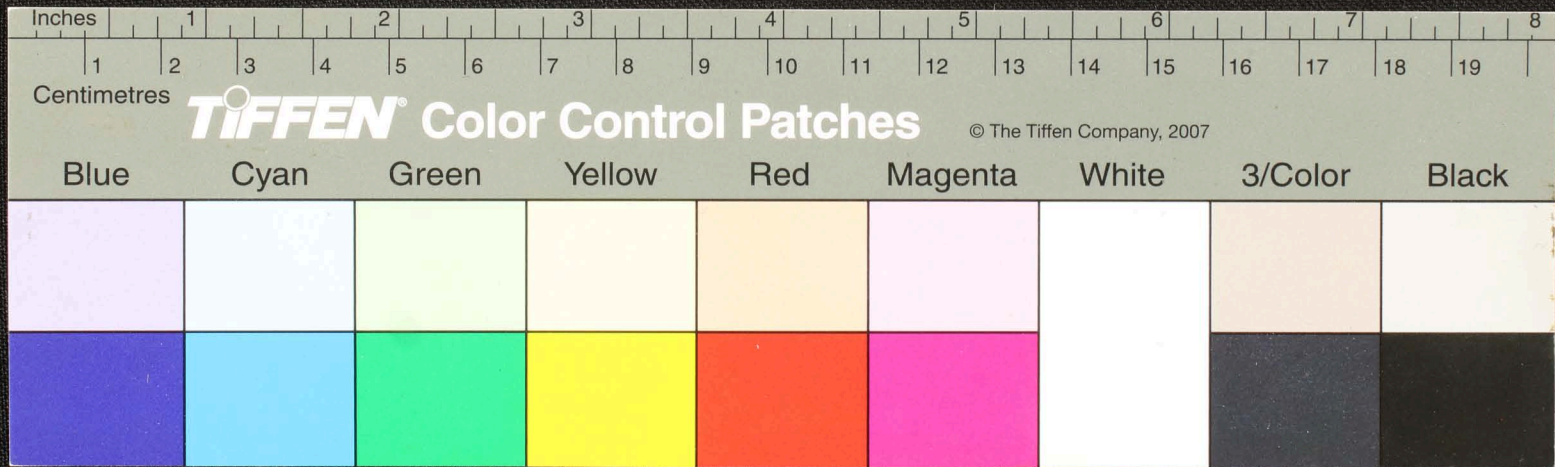


Handwritten Tamil script on a palm leaf manuscript. The text is arranged in two columns, with two circular holes visible for binding. The script is densely packed and appears to be a form of classical Tamil literature or a record.





Handwritten Tamil script on a palm leaf manuscript. The text is arranged in two columns, with some characters appearing to be in a different script or dialect. The leaf shows signs of age and wear, including two circular holes and some staining.

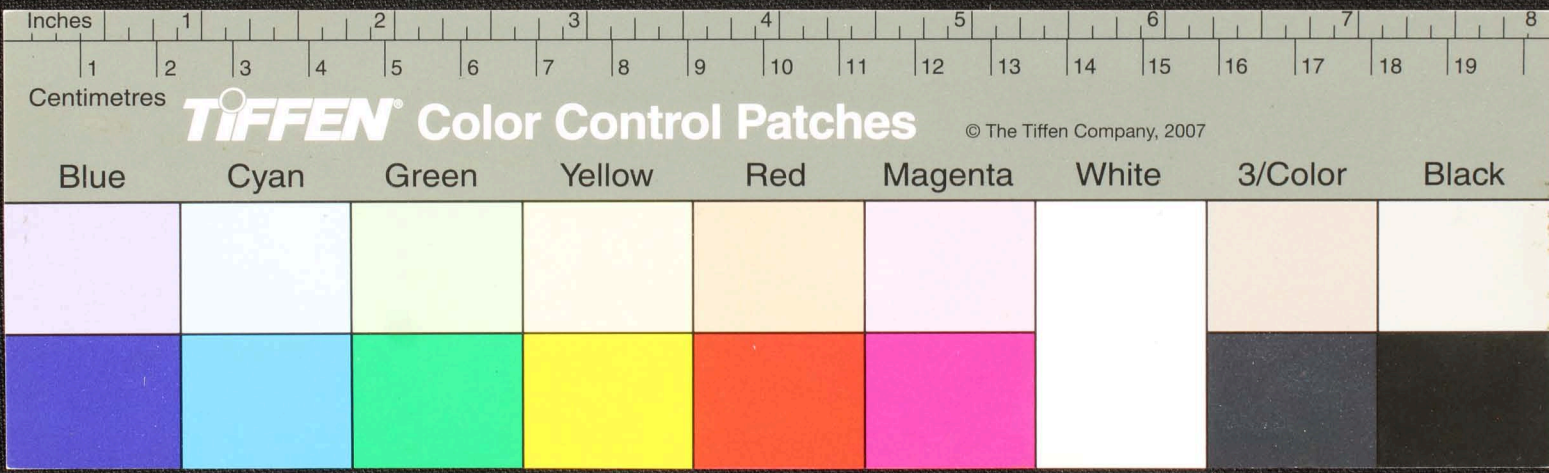








Handwritten Tamil script on a palm leaf manuscript. The text is arranged in approximately 10 horizontal lines across the length of the leaf. The script is densely packed and appears to be a form of classical Tamil. There are two circular holes visible on the leaf, which were traditionally used for threading a cord to bind multiple leaves together into a book format. The leaf shows signs of age, including some darkening and wear, particularly around the edges and between the holes.





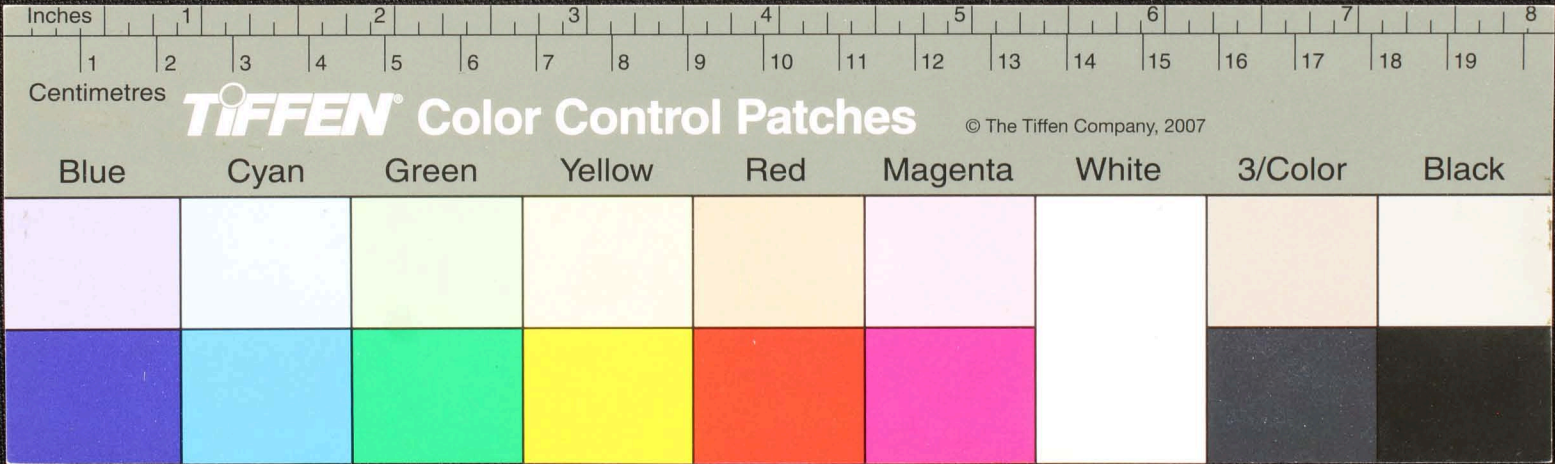








Handwritten Tamil script on a palm leaf manuscript. The text is arranged in two columns, with some characters circled in red ink. The leaf shows signs of age, including holes and discoloration.

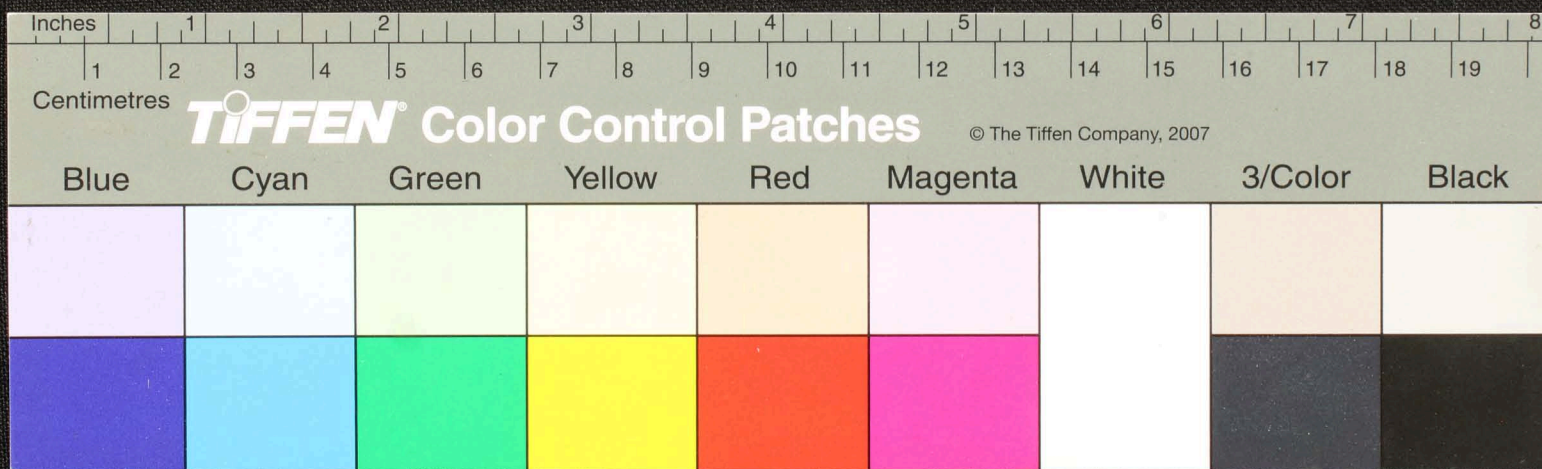








Handwritten text in Tamil script on a palm leaf manuscript. The text is arranged in approximately 10 horizontal lines across the length of the leaf. The script is dark and appears to be a traditional form of the Tamil language. The leaf shows signs of age, with some darkening and wear, particularly around the edges and in the middle section.









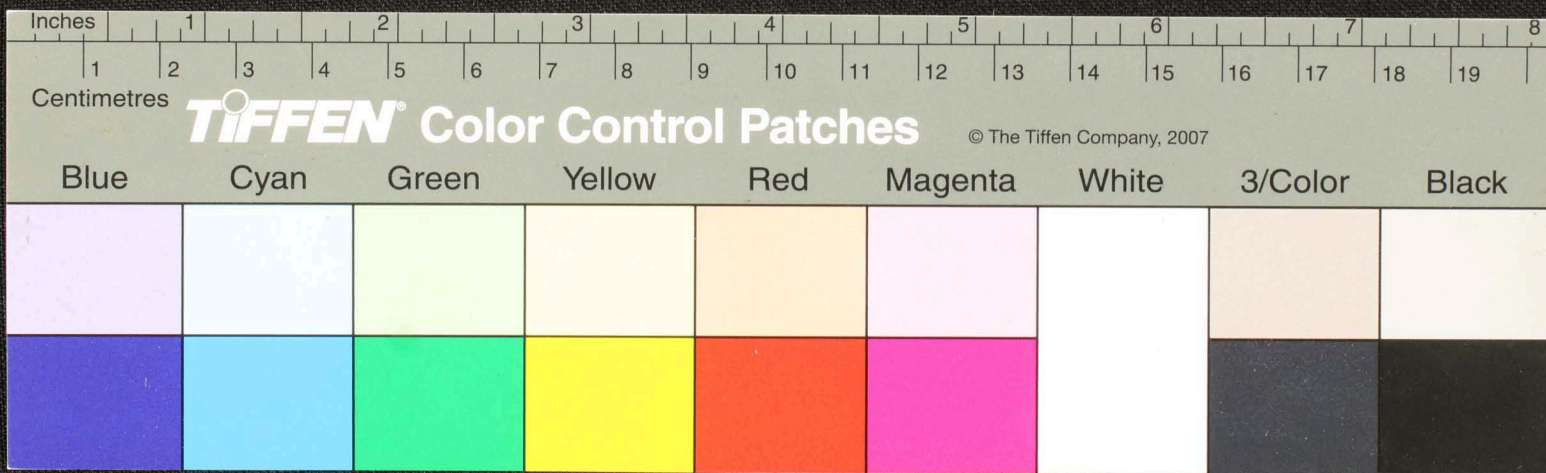








Handwritten text in Tamil script on a palm leaf manuscript. The text is arranged in approximately 10 horizontal lines across the length of the leaf. The script is dark and appears to be a traditional form of the Tamil language. There are several dark, irregular spots and marks scattered across the leaf, possibly due to age or damage. On the left side, there is a small handwritten mark that looks like 'H.M.'.

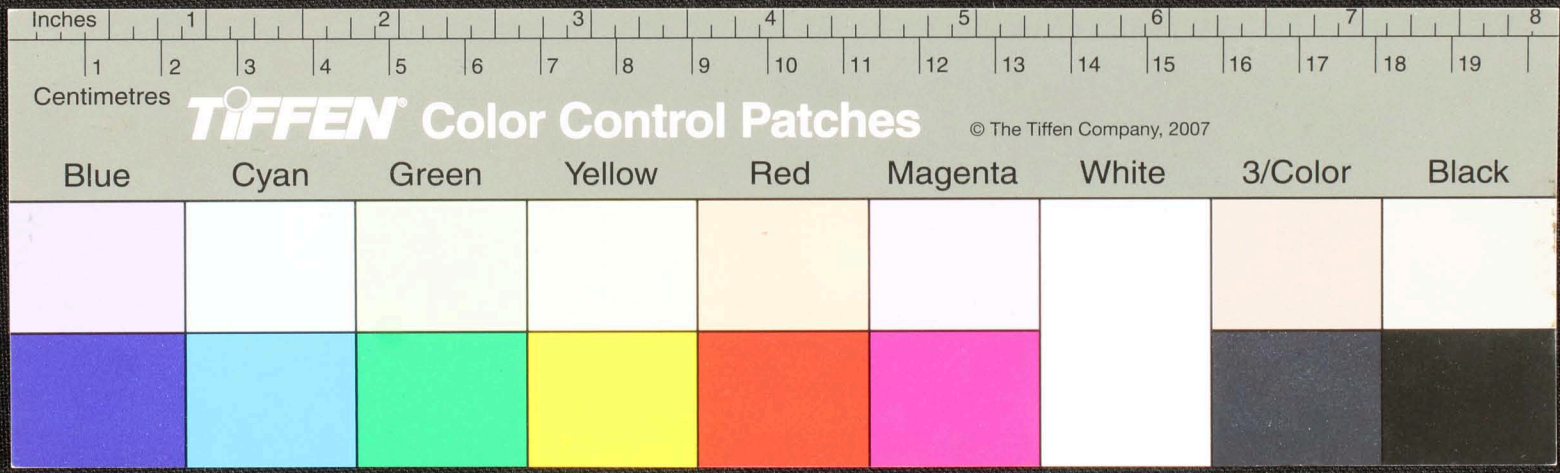








Handwritten Tamil script on a palm leaf manuscript. The text is arranged in two columns, with some characters appearing to be in a different script or dialect. The leaf shows signs of age and wear, including two circular holes and some surface damage.

































































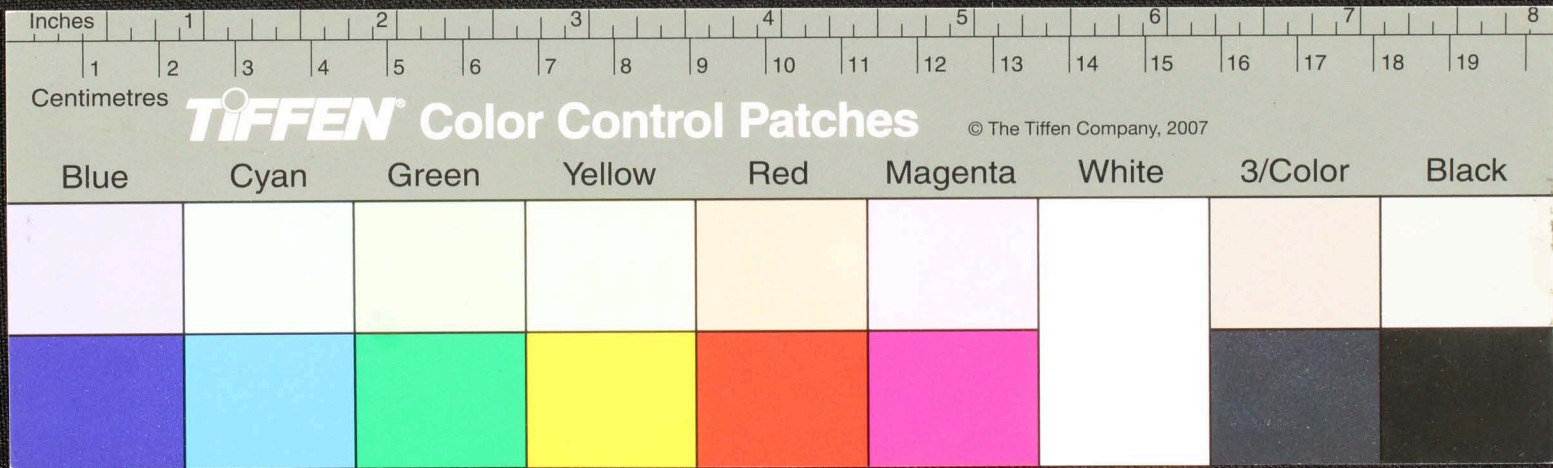








Handwritten Tamil script on a palm leaf manuscript. The text is arranged in two columns, with a central vertical line separating them. The script is densely packed and appears to be a form of classical or religious Tamil. There are two circular holes visible on the leaf, which were traditionally used for threading a cord to bind multiple leaves together into a book format.

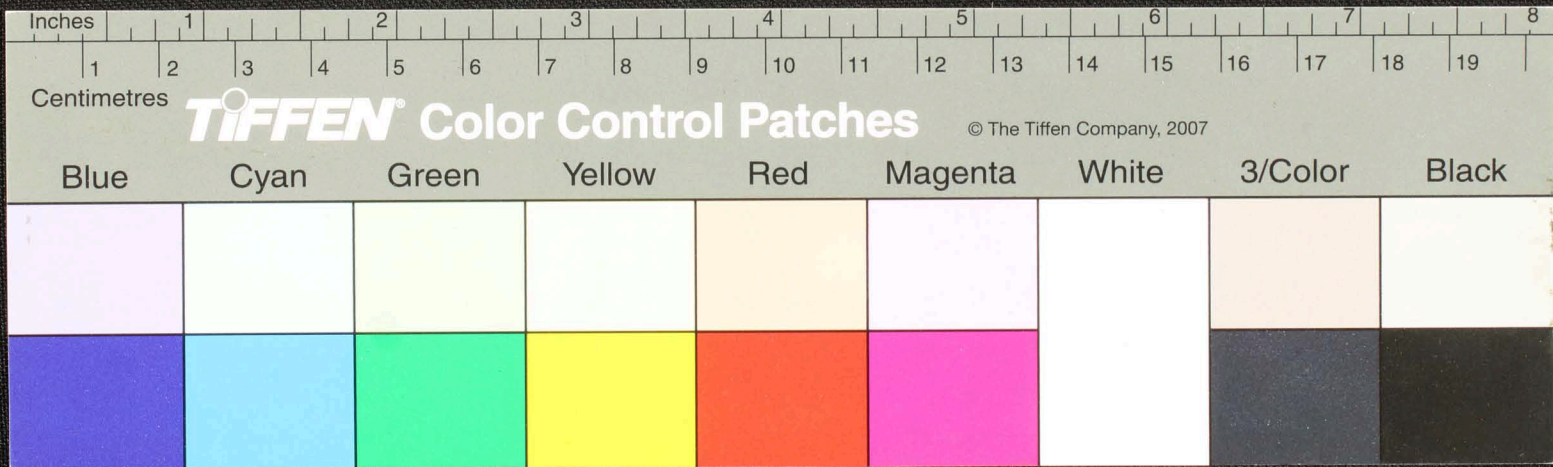






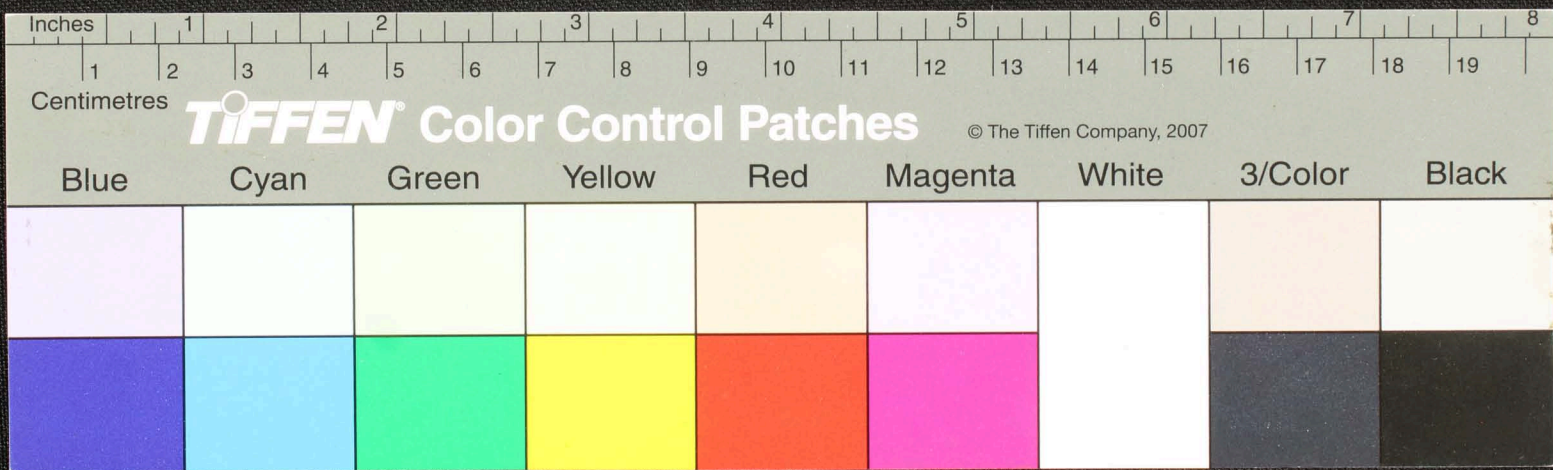


Handwritten Tamil script on a palm leaf manuscript. The text is arranged in approximately 10 horizontal lines across the length of the leaf. The script is densely packed and appears to be a form of classical Tamil. There are two circular holes visible on the leaf, which were traditionally used for threading a cord to bind multiple leaves together into a book format. The leaf shows signs of age, including some dark staining and wear, particularly along the edges and between the lines of text.





Handwritten Tamil script on a palm leaf manuscript. The text is arranged in approximately 10 horizontal lines across the length of the leaf. The script is densely packed and appears to be a form of classical Tamil. There are two circular holes visible on the leaf, which were traditionally used for threading a cord to bind multiple leaves together into a book format. The leaf shows signs of age and wear, with some darkening and irregular edges.

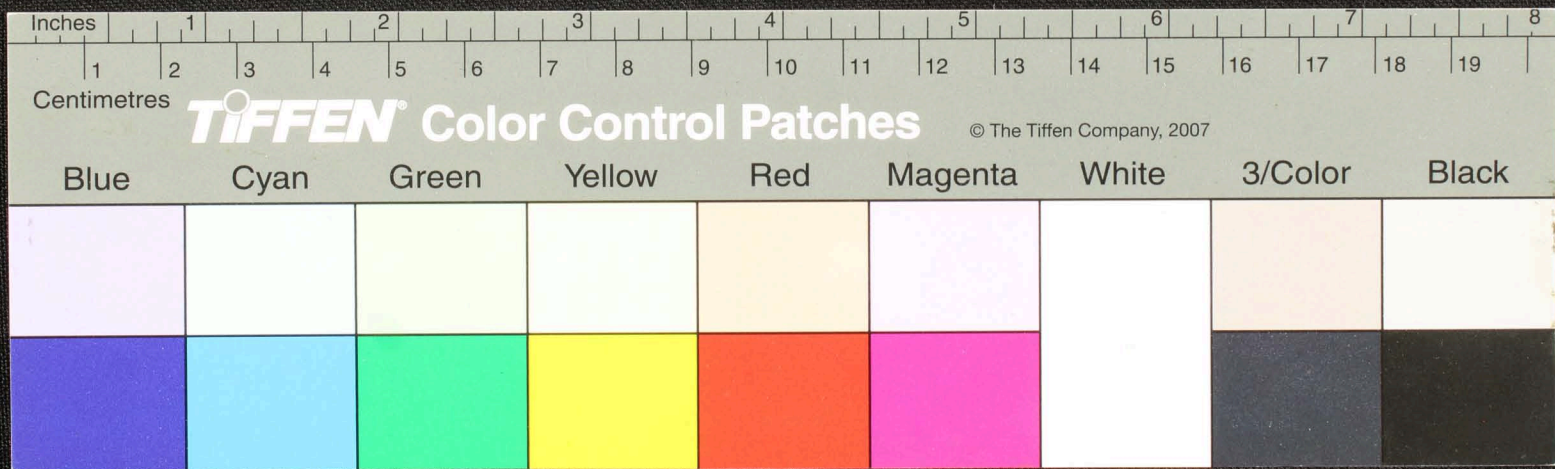






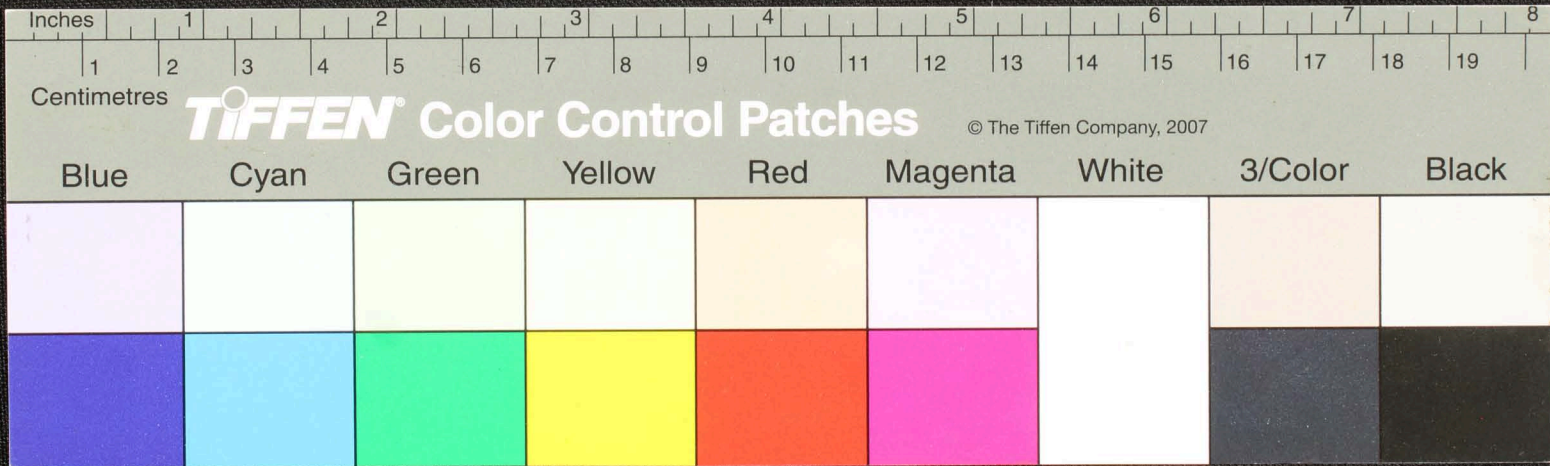


Handwritten Tamil script on a palm leaf manuscript. The text is arranged in approximately 10 horizontal lines across the length of the leaf. The script is dark and appears to be a traditional form of the Tamil language. There are two circular holes visible on the leaf, which were traditionally used for threading a cord to bind multiple leaves together into a book format. The leaf shows signs of age, including some staining and wear, particularly at the right end where it is torn.





Handwritten Tamil script on a palm leaf manuscript. The text is arranged in approximately 10 horizontal lines across the length of the leaf. Two circular holes are visible, which were traditionally used for threading a cord to bind multiple leaves together. The script is densely packed and appears to be a form of classical Tamil.





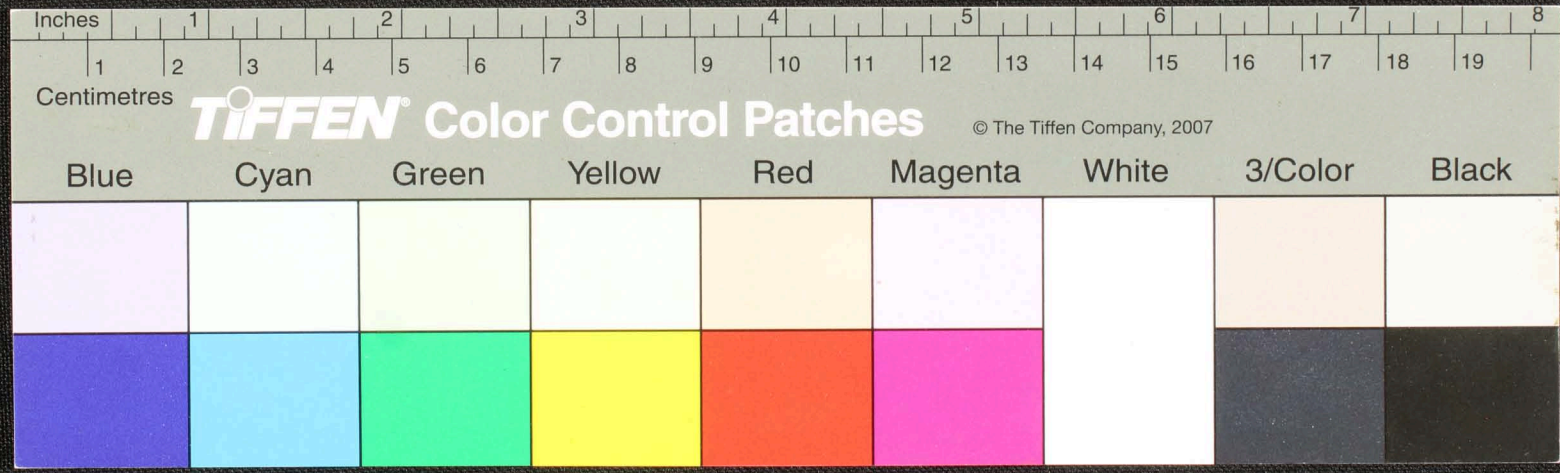






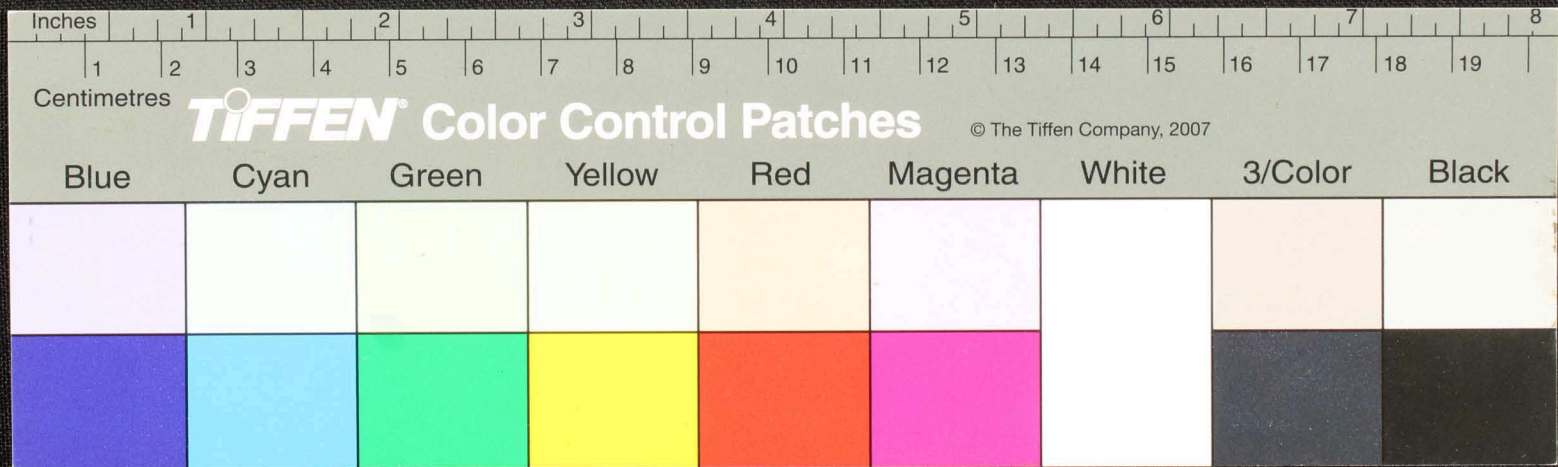


Handwritten Tamil script on a palm leaf manuscript. The text is arranged in two columns, with approximately 12 lines per column. The script is finely etched into the surface of the dried leaf. Two circular holes are visible, which were traditionally used for threading a cord to bind multiple leaves together into a book format.





Handwritten Tamil script on a palm leaf manuscript. The text is arranged in two columns, with approximately 15 lines per column. The script is finely etched into the surface of the dried leaf. There are two circular holes visible, which were traditionally used for threading a cord to bind multiple leaves together into a book format. The leaf shows signs of age, including some staining and wear.

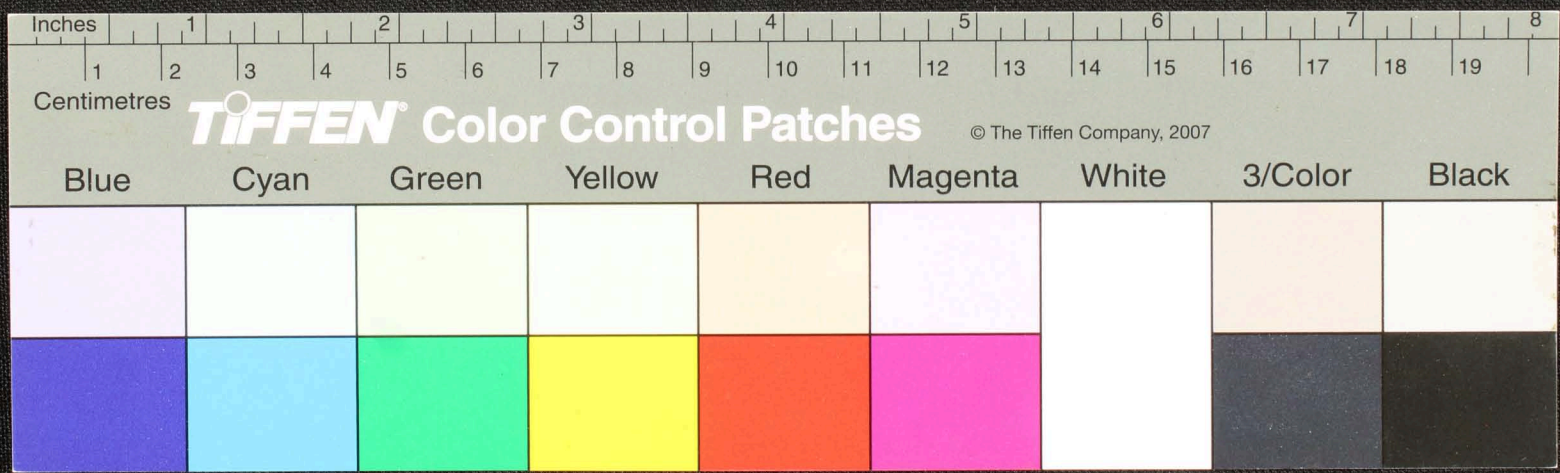








Handwritten Tamil script on a palm leaf manuscript. The text is arranged in approximately 10 horizontal lines across the length of the leaf. Two circular holes are visible, used for threading a cord to bind multiple leaves together. The script is dark and appears to be a traditional form of Tamil used in religious or scholarly contexts.

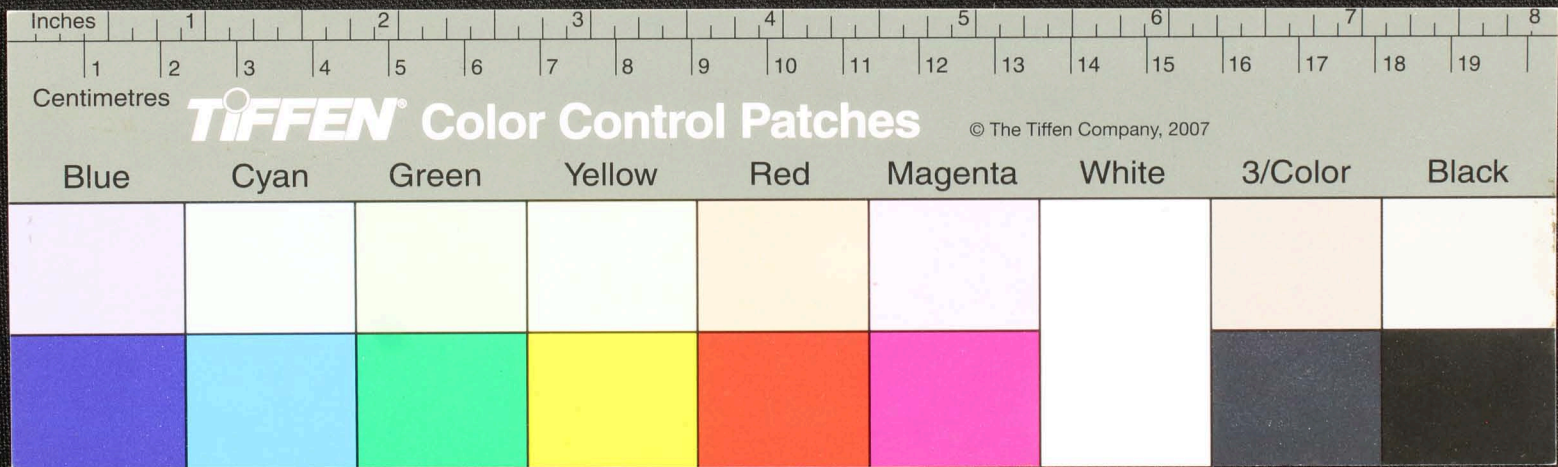








Handwritten Tamil script on a palm leaf manuscript. The text is arranged in approximately 10 horizontal lines across the length of the leaf. Two circular holes are visible, which were traditionally used for threading a cord to bind multiple leaves together. The script is densely packed and appears to be a form of classical Tamil, possibly including religious or philosophical content.





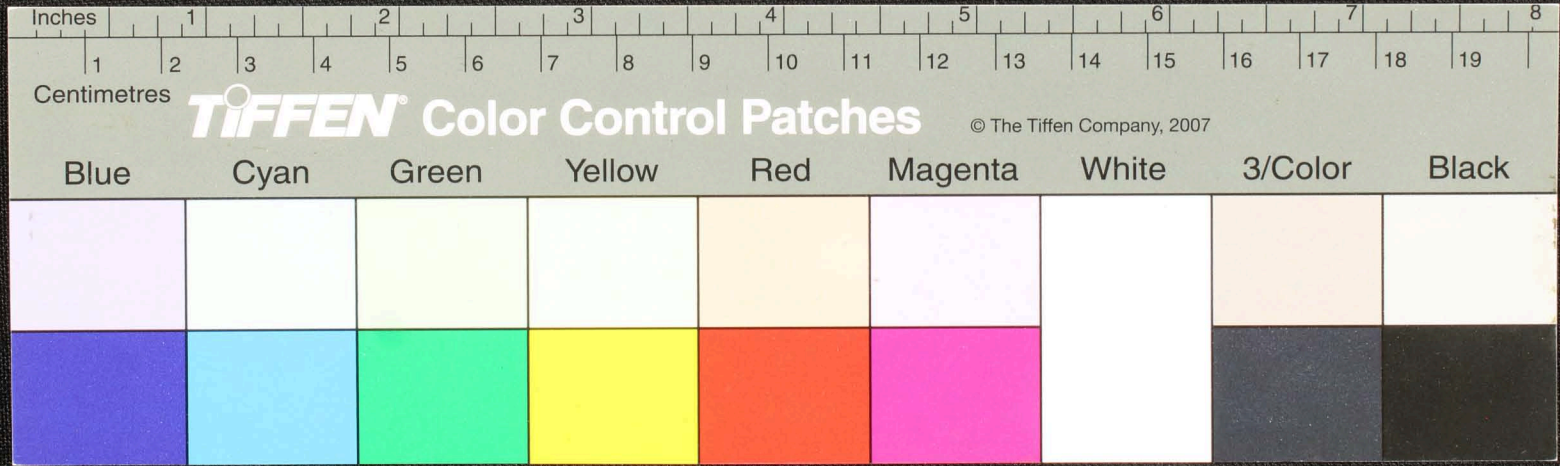








Handwritten Tamil script on a palm leaf manuscript. The text is arranged in approximately 10 horizontal lines across the length of the leaf. The script is dark and appears to be a traditional form of the Tamil language. There are two circular holes visible on the leaf, which were traditionally used for threading a cord to bind multiple leaves together into a book format. The leaf shows signs of age, including some staining and wear at the edges.

















Handwritten Tamil script on a palm leaf manuscript. The text is arranged in approximately 10 horizontal lines across the length of the leaf. The script is dark and appears to be a traditional form of Tamil. There are several large, irregular holes and areas of damage, particularly on the right side and in the center, which have caused some of the text to be lost or obscured. The leaf itself is a yellowish-brown color, characteristic of aged palm leaves.

