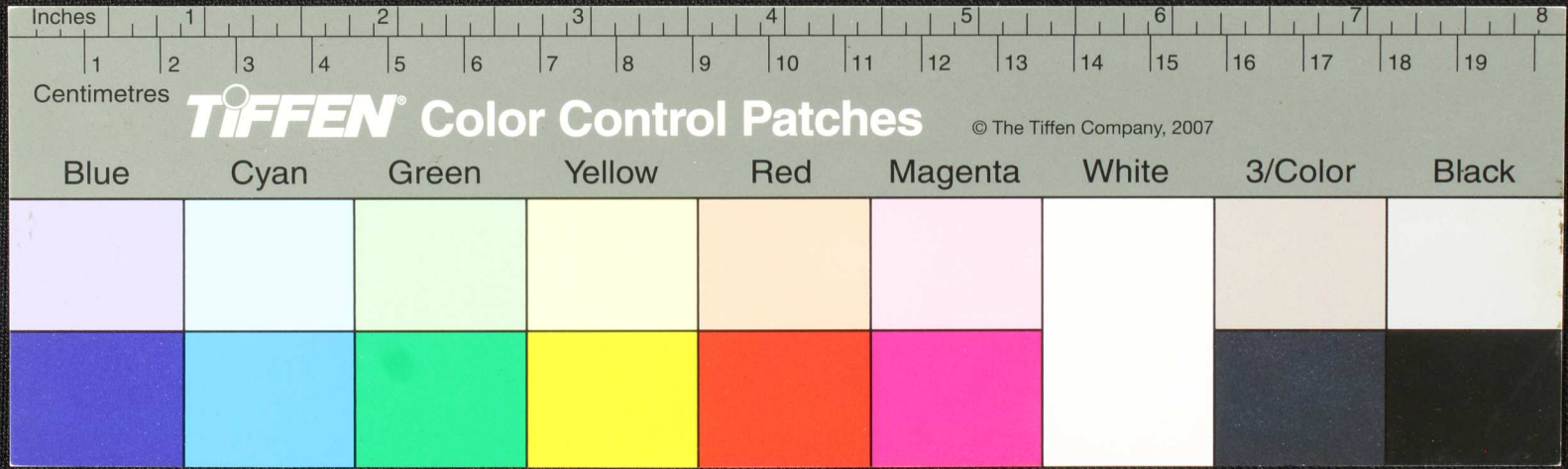
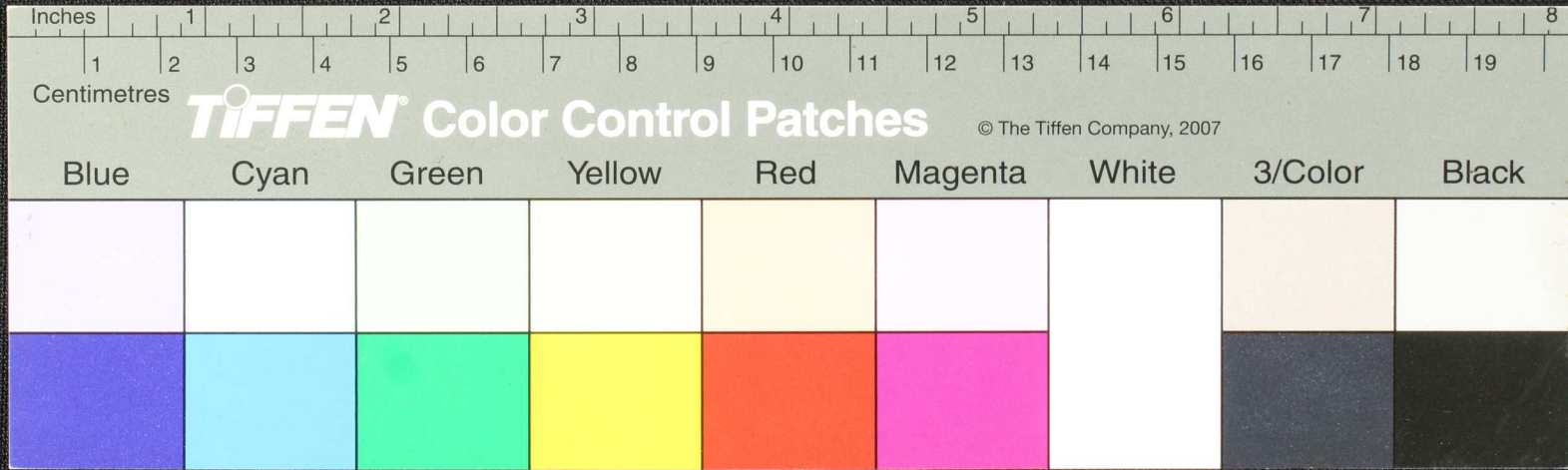


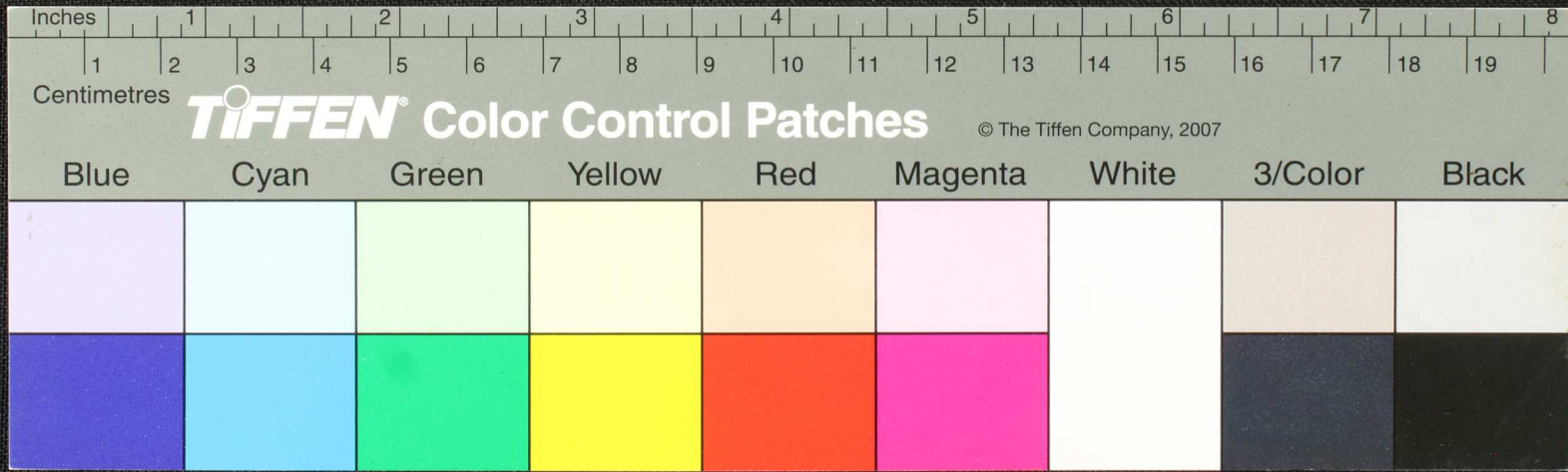
Handwritten Tamil script on a palm leaf manuscript. The text is arranged in approximately 10 horizontal lines across the length of the leaf. The script is finely etched into the surface of the dried leaf. Two circular holes are visible, which were traditionally used for threading a cord to bind multiple leaves together into a book format.



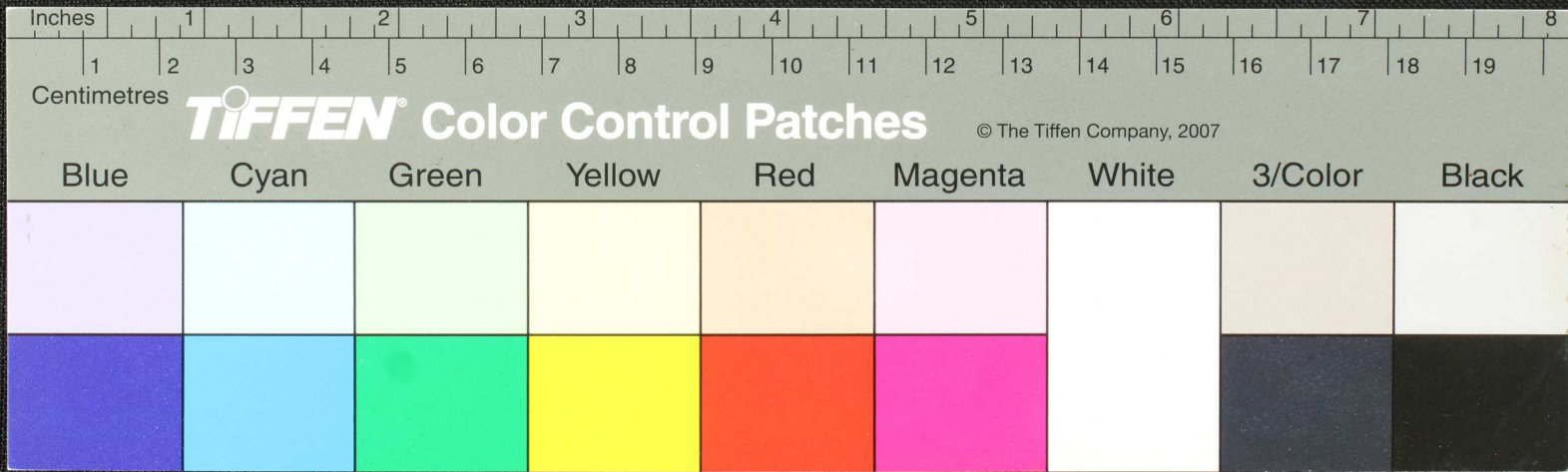
Handwritten Tamil script on a palm leaf manuscript. The text is arranged in several lines across the length of the leaf. Two circular holes are visible, which were traditionally used for threading a cord to bind multiple leaves together. The script is finely etched into the surface of the dried leaf.



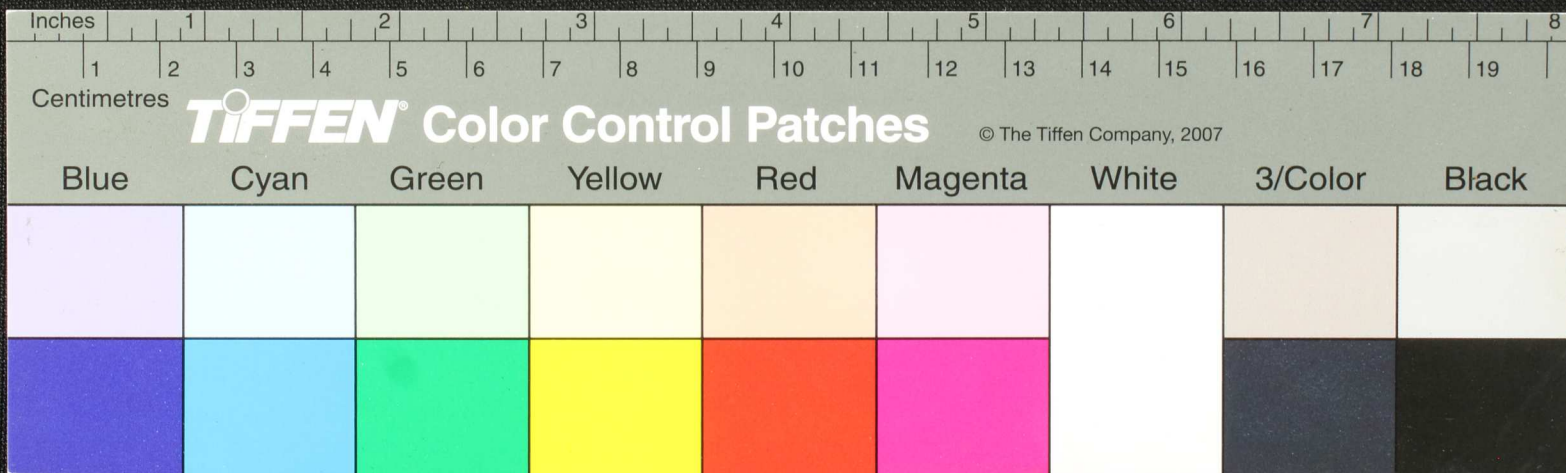
Handwritten Tamil script on a palm leaf manuscript. The text is arranged in approximately four horizontal lines across the length of the leaf. The script is dark and appears to be a traditional form of the Tamil language. There are two circular holes visible on the leaf, which were traditionally used for threading a cord to bind multiple leaves together into a book format.



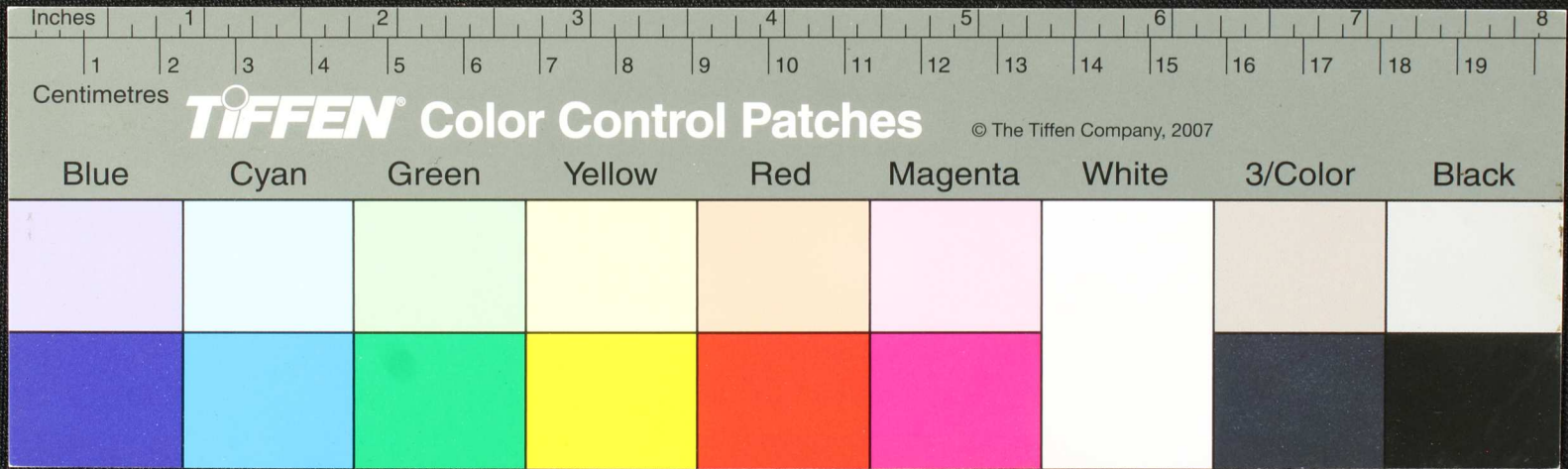
Handwritten Tamil script on a palm leaf manuscript. The text is arranged in approximately 10 horizontal lines across the length of the leaf. The script is dark and appears to be a traditional form of the Tamil language. There are two circular holes visible on the leaf, which were traditionally used for threading a cord to bind multiple leaves together into a book format.



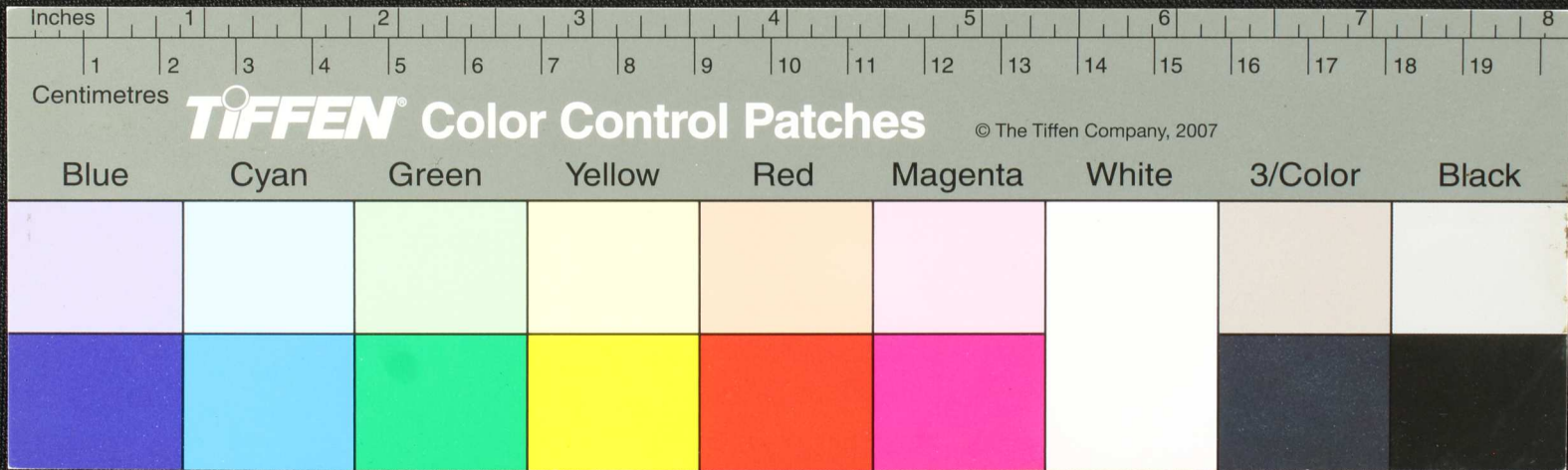
Handwritten Tamil script on a palm leaf manuscript. The text is arranged in approximately 10 horizontal lines across the length of the leaf. The script is dark and appears to be a traditional form of Tamil. There are two circular holes visible on the leaf, which were traditionally used for threading a cord to bind multiple leaves together into a book format. The leaf shows signs of age, including some staining and wear at the edges.



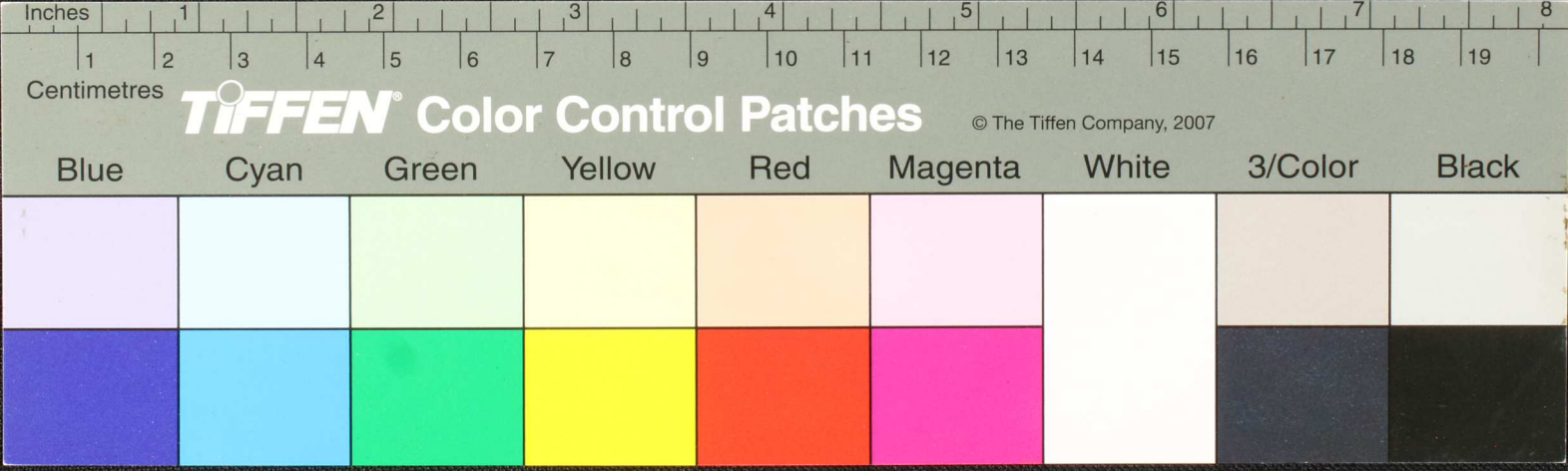
பரமசிவன் ஸ்ரீமாத்மாரகடுதி ஏற்றி. 6 பு சகாமரானி ஸ்ரீமாத்மாரகடுதி
 பரமசிவன் ஸ்ரீமாத்மாரகடுதி ஏற்றி. 6 பு சகாமரானி ஸ்ரீமாத்மாரகடுதி
 பரமசிவன் ஸ்ரீமாத்மாரகடுதி ஏற்றி. 6 பு சகாமரானி ஸ்ரீமாத்மாரகடுதி
 பரமசிவன் ஸ்ரீமாத்மாரகடுதி ஏற்றி. 6 பு சகாமரானி ஸ்ரீமாத்மாரகடுதி
 பரமசிவன் ஸ்ரீமாத்மாரகடுதி ஏற்றி. 6 பு சகாமரானி ஸ்ரீமாத்மாரகடுதி
 பரமசிவன் ஸ்ரீமாத்மாரகடுதி ஏற்றி. 6 பு சகாமரானி ஸ்ரீமாத்மாரகடுதி
 பரமசிவன் ஸ்ரீமாத்மாரகடுதி ஏற்றி. 6 பு சகாமரானி ஸ்ரீமாத்மாரகடுதி
 பரமசிவன் ஸ்ரீமாத்மாரகடுதி ஏற்றி. 6 பு சகாமரானி ஸ்ரீமாத்மாரகடுதி
 பரமசிவன் ஸ்ரீமாத்மாரகடுதி ஏற்றி. 6 பு சகாமரானி ஸ்ரீமாத்மாரகடுதி
 பரமசிவன் ஸ்ரீமாத்மாரகடுதி ஏற்றி. 6 பு சகாமரானி ஸ்ரீமாத்மாரகடுதி



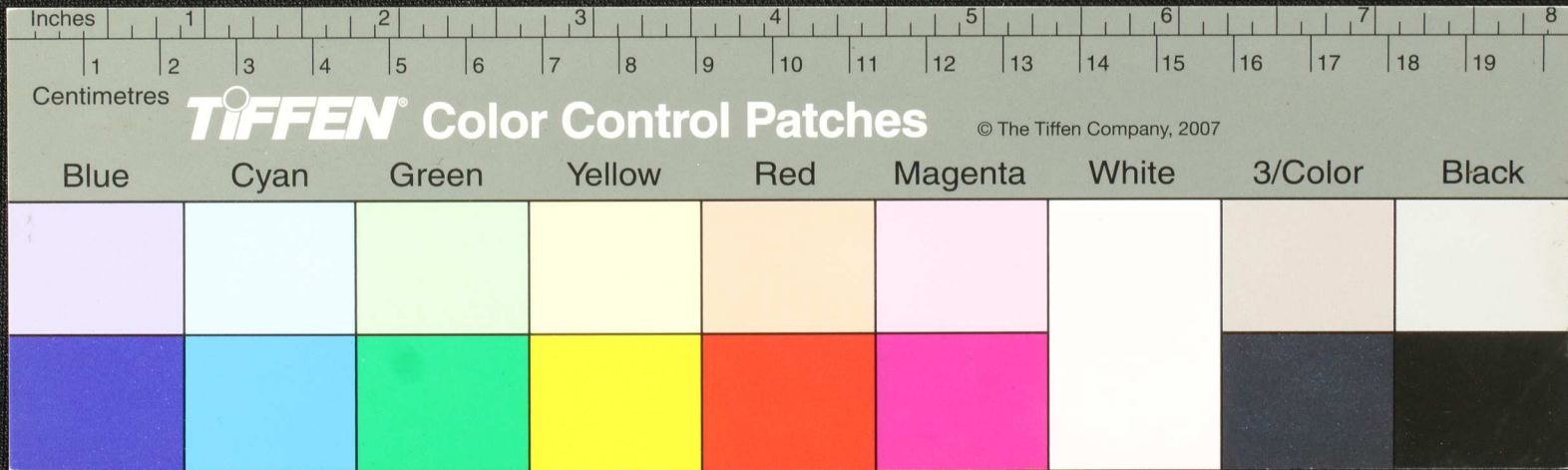
திருவிநீர்தான் னர்தாருவயிற் றுநிபுநகு-சுநராபுகொண்ட
 கீதாநாயவாட சிறுநெய்ச்செய்தி கிவகடுகியுந் திநாநகர்பெர்மெம்
 கெடவது குளிரகினைவார் மனையிலுந் திதரநிபுநகுபடி ஐனயுந்
 உணவுநயிநி னுநகரமதிநுபலநநாநைநிபு தினவடகு
 உணவுநயிநி தாநிநுநலிவடகுபடி னுநகரநிநகரநிபுநகுமெ



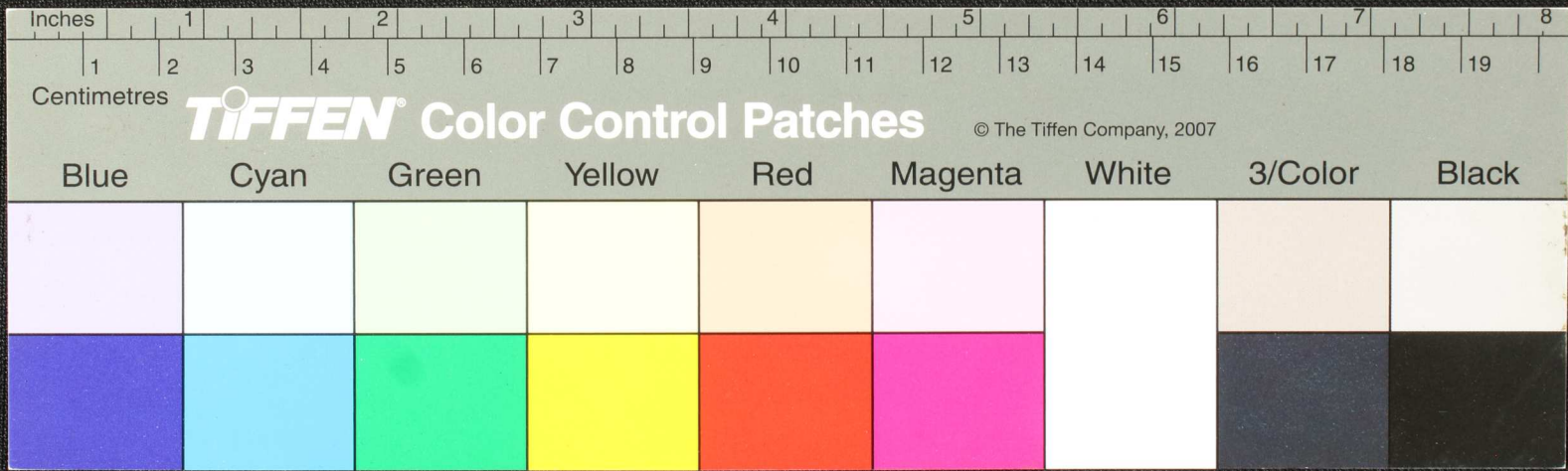
Handwritten Tamil script on a palm leaf manuscript. The text is arranged in approximately 10 horizontal lines across the length of the leaf. The script is dark and appears to be a traditional form of the Tamil language. There are two circular holes visible on the leaf, which were traditionally used for threading a cord to bind multiple leaves together into a book format. The leaf shows signs of age, including some staining and wear, particularly along the edges and between the lines of text.



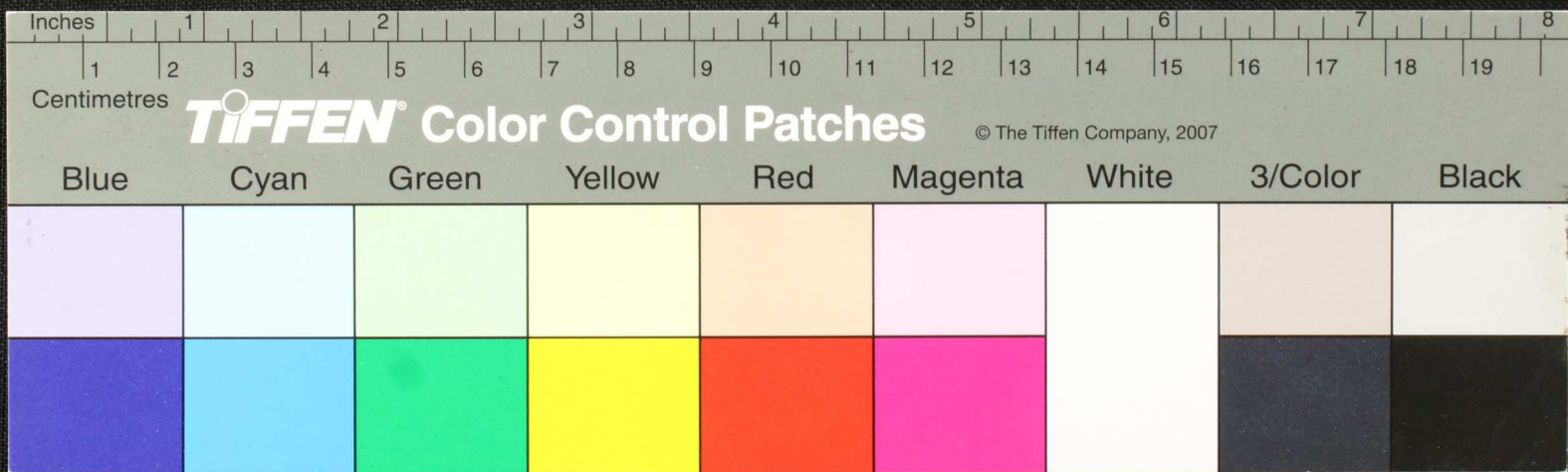
1. கருவியை நன்கு கழுவி வைத்துக் கொள்ளுங்கள். 2. கருவியை நன்கு கழுவி வைத்துக் கொள்ளுங்கள். 3. கருவியை நன்கு கழுவி வைத்துக் கொள்ளுங்கள். 4. கருவியை நன்கு கழுவி வைத்துக் கொள்ளுங்கள். 5. கருவியை நன்கு கழுவி வைத்துக் கொள்ளுங்கள். 6. கருவியை நன்கு கழுவி வைத்துக் கொள்ளுங்கள். 7. கருவியை நன்கு கழுவி வைத்துக் கொள்ளுங்கள். 8. கருவியை நன்கு கழுவி வைத்துக் கொள்ளுங்கள். 9. கருவியை நன்கு கழுவி வைத்துக் கொள்ளுங்கள். 10. கருவியை நன்கு கழுவி வைத்துக் கொள்ளுங்கள். 11. கருவியை நன்கு கழுவி வைத்துக் கொள்ளுங்கள். 12. கருவியை நன்கு கழுவி வைத்துக் கொள்ளுங்கள். 13. கருவியை நன்கு கழுவி வைத்துக் கொள்ளுங்கள். 14. கருவியை நன்கு கழுவி வைத்துக் கொள்ளுங்கள். 15. கருவியை நன்கு கழுவி வைத்துக் கொள்ளுங்கள். 16. கருவியை நன்கு கழுவி வைத்துக் கொள்ளுங்கள். 17. கருவியை நன்கு கழுவி வைத்துக் கொள்ளுங்கள். 18. கருவியை நன்கு கழுவி வைத்துக் கொள்ளுங்கள். 19. கருவியை நன்கு கழுவி வைத்துக் கொள்ளுங்கள். 20. கருவியை நன்கு கழுவி வைத்துக் கொள்ளுங்கள்.



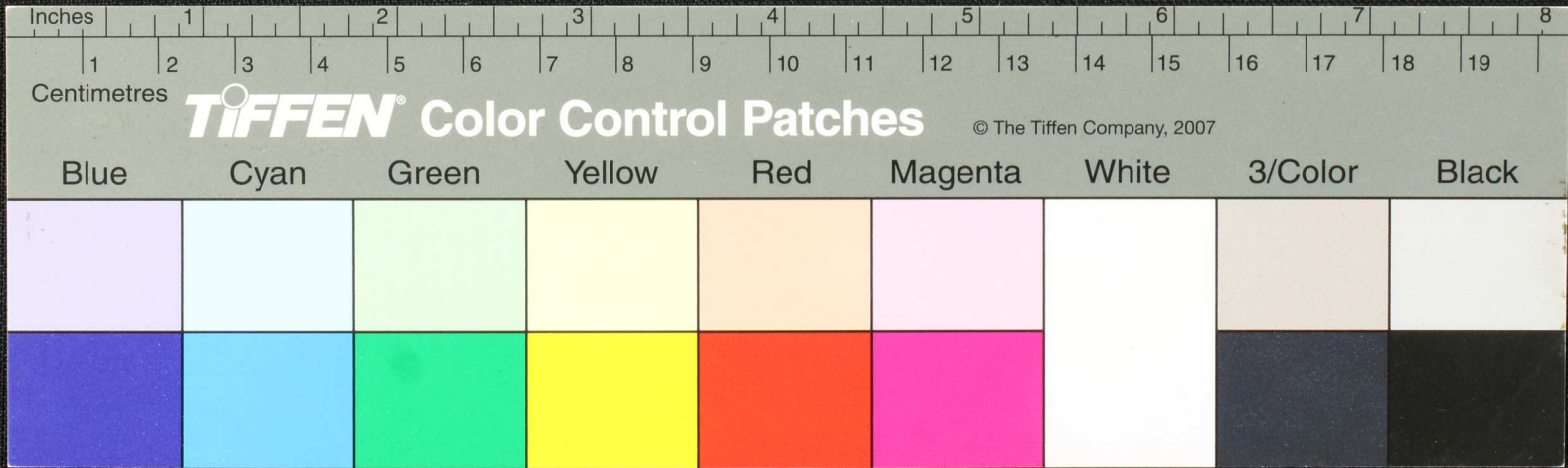
Handwritten Tamil script on a palm leaf manuscript. The text is arranged in approximately 10 horizontal lines. On the left side, there are three vertical characters: 'செய்', 'பெயர்', and 'பதி'. A circular hole is visible in the center of the leaf, used for threading a cord to bind multiple leaves together. The script is finely etched into the surface of the dried leaf.



உரபரவெசனாறுகுடகுளிச்சினைசுதிவிரியுடதுபய
 அரபரவெசனாறுகுடகுளிச்சினைசுதிவிரியுடதுபய
 அதைபரவெசனாறுகுடகுளிச்சினைசுதிவிரியுடதுபய
 கீகுச்சி தாணிதிடமா குச்சிநாணிச்சினைசுதிவிரியுடதுபய
 7-ஆ- னாறுகுடகுளிச்சினைசுதிவிரியுடதுபய
 ருபரவெசனாறுகுடகுளிச்சினைசுதிவிரியுடதுபய

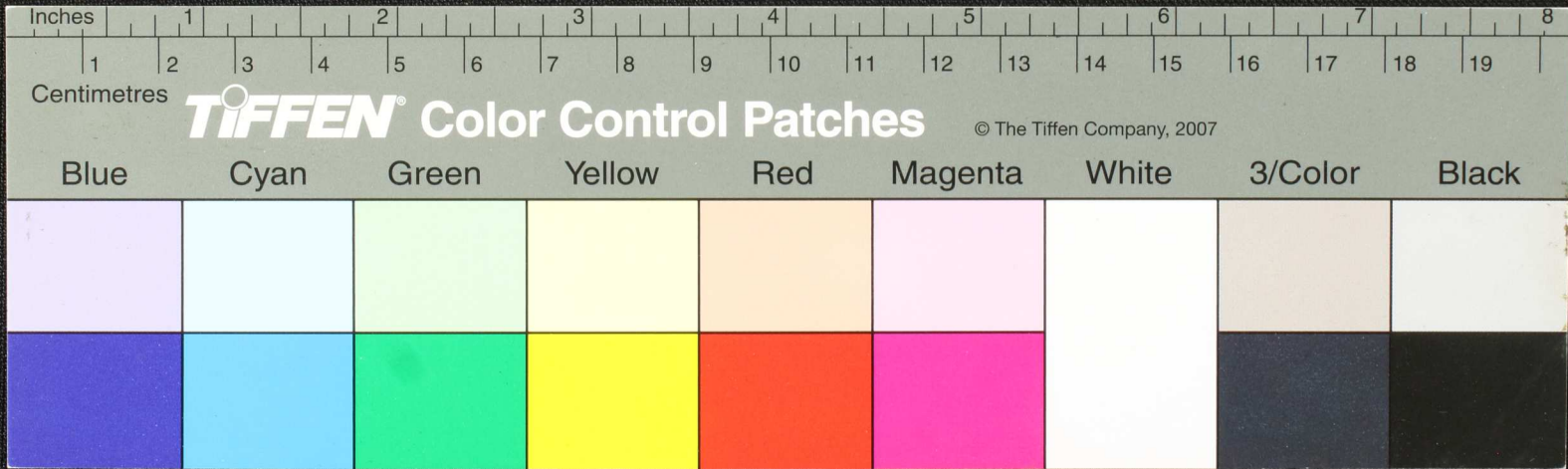


Handwritten Tamil script on a palm leaf manuscript. The text is arranged in approximately 10 horizontal lines across the length of the leaf. The script is dark brown or black, and the leaf itself is aged and yellowish with some surface wear and small holes.

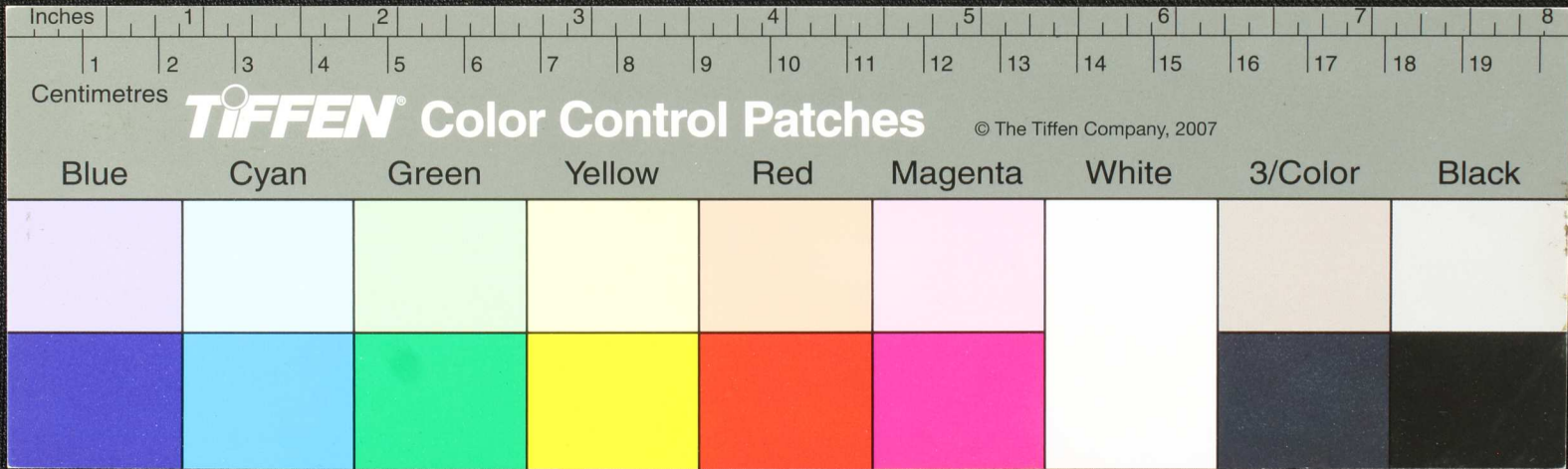


சியாந்
 லைலிம
 லவாகதி
 ஞாபம

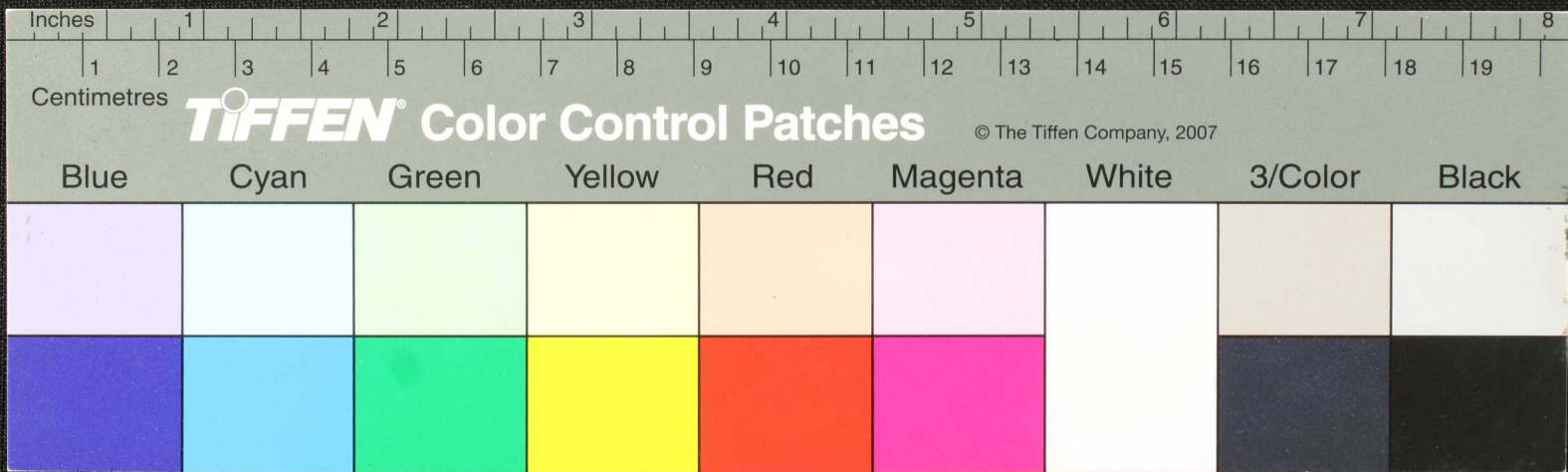
மயகதிராதி னபமவதி கிறிணு பெகமணை உவகதி ராமபுருகி ரபாதி ம
 படுபாபுயி தி கமலி ராமபுருகி ரபாதி ம கிமணை ஸவநயு லைலி ரமதினை
 ரபாதி மவகதி. யாகிணுணு மொபிவதி கிறிணு ருளாம்பரனை
 யுடனலலிம லவாநெரு லவாநியு வகதி உவகதி கிருகிராபல
 மாகிணுநாந னிநிது நிகதி லுடனா லுடனா லுடனா லுடனா லுடனா லுடனா லுடனா லுடனா



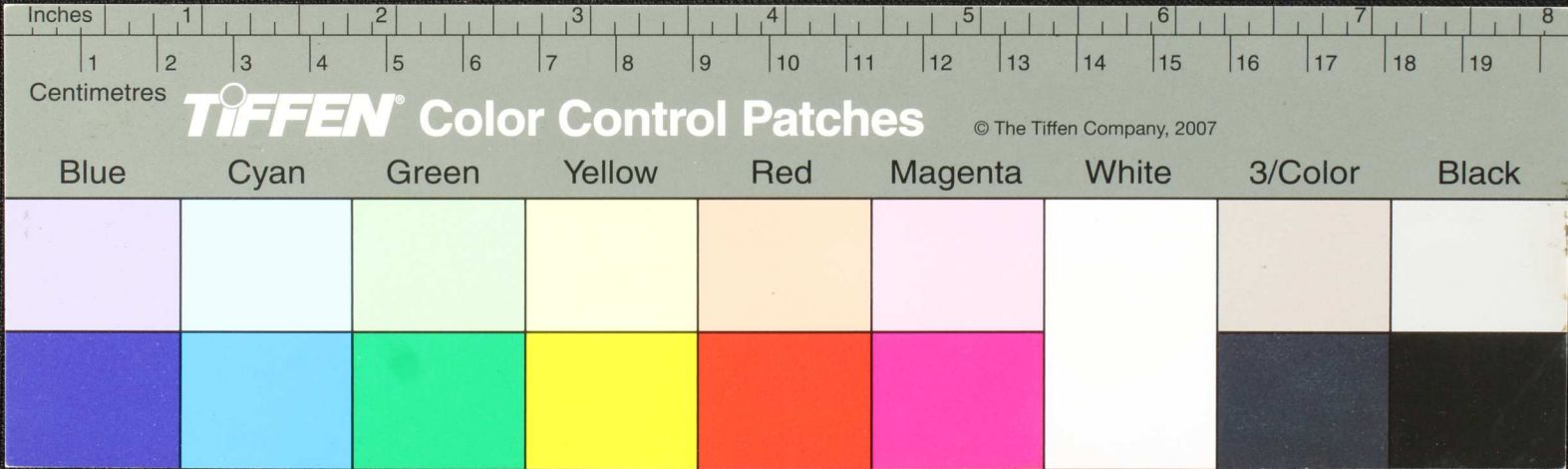
Handwritten Tamil script on a palm leaf manuscript. The text is arranged in approximately four horizontal lines across the length of the leaf. The script is dark and appears to be a traditional form of the Tamil language. There are two circular holes visible on the leaf, which were traditionally used for threading a cord to bind multiple leaves together into a book format.



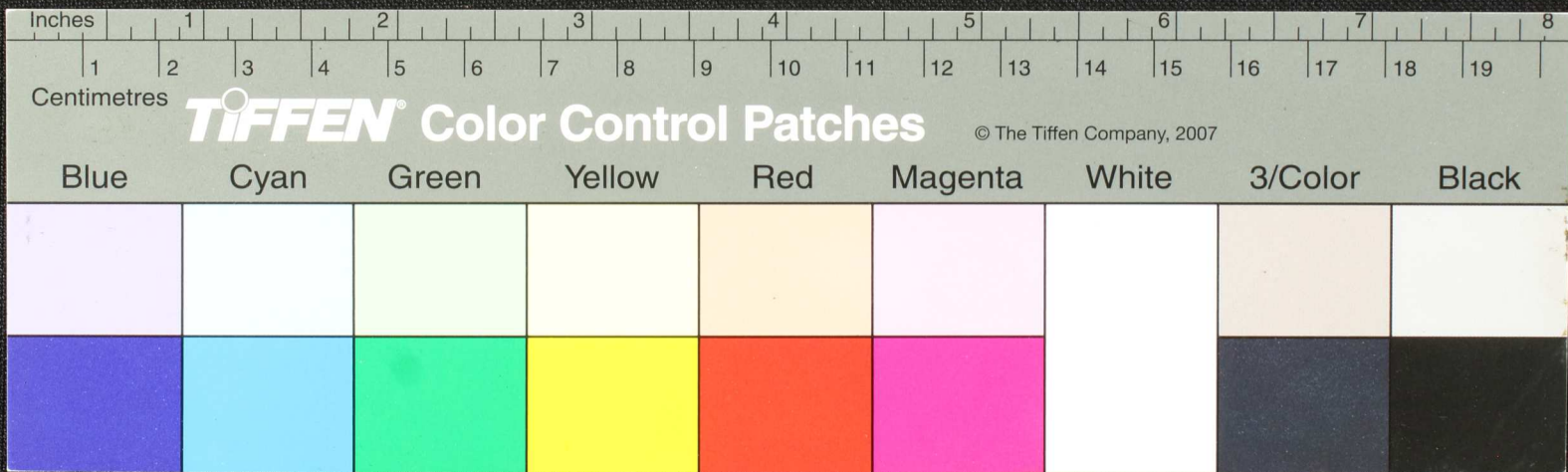
Handwritten Tamil script on a palm leaf manuscript. The text is arranged in approximately four horizontal lines across the length of the leaf. The script is finely etched into the natural texture of the dried leaf. There are two circular holes visible, which were traditionally used for threading a cord to bind multiple leaves together into a book format. The leaf shows signs of age, including some surface wear and discoloration.

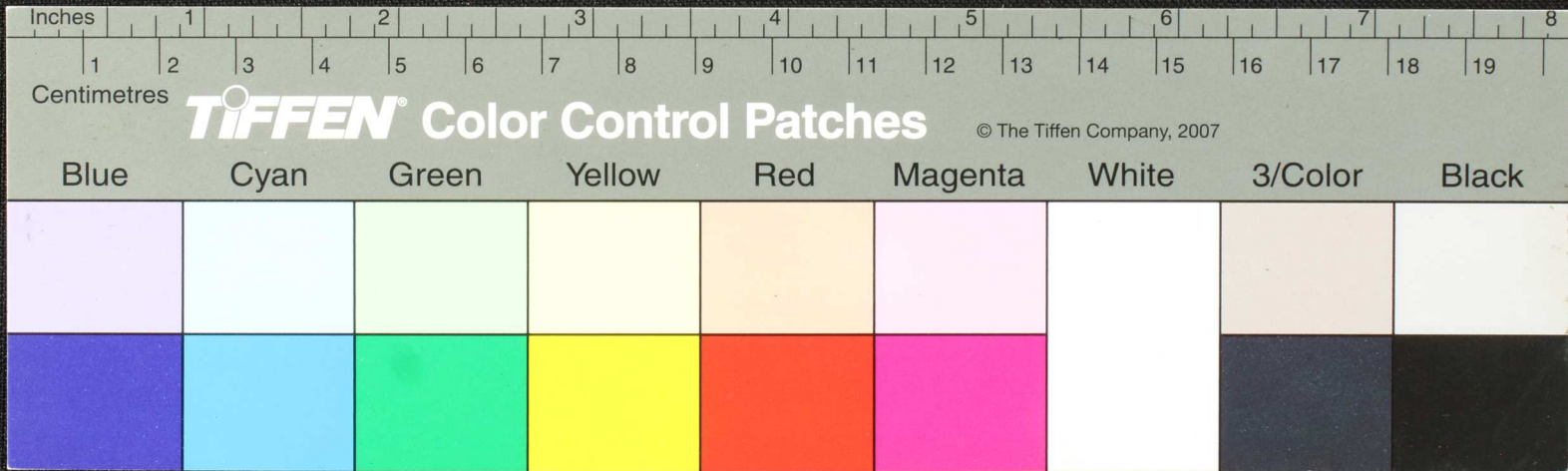


உயர்க்கு
 படை
 திருவெய்து மயல சிபுத்திர மரபு நாம துபராதிமவெ திசுகிர அனவமருதர்
 யுதவிரவெ வன வபவபுடைபடை துடுகிருக்கிருநாதிசு - னவகத்தி
 தநரபவெய்திர கிருவினசு - அருகுநிநிலைபுலப ரத்து - னை -
 (அருவெய) ரடாநாசுக வடகிசுகுகிர விரயசுகதிரும மநகிரமரபு
 யுதவெயிரமரபு வலவசுக நடுவெயகுதிரதிரபுகதிரவெய் குவெய மகிரமரபு

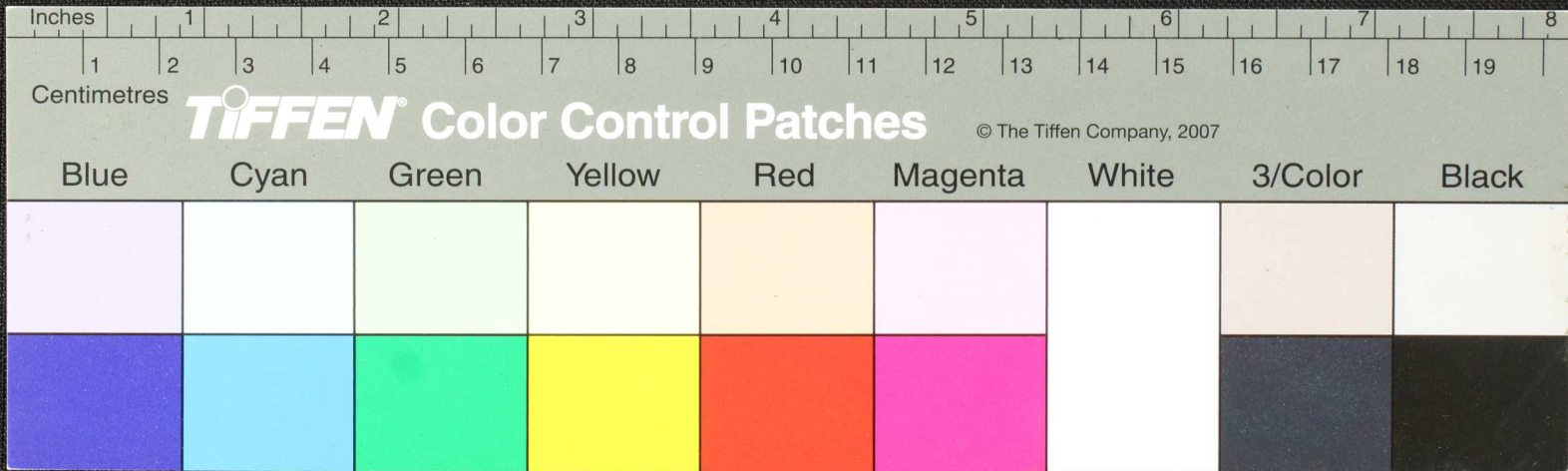


Handwritten Tamil script on a palm leaf manuscript. The text is arranged in approximately 10 horizontal lines across the length of the leaf. The script is finely etched into the surface of the dried leaf. There are two distinct circular holes, likely from a traditional string-and-stick binding method. The leaf shows signs of age, including some staining and wear, particularly at the right end.

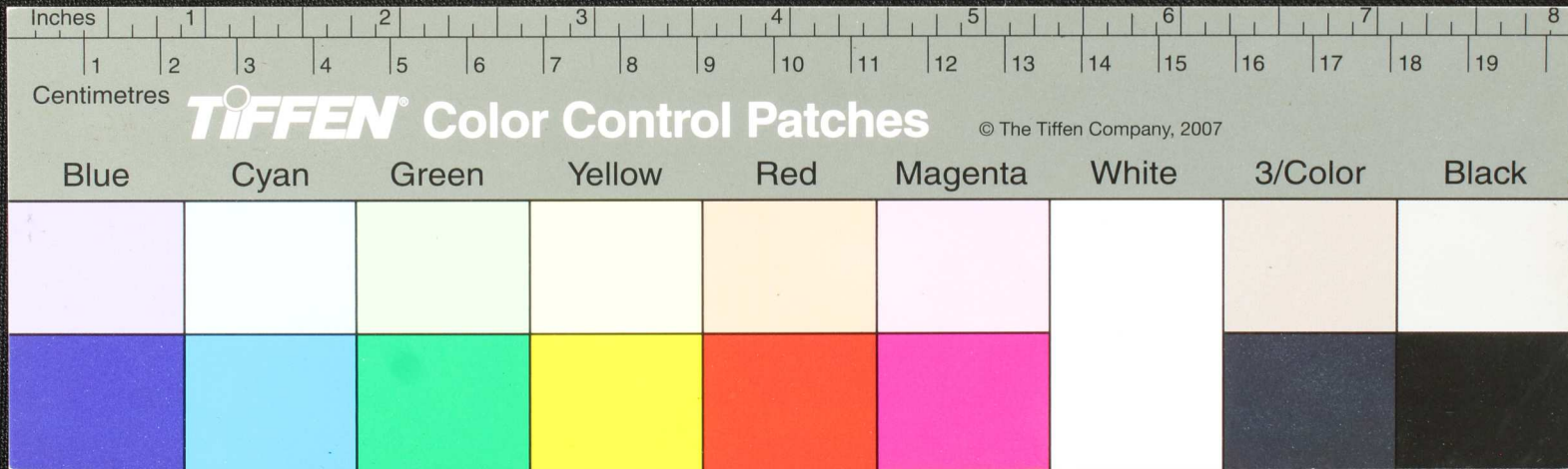


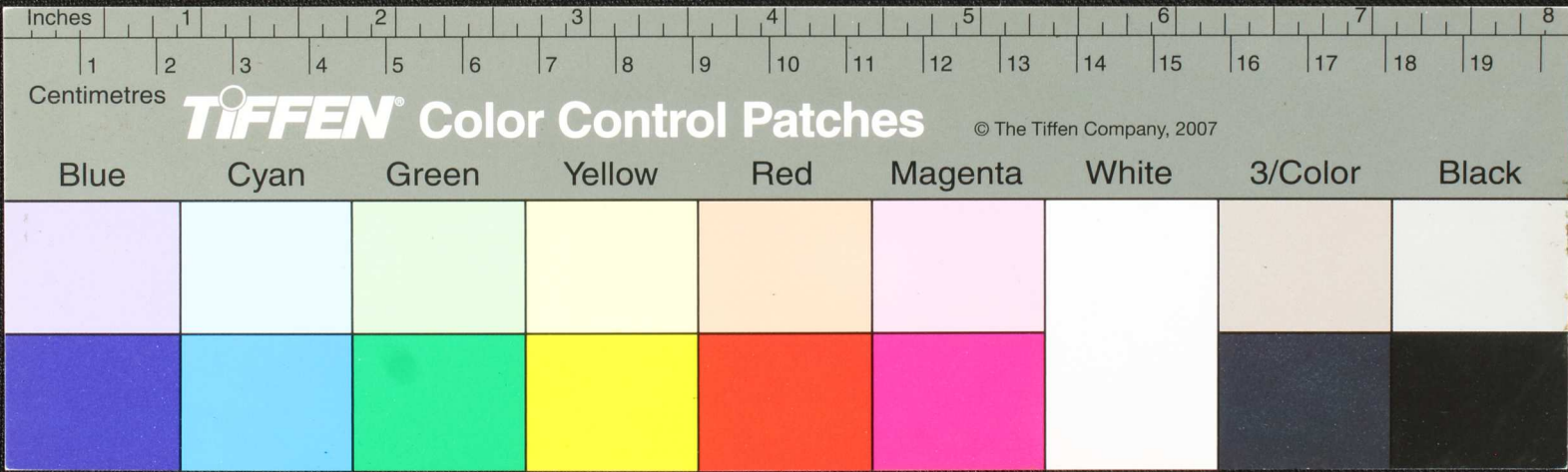


Handwritten Tamil script on a palm leaf manuscript. The text is arranged in approximately 10 horizontal lines across the length of the leaf. The script is dark and appears to be a traditional form of the Tamil language. There are two circular holes visible on the leaf, which were traditionally used for threading a cord to bind multiple leaves together into a book format. The leaf shows signs of age, including some staining and wear at the edges.



Handwritten text in Tamil script on a palm leaf manuscript. The text is arranged in approximately 10 horizontal lines across the length of the leaf. The script is dark and appears to be a traditional form of the Tamil language. There are two distinct circular holes punched through the leaf, one near the left edge and one near the right edge, which were traditionally used for threading a cord to bind multiple leaves together into a book format. The leaf itself is yellowish-brown with some darker staining and wear, particularly around the edges and between the holes.



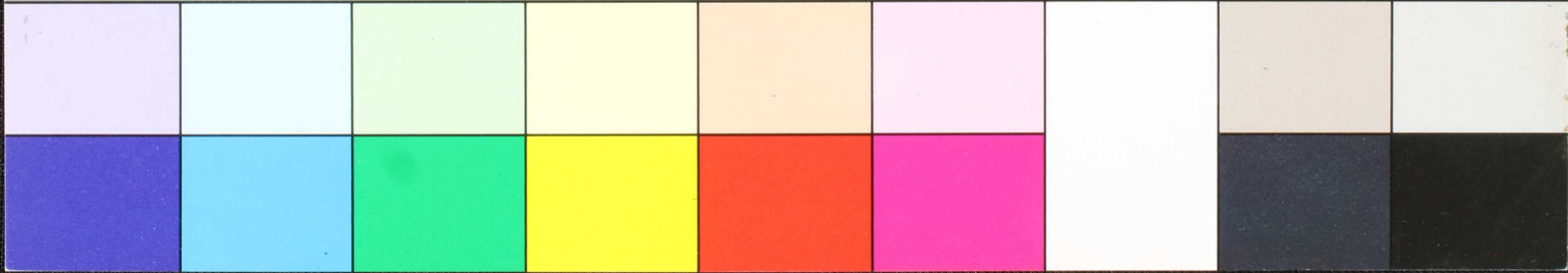


Centimetres

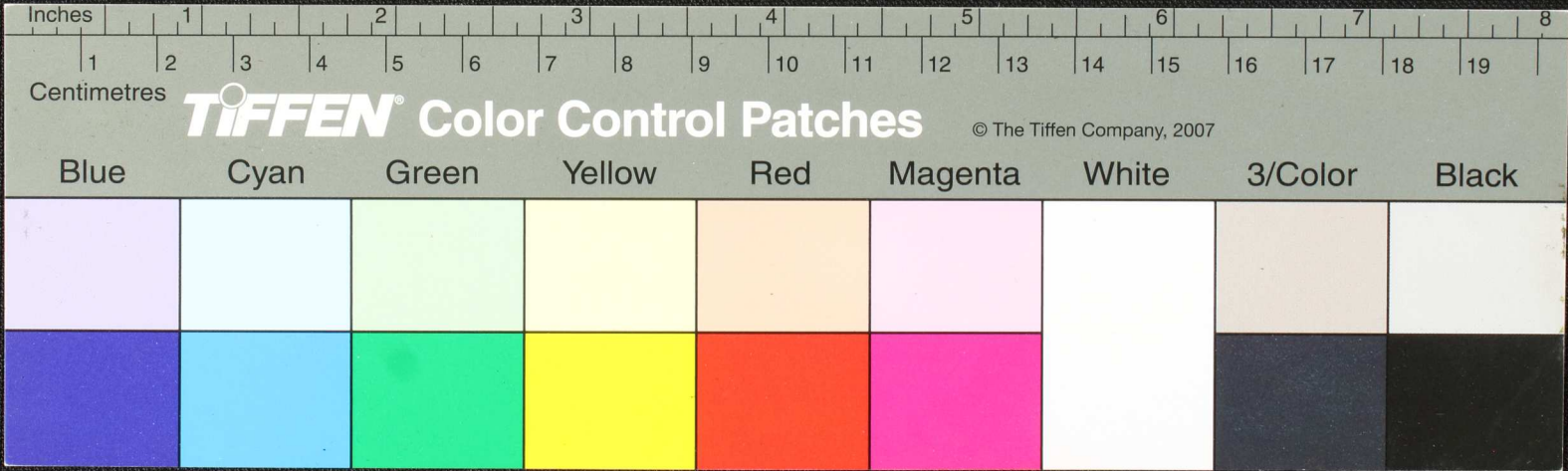
TIFFEN Color Control Patches

© The Tiffen Company, 2007

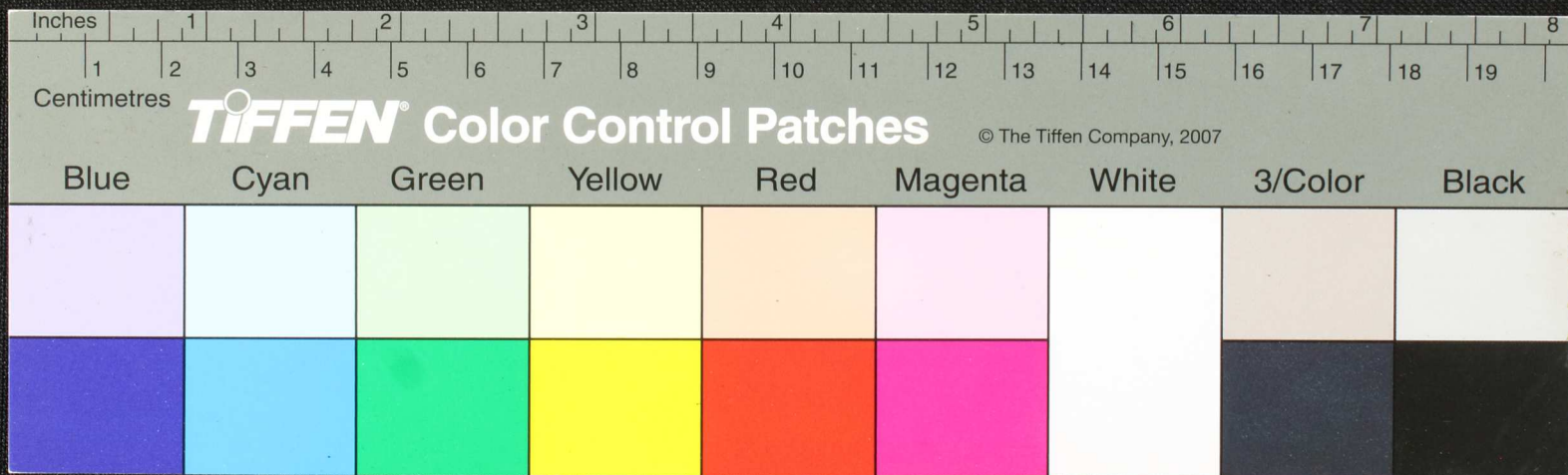
Blue Cyan Green Yellow Red Magenta White 3/Color Black



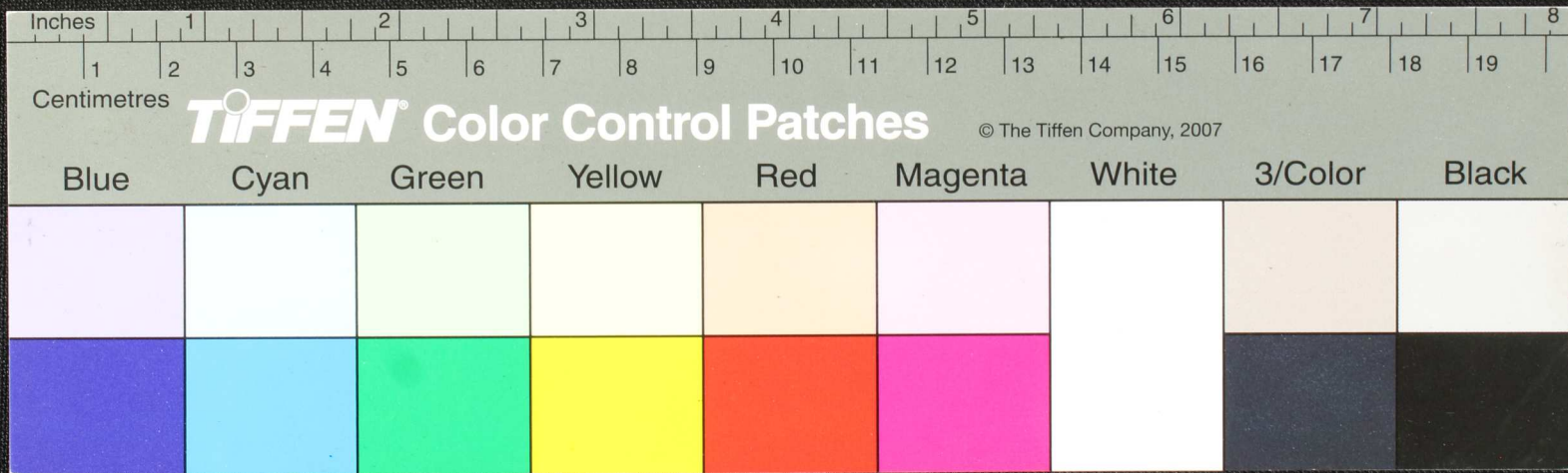
க இயைக்க குதிரமவி தநினைவு தபயி தீத்திரநயயை அருபவியுடைய தீதிர
 டுக்கதா துதியநயை துத்தியுடைய தீதிரநயை நகருகையவ தீயியுடைய தீதிர
 தியிவம தீதிரநயை துதியநயை துதியநயை துதியநயை துதியநயை துதியநயை துதியநயை
 துதியநயை துதியநயை துதியநயை துதியநயை துதியநயை துதியநயை துதியநயை
 துதியநயை துதியநயை துதியநயை துதியநயை துதியநயை துதியநயை துதியநயை
 துதியநயை துதியநயை துதியநயை துதியநயை துதியநயை துதியநயை துதியநயை



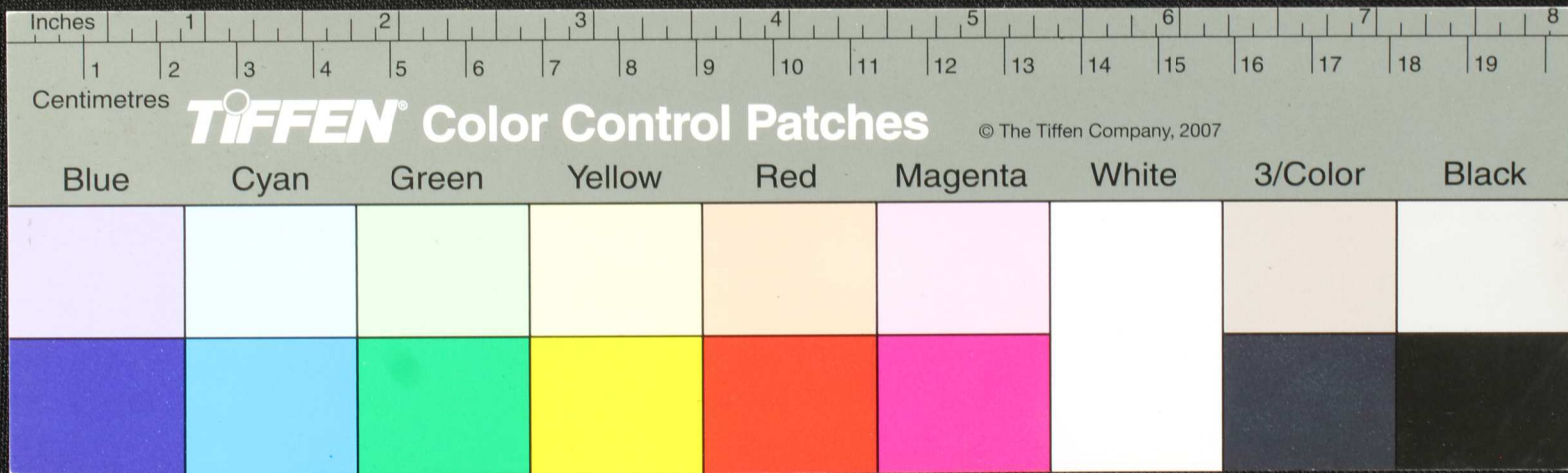
Handwritten Tamil script on a palm leaf manuscript. The text is arranged in two lines across the top of the leaf. The first line contains approximately 12 characters, and the second line contains approximately 10 characters. There are two circular holes punched through the leaf, one at approximately the 6-inch mark and another at the 15-inch mark. The leaf shows signs of age, including some staining and wear.



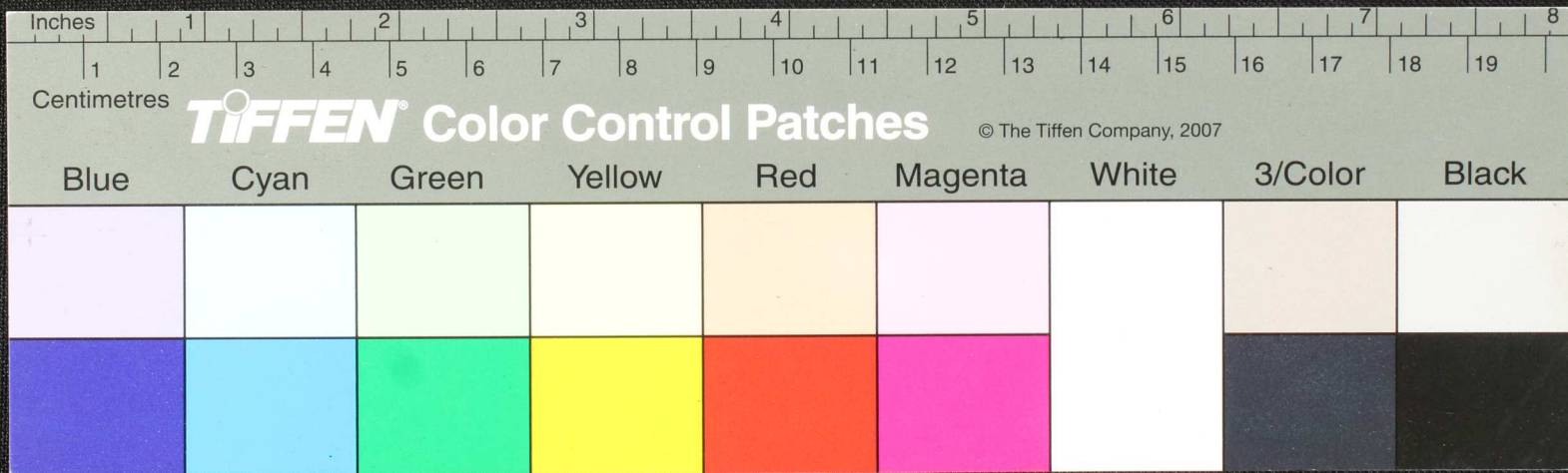
Handwritten Tamil script on a palm leaf manuscript. The text is arranged in approximately 10 horizontal lines. On the left side, there is a vertical column of text that appears to be a title or a reference number, possibly starting with '77'. The main body of text is densely packed and covers most of the leaf's width. There are two distinct circular holes, likely from a traditional binding method, located roughly in the middle and towards the right side of the leaf.



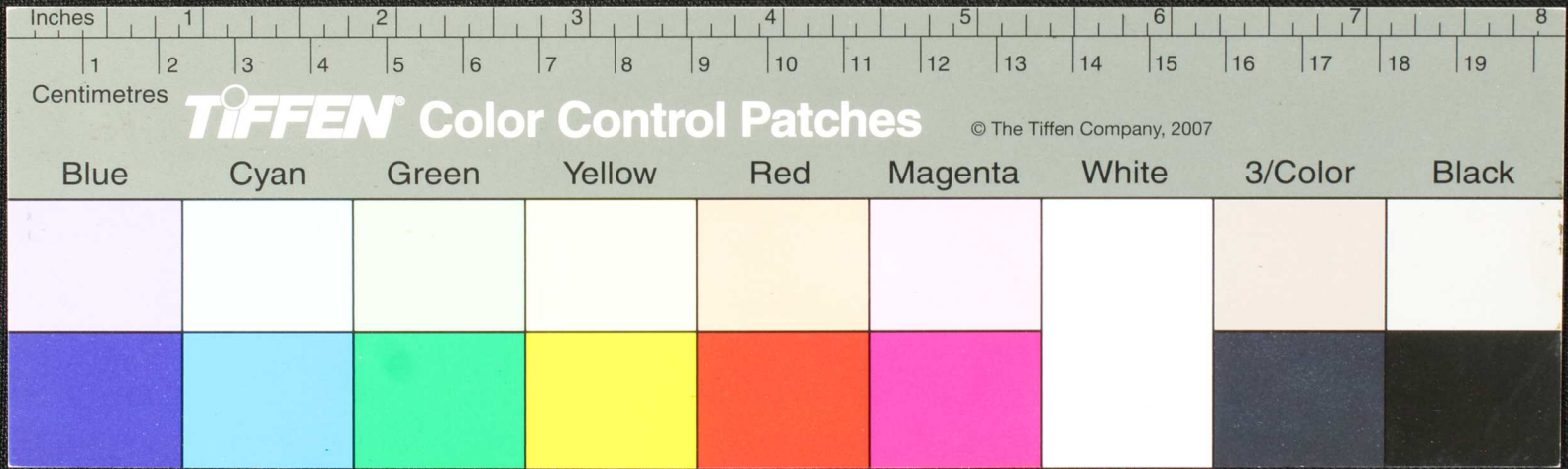
Handwritten Tamil script on a palm leaf manuscript. The text is arranged in approximately 10 horizontal lines. The script is finely etched into the surface of the dried leaf. Two circular holes are visible, which were traditionally used for threading a cord to bind multiple leaves together into a book format. The leaf shows signs of age, with some fraying and discoloration, particularly at the left edge.



Handwritten Tamil script on a palm leaf manuscript. The text is arranged in approximately three horizontal lines. The script is finely etched into the surface of the dried leaf. The leaf shows signs of age, including some dark spots and irregular edges.



Handwritten Tamil script on a palm leaf manuscript. The text is arranged in approximately five horizontal lines. The script is dark and appears to be a traditional form of Tamil. The leaf shows signs of age, including some dark spots and a jagged, damaged edge on the right side.

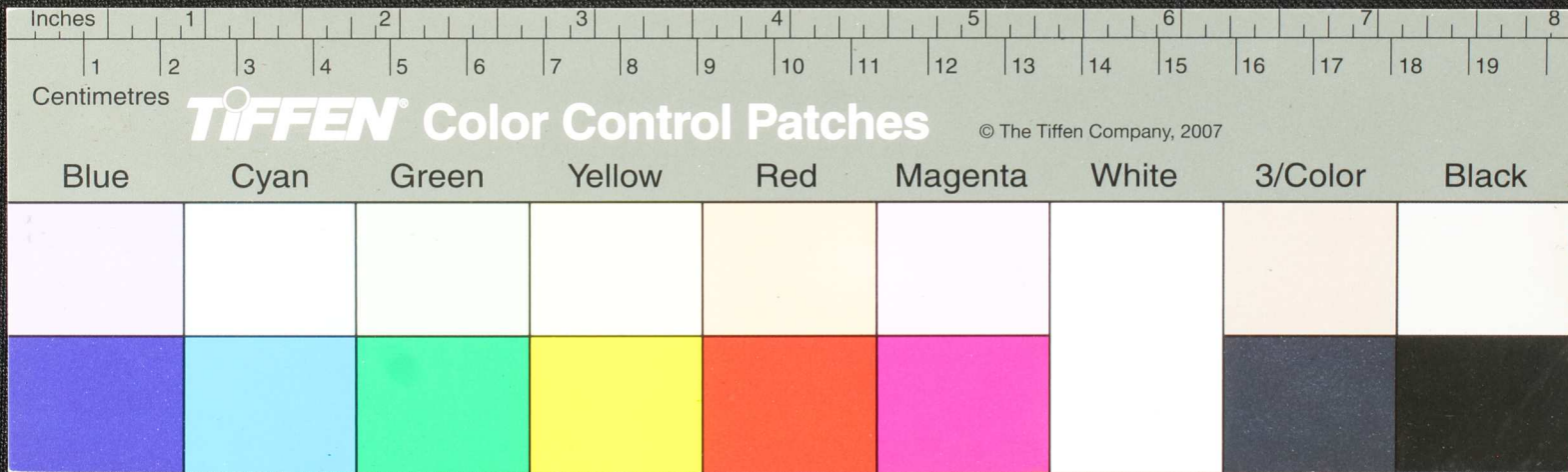


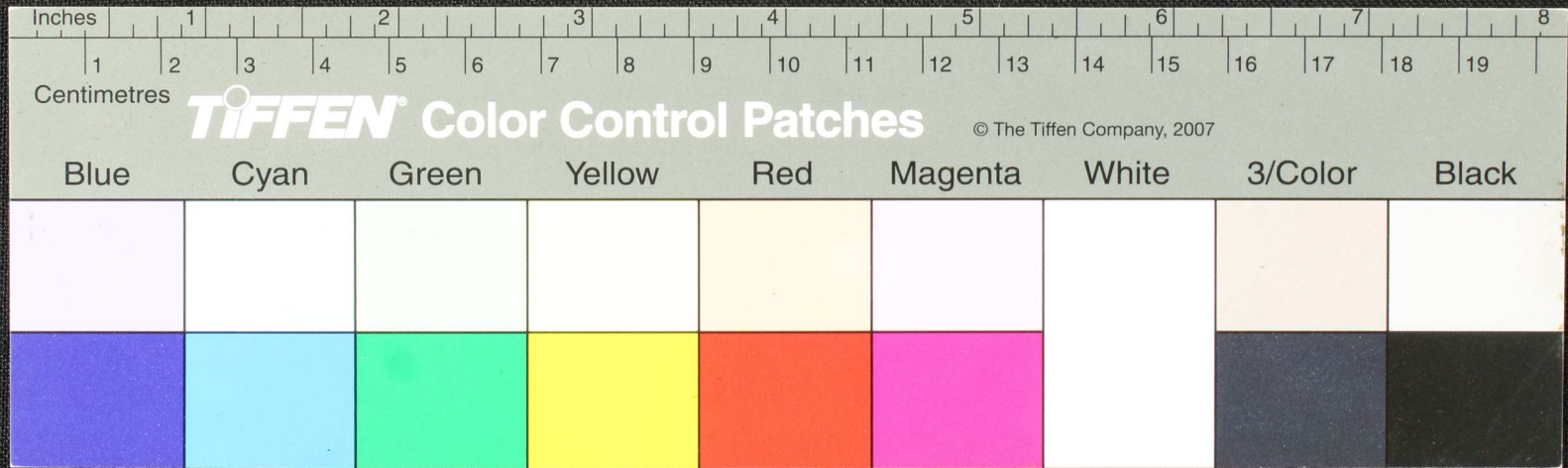
17ஆகித்
 தவிநனூடு
 க்குடுகிடு
 ழலயு
 தியுதுகர
 டுகு
 முறைபுலு

கிரையபயதலிடைபய
 குவாடாணாகிரகநதைவதக
 ஆதாக
 தகக
 வவதக

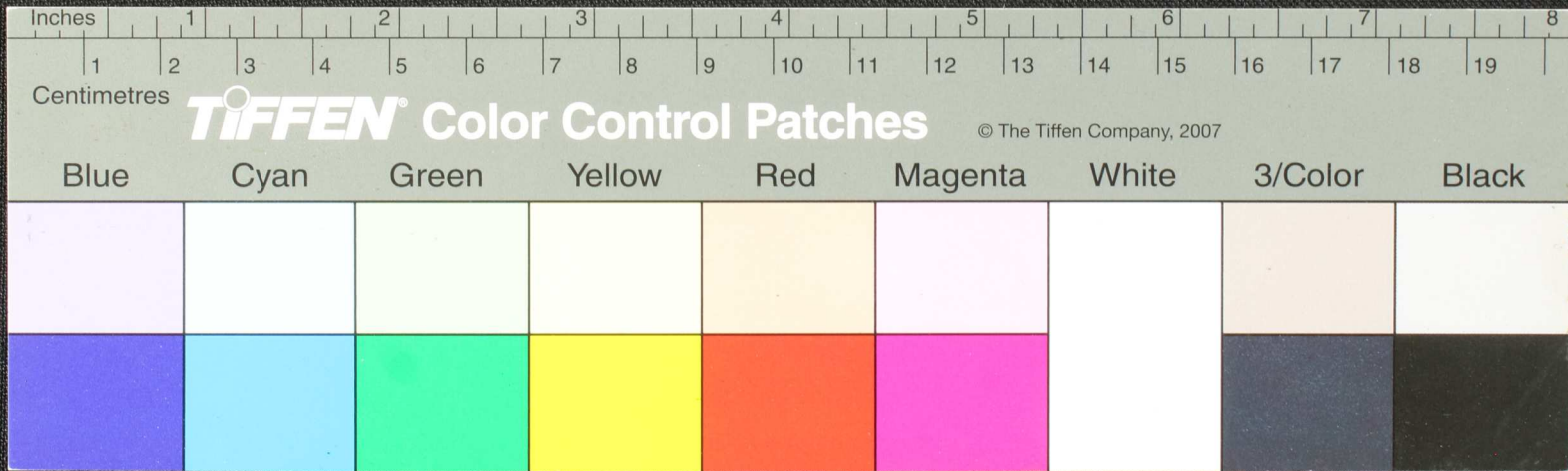
கிரையபயதலிடைபய
 குவாடாணாகிரகநதைவதக
 ஆதாக
 தகக
 வவதக

கிரையபயதலிடைபய
 குவாடாணாகிரகநதைவதக
 ஆதாக
 தகக
 வவதக

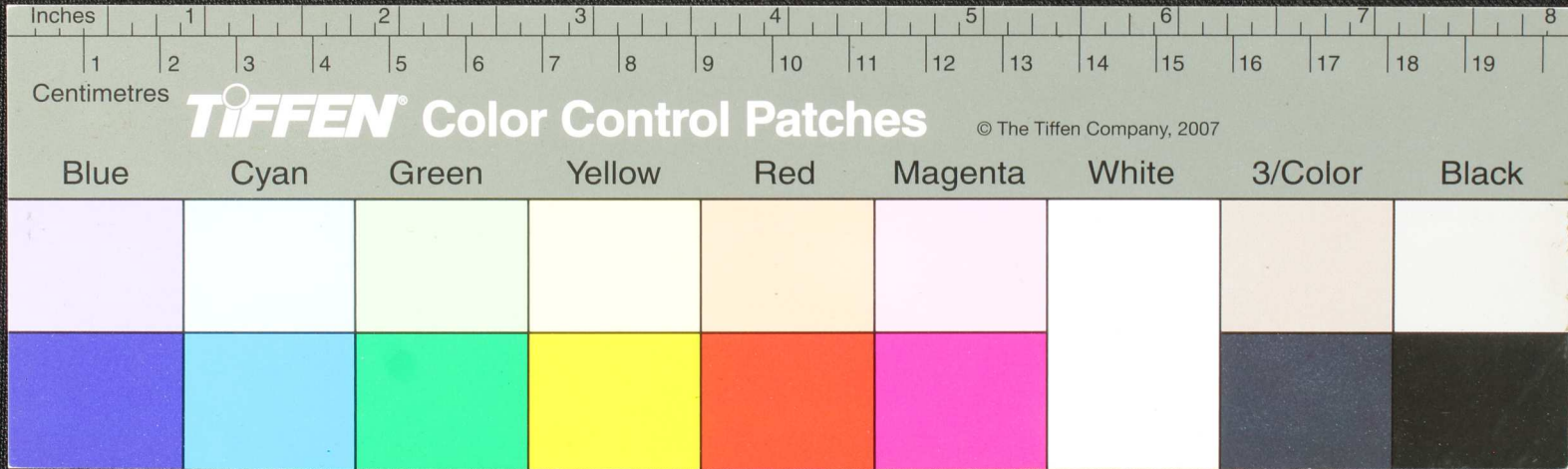




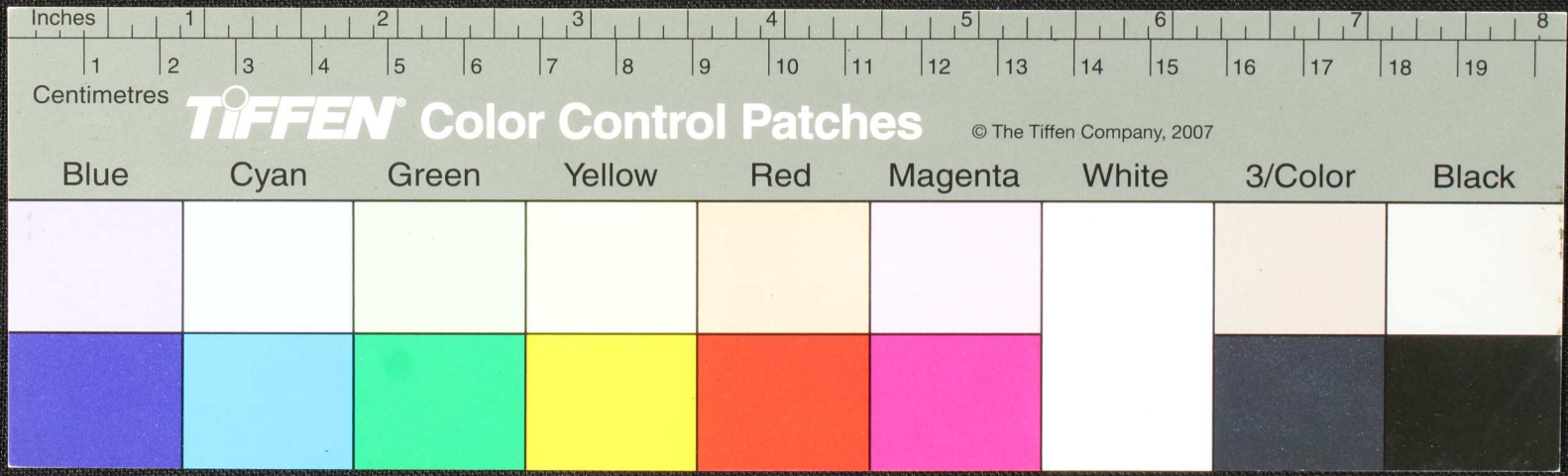
Handwritten text in Tamil script on a palm leaf manuscript. The text is arranged in approximately four horizontal lines. The first line contains the characters 'சுந்தரமே' (Sundaramē), the second 'மலர்வது' (Malarvadu), the third 'மாமல' (Mamal), and the fourth 'மலர்வது' (Malarvadu). The script is dark and appears to be inscribed on the natural surface of the dried leaf. There are some dark spots and irregularities on the leaf, possibly due to age or damage.



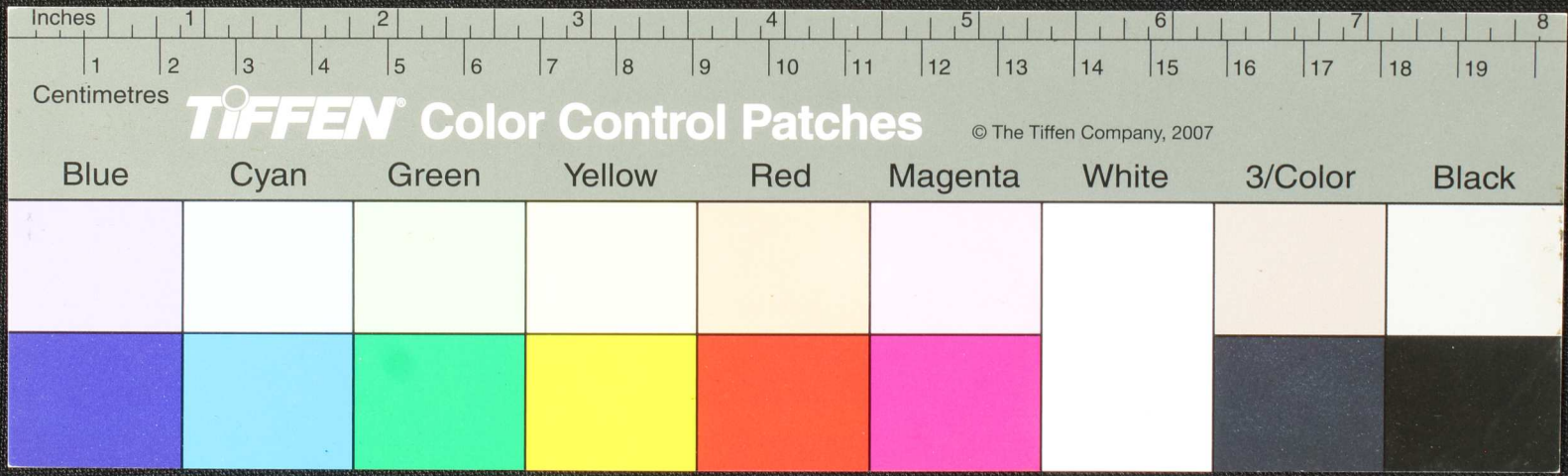
Handwritten Tamil script on a palm leaf manuscript fragment. The text is arranged in approximately four horizontal lines. The script is dark and appears to be a traditional form of Tamil. The leaf is aged and shows signs of wear, including a prominent hole and some staining.



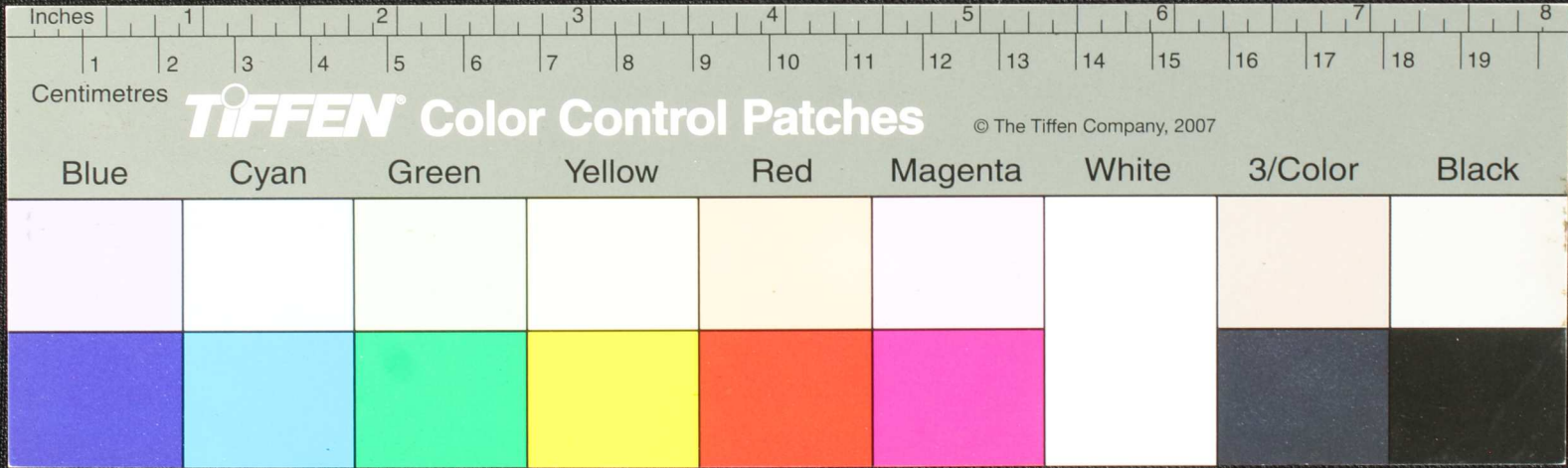
Handwritten text in Tamil script on a palm leaf manuscript. The text is arranged in approximately 10 horizontal lines across the length of the leaf. The script is dark and appears to be a traditional form of the Tamil language. The leaf itself is aged, yellowish-brown, and shows signs of wear, including two circular holes and some surface damage.



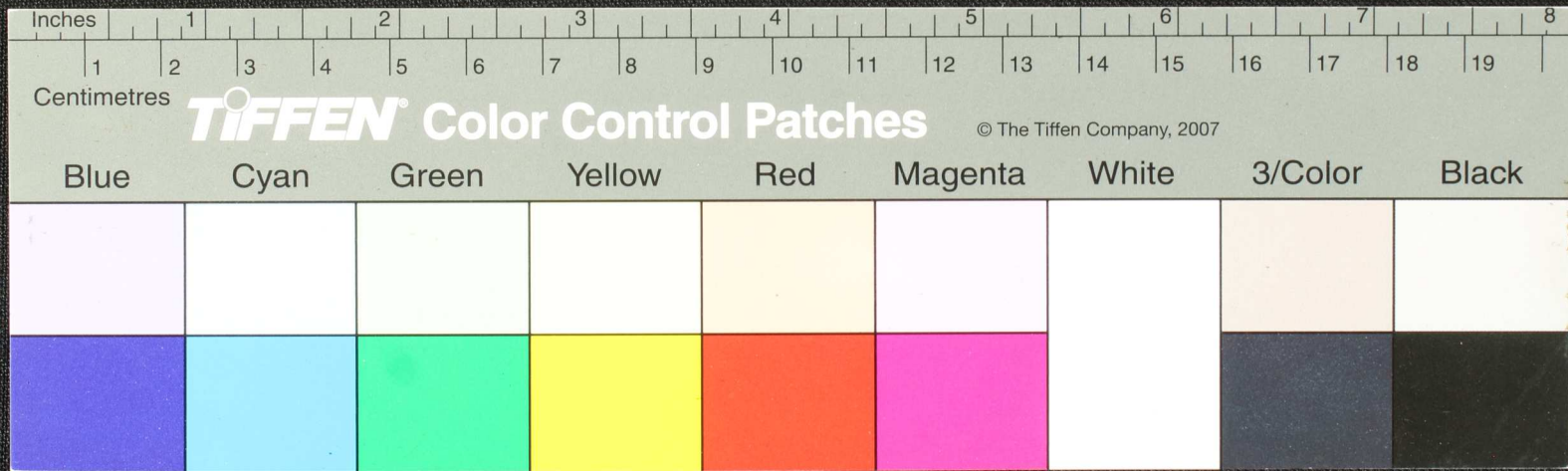
Handwritten Tamil script on a palm leaf manuscript. The text is arranged in approximately three horizontal lines. The script is dark and appears to be a form of classical or historical Tamil. There are two circular holes visible on the leaf, which were traditionally used for threading a cord to bind multiple leaves together into a book format. The leaf shows signs of age, including some staining and wear.



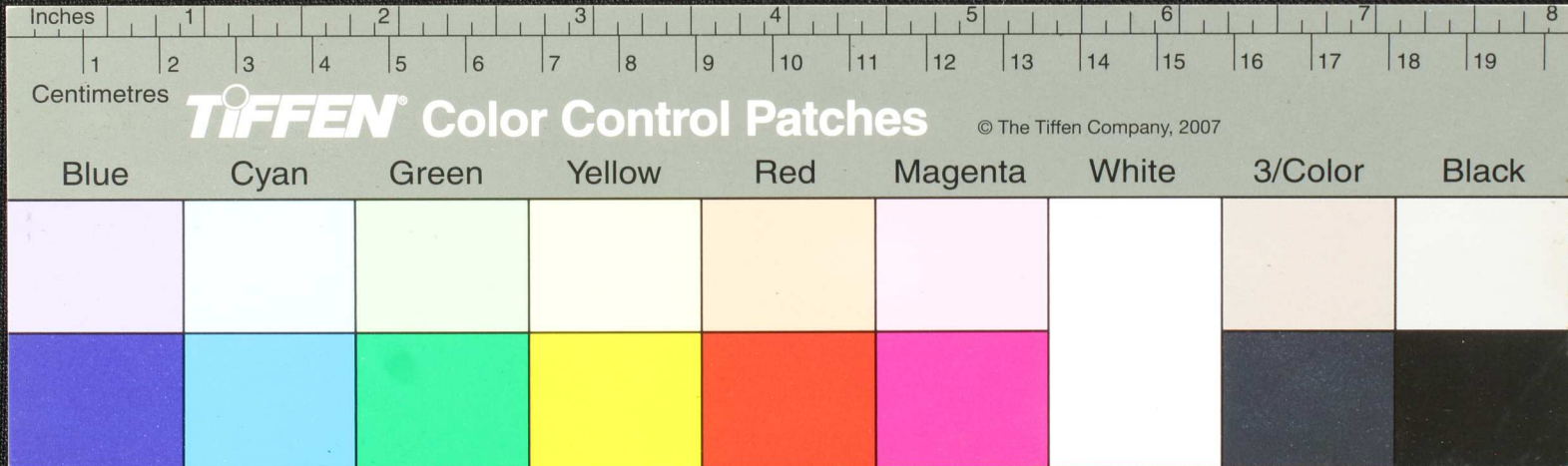
Handwritten Tamil script on a palm leaf manuscript fragment. The text is arranged in approximately four horizontal lines. The script is dark and appears to be a traditional form of Tamil. A small circular hole is visible in the center of the leaf, which is a characteristic feature used for threading a cord to bind multiple leaves together into a book format. The leaf is yellowed and shows signs of age and wear, with some fraying at the edges.



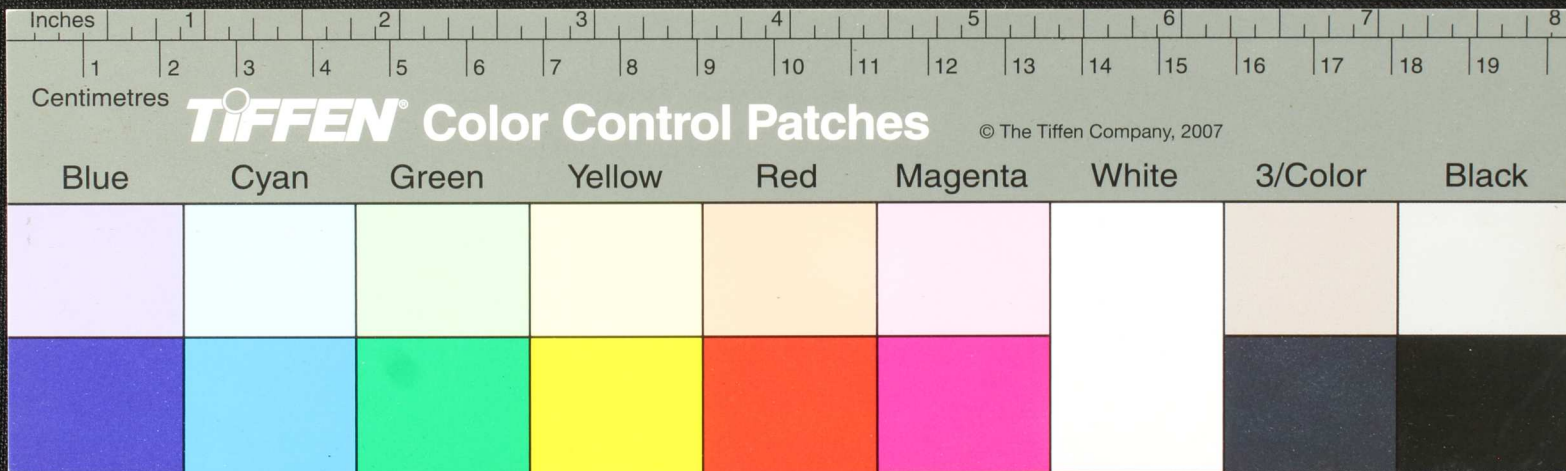
Handwritten Tamil script on a palm leaf manuscript. The text is arranged in approximately four horizontal lines. The script is dark brown or black, and the leaf itself is aged and yellowed with some physical damage, including a large hole on the left side and a smaller circular hole near the center. The characters are clearly legible as Tamil script.



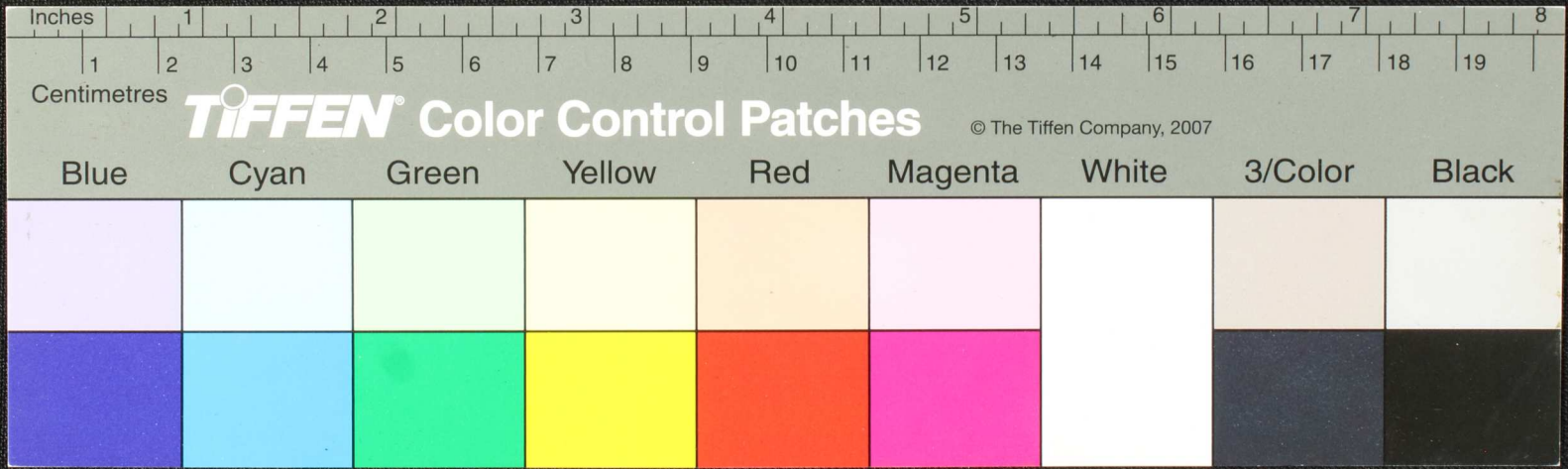
றளகி
 ஞானநாதாவலவலவரா. எ - சாசு உய்யாதந. தனயினதொன. றி
 மனனெட்டாநாநிலவாசுநிவகாநாடுவொடுநிவகல. தனகிவதி
 மருமவாசுந. அதுவநாநிலவடுகாமன. டொரபதி
 றாசுநி. மடுவகடெடதிநிபுட்டு. சாமமனசா
 றம - சாமநிகசாநிதாநதிநாதிமநிவாசுமனிலாநி



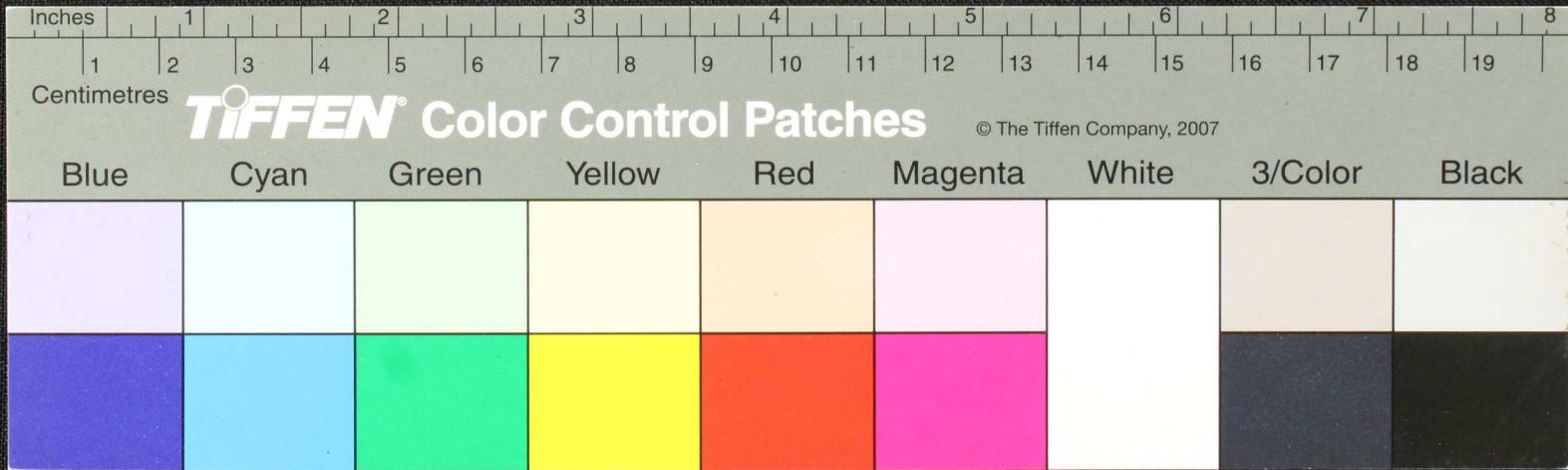
Handwritten Tamil script on a palm leaf manuscript. The text is arranged in approximately 10 horizontal lines across the length of the leaf. The script is densely packed and appears to be a form of classical or religious Tamil. There are two prominent circular holes on the leaf, which were traditionally used for threading a cord to bind multiple leaves together into a book format. The leaf shows signs of age, including some darkening and wear, particularly at the ends.



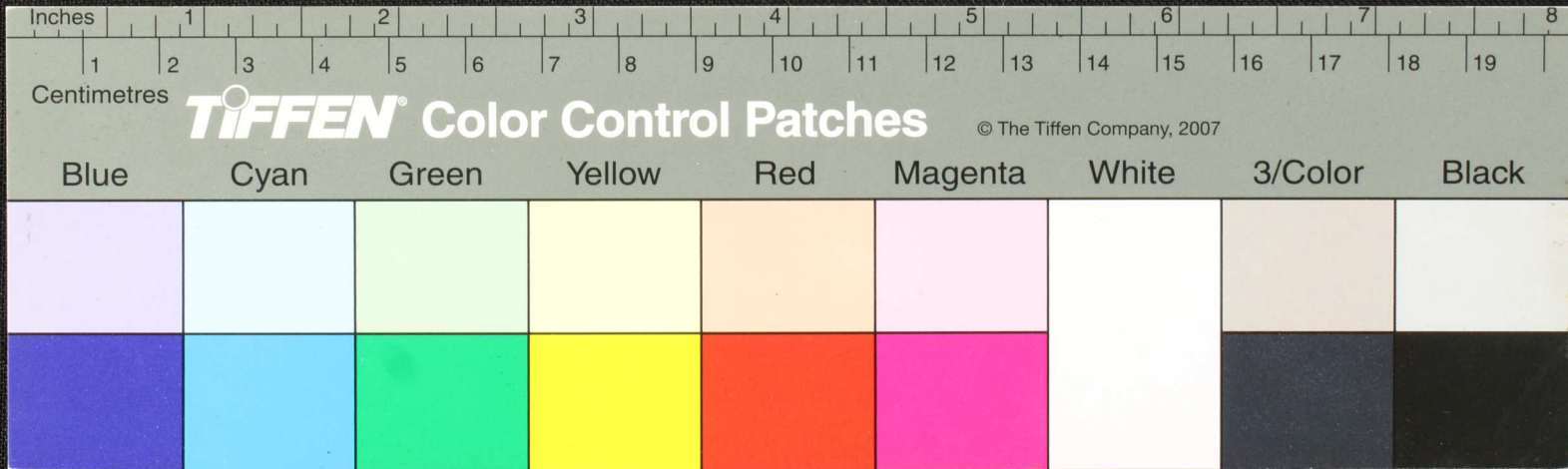
Handwritten Tamil script on a palm leaf manuscript. The text is arranged in approximately 10 horizontal lines across the length of the leaf. The script is finely etched into the surface of the dried leaf. The leaf shows signs of age, including dark spots and some surface wear.



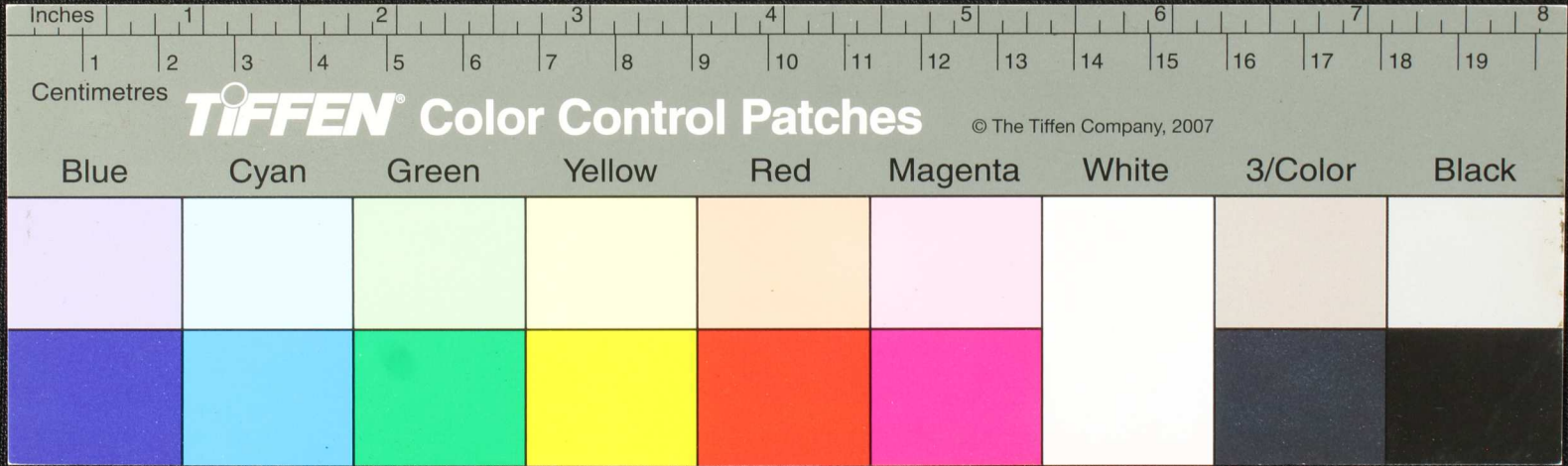
Handwritten Tamil script on a palm leaf manuscript. The text is arranged in approximately 10 horizontal lines across the length of the leaf. Two circular holes are visible, which were traditionally used for threading a cord to bind multiple leaves together into a book format. The leaf shows signs of age, including some darkening and wear, particularly at the ends.



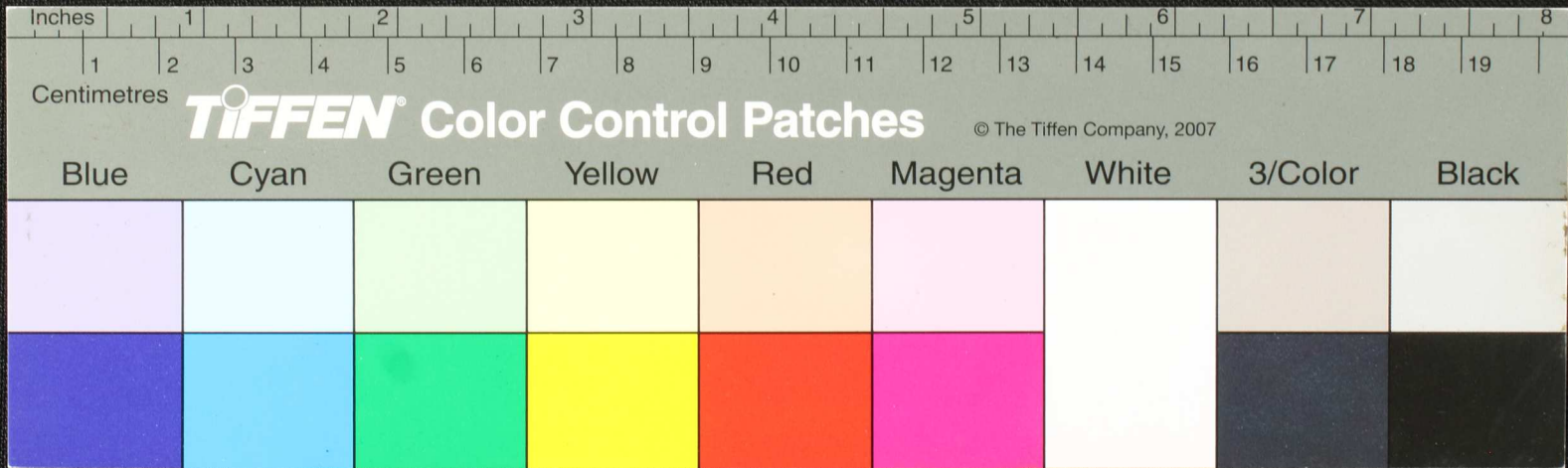
Handwritten Tamil script on a palm leaf manuscript. The text is arranged in approximately 10 horizontal lines across the length of the leaf. The script is dark and appears to be a traditional form of the Tamil language. There are two circular holes visible on the leaf, which were traditionally used for threading a cord to bind multiple leaves together into a book format. The leaf shows signs of age, including some darkening and wear, particularly on the left side.



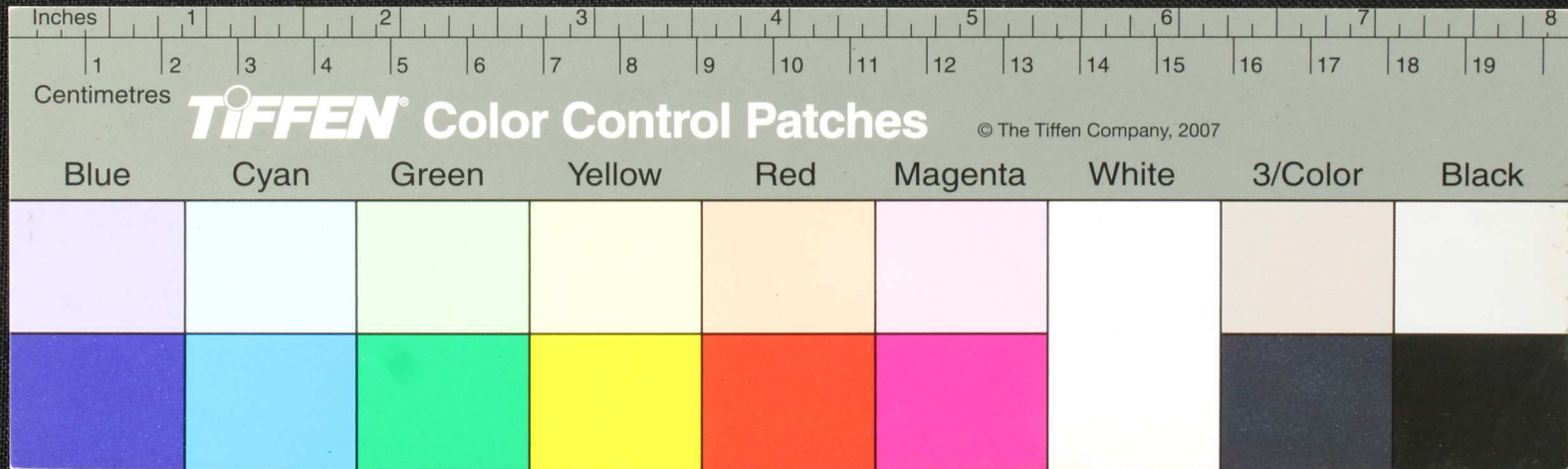
Handwritten text in Tamil script on a palm leaf manuscript. The text is arranged in approximately 10 horizontal lines across the length of the leaf. The script is dark and appears to be a traditional form of the Tamil language. There are several dark spots and irregular markings on the leaf, possibly due to age or damage.



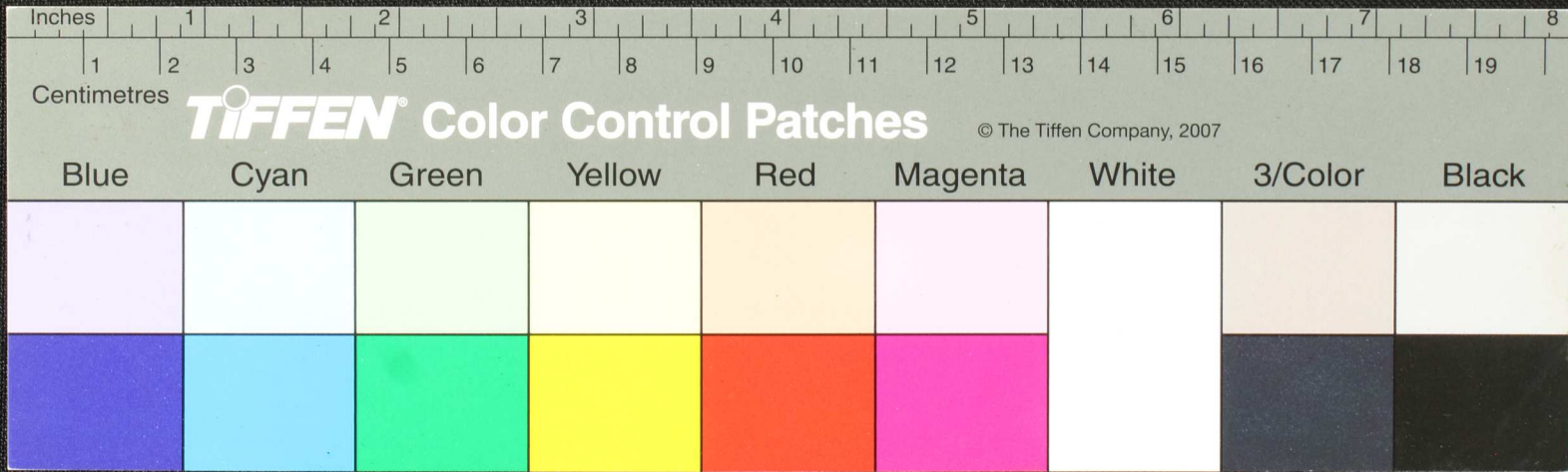
Handwritten Tamil script on a palm leaf manuscript. The text is arranged in approximately 10 horizontal lines across the length of the leaf. The script is densely packed and appears to be a form of classical Tamil. There are two circular holes visible on the leaf, which were traditionally used for threading a cord to bind multiple leaves together into a book format. The leaf shows signs of age, including some darkening and wear, particularly at the edges.



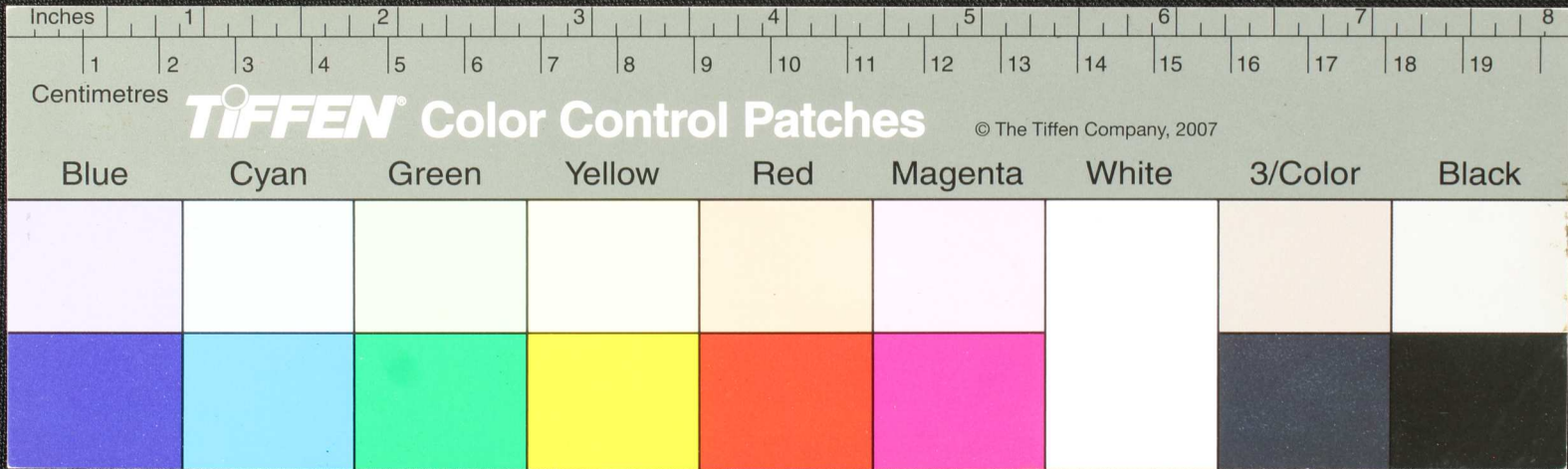
Handwritten Tamil script on a palm leaf manuscript. The text is arranged in approximately 10 horizontal lines across the length of the leaf. The script is densely packed and appears to be a form of classical Tamil. There are two circular holes visible on the leaf, which were traditionally used for threading a cord to bind multiple leaves together into a book format.



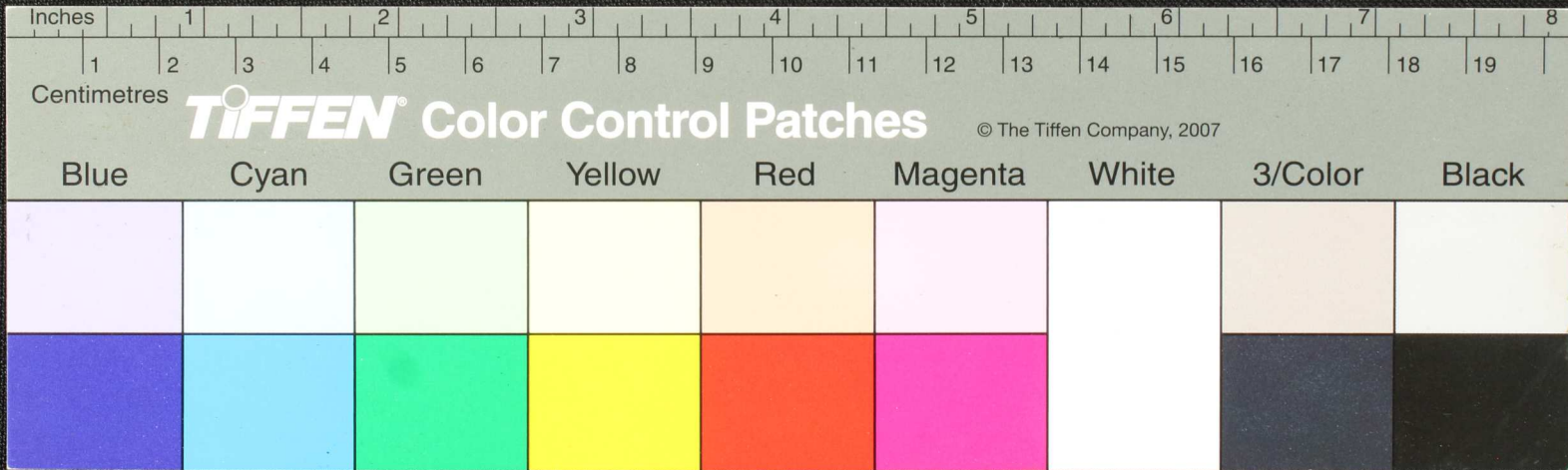
Handwritten Tamil script on a palm leaf manuscript. The text is arranged in approximately 10 horizontal lines across the length of the leaf. The script is finely etched into the surface of the dried leaf. Two circular holes are visible, which were traditionally used for threading a cord to bind multiple leaves together into a book format.



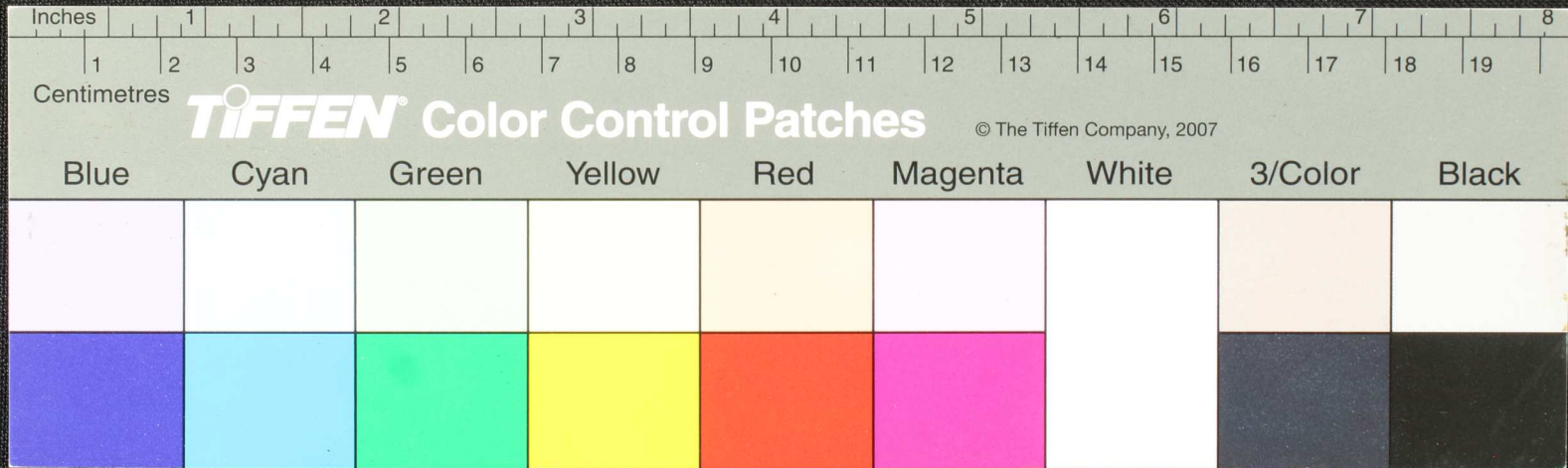
Handwritten Tamil script on a palm leaf manuscript. The text is arranged in approximately 10 horizontal lines across the length of the leaf. The script is finely etched into the surface of the dried leaf. There are two circular holes visible, which were traditionally used for threading a cord to bind multiple leaves together into a book format. The leaf shows signs of age, including some darkening and wear, particularly at the edges.



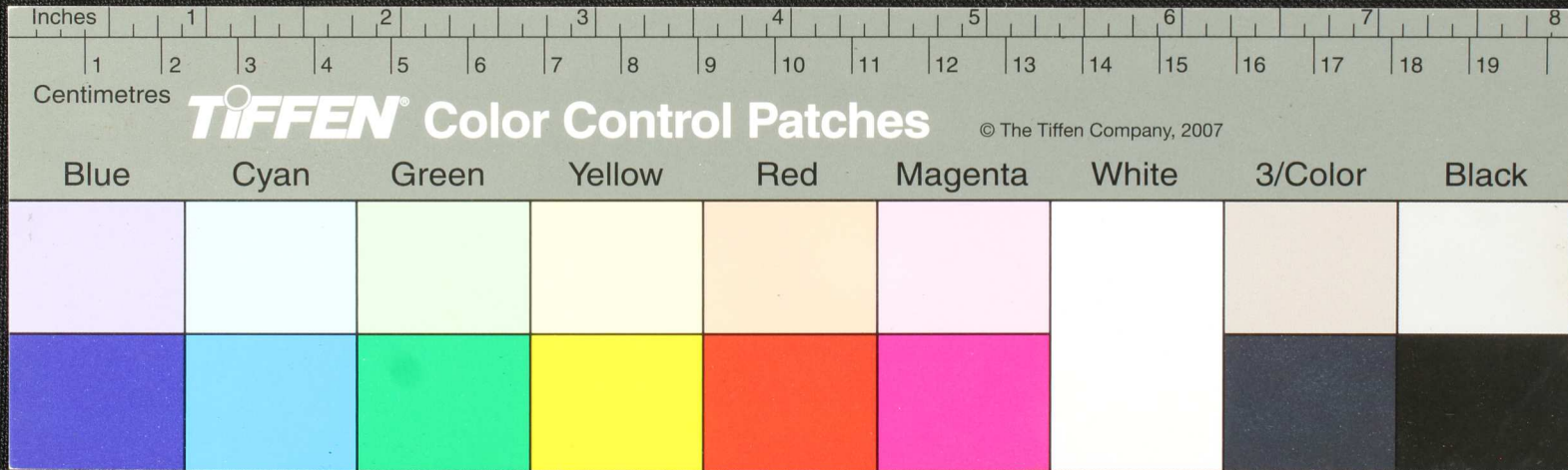
Handwritten Tamil script on a palm leaf manuscript. The text is arranged in approximately 10 horizontal lines across the length of the leaf. The script is finely etched into the surface of the dried leaf. The leaf shows signs of age, including dark spots and some damage at the left end.



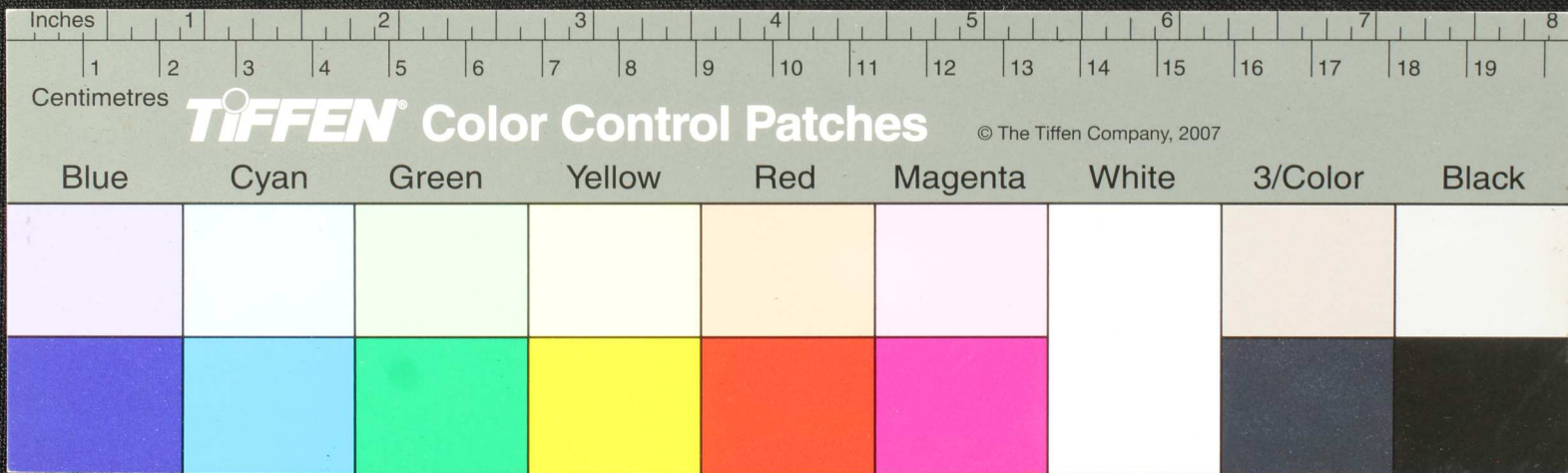
Handwritten Tamil script on a palm leaf manuscript. The text is arranged in approximately 10 horizontal lines across the length of the leaf. Two circular holes are visible, which were traditionally used for threading a cord to bind multiple leaves together. The script is finely etched into the surface of the dried leaf.



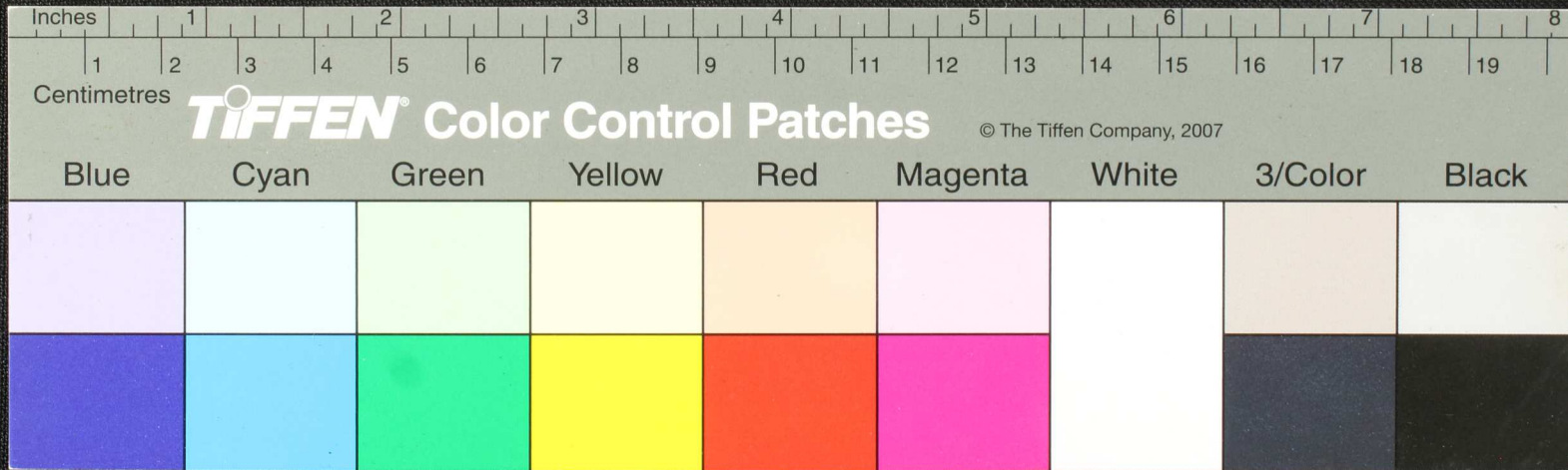
Handwritten Tamil script on a palm leaf manuscript. The text is arranged in approximately 10 horizontal lines across the length of the leaf. The script is densely packed and appears to be a form of classical Tamil. There are several circular holes along the length of the leaf, which were traditionally used for threading a cord to bind multiple leaves together into a book format. The leaf shows signs of age, with some fraying and discoloration, particularly at the left end.



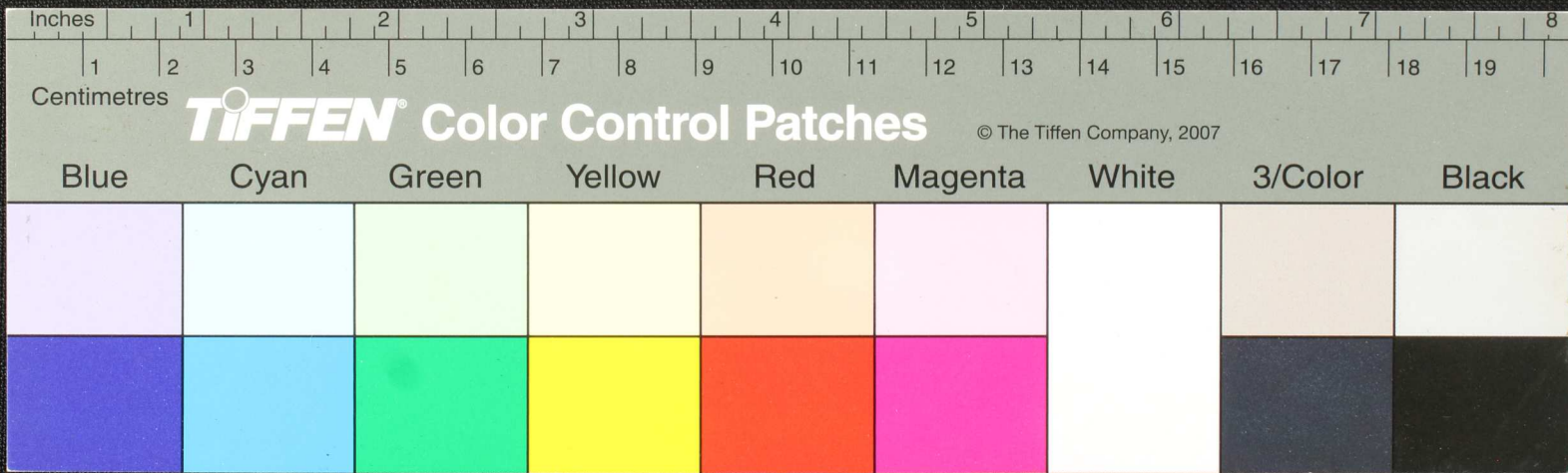
Handwritten Tamil script on a palm leaf manuscript. The text is arranged in approximately 10 horizontal lines across the length of the leaf. The script is densely packed and appears to be a form of classical Tamil. There are two circular holes visible on the leaf, which were traditionally used for threading a cord to bind multiple leaves together into a book format. The leaf shows signs of age, including some discoloration and wear at the edges.



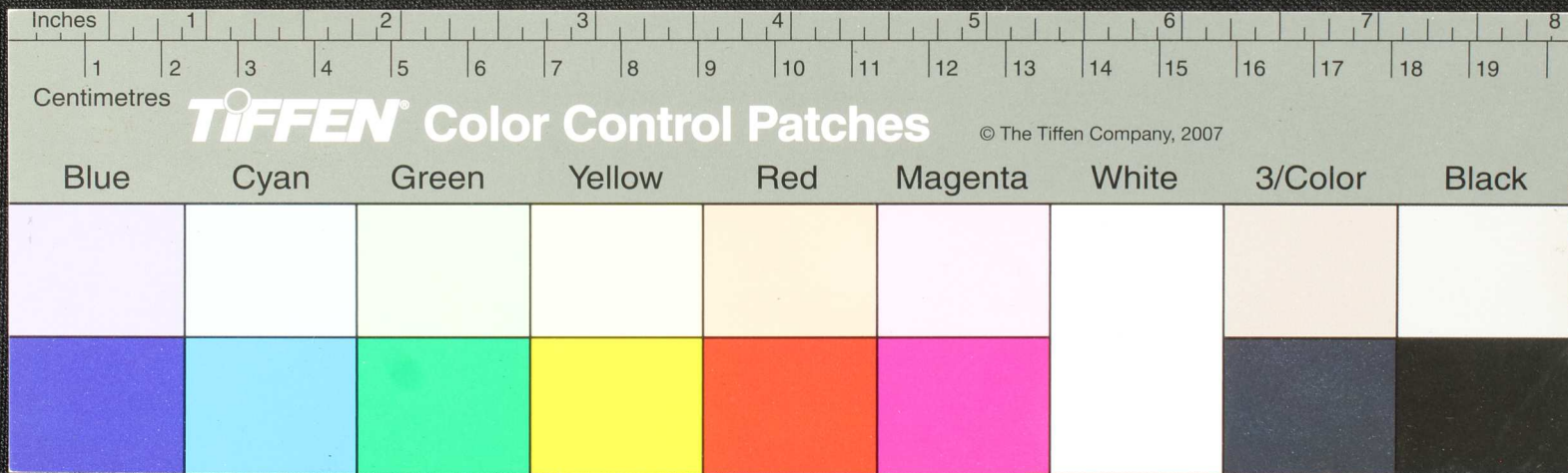
Handwritten Tamil script on a palm leaf manuscript. The text is arranged in approximately 10 horizontal lines across the length of the leaf. The script is finely etched into the surface of the dried leaf. The leaf shows signs of age, including some dark spots and a jagged, torn edge on the left side.



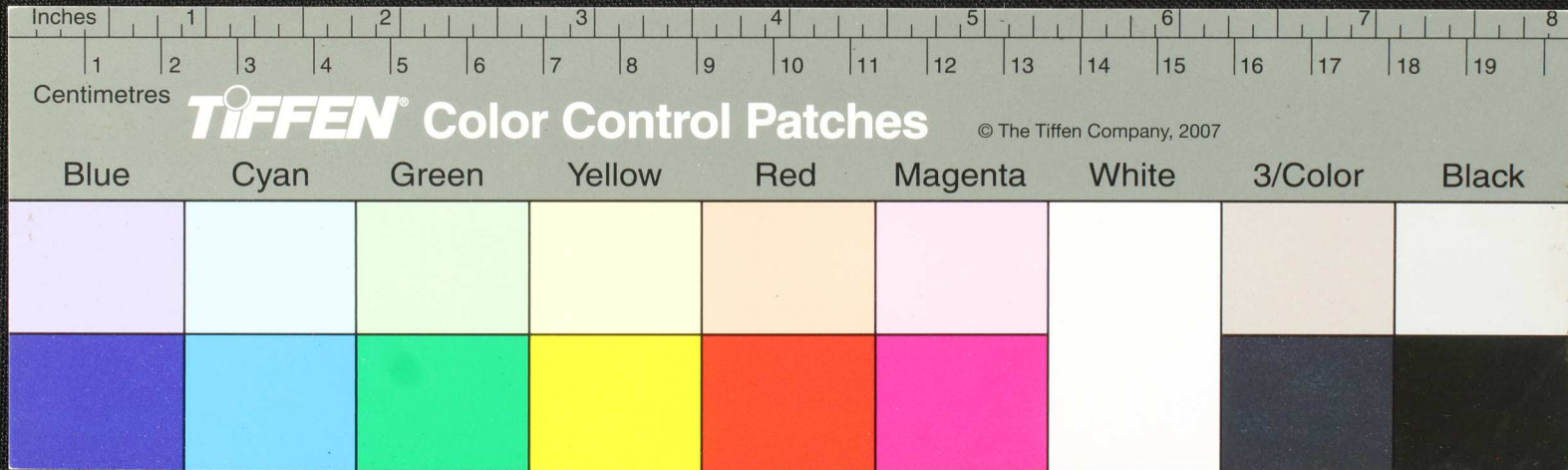
Handwritten Tamil script on a palm leaf manuscript. The text is arranged in approximately 10 horizontal lines. The leaf shows signs of age, including dark spots and some damage at the left end. Two circular holes are visible, which were traditionally used for threading a cord to bind multiple leaves together.



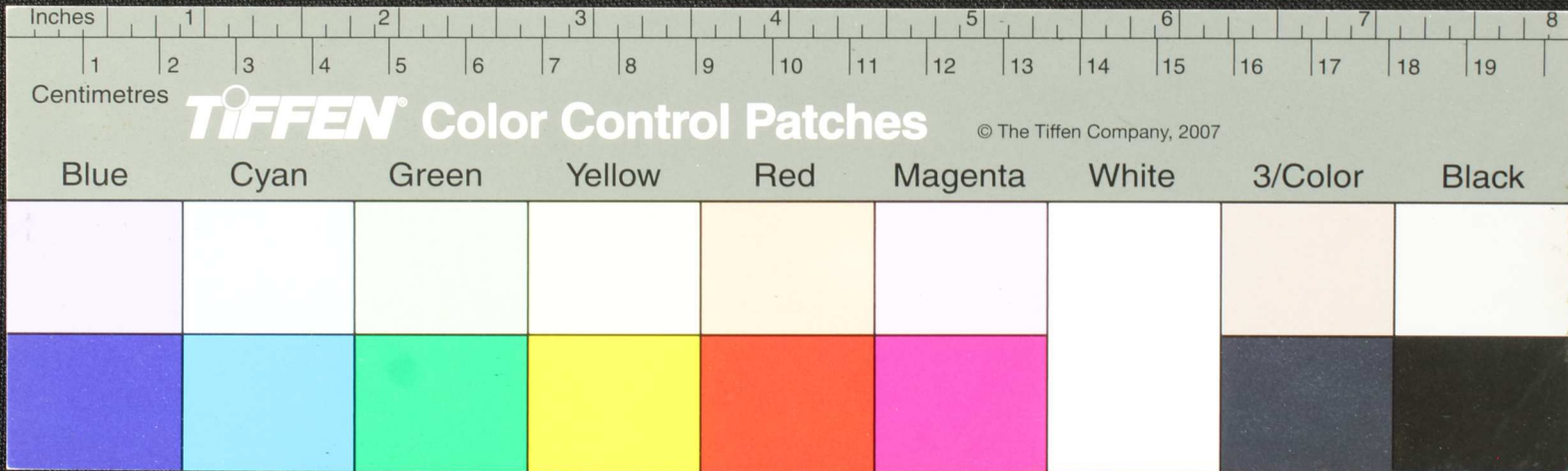
Handwritten text in Tamil script on a palm leaf manuscript. The text is arranged in approximately 10 horizontal lines across the length of the leaf. The script is finely etched into the surface of the dried leaf. The leaf shows signs of age, including some dark spots and irregular edges.



Handwritten Tamil script on a palm leaf manuscript. The text is arranged in approximately four horizontal lines. The script is finely etched into the surface of the dried leaf. Two circular holes are visible, which were traditionally used for threading a cord to bind multiple leaves together into a book format. The leaf shows signs of age, with some fraying and discoloration, particularly at the edges.



Handwritten Tamil script on a palm leaf manuscript. The text is arranged in approximately four horizontal lines. The leaf shows signs of age, including two circular holes and some surface damage.



Handwritten Tamil script on a palm leaf manuscript. The text is arranged in approximately five horizontal lines. The leaf shows signs of age, including two circular holes and some surface damage.

