





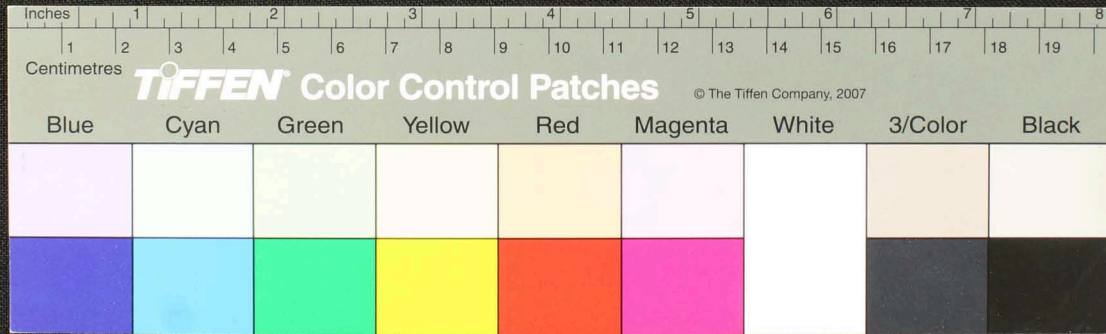








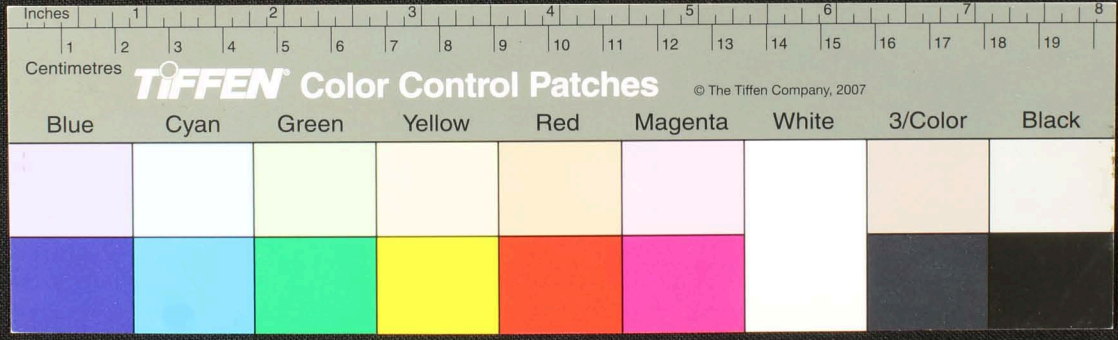
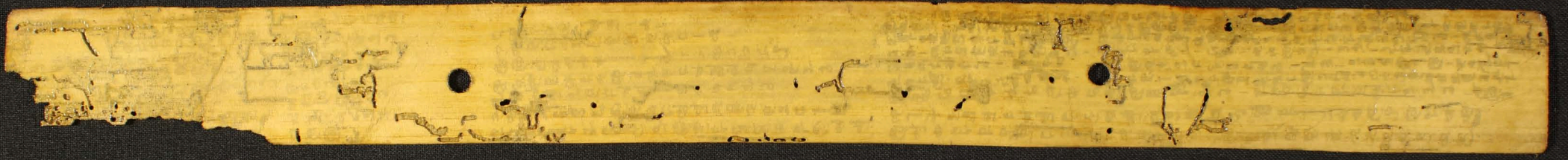
Handwritten text in Tamil script on a palm leaf manuscript. The text is arranged in approximately 10 horizontal lines across the length of the leaf. The script is finely etched into the surface of the dried leaf. There are two prominent circular holes, likely from traditional binding methods. The leaf shows signs of age, including some discoloration and wear at the edges.







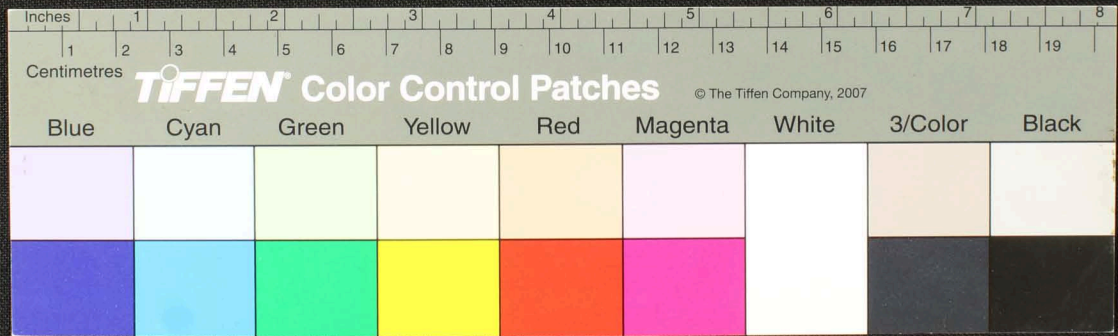




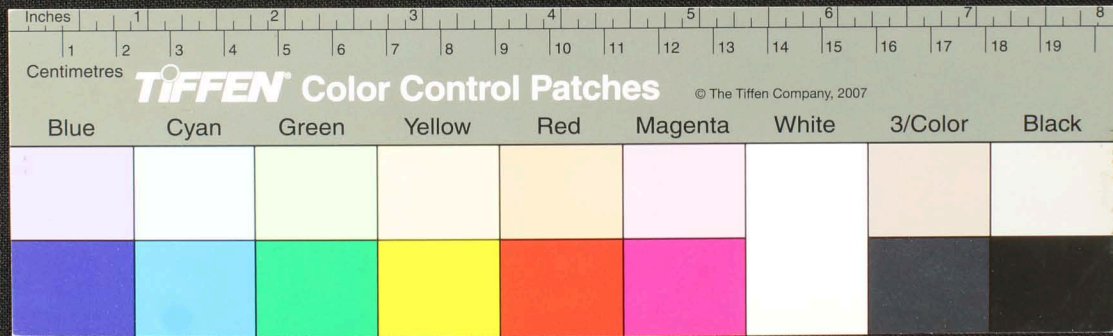
| Blue | Cyan | Green | Yellow | Red | Magenta | White | 3/Color | Black |
|------|------|-------|--------|-----|---------|-------|---------|-------|
|      |      |       |        |     |         |       |         |       |
|      |      |       |        |     |         |       |         |       |



A long, narrow, yellowish-brown strip of ancient palm-leaf manuscript. The surface is covered in handwritten text in a South Indian script, likely Tamil. The text is arranged in approximately 15 horizontal lines. The leaf shows signs of age, including dark spots, small holes, and some fraying at the edges. The script is finely etched into the surface of the leaf.





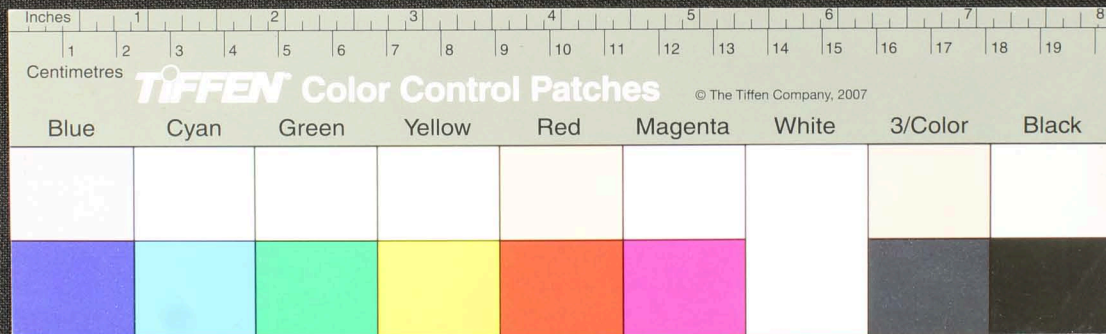








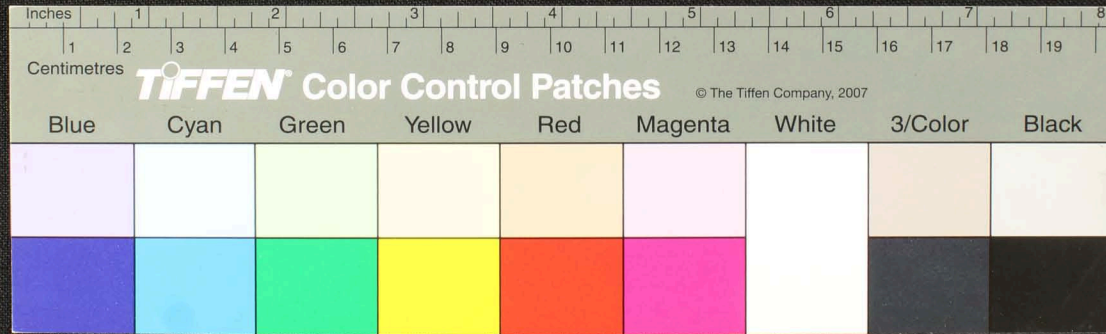
A fragment of an ancient palm-leaf manuscript, approximately 10 cm long and 1.5 cm wide. The leaf is yellowed with age and shows significant damage, including two circular holes and irregular tears along the left edge. The surface is inscribed with several lines of text in a South Indian script, likely Tamil. The characters are small and densely packed, with some larger characters that may represent punctuation or specific markers. The text is arranged in a single line across the width of the fragment.





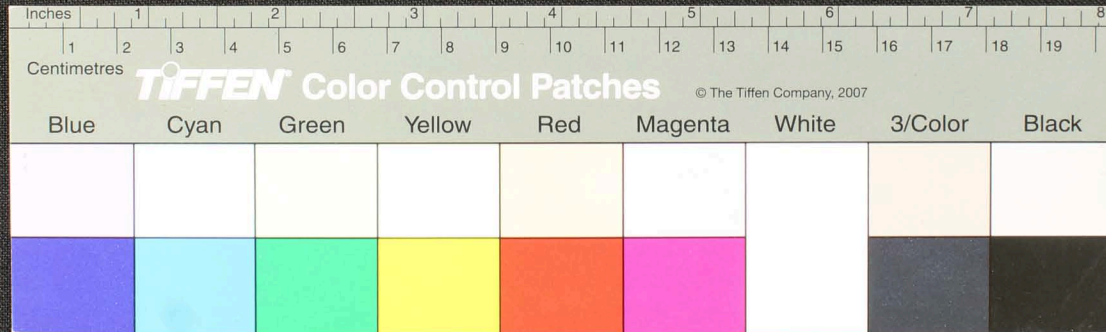






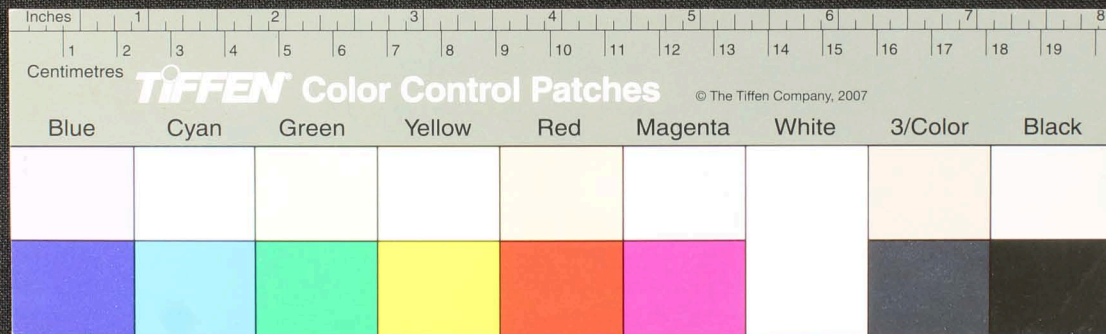


Handwritten Tamil script on a palm leaf manuscript strip. The text is arranged in approximately 10 horizontal lines across the length of the leaf. The script is finely etched into the surface of the dried leaf. The leaf shows signs of age, including several dark, irregular holes and some fraying at the edges, particularly on the left side.





Handwritten Tamil script on a palm leaf manuscript strip. The text is arranged in approximately 10 horizontal lines across the length of the leaf. The script is finely etched into the surface of the dried leaf. The leaf shows signs of age, including some dark spots and irregular edges.

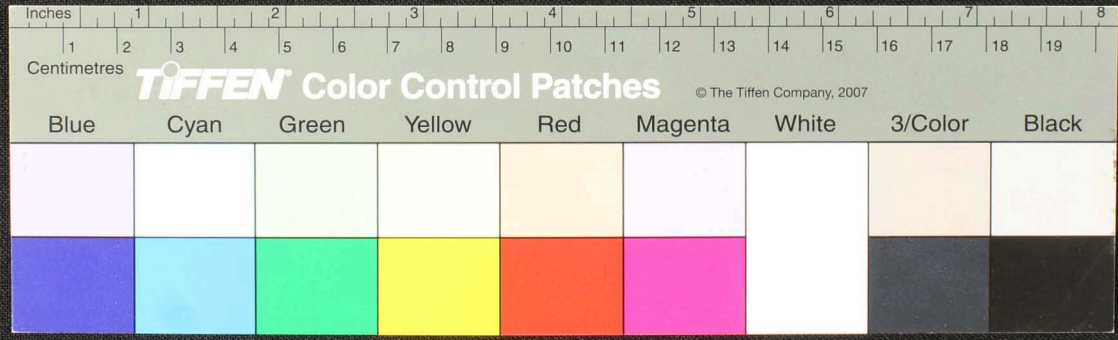




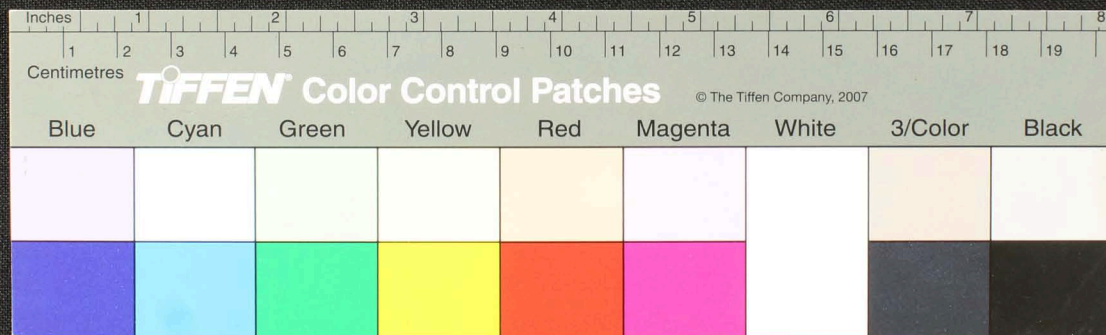
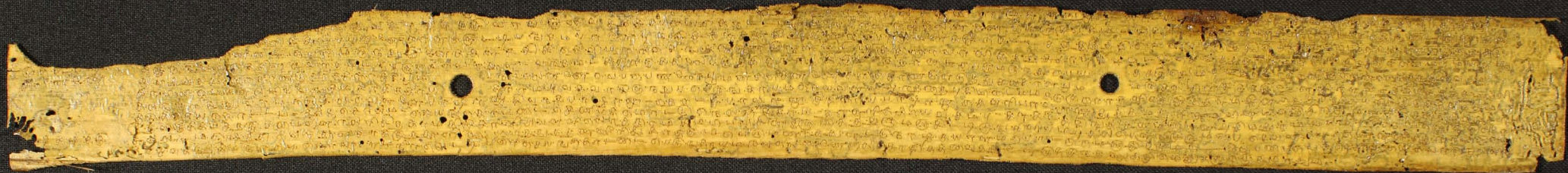




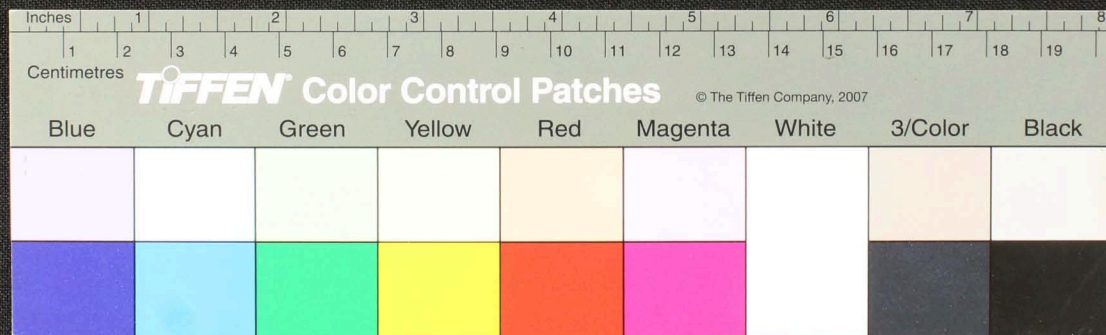
Handwritten text in Tamil script on a palm leaf manuscript. The text is arranged in approximately 10 horizontal lines across the length of the leaf. The script is finely etched into the surface of the dried leaf, which shows signs of age and wear, including some dark spots and irregular edges.





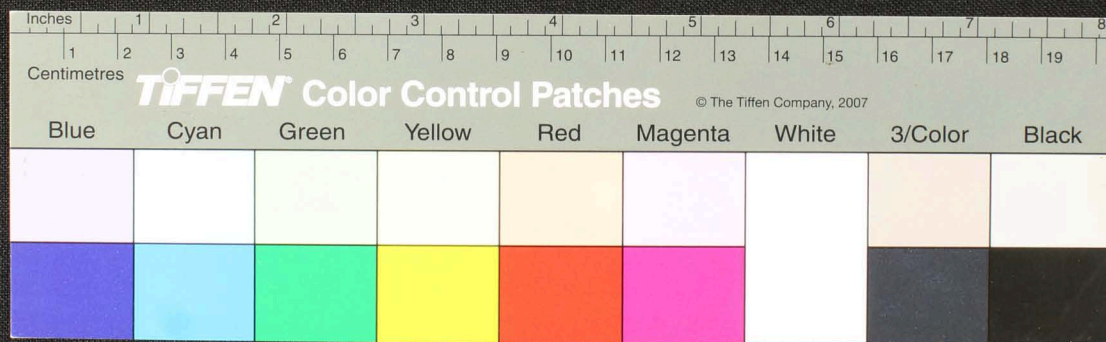






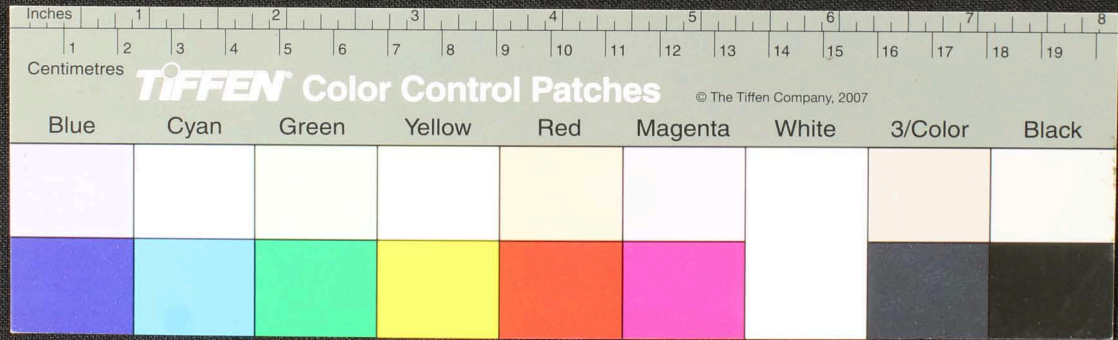


Handwritten text in Tamil script on a palm leaf manuscript strip. The text is arranged in approximately 10 horizontal lines. Two circular holes are visible, which were traditionally used for threading a cord to bind multiple leaves together. The leaf is aged and shows some wear and tear at the edges.

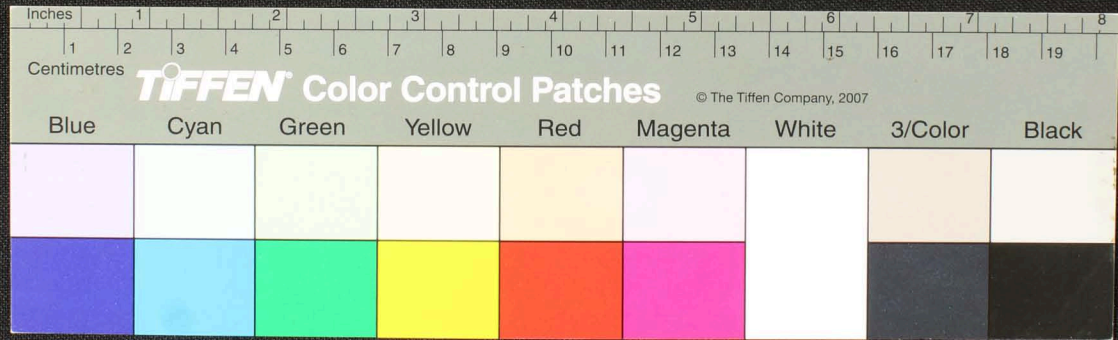
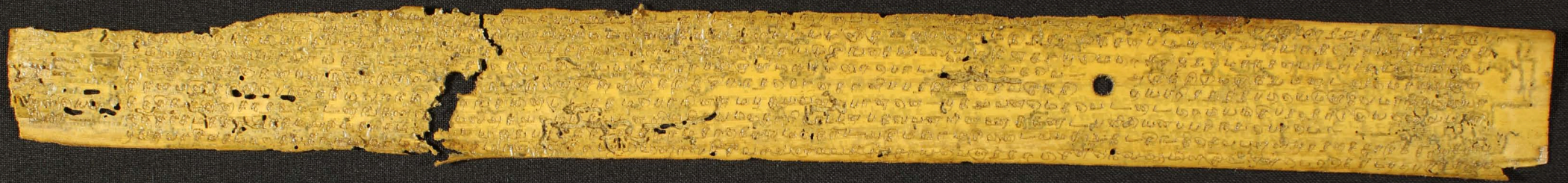




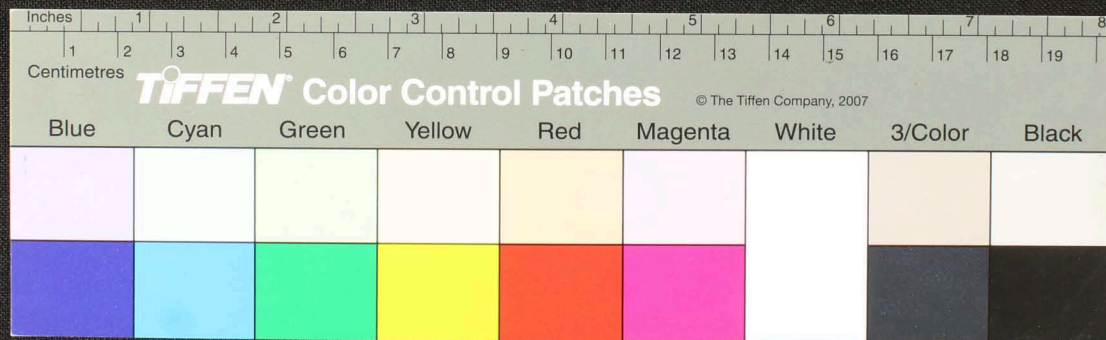
Handwritten text in Tamil script on a palm leaf manuscript. The text is arranged in approximately 10 horizontal lines across the length of the leaf. Two circular holes are visible, which were traditionally used for threading a cord to bind multiple leaves together. The leaf shows signs of age, including some discoloration and wear at the edges.



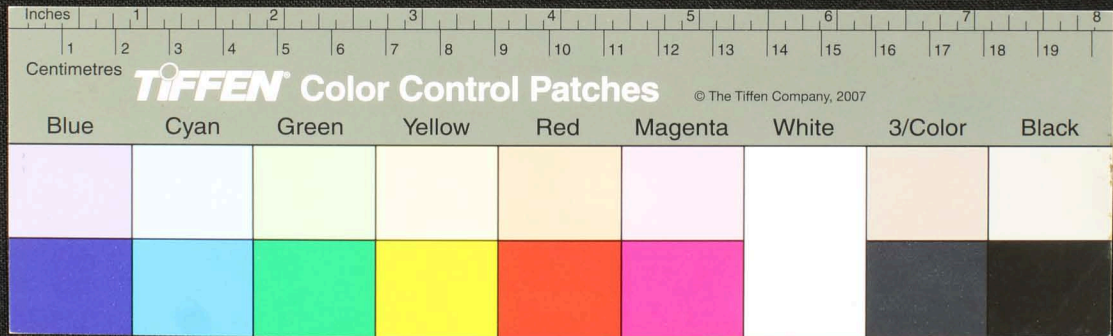
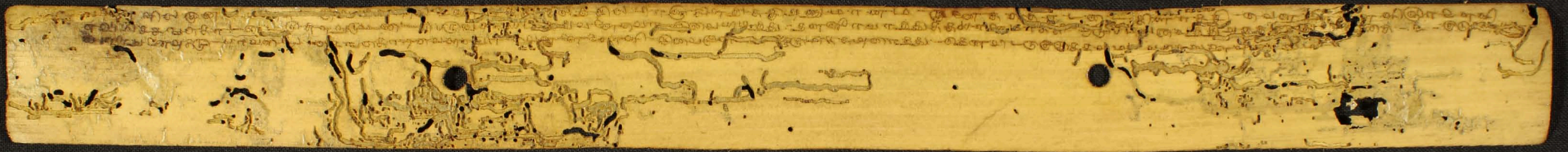










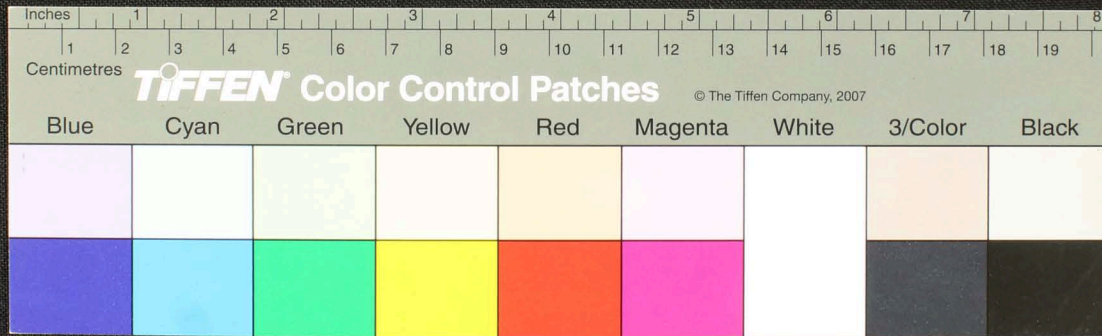






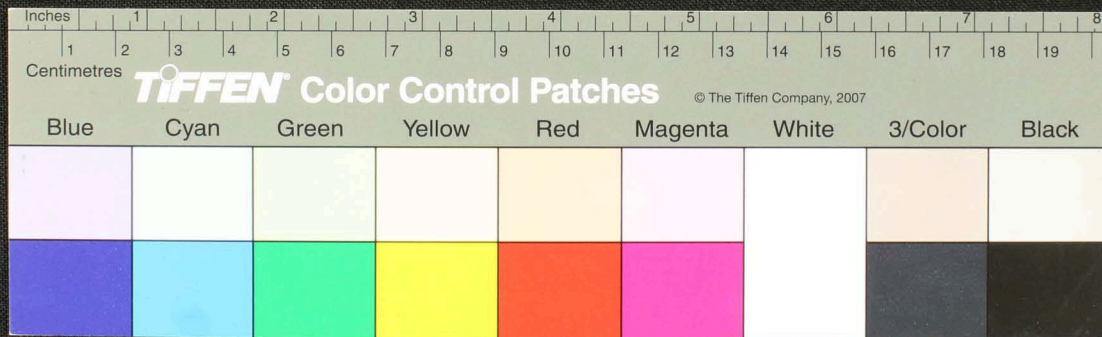


Handwritten text in Tamil script on a palm leaf manuscript. The text is densely packed and runs horizontally across the length of the leaf. The leaf shows signs of age, including dark spots and irregular edges.



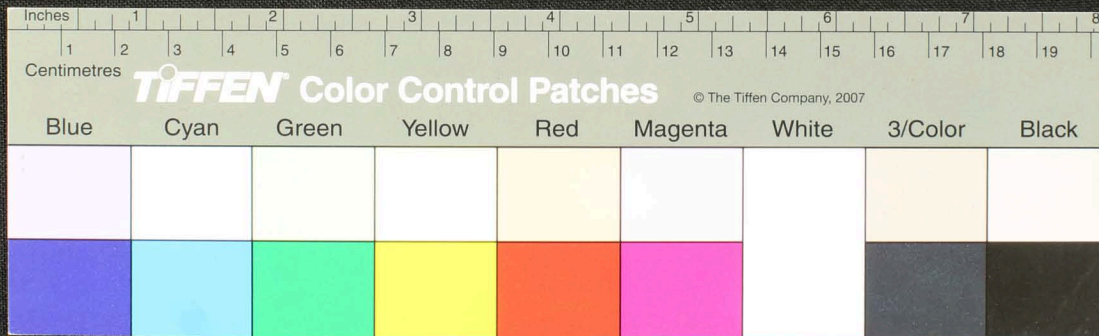


Handwritten text in Tamil script on a long, narrow, yellowed palm leaf manuscript strip. The text is arranged in approximately 10 horizontal lines across the length of the leaf. The script is dense and appears to be a form of classical or historical Tamil. The leaf shows signs of age, including dark spots and irregular edges.



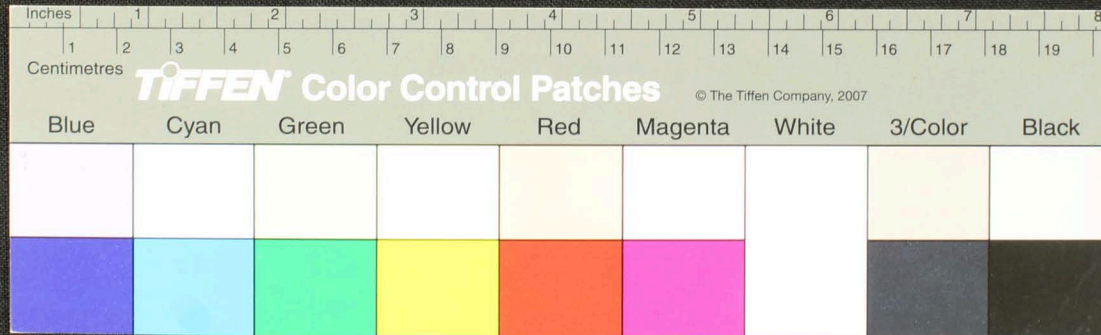


Handwritten Tamil script on a palm leaf manuscript strip. The text is arranged in approximately 10 horizontal lines across the length of the leaf. The script is finely etched into the surface of the dried leaf. There are two circular holes visible, which were traditionally used for threading a cord to bind multiple leaves together into a book format. The leaf shows signs of age, including some staining and irregular edges.





A long, narrow, yellowish-brown strip of ancient papyrus or parchment, heavily damaged and stained. It features faint, handwritten text in an ancient script, likely Coptic or Greek, arranged in several lines. Two circular holes are visible, suggesting it was part of a bound volume. The strip is set against a dark, textured background.





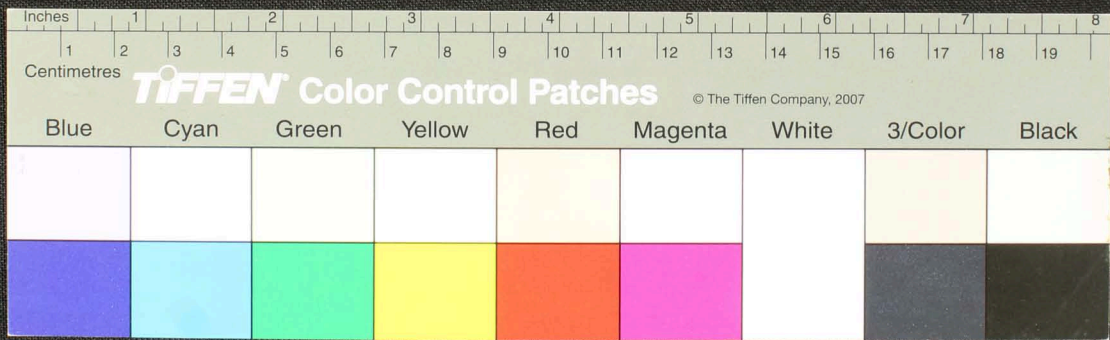






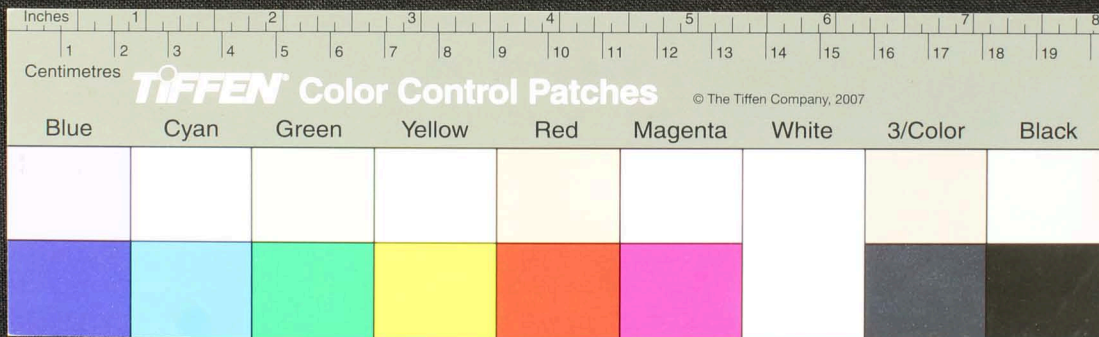


Handwritten text in Tamil script on a palm leaf manuscript. The text is arranged in horizontal lines across the length of the leaf. The script is finely etched into the surface of the dried leaf, which shows signs of age and wear, including dark spots and some surface cracking.



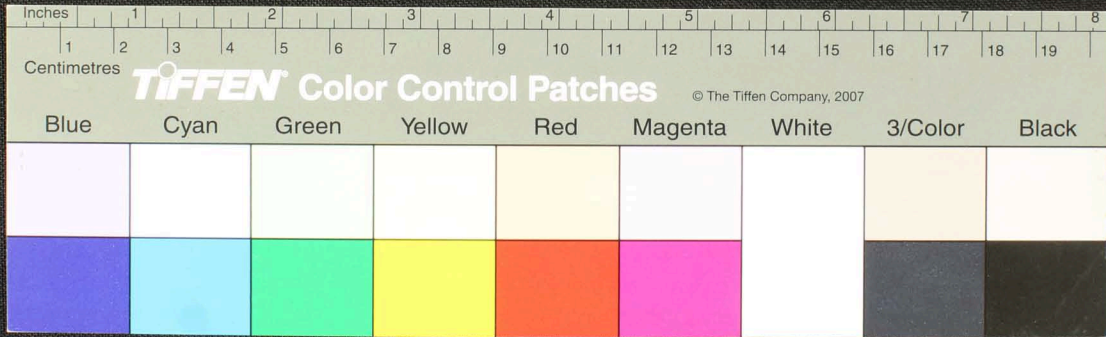


A long, narrow, yellowish-brown palm-leaf manuscript strip with handwritten text in Tamil script. The text is arranged in approximately 12 columns across the length of the leaf. The script is dark brown or black ink. There are several circular holes along the strip, likely from a string used to bind multiple leaves together. The leaf shows signs of age, including some staining and wear at the edges.



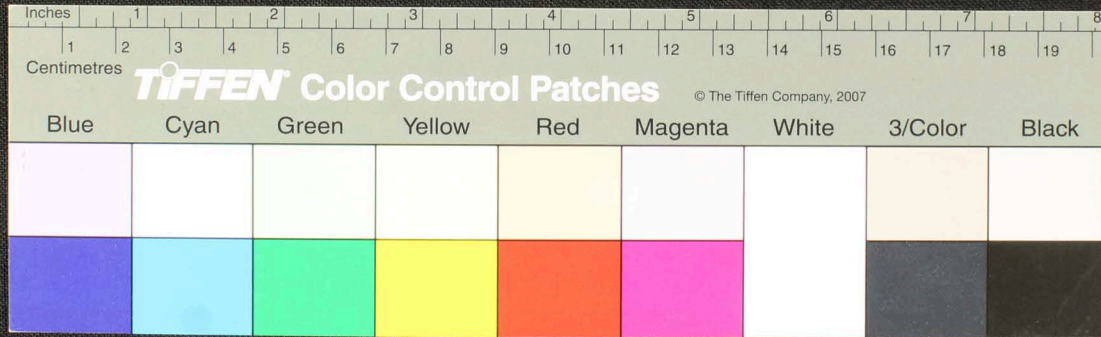


Handwritten Tamil script on a palm leaf manuscript strip. The text is arranged in approximately 10 horizontal lines. The script is finely etched into the surface of the dried leaf. Two circular holes are visible, which were traditionally used for threading a cord to bind multiple leaves together into a book format. The leaf shows signs of age and wear, with some fraying at the edges.





Handwritten Tamil script on a palm leaf manuscript strip. The text is arranged in approximately five horizontal lines. Two circular holes are visible, which were traditionally used for threading a cord to bind multiple leaves together. The script is finely etched into the surface of the dried leaf.

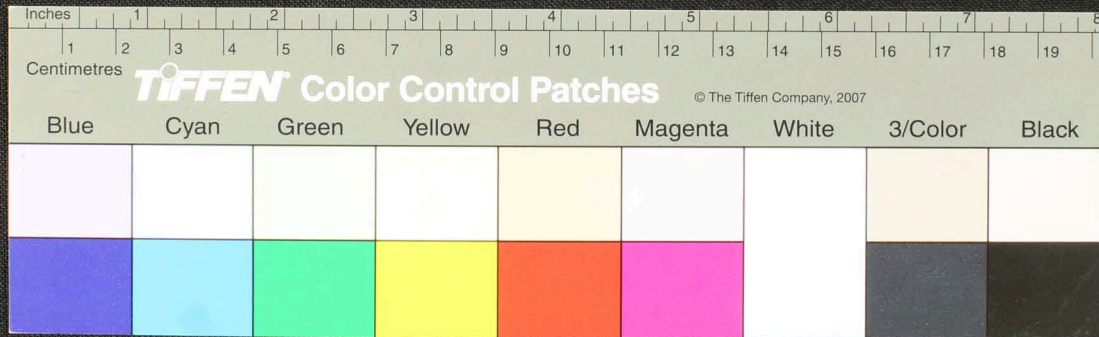






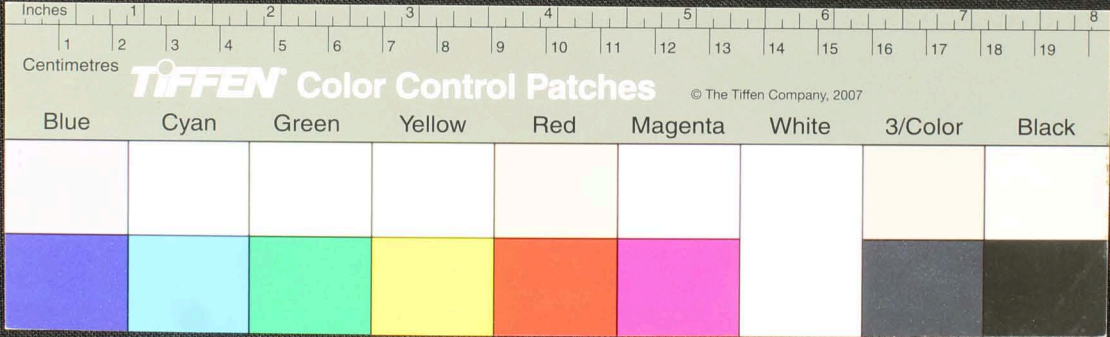


Handwritten text in Tamil script on a palm leaf manuscript strip. The text is arranged in approximately 10 horizontal lines. Two circular holes are visible, which were traditionally used for threading a cord to bind multiple leaves together. The leaf shows signs of age, including some staining and irregular edges.



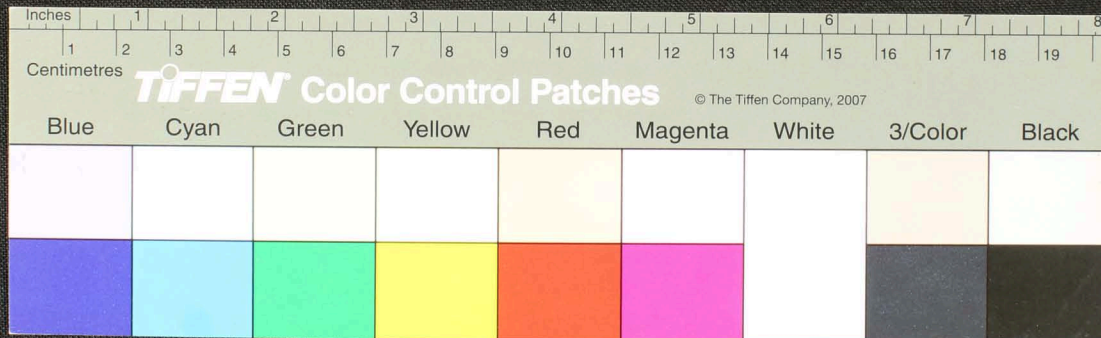


Handwritten text in Tamil script on a palm leaf manuscript strip. The text is arranged in approximately 10 horizontal lines across the length of the leaf. The script is finely etched into the surface of the dried leaf. The leaf shows signs of age, including dark spots and irregular edges.





Handwritten Tamil script on a palm leaf manuscript strip. The text is arranged in approximately 10 horizontal lines across the length of the leaf. The script is finely etched into the surface of the dried leaf. The leaf shows signs of age, including dark spots and some physical damage at the ends.

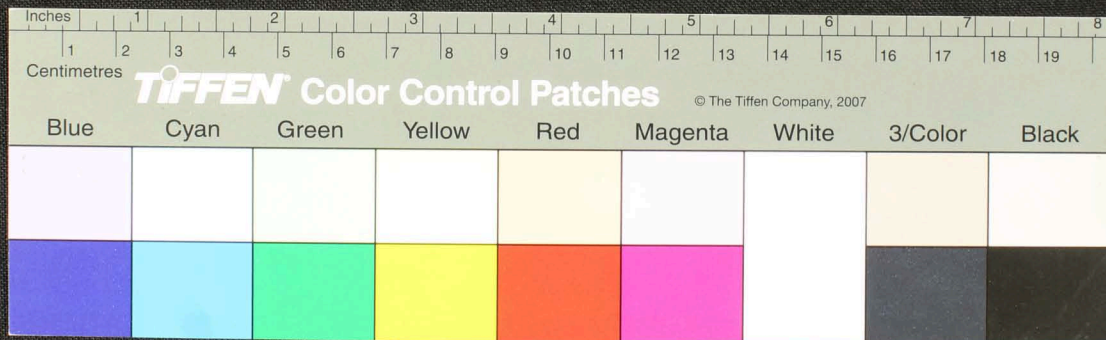




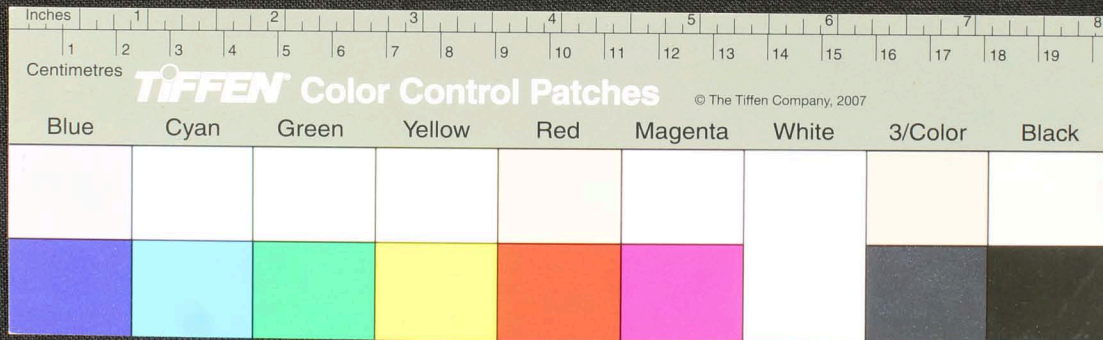




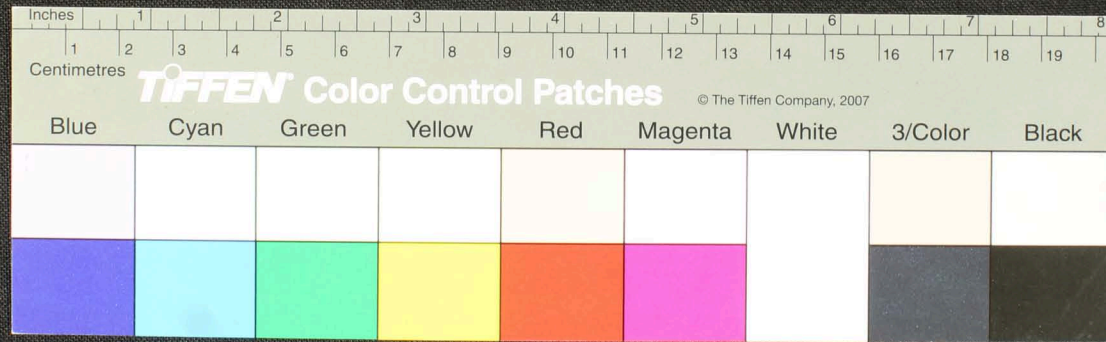
Handwritten text in Tamil script on a palm leaf manuscript. The text is arranged in approximately 10 horizontal lines. On the left side, there is a vertical inscription that reads "வள்ளலார் விநாயக சாஸ்திரி". The main body of text contains several lines of script, with two circular holes visible, which were traditionally used for threading a cord to bind multiple leaves together. The leaf shows signs of age, including some staining and wear at the edges.





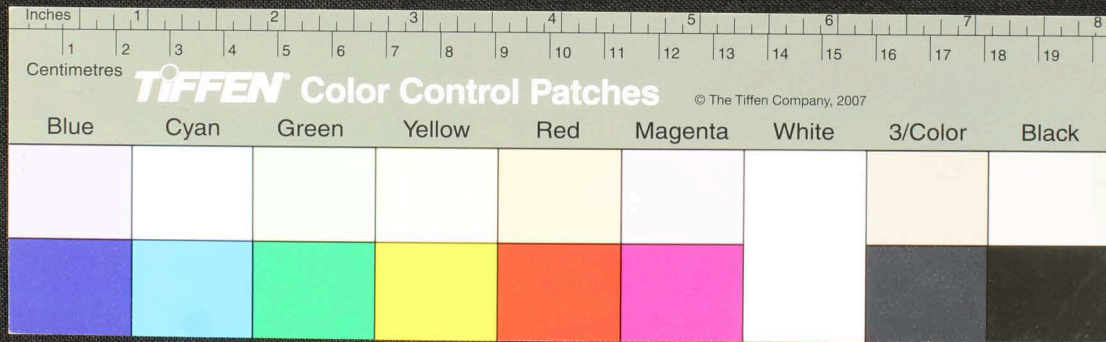








A long, narrow, yellowish-brown strip of ancient palm-leaf manuscript with handwritten text in Tamil script. The text is arranged in approximately 10 horizontal lines. Two circular holes are visible, used for threading a cord to bind multiple leaves together. The leaf shows signs of age, including some staining and wear at the edges.





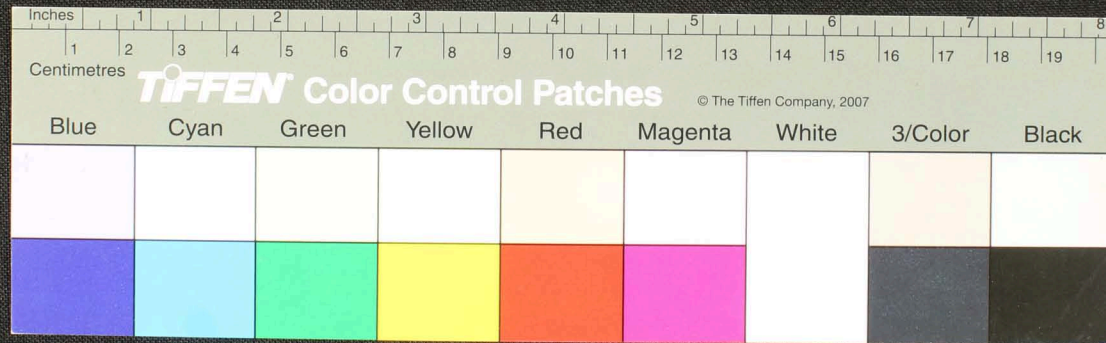








Handwritten text in Tamil script on a palm leaf manuscript. The text is arranged in approximately 10 horizontal lines across the length of the leaf. Two circular holes are visible, which were traditionally used for threading a cord to bind multiple leaves together. The leaf shows signs of age, including some staining and wear at the edges.





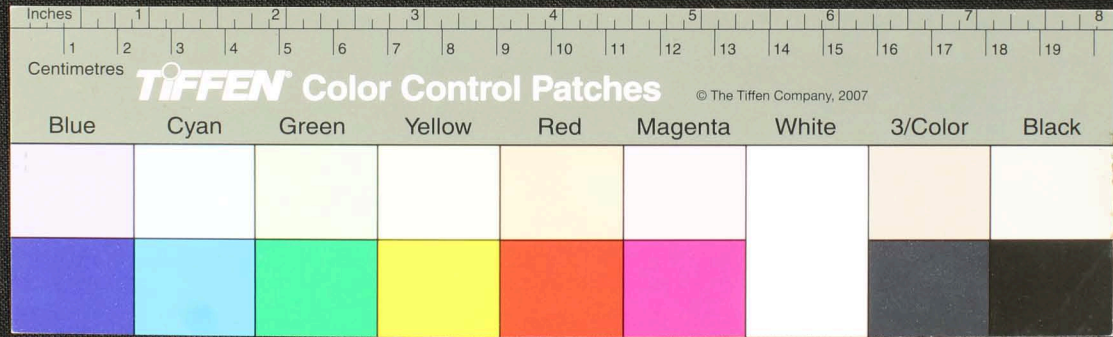






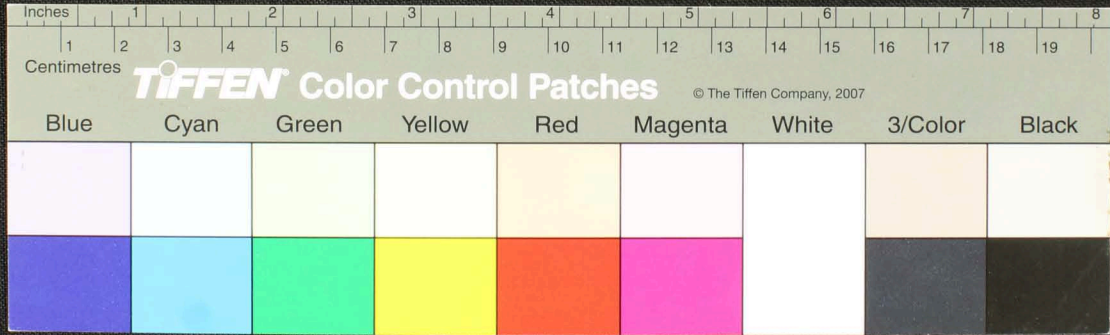


Handwritten text in Tamil script on a palm leaf manuscript. The text is arranged in approximately 10 horizontal lines across the length of the leaf. The script is finely etched into the surface of the dried leaf. There are two circular holes visible, which were traditionally used for threading a cord to bind multiple leaves together into a book format. The leaf shows signs of age, including some staining and irregular edges.

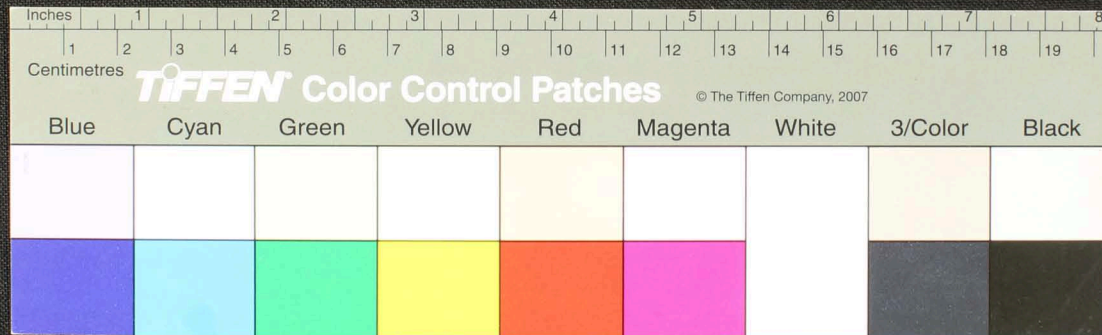




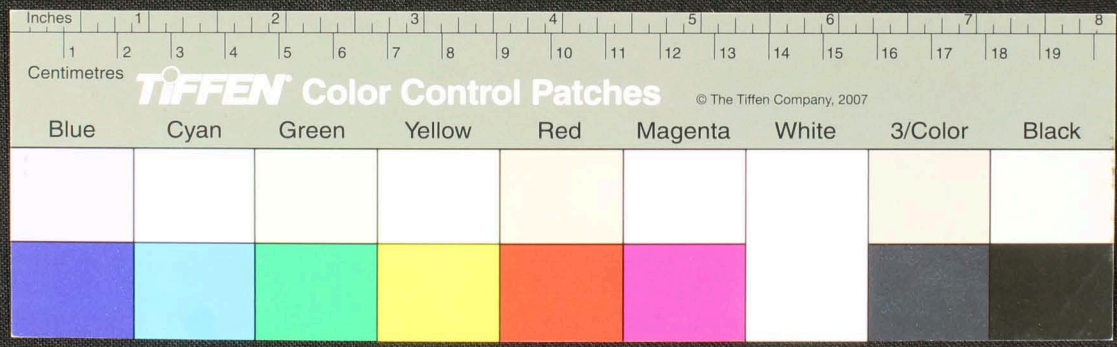
Handwritten Tamil script on a palm leaf manuscript. The text is arranged in approximately 12 horizontal lines across the length of the leaf. The script is finely etched into the surface of the dried leaf. There are two distinct circular holes, one located roughly in the middle and another towards the right end, which were traditionally used for threading a cord to bind multiple leaves together into a book format. The leaf shows signs of age, including some staining and irregular edges.







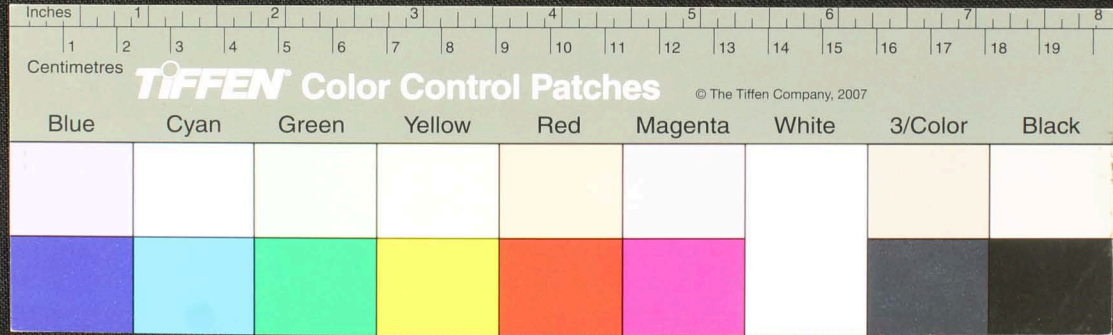
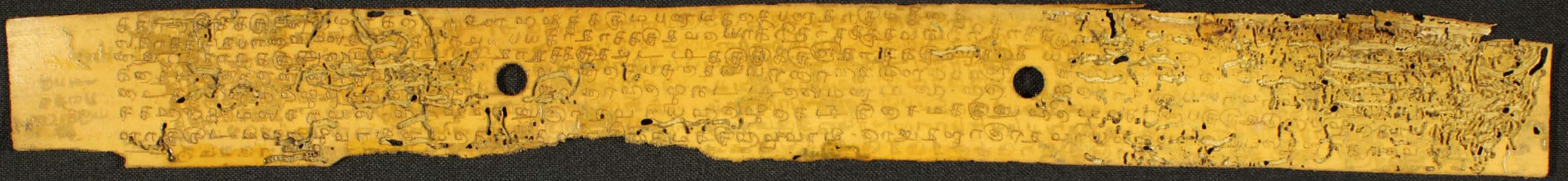






















Handwritten text in Tamil script on a palm leaf manuscript strip. The text is arranged in approximately 10 horizontal lines. The script is finely etched into the surface of the dried leaf, which shows signs of wear, including dark spots and irregular edges. The characters are small and densely packed, typical of traditional palm leaf inscriptions.

