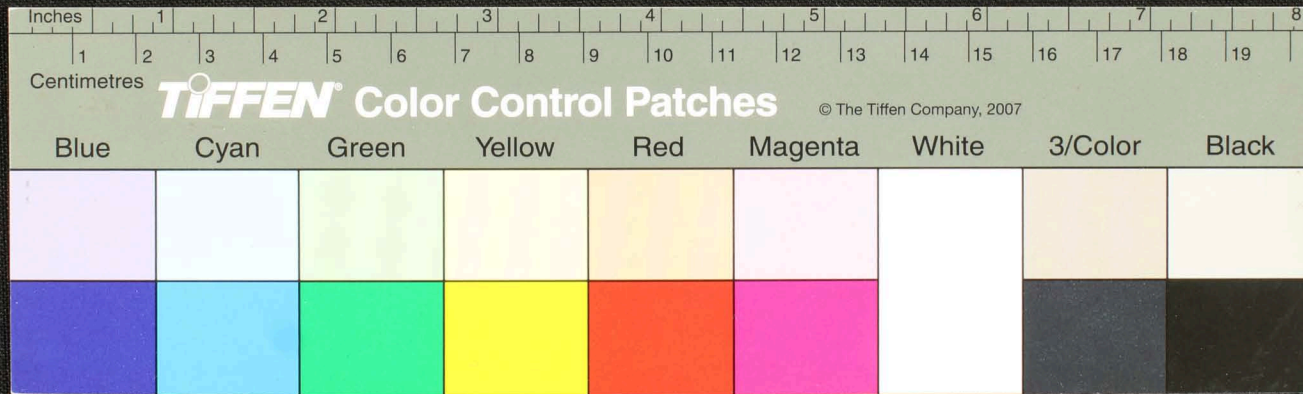
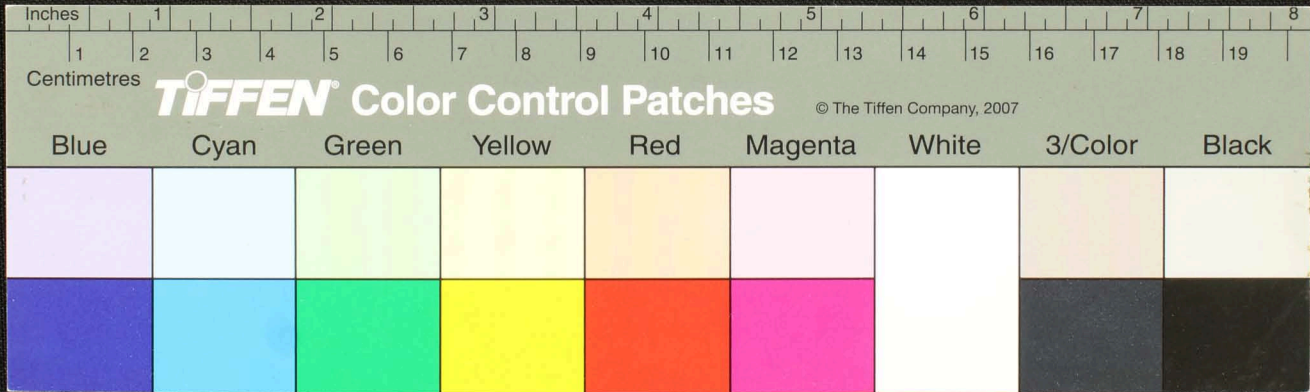


Handwritten text in Tamil script on a palm leaf manuscript. The text is arranged in approximately 10 horizontal lines across the length of the leaf. Two circular holes are visible, which were traditionally used for threading a cord to bind multiple leaves together. The leaf shows signs of age, including some darkening and wear, particularly on the left side.



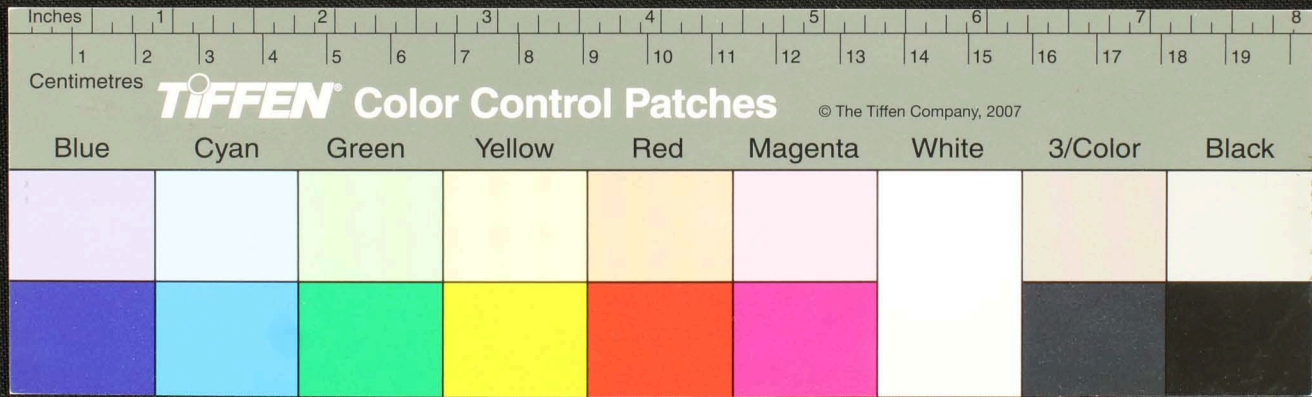


Handwritten Tamil script on a palm leaf manuscript. The text is arranged in approximately 10 horizontal lines across the length of the leaf. The script is finely etched into the surface of the dried leaf. The leaf shows signs of age, including some dark spots and irregular edges.



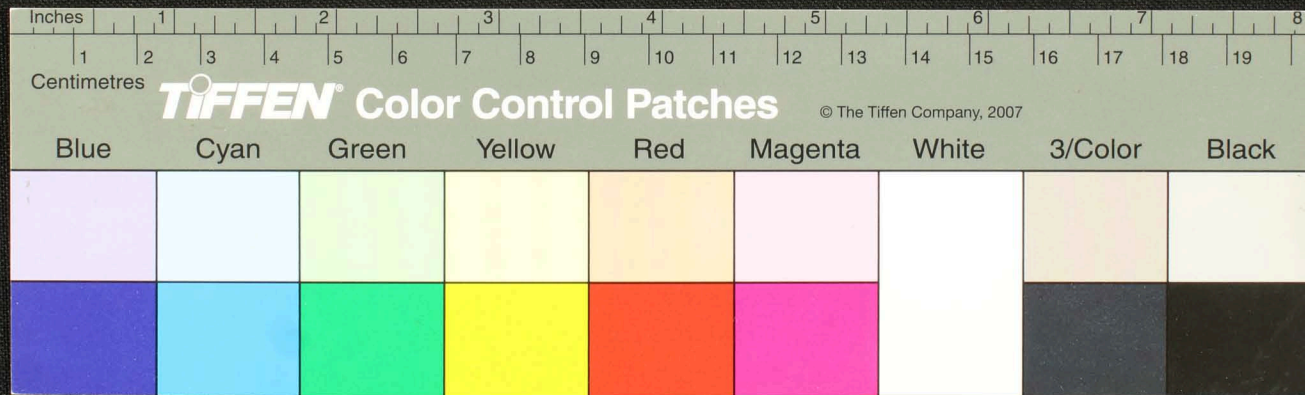


Handwritten text in Tamil script on a palm leaf manuscript. The text is arranged in approximately 10 horizontal lines across the length of the leaf. The script is finely etched into the surface of the dried leaf. A small circular hole is visible near the center of the leaf, which is a traditional feature used for threading a cord to bind multiple leaves together into a book format.



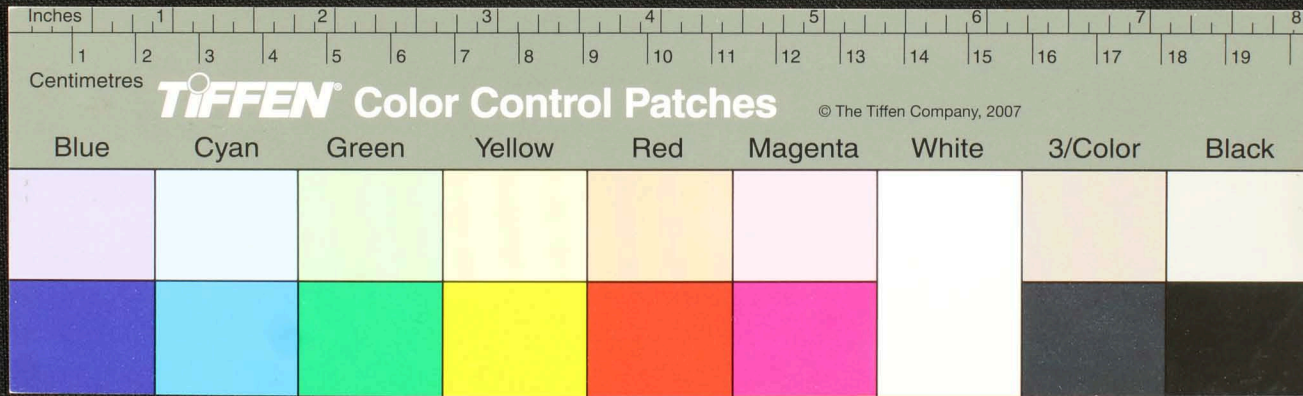


Handwritten text in Tamil script on a palm leaf manuscript. The text is arranged in approximately 10 horizontal lines across the length of the leaf. The script is finely etched into the surface of the dried leaf. A small circular hole is visible near the center of the leaf, which is a traditional feature for threading a cord to bind multiple leaves together into a book format.

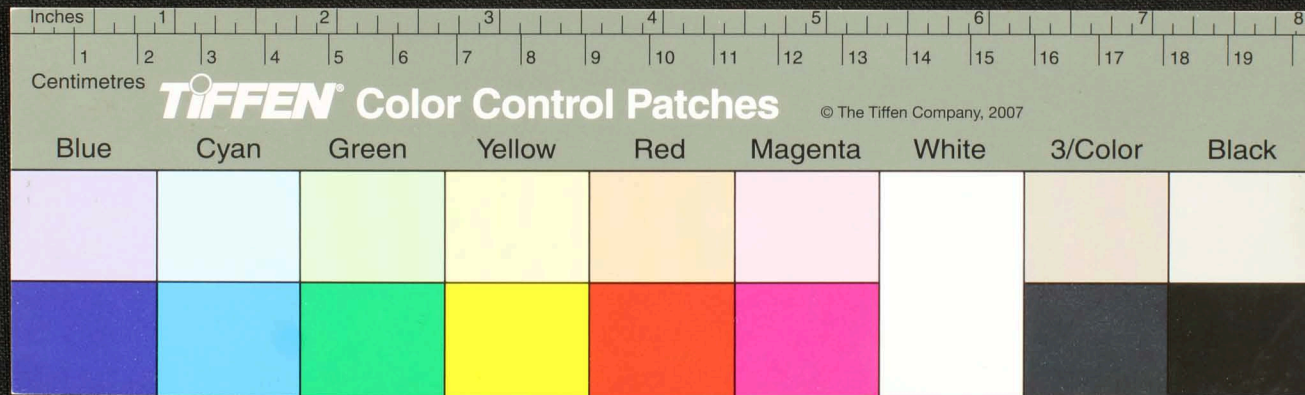
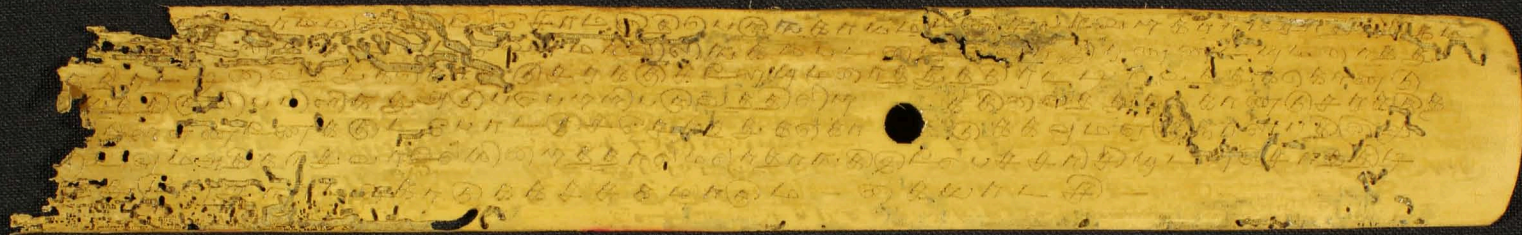




Handwritten Tamil script on a palm leaf manuscript. The text is arranged in approximately 10 horizontal lines across the length of the leaf. The script is finely etched into the surface of the dried leaf. The leaf shows signs of age, including a hole near the center and some fraying at the left end.

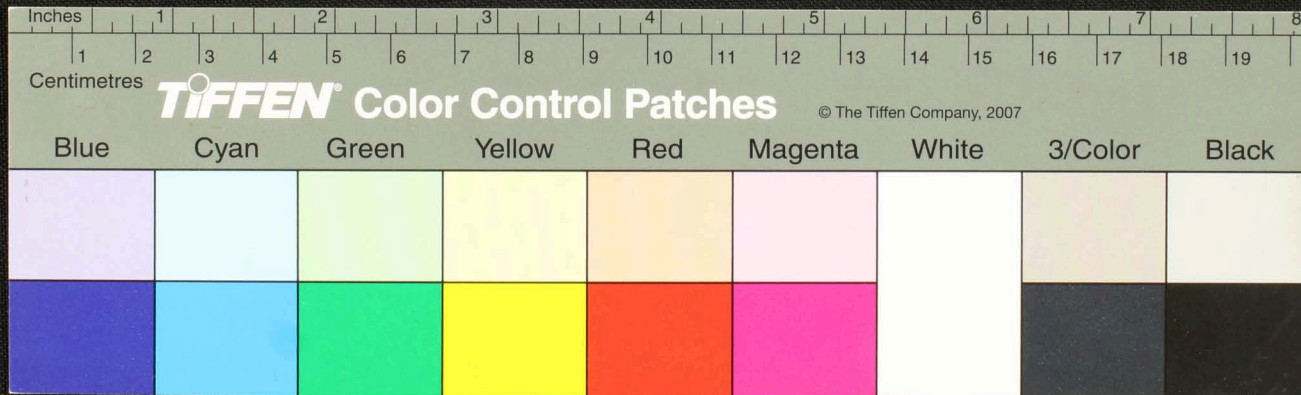








Handwritten Tamil script on a palm leaf manuscript. The text is arranged in approximately 10 horizontal lines across the length of the leaf. The script is finely etched into the surface of the dried leaf. The leaf shows signs of age, including a small circular hole and some fraying at the edges.

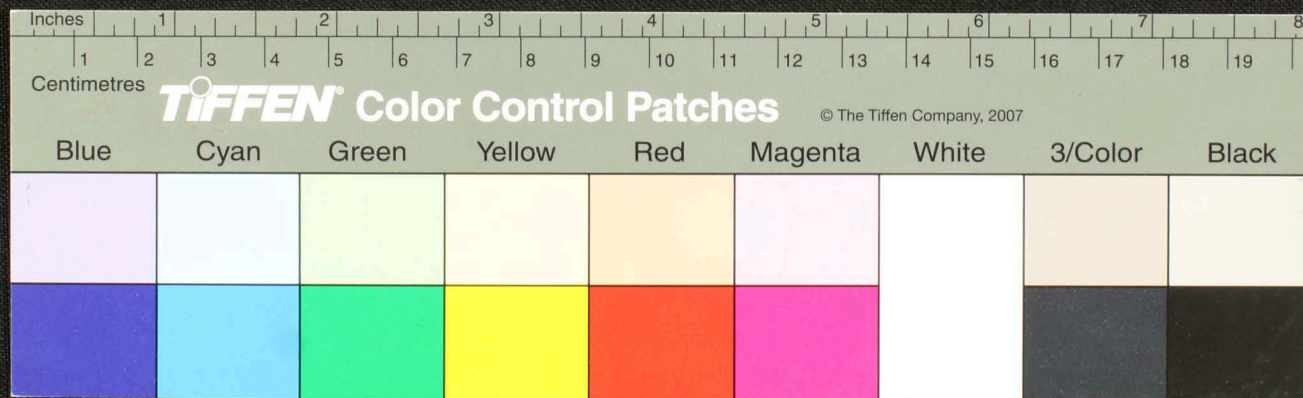




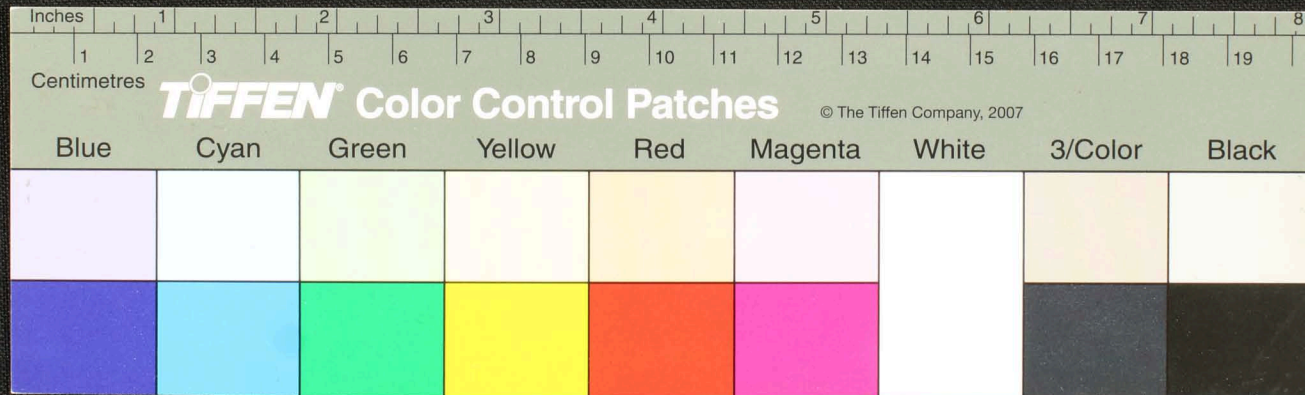




Fragment of ancient papyrus with handwritten text in a cursive script, likely Greek or Latin. The text is arranged in several lines across the length of the strip. Two circular holes are visible, suggesting the fragment was part of a bound volume. The papyrus is yellowed and shows signs of age and wear.

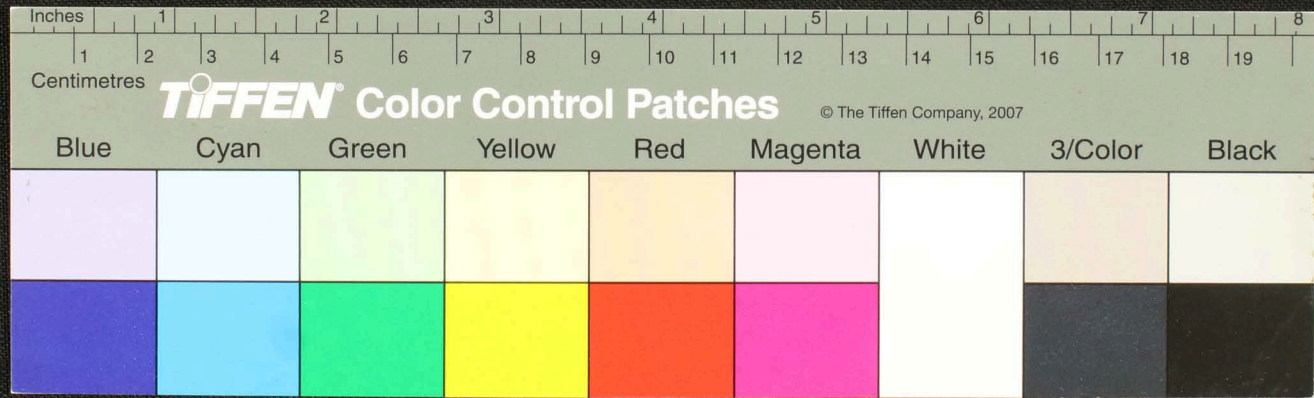






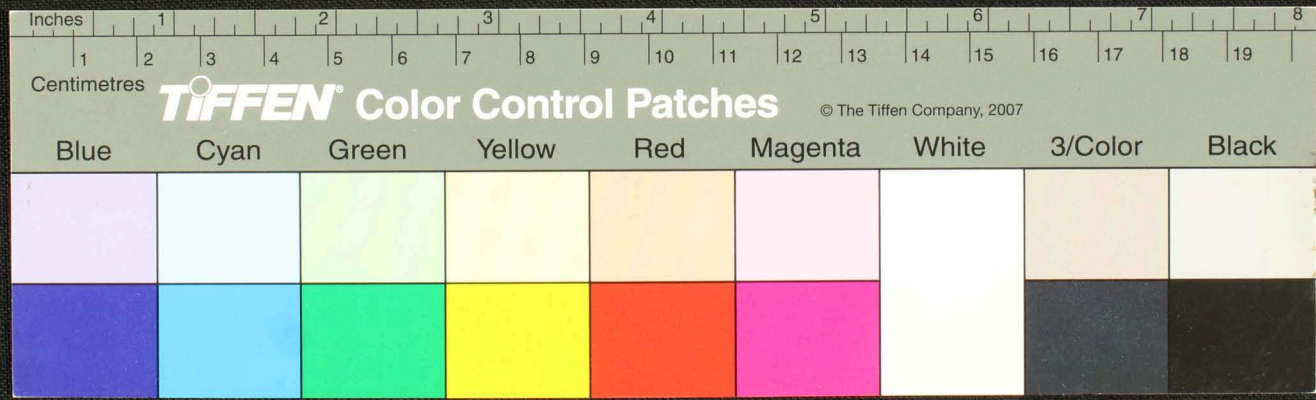


Handwritten text in Tamil script on a palm leaf manuscript. The text is arranged in approximately 10 horizontal lines across the length of the leaf. The script is finely etched into the surface of the dried leaf. The leaf shows signs of age, including a hole and some fraying at the left end.



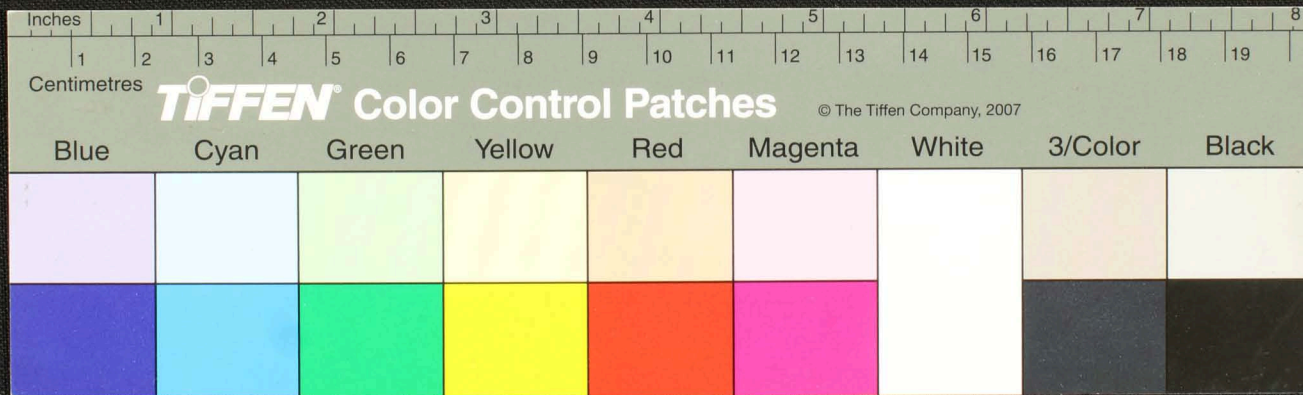


Handwritten text in Tamil script on a palm leaf manuscript. The text is arranged in approximately 10 horizontal lines across the length of the leaf. The script is finely etched into the surface of the dried leaf. The leaf shows signs of age, including dark spots and a hole near the center.

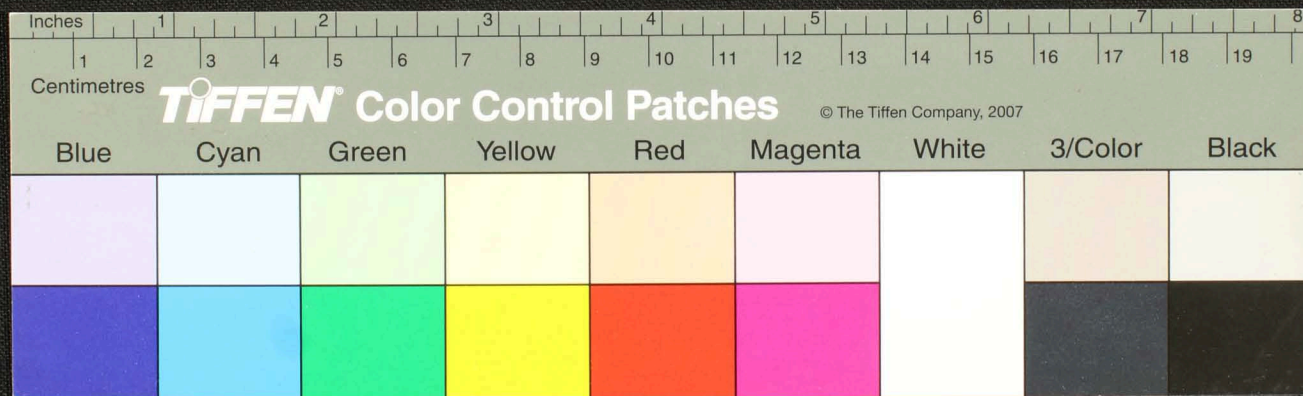




Handwritten text in Tamil script on a palm leaf manuscript. The text is arranged in approximately 10 horizontal lines across the length of the leaf. The script is finely etched into the surface of the dried leaf. A small circular hole is visible near the center of the leaf, which is a traditional feature for threading a cord to bind multiple leaves together into a book format. The leaf shows signs of age, including some dark spots and irregular edges.

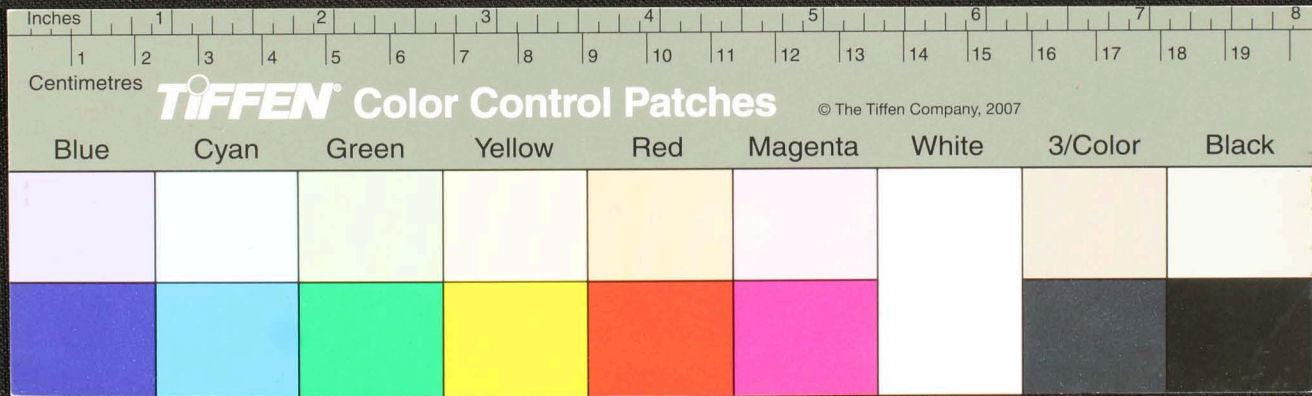






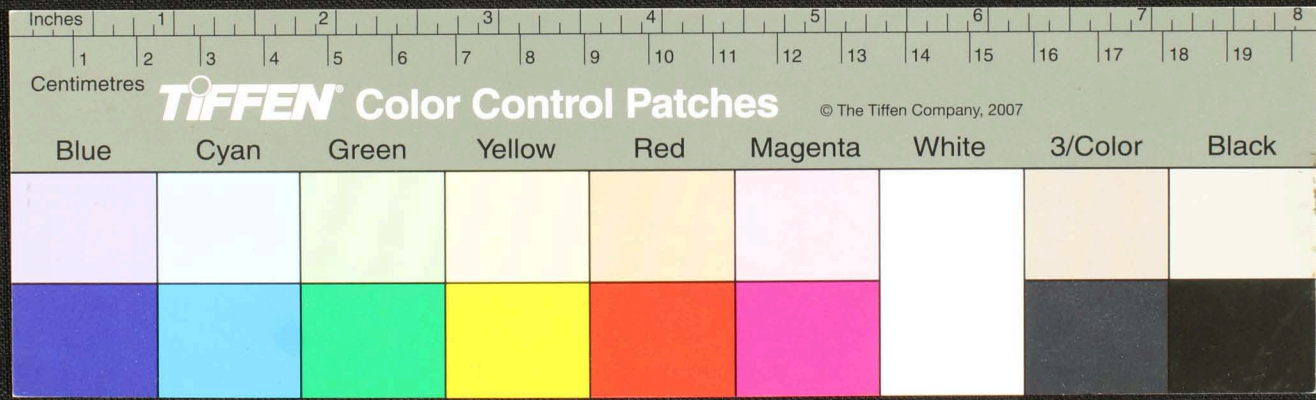


Handwritten Tamil script on a palm leaf manuscript. The text is arranged in approximately 10 horizontal lines. The leaf is yellowed with age and shows significant wear, including a large hole on the left side and a smaller circular hole on the right side. The script is finely etched into the surface of the leaf.



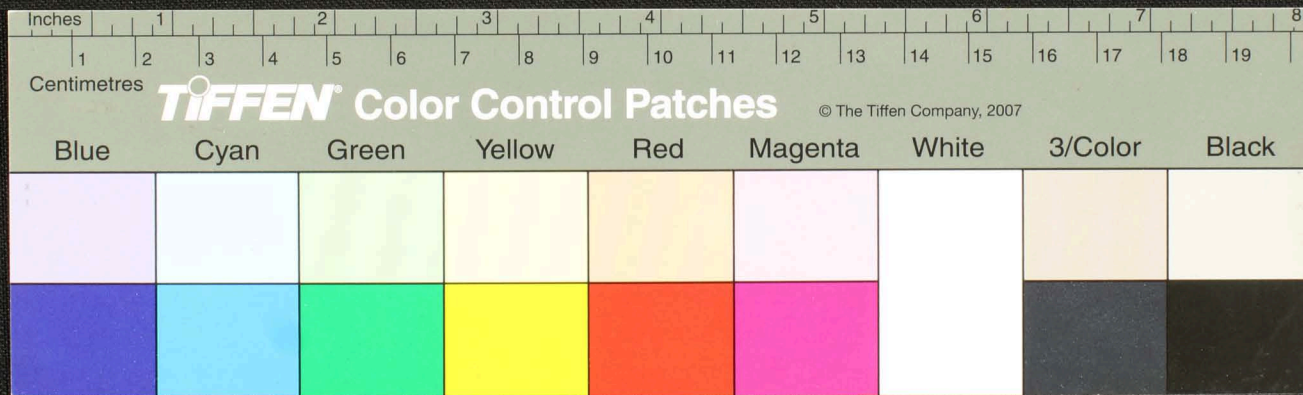


Handwritten text in Tamil script on a palm leaf manuscript. The text is arranged in approximately 10 horizontal lines across the length of the leaf. The script is finely etched into the surface of the dried leaf. A circular hole is visible near the center of the leaf, which is a traditional feature used for threading a cord to bind multiple leaves together into a book format.

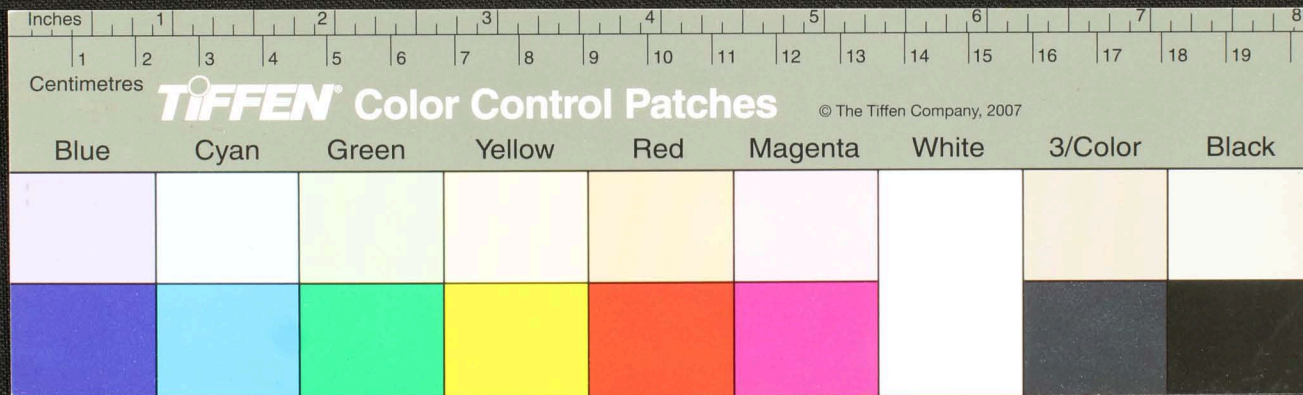
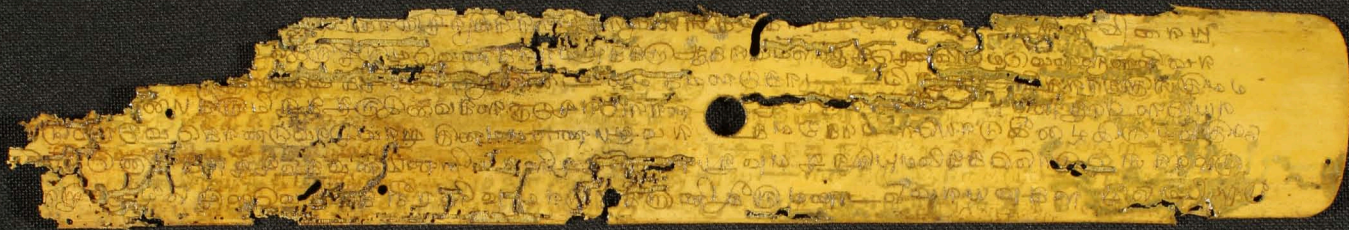




Handwritten text in Tamil script on a palm leaf manuscript. The text is arranged in approximately 10 horizontal lines across the length of the leaf. The script is finely etched into the surface of the dried leaf. The leaf shows signs of age, including some dark spots and irregular edges.

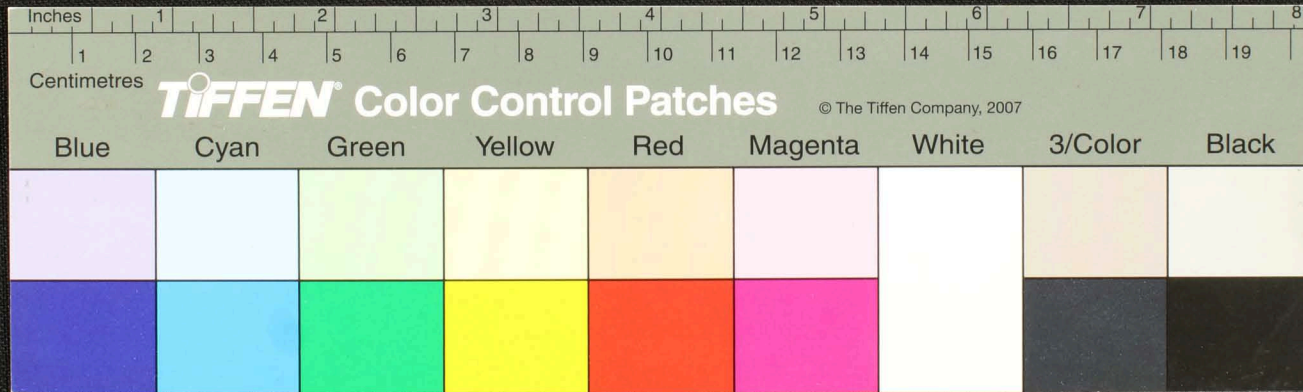








Handwritten Tamil script on a palm leaf manuscript. The text is arranged in approximately 10 horizontal lines across the length of the leaf. The script is finely etched into the surface of the dried leaf. A small circular hole is visible near the center of the leaf, which is a traditional feature for threading a cord to bind multiple leaves together into a book format.

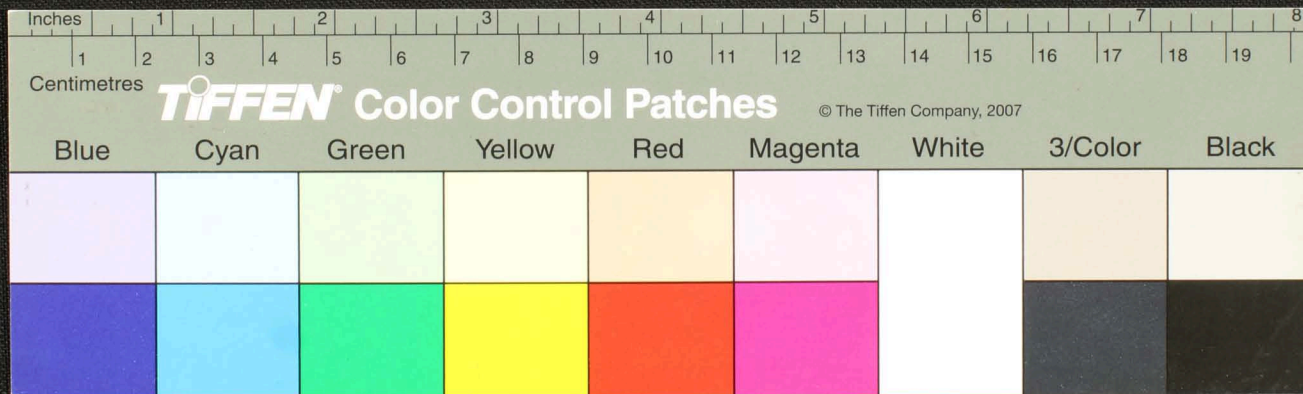






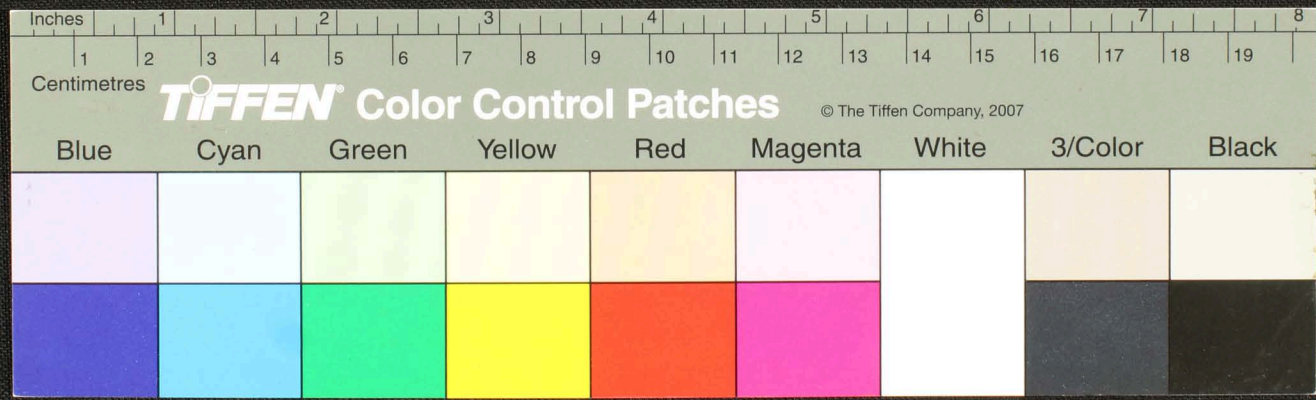


Handwritten text in Tamil script on a palm leaf manuscript. The text is arranged in approximately 10 horizontal lines across the length of the leaf. The script is finely etched into the surface of the dried leaf. The leaf shows signs of age, including dark spots and some physical damage, particularly at the left end.



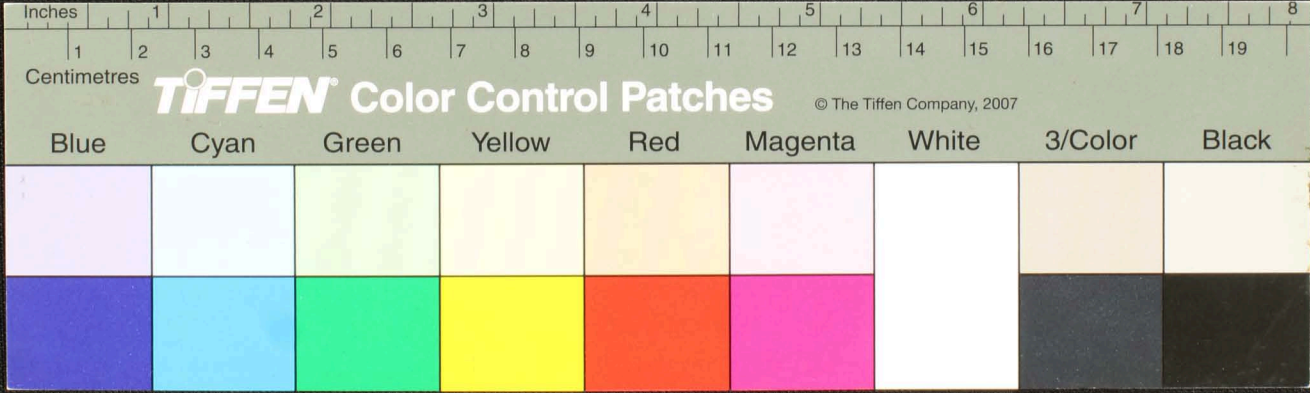


Handwritten Tamil script on a palm leaf manuscript. The text is arranged in approximately five horizontal lines. The leaf shows signs of age, including a hole and some surface wear.





Handwritten text in Tamil script on a palm leaf manuscript. The text is arranged in approximately 10 horizontal lines across the length of the leaf. The script is finely etched into the surface of the dried leaf. A small circular hole is visible near the center of the leaf, which is a traditional feature for threading a cord to bind multiple leaves together into a book format.

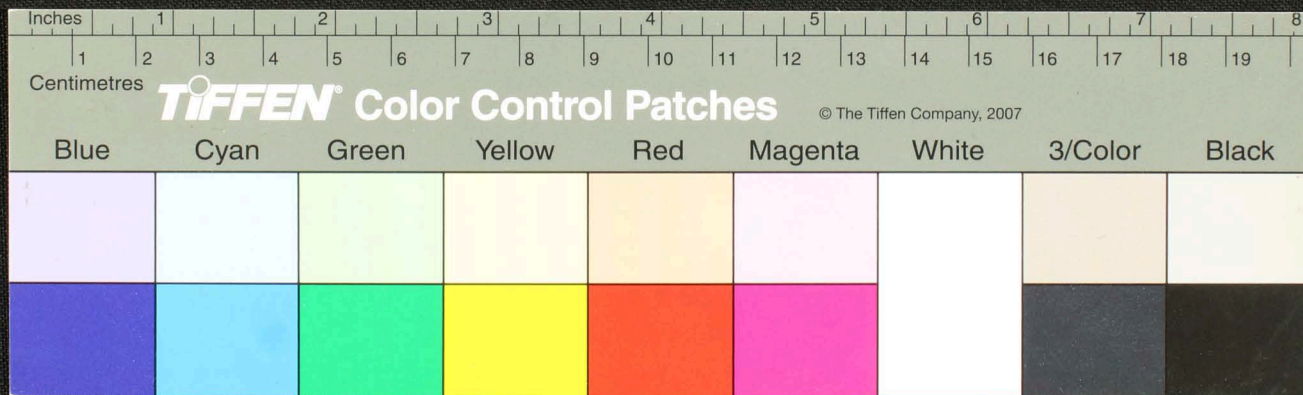




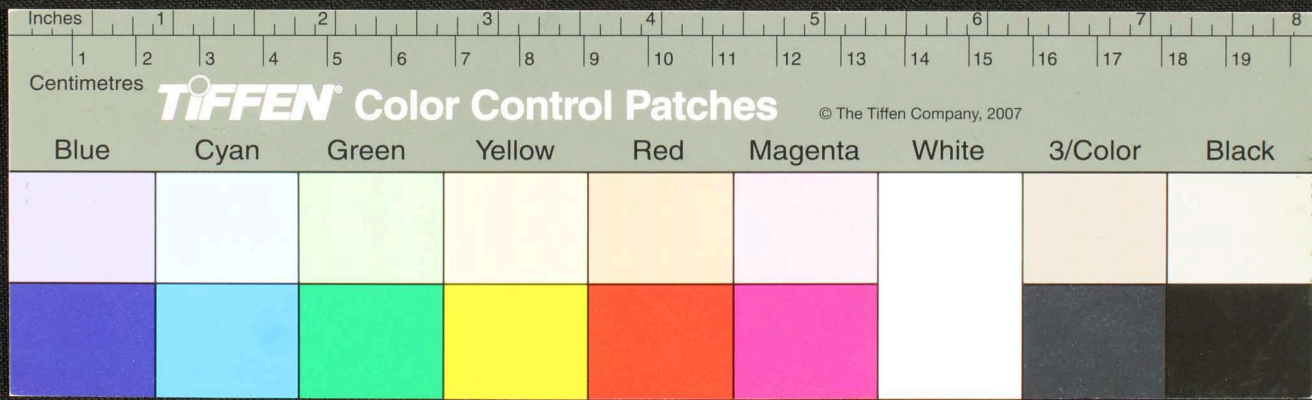




Handwritten Tamil script on a palm leaf manuscript. The text is arranged in approximately 10 horizontal lines across the length of the leaf. The script is finely etched into the surface of the dried leaf, which shows signs of age and wear, including a large hole in the center.

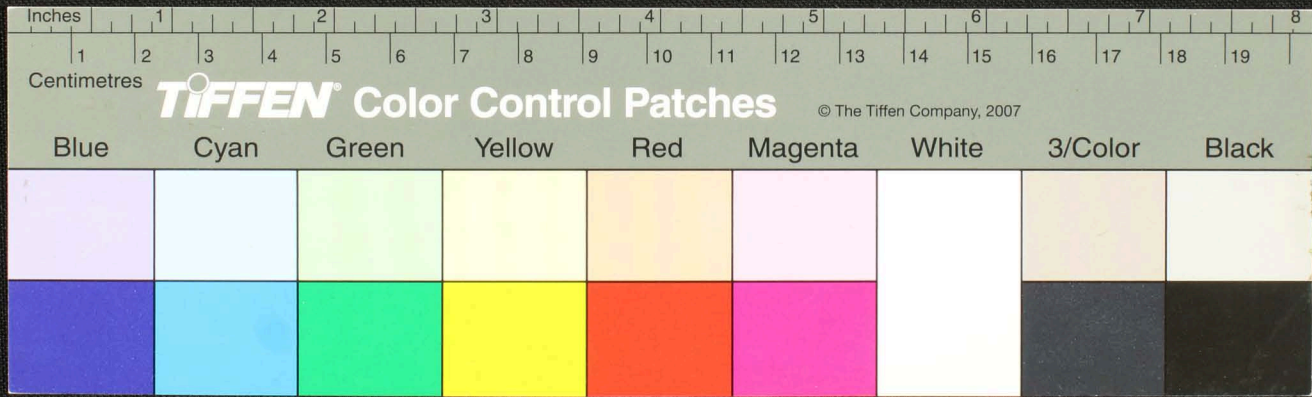






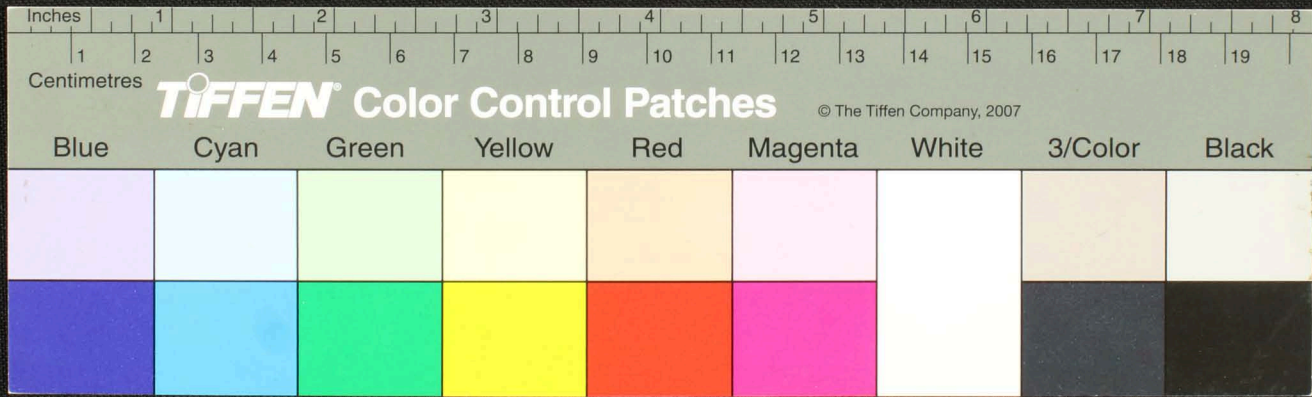


Handwritten Tamil script on a palm leaf manuscript. The text is arranged in approximately 10 horizontal lines across the length of the leaf. The script is finely etched into the surface of the dried leaf. The leaf shows signs of age, including some dark spots and a small hole near the center.

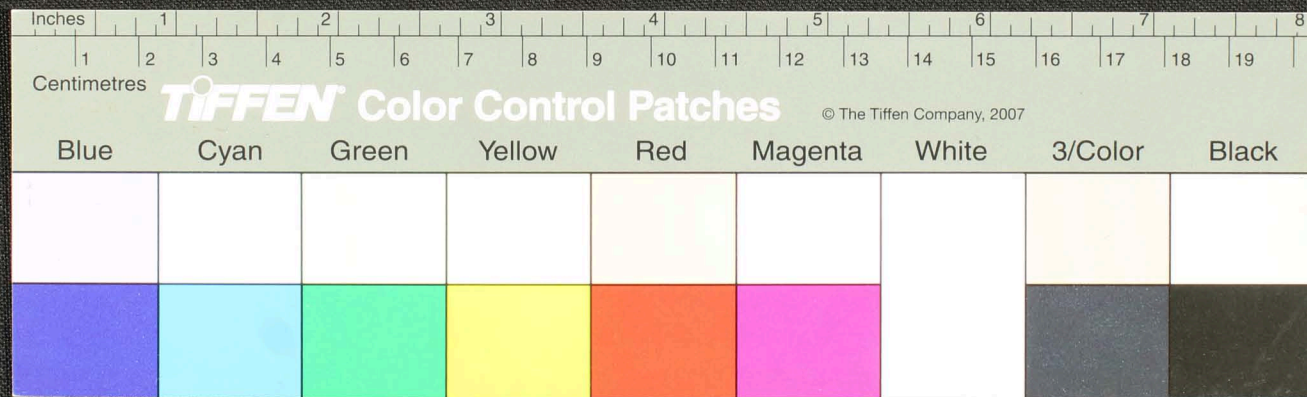




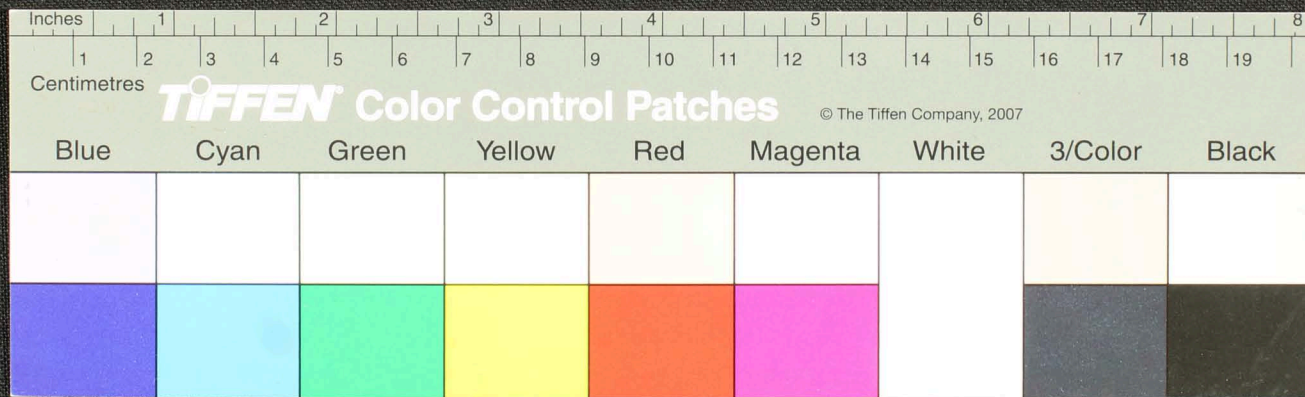
Handwritten text in Tamil script on a palm leaf manuscript. The text is arranged in approximately 10 horizontal lines across the length of the leaf. The script is finely etched into the surface of the dried leaf. The leaf shows signs of age, including some dark spots and a small hole near the center.





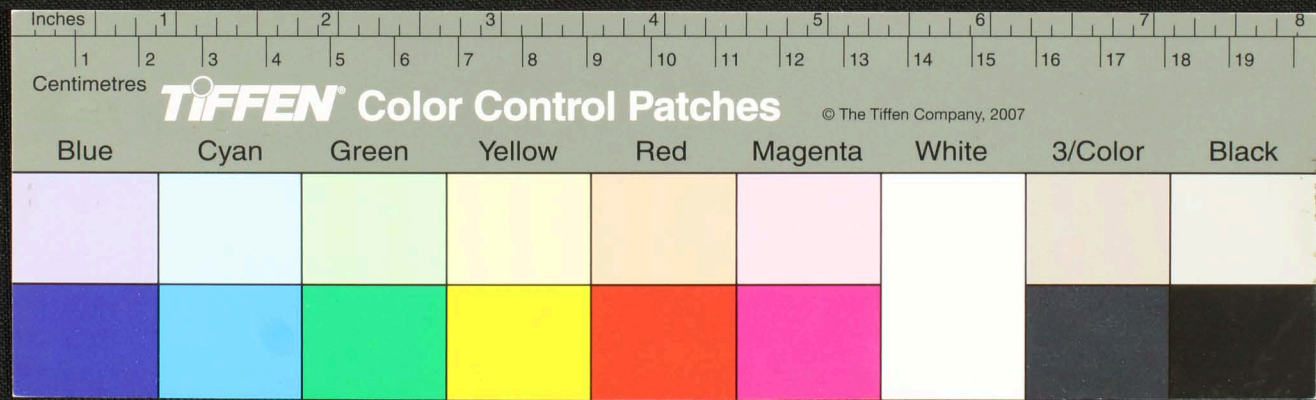






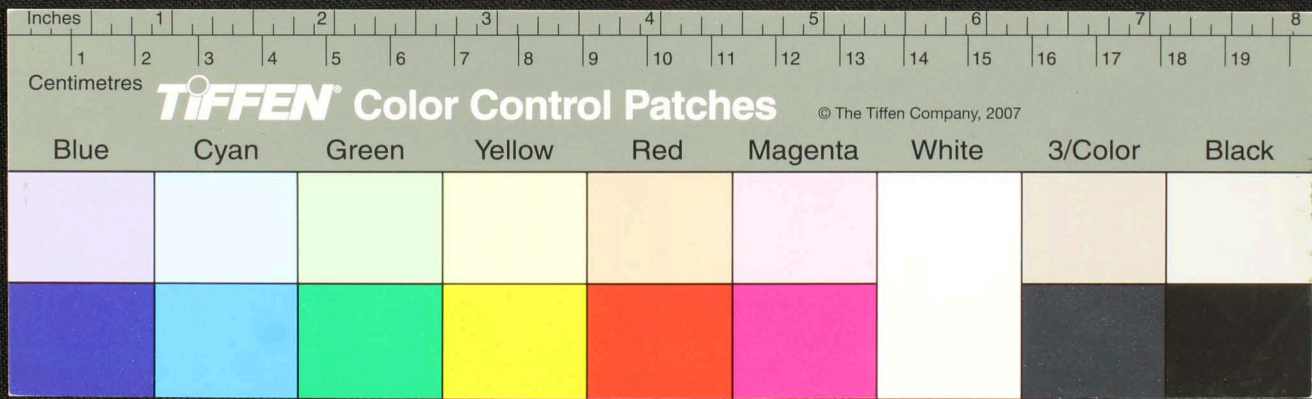


Handwritten text in Tamil script on a palm leaf manuscript. The text is arranged in approximately 10 horizontal lines across the length of the leaf. The script is finely etched into the surface of the dried leaf. The leaf shows signs of age, including some dark spots and a small circular hole near the center.



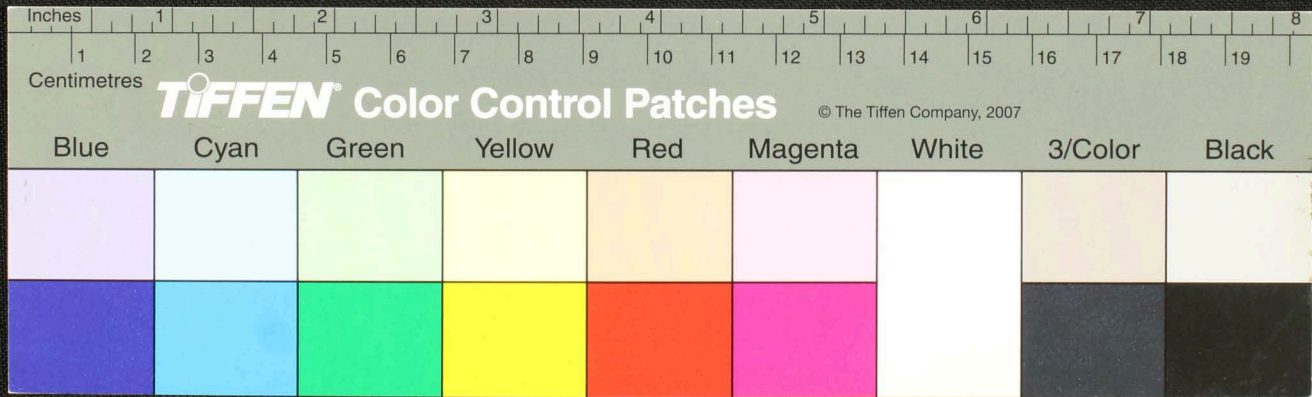


Handwritten text in Tamil script on a palm leaf manuscript. The text is arranged in approximately 10 horizontal lines. The leaf is yellowed with age and shows signs of wear, including a hole near the center and frayed edges on the left side.



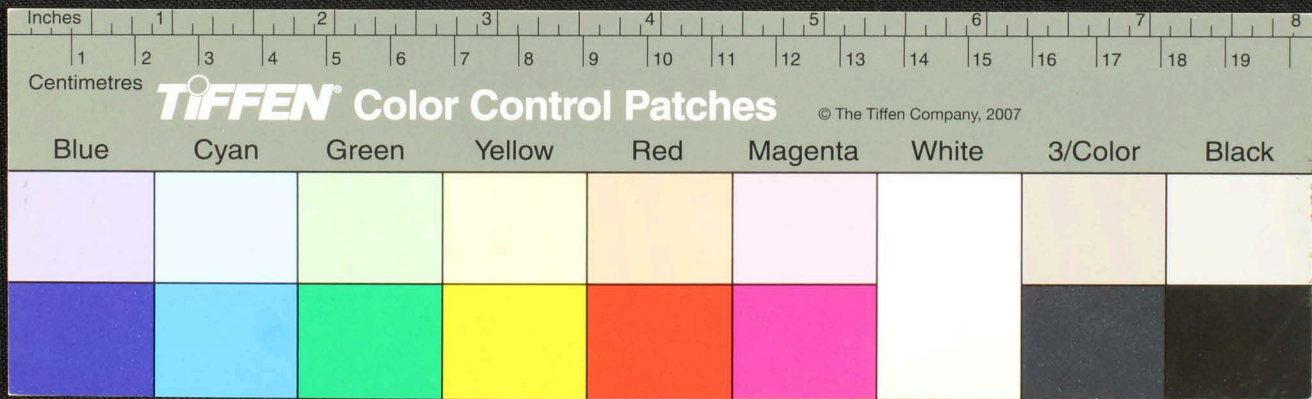


Handwritten text in an ancient script, likely Tamil, on a fragment of aged, yellowed paper. The text is arranged in approximately 10 horizontal lines. The fragment is heavily damaged, with significant portions missing from the left and right edges, and a circular hole is visible near the center. The ink is dark and somewhat faded due to the age of the document.



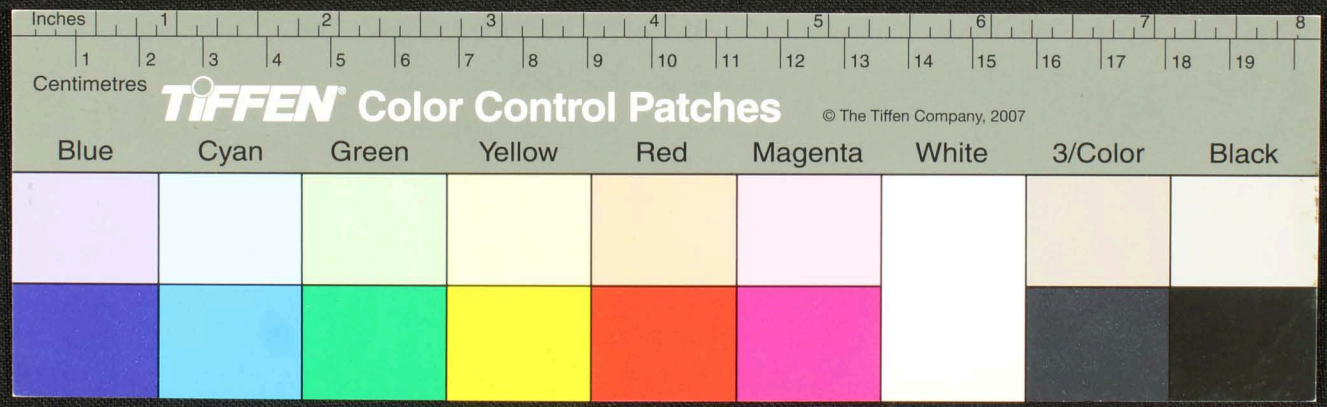


Fragment of an ancient manuscript, likely a scroll, showing several lines of text in an ancient script, possibly Tamil or a similar South Asian script. The text is heavily faded and partially obscured by a large circular hole and significant damage to the material.

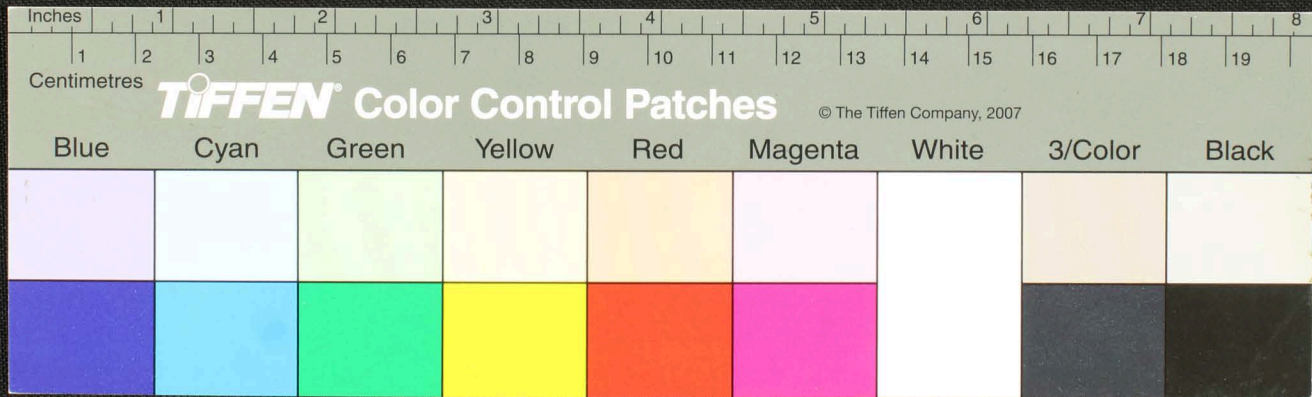




Handwritten text in an ancient script, possibly Tamil, on a palm leaf manuscript. The text is arranged in approximately six horizontal lines. The leaf is yellowed with age and shows signs of wear, including a small hole and some surface damage. The script is finely etched into the surface of the leaf.





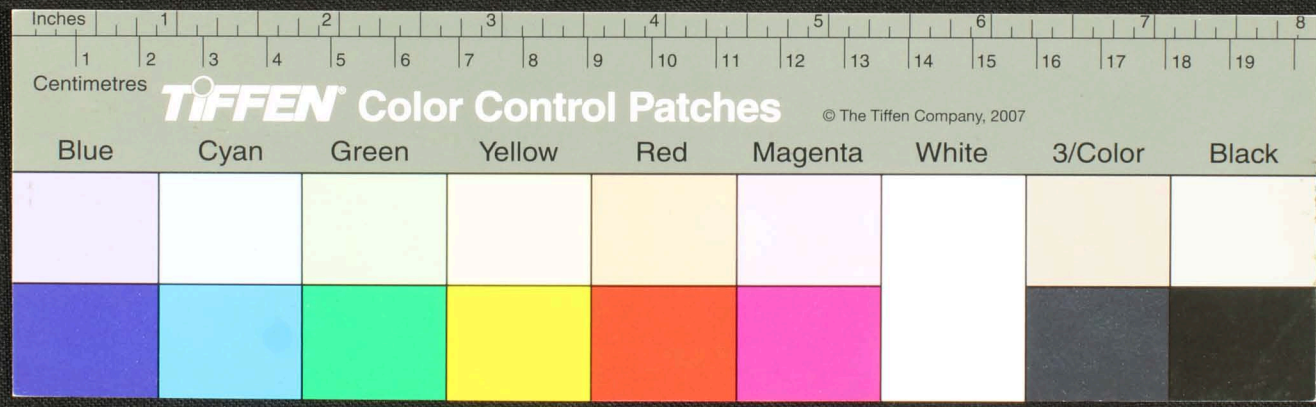






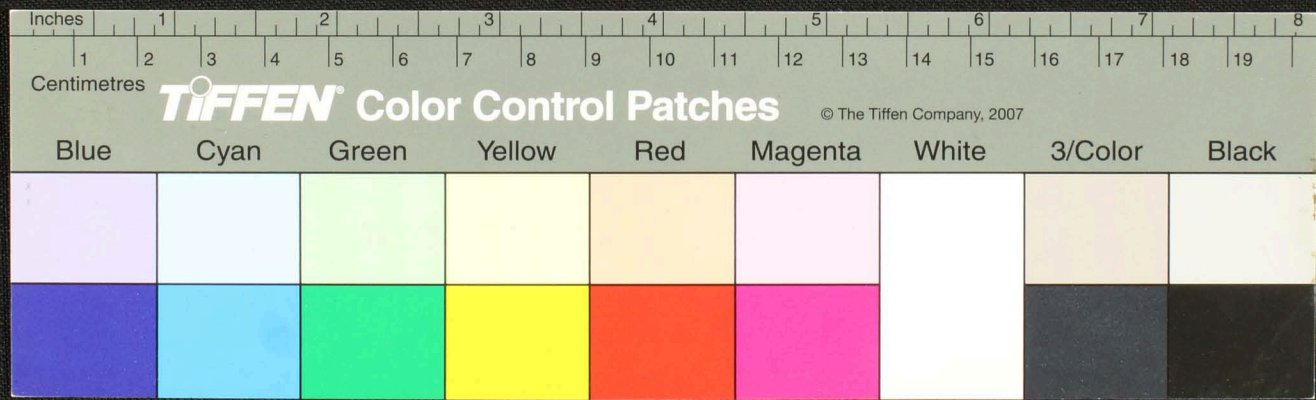


Handwritten text in Tamil script on a palm leaf manuscript. The text is arranged in approximately 10 horizontal lines across the length of the leaf. The script is finely etched into the surface of the dried leaf. There are two distinct circular holes along the length of the leaf, which were traditionally used for threading a cord to bind multiple leaves together into a book format. The leaf shows signs of age, including some fraying and discoloration at the edges.



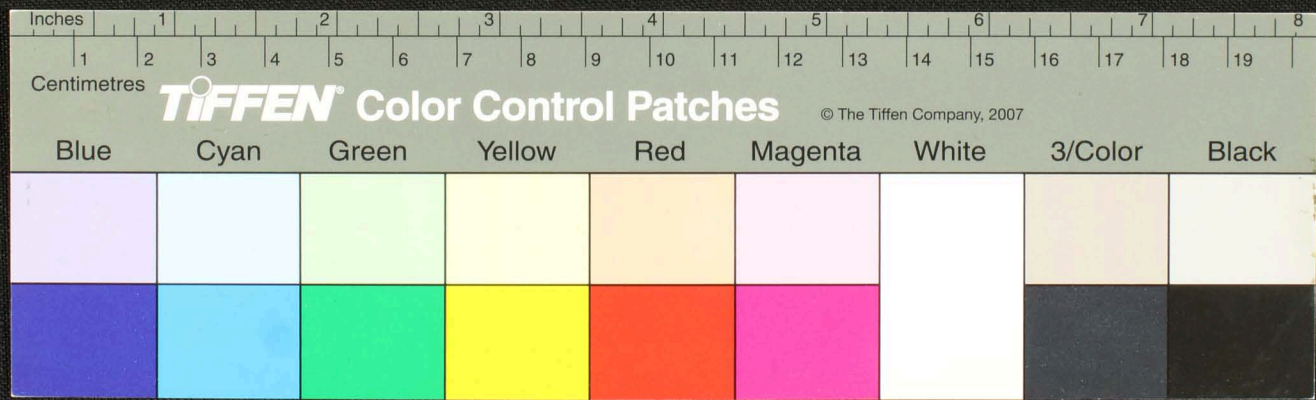


Handwritten Tamil script on a palm leaf manuscript. The text is arranged in approximately 10 horizontal lines across the length of the leaf. The script is finely etched into the surface of the dried leaf. The leaf shows signs of age and wear, with some darkening and irregular edges, particularly on the left side where it appears to have been torn or broken.



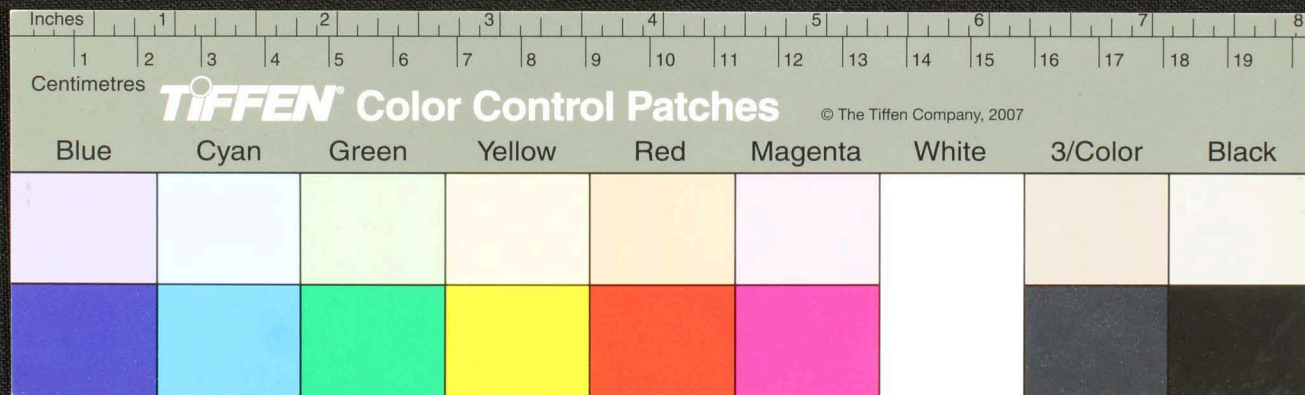


Handwritten Tamil script on a palm leaf manuscript. The text is arranged in approximately 10 horizontal lines across the length of the leaf. The script is finely etched into the surface of the dried leaf. The leaf shows signs of age, including several large holes and irregular damage, particularly on the left side and in the middle. The background is a dark, textured surface.



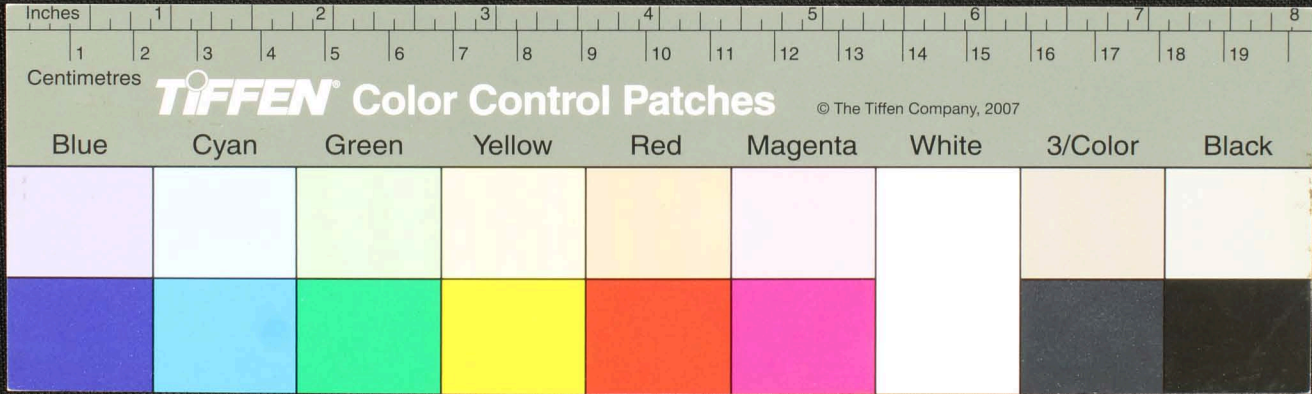


Handwritten text in Tamil script on a palm leaf manuscript. The text is arranged in approximately 10 horizontal lines across the length of the leaf. The script is finely etched into the surface of the dried leaf. There are several dark spots and irregularities on the leaf, possibly due to age or damage.



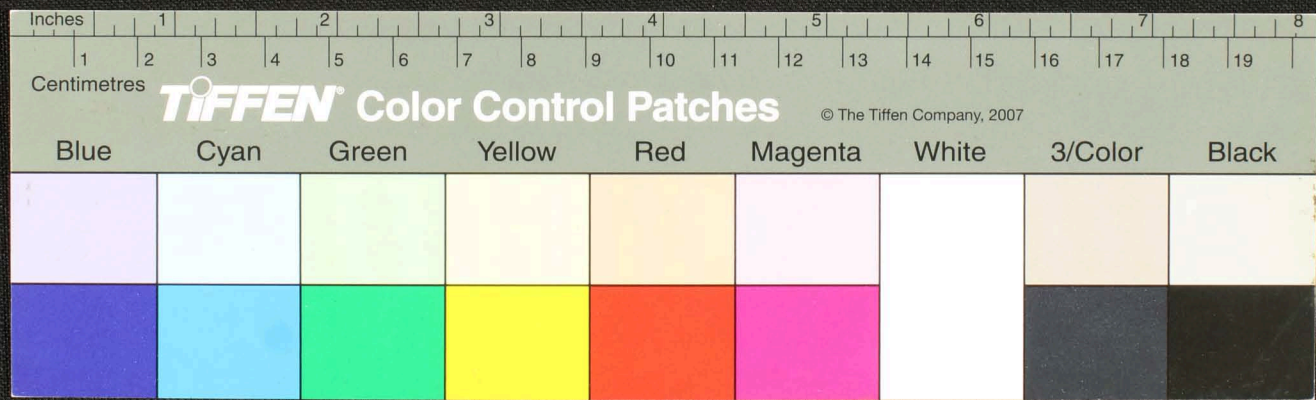


Fragment of an ancient palm-leaf manuscript with handwritten text in Tamil script. The leaf is yellowed and shows signs of wear and damage, including a hole and irregular edges. The text is arranged in horizontal lines across the length of the leaf.



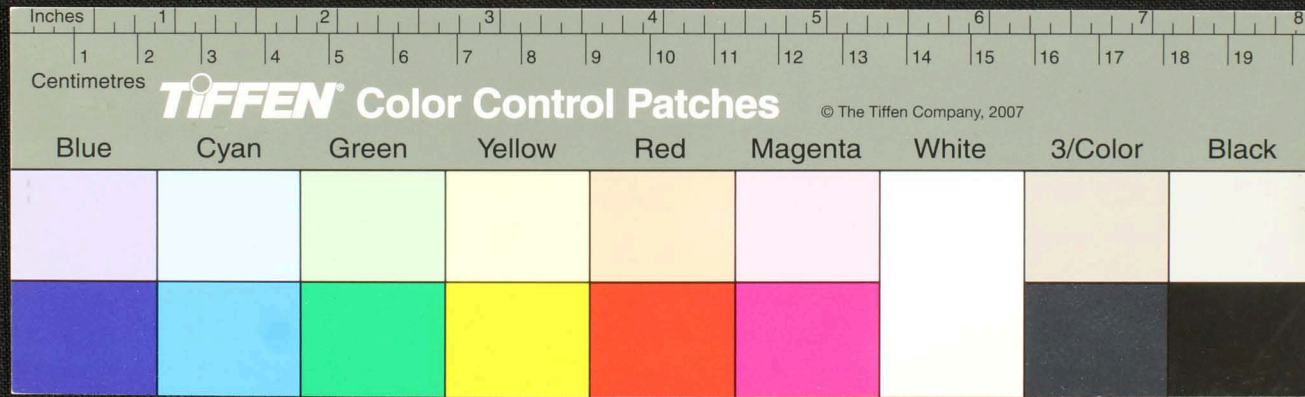


Handwritten text in Tamil script on a yellowed palm leaf manuscript. The text is arranged in approximately 10 horizontal lines. The leaf shows signs of age, including a large hole on the left side and a smaller circular hole near the center. The script is finely etched into the surface of the leaf.





Handwritten Tamil script on a palm leaf manuscript. The text is arranged in approximately 10 horizontal lines. The script is finely etched into the surface of the dried leaf. There is a small circular hole in the center of the leaf, likely from a traditional binding method. The leaf shows signs of age and wear, with some fraying at the edges.





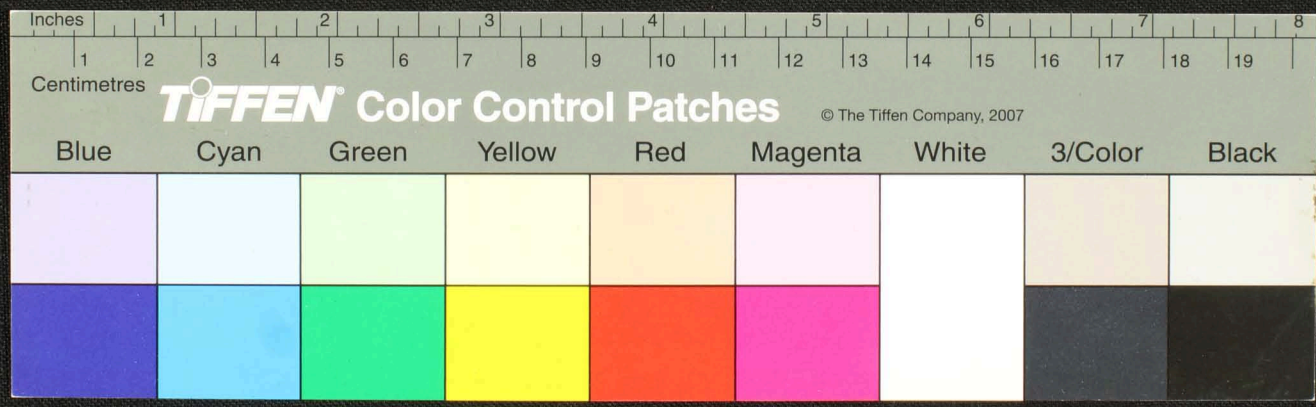






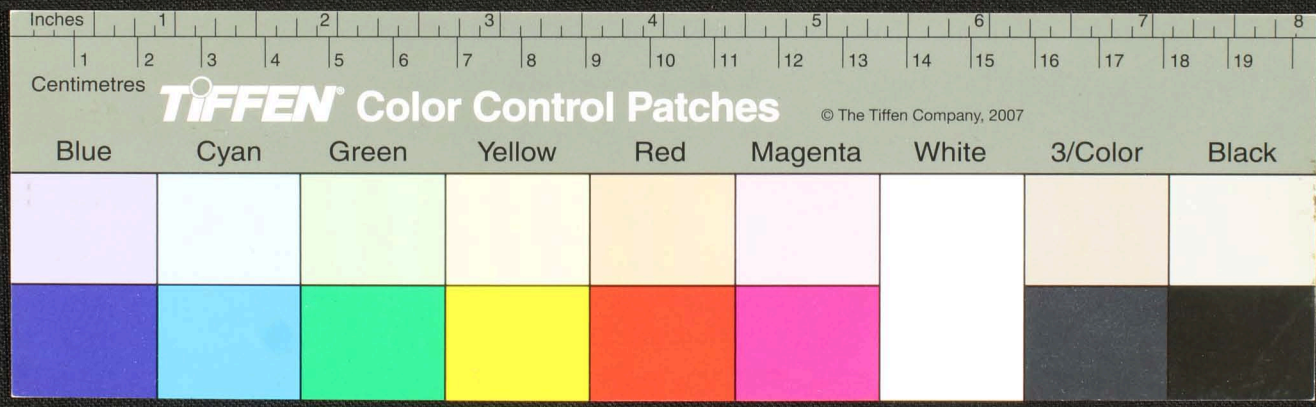


Handwritten text in Tamil script on a yellowed, damaged palm leaf manuscript fragment. The text is arranged in approximately five horizontal lines across the length of the leaf. The script is finely etched into the surface of the dried leaf. The fragment shows signs of significant wear, including a large circular hole and irregular, jagged edges, particularly on the right side.





Handwritten text in Tamil script on a palm leaf manuscript. The text is arranged in approximately 10 horizontal lines across the length of the leaf. The script is finely etched into the surface of the dried leaf. A small circular hole is visible near the center of the leaf, which is a traditional feature for threading a cord to bind multiple leaves together into a book format.

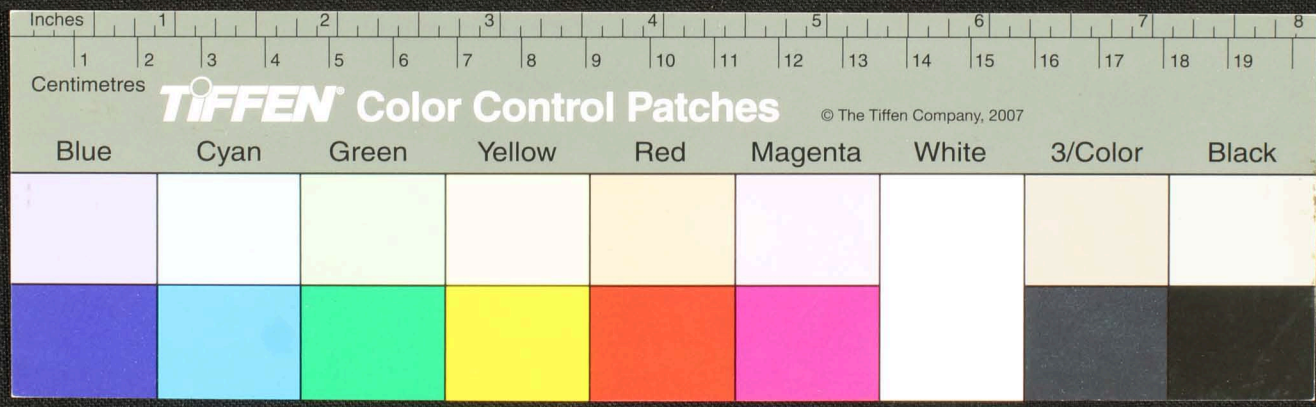






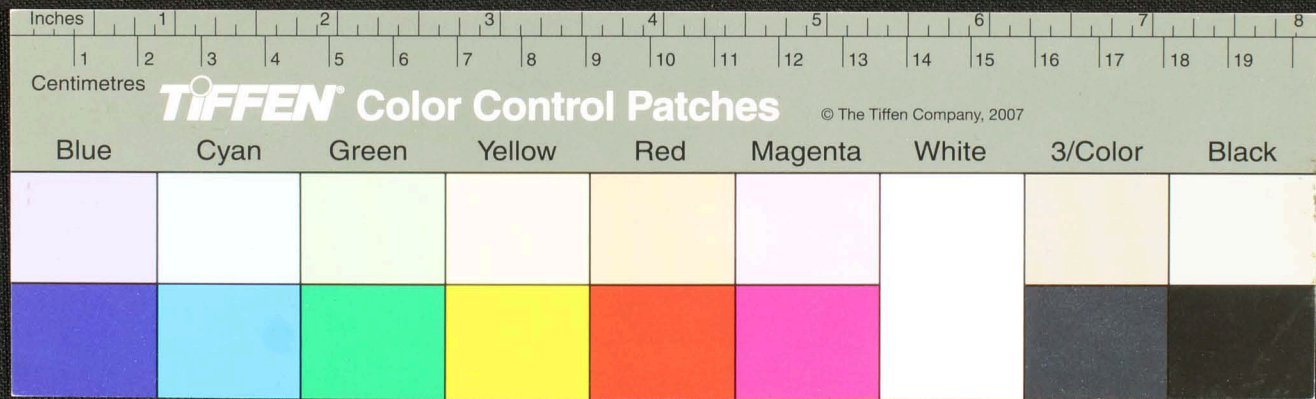


Handwritten text in Tamil script on a palm leaf manuscript. The text is arranged in approximately 10 horizontal lines across the length of the leaf. The script is finely etched into the surface of the dried leaf. There are two prominent circular holes, one near the left edge and one near the right edge, which were traditionally used for threading a cord to bind multiple leaves together into a book format. The leaf shows signs of age, including some staining and irregular edges.



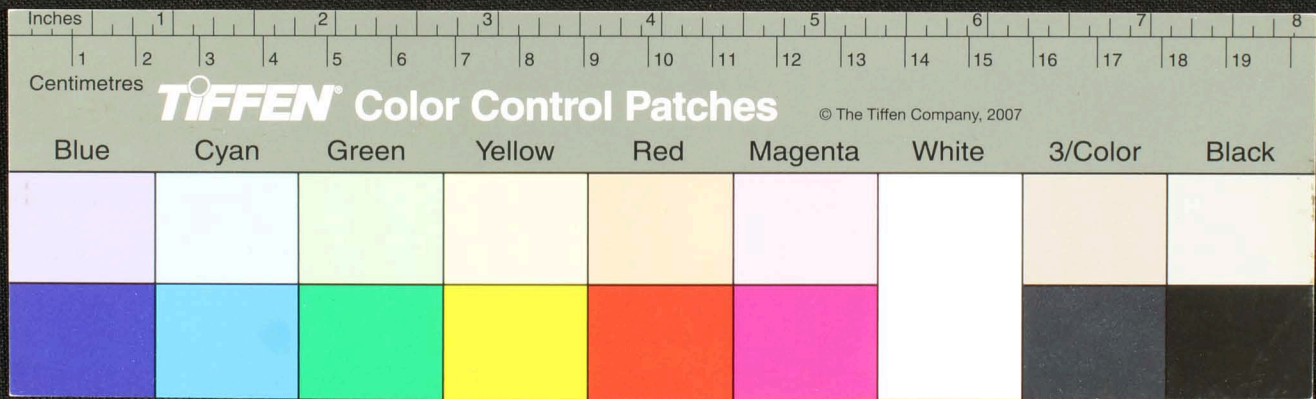


Handwritten text in Tamil script on a palm leaf manuscript. The text is arranged in approximately 10 horizontal lines. A significant portion of the leaf is damaged, particularly on the left side and in the center, where the surface has been eroded or charred, obscuring the underlying script. A circular hole is visible near the center of the leaf.



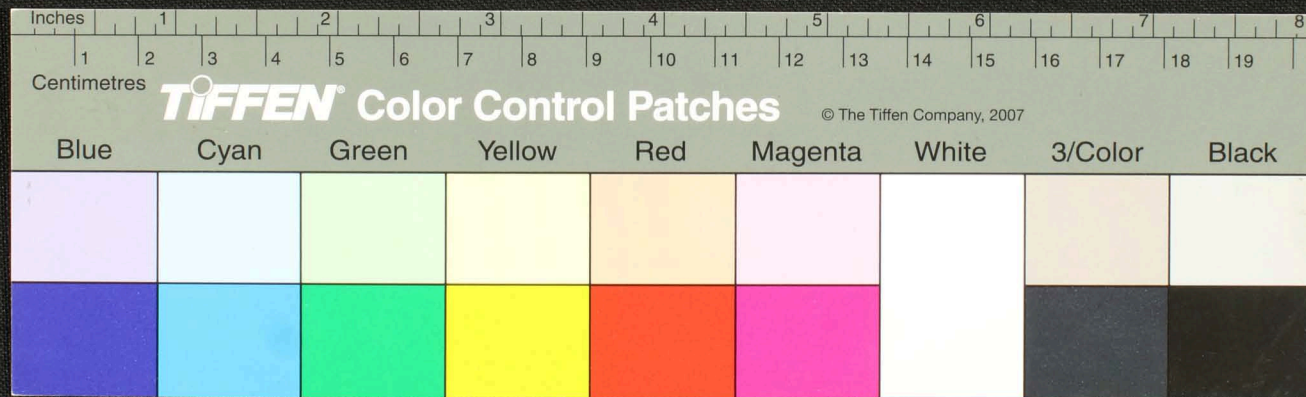


Handwritten Tamil script on a palm leaf manuscript. The text is arranged in approximately 10 horizontal lines. The leaf shows signs of age, including a large hole on the left side and a smaller hole near the center. The script is finely etched into the surface of the dried leaf.



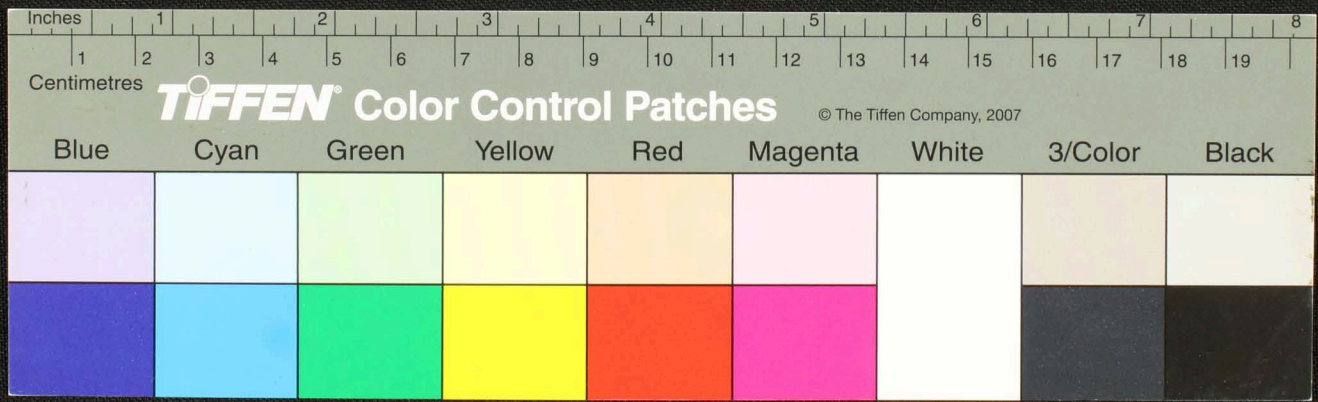


Handwritten text in Tamil script on a palm leaf manuscript. The text is arranged in approximately 10 horizontal lines. The leaf shows signs of age, including a hole near the center and some dark staining or damage on the left side.

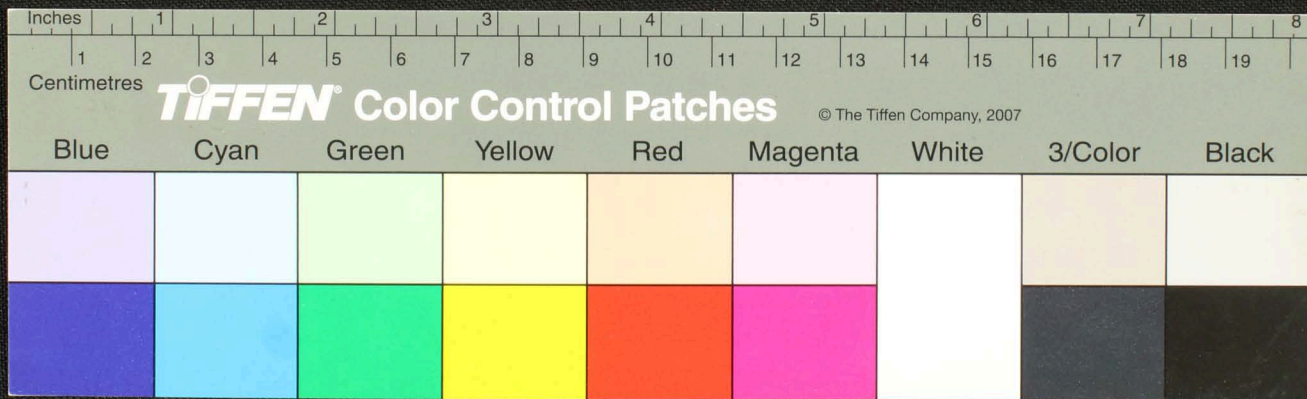




Handwritten text in Tamil script on a palm leaf manuscript. The text is arranged in three lines and is partially obscured by damage on the left side. The script is finely etched into the surface of the dried leaf.

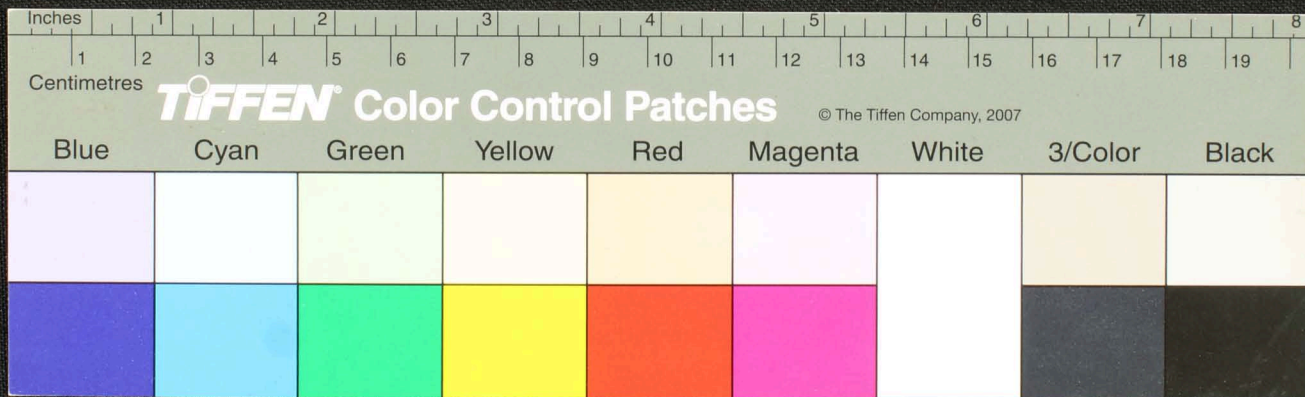




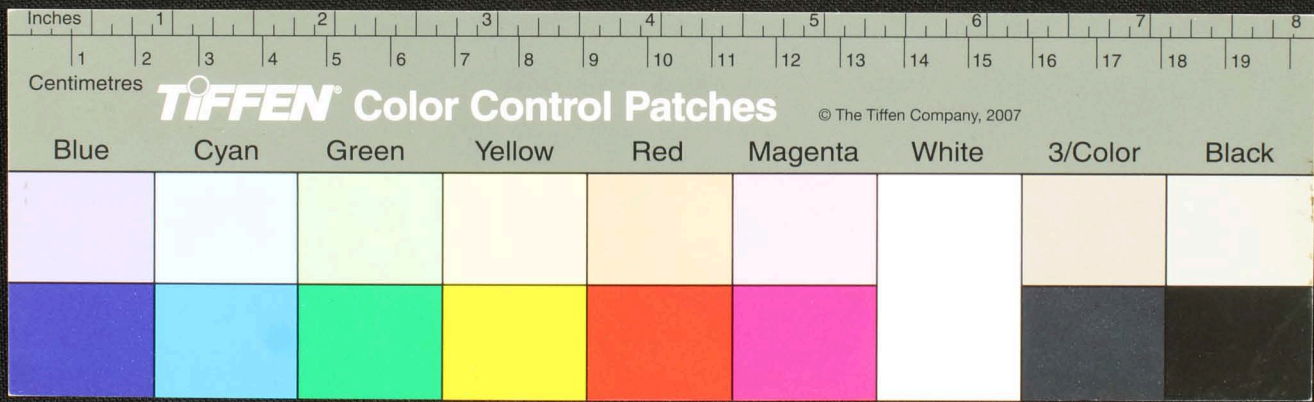
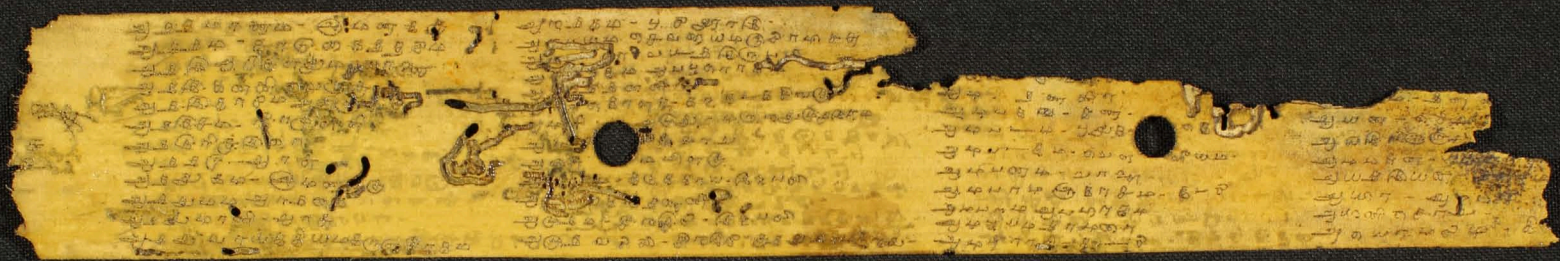




Handwritten text in Tamil script on a palm leaf manuscript fragment. The text is arranged in approximately five horizontal lines. The script is finely etched into the surface of the dried leaf. The fragment is irregularly shaped with some damage and a small circular hole near the center.

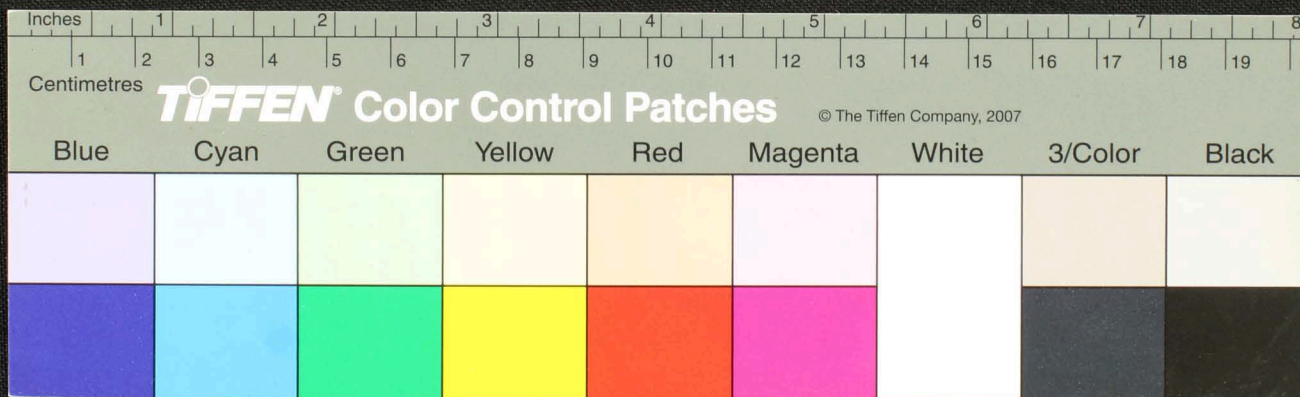






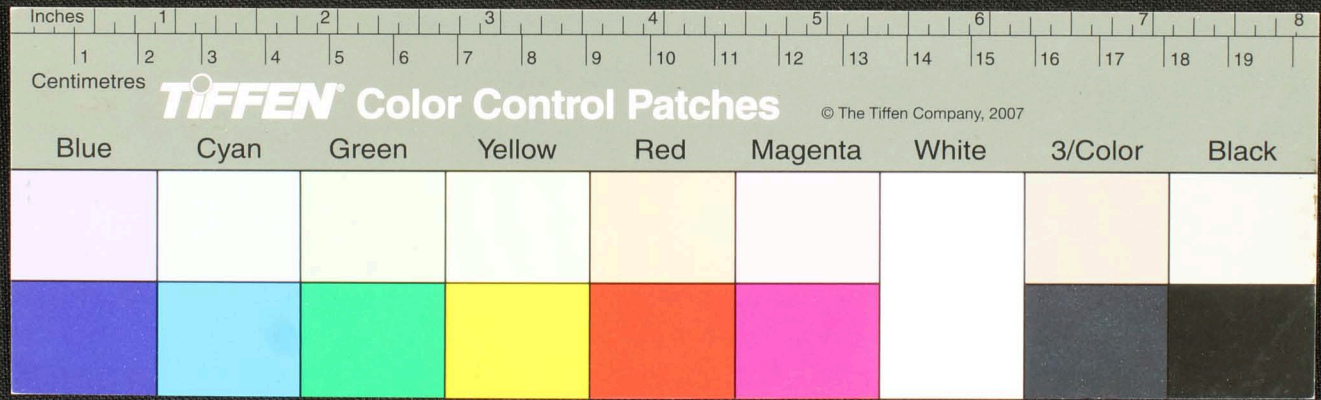


Handwritten text in Tamil script on a palm leaf manuscript strip. The text is arranged in approximately 10 horizontal lines across the length of the leaf. Two circular holes are visible, which were traditionally used for threading a cord to bind multiple leaves together. The leaf shows signs of age, including some staining and irregular edges.



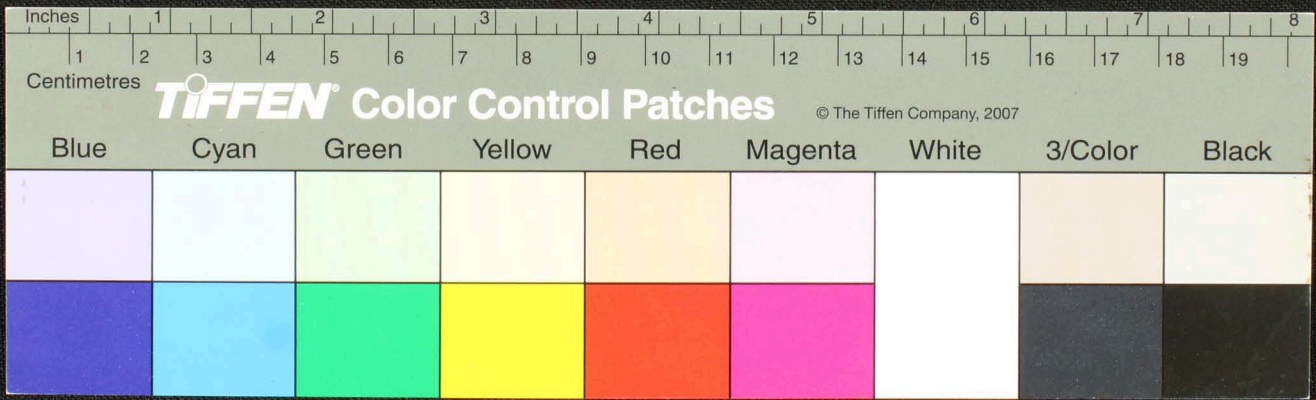


Handwritten text in Tamil script on a palm leaf manuscript. The text is arranged in approximately 10 horizontal lines. The leaf is yellowed with age and shows signs of wear, including a hole and some dark spots. The script is finely etched into the surface of the leaf.



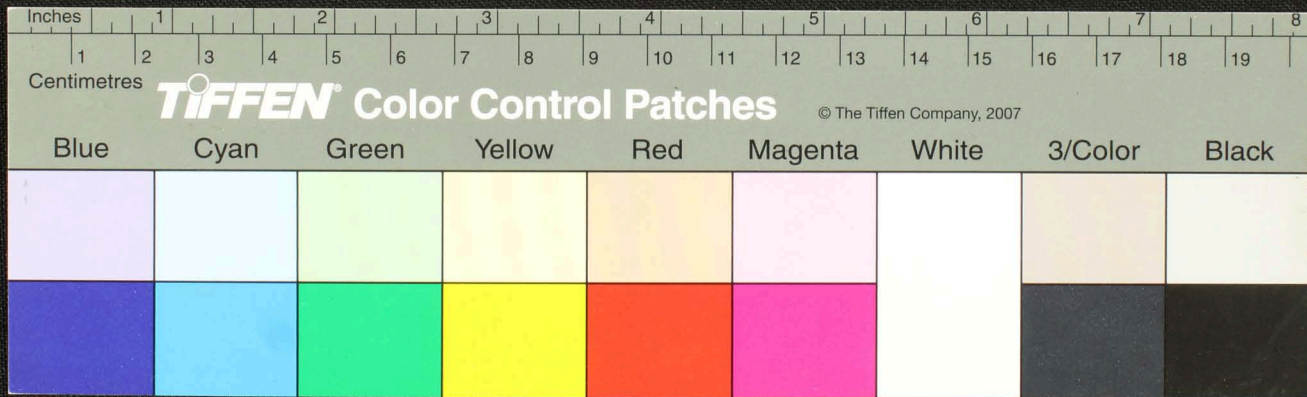


Handwritten Tamil script on a palm leaf manuscript. The text is arranged in approximately five horizontal lines. The script is finely etched into the surface of the dried leaf. The leaf shows signs of age, including a dark circular hole and irregular damage along the left edge.



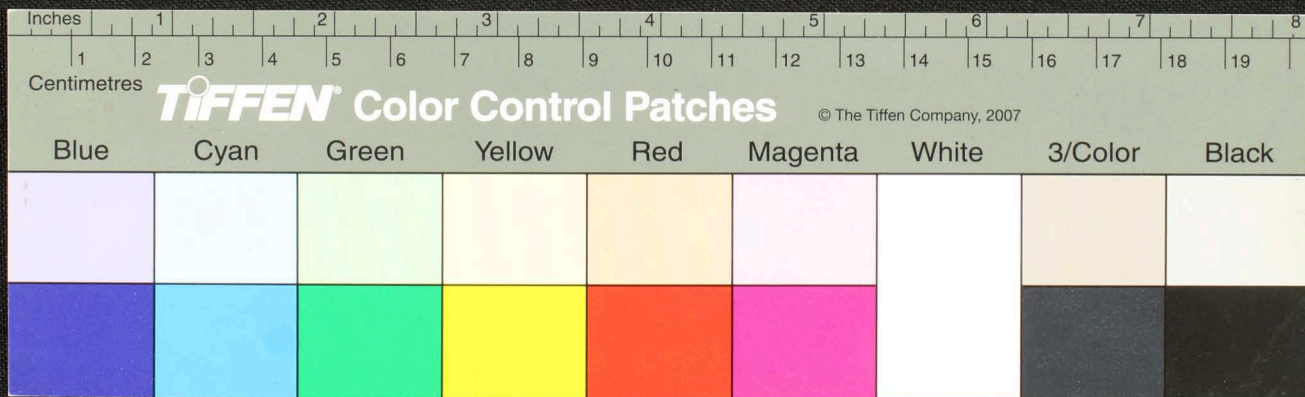


Handwritten Tamil script on a palm leaf manuscript. The text is arranged in approximately 10 horizontal lines across the length of the leaf. The script is finely etched into the surface of the dried leaf. The leaf shows signs of age, including some fraying and a small circular hole near the center.



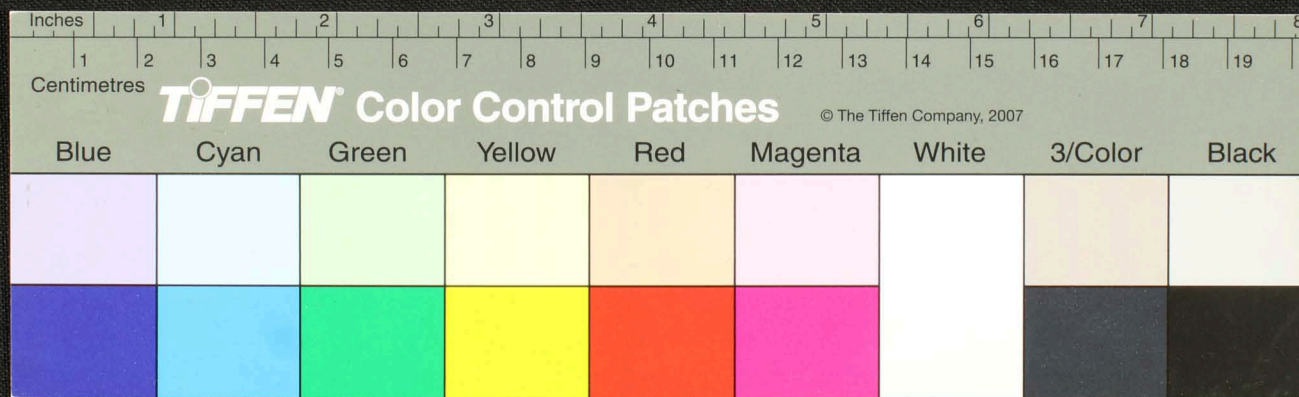


Handwritten text in Tamil script on a palm leaf manuscript. The text is arranged in approximately 10 horizontal lines across the length of the leaf. The script is finely etched into the surface of the dried leaf. A small circular hole is visible near the center of the leaf, which is a traditional feature for threading a cord to bind multiple leaves together into a book format.



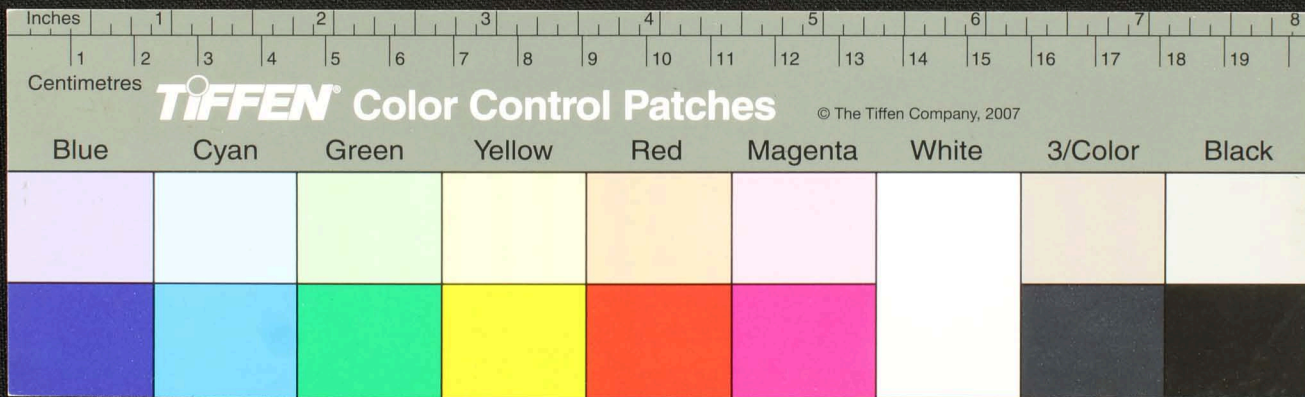


Handwritten text in Tamil script on a palm leaf manuscript. The text is arranged in approximately 10 horizontal lines across the length of the leaf. The script is finely etched into the surface of the dried leaf. A small circular hole is visible near the center of the leaf, which is a traditional feature used for threading a cord to bind multiple leaves together into a book format.





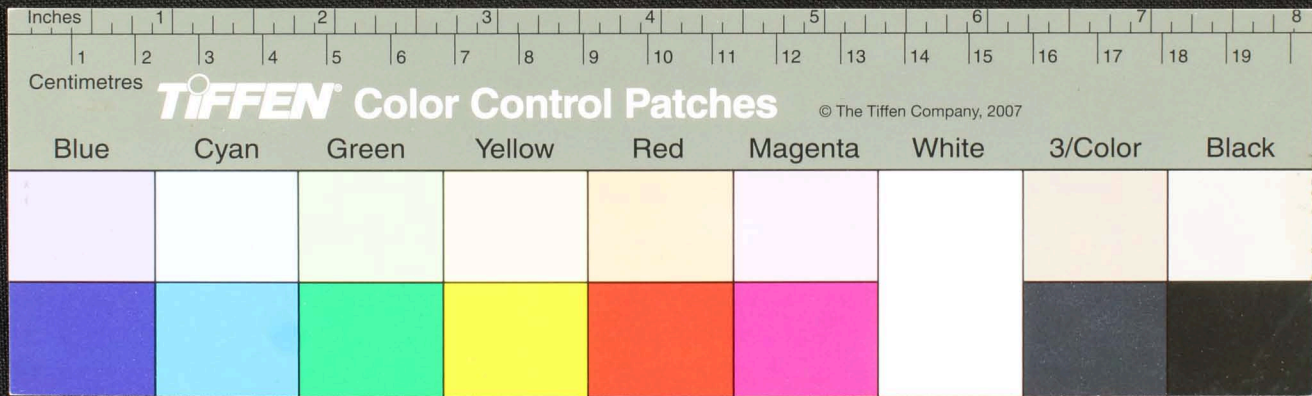
Handwritten text in an ancient script, likely Tamil, on a yellowed palm leaf manuscript. The text is arranged in approximately 10 horizontal lines across the length of the leaf. A small circular hole is visible near the center of the leaf, which is a traditional feature for threading a cord to bind multiple leaves together. The leaf shows signs of age, including some dark spots and irregular edges.





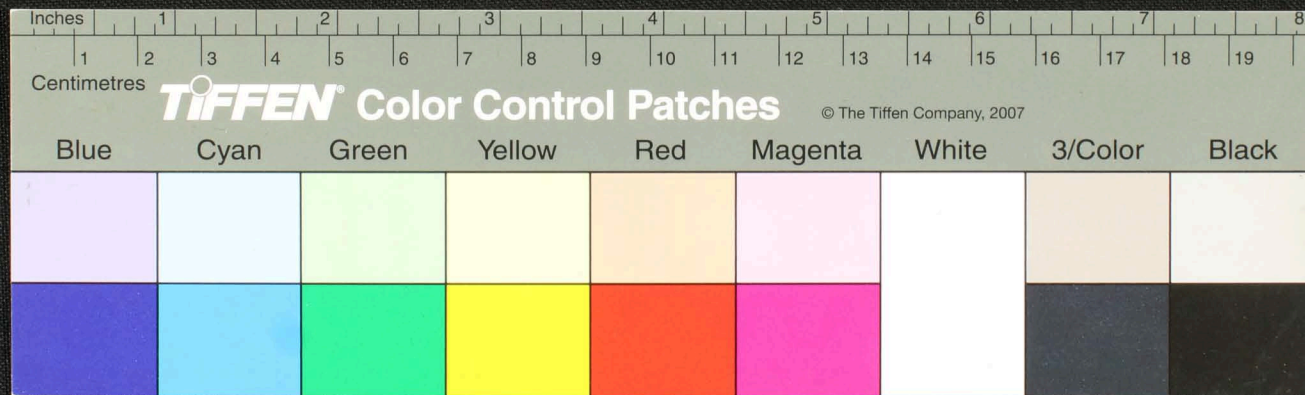






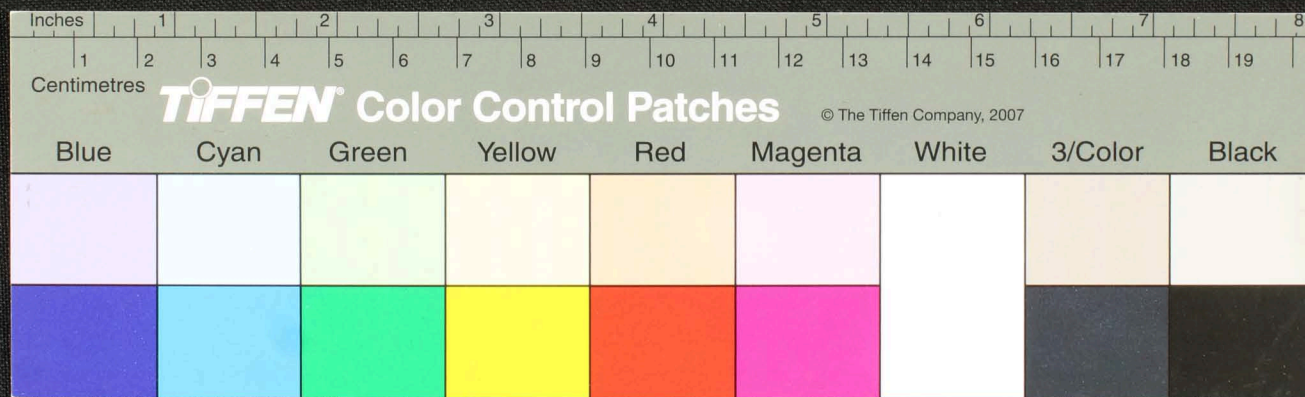


Handwritten Tamil script on a palm leaf manuscript. The text is arranged in approximately 10 horizontal lines across the length of the leaf. The script is finely etched into the surface of the dried leaf. The leaf shows signs of age and wear, with some fraying and a small circular hole near the center.



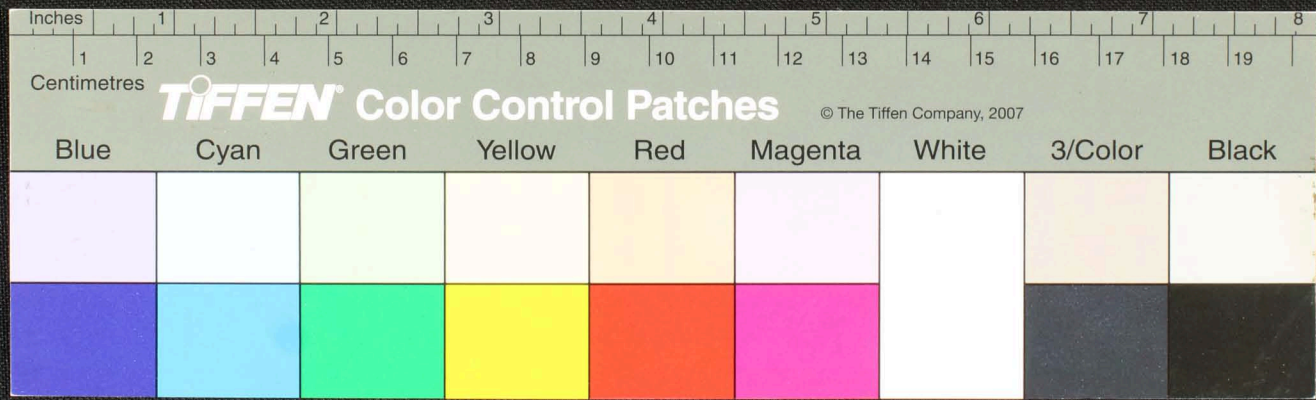


Handwritten text in Tamil script on a yellowed, damaged strip of paper. The text is arranged in approximately 10 horizontal lines. The paper shows signs of age, including a large hole on the left side and a smaller circular hole near the center. The script is dense and appears to be a form of historical or religious text.



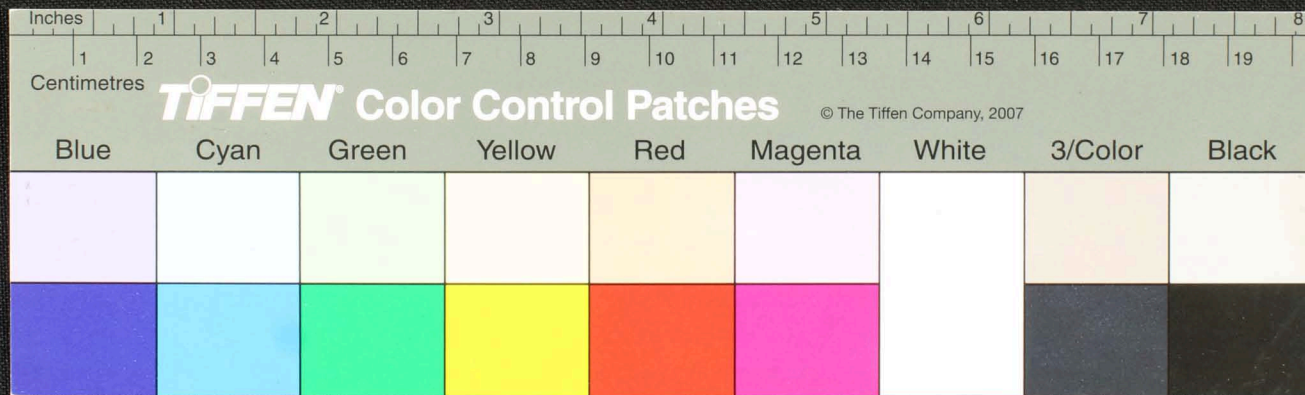


Handwritten text in Tamil script on a palm leaf manuscript. The text is arranged in approximately 10 horizontal lines across the length of the leaf. The script is finely etched into the surface of the dried leaf. The leaf shows signs of age, including a small hole on the left side and some fraying at the right end.



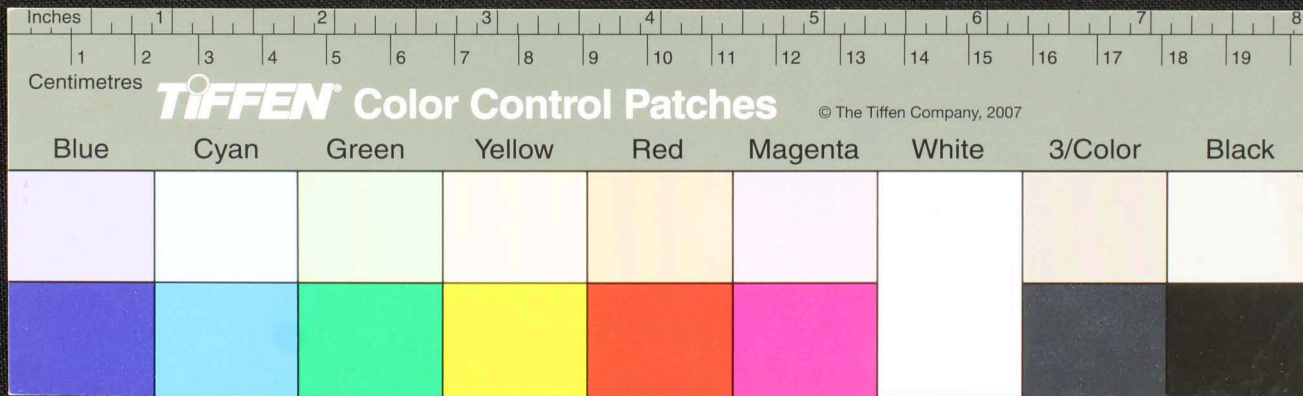


Handwritten text in Tamil script on a palm leaf manuscript. The text is arranged in approximately 10 horizontal lines across the length of the leaf. The script is finely etched into the surface of the dried leaf. The leaf shows signs of age, including a small circular hole on the left side and irregular, torn edges on both ends.

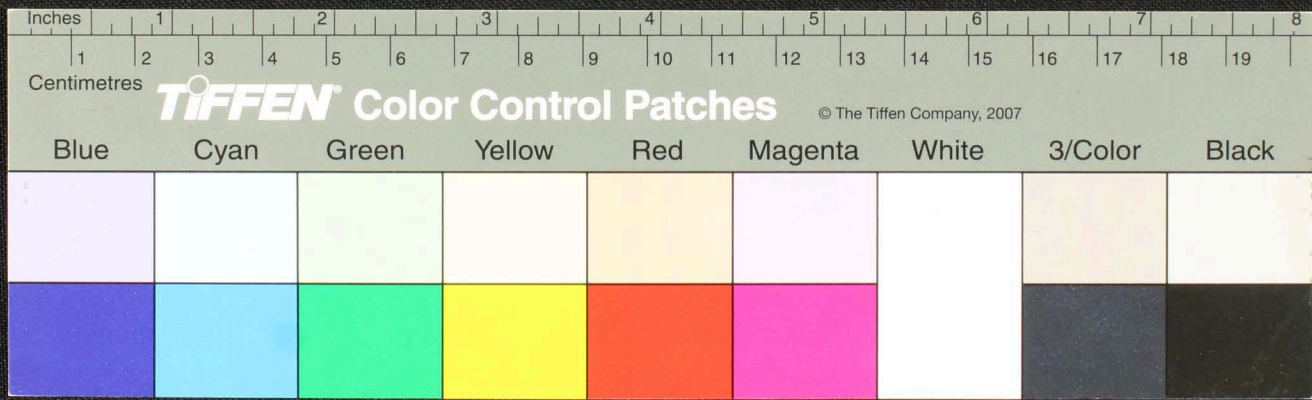




Handwritten text in Tamil script on a palm leaf manuscript. The text is arranged in approximately 10 horizontal lines across the length of the leaf. The script is finely etched into the surface of the dried leaf. The leaf shows signs of age and wear, with some fraying at the edges and a small circular hole near the center.

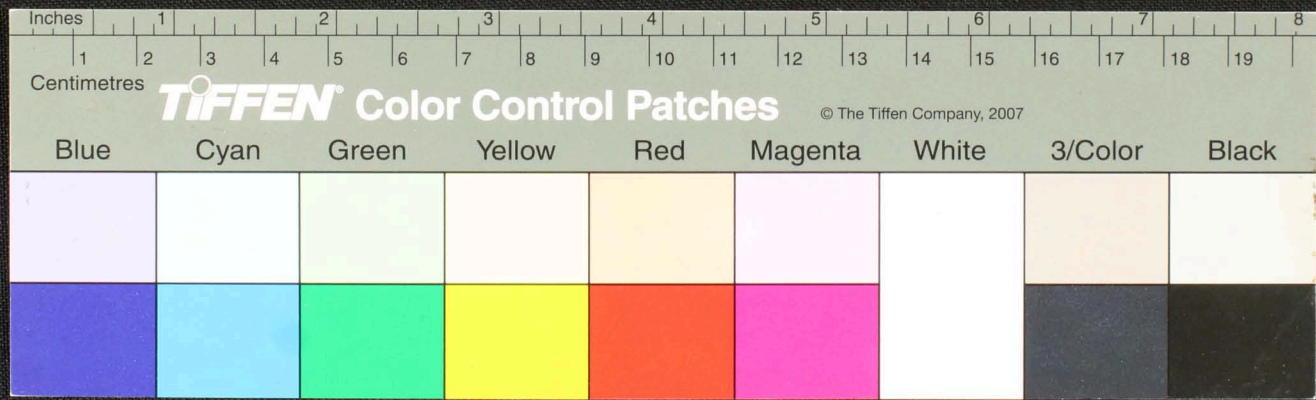




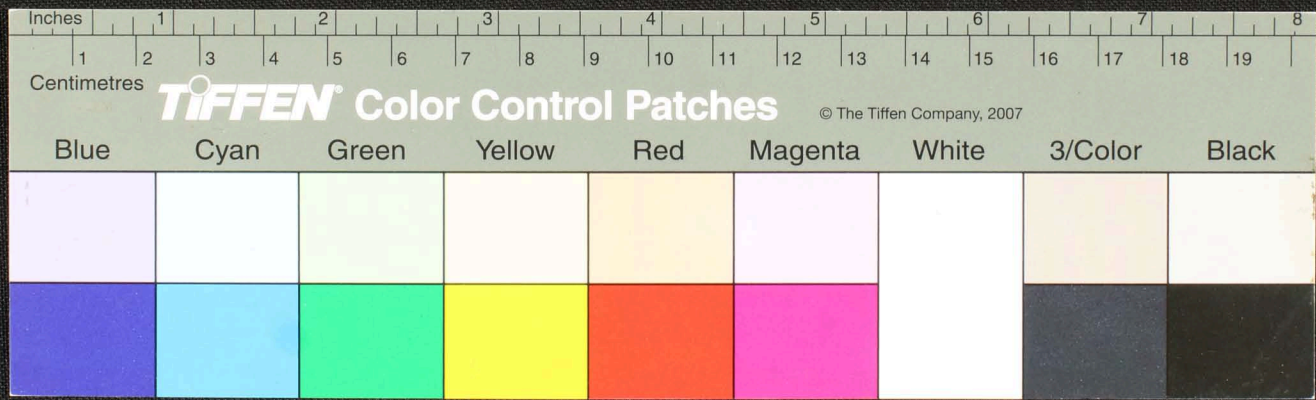




Handwritten text in Tamil script on a palm leaf manuscript. The text is arranged in approximately 10 horizontal lines across the length of the leaf. The script is finely etched into the surface of the dried leaf. The leaf shows signs of age and wear, with some dark spots and irregular edges.









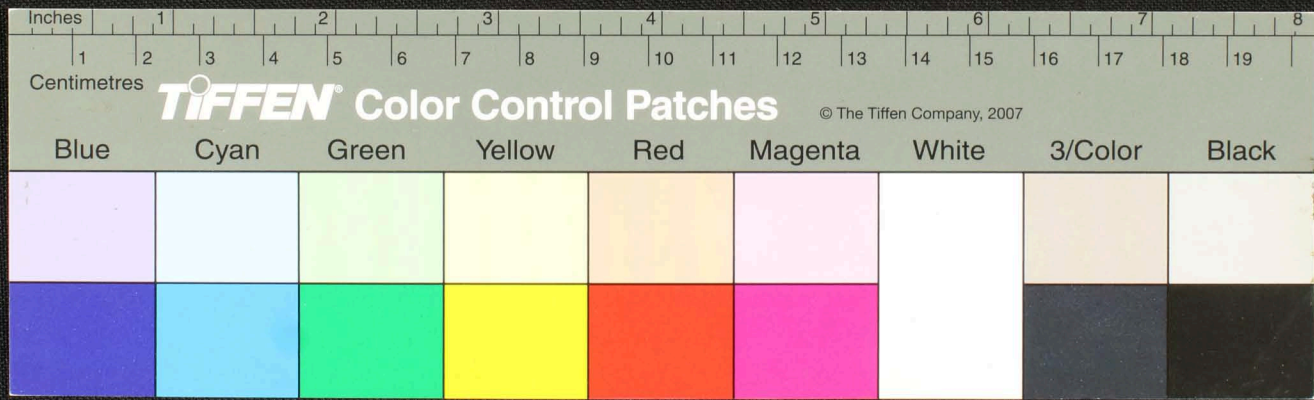






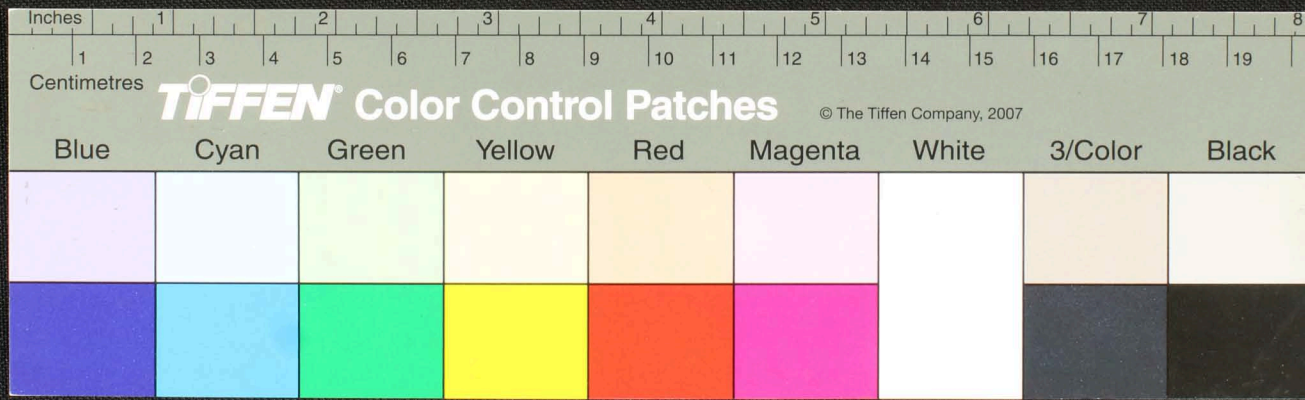


Handwritten text in an ancient script, likely Tamil, on a fragment of aged, yellowed paper. The text is arranged in approximately 12 horizontal lines. The script is finely inscribed and appears to be a form of historical record or correspondence. The paper fragment is irregularly shaped with some damage and a small circular hole near the center.



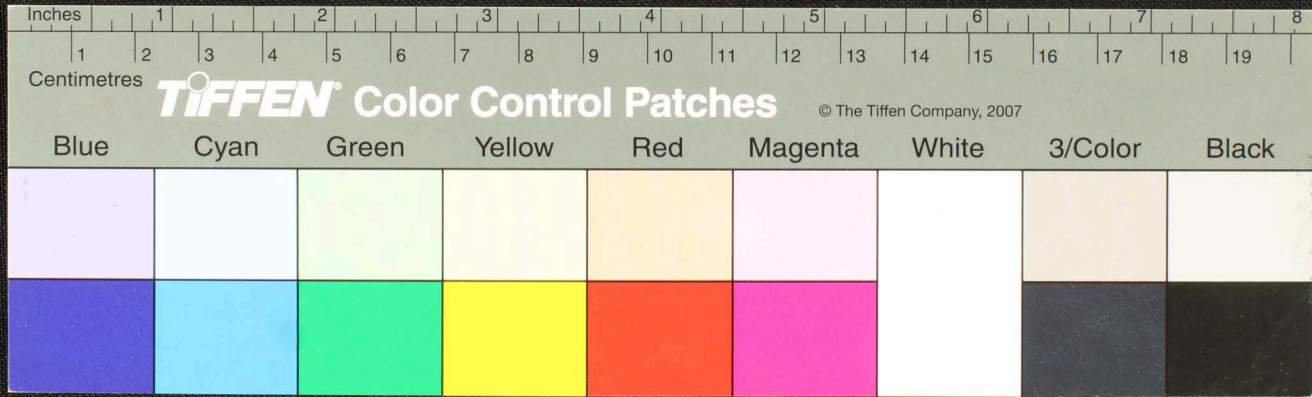


Fragment of an ancient palm-leaf manuscript with handwritten text in Tamil script. The fragment is approximately 4 inches long and 1 inch wide. It features a central hole and several dark, irregular markings, possibly from insect damage or intentional etching. The text is arranged in horizontal lines across the leaf.



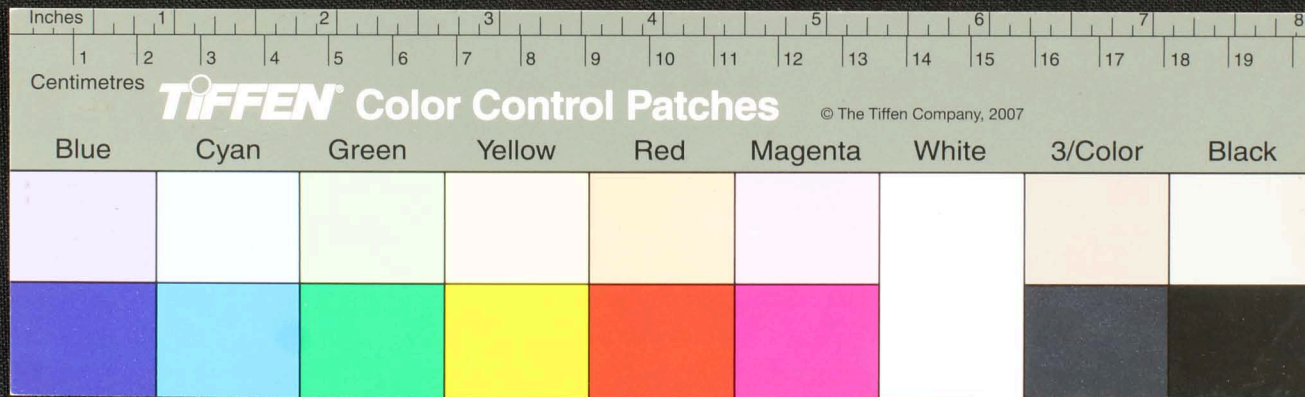


Handwritten text in Tamil script on a palm leaf manuscript. The text is arranged in approximately 10 horizontal lines across the length of the leaf. The script is finely etched into the surface of the dried leaf. The leaf shows signs of age, including some dark spots and a slightly irregular, torn edge on the right side.



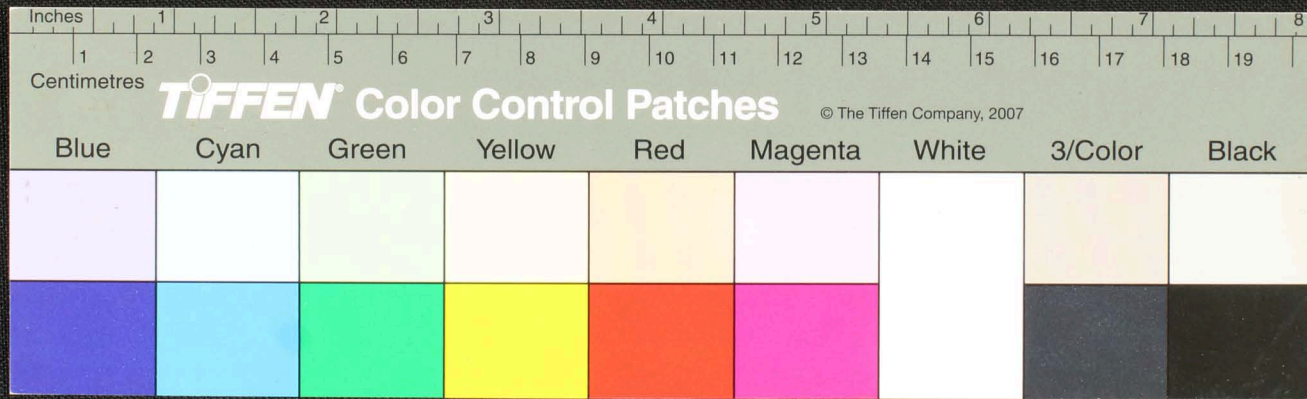


Handwritten Tamil script on a palm leaf manuscript. The text is arranged in approximately 10 horizontal lines across the length of the leaf. The script is finely etched into the surface of the dried leaf. The leaf shows signs of age, including some dark spots and irregular edges.





Handwritten text in Tamil script on a palm leaf manuscript. The text is arranged in approximately 10 horizontal lines across the length of the leaf. The script is finely etched into the surface of the dried leaf. Two circular holes are visible, which were traditionally used for threading a cord to bind multiple leaves together into a book format. The leaf shows signs of age, with some fraying and discoloration at the edges.





Handwritten text in Tamil script on a palm leaf manuscript. The text is densely packed and spans the length of the leaf. Two circular holes are visible, which were traditionally used for threading a cord to bind multiple leaves together into a book format. The leaf shows signs of age and wear, with some fraying at the edges.

